



**DEPARTMENT OF NATURAL RESOURCES
STATE OF MICHIGAN**

TIMBER SALE PROSPECTUS #6378

SCHEDULED SALE DATE AND TIME: 3:00 p.m. (local time) on March 7, 2019.

LOCATION: NEWBERRY MGMT UNIT, 5666 S STATE HWY M 123, NEWBERRY, MI 49868.

PROSPECTUS NOTE: The bidder is advised to inspect the sale area and review the location, estimated volumes, operating costs and contract terms of proposed sales. Please be aware that some landowners may request 60 days or more notice for access across their land.

Notice is hereby given that bids will be received by the Unit Manager, NEWBERRY MANAGEMENT UNIT, for certain timber on the following described lands:

McMillan March (42-016-18) / T47N, R08W, SEC. 6 , NW.

T47N, R09W, SEC. 1 , NW,NE,SW,N1/2SE.

T48N, R08W, SEC. 31, SWSW.

Luce County, Advertised Price \$219,819.85, 463.2 Acres, Hardwood, Spruce/Fir/Tamarack.

SALE NOTE: Permission for access across private land is the responsibility of the Purchaser. See Sale Spec 4.4.1 for additional information.

Harvesting is limited to the period of December 1 to April 1 for ease of access to the sale area.

Some roads may require timber mats. See Sale Spec 5.2.17 for further information.

Access may be through private land.

Point Line Red Pine (42-017-18) / T49N, R11W, SEC. 29, NWNW.

T49N, R11W, SEC. 30, NE,NESE.

Luce County, Advertised Price \$110,283.90, 109.8 Acres, Red Pine, White Pine.

SALE NOTE: No new roads will be permitted in any Payment Unit.

The County must be contacted prior to crossing or harvesting in the county road right-of-way. This applies to Payment Units 1-3 and County Road 416.

The Pine Ridge Trail is an ORV trail or route and is shown on the Timber Sale Map. See Sale Spec 5.2.39 for restrictions.

A recreation site such as a trail, pathway, or campground is within the sale area or the vicinity. Certain restrictions/specifications may be applicable including time restrictions.

BID INSTRUCTIONS (VER. 07/02/2018):

1. Scheduled Bid Location, Date, and Time (2/11)

Bids must be received by the Unit Manager, NEWBERRY OFFICE, 5666 S STATE HWY M 123, NEWBERRY, MI 49868, no later than 3:00 p.m. (local time) on March 7, 2019. For further information concerning this sale, contact Keith Magnusson at 906-293-3293 extension 4740.

2. Bidder's Qualifications (5/16)

Purchaser shall obtain workers compensation insurance to cover claims under Michigan's Worker's Disability Compensation Act of 1969 or similar employee benefit act of any other state applicable to an employee. If all or part of a timber sale was prepared by a private contractor, the contractor and that contractor's company are not permitted to bid on the timber sale contract. Bids will not be accepted from individuals or companies appearing on the DNR/FRD No-Bid List. This list contains the names of purchasers who previously failed to execute a contract within 21-days or who have a history of poor performance.

3. Preparation of Sealed Bids (5/16)

Bid Forms may be completed online thru Michigan DNR Timber Sale Online Bidding (OLB) at www.michigan.gov/timberbidding or by completing the hardcopy Bid Form found in the Timber Sale Prospectus. Hardcopy Bid Forms shall be manually signed in ink. Registration in OLB is considered your 'signature' for all bids submitted thru that system. Bid prices must be entered for each species and product in the Bid Price column for all material subject to bidding and all fill-in blanks must be completed. If erasures or other changes appear on the hardcopy Bid Form, each erasure or change must be initialed by the person signing the bid.

4. Submission of Sealed Bids (5/16)

Bid forms may be obtained from the Unit Manager or thru OLB. Bids may be submitted hardcopy or thru OLB. All hardcopy bids must be submitted on the bid form and in an envelope clearly identified as described in this section. NOTE: Only one bid form per bid envelope. Sealed bids must be submitted to the Unit office designated in the prospectus and must be submitted at or prior to the time established in the prospectus. The envelope should show on the outside (a) the sale name or number and (b) the date and time of bid opening, as shown in the prospectus. Bids received after the time specified in the sale prospectus are late bids and will be rejected.

It is possible for a bidder to submit multiple bids on a single sale. For example, a bid may be submitted hardcopy and a bid may be submitted thru OLB. Or, two bidders from the same company could both submit bids on the same sale. If this were to happen, the State would accept all bids received and award the contract accordingly. All bidding and contractual requirements would apply to all bids received.

5. Public Opening of Sealed Bids (7/16)

If conditions permit, the sealed bids will be publicly opened and posted at the time and place set in the prospectus.

If a bidder, present at a bid opening, has submitted bids on more than one sale, that bidder may withdraw their unopened bid envelopes or announce the withdrawal of their online bid after being declared the successful bidder on one sale.

6. Award of Contract (1/11)

Award of the contract will be made to the Bidder whose bid, conforming to the prospectus, is most advantageous to the State of Michigan on the basis of total value at rates bid for the estimated quantities. The State reserves the right to reject any bid or waive any minor irregularity in bids received. A written award mailed (or otherwise furnished) to the successful Bidder shall be deemed to result in a binding contract without further action by either party.

7. Down Payment (1/11)

The Bidder to whom award is made must make a down payment within 21 days of the sale award. The amount of the down payment will be calculated as shown in the Bond and Payment Schedule of this prospectus. Only cash may be used to meet this requirement.

8. Performance Security (1/11)

As guarantee of faithful performance, a cash bond, certificate of deposit, surety bond or irrevocable letter of credit (LOC) is required within 21 days of the sale award. The amount of the performance security is shown in the Bond and

Payment Schedule of this prospectus. If an LOC or surety is used, the coverage must extend for at least 6 months beyond the contract expiration.

9. Timber Sale Contract (7/18)

Additional conditions and requirements common to all timber sales are listed on the timber sale contract (R4031) and are available on line at www.michigan.gov/timber. Contact the Unit Manager for additional information or a sample contract. Within 21 days of the date of the award letter, the bidder must sign the contract and provide the required down payment, performance security, and verification of worker's disability compensation. The down payment and performance security shall be in accordance with the provisions of the timber sale contract, in the sums stated in this prospectus. If these actions are not taken, then the Bidder, the Bidder's corporation, and the corporation's principals may not be permitted to bid on State timber sales for a period of 3 months after the first offense, 6 months after the second offense, and 1 year after the third offense. An offense will only be counted against the Bidder for 5 years. In addition, the Bidder certifies that if awarded this contract, the Bidder will complete the timber sale contract in accordance with its terms and any modifications thereof including requirements to purchase, cut, and remove the included timber by the expiration date.

Payment Unit values in the State Forest Timber Sale Contract are calculated based on the advertised value of the Payment Unit as a percentage of the total advertised value of the contract. The advertised value of each Payment Unit is given in the Description of Timber by Payment Unit table on the Timber Sale Information page. For example, if the value of Payment Unit 1 is advertised as \$1,500 and the total Timber Sale value is advertised as \$10,000, the contract price for Payment Unit 1 will be 15% of the total bid price ($\$1,500/\$10,000 * 100$).

10. Disclaimer of Estimates and Bidder's Warranty of Inspection (7/16)

Before submitting this bid, the Bidder is advised and cautioned to inspect the sale area, review the requirements of the sale contract, and take other steps as may be reasonably necessary to ascertain the location, estimated volumes, construction estimates, and operating costs of the proposed sale. Failure to do so will not relieve the Bidder from responsibility for completing the contract.

The Bidder warrants that this bid is submitted solely on the basis of the Bidder's examination and inspection of the quality and quantity of the timber offered for sale and the Bidder's opinion of the value thereof and the costs of recovery. No reliance should be placed on the State of Michigan's estimates of timber quality, quantity or costs of recovery. Bidder further acknowledges that the State of Michigan: (i) expressly disclaims any warranty of fitness of timber for any purpose; (ii) offers this timber as is without any warranty of quality (merchantability) or quantity and (iii) expressly disclaims any warranty as to the quantity or quality of timber sold.

11. Certification and Chain-of-Custody (10/14)

Unless otherwise indicated in the contract under section 7 – Other Conditions of the Sale Specific Conditions & Requirements, the area encompassed by this timber sale is certified to the standards of the Forest Stewardship Council (FSC) - Certificate #SCS-FM/COC-00090N and the Sustainable Forestry Initiative (SFI) - Certificate #NSF-SFIS-5Y031-SF5. Forest products from this sale may be delivered to the mill as "FSC 100% and / or SFI certified" as long as the contractor hauling the forest products is chain-of-custody (COC) certified or covered under a COC certificate from the destination mill. The purchaser is responsible for maintaining COC after leaving the sale area.

12. Good Neighbor Authority (GNA) Requirements (7/16)

If the name of this timber sales contains the acronym GNA, it is authorized by the Good Neighbor Authority (GNA) and covered by various agreements between the U.S. Forest Service and the State. The timber sale occurs on federal land and the following conditions apply:

GNA contracts on US Forest Service land will not be awarded to purchasers on the Federal list of excluded parties. The System for Award Management (SAM) will be checked for active excluded parties prior to award of contract. In addition, the Bidder to whom award is made must complete an Assurance Regarding Felony Conviction or Tax Delinquent Status for Corporate Applicants (AD-3031).

13. Good Neighbor Authority (GNA) Requirements, con't (9/16)

Bidder certifies, by signing this bid form, that to the best of Bidder's knowledge that the following representations are accurate and complete.

- a. That the Bidder and its principals are not presently debarred, suspended, proposed for debarment, declared ineligible, or voluntary excluded from timber sales (covered transactions) by any Federal department or agency.
- b. That the Bidder and its principals have not within a 3-year period preceding this bid been convicted of or had a civil judgment rendered against them for commission of fraud or a criminal offense in connection with obtaining, attempting to obtain, or performing a public (Federal, State, or local) transaction or contract under a public transaction; violation of Federal or State antitrust statutes or commission of embezzlement, theft, forgery, bribery, falsification or destruction of records, making false statements, or receiving stolen property.
- c. That the Bidder and its principals are not presently indicted for or otherwise criminally or civilly charged by a governmental entity (Federal, State, or local) with commission of any of the offenses enumerated in paragraph b of this certification.
- d. That the Bidder and its principals have not within a 3-year period preceding this bid had one or more public transactions (Federal, State, or local) terminated for breach or default of a timber or forest product contract.

Bidders that cannot certify this requirement, in whole or in part, shall submit an explanation with their bid.

DAN EICHINGER
Director

TIMBER SALE INFORMATION

McMillan March (42-016-18)

T47N, R08W, SEC. 6; T47N, R09W, SEC. 1; T48N, R08W, SEC. 31.
Luce County (Advertised Price \$219,819.85)

SALE NOTE: Permission for access across private land is the responsibility of the Purchaser. See Sale Spec 4.4.1 for additional information.

Harvesting is limited to the period of December 1 to April 1 for ease of access to the sale area.

Some roads may require timber mats. See Sale Spec 5.2.17 for further information.

Access may be through private land.

A timber sale contract for this lump sum, sealed bid timber sale will be awarded to the responsible bidder offering the highest sealed bid price. Bids must be at or above the following advertised price for each species:

<u>PRODUCTS & SPECIES</u>	<u>ESTIMATED UNITS*</u>		<u>ADVERTISED PRICE</u>
Sawtimber			
Red Maple	231.80	MBF	\$ 142.00 / MBF
Sugar Maple	6.70	MBF	\$ 385.00 / MBF
Yellow Birch	2.10	MBF	\$ 72.00 / MBF
Pulpwood			
Balsam Fir	358.00	Cords	\$ 14.30 / Cord
Hemlock	140.00	Cords	\$ 15.00 / Cord
Mixed Hardwood	8,407.00	Cords	\$ 18.75 / Cord
Mixed Spruce	842.00	Cords	\$ 19.55 / Cord
N. White Cedar	349.00	Cords	\$ 8.20 / Cord

* The estimated units are final and not subject to adjustment. Prospective bidders are urged to examine this timber and to make their own estimates of quantity and quality.

BOND AND PAYMENT SCHEDULE:

1. A bond in the amount of \$10,991.00 to insure faithful performance of the conditions of the contract will be deposited by the successful bidder within 21 days of the sale award.
2. Cutting in any sale or unit without the required advance payment would be considered a trespass.
3. Total payment must be paid in advance or according to the following schedule:
 - (a) Ten percent (10%) of the sale value must be paid within 21 days of the sale award.
 - (b) The 10% down payment will be credited towards the first unit cut.
 - (c) Payment for each of the following units must be made before cutting begins in that unit:

PAYMENT UNIT NUMBER	PERCENT OF TOTAL SALE VALUE
01	7.8%
02	6.2%
03	15.8%
04	11.1%
05	8.7%
06	7.5%
07	2.0%
08	15.0%
09	14.7%
10	11.2%

4. If no cutting takes place, the 10% down payment will not be refunded.
5. Operations on the contract issued will terminate on 06/30/2023.

Description of Timber by Payment Unit (PU)

PU	MARKET GROUP	PRODUCT	QUANTITY	UNIT	ACRES	ADVERTISE PRICE
1	Red Maple	Sawtimber	2.6	MBF	51.5	\$17,184.95
	Yellow Birch		0.5	MBF		
	Balsam Fir	Pulpwood	34.0	Cords		
	Hemlock		53.0	Cords		
	Mixed Hardwood		458.0	Cords		
	<i>Beech</i>		6.0	<i>Cords</i>		
	<i>Black Ash</i>		5.0	<i>Cords</i>		
	<i>Red Maple</i>		336.0	<i>Cords</i>		
	<i>Yellow Birch</i>		111.0	<i>Cords</i>		
	Mixed Spruce		239.0	Cords		
	<i>Black Spruce</i>		212.0	<i>Cords</i>		
	<i>White Spruce</i>		27.0	<i>Cords</i>		
	N. White Cedar		273.0	Cords		
	2	Red Maple	Sawtimber	11.9		
Yellow Birch			1.6	MBF		
Balsam Fir		Pulpwood	17.0	Cords		
Hemlock			17.0	Cords		
Mixed Hardwood			531.0	Cords		
<i>Beech</i>			8.0	<i>Cords</i>		
<i>Red Maple</i>			496.0	<i>Cords</i>		
<i>Yellow Birch</i>			27.0	<i>Cords</i>		
Mixed Spruce			65.0	Cords		
<i>White Spruce</i>			65.0	<i>Cords</i>		
N. White Cedar			8.0	Cords		
3		Red Maple	Sawtimber	26.9	MBF	65.8
	Sugar Maple		5.0	MBF		
	Balsam Fir	Pulpwood	50.0	Cords		
	Mixed Hardwood		1,454.0	Cords		
	<i>Beech</i>	<i>Sawtimber</i>	2.5	<i>MBF</i>		
	<i>Beech</i>	<i>Pulpwood</i>	54.0	<i>Cords</i>		
	<i>Red Maple</i>		1,258.0	<i>Cords</i>		
	<i>Sugar Maple</i>		134.0	<i>Cords</i>		
	<i>Yellow Birch</i>		3.0	<i>Cords</i>		
	Mixed Spruce		67.0	Cords		
	<i>Black Spruce</i>		4.0	<i>Cords</i>		
	<i>White Spruce</i>		63.0	<i>Cords</i>		
	4	Red Maple	Sawtimber	30.5	MBF	
Sugar Maple			1.7	MBF		
Balsam Fir		Pulpwood	27.0	Cords		
Mixed Hardwood			947.0	Cords		
<i>Beech</i>			37.0	<i>Cords</i>		
<i>Red Maple</i>			848.0	<i>Cords</i>		
<i>Sugar Maple</i>			36.0	<i>Cords</i>		
<i>Yellow Birch</i>			26.0	<i>Cords</i>		
Mixed Spruce			66.0	Cords		
<i>White Spruce</i>			66.0	<i>Cords</i>		
5	Red Maple	Sawtimber	13.4	MBF	39.7	\$19,017.40
	Balsam Fir	Pulpwood	31.0	Cords		
	Hemlock		62.0	Cords		
	Mixed Hardwood		739.0	Cords		
	<i>Beech</i>		21.0	<i>Cords</i>		
	<i>Black Cherry</i>		4.0	<i>Cords</i>		
	<i>Red Maple</i>		679.0	<i>Cords</i>		
	<i>Yellow Birch</i>		35.0	<i>Cords</i>		
	Mixed Spruce		83.0	Cords		
	<i>White Spruce</i>		83.0	<i>Cords</i>		

Description of Timber by Payment Unit (PU), con't

PU	MARKET GROUP	PRODUCT	QUANTITY	UNIT	ACRES	ADVERTISE PRICE
5 con't	N. White Cedar	Pulpwood	32.0	Cords		
6	Red Maple	Sawtimber	23.2	MBF	36.0	\$16,428.50
	Balsam Fir	Pulpwood	6.0	Cords		
	Hemlock		8.0	Cords		
	Mixed Hardwood		633.0	Cords		
	<i>Beech</i>		35.0	<i>Cords</i>		
	<i>Red Maple</i>		574.0	<i>Cords</i>		
	<i>Yellow Birch</i>		24.0	<i>Cords</i>		
	Mixed Spruce		37.0	Cords		
	<i>White Spruce</i>		37.0	<i>Cords</i>		
	N. White Cedar		41.0	Cords		
7	Red Maple	Sawtimber	0.7	MBF	13.0	\$4,345.45
	Balsam Fir	Pulpwood	90.0	Cords		
	Mixed Hardwood		89.0	Cords		
	<i>Black Cherry</i>		4.0	<i>Cords</i>		
	<i>Red Maple</i>		71.0	<i>Cords</i>		
	<i>Sugar Maple</i>		14.0	<i>Cords</i>		
	Mixed Spruce		66.0	Cords		
	<i>White Spruce</i>		66.0	<i>Cords</i>		
8	Red Maple	Sawtimber	39.7	MBF	72.8	\$32,889.90
	Balsam Fir	Pulpwood	36.0	Cords		
	Mixed Hardwood		1,328.0	Cords		
	<i>Beech</i>		31.0	<i>Cords</i>		
	<i>Red Maple</i>		1,269.0	<i>Cords</i>		
	<i>Sugar Maple</i>		23.0	<i>Cords</i>		
	<i>Yellow Birch</i>		5.0	<i>Cords</i>		
	Mixed Spruce		94.0	Cords		
	<i>White Spruce</i>		94.0	<i>Cords</i>		
9	Red Maple	Sawtimber	37.4	MBF	58.8	\$32,400.30
	Balsam Fir	Pulpwood	27.0	Cords		
	Mixed Hardwood		1,322.0	Cords		
	<i>Beech</i>		20.0	<i>Cords</i>		
	<i>Red Maple</i>		1,287.0	<i>Cords</i>		
	<i>Sugar Maple</i>		7.0	<i>Cords</i>		
	<i>Yellow Birch</i>		8.0	<i>Cords</i>		
	Mixed Spruce		98.0	Cords		
	<i>White Spruce</i>		98.0	<i>Cords</i>		
10	Red Maple	Sawtimber	45.5	MBF	48.3	\$24,548.35
	Balsam Fir	Pulpwood	40.0	Cords		
	Mixed Hardwood		906.0	Cords		
	<i>Beech</i>	<i>Sawtimber</i>	1.2	<i>MBF</i>		
	<i>Beech</i>	<i>Pulpwood</i>	21.0	<i>Cords</i>		
	<i>Red Maple</i>		881.0	<i>Cords</i>		
	<i>Yellow Birch</i>		2.0	<i>Cords</i>		
	Mixed Spruce		27.0	Cords		
	<i>White Spruce</i>		27.0	<i>Cords</i>		
TOTAL:			240.6	MBF		
TOTAL:			10,101.0	Cords		

Sale Specific Conditions & Requirements

Sale Name: McMillan March

Sale Number: 42-016-18 Seq#: 1

1 - Sale Area

1.2 - Boundaries

1.2.1 - Painted boundaries (1/14)

The sale boundary and Payment Unit boundaries are marked and identified by blue, red and yellow paint. Exterior sale boundary lines against private property are marked with blue paint. Exterior sale boundary lines against state are marked with red paint. Interior Payment Unit boundaries are marked with yellow paint.

2 - Timber Specifications

2.1 - Included Timber

2.1.2 - Clearcut unit(s) w/o unmerchantable trees (8/11)

Within Payment Unit(s) 7, cut all trees which meet minimum piece specifications in 2.2 Utilization, except do not cut any yellow birch, hemlock, white pine or trees marked with green paint.

2.1.7 - Leave tree marked unit(s) (6/14)

Within Payment Unit(s) 1, 2, 5 & 6, all trees which meet minimum piece specifications in 2.2 Utilization are designated for cutting, except do not cut any white pine or trees marked with green paint.

Within Payment Unit(s) 3, 4, 8, 9 & 10, all trees which meet minimum piece specifications in 2.2 Utilization are designated for cutting, except do not cut any hemlock, white pine, cedar or trees marked with green paint.

3 - Payments

3.3 - Pre-measured Sales

3.3.4 - Dividing payment units (7/14)

Payment Unit(s) 1-6, 8, 9 & 10 may be divided at the request of the Purchaser and upon approval of the Unit Manager. Dividing Payment Units is a contract modification which requires a Timber Sale Contract Supplement.

4 - Transportation

4.1 - Construction

4.1.4 - Timber removed for construction (12/09)

Trees cut or damaged in the process of pre-approved road, landing or skid trail construction will be decked in an area separate from other Designated Timber and not removed until measured by the sale administrator. Payment will be made at the specified Purchase Unit Price.

4.1.5 - Culverts (5/14)

Roads may require the installation of culverts for cross drainage at natural drainage-ways. Culverts used shall be a minimum of 12 inches in diameter and 24 feet in length. Prior to closing the sale any culverts that were installed will need to be removed. Fill material shall also be removed from wetland soils and the area rehabbed. Contact the sale administrator prior to any necessary culvert work.

4.1.6 - Road construction (1/09)

Construction of new roads or improvements of existing roads shall be done in such a way as to minimize the environmental and visual impacts. Merchantable trees shall be cut and utilized unless otherwise directed. Non-merchantable trees shall be severed and laid flat on the ground. Slash shall be scattered, and not left in windrows and kept a minimum of 10 feet back from the road edge. Stumps shall be set upright, not left on edge, and be moved at least 10 feet away from the road edge. Disturbed soil shall be feathered into the woods and not left in berms or windrows.

4.1.7 - Road closure (10/11)

All new roads built into the sale must be blocked to vehicle traffic upon completion of the sale. Overgrown roads that are reopened shall be considered new roads. All stumps from road building and landing construction must be reserved to block

any newly constructed roads upon completion of the sale. These stumps must be scattered along the road system to prohibit vehicular movement. Contact the sale administrator for specific details of design and placement.

4.2 - Maintenance

4.2.4 - Grading (10/16)

For completion of the sale, state forest roads must be graded. In general, this will require a road grader or bull dozer to shape up the roads after forest products have been hauled off site. This includes cleaning of drainage areas, grading, crowning and filling with gravel, if necessary. The grading equipment to be used must be approved by the Unit Manager or his/her representative.

4.4 - Access

4.4.1 - Private property access (3/11)

Permission for access across private land is the responsibility of the Purchaser. The access road leading to the sale crosses Hancock Forest Management property. A road use agreement and insurance are required by Hancock Forest Management for the Purchaser to use the road on their property. Contact the Newberry Field Office for further details.

5 - Operations

5.1 - Notification

5.1.1 - Pre-sale conference (10/16)

A pre-sale conference between the Purchaser and sale administrator is required prior to beginning any operations to discuss sale access across private land and general access issues.

5.2 - Conduct of Operations

5.2.1 - Slash

5.2.1.8 - Slash height (12/08)

No slash may exceed 36 inches in height.

5.2.2 - Hazard Trees/Snags

5.2.2.1 - Den trees (10/16)

Obvious hollow and/or den trees shall be protected and left standing unless they are a safety hazard.

5.2.3 - Operating Restrictions

5.2.3.1 - Operating restrictions (9/11)

Within Payment Unit(s) 1 - 10, unless changed by written agreement, cutting, skidding, and hauling are limited to the period of December 1 to April 1. This restriction is because of the need for winter conditions to access the sale. This restriction can be waived if site conditions warrant.

5.2.17 - Timber Mats and Interlocking Composite Mats (3/18)

Some roads or skid trails may require extra protection such as that afforded by timber mats. If available, mats may be borrowed from the DNR. A Timber Sale Contract Supplement will be used to document the Purchaser's use of the DNR's mats. Contact the sale administrator regarding availability and pick-up. When available timber mats are located at the Newberry Field Office. The Purchaser is responsible for picking up and hauling the mats to and from the site. All mats must be cleaned prior to drop off. This may include, but is not limited to, power washing and brushing to remove mud and debris. A charge of \$400.00 per timber mat will be assessed for all damaged or non-returned mats. Damage for the crane/timber mats is defined as three or more broken cants.

5.4 - Soil Protection

5.4.1 - Rutting restriction, general (7/16)

Operations are to cease immediately if equipment and weather conditions result in rutting of roads and/or skid trails which is 12 inches or greater in depth and 50 feet in length. The Unit Manager or his/her representative may restrict hauling and/or skidding if ruts exceed the specified depth. With the Unit Manager or his/her representative's approval, the Purchaser may return to the area when the risk of rutting has decreased.

5.4.5 - Soil caution (11/04)

Care must be taken to minimize soil damage due to the heavy clay / poorly drained soils.

5.4.6 - Wet area protection (5/10)

No harvesting operations, including skidding and felling, are to take place within the vernal pond areas or drainages. Some of these areas have been excluded from the sale area; see Timber Sale Map. When harvesting occurs, there should be no disturbance to the vernal pond depression. All equipment, trees and tops should be kept out of this area. Within 100 feet of the pond, equipment should only be used when the soil is in a dry or frozen condition. Care must be taken by the Purchaser to identify and avoid operating in these areas of the timber sale.

5.8 - Protection of Endangered Species

5.8.5 - Protection of raptor nests (3/13)

All trees with raptor nests will be protected if found during harvesting operations. Notification will be made to the Unit Manager or his/her representative who will notify the Wildlife Biologist so an on-site evaluation and recommendation can be made, if necessary.



TIMBER SALE MAP

This information provided by authority of Part 525, 1994 PA 451, as amended.

Forest Management Unit Newberry Management Unit	County Luce	Mapped By Livermore	Date 10/08/2018	Page 1	of 1
Cruised By Grossman Forestry					

Township 48N / 47N	Range 08W / 09W	Section(s) and Subdivision(s) Section 01 - N½, SW¼, N½SE Section 06 - NW¼	Section 31 - SWSW Section 06 - NW¼	Scale 1:15,840
-----------------------	--------------------	---	---------------------------------------	-------------------

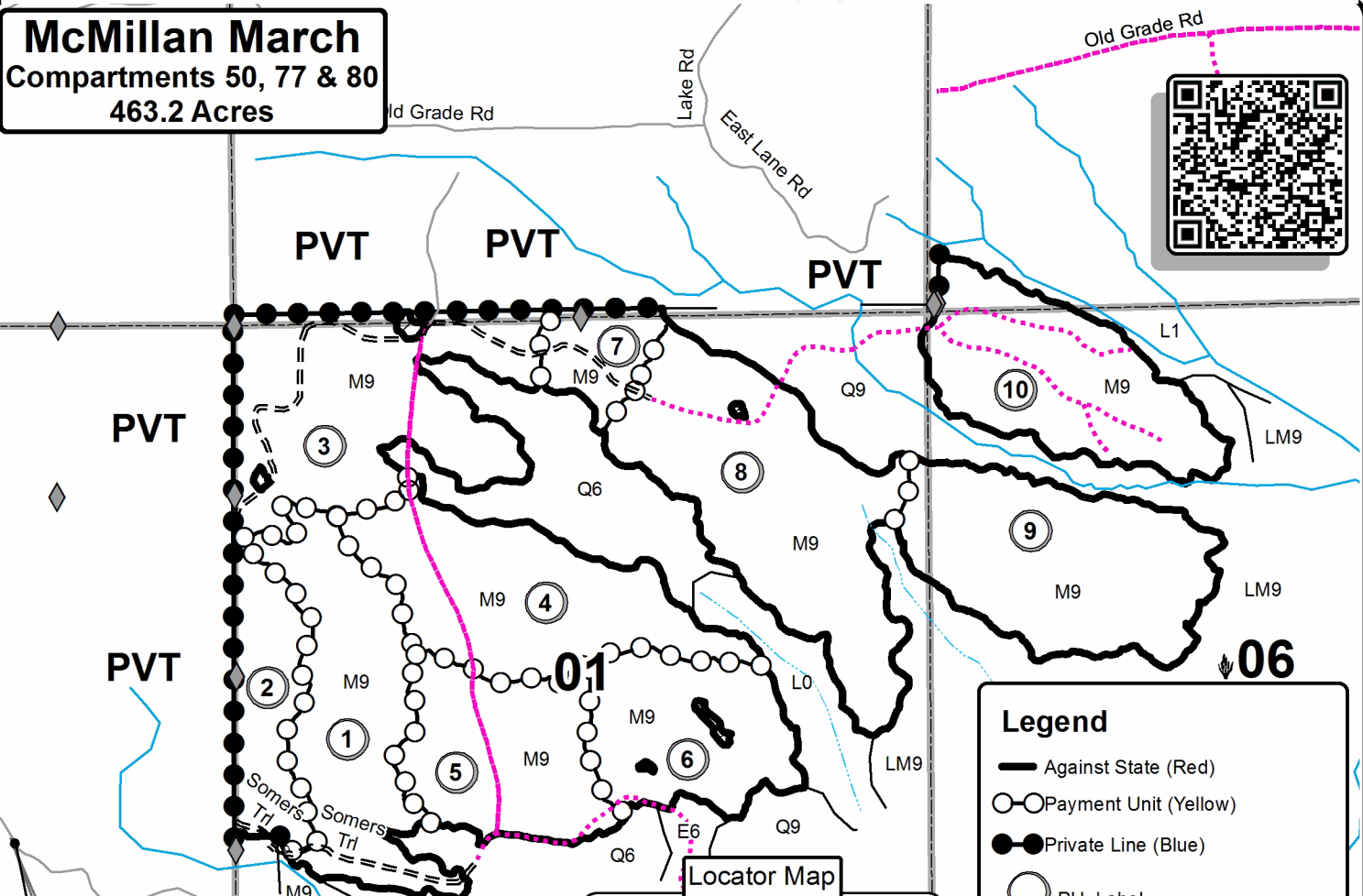
Cover Type

A = Aspen	H = Hemlock	N = Marsh	U = Upland Brush
B = Paper Birch	J = Jack Pine	O = Oak	UM = Upland Mixed
C = Cedar	L = Lowland Brush	P = Lowland Poplar	V = Bog or Marsh
D = Treed Bog	LM = Lowland Mixed	Q = Mixed Swamp Conifer	W = White Pine
E = Swamp Hdwoods	M = Mpl, Bch, Brch	R = Red Pine	X = Non Stocked
F = Spruce Fir	MC = Mixed Conifer	S = Black Spruce	Z = Water
G = Grass	MD = Mixed Deciduous	T = Tamarack	

Density

0 = Non Stocked	5 = Pole Timber Medium
1 = Seedling Sapling Poor	6 = Pole Timber Well
2 = Seedling Sapling Medium	7 = Saw Timber Poor
3 = Seedling Sapling Well	8 = Saw Timber Medium
4 = Pole Timber Poor	9 = Saw Timber Well

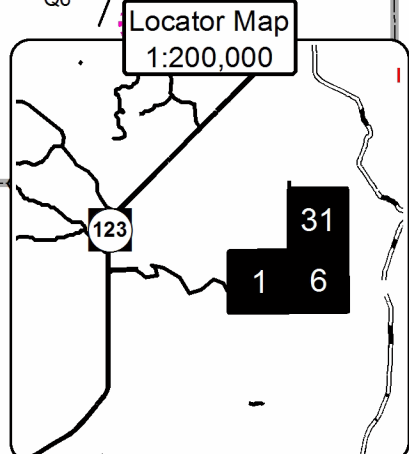
McMillan March
Compartments 50, 77 & 80
463.2 Acres



GPS Location: 46.495°N, -85.391°W

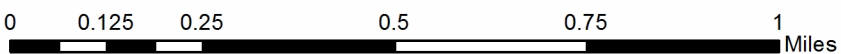
Access from M-123 approx 2.5 miles west through private ownership.

PU	Acres	PU	Acres
1	51.5	6	36.0
2	23.3	7	13.0
3	65.8	8	72.8
4	54.0	9	58.8
5	39.7	10	48.3



Legend

- Against State (Red)
- Payment Unit (Yellow)
- Private Line (Blue)
- PU_Label
- Secondary Forest Road
- Forest Access Route
- Gravel Road
- Private
- Temporary Management Access
- ~ Intermittent Stream
- ~ Perennial River
- PLSS - Sections
- 01** Section Numbers



TIMBER SALE INFORMATION

Point Line Red Pine (42-017-18)
 T49N, R11W, SEC. 29; T49N, R11W, SEC. 30.
 Luce County (Advertised Price \$110,283.90)

SALE NOTE: No new roads will be permitted in any Payment Unit.

The County must be contacted prior to crossing or harvesting in the county road right-of-way. This applies to Payment Units 1-3 and County Road 416.

The Pine Ridge Trail is an ORV trail or route and is shown on the Timber Sale Map. See Sale Spec 5.2.39 for restrictions.

A recreation site such as a trail, pathway, or campground is within the sale area or the vicinity. Certain restrictions/specifications may be applicable including time restrictions.

A timber sale contract for this lump sum, sealed bid timber sale will be awarded to the responsible bidder offering the highest sealed bid price. Bids must be at or above the following advertised price for each species:

<u>PRODUCTS & SPECIES</u>	<u>ESTIMATED UNITS*</u>	<u>ADVERTISED PRICE</u>
Pulpwood		
Black Spruce	2.00 Cords	\$ 19.55 / Cord
Jack Pine	3.00 Cords	\$ 44.25 / Cord
Paper Birch	17.00 Cords	\$ 18.25 / Cord
Red Pine	1,552.00 Cords	\$ 69.75 / Cord
White Pine	63.00 Cords	\$ 24.60 / Cord

* The total volume is statistically estimated within plus (+) or minus (-) 13.66 percent. The estimated units are final and not subject to adjustment. Prospective bidders are urged to examine this timber and to make their own estimates of quantity and quality.

BOND AND PAYMENT SCHEDULE:

1. A bond in the amount of \$5,514.00 to insure faithful performance of the conditions of the contract will be deposited by the successful bidder within 21 days of the sale award.
2. Cutting in any sale or unit without the required advance payment would be considered a trespass.
3. Total payment must be paid in advance or according to the following schedule:
 - (a) Ten percent (10%) of the sale value must be paid within 21 days of the sale award.
 - (b) The 10% down payment will be credited towards the first unit cut.
 - (c) Payment for each of the following units must be made before cutting begins in that unit:

<u>PAYMENT UNIT NUMBER</u>	<u>PERCENT OF TOTAL SALE VALUE</u>
01	27.6%
02	32.9%
03	39.5%
4. If no cutting takes place, the 10% down payment will not be refunded.
5. Operations on the contract issued will terminate on 12/31/2022.

Description of Timber by Payment Unit (PU)

PU	MARKET GROUP	PRODUCT	QUANTITY	UNIT	ACRES	ADVERTISE PRICE
1	Red Pine	Pulpwood	431.0	Cords	37.1	\$30,431.25
	White Pine		15.0	Cords		
	<i>White Pine</i>		15.0	<i>Cords</i>		
2	Red Pine	Pulpwood	519.0	Cords	37.8	\$36,298.65
	White Pine		4.0	Cords		
	<i>White Pine</i>		4.0	<i>Cords</i>		
3	Black Spruce	Pulpwood	2.0	Cords	34.9	\$43,554.00
	Jack Pine		3.0	Cords		
	Paper Birch		17.0	Cords		
	Red Pine		602.0	Cords		
	White Pine		44.0	Cords		
	<i>White Pine</i>	<i>Sawtimber</i>	2.7	<i>MBF</i>		
	<i>White Pine</i>	<i>Pulpwood</i>	39.0	<i>Cords</i>		
TOTAL:			1,637.0	Cords		

Sale Specific Conditions & Requirements

Sale Name: Point Line Red Pine

Sale Number: 42-017-18 Seq#: 1

1 - Sale Area

1.2 - Boundaries

1.2.1 - Painted boundaries (1/14)

The sale boundary and Payment Unit boundaries are marked and identified by red and green paint, along with a county road. Exterior sale boundary lines against state are marked with red paint. Interior Payment Unit boundaries are marked with green paint between Payment Units 1 & 2, and identified by County Road 416 between Payment Units 2 & 3. Green painted trees designating an interior Payment Unit boundary are only to be cut when all surrounding Payment Units have been paid.

2 - Timber Specifications

2.1 - Included Timber

2.1.2 - Clearcut unit(s) w/o unmerchantable trees (8/11)

Within Payment Unit(s) 1 - 3, cut all trees which meet minimum piece specifications in 2.2 Utilization, except do not cut oak. In addition, within Payment Unit 1, do not cut any trees ringed with green paint. Also, within Payment Unit 2, leave one large red pine tree for every 2 acres.

2.2 - Utilization

2.2.3 - Stump heights (4/07)

Stump heights within the Sale Area shall not exceed 12 inches for trees greater than 10 inches DBH and 6 inches for trees smaller than 10 inches DBH. This is to facilitate planting operations.

3 - Payments

3.3 - Pre-measured Sales

3.3.4 - Dividing payment units (7/14)

Payment Unit(s) 1 - 3 may be divided at the request of the Purchaser and upon approval of the Unit Manager. Dividing Payment Units is a contract modification which requires a Timber Sale Contract Supplement. There will be only one division per Payment Unit.

4 - Transportation

4.1 - Construction

4.1.12 - No new roads (1/12)

No new roads will be permitted in any Payment Unit. All operations are limited to existing roads. Skid trails only will be allowed.

4.2 - Maintenance

4.2.4 - Grading (10/16)

For completion of the sale, state forest roads must be graded. In general, this will require a road grader or bull dozer to shape up the roads after forest products have been hauled off site. The grading equipment to be used must be approved by the Unit Manager or his/her representative.

4.2.5 - Two wheel drive condition (2/04)

All existing trail roads on and adjacent to the sale area must be passable by two-wheel drive traffic for the duration of the sale.

4.3 - Public Right-of-Way

4.3.2 - County R-O-W (12/06)

The county must be contacted prior to crossing or harvesting in the county road R-O-W. This applies to Payment Unit(s) 1-3 and County Road 416.

5 - Operations

5.2 - Conduct of Operations

5.2.1 - Slash

5.2.1.8 - Slash height (12/08)

No slash or tree tops may exceed 24 inches in height.

5.2.1.11 - Slash for reforestation (5/07)

To facilitate reforestation, the sale area shall be left with slash evenly distributed. Bunched tops within the cutting area shall be broken up and scattered. Stumps shall be cut low to the ground. Processing sites shall not be left with a compacted layer of slash; tops from these sites shall be hauled back into the cut area and scattered.

5.2.1.12 - Slash for prescribed burning (1/05)

To facilitate prescribed burning, slash shall be moved at least 10 feet inside the sale boundary. Slash cannot be piled or placed near residual trees.

5.2.2 - Hazard Trees/Snags

5.2.2.1 - Den trees (10/16)

Obvious hollow and/or den trees shall be protected and left standing unless they are a safety hazard.

5.2.3 - Operating Restrictions

5.2.3.6 - Bark beetle restriction (12/08)

In the event drought creates a high risk of pine bark beetle infestation, pine is not to be cut during the period March 1 through July 1, unless all portions of trees greater than two inches in diameter are removed from the sale area, reduced to chips, or treated to the satisfaction of the Unit Manager or his/her representative, within fifteen days of being severed from the stump. Pine log decks, pulpwood piles and treetops that are piled for chipping in the fall or winter within a 1/4 mile of susceptible sites must be removed before March 15. Residual slash must not be placed in piles or rows and must be spread over the site for quick drying. The Department of Natural Resources will exercise this specification if the risk of damage warrants.

5.2.37 - No decking areas (12/08)

No decking is allowed within 50 feet of County Road 416 without permission of the County Road foreman.

5.2.38 - No decking against live trees (2/04)

Cut products may not be decked against unmarked or designated leave trees.

5.2.39 - ORV trail/route protection (4/18)

The Pine Ridge Trail is an ORV trail or route and is shown on the Timber Sale Map. Do not cut trees or damage posts with yellow ORV markers. All stumps within 5 feet of the trail must be cut flush with the ground. Maintain a 20 foot wide slash, debris, and rut free zone daily using the ORV trail or route as the centerline. Do not run equipment down the ORV trail or route. Skidding across the trail or route may only occur in locations approved by the sale administrator.

5.4 - Soil Protection

5.4.1 - Rutting restriction, general (7/16)

Operations are to cease immediately if equipment and weather conditions result in rutting of roads and/or skid trails which is 12 inches or greater in depth and 50 feet in length. The Unit Manager or his/her representative may restrict hauling and/or skidding if ruts exceed the specified depth. With the Unit Manager or his/her representative's approval, the Purchaser may return to the area when the risk of rutting has decreased.

5.8 - Protection of Endangered Species

5.8.5 - Protection of raptor nests (3/13)

All trees with raptor nests will be protected if found during harvesting operations. Notification will be made to the Unit Manager or his/her representative who will notify the Wildlife Biologist so an on-site evaluation and recommendation can be made, if necessary.

6 - Safety and Fire Prevention

6.2 - Signing

6.2.1 - Road posting (9/09)

The Purchaser is responsible for posting and maintaining caution signs on County Road 416 prior to beginning operations. The road must be posted at appropriate distances from the sale area to warn of logging activity and truck traffic. Signs must be removed when harvest operations are suspended or completed.

6.2.3 - Recreational trail posting (2/10)

The Purchaser is responsible for posting and maintaining caution signs on Pine Ridge Trail prior to beginning operations. The trail must be posted at appropriate distances from the sale area to warn of logging activity and truck traffic at both ends of the trail. Signs must be removed when harvest operations are suspended or completed.

7 - Other Conditions

7.3 - Contract Modifications

7.3.3 - Modification for reforestation (8/05)

When contractual work of Purchaser has been accepted for any Payment Unit identified on Sale Area Map, Payment Unit will be eliminated from the Sale Area on written notice so that reforestation operations can begin.



TIMBER SALE MAP

This information provided by authority of Part 525, 1994 PA 451, as amended.

Sale Number	42-017	Year	18
Date	10/08/18	Page	1 of 1
Scale	1:15,840		

Forest Management Unit	County	Mapped By	Payment
Newberry	Luce	Cruised By	Newberry Office
Township	Range	Section(s) and Subdivision(s)	
49N	11W	Sec 30: NE 1/4, NESE, Sec 29: NWNW	

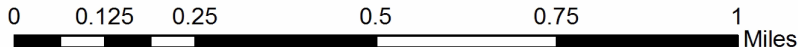
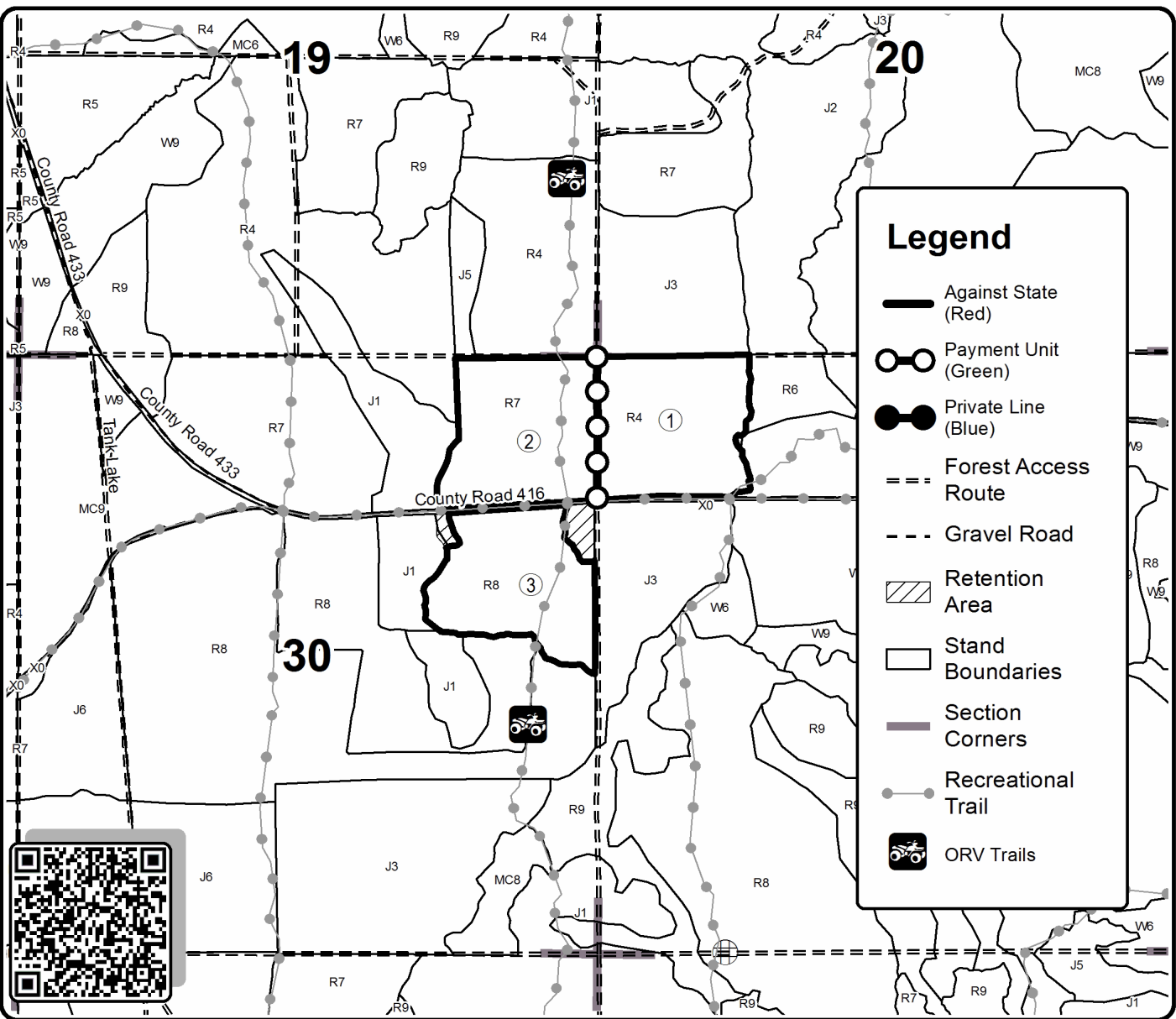
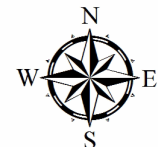
Cover Type				Density			
A = Aspen	H = Hemlock	N = Marsh	U = Upland Brush	0 = Non Stocked	5 = Pole Timber Medium		
B = Paper Birch	J = Jack Pine	O = Oak	UM = Upland Mixed	1 = Seedling Sapling Poor	6 = Pole Timber Well		
C = Cedar	L = Lowland Brush	P = Lowland Poplar	V = Bog or Marsh	2 = Seedling Sapling Medium	7 = Saw Timber Poor		
D = Treed Bog	LM = Lowland Mixed	Q = Mixed Swamp Conifer	W = White Pine	3 = Seedling Sapling Well	8 = Saw Timber Medium		
E = Swamp Hdwoods	M = Mpl, Bch, Brch	R = Red Pine	X = Non Stocked	4 = Pole Timber Poor	9 = Saw Timber Well		
F = Spruce Fir	MC = Mixed Conifer	S = Black Spruce	Z = Water				
G = Grass	MD = Mixed Deciduous	T = Tamarack					

PU	Acres
1	37.1
2	37.8
3	34.9

Point Line Pine

Compartment 14

109.8 Acres



McMillan March (42-016-18)

T47N, R08W, SEC. 6; T47N, R09W, SEC. 1; T48N, R08W, SEC. 31; Luce COUNTY

In response to the notice of sale to be held 3:00 p.m. (local time) on March 7, 2019, I am hereby submitting my sealed bid (firm offer) for the following forest products to be cut. Bids for individual species must be at or above the advertised price. All non-responsive bid forms may be rejected.

<u>PRODUCTS & SPECIES</u>	<u>ESTIMATED VOLUME*</u>	<u>ADVERTISED PRICE</u>	<u>BID PRICE/UNIT</u>
Sawtimber			
Red Maple	231.80 MBF	\$ 142.00/MBF	\$ _____
Sugar Maple	6.70 MBF	\$ 385.00/MBF	\$ _____
Yellow Birch	2.10 MBF	\$ 72.00/MBF	\$ _____
Pulpwood			
Balsam Fir	358.00 Cords	\$ 14.30/Cord	\$ _____
Hemlock	140.00 Cords	\$ 15.00/Cord	\$ _____
Mixed Hardwood	8,407.00 Cords	\$ 18.75/Cord	\$ _____
Mixed Spruce	842.00 Cords	\$ 19.55/Cord	\$ _____
N. White Cedar	349.00 Cords	\$ 8.20/Cord	\$ _____

*These estimated volumes are final and not subject to adjustment. Prospective bidders are urged to examine this timber and to make their own estimates of quantity and quality.

I understand that any or all bids may be rejected. All bids must be signed and all bid items must be bid or the bid form may be rejected. I also understand that consideration and awarding a contract will be based upon my past performance and ability to complete the contract based upon equipment and staffing subject to my control.

FEDERAL ID: ____ - ____ - ____ or SOCIAL SECURITY NUMBER: ____ - ____ - ____

Company or individual bidding: _____

Company representative's name: _____

Address: _____

City: _____ State: _____ Zip: _____

IF AVAILABLE, PLEASE PLACE THE PERSONALIZED LABEL FROM YOUR PROSPECTUS IN THE ABOVE BOX.

Individual or company representative's signature: _____ Date: _____

Phone number : _____ Email (optional): _____

THE WINNING BIDDER MUST COMPLETE THE VERIFICATION OF WORKER'S DISABILITY COMPENSATION ACT COMPLIANCE (ON REVERSE SIDE IF DOUBLE SIDED) WITHIN 21 DAYS OF SALE AWARD DATE



FOR DEPARTMENT USE ONLY	
Sale Number (XX - XXX - XX - XX)	
Forest Management Unit:	

TIMBER SALE VERIFICATION OF WORKER'S DISABILITY COMPENSATION ACT COMPLIANCE

As required by Act 317, P.A. 1969 (Worker's Compensation) and
Part 5 of Act 451 of 1994, as amended.

VERIFICATION OF WORKER'S DISABILITY COMPENSATION ACT COMPLIANCE

- This verification must be completed and submitted within 21 days of contract award and prior to the issuance of the timber sale contract.
- In addition, if boxes 2B or 2C are checked, then Notice of Exclusion or Certificate of Insurance must be submitted within twenty-one (21) days of the contract award and prior to the issuance of the timber sale contract.
- All information must be typed or printed except for written signatures.

Please Check Appropriate Categories:

1. My business is organized as (you **must** check one of the boxes below):
 - A. Sole Proprietorship (individual)
 - B. Partnership
 - C. Corporation
2. You **must** check one of the boxes below:
 - A. I certify my business is a sole proprietorship and it has no employees but the sole proprietor. I am not subject to the Worker's Compensation Laws.
 - B. I certify my business has satisfied its obligation to the Worker's Compensation Act through the use of an approved Notice of Exclusion (BWC-337, Rev. 5/96). I will provide a copy of the Notice of Exclusion within 21 days of the contract award. (For questions or a copy of the BWC-337, please call the Worker's Compensation Bureau at 517-322-1195).
 - C. I certify my business has a Worker's Compensation Policy. I will provide an original Certificate of Insurance within twenty-one (21) days of the contract award.
3. If you have checked item 2(A) or 2(B), you **must** indicate the number of **both** full-time and part-time employees, other than yourself, including family members and active partners (if none, you must enter "0").

_____ Full-time Employees

_____ Part-time Employees

Name of Business		Federal ID (or) Social Security No.	
Address		Telephone ()	
City	State	ZIP	

I hereby certify that the above information is true and correct. I agree to notify the Michigan DNR of any changes that occur in factors affecting my coverage during any of my present and future operations.

Signature of Owner or Authorized Representative

Title

Date

Please complete the "SEALED BID" information on the next page

Point Line Red Pine (42-017-18)
T49N, R11W, SEC. 29; T49N, R11W, SEC. 30; Luce COUNTY

In response to the notice of sale to be held 3:00 p.m. (local time) on March 7, 2019, I am hereby submitting my sealed bid (firm offer) for the following forest products to be cut. Bids for individual species must be at or above the advertised price. All non-responsive bid forms may be rejected.

<u>PRODUCTS & SPECIES</u>	<u>ESTIMATED VOLUME*</u>	<u>ADVERTISED PRICE</u>	<u>BID PRICE/UNIT</u>
Pulpwood			
Black Spruce	2.00 Cords	\$ 19.55/Cord	\$ _____
Jack Pine	3.00 Cords	\$ 44.25/Cord	\$ _____
Paper Birch	17.00 Cords	\$ 18.25/Cord	\$ _____
Red Pine	1,552.00 Cords	\$ 69.75/Cord	\$ _____
White Pine	63.00 Cords	\$ 24.60/Cord	\$ _____

*The volumes are statistically estimated within plus (+) or minus (-) 13.66 percent. These estimated volumes are final and not subject to adjustment. Prospective bidders are urged to examine this timber and to make their own estimates of quantity and quality.

I understand that any or all bids may be rejected. All bids must be signed and all bid items must be bid or the bid form may be rejected. I also understand that consideration and awarding a contract will be based upon my past performance and ability to complete the contract based upon equipment and staffing subject to my control.

FEDERAL ID: _____ - _____ or SOCIAL SECURITY NUMBER: _____ - _____ - _____

Company or individual bidding: _____

Company representative's name: _____

Address: _____

City: _____ State: _____ Zip: _____

IF AVAILABLE, PLEASE PLACE THE PERSONALIZED LABEL FROM YOUR PROSPECTUS IN THE ABOVE BOX.

Individual or company representative's signature: _____ Date: _____

Phone number : _____ Email (optional): _____

THE WINNING BIDDER MUST COMPLETE THE VERIFICATION OF WORKER'S DISABILITY COMPENSATION ACT COMPLIANCE (ON REVERSE SIDE IF DOUBLE SIDED) WITHIN 21 DAYS OF SALE AWARD DATE



FOR DEPARTMENT USE ONLY	
Sale Number (XX - XXX - XX - XX)	
Forest Management Unit:	

TIMBER SALE VERIFICATION OF WORKER'S DISABILITY COMPENSATION ACT COMPLIANCE

As required by Act 317, P.A. 1969 (Worker's Compensation) and
Part 5 of Act 451 of 1994, as amended.

VERIFICATION OF WORKER'S DISABILITY COMPENSATION ACT COMPLIANCE

- This verification must be completed and submitted within 21 days of contract award and prior to the issuance of the timber sale contract.
- In addition, if boxes 2B or 2C are checked, then Notice of Exclusion or Certificate of Insurance must be submitted within twenty-one (21) days of the contract award and prior to the issuance of the timber sale contract.
- All information must be typed or printed except for written signatures.

Please Check Appropriate Categories:

1. My business is organized as (you **must** check one of the boxes below):
 - A. Sole Proprietorship (individual)
 - B. Partnership
 - C. Corporation
2. You **must** check one of the boxes below:
 - A. I certify my business is a sole proprietorship and it has no employees but the sole proprietor. I am not subject to the Worker's Compensation Laws.
 - B. I certify my business has satisfied its obligation to the Worker's Compensation Act through the use of an approved Notice of Exclusion (BWC-337, Rev. 5/96). I will provide a copy of the Notice of Exclusion within 21 days of the contract award. (For questions or a copy of the BWC-337, please call the Worker's Compensation Bureau at 517-322-1195).
 - C. I certify my business has a Worker's Compensation Policy. I will provide an original Certificate of Insurance within twenty-one (21) days of the contract award.
3. If you have checked item 2(A) or 2(B), you **must** indicate the number of **both** full-time and part-time employees, other than yourself, including family members and active partners (if none, you must enter "0").

_____ Full-time Employees

_____ Part-time Employees

Name of Business		Federal ID (or) Social Security No.	
Address		Telephone ()	
City	State	ZIP	

I hereby certify that the above information is true and correct. I agree to notify the Michigan DNR of any changes that occur in factors affecting my coverage during any of my present and future operations.

Signature of Owner or Authorized Representative

Title

Date

Please complete the "SEALED BID" information on the next page