



**DEPARTMENT OF NATURAL RESOURCES
STATE OF MICHIGAN**

TIMBER SALE PROSPECTUS #6446

SCHEDULED SALE DATE AND TIME: 2:00 p.m. (local time) on May 22, 2019.

LOCATION: SHINGLETON MGMT UNIT, PO BOX 67, M 28 WEST, SHINGLETON, MI 49884.

PROSPECTUS NOTE: The bidder is advised to inspect the sale area and review the location, estimated volumes, operating costs and contract terms of proposed sales. Please be aware that some landowners may request 60 days or more notice for access across their land.

Notice is hereby given that bids will be received by the Unit Manager, SHINGLETON MANAGEMENT UNIT, for certain timber on the following described lands:

Stumpy Pine (41-020-18) / T48N, R16W, SEC. 1 , N1/2NW,NE,NESW,SE.

T48N, R16W, SEC. 12, N1/2NE.

T48N, R16W, SEC. 2 , NENE.

T49N, R16W, SEC. 36, S1/2NE,NESW,S1/2SW,SE.

Alger County, Advertised Price \$260,606.35, 669.5 Acres, Red Pine, Hardwood.

SALE NOTE: Extensive road work is required on this sale. The advertised price has been reduced by the estimate cost of this road work to off-set the additional expense. See Sale Spec 4.1.8 for additional information.

A recreation site such as a trail, pathway, or campground is within the sale area or the vicinity. Certain restrictions/specifications may be applicable including time restrictions.

Fielder's Choice Hardwood (41-025-18) / T47N, R15W, SEC. 27, SWNW,W1/2SW.

T47N, R15W, SEC. 28, NE,NESE.

Schoolcraft County, Advertised Price \$11,145.80, 86.5 Acres, Hardwood, Spruce/Fir/Tamarack.

SALE NOTE: The Purchaser shall not cut live or dead trees, or operate equipment within historical sites. Historical sites are excluded with the red line and indicated as "Special Protection Area" on the Timber Sale Map. See Sale Spec. 5.7.1 for additional information.

Bigger Stair Steps (41-035-17) / T43N, R16W, SEC. 20, NW,N1/2SW,SESW,SESE.

T43N, R16W, SEC. 28, NWSW,SESW.

T43N, R16W, SEC. 29, W1/2NW,E1/2NE,SW,SE.

T43N, R16W, SEC. 30, SENE,E1/2SE.

T43N, R16W, SEC. 31, NENE.

T43N, R16W, SEC. 32, NWNW,NWNE.

T43N, R16W, SEC. 33, NENW,NWNE,S1/2NE,E1/2SW,N1/2SE.

Schoolcraft County, Advertised Price \$180,972.55, 269.3 Acres, Spruce/Fir/Tamarack, Red Pine.

SALE NOTE: Road work is required on this sale. See Sale Spec 4.1.8 for additional information.

Permission for access across private land is the responsibility of the Purchaser.

Within Payment Units 10 - 14, harvesting is limited to the period of December 1 through March 31.

Haywire Grade is an ORV trail or route and is shown on the Timber Sale Map. See Sale Spec 5.2.39 for additional information.

The Haywire Grade is a snowmobile trail and is used to access this sale. See Sale Spec 5.2.41 for restrictions.

If weather conditions during the operating period of this contract prevent harvesting, this sale may qualify for a weather-related extension. If approved, the normal extension fee would be waived. To qualify, there must be a documented attempt each year to harvest in the difficult portion of the sale.

A recreation site such as a trail, pathway, or campground is within the sale area or the vicinity. Certain restrictions/specifications may be applicable including time restrictions. Access may be through other public land.

BID INSTRUCTIONS (VER. 07/02/2018):

1. Scheduled Bid Location, Date, and Time (2/11)

Bids must be received by the Unit Manager, SHINGLETON OFFICE, PO Box 67 M 28 West, Shingleton, MI 49884, no later than 2:00 p.m. (local time) on May 22, 2019. For further information concerning this sale, contact Robert Burnham at 906-452-6227 extension 240.

2. Bidder's Qualifications (5/16)

Purchaser shall obtain workers compensation insurance to cover claims under Michigan's Worker's Disability Compensation Act of 1969 or similar employee benefit act of any other state applicable to an employee. If all or part of a timber sale was prepared by a private contractor, the contractor and that contractor's company are not permitted to bid on the timber sale contract. Bids will not be accepted from individuals or companies appearing on the DNR/FRD No-Bid List. This list contains the names of purchasers who previously failed to execute a contract within 21-days or who have a history of poor performance.

3. Preparation of Sealed Bids (5/16)

Bid Forms may be completed online thru Michigan DNR Timber Sale Online Bidding (OLB) at www.michigan.gov/timberbidding or by completing the hardcopy Bid Form found in the Timber Sale Prospectus. Hardcopy Bid Forms shall be manually signed in ink. Registration in OLB is considered your 'signature' for all bids submitted thru that system. Bid prices must be entered for each species and product in the Bid Price column for all material subject to bidding and all fill-in blanks must be completed. If erasures or other changes appear on the hardcopy Bid Form, each erasure or change must be initialed by the person signing the bid.

4. Submission of Sealed Bids (5/16)

Bid forms may be obtained from the Unit Manager or thru OLB. Bids may be submitted hardcopy or thru OLB. All hardcopy bids must be submitted on the bid form and in an envelope clearly identified as described in this section. NOTE: Only one bid form per bid envelope. Sealed bids must be submitted to the Unit office designated in the prospectus and must be submitted at or prior to the time established in the prospectus. The envelope should show on the outside (a) the sale name or number and (b) the date and time of bid opening, as shown in the prospectus. Bids received after the time specified in the sale prospectus are late bids and will be rejected.

It is possible for a bidder to submit multiple bids on a single sale. For example, a bid may be submitted hardcopy and a bid may be submitted thru OLB. Or, two bidders from the same company could both submit bids on the same sale. If this were to happen, the State would accept all bids received and award the contract accordingly. All bidding and contractual requirements would apply to all bids received.

5. Public Opening of Sealed Bids (7/16)

If conditions permit, the sealed bids will be publicly opened and posted at the time and place set in the prospectus.

If a bidder, present at a bid opening, has submitted bids on more than one sale, that bidder may withdraw their unopened bid envelopes or announce the withdrawal of their online bid after being declared the successful bidder on one sale.

6. Award of Contract (1/11)

Award of the contract will be made to the Bidder whose bid, conforming to the prospectus, is most advantageous to the State of Michigan on the basis of total value at rates bid for the estimated quantities. The State reserves the right to reject any bid or waive any minor irregularity in bids received. A written award mailed (or otherwise furnished) to the successful Bidder shall be deemed to result in a binding contract without further action by either party.

7. Down Payment (1/11)

The Bidder to whom award is made must make a down payment within 21 days of the sale award. The amount of the down payment will be calculated as shown in the Bond and Payment Schedule of this prospectus. Only cash may be used to meet this requirement.

8. Performance Security (1/11)

As guarantee of faithful performance, a cash bond, certificate of deposit, surety bond or irrevocable letter of credit (LOC) is required within 21 days of the sale award. The amount of the performance security is shown in the Bond and

Payment Schedule of this prospectus. If an LOC or surety is used, the coverage must extend for at least 6 months beyond the contract expiration.

9. Timber Sale Contract (7/18)

Additional conditions and requirements common to all timber sales are listed on the timber sale contract (R4031) and are available on line at www.michigan.gov/timber. Contact the Unit Manager for additional information or a sample contract. Within 21 days of the date of the award letter, the bidder must sign the contract and provide the required down payment, performance security, and verification of worker's disability compensation. The down payment and performance security shall be in accordance with the provisions of the timber sale contract, in the sums stated in this prospectus. If these actions are not taken, then the Bidder, the Bidder's corporation, and the corporation's principals may not be permitted to bid on State timber sales for a period of 3 months after the first offense, 6 months after the second offense, and 1 year after the third offense. An offense will only be counted against the Bidder for 5 years. In addition, the Bidder certifies that if awarded this contract, the Bidder will complete the timber sale contract in accordance with its terms and any modifications thereof including requirements to purchase, cut, and remove the included timber by the expiration date.

Payment Unit values in the State Forest Timber Sale Contract are calculated based on the advertised value of the Payment Unit as a percentage of the total advertised value of the contract. The advertised value of each Payment Unit is given in the Description of Timber by Payment Unit table on the Timber Sale Information page. For example, if the value of Payment Unit 1 is advertised as \$1,500 and the total Timber Sale value is advertised as \$10,000, the contract price for Payment Unit 1 will be 15% of the total bid price ($\$1,500/\$10,000 * 100$).

10. Disclaimer of Estimates and Bidder's Warranty of Inspection (7/16)

Before submitting this bid, the Bidder is advised and cautioned to inspect the sale area, review the requirements of the sale contract, and take other steps as may be reasonably necessary to ascertain the location, estimated volumes, construction estimates, and operating costs of the proposed sale. Failure to do so will not relieve the Bidder from responsibility for completing the contract.

The Bidder warrants that this bid is submitted solely on the basis of the Bidder's examination and inspection of the quality and quantity of the timber offered for sale and the Bidder's opinion of the value thereof and the costs of recovery. No reliance should be placed on the State of Michigan's estimates of timber quality, quantity or costs of recovery. Bidder further acknowledges that the State of Michigan: (i) expressly disclaims any warranty of fitness of timber for any purpose; (ii) offers this timber as is without any warranty of quality (merchantability) or quantity and (iii) expressly disclaims any warranty as to the quantity or quality of timber sold.

11. Certification and Chain-of-Custody (10/14)

Unless otherwise indicated in the contract under section 7 – Other Conditions of the Sale Specific Conditions & Requirements, the area encompassed by this timber sale is certified to the standards of the Forest Stewardship Council (FSC) - Certificate #SCS-FM/COC-00090N and the Sustainable Forestry Initiative (SFI) - Certificate #NSF-SFIS-5Y031-SF5. Forest products from this sale may be delivered to the mill as "FSC 100% and / or SFI certified" as long as the contractor hauling the forest products is chain-of-custody (COC) certified or covered under a COC certificate from the destination mill. The purchaser is responsible for maintaining COC after leaving the sale area.

12. Good Neighbor Authority (GNA) Requirements (7/16)

If the name of this timber sales contains the acronym GNA, it is authorized by the Good Neighbor Authority (GNA) and covered by various agreements between the U.S. Forest Service and the State. The timber sale occurs on federal land and the following conditions apply:

GNA contracts on US Forest Service land will not be awarded to purchasers on the Federal list of excluded parties. The System for Award Management (SAM) will be checked for active excluded parties prior to award of contract. In addition, the Bidder to whom award is made must complete an Assurance Regarding Felony Conviction or Tax Delinquent Status for Corporate Applicants (AD-3031).

13. Good Neighbor Authority (GNA) Requirements, con't (9/16)

Bidder certifies, by signing this bid form, that to the best of Bidder's knowledge that the following representations are accurate and complete.

- a. That the Bidder and its principals are not presently debarred, suspended, proposed for debarment, declared ineligible, or voluntary excluded from timber sales (covered transactions) by any Federal department or agency.
- b. That the Bidder and its principals have not within a 3-year period preceding this bid been convicted of or had a civil judgment rendered against them for commission of fraud or a criminal offense in connection with obtaining, attempting to obtain, or performing a public (Federal, State, or local) transaction or contract under a public transaction; violation of Federal or State antitrust statutes or commission of embezzlement, theft, forgery, bribery, falsification or destruction of records, making false statements, or receiving stolen property.
- c. That the Bidder and its principals are not presently indicted for or otherwise criminally or civilly charged by a governmental entity (Federal, State, or local) with commission of any of the offenses enumerated in paragraph b of this certification.
- d. That the Bidder and its principals have not within a 3-year period preceding this bid had one or more public transactions (Federal, State, or local) terminated for breach or default of a timber or forest product contract.

Bidders that cannot certify this requirement, in whole or in part, shall submit an explanation with their bid.

DAN EICHINGER
Director

TIMBER SALE INFORMATION

Stumpy Pine (41-020-18)

T48N, R16W, SEC. 1; T48N, R16W, SEC. 12; T48N, R16W, SEC. 2; T49N, R16W, SEC. 36.

Alger County (Advertised Price \$260,606.35)

SALE NOTE: Extensive road work is required on this sale. The advertised price has been reduced by the estimate cost of this road work to off-set the additional expense. See Sale Spec 4.1.8 for additional information.

A recreation site such as a trail, pathway, or campground is within the sale area or the vicinity. Certain restrictions/specifications may be applicable including time restrictions.

A timber sale contract for this lump sum, sealed bid timber sale will be awarded to the responsible bidder offering the highest sealed bid price. Bids must be at or above the following advertised price for each species:

<u>PRODUCTS & SPECIES</u>	<u>ESTIMATED UNITS*</u>		<u>ADVERTISED PRICE</u>
Pulpwood			
Balsam Fir	50.00	Cords	\$ 20.35 / Cord
Hemlock	33.00	Cords	\$ 10.30 / Cord
Jack Pine	364.00	Cords	\$ 35.65 / Cord
Mixed Aspen	147.00	Cords	\$ 28.15 / Cord
Mixed Hardwood	513.00	Cords	\$ 22.75 / Cord
Paper Birch	76.00	Cords	\$ 13.10 / Cord
Red Pine	3,763.00	Cords	\$ 55.50 / Cord
White Pine	501.00	Cords	\$ 22.50 / Cord
White Spruce	247.00	Cords	\$ 37.85 / Cord

* The estimated units are final and not subject to adjustment. Prospective bidders are urged to examine this timber and to make their own estimates of quantity and quality.

BOND AND PAYMENT SCHEDULE:

1. A bond in the amount of \$13,030.00 to insure faithful performance of the conditions of the contract will be deposited by the successful bidder within 21 days of the sale award.
2. Cutting in any sale or unit without the required advance payment would be considered a trespass.
3. Total payment must be paid in advance or according to the following schedule:
 - (a) Ten percent (10%) of the sale value must be paid within 21 days of the sale award.
 - (b) The 10% down payment will be credited towards the first unit cut.
 - (c) Payment for each of the following units must be made before cutting begins in that unit:

PAYMENT UNIT NUMBER	PERCENT OF TOTAL SALE VALUE
01	4.9%
02	2.3%
03	6.3%
04	11.0%
05	6.0%
06	1.6%
07	5.8%
08	0.4%
09	4.6%
10	11.3%
11	7.7%
12	9.8%
13	12.1%
14	9.0%
15	0.3%
16	1.5%
17	3.2%
18	2.2%

4. If no cutting takes place, the 10% down payment will not be refunded.
5. Operations on the contract issued will terminate on 06/30/2022.

Description of Timber by Payment Unit (PU)

PU	MARKET GROUP	PRODUCT	QUANTITY	UNIT	ACRES	ADVERTISE PRICE
1	Jack Pine	Pulpwood	6.0	Cords	24.3	\$12,701.40
	Red Pine		225.0	Cords		
2	Jack Pine	Pulpwood	3.0	Cords	23.7	\$6,045.45
	Red Pine		107.0	Cords		
3	Jack Pine	Pulpwood	237.0	Cords	57.0	\$16,330.05
	Red Pine		142.0	Cords		
4	Jack Pine	Pulpwood	84.0	Cords	98.8	\$28,623.60
	Mixed Aspen		16.0	Cords		
	<i>Quaking Aspen</i>		16.0	<i>Cords</i>		
	Mixed Hardwood		12.0	Cords		
	<i>Red Maple</i>		12.0	<i>Cords</i>		
	Red Pine		405.0	Cords		
	White Pine		81.0	Cords		
	White Spruce		16.0	Cords		
5	Jack Pine	Pulpwood	13.0	Cords	28.6	\$15,542.95
	Red Pine		234.0	Cords		
	White Pine		93.0	Cords		
6	Mixed Aspen	Pulpwood	1.0	Cords	24.9	\$4,045.70
	<i>Quaking Aspen</i>		1.0	<i>Cords</i>		
	Mixed Hardwood		135.0	Cords		
	<i>Beech</i>		68.0	<i>Cords</i>		
	<i>Red Maple</i>		67.0	<i>Cords</i>		
	Paper Birch		38.0	Cords		
	Red Pine		2.0	Cords		
White Pine	15.0	Cords				
7	Balsam Fir	Pulpwood	6.0	Cords	69.3	\$15,122.20
	Jack Pine		3.0	Cords		
	Mixed Aspen		9.0	Cords		
	<i>Quaking Aspen</i>		9.0	<i>Cords</i>		
	Mixed Hardwood		14.0	Cords		
	<i>Red Maple</i>		14.0	<i>Cords</i>		
	Paper Birch		6.0	Cords		
	Red Pine		84.0	Cords		
	White Pine		86.0	Cords		
	White Spruce		202.0	Cords		
8	Red Pine	Pulpwood	6.0	Cords	12.0	\$1,136.90
	White Pine		29.0	Cords		
	White Spruce		4.0	Cords		
9	Red Pine	Pulpwood	211.0	Cords	39.0	\$11,958.00
	White Pine		11.0	Cords		
10	Mixed Aspen	Pulpwood	10.0	Cords	40.3	\$29,373.00
	<i>Quaking Aspen</i>		10.0	<i>Cords</i>		
	Mixed Hardwood		8.0	Cords		
	<i>Red Maple</i>		8.0	<i>Cords</i>		
	Red Pine		514.0	Cords		
White Pine	17.0	Cords				
11	Jack Pine	Pulpwood	18.0	Cords	39.3	\$19,955.70
	Red Pine		348.0	Cords		
12	Red Pine	Pulpwood	458.0	Cords	44.3	\$25,666.50
	White Pine		11.0	Cords		
13	Red Pine	Pulpwood	577.0	Cords	52.3	\$32,023.50
14	Mixed Hardwood	Pulpwood	4.0	Cords	38.5	\$23,352.10
	<i>Red Maple</i>		4.0	<i>Cords</i>		
	Red Pine		413.0	Cords		
White Pine	5.0	Cords				

Description of Timber by Payment Unit (PU), con't

PU	MARKET GROUP	PRODUCT	QUANTITY	UNIT	ACRES	ADVERTISE PRICE
14 con't	White Spruce	Pulpwood	6.0	Cords		
15	White Pine	Pulpwood	37.0	Cords	14.6	\$832.50
16	Balsam Fir	Pulpwood	4.0	Cords	17.4	\$3,850.20
	Mixed Aspen		7.0	Cords		
	<i>Quaking Aspen</i>		7.0	<i>Cords</i>		
	Mixed Hardwood		157.0	Cords		
	<i>Beech</i>		20.0	<i>Cords</i>		
	<i>Black Cherry</i>		6.0	<i>Cords</i>		
	<i>Red Maple</i>		131.0	<i>Cords</i>		
17	Balsam Fir	Pulpwood	29.0	Cords	24.0	\$8,435.50
	Hemlock		33.0	Cords		
	Mixed Hardwood		146.0	Cords		
	<i>Beech</i>		1.0	<i>Cords</i>		
	<i>Red Maple</i>		145.0	<i>Cords</i>		
	Paper Birch		23.0	Cords		
	Red Pine		12.0	Cords		
	White Pine		111.0	Cords		
	White Spruce		19.0	Cords		
	18		Balsam Fir	Pulpwood		
Mixed Aspen		104.0	Cords			
<i>B. T. Aspen</i>		104.0	<i>Cords</i>			
Mixed Hardwood		37.0	Cords			
<i>Red Maple</i>		37.0	<i>Cords</i>			
Paper Birch		9.0	Cords			
Red Pine		25.0	Cords			
White Pine	5.0	Cords				
TOTAL:			5,694.0	Cords		

Sale Specific Conditions & Requirements

Sale Name: Stumpy Pine

Sale Number: 41-020-18 Seq#: 1

1 - Sale Area

1.2 - Boundaries

1.2.1 - Painted boundaries (1/14)

The sale boundary and Payment Unit boundaries are marked and identified by blue, red and yellow paint. Exterior sale boundary lines against private property are marked with blue paint. Exterior sale boundary lines against state are marked with red paint. Interior Payment Unit boundaries are marked with yellow paint. The painted boundary line trees are not Included Timber and are to be protected. Yellow painted trees designating an interior Payment Unit boundary are only to be cut when all surrounding Payment Units have been paid.

2 - Timber Specifications

2.1 - Included Timber

2.1.1 - Clearcut unit(s) with unmerchantable trees (6/14)

Within Payment Unit(s) 3, 5 and 8, cut all trees that are two (2) inches or more at DBH.

2.1.2 - Clearcut unit(s) w/o unmerchantable trees (8/11)

Within Payment Unit(s) 4 and 15, cut all trees which meet minimum piece specifications in 2.2 Utilization, except do not cut hemlock and oak.

2.1.3 - Cut tree marked unit(s) (12/08)

Within Payment Unit(s) 6, 7 and 18, all trees are designated for cutting when marked with orange paint above and below stump height, regardless of merchantability.

2.1.4 - Designated timber unit(s) (6/17)

Within Payment Unit(s) 16 and 17, all trees are designated for cutting which meet minimum piece specifications in 2.2 - Utilization, except do not cut white pine 24" or greater at DBH, any hemlock, and any yellow birch. In addition, all hemlock marked with orange paint are designated for cutting.

2.1.8 - Designated plantation row unit(s) (12/08)

Within Payment Unit(s) 1, 2, and, 9 - 14, all red pine trees which meet minimum piece specifications in 2.2 Utilization, within designated plantation rows are designated for cutting. Designated plantation rows are identified by orange paint.

2.2 - Utilization

2.2.3 - Stump heights (4/07)

Stump heights within the Sale Area shall not exceed 12 inches for trees greater than 10 inches DBH and 4 inches for trees smaller than 10 inches DBH. This is in order to facilitate planting operations.

3 - Payments

3.3 - Pre-measured Sales

3.3.4 - Dividing payment units (7/14)

Payment Unit(s) with a value over \$15,000 may be divided at the request of the Purchaser and upon approval of the Unit Manager. Dividing Payment Units is a contract modification which requires a Timber Sale Contract Supplement.

3.4 - Damaged Timber

3.4.2 - Special Protection Trees (4/14)

The Purchaser shall not cut live or dead special protection trees within cutting units or clearings. Special protection trees are oak. If the Purchaser's operations have cut or damaged special protection trees through carelessness, the Purchaser shall pay \$100 as fixed, agreed and liquidated damages for each special protection tree cut or damaged. Such payment does not constitute ownership of the undesignated timber.

4 - Transportation

4.1 - Construction

4.1.3 - Slash and earthen piles (8/04)

Piles or windrows of earth along roads and landings that have been widened or constructed shall be leveled. Slash from road maintenance or construction, including stumps, shall be dispersed throughout the sale.

4.1.4 - Timber removed for construction (12/09)

Trees cut or damaged in the process of pre-approved road, landing or skid trail construction will be decked in an area separate from other Designated Timber and not removed until measured by the sale administrator. Payment will be made at the specified Purchase Unit Price.

4.1.6 - Road construction (1/09)

Construction of new roads or improvements of existing roads shall be done in such a way as to minimize the environmental and visual impacts. Merchantable trees shall be cut and utilized unless otherwise directed. Non-merchantable trees shall be severed and laid flat on the ground. Slash shall be scattered, and not left in windrows and kept a minimum of 10 feet back from the road edge. Stumps shall be set upright, not left on edge, and be moved at least 10 feet away from the road edge. Disturbed soil shall be feathered into the woods and not left in berms or windrows.

4.1.7 - Road closure (10/11)

All new roads built into the sale must be blocked to vehicle traffic upon completion of the sale. Overgrown roads that are reopened shall be considered new roads. In general, this will require constructing double earthen berms at strategic locations. These roads must be rendered impassable to cars and trucks. Contact the sale administrator for specific details of design and placement.

4.1.8 - Road work (1) (8/07)

The following road work is required: 400 cubic yards of once crushed breaker run gravel must be purchased, hauled and spread between the H-58 and the sale area at locations designated by the sale administrator. All gravel work must be done before hauling cannot begin unless approved by the Unit Manager.

4.1.10 - Oversight (12/08)

The Unit Manager, or his/her representative, must be present when the road improvement project is initiated.

4.2 - Maintenance

4.2.4 - Grading (10/16)

For completion of the sale, state forest roads must be graded. In general, this will require a road grader or bull dozer to shape up the roads after forest products have been hauled off site. The grading equipment to be used must be approved by the Unit Manager or his/her representative.

5 - Operations

5.1 - Notification

5.1.1 - Pre-sale conference (10/16)

A pre-sale conference on site between the Purchaser and sale administrator is required prior to beginning any operations. The Unit Manager or his/her representative must be contacted at least 5 days in advance to schedule the conference.

5.2 - Conduct of Operations

5.2.1 - Slash

5.2.1.11 - Slash for reforestation (5/07)

To facilitate reforestation, Payment Units 2, 3, 5 and 8 shall be left with slash evenly distributed. Bunched tops within the cutting area shall be broken up and scattered. Stumps shall be cut low to the ground. Processing sites shall not be left with a compacted layer of slash; tops from these sites shall be hauled back into the cut area and scattered.

5.2.2 - Hazard Trees/Snags

5.2.2.1 - Den trees (10/16)

Obvious hollow and/or den trees shall be protected and left standing unless they are a safety hazard.

5.2.3 - Operating Restrictions

5.2.3.6 - Bark beetle restriction (12/08)

In the event drought creates a high risk of pine bark beetle infestation, pine is not to be cut during the period March 1 through July 1, unless all portions of trees greater than two inches in diameter are removed from the sale area, reduced to chips, or treated to the satisfaction of the Unit Manager or his/her representative, within fifteen days of being severed from the stump. Pine log decks, pulpwood piles and treetops that are piled for chipping in the fall or winter within a 1/4 mile of susceptible sites must be removed before March 15. Residual slash must not be placed in piles or rows and must be spread over the site for quick drying. The Department of Natural Resources will exercise this specification if the risk of damage warrants.

5.2.32 - Decking/landing restoration (9/13)

All decking and landing areas must have the surface area restored to a condition equal to or better than before. This is to ensure the proper regeneration of the stand. Wood debris, chips and "cookies" from trimmings must be removed or scattered away from landing and loading areas and may not be windrowed on the edge.

5.2.38 - No decking against live trees (2/04)

Cut products may not be decked against unmarked or designated leave trees.

5.2.41 - Snowmobile trail protection (9/11)

H-58, north of Adams Truck Trail, is a snowmobile trail. Do not cut or damage posts with orange trail markers or traffic control signs. The snowmobile trail may not be used for any timber sale operations from December 1 to March 31, unless approved by the Unit Manager.

5.4 - Soil Protection

5.4.1 - Rutting restriction, general (7/16)

Operations are to cease immediately if equipment and weather conditions result in rutting of roads and/or skid trails which is 12 inches or greater in depth and 50 feet in length. The Unit Manager or his/her representative may restrict hauling and/or skidding if ruts exceed the specified depth. With the Unit Manager or his/her representative's approval, the Purchaser may return to the area when the risk of rutting has decreased.

5.4.2 - Skid trails (2/04)

Skid trails up and down slopes should be avoided. If however this is unavoidable, these trails will be left in a non-erodible condition using water bars, logs, and slash. Placing of slash on these skid trails while logging is ongoing may alleviate need for any further action. At the direction of the sale administrator, seed, fertilizer, and mulch may also be required.

5.8 - Protection of Endangered Species

5.8.3 - Red shoulder hawk or goshawk (2/16)

In the event that an active red shoulder hawk or goshawk nest is found, the contract may be amended to protect the nest site until the nest is determined to be inactive. The value of the trees in this excluded area will be refunded or credited to the Purchaser. The nest will be buffered with a five-chain radius (eight acre) protection area, centered on the nest tree, in which there will be no cutting or new roads constructed. Avoid human disturbance, including loading and skidding, in the protection area.

An additional zone of five chains (ten chains centered on the active nest tree) will be established in which there is no management activity from April 1 to July 30. Limit biomass harvesting and chipping operations within this ten-chain zone, retain the maximum one-third of residues per the Woody Biomass Harvesting Guidelines (Michigan DNR 2010). Nests determined to be inactive will be protected with a one-chain no-harvest buffer.

7 - Other Conditions

7.3 - Contract Modifications

7.3.3 - Modification for reforestation (8/05)

When contractual work of Purchaser has been accepted for any Payment Unit identified on Sale Area Map, Payment Unit will be eliminated from the Sale Area on written notice so that reforestation operations can begin.



TIMBER SALE MAP

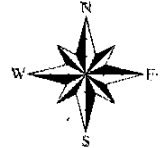
This information provided by authority of Part 5, 1994 PA 451, as amended.

Sale Number	Year
41-135	18

Forest Management Unit Shingleton	County Alger	Mapped By Reidenga	Date 10-1-18	Page 1	of 2
Township 49N	Range 16W	Section(s) and Subdivision(s) Sec. 36 SE 1/4, S 1/2 NE 1/4, S 1/2 SW 1/4, NE 1/4 SW 1/4			

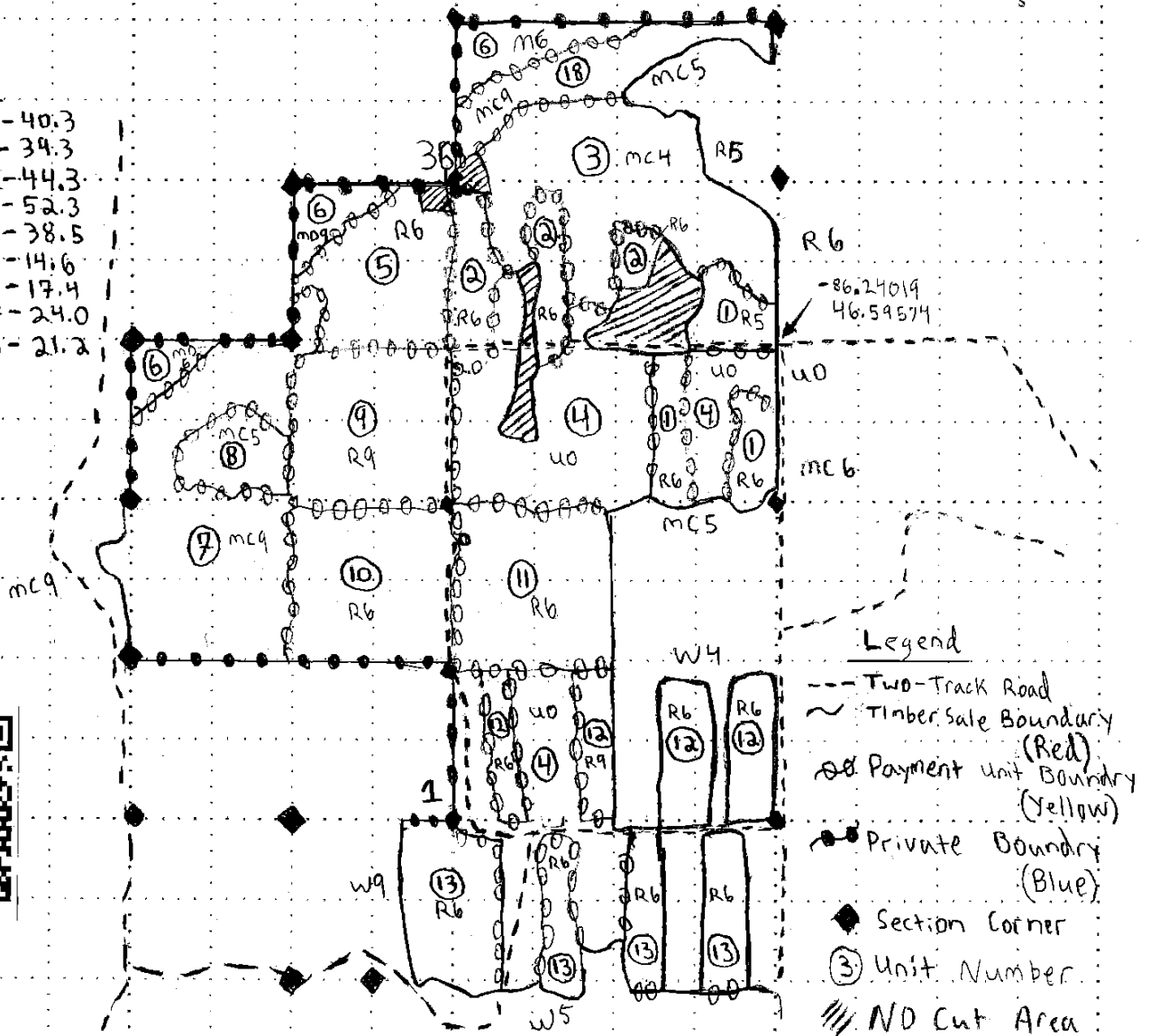
Cover Type				Density	
A = Aspen	J = Jack Pine	O = Oak	U = Upland Brush	0 = Non Stocked	5 = Pole Timber Medium
B = Paper Birch	K = Rock	P = Lowland Poplar	UM = Upland Mix Forest	1 = Seeding Sapling Poor	6 = Pole Timber Well
C = Cedar	L = Lowland Brush	Q = Mixed Swamp Conifer	V = Bog or Marsh	2 = Seeding Sapling Medium	7 = Saw Timber Poor
D = Treed Bog	LM = Lowland Mix Forest	R = Red Pine	W = White Pine	3 = Seeding Sapling Well	8 = Saw Timber Medium
E = Swamp Hardwoods	M = Maple, Beech, Birch	S = Black Spruce	X = Non Stocked	4 = Pole Timber Poor	9 = Saw Timber Well
F = Spruce/Fir	MC = Mixed Conifer	T = Tamarack	Y = Sand		
G = Grass	MD = Mixed Deciduous		Z = Water		
H = Hemlock	N = Marsh				

Stumpy Pine 669.5 Acres



Unit Acres

1-24.3	10-40.3
2-23.7	11-39.3
3-57	12-44.3
4-98.8	13-52.3
5-28.6	14-38.5
6-24.9	15-14.6
7-69.3	16-17.4
8-12.0	17-24.0
9-39.0	18-21.2





TIMBER SALE MAP

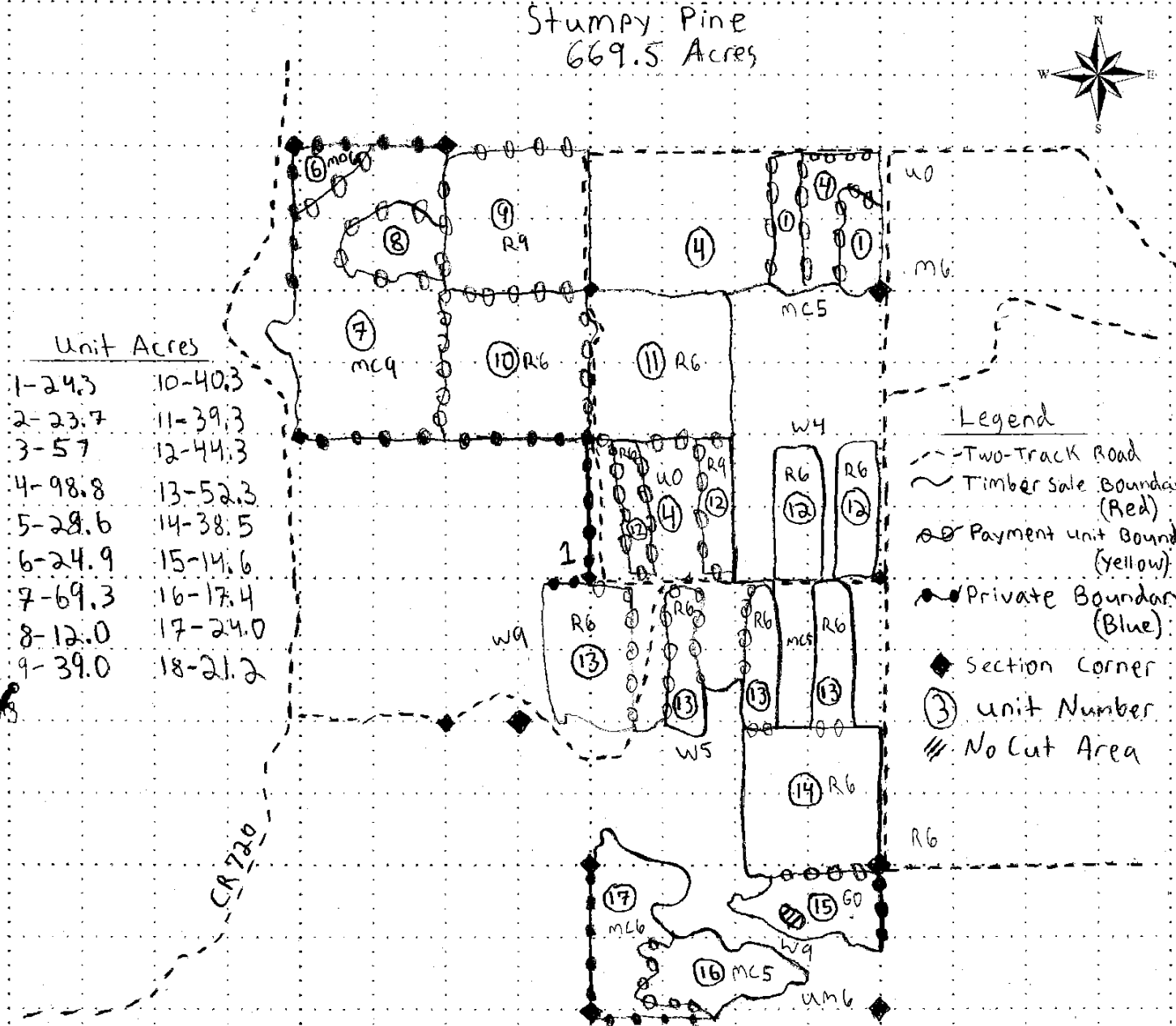
This information provided by authority of Part 5, 1994 PA 451, as amended.

Sale Number	Year
41-135	18

Forest Management Unit Shingleton	County Alger	Mapped By Reidenga	Date 10-1-18	Page 2	of 12
Township 48 N	Range 16 W	Section(s) and Subdivision(s) Sec 12 NE 1/4, N 1/2 NW 1/4, N 1/2 SE 1/4, SE 1/4 SE 1/4, Sec 12 N 1/2 NE 1/4			

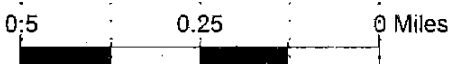
Cover Type				Density	
A = Aspen	J = Jack Pine	O = Oak	U = Upland Brush	0 = Non Stocked	5 = Pole Timber Medium
B = Paper Birch	K = Rock	P = Lowland Poplar	UM = Upland Mix Forest	1 = Seedling Sapling Poor	6 = Pole Timber Well
C = Cedar	L = Lowland Brush	Q = Mixed Swamp Conifer	V = Bog or Marsh	2 = Seedling Sapling Medium	7 = Saw Timber Poor
D = Treed Bog	LM = Lowland Mix Forest	R = Red Pine	W = White Pine	3 = Seedling Sapling Well	8 = Saw Timber Medium
E = Swamp Hardwoods	M = Maple, Beech, Birch	S = Black Spruce	X = Non Stocked	4 = Pole Timber Poor	9 = Saw Timber Well
F = Spruce/Fir	MC = Mixed Conifer	T = Tamarack	Y = Sand		
G = Grass	MD = Mixed Deciduous	Z = Water			
H = Hemlock	N = Marsh				

Stumpy Pine
669.5 Acres



Unit	Acres
1	24.3
2	23.7
3	5.7
4	98.8
5	28.6
6	24.9
7	69.3
8	12.0
9	39.0
10	40.3
11	39.3
12	44.3
13	52.3
14	38.5
15	14.6
16	17.4
17	24.0
18	21.2

- Legend**
- - - Two-Track Road
 - ~ Timber Sale Boundary (Red)
 - o Payment Unit Boundary (Yellow)
 - Private Boundary (Blue)
 - ◆ Section Corner
 - ③ Unit Number
 - /// No Cut Area



TIMBER SALE INFORMATION

Fielder's Choice Hardwood (41-025-18)
 T47N, R15W, SEC. 27; T47N, R15W, SEC. 28.
 Schoolcraft County (Advertised Price \$11,145.80)

SALE NOTE: The Purchaser shall not cut live or dead trees, or operate equipment within historical sites. Historical sites are excluded with the red line and indicated as "Special Protection Area" on the Timber Sale Map. See Sale Spec. 5.7.1 for additional information.

A timber sale contract for this lump sum, sealed bid timber sale will be awarded to the responsible bidder offering the highest sealed bid price. Bids must be at or above the following advertised price for each species:

<u>PRODUCTS & SPECIES</u>	<u>ESTIMATED UNITS*</u>	<u>ADVERTISED PRICE</u>
Sawtimber		
Red Maple	3.60 MBF	\$ 121.00 / MBF
Pulpwood		
Balsam Fir	204.00 Cords	\$ 21.15 / Cord
Mixed Hardwood	271.00 Cords	\$ 23.60 / Cord

* The total volume is statistically estimated within plus (+) or minus (-) 20.20 percent. The estimated units are final and not subject to adjustment. Prospective bidders are urged to examine this timber and to make their own estimates of quantity and quality.

BOND AND PAYMENT SCHEDULE:

- A bond in the amount of \$557.00 to insure faithful performance of the conditions of the contract will be deposited by the successful bidder within 21 days of the sale award.
- Cutting in any sale or unit without the required advance payment would be considered a trespass.
- Total payment must be paid in advance or according to the following schedule:
 - Ten percent (10%) of the sale value must be paid within 21 days of the sale award.
 - The 10% down payment will be credited towards the first unit cut.
 - Payment for each of the following units must be made before cutting begins in that unit:

PAYMENT UNIT NUMBER	PERCENT OF TOTAL SALE VALUE
01	36.4%
02	22.5%
03	41.1%
- If no cutting takes place, the 10% down payment will not be refunded.
- Operations on the contract issued will terminate on 06/30/2021.

Description of Timber by Payment Unit (PU)

PU	MARKET GROUP	PRODUCT	QUANTITY	UNIT	ACRES	ADVERTISE PRICE
1	Balsam Fir	Pulpwood	76.0	Cords	20.1	\$4,061.80
	Mixed Hardwood		104.0	Cords		
	<i>Black Cherry</i>		59.0	Cords		
	<i>Red Maple</i>		45.0	Cords		
2	Balsam Fir	Pulpwood	37.0	Cords	23.9	\$2,505.35
	Mixed Hardwood		73.0	Cords		
	<i>Black Cherry</i>		2.0	Cords		
	<i>Red Maple</i>		71.0	Cords		
3	Red Maple	Sawtimber	3.6	MBF	42.5	\$4,578.65
	Balsam Fir	Pulpwood	91.0	Cords		
	Mixed Hardwood		94.0	Cords		
	<i>Black Cherry</i>		13.0	Cords		
	<i>Red Maple</i>		81.0	Cords		
TOTAL:			3.6	MBF		
TOTAL:			475.0	Cords		

Sale Specific Conditions & Requirements

Sale Name: Fielder's Choice Hardwood

Sale Number: 41-025-18 Seq#: 2

1 - Sale Area

1.2 - Boundaries

1.2.1 - Painted boundaries (1/14)

The sale boundary and Payment Unit boundaries are marked and identified by blue, red and yellow paint. Exterior sale boundary lines against private property are marked with blue paint. Exterior sale boundary lines against state are marked with red paint. Interior Payment Unit boundaries are marked with yellow paint. The painted boundary line trees are not Included Timber and are to be protected, unless marked with orange paint.

2 - Timber Specifications

2.1 - Included Timber

2.1.3 - Cut tree marked unit(s) (12/08)

Within Payment Unit(s) 1-3, all trees are designated for cutting when marked with orange paint above and below stump height, regardless of merchantability. In addition, all balsam fir is designated for harvest.

3 - Payments

3.4 - Damaged Timber

3.4.2 - Special Protection Trees (4/14)

The Purchaser shall not cut live or dead special protection trees within cutting units or clearings. Special protection trees are hemlock and oak. If the Purchaser's operations have cut or damaged special protection trees through carelessness, the Purchaser shall pay \$100 as fixed, agreed and liquidated damages for each special protection tree cut or damaged. Such payment does not constitute ownership of the undesignated timber.

4 - Transportation

4.1 - Construction

4.1.3 - Slash and earthen piles (8/04)

Piles or windrows of earth along roads and landings that have been widened or constructed shall be leveled. Slash from road maintenance or construction, including stumps, shall be dispersed throughout the sale.

4.1.6 - Road construction (1/09)

Construction of new roads or improvements of existing roads shall be done in such a way as to minimize the environmental and visual impacts. Merchantable trees shall be cut and utilized unless otherwise directed. Non-merchantable trees shall be severed and laid flat on the ground. Slash shall be scattered, and not left in windrows and kept a minimum of 10 feet back from the road edge. Stumps shall be set upright, not left on edge, and be moved at least 10 feet away from the road edge. Disturbed soil shall be feathered into the woods and not left in berms or windrows.

4.1.7 - Road closure (10/11)

All new roads built into the sale must be blocked to vehicle traffic upon completion of the sale. Overgrown roads that are reopened shall be considered new roads. In general, this will require constructing a four (4') foot high berm of stumps and logs covered with earth. Stumps and brush must be placed along the remainder of the trail. These roads must be rendered impassable to cars and trucks. Contact the sale administrator for specific details of design and placement.

4.2 - Maintenance

4.2.4 - Grading (10/16)

For completion of the sale, state forest roads must be graded. In general, this will require a road grader or bull dozer to shape up the roads after forest products have been hauled off site. This includes cleaning of drainage areas, grading, crowning and filling with gravel, if necessary. The grading equipment to be used must be approved by the Unit Manager or his/her representative.

5 - Operations

5.1 - Notification

5.1.1 - Pre-sale conference (10/16)

A pre-sale conference on site between the Purchaser and sale administrator is required prior to beginning any operations to determine landing and road locations. The Unit Manager or his/her representative must be contacted at least 5 days in advance to schedule the conference.

5.2 - Conduct of Operations

5.2.2 - Hazard Trees/Snags

5.2.2.1 - Den trees (10/16)

Obvious hollow and/or den trees shall be protected and left standing unless they are a safety hazard.

5.2.32 - Decking/landing restoration (9/13)

All decking and landing areas must have the surface area restored to a condition equal to or better than before. This is to ensure the proper regeneration of the stand. Wood debris, chips and "cookies" from trimmings must be removed or scattered away from landing and loading areas and may not be windrowed on the edge.

5.2.38 - No decking against live trees (2/04)

Cut products may not be decked against unmarked or designated leave trees.

5.4 - Soil Protection

5.4.1 - Rutting restriction, general (7/16)

Operations are to cease immediately if equipment and weather conditions result in rutting of roads and/or skid trails which is 12 inches or greater in depth and 50 feet in length. The Unit Manager or his/her representative may restrict hauling and/or skidding if ruts exceed the specified depth. With the Unit Manager or his/her representative's approval, the Purchaser may return to the area when the risk of rutting has decreased.

5.7 - Protection of Historical Sites

5.7.1 - Historical sites (7/12)

The Purchaser shall not cut live or dead trees or operate equipment within historical sites. Historical sites are excluded with the red line and indicated as "Special Protection Area" on the Timber Sale Map. The Purchaser shall protect historical sites from damage by the Purchaser's operations. If Purchaser's operations have cut or damaged historical sites through carelessness, the Purchaser shall pay \$2000 as fixed, agreed and liquidated damages for each acre or part thereof cut or damaged.

5.8 - Protection of Endangered Species

5.8.3 - Red shoulder hawk or goshawk (2/16)

In the event that an active red shoulder hawk or goshawk nest is found, the contract may be amended to protect the nest site until the nest is determined to be inactive. The value of the trees in this excluded area will be refunded or credited to the Purchaser. The nest will be buffered with a five-chain radius (eight acre) protection area, centered on the nest tree, in which there will be no cutting or new roads constructed. Avoid human disturbance, including loading and skidding, in the protection area.

An additional zone of five chains (ten chains centered on the active nest tree) will be established in which there is no management activity from April 1 to July 30. Limit biomass harvesting and chipping operations within this ten-chain zone, retain the maximum one-third of residues per the Woody Biomass Harvesting Guidelines (Michigan DNR 2010). Nests determined to be inactive will be protected with a one-chain no-harvest buffer.



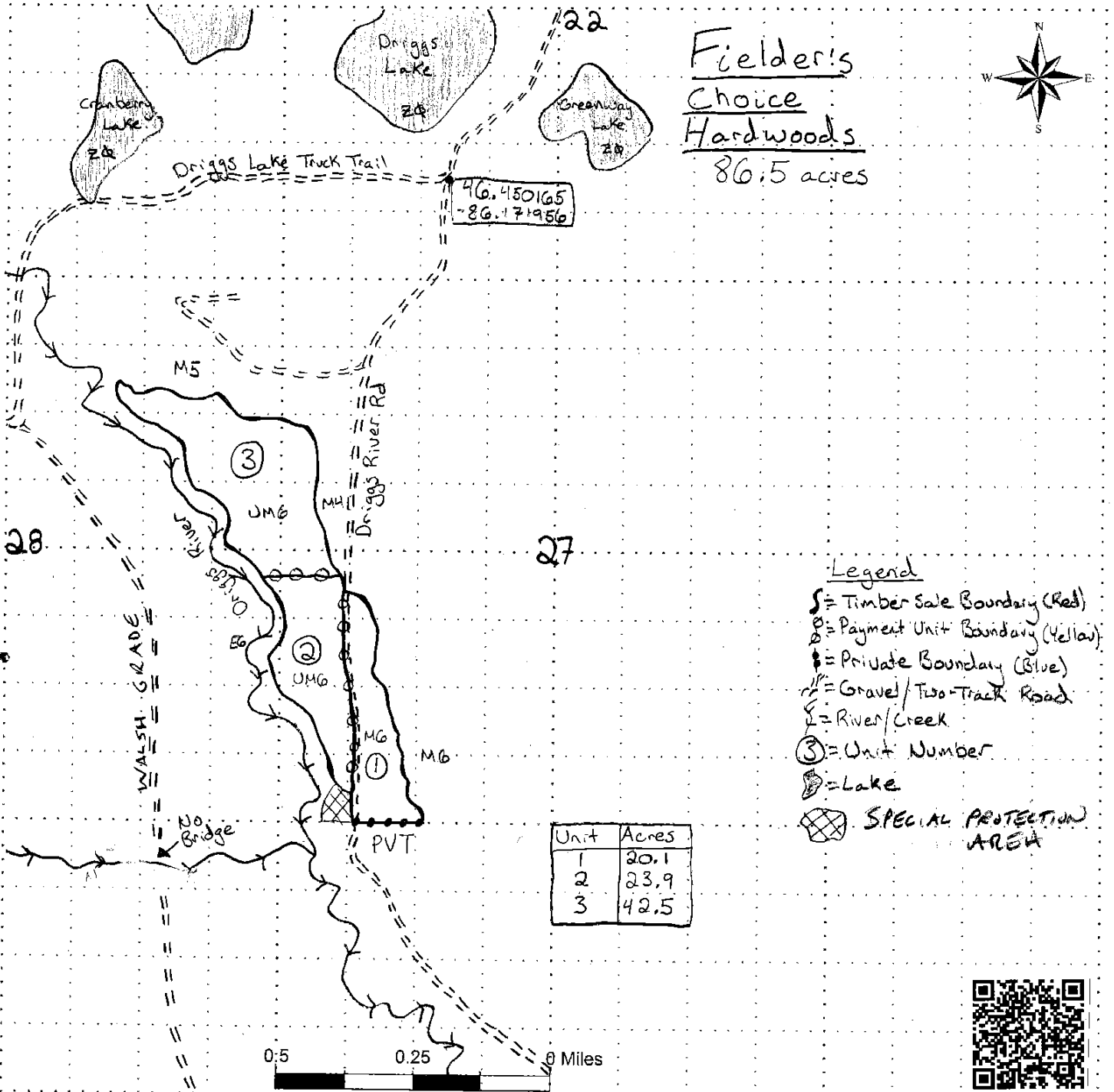
TIMBER SALE MAP

This information provided by authority of Part 5, 1994 PA 451, as amended.

Sale Number	Year
41-025	18

Forest Management Unit Shingleton	County Schoolcraft	Mapped By S. Kentner	Date 9/28/18	Page 1	of 1
Township 47N	Range 15W	Section(s) and Subdivision(s) 28; NE 1/4, E 1/2 SE 1/4 27; SW NW, W 1/2 SW 1/4			

Cover Type				Density	
A = Aspen	J = Jack Pine	O = Oak	U = Upland Brush	0 = Non Stocked	5 = Pole Timber Medium
B = Paper Birch	K = Rock	P = Lowland Poplar	UM = Upland Mix Forest	1 = Seedling Sapling Poor	6 = Pole Timber Well
C = Cedar	L = Lowland Brush	Q = Mixed Swamp Conifer	V = Bog or Marsh	2 = Seedling Sapling Medium	7 = Saw Timber Poor
D = Tread Bog	LM = Lowland Mix Forest	R = Red Pine	W = White Pine	3 = Seedling Sapling Well	8 = Saw Timber Medium
E = Swamp Hardwoods	M = Maple, Beech, Birch	S = Black Spruce	X = Non Stocked	4 = Pole Timber Poor	9 = Saw Timber Well
F = Spruce/Fir	MC = Mixed Conifer	T = Tamarack	Y = Sand		
G = Grass	MD = Mixed Deciduous		Z = Water		
H = Hemlock	N = Marsh				



TIMBER SALE INFORMATION

Bigger Stair Steps (41-035-17)

T43N, R16W, SEC. 20; T43N, R16W, SEC. 28; T43N, R16W, SEC. 29; T43N, R16W, SEC. 30; T43N, R16W, SEC. 31; T43N, R16W, SEC. 32; T43N, R16W, SEC. 33.

SALE NOTE: Road work is required on this sale. See Sale Spec 4.1.8 for additional information.

Permission for access across private land is the responsibility of the Purchaser.

Within Payment Units 10 - 14, harvesting is limited to the period of December 1 through March 31.

Haywire Grade is an ORV trail or route and is shown on the Timber Sale Map. See Sale Spec 5.2.39 for additional information.

The Haywire Grade is a snowmobile trail and is used to access this sale. See Sale Spec 5.2.41 for restrictions.

If weather conditions during the operating period of this contract prevent harvesting, this sale may qualify for a weather-related extension. If approved, the normal extension fee would be waived. To qualify, there must be a documented attempt each year to harvest in the difficult portion of the sale.

A recreation site such as a trail, pathway, or campground is within the sale area or the vicinity. Certain restrictions/specifications may be applicable including time restrictions. Access may be through other public land.

A timber sale contract for this lump sum, sealed bid timber sale will be awarded to the responsible bidder offering the highest sealed bid price. Bids must be at or above the following advertised price for each species:

<u>PRODUCTS & SPECIES</u>	<u>ESTIMATED UNITS*</u>	<u>ADVERTISED PRICE</u>
Pulpwood		
Balsam Fir	31.00 Cords	\$ 15.50 / Cord
Jack Pine	1,100.00 Cords	\$ 27.15 / Cord
Mixed Hardwood	225.00 Cords	\$ 17.30 / Cord
Mixed Spruce	1,336.00 Cords	\$ 28.80 / Cord
N. White Cedar	163.00 Cords	\$ 5.90 / Cord
Paper Birch	50.00 Cords	\$ 10.00 / Cord
Quaking Aspen	28.00 Cords	\$ 21.45 / Cord
Red Pine	1,902.00 Cords	\$ 42.25 / Cord
Tamarack	567.00 Cords	\$ 6.85 / Cord
White Pine	1,280.00 Cords	\$ 17.15 / Cord

* The estimated units are final and not subject to adjustment. Prospective bidders are urged to examine this timber and to make their own estimates of quantity and quality.

BOND AND PAYMENT SCHEDULE:

1. A bond in the amount of \$9,049.00 to insure faithful performance of the conditions of the contract will be deposited by the successful bidder within 21 days of the sale award.
2. Cutting in any sale or unit without the required advance payment would be considered a trespass.
3. Total payment must be paid in advance or according to the following schedule:
 - (a) Ten percent (10%) of the sale value must be paid within 21 days of the sale award.
 - (b) The 10% down payment will be credited towards the first unit cut.

(c) Payment for each of the following units must be made before cutting begins in that unit:

PAYMENT UNIT NUMBER	PERCENT OF TOTAL SALE VALUE
01	2.5%
02	4.1%
03	3.9%
04	0.3%
05	16.5%
06	9.3%
07	0.7%
08	5.4%
09	0.2%
10	2.9%
11	1.7%
12	1.0%
13	0.4%
14	1.3%
15	3.2%
16	3.8%
17	6.0%
18	6.0%
19	15.4%
20	10.0%
21	1.7%
22	3.7%

4. If no cutting takes place, the 10% down payment will not be refunded.

5. Operations on the contract issued will terminate on 06/30/2022.

Description of Timber by Payment Unit (PU)

PU	MARKET GROUP	PRODUCT	QUANTITY	UNIT	ACRES	ADVERTISE PRICE
1	Jack Pine	Pulpwood	29.0	Cords	8.3	\$4,547.60
	Red Pine		89.0	Cords		
2	Balsam Fir	Pulpwood	2.0	Cords	12.6	\$7,412.05
	Jack Pine		34.0	Cords		
	Mixed Hardwood		49.0	Cords		
	<i>Red Maple</i>		49.0	Cords		
	Mixed Spruce		15.0	Cords		
	<i>White Spruce</i>		15.0	Cords		
	Quaking Aspen		7.0	Cords		
	Red Pine		91.0	Cords		
White Pine	69.0	Cords				
3	Jack Pine	Pulpwood	10.0	Cords	10.5	\$7,080.65
	Mixed Hardwood		1.0	Cords		
	<i>Red Maple</i>		1.0	Cords		
	Mixed Spruce		38.0	Cords		
	<i>Black Spruce</i>		21.0	Cords		
	<i>White Spruce</i>		17.0	Cords		
	Quaking Aspen		11.0	Cords		
	Red Pine		111.0	Cords		
	White Pine		45.0	Cords		
4	Mixed Hardwood	Pulpwood	3.0	Cords	7.5	\$509.95
	<i>Red Maple</i>		3.0	Cords		
	Red Pine		8.0	Cords		
	White Pine		7.0	Cords		
5	Balsam Fir	Pulpwood	21.0	Cords	27.6	\$29,775.85
	Jack Pine		37.0	Cords		
	Mixed Hardwood		107.0	Cords		
	<i>Red Maple</i>		84.0	Cords		
	<i>Sugar Maple</i>		23.0	Cords		
	Mixed Spruce		304.0	Cords		
	<i>Black Spruce</i>		304.0	Cords		
	N. White Cedar		21.0	Cords		
	Paper Birch		12.0	Cords		
	Red Pine		220.0	Cords		
	White Pine		484.0	Cords		
6	Jack Pine	Pulpwood	25.0	Cords	12.0	\$16,877.10
	Mixed Spruce		2.0	Cords		
	<i>Black Spruce</i>		2.0	Cords		
	N. White Cedar		2.0	Cords		
	Red Pine		344.0	Cords		
	White Pine		93.0	Cords		
7	Mixed Hardwood	Pulpwood	3.0	Cords	3.4	\$1,219.35
	<i>Red Maple</i>		3.0	Cords		
	Mixed Spruce		7.0	Cords		
	<i>Black Spruce</i>		7.0	Cords		
	Red Pine		5.0	Cords		
White Pine	44.0	Cords				
8	Balsam Fir	Pulpwood	3.0	Cords	7.8	\$9,771.40
	Red Pine		177.0	Cords		
	White Pine		131.0	Cords		
9	Balsam Fir	Pulpwood	1.0	Cords	0.8	\$295.35
	Red Pine		5.0	Cords		
	White Pine		4.0	Cords		
10	Balsam Fir	Pulpwood	1.0	Cords	19.8	\$5,321.15
	Jack Pine		7.0	Cords		

Description of Timber by Payment Unit (PU), con't

PU	MARKET GROUP	PRODUCT	QUANTITY	UNIT	ACRES	ADVERTISE PRICE
10 con't	Mixed Spruce	Pulpwood	81.0	Cords		
	<i>Black Spruce</i>		81.0	<i>Cords</i>		
	N. White Cedar		41.0	Cords		
	Paper Birch		5.0	Cords		
	Red Pine		9.0	Cords		
	Tamarack		223.0	Cords		
	White Pine		34.0	Cords		
11	Balsam Fir	Pulpwood	3.0	Cords	8.8	\$3,075.10
	Mixed Hardwood		4.0	Cords		
	<i>Red Maple</i>		4.0	<i>Cords</i>		
	Mixed Spruce		50.0	Cords		
	<i>Black Spruce</i>		50.0	<i>Cords</i>		
	N. White Cedar		82.0	Cords		
	Paper Birch		4.0	Cords		
	Red Pine		8.0	Cords		
	Tamarack		96.0	Cords		
12	Mixed Spruce	Pulpwood	61.0	Cords	8.1	\$1,756.80
	<i>Black Spruce</i>		61.0	<i>Cords</i>		
13	Mixed Hardwood	Pulpwood	2.0	Cords	4.4	\$707.65
	<i>Red Maple</i>		2.0	<i>Cords</i>		
	Mixed Spruce		3.0	Cords		
	<i>Black Spruce</i>		3.0	<i>Cords</i>		
	N. White Cedar		17.0	Cords		
Tamarack	71.0	Cords				
14	Mixed Hardwood	Pulpwood	6.0	Cords	16.4	\$2,431.55
	<i>Red Maple</i>		6.0	<i>Cords</i>		
	Mixed Spruce		68.0	Cords		
	<i>Black Spruce</i>		68.0	<i>Cords</i>		
	Paper Birch		2.0	Cords		
Tamarack	51.0	Cords				
15	Jack Pine	Pulpwood	83.0	Cords	13.4	\$5,822.90
	Mixed Spruce		99.0	Cords		
	<i>Black Spruce</i>		99.0	<i>Cords</i>		
	Red Pine		17.0	Cords		
16	Jack Pine	Pulpwood	73.0	Cords	7.8	\$6,893.80
	Mixed Spruce		137.0	Cords		
	<i>Black Spruce</i>		137.0	<i>Cords</i>		
	Red Pine		18.0	Cords		
	Tamarack		5.0	Cords		
	White Pine		10.0	Cords		
17	Jack Pine	Pulpwood	108.0	Cords	20.9	\$10,848.55
	Mixed Spruce		134.0	Cords		
	<i>Black Spruce</i>		134.0	<i>Cords</i>		
	Red Pine		50.0	Cords		
	Tamarack		16.0	Cords		
	White Pine		107.0	Cords		
18	Jack Pine	Pulpwood	100.0	Cords	14.5	\$10,899.30
	Mixed Hardwood		8.0	Cords		
	<i>Red Maple</i>		8.0	<i>Cords</i>		
	Mixed Spruce		56.0	Cords		
	<i>Black Spruce</i>		56.0	<i>Cords</i>		
	Red Pine		125.0	Cords		
	Tamarack		63.0	Cords		
White Pine	42.0	Cords				
19	Jack Pine	Pulpwood	188.0	Cords	30.1	\$27,928.10

Description of Timber by Payment Unit (PU), con't

PU	MARKET GROUP	PRODUCT	QUANTITY	UNIT	ACRES	ADVERTISE PRICE
19 con't	Mixed Hardwood	Pulpwood	29.0	Cords		
	<i>Red Maple</i>		29.0	<i>Cords</i>		
	Mixed Spruce		196.0	Cords		
	<i>Black Spruce</i>		196.0	<i>Cords</i>		
	Paper Birch		27.0	Cords		
	Quaking Aspen		10.0	Cords		
	Red Pine		324.0	Cords		
	White Pine		146.0	Cords		
20	Jack Pine	Pulpwood	185.0	Cords	24.9	\$18,034.35
	Mixed Spruce		53.0	Cords		
	<i>Black Spruce</i>		53.0	<i>Cords</i>		
	Red Pine		263.0	Cords		
	Tamarack		42.0	Cords		
	White Pine		5.0	Cords		
21	Jack Pine	Pulpwood	29.0	Cords	4.4	\$3,011.20
	Mixed Hardwood		13.0	Cords		
	<i>Red Maple</i>		13.0	<i>Cords</i>		
	Mixed Spruce		2.0	Cords		
	<i>Black Spruce</i>		2.0	<i>Cords</i>		
	Red Pine		22.0	Cords		
	White Pine		59.0	Cords		
22	Jack Pine	Pulpwood	192.0	Cords	5.3	\$6,752.80
	Mixed Spruce		30.0	Cords		
	<i>Black Spruce</i>		30.0	<i>Cords</i>		
	Red Pine		16.0	Cords		
TOTAL:			6,682.0	Cords		

Sale Specific Conditions & Requirements

Sale Name: Bigger Stair Steps

Sale Number: 41-035-17 Seq#: 2

1 - Sale Area

1.2 - Boundaries

1.2.1 - Painted boundaries (1/14)

The sale boundary and Payment Unit boundaries are marked and identified by blue, red, and yellow paint. Exterior sale boundary lines against private property are marked with blue paint. Exterior sale boundary lines against state are marked with red paint. Interior Payment Unit boundaries are marked with yellow paint. Trees marked with double green lines designate a drain and should only be entered at specified locations. The painted boundary line trees are not Included Timber and are to be protected. Yellow painted trees designating an interior Payment Unit boundary are only to be cut when all surrounding Payment Units have been paid.

2 - Timber Specifications

2.1 - Included Timber

2.1.1 - Clearcut unit(s) with unmerchantable trees (6/14)

Within Payment Unit(s) 4 and 8, cut all trees that are two (2) inches or more at DBH, except do not cut hemlock and oak. In addition, within Payment Unit 8, cut all snags.

2.1.2 - Clearcut unit(s) w/o unmerchantable trees (8/11)

Within Payment Unit(s) 11 - 14, cut all trees which meet minimum piece specifications in 2.2 Utilization, except do not cut oak and hemlock. In addition, within Payment Unit 14, do not cut cedar. Special protection trees identified in accordance with condition 3.4.2, within clearcutting unit boundaries, are not Included Timber and are to be protected.

2.1.7 - Leave tree marked unit(s) (6/14)

Within Payment Unit(s) 1 - 3, 5 - 7, 9, 10, and 15 - 22, all trees which meet minimum piece specifications in 2.2 Utilization are designated for cutting, except do not cut hemlock, oak, and trees marked with green paint above and below stump height. Special protection trees identified in accordance with condition 3.4.2, within clearcutting unit boundaries, are not Included Timber and are to be protected.

2.2 - Utilization

2.2.3 - Stump heights (4/07)

Stump heights within Payment Unit(s) 5, 8, and 15 - 20 shall not exceed 12 inches for trees greater than 10 inches DBH and 4 inches for trees smaller than 10 inches DBH. This is in order to facilitate regeneration operations.

2.2.9 - No chipping permitted (12/08)

Within Payment Unit(s) 10 - 14, all wood must be removed by whole tree, tree segment, or roundwood. No chipping is permitted.

3 - Payments

3.3 - Pre-measured Sales

3.3.4 - Dividing payment units (7/14)

Payment Unit(s) with a value over \$15,000 may be divided at the request of the Purchaser and upon approval of the Unit Manager. Dividing Payment Units is a contract modification which requires a Timber Sale Contract Supplement.

3.4 - Damaged Timber

3.4.2 - Special Protection Trees (4/14)

The Purchaser shall not cut live or dead special protection trees within cutting units or clearings. Special protection trees are hemlock and oak. If the Purchaser's operations have cut or damaged special protection trees through carelessness, the Purchaser shall pay \$100 as fixed, agreed and liquidated damages for each special protection tree cut or damaged. Such payment does not constitute ownership of the undesignated timber.

3.4.3 - Special Protection Areas (8/11)

The Purchaser shall protect special protection areas from damage by the Purchaser's operations. Special protection areas are marked with a double green boundary line. The Purchaser shall not cut live or dead trees within special protection areas. If the Purchaser's operations have cut or damaged special protection areas through carelessness, the Purchaser shall pay \$500 as fixed, agreed and liquidated damages for each acre or part thereof cut or damaged. Such payment does not constitute ownership of the undesigned timber.

4 - Transportation

4.1 - Construction

4.1.2 - Stream crossings, specific (3/11)

As indicated on the Timber Sale Map, there is a stream crossing in Payment Unit 6. The crossing will require the installation of a temporary crossing. This installation will be performed in accordance with the specifications on the appropriate permits which shall be provided by the DNR once the Purchaser determines the type of crossing they want permitted. Allow 60-90 days for permit processing.

4.1.3 - Slash and earthen piles (8/04)

Piles or windrows of earth along roads and landings that have been widened or constructed shall be leveled. Slash from road maintenance or construction, including stumps, shall be dispersed throughout the sale.

4.1.4 - Timber removed for construction (12/09)

Trees cut or damaged in the process of pre-approved road, landing or skid trail construction will be decked in an area separate from other Designated Timber and not removed until measured by the sale administrator. Payment will be made at the specified Purchase Unit Price.

4.1.5 - Culverts (5/14)

Roads may require the installation of culverts for cross drainage or at natural drainage-ways. If culverts are needed in these locations, their placement will be specified by the sale administrator and they shall be installed prior to hauling. The culverts shall be new, corrugated metal. Culverts will be a minimum of 12 inches in diameter and 24 feet in length. If culverts are removed, fill shall be removed from wetland soils as specified. Soils shall be maintained and left in a non-erodible condition, with water bars, seed, fertilizer, mulch, and slash installed as directed by the sale administrator and as specified in the BMP manual. Stream crossing permits, if needed, will be obtained by the DNR.

4.1.6 - Road construction (1/09)

Construction of new roads or improvements of existing roads shall be done in such a way as to minimize the environmental and visual impacts. Merchantable trees shall be cut and utilized unless otherwise directed. Non-merchantable trees shall be severed and laid flat on the ground. Slash shall be scattered, and not left in windrows and kept a minimum of 10 feet back from the road edge. Stumps shall be set upright, not left on edge, and be moved at least 10 feet away from the road edge. Disturbed soil shall be feathered into the woods and not left in berms or windrows.

4.1.7 - Road closure (10/11)

All new roads built into the sale must be blocked to vehicle traffic upon completion of the sale. Overgrown roads that are reopened shall be considered new roads. In general, this will require constructing a four (4') foot high berm of stumps and logs covered with earth. Stumps and brush must be placed along the remainder of the trail. These roads must be rendered impassable to cars and trucks. All stumps from road building and landing construction must be reserved to block any newly constructed roads upon completion of the sale. These stumps must be scattered along the road system to prohibit vehicular movement. Contact the sale administrator for specific details of design and placement.

4.1.8 - Road work (1) (8/07)

The following road work is required: 500 yards of gravel containing rock no larger than 3 inches in diameter must be purchased, hauled, and spread on the Smith Creek Road at locations determined by the sale administrator. All work will be at the Purchaser's expense. All road work must be completed prior or concurrently with harvesting operations. The sale administrator reserves the right to suspend harvesting operations at any time until the roadwork is completed.

4.1.10 - Oversight (12/08)

The Unit Manager, or his/her representative, must be present when the road improvement project is initiated.

4.2 - Maintenance

4.2.2 - Fill material (4/07)

To maintain roads, fill material may be needed in areas where "holes" exist or may be expected to develop. This fill material should be placed before trucking begins. Contact the sale administrator regarding the availability of onsite sand or gravel from adjacent State-owned lands.

4.2.4 - Grading (10/16)

For completion of the sale, state forest roads must be graded. In general, this will require a road grader or bull dozer to shape up the roads after forest products have been hauled off site. The grading equipment to be used must be approved by the Unit Manager or his/her representative.

4.4 - Access

4.4.1 - Private property access (3/11)

Permission for access across private land is the responsibility of the Purchaser.

5 - Operations

5.1 - Notification

5.1.1 - Pre-sale conference (10/16)

A pre-sale conference between the Purchaser and sale administrator is required prior to beginning any operations. The Unit Manager or his/her representative must be contacted at least 10 days in advance to schedule the conference.

5.2 - Conduct of Operations

5.2.1 - Slash

5.2.1.11 - Slash for reforestation (5/07)

To facilitate reforestation, the sale area shall be left with slash evenly distributed. Bunched tops within the cutting area shall be broken up and scattered. Stumps shall be cut low to the ground. Processing sites shall not be left with a compacted layer of slash; tops from these sites shall be hauled back into the cut area and scattered.

5.2.2 - Hazard Trees/Snags

5.2.2.1 - Den trees (10/16)

Obvious hollow and/or den trees shall be protected and left standing unless they are a safety hazard. Note that Payment Units 6 and 8 are an exception; all trees dead or alive are to be cut.

5.2.3 - Operating Restrictions

5.2.3.1 - Operating restrictions (9/11)

Within Payment Unit(s) 10 - 14, unless changed by written agreement, cutting, skidding, and hauling are limited to the period of December 1 to March 31. This restriction is because of deer wintering complex management.

5.2.3.6 - Bark beetle restriction (12/08)

In the event drought creates a high risk of pine bark beetle infestation, pine is not to be cut during the period March 1 through July 1, unless all portions of trees greater than two inches in diameter are removed from the sale area, reduced to chips, or treated to the satisfaction of the Unit Manager or his/her representative, within fifteen days of being severed from the stump. Pine log decks, pulpwood piles and treetops that are piled for chipping in the fall or winter within a 1/4 mile of susceptible sites must be removed before March 15. Residual slash must not be placed in piles or rows and must be spread over the site for quick drying. The Department of Natural Resources will exercise this specification if the risk of damage warrants.

5.2.17 - Timber Mats and Interlocking Composite Mats (3/18)

Some roads or skid trails may require extra protection such as that afforded by timber mats, interlocking composite mats, or another approved system. If available, mats may be borrowed from the DNR. A Timber Sale Contract Supplement will be used to document the Purchaser's use of the DNR's mats. Contact the sale administrator regarding availability and pick-up. Timber mats are available from various field offices. Composite mats are only available from the Grayling field office. The Purchaser is responsible for picking up and hauling the mats to and from the site. The composite mats will require DNR staff onsite for installation and removal. Contact the sale administrator to schedule at least 30 days before desired install/removal date. All mats must be cleaned prior to drop off. This may include, but is not limited to, power washing and brushing to remove mud and debris. A charge of \$400.00 per timber mat and \$2,000.00 per composite mat will be assessed for all

damaged or non-returned mats. Damage for the crane/timber mats is defined as three or more broken cants. Damage for the composite mats is defined as cracked or broken mats.

5.2.32 - Decking/landing restoration (9/13)

All decking and landing areas must have the surface area restored to a condition equal to or better than before. This is to ensure the proper regeneration of the stand. Wood debris, chips and "cookies" from trimmings must be removed or scattered away from landing and loading areas and may not be windrowed on the edge.

5.2.38 - No decking against live trees (2/04)

Cut products may not be decked against unmarked or designated leave trees.

5.2.39 - ORV trail/route protection (4/18)

The Haywire Grade is an ORV trail or route and is shown on the Timber Sale Map. Do not cut trees or damage posts with yellow ORV markers.

5.2.41 - Snowmobile trail protection (9/11)

The Haywire Grade is a snowmobile trail and is used to access this sale. Do not cut or damage posts with orange trail markers or traffic control signs. If the trail is used for hauling, it must be graded to the satisfaction of the Unit Manager or his/her representative prior to December 1st. If the trail road is to be used for hauling during the snowmobile season, then a snow covered base must be left on the trail. No decking of forest products will be permitted along the snowmobile trail.

5.4 - Soil Protection

5.4.1 - Rutting restriction, general (7/16)

Operations are to cease immediately if equipment and weather conditions result in rutting of roads and/or skid trails which is 12 inches or greater in depth and 50 feet in length. The Unit Manager or his/her representative may restrict hauling and/or skidding if ruts exceed the specified depth. With the Unit Manager or his/her representative's approval, the Purchaser may return to the area when the risk of rutting has decreased.

5.8 - Protection of Endangered Species

5.8.3 - Red shoulder hawk or goshawk (2/16)

In the event that an active red shoulder hawk or goshawk nest is found, the contract may be amended to protect the nest site until the nest is determined to be inactive. The value of the trees in this excluded area will be refunded or credited to the Purchaser. The nest will be buffered with a five-chain radius (eight acre) protection area, centered on the nest tree, in which there will be no cutting or new roads constructed. Avoid human disturbance, including loading and skidding, in the protection area.

An additional zone of five chains (ten chains centered on the active nest tree) will be established in which there is no management activity from April 1 to July 30. Limit biomass harvesting and chipping operations within this ten-chain zone, retain the maximum one-third of residues per the Woody Biomass Harvesting Guidelines (Michigan DNR 2010). Nests determined to be inactive will be protected with a one-chain no-harvest buffer.

6 - Safety and Fire Prevention

6.2 - Signing

6.2.2 - Snowmobile trail posting (8/09)

The Purchaser is responsible for posting and maintaining caution signs on the Haywire Grade prior to beginning operations during the snowmobile season (approximately December 1 to March 31). The trail must be posted at appropriate distances from the sale area to warn of logging activity and truck traffic. Signs must be removed when harvest operations are suspended or completed. The DNR will provide these signs.

6.2.3 - Recreational trail posting (2/10)

The Purchaser is responsible for posting and maintaining caution signs on the Haywire Grade prior to beginning operations. The trail must be posted at appropriate distances from the sale area to warn of logging activity and truck traffic at both ends of the trail. Signs must be removed when harvest operations are suspended or completed. The Purchaser will provide these signs.

7 - Other Conditions

7.3 - Contract Modifications

7.3.3 - Modification for reforestation (8/05)

When contractual work of Purchaser has been accepted for any Payment Unit identified on Sale Area Map, Payment Unit will be eliminated from the Sale Area on written notice so that reforestation operations can begin.



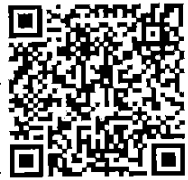
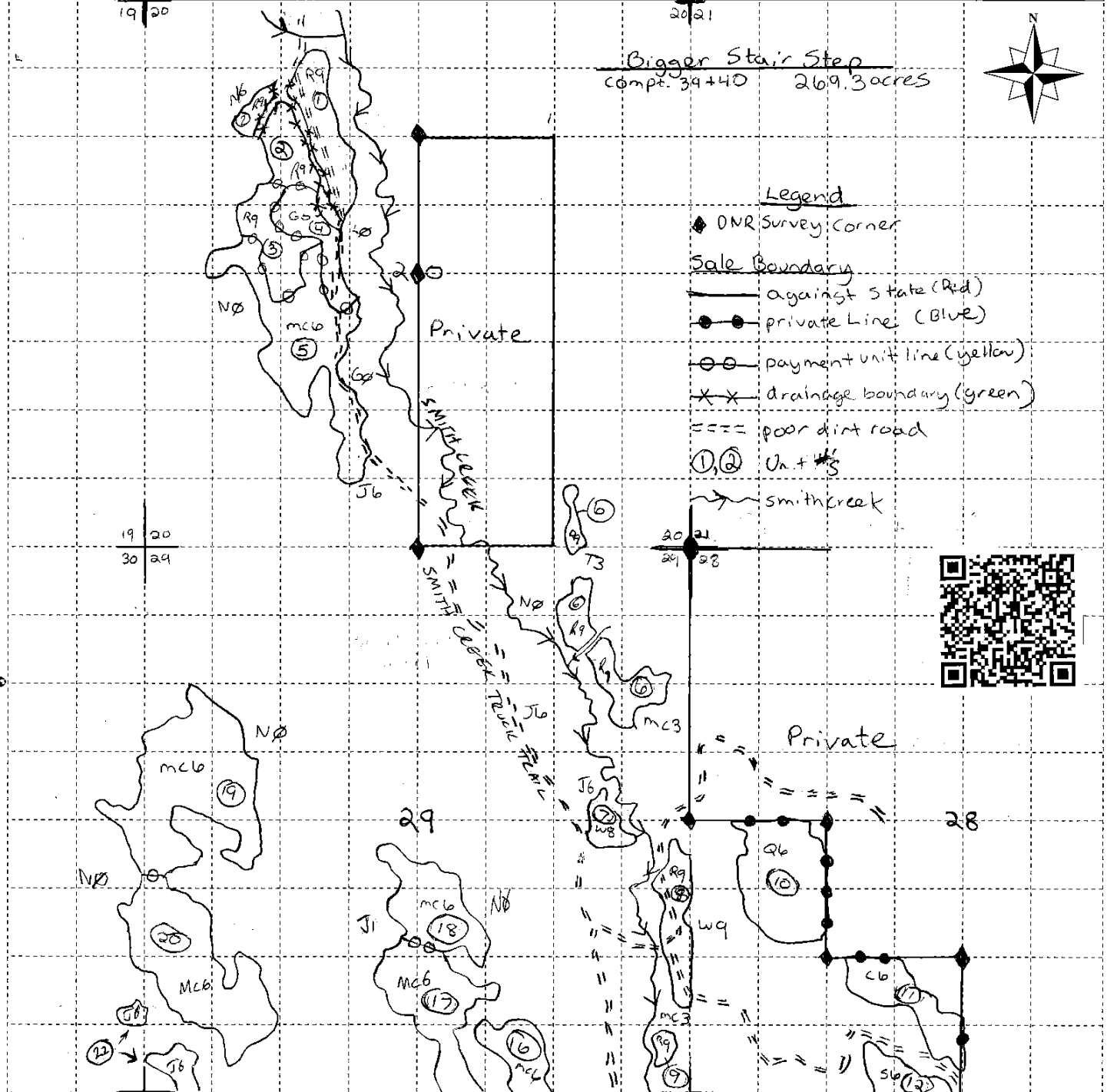
TIMBER SALE MAP

This information provided by authority of Part 5, 1994 PA 451, as amended.

Sale Number	Year
41-35-17	2017

Forest Management Unit Shingleton	County Schoolcraft	Mapped By S.Clark / Petrelius	Date 8-23-2017	Page of 1 3
Compartment Number 39, 40	Township T43N	Range R16W	Section(s) and Subdivision(s) Sec. 20 W/2 EXC. SESE Sec 29 - S/2, E/2 NE 1/4, W/2 NW 1/4	Scale: ...4... = 1 mile

Cover Type				Density	
A = Aspen	J = Jack Pine	O = Oak	U = Upland Brush	0 = Non Stocked	5 = Pole Timber Medium
B = Paper Birch	K = Rock	P = Lowland Poplar	UM = Upland Mix Forest	1 = Seedling Sapling Poor	6 = Pole Timber Well
C = Cedar	L = Lowland Brush	Q = Mixed Swamp Conifer	V = Bog or Marsh	2 = Seedling Sapling Medium	7 = Saw Timber Poor
D = Treed Bog	LM = Lowland Mix Forest	R = Red Pine	W = White Pine	3 = Seedling Sapling Well	8 = Saw Timber Medium
E = Swamp Hardwoods	M = Maple, Beech, Birch	S = Black Spruce	X = Non Stocked	4 = Pole Timber Poor	9 = Saw Timber Well
F = Spruce/Fir	MC = Mixed Conifer	T = Tamarack	Y = Sand		
G = Grass	MD = Mixed Deciduous	Z = Water			
H = Hemlock	N = Marsh				





Sale Number	Year
41-35-17	2017

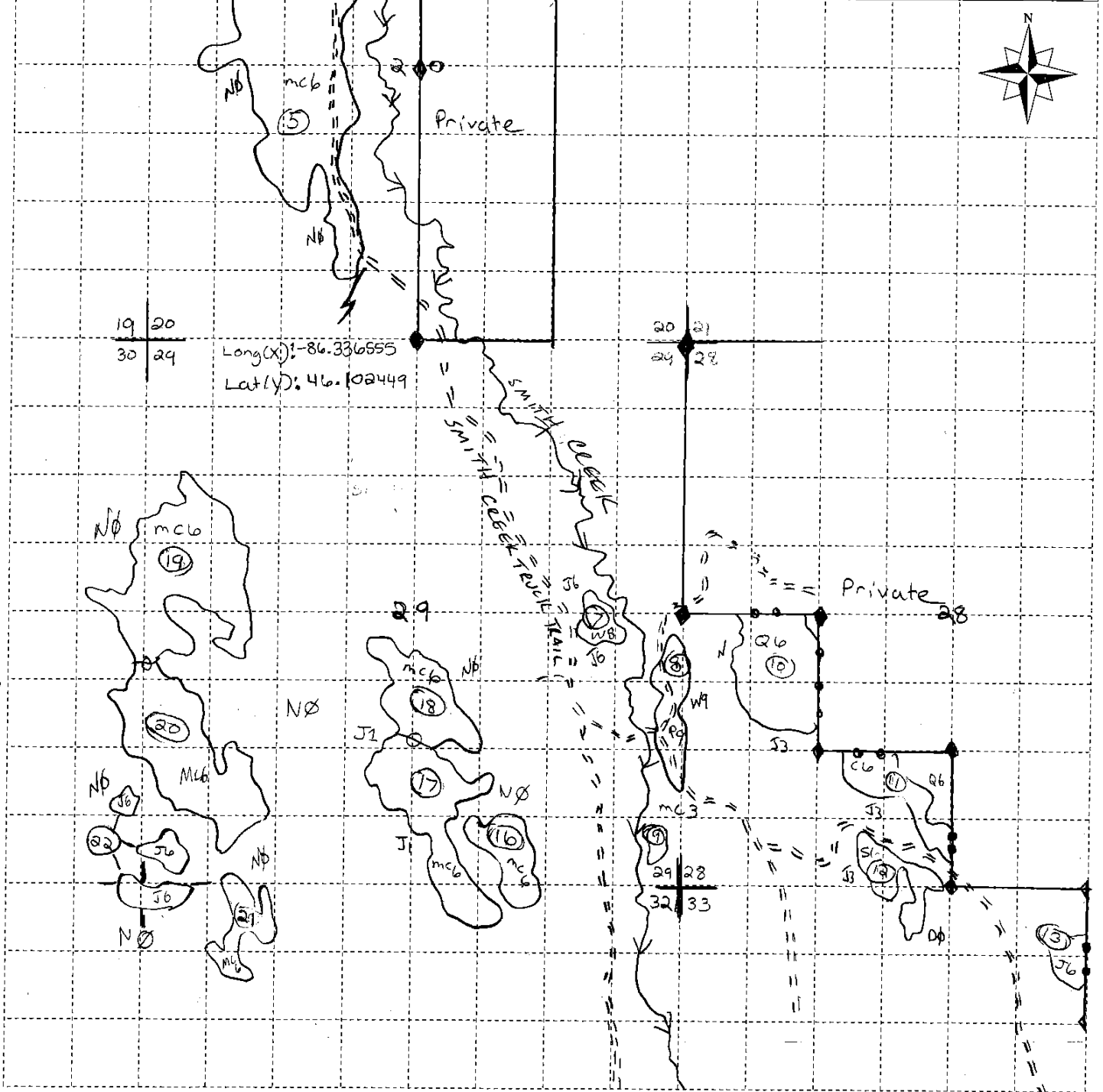
TIMBER SALE MAP

This information provided by authority of Part 5, 1994 PA 451, as amended.

Forest Management Unit Shingleton	County Schoolcraft	Mapped By S. Clark / Petrelius	Date 8-23-2017	Page 2	of 13
Compartment Number 39+40	Township T43N	Range R16W	Section(s) and Subdivision(s) S 30 - SE 1/4, EV 2 SE S 31 - N 1/4 / S 32 - NW 1/4, NW 1/4	Scale: [---4---] = 1 mile	

Cover Type			
A = Aspen	J = Jack Pine	O = Oak	U = Upland Brush
B = Paper Birch	K = Rock	P = Lowland Poplar	UM = Upland Mix Forest
C = Cedar	L = Lowland Brush	Q = Mixed Swamp Conifer	V = Bog or Marsh
D = Treed Bog	LM = Lowland Mix Forest	R = Red Pine	W = White Pine
E = Swamp Hardwoods	M = Maple, Beech, Birch	S = Black Spruce	X = Non Stocked
F = Spruce/Fir	MC = Mixed Conifer	T = Tamarack	Y = Sand
G = Grass	MD = Mixed Deciduous	Z = Water	
H = Hemlock	N = Marsh		

Density	
0 = Non Stocked	5 = Pole Timber Medium
1 = Seedling Sapling Poor	6 = Pole Timber Well
2 = Seedling Sapling Medium	7 = Saw Timber Poor
3 = Seedling Sapling Well	8 = Saw Timber Medium
4 = Pole Timber Poor	9 = Saw Timber Well





TIMBER SALE MAP

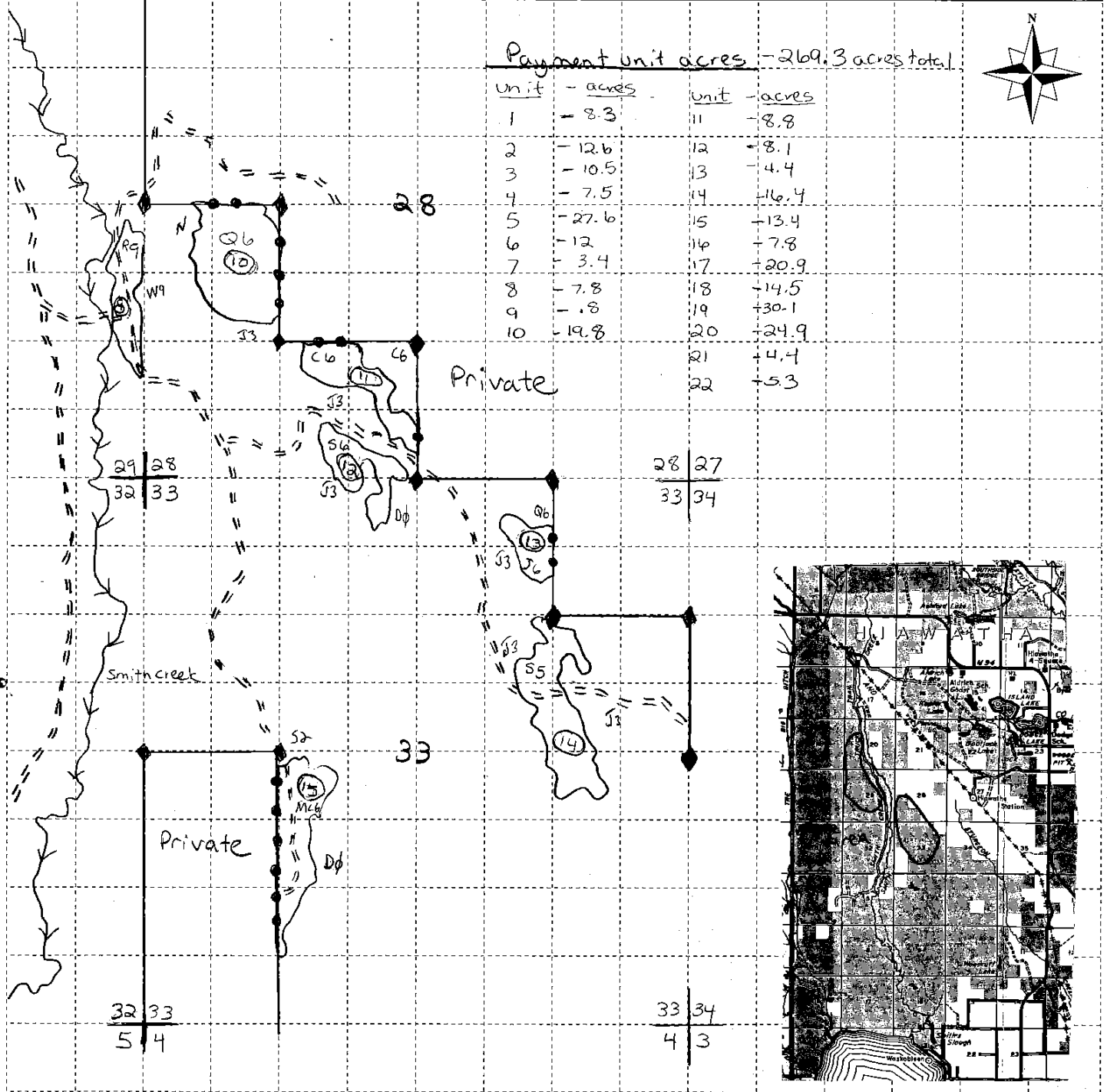
This information provided by authority of Part 5, 1994 PA 451, as amended.

Sale Number	Year
41-35-17	2017

Forest Management Unit Shingleton	County Schoolcraft	Mapped By S.Clark / Petrelius	Date 8-23-2017	Page of 3 3
Compartment Number 39 + 40	Township T43 N	Range R16 W	Section(s) and Subdivision(s) Src 28 - SE SW, NW SW Src 33 - W 1/2 NE, SE NE, N 1/2 SE, E 1/2 SW, NE NW	Scale: ...4..... = 1 mile

Cover Type			
A = Aspen	J = Jack Pine	O = Oak	U = Upland Brush
B = Paper Birch	K = Rock	P = Lowland Poplar	UM = Upland Mix Forest
C = Cedar	L = Lowland Brush	Q = Mixed Swamp Conifer	V = Bog or Marsh
D = Treed Bog	LM = Lowland Mix Forest	R = Red Pine	W = White Pine
E = Swamp Hardwoods	M = Maple, Beech, Birch	S = Black Spruce	X = Non Stocked
F = Spruce/Fir	MC = Mixed Conifer	T = Tamarack	Y = Sand
G = Grass	MD = Mixed Deciduous	Z = Water	
H = Hemlock	N = Marsh		

Density	
0 = Non Stocked	5 = Pole Timber Medium
1 = Seedling Sapling Poor	6 = Pole Timber Well
2 = Seedling Sapling Medium	7 = Saw Timber Poor
3 = Seedling Sapling Well	8 = Saw Timber Medium
4 = Pole Timber Poor	9 = Saw Timber Well



Bigger Stair Steps (41-035-17)

T43N, R16W, SEC. 20; T43N, R16W, SEC. 28; T43N, R16W, SEC. 29; T43N,

In response to the notice of sale to be held 2:00 p.m. (local time) on May 22, 2019, I am hereby submitting my sealed bid (firm offer) for the following forest products to be cut. Bids for individual species must be at or above the advertised price. All non-responsive bid forms may be rejected.

<u>PRODUCTS & SPECIES</u>	<u>ESTIMATED VOLUME*</u>	<u>ADVERTISED PRICE</u>	<u>BID PRICE/UNIT</u>
Pulpwood			
Balsam Fir	31.00 Cords	\$ 15.50/Cord	\$ _____
Jack Pine	1,100.00 Cords	\$ 27.15/Cord	\$ _____
Mixed Hardwood	225.00 Cords	\$ 17.30/Cord	\$ _____
Mixed Spruce	1,336.00 Cords	\$ 28.80/Cord	\$ _____
N. White Cedar	163.00 Cords	\$ 5.90/Cord	\$ _____
Paper Birch	50.00 Cords	\$ 10.00/Cord	\$ _____
Quaking Aspen	28.00 Cords	\$ 21.45/Cord	\$ _____
Red Pine	1,902.00 Cords	\$ 42.25/Cord	\$ _____
Tamarack	567.00 Cords	\$ 6.85/Cord	\$ _____
White Pine	1,280.00 Cords	\$ 17.15/Cord	\$ _____

*These estimated volumes are final and not subject to adjustment. Prospective bidders are urged to examine this timber and to make their own estimates of quantity and quality.

I understand that any or all bids may be rejected. All bids must be signed and all bid items must be bid or the bid form may be rejected. I also understand that consideration and awarding a contract will be based upon my past performance and ability to complete the contract based upon equipment and staffing subject to my control.

FEDERAL ID: ____ - ____ - ____ or SOCIAL SECURITY NUMBER: ____ - ____ - ____

Company or individual bidding: _____

Company representative's name: _____

Address: _____

City: _____ State: _____ Zip: _____

IF AVAILABLE, PLEASE PLACE THE PERSONALIZED LABEL FROM YOUR PROSPECTUS IN THE ABOVE BOX.

Individual or company representative's signature: _____ Date: _____

Phone number : _____ Email (optional): _____

THE WINNING BIDDER MUST COMPLETE THE VERIFICATION OF WORKER'S DISABILITY COMPENSATION ACT COMPLIANCE (ON REVERSE SIDE IF DOUBLE SIDED) WITHIN 21 DAYS OF SALE AWARD DATE



FOR DEPARTMENT USE ONLY	
Sale Number (XX - XXX - XX - XX)	
Forest Management Unit:	

TIMBER SALE VERIFICATION OF WORKER'S DISABILITY COMPENSATION ACT COMPLIANCE

As required by Act 317, P.A. 1969 (Worker's Compensation) and
Part 5 of Act 451 of 1994, as amended.

VERIFICATION OF WORKER'S DISABILITY COMPENSATION ACT COMPLIANCE

- This verification must be completed and submitted within 21 days of contract award and prior to the issuance of the timber sale contract.
- In addition, if boxes 2B or 2C are checked, then Notice of Exclusion or Certificate of Insurance must be submitted within twenty-one (21) days of the contract award and prior to the issuance of the timber sale contract.
- All information must be typed or printed except for written signatures.

Please Check Appropriate Categories:

1. My business is organized as (you **must** check one of the boxes below):
 - A. Sole Proprietorship (individual)
 - B. Partnership
 - C. Corporation
2. You **must** check one of the boxes below:
 - A. I certify my business is a sole proprietorship and it has no employees but the sole proprietor. I am not subject to the Worker's Compensation Laws.
 - B. I certify my business has satisfied its obligation to the Worker's Compensation Act through the use of an approved Notice of Exclusion (BWC-337, Rev. 5/96). I will provide a copy of the Notice of Exclusion within 21 days of the contract award. (For questions or a copy of the BWC-337, please call the Worker's Compensation Bureau at 517-322-1195).
 - C. I certify my business has a Worker's Compensation Policy. I will provide an original Certificate of Insurance within twenty-one (21) days of the contract award.
3. If you have checked item 2(A) or 2(B), you **must** indicate the number of **both** full-time and part-time employees, other than yourself, including family members and active partners (if none, you must enter "0").

_____ Full-time Employees

_____ Part-time Employees

Name of Business		Federal ID (or) Social Security No.	
Address		Telephone ()	
City	State	ZIP	

I hereby certify that the above information is true and correct. I agree to notify the Michigan DNR of any changes that occur in factors affecting my coverage during any of my present and future operations.

Signature of Owner or Authorized Representative

Title

Date

Please complete the "SEALED BID" information on the next page

Stumpy Pine (41-020-18)

T48N, R16W, SEC. 1; T48N, R16W, SEC. 12; T48N, R16W, SEC. 2; T49N, R16W,

In response to the notice of sale to be held 2:00 p.m. (local time) on May 22, 2019, I am hereby submitting my sealed bid (firm offer) for the following forest products to be cut. Bids for individual species must be at or above the advertised price. All non-responsive bid forms may be rejected.

<u>PRODUCTS & SPECIES</u>	<u>ESTIMATED VOLUME*</u>	<u>ADVERTISED PRICE</u>	<u>BID PRICE/UNIT</u>
Pulpwood			
Balsam Fir	50.00 Cords	\$ 20.35/Cord	\$ _____
Hemlock	33.00 Cords	\$ 10.30/Cord	\$ _____
Jack Pine	364.00 Cords	\$ 35.65/Cord	\$ _____
Mixed Aspen	147.00 Cords	\$ 28.15/Cord	\$ _____
Mixed Hardwood	513.00 Cords	\$ 22.75/Cord	\$ _____
Paper Birch	76.00 Cords	\$ 13.10/Cord	\$ _____
Red Pine	3,763.00 Cords	\$ 55.50/Cord	\$ _____
White Pine	501.00 Cords	\$ 22.50/Cord	\$ _____
White Spruce	247.00 Cords	\$ 37.85/Cord	\$ _____

*These estimated volumes are final and not subject to adjustment. Prospective bidders are urged to examine this timber and to make their own estimates of quantity and quality.

I understand that any or all bids may be rejected. All bids must be signed and all bid items must be bid or the bid form may be rejected. I also understand that consideration and awarding a contract will be based upon my past performance and ability to complete the contract based upon equipment and staffing subject to my control.

FEDERAL ID: ____ - ____ - ____ or SOCIAL SECURITY NUMBER: ____ - ____ - ____

Company or individual bidding: _____

Company representative's name: _____

Address: _____

City: _____ State: _____ Zip: _____

IF AVAILABLE, PLEASE PLACE THE PERSONALIZED LABEL FROM YOUR PROSPECTUS IN THE ABOVE BOX.

Individual or company representative's signature: _____ Date: _____

Phone number : _____ Email (optional): _____

THE WINNING BIDDER MUST COMPLETE THE VERIFICATION OF WORKER'S DISABILITY COMPENSATION ACT COMPLIANCE (ON REVERSE SIDE IF DOUBLE SIDED) WITHIN 21 DAYS OF SALE AWARD DATE



FOR DEPARTMENT USE ONLY	
Sale Number (XX - XXX - XX - XX)	
Forest Management Unit:	

TIMBER SALE VERIFICATION OF WORKER'S DISABILITY COMPENSATION ACT COMPLIANCE

As required by Act 317, P.A. 1969 (Worker's Compensation) and
Part 5 of Act 451 of 1994, as amended.

VERIFICATION OF WORKER'S DISABILITY COMPENSATION ACT COMPLIANCE

- This verification must be completed and submitted within 21 days of contract award and prior to the issuance of the timber sale contract.
- In addition, if boxes 2B or 2C are checked, then Notice of Exclusion or Certificate of Insurance must be submitted within twenty-one (21) days of the contract award and prior to the issuance of the timber sale contract.
- All information must be typed or printed except for written signatures.

Please Check Appropriate Categories:

1. My business is organized as (you **must** check one of the boxes below):
 - A. Sole Proprietorship (individual)
 - B. Partnership
 - C. Corporation
2. You **must** check one of the boxes below:
 - A. I certify my business is a sole proprietorship and it has no employees but the sole proprietor. I am not subject to the Worker's Compensation Laws.
 - B. I certify my business has satisfied its obligation to the Worker's Compensation Act through the use of an approved Notice of Exclusion (BWC-337, Rev. 5/96). I will provide a copy of the Notice of Exclusion within 21 days of the contract award. (For questions or a copy of the BWC-337, please call the Worker's Compensation Bureau at 517-322-1195).
 - C. I certify my business has a Worker's Compensation Policy. I will provide an original Certificate of Insurance within twenty-one (21) days of the contract award.
3. If you have checked item 2(A) or 2(B), you **must** indicate the number of **both** full-time and part-time employees, other than yourself, including family members and active partners (if none, you must enter "0").

_____ Full-time Employees

_____ Part-time Employees

Name of Business		Federal ID (or) Social Security No.	
Address		Telephone ()	
City	State	ZIP	

I hereby certify that the above information is true and correct. I agree to notify the Michigan DNR of any changes that occur in factors affecting my coverage during any of my present and future operations.

Signature of Owner or Authorized Representative

Title

Date

Please complete the "SEALED BID" information on the next page

Fielder's Choice Hardwood (41-025-18)
T47N, R15W, SEC. 27; T47N, R15W, SEC. 28; Schoolcraft COUNTY

In response to the notice of sale to be held 2:00 p.m. (local time) on May 22, 2019, I am hereby submitting my sealed bid (firm offer) for the following forest products to be cut. Bids for individual species must be at or above the advertised price. All non-responsive bid forms may be rejected.

<u>PRODUCTS & SPECIES</u>	<u>ESTIMATED VOLUME*</u>	<u>ADVERTISED PRICE</u>	<u>BID PRICE/UNIT</u>
Sawtimber			
Red Maple	3.60 MBF	\$ 121.00/MBF	\$ _____
Pulpwood			
Balsam Fir	204.00 Cords	\$ 21.15/Cord	\$ _____
Mixed Hardwood	271.00 Cords	\$ 23.60/Cord	\$ _____

*The volumes are statistically estimated within plus (+) or minus (-) 20.20 percent. These estimated volumes are final and not subject to adjustment. Prospective bidders are urged to examine this timber and to make their own estimates of quantity and quality.

I understand that any or all bids may be rejected. All bids must be signed and all bid items must be bid or the bid form may be rejected. I also understand that consideration and awarding a contract will be based upon my past performance and ability to complete the contract based upon equipment and staffing subject to my control.

FEDERAL ID: _____ - _____ or SOCIAL SECURITY NUMBER: _____ - _____ - _____

Company or individual bidding: _____

Company representative's name: _____

Address: _____

City: _____ State: _____ Zip: _____

IF AVAILABLE, PLEASE PLACE THE PERSONALIZED LABEL FROM YOUR PROSPECTUS IN THE ABOVE BOX.

Individual or company representative's signature: _____ Date: _____

Phone number : _____ Email (optional): _____

THE WINNING BIDDER MUST COMPLETE THE VERIFICATION OF WORKER'S DISABILITY COMPENSATION ACT COMPLIANCE (ON REVERSE SIDE IF DOUBLE SIDED) WITHIN 21 DAYS OF SALE AWARD DATE



FOR DEPARTMENT USE ONLY
Sale Number (XX - XXX - XX - XX)
Forest Management Unit:

TIMBER SALE VERIFICATION OF WORKER'S DISABILITY COMPENSATION ACT COMPLIANCE

*As required by Act 317, P.A. 1969 (Worker's Compensation) and
Part 5 of Act 451 of 1994, as amended.*

VERIFICATION OF WORKER'S DISABILITY COMPENSATION ACT COMPLIANCE

- This verification must be completed and submitted within 21 days of contract award and prior to the issuance of the timber sale contract.
- In addition, if boxes 2B or 2C are checked, then Notice of Exclusion or Certificate of Insurance must be submitted within twenty-one (21) days of the contract award and prior to the issuance of the timber sale contract.
- All information must be typed or printed except for written signatures.

Please Check Appropriate Categories:

1. My business is organized as (you **must** check one of the boxes below):
 - A. Sole Proprietorship (individual)
 - B. Partnership
 - C. Corporation

2. You **must** check one of the boxes below:
 - A. I certify my business is a sole proprietorship and it has no employees but the sole proprietor. I am not subject to the Worker's Compensation Laws.
 - B. I certify my business has satisfied its obligation to the Worker's Compensation Act through the use of an approved Notice of Exclusion (BWC-337, Rev. 5/96). I will provide a copy of the Notice of Exclusion within 21 days of the contract award. (For questions or a copy of the BWC-337, please call the Worker's Compensation Bureau at 517-322-1195).
 - C. I certify my business has a Worker's Compensation Policy. I will provide an original Certificate of Insurance within twenty-one (21) days of the contract award.

3. If you have checked item 2(A) or 2(B), you **must** indicate the number of **both** full-time and part-time employees, other than yourself, including family members and active partners (if none, you must enter "0").

_____ Full-time Employees

_____ Part-time Employees

Name of Business		Federal ID (or) Social Security No.	
Address		Telephone ()	
City	State	ZIP	

I hereby certify that the above information is true and correct. I agree to notify the Michigan DNR of any changes that occur in factors affecting my coverage during any of my present and future operations.

Signature of Owner or Authorized Representative

Title

Date

Please complete the "SEALED BID" information on the next page