



**DEPARTMENT OF NATURAL RESOURCES
STATE OF MICHIGAN**

TIMBER SALE PROSPECTUS #6411

SCHEDULED SALE DATE AND TIME: 9:00 a.m. (local time) on May 28, 2019.

LOCATION: GRAYLING MGMT UNIT, 1955 HARTWICK PINES ROAD, GRAYLING, MI 49738.

PROSPECTUS NOTE: The bidder is advised to inspect the sale area and review the location, estimated volumes, operating costs and contract terms of proposed sales. Please be aware that some landowners may request 60 days or more notice for access across their land.

Notice is hereby given that bids will be received by the Unit Manager, GRAYLING MANAGEMENT UNIT, for certain timber on the following described lands:

Townline Kittle Aspen (72-006-19) / T27N, R02E, SEC. 30, S1/2NW, W1/2NE, N1/2SW, SWSW.
Oscoda County, Advertised Price \$79,092.10, 99.5 Acres, Aspen, Hardwood.

SALE NOTE: This sale was set up and cruised in 2015. The harvest area includes upland, intermediate, and low ground. Unless it is cut during dry summer or frozen winter conditions, low ground-pressure equipment will likely be needed for harvesting the lower ground. A designated cycle trail follows the county roads through the harvest area. The scattered oak residual will restrict operations during the high-risk period for Oak Wilt.

A recreation site such as a trail, pathway, or campground is within the sale area or the vicinity. Certain restrictions/specifications may be applicable including time restrictions.

Ground Buzzing Aspen (72-019-18) / T27N, R01E, SEC. 5, NENE.
T28N, R01E, SEC. 33, S1/2NE, S1/2SW, N1/2SE.
Oscoda County, Advertised Price \$32,661.75, 85.8 Acres, Aspen, Jack Pine.

SALE NOTE: Access is limited to Payment Unit 1 and will require cutting a haul route through the Kirkland Warblers stand on the north side.

A recreation site such as a trail, pathway, or campground is within the sale area or the vicinity. Certain restrictions/specifications may be applicable including time restrictions.

Bailey Overstory Oak (72-021-18) / T28N, R03E, SEC. 20, S1/2SW.
T28N, R03E, SEC. 29, NW, SWNE, NWSW.
T28N, R03E, SEC. 30, N1/2NE.
Oscoda County, Advertised Price \$114,264.75, 99.4 Acres, Hardwood, Sugar Maple.

SALE NOTE: The Mio Trail runs through Payment Units 2 and 3. Signs warning of logging activity must be placed at each end at an appropriate distance to warn ORV traffic. There are underground pipelines, gas well sites, and overhead powerlines in the vicinity of the sale.

A recreation site such as a trail, pathway, or campground is within the sale area or the vicinity. Certain restrictions/specifications may be applicable including time restrictions.

Frost Pocket Expansion (72-022-18) / T27N, R03E, SEC. 6 , NW,W1/2NE.

T28N, R03E, SEC. 31, NENW,S1/2NW,SW.

Oscoda County, Advertised Price \$69,571.90, 214.4 Acres, Red Pine, Aspen.

SALE NOTE: Payment Units 4, 5 and 6 must be completed prior to 09/30/2020. These units contain low density trees. In order to facilitate future prescribed burning, all stems greater than 2" at DBH must be harvested from these units.

The Mio ATV Trail and ORV Route run through/adjacent to Payment Units 3, 4, 5, and 6 and are shown on the Timber Sale Map. The Purchaser is to post signs warning of logging activity on the trail and route prior to entry of the sale during harvest operations.

A recreation site such as a trail, pathway, or campground is within the sale area or the vicinity. Certain restrictions/specifications may be applicable including time restrictions.

Comp 14 Mix (72-031-18) / T28N, R03E, SEC. 30, NWSE,S1/2SE.

T28N, R03E, SEC. 31, NENW,NE.

Oscoda County, Advertised Price \$132,399.10, 124.7 Acres, Hardwood, Red Pine.

SALE NOTE: The Purchaser may be able to obtain permission from a private landowner to access sale from the South. The existing road crosses across the Northwest corner of the private property. If permission is not obtained, a short stretch of road may need to be constructed for temporary management access.

A recreation site such as a trail, pathway, or campground is within the sale area or the vicinity. Certain restrictions/specifications may be applicable including time restrictions.

BID INSTRUCTIONS (VER. 07/02/2018):

1. Scheduled Bid Location, Date, and Time (2/11)

Bids must be received by the Unit Manager, GRAYLING OFFICE, 1955 HARTWICK PINES ROAD, GRAYLING, MI 49738, no later than 9:00 a.m. (local time) on May 28, 2019. For further information concerning this sale, contact Susan Thiel at 989-348-6371 extension 7440.

2. Bidder's Qualifications (5/16)

Purchaser shall obtain workers compensation insurance to cover claims under Michigan's Worker's Disability Compensation Act of 1969 or similar employee benefit act of any other state applicable to an employee. If all or part of a timber sale was prepared by a private contractor, the contractor and that contractor's company are not permitted to bid on the timber sale contract. Bids will not be accepted from individuals or companies appearing on the DNR/FRD No-Bid List. This list contains the names of purchasers who previously failed to execute a contract within 21-days or who have a history of poor performance.

3. Preparation of Sealed Bids (5/16)

Bid Forms may be completed online thru Michigan DNR Timber Sale Online Bidding (OLB) at www.michigan.gov/timberbidding or by completing the hardcopy Bid Form found in the Timber Sale Prospectus. Hardcopy Bid Forms shall be manually signed in ink. Registration in OLB is considered your 'signature' for all bids submitted thru that system. Bid prices must be entered for each species and product in the Bid Price column for all material subject to bidding and all fill-in blanks must be completed. If erasures or other changes appear on the hardcopy Bid Form, each erasure or change must be initialed by the person signing the bid.

4. Submission of Sealed Bids (5/16)

Bid forms may be obtained from the Unit Manager or thru OLB. Bids may be submitted hardcopy or thru OLB. All hardcopy bids must be submitted on the bid form and in an envelope clearly identified as described in this section. NOTE: Only one bid form per bid envelope. Sealed bids must be submitted to the Unit office designated in the prospectus and must be submitted at or prior to the time established in the prospectus. The envelope should show on the outside (a) the sale name or number and (b) the date and time of bid opening, as shown in the prospectus. Bids received after the time specified in the sale prospectus are late bids and will be rejected.

It is possible for a bidder to submit multiple bids on a single sale. For example, a bid may be submitted hardcopy and a bid may be submitted thru OLB. Or, two bidders from the same company could both submit bids on the same sale. If this were to happen, the State would accept all bids received and award the contract accordingly. All bidding and contractual requirements would apply to all bids received.

5. Public Opening of Sealed Bids (7/16)

If conditions permit, the sealed bids will be publicly opened and posted at the time and place set in the prospectus.

If a bidder, present at a bid opening, has submitted bids on more than one sale, that bidder may withdraw their unopened bid envelopes or announce the withdrawal of their online bid after being declared the successful bidder on one sale.

6. Award of Contract (1/11)

Award of the contract will be made to the Bidder whose bid, conforming to the prospectus, is most advantageous to the State of Michigan on the basis of total value at rates bid for the estimated quantities. The State reserves the right to reject any bid or waive any minor irregularity in bids received. A written award mailed (or otherwise furnished) to the successful Bidder shall be deemed to result in a binding contract without further action by either party.

7. Down Payment (1/11)

The Bidder to whom award is made must make a down payment within 21 days of the sale award. The amount of the down payment will be calculated as shown in the Bond and Payment Schedule of this prospectus. Only cash may be used to meet this requirement.

8. Performance Security (1/11)

As guarantee of faithful performance, a cash bond, certificate of deposit, surety bond or irrevocable letter of credit (LOC) is required within 21 days of the sale award. The amount of the performance security is shown in the Bond and

Payment Schedule of this prospectus. If an LOC or surety is used, the coverage must extend for at least 6 months beyond the contract expiration.

9. Timber Sale Contract (7/18)

Additional conditions and requirements common to all timber sales are listed on the timber sale contract (R4031) and are available on line at www.michigan.gov/timber. Contact the Unit Manager for additional information or a sample contract. Within 21 days of the date of the award letter, the bidder must sign the contract and provide the required down payment, performance security, and verification of worker's disability compensation. The down payment and performance security shall be in accordance with the provisions of the timber sale contract, in the sums stated in this prospectus. If these actions are not taken, then the Bidder, the Bidder's corporation, and the corporation's principals may not be permitted to bid on State timber sales for a period of 3 months after the first offense, 6 months after the second offense, and 1 year after the third offense. An offense will only be counted against the Bidder for 5 years. In addition, the Bidder certifies that if awarded this contract, the Bidder will complete the timber sale contract in accordance with its terms and any modifications thereof including requirements to purchase, cut, and remove the included timber by the expiration date.

Payment Unit values in the State Forest Timber Sale Contract are calculated based on the advertised value of the Payment Unit as a percentage of the total advertised value of the contract. The advertised value of each Payment Unit is given in the Description of Timber by Payment Unit table on the Timber Sale Information page. For example, if the value of Payment Unit 1 is advertised as \$1,500 and the total Timber Sale value is advertised as \$10,000, the contract price for Payment Unit 1 will be 15% of the total bid price ($\$1,500/\$10,000 * 100$).

10. Disclaimer of Estimates and Bidder's Warranty of Inspection (7/16)

Before submitting this bid, the Bidder is advised and cautioned to inspect the sale area, review the requirements of the sale contract, and take other steps as may be reasonably necessary to ascertain the location, estimated volumes, construction estimates, and operating costs of the proposed sale. Failure to do so will not relieve the Bidder from responsibility for completing the contract.

The Bidder warrants that this bid is submitted solely on the basis of the Bidder's examination and inspection of the quality and quantity of the timber offered for sale and the Bidder's opinion of the value thereof and the costs of recovery. No reliance should be placed on the State of Michigan's estimates of timber quality, quantity or costs of recovery. Bidder further acknowledges that the State of Michigan: (i) expressly disclaims any warranty of fitness of timber for any purpose; (ii) offers this timber as is without any warranty of quality (merchantability) or quantity and (iii) expressly disclaims any warranty as to the quantity or quality of timber sold.

11. Certification and Chain-of-Custody (10/14)

Unless otherwise indicated in the contract under section 7 – Other Conditions of the Sale Specific Conditions & Requirements, the area encompassed by this timber sale is certified to the standards of the Forest Stewardship Council (FSC) - Certificate #SCS-FM/COC-00090N and the Sustainable Forestry Initiative (SFI) - Certificate #NSF-SFIS-5Y031-SF5. Forest products from this sale may be delivered to the mill as "FSC 100% and / or SFI certified" as long as the contractor hauling the forest products is chain-of-custody (COC) certified or covered under a COC certificate from the destination mill. The purchaser is responsible for maintaining COC after leaving the sale area.

12. Good Neighbor Authority (GNA) Requirements (7/16)

If the name of this timber sales contains the acronym GNA, it is authorized by the Good Neighbor Authority (GNA) and covered by various agreements between the U.S. Forest Service and the State. The timber sale occurs on federal land and the following conditions apply:

GNA contracts on US Forest Service land will not be awarded to purchasers on the Federal list of excluded parties. The System for Award Management (SAM) will be checked for active excluded parties prior to award of contract. In addition, the Bidder to whom award is made must complete an Assurance Regarding Felony Conviction or Tax Delinquent Status for Corporate Applicants (AD-3031).

13. Good Neighbor Authority (GNA) Requirements, con't (9/16)

Bidder certifies, by signing this bid form, that to the best of Bidder's knowledge that the following representations are accurate and complete.

- a. That the Bidder and its principals are not presently debarred, suspended, proposed for debarment, declared ineligible, or voluntary excluded from timber sales (covered transactions) by any Federal department or agency.
- b. That the Bidder and its principals have not within a 3-year period preceding this bid been convicted of or had a civil judgment rendered against them for commission of fraud or a criminal offense in connection with obtaining, attempting to obtain, or performing a public (Federal, State, or local) transaction or contract under a public transaction; violation of Federal or State antitrust statutes or commission of embezzlement, theft, forgery, bribery, falsification or destruction of records, making false statements, or receiving stolen property.
- c. That the Bidder and its principals are not presently indicted for or otherwise criminally or civilly charged by a governmental entity (Federal, State, or local) with commission of any of the offenses enumerated in paragraph b of this certification.
- d. That the Bidder and its principals have not within a 3-year period preceding this bid had one or more public transactions (Federal, State, or local) terminated for breach or default of a timber or forest product contract.

Bidders that cannot certify this requirement, in whole or in part, shall submit an explanation with their bid.

DAN EICHINGER
Director

TIMBER SALE INFORMATION

Townline Kittle Aspen (72-006-19)
 T27N, R02E, SEC. 30.
 Oscoda County (Advertised Price \$79,092.10)

SALE NOTE: This sale was set up and cruised in 2015. The harvest area includes upland, intermediate, and low ground. Unless it is cut during dry summer or frozen winter conditions, low ground-pressure equipment will likely be needed for harvesting the lower ground. A designated cycle trail follows the county roads through the harvest area. The scattered oak residual will restrict operations during the high-risk period for Oak Wilt.

A recreation site such as a trail, pathway, or campground is within the sale area or the vicinity. Certain restrictions/specifications may be applicable including time restrictions.

A timber sale contract for this lump sum, sealed bid timber sale will be awarded to the responsible bidder offering the highest sealed bid price. Bids must be at or above the following advertised price for each species:

<u>PRODUCTS & SPECIES</u>	<u>ESTIMATED UNITS*</u>	<u>ADVERTISED PRICE</u>
Sawtimber		
Mixed Aspen	113.00 MBF	\$ 68.00 / MBF
Northern Pin Oak	42.30 MBF	\$ 176.00 / MBF
Red Maple	36.60 MBF	\$ 58.00 / MBF
Red Pine	69.10 MBF	\$ 96.00 / MBF
White Pine	27.90 MBF	\$ 58.00 / MBF
Pulpwood		
Balsam Fir	51.00 Cords	\$ 13.40 / Cord
Black Spruce	14.00 Cords	\$ 15.30 / Cord
Jack Pine	222.00 Cords	\$ 16.95 / Cord
Mixed Aspen	920.00 Cords	\$ 22.00 / Cord
Mixed Hardwood	450.00 Cords	\$ 29.05 / Cord
Northern Pin Oak	221.00 Cords	\$ 19.75 / Cord
Red Pine	133.00 Cords	\$ 35.15 / Cord
White Pine	274.00 Cords	\$ 24.00 / Cord

* The total volume is statistically estimated within plus (+) or minus (-) 11.98 percent. The estimated units are final and not subject to adjustment. Prospective bidders are urged to examine this timber and to make their own estimates of quantity and quality.

BOND AND PAYMENT SCHEDULE:

1. A bond in the amount of \$3,955.00 to insure faithful performance of the conditions of the contract will be deposited by the successful bidder within 21 days of the sale award.
2. Cutting in any sale or unit without the required advance payment would be considered a trespass.
3. Total payment must be paid in advance or according to the following schedule:
 - (a) Ten percent (10%) of the sale value must be paid within 21 days of the sale award.
 - (b) The 10% down payment will be credited towards the first unit cut.
 - (c) Payment for each of the following units must be made before cutting begins in that unit:

<u>PAYMENT UNIT NUMBER</u>	<u>PERCENT OF TOTAL SALE VALUE</u>
01	28.5%
02	44.8%
03	26.7%
4. If no cutting takes place, the 10% down payment will not be refunded.
5. Operations on the contract issued will terminate on 03/31/2021.

Description of Timber by Payment Unit (PU)

PU	MARKET GROUP	PRODUCT	QUANTITY	UNIT	ACRES	ADVERTISE PRICE
1	Mixed Aspen	Sawtimber	18.4	MBF	34.6	\$22,537.30
	<i>B. T. Aspen</i>		7.3	<i>MBF</i>		
	<i>Quaking Aspen</i>		11.1	<i>MBF</i>		
	Northern Pin Oak		34.2	MBF		
	Red Maple		2.9	MBF		
	White Pine		11.5	MBF		
	Balsam Fir	Pulpwood	6.0	Cords		
	Black Spruce		14.0	Cords		
	Jack Pine		70.0	Cords		
	<i>Jack Pine</i>	<i>Sawtimber</i>	3.3	<i>MBF</i>		
	<i>Jack Pine</i>	<i>Pulpwood</i>	63.0	<i>Cords</i>		
	Mixed Aspen		285.0	Cords		
	<i>B. T. Aspen</i>		73.0	<i>Cords</i>		
	<i>Quaking Aspen</i>		212.0	<i>Cords</i>		
	Mixed Hardwood		62.0	Cords		
	<i>Black Cherry</i>		9.0	<i>Cords</i>		
	<i>Red Maple</i>		53.0	<i>Cords</i>		
	Northern Pin Oak		162.0	Cords		
	White Pine		70.0	Cords		
	2	Mixed Aspen	Sawtimber	53.3		
<i>B. T. Aspen</i>			32.9	<i>MBF</i>		
<i>Quaking Aspen</i>			20.4	<i>MBF</i>		
Northern Pin Oak			8.1	MBF		
Red Maple			11.5	MBF		
Red Pine			57.7	MBF		
White Pine			13.5	MBF		
Jack Pine		Pulpwood	152.0	Cords		
<i>Jack Pine</i>		<i>Sawtimber</i>	3.5	<i>MBF</i>		
<i>Jack Pine</i>		<i>Pulpwood</i>	145.0	<i>Cords</i>		
Mixed Aspen			331.0	Cords		
<i>B. T. Aspen</i>			235.0	<i>Cords</i>		
<i>Quaking Aspen</i>			96.0	<i>Cords</i>		
Mixed Hardwood			131.0	Cords		
<i>Black Cherry</i>			4.0	<i>Cords</i>		
<i>Red Maple</i>			127.0	<i>Cords</i>		
Northern Pin Oak			59.0	Cords		
Red Pine			121.0	Cords		
White Pine			180.0	Cords		
3		Mixed Aspen	Sawtimber	41.3	MBF	26.2
	<i>B. T. Aspen</i>		4.8	<i>MBF</i>		
	<i>Quaking Aspen</i>		36.5	<i>MBF</i>		
	Red Maple		22.2	MBF		
	Red Pine		11.4	MBF		
	White Pine		2.9	MBF		
	Balsam Fir	Pulpwood	45.0	Cords		
	Mixed Aspen		304.0	Cords		
	<i>B. T. Aspen</i>		15.0	<i>Cords</i>		
	<i>Quaking Aspen</i>		289.0	<i>Cords</i>		
	Mixed Hardwood		257.0	Cords		
	<i>Paper Birch</i>	<i>Sawtimber</i>	4.0	<i>MBF</i>		
	<i>Black Cherry</i>	<i>Pulpwood</i>	21.0	<i>Cords</i>		
	<i>Ironwood</i>		2.0	<i>Cords</i>		
	<i>Paper Birch</i>		22.0	<i>Cords</i>		
	<i>Red Maple</i>		204.0	<i>Cords</i>		
	Red Pine		12.0	Cords		
White Pine		24.0	Cords			

TOTAL:	288.9	MBF
--------	-------	-----

TOTAL:	2,285.0	Cords
--------	---------	-------

Sale Specific Conditions & Requirements

Sale Name: Townline Kittle Aspen

Sale Number: 72-006-19 Seq#: 1

1 - Sale Area

1.2 - Boundaries

1.2.1 - Painted boundaries (1/14)

The sale boundary and Payment Unit boundaries are marked and identified by blue, red and yellow paint, along with a road. Exterior sale boundary lines against private property are marked with blue paint. Exterior sale boundary lines against state are marked with red paint. Interior retention island boundaries are also marked with red paint. Interior Payment Unit boundaries are marked with yellow paint, with the exception of the boundary between Payment Units 1 & 3, which is unpainted and designated by Kittle Road. The painted boundary line trees are not Included Timber and are to be protected, except cut the red painted boundary line trees that border cleared county road corridors and meet the Included Timber specified in 2.1.1. Yellow painted trees designating an interior Payment Unit boundary are only to be cut when all surrounding Payment Units have been paid.

2 - Timber Specifications

2.1 - Included Timber

2.1.1 - Clearcut unit(s) with unmerchantable trees (6/14)

Within Payment Unit(s) 1 & 2, cut all trees that are two (2) inches or more at DBH, except do not cut oak less than 7 inches at DBH and green-marked trees.

Within Payment Unit 3, cut all trees that are two (2) inches or more at DBH, except do not cut any oak and green-marked trees.

2.1.15 - Hazard trees near roads (7/13)

Cut and remove all standing dead trees within 100 feet of the cleared portion of Kittle Road and Townline Road. These trees may be utilized or must be scattered back into the sale area

2.2 - Utilization

2.2.3 - Stump heights (4/07)

Stump heights within the Sale Area shall not exceed 18 inches for trees greater than 18 inches DBH and 12 inches for trees smaller than 18 inches DBH.

3 - Payments

3.3 - Pre-measured Sales

3.3.4 - Dividing payment units (7/14)

Payment Unit(s) may be divided at the request of the Purchaser and upon approval of the Unit Manager. Dividing Payment Units is a contract modification which requires a Timber Sale Contract Supplement.

4 - Transportation

4.1 - Construction

4.1.3 - Slash and earthen piles (8/04)

Piles or windrows of earth along roads and landings that have been widened or constructed shall be leveled. Slash from road maintenance or construction, including stumps, shall be chipped, utilized or dispersed into the sale.

4.1.6 - Road construction (1/09)

Construction of new roads or improvements of existing roads shall be done in such a way as to minimize the environmental and visual impacts. Merchantable trees shall be cut and utilized unless otherwise directed. Non-merchantable trees shall be severed and laid flat on the ground. Slash shall be utilized or scattered, and not left in windrows and kept a minimum of 10 feet back from the road edge. Stumps shall be set upright, not left on edge, and be moved at least 10 feet away from the road edge. Disturbed soil shall be feathered into the woods and not left in berms or windrows.

4.1.7 - Road closure (10/11)

All new roads built into the sale must be blocked to vehicle traffic upon completion of the sale. Overgrown roads that are reopened shall be considered new roads. Payment Units 1 & 2 have illegally-created trails that also need to be closed; see the Timber Sale administrator for locations. In general, this may require constructing a four (4') foot high berm of stumps and logs covered with earth. Stumps and brush may also need to be scattered across the road behind the berm. Contact the sale administrator for specific details of design and placement.

4.1.11 - Permits (2/12)

The Purchaser will secure any necessary permits that may be required.

5 - Operations

5.2 - Conduct of Operations

5.2.1 - Slash

5.2.1.13 - Dispose of slash as directed (12/05)

Slash is to be disposed of as directed by the Sale Administrator (i.e. flattening taller slash piles near roads or private property).

5.2.3 - Operating Restrictions

5.2.3.5 - Oak wilt restriction (1/18)

Within Payment Unit(s) 1-3, unless changed by written agreement, cutting, skidding, hauling within the sale and brushing of access roads to the sale are not permitted during the period of April 15 to July 15. Operations may be allowed if specific steps are taken to prevent damaging uncut oak during the high risk period. Those steps may include completing all road brushing before April 15th and clearing a tree-length buffer along uncut oak cover before April 15th. This is necessary to reduce the spread of oak wilt. For more information, contact the Unit Manager or his/her representative.

5.2.3.11 - Coppice regeneration protection (4/10)

Timber harvesting in any Payment Unit must be completed before significant aspen sprouting occurs in that Payment Unit so as to minimize damage to the new regeneration. Any post harvest operations, such as chipping, must be completed before sprouting of regeneration occurs. If it is anticipated that chipping will be delayed, then tops shall be carried to one central location or left unchipped. The Unit Manager or his/her representative may cease such operations if sprouting occurs before the operation is complete.

5.2.4 - Dead and Down Creation

5.2.4.4 - Dead and down creation, grouse (6/18)

To encourage grouse and other wildlife, in Payment Unit(s) 1-3, leave one, 12" diameter or larger log-length (8 foot minimum) piece on the ground for every 2 acres, or at least six (6) large tops per acre. These trees will be evenly scattered throughout the unit, preferably at least two chains from any roads, two-tracks, or trails open to vehicles.

5.2.22 - Operating Caution

5.2.22.1 - Operating caution (6/11)

It is recommended, but not required, that within Payment Unit(s) 3, cutting and skidding occur during dry summer or frozen winter conditions. The reason for the recommendation is because the unit is on ground with a seasonal high water table. Payment Units 1 & 2 are on mostly upland ground, but have extensive lowland interface and the harvest boundary was extended into the swamp edge in places.

5.2.29 - Shrub protection (9/07)

Do not cut or damage hazelnut, witch-hazel, viburnum or junberry. These woody-shrub plants are highly beneficial to various wildlife species.

5.2.39 - ORV trail/route protection (4/18)

The MCCCT trail is a cycle trail and is shown on the Timber Sale Map. Do not cut trees or damage posts with ORV markers. The portion of cycle trail bordering the harvest area runs down county roads. All stumps within 5 feet of the trail must be cut flush with the ground. Maintain a 20-foot wide slash, debris, and rut free zone daily using the ORV trail or route as the centerline.

5.2.43 - Opening protection (12/08)

No activities are permitted in openings marked on the Timber Sale Map with the letter "G". Any damage to the openings shall be repaired according to specifications of the Unit Manager or his/her representative.

5.4 - Soil Protection

5.4.1 - Rutting restriction, general (7/16)

Operations are to cease immediately if equipment and weather conditions result in rutting of roads and/or skid trails which is 12 inches or greater in depth and 50 feet in length. The Unit Manager or his/her representative may restrict hauling and/or skidding if ruts exceed the specified depth. With the Unit Manager or his/her representative's approval, the Purchaser may return to the area when the risk of rutting has decreased.

6 - Safety and Fire Prevention

6.2 - Signing

6.2.3 - Recreational trail posting (2/10)

The Purchaser is responsible for posting and maintaining caution signs on the MCCCT cycle trail prior to beginning operations. The trail must be posted at appropriate distances from the sale area to warn of logging activity and truck traffic at both ends of the trail. Signs must be removed when harvest operations are suspended or completed. The Purchaser will provide these signs.

7 - Other Conditions

7.5 - Loss

7.5.1 - Deteriorating timber (7/09)

The sale area has received damage from age-related decline and mortality in the oak in Payment Units 1 & 2. The Purchaser should harvest the wood as soon as possible. The Department of Natural Resources is held free of responsibility of any further damage or deterioration due to delay in harvesting.



TIMBER SALE MAP

This information provided by authority of Part 525, 1994 PA 451, as amended.

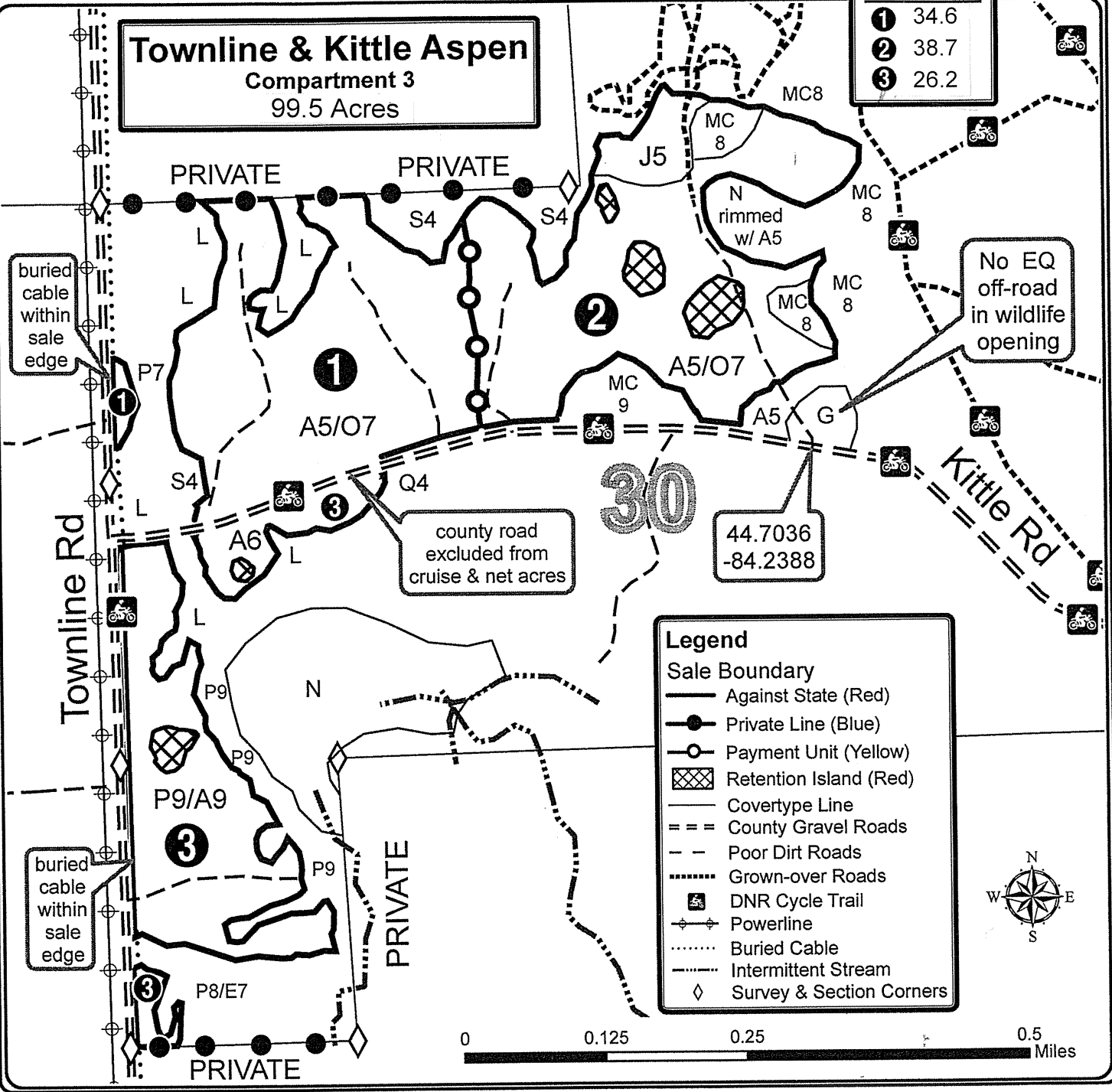
Sale Number	Year
72 - 006	19

Forest Management Unit	County	Blue Line: Potter	Date	Page	of
Grayling	Oscoda	Red, Yellow, Mark & Cruise: Charlebois	9/30/2015	1	1
Township	Range	Section(s) and Subdivision(s)	Scale		
27N	02E	Sec 30: W1/2NE, S1/2NW, N1/2SW, SWSW	1:7,920		

Cover Type				Density			
A = Aspen	H = Hemlock	N = Marsh	U = Upland Brush	0 = Non Stocked	5 = Pole Timber Medium		
B = Paper Birch	J = Jack Pine	O = Oak	UM = Upland Mixed	1 = Seedling Sapling Poor	6 = Pole Timber Well		
C = Cedar	L = Lowland Brush	P = Lowland Poplar	V = Bog or Marsh	2 = Seedling Sapling Medium	7 = Saw Timber Poor		
D = Treed Bog	LM = Lowland Mixed	Q = Mixed Swamp Conifer	W = White Pine	3 = Seedling Sapling Well	8 = Saw Timber Medium		
E = Swamp Hdwoods	M = Mpl, Bch, Brch	R = Red Pine	X = Non Stocked	4 = Pole Timber Poor	9 = Saw Timber Well		
F = Spruce Fir	MC = Mixed Conifer	S = Black Spruce	Z = Water				
G = Grass	MD = Mixed Deciduous	T = Tamarack					

PU Acres
1 34.6
2 38.7
3 26.2

Townline & Kittle Aspen
Compartment 3
99.5 Acres



Legend	
	Sale Boundary
	Against State (Red)
	Private Line (Blue)
	Payment Unit (Yellow)
	Retention Island (Red)
	Covertype Line
	County Gravel Roads
	Poor Dirt Roads
	Grown-over Roads
	DNR Cycle Trail
	Powerline
	Buried Cable
	Intermittent Stream
	Survey & Section Corners



TIMBER SALE INFORMATION

Ground Buzzing Aspen (72-019-18)
 T27N, R01E, SEC. 5; T28N, R01E, SEC. 33.
 Oscoda County (Advertised Price \$32,661.75)

SALE NOTE: Access is limited to Payment Unit 1 and will require cutting a haul route through the Kirkland Warblers stand on the north side.

A recreation site such as a trail, pathway, or campground is within the sale area or the vicinity. Certain restrictions/specifications may be applicable including time restrictions.

A timber sale contract for this lump sum, sealed bid timber sale will be awarded to the responsible bidder offering the highest sealed bid price. Bids must be at or above the following advertised price for each species:

<u>PRODUCTS & SPECIES</u>	<u>ESTIMATED UNITS*</u>	<u>ADVERTISED PRICE</u>
Sawtimber		
Quaking Aspen	32.80 MBF	\$ 78.00 / MBF
Red Pine	46.70 MBF	\$ 111.00 / MBF
Pulpwood		
Balsam Fir	55.00 Cords	\$ 15.50 / Cord
Black Spruce	58.00 Cords	\$ 17.70 / Cord
Jack Pine	295.00 Cords	\$ 19.55 / Cord
Mixed Hardwood	36.00 Cords	\$ 33.50 / Cord
Northern Pin Oak	61.00 Cords	\$ 22.75 / Cord
Quaking Aspen	312.00 Cords	\$ 25.40 / Cord
Red Pine	101.00 Cords	\$ 40.55 / Cord
White Pine	96.00 Cords	\$ 27.70 / Cord

* The total volume is statistically estimated within plus (+) or minus (-) 13.56 percent. The estimated units are final and not subject to adjustment. Prospective bidders are urged to examine this timber and to make their own estimates of quantity and quality.

BOND AND PAYMENT SCHEDULE:

1. A bond in the amount of \$1,633.00 to insure faithful performance of the conditions of the contract will be deposited by the successful bidder within 21 days of the sale award.
2. Cutting in any sale or unit without the required advance payment would be considered a trespass.
3. Total payment must be paid in advance or according to the following schedule:
 - (a) Ten percent (10%) of the sale value must be paid within 21 days of the sale award.
 - (b) The 10% down payment will be credited towards the first unit cut.
 - (c) Payment for each of the following units must be made before cutting begins in that unit:

<u>PAYMENT UNIT NUMBER</u>	<u>PERCENT OF TOTAL SALE VALUE</u>
01	8.0%
02	16.7%
03	30.8%
04	44.5%

4. If no cutting takes place, the 10% down payment will not be refunded.
5. Operations on the contract issued will terminate on 06/30/2022.

Description of Timber by Payment Unit (PU)

PU	MARKET GROUP	PRODUCT	QUANTITY	UNIT	ACRES	ADVERTISE PRICE
1	Quaking Aspen	Sawtimber	4.4	MBF	9.4	\$2,604.75
	Red Pine		0.7	MBF		
	Black Spruce	Pulpwood	6.0	Cords		
	<i>Black Spruce</i>		6.0	<i>Cords</i>		
	Jack Pine		30.0	Cords		
	<i>Jack Pine</i>	Sawtimber	0.8	MBF		
	<i>Jack Pine</i>	Pulpwood	28.0	Cords		
	Mixed Hardwood		1.0	Cords		
	<i>Black Cherry</i>		1.0	<i>Cords</i>		
	Northern Pin Oak		2.0	Cords		
	<i>Northern Pin Oak</i>		2.0	<i>Cords</i>		
	Quaking Aspen		54.0	Cords		
	Red Pine		1.0	Cords		
	2	Quaking Aspen	Sawtimber	1.5		
Red Pine			6.8	MBF		
Black Spruce		Pulpwood	8.0	Cords		
<i>Black Spruce</i>		Sawtimber	0.5	MBF		
<i>Black Spruce</i>		Pulpwood	7.0	Cords		
Jack Pine			116.0	Cords		
<i>Jack Pine</i>		Sawtimber	14.5	MBF		
<i>Jack Pine</i>		Pulpwood	87.0	Cords		
Mixed Hardwood			4.0	Cords		
<i>Black Cherry</i>			4.0	<i>Cords</i>		
Quaking Aspen			15.0	Cords		
Red Pine			16.0	Cords		
White Pine			36.0	Cords		
<i>White Pine</i>		Sawtimber	0.5	MBF		
<i>White Pine</i>	Pulpwood	35.0	Cords			
3	Quaking Aspen	Sawtimber	12.9	MBF	18.7	\$10,067.90
	Red Pine		20.8	MBF		
	Balsam Fir	Pulpwood	1.0	Cords		
	<i>Balsam Fir</i>		1.0	<i>Cords</i>		
	Black Spruce		1.0	Cords		
	<i>Black Spruce</i>		1.0	<i>Cords</i>		
	Jack Pine		58.0	Cords		
	<i>Jack Pine</i>	Sawtimber	5.9	MBF		
	<i>Jack Pine</i>	Pulpwood	46.0	Cords		
	Mixed Hardwood		6.0	Cords		
	<i>Red Maple</i>	Sawtimber	0.7	MBF		
	<i>Black Cherry</i>	Pulpwood	4.0	Cords		
	<i>Red Maple</i>		1.0	<i>Cords</i>		
	Northern Pin Oak		11.0	Cords		
	<i>Northern Pin Oak</i>	Sawtimber	1.3	MBF		
	<i>Northern Pin Oak</i>	Pulpwood	8.0	Cords		
	Quaking Aspen		87.0	Cords		
	Red Pine		53.0	Cords		
	White Pine		28.0	Cords		
<i>White Pine</i>	Sawtimber	0.5	MBF			
<i>White Pine</i>	Pulpwood	27.0	Cords			
4	Quaking Aspen	Sawtimber	14.0	MBF	43.6	\$14,546.90
	Red Pine		18.4	MBF		
	Balsam Fir	Pulpwood	54.0	Cords		
	<i>Balsam Fir</i>	Sawtimber	4.4	MBF		
	<i>Balsam Fir</i>	Pulpwood	45.0	Cords		
	Black Spruce		43.0	Cords		
	<i>Black Spruce</i>	Sawtimber	1.8	MBF		

Description of Timber by Payment Unit (PU), con't

PU	MARKET GROUP	PRODUCT	QUANTITY	UNIT	ACRES	ADVERTISE PRICE
4 con't	<i>Black Spruce</i>	<i>Pulpwood</i>	39.0	<i>Cords</i>		
	Jack Pine		91.0	Cords		
	<i>Jack Pine</i>	<i>Sawtimber</i>	7.6	<i>MBF</i>		
	<i>Jack Pine</i>	<i>Pulpwood</i>	76.0	<i>Cords</i>		
	Mixed Hardwood		25.0	Cords		
	<i>Red Maple</i>	<i>Sawtimber</i>	2.1	<i>MBF</i>		
	<i>Black Cherry</i>	<i>Pulpwood</i>	9.0	<i>Cords</i>		
	<i>Red Maple</i>		12.0	<i>Cords</i>		
	Northern Pin Oak		48.0	Cords		
	<i>Northern Pin Oak</i>	<i>Sawtimber</i>	5.6	<i>MBF</i>		
	<i>Northern Pin Oak</i>	<i>Pulpwood</i>	37.0	<i>Cords</i>		
	Quaking Aspen		156.0	Cords		
	Red Pine		31.0	Cords		
	White Pine		32.0	Cords		
	<i>White Pine</i>	<i>Sawtimber</i>	3.4	<i>MBF</i>		
	<i>White Pine</i>	<i>Pulpwood</i>	25.0	<i>Cords</i>		
	TOTAL:			79.5	MBF	
TOTAL:			1,014.0	Cords		

Sale Specific Conditions & Requirements

Sale Name: Ground Buzzing Aspen

Sale Number: 72-019-18 Seq#: 2

1 - Sale Area

1.2 - Boundaries

1.2.1 - Painted boundaries (1/14)

The sale boundary and Payment Unit boundaries are marked and identified by blue, red, green and yellow paint. Exterior sale boundary lines against private property are marked with blue paint, with the exception of the southern boundary of Payment Units 2 & 3, which is unpainted and identified by Snowmobile Trail #4. Exterior sale boundary lines against state are marked with red paint. Interior payment unit boundaries are marked with yellow paint. Interior retention islands are marked with green paint. The painted boundary line trees are not Included Timber and are to be protected. Yellow painted trees designating an interior Payment Unit boundary are only to be cut when all surrounding payment units have been paid.

2 - Timber Specifications

2.1 - Included Timber

2.1.1 - Clearcut unit(s) with unmerchantable trees (6/14)

Within Payment Unit(s) 1 - 4, cut all trees that are two (2) inches or more at DBH.

3 - Payments

3.3 - Pre-measured Sales

3.3.4 - Dividing payment units (7/14)

Payment Unit(s) may be divided at the request of the Purchaser and upon approval of the Unit Manager. Dividing Payment Units is a contract modification which requires a Timber Sale Contract Supplement.

4 - Transportation

4.1 - Construction

4.1.6 - Road construction (1/09)

Construction of new roads or improvements of existing roads shall be done in such a way as to minimize the environmental and visual impacts. Merchantable trees shall be cut and utilized unless otherwise directed. Non-merchantable trees shall be severed and laid flat on the ground. Slash shall be scattered or used to close new roads, and not left in windrows and kept a minimum of 10 feet back from the road edge. Stumps shall be set upright, not left on edge, and be moved at least 10 feet away from the road edge. Disturbed soil shall be feathered into the woods and not left in berms or windrows.

4.1.7 - Road closure (10/11)

All new roads built into the sale must be blocked to vehicle traffic upon completion of the sale. Overgrown roads that are reopened shall be considered new roads. In general, this will require constructing a four (4') foot high berm of stumps and logs covered with earth. Stumps and brush must be placed along the remainder of the trail. These roads must be rendered impassable to cars and trucks. Contact the sale administrator for specific details of design and placement.

4.1.11 - Permits (2/12)

The Purchaser will secure any necessary highway permits that may be required.

4.2 - Maintenance

4.2.5 - Two wheel drive condition (2/04)

All existing trail roads on and adjacent to the sale area must be passable by two-wheel drive traffic for the duration of the sale.

5 - Operations

5.1 - Notification

5.1.1 - Pre-sale conference (10/16)

A pre-sale conference on site between the Purchaser and sale administrator is required prior to beginning any operations to determine landing and road locations. The Unit Manager or his/her representative must be contacted at least 5 days in advance to schedule the conference.

5.2 - Conduct of Operations

5.2.1 - Slash

5.2.1.8 - Slash height (12/08)

No slash or tree tops may exceed 24 inches in height.

5.2.2 - Hazard Trees/Snags

5.2.2.1 - Den trees (10/16)

Obvious hollow and/or den trees shall be protected and left standing unless they are a safety hazard.

5.2.4 - Dead and Down Creation

5.2.4.4 - Dead and down creation, grouse (6/18)

To encourage grouse and other wildlife, in Payment Unit(s) 3, leave one, 12" diameter or larger log-length (8 foot minimum) piece on the ground for every 2 acres. These trees will be evenly scattered throughout the unit, preferably at least two chains from any roads, two-tracks, or trails open to vehicles. This can be an unmerchantable piece or a full tree.

5.2.4.7 - Dead and down creation: hare, grouse, deer and other species (5/15)

To improve horizontal cover habitat for snowshoe hare, grouse, deer, and other species, the Purchaser is to push over balsam fir or black spruce boundary line trees along the western boundary of Payment Unit 1. These trees should be tipped over with the root ball still attached so the base of the tree is suspended off the ground. The crown of the fallen tree should be at or near ground level after it is pushed over.

5.2.32 - Decking/landing restoration (9/13)

All decking and landing areas must have the surface area restored to a condition equal to or better than before. This is to ensure the proper regeneration of the stand. Wood debris, chips and "cookies" from trimmings must be removed or scattered away from landing and loading areas and may not be windrowed on the edge.

5.2.41 - Snowmobile trail protection (9/11)

Trail #4 is a snowmobile trail and is shown on the Timber Sale Map. Do not cut or damage posts with orange trail markers or traffic control signs. If the trail is used, it must be maintained and restored to a condition equal to or better than before the sale. The road maintenance/restoration must be done prior to December 1. If the trail is used for hauling, it must be graded to the satisfaction of the Unit Manager or his/her representative prior to December 1st. If the trail road is to be used for hauling during the snowmobile season, then a snow covered base must be left on the trail. Maintain a 20 foot wide slash, debris, and rut free zone daily using the snowmobile trail as the centerline. No decking of forest products will be permitted along the snowmobile trail. All stumps within 20 feet of the snowmobile trail must be cut at ground level. In addition, any trees cut within 5 feet of the trail must have the stumps removed and be disposed of according to the direction of the Unit Manager or his/her representative.

6 - Safety and Fire Prevention

6.2 - Signing

6.2.1 - Road posting (9/09)

The Purchaser is responsible for posting and maintaining caution signs on Red Oak Road and Town Hall Road prior to beginning operations. The road must be posted at appropriate distances from the sale area to warn of logging activity and truck traffic. Signs must be removed when harvest operations are suspended or completed. The Purchaser will provide these signs.

6.2.2 - Snowmobile trail posting (8/09)

The Purchaser is responsible for posting and maintaining caution signs on Snowmobile Trail #4 prior to beginning operations during the snowmobile season (approximately December 1 to March 31). The trail must be posted at appropriate distances from the sale area to warn of logging activity and truck traffic. Signs must be removed when harvest operations are suspended or completed. The Purchaser will provide these signs.



TIMBER SALE MAP

This information provided by authority of Part 525, 1994 PA 451, as amended.

Sale Number	Year
72 - 019	18

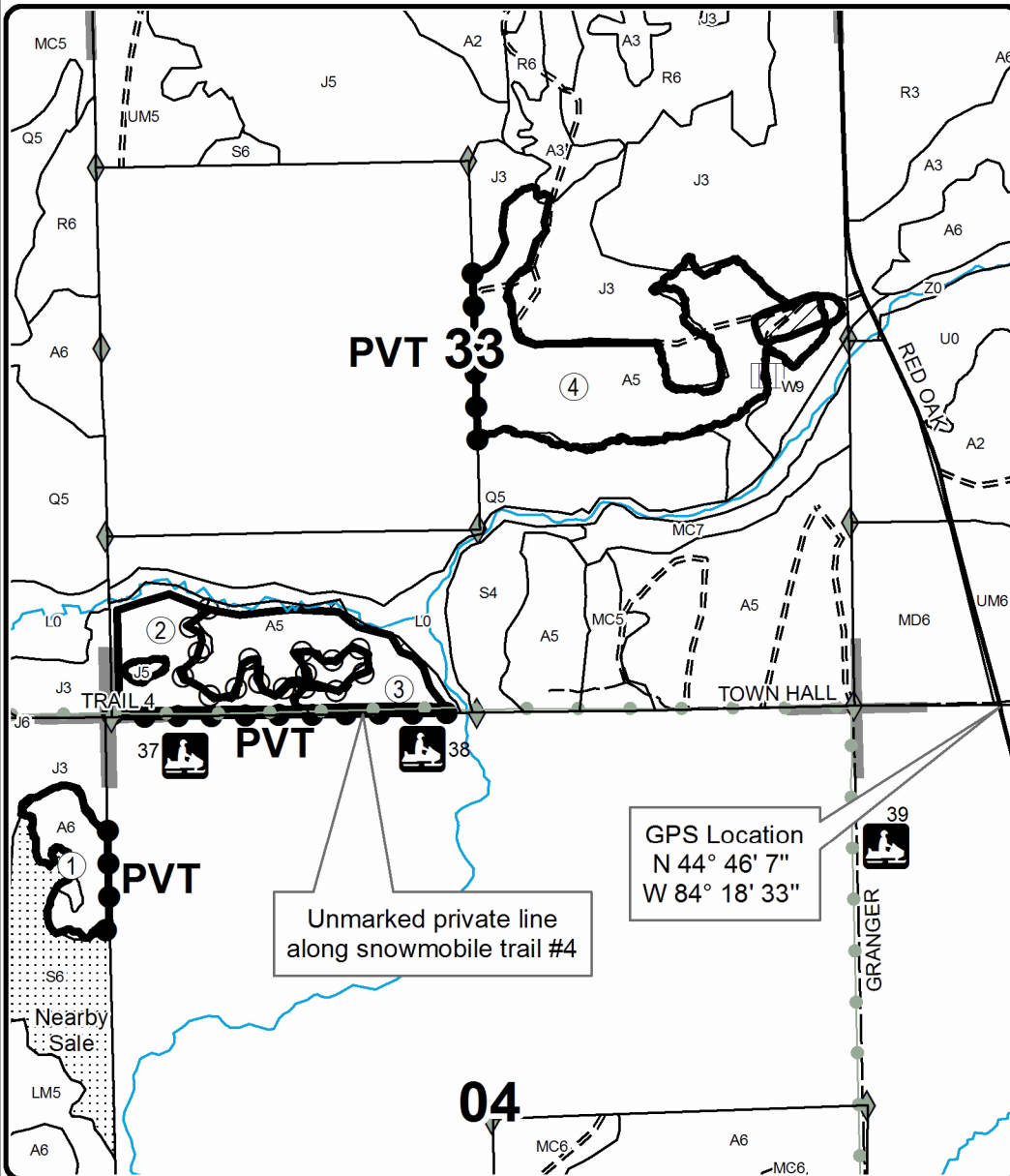
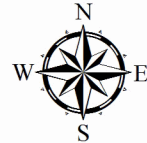
Forest Management Unit Grayling	County Oscoda	Mapped By Behrmann	Date 08/19/2018	Page 1	of 1
Township 27N & 28N	Range 01E	Section(s) and Subdivision(s) Section 5 NENE, Section 33 S1/2NE, N1/2SE, S1/2SW	Scale 1:15,840		

Cover Type				Density	
A = Aspen	H = Hemlock	N = Marsh	U = Upland Brush	0 = Non Stocked	5 = Pole Timber Medium
B = Paper Birch	J = Jack Pine	O = Oak	UM = Upland Mixed	1 = Seedling Sapling Poor	6 = Pole Timber Well
C = Cedar	L = Lowland Brush	P = Lowland Poplar	V = Bog or Marsh	2 = Seedling Sapling Medium	7 = Saw Timber Poor
D = Treed Bog	LM = Lowland Mixed	Q = Mixed Swamp Conifer	W = White Pine	3 = Seedling Sapling Well	8 = Saw Timber Medium
E = Swamp Hdwoods	M = Mpl, Bch, Brch	R = Red Pine	X = Non Stocked	4 = Pole Timber Poor	9 = Saw Timber Well
F = Spruce Fir	MD = Mixed Deciduous	S = Black Spruce	Z = Water		
G = Grass		T = Tamarack			

PU	Acres	PU	Acres
1	9.4	4	43.6
2	14.1		
3	18.7		

Ground Buzzing Aspen

Compartment 7 & 6
85.8 Acres



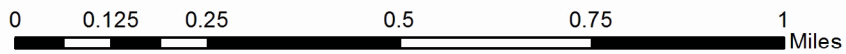
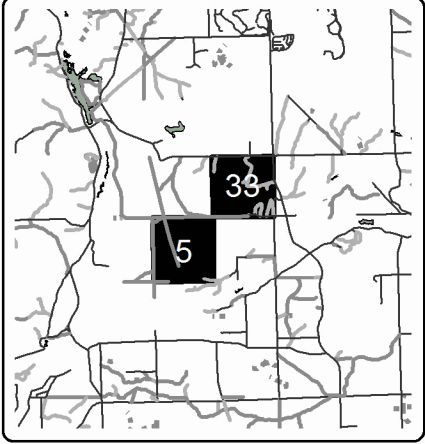
Legend

- Stand Boundaries
- Field Grade Corners
- poor dirt road
- Paved Road
- Gravel Road
- Retention Area (Green)
- Against State (Red)
- Payment Unit (Yellow)
- Private Line (Blue)
- Nearby Timber Sales
- Section Corners

Trail_Symbols

- Snowmobile Trails
- Recreational Trail
- Lakes and Rivers

Locator Map
1:200,000



TIMBER SALE INFORMATION

Bailey Overstory Oak (72-021-18)

T28N, R03E, SEC. 20; T28N, R03E, SEC. 29; T28N, R03E, SEC. 30.
Oscoda County (Advertised Price \$114,264.75)

SALE NOTE: The Mio Trail runs through Payment Units 2 and 3. Signs warning of logging activity must be placed at each end at an appropriate distance to warn ORV traffic. There are underground pipelines, gas well sites, and overhead powerlines in the vicinity of the sale.

A recreation site such as a trail, pathway, or campground is within the sale area or the vicinity. Certain restrictions/specifications may be applicable including time restrictions.

A timber sale contract for this lump sum, sealed bid timber sale will be awarded to the responsible bidder offering the highest sealed bid price. Bids must be at or above the following advertised price for each species:

<u>PRODUCTS & SPECIES</u>	<u>ESTIMATED UNITS*</u>		<u>ADVERTISED PRICE</u>
Sawtimber			
B. T. Aspen	38.40	MBF	\$ 78.00 / MBF
Basswood	28.30	MBF	\$ 114.00 / MBF
Beech	16.10	MBF	\$ 113.00 / MBF
Mixed Oak	199.70	MBF	\$ 203.00 / MBF
Red Pine	33.30	MBF	\$ 111.00 / MBF
Sugar Maple	120.10	MBF	\$ 278.00 / MBF
Pulpwood			
B. T. Aspen	92.00	Cords	\$ 25.40 / Cord
Basswood	35.00	Cords	\$ 20.35 / Cord
Mixed Hardwood	488.00	Cords	\$ 33.50 / Cord
Mixed Oak	265.00	Cords	\$ 22.75 / Cord
Paper Birch	35.00	Cords	\$ 15.40 / Cord
Red Pine	37.00	Cords	\$ 40.55 / Cord
White Pine	41.00	Cords	\$ 27.70 / Cord

* The total volume is statistically estimated within plus (+) or minus (-) 15.55 percent. The estimated units are final and not subject to adjustment. Prospective bidders are urged to examine this timber and to make their own estimates of quantity and quality.

BOND AND PAYMENT SCHEDULE:

1. A bond in the amount of \$5,713.00 to insure faithful performance of the conditions of the contract will be deposited by the successful bidder within 21 days of the sale award.
2. Cutting in any sale or unit without the required advance payment would be considered a trespass.
3. Total payment must be paid in advance or according to the following schedule:
 - (a) Ten percent (10%) of the sale value must be paid within 21 days of the sale award.
 - (b) The 10% down payment will be credited towards the first unit cut.
 - (c) Payment for each of the following units must be made before cutting begins in that unit:

PAYMENT UNIT NUMBER	PERCENT OF TOTAL SALE VALUE
01	6.2%
02	15.5%
03	15.9%
04	62.4%

4. If no cutting takes place, the 10% down payment will not be refunded.
5. Operations on the contract issued will terminate on 09/30/2021.

Description of Timber by Payment Unit (PU)

PU	MARKET GROUP	PRODUCT	QUANTITY	UNIT	ACRES	ADVERTISE PRICE
1	Mixed Oak	Sawtimber	26.5	MBF	9.6	\$7,032.00
	<i>Bl/R/Hybrid Oak</i>		0.1	<i>MBF</i>		
	<i>Red Oak</i>		26.4	<i>MBF</i>		
	Red Pine		4.2	MBF		
	Mixed Hardwood	Pulpwood	5.0	Cords		
	<i>Red Maple</i>	<i>Sawtimber</i>	0.3	<i>MBF</i>		
	<i>Beech</i>	<i>Pulpwood</i>	1.0	<i>Cords</i>		
	<i>Red Maple</i>		3.0	<i>Cords</i>		
	Mixed Oak		34.0	Cords		
	<i>Red Oak</i>		34.0	<i>Cords</i>		
	Red Pine		4.0	Cords		
	White Pine		3.0	Cords		
	<i>White Pine</i>		3.0	<i>Cords</i>		
	2	Mixed Oak	Sawtimber	67.4		
<i>Bl/R/Hybrid Oak</i>			0.4	<i>MBF</i>		
<i>Red Oak</i>			67.0	<i>MBF</i>		
Red Pine			10.7	MBF		
Mixed Hardwood		Pulpwood	10.0	Cords		
<i>Red Maple</i>		<i>Sawtimber</i>	0.7	<i>MBF</i>		
<i>Beech</i>		<i>Pulpwood</i>	2.0	<i>Cords</i>		
<i>Red Maple</i>			7.0	<i>Cords</i>		
Mixed Oak			88.0	Cords		
<i>Bl/R/Hybrid Oak</i>			1.0	<i>Cords</i>		
<i>Red Oak</i>			87.0	<i>Cords</i>		
Red Pine			9.0	Cords		
White Pine			7.0	Cords		
<i>White Pine</i>			7.0	<i>Cords</i>		
3	Mixed Oak	Sawtimber	68.7	MBF	24.9	\$18,152.70
	<i>Bl/R/Hybrid Oak</i>		0.4	<i>MBF</i>		
	<i>Red Oak</i>		68.3	<i>MBF</i>		
	Red Pine		11.0	MBF		
	Mixed Hardwood	Pulpwood	12.0	Cords		
	<i>Red Maple</i>	<i>Sawtimber</i>	0.6	<i>MBF</i>		
	<i>Beech</i>	<i>Pulpwood</i>	3.0	<i>Cords</i>		
	<i>Red Maple</i>		8.0	<i>Cords</i>		
	Mixed Oak		89.0	Cords		
	<i>Bl/R/Hybrid Oak</i>		1.0	<i>Cords</i>		
	<i>Red Oak</i>		88.0	<i>Cords</i>		
	Red Pine		9.0	Cords		
	White Pine		7.0	Cords		
	<i>White Pine</i>		7.0	<i>Cords</i>		
4	B. T. Aspen	Sawtimber	38.4	MBF	40.5	\$71,314.30
	Basswood		28.3	MBF		
	Beech		16.1	MBF		
	Mixed Oak		37.1	MBF		
	<i>Red Oak</i>		37.1	<i>MBF</i>		
	Red Pine		7.4	MBF		
	Sugar Maple		120.1	MBF		
	B. T. Aspen	Pulpwood	92.0	Cords		
	Basswood		35.0	Cords		
	Mixed Hardwood		461.0	Cords		
	<i>American Elm</i>		3.0	<i>Cords</i>		
	<i>Beech</i>		154.0	<i>Cords</i>		
	<i>Ironwood</i>		8.0	<i>Cords</i>		
	<i>Sugar Maple</i>		293.0	<i>Cords</i>		
<i>White Ash</i>		3.0	<i>Cords</i>			

Description of Timber by Payment Unit (PU), con't

PU	MARKET GROUP	PRODUCT	QUANTITY	UNIT	ACRES	ADVERTISE PRICE
4 con't	Mixed Oak	Pulpwood	54.0	Cords		
	<i>Red Oak</i>		54.0	<i>Cords</i>		
	Paper Birch		35.0	Cords		
	<i>Paper Birch</i>	<i>Sawtimber</i>	6.7	<i>MBF</i>		
	<i>Paper Birch</i>	<i>Pulpwood</i>	22.0	<i>Cords</i>		
	Red Pine		15.0	Cords		
	White Pine		24.0	Cords		
	<i>White Pine</i>	<i>Sawtimber</i>	9.1	<i>MBF</i>		
	<i>White Pine</i>	<i>Pulpwood</i>	6.0	<i>Cords</i>		
	TOTAL:			435.9	MBF	
TOTAL:			993.0	Cords		

Sale Specific Conditions & Requirements

Sale Name: Bailey Overstory Oak

Sale Number: 72-021-18 Seq#: 2

1 - Sale Area

1.2 - Boundaries

1.2.1 - Painted boundaries (1/14)

The sale boundary and Payment Unit boundaries are marked and identified by blue and red paint, along with a powerline.

Exterior sale boundary lines against private property are marked with blue paint. Exterior sale boundary lines against state are marked with red paint. The interior Payment Unit boundary between Payment Units 2 and 3 is unpainted and identified by the powerline right of way. The painted boundary line trees are not Included Timber and are to be protected.

2 - Timber Specifications

2.1 - Included Timber

2.1.1 - Clearcut unit(s) with unmerchantable trees (6/14)

Within Payment Unit(s) 4, cut all trees that are two (2) inches or more at DBH, except do not cut trees greater than 30 inches at DBH or any hemlock.

2.1.5 - Overstory removal unit(s) (8/11)

Within Payment Unit(s) 1-3, all trees which meet minimum piece specifications in 2.2 Utilization, are designated for cutting.

3 - Payments

3.3 - Pre-measured Sales

3.3.4 - Dividing payment units (7/14)

Payment Unit(s) may be divided at the request of the Purchaser and upon approval of the Unit Manager. Dividing Payment Units is a contract modification which requires a Timber Sale Contract Supplement.

3.4 - Damaged Timber

3.4.1 - Damaged timber (6/14)

General Condition and Requirement 3.4 Damaged Timber, defines liquidated damages for undesignated live merchantable trees which are cut or injured. In addition, extreme care should be taken to avoid damage to tree seedlings and saplings.

Within the sale area, if more than 50% of the tree seedlings or saplings (1/4" to 4.5" DBH) within a specified portion of the sale area are damaged, liquidated damages will be assessed at \$200 per acre for all acreage within that specified portion of the sale area that was damaged. Operational paths will have to be cut through areas of regen to reach overstory trees.

Those paths will not count as damaged areas.

4 - Transportation

4.1 - Construction

4.1.6 - Road construction (1/09)

Construction of new roads or improvements of existing roads shall be done in such a way as to minimize the environmental and visual impacts. Merchantable trees shall be cut and utilized unless otherwise directed. Non-merchantable trees shall be severed and laid flat on the ground. Slash shall be scattered, and not left in windrows and kept a minimum of 10 feet back from the road edge. Stumps shall be set upright, not left on edge, and be moved at least 10 feet away from the road edge. Disturbed soil shall be feathered into the woods and not left in berms or windrows.

4.1.7 - Road closure (10/11)

All new roads built into the sale must be blocked to vehicle traffic upon completion of the sale. Overgrown roads that are reopened shall be considered new roads. In general, this will require constructing a four (4') foot high berm of stumps and logs covered with earth. All stumps from road building and landing construction must be reserved to block any newly constructed roads upon completion of the sale. These stumps must be scattered along the road system to prohibit vehicular movement. Contact the sale administrator for specific details of design and placement.

4.1.11 - Permits (2/12)

The Purchaser will secure any necessary highway and stream crossing permits that may be required.

5 - Operations

5.1 - Notification

5.1.1 - Pre-sale conference (10/16)

A pre-sale conference between the Purchaser and sale administrator is required prior to beginning any operations to determine landing and road locations. The Unit Manager or his/her representative must be contacted at least 5 days in advance to schedule the conference.

5.1.3 - Well heads and natural gas pipelines (11/15)

The Purchaser is responsible for contacting the gas or pipeline company prior to operating equipment in the vicinity of well heads or natural gas pipelines. Contact Merritt Energy Company at 1(800)328-7430.

5.2 - Conduct of Operations

5.2.1 - Slash

5.2.1.8 - Slash height (12/08)

No slash or tree tops may exceed 48 inches in height.

5.2.2 - Hazard Trees/Snags

5.2.2.1 - Den trees (10/16)

Obvious hollow and/or den trees shall be protected and left standing unless they are a safety hazard.

5.2.3 - Operating Restrictions

5.2.3.5 - Oak wilt restriction (1/18)

Within Payment Unit 4, unless changed by written agreement, cutting, skidding, hauling within the sale and brushing of access roads to the sale are not permitted during the period of April 15 to July 15. Operations may be allowed if specific steps are taken to prevent damaging uncut oak during the high risk period. Those steps may include completing all road brushing before April 15th and clearing a tree-length buffer along uncut oak cover before April 15th. This is necessary to reduce the spread of oak wilt. For more information, contact the Unit Manager or his/her representative.

Within Payment Units 1-3, only hauling may be permitted with written agreement if haul road brushing is completed outside of the high risk oak wilt period. Any operations within Payment Units 1-3 other than hauling will not be permitted.

5.2.32 - Decking/landing restoration (9/13)

All decking and landing areas must have the surface area restored to a condition equal to or better than before. This is to ensure the proper regeneration of the stand. Wood debris, chips and "cookies" from trimmings must be removed or scattered away from landing and loading areas and may not be windrowed on the edge.

5.2.39 - ORV trail/route protection (4/18)

The Mio Trail is an ORV trail and is shown on the Timber Sale Map. Do not cut trees or damage posts with yellow ORV markers. All stumps within 5 feet of the trail must be cut flush with the ground. Maintain a 20 foot wide slash, debris, and rut free zone daily using the ORV trail or route as the centerline. Do not run equipment down the ORV trail or route. Skidding across the trail or route may only occur in locations approved by the sale administrator.

6 - Safety and Fire Prevention

6.2 - Signing

6.2.1 - Road posting (9/09)

The Purchaser is responsible for posting and maintaining caution signs on Bailey Road prior to beginning operations. The road must be posted at appropriate distances from the sale area to warn of logging activity and truck traffic. Signs must be removed when harvest operations are suspended or completed. The Purchaser will provide these signs.

6.2.3 - Recreational trail posting (2/10)

The Purchaser is responsible for posting and maintaining caution signs on the Mio Trail prior to beginning operations. The trail must be posted at appropriate distances from the sale area to warn of logging activity and truck traffic at both ends of the trail. Signs must be removed when harvest operations are suspended or completed. The Purchaser will provide these signs.



TIMBER SALE MAP

This information provided by authority of Part 525, 1994 PA 451, as amended.

Sale Number	Year
72 - 021	18

Forest Management Unit Grayling	County Oscoda	Mapped By K. Ehlert	Date 09/13/2018	Page 1	of 1
Township 28N	Range 03E	Section(s) and Subdivision(s) Sec 29- NW, SWNE, NWSW, Sec 30- N 1/2 NE	Scale 1:15,840		

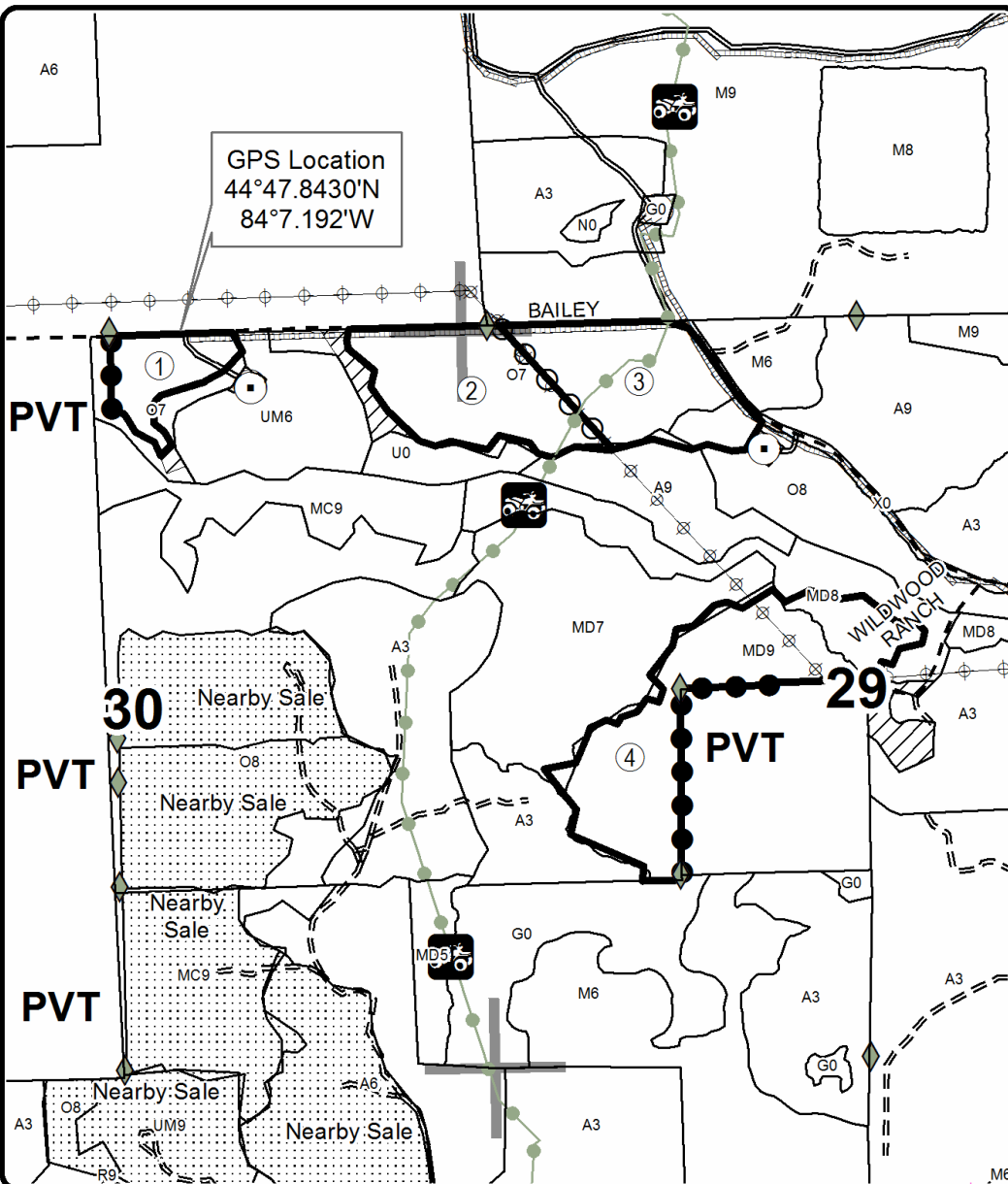
Cover Type				Density			
A = Aspen	H = Hemlock	N = Marsh	U = Upland Brush	0 = Non Stocked	5 = Pole Timber Medium		
B = Paper Birch	J = Jack Pine	O = Oak	UM = Upland Mixed	1 = Seedling Sapling Poor	6 = Pole Timber Well		
C = Cedar	L = Lowland Brush	P = Lowland Poplar	V = Bog or Marsh	2 = Seedling Sapling Medium	7 = Saw Timber Poor		
D = Treed Bog	LM = Lowland Mixed	Q = Mixed Swamp Conifer	W = White Pine	3 = Seedling Sapling Well	8 = Saw Timber Medium		
E = Swamp Hdwoods	M = Mpl, Bch, Brch	R = Red Pine	X = Non Stocked	4 = Pole Timber Poor	9 = Saw Timber Well		
F = Spruce Fir	MC = Mixed Conifer	S = Black Spruce	Z = Water				
G = Grass	MD = Mixed Deciduous	T = Tamarack					

PU	Acres	PU	Acres
1	9.6	3	24.9
2	24.4	4	40.5

Bailey Overstory Oak

Compartment 014

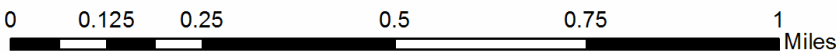
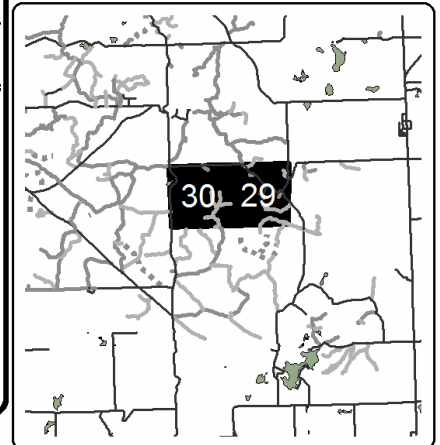
99.4 Acres



Legend

- Stand Boundaries
- Field Grade Corners
- Oil & Gas Well Surface Locations
- Secondary Forest Road
- Forest Access Route
- Gravel Road
- Temporary Management Access
- Retention Area
- Against State (Red/Road)
- Payment Unit (Powerline)
- Private Line (Blue)
- Nearby Timber Sales
- Section Corners
- PU Label
- Recreational Trail
- Pipeline
- Powerline

Locator Map
1:200,000



TIMBER SALE INFORMATION

Frost Pocket Expansion (72-022-18)
 T27N, R03E, SEC. 6; T28N, R03E, SEC. 31.
 Oscoda County (Advertised Price \$69,571.90)

SALE NOTE: Payment Units 4, 5 and 6 must be completed prior to 09/30/2020. These units contain low density trees. In order to facilitate future prescribed burning, all stems greater than 2" at DBH must be harvested from these units.

The Mio ATV Trail and ORV Route run through/adjacent to Payment Units 3, 4, 5, and 6 and are shown on the Timber Sale Map. The Purchaser is to post signs warning of logging activity on the trail and route prior to entry of the sale during harvest operations.

A recreation site such as a trail, pathway, or campground is within the sale area or the vicinity. Certain restrictions/specifications may be applicable including time restrictions.

A timber sale contract for this lump sum, sealed bid timber sale will be awarded to the responsible bidder offering the highest sealed bid price. Bids must be at or above the following advertised price for each species:

<u>PRODUCTS & SPECIES</u>	<u>ESTIMATED UNITS*</u>	<u>ADVERTISED PRICE</u>
Sawtimber		
BI/R/Hybrid Oak	15.10 MBF	\$ 135.00 / MBF
Mixed Aspen	71.10 MBF	\$ 52.00 / MBF
Red Maple	16.60 MBF	\$ 45.00 / MBF
Red Pine	338.90 MBF	\$ 74.00 / MBF
White Pine	42.50 MBF	\$ 44.00 / MBF
Pulpwood		
Jack Pine	327.00 Cords	\$ 13.05 / Cord
Mixed Aspen	567.00 Cords	\$ 16.95 / Cord
Mixed Hardwood	304.00 Cords	\$ 22.35 / Cord
Mixed Oak	107.00 Cords	\$ 15.20 / Cord
Paper Birch	2.00 Cords	\$ 10.25 / Cord
Red Pine	434.00 Cords	\$ 27.00 / Cord
White Pine	114.00 Cords	\$ 18.45 / Cord

* The total volume is statistically estimated within plus (+) or minus (-) 16.89 percent. The estimated units are final and not subject to adjustment. Prospective bidders are urged to examine this timber and to make their own estimates of quantity and quality.

BOND AND PAYMENT SCHEDULE:

1. A bond in the amount of \$3,479.00 to insure faithful performance of the conditions of the contract will be deposited by the successful bidder within 21 days of the sale award.
2. Cutting in any sale or unit without the required advance payment would be considered a trespass.
3. Total payment must be paid in advance or according to the following schedule:
 - (a) Ten percent (10%) of the sale value must be paid within 21 days of the sale award.
 - (b) The 10% down payment will be credited towards the first unit cut.
 - (c) Payment for each of the following units must be made before cutting begins in that unit:

<u>PAYMENT UNIT NUMBER</u>	<u>PERCENT OF TOTAL SALE VALUE</u>
01	19.9%
02	13.9%
03	47.0%
04	7.0%
05	5.2%
06	7.0%
4. If no cutting takes place, the 10% down payment will not be refunded.
5. Operations on the contract issued will terminate on 12/31/2021.

Description of Timber by Payment Unit (PU)

PU	MARKET GROUP	PRODUCT	QUANTITY	UNIT	ACRES	ADVERTISE PRICE
1	BI/R/Hybrid Oak	Sawtimber	5.8	MBF	26.0	\$13,860.55
	Mixed Aspen		42.8	MBF		
	<i>B. T. Aspen</i>		42.8	<i>MBF</i>		
	Red Maple		2.4	MBF		
	Red Pine		35.2	MBF		
	White Pine		5.8	MBF		
	Mixed Aspen	Pulpwood	303.0	Cords		
	<i>B. T. Aspen</i>		303.0	<i>Cords</i>		
	Mixed Hardwood		64.0	Cords		
	<i>Black Cherry</i>		8.0	<i>Cords</i>		
	<i>Red Maple</i>		56.0	<i>Cords</i>		
	Mixed Oak		33.0	Cords		
	<i>BI/R/Hybrid Oak</i>		33.0	<i>Cords</i>		
	Paper Birch		2.0	Cords		
	Red Pine		24.0	Cords		
	White Pine		8.0	Cords		
2	BI/R/Hybrid Oak	Sawtimber	5.8	MBF	12.4	\$9,685.65
	Mixed Aspen		1.1	MBF		
	<i>B. T. Aspen</i>		1.1	<i>MBF</i>		
	Red Maple		5.1	MBF		
	Red Pine		66.6	MBF		
	White Pine		4.8	MBF		
	Jack Pine	Pulpwood	16.0	Cords		
	<i>Jack Pine</i>		16.0	<i>Cords</i>		
	Mixed Aspen		35.0	Cords		
	<i>B. T. Aspen</i>		35.0	<i>Cords</i>		
	Mixed Hardwood		21.0	Cords		
	<i>Black Cherry</i>		5.0	<i>Cords</i>		
	<i>Red Maple</i>		16.0	<i>Cords</i>		
	Mixed Oak		14.0	Cords		
	<i>BI/R/Hybrid Oak</i>		12.0	<i>Cords</i>		
	<i>Northern Pin Oak</i>		2.0	<i>Cords</i>		
Red Pine		69.0	Cords			
White Pine		7.0	Cords			
3	BI/R/Hybrid Oak	Sawtimber	3.5	MBF	35.4	\$32,620.25
	Mixed Aspen		21.7	MBF		
	<i>B. T. Aspen</i>		21.7	<i>MBF</i>		
	Red Maple		9.1	MBF		
	Red Pine		217.6	MBF		
	White Pine		31.9	MBF		
	Jack Pine	Pulpwood	56.0	Cords		
	<i>Jack Pine</i>	<i>Sawtimber</i>	4.6	<i>MBF</i>		
	<i>Jack Pine</i>	<i>Pulpwood</i>	47.0	<i>Cords</i>		
	Mixed Aspen		103.0	Cords		
	<i>B. T. Aspen</i>		99.0	<i>Cords</i>		
	<i>Quaking Aspen</i>		4.0	<i>Cords</i>		
	Mixed Hardwood		62.0	Cords		
	<i>Red Maple</i>		62.0	<i>Cords</i>		
	Mixed Oak		24.0	Cords		
	<i>BI/R/Hybrid Oak</i>		13.0	<i>Cords</i>		
<i>Northern Pin Oak</i>		11.0	<i>Cords</i>			
Red Pine		270.0	Cords			
White Pine		86.0	Cords			
4	Mixed Aspen	Sawtimber	5.5	MBF	35.0	\$4,896.70
	<i>Quaking Aspen</i>		5.5	<i>MBF</i>		
	Red Pine		12.4	MBF		

Description of Timber by Payment Unit (PU), con't

PU	MARKET GROUP	PRODUCT	QUANTITY	UNIT	ACRES	ADVERTISE PRICE
4 con't	Jack Pine	Pulpwood	85.0	Cords		
	<i>Jack Pine</i>	<i>Sawtimber</i>	0.9	<i>MBF</i>		
	<i>Jack Pine</i>	<i>Pulpwood</i>	83.0	<i>Cords</i>		
	Mixed Aspen		52.0	Cords		
	<i>Quaking Aspen</i>		52.0	<i>Cords</i>		
	Mixed Hardwood		42.0	Cords		
	<i>Black Cherry</i>		42.0	<i>Cords</i>		
	Mixed Oak		8.0	Cords		
	<i>BI/R/Hybrid Oak</i>		8.0	<i>Cords</i>		
	Red Pine		19.0	Cords		
	White Pine		7.0	Cords		
5	Jack Pine	Pulpwood	112.0	Cords	66.7	\$3,636.75
	<i>Jack Pine</i>		112.0	<i>Cords</i>		
	Mixed Hardwood		77.0	Cords		
	<i>Black Cherry</i>		77.0	<i>Cords</i>		
	Mixed Oak		21.0	Cords		
	<i>BI/R/Hybrid Oak</i>		21.0	<i>Cords</i>		
	Red Pine		5.0	Cords		
6	Red Pine	Sawtimber	7.1	MBF	38.9	\$4,872.00
	Jack Pine	Pulpwood	58.0	Cords		
	<i>Jack Pine</i>		58.0	<i>Cords</i>		
	Mixed Aspen		74.0	Cords		
	<i>Quaking Aspen</i>		74.0	<i>Cords</i>		
	Mixed Hardwood		38.0	Cords		
	<i>Black Cherry</i>		38.0	<i>Cords</i>		
	Mixed Oak		7.0	Cords		
	<i>BI/R/Hybrid Oak</i>		7.0	<i>Cords</i>		
	Red Pine		47.0	Cords		
White Pine		6.0	Cords			
TOTAL:			484.2	MBF		
TOTAL:			1,855.0	Cords		

Sale Specific Conditions & Requirements

Sale Name: Frost Pocket Expansion

Sale Number: 72-022-18 Seq#: 2

1 - Sale Area

1.2 - Boundaries

1.2.1 - Painted boundaries (1/14)

The sale boundary and Payment Unit boundaries are marked and identified by red and yellow paint, along with roads. Exterior sale boundary lines against state are marked with red paint, with the following exceptions - The north boundary of Payment Unit 3, the west boundary of Payment Units 2, 3, 4 and 5, and the south boundary of Payment Units 5 and 6, which are unpainted and identified by the adjacent roads. Interior Payment Unit boundaries are marked with red paint, except the boundary between Payment Units 1 and 2, which is marked with yellow paint. The painted boundary line trees are not Included Timber and are to be protected. Red or yellow painted trees designating an interior Payment Unit boundary are only to be cut when all surrounding Payment Units have been paid.

2 - Timber Specifications

2.1 - Included Timber

2.1.1 - Clearcut unit(s) with unmerchantable trees (6/14)

Within Payment Unit(s) 1-6, cut all trees that are two (2) inches or more at DBH. In addition, within Payment Unit 1, do not cut any oak, red pine, or white pine greater than 30" at DBH.

2.2 - Utilization

2.2.2 - Chipping required (2/18)

Payment Units 2 and 3 must be chip harvested to facilitate subsequent planting operations. The Purchaser has the option to produce sawlogs or pulpwood bolts, but the remaining portion of the trees must be chipped and hauled. If market conditions limit the practicality of chipping, tops and slash must be arranged in a way that will not inhibit future planting operations, as directed by the sale administrator. The requirement to retain approximately 1/6 to 1/3 of tree tops and limbs less than four inches in diameter is still applicable (G. C. & R. 2.2).

2.2.3 - Stump heights (4/07)

Stump heights within the Sale Area shall not exceed 6 inches for all trees. This is in order to facilitate planting operations.

3 - Payments

3.3 - Pre-measured Sales

3.3.4 - Dividing payment units (7/14)

Payment Unit(s) may be divided at the request of the Purchaser and upon approval of the Unit Manager. Dividing Payment Units is a contract modification which requires a Timber Sale Contract Supplement.

4 - Transportation

4.1 - Construction

4.1.6 - Road construction (1/09)

Construction of new roads or improvements of existing roads shall be done in such a way as to minimize the environmental and visual impacts. Merchantable trees shall be cut and utilized unless otherwise directed. Non-merchantable trees shall be severed and laid flat on the ground. Slash shall be scattered, and not left in windrows and kept a minimum of 10 feet back from the road edge. Stumps shall be set upright, not left on edge, and be moved at least 10 feet away from the road edge. Disturbed soil shall be feathered into the woods and not left in berms or windrows.

4.1.7 - Road closure (10/11)

All new roads built into the sale must be blocked to vehicle traffic upon completion of the sale. Overgrown roads that are reopened shall be considered new roads. In general, this will require constructing a four (4') foot high berm of stumps and logs covered with earth. All stumps from road building and landing construction must be reserved to block any newly constructed roads upon completion of the sale. These stumps must be scattered along the road system to prohibit vehicular

movement. Contact the sale administrator for specific details of design and placement.

4.1.11 - Permits (2/12)

The Purchaser will secure any necessary highway permits that may be required.

5 - Operations

5.1 - Notification

5.1.1 - Pre-sale conference (10/16)

A pre-sale conference between the Purchaser and sale administrator is required prior to beginning any operations to determine landing and road locations. The Unit Manager or his/her representative must be contacted at least 5 days in advance to schedule the conference.

5.2 - Conduct of Operations

5.2.1 - Slash

5.2.1.8 - Slash height (12/08)

No slash or tree tops may exceed 24 inches in height.

5.2.2 - Hazard Trees/Snags

5.2.2.1 - Den trees (10/16)

Obvious hollow and/or den trees shall be protected and left standing unless they are a safety hazard.

5.2.3 - Operating Restrictions

5.2.3.1 - Operating restrictions (9/11)

Within Payment Unit(s) 4, 5, and 6, cutting, skidding, and hauling must be completed by 9/30/2020. This restriction is to meet the timeline necessary for subsequent prescribed burning operations.

5.2.3.5 - Oak wilt restriction (1/18)

Within Payment Unit(s) 1-3, unless changed by written agreement, cutting, skidding, hauling within the sale and brushing of access roads to the sale are not permitted during the period of April 15 to July 15. Operations may be allowed if specific steps are taken to prevent damaging uncut oak during the high risk period. Those steps may include completing all road brushing before April 15th and clearing a tree-length buffer along uncut oak cover before April 15th. This is necessary to reduce the spread of oak wilt. For more information, contact the Unit Manager or his/her representative.

5.2.4 - Dead and Down Creation

5.2.4.4 - Dead and down creation, grouse (6/18)

To encourage grouse and other wildlife, in Payment Unit(s) 1, leave one, 12" or larger diameter (or largest diameter trees available within the stand) whole tree on the ground for every 2 acres, preferably a hardwood species such as oak or maple or pine species (white or red) if no hardwoods are present. These will be evenly scattered throughout the unit, preferably at least two chains from any roads, two tracks or trails open to vehicles.

5.2.32 - Decking/landing restoration (9/13)

All decking and landing areas must have the surface area restored to a condition equal to or better than before. This is to ensure the proper regeneration of the stand. Wood debris, chips and "cookies" from trimmings must be removed or scattered away from landing and loading areas and may not be windrowed on the edge.

5.2.39 - ORV trail/route protection (4/18)

The Mio Trail and Mio Route are ORV trail/routes and are shown on the Timber Sale Map. Do not cut trees or damage posts with yellow ORV markers. All stumps within 5 feet of the trail must be cut flush with the ground. Maintain a 20 foot wide slash, debris, and rut free zone daily using the ORV trail or route as the centerline. Do not run equipment down the ORV trail or route. Skidding across the trail or route may only occur in locations approved by the sale administrator.

6 - Safety and Fire Prevention

6.2 - Signing

6.2.1 - Road posting (9/09)

The Purchaser is responsible for posting and maintaining caution signs on Mt. Tom Road prior to beginning operations. The road must be posted at appropriate distances from the sale area to warn of logging activity and truck traffic. Signs must be removed when harvest operations are suspended or completed. The Purchaser will provide these signs.

6.2.3 - Recreational trail posting (2/10)

The Purchaser is responsible for posting and maintaining caution signs on the Mio Trail and Mio Route prior to beginning operations. The trail must be posted at appropriate distances from the sale area to warn of logging activity and truck traffic at both ends of the trail. Signs must be removed when harvest operations are suspended or completed. The Purchaser will provide these signs.



TIMBER SALE MAP

This information provided by authority of Part 525, 1994 PA 451, as amended.

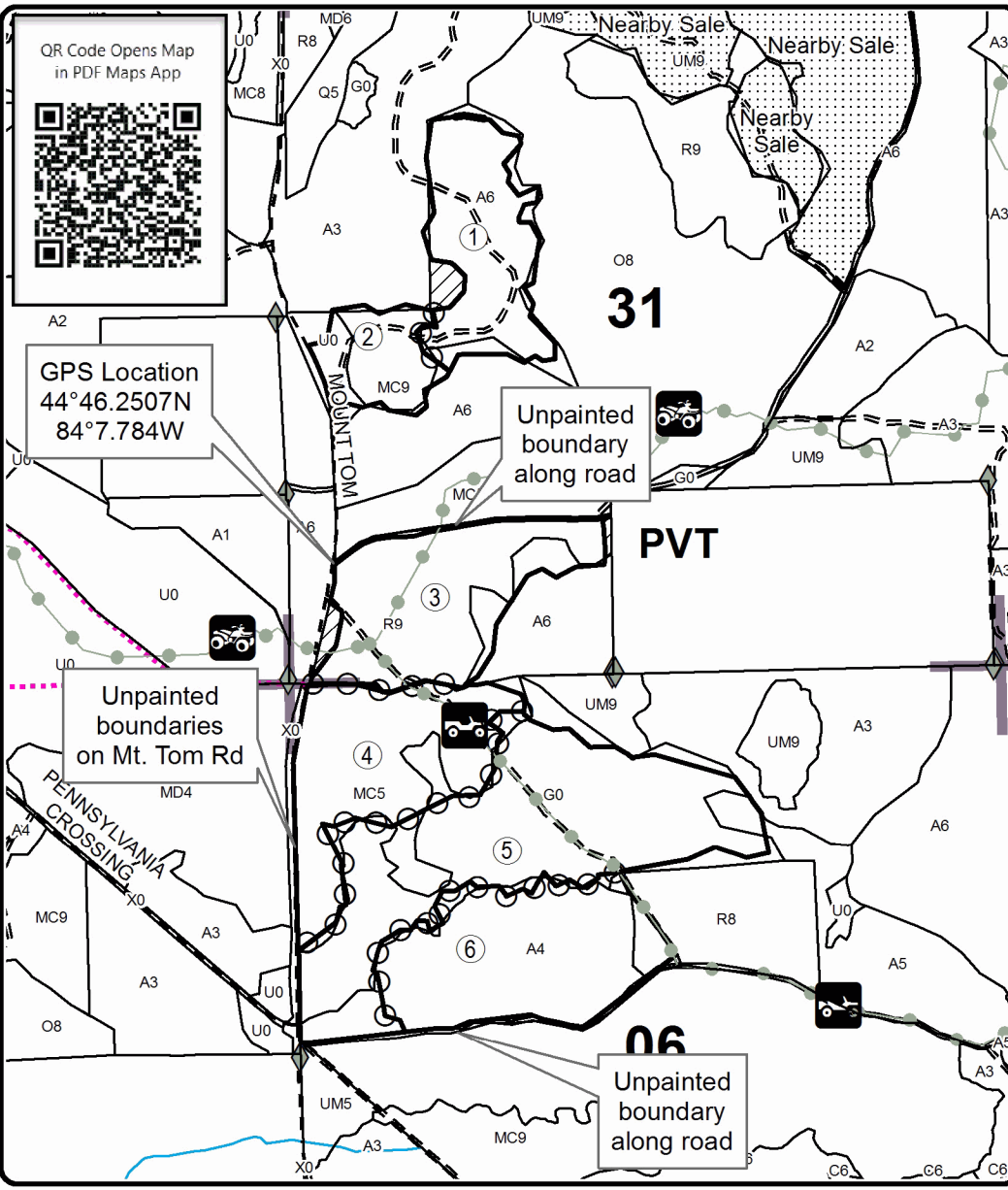
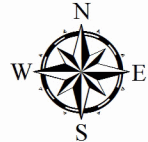
Forest Management Unit Grayling	County Oscoda	Mapped By K. Ehlert	Date 04/11/2019	Page 1	of 1
Township 28N; T27N	Range 03E; 03E	Section(s) and Subdivision(s) Sec 31- NENW, S 1/2 NW, SW; Sec 6- N 1/2	Scale 1:15,840		

Cover Type				Density	
A = Aspen	H = Hemlock	N = Marsh	U = Upland Brush	0 = Non Stocked	5 = Pole Timber Medium
B = Paper Birch	J = Jack Pine	O = Oak	UM = Upland Mixed	1 = Seedling Sapling Poor	6 = Pole Timber Well
C = Cedar	L = Lowland Brush	P = Lowland Poplar	V = Bog or Marsh	2 = Seedling Sapling Medium	7 = Saw Timber Poor
D = Treed Bog	LM = Lowland Mixed	Q = Mixed Swamp Conifer	W = White Pine	3 = Seedling Sapling Well	8 = Saw Timber Medium
E = Swamp Hdwoods	M = Mpl, Bch, Brch	R = Red Pine	X = Non Stocked	4 = Pole Timber Poor	9 = Saw Timber Well
F = Spruce Fir	MC = Mixed Conifer	S = Black Spruce	Z = Water		
G = Grass	MD = Mixed Deciduous	T = Tamarack			

PU	Acres	PU	Acres
1	26.0	4	35
2	12.4	5	66.7
3	35.4	6	38.9

Frost Pocket Expansion

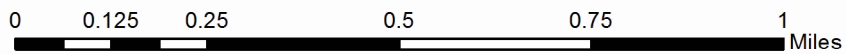
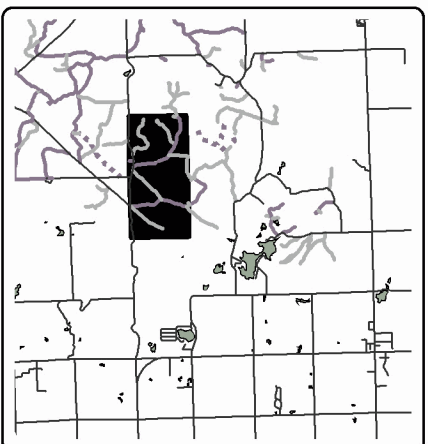
Compartments 014, 029
214.4 Acres



Legend

- Against State (Red or Road)
- Payment Unit (Yellow/Red)
- ▨ Retention Area
- ▭ Stand Boundaries
- ▤ Nearby Timber Sales
- Section Corners
- ◆ Field Grade Corners
- Secondary Forest Road
- == Forest Access Route
- - Gravel Road
- ⋯ Temporary Management Access
- Perennial River
- PU Label

Locator Map
1:200,000



TIMBER SALE INFORMATION

Comp 14 Mix (72-031-18)

T28N, R03E, SEC. 30; T28N, R03E, SEC. 31.
Oscoda County (Advertised Price \$132,399.10)

SALE NOTE: The Purchaser may be able to obtain permission from a private landowner to access sale from the South. The existing road crosses across the Northwest corner of the private property. If permission is not obtained, a short stretch of road may need to be constructed for temporary management access.

A recreation site such as a trail, pathway, or campground is within the sale area or the vicinity. Certain restrictions/specifications may be applicable including time restrictions.

A timber sale contract for this lump sum, sealed bid timber sale will be awarded to the responsible bidder offering the highest sealed bid price. Bids must be at or above the following advertised price for each species:

<u>PRODUCTS & SPECIES</u>	<u>ESTIMATED UNITS*</u>	<u>ADVERTISED PRICE</u>
Sawtimber		
Mixed Aspen	23.30 MBF	\$ 78.00 / MBF
Mixed Oak	192.70 MBF	\$ 203.00 / MBF
Red Pine	295.30 MBF	\$ 111.00 / MBF
White Pine	106.40 MBF	\$ 66.00 / MBF
Pulpwood		
Mixed Aspen	578.00 Cords	\$ 25.40 / Cord
Mixed Hardwood	330.00 Cords	\$ 33.50 / Cord
Mixed Oak	295.00 Cords	\$ 22.75 / Cord
Paper Birch	66.00 Cords	\$ 15.40 / Cord
Red Pine	263.00 Cords	\$ 40.55 / Cord
White Pine	272.00 Cords	\$ 27.70 / Cord

* The total volume is statistically estimated within plus (+) or minus (-) 8.55 percent. The estimated units are final and not subject to adjustment. Prospective bidders are urged to examine this timber and to make their own estimates of quantity and quality.

BOND AND PAYMENT SCHEDULE:

1. A bond in the amount of \$6,620.00 to insure faithful performance of the conditions of the contract will be deposited by the successful bidder within 21 days of the sale award.
2. Cutting in any sale or unit without the required advance payment would be considered a trespass.
3. Total payment must be paid in advance or according to the following schedule:
 - (a) Ten percent (10%) of the sale value must be paid within 21 days of the sale award.
 - (b) The 10% down payment will be credited towards the first unit cut.
 - (c) Payment for each of the following units must be made before cutting begins in that unit:

<u>PAYMENT UNIT NUMBER</u>	<u>PERCENT OF TOTAL SALE VALUE</u>
01	24.6%
02	28.4%
03	35.5%
04	11.5%

4. If no cutting takes place, the 10% down payment will not be refunded.
5. Operations on the contract issued will terminate on 12/31/2021.

Description of Timber by Payment Unit (PU)

PU	MARKET GROUP	PRODUCT	QUANTITY	UNIT	ACRES	ADVERTISE PRICE		
1	Mixed Aspen	Sawtimber	19.8	MBF	54.8	\$32,537.20		
	<i>B. T. Aspen</i>		17.1	<i>MBF</i>				
	<i>Quaking Aspen</i>		2.7	<i>MBF</i>				
	Mixed Oak		7.3	MBF				
	<i>Bl/R/Hybrid Oak</i>		2.4	<i>MBF</i>				
	<i>Red Oak</i>		4.9	<i>MBF</i>				
	Red Pine		29.9	MBF				
	White Pine		27.9	MBF				
	Mixed Aspen		Pulpwood	488.0			Cords	
	<i>B. T. Aspen</i>			342.0			<i>Cords</i>	
	<i>Quaking Aspen</i>			146.0			<i>Cords</i>	
	Mixed Hardwood			158.0			Cords	
	<i>Red Maple</i>			Sawtimber			1.3	<i>MBF</i>
	<i>Sugar Maple</i>						8.5	<i>MBF</i>
	<i>Black Cherry</i>			Pulpwood			4.0	<i>Cords</i>
	<i>Red Maple</i>						26.0	<i>Cords</i>
	<i>Sugar Maple</i>	108.0			<i>Cords</i>			
	Mixed Oak	55.0		Cords				
	<i>Bl/R/Hybrid Oak</i>	36.0	<i>Cords</i>					
	<i>Red Oak</i>	19.0	<i>Cords</i>					
	Paper Birch	57.0	Cords					
	<i>Paper Birch</i>	Sawtimber	0.8	<i>MBF</i>				
	<i>Paper Birch</i>		Pulpwood	55.0	<i>Cords</i>			
	Red Pine	51.0		Cords				
	White Pine	89.0	Cords					
	2	Mixed Aspen	Sawtimber	1.4	MBF	31.8	\$37,564.55	
<i>B. T. Aspen</i>		1.4		<i>MBF</i>				
Red Pine		174.3	MBF					
White Pine		41.9	MBF					
Mixed Aspen		Pulpwood	77.0	Cords				
<i>B. T. Aspen</i>			42.0	<i>Cords</i>				
<i>Quaking Aspen</i>			35.0	<i>Cords</i>				
Mixed Hardwood			99.0	Cords				
<i>Red Maple</i>			Sawtimber	1.8	<i>MBF</i>			
<i>Red Maple</i>				Pulpwood	93.0			<i>Cords</i>
<i>Sugar Maple</i>			2.0		<i>Cords</i>			
Mixed Oak			20.0		Cords			
<i>Bl/R/Hybrid Oak</i>			6.0	<i>Cords</i>				
<i>Northern Pin Oak</i>			14.0	<i>Cords</i>				
Paper Birch		9.0	Cords					
<i>Paper Birch</i>		9.0	<i>Cords</i>					
Red Pine		149.0	Cords					
White Pine	124.0	Cords						
3	Mixed Aspen	Sawtimber	1.6	MBF	28.8	\$47,096.35		
	<i>Quaking Aspen</i>		1.6	<i>MBF</i>				
	Mixed Oak		140.1	MBF				
	<i>Bl/R/Hybrid Oak</i>	28.5	<i>MBF</i>					
	<i>Red Oak</i>	111.6	<i>MBF</i>					
	Red Pine	68.9	MBF					
	White Pine	27.7	MBF					
	Mixed Aspen	Pulpwood	10.0	Cords				
	<i>B. T. Aspen</i>		2.0	<i>Cords</i>				
	<i>Quaking Aspen</i>		8.0	<i>Cords</i>				
	Mixed Hardwood		54.0	Cords				
	<i>Basswood</i>		Sawtimber	1.1			<i>MBF</i>	
	<i>Beech</i>	1.1		<i>MBF</i>				

Description of Timber by Payment Unit (PU), con't

PU	MARKET GROUP	PRODUCT	QUANTITY	UNIT	ACRES	ADVERTISE PRICE			
3 con't	<i>Red Maple</i>	<i>Sawtimber</i>	1.1	<i>MBF</i>					
	<i>Sugar Maple</i>		0.3	<i>MBF</i>					
	<i>American Elm</i>	<i>Pulpwood</i>	5.0	<i>Cords</i>					
	<i>Basswood</i>		8.0	<i>Cords</i>					
	<i>Beech</i>		6.0	<i>Cords</i>					
	<i>Red Maple</i>		18.0	<i>Cords</i>					
	<i>Sugar Maple</i>		10.0	<i>Cords</i>					
	Mixed Oak		167.0	<i>Cords</i>					
	<i>BI/R/Hybrid Oak</i>		51.0	<i>Cords</i>					
	<i>Red Oak</i>		116.0	<i>Cords</i>					
	Red Pine		48.0	<i>Cords</i>					
	White Pine		45.0	<i>Cords</i>					
	4	Mixed Aspen	Sawtimber	0.5	MBF	9.3	\$15,201.00		
<i>Quaking Aspen</i>			0.5	<i>MBF</i>					
Mixed Oak			45.3	MBF					
<i>BI/R/Hybrid Oak</i>			9.2	<i>MBF</i>					
<i>Red Oak</i>			36.1	<i>MBF</i>					
Red Pine			22.2	MBF					
White Pine			8.9	MBF					
Mixed Aspen		Pulpwood	3.0	<i>Cords</i>					
<i>Quaking Aspen</i>			3.0	<i>Cords</i>					
Mixed Hardwood			19.0	<i>Cords</i>					
<i>Basswood</i>		<i>Sawtimber</i>	0.4	<i>MBF</i>					
<i>Beech</i>			0.3	<i>MBF</i>					
<i>Red Maple</i>			0.3	<i>MBF</i>					
<i>Sugar Maple</i>			0.1	<i>MBF</i>					
<i>American Elm</i>		<i>Pulpwood</i>	2.0	<i>Cords</i>					
<i>Basswood</i>			3.0	<i>Cords</i>					
<i>Beech</i>			2.0	<i>Cords</i>					
<i>Red Maple</i>			6.0	<i>Cords</i>					
<i>Sugar Maple</i>			3.0	<i>Cords</i>					
Mixed Oak			53.0	<i>Cords</i>					
<i>BI/R/Hybrid Oak</i>			16.0	<i>Cords</i>					
<i>Red Oak</i>			37.0	<i>Cords</i>					
Red Pine			15.0	<i>Cords</i>					
White Pine			14.0	<i>Cords</i>					
TOTAL:			617.7	MBF					
TOTAL:			1,804.0	Cords					

Sale Specific Conditions & Requirements

Sale Name: Comp 14 Mix

Sale Number: 72-031-18 Seq#: 1

1 - Sale Area

1.2 - Boundaries

1.2.1 - Painted boundaries (1/14)

The sale boundary and Payment Unit boundaries are marked and identified by blue, red and yellow paint. Exterior sale boundary lines against private property are marked with blue paint. Exterior sale boundary lines against state are marked with red paint. Interior Payment Unit boundaries are marked with yellow paint. The painted boundary line trees are not Included Timber and are to be protected. Yellow painted trees designating an interior Payment Unit boundary are only to be cut when all surrounding Payment Units have been paid.

2 - Timber Specifications

2.1 - Included Timber

2.1.1 - Clearcut unit(s) with unmerchantable trees (6/14)

Within Payment Unit(s) 1-4, cut all trees that are two (2) inches or more at DBH. In Payment Units 3 and 4, leave all top wood smaller than 4" in diameter. Top wood must be scattered evenly throughout the harvest area.

2.2 - Utilization

2.2.2 - Chipping required (2/18)

Payment Unit 2 must be chip harvested to facilitate subsequent planting operations. The Purchaser has the option to produce sawlogs or pulpwood bolts, but the remaining portion of the trees must be chipped and hauled. A chipping exemption can be obtained if proposed operations are determined to be suitable for planting by reforestation staff. This exemption must be granted in writing. The requirement to retain approximately 1/6 to 1/3 of tree tops and limbs less than four inches in diameter is still applicable (G. C. & R. 2.2).

2.2.3 - Stump heights (4/07)

Stump heights within Payment Unit(s) 1 shall not exceed 12 inches for trees greater than 10 inches DBH and 4 inches for trees smaller than 10 inches DBH.

Stump heights within Payment Unit(s) 2-4 shall not exceed 6 inches for all trees. This is in order to facilitate reforestation treatments.

2.2.6 - Roundwood operation required (5/07)

The skidding of whole trees or tree segments with limbs attached is prohibited within Payment Unit(s) 3 and 4. All products must be produced as roundwood and forwarded to existing roads or landing areas in final product length.

2.2.10 - No chipping tops and limbs (8/16)

Within Payment Unit(s) 3 and 4, chipping of limbs or tops less than 4" in diameter is not permitted. Limbs and the remaining top must be left on site and scattered.

3 - Payments

3.3 - Pre-measured Sales

3.3.4 - Dividing payment units (7/14)

Payment Unit(s) may be divided at the request of the Purchaser and upon approval of the Unit Manager. Dividing Payment Units is a contract modification which requires a Timber Sale Contract Supplement.

4 - Transportation

4.1 - Construction

4.1.3 - Slash and earthen piles (8/04)

Piles or windrows of earth along roads and landings that have been widened or constructed shall be leveled. Slash from road maintenance or construction, including stumps, shall be dispersed throughout the sale.

4.1.6 - Road construction (1/09)

Construction of new roads or improvements of existing roads shall be done in such a way as to minimize the environmental and visual impacts. Merchantable trees shall be cut and utilized unless otherwise directed. Non-merchantable trees shall be severed and laid flat on the ground. Slash shall be scattered, and not left in windrows and kept a minimum of 10 feet back from the road edge. Stumps shall be set upright, not left on edge, and be moved at least 10 feet away from the road edge. Disturbed soil shall be feathered into the woods and not left in berms or windrows.

4.1.7 - Road closure (10/11)

All new roads built into the sale must be blocked to vehicle traffic upon completion of the sale. Overgrown roads that are reopened shall be considered new roads. In general, this will require constructing a four (4') foot high berm of stumps and logs covered with earth. All stumps from road building and landing construction must be reserved to block any newly constructed roads upon completion of the sale. These stumps must be scattered along the road system to prohibit vehicular movement. Contact the sale administrator for specific details of design and placement.

4.1.11 - Permits (2/12)

The Purchaser will secure any necessary highway and stream crossing permits that may be required.

4.4 - Access

4.4.2 - Alternate route on private property (2/04)

It is the Purchaser's responsibility to obtain access across private land for any routes other than the route shown on the sale map.

5 - Operations

5.1 - Notification

5.1.1 - Pre-sale conference (10/16)

A pre-sale conference between the Purchaser and sale administrator is required prior to beginning any operations to determine landing and road locations. The Unit Manager or his/her representative must be contacted at least 5 days in advance to schedule the conference.

5.2 - Conduct of Operations

5.2.2 - Hazard Trees/Snags

5.2.2.1 - Den trees (10/16)

Obvious hollow and/or den trees shall be protected and left standing unless they are a safety hazard.

5.2.3 - Operating Restrictions

5.2.3.5 - Oak wilt restriction (1/18)

Within Payment Unit(s) 1-4, unless changed by written agreement, cutting, skidding, hauling within the sale and brushing of access roads to the sale are not permitted during the period of April 15 to July 15. Operations may be allowed if specific steps are taken to prevent damaging uncut oak during the high risk period. Those steps may include completing all road brushing before April 15th and clearing a tree-length buffer along uncut oak cover before April 15th. This is necessary to reduce the spread of oak wilt. For more information, contact the Unit Manager or his/her representative.

5.2.4 - Dead and Down Creation

5.2.4.4 - Dead and down creation, grouse (6/18)

To encourage grouse and other wildlife, in Payment Unit(s) 1, leave one, 12" or larger diameter (or largest diameter trees within stand) whole tree on the ground for every 2 acres, preferably a hardwood species such as oak or maple or if no hardwoods are present, a pine species (white or red). These trees will be evenly scattered throughout the unit, preferably at least two chains from any roads, two-tracks, or trails open to vehicles.

5.2.32 - Decking/landing restoration (9/13)

All decking and landing areas must have the surface area restored to a condition equal to or better than before. This is to ensure the proper regeneration of the stand. Wood debris, chips and "cookies" from trimmings must be removed or scattered away from landing and loading areas and may not be windrowed on the edge.

6 - Safety and Fire Prevention

6.2 - Signing

6.2.3 - Recreational trail posting (2/10)

The Purchaser is responsible for posting and maintaining caution signs on the Mio Trail prior to beginning operations. The trail must be posted at appropriate distances from the sale area to warn of logging activity and truck traffic at both ends of the trail. Signs must be removed when harvest operations are suspended or completed. The Purchaser will provide these signs. If a haul route is used that does not intersect with the trail, this requirement will not apply.



TIMBER SALE MAP

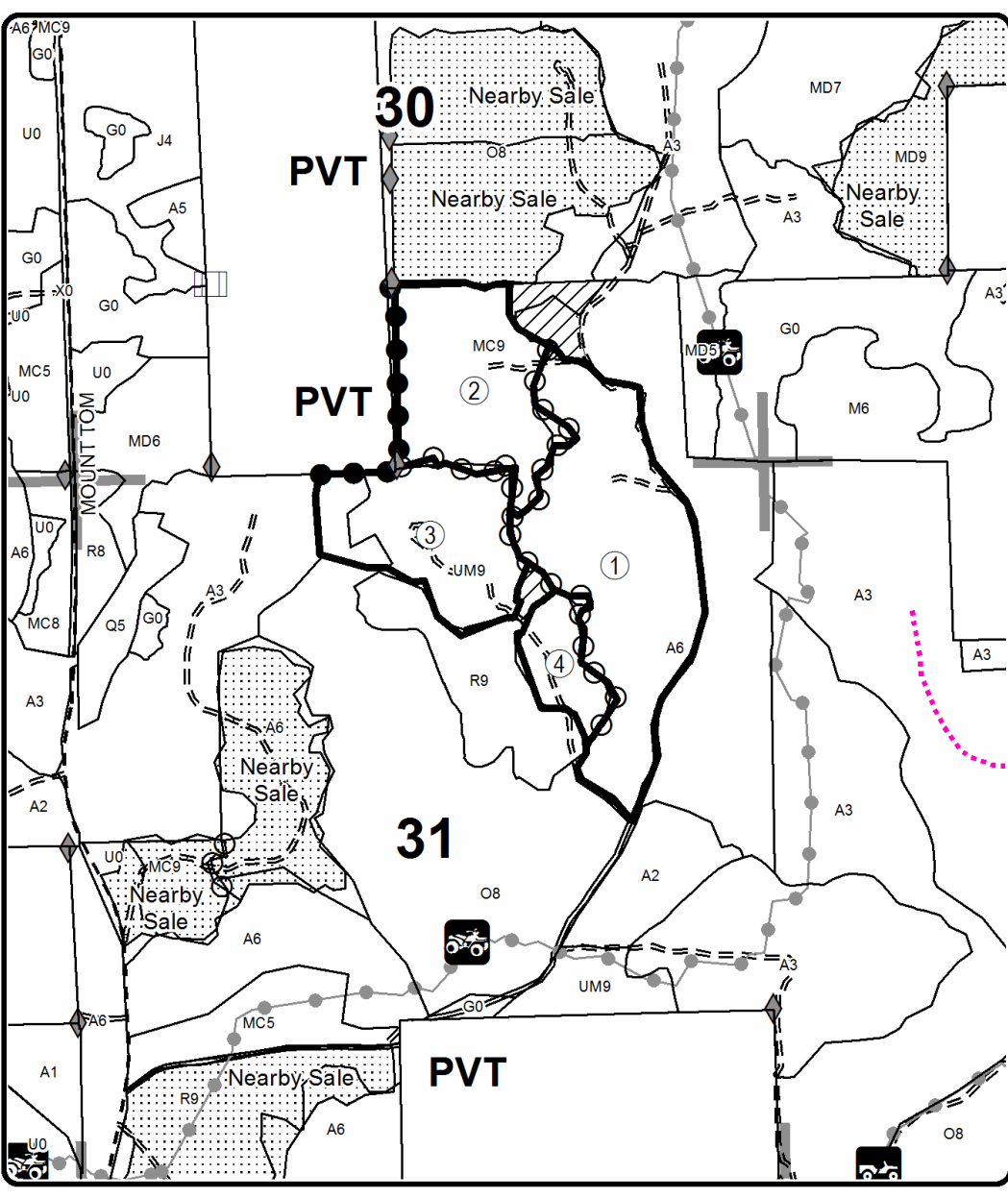
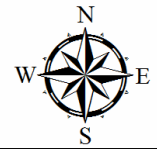
This information provided by authority of Part 525, 1994 PA 451, as amended.

Forest Management Unit Grayling	County Oscoda	Mapped By K. Ehlert	Date 09/13/2018	Page 1	of 1
Township 28N	Range 03E	Section(s) and Subdivision(s) Sec 30- NWSE, S 1/2 SE; Sec 31- NENW, NE	Scale 1:15,840		

Cover Type				Density	
A = Aspen	H = Hemlock	N = Marsh	U = Upland Brush	0 = Non Stocked	5 = Pole Timber Medium
B = Paper Birch	J = Jack Pine	O = Oak	UM = Upland Mixed	1 = Seedling Sapling Poor	6 = Pole Timber Well
C = Cedar	L = Lowland Brush	P = Lowland Poplar	V = Bog or Marsh	2 = Seedling Sapling Medium	7 = Saw Timber Poor
D = Treed Bog	LM = Lowland Mixed	Q = Mixed Swamp Conifer	W = White Pine	3 = Seedling Sapling Well	8 = Saw Timber Medium
E = Swamp Hdwoods	M = Mpl, Bch, Brch	R = Red Pine	X = Non Stocked	4 = Pole Timber Poor	9 = Saw Timber Well
F = Spruce Fir	MC = Mixed Conifer	S = Black Spruce	Z = Water		
G = Grass	MD = Mixed Deciduous	T = Tamarack			

PU	Acres	PU	Acres
1	54.8	3	28.8
2	31.8	4	9.3

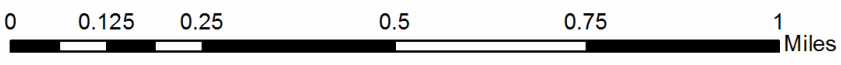
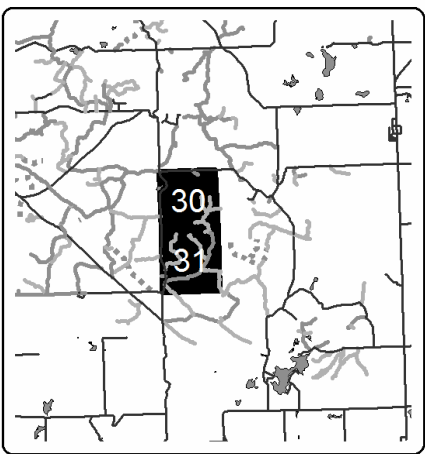
Comp 14 Mix
Compartment 014
124.7



Legend

- Stand Boundaries
- ◆ Field Grade Corners
- Secondary Forest Road
- == Forest Access Route
- - Gravel Road
- ⋯ Temporary Management Access
- ▨ Retention Area
- Against State (Red)
- Payment Unit (Yellow)
- Private Line (Blue)
- ▨ Nearby Timber Sales
- Section Corners
- PU Label
- Recreational Trail

Locator Map
1:200,000



Comp 14 Mix (72-031-18)
T28N, R03E, SEC. 30; T28N, R03E, SEC. 31; Oscoda COUNTY

In response to the notice of sale to be held 9:00 a.m. (local time) on May 28, 2019, I am hereby submitting my sealed bid (firm offer) for the following forest products to be cut. Bids for individual species must be at or above the advertised price. All non-responsive bid forms may be rejected.

<u>PRODUCTS & SPECIES</u>	<u>ESTIMATED VOLUME*</u>	<u>ADVERTISED PRICE</u>	<u>BID PRICE/UNIT</u>
Sawtimber			
Mixed Aspen	23.30 MBF	\$ 78.00/MBF	\$ _____
Mixed Oak	192.70 MBF	\$ 203.00/MBF	\$ _____
Red Pine	295.30 MBF	\$ 111.00/MBF	\$ _____
White Pine	106.40 MBF	\$ 66.00/MBF	\$ _____
Pulpwood			
Mixed Aspen	578.00 Cords	\$ 25.40/Cord	\$ _____
Mixed Hardwood	330.00 Cords	\$ 33.50/Cord	\$ _____
Mixed Oak	295.00 Cords	\$ 22.75/Cord	\$ _____
Paper Birch	66.00 Cords	\$ 15.40/Cord	\$ _____
Red Pine	263.00 Cords	\$ 40.55/Cord	\$ _____
White Pine	272.00 Cords	\$ 27.70/Cord	\$ _____

*The volumes are statistically estimated within plus (+) or minus (-) 8.55 percent. These estimated volumes are final and not subject to adjustment. Prospective bidders are urged to examine this timber and to make their own estimates of quantity and quality.

I understand that any or all bids may be rejected. All bids must be signed and all bid items must be bid or the bid form may be rejected. I also understand that consideration and awarding a contract will be based upon my past performance and ability to complete the contract based upon equipment and staffing subject to my control.

FEDERAL ID: _____ or SOCIAL SECURITY NUMBER: _____

Company or individual bidding: _____

Company representative's name: _____

Address: _____

City: _____ State: _____ Zip: _____

IF AVAILABLE, PLEASE PLACE THE PERSONALIZED LABEL FROM YOUR PROSPECTUS IN THE ABOVE BOX.

Individual or company representative's signature: _____ Date: _____

Phone number : _____ Email (optional): _____

THE WINNING BIDDER MUST COMPLETE THE VERIFICATION OF WORKER'S DISABILITY COMPENSATION ACT COMPLIANCE (ON REVERSE SIDE IF DOUBLE SIDED) WITHIN 21 DAYS OF SALE AWARD DATE



FOR DEPARTMENT USE ONLY
Sale Number (XX - XXX - XX - XX)
Forest Management Unit:

TIMBER SALE VERIFICATION OF WORKER'S DISABILITY COMPENSATION ACT COMPLIANCE

*As required by Act 317, P.A. 1969 (Worker's Compensation) and
Part 5 of Act 451 of 1994, as amended.*

VERIFICATION OF WORKER'S DISABILITY COMPENSATION ACT COMPLIANCE

- This verification must be completed and submitted within 21 days of contract award and prior to the issuance of the timber sale contract.
- In addition, if boxes 2B or 2C are checked, then Notice of Exclusion or Certificate of Insurance must be submitted within twenty-one (21) days of the contract award and prior to the issuance of the timber sale contract.
- All information must be typed or printed except for written signatures.

Please Check Appropriate Categories:

1. My business is organized as (you **must** check one of the boxes below):
 - A. Sole Proprietorship (individual)
 - B. Partnership
 - C. Corporation
2. You **must** check one of the boxes below:
 - A. I certify my business is a sole proprietorship and it has no employees but the sole proprietor. I am not subject to the Worker's Compensation Laws.
 - B. I certify my business has satisfied its obligation to the Worker's Compensation Act through the use of an approved Notice of Exclusion (BWC-337, Rev. 5/96). I will provide a copy of the Notice of Exclusion within 21 days of the contract award. (For questions or a copy of the BWC-337, please call the Worker's Compensation Bureau at 517-322-1195).
 - C. I certify my business has a Worker's Compensation Policy. I will provide an original Certificate of Insurance within twenty-one (21) days of the contract award.
3. If you have checked item 2(A) or 2(B), you **must** indicate the number of **both** full-time and part-time employees, other than yourself, including family members and active partners (if none, you must enter "0").

_____ Full-time Employees

_____ Part-time Employees

Name of Business		Federal ID (or) Social Security No.	
Address		Telephone ()	
City	State	ZIP	

I hereby certify that the above information is true and correct. I agree to notify the Michigan DNR of any changes that occur in factors affecting my coverage during any of my present and future operations.

Signature of Owner or Authorized Representative

Title

Date

Please complete the "SEALED BID" information on the next page

Frost Pocket Expansion (72-022-18)
T27N, R03E, SEC. 6; T28N, R03E, SEC. 31; Oscoda COUNTY

In response to the notice of sale to be held 9:00 a.m. (local time) on May 28, 2019, I am hereby submitting my sealed bid (firm offer) for the following forest products to be cut. Bids for individual species must be at or above the advertised price. All non-responsive bid forms may be rejected.

<u>PRODUCTS & SPECIES</u>	<u>ESTIMATED VOLUME*</u>	<u>ADVERTISED PRICE</u>	<u>BID PRICE/UNIT</u>
Sawtimber			
BI/R/Hybrid Oak	15.10 MBF	\$ 135.00/MBF	\$ _____
Mixed Aspen	71.10 MBF	\$ 52.00/MBF	\$ _____
Red Maple	16.60 MBF	\$ 45.00/MBF	\$ _____
Red Pine	338.90 MBF	\$ 74.00/MBF	\$ _____
White Pine	42.50 MBF	\$ 44.00/MBF	\$ _____
Pulpwood			
Jack Pine	327.00 Cords	\$ 13.05/Cord	\$ _____
Mixed Aspen	567.00 Cords	\$ 16.95/Cord	\$ _____
Mixed Hardwood	304.00 Cords	\$ 22.35/Cord	\$ _____
Mixed Oak	107.00 Cords	\$ 15.20/Cord	\$ _____
Paper Birch	2.00 Cords	\$ 10.25/Cord	\$ _____
Red Pine	434.00 Cords	\$ 27.00/Cord	\$ _____
White Pine	114.00 Cords	\$ 18.45/Cord	\$ _____

*The volumes are statistically estimated within plus (+) or minus (-) 16.89 percent. These estimated volumes are final and not subject to adjustment. Prospective bidders are urged to examine this timber and to make their own estimates of quantity and quality.

I understand that any or all bids may be rejected. All bids must be signed and all bid items must be bid or the bid form may be rejected. I also understand that consideration and awarding a contract will be based upon my past performance and ability to complete the contract based upon equipment and staffing subject to my control.

FEDERAL ID: _____ or SOCIAL SECURITY NUMBER: _____

Company or individual bidding: _____

Company representative's name: _____

Address: _____

City: _____ State: _____ Zip: _____

IF AVAILABLE, PLEASE PLACE THE PERSONALIZED LABEL FROM YOUR PROSPECTUS IN THE ABOVE BOX.

Individual or company representative's signature: _____ Date: _____

Phone number : _____ Email (optional): _____

THE WINNING BIDDER MUST COMPLETE THE VERIFICATION OF WORKER'S DISABILITY COMPENSATION ACT COMPLIANCE (ON REVERSE SIDE IF DOUBLE SIDED) WITHIN 21 DAYS OF SALE AWARD DATE



FOR DEPARTMENT USE ONLY

Sale Number (XX – XXX – XX – XX)
Forest Management Unit:

**TIMBER SALE
VERIFICATION OF WORKER'S DISABILITY
COMPENSATION ACT COMPLIANCE**

*As required by Act 317, P.A. 1969 (Worker's Compensation) and
Part 5 of Act 451 of 1994, as amended.*

VERIFICATION OF WORKER'S DISABILITY COMPENSATION ACT COMPLIANCE

- This verification must be completed and submitted within 21 days of contract award and prior to the issuance of the timber sale contract.
- In addition, if boxes 2B or 2C are checked, then Notice of Exclusion or Certificate of Insurance must be submitted within twenty-one (21) days of the contract award and prior to the issuance of the timber sale contract.
- All information must be typed or printed except for written signatures.

Please Check Appropriate Categories:

1. My business is organized as (you **must** check one of the boxes below):
 - A. Sole Proprietorship (individual)
 - B. Partnership
 - C. Corporation
2. You **must** check one of the boxes below:
 - A. I certify my business is a sole proprietorship and it has no employees but the sole proprietor. I am not subject to the Worker's Compensation Laws.
 - B. I certify my business has satisfied its obligation to the Worker's Compensation Act through the use of an approved Notice of Exclusion (BWC-337, Rev. 5/96). I will provide a copy of the Notice of Exclusion within 21 days of the contract award. (For questions or a copy of the BWC-337, please call the Worker's Compensation Bureau at 517-322-1195).
 - C. I certify my business has a Worker's Compensation Policy. I will provide an original Certificate of Insurance within twenty-one (21) days of the contract award.
3. If you have checked item 2(A) or 2(B), you **must** indicate the number of **both** full-time and part-time employees, other than yourself, including family members and active partners (if none, you must enter "0").

_____ Full-time Employees

_____ Part-time Employees

Name of Business		Federal ID (or) Social Security No.	
Address		Telephone ()	
City	State	ZIP	

I hereby certify that the above information is true and correct. I agree to notify the Michigan DNR of any changes that occur in factors affecting my coverage during any of my present and future operations.

Signature of Owner or Authorized Representative

Title

Date

Please complete the "SEALED BID" information on the next page

Townline Kittle Aspen (72-006-19)
T27N, R02E, SEC. 30; Oscoda COUNTY

In response to the notice of sale to be held 9:00 a.m. (local time) on May 28, 2019, I am hereby submitting my sealed bid (firm offer) for the following forest products to be cut. Bids for individual species must be at or above the advertised price. All non-responsive bid forms may be rejected.

<u>PRODUCTS & SPECIES</u>	<u>ESTIMATED VOLUME*</u>	<u>ADVERTISED PRICE</u>	<u>BID PRICE/UNIT</u>
Sawtimber			
Mixed Aspen	113.00 MBF	\$ 68.00/MBF	\$ _____
Northern Pin Oak	42.30 MBF	\$ 176.00/MBF	\$ _____
Red Maple	36.60 MBF	\$ 58.00/MBF	\$ _____
Red Pine	69.10 MBF	\$ 96.00/MBF	\$ _____
White Pine	27.90 MBF	\$ 58.00/MBF	\$ _____
Pulpwood			
Balsam Fir	51.00 Cords	\$ 13.40/Cord	\$ _____
Black Spruce	14.00 Cords	\$ 15.30/Cord	\$ _____
Jack Pine	222.00 Cords	\$ 16.95/Cord	\$ _____
Mixed Aspen	920.00 Cords	\$ 22.00/Cord	\$ _____
Mixed Hardwood	450.00 Cords	\$ 29.05/Cord	\$ _____
Northern Pin Oak	221.00 Cords	\$ 19.75/Cord	\$ _____
Red Pine	133.00 Cords	\$ 35.15/Cord	\$ _____
White Pine	274.00 Cords	\$ 24.00/Cord	\$ _____

*The volumes are statistically estimated within plus (+) or minus (-) 11.98 percent. These estimated volumes are final and not subject to adjustment. Prospective bidders are urged to examine this timber and to make their own estimates of quantity and quality.

I understand that any or all bids may be rejected. All bids must be signed and all bid items must be bid or the bid form may be rejected. I also understand that consideration and awarding a contract will be based upon my past performance and ability to complete the contract based upon equipment and staffing subject to my control.

FEDERAL ID: _____ or SOCIAL SECURITY NUMBER: _____

Company or individual bidding: _____

Company representative's name: _____

Address: _____

City: _____ State: _____ Zip: _____

IF AVAILABLE, PLEASE PLACE THE PERSONALIZED LABEL FROM YOUR PROSPECTUS IN THE ABOVE BOX.

Individual or company representative's signature: _____ Date: _____

Phone number : _____ Email (optional): _____

THE WINNING BIDDER MUST COMPLETE THE VERIFICATION OF WORKER'S DISABILITY COMPENSATION ACT COMPLIANCE (ON REVERSE SIDE IF DOUBLE SIDED) WITHIN 21 DAYS OF SALE AWARD DATE



FOR DEPARTMENT USE ONLY
Sale Number (XX - XXX - XX - XX)
Forest Management Unit:

TIMBER SALE VERIFICATION OF WORKER'S DISABILITY COMPENSATION ACT COMPLIANCE

*As required by Act 317, P.A. 1969 (Worker's Compensation) and
Part 5 of Act 451 of 1994, as amended.*

VERIFICATION OF WORKER'S DISABILITY COMPENSATION ACT COMPLIANCE

- This verification must be completed and submitted within 21 days of contract award and prior to the issuance of the timber sale contract.
- In addition, if boxes 2B or 2C are checked, then Notice of Exclusion or Certificate of Insurance must be submitted within twenty-one (21) days of the contract award and prior to the issuance of the timber sale contract.
- All information must be typed or printed except for written signatures.

Please Check Appropriate Categories:

1. My business is organized as (you **must** check one of the boxes below):
 - A. Sole Proprietorship (individual)
 - B. Partnership
 - C. Corporation

2. You **must** check one of the boxes below:
 - A. I certify my business is a sole proprietorship and it has no employees but the sole proprietor. I am not subject to the Worker's Compensation Laws.
 - B. I certify my business has satisfied its obligation to the Worker's Compensation Act through the use of an approved Notice of Exclusion (BWC-337, Rev. 5/96). I will provide a copy of the Notice of Exclusion within 21 days of the contract award. (For questions or a copy of the BWC-337, please call the Worker's Compensation Bureau at 517-322-1195).
 - C. I certify my business has a Worker's Compensation Policy. I will provide an original Certificate of Insurance within twenty-one (21) days of the contract award.

3. If you have checked item 2(A) or 2(B), you **must** indicate the number of **both** full-time and part-time employees, other than yourself, including family members and active partners (if none, you must enter "0").

_____ Full-time Employees

_____ Part-time Employees

Name of Business		Federal ID (or) Social Security No.	
Address		Telephone ()	
City	State	ZIP	

I hereby certify that the above information is true and correct. I agree to notify the Michigan DNR of any changes that occur in factors affecting my coverage during any of my present and future operations.

Signature of Owner or Authorized Representative

Title

Date

Please complete the "SEALED BID" information on the next page

Ground Buzzing Aspen (72-019-18)
T27N, R01E, SEC. 5; T28N, R01E, SEC. 33; Oscoda COUNTY

In response to the notice of sale to be held 9:00 a.m. (local time) on May 28, 2019, I am hereby submitting my sealed bid (firm offer) for the following forest products to be cut. Bids for individual species must be at or above the advertised price. All non-responsive bid forms may be rejected.

<u>PRODUCTS & SPECIES</u>	<u>ESTIMATED VOLUME*</u>	<u>ADVERTISED PRICE</u>	<u>BID PRICE/UNIT</u>
Sawtimber			
Quaking Aspen	32.80 MBF	\$ 78.00/MBF	\$ _____
Red Pine	46.70 MBF	\$ 111.00/MBF	\$ _____
Pulpwood			
Balsam Fir	55.00 Cords	\$ 15.50/Cord	\$ _____
Black Spruce	58.00 Cords	\$ 17.70/Cord	\$ _____
Jack Pine	295.00 Cords	\$ 19.55/Cord	\$ _____
Mixed Hardwood	36.00 Cords	\$ 33.50/Cord	\$ _____
Northern Pin Oak	61.00 Cords	\$ 22.75/Cord	\$ _____
Quaking Aspen	312.00 Cords	\$ 25.40/Cord	\$ _____
Red Pine	101.00 Cords	\$ 40.55/Cord	\$ _____
White Pine	96.00 Cords	\$ 27.70/Cord	\$ _____

*The volumes are statistically estimated within plus (+) or minus (-) 13.56 percent. These estimated volumes are final and not subject to adjustment. Prospective bidders are urged to examine this timber and to make their own estimates of quantity and quality.

I understand that any or all bids may be rejected. All bids must be signed and all bid items must be bid or the bid form may be rejected. I also understand that consideration and awarding a contract will be based upon my past performance and ability to complete the contract based upon equipment and staffing subject to my control.

FEDERAL ID: _____ or SOCIAL SECURITY NUMBER: _____

Company or individual bidding: _____

Company representative's name: _____

Address: _____

City: _____ State: _____ Zip: _____

IF AVAILABLE, PLEASE PLACE THE PERSONALIZED LABEL FROM YOUR PROSPECTUS IN THE ABOVE BOX.

Individual or company representative's signature: _____ Date: _____

Phone number : _____ Email (optional): _____

THE WINNING BIDDER MUST COMPLETE THE VERIFICATION OF WORKER'S DISABILITY COMPENSATION ACT COMPLIANCE (ON REVERSE SIDE IF DOUBLE SIDED) WITHIN 21 DAYS OF SALE AWARD DATE



FOR DEPARTMENT USE ONLY	
Sale Number (XX - XXX - XX - XX)	
Forest Management Unit:	

TIMBER SALE VERIFICATION OF WORKER'S DISABILITY COMPENSATION ACT COMPLIANCE

*As required by Act 317, P.A. 1969 (Worker's Compensation) and
Part 5 of Act 451 of 1994, as amended.*

VERIFICATION OF WORKER'S DISABILITY COMPENSATION ACT COMPLIANCE

- This verification must be completed and submitted within 21 days of contract award and prior to the issuance of the timber sale contract.
- In addition, if boxes 2B or 2C are checked, then Notice of Exclusion or Certificate of Insurance must be submitted within twenty-one (21) days of the contract award and prior to the issuance of the timber sale contract.
- All information must be typed or printed except for written signatures.

Please Check Appropriate Categories:

1. My business is organized as (you **must** check one of the boxes below):
 - A. Sole Proprietorship (individual)
 - B. Partnership
 - C. Corporation
2. You **must** check one of the boxes below:
 - A. I certify my business is a sole proprietorship and it has no employees but the sole proprietor. I am not subject to the Worker's Compensation Laws.
 - B. I certify my business has satisfied its obligation to the Worker's Compensation Act through the use of an approved Notice of Exclusion (BWC-337, Rev. 5/96). I will provide a copy of the Notice of Exclusion within 21 days of the contract award. (For questions or a copy of the BWC-337, please call the Worker's Compensation Bureau at 517-322-1195).
 - C. I certify my business has a Worker's Compensation Policy. I will provide an original Certificate of Insurance within twenty-one (21) days of the contract award.
3. If you have checked item 2(A) or 2(B), you **must** indicate the number of **both** full-time and part-time employees, other than yourself, including family members and active partners (if none, you must enter "0").

_____ Full-time Employees

_____ Part-time Employees

Name of Business		Federal ID (or) Social Security No.	
Address		Telephone ()	
City	State	ZIP	

I hereby certify that the above information is true and correct. I agree to notify the Michigan DNR of any changes that occur in factors affecting my coverage during any of my present and future operations.

Signature of Owner or Authorized Representative

Title

Date

Please complete the "SEALED BID" information on the next page

Bailey Overstory Oak (72-021-18)
T28N, R03E, SEC. 20; T28N, R03E, SEC. 29; T28N, R03E, SEC. 30; Oscoda

In response to the notice of sale to be held 9:00 a.m. (local time) on May 28, 2019, I am hereby submitting my sealed bid (firm offer) for the following forest products to be cut. Bids for individual species must be at or above the advertised price. All non-responsive bid forms may be rejected.

<u>PRODUCTS & SPECIES</u>	<u>ESTIMATED VOLUME*</u>	<u>ADVERTISED PRICE</u>	<u>BID PRICE/UNIT</u>
Sawtimber			
B. T. Aspen	38.40 MBF	\$ 78.00/MBF	\$ _____
Basswood	28.30 MBF	\$ 114.00/MBF	\$ _____
Beech	16.10 MBF	\$ 113.00/MBF	\$ _____
Mixed Oak	199.70 MBF	\$ 203.00/MBF	\$ _____
Red Pine	33.30 MBF	\$ 111.00/MBF	\$ _____
Sugar Maple	120.10 MBF	\$ 278.00/MBF	\$ _____
Pulpwood			
B. T. Aspen	92.00 Cords	\$ 25.40/Cord	\$ _____
Basswood	35.00 Cords	\$ 20.35/Cord	\$ _____
Mixed Hardwood	488.00 Cords	\$ 33.50/Cord	\$ _____
Mixed Oak	265.00 Cords	\$ 22.75/Cord	\$ _____
Paper Birch	35.00 Cords	\$ 15.40/Cord	\$ _____
Red Pine	37.00 Cords	\$ 40.55/Cord	\$ _____
White Pine	41.00 Cords	\$ 27.70/Cord	\$ _____

*The volumes are statistically estimated within plus (+) or minus (-) 15.55 percent. These estimated volumes are final and not subject to adjustment. Prospective bidders are urged to examine this timber and to make their own estimates of quantity and quality.

I understand that any or all bids may be rejected. All bids must be signed and all bid items must be bid or the bid form may be rejected. I also understand that consideration and awarding a contract will be based upon my past performance and ability to complete the contract based upon equipment and staffing subject to my control.

FEDERAL ID: _____ or SOCIAL SECURITY NUMBER: _____

Company or individual bidding: _____

Company representative's name: _____

Address: _____

City: _____ State: _____ Zip: _____

IF AVAILABLE, PLEASE PLACE THE PERSONALIZED LABEL FROM YOUR PROSPECTUS IN THE ABOVE BOX.

Individual or company representative's signature: _____ Date: _____

Phone number : _____ Email (optional): _____

THE WINNING BIDDER MUST COMPLETE THE VERIFICATION OF WORKER'S DISABILITY COMPENSATION ACT COMPLIANCE (ON REVERSE SIDE IF DOUBLE SIDED) WITHIN 21 DAYS OF SALE AWARD DATE



FOR DEPARTMENT USE ONLY	
Sale Number (XX - XXX - XX - XX)	
Forest Management Unit:	

TIMBER SALE VERIFICATION OF WORKER'S DISABILITY COMPENSATION ACT COMPLIANCE

As required by Act 317, P.A. 1969 (Worker's Compensation) and
Part 5 of Act 451 of 1994, as amended.

VERIFICATION OF WORKER'S DISABILITY COMPENSATION ACT COMPLIANCE

- This verification must be completed and submitted within 21 days of contract award and prior to the issuance of the timber sale contract.
- In addition, if boxes 2B or 2C are checked, then Notice of Exclusion or Certificate of Insurance must be submitted within twenty-one (21) days of the contract award and prior to the issuance of the timber sale contract.
- All information must be typed or printed except for written signatures.

Please Check Appropriate Categories:

1. My business is organized as (you **must** check one of the boxes below):
 - A. Sole Proprietorship (individual)
 - B. Partnership
 - C. Corporation
2. You **must** check one of the boxes below:
 - A. I certify my business is a sole proprietorship and it has no employees but the sole proprietor. I am not subject to the Worker's Compensation Laws.
 - B. I certify my business has satisfied its obligation to the Worker's Compensation Act through the use of an approved Notice of Exclusion (BWC-337, Rev. 5/96). I will provide a copy of the Notice of Exclusion within 21 days of the contract award. (For questions or a copy of the BWC-337, please call the Worker's Compensation Bureau at 517-322-1195).
 - C. I certify my business has a Worker's Compensation Policy. I will provide an original Certificate of Insurance within twenty-one (21) days of the contract award.
3. If you have checked item 2(A) or 2(B), you **must** indicate the number of **both** full-time and part-time employees, other than yourself, including family members and active partners (if none, you must enter "0").

_____ Full-time Employees

_____ Part-time Employees

Name of Business		Federal ID (or) Social Security No.	
Address		Telephone ()	
City	State	ZIP	

I hereby certify that the above information is true and correct. I agree to notify the Michigan DNR of any changes that occur in factors affecting my coverage during any of my present and future operations.

Signature of Owner or Authorized Representative

Title

Date

Please complete the "SEALED BID" information on the next page