



**DEPARTMENT OF NATURAL RESOURCES
STATE OF MICHIGAN**

TIMBER SALE PROSPECTUS #6422

SCHEDULED SALE DATE AND TIME: 9:00 a.m. (local time) on July 9, 2019.

LOCATION: GRAYLING MGMT UNIT, 1955 HARTWICK PINES ROAD, GRAYLING, MI 49738.

PROSPECTUS NOTE: The bidder is advised to inspect the sale area and review the location, estimated volumes, operating costs and contract terms of proposed sales. Please be aware that some landowners may request 60 days or more notice for access across their land.

Notice is hereby given that bids will be received by the Unit Manager, GRAYLING MANAGEMENT UNIT, for certain timber on the following described lands:

Military Red Pine (72-011-18) / T25N, R04W, SEC. 26, SWNW,SW.

Crawford County, Advertised Price \$150,539.20, 82.6 Acres, Red Pine, White Pine.

SALE NOTE: This sale is adjacent to Military Road, which is Class A south of Fletcher Road. Sale has motorcycle, ORV route and snowmobile trails with appropriate specs, as well as bark beetle spec.

A recreation site such as a trail, pathway, or campground is within the sale area or the vicinity. Certain restrictions/specifications may be applicable including time restrictions.

7 Mile Red Pine (72-023-18) / T25N, R04W, SEC. 24, NENW,NWNE.

Crawford County, Advertised Price \$23,133.60, 43.8 Acres, Red Pine, Hardwood.

Matthes Pine Mix (72-026-18) / T25N, R04W, SEC. 21, NENE.

T25N, R04W, SEC. 22, W1/2NW.

Crawford County, Advertised Price \$71,813.25, 69.8 Acres, Red Pine, Hardwood.

SALE NOTE: The sale area is within the Beaver Creek sour gas field. There are two active oil wells within the sale area with above and below ground pipelines. An on-site meeting between the pipeline company and the Purchaser will be necessary to identify the locations of all pipelines before harvesting begins. Contact Breitburn at (989) 348-8459.

Chipping and low stumps are required in Payment Units 1 and 2 (see specs 2.2.2 and 2.2.3).

Oak wilt restrictions apply to Payment Unit 1 (see spec 5.2.3.5).

Cellar Spider Aspen (72-029-18) / T25N, R04W, SEC. 23, SWNW,SW,W1/2SE.

T25N, R04W, SEC. 24, SWNW.

Crawford County, Advertised Price \$20,785.10, 42.2 Acres, Aspen, Jack Pine.

SALE NOTE: Payment Unit 1 borders Military Road, which is a weight restricted road. Payment Units 2 and 3 have dual snowmobile trail and ORV route interface.

Tilt-A-Whirl Red Pine (72-030-18) / T25N, R04W, SEC. 27, NESW,S1/2SW.
T25N, R04W, SEC. 28, SESE.

Crawford County, Advertised Price \$81,881.70, 49.4 Acres, Red Pine, Hardwood.

SALE NOTE: These two stands are in the Beaver Creek Oil Field, so there is heavy oil and gas development. Snowmobile trail #7/West Higgins ORV Route cuts through the middle of Payment Unit 1 going East/West.

Year End Red Pine (72-040-18) / T25N, R04W, SEC. 23, N1/2NE,SWNE.

Crawford County, Advertised Price \$53,621.40, 38.5 Acres, Red Pine, Hardwood.

SALE NOTE: This red pine plantation contains a component of oak, with mixed deciduous stands bordering the stand. Oak wilt restrictions are in place. There is a natural gas pipeline running north/south along King Road and is identified on the Timber Sale Map. Low stump heights and chipping of all slash are required to help facilitate subsequent planting operations (see specs 2.2.2 & 2.2.3).

BID INSTRUCTIONS (VER. 07/02/2018):

1. Scheduled Bid Location, Date, and Time (2/11)

Bids must be received by the Unit Manager, GRAYLING OFFICE, 1955 HARTWICK PINES ROAD, GRAYLING, MI 49738, no later than 9:00 a.m. (local time) on July 9, 2019. For further information concerning this sale, contact Susan Thiel at 989-348-6371 extension 7440.

2. Bidder's Qualifications (5/16)

Purchaser shall obtain workers compensation insurance to cover claims under Michigan's Worker's Disability Compensation Act of 1969 or similar employee benefit act of any other state applicable to an employee. If all or part of a timber sale was prepared by a private contractor, the contractor and that contractor's company are not permitted to bid on the timber sale contract. Bids will not be accepted from individuals or companies appearing on the DNR/FRD No-Bid List. This list contains the names of purchasers who previously failed to execute a contract within 21-days or who have a history of poor performance.

3. Preparation of Sealed Bids (5/16)

Bid Forms may be completed online thru Michigan DNR Timber Sale Online Bidding (OLB) at www.michigan.gov/timberbidding or by completing the hardcopy Bid Form found in the Timber Sale Prospectus. Hardcopy Bid Forms shall be manually signed in ink. Registration in OLB is considered your 'signature' for all bids submitted thru that system. Bid prices must be entered for each species and product in the Bid Price column for all material subject to bidding and all fill-in blanks must be completed. If erasures or other changes appear on the hardcopy Bid Form, each erasure or change must be initialed by the person signing the bid.

4. Submission of Sealed Bids (5/16)

Bid forms may be obtained from the Unit Manager or thru OLB. Bids may be submitted hardcopy or thru OLB. All hardcopy bids must be submitted on the bid form and in an envelope clearly identified as described in this section. NOTE: Only one bid form per bid envelope. Sealed bids must be submitted to the Unit office designated in the prospectus and must be submitted at or prior to the time established in the prospectus. The envelope should show on the outside (a) the sale name or number and (b) the date and time of bid opening, as shown in the prospectus. Bids received after the time specified in the sale prospectus are late bids and will be rejected.

It is possible for a bidder to submit multiple bids on a single sale. For example, a bid may be submitted hardcopy and a bid may be submitted thru OLB. Or, two bidders from the same company could both submit bids on the same sale. If this were to happen, the State would accept all bids received and award the contract accordingly. All bidding and contractual requirements would apply to all bids received.

5. Public Opening of Sealed Bids (7/16)

If conditions permit, the sealed bids will be publicly opened and posted at the time and place set in the prospectus.

If a bidder, present at a bid opening, has submitted bids on more than one sale, that bidder may withdraw their unopened bid envelopes or announce the withdrawal of their online bid after being declared the successful bidder on one sale.

6. Award of Contract (1/11)

Award of the contract will be made to the Bidder whose bid, conforming to the prospectus, is most advantageous to the State of Michigan on the basis of total value at rates bid for the estimated quantities. The State reserves the right to reject any bid or waive any minor irregularity in bids received. A written award mailed (or otherwise furnished) to the successful Bidder shall be deemed to result in a binding contract without further action by either party.

7. Down Payment (1/11)

The Bidder to whom award is made must make a down payment within 21 days of the sale award. The amount of the down payment will be calculated as shown in the Bond and Payment Schedule of this prospectus. Only cash may be used to meet this requirement.

8. Performance Security (1/11)

As guarantee of faithful performance, a cash bond, certificate of deposit, surety bond or irrevocable letter of credit (LOC) is required within 21 days of the sale award. The amount of the performance security is shown in the Bond and

Payment Schedule of this prospectus. If an LOC or surety is used, the coverage must extend for at least 6 months beyond the contract expiration.

9. Timber Sale Contract (7/18)

Additional conditions and requirements common to all timber sales are listed on the timber sale contract (R4031) and are available on line at www.michigan.gov/timber. Contact the Unit Manager for additional information or a sample contract. Within 21 days of the date of the award letter, the bidder must sign the contract and provide the required down payment, performance security, and verification of worker's disability compensation. The down payment and performance security shall be in accordance with the provisions of the timber sale contract, in the sums stated in this prospectus. If these actions are not taken, then the Bidder, the Bidder's corporation, and the corporation's principals may not be permitted to bid on State timber sales for a period of 3 months after the first offense, 6 months after the second offense, and 1 year after the third offense. An offense will only be counted against the Bidder for 5 years. In addition, the Bidder certifies that if awarded this contract, the Bidder will complete the timber sale contract in accordance with its terms and any modifications thereof including requirements to purchase, cut, and remove the included timber by the expiration date.

Payment Unit values in the State Forest Timber Sale Contract are calculated based on the advertised value of the Payment Unit as a percentage of the total advertised value of the contract. The advertised value of each Payment Unit is given in the Description of Timber by Payment Unit table on the Timber Sale Information page. For example, if the value of Payment Unit 1 is advertised as \$1,500 and the total Timber Sale value is advertised as \$10,000, the contract price for Payment Unit 1 will be 15% of the total bid price ($\$1,500/\$10,000 * 100$).

10. Disclaimer of Estimates and Bidder's Warranty of Inspection (7/16)

Before submitting this bid, the Bidder is advised and cautioned to inspect the sale area, review the requirements of the sale contract, and take other steps as may be reasonably necessary to ascertain the location, estimated volumes, construction estimates, and operating costs of the proposed sale. Failure to do so will not relieve the Bidder from responsibility for completing the contract.

The Bidder warrants that this bid is submitted solely on the basis of the Bidder's examination and inspection of the quality and quantity of the timber offered for sale and the Bidder's opinion of the value thereof and the costs of recovery. No reliance should be placed on the State of Michigan's estimates of timber quality, quantity or costs of recovery. Bidder further acknowledges that the State of Michigan: (i) expressly disclaims any warranty of fitness of timber for any purpose; (ii) offers this timber as is without any warranty of quality (merchantability) or quantity and (iii) expressly disclaims any warranty as to the quantity or quality of timber sold.

11. Certification and Chain-of-Custody (10/14)

Unless otherwise indicated in the contract under section 7 – Other Conditions of the Sale Specific Conditions & Requirements, the area encompassed by this timber sale is certified to the standards of the Forest Stewardship Council (FSC) - Certificate #SCS-FM/COC-00090N and the Sustainable Forestry Initiative (SFI) - Certificate #NSF-SFIS-5Y031-SF5. Forest products from this sale may be delivered to the mill as "FSC 100% and / or SFI certified" as long as the contractor hauling the forest products is chain-of-custody (COC) certified or covered under a COC certificate from the destination mill. The purchaser is responsible for maintaining COC after leaving the sale area.

12. Good Neighbor Authority (GNA) Requirements (7/16)

If the name of this timber sales contains the acronym GNA, it is authorized by the Good Neighbor Authority (GNA) and covered by various agreements between the U.S. Forest Service and the State. The timber sale occurs on federal land and the following conditions apply:

GNA contracts on US Forest Service land will not be awarded to purchasers on the Federal list of excluded parties. The System for Award Management (SAM) will be checked for active excluded parties prior to award of contract. In addition, the Bidder to whom award is made must complete an Assurance Regarding Felony Conviction or Tax Delinquent Status for Corporate Applicants (AD-3031).

13. Good Neighbor Authority (GNA) Requirements, con't (9/16)

Bidder certifies, by signing this bid form, that to the best of Bidder's knowledge that the following representations are accurate and complete.

- a. That the Bidder and its principals are not presently debarred, suspended, proposed for debarment, declared ineligible, or voluntary excluded from timber sales (covered transactions) by any Federal department or agency.
- b. That the Bidder and its principals have not within a 3-year period preceding this bid been convicted of or had a civil judgment rendered against them for commission of fraud or a criminal offense in connection with obtaining, attempting to obtain, or performing a public (Federal, State, or local) transaction or contract under a public transaction; violation of Federal or State antitrust statutes or commission of embezzlement, theft, forgery, bribery, falsification or destruction of records, making false statements, or receiving stolen property.
- c. That the Bidder and its principals are not presently indicted for or otherwise criminally or civilly charged by a governmental entity (Federal, State, or local) with commission of any of the offenses enumerated in paragraph b of this certification.
- d. That the Bidder and its principals have not within a 3-year period preceding this bid had one or more public transactions (Federal, State, or local) terminated for breach or default of a timber or forest product contract.

Bidders that cannot certify this requirement, in whole or in part, shall submit an explanation with their bid.

DAN EICHINGER
Director

TIMBER SALE INFORMATION

Military Red Pine (72-011-18)
T25N, R04W, SEC. 26.
Crawford County (Advertised Price \$150,539.20)

SALE NOTE: This sale is adjacent to Military Road, which is Class A south of Fletcher Road. Sale has motorcycle, ORV route and snowmobile trails with appropriate specs, as well as bark beetle spec.

A recreation site such as a trail, pathway, or campground is within the sale area or the vicinity. Certain restrictions/specifications may be applicable including time restrictions.

A timber sale contract for this lump sum, sealed bid timber sale will be awarded to the responsible bidder offering the highest sealed bid price. Bids must be at or above the following advertised price for each species:

<u>PRODUCTS & SPECIES</u>	<u>ESTIMATED UNITS*</u>	<u>ADVERTISED PRICE</u>
Sawtimber		
Red Pine	703.50 MBF	\$ 109.00 / MBF
Pulpwood		
Bl/R/Hybrid Oak	22.00 Cords	\$ 24.10 / Cord
Quaking Aspen	54.00 Cords	\$ 24.95 / Cord
Red Maple	103.00 Cords	\$ 36.05 / Cord
Red Pine	1,191.00 Cords	\$ 39.75 / Cord
Scotch Pine	208.00 Cords	\$ 31.25 / Cord
White Pine	494.00 Cords	\$ 29.20 / Cord

* The total volume is statistically estimated within plus (+) or minus (-) 7.31 percent. The estimated units are final and not subject to adjustment. Prospective bidders are urged to examine this timber and to make their own estimates of quantity and quality.

BOND AND PAYMENT SCHEDULE:

1. A bond in the amount of \$7,527.00 to insure faithful performance of the conditions of the contract will be deposited by the successful bidder within 21 days of the sale award.
2. Cutting in any sale or unit without the required advance payment would be considered a trespass.
3. Total payment must be paid in advance or according to the following schedule:
 - (a) Ten percent (10%) of the sale value must be paid within 21 days of the sale award.
 - (b) The 10% down payment will be credited towards the first unit cut.
 - (c) Payment for each of the following units must be made before cutting begins in that unit:

<u>PAYMENT UNIT NUMBER</u>	<u>PERCENT OF TOTAL SALE VALUE</u>
01	36.7%
02	36.8%
03	26.5%
4. If no cutting takes place, the 10% down payment will not be refunded.
5. Operations on the contract issued will terminate on 03/31/2022.

Description of Timber by Payment Unit (PU)

PU	MARKET GROUP	PRODUCT	QUANTITY	UNIT	ACRES	ADVERTISE PRICE
1	Red Pine	Sawtimber	278.1	MBF	27.9	\$55,280.70
	BI/R/Hybrid Oak	Pulpwood	6.0	Cords		
	Red Pine		576.0	Cords		
	White Pine		66.0	Cords		
2	Red Pine	Sawtimber	262.1	MBF	29.9	\$55,438.70
	BI/R/Hybrid Oak	Pulpwood	12.0	Cords		
	Quaking Aspen		18.0	Cords		
	Red Maple		33.0	Cords		
	Red Pine		378.0	Cords		
	Scotch Pine		151.0	Cords		
	<i>Scotch Pine</i>		<i>151.0</i>	<i>Cords</i>		
	White Pine		178.0	Cords		
3	Red Pine	Sawtimber	163.3	MBF	24.8	\$39,819.80
	BI/R/Hybrid Oak	Pulpwood	4.0	Cords		
	Quaking Aspen		36.0	Cords		
	Red Maple		70.0	Cords		
	Red Pine		237.0	Cords		
	Scotch Pine		57.0	Cords		
	<i>Jack Pine</i>		<i>4.0</i>	<i>Cords</i>		
	<i>Scotch Pine</i>		<i>53.0</i>	<i>Cords</i>		
	White Pine		250.0	Cords		
	TOTAL:			703.5		
TOTAL:			2,072.0	Cords		

Sale Specific Conditions & Requirements

Sale Name: Military Red Pine

Sale Number: 72-011-18 Seq#: 1

1 - Sale Area

1.2 - Boundaries

1.2.1 - Painted boundaries (1/14)

The sale boundary and Payment Unit boundaries are marked and identified by red and yellow paint. Exterior sale boundary lines against state are marked with red paint. Interior Payment Unit boundaries are marked with yellow paint. The painted boundary line trees are not Included Timber and are to be protected, unless they are along a county road. Yellow painted trees designating an interior Payment Unit boundary are only to be cut when all surrounding Payment Units have been paid.

2 - Timber Specifications

2.1 - Included Timber

2.1.1 - Clearcut unit(s) with unmerchantable trees (6/14)

Within Payment Unit(s) 1 - 3, cut all trees that are two (2) inches or more at DBH.

2.2 - Utilization

2.2.2 - Chipping required (2/18)

Payment Units 1 - 3 must be chip harvested to facilitate subsequent planting operations. Products may be produced as roundwood and forwarded to decking areas in final product length, but the tops must be left intact and skidded to the landing for chipping in order to minimize the amount of residual slash. A chipping exemption can be obtained if proposed operations are determined to be suitable for planting by reforestation staff. This exemption must be granted in writing. The requirement to retain approximately 1/6 to 1/3 of tree tops and limbs less than four inches in diameter is still applicable (G. C. & R. 2.2).

2.2.3 - Stump heights (4/07)

Stump heights within the Sale Area shall not exceed 6 inches for all trees. This is in order to facilitate planting operations.

3 - Payments

3.3 - Pre-measured Sales

3.3.4 - Dividing payment units (7/14)

Payment Unit(s) may be divided at the request of the Purchaser and upon approval of the Unit Manager. Dividing Payment Units is a contract modification which requires a Timber Sale Contract Supplement.

4 - Transportation

4.1 - Construction

4.1.3 - Slash and earthen piles (8/04)

Piles or windrows of earth along roads and landings that have been widened or constructed shall be leveled. Slash from road maintenance or construction, including stumps, shall be chipped, utilized or dispersed throughout the sale.

4.1.6 - Road construction (1/09)

Construction of new roads or improvements of existing roads shall be done in such a way as to minimize the environmental and visual impacts. Merchantable trees shall be cut and utilized unless otherwise directed. Non-merchantable trees shall be severed and laid flat on the ground. Slash shall be chipped, utilized or dispersed throughout the sale. Stumps shall be set upright, not left on edge, and be moved at least 10 feet away from the road edge. Disturbed soil shall be feathered into the woods and not left in berms or windrows.

4.1.7 - Road closure (10/11)

All new roads built into the sale must be blocked to vehicle traffic upon completion of the sale. Overgrown roads that are reopened shall be considered new roads. In general, this will require constructing a four (4') foot high berm of stumps, logs or earth. Stumps and brush must be placed along the remainder of the trail. These roads must be rendered impassable to cars and trucks. All stumps from road building and landing construction must be reserved to block any newly constructed roads upon completion of the sale. These stumps must be scattered along the road system to prohibit vehicular movement. Contact

the sale administrator for specific details of design and placement.

4.1.11 - Permits (2/12)

The Purchaser will secure any necessary permits that may be required.

4.2 - Maintenance

4.2.5 - Two wheel drive condition (2/04)

All existing trail roads on and adjacent to the sale area must be passable by two-wheel drive traffic for the duration of the sale.

5 - Operations

5.1 - Notification

5.1.1 - Pre-sale conference (10/16)

A pre-sale conference between the Purchaser and sale administrator is required prior to beginning any operations to determine landing and road locations. The Unit Manager or his/her representative must be contacted at least 10 days in advance to schedule the conference.

5.1.6 - Utility R.O.W. (1/15)

It is the responsibility of the Purchaser to obtain permission from the utility company to utilize the power line R.O.W. for operations. Contact Consumers at 800.477.5050.

5.2 - Conduct of Operations

5.2.1 - Slash

5.2.1.8 - Slash height (12/08)

No slash or tree tops may exceed 24 inches in height.

5.2.3 - Operating Restrictions

5.2.3.6 - Bark beetle restriction (12/08)

In the event drought creates a high risk of pine bark beetle infestation, pine is not to be cut during the period March 1 through July 1, unless all portions of trees greater than two inches in diameter are removed from the sale area, reduced to chips, or treated to the satisfaction of the Unit Manager or his/her representative, within fifteen days of being severed from the stump. Pine log decks, pulpwood piles and treetops that are piled for chipping in the fall or winter within a 1/4 mile of susceptible sites must be removed before March 15. Residual slash must not be placed in piles or rows and must be spread over the site for quick drying. The Department of Natural Resources will exercise this specification if the risk of damage warrants.

5.2.32 - Decking/landing restoration (9/13)

All decking and landing areas must have the surface area restored to a condition equal to or better than before. This is to ensure the proper regeneration of the stand. Wood debris, chips and "cookies" from trimmings must be removed or scattered away from landing and loading areas and may not be windrowed on the edge.

5.2.38 - No decking against live trees (2/04)

Cut products may not be decked against unmarked or designated leave trees.

5.2.39 - ORV trail/route protection (4/18)

The MCCCT is a cycle trail and LP 7 is a designated ORV route, and both are shown on the Timber Sale Map. Do not cut trees or damage posts with yellow ORV markers. All stumps within 5 feet of the trail must be cut flush with the ground. Maintain a 20 foot wide slash, debris, and rut free zone daily using the ORV trail or route as the centerline. Skidding across the trail or route may only occur in locations approved by the sale administrator. The MCCCT trail is scheduled to be rerouted prior to the sale being cut - If the MCCCT trail is rerouted prior to cutting, then the portion of this requirement that applies to the MCCCT can be disregarded.

5.2.41 - Snowmobile trail protection (9/11)

The LP 7 is a snowmobile trail and is shown on the Timber Sale Map. Do not cut or damage posts with orange trail markers or traffic control signs. If the trail is used, it must be maintained and restored to a condition equal to or better than before the sale. The road maintenance/restoration must be done prior to December 1. If the trail is used for hauling, it must be graded

to the satisfaction of the Unit Manager or his/her representative prior to December 1st. The snowmobile trail may not be used for any timber sale operations from December 1 to March 31 without written approval of Unit Manager. If the trail road is to be used for hauling during the snowmobile season, then a snow covered base must be left on the trail. The snowmobile trail may only be crossed at right angles. Maintain a 20 foot wide slash, debris, and rut free zone daily using the snowmobile trail as the centerline. No decking of forest products will be permitted along the snowmobile trail. All stumps within 20 feet of the snowmobile trail must be cut at ground level.

5.4 - Soil Protection

5.4.1 - Rutting restriction, general (7/16)

Operations are to cease immediately if equipment and weather conditions result in rutting of roads and/or skid trails which is 12 inches or greater in depth and 50 feet in length. The Unit Manager or his/her representative may restrict hauling and/or skidding if ruts exceed the specified depth. With the Unit Manager or his/her representative's approval, the Purchaser may return to the area when the risk of rutting has decreased.

6 - Safety and Fire Prevention

6.2 - Signing

6.2.1 - Road posting (9/09)

The Purchaser is responsible for posting and maintaining caution signs on Military Rd prior to beginning operations. The road must be posted at appropriate distances from the sale area to warn of logging activity and truck traffic. Signs must be removed when harvest operations are suspended or completed. The Purchaser will provide these signs.

6.2.2 - Snowmobile trail posting (8/09)

The Purchaser is responsible for posting and maintaining caution signs on LP 7 (this trail is used by both ORV's and snowmobiles) prior to beginning operations during the snowmobile season (approximately December 1 to March 31). The trail must be posted at appropriate distances from the sale area to warn of logging activity and truck traffic. Signs must be removed when harvest operations are suspended or completed. The Purchaser will provide these signs.

6.2.3 - Recreational trail posting (2/10)

The Purchaser is responsible for posting and maintaining caution signs on the MCCCT prior to beginning operations. The trail must be posted at appropriate distances from the sale area to warn of logging activity and truck traffic at both ends of the trail. Signs must be removed when harvest operations are suspended or completed. The Purchaser will provide these signs. If the MCCCT is rerouted to new location prior to the sale being cut, then posting of signs will not be required.



TIMBER SALE MAP

This information provided by authority of Part 525, 1994 PA 451, as amended.

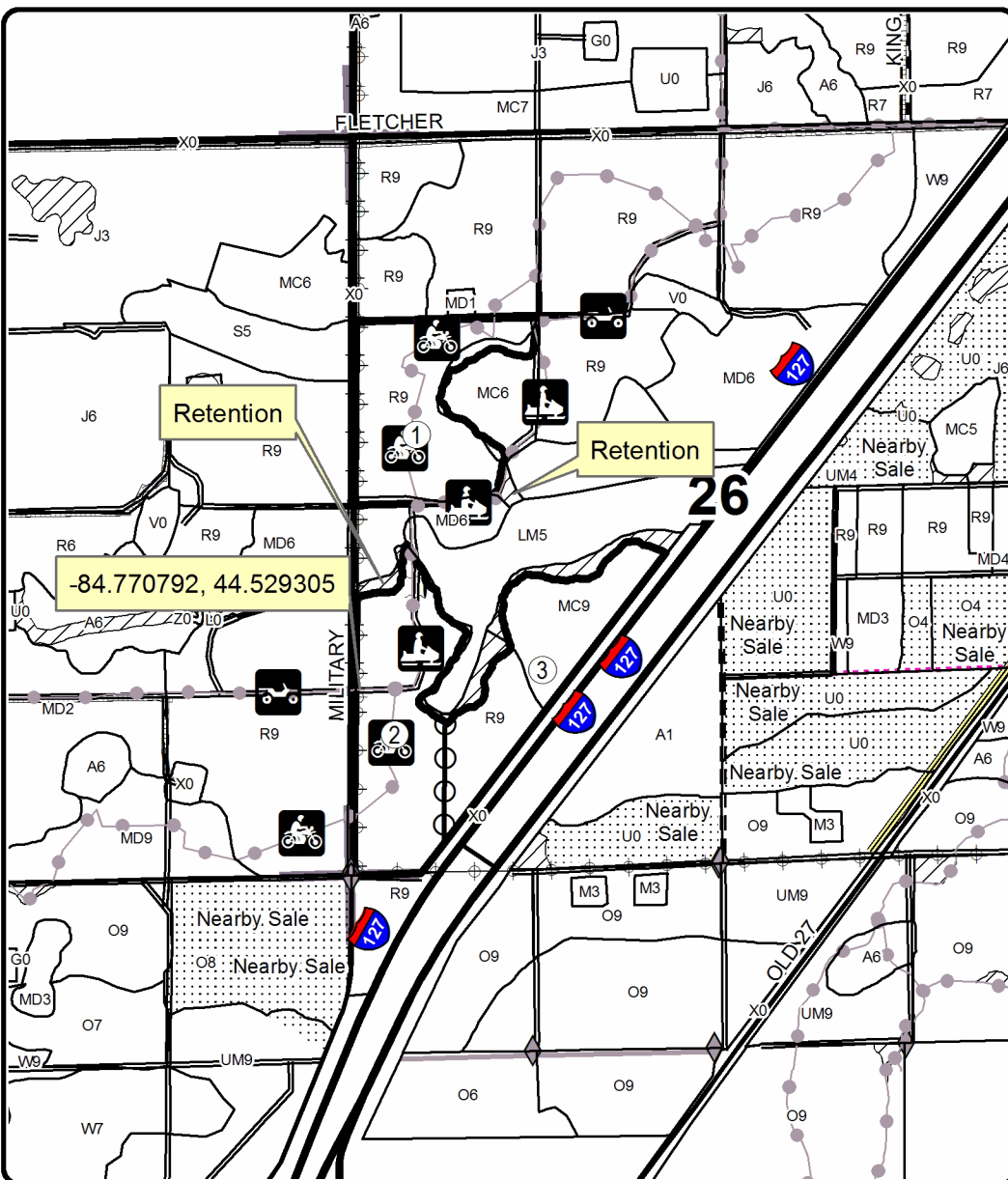
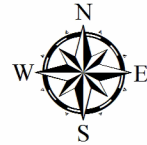
Sale Number	Year
72-011	18

Forest Management Unit Grayling	County Crawford	Mapped By Barnes	Date 9/24/2018	Page 1	of 1
Township 25N	Range 04W	Section(s) and Subdivision(s) Sec 26 - SWNW; SW	Scale 1:15,840		

Cover Type				Density	
A = Aspen	H = Hemlock	N = Marsh	U = Upland Brush	0 = Non Stocked	5 = Pole Timber Medium
B = Paper Birch	J = Jack Pine	O = Oak	UM = Upland Mixed	1 = Seedling Sapling Poor	6 = Pole Timber Well
C = Cedar	L = Lowland Brush	P = Lowland Poplar	V = Bog or Marsh	2 = Seedling Sapling Medium	7 = Saw Timber Poor
D = Tread Bog	LM = Lowland Mixed	Q = Mixed Swamp Conifer	W = White Pine	3 = Seedling Sapling Well	8 = Saw Timber Medium
E = Swamp Hdwoods	M = Mpl, Bch, Brch	R = Red Pine	X = Non Stocked	4 = Pole Timber Poor	9 = Saw Timber Well
F = Spruce Fir	MC = Mixed Conifer	S = Black Spruce	Z = Water		
G = Grass	MD = Mixed Deciduous	T = Tamarack			

PU	Acres	MBF	Cords
1	27.9	278.1	648
2	29.9	262.1	770
3	24.8	163.3	654

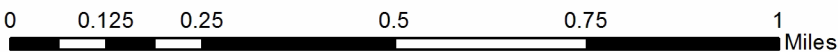
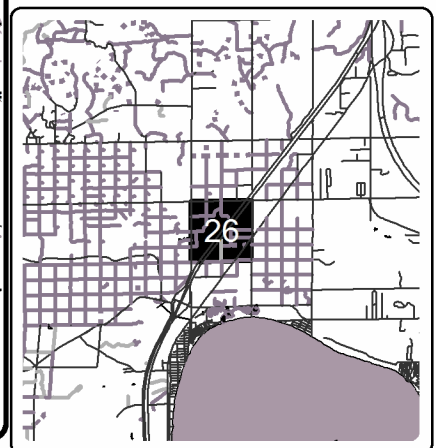
Military Red Pine
Compartment 196
82.6 Acres
703.5MBF & 2072 Cords



Legend

- Against State (Red)
- Payment Unit (Yellow)
- ▨ Retention Area
- ▭ Stand Boundaries
- ◆ Field Grade Corners
- Oil & Gas Well Surface Locations
- == Secondary Forest Road
- - Forest Access Route
- Paved Road
- - Gravel Road
- Private
- Section Corners
- PU_Label
- Pipeline
- ⊕ Powerline
- Recreational Trail
- Lakes and Rivers

Locator Map
1:200,000



TIMBER SALE INFORMATION

7 Mile Red Pine (72-023-18)

T25N, R04W, SEC. 24.

Crawford County (Advertised Price \$23,133.60)

A timber sale contract for this lump sum, sealed bid timber sale will be awarded to the responsible bidder offering the highest sealed bid price. Bids must be at or above the following advertised price for each species:

<u>PRODUCTS & SPECIES</u>	<u>ESTIMATED UNITS*</u>	<u>ADVERTISED PRICE</u>
Sawtimber		
Red Maple	12.00 MBF	\$ 72.00 / MBF
Red Pine	166.70 MBF	\$ 109.00 / MBF
Pulpwood		
Mixed Hardwood	33.00 Cords	\$ 36.05 / Cord
Mixed Oak	37.00 Cords	\$ 24.10 / Cord
Quaking Aspen	6.00 Cords	\$ 24.95 / Cord
Red Pine	47.00 Cords	\$ 39.75 / Cord

* The total volume is statistically estimated within plus (+) or minus (-) 24.66 percent. The estimated units are final and not subject to adjustment. Prospective bidders are urged to examine this timber and to make their own estimates of quantity and quality.

BOND AND PAYMENT SCHEDULE:

- A bond in the amount of \$1,157.00 to insure faithful performance of the conditions of the contract will be deposited by the successful bidder within 21 days of the sale award.
- Cutting in any sale or unit without the required advance payment would be considered a trespass.
- Total payment must be paid in advance or according to the following schedule:
 - Ten percent (10%) of the sale value must be paid within 21 days of the sale award.
 - The 10% down payment will be credited towards the first unit cut.
 - Payment for each of the following units must be made before cutting begins in that unit:

PAYMENT UNIT NUMBER	PERCENT OF TOTAL SALE VALUE
01	75.2%
02	24.8%
- If no cutting takes place, the 10% down payment will not be refunded.
- Operations on the contract issued will terminate on 12/31/2021.

Description of Timber by Payment Unit (PU)

PU	MARKET GROUP	PRODUCT	QUANTITY	UNIT	ACRES	ADVERTISE PRICE
1	Red Maple	Sawtimber	12.0	MBF	35.5	\$17,402.20
	Red Pine		123.6	MBF		
	Mixed Hardwood	Pulpwood	33.0	Cords		
	<i>Beech</i>		1.0	<i>Cords</i>		
	<i>Red Maple</i>		32.0	<i>Cords</i>		
	Mixed Oak		37.0	Cords		
	<i>BI/R/Hybrid Oak</i>	<i>Sawtimber</i>	6.2	<i>MBF</i>		
	<i>BI/R/Hybrid Oak</i>	<i>Pulpwood</i>	25.0	<i>Cords</i>		
	Quaking Aspen		6.0	Cords		
	Red Pine		21.0	Cords		
2	Red Pine	Sawtimber	43.1	MBF	8.3	\$5,731.40
	Red Pine	Pulpwood	26.0	Cords		
TOTAL:			178.7	MBF		
TOTAL:			123.0	Cords		

Sale Specific Conditions & Requirements

Sale Name: 7 Mile Red Pine

Sale Number: 72-023-18 Seq#: 1

1 - Sale Area

1.2 - Boundaries

1.2.1 - Painted boundaries (1/14)

The sale boundary and Payment Unit boundaries are marked and identified by red and yellow paint. Exterior sale boundary lines against state are marked with red paint. Interior Payment Unit boundaries are marked with yellow paint. The painted boundary line trees are not Included Timber and are to be protected unless marked with orange paint. Yellow painted trees designating an interior Payment Unit boundary are only to be cut when all surrounding Payment Units have been paid.

2 - Timber Specifications

2.1 - Included Timber

2.1.1 - Clearcut unit(s) with unmerchantable trees (6/14)

Within Payment Unit(s) 2, cut all trees that are two (2) inches or more at DBH.

2.1.3 - Cut tree marked unit(s) (12/08)

Within Payment Unit(s) 1, all trees are designated for cutting when marked with orange paint above and below stump height, regardless of merchantability.

2.2 - Utilization

2.2.2 - Chipping required (2/18)

Payment Unit 2 must be chip harvested to facilitate subsequent planting operations. Products may be produced as roundwood and forwarded to decking areas in final product length, but the tops must be left intact and skidded to the landing for chipping in order to minimize the amount of residual slash. A chipping exemption can be obtained if proposed operations are determined to be suitable for planting by reforestation staff. This exemption must be granted in writing. The requirement to retain approximately 1/6 to 1/3 of tree tops and limbs less than four inches in diameter is still applicable (G. C. & R. 2.2).

2.2.3 - Stump heights (4/07)

Stump heights within the Sale Area shall not exceed 6 inches for all trees. This is in order to facilitate planting operations.

3 - Payments

3.3 - Pre-measured Sales

3.3.4 - Dividing payment units (7/14)

Payment Unit(s) may be divided at the request of the Purchaser and upon approval of the Unit Manager. Dividing Payment Units is a contract modification which requires a Timber Sale Contract Supplement. There will be only one division per Payment Unit.

4 - Transportation

4.1 - Construction

4.1.6 - Road construction (1/09)

Construction of new roads or improvements of existing roads shall be done in such a way as to minimize the environmental and visual impacts. Merchantable trees shall be cut and utilized unless otherwise directed. Non-merchantable trees shall be severed and laid flat on the ground. Slash shall be scattered, and not left in windrows and kept a minimum of 10 feet back from the road edge. Stumps shall be set upright, not left on edge, and be moved at least 10 feet away from the road edge. Disturbed soil shall be feathered into the woods and not left in berms or windrows.

4.1.7 - Road closure (10/11)

All new roads built into the sale must be blocked to vehicle traffic upon completion of the sale. Overgrown roads that are reopened shall be considered new roads. In general, this will require constructing a four (4') foot high berm of stumps and logs covered with earth. These roads must be rendered impassable to cars and trucks. Contact the sale administrator for specific details of design and placement.

4.1.11 - Permits (2/12)

The Purchaser will secure any necessary permits that may be required.

5 - Operations

5.1 - Notification

5.1.1 - Pre-sale conference (10/16)

A pre-sale conference between the Purchaser and sale administrator is required prior to beginning any operations to determine landing and road locations. The Unit Manager or his/her representative must be contacted at least 10 days in advance to schedule the conference.

5.2 - Conduct of Operations

5.2.3 - Operating Restrictions

5.2.3.3 - Bark slippage restriction (3/09)

Within Payment Unit(s) 1, unless changed by written agreement, cutting and skidding are not permitted during the period of April 15 to July 15. This restriction is because of bark slippage.

5.2.3.6 - Bark beetle restriction (12/08)

In the event drought creates a high risk of pine bark beetle infestation, pine is not to be cut during the period March 1 through July 1, unless all portions of trees greater than two inches in diameter are removed from the sale area, reduced to chips, or treated to the satisfaction of the Unit Manager or his/her representative, within fifteen days of being severed from the stump. Pine log decks, pulpwood piles and treetops that are piled for chipping in the fall or winter within a 1/4 mile of susceptible sites must be removed before March 15. Residual slash must not be placed in piles or rows and must be spread over the site for quick drying. The Department of Natural Resources will exercise this specification if the risk of damage warrants.

5.2.32 - Decking/landing restoration (9/13)

All decking and landing areas must have the surface area restored to a condition equal to or better than before. This is to ensure the proper regeneration of the stand. Wood debris, chips and "cookies" from trimmings must be removed or scattered away from landing and loading areas and may not be windrowed on the edge.

5.2.38 - No decking against live trees (2/04)

Cut products may not be decked against unmarked or designated leave trees.

5.4 - Soil Protection

5.4.1 - Rutting restriction, general (7/16)

Operations are to cease immediately if equipment and weather conditions result in rutting of roads and/or skid trails which is 12 inches or greater in depth and 50 feet in length. The Unit Manager or his/her representative may restrict hauling and/or skidding if ruts exceed the specified depth. With the Unit Manager or his/her representative's approval, the Purchaser may return to the area when the risk of rutting has decreased.

6 - Safety and Fire Prevention

6.2 - Signing

6.2.1 - Road posting (9/09)

The Purchaser is responsible for posting and maintaining caution signs on 7 Mile Road prior to beginning operations. The road must be posted at appropriate distances from the sale area to warn of logging activity and truck traffic. Signs must be removed when harvest operations are suspended or completed. The Purchaser will provide these signs.



TIMBER SALE MAP

This information provided by authority of Part 525, 1994 PA 451, as amended.

Forest Management Unit Grayling	County Crawford	Mapped By Martell/Bates	Date 08/03/18	Page 1	of 1
Township 25N	Range 04W	Section(s) and Subdivision(s) Sec. 24 - NENW, NWNE	Scale 1:7,920		

Cover Type				Density	
A = Aspen	H = Hemlock	N = Marsh	U = Upland Brush	0 = Non Stocked	5 = Pole Timber Medium
B = Paper Birch	J = Jack Pine	O = Oak	UM = Upland Mixed	1 = Seedling Sapling Poor	6 = Pole Timber Well
C = Cedar	L = Lowland Brush	P = Lowland Poplar	V = Bog or Marsh	2 = Seedling Sapling Medium	7 = Saw Timber Poor
D = Treed Bog	LM = Lowland Mixed	Q = Mixed Swamp Conifer	W = White Pine	3 = Seedling Sapling Well	8 = Saw Timber Medium
E = Swamp Hdwoods	M = Mpl, Bch, Brch	R = Red Pine	X = Non Stocked	4 = Pole Timber Poor	9 = Saw Timber Well
F = Spruce Fir	MC = Mixed Conifer	S = Black Spruce	Z = Water		
G = Grass	MD = Mixed Deciduous	T = Tamarack			

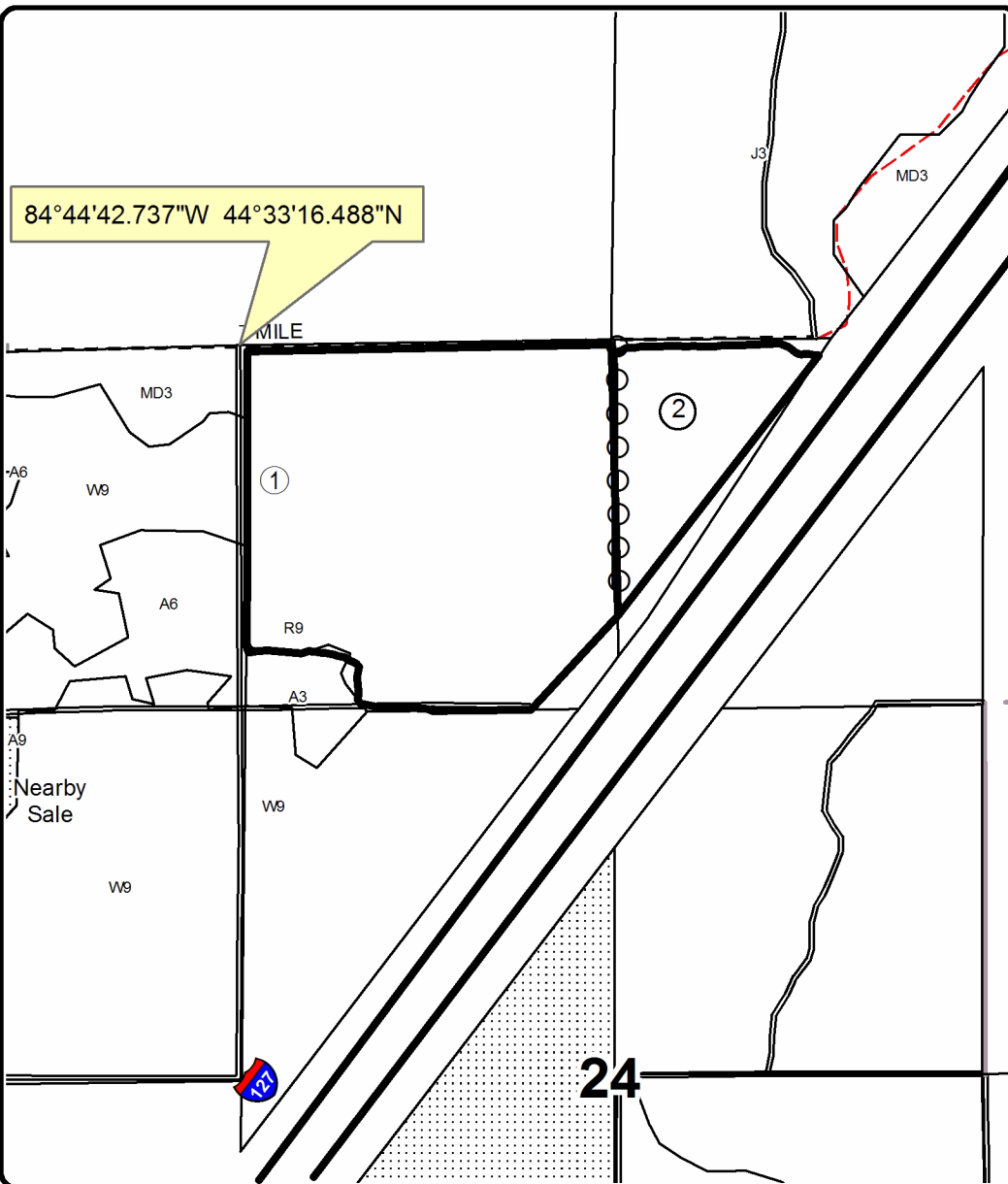
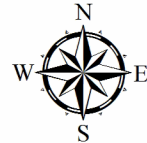
PU Acres

1	35.5
2	8.3

7 Mile Red Pine

Compartment 196

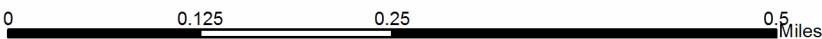
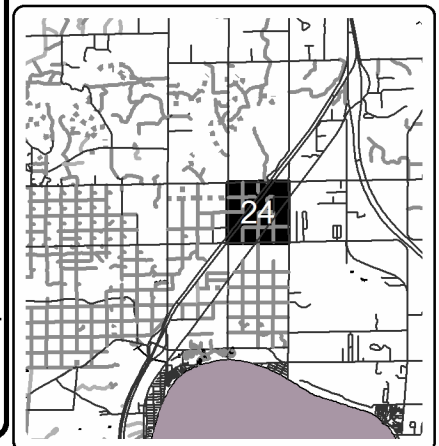
43.8 Acres



Legend

- ○ Payment Unit (Yellow)
- ▭ Against State (red)
- ▭ Stand Boundaries
- Secondary Forest Road
- - Gravel Road
- - County Road - Seasonal
- Private
- ▨ Nearby Timber Sales
- Highway

Locator Map
1:200,000



TIMBER SALE INFORMATION

Matthes Pine Mix (72-026-18)
 T25N, R04W, SEC. 21; T25N, R04W, SEC. 22.
 Crawford County (Advertised Price \$71,813.25)

SALE NOTE: The sale area is within the Beaver Creek sour gas field. There are two active oil wells within the sale area with above and below ground pipelines. An on-site meeting between the pipeline company and the Purchaser will be necessary to identify the locations of all pipelines before harvesting begins. Contact Breitburn at (989) 348-8459.

Chipping and low stumps are required in Payment Units 1 and 2 (see specs 2.2.2 and 2.2.3).

Oak wilt restrictions apply to Payment Unit 1 (see spec 5.2.3.5).

A timber sale contract for this lump sum, sealed bid timber sale will be awarded to the responsible bidder offering the highest sealed bid price. Bids must be at or above the following advertised price for each species:

<u>PRODUCTS & SPECIES</u>	<u>ESTIMATED UNITS*</u>		<u>ADVERTISED PRICE</u>
Sawtimber			
Northern Pin Oak	24.00	MBF	\$ 163.00 / MBF
Red Pine	480.20	MBF	\$ 87.00 / MBF
Pulpwood			
Jack Pine	30.00	Cords	\$ 16.45 / Cord
Misc. Species 2	17.00	Cords	\$ 9.00 / Cord
Mixed Hardwood	60.00	Cords	\$ 28.85 / Cord
Mixed Oak	240.00	Cords	\$ 19.30 / Cord
Red Pine	473.00	Cords	\$ 31.80 / Cord
Scotch Pine	91.00	Cords	\$ 25.00 / Cord
White Pine	77.00	Cords	\$ 23.35 / Cord

* The total volume is statistically estimated within plus (+) or minus (-) 10.54 percent. The estimated units are final and not subject to adjustment. Prospective bidders are urged to examine this timber and to make their own estimates of quantity and quality.

BOND AND PAYMENT SCHEDULE:

1. A bond in the amount of \$3,591.00 to insure faithful performance of the conditions of the contract will be deposited by the successful bidder within 21 days of the sale award.
2. Cutting in any sale or unit without the required advance payment would be considered a trespass.
3. Total payment must be paid in advance or according to the following schedule:
 - (a) Ten percent (10%) of the sale value must be paid within 21 days of the sale award.
 - (b) The 10% down payment will be credited towards the first unit cut.
 - (c) Payment for each of the following units must be made before cutting begins in that unit:

PAYMENT UNIT NUMBER	PERCENT OF TOTAL SALE VALUE
01	23.8%
02	76.2%

4. If no cutting takes place, the 10% down payment will not be refunded.
5. Operations on the contract issued will terminate on 12/31/2021.

Description of Timber by Payment Unit (PU)

PU	MARKET GROUP	PRODUCT	QUANTITY	UNIT	ACRES	ADVERTISE PRICE
1	Northern Pin Oak	Sawtimber	24.0	MBF	34.3	\$17,070.45
	Red Pine		11.8	MBF		
	Jack Pine	Pulpwood	30.0	Cords		
	<i>Jack Pine</i>	<i>Sawtimber</i>	0.9	<i>MBF</i>		
	<i>Jack Pine</i>	<i>Pulpwood</i>	28.0	<i>Cords</i>		
	Misc. Species 2		17.0	Cords		
	Mixed Hardwood		60.0	Cords		
	<i>Red Maple</i>	<i>Sawtimber</i>	0.9	<i>MBF</i>		
	<i>Black Cherry</i>	<i>Pulpwood</i>	44.0	<i>Cords</i>		
	<i>Red Maple</i>		14.0	<i>Cords</i>		
	Mixed Oak		240.0	Cords		
	<i>Northern Pin Oak</i>		225.0	<i>Cords</i>		
	<i>White Oak</i>		15.0	<i>Cords</i>		
	Red Pine		33.0	Cords		
	Scotch Pine		91.0	Cords		
	<i>Scotch Pine</i>	<i>Sawtimber</i>	1.9	<i>MBF</i>		
	<i>Scotch Pine</i>	<i>Pulpwood</i>	87.0	<i>Cords</i>		
	White Pine		77.0	Cords		
	<i>White Pine</i>	<i>Sawtimber</i>	4.9	<i>MBF</i>		
	<i>White Pine</i>	<i>Pulpwood</i>	67.0	<i>Cords</i>		
2	Red Pine	Sawtimber	468.4	MBF	35.5	\$54,742.80
	Red Pine	Pulpwood	440.0	Cords		
TOTAL:			504.2	MBF		
TOTAL:			988.0	Cords		

Sale Specific Conditions & Requirements

Sale Name: Matthes Pine Mix

Sale Number: 72-026-18 Seq#: 1

1 - Sale Area

1.2 - Boundaries

1.2.1 - Painted boundaries (1/14)

The sale boundary and Payment Unit boundaries are marked and identified by red paint, along with designated unpainted boundaries. Exterior sale boundary lines against state are marked with red paint, with the following exceptions: The east boundary is unpainted and identified by Matthes Road. The north boundary is unpainted and identified by 7 Mile Road. Interior well site boundaries are unpainted and excluded from the sale area. The interior Payment Unit boundary is unpainted and designated by the cleared pipeline corridor. The painted boundary line trees are not Included Timber and are to be protected.

2 - Timber Specifications

2.1 - Included Timber

2.1.1 - Clearcut unit(s) with unmerchantable trees (6/14)

Within Payment Unit(s) 1 and 2, cut all trees that are one (1) inch or more at DBH, except do not cut the survey corner witness trees ringed with green paint.

2.1.11 - Description of timber note (2/04)

Note that Misc. Species 2 = dead oak.

2.2 - Utilization

2.2.2 - Chipping required (2/18)

This area must be chip harvested to facilitate subsequent planting operations. The Purchaser has the option to produce sawlogs or pulpwood bolts, but the remaining portion of the trees must be chipped and hauled. Within Payment Unit 2, the requirement to retain approximately 1/6 to 1/3 of tree tops and limbs less than four inches in diameter is still applicable (G. C. & R. 2.2). Residual slash must be scattered so as not to impede trenching and planting operations. Within Payment Unit 1, the requirement to retain approximately 1/6 to 1/3 of tree tops and limbs less than four inches in diameter is not applicable. This is in order to reduce the scotch pine seed source on site.

2.2.3 - Stump heights (4/07)

Stump heights within the Sale Area shall not exceed 6 inches for all trees. This is in order to facilitate planting operations.

3 - Payments

3.3 - Pre-measured Sales

3.3.4 - Dividing payment units (7/14)

Payment Unit(s) may be divided at the request of the Purchaser and upon approval of the Unit Manager. Dividing Payment Units is a contract modification which requires a Timber Sale Contract Supplement.

4 - Transportation

4.1 - Construction

4.1.6 - Road construction (1/09)

Construction of new roads or improvements of existing roads shall be done in such a way as to minimize the environmental and visual impacts. Merchantable trees shall be cut and utilized unless otherwise directed. Non-merchantable trees shall be severed and laid flat on the ground. Slash shall be chipped, utilized or otherwise removed from the sale. Stumps shall be set upright, not left on edge, and be moved at least 10 feet away from the road edge. Disturbed soil shall be feathered into the woods and not left in berms or windrows.

4.1.7 - Road closure (10/11)

All new roads built into the sale must be blocked to vehicle traffic upon completion of the sale. Overgrown roads that are reopened shall be considered new roads. In general, this will require constructing a four (4') foot high berm of stumps and

logs covered with earth. These roads must be rendered impassable to cars and trucks. Contact the sale administrator for specific details of design and placement.

4.1.11 - Permits (2/12)

The Purchaser will secure any necessary permits that may be required.

5 - Operations

5.1 - Notification

5.1.1 - Pre-sale conference (10/16)

A pre-sale conference on site between the Purchaser and sale administrator is required prior to beginning any operations to determine landing and road locations. The Unit Manager or his/her representative must be contacted at least 5 days in advance to schedule the conference. An on-site meeting between the pipeline company and the Purchaser is required prior to beginning any operations to identify the locations of all above and below ground pipelines.

5.1.3 - Well heads and natural gas pipelines (11/15)

The Purchaser is responsible for contacting the gas or pipeline company prior to operating equipment in the vicinity of well heads or natural gas pipelines. This is in order to plan operations around the gas lines and well heads. Contact the Breitburn 7 Mile Office at (989) 348-8459.

5.2 - Conduct of Operations

5.2.3 - Operating Restrictions

5.2.3.5 - Oak wilt restriction (1/18)

Within Payment Unit(s) 1, unless changed by written agreement, cutting, skidding, hauling within the sale and brushing of access roads to the sale are not permitted during the period of April 15 to July 15. Operations may be allowed if specific steps are taken to prevent damaging uncut oak during the high risk period. Those steps may include completing all road brushing before April 15th and clearing a tree-length buffer along uncut oak cover before April 15th. This is necessary to reduce the spread of oak wilt. For more information, contact the Unit Manager or his/her representative.

5.2.32 - Decking/landing restoration (9/13)

All decking and landing areas must have the surface area restored to a condition equal to or better than before. This is to ensure the proper regeneration of the stand. Wood debris, chips and "cookies" from trimmings must be removed or scattered away from landing and loading areas and may not be windrowed on the edge.

5.4 - Soil Protection

5.4.1 - Rutting restriction, general (7/16)

Operations are to cease immediately if equipment and weather conditions result in rutting of roads and/or skid trails which is 12 inches or greater in depth and 50 feet in length. The Unit Manager or his/her representative may restrict hauling and/or skidding if ruts exceed the specified depth. With the Unit Manager or his/her representative's approval, the Purchaser may return to the area when the risk of rutting has decreased.

7 - Other Conditions

7.5 - Loss

7.5.1 - Deteriorating timber (7/09)

The sale area has received damage from secondary pests and diseases impacting the overmature component of the jack pine and oak in Payment Unit 1. That component is losing volume through decay, dieback, and mortality. The Purchaser should harvest the wood as soon as possible. The Department of Natural Resources is held free of responsibility of any further damage or deterioration due to delay in harvesting.



TIMBER SALE MAP

This information provided by authority of Part 525, 1994 PA 451, as amended.

Sale Number	Year
72-026	18

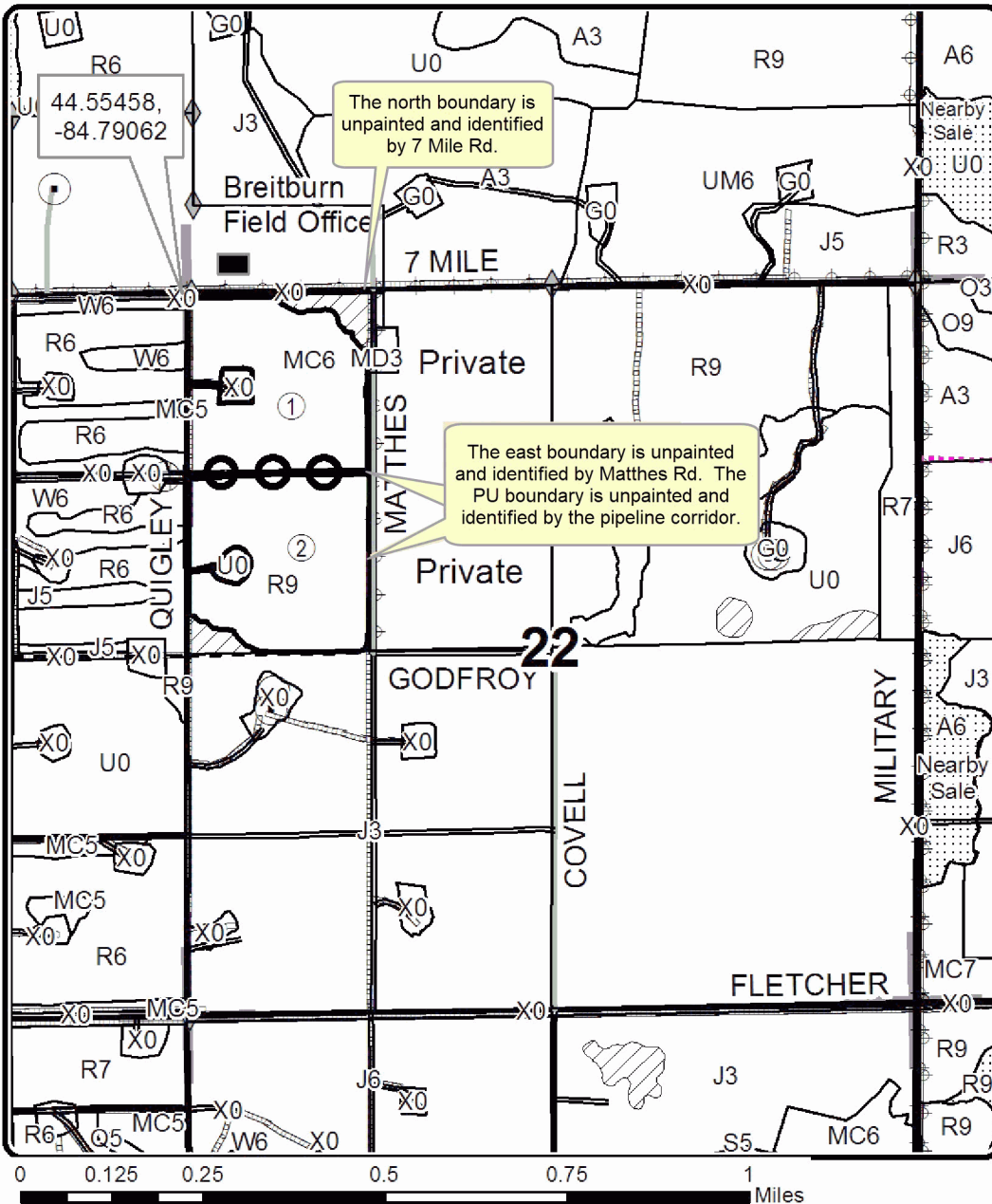
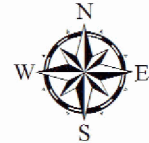
Forest Management Unit	County	Mapped By	Date	Page	of
Grayling FMU	Crawford	Shelby Schueller	08/17/18	1	1
Township	Range	Section(s) and Subdivision(s)	Scale		
25N	04W	Section 22; W1/2NW	1:15,840		

Cover Type				Density			
A = Aspen	H = Hemlock	N = Marsh	U = Upland Brush	0 = Non Stocked	5 = Pole Timber Medium		
B = Paper Birch	J = Jack Pine	O = Oak	UM = Upland Mixed	1 = Seedling Sapling Poor	6 = Pole Timber Well		
C = Cedar	L = Lowland Brush	P = Lowland Poplar	V = Bog or Marsh	2 = Seedling Sapling Medium	7 = Saw Timber Poor		
D = Tread Bog	LM = Lowland Mixed	Q = Mixed Swamp Conifer	W = White Pine	3 = Seedling Sapling Well	8 = Saw Timber Medium		
E = Swamp Hdwoods	M = Mpl, Bch, Brch	R = Red Pine	X = Non Stocked	4 = Pole Timber Poor	9 = Saw Timber Well		
F = Spruce Fir	MC = Mixed Conifer	S = Black Spruce	Z = Water				
G = Grass	MD = Mixed Deciduous	T = Tamarack					

PU	Acres
1	34.3
2	35.5

Matthes Pine Mix

Compartment 196
69.8 Acres



Legend

- Sale Boundary (Red & Designated Unpainted)
- Payment Unit (Pipeline Corridor)
- Retention Area
- Stand Boundaries
- Field Grade Corners
- Oil & Gas Well Surface Locations
- Secondary Forest Road
- Paved Road
- Gravel Road
- Private
- Temporary Management Access
- Pipeline
- Powerline
- Nearby Timber Sales
- Section Corners

TIMBER SALE INFORMATION

Cellar Spider Aspen (72-029-18)
 T25N, R04W, SEC. 23; T25N, R04W, SEC. 24.
 Crawford County (Advertised Price \$20,785.10)

SALE NOTE: Payment Unit 1 borders Military Road, which is a weight restricted road. Payment Units 2 and 3 have dual snowmobile trail and ORV route interface.

A timber sale contract for this lump sum, sealed bid timber sale will be awarded to the responsible bidder offering the highest sealed bid price. Bids must be at or above the following advertised price for each species:

<u>PRODUCTS & SPECIES</u>	<u>ESTIMATED UNITS*</u>	<u>ADVERTISED PRICE</u>
Sawtimber		
Mixed Aspen	32.50 MBF	\$ 75.00 / MBF
Northern Pin Oak	10.00 MBF	\$ 203.00 / MBF
Red Pine	14.70 MBF	\$ 109.00 / MBF
White Pine	4.90 MBF	\$ 63.00 / MBF
Pulpwood		
Balsam Fir	15.00 Cords	\$ 21.15 / Cord
Jack Pine	154.00 Cords	\$ 20.55 / Cord
Misc. Species 2	17.00 Cords	\$ 11.25 / Cord
Mixed Aspen	253.00 Cords	\$ 24.95 / Cord
Mixed Hardwood	63.00 Cords	\$ 36.05 / Cord
Mixed Oak	54.00 Cords	\$ 24.10 / Cord
Red Pine	14.00 Cords	\$ 39.75 / Cord
White Pine	10.00 Cords	\$ 29.20 / Cord

* The total volume is statistically estimated within plus (+) or minus (-) 16.71 percent. The estimated units are final and not subject to adjustment. Prospective bidders are urged to examine this timber and to make their own estimates of quantity and quality.

BOND AND PAYMENT SCHEDULE:

1. A bond in the amount of \$1,039.00 to insure faithful performance of the conditions of the contract will be deposited by the successful bidder within 21 days of the sale award.
2. Cutting in any sale or unit without the required advance payment would be considered a trespass.
3. Total payment must be paid in advance or according to the following schedule:
 - (a) Ten percent (10%) of the sale value must be paid within 21 days of the sale award.
 - (b) The 10% down payment will be credited towards the first unit cut.
 - (c) Payment for each of the following units must be made before cutting begins in that unit:

PAYMENT UNIT NUMBER	PERCENT OF TOTAL SALE VALUE
01	26.5%
02	41.8%
03	31.7%
4. If no cutting takes place, the 10% down payment will not be refunded.
5. Operations on the contract issued will terminate on 03/31/2022.

Description of Timber by Payment Unit (PU)

PU	MARKET GROUP	PRODUCT	QUANTITY	UNIT	ACRES	ADVERTISE PRICE
1	Mixed Aspen	Sawtimber	3.7	MBF	14.1	\$5,506.75
	<i>Quaking Aspen</i>		3.7	<i>MBF</i>		
	Northern Pin Oak		2.3	MBF		
	Red Pine		3.7	MBF		
	Balsam Fir	Pulpwood	4.0	Cords		
	<i>Balsam Fir</i>	<i>Sawtimber</i>	0.9	<i>MBF</i>		
	<i>Balsam Fir</i>	<i>Pulpwood</i>	2.0	<i>Cords</i>		
	Jack Pine		62.0	Cords		
	<i>Jack Pine</i>	<i>Sawtimber</i>	6.4	<i>MBF</i>		
	<i>Jack Pine</i>	<i>Pulpwood</i>	49.0	<i>Cords</i>		
	Mixed Aspen		87.0	Cords		
	<i>Quaking Aspen</i>		87.0	<i>Cords</i>		
	Mixed Hardwood		5.0	Cords		
	<i>Black Cherry</i>		5.0	<i>Cords</i>		
	Mixed Oak		22.0	Cords		
	<i>Northern Pin Oak</i>		22.0	<i>Cords</i>		
	Red Pine		3.0	Cords		
	2	Mixed Aspen	Sawtimber	13.8		
<i>Quaking Aspen</i>			13.8	<i>MBF</i>		
Northern Pin Oak			2.4	MBF		
Red Pine			6.9	MBF		
White Pine			3.4	MBF		
Balsam Fir		Pulpwood	11.0	Cords		
<i>Balsam Fir</i>			11.0	<i>Cords</i>		
Jack Pine			92.0	Cords		
<i>Jack Pine</i>		<i>Sawtimber</i>	5.7	<i>MBF</i>		
<i>Jack Pine</i>		<i>Pulpwood</i>	81.0	<i>Cords</i>		
Mixed Aspen			115.0	Cords		
<i>Quaking Aspen</i>			115.0	<i>Cords</i>		
Mixed Hardwood			17.0	Cords		
<i>Red Maple</i>		<i>Sawtimber</i>	4.0	<i>MBF</i>		
<i>Red Maple</i>		<i>Pulpwood</i>	9.0	<i>Cords</i>		
Mixed Oak			12.0	Cords		
<i>White Oak</i>		<i>Sawtimber</i>	0.7	<i>MBF</i>		
<i>Northern Pin Oak</i>		<i>Pulpwood</i>	8.0	<i>Cords</i>		
<i>White Oak</i>		3.0	<i>Cords</i>			
Red Pine		4.0	Cords			
White Pine		5.0	Cords			
3	Mixed Aspen	Sawtimber	15.0	MBF	7.7	\$6,590.30
	<i>B. T. Aspen</i>		15.0	<i>MBF</i>		
	Northern Pin Oak		5.3	MBF		
	Red Pine		4.1	MBF		
	White Pine		1.5	MBF		
	Misc. Species 2	Pulpwood	17.0	Cords		
	<i>Misc. Species 2</i>	<i>Sawtimber</i>	5.3	<i>MBF</i>		
	<i>Misc. Species 2</i>	<i>Pulpwood</i>	6.0	<i>Cords</i>		
	Mixed Aspen		51.0	Cords		
	<i>B. T. Aspen</i>		51.0	<i>Cords</i>		
	Mixed Hardwood		41.0	Cords		
	<i>Red Maple</i>	<i>Sawtimber</i>	4.4	<i>MBF</i>		
	<i>Red Maple</i>	<i>Pulpwood</i>	32.0	<i>Cords</i>		
	Mixed Oak		20.0	Cords		
	<i>White Oak</i>	<i>Sawtimber</i>	1.4	<i>MBF</i>		
	<i>Northern Pin Oak</i>	<i>Pulpwood</i>	14.0	<i>Cords</i>		
	<i>White Oak</i>		3.0	<i>Cords</i>		
	Red Pine		7.0	Cords		

Description of Timber by Payment Unit (PU), con't

PU	MARKET GROUP	PRODUCT	QUANTITY	UNIT	ACRES	ADVERTISE PRICE
3 con't	White Pine	Pulpwood	5.0	Cords		
TOTAL:			62.1	MBF		
TOTAL:			580.0	Cords		

Sale Specific Conditions & Requirements

Sale Name: Cellar Spider Aspen

Sale Number: 72-029-18 Seq#: 1

1 - Sale Area

1.2 - Boundaries

1.2.1 - Painted boundaries (1/14)

The sale boundary and Payment Unit boundaries are marked and identified by red paint, along with roads. Exterior sale boundary lines against state are marked with red paint, with the exception of the west boundary of Payment Unit 1, which is unpainted and identified by Military Road, and the east boundary of Payment Unit 3, which is unpainted and identified by King Road. The painted boundary line trees are not Included Timber and are to be protected.

2 - Timber Specifications

2.1 - Included Timber

2.1.1 - Clearcut unit(s) with unmerchantable trees (6/14)

Within Payment Unit(s) 1, 2, and 3, cut all trees that are two (2) inches or more at DBH.

2.1.11 - Description of timber note (2/04)

Note that Misc. Species 2 = dead oak.

3 - Payments

3.3 - Pre-measured Sales

3.3.4 - Dividing payment units (7/14)

Payment Unit(s) may be divided at the request of the Purchaser and upon approval of the Unit Manager. Dividing Payment Units is a contract modification which requires a Timber Sale Contract Supplement.

4 - Transportation

4.1 - Construction

4.1.6 - Road construction (1/09)

Construction of new roads or improvements of existing roads shall be done in such a way as to minimize the environmental and visual impacts. Merchantable trees shall be cut and utilized unless otherwise directed. Non-merchantable trees shall be severed and laid flat on the ground. Slash shall be chipped, utilized, or otherwise removed from the sale. Stumps shall be set upright, not left on edge, and be moved at least 10 feet away from the road edge. Disturbed soil shall be feathered into the woods and not left in berms or windrows.

4.1.7 - Road closure (10/11)

All new roads built into the sale must be blocked to vehicle traffic upon completion of the sale. Overgrown roads that are reopened shall be considered new roads. In general, this will require constructing a four (4') foot high berm of stumps and logs covered with earth. These roads must be rendered impassable to cars and trucks. Contact the sale administrator for specific details of design and placement.

4.1.11 - Permits (2/12)

The Purchaser will secure any necessary permits that may be required.

5 - Operations

5.1 - Notification

5.1.1 - Pre-sale conference (10/16)

A pre-sale conference on site between the Purchaser and sale administrator is required prior to beginning any operations to determine landing and road locations. The Unit Manager or his/her representative must be contacted at least 5 days in advance to schedule the conference.

5.1.3 - Well heads and natural gas pipelines (11/15)

The Purchaser is responsible for contacting the gas or pipeline company prior to operating equipment in the vicinity of well heads or natural gas pipelines. This is to plan operations around the gas lines and well heads.

5.2 - Conduct of Operations

5.2.1 - Slash

5.2.1.8 - Slash height (12/08)

No slash or tree tops may exceed 24 inches in height.

5.2.4 - Dead and Down Creation

5.2.4.4 - Dead and down creation, grouse (6/18)

To encourage grouse and other wildlife, in Payment Unit(s) 1, 2, and 3, leave one, 12" or larger diameter (or largest diameter trees within stand) whole tree on the ground for every 2 acres, preferably a hardwood species such as oak or maple or if no hardwoods are present, a pine species (white or red). These trees will be evenly scattered throughout the unit, preferably at least two chains from any roads, two-tracks, or trails open to vehicles. This can be an unmerchantable piece or a full tree.

5.2.29 - Shrub protection (9/07)

Do not cut or damage hawthorn, witch-hazel, dogwood or juneberry. These woody-shrub plants are highly beneficial to various wildlife species.

5.2.32 - Decking/landing restoration (9/13)

All decking and landing areas must have the surface area restored to a condition equal to or better than before. This is to ensure the proper regeneration of the stand. Wood debris, chips and "cookies" from trimmings must be removed or scattered away from landing and loading areas and may not be windrowed on the edge.

5.2.38 - No decking against live trees (2/04)

Cut products may not be decked against unmarked or designated leave trees.

5.2.41 - Snowmobile trail protection (9/11)

Trail #7 is a snowmobile trail and is shown on the Timber Sale Map. This is also the West Higgins ORV Route. Do not cut or damage posts with orange trail markers or traffic control signs. If the trail is used for hauling, it must be graded to the satisfaction of the Unit Manager or his/her representative prior to December 1st. If the trail road is to be used for hauling during the snowmobile season, then a snow covered base must be left on the trail. Maintain a 20 foot wide slash, debris, and rut free zone daily using the snowmobile trail as the centerline. No decking of forest products will be permitted along the snowmobile trail. All stumps within 20 feet of the snowmobile trail must be cut at ground level. In addition, any trees cut within 5 feet of the trail may need to have the stumps removed and be disposed of, per the direction of the Unit Manager or his/her representative.

5.4 - Soil Protection

5.4.1 - Rutting restriction, general (7/16)

Operations are to cease immediately if equipment and weather conditions result in rutting of roads and/or skid trails which is 12 inches or greater in depth and 50 feet in length. The Unit Manager or his/her representative may restrict hauling and/or skidding if ruts exceed the specified depth. With the Unit Manager or his/her representative's approval, the Purchaser may return to the area when the risk of rutting has decreased.

6 - Safety and Fire Prevention

6.2 - Signing

6.2.3 - Recreational trail posting (2/10)

The Purchaser is responsible for posting and maintaining caution signs on snowmobile trail #7 and West Higgins ORV Route prior to beginning operations. The trail must be posted at appropriate distances from the sale area to warn of logging activity and truck traffic at both ends of the trail. Signs must be removed when harvest operations are suspended or completed. The Purchaser will provide these signs.



TIMBER SALE MAP

This information provided by authority of Part 525, 1994 PA 451, as amended.

Sale Number	Year
72-029	18

Forest Management Unit Grayling FMU	County Crawford	Mapped By Shelby Schueller	Date 08/21/18	Page 1	of 1
Township 25N	Range 04W	Section(s) and Subdivision(s) Section 23: W1/2SW, NESW, W1/2SE; Section 24: SWNW	Scale 1:15,840		

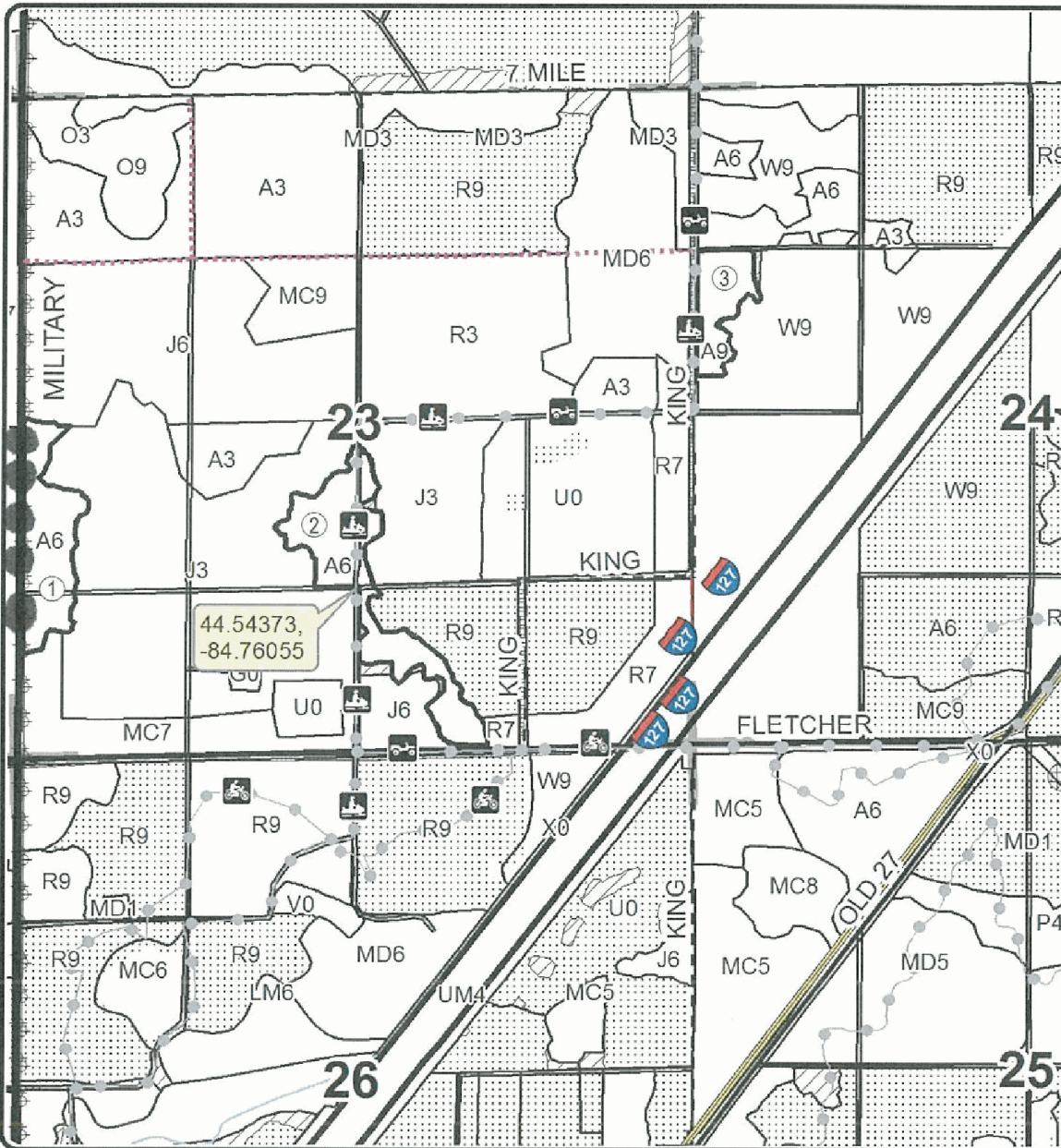
Cover Type				Density			
A = Aspen	H = Hemlock	N = Marsh	U = Upland Brush	0 = Non Stocked	5 = Pole Timber Medium		
B = Paper Birch	J = Jack Pine	O = Oak	UM = Upland Mixed	1 = Seedling Sapling Poor	6 = Pole Timber Well		
C = Cedar	L = Lowland Brush	P = Lowland Poplar	V = Bog or Marsh	2 = Seedling Sapling Medium	7 = Saw Timber Poor		
D = Tread Bog	LM = Lowland Mixed	Q = Mixed Swamp Conifer	W = White Pine	3 = Seedling Sapling Well	8 = Saw Timber Medium		
E = Swamp Hdwoods	M = Mpl, Bch, Brch	R = Red Pine	X = Non Stocked	4 = Pole Timber Poor	9 = Saw Timber Well		
F = Spruce Fir	MC = Mixed Conifer	S = Black Spruce	Z = Water				
G = Grass	MD = Mixed Deciduous	T = Tamarack					

PU	Acres
1	14.1
2	20.4
3	7.7

Cellar Spider Aspen

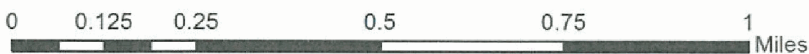
Compartment 196

42.2 Acres



Legend

- Against State (Red / King Road)
- Private Line (Military Road)
- Pipeline
- Powerline
- Highway
- Secondary Forest Road
- Paved Road
- Gravel Road
- County Road - Seasonal
- Temporary Management Access
- Recreation Trail
- Retention Area
- Stand Boundaries
- Nearby Timber Sale
- Section Corners



TIMBER SALE INFORMATION

Tilt-A-Whirl Red Pine (72-030-18)
 T25N, R04W, SEC. 27; T25N, R04W, SEC. 28.
 Crawford County (Advertised Price \$81,881.70)

SALE NOTE: These two stands are in the Beaver Creek Oil Field, so there is heavy oil and gas development. Snowmobile trail #7/West Higgins ORV Route cuts through the middle of Payment Unit 1 going East/West.

A timber sale contract for this lump sum, sealed bid timber sale will be awarded to the responsible bidder offering the highest sealed bid price. Bids must be at or above the following advertised price for each species:

<u>PRODUCTS & SPECIES</u>	<u>ESTIMATED UNITS*</u>	<u>ADVERTISED PRICE</u>
Sawtimber		
Red Pine	513.00 MBF	\$ 109.00 / MBF
Pulpwood		
Balsam Fir	6.00 Cords	\$ 21.15 / Cord
Mixed Oak	50.00 Cords	\$ 24.10 / Cord
Paper Birch	4.00 Cords	\$ 16.85 / Cord
Red Maple	82.00 Cords	\$ 36.05 / Cord
Red Pine	526.00 Cords	\$ 39.75 / Cord
White Pine	24.00 Cords	\$ 29.20 / Cord

* The total volume is statistically estimated within plus (+) or minus (-) 11.66 percent. The estimated units are final and not subject to adjustment. Prospective bidders are urged to examine this timber and to make their own estimates of quantity and quality.

BOND AND PAYMENT SCHEDULE:

1. A bond in the amount of \$4,094.00 to insure faithful performance of the conditions of the contract will be deposited by the successful bidder within 21 days of the sale award.
2. Cutting in any sale or unit without the required advance payment would be considered a trespass.
3. Total payment must be paid in advance or according to the following schedule:
 - (a) Ten percent (10%) of the sale value must be paid within 21 days of the sale award.
 - (b) The 10% down payment will be credited towards the first unit cut.
 - (c) Payment for each of the following units must be made before cutting begins in that unit:

PAYMENT UNIT NUMBER	PERCENT OF TOTAL SALE VALUE
01	55.9%
02	44.1%

4. If no cutting takes place, the 10% down payment will not be refunded.
5. Operations on the contract issued will terminate on 03/31/2022.

Description of Timber by Payment Unit (PU)

PU	MARKET GROUP	PRODUCT	QUANTITY	UNIT	ACRES	ADVERTISE PRICE
1	Red Pine	Sawtimber	282.5	MBF	29.5	\$45,763.30
	Balsam Fir	Pulpwood	6.0	Cords		
	Mixed Oak		38.0	Cords		
	<i>BI/R/Hybrid Oak</i>	<i>Sawtimber</i>	7.6	<i>MBF</i>		
	<i>White Oak</i>		0.9	<i>MBF</i>		
	<i>BI/R/Hybrid Oak</i>	<i>Pulpwood</i>	17.0	<i>Cords</i>		
	<i>White Oak</i>		4.0	<i>Cords</i>		
	Paper Birch		4.0	Cords		
	Red Maple		53.0	Cords		
	<i>Red Maple</i>		53.0	<i>Cords</i>		
	Red Pine		283.0	Cords		
	White Pine		24.0	Cords		
	<i>White Pine</i>	<i>Sawtimber</i>	1.0	<i>MBF</i>		
	<i>White Pine</i>	<i>Pulpwood</i>	22.0	<i>Cords</i>		
	2	Red Pine	Sawtimber	230.5		
Mixed Oak		Pulpwood	12.0	Cords		
<i>BI/R/Hybrid Oak</i>		<i>Sawtimber</i>	3.1	<i>MBF</i>		
<i>BI/R/Hybrid Oak</i>		<i>Pulpwood</i>	6.0	<i>Cords</i>		
Red Maple			29.0	Cords		
<i>Red Maple</i>		<i>Sawtimber</i>	8.5	<i>MBF</i>		
<i>Red Maple</i>		<i>Pulpwood</i>	12.0	<i>Cords</i>		
Red Pine			243.0	Cords		
TOTAL:			513.0	MBF		
TOTAL:			692.0	Cords		

Sale Specific Conditions & Requirements

Sale Name: Tilt-A-Whirl Red Pine

Sale Number: 72-030-18 Seq#: 1

1 - Sale Area

1.2 - Boundaries

1.2.1 - Painted boundaries (1/14)

The sale boundary and Payment Unit boundaries are marked and identified by red paint. Exterior sale boundary lines against state are marked with red paint. The painted boundary line trees are not Included Timber and are to be protected.

2 - Timber Specifications

2.1 - Included Timber

2.1.1 - Clearcut unit(s) with unmerchantable trees (6/14)

Within Payment Unit(s) 1 and 2, cut all trees that are two (2) inches or more at DBH, except do not cut trees marked with green paint.

2.2 - Utilization

2.2.2 - Chipping required (2/18)

This area must be chip harvested to facilitate subsequent planting operations. The Purchaser has the option to produce sawlogs or pulpwood bolts, but the remaining portion of the trees must be chipped and hauled. The requirement to retain approximately 1/6 to 1/3 of tree tops and limbs less than four inches in diameter is still applicable (G. C. & R. 2.2).

2.2.3 - Stump heights (4/07)

Stump heights within the Sale Area shall not exceed 6 inches for all trees. This is in order to facilitate planting operations.

3 - Payments

3.3 - Pre-measured Sales

3.3.4 - Dividing payment units (7/14)

Payment Unit(s) may be divided at the request of the Purchaser and upon approval of the Unit Manager. Dividing Payment Units is a contract modification which requires a Timber Sale Contract Supplement.

4 - Transportation

4.1 - Construction

4.1.6 - Road construction (1/09)

Construction of new roads or improvements of existing roads shall be done in such a way as to minimize the environmental and visual impacts. Merchantable trees shall be cut and utilized unless otherwise directed. Non-merchantable trees shall be severed and laid flat on the ground. Slash shall be chipped, utilized or otherwise removed from the sale. Stumps shall be set upright, not left on edge, and be moved at least 10 feet away from the road edge. Disturbed soil shall be feathered into the woods and not left in berms or windrows.

4.1.7 - Road closure (10/11)

All new roads built into the sale must be blocked to vehicle traffic upon completion of the sale. Overgrown roads that are reopened shall be considered new roads. In general, this will require constructing a four (4') foot high berm of stumps and logs covered with earth. These roads must be rendered impassable to cars and trucks. Contact the sale administrator for specific details of design and placement.

4.1.11 - Permits (2/12)

The Purchaser will secure any necessary permits that may be required.

5 - Operations

5.1 - Notification

5.1.1 - Pre-sale conference (10/16)

A pre-sale conference on site between the Purchaser and sale administrator is required prior to beginning any operations to determine landing and road locations. The Unit Manager or his/her representative must be contacted at least 5 days in advance to schedule the conference.

5.1.3 - Well heads and natural gas pipelines (11/15)

The Purchaser is responsible for contacting the gas or pipeline company prior to operating equipment in the vicinity of well heads or natural gas pipelines. This is in order to plan operations around the gas lines and well heads.

5.2 - Conduct of Operations

5.2.32 - Decking/landing restoration (9/13)

All decking and landing areas must have the surface area restored to a condition equal to or better than before. This is to ensure the proper regeneration of the stand. Wood debris, chips and "cookies" from trimmings must be removed or scattered away from landing and loading areas and may not be windrowed on the edge.

5.2.38 - No decking against live trees (2/04)

Cut products may not be decked against unmarked or designated leave trees.

5.2.41 - Snowmobile trail protection (9/11)

Trail #7 is a snowmobile trail and is shown on the Timber Sale Map. This is also the West Higgins ORV Route. Do not cut or damage posts with orange trail markers or traffic control signs. If the trail is used for hauling, it must be graded to the satisfaction of the Unit Manager or his/her representative prior to December 1st. If the trail road is to be used for hauling during the snowmobile season, then a snow covered base must be left on the trail. Maintain a 20 foot wide slash, debris, and rut free zone daily using the snowmobile trail as the centerline. No decking of forest products will be permitted along the snowmobile trail. All stumps within 20 feet of the snowmobile trail must be cut at ground level. In addition, any trees cut within 5 feet of the trail must have the stumps removed and be disposed of, per the direction of the Unit Manager or his/her representative.

5.4 - Soil Protection

5.4.1 - Rutting restriction, general (7/16)

Operations are to cease immediately if equipment and weather conditions result in rutting of roads and/or skid trails which is 12 inches or greater in depth and 50 feet in length. The Unit Manager or his/her representative may restrict hauling and/or skidding if ruts exceed the specified depth. With the Unit Manager or his/her representative's approval, the Purchaser may return to the area when the risk of rutting has decreased.

6 - Safety and Fire Prevention

6.2 - Signing

6.2.3 - Recreational trail posting (2/10)

The Purchaser is responsible for posting and maintaining caution signs on snowmobile trail #7 and West Higgins ORV Route prior to beginning operations. The trail must be posted at appropriate distances from the sale area to warn of logging activity and truck traffic at both ends of the trail. Signs must be removed when harvest operations are suspended or completed. The Purchaser will provide these signs.



TIMBER SALE MAP

This information provided by authority of Part 525, 1994 PA 451, as amended.

Sale Number	Year
72 - 030	18

Forest Management Unit Grayling FMU	County Crawford	Mapped By Shelby Schueller	Date 08/24/18	Page 1	of 1
Township 25N	Range 04W	Section(s) and Subdivision(s) Section 27: SWSW, NESW	Scale 1:15,840		

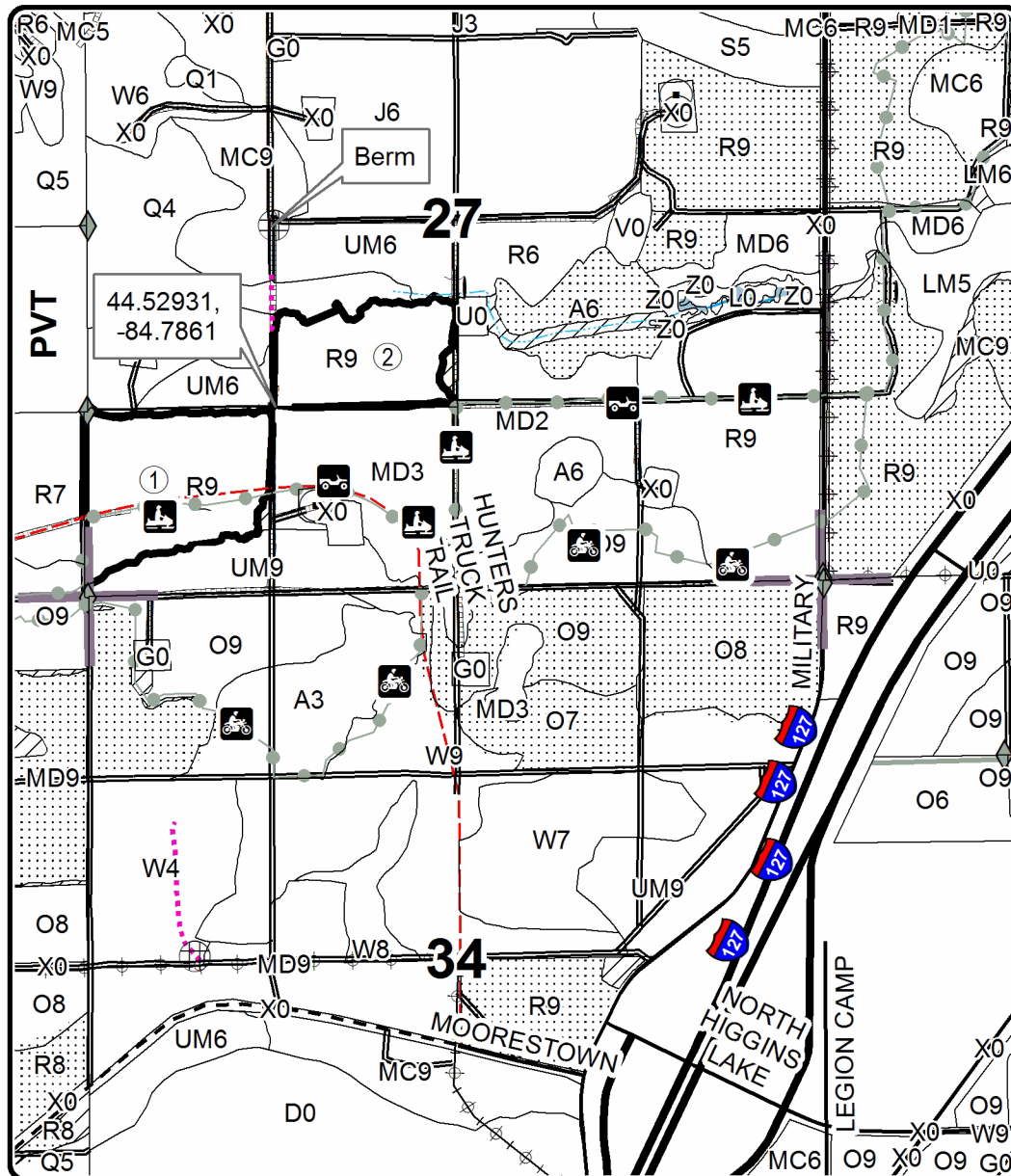
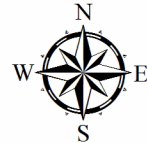
Cover Type				Density			
A = Aspen	H = Hemlock	N = Marsh	U = Upland Brush	0 = Non Stocked	5 = Pole Timber Medium		
B = Paper Birch	J = Jack Pine	O = Oak	UM = Upland Mixed	1 = Seedling Sapling Poor	6 = Pole Timber Well		
C = Cedar	L = Lowland Brush	P = Lowland Poplar	V = Bog or Marsh	2 = Seedling Sapling Medium	7 = Saw Timber Poor		
D = Treed Bog	LM = Lowland Mixed	Q = Mixed Swamp Conifer	W = White Pine	3 = Seedling Sapling Well	8 = Saw Timber Medium		
E = Swamp Hdwoods	M = Mpl, Bch, Brch	R = Red Pine	X = Non Stocked	4 = Pole Timber Poor	9 = Saw Timber Well		
F = Spruce Fir	MC = Mixed Conifer	S = Black Spruce	Z = Water				
G = Grass	MD = Mixed Deciduous	T = Tamarack					

PU	Acres
1	29.5
2	19.9

Tilt-A-Whirl Red Pine

Compartment 196

49.4 Acres



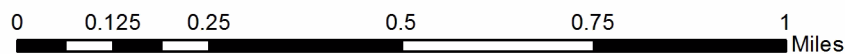
Legend

- Sale Boundary Against State (Red Paint)
- Stand Boundaries
- Field Grade Corners
- Pipeline
- Powerline
- Oil & Gas Well Surface Locations
- Highway
- Secondary Forest Road
- Paved Road
- Gravel Road
- County Road - Seasonal
- Private
- Temporary Management Access
- Recreational Trail

Streams

Type

- Intermittent Stream
- Perennial River
- Retention Area
- Nearby Timber Sales
- Section Corners



TIMBER SALE INFORMATION

Year End Red Pine (72-040-18)

T25N, R04W, SEC. 23.

Crawford County (Advertised Price \$53,621.40)

SALE NOTE: This red pine plantation contains a component of oak, with mixed deciduous stands bordering the stand. Oak wilt restrictions are in place. There is a natural gas pipeline running north/south along King Road and is identified on the Timber Sale Map. Low stump heights and chipping of all slash are required to help facilitate subsequent planting operations (see specs 2.2.2 & 2.2.3).

A timber sale contract for this lump sum, sealed bid timber sale will be awarded to the responsible bidder offering the highest sealed bid price. Bids must be at or above the following advertised price for each species:

<u>PRODUCTS & SPECIES</u>	<u>ESTIMATED UNITS*</u>	<u>ADVERTISED PRICE</u>
Sawtimber		
Red Pine	252.40 MBF	\$ 109.00 / MBF
White Pine	26.00 MBF	\$ 63.00 / MBF
Pulpwood		
Jack Pine	4.00 Cords	\$ 20.55 / Cord
Northern Pin Oak	117.00 Cords	\$ 24.10 / Cord
Quaking Aspen	27.00 Cords	\$ 24.95 / Cord
Red Maple	78.00 Cords	\$ 36.05 / Cord
Red Pine	405.00 Cords	\$ 39.75 / Cord
White Pine	68.00 Cords	\$ 29.20 / Cord

* The total volume is statistically estimated within plus (+) or minus (-) 16.96 percent. The estimated units are final and not subject to adjustment. Prospective bidders are urged to examine this timber and to make their own estimates of quantity and quality.

BOND AND PAYMENT SCHEDULE:

1. A bond in the amount of \$2,681.00 to insure faithful performance of the conditions of the contract will be deposited by the successful bidder within 21 days of the sale award.
2. Cutting in any sale or unit without the required advance payment would be considered a trespass.
3. Total payment must be paid in advance or according to the following schedule:
 - (a) Ten percent (10%) of the sale value must be paid within 21 days of the sale award.
 - (b) The remainder is due before cutting begins.
 - (c) Payment for each of the following units must be made before cutting begins in that unit:

<u>PAYMENT UNIT NUMBER</u>	<u>PERCENT OF TOTAL SALE VALUE</u>
01	100.0%
4. If no cutting takes place, the 10% down payment will not be refunded.
5. Operations on the contract issued will terminate on 12/31/2021.

Description of Timber by Payment Unit (PU)

PU	MARKET GROUP	PRODUCT	QUANTITY	UNIT	ACRES	ADVERTISE PRICE
1	Red Pine	Sawtimber	252.4	MBF	38.5	\$53,621.40
	White Pine		26.0	MBF		
	Jack Pine	Pulpwood	4.0	Cords		
	<i>Jack Pine</i>	<i>Sawtimber</i>	<i>0.7</i>	<i>MBF</i>		
	<i>Jack Pine</i>	<i>Pulpwood</i>	<i>3.0</i>	<i>Cords</i>		
	Northern Pin Oak		117.0	Cords		
	<i>Northern Pin Oak</i>	<i>Sawtimber</i>	<i>16.7</i>	<i>MBF</i>		
	<i>Northern Pin Oak</i>	<i>Pulpwood</i>	<i>84.0</i>	<i>Cords</i>		
	Quaking Aspen		27.0	Cords		
	<i>Quaking Aspen</i>	<i>Sawtimber</i>	<i>2.8</i>	<i>MBF</i>		
	<i>Quaking Aspen</i>	<i>Pulpwood</i>	<i>21.0</i>	<i>Cords</i>		
	Red Maple		78.0	Cords		
	<i>Red Maple</i>	<i>Sawtimber</i>	<i>2.0</i>	<i>MBF</i>		
	<i>Red Maple</i>	<i>Pulpwood</i>	<i>74.0</i>	<i>Cords</i>		
	Red Pine		405.0	Cords		
	White Pine		68.0	Cords		
	TOTAL:			278.4		
TOTAL:			699.0	Cords		

Sale Specific Conditions & Requirements

Sale Name: Year End Red Pine

Sale Number: 72-040-18 Seq#: 1

1 - Sale Area

1.2 - Boundaries

1.2.1 - Painted boundaries (1/14)

The sale boundary is marked and identified by red paint. Exterior sale boundary lines against state are marked with red paint. The painted boundary line trees are not Included Timber and are to be protected.

2 - Timber Specifications

2.1 - Included Timber

2.1.1 - Clearcut unit(s) with unmerchantable trees (6/14)

Within Payment Unit(s) 1, cut all trees that are two (2) inches or more at DBH

2.2 - Utilization

2.2.2 - Chipping required (2/18)

This area must be chip harvested to facilitate subsequent planting operations. The Purchaser has the option to produce sawlogs or pulpwood bolts, but the remaining portion of the trees must be chipped and hauled. Products may be produced as roundwood and forwarded to decking areas in final product length, but the tops must be left intact and skidded to the landing for chipping in order to minimize the amount of residual slash. A chipping exemption can be obtained if proposed operations are determined to be suitable for planting by reforestation staff. This exemption must be granted in writing. The requirement to retain approximately 1/6 to 1/3 of tree tops and limbs less than four inches in diameter is still applicable (G. C. & R. 2.2).

2.2.3 - Stump heights (4/07)

Stump heights within the Sale Area shall not exceed 6 inches for all trees. This is in order to facilitate planting operations.

3 - Payments

3.3 - Pre-measured Sales

3.3.4 - Dividing payment units (7/14)

Payment Unit(s) 1 may be divided at the request of the Purchaser and upon approval of the Unit Manager. Dividing Payment Units is a contract modification which requires a Timber Sale Contract Supplement.

4 - Transportation

4.1 - Construction

4.1.3 - Slash and earthen piles (8/04)

Piles or windrows of earth along roads and landings that have been widened or constructed shall be leveled. Slash from road maintenance or construction, including stumps, shall be chipped, utilized or otherwise removed from the sale.

4.1.6 - Road construction (1/09)

Construction of new roads or improvements of existing roads shall be done in such a way as to minimize the environmental and visual impacts. Merchantable trees shall be cut and utilized unless otherwise directed. Non-merchantable trees shall be severed and laid flat on the ground. Slash shall be chipped, utilized or otherwise removed from the sale. Stumps shall be set upright, not left on edge, and be moved at least 10 feet away from the road edge. Disturbed soil shall be feathered into the woods and not left in berms or windrows.

4.1.7 - Road closure (10/11)

All new roads built into the sale must be blocked to vehicle traffic upon completion of the sale. Overgrown roads that are reopened shall be considered new roads. In general, this will require constructing a four (4') foot high berm of stumps and logs covered with earth. Stumps and brush must be placed along the remainder of the trail. These roads must be rendered impassable to cars and trucks. Contact the sale administrator for specific details of design and placement.

4.1.11 - Permits (2/12)

The Purchaser will secure any necessary highway and stream crossing permits that may be required.

4.2 - Maintenance

4.2.5 - Two wheel drive condition (2/04)

All existing trail roads on and adjacent to the sale area must be passable by two-wheel drive traffic for the duration of the sale.

5 - Operations

5.1 - Notification

5.1.1 - Pre-sale conference (10/16)

A pre-sale conference on site between the Purchaser and sale administrator is required prior to beginning any operations to determine landing and road locations. The Unit Manager or his/her representative must be contacted at least 5 days in advance to schedule the conference.

5.1.3 - Well heads and natural gas pipelines (11/15)

The Purchaser is responsible for contacting the gas or pipeline company 30 days prior to operating equipment in the vicinity of well heads or natural gas pipelines. Written permission is required before harvest operations begin and must be submitted to the Unit Manager.

5.2 - Conduct of Operations

5.2.1 - Slash

5.2.1.8 - Slash height (12/08)

No slash or tree tops may exceed 24 inches in height.

5.2.1.11 - Slash for reforestation (5/07)

To facilitate reforestation, the sale area shall be left with slash evenly distributed. Bunched tops within the cutting area shall be broken up and scattered. Stumps shall be cut low to the ground. Processing sites shall not be left with a compacted layer of slash; tops from these sites shall be hauled back into the cut area and scattered.

5.2.3 - Operating Restrictions

5.2.3.5 - Oak wilt restriction (1/18)

Within Payment Unit(s) 1, unless changed by written agreement, cutting, skidding, hauling within the sale and brushing of access roads to the sale are not permitted during the period of April 15 to July 15. Operations may be allowed if specific steps are taken to prevent damaging uncut oak during the high risk period. Those steps may include completing all road brushing before April 15th and clearing a tree-length buffer along uncut oak cover before April 15th. This is necessary to reduce the spread of oak wilt. For more information, contact the Unit Manager or his/her representative.

5.2.32 - Decking/landing restoration (9/13)

All decking and landing areas must have the surface area restored to a condition equal to or better than before. This is to ensure the proper regeneration of the stand. Wood debris, chips and "cookies" from trimmings must be removed or scattered away from landing and loading areas and may not be windrowed on the edge.

6 - Safety and Fire Prevention

6.2 - Signing

6.2.1 - Road posting (9/09)

The Purchaser is responsible for posting and maintaining caution signs on 7 Mile Road prior to beginning operations. The road must be posted at appropriate distances from the sale area to warn of logging activity and truck traffic. Signs must be removed when harvest operations are suspended or completed. The Purchaser will provide these signs.



TIMBER SALE MAP

This information provided by authority of Part 525, 1994 PA 451, as amended.

Sale Number	Year
72 - 040	18

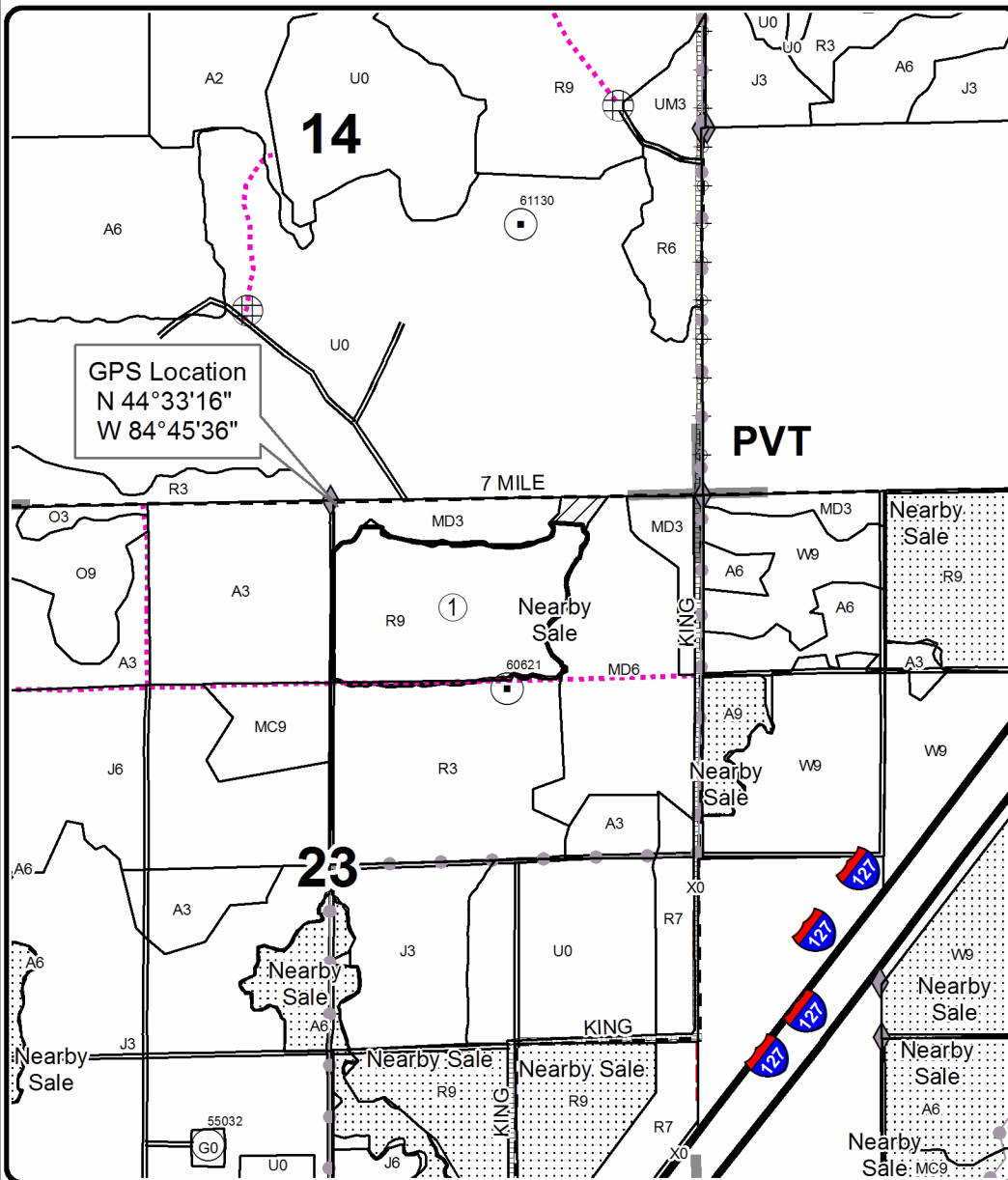
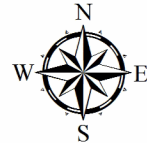
Forest Management Unit Grayling	County Crawford	Mapped By Behrmann	Date 09/27/2018	Page 1	of 1
Cruised By Behrmann					

Township 25N	Range 04W	Section(s) and Subdivision(s) Section 23 N1/2NE, SWNE	Scale 1:15,840
-----------------	--------------	--	-------------------

Cover Type				Density	
A = Aspen	H = Hemlock	N = Marsh	U = Upland Brush	0 = Non Stocked	5 = Pole Timber Medium
B = Paper Birch	J = Jack Pine	O = Oak	UM = Upland Mixed	1 = Seedling Sapling Poor	6 = Pole Timber Well
C = Cedar	L = Lowland Brush	P = Lowland Poplar	V = Bog or Marsh	2 = Seedling Sapling Medium	7 = Saw Timber Poor
D = Treed Bog	LM = Lowland Mixed	Q = Mixed Swamp Conifer	W = White Pine	3 = Seedling Sapling Well	8 = Saw Timber Medium
E = Swamp Hdwoods	M = Mpl, Bch, Brch	R = Red Pine	X = Non Stocked	4 = Pole Timber Poor	9 = Saw Timber Well
F = Spruce Fir	MC = Mixed Conifer	S = Black Spruce	Z = Water		
G = Grass	MD = Mixed Deciduous	T = Tamarack			

PU Acres
1 38.5

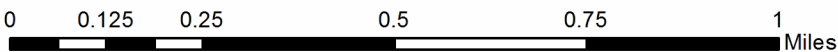
Year End Red Pine Compartment 196 38.5 Acres



Legend

- Stand Boundaries
- Field Grade Corners
- Temporary Management Access
- Retention Area
- Against State (Red)
- Nearby Timber Sales
- Section Corners
- Secondary Forest Road
- Gravel Road
- County Road - Seasonal
- Pipeline
- Powerline
- Highway
- Oil & Gas Well Surface Locations

Locator Map
1:200,000



7 Mile Red Pine (72-023-18)
T25N, R04W, SEC. 24; Crawford COUNTY

In response to the notice of sale to be held 9:00 a.m. (local time) on July 9, 2019, I am hereby submitting my sealed bid (firm offer) for the following forest products to be cut. Bids for individual species must be at or above the advertised price. All non-responsive bid forms may be rejected.

<u>PRODUCTS & SPECIES</u>	<u>ESTIMATED VOLUME*</u>	<u>ADVERTISED PRICE</u>	<u>BID PRICE/UNIT</u>
Sawtimber			
Red Maple	12.00 MBF	\$ 72.00/MBF	\$ _____
Red Pine	166.70 MBF	\$ 109.00/MBF	\$ _____
Pulpwood			
Mixed Hardwood	33.00 Cords	\$ 36.05/Cord	\$ _____
Mixed Oak	37.00 Cords	\$ 24.10/Cord	\$ _____
Quaking Aspen	6.00 Cords	\$ 24.95/Cord	\$ _____
Red Pine	47.00 Cords	\$ 39.75/Cord	\$ _____

*The volumes are statistically estimated within plus (+) or minus (-) 24.66 percent. These estimated volumes are final and not subject to adjustment. Prospective bidders are urged to examine this timber and to make their own estimates of quantity and quality.

I understand that any or all bids may be rejected. All bids must be signed and all bid items must be bid or the bid form may be rejected. I also understand that consideration and awarding a contract will be based upon my past performance and ability to complete the contract based upon equipment and staffing subject to my control.

FEDERAL ID: _____ or SOCIAL SECURITY NUMBER: _____

Company or individual bidding: _____

Company representative's name: _____

Address: _____

City: _____ State: _____ Zip: _____

IF AVAILABLE, PLEASE PLACE THE PERSONALIZED LABEL FROM YOUR PROSPECTUS IN THE ABOVE BOX.

Individual or company representative's signature: _____ Date: _____

Phone number : _____ Email (optional): _____

THE WINNING BIDDER MUST COMPLETE THE VERIFICATION OF WORKER'S DISABILITY COMPENSATION ACT COMPLIANCE (ON REVERSE SIDE IF DOUBLE SIDED) WITHIN 21 DAYS OF SALE AWARD DATE



FOR DEPARTMENT USE ONLY
Sale Number (XX – XXX – XX – XX)
Forest Management Unit:

TIMBER SALE VERIFICATION OF WORKER'S DISABILITY COMPENSATION ACT COMPLIANCE

*As required by Act 317, P.A. 1969 (Worker's Compensation) and
Part 5 of Act 451 of 1994, as amended.*

VERIFICATION OF WORKER'S DISABILITY COMPENSATION ACT COMPLIANCE

- This verification must be completed and submitted within 21 days of contract award and prior to the issuance of the timber sale contract.
- In addition, if boxes 2B or 2C are checked, then Notice of Exclusion or Certificate of Insurance must be submitted within twenty-one (21) days of the contract award and prior to the issuance of the timber sale contract.
- All information must be typed or printed except for written signatures.

Please Check Appropriate Categories:

1. My business is organized as (you **must** check one of the boxes below):
 - A. Sole Proprietorship (individual)
 - B. Partnership
 - C. Corporation
2. You **must** check one of the boxes below:
 - A. I certify my business is a sole proprietorship and it has no employees but the sole proprietor. I am not subject to the Worker's Compensation Laws.
 - B. I certify my business has satisfied its obligation to the Worker's Compensation Act through the use of an approved Notice of Exclusion (BWC-337, Rev. 5/96). I will provide a copy of the Notice of Exclusion within 21 days of the contract award. (For questions or a copy of the BWC-337, please call the Worker's Compensation Bureau at 517-322-1195).
 - C. I certify my business has a Worker's Compensation Policy. I will provide an original Certificate of Insurance within twenty-one (21) days of the contract award.
3. If you have checked item 2(A) or 2(B), you **must** indicate the number of **both** full-time and part-time employees, other than yourself, including family members and active partners (if none, you must enter "0").

_____ Full-time Employees

_____ Part-time Employees

Name of Business		Federal ID (or) Social Security No.	
Address		Telephone ()	
City	State	ZIP	

I hereby certify that the above information is true and correct. I agree to notify the Michigan DNR of any changes that occur in factors affecting my coverage during any of my present and future operations.

Signature of Owner or Authorized Representative

Title

Date

Please complete the "SEALED BID" information on the next page

Military Red Pine (72-011-18)
T25N, R04W, SEC. 26; Crawford COUNTY

In response to the notice of sale to be held 9:00 a.m. (local time) on July 9, 2019, I am hereby submitting my sealed bid (firm offer) for the following forest products to be cut. Bids for individual species must be at or above the advertised price. All non-responsive bid forms may be rejected.

<u>PRODUCTS & SPECIES</u>	<u>ESTIMATED VOLUME*</u>	<u>ADVERTISED PRICE</u>	<u>BID PRICE/UNIT</u>
Sawtimber			
Red Pine	703.50 MBF	\$ 109.00/MBF	\$ _____
Pulpwood			
Bl/R/Hybrid Oak	22.00 Cords	\$ 24.10/Cord	\$ _____
Quaking Aspen	54.00 Cords	\$ 24.95/Cord	\$ _____
Red Maple	103.00 Cords	\$ 36.05/Cord	\$ _____
Red Pine	1,191.00 Cords	\$ 39.75/Cord	\$ _____
Scotch Pine	208.00 Cords	\$ 31.25/Cord	\$ _____
White Pine	494.00 Cords	\$ 29.20/Cord	\$ _____

*The volumes are statistically estimated within plus (+) or minus (-) 7.31 percent. These estimated volumes are final and not subject to adjustment. Prospective bidders are urged to examine this timber and to make their own estimates of quantity and quality.

I understand that any or all bids may be rejected. All bids must be signed and all bid items must be bid or the bid form may be rejected. I also understand that consideration and awarding a contract will be based upon my past performance and ability to complete the contract based upon equipment and staffing subject to my control.

FEDERAL ID: _____ or SOCIAL SECURITY NUMBER: _____

Company or individual bidding: _____

Company representative's name: _____

Address: _____

City: _____ State: _____ Zip: _____

IF AVAILABLE, PLEASE PLACE THE PERSONALIZED LABEL FROM YOUR PROSPECTUS IN THE ABOVE BOX.

Individual or company representative's signature: _____ Date: _____

Phone number : _____ Email (optional): _____

THE WINNING BIDDER MUST COMPLETE THE VERIFICATION OF WORKER'S DISABILITY COMPENSATION ACT COMPLIANCE (ON REVERSE SIDE IF DOUBLE SIDED) WITHIN 21 DAYS OF SALE AWARD DATE



FOR DEPARTMENT USE ONLY
Sale Number (XX - XXX - XX - XX)
Forest Management Unit:

TIMBER SALE VERIFICATION OF WORKER'S DISABILITY COMPENSATION ACT COMPLIANCE

*As required by Act 317, P.A. 1969 (Worker's Compensation) and
Part 5 of Act 451 of 1994, as amended.*

VERIFICATION OF WORKER'S DISABILITY COMPENSATION ACT COMPLIANCE

- This verification must be completed and submitted within 21 days of contract award and prior to the issuance of the timber sale contract.
- In addition, if boxes 2B or 2C are checked, then Notice of Exclusion or Certificate of Insurance must be submitted within twenty-one (21) days of the contract award and prior to the issuance of the timber sale contract.
- All information must be typed or printed except for written signatures.

Please Check Appropriate Categories:

1. My business is organized as (you **must** check one of the boxes below):
 - A. Sole Proprietorship (individual)
 - B. Partnership
 - C. Corporation

2. You **must** check one of the boxes below:
 - A. I certify my business is a sole proprietorship and it has no employees but the sole proprietor. I am not subject to the Worker's Compensation Laws.
 - B. I certify my business has satisfied its obligation to the Worker's Compensation Act through the use of an approved Notice of Exclusion (BWC-337, Rev. 5/96). I will provide a copy of the Notice of Exclusion within 21 days of the contract award. (For questions or a copy of the BWC-337, please call the Worker's Compensation Bureau at 517-322-1195).
 - C. I certify my business has a Worker's Compensation Policy. I will provide an original Certificate of Insurance within twenty-one (21) days of the contract award.

3. If you have checked item 2(A) or 2(B), you **must** indicate the number of **both** full-time and part-time employees, other than yourself, including family members and active partners (if none, you must enter "0").

_____ Full-time Employees

_____ Part-time Employees

Name of Business		Federal ID (or) Social Security No.	
Address		Telephone ()	
City	State	ZIP	

I hereby certify that the above information is true and correct. I agree to notify the Michigan DNR of any changes that occur in factors affecting my coverage during any of my present and future operations.

Signature of Owner or Authorized Representative

Title

Date

Please complete the "SEALED BID" information on the next page

Matthes Pine Mix (72-026-18)
T25N, R04W, SEC. 21; T25N, R04W, SEC. 22; Crawford COUNTY

In response to the notice of sale to be held 9:00 a.m. (local time) on July 9, 2019, I am hereby submitting my sealed bid (firm offer) for the following forest products to be cut. Bids for individual species must be at or above the advertised price. All non-responsive bid forms may be rejected.

<u>PRODUCTS & SPECIES</u>	<u>ESTIMATED VOLUME*</u>	<u>ADVERTISED PRICE</u>	<u>BID PRICE/UNIT</u>
Sawtimber			
Northern Pin Oak	24.00 MBF	\$ 163.00/MBF	\$ _____
Red Pine	480.20 MBF	\$ 87.00/MBF	\$ _____
Pulpwood			
Jack Pine	30.00 Cords	\$ 16.45/Cord	\$ _____
Misc. Species 2	17.00 Cords	\$ 9.00/Cord	\$ _____
Mixed Hardwood	60.00 Cords	\$ 28.85/Cord	\$ _____
Mixed Oak	240.00 Cords	\$ 19.30/Cord	\$ _____
Red Pine	473.00 Cords	\$ 31.80/Cord	\$ _____
Scotch Pine	91.00 Cords	\$ 25.00/Cord	\$ _____
White Pine	77.00 Cords	\$ 23.35/Cord	\$ _____

*The volumes are statistically estimated within plus (+) or minus (-) 10.54 percent. These estimated volumes are final and not subject to adjustment. Prospective bidders are urged to examine this timber and to make their own estimates of quantity and quality.

I understand that any or all bids may be rejected. All bids must be signed and all bid items must be bid or the bid form may be rejected. I also understand that consideration and awarding a contract will be based upon my past performance and ability to complete the contract based upon equipment and staffing subject to my control.

FEDERAL ID: ____ - ____ - ____ or SOCIAL SECURITY NUMBER: ____ - ____ - ____

Company or individual bidding: _____

Company representative's name: _____

Address: _____

City: _____ State: _____ Zip: _____

IF AVAILABLE, PLEASE PLACE THE PERSONALIZED LABEL FROM YOUR PROSPECTUS IN THE ABOVE BOX.

Individual or company representative's signature: _____ Date: _____

Phone number : _____ Email (optional): _____

THE WINNING BIDDER MUST COMPLETE THE VERIFICATION OF WORKER'S DISABILITY COMPENSATION ACT COMPLIANCE (ON REVERSE SIDE IF DOUBLE SIDED) WITHIN 21 DAYS OF SALE AWARD DATE



FOR DEPARTMENT USE ONLY	
Sale Number (XX - XXX - XX - XX)	
Forest Management Unit:	

TIMBER SALE VERIFICATION OF WORKER'S DISABILITY COMPENSATION ACT COMPLIANCE

As required by Act 317, P.A. 1969 (Worker's Compensation) and
Part 5 of Act 451 of 1994, as amended.

VERIFICATION OF WORKER'S DISABILITY COMPENSATION ACT COMPLIANCE

- This verification must be completed and submitted within 21 days of contract award and prior to the issuance of the timber sale contract.
- In addition, if boxes 2B or 2C are checked, then Notice of Exclusion or Certificate of Insurance must be submitted within twenty-one (21) days of the contract award and prior to the issuance of the timber sale contract.
- All information must be typed or printed except for written signatures.

Please Check Appropriate Categories:

1. My business is organized as (you **must** check one of the boxes below):
 - A. Sole Proprietorship (individual)
 - B. Partnership
 - C. Corporation
2. You **must** check one of the boxes below:
 - A. I certify my business is a sole proprietorship and it has no employees but the sole proprietor. I am not subject to the Worker's Compensation Laws.
 - B. I certify my business has satisfied its obligation to the Worker's Compensation Act through the use of an approved Notice of Exclusion (BWC-337, Rev. 5/96). I will provide a copy of the Notice of Exclusion within 21 days of the contract award. (For questions or a copy of the BWC-337, please call the Worker's Compensation Bureau at 517-322-1195).
 - C. I certify my business has a Worker's Compensation Policy. I will provide an original Certificate of Insurance within twenty-one (21) days of the contract award.
3. If you have checked item 2(A) or 2(B), you **must** indicate the number of **both** full-time and part-time employees, other than yourself, including family members and active partners (if none, you must enter "0").

_____ Full-time Employees

_____ Part-time Employees

Name of Business		Federal ID (or) Social Security No.	
Address		Telephone ()	
City	State	ZIP	

I hereby certify that the above information is true and correct. I agree to notify the Michigan DNR of any changes that occur in factors affecting my coverage during any of my present and future operations.

Signature of Owner or Authorized Representative

Title

Date

Please complete the "SEALED BID" information on the next page

Cellar Spider Aspen (72-029-18)
T25N, R04W, SEC. 23; T25N, R04W, SEC. 24; Crawford COUNTY

In response to the notice of sale to be held 9:00 a.m. (local time) on July 9, 2019, I am hereby submitting my sealed bid (firm offer) for the following forest products to be cut. Bids for individual species must be at or above the advertised price. All non-responsive bid forms may be rejected.

<u>PRODUCTS & SPECIES</u>	<u>ESTIMATED VOLUME*</u>	<u>ADVERTISED PRICE</u>	<u>BID PRICE/UNIT</u>
Sawtimber			
Mixed Aspen	32.50 MBF	\$ 75.00/MBF	\$ _____
Northern Pin Oak	10.00 MBF	\$ 203.00/MBF	\$ _____
Red Pine	14.70 MBF	\$ 109.00/MBF	\$ _____
White Pine	4.90 MBF	\$ 63.00/MBF	\$ _____
Pulpwood			
Balsam Fir	15.00 Cords	\$ 21.15/Cord	\$ _____
Jack Pine	154.00 Cords	\$ 20.55/Cord	\$ _____
Misc. Species 2	17.00 Cords	\$ 11.25/Cord	\$ _____
Mixed Aspen	253.00 Cords	\$ 24.95/Cord	\$ _____
Mixed Hardwood	63.00 Cords	\$ 36.05/Cord	\$ _____
Mixed Oak	54.00 Cords	\$ 24.10/Cord	\$ _____
Red Pine	14.00 Cords	\$ 39.75/Cord	\$ _____
White Pine	10.00 Cords	\$ 29.20/Cord	\$ _____

*The volumes are statistically estimated within plus (+) or minus (-) 16.71 percent. These estimated volumes are final and not subject to adjustment. Prospective bidders are urged to examine this timber and to make their own estimates of quantity and quality.

I understand that any or all bids may be rejected. All bids must be signed and all bid items must be bid or the bid form may be rejected. I also understand that consideration and awarding a contract will be based upon my past performance and ability to complete the contract based upon equipment and staffing subject to my control.

FEDERAL ID: ____ - ____ - ____ or SOCIAL SECURITY NUMBER: ____ - ____ - ____

Company or individual bidding: _____

Company representative's name: _____

Address: _____

City: _____ State: _____ Zip: _____

IF AVAILABLE, PLEASE PLACE THE PERSONALIZED LABEL FROM YOUR PROSPECTUS IN THE ABOVE BOX.

Individual or company representative's signature: _____ Date: _____

Phone number : _____ Email (optional): _____

THE WINNING BIDDER MUST COMPLETE THE VERIFICATION OF WORKER'S DISABILITY COMPENSATION ACT COMPLIANCE (ON REVERSE SIDE IF DOUBLE SIDED) WITHIN 21 DAYS OF SALE AWARD DATE



FOR DEPARTMENT USE ONLY	
Sale Number (XX - XXX - XX - XX)	
Forest Management Unit:	

TIMBER SALE VERIFICATION OF WORKER'S DISABILITY COMPENSATION ACT COMPLIANCE

As required by Act 317, P.A. 1969 (Worker's Compensation) and
Part 5 of Act 451 of 1994, as amended.

VERIFICATION OF WORKER'S DISABILITY COMPENSATION ACT COMPLIANCE

- This verification must be completed and submitted within 21 days of contract award and prior to the issuance of the timber sale contract.
- In addition, if boxes 2B or 2C are checked, then Notice of Exclusion or Certificate of Insurance must be submitted within twenty-one (21) days of the contract award and prior to the issuance of the timber sale contract.
- All information must be typed or printed except for written signatures.

Please Check Appropriate Categories:

- My business is organized as (you **must** check one of the boxes below):
 - Sole Proprietorship (individual)
 - Partnership
 - Corporation
- You **must** check one of the boxes below:
 - I certify my business is a sole proprietorship and it has no employees but the sole proprietor. I am not subject to the Worker's Compensation Laws.
 - I certify my business has satisfied its obligation to the Worker's Compensation Act through the use of an approved Notice of Exclusion (BWC-337, Rev. 5/96). I will provide a copy of the Notice of Exclusion within 21 days of the contract award. (For questions or a copy of the BWC-337, please call the Worker's Compensation Bureau at 517-322-1195).
 - I certify my business has a Worker's Compensation Policy. I will provide an original Certificate of Insurance within twenty-one (21) days of the contract award.
- If you have checked item 2(A) or 2(B), you **must** indicate the number of **both** full-time and part-time employees, other than yourself, including family members and active partners (if none, you must enter "0").

_____ Full-time Employees

_____ Part-time Employees

Name of Business		Federal ID (or) Social Security No.	
Address		Telephone ()	
City	State	ZIP	

I hereby certify that the above information is true and correct. I agree to notify the Michigan DNR of any changes that occur in factors affecting my coverage during any of my present and future operations.

Signature of Owner or Authorized Representative

Title

Date

Please complete the "SEALED BID" information on the next page

Tilt-A-Whirl Red Pine (72-030-18)
T25N, R04W, SEC. 27; T25N, R04W, SEC. 28; Crawford COUNTY

In response to the notice of sale to be held 9:00 a.m. (local time) on July 9, 2019, I am hereby submitting my sealed bid (firm offer) for the following forest products to be cut. Bids for individual species must be at or above the advertised price. All non-responsive bid forms may be rejected.

<u>PRODUCTS & SPECIES</u>	<u>ESTIMATED VOLUME*</u>	<u>ADVERTISED PRICE</u>	<u>BID PRICE/UNIT</u>
Sawtimber			
Red Pine	513.00 MBF	\$ 109.00/MBF	\$ _____
Pulpwood			
Balsam Fir	6.00 Cords	\$ 21.15/Cord	\$ _____
Mixed Oak	50.00 Cords	\$ 24.10/Cord	\$ _____
Paper Birch	4.00 Cords	\$ 16.85/Cord	\$ _____
Red Maple	82.00 Cords	\$ 36.05/Cord	\$ _____
Red Pine	526.00 Cords	\$ 39.75/Cord	\$ _____
White Pine	24.00 Cords	\$ 29.20/Cord	\$ _____

*The volumes are statistically estimated within plus (+) or minus (-) 11.66 percent. These estimated volumes are final and not subject to adjustment. Prospective bidders are urged to examine this timber and to make their own estimates of quantity and quality.

I understand that any or all bids may be rejected. All bids must be signed and all bid items must be bid or the bid form may be rejected. I also understand that consideration and awarding a contract will be based upon my past performance and ability to complete the contract based upon equipment and staffing subject to my control.

FEDERAL ID: _____ or SOCIAL SECURITY NUMBER: _____

Company or individual bidding: _____

Company representative's name: _____

Address: _____

City: _____ State: _____ Zip: _____

IF AVAILABLE, PLEASE PLACE THE PERSONALIZED LABEL FROM YOUR PROSPECTUS IN THE ABOVE BOX.

Individual or company representative's signature: _____ Date: _____

Phone number : _____ Email (optional): _____

THE WINNING BIDDER MUST COMPLETE THE VERIFICATION OF WORKER'S DISABILITY COMPENSATION ACT COMPLIANCE (ON REVERSE SIDE IF DOUBLE SIDED) WITHIN 21 DAYS OF SALE AWARD DATE



FOR DEPARTMENT USE ONLY	
Sale Number (XX - XXX - XX - XX)	
Forest Management Unit:	

TIMBER SALE VERIFICATION OF WORKER'S DISABILITY COMPENSATION ACT COMPLIANCE

As required by Act 317, P.A. 1969 (Worker's Compensation) and
Part 5 of Act 451 of 1994, as amended.

VERIFICATION OF WORKER'S DISABILITY COMPENSATION ACT COMPLIANCE

- This verification must be completed and submitted within 21 days of contract award and prior to the issuance of the timber sale contract.
- In addition, if boxes 2B or 2C are checked, then Notice of Exclusion or Certificate of Insurance must be submitted within twenty-one (21) days of the contract award and prior to the issuance of the timber sale contract.
- All information must be typed or printed except for written signatures.

Please Check Appropriate Categories:

1. My business is organized as (you **must** check one of the boxes below):
 - A. Sole Proprietorship (individual)
 - B. Partnership
 - C. Corporation
2. You **must** check one of the boxes below:
 - A. I certify my business is a sole proprietorship and it has no employees but the sole proprietor. I am not subject to the Worker's Compensation Laws.
 - B. I certify my business has satisfied its obligation to the Worker's Compensation Act through the use of an approved Notice of Exclusion (BWC-337, Rev. 5/96). I will provide a copy of the Notice of Exclusion within 21 days of the contract award. (For questions or a copy of the BWC-337, please call the Worker's Compensation Bureau at 517-322-1195).
 - C. I certify my business has a Worker's Compensation Policy. I will provide an original Certificate of Insurance within twenty-one (21) days of the contract award.
3. If you have checked item 2(A) or 2(B), you **must** indicate the number of **both** full-time and part-time employees, other than yourself, including family members and active partners (if none, you must enter "0").

_____ Full-time Employees

_____ Part-time Employees

Name of Business		Federal ID (or) Social Security No.	
Address		Telephone ()	
City	State	ZIP	

I hereby certify that the above information is true and correct. I agree to notify the Michigan DNR of any changes that occur in factors affecting my coverage during any of my present and future operations.

Signature of Owner or Authorized Representative

Title

Date

Please complete the "SEALED BID" information on the next page

Year End Red Pine (72-040-18)
T25N, R04W, SEC. 23; Crawford COUNTY

In response to the notice of sale to be held 9:00 a.m. (local time) on July 9, 2019, I am hereby submitting my sealed bid (firm offer) for the following forest products to be cut. Bids for individual species must be at or above the advertised price. All non-responsive bid forms may be rejected.

<u>PRODUCTS & SPECIES</u>	<u>ESTIMATED VOLUME*</u>	<u>ADVERTISED PRICE</u>	<u>BID PRICE/UNIT</u>
Sawtimber			
Red Pine	252.40 MBF	\$ 109.00/MBF	\$ _____
White Pine	26.00 MBF	\$ 63.00/MBF	\$ _____
Pulpwood			
Jack Pine	4.00 Cords	\$ 20.55/Cord	\$ _____
Northern Pin Oak	117.00 Cords	\$ 24.10/Cord	\$ _____
Quaking Aspen	27.00 Cords	\$ 24.95/Cord	\$ _____
Red Maple	78.00 Cords	\$ 36.05/Cord	\$ _____
Red Pine	405.00 Cords	\$ 39.75/Cord	\$ _____
White Pine	68.00 Cords	\$ 29.20/Cord	\$ _____

*The volumes are statistically estimated within plus (+) or minus (-) 16.96 percent. These estimated volumes are final and not subject to adjustment. Prospective bidders are urged to examine this timber and to make their own estimates of quantity and quality.

I understand that any or all bids may be rejected. All bids must be signed and all bid items must be bid or the bid form may be rejected. I also understand that consideration and awarding a contract will be based upon my past performance and ability to complete the contract based upon equipment and staffing subject to my control.

FEDERAL ID: _____ or SOCIAL SECURITY NUMBER: _____

Company or individual bidding: _____

Company representative's name: _____

Address: _____

City: _____ State: _____ Zip: _____

IF AVAILABLE, PLEASE PLACE THE PERSONALIZED LABEL FROM YOUR PROSPECTUS IN THE ABOVE BOX.

Individual or company representative's signature: _____ Date: _____

Phone number : _____ Email (optional): _____

THE WINNING BIDDER MUST COMPLETE THE VERIFICATION OF WORKER'S DISABILITY COMPENSATION ACT COMPLIANCE (ON REVERSE SIDE IF DOUBLE SIDED) WITHIN 21 DAYS OF SALE AWARD DATE



FOR DEPARTMENT USE ONLY	
Sale Number (XX - XXX - XX - XX)	
Forest Management Unit:	

TIMBER SALE VERIFICATION OF WORKER'S DISABILITY COMPENSATION ACT COMPLIANCE

As required by Act 317, P.A. 1969 (Worker's Compensation) and
Part 5 of Act 451 of 1994, as amended.

VERIFICATION OF WORKER'S DISABILITY COMPENSATION ACT COMPLIANCE

- This verification must be completed and submitted within 21 days of contract award and prior to the issuance of the timber sale contract.
- In addition, if boxes 2B or 2C are checked, then Notice of Exclusion or Certificate of Insurance must be submitted within twenty-one (21) days of the contract award and prior to the issuance of the timber sale contract.
- All information must be typed or printed except for written signatures.

Please Check Appropriate Categories:

1. My business is organized as (you **must** check one of the boxes below):
 - A. Sole Proprietorship (individual)
 - B. Partnership
 - C. Corporation
2. You **must** check one of the boxes below:
 - A. I certify my business is a sole proprietorship and it has no employees but the sole proprietor. I am not subject to the Worker's Compensation Laws.
 - B. I certify my business has satisfied its obligation to the Worker's Compensation Act through the use of an approved Notice of Exclusion (BWC-337, Rev. 5/96). I will provide a copy of the Notice of Exclusion within 21 days of the contract award. (For questions or a copy of the BWC-337, please call the Worker's Compensation Bureau at 517-322-1195).
 - C. I certify my business has a Worker's Compensation Policy. I will provide an original Certificate of Insurance within twenty-one (21) days of the contract award.
3. If you have checked item 2(A) or 2(B), you **must** indicate the number of **both** full-time and part-time employees, other than yourself, including family members and active partners (if none, you must enter "0").

_____ Full-time Employees

_____ Part-time Employees

Name of Business		Federal ID (or) Social Security No.	
Address		Telephone ()	
City	State	ZIP	

I hereby certify that the above information is true and correct. I agree to notify the Michigan DNR of any changes that occur in factors affecting my coverage during any of my present and future operations.

Signature of Owner or Authorized Representative

Title

Date

Please complete the "SEALED BID" information on the next page