



**DEPARTMENT OF NATURAL RESOURCES  
STATE OF MICHIGAN**

**TIMBER SALE PROSPECTUS #6464**

SCHEDULED SALE DATE AND TIME: 3:00 p.m. (local time) on July 12, 2019.

LOCATION: INDIAN RIVER FIELD OFFICE, 6984 WILSON, INDIAN RIVER, MI 49749.

PROSPECTUS NOTE: The bidder is advised to inspect the sale area and review the location, estimated volumes, operating costs and contract terms of proposed sales. Please be aware that some landowners may request 60 days or more notice for access across their land.

Notice is hereby given that bids will be received by the Unit Manager, GAYLORD MANAGEMENT UNIT, for certain timber on the following described lands:

Dingman Aspen (52-124-18) / T38N, R03W, SEC. 5 , NESW,S1/2SW,NWSE.

T38N, R03W, SEC. 6 , S1/2SE.

T38N, R03W, SEC. 7 , E1/2NW,NE,N1/2SE.

T38N, R03W, SEC. 8 , N1/2NW,NWSW,S1/2SW.

Cheboygan County, Advertised Price \$106,167.20, 166.8 Acres, Aspen, Hardwood.

SALE NOTE: There are two access roads to this sale off Potter Road. The westernmost access must be used for equipment and trucking. The east access can only be used for passenger vehicles. Parts of this sale are almost two miles off Potter Road. The entire road will most likely need to be graded and fill may be needed. A mile or more of the road will need to be brushed to widen it to accommodate truck traffic.

Rocky Road Aspen (52-129-18) / T38N, R02W, SEC. 18, SENW,SWNE,NESW,S1/2SW,SE.

T38N, R02W, SEC. 19, NENE.

Cheboygan County, Advertised Price \$113,791.00, 196.9 Acres, Aspen, Spruce/Fir/Tamarack.

SALE NOTE: Access to sale will be through private property off of Old Mackinaw Road and has been obtained by the DNR. There may be additional access through private property from the southeast.

Access may be through private land.

Sierra Hardwood (52-130-18) / T33N, R04W, SEC. 1 , W1/2NW.

T33N, R04W, SEC. 2 , NW,E1/2NE.

Charlevoix County, Advertised Price \$65,329.50, 121.0 Acres, Hardwood, Sugar Maple.

SALE NOTE: Designated cycle and snowmobile trails are present within and adjacent to the timber sale area. Seasonal snowmobile trail restrictions are in place. Both trails must be protected from damage during harvest operations. There is an adjacent timber sale to the south of Payment Unit 1.

A recreation site such as a trail, pathway, or campground is within the sale area or the vicinity. Certain restrictions/specifications may be applicable including time restrictions.

## BID INSTRUCTIONS (VER. 07/02/2018):

### 1. Scheduled Bid Location, Date, and Time (2/11)

Bids must be received by the Unit Manager, INDIAN RIVER OFFICE, 6984 Wilson, Indian River, MI 49749, no later than 3:00 p.m. (local time) on July 12, 2019. For further information concerning this sale, contact Lucas Merrick at 989-732-3541 extension 5440.

### 2. Bidder's Qualifications (5/16)

Purchaser shall obtain workers compensation insurance to cover claims under Michigan's Worker's Disability Compensation Act of 1969 or similar employee benefit act of any other state applicable to an employee. If all or part of a timber sale was prepared by a private contractor, the contractor and that contractor's company are not permitted to bid on the timber sale contract. Bids will not be accepted from individuals or companies appearing on the DNR/FRD No-Bid List. This list contains the names of purchasers who previously failed to execute a contract within 21-days or who have a history of poor performance.

### 3. Preparation of Sealed Bids (5/16)

Bid Forms may be completed online thru Michigan DNR Timber Sale Online Bidding (OLB) at [www.michigan.gov/timberbidding](http://www.michigan.gov/timberbidding) or by completing the hardcopy Bid Form found in the Timber Sale Prospectus. Hardcopy Bid Forms shall be manually signed in ink. Registration in OLB is considered your 'signature' for all bids submitted thru that system. Bid prices must be entered for each species and product in the Bid Price column for all material subject to bidding and all fill-in blanks must be completed. If erasures or other changes appear on the hardcopy Bid Form, each erasure or change must be initialed by the person signing the bid.

### 4. Submission of Sealed Bids (5/16)

Bid forms may be obtained from the Unit Manager or thru OLB. Bids may be submitted hardcopy or thru OLB. All hardcopy bids must be submitted on the bid form and in an envelope clearly identified as described in this section. NOTE: Only one bid form per bid envelope. Sealed bids must be submitted to the Unit office designated in the prospectus and must be submitted at or prior to the time established in the prospectus. The envelope should show on the outside (a) the sale name or number and (b) the date and time of bid opening, as shown in the prospectus. Bids received after the time specified in the sale prospectus are late bids and will be rejected.

It is possible for a bidder to submit multiple bids on a single sale. For example, a bid may be submitted hardcopy and a bid may be submitted thru OLB. Or, two bidders from the same company could both submit bids on the same sale. If this were to happen, the State would accept all bids received and award the contract accordingly. All bidding and contractual requirements would apply to all bids received.

### 5. Public Opening of Sealed Bids (7/16)

If conditions permit, the sealed bids will be publicly opened and posted at the time and place set in the prospectus.

If a bidder, present at a bid opening, has submitted bids on more than one sale, that bidder may withdraw their unopened bid envelopes or announce the withdrawal of their online bid after being declared the successful bidder on one sale.

### 6. Award of Contract (1/11)

Award of the contract will be made to the Bidder whose bid, conforming to the prospectus, is most advantageous to the State of Michigan on the basis of total value at rates bid for the estimated quantities. The State reserves the right to reject any bid or waive any minor irregularity in bids received. A written award mailed (or otherwise furnished) to the successful Bidder shall be deemed to result in a binding contract without further action by either party.

### 7. Down Payment (1/11)

The Bidder to whom award is made must make a down payment within 21 days of the sale award. The amount of the down payment will be calculated as shown in the Bond and Payment Schedule of this prospectus. Only cash may be used to meet this requirement.

### 8. Performance Security (1/11)

As guarantee of faithful performance, a cash bond, certificate of deposit, surety bond or irrevocable letter of credit (LOC) is required within 21 days of the sale award. The amount of the performance security is shown in the Bond and

Payment Schedule of this prospectus. If an LOC or surety is used, the coverage must extend for at least 6 months beyond the contract expiration.

#### 9. Timber Sale Contract (7/18)

Additional conditions and requirements common to all timber sales are listed on the timber sale contract (R4031) and are available on line at [www.michigan.gov/timber](http://www.michigan.gov/timber). Contact the Unit Manager for additional information or a sample contract. Within 21 days of the date of the award letter, the bidder must sign the contract and provide the required down payment, performance security, and verification of worker's disability compensation. The down payment and performance security shall be in accordance with the provisions of the timber sale contract, in the sums stated in this prospectus. If these actions are not taken, then the Bidder, the Bidder's corporation, and the corporation's principals may not be permitted to bid on State timber sales for a period of 3 months after the first offense, 6 months after the second offense, and 1 year after the third offense. An offense will only be counted against the Bidder for 5 years. In addition, the Bidder certifies that if awarded this contract, the Bidder will complete the timber sale contract in accordance with its terms and any modifications thereof including requirements to purchase, cut, and remove the included timber by the expiration date.

Payment Unit values in the State Forest Timber Sale Contract are calculated based on the advertised value of the Payment Unit as a percentage of the total advertised value of the contract. The advertised value of each Payment Unit is given in the Description of Timber by Payment Unit table on the Timber Sale Information page. For example, if the value of Payment Unit 1 is advertised as \$1,500 and the total Timber Sale value is advertised as \$10,000, the contract price for Payment Unit 1 will be 15% of the total bid price ( $\$1,500/\$10,000 * 100$ ).

#### 10. Disclaimer of Estimates and Bidder's Warranty of Inspection (7/16)

Before submitting this bid, the Bidder is advised and cautioned to inspect the sale area, review the requirements of the sale contract, and take other steps as may be reasonably necessary to ascertain the location, estimated volumes, construction estimates, and operating costs of the proposed sale. Failure to do so will not relieve the Bidder from responsibility for completing the contract.

The Bidder warrants that this bid is submitted solely on the basis of the Bidder's examination and inspection of the quality and quantity of the timber offered for sale and the Bidder's opinion of the value thereof and the costs of recovery. No reliance should be placed on the State of Michigan's estimates of timber quality, quantity or costs of recovery. Bidder further acknowledges that the State of Michigan: (i) expressly disclaims any warranty of fitness of timber for any purpose; (ii) offers this timber as is without any warranty of quality (merchantability) or quantity and (iii) expressly disclaims any warranty as to the quantity or quality of timber sold.

#### 11. Certification and Chain-of-Custody (10/14)

Unless otherwise indicated in the contract under section 7 – Other Conditions of the Sale Specific Conditions & Requirements, the area encompassed by this timber sale is certified to the standards of the Forest Stewardship Council (FSC) - Certificate #SCS-FM/COC-00090N and the Sustainable Forestry Initiative (SFI) - Certificate #NSF-SFIS-5Y031-SF5. Forest products from this sale may be delivered to the mill as "FSC 100% and / or SFI certified" as long as the contractor hauling the forest products is chain-of-custody (COC) certified or covered under a COC certificate from the destination mill. The purchaser is responsible for maintaining COC after leaving the sale area.

#### 12. Good Neighbor Authority (GNA) Requirements (7/16)

If the name of this timber sales contains the acronym GNA, it is authorized by the Good Neighbor Authority (GNA) and covered by various agreements between the U.S. Forest Service and the State. The timber sale occurs on federal land and the following conditions apply:

GNA contracts on US Forest Service land will not be awarded to purchasers on the Federal list of excluded parties. The System for Award Management (SAM) will be checked for active excluded parties prior to award of contract. In addition, the Bidder to whom award is made must complete an Assurance Regarding Felony Conviction or Tax Delinquent Status for Corporate Applicants (AD-3031).

#### 13. Good Neighbor Authority (GNA) Requirements, con't (9/16)

Bidder certifies, by signing this bid form, that to the best of Bidder's knowledge that the following representations are accurate and complete.

- a. That the Bidder and its principals are not presently debarred, suspended, proposed for debarment, declared ineligible, or voluntary excluded from timber sales (covered transactions) by any Federal department or agency.
- b. That the Bidder and its principals have not within a 3-year period preceding this bid been convicted of or had a civil judgment rendered against them for commission of fraud or a criminal offense in connection with obtaining, attempting to obtain, or performing a public (Federal, State, or local) transaction or contract under a public transaction; violation of Federal or State antitrust statutes or commission of embezzlement, theft, forgery, bribery, falsification or destruction of records, making false statements, or receiving stolen property.
- c. That the Bidder and its principals are not presently indicted for or otherwise criminally or civilly charged by a governmental entity (Federal, State, or local) with commission of any of the offenses enumerated in paragraph b of this certification.
- d. That the Bidder and its principals have not within a 3-year period preceding this bid had one or more public transactions (Federal, State, or local) terminated for breach or default of a timber or forest product contract.

Bidders that cannot certify this requirement, in whole or in part, shall submit an explanation with their bid.

DAN EICHINGER  
Director

**TIMBER SALE INFORMATION**

Dingman Aspen (52-124-18)

T38N, R03W, SEC. 5; T38N, R03W, SEC. 6; T38N, R03W, SEC. 7; T38N, R03W, SEC. 8.  
Cheboygan County (Advertised Price \$106,167.20)

SALE NOTE: There are two access roads to this sale off Potter Road. The westernmost access must be used for equipment and trucking. The east access can only be used for passenger vehicles. Parts of this sale are almost two miles off Potter Road. The entire road will most likely need to be graded and fill may be needed. A mile or more of the road will need to be brushed to widen it to accommodate truck traffic.

A timber sale contract for this lump sum, sealed bid timber sale will be awarded to the responsible bidder offering the highest sealed bid price. Bids must be at or above the following advertised price for each species:

<u>PRODUCTS &amp; SPECIES</u>	<u>ESTIMATED UNITS*</u>	<u>ADVERTISED PRICE</u>
<b>Sawtimber</b>		
Mixed Aspen	132.00 MBF	\$ 60.00 / MBF
Paper Birch	1.00 MBF	\$ 47.00 / MBF
Red Maple	5.50 MBF	\$ 109.00 / MBF
Red Oak	39.00 MBF	\$ 241.00 / MBF
Red Pine	10.60 MBF	\$ 117.00 / MBF
<b>Pulpwood</b>		
Balsam Fir	121.00 Cords	\$ 34.80 / Cord
Mixed Aspen	3,016.00 Cords	\$ 21.00 / Cord
Mixed Hardwood	440.00 Cords	\$ 28.05 / Cord
Red Oak	210.00 Cords	\$ 22.15 / Cord
Red Pine	34.00 Cords	\$ 50.55 / Cord
White Pine	25.00 Cords	\$ 28.10 / Cord

\* The total volume is statistically estimated within plus (+) or minus (-) 13.54 percent. The estimated units are final and not subject to adjustment. Prospective bidders are urged to examine this timber and to make their own estimates of quantity and quality.

**BOND AND PAYMENT SCHEDULE:**

1. A bond in the amount of \$5,308.00 to insure faithful performance of the conditions of the contract will be deposited by the successful bidder within 21 days of the sale award.
2. Cutting in any sale or unit without the required advance payment would be considered a trespass.
3. Total payment must be paid in advance or according to the following schedule:
  - (a) Ten percent (10%) of the sale value must be paid within 21 days of the sale award.
  - (b) The 10% down payment will be credited towards the first unit cut.
  - (c) Payment for each of the following units must be made before cutting begins in that unit:

<u>PAYMENT UNIT NUMBER</u>	<u>PERCENT OF TOTAL SALE VALUE</u>
01	11.7%
02	20.3%
03	24.3%
04	5.9%
05	7.0%
06	30.8%

4. If no cutting takes place, the 10% down payment will not be refunded.
5. Operations on the contract issued will terminate on 06/30/2022.

**Description of Timber by Payment Unit (PU)**

PU	MARKET GROUP	PRODUCT	QUANTITY	UNIT	ACRES	ADVERTISE PRICE	
1	Mixed Aspen	Sawtimber	23.3	MBF	19.5	\$12,437.80	
	<i>B. T. Aspen</i>		21.8	<i>MBF</i>			
	<i>Quaking Aspen</i>		1.5	<i>MBF</i>			
	Paper Birch		1.0	MBF			
	Red Maple		3.5	MBF			
	Balsam Fir		Pulpwood	16.0			Cords
	Mixed Aspen			412.0			Cords
	<i>B. T. Aspen</i>			380.0			<i>Cords</i>
	<i>Quaking Aspen</i>			32.0			<i>Cords</i>
	Mixed Hardwood			50.0			Cords
	<i>Paper Birch</i>			16.0			<i>Cords</i>
	<i>Red Maple</i>			34.0			<i>Cords</i>
	2		Mixed Aspen	Sawtimber			5.4
<i>B. T. Aspen</i>		5.4	<i>MBF</i>				
Balsam Fir		Pulpwood	42.0		Cords		
Mixed Aspen			819.0		Cords		
<i>B. T. Aspen</i>			723.0		<i>Cords</i>		
<i>Quaking Aspen</i>			96.0		<i>Cords</i>		
Mixed Hardwood			91.0		Cords		
<i>Beech</i>			2.0		<i>Cords</i>		
<i>Paper Birch</i>			23.0		<i>Cords</i>		
<i>Red Maple</i>			47.0		<i>Cords</i>		
<i>Sugar Maple</i>			19.0		<i>Cords</i>		
3	Mixed Aspen	Sawtimber	6.5	MBF	49.6	\$25,816.20	
	<i>B. T. Aspen</i>		6.5	<i>MBF</i>			
	Balsam Fir		Pulpwood	51.0			Cords
	Mixed Aspen			982.0			Cords
	<i>B. T. Aspen</i>			866.0			<i>Cords</i>
	<i>Quaking Aspen</i>			116.0			<i>Cords</i>
	Mixed Hardwood			108.0			Cords
	<i>Beech</i>			3.0			<i>Cords</i>
	<i>Paper Birch</i>			27.0			<i>Cords</i>
	<i>Red Maple</i>			55.0			<i>Cords</i>
	<i>Sugar Maple</i>			23.0			<i>Cords</i>
4	Mixed Aspen	Sawtimber	1.6	MBF	12.0	\$6,276.00	
	<i>B. T. Aspen</i>		1.6	<i>MBF</i>			
	Balsam Fir		Pulpwood	12.0			Cords
	Mixed Aspen			237.0			Cords
	<i>B. T. Aspen</i>			209.0			<i>Cords</i>
	<i>Quaking Aspen</i>			28.0			<i>Cords</i>
	Mixed Hardwood			28.0			Cords
	<i>Beech</i>			1.0			<i>Cords</i>
	<i>Paper Birch</i>			7.0			<i>Cords</i>
	<i>Red Maple</i>			14.0			<i>Cords</i>
	<i>Sugar Maple</i>			6.0			<i>Cords</i>
5	Mixed Aspen	Sawtimber	1.4	MBF	6.0	\$7,431.50	
	<i>B. T. Aspen</i>		1.4	<i>MBF</i>			
	Red Maple		2.0	MBF			
	Red Oak		14.3	MBF			
	Mixed Aspen		Pulpwood	12.0			Cords
	<i>B. T. Aspen</i>			12.0			<i>Cords</i>
	Mixed Hardwood			86.0			Cords
	<i>Beech</i>			15.0			<i>Cords</i>
	<i>Red Maple</i>			34.0			<i>Cords</i>
	<i>Sugar Maple</i>			37.0			<i>Cords</i>
	Red Oak			46.0			Cords

**Description of Timber by Payment Unit (PU), con't**

PU	MARKET GROUP	PRODUCT	QUANTITY	UNIT	ACRES	ADVERTISE PRICE
6	Mixed Aspen	Sawtimber	93.8	MBF	38.3	\$32,668.55
	<i>B. T. Aspen</i>		93.8	<i>MBF</i>		
	Red Oak		24.7	MBF		
	Red Pine		10.6	MBF		
	Mixed Aspen	Pulpwood	554.0	Cords		
	<i>B. T. Aspen</i>		554.0	<i>Cords</i>		
	Mixed Hardwood		77.0	Cords		
	<i>Beech</i>		7.0	<i>Cords</i>		
	<i>Paper Birch</i>		14.0	<i>Cords</i>		
	<i>Red Maple</i>		49.0	<i>Cords</i>		
	<i>Sugar Maple</i>		7.0	<i>Cords</i>		
	Red Oak		164.0	Cords		
	Red Pine	34.0	Cords			
	White Pine	25.0	Cords			
TOTAL:			188.1	MBF		
TOTAL:			3,846.0	Cords		

# Sale Specific Conditions & Requirements

**Sale Name: Dingman Aspen**

**Sale Number: 52-124-18 Seq#: 2**

## 1 - Sale Area

### 1.2 - Boundaries

#### 1.2.1 - Painted boundaries (1/14)

The sale boundary and Payment Unit boundaries are marked and identified by blue, red and yellow paint. Exterior sale boundary lines against private are marked with blue paint. Exterior sale boundary lines against state are marked with red paint. Interior Payment Unit boundaries are marked with yellow paint. The painted boundary line trees are not Included Timber and are to be protected unless marked with orange paint. Yellow painted trees designating an interior Payment Unit boundary are only to be cut when all surrounding Payment Units have been paid.

## 2 - Timber Specifications

### 2.1 - Included Timber

#### 2.1.1 - Clearcut unit(s) with unmerchantable trees (6/14)

Within Payment Unit(s) 1 - 6, cut all trees that are two (2) inches or more at DBH, with the following exceptions:

- Within Payment Unit 1, do not cut red pine or hemlock.
- Within Payment Units 2, 3 and 4, do not cut oak, hemlock and green painted legacy trees.
- Within Payment Units 5 and 6, do not cut hemlock or green painted trees.

## 3 - Payments

### 3.3 - Pre-measured Sales

#### 3.3.4 - Dividing payment units (7/14)

Payment Unit(s) 1, 2, 3 and 6 may be divided at the request of the Purchaser and upon approval of the Unit Manager.

Dividing Payment Units is a contract modification which requires a Timber Sale Contract Supplement. There will be only one division per Payment Unit.

### 3.4 - Damaged Timber

#### 3.4.1 - Damaged timber (6/14)

General Condition and Requirement 3.4 Damaged Timber, defines liquidated damages for undesignated live merchantable trees which are cut or injured.

No damage is acceptable to merchantable trees. Within the sale area, if more than 5% of trees (> 4.5" DBH) within a specified area of the sale are damaged, liquidated damages will be assessed for all trees damaged. Rates will be in accordance with General Condition and Requirement 3.4 Damaged Timber.

## 4 - Transportation

### 4.1 - Construction

#### 4.1.6 - Road construction (1/09)

Construction of new roads or improvements of existing roads shall be done in such a way as to minimize the environmental and visual impacts. Merchantable trees shall be cut and utilized unless otherwise directed. Non-merchantable trees shall be severed and laid flat on the ground. Slash shall be scattered, and not left in windrows and kept a minimum of 10 feet back from the road edge. Stumps shall be set upright, not left on edge, and be moved at least 10 feet away from the road edge. Disturbed soil shall be feathered into the woods and not left in berms or windrows.

#### 4.1.7 - Road closure (10/11)

All new roads built into the sale must be blocked to vehicle traffic upon completion of the sale. In general, this will require constructing a four (4') foot high berm of stumps and logs covered with earth. These roads must be rendered impassable to cars and trucks. Contact the sale administrator for specific details of design and placement.

## 5 - Operations



## 5.1 - Notification

### 5.1.3 - Well heads and natural gas pipelines (11/15)

The Purchaser is responsible for contacting the gas or pipeline company 30 days prior to operating equipment in the vicinity of well heads or natural gas pipelines. Written permission is required before harvest operations begin and must be submitted to the Unit Manager.

## 5.2 - Conduct of Operations

### 5.2.2 - Hazard Trees/Snags

#### 5.2.2.1 - Den trees (10/16)

Obvious hollow and/or den trees shall be protected and left standing unless they are a safety hazard.

### 5.2.3 - Operating Restrictions

#### 5.2.3.5 - Oak wilt restriction (1/18)

Within Payment Unit(s) 1 and 2, unless changed by written agreement, cutting, skidding, hauling within the sale and brushing of access roads to the sale are not permitted during the period of April 15 to July 15. Operations may be allowed if specific steps are taken to prevent damaging uncut oak during the high risk period. Those steps may include completing all road brushing before April 15th and clearing a tree-length buffer along uncut oak cover before April 15th. This is necessary to reduce the spread of oak wilt. For more information, contact the Unit Manager or his/her representative.

### 5.2.22 - Operating Caution

#### 5.2.22.1 - Operating caution (6/11)

It is recommended, but not required, that within Payment Unit(s) 1 - 6, cutting, skidding, and hauling occur during dry summer or frozen winter conditions. The reason for the recommendation is because of seasonally wet soils in parts of the sale.

### 5.2.29 - Shrub protection (9/07)

Do not cut or damage hawthorn, witch-hazel, dogwood or junberry. These woody-shrub plants are highly beneficial to various wildlife species.

## 5.4 - Soil Protection

### 5.4.1 - Rutting restriction, general (7/16)

Operations are to cease immediately if equipment and weather conditions result in rutting of roads and/or skid trails which is 12 inches or greater in depth and 50 feet in length. The Unit Manager or his/her representative may restrict hauling and/or skidding if ruts exceed the specified depth. With the Unit Manager or his/her representative's approval, the Purchaser may return to the area when the risk of rutting has decreased.

## 5.8 - Protection of Endangered Species

### 5.8.5 - Protection of raptor nests (3/13)

All trees with raptor nests will be protected if found during harvesting operations. Notification will be made to the Unit Manager or his/her representative who will notify the Wildlife Biologist so an on-site evaluation and recommendation can be made, if necessary.



# TIMBER SALE MAP

This information provided by authority of Part 525, 1994 PA 451, as amended.

Forest Management Unit Gaylord FMU/Indian River FO	County Cheboygan	Mapped By Harig	Date 9/25/2018	Page 1	of 1
Township 38N	Range 03W	Section(s) and Subdivision(s) Sec. 5,6,7,8	Scale 1:15,840		

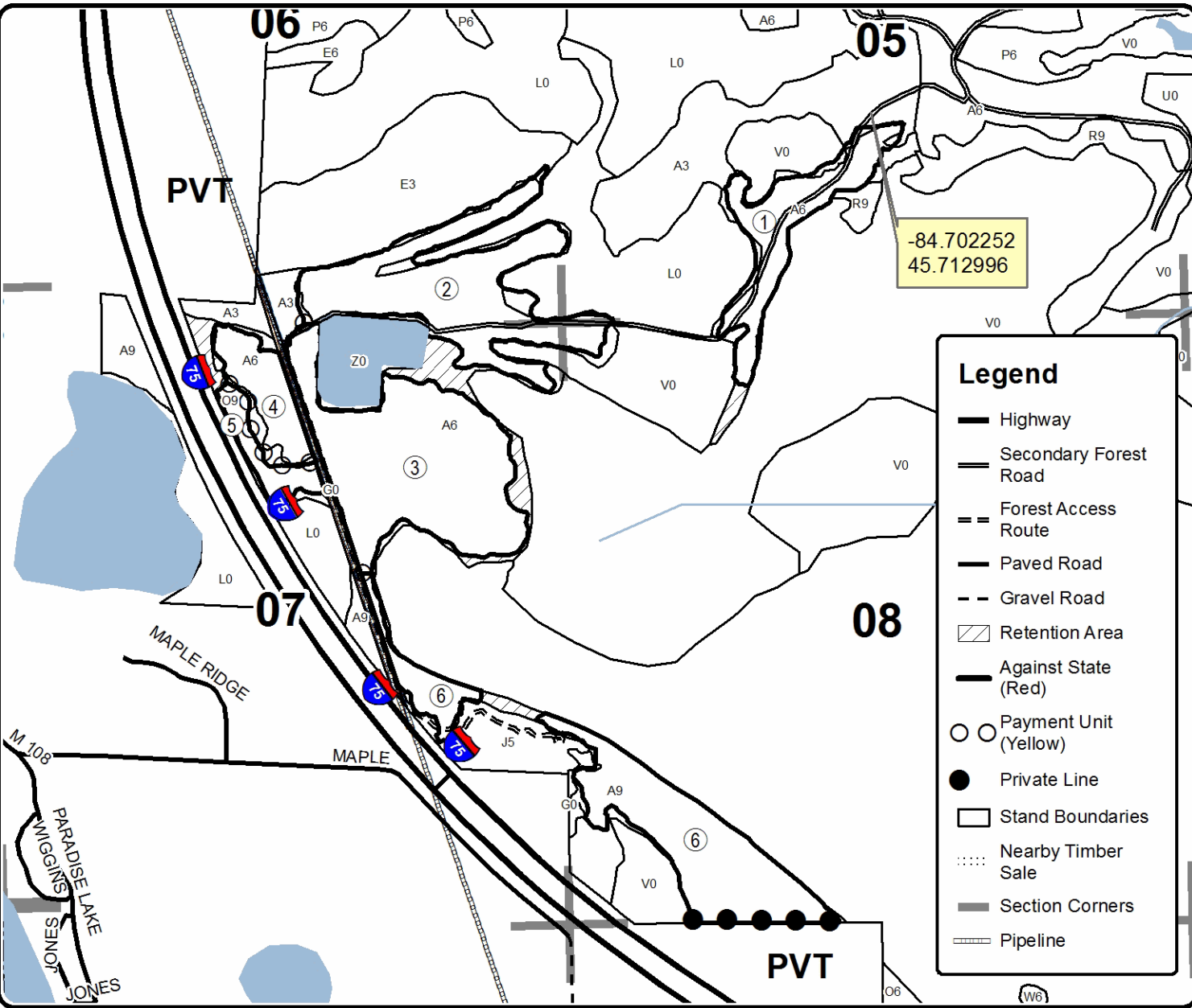
Cover Type				Density	
A = Aspen	H = Hemlock	N = Marsh	U = Upland Brush	0 = Non Stocked	5 = Pole Timber Medium
B = Paper Birch	J = Jack Pine	O = Oak	UM = Upland Mixed	1 = Seedling Sapling Poor	6 = Pole Timber Well
C = Cedar	L = Lowland Brush	P = Lowland Poplar	V = Bog or Marsh	2 = Seedling Sapling Medium	7 = Saw Timber Poor
D = Treed Bog	LM = Lowland Mixed	Q = Mixed Swamp Conifer	W = White Pine	3 = Seedling Sapling Well	8 = Saw Timber Medium
E = Swamp Hdwoods	M = Mpl, Bch, Brch	R = Red Pine	X = Non Stocked	4 = Pole Timber Poor	9 = Saw Timber Well
F = Spruce Fir	MC = Mixed Conifer	S = Black Spruce	Z = Water		
G = Grass	MD = Mixed Deciduous	T = Tamarack			

PU	Acres	PU	Acres
1	19.5	4	12.0
2	41.4	5	6.0
3	49.6	6	38.3

## Dingman Aspen

### Compartment 137

166.8 Acres



## TIMBER SALE INFORMATION

Rocky Road Aspen (52-129-18)  
 T38N, R02W, SEC. 18; T38N, R02W, SEC. 19.  
 Cheboygan County (Advertised Price \$113,791.00)

SALE NOTE: Access to sale will be through private property off of Old Mackinaw Road and has been obtained by the DNR. There may be additional access through private property from the southeast.

Access may be through private land.

A timber sale contract for this lump sum, sealed bid timber sale will be awarded to the responsible bidder offering the highest sealed bid price. Bids must be at or above the following advertised price for each species:

<u>PRODUCTS &amp; SPECIES</u>	<u>ESTIMATED UNITS*</u>	<u>ADVERTISED PRICE</u>
Sawtimber		
Mixed Aspen	294.90 MBF	\$ 60.00 / MBF
Paper Birch	2.10 MBF	\$ 47.00 / MBF
Red Maple	2.10 MBF	\$ 109.00 / MBF
White Spruce	14.60 MBF	\$ 65.00 / MBF
Pulpwood		
Balsam Fir	849.00 Cords	\$ 34.80 / Cord
Basswood	109.00 Cords	\$ 7.70 / Cord
Mixed Aspen	1,854.00 Cords	\$ 21.00 / Cord
Mixed Hardwood	563.00 Cords	\$ 28.05 / Cord
Paper Birch	269.00 Cords	\$ 18.35 / Cord
White Spruce	156.00 Cords	\$ 30.60 / Cord

\* The total volume is statistically estimated within plus (+) or minus (-) 10.84 percent. The estimated units are final and not subject to adjustment. Prospective bidders are urged to examine this timber and to make their own estimates of quantity and quality.

**BOND AND PAYMENT SCHEDULE:**

1. A bond in the amount of \$11,379.00 to insure faithful performance of the conditions of the contract will be deposited by the successful bidder within 21 days of the sale award.
2. Cutting in any sale or unit without the required advance payment would be considered a trespass.
3. Total payment must be paid in advance or according to the following schedule:
  - (a) Ten percent (10%) of the sale value must be paid within 21 days of the sale award.
  - (b) The 10% down payment will be credited towards the first unit cut.
  - (c) Payment for each of the following units must be made before cutting begins in that unit:
 

PAYMENT UNIT NUMBER	PERCENT OF TOTAL SALE VALUE
01	2.5%
02	36.0%
03	49.5%
04	4.5%
05	7.5%
4. If no cutting takes place, the 10% down payment will not be refunded.
5. Operations on the contract issued will terminate on 06/30/2022.

**Description of Timber by Payment Unit (PU)**

PU	MARKET GROUP	PRODUCT	QUANTITY	UNIT	ACRES	ADVERTISE PRICE	
1	Balsam Fir	Pulpwood	24.0	Cords	7.8	\$2,832.25	
	Mixed Aspen		84.0	Cords			
	<i>Quaking Aspen</i>		84.0	<i>Cords</i>			
	Mixed Hardwood		7.0	Cords			
	<i>Red Maple</i>		6.0	<i>Cords</i>			
	<i>White Ash</i>		1.0	<i>Cords</i>			
	Paper Birch		2.0	Cords			
	2		Mixed Aspen	Sawtimber			164.9
<i>B. T. Aspen</i>		164.9	<i>MBF</i>				
Paper Birch		2.1	MBF				
Red Maple		2.1	MBF				
Balsam Fir		Pulpwood	117.0	Cords			
Basswood			79.0	Cords			
Mixed Aspen			598.0	Cords			
<i>B. T. Aspen</i>			593.0	<i>Cords</i>			
<i>Balsam Poplar</i>			5.0	<i>Cords</i>			
Mixed Hardwood			330.0	Cords			
<i>Red Maple</i>			247.0	<i>Cords</i>			
<i>Sugar Maple</i>			77.0	<i>Cords</i>			
<i>White Ash</i>			6.0	<i>Cords</i>			
Paper Birch			234.0	Cords			
3			Mixed Aspen	Sawtimber	116.2	MBF	98.8
	<i>Quaking Aspen</i>		116.2		<i>MBF</i>		
	White Spruce	5.2	MBF				
	Balsam Fir	Pulpwood	575.0	Cords			
	Basswood		30.0	Cords			
	Mixed Aspen		948.0	Cords			
	<i>Balsam Poplar</i>		33.0	<i>Cords</i>			
	<i>Quaking Aspen</i>		915.0	<i>Cords</i>			
	Mixed Hardwood		210.0	Cords			
	<i>Red Maple</i>		161.0	<i>Cords</i>			
	<i>Sugar Maple</i>		32.0	<i>Cords</i>			
	<i>White Ash</i>		17.0	<i>Cords</i>			
	Paper Birch		27.0	Cords			
	White Spruce		82.0	Cords			
4	Balsam Fir		Pulpwood	69.0	Cords	16.7	\$5,110.65
	Mixed Aspen	83.0		Cords			
	<i>Balsam Poplar</i>	2.0		<i>Cords</i>			
	<i>Quaking Aspen</i>	81.0		<i>Cords</i>			
	Mixed Hardwood	5.0		Cords			
	<i>Red Maple</i>	1.0		<i>Cords</i>			
	<i>White Ash</i>	4.0		<i>Cords</i>			
	White Spruce	27.0		Cords			
	5	Mixed Aspen		Sawtimber	13.8		
<i>Quaking Aspen</i>		13.8	<i>MBF</i>				
White Spruce		9.4	MBF				
Balsam Fir		Pulpwood	64.0	Cords			
Mixed Aspen			141.0	Cords			
<i>Balsam Poplar</i>			5.0	<i>Cords</i>			
<i>Quaking Aspen</i>			136.0	<i>Cords</i>			
Mixed Hardwood			11.0	Cords			
<i>Red Maple</i>			11.0	<i>Cords</i>			
Paper Birch			6.0	Cords			
White Spruce			47.0	Cords			
TOTAL:			313.7	MBF			

TOTAL: 3,800.0 Cords
----------------------

## Sale Specific Conditions & Requirements

**Sale Name: Rocky Road Aspen**

**Sale Number: 52-129-18 Seq#: 1**

### 1 - Sale Area

#### 1.2 - Boundaries

##### 1.2.1 - Painted boundaries (1/14)

The sale boundary and Payment Unit boundaries are marked and identified by blue, red, teal, and yellow paint. Exterior sale boundary lines against private property are marked with blue paint. Exterior sale boundary lines against state are marked with red paint. Retention areas are marked with teal paint. Interior Payment Unit boundaries are marked with yellow paint.

### 2 - Timber Specifications

#### 2.1 - Included Timber

##### 2.1.2 - Clearcut unit(s) w/o unmerchantable trees (8/11)

Within Payment Unit(s) 1 - 5, cut all trees which meet minimum piece specifications in 2.2 Utilization, with the following exceptions: Within Payment Unit 1, do not cut white spruce. In addition, within Payment Units 3 and 5, do not cut cedar.

### 3 - Payments

#### 3.3 - Pre-measured Sales

##### 3.3.4 - Dividing payment units (7/14)

Payment Unit(s) 2 and 3 may be divided at the request of the Purchaser and upon approval of the Unit Manager. Dividing Payment Units is a contract modification which requires a Timber Sale Contract Supplement.

#### 3.6 - Payment Unit Cutting Schedule

##### 3.6.1 - Order of cutting (1/09)

Payment Units shall be cut in numerical order unless the sale is paid in full, or approved by the Unit Manager or his/her representative.

### 4 - Transportation

#### 4.1 - Construction

##### 4.1.3 - Slash and earthen piles (8/04)

Piles or windrows of earth along roads and landings that have been widened or constructed shall be leveled. Slash from road maintenance or construction, including stumps, shall be dispersed throughout the sale.

##### 4.1.6 - Road construction (1/09)

Construction of new roads or improvements of existing roads shall be done in such a way as to minimize the environmental and visual impacts. Merchantable trees shall be cut and utilized unless otherwise directed. Non-merchantable trees shall be severed and laid flat on the ground. Slash shall be scattered, and not left in windrows and kept a minimum of 10 feet back from the road edge. Stumps shall be set upright, not left on edge, and be moved at least 10 feet away from the road edge. Disturbed soil shall be feathered into the woods and not left in berms or windrows.

##### 4.1.7 - Road closure (10/11)

All new roads built into the sale must be blocked to vehicle traffic upon completion of the sale. In general, this will require constructing a four (4') foot high berm of stumps and logs covered with earth. Contact the sale administrator for specific details of design and placement.

#### 4.2 - Maintenance

##### 4.2.4 - Grading (10/16)

For completion of the sale, state forest roads must be graded. In general, this will require a road grader or bull dozer to shape up the roads after forest products have been hauled off site. This includes cleaning of drainage areas, grading, crowning and filling with gravel, if necessary. The grading equipment to be used must be approved by the Unit Manager or his/her representative.

#### 4.4 - Access

##### 4.4.1 - Private property access (3/11)

Permission for access across private land has been obtained by the DNR.

### 5 - Operations

#### 5.1 - Notification

##### 5.1.1 - Pre-sale conference (10/16)

A pre-sale conference between the Purchaser and sale administrator is required prior to beginning any operations to determine landing and road locations. The Unit Manager or his/her representative must be contacted at least 3 days in advance to schedule the conference.

##### 5.1.4 - Post-sale conference (10/16)

A post-sale conference on site between the Purchaser and sale administrator is required 3 days prior to the completion of active logging operations to determine clean-up and repair of landings, road edges, and the fulfillment of other contract specifications.

#### 5.2 - Conduct of Operations

##### 5.2.1 - Slash

###### 5.2.1.13 - Dispose of slash as directed (12/05)

Slash is to be disposed of as directed by the sale administrator.

##### 5.2.2 - Hazard Trees/Snags

###### 5.2.2.1 - Den trees (10/16)

Obvious hollow and/or den trees shall be protected and left standing unless they are a safety hazard.

##### 5.2.17 - Timber Mats and Interlocking Composite Mats (3/18)

Some roads or skid trails may require extra protection such as that afforded by timber mats, interlocking composite mats, or another approved system. If available, mats may be borrowed from the DNR. A Timber Sale Contract Supplement will be used to document the Purchaser's use of the DNR's mats. Contact the sale administrator regarding availability and pick-up. Timber mats are available from various field offices. Composite mats are only available from the Grayling field office. The Purchaser is responsible for picking up and hauling the mats to and from the site. The composite mats will require DNR staff onsite for installation and removal. Contact the sale administrator to schedule at least 30 days before desired install/removal date. All mats must be cleaned prior to drop off. This may include, but is not limited to, power washing and brushing to remove mud and debris. A charge of \$400.00 per timber mat and \$2,000.00 per composite mat will be assessed for all damaged or non-returned mats. Damage for the crane/timber mats is defined as three or more broken cants. Damage for the composite mats is defined as cracked or broken mats.

##### 5.2.22 - Operating Caution

###### 5.2.22.1 - Operating caution (6/11)

It is recommended, but not required, that within Payment Unit(s) 1 and 3, cutting, skidding, and hauling occur during dry summer or frozen winter conditions. The reason for the recommendation is because of the wetter soil conditions.

##### 5.2.32 - Decking/landing restoration (9/13)

All decking and landing areas must have the surface area restored to a condition equal to or better than before. This is to ensure the proper regeneration of the stand.

#### 5.4 - Soil Protection

##### 5.4.1 - Rutting restriction, general (7/16)

Operations are to cease immediately if equipment and weather conditions result in rutting of roads and/or skid trails which is 12 inches or greater in depth and 50 feet in length. The Unit Manager or his/her representative may restrict hauling and/or skidding if ruts exceed the specified depth. With the Unit Manager or his/her representative's approval, the Purchaser may return to the area when the risk of rutting has decreased.

5.4.5 - Soil caution (11/04)

Care must be taken to minimize soil damage due to the wet soils.

5.8 - Protection of Endangered Species

5.8.5 - Protection of raptor nests (3/13)

All trees with raptor nests will be protected if found during harvesting operations. Notification will be made to the Unit Manager or his/her representative who will notify the Wildlife Biologist so an on-site evaluation and recommendation can be made, if necessary.

**7 - Other Conditions**

7.5 - Loss

7.5.1 - Deteriorating timber (7/09)

The sale area has received damage from windthrow and over-maturity. The Purchaser should harvest the wood as soon as possible. The Department of Natural Resources is held free of responsibility of any further damage or deterioration due to delay in harvesting.





# TIMBER SALE MAP

This information provided by authority of Part 525, 1994 PA 451, as amended.

Sale Number	Year
52-129	18

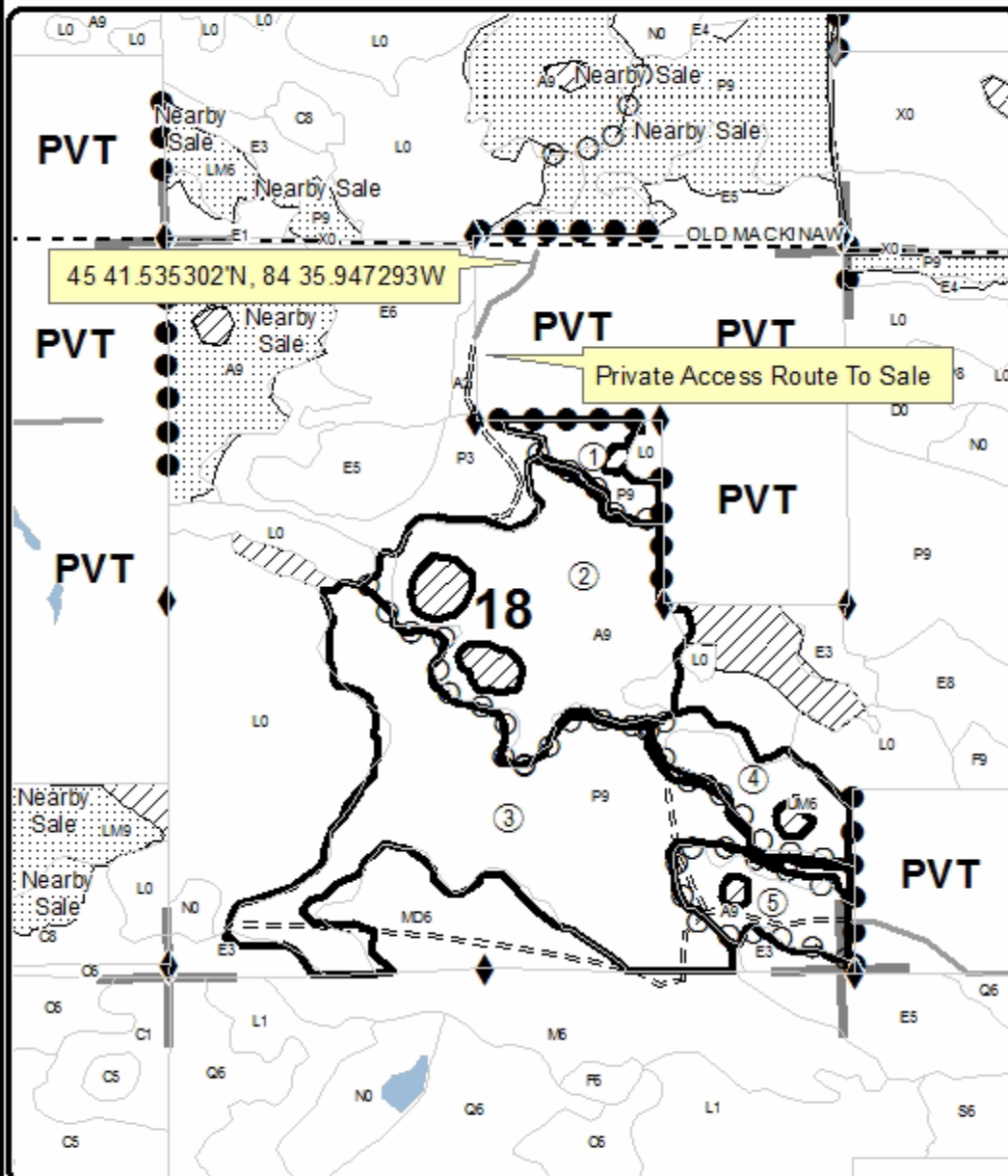
Forest Management Unit <b>GAYLORD MANAGEMENT UNIT</b>	County <b>CHEBOYGAN</b>	Mapped By <b>SCHEELE</b>	Date <b>09/25/2018</b>	Page <b>1</b>	of <b>1</b>
Township <b>38N</b>	Range <b>02W</b>	Section(s) and Subdivision(s) <b>SEC 18: SWNE, SENW, NESW, S1/2SW, SE1/4</b>	Scale <b>1:15,840</b>		

Cover Type				Density			
A = Aspen	H = Hemlock	N = Marsh	U = Upland Brush	0 = Non Stocked	5 = Pole Timber Medium		
D = Paper Birch	J = Jack Pine	O = Oak	UM = Upland Mixed	1 = Seedling Sapling Poor	6 = Pole Timber Well		
C = Cedar	L = Lowland Brush	P = Lowland Poplar	V = Bog or Marsh	2 = Seedling Sapling Medium	7 = Saw Timber Poor		
D = Treed Bog	LM = Lowland Mixed	Q = Mixed Swamo Conifer	W = White Pine	3 = Seedling Sapling Well	8 = Saw Timber Medium		
E = Swamp Hdwoods	M = Mpl. Dch, Drch	R = Red Pine	X = Non Stocked	4 = Pole Timber Poor	9 = Saw Timber Well		
F = Spruce Fir	MC = Mixed Conifer	S = Black Spruce	Z = Water				
G = Grass	MD = Mixed Deciduous	T = Tamarack					

PU	Acres	PU	Acres
1	7.8	4	16.7
2	59.3	5	14.3
3	98.8		

## ROCKY ROAD ASPEN

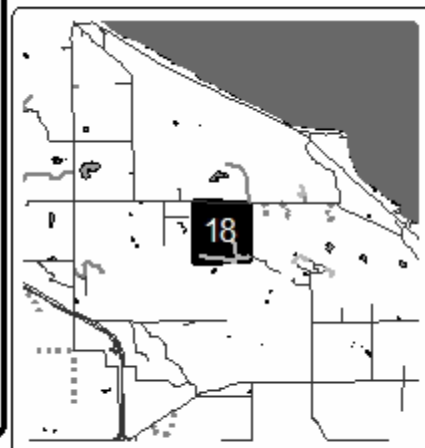
Compartment 165  
196.9 Acres



### Legend

- Against State (Red)
- Payment Unit (Yellow)
- Private Line (Blue)
- ▨ Retention Area (Teal)
- ▤ Nearby Timber Sales
- Stand Boundaries
- ◆ Survey Corners
- ◆ Field Grade Corners
- Secondary Forest Road
- == Forest Access Route
- - Gravel Road
- Private
- Lakes and Rivers
- Section Corners

Locator Map  
1:200,000





**TIMBER SALE INFORMATION**

Sierra Hardwood (52-130-18)  
 T33N, R04W, SEC. 1; T33N, R04W, SEC. 2.  
 Charlevoix County (Advertised Price \$65,329.50)

SALE NOTE: Designated cycle and snowmobile trails are present within and adjacent to the timber sale area. Seasonal snowmobile trail restrictions are in place. Both trails must be protected from damage during harvest operations. There is an adjacent timber sale to the south of Payment Unit 1.

A recreation site such as a trail, pathway, or campground is within the sale area or the vicinity. Certain restrictions/specifications may be applicable including time restrictions.

A timber sale contract for this lump sum, sealed bid timber sale will be awarded to the responsible bidder offering the highest sealed bid price. Bids must be at or above the following advertised price for each species:

<u>PRODUCTS &amp; SPECIES</u>	<u>ESTIMATED UNITS*</u>	<u>ADVERTISED PRICE</u>
Sawtimber		
Basswood	152.80 MBF	\$ 54.00 / MBF
Black Cherry	4.50 MBF	\$ 193.00 / MBF
Sugar Maple	106.60 MBF	\$ 321.00 / MBF
Pulpwood		
Mixed Hardwood	784.00 Cords	\$ 28.05 / Cord

\* The total volume is statistically estimated within plus (+) or minus (-) 19.21 percent. The estimated units are final and not subject to adjustment. Prospective bidders are urged to examine this timber and to make their own estimates of quantity and quality.

**BOND AND PAYMENT SCHEDULE:**

- A bond in the amount of \$3,266.00 to insure faithful performance of the conditions of the contract will be deposited by the successful bidder within 21 days of the sale award.
- Cutting in any sale or unit without the required advance payment would be considered a trespass.
- Total payment must be paid in advance or according to the following schedule:
  - Ten percent (10%) of the sale value must be paid within 21 days of the sale award.
  - The 10% down payment will be credited towards the first unit cut.
  - Payment for each of the following units must be made before cutting begins in that unit:
 

PAYMENT UNIT NUMBER	PERCENT OF TOTAL SALE VALUE
01	55.8%
02	44.2%
- If no cutting takes place, the 10% down payment will not be refunded.
- Operations on the contract issued will terminate on 06/30/2022.

**Description of Timber by Payment Unit (PU)**

PU	MARKET GROUP	PRODUCT	QUANTITY	UNIT	ACRES	ADVERTISE PRICE
1	Basswood	Sawtimber	42.8	MBF	60.3	\$36,448.35
	Sugar Maple		75.5	MBF		
	Mixed Hardwood	Pulpwood	353.0	Cords		
	<i>Basswood</i>		82.0	<i>Cords</i>		
	<i>Beech</i>		97.0	<i>Cords</i>		
	<i>Sugar Maple</i>		174.0	<i>Cords</i>		
2	Basswood	Sawtimber	110.0	MBF	60.7	\$28,881.15
	Black Cherry		4.5	MBF		
	Sugar Maple		31.1	MBF		
	Mixed Hardwood	Pulpwood	431.0	Cords		
	<i>Basswood</i>		252.0	<i>Cords</i>		
	<i>Black Cherry</i>		6.0	<i>Cords</i>		
	<i>Sugar Maple</i>		173.0	<i>Cords</i>		
	TOTAL:			263.9		
TOTAL:			784.0	Cords		

## Sale Specific Conditions & Requirements

**Sale Name: Sierra Hardwood**

**Sale Number: 52-130-18 Seq#: 2**

### 1 - Sale Area

#### 1.2 - Boundaries

##### 1.2.1 - Painted boundaries (1/14)

The sale boundary is marked and identified by red and blue paint. Exterior sale boundary lines adjacent to privately-owned land are marked with blue paint. Exterior sale boundary lines adjacent to state-owned land are marked with red paint.

### 2 - Timber Specifications

#### 2.1 - Included Timber

##### 2.1.3 - Cut tree marked unit(s) (12/08)

Within Payment Unit(s) 1, all trees are designated for cutting when marked with orange paint above and below stump height, regardless of merchantability.

Within Payment Unit(s) 2, all trees are designated for cutting when marked with teal/green paint above and below stump height, regardless of merchantability.

In addition, within Payment Units 1 and 2, all beech and ash trees are designated for cutting which meet minimum piece specifications in 2.2 - Utilization, unless marked with pink paint.

#### 2.2 - Utilization

##### 2.2.6 - Roundwood operation required (5/07)

The skidding of whole trees or tree segments with limbs attached is prohibited. All products must be produced as roundwood and forwarded to existing roads or landing areas in final product length.

### 3 - Payments

#### 3.3 - Pre-measured Sales

##### 3.3.4 - Dividing payment units (7/14)

Payment Unit(s) 1 and 2 may be divided at the request of the Purchaser and upon approval of the Unit Manager. Dividing Payment Units is a contract modification which requires a Timber Sale Contract Supplement. There will be only one division per Payment Unit.

#### 3.4 - Damaged Timber

##### 3.4.1 - Damaged timber (6/14)

General Condition and Requirement 3.4 Damaged Timber, defines liquidated damages for undesignated live merchantable trees which are cut or injured.

No damage is acceptable to merchantable trees. Within the sale area, if more than 5% of trees (> 4.5" DBH) within a specified area of the sale are damaged, liquidated damages will be assessed for all trees damaged. Rates will be in accordance with General Condition and Requirement 3.4 Damaged Timber.

### 4 - Transportation

#### 4.1 - Construction

##### 4.1.3 - Slash and earthen piles (8/04)

Piles or windrows of earth along roads and landings that have been widened or constructed shall be leveled. Slash from road maintenance or construction, including stumps, shall be dispersed throughout the sale.

##### 4.1.4 - Timber removed for construction (12/09)

Trees cut or damaged in the process of pre-approved road, landing or skid trail construction will be decked in an area separate

from other Designated Timber and not removed until measured by the sale administrator. Payment will be made at the specified Purchase Unit Price.

#### 4.1.6 - Road construction (1/09)

Construction of new roads or improvements of existing roads shall be done in such a way as to minimize the environmental and visual impacts. Merchantable trees shall be cut and utilized unless otherwise directed. Non-merchantable trees shall be severed and laid flat on the ground. Slash shall be scattered, and not left in windrows and kept a minimum of 10 feet back from the road edge. Stumps shall be set upright, not left on edge, and be moved at least 10 feet away from the road edge. Disturbed soil shall be feathered into the woods and not left in berms or windrows.

#### 4.1.7 - Road closure (10/11)

All new roads built into the sale must be blocked to vehicle traffic upon completion of the sale. In general, this will require constructing a four (4') foot high berm of stumps and logs covered with earth.

### 4.2 - Maintenance

#### 4.2.5 - Two wheel drive condition (2/04)

All existing trail roads on and adjacent to the sale area must be passable by two-wheel drive traffic for the duration of the sale.

## 5 - Operations

### 5.1 - Notification

#### 5.1.1 - Pre-sale conference (10/16)

A pre-sale conference between the Purchaser and sale administrator is required prior to beginning any operations to discuss contract specifications and to determine landing and road locations.

### 5.2 - Conduct of Operations

#### 5.2.1 - Slash

##### 5.2.1.1 - Slash within sale area (9/16)

No trees are to be felled outside the sale area and all slash is to be kept at least 20 feet back from the blue paint line. If sale boundary lines are along a public road or highway, then slash must be removed 50' from these lines per General Condition & Requirement 5.2.1.

#### 5.2.2 - Hazard Trees/Snags

##### 5.2.2.1 - Den trees (10/16)

Obvious hollow and/or den trees shall be protected and left standing unless they are a safety hazard.

#### 5.2.3 - Operating Restrictions

##### 5.2.3.3 - Bark slippage restriction (3/09)

Within Payment Unit(s) 1 and 2, unless changed by written agreement, cutting and skidding are not permitted during the period of April 15 to July 15. This restriction is because of bark slippage.

#### 5.2.32 - Decking/landing restoration (9/13)

All decking and landing areas must have the surface area restored to a condition equal to or better than before. This is to ensure the proper regeneration of the stand. Slash, wood debris, chips and "cookies" from trimmings must be removed or scattered away from landing and loading areas and may not be windrowed on the edge. Stumps will be removed from the landing area and dispersed back into the sale area. Piles of topsoil will need to be spread out evenly.

#### 5.2.38 - No decking against live trees (2/04)

Cut products may not be decked against unmarked or designated leave trees.

#### 5.2.39 - ORV trail/route protection (4/18)

A cycle trail is located within Payment Unit 2 and is shown on the Timber Sale Map. Do not cut trees or damage posts with yellow ORV markers. All stumps within 5 feet of the trail must be cut flush with the ground. Maintain a 20 foot wide slash, debris, and rut free zone daily using the ORV trail or route as the centerline. Do not run equipment down the ORV trail or route. Skidding across the trail or route may only occur in locations approved by the sale administrator.

#### 5.2.41 - Snowmobile trail protection (9/11)

The snowmobile trail is shown on the Timber Sale Map. Do not cut or damage posts with orange trail markers or traffic control signs. If the county road is to be used for hauling during the snowmobile season, then a snow covered base must be left on the trail. Maintain a 20 foot wide slash, debris, and rut free zone daily using the snowmobile trail as the center line. All stumps within 5 feet of the snowmobile trail must be cut at ground level.

#### 5.4 - Soil Protection

##### 5.4.1 - Rutting restriction, general (7/16)

Operations are to cease immediately if equipment and weather conditions result in rutting of roads and/or skid trails which is 12 inches or greater in depth and 50 feet in length. The Unit Manager or his/her representative may restrict hauling and/or skidding if ruts exceed the specified depth. With the Unit Manager or his/her representative's approval, the Purchaser may return to the area when the risk of rutting has decreased.

#### 5.8 - Protection of Endangered Species

##### 5.8.5 - Protection of raptor nests (3/13)

All trees with raptor nests will be protected if found during harvesting operations. Notification will be made to the Unit Manager or his/her representative who will notify the Wildlife Biologist so an on-site evaluation and recommendation can be made, if necessary.



# TIMBER SALE MAP

This information provided by authority of Part 525, 1994 PA 451, as amended.

Sale Number	Year
52-130-18	2018
Date	Page of
09/28/2018	1   1

Forest Management Unit	County	Mapped By
GAYLORD	CHARLEVOIX	STACKS
Township	Range	Section(s) and Subdivision(s)
T33N	R04W	1 W 1/2 NW, 2 E 1/2 NE, NW 1/4

Cover Type				Density	
A = Aspen	J = Jack Pine	O = Oak	U = Upland Brush	0 = Non Stocked	5 = Pole Timber Medium
B = Paper Birch	K = Rock	P = Lowland Poplar	UM = Upland Mix Forest	1 = Seedling Sapling Poor	6 = Pole Timber Well
C = Cedar	L = Lowland Brush	Q = Mixed Swamp Conifer	V = Bog or Marsh	2 = Seedling Sapling Medium	7 = Saw Timber Poor
D = Tread Bog	LM = Lowland Mix Forest	R = Red Pine	W = White Pine	3 = Seedling Sapling Well	8 = Saw Timber Medium
E = Swamp Hardwoods	M = Maple, Beech, Birch	S = Black Spruce	X = Non Stocked	4 = Pole Timber Poor	9 = Saw Timber Well
F = Spruce/Fir	MC = Mixed Conifer	T = Tamarack	Y = Sand		
G = Grass	MD = Mixed Deciduous		Z = Water		
H = Hemlock	N = Marsh				

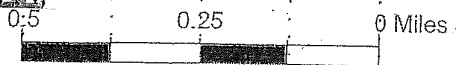
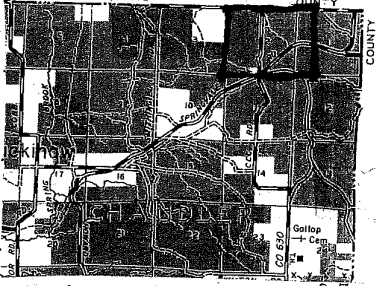
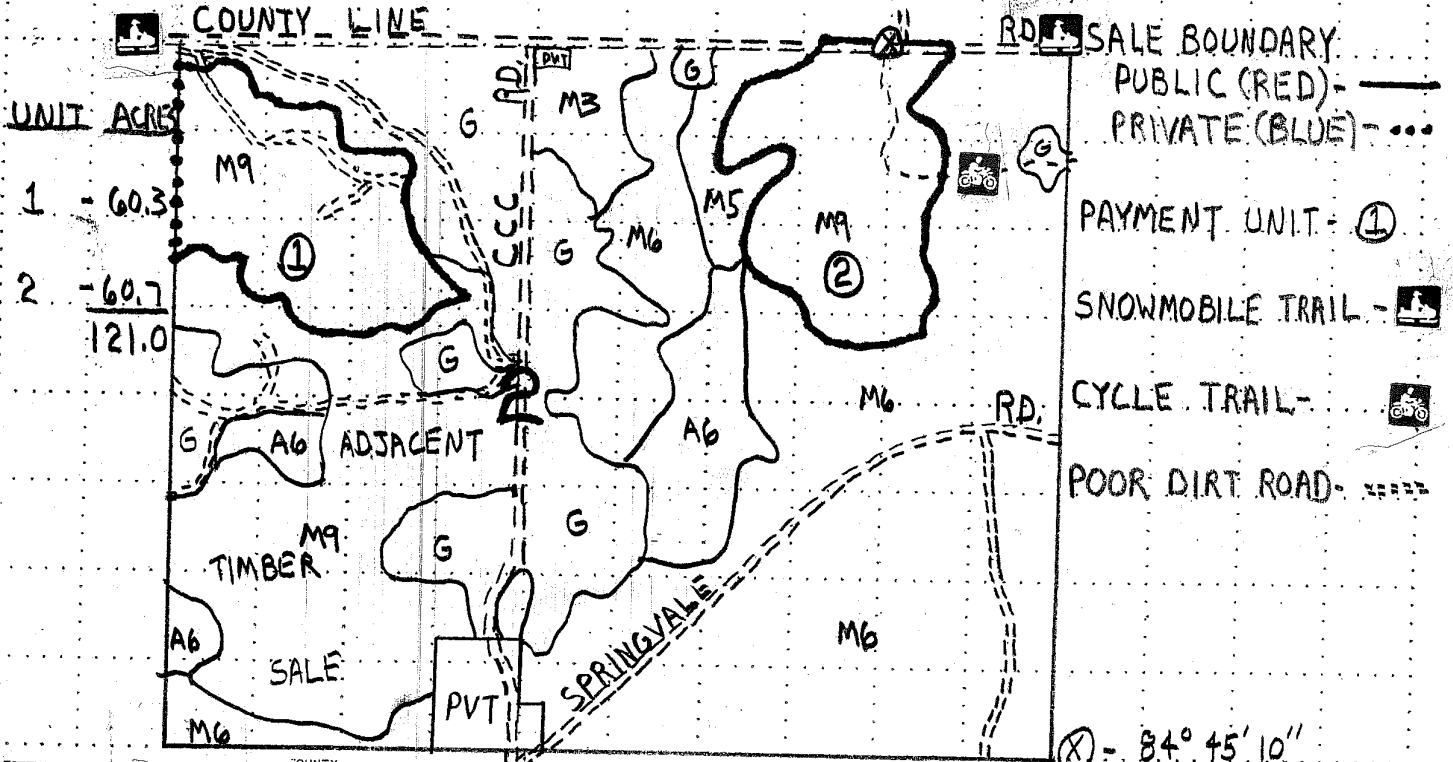
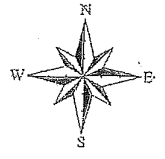
COMPARTMENT 34

SIERRA HARDWOOD

CHARLEVOIX COUNTY

121 ACRES

1:15,040







Rocky Road Aspen (52-129-18)  
T38N, R02W, SEC. 18; T38N, R02W, SEC. 19; Cheboygan COUNTY

In response to the notice of sale to be held 3:00 p.m. (local time) on July 12, 2019, I am hereby submitting my sealed bid (firm offer) for the following forest products to be cut. Bids for individual species must be at or above the advertised price. All non-responsive bid forms may be rejected.

<u>PRODUCTS &amp; SPECIES</u>	<u>ESTIMATED VOLUME*</u>	<u>ADVERTISED PRICE</u>	<u>BID PRICE/UNIT</u>
<b>Sawtimber</b>			
Mixed Aspen	294.90 MBF	\$ 60.00/MBF	\$ _____
Paper Birch	2.10 MBF	\$ 47.00/MBF	\$ _____
Red Maple	2.10 MBF	\$ 109.00/MBF	\$ _____
White Spruce	14.60 MBF	\$ 65.00/MBF	\$ _____
<b>Pulpwood</b>			
Balsam Fir	849.00 Cords	\$ 34.80/Cord	\$ _____
Basswood	109.00 Cords	\$ 7.70/Cord	\$ _____
Mixed Aspen	1,854.00 Cords	\$ 21.00/Cord	\$ _____
Mixed Hardwood	563.00 Cords	\$ 28.05/Cord	\$ _____
Paper Birch	269.00 Cords	\$ 18.35/Cord	\$ _____
White Spruce	156.00 Cords	\$ 30.60/Cord	\$ _____

\*The volumes are statistically estimated within plus (+) or minus (-) 10.84 percent. These estimated volumes are final and not subject to adjustment. Prospective bidders are urged to examine this timber and to make their own estimates of quantity and quality.

I understand that any or all bids may be rejected. All bids must be signed and all bid items must be bid or the bid form may be rejected. I also understand that consideration and awarding a contract will be based upon my past performance and ability to complete the contract based upon equipment and staffing subject to my control.

FEDERAL ID: _____ or SOCIAL SECURITY NUMBER: _____ Company or individual bidding: _____ Company representative's name: _____ Address: _____ City: _____ State: _____ Zip: _____
---

IF AVAILABLE, PLEASE PLACE THE PERSONALIZED LABEL FROM YOUR PROSPECTUS IN THE ABOVE BOX.

Individual or company representative's signature: \_\_\_\_\_ Date: \_\_\_\_\_

Phone number : \_\_\_\_\_ Email (optional): \_\_\_\_\_

**THE WINNING BIDDER MUST COMPLETE THE VERIFICATION OF WORKER'S DISABILITY COMPENSATION ACT COMPLIANCE (ON REVERSE SIDE IF DOUBLE SIDED) WITHIN 21 DAYS OF SALE AWARD DATE**



FOR DEPARTMENT USE ONLY	
Sale Number (XX - XXX - XX - XX)	
Forest Management Unit:	

## TIMBER SALE VERIFICATION OF WORKER'S DISABILITY COMPENSATION ACT COMPLIANCE

As required by Act 317, P.A. 1969 (Worker's Compensation) and  
Part 5 of Act 451 of 1994, as amended.

### VERIFICATION OF WORKER'S DISABILITY COMPENSATION ACT COMPLIANCE

- This verification must be completed and submitted within 21 days of contract award and prior to the issuance of the timber sale contract.
- In addition, if boxes 2B or 2C are checked, then Notice of Exclusion or Certificate of Insurance must be submitted within twenty-one (21) days of the contract award and prior to the issuance of the timber sale contract.
- All information must be typed or printed except for written signatures.

Please Check Appropriate Categories:

1. My business is organized as (you **must** check one of the boxes below):
  - A.  Sole Proprietorship (individual)
  - B.  Partnership
  - C.  Corporation
2. You **must** check one of the boxes below:
  - A.  I certify my business is a sole proprietorship and it has no employees but the sole proprietor. I am not subject to the Worker's Compensation Laws.
  - B.  I certify my business has satisfied its obligation to the Worker's Compensation Act through the use of an approved Notice of Exclusion (BWC-337, Rev. 5/96). I will provide a copy of the Notice of Exclusion within 21 days of the contract award. (For questions or a copy of the BWC-337, please call the Worker's Compensation Bureau at 517-322-1195).
  - C.  I certify my business has a Worker's Compensation Policy. I will provide an original Certificate of Insurance within twenty-one (21) days of the contract award.
3. If you have checked item 2(A) or 2(B), you **must** indicate the number of **both** full-time and part-time employees, other than yourself, including family members and active partners (if none, you must enter "0").

\_\_\_\_\_ Full-time Employees

\_\_\_\_\_ Part-time Employees

Name of Business		Federal ID (or) Social Security No.	
Address		Telephone (       )	
City	State	ZIP	

*I hereby certify that the above information is true and correct. I agree to notify the Michigan DNR of any changes that occur in factors affecting my coverage during any of my present and future operations.*

\_\_\_\_\_  
Signature of Owner or Authorized Representative

\_\_\_\_\_  
Title

\_\_\_\_\_  
Date

Please complete the "SEALED BID" information on the next page

Sierra Hardwood (52-130-18)  
T33N, R04W, SEC. 1; T33N, R04W, SEC. 2; Charlevoix COUNTY

In response to the notice of sale to be held 3:00 p.m. (local time) on July 12, 2019, I am hereby submitting my sealed bid (firm offer) for the following forest products to be cut. Bids for individual species must be at or above the advertised price. All non-responsive bid forms may be rejected.

<u>PRODUCTS &amp; SPECIES</u>	<u>ESTIMATED VOLUME*</u>	<u>ADVERTISED PRICE</u>	<u>BID PRICE/UNIT</u>
<b>Sawtimber</b>			
Basswood	152.80 MBF	\$ 54.00/MBF	\$ _____
Black Cherry	4.50 MBF	\$ 193.00/MBF	\$ _____
Sugar Maple	106.60 MBF	\$ 321.00/MBF	\$ _____
<b>Pulpwood</b>			
Mixed Hardwood	784.00 Cords	\$ 28.05/Cord	\$ _____

\*The volumes are statistically estimated within plus (+) or minus (-) 19.21 percent. These estimated volumes are final and not subject to adjustment. Prospective bidders are urged to examine this timber and to make their own estimates of quantity and quality.

I understand that any or all bids may be rejected. All bids must be signed and all bid items must be bid or the bid form may be rejected. I also understand that consideration and awarding a contract will be based upon my past performance and ability to complete the contract based upon equipment and staffing subject to my control.

FEDERAL ID: \_\_\_\_\_ or SOCIAL SECURITY NUMBER: \_\_\_\_\_

Company or individual bidding: \_\_\_\_\_

Company representative's name: \_\_\_\_\_

Address: \_\_\_\_\_

City: \_\_\_\_\_ State: \_\_\_\_\_ Zip: \_\_\_\_\_

IF AVAILABLE, PLEASE PLACE THE PERSONALIZED LABEL FROM YOUR PROSPECTUS IN THE ABOVE BOX.

Individual or company representative's signature: \_\_\_\_\_ Date: \_\_\_\_\_

Phone number : \_\_\_\_\_ Email (optional): \_\_\_\_\_

**THE WINNING BIDDER MUST COMPLETE THE VERIFICATION OF WORKER'S DISABILITY COMPENSATION ACT COMPLIANCE (ON REVERSE SIDE IF DOUBLE SIDED) WITHIN 21 DAYS OF SALE AWARD DATE**



FOR DEPARTMENT USE ONLY	
Sale Number (XX - XXX - XX - XX)	
Forest Management Unit:	

## TIMBER SALE VERIFICATION OF WORKER'S DISABILITY COMPENSATION ACT COMPLIANCE

As required by Act 317, P.A. 1969 (Worker's Compensation) and  
Part 5 of Act 451 of 1994, as amended.

### VERIFICATION OF WORKER'S DISABILITY COMPENSATION ACT COMPLIANCE

- This verification must be completed and submitted within 21 days of contract award and prior to the issuance of the timber sale contract.
- In addition, if boxes 2B or 2C are checked, then Notice of Exclusion or Certificate of Insurance must be submitted within twenty-one (21) days of the contract award and prior to the issuance of the timber sale contract.
- All information must be typed or printed except for written signatures.

Please Check Appropriate Categories:

1. My business is organized as (you **must** check one of the boxes below):
  - A.  Sole Proprietorship (individual)
  - B.  Partnership
  - C.  Corporation
2. You **must** check one of the boxes below:
  - A.  I certify my business is a sole proprietorship and it has no employees but the sole proprietor. I am not subject to the Worker's Compensation Laws.
  - B.  I certify my business has satisfied its obligation to the Worker's Compensation Act through the use of an approved Notice of Exclusion (BWC-337, Rev. 5/96). I will provide a copy of the Notice of Exclusion within 21 days of the contract award. (For questions or a copy of the BWC-337, please call the Worker's Compensation Bureau at 517-322-1195).
  - C.  I certify my business has a Worker's Compensation Policy. I will provide an original Certificate of Insurance within twenty-one (21) days of the contract award.
3. If you have checked item 2(A) or 2(B), you **must** indicate the number of **both** full-time and part-time employees, other than yourself, including family members and active partners (if none, you must enter "0").

\_\_\_\_\_ Full-time Employees

\_\_\_\_\_ Part-time Employees

Name of Business		Federal ID (or) Social Security No.	
Address		Telephone (       )	
City	State	ZIP	

*I hereby certify that the above information is true and correct. I agree to notify the Michigan DNR of any changes that occur in factors affecting my coverage during any of my present and future operations.*

\_\_\_\_\_  
Signature of Owner or Authorized Representative

\_\_\_\_\_  
Title

\_\_\_\_\_  
Date

Please complete the "SEALED BID" information on the next page

Dingman Aspen (52-124-18)  
T38N, R03W, SEC. 5; T38N, R03W, SEC. 6; T38N, R03W, SEC. 7; T38N, R03W,

In response to the notice of sale to be held 3:00 p.m. (local time) on July 12, 2019, I am hereby submitting my sealed bid (firm offer) for the following forest products to be cut. Bids for individual species must be at or above the advertised price. All non-responsive bid forms may be rejected.

<u>PRODUCTS &amp; SPECIES</u>	<u>ESTIMATED VOLUME*</u>	<u>ADVERTISED PRICE</u>	<u>BID PRICE/UNIT</u>
<b>Sawtimber</b>			
Mixed Aspen	132.00 MBF	\$ 60.00/MBF	\$ _____
Paper Birch	1.00 MBF	\$ 47.00/MBF	\$ _____
Red Maple	5.50 MBF	\$ 109.00/MBF	\$ _____
Red Oak	39.00 MBF	\$ 241.00/MBF	\$ _____
Red Pine	10.60 MBF	\$ 117.00/MBF	\$ _____
<b>Pulpwood</b>			
Balsam Fir	121.00 Cords	\$ 34.80/Cord	\$ _____
Mixed Aspen	3,016.00 Cords	\$ 21.00/Cord	\$ _____
Mixed Hardwood	440.00 Cords	\$ 28.05/Cord	\$ _____
Red Oak	210.00 Cords	\$ 22.15/Cord	\$ _____
Red Pine	34.00 Cords	\$ 50.55/Cord	\$ _____
White Pine	25.00 Cords	\$ 28.10/Cord	\$ _____

\*The volumes are statistically estimated within plus (+) or minus (-) 13.54 percent. These estimated volumes are final and not subject to adjustment. Prospective bidders are urged to examine this timber and to make their own estimates of quantity and quality.

I understand that any or all bids may be rejected. All bids must be signed and all bid items must be bid or the bid form may be rejected. I also understand that consideration and awarding a contract will be based upon my past performance and ability to complete the contract based upon equipment and staffing subject to my control.

FEDERAL ID: \_\_\_\_\_ or SOCIAL SECURITY NUMBER: \_\_\_\_\_

Company or individual bidding: \_\_\_\_\_

Company representative's name: \_\_\_\_\_

Address: \_\_\_\_\_

City: \_\_\_\_\_ State: \_\_\_\_\_ Zip: \_\_\_\_\_

IF AVAILABLE, PLEASE PLACE THE PERSONALIZED LABEL FROM YOUR PROSPECTUS IN THE ABOVE BOX.

Individual or company representative's signature: \_\_\_\_\_ Date: \_\_\_\_\_

Phone number : \_\_\_\_\_ Email (optional): \_\_\_\_\_

**THE WINNING BIDDER MUST COMPLETE THE VERIFICATION OF WORKER'S DISABILITY COMPENSATION ACT COMPLIANCE (ON REVERSE SIDE IF DOUBLE SIDED) WITHIN 21 DAYS OF SALE AWARD DATE**



<b>FOR DEPARTMENT USE ONLY</b>
Sale Number (XX - XXX - XX - XX)
Forest Management Unit:

## TIMBER SALE VERIFICATION OF WORKER'S DISABILITY COMPENSATION ACT COMPLIANCE

*As required by Act 317, P.A. 1969 (Worker's Compensation) and  
Part 5 of Act 451 of 1994, as amended.*

### VERIFICATION OF WORKER'S DISABILITY COMPENSATION ACT COMPLIANCE

- This verification must be completed and submitted within 21 days of contract award and prior to the issuance of the timber sale contract.
- In addition, if boxes 2B or 2C are checked, then Notice of Exclusion or Certificate of Insurance must be submitted within twenty-one (21) days of the contract award and prior to the issuance of the timber sale contract.
- All information must be typed or printed except for written signatures.

Please Check Appropriate Categories:

1. My business is organized as (you **must** check one of the boxes below):
  - A.  Sole Proprietorship (individual)
  - B.  Partnership
  - C.  Corporation
  
2. You **must** check one of the boxes below:
  - A.  I certify my business is a sole proprietorship and it has no employees but the sole proprietor. I am not subject to the Worker's Compensation Laws.
  - B.  I certify my business has satisfied its obligation to the Worker's Compensation Act through the use of an approved Notice of Exclusion (BWC-337, Rev. 5/96). I will provide a copy of the Notice of Exclusion within 21 days of the contract award. (For questions or a copy of the BWC-337, please call the Worker's Compensation Bureau at 517-322-1195).
  - C.  I certify my business has a Worker's Compensation Policy. I will provide an original Certificate of Insurance within twenty-one (21) days of the contract award.
  
3. If you have checked item 2(A) or 2(B), you **must** indicate the number of **both** full-time and part-time employees, other than yourself, including family members and active partners (if none, you must enter "0").

\_\_\_\_\_ Full-time Employees

\_\_\_\_\_ Part-time Employees

Name of Business		Federal ID (or) Social Security No.	
Address		Telephone (       )	
City	State	ZIP	

*I hereby certify that the above information is true and correct. I agree to notify the Michigan DNR of any changes that occur in factors affecting my coverage during any of my present and future operations.*

\_\_\_\_\_  
Signature of Owner or Authorized Representative

\_\_\_\_\_  
Title

\_\_\_\_\_  
Date

**Please complete the "SEALED BID" information on the next page**