



**DEPARTMENT OF NATURAL RESOURCES
STATE OF MICHIGAN**

TIMBER SALE PROSPECTUS #6481

SCHEDULED SALE DATE AND TIME: 2:00 p.m. (local time) on July 17, 2019.

LOCATION: SHINGLETON MGMT UNIT, PO BOX 67, M 28 WEST, SHINGLETON, MI 49884.

PROSPECTUS NOTE: The bidder is advised to inspect the sale area and review the location, estimated volumes, operating costs and contract terms of proposed sales. Please be aware that some landowners may request 60 days or more notice for access across their land.

Notice is hereby given that bids will be received by the Unit Manager, SHINGLETON MANAGEMENT UNIT, for certain timber on the following described lands:

The Marsh King (41-013-18) / T45N, R13W, SEC. 14, NENE.

T45N, R13W, SEC. 2 , SENW,S1/2NE,N1/2SW,N1/2SE.

Schoolcraft County, Advertised Price \$10,229.05, 99.1 Acres, N White Cedar, Spruce/Fir/Tamarack.

SALE NOTE: This sale has been reduced approximately 25 percent from the original advertised price, as it went "no bid" on June 26, 2019.

Permission for access across private land is the responsibility of the Purchaser.

Within Payment Unit(s) 1 - 3, harvesting is limited to frozen conditions due to lowland soils.

Some roads or skid trails may require extra protection such as that afforded by timber mats, interlocking composite mats, or another approved system. See Sale Spec 5.2.17 for additional information.

The Old Seney Road is a snowmobile trail shown on the Timber Sale Map. See Sale Spec 5.2.41 for restrictions.

A recreation site such as a trail, pathway, or campground is within the sale area or the vicinity. Certain restrictions/specifications may be applicable including time restrictions. Access may be through private or other public land.

Twofer (41-017-18) / T46N, R16W, SEC. 18, N1/2NW.

T46N, R16W, SEC. 7, SW,SE.

T46N, R17W, SEC. 12, SW,NWSE.

T46N, R17W, SEC. 13, NENW.

Schoolcraft County, Advertised Price \$18,855.15, 194.6 Acres, Hardwood, Paper Birch.

SALE NOTE: This sale has been reduced approximately 25 percent from the original advertised price, as it went "no bid" on June 26, 2019.

Roads may require the installation of culverts for cross drainage or at natural drainage-ways. See Sale Spec 4.1.5 for additional information.

Permission for access across private land is the responsibility of the Purchaser. If crossing Hancock Timber Resource Group property, a permit from them is required. See Sale Spec 4.4.1 for requirements.

Harvesting is limited to frozen conditions due to sensitive soils.

Access may be through private land.

Surfside Mix (41-023-18) / T47N, R17W, SEC. 16, NWNW.

T47N, R17W, SEC. 17, N1/2NE,SENE,NESE.

T47N, R17W, SEC. 8, SESE.

Alger County, Advertised Price \$14,771.95, 69.7 Acres, N White Cedar, Hardwood.

SALE NOTE: This sale has been reduced approximately 25 percent from the original advertised price, as it went "no bid" on June 12, 2019.

Permission for access across private land is the responsibility of the Purchaser. If crossing Hancock Forest Management Property, a permit is required. See Sale Spec 4.4.1 for requirements.

Within Payment Unit(s) 1 and 2, harvesting is not permitted during the period of April 15 to July 15 because of bark slippage. See Sale Spec 5.2.3.3.

Within Payment Unit(s) 3 and 4, it is recommended, but not required, that harvesting occur during dry summer or frozen winter conditions due to low ground areas. See Sale Spec 5.2.22.1.

Access may be through private land.

Fielder's Choice Hardwood (41-025-18) / T47N, R15W, SEC. 27, SWNW,W1/2SW.

T47N, R15W, SEC. 28, NE,NESE.

Schoolcraft County, Advertised Price \$6,971.95, 86.5 Acres, Hardwood, Spruce/Fir/Tamarack.

SALE NOTE: This sale has been reduced approximately 25 percent from the original advertised price, as it went "no bid" on May 22, 2019.

The Purchaser shall not cut live or dead trees, or operate equipment within historical sites. Historical sites are excluded with the red line and indicated as "Special Protection Area" on the Timber Sale Map. See Sale Spec. 5.7.1 for additional information.

BID INSTRUCTIONS (VER. 07/02/2018):

1. Scheduled Bid Location, Date, and Time (2/11)

Bids must be received by the Unit Manager, SHINGLETON OFFICE, PO Box 67 M 28 West, Shingleton, MI 49884, no later than 2:00 p.m. (local time) on July 17, 2019. For further information concerning this sale, contact Robert Burnham at 906-452-6227 extension 240.

2. Bidder's Qualifications (5/16)

Purchaser shall obtain workers compensation insurance to cover claims under Michigan's Worker's Disability Compensation Act of 1969 or similar employee benefit act of any other state applicable to an employee. If all or part of a timber sale was prepared by a private contractor, the contractor and that contractor's company are not permitted to bid on the timber sale contract. Bids will not be accepted from individuals or companies appearing on the DNR/FRD No-Bid List. This list contains the names of purchasers who previously failed to execute a contract within 21-days or who have a history of poor performance.

3. Preparation of Sealed Bids (5/16)

Bid Forms may be completed online thru Michigan DNR Timber Sale Online Bidding (OLB) at www.michigan.gov/timberbidding or by completing the hardcopy Bid Form found in the Timber Sale Prospectus. Hardcopy Bid Forms shall be manually signed in ink. Registration in OLB is considered your 'signature' for all bids submitted thru that system. Bid prices must be entered for each species and product in the Bid Price column for all material subject to bidding and all fill-in blanks must be completed. If erasures or other changes appear on the hardcopy Bid Form, each erasure or change must be initialed by the person signing the bid.

4. Submission of Sealed Bids (5/16)

Bid forms may be obtained from the Unit Manager or thru OLB. Bids may be submitted hardcopy or thru OLB. All hardcopy bids must be submitted on the bid form and in an envelope clearly identified as described in this section. NOTE: Only one bid form per bid envelope. Sealed bids must be submitted to the Unit office designated in the prospectus and must be submitted at or prior to the time established in the prospectus. The envelope should show on the outside (a) the sale name or number and (b) the date and time of bid opening, as shown in the prospectus. Bids received after the time specified in the sale prospectus are late bids and will be rejected.

It is possible for a bidder to submit multiple bids on a single sale. For example, a bid may be submitted hardcopy and a bid may be submitted thru OLB. Or, two bidders from the same company could both submit bids on the same sale. If this were to happen, the State would accept all bids received and award the contract accordingly. All bidding and contractual requirements would apply to all bids received.

5. Public Opening of Sealed Bids (7/16)

If conditions permit, the sealed bids will be publicly opened and posted at the time and place set in the prospectus.

If a bidder, present at a bid opening, has submitted bids on more than one sale, that bidder may withdraw their unopened bid envelopes or announce the withdrawal of their online bid after being declared the successful bidder on one sale.

6. Award of Contract (1/11)

Award of the contract will be made to the Bidder whose bid, conforming to the prospectus, is most advantageous to the State of Michigan on the basis of total value at rates bid for the estimated quantities. The State reserves the right to reject any bid or waive any minor irregularity in bids received. A written award mailed (or otherwise furnished) to the successful Bidder shall be deemed to result in a binding contract without further action by either party.

7. Down Payment (1/11)

The Bidder to whom award is made must make a down payment within 21 days of the sale award. The amount of the down payment will be calculated as shown in the Bond and Payment Schedule of this prospectus. Only cash may be used to meet this requirement.

8. Performance Security (1/11)

As guarantee of faithful performance, a cash bond, certificate of deposit, surety bond or irrevocable letter of credit (LOC) is required within 21 days of the sale award. The amount of the performance security is shown in the Bond and

Payment Schedule of this prospectus. If an LOC or surety is used, the coverage must extend for at least 6 months beyond the contract expiration.

9. Timber Sale Contract (7/18)

Additional conditions and requirements common to all timber sales are listed on the timber sale contract (R4031) and are available on line at www.michigan.gov/timber. Contact the Unit Manager for additional information or a sample contract. Within 21 days of the date of the award letter, the bidder must sign the contract and provide the required down payment, performance security, and verification of worker's disability compensation. The down payment and performance security shall be in accordance with the provisions of the timber sale contract, in the sums stated in this prospectus. If these actions are not taken, then the Bidder, the Bidder's corporation, and the corporation's principals may not be permitted to bid on State timber sales for a period of 3 months after the first offense, 6 months after the second offense, and 1 year after the third offense. An offense will only be counted against the Bidder for 5 years. In addition, the Bidder certifies that if awarded this contract, the Bidder will complete the timber sale contract in accordance with its terms and any modifications thereof including requirements to purchase, cut, and remove the included timber by the expiration date.

Payment Unit values in the State Forest Timber Sale Contract are calculated based on the advertised value of the Payment Unit as a percentage of the total advertised value of the contract. The advertised value of each Payment Unit is given in the Description of Timber by Payment Unit table on the Timber Sale Information page. For example, if the value of Payment Unit 1 is advertised as \$1,500 and the total Timber Sale value is advertised as \$10,000, the contract price for Payment Unit 1 will be 15% of the total bid price ($\$1,500/\$10,000 * 100$).

10. Disclaimer of Estimates and Bidder's Warranty of Inspection (7/16)

Before submitting this bid, the Bidder is advised and cautioned to inspect the sale area, review the requirements of the sale contract, and take other steps as may be reasonably necessary to ascertain the location, estimated volumes, construction estimates, and operating costs of the proposed sale. Failure to do so will not relieve the Bidder from responsibility for completing the contract.

The Bidder warrants that this bid is submitted solely on the basis of the Bidder's examination and inspection of the quality and quantity of the timber offered for sale and the Bidder's opinion of the value thereof and the costs of recovery. No reliance should be placed on the State of Michigan's estimates of timber quality, quantity or costs of recovery. Bidder further acknowledges that the State of Michigan: (i) expressly disclaims any warranty of fitness of timber for any purpose; (ii) offers this timber as is without any warranty of quality (merchantability) or quantity and (iii) expressly disclaims any warranty as to the quantity or quality of timber sold.

11. Certification and Chain-of-Custody (10/14)

Unless otherwise indicated in the contract under section 7 – Other Conditions of the Sale Specific Conditions & Requirements, the area encompassed by this timber sale is certified to the standards of the Forest Stewardship Council (FSC) - Certificate #SCS-FM/COC-00090N and the Sustainable Forestry Initiative (SFI) - Certificate #NSF-SFIS-5Y031-SF5. Forest products from this sale may be delivered to the mill as "FSC 100% and / or SFI certified" as long as the contractor hauling the forest products is chain-of-custody (COC) certified or covered under a COC certificate from the destination mill. The purchaser is responsible for maintaining COC after leaving the sale area.

12. Good Neighbor Authority (GNA) Requirements (7/16)

If the name of this timber sales contains the acronym GNA, it is authorized by the Good Neighbor Authority (GNA) and covered by various agreements between the U.S. Forest Service and the State. The timber sale occurs on federal land and the following conditions apply:

GNA contracts on US Forest Service land will not be awarded to purchasers on the Federal list of excluded parties. The System for Award Management (SAM) will be checked for active excluded parties prior to award of contract. In addition, the Bidder to whom award is made must complete an Assurance Regarding Felony Conviction or Tax Delinquent Status for Corporate Applicants (AD-3031).

13. Good Neighbor Authority (GNA) Requirements, con't (9/16)

Bidder certifies, by signing this bid form, that to the best of Bidder's knowledge that the following representations are accurate and complete.

- a. That the Bidder and its principals are not presently debarred, suspended, proposed for debarment, declared ineligible, or voluntary excluded from timber sales (covered transactions) by any Federal department or agency.
- b. That the Bidder and its principals have not within a 3-year period preceding this bid been convicted of or had a civil judgment rendered against them for commission of fraud or a criminal offense in connection with obtaining, attempting to obtain, or performing a public (Federal, State, or local) transaction or contract under a public transaction; violation of Federal or State antitrust statutes or commission of embezzlement, theft, forgery, bribery, falsification or destruction of records, making false statements, or receiving stolen property.
- c. That the Bidder and its principals are not presently indicted for or otherwise criminally or civilly charged by a governmental entity (Federal, State, or local) with commission of any of the offenses enumerated in paragraph b of this certification.
- d. That the Bidder and its principals have not within a 3-year period preceding this bid had one or more public transactions (Federal, State, or local) terminated for breach or default of a timber or forest product contract.

Bidders that cannot certify this requirement, in whole or in part, shall submit an explanation with their bid.

DAN EICHINGER
Director

TIMBER SALE INFORMATION

The Marsh King (41-013-18)
 T45N, R13W, SEC. 14; T45N, R13W, SEC. 2.
 Schoolcraft County (Advertised Price \$10,229.05)

SALE NOTE: This sale has been reduced approximately 25 percent from the original advertised price, as it went "no bid" on June 26, 2019.

Permission for access across private land is the responsibility of the Purchaser.

Within Payment Unit(s) 1 - 3, harvesting is limited to frozen conditions due to lowland soils.

Some roads or skid trails may require extra protection such as that afforded by timber mats, interlocking composite mats, or another approved system. See Sale Spec 5.2.17 for additional information.

The Old Seney Road is a snowmobile trail shown on the Timber Sale Map. See Sale Spec 5.2.41 for restrictions.

A recreation site such as a trail, pathway, or campground is within the sale area or the vicinity. Certain restrictions/specifications may be applicable including time restrictions. Access may be through private or other public land.

A timber sale contract for this lump sum, sealed bid timber sale will be awarded to the responsible bidder offering the highest sealed bid price. Bids must be at or above the following advertised price for each species:

<u>PRODUCTS & SPECIES</u>	<u>ESTIMATED UNITS*</u>	<u>ADVERTISED PRICE</u>
Sawtimber		
Paper Birch	4.00 MBF	\$ 36.00 / MBF
Yellow Birch	1.40 MBF	\$ 59.00 / MBF
Pulpwood		
B. T. Aspen	23.00 Cords	\$ 13.40 / Cord
Balsam Fir	76.00 Cords	\$ 9.90 / Cord
Black Spruce	327.00 Cords	\$ 17.85 / Cord
Mixed Hardwood	55.00 Cords	\$ 9.85 / Cord
N. White Cedar	434.00 Cords	\$ 3.65 / Cord
Paper Birch	100.00 Cords	\$ 7.05 / Cord
White Pine	27.00 Cords	\$ 10.15 / Cord

* The total volume is statistically estimated within plus (+) or minus (-) 15.61 percent. The estimated units are final and not subject to adjustment. Prospective bidders are urged to examine this timber and to make their own estimates of quantity and quality.

BOND AND PAYMENT SCHEDULE:

1. A bond in the amount of \$511.00 to insure faithful performance of the conditions of the contract will be deposited by the successful bidder within 21 days of the sale award.
2. Cutting in any sale or unit without the required advance payment would be considered a trespass.
3. Total payment must be paid in advance or according to the following schedule:
 - (a) Ten percent (10%) of the sale value must be paid within 21 days of the sale award.
 - (b) The 10% down payment will be credited towards the first unit cut.
 - (c) Payment for each of the following units must be made before cutting begins in that unit:

PAYMENT UNIT NUMBER	PERCENT OF TOTAL SALE VALUE
01	40.1%
02	26.4%
03	29.1%
04	4.4%
4. If no cutting takes place, the 10% down payment will not be refunded.
5. Operations on the contract issued will terminate on 06/30/2022.

Description of Timber by Payment Unit (PU)

PU	MARKET GROUP	PRODUCT	QUANTITY	UNIT	ACRES	ADVERTISE PRICE
1	Paper Birch	Sawtimber	2.2	MBF	19.7	\$4,099.85
	Balsam Fir	Pulpwood	15.0	Cords		
	Black Spruce		185.0	Cords		
	Mixed Hardwood		12.0	Cords		
	<i>Red Maple</i>		12.0	<i>Cords</i>		
	N. White Cedar		73.0	Cords		
	Paper Birch		9.0	Cords		
	White Pine		12.0	Cords		
2	Paper Birch	Sawtimber	1.1	MBF	29.1	\$2,701.50
	Yellow Birch		1.4	MBF		
	Balsam Fir	Pulpwood	30.0	Cords		
	Black Spruce		70.0	Cords		
	Mixed Hardwood		21.0	Cords		
	<i>Red Maple</i>		7.0	<i>Cords</i>		
	<i>Yellow Birch</i>		14.0	<i>Cords</i>		
	N. White Cedar		178.0	Cords		
	Paper Birch		25.0	Cords		
3	Paper Birch	Sawtimber	0.7	MBF	43.7	\$2,973.85
	Balsam Fir	Pulpwood	17.0	Cords		
	Black Spruce		72.0	Cords		
	Mixed Hardwood		22.0	Cords		
	<i>Red Maple</i>		11.0	<i>Cords</i>		
	<i>Yellow Birch</i>		11.0	<i>Cords</i>		
	N. White Cedar		183.0	Cords		
	Paper Birch		65.0	Cords		
	White Pine		15.0	Cords		
4	B. T. Aspen	Pulpwood	23.0	Cords	6.6	\$453.85
	Balsam Fir		14.0	Cords		
	Paper Birch		1.0	Cords		
TOTAL:			5.4	MBF		
TOTAL:			1,042.0	Cords		

Sale Specific Conditions & Requirements

Sale Name: The Marsh King

Sale Number: 41-013-18 Seq#: 3

1 - Sale Area

1.2 - Boundaries

1.2.1 - Painted boundaries (1/14)

The sale boundary and Payment Unit boundaries are marked and identified by blue, red and yellow paint. Exterior sale boundary lines against private property are marked with blue paint. Exterior sale boundary lines against state are marked with red paint. Interior Payment Unit boundaries are marked with yellow paint. The painted boundary line trees are not Included Timber and are to be protected.

2 - Timber Specifications

2.1 - Included Timber

2.1.1 - Clearcut unit(s) with unmerchantable trees (6/14)

Within Payment Unit(s) 4, cut all trees that are two (2) inches or more at DBH, except do not cut oak, hemlock, black cherry and cedar.

2.1.2 - Clearcut unit(s) w/o unmerchantable trees (8/11)

Within Payment Unit(s) 1 - 3, cut all trees which meet minimum piece specifications in 2.2 Utilization, except do not cut hemlock and oak. Special protection trees identified in accordance with condition 3.4.2, within clearcutting unit boundaries, are not Included Timber and are to be protected.

3 - Payments

3.4 - Damaged Timber

3.4.1 - Damaged timber (6/14)

General Condition and Requirement 3.4 Damaged Timber, defines liquidated damages for undesignated live merchantable trees which are cut or injured. In addition, extreme care should be taken to avoid damage to cedar and hemlock seedlings and saplings in Payment Units 1 - 3. Within the sale area, if more than 25% of the cedar and hemlock seedlings or saplings (1/4" to 4.5" DBH) within a specified portion of the sale area are damaged, liquidated damages will be assessed at \$500 per acre for all acreage within that specified portion of the sale area that was damaged.

3.4.2 - Special Protection Trees (4/14)

The Purchaser shall not cut live or dead special protection trees within cutting units or clearings. Special protection trees are hemlock and oak. If the Purchaser's operations have cut or damaged special protection trees through carelessness, the Purchaser shall pay \$100 as fixed, agreed and liquidated damages for each special protection tree cut or damaged. Such payment does not constitute ownership of the undesignated timber.

4 - Transportation

4.1 - Construction

4.1.3 - Slash and earthen piles (8/04)

Piles or windrows of earth along roads and landings that have been widened or constructed shall be leveled. Slash from road maintenance or construction, including stumps, shall be dispersed throughout the sale.

4.1.4 - Timber removed for construction (12/09)

Trees cut or damaged in the process of pre-approved road, landing or skid trail construction will be decked in an area separate from other Designated Timber and not removed until measured by the sale administrator. Payment will be made at the specified Purchase Unit Price.

4.1.6 - Road construction (1/09)

Construction of new roads or improvements of existing roads shall be done in such a way as to minimize the environmental and visual impacts. Merchantable trees shall be cut and utilized unless otherwise directed. Non-merchantable trees shall be severed and laid flat on the ground. Slash shall be scattered, and not left in windrows and kept a minimum of 10 feet back

from the road edge. Stumps shall be set upright, not left on edge, and be moved at least 10 feet away from the road edge. Disturbed soil shall be feathered into the woods and not left in berms or windrows.

4.1.7 - Road closure (10/11)

All new roads built into the sale must be blocked to vehicle traffic upon completion of the sale. Overgrown roads that are reopened shall be considered new roads. In general, this will require constructing a four (4') foot high berm of stumps and logs covered with earth. Stumps and brush must be placed along the remainder of the trail. These roads must be rendered impassable to cars and trucks. All stumps from road building and landing construction must be reserved to block any newly constructed roads upon completion of the sale. These stumps must be scattered along the road system to prohibit vehicular movement. Contact the sale administrator for specific details of design and placement.

4.2 - Maintenance

4.2.2 - Fill material (4/07)

To maintain roads, fill material may be needed in areas where "holes" exist or may be expected to develop. This fill material should be placed before trucking begins.

4.2.4 - Grading (10/16)

For completion of the sale, state forest roads must be graded. In general, this will require a road grader or bull dozer to shape up the roads after forest products have been hauled off site. This includes cleaning of drainage areas, grading, crowning and filling with gravel, if necessary. The grading equipment to be used must be approved by the Unit Manager or his/her representative.

4.4 - Access

4.4.1 - Private property access (3/11)

Permission for access across private land is the responsibility of the Purchaser.

5 - Operations

5.1 - Notification

5.1.1 - Pre-sale conference (10/16)

A pre-sale conference between the Purchaser and sale administrator is required prior to beginning any operations. The Unit Manager or his/her representative must be contacted at least 5 days in advance to schedule the conference.

5.2 - Conduct of Operations

5.2.2 - Hazard Trees/Snags

5.2.2.1 - Den trees (10/16)

Obvious hollow and/or den trees shall be protected and left standing unless they are a safety hazard.

5.2.3 - Operating Restrictions

5.2.3.1 - Operating restrictions (9/11)

Within Payment Unit(s) 1 - 3, unless changed by written agreement, cutting, skidding, and hauling are limited frozen conditions. This restriction is to protect lowland soils.

5.2.17 - Timber Mats and Interlocking Composite Mats (3/18)

Some roads or skid trails may require extra protection such as that afforded by timber mats, interlocking composite mats, or another approved system. If available, mats may be borrowed from the DNR. A Timber Sale Contract Supplement will be used to document the Purchaser's use of the DNR's mats. Contact the sale administrator regarding availability and pick-up. Timber mats are available from various field offices. Composite mats are only available from the Grayling field office. The Purchaser is responsible for picking up and hauling the mats to and from the site. The composite mats will require DNR staff onsite for installation and removal. Contact the sale administrator to schedule at least 30 days before desired install/removal date. All mats must be cleaned prior to drop off. This may include, but is not limited to, power washing and brushing to remove mud and debris. A charge of \$400.00 per timber mat and \$2,000.00 per composite mat will be assessed for all damaged or non-returned mats. Damage for the crane/timber mats is defined as three or more broken cants. Damage for the composite mats is defined as cracked or broken mats.

5.2.32 - Decking/landing restoration (9/13)

All decking and landing areas must have the surface area restored to a condition equal to or better than before. This is to ensure the proper regeneration of the stand. Wood debris, chips and "cookies" from trimmings must be removed or scattered away from landing and loading areas and may not be windrowed on the edge.

5.2.38 - No decking against live trees (2/04)

Cut products may not be decked against unmarked or designated leave trees.

5.2.41 - Snowmobile trail protection (9/11)

The Old Seney Road is a snowmobile trail and is shown on the Timber Sale Map. Do not cut or damage posts with orange trail markers or traffic control signs. If the trail road is to be used for hauling during the snowmobile season, then a snow covered base must be left on the trail. Maintain a 20 foot wide slash, debris, and rut free zone daily using the snowmobile trail as the centerline. No decking of forest products will be permitted along the snowmobile trail.

5.4 - Soil Protection

5.4.1 - Rutting restriction, general (7/16)

Operations are to cease immediately if equipment and weather conditions result in rutting of roads and/or skid trails which is 12 inches or greater in depth and 50 feet in length. The Unit Manager or his/her representative may restrict hauling and/or skidding if ruts exceed the specified depth. With the Unit Manager or his/her representative's approval, the Purchaser may return to the area when the risk of rutting has decreased.

5.8 - Protection of Endangered Species

5.8.3 - Red shoulder hawk or goshawk (2/16)

In the event that an active red shoulder hawk or goshawk nest is found, the contract may be amended to protect the nest site until the nest is determined to be inactive. The value of the trees in this excluded area will be refunded or credited to the Purchaser. The nest will be buffered with a five-chain radius (eight acre) protection area, centered on the nest tree, in which there will be no cutting or new roads constructed. Avoid human disturbance, including loading and skidding, in the protection area.

An additional zone of five chains (ten chains centered on the active nest tree) will be established in which there is no management activity from April 1 to July 30. Limit biomass harvesting and chipping operations within this ten-chain zone, retain the maximum one-third of residues per the Woody Biomass Harvesting Guidelines (Michigan DNR 2010). Nests determined to be inactive will be protected with a one-chain no-harvest buffer.

6 - Safety and Fire Prevention

6.2 - Signing

6.2.2 - Snowmobile trail posting (8/09)

The Purchaser is responsible for posting and maintaining caution signs on the Old Seney Road prior to beginning operations during the snowmobile season (approximately December 1 to March 31). The trail must be posted at appropriate distances from the sale area to warn of logging activity and truck traffic. Signs must be removed when harvest operations are suspended or completed.



TIMBER SALE MAP

This information provided by authority of Part 525, 1994 PA 451, as amended.

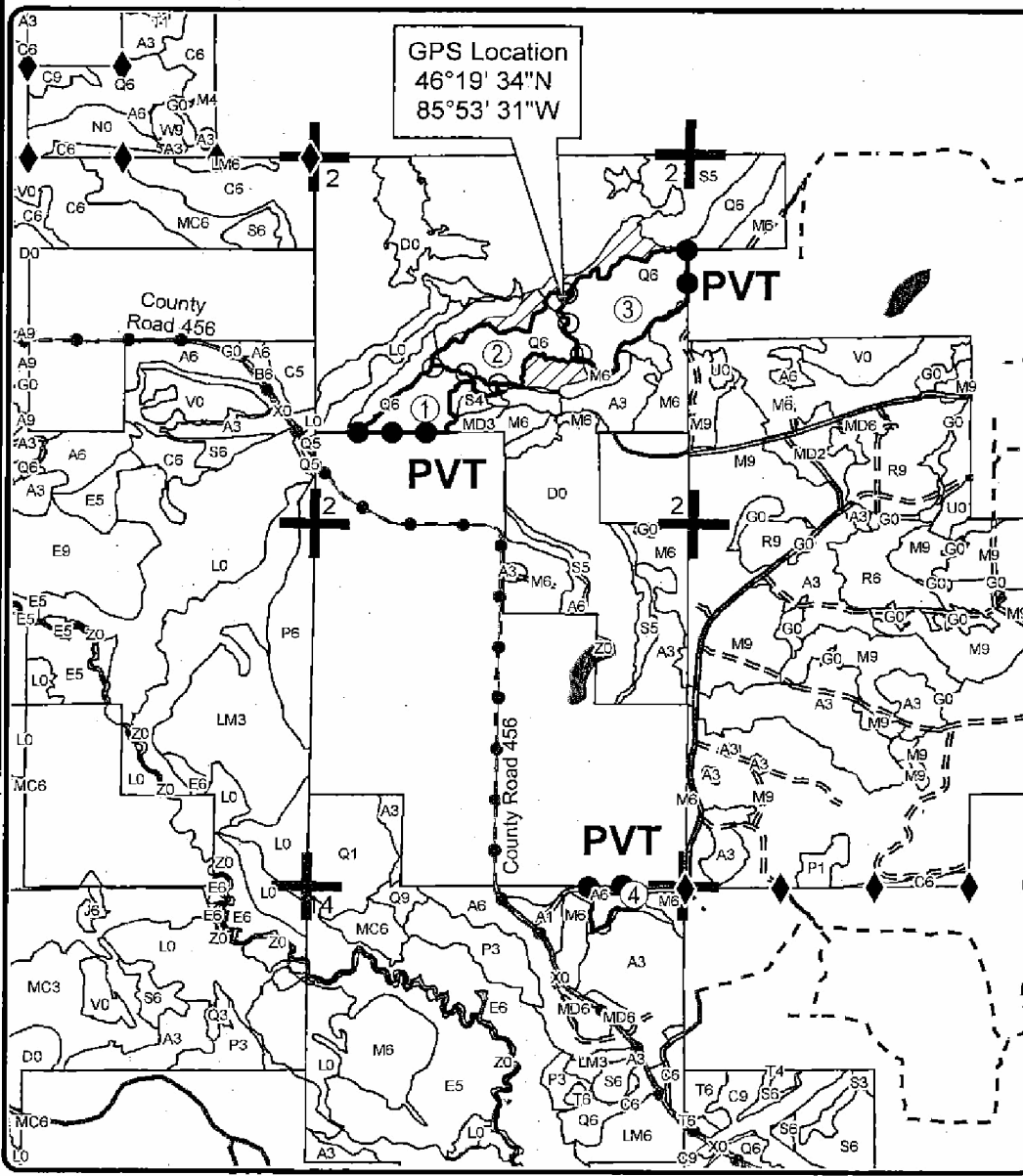
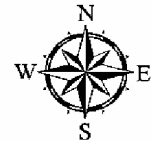
Sale Number	Year
41-013	18

Forest Management Unit Shingleton	County Alger	Mapped By Irving	Date 9/20/2018	Page 1	of 1
Township 45N	Range 13W	Section(s) and Subdivision(s) S2: SENW, S1/2NE, N1/2SW, N1/2SE S14: NENE	Scale 1:31,680		

Cover Type				Density	
A = Aspen	H = Hemlock	N = Marsh	U = Upland Brush	0 = Non Stocked	5 = Pole Timber Medium
B = Paper Birch	J = Jack Pine	O = Oak	UM = Upland Mixed	1 = Seedling Sapling Poor	6 = Pole Timber Well
C = Cedar	L = Lowland Brush	P = Lowland Poplar	V = Bog or Marsh	2 = Seedling Sapling Medium	7 = Saw Timber Poor
D = Tired Bog	LM = Lowland Mixed	Q = Mixed Swamp Conifer	W = White Pine	3 = Seedling Sapling Well	8 = Saw Timber Medium
E = Swamp Hardwoods	M = Mpl, Bch, Brch	R = Red Pine	X = Non Stocked	4 = Pole Timber Poor	9 = Saw Timber Well
F = Spruce Fir	MC = Mixed Conifer	S = Black Spruce	Z = Water		
G = Grass	MD = Mixed Deciduous	T = Tamarack			

PU	Acres	PU	Acres
1	19.7	4	6.6
2	29.1		
3	43.7		

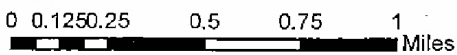
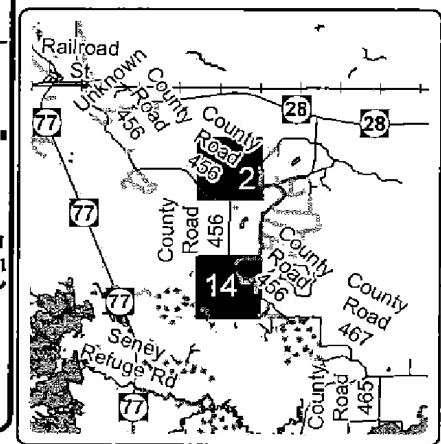
The Marsh King
Compartment 02
99.1 Acres



Legend

- Against State (Red)
- Payment Unit (Yellow)
- Private Line (Blue)
- ▨ Retention Area
- Section Corners
- Stand Boundaries
- Secondary Forest Road
- == Forest Access Route
- - - Gravel Road
- Private Road
- Perennial River
- Recreation Trail
- ▭ Lakes and Rivers
- ◆ Survey Corners

Locator Map
1:200,000



TIMBER SALE INFORMATION

Twofer (41-017-18)

T46N, R16W, SEC. 18; T46N, R16W, SEC. 7; T46N, R17W, SEC. 12; T46N, R17W, SEC. 13.
Schoolcraft County (Advertised Price \$18,855.15)

SALE NOTE: This sale has been reduced approximately 25 percent from the original advertised price, as it went "no bid" on June 26, 2019.

Roads may require the installation of culverts for cross drainage or at natural drainage-ways. See Sale Spec 4.1.5 for additional information.

Permission for access across private land is the responsibility of the Purchaser. If crossing Hancock Timber Resource Group property, a permit from them is required. See Sale Spec 4.4.1 for requirements.

Harvesting is limited to frozen conditions due to sensitive soils.

Access may be through private land.

A timber sale contract for this lump sum, sealed bid timber sale will be awarded to the responsible bidder offering the highest sealed bid price. Bids must be at or above the following advertised price for each species:

<u>PRODUCTS & SPECIES</u>	<u>ESTIMATED UNITS*</u>	<u>ADVERTISED PRICE</u>
Pulpwood		
B. T. Aspen	403.00 Cords	\$ 9.55 / Cord
Balsam Fir	121.00 Cords	\$ 7.05 / Cord
Mixed Hardwood	753.00 Cords	\$ 7.05 / Cord
Mixed Spruce	354.00 Cords	\$ 12.75 / Cord
N. White Cedar	188.00 Cords	\$ 2.60 / Cord
Paper Birch	679.00 Cords	\$ 5.05 / Cord
Tamarack	78.00 Cords	\$ 3.35 / Cord
White Pine	21.00 Cords	\$ 7.25 / Cord

* The total volume is statistically estimated within plus (+) or minus (-) 10.24 percent. The estimated units are final and not subject to adjustment. Prospective bidders are urged to examine this timber and to make their own estimates of quantity and quality.

BOND AND PAYMENT SCHEDULE:

1. A bond in the amount of \$943.00 to insure faithful performance of the conditions of the contract will be deposited by the successful bidder within 21 days of the sale award.
2. Cutting in any sale or unit without the required advance payment would be considered a trespass.
3. Total payment must be paid in advance or according to the following schedule:
 - (a) Ten percent (10%) of the sale value must be paid within 21 days of the sale award.
 - (b) The 10% down payment will be credited towards the first unit cut.
 - (c) Payment for each of the following units must be made before cutting begins in that unit:

<u>PAYMENT UNIT NUMBER</u>	<u>PERCENT OF TOTAL SALE VALUE</u>
01	15.6%
02	23.0%
03	41.5%
04	19.9%

4. If no cutting takes place, the 10% down payment will not be refunded.
5. Operations on the contract issued will terminate on 06/30/2023.

Description of Timber by Payment Unit (PU)

PU	MARKET GROUP	PRODUCT	QUANTITY	UNIT	ACRES	ADVERTISE PRICE
1	Balsam Fir	Pulpwood	12.0	Cords	40.3	\$2,935.70
	Mixed Hardwood		209.0	Cords		
	<i>Red Maple</i>		191.0	<i>Cords</i>		
	<i>Yellow Birch</i>		18.0	<i>Cords</i>		
	Mixed Spruce		79.0	Cords		
	<i>Black Spruce</i>		79.0	<i>Cords</i>		
	N. White Cedar		112.0	Cords		
	Tamarack		2.0	Cords		
	White Pine		10.0	Cords		
2	B. T. Aspen	Pulpwood	90.0	Cords	25.6	\$4,342.40
	Balsam Fir		41.0	Cords		
	Mixed Hardwood		295.0	Cords		
	<i>Beech</i>		22.0	<i>Cords</i>		
	<i>Red Maple</i>		273.0	<i>Cords</i>		
	Mixed Spruce		45.0	Cords		
	<i>Black Spruce</i>		33.0	<i>Cords</i>		
	<i>White Spruce</i>		12.0	<i>Cords</i>		
	Paper Birch		107.0	Cords		
3	B. T. Aspen	Pulpwood	283.0	Cords	76.5	\$7,817.90
	Balsam Fir		57.0	Cords		
	Mixed Hardwood		192.0	Cords		
	<i>Red Maple</i>		192.0	<i>Cords</i>		
	Mixed Spruce		45.0	Cords		
	<i>Black Spruce</i>		45.0	<i>Cords</i>		
	N. White Cedar		14.0	Cords		
	Paper Birch		508.0	Cords		
	Tamarack		55.0	Cords		
4	B. T. Aspen	Pulpwood	30.0	Cords	52.2	\$3,759.15
	Balsam Fir		11.0	Cords		
	Mixed Hardwood		57.0	Cords		
	<i>Red Maple</i>		57.0	<i>Cords</i>		
	Mixed Spruce		185.0	Cords		
	<i>Black Spruce</i>		185.0	<i>Cords</i>		
	N. White Cedar		62.0	Cords		
	Paper Birch		64.0	Cords		
	Tamarack		21.0	Cords		
White Pine	11.0	Cords				
TOTAL:			2,597.0	Cords		

Sale Specific Conditions & Requirements

Sale Name: Twofer

Sale Number: 41-017-18 Seq#: 3

1 - Sale Area

1.2 - Boundaries

1.2.1 - Painted boundaries (1/14)

The sale boundary and Payment Unit boundaries are marked and identified by blue, red, yellow and green paint. Exterior sale boundary lines against private property are marked with blue paint. Exterior sale boundary lines against state are marked with red paint. Interior Payment Unit boundaries are marked with yellow paint. Interior retention boundaries are marked with green paint. The painted boundary line trees are not Included Timber and are to be protected. Yellow painted trees designating an interior Payment Unit boundary are only to be cut when all surrounding Payment Units have been paid.

2 - Timber Specifications

2.1 - Included Timber

2.1.2 - Clearcut unit(s) w/o unmerchantable trees (8/11)

Within Payment Unit(s) 2 - 4, cut all trees which meet minimum piece specifications in 2.2 Utilization, except do not cut hemlock, elm and oak. In addition, within Payment Unit 2, do not cut yellow birch, cedar, and white pine. Special protection trees identified in accordance with condition 3.4.2, within clearcutting unit boundaries, are not Included Timber and are to be protected. Special protection areas identified in accordance with condition 3.4.3, within clearcutting unit boundaries, are not Included Timber and are to be protected.

2.1.7 - Leave tree marked unit(s) (6/14)

Within Payment Unit(s) 1, all trees which meet minimum piece specifications in 2.2 Utilization are designated for cutting, except do not cut hemlock and trees marked with green paint above and below stump height. Special protection trees identified in accordance with condition 3.4.2, within clearcutting unit boundaries, are not Included Timber and are to be protected.

3 - Payments

3.3 - Pre-measured Sales

3.3.4 - Dividing payment units (7/14)

Payment Unit(s) with a value greater than \$15,000 may be divided at the request of the Purchaser and upon approval of the Unit Manager. Dividing Payment Units is a contract modification which requires a Timber Sale Contract Supplement.

3.4 - Damaged Timber

3.4.2 - Special Protection Trees (4/14)

The Purchaser shall not cut live or dead special protection trees within cutting units or clearings. Special protection trees are hemlock and oak. If the Purchaser's operations have cut or damaged special protection trees through carelessness, the Purchaser shall pay \$100 as fixed, agreed and liquidated damages for each special protection tree cut or damaged. Such payment does not constitute ownership of the undesignated timber.

4 - Transportation

4.1 - Construction

4.1.3 - Slash and earthen piles (8/04)

Piles or windrows of earth along roads and landings that have been widened or constructed shall be leveled. Slash from road maintenance or construction, including stumps, shall be dispersed throughout the sale.

4.1.4 - Timber removed for construction (12/09)

Trees cut or damaged in the process of pre-approved road, landing or skid trail construction will be decked in an area separate from other Designated Timber and not removed until measured by the sale administrator. Payment will be made at the specified Purchase Unit Price.

4.1.5 - Culverts (5/14)

Roads may require the installation of culverts for cross drainage or at natural drainage-ways. If culverts are needed in these locations, their placement will be specified by the sale administrator and they shall be installed prior to hauling. The culverts shall be new, corrugated metal or plastic gauge. Culverts will be a minimum of 12 inches in diameter and 24 feet in length. If culverts are removed, fill shall be removed from wetland soils as specified. Soils shall be maintained and left in a non-erodible condition, with water bars, seed, fertilizer, mulch, and slash installed as directed by the sale administrator and as specified in the BMP manual. Stream crossing permits, if needed, will be obtained by the DNR.

4.1.6 - Road construction (1/09)

Construction of new roads or improvements of existing roads shall be done in such a way as to minimize the environmental and visual impacts. Merchantable trees shall be cut and utilized unless otherwise directed. Non-merchantable trees shall be severed and laid flat on the ground. Slash shall be scattered, and not left in windrows and kept a minimum of 10 feet back from the road edge. Stumps shall be set upright, not left on edge, and be moved at least 10 feet away from the road edge. Disturbed soil shall be feathered into the woods and not left in berms or windrows.

4.1.7 - Road closure (10/11)

All new roads built into the sale must be blocked to vehicle traffic upon completion of the sale. Overgrown roads that are reopened shall be considered new roads. In general, this will require constructing a four (4') foot high berm of stumps and logs covered with earth. Stumps and brush must be placed along the remainder of the trail. These roads must be rendered impassable to cars and trucks. Contact the sale administrator for specific details of design and placement.

4.4 - Access

4.4.1 - Private property access (3/11)

Permission for access across private land is the responsibility of the Purchaser. If crossing Hancock Timber Resource Group property, a permit from them is required. When the sale is purchased, they should be contacted regarding crossing their property. Allow 30-60 days for permit processing. A copy of the permit should be provided to the Unit Manager by the pre-sale conference.

5 - Operations

5.1 - Notification

5.1.1 - Pre-sale conference (10/16)

A pre-sale conference on site between the Purchaser and sale administrator is required prior to beginning any operations to determine landing and road locations. The Unit Manager or his/her representative must be contacted at least 5 days in advance to schedule the conference.

5.2 - Conduct of Operations

5.2.2 - Hazard Trees/Snags

5.2.2.1 - Den trees (10/16)

Obvious hollow and/or den trees shall be protected and left standing unless they are a safety hazard.

5.2.3 - Operating Restrictions

5.2.3.1 - Operating restrictions (9/11)

Within Payment Unit(s) 1 - 4, unless changed by written agreement, cutting, skidding, and hauling are limited to frozen conditions, which is typically from December 1 to March 31. This restriction is because of sensitive soils and deer yard management.

5.2.32 - Decking/landing restoration (9/13)

All decking and landing areas must have the surface area restored to a condition equal to or better than before. This is to ensure the proper regeneration of the stand. Wood debris, chips and "cookies" from trimmings must be removed or scattered away from landing and loading areas and may not be windrowed on the edge.

5.2.38 - No decking against live trees (2/04)

Cut products may not be decked against unmarked or designated leave trees.

5.4 - Soil Protection

5.4.1 - Rutting restriction, general (7/16)

Operations are to cease immediately if equipment and weather conditions result in rutting of roads and/or skid trails which is 12 inches or greater in depth and 50 feet in length. The Unit Manager or his/her representative may restrict hauling and/or skidding if ruts exceed the specified depth. With the Unit Manager or his/her representative's approval, the Purchaser may return to the area when the risk of rutting has decreased.

5.8 - Protection of Endangered Species

5.8.3 - Red shoulder hawk or goshawk (2/16)

In the event that an active red shoulder hawk or goshawk nest is found, the contract may be amended to protect the nest site until the nest is determined to be inactive. The value of the trees in this excluded area will be refunded or credited to the Purchaser. The nest will be buffered with a five-chain radius (eight acre) protection area, centered on the nest tree, in which there will be no cutting or new roads constructed. Avoid human disturbance, including loading and skidding, in the protection area.

An additional zone of five chains (ten chains centered on the active nest tree) will be established in which there is no management activity from April 1 to July 30. Limit biomass harvesting and chipping operations within this ten-chain zone, retain the maximum one-third of residues per the Woody Biomass Harvesting Guidelines (Michigan DNR 2010). Nests determined to be inactive will be protected with a one-chain no-harvest buffer.



Sale Number	Year
41-017	18

TIMBER SALE MAP

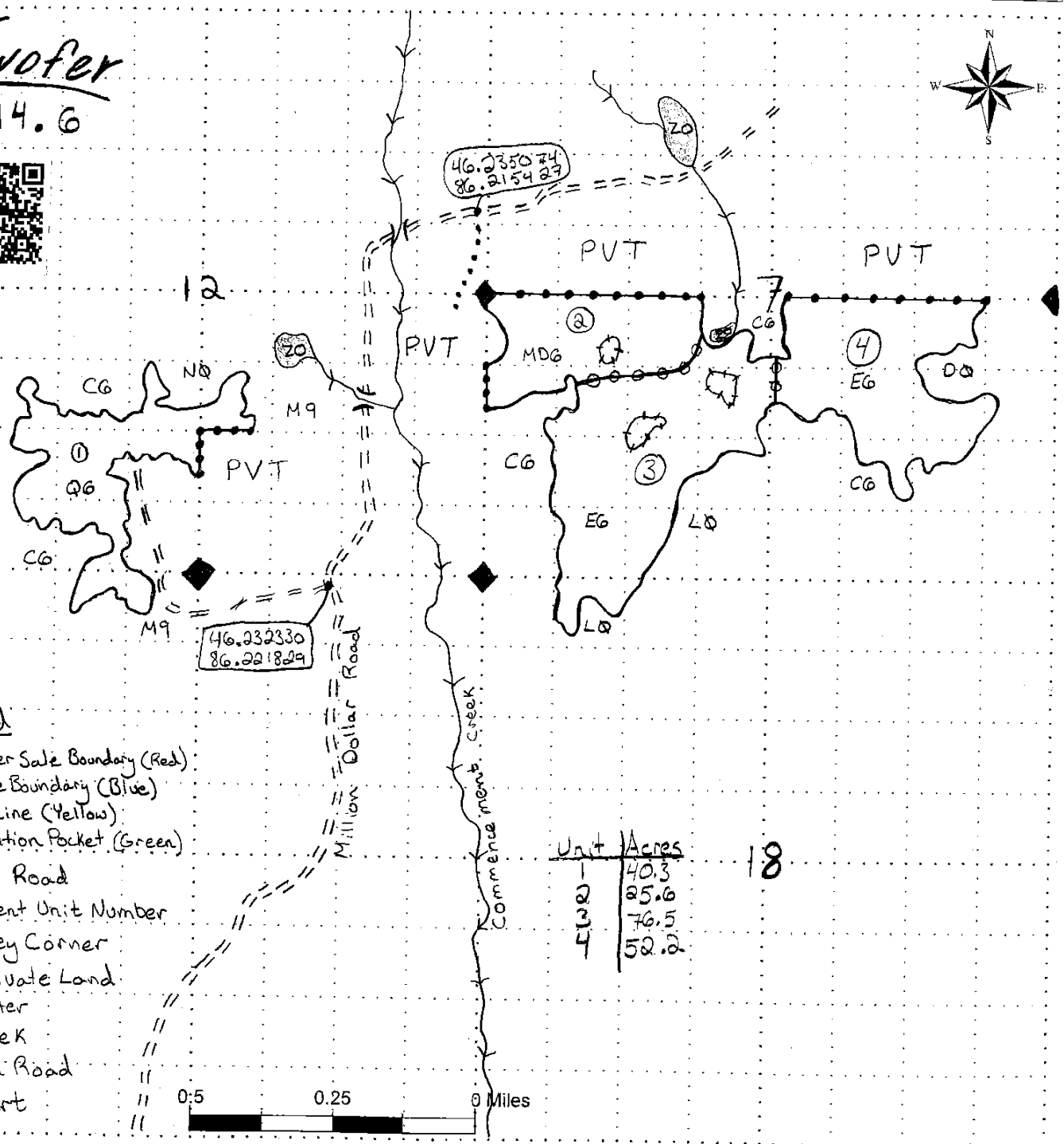
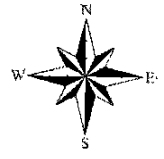
This information provided by authority of Part 5, 1994 PA 451, as amended.

Forest Management Unit Shingleton	County Alger Schoolcraft	Mapped By S. Kentner Cruised By Molin, Kentner	Date 8/27/18	Page 1 of 1
Township 46 N	Range 16+17W	Section(s) and Subdivision(s) 12: SW 1/4, NW 1/4, SE 1/4, SW 1/4 7: SW 1/4, SE 1/4 18: N 1/2 NW	13: NENE, NENW	

Cover Type				Density	
A = Aspen	J = Jack Pine	O = Oak	U = Upland Brush	0 = Non Stocked	5 = Pole Timber Medium
B = Paper Birch	K = Rock	P = Lowland Poplar	UM = Upland Mix Forest	1 = Seedling Sapling Poor	6 = Pole Timber Well
C = Cedar	L = Lowland Brush	Q = Mixed Swamp Conifer	V = Bog or Marsh	2 = Seedling Sapling Medium	7 = Saw Timber Poor
D = Tread Bog	LM = Lowland Mix Forest	R = Red Pine	W = White Pine	3 = Seedling Sapling Well	8 = Saw Timber Medium
E = Swamp Hardwoods	M = Maple, Beech, Birch	S = Black Spruce	X = Non Stocked	4 = Pole Timber Poor	9 = Saw Timber Well
F = Spruce/Fir	MC = Mixed Conifer	T = Tamarack	Y = Sand		
G = Grass	MD = Mixed Deciduous		Z = Water		
H = Hemlock	N = Marsh				

Twofer

194.6

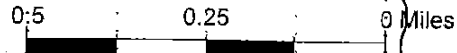


Legend

- S = Timber Sale Boundary (Red)
- = Private Boundary (Blue)
- = Unit Line (Yellow)
- = Retention Pocket (Green)
- == = Dirt Road
- ② = Payment Unit Number
- ◆ = Survey Corner
- PVT = Private Land
- ☉ = water
- ~ = Creek
- = Closed Road
- |) = Culvert

Unit	Acres
1	40.3
2	25.6
3	76.5
4	52.2

18



TIMBER SALE INFORMATION

Surfside Mix (41-023-18)

T47N, R17W, SEC. 16; T47N, R17W, SEC. 17; T47N, R17W, SEC. 8.
Alger County (Advertised Price \$14,771.95)

SALE NOTE: This sale has been reduced approximately 25 percent from the original advertised price, as it went "no bid" on June 12, 2019.

Permission for access across private land is the responsibility of the Purchaser. If crossing Hancock Forest Management Property, a permit is required. See Sale Spec 4.4.1 for requirements.

Within Payment Unit(s) 1 and 2, harvesting is not permitted during the period of April 15 to July 15 because of bark slippage. See Sale Spec 5.2.3.3.

Within Payment Unit(s) 3 and 4, it is recommended, but not required, that harvesting occur during dry summer or frozen winter conditions due to low ground areas. See Sale Spec 5.2.22.1.

Access may be through private land.

A timber sale contract for this lump sum, sealed bid timber sale will be awarded to the responsible bidder offering the highest sealed bid price. Bids must be at or above the following advertised price for each species:

<u>PRODUCTS & SPECIES</u>	<u>ESTIMATED UNITS*</u>	<u>ADVERTISED PRICE</u>
Sawtimber		
Black Cherry	0.40 MBF	\$ 105.00 / MBF
Red Maple	3.20 MBF	\$ 64.00 / MBF
Sugar Maple	13.90 MBF	\$ 230.00 / MBF
Pulpwood		
Balsam Fir	52.00 Cords	\$ 11.30 / Cord
Mixed Hardwood	429.00 Cords	\$ 11.25 / Cord
N. White Cedar	540.00 Cords	\$ 4.15 / Cord
Paper Birch	248.00 Cords	\$ 8.05 / Cord
White Spruce	82.00 Cords	\$ 20.45 / Cord

* The total volume is statistically estimated within plus (+) or minus (-) 22.25 percent. The estimated units are final and not subject to adjustment. Prospective bidders are urged to examine this timber and to make their own estimates of quantity and quality.

BOND AND PAYMENT SCHEDULE:

1. A bond in the amount of \$739.00 to insure faithful performance of the conditions of the contract will be deposited by the successful bidder within 21 days of the sale award.
2. Cutting in any sale or unit without the required advance payment would be considered a trespass.
3. Total payment must be paid in advance or according to the following schedule:
 - (a) Ten percent (10%) of the sale value must be paid within 21 days of the sale award.
 - (b) The 10% down payment will be credited towards the first unit cut.
 - (c) Payment for each of the following units must be made before cutting begins in that unit:

PAYMENT UNIT NUMBER	PERCENT OF TOTAL SALE VALUE
01	17.9%
02	20.2%
03	24.0%
04	37.9%

4. If no cutting takes place, the 10% down payment will not be refunded.
5. Operations on the contract issued will terminate on 06/30/2022.

Description of Timber by Payment Unit (PU)

PU	MARKET GROUP	PRODUCT	QUANTITY	UNIT	ACRES	ADVERTISE PRICE
1	Black Cherry	Sawtimber Pulpwood	0.1	MBF	18.4	\$2,650.45
	Red Maple		1.5	MBF		
	Sugar Maple		5.6	MBF		
	Balsam Fir		1.0	Cords		
	Mixed Hardwood		107.0	Cords		
	<i>Beech</i>		24.0	<i>Cords</i>		
	<i>Black Cherry</i>		1.0	<i>Cords</i>		
	<i>Ironwood</i>		1.0	<i>Cords</i>		
	<i>Red Maple</i>		9.0	<i>Cords</i>		
	<i>Sugar Maple</i>		72.0	<i>Cords</i>		
	White Spruce		2.0	Cords		
2	Black Cherry	Sawtimber Pulpwood	0.3	MBF	17.2	\$2,988.25
	Red Maple		1.7	MBF		
	Sugar Maple		8.3	MBF		
	Balsam Fir		2.0	Cords		
	Mixed Hardwood		76.0	Cords		
	<i>Beech</i>		4.0	<i>Cords</i>		
	<i>Black Cherry</i>		3.0	<i>Cords</i>		
	<i>Ironwood</i>		3.0	<i>Cords</i>		
	<i>Red Maple</i>		7.0	<i>Cords</i>		
	<i>Sugar Maple</i>		59.0	<i>Cords</i>		
	White Spruce		3.0	Cords		
3	Balsam Fir	Pulpwood	24.0	Cords	12.0	\$3,539.50
	Mixed Hardwood		155.0	Cords		
	<i>Red Maple</i>		129.0	<i>Cords</i>		
	<i>Yellow Birch</i>		26.0	<i>Cords</i>		
	N. White Cedar		154.0	Cords		
	Paper Birch		16.0	Cords		
	White Spruce		37.0	Cords		
4	Balsam Fir	Pulpwood	25.0	Cords	22.1	\$5,593.75
	Mixed Hardwood		91.0	Cords		
	<i>Black Ash</i>		6.0	<i>Cords</i>		
	<i>Red Maple</i>		85.0	<i>Cords</i>		
	N. White Cedar		386.0	Cords		
	Paper Birch		232.0	Cords		
	White Spruce		40.0	Cords		
TOTAL:			17.5	MBF		
TOTAL:			1,351.0	Cords		

Sale Specific Conditions & Requirements

Sale Name: Surfside Mix

Sale Number: 41-023-18 Seq#: 3

1 - Sale Area

1.2 - Boundaries

1.2.1 - Painted boundaries (1/14)

The Sale Boundary and Payment Unit boundaries are marked and identified by red, blue, yellow, and green paint. Exterior sale boundary lines against state are marked with red paint. Exterior sale boundary lines against private property are marked with blue paint. Interior Payment Unit boundaries are marked with yellow paint. Retention areas are marked with green paint. The painted boundary line trees are not Included Timber and are to be protected.

2 - Timber Specifications

2.1 - Included Timber

2.1.2 - Clearcut unit(s) w/o unmerchantable trees (8/11)

Within Payment Unit(s) 3 and 4, cut all trees which meet minimum piece specifications in 2.2 Utilization, except do not cut hemlock and oak. Special protection trees identified in accordance with condition 3.4.2, within clearcutting unit boundaries, are not Included Timber and are to be protected.

2.1.3 - Cut tree marked unit(s) (12/08)

Within Payment Unit(s) 1 and 2, all trees are designated for cutting when marked with orange paint above and below stump height, regardless of merchantability.

3 - Payments

3.4 - Damaged Timber

3.4.2 - Special Protection Trees (4/14)

The Purchaser shall not cut live or dead special protection trees within cutting units or clearings. Special protection trees are hemlock and oak. If the Purchaser's operations have cut or damaged special protection trees through carelessness, the Purchaser shall pay \$100 as fixed, agreed and liquidated damages for each special protection tree cut or damaged. Such payment does not constitute ownership of the undesignated timber.

4 - Transportation

4.1 - Construction

4.1.3 - Slash and earthen piles (8/04)

Piles or windrows of earth along roads and landings that have been widened or constructed shall be leveled. Slash from road maintenance or construction, including stumps, shall be dispersed throughout the sale.

4.1.4 - Timber removed for construction (12/09)

Trees cut or damaged in the process of pre-approved road, landing or skid trail construction will be decked in an area separate from other Designated Timber and not removed until measured by the sale administrator. Payment will be made at the specified Purchase Unit Price.

4.1.6 - Road construction (1/09)

Construction of new roads or improvements of existing roads shall be done in such a way as to minimize the environmental and visual impacts. Merchantable trees shall be cut and utilized unless otherwise directed. Non-merchantable trees shall be severed and laid flat on the ground. Slash shall be scattered, and not left in windrows and kept a minimum of 10 feet back from the road edge. Stumps shall be set upright, not left on edge, and be moved at least 10 feet away from the road edge. Disturbed soil shall be feathered into the woods and not left in berms or windrows.

4.1.7 - Road closure (10/11)

All new roads built into the sale must be blocked to vehicle traffic upon completion of the sale. Overgrown roads that are reopened shall be considered new roads. In general, this will require constructing a four (4') foot high berm of stumps and logs covered with earth. Contact the sale administrator for specific details of design and placement.

4.2 - Maintenance

4.2.2 - Fill material (4/07)

To maintain roads, fill material may be needed in areas where "holes" exist or may be expected to develop. This fill material should be placed before trucking begins. Contact the sale administrator regarding the availability of onsite sand, gravel, or pit run from adjacent State-owned lands.

4.2.4 - Grading (10/16)

For completion of the sale, state forest roads must be graded. In general, this will require a road grader or bull dozer to shape up the roads after forest products have been hauled off site. This includes cleaning of drainage areas, grading, crowning and filling with gravel, if necessary. The grading equipment to be used must be approved by the Unit Manager or his/her representative.

4.4 - Access

4.4.1 - Private property access (3/11)

Permission for access across private land is the responsibility of the Purchaser. If crossing Hancock property, a permit from them is required. When the sale is purchased, Hancock should be contacted regarding crossing their property. Allow 30-60 days for permit processing. A copy of the permit should be provided to the Unit Manager by the Pre-sale conference.

5 - Operations

5.1 - Notification

5.1.1 - Pre-sale conference (10/16)

A pre-sale conference between the Purchaser and sale administrator is required prior to beginning any operations. The Unit Manager or his/her representative must be contacted at least 5 days in advance to schedule the conference.

5.2 - Conduct of Operations

5.2.2 - Hazard Trees/Snags

5.2.2.1 - Den trees (10/16)

Obvious hollow and/or den trees shall be protected and left standing unless they are a safety hazard.

5.2.3 - Operating Restrictions

5.2.3.3 - Bark slippage restriction (3/09)

Within Payment Unit(s) 1 and 2, unless changed by written agreement, cutting and skidding are not permitted during the period of April 15 to July 15. This restriction is because of bark slippage.

5.2.22 - Operating Caution

5.2.22.1 - Operating caution (6/11)

It is recommended, but not required, that within Payment Unit(s) 3 and 4, cutting, skidding and hauling occur during dry summer or frozen winter conditions. The reason for the recommendation low ground within the Payment Units.

5.2.32 - Decking/landing restoration (9/13)

All decking and landing areas must have the surface area restored to a condition equal to or better than before. This is to ensure the proper regeneration of the stand. Wood debris and slash must be removed or scattered away from landing and loading areas and may not be windrowed on the edge.

5.2.38 - No decking against live trees (2/04)

Cut products may not be decked against unmarked or designated leave trees.

5.4 - Soil Protection

5.4.1 - Rutting restriction, general (7/16)

Operations are to cease immediately if equipment and weather conditions result in rutting of roads and/or skid trails which is 12 inches or greater in depth and 50 feet in length. The Unit Manager or his/her representative may restrict hauling and/or skidding if ruts exceed the specified depth. With the Unit Manager or his/her representative's approval, the Purchaser may return to the area when the risk of rutting has decreased.

5.8 - Protection of Endangered Species

5.8.3 - Red shoulder hawk or goshawk (2/16)

In the event that an active red shoulder hawk or goshawk nest is found, the contract may be amended to protect the nest site until the nest is determined to be inactive. The value of the trees in this excluded area will be refunded or credited to the Purchaser. The nest will be buffered with a five-chain radius (eight acre) protection area, centered on the nest tree, in which there will be no cutting or new roads constructed. Avoid human disturbance, including loading and skidding, in the protection area.

An additional zone of five chains (ten chains centered on the active nest tree) will be established in which there is no management activity from April 1 to July 30. Limit biomass harvesting and chipping operations within this ten-chain zone, retain the maximum one-third of residues per the Woody Biomass Harvesting Guidelines (Michigan DNR 2010). Nests determined to be inactive will be protected with a one-chain no-harvest buffer.



Sale Number	Year
41 - 023	18

TIMBER SALE MAP

This information provided by authority of Part 525, 1994 PA 451, as amended.

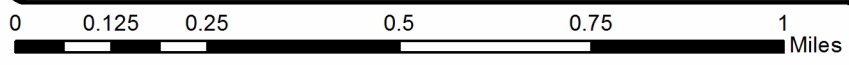
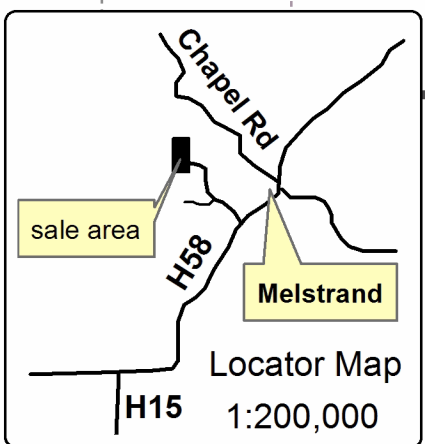
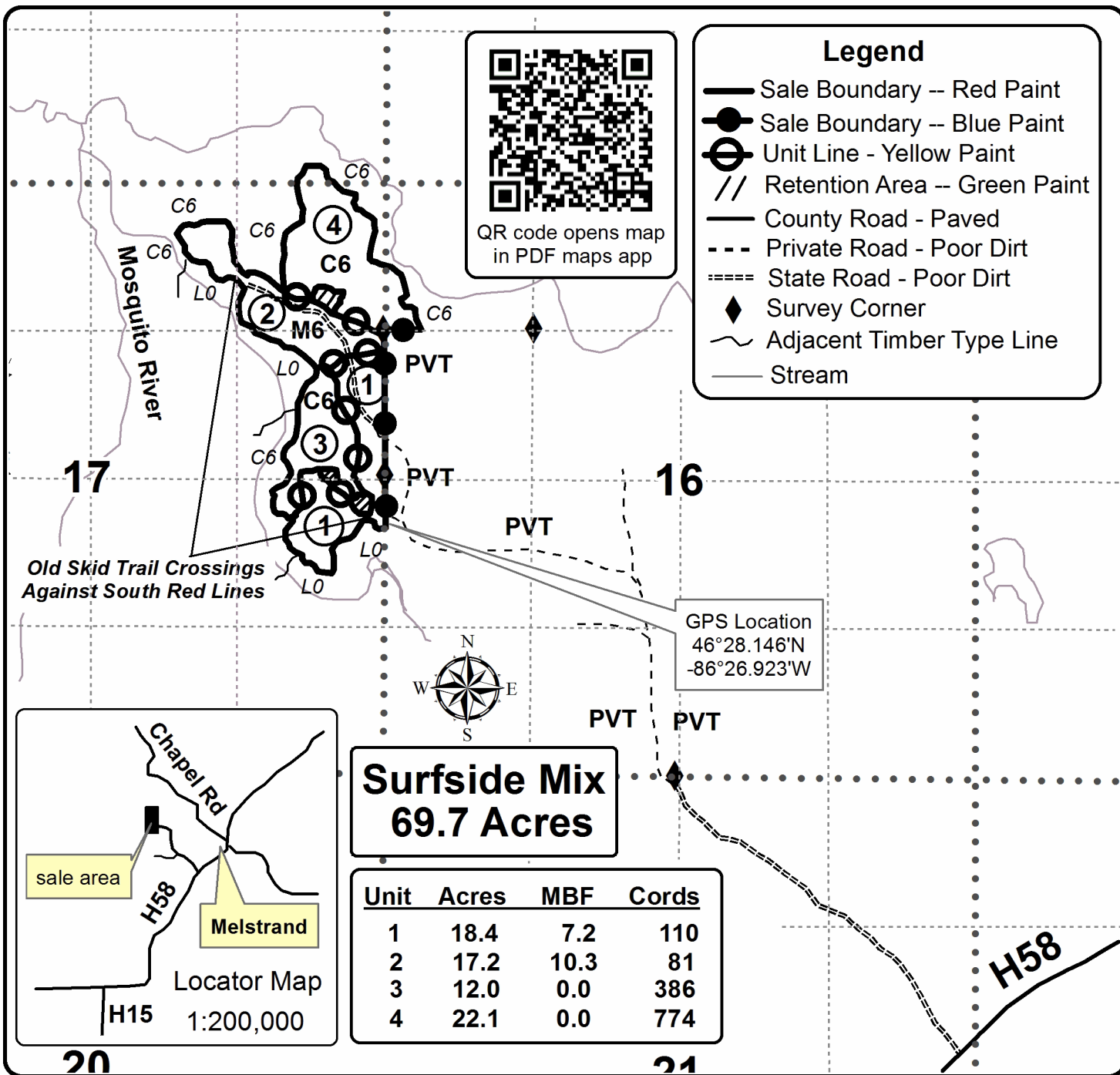
Forest Management Unit Shingleton	County Alger	Mapped By Steve Tuovila	Date 10/11/18	Page 1	of 1
Township 47N	Range 17W	Section(s) and Subdivision(s) 8-SESE 16-NWNW 17-N1/2NE,SENE,NESE	Scale 1:15,840		

Cover Type

A = Aspen	H = Hemlock	N = Marsh	U = Upland Brush
B = Paper Birch	J = Jack Pine	O = Oak	UM = Upland Mixed
C = Cedar	L = Lowland Brush	P = Lowland Poplar	V = Bog or Marsh
D = Treed Bog	LM = Lowland Mixed	Q = Mixed Swamp Conifer	W = White Pine
E = Swamp Hdwoods	M = Mpl, Bch, Brch	R = Red Pine	X = Non Stocked
F = Spruce Fir	MC = Mixed Conifer	S = Black Spruce	Z = Water
G = Grass	MD = Mixed Deciduous	T = Tamarack	

Density

0 = Non Stocked	5 = Pole Timber Medium
1 = Seedling Sapling Poor	6 = Pole Timber Well
2 = Seedling Sapling Medium	7 = Saw Timber Poor
3 = Seedling Sapling Well	8 = Saw Timber Medium
4 = Pole Timber Poor	9 = Saw Timber Well



TIMBER SALE INFORMATION

Fielder's Choice Hardwood (41-025-18)
 T47N, R15W, SEC. 27; T47N, R15W, SEC. 28.
 Schoolcraft County (Advertised Price \$6,971.95)

SALE NOTE: This sale has been reduced approximately 25 percent from the original advertised price, as it went "no bid" on May 22, 2019.

The Purchaser shall not cut live or dead trees, or operate equipment within historical sites. Historical sites are excluded with the red line and indicated as "Special Protection Area" on the Timber Sale Map. See Sale Spec. 5.7.1 for additional information.

A timber sale contract for this lump sum, sealed bid timber sale will be awarded to the responsible bidder offering the highest sealed bid price. Bids must be at or above the following advertised price for each species:

<u>PRODUCTS & SPECIES</u>	<u>ESTIMATED UNITS*</u>	<u>ADVERTISED PRICE</u>
Sawtimber		
Red Maple	3.60 MBF	\$ 80.00 / MBF
Pulpwood		
Balsam Fir	204.00 Cords	\$ 14.10 / Cord
Mixed Hardwood	271.00 Cords	\$ 14.05 / Cord

* The total volume is statistically estimated within plus (+) or minus (-) 20.20 percent. The estimated units are final and not subject to adjustment. Prospective bidders are urged to examine this timber and to make their own estimates of quantity and quality.

BOND AND PAYMENT SCHEDULE:

- A bond in the amount of \$349.00 to insure faithful performance of the conditions of the contract will be deposited by the successful bidder within 21 days of the sale award.
- Cutting in any sale or unit without the required advance payment would be considered a trespass.
- Total payment must be paid in advance or according to the following schedule:
 - Ten percent (10%) of the sale value must be paid within 21 days of the sale award.
 - The 10% down payment will be credited towards the first unit cut.
 - Payment for each of the following units must be made before cutting begins in that unit:

PAYMENT UNIT NUMBER	PERCENT OF TOTAL SALE VALUE
01	36.3%
02	22.2%
03	41.5%
- If no cutting takes place, the 10% down payment will not be refunded.
- Operations on the contract issued will terminate on 06/30/2022.

Description of Timber by Payment Unit (PU)

PU	MARKET GROUP	PRODUCT	QUANTITY	UNIT	ACRES	ADVERTISE PRICE
1	Balsam Fir	Pulpwood	76.0	Cords	20.1	\$2,532.80
	Mixed Hardwood		104.0	Cords		
	<i>Black Cherry</i>		59.0	<i>Cords</i>		
	<i>Red Maple</i>		45.0	<i>Cords</i>		
2	Balsam Fir	Pulpwood	37.0	Cords	23.9	\$1,547.35
	Mixed Hardwood		73.0	Cords		
	<i>Black Cherry</i>		2.0	<i>Cords</i>		
	<i>Red Maple</i>		71.0	<i>Cords</i>		
3	Red Maple	Sawtimber	3.6	MBF	42.5	\$2,891.80
	Balsam Fir	Pulpwood	91.0	Cords		
	Mixed Hardwood		94.0	Cords		
	<i>Black Cherry</i>		13.0	<i>Cords</i>		
	<i>Red Maple</i>		81.0	<i>Cords</i>		
TOTAL:			3.6	MBF		
TOTAL:			475.0	Cords		

Sale Specific Conditions & Requirements

Sale Name: Fielder's Choice Hardwood

Sale Number: 41-025-18 Seq#: 3

1 - Sale Area

1.2 - Boundaries

1.2.1 - Painted boundaries (1/14)

The sale boundary and Payment Unit boundaries are marked and identified by blue, red and yellow paint. Exterior sale boundary lines against private property are marked with blue paint. Exterior sale boundary lines against state are marked with red paint. Interior Payment Unit boundaries are marked with yellow paint. The painted boundary line trees are not Included Timber and are to be protected, unless marked with orange paint.

2 - Timber Specifications

2.1 - Included Timber

2.1.3 - Cut tree marked unit(s) (12/08)

Within Payment Unit(s) 1-3, all trees are designated for cutting when marked with orange paint above and below stump height, regardless of merchantability. In addition, all balsam fir is designated for harvest.

3 - Payments

3.4 - Damaged Timber

3.4.2 - Special Protection Trees (4/14)

The Purchaser shall not cut live or dead special protection trees within cutting units or clearings. Special protection trees are hemlock and oak. If the Purchaser's operations have cut or damaged special protection trees through carelessness, the Purchaser shall pay \$100 as fixed, agreed and liquidated damages for each special protection tree cut or damaged. Such payment does not constitute ownership of the undesignated timber.

4 - Transportation

4.1 - Construction

4.1.3 - Slash and earthen piles (8/04)

Piles or windrows of earth along roads and landings that have been widened or constructed shall be leveled. Slash from road maintenance or construction, including stumps, shall be dispersed throughout the sale.

4.1.6 - Road construction (1/09)

Construction of new roads or improvements of existing roads shall be done in such a way as to minimize the environmental and visual impacts. Merchantable trees shall be cut and utilized unless otherwise directed. Non-merchantable trees shall be severed and laid flat on the ground. Slash shall be scattered, and not left in windrows and kept a minimum of 10 feet back from the road edge. Stumps shall be set upright, not left on edge, and be moved at least 10 feet away from the road edge. Disturbed soil shall be feathered into the woods and not left in berms or windrows.

4.1.7 - Road closure (10/11)

All new roads built into the sale must be blocked to vehicle traffic upon completion of the sale. Overgrown roads that are reopened shall be considered new roads. In general, this will require constructing a four (4') foot high berm of stumps and logs covered with earth. Stumps and brush must be placed along the remainder of the trail. These roads must be rendered impassable to cars and trucks. Contact the sale administrator for specific details of design and placement.

4.2 - Maintenance

4.2.4 - Grading (10/16)

For completion of the sale, state forest roads must be graded. In general, this will require a road grader or bull dozer to shape up the roads after forest products have been hauled off site. This includes cleaning of drainage areas, grading, crowning and filling with gravel, if necessary. The grading equipment to be used must be approved by the Unit Manager or his/her representative.

5 - Operations

5.1 - Notification

5.1.1 - Pre-sale conference (10/16)

A pre-sale conference on site between the Purchaser and sale administrator is required prior to beginning any operations to determine landing and road locations. The Unit Manager or his/her representative must be contacted at least 5 days in advance to schedule the conference.

5.2 - Conduct of Operations

5.2.2 - Hazard Trees/Snags

5.2.2.1 - Den trees (10/16)

Obvious hollow and/or den trees shall be protected and left standing unless they are a safety hazard.

5.2.32 - Decking/landing restoration (9/13)

All decking and landing areas must have the surface area restored to a condition equal to or better than before. This is to ensure the proper regeneration of the stand. Wood debris, chips and "cookies" from trimmings must be removed or scattered away from landing and loading areas and may not be windrowed on the edge.

5.2.38 - No decking against live trees (2/04)

Cut products may not be decked against unmarked or designated leave trees.

5.4 - Soil Protection

5.4.1 - Rutting restriction, general (7/16)

Operations are to cease immediately if equipment and weather conditions result in rutting of roads and/or skid trails which is 12 inches or greater in depth and 50 feet in length. The Unit Manager or his/her representative may restrict hauling and/or skidding if ruts exceed the specified depth. With the Unit Manager or his/her representative's approval, the Purchaser may return to the area when the risk of rutting has decreased.

5.7 - Protection of Historical Sites

5.7.1 - Historical sites (7/12)

The Purchaser shall not cut live or dead trees or operate equipment within historical sites. Historical sites are excluded with the red line and indicated as "Special Protection Area" on the Timber Sale Map. The Purchaser shall protect historical sites from damage by the Purchaser's operations. If Purchaser's operations have cut or damaged historical sites through carelessness, the Purchaser shall pay \$2000 as fixed, agreed and liquidated damages for each acre or part thereof cut or damaged.

5.8 - Protection of Endangered Species

5.8.3 - Red shoulder hawk or goshawk (2/16)

In the event that an active red shoulder hawk or goshawk nest is found, the contract may be amended to protect the nest site until the nest is determined to be inactive. The value of the trees in this excluded area will be refunded or credited to the Purchaser. The nest will be buffered with a five-chain radius (eight acre) protection area, centered on the nest tree, in which there will be no cutting or new roads constructed. Avoid human disturbance, including loading and skidding, in the protection area.

An additional zone of five chains (ten chains centered on the active nest tree) will be established in which there is no management activity from April 1 to July 30. Limit biomass harvesting and chipping operations within this ten-chain zone, retain the maximum one-third of residues per the Woody Biomass Harvesting Guidelines (Michigan DNR 2010). Nests determined to be inactive will be protected with a one-chain no-harvest buffer.



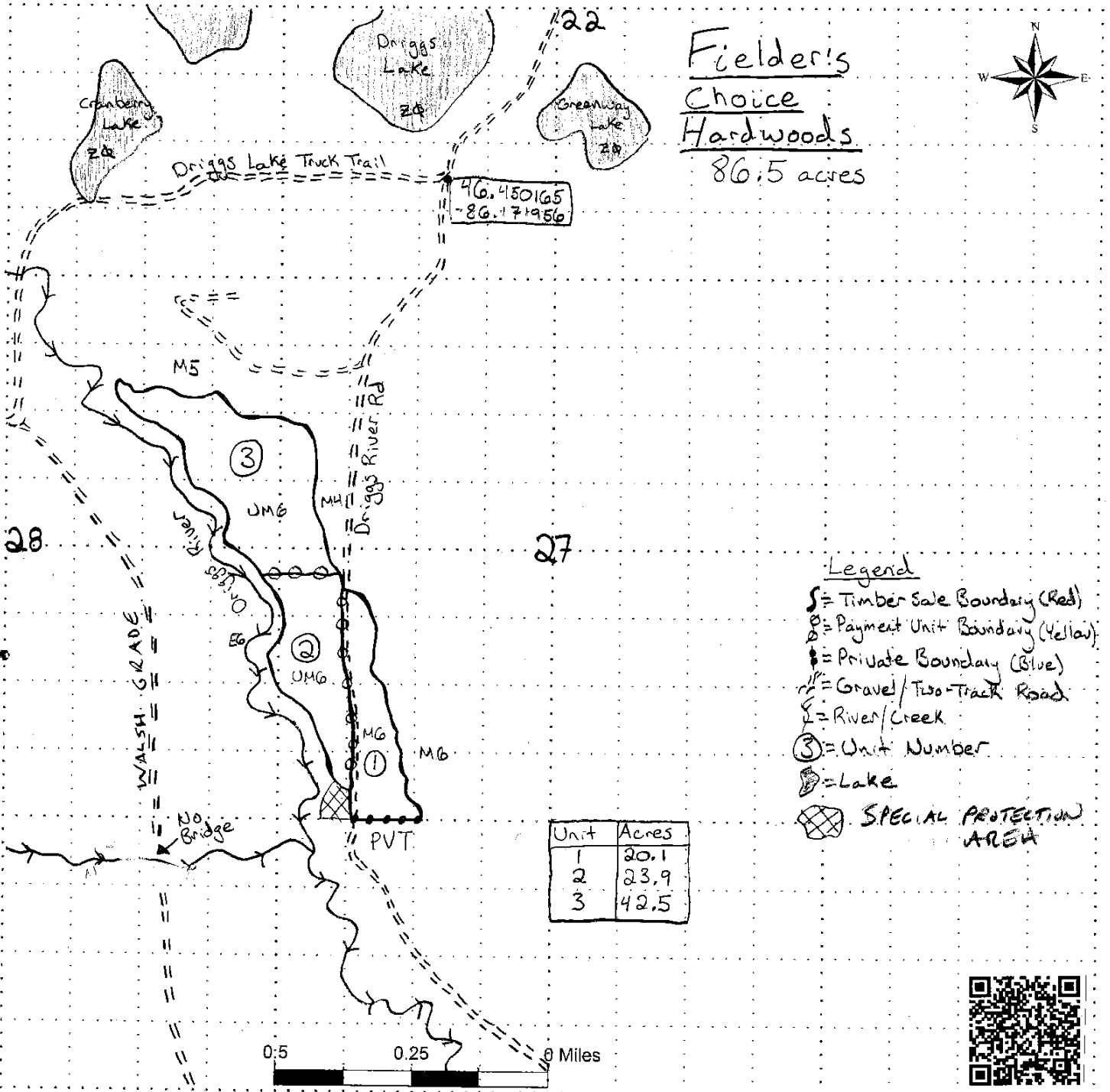
TIMBER SALE MAP

This information provided by authority of Part 5, 1994 PA 451, as amended.

Sale Number	Year
41-025	18

Forest Management Unit Shingleton	County Schoolcraft	Mapped By S. Kentner	Date 9/28/18	Page 1	of 1
Township 47N	Range 15W	Section(s) and Subdivision(s) 28; NE 1/4, E 1/2 SE 1/4 27; SW NW, W 1/2 SW 1/4			

Cover Type				Density	
A = Aspen	J = Jack Pine	O = Oak	U = Upland Brush	0 = Non Stocked	5 = Pole Timber Medium
B = Paper Birch	K = Rock	P = Lowland Poplar	UM = Upland Mix Forest	1 = Seedling Sapling Poor	6 = Pole Timber Well
C = Cedar	L = Lowland Brush	Q = Mixed Swamp Conifer	V = Bog or Marsh	2 = Seedling Sapling Medium	7 = Saw Timber Poor
D = Treed Bog	LM = Lowland Mix Forest	R = Red Pine	W = White Pine	3 = Seedling Sapling Well	8 = Saw Timber Medium
E = Swamp Hardwoods	M = Maple, Beech, Birch	S = Black Spruce	X = Non Stocked	4 = Pole Timber Poor	9 = Saw Timber Well
F = Spruce/Fir	MC = Mixed Conifer	T = Tamarack	Y = Sand		
G = Grass	MD = Mixed Deciduous		Z = Water		
H = Hemlock	N = Marsh				



Fielder's Choice Hardwood (41-025-18)
T47N, R15W, SEC. 27; T47N, R15W, SEC. 28; Schoolcraft COUNTY

In response to the notice of sale to be held 2:00 p.m. (local time) on July 17, 2019, I am hereby submitting my sealed bid (firm offer) for the following forest products to be cut. Bids for individual species must be at or above the advertised price. All non-responsive bid forms may be rejected.

<u>PRODUCTS & SPECIES</u>	<u>ESTIMATED VOLUME*</u>	<u>ADVERTISED PRICE</u>	<u>BID PRICE/UNIT</u>
Sawtimber			
Red Maple	3.60 MBF	\$ 80.00/MBF	\$ _____
Pulpwood			
Balsam Fir	204.00 Cords	\$ 14.10/Cord	\$ _____
Mixed Hardwood	271.00 Cords	\$ 14.05/Cord	\$ _____

*The volumes are statistically estimated within plus (+) or minus (-) 20.20 percent. These estimated volumes are final and not subject to adjustment. Prospective bidders are urged to examine this timber and to make their own estimates of quantity and quality.

I understand that any or all bids may be rejected. All bids must be signed and all bid items must be bid or the bid form may be rejected. I also understand that consideration and awarding a contract will be based upon my past performance and ability to complete the contract based upon equipment and staffing subject to my control.

FEDERAL ID: _____ or SOCIAL SECURITY NUMBER: _____

Company or individual bidding: _____

Company representative's name: _____

Address: _____

City: _____ State: _____ Zip: _____

IF AVAILABLE, PLEASE PLACE THE PERSONALIZED LABEL FROM YOUR PROSPECTUS IN THE ABOVE BOX.

Individual or company representative's signature: _____ Date: _____

Phone number : _____ Email (optional): _____

THE WINNING BIDDER MUST COMPLETE THE VERIFICATION OF WORKER'S DISABILITY COMPENSATION ACT COMPLIANCE (ON REVERSE SIDE IF DOUBLE SIDED) WITHIN 21 DAYS OF SALE AWARD DATE



FOR DEPARTMENT USE ONLY	
Sale Number (XX - XXX - XX - XX)	
Forest Management Unit:	

TIMBER SALE VERIFICATION OF WORKER'S DISABILITY COMPENSATION ACT COMPLIANCE

As required by Act 317, P.A. 1969 (Worker's Compensation) and
Part 5 of Act 451 of 1994, as amended.

VERIFICATION OF WORKER'S DISABILITY COMPENSATION ACT COMPLIANCE

- This verification must be completed and submitted within 21 days of contract award and prior to the issuance of the timber sale contract.
- In addition, if boxes 2B or 2C are checked, then Notice of Exclusion or Certificate of Insurance must be submitted within twenty-one (21) days of the contract award and prior to the issuance of the timber sale contract.
- All information must be typed or printed except for written signatures.

Please Check Appropriate Categories:

1. My business is organized as (you **must** check one of the boxes below):
 - A. Sole Proprietorship (individual)
 - B. Partnership
 - C. Corporation
2. You **must** check one of the boxes below:
 - A. I certify my business is a sole proprietorship and it has no employees but the sole proprietor. I am not subject to the Worker's Compensation Laws.
 - B. I certify my business has satisfied its obligation to the Worker's Compensation Act through the use of an approved Notice of Exclusion (BWC-337, Rev. 5/96). I will provide a copy of the Notice of Exclusion within 21 days of the contract award. (For questions or a copy of the BWC-337, please call the Worker's Compensation Bureau at 517-322-1195).
 - C. I certify my business has a Worker's Compensation Policy. I will provide an original Certificate of Insurance within twenty-one (21) days of the contract award.
3. If you have checked item 2(A) or 2(B), you **must** indicate the number of **both** full-time and part-time employees, other than yourself, including family members and active partners (if none, you must enter "0").

_____ Full-time Employees

_____ Part-time Employees

Name of Business		Federal ID (or) Social Security No.	
Address		Telephone ()	
City	State	ZIP	

I hereby certify that the above information is true and correct. I agree to notify the Michigan DNR of any changes that occur in factors affecting my coverage during any of my present and future operations.

Signature of Owner or Authorized Representative

Title

Date

Please complete the "SEALED BID" information on the next page

Surfside Mix (41-023-18)

T47N, R17W, SEC. 16; T47N, R17W, SEC. 17; T47N, R17W, SEC. 8; Alger

In response to the notice of sale to be held 2:00 p.m. (local time) on July 17, 2019, I am hereby submitting my sealed bid (firm offer) for the following forest products to be cut. Bids for individual species must be at or above the advertised price. All non-responsive bid forms may be rejected.

<u>PRODUCTS & SPECIES</u>	<u>ESTIMATED VOLUME*</u>	<u>ADVERTISED PRICE</u>	<u>BID PRICE/UNIT</u>
Sawtimber			
Black Cherry	0.40 MBF	\$ 105.00/MBF	\$ _____
Red Maple	3.20 MBF	\$ 64.00/MBF	\$ _____
Sugar Maple	13.90 MBF	\$ 230.00/MBF	\$ _____
Pulpwood			
Balsam Fir	52.00 Cords	\$ 11.30/Cord	\$ _____
Mixed Hardwood	429.00 Cords	\$ 11.25/Cord	\$ _____
N. White Cedar	540.00 Cords	\$ 4.15/Cord	\$ _____
Paper Birch	248.00 Cords	\$ 8.05/Cord	\$ _____
White Spruce	82.00 Cords	\$ 20.45/Cord	\$ _____

*The volumes are statistically estimated within plus (+) or minus (-) 22.25 percent. These estimated volumes are final and not subject to adjustment. Prospective bidders are urged to examine this timber and to make their own estimates of quantity and quality.

I understand that any or all bids may be rejected. All bids must be signed and all bid items must be bid or the bid form may be rejected. I also understand that consideration and awarding a contract will be based upon my past performance and ability to complete the contract based upon equipment and staffing subject to my control.

FEDERAL ID: _____ or SOCIAL SECURITY NUMBER: _____

Company or individual bidding: _____

Company representative's name: _____

Address: _____

City: _____ State: _____ Zip: _____

IF AVAILABLE, PLEASE PLACE THE PERSONALIZED LABEL FROM YOUR PROSPECTUS IN THE ABOVE BOX.

Individual or company representative's signature: _____ Date: _____

Phone number : _____ Email (optional): _____

THE WINNING BIDDER MUST COMPLETE THE VERIFICATION OF WORKER'S DISABILITY COMPENSATION ACT COMPLIANCE (ON REVERSE SIDE IF DOUBLE SIDED) WITHIN 21 DAYS OF SALE AWARD DATE



FOR DEPARTMENT USE ONLY
Sale Number (XX - XXX - XX - XX)
Forest Management Unit:

TIMBER SALE VERIFICATION OF WORKER'S DISABILITY COMPENSATION ACT COMPLIANCE

*As required by Act 317, P.A. 1969 (Worker's Compensation) and
Part 5 of Act 451 of 1994, as amended.*

VERIFICATION OF WORKER'S DISABILITY COMPENSATION ACT COMPLIANCE

- This verification must be completed and submitted within 21 days of contract award and prior to the issuance of the timber sale contract.
- In addition, if boxes 2B or 2C are checked, then Notice of Exclusion or Certificate of Insurance must be submitted within twenty-one (21) days of the contract award and prior to the issuance of the timber sale contract.
- All information must be typed or printed except for written signatures.

Please Check Appropriate Categories:

1. My business is organized as (you **must** check one of the boxes below):
 - A. Sole Proprietorship (individual)
 - B. Partnership
 - C. Corporation
2. You **must** check one of the boxes below:
 - A. I certify my business is a sole proprietorship and it has no employees but the sole proprietor. I am not subject to the Worker's Compensation Laws.
 - B. I certify my business has satisfied its obligation to the Worker's Compensation Act through the use of an approved Notice of Exclusion (BWC-337, Rev. 5/96). I will provide a copy of the Notice of Exclusion within 21 days of the contract award. (For questions or a copy of the BWC-337, please call the Worker's Compensation Bureau at 517-322-1195).
 - C. I certify my business has a Worker's Compensation Policy. I will provide an original Certificate of Insurance within twenty-one (21) days of the contract award.
3. If you have checked item 2(A) or 2(B), you **must** indicate the number of **both** full-time and part-time employees, other than yourself, including family members and active partners (if none, you must enter "0").

_____ Full-time Employees

_____ Part-time Employees

Name of Business		Federal ID (or) Social Security No.	
Address		Telephone ()	
City	State	ZIP	

I hereby certify that the above information is true and correct. I agree to notify the Michigan DNR of any changes that occur in factors affecting my coverage during any of my present and future operations.

Signature of Owner or Authorized Representative

Title

Date

Please complete the "SEALED BID" information on the next page

Twofer (41-017-18)

T46N, R16W, SEC. 18; T46N, R16W, SEC. 7; T46N, R17W, SEC. 12; T46N, R17W,

In response to the notice of sale to be held 2:00 p.m. (local time) on July 17, 2019, I am hereby submitting my sealed bid (firm offer) for the following forest products to be cut. Bids for individual species must be at or above the advertised price. All non-responsive bid forms may be rejected.

<u>PRODUCTS & SPECIES</u>	<u>ESTIMATED VOLUME*</u>	<u>ADVERTISED PRICE</u>	<u>BID PRICE/UNIT</u>
Pulpwood			
B. T. Aspen	403.00 Cords	\$ 9.55/Cord	\$ _____
Balsam Fir	121.00 Cords	\$ 7.05/Cord	\$ _____
Mixed Hardwood	753.00 Cords	\$ 7.05/Cord	\$ _____
Mixed Spruce	354.00 Cords	\$ 12.75/Cord	\$ _____
N. White Cedar	188.00 Cords	\$ 2.60/Cord	\$ _____
Paper Birch	679.00 Cords	\$ 5.05/Cord	\$ _____
Tamarack	78.00 Cords	\$ 3.35/Cord	\$ _____
White Pine	21.00 Cords	\$ 7.25/Cord	\$ _____

*The volumes are statistically estimated within plus (+) or minus (-) 10.24 percent. These estimated volumes are final and not subject to adjustment. Prospective bidders are urged to examine this timber and to make their own estimates of quantity and quality.

I understand that any or all bids may be rejected. All bids must be signed and all bid items must be bid or the bid form may be rejected. I also understand that consideration and awarding a contract will be based upon my past performance and ability to complete the contract based upon equipment and staffing subject to my control.

FEDERAL ID: ____ - ____ - ____ or SOCIAL SECURITY NUMBER: ____ - ____ - ____

Company or individual bidding: _____

Company representative's name: _____

Address: _____

City: _____ State: _____ Zip: _____

IF AVAILABLE, PLEASE PLACE THE PERSONALIZED LABEL FROM YOUR PROSPECTUS IN THE ABOVE BOX.

Individual or company representative's signature: _____ Date: _____

Phone number : _____ Email (optional): _____

THE WINNING BIDDER MUST COMPLETE THE VERIFICATION OF WORKER'S DISABILITY COMPENSATION ACT COMPLIANCE (ON REVERSE SIDE IF DOUBLE SIDED) WITHIN 21 DAYS OF SALE AWARD DATE



FOR DEPARTMENT USE ONLY	
Sale Number (XX - XXX - XX - XX)	
Forest Management Unit:	

TIMBER SALE VERIFICATION OF WORKER'S DISABILITY COMPENSATION ACT COMPLIANCE

As required by Act 317, P.A. 1969 (Worker's Compensation) and
Part 5 of Act 451 of 1994, as amended.

VERIFICATION OF WORKER'S DISABILITY COMPENSATION ACT COMPLIANCE

- This verification must be completed and submitted within 21 days of contract award and prior to the issuance of the timber sale contract.
- In addition, if boxes 2B or 2C are checked, then Notice of Exclusion or Certificate of Insurance must be submitted within twenty-one (21) days of the contract award and prior to the issuance of the timber sale contract.
- All information must be typed or printed except for written signatures.

Please Check Appropriate Categories:

1. My business is organized as (you **must** check one of the boxes below):
 - A. Sole Proprietorship (individual)
 - B. Partnership
 - C. Corporation
2. You **must** check one of the boxes below:
 - A. I certify my business is a sole proprietorship and it has no employees but the sole proprietor. I am not subject to the Worker's Compensation Laws.
 - B. I certify my business has satisfied its obligation to the Worker's Compensation Act through the use of an approved Notice of Exclusion (BWC-337, Rev. 5/96). I will provide a copy of the Notice of Exclusion within 21 days of the contract award. (For questions or a copy of the BWC-337, please call the Worker's Compensation Bureau at 517-322-1195).
 - C. I certify my business has a Worker's Compensation Policy. I will provide an original Certificate of Insurance within twenty-one (21) days of the contract award.
3. If you have checked item 2(A) or 2(B), you **must** indicate the number of **both** full-time and part-time employees, other than yourself, including family members and active partners (if none, you must enter "0").

_____ Full-time Employees

_____ Part-time Employees

Name of Business		Federal ID (or) Social Security No.	
Address		Telephone ()	
City	State	ZIP	

I hereby certify that the above information is true and correct. I agree to notify the Michigan DNR of any changes that occur in factors affecting my coverage during any of my present and future operations.

Signature of Owner or Authorized Representative

Title

Date

Please complete the "SEALED BID" information on the next page

The Marsh King (41-013-18)
T45N, R13W, SEC. 14; T45N, R13W, SEC. 2; Schoolcraft COUNTY

In response to the notice of sale to be held 2:00 p.m. (local time) on July 17, 2019, I am hereby submitting my sealed bid (firm offer) for the following forest products to be cut. Bids for individual species must be at or above the advertised price. All non-responsive bid forms may be rejected.

<u>PRODUCTS & SPECIES</u>	<u>ESTIMATED VOLUME*</u>	<u>ADVERTISED PRICE</u>	<u>BID PRICE/UNIT</u>
Sawtimber			
Paper Birch	4.00 MBF	\$ 36.00/MBF	\$ _____
Yellow Birch	1.40 MBF	\$ 59.00/MBF	\$ _____
Pulpwood			
B. T. Aspen	23.00 Cords	\$ 13.40/Cord	\$ _____
Balsam Fir	76.00 Cords	\$ 9.90/Cord	\$ _____
Black Spruce	327.00 Cords	\$ 17.85/Cord	\$ _____
Mixed Hardwood	55.00 Cords	\$ 9.85/Cord	\$ _____
N. White Cedar	434.00 Cords	\$ 3.65/Cord	\$ _____
Paper Birch	100.00 Cords	\$ 7.05/Cord	\$ _____
White Pine	27.00 Cords	\$ 10.15/Cord	\$ _____

*The volumes are statistically estimated within plus (+) or minus (-) 15.61 percent. These estimated volumes are final and not subject to adjustment. Prospective bidders are urged to examine this timber and to make their own estimates of quantity and quality.

I understand that any or all bids may be rejected. All bids must be signed and all bid items must be bid or the bid form may be rejected. I also understand that consideration and awarding a contract will be based upon my past performance and ability to complete the contract based upon equipment and staffing subject to my control.

FEDERAL ID: ____ - ____ - ____ or SOCIAL SECURITY NUMBER: ____ - ____ - ____

Company or individual bidding: _____

Company representative's name: _____

Address: _____

City: _____ State: _____ Zip: _____

IF AVAILABLE, PLEASE PLACE THE PERSONALIZED LABEL FROM YOUR PROSPECTUS IN THE ABOVE BOX.

Individual or company representative's signature: _____ Date: _____

Phone number : _____ Email (optional): _____

THE WINNING BIDDER MUST COMPLETE THE VERIFICATION OF WORKER'S DISABILITY COMPENSATION ACT COMPLIANCE (ON REVERSE SIDE IF DOUBLE SIDED) WITHIN 21 DAYS OF SALE AWARD DATE



FOR DEPARTMENT USE ONLY
Sale Number (XX - XXX - XX - XX)
Forest Management Unit:

TIMBER SALE VERIFICATION OF WORKER'S DISABILITY COMPENSATION ACT COMPLIANCE

*As required by Act 317, P.A. 1969 (Worker's Compensation) and
Part 5 of Act 451 of 1994, as amended.*

VERIFICATION OF WORKER'S DISABILITY COMPENSATION ACT COMPLIANCE

- This verification must be completed and submitted within 21 days of contract award and prior to the issuance of the timber sale contract.
- In addition, if boxes 2B or 2C are checked, then Notice of Exclusion or Certificate of Insurance must be submitted within twenty-one (21) days of the contract award and prior to the issuance of the timber sale contract.
- All information must be typed or printed except for written signatures.

Please Check Appropriate Categories:

1. My business is organized as (you **must** check one of the boxes below):
 - A. Sole Proprietorship (individual)
 - B. Partnership
 - C. Corporation

2. You **must** check one of the boxes below:
 - A. I certify my business is a sole proprietorship and it has no employees but the sole proprietor. I am not subject to the Worker's Compensation Laws.
 - B. I certify my business has satisfied its obligation to the Worker's Compensation Act through the use of an approved Notice of Exclusion (BWC-337, Rev. 5/96). I will provide a copy of the Notice of Exclusion within 21 days of the contract award. (For questions or a copy of the BWC-337, please call the Worker's Compensation Bureau at 517-322-1195).
 - C. I certify my business has a Worker's Compensation Policy. I will provide an original Certificate of Insurance within twenty-one (21) days of the contract award.

3. If you have checked item 2(A) or 2(B), you **must** indicate the number of **both** full-time and part-time employees, other than yourself, including family members and active partners (if none, you must enter "0").

_____ Full-time Employees

_____ Part-time Employees

Name of Business		Federal ID (or) Social Security No.	
Address		Telephone ()	
City	State	ZIP	

I hereby certify that the above information is true and correct. I agree to notify the Michigan DNR of any changes that occur in factors affecting my coverage during any of my present and future operations.

Signature of Owner or Authorized Representative

Title

Date

Please complete the "SEALED BID" information on the next page