



**DEPARTMENT OF NATURAL RESOURCES
STATE OF MICHIGAN**

TIMBER SALE PROSPECTUS #6471

SCHEDULED SALE DATE AND TIME: 9:00 a.m. (local time) on August 15, 2019.

LOCATION: BARAGA MGMT UNIT, 427 US 41 NORTH, BARAGA, MI 49908.

PROSPECTUS NOTE: The bidder is advised to inspect the sale area and review the location, estimated volumes, operating costs and contract terms of proposed sales. Please be aware that some landowners may request 60 days or more notice for access across their land.

Notice is hereby given that bids will be received by the Unit Manager, BARAGA MANAGEMENT UNIT, for certain timber on the following described lands:

Indy Aspen (11-001-19) / T49N, R34W, SEC. 3 , S1/2NW,N1/2SW,SWSW.

T49N, R34W, SEC. 4 , NW,S1/2NE,SW,SE.

T49N, R34W, SEC. 5 , E1/2NE,NESE,S1/2SE.

T49N, R34W, SEC. 8 , SENW,NE,NESW,NWSE.

Baraga County, Advertised Price \$127,333.25, 324.5 Acres, Aspen, Red Oak.

SALE NOTE: A recreation site such as a trail, pathway, or campground is within the sale area or the vicinity. Certain restrictions/specifications may be applicable including time restrictions.

Peshky Hardwoods (11-012-19) / T51N, R35W, SEC. 3 , NW,NE,N1/2SW,NWSE.

T52N, R35W, SEC. 34, SWSE.

Houghton County, Advertised Price \$132,480.00, 192.1 Acres, Hardwood, Sugar Maple.

GEM Trail Aspen (11-014-19) / T51N, R35W, SEC. 11, E1/2SW,SWSE.

Houghton County, Advertised Price \$14,366.60, 35.3 Acres, Hardwood, Aspen.

SALE NOTE: Harvest operations are limited to the period of December 1 to April 15. See spec 5.2.3.1.

A recreation site such as a trail, pathway, or campground is within the sale area or the vicinity. Certain restrictions/specifications may be applicable including time restrictions.

Bruno Plains (11-018-19) / T51N, R35W, SEC. 17, SE.

Houghton County, Advertised Price \$12,634.15, 63.0 Acres, Hardwood, Aspen.

SALE NOTE: Access may be through private land.

BID INSTRUCTIONS (VER. 07/02/2018):

1. Scheduled Bid Location, Date, and Time (2/11)

Bids must be received by the Unit Manager, BARAGA OFFICE, 427 US 41 North, Baraga, MI 49908, no later than 9:00 a.m. (local time) on August 15, 2019. For further information concerning this sale, contact Brad Carlson at 906-353-6651.

2. Bidder's Qualifications (5/16)

Purchaser shall obtain workers compensation insurance to cover claims under Michigan's Worker's Disability Compensation Act of 1969 or similar employee benefit act of any other state applicable to an employee. If all or part of a timber sale was prepared by a private contractor, the contractor and that contractor's company are not permitted to bid on the timber sale contract. Bids will not be accepted from individuals or companies appearing on the DNR/FRD No-Bid List. This list contains the names of purchasers who previously failed to execute a contract within 21-days or who have a history of poor performance.

3. Preparation of Sealed Bids (5/16)

Bid Forms may be completed online thru Michigan DNR Timber Sale Online Bidding (OLB) at www.michigan.gov/timberbidding or by completing the hardcopy Bid Form found in the Timber Sale Prospectus. Hardcopy Bid Forms shall be manually signed in ink. Registration in OLB is considered your 'signature' for all bids submitted thru that system. Bid prices must be entered for each species and product in the Bid Price column for all material subject to bidding and all fill-in blanks must be completed. If erasures or other changes appear on the hardcopy Bid Form, each erasure or change must be initialed by the person signing the bid.

4. Submission of Sealed Bids (5/16)

Bid forms may be obtained from the Unit Manager or thru OLB. Bids may be submitted hardcopy or thru OLB. All hardcopy bids must be submitted on the bid form and in an envelope clearly identified as described in this section. NOTE: Only one bid form per bid envelope. Sealed bids must be submitted to the Unit office designated in the prospectus and must be submitted at or prior to the time established in the prospectus. The envelope should show on the outside (a) the sale name or number and (b) the date and time of bid opening, as shown in the prospectus. Bids received after the time specified in the sale prospectus are late bids and will be rejected.

It is possible for a bidder to submit multiple bids on a single sale. For example, a bid may be submitted hardcopy and a bid may be submitted thru OLB. Or, two bidders from the same company could both submit bids on the same sale. If this were to happen, the State would accept all bids received and award the contract accordingly. All bidding and contractual requirements would apply to all bids received.

5. Public Opening of Sealed Bids (7/16)

If conditions permit, the sealed bids will be publicly opened and posted at the time and place set in the prospectus.

If a bidder, present at a bid opening, has submitted bids on more than one sale, that bidder may withdraw their unopened bid envelopes or announce the withdrawal of their online bid after being declared the successful bidder on one sale.

6. Award of Contract (1/11)

Award of the contract will be made to the Bidder whose bid, conforming to the prospectus, is most advantageous to the State of Michigan on the basis of total value at rates bid for the estimated quantities. The State reserves the right to reject any bid or waive any minor irregularity in bids received. A written award mailed (or otherwise furnished) to the successful Bidder shall be deemed to result in a binding contract without further action by either party.

7. Down Payment (1/11)

The Bidder to whom award is made must make a down payment within 21 days of the sale award. The amount of the down payment will be calculated as shown in the Bond and Payment Schedule of this prospectus. Only cash may be used to meet this requirement.

8. Performance Security (1/11)

As guarantee of faithful performance, a cash bond, certificate of deposit, surety bond or irrevocable letter of credit (LOC) is required within 21 days of the sale award. The amount of the performance security is shown in the Bond and

Payment Schedule of this prospectus. If an LOC or surety is used, the coverage must extend for at least 6 months beyond the contract expiration.

9. Timber Sale Contract (7/18)

Additional conditions and requirements common to all timber sales are listed on the timber sale contract (R4031) and are available on line at www.michigan.gov/timber. Contact the Unit Manager for additional information or a sample contract. Within 21 days of the date of the award letter, the bidder must sign the contract and provide the required down payment, performance security, and verification of worker's disability compensation. The down payment and performance security shall be in accordance with the provisions of the timber sale contract, in the sums stated in this prospectus. If these actions are not taken, then the Bidder, the Bidder's corporation, and the corporation's principals may not be permitted to bid on State timber sales for a period of 3 months after the first offense, 6 months after the second offense, and 1 year after the third offense. An offense will only be counted against the Bidder for 5 years. In addition, the Bidder certifies that if awarded this contract, the Bidder will complete the timber sale contract in accordance with its terms and any modifications thereof including requirements to purchase, cut, and remove the included timber by the expiration date.

Payment Unit values in the State Forest Timber Sale Contract are calculated based on the advertised value of the Payment Unit as a percentage of the total advertised value of the contract. The advertised value of each Payment Unit is given in the Description of Timber by Payment Unit table on the Timber Sale Information page. For example, if the value of Payment Unit 1 is advertised as \$1,500 and the total Timber Sale value is advertised as \$10,000, the contract price for Payment Unit 1 will be 15% of the total bid price ($\$1,500/\$10,000 * 100$).

10. Disclaimer of Estimates and Bidder's Warranty of Inspection (7/16)

Before submitting this bid, the Bidder is advised and cautioned to inspect the sale area, review the requirements of the sale contract, and take other steps as may be reasonably necessary to ascertain the location, estimated volumes, construction estimates, and operating costs of the proposed sale. Failure to do so will not relieve the Bidder from responsibility for completing the contract.

The Bidder warrants that this bid is submitted solely on the basis of the Bidder's examination and inspection of the quality and quantity of the timber offered for sale and the Bidder's opinion of the value thereof and the costs of recovery. No reliance should be placed on the State of Michigan's estimates of timber quality, quantity or costs of recovery. Bidder further acknowledges that the State of Michigan: (i) expressly disclaims any warranty of fitness of timber for any purpose; (ii) offers this timber as is without any warranty of quality (merchantability) or quantity and (iii) expressly disclaims any warranty as to the quantity or quality of timber sold.

11. Certification and Chain-of-Custody (10/14)

Unless otherwise indicated in the contract under section 7 – Other Conditions of the Sale Specific Conditions & Requirements, the area encompassed by this timber sale is certified to the standards of the Forest Stewardship Council (FSC) - Certificate #SCS-FM/COC-00090N and the Sustainable Forestry Initiative (SFI) - Certificate #NSF-SFIS-5Y031-SF5. Forest products from this sale may be delivered to the mill as "FSC 100% and / or SFI certified" as long as the contractor hauling the forest products is chain-of-custody (COC) certified or covered under a COC certificate from the destination mill. The purchaser is responsible for maintaining COC after leaving the sale area.

12. Good Neighbor Authority (GNA) Requirements (7/16)

If the name of this timber sales contains the acronym GNA, it is authorized by the Good Neighbor Authority (GNA) and covered by various agreements between the U.S. Forest Service and the State. The timber sale occurs on federal land and the following conditions apply:

GNA contracts on US Forest Service land will not be awarded to purchasers on the Federal list of excluded parties. The System for Award Management (SAM) will be checked for active excluded parties prior to award of contract. In addition, the Bidder to whom award is made must complete an Assurance Regarding Felony Conviction or Tax Delinquent Status for Corporate Applicants (AD-3031).

13. Good Neighbor Authority (GNA) Requirements, con't (9/16)

Bidder certifies, by signing this bid form, that to the best of Bidder's knowledge that the following representations are accurate and complete.

- a. That the Bidder and its principals are not presently debarred, suspended, proposed for debarment, declared ineligible, or voluntary excluded from timber sales (covered transactions) by any Federal department or agency.
- b. That the Bidder and its principals have not within a 3-year period preceding this bid been convicted of or had a civil judgment rendered against them for commission of fraud or a criminal offense in connection with obtaining, attempting to obtain, or performing a public (Federal, State, or local) transaction or contract under a public transaction; violation of Federal or State antitrust statutes or commission of embezzlement, theft, forgery, bribery, falsification or destruction of records, making false statements, or receiving stolen property.
- c. That the Bidder and its principals are not presently indicted for or otherwise criminally or civilly charged by a governmental entity (Federal, State, or local) with commission of any of the offenses enumerated in paragraph b of this certification.
- d. That the Bidder and its principals have not within a 3-year period preceding this bid had one or more public transactions (Federal, State, or local) terminated for breach or default of a timber or forest product contract.

Bidders that cannot certify this requirement, in whole or in part, shall submit an explanation with their bid.

DAN EICHINGER
Director

TIMBER SALE INFORMATION

Indy Aspen (11-001-19)

T49N, R34W, SEC. 3; T49N, R34W, SEC. 4; T49N, R34W, SEC. 5; T49N, R34W, SEC. 8.
Baraga County (Advertised Price \$127,333.25)

SALE NOTE: A recreation site such as a trail, pathway, or campground is within the sale area or the vicinity. Certain restrictions/specifications may be applicable including time restrictions.

A timber sale contract for this lump sum, sealed bid timber sale will be awarded to the responsible bidder offering the highest sealed bid price. Bids must be at or above the following advertised price for each species:

<u>PRODUCTS & SPECIES</u>	<u>ESTIMATED UNITS*</u>	<u>ADVERTISED PRICE</u>
Sawtimber		
Paper Birch	3.00 MBF	\$ 75.00 / MBF
Red Oak	26.50 MBF	\$ 161.00 / MBF
Pulpwood		
Balsam Fir	4.00 Cords	\$ 16.25 / Cord
Jack Pine	643.00 Cords	\$ 43.85 / Cord
Mixed Aspen	2,354.00 Cords	\$ 26.10 / Cord
Mixed Hardwood	165.00 Cords	\$ 15.05 / Cord
Red Oak	1,015.00 Cords	\$ 29.85 / Cord
White Spruce	11.00 Cords	\$ 32.80 / Cord

* The estimated units are final and not subject to adjustment. Prospective bidders are urged to examine this timber and to make their own estimates of quantity and quality.

BOND AND PAYMENT SCHEDULE:

1. A bond in the amount of \$11,000.00 to insure faithful performance of the conditions of the contract will be deposited by the successful bidder within 21 days of the sale award.
2. Cutting in any sale or unit without the required advance payment would be considered a trespass.
3. Total payment must be paid in advance or according to the following schedule:
 - (a) Ten percent (10%) of the sale value must be paid within 21 days of the sale award.
 - (b) The 10% down payment will be credited towards the first unit cut.
 - (c) Payment for each of the following units must be made before cutting begins in that unit:

<u>PAYMENT UNIT NUMBER</u>	<u>PERCENT OF TOTAL SALE VALUE</u>
01	28.4%
02	4.4%
03	4.2%
04	7.9%
05	12.7%
06	18.5%
07	12.1%
08	11.8%
4. If no cutting takes place, the 10% down payment will not be refunded.
5. Operations on the contract issued will terminate on 06/30/2023.

Description of Timber by Payment Unit (PU)

PU	MARKET GROUP	PRODUCT	QUANTITY	UNIT	ACRES	ADVERTISE PRICE
1	Paper Birch	Sawtimber	2.2	MBF	56.4	\$36,285.70
	Red Oak		6.6	MBF		
	Jack Pine	Pulpwood	125.0	Cords		
	Mixed Aspen		932.0	Cords		
	<i>B. T. Aspen</i>		932.0	<i>Cords</i>		
	Mixed Hardwood		58.0	Cords		
	<i>Paper Birch</i>		41.0	<i>Cords</i>		
	<i>Red Maple</i>		17.0	<i>Cords</i>		
	Red Oak		139.0	Cords		
	White Spruce		7.0	Cords		
2	Balsam Fir	Pulpwood	2.0	Cords	19.1	\$5,578.45
	Jack Pine		45.0	Cords		
	Mixed Aspen		118.0	Cords		
	<i>B. T. Aspen</i>		112.0	<i>Cords</i>		
	<i>Quaking Aspen</i>		6.0	<i>Cords</i>		
	Mixed Hardwood		3.0	Cords		
	<i>Black Cherry</i>		1.0	<i>Cords</i>		
	<i>Paper Birch</i>		1.0	<i>Cords</i>		
	<i>Red Maple</i>		1.0	<i>Cords</i>		
	Red Oak		15.0	Cords		
	3	Balsam Fir	Pulpwood	2.0		
Jack Pine			69.0	Cords		
Mixed Aspen			86.0	Cords		
<i>B. T. Aspen</i>			67.0	<i>Cords</i>		
<i>Quaking Aspen</i>			19.0	<i>Cords</i>		
Mixed Hardwood			5.0	Cords		
<i>Paper Birch</i>			3.0	<i>Cords</i>		
<i>Red Maple</i>			2.0	<i>Cords</i>		
4	Red Oak	Sawtimber	0.8	MBF	36.5	\$10,019.35
	Jack Pine	Pulpwood	93.0	Cords		
	Mixed Aspen		62.0	Cords		
	<i>B. T. Aspen</i>		62.0	<i>Cords</i>		
	Mixed Hardwood		3.0	Cords		
	<i>Red Maple</i>		3.0	<i>Cords</i>		
	Red Oak		139.0	Cords		
5	Jack Pine	Pulpwood	117.0	Cords	44.2	\$16,111.85
	Mixed Aspen		307.0	Cords		
	<i>B. T. Aspen</i>		307.0	<i>Cords</i>		
	Mixed Hardwood		14.0	Cords		
	<i>Paper Birch</i>		3.0	<i>Cords</i>		
	<i>Red Maple</i>		11.0	<i>Cords</i>		
	Red Oak		88.0	Cords		
White Spruce		4.0	Cords			
6	Paper Birch	Sawtimber	0.8	MBF	60.5	\$23,582.65
	Red Oak		3.8	MBF		
	Jack Pine	Pulpwood	84.0	Cords		
	Mixed Aspen		541.0	Cords		
	<i>B. T. Aspen</i>		541.0	<i>Cords</i>		
	Mixed Hardwood		24.0	Cords		
	<i>Paper Birch</i>		14.0	<i>Cords</i>		
	<i>Red Maple</i>		10.0	<i>Cords</i>		
	Red Oak		159.0	Cords		
7	Red Oak	Sawtimber	2.4	MBF	40.1	\$15,345.95
	Jack Pine	Pulpwood	62.0	Cords		
	Mixed Aspen		207.0	Cords		
	<i>B. T. Aspen</i>		207.0	<i>Cords</i>		

Description of Timber by Payment Unit (PU), con't

PU	MARKET GROUP	PRODUCT	QUANTITY	UNIT	ACRES	ADVERTISE PRICE
	Mixed Hardwood		20.0	Cords		
	<i>Paper Birch</i>		12.0	<i>Cords</i>		
	<i>Red Maple</i>		8.0	<i>Cords</i>		
	Red Oak		219.0	Cords		
8	Red Oak	Sawtimber	12.9	MBF	53.0	\$15,031.30
	Jack Pine	Pulpwood	48.0	Cords		
	Mixed Aspen		101.0	Cords		
	<i>B. T. Aspen</i>		101.0	<i>Cords</i>		
	Mixed Hardwood		38.0	Cords		
	<i>Paper Birch</i>		20.0	<i>Cords</i>		
	<i>Red Maple</i>		18.0	<i>Cords</i>		
	Red Oak		256.0	Cords		
TOTAL:			29.5	MBF		
TOTAL:			4,192.0	Cords		

Sale Specific Conditions & Requirements

Sale Name: Indy Aspen

Sale Number: 11-001-19 Seq#: 1

1 - Sale Area

1.2 - Boundaries

1.2.1 - Painted boundaries (1/14)

The sale boundary and Payment Unit boundaries are marked and identified by blue and red paint, along with a pipeline, road, and type change. Exterior sale boundary lines against private property are marked with blue paint. Exterior sale boundary lines against state are marked with red paint, with the exception of the boundaries along the natural gas line ROW on the west side of the sale, Menge Road, and the G0 field edge on the east side of the sale, which are unpainted. Interior Payment Unit boundaries are marked with red paint. The painted boundary line trees are not Included Timber and are to be protected, unless otherwise directed by the sale administrator. If there are any questions about the sale boundary, contact the sale administrator.

2 - Timber Specifications

2.1 - Included Timber

2.1.2 - Clearcut unit(s) w/o unmerchantable trees (8/11)

Within Payment Unit(s) 2 and 3, cut all trees which meet minimum piece specifications in 2.2 Utilization, except do not cut any red pine, hemlock, and white pine. In addition, within Payment Unit 3, do not cut any oak.

2.1.7 - Leave tree marked unit(s) (6/14)

Within Payment Unit(s) 1, 4, 5, 6, 7 and 8, all trees which meet minimum piece specifications in 2.2 Utilization are designated for cutting, except do not cut red pine, white pine and hemlock. In addition, do not cut red oak marked with purple paint above and below stump height.

2.2 - Utilization

2.2.1 - Utilization (2/04)

All listed board foot volumes of sawlog size products in this contract have been determined using a top diameter inside bark of 8 inches.

2.2.8 - Utilization and removal (5/14)

All products meeting standards set forth in General Condition and Requirement 2.2 - Utilization must be removed from the sale area. Chips are considered a product and cannot be stockpiled on site. This is because chip piles inhibit regeneration.

2.2.11 - Chipping restriction (9/14)

If chipping occurs on this sale, then no woody debris present on the ground at the start of the sale may be chipped. In addition, brush or chips may not be stored or stockpiled on-site for more than 30 days.

3 - Payments

3.4 - Damaged Timber

3.4.1 - Damaged timber (6/14)

General Condition and Requirement 3.4 Damaged Timber, defines liquidated damages for undesignated live merchantable trees which are cut or injured. In addition, extreme care should be taken to avoid damage to the white pine, red pine, red oak and hemlock seedlings and saplings. Within the sale area, if more than 5% of the tree seedlings or saplings (1/4" to 4.5" DBH) within a specified portion of the sale area are damaged, liquidated damages will be assessed at \$100 per acre for all acreage within that specified portion of the sale area that was damaged.

4 - Transportation

4.1 - Construction

4.1.3 - Slash and earthen piles (8/04)

Piles or windrows of earth along roads and landings that have been widened or constructed shall be leveled. Slash from road maintenance or construction, including stumps, shall be dispersed throughout the sale or chipped, utilized or otherwise removed

from the sale. All stumps from road building and landing construction must be reserved to block any newly constructed roads upon completion of the sale. These stumps must be scattered along the road system to prohibit vehicular movement.

4.1.5 - Culverts (5/14)

Roads may require the installation of culverts for cross drainage or at natural drainage-ways. If culverts are needed in these locations, their placement will be specified by the sale administrator and they shall be installed prior to hauling. The culverts shall be new, corrugated metal or plastic gauge. Culverts will be a minimum of 12 inches in diameter and 24 feet in length. If culverts are removed, fill shall be removed from wetland soils as specified. Soils shall be maintained and left in a non-erodible condition, with water bars, seed, fertilizer, mulch, and slash installed as directed by the sale administrator and as specified in the BMP manual. Stream crossing permits, for crossings on state land, will be obtained by the DNR. Please notify the DNR 90 days prior to working on any crossings that will require a DEQ permit.

4.1.6 - Road construction (1/09)

Construction of new roads or improvements of existing roads shall be done in such a way as to minimize the environmental and visual impacts. Merchantable trees shall be cut and utilized unless otherwise directed. Non-merchantable trees shall be severed and laid flat on the ground. Slash shall be scattered, and not left in windrows and kept a minimum of 10 feet back from the road edge, or chipped, utilized or otherwise removed from the sale. Stumps shall be set upright, not left on edge, and be moved at least 10 feet away from the road edge. Disturbed soil shall be feathered into the woods and not left in berms or windrows.

4.1.7 - Road closure (10/11)

All new roads built into the sale must be blocked to vehicle traffic upon completion of the sale. Overgrown roads that are reopened shall be considered new roads. In general, this will require constructing double earthen berms at strategic locations. These roads must be rendered impassable to cars and trucks. All stumps from road building and landing construction must be reserved to block any newly constructed roads upon completion of the sale. These stumps must be scattered along the road system to prohibit vehicular movement. Temporary berms may be required if no sale activity occurs for 30 or more consecutive days. Contact the sale administrator for specific details of design and placement.

4.1.11 - Permits (2/12)

The Purchaser will secure any necessary County Road permits that may be required.

4.2 - Maintenance

4.2.2 - Fill material (4/07)

To maintain roads, fill material may be needed in areas where "holes" exist or may be expected to develop. This fill material should be placed before trucking begins. The sale administrator reserves the right to halt harvest activities if haul roads are not properly filled and shaped to his/her specifications.

4.2.4 - Grading (10/16)

For completion of the sale, state forest roads must be graded. In general, this will require a road grader or bull dozer to shape up the roads after forest products have been hauled off site. This includes cleaning of drainage areas, grading, crowning and filling with gravel, if necessary. The grading equipment to be used must be approved by the Unit Manager or his/her representative.

4.2.5 - Two wheel drive condition (2/04)

All existing trail roads on and adjacent to the sale area must be passable by two-wheel drive traffic for the duration of the sale.

4.3 - Public Right-of-Way

4.3.2 - County R-O-W (12/06)

The county must be contacted prior to harvesting in the county road R-O-W. This applies to Payment Units 3 and 4.

5 - Operations

5.1 - Notification

5.1.1 - Pre-sale conference (10/16)

A pre-sale conference between the Purchaser and sale administrator is required prior to beginning any operations to determine landing and road locations. The Unit Manager or his/her representative must be contacted at least 10 days in advance to schedule the conference.

5.1.4 - Post-sale conference (10/16)

A post-sale conference on site between the Purchaser and sale administrator is required 5 days prior to the completion of active logging operations to determine clean-up and repair of landings, road edges, and the fulfillment of other contract specifications.

5.1.6 - Utility R.O.W. (4/19)

It is the responsibility of the Purchaser to obtain permission from the utility company to utilize the natural gas line R.O.W. for operations. Contact Daniel Gorman with Northern Natural Gas at (651) 497-5805.

5.2 - Conduct of Operations

5.2.1 - Slash

5.2.1.10 - No slash in openings (5/10)

No brush or logging debris is to be left in the maintained wildlife opening which is indicated by G0 on the Timber Sale Map. Any damage to the opening shall be repaired according to specifications of the Unit Manager or his/her representative.

5.2.1.11 - Slash for reforestation (5/07)

To facilitate reforestation, the sale area shall be left with slash evenly distributed. Bunched tops within the cutting area shall be broken up and scattered. Stumps shall be cut low to the ground. Processing sites shall not be left with a compacted layer of slash; tops from these sites shall be hauled back into the cut area and scattered.

5.2.2 - Hazard Trees/Snags

5.2.2.1 - Den trees (10/16)

Obvious hollow and/or den trees shall be protected and left standing unless they are a safety hazard.

5.2.3 - Operating Restrictions

5.2.3.2 - Operating restrictions (9/11)

Within Payment Unit(s) 1-8, unless changed by written agreement, all clean up activities are to be completed by July 15. This restriction is to let the area revegetate before the dry season.

5.2.3.5 - Oak wilt restriction (1/18)

Within Payment Unit(s) 1-8, unless changed by written agreement, cutting, skidding, hauling within the sale and brushing of access roads to the sale are not permitted during the period of April 15 to July 15. Operations may be allowed if specific steps are taken to prevent damaging uncut oak during the high risk period. Those steps may include completing all road brushing before April 15th and clearing a tree-length buffer along uncut oak cover before April 15th. This is necessary to reduce the spread of oak wilt. For more information, contact the Unit Manager or his/her representative.

5.2.30 - Landing/road top soil protection (2/15)

Top soil on landings and new roads must be removed, stockpiled and saved. Upon completion of the timber sale, soil must be evenly distributed back over the area for revegetation. In addition, the area must be seeded and mulched per instructions of the sale administrator by June 30th following harvest completion to allow for re-vegetation before the dry season.

5.2.32 - Decking/landing restoration (9/13)

All decking and landing areas must have the surface area restored to a condition equal to or better than before. This is to ensure the proper regeneration of the stand. Wood debris, chips and "cookies" from trimmings must be removed or scattered away from landing and loading areas and may not be windrowed on the edge.

5.2.38 - No decking against live trees (2/04)

Cut products may not be decked against unmarked or designated leave trees.

5.2.39 - ORV trail/route protection (4/18)

The Baraga Plains ORV trail is shown on the Timber Sale Map. Trees with yellow ORV markers shall be cut off above the markers and at least 5 feet above ground. All stumps within 5 feet of the trail must be cut flush with the ground. Maintain a 20 foot wide slash, debris, and rut free zone daily using the ORV trail or route as the centerline. Do not run equipment down the ORV trail or route. Skidding across the trail or route may only occur in locations approved by the sale administrator.

5.2.41 - Snowmobile trail protection (9/11)

The snowmobile trail (Trail 15) is shown on the Timber Sale Map. Do not cut or damage posts with orange trail markers or traffic control signs. If the trail is used, it must be maintained and restored to a condition equal to or better than before the sale. The road maintenance/restoration must be done prior to December 1. If the trail road is to be used for hauling during the snowmobile season, then a snow covered base must be left on the trail. Maintain a 20 foot wide slash, debris, and rut free zone daily using the snowmobile trail as the centerline. No decking of forest products will be permitted along the snowmobile trail. All stumps within 20 feet of the snowmobile trail must be cut at ground level.

5.4 - Soil Protection

5.4.1 - Rutting restriction, general (7/16)

Operations are to cease immediately if equipment and weather conditions result in rutting of roads and/or skid trails which is 12 inches or greater in depth and 50 feet in length. The Unit Manager or his/her representative may restrict hauling and/or skidding if ruts exceed the specified depth. With the Unit Manager or his/her representative's approval, the Purchaser may return to the area when the risk of rutting has decreased.

5.8 - Protection of Endangered Species

5.8.5 - Protection of raptor nests (3/13)

All trees with raptor nests will be protected if found during harvesting operations. Notification will be made to the Unit Manager or his/her representative who will notify the Wildlife Biologist so an on-site evaluation and recommendation can be made, if necessary.

6 - Safety and Fire Prevention

6.2 - Signing

6.2.1 - Road posting (9/09)

The Purchaser is responsible for posting and maintaining caution signs on Menge Road prior to beginning operations. The road must be posted at appropriate distances from the sale area to warn of logging activity and truck traffic. Signs must be removed when harvest operations are suspended or completed. The Purchaser will provide these signs.

6.2.2 - Snowmobile trail posting (8/09)

The Purchaser is responsible for posting and maintaining caution signs on Trail 15 prior to beginning operations during the snowmobile season (approximately December 1 to March 31). The trail must be posted at appropriate distances from the sale area to warn of logging activity and truck traffic. Signs must be removed when harvest operations are suspended or completed. The Purchaser must contact the snowmobile club, Baraga Tourism, at (906) 524-7444 to coordinate trail postings. Also contact Jeff Kakuk, MDNR trails specialist, at (906) 563-9247.

6.2.3 - Recreational trail posting (2/10)

The Purchaser is responsible for posting and maintaining caution signs on Baraga Plains Trail prior to beginning operations. The trail must be posted at appropriate distances from the sale area to warn of logging activity and truck traffic at both ends of the trail. Signs must be removed when harvest operations are suspended or completed. The Purchaser must contact the Baraga Tourism at (906) 524-7444 to coordinate trail postings. Also contact Jeff Kakuk, MDNR trails specialist, at (906) 563-9247.

Michigan Department of Natural Resources - Forest Resources Division

TIMBER SALE MAP

This information provided by authority of Part 525, 1994 PA 451, as amended.

Year: 19

State Number: 11-001

Date: 4/29/2019

Page of: 1

Scale: 1:15,840

Forest Management Unit: Baraga

County: Baraga

Cruised By: Ryan Mattila

Baraga Staff

Section(s) and Subdivision(s): Sec 3; S1/2NW, W1/2SW, Sec 4; S1/2, S1/2NE, NW1/4, Sec 5; E1/2E1/2, Sec 8; NE1/4, SENW, NESW.

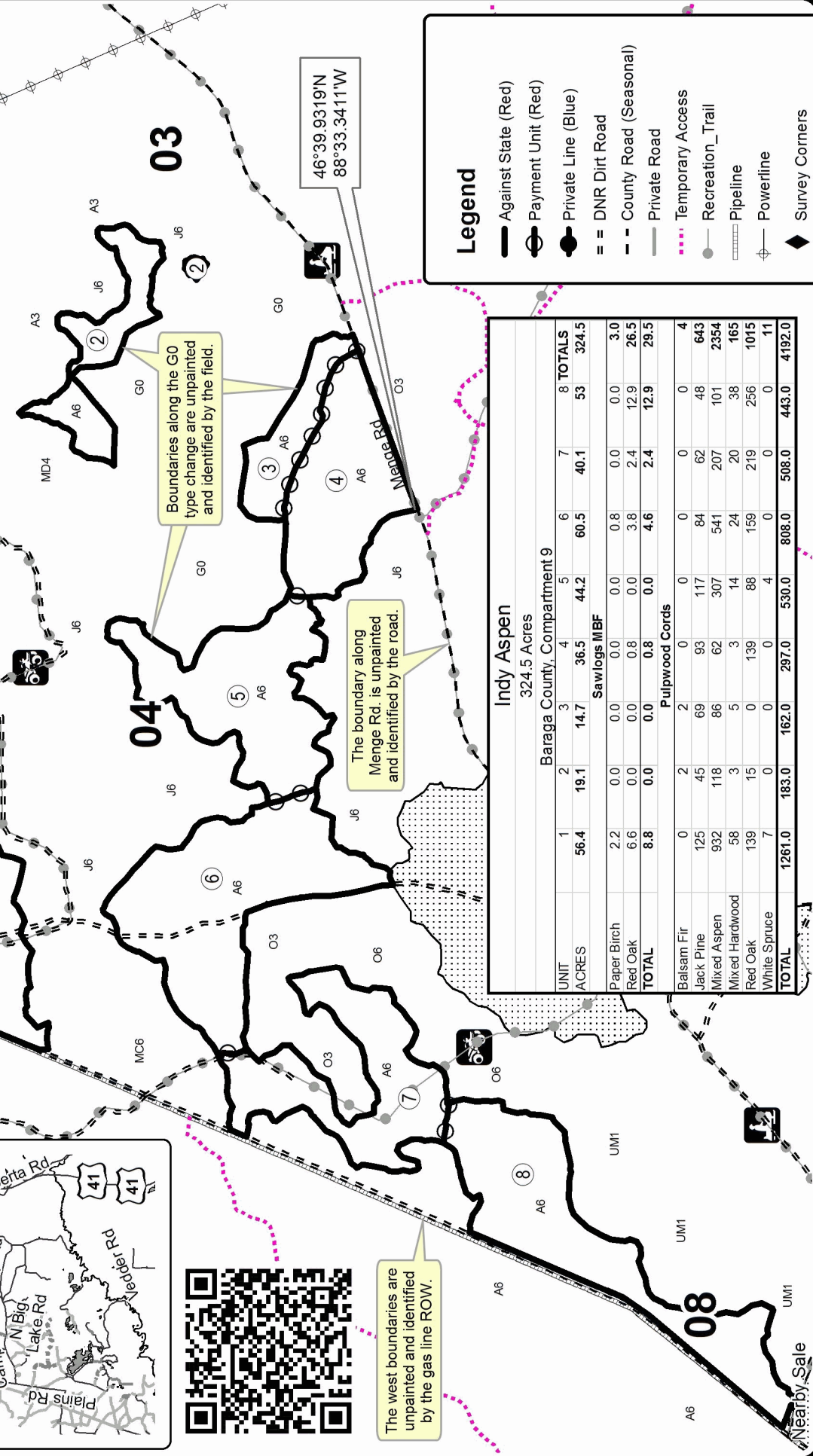
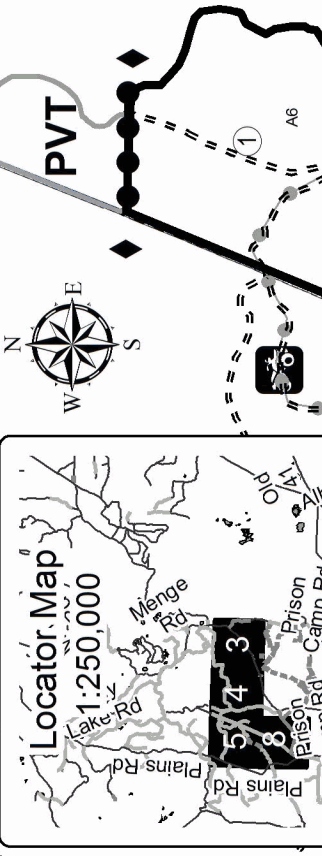
Township: 49N

Range: 34W

Density

Cover Type

H = Hemlock
 J = Jack Pine
 L = Lowland Mixed
 LW = Lobl. Birch
 MC = Mixed Conifer
 S = Spruce Fir
 G = Grass
 A = Aspen
 B = Paper Birch
 C = Cedar
 D = Tread Bog
 E = Swamp Hardwoods
 F = Spruce Fir
 N = Marsh
 O = Oak
 P = Lowland Poplar
 Q = Mixed Swamp Conifer
 R = Red Pine
 S = Black Spruce
 T = Tamarack
 U = Upland Brush
 UM = Upland Mixed
 V = Bog or Marsh
 W = White Pine
 X = Non Stocked
 Y = Pole Timber Medium
 Z = Water
 0 = Non Stocked
 1 = Seeding Sapling Poor
 2 = Seeding Sapling Medium
 3 = Seeding Sapling Well
 4 = Pole Timber Poor
 5 = Pole Timber Medium
 6 = Pole Timber Well
 7 = Saw Timber Poor
 8 = Saw Timber Medium
 9 = Saw Timber Well



Legend

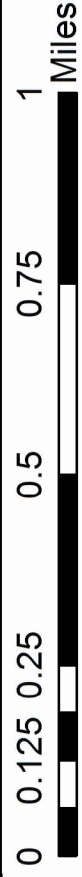
- Against State (Red)
- Payment Unit (Red)
- Private Line (Blue)
- DNR Dirt Road
- County Road (Seasonal)
- Private Road
- Temporary Access
- Recreation_Trail
- Pipeline
- Powerline
- Survey Corners
- Nearby Timber Sales

Indy Aspen

324.5 Acres

Baraga County, Compartment 9

UNIT	1	2	3	4	5	6	7	8	TOTALS
ACRES	56.4	19.1	14.7	36.5	44.2	60.5	40.1	53	324.5
Paper Birch	2.2	0.0	0.0	0.0	0.0	0.8	0.0	0.0	3.0
Red Oak	6.6	0.0	0.0	0.8	0.0	3.8	2.4	12.9	26.5
TOTAL	8.8	0.0	0.0	0.8	0.0	4.6	2.4	12.9	29.5
Pulpwood Cords									
Balsam Fir	0	2	0	0	0	0	0	0	4
Jack Pine	125	45	69	93	117	84	62	48	643
Mixed Aspen	932	118	86	62	307	541	207	101	2354
Mixed Hardwood	58	3	5	3	14	24	20	38	165
Red Oak	139	15	0	139	88	159	219	256	1015
White Spruce	7	0	0	0	4	0	0	0	11
TOTAL	1261.0	183.0	162.0	297.0	530.0	808.0	508.0	443.0	4192.0



TIMBER SALE INFORMATION

Peshky Hardwoods (11-012-19)
 T51N, R35W, SEC. 3; T52N, R35W, SEC. 34.
 Houghton County (Advertised Price \$132,480.00)

A timber sale contract for this lump sum, sealed bid timber sale will be awarded to the responsible bidder offering the highest sealed bid price. Bids must be at or above the following advertised price for each species:

<u>PRODUCTS & SPECIES</u>	<u>ESTIMATED UNITS*</u>	<u>ADVERTISED PRICE</u>
Sawtimber		
Basswood	10.20 MBF	\$ 90.00 / MBF
Red Maple	139.50 MBF	\$ 208.00 / MBF
Sugar Maple	216.30 MBF	\$ 359.00 / MBF
White Ash	17.10 MBF	\$ 77.00 / MBF
Yellow Birch	4.90 MBF	\$ 147.00 / MBF
Pulpwood		
Basswood	50.00 Cords	\$ 6.85 / Cord
Mixed Hardwood	1,496.00 Cords	\$ 15.05 / Cord

* The total volume is statistically estimated within plus (+) or minus (-) 9.42 percent. The estimated units are final and not subject to adjustment. Prospective bidders are urged to examine this timber and to make their own estimates of quantity and quality.

BOND AND PAYMENT SCHEDULE:

1. A bond in the amount of \$13,000.00 to insure faithful performance of the conditions of the contract will be deposited by the successful bidder within 21 days of the sale award.
2. Cutting in any sale or unit without the required advance payment would be considered a trespass.
3. Total payment must be paid in advance or according to the following schedule:
 - (a) Ten percent (10%) of the sale value must be paid within 21 days of the sale award.
 - (b) The 10% down payment will be credited towards the first unit cut.
 - (c) Payment for each of the following units must be made before cutting begins in that unit:

<u>PAYMENT UNIT NUMBER</u>	<u>PERCENT OF TOTAL SALE VALUE</u>
01	19.8%
02	32.5%
03	17.0%
04	12.5%
05	18.2%
4. If no cutting takes place, the 10% down payment will not be refunded.
5. Operations on the contract issued will terminate on 06/30/2022.

Description of Timber by Payment Unit (PU)

PU	MARKET GROUP	PRODUCT	QUANTITY	UNIT	ACRES	ADVERTISE PRICE
1	Basswood	Sawtimber	5.4	MBF	47.8	\$26,265.35
	Red Maple		33.5	MBF		
	Sugar Maple		31.9	MBF		
	Yellow Birch		3.2	MBF		
	Basswood		Pulpwood	6.0		
	Mixed Hardwood	455.0		Cords		
	<i>Red Maple</i>	226.0		<i>Cords</i>		
	<i>Sugar Maple</i>	192.0		<i>Cords</i>		
	<i>Yellow Birch</i>	37.0		<i>Cords</i>		
	2	Red Maple	Sawtimber	35.7		
Sugar Maple		87.6		MBF		
Mixed Hardwood		Pulpwood	278.0	Cords		
<i>Red Maple</i>			62.0	<i>Cords</i>		
<i>Sugar Maple</i>			206.0	<i>Cords</i>		
<i>Yellow Birch</i>			10.0	<i>Cords</i>		
3	Red Maple	Sawtimber	40.1	MBF	33.1	\$22,567.60
	Sugar Maple		29.4	MBF		
	Mixed Hardwood	Pulpwood	244.0	Cords		
	<i>Red Maple</i>		129.0	<i>Cords</i>		
	<i>Sugar Maple</i>		115.0	<i>Cords</i>		
4	Basswood	Sawtimber	1.3	MBF	30.8	\$16,509.65
	Red Maple		27.7	MBF		
	Sugar Maple		18.3	MBF		
	White Ash		5.0	MBF		
	Basswood		Pulpwood	5.0		
	Mixed Hardwood	242.0		Cords		
	<i>Ironwood</i>	2.0		<i>Cords</i>		
	<i>Red Maple</i>	139.0		<i>Cords</i>		
	<i>Sugar Maple</i>	69.0		<i>Cords</i>		
	<i>White Ash</i>	12.0		<i>Cords</i>		
	<i>Yellow Birch</i>	20.0	<i>Cords</i>			
5	Basswood	Sawtimber	3.5	MBF	36.3	\$24,079.50
	Red Maple		2.5	MBF		
	Sugar Maple		49.1	MBF		
	White Ash		12.1	MBF		
	Yellow Birch		1.7	MBF		
	Basswood	Pulpwood	39.0	Cords		
	Mixed Hardwood		277.0	Cords		
	<i>Black Ash</i>		8.0	<i>Cords</i>		
	<i>Red Maple</i>		14.0	<i>Cords</i>		
	<i>Sugar Maple</i>		192.0	<i>Cords</i>		
	<i>White Ash</i>		18.0	<i>Cords</i>		
	<i>Yellow Birch</i>		45.0	<i>Cords</i>		
TOTAL:			388.0	MBF		
TOTAL:			1,546.0	Cords		

Sale Specific Conditions & Requirements

Sale Name: Peshky Hardwoods

Sale Number: 11-012-19 Seq#: 1

1 - Sale Area

1.2 - Boundaries

1.2.1 - Painted boundaries (1/14)

The sale boundary and Payment Unit boundaries are marked and identified by red paint. Exterior sale boundary lines against state are marked with red paint. Interior Payment Unit boundaries are marked with red paint. The painted boundary line trees are not Included Timber and are to be protected, unless otherwise directed by the sale administrator.

2 - Timber Specifications

2.1 - Included Timber

2.1.3 - Cut tree marked unit(s) (12/08)

Within Payment Unit(s) 1-5, all trees are designated for cutting when marked with orange paint above and below stump height, regardless of merchantability.

2.2 - Utilization

2.2.1 - Utilization (2/04)

All listed board foot volumes of sawlog size products in this contract have been determined using a top diameter inside bark of 8 inches.

2.2.4 - Skidding length (2/14)

Skidding of unlimbed tops or lengths over 26 feet is not permissible, unless approved by the Unit Manager or his/her representative.

2.2.7 - Uncut designated trees (2/04)

Liquidated damages of \$10.00 per tree will be assessed for every marked tree not cut.

2.2.8 - Utilization and removal (5/14)

All products meeting standards set forth in General Condition and Requirement 2.2 - Utilization must be removed from the sale area. Chips are considered a product and cannot be stockpiled on site. This is because chip piles inhibit regeneration.

2.2.11 - Chipping restriction (9/14)

If chipping occurs on this sale, then no woody debris present on the ground at the start of the sale may be chipped.

3 - Payments

3.4 - Damaged Timber

3.4.1 - Damaged timber (6/14)

General Condition and Requirement 3.4 Damaged Timber, defines liquidated damages for undesignated live merchantable trees which are cut or injured. In addition, extreme care should be taken to avoid damage to tree seedlings and saplings. No damage is acceptable to merchantable trees. Within the sale area, if more than 5% of trees (> 4.5" DBH) within a specified area of the sale are damaged, liquidated damages will be assessed for all trees damaged. Rates will be in accordance with General Condition and Requirement 3.4 Damaged Timber.

4 - Transportation

4.1 - Construction

4.1.1 - Stream crossings, general (3/11)

All stream crossing structures will be temporary and therefore, shall be provided by the Purchaser, and must be removed upon completion of the sale. All permits for stream crossings will be provided by the DNR for crossings on State Forest Land. Please notify the DNR 90 days prior to working on any crossings that will require a DEQ permit.

4.1.3 - Slash and earthen piles (8/04)

Piles or windrows of earth along roads and landings that have been widened or constructed shall be leveled. Slash from road

maintenance or construction, including stumps, shall be dispersed throughout the sale.

4.1.5 - Culverts (5/14)

Roads may require the installation of culverts for cross drainage or at natural drainage-ways. If culverts are needed in these locations, their placement will be specified by the sale administrator and they shall be installed prior to hauling. The culverts shall be new, corrugated metal or plastic gauge. Culverts will be a minimum of 12 inches in diameter and 24 feet in length. If culverts are removed, fill shall be removed from wetland soils as specified. Soils shall be maintained and left in a non-erodible condition, with water bars, seed, fertilizer, mulch, and slash installed as directed by the sale administrator and as specified in the BMP manual. Stream crossing permits, for crossings on state land, will be obtained by the DNR. Please notify the DNR 90 days prior to working on any crossings that will require a DEQ permit.

4.1.6 - Road construction (1/09)

Construction of new roads or improvements of existing roads shall be done in such a way as to minimize the environmental and visual impacts. Merchantable trees shall be cut and utilized unless otherwise directed. Non-merchantable trees shall be severed and laid flat on the ground. Slash shall be scattered, and not left in windrows and kept a minimum of 10 feet back from the road edge, and may be chipped, utilized or otherwise removed from the sale. Stumps shall be set upright, not left on edge, and be moved at least 10 feet away from the road edge. Disturbed soil shall be feathered into the woods and not left in berms or windrows.

4.1.7 - Road closure (10/11)

All new roads built into the sale must be blocked to vehicle traffic upon completion of the sale. Overgrown roads that are reopened shall be considered new roads. In general, this will require constructing a four (4') foot high berm of stumps and logs covered with earth. Contact the sale administrator for specific details of design and placement.

4.2 - Maintenance

4.2.2 - Fill material (4/07)

To maintain roads, fill material may be needed in areas where "holes" exist or may be expected to develop. This fill material should be placed before trucking begins. The sale administrator reserves the right to halt harvest activities if haul roads are not properly filled and shaped to his/her specifications.

4.2.4 - Grading (10/16)

For completion of the sale, state forest roads must be graded. In general, this will require a road grader or bull dozer to shape up the roads after forest products have been hauled off site. This includes cleaning of drainage areas, grading, crowning and filling with gravel, if necessary. The grading equipment to be used must be approved by the Unit Manager or his/her representative.

4.2.5 - Two wheel drive condition (2/04)

All existing trail roads on and adjacent to the sale area must be passable by two-wheel drive traffic for the duration of the sale.

5 - Operations

5.1 - Notification

5.1.1 - Pre-sale conference (10/16)

A pre-sale conference between the Purchaser and sale administrator is required prior to beginning any operations to determine landing and road locations. The Unit Manager or his/her representative must be contacted at least 10 days in advance to schedule the conference.

5.1.4 - Post-sale conference (10/16)

A post-sale conference on site between the Purchaser and sale administrator is required 5 days prior to the completion of active logging operations to determine clean-up and repair of landings, road edges, and the fulfillment of other contract specifications.

5.2 - Conduct of Operations

5.2.1 - Slash

5.2.1.11 - Slash for reforestation (5/07)

To facilitate reforestation, the sale area shall be left with slash evenly distributed. Bunched tops within the cutting area

shall be broken up and scattered. Stumps shall be cut low to the ground. Processing sites shall not be left with a compacted layer of slash; tops from these sites shall be hauled back into the cut area and scattered.

5.2.2 - Hazard Trees/Snags

5.2.2.1 - Den trees (10/16)

Obvious hollow and/or den trees shall be protected and left standing unless they are a safety hazard.

5.2.3 - Operating Restrictions

5.2.3.2 - Operating restrictions (9/11)

Within Payment Unit(s) 1-5, unless changed by written agreement, all clean up activities are to be completed by July 15. This restriction is to let the area revegetate before the dry season.

5.2.3.3 - Bark slippage restriction (3/09)

Within Payment Unit(s) 1-5, unless changed by written agreement, cutting and skidding are not permitted during the period of April 15 to July 15. This restriction is because of bark slippage.

5.2.30 - Landing/road top soil protection (2/15)

Top soil on landings and new roads must be removed, stockpiled and saved. Upon completion of the timber sale, soil must be evenly distributed back over the area for revegetation. In addition, the area must be seeded and mulched per the instructions of the sale administrator by July 15 following harvest completion to allow for re-vegetation before the dry season.

5.2.32 - Decking/landing restoration (9/13)

All decking and landing areas must have the surface area restored to a condition equal to or better than before. This is to ensure the proper regeneration of the stand. Wood debris, chips and "cookies" from trimmings must be removed or scattered away from landing and loading areas and may not be wind rowed on the edge.

5.2.38 - No decking against live trees (2/04)

Cut products may not be decked against unmarked or designated leave trees.

5.2.41 - Snowmobile trail protection (9/11)

The Alston Trail is a snowmobile trail (Trail 109) and is shown on the Timber Sale Map. Do not cut or damage posts with orange trail markers or traffic control signs. The road maintenance/restoration must be done prior to December 1. If the trail road is to be used for hauling during the snowmobile season, then a snow covered base must be left on the trail. Hauling of forest products may only occur Monday through Friday during daylight hours. No decking of forest products will be permitted along the snowmobile trail.

5.4 - Soil Protection

5.4.1 - Rutting restriction, general (7/16)

Operations are to cease immediately if equipment and weather conditions result in rutting of roads and/or skid trails which is 12 inches or greater in depth and 50 feet in length. The Unit Manager or his/her representative may restrict hauling and/or skidding if ruts exceed the specified depth. With the Unit Manager or his/her representative's approval, the Purchaser may return to the area when the risk of rutting has decreased.

5.8 - Protection of Endangered Species

5.8.5 - Protection of raptor nests (3/13)

All trees with raptor nests will be protected if found during harvesting operations. Notification will be made to the Unit Manager or his/her representative who will notify the Wildlife Biologist so an on-site evaluation and recommendation can be made, if necessary.

6 - Safety and Fire Prevention

6.2 - Signing

6.2.1 - Road posting (9/09)

The Purchaser is responsible for posting and maintaining caution signs on Hazel Swamp Road prior to beginning operations. The road must be posted at appropriate distances from the sale area to warn of logging activity and truck traffic. Signs must be removed when harvest operations are suspended or completed. The Purchaser will provide these signs.

6.2.2 - Snowmobile trail posting (8/09)

The Purchaser is responsible for posting and maintaining caution signs on the snowmobile trail prior to beginning operations during the snowmobile season (approximately December 1 to March 31). The trail must be posted at appropriate distances from the sale area to warn of logging activity and truck traffic. Signs must be removed when harvest operations are suspended or completed. The Purchaser will provide these signs. The trail is groomed by the Superior Snowmobile club; the Purchaser must contact them at (906) 288-3025 and notify them about the upcoming harvest operation. Additionally, the Purchaser must contact the DNR Unit Manager or his/her representative prior to any operations involving the snowmobile trail.



TIMBER SALE MAP

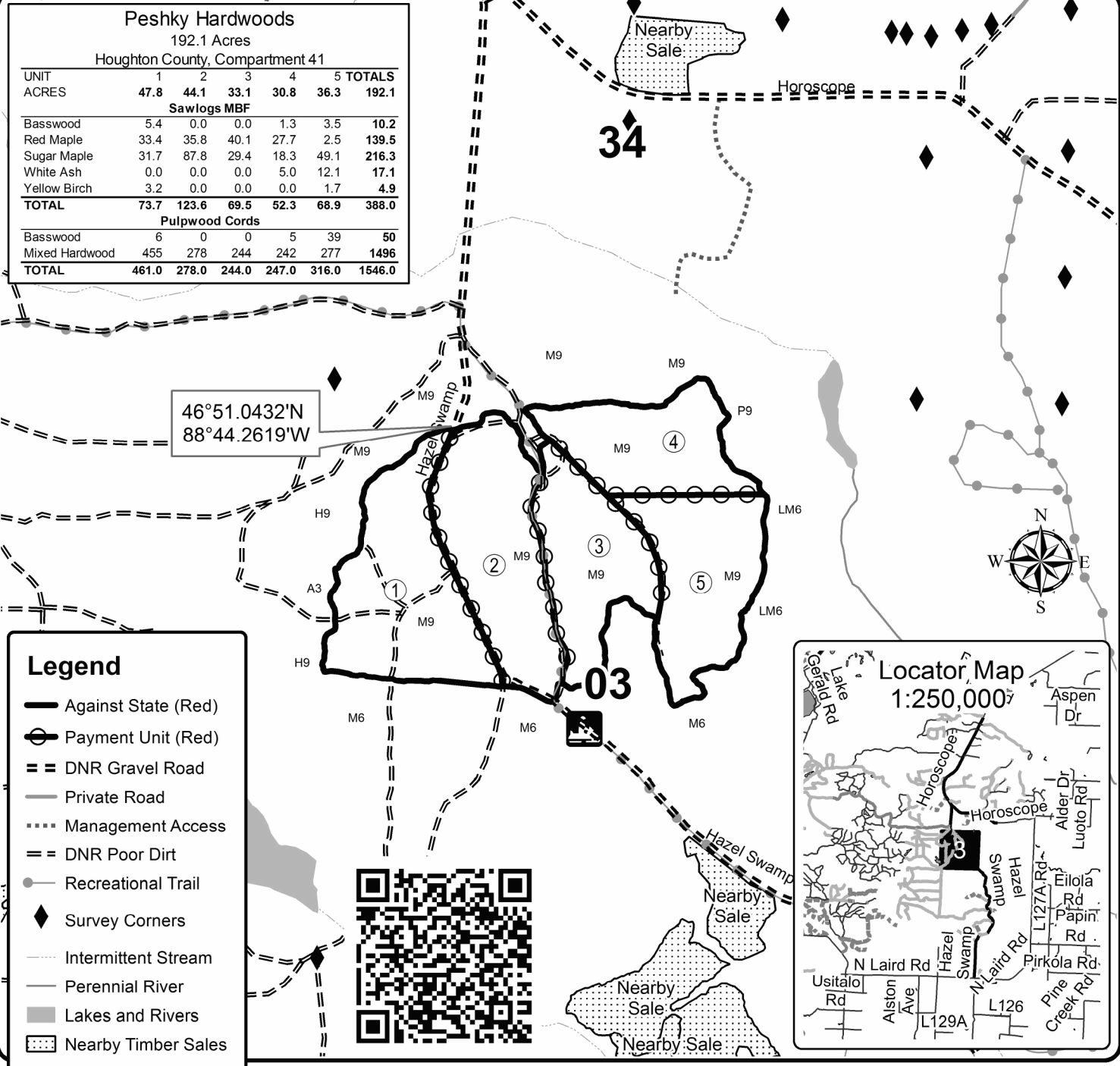
This information provided by authority of Part 525, 1994 PA 451, as amended.

Forest Management Unit Baraga		County Houghton	Mapped By Ryan Mattila		Date 5/9/2019	Page of 1 1	
Township 51&52N	Range 35W	Section(s) and Subdivision(s) 52N 35W - Sec 34; SWSE. 51N 35W - Sec 3; N1/2, NESW, NWSE.		Scale 1:15,840			

Cover Type				Density			
A = Aspen	H = Hemlock	N = Marsh	U = Upland Brush	0 = Non Stocked	5 = Pole Timber Medium		
B = Paper Birch	J = Jack Pine	O = Oak	UM = Upland Mixed	1 = Seedling Sapling Poor	6 = Pole Timber Well		
C = Cedar	L = Lowland Brush	P = Lowland Poplar	V = Bog or Marsh	2 = Seedling Sapling Medium	7 = Saw Timber Poor		
D = Treed Bog	LM = Lowland Mixed	Q = Mixed Swamp Conifer	W = White Pine	3 = Seedling Sapling Well	8 = Saw Timber Medium		
E = Swamp Hdwoods	M = Mpl, Bch, Brch	R = Red Pine	X = Non Stocked	4 = Pole Timber Poor	9 = Saw Timber Well		
F = Spruce Fir	MC = Mixed Conifer	S = Black Spruce	Z = Water				
G = Grass	MD = Mixed Deciduous	T = Tamarack					

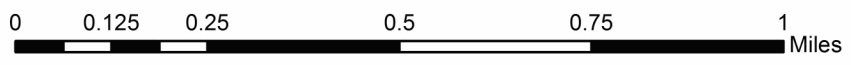
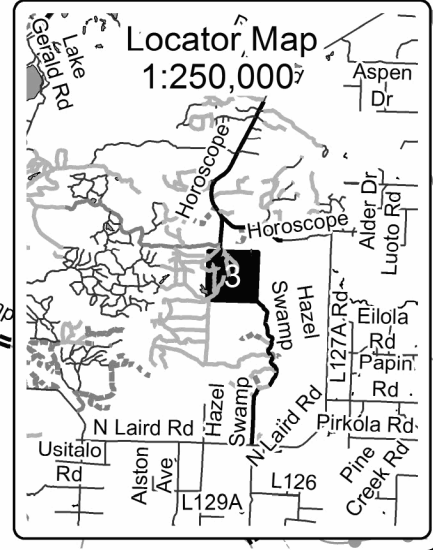
Peshky Hardwoods
192.1 Acres
Houghton County, Compartment 41

UNIT	1	2	3	4	5	TOTALS
ACRES	47.8	44.1	33.1	30.8	36.3	192.1
Sawlogs MBF						
Basswood	5.4	0.0	0.0	1.3	3.5	10.2
Red Maple	33.4	35.8	40.1	27.7	2.5	139.5
Sugar Maple	31.7	87.8	29.4	18.3	49.1	216.3
White Ash	0.0	0.0	0.0	5.0	12.1	17.1
Yellow Birch	3.2	0.0	0.0	0.0	1.7	4.9
TOTAL	73.7	123.6	69.5	52.3	68.9	388.0
Pulpwood Cords						
Basswood	6	0	0	5	39	50
Mixed Hardwood	455	278	244	242	277	1496
TOTAL	461.0	278.0	244.0	247.0	316.0	1546.0



Legend

- Against State (Red)
- ⊖ Payment Unit (Red)
- == DNR Gravel Road
- Private Road
- ⋯ Management Access
- == DNR Poor Dirt
- ⊙ Recreational Trail
- ◆ Survey Corners
- ⋯ Intermittent Stream
- Perennial River
- Lakes and Rivers
- ▨ Nearby Timber Sales



TIMBER SALE INFORMATION

GEM Trail Aspen (11-014-19)
 T51N, R35W, SEC. 11.
 Houghton County (Advertised Price \$14,366.60)

SALE NOTE: Harvest operations are limited to the period of December 1 to April 15. See spec 5.2.3.1.

A recreation site such as a trail, pathway, or campground is within the sale area or the vicinity. Certain restrictions/specifications may be applicable including time restrictions.

A timber sale contract for this lump sum, sealed bid timber sale will be awarded to the responsible bidder offering the highest sealed bid price. Bids must be at or above the following advertised price for each species:

<u>PRODUCTS & SPECIES</u>	<u>ESTIMATED UNITS*</u>	<u>ADVERTISED PRICE</u>
Sawtimber		
Black Ash	3.00 MBF	\$ 38.00 / MBF
Red Maple	7.00 MBF	\$ 139.00 / MBF
Yellow Birch	3.00 MBF	\$ 98.00 / MBF
Pulpwood		
Balsam Fir	12.00 Cords	\$ 10.85 / Cord
Mixed Hardwood	579.00 Cords	\$ 10.05 / Cord
Quaking Aspen	373.00 Cords	\$ 17.40 / Cord
White Spruce	25.00 Cords	\$ 21.85 / Cord

* The total volume is statistically estimated within plus (+) or minus (-) 14.30 percent. The estimated units are final and not subject to adjustment. Prospective bidders are urged to examine this timber and to make their own estimates of quantity and quality.

BOND AND PAYMENT SCHEDULE:

- A bond in the amount of \$2,300.00 to insure faithful performance of the conditions of the contract will be deposited by the successful bidder within 21 days of the sale award.
- Cutting in any sale or unit without the required advance payment would be considered a trespass.
- Total payment must be paid in advance or according to the following schedule:
 - Ten percent (10%) of the sale value must be paid within 21 days of the sale award.
 - The remainder is due before cutting begins.
 - Payment for each of the following units must be made before cutting begins in that unit:

PAYMENT UNIT NUMBER	PERCENT OF TOTAL SALE VALUE
01	100.0%
- If no cutting takes place, the 10% down payment will not be refunded.
- Operations on the contract issued will terminate on 06/30/2022.

Description of Timber by Payment Unit (PU)

PU	MARKET GROUP	PRODUCT	QUANTITY	UNIT	ACRES	ADVERTISE PRICE	
1	Black Ash	Sawtimber	3.0	MBF	35.3	\$14,366.60	
	Red Maple		7.0	MBF			
	Yellow Birch		3.0	MBF			
	Balsam Fir	Pulpwood	12.0	Cords			
	Mixed Hardwood		579.0	Cords			
	Black Ash		30.0	Cords			
	Paper Birch		3.0	Cords			
	Red Maple		453.0	Cords			
	Sugar Maple		9.0	Cords			
	Yellow Birch		84.0	Cords			
	Quaking Aspen		373.0	Cords			
	White Spruce		25.0	Cords			
	TOTAL:			13.0			MBF
	TOTAL:			989.0			Cords

Sale Specific Conditions & Requirements

Sale Name: GEM Trail Aspen

Sale Number: 11-014-19 Seq#: 2

1 - Sale Area

1.2 - Boundaries

1.2.1 - Painted boundaries (1/14)

The sale boundary and Payment Unit boundaries are marked and identified by red paint. Exterior sale boundary lines against state are marked with red paint. The painted boundary line trees are not Included Timber and are to be protected, unless otherwise directed by the sale administrator.

2 - Timber Specifications

2.1 - Included Timber

2.1.2 - Clearcut unit(s) w/o unmerchantable trees (8/11)

Within Payment Unit(s) 1, cut all trees which meet minimum piece specifications in 2.2 Utilization, except do not cut white pine, oak, cedar, black cherry, hemlock and purple marked yellow birch.

2.2 - Utilization

2.2.1 - Utilization (2/04)

All listed board foot volumes of sawlog size products in this contract have been determined using a top diameter inside bark of 8 inches.

2.2.8 - Utilization and removal (5/14)

All products meeting standards set forth in General Condition and Requirement 2.2 - Utilization must be removed from the sale area. Chips are considered a product and cannot be stockpiled on site. This is because chip piles inhibit regeneration.

2.2.11 - Chipping restriction (9/14)

If chipping occurs on this sale, then no woody debris present on the ground at the start of the sale may be chipped. In addition, brush or chips may not be stored or stockpiled on-site for more than 30 days.

3 - Payments

3.4 - Damaged Timber

3.4.1 - Damaged timber (6/14)

General Condition and Requirement 3.4 Damaged Timber, defines liquidated damages for undesignated live merchantable trees which are cut or injured. In addition, extreme care should be taken to avoid damage to tree seedlings and saplings. No damage is acceptable to merchantable trees. Within the sale area, if more than 5% of trees (> 4.5" DBH) within a specified area of the sale are damaged, liquidated damages will be assessed for all trees damaged. Rates will be in accordance with General Condition and Requirement 3.4 Damaged Timber.

4 - Transportation

4.1 - Construction

4.1.1 - Stream crossings, general (3/11)

All stream crossing structures will be temporary and therefore, shall be provided by the Purchaser, and must be removed upon completion of the sale. All permits for stream crossings will be provided by the DNR for crossings on State Forest Land. Please notify the DNR 90 days prior to working on any crossings that will require a DEQ permit.

4.1.3 - Slash and earthen piles (8/04)

Piles or windrows of earth along roads and landings that have been widened or constructed shall be leveled. Slash from road maintenance or construction, including stumps, shall be dispersed throughout the sale.

4.1.5 - Culverts (5/14)

Roads may require the installation of culverts for cross drainage or at natural drainage-ways. If culverts are needed in these locations, their placement will be specified by the sale administrator and they shall be installed prior to hauling. The culverts

shall be new, corrugated metal or plastic gauge. Culverts will be a minimum of 12 inches in diameter and 24 feet in length. If culverts are removed, fill shall be removed from wetland soils as specified. Soils shall be maintained and left in a non-erodible condition, with water bars, seed, fertilizer, mulch, and slash installed as directed by the sale administrator and as specified in the BMP manual. Stream crossing permits, for crossings on state land, will be obtained by the DNR. Please notify the DNR 90 days prior to working on any crossings that will require a DEQ permit.

4.1.6 - Road construction (1/09)

Construction of new roads or improvements of existing roads shall be done in such a way as to minimize the environmental and visual impacts. Merchantable trees shall be cut and utilized unless otherwise directed. Non-merchantable trees shall be severed and laid flat on the ground. Slash shall be scattered, and not left in windrows and kept a minimum of 10 feet back from the road edge, and may be chipped, utilized or otherwise removed from the sale. Stumps shall be set upright, not left on edge, and be moved at least 10 feet away from the road edge. Disturbed soil shall be feathered into the woods and not left in berms or windrows.

4.1.7 - Road closure (10/11)

All new roads built into the sale must be blocked to vehicle traffic upon completion of the sale. Overgrown roads that are reopened shall be considered new roads. In general, this will require constructing a four (4') foot high berm of stumps and logs covered with earth. Contact the sale administrator for specific details of design and placement.

4.2 - Maintenance

4.2.2 - Fill material (4/07)

To maintain roads, fill material may be needed in areas where "holes" exist or may be expected to develop. This fill material should be placed before trucking begins. The sale administrator reserves the right to halt harvest activities if haul roads are not properly filled and shaped to his/her specifications.

4.2.4 - Grading (10/16)

For completion of the sale, state forest roads must be graded. In general, this will require a road grader or bull dozer to shape up the roads after forest products have been hauled off site. This includes cleaning of drainage areas, grading, crowning and filling with gravel, if necessary. The grading equipment to be used must be approved by the Unit Manager or his/her representative.

5 - Operations

5.2 - Conduct of Operations

5.2.1 - Slash

5.2.1.11 - Slash for reforestation (5/07)

To facilitate reforestation, the sale area shall be left with slash evenly distributed. Bunched tops within the cutting area shall be broken up and scattered. Stumps shall be cut low to the ground. Processing sites shall not be left with a compacted layer of slash; tops from these sites shall be hauled back into the cut area and scattered.

5.2.2 - Hazard Trees/Snags

5.2.2.1 - Den trees (10/16)

Obvious hollow and/or den trees shall be protected and left standing unless they are a safety hazard.

5.2.3 - Operating Restrictions

5.2.3.1 - Operating restrictions (9/11)

Within Payment Unit(s) 1, unless changed by written agreement, cutting, skidding, and hauling are limited to the period of December 1 to April 15. This restriction is because a portion of the sale area will need frozen winter conditions to conduct harvest operations.

5.2.3.2 - Operating restrictions (9/11)

Within Payment Unit(s) 1, unless changed by written agreement, all clean up activities are to be completed by June 30. This restriction is to let the area revegetate before the dry season.

5.2.30 - Landing/road top soil protection (2/15)

Top soil on landings and new roads must be removed, stockpiled and saved. Upon completion of the timber sale, soil must be

evenly distributed back over the area for revegetation. In addition, the area must be seeded and mulched per the instructions of the sale administrator by June 30 following harvest completion to allow for re-vegetation before the dry season.

5.2.32 - Decking/landing restoration (9/13)

All decking and landing areas must have the surface area restored to a condition equal to or better than before. This is to ensure the proper regeneration of the stand. Wood debris, chips and "cookies" from trimmings must be removed or scattered away from landing and loading areas and may not be wind rowed on the edge.

5.2.38 - No decking against live trees (2/04)

Cut products may not be decked against unmarked or designated leave trees.

5.2.40 - Pathway protection (10/10)

The Hazel Swamp Grouse Enhancement Management area has a hunter walking trail within the sale area and is shown on the Timber Sale Map. Care should be taken to protect the trail and keep it clear of debris from harvest operations. Maintain a 20-foot wide slash, debris, and rut free zone daily, using the pathway as the centerline.

5.2.41 - Snowmobile trail protection (9/11)

The Alston Trail is a snowmobile trail (Trail 109) and is shown on the Timber Sale Map. Do not cut or damage posts with orange trail markers or traffic control signs. The road maintenance/restoration must be done prior to December 1. If the trail road is to be used for hauling during the snowmobile season, then a snow covered base must be left on the trail. Hauling of forest products may only occur Monday through Friday during daylight hours. No decking of forest products will be permitted along the snowmobile trail.

5.4 - Soil Protection

5.4.1 - Rutting restriction, general (7/16)

Operations are to cease immediately if equipment and weather conditions result in rutting of roads and/or skid trails which is 12 inches or greater in depth and 50 feet in length. The Unit Manager or his/her representative may restrict hauling and/or skidding if ruts exceed the specified depth. With the Unit Manager or his/her representative's approval, the Purchaser may return to the area when the risk of rutting has decreased.

5.8 - Protection of Endangered Species

5.8.5 - Protection of raptor nests (3/13)

All trees with raptor nests will be protected if found during harvesting operations. Notification will be made to the Unit Manager or his/her representative who will notify the Wildlife Biologist so an on-site evaluation and recommendation can be made, if necessary.

6 - Safety and Fire Prevention

6.2 - Signing

6.2.1 - Road posting (9/09)

The Purchaser is responsible for posting and maintaining caution signs on Hazel Swamp Road prior to beginning operations. The road must be posted at appropriate distances from the sale area to warn of logging activity and truck traffic. Signs must be removed when harvest operations are suspended or completed. The Purchaser will provide these signs.

6.2.2 - Snowmobile trail posting (8/09)

The Purchaser is responsible for posting and maintaining caution signs on the snowmobile trail prior to beginning operations during the snowmobile season (approximately December 1 to March 31). The trail must be posted at appropriate distances from the sale area to warn of logging activity and truck traffic. Signs must be removed when harvest operations are suspended or completed. The Purchaser will provide these signs. Note: The trail is groomed by the Superior Snowmobile club. The Purchaser must contact them at (906) 288-3025 and notify them about the upcoming harvest operation. Additionally, the Purchaser must contact the DNR Unit Manager or his/her representative prior to any operations involving the snowmobile trail.



Sale Number	Year
11-014	19

TIMBER SALE MAP

This information provided by authority of Part 525, 1994 PA 451, as amended.

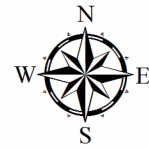
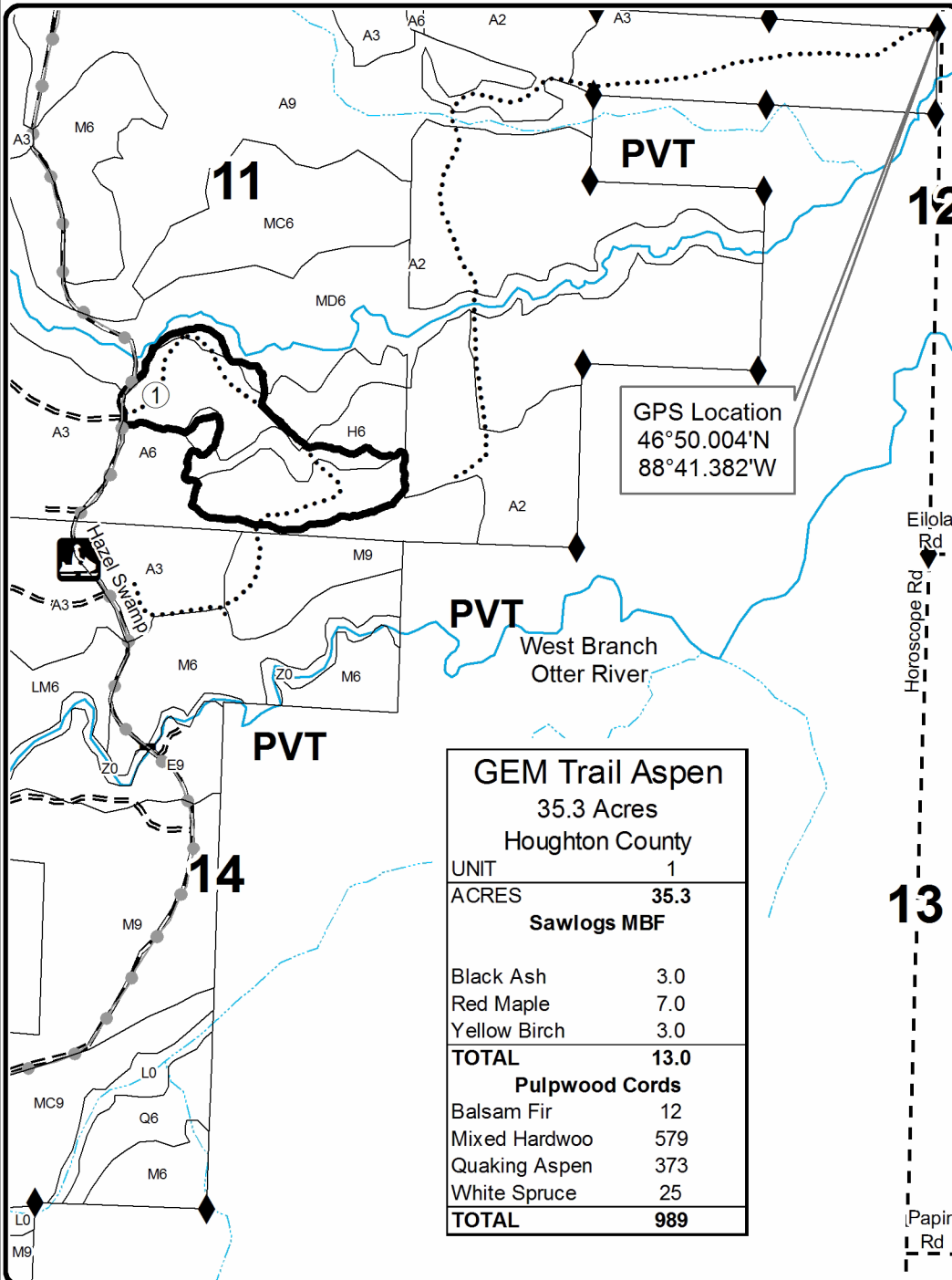
Forest Management Unit Baraga		County Houghton	Mapped By Carlson	Date 12/27/2018	Page 1	of 1
Township 51N	Range 35W	Section(s) and Subdivision(s) Sec 11 - E1/2SW, SWSE		Scale 1:15,840		
			Cruised By R. Mattila			

Cover Type

A = Aspen	H = Hemlock	N = Marsh	U = Upland Brush
B = Paper Birch	J = Jack Pine	O = Oak	UM = Upland Mixed
C = Cedar	L = Lowland Brush	P = Lowland Poplar	V = Bog or Marsh
D = Treed Bog	LM = Lowland Mixed	Q = Mixed Swamp Conifer	W = White Pine
E = Swamp Hdwoods	M = Mpl, Bch, Brch	R = Red Pine	X = Non Stocked
F = Spruce Fir	MC = Mixed Conifer	S = Black Spruce	Z = Water
G = Grass	MD = Mixed Deciduous	T = Tamarack	

Density

0 = Non Stocked	5 = Pole Timber Medium
1 = Seedling Sapling Poor	6 = Pole Timber Well
2 = Seedling Sapling Medium	7 = Saw Timber Poor
3 = Seedling Sapling Well	8 = Saw Timber Medium
4 = Pole Timber Poor	9 = Saw Timber Well



Legend

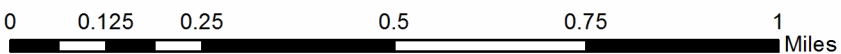
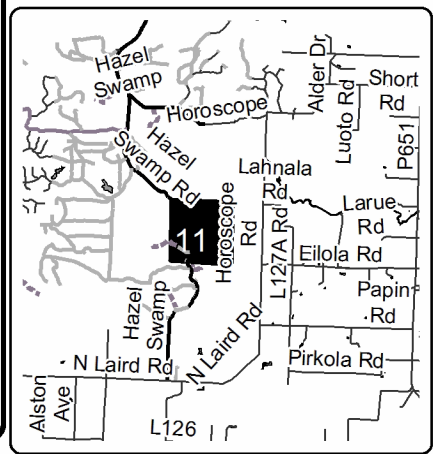
- GEM Trails
- Intermittent Stream
- Perennial River
- Against State (Red)
- Recreational Trail
- ◆ Survey Corners
- Primary Forest Road
- == Forest Access Route
- - Gravel Road

GPS Location
46°50.004'N
88°41.382'W

GEM Trail Aspen	
35.3 Acres	
Houghton County	
UNIT	1
ACRES	35.3
Sawlogs MBF	
Black Ash	3.0
Red Maple	7.0
Yellow Birch	3.0
TOTAL	13.0
Pulpwood Cords	
Balsam Fir	12
Mixed Hardwood	579
Quaking Aspen	373
White Spruce	25
TOTAL	989



Locator Map
1:200,000



TIMBER SALE INFORMATION

Bruno Plains (11-018-19)
 T51N, R35W, SEC. 17.
 Houghton County (Advertised Price \$12,634.15)

SALE NOTE: Access may be through private land.

A timber sale contract for this lump sum, sealed bid timber sale will be awarded to the responsible bidder offering the highest sealed bid price. Bids must be at or above the following advertised price for each species:

<u>PRODUCTS & SPECIES</u>	<u>ESTIMATED UNITS*</u>	<u>ADVERTISED PRICE</u>
Pulpwood		
Balsam Fir	161.00 Cords	\$ 10.85 / Cord
Mixed Aspen	319.00 Cords	\$ 17.40 / Cord
Mixed Hardwood	381.00 Cords	\$ 10.05 / Cord
White Spruce	69.00 Cords	\$ 21.85 / Cord

* The estimated units are final and not subject to adjustment. Prospective bidders are urged to examine this timber and to make their own estimates of quantity and quality.

BOND AND PAYMENT SCHEDULE:

- A bond in the amount of \$2,000.00 to insure faithful performance of the conditions of the contract will be deposited by the successful bidder within 21 days of the sale award.
- Cutting in any sale or unit without the required advance payment would be considered a trespass.
- Total payment must be paid in advance or according to the following schedule:
 - Ten percent (10%) of the sale value must be paid within 21 days of the sale award.
 - The remainder is due before cutting begins.
 - Payment for each of the following units must be made before cutting begins in that unit:

PAYMENT UNIT NUMBER	PERCENT OF TOTAL SALE VALUE
01	100.0%
- If no cutting takes place, the 10% down payment will not be refunded.
- Operations on the contract issued will terminate on 06/30/2022.

Description of Timber by Payment Unit (PU)

PU	MARKET GROUP	PRODUCT	QUANTITY	UNIT	ACRES	ADVERTISE PRICE
1	Balsam Fir	Pulpwood	161.0	Cords	63.0	\$12,634.15
	Mixed Aspen		319.0	Cords		
	<i>B. T. Aspen</i>		<i>113.0</i>	<i>Cords</i>		
	<i>Quaking Aspen</i>		<i>206.0</i>	<i>Cords</i>		
	Mixed Hardwood		381.0	Cords		
	<i>Red Maple</i>		<i>340.0</i>	<i>Cords</i>		
	<i>Sugar Maple</i>		<i>41.0</i>	<i>Cords</i>		
	White Spruce		69.0	Cords		
TOTAL:			930.0	Cords		

Sale Specific Conditions & Requirements

Sale Name: Bruno Plains

Sale Number: 11-018-19 Seq#: 2

1 - Sale Area

1.2 - Boundaries

1.2.1 - Painted boundaries (1/14)

The sale boundary and Payment Unit boundaries are marked and identified by red paint. Exterior sale boundary lines against state are marked with red paint. The painted boundary line trees are not Included Timber and are to be protected, unless otherwise directed by the sale administrator.

2 - Timber Specifications

2.1 - Included Timber

2.1.2 - Clearcut unit(s) w/o unmerchantable trees (8/11)

Within Payment Unit(s) 1, cut all trees which meet minimum piece specifications in 2.2 Utilization, except do not cut apple spp., white pine, any oak, white birch, cedar, black cherry, yellow birch and hemlock. Tree seedlings and saplings identified in accordance with condition 3.4.1, within clearcutting unit boundaries, are to be protected.

2.2 - Utilization

2.2.8 - Utilization and removal (5/14)

All products meeting standards set forth in General Condition and Requirement 2.2 - Utilization must be removed from the sale area. Chips are considered a product and cannot be stockpiled on site. This is because chip piles inhibit regeneration.

2.2.11 - Chipping restriction (9/14)

If chipping occurs on this sale, then no woody debris present on the ground at the start of the sale may be chipped. In addition, brush or chips may not be stored or stockpiled on-site for more than 30 days.

3 - Payments

3.4 - Damaged Timber

3.4.1 - Damaged timber (6/14)

General Condition and Requirement 3.4 Damaged Timber, defines liquidated damages for undesignated live merchantable trees which are cut or injured. In addition, extreme care should be taken to avoid damage to the apple and bur oak saplings in the sale area. These saplings were planted in 2018 and are flagged with blue ribbon. No damage is acceptable to merchantable trees. Within the sale area, if more than 5% of trees (> 4.5" DBH) within a specified area of the sale are damaged, liquidated damages will be assessed for all trees damaged. Rates will be in accordance with General Condition and Requirement 3.4 Damaged Timber.

4 - Transportation

4.1 - Construction

4.1.1 - Stream crossings, general (3/11)

All stream crossing structures will be temporary and therefore, shall be provided by the Purchaser, and must be removed upon completion of the sale. All permits for stream crossings will be provided by the DNR for crossings on State Forest Land. Please notify the DNR 90 days prior to working on any crossings that will require a DEQ permit.

4.1.3 - Slash and earthen piles (8/04)

Piles or windrows of earth along roads and landings that have been widened or constructed shall be leveled. Slash from road maintenance or construction, including stumps, shall be dispersed throughout the sale.

4.1.5 - Culverts (5/14)

Roads may require the installation of culverts for cross drainage or at natural drainage-ways. If culverts are needed in these locations, their placement will be specified by the sale administrator and they shall be installed prior to hauling. The culverts shall be new, corrugated metal or plastic gauge. Culverts will be a minimum of 12 inches in diameter and 24 feet in length. If culverts are removed, fill shall be removed from wetland soils as specified. Soils shall be maintained and left in a non-erodible

condition, with water bars, seed, fertilizer, mulch, and slash installed as directed by the sale administrator and as specified in the BMP manual. Stream crossing permits, for crossings on state land, will be obtained by the DNR. Please notify the DNR 90 days prior to working on any crossings that will require a DEQ permit.

4.1.6 - Road construction (1/09)

Construction of new roads or improvements of existing roads shall be done in such a way as to minimize the environmental and visual impacts. Merchantable trees shall be cut and utilized unless otherwise directed. Non-merchantable trees shall be severed and laid flat on the ground. Slash shall be scattered, and not left in windrows and kept a minimum of 10 feet back from the road edge, and may be chipped, utilized or otherwise removed from the sale. Stumps shall be set upright, not left on edge, and be moved at least 10 feet away from the road edge. Disturbed soil shall be feathered into the woods and not left in berms or windrows.

4.1.7 - Road closure (10/11)

All new roads built into the sale must be blocked to vehicle traffic upon completion of the sale. Overgrown roads that are reopened shall be considered new roads. In general, this will require constructing a four (4') foot high berm of stumps and logs covered with earth. Contact the sale administrator for specific details of design and placement.

4.2 - Maintenance

4.2.2 - Fill material (4/07)

To maintain roads, fill material may be needed in areas where "holes" exist or may be expected to develop. This fill material should be placed before trucking begins. The sale administrator reserves the right to halt harvest activities if haul roads are not properly filled and shaped to his/her specifications.

4.2.4 - Grading (10/16)

For completion of the sale, state forest roads must be graded. In general, this will require a road grader or bull dozer to shape up the roads after forest products have been hauled off site. This includes cleaning of drainage areas, grading, crowning and filling with gravel, if necessary. The grading equipment to be used must be approved by the Unit Manager or his/her representative.

4.4 - Access

4.4.1 - Private property access (3/11)

Permission for access across private land is the responsibility of the Purchaser. Should the Purchaser desire to cross private land, a copy of the written permission from the private land-owner may be required by the DNR.

5 - Operations

5.2 - Conduct of Operations

5.2.1 - Slash

5.2.1.11 - Slash for reforestation (5/07)

To facilitate reforestation, the sale area shall be left with slash evenly distributed. Bunched tops within the cutting area shall be broken up and scattered. Stumps shall be cut low to the ground. Processing sites shall not be left with a compacted layer of slash; tops from these sites shall be hauled back into the cut area and scattered.

5.2.2 - Hazard Trees/Snags

5.2.2.1 - Den trees (10/16)

Obvious hollow and/or den trees shall be protected and left standing unless they are a safety hazard.

5.2.3 - Operating Restrictions

5.2.3.2 - Operating restrictions (9/11)

Within Payment Unit(s) 1, unless changed by written agreement, all clean up activities are to be completed by June 30. This restriction is to let the area re-vegetate before the dry season.

5.2.30 - Landing/road top soil protection (2/15)

Top soil on landings and new roads must be removed, stockpiled and saved. Upon completion of the timber sale, soil must be evenly distributed back over the area for revegetation. In addition, the area must be seeded and mulched per the instructions of the sale administrator by June 30 following harvest completion to allow for re-vegetation before the dry season.

5.2.32 - Decking/landing restoration (9/13)

All decking and landing areas must have the surface area restored to a condition equal to or better than before. This is to ensure the proper regeneration of the stand. Wood debris, chips and "cookies" from trimmings must be removed or scattered away from landing and loading areas and may not be wind rowed on the edge.

5.2.38 - No decking against live trees (2/04)

Cut products may not be decked against unmarked or designated leave trees.

5.4 - Soil Protection

5.4.1 - Rutting restriction, general (7/16)

Operations are to cease immediately if equipment and weather conditions result in rutting of roads and/or skid trails which is 12 inches or greater in depth and 50 feet in length. The Unit Manager or his/her representative may restrict hauling and/or skidding if ruts exceed the specified depth. With the Unit Manager or his/her representative's approval, the Purchaser may return to the area when the risk of rutting has decreased.

5.8 - Protection of Endangered Species

5.8.5 - Protection of raptor nests (3/13)

All trees with raptor nests will be protected if found during harvesting operations. Notification will be made to the Unit Manager or his/her representative who will notify the Wildlife Biologist so an on-site evaluation and recommendation can be made, if necessary.



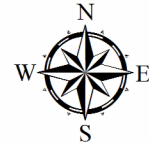
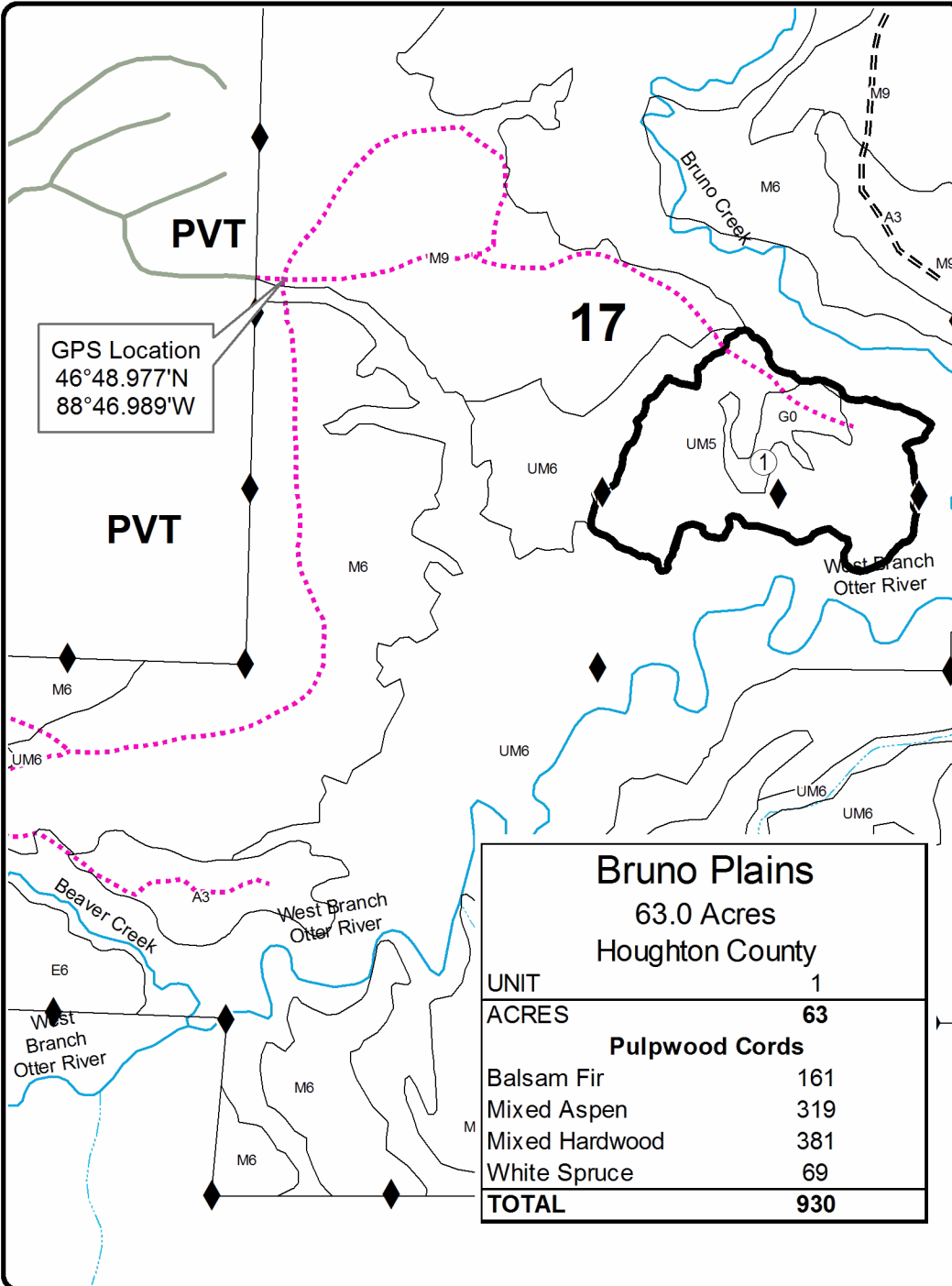
TIMBER SALE MAP

This information provided by authority of Part 525, 1994 PA 451, as amended.

Sale Number	Year
11-018	19

Forest Management Unit Baraga	County Houghton	Mapped By Carlson	Date 12/27/2018	Page 1	of 1
Township 51N	Range 35W	Section(s) and Subdivision(s) Sec 17 - SE1/4	Scale 1:15,840		

Cover Type				Density			
A = Aspen	H = Hemlock	N = Marsh	U = Upland Brush	0 = Non Stocked	5 = Pole Timber Medium		
B = Paper Birch	J = Jack Pine	O = Oak	UM = Upland Mixed	1 = Seedling Sapling Poor	6 = Pole Timber Well		
C = Cedar	L = Lowland Brush	P = Lowland Poplar	V = Bog or Marsh	2 = Seedling Sapling Medium	7 = Saw Timber Poor		
D = Treed Bog	LM = Lowland Mixed	Q = Mixed Swamp Conifer	W = White Pine	3 = Seedling Sapling Well	8 = Saw Timber Medium		
E = Swamp Hdwoods	M = Mpl, Bch, Brch	R = Red Pine	X = Non Stocked	4 = Pole Timber Poor	9 = Saw Timber Well		
F = Spruce Fir	MC = Mixed Conifer	S = Black Spruce	Z = Water				
G = Grass	MD = Mixed Deciduous	T = Tamarack					

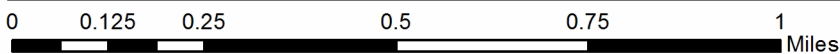
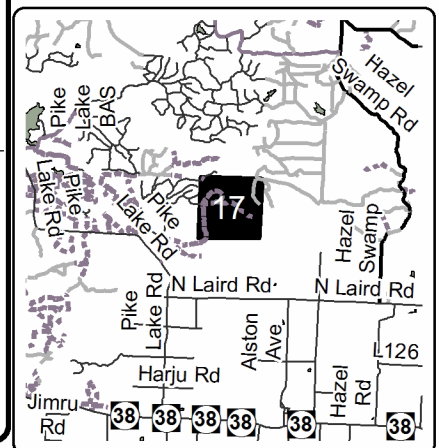


Legend

- Intermittent Stream
- Perennial River
- Survey Corners
- Forest Access Route
- Private
- Temporary Management Access
- Against State (Red)



Locator Map
1:200,000



Indy Aspen (11-001-19)

T49N, R34W, SEC. 3; T49N, R34W, SEC. 4; T49N, R34W, SEC. 5; T49N, R34W,

In response to the notice of sale to be held 9:00 a.m. (local time) on August 15, 2019, I am hereby submitting my sealed bid (firm offer) for the following forest products to be cut. Bids for individual species must be at or above the advertised price. All non-responsive bid forms may be rejected.

<u>PRODUCTS & SPECIES</u>	<u>ESTIMATED VOLUME*</u>	<u>ADVERTISED PRICE</u>	<u>BID PRICE/UNIT</u>
Sawtimber			
Paper Birch	3.00 MBF	\$ 75.00/MBF	\$ _____
Red Oak	26.50 MBF	\$ 161.00/MBF	\$ _____
Pulpwood			
Balsam Fir	4.00 Cords	\$ 16.25/Cord	\$ _____
Jack Pine	643.00 Cords	\$ 43.85/Cord	\$ _____
Mixed Aspen	2,354.00 Cords	\$ 26.10/Cord	\$ _____
Mixed Hardwood	165.00 Cords	\$ 15.05/Cord	\$ _____
Red Oak	1,015.00 Cords	\$ 29.85/Cord	\$ _____
White Spruce	11.00 Cords	\$ 32.80/Cord	\$ _____

*These estimated volumes are final and not subject to adjustment. Prospective bidders are urged to examine this timber and to make their own estimates of quantity and quality.

I understand that any or all bids may be rejected. All bids must be signed and all bid items must be bid or the bid form may be rejected. I also understand that consideration and awarding a contract will be based upon my past performance and ability to complete the contract based upon equipment and staffing subject to my control.

FEDERAL ID: ____ - ____ - ____ or SOCIAL SECURITY NUMBER: ____ - ____ - ____

Company or individual bidding: _____

Company representative's name: _____

Address: _____

City: _____ State: _____ Zip: _____

IF AVAILABLE, PLEASE PLACE THE PERSONALIZED LABEL FROM YOUR PROSPECTUS IN THE ABOVE BOX.

Individual or company representative's signature: _____ Date: _____

Phone number : _____ Email (optional): _____

THE WINNING BIDDER MUST COMPLETE THE VERIFICATION OF WORKER'S DISABILITY COMPENSATION ACT COMPLIANCE (ON REVERSE SIDE IF DOUBLE SIDED) WITHIN 21 DAYS OF SALE AWARD DATE



FOR DEPARTMENT USE ONLY	
Sale Number (XX - XXX - XX - XX)	
Forest Management Unit:	

TIMBER SALE VERIFICATION OF WORKER'S DISABILITY COMPENSATION ACT COMPLIANCE

As required by Act 317, P.A. 1969 (Worker's Compensation) and
Part 5 of Act 451 of 1994, as amended.

VERIFICATION OF WORKER'S DISABILITY COMPENSATION ACT COMPLIANCE

- This verification must be completed and submitted within 21 days of contract award and prior to the issuance of the timber sale contract.
- In addition, if boxes 2B or 2C are checked, then Notice of Exclusion or Certificate of Insurance must be submitted within twenty-one (21) days of the contract award and prior to the issuance of the timber sale contract.
- All information must be typed or printed except for written signatures.

Please Check Appropriate Categories:

1. My business is organized as (you **must** check one of the boxes below):
 - A. Sole Proprietorship (individual)
 - B. Partnership
 - C. Corporation
2. You **must** check one of the boxes below:
 - A. I certify my business is a sole proprietorship and it has no employees but the sole proprietor. I am not subject to the Worker's Compensation Laws.
 - B. I certify my business has satisfied its obligation to the Worker's Compensation Act through the use of an approved Notice of Exclusion (BWC-337, Rev. 5/96). I will provide a copy of the Notice of Exclusion within 21 days of the contract award. (For questions or a copy of the BWC-337, please call the Worker's Compensation Bureau at 517-322-1195).
 - C. I certify my business has a Worker's Compensation Policy. I will provide an original Certificate of Insurance within twenty-one (21) days of the contract award.
3. If you have checked item 2(A) or 2(B), you **must** indicate the number of **both** full-time and part-time employees, other than yourself, including family members and active partners (if none, you must enter "0").

_____ Full-time Employees

_____ Part-time Employees

Name of Business		Federal ID (or) Social Security No.	
Address		Telephone ()	
City	State	ZIP	

I hereby certify that the above information is true and correct. I agree to notify the Michigan DNR of any changes that occur in factors affecting my coverage during any of my present and future operations.

Signature of Owner or Authorized Representative

Title

Date

Please complete the "SEALED BID" information on the next page

Peshky Hardwoods (11-012-19)
T51N, R35W, SEC. 3; T52N, R35W, SEC. 34; Houghton COUNTY

In response to the notice of sale to be held 9:00 a.m. (local time) on August 15, 2019, I am hereby submitting my sealed bid (firm offer) for the following forest products to be cut. Bids for individual species must be at or above the advertised price. All non-responsive bid forms may be rejected.

<u>PRODUCTS & SPECIES</u>	<u>ESTIMATED VOLUME*</u>	<u>ADVERTISED PRICE</u>	<u>BID PRICE/UNIT</u>
Sawtimber			
Basswood	10.20 MBF	\$ 90.00/MBF	\$ _____
Red Maple	139.50 MBF	\$ 208.00/MBF	\$ _____
Sugar Maple	216.30 MBF	\$ 359.00/MBF	\$ _____
White Ash	17.10 MBF	\$ 77.00/MBF	\$ _____
Yellow Birch	4.90 MBF	\$ 147.00/MBF	\$ _____
Pulpwood			
Basswood	50.00 Cords	\$ 6.85/Cord	\$ _____
Mixed Hardwood	1,496.00 Cords	\$ 15.05/Cord	\$ _____

*The volumes are statistically estimated within plus (+) or minus (-) 9.42 percent. These estimated volumes are final and not subject to adjustment. Prospective bidders are urged to examine this timber and to make their own estimates of quantity and quality.

I understand that any or all bids may be rejected. All bids must be signed and all bid items must be bid or the bid form may be rejected. I also understand that consideration and awarding a contract will be based upon my past performance and ability to complete the contract based upon equipment and staffing subject to my control.

FEDERAL ID: _____ or SOCIAL SECURITY NUMBER: _____

Company or individual bidding: _____

Company representative's name: _____

Address: _____

City: _____ State: _____ Zip: _____

IF AVAILABLE, PLEASE PLACE THE PERSONALIZED LABEL FROM YOUR PROSPECTUS IN THE ABOVE BOX.

Individual or company representative's signature: _____ Date: _____

Phone number : _____ Email (optional): _____

THE WINNING BIDDER MUST COMPLETE THE VERIFICATION OF WORKER'S DISABILITY COMPENSATION ACT COMPLIANCE (ON REVERSE SIDE IF DOUBLE SIDED) WITHIN 21 DAYS OF SALE AWARD DATE

GEM Trail Aspen (11-014-19)
T51N, R35W, SEC. 11; Houghton COUNTY

In response to the notice of sale to be held 9:00 a.m. (local time) on August 15, 2019, I am hereby submitting my sealed bid (firm offer) for the following forest products to be cut. Bids for individual species must be at or above the advertised price. All non-responsive bid forms may be rejected.

<u>PRODUCTS & SPECIES</u>	<u>ESTIMATED VOLUME*</u>	<u>ADVERTISED PRICE</u>	<u>BID PRICE/UNIT</u>
Sawtimber			
Black Ash	3.00 MBF	\$ 38.00/MBF	\$ _____
Red Maple	7.00 MBF	\$ 139.00/MBF	\$ _____
Yellow Birch	3.00 MBF	\$ 98.00/MBF	\$ _____
Pulpwood			
Balsam Fir	12.00 Cords	\$ 10.85/Cord	\$ _____
Mixed Hardwood	579.00 Cords	\$ 10.05/Cord	\$ _____
Quaking Aspen	373.00 Cords	\$ 17.40/Cord	\$ _____
White Spruce	25.00 Cords	\$ 21.85/Cord	\$ _____

*The volumes are statistically estimated within plus (+) or minus (-) 14.30 percent. These estimated volumes are final and not subject to adjustment. Prospective bidders are urged to examine this timber and to make their own estimates of quantity and quality.

I understand that any or all bids may be rejected. All bids must be signed and all bid items must be bid or the bid form may be rejected. I also understand that consideration and awarding a contract will be based upon my past performance and ability to complete the contract based upon equipment and staffing subject to my control.

FEDERAL ID: _____ or SOCIAL SECURITY NUMBER: _____
 Company or individual bidding: _____
 Company representative's name: _____
 Address: _____
 City: _____ State: _____ Zip: _____

IF AVAILABLE, PLEASE PLACE THE PERSONALIZED LABEL FROM YOUR PROSPECTUS IN THE ABOVE BOX.

Individual or company representative's signature: _____ Date: _____

Phone number : _____ Email (optional): _____

THE WINNING BIDDER MUST COMPLETE THE VERIFICATION OF WORKER'S DISABILITY COMPENSATION ACT COMPLIANCE (ON REVERSE SIDE IF DOUBLE SIDED) WITHIN 21 DAYS OF SALE AWARD DATE



FOR DEPARTMENT USE ONLY
Sale Number (XX - XXX - XX - XX)
Forest Management Unit:

TIMBER SALE VERIFICATION OF WORKER'S DISABILITY COMPENSATION ACT COMPLIANCE

*As required by Act 317, P.A. 1969 (Worker's Compensation) and
Part 5 of Act 451 of 1994, as amended.*

VERIFICATION OF WORKER'S DISABILITY COMPENSATION ACT COMPLIANCE

- This verification must be completed and submitted within 21 days of contract award and prior to the issuance of the timber sale contract.
- In addition, if boxes 2B or 2C are checked, then Notice of Exclusion or Certificate of Insurance must be submitted within twenty-one (21) days of the contract award and prior to the issuance of the timber sale contract.
- All information must be typed or printed except for written signatures.

Please Check Appropriate Categories:

1. My business is organized as (you **must** check one of the boxes below):
 - A. Sole Proprietorship (individual)
 - B. Partnership
 - C. Corporation

2. You **must** check one of the boxes below:
 - A. I certify my business is a sole proprietorship and it has no employees but the sole proprietor. I am not subject to the Worker's Compensation Laws.
 - B. I certify my business has satisfied its obligation to the Worker's Compensation Act through the use of an approved Notice of Exclusion (BWC-337, Rev. 5/96). I will provide a copy of the Notice of Exclusion within 21 days of the contract award. (For questions or a copy of the BWC-337, please call the Worker's Compensation Bureau at 517-322-1195).
 - C. I certify my business has a Worker's Compensation Policy. I will provide an original Certificate of Insurance within twenty-one (21) days of the contract award.

3. If you have checked item 2(A) or 2(B), you **must** indicate the number of **both** full-time and part-time employees, other than yourself, including family members and active partners (if none, you must enter "0").

_____ Full-time Employees

_____ Part-time Employees

Name of Business		Federal ID (or) Social Security No.	
Address		Telephone ()	
City	State	ZIP	

I hereby certify that the above information is true and correct. I agree to notify the Michigan DNR of any changes that occur in factors affecting my coverage during any of my present and future operations.

Signature of Owner or Authorized Representative

Title

Date

Please complete the "SEALED BID" information on the next page

Bruno Plains (11-018-19)
T51N, R35W, SEC. 17; Houghton COUNTY

In response to the notice of sale to be held 9:00 a.m. (local time) on August 15, 2019, I am hereby submitting my sealed bid (firm offer) for the following forest products to be cut. Bids for individual species must be at or above the advertised price. All non-responsive bid forms may be rejected.

<u>PRODUCTS & SPECIES</u>	<u>ESTIMATED VOLUME*</u>	<u>ADVERTISED PRICE</u>	<u>BID PRICE/UNIT</u>
Pulpwood			
Balsam Fir	161.00 Cords	\$ 10.85/Cord	\$ _____
Mixed Aspen	319.00 Cords	\$ 17.40/Cord	\$ _____
Mixed Hardwood	381.00 Cords	\$ 10.05/Cord	\$ _____
White Spruce	69.00 Cords	\$ 21.85/Cord	\$ _____

*These estimated volumes are final and not subject to adjustment. Prospective bidders are urged to examine this timber and to make their own estimates of quantity and quality.

I understand that any or all bids may be rejected. All bids must be signed and all bid items must be bid or the bid form may be rejected. I also understand that consideration and awarding a contract will be based upon my past performance and ability to complete the contract based upon equipment and staffing subject to my control.

FEDERAL ID: ____ - ____ - ____ or SOCIAL SECURITY NUMBER: ____ - ____ - ____

Company or individual bidding: _____

Company representative's name: _____

Address: _____

City: _____ State: _____ Zip: _____

IF AVAILABLE, PLEASE PLACE THE PERSONALIZED LABEL FROM YOUR PROSPECTUS IN THE ABOVE BOX.

Individual or company representative's signature: _____ Date: _____

Phone number : _____ Email (optional): _____

THE WINNING BIDDER MUST COMPLETE THE VERIFICATION OF WORKER'S DISABILITY COMPENSATION ACT COMPLIANCE (ON REVERSE SIDE IF DOUBLE SIDED) WITHIN 21 DAYS OF SALE AWARD DATE



FOR DEPARTMENT USE ONLY	
Sale Number (XX - XXX - XX - XX)	
Forest Management Unit:	

TIMBER SALE VERIFICATION OF WORKER'S DISABILITY COMPENSATION ACT COMPLIANCE

As required by Act 317, P.A. 1969 (Worker's Compensation) and
Part 5 of Act 451 of 1994, as amended.

VERIFICATION OF WORKER'S DISABILITY COMPENSATION ACT COMPLIANCE

- This verification must be completed and submitted within 21 days of contract award and prior to the issuance of the timber sale contract.
- In addition, if boxes 2B or 2C are checked, then Notice of Exclusion or Certificate of Insurance must be submitted within twenty-one (21) days of the contract award and prior to the issuance of the timber sale contract.
- All information must be typed or printed except for written signatures.

Please Check Appropriate Categories:

1. My business is organized as (you **must** check one of the boxes below):
 - A. Sole Proprietorship (individual)
 - B. Partnership
 - C. Corporation
2. You **must** check one of the boxes below:
 - A. I certify my business is a sole proprietorship and it has no employees but the sole proprietor. I am not subject to the Worker's Compensation Laws.
 - B. I certify my business has satisfied its obligation to the Worker's Compensation Act through the use of an approved Notice of Exclusion (BWC-337, Rev. 5/96). I will provide a copy of the Notice of Exclusion within 21 days of the contract award. (For questions or a copy of the BWC-337, please call the Worker's Compensation Bureau at 517-322-1195).
 - C. I certify my business has a Worker's Compensation Policy. I will provide an original Certificate of Insurance within twenty-one (21) days of the contract award.
3. If you have checked item 2(A) or 2(B), you **must** indicate the number of **both** full-time and part-time employees, other than yourself, including family members and active partners (if none, you must enter "0").

_____ Full-time Employees

_____ Part-time Employees

Name of Business		Federal ID (or) Social Security No.	
Address		Telephone ()	
City	State	ZIP	

I hereby certify that the above information is true and correct. I agree to notify the Michigan DNR of any changes that occur in factors affecting my coverage during any of my present and future operations.

Signature of Owner or Authorized Representative

Title

Date

Please complete the "SEALED BID" information on the next page