



**DEPARTMENT OF NATURAL RESOURCES
STATE OF MICHIGAN**

TIMBER SALE PROSPECTUS #6619

SCHEDULED SALE DATE AND TIME: 10:00 a.m. (local time) on March 3, 2020.

LOCATION: ATLANTA MGMT UNIT, 13501 M 33, ATLANTA, MI 49709.

PROSPECTUS NOTE: The bidder is advised to inspect the sale area and review the location, estimated volumes, operating costs and contract terms of proposed sales. Please be aware that some landowners may request 60 days or more notice for access across their land.

Notice is hereby given that bids will be received by the Unit Manager, ATLANTA MANAGEMENT UNIT, for certain timber on the following described lands:

Jeopardy Music Mix (54-007-19) / T33N, R02E, SEC. 29, S1/2NW,N1/2SW.

T33N, R02E, SEC. 30, SWNW,S1/2NE,N1/2SW,N1/2SE.

Presque Isle County, Advertised Price \$38,763.00, 111.6 Acres, Hardwood, Jack Pine.

SALE NOTE: See spec 5.5.3 regarding the wood fences along Canada Creek Highway.

Be Best Pine (54-017-19) / T35N, R02E, SEC. 10, SESW.

T35N, R02E, SEC. 14, NWSW.

T35N, R02E, SEC. 15, NENW,SENE,N1/2SE,SWSE.

Presque Isle County, Advertised Price \$26,676.90, 42.7 Acres, Red Pine, Hardwood.

Sugar Bunny Blend (54-018-19) / T35N, R02E, SEC. 10, NW,NWNE,S1/2NE.

T35N, R02E, SEC. 12, S1/2NE.

T35N, R02E, SEC. 9, NE.

Presque Isle County, Advertised Price \$61,321.70, 115.7 Acres, Hardwood, Aspen.

BID INSTRUCTIONS (VER. 07/02/2018):

1. Scheduled Bid Location, Date, and Time (2/11)

Bids must be received by the Unit Manager, ATLANTA OFFICE, 13501 M 33, ATLANTA, MI 49709, no later than 10:00 a.m. (local time) on March 3, 2020. For further information concerning this sale, contact Cody Stevens at 989-785-4251 extension 5240.

2. Bidder's Qualifications (5/16)

Purchaser shall obtain workers compensation insurance to cover claims under Michigan's Worker's Disability Compensation Act of 1969 or similar employee benefit act of any other state applicable to an employee. If all or part of a timber sale was prepared by a private contractor, the contractor and that contractor's company are not permitted to bid on the timber sale contract. Bids will not be accepted from individuals or companies appearing on the DNR/FRD No-Bid List. This list contains the names of purchasers who previously failed to execute a contract within 21-days or who have a history of poor performance.

3. Preparation of Sealed Bids (5/16)

Bid Forms may be completed online thru Michigan DNR Timber Sale Online Bidding (OLB) at www.michigan.gov/timberbidding or by completing the hardcopy Bid Form found in the Timber Sale Prospectus. Hardcopy Bid Forms shall be manually signed in ink. Registration in OLB is considered your 'signature' for all bids submitted thru that system. Bid prices must be entered for each species and product in the Bid Price column for all material subject to bidding and all fill-in blanks must be completed. If erasures or other changes appear on the hardcopy Bid Form, each erasure or change must be initialed by the person signing the bid.

4. Submission of Sealed Bids (5/16)

Bid forms may be obtained from the Unit Manager or thru OLB. Bids may be submitted hardcopy or thru OLB. All hardcopy bids must be submitted on the bid form and in an envelope clearly identified as described in this section. NOTE: Only one bid form per bid envelope. Sealed bids must be submitted to the Unit office designated in the prospectus and must be submitted at or prior to the time established in the prospectus. The envelope should show on the outside (a) the sale name or number and (b) the date and time of bid opening, as shown in the prospectus. Bids received after the time specified in the sale prospectus are late bids and will be rejected.

It is possible for a bidder to submit multiple bids on a single sale. For example, a bid may be submitted hardcopy and a bid may be submitted thru OLB. Or, two bidders from the same company could both submit bids on the same sale. If this were to happen, the State would accept all bids received and award the contract accordingly. All bidding and contractual requirements would apply to all bids received.

5. Public Opening of Sealed Bids (7/16)

If conditions permit, the sealed bids will be publicly opened and posted at the time and place set in the prospectus.

If a bidder, present at a bid opening, has submitted bids on more than one sale, that bidder may withdraw their unopened bid envelopes or announce the withdrawal of their online bid after being declared the successful bidder on one sale.

6. Award of Contract (1/11)

Award of the contract will be made to the Bidder whose bid, conforming to the prospectus, is most advantageous to the State of Michigan on the basis of total value at rates bid for the estimated quantities. The State reserves the right to reject any bid or waive any minor irregularity in bids received. A written award mailed (or otherwise furnished) to the successful Bidder shall be deemed to result in a binding contract without further action by either party.

7. Down Payment (1/11)

The Bidder to whom award is made must make a down payment within 21 days of the sale award. The amount of the down payment will be calculated as shown in the Bond and Payment Schedule of this prospectus. Only cash may be used to meet this requirement.

8. Performance Security (1/11)

As guarantee of faithful performance, a cash bond, certificate of deposit, surety bond or irrevocable letter of credit (LOC) is required within 21 days of the sale award. The amount of the performance security is shown in the Bond and

Payment Schedule of this prospectus. If an LOC or surety is used, the coverage must extend for at least 6 months beyond the contract expiration.

9. Timber Sale Contract (7/18)

Additional conditions and requirements common to all timber sales are listed on the timber sale contract (R4031) and are available on line at www.michigan.gov/timber. Contact the Unit Manager for additional information or a sample contract. Within 21 days of the date of the award letter, the bidder must sign the contract and provide the required down payment, performance security, and verification of worker's disability compensation. The down payment and performance security shall be in accordance with the provisions of the timber sale contract, in the sums stated in this prospectus. If these actions are not taken, then the Bidder, the Bidder's corporation, and the corporation's principals may not be permitted to bid on State timber sales for a period of 3 months after the first offense, 6 months after the second offense, and 1 year after the third offense. An offense will only be counted against the Bidder for 5 years. In addition, the Bidder certifies that if awarded this contract, the Bidder will complete the timber sale contract in accordance with its terms and any modifications thereof including requirements to purchase, cut, and remove the included timber by the expiration date.

Payment Unit values in the State Forest Timber Sale Contract are calculated based on the advertised value of the Payment Unit as a percentage of the total advertised value of the contract. The advertised value of each Payment Unit is given in the Description of Timber by Payment Unit table on the Timber Sale Information page. For example, if the value of Payment Unit 1 is advertised as \$1,500 and the total Timber Sale value is advertised as \$10,000, the contract price for Payment Unit 1 will be 15% of the total bid price ($\$1,500/\$10,000 * 100$).

10. Disclaimer of Estimates and Bidder's Warranty of Inspection (7/16)

Before submitting this bid, the Bidder is advised and cautioned to inspect the sale area, review the requirements of the sale contract, and take other steps as may be reasonably necessary to ascertain the location, estimated volumes, construction estimates, and operating costs of the proposed sale. Failure to do so will not relieve the Bidder from responsibility for completing the contract.

The Bidder warrants that this bid is submitted solely on the basis of the Bidder's examination and inspection of the quality and quantity of the timber offered for sale and the Bidder's opinion of the value thereof and the costs of recovery. No reliance should be placed on the State of Michigan's estimates of timber quality, quantity or costs of recovery. Bidder further acknowledges that the State of Michigan: (i) expressly disclaims any warranty of fitness of timber for any purpose; (ii) offers this timber as is without any warranty of quality (merchantability) or quantity and (iii) expressly disclaims any warranty as to the quantity or quality of timber sold.

11. Certification and Chain-of-Custody (10/14)

Unless otherwise indicated in the contract under section 7 – Other Conditions of the Sale Specific Conditions & Requirements, the area encompassed by this timber sale is certified to the standards of the Forest Stewardship Council (FSC) - Certificate #SCS-FM/COC-00090N and the Sustainable Forestry Initiative (SFI) - Certificate #NSF-SFIS-5Y031-SF5. Forest products from this sale may be delivered to the mill as "FSC 100% and / or SFI certified" as long as the contractor hauling the forest products is chain-of-custody (COC) certified or covered under a COC certificate from the destination mill. The purchaser is responsible for maintaining COC after leaving the sale area.

12. Good Neighbor Authority (GNA) Requirements (7/16)

If the name of this timber sales contains the acronym GNA, it is authorized by the Good Neighbor Authority (GNA) and covered by various agreements between the U.S. Forest Service and the State. The timber sale occurs on federal land and the following conditions apply:

GNA contracts on US Forest Service land will not be awarded to purchasers on the Federal list of excluded parties. The System for Award Management (SAM) will be checked for active excluded parties prior to award of contract. In addition, the Bidder to whom award is made must complete an Assurance Regarding Felony Conviction or Tax Delinquent Status for Corporate Applicants (AD-3031).

13. Good Neighbor Authority (GNA) Requirements, con't (9/16)

Bidder certifies, by signing this bid form, that to the best of Bidder's knowledge that the following representations are accurate and complete.

- a. That the Bidder and its principals are not presently debarred, suspended, proposed for debarment, declared ineligible, or voluntary excluded from timber sales (covered transactions) by any Federal department or agency.
- b. That the Bidder and its principals have not within a 3-year period preceding this bid been convicted of or had a civil judgment rendered against them for commission of fraud or a criminal offense in connection with obtaining , attempting to obtain, or performing a public (Federal, State, or local) transaction or contract under a public transaction; violation of Federal or State antitrust statutes or commission of embezzlement, theft, forgery, bribery, falsification or destruction of records, making false statements, or receiving stolen property.
- c. That the Bidder and its principals are not presently indicted for or otherwise criminally or civilly charged by a governmental entity (Federal, State, or local) with commission of any of the offenses enumerated in paragraph b of this certification.
- d. That the Bidder and its principals have not within a 3-year period preceding this bid had one or more public transactions (Federal, State, or local) terminated for breach or default of a timber or forest product contract.

Bidders that cannot certify this requirement, in whole or in part, shall submit an explanation with their bid.

DAN EICHINGER
Director

TIMBER SALE INFORMATION

Jeopardy Music Mix (54-007-19)
 T33N, R02E, SEC. 29; T33N, R02E, SEC. 30.
 Presque Isle County (Advertised Price \$38,763.00)

SALE NOTE: See spec 5.5.3 regarding the wood fences along Canada Creek Highway.

A timber sale contract for this lump sum, sealed bid timber sale will be awarded to the responsible bidder offering the highest sealed bid price. Bids must be at or above the following advertised price for each species:

<u>PRODUCTS & SPECIES</u>	<u>ESTIMATED UNITS*</u>	<u>ADVERTISED PRICE</u>
Sawtimber		
Mixed Aspen	21.20 MBF	\$ 85.00 / MBF
Red Pine	9.30 MBF	\$ 122.00 / MBF
Pulpwood		
Balsam Fir	1.00 Cords	\$ 27.60 / Cord
Jack Pine	414.00 Cords	\$ 22.80 / Cord
Mixed Aspen	276.00 Cords	\$ 25.25 / Cord
Mixed Oak	529.00 Cords	\$ 31.80 / Cord
Red Maple	15.00 Cords	\$ 22.10 / Cord
Red Pine	28.00 Cords	\$ 49.75 / Cord
White Pine	29.00 Cords	\$ 29.10 / Cord

* The total volume is statistically estimated within plus (+) or minus (-) 13.88 percent. The estimated units are final and not subject to adjustment. Prospective bidders are urged to examine this timber and to make their own estimates of quantity and quality.

BOND AND PAYMENT SCHEDULE:

1. A bond in the amount of \$1,938.00 to insure faithful performance of the conditions of the contract will be deposited by the successful bidder within 21 days of the sale award.
2. Cutting in any sale or unit without the required advance payment would be considered a trespass.
3. Total payment must be paid in advance or according to the following schedule :
 - (a) Ten percent (10%) of the sale value must be paid within 21 days of the sale award.
 - (b) The 10% down payment will be credited towards the first unit cut.
 - (c) Payment for each of the following units must be made before cutting begins in that unit:

PAYMENT UNIT NUMBER	PERCENT OF TOTAL SALE VALUE
01	13.9%
02	13.7%
03	22.4%
04	21.5%
05	11.2%
06	17.3%
4. If no cutting takes place, the 10% down payment will not be refunded.
5. Operations on the contract issued will terminate on 12/31/2022.

Description of Timber by Payment Unit (PU)

PU	MARKET GROUP	PRODUCT	QUANTITY	UNIT	ACRES	ADVERTISE PRICE
1	Mixed Aspen	Sawtimber	6.2	MBF	13.3	\$5,370.40
	<i>B. T. Aspen</i>		5.1	<i>MBF</i>		
	<i>Quaking Aspen</i>		1.1	<i>MBF</i>		
	Red Pine		0.5	MBF		
	Balsam Fir	Pulpwood	1.0	Cords		
	Jack Pine		70.0	Cords		
	Mixed Aspen		47.0	Cords		
	Mixed Oak		47.0	Cords		
	Red Maple		3.0	Cords		
	Red Pine		3.0	Cords		
	White Pine		9.0	Cords		
2	Mixed Aspen	Sawtimber	1.8	MBF	15.8	\$5,296.05
	<i>B. T. Aspen</i>		1.8	<i>MBF</i>		
	Red Pine		2.1	MBF		
	Jack Pine	Pulpwood	118.0	Cords		
	Mixed Aspen		33.0	Cords		
	Mixed Oak		35.0	Cords		
	Red Maple		1.0	Cords		
	Red Pine		4.0	Cords		
	White Pine		1.0	Cords		
3	Mixed Aspen	Sawtimber	8.3	MBF	18.7	\$8,691.75
	<i>B. T. Aspen</i>		8.3	<i>MBF</i>		
	Red Pine		2.4	MBF		
	Jack Pine	Pulpwood	28.0	Cords		
	Mixed Aspen		140.0	Cords		
	Mixed Oak		103.0	Cords		
	Red Maple		3.0	Cords		
	Red Pine		3.0	Cords		
	White Pine		1.0	Cords		
4	Mixed Aspen	Sawtimber	1.9	MBF	23.1	\$8,324.40
	<i>B. T. Aspen</i>		1.9	<i>MBF</i>		
	Red Pine		1.9	MBF		
	Jack Pine	Pulpwood	32.0	Cords		
	Mixed Aspen		40.0	Cords		
	Mixed Oak		176.0	Cords		
	Red Maple		1.0	Cords		
	Red Pine		8.0	Cords		
	White Pine		6.0	Cords		
5	Mixed Aspen	Sawtimber	2.1	MBF	13.6	\$4,351.05
	<i>B. T. Aspen</i>		2.1	<i>MBF</i>		
	Red Pine		1.2	MBF		
	Jack Pine	Pulpwood	15.0	Cords		
	Mixed Aspen		9.0	Cords		
	Mixed Oak		86.0	Cords		
	Red Maple		6.0	Cords		
	Red Pine		6.0	Cords		
	White Pine		10.0	Cords		
6	Mixed Aspen	Sawtimber	0.9	MBF	27.1	\$6,697.55
	<i>B. T. Aspen</i>		0.9	<i>MBF</i>		
	Red Pine		1.2	MBF		
	Jack Pine	Pulpwood	151.0	Cords		
	Mixed Aspen		7.0	Cords		
	Mixed Oak		81.0	Cords		
	Red Maple		1.0	Cords		
	Red Pine		4.0	Cords		
	White Pine		2.0	Cords		

TOTAL:	30.5	MBF
--------	------	-----

TOTAL:	1,291.0	Cords
--------	---------	-------

Sale Specific Conditions & Requirements

Sale Name: Jeopardy Music Mix

Sale Number: 54-007-19 Seq#: 2

1 - Sale Area

1.2 - Boundaries

1.2.1 - Painted boundaries (1/14)

The sale boundary and Payment Unit boundaries are marked and identified by red and yellow paint, along with Canada Creek Highway. Exterior sale boundary lines against state are marked with red paint, with the exception of the southern boundary of the sale, which is unpainted and identified by Canada Creek Highway. Interior retention areas are marked with red X's. Interior Payment Unit boundaries are marked with yellow paint. The red painted trees and trees with both red and yellow paint are not Included Timber and are to be protected. Yellow painted trees designating an interior Payment Unit boundary are only to be cut when all surrounding Payment Units have been paid.

2 - Timber Specifications

2.1 - Included Timber

2.1.1 - Clearcut unit(s) with unmerchantable trees (6/14)

Within Payment Unit(s) 1-6, cut all trees that are two (2) inches or more at DBH.

2.2 - Utilization

2.2.2 - Chipping required (2/18)

Payment Units 1, 2, and 6 must be chip harvested to facilitate subsequent planting operations. The Purchaser has the option to produce sawlogs or pulpwood bolts, but the remaining portion of the trees must be chipped and hauled. If market conditions limit the practicality of chipping, tops and slash must be arranged in a way that will not inhibit future planting operations, as directed by the sale administrator. The requirement to retain approximately 1/6 to 1/3 of tree tops and limbs less than four inches in diameter is still applicable (G. C. & R. 2.2).

2.2.3 - Stump heights (4/07)

Stump heights within Payment Units 1, 2 and 6 shall not exceed 6 inches for all trees. This is in order to facilitate planting operations.

3 - Payments

3.6 - Payment Unit Cutting Schedule

3.6.1 - Order of cutting (1/09)

Payment Units shall be cut in numerical order due to slope and soil concerns, unless approved by the Unit Manager or his/her representative.

4 - Transportation

4.1 - Construction

4.1.3 - Slash and earthen piles (8/04)

Piles or windrows of earth along roads and landings that have been widened or constructed shall be leveled. Slash from road maintenance or construction, including stumps, shall be dispersed throughout Payment Units 3-5.

4.1.12 - No new roads (1/12)

No new roads will be permitted in any Payment Unit. All operations are limited to existing roads. Skid trails only will be allowed.

4.2 - Maintenance

4.2.5 - Two wheel drive condition (2/04)

All existing trail roads on and adjacent to the sale area must be passable by two-wheel drive traffic for the duration of the sale.

5 - Operations

5.1 - Notification

5.1.1 - Pre-sale conference (10/16)

A pre-sale conference on site between the Purchaser and sale administrator is required prior to beginning any operations to discuss landing locations and slope concerns. The Unit Manager or his/her representative must be contacted at least 10 days in advance to schedule the conference.

5.1.3 - Well heads and natural gas pipelines (11/15)

The Purchaser is responsible for contacting the gas company 30 days prior to operating equipment in the vicinity of well heads or natural gas pipelines. Contact Lambda Energy Resources LLC at 281-920-9595. Shut-off valves are located along two-tracks that lead to the sale, but are not shown on the Timber Sale Map.

5.1.4 - Post-sale conference (10/16)

A post-sale conference on site between the Purchaser and sale administrator is required 5 days prior to the completion of active logging operations to determine clean-up and repair of landings, road edges, and the fulfillment of other contract specifications.

5.2 - Conduct of Operations

5.2.1 - Slash

5.2.1.10 - No slash in openings (5/10)

No brush or logging debris is to be left in the maintained wildlife opening which is indicated by G0 on the Timber Sale Map. Any damage to the opening shall be repaired according to specifications of the Unit Manager or his/her representative.

5.2.2 - Hazard Trees/Snags

5.2.2.1 - Den trees (10/16)

Obvious hollow and/or den trees shall be protected and left standing unless they are a safety hazard.

5.2.3 - Operating Restrictions

5.2.3.4 - Oak wilt restriction, no exceptions (1/18)

Within Payment Units 1-6, cutting, skidding, hauling within the sale and brushing of access roads to the sale are not permitted during the period of April 15 to July 15. No exceptions will be granted. This is necessary to reduce the spread of oak wilt.

5.2.3.11 - Coppice regeneration protection (4/10)

Timber harvesting in Payment Units 3, 4, and 5 must be completed before significant deciduous sprouting occurs to minimize damage to the new regeneration. Any post harvest operations, such as chipping, must be completed before sprouting of regeneration occurs. If it is anticipated that chipping will be delayed, then tops shall be carried to one central location or left unchipped. The Unit Manager or his/her representative may cease such operations if sprouting occurs before the operation is complete.

5.2.4 - Dead and Down Creation

5.2.4.7 - Dead and down creation: hare, grouse, deer and other species (5/15)

To improve horizontal cover habitat for snowshoe hare, grouse, deer, and other species, the Purchaser is to push over at least one, 12 inch diameter, merchantable tree for every two acres within Payment Units 3, 4, and 5. These trees should be tipped over with the root ball still attached so the base of the tree is suspended off the ground. The crown of the fallen tree should be at or near ground level after it is pushed over.

5.2.31 - Landing locations (9/13)

Landing areas are show on the Timber Sale Map and must be confined to these designated sites, unless otherwise authorized by the Unit Manager or his/her representative.

5.2.32 - Decking/landing restoration (9/13)

All decking and landing areas must have the surface area restored to a condition equal to or better than before. This is to

ensure the proper regeneration of the stand. Wood debris, chips and "cookies" from trimmings must be removed or scattered away from landing and loading areas and may not be windrowed on the edge.

5.4 - Soil Protection

5.4.1 - Rutting restriction, general (7/16)

Operations are to cease immediately if equipment and weather conditions result in rutting of roads and/or skid trails which is 12 inches or greater in depth and 50 feet in length. The Unit Manager or his/her representative may restrict hauling and/or skidding if ruts exceed the specified depth. With the Unit Manager or his/her representative's approval, the Purchaser may return to the area when the risk of rutting has decreased.

5.4.4 - Slope protection (5/15)

Skid trails and roads on slopes shall be water barred with slash, stumps, and/or clean straw bales native to the area as soon as use is complete to prevent erosion.

5.5 - Protection of Improvements

5.5.3 - Protection of improvements detail (10/13)

The wood fences along Canada Creek Highway do not apply to General Condition and Requirement 5.5, i.e., these fences do not need to be protected. The Purchaser may destroy, remove, or dispose of these fences, if needed.

5.8 - Protection of Endangered Species

5.8.5 - Protection of raptor nests (3/13)

All trees with raptor nests will be protected if found during harvesting operations. Notification will be made to the Unit Manager or his/her representative who will notify the Wildlife Biologist so an on-site evaluation and recommendation can be made, if necessary.



TIMBER SALE MAP

This information provided by authority of Part 525, 1994 PA 451, as amended.

Sale Number	Year
54 - 007	19

Forest Management Unit Atlanta	County Presque Isle	Mapped By J. Mittig	Date 06/05/2019	Page 1	of 2
Township 33N	Range 02E	Section(s) and Subdivision(s) Section 29 S1/2NW,N1/2SW Section 30 SWNW,S1/2NE,N1/2SW,N1/2SE	Scale 1:15,840		

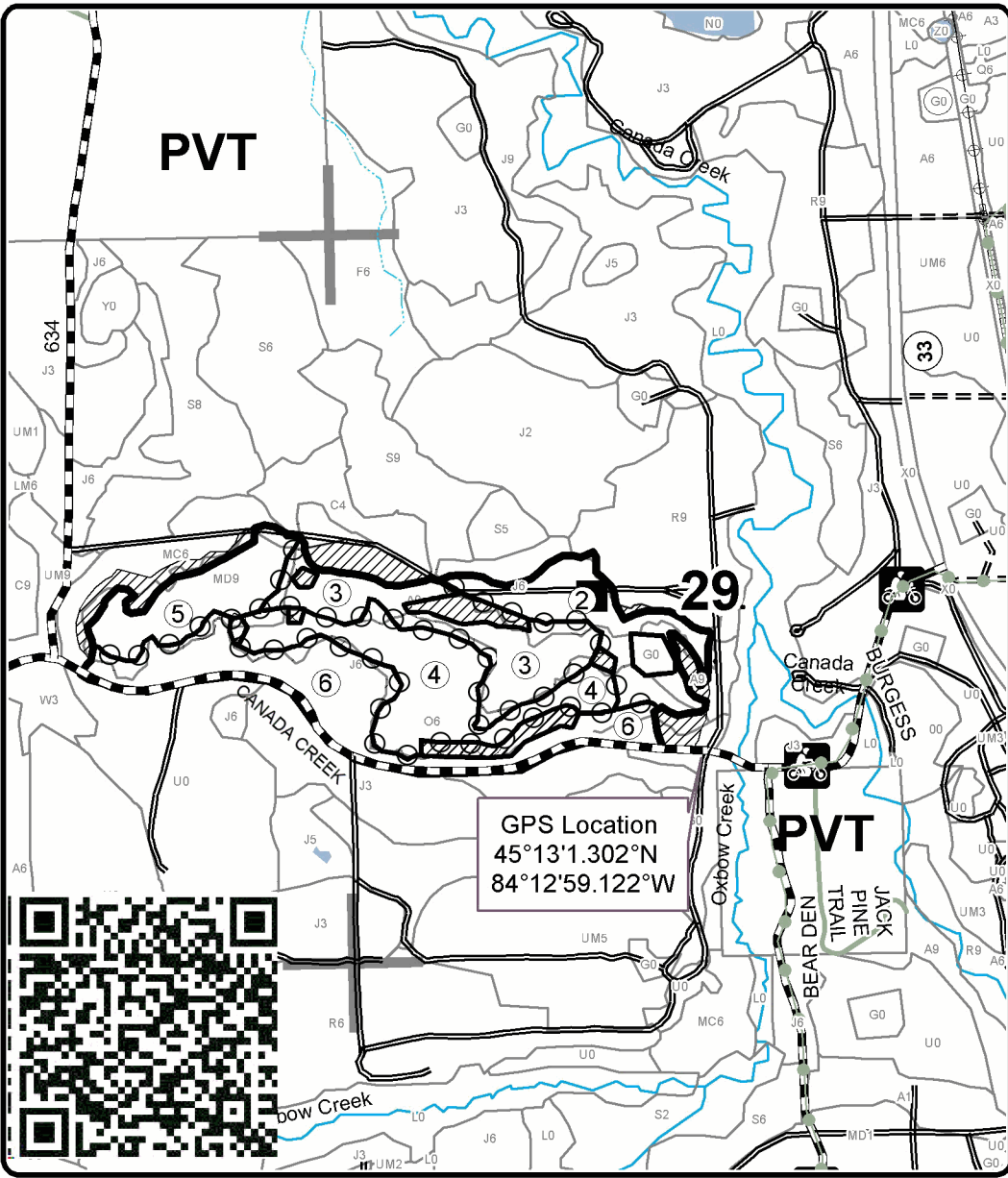
Cover Type				Density	
A = Aspen	H = Hemlock	N = Marsh	U = Upland Brush	0 = Non Stocked	5 = Pole Timber Medium
B = Paper Birch	J = Jack Pine	O = Oak	UM = Upland Mixed	1 = Seedling Sapling Poor	6 = Pole Timber Well
C = Cedar	L = Lowland Brush	P = Lowland Poplar	V = Bog or Marsh	2 = Seedling Sapling Medium	7 = Saw Timber Poor
D = Treed Bog	LM = Lowland Mixed	Q = Mixed Swamp Conifer	W = White Pine	3 = Seedling Sapling Well	8 = Saw Timber Medium
E = Swamp Hdwoods	M = Mpl, Bch, Brch	R = Red Pine	X = Non Stocked	4 = Pole Timber Poor	9 = Saw Timber Well
F = Spruce Fir	MC = Mixed Conifer	S = Black Spruce	Z = Water		
G = Grass	MD = Mixed Deciduous	T = Tamarack			

PU	Acres	PU	Acres
1	13.3	4	23.1
2	15.8	5	13.6
3	18.7	6	27.1

Jeopardy Music Mix

Compartment 121

111.6 Acres

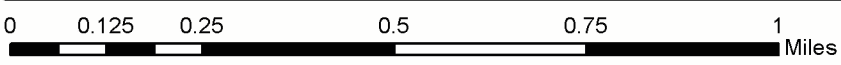
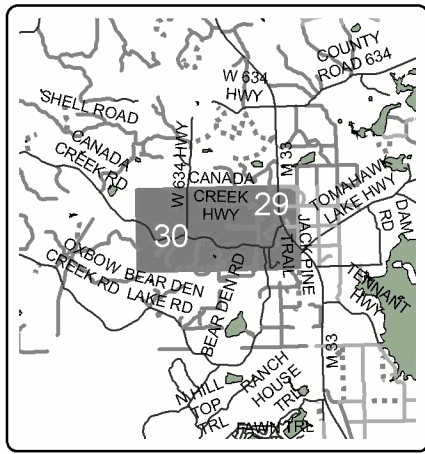


GPS Location
 45°13'1.302"N
 84°12'59.122"W

Legend

- Against State (Red)
- ⊕ Payment Unit (Yellow)
- Payment Unit Label
- Landing
- ▨ Retention Area
- Stand Boundaries
- Section Corners
- Recreational Trail
- Secondary Forest Road
- == Forest Access Route
- Gravel Road
- Private Road
- Intermittent Stream
- Perennial River

Locator Map
1:150,000





TIMBER SALE MAP

This information provided by authority of Part 525, 1994 PA 451, as amended.

Forest Management Unit Atlanta		County Presque Isle	Mapped By J. Mittig	Date 06/05/2019	Page 2	of 2
Township 33N	Range 02E	Section(s) and Subdivision(s) Section 29 S1/2NW,N1/2SW Section 30 SWNW,S1/2NE,N1/2SW,N1/2SE		Scale 1:15,840		

Cover Type

A = Aspen	H = Hemlock	N = Marsh	U = Upland Brush
B = Paper Birch	J = Jack Pine	O = Oak	UM = Upland Mixed
C = Cedar	L = Lowland Brush	P = Lowland Poplar	V = Bog or Marsh
D = Treed Bog	LM = Lowland Mixed	Q = Mixed Swamp Conifer	W = White Pine
E = Swamp Hdwoods	M = Mpl, Bch, Brch	R = Red Pine	X = Non Stocked
F = Spruce Fir	MC = Mixed Conifer	S = Black Spruce	Z = Water
G = Grass	MD = Mixed Deciduous	T = Tamarack	

Density

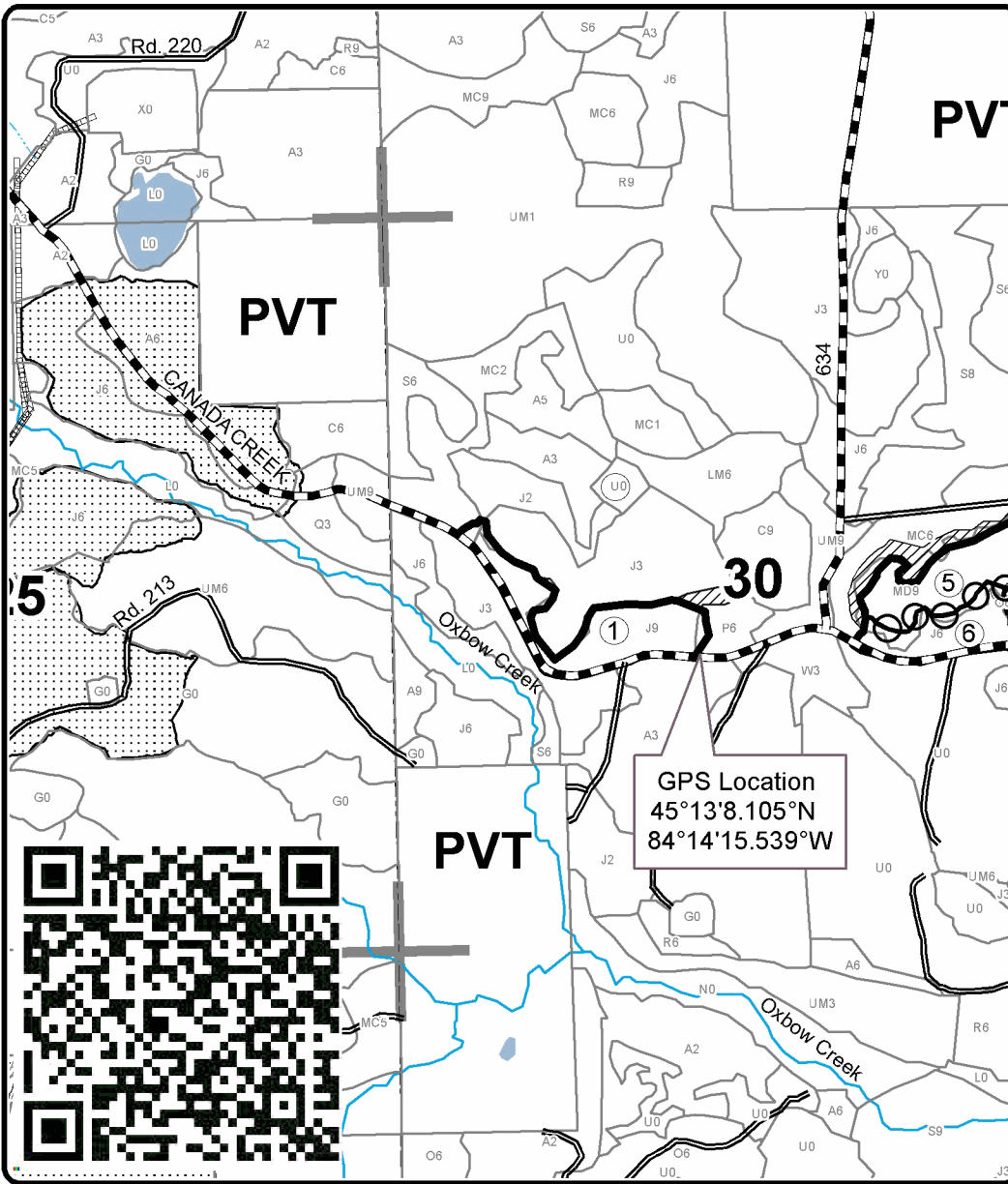
0 = Non Stocked	5 = Pole Timber Medium
1 = Seedling Sapling Poor	6 = Pole Timber Well
2 = Seedling Sapling Medium	7 = Saw Timber Poor
3 = Seedling Sapling Well	8 = Saw Timber Medium
4 = Pole Timber Poor	9 = Saw Timber Well

PU	Acres	PU	Acres
1	13.3	4	23.1
2	15.8	5	13.6
3	18.7	6	27.1

Jeopardy Music Mix

Compartment 121

111.6 Acres

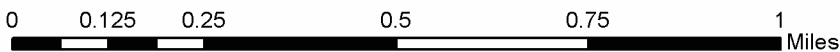
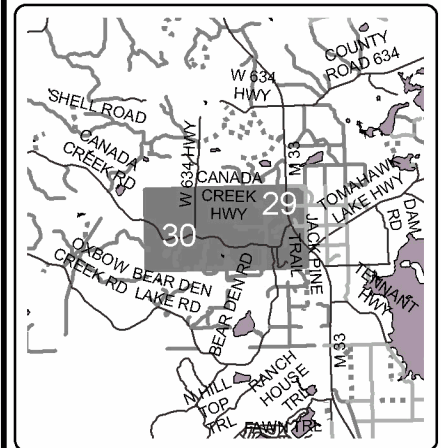


Legend

- Against State (Red)
- Payment Unit (Yellow)
- Payment Unit Label
- Retention Area
- Nearby Timber Sales
- Stand Boundaries
- Section Corners
- Secondary Forest Road
- Gravel Road
- Intermittent Stream
- Perennial River

Locator Map

1:150,000



TIMBER SALE INFORMATION

Be Best Pine (54-017-19)

T35N, R02E, SEC. 10; T35N, R02E, SEC. 14; T35N, R02E, SEC. 15.
Presque Isle County (Advertised Price \$26,676.90)

A timber sale contract for this lump sum, sealed bid timber sale will be awarded to the responsible bidder offering the highest sealed bid price. Bids must be at or above the following advertised price for each species:

<u>PRODUCTS & SPECIES</u>	<u>ESTIMATED UNITS*</u>	<u>ADVERTISED PRICE</u>
Sawtimber		
Red Pine	35.80 MBF	\$ 122.00 / MBF
Pulpwood		
BI/R/Hybrid Oak	4.00 Cords	\$ 31.80 / Cord
Red Maple	4.00 Cords	\$ 22.10 / Cord
Red Pine	440.00 Cords	\$ 49.75 / Cord
White Pine	7.00 Cords	\$ 29.10 / Cord

* The total volume is statistically estimated within plus (+) or minus (-) 25.21 percent. The estimated units are final and not subject to adjustment. Prospective bidders are urged to examine this timber and to make their own estimates of quantity and quality.

BOND AND PAYMENT SCHEDULE:

1. A bond in the amount of \$1,334.00 to insure faithful performance of the conditions of the contract will be deposited by the successful bidder within 21 days of the sale award.
2. Cutting in any sale or unit without the required advance payment would be considered a trespass.
3. Total payment must be paid in advance or according to the following schedule :
 - (a) Ten percent (10%) of the sale value must be paid within 21 days of the sale award.
 - (b) The 10% down payment will be credited towards the first unit cut.
 - (c) Payment for each of the following units must be made before cutting begins in that unit:

PAYMENT UNIT NUMBER	PERCENT OF TOTAL SALE VALUE
01	40.7%
02	59.3%
4. If no cutting takes place, the 10% down payment will not be refunded.
5. Operations on the contract issued will terminate on 06/30/2022.

Description of Timber by Payment Unit (PU)

PU	MARKET GROUP	PRODUCT	QUANTITY	UNIT	ACRES	ADVERTISE PRICE
1	Red Pine	Sawtimber	15.2	MBF	19.9	\$10,861.90
	BI/R/Hybrid Oak	Pulpwood	2.0	Cords		
	Red Maple		4.0	Cords		
	Red Pine		178.0	Cords		
2	Red Pine	Sawtimber	20.6	MBF	22.8	\$15,815.00
	BI/R/Hybrid Oak	Pulpwood	2.0	Cords		
	Red Pine		262.0	Cords		
	White Pine		7.0	Cords		
TOTAL:			35.8	MBF		
TOTAL:			455.0	Cords		

Sale Specific Conditions & Requirements

Sale Name: Be Best Pine

Sale Number: 54-017-19 Seq#: 2

1 - Sale Area

1.2 - Boundaries

1.2.1 - Painted boundaries (1/14)

The sale boundaries are marked and identified by red and blue paint. Exterior sale boundary lines against private are marked with blue paint. Exterior sale boundary lines against state are marked with red paint. The painted boundary line trees are not Included Timber and are to be protected.

2 - Timber Specifications

2.1 - Included Timber

2.1.3 - Cut tree marked unit(s) (12/08)

Within Payment Unit(s) 1 and 2, all trees are designated for cutting when marked with yellow paint above and below stump height, regardless of merchantability.

2.1.11 - Description of timber note (2/04)

Note that yellow dots on cut trees indicate direction of travel within rows for harvest equipment. Dots are being used to assist operations and minimize damage to residual trees.

2.2 - Utilization

2.2.5 - Limbed tree skidding (1/09)

The skidding of whole trees or tree segments with limbs attached is prohibited, unless approved by the Unit Manager or his/her representative.

3 - Payments

3.4 - Damaged Timber

3.4.1 - Damaged timber (7/16)

General Condition and Requirement 3.4 Damaged Timber, defines liquidated damages for undesignated live merchantable trees which are cut or injured. No damage is acceptable to undesignated live merchantable trees. Within the sale area, if more than 5% of trees (> 4.5" DBH) within a specified area of the sale are damaged, liquidated damages will be assessed for all trees damaged. Rates will be in accordance with General Condition and Requirement 3.4 Damaged Timber.

4 - Transportation

4.1 - Construction

4.1.3 - Slash and earthen piles (8/04)

Piles or windrows of earth along roads and landings that have been widened or constructed shall be leveled. Slash from road maintenance or construction, including stumps, shall be chipped, utilized or otherwise removed from the sale.

4.1.6 - Road construction (1/09)

Improvements to existing roads shall be done in such a way as to minimize the environmental and visual impacts.

Merchantable trees shall be cut and utilized unless otherwise directed. Non-merchantable trees shall be severed and laid flat on the ground. Slash shall be scattered, and not left in windrows and kept a minimum of 10 feet back from the road edge.

Stumps shall be set upright, not left on edge, and be moved at least 10 feet away from the road edge. Disturbed soil shall be feathered into the woods and not left in berms or windrows.

4.2 - Maintenance

4.2.5 - Two wheel drive condition (2/04)

All existing trail roads on and adjacent to the sale area must be passable by two-wheel drive traffic for the duration of the sale.

5 - Operations

5.1 - Notification

5.1.1 - Pre-sale conference (10/16)

A pre-sale conference between the Purchaser and sale administrator is required prior to beginning any operations to determine landing and road locations. The Unit Manager or his/her representative must be contacted at least 5 days in advance to schedule the conference.

5.1.4 - Post-sale conference (10/16)

A post-sale conference on site between the Purchaser and sale administrator is required 5 days prior to the completion of active logging operations to determine clean-up and repair of landings, road edges, and the fulfillment of other contract specifications.

5.2 - Conduct of Operations

5.2.2 - Hazard Trees/Snags

5.2.2.1 - Den trees (10/16)

Obvious hollow and/or den trees shall be protected and left standing unless they are a safety hazard.

5.2.3 - Operating Restrictions

5.2.3.3 - Bark slippage restriction (3/09)

Within Payment Unit(s) 1 and 2, unless changed by written agreement, cutting and skidding are not permitted during the period of April 15 to July 15. This restriction is because of bark slippage.

5.2.3.6 - Bark beetle restriction (12/08)

In the event drought creates a high risk of pine bark beetle infestation, pine is not to be cut during the period March 1 through July 1, unless all portions of trees greater than two inches in diameter are removed from the sale area, reduced to chips, or treated to the satisfaction of the Unit Manager or his/her representative, within fifteen days of being severed from the stump. Pine log decks, pulpwood piles and treetops that are piled for chipping in the fall or winter within a 1/4 mile of susceptible sites must be removed before March 15. Residual slash must not be placed in piles or rows and must be spread over the site for quick drying. The Department of Natural Resources will exercise this specification if the risk of damage warrants.

5.2.31 - Landing locations (9/13)

Landing locations are shown on the Timber Sale Map. Landings must be confined to these designated sites unless otherwise authorized by the Unit Manager or his/her representative.

5.2.32 - Decking/landing restoration (9/13)

All decking and landing areas must have the surface area restored to a condition equal to or better than before. This is to ensure the proper regeneration of the stand. Wood debris, chips and "cookies" from trimmings must be removed or scattered away from landing and loading areas and may not be windrowed on the edge.

5.2.38 - No decking against live trees (2/04)

Cut products may not be decked against unmarked or designated leave trees.

5.4 - Soil Protection

5.4.1 - Rutting restriction, general (7/16)

Operations are to cease immediately if equipment and weather conditions result in rutting of roads and/or skid trails which is 12 inches or greater in depth and 50 feet in length. The Unit Manager or his/her representative may restrict hauling and/or skidding if ruts exceed the specified depth. With the Unit Manager or his/her representative's approval, the Purchaser may return to the area when the risk of rutting has decreased.

5.8 - Protection of Endangered Species

5.8.5 - Protection of raptor nests (3/13)

All trees with raptor nests will be protected if found during harvesting operations. Notification will be made to the Unit Manager or his/her representative who will notify the Wildlife Biologist so an on-site evaluation and recommendation can be

made, if necessary.

6 - Safety and Fire Prevention

6.2 - Signing

6.2.1 - Road posting (9/09)

The Purchaser is responsible for posting and maintaining caution signs on state forest roads near the sale area prior to beginning operations. The road must be posted at appropriate distances from the sale area to warn of logging activity and truck traffic. Signs must be removed when harvest operations are suspended or completed. The Purchaser will provide these signs.

TIMBER SALE INFORMATION

Sugar Bunny Blend (54-018-19)

T35N, R02E, SEC. 10; T35N, R02E, SEC. 12; T35N, R02E, SEC. 9.
Presque Isle County (Advertised Price \$61,321.70)

A timber sale contract for this lump sum, sealed bid timber sale will be awarded to the responsible bidder offering the highest sealed bid price. Bids must be at or above the following advertised price for each species:

<u>PRODUCTS & SPECIES</u>	<u>ESTIMATED UNITS*</u>		<u>ADVERTISED PRICE</u>
Sawtimber			
Mixed Aspen	34.50	MBF	\$ 85.00 / MBF
Red Maple	11.00	MBF	\$ 113.00 / MBF
Red Oak	5.60	MBF	\$ 210.00 / MBF
Red Pine	62.70	MBF	\$ 122.00 / MBF
White Pine	3.10	MBF	\$ 80.00 / MBF
Pulpwood			
Balsam Fir	279.00	Cords	\$ 27.60 / Cord
Jack Pine	103.00	Cords	\$ 22.80 / Cord
Mixed Aspen	523.00	Cords	\$ 25.25 / Cord
Mixed Hardwood	775.00	Cords	\$ 22.10 / Cord
Mixed Oak	38.00	Cords	\$ 31.80 / Cord
Mixed Spruce	53.00	Cords	\$ 15.40 / Cord
N. White Cedar	3.00	Cords	\$ 9.15 / Cord
Red Pine	80.00	Cords	\$ 49.75 / Cord
White Pine	57.00	Cords	\$ 29.10 / Cord

* The total volume is statistically estimated within plus (+) or minus (-) 10.98 percent. The estimated units are final and not subject to adjustment. Prospective bidders are urged to examine this timber and to make their own estimates of quantity and quality.

BOND AND PAYMENT SCHEDULE:

1. A bond in the amount of \$3,066.00 to insure faithful performance of the conditions of the contract will be deposited by the successful bidder within 21 days of the sale award.
2. Cutting in any sale or unit without the required advance payment would be considered a trespass.
3. Total payment must be paid in advance or according to the following schedule :
 - (a) Ten percent (10%) of the sale value must be paid within 21 days of the sale award.
 - (b) The 10% down payment will be credited towards the first unit cut.
 - (c) Payment for each of the following units must be made before cutting begins in that unit:

PAYMENT UNIT NUMBER	PERCENT OF TOTAL SALE VALUE
01	26.0%
02	19.7%
03	9.8%
04	11.8%
05	12.2%
06	18.3%
07	2.2%
4. If no cutting takes place, the 10% down payment will not be refunded.
5. Operations on the contract issued will terminate on 12/31/2022.

Description of Timber by Payment Unit (PU)

PU	MARKET GROUP	PRODUCT	QUANTITY	UNIT	ACRES	ADVERTISE PRICE	
1	Mixed Aspen	Sawtimber	4.9	MBF	24.1	\$15,925.10	
	<i>B. T. Aspen</i>		0.9	<i>MBF</i>			
	<i>Quaking Aspen</i>		4.0	<i>MBF</i>			
	Red Maple		2.5	MBF			
	Red Oak		1.6	MBF			
	Red Pine		18.6	MBF			
	White Pine		1.2	MBF			
	Balsam Fir		Pulpwood	102.0			Cords
	Mixed Aspen			129.0			Cords
	Mixed Hardwood			228.0			Cords
	Mixed Oak			10.0			Cords
	Mixed Spruce			3.0			Cords
	Red Pine			17.0			Cords
	White Pine			7.0			Cords
	2	Mixed Aspen		Sawtimber			1.6
<i>B. T. Aspen</i>		0.3	<i>MBF</i>				
<i>Quaking Aspen</i>		1.3	<i>MBF</i>				
Red Maple		0.9	MBF				
Red Oak		0.5	MBF				
Red Pine		16.3	MBF				
White Pine		1.9	MBF				
Balsam Fir		Pulpwood	49.0		Cords		
Jack Pine			26.0		Cords		
Mixed Aspen			44.0		Cords		
Mixed Hardwood			115.0		Cords		
Mixed Oak			6.0		Cords		
Mixed Spruce			29.0		Cords		
Red Pine			38.0		Cords		
White Pine			50.0	Cords			
3	Mixed Aspen	Sawtimber	6.7	MBF	12.3	\$6,004.45	
	<i>Quaking Aspen</i>		6.7	<i>MBF</i>			
	Red Maple		2.7	MBF			
	Red Oak		0.6	MBF			
	Red Pine		6.1	MBF			
	Balsam Fir		Pulpwood	19.0			Cords
	Jack Pine			12.0			Cords
	Mixed Aspen			48.0			Cords
	Mixed Hardwood			84.0			Cords
	Mixed Oak			3.0			Cords
	Mixed Spruce			2.0			Cords
	N. White Cedar			2.0			Cords
	Red Pine	5.0	Cords				
4	Mixed Aspen	Sawtimber	1.9	MBF	16.6	\$7,263.30	
	<i>Quaking Aspen</i>		1.9	<i>MBF</i>			
	Red Maple		1.8	MBF			
	Red Oak		0.7	MBF			
	Red Pine		13.1	MBF			
	Balsam Fir		Pulpwood	9.0			Cords
	Jack Pine			51.0			Cords
	Mixed Aspen			47.0			Cords
	Mixed Hardwood			79.0			Cords
	Mixed Oak			3.0			Cords
	Mixed Spruce			7.0			Cords
	N. White Cedar			1.0			Cords
	Red Pine	12.0	Cords				
5	Mixed Aspen	Sawtimber	8.5	MBF	21.0	\$7,508.95	

Description of Timber by Payment Unit (PU), con't

PU	MARKET GROUP	PRODUCT	QUANTITY	UNIT	ACRES	ADVERTISE PRICE
5 con't	<i>B. T. Aspen</i>	<i>Sawtimber</i>	8.5	<i>MBF</i>		
	Red Maple		0.7	MBF		
	Red Oak		0.7	MBF		
	Red Pine		4.0	MBF		
	Balsam Fir	Pulpwood	31.0	Cords		
	Jack Pine		14.0	Cords		
	Mixed Aspen		79.0	Cords		
	Mixed Hardwood		106.0	Cords		
	Mixed Oak		7.0	Cords		
	Mixed Spruce		9.0	Cords		
	Red Pine		4.0	Cords		
6	Mixed Aspen	Sawtimber	9.7	MBF	16.7	\$11,210.10
	<i>B. T. Aspen</i>		2.6	<i>MBF</i>		
	<i>Quaking Aspen</i>		7.1	<i>MBF</i>		
	Red Maple		2.4	MBF		
	Red Oak		1.5	MBF		
	Red Pine		4.6	MBF		
	Balsam Fir	Pulpwood	69.0	Cords		
	Mixed Aspen		174.0	Cords		
	Mixed Hardwood		109.0	Cords		
	Mixed Oak		9.0	Cords		
	Mixed Spruce		3.0	Cords		
	Red Pine		4.0	Cords		
	7	Mixed Aspen	Sawtimber	1.2		
<i>B. T. Aspen</i>			1.2	<i>MBF</i>		
Mixed Aspen		Pulpwood	2.0	Cords		
Mixed Hardwood			54.0	Cords		
TOTAL:			116.9	MBF		
TOTAL:			1,911.0	Cords		

Sale Specific Conditions & Requirements

Sale Name: Sugar Bunny Blend

Sale Number: 54-018-19 Seq#: 2

1 - Sale Area

1.2 - Boundaries

1.2.1 - Painted boundaries (9/19)

The sale boundary and Payment Unit boundaries are marked and identified by blue, red and yellow paint. Exterior sale boundary lines against private property are marked with blue paint. Exterior sale boundary lines against state are marked with red paint. Interior Payment Unit boundaries are marked with yellow paint. Retention patches are marked with red paint; no harvesting activities may occur within these areas. The painted boundary line trees are not Included Timber and are to be protected. Yellow painted trees designating an interior Payment Unit boundary are only to be cut when all surrounding Payment Units have been paid.

2 - Timber Specifications

2.1 - Included Timber

2.1.1 - Clearcut unit(s) with unmerchantable trees (6/14)

Within Payment Unit(s) 1-6, cut all trees that are two (2) inches or more at DBH, except within Payment Units 3-6, do not cut any white pine. See sale spec 5.2.4.7 regarding orange marked grouse trees.

2.1.3 - Cut tree marked unit(s) (12/08)

Within Payment Unit(s) 7, all trees are designated for cutting when marked with orange paint above and below stump height, regardless of merchantability.

2.2 - Utilization

2.2.5 - Limbed tree skidding (1/09)

The skidding of whole trees or tree segments with limbs attached is prohibited within Payment Unit 7, unless approved by the Unit Manager or his/her representative. If damage exceeds specification 3.4.1, all products must be processed at the stump using a shortwood operation and forwarded to the landing.

3 - Payments

3.4 - Damaged Timber

3.4.1 - Damaged timber (7/16)

General Condition and Requirement 3.4 Damaged Timber, defines liquidated damages for undesignated live merchantable trees which are cut or injured. No damage is acceptable to undesignated live merchantable trees. Within the sale area, if more than 5% of trees (> 4.5" DBH) within a specified area of the sale are damaged, liquidated damages will be assessed for all trees damaged. Rates will be in accordance with General Condition and Requirement 3.4 Damaged Timber.

4 - Transportation

4.1 - Construction

4.1.3 - Slash and earthen piles (8/04)

Piles or windrows of earth along roads and landings that have been widened or constructed shall be leveled. Slash from road maintenance or construction, including stumps, shall be chipped, utilized or otherwise removed from the sale.

4.1.4 - Timber removed for construction (12/09)

Trees cut or damaged in the process of pre-approved road, landing or skid trail construction will be decked in an area separate from other Designated Timber and not removed until measured by the sale administrator. Payment will be made at the specified Purchase Unit Price. Orange painted trees along the narrow forest access route to Payment Units 1-6 may be cut and utilized.

4.1.6 - Road construction (1/09)

Construction or improvements of existing roads shall be done in such a way as to minimize the environmental and visual impacts. Merchantable trees shall be cut and utilized unless otherwise directed. Non-merchantable trees shall be severed and

laid flat on the ground. Slash shall be scattered, and not left in windrows and kept a minimum of 10 feet back from the road edge. Stumps shall be set upright, not left on edge, and be moved at least 10 feet away from the road edge. Disturbed soil shall be feathered into the woods and not left in berms or windrows.

4.1.7 - Road closure (10/11)

All new roads built into the sale must be blocked to vehicle traffic upon completion of the sale. Overgrown roads that are reopened shall be considered new roads. In general, this will require constructing a four (4') foot high berm of stumps and logs covered with earth. Stumps and brush must be placed along the remainder of the trail. These roads must be rendered impassable to cars and trucks. Contact the sale administrator for specific details of design and placement.

4.2 - Maintenance

4.2.5 - Two wheel drive condition (2/04)

All existing trail roads on and adjacent to the sale area must be passable by two-wheel drive traffic for the duration of the sale.

5 - Operations

5.1 - Notification

5.1.1 - Pre-sale conference (10/16)

A pre-sale conference between the Purchaser and sale administrator is required prior to beginning any operations to determine landing and road locations. The Unit Manager or his/her representative must be contacted at least 5 days in advance to schedule the conference.

5.1.4 - Post-sale conference (10/16)

A post-sale conference on site between the Purchaser and sale administrator is required 5 days prior to the completion of active logging operations to determine clean-up and repair of landings, road edges, and the fulfillment of other contract specifications.

5.2 - Conduct of Operations

5.2.2 - Hazard Trees/Snags

5.2.2.1 - Den trees (10/16)

Obvious hollow and/or den trees shall be protected and left standing unless they are a safety hazard.

5.2.3 - Operating Restrictions

5.2.3.3 - Bark slippage restriction (3/09)

Within Payment Unit(s) 7, unless changed by written agreement, cutting and skidding are not permitted during the period of April 15 to July 15. This restriction is because of bark slippage.

5.2.3.6 - Bark beetle restriction (12/08)

In the event drought creates a high risk of pine bark beetle infestation, pine is not to be cut during the period March 1 through July 1, unless all portions of trees greater than two inches in diameter are removed from the sale area, reduced to chips, or treated to the satisfaction of the Unit Manager or his/her representative, within fifteen days of being severed from the stump. Pine log decks, pulpwood piles and treetops that are piled for chipping in the fall or winter within a 1/4 mile of susceptible sites must be removed before March 15. Residual slash must not be placed in piles or rows and must be spread over the site for quick drying. The Department of Natural Resources will exercise this specification if the risk of damage warrants.

5.2.3.11 - Coppice regeneration protection (4/10)

Timber harvesting in any Payment Units 1-6 must be completed within 30 days of cutting/severing stem(s) to minimize damage to new regeneration. Any post harvest operations, such as chipping, must be completed before sprouting of regeneration occurs. If it is anticipated that chipping will be delayed, then tops shall be carried to one central location or left unchipped. The Unit Manager or his/her representative may cease such operations if sprouting occurs before the operation is complete.

5.2.4 - Dead and Down Creation

5.2.4.7 - Dead and down creation: hare, grouse, deer and other species (5/15)

To improve horizontal cover habitat for snowshoe hare, grouse, deer, and other species, the Purchaser is to push over or cut and leave on site all orange marked trees within Payment Units 3, 5, and 6.

In addition, within Payment Units 1 & 2, a minimum of one tree, at least 12" in diameter, will need be pushed over or cut for every 2 acres. If the tree is able to be pushed over, the following statements apply: These trees should be tipped over with the root ball still attached so the base of the tree is suspended off the ground. The crown of the fallen tree should be at or near ground level after it is pushed over.

5.2.22 - Operating Caution

5.2.22.1 - Operating caution (6/11)

It is recommended, but not required, that within Payment Unit(s) 1-6, cutting and skidding occur during July 15th to April 15th. The reason for the recommendation is to reduce minimize damage to seasonally wet soils within Payment Units 1-6.

5.2.31 - Landing locations (9/13)

Landing locations are shown on the Timber Sale Map. Landings must be confined to these designated sites unless otherwise authorized by the Unit Manager or his/her representative.

5.2.32 - Decking/landing restoration (9/13)

All decking and landing areas must have the surface area restored to a condition equal to or better than before. This is to ensure the proper regeneration of the stand. Wood debris, chips and "cookies" from trimmings must be removed or scattered away from landing and loading areas and may not be windrowed on the edge.

5.2.38 - No decking against live trees (2/04)

Cut products may not be decked against unmarked or designated leave trees.

5.4 - Soil Protection

5.4.1 - Rutting restriction, general (7/16)

Operations are to cease immediately if equipment and weather conditions result in rutting of roads and/or skid trails which is 12 inches or greater in depth and 50 feet in length. The Unit Manager or his/her representative may restrict hauling and/or skidding if ruts exceed the specified depth. With the Unit Manager or his/her representative's approval, the Purchaser may return to the area when the risk of rutting has decreased.

5.8 - Protection of Endangered Species

5.8.5 - Protection of raptor nests (3/13)

All trees with raptor nests will be protected if found during harvesting operations. Notification will be made to the Unit Manager or his/her representative who will notify the Wildlife Biologist so an on-site evaluation and recommendation can be made, if necessary.

6 - Safety and Fire Prevention

6.2 - Signing

6.2.1 - Road posting (9/09)

The Purchaser is responsible for posting and maintaining caution signs on state forest roads near the sale area prior to beginning operations. The road must be posted at appropriate distances from the sale area to warn of logging activity and truck traffic. Signs must be removed when harvest operations are suspended or completed. The Purchaser will provide these signs.



TIMBER SALE MAP

This information provided by authority of Part 525, 1994 PA 451, as amended.

Forest Management Unit Atlanta Management Unit	County Presque Isle	Mapped By Coy	Date 08/27/2019	Page 1	of 2
Cruised By Coy & Zaremba (PUs 1 & 2)		Scale 1:15,840			

Township 35N	Range 02E	Section(s) and Subdivision(s) 9- NE 10- NW,NWNE,S2NE 12- S2NE	Scale 1:15,840
-----------------	--------------	--	-------------------

Cover Type

A = Aspen	H = Hemlock	N = Marsh	U = Upland Brush
B = Paper Birch	J = Jack Pine	O = Oak	UM = Upland Mixed
C = Cedar	L = Lowland Brush	P = Lowland Poplar	V = Bog or Marsh
D = Treed Bog	LM = Lowland Mixed	Q = Mixed Swamp Conifer	W = White Pine
E = Swamp Hdwoods	M = Mpl, Bch, Brch	R = Red Pine	X = Non Stocked
F = Spruce Fir	MC = Mixed Conifer	S = Black Spruce	Z = Water
G = Grass	MD = Mixed Deciduous	T = Tamarack	

Density

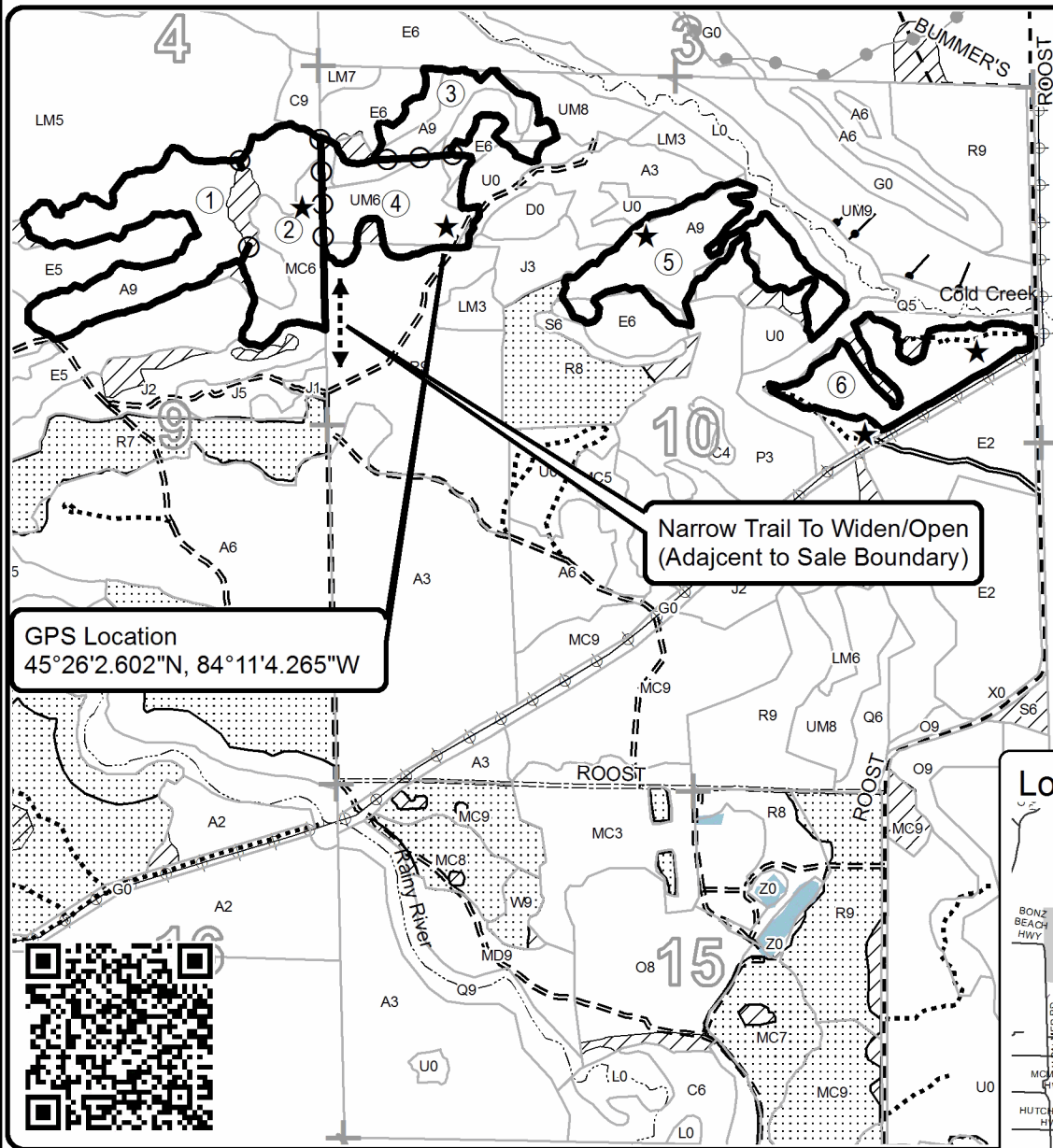
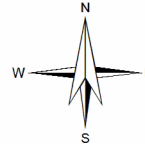
0 = Non Stocked	5 = Pole Timber Medium
1 = Seedling Sapling Poor	6 = Pole Timber Well
2 = Seedling Sapling Medium	7 = Saw Timber Poor
3 = Seedling Sapling Well	8 = Saw Timber Medium
4 = Pole Timber Poor	9 = Saw Timber Well

PU	Acres	PU	Acres
1	24.1	6	16.7
2	18.2	7	6.8
3	12.3		
4	16.6		
5	21.0		

Sugar Bunny Blend

Compartment 144 & 145

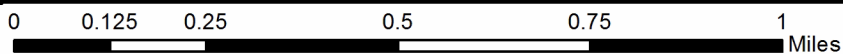
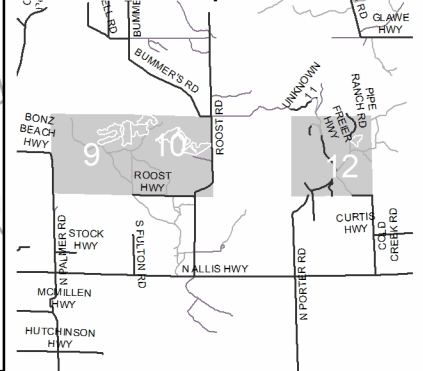
115.7 Acres



Legend

- Against State (Red)
- Payment Unit (Yellow)
- Retention Area (Red)
- Nearby Timber Sales
- Stand Boundaries
- Lakes
- Payment Unit
- Landing
- Section Corners
- Recreational Trail
- Secondary Forest Road
- Forest Access Route
- Gravel Road
- County Road - Seasonal
- Private Road
- Temporary Access
- Powerline
- Drain
- Perennial River

Locator Map 1:150,000





TIMBER SALE MAP

This information provided by authority of Part 525, 1994 PA 451, as amended.

Forest Management Unit Atlanta Management Unit		County Presque Isle	Mapped By Coy	Date 08/27/2019	Page 2	of 2
Township 35N	Range 02E	Section(s) and Subdivision(s) 9- NE 10- NW,NWNE,S2NE 12- S2NE		Scale 1:15,840		

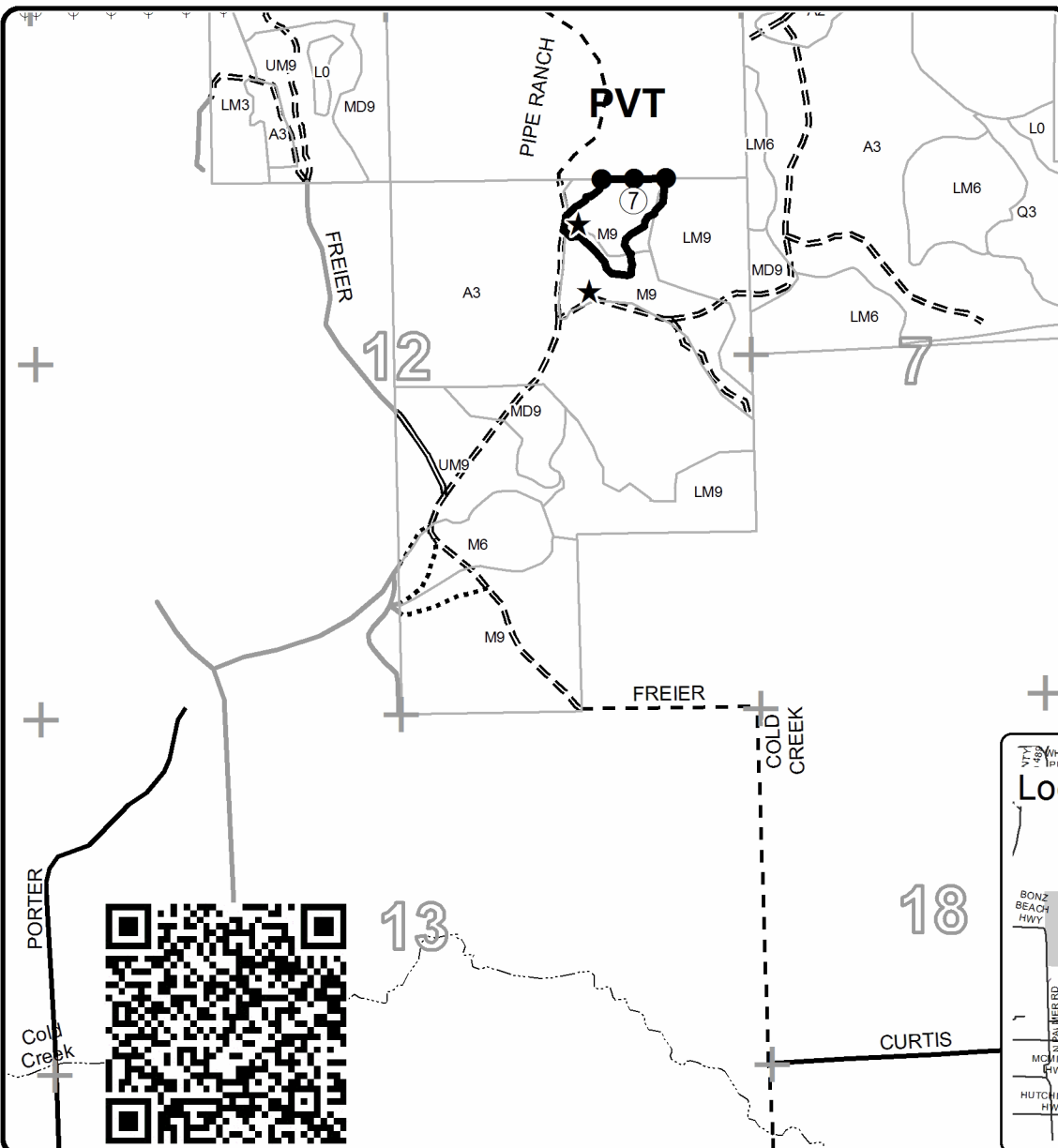
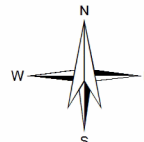
Cover Type				Density			
A = Aspen	H = Hemlock	N = Marsh	U = Upland Brush	0 = Non Stocked	5 = Pole Timber Medium		
B = Paper Birch	J = Jack Pine	O = Oak	UM = Upland Mixed	1 = Seedling Sapling Poor	6 = Pole Timber Well		
C = Cedar	L = Lowland Brush	P = Lowland Poplar	V = Bog or Marsh	2 = Seedling Sapling Medium	7 = Saw Timber Poor		
D = Tread Bog	LM = Lowland Mixed	Q = Mixed Swamp Conifer	W = White Pine	3 = Seedling Sapling Well	8 = Saw Timber Medium		
E = Swamp Hdwoods	M = Mpl, Bch, Brch	R = Red Pine	X = Non Stocked	4 = Pole Timber Poor	9 = Saw Timber Well		
F = Spruce Fir	MC = Mixed Conifer	S = Black Spruce	Z = Water				
G = Grass	MD = Mixed Deciduous	T = Tamarack					

PU	Acres	PU	Acres
1	24.1	6	16.7
2	18.2	7	6.8
3	12.3		
4	16.6		
5	21.0		

Sugar Bunny Blend

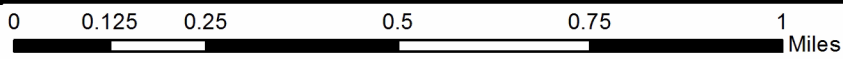
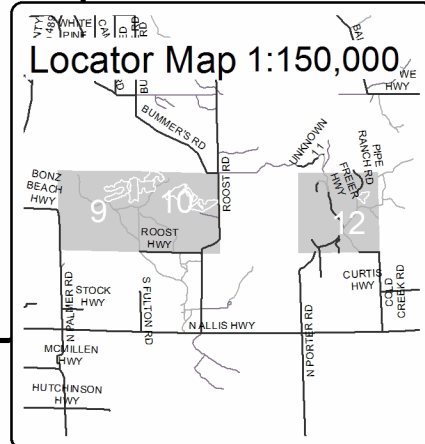
Compartment 144 & 145

115.7 Acres



Legend

- Against State (Red)
- Private Line (Blue)
- Stand Boundaries
- Payment Unit
- Landing
- Section Corners
- Secondary Forest Road
- Forest Access Route
- Paved Road
- Gravel Road
- Private Road
- Temporary Access
- Intermittent Stream



Be Best Pine (54-017-19)

T35N, R02E, SEC. 10; T35N, R02E, SEC. 14; T35N, R02E, SEC. 15; Presque Isle

In response to the notice of sale to be held 10:00 a.m. (local time) on March 3, 2020, I am hereby submitting my sealed bid (firm offer) for the following forest products to be cut. Bids for individual species must be at or above the advertised price. All non-responsive bid forms may be rejected.

<u>PRODUCTS & SPECIES</u>	<u>ESTIMATED VOLUME*</u>	<u>ADVERTISED PRICE</u>	<u>BID PRICE/UNIT</u>
Sawtimber			
Red Pine	35.80 MBF	\$ 122.00/MBF	\$ _____
Pulpwood			
Bl/R/Hybrid Oak	4.00 Cords	\$ 31.80/Cord	\$ _____
Red Maple	4.00 Cords	\$ 22.10/Cord	\$ _____
Red Pine	440.00 Cords	\$ 49.75/Cord	\$ _____
White Pine	7.00 Cords	\$ 29.10/Cord	\$ _____

*The volumes are statistically estimated within plus (+) or minus (-) 25.21 percent. These estimated volumes are final and not subject to adjustment. Prospective bidders are urged to examine this timber and to make their own estimates of quantity and quality.

I understand that any or all bids may be rejected. All bids must be signed and all bid items must be bid or the bid form may be rejected. I also understand that consideration and awarding a contract will be based upon my past performance and ability to complete the contract based upon equipment and staffing subject to my control.

FEDERAL ID: _____ - _____ or SOCIAL SECURITY NUMBER: _____ - _____ - _____

Company or individual bidding: _____

Company representative's name: _____

Address: _____

City: _____ State: _____ Zip: _____

IF AVAILABLE, PLEASE PLACE THE PERSONALIZED LABEL FROM YOUR PROSPECTUS IN THE ABOVE BOX.

Individual or company representative's signature: _____ Date: _____

Phone number : _____ Email (optional): _____

THE WINNING BIDDER MUST COMPLETE THE VERIFICATION OF WORKER'S DISABILITY COMPENSATION ACT COMPLIANCE (ON REVERSE SIDE IF DOUBLE SIDED) WITHIN 21 DAYS OF SALE AWARD DATE



FOR DEPARTMENT USE ONLY	
Sale Number (XX - XXX - XX - XX)	
Forest Management Unit:	

TIMBER SALE VERIFICATION OF WORKER'S DISABILITY COMPENSATION ACT COMPLIANCE

As required by Act 317, P.A. 1969 (Worker's Compensation) and
Part 5 of Act 451 of 1994, as amended.

VERIFICATION OF WORKER'S DISABILITY COMPENSATION ACT COMPLIANCE

- This verification must be completed and submitted within 21 days of contract award and prior to the issuance of the timber sale contract.
- In addition, if boxes 2B or 2C are checked, then Notice of Exclusion or Certificate of Insurance must be submitted within twenty-one (21) days of the contract award and prior to the issuance of the timber sale contract.
- All information must be typed or printed except for written signatures.

Please Check Appropriate Categories:

1. My business is organized as (you **must** check one of the boxes below):
 - A. Sole Proprietorship (individual)
 - B. Partnership
 - C. Corporation
2. You **must** check one of the boxes below:
 - A. I certify my business is a sole proprietorship and it has no employees but the sole proprietor. I am not subject to the Worker's Compensation Laws.
 - B. I certify my business has satisfied its obligation to the Worker's Compensation Act through the use of an approved Notice of Exclusion (BWC-337, Rev. 5/96). I will provide a copy of the Notice of Exclusion within 21 days of the contract award. (For questions or a copy of the BWC-337, please call the Worker's Compensation Bureau at 517-322-1195).
 - C. I certify my business has a Worker's Compensation Policy. I will provide an original Certificate of Insurance within twenty-one (21) days of the contract award.
3. If you have checked item 2(A) or 2(B), you **must** indicate the number of **both** full-time and part-time employees, other than yourself, including family members and active partners (if none, you must enter "0").

_____ Full-time Employees

_____ Part-time Employees

Name of Business		Federal ID (or) Social Security No.	
Address		Telephone ()	
City	State	ZIP	

I hereby certify that the above information is true and correct. I agree to notify the Michigan DNR of any changes that occur in factors affecting my coverage during any of my present and future operations.

Signature of Owner or Authorized Representative

Title

Date

Please complete the "SEALED BID" information on the next page

Sugar Bunny Blend (54-018-19)
T35N, R02E, SEC. 10; T35N, R02E, SEC. 12; T35N, R02E, SEC. 9; Presque Isle

In response to the notice of sale to be held 10:00 a.m. (local time) on March 3, 2020, I am hereby submitting my sealed bid (firm offer) for the following forest products to be cut. Bids for individual species must be at or above the advertised price. All non-responsive bid forms may be rejected.

<u>PRODUCTS & SPECIES</u>	<u>ESTIMATED VOLUME*</u>	<u>ADVERTISED PRICE</u>	<u>BID PRICE/UNIT</u>
Sawtimber			
Mixed Aspen	34.50 MBF	\$ 85.00/MBF	\$ _____
Red Maple	11.00 MBF	\$ 113.00/MBF	\$ _____
Red Oak	5.60 MBF	\$ 210.00/MBF	\$ _____
Red Pine	62.70 MBF	\$ 122.00/MBF	\$ _____
White Pine	3.10 MBF	\$ 80.00/MBF	\$ _____
Pulpwood			
Balsam Fir	279.00 Cords	\$ 27.60/Cord	\$ _____
Jack Pine	103.00 Cords	\$ 22.80/Cord	\$ _____
Mixed Aspen	523.00 Cords	\$ 25.25/Cord	\$ _____
Mixed Hardwood	775.00 Cords	\$ 22.10/Cord	\$ _____
Mixed Oak	38.00 Cords	\$ 31.80/Cord	\$ _____
Mixed Spruce	53.00 Cords	\$ 15.40/Cord	\$ _____
N. White Cedar	3.00 Cords	\$ 9.15/Cord	\$ _____
Red Pine	80.00 Cords	\$ 49.75/Cord	\$ _____
White Pine	57.00 Cords	\$ 29.10/Cord	\$ _____

*The volumes are statistically estimated within plus (+) or minus (-) 10.98 percent. These estimated volumes are final and not subject to adjustment. Prospective bidders are urged to examine this timber and to make their own estimates of quantity and quality.

I understand that any or all bids may be rejected. All bids must be signed and all bid items must be bid or the bid form may be rejected. I also understand that consideration and awarding a contract will be based upon my past performance and ability to complete the contract based upon equipment and staffing subject to my control.

FEDERAL ID: _____ or SOCIAL SECURITY NUMBER: _____

Company or individual bidding: _____

Company representative's name: _____

Address: _____

City: _____ State: _____ Zip: _____

IF AVAILABLE, PLEASE PLACE THE PERSONALIZED LABEL FROM YOUR PROSPECTUS IN THE ABOVE BOX.

Individual or company representative's signature: _____ Date: _____

Phone number : _____ Email (optional): _____

THE WINNING BIDDER MUST COMPLETE THE VERIFICATION OF WORKER'S DISABILITY COMPENSATION ACT COMPLIANCE (ON REVERSE SIDE IF DOUBLE SIDED) WITHIN 21 DAYS OF SALE AWARD DATE



FOR DEPARTMENT USE ONLY	
Sale Number (XX - XXX - XX - XX)	
Forest Management Unit:	

TIMBER SALE VERIFICATION OF WORKER'S DISABILITY COMPENSATION ACT COMPLIANCE

As required by Act 317, P.A. 1969 (Worker's Compensation) and
Part 5 of Act 451 of 1994, as amended.

VERIFICATION OF WORKER'S DISABILITY COMPENSATION ACT COMPLIANCE

- This verification must be completed and submitted within 21 days of contract award and prior to the issuance of the timber sale contract.
- In addition, if boxes 2B or 2C are checked, then Notice of Exclusion or Certificate of Insurance must be submitted within twenty-one (21) days of the contract award and prior to the issuance of the timber sale contract.
- All information must be typed or printed except for written signatures.

Please Check Appropriate Categories:

1. My business is organized as (you **must** check one of the boxes below):
 - A. Sole Proprietorship (individual)
 - B. Partnership
 - C. Corporation
2. You **must** check one of the boxes below:
 - A. I certify my business is a sole proprietorship and it has no employees but the sole proprietor. I am not subject to the Worker's Compensation Laws.
 - B. I certify my business has satisfied its obligation to the Worker's Compensation Act through the use of an approved Notice of Exclusion (BWC-337, Rev. 5/96). I will provide a copy of the Notice of Exclusion within 21 days of the contract award. (For questions or a copy of the BWC-337, please call the Worker's Compensation Bureau at 517-322-1195).
 - C. I certify my business has a Worker's Compensation Policy. I will provide an original Certificate of Insurance within twenty-one (21) days of the contract award.
3. If you have checked item 2(A) or 2(B), you **must** indicate the number of **both** full-time and part-time employees, other than yourself, including family members and active partners (if none, you must enter "0").

_____ Full-time Employees

_____ Part-time Employees

Name of Business		Federal ID (or) Social Security No.	
Address		Telephone ()	
City	State	ZIP	

I hereby certify that the above information is true and correct. I agree to notify the Michigan DNR of any changes that occur in factors affecting my coverage during any of my present and future operations.

Signature of Owner or Authorized Representative

Title

Date

Please complete the "SEALED BID" information on the next page

Jeopardy Music Mix (54-007-19)
T33N, R02E, SEC. 29; T33N, R02E, SEC. 30; Presque Isle COUNTY

In response to the notice of sale to be held 10:00 a.m. (local time) on March 3, 2020, I am hereby submitting my sealed bid (firm offer) for the following forest products to be cut. Bids for individual species must be at or above the advertised price. All non-responsive bid forms may be rejected.

<u>PRODUCTS & SPECIES</u>	<u>ESTIMATED VOLUME*</u>	<u>ADVERTISED PRICE</u>	<u>BID PRICE/UNIT</u>
Sawtimber			
Mixed Aspen	21.20 MBF	\$ 85.00/MBF	\$ _____
Red Pine	9.30 MBF	\$ 122.00/MBF	\$ _____
Pulpwood			
Balsam Fir	1.00 Cords	\$ 27.60/Cord	\$ _____
Jack Pine	414.00 Cords	\$ 22.80/Cord	\$ _____
Mixed Aspen	276.00 Cords	\$ 25.25/Cord	\$ _____
Mixed Oak	529.00 Cords	\$ 31.80/Cord	\$ _____
Red Maple	15.00 Cords	\$ 22.10/Cord	\$ _____
Red Pine	28.00 Cords	\$ 49.75/Cord	\$ _____
White Pine	29.00 Cords	\$ 29.10/Cord	\$ _____

*The volumes are statistically estimated within plus (+) or minus (-) 13.88 percent. These estimated volumes are final and not subject to adjustment. Prospective bidders are urged to examine this timber and to make their own estimates of quantity and quality.

I understand that any or all bids may be rejected. All bids must be signed and all bid items must be bid or the bid form may be rejected. I also understand that consideration and awarding a contract will be based upon my past performance and ability to complete the contract based upon equipment and staffing subject to my control.

FEDERAL ID: ____ - ____ - ____ or SOCIAL SECURITY NUMBER: ____ - ____ - ____

Company or individual bidding: _____

Company representative's name: _____

Address: _____

City: _____ State: _____ Zip: _____

IF AVAILABLE, PLEASE PLACE THE PERSONALIZED LABEL FROM YOUR PROSPECTUS IN THE ABOVE BOX.

Individual or company representative's signature: _____ Date: _____

Phone number : _____ Email (optional): _____

THE WINNING BIDDER MUST COMPLETE THE VERIFICATION OF WORKER'S DISABILITY COMPENSATION ACT COMPLIANCE (ON REVERSE SIDE IF DOUBLE SIDED) WITHIN 21 DAYS OF SALE AWARD DATE



FOR DEPARTMENT USE ONLY	
Sale Number (XX - XXX - XX - XX)	
Forest Management Unit:	

TIMBER SALE VERIFICATION OF WORKER'S DISABILITY COMPENSATION ACT COMPLIANCE

As required by Act 317, P.A. 1969 (Worker's Compensation) and
Part 5 of Act 451 of 1994, as amended.

VERIFICATION OF WORKER'S DISABILITY COMPENSATION ACT COMPLIANCE

- This verification must be completed and submitted within 21 days of contract award and prior to the issuance of the timber sale contract.
- In addition, if boxes 2B or 2C are checked, then Notice of Exclusion or Certificate of Insurance must be submitted within twenty-one (21) days of the contract award and prior to the issuance of the timber sale contract.
- All information must be typed or printed except for written signatures.

Please Check Appropriate Categories:

1. My business is organized as (you **must** check one of the boxes below):
 - A. Sole Proprietorship (individual)
 - B. Partnership
 - C. Corporation
2. You **must** check one of the boxes below:
 - A. I certify my business is a sole proprietorship and it has no employees but the sole proprietor. I am not subject to the Worker's Compensation Laws.
 - B. I certify my business has satisfied its obligation to the Worker's Compensation Act through the use of an approved Notice of Exclusion (BWC-337, Rev. 5/96). I will provide a copy of the Notice of Exclusion within 21 days of the contract award. (For questions or a copy of the BWC-337, please call the Worker's Compensation Bureau at 517-322-1195).
 - C. I certify my business has a Worker's Compensation Policy. I will provide an original Certificate of Insurance within twenty-one (21) days of the contract award.
3. If you have checked item 2(A) or 2(B), you **must** indicate the number of **both** full-time and part-time employees, other than yourself, including family members and active partners (if none, you must enter "0").

_____ Full-time Employees

_____ Part-time Employees

Name of Business		Federal ID (or) Social Security No.	
Address		Telephone ()	
City	State	ZIP	

I hereby certify that the above information is true and correct. I agree to notify the Michigan DNR of any changes that occur in factors affecting my coverage during any of my present and future operations.

Signature of Owner or Authorized Representative

Title

Date

Please complete the "SEALED BID" information on the next page