



**DEPARTMENT OF NATURAL RESOURCES  
STATE OF MICHIGAN**

**TIMBER SALE PROSPECTUS #6621**

SCHEDULED SALE DATE AND TIME: 10:00 a.m. (local time) on April 7, 2020.

LOCATION: ATLANTA MGMT UNIT, 13501 M 33, ATLANTA, MI 49709.

PROSPECTUS NOTE: The bidder is advised to inspect the sale area and review the location, estimated volumes, operating costs and contract terms of proposed sales. Please be aware that some landowners may request 60 days or more notice for access across their land.

Notice is hereby given that bids will be received by the Unit Manager, ATLANTA MANAGEMENT UNIT, for certain timber on the following described lands:

Thigh Burner Aspen (54-029-19) / T36N, R01E, SEC. 1 , NW,NWNE.

T36N, R01E, SEC. 12, N1/2SW,SESW,SE.

T36N, R01E, SEC. 2 , N1/2NE,NESE,S1/2SE.

Cheboygan County, Advertised Price \$174,399.45, 166.2 Acres, Hardwood, Aspen.

SALE NOTE: A recreation site such as a trail, pathway, or campground is within the sale area or the vicinity. Certain restrictions/specifications may be applicable including time restrictions.

A Grand Endeavor (54-027-18) / T37N, R01E, SEC. 15, SE.

T37N, R01E, SEC. 22, N1/2NE.

Cheboygan County, Advertised Price \$16,519.45, 54.1 Acres, Hardwood, Aspen.

SALE NOTE: Access into the sale area will be through Grand Rack Hunt Club property. Potential bidders wishing to evaluate this sale need to contact Cody Stevens at (989) 785-4251 ext. 5240 to facilitate entry into the sale area. Cutting, skidding, and hauling are not permitted from September 1 to January 1. See Spec 2.1.11 regarding a 3.9 acre optional unit.

Access may be through private land.

## BID INSTRUCTIONS (VER. 07/02/2018):

### 1. Scheduled Bid Location, Date, and Time (2/11)

Bids must be received by the Unit Manager, ATLANTA OFFICE, 13501 M 33, ATLANTA, MI 49709, no later than 10:00 a.m. (local time) on April 7, 2020. For further information concerning this sale, contact Cody Stevens at 989-785-4251 extension 5240.

### 2. Bidder's Qualifications (5/16)

Purchaser shall obtain workers compensation insurance to cover claims under Michigan's Worker's Disability Compensation Act of 1969 or similar employee benefit act of any other state applicable to an employee. If all or part of a timber sale was prepared by a private contractor, the contractor and that contractor's company are not permitted to bid on the timber sale contract. Bids will not be accepted from individuals or companies appearing on the DNR/FRD No-Bid List. This list contains the names of purchasers who previously failed to execute a contract within 21-days or who have a history of poor performance.

### 3. Preparation of Sealed Bids (5/16)

Bid Forms may be completed online thru Michigan DNR Timber Sale Online Bidding (OLB) at [www.michigan.gov/timberbidding](http://www.michigan.gov/timberbidding) or by completing the hardcopy Bid Form found in the Timber Sale Prospectus. Hardcopy Bid Forms shall be manually signed in ink. Registration in OLB is considered your 'signature' for all bids submitted thru that system. Bid prices must be entered for each species and product in the Bid Price column for all material subject to bidding and all fill-in blanks must be completed. If erasures or other changes appear on the hardcopy Bid Form, each erasure or change must be initialed by the person signing the bid.

### 4. Submission of Sealed Bids (5/16)

Bid forms may be obtained from the Unit Manager or thru OLB. Bids may be submitted hardcopy or thru OLB. All hardcopy bids must be submitted on the bid form and in an envelope clearly identified as described in this section. NOTE: Only one bid form per bid envelope. Sealed bids must be submitted to the Unit office designated in the prospectus and must be submitted at or prior to the time established in the prospectus. The envelope should show on the outside (a) the sale name or number and (b) the date and time of bid opening, as shown in the prospectus. Bids received after the time specified in the sale prospectus are late bids and will be rejected.

It is possible for a bidder to submit multiple bids on a single sale. For example, a bid may be submitted hardcopy and a bid may be submitted thru OLB. Or, two bidders from the same company could both submit bids on the same sale. If this were to happen, the State would accept all bids received and award the contract accordingly. All bidding and contractual requirements would apply to all bids received.

### 5. Public Opening of Sealed Bids (7/16)

If conditions permit, the sealed bids will be publicly opened and posted at the time and place set in the prospectus.

If a bidder, present at a bid opening, has submitted bids on more than one sale, that bidder may withdraw their unopened bid envelopes or announce the withdrawal of their online bid after being declared the successful bidder on one sale.

### 6. Award of Contract (1/11)

Award of the contract will be made to the Bidder whose bid, conforming to the prospectus, is most advantageous to the State of Michigan on the basis of total value at rates bid for the estimated quantities. The State reserves the right to reject any bid or waive any minor irregularity in bids received. A written award mailed (or otherwise furnished) to the successful Bidder shall be deemed to result in a binding contract without further action by either party.

### 7. Down Payment (1/11)

The Bidder to whom award is made must make a down payment within 21 days of the sale award. The amount of the down payment will be calculated as shown in the Bond and Payment Schedule of this prospectus. Only cash may be used to meet this requirement.

### 8. Performance Security (1/11)

As guarantee of faithful performance, a cash bond, certificate of deposit, surety bond or irrevocable letter of credit (LOC) is required within 21 days of the sale award. The amount of the performance security is shown in the Bond and

Payment Schedule of this prospectus. If an LOC or surety is used, the coverage must extend for at least 6 months beyond the contract expiration.

#### 9. Timber Sale Contract (7/18)

Additional conditions and requirements common to all timber sales are listed on the timber sale contract (R4031) and are available on line at [www.michigan.gov/timber](http://www.michigan.gov/timber). Contact the Unit Manager for additional information or a sample contract. Within 21 days of the date of the award letter, the bidder must sign the contract and provide the required down payment, performance security, and verification of worker's disability compensation. The down payment and performance security shall be in accordance with the provisions of the timber sale contract, in the sums stated in this prospectus. If these actions are not taken, then the Bidder, the Bidder's corporation, and the corporation's principals may not be permitted to bid on State timber sales for a period of 3 months after the first offense, 6 months after the second offense, and 1 year after the third offense. An offense will only be counted against the Bidder for 5 years. In addition, the Bidder certifies that if awarded this contract, the Bidder will complete the timber sale contract in accordance with its terms and any modifications thereof including requirements to purchase, cut, and remove the included timber by the expiration date.

Payment Unit values in the State Forest Timber Sale Contract are calculated based on the advertised value of the Payment Unit as a percentage of the total advertised value of the contract. The advertised value of each Payment Unit is given in the Description of Timber by Payment Unit table on the Timber Sale Information page. For example, if the value of Payment Unit 1 is advertised as \$1,500 and the total Timber Sale value is advertised as \$10,000, the contract price for Payment Unit 1 will be 15% of the total bid price ( $\$1,500/\$10,000 * 100$ ).

#### 10. Disclaimer of Estimates and Bidder's Warranty of Inspection (7/16)

Before submitting this bid, the Bidder is advised and cautioned to inspect the sale area, review the requirements of the sale contract, and take other steps as may be reasonably necessary to ascertain the location, estimated volumes, construction estimates, and operating costs of the proposed sale. Failure to do so will not relieve the Bidder from responsibility for completing the contract.

The Bidder warrants that this bid is submitted solely on the basis of the Bidder's examination and inspection of the quality and quantity of the timber offered for sale and the Bidder's opinion of the value thereof and the costs of recovery. No reliance should be placed on the State of Michigan's estimates of timber quality, quantity or costs of recovery. Bidder further acknowledges that the State of Michigan: (i) expressly disclaims any warranty of fitness of timber for any purpose; (ii) offers this timber as is without any warranty of quality (merchantability) or quantity and (iii) expressly disclaims any warranty as to the quantity or quality of timber sold.

#### 11. Certification and Chain-of-Custody (10/14)

Unless otherwise indicated in the contract under section 7 – Other Conditions of the Sale Specific Conditions & Requirements, the area encompassed by this timber sale is certified to the standards of the Forest Stewardship Council (FSC) - Certificate #SCS-FM/COC-00090N and the Sustainable Forestry Initiative (SFI) - Certificate #NSF-SFIS-5Y031-SF5. Forest products from this sale may be delivered to the mill as "FSC 100% and / or SFI certified" as long as the contractor hauling the forest products is chain-of-custody (COC) certified or covered under a COC certificate from the destination mill. The purchaser is responsible for maintaining COC after leaving the sale area.

#### 12. Good Neighbor Authority (GNA) Requirements (7/16)

If the name of this timber sales contains the acronym GNA, it is authorized by the Good Neighbor Authority (GNA) and covered by various agreements between the U.S. Forest Service and the State. The timber sale occurs on federal land and the following conditions apply:

GNA contracts on US Forest Service land will not be awarded to purchasers on the Federal list of excluded parties. The System for Award Management (SAM) will be checked for active excluded parties prior to award of contract. In addition, the Bidder to whom award is made must complete an Assurance Regarding Felony Conviction or Tax Delinquent Status for Corporate Applicants (AD-3031).

#### 13. Good Neighbor Authority (GNA) Requirements, con't (9/16)

Bidder certifies, by signing this bid form, that to the best of Bidder's knowledge that the following representations are accurate and complete.

- a. That the Bidder and its principals are not presently debarred, suspended, proposed for debarment, declared ineligible, or voluntary excluded from timber sales (covered transactions) by any Federal department or agency.
- b. That the Bidder and its principals have not within a 3-year period preceding this bid been convicted of or had a civil judgment rendered against them for commission of fraud or a criminal offense in connection with obtaining , attempting to obtain, or performing a public (Federal, State, or local) transaction or contract under a public transaction; violation of Federal or State antitrust statutes or commission of embezzlement, theft, forgery, bribery, falsification or destruction of records, making false statements, or receiving stolen property.
- c. That the Bidder and its principals are not presently indicted for or otherwise criminally or civilly charged by a governmental entity (Federal, State, or local) with commission of any of the offenses enumerated in paragraph b of this certification.
- d. That the Bidder and its principals have not within a 3-year period preceding this bid had one or more public transactions (Federal, State, or local) terminated for breach or default of a timber or forest product contract.

Bidders that cannot certify this requirement, in whole or in part, shall submit an explanation with their bid.

DAN EICHINGER  
Director

## TIMBER SALE INFORMATION

Thigh Burner Aspen (54-029-19)  
 T36N, R01E, SEC. 1; T36N, R01E, SEC. 12; T36N, R01E, SEC. 2.  
 Cheboygan County (Advertised Price \$174,399.45)

SALE NOTE: A recreation site such as a trail, pathway, or campground is within the sale area or the vicinity. Certain restrictions/specifications may be applicable including time restrictions.

A timber sale contract for this lump sum, sealed bid timber sale will be awarded to the responsible bidder offering the highest sealed bid price. Bids must be at or above the following advertised price for each species:

<u>PRODUCTS &amp; SPECIES</u>	<u>ESTIMATED UNITS*</u>		<u>ADVERTISED PRICE</u>
<b>Sawtimber</b>			
Basswood	34.20	MBF	\$ 67.00 / MBF
Bl/R/Hybrid Oak	164.70	MBF	\$ 94.00 / MBF
Mixed Aspen	83.50	MBF	\$ 84.00 / MBF
Red Maple	12.20	MBF	\$ 112.00 / MBF
Red Pine	166.00	MBF	\$ 132.00 / MBF
Sugar Maple	29.30	MBF	\$ 356.00 / MBF
White Pine	26.40	MBF	\$ 82.00 / MBF
<b>Pulpwood</b>			
Bl/R/Hybrid Oak	1,097.00	Cords	\$ 33.40 / Cord
Jack Pine	15.00	Cords	\$ 22.30 / Cord
Mixed Aspen	1,279.00	Cords	\$ 24.65 / Cord
Mixed Hardwood	702.00	Cords	\$ 21.75 / Cord
Red Pine	482.00	Cords	\$ 55.15 / Cord
White Pine	114.00	Cords	\$ 29.70 / Cord

\* The total volume is statistically estimated within plus (+) or minus (-) 9.44 percent. The estimated units are final and not subject to adjustment. Prospective bidders are urged to examine this timber and to make their own estimates of quantity and quality.

**BOND AND PAYMENT SCHEDULE:**

1. A bond in the amount of \$8,720.00 to insure faithful performance of the conditions of the contract will be deposited by the successful bidder within 21 days of the sale award.
2. Cutting in any sale or unit without the required advance payment would be considered a trespass.
3. Total payment must be paid in advance or according to the following schedule :
  - (a) Ten percent (10%) of the sale value must be paid within 21 days of the sale award.
  - (b) The 10% down payment will be credited towards the first unit cut.
  - (c) Payment for each of the following units must be made before cutting begins in that unit:

PAYMENT UNIT NUMBER	PERCENT OF TOTAL SALE VALUE
01	6.7%
02	8.7%
03	10.5%
04	9.8%
05	3.8%
06	22.2%
07	15.9%
08	22.4%

4. If no cutting takes place, the 10% down payment will not be refunded.
5. Operations on the contract issued will terminate on 06/30/2022.

**Description of Timber by Payment Unit (PU)**

PU	MARKET GROUP	PRODUCT	QUANTITY	UNIT	ACRES	ADVERTISE PRICE
1	Mixed Aspen <i>B. T. Aspen</i>	Sawtimber	17.4	MBF	7.5	\$11,678.65
			17.4	<i>MBF</i>		
			2.9	MBF		
			2.2	MBF		
		0.9	MBF			
		Pulpwood	273.0	Cords		
			46.0	Cords		
			14.0	Cords		
			16.0	Cords		
2	Basswood BI/R/Hybrid Oak Mixed Aspen Red Maple Red Pine Sugar Maple White Pine BI/R/Hybrid Oak Mixed Aspen Mixed Hardwood Red Pine White Pine	Sawtimber	10.3	MBF	20.3	\$15,144.80
			26.8	MBF		
			7.1	MBF		
			1.3	MBF		
			5.0	MBF		
			8.1	MBF		
			4.6	MBF		
		Pulpwood	74.0	Cords		
			34.0	Cords		
			143.0	Cords		
			9.0	Cords		
			12.0	Cords		
3	Basswood BI/R/Hybrid Oak Mixed Aspen Red Maple Red Pine Sugar Maple White Pine BI/R/Hybrid Oak Mixed Aspen Mixed Hardwood Red Pine White Pine	Sawtimber	12.3	MBF	24.4	\$18,252.40
			32.2	MBF		
			8.7	MBF		
			1.6	MBF		
			6.0	MBF		
			9.8	MBF		
			5.5	MBF		
		Pulpwood	89.0	Cords		
			42.0	Cords		
			174.0	Cords		
			10.0	Cords		
			14.0	Cords		
4	Basswood BI/R/Hybrid Oak Mixed Aspen Red Maple Red Pine Sugar Maple White Pine BI/R/Hybrid Oak Mixed Aspen Mixed Hardwood Red Pine White Pine	Sawtimber	11.6	MBF	22.9	\$17,099.60
			30.2	MBF		
			8.1	MBF		
			1.5	MBF		
			5.6	MBF		
			9.2	MBF		
			5.1	MBF		
		Pulpwood	83.0	Cords		
			39.0	Cords		
			161.0	Cords		
			10.0	Cords		
			14.0	Cords		
5	BI/R/Hybrid Oak <i>Red Oak</i>	Sawtimber	3.6	MBF	8.4	\$6,651.85
			3.6	<i>MBF</i>		
			18.4	MBF		
		Pulpwood	2.9	MBF		
			32.0	Cords		
			123.0	Cords		
			8.0	Cords		
			2.0	Cords		
6	BI/R/Hybrid Oak <i>BI/R/Hybrid Oak</i> <i>Red Oak</i>	Sawtimber	30.2	MBF	30.2	\$38,748.80
			25.8	<i>MBF</i>		
			4.4	<i>MBF</i>		

**Description of Timber by Payment Unit (PU), con't**

PU	MARKET GROUP	PRODUCT	QUANTITY	UNIT	ACRES	ADVERTISE PRICE	
6 con't	Mixed Aspen	Sawtimber	5.1	MBF			
	Red Maple		6.7	MBF			
	Red Pine		76.7	MBF			
	White Pine		10.3	MBF			
	Bl/R/Hybrid Oak		Pulpwood	196.0			Cords
	Jack Pine			2.0			Cords
	Mixed Aspen			194.0			Cords
	Mixed Hardwood			34.0			Cords
	Red Pine			180.0			Cords
	White Pine			58.0			Cords
7	Bl/R/Hybrid Oak	Sawtimber	13.3	MBF	24.4	\$27,664.70	
	<i>Red Oak</i>		13.3	<i>MBF</i>			
	Mixed Aspen		4.9	MBF			
	Red Pine		41.6	MBF			
	Bl/R/Hybrid Oak		Pulpwood	283.0			Cords
	Jack Pine			4.0			Cords
	Mixed Aspen			199.0			Cords
	Mixed Hardwood			5.0			Cords
	Red Pine			108.0			Cords
8	Bl/R/Hybrid Oak	Sawtimber	28.4	MBF	28.1	\$39,158.65	
	<i>Red Oak</i>		28.4	<i>MBF</i>			
	Mixed Aspen		13.8	MBF			
	Red Maple		1.1	MBF			
	Red Pine		25.3	MBF			
	Bl/R/Hybrid Oak		Pulpwood	340.0			Cords
	Jack Pine			9.0			Cords
	Mixed Aspen			375.0			Cords
	Mixed Hardwood			131.0			Cords
	Red Pine			149.0			Cords
TOTAL:			516.3	MBF			
TOTAL:			3,689.0	Cords			

# Sale Specific Conditions & Requirements

**Sale Name: Thigh Burner Aspen**

**Sale Number: 54-029-19 Seq#: 2**

## 1 - Sale Area

### 1.2 - Boundaries

#### 1.2.1 - Painted boundaries (9/19)

The sale boundary and Payment Unit boundaries are marked and identified by red and yellow paint. Exterior sale boundary lines against state are marked with red paint. Interior Payment Unit boundaries are marked with yellow paint. Retention patches are marked with red paint; no harvesting activities may occur within these areas. The painted boundary line trees are not Included Timber and are to be protected. Yellow painted trees designating an interior Payment Unit boundary are only to be cut when all surrounding Payment Units have been paid.

## 2 - Timber Specifications

### 2.1 - Included Timber

#### 2.1.1 - Clearcut unit(s) with unmerchantable trees (6/14)

Within Payment Unit(s) 1-8, cut all trees that are two (2) inches or more at DBH, except within Payment Unit 8, do not cut red or white pine. Also, within Payment Unit 1, do not cut hemlock.

### 2.2 - Utilization

#### 2.2.2 - Chipping required (2/18)

Payment Units 2-4 must be chip harvested to facilitate subsequent planting operations. The Purchaser has the option to produce sawlogs or pulpwood bolts, but the remaining portion of the trees must be chipped and hauled. Products may be produced as roundwood and forwarded to decking areas in final product length, but the tops must be left intact and skidded to the landing for chipping in order to minimize the amount of residual slash. If market conditions limit the practicality of chipping, tops and slash must be arranged in a way that will not inhibit future planting operations, as directed by the sale administrator. A chipping exemption can be obtained if proposed operations are determined to be suitable for planting by reforestation staff. This exemption must be granted in writing. The requirement to retain approximately 1/6 to 1/3 of tree tops and limbs less than four inches in diameter is still applicable (G. C. & R. 2.2).

#### 2.2.3 - Stump heights (4/07)

Stump heights within Payment Unit(s) 2-4 shall not exceed six (6) inches for all trees. This is in order to facilitate planting operations.

## 4 - Transportation

### 4.1 - Construction

#### 4.1.3 - Slash and earthen piles (8/04)

Piles or windrows of earth along roads and landings that have been widened or constructed shall be leveled. Slash from road maintenance or construction, including stumps, shall be dispersed throughout the sale.

#### 4.1.6 - Road construction (1/09)

Construction of new roads or improvements of existing roads shall be done in such a way as to minimize the environmental and visual impacts. Merchantable trees shall be cut and utilized unless otherwise directed. Non-merchantable trees shall be severed and laid flat on the ground. Slash shall be scattered, and not left in windrows and kept a minimum of 10 feet back from the road edge. Stumps shall be set upright, not left on edge, and be moved at least Disturbed soil shall be feathered into the woods and not left in berms or windrows.

#### 4.1.7 - Road closure (10/11)

All new roads built into the sale must be blocked to vehicle traffic upon completion of the sale. Overgrown roads that are reopened shall be considered new roads. In general, this will require constructing a four (4') foot high berm of stumps and logs covered with earth. These roads must be rendered impassable to cars and trucks. All stumps from road building and landing construction must be reserved to block any newly constructed roads upon completion of the sale. These stumps must be scattered along the road system to prohibit vehicular movement. Temporary berms may be required if no sale activity occurs for 30 or more consecutive days. Contact the sale administrator for specific details of design and placement.



## 4.2 - Maintenance

### 4.2.5 - Two wheel drive condition (2/04)

All existing trail roads on and adjacent to the sale area must be passable by two-wheel drive traffic for the duration of the sale.

## 5 - Operations

### 5.1 - Notification

#### 5.1.1 - Pre-sale conference (10/16)

A pre-sale conference on site between the Purchaser and sale administrator is required prior to beginning any operations to determine landing and road locations. The Unit Manager or his/her representative must be contacted at least 10 days in advance to schedule the conference.

#### 5.1.4 - Post-sale conference (10/16)

A post-sale conference on site between the Purchaser and sale administrator is required 5 days prior to the completion of active logging operations to determine clean-up and repair of landings, road edges, and the fulfillment of other contract specifications.

### 5.2 - Conduct of Operations

#### 5.2.2 - Hazard Trees/Snags

##### 5.2.2.1 - Den trees (10/16)

Obvious hollow and/or den trees shall be protected and left standing unless they are a safety hazard.

#### 5.2.3 - Operating Restrictions

##### 5.2.3.5 - Oak wilt restriction (1/18)

Within Payment Unit(s) 1-4 and 6-8, unless changed by written agreement, cutting, skidding, hauling within the sale and brushing of access roads to the sale are not permitted during the period of April 15 to July 15. Operations may be allowed if specific steps are taken to prevent damaging uncut oak during the high risk period. Those steps may include completing all road brushing before April 15th and clearing a tree-length buffer along uncut oak cover before April 15th. This is necessary to reduce the spread of oak wilt. For more information, contact the Unit Manager or his/her representative.

##### 5.2.3.11 - Coppice regeneration protection (4/10)

Timber harvesting in Payment Units 1 and 5-8, must be completed before significant aspen sprouting occurs in that Payment Unit so as to minimize damage to the new regeneration. Any post harvest operations, such as chipping, must be completed before sprouting of regeneration occurs. If it is anticipated that chipping will be delayed, then tops shall be carried to one central location or left unchipped. The Unit Manager or his/her representative may cease such operations if sprouting occurs before the operation is complete.

#### 5.2.4 - Dead and Down Creation

##### 5.2.4.7 - Dead and down creation: hare, grouse, deer and other species (5/15)

To improve horizontal cover habitat for snowshoe hare, grouse, deer, and other species, the Purchaser is to push over (or fell if too large) one tree, 12 inches or greater at DBH every two acres within Payment Unit(s) 1 and 5-8. These trees should be tipped over with the root ball still attached so the base of the tree is suspended off the ground. The crown of the fallen tree should be at or near ground level after it is pushed over.

#### 5.2.32 - Decking/landing restoration (9/13)

All decking and landing areas must have the surface area restored to a condition equal to or better than before. This is to ensure the proper regeneration of the stand. Wood debris, chips and "cookies" from trimmings must be removed or scattered away from landing and loading areas and may not be windrowed on the edge.

#### 5.2.39 - ORV trail/route protection (4/18)

The ORV trail and route and is shown on the Timber Sale Map. Trees with yellow ORV markers shall be cut off above the markers and at least 5 feet above ground. All stumps within 5 feet of the trail must be cut flush with the ground. Maintain a 20 foot wide slash, debris, and rut free zone daily using the ORV trail or route as the centerline. Do not run equipment down the ORV trail or route. Skidding across the trail or route may only occur in locations approved by the sale administrator.

#### 5.2.40 - Pathway protection (10/10)

The biking, hiking, horse riding and ski trails are non-motorized trails and are shown on the Timber Sale Map. Cut trees with blue pathway markers at least 5 feet above ground level and do not damage posts used to mark trails. Maintain a 20-foot wide slash, debris, and rut free zone daily, using the pathway as the centerline. Do not run equipment down the pathway. Skidding across the trail may only occur in locations approved by the sale administrator.

#### 5.2.41 - Snowmobile trail protection (9/11)

Trail 99 is a snowmobile trail and is shown on the Timber Sale Map. Do not cut or damage posts with orange trail markers or traffic control signs. If the trail is used, it must be maintained and restored to a condition equal to or better than before the sale. The road maintenance/restoration must be done prior to December 1. If the trail is used for hauling, it must be graded to the satisfaction of the Unit Manager or his/her representative prior to December 1st. If the trail road is to be used for hauling during the snowmobile season, then a snow covered base must be left on the trail. The snowmobile trail may only be crossed at right angles. Maintain a 20 foot wide slash, debris, and rut free zone daily using the snowmobile trail as the centerline. No decking of forest products will be permitted along the snowmobile trail. All stumps within 10 feet of the snowmobile trail must be cut at ground level.

### 5.4 - Soil Protection

#### 5.4.1 - Rutting restriction, general (7/16)

Operations are to cease immediately if equipment and weather conditions result in rutting of roads and/or skid trails which is 12 inches or greater in depth and 50 feet in length. The Unit Manager or his/her representative may restrict hauling and/or skidding if ruts exceed the specified depth. With the Unit Manager or his/her representative's approval, the Purchaser may return to the area when the risk of rutting has decreased.

#### 5.4.4 - Slope protection (9/19)

Skid trails and roads on slopes shall be water barred with slash, stumps, and/or clean straw bales native to the area as soon as use is complete to prevent erosion.

### 5.8 - Protection of Endangered Species

#### 5.8.5 - Protection of raptor nests (3/13)

All trees with raptor nests will be protected if found during harvesting operations. Notification will be made to the Unit Manager or his/her representative who will notify the Wildlife Biologist so an on-site evaluation and recommendation can be made, if necessary.

## 6 - Safety and Fire Prevention

### 6.2 - Signing

#### 6.2.2 - Snowmobile trail posting (8/09)

The Purchaser is responsible for posting and maintaining caution signs on Snowmobile Trail 99 prior to beginning operations during the snowmobile season (approximately December 1 to March 31). The trail must be posted at appropriate distances from the sale area to warn of logging activity and truck traffic. Signs must be removed when harvest operations are suspended or completed. The Purchaser will provide these signs.

#### 6.2.3 - Recreational trail posting (2/10)

The Purchaser is responsible for posting and maintaining caution signs on the ORV and non-motorized trails prior to beginning operations. The trail must be posted at appropriate distances from the sale area to warn of logging activity and truck traffic at both ends of the trail. Signs must be removed when harvest operations are suspended or completed. The Purchaser will provide these signs.



# TIMBER SALE MAP

This information provided by authority of Part 525, 1994 PA 451, as amended.

Sale Number	Year
54 - 029	19

Forest Management Unit <b>Atlanta</b>	County <b>Cheboygan</b>	Mapped By <b>R. Zimmerman</b>	Date <b>09/19/2019</b>	Page <b>1</b>	of <b>2</b>
Township <b>36N</b>	Range <b>01E</b>	Section(s) and Subdivision(s) Sec 1: NWNE, Sec 2: N1/2NE, NESE, S1/2SE, Sec 12: N1/2SW, SESW, SE	Scale <b>1:15,840</b>		

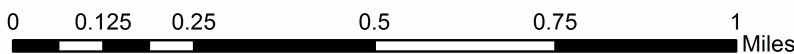
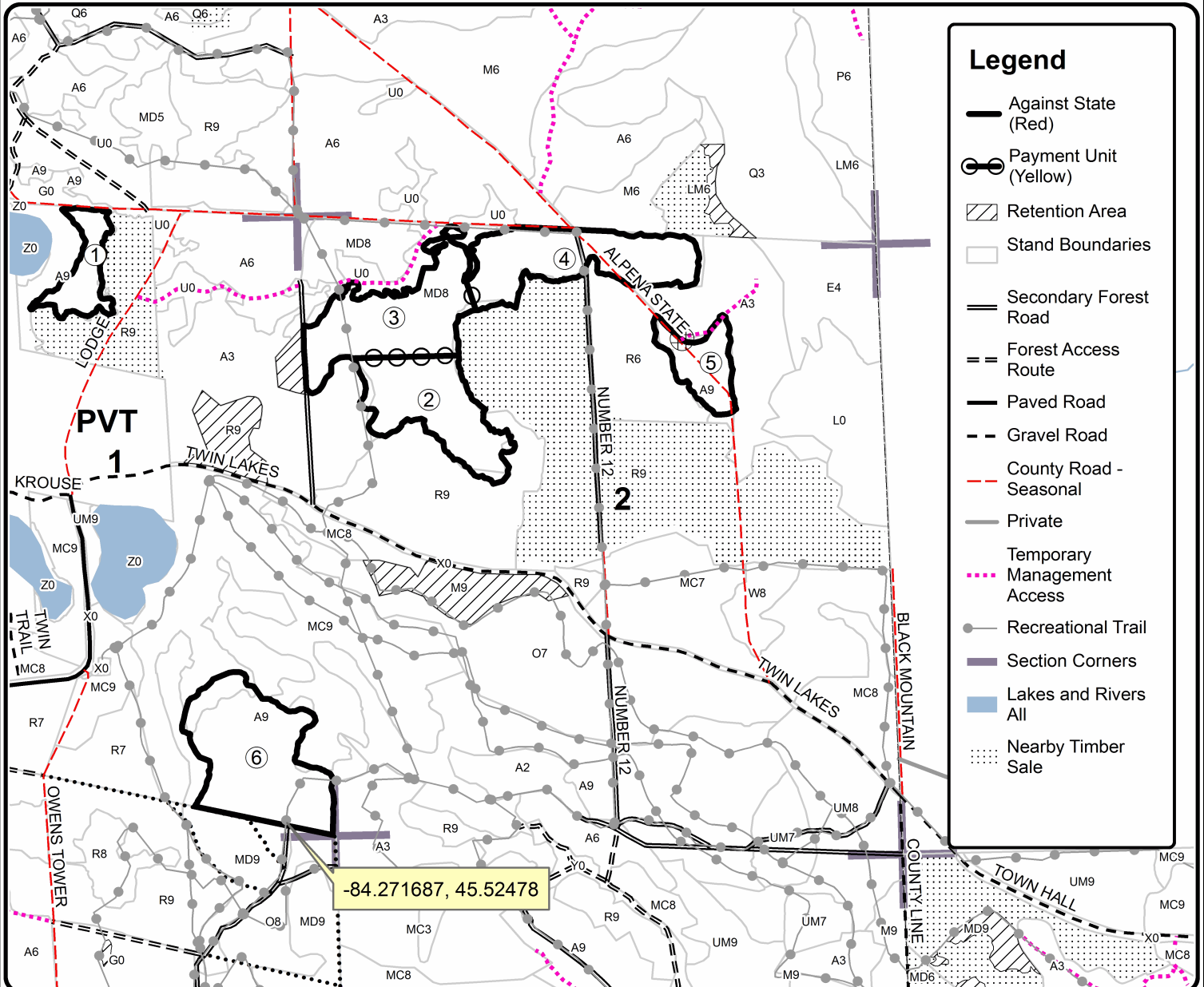
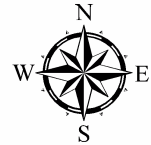
Cover Type				Density			
A = Aspen	H = Hemlock	N = Marsh	U = Upland Brush	0 = Non Stocked	5 = Pole Timber Medium		
B = Paper Birch	J = Jack Pine	O = Oak	UM = Upland Mixed	1 = Seedling Sapling Poor	6 = Pole Timber Well		
C = Cedar	L = Lowland Brush	P = Lowland Poplar	V = Bog or Marsh	2 = Seedling Sapling Medium	7 = Saw Timber Poor		
D = Treed Bog	LM = Lowland Mixed	Q = Mixed Swamp Conifer	W = White Pine	3 = Seedling Sapling Well	8 = Saw Timber Medium		
E = Swamp Hdwoods	M = Mpl, Bch, Brch	R = Red Pine	X = Non Stocked	4 = Pole Timber Poor	9 = Saw Timber Well		
F = Spruce Fir	MC = Mixed Conifer	S = Black Spruce	Z = Water				
G = Grass	MD = Mixed Deciduous	T = Tamarack					

PU	Acres	PU	Acres
1	7.5	5	8.4
2	20.3	6	30.2
3	24.4	7	24.4
4	22.9	8	28.1

## Thigh Burner Aspen

### Compartment 175

166.2 Acres





# TIMBER SALE MAP

This information provided by authority of Part 525, 1994 PA 451, as amended.

Sale Number	Year
54 - 029	19

Forest Management Unit Atlanta	County Cheboygan	Mapped By R. Zimmerman	Date 09/19/2019	Page 2	of 2
Township 36N	Range 01E	Section(s) and Subdivision(s) Sec 1: NWNE, Sec 2: N1/2NE, NESE, S1/2SE, Sec 12: N1/2SW, SESW, SE	Scale 1:15,840		

### Cover Type

A = Aspen	H = Hemlock	N = Marsh	U = Upland Brush
B = Paper Birch	J = Jack Pine	O = Oak	UM = Upland Mixed
C = Cedar	L = Lowland Brush	P = Lowland Poplar	V = Bog or Marsh
D = Treed Bog	LM = Lowland Mixed	Q = Mixed Swamp Conifer	W = White Pine
E = Swamp Hdwoods	M = Mpl, Bch, Brch	R = Red Pine	X = Non Stocked
F = Spruce Fir	MC = Mixed Conifer	S = Black Spruce	Z = Water
G = Grass	MD = Mixed Deciduous	T = Tamarack	

### Density

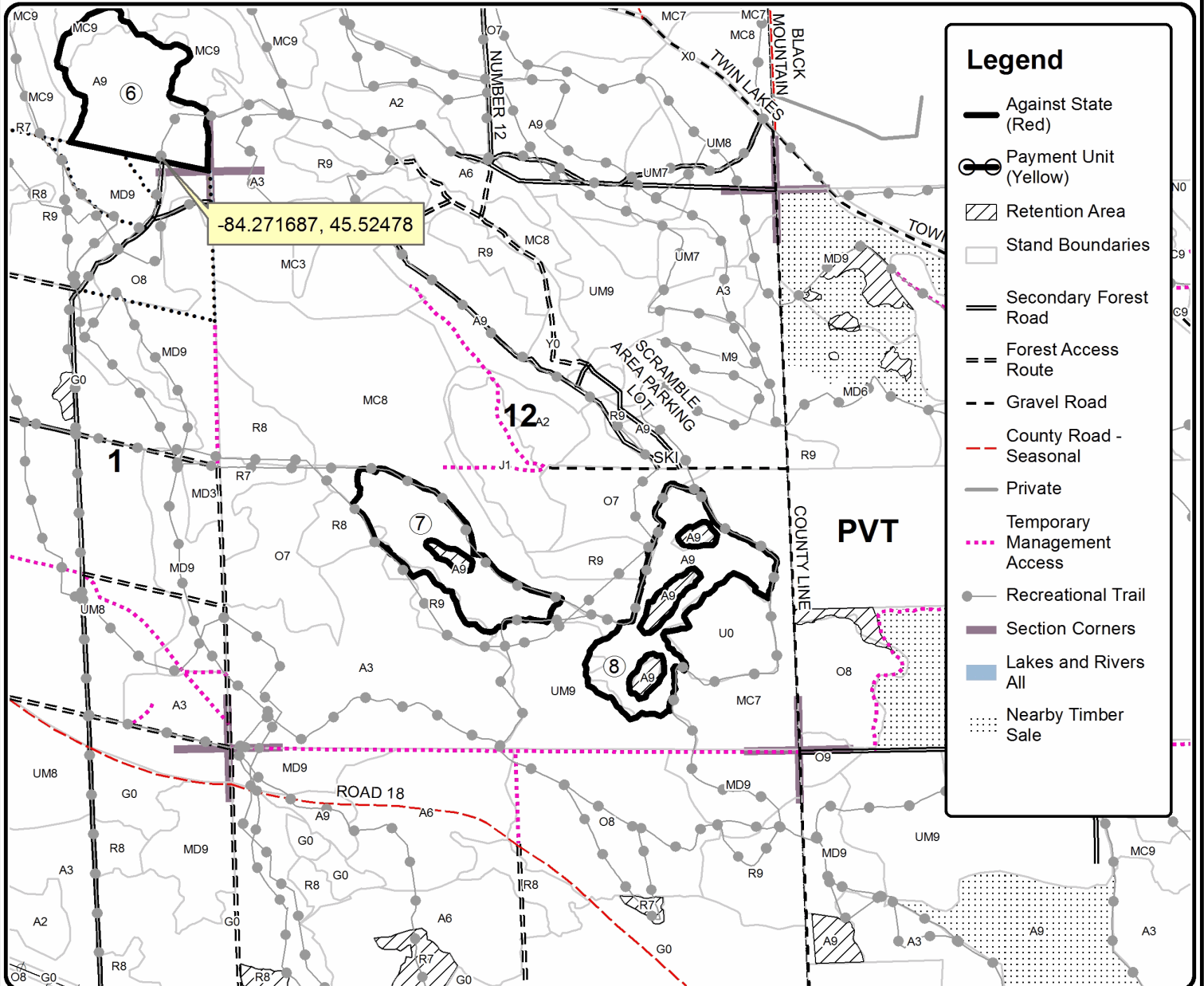
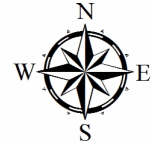
0 = Non Stocked	5 = Pole Timber Medium
1 = Seedling Sapling Poor	6 = Pole Timber Well
2 = Seedling Sapling Medium	7 = Saw Timber Poor
3 = Seedling Sapling Well	8 = Saw Timber Medium
4 = Pole Timber Poor	9 = Saw Timber Well

PU	Acres	PU	Acres
1	7.5	5	8.4
2	20.3	6	30.2
3	24.4	7	24.4
4	22.9	8	28.1

## Thigh Burner Aspen

### Compartment 175

166.2 Acres



## TIMBER SALE INFORMATION

### A Grand Endeavor (54-027-18)

T37N, R01E, SEC. 15; T37N, R01E, SEC. 22.  
Cheboygan County (Advertised Price \$16,519.45)

SALE NOTE: Access into the sale area will be through Grand Rack Hunt Club property. Potential bidders wishing to evaluate this sale need to contact Cody Stevens at (989) 785-4251 ext. 5240 to facilitate entry into the sale area. Cutting, skidding, and hauling are not permitted from September 1 to January 1. See Spec 2.1.11 regarding a 3.9 acre optional unit.

Access may be through private land.

A timber sale contract for this lump sum, sealed bid timber sale will be awarded to the responsible bidder offering the highest sealed bid price. Bids must be at or above the following advertised price for each species:

<u>PRODUCTS &amp; SPECIES</u>	<u>ESTIMATED UNITS*</u>		<u>ADVERTISED PRICE</u>
<b>Sawtimber</b>			
Mixed Aspen	25.50	MBF	\$ 51.00 / MBF
N. White Cedar	20.10	MBF	\$ 18.00 / MBF
Paper Birch	2.90	MBF	\$ 24.00 / MBF
Red Maple	30.30	MBF	\$ 67.00 / MBF
<b>Pulpwood</b>			
Balsam Fir	121.00	Cords	\$ 15.70 / Cord
Mixed Aspen	319.00	Cords	\$ 14.80 / Cord
Mixed Spruce	92.00	Cords	\$ 8.95 / Cord
N. White Cedar	104.00	Cords	\$ 5.20 / Cord
Paper Birch	50.00	Cords	\$ 10.10 / Cord
Red Maple	327.00	Cords	\$ 13.05 / Cord

\* The total volume is statistically estimated within plus (+) or minus (-) 20.19 percent. The estimated units are final and not subject to adjustment. Prospective bidders are urged to examine this timber and to make their own estimates of quantity and quality.

### **BOND AND PAYMENT SCHEDULE:**

1. A bond in the amount of \$826.00 to insure faithful performance of the conditions of the contract will be deposited by the successful bidder within 21 days of the sale award.
2. Cutting in any sale or unit without the required advance payment would be considered a trespass.
3. Total payment must be paid in advance or according to the following schedule :
  - (a) Ten percent (10%) of the sale value must be paid within 21 days of the sale award.
  - (b) The remainder is due before cutting begins.
  - (c) Payment for each of the following units must be made before cutting begins in that unit:

PAYMENT UNIT NUMBER	PERCENT OF TOTAL SALE VALUE
01	100.0%

4. If no cutting takes place, the 10% down payment will not be refunded.
5. Operations on the contract issued will terminate on 12/31/2023.

**Description of Timber by Payment Unit (PU)**

PU	MARKET GROUP	PRODUCT	QUANTITY	UNIT	ACRES	ADVERTISE PRICE	
1	Mixed Aspen	Sawtimber	25.5	MBF	54.1	\$16,519.45	
	<i>B. T. Aspen</i>		8.7	<i>MBF</i>			
	<i>Quaking Aspen</i>		16.8	<i>MBF</i>			
	N. White Cedar		20.1	MBF			
	Paper Birch		2.9	MBF			
	Red Maple		30.3	MBF			
	Balsam Fir		Pulpwood	121.0			Cords
	Mixed Aspen			319.0			Cords
	Mixed Spruce			92.0			Cords
	N. White Cedar			104.0			Cords
	Paper Birch			50.0			Cords
	Red Maple			327.0			Cords
TOTAL:			78.8	MBF			
TOTAL:			1,013.0	Cords			

## Sale Specific Conditions & Requirements

**Sale Name: A Grand Endeavor**

**Sale Number: 54-027-18 Seq#: 2**

### 1 - Sale Area

#### 1.2 - Boundaries

##### 1.2.1 - Painted boundaries (1/14)

The sale boundary and Payment Unit boundaries are marked and identified by red and purple paint. Exterior sale boundary lines against state are marked with red paint. The interior retention island is marked with red painted 'X's'. Excluded portions of the original sale area that will serve as retention are shown on the Timber Sale Map. An optional unit is marked with red and purple paint. The painted boundary line trees are not Included Timber and are to be protected.

### 2 - Timber Specifications

#### 2.1 - Included Timber

##### 2.1.1 - Clearcut unit(s) with unmerchantable trees (6/14)

Within Payment Unit(s) 1, cut all trees that are two (2) inches or more at DBH, except do not cut hemlock, white pine, red pine, and trees marked with green paint.

Special protection trees identified in accordance with condition 3.4.2, within clearcutting unit boundaries, are not Included Timber and are to be protected.

Special protection areas identified in accordance with condition 3.4.3, within clearcutting unit boundaries, are not Included Timber and are to be protected.

##### 2.1.11 - Description of timber note (2/04)

Note that the Purchaser will have the opportunity to purchase an optional 3.9 acre Payment Unit if harvesting operations are ongoing between June 2 and August 31. Adding a Payment Unit is a contract modification which will require a Timber Sale Contract Supplement. The optional unit is shown on the Timber Sale Map; it includes approximately 5.6 MBF and 52 cords of mostly red maple, with smaller amounts of aspen and spruce/fir.

### 3 - Payments

#### 3.3 - Pre-measured Sales

##### 3.3.4 - Dividing payment units (7/14)

Payment Unit(s) 1 may be divided at the request of the Purchaser and upon approval of the Unit Manager. Dividing Payment Units is a contract modification which requires a Timber Sale Contract Supplement. There will be only one division per Payment Unit.

#### 3.4 - Damaged Timber

##### 3.4.1 - Damaged timber (6/14)

General Condition and Requirement 3.4 Damaged Timber, defines liquidated damages for undesignated live merchantable trees which are cut or injured.

No damage is acceptable to undesignated merchantable trees, designated retention, and protected areas. Within the sale area, if more than 5% of trees (> 4.5" DBH) within a specified area of the sale are damaged, liquidated damages will be assessed for all trees damaged. Rates will be in accordance with General Condition and Requirement 3.4 Damaged Timber.

##### 3.4.2 - Special Protection Trees (4/14)

The Purchaser shall not cut live or dead special protection trees within cutting units or clearings. Special protection trees are all red pine and white pine. Some of the white and red pine located within the sale area meet legacy tree standards (26" DBH of greater, fire scars, broken tops/crowns, etc.). If the Purchaser's operations have cut or damaged special protection trees through carelessness, the Purchaser shall pay \$250.00 as fixed, agreed and liquidated damages for each special protection tree

cut or damaged. Such payment does not constitute ownership of the undesignated timber.

#### 3.4.3 - Special Protection Areas (8/11)

The Purchaser shall protect special protection areas from damage by the Purchaser's operations. Special protection areas are marked with red painted 'X's'. If the Purchaser's operations have cut or damaged special protection areas through carelessness, the Purchaser shall pay \$500.00 as fixed, agreed and liquidated damages for each acre or part thereof cut or damaged. Such payment does not constitute ownership of the undesignated timber.

### 4 - Transportation

#### 4.1 - Construction

##### 4.1.3 - Slash and earthen piles (8/04)

Piles or windrows of earth along roads and landings that have been widened or constructed shall be leveled. Slash from road maintenance or construction, including stumps, shall be dispersed throughout the sale.

##### 4.1.12 - No new roads (1/12)

No new roads will be permitted in Payment Unit 1. All operations are limited to existing roads. Skid trails only will be allowed.

#### 4.2 - Maintenance

##### 4.2.5 - Two wheel drive condition (2/04)

All existing trail roads on and adjacent to the sale area must be passable by two-wheel drive traffic for the duration of the sale.

#### 4.4 - Access

##### 4.4.1 - Private property access (3/11)

Permission for access across private land has been obtained by the DNR to access the sale area. The Purchaser will need to coordinate closely with the sale administrator and Adam Osmun (Operations Manager for Grand Rack Hunt Club). Adam's contact information will be given to the winning bidder when the sale is sold.

### 5 - Operations

#### 5.1 - Notification

##### 5.1.1 - Pre-sale conference (10/16)

A pre-sale conference on site between the Purchaser and sale administrator is required prior to beginning any operations to determine landing and road locations. The Unit Manager or his/her representative must be contacted at least 10 days in advance to schedule the conference.

##### 5.1.4 - Post-sale conference (10/16)

A post-sale conference on site between the Purchaser and sale administrator is required 5 days prior to the completion of active logging operations to determine clean-up and repair of landings, road edges, and the fulfillment of other contract specifications.

#### 5.2 - Conduct of Operations

##### 5.2.2 - Hazard Trees/Snags

###### 5.2.2.1 - Den trees (10/16)

Obvious hollow and/or den trees shall be protected and left standing unless they are a safety hazard.

##### 5.2.3 - Operating Restrictions

###### 5.2.3.1 - Operating restrictions (9/11)

Within Payment Unit(s) 1, cutting, skidding, and hauling are not permitted during the period of September 1 to January 1. This restriction is the request of the private property landowner that is providing access into and out of the sale area.

###### 5.2.3.11 - Coppice regeneration protection (4/10)

Any post harvest operations, such as chipping, must be completed before sprouting of regeneration occurs. If it is anticipated that chipping will be delayed more than 30 days from severing of the stem(s), then tops shall be carried to one



central location or left unchipped. The Unit Manager or his/her representative may cease such operations if sprouting occurs before the operation is complete.

#### 5.2.4 - Dead and Down Creation

##### 5.2.4.2 - Dead and down creation, hare and grouse (1/14)

To improve habitat for snowshoe hare, grouse, and other species, the Purchaser is to leave a linear (not round) brush pile composed of at least six (6) of the largest available tops on the ground for every 1 - 2 acres within Payment Unit 1. They should be evenly scattered throughout the sale or positioned per the sale administrators instructions. These brush piles can be constructed from the tops of any available tree species.

##### 5.2.4.4 - Dead and down creation, grouse (6/18)

To encourage grouse and other wildlife, in Payment Unit(s) 1, leave one, 12" diameter or larger log-length (8 foot minimum) piece on the ground for every 2 acres. These will be evenly scattered throughout the unit. This can be an unmerchantable piece or a full tree.

#### 5.2.17 - Timber Mats and Interlocking Composite Mats (3/18)

Some roads or skid trails may require extra protection such as that afforded by timber mats, interlocking composite mats, or another approved system. Depending upon seasonal conditions, roughly 200-300 feet of skid trail or possibly road will need extra protection at the location(s) shown on the Timber Sale Map. If available, mats may be borrowed from the DNR. A Timber Sale Contract Supplement will be used to document the Purchaser's use of the DNR's mats. Contact the sale administrator regarding availability and pick-up. Timber mats are available from various field offices. Composite mats are only available from the Grayling field office. The Purchaser is responsible for picking up and hauling the mats to and from the site. The composite mats will require DNR staff onsite for installation and removal. Contact the sale administrator to schedule at least 30 days before desired install/removal date. All mats must be cleaned prior to drop off. This may include, but is not limited to, power washing and brushing to remove mud and debris. A charge of \$400.00 per timber mat and \$2,000.00 per composite mat will be assessed for all damaged or non-returned mats. Damage for the crane/timber mats is defined as three or more broken cants. Damage for the composite mats is defined as cracked or broken mats.

#### 5.2.22 - Operating Caution

##### 5.2.22.1 - Operating caution (6/11)

It is recommended, but not required, that within Payment Unit(s) 1, outside of the already restricted time frame from September 1 - January 1, that cutting, skidding, and hauling occur during very dry summer or frozen winter conditions. The reason for the recommendation is because of seasonally saturated soils and a very high water table.

#### 5.2.32 - Decking/landing restoration (9/13)

All decking and landing areas must have the surface area restored to a condition equal to or better than before. This is to ensure the proper regeneration of the stand. Wood debris, chips and "cookies" from trimmings, and earthen mounds must be removed or scattered away from landing and loading areas and may not be windrowed on the edge.

#### 5.2.38 - No decking against live trees (2/04)

Cut products may not be decked against unmarked or designated leave trees.

#### 5.4 - Soil Protection

##### 5.4.1 - Rutting restriction, general (7/16)

Operations are to cease immediately if equipment and weather conditions result in rutting of roads and/or skid trails which is 12 inches or greater in depth and 50 feet in length. The Unit Manager or his/her representative may restrict hauling and/or skidding if ruts exceed the specified depth. With the Unit Manager or his/her representative's approval, the Purchaser may return to the area when the risk of rutting has decreased.

##### 5.4.5 - Soil caution (11/04)

Care must be taken to minimize soil damage due to seasonally saturated conditions and sensitive soils.

#### 5.8 - Protection of Endangered Species

##### 5.8.5 - Protection of raptor nests (3/13)

All trees with raptor nests will be protected if found during harvesting operations. Notification will be made to the Unit Manager or his/her representative who will notify the Wildlife Biologist so an on-site evaluation and recommendation can be made, if necessary.





# TIMBER SALE MAP

This information provided by authority of Part 525, 1994 PA 451, as amended.

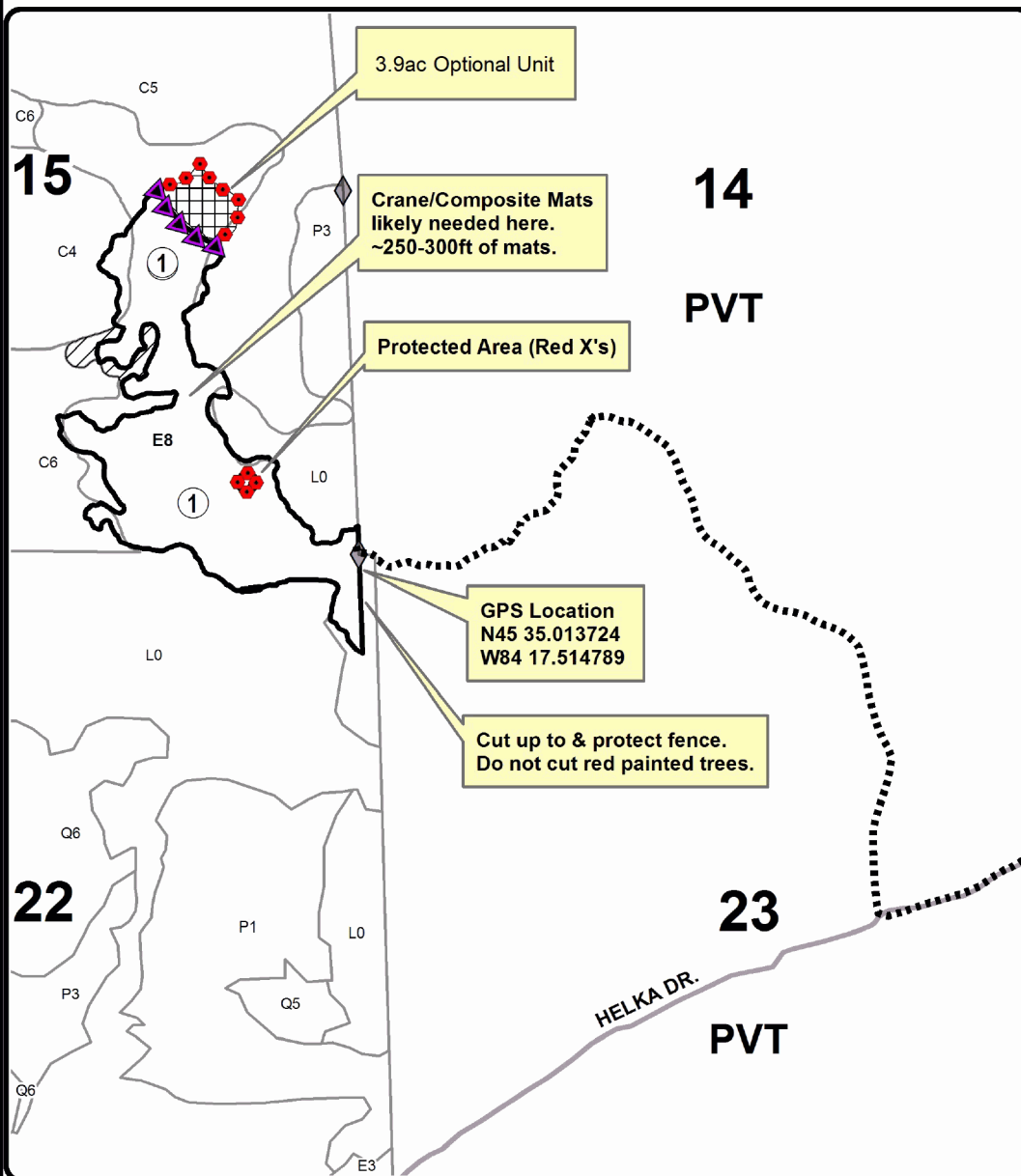
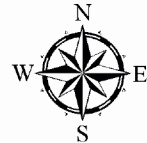
Forest Management Unit Atlanta Management Unit	County Cheboygan	Mapped By J. St. Pierre	Date 9/26/18	Page 1	of 1
Township 37N	Range 01E	Section(s) and Subdivision(s) Sec.15 SE Sec.22 N1/2NE	Scale 1:15,840		

Cover Type				Density	
A = Aspen	H = Hemlock	N = Marsh	U = Upland Brush	0 = Non Stocked	5 = Pole Timber Medium
B = Paper Birch	J = Jack Pine	O = Oak	UM = Upland Mixed	1 = Seedling Sapling Poor	6 = Pole Timber Well
C = Cedar	L = Lowland Brush	P = Lowland Poplar	V = Bog or Marsh	2 = Seedling Sapling Medium	7 = Saw Timber Poor
D = Treed Bog	LM = Lowland Mixed	Q = Mixed Swamp Conifer	W = White Pine	3 = Seedling Sapling Well	8 = Saw Timber Medium
E = Swamp Hdwoods	M = Mpl, Bch, Brch	R = Red Pine	X = Non Stocked	4 = Pole Timber Poor	9 = Saw Timber Well
F = Spruce Fir	MC = Mixed Conifer	S = Black Spruce	Z = Water		
G = Grass	MD = Mixed Deciduous	T = Tamarack			

**PU Acres**  
1 54.1

## A Grand Endeavor

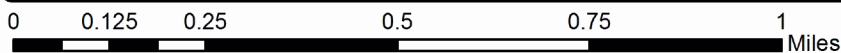
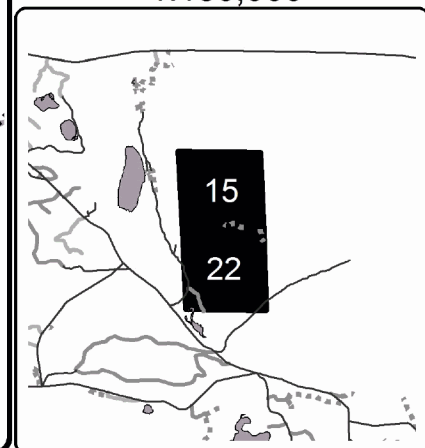
Compartment 170  
54.1 Acres



### Legend

- Against State (Red)
- ▲ Optional Unit Line (Purple)
- Protected Area Line (Red)
- Optional Unit
- ▨ Retention Area
- Payment Unit #
- ⋯ Proposed Haul Route
- Private Road
- ◆ Field Grade Corners

Locator Map  
1:150,000





Thigh Burner Aspen (54-029-19)  
T36N, R01E, SEC. 1; T36N, R01E, SEC. 12; T36N, R01E, SEC. 2; Cheboygan

In response to the notice of sale to be held 10:00 a.m. (local time) on April 7, 2020, I am hereby submitting my sealed bid (firm offer) for the following forest products to be cut. Bids for individual species must be at or above the advertised price. All non-responsive bid forms may be rejected.

<u>PRODUCTS &amp; SPECIES</u>	<u>ESTIMATED VOLUME*</u>	<u>ADVERTISED PRICE</u>	<u>BID PRICE/UNIT</u>
<b>Sawtimber</b>			
Basswood	34.20 MBF	\$ 67.00/MBF	\$ _____
Bl/R/Hybrid Oak	164.70 MBF	\$ 94.00/MBF	\$ _____
Mixed Aspen	83.50 MBF	\$ 84.00/MBF	\$ _____
Red Maple	12.20 MBF	\$ 112.00/MBF	\$ _____
Red Pine	166.00 MBF	\$ 132.00/MBF	\$ _____
Sugar Maple	29.30 MBF	\$ 356.00/MBF	\$ _____
White Pine	26.40 MBF	\$ 82.00/MBF	\$ _____
<b>Pulpwood</b>			
Bl/R/Hybrid Oak	1,097.00 Cords	\$ 33.40/Cord	\$ _____
Jack Pine	15.00 Cords	\$ 22.30/Cord	\$ _____
Mixed Aspen	1,279.00 Cords	\$ 24.65/Cord	\$ _____
Mixed Hardwood	702.00 Cords	\$ 21.75/Cord	\$ _____
Red Pine	482.00 Cords	\$ 55.15/Cord	\$ _____
White Pine	114.00 Cords	\$ 29.70/Cord	\$ _____

\*The volumes are statistically estimated within plus (+) or minus (-) 9.44 percent. These estimated volumes are final and not subject to adjustment. Prospective bidders are urged to examine this timber and to make their own estimates of quantity and quality.

I understand that any or all bids may be rejected. All bids must be signed and all bid items must be bid or the bid form may be rejected. I also understand that consideration and awarding a contract will be based upon my past performance and ability to complete the contract based upon equipment and staffing subject to my control.

FEDERAL ID: \_\_\_\_\_ or SOCIAL SECURITY NUMBER: \_\_\_\_\_

Company or individual bidding: \_\_\_\_\_

Company representative's name: \_\_\_\_\_

Address: \_\_\_\_\_

City: \_\_\_\_\_ State: \_\_\_\_\_ Zip: \_\_\_\_\_

IF AVAILABLE, PLEASE PLACE THE PERSONALIZED LABEL FROM YOUR PROSPECTUS IN THE ABOVE BOX.

Individual or company representative's signature: \_\_\_\_\_ Date: \_\_\_\_\_

Phone number : \_\_\_\_\_ Email (optional): \_\_\_\_\_

**THE WINNING BIDDER MUST COMPLETE THE VERIFICATION OF WORKER'S DISABILITY COMPENSATION ACT COMPLIANCE (ON REVERSE SIDE IF DOUBLE SIDED) WITHIN 21 DAYS OF SALE AWARD DATE**



<b>FOR DEPARTMENT USE ONLY</b>	
Sale Number (XX - XXX - XX - XX)	
Forest Management Unit:	

## TIMBER SALE VERIFICATION OF WORKER'S DISABILITY COMPENSATION ACT COMPLIANCE

As required by Act 317, P.A. 1969 (Worker's Compensation) and  
Part 5 of Act 451 of 1994, as amended.

### VERIFICATION OF WORKER'S DISABILITY COMPENSATION ACT COMPLIANCE

- This verification must be completed and submitted within 21 days of contract award and prior to the issuance of the timber sale contract.
- In addition, if boxes 2B or 2C are checked, then Notice of Exclusion or Certificate of Insurance must be submitted within twenty-one (21) days of the contract award and prior to the issuance of the timber sale contract.
- All information must be typed or printed except for written signatures.

Please Check Appropriate Categories:

1. My business is organized as (you **must** check one of the boxes below):
  - A.  Sole Proprietorship (individual)
  - B.  Partnership
  - C.  Corporation
2. You **must** check one of the boxes below:
  - A.  I certify my business is a sole proprietorship and it has no employees but the sole proprietor. I am not subject to the Worker's Compensation Laws.
  - B.  I certify my business has satisfied its obligation to the Worker's Compensation Act through the use of an approved Notice of Exclusion (BWC-337, Rev. 5/96). I will provide a copy of the Notice of Exclusion within 21 days of the contract award. (For questions or a copy of the BWC-337, please call the Worker's Compensation Bureau at 517-322-1195).
  - C.  I certify my business has a Worker's Compensation Policy. I will provide an original Certificate of Insurance within twenty-one (21) days of the contract award.
3. If you have checked item 2(A) or 2(B), you **must** indicate the number of **both** full-time and part-time employees, other than yourself, including family members and active partners (if none, you must enter "0").

\_\_\_\_\_ Full-time Employees

\_\_\_\_\_ Part-time Employees

Name of Business		Federal ID (or) Social Security No.	
Address		Telephone (       )	
City	State	ZIP	

*I hereby certify that the above information is true and correct. I agree to notify the Michigan DNR of any changes that occur in factors affecting my coverage during any of my present and future operations.*

\_\_\_\_\_  
Signature of Owner or Authorized Representative

\_\_\_\_\_  
Title

\_\_\_\_\_  
Date

Please complete the "SEALED BID" information on the next page

A Grand Endeavor (54-027-18)  
T37N, R01E, SEC. 15; T37N, R01E, SEC. 22; Cheboygan COUNTY

In response to the notice of sale to be held 10:00 a.m. (local time) on April 7, 2020, I am hereby submitting my sealed bid (firm offer) for the following forest products to be cut. Bids for individual species must be at or above the advertised price. All non-responsive bid forms may be rejected.

<u>PRODUCTS &amp; SPECIES</u>	<u>ESTIMATED VOLUME*</u>	<u>ADVERTISED PRICE</u>	<u>BID PRICE/UNIT</u>
<b>Sawtimber</b>			
Mixed Aspen	25.50 MBF	\$ 51.00/MBF	\$ _____
N. White Cedar	20.10 MBF	\$ 18.00/MBF	\$ _____
Paper Birch	2.90 MBF	\$ 24.00/MBF	\$ _____
Red Maple	30.30 MBF	\$ 67.00/MBF	\$ _____
<b>Pulpwood</b>			
Balsam Fir	121.00 Cords	\$ 15.70/Cord	\$ _____
Mixed Aspen	319.00 Cords	\$ 14.80/Cord	\$ _____
Mixed Spruce	92.00 Cords	\$ 8.95/Cord	\$ _____
N. White Cedar	104.00 Cords	\$ 5.20/Cord	\$ _____
Paper Birch	50.00 Cords	\$ 10.10/Cord	\$ _____
Red Maple	327.00 Cords	\$ 13.05/Cord	\$ _____

\*The volumes are statistically estimated within plus (+) or minus (-) 20.19 percent. These estimated volumes are final and not subject to adjustment. Prospective bidders are urged to examine this timber and to make their own estimates of quantity and quality.

I understand that any or all bids may be rejected. All bids must be signed and all bid items must be bid or the bid form may be rejected. I also understand that consideration and awarding a contract will be based upon my past performance and ability to complete the contract based upon equipment and staffing subject to my control.

FEDERAL ID: \_\_\_\_\_ or SOCIAL SECURITY NUMBER: \_\_\_\_\_

Company or individual bidding: \_\_\_\_\_

Company representative's name: \_\_\_\_\_

Address: \_\_\_\_\_

City: \_\_\_\_\_ State: \_\_\_\_\_ Zip: \_\_\_\_\_

IF AVAILABLE, PLEASE PLACE THE PERSONALIZED LABEL FROM YOUR PROSPECTUS IN THE ABOVE BOX.

Individual or company representative's signature: \_\_\_\_\_ Date: \_\_\_\_\_

Phone number : \_\_\_\_\_ Email (optional): \_\_\_\_\_

**THE WINNING BIDDER MUST COMPLETE THE VERIFICATION OF WORKER'S DISABILITY COMPENSATION ACT COMPLIANCE (ON REVERSE SIDE IF DOUBLE SIDED) WITHIN 21 DAYS OF SALE AWARD DATE**



<b>FOR DEPARTMENT USE ONLY</b>
Sale Number (XX – XXX – XX – XX)
Forest Management Unit:

## TIMBER SALE VERIFICATION OF WORKER'S DISABILITY COMPENSATION ACT COMPLIANCE

*As required by Act 317, P.A. 1969 (Worker's Compensation) and  
Part 5 of Act 451 of 1994, as amended.*

### VERIFICATION OF WORKER'S DISABILITY COMPENSATION ACT COMPLIANCE

- This verification must be completed and submitted within 21 days of contract award and prior to the issuance of the timber sale contract.
- In addition, if boxes 2B or 2C are checked, then Notice of Exclusion or Certificate of Insurance must be submitted within twenty-one (21) days of the contract award and prior to the issuance of the timber sale contract.
- All information must be typed or printed except for written signatures.

Please Check Appropriate Categories:

1. My business is organized as (you **must** check one of the boxes below):
  - A.  Sole Proprietorship (individual)
  - B.  Partnership
  - C.  Corporation
2. You **must** check one of the boxes below:
  - A.  I certify my business is a sole proprietorship and it has no employees but the sole proprietor. I am not subject to the Worker's Compensation Laws.
  - B.  I certify my business has satisfied its obligation to the Worker's Compensation Act through the use of an approved Notice of Exclusion (BWC-337, Rev. 5/96). I will provide a copy of the Notice of Exclusion within 21 days of the contract award. (For questions or a copy of the BWC-337, please call the Worker's Compensation Bureau at 517-322-1195).
  - C.  I certify my business has a Worker's Compensation Policy. I will provide an original Certificate of Insurance within twenty-one (21) days of the contract award.
3. If you have checked item 2(A) or 2(B), you **must** indicate the number of **both** full-time and part-time employees, other than yourself, including family members and active partners (if none, you must enter "0").

\_\_\_\_\_ Full-time Employees

\_\_\_\_\_ Part-time Employees

Name of Business		Federal ID (or) Social Security No.	
Address		Telephone (       )	
City	State	ZIP	

*I hereby certify that the above information is true and correct. I agree to notify the Michigan DNR of any changes that occur in factors affecting my coverage during any of my present and future operations.*

\_\_\_\_\_  
Signature of Owner or Authorized Representative

\_\_\_\_\_  
Title

\_\_\_\_\_  
Date

**Please complete the "SEALED BID" information on the next page**