



**DEPARTMENT OF NATURAL RESOURCES
STATE OF MICHIGAN**

TIMBER SALE PROSPECTUS #6667

SCHEDULED SALE DATE AND TIME: 3:00 p.m. (local time) on May 27, 2020.

LOCATION: ESCANABA MGMT UNIT, 6833 HWY'S 2, 41 & M-35, GLADSTONE, MI 49837.

PROSPECTUS NOTE: It is recommended that for the duration of the "Stay Home, Stay Safe" executive order that bidders submit their bids through the Online Bidding System (<https://www2.dnr.state.mi.us/VMSONlineBidding/>). If you need to register, contact Jake Reid (ReidJ6@michigan.gov, 517-284-5908) or Donovan Asselin (AsselinD@michigan.gov, 517-930-1326). Paper bids will still be accepted during this time, either dropped in the bid box at the bid location or by mailing. If mailing, please allow for additional time.

The bidder is advised to inspect the sale area and review the location, estimated volumes, operating costs and contract terms of proposed sales. Please be aware that some landowners may request 60 days or more notice for access across their land.

North Fox Bridge (33-024-20) / T36N, R25W, SEC. 13, SWNW,NWSW.

T36N, R25W, SEC. 14, SENW,NE,SE.

Menominee County, Advertised Price \$40,528.00, 130.0 Acres, Hardwood, Spruce/Fir/Tamarack.

SALE NOTE: This sale is accessed off of the North Fox Road. This road is a state maintained road with access to the public. Payment Units 1, 5, 6, 8 and 9 can be cut during a dry summer. Payment Units 2, 3, 4 and 7 will have to be cut during a dry summer or with frozen ground conditions.

Foxy Pine Mix (33-026-20) / T36N, R24W, SEC. 7 , NWNW.

T36N, R25W, SEC. 12, SENW,N1/2NE,SWNE,SW,W1/2SE.

T36N, R25W, SEC. 13, N1/2NW.

Menominee County, Advertised Price \$36,921.40, 116.0 Acres, White Pine, Hardwood.

SALE NOTE: All Payment Units can be accessed through state land. Most of the Payment Units can be harvested during a dry summer. There is a berm on the access road into Payment Units 4 and 9 which can be removed.

Snowy North Branch (33-027-20) / T36N, R25W, SEC. 11, NE,N1/2SE,SESE.

T36N, R25W, SEC. 12, NW.

Menominee County, Advertised Price \$28,244.10, 105.8 Acres, Hardwood, White Pine.

SALE NOTE: Payment Units 1 - 3 will be accessed off of the Forest Island ORV Trail. The Purchaser must post caution signs on the trail/road prior to any logging activity.

Homestead Drier SBW (33-035-19) / T36N, R27W, SEC. 20, NW,SESE.

T36N, R27W, SEC. 21, W1/2NE.

Menominee County, Advertised Price \$13,265.70, 76.3 Acres, Hardwood, Spruce/Fir/Tamarack.

SALE NOTE: Access into Payment Units 1, 2 and 3 will have to be through private property. Payment Units 4 - 6 will be accessed through state land off of the Klatt Road. See sale spec 4.4.1 for more details.

The spruce budworm has caused defoliation and mortality of the balsam fir and spruce within Payment Units 2 and 4.

Access may be through private land.

Walton Revival (33-037-19) / T35N, R26W, SEC. 13, SESW.

T35N, R26W, SEC. 24, NENW,S1/2NW,SESW,SWSE.

T35N, R26W, SEC. 26, SENW.

Menominee County, Advertised Price \$15,495.65, 48.0 Acres, Hardwood, Spruce/Fir/Tamarack.

SALE NOTE: The only access into Payment Units 1 & 4 is through private property. Each of the landowners has indicated they would allow access, but the Purchaser must contact each landowner to obtain permission. Payment Units 2 & 3 will be accessed on an un-improved county road heading east off of Wery Road.

Access may be through private land.

BID INSTRUCTIONS (VER. 07/02/2018):

1. Scheduled Bid Location, Date, and Time (2/11)

Bids must be received by the Unit Manager, ESCANABA OFFICE, 6833 Hwy's 2, 41 & M-35, Gladstone, MI 49837, no later than 3:00 p.m. (local time) on May 27, 2020. For further information concerning this sale, contact Eric Thompson at 906-786-2354.

2. Bidder's Qualifications (5/16)

Purchaser shall obtain workers compensation insurance to cover claims under Michigan's Worker's Disability Compensation Act of 1969 or similar employee benefit act of any other state applicable to an employee. If all or part of a timber sale was prepared by a private contractor, the contractor and that contractor's company are not permitted to bid on the timber sale contract. Bids will not be accepted from individuals or companies appearing on the DNR/FRD No-Bid List. This list contains the names of purchasers who previously failed to execute a contract within 21-days or who have a history of poor performance.

3. Preparation of Sealed Bids (5/16)

Bid Forms may be completed online thru Michigan DNR Timber Sale Online Bidding (OLB) at www.michigan.gov/timberbidding or by completing the hardcopy Bid Form found in the Timber Sale Prospectus. Hardcopy Bid Forms shall be manually signed in ink. Registration in OLB is considered your 'signature' for all bids submitted thru that system. Bid prices must be entered for each species and product in the Bid Price column for all material subject to bidding and all fill-in blanks must be completed. If erasures or other changes appear on the hardcopy Bid Form, each erasure or change must be initialed by the person signing the bid.

4. Submission of Sealed Bids (5/16)

Bid forms may be obtained from the Unit Manager or thru OLB. Bids may be submitted hardcopy or thru OLB. All hardcopy bids must be submitted on the bid form and in an envelope clearly identified as described in this section. NOTE: Only one bid form per bid envelope. Sealed bids must be submitted to the Unit office designated in the prospectus and must be submitted at or prior to the time established in the prospectus. The envelope should show on the outside (a) the sale name or number and (b) the date and time of bid opening, as shown in the prospectus. Bids received after the time specified in the sale prospectus are late bids and will be rejected.

It is possible for a bidder to submit multiple bids on a single sale. For example, a bid may be submitted hardcopy and a bid may be submitted thru OLB. Or, two bidders from the same company could both submit bids on the same sale. If this were to happen, the State would accept all bids received and award the contract accordingly. All bidding and contractual requirements would apply to all bids received.

5. Public Opening of Sealed Bids (7/16)

If conditions permit, the sealed bids will be publicly opened and posted at the time and place set in the prospectus.

If a bidder, present at a bid opening, has submitted bids on more than one sale, that bidder may withdraw their unopened bid envelopes or announce the withdrawal of their online bid after being declared the successful bidder on one sale.

6. Award of Contract (1/11)

Award of the contract will be made to the Bidder whose bid, conforming to the prospectus, is most advantageous to the State of Michigan on the basis of total value at rates bid for the estimated quantities. The State reserves the right to reject any bid or waive any minor irregularity in bids received. A written award mailed (or otherwise furnished) to the successful Bidder shall be deemed to result in a binding contract without further action by either party.

7. Down Payment (1/11)

The Bidder to whom award is made must make a down payment within 21 days of the sale award. The amount of the down payment will be calculated as shown in the Bond and Payment Schedule of this prospectus. Only cash may be used to meet this requirement.

8. Performance Security (1/11)

As guarantee of faithful performance, a cash bond, certificate of deposit, surety bond or irrevocable letter of credit (LOC) is required within 21 days of the sale award. The amount of the performance security is shown in the Bond and

Payment Schedule of this prospectus. If an LOC or surety is used, the coverage must extend for at least 6 months beyond the contract expiration.

9. Timber Sale Contract (7/18)

Additional conditions and requirements common to all timber sales are listed on the timber sale contract (R4031) and are available on line at www.michigan.gov/timber. Contact the Unit Manager for additional information or a sample contract. Within 21 days of the date of the award letter, the bidder must sign the contract and provide the required down payment, performance security, and verification of worker's disability compensation. The down payment and performance security shall be in accordance with the provisions of the timber sale contract, in the sums stated in this prospectus. If these actions are not taken, then the Bidder, the Bidder's corporation, and the corporation's principals may not be permitted to bid on State timber sales for a period of 3 months after the first offense, 6 months after the second offense, and 1 year after the third offense. An offense will only be counted against the Bidder for 5 years. In addition, the Bidder certifies that if awarded this contract, the Bidder will complete the timber sale contract in accordance with its terms and any modifications thereof including requirements to purchase, cut, and remove the included timber by the expiration date.

Payment Unit values in the State Forest Timber Sale Contract are calculated based on the advertised value of the Payment Unit as a percentage of the total advertised value of the contract. The advertised value of each Payment Unit is given in the Description of Timber by Payment Unit table on the Timber Sale Information page. For example, if the value of Payment Unit 1 is advertised as \$1,500 and the total Timber Sale value is advertised as \$10,000, the contract price for Payment Unit 1 will be 15% of the total bid price ($\$1,500/\$10,000 * 100$).

10. Disclaimer of Estimates and Bidder's Warranty of Inspection (7/16)

Before submitting this bid, the Bidder is advised and cautioned to inspect the sale area, review the requirements of the sale contract, and take other steps as may be reasonably necessary to ascertain the location, estimated volumes, construction estimates, and operating costs of the proposed sale. Failure to do so will not relieve the Bidder from responsibility for completing the contract.

The Bidder warrants that this bid is submitted solely on the basis of the Bidder's examination and inspection of the quality and quantity of the timber offered for sale and the Bidder's opinion of the value thereof and the costs of recovery. No reliance should be placed on the State of Michigan's estimates of timber quality, quantity or costs of recovery. Bidder further acknowledges that the State of Michigan: (i) expressly disclaims any warranty of fitness of timber for any purpose; (ii) offers this timber as is without any warranty of quality (merchantability) or quantity and (iii) expressly disclaims any warranty as to the quantity or quality of timber sold.

11. Certification and Chain-of-Custody (10/14)

Unless otherwise indicated in the contract under section 7 – Other Conditions of the Sale Specific Conditions & Requirements, the area encompassed by this timber sale is certified to the standards of the Forest Stewardship Council (FSC) - Certificate #SCS-FM/COC-00090N and the Sustainable Forestry Initiative (SFI) - Certificate #NSF-SFIS-5Y031-SF5. Forest products from this sale may be delivered to the mill as "FSC 100% and / or SFI certified" as long as the contractor hauling the forest products is chain-of-custody (COC) certified or covered under a COC certificate from the destination mill. The purchaser is responsible for maintaining COC after leaving the sale area.

12. Good Neighbor Authority (GNA) Requirements (7/16)

If the name of this timber sales contains the acronym GNA, it is authorized by the Good Neighbor Authority (GNA) and covered by various agreements between the U.S. Forest Service and the State. The timber sale occurs on federal land and the following conditions apply:

GNA contracts on US Forest Service land will not be awarded to purchasers on the Federal list of excluded parties. The System for Award Management (SAM) will be checked for active excluded parties prior to award of contract. In addition, the Bidder to whom award is made must complete an Assurance Regarding Felony Conviction or Tax Delinquent Status for Corporate Applicants (AD-3031).

13. Good Neighbor Authority (GNA) Requirements, con't (9/16)

Bidder certifies, by signing this bid form, that to the best of Bidder's knowledge that the following representations are accurate and complete.

- a. That the Bidder and its principals are not presently debarred, suspended, proposed for debarment, declared ineligible, or voluntary excluded from timber sales (covered transactions) by any Federal department or agency.
- b. That the Bidder and its principals have not within a 3-year period preceding this bid been convicted of or had a civil judgment rendered against them for commission of fraud or a criminal offense in connection with obtaining , attempting to obtain, or performing a public (Federal, State, or local) transaction or contract under a public transaction; violation of Federal or State antitrust statutes or commission of embezzlement, theft, forgery, bribery, falsification or destruction of records, making false statements, or receiving stolen property.
- c. That the Bidder and its principals are not presently indicted for or otherwise criminally or civilly charged by a governmental entity (Federal, State, or local) with commission of any of the offenses enumerated in paragraph b of this certification.
- d. That the Bidder and its principals have not within a 3-year period preceding this bid had one or more public transactions (Federal, State, or local) terminated for breach or default of a timber or forest product contract.

Bidders that cannot certify this requirement, in whole or in part, shall submit an explanation with their bid.

DAN EICHINGER
Director

TIMBER SALE INFORMATION

North Fox Bridge (33-024-20)
 T36N, R25W, SEC. 13; T36N, R25W, SEC. 14.
 Menominee County (Advertised Price \$40,528.00)

SALE NOTE: This sale is accessed off of the North Fox Road. This road is a state maintained road with access to the public. Payment Units 1, 5, 6, 8 and 9 can be cut during a dry summer. Payment Units 2, 3, 4 and 7 will have to be cut during a dry summer or with frozen ground conditions.

A timber sale contract for this lump sum, sealed bid timber sale will be awarded to the responsible bidder offering the highest sealed bid price. Bids must be at or above the following advertised price for each species:

<u>PRODUCTS & SPECIES</u>	<u>ESTIMATED UNITS*</u>	<u>ADVERTISED PRICE</u>
Sawtimber		
Green Ash	2.30 MBF	\$ 39.00 / MBF
Red Maple	3.40 MBF	\$ 120.00 / MBF
Pulpwood		
Balsam Fir	101.00 Cords	\$ 13.40 / Cord
Mixed Aspen	14.00 Cords	\$ 20.55 / Cord
Mixed Hardwood	1,325.00 Cords	\$ 18.50 / Cord
Mixed Spruce	319.00 Cords	\$ 15.90 / Cord
N. White Cedar	25.00 Cords	\$ 12.20 / Cord
Red Pine	108.00 Cords	\$ 30.75 / Cord
Tamarack	90.00 Cords	\$ 9.30 / Cord
White Pine	201.00 Cords	\$ 21.60 / Cord

* The total volume is statistically estimated within plus (+) or minus (-) 9.88 percent. The estimated units are final and not subject to adjustment. Prospective bidders are urged to examine this timber and to make their own estimates of quantity and quality.

BOND AND PAYMENT SCHEDULE:

1. A bond in the amount of \$2,026.00 to insure faithful performance of the conditions of the contract will be deposited by the successful bidder within 21 days of the sale award.
2. Cutting in any sale or unit without the required advance payment would be considered a trespass.
3. Total payment must be paid in advance or according to the following schedule :
 - (a) Ten percent (10%) of the sale value must be paid within 21 days of the sale award.
 - (b) The 10% down payment will be credited towards the first unit cut.
 - (c) Payment for each of the following units must be made before cutting begins in that unit:

PAYMENT UNIT NUMBER	PERCENT OF TOTAL SALE VALUE
01	4.2%
02	18.1%
03	12.8%
04	18.1%
05	10.4%
06	10.1%
07	9.7%
08	6.1%
09	10.5%

4. If no cutting takes place, the 10% down payment will not be refunded.
5. Operations on the contract issued will terminate on 06/30/2024.

Description of Timber by Payment Unit (PU)

PU	MARKET GROUP	PRODUCT	QUANTITY	UNIT	ACRES	ADVERTISE PRICE
1	Balsam Fir	Pulpwood	21.0	Cords	7.7	\$1,687.85
	Mixed Hardwood		13.0	Cords		
	Mixed Spruce		9.0	Cords		
	Red Pine		15.0	Cords		
	White Pine		26.0	Cords		
2	Red Maple	Sawtimber	0.6	MBF	26.4	\$7,362.90
	Balsam Fir	Pulpwood	41.0	Cords		
	Mixed Hardwood		331.0	Cords		
	Mixed Spruce		28.0	Cords		
	White Pine		8.0	Cords		
3	Green Ash	Sawtimber	1.0	MBF	16.7	\$5,206.90
	Balsam Fir	Pulpwood	15.0	Cords		
	Mixed Hardwood		197.0	Cords		
	Mixed Spruce		56.0	Cords		
	White Pine		20.0	Cords		
4	Balsam Fir	Pulpwood	14.0	Cords	25.4	\$7,346.35
	Mixed Hardwood		282.0	Cords		
	Mixed Spruce		25.0	Cords		
	Red Pine		31.0	Cords		
	Tamarack		38.0	Cords		
	White Pine		11.0	Cords		
5	Balsam Fir	Pulpwood	2.0	Cords	6.8	\$4,216.20
	Mixed Aspen		3.0	Cords		
	Mixed Hardwood		54.0	Cords		
	Mixed Spruce		3.0	Cords		
	N. White Cedar		13.0	Cords		
	Red Pine		55.0	Cords		
	White Pine		57.0	Cords		
6	Green Ash	Sawtimber	0.8	MBF	9.7	\$4,082.85
	Red Maple		2.3	MBF		
	Balsam Fir	Pulpwood	4.0	Cords		
	Mixed Hardwood		165.0	Cords		
	Mixed Spruce		3.0	Cords		
	N. White Cedar		8.0	Cords		
	Red Pine		3.0	Cords		
	White Pine		20.0	Cords		
	7		Mixed Hardwood	Pulpwood		
<i>Red Maple</i>		4.0	<i>Cords</i>			
Mixed Spruce		156.0	Cords			
Tamarack		52.0	Cords			
White Pine		41.0	Cords			
8	Green Ash	Sawtimber	0.5	MBF	8.4	\$2,465.25
	Red Maple		0.5	MBF		
	Balsam Fir	Pulpwood	1.0	Cords		
	Mixed Aspen		8.0	Cords		
	Mixed Hardwood		95.0	Cords		
	Mixed Spruce		8.0	Cords		
	N. White Cedar		3.0	Cords		
	Red Pine		3.0	Cords		
	White Pine		9.0	Cords		
9	Balsam Fir	Pulpwood	3.0	Cords	15.6	\$4,236.10
	Mixed Aspen		3.0	Cords		
	Mixed Hardwood		184.0	Cords		
	Mixed Spruce		31.0	Cords		
	N. White Cedar		1.0	Cords		

Description of Timber by Payment Unit (PU), con't

PU	MARKET GROUP	PRODUCT	QUANTITY	UNIT	ACRES	ADVERTISE PRICE
9 con't	Red Pine	Pulpwood	1.0	Cords		
	White Pine		9.0	Cords		
TOTAL:			5.7	MBF		
TOTAL:			2,183.0	Cords		

Sale Specific Conditions & Requirements

Sale Name: North Fox Bridge

Sale Number: 33-024-20 Seq#: 1

1 - Sale Area

1.2 - Boundaries

1.2.1 - Painted boundaries (9/19)

The sale boundary and Payment Unit boundaries are marked and identified by blue, red and yellow paint. Exterior sale boundary lines against private property are marked with blue paint. Exterior sale boundary lines against state are marked with red paint. Interior Payment Unit boundaries are marked with yellow paint. The painted boundary line trees are not Included Timber and are to be protected. Yellow painted trees designating an interior Payment Unit boundary are only to be cut when all surrounding Payment Units have been paid for.

2 - Timber Specifications

2.1 - Included Timber

2.1.1 - Clearcut unit(s) with unmerchantable trees (6/14)

Within Payment Unit(s) 1, cut all trees that are four (4) inches or more at DBH, except do not cut cedar, hemlock, or any trees marked with green paint.

Within Payment Unit(s) 2 - 9, cut all trees that are three (3) inches or more at DBH, with the following exceptions:

- Within Payment Units 2, 3, and 4, do not cut spruce less than five (5) inches at DBH, any cedar, or any trees marked with green paint.
- Within Payment Units 5, 8, and 9, do not cut hemlock or any trees marked with green paint.
- Within Payment Unit 6, do not cut spruce less than five (5) inches at DBH or any trees marked with green paint.

2.1.9 - Harvest exception (12/08)

Do not cut any hemlock trees other than those that are necessary to remove in order to operate within the sale area. Every effort must be made to preserve the existing hemlock and to leave an intact stand upon sale completion. All cut hemlock shall be piled separately by products and scaled in the woods unless other scaling arrangements are agreed to by the Unit Manager or his/her representative. Stumpage price for hemlock shall be \$32.00 per cord.

3 - Payments

3.3 - Pre-measured Sales

3.3.4 - Dividing payment units (7/14)

Payment Unit(s) \$18,000 in value or greater may be divided at the request of the Purchaser and upon approval of the Unit Manager. Dividing Payment Units is a contract modification which requires a Timber Sale Contract Supplement. There will be only one division per Payment Unit.

4 - Transportation

4.2 - Maintenance

4.2.1 - Hauling restriction (12/08)

Hauling may be restricted on forest roads by the Unit Manager or his/her representative. The restriction may occur during spring breakup or during other wet weather conditions.

4.2.4 - Grading (10/16)

For completion of the sale, state forest roads must be graded. In general, this will require a road grader or bull dozer to shape up the roads after forest products have been hauled off site. This includes cleaning of drainage areas, grading, crowning and filling with gravel, if necessary. The grading equipment to be used must be approved by the Unit Manager or his/her representative.

5 - Operations

5.2 - Conduct of Operations

5.2.3 - Operating Restrictions

5.2.3.1 - Operating restrictions (9/11)

Within Payment Unit(s) 2, 3, 4, and 7, cutting and skidding are limited to the period of December 1 to March 31, unless there is an extended dry or frozen period of time and the sale administrator allows harvesting during that time period. This restriction is because of low wet ground within each of the Payment Units.

5.2.22 - Operating Caution

5.2.22.1 - Operating caution (6/11)

It is recommended, but not required, that within Payment Unit(s) 1, 6, 8 and 9, cutting and skidding occur during dry summer or frozen winter conditions. The reason for the recommendation is because of some isolated low wet ground pockets within each of the Payment Units.

5.4 - Soil Protection

5.4.1 - Rutting restriction, general (7/16)

Operations are to cease immediately if equipment and weather conditions result in rutting of roads and/or skid trails which is 12 inches or greater in depth and 50 feet in length. The Unit Manager or his/her representative may restrict hauling and/or skidding if ruts exceed the specified depth. With the Unit Manager or his/her representative's approval, the Purchaser may return to the area when the risk of rutting has decreased.

6 - Safety and Fire Prevention

6.2 - Signing

6.2.1 - Road posting (9/09)

The Purchaser is responsible for posting and maintaining caution signs on the North Fox, Camp "K", and the North Branch of the North Fox roads prior to beginning operations. The road must be posted at appropriate distances from the sale area to warn of logging activity and truck traffic. Signs must be removed when harvest operations are suspended or completed. The Purchaser will provide these signs.

7 - Other Conditions

7.2 - Extensions

7.2.5 - Weather related extension (1/13)

If weather conditions during the operating period of this contract prevent harvesting, this sale may qualify for a weather related extension. If approved, the normal extension fee would be waived. To qualify, there must be a documented attempt each year to harvest in the difficult portion of the sale.



TIMBER SALE MAP

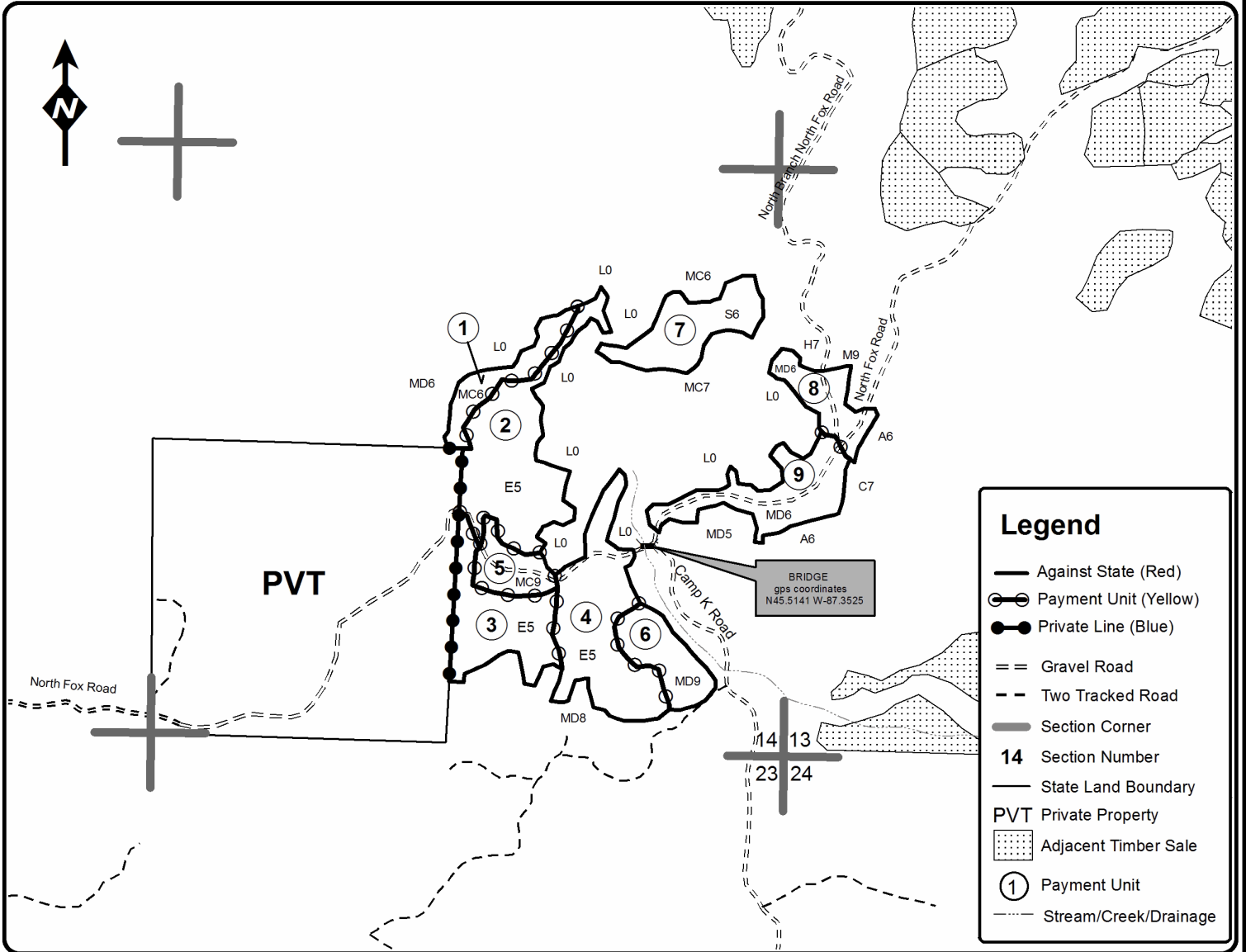
This information provided by authority of Part 525, 1994 PA 451, as amended.

Forest Management Unit Escanaba Management Unit		County Menominee County	Mapped By Beaudo	Date 1/13/2020	Page 1	of 1
Township 36N	Range 25W	Section(s) and Subdivision(s) Sec 13 - SWNW, NWSW; Sec 14 - SENW, NE, SE.		Scale 1:15,840		

Cover Type				Density	
A = Aspen	H = Hemlock	N = Marsh	U = Upland Brush	0 = Non Stocked	5 = Pole Timber Medium
B = Paper Birch	J = Jack Pine	O = Oak	UM = Upland Mixed	1 = Seedling Sapling Poor	6 = Pole Timber Well
C = Cedar	L = Lowland Brush	P = Lowland Poplar	V = Bog or Marsh	2 = Seedling Sapling Medium	7 = Saw Timber Poor
D = Treed Bog	LM = Lowland Mixed	Q = Mixed Swamp Conifer	W = White Pine	3 = Seedling Sapling Well	8 = Saw Timber Medium
E = Swamp Hdwoods	M = Mpl, Bch, Brch	R = Red Pine	X = Non Stocked	4 = Pole Timber Poor	9 = Saw Timber Well
F = Spruce Fir	MC = Mixed Conifer	S = Black Spruce	Z = Water		
G = Grass	MD = Mixed Deciduous	T = Tamarack			

PU	Acres	PU	Acres
1	7.7	6	9.7
2	26.4	7	13.3
3	16.7	8	8.4
4	25.4	9	15.6
5	6.8		

North Fox Bridge
Compartment 40
130.0 Acres



TIMBER SALE INFORMATION

Foxy Pine Mix (33-026-20)

T36N, R24W, SEC. 7; T36N, R25W, SEC. 12; T36N, R25W, SEC. 13.
Menominee County (Advertised Price \$36,921.40)

SALE NOTE: All Payment Units can be accessed through state land. Most of the Payment Units can be harvested during a dry summer. There is a berm on the access road into Payment Units 4 and 9 which can be removed.

A timber sale contract for this lump sum, sealed bid timber sale will be awarded to the responsible bidder offering the highest sealed bid price. Bids must be at or above the following advertised price for each species:

<u>PRODUCTS & SPECIES</u>	<u>ESTIMATED UNITS*</u>	<u>ADVERTISED PRICE</u>
Sawtimber		
Green Ash	2.70 MBF	\$ 32.00 / MBF
Paper Birch	1.00 MBF	\$ 41.00 / MBF
Red Maple	7.30 MBF	\$ 98.00 / MBF
Sugar Maple	3.00 MBF	\$ 142.00 / MBF
Pulpwood		
Balsam Fir	108.00 Cords	\$ 10.95 / Cord
Mixed Hardwood	668.00 Cords	\$ 15.15 / Cord
Mixed Spruce	162.00 Cords	\$ 13.00 / Cord
N. White Cedar	12.00 Cords	\$ 10.00 / Cord
Quaking Aspen	144.00 Cords	\$ 16.80 / Cord
Red Pine	241.00 Cords	\$ 25.15 / Cord
White Pine	773.00 Cords	\$ 17.65 / Cord

* The total volume is statistically estimated within plus (+) or minus (-) 11.66 percent. The estimated units are final and not subject to adjustment. Prospective bidders are urged to examine this timber and to make their own estimates of quantity and quality.

BOND AND PAYMENT SCHEDULE:

1. A bond in the amount of \$1,846.00 to insure faithful performance of the conditions of the contract will be deposited by the successful bidder within 21 days of the sale award.
2. Cutting in any sale or unit without the required advance payment would be considered a trespass.
3. Total payment must be paid in advance or according to the following schedule :
 - (a) Ten percent (10%) of the sale value must be paid within 21 days of the sale award.
 - (b) The 10% down payment will be credited towards the first unit cut.
 - (c) Payment for each of the following units must be made before cutting begins in that unit:

PAYMENT UNIT NUMBER	PERCENT OF TOTAL SALE VALUE
01	15.6%
02	14.0%
03	6.5%
04	3.5%
05	11.6%
06	8.3%
07	18.4%
08	12.1%
09	10.0%

4. If no cutting takes place, the 10% down payment will not be refunded.
5. Operations on the contract issued will terminate on 09/30/2023.

Description of Timber by Payment Unit (PU)

PU	MARKET GROUP	PRODUCT	QUANTITY	UNIT	ACRES	ADVERTISE PRICE
1	Green Ash Red Maple Sugar Maple Balsam Fir Mixed Hardwood Mixed Spruce Quaking Aspen White Pine	Sawtimber	2.2	MBF	15.2	\$5,754.00
			4.2	MBF		
		0.5	MBF			
		Pulpwood	34.0	Cords		
			145.0	Cords		
			35.0	Cords		
			76.0	Cords		
			51.0	Cords		
2	Green Ash Paper Birch Red Maple Sugar Maple Balsam Fir Mixed Hardwood Mixed Spruce Quaking Aspen White Pine	Sawtimber	0.5	MBF	14.1	\$5,156.50
			1.0	MBF		
			1.4	MBF		
		Pulpwood	2.5	MBF		
			45.0	Cords		
			164.0	Cords		
			51.0	Cords		
			46.0	Cords		
			11.0	Cords		
3	Red Maple Balsam Fir Mixed Hardwood Mixed Spruce Quaking Aspen	Sawtimber	0.8	MBF	8.2	\$2,407.35
			Pulpwood	15.0		
		94.0		Cords		
		35.0		Cords		
		17.0		Cords		
		4	Mixed Hardwood <i>Black Ash</i> <i>Green Ash</i> <i>Red Maple</i>	Pulpwood		
5.0	Cords					
31.0	Cords					
49.0	Cords					
5	Balsam Fir Mixed Hardwood Mixed Spruce Red Pine White Pine	Pulpwood	6.0	Cords	8.4	\$4,291.15
			9.0	Cords		
			1.0	Cords		
			134.0	Cords		
			40.0	Cords		
6	Balsam Fir Mixed Hardwood Mixed Spruce N. White Cedar Red Pine White Pine	Pulpwood	2.0	Cords	9.6	\$3,065.40
			2.0	Cords		
			2.0	Cords		
			12.0	Cords		
			34.0	Cords		
			114.0	Cords		
7	Balsam Fir Mixed Hardwood Quaking Aspen Red Pine White Pine	Pulpwood	4.0	Cords	17.2	\$6,812.45
			23.0	Cords		
			2.0	Cords		
			42.0	Cords		
			302.0	Cords		
8	Mixed Hardwood <i>Yellow Birch</i> Red Pine White Pine	Pulpwood	2.0	Cords	10.1	\$4,461.30
			2.0	Cords		
			26.0	Cords		
			214.0	Cords		
9	Red Maple Balsam Fir Mixed Hardwood Mixed Spruce Quaking Aspen Red Pine White Pine	Sawtimber	0.9	MBF	15.6	\$3,685.50
			Pulpwood	2.0		
		144.0		Cords		
		38.0		Cords		
		3.0		Cords		
		5.0		Cords		
		41.0	Cords			
TOTAL:			14.0	MBF		

TOTAL:	2,108.0	Cords
--------	---------	-------

Sale Specific Conditions & Requirements

Sale Name: Foxy Pine Mix

Sale Number: 33-026-20 Seq#: 1

1 - Sale Area

1.2 - Boundaries

1.2.1 - Painted boundaries (9/19)

The sale boundary and Payment Unit boundaries are marked and identified by blue, red and yellow paint. Exterior sale boundary lines against private property are marked with blue paint. Exterior sale boundary lines against state are marked with red paint. Interior Payment Unit boundaries are marked with yellow paint. The painted boundary line trees are not Included Timber and are to be protected. Yellow painted trees designating an interior Payment Unit boundary are only to be cut when all surrounding Payment Units have been paid for.

2 - Timber Specifications

2.1 - Included Timber

2.1.1 - Clearcut unit(s) with unmerchantable trees (6/14)

Within Payment Unit(s) 1, 2, 3 and 9, cut all trees that are three (3) inches or more at DBH, except do not cut cedar. In addition, within Payment Units 1, 2, and 9, do not cut hemlock or any trees marked with green paint.

Within Payment Unit(s) 4, cut all hardwood trees that are four (4) inches or more at DBH.

Within Payment Unit(s) 5, cut all trees that are four (4) inches or more at DBH, except do not cut hemlock or any trees marked with green paint.

2.1.7 - Leave tree marked unit(s) (6/14)

Within Payment Unit(s) 6, 7, and 8, cut all trees that are five (5) inches or more at DBH, except do not cut hemlock and trees marked with green paint above and below stump height.

2.1.9 - Harvest exception (12/08)

Do not cut any hemlock other than those that are necessary to remove in order to operate within the sale area. Every effort must be made to preserve the existing hemlock and to leave an intact stand upon sale completion. All cut hemlock shall be piled separately by products and scaled in the woods unless other scaling arrangements are agreed to by the Unit Manager or his/her representative. Stumpage price for hemlock shall be \$32.00 per cord for pulpwood.

3 - Payments

3.3 - Pre-measured Sales

3.3.4 - Dividing payment units (7/14)

Payment Unit(s) \$18,000 in value or greater may be divided at the request of the Purchaser and upon approval of the Unit Manager. Dividing Payment Units is a contract modification which requires a Timber Sale Contract Supplement. There will be only one division per Payment Unit.

4 - Transportation

4.2 - Maintenance

4.2.1 - Hauling restriction (12/08)

Hauling may be restricted on forest roads by the Unit Manager or his/her representative. The restriction may occur during spring breakup or during other wet weather conditions.

4.2.4 - Grading (10/16)

For completion of the sale, state forest roads must be graded. In general, this will require a road grader or bull dozer to shape up the roads after forest products have been hauled off site. This includes cleaning of drainage areas, grading, crowning and filling with gravel, if necessary. The grading equipment to be used must be approved by the Unit Manager or his/her representative.

5 - Operations

5.2 - Conduct of Operations

5.2.3 - Operating Restrictions

5.2.3.1 - Operating restrictions (9/11)

Within Payment Unit(s) 3 and 4, cutting and skidding are limited to the period of December 1 to March 31, unless there is an extended dry or frozen period and the sale administrator allows harvesting during that time period. This restriction is because of low wet ground throughout these Payment Units.

5.2.22 - Operating Caution

5.2.22.1 - Operating caution (6/11)

It is recommended, but not required, that within Payment Unit(s) 1, 2, 5, 6, 7, 8 and 9, cutting and skidding occur during dry summer or frozen winter conditions. The reason for the recommendation is because of some low wet ground within each of the Payment Units. Payment Unit 5 is dry, but the access road/trail into it has some low wet ground.

5.4 - Soil Protection

5.4.1 - Rutting restriction, general (7/16)

Operations are to cease immediately if equipment and weather conditions result in rutting of roads and/or skid trails which is 12 inches or greater in depth and 50 feet in length. The Unit Manager or his/her representative may restrict hauling and/or skidding if ruts exceed the specified depth. With the Unit Manager or his/her representative's approval, the Purchaser may return to the area when the risk of rutting has decreased.

6 - Safety and Fire Prevention

6.2 - Signing

6.2.1 - Road posting (9/09)

The Purchaser is responsible for posting and maintaining caution signs on the North Fox, North Branch of the North Fox, and the Forest Island ORV Trail (if used) prior to beginning operations. The road must be posted at appropriate distances from the sale area to warn of logging activity and truck traffic. Signs must be removed when harvest operations are suspended or completed. The Purchaser will provide these signs.

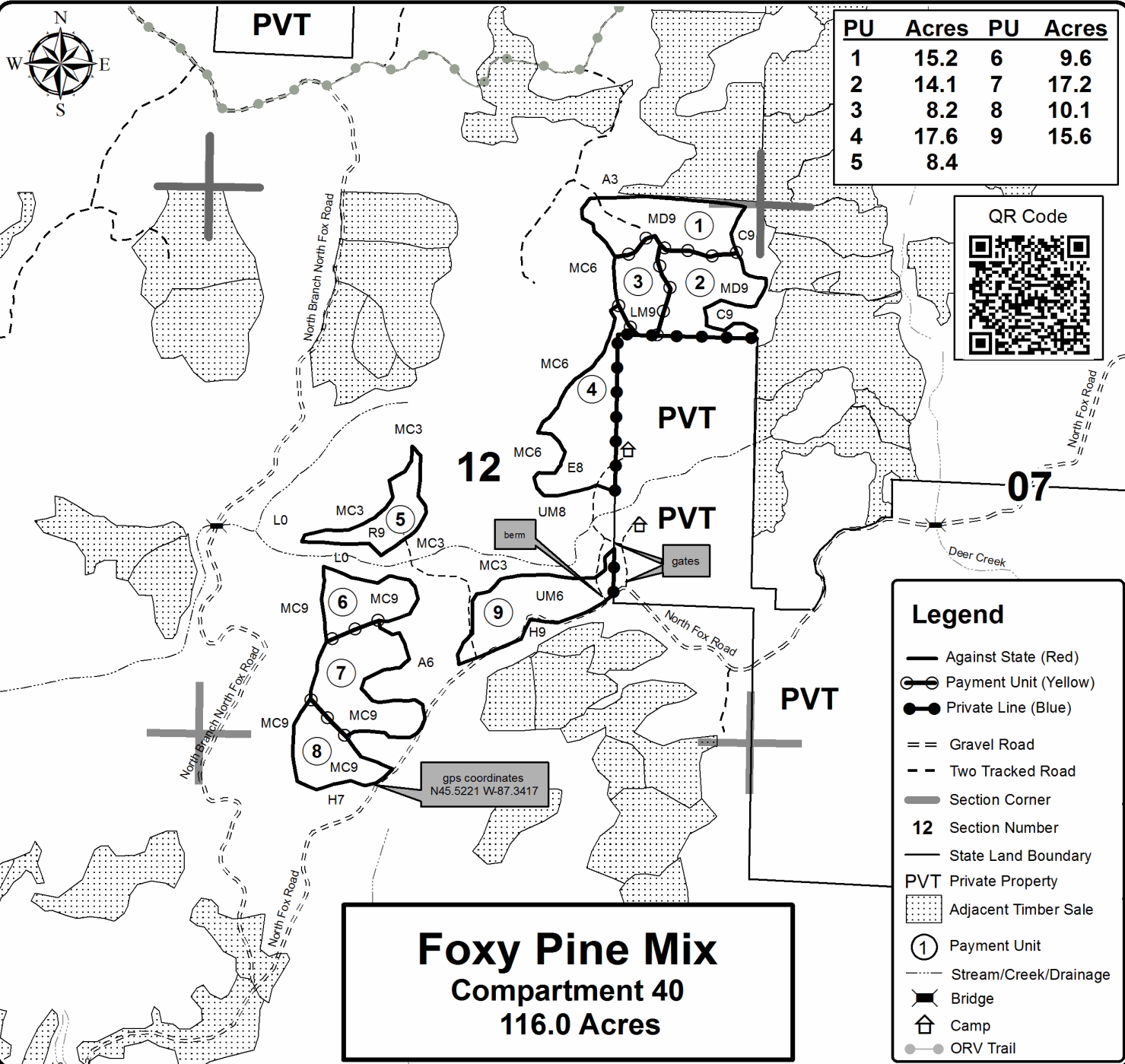


TIMBER SALE MAP

This information provided by authority of Part 525, 1994 PA 451, as amended.

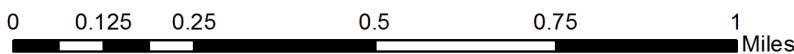
Forest Management Unit Escanaba Management Unit	County Menominee County	Mapped By Beaudo	Date 2/7/2020	Page 1	of 1
Township 36N	Range 24W, 25W	Section(s) and Subdivision(s) 24W: Sec 7 - NWNW. 25W: Sec 12 - SENW, N1/2NE, SWNE, SW, W1/2SE; Sec 13 - N1/2NW.	Scale 1:15,840		

Cover Type				Density			
A = Aspen	H = Hemlock	N = Marsh	U = Upland Brush	0 = Non Stocked	5 = Pole Timber Medium		
B = Paper Birch	J = Jack Pine	O = Oak	UM = Upland Mixed	1 = Seedling Sapling Poor	6 = Pole Timber Well		
C = Cedar	L = Lowland Brush	P = Lowland Poplar	V = Bog or Marsh	2 = Seedling Sapling Medium	7 = Saw Timber Poor		
D = Treed Bog	LM = Lowland Mixed	Q = Mixed Swamp Conifer	W = White Pine	3 = Seedling Sapling Well	8 = Saw Timber Medium		
E = Swamp Hdwoods	M = Mpl, Bch, Brch	R = Red Pine	X = Non Stocked	4 = Pole Timber Poor	9 = Saw Timber Well		
F = Spruce Fir	MC = Mixed Conifer	S = Black Spruce	Z = Water				
G = Grass	MD = Mixed Deciduous	T = Tamarack					



PU	Acres	PU	Acres
1	15.2	6	9.6
2	14.1	7	17.2
3	8.2	8	10.1
4	17.6	9	15.6
5	8.4		

Foxy Pine Mix
Compartment 40
116.0 Acres



TIMBER SALE INFORMATION

Snowy North Branch (33-027-20)
 T36N, R25W, SEC. 11; T36N, R25W, SEC. 12.
 Menominee County (Advertised Price \$28,244.10)

SALE NOTE: Payment Units 1 - 3 will be accessed off of the Forest Island ORV Trail. The Purchaser must post caution signs on the trail/road prior to any logging activity.

A timber sale contract for this lump sum, sealed bid timber sale will be awarded to the responsible bidder offering the highest sealed bid price. Bids must be at or above the following advertised price for each species:

<u>PRODUCTS & SPECIES</u>	<u>ESTIMATED UNITS*</u>	<u>ADVERTISED PRICE</u>
Sawtimber		
Green Ash	1.00 MBF	\$ 36.00 / MBF
Paper Birch	1.30 MBF	\$ 45.00 / MBF
Red Maple	4.10 MBF	\$ 109.00 / MBF
Pulpwood		
Balsam Fir	66.00 Cords	\$ 12.20 / Cord
Mixed Aspen	52.00 Cords	\$ 18.65 / Cord
Mixed Hardwood	731.00 Cords	\$ 16.85 / Cord
Mixed Spruce	67.00 Cords	\$ 14.45 / Cord
Paper Birch	56.00 Cords	\$ 8.50 / Cord
Red Pine	72.00 Cords	\$ 27.95 / Cord
Tamarack	4.00 Cords	\$ 8.45 / Cord
White Pine	506.00 Cords	\$ 20.00 / Cord

* The total volume is statistically estimated within plus (+) or minus (-) 15.79 percent. The estimated units are final and not subject to adjustment. Prospective bidders are urged to examine this timber and to make their own estimates of quantity and quality.

BOND AND PAYMENT SCHEDULE:

1. A bond in the amount of \$1,412.00 to insure faithful performance of the conditions of the contract will be deposited by the successful bidder within 21 days of the sale award.
2. Cutting in any sale or unit without the required advance payment would be considered a trespass.
3. Total payment must be paid in advance or according to the following schedule :
 - (a) Ten percent (10%) of the sale value must be paid within 21 days of the sale award.
 - (b) The 10% down payment will be credited towards the first unit cut.
 - (c) Payment for each of the following units must be made before cutting begins in that unit:

PAYMENT UNIT NUMBER	PERCENT OF TOTAL SALE VALUE
01	15.2%
02	17.3%
03	26.2%
04	11.9%
05	7.1%
06	3.8%
07	7.9%
08	10.6%
4. If no cutting takes place, the 10% down payment will not be refunded.
5. Operations on the contract issued will terminate on 09/30/2023.

Description of Timber by Payment Unit (PU)

PU	MARKET GROUP	PRODUCT	QUANTITY	UNIT	ACRES	ADVERTISE PRICE
1	Mixed Hardwood	Pulpwood	2.0	Cords	5.9	\$4,281.00
	Red Maple		2.0	Cords		
	Mixed Spruce		12.0	Cords		
	Red Pine		60.0	Cords		
	Tamarack		2.0	Cords		
	White Pine		119.0	Cords		
2	Green Ash	Sawtimber	0.5	MBF	20.0	\$4,880.95
	Paper Birch		1.3	MBF		
	Red Maple		3.2	MBF		
	Balsam Fir	Pulpwood	10.0	Cords		
	Mixed Hardwood		177.0	Cords		
	Mixed Spruce		6.0	Cords		
	Paper Birch		17.0	Cords		
	White Pine		56.0	Cords		
	3		Red Maple	Sawtimber		
Balsam Fir		Pulpwood	20.0	Cords		
Mixed Hardwood			135.0	Cords		
Mixed Spruce			7.0	Cords		
Paper Birch			20.0	Cords		
White Pine			225.0	Cords		
4			Green Ash	Sawtimber	0.5	MBF
	Balsam Fir	Pulpwood	6.0	Cords		
	Mixed Hardwood		122.0	Cords		
	Mixed Spruce		13.0	Cords		
	Paper Birch		12.0	Cords		
	Red Pine		12.0	Cords		
	Tamarack		2.0	Cords		
	White Pine		28.0	Cords		
	5		Balsam Fir	Pulpwood	20.0	Cords
Mixed Aspen		52.0	Cords			
Mixed Hardwood		34.0	Cords			
Mixed Spruce		2.0	Cords			
White Pine		10.0	Cords			
6	Balsam Fir	Pulpwood	2.0	Cords	11.9	\$1,081.70
	Mixed Hardwood		58.0	Cords		
	White Pine		4.0	Cords		
7	Balsam Fir	Pulpwood	3.0	Cords	19.1	\$2,240.35
	Mixed Hardwood		89.0	Cords		
	Mixed Spruce		8.0	Cords		
	Paper Birch		1.0	Cords		
	White Pine		29.0	Cords		
8	Balsam Fir	Pulpwood	5.0	Cords	11.6	\$3,007.45
	Mixed Hardwood		114.0	Cords		
	Mixed Spruce		19.0	Cords		
	Paper Birch		6.0	Cords		
	White Pine		35.0	Cords		
TOTAL:			6.4	MBF		
TOTAL:			1,554.0	Cords		

Sale Specific Conditions & Requirements

Sale Name: Snowy North Branch

Sale Number: 33-027-20 Seq#: 1

1 - Sale Area

1.2 - Boundaries

1.2.1 - Painted boundaries (9/19)

The sale boundary and Payment Unit boundaries are marked and identified by red and yellow paint. Exterior sale boundary lines against state are marked with red paint. Interior Payment Unit boundaries are marked with yellow paint. The painted boundary line trees are not Included Timber and are to be protected. Yellow painted trees designating an interior Payment Unit boundary are only to be cut when all surrounding Payment Units have been paid for.

2 - Timber Specifications

2.1 - Included Timber

2.1.1 - Clearcut unit(s) with unmerchantable trees (6/14)

Within Payment Unit(s) 1 - 5 and 8, cut all trees that are three (3) inches or more at DBH, except do not cut any cedar, hemlock, or green marked trees.

Within Payment Unit(s) 6 and 7, cut all trees four (4) inches or more at DBH; except do not cut any cedar, hemlock, spruce six (6) inches or less at DBH, or any green marked trees.

3 - Payments

3.3 - Pre-measured Sales

3.3.4 - Dividing payment units (7/14)

Payment Unit(s) \$18,000 in value or greater may be divided at the request of the Purchaser and upon approval of the Unit Manager. Dividing Payment Units is a contract modification which requires a Timber Sale Contract Supplement. There will be only one division per Payment Unit.

4 - Transportation

4.2 - Maintenance

4.2.1 - Hauling restriction (12/08)

Hauling may be restricted on forest roads by the Unit Manager or his/her representative. The restriction may occur during spring breakup or during other wet weather conditions.

4.2.4 - Grading (10/16)

For completion of the sale, state forest roads must be graded. In general, this will require a road grader or bull dozer to shape up the roads after forest products have been hauled off site. This includes cleaning of drainage areas, grading, crowning and filling with gravel, if necessary. The grading equipment to be used must be approved by the Unit Manager or his/her representative.

5 - Operations

5.2 - Conduct of Operations

5.2.3 - Operating Restrictions

5.2.3.1 - Operating restrictions (9/11)

Within Payment Unit(s) 4, 6 and 7, cutting and skidding are limited to the period of December 1st to March 31st, unless there is an extended dry or frozen period and the sale administrator allows harvesting during that period of time. This restriction is because of low wet ground throughout these Payment Units.

5.2.22 - Operating Caution

5.2.22.1 - Operating caution (6/11)

It is recommended, but not required, that within Payment Unit(s) 1, 2, 3, 5 and 8, cutting and skidding occur during dry summer or frozen winter conditions. The reason for the recommendation is because of some low wet ground within each of the Payment Units.

5.4 - Soil Protection

5.4.1 - Rutting restriction, general (7/16)

Operations are to cease immediately if equipment and weather conditions result in rutting of roads and/or skid trails which is 12 inches or greater in depth and 50 feet in length. The Unit Manager or his/her representative may restrict hauling and/or skidding if ruts exceed the specified depth. With the Unit Manager or his/her representative's approval, the Purchaser may return to the area when the risk of rutting has decreased.

6 - Safety and Fire Prevention

6.2 - Signing

6.2.1 - Road posting (9/09)

The Purchaser is responsible for posting and maintaining caution signs on the North Branch of the North Fox prior to beginning operations. The road must be posted at appropriate distances from the sale area to warn of logging activity and truck traffic. Signs must be removed when harvest operations are suspended or completed. The Purchaser will provide these signs.

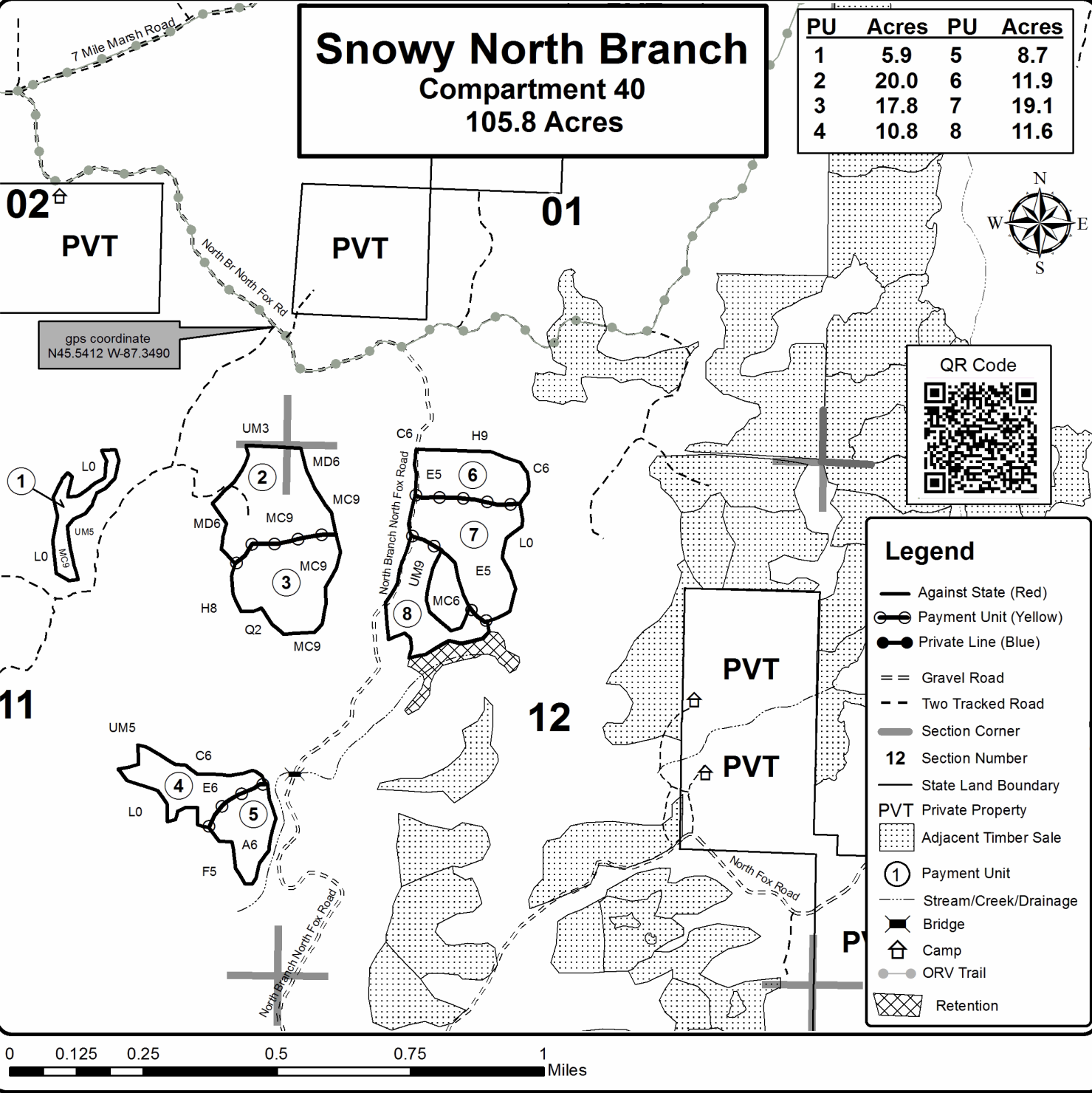


TIMBER SALE MAP

This information provided by authority of Part 525, 1994 PA 451, as amended.

Forest Management Unit Escanaba Management Unit		County Menominee County	Mapped By Beaudo	Date 2/21/2020	Page 1	of 1
Township 36N	Range 25W	Section(s) and Subdivision(s) Sec 11 - NE, N1/2SE, SESE; Sec 12 - NW		Scale 1:15,840		

Cover Type				Density			
A = Aspen	H = Hemlock	N = Marsh	U = Upland Brush	0 = Non Stocked	5 = Pole Timber Medium		
B = Paper Birch	J = Jack Pine	O = Oak	UM = Upland Mixed	1 = Seedling Sapling Poor	6 = Pole Timber Well		
C = Cedar	L = Lowland Brush	P = Lowland Poplar	V = Bog or Marsh	2 = Seedling Sapling Medium	7 = Saw Timber Poor		
D = Treed Bog	LM = Lowland Mixed	Q = Mixed Swamp Conifer	W = White Pine	3 = Seedling Sapling Well	8 = Saw Timber Medium		
E = Swamp Hdwoods	M = Mpl, Bch, Brch	R = Red Pine	X = Non Stocked	4 = Pole Timber Poor	9 = Saw Timber Well		
F = Spruce Fir	MC = Mixed Conifer	S = Black Spruce	Z = Water				
G = Grass	MD = Mixed Deciduous	T = Tamarack					



TIMBER SALE INFORMATION

Homestead Drier SBW (33-035-19)
 T36N, R27W, SEC. 20; T36N, R27W, SEC. 21.
 Menominee County (Advertised Price \$13,265.70)

SALE NOTE: Access into Payment Units 1, 2 and 3 will have to be through private property. Payment Units 4 - 6 will be accessed through state land off of the Klatt Road. See sale spec 4.4.1 for more details.

The spruce budworm has caused defoliation and mortality of the balsam fir and spruce within Payment Units 2 and 4.

Access may be through private land.

A timber sale contract for this lump sum, sealed bid timber sale will be awarded to the responsible bidder offering the highest sealed bid price. Bids must be at or above the following advertised price for each species:

<u>PRODUCTS & SPECIES</u>	<u>ESTIMATED UNITS*</u>	<u>ADVERTISED PRICE</u>
Sawtimber		
Basswood	4.30 MBF	\$ 68.00 / MBF
Red Maple	6.20 MBF	\$ 98.00 / MBF
Sugar Maple	10.80 MBF	\$ 142.00 / MBF
White Ash	1.90 MBF	\$ 65.00 / MBF
Pulpwood		
Balsam Fir	137.00 Cords	\$ 10.95 / Cord
Mixed Aspen	62.00 Cords	\$ 16.80 / Cord
Mixed Hardwood	394.00 Cords	\$ 15.15 / Cord
Mixed Spruce	93.00 Cords	\$ 13.00 / Cord
N. White Cedar	85.00 Cords	\$ 10.00 / Cord
Tamarack	2.00 Cords	\$ 7.60 / Cord
White Pine	7.00 Cords	\$ 17.65 / Cord

* The total volume is statistically estimated within plus (+) or minus (-) 18.33 percent. The estimated units are final and not subject to adjustment. Prospective bidders are urged to examine this timber and to make their own estimates of quantity and quality.

BOND AND PAYMENT SCHEDULE:

1. A bond in the amount of \$663.00 to insure faithful performance of the conditions of the contract will be deposited by the successful bidder within 21 days of the sale award.
2. Cutting in any sale or unit without the required advance payment would be considered a trespass.
3. Total payment must be paid in advance or according to the following schedule :
 - (a) Ten percent (10%) of the sale value must be paid within 21 days of the sale award.
 - (b) The 10% down payment will be credited towards the first unit cut.
 - (c) Payment for each of the following units must be made before cutting begins in that unit:

<u>PAYMENT UNIT NUMBER</u>	<u>PERCENT OF TOTAL SALE VALUE</u>
01	8.6%
02	33.0%
03	8.4%
04	2.5%
05	19.6%
06	27.9%

4. If no cutting takes place, the 10% down payment will not be refunded.
5. Operations on the contract issued will terminate on 09/30/2022.

Description of Timber by Payment Unit (PU)

PU	MARKET GROUP	PRODUCT	QUANTITY	UNIT	ACRES	ADVERTISE PRICE
1	Basswood	Sawtimber	0.8	MBF	10.9	\$1,141.30
	Sugar Maple		1.0	MBF		
	White Ash		1.9	MBF		
	Mixed Aspen	Pulpwood	2.0	Cords		
	Mixed Hardwood		52.0	Cords		
2	Balsam Fir	Pulpwood	114.0	Cords	34.3	\$4,366.35
	Mixed Aspen		58.0	Cords		
	Mixed Hardwood		83.0	Cords		
	Mixed Spruce		67.0	Cords		
	Tamarack		2.0	Cords		
3	Basswood	Sawtimber	2.5	MBF	7.1	\$1,120.60
	Sugar Maple		1.9	MBF		
	Balsam Fir	Pulpwood	9.0	Cords		
	Mixed Hardwood		35.0	Cords		
	Mixed Spruce		4.0	Cords		
4	Balsam Fir	Pulpwood	2.0	Cords	4.1	\$337.25
	Mixed Aspen		2.0	Cords		
	Mixed Hardwood		1.0	Cords		
	Mixed Spruce		2.0	Cords		
	N. White Cedar		17.0	Cords		
	White Pine		4.0	Cords		
5	Balsam Fir	Pulpwood	7.0	Cords	12.2	\$2,601.10
	Mixed Hardwood		123.0	Cords		
	Mixed Spruce		17.0	Cords		
	N. White Cedar		44.0	Cords		
6	Basswood	Sawtimber	1.0	MBF	7.7	\$3,699.10
	Red Maple		6.2	MBF		
	Sugar Maple		7.9	MBF		
	Balsam Fir	Pulpwood	5.0	Cords		
	Mixed Hardwood		100.0	Cords		
	Mixed Spruce		3.0	Cords		
	N. White Cedar		24.0	Cords		
	White Pine		3.0	Cords		
TOTAL:			23.2	MBF		
TOTAL:			780.0	Cords		

Sale Specific Conditions & Requirements

Sale Name: Homestead Drier SBW

Sale Number: 33-035-19 Seq#: 2

1 - Sale Area

1.2 - Boundaries

1.2.1 - Painted boundaries (1/14)

The sale boundary and Payment Unit boundaries are marked and identified by blue, red and yellow paint. Exterior sale boundary lines against private property are marked with blue paint. Exterior sale boundary lines against state are marked with red paint. Retention patches are marked with red paint; no harvesting activities may occur within these areas. Interior Payment Unit boundaries are marked with yellow paint. The painted boundary line trees are not Included Timber and are to be protected unless marked with orange paint. Yellow painted trees designating an interior Payment Unit boundary are only to be cut when all surrounding Payment Units have been paid for.

2 - Timber Specifications

2.1 - Included Timber

2.1.1 - Clearcut unit(s) with unmerchantable trees (6/14)

Within Payment Unit(s) 5 and 6, cut all trees that are three (3) inches or more at DBH, except do not cut hemlock and trees marked with green paint.

2.1.2 - Clearcut unit(s) w/o unmerchantable trees (8/11)

Within Payment Unit(s) 2 and 4, cut all trees which meet minimum piece specifications in 2.2 Utilization, except within Payment Unit 2, do not cut hemlock, cedar, pine and apple trees. In addition, within Payment Unit 4, cut all balsam fir and spruce that are greater than three (3) inches at DBH.

2.1.3 - Cut tree marked unit(s) (12/08)

Within Payment Unit(s) 1 and 3, all trees are designated for cutting when marked with orange paint above and below stump height, regardless of merchantability.

2.2 - Utilization

2.2.4 - Skidding length (2/14)

Skidding of unlimbed tops or lengths over 17 feet is not permissible, unless approved by the Unit Manager or his/her representative.

3 - Payments

3.3 - Pre-measured Sales

3.3.4 - Dividing payment units (7/14)

Payment Unit(s) \$18,000 in value or greater may be divided at the request of the Purchaser and upon approval of the Unit Manager. Dividing Payment Units is a contract modification which requires a Timber Sale Contract Supplement. There will be only one division per Payment Unit.

3.4 - Damaged Timber

3.4.1 - Damaged timber (7/16)

General Condition and Requirement 3.4 Damaged Timber, defines liquidated damages for undesignated live merchantable trees which are cut or injured. In addition, extreme care should be taken to avoid damage to aspen seedlings and saplings within Payment Unit 2.

4 - Transportation

4.2 - Maintenance

4.2.1 - Hauling restriction (12/08)

Hauling may be restricted on forest roads by the Unit Manager or his/her representative. The restriction may occur during spring breakup or during other wet weather conditions.

4.2.4 - Grading (10/16)

For completion of the sale, state forest roads must be graded. In general, this will require a road grader or bull dozer to shape up the roads after forest products have been hauled off site. This includes cleaning of drainage areas, grading, crowning and filling with gravel, if necessary. The grading equipment to be used must be approved by the Unit Manager or his/her representative.

4.4 - Access

4.4.1 - Private property access (3/11)

Permission for access across private land is the responsibility of the Purchaser. Should the Purchaser desire to cross private land, a copy of the written permission from the private land-owner may be required by the DNR.

Access into Payment Units 1, 2 and 3 will have to be through private property. Each of the landowners has been contacted and they have indicated they would allow the Purchaser access through their property, but it is the Purchaser's responsibility to get permission from the the two landowners prior to harvesting.

Payment Units 4 - 6 will be accessed through state land off of the Klatt Road.

5 - Operations

5.2 - Conduct of Operations

5.2.3 - Operating Restrictions

5.2.3.1 - Operating restrictions (9/11)

Within Payment Unit(s) 5, cutting and skidding are limited to the period of December 1 to March 31, unless there is an extended dry or frozen period and the sale administrator allows harvesting during that time period. This restriction is because of low wet ground throughout the Payment Unit.

5.2.3.3 - Bark slippage restriction (3/09)

Within Payment Unit(s) 1 and 3, unless changed by written agreement, cutting and skidding are not permitted during the period of April 15 to July 15. This restriction is because of bark slippage.

5.4 - Soil Protection

5.4.1 - Rutting restriction, general (7/16)

Operations are to cease immediately if equipment and weather conditions result in rutting of roads and/or skid trails which is 12 inches or greater in depth and 50 feet in length. The Unit Manager or his/her representative may restrict hauling and/or skidding if ruts exceed the specified depth. With the Unit Manager or his/her representative's approval, the Purchaser may return to the area when the risk of rutting has decreased.

7 - Other Conditions

7.5 - Loss

7.5.1 - Deteriorating timber (7/09)

The sale area has received damage from spruce budworm. The Purchaser should harvest the wood as soon as possible. The Department of Natural Resources is held free of responsibility of any further damage or deterioration due to delay in harvesting.

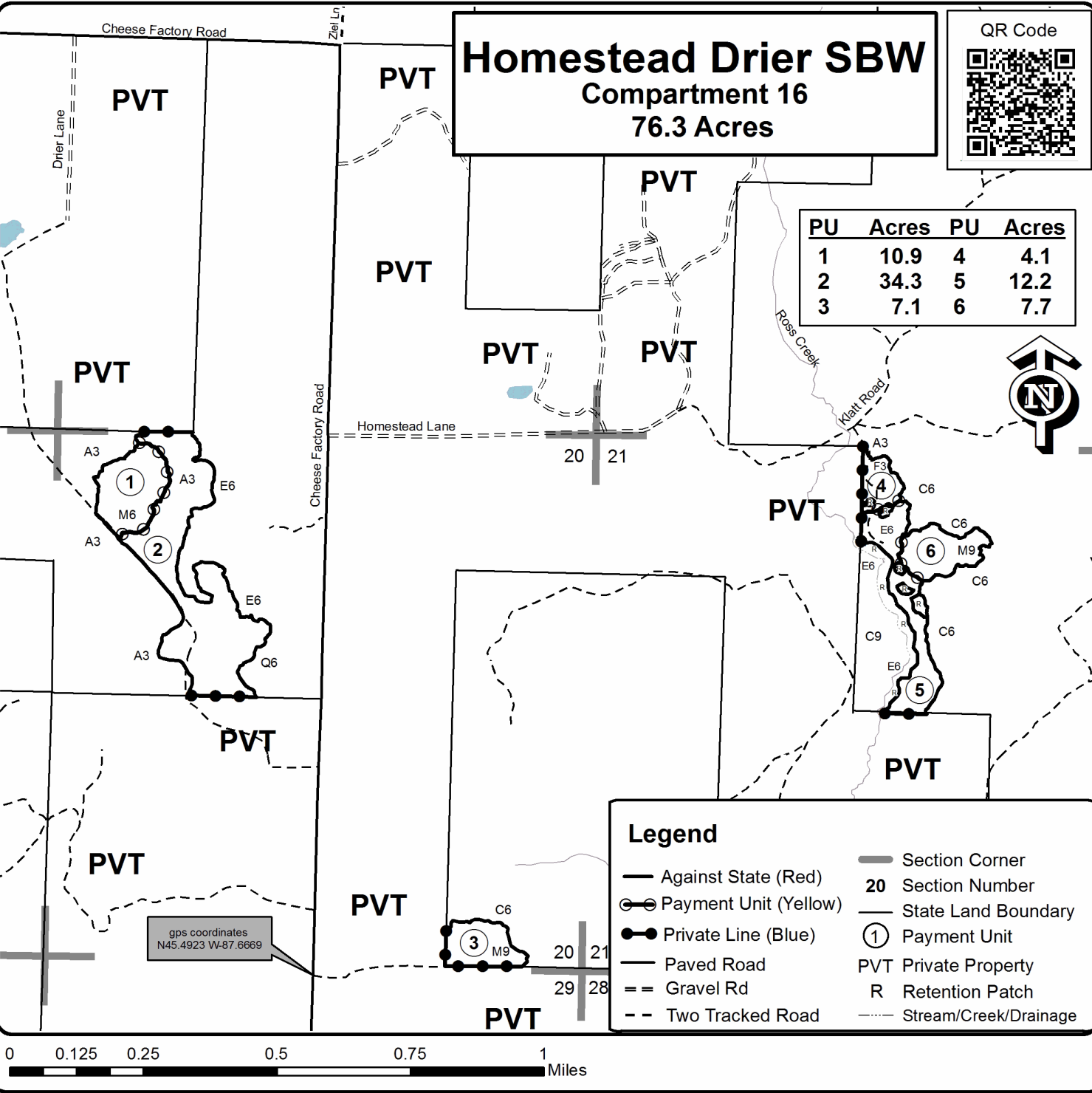


TIMBER SALE MAP

This information provided by authority of Part 525, 1994 PA 451, as amended.

Forest Management Unit Escanaba Management Unit	County Menominee County	Mapped By Beaudo	Date 8/8/2019	Page 1	of 1
Township 36N	Range 27W	Cruised By Salter, Beaudo	Revised 9/27/19		
Section(s) and Subdivision(s) Sec 20 - NW, SESE; Sec 21 - W1/2NE.			Scale 1:15,840		

Cover Type				Density			
A = Aspen	H = Hemlock	N = Marsh	U = Upland Brush	0 = Non Stocked	5 = Pole Timber Medium		
B = Paper Birch	J = Jack Pine	O = Oak	UM = Upland Mixed	1 = Seedling Sapling Poor	6 = Pole Timber Well		
C = Cedar	L = Lowland Brush	P = Lowland Poplar	V = Bog or Marsh	2 = Seedling Sapling Medium	7 = Saw Timber Poor		
D = Treed Bog	LM = Lowland Mixed	Q = Mixed Swamp Conifer	W = White Pine	3 = Seedling Sapling Well	8 = Saw Timber Medium		
E = Swamp Hdwoods	M = Mpl, Bch, Brch	R = Red Pine	X = Non Stocked	4 = Pole Timber Poor	9 = Saw Timber Well		
F = Spruce Fir	MC = Mixed Conifer	S = Black Spruce	Z = Water				
G = Grass	MD = Mixed Deciduous	T = Tamarack					



TIMBER SALE INFORMATION

Walton Revival (33-037-19)

T35N, R26W, SEC. 13; T35N, R26W, SEC. 24; T35N, R26W, SEC. 26.
Menominee County (Advertised Price \$15,495.65)

SALE NOTE: The only access into Payment Units 1 & 4 is through private property. Each of the landowners has indicated they would allow access, but the Purchaser must contact each landowner to obtain permission. Payment Units 2 & 3 will be accessed on an un-improved county road heading east off of Wery Road.

Access may be through private land.

A timber sale contract for this lump sum, sealed bid timber sale will be awarded to the responsible bidder offering the highest sealed bid price. Bids must be at or above the following advertised price for each species:

<u>PRODUCTS & SPECIES</u>	<u>ESTIMATED UNITS*</u>	<u>ADVERTISED PRICE</u>
Sawtimber		
Basswood	6.30 MBF	\$ 60.00 / MBF
Green Ash	2.50 MBF	\$ 2.00 / MBF
Paper Birch	1.80 MBF	\$ 36.00 / MBF
Red Maple	5.60 MBF	\$ 88.00 / MBF
Sugar Maple	20.20 MBF	\$ 126.00 / MBF
Pulpwood		
Balsam Fir	116.00 Cords	\$ 9.75 / Cord
Mixed Hardwood	589.00 Cords	\$ 13.45 / Cord
Mixed Spruce	15.00 Cords	\$ 11.55 / Cord
N. White Cedar	101.00 Cords	\$ 8.90 / Cord
Quaking Aspen	122.00 Cords	\$ 14.95 / Cord
Tamarack	9.00 Cords	\$ 6.75 / Cord

* The total volume is statistically estimated within plus (+) or minus (-) 13.53 percent. The estimated units are final and not subject to adjustment. Prospective bidders are urged to examine this timber and to make their own estimates of quantity and quality.

BOND AND PAYMENT SCHEDULE:

1. A bond in the amount of \$775.00 to insure faithful performance of the conditions of the contract will be deposited by the successful bidder within 21 days of the sale award.
2. Cutting in any sale or unit without the required advance payment would be considered a trespass.
3. Total payment must be paid in advance or according to the following schedule :
 - (a) Ten percent (10%) of the sale value must be paid within 21 days of the sale award.
 - (b) The 10% down payment will be credited towards the first unit cut.
 - (c) Payment for each of the following units must be made before cutting begins in that unit:

PAYMENT UNIT NUMBER	PERCENT OF TOTAL SALE VALUE
01	3.1%
02	7.9%
03	38.7%
04	39.3%
05	11.0%

4. If no cutting takes place, the 10% down payment will not be refunded.
5. Operations on the contract issued will terminate on 09/30/2022.

Description of Timber by Payment Unit (PU)

PU	MARKET GROUP	PRODUCT	QUANTITY	UNIT	ACRES	ADVERTISE PRICE																																																																																																																					
1	Balsam Fir	Pulpwood	3.0	Cords	3.2	\$473.10																																																																																																																					
	Mixed Hardwood		33.0	Cords			2	Basswood	Sawtimber	0.8	MBF	4.9	\$1,220.70	Red Maple	2.3	MBF	Sugar Maple	0.5	MBF	Balsam Fir	Pulpwood	4.0	Cords	Mixed Hardwood	59.0	Cords	Quaking Aspen	5.0	Cords	3	Basswood	Sawtimber	0.7	MBF	19.9	\$6,001.50	Green Ash	0.7	MBF	Paper Birch	1.8	MBF	Red Maple	2.4	MBF	Sugar Maple	3.8	MBF	Balsam Fir	Pulpwood	64.0	Cords	Mixed Hardwood	229.0	Cords	Mixed Spruce	9.0	Cords	N. White Cedar	71.0	Cords	Quaking Aspen	47.0	Cords	Tamarack	9.0	Cords	4	Basswood	Sawtimber	4.8	MBF	11.5	\$6,090.85	Green Ash	1.8	MBF	Sugar Maple	15.9	MBF	Balsam Fir	Pulpwood	10.0	Cords	Mixed Hardwood	234.0	Cords	N. White Cedar	30.0	Cords	Quaking Aspen	19.0	Cords	5	Red Maple	Sawtimber	0.9	MBF	8.5	\$1,709.50	Balsam Fir	Pulpwood	35.0	Cords	Mixed Hardwood	34.0	Cords	Mixed Spruce	6.0	Cords	Quaking Aspen	51.0	Cords	TOTAL:			36.4	MBF			TOTAL:		
2	Basswood	Sawtimber	0.8	MBF	4.9	\$1,220.70																																																																																																																					
	Red Maple		2.3	MBF																																																																																																																							
	Sugar Maple		0.5	MBF																																																																																																																							
	Balsam Fir	Pulpwood	4.0	Cords																																																																																																																							
	Mixed Hardwood		59.0	Cords																																																																																																																							
	Quaking Aspen		5.0	Cords																																																																																																																							
3	Basswood	Sawtimber	0.7	MBF	19.9	\$6,001.50																																																																																																																					
	Green Ash		0.7	MBF																																																																																																																							
	Paper Birch		1.8	MBF																																																																																																																							
	Red Maple		2.4	MBF																																																																																																																							
	Sugar Maple		3.8	MBF																																																																																																																							
	Balsam Fir	Pulpwood	64.0	Cords																																																																																																																							
	Mixed Hardwood		229.0	Cords																																																																																																																							
	Mixed Spruce		9.0	Cords																																																																																																																							
	N. White Cedar		71.0	Cords																																																																																																																							
	Quaking Aspen		47.0	Cords																																																																																																																							
	Tamarack		9.0	Cords																																																																																																																							
	4		Basswood	Sawtimber			4.8	MBF	11.5	\$6,090.85																																																																																																																	
			Green Ash				1.8	MBF																																																																																																																			
Sugar Maple		15.9	MBF																																																																																																																								
Balsam Fir		Pulpwood	10.0	Cords																																																																																																																							
Mixed Hardwood			234.0	Cords																																																																																																																							
N. White Cedar			30.0	Cords																																																																																																																							
Quaking Aspen			19.0	Cords																																																																																																																							
5			Red Maple	Sawtimber	0.9	MBF	8.5	\$1,709.50																																																																																																																			
	Balsam Fir	Pulpwood	35.0	Cords																																																																																																																							
	Mixed Hardwood		34.0	Cords																																																																																																																							
	Mixed Spruce		6.0	Cords																																																																																																																							
	Quaking Aspen		51.0	Cords																																																																																																																							
TOTAL:			36.4	MBF																																																																																																																							
TOTAL:			952.0	Cords																																																																																																																							

Sale Specific Conditions & Requirements

Sale Name: Walton Revival

Sale Number: 33-037-19 Seq#: 2

1 - Sale Area

1.2 - Boundaries

1.2.1 - Painted boundaries (1/14)

The sale boundary and Payment Unit boundaries are marked and identified by blue, red and yellow paint. Exterior sale boundary lines against private property are marked with blue paint. Exterior sale boundary lines against state are marked with red paint. Retention patches are marked with red paint; no harvesting activities may occur within these areas. Interior Payment Unit boundaries are marked with yellow paint. The painted boundary line trees are not Included Timber and are to be protected, unless marked with orange paint. Yellow painted trees designating an interior Payment Unit boundary are only to be cut when all surrounding Payment Units have been paid for.

2 - Timber Specifications

2.1 - Included Timber

2.1.1 - Clearcut unit(s) with unmerchantable trees (6/14)

Within Payment Unit(s) 3, 4 and 5, cut all trees that are three (3) inches or more at DBH, with the following exceptions:

- Within Payment Unit 3, do not cut cedar greater than twelve (12) inches at DBH, or any pine and hemlock.
- Within Payment Unit 4, do not cut hemlock and trees marked with green paint.
- Within Payment Unit 5, do not cut cedar.

2.1.3 - Cut tree marked unit(s) (12/08)

Within Payment Unit(s) 1 and 2, all trees are designated for cutting when marked with orange paint above and below stump height, regardless of merchantability.

3 - Payments

3.3 - Pre-measured Sales

3.3.4 - Dividing payment units (7/14)

Payment Unit(s) \$18,000 in value or greater may be divided at the request of the Purchaser and upon approval of the Unit Manager. Dividing Payment Units is a contract modification which requires a Timber Sale Contract Supplement. There will be only one division per Payment Unit.

4 - Transportation

4.2 - Maintenance

4.2.1 - Hauling restriction (12/08)

Hauling may be restricted on forest roads by the Unit Manager or his/her representative. The restriction may occur during spring breakup or during other wet weather conditions.

4.2.4 - Grading (10/16)

For completion of the sale, state forest roads must be graded. In general, this will require a road grader or bull dozer to shape up the roads after forest products have been hauled off site. This includes cleaning of drainage areas, grading, crowning and filling with gravel, if necessary. The grading equipment to be used must be approved by the Unit Manager or his/her representative.

4.4 - Access

4.4.1 - Private property access (3/11)

Permission for access across private land is the responsibility of the Purchaser. The best access into Payment Units 1 and 4 is through private property. Each of the landowners was contacted by the DNR and each of them is willing to work with the Purchaser on allowing access. Should the Purchaser desire to cross private land, a copy of the written permission from the private land-owner may be required by the DNR. Access into Payment Units 2 and 3 is via an old un-improved county road from Wery Road heading east into the state land. The Menominee County Road Commission must be contacted by the

Purchaser prior to improving the county road for access.

5 - Operations

5.2 - Conduct of Operations

5.2.3 - Operating Restrictions

5.2.3.3 - Bark slippage restriction (3/09)

Within Payment Unit(s) 1 and 2, unless changed by written agreement, cutting and skidding are not permitted during the period of April 15 to July 15. This restriction is because of bark slippage.

5.2.22 - Operating Caution

5.2.22.1 - Operating caution (6/11)

It is recommended, but not required, that within Payment Unit(s) 2 and 3, cutting and skidding occur during dry summer or frozen winter conditions. The reason for the recommendation is because of some low wet ground within Payment Unit 3. The north half of Payment Unit 3 is mostly dry, with the southern half being wetter. The low wet ground within Payment Unit 3 will need to be crossed in order to access Payment Unit 2, so dry summer or frozen winter conditions will also be needed to access Payment Unit 2.

5.4 - Soil Protection

5.4.1 - Rutting restriction, general (7/16)

Operations are to cease immediately if equipment and weather conditions result in rutting of roads and/or skid trails which is 12 inches or greater in depth and 50 feet in length. The Unit Manager or his/her representative may restrict hauling and/or skidding if ruts exceed the specified depth. With the Unit Manager or his/her representative's approval, the Purchaser may return to the area when the risk of rutting has decreased.

7 - Other Conditions

7.5 - Loss

7.5.1 - Deteriorating timber (7/09)

The sale area has received damage from the eastern larch beetle. The Purchaser should harvest the wood as soon as possible. The Department of Natural Resources is held free of responsibility of any further damage or deterioration due to delay in harvesting.



TIMBER SALE MAP

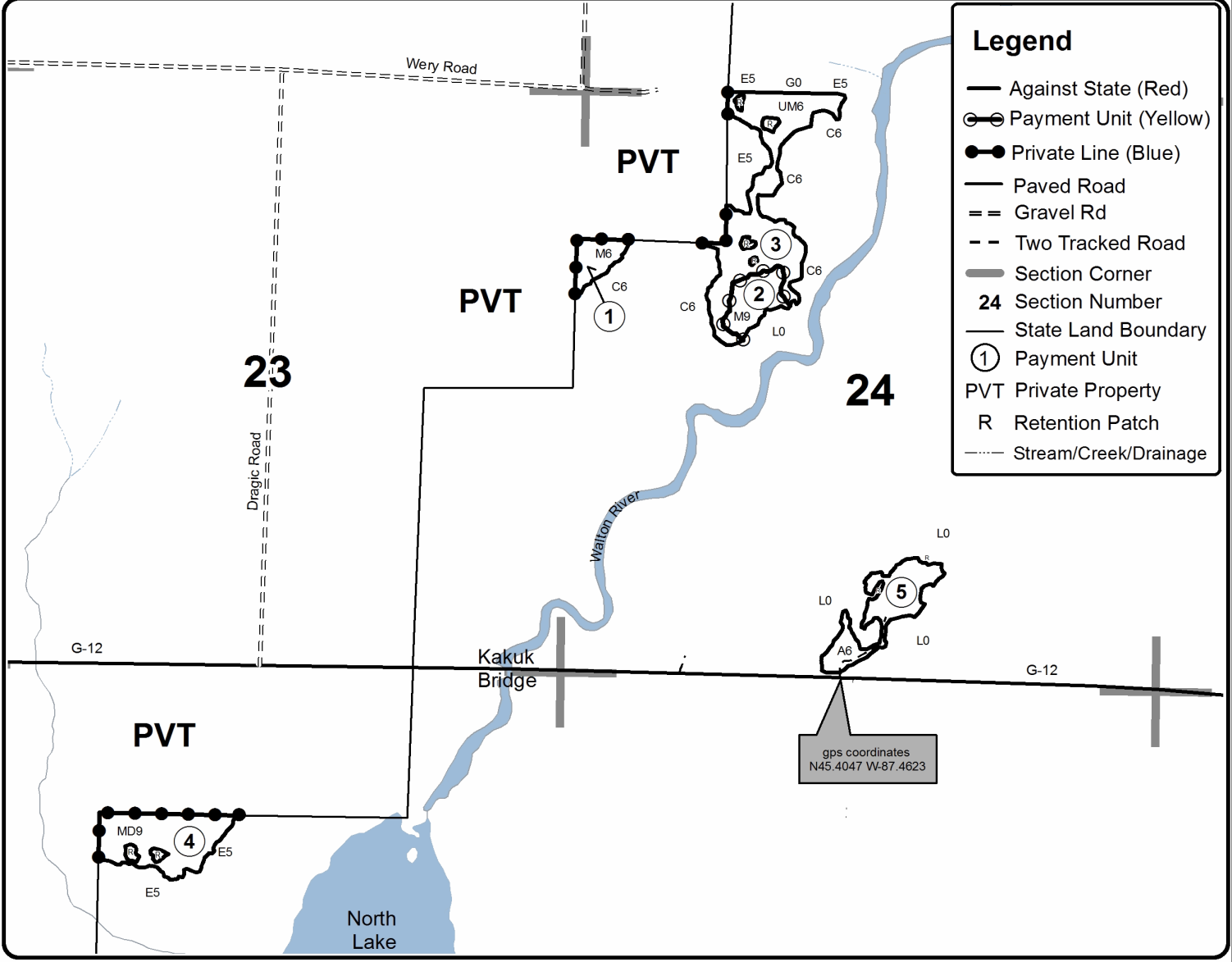
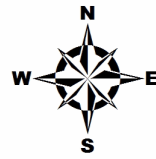
This information provided by authority of Part 525, 1994 PA 451, as amended.

Forest Management Unit Escanaba Management Unit		County Menominee County	Mapped By Beaudo	Date 8/22/2019	Page 1	of 1
Township 35N	Range 26W	Section(s) and Subdivision(s) Sec 24 - SWNW, E1/2NW, SESW, SWSE; Sec 26 - SENW.		Scale 1:15,840		

Cover Type				Density			
A = Aspen	H = Hemlock	N = Marsh	U = Upland Brush	0 = Non Stocked	5 = Pole Timber Medium		
B = Paper Birch	J = Jack Pine	O = Oak	UM = Upland Mixed	1 = Seedling Sapling Poor	6 = Pole Timber Well		
C = Cedar	L = Lowland Brush	P = Lowland Poplar	V = Bog or Marsh	2 = Seedling Sapling Medium	7 = Saw Timber Poor		
D = Treed Bog	LM = Lowland Mixed	Q = Mixed Swamp Conifer	W = White Pine	3 = Seedling Sapling Well	8 = Saw Timber Medium		
E = Swamp Hdwoods	M = Mpl, Bch, Brch	R = Red Pine	X = Non Stocked	4 = Pole Timber Poor	9 = Saw Timber Well		
F = Spruce Fir	MC = Mixed Conifer	S = Black Spruce	Z = Water				
G = Grass	MD = Mixed Deciduous	T = Tamarack					

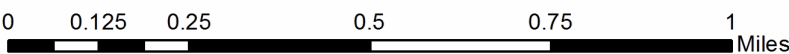
PU	Acres	PU	Acres
1	3.2	4	11.5
2	4.9	5	8.5
3	19.9		

Walton Revival Compartment 59 48.0 Acres



Legend

- Against State (Red)
- Payment Unit (Yellow)
- Private Line (Blue)
- Paved Road
- Gravel Rd
- Two Tracked Road
- Section Corner
- 24** Section Number
- State Land Boundary
- 1** Payment Unit
- PVT Private Property
- R Retention Patch
- Stream/Creek/Drainage



North Fox Bridge (33-024-20)
T36N, R25W, SEC. 13; T36N, R25W, SEC. 14; Menominee COUNTY

In response to the notice of sale to be held 3:00 p.m. (local time) on May 27, 2020, I am hereby submitting my sealed bid (firm offer) for the following forest products to be cut. Bids for individual species must be at or above the advertised price. All non-responsive bid forms may be rejected.

<u>PRODUCTS & SPECIES</u>	<u>ESTIMATED VOLUME*</u>	<u>ADVERTISED PRICE</u>	<u>BID PRICE/UNIT</u>
Sawtimber			
Green Ash	2.30 MBF	\$ 39.00/MBF	\$ _____
Red Maple	3.40 MBF	\$ 120.00/MBF	\$ _____
Pulpwood			
Balsam Fir	101.00 Cords	\$ 13.40/Cord	\$ _____
Mixed Aspen	14.00 Cords	\$ 20.55/Cord	\$ _____
Mixed Hardwood	1,325.00 Cords	\$ 18.50/Cord	\$ _____
Mixed Spruce	319.00 Cords	\$ 15.90/Cord	\$ _____
N. White Cedar	25.00 Cords	\$ 12.20/Cord	\$ _____
Red Pine	108.00 Cords	\$ 30.75/Cord	\$ _____
Tamarack	90.00 Cords	\$ 9.30/Cord	\$ _____
White Pine	201.00 Cords	\$ 21.60/Cord	\$ _____

*The volumes are statistically estimated within plus (+) or minus (-) 9.88 percent. These estimated volumes are final and not subject to adjustment. Prospective bidders are urged to examine this timber and to make their own estimates of quantity and quality.

I understand that any or all bids may be rejected. All bids must be signed and all bid items must be bid or the bid form may be rejected. I also understand that consideration and awarding a contract will be based upon my past performance and ability to complete the contract based upon equipment and staffing subject to my control.

FEDERAL ID: _____ or SOCIAL SECURITY NUMBER: _____

Company or individual bidding: _____

Company representative's name: _____

Address: _____

City: _____ State: _____ Zip: _____

IF AVAILABLE, PLEASE PLACE THE PERSONALIZED LABEL FROM YOUR PROSPECTUS IN THE ABOVE BOX.

Individual or company representative's signature: _____ Date: _____

Phone number : _____ Email (optional): _____

THE WINNING BIDDER MUST COMPLETE THE VERIFICATION OF WORKER'S DISABILITY COMPENSATION ACT COMPLIANCE (ON REVERSE SIDE IF DOUBLE SIDED) WITHIN 21 DAYS OF SALE AWARD DATE



FOR DEPARTMENT USE ONLY	
Sale Number (XX - XXX - XX - XX)	
Forest Management Unit:	

TIMBER SALE VERIFICATION OF WORKER'S DISABILITY COMPENSATION ACT COMPLIANCE

As required by Act 317, P.A. 1969 (Worker's Compensation) and
Part 5 of Act 451 of 1994, as amended.

VERIFICATION OF WORKER'S DISABILITY COMPENSATION ACT COMPLIANCE

- This verification must be completed and submitted within 21 days of contract award and prior to the issuance of the timber sale contract.
- In addition, if boxes 2B or 2C are checked, then Notice of Exclusion or Certificate of Insurance must be submitted within twenty-one (21) days of the contract award and prior to the issuance of the timber sale contract.
- All information must be typed or printed except for written signatures.

Please Check Appropriate Categories:

1. My business is organized as (you **must** check one of the boxes below):
 - A. Sole Proprietorship (individual)
 - B. Partnership
 - C. Corporation
2. You **must** check one of the boxes below:
 - A. I certify my business is a sole proprietorship and it has no employees but the sole proprietor. I am not subject to the Worker's Compensation Laws.
 - B. I certify my business has satisfied its obligation to the Worker's Compensation Act through the use of an approved Notice of Exclusion (BWC-337, Rev. 5/96). I will provide a copy of the Notice of Exclusion within 21 days of the contract award. (For questions or a copy of the BWC-337, please call the Worker's Compensation Bureau at 517-322-1195).
 - C. I certify my business has a Worker's Compensation Policy. I will provide an original Certificate of Insurance within twenty-one (21) days of the contract award.
3. If you have checked item 2(A) or 2(B), you **must** indicate the number of **both** full-time and part-time employees, other than yourself, including family members and active partners (if none, you must enter "0").

_____ Full-time Employees

_____ Part-time Employees

Name of Business		Federal ID (or) Social Security No.	
Address		Telephone ()	
City	State	ZIP	

I hereby certify that the above information is true and correct. I agree to notify the Michigan DNR of any changes that occur in factors affecting my coverage during any of my present and future operations.

Signature of Owner or Authorized Representative

Title

Date

Please complete the "SEALED BID" information on the next page

Foxy Pine Mix (33-026-20)

T36N, R24W, SEC. 7; T36N, R25W, SEC. 12; T36N, R25W, SEC. 13; Menominee

In response to the notice of sale to be held 3:00 p.m. (local time) on May 27, 2020, I am hereby submitting my sealed bid (firm offer) for the following forest products to be cut. Bids for individual species must be at or above the advertised price. All non-responsive bid forms may be rejected.

<u>PRODUCTS & SPECIES</u>	<u>ESTIMATED VOLUME*</u>	<u>ADVERTISED PRICE</u>	<u>BID PRICE/UNIT</u>
Sawtimber			
Green Ash	2.70 MBF	\$ 32.00/MBF	\$ _____
Paper Birch	1.00 MBF	\$ 41.00/MBF	\$ _____
Red Maple	7.30 MBF	\$ 98.00/MBF	\$ _____
Sugar Maple	3.00 MBF	\$ 142.00/MBF	\$ _____
Pulpwood			
Balsam Fir	108.00 Cords	\$ 10.95/Cord	\$ _____
Mixed Hardwood	668.00 Cords	\$ 15.15/Cord	\$ _____
Mixed Spruce	162.00 Cords	\$ 13.00/Cord	\$ _____
N. White Cedar	12.00 Cords	\$ 10.00/Cord	\$ _____
Quaking Aspen	144.00 Cords	\$ 16.80/Cord	\$ _____
Red Pine	241.00 Cords	\$ 25.15/Cord	\$ _____
White Pine	773.00 Cords	\$ 17.65/Cord	\$ _____

*The volumes are statistically estimated within plus (+) or minus (-) 11.66 percent. These estimated volumes are final and not subject to adjustment. Prospective bidders are urged to examine this timber and to make their own estimates of quantity and quality.

I understand that any or all bids may be rejected. All bids must be signed and all bid items must be bid or the bid form may be rejected. I also understand that consideration and awarding a contract will be based upon my past performance and ability to complete the contract based upon equipment and staffing subject to my control.

FEDERAL ID: _____ - _____ or SOCIAL SECURITY NUMBER: _____ - _____ - _____

Company or individual bidding: _____

Company representative's name: _____

Address: _____

City: _____ State: _____ Zip: _____

IF AVAILABLE, PLEASE PLACE THE PERSONALIZED LABEL FROM YOUR PROSPECTUS IN THE ABOVE BOX.

Individual or company representative's signature: _____ Date: _____

Phone number : _____ Email (optional): _____

THE WINNING BIDDER MUST COMPLETE THE VERIFICATION OF WORKER'S DISABILITY COMPENSATION ACT COMPLIANCE (ON REVERSE SIDE IF DOUBLE SIDED) WITHIN 21 DAYS OF SALE AWARD DATE



FOR DEPARTMENT USE ONLY
Sale Number (XX - XXX - XX - XX)
Forest Management Unit:

TIMBER SALE VERIFICATION OF WORKER'S DISABILITY COMPENSATION ACT COMPLIANCE

*As required by Act 317, P.A. 1969 (Worker's Compensation) and
Part 5 of Act 451 of 1994, as amended.*

VERIFICATION OF WORKER'S DISABILITY COMPENSATION ACT COMPLIANCE

- This verification must be completed and submitted within 21 days of contract award and prior to the issuance of the timber sale contract.
- In addition, if boxes 2B or 2C are checked, then Notice of Exclusion or Certificate of Insurance must be submitted within twenty-one (21) days of the contract award and prior to the issuance of the timber sale contract.
- All information must be typed or printed except for written signatures.

Please Check Appropriate Categories:

1. My business is organized as (you **must** check one of the boxes below):
 - A. Sole Proprietorship (individual)
 - B. Partnership
 - C. Corporation
2. You **must** check one of the boxes below:
 - A. I certify my business is a sole proprietorship and it has no employees but the sole proprietor. I am not subject to the Worker's Compensation Laws.
 - B. I certify my business has satisfied its obligation to the Worker's Compensation Act through the use of an approved Notice of Exclusion (BWC-337, Rev. 5/96). I will provide a copy of the Notice of Exclusion within 21 days of the contract award. (For questions or a copy of the BWC-337, please call the Worker's Compensation Bureau at 517-322-1195).
 - C. I certify my business has a Worker's Compensation Policy. I will provide an original Certificate of Insurance within twenty-one (21) days of the contract award.
3. If you have checked item 2(A) or 2(B), you **must** indicate the number of **both** full-time and part-time employees, other than yourself, including family members and active partners (if none, you must enter "0").

_____ Full-time Employees

_____ Part-time Employees

Name of Business		Federal ID (or) Social Security No.	
Address		Telephone ()	
City	State	ZIP	

I hereby certify that the above information is true and correct. I agree to notify the Michigan DNR of any changes that occur in factors affecting my coverage during any of my present and future operations.

Signature of Owner or Authorized Representative

Title

Date

Please complete the "SEALED BID" information on the next page

Snowy North Branch (33-027-20)
T36N, R25W, SEC. 11; T36N, R25W, SEC. 12; Menominee COUNTY

In response to the notice of sale to be held 3:00 p.m. (local time) on May 27, 2020, I am hereby submitting my sealed bid (firm offer) for the following forest products to be cut. Bids for individual species must be at or above the advertised price. All non-responsive bid forms may be rejected.

<u>PRODUCTS & SPECIES</u>	<u>ESTIMATED VOLUME*</u>	<u>ADVERTISED PRICE</u>	<u>BID PRICE/UNIT</u>
Sawtimber			
Green Ash	1.00 MBF	\$ 36.00/MBF	\$ _____
Paper Birch	1.30 MBF	\$ 45.00/MBF	\$ _____
Red Maple	4.10 MBF	\$ 109.00/MBF	\$ _____
Pulpwood			
Balsam Fir	66.00 Cords	\$ 12.20/Cord	\$ _____
Mixed Aspen	52.00 Cords	\$ 18.65/Cord	\$ _____
Mixed Hardwood	731.00 Cords	\$ 16.85/Cord	\$ _____
Mixed Spruce	67.00 Cords	\$ 14.45/Cord	\$ _____
Paper Birch	56.00 Cords	\$ 8.50/Cord	\$ _____
Red Pine	72.00 Cords	\$ 27.95/Cord	\$ _____
Tamarack	4.00 Cords	\$ 8.45/Cord	\$ _____
White Pine	506.00 Cords	\$ 20.00/Cord	\$ _____

*The volumes are statistically estimated within plus (+) or minus (-) 15.79 percent. These estimated volumes are final and not subject to adjustment. Prospective bidders are urged to examine this timber and to make their own estimates of quantity and quality.

I understand that any or all bids may be rejected. All bids must be signed and all bid items must be bid or the bid form may be rejected. I also understand that consideration and awarding a contract will be based upon my past performance and ability to complete the contract based upon equipment and staffing subject to my control.

FEDERAL ID: _____ - _____ or SOCIAL SECURITY NUMBER: _____ - _____ - _____

Company or individual bidding: _____

Company representative's name: _____

Address: _____

City: _____ State: _____ Zip: _____

IF AVAILABLE, PLEASE PLACE THE PERSONALIZED LABEL FROM YOUR PROSPECTUS IN THE ABOVE BOX.

Individual or company representative's signature: _____ Date: _____

Phone number : _____ Email (optional): _____

THE WINNING BIDDER MUST COMPLETE THE VERIFICATION OF WORKER'S DISABILITY COMPENSATION ACT COMPLIANCE (ON REVERSE SIDE IF DOUBLE SIDED) WITHIN 21 DAYS OF SALE AWARD DATE



FOR DEPARTMENT USE ONLY
Sale Number (XX - XXX - XX - XX)
Forest Management Unit:

TIMBER SALE VERIFICATION OF WORKER'S DISABILITY COMPENSATION ACT COMPLIANCE

*As required by Act 317, P.A. 1969 (Worker's Compensation) and
Part 5 of Act 451 of 1994, as amended.*

VERIFICATION OF WORKER'S DISABILITY COMPENSATION ACT COMPLIANCE

- This verification must be completed and submitted within 21 days of contract award and prior to the issuance of the timber sale contract.
- In addition, if boxes 2B or 2C are checked, then Notice of Exclusion or Certificate of Insurance must be submitted within twenty-one (21) days of the contract award and prior to the issuance of the timber sale contract.
- All information must be typed or printed except for written signatures.

Please Check Appropriate Categories:

1. My business is organized as (you **must** check one of the boxes below):
 - A. Sole Proprietorship (individual)
 - B. Partnership
 - C. Corporation
2. You **must** check one of the boxes below:
 - A. I certify my business is a sole proprietorship and it has no employees but the sole proprietor. I am not subject to the Worker's Compensation Laws.
 - B. I certify my business has satisfied its obligation to the Worker's Compensation Act through the use of an approved Notice of Exclusion (BWC-337, Rev. 5/96). I will provide a copy of the Notice of Exclusion within 21 days of the contract award. (For questions or a copy of the BWC-337, please call the Worker's Compensation Bureau at 517-322-1195).
 - C. I certify my business has a Worker's Compensation Policy. I will provide an original Certificate of Insurance within twenty-one (21) days of the contract award.
3. If you have checked item 2(A) or 2(B), you **must** indicate the number of **both** full-time and part-time employees, other than yourself, including family members and active partners (if none, you must enter "0").

_____ Full-time Employees

_____ Part-time Employees

Name of Business		Federal ID (or) Social Security No.	
Address		Telephone ()	
City	State	ZIP	

I hereby certify that the above information is true and correct. I agree to notify the Michigan DNR of any changes that occur in factors affecting my coverage during any of my present and future operations.

Signature of Owner or Authorized Representative

Title

Date

Please complete the "SEALED BID" information on the next page

Homestead Drier SBW (33-035-19)
T36N, R27W, SEC. 20; T36N, R27W, SEC. 21; Menominee COUNTY

In response to the notice of sale to be held 3:00 p.m. (local time) on May 27, 2020, I am hereby submitting my sealed bid (firm offer) for the following forest products to be cut. Bids for individual species must be at or above the advertised price. All non-responsive bid forms may be rejected.

<u>PRODUCTS & SPECIES</u>	<u>ESTIMATED VOLUME*</u>	<u>ADVERTISED PRICE</u>	<u>BID PRICE/UNIT</u>
Sawtimber			
Basswood	4.30 MBF	\$ 68.00/MBF	\$ _____
Red Maple	6.20 MBF	\$ 98.00/MBF	\$ _____
Sugar Maple	10.80 MBF	\$ 142.00/MBF	\$ _____
White Ash	1.90 MBF	\$ 65.00/MBF	\$ _____
Pulpwood			
Balsam Fir	137.00 Cords	\$ 10.95/Cord	\$ _____
Mixed Aspen	62.00 Cords	\$ 16.80/Cord	\$ _____
Mixed Hardwood	394.00 Cords	\$ 15.15/Cord	\$ _____
Mixed Spruce	93.00 Cords	\$ 13.00/Cord	\$ _____
N. White Cedar	85.00 Cords	\$ 10.00/Cord	\$ _____
Tamarack	2.00 Cords	\$ 7.60/Cord	\$ _____
White Pine	7.00 Cords	\$ 17.65/Cord	\$ _____

*The volumes are statistically estimated within plus (+) or minus (-) 18.33 percent. These estimated volumes are final and not subject to adjustment. Prospective bidders are urged to examine this timber and to make their own estimates of quantity and quality.

I understand that any or all bids may be rejected. All bids must be signed and all bid items must be bid or the bid form may be rejected. I also understand that consideration and awarding a contract will be based upon my past performance and ability to complete the contract based upon equipment and staffing subject to my control.

FEDERAL ID: _____ - _____ or SOCIAL SECURITY NUMBER: _____ - _____ - _____

Company or individual bidding: _____

Company representative's name: _____

Address: _____

City: _____ State: _____ Zip: _____

IF AVAILABLE, PLEASE PLACE THE PERSONALIZED LABEL FROM YOUR PROSPECTUS IN THE ABOVE BOX.

Individual or company representative's signature: _____ Date: _____

Phone number : _____ Email (optional): _____

THE WINNING BIDDER MUST COMPLETE THE VERIFICATION OF WORKER'S DISABILITY COMPENSATION ACT COMPLIANCE (ON REVERSE SIDE IF DOUBLE SIDED) WITHIN 21 DAYS OF SALE AWARD DATE



FOR DEPARTMENT USE ONLY	
Sale Number (XX - XXX - XX - XX)	
Forest Management Unit:	

TIMBER SALE VERIFICATION OF WORKER'S DISABILITY COMPENSATION ACT COMPLIANCE

As required by Act 317, P.A. 1969 (Worker's Compensation) and
Part 5 of Act 451 of 1994, as amended.

VERIFICATION OF WORKER'S DISABILITY COMPENSATION ACT COMPLIANCE

- This verification must be completed and submitted within 21 days of contract award and prior to the issuance of the timber sale contract.
- In addition, if boxes 2B or 2C are checked, then Notice of Exclusion or Certificate of Insurance must be submitted within twenty-one (21) days of the contract award and prior to the issuance of the timber sale contract.
- All information must be typed or printed except for written signatures.

Please Check Appropriate Categories:

1. My business is organized as (you **must** check one of the boxes below):
 - A. Sole Proprietorship (individual)
 - B. Partnership
 - C. Corporation
2. You **must** check one of the boxes below:
 - A. I certify my business is a sole proprietorship and it has no employees but the sole proprietor. I am not subject to the Worker's Compensation Laws.
 - B. I certify my business has satisfied its obligation to the Worker's Compensation Act through the use of an approved Notice of Exclusion (BWC-337, Rev. 5/96). I will provide a copy of the Notice of Exclusion within 21 days of the contract award. (For questions or a copy of the BWC-337, please call the Worker's Compensation Bureau at 517-322-1195).
 - C. I certify my business has a Worker's Compensation Policy. I will provide an original Certificate of Insurance within twenty-one (21) days of the contract award.
3. If you have checked item 2(A) or 2(B), you **must** indicate the number of **both** full-time and part-time employees, other than yourself, including family members and active partners (if none, you must enter "0").

_____ Full-time Employees

_____ Part-time Employees

Name of Business		Federal ID (or) Social Security No.	
Address		Telephone ()	
City	State	ZIP	

I hereby certify that the above information is true and correct. I agree to notify the Michigan DNR of any changes that occur in factors affecting my coverage during any of my present and future operations.

Signature of Owner or Authorized Representative

Title

Date

Please complete the "SEALED BID" information on the next page

Walton Revival (33-037-19)

T35N, R26W, SEC. 13; T35N, R26W, SEC. 24; T35N, R26W, SEC. 26; Menominee

In response to the notice of sale to be held 3:00 p.m. (local time) on May 27, 2020, I am hereby submitting my sealed bid (firm offer) for the following forest products to be cut. Bids for individual species must be at or above the advertised price. All non-responsive bid forms may be rejected.

<u>PRODUCTS & SPECIES</u>	<u>ESTIMATED VOLUME*</u>	<u>ADVERTISED PRICE</u>	<u>BID PRICE/UNIT</u>
Sawtimber			
Basswood	6.30 MBF	\$ 60.00/MBF	\$ _____
Green Ash	2.50 MBF	\$ 2.00/MBF	\$ _____
Paper Birch	1.80 MBF	\$ 36.00/MBF	\$ _____
Red Maple	5.60 MBF	\$ 88.00/MBF	\$ _____
Sugar Maple	20.20 MBF	\$ 126.00/MBF	\$ _____
Pulpwood			
Balsam Fir	116.00 Cords	\$ 9.75/Cord	\$ _____
Mixed Hardwood	589.00 Cords	\$ 13.45/Cord	\$ _____
Mixed Spruce	15.00 Cords	\$ 11.55/Cord	\$ _____
N. White Cedar	101.00 Cords	\$ 8.90/Cord	\$ _____
Quaking Aspen	122.00 Cords	\$ 14.95/Cord	\$ _____
Tamarack	9.00 Cords	\$ 6.75/Cord	\$ _____

*The volumes are statistically estimated within plus (+) or minus (-) 13.53 percent. These estimated volumes are final and not subject to adjustment. Prospective bidders are urged to examine this timber and to make their own estimates of quantity and quality.

I understand that any or all bids may be rejected. All bids must be signed and all bid items must be bid or the bid form may be rejected. I also understand that consideration and awarding a contract will be based upon my past performance and ability to complete the contract based upon equipment and staffing subject to my control.

FEDERAL ID: _____ or SOCIAL SECURITY NUMBER: _____

Company or individual bidding: _____

Company representative's name: _____

Address: _____

City: _____ State: _____ Zip: _____

IF AVAILABLE, PLEASE PLACE THE PERSONALIZED LABEL FROM YOUR PROSPECTUS IN THE ABOVE BOX.

Individual or company representative's signature: _____ Date: _____

Phone number : _____ Email (optional): _____

THE WINNING BIDDER MUST COMPLETE THE VERIFICATION OF WORKER'S DISABILITY COMPENSATION ACT COMPLIANCE (ON REVERSE SIDE IF DOUBLE SIDED) WITHIN 21 DAYS OF SALE AWARD DATE



FOR DEPARTMENT USE ONLY	
Sale Number (XX - XXX - XX - XX)	
Forest Management Unit:	

TIMBER SALE VERIFICATION OF WORKER'S DISABILITY COMPENSATION ACT COMPLIANCE

As required by Act 317, P.A. 1969 (Worker's Compensation) and
Part 5 of Act 451 of 1994, as amended.

VERIFICATION OF WORKER'S DISABILITY COMPENSATION ACT COMPLIANCE

- This verification must be completed and submitted within 21 days of contract award and prior to the issuance of the timber sale contract.
- In addition, if boxes 2B or 2C are checked, then Notice of Exclusion or Certificate of Insurance must be submitted within twenty-one (21) days of the contract award and prior to the issuance of the timber sale contract.
- All information must be typed or printed except for written signatures.

Please Check Appropriate Categories:

1. My business is organized as (you **must** check one of the boxes below):
 - A. Sole Proprietorship (individual)
 - B. Partnership
 - C. Corporation
2. You **must** check one of the boxes below:
 - A. I certify my business is a sole proprietorship and it has no employees but the sole proprietor. I am not subject to the Worker's Compensation Laws.
 - B. I certify my business has satisfied its obligation to the Worker's Compensation Act through the use of an approved Notice of Exclusion (BWC-337, Rev. 5/96). I will provide a copy of the Notice of Exclusion within 21 days of the contract award. (For questions or a copy of the BWC-337, please call the Worker's Compensation Bureau at 517-322-1195).
 - C. I certify my business has a Worker's Compensation Policy. I will provide an original Certificate of Insurance within twenty-one (21) days of the contract award.
3. If you have checked item 2(A) or 2(B), you **must** indicate the number of **both** full-time and part-time employees, other than yourself, including family members and active partners (if none, you must enter "0").

_____ Full-time Employees

_____ Part-time Employees

Name of Business		Federal ID (or) Social Security No.	
Address		Telephone ()	
City	State	ZIP	

I hereby certify that the above information is true and correct. I agree to notify the Michigan DNR of any changes that occur in factors affecting my coverage during any of my present and future operations.

Signature of Owner or Authorized Representative

Title

Date

Please complete the "SEALED BID" information on the next page