



**DEPARTMENT OF NATURAL RESOURCES
STATE OF MICHIGAN**

TIMBER SALE PROSPECTUS #6645

SCHEDULED SALE DATE AND TIME: 3:00 p.m. (local time) on June 11, 2020.

LOCATION: GAYLORD MGMT UNIT, 1732 WEST M 32, GAYLORD, MI 49735.

PROSPECTUS NOTE: The bidder is advised to inspect the sale area and review the location, estimated volumes, operating costs and contract terms of proposed sales. Please be aware that some landowners may request 60 days or more notice for access across their land.

Notice is hereby given that bids will be received by the Unit Manager, GAYLORD MANAGEMENT UNIT, for certain timber on the following described lands:

Wet Shoes Mix (52-118-19) / T35N, R01E, SEC. 5, SW,SWSE.

T35N, R01E, SEC. 8, N1/2NW,SEW,W1/2NE.

Cheboygan County, Advertised Price \$49,030.55, 106.8 Acres, Red Pine, Hardwood.

SALE NOTE: Payment Units 1, 2 and 3 must be cut with no snow cover or frozen ground conditions (see spec 5.2.3.1 for details). Payment Units 1, 2 and 3 have restricted harvest activities from April 15th to July 15th (see spec 5.2.3.4 for details). Payment Unit 5 has a recommendation to cut during winter or summer (see spec 5.2.22.1 for details).

A recreation site such as a trail, pathway, or campground is within the sale area or the vicinity. Certain restrictions/specifications may be applicable including time restrictions.

Side Slope Aspen Mix (52-119-19) / T35N, R01E, SEC. 17, NENW,SW.

T35N, R01E, SEC. 8, SENW,E1/2SW,NWSE.

Cheboygan County, Advertised Price \$20,036.20, 45.7 Acres, Aspen, Red Pine.

SALE NOTE: There is an Oak Wilt restriction covering Payment Units 2 and 3 from April 15 through July 15 (see spec 5.2.3.5 for details).

A recreation site such as a trail, pathway, or campground is within the sale area or the vicinity. Certain restrictions/specifications may be applicable including time restrictions.

BID INSTRUCTIONS (VER. 07/02/2018):

1. Scheduled Bid Location, Date, and Time (2/11)

Bids must be received by the Unit Manager, GAYLORD OFFICE, 1732 West M 32, Gaylord, MI 49735, no later than 3:00 p.m. (local time) on June 11, 2020. For further information concerning this sale, contact Lucas Merrick at 989-732-3541 extension 5440.

2. Bidder's Qualifications (5/16)

Purchaser shall obtain workers compensation insurance to cover claims under Michigan's Worker's Disability Compensation Act of 1969 or similar employee benefit act of any other state applicable to an employee. If all or part of a timber sale was prepared by a private contractor, the contractor and that contractor's company are not permitted to bid on the timber sale contract. Bids will not be accepted from individuals or companies appearing on the DNR/FRD No-Bid List. This list contains the names of purchasers who previously failed to execute a contract within 21-days or who have a history of poor performance.

3. Preparation of Sealed Bids (5/16)

Bid Forms may be completed online thru Michigan DNR Timber Sale Online Bidding (OLB) at www.michigan.gov/timberbidding or by completing the hardcopy Bid Form found in the Timber Sale Prospectus. Hardcopy Bid Forms shall be manually signed in ink. Registration in OLB is considered your 'signature' for all bids submitted thru that system. Bid prices must be entered for each species and product in the Bid Price column for all material subject to bidding and all fill-in blanks must be completed. If erasures or other changes appear on the hardcopy Bid Form, each erasure or change must be initialed by the person signing the bid.

4. Submission of Sealed Bids (5/16)

Bid forms may be obtained from the Unit Manager or thru OLB. Bids may be submitted hardcopy or thru OLB. All hardcopy bids must be submitted on the bid form and in an envelope clearly identified as described in this section. NOTE: Only one bid form per bid envelope. Sealed bids must be submitted to the Unit office designated in the prospectus and must be submitted at or prior to the time established in the prospectus. The envelope should show on the outside (a) the sale name or number and (b) the date and time of bid opening, as shown in the prospectus. Bids received after the time specified in the sale prospectus are late bids and will be rejected.

It is possible for a bidder to submit multiple bids on a single sale. For example, a bid may be submitted hardcopy and a bid may be submitted thru OLB. Or, two bidders from the same company could both submit bids on the same sale. If this were to happen, the State would accept all bids received and award the contract accordingly. All bidding and contractual requirements would apply to all bids received.

5. Public Opening of Sealed Bids (7/16)

If conditions permit, the sealed bids will be publicly opened and posted at the time and place set in the prospectus.

If a bidder, present at a bid opening, has submitted bids on more than one sale, that bidder may withdraw their unopened bid envelopes or announce the withdrawal of their online bid after being declared the successful bidder on one sale.

6. Award of Contract (1/11)

Award of the contract will be made to the Bidder whose bid, conforming to the prospectus, is most advantageous to the State of Michigan on the basis of total value at rates bid for the estimated quantities. The State reserves the right to reject any bid or waive any minor irregularity in bids received. A written award mailed (or otherwise furnished) to the successful Bidder shall be deemed to result in a binding contract without further action by either party.

7. Down Payment (1/11)

The Bidder to whom award is made must make a down payment within 21 days of the sale award. The amount of the down payment will be calculated as shown in the Bond and Payment Schedule of this prospectus. Only cash may be used to meet this requirement.

8. Performance Security (1/11)

As guarantee of faithful performance, a cash bond, certificate of deposit, surety bond or irrevocable letter of credit (LOC) is required within 21 days of the sale award. The amount of the performance security is shown in the Bond and

Payment Schedule of this prospectus. If an LOC or surety is used, the coverage must extend for at least 6 months beyond the contract expiration.

9. Timber Sale Contract (7/18)

Additional conditions and requirements common to all timber sales are listed on the timber sale contract (R4031) and are available on line at www.michigan.gov/timber. Contact the Unit Manager for additional information or a sample contract. Within 21 days of the date of the award letter, the bidder must sign the contract and provide the required down payment, performance security, and verification of worker's disability compensation. The down payment and performance security shall be in accordance with the provisions of the timber sale contract, in the sums stated in this prospectus. If these actions are not taken, then the Bidder, the Bidder's corporation, and the corporation's principals may not be permitted to bid on State timber sales for a period of 3 months after the first offense, 6 months after the second offense, and 1 year after the third offense. An offense will only be counted against the Bidder for 5 years. In addition, the Bidder certifies that if awarded this contract, the Bidder will complete the timber sale contract in accordance with its terms and any modifications thereof including requirements to purchase, cut, and remove the included timber by the expiration date.

Payment Unit values in the State Forest Timber Sale Contract are calculated based on the advertised value of the Payment Unit as a percentage of the total advertised value of the contract. The advertised value of each Payment Unit is given in the Description of Timber by Payment Unit table on the Timber Sale Information page. For example, if the value of Payment Unit 1 is advertised as \$1,500 and the total Timber Sale value is advertised as \$10,000, the contract price for Payment Unit 1 will be 15% of the total bid price ($\$1,500/\$10,000 * 100$).

10. Disclaimer of Estimates and Bidder's Warranty of Inspection (7/16)

Before submitting this bid, the Bidder is advised and cautioned to inspect the sale area, review the requirements of the sale contract, and take other steps as may be reasonably necessary to ascertain the location, estimated volumes, construction estimates, and operating costs of the proposed sale. Failure to do so will not relieve the Bidder from responsibility for completing the contract.

The Bidder warrants that this bid is submitted solely on the basis of the Bidder's examination and inspection of the quality and quantity of the timber offered for sale and the Bidder's opinion of the value thereof and the costs of recovery. No reliance should be placed on the State of Michigan's estimates of timber quality, quantity or costs of recovery. Bidder further acknowledges that the State of Michigan: (i) expressly disclaims any warranty of fitness of timber for any purpose; (ii) offers this timber as is without any warranty of quality (merchantability) or quantity and (iii) expressly disclaims any warranty as to the quantity or quality of timber sold.

11. Certification and Chain-of-Custody (10/14)

Unless otherwise indicated in the contract under section 7 – Other Conditions of the Sale Specific Conditions & Requirements, the area encompassed by this timber sale is certified to the standards of the Forest Stewardship Council (FSC) - Certificate #SCS-FM/COC-00090N and the Sustainable Forestry Initiative (SFI) - Certificate # NSF-SFIS-5Y031-SF5. Forest products from this sale may be delivered to the mill as "FSC 100% and / or SFI certified" as long as the contractor hauling the forest products is chain-of-custody (COC) certified or covered under a COC certificate from the destination mill. The purchaser is responsible for maintaining COC after leaving the sale area.

12. Good Neighbor Authority (GNA) Requirements (7/16)

If the name of this timber sales contains the acronym GNA, it is authorized by the Good Neighbor Authority (GNA) and covered by various agreements between the U.S. Forest Service and the State. The timber sale occurs on federal land and the following conditions apply:

GNA contracts on US Forest Service land will not be awarded to purchasers on the Federal list of excluded parties. The System for Award Management (SAM) will be checked for active excluded parties prior to award of contract. In addition, the Bidder to whom award is made must complete an Assurance Regarding Felony Conviction or Tax Delinquent Status for Corporate Applicants (AD-3031).

13. Good Neighbor Authority (GNA) Requirements, con't (9/16)

Bidder certifies, by signing this bid form, that to the best of Bidder's knowledge that the following representations are accurate and complete.

- a. That the Bidder and its principals are not presently debarred, suspended, proposed for debarment, declared ineligible, or voluntary excluded from timber sales (covered transactions) by any Federal department or agency.
- b. That the Bidder and its principals have not within a 3-year period preceding this bid been convicted of or had a civil judgment rendered against them for commission of fraud or a criminal offense in connection with obtaining , attempting to obtain, or performing a public (Federal, State, or local) transaction or contract under a public transaction; violation of Federal or State antitrust statutes or commission of embezzlement, theft, forgery, bribery, falsification or destruction of records, making false statements, or receiving stolen property.
- c. That the Bidder and its principals are not presently indicted for or otherwise criminally or civilly charged by a governmental entity (Federal, State, or local) with commission of any of the offenses enumerated in paragraph b of this certification.
- d. That the Bidder and its principals have not within a 3-year period preceding this bid had one or more public transactions (Federal, State, or local) terminated for breach or default of a timber or forest product contract.

Bidders that cannot certify this requirement, in whole or in part, shall submit an explanation with their bid.

DAN EICHINGER
Director

TIMBER SALE INFORMATION

Wet Shoes Mix (52-118-19)

T35N, R01E, SEC. 5; T35N, R01E, SEC. 8.
Cheboygan County (Advertised Price \$49,030.55)

SALE NOTE: Payment Units 1, 2 and 3 must be cut with no snow cover or frozen ground conditions (see spec 5.2.3.1 for details). Payment Units 1, 2 and 3 have restricted harvest activities from April 15th to July 15th (see spec 5.2.3.4 for details). Payment Unit 5 has a recommendation to cut during winter or summer (see spec 5.2.22.1 for details).

A recreation site such as a trail, pathway, or campground is within the sale area or the vicinity. Certain restrictions/specifications may be applicable including time restrictions.

A timber sale contract for this lump sum, sealed bid timber sale will be awarded to the responsible bidder offering the highest sealed bid price. Bids must be at or above the following advertised price for each species:

| <u>PRODUCTS & SPECIES</u> | <u>ESTIMATED UNITS*</u> | | <u>ADVERTISED PRICE</u> |
|-------------------------------|-------------------------|-------|-------------------------|
| Sawtimber | | | |
| B. T. Aspen | 4.80 | MBF | \$ 40.00 / MBF |
| N. White Cedar | 6.10 | MBF | \$ 20.00 / MBF |
| Red Maple | 2.80 | MBF | \$ 51.00 / MBF |
| Red Oak | 27.20 | MBF | \$ 126.00 / MBF |
| Red Pine | 170.20 | MBF | \$ 84.00 / MBF |
| White Spruce | 1.90 | MBF | \$ 34.00 / MBF |
| Pulpwood | | | |
| B. T. Aspen | 129.00 | Cords | \$ 14.95 / Cord |
| Balsam Fir | 44.00 | Cords | \$ 16.00 / Cord |
| Jack Pine | 269.00 | Cords | \$ 11.60 / Cord |
| Mixed Oak | 302.00 | Cords | \$ 13.90 / Cord |
| N. White Cedar | 55.00 | Cords | \$ 6.10 / Cord |
| Paper Birch | 25.00 | Cords | \$ 9.45 / Cord |
| Red Maple | 125.00 | Cords | \$ 18.50 / Cord |
| Red Pine | 496.00 | Cords | \$ 32.00 / Cord |
| White Pine | 123.00 | Cords | \$ 16.45 / Cord |
| White Spruce | 4.00 | Cords | \$ 13.70 / Cord |

* The total volume is statistically estimated within plus (+) or minus (-) 10.99 percent. The estimated units are final and not subject to adjustment. Prospective bidders are urged to examine this timber and to make their own estimates of quantity and quality.

BOND AND PAYMENT SCHEDULE:

1. A bond in the amount of \$4,903.00 to insure faithful performance of the conditions of the contract will be deposited by the successful bidder within 21 days of the sale award.
2. Cutting in any sale or unit without the required advance payment would be considered a trespass.
3. Total payment must be paid in advance or according to the following schedule :
 - (a) Ten percent (10%) of the sale value must be paid within 21 days of the sale award.
 - (b) The 10% down payment will be credited towards the first unit cut.
 - (c) Payment for each of the following units must be made before cutting begins in that unit:

| PAYMENT UNIT NUMBER | PERCENT OF TOTAL SALE VALUE |
|---------------------|-----------------------------|
| 01 | 38.0% |
| 02 | 25.5% |
| 03 | 16.8% |
| 04 | 12.8% |
| 05 | 6.9% |
4. If no cutting takes place, the 10% down payment will not be refunded.
5. Operations on the contract issued will terminate on 06/30/2023.

Description of Timber by Payment Unit (PU)

| PU | MARKET GROUP | PRODUCT | QUANTITY | UNIT | ACRES | ADVERTISE PRICE |
|-------------|----------------|----------------|-----------|-------|-------|-----------------|
| 1 | Red Pine | Sawtimber | 102.5 | MBF | 36.3 | \$18,651.85 |
| | B. T. Aspen | Pulpwood | 30.0 | Cords | | |
| | Jack Pine | | 172.0 | Cords | | |
| | Mixed Oak | | 52.0 | Cords | | |
| | Red Maple | | 5.0 | Cords | | |
| | Red Pine | | 195.0 | Cords | | |
| | White Pine | | 33.0 | Cords | | |
| | 2 | Red Pine | Sawtimber | 36.5 | | |
| B. T. Aspen | | Pulpwood | 19.0 | Cords | | |
| Jack Pine | | | 76.0 | Cords | | |
| Mixed Oak | | | 43.0 | Cords | | |
| Red Maple | | | 6.0 | Cords | | |
| Red Pine | | | 212.0 | Cords | | |
| White Pine | | | 48.0 | Cords | | |
| 3 | | Red Pine | Sawtimber | 31.2 | MBF | 16.2 |
| | B. T. Aspen | Pulpwood | 22.0 | Cords | | |
| | Jack Pine | | 21.0 | Cords | | |
| | Mixed Oak | | 103.0 | Cords | | |
| | Red Maple | | 3.0 | Cords | | |
| | Red Pine | | 89.0 | Cords | | |
| | White Pine | | 42.0 | Cords | | |
| | 4 | B. T. Aspen | Sawtimber | 4.8 | MBF | |
| Red Oak | | | 27.2 | MBF | | |
| B. T. Aspen | | Pulpwood | 58.0 | Cords | | |
| Balsam Fir | | | 11.0 | Cords | | |
| Mixed Oak | | | 104.0 | Cords | | |
| Red Maple | | | 9.0 | Cords | | |
| 5 | | N. White Cedar | Sawtimber | 6.1 | MBF | 7.7 |
| | Red Maple | | 2.8 | MBF | | |
| | White Spruce | | 1.9 | MBF | | |
| | Balsam Fir | Pulpwood | 33.0 | Cords | | |
| | N. White Cedar | | 55.0 | Cords | | |
| | Paper Birch | | 25.0 | Cords | | |
| | Red Maple | | 102.0 | Cords | | |
| | White Spruce | | 4.0 | Cords | | |
| | TOTAL: | | | 213.0 | MBF | |
| TOTAL: | | | 1,572.0 | Cords | | |

Sale Specific Conditions & Requirements

Sale Name: Wet Shoes Mix

Sale Number: 52-118-19 Seq#: 2

1 - Sale Area

1.2 - Boundaries

1.2.1 - Painted boundaries (1/14)

The sale boundary and Payment Unit boundaries are marked and identified by red paint. Exterior sale boundary lines against state are marked with red paint. Interior Payment Unit boundaries are also marked with red paint. Retention and special protection areas are marked with teal paint. The painted boundary line trees are not Included Timber and are to be protected.

2 - Timber Specifications

2.1 - Included Timber

2.1.1 - Clearcut unit(s) with unmerchantable trees (6/14)

Within Payment Unit(s) 1 and 2, cut all trees that are two (2) inches or more at DBH, except do not cut any red oak, white oak, or teal marked trees.

Special protection areas are identified in accordance with condition 3.4.3, within clearcutting unit boundaries, are not Included Timber and are to be protected.

2.1.2 - Clearcut unit(s) w/o unmerchantable trees (8/11)

Within Payment Unit(s) 3, 4 and 5, cut all trees which meet minimum piece specifications in 2.2 Utilization, except within Payment Units 3 and 4, do not cut any red oak, white oak, or teal marked trees. In addition, within Payment Unit 5, do not cut any white pine twenty four (24) inches or more at DBH.

Special protection areas identified in accordance with condition 3.4.3, within clearcutting unit boundaries, are not Included Timber and are to be protected.

2.2 - Utilization

2.2.3 - Stump heights (4/07)

Stump heights within Payment Unit(s) 1, 2 and 3 shall not exceed 6 inches for all trees. This is in order to facilitate planting operations if necessary.

3 - Payments

3.3 - Pre-measured Sales

3.3.4 - Dividing payment units (7/14)

Payment Unit(s) may be divided at the request of the Purchaser and upon approval of the Unit Manager. Dividing Payment Units is a contract modification which requires a Timber Sale Contract Supplement.

3.4 - Damaged Timber

3.4.1 - Damaged timber (7/16)

General Condition and Requirement 3.4 Damaged Timber, defines liquidated damages for undesignated live merchantable trees which are cut or injured. In addition, a reasonable effort should be taken to avoid damage to pine seedlings and saplings during harvest activities.

3.4.3 - Special Protection Areas (8/11)

The Purchaser shall protect special protection areas from damage by the Purchaser's operations. Special protection areas are marked with a teal boundary line. The Purchaser shall not cut live or dead trees within special protection areas. If the Purchaser's operations have cut or damaged special protection areas through carelessness, the Purchaser shall pay \$1000 as fixed, agreed and liquidated damages for each acre or part thereof cut or damaged. Such payment does not constitute ownership of the undesignated timber.

4 - Transportation

4.1 - Construction

4.1.3 - Slash and earthen piles (8/04)

Piles or windrows of earth along roads and landings that have been widened or constructed shall be leveled. Slash from road maintenance or construction, including stumps, shall be dispersed throughout the sale.

4.1.6 - Road construction (1/09)

Improvements of existing roads shall be done in such a way as to minimize the environmental and visual impacts. Merchantable trees shall be cut and utilized unless otherwise directed. Non-merchantable trees shall be severed and laid flat on the ground. Slash shall be scattered, and not left in windrows and kept a minimum of 10 feet back from the road edge. Stumps shall be set upright, not left on edge, and be moved at least 10 feet away from the road edge. Disturbed soil shall be feathered into the woods and not left in berms or windrows.

4.1.12 - No new roads (1/12)

No new roads will be permitted in any Payment Unit. All operations are limited to existing roads. Skid trails only will be allowed.

4.2 - Maintenance

4.2.2 - Fill material (4/07)

To maintain roads, fill material may be needed in areas where "holes" exist or may be expected to develop. This fill material should be placed before trucking begins. Contact the sale administrator regarding the availability of onsite sand or gravel from adjacent State-owned lands.

4.2.4 - Grading (10/16)

For completion of the sale, state forest roads must be graded. In general, this will require a road grader or bull dozer to shape up the roads after forest products have been hauled off site. This includes cleaning of drainage areas, grading, crowning and filling with gravel, if necessary. The grading equipment to be used must be approved by the Unit Manager or his/her representative.

5 - Operations

5.1 - Notification

5.1.1 - Pre-sale conference (10/16)

A pre-sale conference on site between the Purchaser and sale administrator is required prior to beginning any operations to determine landing and road locations. The Unit Manager or his/her representative must be contacted at least 2 business days in advance to schedule the conference.

5.1.4 - Post-sale conference (10/16)

A post-sale conference on site between the Purchaser and sale administrator is required 5 days prior to the completion of active logging operations to determine clean-up and repair of landings, road edges, and the fulfillment of other contract specifications.

5.2 - Conduct of Operations

5.2.1 - Slash

5.2.1.11 - Slash for reforestation (5/07)

To facilitate reforestation, Payment Unit(s) 1 and 2, shall be left with slash evenly distributed. Bunched tops within the cutting area shall be broken up and scattered. Stumps shall be cut low to the ground. Processing sites shall not be left with a compacted layer of slash; tops from these sites shall be hauled back into the cut area and scattered.

5.2.1.13 - Dispose of slash as directed (12/05)

Slash is to be disposed of as directed by the sale administrator.

5.2.2 - Hazard Trees/Snags

5.2.2.1 - Den trees (10/16)

Obvious hollow and/or den trees shall be protected and left standing unless they are a safety hazard.

5.2.3 - Operating Restrictions

5.2.3.1 - Operating restrictions (9/11)

Within Payment Unit(s) 1, 2 and 3, unless changed by written agreement, cutting, skidding and hauling are not permitted during snow cover or frozen ground conditions. This restriction is to promote ground scarification and natural regeneration.

5.2.3.4 - Oak wilt restriction, no exceptions (1/18)

Within Payment Unit 4, cutting, skidding, hauling within the sale and brushing of access roads to the sale are not permitted during the period of April 15 to July 15. No exceptions will be granted. This is necessary to reduce the spread of oak wilt.

5.2.3.5 - Oak wilt restriction (1/18)

Within Payment Units 1-3, unless changed by written agreement, cutting, skidding, hauling within the sale and brushing of access roads to the sale are not permitted during the period of April 15 to July 15. Operations may be allowed if specific steps are taken to prevent damaging uncut oak during the high risk period. Those steps may include completing all road brushing before April 15th and clearing a tree-length buffer along uncut oak cover before April 15th. This is necessary to reduce the spread of oak wilt. For more information, contact the Unit Manager or his/her representative.

5.2.22 - Operating Caution

5.2.22.1 - Operating caution (6/11)

It is recommended, but not required, that within Payment Unit(s) 5, cutting, skidding and hauling occur during dry summer or frozen winter conditions. The reason for the recommendation is to minimize soil compaction and rutting concerns.

5.2.32 - Decking/landing restoration (9/13)

All decking and landing areas must have the surface area restored to a condition equal to or better than before. This is to ensure the proper regeneration of the stand.

5.2.39 - ORV trail/route protection (4/18)

The Red Bridge Trail is an ORV trail or route and is shown on the Timber Sale Map. Do not cut trees or damage posts with yellow ORV markers. All stumps within 5 feet of the trail must be cut flush with the ground. Maintain a 20 foot wide slash, debris, and rut free zone daily using the ORV trail or route as the centerline. Do not run equipment down the ORV trail or route. Skidding across the trail or route may only occur in locations approved by the sale administrator.

5.4 - Soil Protection

5.4.1 - Rutting restriction, general (7/16)

Operations are to cease immediately if equipment and weather conditions result in rutting of roads and/or skid trails which is 12 inches or greater in depth and 50 feet in length. The Unit Manager or his/her representative may restrict hauling and/or skidding if ruts exceed the specified depth. With the Unit Manager or his/her representative's approval, the Purchaser may return to the area when the risk of rutting has decreased.

5.8 - Protection of Endangered Species

5.8.5 - Protection of raptor nests (3/13)

All trees with raptor nests will be protected if found during harvesting operations. Notification will be made to the Unit Manager or his/her representative who will notify the Wildlife Biologist so an on-site evaluation and recommendation can be made, if necessary.

6 - Safety and Fire Prevention

6.2 - Signing

6.2.1 - Road posting (9/09)

The Purchaser is responsible for posting and maintaining caution signs on Waveland Road prior to beginning operations. The road must be posted at appropriate distances from the sale area to warn of logging activity and truck traffic. Signs must be removed when harvest operations are suspended or completed. The Purchaser shall provide these signs.

6.2.3 - Recreational trail posting (2/10)

The Purchaser is responsible for posting and maintaining caution signs on the Red Bridge ORV Trail prior to beginning operations. The trail must be posted at appropriate distances from the sale area to warn of logging activity and truck traffic at both ends of the trail. Signs must be removed when harvest operations are suspended or completed. The Purchaser shall

provide these signs.



TIMBER SALE MAP

This information provided by authority of Part 525, 1994 PA 451, as amended.

| | | | | | |
|--|----------------------------|------------------------------|---------------------------|------------------|----------------|
| Forest Management Unit GAYLORD MANAGEMENT UNIT | County CHEBOYGAN | Mapped By SCHEELE | Date 09/18/2019 | Page 1 | of 1 |
| | | Cruised By SCHEELE | | | |

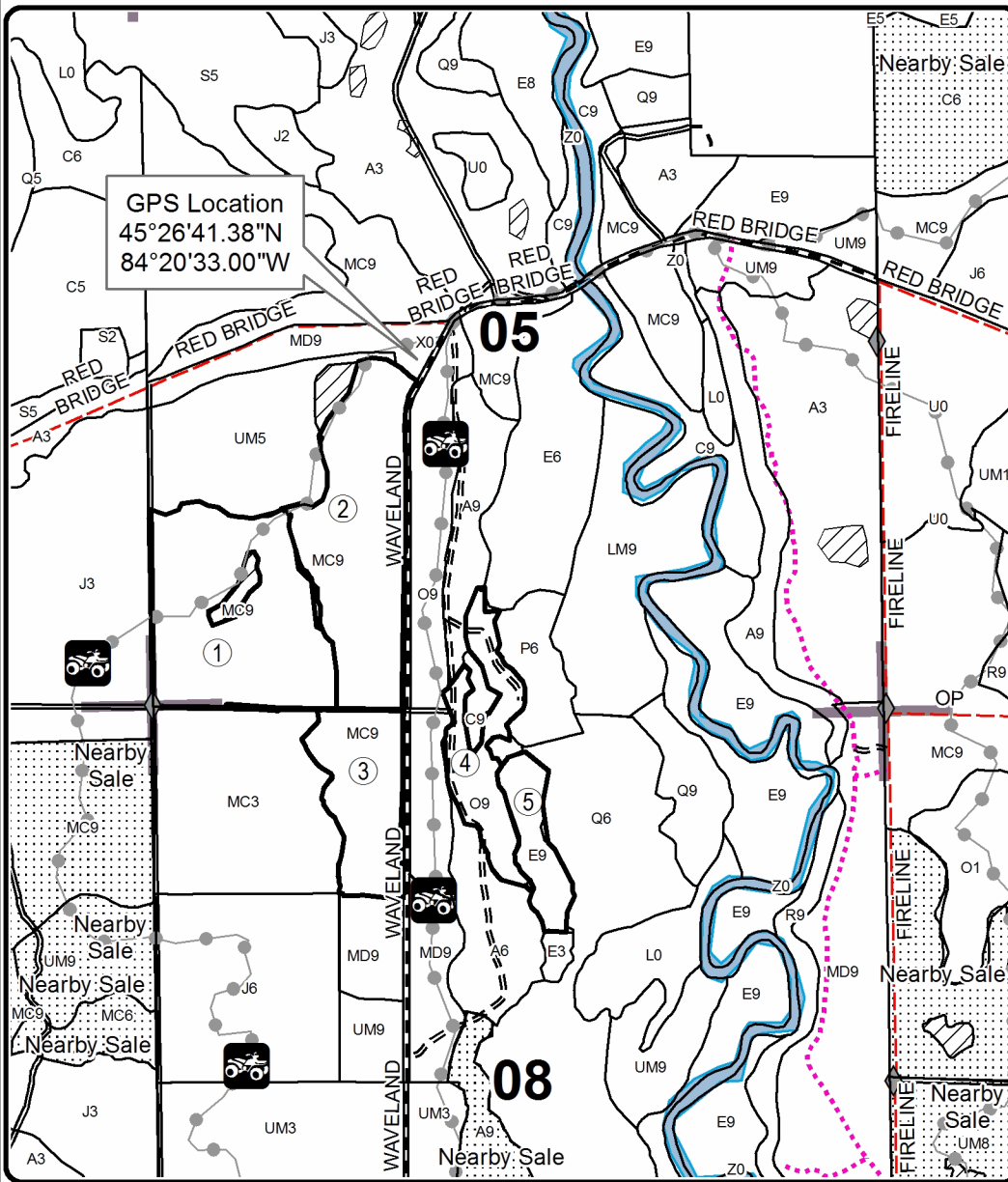
| | | | |
|------------------------|---------------------|---|--------------------------|
| Township 35N | Range 01E | Section(s) and Subdivision(s) SECTION 5 SW, SWSE SECTION 8 N1/2NW, SENW, W1/2NE | Scale 1:15,840 |
|------------------------|---------------------|---|--------------------------|

| Cover Type | | | | Density | |
|-------------------|----------------------|-------------------------|-------------------|-----------------------------|------------------------|
| A = Aspen | H = Hemlock | N = Marsh | U = Upland Brush | 0 = Non Stocked | 5 = Pole Timber Medium |
| B = Paper Birch | J = Jack Pine | O = Oak | UM = Upland Mixed | 1 = Seedling Sapling Poor | 6 = Pole Timber Well |
| C = Cedar | L = Lowland Brush | P = Lowland Poplar | V = Bog or Marsh | 2 = Seedling Sapling Medium | 7 = Saw Timber Poor |
| D = Tread Bog | LM = Lowland Mixed | Q = Mixed Swamp Conifer | W = White Pine | 3 = Seedling Sapling Well | 8 = Saw Timber Medium |
| E = Swamp Hdwoods | M = Mpl, Bch, Brch | R = Red Pine | X = Non Stocked | 4 = Pole Timber Poor | 9 = Saw Timber Well |
| F = Spruce Fir | MC = Mixed Conifer | S = Black Spruce | Z = Water | | |
| G = Grass | MD = Mixed Deciduous | T = Tamarack | | | |

| PU | Acres | PU | Acres |
|----|-------|----|-------|
| 1 | 36.3 | 4 | 13.2 |
| 2 | 33.4 | 5 | 7.7 |
| 3 | 16.2 | | |

WET SHOES MIX

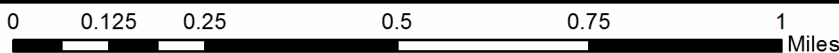
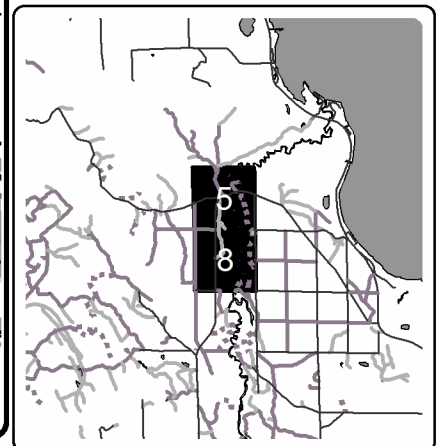
Compartment 206
106.8 Acres



Legend

- Against State (Red)
- Stand Boundaries
- Retention Area (Teal)
- Nearby Timber Sales
- Recreation Trail
- Field Grade Corners
- Secondary Forest Road
- Forest Access Route
- Paved Road
- Gravel Road
- County Road - Seasonal
- Temporary Management Access
- Perennial River
- Lakes and Rivers
- Section Corners

Locator Map
1:200,000



TIMBER SALE INFORMATION

Side Slope Aspen Mix (52-119-19)
 T35N, R01E, SEC. 17; T35N, R01E, SEC. 8.
 Cheboygan County (Advertised Price \$20,036.20)

SALE NOTE: There is an Oak Wilt restriction covering Payment Units 2 and 3 from April 15 through July 15 (see spec 5.2.3.5 for details).

A recreation site such as a trail, pathway, or campground is within the sale area or the vicinity. Certain restrictions/specifications may be applicable including time restrictions.

A timber sale contract for this lump sum, sealed bid timber sale will be awarded to the responsible bidder offering the highest sealed bid price. Bids must be at or above the following advertised price for each species:

| <u>PRODUCTS & SPECIES</u> | <u>ESTIMATED UNITS*</u> | <u>ADVERTISED PRICE</u> |
|-------------------------------|-------------------------|-------------------------|
| Sawtimber | | |
| B. T. Aspen | 34.50 MBF | \$ 40.00 / MBF |
| Red Oak | 5.60 MBF | \$ 126.00 / MBF |
| Red Pine | 65.60 MBF | \$ 84.00 / MBF |
| Pulpwood | | |
| B. T. Aspen | 302.00 Cords | \$ 14.95 / Cord |
| Jack Pine | 61.00 Cords | \$ 11.60 / Cord |
| Mixed Oak | 228.00 Cords | \$ 13.90 / Cord |
| Red Maple | 13.00 Cords | \$ 18.50 / Cord |
| Red Pine | 119.00 Cords | \$ 32.00 / Cord |

* The total volume is statistically estimated within plus (+) or minus (-) 17.51 percent. The estimated units are final and not subject to adjustment. Prospective bidders are urged to examine this timber and to make their own estimates of quantity and quality.

BOND AND PAYMENT SCHEDULE:

1. A bond in the amount of \$2,004.00 to insure faithful performance of the conditions of the contract will be deposited by the successful bidder within 21 days of the sale award.
2. Cutting in any sale or unit without the required advance payment would be considered a trespass.
3. Total payment must be paid in advance or according to the following schedule :
 - (a) Ten percent (10%) of the sale value must be paid within 21 days of the sale award.
 - (b) The 10% down payment will be credited towards the first unit cut.
 - (c) Payment for each of the following units must be made before cutting begins in that unit:

| PAYMENT UNIT NUMBER | PERCENT OF TOTAL SALE VALUE |
|---------------------|-----------------------------|
| 01 | 14.4% |
| 02 | 37.2% |
| 03 | 48.4% |
4. If no cutting takes place, the 10% down payment will not be refunded.
5. Operations on the contract issued will terminate on 06/30/2023.

Description of Timber by Payment Unit (PU)

| PU | MARKET GROUP | PRODUCT | QUANTITY | UNIT | ACRES | ADVERTISE PRICE |
|--------|--------------|-----------|----------|-------|-------|-----------------|
| 1 | B. T. Aspen | Sawtimber | 13.0 | MBF | 7.3 | \$2,891.50 |
| | B. T. Aspen | Pulpwood | 114.0 | Cords | | |
| | Mixed Oak | | 48.0 | Cords | | |
| 2 | B. T. Aspen | Sawtimber | 21.5 | MBF | 14.0 | \$7,462.95 |
| | Red Oak | | 3.2 | MBF | | |
| | Red Pine | | 19.1 | MBF | | |
| | B. T. Aspen | Pulpwood | 119.0 | Cords | | |
| | Mixed Oak | | 72.0 | Cords | | |
| | Red Maple | | 3.0 | Cords | | |
| | Red Pine | | 55.0 | Cords | | |
| | | | | | | |
| 3 | Red Oak | Sawtimber | 2.4 | MBF | 24.4 | \$9,681.75 |
| | Red Pine | | 46.5 | MBF | | |
| | B. T. Aspen | Pulpwood | 69.0 | Cords | | |
| | Jack Pine | | 61.0 | Cords | | |
| | Mixed Oak | | 108.0 | Cords | | |
| | Red Maple | | 10.0 | Cords | | |
| | Red Pine | | 64.0 | Cords | | |
| | | | | | | |
| TOTAL: | | | 105.7 | MBF | | |
| TOTAL: | | | 723.0 | Cords | | |

Sale Specific Conditions & Requirements

Sale Name: Side Slope Aspen Mix

Sale Number: 52-119-19 Seq#: 2

1 - Sale Area

1.2 - Boundaries

1.2.1 - Painted boundaries (1/14)

The sale boundary is marked and identified by red and teal paint. Exterior sale boundary lines against state are marked with red paint. The interior retention area is marked with teal paint. The painted boundary line trees are not Included Timber and are to be protected.

2 - Timber Specifications

2.1 - Included Timber

2.1.2 - Clearcut unit(s) w/o unmerchantable trees (8/11)

Within Payment Unit(s) 1, 2 and 3, cut all trees which meet minimum piece specifications in 2.2 Utilization, except do not cut teal marked trees. In addition, within Payment Unit 3 do not cut any white oak or white pine.

3 - Payments

3.3 - Pre-measured Sales

3.3.4 - Dividing payment units (7/14)

Payment Unit(s) may be divided at the request of the Purchaser and upon approval of the Unit Manager. Dividing Payment Units is a contract modification which requires a Timber Sale Contract Supplement.

3.4 - Damaged Timber

3.4.1 - Damaged timber (7/16)

General Condition and Requirement 3.4 Damaged Timber, defines liquidated damages for undesignated live merchantable trees which are cut or injured.

No damage is acceptable to undesignated live merchantable trees. Within the sale area, if more than 2 % of trees (> 4.5" DBH) within a specified area of the sale are damaged, liquidated damages will be assessed for all trees damaged. Rates will be in accordance with General Condition and Requirement 3.4 Damaged Timber.

4 - Transportation

4.1 - Construction

4.1.3 - Slash and earthen piles (8/04)

Piles or windrows of earth along roads and landings that have been widened or constructed shall be leveled. Slash from road maintenance or construction, including stumps, shall be dispersed throughout the sale.

4.1.12 - No new roads (1/12)

No new roads will be permitted in any Payment Unit. All operations are limited to existing roads. Skid trails only will be allowed.

4.2 - Maintenance

4.2.4 - Grading (10/16)

For completion of the sale, state forest roads must be graded. In general, this will require a road grader or bull dozer to shape up the roads after forest products have been hauled off site. This includes cleaning of drainage areas, grading, crowning and filling with gravel, if necessary. The grading equipment to be used must be approved by the Unit Manager or his/her representative.

5 - Operations

5.1 - Notification

5.1.1 - Pre-sale conference (10/16)

A pre-sale conference between the Purchaser and sale administrator is required prior to beginning any operations to determine landing location and review cutting specifications. The Unit Manager or his/her representative must be contacted at least 2 business days in advance to schedule the conference.

5.1.4 - Post-sale conference (10/16)

A post-sale conference on site between the Purchaser and sale administrator is required 5 days prior to the completion of active logging operations to determine clean-up and repair of landings, road edges, and the fulfillment of other contract specifications.

5.2 - Conduct of Operations

5.2.1 - Slash

5.2.1.13 - Dispose of slash as directed (12/05)

Slash is to be disposed of as directed by the contract administrator.

5.2.2 - Hazard Trees/Snags

5.2.2.1 - Den trees (10/16)

Obvious hollow and/or den trees shall be protected and left standing unless they are a safety hazard.

5.2.3 - Operating Restrictions

5.2.3.5 - Oak wilt restriction (1/18)

Within Payment Unit(s) 2 and 3, unless changed by written agreement, cutting, skidding, hauling within the sale and brushing of access roads to the sale are not permitted during the period of April 15 to July 15. Operations may be allowed if specific steps are taken to prevent damaging uncut oak during the high risk period. Those steps may include completing all road brushing before April 15th and clearing a tree-length buffer along uncut oak cover before April 15th. This is necessary to reduce the spread of oak wilt. For more information, contact the Unit Manager or his/her representative.

5.2.32 - Decking/landing restoration (9/13)

All decking and landing areas must have the surface area restored to a condition equal to or better than before. This is to ensure the proper regeneration of the stand. Wood debris, chips and "cookies" from trimmings must be removed or scattered away from landing and loading areas and may not be windrowed on the edge.

5.2.39 - ORV trail/route protection (4/18)

The Red Bridge ORV Trail is shown on the Timber Sale Map. Do not cut trees or damage posts with yellow ORV markers. All stumps within 5 feet of the trail must be cut flush with the ground. Maintain a 20 foot wide slash, debris, and rut free zone daily using the ORV trail or route as the centerline. Do not run equipment down the ORV trail or route. Skidding across the trail or route may only occur in locations approved by the sale administrator.

5.4 - Soil Protection

5.4.1 - Rutting restriction, general (7/16)

Operations are to cease immediately if equipment and weather conditions result in rutting of roads and/or skid trails which is 12 inches or greater in depth and 50 feet in length. The Unit Manager or his/her representative may restrict hauling and/or skidding if ruts exceed the specified depth. With the Unit Manager or his/her representative's approval, the Purchaser may return to the area when the risk of rutting has decreased.

5.4.2 - Skid trails (2/04)

Skid trails up and down slopes should be avoided. If however this is unavoidable, these trails will be left in a non-erodible condition using water bars, logs, and slash. Placing of slash on these skid trails while logging is ongoing may alleviate need for any further action. At the direction of the sale administrator, seed, fertilizer, and mulch may also be required.

5.8 - Protection of Endangered Species

5.8.5 - Protection of raptor nests (3/13)

All trees with raptor nests will be protected if found during harvesting operations. Notification will be made to the Unit Manager or his/her representative who will notify the Wildlife Biologist so an on-site evaluation and recommendation can be made, if necessary.

6 - Safety and Fire Prevention

6.2 - Signing

6.2.1 - Road posting (9/09)

The Purchaser is responsible for posting and maintaining caution signs on Waveland Road prior to beginning operations. The road must be posted at appropriate distances from the sale area to warn of logging activity and truck traffic. Signs must be removed when harvest operations are suspended or completed. The Purchaser will provide these signs.

6.2.3 - Recreational trail posting (2/10)

The Purchaser is responsible for posting and maintaining caution signs on the Red Bridge ORV Trail prior to beginning operations. The trail must be posted at appropriate distances from the sale area to warn of logging activity and truck traffic at both ends of the trail. Signs must be removed when harvest operations are suspended or completed. The Purchaser will provide these signs.



TIMBER SALE MAP

This information provided by authority of Part 525, 1994 PA 451, as amended.

| | |
|-------------|------|
| Sale Number | Year |
| 52 - 119 | 19 |

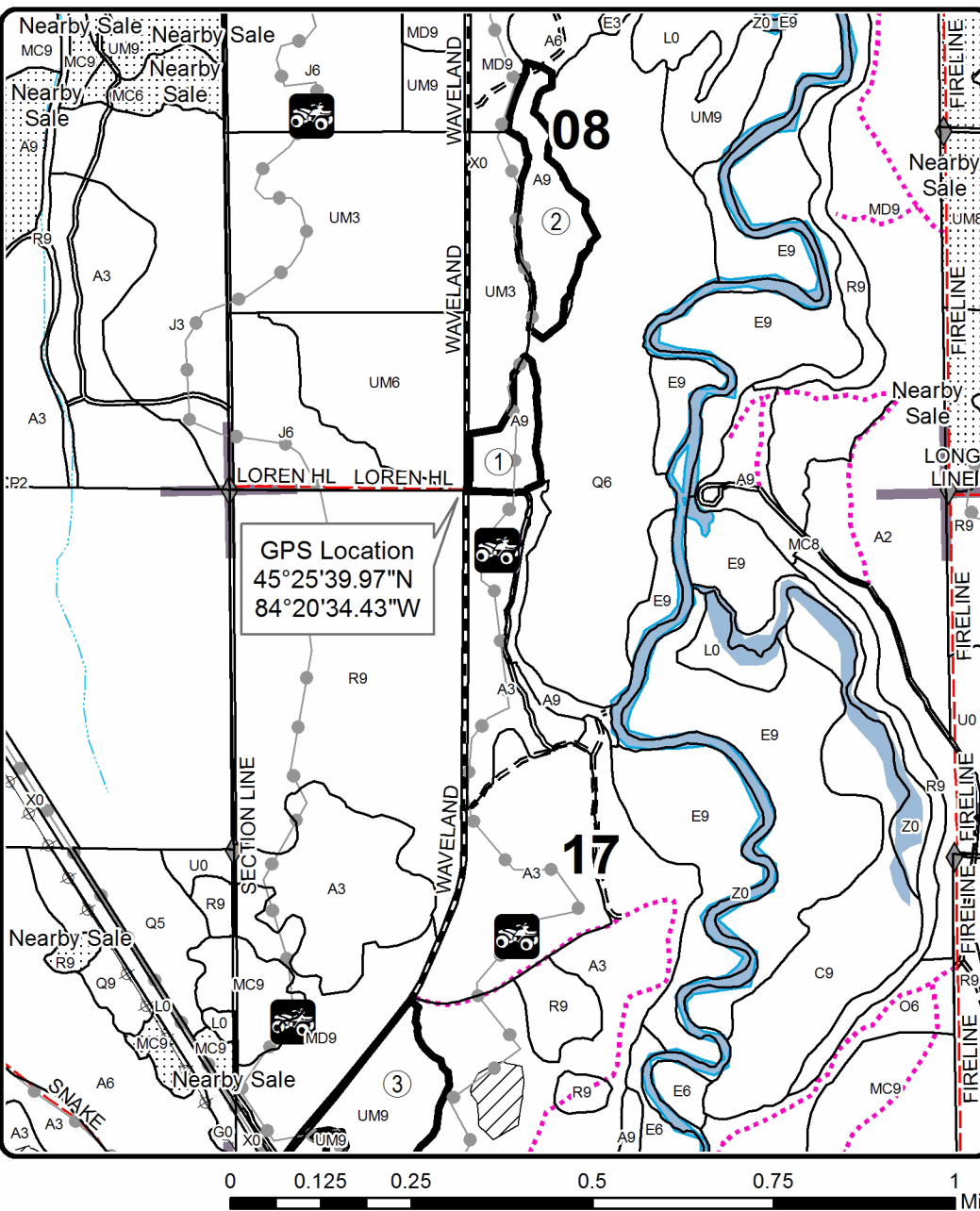
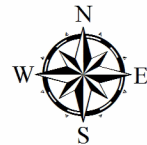
| | | | | | |
|--|----------------------------|--|---------------------------|------------------|----------------|
| Forest Management Unit GAYLORD MANAGEMENT UNIT | County CHEBOYGAN | Mapped By SCHEELE | Date 09/18/2019 | Page 1 | of 2 |
| Township 35N | Range 01E | Section(s) and Subdivision(s) SECTION 8 SENW, E1/2SW, NWSE SECTION 17 NENW, SW | Scale 1:15,840 | | |

| Cover Type | | | | Density | |
|-------------------|----------------------|-------------------------|-------------------|-----------------------------|------------------------|
| A = Aspen | H = Hemlock | N = Marsh | U = Upland Brush | 0 = Non Stocked | 5 = Pole Timber Medium |
| B = Paper Birch | J = Jack Pine | O = Oak | UM = Upland Mixed | 1 = Seedling Sapling Poor | 6 = Pole Timber Well |
| C = Cedar | L = Lowland Brush | P = Lowland Poplar | V = Bog or Marsh | 2 = Seedling Sapling Medium | 7 = Saw Timber Poor |
| D = Tread Bog | LM = Lowland Mixed | Q = Mixed Swamp Conifer | W = White Pine | 3 = Seedling Sapling Well | 8 = Saw Timber Medium |
| E = Swamp Hdwoods | M = Mpl, Bch, Brch | R = Red Pine | X = Non Stocked | 4 = Pole Timber Poor | 9 = Saw Timber Well |
| F = Spruce Fir | MC = Mixed Conifer | S = Black Spruce | Z = Water | | |
| G = Grass | MD = Mixed Deciduous | T = Tamarack | | | |

| PU | Acres |
|----|-------|
| 1 | 7.3 |
| 2 | 14.0 |
| 3 | 24.4 |

SIDE SLOPE ASPEN MIX

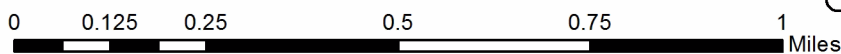
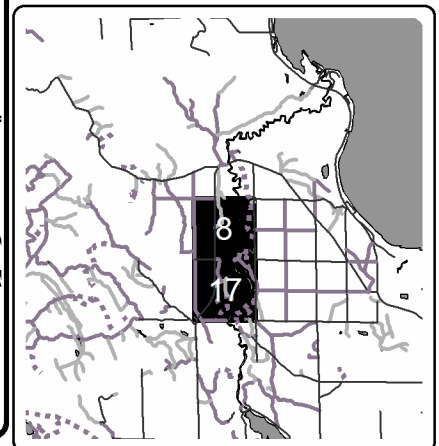
Compartment 206
45.7 Acres



Legend

- Against State (Red)
- Stand Boundaries
- ▨ Retention Area
- ▤ Nearby Timber Sales
- Recreation Trail
- ◆ Field Grade Corners
- Secondary Forest Road
- == Forest Access Route
- - Gravel Road
- - County Road - Seasonal
- ⋯ Temporary Management Access
- ⋯ Intermittent Stream
- Perennial River
- Lakes and Rivers
- Section Corners

Locator Map
1:200,000





TIMBER SALE MAP

This information provided by authority of Part 525, 1994 PA 451, as amended.

| | |
|-------------|------|
| Sale Number | Year |
| 52 - 119 | 19 |

| | | | | | |
|--|----------------------------|-----------------------------|---------------------------|------------------|----------------|
| Forest Management Unit GAYLORD MANAGEMENT UNIT | County CHEBOYGAN | Mapped By SCHEELE | Date 09/18/2019 | Page 2 | of 2 |
| Cruised By SCHEELE | | | | | |

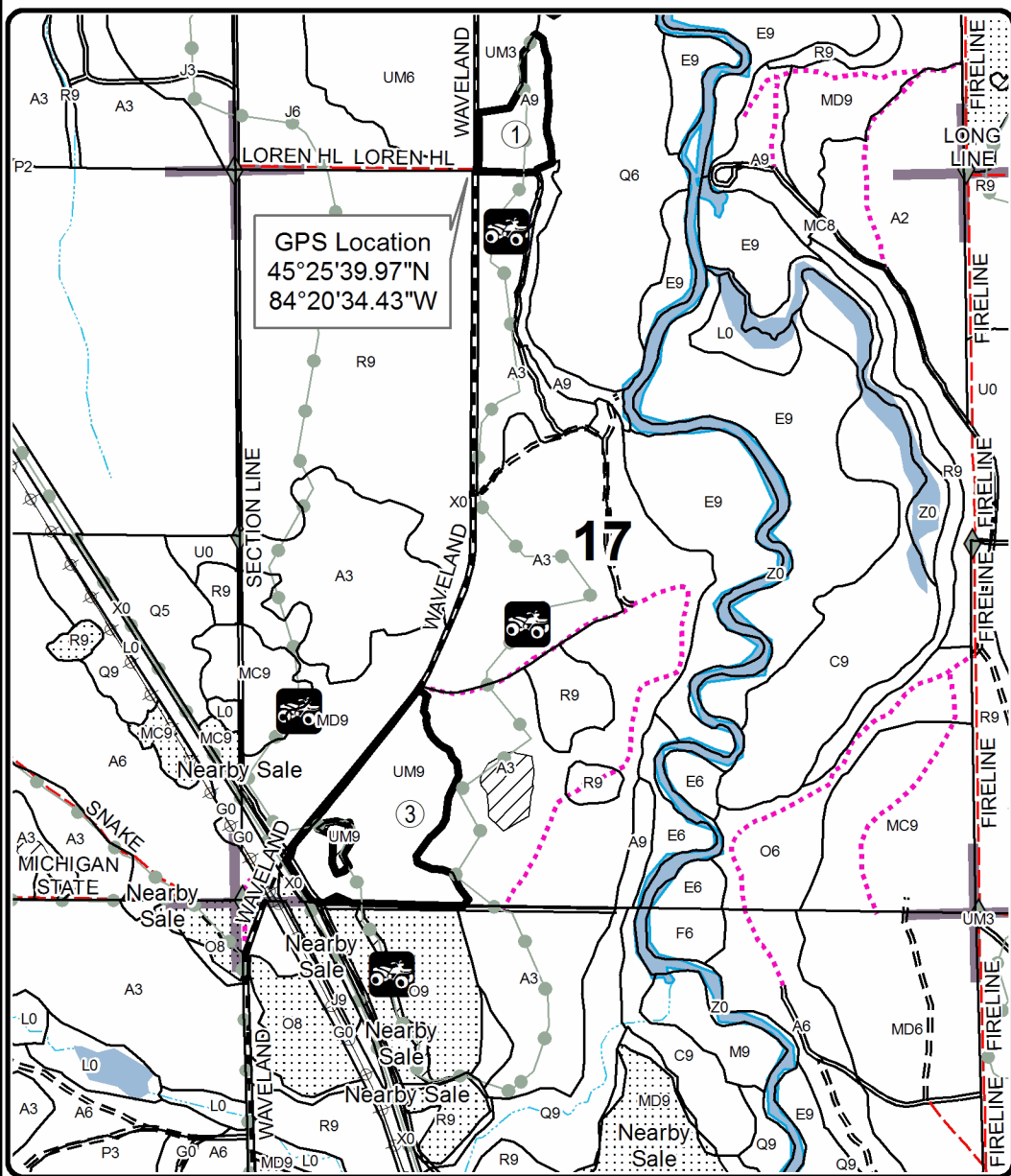
| | | | |
|------------------------|---------------------|--|--------------------------|
| Township 35N | Range 01E | Section(s) and Subdivision(s) SECTION 8 SENW, E1/2SW, NWSE SECTION 17 NENW, SW | Scale 1:15,840 |
|------------------------|---------------------|--|--------------------------|

| Cover Type | | | | Density | |
|-------------------|----------------------|-------------------------|-------------------|-----------------------------|------------------------|
| A = Aspen | H = Hemlock | N = Marsh | U = Upland Brush | 0 = Non Stocked | 5 = Pole Timber Medium |
| B = Paper Birch | J = Jack Pine | O = Oak | UM = Upland Mixed | 1 = Seedling Sapling Poor | 6 = Pole Timber Well |
| C = Cedar | L = Lowland Brush | P = Lowland Poplar | V = Bog or Marsh | 2 = Seedling Sapling Medium | 7 = Saw Timber Poor |
| D = Treed Bog | LM = Lowland Mixed | Q = Mixed Swamp Conifer | W = White Pine | 3 = Seedling Sapling Well | 8 = Saw Timber Medium |
| E = Swamp Hdwoods | M = Mpl, Bch, Brch | R = Red Pine | X = Non Stocked | 4 = Pole Timber Poor | 9 = Saw Timber Well |
| F = Spruce Fir | MC = Mixed Conifer | S = Black Spruce | Z = Water | | |
| G = Grass | MD = Mixed Deciduous | T = Tamarack | | | |

| PU | Acres |
|----|-------|
| 1 | 7.3 |
| 2 | 14.0 |
| 3 | 24.4 |

SIDE SLOPE ASPEN MIX

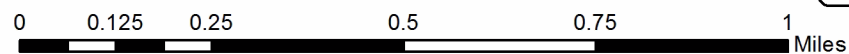
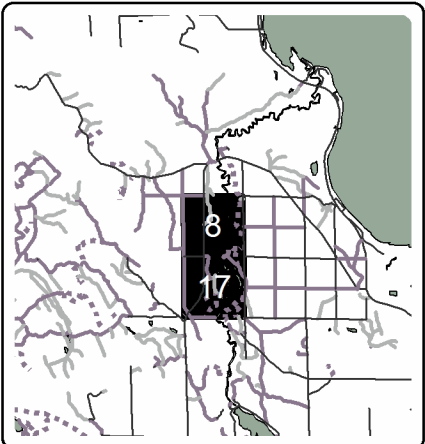
Compartment 206
45.7 Acres



Legend

- Against State (Red)
- Stand Boundaries
- ▨ Retention Area
- ⋯ Nearby Timber Sales
- Recreation Trail
- ◆ Field Grade Corners
- Secondary Forest Road
- == Forest Access Route
- - Gravel Road
- - - County Road - Seasonal
- ⋯ Temporary Management Access
- ⋯ Intermittent Stream
- Perennial River
- Lakes and Rivers
- Section Corners

Locator Map
1:200,000



Side Slope Aspen Mix (52-119-19)
T35N, R01E, SEC. 17; T35N, R01E, SEC. 8; Cheboygan COUNTY

In response to the notice of sale to be held 3:00 p.m. (local time) on June 11, 2020, I am hereby submitting my sealed bid (firm offer) for the following forest products to be cut. Bids for individual species must be at or above the advertised price. All non-responsive bid forms may be rejected.

| <u>PRODUCTS & SPECIES</u> | <u>ESTIMATED VOLUME*</u> | <u>ADVERTISED PRICE</u> | <u>BID PRICE/UNIT</u> |
|-------------------------------|--------------------------|-------------------------|-----------------------|
| Sawtimber | | | |
| B. T. Aspen | 34.50 MBF | \$ 40.00/MBF | \$ _____ |
| Red Oak | 5.60 MBF | \$ 126.00/MBF | \$ _____ |
| Red Pine | 65.60 MBF | \$ 84.00/MBF | \$ _____ |
| Pulpwood | | | |
| B. T. Aspen | 302.00 Cords | \$ 14.95/Cord | \$ _____ |
| Jack Pine | 61.00 Cords | \$ 11.60/Cord | \$ _____ |
| Mixed Oak | 228.00 Cords | \$ 13.90/Cord | \$ _____ |
| Red Maple | 13.00 Cords | \$ 18.50/Cord | \$ _____ |
| Red Pine | 119.00 Cords | \$ 32.00/Cord | \$ _____ |

*The volumes are statistically estimated within plus (+) or minus (-) 17.51 percent. These estimated volumes are final and not subject to adjustment. Prospective bidders are urged to examine this timber and to make their own estimates of quantity and quality.

I understand that any or all bids may be rejected. All bids must be signed and all bid items must be bid or the bid form may be rejected. I also understand that consideration and awarding a contract will be based upon my past performance and ability to complete the contract based upon equipment and staffing subject to my control.

FEDERAL ID: ____ - ____ - ____ or SOCIAL SECURITY NUMBER: ____ - ____ - ____

Company or individual bidding: _____

Company representative's name: _____

Address: _____

City: _____ State: _____ Zip: _____

IF AVAILABLE, PLEASE PLACE THE PERSONALIZED LABEL FROM YOUR PROSPECTUS IN THE ABOVE BOX.

Individual or company representative's signature: _____ Date: _____

Phone number : _____ Email (optional): _____

THE WINNING BIDDER MUST COMPLETE THE VERIFICATION OF WORKER'S DISABILITY COMPENSATION ACT COMPLIANCE (ON REVERSE SIDE IF DOUBLE SIDED) WITHIN 21 DAYS OF SALE AWARD DATE



| | |
|----------------------------------|--|
| FOR DEPARTMENT USE ONLY | |
| Sale Number (XX - XXX - XX - XX) | |
| Forest Management Unit: | |

TIMBER SALE VERIFICATION OF WORKER'S DISABILITY COMPENSATION ACT COMPLIANCE

As required by Act 317, P.A. 1969 (Worker's Compensation) and
Part 5 of Act 451 of 1994, as amended.

VERIFICATION OF WORKER'S DISABILITY COMPENSATION ACT COMPLIANCE

- This verification must be completed and submitted within 21 days of contract award and prior to the issuance of the timber sale contract.
- In addition, if boxes 2B or 2C are checked, then Notice of Exclusion or Certificate of Insurance must be submitted within twenty-one (21) days of the contract award and prior to the issuance of the timber sale contract.
- All information must be typed or printed except for written signatures.

Please Check Appropriate Categories:

1. My business is organized as (you **must** check one of the boxes below):
 - A. Sole Proprietorship (individual)
 - B. Partnership
 - C. Corporation
2. You **must** check one of the boxes below:
 - A. I certify my business is a sole proprietorship and it has no employees but the sole proprietor. I am not subject to the Worker's Compensation Laws.
 - B. I certify my business has satisfied its obligation to the Worker's Compensation Act through the use of an approved Notice of Exclusion (BWC-337, Rev. 5/96). I will provide a copy of the Notice of Exclusion within 21 days of the contract award. (For questions or a copy of the BWC-337, please call the Worker's Compensation Bureau at 517-322-1195).
 - C. I certify my business has a Worker's Compensation Policy. I will provide an original Certificate of Insurance within twenty-one (21) days of the contract award.
3. If you have checked item 2(A) or 2(B), you **must** indicate the number of **both** full-time and part-time employees, other than yourself, including family members and active partners (if none, you must enter "0").

_____ Full-time Employees

_____ Part-time Employees

| | | | |
|------------------|-------|-------------------------------------|--|
| Name of Business | | Federal ID (or) Social Security No. | |
| Address | | Telephone () | |
| City | State | ZIP | |

I hereby certify that the above information is true and correct. I agree to notify the Michigan DNR of any changes that occur in factors affecting my coverage during any of my present and future operations.

Signature of Owner or Authorized Representative

Title

Date

Please complete the "SEALED BID" information on the next page

Wet Shoes Mix (52-118-19)
T35N, R01E, SEC. 5; T35N, R01E, SEC. 8; Cheboygan COUNTY

In response to the notice of sale to be held 3:00 p.m. (local time) on June 11, 2020, I am hereby submitting my sealed bid (firm offer) for the following forest products to be cut. Bids for individual species must be at or above the advertised price. All non-responsive bid forms may be rejected.

| <u>PRODUCTS & SPECIES</u> | <u>ESTIMATED VOLUME*</u> | <u>ADVERTISED PRICE</u> | <u>BID PRICE/UNIT</u> |
|-------------------------------|--------------------------|-------------------------|-----------------------|
| Sawtimber | | | |
| B. T. Aspen | 4.80 MBF | \$ 40.00/MBF | \$ _____ |
| N. White Cedar | 6.10 MBF | \$ 20.00/MBF | \$ _____ |
| Red Maple | 2.80 MBF | \$ 51.00/MBF | \$ _____ |
| Red Oak | 27.20 MBF | \$ 126.00/MBF | \$ _____ |
| Red Pine | 170.20 MBF | \$ 84.00/MBF | \$ _____ |
| White Spruce | 1.90 MBF | \$ 34.00/MBF | \$ _____ |
| Pulpwood | | | |
| B. T. Aspen | 129.00 Cords | \$ 14.95/Cord | \$ _____ |
| Balsam Fir | 44.00 Cords | \$ 16.00/Cord | \$ _____ |
| Jack Pine | 269.00 Cords | \$ 11.60/Cord | \$ _____ |
| Mixed Oak | 302.00 Cords | \$ 13.90/Cord | \$ _____ |
| N. White Cedar | 55.00 Cords | \$ 6.10/Cord | \$ _____ |
| Paper Birch | 25.00 Cords | \$ 9.45/Cord | \$ _____ |
| Red Maple | 125.00 Cords | \$ 18.50/Cord | \$ _____ |
| Red Pine | 496.00 Cords | \$ 32.00/Cord | \$ _____ |
| White Pine | 123.00 Cords | \$ 16.45/Cord | \$ _____ |
| White Spruce | 4.00 Cords | \$ 13.70/Cord | \$ _____ |

*The volumes are statistically estimated within plus (+) or minus (-) 10.99 percent. These estimated volumes are final and not subject to adjustment. Prospective bidders are urged to examine this timber and to make their own estimates of quantity and quality.

I understand that any or all bids may be rejected. All bids must be signed and all bid items must be bid or the bid form may be rejected. I also understand that consideration and awarding a contract will be based upon my past performance and ability to complete the contract based upon equipment and staffing subject to my control.

FEDERAL ID: ____ - ____ - ____ or SOCIAL SECURITY NUMBER: ____ - ____ - ____

Company or individual bidding: _____

Company representative's name: _____

Address: _____

City: _____ State: _____ Zip: _____

IF AVAILABLE, PLEASE PLACE THE PERSONALIZED LABEL FROM YOUR PROSPECTUS IN THE ABOVE BOX.

Individual or company representative's signature: _____ Date: _____

Phone number : _____ Email (optional): _____

THE WINNING BIDDER MUST COMPLETE THE VERIFICATION OF WORKER'S DISABILITY COMPENSATION ACT COMPLIANCE (ON REVERSE SIDE IF DOUBLE SIDED) WITHIN 21 DAYS OF SALE AWARD DATE



| FOR DEPARTMENT USE ONLY | |
|----------------------------------|--|
| Sale Number (XX - XXX - XX - XX) | |
| Forest Management Unit: | |

TIMBER SALE VERIFICATION OF WORKER'S DISABILITY COMPENSATION ACT COMPLIANCE

As required by Act 317, P.A. 1969 (Worker's Compensation) and
Part 5 of Act 451 of 1994, as amended.

VERIFICATION OF WORKER'S DISABILITY COMPENSATION ACT COMPLIANCE

- This verification must be completed and submitted within 21 days of contract award and prior to the issuance of the timber sale contract.
- In addition, if boxes 2B or 2C are checked, then Notice of Exclusion or Certificate of Insurance must be submitted within twenty-one (21) days of the contract award and prior to the issuance of the timber sale contract.
- All information must be typed or printed except for written signatures.

Please Check Appropriate Categories:

1. My business is organized as (you **must** check one of the boxes below):
 - A. Sole Proprietorship (individual)
 - B. Partnership
 - C. Corporation
2. You **must** check one of the boxes below:
 - A. I certify my business is a sole proprietorship and it has no employees but the sole proprietor. I am not subject to the Worker's Compensation Laws.
 - B. I certify my business has satisfied its obligation to the Worker's Compensation Act through the use of an approved Notice of Exclusion (BWC-337, Rev. 5/96). I will provide a copy of the Notice of Exclusion within 21 days of the contract award. (For questions or a copy of the BWC-337, please call the Worker's Compensation Bureau at 517-322-1195).
 - C. I certify my business has a Worker's Compensation Policy. I will provide an original Certificate of Insurance within twenty-one (21) days of the contract award.
3. If you have checked item 2(A) or 2(B), you **must** indicate the number of **both** full-time and part-time employees, other than yourself, including family members and active partners (if none, you must enter "0").

_____ Full-time Employees

_____ Part-time Employees

| | | | |
|------------------|-------|-------------------------------------|--|
| Name of Business | | Federal ID (or) Social Security No. | |
| Address | | Telephone () | |
| City | State | ZIP | |

I hereby certify that the above information is true and correct. I agree to notify the Michigan DNR of any changes that occur in factors affecting my coverage during any of my present and future operations.

Signature of Owner or Authorized Representative

Title

Date

Please complete the "SEALED BID" information on the next page