



**DEPARTMENT OF NATURAL RESOURCES  
STATE OF MICHIGAN**

**TIMBER SALE PROSPECTUS #6491**

SCHEDULED SALE DATE AND TIME: 4:00 p.m. (local time) on October 31, 2019.

LOCATION: TRAVERSE CITY MGMT UNIT, 2122 M 37 SOUTH, TRAVERSE CITY, MI 49685.

PROSPECTUS NOTE: The bidder is advised to inspect the sale area and review the location, estimated volumes, operating costs and contract terms of proposed sales. Please be aware that some landowners may request 60 days or more notice for access across their land.

Notice is hereby given that bids will be received by the Unit Manager, TRAVERSE CITY MANAGEMENT UNIT, for certain timber on the following described lands:

Both Sides of the Line Aspen (61-031-19) / T23N, R14W, SEC. 1 , E1/2NW,W1/2NE.  
Manistee County, Advertised Price \$22,549.90, 19.5 Acres, Aspen, Hardwood.

Oil Can Mix (61-032-19) / T26N, R13W, SEC. 15, SESW,SE.  
Benzie County, Advertised Price \$75,624.60, 106.9 Acres, Aspen, Hardwood.

Mountaintop Mix (61-039-19) / T22N, R14W, SEC. 18, SWSE.  
Manistee County, Advertised Price \$23,911.90, 13.4 Acres, Red Oak, Hardwood.

570 Case Oak (61-123-19) / T27N, R08W, SEC. 25, NW,W1/2NE,N1/2SW.  
T27N, R08W, SEC. 26, NW,E1/2NE,W1/2SW,N1/2SE.  
T27N, R08W, SEC. 27, SENE,NESE,S1/2SE.  
Kalkaska County, Advertised Price \$68,893.70, 227.0 Acres, Jack Pine, Hardwood.

SALE NOTE: A recreation site such as a trail, pathway, or campground is within the sale area or the vicinity. Certain restrictions/specifications may be applicable including time restrictions.

## BID INSTRUCTIONS (VER. 07/02/2018):

### 1. Scheduled Bid Location, Date, and Time (2/11)

Bids must be received by the Unit Manager, TRAVERSE CITY OFFICE, 2122 M 37 South, Traverse City, MI 49685, no later than 4:00 p.m. (local time) on October 31, 2019. For further information concerning this sale, contact David Lemmien at 231-922-6040.

### 2. Bidder's Qualifications (5/16)

Purchaser shall obtain workers compensation insurance to cover claims under Michigan's Worker's Disability Compensation Act of 1969 or similar employee benefit act of any other state applicable to an employee. If all or part of a timber sale was prepared by a private contractor, the contractor and that contractor's company are not permitted to bid on the timber sale contract. Bids will not be accepted from individuals or companies appearing on the DNR/FRD No-Bid List. This list contains the names of purchasers who previously failed to execute a contract within 21-days or who have a history of poor performance.

### 3. Preparation of Sealed Bids (5/16)

Bid Forms may be completed online thru Michigan DNR Timber Sale Online Bidding (OLB) at [www.michigan.gov/timberbidding](http://www.michigan.gov/timberbidding) or by completing the hardcopy Bid Form found in the Timber Sale Prospectus. Hardcopy Bid Forms shall be manually signed in ink. Registration in OLB is considered your 'signature' for all bids submitted thru that system. Bid prices must be entered for each species and product in the Bid Price column for all material subject to bidding and all fill-in blanks must be completed. If erasures or other changes appear on the hardcopy Bid Form, each erasure or change must be initialed by the person signing the bid.

### 4. Submission of Sealed Bids (5/16)

Bid forms may be obtained from the Unit Manager or thru OLB. Bids may be submitted hardcopy or thru OLB. All hardcopy bids must be submitted on the bid form and in an envelope clearly identified as described in this section. NOTE: Only one bid form per bid envelope. Sealed bids must be submitted to the Unit office designated in the prospectus and must be submitted at or prior to the time established in the prospectus. The envelope should show on the outside (a) the sale name or number and (b) the date and time of bid opening, as shown in the prospectus. Bids received after the time specified in the sale prospectus are late bids and will be rejected.

It is possible for a bidder to submit multiple bids on a single sale. For example, a bid may be submitted hardcopy and a bid may be submitted thru OLB. Or, two bidders from the same company could both submit bids on the same sale. If this were to happen, the State would accept all bids received and award the contract accordingly. All bidding and contractual requirements would apply to all bids received.

### 5. Public Opening of Sealed Bids (7/16)

If conditions permit, the sealed bids will be publicly opened and posted at the time and place set in the prospectus.

If a bidder, present at a bid opening, has submitted bids on more than one sale, that bidder may withdraw their unopened bid envelopes or announce the withdrawal of their online bid after being declared the successful bidder on one sale.

### 6. Award of Contract (1/11)

Award of the contract will be made to the Bidder whose bid, conforming to the prospectus, is most advantageous to the State of Michigan on the basis of total value at rates bid for the estimated quantities. The State reserves the right to reject any bid or waive any minor irregularity in bids received. A written award mailed (or otherwise furnished) to the successful Bidder shall be deemed to result in a binding contract without further action by either party.

### 7. Down Payment (1/11)

The Bidder to whom award is made must make a down payment within 21 days of the sale award. The amount of the down payment will be calculated as shown in the Bond and Payment Schedule of this prospectus. Only cash may be used to meet this requirement.

### 8. Performance Security (1/11)

As guarantee of faithful performance, a cash bond, certificate of deposit, surety bond or irrevocable letter of credit (LOC) is required within 21 days of the sale award. The amount of the performance security is shown in the Bond and

Payment Schedule of this prospectus. If an LOC or surety is used, the coverage must extend for at least 6 months beyond the contract expiration.

#### 9. Timber Sale Contract (7/18)

Additional conditions and requirements common to all timber sales are listed on the timber sale contract (R4031) and are available on line at [www.michigan.gov/timber](http://www.michigan.gov/timber). Contact the Unit Manager for additional information or a sample contract. Within 21 days of the date of the award letter, the bidder must sign the contract and provide the required down payment, performance security, and verification of worker's disability compensation. The down payment and performance security shall be in accordance with the provisions of the timber sale contract, in the sums stated in this prospectus. If these actions are not taken, then the Bidder, the Bidder's corporation, and the corporation's principals may not be permitted to bid on State timber sales for a period of 3 months after the first offense, 6 months after the second offense, and 1 year after the third offense. An offense will only be counted against the Bidder for 5 years. In addition, the Bidder certifies that if awarded this contract, the Bidder will complete the timber sale contract in accordance with its terms and any modifications thereof including requirements to purchase, cut, and remove the included timber by the expiration date.

Payment Unit values in the State Forest Timber Sale Contract are calculated based on the advertised value of the Payment Unit as a percentage of the total advertised value of the contract. The advertised value of each Payment Unit is given in the Description of Timber by Payment Unit table on the Timber Sale Information page. For example, if the value of Payment Unit 1 is advertised as \$1,500 and the total Timber Sale value is advertised as \$10,000, the contract price for Payment Unit 1 will be 15% of the total bid price ( $\$1,500/\$10,000 * 100$ ).

#### 10. Disclaimer of Estimates and Bidder's Warranty of Inspection (7/16)

Before submitting this bid, the Bidder is advised and cautioned to inspect the sale area, review the requirements of the sale contract, and take other steps as may be reasonably necessary to ascertain the location, estimated volumes, construction estimates, and operating costs of the proposed sale. Failure to do so will not relieve the Bidder from responsibility for completing the contract.

The Bidder warrants that this bid is submitted solely on the basis of the Bidder's examination and inspection of the quality and quantity of the timber offered for sale and the Bidder's opinion of the value thereof and the costs of recovery. No reliance should be placed on the State of Michigan's estimates of timber quality, quantity or costs of recovery. Bidder further acknowledges that the State of Michigan: (i) expressly disclaims any warranty of fitness of timber for any purpose; (ii) offers this timber as is without any warranty of quality (merchantability) or quantity and (iii) expressly disclaims any warranty as to the quantity or quality of timber sold.

#### 11. Certification and Chain-of-Custody (10/14)

Unless otherwise indicated in the contract under section 7 – Other Conditions of the Sale Specific Conditions & Requirements, the area encompassed by this timber sale is certified to the standards of the Forest Stewardship Council (FSC) - Certificate #SCS-FM/COC-00090N and the Sustainable Forestry Initiative (SFI) - Certificate #NSF-SFIS-5Y031-SF5. Forest products from this sale may be delivered to the mill as "FSC 100% and / or SFI certified" as long as the contractor hauling the forest products is chain-of-custody (COC) certified or covered under a COC certificate from the destination mill. The purchaser is responsible for maintaining COC after leaving the sale area.

#### 12. Good Neighbor Authority (GNA) Requirements (7/16)

If the name of this timber sales contains the acronym GNA, it is authorized by the Good Neighbor Authority (GNA) and covered by various agreements between the U.S. Forest Service and the State. The timber sale occurs on federal land and the following conditions apply:

GNA contracts on US Forest Service land will not be awarded to purchasers on the Federal list of excluded parties. The System for Award Management (SAM) will be checked for active excluded parties prior to award of contract. In addition, the Bidder to whom award is made must complete an Assurance Regarding Felony Conviction or Tax Delinquent Status for Corporate Applicants (AD-3031).

#### 13. Good Neighbor Authority (GNA) Requirements, con't (9/16)

Bidder certifies, by signing this bid form, that to the best of Bidder's knowledge that the following representations are accurate and complete.

- a. That the Bidder and its principals are not presently debarred, suspended, proposed for debarment, declared ineligible, or voluntary excluded from timber sales (covered transactions) by any Federal department or agency.
- b. That the Bidder and its principals have not within a 3-year period preceding this bid been convicted of or had a civil judgment rendered against them for commission of fraud or a criminal offense in connection with obtaining, attempting to obtain, or performing a public (Federal, State, or local) transaction or contract under a public transaction; violation of Federal or State antitrust statutes or commission of embezzlement, theft, forgery, bribery, falsification or destruction of records, making false statements, or receiving stolen property.
- c. That the Bidder and its principals are not presently indicted for or otherwise criminally or civilly charged by a governmental entity (Federal, State, or local) with commission of any of the offenses enumerated in paragraph b of this certification.
- d. That the Bidder and its principals have not within a 3-year period preceding this bid had one or more public transactions (Federal, State, or local) terminated for breach or default of a timber or forest product contract.

Bidders that cannot certify this requirement, in whole or in part, shall submit an explanation with their bid.

DAN EICHINGER  
Director

**TIMBER SALE INFORMATION**

Both Sides of the Line Aspen (61-031-19)  
 T23N, R14W, SEC. 1.  
 Manistee County (Advertised Price \$22,549.90)

A timber sale contract for this lump sum, sealed bid timber sale will be awarded to the responsible bidder offering the highest sealed bid price. Bids must be at or above the following advertised price for each species:

<u>PRODUCTS &amp; SPECIES</u>	<u>ESTIMATED UNITS*</u>	<u>ADVERTISED PRICE</u>
Sawtimber		
B. T. Aspen	91.40 MBF	\$ 118.00 / MBF
Red Maple	35.40 MBF	\$ 117.00 / MBF
Pulpwood		
B. T. Aspen	264.00 Cords	\$ 17.90 / Cord
Mixed Hardwood	156.00 Cords	\$ 16.10 / Cord
White Pine	29.00 Cords	\$ 13.30 / Cord

\* The total volume is statistically estimated within plus (+) or minus (-) 20.78 percent. The estimated units are final and not subject to adjustment. Prospective bidders are urged to examine this timber and to make their own estimates of quantity and quality.

**BOND AND PAYMENT SCHEDULE:**

- A bond in the amount of \$1,127.00 to insure faithful performance of the conditions of the contract will be deposited by the successful bidder within 21 days of the sale award.
- Cutting in any sale or unit without the required advance payment would be considered a trespass.
- Total payment must be paid in advance or according to the following schedule:
  - Ten percent (10%) of the sale value must be paid within 21 days of the sale award.
  - The remainder is due before cutting begins.
  - Payment for each of the following units must be made before cutting begins in that unit:
 

PAYMENT UNIT NUMBER	PERCENT OF TOTAL SALE VALUE
01	100.0%
- If no cutting takes place, the 10% down payment will not be refunded.
- Operations on the contract issued will terminate on 12/31/2021.

**Description of Timber by Payment Unit (PU)**

PU	MARKET GROUP	PRODUCT	QUANTITY	UNIT	ACRES	ADVERTISE PRICE
1	B. T. Aspen	Sawtimber	91.4	MBF	19.5	\$22,549.90
	Red Maple		35.4	MBF		
	B. T. Aspen	Pulpwood	264.0	Cords		
	Mixed Hardwood		156.0	Cords		
	White Pine		29.0	Cords		
TOTAL:			126.8	MBF		
TOTAL:			449.0	Cords		

# Sale Specific Conditions & Requirements

**Sale Name: Both Sides of the Line Aspen**

**Sale Number: 61-031-19 Seq#: 1**

## 1 - Sale Area

### 1.2 - Boundaries

#### 1.2.1 - Painted boundaries (1/14)

The sale boundary and Payment Unit boundaries are marked and identified by red paint. Exterior sale boundary lines against state are marked with red paint. The painted boundary line trees are not Included Timber and are to be protected.

## 2 - Timber Specifications

### 2.1 - Included Timber

#### 2.1.1 - Clearcut unit(s) with unmerchantable trees (6/14)

Within Payment Unit(s) 1B, cut all trees that are two (2) inches or more at DBH, except do not cut balsam fir and eastern hemlock. In addition, do not cut white pine greater than 10" at DBH.

#### 2.1.2 - Clearcut unit(s) w/o unmerchantable trees (8/11)

Within Payment Unit(s) 1A, cut all trees which meet minimum piece specifications in 2.2 Utilization, except do not cut trees marked with green paint.

### 2.2 - Utilization

#### 2.2.3 - Stump heights (4/07)

Stump heights within the Sale Area shall not exceed 6 inches for all trees.

## 3 - Payments

### 3.4 - Damaged Timber

#### 3.4.1 - Damaged timber (6/14)

General Condition and Requirement 3.4 Damaged Timber, defines liquidated damages for undesignated live merchantable trees which are cut or injured. In addition, extreme care should be taken to avoid damage to tree seedlings and saplings.

No damage is acceptable to merchantable trees. Within the sale area, if more than 10% of trees (> 4.5" DBH) within a specified area of the sale are damaged, liquidated damages will be assessed for all trees damaged. Rates will be in accordance with General Condition and Requirement 3.4 Damaged Timber.

## 4 - Transportation

### 4.1 - Construction

#### 4.1.11 - Permits (2/12)

The Purchaser will secure any necessary permits that may be required.

#### 4.1.12 - No new roads (1/12)

No new roads will be permitted in any Payment Unit. All operations are limited to existing roads. Skid trails only will be allowed.

## 5 - Operations

### 5.2 - Conduct of Operations

#### 5.2.1 - Slash

##### 5.2.1.8 - Slash height (12/08)

No slash or tree tops may exceed 24 inches in height.

#### 5.2.2 - Hazard Trees/Snags

#### 5.2.2.1 - Den trees (10/16)

Obvious hollow and/or den trees shall be protected and left standing unless they are a safety hazard.

#### 5.2.4 - Dead and Down Creation

##### 5.2.4.2 - Dead and down creation, hare and grouse (1/14)

To improve habitat for snowshoe hare, grouse, and other species, the Purchaser is to leave two, 10 inch diameter or larger log size pieces on the ground for every two acres. They should be scattered throughout the sale or positioned per the sale administrators instructions. If possible, the logs or trees should be felled so they overlap. Note these pieces should have a minimum length of eight feet.

##### 5.2.29 - Shrub protection (9/07)

Do not cut or damage hawthorn, witch-hazel or juneberry. These woody-shrub plants are highly beneficial to various wildlife species.

#### 5.4 - Soil Protection

##### 5.4.1 - Rutting restriction, general (7/16)

Operations are to cease immediately if equipment and weather conditions result in rutting of roads and/or skid trails which is 12 inches or greater in depth and 50 feet in length. The Unit Manager or his/her representative may restrict hauling and/or skidding if ruts exceed the specified depth. With the Unit Manager or his/her representative's approval, the Purchaser may return to the area when the risk of rutting has decreased.

### 6 - Safety and Fire Prevention

#### 6.2 - Signing

##### 6.2.1 - Road posting (9/09)

The Purchaser is responsible for posting and maintaining caution signs on 13 Mile Rd prior to beginning operations. The road must be posted at appropriate distances from the sale area to warn of logging activity and truck traffic. Signs must be removed when harvest operations are suspended or completed. The Purchaser will provide these signs.



Sale Number	Year
61-031	19

### TIMBER SALE MAP

This information provided by authority of Part 525, 1994 PA 451, as amended.

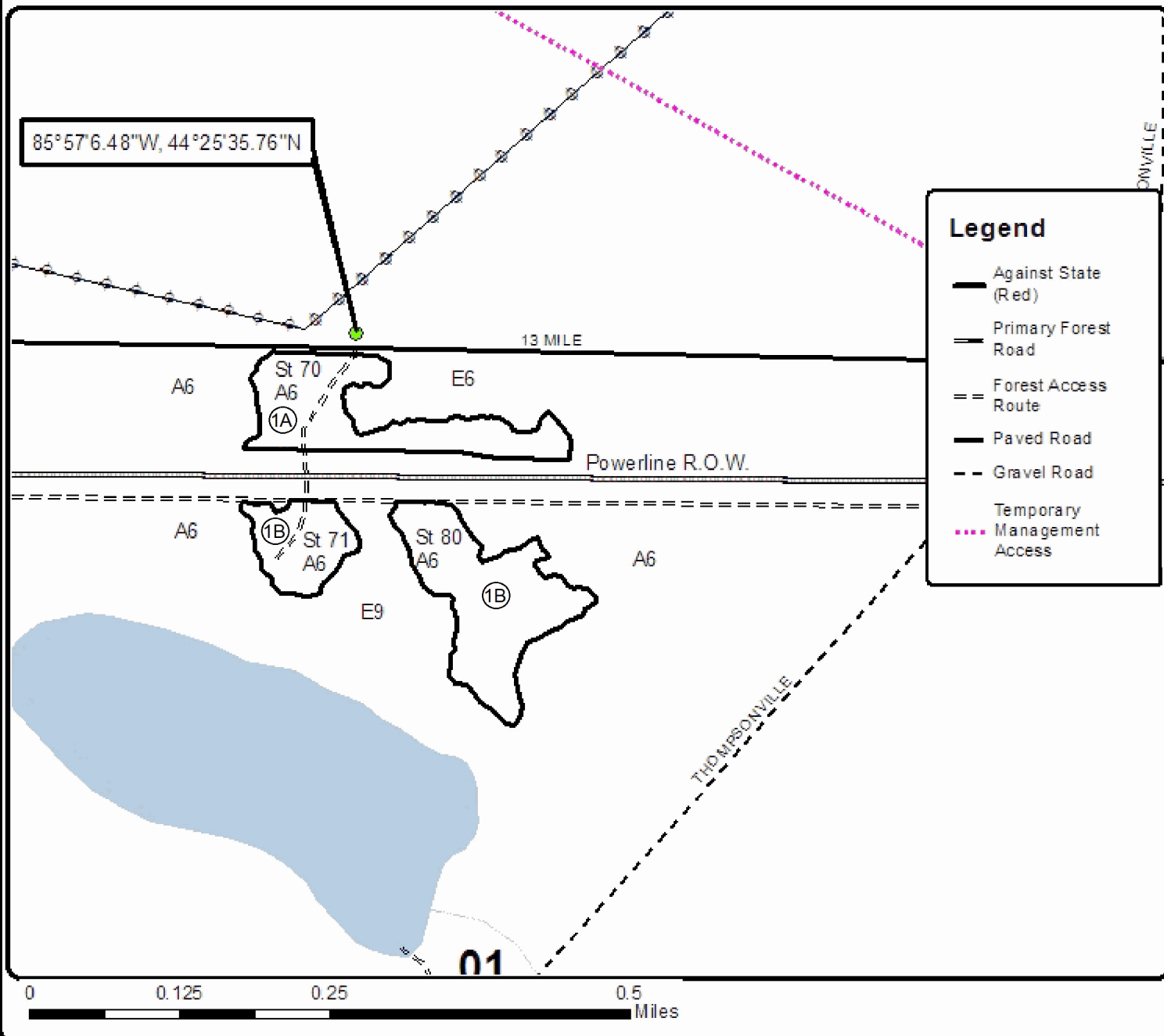
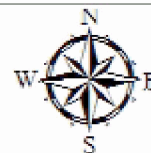
Forest Management Unit Traverse City FMU	County Manistee	Mapped By Patrick Cotant	Date 07/29/2019	Page 1	of 1
Township 23N	Range 14W	Section(s) and Subdivision(s) Sec 1 - E1/2NW, W 1/2NE	Scale 1:7,920		

Cover Type				Density	
A = Aspen	H = Hemlock	N = Marsh	U = Upland Brush	0 = Non Stocked	5 = Pole Timber Medium
B = Paper Birch	J = Jack Pine	O = Oak	UM = Upland Mixed	1 = Seeding Sapling Poor	6 = Pole Timber Well
C = Cedar	L = Lowland Brush	P = Lowland Poplar	V = Bog or Marsh	2 = Seeding Sapling Medium	7 = Saw Timber Poor
D = Treed Bog	LM = Lowland Mixed	Q = Mixed Swamp Conifer	W = White Pine	3 = Seeding Sapling Well	8 = Saw Timber Medium
E = Swamp Hardwoods	M = Mpl. Ech. Birch	R = Red Pine	X = Non Stocked	4 = Pole Timber Poor	9 = Saw Timber Well
F = Spruce Fir	MC = Mixed Conifer	S = Black Spruce	Z = Water		
G = Cress	MD = Mixed Deciduous	T = Tamarack			

**PU Acres**  
1 19.5

## Both Sides of the Line Aspen

Compartment 039  
19.5 Acres





**TIMBER SALE INFORMATION**

Oil Can Mix (61-032-19)

T26N, R13W, SEC. 15.

Benzie County (Advertised Price \$75,624.60)

A timber sale contract for this lump sum, sealed bid timber sale will be awarded to the responsible bidder offering the highest sealed bid price. Bids must be at or above the following advertised price for each species:

<u>PRODUCTS &amp; SPECIES</u>	<u>ESTIMATED UNITS*</u>	<u>ADVERTISED PRICE</u>
<b>Sawtimber</b>		
Basswood	1.00 MBF	\$ 108.00 / MBF
Beech	8.50 MBF	\$ 90.00 / MBF
Black Cherry	4.10 MBF	\$ 137.00 / MBF
Mixed Aspen	289.40 MBF	\$ 118.00 / MBF
Red Maple	21.00 MBF	\$ 117.00 / MBF
Red Pine	47.60 MBF	\$ 114.00 / MBF
Sugar Maple	15.20 MBF	\$ 295.00 / MBF
White Pine	7.60 MBF	\$ 46.00 / MBF
<b>Pulpwood</b>		
Mixed Aspen	892.00 Cords	\$ 17.90 / Cord
Mixed Hardwood	407.00 Cords	\$ 16.10 / Cord
Red Pine	109.00 Cords	\$ 35.90 / Cord
White Pine	67.00 Cords	\$ 13.30 / Cord

\* The total volume is statistically estimated within plus (+) or minus (-) 14.34 percent. The estimated units are final and not subject to adjustment. Prospective bidders are urged to examine this timber and to make their own estimates of quantity and quality.

**BOND AND PAYMENT SCHEDULE:**

1. A bond in the amount of \$3,781.00 to insure faithful performance of the conditions of the contract will be deposited by the successful bidder within 21 days of the sale award.
2. Cutting in any sale or unit without the required advance payment would be considered a trespass.
3. Total payment must be paid in advance or according to the following schedule:
  - (a) Ten percent (10%) of the sale value must be paid within 21 days of the sale award.
  - (b) The 10% down payment will be credited towards the first unit cut.
  - (c) Payment for each of the following units must be made before cutting begins in that unit:

<u>PAYMENT UNIT NUMBER</u>	<u>PERCENT OF TOTAL SALE VALUE</u>
01	4.0%
02	19.4%
03	21.6%
04	8.3%
05	7.8%
06	3.2%
07	11.2%
08	1.2%
09	2.4%
10	8.6%
11	12.3%

4. If no cutting takes place, the 10% down payment will not be refunded.
5. Operations on the contract issued will terminate on 12/31/2021.

**Description of Timber by Payment Unit (PU)**

PU	MARKET GROUP	PRODUCT	QUANTITY	UNIT	ACRES	ADVERTISE PRICE
1	Basswood Mixed Aspen Red Maple Sugar Maple Mixed Aspen Mixed Hardwood	Sawtimber	1.0	MBF	9.3	\$3,055.00
			0.7	MBF		
			3.3	MBF		
			3.1	MBF		
		Pulpwood	28.0	Cords		
			66.0	Cords		
2	Beech Black Cherry Mixed Aspen Red Maple Sugar Maple Mixed Aspen Mixed Hardwood	Sawtimber	1.5	MBF	11.1	\$14,684.60
			2.3	MBF		
			83.0	MBF		
			0.9	MBF		
			0.9	MBF		
		Pulpwood	159.0	Cords		
			76.0	Cords		
3	Beech Mixed Aspen Sugar Maple Mixed Aspen Mixed Hardwood	Sawtimber	5.2	MBF	11.0	\$16,307.60
			90.3	MBF		
			2.0	MBF		
			191.0	Cords		
		Pulpwood	73.0	Cords		
4	Mixed Aspen <i>B. T. Aspen</i> <i>Quaking Aspen</i> Sugar Maple White Pine Mixed Aspen Mixed Hardwood White Pine	Sawtimber	24.4	MBF	5.7	\$6,259.60
			21.2	<i>MBF</i>		
			3.2	<i>MBF</i>		
			2.7	MBF		
		Pulpwood	4.4	MBF		
			107.0	Cords		
			5.0	Cords		
			29.0	Cords		
5	Black Cherry Mixed Aspen Red Maple White Pine Mixed Aspen Mixed Hardwood White Pine	Sawtimber	0.9	MBF	23.2	\$5,882.00
			22.0	MBF		
			0.7	MBF		
			2.2	MBF		
			113.0	Cords		
		Pulpwood	33.0	Cords		
			32.0	Cords		
6	Mixed Aspen <i>B. T. Aspen</i> Red Maple Mixed Aspen Mixed Hardwood White Pine	Sawtimber	14.8	MBF	4.9	\$2,452.50
			14.8	<i>MBF</i>		
			0.6	MBF		
		Pulpwood	27.0	Cords		
			7.0	Cords		
			3.0	Cords		
7	Mixed Aspen <i>B. T. Aspen</i> <i>Quaking Aspen</i> Red Maple Sugar Maple White Pine Mixed Aspen Mixed Hardwood White Pine	Sawtimber	22.5	MBF	14.1	\$8,456.20
			21.1	<i>MBF</i>		
			1.4	<i>MBF</i>		
			5.2	MBF		
		Pulpwood	3.2	MBF		
			1.0	MBF		
			175.0	Cords		
			64.0	Cords		
			3.0	Cords		
8	Beech Black Cherry Mixed Aspen Red Maple Sugar Maple Mixed Aspen Mixed Hardwood	Sawtimber	1.8	MBF	2.9	\$881.20
			0.5	MBF		
			0.4	MBF		
			1.0	MBF		
			0.6	MBF		
		Pulpwood	2.0	Cords		
			17.0	Cords		

**Description of Timber by Payment Unit (PU), con't**

PU	MARKET GROUP	PRODUCT	QUANTITY	UNIT	ACRES	ADVERTISE PRICE
9	Black Cherry	Sawtimber	0.4	MBF	6.8	\$1,806.50
	Mixed Aspen		8.9	MBF		
	Mixed Aspen	Pulpwood	23.0	Cords		
	Mixed Hardwood		18.0	Cords		
10	Mixed Aspen	Sawtimber	22.4	MBF	5.7	\$6,499.90
	<i>B. T. Aspen</i>		22.4	<i>MBF</i>		
	Red Maple		9.3	MBF		
	Sugar Maple		2.7	MBF		
	Mixed Aspen	Pulpwood	67.0	Cords		
	Mixed Hardwood		48.0	Cords		
11	Red Pine	Sawtimber	47.6	MBF	12.2	\$9,339.50
	Red Pine	Pulpwood	109.0	Cords		
TOTAL:			394.4	MBF		
TOTAL:			1,475.0	Cords		

## Sale Specific Conditions & Requirements

**Sale Name: Oil Can Mix**

**Sale Number: 61-032-19 Seq#: 1**

### 1 - Sale Area

#### 1.2 - Boundaries

##### 1.2.1 - Painted boundaries (1/14)

The sale boundary and Payment Unit boundaries are marked and identified by blue, red, yellow and green paint. Exterior sale boundary lines against private property are marked with blue paint. Exterior sale boundary lines against state lands are marked with red paint. Retention areas within payment units 2, 3, and 7 are marked with double red paint marks. A clearcut patch within payment unit 11 is marked with double green paint marks (see spec. 2.1.3). Interior Payment Unit boundaries are marked with yellow paint. The painted boundary line trees are not Included Timber and are to be protected unless marked with orange paint.

### 2 - Timber Specifications

#### 2.1 - Included Timber

##### 2.1.1 - Clearcut unit(s) with unmerchantable trees (6/14)

Within Payment Unit(s) 2, 3, 4, 7, and 10, cut all trees that are two (2) inches or more at DBH except as follows:

Payment Unit(s) 2, 3 & 7, do not cut any white pine or oak unless marked with orange paint;

Payment Unit 4, do not cut any oak, cherry, or trees marked with green paint;

Payment Unit 10, do not cut any trees marked with green paint.

##### 2.1.3 - Cut tree marked unit(s) (12/08)

Within Payment Unit(s) 1, 6, 8, 9, and 11, all trees are designated for cutting when marked with orange paint above and below stump height, regardless of merchantability. In addition, within the area labeled "11-cc" on the Timber Sale Map (in the north part of Payment Unit 11), cut all live red pine regardless of merchantability. This area boundary is identified by double green paint marks.

##### 2.1.7 - Leave tree marked unit(s) (6/14)

Within Payment Unit(s) 5, all aspen trees which meet minimum piece specifications in 2.2 Utilization are designated for cutting unless marked with green paint above and below stump height. In addition, cut all trees marked with orange paint regardless of merchantability.

#### 2.2 - Utilization

##### 2.2.4 - Skidding length (2/14)

Within Payment Units 1, 5, 6, 8, 9, and 11 skidding of unlimbed tops or lengths over 17 feet is not permissible.

### 4 - Transportation

#### 4.1 - Construction

##### 4.1.2 - Stream crossings, specific (3/11)

There is an intermittent stream within payment unit 11 as shown on the Timber Sale Map. Crossing this stream will only be permitted at a single approved location and when there is no water flow. Crane mats or other protection measures will be needed to protect the stream channel and banks (see spec. 5.2.17).

##### 4.1.3 - Slash and earthen piles (8/04)

Piles or windrows of earth along roads and landings that have been widened or constructed shall be leveled. Slash from road maintenance or construction, including stumps, shall be dispersed throughout the sale.

##### 4.1.7 - Road closure (10/11)

All new roads built into the sale must be blocked to vehicle traffic upon completion of the sale. In general, this will require constructing a four (4') foot high berm of stumps and logs covered with earth. Contact the sale administrator for specific

details of design and placement.

## 5 - Operations

### 5.2 - Conduct of Operations

#### 5.2.1 - Slash

##### 5.2.1.8 - Slash height (12/08)

No slash or tree tops may exceed 24 inches in height. However, within payment units 2, 3, 4, 7, and 10, scattered piles of compacted slash not exceeding 4 feet in height are acceptable.

#### 5.2.3 - Operating Restrictions

##### 5.2.3.3 - Bark slippage restriction (3/09)

Within Payment Unit(s) 1, 5, 6, 8, 9, and 11, unless changed by written agreement, cutting and skidding are not permitted during the period of April 15 to July 15. This restriction is because of bark slippage.

##### 5.2.3.4 - Oak wilt restriction, no exceptions (1/18)

Within Payment Unit(s) 1 - 10, cutting, skidding, hauling within the sale and brushing of access roads to the sale are not permitted during the period of April 15 to July 15. No exceptions will be granted. This is necessary to reduce the spread of oak wilt.

##### 5.2.3.6 - Bark beetle restriction (12/08)

In the event drought creates a high risk of pine bark beetle infestation, pine is not to be cut during the period March 1 through July 1, unless all portions of trees greater than two inches in diameter are removed from the sale area, reduced to chips, or treated to the satisfaction of the Unit Manager or his/her representative, within fifteen days of being severed from the stump. Pine log decks, pulpwood piles and treetops that are piled for chipping in the fall or winter within a 1/4 mile of susceptible sites must be removed before March 15. Residual slash must not be placed in piles or rows and must be spread over the site for quick drying. The Department of Natural Resources will exercise this specification if the risk of damage warrants.

#### 5.2.4 - Dead and Down Creation

##### 5.2.4.1 - Dead and down creation, marked trees (10/13)

All trees marked with an orange "X" must be felled and left on site for wildlife. These trees have been taken off the timber tally.

#### 5.2.17 - Timber Mats and Interlocking Composite Mats (3/18)

Crossing the intermittent stream bed within Payment Unit 11 will require use of timber mats, interlocking composite mats, or another approved system. If available, mats may be borrowed from the DNR. A Timber Sale Contract Supplement will be used to document the Purchaser's use of the DNR's mats. Contact the sale administrator regarding availability and pick-up. Timber mats are available from various field offices. Composite mats are only available from the Grayling field office. The Purchaser is responsible for picking up and hauling the mats to and from the site. The composite mats will require DNR staff onsite for installation and removal. Contact the sale administrator to schedule at least 30 days before desired install/removal date. All mats must be cleaned prior to drop off. This may include, but is not limited to, power washing and brushing to remove mud and debris. A charge of \$400.00 per timber mat and \$2,000.00 per composite mat will be assessed for all damaged or non-returned mats. Damage for the crane/timber mats is defined as three or more broken cants. Damage for the composite mats is defined as cracked or broken mats.

#### 5.2.38 - No decking against live trees (2/04)

Cut products may not be decked against unmarked or designated leave trees.

### 5.4 - Soil Protection

#### 5.4.3 - Erosion control (12/08)

Skid trails or haul roads may require erosion control structures or berms per direction of the Unit Manager or his/her representative.

#### 5.4.7 - Rutting restriction, Riparian Management Zone (RMZ) (1/09)

Within the Riparian Management Zone (RMZ), defined as 50 feet on either side of the intermittent stream shown on the

attached Timber Sale Map within payment unit 11, operations are to cease immediately if equipment and weather conditions result in rutting of skid trails which is 6 inches or greater in depth and 25 feet in length. The Unit Manager or his/her representative may restrict hauling and/or skidding if ruts exceed the specified depth. With the Unit Manager or his/her representative's approval, the Purchaser may return to the area when the risk of rutting has decreased.

## **6 - Safety and Fire Prevention**

### 6.2 - Signing

#### 6.2.1 - Road posting (9/09)

The Purchaser is responsible for posting and maintaining caution signs on Reynolds Road prior to beginning operations. The road must be posted at appropriate distances from the sale area to warn of logging activity and truck traffic. Signs must be removed when harvest operations are suspended or completed. The Purchaser will provide these signs.



### TIMBER SALE MAP

This information provided by authority of Part 525, 1994 PA 451, as amended.

Forest Management Unit Traverse City		County Benzie	Mapped By Tim Webb	Date 7/15/2019	Page 1	of 1
Township 26N	Range 13W	Section(s) and Subdivision(s) Sec. 15, SE1/4, SESW		Scale 1:7,920		

Cover Type				Density	
A = Aspen	H = Hemlock	N = Marsh	U = Upland Brush	0 = Non Stocked	5 = Pole Timber Medium
B = Paper Birch	J = Jack Pine	O = Oak	UM = Upland Mixed	1 = Seedling Sapling Poor	6 = Pole Timber Well
C = Cedar	L = Lowland Brush	P = Lowland Poplar	V = Bog or Marsh	2 = Seedling Sapling Medium	7 = Saw Timber Poor
D = Tread Bog	LM = Lowland Mixed	Q = Mixed Swamp Conifer	W = White Pine	3 = Seedling Sapling Well	8 = Saw Timber Medium
E = Swamp Hdwoods	M = Mpl, Bch, Brch	R = Red Pine	X = Non Stocked	4 = Pole Timber Poor	9 = Saw Timber Well
F = Spruce Fir	MC = Mixed Conifer	S = Black Spruce	Z = Water		
G = Grass	MD = Mixed Deciduous	T = Tamarack			

PU	Acres	PU	Acres	PU	Acres
1	9.3	5	23.2	9	6.8
2	11.1	6	4.9	10	5.7
3	11.0	7	14.1	11	12.2
4	5.7	8	2.9		

**Oil Can Mix**  
**Compartment 18**  
**106.9 acres**

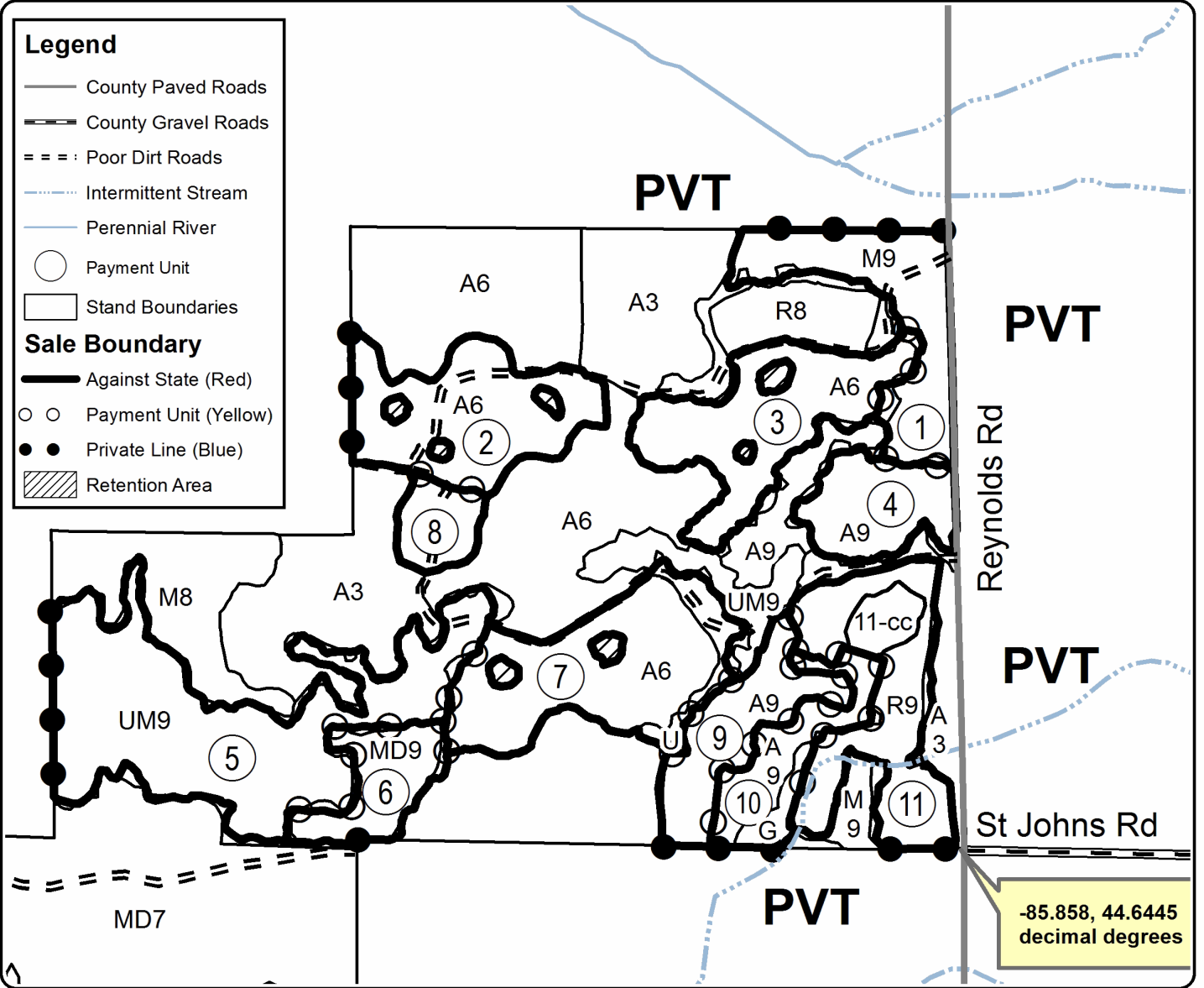


**Legend**

- County Paved Roads
- County Gravel Roads
- Poor Dirt Roads
- Intermittent Stream
- Perennial River
- Payment Unit
- Stand Boundaries

**Sale Boundary**

- Against State (Red)
- Payment Unit (Yellow)
- Private Line (Blue)
- Retention Area







**TIMBER SALE INFORMATION**

Mountaintop Mix (61-039-19)  
 T22N, R14W, SEC. 18.  
 Manistee County (Advertised Price \$23,911.90)

A timber sale contract for this lump sum, sealed bid timber sale will be awarded to the responsible bidder offering the highest sealed bid price. Bids must be at or above the following advertised price for each species:

<u>PRODUCTS &amp; SPECIES</u>	<u>ESTIMATED UNITS*</u>	<u>ADVERTISED PRICE</u>
<b>Sawtimber</b>		
B. T. Aspen	14.30 MBF	\$ 118.00 / MBF
Beech	11.20 MBF	\$ 90.00 / MBF
Red Maple	17.00 MBF	\$ 117.00 / MBF
Red Oak	89.90 MBF	\$ 186.00 / MBF
<b>Pulpwood</b>		
B. T. Aspen	18.00 Cords	\$ 17.90 / Cord
Mixed Hardwood	84.00 Cords	\$ 16.10 / Cord
Red Oak	68.00 Cords	\$ 11.25 / Cord
White Pine	5.00 Cords	\$ 13.30 / Cord

\* The total volume is statistically estimated within plus (+) or minus (-) 21.18 percent. The estimated units are final and not subject to adjustment. Prospective bidders are urged to examine this timber and to make their own estimates of quantity and quality.

**BOND AND PAYMENT SCHEDULE:**

- A bond in the amount of \$1,196.00 to insure faithful performance of the conditions of the contract will be deposited by the successful bidder within 21 days of the sale award.
- Cutting in any sale or unit without the required advance payment would be considered a trespass.
- Total payment must be paid in advance or according to the following schedule:
  - Ten percent (10%) of the sale value must be paid within 21 days of the sale award.
  - The remainder is due before cutting begins.
  - Payment for each of the following units must be made before cutting begins in that unit:
 

PAYMENT UNIT NUMBER	PERCENT OF TOTAL SALE VALUE
01	100.0%
- If no cutting takes place, the 10% down payment will not be refunded.
- Operations on the contract issued will terminate on 06/30/2022.

**Description of Timber by Payment Unit (PU)**

PU	MARKET GROUP	PRODUCT	QUANTITY	UNIT	ACRES	ADVERTISE PRICE		
1	B. T. Aspen	Sawtimber	14.3	MBF	13.4	\$23,911.90		
	Beech		11.2	MBF				
	Red Maple		17.0	MBF				
	Red Oak		89.9	MBF				
	B. T. Aspen	Pulpwood	18.0	Cords				
	Mixed Hardwood		84.0	Cords				
	Red Oak		68.0	Cords				
	White Pine		5.0	Cords				
	TOTAL:			132.4			MBF	
	TOTAL:			175.0			Cords	

## Sale Specific Conditions & Requirements

**Sale Name: Mountaintop Mix**

**Sale Number: 61-039-19 Seq#: 1**

### 1 - Sale Area

#### 1.2 - Boundaries

##### 1.2.1 - Painted boundaries (1/14)

The sale boundary and Payment Unit boundaries are marked and identified by blue and red paint. Exterior sale boundary lines against private property are marked with blue paint. Exterior sale boundary lines against state are marked with red paint. The painted boundary line trees are not Included Timber and are to be protected unless marked with orange paint.

### 2 - Timber Specifications

#### 2.1 - Included Timber

##### 2.1.3 - Cut tree marked unit(s) (12/08)

Within Payment Unit(s) 1, all trees are designated for cutting when marked with orange paint above and below stump height, regardless of merchantability. In addition, all aspen and beech are designated for cutting.

### 3 - Payments

#### 3.4 - Damaged Timber

##### 3.4.1 - Damaged timber (7/16)

General Condition and Requirement 3.4 Damaged Timber, defines liquidated damages for undesignated live merchantable trees which are cut or injured.

No damage is acceptable to undesignated live merchantable trees. Within the sale area, if more than 10% of trees (> 4.5" DBH) within a specified area of the sale are damaged, liquidated damages will be assessed for all trees damaged. Rates will be in accordance with General Condition and Requirement 3.4 Damaged Timber.

### 4 - Transportation

#### 4.1 - Construction

##### 4.1.12 - No new roads (1/12)

No new roads will be permitted in any Payment Unit. All operations are limited to existing roads. Skid trails only will be allowed.

### 5 - Operations

#### 5.2 - Conduct of Operations

##### 5.2.1 - Slash

###### 5.2.1.8 - Slash height (12/08)

No slash or tree tops may exceed 24 inches in height.

##### 5.2.2 - Hazard Trees/Snags

###### 5.2.2.1 - Den trees (10/16)

Obvious hollow and/or den trees shall be protected and left standing unless they are a safety hazard.

##### 5.2.3 - Operating Restrictions

###### 5.2.3.4 - Oak wilt restriction, no exceptions (1/18)

Within Payment Unit(s) 1, cutting, skidding, hauling within the sale and brushing of access roads to the sale are not permitted during the period of April 15 to July 15. No exceptions will be granted. This is necessary to reduce the spread of oak wilt.

##### 5.2.29 - Shrub protection (9/07)

Do not cut or damage hawthorn, witch-hazel, dogwood or juneberry. These woody-shrub plants are highly beneficial to various wildlife species.

#### 5.4 - Soil Protection

##### 5.4.1 - Rutting restriction, general (7/16)

Operations are to cease immediately if equipment and weather conditions result in rutting of roads and/or skid trails which is 12 inches or greater in depth and 50 feet in length. The Unit Manager or his/her representative may restrict hauling and/or skidding if ruts exceed the specified depth. With the Unit Manager or his/her representative's approval, the Purchaser may return to the area when the risk of rutting has decreased.



# TIMBER SALE MAP

This information provided by authority of Part 525, 1994 PA 451, as amended.

Sale Number	Year
61-039	2019

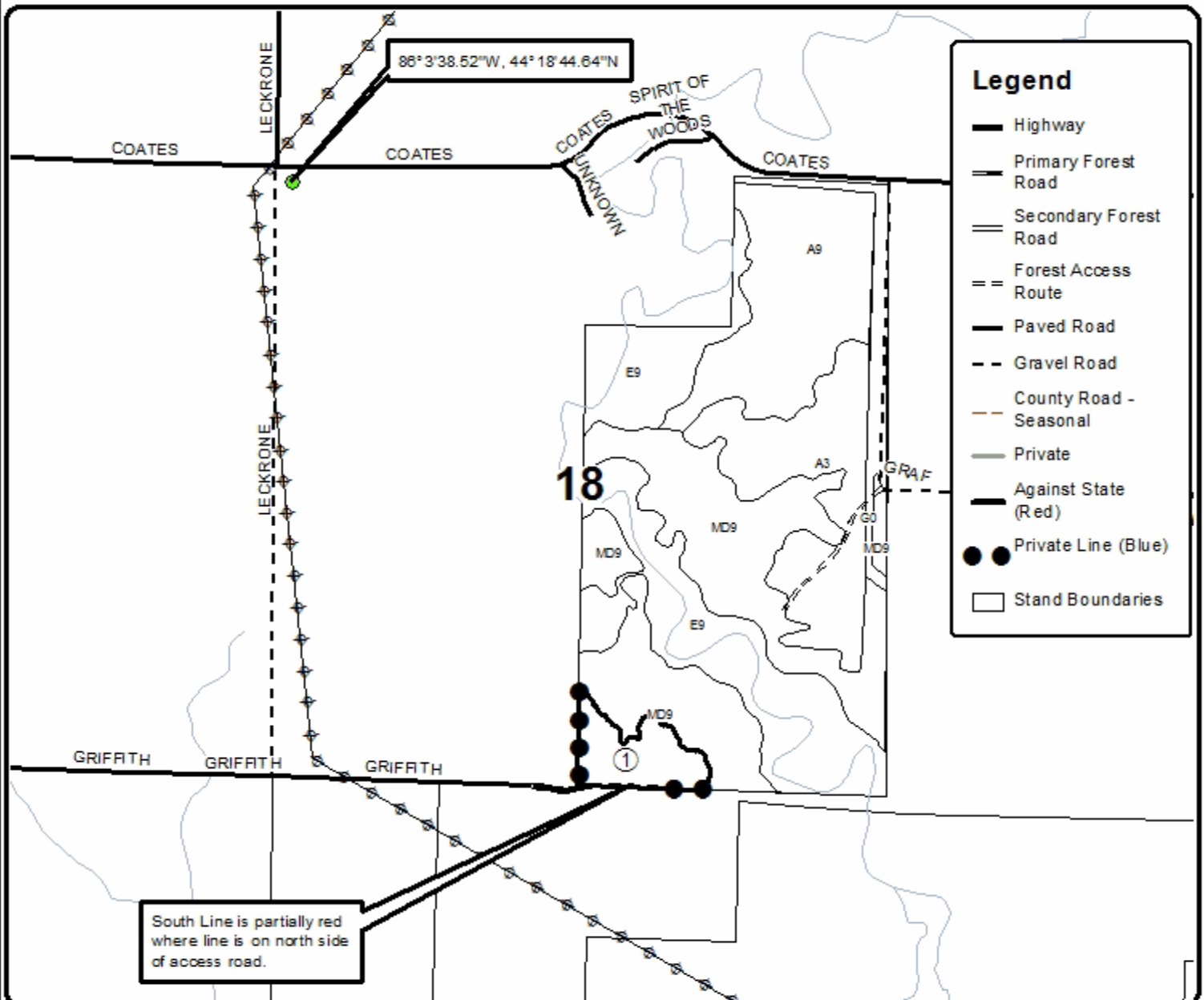
Forest Management Unit Traverse City FMU	County Manistee	Mapped By Patrick Cotant	Date 08/22/2019	Page 1	of 1
Township 22N	Range 14W	Section(s) and Subdivision(s) Sec 18 SWSE	Scale 1:15,840		

Cover Type				Density	
A = Aspen	H = Hemlock	N = Marsh	U = Upland Brush	0 = Non Stocked	5 = Pole Timber Medium
B = Paper Birch	J = Jack Pine	O = Oak	UM = Upland Mixed	1 = Seeding Sapling Poor	6 = Pole Timber Well
C = Cedar	L = Lowland Brush	P = Lowland Poplar	V = Bog or Marsh	2 = Seeding Sapling Medium	7 = Saw Timber Poor
D = Treed Bog	LM = Lowland Mixed	Q = Mixed Swamp Conifer	W = White Pine	3 = Seeding Sapling Well	8 = Saw Timber Medium
E = Swamp Hardwoods	M = Mpl. Ech. Birch	R = Red Pine	X = Non Stocked	4 = Pole Timber Poor	9 = Saw Timber Well
F = Spruce Fir	MC = Mixed Conifer	S = Black Spruce	Z = Water		
G = Creas	MD = Mixed Deciduous	T = Tamarack			

**PU Acres**  
1 13.4

## Mountaintop Mix

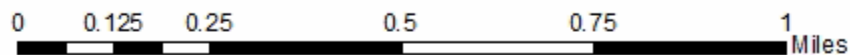
Compartment 039  
13.4 Acres



### Legend

- Highway
- Primary Forest Road
- Secondary Forest Road
- Forest Access Route
- Paved Road
- Gravel Road
- County Road - Seasonal
- Private
- Against State (Red)
- Private Line (Blue)
- Stand Boundaries

South Line is partially red where line is on north side of access road.



**TIMBER SALE INFORMATION**

570 Case Oak (61-123-19)

T27N, R08W, SEC. 25; T27N, R08W, SEC. 26; T27N, R08W, SEC. 27.  
Kalkaska County (Advertised Price \$68,893.70)

SALE NOTE: A recreation site such as a trail, pathway, or campground is within the sale area or the vicinity. Certain restrictions/specifications may be applicable including time restrictions.

A timber sale contract for this lump sum, sealed bid timber sale will be awarded to the responsible bidder offering the highest sealed bid price. Bids must be at or above the following advertised price for each species:

<u>PRODUCTS &amp; SPECIES</u>	<u>ESTIMATED UNITS*</u>	<u>ADVERTISED PRICE</u>
<b>Sawtimber</b>		
B. T. Aspen	7.80 MBF	\$ 118.00 / MBF
Jack Pine	0.90 MBF	\$ 23.00 / MBF
Red Maple	4.50 MBF	\$ 117.00 / MBF
Red Oak	59.90 MBF	\$ 186.00 / MBF
Red Pine	149.90 MBF	\$ 114.00 / MBF
White Oak	5.20 MBF	\$ 48.00 / MBF
White Pine	4.40 MBF	\$ 46.00 / MBF
<b>Pulpwood</b>		
B. T. Aspen	174.00 Cords	\$ 17.90 / Cord
Jack Pine	1,305.00 Cords	\$ 11.55 / Cord
Mixed Hardwood	265.00 Cords	\$ 16.10 / Cord
Mixed Oak	407.00 Cords	\$ 11.25 / Cord
Red Pine	314.00 Cords	\$ 35.90 / Cord
White Pine	33.00 Cords	\$ 13.30 / Cord

\* The total volume is statistically estimated within plus (+) or minus (-) 9.42 percent. The estimated units are final and not subject to adjustment. Prospective bidders are urged to examine this timber and to make their own estimates of quantity and quality.

**BOND AND PAYMENT SCHEDULE:**

1. A bond in the amount of \$3,445.00 to insure faithful performance of the conditions of the contract will be deposited by the successful bidder within 21 days of the sale award.
2. Cutting in any sale or unit without the required advance payment would be considered a trespass.
3. Total payment must be paid in advance or according to the following schedule:
  - (a) Ten percent (10%) of the sale value must be paid within 21 days of the sale award.
  - (b) The 10% down payment will be credited towards the first unit cut.
  - (c) Payment for each of the following units must be made before cutting begins in that unit:

<u>PAYMENT UNIT NUMBER</u>	<u>PERCENT OF TOTAL SALE VALUE</u>
01	19.4%
02	26.2%
03	31.2%
04	15.1%
05	8.1%

4. If no cutting takes place, the 10% down payment will not be refunded.
5. Operations on the contract issued will terminate on 12/31/2022.

**Description of Timber by Payment Unit (PU)**

PU	MARKET GROUP	PRODUCT	QUANTITY	UNIT	ACRES	ADVERTISE PRICE		
1	Red Oak	Sawtimber	34.4	MBF	34.8	\$13,362.10		
	Red Pine		21.0	MBF				
	White Pine		1.7	MBF				
	Mixed Hardwood		Pulpwood	2.0			Cords	
	Mixed Oak			186.0			Cords	
	Red Pine			60.0			Cords	
	White Pine			16.0			Cords	
2	B. T. Aspen	Sawtimber	7.8	MBF	63.1	\$18,040.55		
	Jack Pine		0.9	MBF				
	Red Maple		4.5	MBF				
	Red Pine		31.6	MBF				
	White Pine		2.0	MBF				
	B. T. Aspen		Pulpwood	130.0			Cords	
	Jack Pine			477.0			Cords	
	Mixed Hardwood			158.0			Cords	
	Red Pine			67.0			Cords	
	White Pine			7.0			Cords	
3	Red Pine	Sawtimber	55.0	MBF	74.9	\$21,473.15		
	B. T. Aspen		Pulpwood	42.0			Cords	
	Jack Pine			825.0			Cords	
	Mixed Hardwood			85.0			Cords	
	Red Pine			99.0			Cords	
4	Red Oak	Sawtimber		11.1	MBF	39.7	\$10,431.15	
	Red Pine		33.5	MBF				
	White Oak		5.2	MBF				
	B. T. Aspen		Pulpwood	2.0	Cords			
	Jack Pine			3.0	Cords			
	Mixed Hardwood			19.0	Cords			
	Mixed Oak			144.0	Cords			
	Red Pine			63.0	Cords			
	White Pine			3.0	Cords			
5	Red Oak	Sawtimber	14.4	MBF	14.5	\$5,586.75		
	Red Pine		8.8	MBF				
	White Pine		0.7	MBF				
	Mixed Hardwood		Pulpwood	1.0			Cords	
	Mixed Oak			77.0			Cords	
	Red Pine			25.0			Cords	
	White Pine			7.0			Cords	
TOTAL:			232.6	MBF				
TOTAL:			2,498.0	Cords				

## Sale Specific Conditions & Requirements

Sale Name: 570 Case Oak

Sale Number: 61-123-19 Seq#: 1

### 1 - Sale Area

#### 1.2 - Boundaries

##### 1.2.1 - Painted boundaries (1/14)

The sale boundary and Payment Unit boundaries are marked and identified by blue and red paint, along with a road. Exterior sale boundary lines against private property are marked with blue paint. Exterior sale boundary lines against state are marked with red paint. The interior Payment Unit boundary between Payment Units 4 & 5 is unpainted and identified by River Road. The painted boundary line trees are not Included Timber and are to be protected.

### 2 - Timber Specifications

#### 2.1 - Included Timber

##### 2.1.1 - Clearcut unit(s) with unmerchantable trees (6/14)

Within Payment Unit(s) 1, 2, 3 & 5, cut all trees that are two (2) inches or more at DBH, except do not cut white oak and trees marked with green paint.

Within Payment Unit(s) 4, cut white oak and white pine that are six (6) inches or more at DBH, except do not cut trees marked with green paint. In addition, cut all other trees that are two (2) inches or more at DBH.

### 3 - Payments

#### 3.4 - Damaged Timber

##### 3.4.1 - Damaged timber (6/14)

General Condition and Requirement 3.4 Damaged Timber, defines liquidated damages for undesignated live merchantable trees which are cut or injured. In addition, extreme care should be taken to avoid damage to tree seedlings and saplings.

Within the sale area, if more than 25% of the tree seedlings or saplings (1/4" to 2" DBH) within a specified portion of the sale area are damaged, liquidated damages will be assessed at \$300.00 per acre for all acreage within that specified portion of the sale area that was damaged.

### 4 - Transportation

#### 4.2 - Maintenance

##### 4.2.5 - Two wheel drive condition (2/04)

All existing trail roads on and adjacent to the sale area must be passable by two-wheel drive traffic for the duration of the sale.

### 5 - Operations

#### 5.1 - Notification

##### 5.1.1 - Pre-sale conference (10/16)

A pre-sale conference on site between the Purchaser and sale administrator is required prior to beginning any operations to determine landing and road locations. The snowmobile trail will not be used as a haul road; there are multiple options to avoid user conflict. The Unit Manager or his/her representative must be contacted at least 5 days in advance to schedule the conference.

##### 5.1.4 - Post-sale conference (10/16)

A post-sale conference on site between the Purchaser and sale administrator is required 5 days prior to the completion of active logging operations to determine clean-up and repair of landings, road edges, and the fulfillment of other contract specifications.

#### 5.2 - Conduct of Operations

## 5.2.1 - Slash

### 5.2.1.8 - Slash height (12/08)

No slash or tree tops may exceed 24 inches in height.

## 5.2.2 - Hazard Trees/Snags

### 5.2.2.1 - Den trees (10/16)

Obvious hollow and/or den trees shall be protected and left standing unless they are a safety hazard.

## 5.2.3 - Operating Restrictions

### 5.2.3.4 - Oak wilt restriction, no exceptions (1/18)

Within Payment Unit(s) 1, 4 and 5, cutting, skidding, hauling within the sale and brushing of access roads to the sale are not permitted during the period of April 15 to July 15. No exceptions will be granted. This is necessary to reduce the spread of oak wilt.

### 5.2.32 - Decking/landing restoration (9/13)

All decking and landing areas must have the surface area restored to a condition equal to or better than before. This is to ensure the proper regeneration of the stand. Wood debris, chips and "cookies" from trimmings must be removed or scattered away from landing and loading areas and may not be windrowed on the edge.

### 5.2.40 - Pathway protection (10/10)

There is a biking/hiking trail on the boundary of Payment Units 1 & 5 and is shown on the Timber Sale Map. Do not cut trees or damage posts with pathway markers. Maintain a 20-foot wide slash, debris, and rut free zone daily, using the pathway as the centerline. Do not run equipment down the pathway. Skidding across the trail may only occur in locations approved by the sale administrator.

### 5.2.41 - Snowmobile trail protection (9/11)

The snowmobile trail is shown on the Timber Sale Map. Do not cut or damage posts with orange trail markers or traffic control signs. The snowmobile trail may not be used for hauling. The snowmobile trail may not be used for any timber sale operations from December 1 to March 31. Maintain a 20 foot wide slash, debris, and rut free zone daily using the snowmobile trail as the centerline. No decking of forest products will be permitted along the snowmobile trail. All stumps within 20 feet of the snowmobile trail must be cut at ground level. In addition, any trees cut within 5 feet of the trail must have the stumps removed and be disposed of according to the direction of the Unit Manager or his/her representative.

## 5.4 - Soil Protection

### 5.4.1 - Rutting restriction, general (7/16)

Operations are to cease immediately if equipment and weather conditions result in rutting of roads and/or skid trails which is 12 inches or greater in depth and 50 feet in length. The Unit Manager or his/her representative may restrict hauling and/or skidding if ruts exceed the specified depth. With the Unit Manager or his/her representative's approval, the Purchaser may return to the area when the risk of rutting has decreased.

## 6 - Safety and Fire Prevention

### 6.2 - Signing

#### 6.2.1 - Road posting (9/09)

The Purchaser is responsible for posting and maintaining caution signs on River Road prior to beginning operations. The road must be posted at appropriate distances from the sale area to warn of logging activity and truck traffic. Signs must be removed when harvest operations are suspended or completed. The Purchaser will provide these signs.

#### 6.2.3 - Recreational trail posting (2/10)

The Purchaser is responsible for posting and maintaining caution signs on the hiking/biking and snowmobile trails prior to beginning operations. The trail must be posted 200 feet from the sale area to warn of logging activity and truck traffic at both ends of the trail. Signs must be removed when harvest operations are suspended or completed. The Purchaser will provide these signs.





# TIMBER SALE MAP

This information provided by authority of Part 525, 1994 PA 451 as amended.

Sale Number	61-123	Year	19
-------------	--------	------	----

Forest Management Unit Traverse City	County Kalkaska	Mapped By Roell	Date 08/29/2019	Page 1	of 1
Township 27N	Range 08W	Section(s) and Subdivision(s) Sections 25, 26 & 27	Scale 1:15,840		

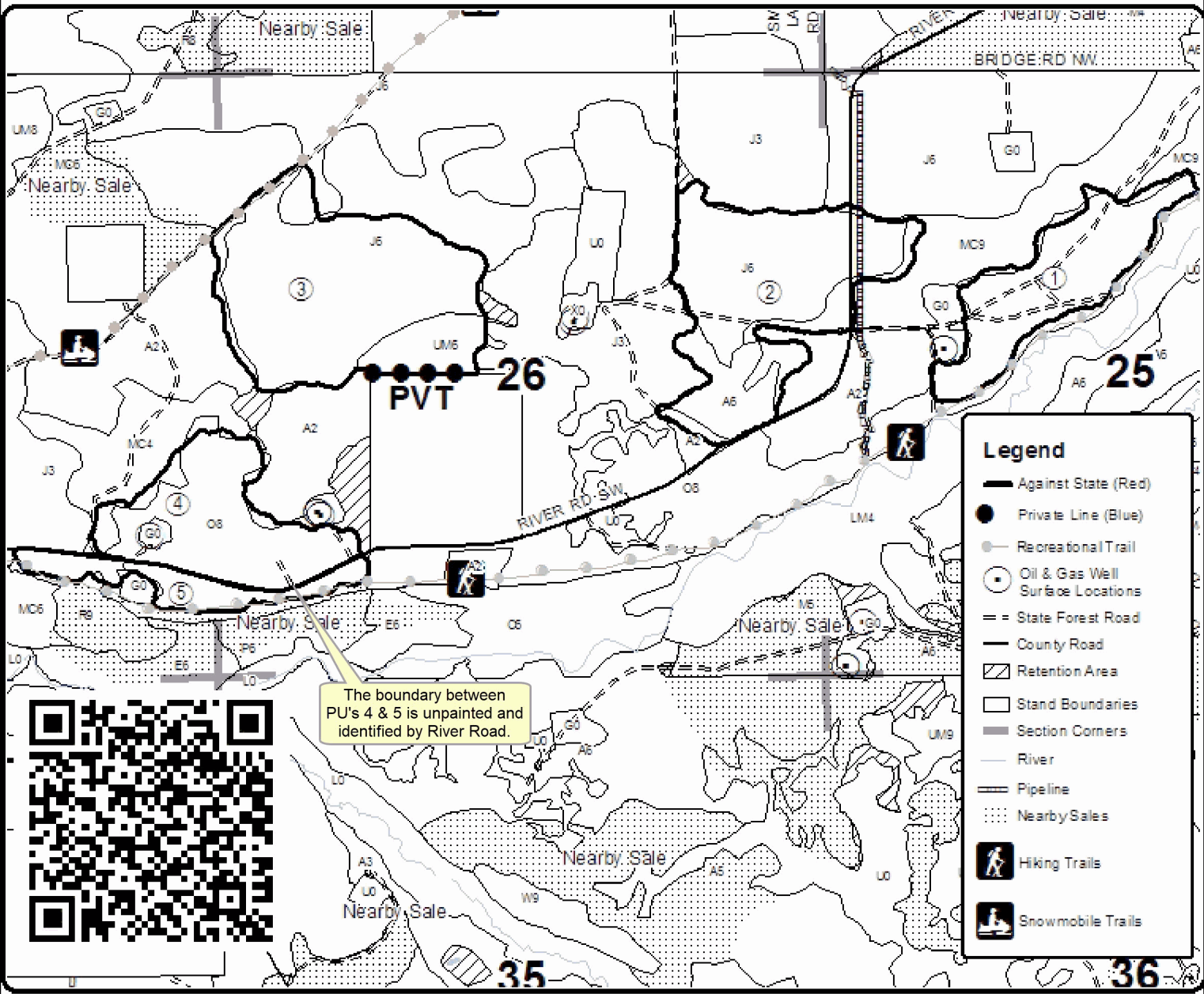
Cover Type				Density			
A = Aspen	H = Hemlock	N = Marsh	U = Upland Brush	0 = Non Stocked	5 = Pole Timber Medium		
B = Paper Birch	J = Jack Pine	O = Oak	UM = Upland Mixed	1 = Seeding Sapling Poor	6 = Pole Timber Well		
C = Cedar	L = Lowland Brush	P = Lowland Poplar	V = Bog or Marsh	2 = Seeding Sapling Medium	7 = Saw Timber Poor		
D = Treed Bog	LM = Lowland Mixed	Q = Mixed Swamp Conifer	W = White Pine	3 = Seeding Sapling Well	8 = Saw Timber Medium		
E = Swamp Hardwoods	M = Mpl. Ech. Birch	R = Red Pine	X = Non Stocked	4 = Pole Timber Poor	9 = Saw Timber Well		
F = Spruce Fir	MC = Mixed Conifer	S = Black Spruce	Z = Water				
G = Cress	MD = Mixed Deciduous	T = Tamarack					

PU	Acres	PU	Acres
1	34.8	4	39.7
2	63.1	5	14.5
3	74.9		

## 570 CASE OAK

### Compartment 161

227 Acres

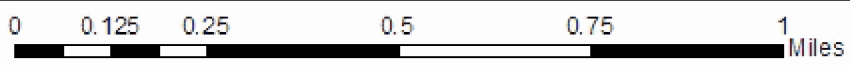


### Legend

- Against State (Red)
- Private Line (Blue)
- Recreational Trail
- Oil & Gas Well Surface Locations
- == State Forest Road
- County Road
- ▨ Retention Area
- Stand Boundaries
- Section Corners
- River
- Pipeline
- ⋯ Nearby Sales
- 🚶 Hiking Trails
- 🚙 Snowmobile Trails



The boundary between PUs 4 & 5 is unpainted and identified by River Road.





Oil Can Mix (61-032-19)  
T26N, R13W, SEC. 15; Benzie COUNTY

In response to the notice of sale to be held 4:00 p.m. (local time) on October 31, 2019, I am hereby submitting my sealed bid (firm offer) for the following forest products to be cut. Bids for individual species must be at or above the advertised price. All non-responsive bid forms may be rejected.

<u>PRODUCTS &amp; SPECIES</u>	<u>ESTIMATED VOLUME*</u>	<u>ADVERTISED PRICE</u>	<u>BID PRICE/UNIT</u>
<b>Sawtimber</b>			
Basswood	1.00 MBF	\$ 108.00/MBF	\$ _____
Beech	8.50 MBF	\$ 90.00/MBF	\$ _____
Black Cherry	4.10 MBF	\$ 137.00/MBF	\$ _____
Mixed Aspen	289.40 MBF	\$ 118.00/MBF	\$ _____
Red Maple	21.00 MBF	\$ 117.00/MBF	\$ _____
Red Pine	47.60 MBF	\$ 114.00/MBF	\$ _____
Sugar Maple	15.20 MBF	\$ 295.00/MBF	\$ _____
White Pine	7.60 MBF	\$ 46.00/MBF	\$ _____
<b>Pulpwood</b>			
Mixed Aspen	892.00 Cords	\$ 17.90/Cord	\$ _____
Mixed Hardwood	407.00 Cords	\$ 16.10/Cord	\$ _____
Red Pine	109.00 Cords	\$ 35.90/Cord	\$ _____
White Pine	67.00 Cords	\$ 13.30/Cord	\$ _____

\*The volumes are statistically estimated within plus (+) or minus (-) 14.34 percent. These estimated volumes are final and not subject to adjustment. Prospective bidders are urged to examine this timber and to make their own estimates of quantity and quality.

I understand that any or all bids may be rejected. All bids must be signed and all bid items must be bid or the bid form may be rejected. I also understand that consideration and awarding a contract will be based upon my past performance and ability to complete the contract based upon equipment and staffing subject to my control.

FEDERAL ID: \_\_\_\_ - \_\_\_\_ - \_\_\_\_ or SOCIAL SECURITY NUMBER: \_\_\_\_ - \_\_\_\_ - \_\_\_\_

Company or individual bidding: \_\_\_\_\_

Company representative's name: \_\_\_\_\_

Address: \_\_\_\_\_

City: \_\_\_\_\_ State: \_\_\_\_\_ Zip: \_\_\_\_\_

IF AVAILABLE, PLEASE PLACE THE PERSONALIZED LABEL FROM YOUR PROSPECTUS IN THE ABOVE BOX.

Individual or company representative's signature: \_\_\_\_\_ Date: \_\_\_\_\_

Phone number : \_\_\_\_\_ Email (optional): \_\_\_\_\_

**THE WINNING BIDDER MUST COMPLETE THE VERIFICATION OF WORKER'S DISABILITY COMPENSATION ACT COMPLIANCE (ON REVERSE SIDE IF DOUBLE SIDED) WITHIN 21 DAYS OF SALE AWARD DATE**



<b>FOR DEPARTMENT USE ONLY</b>
Sale Number (XX - XXX - XX - XX)
Forest Management Unit:

## TIMBER SALE VERIFICATION OF WORKER'S DISABILITY COMPENSATION ACT COMPLIANCE

*As required by Act 317, P.A. 1969 (Worker's Compensation) and  
Part 5 of Act 451 of 1994, as amended.*

### VERIFICATION OF WORKER'S DISABILITY COMPENSATION ACT COMPLIANCE

- This verification must be completed and submitted within 21 days of contract award and prior to the issuance of the timber sale contract.
- In addition, if boxes 2B or 2C are checked, then Notice of Exclusion or Certificate of Insurance must be submitted within twenty-one (21) days of the contract award and prior to the issuance of the timber sale contract.
- All information must be typed or printed except for written signatures.

Please Check Appropriate Categories:

1. My business is organized as (you **must** check one of the boxes below):
  - A.  Sole Proprietorship (individual)
  - B.  Partnership
  - C.  Corporation
2. You **must** check one of the boxes below:
  - A.  I certify my business is a sole proprietorship and it has no employees but the sole proprietor. I am not subject to the Worker's Compensation Laws.
  - B.  I certify my business has satisfied its obligation to the Worker's Compensation Act through the use of an approved Notice of Exclusion (BWC-337, Rev. 5/96). I will provide a copy of the Notice of Exclusion within 21 days of the contract award. (For questions or a copy of the BWC-337, please call the Worker's Compensation Bureau at 517-322-1195).
  - C.  I certify my business has a Worker's Compensation Policy. I will provide an original Certificate of Insurance within twenty-one (21) days of the contract award.
3. If you have checked item 2(A) or 2(B), you **must** indicate the number of **both** full-time and part-time employees, other than yourself, including family members and active partners (if none, you must enter "0").

\_\_\_\_\_ Full-time Employees

\_\_\_\_\_ Part-time Employees

Name of Business		Federal ID (or) Social Security No.	
Address		Telephone (       )	
City	State	ZIP	

*I hereby certify that the above information is true and correct. I agree to notify the Michigan DNR of any changes that occur in factors affecting my coverage during any of my present and future operations.*

\_\_\_\_\_  
Signature of Owner or Authorized Representative

\_\_\_\_\_  
Title

\_\_\_\_\_  
Date

**Please complete the "SEALED BID" information on the next page**

Both Sides of the Line Aspen (61-031-19)  
T23N, R14W, SEC. 1; Manistee COUNTY

In response to the notice of sale to be held 4:00 p.m. (local time) on October 31, 2019, I am hereby submitting my sealed bid (firm offer) for the following forest products to be cut. Bids for individual species must be at or above the advertised price. All non-responsive bid forms may be rejected.

<u>PRODUCTS &amp; SPECIES</u>	<u>ESTIMATED VOLUME*</u>	<u>ADVERTISED PRICE</u>	<u>BID PRICE/UNIT</u>
<b>Sawtimber</b>			
B. T. Aspen	91.40 MBF	\$ 118.00/MBF	\$ _____
Red Maple	35.40 MBF	\$ 117.00/MBF	\$ _____
<b>Pulpwood</b>			
B. T. Aspen	264.00 Cords	\$ 17.90/Cord	\$ _____
Mixed Hardwood	156.00 Cords	\$ 16.10/Cord	\$ _____
White Pine	29.00 Cords	\$ 13.30/Cord	\$ _____

\*The volumes are statistically estimated within plus (+) or minus (-) 20.78 percent. These estimated volumes are final and not subject to adjustment. Prospective bidders are urged to examine this timber and to make their own estimates of quantity and quality.

I understand that any or all bids may be rejected. All bids must be signed and all bid items must be bid or the bid form may be rejected. I also understand that consideration and awarding a contract will be based upon my past performance and ability to complete the contract based upon equipment and staffing subject to my control.

FEDERAL ID: \_\_\_\_\_ or SOCIAL SECURITY NUMBER: \_\_\_\_\_

Company or individual bidding: \_\_\_\_\_

Company representative's name: \_\_\_\_\_

Address: \_\_\_\_\_

City: \_\_\_\_\_ State: \_\_\_\_\_ Zip: \_\_\_\_\_

IF AVAILABLE, PLEASE PLACE THE PERSONALIZED LABEL FROM YOUR PROSPECTUS IN THE ABOVE BOX.

Individual or company representative's signature: \_\_\_\_\_ Date: \_\_\_\_\_

Phone number : \_\_\_\_\_ Email (optional): \_\_\_\_\_

**THE WINNING BIDDER MUST COMPLETE THE VERIFICATION OF WORKER'S DISABILITY COMPENSATION ACT COMPLIANCE (ON REVERSE SIDE IF DOUBLE SIDED) WITHIN 21 DAYS OF SALE AWARD DATE**



<b>FOR DEPARTMENT USE ONLY</b>
Sale Number (XX - XXX - XX - XX)
Forest Management Unit:

## TIMBER SALE VERIFICATION OF WORKER'S DISABILITY COMPENSATION ACT COMPLIANCE

*As required by Act 317, P.A. 1969 (Worker's Compensation) and  
Part 5 of Act 451 of 1994, as amended.*

### VERIFICATION OF WORKER'S DISABILITY COMPENSATION ACT COMPLIANCE

- This verification must be completed and submitted within 21 days of contract award and prior to the issuance of the timber sale contract.
- In addition, if boxes 2B or 2C are checked, then Notice of Exclusion or Certificate of Insurance must be submitted within twenty-one (21) days of the contract award and prior to the issuance of the timber sale contract.
- All information must be typed or printed except for written signatures.

Please Check Appropriate Categories:

1. My business is organized as (you **must** check one of the boxes below):
  - A.  Sole Proprietorship (individual)
  - B.  Partnership
  - C.  Corporation
2. You **must** check one of the boxes below:
  - A.  I certify my business is a sole proprietorship and it has no employees but the sole proprietor. I am not subject to the Worker's Compensation Laws.
  - B.  I certify my business has satisfied its obligation to the Worker's Compensation Act through the use of an approved Notice of Exclusion (BWC-337, Rev. 5/96). I will provide a copy of the Notice of Exclusion within 21 days of the contract award. (For questions or a copy of the BWC-337, please call the Worker's Compensation Bureau at 517-322-1195).
  - C.  I certify my business has a Worker's Compensation Policy. I will provide an original Certificate of Insurance within twenty-one (21) days of the contract award.
3. If you have checked item 2(A) or 2(B), you **must** indicate the number of **both** full-time and part-time employees, other than yourself, including family members and active partners (if none, you must enter "0").

\_\_\_\_\_ Full-time Employees

\_\_\_\_\_ Part-time Employees

Name of Business		Federal ID (or) Social Security No.	
Address		Telephone (       )	
City	State	ZIP	

*I hereby certify that the above information is true and correct. I agree to notify the Michigan DNR of any changes that occur in factors affecting my coverage during any of my present and future operations.*

\_\_\_\_\_  
Signature of Owner or Authorized Representative

\_\_\_\_\_  
Title

\_\_\_\_\_  
Date

**Please complete the "SEALED BID" information on the next page**

570 Case Oak (61-123-19)

T27N, R08W, SEC. 25; T27N, R08W, SEC. 26; T27N, R08W, SEC. 27; Kalkaska

In response to the notice of sale to be held 4:00 p.m. (local time) on October 31, 2019, I am hereby submitting my sealed bid (firm offer) for the following forest products to be cut. Bids for individual species must be at or above the advertised price. All non-responsive bid forms may be rejected.

<u>PRODUCTS &amp; SPECIES</u>	<u>ESTIMATED VOLUME*</u>	<u>ADVERTISED PRICE</u>	<u>BID PRICE/UNIT</u>
<b>Sawtimber</b>			
B. T. Aspen	7.80 MBF	\$ 118.00/MBF	\$ _____
Jack Pine	0.90 MBF	\$ 23.00/MBF	\$ _____
Red Maple	4.50 MBF	\$ 117.00/MBF	\$ _____
Red Oak	59.90 MBF	\$ 186.00/MBF	\$ _____
Red Pine	149.90 MBF	\$ 114.00/MBF	\$ _____
White Oak	5.20 MBF	\$ 48.00/MBF	\$ _____
White Pine	4.40 MBF	\$ 46.00/MBF	\$ _____
<b>Pulpwood</b>			
B. T. Aspen	174.00 Cords	\$ 17.90/Cord	\$ _____
Jack Pine	1,305.00 Cords	\$ 11.55/Cord	\$ _____
Mixed Hardwood	265.00 Cords	\$ 16.10/Cord	\$ _____
Mixed Oak	407.00 Cords	\$ 11.25/Cord	\$ _____
Red Pine	314.00 Cords	\$ 35.90/Cord	\$ _____
White Pine	33.00 Cords	\$ 13.30/Cord	\$ _____

\*The volumes are statistically estimated within plus (+) or minus (-) 9.42 percent. These estimated volumes are final and not subject to adjustment. Prospective bidders are urged to examine this timber and to make their own estimates of quantity and quality.

I understand that any or all bids may be rejected. All bids must be signed and all bid items must be bid or the bid form may be rejected. I also understand that consideration and awarding a contract will be based upon my past performance and ability to complete the contract based upon equipment and staffing subject to my control.

FEDERAL ID: \_\_\_\_\_ or SOCIAL SECURITY NUMBER: \_\_\_\_\_

Company or individual bidding: \_\_\_\_\_

Company representative's name: \_\_\_\_\_

Address: \_\_\_\_\_

City: \_\_\_\_\_ State: \_\_\_\_\_ Zip: \_\_\_\_\_

IF AVAILABLE, PLEASE PLACE THE PERSONALIZED LABEL FROM YOUR PROSPECTUS IN THE ABOVE BOX.

Individual or company representative's signature: \_\_\_\_\_ Date: \_\_\_\_\_

Phone number : \_\_\_\_\_ Email (optional): \_\_\_\_\_

**THE WINNING BIDDER MUST COMPLETE THE VERIFICATION OF WORKER'S DISABILITY COMPENSATION ACT COMPLIANCE (ON REVERSE SIDE IF DOUBLE SIDED) WITHIN 21 DAYS OF SALE AWARD DATE**



<b>FOR DEPARTMENT USE ONLY</b>
Sale Number (XX - XXX - XX - XX)
Forest Management Unit:

## TIMBER SALE VERIFICATION OF WORKER'S DISABILITY COMPENSATION ACT COMPLIANCE

*As required by Act 317, P.A. 1969 (Worker's Compensation) and  
Part 5 of Act 451 of 1994, as amended.*

### VERIFICATION OF WORKER'S DISABILITY COMPENSATION ACT COMPLIANCE

- This verification must be completed and submitted within 21 days of contract award and prior to the issuance of the timber sale contract.
- In addition, if boxes 2B or 2C are checked, then Notice of Exclusion or Certificate of Insurance must be submitted within twenty-one (21) days of the contract award and prior to the issuance of the timber sale contract.
- All information must be typed or printed except for written signatures.

Please Check Appropriate Categories:

1. My business is organized as (you **must** check one of the boxes below):
  - A.  Sole Proprietorship (individual)
  - B.  Partnership
  - C.  Corporation
2. You **must** check one of the boxes below:
  - A.  I certify my business is a sole proprietorship and it has no employees but the sole proprietor. I am not subject to the Worker's Compensation Laws.
  - B.  I certify my business has satisfied its obligation to the Worker's Compensation Act through the use of an approved Notice of Exclusion (BWC-337, Rev. 5/96). I will provide a copy of the Notice of Exclusion within 21 days of the contract award. (For questions or a copy of the BWC-337, please call the Worker's Compensation Bureau at 517-322-1195).
  - C.  I certify my business has a Worker's Compensation Policy. I will provide an original Certificate of Insurance within twenty-one (21) days of the contract award.
3. If you have checked item 2(A) or 2(B), you **must** indicate the number of **both** full-time and part-time employees, other than yourself, including family members and active partners (if none, you must enter "0").

\_\_\_\_\_ Full-time Employees

\_\_\_\_\_ Part-time Employees

Name of Business		Federal ID (or) Social Security No.	
Address		Telephone (       )	
City	State	ZIP	

*I hereby certify that the above information is true and correct. I agree to notify the Michigan DNR of any changes that occur in factors affecting my coverage during any of my present and future operations.*

\_\_\_\_\_  
Signature of Owner or Authorized Representative

\_\_\_\_\_  
Title

\_\_\_\_\_  
Date

**Please complete the "SEALED BID" information on the next page**



Mountaintop Mix (61-039-19)  
T22N, R14W, SEC. 18; Manistee COUNTY

In response to the notice of sale to be held 4:00 p.m. (local time) on October 31, 2019, I am hereby submitting my sealed bid (firm offer) for the following forest products to be cut. Bids for individual species must be at or above the advertised price. All non-responsive bid forms may be rejected.

<u>PRODUCTS &amp; SPECIES</u>	<u>ESTIMATED VOLUME*</u>	<u>ADVERTISED PRICE</u>	<u>BID PRICE/UNIT</u>
<b>Sawtimber</b>			
B. T. Aspen	14.30 MBF	\$ 118.00/MBF	\$ _____
Beech	11.20 MBF	\$ 90.00/MBF	\$ _____
Red Maple	17.00 MBF	\$ 117.00/MBF	\$ _____
Red Oak	89.90 MBF	\$ 186.00/MBF	\$ _____
<b>Pulpwood</b>			
B. T. Aspen	18.00 Cords	\$ 17.90/Cord	\$ _____
Mixed Hardwood	84.00 Cords	\$ 16.10/Cord	\$ _____
Red Oak	68.00 Cords	\$ 11.25/Cord	\$ _____
White Pine	5.00 Cords	\$ 13.30/Cord	\$ _____

\*The volumes are statistically estimated within plus (+) or minus (-) 21.18 percent. These estimated volumes are final and not subject to adjustment. Prospective bidders are urged to examine this timber and to make their own estimates of quantity and quality.

I understand that any or all bids may be rejected. All bids must be signed and all bid items must be bid or the bid form may be rejected. I also understand that consideration and awarding a contract will be based upon my past performance and ability to complete the contract based upon equipment and staffing subject to my control.

FEDERAL ID: \_\_\_\_\_ or SOCIAL SECURITY NUMBER: \_\_\_\_\_

Company or individual bidding: \_\_\_\_\_

Company representative's name: \_\_\_\_\_

Address: \_\_\_\_\_

City: \_\_\_\_\_ State: \_\_\_\_\_ Zip: \_\_\_\_\_

IF AVAILABLE, PLEASE PLACE THE PERSONALIZED LABEL FROM YOUR PROSPECTUS IN THE ABOVE BOX.

Individual or company representative's signature: \_\_\_\_\_ Date: \_\_\_\_\_

Phone number : \_\_\_\_\_ Email (optional): \_\_\_\_\_

**THE WINNING BIDDER MUST COMPLETE THE VERIFICATION OF WORKER'S DISABILITY COMPENSATION ACT COMPLIANCE (ON REVERSE SIDE IF DOUBLE SIDED) WITHIN 21 DAYS OF SALE AWARD DATE**



<b>FOR DEPARTMENT USE ONLY</b>
Sale Number (XX - XXX - XX - XX)
Forest Management Unit:

## TIMBER SALE VERIFICATION OF WORKER'S DISABILITY COMPENSATION ACT COMPLIANCE

*As required by Act 317, P.A. 1969 (Worker's Compensation) and  
Part 5 of Act 451 of 1994, as amended.*

### VERIFICATION OF WORKER'S DISABILITY COMPENSATION ACT COMPLIANCE

- This verification must be completed and submitted within 21 days of contract award and prior to the issuance of the timber sale contract.
- In addition, if boxes 2B or 2C are checked, then Notice of Exclusion or Certificate of Insurance must be submitted within twenty-one (21) days of the contract award and prior to the issuance of the timber sale contract.
- All information must be typed or printed except for written signatures.

Please Check Appropriate Categories:

1. My business is organized as (you **must** check one of the boxes below):
  - A.  Sole Proprietorship (individual)
  - B.  Partnership
  - C.  Corporation
  
2. You **must** check one of the boxes below:
  - A.  I certify my business is a sole proprietorship and it has no employees but the sole proprietor. I am not subject to the Worker's Compensation Laws.
  - B.  I certify my business has satisfied its obligation to the Worker's Compensation Act through the use of an approved Notice of Exclusion (BWC-337, Rev. 5/96). I will provide a copy of the Notice of Exclusion within 21 days of the contract award. (For questions or a copy of the BWC-337, please call the Worker's Compensation Bureau at 517-322-1195).
  - C.  I certify my business has a Worker's Compensation Policy. I will provide an original Certificate of Insurance within twenty-one (21) days of the contract award.
  
3. If you have checked item 2(A) or 2(B), you **must** indicate the number of **both** full-time and part-time employees, other than yourself, including family members and active partners (if none, you must enter "0").

\_\_\_\_\_ Full-time Employees

\_\_\_\_\_ Part-time Employees

Name of Business		Federal ID (or) Social Security No.	
Address		Telephone (       )	
City	State	ZIP	

*I hereby certify that the above information is true and correct. I agree to notify the Michigan DNR of any changes that occur in factors affecting my coverage during any of my present and future operations.*

\_\_\_\_\_  
Signature of Owner or Authorized Representative

\_\_\_\_\_  
Title

\_\_\_\_\_  
Date

**Please complete the "SEALED BID" information on the next page**