



**DEPARTMENT OF NATURAL RESOURCES  
STATE OF MICHIGAN**

**TIMBER SALE PROSPECTUS #6421**

SCHEDULED SALE DATE AND TIME: 9:00 a.m. (local time) on October 29, 2019.

LOCATION: GRAYLING MGMT UNIT, 1955 HARTWICK PINES ROAD, GRAYLING, MI 49738.

PROSPECTUS NOTE: This sale is being re-advertised with reduced prices to offset the extraordinary production costs associated with the spray field unit.

The bidder is advised to inspect the sale area and review the location, estimated volumes, operating costs and contract terms of proposed sales. Please be aware that some landowners may request 60 days or more notice for access across their land.

Notice is hereby given that bids will be received by the Unit Manager, GRAYLING MANAGEMENT UNIT, for certain timber on the following described lands:

Monument Kw Block (72-008-19) / T26N, R01E, SEC. 5 , N1/2NE.

T27N, R01E, SEC. 31, NENW,NE,SE.

T27N, R01E, SEC. 32, S1/2NW,SWNE,SE.

T27N, R01E, SEC. 33, NWSW,S1/2SW.

Oscoda County, Advertised Price \$115,066.40, 459.4 Acres, Jack Pine, Hardwood.

SALE NOTE: Sale contains 459.4 acres of final harvest, mostly in jack pine. Sale contains low stump spec (<6") and chipping requirements to facilitate subsequent planting operations for Kirtland's Warbler Management. The area is scheduled to be planted in 2022, so no extensions will be granted. Sale expires 09/30/2021.

A recreation site such as a trail, pathway, or campground is within the sale area or the vicinity. Certain restrictions/specifications may be applicable including time restrictions.

Left Field Mix (72-013-19) / T27N, R04W, SEC. 24, NWNW,S1/2NW,SW,S1/2SE.

T27N, R04W, SEC. 25, NW,N1/2NE,SWNE,E1/2SW.

Crawford County, Advertised Price \$103,066.85, 146.5 Acres, Aspen, Red Pine.

SALE NOTE: All payment units have direct access to Old 27 (Class A route). Oak wilt restrictions apply for PU 3.

A recreation site such as a trail, pathway, or campground is within the sale area or the vicinity. Certain restrictions/specifications may be applicable including time restrictions.

Couch Heavy Jack (72-614-19) / T27N, R04W, SEC. 36, N1/2NE,N1/2SE.

Crawford County, Advertised Price \$21,298.55, 71.6 Acres, Jack Pine, Hardwood.

SALE NOTE: Timber sale has direct access to Old 27 (Class A highway). This sale is located on non-certified military land. Oak Wilt restrictions apply. Cutting and skidding of PU 1 is restricted to snow off period.

A recreation site such as a trail, pathway, or campground is within the sale area or the vicinity. Certain restrictions/specifications may be applicable including time restrictions.

Higgins Oak and Pine (72-015-18) / T25N, R04W, SEC. 35, N1/2NE,SWNE,NWSE.

T25N, R04W, SEC. 36, NW,W1/2NE,NESE.

Crawford County, Advertised Price \$227,350.60, 151.7 Acres, Hardwood, Red Pine, Red Oak.

SALE NOTE: Most of the sale's units have hiking trail and groomed cross country ski trail interface. The trail surface and markers must be protected, slash will need to be managed along the trail corridors, and seasonal operating restrictions will apply, including oak wilt. Units 3 & 4 are on North Higgins Lake State Park lands; they must be cut first and completed by September 31, 2021 in order to facilitate tree nursery improvement plans. Payment Units 2 & 5 must be completed by September 31, 2021 in advance of the planned Iron Belle Trail construction.

Cruise volumes for the highly variable nursery Payment Units 3 & 4 are statistically estimated within plus or minus 36.42 percent. The total volume for the rest of the harvest on State Forest Land is statistically estimated within plus or minus 6.63 percent.

A recreation site such as a trail, pathway, or campground is within the sale area or the vicinity. Certain restrictions/specifications may be applicable including time restrictions.

## BID INSTRUCTIONS (VER. 07/02/2018):

### 1. Scheduled Bid Location, Date, and Time (2/11)

Bids must be received by the Unit Manager, GRAYLING OFFICE, 1955 HARTWICK PINES ROAD, GRAYLING, MI 49738, no later than 9:00 a.m. (local time) on October 29, 2019. For further information concerning this sale, contact Thomas Barnes at 989-348-6371 extension 7440.

### 2. Bidder's Qualifications (5/16)

Purchaser shall obtain workers compensation insurance to cover claims under Michigan's Worker's Disability Compensation Act of 1969 or similar employee benefit act of any other state applicable to an employee. If all or part of a timber sale was prepared by a private contractor, the contractor and that contractor's company are not permitted to bid on the timber sale contract. Bids will not be accepted from individuals or companies appearing on the DNR/FRD No-Bid List. This list contains the names of purchasers who previously failed to execute a contract within 21-days or who have a history of poor performance.

### 3. Preparation of Sealed Bids (5/16)

Bid Forms may be completed online thru Michigan DNR Timber Sale Online Bidding (OLB) at [www.michigan.gov/timberbidding](http://www.michigan.gov/timberbidding) or by completing the hardcopy Bid Form found in the Timber Sale Prospectus. Hardcopy Bid Forms shall be manually signed in ink. Registration in OLB is considered your 'signature' for all bids submitted thru that system. Bid prices must be entered for each species and product in the Bid Price column for all material subject to bidding and all fill-in blanks must be completed. If erasures or other changes appear on the hardcopy Bid Form, each erasure or change must be initialed by the person signing the bid.

### 4. Submission of Sealed Bids (5/16)

Bid forms may be obtained from the Unit Manager or thru OLB. Bids may be submitted hardcopy or thru OLB. All hardcopy bids must be submitted on the bid form and in an envelope clearly identified as described in this section. NOTE: Only one bid form per bid envelope. Sealed bids must be submitted to the Unit office designated in the prospectus and must be submitted at or prior to the time established in the prospectus. The envelope should show on the outside (a) the sale name or number and (b) the date and time of bid opening, as shown in the prospectus. Bids received after the time specified in the sale prospectus are late bids and will be rejected.

It is possible for a bidder to submit multiple bids on a single sale. For example, a bid may be submitted hardcopy and a bid may be submitted thru OLB. Or, two bidders from the same company could both submit bids on the same sale. If this were to happen, the State would accept all bids received and award the contract accordingly. All bidding and contractual requirements would apply to all bids received.

### 5. Public Opening of Sealed Bids (7/16)

If conditions permit, the sealed bids will be publicly opened and posted at the time and place set in the prospectus.

If a bidder, present at a bid opening, has submitted bids on more than one sale, that bidder may withdraw their unopened bid envelopes or announce the withdrawal of their online bid after being declared the successful bidder on one sale.

### 6. Award of Contract (1/11)

Award of the contract will be made to the Bidder whose bid, conforming to the prospectus, is most advantageous to the State of Michigan on the basis of total value at rates bid for the estimated quantities. The State reserves the right to reject any bid or waive any minor irregularity in bids received. A written award mailed (or otherwise furnished) to the successful Bidder shall be deemed to result in a binding contract without further action by either party.

### 7. Down Payment (1/11)

The Bidder to whom award is made must make a down payment within 21 days of the sale award. The amount of the down payment will be calculated as shown in the Bond and Payment Schedule of this prospectus. Only cash may be used to meet this requirement.

### 8. Performance Security (1/11)

As guarantee of faithful performance, a cash bond, certificate of deposit, surety bond or irrevocable letter of credit (LOC) is required within 21 days of the sale award. The amount of the performance security is shown in the Bond and

Payment Schedule of this prospectus. If an LOC or surety is used, the coverage must extend for at least 6 months beyond the contract expiration.

#### 9. Timber Sale Contract (7/18)

Additional conditions and requirements common to all timber sales are listed on the timber sale contract (R4031) and are available on line at [www.michigan.gov/timber](http://www.michigan.gov/timber). Contact the Unit Manager for additional information or a sample contract. Within 21 days of the date of the award letter, the bidder must sign the contract and provide the required down payment, performance security, and verification of worker's disability compensation. The down payment and performance security shall be in accordance with the provisions of the timber sale contract, in the sums stated in this prospectus. If these actions are not taken, then the Bidder, the Bidder's corporation, and the corporation's principals may not be permitted to bid on State timber sales for a period of 3 months after the first offense, 6 months after the second offense, and 1 year after the third offense. An offense will only be counted against the Bidder for 5 years. In addition, the Bidder certifies that if awarded this contract, the Bidder will complete the timber sale contract in accordance with its terms and any modifications thereof including requirements to purchase, cut, and remove the included timber by the expiration date.

Payment Unit values in the State Forest Timber Sale Contract are calculated based on the advertised value of the Payment Unit as a percentage of the total advertised value of the contract. The advertised value of each Payment Unit is given in the Description of Timber by Payment Unit table on the Timber Sale Information page. For example, if the value of Payment Unit 1 is advertised as \$1,500 and the total Timber Sale value is advertised as \$10,000, the contract price for Payment Unit 1 will be 15% of the total bid price ( $\$1,500/\$10,000 * 100$ ).

#### 10. Disclaimer of Estimates and Bidder's Warranty of Inspection (7/16)

Before submitting this bid, the Bidder is advised and cautioned to inspect the sale area, review the requirements of the sale contract, and take other steps as may be reasonably necessary to ascertain the location, estimated volumes, construction estimates, and operating costs of the proposed sale. Failure to do so will not relieve the Bidder from responsibility for completing the contract.

The Bidder warrants that this bid is submitted solely on the basis of the Bidder's examination and inspection of the quality and quantity of the timber offered for sale and the Bidder's opinion of the value thereof and the costs of recovery. No reliance should be placed on the State of Michigan's estimates of timber quality, quantity or costs of recovery. Bidder further acknowledges that the State of Michigan: (i) expressly disclaims any warranty of fitness of timber for any purpose; (ii) offers this timber as is without any warranty of quality (merchantability) or quantity and (iii) expressly disclaims any warranty as to the quantity or quality of timber sold.

#### 11. Certification and Chain-of-Custody (10/14)

Unless otherwise indicated in the contract under section 7 – Other Conditions of the Sale Specific Conditions & Requirements, the area encompassed by this timber sale is certified to the standards of the Forest Stewardship Council (FSC) - Certificate #SCS-FM/COC-00090N and the Sustainable Forestry Initiative (SFI) - Certificate #NSF-SFIS-5Y031-SF5. Forest products from this sale may be delivered to the mill as "FSC 100% and / or SFI certified" as long as the contractor hauling the forest products is chain-of-custody (COC) certified or covered under a COC certificate from the destination mill. The purchaser is responsible for maintaining COC after leaving the sale area.

#### 12. Good Neighbor Authority (GNA) Requirements (7/16)

If the name of this timber sales contains the acronym GNA, it is authorized by the Good Neighbor Authority (GNA) and covered by various agreements between the U.S. Forest Service and the State. The timber sale occurs on federal land and the following conditions apply:

GNA contracts on US Forest Service land will not be awarded to purchasers on the Federal list of excluded parties. The System for Award Management (SAM) will be checked for active excluded parties prior to award of contract. In addition, the Bidder to whom award is made must complete an Assurance Regarding Felony Conviction or Tax Delinquent Status for Corporate Applicants (AD-3031).

#### 13. Good Neighbor Authority (GNA) Requirements, con't (9/16)

Bidder certifies, by signing this bid form, that to the best of Bidder's knowledge that the following representations are accurate and complete.

- a. That the Bidder and its principals are not presently debarred, suspended, proposed for debarment, declared ineligible, or voluntary excluded from timber sales (covered transactions) by any Federal department or agency.
- b. That the Bidder and its principals have not within a 3-year period preceding this bid been convicted of or had a civil judgment rendered against them for commission of fraud or a criminal offense in connection with obtaining, attempting to obtain, or performing a public (Federal, State, or local) transaction or contract under a public transaction; violation of Federal or State antitrust statutes or commission of embezzlement, theft, forgery, bribery, falsification or destruction of records, making false statements, or receiving stolen property.
- c. That the Bidder and its principals are not presently indicted for or otherwise criminally or civilly charged by a governmental entity (Federal, State, or local) with commission of any of the offenses enumerated in paragraph b of this certification.
- d. That the Bidder and its principals have not within a 3-year period preceding this bid had one or more public transactions (Federal, State, or local) terminated for breach or default of a timber or forest product contract.

Bidders that cannot certify this requirement, in whole or in part, shall submit an explanation with their bid.

DAN EICHINGER  
Director



# TIMBER SALE INFORMATION

## Monument Kw Block (72-008-19)

T26N, R01E, SEC. 5; T27N, R01E, SEC. 31; T27N, R01E, SEC. 32; T27N, R01E, SEC. 33.

Oscoda County (Advertised Price \$115,066.40)

SALE NOTE: Sale contains 459.4 acres of final harvest, mostly in jack pine. Sale contains low stump spec (<6") and chipping requirements to facilitate subsequent planting operations for Kirtland's Warbler Management. The area is scheduled to be planted in 2022, so no extensions will be granted. Sale expires 09/30/2021.

A recreation site such as a trail, pathway, or campground is within the sale area or the vicinity. Certain restrictions/specifications may be applicable including time restrictions.

A timber sale contract for this lump sum, sealed bid timber sale will be awarded to the responsible bidder offering the highest sealed bid price. Bids must be at or above the following advertised price for each species:

<u>PRODUCTS &amp; SPECIES</u>	<u>ESTIMATED UNITS*</u>		<u>ADVERTISED PRICE</u>
<b>Sawtimber</b>			
Northern Pin Oak	12.00	MBF	\$ 199.00 / MBF
<b>Pulpwood</b>			
Balsam Fir	11.00	Cords	\$ 20.00 / Cord
Black Spruce	3.00	Cords	\$ 20.90 / Cord
Jack Pine	4,180.00	Cords	\$ 22.00 / Cord
Mixed Hardwood	11.00	Cords	\$ 36.20 / Cord
Northern Pin Oak	415.00	Cords	\$ 24.20 / Cord
Quaking Aspen	306.00	Cords	\$ 24.65 / Cord
Red Pine	2.00	Cords	\$ 51.15 / Cord
White Pine	82.00	Cords	\$ 28.65 / Cord

\* The total volume is statistically estimated within plus (+) or minus (-) 7.68 percent. The estimated units are final and not subject to adjustment. Prospective bidders are urged to examine this timber and to make their own estimates of quantity and quality.

### **BOND AND PAYMENT SCHEDULE:**

1. A bond in the amount of \$5,753.00 to insure faithful performance of the conditions of the contract will be deposited by the successful bidder within 21 days of the sale award.
2. Cutting in any sale or unit without the required advance payment would be considered a trespass.
3. Total payment must be paid in advance or according to the following schedule:
  - (a) Ten percent (10%) of the sale value must be paid within 21 days of the sale award.
  - (b) The 10% down payment will be credited towards the first unit cut.
  - (c) Payment for each of the following units must be made before cutting begins in that unit:

PAYMENT UNIT NUMBER	PERCENT OF TOTAL SALE VALUE
01	1.9%
02	5.7%
03	7.3%
04	24.8%
05	7.7%
06	5.0%
07	27.0%
08	8.9%
09	11.7%

4. If no cutting takes place, the 10% down payment will not be refunded.
5. Operations on the contract issued will terminate on 09/30/2021.

**Description of Timber by Payment Unit (PU)**

PU	MARKET GROUP	PRODUCT	QUANTITY	UNIT	ACRES	ADVERTISE PRICE
1	Balsam Fir	Pulpwood	8.0	Cords	5.4	\$2,240.85
	Black Spruce		3.0	Cords		
	Jack Pine		2.0	Cords		
	Mixed Hardwood		2.0	Cords		
	Quaking Aspen		73.0	Cords		
	Red Pine		2.0	Cords		
	2		Jack Pine	Pulpwood		
	<i>Jack Pine</i>	<i>Sawtimber</i>	0.7	<i>MBF</i>		
	<i>Jack Pine</i>	<i>Pulpwood</i>	287.0	<i>Cords</i>		
	Mixed Hardwood		1.0	Cords		
	Northern Pin Oak		8.0	Cords		
3	Jack Pine	Pulpwood	367.0	Cords	33.9	\$8,376.40
	<i>Jack Pine</i>	<i>Sawtimber</i>	0.8	<i>MBF</i>		
	<i>Jack Pine</i>	<i>Pulpwood</i>	365.0	<i>Cords</i>		
	Mixed Hardwood		1.0	Cords		
	Northern Pin Oak		11.0	Cords		
4	Jack Pine	Pulpwood	1,253.0	Cords	115.9	\$28,545.80
	<i>Jack Pine</i>	<i>Sawtimber</i>	2.8	<i>MBF</i>		
	<i>Jack Pine</i>	<i>Pulpwood</i>	1,247.0	<i>Cords</i>		
	Mixed Hardwood		3.0	Cords		
	Northern Pin Oak		36.0	Cords		
5	Balsam Fir	Pulpwood	3.0	Cords	25.8	\$8,910.30
	Jack Pine		27.0	Cords		
	Northern Pin Oak		20.0	Cords		
	Quaking Aspen		220.0	Cords		
	White Pine		82.0	Cords		
	6		Jack Pine	Pulpwood		
	<i>Jack Pine</i>		245.0	<i>Cords</i>		
	Northern Pin Oak		3.0	Cords		
	Quaking Aspen		13.0	Cords		
7	Northern Pin Oak	Sawtimber	6.7	MBF	131.9	\$30,865.90
	Jack Pine	Pulpwood	1,129.0	Cords		
	Mixed Hardwood		2.0	Cords		
	Northern Pin Oak		191.0	Cords		
8	Northern Pin Oak	Sawtimber	2.3	MBF	43.9	\$10,290.50
	Jack Pine	Pulpwood	376.0	Cords		
	Mixed Hardwood		1.0	Cords		
	Northern Pin Oak		63.0	Cords		
9	Northern Pin Oak	Sawtimber	3.0	MBF	57.6	\$13,487.80
	Jack Pine	Pulpwood	493.0	Cords		
	Mixed Hardwood		1.0	Cords		
	Northern Pin Oak		83.0	Cords		
TOTAL:			12.0	MBF		
TOTAL:			5,010.0	Cords		



## Sale Specific Conditions & Requirements

**Sale Name: Monument Kw Block**

**Sale Number: 72-008-19 Seq#: 1**

### 1 - Sale Area

#### 1.2 - Boundaries

##### 1.2.1 - Painted boundaries (1/14)

The sale boundary and Payment Unit boundaries are marked and identified by blue, red or yellow paint, or are designated and unmarked. Exterior sale boundary lines against private property are marked with blue paint, or designated at Fire Tower Road as shown on map. Exterior sale boundary lines against state are marked with red paint, or designated at Cherry Creek Road, or other un-named roads as shown on map. Interior Payment Unit boundaries are marked with yellow paint or unpainted at Trail 9 and other un-named forest roads and access routes as shown on map. The painted boundary line trees are not Included Timber and are to be protected. Yellow painted trees designating an interior Payment Unit boundary are only to be cut when all surrounding Payment Units have been paid.

### 2 - Timber Specifications

#### 2.1 - Included Timber

##### 2.1.1 - Clearcut unit(s) with unmerchantable trees (6/14)

Within Payment Unit(s) 1-9, cut all trees that are two (2) inches or more at DBH except for the following:

In Payment Unit 1, leave all X-Log(>18"DBH) red pine and white pine.

In Payment Unit(s) 2, 3, 4, 6, 7, 8, and 9, leave all red pine and white pine.

In Payment Unit 5, leave all red pine and X-Log white pine(>18" DBH).

#### 2.2 - Utilization

##### 2.2.2 - Chipping required (2/18)

Payment Units 2, 3, 4, 6, 7, 8, and 9 must be chip harvested to meet Kirtland's warbler habitat requirements. The requirement to retain approximately 1/6 to 1/3 of tree tops and limbs less than four inches in diameter does not apply (G. C. & R. 2.2).

##### 2.2.3 - Stump heights (4/07)

Stump heights within the Sale Area shall not exceed 6 inches for all trees. This is in order to facilitate planting operations.

### 3 - Payments

#### 3.3 - Pre-measured Sales

##### 3.3.4 - Dividing payment units (7/14)

Payment Unit(s) may be divided at the request of the Purchaser and upon approval of the Unit Manager. Dividing Payment Units is a contract modification which requires a Timber Sale Contract Supplement. There will be only one division per Payment Unit.

#### 3.4 - Damaged Timber

##### 3.4.3 - Special Protection Areas (8/11)

The Purchaser shall protect special protection areas from damage by the Purchaser's operations. Special protection areas are marked with a red boundary line. The sale administrator may give permission to cross through retention islands in a designated location on order to facilitate skidding operations. The Purchaser shall not cut live or dead trees within special protection areas.

### 4 - Transportation

#### 4.1 - Construction

##### 4.1.3 - Slash and earthen piles (8/04)

Piles or windrows of earth along roads and landings that have been widened or constructed shall be leveled. Slash from road maintenance or construction, including stumps, shall be dispersed throughout the sale if not utilized.

##### 4.1.6 - Road construction (1/09)

Construction of new roads or improvements of existing roads shall be done in such a way as to minimize the environmental and visual impacts. Merchantable trees shall be cut and utilized unless otherwise directed. Non-merchantable trees shall be severed and laid flat on the ground. Slash shall be chipped, utilized or otherwise removed from the sale. Stumps shall be set upright, not left on edge, and be moved at least 10 feet away from the road edge. Disturbed soil shall be feathered into the woods and not left in berms or windrows.

#### 4.1.7 - Road closure (10/11)

All new roads built into the sale must be blocked to vehicle traffic upon completion of the sale. Overgrown roads that are reopened shall be considered new roads. In general, this will require constructing a four (4') foot high berm of stumps and logs covered with earth. Stumps and brush must be placed along the remainder of the trail. These roads must be rendered impassable to cars and trucks. Contact the sale administrator for specific details of design and placement.

#### 4.1.11 - Permits (2/12)

The Purchaser will secure any necessary permits that may be required.

### 4.2 - Maintenance

#### 4.2.5 - Two wheel drive condition (2/04)

All existing trail roads on and adjacent to the sale area must be passable by two-wheel drive traffic for the duration of the sale.

## 5 - Operations

### 5.1 - Notification

#### 5.1.6 - Utility R.O.W. (4/19)

It is the responsibility of the Purchaser to obtain permission from the utility company to utilize the power line R.O.W. for operations.

### 5.2 - Conduct of Operations

#### 5.2.2 - Hazard Trees/Snags

##### 5.2.2.1 - Den trees (10/16)

Obvious hollow and/or den trees shall be protected and left standing unless they are a safety hazard.

#### 5.2.3 - Operating Restrictions

##### 5.2.3.5 - Oak wilt restriction (1/18)

Along the North boundary of payment unit 7, boundaries adjacent to private property and retention vortices, unless changed by written agreement, cutting, skidding, hauling within the sale and brushing of access roads to the sale are not permitted during the period of April 15 to July 15. Operations may be allowed if specific steps are taken to prevent damaging uncut oak during the high risk period. Those steps may include completing all road brushing before April 15th and clearing a tree-length buffer along uncut oak cover before April 15th. Operations may also be allowed if a tree length buffer is left along any uncut oak, which would be required to be cut immediately after the restricted period. This is necessary to reduce the spread of oak wilt. For more information, contact the Unit Manager or his/her representative.

#### 5.2.22 - Operating Caution

##### 5.2.22.1 - Operating caution (6/11)

It is recommended, but not required, that within Payment Unit(s) 1, 5, and 6, cutting, skidding, and hauling occur during dry summer or frozen winter conditions. The reason for the recommendation is to mitigate risk of rutting in areas of transition between upland and lowland.

#### 5.2.32 - Decking/landing restoration (9/13)

All decking and landing areas must have the surface area restored to a condition equal to or better than before. This is to ensure the proper regeneration of the stand. Wood debris, chips and "cookies" from trimmings must be removed or scattered away from landing and loading areas and may not be windrowed on the edge.

#### 5.2.40 - Pathway protection (10/10)

The Shore to Shore Trail is a hiking/horse trail and is shown on the Timber Sale Map. Do not cut trees or damage posts with blue pathway markers. Maintain a 20-foot wide slash, debris, and rut free zone daily, using the pathway as the centerline. Do

not run equipment down the pathway. Skidding across the trail may only occur in locations approved by the sale administrator. The administrator will provide a minimum of two weeks notice of when scheduled rides are to occur. Producers are to move cutting and hauling operations furthest away from the trail or suspend operations for the day of the ride.

#### 5.2.41 - Snowmobile trail protection (9/11)

Trail 9 is a snowmobile trail and is shown on the Timber Sale Map. Do not cut or damage posts with orange trail markers or traffic control signs. If the trail is used, it must be maintained and restored to a condition equal to or better than before the sale. The road maintenance/restoration must be done prior to December 1. Written permission must be obtained if the trail road is to be used for hauling during the snowmobile season and a snow covered base must be left on the trail. Maintain a 20 foot wide slash, debris, and rut free zone daily using the snowmobile trail as the centerline. No decking of forest products will be permitted along the snowmobile trail. All stumps within 20 feet of the snowmobile trail must be cut at ground level.

### 5.4 - Soil Protection

#### 5.4.1 - Rutting restriction, general (7/16)

Operations are to cease immediately if equipment and weather conditions result in rutting of roads and/or skid trails which is 12 inches or greater in depth and 50 feet in length. The Unit Manager or his/her representative may restrict hauling and/or skidding if ruts exceed the specified depth. With the Unit Manager or his/her representative's approval, the Purchaser may return to the area when the risk of rutting has decreased.

### 5.8 - Protection of Endangered Species

#### 5.8.1 - Kirtland's warbler (1) (10/12)

This sale is adjacent to a young jack pine stand which may be used by the endangered Kirtland's Warbler. The Department reserves the right to temporarily restrict all harvesting operations in a buffer zone of up to 500 feet if it is determined that Warbler territory has been established in the adjacent stand. The restricted period, if put into effect, would apply from May 1st to August 15th.

## 6 - Safety and Fire Prevention

### 6.2 - Signing

#### 6.2.1 - Road posting (9/09)

The Purchaser is responsible for posting and maintaining caution signs on Cherry Creek Rd prior to beginning operations. The road must be posted at appropriate distances from the sale area to warn of logging activity and truck traffic. Signs must be removed when harvest operations are suspended or completed. The Purchaser will provide these signs.

#### 6.2.3 - Recreational trail posting (2/10)

The Purchaser is responsible for posting and maintaining caution signs on the Shore to Shore Trail/Trail 9 prior to beginning operations. The trail must be posted at appropriate distances from the sale area to warn of logging activity and truck traffic at both ends of the trail. Signs must be removed when harvest operations are suspended or completed. The Purchaser will provide these signs.

## 7 - Other Conditions

### 7.2 - Extensions

#### 7.2.2 - No extensions (3/09)

There will be no extensions granted on this contract. The purpose of this sale is to create habitat for the Kirtland's Warbler. This sale is already scheduled for planting.



# TIMBER SALE MAP

This information provided by authority of Part 525, 1994 PA 451, as amended.

Forest Management Unit	Grayling	Range	01E	Section(s) and Subdivision(s)	Sec 31- NENW/NE, SE; Sec 32- S1/2NW, SW/NE, SE; Sec 33- NWSW, S1/2SW	Sale Number	72 - 008	Year	19
County	Oscoda	Maped By	K. Ehlerdt	Cruised By	K. Ehlerdt	Date	07/22/2019	Page	1
Scale	1:15,840	of	1						

PU	Acres	PU	Acres	PU	Acres	Density
1	5.4	4	115.9	7	131.9	0 = Non Stocked
2	26.7	5	25.8	8	43.9	1 = Seeding Sapling Poor
3	33.9	6	18.3	9	57.6	2 = Seeding Sapling Medium
						3 = Seeding Sapling Well
						4 = Pole Timber Poor
						5 = Pole Timber Medium
						6 = Pole Timber Well
						7 = Saw Timber Poor
						8 = Saw Timber Medium
						9 = Saw Timber Well

## Monument KW Block

Compartment 001  
459.4 Acres



### Legend

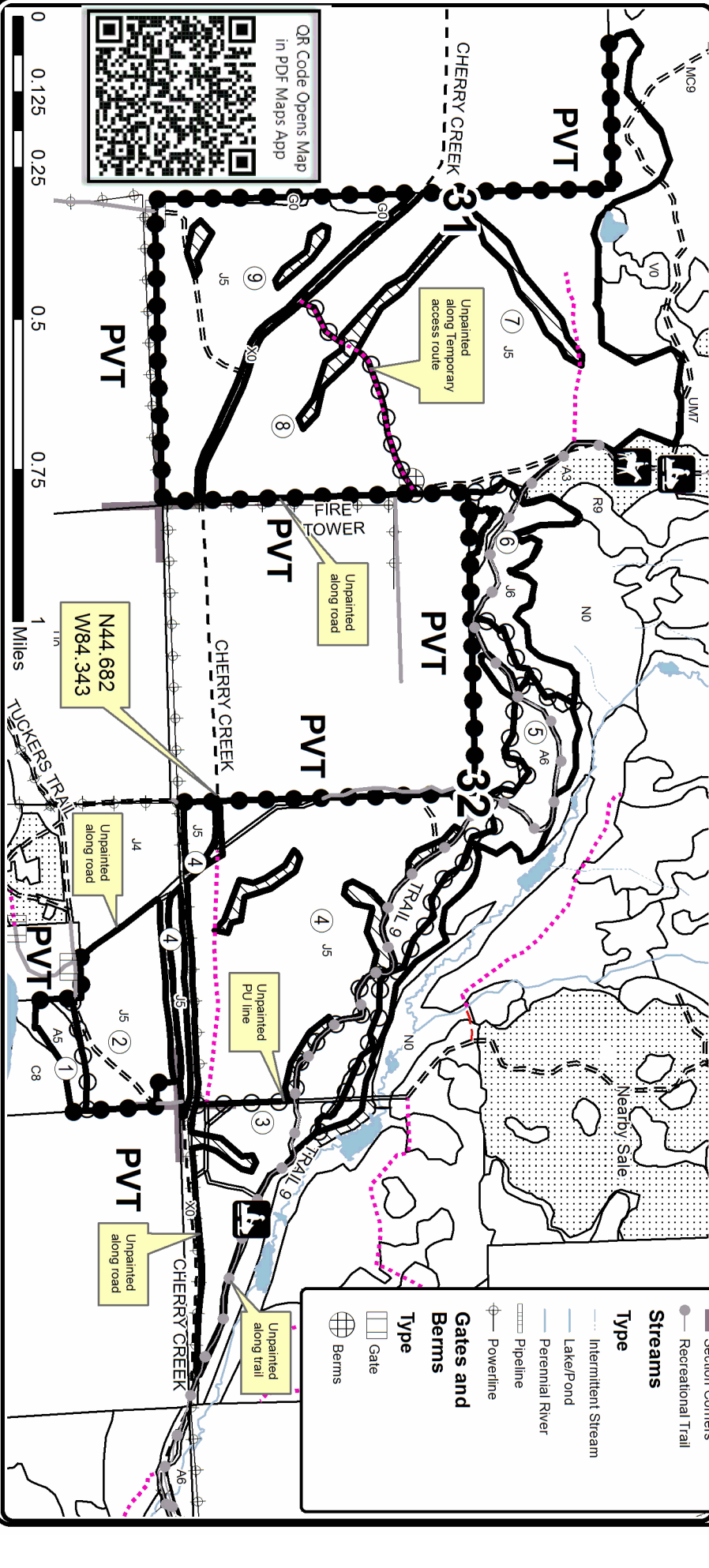
- Secondary Forest Road
- Forest Access Route
- Paved Road
- Gravel Road
- County Road - Seasonal
- Private
- Temporary Management Access
- Retention Area (Red)
- Against State (Red/Unpainted)
- Payment Unit (Yellow/Unpainted)
- Private Line (Blue/Road)
- Stand Boundaries
- Nearby Timber Sale
- Section Corners
- Recreational Trail

### Streams

- Intermittent Stream
- Lake/Pond
- Perennial River
- Pipeline
- Powerline

### Gates and Berrns

- Gate
- Berrns



## TIMBER SALE INFORMATION

Left Field Mix (72-013-19)

T27N, R04W, SEC. 24; T27N, R04W, SEC. 25.  
Crawford County (Advertised Price \$103,066.85)

SALE NOTE: All payment units have direct access to Old 27 (Class A route).  
Oak wilt restrictions apply for PU 3.

A recreation site such as a trail, pathway, or campground is within the sale area or the vicinity. Certain restrictions/specifications may be applicable including time restrictions.

A timber sale contract for this lump sum, sealed bid timber sale will be awarded to the responsible bidder offering the highest sealed bid price. Bids must be at or above the following advertised price for each species:

<u>PRODUCTS &amp; SPECIES</u>	<u>ESTIMATED UNITS*</u>		<u>ADVERTISED PRICE</u>
<b>Sawtimber</b>			
Mixed Oak	5.30	MBF	\$ 199.00 / MBF
Red Pine	296.00	MBF	\$ 118.00 / MBF
White Pine	10.00	MBF	\$ 58.00 / MBF
<b>Pulpwood</b>			
Jack Pine	67.00	Cords	\$ 22.00 / Cord
Mixed Aspen	995.00	Cords	\$ 24.65 / Cord
Mixed Oak	279.00	Cords	\$ 24.20 / Cord
Red Maple	146.00	Cords	\$ 36.20 / Cord
Red Pine	438.00	Cords	\$ 51.15 / Cord
Scotch Pine	15.00	Cords	\$ 35.55 / Cord
White Pine	193.00	Cords	\$ 28.65 / Cord

\* The total volume is statistically estimated within plus (+) or minus (-) 9.14 percent. The estimated units are final and not subject to adjustment. Prospective bidders are urged to examine this timber and to make their own estimates of quantity and quality.

**BOND AND PAYMENT SCHEDULE:**

1. A bond in the amount of \$5,153.00 to insure faithful performance of the conditions of the contract will be deposited by the successful bidder within 21 days of the sale award.
2. Cutting in any sale or unit without the required advance payment would be considered a trespass.
3. Total payment must be paid in advance or according to the following schedule:
  - (a) Ten percent (10%) of the sale value must be paid within 21 days of the sale award.
  - (b) The 10% down payment will be credited towards the first unit cut.
  - (c) Payment for each of the following units must be made before cutting begins in that unit:

PAYMENT UNIT NUMBER	PERCENT OF TOTAL SALE VALUE
01	26.9%
02	6.4%
03	24.8%
04	15.0%
05	26.9%

4. If no cutting takes place, the 10% down payment will not be refunded.
5. Operations on the contract issued will terminate on 12/31/2021.

**Description of Timber by Payment Unit (PU)**

PU	MARKET GROUP	PRODUCT	QUANTITY	UNIT	ACRES	ADVERTISE PRICE
1	Mixed Oak	Sawtimber	1.9	MBF	47.1	\$27,766.95
	<i>White Oak</i>		1.9	<i>MBF</i>		
	Red Pine	Pulpwood	99.9	MBF		
	White Pine		2.8	MBF		
	Jack Pine		14.0	Cords		
	Mixed Aspen		23.0	Cords		
	Mixed Oak		91.0	Cords		
	Red Maple		67.0	Cords		
	Red Pine		164.0	Cords		
	White Pine		54.0	Cords		
2	Mixed Oak	Sawtimber	0.5	MBF	7.9	\$6,571.25
	<i>White Oak</i>		0.5	<i>MBF</i>		
	Red Pine	Pulpwood	10.2	MBF		
	White Pine		1.8	MBF		
	Jack Pine		2.0	Cords		
	Mixed Aspen		116.0	Cords		
	Mixed Oak		4.0	Cords		
	Red Maple		2.0	Cords		
	Red Pine		28.0	Cords		
	White Pine		23.0	Cords		
3	Mixed Oak	Sawtimber	1.8	MBF	43.3	\$25,524.40
	<i>BI/R/Hybrid Oak</i>		1.8	<i>MBF</i>		
	Red Pine	Pulpwood	12.3	MBF		
	Jack Pine		11.0	Cords		
	Mixed Aspen		606.0	Cords		
	Mixed Oak		153.0	Cords		
	Red Maple		58.0	Cords		
	Red Pine		43.0	Cords		
	Scotch Pine		15.0	Cords		
4	Red Pine	Sawtimber	24.6	MBF	24.3	\$15,423.00
	White Pine		5.4	MBF		
	Jack Pine	Pulpwood	10.0	Cords		
	Mixed Aspen		250.0	Cords		
	Mixed Oak		6.0	Cords		
	Red Maple		18.0	Cords		
	Red Pine		35.0	Cords		
	White Pine		113.0	Cords		
5	Mixed Oak	Sawtimber	1.1	MBF	23.9	\$27,781.25
	<i>BI/R/Hybrid Oak</i>		1.1	<i>MBF</i>		
	Red Pine	Pulpwood	149.0	MBF		
	Jack Pine		30.0	Cords		
	Mixed Oak		25.0	Cords		
	Red Maple		1.0	Cords		
	Red Pine		168.0	Cords		
White Pine	3.0	Cords				
TOTAL:			311.3	MBF		
TOTAL:			2,133.0	Cords		

## Sale Specific Conditions & Requirements

**Sale Name: Left Field Mix**

**Sale Number: 72-013-19 Seq#: 1**

### 1 - Sale Area

#### 1.2 - Boundaries

##### 1.2.1 - Painted boundaries (1/14)

The sale boundary and Payment Unit boundaries are marked and identified by blue, red and yellow paint. Exterior sale boundary lines against private property are marked with blue paint. Exterior sale boundary lines against state are marked with red paint except for all boundaries against Old 27 are unpainted and identified on timber sale map. In addition, unpainted boundaries include the snowmobile trail along the west side of Payment Unit 1, the unnamed forest road along the northwest side of Payment Unit 3, and the unnamed forest road along the north side of Payment Unit 5 as identified on timber sale map. Interior Payment Unit boundaries are marked with yellow paint. Yellow painted trees designating an interior Payment Unit boundary are only to be cut when all surrounding Payment Units have been paid.

### 2 - Timber Specifications

#### 2.1 - Included Timber

##### 2.1.1 - Clearcut unit(s) with unmerchantable trees (6/14)

Within Payment Unit(s) 1-5, cut all trees that are two (2) inches or more at DBH except trees marked with green paint.

#### 2.2 - Utilization

##### 2.2.2 - Chipping required (2/18)

Payment Unit 1 & 5 must be chip harvested to facilitate subsequent planting operations. The Purchaser has the option to produce sawlogs or pulpwood bolts, but the remaining portion of the trees must be chipped and hauled. A chipping exemption can be obtained if proposed operations are determined to be suitable for planting by reforestation staff. This exemption must be granted in writing. The requirement to retain approximately 1/6 to 1/3 of tree tops and limbs less than four inches in diameter is still applicable (G. C. & R. 2.2).

##### 2.2.3 - Stump heights (4/07)

Stump heights within Payment Unit(s) 1, 3, & 5 shall not exceed 6 inches for all trees. This is in order to facilitate planting operations.

### 3 - Payments

#### 3.3 - Pre-measured Sales

##### 3.3.4 - Dividing payment units (7/14)

Payment Unit(s) may be divided at the request of the Purchaser and upon approval of the Unit Manager. Dividing Payment Units is a contract modification which requires a Timber Sale Contract Supplement.

### 4 - Transportation

#### 4.1 - Construction

##### 4.1.6 - Road construction (1/09)

Construction of new roads or improvements of existing roads shall be done in such a way as to minimize the environmental and visual impacts. Merchantable trees shall be cut and utilized unless otherwise directed. Non-merchantable trees shall be severed and laid flat on the ground. Slash shall be chipped, utilized or otherwise removed from the sale. Stumps shall be set upright, not left on edge, and be moved at least 10 feet away from the road edge. Disturbed soil shall be feathered into the woods and not left in berms or windrows.

##### 4.1.7 - Road closure (10/11)

All new roads built into the sale must be blocked to vehicle traffic upon completion of the sale. Overgrown roads that are reopened shall be considered new roads. In general, this will require constructing a four (4') foot high berm of stumps and logs covered with earth. Stumps and brush must be placed along the remainder of the trail. These roads must be rendered impassable to cars and trucks. Temporary berms may be required if no sale activity occurs for 30 or more consecutive days.

Contact the sale administrator for specific details of design and placement.

#### 4.1.11 - Permits (2/12)

The Purchaser will secure any necessary permits that may be required.

### 4.2 - Maintenance

#### 4.2.5 - Two wheel drive condition (2/04)

All existing trail roads on and adjacent to the sale area must be passable by two-wheel drive traffic for the duration of the sale.

## 5 - Operations

### 5.1 - Notification

#### 5.1.1 - Pre-sale conference (10/16)

A pre-sale conference between the Purchaser and sale administrator is required prior to beginning any operations to determine landing and road locations. The Unit Manager or his/her representative must be contacted at least 5 days in advance to schedule the conference.

### 5.2 - Conduct of Operations

#### 5.2.2 - Hazard Trees/Snags

##### 5.2.2.1 - Den trees (10/16)

Obvious hollow and/or den trees shall be protected and left standing unless they are a safety hazard.

#### 5.2.3 - Operating Restrictions

##### 5.2.3.5 - Oak wilt restriction (1/18)

Within Payment Unit 3, unless changed by written agreement, cutting, skidding, hauling within the sale and brushing of access roads to the sale are not permitted during the period of April 15 to July 15. Operations may be allowed if specific steps are taken to prevent damaging uncut oak during the high risk period. Those steps may include completing all road brushing before April 15th and clearing a tree-length buffer along uncut oak cover before April 15th. This is necessary to reduce the spread of oak wilt. For more information, contact the Unit Manager or his/her representative.

#### 5.2.4 - Dead and Down Creation

##### 5.2.4.4 - Dead and down creation, grouse (6/18)

To encourage grouse and other wildlife, in Payment Unit(s) 3, leave one, 12" or larger diameter (or largest diameter trees within stand), tree on the ground for every 2 acres. Preferably the tree will be a hardwood species such as oak or maple or if no hardwoods are present, a pine species (white or red) should be used. These trees will be evenly scattered throughout the unit, preferably at least two chains from any roads, two-tracks, or trails open to vehicles. This can be an unmerchantable piece or a full tree.

#### 5.2.32 - Decking/landing restoration (9/13)

All decking and landing areas must have the surface area restored to a condition equal to or better than before. This is to ensure the proper regeneration of the stand. Wood debris, chips and "cookies" from trimmings must be removed or scattered away from landing and loading areas and may not be windrowed on the edge.

#### 5.2.41 - Snowmobile trail protection (9/11)

The snowmobile trail is shown on the Timber Sale Map. Do not cut or damage posts with orange trail markers or traffic control signs. If the trail is used, it must be maintained and restored to a condition equal to or better than before the sale. The road maintenance/restoration must be done prior to December 1. If the trail is used for hauling, it must be graded to the satisfaction of the Unit Manager or his/her representative prior to December 1st. If the trail road is to be used for hauling during the snowmobile season, then a snow covered base must be left on the trail. The snowmobile trail may only be crossed at right angles. Maintain a 20 foot wide slash, debris, and rut free zone daily using the snowmobile trail as the centerline. No decking of forest products will be permitted along the snowmobile trail. All stumps within 20 feet of the snowmobile trail must be cut at ground level. In addition, any trees cut within 5 feet of the trail must have the stumps removed and be disposed of according to the direction of the Unit Manager or his/her representative.



## 5.4 - Soil Protection

### 5.4.1 - Rutting restriction, general (7/16)

Operations are to cease immediately if equipment and weather conditions result in rutting of roads and/or skid trails which is 12 inches or greater in depth and 50 feet in length. The Unit Manager or his/her representative may restrict hauling and/or skidding if ruts exceed the specified depth. With the Unit Manager or his/her representative's approval, the Purchaser may return to the area when the risk of rutting has decreased.

## 6 - Safety and Fire Prevention

### 6.2 - Signing

#### 6.2.1 - Road posting (9/09)

The Purchaser is responsible for posting and maintaining caution signs on Old 27 prior to beginning operations. The road must be posted at appropriate distances from the sale area to warn of logging activity and truck traffic. Signs must be removed when harvest operations are suspended or completed. The Purchaser will provide these signs.

#### 6.2.2 - Snowmobile trail posting (8/09)

The Purchaser is responsible for posting and maintaining caution signs on the snowmobile trail prior to beginning operations during the snowmobile season (approximately December 1 to March 31). The trail must be posted at appropriate distances from the sale area to warn of logging activity and truck traffic. Signs must be removed when harvest operations are suspended or completed. The Purchaser will provide these signs.



# TIMBER SALE MAP

This information provided by authority of Part 525, 1994 PA 451, as amended.

Sale Number	Year
72 - 013	19

Forest Management Unit	County	Mapped By	Date	Page	of
Grayling	Crawford	Scott McClarren	06/24/2019	1	2
Township	Range	Section(s) and Subdivision(s)	Scale		
27N	04W	Sec 25 NW, N1/2NE, SWNE, E1/2SW, Sec 24, NWNW, S1/2NW, SW, S1/2SE	1:15,840		

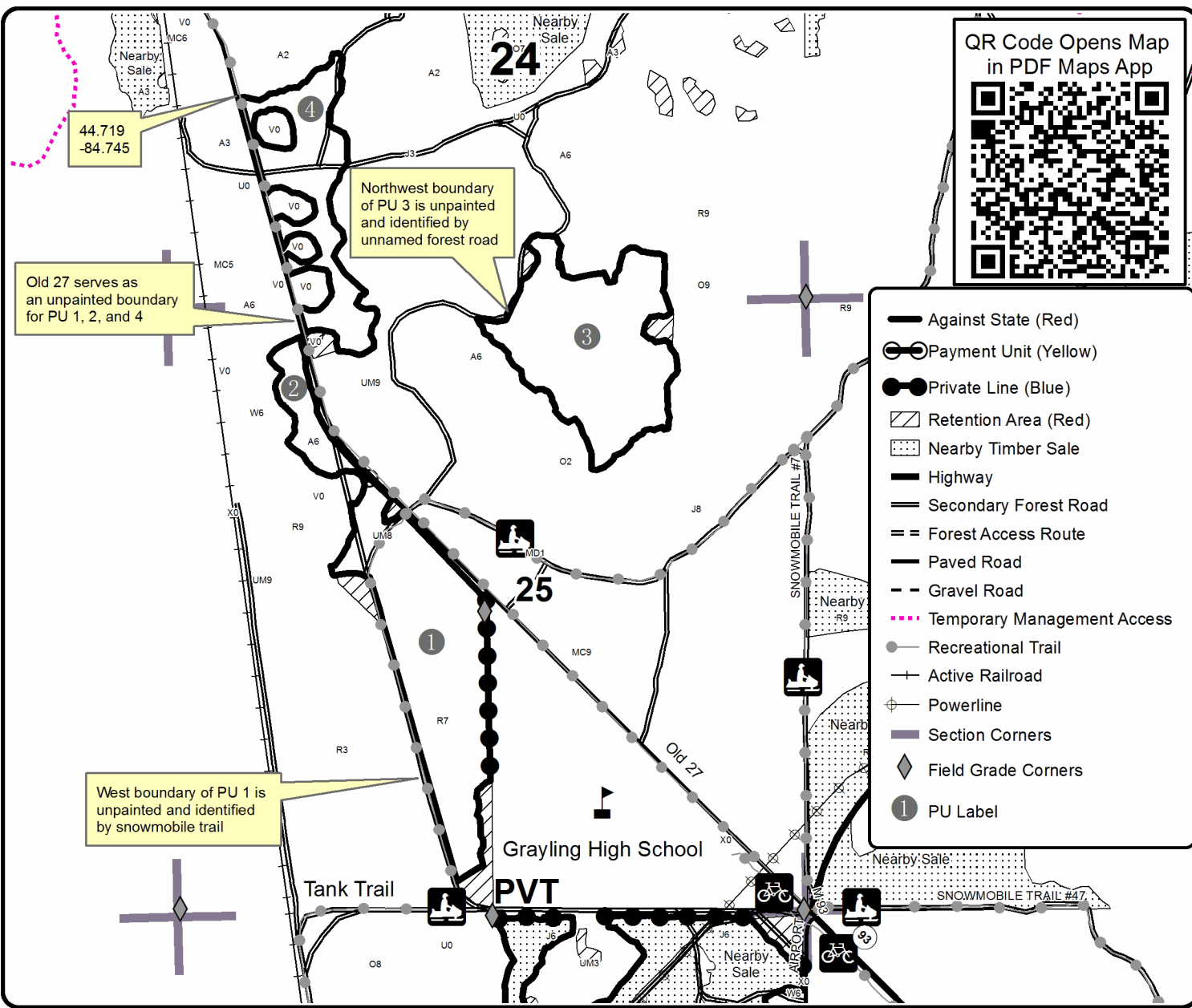
Cover Type				Density	
A = Aspen	H = Hemlock	N = Marsh	U = Upland Brush	0 = Non Stocked	5 = Pole Timber Medium
B = Paper Birch	J = Jack Pine	O = Oak	UM = Upland Mixed	1 = Seedling Sapling Poor	6 = Pole Timber Well
C = Cedar	L = Lowland Brush	P = Lowland Poplar	V = Bog or Marsh	2 = Seedling Sapling Medium	7 = Saw Timber Poor
D = Treed Bog	LM = Lowland Mixed	Q = Mixed Swamp Conifer	W = White Pine	3 = Seedling Sapling Well	8 = Saw Timber Medium
E = Swamp Hdwoods	M = Mpl, Bch, Brch	R = Red Pine	X = Non Stocked	4 = Pole Timber Poor	9 = Saw Timber Well
F = Spruce Fir	MC = Mixed Conifer	S = Black Spruce	Z = Water		
G = Grass	MD = Mixed Deciduous	T = Tamarack			

PU	Acres	PU	Acres
1	47.1	4	24.3
2	7.9	5	23.9
3	43.3		

## Left Field Mix

### Compartment 206

146.5 Acres



QR Code Opens Map in PDF Maps App

- Against State (Red)
- Payment Unit (Yellow)
- Private Line (Blue)
- Retention Area (Red)
- Nearby Timber Sale
- Highway
- Secondary Forest Road
- Forest Access Route
- Paved Road
- Gravel Road
- Temporary Management Access
- Recreational Trail
- Active Railroad
- Powerline
- Section Corners
- Field Grade Corners
- PU Label



Sale Number	Year
72 - 013	19

# TIMBER SALE MAP

This information provided by authority of Part 525, 1994 PA 451, as amended.

Forest Management Unit	County	Mapped By	Date	Page	of
Grayling	Crawford	Scott McClarren	06/24/2019	2	2
Township	Range	Section(s) and Subdivision(s)	Scale		
27N	04W	Sec 25 NW, N1/2NE, SWNE, E1/2SW, Sec 24, NWNW, S1/2NW, SW, S1/2SE	1:7,920		

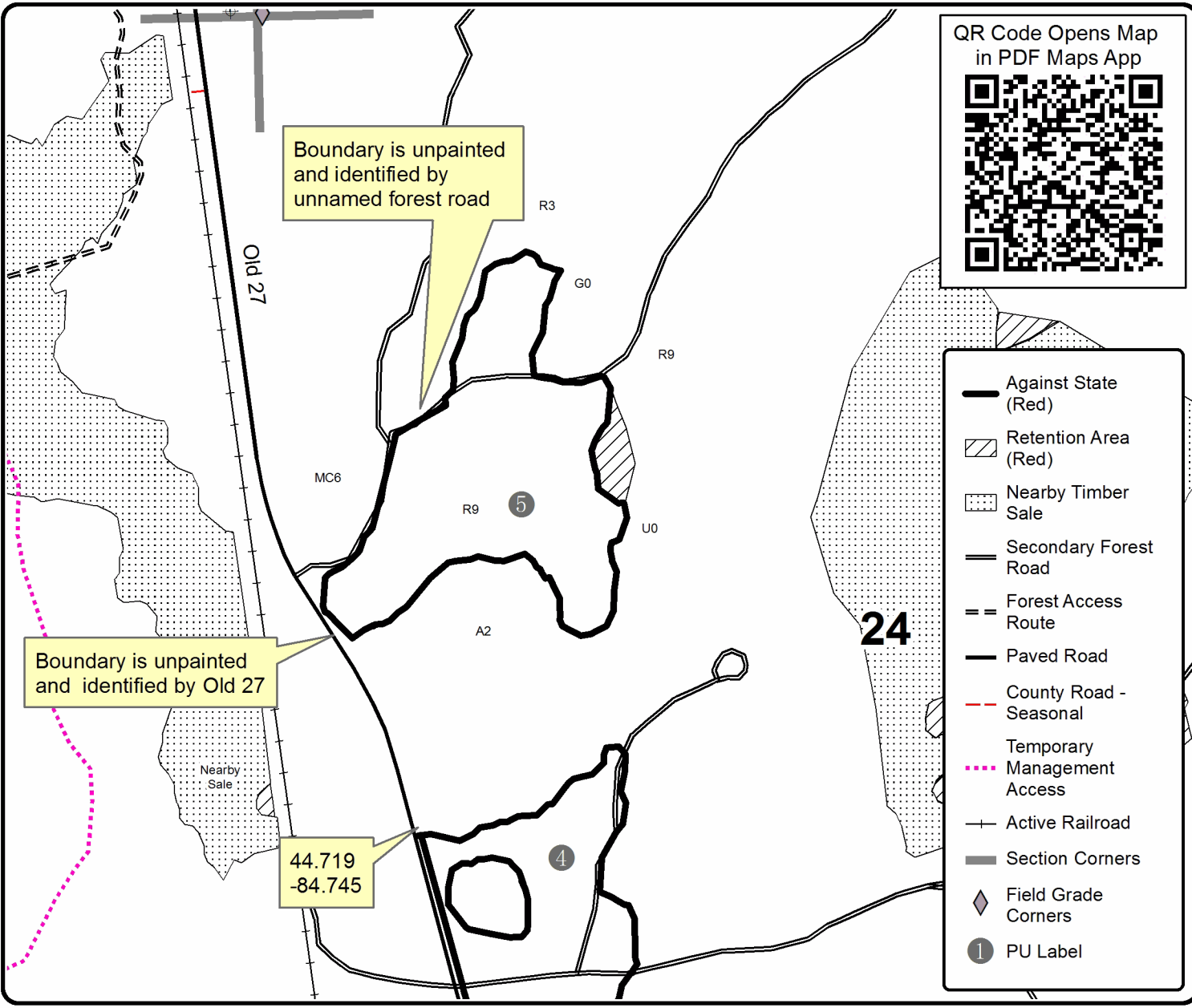
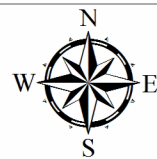
Cover Type				Density	
A = Aspen	H = Hemlock	N = Marsh	U = Upland Brush	0 = Non Stocked	5 = Pole Timber Medium
B = Paper Birch	J = Jack Pine	O = Oak	UM = Upland Mixed	1 = Seedling Sapling Poor	6 = Pole Timber Well
C = Cedar	L = Lowland Brush	P = Lowland Poplar	V = Bog or Marsh	2 = Seedling Sapling Medium	7 = Saw Timber Poor
D = Treed Bog	LM = Lowland Mixed	Q = Mixed Swamp Conifer	W = White Pine	3 = Seedling Sapling Well	8 = Saw Timber Medium
E = Swamp Hdwoods	M = Mpl, Bch, Brch	R = Red Pine	X = Non Stocked	4 = Pole Timber Poor	9 = Saw Timber Well
F = Spruce Fir	MC = Mixed Conifer	S = Black Spruce	Z = Water		
G = Grass	MD = Mixed Deciduous	T = Tamarack			

PU	Acres	PU	Acres
1	47.1	4	24.3
2	7.9	5	23.9
3	43.3		

## Left Field Mix

### Compartment 206

146.5 Acres



QR Code Opens Map in PDF Maps App

- Against State (Red)
- Retention Area (Red)
- Nearby Timber Sale
- Secondary Forest Road
- Forest Access Route
- Paved Road
- County Road - Seasonal
- Temporary Management Access
- Active Railroad
- Section Corners
- Field Grade Corners
- PU Label



**TIMBER SALE INFORMATION**

Couch Heavy Jack (72-614-19)  
 T27N, R04W, SEC. 36.  
 Crawford County (Advertised Price \$21,298.55)

SALE NOTE: Timber sale has direct access to Old 27 (Class A highway). This sale is located on non-certified military land. Oak Wilt restrictions apply. Cutting and skidding of PU 1 is restricted to snow off period.

A recreation site such as a trail, pathway, or campground is within the sale area or the vicinity. Certain restrictions/specifications may be applicable including time restrictions.

A timber sale contract for this lump sum, sealed bid timber sale will be awarded to the responsible bidder offering the highest sealed bid price. Bids must be at or above the following advertised price for each species:

<u>PRODUCTS &amp; SPECIES</u>	<u>ESTIMATED UNITS*</u>	<u>ADVERTISED PRICE</u>
Sawtimber		
Red Pine	7.90 MBF	\$ 118.00 / MBF
Pulpwood		
BI/R/Hybrid Oak	244.00 Cords	\$ 24.20 / Cord
Jack Pine	569.00 Cords	\$ 22.00 / Cord
Quaking Aspen	18.00 Cords	\$ 24.65 / Cord
Red Pine	17.00 Cords	\$ 51.15 / Cord
White Pine	22.00 Cords	\$ 28.65 / Cord

\* The total volume is statistically estimated within plus (+) or minus (-) 13.38 percent. The estimated units are final and not subject to adjustment. Prospective bidders are urged to examine this timber and to make their own estimates of quantity and quality.

**BOND AND PAYMENT SCHEDULE:**

- A bond in the amount of \$1,065.00 to insure faithful performance of the conditions of the contract will be deposited by the successful bidder within 21 days of the sale award.
- Cutting in any sale or unit without the required advance payment would be considered a trespass.
- Total payment must be paid in advance or according to the following schedule:
  - Ten percent (10%) of the sale value must be paid within 21 days of the sale award.
  - The 10% down payment will be credited towards the first unit cut.
  - Payment for each of the following units must be made before cutting begins in that unit:
 

PAYMENT UNIT NUMBER	PERCENT OF TOTAL SALE VALUE
01	89.1%
02	10.9%
- If no cutting takes place, the 10% down payment will not be refunded.
- Operations on the contract issued will terminate on 12/31/2021.

**Description of Timber by Payment Unit (PU)**

PU	MARKET GROUP	PRODUCT	QUANTITY	UNIT	ACRES	ADVERTISE PRICE
1	Red Pine	Sawtimber	2.7	MBF	62.5	\$18,975.85
	BI/R/Hybrid Oak	Pulpwood	204.0	Cords		
	Jack Pine		561.0	Cords		
	Quaking Aspen		14.0	Cords		
	Red Pine		9.0	Cords		
	White Pine		20.0	Cords		
2	Red Pine	Sawtimber	5.2	MBF	9.1	\$2,322.70
	BI/R/Hybrid Oak	Pulpwood	40.0	Cords		
	Jack Pine		8.0	Cords		
	Quaking Aspen		4.0	Cords		
	Red Pine		8.0	Cords		
	White Pine		2.0	Cords		
TOTAL:			7.9	MBF		
TOTAL:			870.0	Cords		

# Sale Specific Conditions & Requirements

**Sale Name: Couch Heavy Jack**

**Sale Number: 72-614-19 Seq#: 1**

## 1 - Sale Area

### 1.2 - Boundaries

#### 1.2.1 - Painted boundaries (1/14)

The sale boundary and Payment Unit boundaries are marked and identified by red paint or are unmarked and identified by roads. Exterior sale boundary lines against private property are unmarked and identified by Airport Rd along the east side of Payment Unit 1 and the fuel break south of the tank trail along the north boundary of Payment Unit 1 as identified on the Timber Sale Map. Exterior sale boundary lines against state are marked with red paint. The painted boundary line trees are not Included Timber and are to be protected.

## 2 - Timber Specifications

### 2.1 - Included Timber

#### 2.1.1 - Clearcut unit(s) with unmerchantable trees (6/14)

Within Payment Unit(s) 1 & 2, cut all trees that are two (2) inches or more at DBH.

### 2.2 - Utilization

#### 2.2.2 - Chipping required (2/18)

Payment Unit(s) 1 & 2 must be chip harvested to meet National Guard requirements. However, the chipping requirement could be waived with military approval, if chip markets are depressed. The Purchaser has the option to produce sawlogs or pulpwood bolts, but the remaining portion of the trees must be chipped and hauled. The requirement to retain approximately 1/6 to 1/3 of tree tops and limbs less than four inches in diameter does not apply (G. C. & R. 2.2). This is because this is non-certified military land.

#### 2.2.3 - Stump heights (4/07)

Stump heights within Payment Unit(s) 1 & 2 shall not exceed 6 inches for all trees. This is in order to facilitate military requirements. A written waiver of this requirement may be obtained if wet summer weather makes winter logging necessary.

## 3 - Payments

### 3.3 - Pre-measured Sales

#### 3.3.4 - Dividing payment units (7/14)

Payment Unit(s) 1 may be divided at the request of the Purchaser and upon approval of the Unit Manager. Dividing Payment Units is a contract modification which requires a Timber Sale Contract Supplement.

## 4 - Transportation

### 4.1 - Construction

#### 4.1.3 - Slash and earthen piles (8/04)

Piles or windrows of earth along roads and landings that have been widened or constructed shall be leveled. Slash from road maintenance or construction, including stumps, shall be chipped, utilized or otherwise removed from the sale.

#### 4.1.6 - Road construction (1/09)

Construction of new roads or improvements of existing roads shall be done in such a way as to minimize the environmental and visual impacts. Merchantable trees shall be cut and utilized unless otherwise directed. Non-merchantable trees shall be severed and laid flat on the ground. Slash shall be scattered, and not left in windrows and kept a minimum of 10 feet back from the road edge. Stumps shall be set upright, not left on edge, and be moved at least 10 feet away from the road edge. Disturbed soil shall be feathered into the woods and not left in berms or windrows.

#### 4.1.7 - Road closure (10/11)

All new roads built into the sale must be blocked to vehicle traffic upon completion of the sale. Overgrown roads that are reopened shall be considered new roads. In general, this will require constructing a four (4') foot high berm of stumps and logs covered with earth. Stumps and brush must be placed along the remainder of the trail. These roads must be rendered

impassable to cars and trucks. All stumps from road building and landing construction must be reserved to block any newly constructed roads upon completion of the sale. These stumps must be scattered along the road system to prohibit vehicular movement. Contact the sale administrator for specific details of design and placement.

#### 4.1.11 - Permits (2/12)

The Purchaser will secure any necessary highway permits that may be required.

### 4.2 - Maintenance

#### 4.2.5 - Two wheel drive condition (2/04)

All existing trail roads on and adjacent to the sale area must be passable by two-wheel drive traffic for the duration of the sale.

## 5 - Operations

### 5.1 - Notification

#### 5.1.1 - Pre-sale conference (10/16)

A pre-sale conference between the Purchaser and sale administrator is required prior to beginning any operations to determine landing and road locations. The Unit Manager or his/her representative must be contacted at least 5 days in advance to schedule the conference.

#### 5.1.5 - National Guard notification (2/15)

This sale is upon lands utilized for training by the Michigan National Guard - Camp Grayling. A minimum of five (5) business days prior to opening this sale, the producer must request that the sale administrator contact the military for information regarding training plans that may impact sale operations.

#### 5.1.6 - Utility R.O.W. (4/19)

It is the responsibility of the Purchaser to obtain permission from the utility company to utilize the power line R.O.W. for operations.

### 5.2 - Conduct of Operations

#### 5.2.3 - Operating Restrictions

##### 5.2.3.1 - Operating restrictions (9/11)

Within Payment Unit(s) 1, unless changed by written agreement, cutting and skidding are not permitted while snow is on the ground. This restriction is to increase scarification to promote natural regeneration of stand.

##### 5.2.3.5 - Oak wilt restriction (1/18)

Within Payment Unit(s) 1 & 2 unless changed by written agreement, cutting, skidding, hauling within the sale and brushing of access roads to the sale are not permitted during the period of April 15 to July 15. Operations may be allowed if specific steps are taken to prevent damaging uncut oak during the high risk period. Those steps may include completing all road brushing before April 15th and clearing a tree-length buffer along uncut oak cover before April 15th. This is necessary to reduce the spread of oak wilt. For more information, contact the Unit Manager or his/her representative.

#### 5.2.32 - Decking/landing restoration (9/13)

All decking and landing areas must have the surface area restored to a condition equal to or better than before. This is to ensure the proper regeneration of the stand. Wood debris, chips and "cookies" from trimmings must be removed or scattered away from landing and loading areas and may not be windrowed on the edge.

#### 5.2.37 - No decking areas (12/08)

No decking is allowed within 50 feet of the Tank Trail without permission of the Unit Manager or his/her representative. In addition, roads and landings should avoid Hill's Thistle if found on site.

### 5.4 - Soil Protection

#### 5.4.1 - Rutting restriction, general (7/16)

Operations are to cease immediately if equipment and weather conditions result in rutting of roads and/or skid trails which is 12 inches or greater in depth and 50 feet in length. The Unit Manager or his/her representative may restrict hauling and/or skidding if ruts exceed the specified depth. With the Unit Manager or his/her representative's approval, the Purchaser may return to the area when the risk of rutting has decreased.

## **6 - Safety and Fire Prevention**

### 6.2 - Signing

#### 6.2.1 - Road posting (9/09)

The Purchaser is responsible for posting and maintaining caution signs on Airport Rd and the Tank Trail prior to beginning operations. The road must be posted at appropriate distances from the sale area to warn of logging activity and truck traffic. Signs must be removed when harvest operations are suspended or completed. The Purchaser will provide these signs.

#### 6.2.3 - Recreational trail posting (2/10)

The Purchaser is responsible for posting and maintaining caution signs on the Bike Trail prior to beginning operations. The trail must be posted at appropriate distances from the sale area to warn of logging activity and truck traffic at both ends of the trail. Signs must be removed when harvest operations are suspended or completed. The Purchaser will provide these signs.

## **7 - Other Conditions**

### 7.10 - Certified Timber

#### 7.10.1 - Non-certified timber (2/16)

The area encompassed by this timber sale is not certified to the standards of the Forest Stewardship Council (FSC) or the Sustainable Forestry Initiative (SFI). Forest products from this sale may not be delivered to the mill as "FSC and / or SFI certified".





# TIMBER SALE MAP

This information provided by authority of Part 525, 1994 PA 451, as amended.

Forest Management Unit Grayling		County Crawford	Mapped By Scott McClarren		Date 06/03/2019	Page 1 of 1	
Township 27N	Range 04W	Section(s) and Subdivision(s) Sec. 36 NE, N1/2 SE, SENW, NESW			Scale 1:7,920		
Cruised By Scott McClarren, Dakota Ewald							

### Cover Type

A = Aspen	H = Hemlock	N = Marsh	U = Upland Brush
B = Paper Birch	J = Jack Pine	O = Oak	UM = Upland Mixed
C = Cedar	L = Lowland Brush	P = Lowland Poplar	V = Bog or Marsh
D = Treed Bog	LM = Lowland Mixed	Q = Mixed Swamp Conifer	W = White Pine
E = Swamp Hdwoods	M = Mpl, Bch, Brch	R = Red Pine	X = Non Stocked
F = Spruce Fir	MC = Mixed Conifer	S = Black Spruce	Z = Water
G = Grass	MD = Mixed Deciduous	T = Tamarack	

### Density

0 = Non Stocked	5 = Pole Timber Medium
1 = Seedling Sapling Poor	6 = Pole Timber Well
2 = Seedling Sapling Medium	7 = Saw Timber Poor
3 = Seedling Sapling Well	8 = Saw Timber Medium
4 = Pole Timber Poor	9 = Saw Timber Well

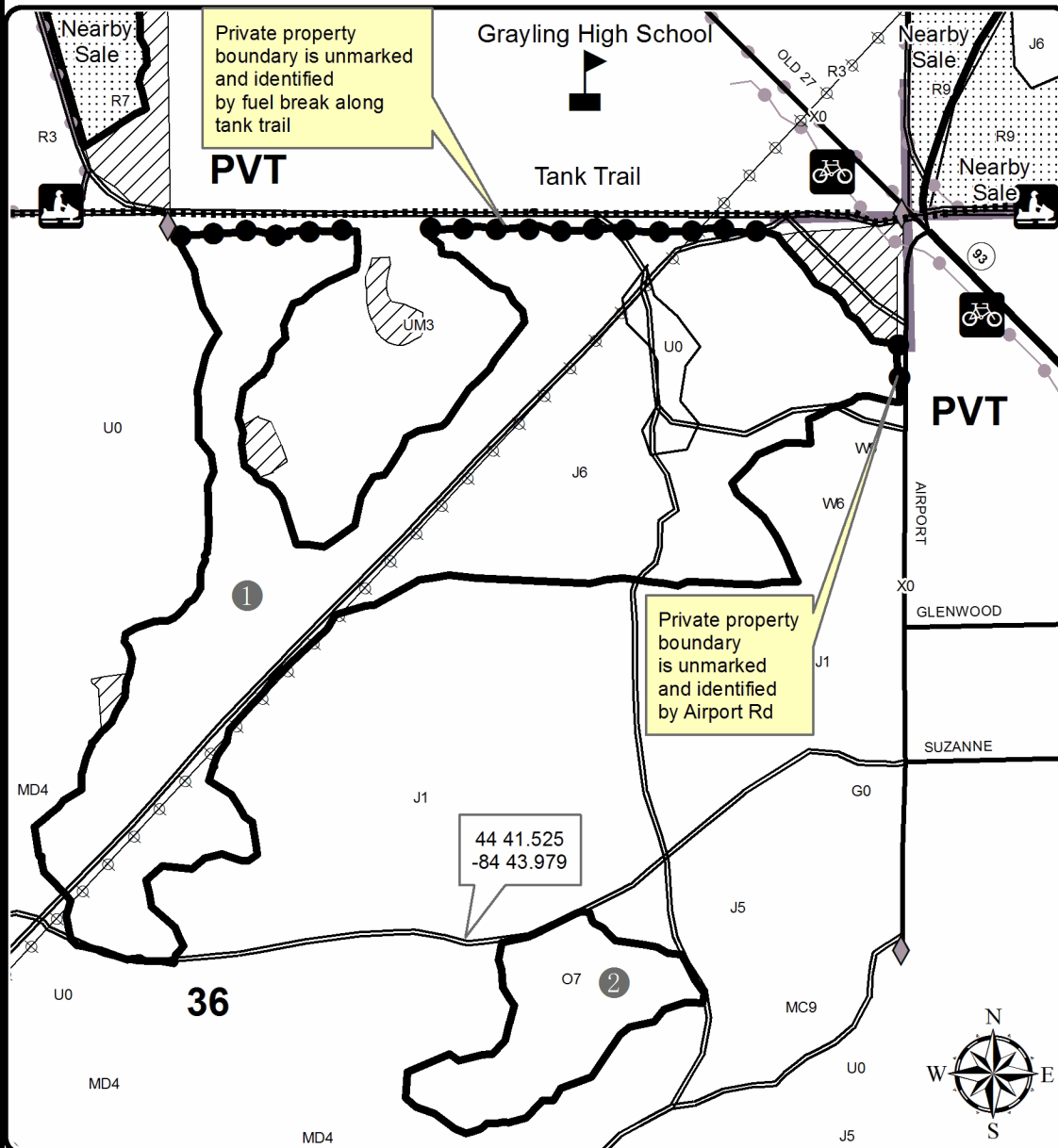
PU	Acres
1	62.5
2	9.1

## Couch Heavy Jack

### Compartment 206

71.6 Acres

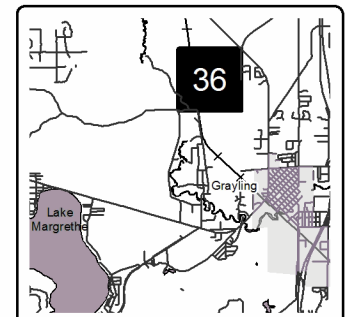
QR Code Opens Map in PDF Maps App



- Against State (Red)
- Private Line
- Retention Area (Red)
- Nearby Timber Sales
- Secondary Forest Road
- Paved Road
- Gravel Road
- Tank Trail
- Powerline
- Section Corners
- Recreational Trail
- Bike Trails
- Snowmobile Trails
- Field Grade Corners
- PU Label

### Locator Map

1:200,000





## TIMBER SALE INFORMATION

Higgins Oak and Pine (72-015-18)  
 T25N, R04W, SEC. 35; T25N, R04W, SEC. 36.  
 Crawford County (Advertised Price \$227,350.60)

SALE NOTE: Most of the sale's units have hiking trail and groomed cross country ski trail interface. The trail surface and markers must be protected, slash will need to be managed along the trail corridors, and seasonal operating restrictions will apply, including oak wilt. Units 3 & 4 are on North Higgins Lake State Park lands; they must be cut first and completed by September 31, 2021 in order to facilitate tree nursery improvement plans. Payment Units 2 & 5 must be completed by September 31, 2021 in advance of the planned Iron Belle Trail construction.

Cruise volumes for the highly variable nursery Payment Units 3 & 4 are statistically estimated within plus or minus 36.42 percent. The total volume for the rest of the harvest on State Forest Land is statistically estimated within plus or minus 6.63 percent.

A recreation site such as a trail, pathway, or campground is within the sale area or the vicinity. Certain restrictions/specifications may be applicable including time restrictions.

A timber sale contract for this lump sum, sealed bid timber sale will be awarded to the responsible bidder offering the highest sealed bid price. Bids must be at or above the following advertised price for each species:

<u>PRODUCTS &amp; SPECIES</u>	<u>ESTIMATED UNITS*</u>	<u>ADVERTISED PRICE</u>
<b>Sawtimber</b>		
BI/R/Hybrid Oak	674.80 MBF	\$ 173.00 / MBF
Mixed Aspen	10.20 MBF	\$ 61.00 / MBF
Red Maple	20.30 MBF	\$ 64.00 / MBF
Red Oak	162.50 MBF	\$ 246.00 / MBF
Red Pine	107.40 MBF	\$ 102.00 / MBF
White Oak	110.80 MBF	\$ 66.00 / MBF
White Pine	88.50 MBF	\$ 50.00 / MBF
<b>Pulpwood</b>		
Misc. Species 1	6.00 Cords	\$ 28.55 / Cord
Mixed Aspen	55.00 Cords	\$ 21.35 / Cord
Mixed Hardwood	208.00 Cords	\$ 31.35 / Cord
Mixed Oak	1,105.00 Cords	\$ 20.95 / Cord
Red Pine	186.00 Cords	\$ 44.35 / Cord
Scotch Pine	10.00 Cords	\$ 30.80 / Cord
White Pine	260.00 Cords	\$ 24.80 / Cord

\* The estimated units are final and not subject to adjustment. Prospective bidders are urged to examine this timber and to make their own estimates of quantity and quality.

**BOND AND PAYMENT SCHEDULE:**

1. A bond in the amount of \$11,368.00 to insure faithful performance of the conditions of the contract will be deposited by the successful bidder within 21 days of the sale award.
2. Cutting in any sale or unit without the required advance payment would be considered a trespass.
3. Total payment must be paid in advance or according to the following schedule:
  - (a) Ten percent (10%) of the sale value must be paid within 21 days of the sale award.
  - (b) The 10% down payment will be credited towards the first unit cut.
  - (c) Payment for each of the following units must be made before cutting begins in that unit:

PAYMENT UNIT NUMBER	PERCENT OF TOTAL SALE VALUE
01	9.7%
02	11.0%
03	1.3%
04	0.9%
05	21.1%
06	20.0%
07	10.1%
08	4.8%
09	8.4%
10	8.1%
11	4.6%

4. If no cutting takes place, the 10% down payment will not be refunded.
5. Operations on the contract issued will terminate on 12/31/2022.

**Description of Timber by Payment Unit (PU)**

PU	MARKET GROUP	PRODUCT	QUANTITY	UNIT	ACRES	ADVERTISE PRICE
1	BI/R/Hybrid Oak Mixed Aspen Red Pine White Pine Mixed Aspen Mixed Hardwood Mixed Oak Red Pine White Pine	Sawtimber	14.4	MBF	11.4	\$22,117.55
			7.4	MBF		
			96.2	MBF		
			11.0	MBF		
			51.0	Cords		
		Pulpwood	9.0	Cords		
			79.0	Cords		
			126.0	Cords		
			8.0	Cords		
2	BI/R/Hybrid Oak White Oak White Pine Mixed Hardwood Mixed Oak White Pine	Sawtimber	113.7	MBF	17.3	\$25,045.95
			15.0	MBF		
			1.5	MBF		
		Pulpwood	5.0	Cords		
			190.0	Cords		
			7.0	Cords		
3	Red Pine Misc. Species 1 Mixed Hardwood Mixed Oak Red Pine White Pine	Sawtimber	1.3	MBF	9.8	\$2,905.90
		Pulpwood	6.0	Cords		
			32.0	Cords		
			7.0	Cords		
			21.0	Cords		
			21.0	Cords		
4	Mixed Aspen <i>Quaking Aspen</i> Red Pine Mixed Aspen Mixed Oak Red Pine White Pine	Sawtimber	0.4	MBF	4.0	\$1,967.80
			0.4	<i>MBF</i>		
			4.3	MBF		
		Pulpwood	1.0	Cords		
			4.0	Cords		
			31.0	Cords		
			1.0	Cords		
5	BI/R/Hybrid Oak Mixed Aspen Red Maple White Oak White Pine Mixed Aspen Mixed Hardwood Mixed Oak Red Pine Scotch Pine White Pine	Sawtimber	226.2	MBF	25.4	\$48,222.25
			1.0	MBF		
			8.0	MBF		
			15.7	MBF		
			1.0	MBF		
			Pulpwood	1.0		
		60.0		Cords		
		236.0		Cords		
		2.0		Cords		
		4.0		Cords		
		15.0		Cords		
		6	BI/R/Hybrid Oak Mixed Aspen Red Maple White Oak White Pine Mixed Aspen Mixed Hardwood Mixed Oak Red Pine Scotch Pine White Pine	Sawtimber		
0.9	MBF					
7.6	MBF					
14.8	MBF					
0.9	MBF					
Pulpwood	1.0				Cords	
	56.0			Cords		
	223.0			Cords		
	2.0			Cords		
	4.0			Cords		
	14.0			Cords		
7	BI/R/Hybrid Oak Mixed Aspen Red Maple White Oak White Pine Mixed Hardwood			Sawtimber	107.7	MBF
		0.5	MBF			
		3.8	MBF			
		7.5	MBF			
		0.5	MBF			
		Pulpwood	29.0		Cords	

**Description of Timber by Payment Unit (PU), con't**

PU	MARKET GROUP	PRODUCT	QUANTITY	UNIT	ACRES	ADVERTISE PRICE
	Mixed Oak Red Pine Scotch Pine White Pine		113.0 1.0 2.0 7.0	Cords Cords Cords Cords		
8	Red Maple Red Oak Red Pine White Oak White Pine Mixed Hardwood Mixed Oak Red Pine White Pine	Sawtimber     Pulpwood    	0.3 25.2 1.0 12.2 20.5 6.0 42.0 1.0 62.0	MBF MBF MBF MBF MBF Cords Cords Cords Cords	6.4	\$10,800.55
9	Red Maple Red Oak Red Pine White Oak White Pine Mixed Hardwood Mixed Oak Red Pine White Pine	Sawtimber     Pulpwood    	0.6 44.6 1.8 21.4 36.3 11.0 74.0 1.0 110.0	MBF MBF MBF MBF MBF Cords Cords Cords Cords	11.3	\$19,088.50
10	Red Oak Red Pine White Oak White Pine Mixed Aspen Mixed Oak Red Pine White Pine	Sawtimber    Pulpwood    	58.8 1.8 15.4 10.7 1.0 87.0 1.0 10.0	MBF MBF MBF MBF Cords Cords Cords Cords	19.1	\$18,336.15
11	Red Oak Red Pine White Oak White Pine Mixed Oak White Pine	Sawtimber    Pulpwood  	33.9 1.0 8.8 6.1 50.0 5.0	MBF MBF MBF MBF Cords Cords	11.0	\$10,498.70
TOTAL:			1,174.5	MBF		
TOTAL:			1,830.0	Cords		

## Sale Specific Conditions & Requirements

Sale Name: Higgins Oak and Pine

Sale Number: 72-015-18 Seq#: 2

### 1 - Sale Area

#### 1.2 - Boundaries

##### 1.2.1 - Painted boundaries (1/14)

The sale boundary and Payment Unit boundaries are marked and identified by red paint or are unpainted and follow designated roads as shown on the timber sale map. Exterior sale boundary lines against state are marked with red paint in addition to designated unpainted borders along Old 27 (Payment Unit 1), Desert Trail (Payment Unit 10 & 11), portions of Oak Road (Payment Unit 11), and an unnamed forty road (north edge of Payment Unit 10 & 11). Interior Payment Unit boundaries are unpainted and designated as the mapped interior roads. The painted boundary line trees are not Included Timber and are to be protected, except for Payment Unit(s) 3 & 4: cut all red painted boundary lines trees other than the live spruce windrow trees.

### 2 - Timber Specifications

#### 2.1 - Included Timber

##### 2.1.1 - Clearcut unit(s) with unmerchantable trees (6/14)

Within Payment Unit(s) 1, 5, 6, 7, 10 & 11, cut all trees that are two (2) inches or more at DBH except for green-painted witness trees in Payment Unit(s) 1, 5, 6 & 11.

Within Payment Unit 3, cut all live and dead trees and shrubs that are one (1) inch or more at DBH except for the live spruce windrow trees.

##### 2.1.3 - Cut tree marked unit(s) (12/08)

Within Payment Unit(s) 4, one acre of red pine plantation exists in the south-west corner, all trees within the one acre red pine plantation are designated for cutting when marked with orange paint above and below stump height, regardless of merchantability. In addition, cut all unmarked red pine there that are less than six (6) inches at DBH. Across the remaining 3 acres of Payment Unit 4, cut all live and dead trees and shrubs that are one (1) inch or more at DBH except for the live spruce windrow trees.

##### 2.1.5 - Overstory removal unit(s) (8/11)

Within Payment Unit(s) 2, 8 & 9, all trees with DBH equal to or greater than 4 inches which meet minimum piece specifications in 2.2 Utilization, are designated for cutting.

##### 2.1.11 - Description of timber note (2/04)

Note that in Payment Unit(s) 3 & 4: Misc Species 1 = dead trees; Misc Species 3 = tulip tree; and Misc Species 4 = black locust. Additional species within those Units that did not land in cruise plots include: shagbark hickory, black walnut, austrian pine, european larch, scotch pine and white spruce.

##### 2.1.15 - Hazard trees near roads (7/13)

Cut and remove all standing dead trees within 100 feet of the cleared portion of county roads, mapped forest roads, and recreational trails. These trees may be utilized.

#### 2.2 - Utilization

##### 2.2.2 - Chipping required (2/18)

Payment Unit(s) 3 & 4 must be chip harvested to facilitate subsequent planting operations. The Purchaser has the option to produce sawlogs or pulpwood bolts, but the remaining portion of the trees must be chipped and hauled. The requirement to retain approximately 1/6 to 1/3 of tree tops and limbs less than four inches in diameter does not apply to Payment Units 3 & 4 (G. C. & R. 2.2). This is because the grown-over nursery beds within Payment Unit(s) 3 & 4 must be cleared to facilitate red pine progeny testing and seed orchard establishment.

##### 2.2.3 - Stump heights (4/07)

Stump heights within Payment Unit(s) 3 & 4 shall not exceed 6 inches for all trees. This is in order to facilitate nursery planting operations. Stump heights within Payment Unit(s) 1, 2, & 5 - 11, shall not exceed 18 inches for trees or multiple-stem clumps greater than 18 inches DBH and 12 inches for trees less than 18 inches DBH. Stumps along recreational trails must

be cut lower (see spec 5.2.40).

#### 2.2.6 - Roundwood operation required (5/07)

The skidding of whole trees or tree segments with limbs attached is prohibited within Payment Unit(s) 2, 8 & 9, unless changed by written agreement. All products must be produced as roundwood and forwarded to existing roads or landing areas in final product length.

### 3 - Payments

#### 3.3 - Pre-measured Sales

##### 3.3.4 - Dividing payment units (7/14)

Payment Unit(s) may be divided at the request of the Purchaser and upon approval of the Unit Manager. Dividing Payment Units is a contract modification which requires a Timber Sale Contract Supplement.

#### 3.4 - Damaged Timber

##### 3.4.1 - Damaged timber (7/16)

General Condition and Requirement 3.4 Damaged Timber, defines liquidated damages for undesignated live merchantable trees which are cut or injured. In addition, reasonable care should be taken to avoid damage to tree seedlings and saplings. Within Payment Unit(s) 2, 8 & 9 if more than 50% of the tree seedlings or saplings (1/4" to 3.9" DBH) within a specified portion of the sale area are damaged, liquidated damages will be assessed at \$300 per acre for all acreage within that specified portion of the sale area that was damaged. Where regeneration is dense, operable paths will have to be cleared to reach included timber. Provided that the regen in those paths is cut cleanly and not left bent or broken, those cleared paths will not be considered as damaged areas.

#### 3.6 - Payment Unit Cutting Schedule

##### 3.6.1 - Order of cutting (1/09)

Payment Units shall be cut in the following order, unless approved by the Unit Manager or his/her representative: Payment Unit(s) 3 & 4 must be completed first, followed by Payment Unit(s) 2 & 5, by September 31, 2021 in order to facilitate nursery improvements and Iron Belle Trail construction.

### 4 - Transportation

#### 4.1 - Construction

##### 4.1.6 - Road construction (1/09)

Construction of new roads or improvements of existing roads shall be done in such a way as to minimize the environmental and visual impacts. Merchantable trees shall be cut and utilized unless otherwise directed. Non-merchantable trees shall be severed and laid flat on the ground. Slash shall be scattered, and not left in windrows and kept a minimum of 10 feet back from the road edge. Stumps shall be set upright, not left on edge, and be moved at least 10 feet away from the road edge. Disturbed soil shall be feathered into the woods and not left in berms or windrows.

##### 4.1.7 - Road closure (10/11)

All new roads built into the sale must be blocked to vehicle traffic upon completion of the sale. Overgrown roads that are reopened shall be considered new roads. In general, this will require constructing a four (4') foot high berm of stumps and logs covered with earth. These roads must be rendered impassable to cars and trucks. Contact the sale administrator for specific details of design and placement.

##### 4.1.11 - Permits (2/12)

The Purchaser will secure any necessary permits that may be required.

#### 4.2 - Maintenance

##### 4.2.1 - Hauling restriction (12/08)

Hauling is restricted on the Park roads between Payment Unit(s) 3 & 4 and North Higgins Lake Drive. The restriction is year-round because those roads access the Park headquarters, pathway parking lot and museum.

### 5 - Operations

#### 5.1 - Notification



#### 5.1.1 - Pre-sale conference (10/16)

A pre-sale conference on site between the Purchaser and sale administrator is required prior to beginning any operations to determine landing and road locations. The Unit Manager or his/her representative must be contacted at least 10 days in advance to schedule the conference and allow time for harvest coordination with Parks and Recreation Division.

#### 5.1.4 - Post-sale conference (10/16)

A post-sale conference on site between the Purchaser and sale administrator is required prior to the completion of active logging operations to determine clean-up and repair of landings, road edges, and the fulfillment of other contract specifications.

### 5.2 - Conduct of Operations

#### 5.2.2 - Hazard Trees/Snags

##### 5.2.2.1 - Den trees (10/16)

Obvious hollow and/or den trees shall be protected and left standing unless they are a safety hazard.

#### 5.2.3 - Operating Restrictions

##### 5.2.3.1 - Operating restrictions (9/11)

Within Payment Unit(s) 2-9, unless changed by written agreement, tree felling within 100 feet of the ski trail edge is not permitted during the active winter grooming season. This restriction is intended to limit disruption to the cross country ski trail use and maintenance.

##### 5.2.3.5 - Oak wilt restriction (1/18)

Within Payment Unit(s) 1-11, unless changed by written agreement, cutting, skidding, hauling within the sale and brushing of access roads to the sale are not permitted during the period of April 15 to July 15. Operations may be allowed if specific steps are taken to prevent damaging uncut oak during the high risk period. Those steps may include completing all road brushing before April 15th and clearing a tree-length buffer along uncut oak cover before April 15th. This is necessary to reduce the spread of oak wilt. For more information, contact the Unit Manager or his/her representative.

#### 5.2.32 - Decking/landing restoration (9/13)

All decking and landing areas must have the surface area restored to a condition equal to or better than before. This is to ensure the proper regeneration of the stand. Wood debris, chips and "cookies" from trimmings must be removed or scattered away from landing and loading areas and may not be windrowed on the edge.

#### 5.2.38 - No decking against live trees (2/04)

Cut products may not be decked against unmarked or designated leave trees.

#### 5.2.40 - Pathway protection (10/10)

Hiking and groomed cross country ski trails occur within the sale area and are shown on the Timber Sale Map. Do not cut trees or damage posts with blue pathway markers. Stump heights along the pathway edge must not exceed 4 inches in height. Maintain a 20-foot wide slash, debris, and rut free zone daily, using the pathway as the centerline. Slash and debris may need to be managed further from the pathway according to the sale administrator. Do not run equipment down the pathway. The pathway may only be crossed at locations designated by the sale administrator. Temporary pathway closures and/or re-routes may need to be implemented before cutting can occur immediately alongside pathway segments.

### 5.4 - Soil Protection

#### 5.4.1 - Rutting restriction, general (7/16)

Operations are to cease immediately if equipment and weather conditions result in rutting of roads and/or skid trails which is 12 inches or greater in depth and 50 feet in length. The Unit Manager or his/her representative may restrict hauling and/or skidding if ruts exceed the specified depth. With the Unit Manager or his/her representative's approval, the Purchaser may return to the area when the risk of rutting has decreased.

### 5.5 - Protection of Improvements

#### 5.5.3 - Protection of improvements detail (10/13)

The following are specific protection measures for this sale. Protect the exercise stations and interpretive signs along the pathways in Payment Unit(s) 2 & 4. Note that there is some above-ground vertical piping in Payment Unit(s) 3 & 4 that should be avoided.

## **6 - Safety and Fire Prevention**

### **6.2 - Signing**

#### **6.2.1 - Road posting (9/09)**

The Purchaser is responsible for posting and maintaining caution signs on administrator-identified roads prior to beginning operations. The road must be posted at appropriate distances from the sale area when harvesting is occurring alongside the roads, in order to warn of logging activity and truck traffic. Signs must be removed when harvest operations are suspended or completed. The Purchaser will provide these signs.

#### **6.2.3 - Recreational trail posting (2/10)**

The Purchaser is responsible for posting and maintaining caution signs on the hiking and ski trails prior to beginning operations. The trail must be posted at appropriate distances from the sale area, when units adjacent to these trails are active, to warn of logging activity and truck traffic at both ends of the trail. Signs must be removed when harvest operations are suspended or completed. The Purchaser will provide these signs.

## **7 - Other Conditions**

### **7.3 - Contract Modifications**

#### **7.3.2 - Modification for oak wilt (2/05)**

Within the sale area, there may be patches of oak wilt. If oak wilt is identified within the sale area, this contract may be modified. The following modifications could occur: time of cutting, species to cut, volume to harvest, or various others dealing with the treatment of oak wilt. If a species is not specified in this contract, it shall be paid for at the average price received for that species and product.

### **7.10 - Certified Timber**

#### **7.10.1 - Non-certified timber (2/16)**

The area encompassed by this timber sale is not certified to the standards of the Forest Stewardship Council (FSC) or the Sustainable Forestry Initiative (SFI). Forest products from this sale may not be delivered to the mill as "FSC and / or SFI certified".



# TIMBER SALE MAP

This information provided by authority of Part 525, 1994 PA 451, as amended.

Sale Number	Year
72-015	18

Forest Management Unit	County	Mapped By	Date	Page	of
Grayling	Crawford	Martell (PU 1, 2, 5-11)	07/31/2019	1	2
Township	Range	Section(s) and Subdivision(s)	Scale		
25N	04W	Sec 35 - N1/2NE, SWNE, NWSE Sec 36 - NW, W1/2NE, NESE	1:15,840		

### Cover Type

A = Aspen	H = Hemlock	N = Marsh	U = Upland Brush
B = Paper Birch	J = Jack Pine	O = Oak	UM = Upland Mixed
C = Cedar	L = Lowland Brush	P = Lowland Poplar	V = Bog or Marsh
D = Treed Bog	LM = Lowland Mixed	Q = Mixed Swamp Conifer	W = White Pine
E = Swamp Hdwoods	M = Mpl, Bch, Brch	R = Red Pine	X = Non Stocked
F = Spruce Fir	MC = Mixed Conifer	S = Black Spruce	Z = Water
G = Grass	MD = Mixed Deciduous	T = Tamarack	

### Density

0 = Non Stocked	5 = Pole Timber Medium
1 = Seedling Sapling Poor	6 = Pole Timber Well
2 = Seedling Sapling Medium	7 = Saw Timber Poor
3 = Seedling Sapling Well	8 = Saw Timber Medium
4 = Pole Timber Poor	9 = Saw Timber Well

### Legend

- Sale Boundary: red paint & designated unpainted along roads
- 3** Payment Unit #  
PUs designated by mapped interior roads
- Exclusions from harvest (red paint)
- Recreational Trail
- Hiking and horse trails
- County Road
- Forest Road
- Parking Lot
- Property Line
- Overhead Powerline
- 35 Section #

PU	Acres	PU	Acres
1	11.4	7	12.1
2	17.3	8	6.4
3	9.8	9	11.3
4	4.0	10	19.1
5	25.4	11	11.0
6	23.9		

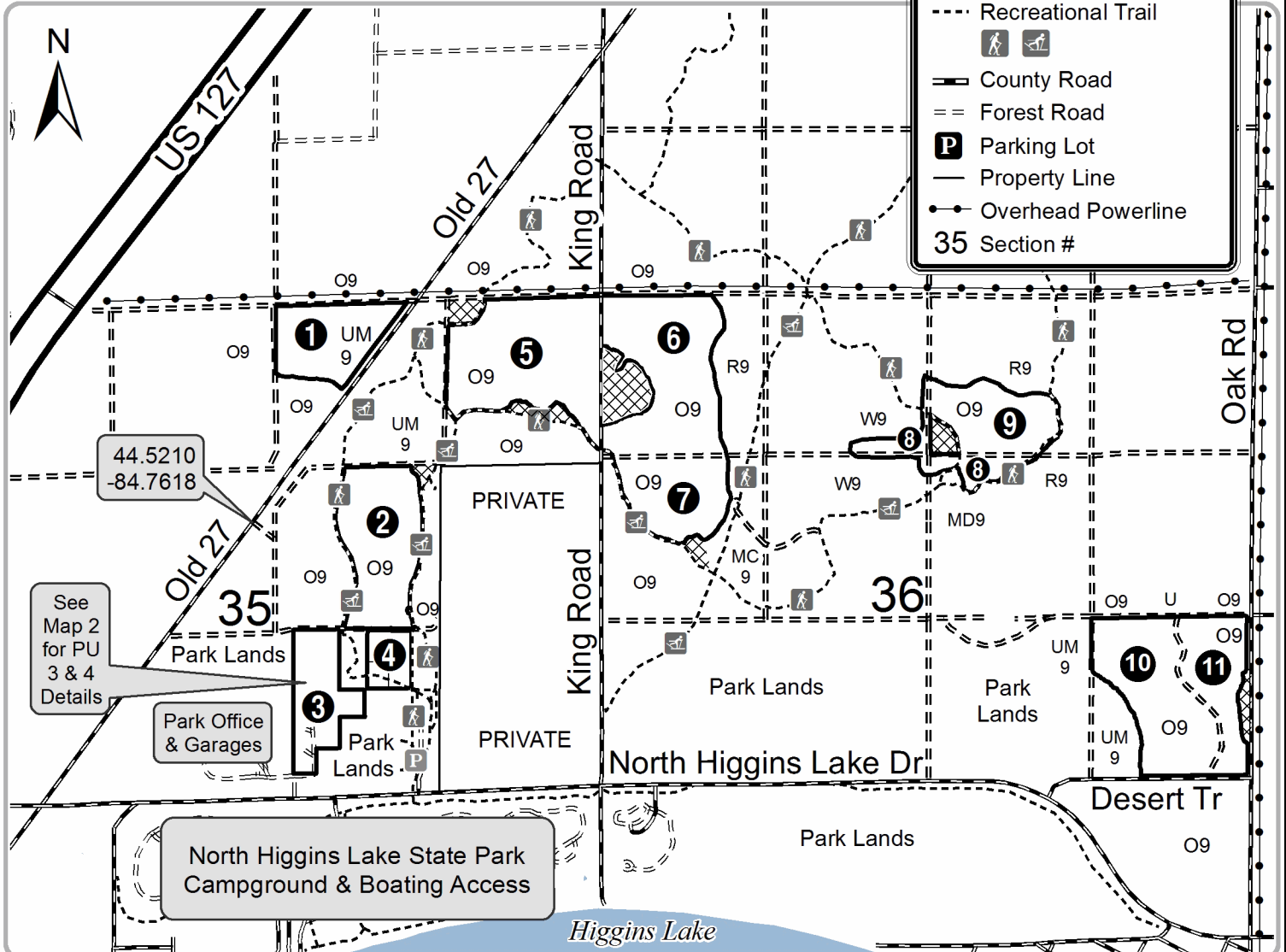
## Higgins Oak and Pine

### Compartment 194 & NHLSP 001

151.7 acres



Geo  
PDF  
map





Sale Number	Year
72-015	18

# TIMBER SALE MAP

This information provided by authority of Part 525, 1994 PA 451, as amended.

Forest Management Unit	County	Mapped By	Date	Page	of
Grayling	Crawford	Charlebois (PU 3 & 4 only)	07/31/2019	2	2
Township	Range	Section(s) and Subdivision(s)	Scale		
25N	04W	Sec 35 - NWSE (PU 3 & 4 only)	1:2,800		

### Cover Type

A = Aspen	H = Hemlock	N = Marsh	U = Upland Brush
B = Paper Birch	J = Jack Pine	O = Oak	UM = Upland Mixed
C = Cedar	L = Lowland Brush	P = Lowland Poplar	V = Bog or Marsh
D = Treed Bog	LM = Lowland Mixed	Q = Mixed Swamp Conifer	W = White Pine
E = Swamp Hdwoods	M = Mpl, Bch, Brch	R = Red Pine	X = Non Stocked
F = Spruce Fir	MC = Mixed Conifer	S = Black Spruce	Z = Water
G = Grass	MD = Mixed Deciduous	T = Tamarack	

### Density

0 = Non Stocked	5 = Pole Timber Medium
1 = Seedling Sapling Poor	6 = Pole Timber Well
2 = Seedling Sapling Medium	7 = Saw Timber Poor
3 = Seedling Sapling Well	8 = Saw Timber Medium
4 = Pole Timber Poor	9 = Saw Timber Well

PU	Acres
3	9.8
4	4.0

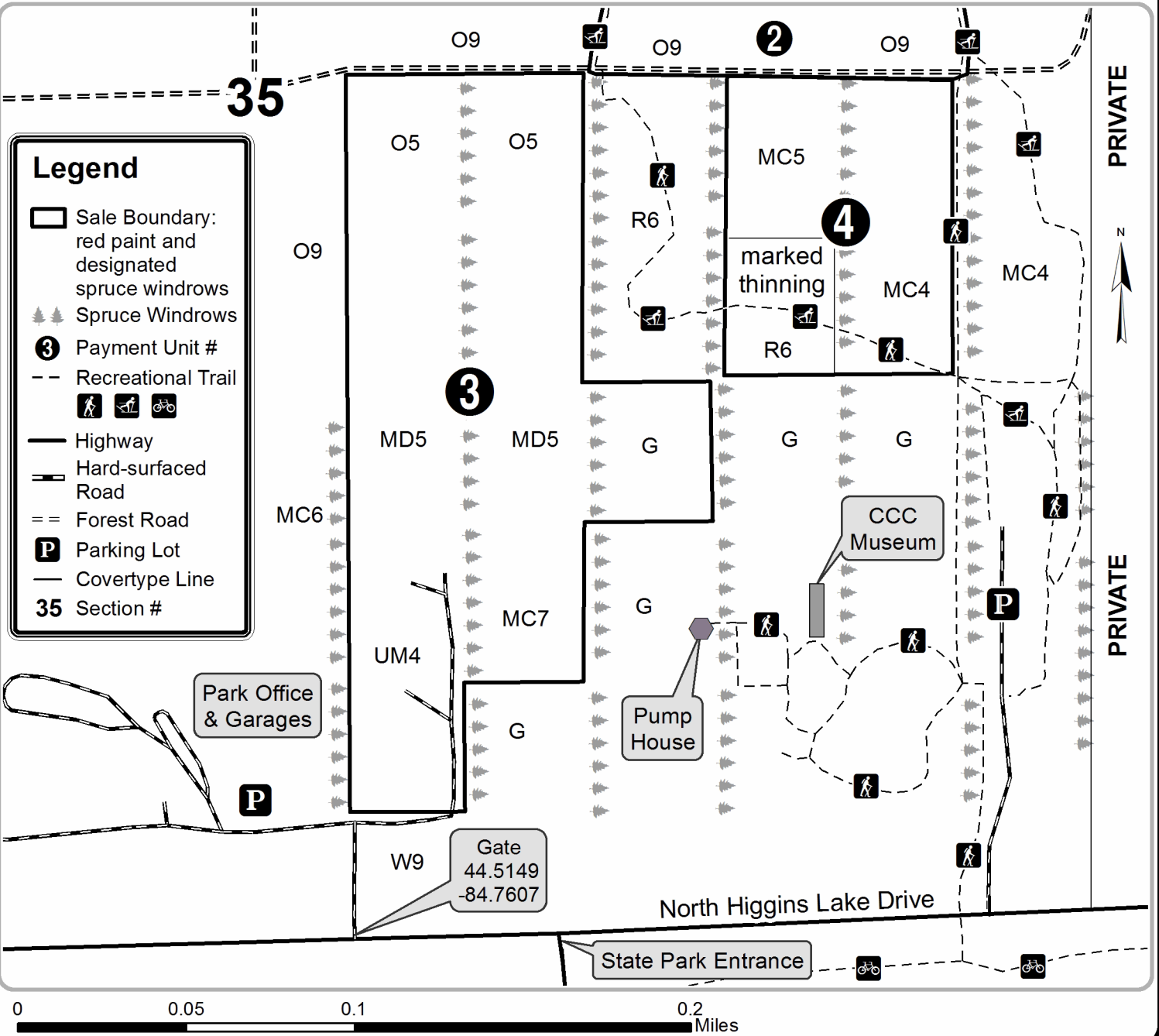
Geo PDF line



## Higgins Oak and Pine

### Detail map of Payment Units 3 & 4 NHLSP Compartment 1 (13.8 acres)

Geo PDF aerial



Monument Kw Block (72-008-19)  
T26N, R01E, SEC. 5; T27N, R01E, SEC. 31; T27N, R01E, SEC. 32; T27N, R01E,

In response to the notice of sale to be held 9:00 a.m. (local time) on October 29, 2019, I am hereby submitting my sealed bid (firm offer) for the following forest products to be cut. Bids for individual species must be at or above the advertised price. All non-responsive bid forms may be rejected.

<u>PRODUCTS &amp; SPECIES</u>	<u>ESTIMATED VOLUME*</u>	<u>ADVERTISED PRICE</u>	<u>BID PRICE/UNIT</u>
<b>Sawtimber</b>			
Northern Pin Oak	12.00 MBF	\$ 199.00/MBF	\$ _____
<b>Pulpwood</b>			
Balsam Fir	11.00 Cords	\$ 20.00/Cord	\$ _____
Black Spruce	3.00 Cords	\$ 20.90/Cord	\$ _____
Jack Pine	4,180.00 Cords	\$ 22.00/Cord	\$ _____
Mixed Hardwood	11.00 Cords	\$ 36.20/Cord	\$ _____
Northern Pin Oak	415.00 Cords	\$ 24.20/Cord	\$ _____
Quaking Aspen	306.00 Cords	\$ 24.65/Cord	\$ _____
Red Pine	2.00 Cords	\$ 51.15/Cord	\$ _____
White Pine	82.00 Cords	\$ 28.65/Cord	\$ _____

\*The volumes are statistically estimated within plus (+) or minus (-) 7.68 percent. These estimated volumes are final and not subject to adjustment. Prospective bidders are urged to examine this timber and to make their own estimates of quantity and quality.

I understand that any or all bids may be rejected. All bids must be signed and all bid items must be bid or the bid form may be rejected. I also understand that consideration and awarding a contract will be based upon my past performance and ability to complete the contract based upon equipment and staffing subject to my control.

FEDERAL ID: \_\_\_\_ - \_\_\_\_ - \_\_\_\_ or SOCIAL SECURITY NUMBER: \_\_\_\_ - \_\_\_\_ - \_\_\_\_

Company or individual bidding: \_\_\_\_\_

Company representative's name: \_\_\_\_\_

Address: \_\_\_\_\_

City: \_\_\_\_\_ State: \_\_\_\_\_ Zip: \_\_\_\_\_

IF AVAILABLE, PLEASE PLACE THE PERSONALIZED LABEL FROM YOUR PROSPECTUS IN THE ABOVE BOX.

Individual or company representative's signature: \_\_\_\_\_ Date: \_\_\_\_\_

Phone number : \_\_\_\_\_ Email (optional): \_\_\_\_\_

**THE WINNING BIDDER MUST COMPLETE THE VERIFICATION OF WORKER'S DISABILITY COMPENSATION ACT COMPLIANCE (ON REVERSE SIDE IF DOUBLE SIDED) WITHIN 21 DAYS OF SALE AWARD DATE**



<b>FOR DEPARTMENT USE ONLY</b>
Sale Number (XX - XXX - XX - XX)
Forest Management Unit:

## TIMBER SALE VERIFICATION OF WORKER'S DISABILITY COMPENSATION ACT COMPLIANCE

*As required by Act 317, P.A. 1969 (Worker's Compensation) and  
Part 5 of Act 451 of 1994, as amended.*

### VERIFICATION OF WORKER'S DISABILITY COMPENSATION ACT COMPLIANCE

- This verification must be completed and submitted within 21 days of contract award and prior to the issuance of the timber sale contract.
- In addition, if boxes 2B or 2C are checked, then Notice of Exclusion or Certificate of Insurance must be submitted within twenty-one (21) days of the contract award and prior to the issuance of the timber sale contract.
- All information must be typed or printed except for written signatures.

Please Check Appropriate Categories:

1. My business is organized as (you **must** check one of the boxes below):
  - A.  Sole Proprietorship (individual)
  - B.  Partnership
  - C.  Corporation
2. You **must** check one of the boxes below:
  - A.  I certify my business is a sole proprietorship and it has no employees but the sole proprietor. I am not subject to the Worker's Compensation Laws.
  - B.  I certify my business has satisfied its obligation to the Worker's Compensation Act through the use of an approved Notice of Exclusion (BWC-337, Rev. 5/96). I will provide a copy of the Notice of Exclusion within 21 days of the contract award. (For questions or a copy of the BWC-337, please call the Worker's Compensation Bureau at 517-322-1195).
  - C.  I certify my business has a Worker's Compensation Policy. I will provide an original Certificate of Insurance within twenty-one (21) days of the contract award.
3. If you have checked item 2(A) or 2(B), you **must** indicate the number of **both** full-time and part-time employees, other than yourself, including family members and active partners (if none, you must enter "0").

\_\_\_\_\_ Full-time Employees

\_\_\_\_\_ Part-time Employees

Name of Business		Federal ID (or) Social Security No.	
Address		Telephone (       )	
City	State	ZIP	

*I hereby certify that the above information is true and correct. I agree to notify the Michigan DNR of any changes that occur in factors affecting my coverage during any of my present and future operations.*

\_\_\_\_\_  
Signature of Owner or Authorized Representative

\_\_\_\_\_  
Title

\_\_\_\_\_  
Date

**Please complete the "SEALED BID" information on the next page**

Couch Heavy Jack (72-614-19)  
T27N, R04W, SEC. 36; Crawford COUNTY

In response to the notice of sale to be held 9:00 a.m. (local time) on October 29, 2019, I am hereby submitting my sealed bid (firm offer) for the following forest products to be cut. Bids for individual species must be at or above the advertised price. All non-responsive bid forms may be rejected.

<u>PRODUCTS &amp; SPECIES</u>	<u>ESTIMATED VOLUME*</u>	<u>ADVERTISED PRICE</u>	<u>BID PRICE/UNIT</u>
Sawtimber			
Red Pine	7.90 MBF	\$ 118.00/MBF	\$ _____
Pulpwood			
Bl/R/Hybrid Oak	244.00 Cords	\$ 24.20/Cord	\$ _____
Jack Pine	569.00 Cords	\$ 22.00/Cord	\$ _____
Quaking Aspen	18.00 Cords	\$ 24.65/Cord	\$ _____
Red Pine	17.00 Cords	\$ 51.15/Cord	\$ _____
White Pine	22.00 Cords	\$ 28.65/Cord	\$ _____

\*The volumes are statistically estimated within plus (+) or minus (-) 13.38 percent. These estimated volumes are final and not subject to adjustment. Prospective bidders are urged to examine this timber and to make their own estimates of quantity and quality.

I understand that any or all bids may be rejected. All bids must be signed and all bid items must be bid or the bid form may be rejected. I also understand that consideration and awarding a contract will be based upon my past performance and ability to complete the contract based upon equipment and staffing subject to my control.

FEDERAL ID: \_\_\_\_\_ or SOCIAL SECURITY NUMBER: \_\_\_\_\_

Company or individual bidding: \_\_\_\_\_

Company representative's name: \_\_\_\_\_

Address: \_\_\_\_\_

City: \_\_\_\_\_ State: \_\_\_\_\_ Zip: \_\_\_\_\_

IF AVAILABLE, PLEASE PLACE THE PERSONALIZED LABEL FROM YOUR PROSPECTUS IN THE ABOVE BOX.

Individual or company representative's signature: \_\_\_\_\_ Date: \_\_\_\_\_

Phone number : \_\_\_\_\_ Email (optional): \_\_\_\_\_

**THE WINNING BIDDER MUST COMPLETE THE VERIFICATION OF WORKER'S DISABILITY COMPENSATION ACT COMPLIANCE (ON REVERSE SIDE IF DOUBLE SIDED) WITHIN 21 DAYS OF SALE AWARD DATE**



<b>FOR DEPARTMENT USE ONLY</b>
Sale Number (XX - XXX - XX - XX)
Forest Management Unit:

## TIMBER SALE VERIFICATION OF WORKER'S DISABILITY COMPENSATION ACT COMPLIANCE

*As required by Act 317, P.A. 1969 (Worker's Compensation) and  
Part 5 of Act 451 of 1994, as amended.*

### VERIFICATION OF WORKER'S DISABILITY COMPENSATION ACT COMPLIANCE

- This verification must be completed and submitted within 21 days of contract award and prior to the issuance of the timber sale contract.
- In addition, if boxes 2B or 2C are checked, then Notice of Exclusion or Certificate of Insurance must be submitted within twenty-one (21) days of the contract award and prior to the issuance of the timber sale contract.
- All information must be typed or printed except for written signatures.

Please Check Appropriate Categories:

1. My business is organized as (you **must** check one of the boxes below):
  - A.  Sole Proprietorship (individual)
  - B.  Partnership
  - C.  Corporation
2. You **must** check one of the boxes below:
  - A.  I certify my business is a sole proprietorship and it has no employees but the sole proprietor. I am not subject to the Worker's Compensation Laws.
  - B.  I certify my business has satisfied its obligation to the Worker's Compensation Act through the use of an approved Notice of Exclusion (BWC-337, Rev. 5/96). I will provide a copy of the Notice of Exclusion within 21 days of the contract award. (For questions or a copy of the BWC-337, please call the Worker's Compensation Bureau at 517-322-1195).
  - C.  I certify my business has a Worker's Compensation Policy. I will provide an original Certificate of Insurance within twenty-one (21) days of the contract award.
3. If you have checked item 2(A) or 2(B), you **must** indicate the number of **both** full-time and part-time employees, other than yourself, including family members and active partners (if none, you must enter "0").

\_\_\_\_\_ Full-time Employees

\_\_\_\_\_ Part-time Employees

Name of Business		Federal ID (or) Social Security No.	
Address		Telephone (       )	
City	State	ZIP	

*I hereby certify that the above information is true and correct. I agree to notify the Michigan DNR of any changes that occur in factors affecting my coverage during any of my present and future operations.*

\_\_\_\_\_  
Signature of Owner or Authorized Representative

\_\_\_\_\_  
Title

\_\_\_\_\_  
Date

**Please complete the "SEALED BID" information on the next page**



Left Field Mix (72-013-19)  
T27N, R04W, SEC. 24; T27N, R04W, SEC. 25; Crawford COUNTY

In response to the notice of sale to be held 9:00 a.m. (local time) on October 29, 2019, I am hereby submitting my sealed bid (firm offer) for the following forest products to be cut. Bids for individual species must be at or above the advertised price. All non-responsive bid forms may be rejected.

<u>PRODUCTS &amp; SPECIES</u>	<u>ESTIMATED VOLUME*</u>	<u>ADVERTISED PRICE</u>	<u>BID PRICE/UNIT</u>
<b>Sawtimber</b>			
Mixed Oak	5.30 MBF	\$ 199.00/MBF	\$ _____
Red Pine	296.00 MBF	\$ 118.00/MBF	\$ _____
White Pine	10.00 MBF	\$ 58.00/MBF	\$ _____
<b>Pulpwood</b>			
Jack Pine	67.00 Cords	\$ 22.00/Cord	\$ _____
Mixed Aspen	995.00 Cords	\$ 24.65/Cord	\$ _____
Mixed Oak	279.00 Cords	\$ 24.20/Cord	\$ _____
Red Maple	146.00 Cords	\$ 36.20/Cord	\$ _____
Red Pine	438.00 Cords	\$ 51.15/Cord	\$ _____
Scotch Pine	15.00 Cords	\$ 35.55/Cord	\$ _____
White Pine	193.00 Cords	\$ 28.65/Cord	\$ _____

\*The volumes are statistically estimated within plus (+) or minus (-) 9.14 percent. These estimated volumes are final and not subject to adjustment. Prospective bidders are urged to examine this timber and to make their own estimates of quantity and quality.

I understand that any or all bids may be rejected. All bids must be signed and all bid items must be bid or the bid form may be rejected. I also understand that consideration and awarding a contract will be based upon my past performance and ability to complete the contract based upon equipment and staffing subject to my control.

FEDERAL ID: \_\_\_\_\_ or SOCIAL SECURITY NUMBER: \_\_\_\_\_

Company or individual bidding: \_\_\_\_\_

Company representative's name: \_\_\_\_\_

Address: \_\_\_\_\_

City: \_\_\_\_\_ State: \_\_\_\_\_ Zip: \_\_\_\_\_

IF AVAILABLE, PLEASE PLACE THE PERSONALIZED LABEL FROM YOUR PROSPECTUS IN THE ABOVE BOX.

Individual or company representative's signature: \_\_\_\_\_ Date: \_\_\_\_\_

Phone number : \_\_\_\_\_ Email (optional): \_\_\_\_\_

**THE WINNING BIDDER MUST COMPLETE THE VERIFICATION OF WORKER'S DISABILITY COMPENSATION ACT COMPLIANCE (ON REVERSE SIDE IF DOUBLE SIDED) WITHIN 21 DAYS OF SALE AWARD DATE**



Higgins Oak and Pine (72-015-18)  
T25N, R04W, SEC. 35; T25N, R04W, SEC. 36; Crawford COUNTY

In response to the notice of sale to be held 9:00 a.m. (local time) on October 29, 2019, I am hereby submitting my sealed bid (firm offer) for the following forest products to be cut. Bids for individual species must be at or above the advertised price. All non-responsive bid forms may be rejected.

<u>PRODUCTS &amp; SPECIES</u>	<u>ESTIMATED VOLUME*</u>	<u>ADVERTISED PRICE</u>	<u>BID PRICE/UNIT</u>
<b>Sawtimber</b>			
Bl/R/Hybrid Oak	674.80 MBF	\$ 173.00/MBF	\$ _____
Mixed Aspen	10.20 MBF	\$ 61.00/MBF	\$ _____
Red Maple	20.30 MBF	\$ 64.00/MBF	\$ _____
Red Oak	162.50 MBF	\$ 246.00/MBF	\$ _____
Red Pine	107.40 MBF	\$ 102.00/MBF	\$ _____
White Oak	110.80 MBF	\$ 66.00/MBF	\$ _____
White Pine	88.50 MBF	\$ 50.00/MBF	\$ _____
<b>Pulpwood</b>			
Misc. Species 1	6.00 Cords	\$ 28.55/Cord	\$ _____
Mixed Aspen	55.00 Cords	\$ 21.35/Cord	\$ _____
Mixed Hardwood	208.00 Cords	\$ 31.35/Cord	\$ _____
Mixed Oak	1,105.00 Cords	\$ 20.95/Cord	\$ _____
Red Pine	186.00 Cords	\$ 44.35/Cord	\$ _____
Scotch Pine	10.00 Cords	\$ 30.80/Cord	\$ _____
White Pine	260.00 Cords	\$ 24.80/Cord	\$ _____

\*These estimated volumes are final and not subject to adjustment. Prospective bidders are urged to examine this timber and to make their own estimates of quantity and quality.

I understand that any or all bids may be rejected. All bids must be signed and all bid items must be bid or the bid form may be rejected. I also understand that consideration and awarding a contract will be based upon my past performance and ability to complete the contract based upon equipment and staffing subject to my control.

FEDERAL ID: \_\_\_\_\_ or SOCIAL SECURITY NUMBER: \_\_\_\_\_

Company or individual bidding: \_\_\_\_\_

Company representative's name: \_\_\_\_\_

Address: \_\_\_\_\_

City: \_\_\_\_\_ State: \_\_\_\_\_ Zip: \_\_\_\_\_

IF AVAILABLE, PLEASE PLACE THE PERSONALIZED LABEL FROM YOUR PROSPECTUS IN THE ABOVE BOX.

Individual or company representative's signature: \_\_\_\_\_ Date: \_\_\_\_\_

Phone number : \_\_\_\_\_ Email (optional): \_\_\_\_\_

**THE WINNING BIDDER MUST COMPLETE THE VERIFICATION OF WORKER'S DISABILITY COMPENSATION ACT COMPLIANCE (ON REVERSE SIDE IF DOUBLE SIDED) WITHIN 21 DAYS OF SALE AWARD DATE**



<b>FOR DEPARTMENT USE ONLY</b>
Sale Number (XX - XXX - XX - XX)
Forest Management Unit:

## TIMBER SALE VERIFICATION OF WORKER'S DISABILITY COMPENSATION ACT COMPLIANCE

*As required by Act 317, P.A. 1969 (Worker's Compensation) and  
Part 5 of Act 451 of 1994, as amended.*

### VERIFICATION OF WORKER'S DISABILITY COMPENSATION ACT COMPLIANCE

- This verification must be completed and submitted within 21 days of contract award and prior to the issuance of the timber sale contract.
- In addition, if boxes 2B or 2C are checked, then Notice of Exclusion or Certificate of Insurance must be submitted within twenty-one (21) days of the contract award and prior to the issuance of the timber sale contract.
- All information must be typed or printed except for written signatures.

Please Check Appropriate Categories:

1. My business is organized as (you **must** check one of the boxes below):
  - A.  Sole Proprietorship (individual)
  - B.  Partnership
  - C.  Corporation
  
2. You **must** check one of the boxes below:
  - A.  I certify my business is a sole proprietorship and it has no employees but the sole proprietor. I am not subject to the Worker's Compensation Laws.
  - B.  I certify my business has satisfied its obligation to the Worker's Compensation Act through the use of an approved Notice of Exclusion (BWC-337, Rev. 5/96). I will provide a copy of the Notice of Exclusion within 21 days of the contract award. (For questions or a copy of the BWC-337, please call the Worker's Compensation Bureau at 517-322-1195).
  - C.  I certify my business has a Worker's Compensation Policy. I will provide an original Certificate of Insurance within twenty-one (21) days of the contract award.
  
3. If you have checked item 2(A) or 2(B), you **must** indicate the number of **both** full-time and part-time employees, other than yourself, including family members and active partners (if none, you must enter "0").

\_\_\_\_\_ Full-time Employees

\_\_\_\_\_ Part-time Employees

Name of Business		Federal ID (or) Social Security No.	
Address		Telephone (       )	
City	State	ZIP	

*I hereby certify that the above information is true and correct. I agree to notify the Michigan DNR of any changes that occur in factors affecting my coverage during any of my present and future operations.*

\_\_\_\_\_  
Signature of Owner or Authorized Representative

\_\_\_\_\_  
Title

\_\_\_\_\_  
Date

**Please complete the "SEALED BID" information on the next page**