



**DEPARTMENT OF NATURAL RESOURCES  
STATE OF MICHIGAN**

**TIMBER SALE PROSPECTUS #6662**

SCHEDULED SALE DATE AND TIME: 8:30 a.m. (local time) on April 8, 2020.

LOCATION: CRYSTAL FALLS MGMT UNIT, 1420 US 2 WEST, CRYSTAL FALLS, MI 49920.

PROSPECTUS NOTE: The bidder is advised to inspect the sale area and review the location, estimated volumes, operating costs and contract terms of proposed sales. Please be aware that some landowners may request 60 days or more notice for access across their land.

Notice is hereby given that bids will be received by the Unit Manager, CRYSTAL FALLS MANAGEMENT UNIT, for certain timber on the following described lands:

Weber Pine (12-012-19) / T43N, R29W, SEC. 6 , NW,NE,NESW,NWSE.

T44N, R29W, SEC. 30, N1/2NW,SWNW,SESW.

T44N, R29W, SEC. 31, NENW,SWNW,N1/2SW,SWSW.

T44N, R30W, SEC. 25, N1/2NE.

T44N, R30W, SEC. 36, SENW,SWNE,N1/2SW,E1/2SE.

Dickinson County, Advertised Price \$254,102.60, 326.0 Acres, Red Pine, Aspen.

SALE NOTE: Access may be through private land.

Gobblers Gamble (12-013-19) / T43N, R27W, SEC. 16, SWSW.

T43N, R27W, SEC. 17, S1/2NW,SW,NWSE,S1/2SE.

T43N, R27W, SEC. 18, N1/2SW,SE.

T43N, R27W, SEC. 19, NENE,S1/2NE,NWSE.

T43N, R27W, SEC. 20, N1/2NW,N1/2NE.

Dickinson County, Advertised Price \$212,389.30, 339.9 Acres, Aspen, Spruce/Fir/Tamarack.

SALE NOTE: Extensive road work is required on this sale (see spec 4.1.8). This sale has class A road access.

Access may be through private or other public land.

Twisted Lines (12-021-19) / T41N, R28W, SEC. 5 , SWNW,NWNE,SENE,NWSW,SWSE.

T41N, R28W, SEC. 6 , NENE,S1/2NE,N1/2SE.

T41N, R28W, SEC. 7 , S1/2NW,NENE.

T41N, R28W, SEC. 8 , NWNW.

Dickinson County, Advertised Price \$50,184.25, 140.7 Acres, Hardwood, Aspen.

SALE NOTE: Access is through private land (see spec 4.4.1). Several units have Spruce Budworm damage (see spec 7.5.1). Payment Units 2 and 3 are limited to winter or dry ground only (see spec 5.2.3.1). Road work is required (see spec 4.1.8).

Access may be through private land.

Valley Hopper HDWD (12-022-19) / T41N, R30W, SEC. 16, SWSW.

T41N, R30W, SEC. 17, S1/2SE.

T41N, R30W, SEC. 20, NENE,S1/2NE.

T41N, R30W, SEC. 21, N1/2NW,SWNW,NENE.

T41N, R30W, SEC. 22, NWNW.

Dickinson County, Advertised Price \$25,594.30, 58.5 Acres, Hardwood, Aspen.

SALE NOTE: Payment Unit 1 has steep terrain. The DNR will obtain the necessary stream crossing permit.

## BID INSTRUCTIONS (VER. 07/02/2018):

### 1. Scheduled Bid Location, Date, and Time (2/11)

Bids must be received by the Unit Manager, CRYSTAL FALLS OFFICE, 1420 US 2 West, Crystal Falls, MI 49920, no later than 8:30 a.m. (local time) on April 8, 2020. For further information concerning this sale, contact Dan McNamee at 906-875-6622.

### 2. Bidder's Qualifications (5/16)

Purchaser shall obtain workers compensation insurance to cover claims under Michigan's Worker's Disability Compensation Act of 1969 or similar employee benefit act of any other state applicable to an employee. If all or part of a timber sale was prepared by a private contractor, the contractor and that contractor's company are not permitted to bid on the timber sale contract. Bids will not be accepted from individuals or companies appearing on the DNR/FRD No-Bid List. This list contains the names of purchasers who previously failed to execute a contract within 21-days or who have a history of poor performance.

### 3. Preparation of Sealed Bids (5/16)

Bid Forms may be completed online thru Michigan DNR Timber Sale Online Bidding (OLB) at [www.michigan.gov/timberbidding](http://www.michigan.gov/timberbidding) or by completing the hardcopy Bid Form found in the Timber Sale Prospectus. Hardcopy Bid Forms shall be manually signed in ink. Registration in OLB is considered your 'signature' for all bids submitted thru that system. Bid prices must be entered for each species and product in the Bid Price column for all material subject to bidding and all fill-in blanks must be completed. If erasures or other changes appear on the hardcopy Bid Form, each erasure or change must be initialed by the person signing the bid.

### 4. Submission of Sealed Bids (5/16)

Bid forms may be obtained from the Unit Manager or thru OLB. Bids may be submitted hardcopy or thru OLB. All hardcopy bids must be submitted on the bid form and in an envelope clearly identified as described in this section. NOTE: Only one bid form per bid envelope. Sealed bids must be submitted to the Unit office designated in the prospectus and must be submitted at or prior to the time established in the prospectus. The envelope should show on the outside (a) the sale name or number and (b) the date and time of bid opening, as shown in the prospectus. Bids received after the time specified in the sale prospectus are late bids and will be rejected.

It is possible for a bidder to submit multiple bids on a single sale. For example, a bid may be submitted hardcopy and a bid may be submitted thru OLB. Or, two bidders from the same company could both submit bids on the same sale. If this were to happen, the State would accept all bids received and award the contract accordingly. All bidding and contractual requirements would apply to all bids received.

### 5. Public Opening of Sealed Bids (7/16)

If conditions permit, the sealed bids will be publicly opened and posted at the time and place set in the prospectus.

If a bidder, present at a bid opening, has submitted bids on more than one sale, that bidder may withdraw their unopened bid envelopes or announce the withdrawal of their online bid after being declared the successful bidder on one sale.

### 6. Award of Contract (1/11)

Award of the contract will be made to the Bidder whose bid, conforming to the prospectus, is most advantageous to the State of Michigan on the basis of total value at rates bid for the estimated quantities. The State reserves the right to reject any bid or waive any minor irregularity in bids received. A written award mailed (or otherwise furnished) to the successful Bidder shall be deemed to result in a binding contract without further action by either party.

### 7. Down Payment (1/11)

The Bidder to whom award is made must make a down payment within 21 days of the sale award. The amount of the down payment will be calculated as shown in the Bond and Payment Schedule of this prospectus. Only cash may be used to meet this requirement.

### 8. Performance Security (1/11)

As guarantee of faithful performance, a cash bond, certificate of deposit, surety bond or irrevocable letter of credit (LOC) is required within 21 days of the sale award. The amount of the performance security is shown in the Bond and

Payment Schedule of this prospectus. If an LOC or surety is used, the coverage must extend for at least 6 months beyond the contract expiration.

#### 9. Timber Sale Contract (7/18)

Additional conditions and requirements common to all timber sales are listed on the timber sale contract (R4031) and are available on line at [www.michigan.gov/timber](http://www.michigan.gov/timber). Contact the Unit Manager for additional information or a sample contract. Within 21 days of the date of the award letter, the bidder must sign the contract and provide the required down payment, performance security, and verification of worker's disability compensation. The down payment and performance security shall be in accordance with the provisions of the timber sale contract, in the sums stated in this prospectus. If these actions are not taken, then the Bidder, the Bidder's corporation, and the corporation's principals may not be permitted to bid on State timber sales for a period of 3 months after the first offense, 6 months after the second offense, and 1 year after the third offense. An offense will only be counted against the Bidder for 5 years. In addition, the Bidder certifies that if awarded this contract, the Bidder will complete the timber sale contract in accordance with its terms and any modifications thereof including requirements to purchase, cut, and remove the included timber by the expiration date.

Payment Unit values in the State Forest Timber Sale Contract are calculated based on the advertised value of the Payment Unit as a percentage of the total advertised value of the contract. The advertised value of each Payment Unit is given in the Description of Timber by Payment Unit table on the Timber Sale Information page. For example, if the value of Payment Unit 1 is advertised as \$1,500 and the total Timber Sale value is advertised as \$10,000, the contract price for Payment Unit 1 will be 15% of the total bid price ( $\$1,500/\$10,000 * 100$ ).

#### 10. Disclaimer of Estimates and Bidder's Warranty of Inspection (7/16)

Before submitting this bid, the Bidder is advised and cautioned to inspect the sale area, review the requirements of the sale contract, and take other steps as may be reasonably necessary to ascertain the location, estimated volumes, construction estimates, and operating costs of the proposed sale. Failure to do so will not relieve the Bidder from responsibility for completing the contract.

The Bidder warrants that this bid is submitted solely on the basis of the Bidder's examination and inspection of the quality and quantity of the timber offered for sale and the Bidder's opinion of the value thereof and the costs of recovery. No reliance should be placed on the State of Michigan's estimates of timber quality, quantity or costs of recovery. Bidder further acknowledges that the State of Michigan: (i) expressly disclaims any warranty of fitness of timber for any purpose; (ii) offers this timber as is without any warranty of quality (merchantability) or quantity and (iii) expressly disclaims any warranty as to the quantity or quality of timber sold.

#### 11. Certification and Chain-of-Custody (10/14)

Unless otherwise indicated in the contract under section 7 – Other Conditions of the Sale Specific Conditions & Requirements, the area encompassed by this timber sale is certified to the standards of the Forest Stewardship Council (FSC) - Certificate #SCS-FM/COC-00090N and the Sustainable Forestry Initiative (SFI) - Certificate #NSF-SFIS-5Y031-SF5. Forest products from this sale may be delivered to the mill as "FSC 100% and / or SFI certified" as long as the contractor hauling the forest products is chain-of-custody (COC) certified or covered under a COC certificate from the destination mill. The purchaser is responsible for maintaining COC after leaving the sale area.

#### 12. Good Neighbor Authority (GNA) Requirements (7/16)

If the name of this timber sales contains the acronym GNA, it is authorized by the Good Neighbor Authority (GNA) and covered by various agreements between the U.S. Forest Service and the State. The timber sale occurs on federal land and the following conditions apply:

GNA contracts on US Forest Service land will not be awarded to purchasers on the Federal list of excluded parties. The System for Award Management (SAM) will be checked for active excluded parties prior to award of contract. In addition, the Bidder to whom award is made must complete an Assurance Regarding Felony Conviction or Tax Delinquent Status for Corporate Applicants (AD-3031).

#### 13. Good Neighbor Authority (GNA) Requirements, con't (9/16)

Bidder certifies, by signing this bid form, that to the best of Bidder's knowledge that the following representations are accurate and complete.

- a. That the Bidder and its principals are not presently debarred, suspended, proposed for debarment, declared ineligible, or voluntary excluded from timber sales (covered transactions) by any Federal department or agency.
- b. That the Bidder and its principals have not within a 3-year period preceding this bid been convicted of or had a civil judgment rendered against them for commission of fraud or a criminal offense in connection with obtaining , attempting to obtain, or performing a public (Federal, State, or local) transaction or contract under a public transaction; violation of Federal or State antitrust statutes or commission of embezzlement, theft, forgery, bribery, falsification or destruction of records, making false statements, or receiving stolen property.
- c. That the Bidder and its principals are not presently indicted for or otherwise criminally or civilly charged by a governmental entity (Federal, State, or local) with commission of any of the offenses enumerated in paragraph b of this certification.
- d. That the Bidder and its principals have not within a 3-year period preceding this bid had one or more public transactions (Federal, State, or local) terminated for breach or default of a timber or forest product contract.

Bidders that cannot certify this requirement, in whole or in part, shall submit an explanation with their bid.

DAN EICHINGER  
Director



# TIMBER SALE INFORMATION

Weber Pine (12-012-19)

T43N, R29W, SEC. 6; T44N, R29W, SEC. 30; T44N, R29W, SEC. 31; T44N, R30W, SEC. 25; T44N, R30W, SEC. 36.  
Dickinson County (Advertised Price \$254,102.60)

SALE NOTE: Access may be through private land.

A timber sale contract for this lump sum, sealed bid timber sale will be awarded to the responsible bidder offering the highest sealed bid price. Bids must be at or above the following advertised price for each species:

<u>PRODUCTS &amp; SPECIES</u>	<u>ESTIMATED UNITS*</u>	<u>ADVERTISED PRICE</u>
<b>Sawtimber</b>		
Paper Birch	1.70 MBF	\$ 70.00 / MBF
Red Maple	4.60 MBF	\$ 102.00 / MBF
Red Pine	429.20 MBF	\$ 131.00 / MBF
Sugar Maple	3.70 MBF	\$ 238.00 / MBF
<b>Pulpwood</b>		
Balsam Fir	137.00 Cords	\$ 13.90 / Cord
Basswood	17.00 Cords	\$ 8.80 / Cord
Jack Pine	249.00 Cords	\$ 37.35 / Cord
Mixed Aspen	1,591.00 Cords	\$ 37.40 / Cord
Mixed Hardwood	215.00 Cords	\$ 19.85 / Cord
Mixed Spruce	358.00 Cords	\$ 15.20 / Cord
Red Pine	1,997.00 Cords	\$ 57.85 / Cord
Tamarack	119.00 Cords	\$ 2.65 / Cord

\* The estimated units are final and not subject to adjustment. Prospective bidders are urged to examine this timber and to make their own estimates of quantity and quality.

**BOND AND PAYMENT SCHEDULE:**

1. A bond in the amount of \$15,000.00 to insure faithful performance of the conditions of the contract will be deposited by the successful bidder within 21 days of the sale award.
2. Cutting in any sale or unit without the required advance payment would be considered a trespass.
3. Total payment must be paid in advance or according to the following schedule :
  - (a) Ten percent (10%) of the sale value must be paid within 21 days of the sale award.
  - (b) The 10% down payment will be credited towards the first unit cut.
  - (c) Payment for each of the following units must be made before cutting begins in that unit:

PAYMENT UNIT NUMBER	PERCENT OF TOTAL SALE VALUE
01	18.9%
02	0.9%
03	4.6%
04	2.9%
05	5.6%
06	11.6%
07	10.1%
08	6.1%
09	2.7%
10	0.8%
11	1.7%
12	15.3%
13	17.0%
14	1.8%

4. If no cutting takes place, the 10% down payment will not be refunded.
5. Operations on the contract issued will terminate on 06/29/2023.

**Description of Timber by Payment Unit (PU)**

PU	MARKET GROUP	PRODUCT	QUANTITY	UNIT	ACRES	ADVERTISE PRICE
1	Paper Birch	Sawtimber	1.7	MBF	46.9	\$47,604.35
	Red Maple		4.6	MBF		
	Sugar Maple		2.6	MBF		
	Balsam Fir	Pulpwood	101.0	Cords		
	Basswood		17.0	Cords		
	Mixed Aspen		1,127.0	Cords		
	Mixed Hardwood		125.0	Cords		
	Mixed Spruce		14.0	Cords		
	2	Sugar Maple	Sawtimber	1.1		
Balsam Fir		Pulpwood	6.0	Cords		
Mixed Aspen			8.0	Cords		
Mixed Hardwood			85.0	Cords		
3	Red Pine	Sawtimber	13.9	MBF	13.1	\$11,778.70
	Mixed Hardwood	Pulpwood	1.0	Cords		
	Mixed Spruce		3.0	Cords		
	Red Pine		171.0	Cords		
4	Jack Pine	Pulpwood	39.0	Cords	26.3	\$7,468.70
	Mixed Aspen		159.0	Cords		
	Mixed Hardwood		1.0	Cords		
	Mixed Spruce		3.0	Cords		
5	Red Pine	Sawtimber	46.6	MBF	36.7	\$14,232.05
	Jack Pine	Pulpwood	7.0	Cords		
	Mixed Aspen		81.0	Cords		
	Mixed Hardwood		3.0	Cords		
	Mixed Spruce		6.0	Cords		
	Red Pine		81.0	Cords		
6	Red Pine	Sawtimber	71.4	MBF	24.2	\$29,491.20
	Balsam Fir	Pulpwood	22.0	Cords		
	Jack Pine		7.0	Cords		
	Mixed Aspen		35.0	Cords		
	Mixed Spruce		33.0	Cords		
	Red Pine		307.0	Cords		
	7	Red Pine	Sawtimber	67.5		
Balsam Fir		Pulpwood	3.0	Cords		
Mixed Spruce			10.0	Cords		
Red Pine			288.0	Cords		
8	Red Pine	Sawtimber	24.4	MBF	20.9	\$15,617.30
	Jack Pine	Pulpwood	72.0	Cords		
	Mixed Aspen		22.0	Cords		
	Red Pine		154.0	Cords		
9	Red Pine	Sawtimber	7.4	MBF	6.7	\$6,814.80
	Jack Pine	Pulpwood	93.0	Cords		
	Red Pine		41.0	Cords		
10	Jack Pine	Pulpwood	10.0	Cords	2.2	\$2,012.10
	Mixed Aspen		43.0	Cords		
	Mixed Spruce		2.0	Cords		
11	Balsam Fir	Pulpwood	2.0	Cords	11.3	\$4,373.20
	Mixed Aspen		29.0	Cords		
	Mixed Spruce		195.0	Cords		
	Tamarack		112.0	Cords		
12	Red Pine	Sawtimber	118.9	MBF	46.6	\$38,823.00
	Jack Pine	Pulpwood	21.0	Cords		
	Mixed Aspen		2.0	Cords		
	Red Pine		387.0	Cords		
13	Red Pine	Sawtimber	79.1	MBF	44.5	\$43,251.30



**Description of Timber by Payment Unit (PU), con't**

PU	MARKET GROUP	PRODUCT	QUANTITY	UNIT	ACRES	ADVERTISE PRICE
13 con't	Mixed Spruce	Pulpwood	2.0	Cords		
	Red Pine		568.0	Cords		
14	Balsam Fir	Pulpwood	3.0	Cords	7.4	\$4,607.25
	Mixed Aspen		85.0	Cords		
	Mixed Spruce		90.0	Cords		
	Tamarack		7.0	Cords		
TOTAL:			439.2	MBF		
TOTAL:			4,683.0	Cords		

## Sale Specific Conditions & Requirements

**Sale Name: Weber Pine**

**Sale Number: 12-012-19 Seq#: 2**

### 1 - Sale Area

#### 1.2 - Boundaries

##### 1.2.1 - Painted boundaries (9/19)

The sale boundary and Payment Unit boundaries are marked and identified by blue and red paint. Exterior sale boundary lines against private property are marked with blue paint. Exterior sale boundary lines against state are marked with red paint. Interior Payment Unit boundaries are marked with double red slashes. The painted boundary line trees are not Included Timber and are to be protected unless marked with orange paint. Trees marked with double red slashes, designating an interior Payment Unit boundary, are only to be cut when all surrounding Payment Units have been paid.

### 2 - Timber Specifications

#### 2.1 - Included Timber

##### 2.1.1 - Clearcut unit(s) with unmerchantable trees (6/14)

Within Payment Unit(s) 1, 4, 10 and 14, cut all aspen and maple trees that are two (2) inches or more at DBH. Cut all other trees with one or more pulpwood sticks except cedar, hemlock, red and white pine and oak. In Payment Unit 11, cut all trees with one or more pulpwood sticks except cedar, hemlock, red and white pine and oak.

##### 2.1.3 - Cut tree marked unit(s) (12/08)

Within Payment Unit(s) 2, 3, 5, 6, 7, 8, 9, 12 and 13, all trees are designated for cutting when marked with orange paint above and below stump height, regardless of merchantability. In Payment Units 2, 3, 5, 7, 8, 12 and 13, in addition to trees marked with orange paint, cut all aspen, maple, spruce, balsam, tamarack and jack pine with one or more pulpwood stick. In Payment Units 6 and 9, in addition to trees marked with orange paint, cut all aspen and maple with one or more pulpwood stick and all spruce, balsam, tamarack and jack pine with two or more pulpwood sticks.

#### 2.2 - Utilization

##### 2.2.11 - Chipping restriction (9/14)

If chipping occurs on this sale, then no woody debris present on the ground at the start of the sale may be chipped. In addition, brush or chips may not be stored or stockpiled on-site for more than 60 days past the sale expiration date. Residual chip depth at the landing may not exceed 4 inches.

### 4 - Transportation

#### 4.1 - Construction

##### 4.1.4 - Timber removed for construction (12/09)

Trees cut or damaged in the process of pre-approved road, landing or skid trail construction will be decked in an area separate from other Designated Timber and not removed until measured by the sale administrator. Payment will be made at the specified Purchase Unit Price.

##### 4.1.6 - Road construction (1/09)

Construction of new roads or improvements of existing roads shall be done in such a way as to minimize the environmental and visual impacts. Merchantable trees shall be cut and utilized unless otherwise directed. Non-merchantable trees shall be severed and laid flat on the ground. Slash shall be scattered, and not left in windrows and kept a minimum of 10 feet back from the road edge. Stumps shall be set upright, not left on edge, and be moved at least 10 feet away from the road edge. Disturbed soil shall be feathered into the woods and not left in berms or windrows. Main haul road will need to be moved to go around private property in two places. These two sites are shown on the sale map. This work will be required. Minimum stumpage prices have been lowered to give credit for this work.

##### 4.1.7 - Road closure (10/11)

All new roads built into the sale must be blocked to vehicle traffic upon completion of the sale. Overgrown roads that are reopened shall be considered new roads. In general, this will require constructing a four (4') foot high berm of stumps and logs covered with earth. Contact the sale administrator for specific details of design and placement.

#### 4.4 - Access

##### 4.4.1 - Private property access (3/11)

Permission for access across private land is the responsibility of the Purchaser. A copy of written permission must be given to the Unit Manager or his representative prior to beginning Payment Units 9 and 10.

### 5 - Operations

#### 5.2 - Conduct of Operations

##### 5.2.1 - Slash

###### 5.2.1.8 - Slash height (12/08)

No slash or tree tops may exceed 36 inches in height.

##### 5.2.3 - Operating Restrictions

###### 5.2.3.3 - Bark slippage restriction (3/09)

Within Payment Unit(s) 2, unless changed by written agreement, cutting and skidding are not permitted during the period of April 15 to July 15. This restriction is because of bark slippage.

###### 5.2.3.6 - Bark beetle restriction (12/08)

In the event drought creates a high risk of pine bark beetle infestation, pine is not to be cut during the period March 1 through July 1, unless all portions of trees greater than two inches in diameter are removed from the sale area, reduced to chips, or treated to the satisfaction of the Unit Manager or his/her representative, within fifteen days of being severed from the stump. Pine log decks, pulpwood piles and treetops that are piled for chipping in the fall or winter within a 1/4 mile of susceptible sites must be removed before March 15. Residual slash must not be placed in piles or rows and must be spread over the site for quick drying. The Department of Natural Resources will exercise this specification if the risk of damage warrants.

###### 5.2.38 - No decking against live trees (2/04)

Cut products may not be decked against unmarked or designated leave trees.

#### 5.4 - Soil Protection

##### 5.4.1 - Rutting restriction, general (7/16)

Operations are to cease immediately if equipment and weather conditions result in rutting of roads and/or skid trails which is 12 inches or greater in depth and 50 feet in length. The Unit Manager or his/her representative may restrict hauling and/or skidding if ruts exceed the specified depth. With the Unit Manager or his/her representative's approval, the Purchaser may return to the area when the risk of rutting has decreased.

#### 5.8 - Protection of Endangered Species

##### 5.8.5 - Protection of raptor nests (3/13)

All trees with raptor nests will be protected if found during harvesting operations. Notification will be made to the Unit Manager or his/her representative who will notify the Wildlife Biologist so an on-site evaluation and recommendation can be made, if necessary.



# TIMBER SALE MAP

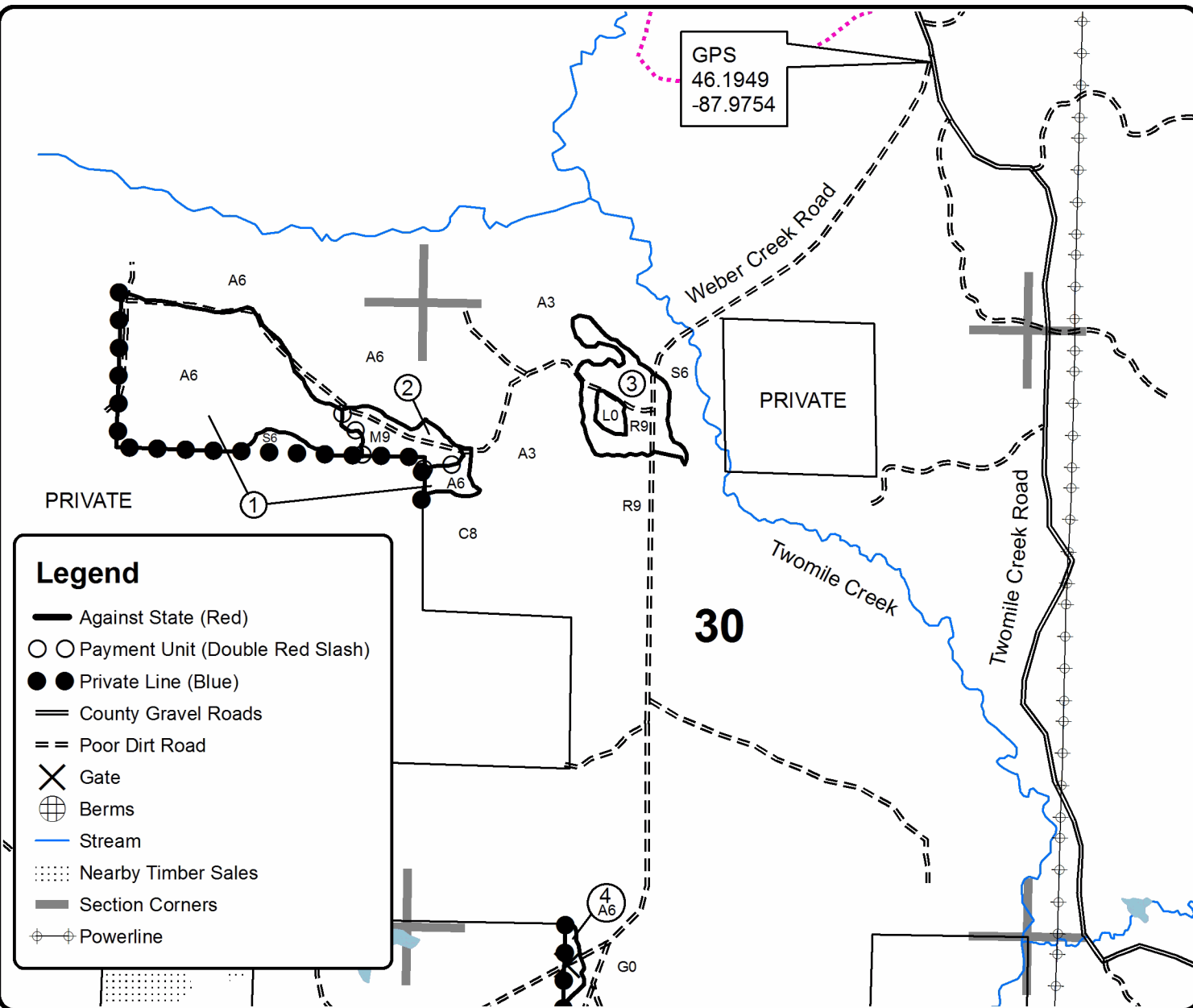
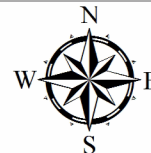
This information provided by authority of Part 525, 1994 PA 451, as amended.

Forest Management Unit Crystal Falls	County Dickinson	Mapped By Sebero	Date 09/03/2019	Page 1	of 2
Township 43N,44N	Range 29W,30W	Section(s) and Subdivision(s) 43N 29W: Sec 6 NW,NE,NESW,NWSE 44N 29W: Sec 30 N1/2NW,SWNW,SESW Sec 31 NENW,SWNW,N1/2SW,SWSW 44N 30W: Sec 25 N1/2NE Sec 36 SENW,SWNE,N1/2SE	Scale 1:15,840		

Cover Type				Density	
A = Aspen	H = Hemlock	N = Marsh	U = Upland Brush	0 = Non Stocked	5 = Pole Timber Medium
B = Paper Birch	J = Jack Pine	O = Oak	UM = Upland Mixed	1 = Seedling Sapling Poor	6 = Pole Timber Well
C = Cedar	L = Lowland Brush	P = Lowland Poplar	V = Bog or Marsh	2 = Seedling Sapling Medium	7 = Saw Timber Poor
D = Treed Bog	LM = Lowland Mixed	Q = Mixed Swamp Conifer	W = White Pine	3 = Seedling Sapling Well	8 = Saw Timber Medium
E = Swamp Hdwoods	M = Mpl, Bch, Brch	R = Red Pine	X = Non Stocked	4 = Pole Timber Poor	9 = Saw Timber Well
F = Spruce Fir	MC = Mixed Conifer	S = Black Spruce	Z = Water		
G = Grass	MD = Mixed Deciduous	T = Tamarack			

PU	Acres	PU	Acres	PU	Acres
1	46.9	6	24.2	11	11.3
2	6.7	7	32.5	12	46.6
3	13.1	8	20.9	13	44.5
4	26.3	9	6.7	14	7.4
5	36.7	10	2.2		

## Weber Pine Compartment 044 326.0 Acres





Sale Number	Year
12 - 012	19

# TIMBER SALE MAP

This information provided by authority of Part 525, 1994 PA 451, as amended.

Forest Management Unit Crystal Falls	County Dickinson	Mapped By Sebero	Date 09/03/2019	Page 2	of 2
Township 43N,44N	Range 29W,30W	Section(s) and Subdivision(s) 43N 29W: Sec 6 NW,NE,NESW,NWSE 44N 29W: Sec 30 N1/2NW,SWNW,SESW Sec 31 NENW,SWNW,N1/2SW,SWSW 44N 30W: Sec 25 N1/2NE Sec 36 SENW,SWNE,N1/2SW,E1/2SE	Scale 1:15,840		

### Cover Type

A = Aspen	H = Hemlock	N = Marsh	U = Upland Brush
B = Paper Birch	J = Jack Pine	O = Oak	UM = Upland Mixed
C = Cedar	L = Lowland Brush	P = Lowland Poplar	V = Bog or Marsh
D = Treed Bog	LM = Lowland Mixed	Q = Mixed Swamp Conifer	W = White Pine
E = Swamp Hdwoods	M = Mpl, Bch, Brch	R = Red Pine	X = Non Stocked
F = Spruce Fir	MC = Mixed Conifer	S = Black Spruce	Z = Water
G = Grass	MD = Mixed Deciduous	T = Tamarack	

### Density

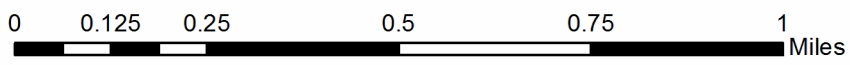
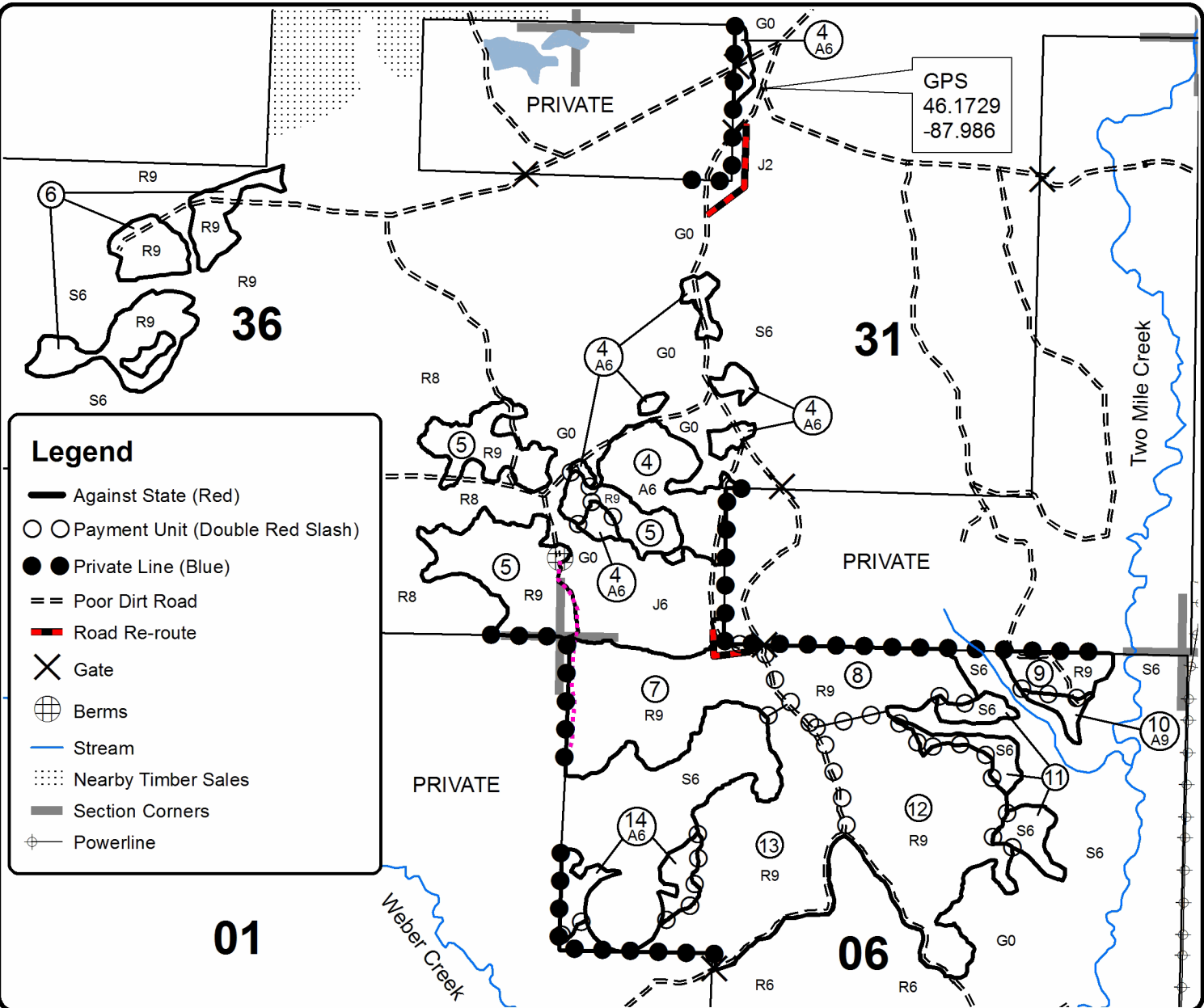
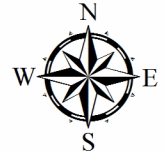
0 = Non Stocked	5 = Pole Timber Medium
1 = Seedling Sapling Poor	6 = Pole Timber Well
2 = Seedling Sapling Medium	7 = Saw Timber Poor
3 = Seedling Sapling Well	8 = Saw Timber Medium
4 = Pole Timber Poor	9 = Saw Timber Well

PU	Acres	PU	Acres	PU	Acres
1	46.9	6	24.2	11	11.3
2	6.7	7	32.5	12	46.6
3	13.1	8	20.9	13	44.5
4	26.3	9	6.7	14	7.4
5	36.7	10	2.2		

## Weber Pine

### Compartment 044

#### 326.0 Acres





## TIMBER SALE INFORMATION

### Gobblers Gamble (12-013-19)

T43N, R27W, SEC. 16; T43N, R27W, SEC. 17; T43N, R27W, SEC. 18; T43N, R27W, SEC. 19; T43N, R27W, SEC. 20.  
Dickinson County (Advertised Price \$212,389.30)

SALE NOTE: Extensive road work is required on this sale (see spec 4.1.8). This sale has class A road access.

Access may be through private or other public land.

A timber sale contract for this lump sum, sealed bid timber sale will be awarded to the responsible bidder offering the highest sealed bid price. Bids must be at or above the following advertised price for each species:

<u>PRODUCTS &amp; SPECIES</u>	<u>ESTIMATED UNITS*</u>		<u>ADVERTISED PRICE</u>
Sawtimber			
Black Cherry	0.80	MBF	\$ 114.00 / MBF
Paper Birch	3.10	MBF	\$ 81.00 / MBF
Sugar Maple	4.70	MBF	\$ 275.00 / MBF
Pulpwood			
Balsam Fir	235.00	Cords	\$ 16.05 / Cord
Mixed Aspen	4,179.00	Cords	\$ 43.15 / Cord
Mixed Hardwood	231.00	Cords	\$ 22.90 / Cord
Mixed Spruce	1,012.00	Cords	\$ 17.55 / Cord
Tamarack	1,164.00	Cords	\$ 3.10 / Cord

\* The total volume is statistically estimated within plus (+) or minus (-) 6.57 percent. The estimated units are final and not subject to adjustment. Prospective bidders are urged to examine this timber and to make their own estimates of quantity and quality.

#### **BOND AND PAYMENT SCHEDULE:**

1. A bond in the amount of \$10,619.00 to insure faithful performance of the conditions of the contract will be deposited by the successful bidder within 21 days of the sale award.
2. Cutting in any sale or unit without the required advance payment would be considered a trespass.
3. Total payment must be paid in advance or according to the following schedule :
  - (a) Ten percent (10%) of the sale value must be paid within 21 days of the sale award.
  - (b) The 10% down payment will be credited towards the first unit cut.
  - (c) Payment for each of the following units must be made before cutting begins in that unit:

PAYMENT UNIT NUMBER	PERCENT OF TOTAL SALE VALUE
01	13.7%
02	22.4%
03	18.7%
04	1.4%
05	2.5%
06	4.9%
07	15.2%
08	2.4%
09	6.3%
10	4.7%
11	7.8%

4. If no cutting takes place, the 10% down payment will not be refunded.
5. Operations on the contract issued will terminate on 06/29/2024.

**Description of Timber by Payment Unit (PU)**

PU	MARKET GROUP	PRODUCT	QUANTITY	UNIT	ACRES	ADVERTISE PRICE
1	Black Cherry	Sawtimber	0.8	MBF	34.2	\$29,056.35
	Balsam Fir	Pulpwood	53.0	Cords		
	Mixed Aspen		642.0	Cords		
	Mixed Hardwood		18.0	Cords		
2	Sugar Maple	Sawtimber	0.9	MBF	47.8	\$47,955.95
	Balsam Fir	Pulpwood	4.0	Cords		
	Mixed Aspen		1,083.0	Cords		
	Mixed Hardwood		23.0	Cords		
	Mixed Spruce		22.0	Cords		
3	Balsam Fir	Pulpwood	84.0	Cords	49.7	\$39,701.15
	Mixed Aspen		862.0	Cords		
	Mixed Hardwood		13.0	Cords		
	Mixed Spruce		49.0	Cords		
4	Balsam Fir	Pulpwood	2.0	Cords	18.6	\$2,968.50
	Mixed Aspen		21.0	Cords		
	Mixed Hardwood		6.0	Cords		
	Mixed Spruce		75.0	Cords		
	Tamarack		186.0	Cords		
5	Paper Birch	Sawtimber	1.3	MBF	6.4	\$5,236.05
	Balsam Fir	Pulpwood	18.0	Cords		
	Mixed Aspen		93.0	Cords		
	Mixed Hardwood		27.0	Cords		
	Mixed Spruce		12.0	Cords		
6	Balsam Fir	Pulpwood	11.0	Cords	24.3	\$10,333.80
	Mixed Aspen		211.0	Cords		
	Mixed Hardwood		8.0	Cords		
	Mixed Spruce		40.0	Cords		
	Tamarack		54.0	Cords		
7	Paper Birch	Sawtimber	0.8	MBF	39.0	\$32,277.45
	Sugar Maple		1.4	MBF		
	Balsam Fir	Pulpwood	10.0	Cords		
	Mixed Aspen		685.0	Cords		
	Mixed Hardwood		40.0	Cords		
	Mixed Spruce		68.0	Cords		
8	Balsam Fir	Pulpwood	6.0	Cords	17.9	\$5,013.85
	Mixed Aspen		75.0	Cords		
	Mixed Hardwood		5.0	Cords		
	Mixed Spruce		46.0	Cords		
	Tamarack		245.0	Cords		
9	Balsam Fir	Pulpwood	11.0	Cords	40.6	\$13,309.65
	Mixed Aspen		117.0	Cords		
	Mixed Hardwood		6.0	Cords		
	Mixed Spruce		385.0	Cords		
	Tamarack		384.0	Cords		
10	Paper Birch	Sawtimber	0.5	MBF	35.5	\$9,968.65
	Balsam Fir	Pulpwood	8.0	Cords		
	Mixed Aspen		77.0	Cords		
	Mixed Hardwood		13.0	Cords		
	Mixed Spruce		300.0	Cords		
	Tamarack		295.0	Cords		
11	Paper Birch	Sawtimber	0.5	MBF	25.9	\$16,567.90
	Sugar Maple		2.4	MBF		
	Balsam Fir	Pulpwood	28.0	Cords		
	Mixed Aspen		313.0	Cords		
	Mixed Hardwood		72.0	Cords		



**Description of Timber by Payment Unit (PU), con't**

PU	MARKET GROUP	PRODUCT	QUANTITY	UNIT	ACRES	ADVERTISE PRICE
11 con't	Mixed Spruce	Pulpwood	15.0	Cords		
TOTAL:			8.6	MBF		
TOTAL:			6,821.0	Cords		

# Sale Specific Conditions & Requirements

**Sale Name: Gobblers Gamble**

**Sale Number: 12-013-19 Seq#: 2**

## 1 - Sale Area

### 1.2 - Boundaries

#### 1.2.1 - Painted boundaries (1/14)

The sale boundary and Payment Unit boundaries are marked and identified by blue, red and yellow paint. Exterior sale boundary lines against private property are marked with blue paint. Exterior sale boundary lines against state are marked with red paint. Interior Payment Unit boundaries are marked with yellow paint. The painted boundary line trees are not Included Timber and are to be protected. Yellow painted trees designating an interior Payment Unit boundary are only to be cut when all surrounding Payment Units have been paid.

## 2 - Timber Specifications

### 2.1 - Included Timber

#### 2.1.1 - Clearcut unit(s) with unmerchantable trees (6/14)

Within Payment Unit(s) 1-11, cut all trees that are two (2) inches or more at DBH, except do not cut cedar, hemlock, oak and pine. In addition, within Payment Units 1-3 and 11, do not cut sub-merchantable conifers.

### 2.2 - Utilization

#### 2.2.6 - Roundwood operation required (5/07)

The skidding of whole trees or tree segments with limbs attached is prohibited within Payment Unit(s) 4 and 8-10. All products must be produced as roundwood and forwarded to existing roads or landing areas in final product length.

## 3 - Payments

### 3.3 - Pre-measured Sales

#### 3.3.4 - Dividing payment units (7/14)

Payment Unit(s) 2, 3, and 10 may be divided at the request of the Purchaser and upon approval of the Unit Manager.

Dividing Payment Units is a contract modification which requires a Timber Sale Contract Supplement. There will be only one division per Payment Unit.

### 3.4 - Damaged Timber

#### 3.4.1 - Damaged timber (7/16)

General Condition and Requirement 3.4 Damaged Timber, defines liquidated damages for undesignated live merchantable trees which are cut or injured.

Within Payment Units 1-3 and 11, if more than 20% of the conifer tree seedlings or saplings (1/4" to 4.5" DBH) within a specified portion of the sale area are damaged, liquidated damages will be assessed at \$100 per acre for all acreage within that specified portion of the sale area that was damaged.

## 4 - Transportation

### 4.1 - Construction

#### 4.1.4 - Timber removed for construction (12/09)

Trees cut or damaged in the process of pre-approved road, landing or skid trail construction will be decked in an area separate from other Designated Timber and not removed until measured by the sale administrator. Payment will be made at the specified Purchase Unit Price.

#### 4.1.5 - Culverts (5/14)

Roads may require the installation of culverts for cross drainage or at natural drainage-ways. If culverts are needed in these locations, their placement will be specified by the sale administrator and they shall be installed prior to hauling. The culverts shall be new, corrugated metal or plastic gauge. Culverts will be a minimum of 18 inches in diameter. Culverts needed beyond

those specified as required road work, may be supplied by the DNR.

#### 4.1.6 - Road construction (1/09)

Construction of new roads or improvements of existing roads shall be done in such a way as to minimize the environmental and visual impacts. Merchantable trees shall be cut and utilized unless otherwise directed. Non-merchantable trees shall be severed and laid flat on the ground. Slash shall be scattered, and not left in windrows and kept a minimum of 10 feet back from the road edge, or be chipped, utilized or otherwise removed from the sale. Stumps shall be set upright, not left on edge, and be moved at least 10 feet away from the road edge. Disturbed soil shall be feathered into the woods and not left in berms or windrows.

#### 4.1.7 - Road closure (10/11)

All new roads built into the sale must be blocked to vehicle traffic upon completion of the sale. Overgrown roads that are reopened shall be considered new roads. In general, this will require constructing a four (4') foot high berm of stumps and logs covered with earth. Contact the sale administrator for specific details of design and placement.

#### 4.1.8 - Road work (1) (8/07)

The following road work is required: 310 yards of gravel will need to be hauled and spread, and two equalization culverts 18" x 20' must be installed on Stafford Creek Rd before harvesting occurs. In addition, one equalization culvert 18" x 20' will need to be installed on the forest access route within Payment Unit 2 before the sale can be closed. Culverts must have at least 12 inches of fill placed over them. The culvert locations are identified on the Timber Sale Map. Culverts identified as required road work will be provided by the Purchaser. For more information regarding road work contact the sale administrator.

### 4.2 - Maintenance

#### 4.2.5 - Two wheel drive condition (2/04)

All existing trail roads on and adjacent to the sale area must be passable by two-wheel drive traffic for the duration of the sale.

### 4.4 - Access

#### 4.4.1 - Private property access (3/11)

Permission for access across private land is the responsibility of the Purchaser. Should the Purchaser desire to cross private land, a copy of the written permission from the private land-owner may be required by the DNR.

## 5 - Operations

### 5.2 - Conduct of Operations

#### 5.2.1 - Slash

##### 5.2.1.13 - Dispose of slash as directed (12/05)

Slash is to be disposed of as directed by the sale administrator.

#### 5.2.22 - Operating Caution

##### 5.2.22.1 - Operating caution (6/11)

It is recommended, but not required, that within Payment Unit(s) 6, cutting, skidding, and hauling occur during dry summer or frozen winter conditions. The reason for the recommendation is because wet ground.

#### 5.2.32 - Decking/landing restoration (9/13)

All decking and landing areas must have the surface area restored to a condition equal to or better than before. This is to ensure the proper regeneration of the stand. Wood debris, chips and "cookies" from trimmings must be removed or scattered away from landing and loading areas and may not be windrowed on the edge.

### 5.4 - Soil Protection

#### 5.4.3 - Erosion control (12/08)

Skid trails or haul roads may require erosion control structures or berms per direction of the Unit Manager or his/her representative.

## 6 - Safety and Fire Prevention

## 6.2 - Signing

### 6.2.1 - Road posting (9/09)

The Purchaser is responsible for posting and maintaining caution signs on County Road 426 prior to beginning operations. The road must be posted at appropriate distances from the sale area to warn of logging activity and truck traffic. Signs must be removed when harvest operations are suspended or completed.

## 7 - Other Conditions

### 7.2 - Extensions

#### 7.2.5 - Weather related extension (1/13)

If weather conditions during the operating period of this contract prevent harvesting, this sale may qualify for a weather related extension. If approved, the normal extension fee would be waived. To qualify, there must be a documented attempt each year to harvest in the difficult portion of the sale.

### 7.5 - Loss

#### 7.5.1 - Deteriorating timber (7/09)

The sale area has received damage from Eastern Dwarf Mistletoe. The Purchaser should harvest the wood as soon as possible. The Department of Natural Resources is held free of responsibility of any further damage or deterioration due to delay in harvesting.

## 8 - Performance and Settlement

### 8.3 - Uncompleted or Terminated Contracts

#### 8.3.2 - Completion of contract, other (11/16)

Areas of this sale may be difficult to log. Per General Condition & Requirement 3.5 - Adjustment of Quantity, there will be no adjustment to contract volume, but unharvested timber may not be considered a violation of General Condition & Requirement 8.3 - Uncompleted or Terminated Contract. These areas are located within Payment Unit 5.



Michigan Department of Natural Resources - Forest Resources Division

### TIMBER SALE MAP

This information provided by authority of Part 525, 1994 PA 451, as amended.

Forest Management Unit Crystal Falls	County Dickinson	Mappped By Jacob Siler	Date 08/30/2019	Sale Number 013-19	Year 19
Township 43N	Range 27W	Cruised By Jacob Siler	Page 1	of 1	
Section(s) and Subdivision(s) Sections: 16, 17, 18, 19, & 20	Scale 1:15,840				

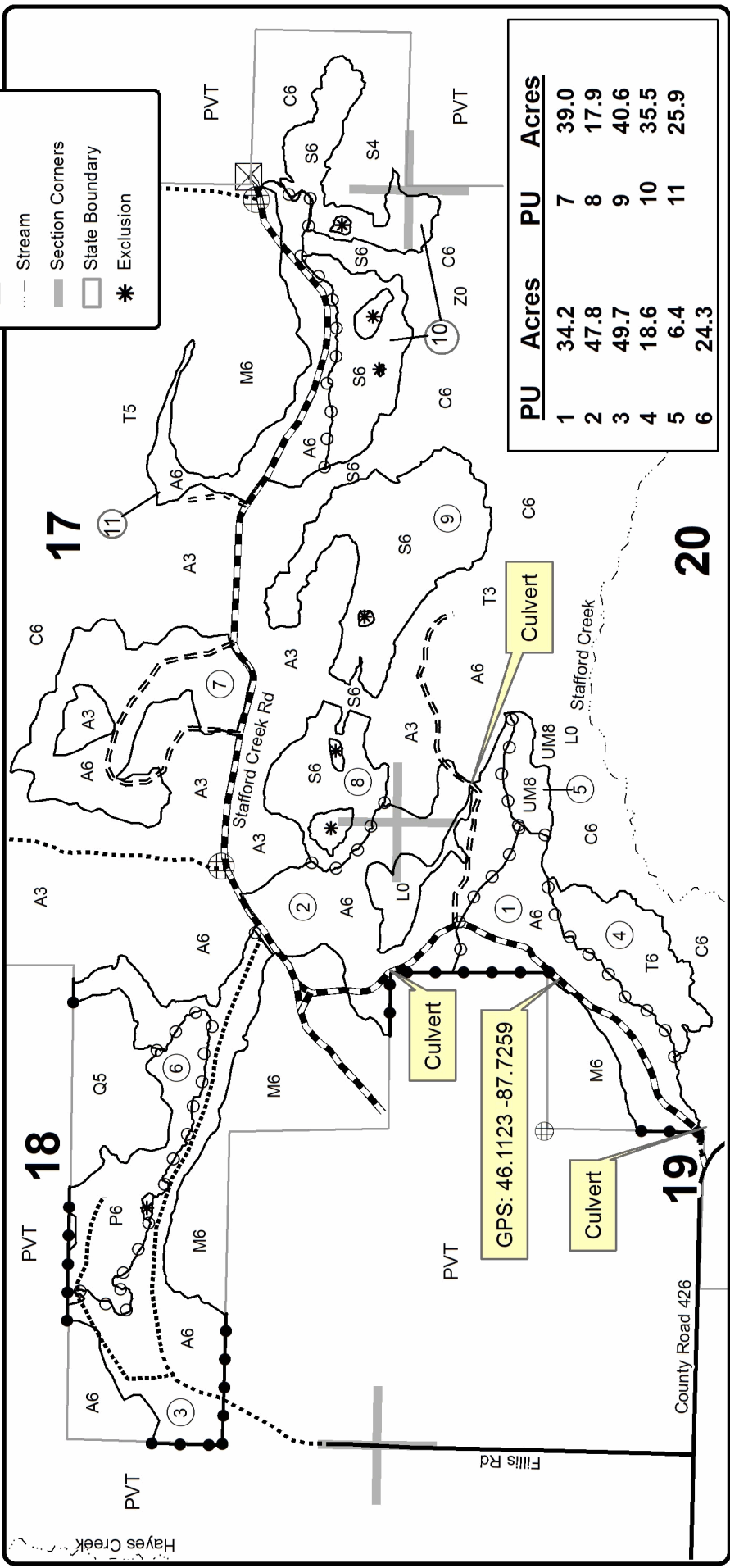
#### Cover Type

- A = Aspen
- B = Paper Birch
- C = Cedar
- D = Tread Bog
- E = Swamp Hdwoods
- F = Spruce Fir
- G = Grass
- H = Hemlock
- J = Jack Pine
- L = Lowland Brush
- LM = Lowland Mixed
- M = Mpl. Bch, Birch
- MC = Mixed Conifer
- MD = Mixed Deciduous
- N = Marsh
- O = Oak
- P = Lowland Poplar
- Q = Mixed Swamp Conifer
- R = Red Pine
- S = Black Spruce
- T = Tamarack
- U = Upland Brush
- UM = Upland Mixed
- V = Bog or Marsh
- W = White Pine
- X = Non Stocked
- Z = Water

#### Density

- 0 = Non Stocked
- 1 = Seeding Sapling Poor
- 2 = Seeding Sapling Medium
- 3 = Seeding Sapling Well
- 4 = Pole Timber Poor
- 5 = Pole Timber Medium
- 6 = Pole Timber Well
- 7 = Saw Timber Poor
- 8 = Saw Timber Medium
- 9 = Saw Timber Well

## Gobblers Gamble



Compartment 30 339.9 Acres



## TIMBER SALE INFORMATION

### Twisted Lines (12-021-19)

T41N, R28W, SEC. 5; T41N, R28W, SEC. 6; T41N, R28W, SEC. 7; T41N, R28W, SEC. 8.  
Dickinson County (Advertised Price \$50,184.25)

SALE NOTE: Access is through private land (see spec 4.4.1). Several units have Spruce Budworm damage (see spec 7.5.1). Payment Units 2 and 3 are limited to winter or dry ground only (see spec 5.2.3.1). Road work is required (see spec 4.1.8).

Access may be through private land.

A timber sale contract for this lump sum, sealed bid timber sale will be awarded to the responsible bidder offering the highest sealed bid price. Bids must be at or above the following advertised price for each species:

<u>PRODUCTS &amp; SPECIES</u>	<u>ESTIMATED UNITS*</u>	<u>ADVERTISED PRICE</u>
<b>Sawtimber</b>		
Basswood	3.80 MBF	\$ 142.00 / MBF
Paper Birch	6.90 MBF	\$ 81.00 / MBF
Red Maple	16.80 MBF	\$ 118.00 / MBF
Red Pine	7.00 MBF	\$ 151.00 / MBF
Sugar Maple	7.00 MBF	\$ 275.00 / MBF
White Ash	7.30 MBF	\$ 82.00 / MBF
White Pine	46.00 MBF	\$ 65.00 / MBF
<b>Pulpwood</b>		
Balsam Fir	42.00 Cords	\$ 16.05 / Cord
Mixed Aspen	426.00 Cords	\$ 43.15 / Cord
Mixed Hardwood	572.00 Cords	\$ 22.90 / Cord
Mixed Spruce	54.00 Cords	\$ 17.55 / Cord
Red Pine	43.00 Cords	\$ 66.75 / Cord
White Pine	152.00 Cords	\$ 30.00 / Cord

\* The total volume is statistically estimated within plus (+) or minus (-) 10.14 percent. The estimated units are final and not subject to adjustment. Prospective bidders are urged to examine this timber and to make their own estimates of quantity and quality.

### **BOND AND PAYMENT SCHEDULE:**

1. A bond in the amount of \$2,509.00 to insure faithful performance of the conditions of the contract will be deposited by the successful bidder within 21 days of the sale award.
2. Cutting in any sale or unit without the required advance payment would be considered a trespass.
3. Total payment must be paid in advance or according to the following schedule :
  - (a) Ten percent (10%) of the sale value must be paid within 21 days of the sale award.
  - (b) The 10% down payment will be credited towards the first unit cut.
  - (c) Payment for each of the following units must be made before cutting begins in that unit:

PAYMENT UNIT NUMBER	PERCENT OF TOTAL SALE VALUE
01	7.2%
02	11.9%
03	13.5%
04	2.4%
05	6.1%
06	12.4%
07	17.7%
08	9.3%
09	5.4%
10	3.6%
11	10.5%

4. If no cutting takes place, the 10% down payment will not be refunded.
5. Operations on the contract issued will terminate on 06/29/2023.

**Description of Timber by Payment Unit (PU)**

PU	MARKET GROUP	PRODUCT	QUANTITY	UNIT	ACRES	ADVERTISE PRICE
1		Basswood	3.8	MBF	7.3	\$3,604.90
		Sugar Maple	3.4	MBF		
		White Ash	2.2	MBF		
		Mixed Aspen	16.0	Cords		
		Mixed Hardwood	55.0	Cords		
2		Paper Birch	0.5	MBF	19.4	\$5,976.20
		Red Maple	2.1	MBF		
		Balsam Fir	2.0	Cords		
		Mixed Aspen	69.0	Cords		
		Mixed Hardwood	107.0	Cords		
		Mixed Spruce	13.0	Cords		
3		Paper Birch	2.3	MBF	19.1	\$6,780.95
		Red Maple	4.7	MBF		
		Sugar Maple	1.7	MBF		
		White Ash	1.3	MBF		
		Balsam Fir	5.0	Cords		
		Mixed Aspen	56.0	Cords		
		Mixed Hardwood	122.0	Cords		
		Mixed Spruce	10.0	Cords		
		4		Mixed Aspen		
<i>Quaking Aspen</i>	4.0			<i>Cords</i>		
Mixed Hardwood	44.0			Cords		
5		Paper Birch	3.6	MBF	8.1	\$3,064.35
		Red Maple	1.8	MBF		
		Balsam Fir	7.0	Cords		
		Mixed Aspen	36.0	Cords		
		Mixed Hardwood	36.0	Cords		
		Mixed Spruce	4.0	Cords		
6		Paper Birch	0.5	MBF	16.3	\$6,240.10
		Balsam Fir	13.0	Cords		
		Mixed Aspen	103.0	Cords		
		Mixed Hardwood	66.0	Cords		
		Mixed Spruce	2.0	Cords		
7		Red Maple	6.1	MBF	30.0	\$8,849.35
		White Ash	3.8	MBF		
		White Pine	19.6	MBF		
		Balsam Fir	3.0	Cords		
		Mixed Aspen	41.0	Cords		
		Mixed Hardwood	108.0	Cords		
		Mixed Spruce	19.0	Cords		
		White Pine	64.0	Cords		
8		White Pine	26.4	MBF	22.1	\$4,684.05
		Balsam Fir	8.0	Cords		
		Mixed Aspen	3.0	Cords		
		Mixed Spruce	4.0	Cords		
		White Pine	88.0	Cords		
9		Red Pine	4.2	MBF	5.2	\$2,712.10
		Mixed Aspen	12.0	Cords		
		Mixed Hardwood	4.0	Cords		
		Red Pine	22.0	Cords		
10		Red Pine	2.8	MBF	2.3	\$1,824.55
		Red Pine	21.0	Cords		
11		Red Maple	2.1	MBF	6.6	\$5,267.50
		Sugar Maple	1.9	MBF		
		Balsam Fir	4.0	Cords		



**Description of Timber by Payment Unit (PU), con't**

PU	MARKET GROUP	PRODUCT	QUANTITY	UNIT	ACRES	ADVERTISE PRICE
11 con't	Mixed Aspen	Pulpwood	86.0	Cords		
	Mixed Hardwood		30.0	Cords		
	Mixed Spruce		2.0	Cords		
TOTAL:			94.8	MBF		
TOTAL:			1,289.0	Cords		

# Sale Specific Conditions & Requirements

**Sale Name: Twisted Lines**

**Sale Number: 12-021-19 Seq#: 2**

## 1 - Sale Area

### 1.2 - Boundaries

#### 1.2.1 - Painted boundaries (1/14)

The sale boundary and Payment Unit boundaries are marked and identified by blue, red and yellow paint, along with a road. Exterior sale boundary lines against private property are marked with blue paint. Exterior sale boundary lines against state are marked with red paint, with the exception of the west boundary of Payment Unit 6, which is unpainted and identified by the road. Interior Payment Unit boundaries are marked with yellow paint. The painted boundary line trees are not Included Timber and are to be protected.

## 2 - Timber Specifications

### 2.1 - Included Timber

#### 2.1.1 - Clearcut unit(s) with unmerchantable trees (6/14)

Within Payment Unit(s) 6 and 11, cut all trees that are two (2) inches or more at DBH, except do not cut cedar, pine, hemlock, and oak. In addition, within Payment Unit 6, do not cut any spruce/fir 4 inches or less at DBH. Also, within Payment Unit 11, do not cut any birch.

#### 2.1.3 - Cut tree marked unit(s) (12/08)

Within Payment Unit(s) 1, 4, and 10, all trees are designated for cutting when marked with orange paint above and below stump height, regardless of merchantability.

#### 2.1.4 - Designated timber unit(s) (6/17)

Within Payment Unit(s) 2 and 5, all hardwoods are designated for cutting which meet minimum piece specifications in 2.2 - Utilization, except do not cut oak. In addition, cut all spruce/fir that are 4 inches or more at DBH.

Within Payment Unit(s) 3, cut all aspen, birch, and ash that are 8 inches or more at DBH. In addition, cut all maple that are 12 inches or more at DBH. Also, cut all spruce/fir that are 4 inches or more at DBH.

Within Payment Unit(s) 7, all pine are designated for cutting when marked with orange paint. In addition, cut all aspen, birch, maple, ironwood, and ash that are 8 inches or more at DBH. Also, cut all spruce/fir that are 4 inches or more at DBH. Do not cut any trees that are marked with green paint.

Within Payment Unit(s) 8, all pine are designated for cutting when marked with orange paint. In addition, cut all spruce/fir that are 4 inches or more at DBH. Also, cut all other species that are 12 inches or more at DBH.

Within Payment Unit(s) 9, all pine are designated for cutting when marked with orange paint. In addition, all other species are designated for cutting which meet minimum piece specifications in 2.2 - Utilization.

## 3 - Payments

### 3.4 - Damaged Timber

#### 3.4.1 - Damaged timber (7/16)

General Condition and Requirement 3.4 Damaged Timber, defines liquidated damages for undesignated live merchantable trees which are cut or injured. In addition, extreme care should be taken to avoid damage to tree seedlings and saplings.

Within Payment Unit 10, if more than 10% of the tree seedlings or saplings (1/4" to 4.5" DBH) within a specified portion of the sale area are damaged, liquidated damages will be assessed at 100 dollars per acre for all acreage within that specified portion that was damaged.

## 4 - Transportation

### 4.1 - Construction

#### 4.1.4 - Timber removed for construction (12/09)

Trees cut or damaged in the process of pre-approved road, landing or skid trail construction will be decked in an area separate from other Designated Timber and not removed until measured by the sale administrator. Payment will be made at the specified Purchase Unit Price.

#### 4.1.7 - Road closure (10/11)

All new roads built into the sale must be blocked to vehicle traffic upon completion of the sale. In general, this will require constructing an earthen berms at strategic locations. These roads must be rendered impassable to cars and trucks.

#### 4.1.8 - Road work (1) (8/07)

The following road work is required: The Purchaser will supply and install a culvert according to the DEGL permit at the location shown on the Timber Sale Map. The permit for the culvert will be obtained by the DNR. The culvert must be installed before any operations begin.

### 4.2 - Maintenance

#### 4.2.3 - Road maintenance (8/13)

The following road maintenance is required: All access roads must be left in a condition equal to or better than when operations begin.

### 4.3 - Public Right-of-Way

#### 4.3.2 - County R-O-W (12/06)

The county must be contacted prior to decking on the county road R-O-W. This applies to Payment Unit 6 and Calumet Mine Road.

### 4.4 - Access

#### 4.4.1 - Private property access (3/11)

Permission for access across private land is the responsibility of the Purchaser. Should the Purchaser desire to cross private land, a copy of the written permission from the private land-owner may be required by the DNR.

#### 4.4.3 - Access gate (12/08)

The access gate must be locked at the completion of each day unless otherwise approved by the sale administrator.

## 5 - Operations

### 5.2 - Conduct of Operations

#### 5.2.1 - Slash

##### 5.2.1.13 - Dispose of slash as directed (12/05)

Slash is to be disposed of as directed by the sale administrator.

#### 5.2.3 - Operating Restrictions

##### 5.2.3.1 - Operating restrictions (9/11)

Within Payment Unit(s) 2 and 3, unless changed by written agreement, cutting, skidding, and hauling are limited to frozen or dry ground conditions. This restriction is because of wet soils.

##### 5.2.3.3 - Bark slippage restriction (3/09)

Within Payment Unit(s) 1 and 4, unless changed by written agreement, cutting and skidding are not permitted during the period of April 1 to July 15. This restriction is because of bark slippage.

##### 5.2.3.5 - Oak wilt restriction (1/18)

Within Payment Unit(s) 5, unless changed by written agreement, cutting, skidding, hauling within the sale and brushing of access roads to the sale are not permitted during the period of April 15 to July 15. Operations may be allowed if specific steps are taken to prevent damaging uncut oak during the high risk period. Those steps may include completing all road brushing before April 15th and clearing a tree-length buffer along uncut oak cover before April 15th. This is necessary to reduce the spread of oak wilt. For more information, contact the Unit Manager or his/her representative.

#### 5.2.32 - Decking/landing restoration (9/13)

All decking and landing areas must have the surface area restored to a condition equal to or better than before. This is to ensure the proper regeneration of the stand. Wood debris, chips and "cookies" from trimmings must be removed or scattered away from landing and loading areas and may not be windrowed on the edge.

#### 5.4 - Soil Protection

##### 5.4.1 - Rutting restriction, general (7/16)

Operations are to cease immediately if equipment and weather conditions result in rutting of roads and/or skid trails which is 12 inches or greater in depth and 50 feet in length. The Unit Manager or his/her representative may restrict hauling and/or skidding if ruts exceed the specified depth. With the Unit Manager or his/her representative's approval, the Purchaser may return to the area when the risk of rutting has decreased.

##### 5.4.6 - Wet area protection (5/10)

No harvesting operations, including skidding and felling, are to take place within the vernal pond areas or drainages. When harvesting occurs, there should be no disturbance to the vernal pond depression. All equipment, trees and tops should be kept out of this area. Within 100 feet of the pond, equipment should only be used when the soil is in a dry or frozen condition. Care must be taken by the Purchaser to identify and avoid operating in these areas of the timber sale.

### 6 - Safety and Fire Prevention

#### 6.2 - Signing

##### 6.2.1 - Road posting (9/09)

The Purchaser is responsible for posting and maintaining caution signs on Calumet Mine Road prior to beginning operations. The road must be posted at appropriate distances from the sale area to warn of logging activity and truck traffic. Signs must be removed when harvest operations are suspended or completed. The Purchaser will provide these signs.

### 7 - Other Conditions

#### 7.5 - Loss

##### 7.5.1 - Deteriorating timber (7/09)

The sale area has received damage from Spruce Budworm. The Purchaser should harvest the wood as soon as possible. The Department of Natural Resources is held free of responsibility of any further damage or deterioration due to delay in harvesting.



Sale Number	Year
12-021-19	19

### TIMBER SALE MAP

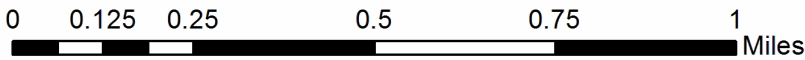
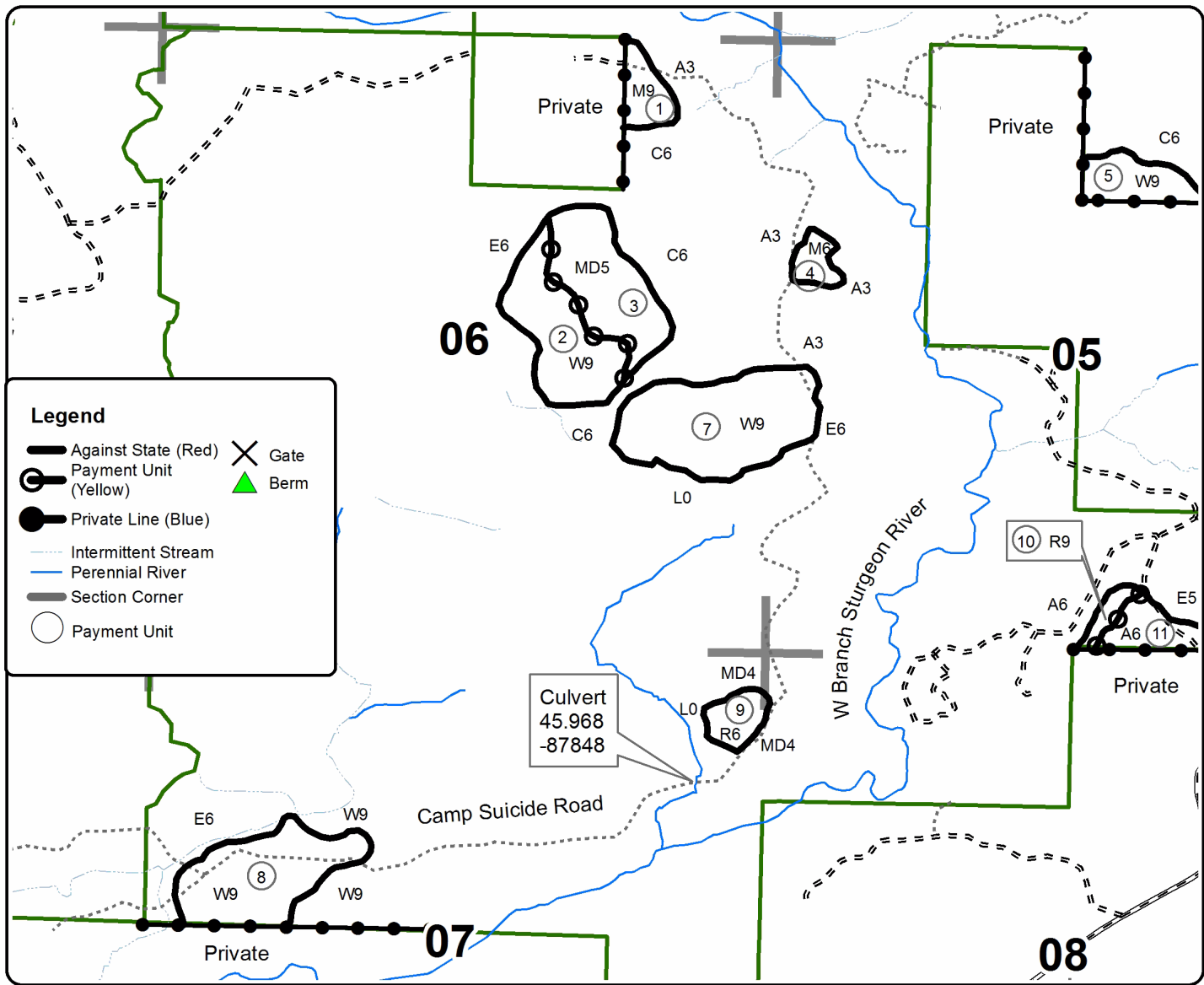
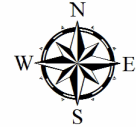
This information provided by authority of Part 525, 1994 PA 451, as amended.

Forest Management Unit Crystal Falls Management Unit	County Dickinson Co.	Mapped By Dickie Goupell	Date 9-20-2019	Page 1	of 2
Township 40N	Range 29W	Section(s) and Subdivision(s) Sec 5 SWNW, NWNE, SENE, NWSW, SWSE Sec 6 NENE, S1/2NE, N1/2SE Sec 7 S1/2NW, NENE Sec 8 NWNW	Scale 1:15,840		

Cover Type				Density	
A = Aspen	H = Hemlock	N = Marsh	U = Upland Brush	0 = Non Stocked	5 = Pole Timber Medium
B = Paper Birch	J = Jack Pine	O = Oak	UM = Upland Mixed	1 = Seedling Sapling Poor	6 = Pole Timber Well
C = Cedar	L = Lowland Brush	P = Lowland Poplar	V = Bog or Marsh	2 = Seedling Sapling Medium	7 = Saw Timber Poor
D = Tread Bog	LM = Lowland Mixed	Q = Mixed Swamp Conifer	W = White Pine	3 = Seedling Sapling Well	8 = Saw Timber Medium
E = Swamp Hdwoods	M = Mpl, Bch, Brch	R = Red Pine	X = Non Stocked	4 = Pole Timber Poor	9 = Saw Timber Well
F = Spruce Fir	MC = Mixed Conifer	S = Black Spruce	Z = Water		
G = Grass	MD = Mixed Deciduous	T = Tamarack			

PU Acres	PU Acres	PU Acres
1 7.3	6 16.3	11 6.6
2 19.4	7 30.0	
3 19.1	8 22.1	
4 4.3	9 5.2	
5 8.1	10 2.3	

## Twisted Lines Compartment 70 Acres 140.7





# TIMBER SALE MAP

This information provided by authority of Part 525, 1994 PA 451, as amended.

Sale Number	Year
12-021-19	19

Forest Management Unit	County	Mapped By
Crystal Falls Management Unit	Dickinson Co.	Dickie Goupell
		Cruised By
		Dickie Goupell

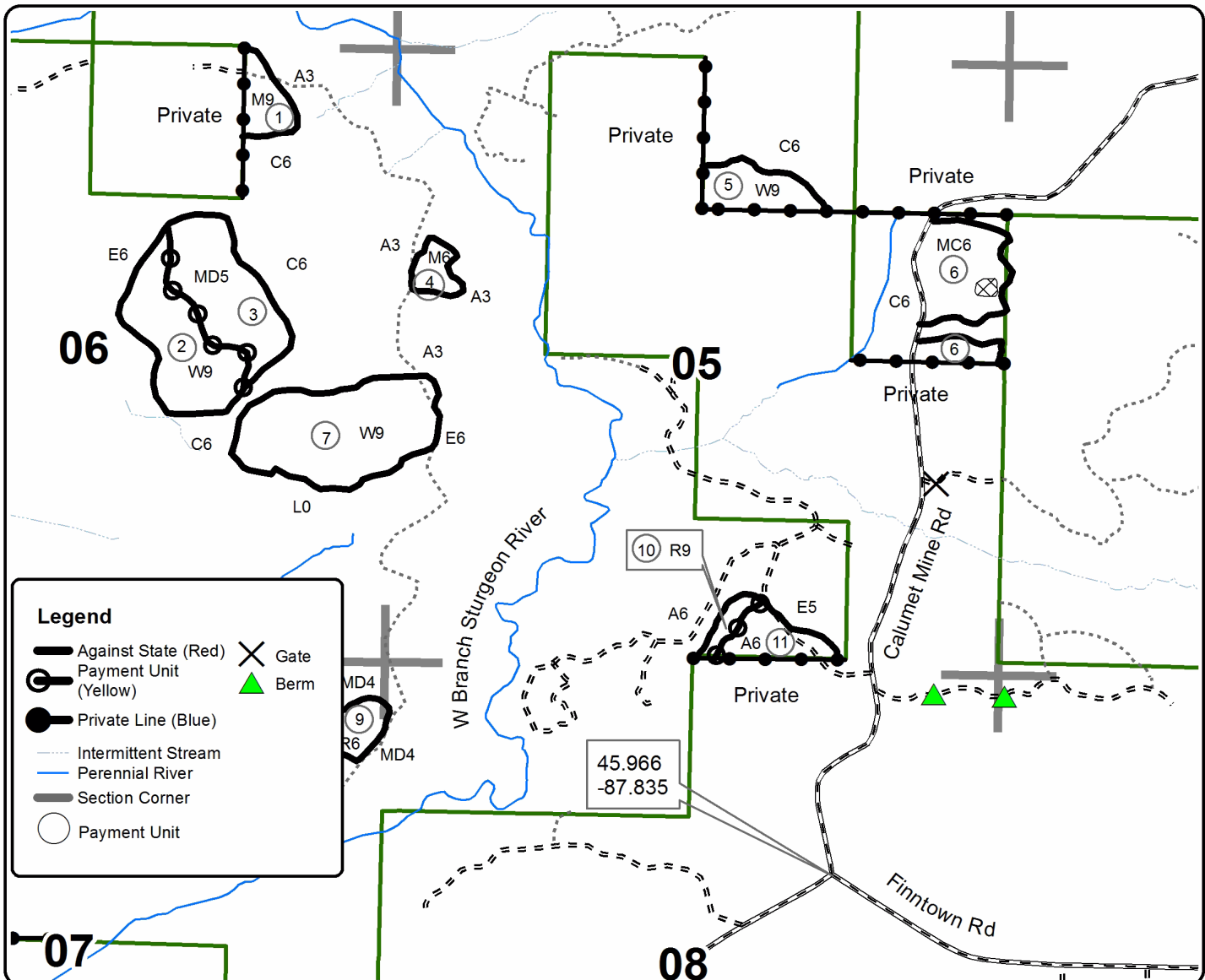
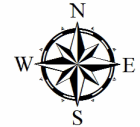
Date	Page	of
9-20-2019	2	2

Township	Range	Section(s) and Subdivision(s)	Scale
40N	29W	Sec 5 SWNW, NWNE, SENE, NWSW, SWSE Sec 6 NENE, S1/2NE, N1/2SE Sec 7 S1/2NW, NENE Sec 8 NWNW	1:15,840

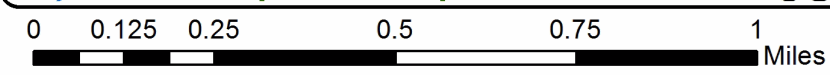
Cover Type				Density			
A = Aspen	H = Hemlock	N = Marsh	U = Upland Brush	0 = Non Stocked	5 = Pole Timber Medium		
B = Paper Birch	J = Jack Pine	O = Oak	UM = Upland Mixed	1 = Seedling Sapling Poor	6 = Pole Timber Well		
C = Cedar	L = Lowland Brush	P = Lowland Poplar	V = Bog or Marsh	2 = Seedling Sapling Medium	7 = Saw Timber Poor		
D = Treed Bog	LM = Lowland Mixed	Q = Mixed Swamp Conifer	W = White Pine	3 = Seedling Sapling Well	8 = Saw Timber Medium		
E = Swamp Hdwoods	M = Mpl, Bch, Brch	R = Red Pine	X = Non Stocked	4 = Pole Timber Poor	9 = Saw Timber Well		
F = Spruce Fir	MC = Mixed Conifer	S = Black Spruce	Z = Water				
G = Grass	MD = Mixed Deciduous	T = Tamarack					

PU Acres	PU Acres	PU Acres	PU Acres
1 7.3	6 16.3	11 6.6	
2 19.4	7 30.0		
3 19.1	8 22.1		
4 4.3	9 5.2		
5 8.1	10 2.3		

## Twisted Lines Compartment 70 Acres 140.7



45.966  
-87.835



**TIMBER SALE INFORMATION**

Valley Hopper HDWD (12-022-19)

T41N, R30W, SEC. 16; T41N, R30W, SEC. 17; T41N, R30W, SEC. 20; T41N, R30W, SEC. 21; T41N, R30W, SEC. 22.  
Dickinson County (Advertised Price \$25,594.30)

SALE NOTE: Payment Unit 1 has steep terrain. The DNR will obtain the necessary stream crossing permit.

A timber sale contract for this lump sum, sealed bid timber sale will be awarded to the responsible bidder offering the highest sealed bid price. Bids must be at or above the following advertised price for each species:

<u>PRODUCTS &amp; SPECIES</u>	<u>ESTIMATED UNITS*</u>	<u>ADVERTISED PRICE</u>
<b>Sawtimber</b>		
Basswood	20.50 MBF	\$ 123.00 / MBF
Paper Birch	7.30 MBF	\$ 70.00 / MBF
Sugar Maple	7.40 MBF	\$ 238.00 / MBF
White Ash	10.90 MBF	\$ 71.00 / MBF
<b>Pulpwood</b>		
Basswood	192.00 Cords	\$ 8.80 / Cord
Mixed Hardwood	346.00 Cords	\$ 19.85 / Cord
Quaking Aspen	303.00 Cords	\$ 37.40 / Cord
White Spruce	9.00 Cords	\$ 15.20 / Cord

\* The total volume is statistically estimated within plus (+) or minus (-) 10.75 percent. The estimated units are final and not subject to adjustment. Prospective bidders are urged to examine this timber and to make their own estimates of quantity and quality.

**BOND AND PAYMENT SCHEDULE:**

1. A bond in the amount of \$1,792.00 to insure faithful performance of the conditions of the contract will be deposited by the successful bidder within 21 days of the sale award.
2. Cutting in any sale or unit without the required advance payment would be considered a trespass.
3. Total payment must be paid in advance or according to the following schedule :
  - (a) Ten percent (10%) of the sale value must be paid within 21 days of the sale award.
  - (b) The 10% down payment will be credited towards the first unit cut.
  - (c) Payment for each of the following units must be made before cutting begins in that unit:

<u>PAYMENT UNIT NUMBER</u>	<u>PERCENT OF TOTAL SALE VALUE</u>
01	48.2%
02	17.6%
03	34.2%
4. If no cutting takes place, the 10% down payment will not be refunded.
5. Operations on the contract issued will terminate on 06/29/2022.

**Description of Timber by Payment Unit (PU)**

PU	MARKET GROUP	PRODUCT	QUANTITY	UNIT	ACRES	ADVERTISE PRICE
1	Basswood	Sawtimber	9.6	MBF	34.6	\$12,338.05
	Paper Birch		7.3	MBF		
	Sugar Maple		6.0	MBF		
	White Ash		9.5	MBF		
	Basswood	Pulpwood	39.0	Cords		
	Mixed Hardwood		155.0	Cords		
	Quaking Aspen		137.0	Cords		
2	Basswood	Sawtimber	10.9	MBF	14.0	\$4,494.30
	Sugar Maple		0.5	MBF		
	White Ash		1.4	MBF		
	Basswood	Pulpwood	127.0	Cords		
	Mixed Hardwood		52.0	Cords		
	Quaking Aspen		21.0	Cords		
3	Sugar Maple	Sawtimber	0.9	MBF	9.9	\$8,761.95
	Basswood	Pulpwood	26.0	Cords		
	Mixed Hardwood		139.0	Cords		
	Quaking Aspen		145.0	Cords		
	White Spruce		9.0	Cords		
TOTAL:			46.1	MBF		
TOTAL:			850.0	Cords		



## Sale Specific Conditions & Requirements

**Sale Name: Valley Hopper HDWD**

**Sale Number: 12-022-19 Seq#: 2**

### 1 - Sale Area

#### 1.2 - Boundaries

##### 1.2.1 - Painted boundaries (9/19)

The sale boundary and Payment Unit boundaries are marked and identified by blue and red paint. Exterior sale boundary lines against private property are marked with blue paint. Exterior sale boundary lines against state are marked with red paint. The painted boundary line trees are not Included Timber and are to be protected unless marked with orange paint.

### 2 - Timber Specifications

#### 2.1 - Included Timber

##### 2.1.2 - Clearcut unit(s) w/o unmerchantable trees (8/11)

Within Payment Unit(s) 3, cut all trees which meet minimum piece specifications in 2.2 Utilization, except do not cut red pine, white pine, cedar, hemlock, and oak.

##### 2.1.3 - Cut tree marked unit(s) (12/08)

Within Payment Unit(s) 1 and 2, all trees are designated for cutting when marked with orange paint above and below stump height, regardless of merchantability. In addition, cut all aspen.

### 3 - Payments

#### 3.4 - Damaged Timber

##### 3.4.1 - Damaged timber (7/16)

General Condition and Requirement 3.4 Damaged Timber, defines liquidated damages for undesigned live merchantable trees which are cut or injured. No damage is acceptable to undesigned live merchantable trees. Within the sale area, if more than 10% of trees (> 4.5" DBH) within a specified area of the sale are damaged, liquidated damages will be assessed for all trees damaged. Rates will be in accordance with General Condition and Requirement 3.4 Damaged Timber.

### 4 - Transportation

#### 4.1 - Construction

##### 4.1.1 - Stream crossings, general (3/11)

All stream crossing structures will be temporary and therefore, shall be provided by the Purchaser, and must be removed upon completion of the sale. All permits for stream crossings will be provided by the DNR.

##### 4.1.6 - Road construction (1/09)

Construction of new roads or improvements of existing roads shall be done in such a way as to minimize the environmental and visual impacts. Merchantable trees shall be cut and utilized unless otherwise directed. Non-merchantable trees shall be severed and laid flat on the ground. Slash shall be scattered, and not left in windrows and kept a minimum of 10 feet back from the road edge. Stumps shall be set upright, not left on edge, and be moved at least 10 feet away from the road edge. Disturbed soil shall be feathered into the woods and not left in berms or windrows.

##### 4.1.7 - Road closure (10/11)

All new roads built into the sale must be blocked to vehicle traffic upon completion of the sale. Overgrown roads that are reopened shall be considered new roads. In general, this will require constructing a four (4') foot high berm of stumps and logs covered with earth. These roads must be rendered impassable to cars and trucks. Contact the sale administrator for specific details of design and placement.

#### 4.3 - Public Right-of-Way

##### 4.3.2 - County R-O-W (12/06)

The county must be contacted prior to crossing or harvesting in the county road R-O-W. This applies to Payment Unit 3 and County Road 607.

#### 4.4 - Access

##### 4.4.1 - Private property access (3/11)

Permission for access across private land is the responsibility of the Purchaser.

### 5 - Operations

#### 5.2 - Conduct of Operations

##### 5.2.1 - Slash

###### 5.2.1.13 - Dispose of slash as directed (12/05)

Slash is to be disposed of as directed by the sale administrator.

##### 5.2.3 - Operating Restrictions

###### 5.2.3.3 - Bark slippage restriction (3/09)

Within Payment Unit(s) 1 and 2, unless changed by written agreement, cutting and skidding are not permitted during the period of April 15 to July 15. This restriction is because of bark slippage.

###### 5.2.3.4 - Oak wilt restriction, no exceptions (1/18)

Within Payment Unit(s) 1 and 2, cutting, skidding, hauling within the sale and brushing of access roads to the sale are not permitted during the period of April 15 to July 15. No exceptions will be granted. This is necessary to reduce the spread of oak wilt.

#### 5.4 - Soil Protection

##### 5.4.1 - Rutting restriction, general (7/16)

Operations are to cease immediately if equipment and weather conditions result in rutting of roads and/or skid trails which is 12 inches or greater in depth and 50 feet in length. The Unit Manager or his/her representative may restrict hauling and/or skidding if ruts exceed the specified depth. With the Unit Manager or his/her representative's approval, the Purchaser may return to the area when the risk of rutting has decreased.

##### 5.4.3 - Erosion control (12/08)

Skid trails or haul roads may require erosion control structures or berms per direction of the Unit Manager or his/her representative.

### 6 - Safety and Fire Prevention

#### 6.2 - Signing

##### 6.2.1 - Road posting (9/09)

The Purchaser is responsible for posting and maintaining caution signs on County Rd 607 prior to beginning operations. The road must be posted at appropriate distances from the sale area to warn of logging activity and truck traffic. Signs must be removed when harvest operations are suspended or completed. The Purchaser will provide these signs.



# TIMBER SALE MAP

This information provided by authority of Part 525, 1994 PA 451, as amended.

Sale Number	Year
12 - 022	19

Forest Management Unit Crystal Falls	County Dickinson	Mapped By Church	Date 9/25/2019	Page 1	of 1
Township 41N	Range 30W	Section(s) and Subdivision(s) 20: NWNE, S1/2NE 21: N1/2NW, SWNW, NENE 22: NWNW	Scale 1:15,840		

Cover Type				Density	
A = Aspen	H = Hemlock	N = Marsh	U = Upland Brush	0 = Non Stocked	5 = Pole Timber Medium
B = Paper Birch	J = Jack Pine	O = Oak	UM = Upland Mixed	1 = Seedling Sapling Poor	6 = Pole Timber Well
C = Cedar	L = Lowland Brush	P = Lowland Poplar	V = Bog or Marsh	2 = Seedling Sapling Medium	7 = Saw Timber Poor
D = Tread Bog	LM = Lowland Mixed	Q = Mixed Swamp Conifer	W = White Pine	3 = Seedling Sapling Well	8 = Saw Timber Medium
E = Swamp Hdwoods	M = Mpl, Bch, Brch	R = Red Pine	X = Non Stocked	4 = Pole Timber Poor	9 = Saw Timber Well
F = Spruce Fir	MC = Mixed Conifer	S = Black Spruce	Z = Water		
G = Grass	MD = Mixed Deciduous	T = Tamarack			

### PU Acres

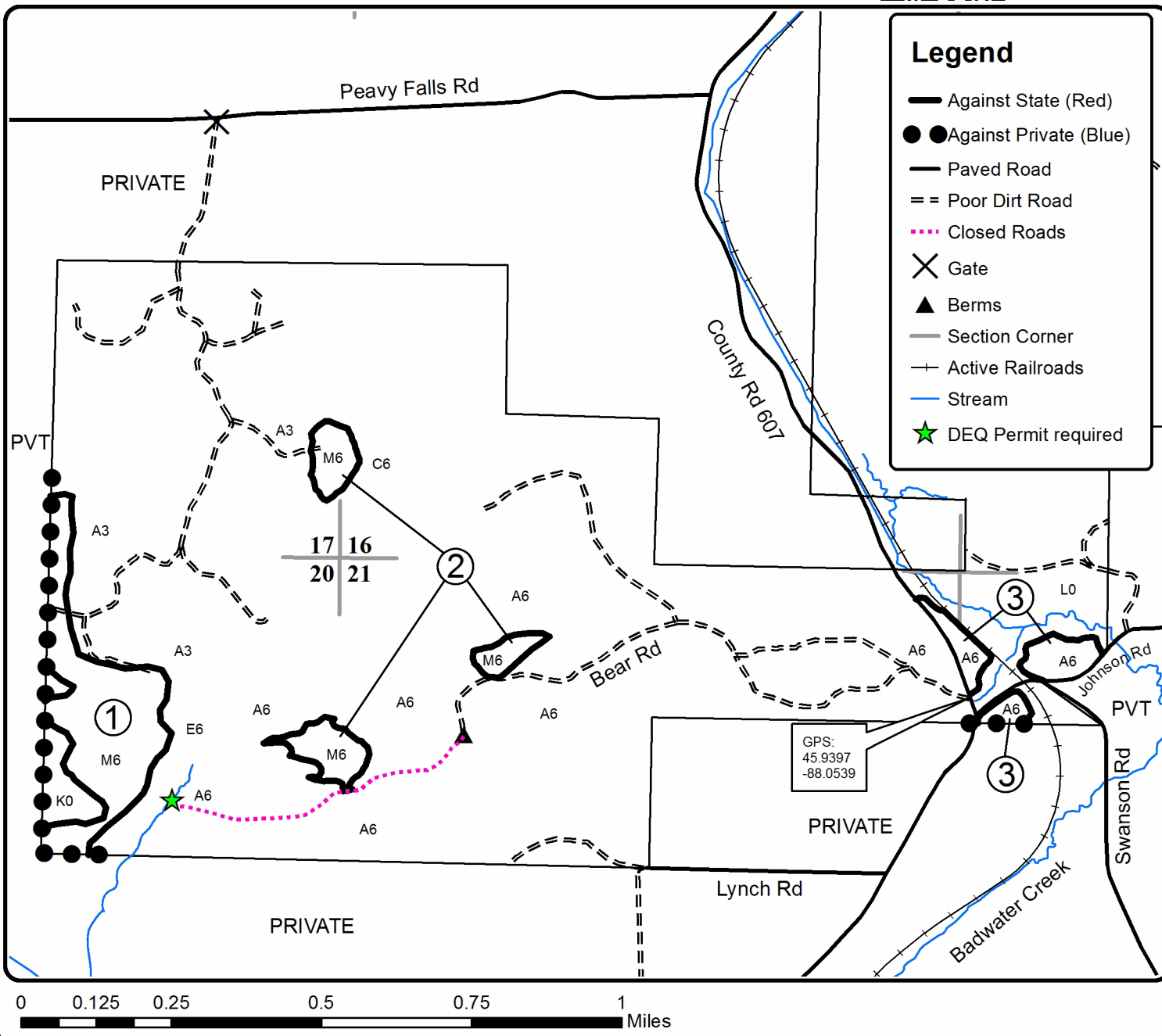
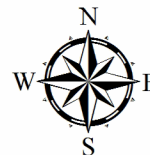
1	34.6
2	14.0
3	9.9

## Valley Hopper HDWD

### Compartment 73 & 75

#### 58.5 Acres

QR Code for GeoRef PDF





Weber Pine (12-012-19)

T43N, R29W, SEC. 6; T44N, R29W, SEC. 30; T44N, R29W, SEC. 31; T44N, R30W,

In response to the notice of sale to be held 8:30 a.m. (local time) on April 8, 2020, I am hereby submitting my sealed bid (firm offer) for the following forest products to be cut. Bids for individual species must be at or above the advertised price. All non-responsive bid forms may be rejected.

<u>PRODUCTS &amp; SPECIES</u>	<u>ESTIMATED VOLUME*</u>	<u>ADVERTISED PRICE</u>	<u>BID PRICE/UNIT</u>
<b>Sawtimber</b>			
Paper Birch	1.70 MBF	\$ 70.00/MBF	\$ _____
Red Maple	4.60 MBF	\$ 102.00/MBF	\$ _____
Red Pine	429.20 MBF	\$ 131.00/MBF	\$ _____
Sugar Maple	3.70 MBF	\$ 238.00/MBF	\$ _____
<b>Pulpwood</b>			
Balsam Fir	137.00 Cords	\$ 13.90/Cord	\$ _____
Basswood	17.00 Cords	\$ 8.80/Cord	\$ _____
Jack Pine	249.00 Cords	\$ 37.35/Cord	\$ _____
Mixed Aspen	1,591.00 Cords	\$ 37.40/Cord	\$ _____
Mixed Hardwood	215.00 Cords	\$ 19.85/Cord	\$ _____
Mixed Spruce	358.00 Cords	\$ 15.20/Cord	\$ _____
Red Pine	1,997.00 Cords	\$ 57.85/Cord	\$ _____
Tamarack	119.00 Cords	\$ 2.65/Cord	\$ _____

\*These estimated volumes are final and not subject to adjustment. Prospective bidders are urged to examine this timber and to make their own estimates of quantity and quality.

I understand that any or all bids may be rejected. All bids must be signed and all bid items must be bid or the bid form may be rejected. I also understand that consideration and awarding a contract will be based upon my past performance and ability to complete the contract based upon equipment and staffing subject to my control.

FEDERAL ID: \_\_\_\_ - \_\_\_\_ - \_\_\_\_ or SOCIAL SECURITY NUMBER: \_\_\_\_ - \_\_\_\_ - \_\_\_\_

Company or individual bidding: \_\_\_\_\_

Company representative's name: \_\_\_\_\_

Address: \_\_\_\_\_

City: \_\_\_\_\_ State: \_\_\_\_\_ Zip: \_\_\_\_\_

IF AVAILABLE, PLEASE PLACE THE PERSONALIZED LABEL FROM YOUR PROSPECTUS IN THE ABOVE BOX.

Individual or company representative's signature: \_\_\_\_\_ Date: \_\_\_\_\_

Phone number : \_\_\_\_\_ Email (optional): \_\_\_\_\_

**THE WINNING BIDDER MUST COMPLETE THE VERIFICATION OF WORKER'S DISABILITY COMPENSATION ACT COMPLIANCE (ON REVERSE SIDE IF DOUBLE SIDED) WITHIN 21 DAYS OF SALE AWARD DATE**



# TIMBER SALE VERIFICATION OF WORKER'S DISABILITY COMPENSATION ACT COMPLIANCE

As required by Act 317, P.A. 1969 (Worker's Compensation) and  
Part 5 of Act 451 of 1994, as amended.

FOR DEPARTMENT USE ONLY	
Sale Number (XX - XXX - XX - XX)	
Forest Management Unit:	

## VERIFICATION OF WORKER'S DISABILITY COMPENSATION ACT COMPLIANCE

- This verification must be completed and submitted within 21 days of contract award and prior to the issuance of the timber sale contract.
- In addition, if boxes 2B or 2C are checked, then Notice of Exclusion or Certificate of Insurance must be submitted within twenty-one (21) days of the contract award and prior to the issuance of the timber sale contract.
- All information must be typed or printed except for written signatures.

Please Check Appropriate Categories:

1. My business is organized as (you **must** check one of the boxes below):
  - A.  Sole Proprietorship (individual)
  - B.  Partnership
  - C.  Corporation
2. You **must** check one of the boxes below:
  - A.  I certify my business is a sole proprietorship and it has no employees but the sole proprietor. I am not subject to the Worker's Compensation Laws.
  - B.  I certify my business has satisfied its obligation to the Worker's Compensation Act through the use of an approved Notice of Exclusion (BWC-337, Rev. 5/96). I will provide a copy of the Notice of Exclusion within 21 days of the contract award. (For questions or a copy of the BWC-337, please call the Worker's Compensation Bureau at 517-322-1195).
  - C.  I certify my business has a Worker's Compensation Policy. I will provide an original Certificate of Insurance within twenty-one (21) days of the contract award.
3. If you have checked item 2(A) or 2(B), you **must** indicate the number of **both** full-time and part-time employees, other than yourself, including family members and active partners (if none, you must enter "0").

\_\_\_\_\_ Full-time Employees

\_\_\_\_\_ Part-time Employees

Name of Business		Federal ID (or) Social Security No.	
Address		Telephone (       )	
City	State	ZIP	

*I hereby certify that the above information is true and correct. I agree to notify the Michigan DNR of any changes that occur in factors affecting my coverage during any of my present and future operations.*

\_\_\_\_\_  
Signature of Owner or Authorized Representative

\_\_\_\_\_  
Title

\_\_\_\_\_  
Date

Please complete the "SEALED BID" information on the next page

Valley Hopper HDWD (12-022-19)

T41N, R30W, SEC. 16; T41N, R30W, SEC. 17; T41N, R30W, SEC. 20; T41N,

In response to the notice of sale to be held 8:30 a.m. (local time) on April 8, 2020, I am hereby submitting my sealed bid (firm offer) for the following forest products to be cut. Bids for individual species must be at or above the advertised price. All non-responsive bid forms may be rejected.

<u>PRODUCTS &amp; SPECIES</u>	<u>ESTIMATED VOLUME*</u>	<u>ADVERTISED PRICE</u>	<u>BID PRICE/UNIT</u>
<b>Sawtimber</b>			
Basswood	20.50 MBF	\$ 123.00/MBF	\$ _____
Paper Birch	7.30 MBF	\$ 70.00/MBF	\$ _____
Sugar Maple	7.40 MBF	\$ 238.00/MBF	\$ _____
White Ash	10.90 MBF	\$ 71.00/MBF	\$ _____
<b>Pulpwood</b>			
Basswood	192.00 Cords	\$ 8.80/Cord	\$ _____
Mixed Hardwood	346.00 Cords	\$ 19.85/Cord	\$ _____
Quaking Aspen	303.00 Cords	\$ 37.40/Cord	\$ _____
White Spruce	9.00 Cords	\$ 15.20/Cord	\$ _____

\*The volumes are statistically estimated within plus (+) or minus (-) 10.75 percent. These estimated volumes are final and not subject to adjustment. Prospective bidders are urged to examine this timber and to make their own estimates of quantity and quality.

I understand that any or all bids may be rejected. All bids must be signed and all bid items must be bid or the bid form may be rejected. I also understand that consideration and awarding a contract will be based upon my past performance and ability to complete the contract based upon equipment and staffing subject to my control.

FEDERAL ID: \_\_\_ - \_\_\_ - \_\_\_ or SOCIAL SECURITY NUMBER: \_\_\_ - \_\_\_ - \_\_\_

Company or individual bidding: \_\_\_\_\_

Company representative's name: \_\_\_\_\_

Address: \_\_\_\_\_

City: \_\_\_\_\_ State: \_\_\_\_\_ Zip: \_\_\_\_\_

IF AVAILABLE, PLEASE PLACE THE PERSONALIZED LABEL FROM YOUR PROSPECTUS IN THE ABOVE BOX.

Individual or company representative's signature: \_\_\_\_\_ Date: \_\_\_\_\_

Phone number : \_\_\_\_\_ Email (optional): \_\_\_\_\_

**THE WINNING BIDDER MUST COMPLETE THE VERIFICATION OF WORKER'S DISABILITY COMPENSATION ACT COMPLIANCE (ON REVERSE SIDE IF DOUBLE SIDED) WITHIN 21 DAYS OF SALE AWARD DATE**



FOR DEPARTMENT USE ONLY	
Sale Number (XX - XXX - XX - XX)	
Forest Management Unit:	

# TIMBER SALE VERIFICATION OF WORKER'S DISABILITY COMPENSATION ACT COMPLIANCE

As required by Act 317, P.A. 1969 (Worker's Compensation) and  
Part 5 of Act 451 of 1994, as amended.

## VERIFICATION OF WORKER'S DISABILITY COMPENSATION ACT COMPLIANCE

- This verification must be completed and submitted within 21 days of contract award and prior to the issuance of the timber sale contract.
- In addition, if boxes 2B or 2C are checked, then Notice of Exclusion or Certificate of Insurance must be submitted within twenty-one (21) days of the contract award and prior to the issuance of the timber sale contract.
- All information must be typed or printed except for written signatures.

Please Check Appropriate Categories:

1. My business is organized as (you **must** check one of the boxes below):
  - A.  Sole Proprietorship (individual)
  - B.  Partnership
  - C.  Corporation
2. You **must** check one of the boxes below:
  - A.  I certify my business is a sole proprietorship and it has no employees but the sole proprietor. I am not subject to the Worker's Compensation Laws.
  - B.  I certify my business has satisfied its obligation to the Worker's Compensation Act through the use of an approved Notice of Exclusion (BWC-337, Rev. 5/96). I will provide a copy of the Notice of Exclusion within 21 days of the contract award. (For questions or a copy of the BWC-337, please call the Worker's Compensation Bureau at 517-322-1195).
  - C.  I certify my business has a Worker's Compensation Policy. I will provide an original Certificate of Insurance within twenty-one (21) days of the contract award.
3. If you have checked item 2(A) or 2(B), you **must** indicate the number of **both** full-time and part-time employees, other than yourself, including family members and active partners (if none, you must enter "0").

\_\_\_\_\_ Full-time Employees

\_\_\_\_\_ Part-time Employees

Name of Business		Federal ID (or) Social Security No.	
Address		Telephone (       )	
City	State	ZIP	

*I hereby certify that the above information is true and correct. I agree to notify the Michigan DNR of any changes that occur in factors affecting my coverage during any of my present and future operations.*

\_\_\_\_\_  
Signature of Owner or Authorized Representative

\_\_\_\_\_  
Title

\_\_\_\_\_  
Date

Please complete the "SEALED BID" information on the next page



Gobblers Gamble (12-013-19)

T43N, R27W, SEC. 16; T43N, R27W, SEC. 17; T43N, R27W, SEC. 18; T43N,

In response to the notice of sale to be held 8:30 a.m. (local time) on April 8, 2020, I am hereby submitting my sealed bid (firm offer) for the following forest products to be cut. Bids for individual species must be at or above the advertised price. All non-responsive bid forms may be rejected.

<u>PRODUCTS &amp; SPECIES</u>	<u>ESTIMATED VOLUME*</u>	<u>ADVERTISED PRICE</u>	<u>BID PRICE/UNIT</u>
<b>Sawtimber</b>			
Black Cherry	0.80 MBF	\$ 114.00/MBF	\$ _____
Paper Birch	3.10 MBF	\$ 81.00/MBF	\$ _____
Sugar Maple	4.70 MBF	\$ 275.00/MBF	\$ _____
<b>Pulpwood</b>			
Balsam Fir	235.00 Cords	\$ 16.05/Cord	\$ _____
Mixed Aspen	4,179.00 Cords	\$ 43.15/Cord	\$ _____
Mixed Hardwood	231.00 Cords	\$ 22.90/Cord	\$ _____
Mixed Spruce	1,012.00 Cords	\$ 17.55/Cord	\$ _____
Tamarack	1,164.00 Cords	\$ 3.10/Cord	\$ _____

\*The volumes are statistically estimated within plus (+) or minus (-) 6.57 percent. These estimated volumes are final and not subject to adjustment. Prospective bidders are urged to examine this timber and to make their own estimates of quantity and quality.

I understand that any or all bids may be rejected. All bids must be signed and all bid items must be bid or the bid form may be rejected. I also understand that consideration and awarding a contract will be based upon my past performance and ability to complete the contract based upon equipment and staffing subject to my control.

FEDERAL ID: \_\_\_\_ - \_\_\_\_ - \_\_\_\_ or SOCIAL SECURITY NUMBER: \_\_\_\_ - \_\_\_\_ - \_\_\_\_

Company or individual bidding: \_\_\_\_\_

Company representative's name: \_\_\_\_\_

Address: \_\_\_\_\_

City: \_\_\_\_\_ State: \_\_\_\_\_ Zip: \_\_\_\_\_

IF AVAILABLE, PLEASE PLACE THE PERSONALIZED LABEL FROM YOUR PROSPECTUS IN THE ABOVE BOX.

Individual or company representative's signature: \_\_\_\_\_ Date: \_\_\_\_\_

Phone number : \_\_\_\_\_ Email (optional): \_\_\_\_\_

**THE WINNING BIDDER MUST COMPLETE THE VERIFICATION OF WORKER'S DISABILITY COMPENSATION ACT COMPLIANCE (ON REVERSE SIDE IF DOUBLE SIDED) WITHIN 21 DAYS OF SALE AWARD DATE**



FOR DEPARTMENT USE ONLY	
Sale Number (XX – XXX – XX – XX)	
Forest Management Unit:	

## TIMBER SALE VERIFICATION OF WORKER'S DISABILITY COMPENSATION ACT COMPLIANCE

As required by Act 317, P.A. 1969 (Worker's Compensation) and  
Part 5 of Act 451 of 1994, as amended.

### VERIFICATION OF WORKER'S DISABILITY COMPENSATION ACT COMPLIANCE

- This verification must be completed and submitted within 21 days of contract award and prior to the issuance of the timber sale contract.
- In addition, if boxes 2B or 2C are checked, then Notice of Exclusion or Certificate of Insurance must be submitted within twenty-one (21) days of the contract award and prior to the issuance of the timber sale contract.
- All information must be typed or printed except for written signatures.

Please Check Appropriate Categories:

1. My business is organized as (you **must** check one of the boxes below):
  - A.  Sole Proprietorship (individual)
  - B.  Partnership
  - C.  Corporation
2. You **must** check one of the boxes below:
  - A.  I certify my business is a sole proprietorship and it has no employees but the sole proprietor. I am not subject to the Worker's Compensation Laws.
  - B.  I certify my business has satisfied its obligation to the Worker's Compensation Act through the use of an approved Notice of Exclusion (BWC-337, Rev. 5/96). I will provide a copy of the Notice of Exclusion within 21 days of the contract award. (For questions or a copy of the BWC-337, please call the Worker's Compensation Bureau at 517-322-1195).
  - C.  I certify my business has a Worker's Compensation Policy. I will provide an original Certificate of Insurance within twenty-one (21) days of the contract award.
3. If you have checked item 2(A) or 2(B), you **must** indicate the number of **both** full-time and part-time employees, other than yourself, including family members and active partners (if none, you must enter "0").

\_\_\_\_\_ Full-time Employees

\_\_\_\_\_ Part-time Employees

Name of Business		Federal ID (or) Social Security No.	
Address		Telephone (       )	
City	State	ZIP	

*I hereby certify that the above information is true and correct. I agree to notify the Michigan DNR of any changes that occur in factors affecting my coverage during any of my present and future operations.*

\_\_\_\_\_  
Signature of Owner or Authorized Representative

\_\_\_\_\_  
Title

\_\_\_\_\_  
Date

Please complete the "SEALED BID" information on the next page

Twisted Lines (12-021-19)

T41N, R28W, SEC. 5; T41N, R28W, SEC. 6; T41N, R28W, SEC. 7; T41N, R28W,

In response to the notice of sale to be held 8:30 a.m. (local time) on April 8, 2020, I am hereby submitting my sealed bid (firm offer) for the following forest products to be cut. Bids for individual species must be at or above the advertised price. All non-responsive bid forms may be rejected.

<u>PRODUCTS &amp; SPECIES</u>	<u>ESTIMATED VOLUME*</u>	<u>ADVERTISED PRICE</u>	<u>BID PRICE/UNIT</u>
<b>Sawtimber</b>			
Basswood	3.80 MBF	\$ 142.00/MBF	\$ _____
Paper Birch	6.90 MBF	\$ 81.00/MBF	\$ _____
Red Maple	16.80 MBF	\$ 118.00/MBF	\$ _____
Red Pine	7.00 MBF	\$ 151.00/MBF	\$ _____
Sugar Maple	7.00 MBF	\$ 275.00/MBF	\$ _____
White Ash	7.30 MBF	\$ 82.00/MBF	\$ _____
White Pine	46.00 MBF	\$ 65.00/MBF	\$ _____
<b>Pulpwood</b>			
Balsam Fir	42.00 Cords	\$ 16.05/Cord	\$ _____
Mixed Aspen	426.00 Cords	\$ 43.15/Cord	\$ _____
Mixed Hardwood	572.00 Cords	\$ 22.90/Cord	\$ _____
Mixed Spruce	54.00 Cords	\$ 17.55/Cord	\$ _____
Red Pine	43.00 Cords	\$ 66.75/Cord	\$ _____
White Pine	152.00 Cords	\$ 30.00/Cord	\$ _____

\*The volumes are statistically estimated within plus (+) or minus (-) 10.14 percent. These estimated volumes are final and not subject to adjustment. Prospective bidders are urged to examine this timber and to make their own estimates of quantity and quality.

I understand that any or all bids may be rejected. All bids must be signed and all bid items must be bid or the bid form may be rejected. I also understand that consideration and awarding a contract will be based upon my past performance and ability to complete the contract based upon equipment and staffing subject to my control.

FEDERAL ID: \_\_\_\_\_ or SOCIAL SECURITY NUMBER: \_\_\_\_\_

Company or individual bidding: \_\_\_\_\_

Company representative's name: \_\_\_\_\_

Address: \_\_\_\_\_

City: \_\_\_\_\_ State: \_\_\_\_\_ Zip: \_\_\_\_\_

IF AVAILABLE, PLEASE PLACE THE PERSONALIZED LABEL FROM YOUR PROSPECTUS IN THE ABOVE BOX.

Individual or company representative's signature: \_\_\_\_\_ Date: \_\_\_\_\_

Phone number : \_\_\_\_\_ Email (optional): \_\_\_\_\_

**THE WINNING BIDDER MUST COMPLETE THE VERIFICATION OF WORKER'S DISABILITY COMPENSATION ACT COMPLIANCE (ON REVERSE SIDE IF DOUBLE SIDED) WITHIN 21 DAYS OF SALE AWARD DATE**



# TIMBER SALE VERIFICATION OF WORKER'S DISABILITY COMPENSATION ACT COMPLIANCE

As required by Act 317, P.A. 1969 (Worker's Compensation) and  
Part 5 of Act 451 of 1994, as amended.

FOR DEPARTMENT USE ONLY	
Sale Number (XX - XXX - XX - XX)	
Forest Management Unit:	

## VERIFICATION OF WORKER'S DISABILITY COMPENSATION ACT COMPLIANCE

- This verification must be completed and submitted within 21 days of contract award and prior to the issuance of the timber sale contract.
- In addition, if boxes 2B or 2C are checked, then Notice of Exclusion or Certificate of Insurance must be submitted within twenty-one (21) days of the contract award and prior to the issuance of the timber sale contract.
- All information must be typed or printed except for written signatures.

Please Check Appropriate Categories:

1. My business is organized as (you **must** check one of the boxes below):
  - A.  Sole Proprietorship (individual)
  - B.  Partnership
  - C.  Corporation
2. You **must** check one of the boxes below:
  - A.  I certify my business is a sole proprietorship and it has no employees but the sole proprietor. I am not subject to the Worker's Compensation Laws.
  - B.  I certify my business has satisfied its obligation to the Worker's Compensation Act through the use of an approved Notice of Exclusion (BWC-337, Rev. 5/96). I will provide a copy of the Notice of Exclusion within 21 days of the contract award. (For questions or a copy of the BWC-337, please call the Worker's Compensation Bureau at 517-322-1195).
  - C.  I certify my business has a Worker's Compensation Policy. I will provide an original Certificate of Insurance within twenty-one (21) days of the contract award.
3. If you have checked item 2(A) or 2(B), you **must** indicate the number of **both** full-time and part-time employees, other than yourself, including family members and active partners (if none, you must enter "0").

\_\_\_\_\_ Full-time Employees

\_\_\_\_\_ Part-time Employees

Name of Business		Federal ID (or) Social Security No.	
Address		Telephone (       )	
City	State	ZIP	

*I hereby certify that the above information is true and correct. I agree to notify the Michigan DNR of any changes that occur in factors affecting my coverage during any of my present and future operations.*

\_\_\_\_\_  
Signature of Owner or Authorized Representative

\_\_\_\_\_  
Title

\_\_\_\_\_  
Date

Please complete the "SEALED BID" information on the next page