



**DEPARTMENT OF NATURAL RESOURCES  
STATE OF MICHIGAN**

**TIMBER SALE PROSPECTUS #6855**

SCHEDULED SALE DATE AND TIME: 9:00 a.m. (local time) on May 27, 2021.

LOCATION: **BARAGA MGMT UNIT, 427 US 41 NORTH, BARAGA, MI 49908.**

PROSPECTUS NOTE: The bidder is advised to inspect the sale area and review the location, estimated volumes, operating costs and contract terms of proposed sales. Please be aware that some landowners may request 60 days or more notice for access across their land.

Notice is hereby given that bids will be received by the Unit Manager, BARAGA MANAGEMENT UNIT, for certain timber on the following described lands:

Free Man Mix (11-004-21) / T47N, R33W, SEC. 28, N1/2NW,SENW,NE,N1/2SE.

T47N, R33W, SEC. 32, SENE,SESW,SE.

T47N, R33W, SEC. 33, SWNW,NENE,S1/2NE,SW,N1/2SE.

T47N, R33W, SEC. 34, NW,NWSW.

Baraga County, Advertised Price \$43,126.15, 361.3 Acres, Hardwood, Aspen.

SALE NOTE: Access may be through private land.

Pinnacle Hardwoods (11-008-21) / T52N, R36W, SEC. 11, NWNW,NWNE.

T52N, R36W, SEC. 2, NESW,S1/2SW,SE.

Houghton County, Advertised Price \$24,738.85, 120.7 Acres, Hardwood, Sugar Maple.

## BID INSTRUCTIONS (VER. 07/02/2018):

### 1. Scheduled Bid Location, Date, and Time (2/11)

Bids must be received by the Unit Manager, BARAGA OFFICE, 427 US 41 North, Baraga, MI 49908, no later than 9:00 a.m. (local time) on May 27, 2021. For further information concerning this sale, contact Brad Carlson at 906-353-6651.

### 2. Bidder's Qualifications (5/16)

Purchaser shall obtain workers compensation insurance to cover claims under Michigan's Worker's Disability Compensation Act of 1969 or similar employee benefit act of any other state applicable to an employee. If all or part of a timber sale was prepared by a private contractor, the contractor and that contractor's company are not permitted to bid on the timber sale contract. Bids will not be accepted from individuals or companies appearing on the DNR/FRD No-Bid List. This list contains the names of purchasers who previously failed to execute a contract within 21-days or who have a history of poor performance.

### 3. Preparation of Sealed Bids (5/16)

Bid Forms may be completed online thru Michigan DNR Timber Sale Online Bidding (OLB) at [www.michigan.gov/timberbidding](http://www.michigan.gov/timberbidding) or by completing the hardcopy Bid Form found in the Timber Sale Prospectus. Hardcopy Bid Forms shall be manually signed in ink. Registration in OLB is considered your 'signature' for all bids submitted thru that system. Bid prices must be entered for each species and product in the Bid Price column for all material subject to bidding and all fill-in blanks must be completed. If erasures or other changes appear on the hardcopy Bid Form, each erasure or change must be initialed by the person signing the bid.

### 4. Submission of Sealed Bids (5/16)

Bid forms may be obtained from the Unit Manager or thru OLB. Bids may be submitted hardcopy or thru OLB. All hardcopy bids must be submitted on the bid form and in an envelope clearly identified as described in this section. NOTE: Only one bid form per bid envelope. Sealed bids must be submitted to the Unit office designated in the prospectus and must be submitted at or prior to the time established in the prospectus. The envelope should show on the outside (a) the sale name or number and (b) the date and time of bid opening, as shown in the prospectus. Bids received after the time specified in the sale prospectus are late bids and will be rejected.

It is possible for a bidder to submit multiple bids on a single sale. For example, a bid may be submitted hardcopy and a bid may be submitted thru OLB. Or, two bidders from the same company could both submit bids on the same sale. If this were to happen, the State would accept all bids received and award the contract accordingly. All bidding and contractual requirements would apply to all bids received.

### 5. Public Opening of Sealed Bids (7/16)

If conditions permit, the sealed bids will be publicly opened and posted at the time and place set in the prospectus.

If a bidder, present at a bid opening, has submitted bids on more than one sale, that bidder may withdraw their unopened bid envelopes or announce the withdrawal of their online bid after being declared the successful bidder on one sale.

### 6. Award of Contract (1/11)

Award of the contract will be made to the Bidder whose bid, conforming to the prospectus, is most advantageous to the State of Michigan on the basis of total value at rates bid for the estimated quantities. The State reserves the right to reject any bid or waive any minor irregularity in bids received. A written award mailed (or otherwise furnished) to the successful Bidder shall be deemed to result in a binding contract without further action by either party.

### 7. Down Payment (1/11)

The Bidder to whom award is made must make a down payment within 21 days of the sale award. The amount of the down payment will be calculated as shown in the Bond and Payment Schedule of this prospectus. Only cash may be used to meet this requirement.

### 8. Performance Security (1/11)

As guarantee of faithful performance, a cash bond, certificate of deposit, surety bond or irrevocable letter of credit (LOC) is required within 21 days of the sale award. The amount of the performance security is shown in the Bond and Payment Schedule of this prospectus. If an LOC or surety is used, the coverage must extend for at least 6 months

beyond the contract expiration.

#### 9. Timber Sale Contract (7/18)

Additional conditions and requirements common to all timber sales are listed on the timber sale contract (R4031) and are available on line at [www.michigan.gov/timber](http://www.michigan.gov/timber). Contact the Unit Manager for additional information or a sample contract. Within 21 days of the date of the award letter, the bidder must sign the contract and provide the required down payment, performance security, and verification of worker's disability compensation. The down payment and performance security shall be in accordance with the provisions of the timber sale contract, in the sums stated in this prospectus. If these actions are not taken, then the Bidder, the Bidder's corporation, and the corporation's principals may not be permitted to bid on State timber sales for a period of 3 months after the first offense, 6 months after the second offense, and 1 year after the third offense. An offense will only be counted against the Bidder for 5 years. In addition, the Bidder certifies that if awarded this contract, the Bidder will complete the timber sale contract in accordance with its terms and any modifications thereof including requirements to purchase, cut, and remove the included timber by the expiration date.

Payment Unit values in the State Forest Timber Sale Contract are calculated based on the advertised value of the Payment Unit as a percentage of the total advertised value of the contract. The advertised value of each Payment Unit is given in the Description of Timber by Payment Unit table on the Timber Sale Information page. For example, if the value of Payment Unit 1 is advertised as \$1,500 and the total Timber Sale value is advertised as \$10,000, the contract price for Payment Unit 1 will be 15% of the total bid price ( $\$1,500/\$10,000 * 100$ ).

#### 10. Disclaimer of Estimates and Bidder's Warranty of Inspection (7/16)

Before submitting this bid, the Bidder is advised and cautioned to inspect the sale area, review the requirements of the sale contract, and take other steps as may be reasonably necessary to ascertain the location, estimated volumes, construction estimates, and operating costs of the proposed sale. Failure to do so will not relieve the Bidder from responsibility for completing the contract.

The Bidder warrants that this bid is submitted solely on the basis of the Bidder's examination and inspection of the quality and quantity of the timber offered for sale and the Bidder's opinion of the value thereof and the costs of recovery. No reliance should be placed on the State of Michigan's estimates of timber quality, quantity or costs of recovery. Bidder further acknowledges that the State of Michigan: (i) expressly disclaims any warranty of fitness of timber for any purpose; (ii) offers this timber as is without any warranty of quality (merchantability) or quantity and (iii) expressly disclaims any warranty as to the quantity or quality of timber sold.

#### 11. Certification and Chain-of-Custody (10/14)

Unless otherwise indicated in the contract under section 7 – Other Conditions of the Sale Specific Conditions & Requirements, the area encompassed by this timber sale is certified to the standards of the Forest Stewardship Council (FSC) - Certificate #SCS-FM/COC-00090N and the Sustainable Forestry Initiative (SFI) - Certificate #NSF-SFIS-5Y031-SF5. Forest products from this sale may be delivered to the mill as "FSC 100% and / or SFI certified" as long as the contractor hauling the forest products is chain-of-custody (COC) certified or covered under a COC certificate from the destination mill. The purchaser is responsible for maintaining COC after leaving the sale area.

#### 12. Good Neighbor Authority (GNA) Requirements (7/16)

If the name of this timber sales contains the acronym GNA, it is authorized by the Good Neighbor Authority (GNA) and covered by various agreements between the U.S. Forest Service and the State. The timber sale occurs on federal land and the following conditions apply:

GNA contracts on US Forest Service land will not be awarded to purchasers on the Federal list of excluded parties. The System for Award Management (SAM) will be checked for active excluded parties prior to award of contract. In addition, the Bidder to whom award is made must complete an Assurance Regarding Felony Conviction or Tax Delinquent Status for Corporate Applicants (AD-3031).

#### 13. Good Neighbor Authority (GNA) Requirements, con't (9/16)

Bidder certifies, by signing this bid form, that to the best of Bidder's knowledge that the following representations are accurate and complete.

a. That the Bidder and its principals are not presently debarred, suspended, proposed for debarment, declared

ineligible, or voluntary excluded from timber sales (covered transactions) by any Federal department or agency.

b. That the Bidder and its principals have not within a 3-year period preceding this bid been convicted of or had a civil judgment rendered against them for commission of fraud or a criminal offense in connection with obtaining , attempting to obtain, or performing a public (Federal, State, or local) transaction or contract under a public transaction; violation of Federal or State antitrust statutes or commission of embezzlement, theft, forgery, bribery, falsification or destruction of records, making false statements, or receiving stolen property.

c. That the Bidder and its principals are not presently indicted for or otherwise criminally or civilly charged by a governmental entity (Federal, State, or local) with commission of any of the offenses enumerated in paragraph b of this certification.

d. That the Bidder and its principals have not within a 3-year period preceding this bid had one or more public transactions (Federal, State, or local) terminated for breach or default of a timber or forest product contract.

Bidders that cannot certify this requirement, in whole or in part, shall submit an explanation with their bid.

DAN EICHINGER

Director

## TIMBER SALE INFORMATION

### Free Man Mix (11-004-21)

T47N, R33W, SEC. 28; T47N, R33W, SEC. 32; T47N, R33W, SEC. 33; T47N, R33W, SEC. 34.  
Baraga County (Advertised Price \$43,126.15)

SALE NOTE: Access may be through private land.

A timber sale contract for this lump sum, sealed bid timber sale will be awarded to the responsible bidder offering the highest sealed bid price. All units of volume listed below were estimated using the Inventory Manager computer program and the new Michigan taper model. Bids must be at or above the following advertised price for each product and species:

<u>PRODUCTS &amp; SPECIES</u>	<u>ESTIMATED UNITS*</u>	<u>ADVERTISED PRICE</u>
Sawtimber		
Paper Birch	61.2 MBF	\$ 25.00 / MBF
Red Maple	131.0 MBF	\$ 63.00 / MBF
Sugar Maple	65.1 MBF	\$ 113.00 / MBF
Yellow Birch	98.7 MBF	\$ 38.00 / MBF
Pulpwood		
Balsam Fir	276 Cords	\$ 3.05 / Cord
Mixed Aspen	935 Cords	\$ 6.25 / Cord
Mixed Hardwood	2,622 Cords	\$ 4.60 / Cord
Mixed Spruce	443 Cords	\$ 3.35 / Cord
Paper Birch	531 Cords	\$ 3.55 / Cord
Tamarack	14 Cords	\$ 8.60 / Cord

\* The total volume is statistically estimated within plus (+) or minus (-) 4.02 percent. There are an estimated 5,758 cords on this timber sale, plus or minus 232 cords at the 95% confidence level. The estimated units are final and not subject to adjustment. Prospective bidders are urged to examine this timber and to make their own estimates of quantity and quality.

### **BOND AND PAYMENT SCHEDULE:**

1. A bond in the amount of \$3,500.00 to insure faithful performance of the conditions of the contract will be deposited by the successful bidder within 21 days of the sale award.
2. Cutting in any sale or unit without the required advance payment would be considered a trespass.
3. Total payment must be paid in advance or according to the following schedule :
  - (a) Ten percent (10%) of the sale value must be paid within 21 days of the sale award.
  - (b) The 10% down payment will be credited towards the first unit cut.
  - (c) Payment for each of the following units must be made before cutting begins in that unit:
 

PAYMENT UNIT NUMBER	PERCENT OF TOTAL SALE VALUE
01	10.6%
02	5.2%
03	11.7%
04	18.8%
05	14.2%
06	9.4%
07	20.7%
08	9.4%
4. If no cutting takes place, the 10% down payment will not be refunded.
5. Operations on the contract issued will terminate on 06/30/2024.

### **SALE STATISTICS**

Volumes were calculated in cubic feet using the Michigan taper model. Cubic foot volume includes all wood inside bark for the product indicated. For display purposes, cubic feet were converted to cords and MBF using a simple conversion factor, e.g. 79 cubic feet per cord and 185 cubic feet per MBF. The cubic foot volumes are precise; the cords and MBF volumes are not. Cubic foot volume cannot be directly converted to cords or boards with precision.

## SALE VOLUMES

The total estimated sale volume may not equal the sum of the species/products due to the nature of statistical calculations associated with double sampling methodology.

VOLUME			STATISTICAL RANGE IN CORDS	
TOTAL CUBIC FEET	TOTAL CORDS	PERCENT ERROR	MINIMUM	MAXIMUM
454,919	5,758	4.02%	5,527	5,990

## VDU VOLUMES

A VDU is a Volume Determination Unit. Volumes and their associated statistics are calculated at the VDU level and summarized to the sale level. There is often a one to one relationship between a VDU and a Payment Unit, but not always, depending on the cruise design. Refer to the VDU TO PAYMENT UNIT table.

	VOLUME			RANGE IN CORDS	
VDU	TOTAL CUBIC FEET	TOTAL CORDS	PERCENT ERROR	MINIMUM	MAXIMUM
26	3,726	47	20.00%	38	57
42	20,887	264	12.44%	231	297
57	49,376	625	8.27%	573	677
62	14,955	189	15.79%	159	219
65	24,503	310	11.50%	275	346
67	65,349	827	13.26%	717	937
71	88,738	1,123	10.78%	1,002	1,244
126	60,681	768	8.56%	702	834
226	109,166	1,382	8.25%	1,268	1,496
<b>TOTAL:</b>	<b>437,381</b>	<b>5,536</b>		<b>4,966</b>	<b>6,107</b>

## VDU TO PAYMENT UNIT

When a VDU is associated with more than one Payment Unit (PU), the VDU volumes are assigned to the PU based on acres of the VDU within the PU.

VDU	VDU ACRES	PU	PU ACRES
26	5.6	2	5.6
42	40.9	8	40.9
57	66.7	7	66.7
62	38.5	2	38.5
65	44.6	1	44.6
67	45.2	6	45.2
71	46.0	5	46.0
126	27.6	3	27.6
226	46.2	4	46.2
<b>TOTAL:</b>	<b>361.3</b>		<b>361.3</b>

**DESCRIPTION OF TIMBER BY PAYMENT UNIT (PU)**

PU	MARKET GROUP	PRODUCT	QUANTITY	UNIT	ACRES	ADVERTISE PRICE
1	Red Maple	Sawtimber	16.7	MBF	44.6	\$4,555.40
	Sugar Maple		16.1	MBF		
	Yellow Birch		19.5	MBF		
	Mixed Hardwood	Pulpwood	205	Cords		
	<i>Ironwood</i>		5	<i>Cords</i>		
	<i>Red Maple</i>		80	<i>Cords</i>		
	<i>Sugar Maple</i>		46	<i>Cords</i>		
	<i>Yellow Birch</i>		74	<i>Cords</i>		
2	Red Maple	Sawtimber	17.8	MBF	44.1	\$2,261.85
	Yellow Birch		8.0	MBF		
	Balsam Fir	Pulpwood	4	Cords		
	Mixed Hardwood		177	Cords		
	<i>Red Maple</i>		55	<i>Cords</i>		
	<i>Sugar Maple</i>		19	<i>Cords</i>		
	<i>Yellow Birch</i>		103	<i>Cords</i>		
	Mixed Spruce		3	Cords		
	<i>White Spruce</i>		3	<i>Cords</i>		
	3	Paper Birch	Sawtimber	17.7		
Red Maple			10.5	MBF		
Yellow Birch			24.1	MBF		
Balsam Fir		Pulpwood	3	Cords		
Mixed Aspen			107	Cords		
<i>Quaking Aspen</i>			107	<i>Cords</i>		
Mixed Hardwood			382	Cords		
<i>Red Maple</i>			171	<i>Cords</i>		
<i>Sugar Maple</i>			3	<i>Cords</i>		
<i>Yellow Birch</i>			208	<i>Cords</i>		
Mixed Spruce			29	Cords		
<i>Black Spruce</i>			5	<i>Cords</i>		
<i>White Spruce</i>			24	<i>Cords</i>		
Paper Birch			142	Cords		
4	Paper Birch	Sawtimber	25.3	MBF	46.2	\$8,102.55
	Red Maple		7.5	MBF		
	Yellow Birch		22.5	MBF		
	Balsam Fir	Pulpwood	21	Cords		
	Mixed Aspen		407	Cords		
	<i>Quaking Aspen</i>		407	<i>Cords</i>		
	Mixed Hardwood		537	Cords		
	<i>Red Maple</i>		265	<i>Cords</i>		
	<i>Sugar Maple</i>		6	<i>Cords</i>		
	<i>Yellow Birch</i>		266	<i>Cords</i>		
	Mixed Spruce		91	Cords		
	<i>Black Spruce</i>		76	<i>Cords</i>		
	<i>White Spruce</i>		15	<i>Cords</i>		
	Paper Birch		214	Cords		
5	Paper Birch	Sawtimber	7.0	MBF	46.0	\$6,142.25
	Red Maple		13.8	MBF		
	Yellow Birch		3.6	MBF		
	Balsam Fir	Pulpwood	54	Cords		
	Mixed Aspen		269	Cords		
	<i>Quaking Aspen</i>		269	<i>Cords</i>		
	Mixed Hardwood		400	Cords		
	<i>Black Cherry</i>		4	<i>Cords</i>		
	<i>Red Maple</i>		324	<i>Cords</i>		
	<i>Sugar Maple</i>		6	<i>Cords</i>		
	<i>Yellow Birch</i>		66	<i>Cords</i>		

**DESCRIPTION OF TIMBER BY PAYMENT UNIT (PU), CON'T**

PU	MARKET GROUP	PRODUCT	QUANTITY	UNIT	ACRES	ADVERTISE PRICE
5 con't	Mixed Spruce	Pulpwood	226	Cords		
	<i>Black Spruce</i>		210	<i>Cords</i>		
	<i>White Spruce</i>		16	<i>Cords</i>		
	Paper Birch		112	Cords		
	Tamarack		14	Cords		
6	Paper Birch	Sawtimber	6.1	MBF	45.2	\$4,051.70
	Red Maple	Pulpwood	6.9	MBF		
	Balsam Fir		186	Cords		
	Mixed Aspen		145	Cords		
	<i>Balsam Poplar</i>		21	<i>Cords</i>		
	<i>Quaking Aspen</i>		124	<i>Cords</i>		
	Mixed Hardwood		325	Cords		
	<i>Red Maple</i>		271	<i>Cords</i>		
	<i>Sugar Maple</i>		8	<i>Cords</i>		
	<i>Yellow Birch</i>		46	<i>Cords</i>		
	Mixed Spruce		94	Cords		
	<i>Black Spruce</i>		46	<i>Cords</i>		
	<i>White Spruce</i>		48	<i>Cords</i>		
	Paper Birch		51	Cords		
	7		Paper Birch	Sawtimber		
Red Maple		Pulpwood	45.2	MBF		
Sugar Maple			30.4	MBF		
Yellow Birch			14.4	MBF		
Balsam Fir			3	Cords		
Mixed Hardwood			436	Cords		
<i>Red Maple</i>			229	<i>Cords</i>		
<i>Sugar Maple</i>			107	<i>Cords</i>		
<i>Yellow Birch</i>			100	<i>Cords</i>		
Paper Birch			2	Cords		
8			Paper Birch	Sawtimber	3.0	MBF
	Red Maple	Pulpwood	12.6	MBF		
	Sugar Maple		18.6	MBF		
	Yellow Birch		6.6	MBF		
	Balsam Fir		5	Cords		
	Mixed Aspen		7	Cords		
	<i>Quaking Aspen</i>		7	<i>Cords</i>		
	Mixed Hardwood		160	Cords		
	<i>Red Maple</i>		73	<i>Cords</i>		
	<i>Sugar Maple</i>		24	<i>Cords</i>		
	<i>Yellow Birch</i>		63	<i>Cords</i>		
	Paper Birch		10	Cords		
	TOTAL:			356.0	MBF	
TOTAL:			4,821	Cords		



## Sale Specific Conditions & Requirements

**Sale Name: Free Man Mix**

**Sale Number: 11-004-21 Seq#: 1**

### 1 - Sale Area

#### 1.2 - Boundaries

##### 1.2.1 - Painted boundaries (9/19)

The sale boundary and Payment Unit boundaries are marked and identified by blue and red paint. Exterior sale boundary lines against private property are marked with blue paint. Exterior sale boundary lines against state are marked with red paint. Interior Payment Unit boundaries are marked with red paint. The painted boundary line trees are not included timber and are to be protected unless marked with orange paint. Red painted trees designating an interior Payment Unit boundary are only to be cut when all surrounding Payment Units have been paid.

### 2 - Timber Specifications

#### 2.1 - Included Timber

##### 2.1.2 - Clearcut unit(s) w/o unmerchantable trees (8/11)

Within Payment Unit(s) 3 - 6, cut all trees which meet minimum piece specifications in 2.2 Utilization, except for hemlock, cedar, red pine, white pine, and red oak. Also, retain all yellow birch that are 20" and larger at DBH.

##### 2.1.3 - Cut tree marked unit(s) (12/08)

Within Payment Unit(s) 1, 2, 7 and 8, all trees are designated for cutting when marked with orange paint above and below stump height, regardless of merchantability.

#### 2.2 - Utilization

##### 2.2.4 - Skidding length (2/14)

Skidding of unlimbed tops or lengths over 17 feet is not permissible unless approved by the Unit Manager or his/her representative.

##### 2.2.11 - Chipping restriction (9/14)

If chipping occurs on this sale, then no woody debris present on the ground at the start of the sale may be chipped. In addition, brush or chips may not be stored or stockpiled on-site for more than 30 days.

#### 2.3 - Log Rule

##### 2.3.1 - Log rule (12/08)

All board foot volumes of sawlog size products in this contract have been determined by the Scribner Decimal C Log Rule.

### 3 - Payments

#### 3.4 - Damaged Timber

##### 3.4.1 - Damaged timber (7/16)

General Condition and Requirement 3.4 Damaged Timber, defines liquidated damages for undesignated live merchantable trees which are cut or injured. In addition, extreme care should be taken to avoid damage to tree seedlings and saplings.

### 4 - Transportation

#### 4.1 - Construction

##### 4.1.1 - Stream crossings, general (3/11)

All stream crossing structures will be temporary and therefore, shall be provided by the Purchaser, and must be removed upon completion of the sale. All permits for stream crossings will be provided by the DNR. Please notify the DNR 90 days prior to working on any crossings that will require a EGLE permit.

##### 4.1.3 - Slash and earthen piles (8/04)

Piles or windrows of earth along roads and landings that have been widened or constructed shall be leveled. Slash from road maintenance or construction, including stumps, shall be dispersed throughout the sale, chipped, utilized or otherwise removed

from the sale.

#### 4.1.5 - Culverts (5/14)

Roads may require the installation of culverts for cross drainage or at natural drainage-ways. If culverts are needed in these locations, their placement will be specified by the sale administrator and they shall be installed prior to hauling. The culverts shall be new, corrugated metal or plastic gauge. Culverts will be a minimum of 12 inches in diameter and 24 feet in length. If culverts are removed, fill shall be removed from wetland soils as specified. Soils shall be maintained and left in a non-erodible condition, with water bars, seed, fertilizer, mulch, and slash installed as directed by the sale administrator and as specified in the BMP manual. Stream crossing permits, if needed, will be obtained by the DNR for crossings located on state land.

#### 4.1.6 - Road construction (1/09)

Construction of new roads or improvements of existing roads shall be done in such a way as to minimize the environmental and visual impacts. Merchantable trees shall be cut and utilized unless otherwise directed. Non-merchantable trees shall be severed and laid flat on the ground. Slash shall be scattered, and not left in windrows and kept a minimum of 10 feet back from the road edge. Stumps shall be set upright, not left on edge, and be moved at least 10 feet away from the road edge. Disturbed soil shall be feathered into the woods and not left in berms or windrows.

#### 4.1.7 - Road closure (10/11)

All new roads built into the sale must be blocked to vehicle traffic upon completion of the sale. Overgrown roads that are reopened shall be considered new roads. In general, this will require constructing a four (4') foot high berm of stumps and logs covered with earth. Contact the sale administrator for specific details of design and placement.

### 4.2 - Maintenance

#### 4.2.4 - Grading (10/16)

For completion of the sale, state forest roads must be graded. In general, this will require a road grader or bulldozer to shape up the roads after forest products have been hauled off site. This includes cleaning of drainage areas, grading, crowning, and filling with gravel, if necessary. The grading equipment to be used must be approved by the Unit Manager or his/her representative.

### 4.4 - Access

#### 4.4.1 - Private property access (3/11)

Permission for access across private land is the responsibility of the Purchaser. Should the Purchaser desire to cross private land, a copy of the written permission from the private land-owner may be required by the DNR.

## 5 - Operations

### 5.1 - Notification

#### 5.1.4 - Post-sale conference (10/16)

A post-sale conference on site between the Purchaser and sale administrator is required 5 days prior to the completion of active logging operations to determine clean-up and repair of landings, road edges, and the fulfillment of other contract specifications.

### 5.2 - Conduct of Operations

#### 5.2.1 - Slash

##### 5.2.1.11 - Slash for reforestation (5/07)

To facilitate reforestation, the Sale Area shall be left with slash evenly distributed. Bunched tops within the cutting area shall be broken up and scattered. Stumps shall be cut low to the ground. Processing sites shall not be left with a compacted layer of slash; tops from these sites shall be hauled back into the cut area and scattered.

#### 5.2.2 - Hazard Trees/Snags

##### 5.2.2.1 - Den trees (10/16)

Obvious hollow and/or den trees shall be protected and left standing unless they are a safety hazard.

#### 5.2.3 - Operating Restrictions

##### 5.2.3.2 - Operating restrictions (9/11)

Within Payment Unit(s) 1 - 8, unless changed by written agreement, clean up must be completed by July 15 following the harvest completion. This restriction is to allow the cleanup areas to re-vegetate before the dry season.

#### 5.2.3.3 - Bark slippage restriction (3/09)

Within Payment Unit(s) 1, 2, 7 and 8, unless changed by written agreement, cutting and skidding are not permitted during the period of April 15 to July 15. This restriction is because of bark slippage.

#### 5.2.30 - Landing/road top soil protection (2/15)

Top soil on new landings and new roads must be removed, stockpiled and saved. Upon completion of the timber sale, soil must be evenly distributed back over the area for revegetation. In addition, the area must be seeded and mulched per instructions of the sale administrator.

#### 5.2.38 - No decking against live trees (2/04)

Cut products may not be decked against unmarked or designated leave trees.

### 5.4 - Soil Protection

#### 5.4.1 - Rutting restriction, general (7/16)

Operations are to cease immediately if equipment and weather conditions result in rutting of roads and/or skid trails which is 12 inches or greater in depth and 50 feet in length. The Unit Manager or his/her representative may restrict hauling and/or skidding if ruts exceed the specified depth. With the Unit Manager or his/her representative's approval, the Purchaser may return to the area when the risk of rutting has decreased.

### 5.8 - Protection of Endangered Species

#### 5.8.5 - Protection of raptor nests (3/13)

All trees with raptor nests will be protected if found during harvesting operations. Notification will be made to the Unit Manager or his/her representative who will notify the Wildlife Biologist so an on-site evaluation and recommendation can be made, if necessary.



# TIMBER SALE MAP

This information provided by authority of Part 525, 1994 PA 451, as amended.

Sale Number	Year
11-004	21

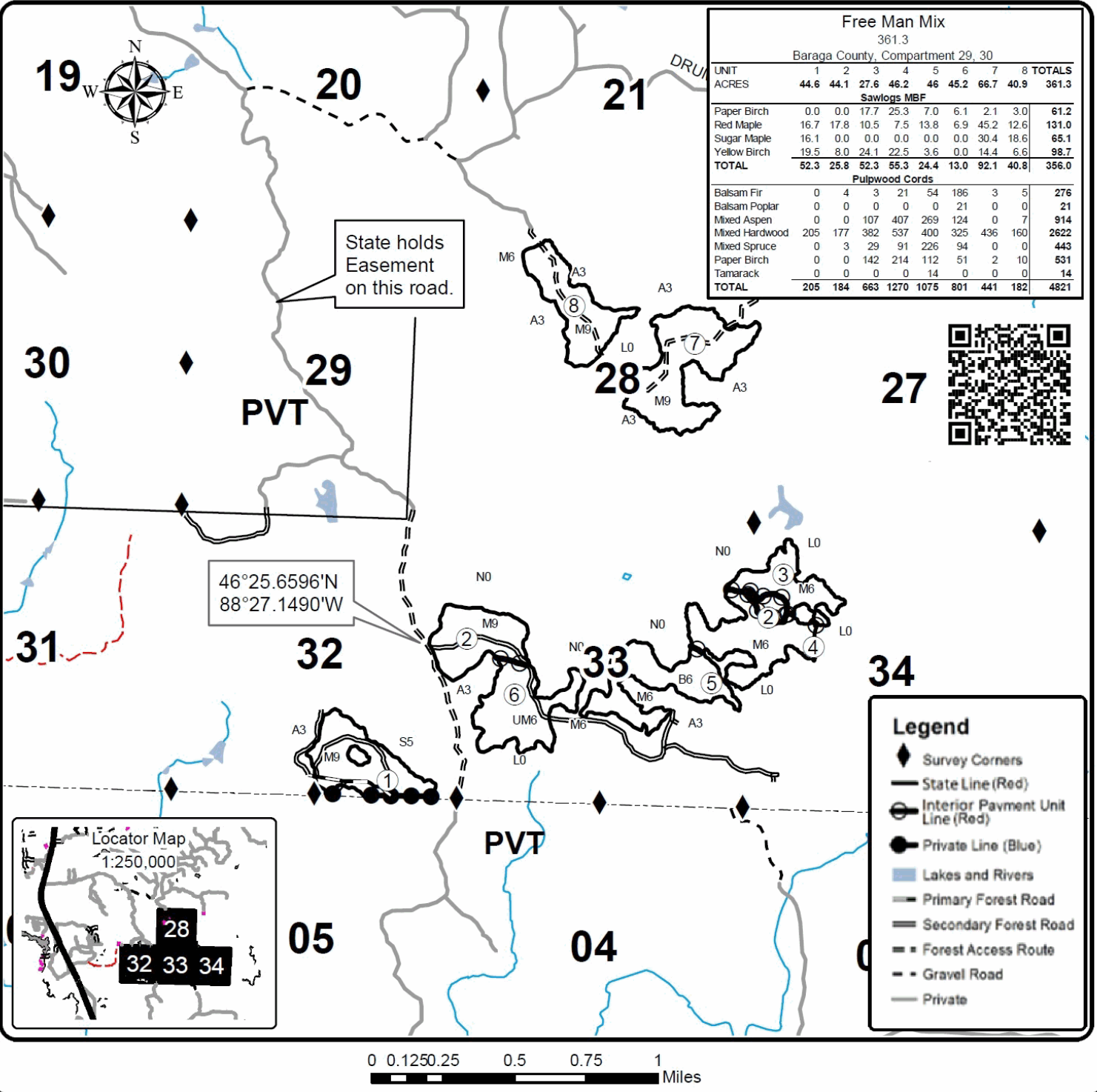
Forest Management Unit Baraga		County Baraga	Mapped By Shaun Sullivan	Date 04/23/2021	Page 1	of 1
Township 47N	Range 33W	Section(s) and Subdivision(s) 28, 32, 33, 34		Scale 1:31,680		
			Cruised By Baraga Staff			

### Cover Type

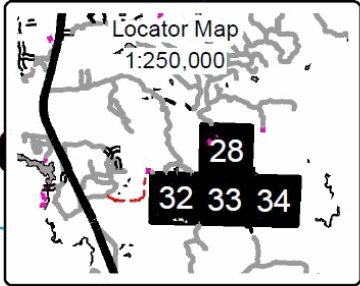
A = Aspen	H = Hemlock	N = Marsh	U = Upland Brush
B = Paper Birch	J = Jack Pine	O = Oak	UM = Upland Mixed
C = Cedar	L = Lowland Brush	P = Lowland Poplar	V = Bog or Marsh
D = Treed Bog	LM = Lowland Mixed	Q = Mixed Swamp Conifer	W = White Pine
E = Swamp Hdwoods	M = Mpl, Bch, Brch	R = Red Pine	X = Non Stocked
F = Spruce Fir	MC = Mixed Conifer	S = Black Spruce	Z = Water
G = Grass	MD = Mixed Deciduous	T = Tamarack	

### Density

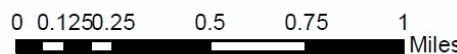
0 = Non Stocked	5 = Pole Timber Medium
1 = Seedling Sapling Poor	6 = Pole Timber Well
2 = Seedling Sapling Medium	7 = Saw Timber Poor
3 = Seedling Sapling Well	8 = Saw Timber Medium
4 = Pole Timber Poor	9 = Saw Timber Well



Free Man Mix									
361.3									
Baraga County, Compartment 29, 30									
UNIT	1	2	3	4	5	6	7	8	TOTALS
ACRES	44.6	44.1	27.6	46.2	46	45.2	66.7	40.9	361.3
Sawlogs MBF									
Paper Birch	0.0	0.0	17.7	25.3	7.0	6.1	2.1	3.0	61.2
Red Maple	16.7	17.8	10.5	7.5	13.8	6.9	45.2	12.6	131.0
Sugar Maple	16.1	0.0	0.0	0.0	0.0	0.0	30.4	18.6	65.1
Yellow Birch	19.5	8.0	24.1	22.5	3.6	0.0	14.4	6.6	98.7
<b>TOTAL</b>	<b>52.3</b>	<b>25.8</b>	<b>52.3</b>	<b>55.3</b>	<b>24.4</b>	<b>13.0</b>	<b>92.1</b>	<b>40.8</b>	<b>356.0</b>
Pulpwood Cords									
Balsam Fir	0	4	3	21	54	186	3	5	276
Balsam Poplar	0	0	0	0	0	0	21	0	21
Mixed Aspen	0	0	107	407	269	124	0	7	914
Mixed Hardwood	205	177	382	537	400	325	436	160	2622
Mixed Spruce	0	3	29	91	226	94	0	0	443
Paper Birch	0	0	142	214	112	51	2	10	531
Tamarack	0	0	0	0	14	0	0	0	14
<b>TOTAL</b>	<b>205</b>	<b>184</b>	<b>663</b>	<b>1270</b>	<b>1075</b>	<b>801</b>	<b>441</b>	<b>182</b>	<b>4821</b>



Legend	
	Survey Corners
	State Line (Red)
	Interior Pavment Unit Line (Red)
	Private Line (Blue)
	Lakes and Rivers
	Primary Forest Road
	Secondary Forest Road
	Forest Access Route
	Gravel Road
	Private



## TIMBER SALE INFORMATION

Pinnacle Hardwoods (11-008-21)  
T52N, R36W, SEC. 11; T52N, R36W, SEC. 2.  
Houghton County (Advertised Price \$24,738.85)

A timber sale contract for this lump sum, sealed bid timber sale will be awarded to the responsible bidder offering the highest sealed bid price. All units of volume listed below were estimated using the Inventory Manager computer program and the new Michigan taper model. Bids must be at or above the following advertised price for each product and species:

<u>PRODUCTS &amp; SPECIES</u>	<u>ESTIMATED UNITS*</u>	<u>ADVERTISED PRICE</u>
<b>Sawtimber</b>		
Basswood	14.0 MBF	\$ 31.00 / MBF
Black Ash	1.2 MBF	\$ 14.00 / MBF
Red Maple	23.6 MBF	\$ 63.00 / MBF
Sugar Maple	179.2 MBF	\$ 113.00 / MBF
White Ash	1.9 MBF	\$ 30.00 / MBF
White Spruce	2.4 MBF	\$ 31.00 / MBF
Yellow Birch	3.1 MBF	\$ 38.00 / MBF
<b>Pulpwood</b>		
Basswood	16 Cords	\$ 3.55 / Cord
Mixed Hardwood	486 Cords	\$ 4.60 / Cord
White Spruce	3 Cords	\$ 3.35 / Cord

\* The total volume is statistically estimated within plus (+) or minus (-) 8.78 percent. There are an estimated 1,011 cords on this timber sale, plus or minus 89 cords at the 95% confidence level. The estimated units are final and not subject to adjustment. Prospective bidders are urged to examine this timber and to make their own estimates of quantity and quality.

### **BOND AND PAYMENT SCHEDULE:**

1. A bond in the amount of \$2,000.00 to insure faithful performance of the conditions of the contract will be deposited by the successful bidder within 21 days of the sale award.
2. Cutting in any sale or unit without the required advance payment would be considered a trespass.
3. Total payment must be paid in advance or according to the following schedule :
  - (a) Ten percent (10%) of the sale value must be paid within 21 days of the sale award.
  - (b) The 10% down payment will be credited towards the first unit cut.
  - (c) Payment for each of the following units must be made before cutting begins in that unit:
 

PAYMENT UNIT NUMBER	PERCENT OF TOTAL SALE VALUE
01	39.9%
02	42.0%
03	18.1%
4. If no cutting takes place, the 10% down payment will not be refunded.
5. Operations on the contract issued will terminate on 06/30/2024.

### **SALE STATISTICS**

Volumes were calculated in cubic feet using the Michigan taper model. Cubic foot volume includes all wood inside bark for the product indicated. For display purposes, cubic feet were converted to cords and MBF using a simple conversion factor, e.g. 79 cubic feet per cord and 185 cubic feet per MBF. The cubic foot volumes are precise; the cords and MBF volumes are not. Cubic foot volume cannot be directly converted to cords or boards with precision.

### **SALE VOLUMES**

The total estimated sale volume may not equal the sum of the species/products due to the nature of statistical calculations associated with double sampling methodology.

VOLUME		STATISTICAL RANGE IN CORDS		
TOTAL CUBIC FEET	TOTAL CORDS	PERCENT ERROR	MINIMUM	MAXIMUM
79,844	1,011	8.78%	922	1,099

**VDU VOLUMES**

A VDU is a Volume Determination Unit. Volumes and their associated statistics are calculated at the VDU level and summarized to the sale level. There is often a one to one relationship between a VDU and a Payment Unit, but not always, depending on the cruise design. Refer to the VDU TO PAYMENT UNIT table.

VDU	VOLUME		PERCENT ERROR	RANGE IN CORDS	
	TOTAL CUBIC FEET	TOTAL CORDS		MINIMUM	MAXIMUM
7	75,538	956	8.78%	872	1,040
<b>TOTAL:</b>	<b>75,538</b>	<b>956</b>		<b>872</b>	<b>1,040</b>

**VDU TO PAYMENT UNIT**

When a VDU is associated with more than one Payment Unit (PU), the VDU volumes are assigned to the PU based on acres of the VDU within the PU.

VDU	VDU ACRES	PU	PU ACRES
7	120.7	1	48.1
		2	50.8
		3	21.8
<b>TOTAL:</b>	<b>120.7</b>		<b>120.7</b>

**DESCRIPTION OF TIMBER BY PAYMENT UNIT (PU)**

PU	MARKET GROUP	PRODUCT	QUANTITY	UNIT	ACRES	ADVERTISE PRICE
1	Basswood	Sawtimber	5.6	MBF	48.1	\$9,858.65
	Black Ash		0.5	MBF		
	Red Maple		9.4	MBF		
	Sugar Maple		71.4	MBF		
	White Ash		0.8	MBF		
	White Spruce		1.0	MBF		
	Yellow Birch		1.2	MBF		
	Basswood		Pulpwood	6		
	Mixed Hardwood	194		Cords		
	<i>American Elm</i>	3		<i>Cords</i>		
	<i>Black Ash</i>	1		<i>Cords</i>		
	<i>Red Maple</i>	20		<i>Cords</i>		
	<i>Sugar Maple</i>	149		<i>Cords</i>		
	<i>White Ash</i>	13		<i>Cords</i>		
	<i>Yellow Birch</i>	8		<i>Cords</i>		
	White Spruce	1	Cords			
2	Basswood	Sawtimber	5.9	MBF	50.8	\$10,404.80
	Black Ash		0.5	MBF		
	Red Maple		9.9	MBF		
	Sugar Maple		75.4	MBF		
	White Ash		0.8	MBF		
	White Spruce		1.0	MBF		
	Yellow Birch		1.3	MBF		
	Basswood		Pulpwood	7		
	Mixed Hardwood	204		Cords		
	<i>American Elm</i>	4		<i>Cords</i>		
	<i>Black Ash</i>	1		<i>Cords</i>		
	<i>Red Maple</i>	20		<i>Cords</i>		
	<i>Sugar Maple</i>	157		<i>Cords</i>		
	<i>White Ash</i>	13		<i>Cords</i>		
	<i>Yellow Birch</i>	9		<i>Cords</i>		
	White Spruce	1	Cords			
3	Basswood	Sawtimber	2.5	MBF	21.8	\$4,475.40
	Black Ash		0.2	MBF		
	Red Maple		4.3	MBF		
	Sugar Maple		32.4	MBF		
	White Ash		0.3	MBF		
	White Spruce		0.4	MBF		
	Yellow Birch		0.6	MBF		
	Basswood		Pulpwood	3		
	Mixed Hardwood	88		Cords		
	<i>American Elm</i>	1		<i>Cords</i>		
	<i>Black Ash</i>	1		<i>Cords</i>		
	<i>Red Maple</i>	9		<i>Cords</i>		
	<i>Sugar Maple</i>	67		<i>Cords</i>		
	<i>White Ash</i>	6		<i>Cords</i>		
	<i>Yellow Birch</i>	4		<i>Cords</i>		
	White Spruce	1	Cords			
TOTAL:			225.4	MBF		
TOTAL:			505	Cords		

## Sale Specific Conditions & Requirements

**Sale Name: Pinnacle Hardwoods**

**Sale Number: 11-008-21 Seq#: 1**

### 1 - Sale Area

#### 1.2 - Boundaries

##### 1.2.1 - Painted boundaries (9/19)

The sale boundary and Payment Unit boundaries are marked and identified by red paint. Exterior sale boundary lines against state are marked with red paint. Interior Payment Unit boundaries are marked with red paint. The painted boundary line trees are not Included Timber and are to be protected unless marked with orange paint. Red painted trees designating an interior Payment Unit boundary are only to be cut when all surrounding Payment Units have been paid.

### 2 - Timber Specifications

#### 2.1 - Included Timber

##### 2.1.3 - Cut tree marked unit(s) (12/08)

Within Payment Unit(s) 1 - 3, all trees are designated for cutting when marked with orange paint above and below stump height, regardless of merchantability.

#### 2.2 - Utilization

##### 2.2.1 - Utilization (2/04)

All listed board foot volumes of sawlog size products in this contract have been determined using a top diameter inside bark of 10 inches.

##### 2.2.4 - Skidding length (2/14)

Skidding of lengths over 17 feet is permissible if the timber sale administrator approves the method and machinery used. If at any point damage exceeds specification 3.4.1, all the remaining wood must be skid in lengths less than 17 feet.

#### 2.3 - Log Rule

##### 2.3.1 - Log rule (12/08)

All board foot volumes of sawlog size products in this contract have been determined by the Scribner Decimal C Log Rule.

### 3 - Payments

#### 3.4 - Damaged Timber

##### 3.4.1 - Damaged timber (7/16)

General Condition and Requirement 3.4 Damaged Timber, defines liquidated damages for undesignated live merchantable trees which are cut or injured. In addition, extreme care should be taken to avoid damage to tree seedlings and saplings.

### 4 - Transportation

#### 4.1 - Construction

##### 4.1.1 - Stream crossings, general (3/11)

All stream crossing structures will be temporary and therefore, shall be provided by the Purchaser, and must be removed upon completion of the sale. All permits for stream crossings will be provided by the DNR for crossings located on state land.

##### 4.1.3 - Slash and earthen piles (8/04)

Piles or windrows of earth along roads and landings that have been widened or constructed shall be leveled. Slash from road maintenance or construction, including stumps, shall be dispersed throughout the sale, chipped, utilized or otherwise removed from the sale.

##### 4.1.5 - Culverts (5/14)

Roads may require the installation of culverts for cross drainage or at natural drainage-ways. If culverts are needed in these locations, their placement will be specified by the sale administrator and they shall be installed prior to hauling. The culverts shall be new, corrugated metal or plastic gauge. Culverts will be a minimum of 12 inches in diameter and 24 feet in length. If



culverts are removed, fill shall be removed from wetland soils as specified. Soils shall be maintained and left in a non-erodible condition, with water bars, seed, fertilizer, mulch, and slash installed as directed by the sale administrator and as specified in the BMP manual. Stream crossing permits, if needed, will be obtained by the DNR for crossings located on state land.

#### 4.1.6 - Road construction (1/09)

Construction of new roads or improvements of existing roads shall be done in such a way as to minimize the environmental and visual impacts. Merchantable trees shall be cut and utilized unless otherwise directed. Non-merchantable trees shall be severed and laid flat on the ground. Slash shall be scattered, and not left in windrows and kept a minimum of 10 feet back from the road edge or be chipped, utilized, or otherwise removed from the sale. Stumps shall be set upright, not left on edge, and be moved at least 10 feet away from the road edge. Disturbed soil shall be feathered into the woods and not left in berms or windrows.

#### 4.1.7 - Road closure (10/11)

All new roads built into the sale must be blocked to vehicle traffic upon completion of the sale. Overgrown roads that are reopened shall be considered new roads. In general, this will require constructing a four (4') foot high berm of stumps and logs covered with earth.

#### 4.1.12 - No new roads (1/12)

No new roads will be permitted in any Payment Unit. All operations are limited to existing roads. Skid trails only will be allowed.

### 4.2 - Maintenance

#### 4.2.2 - Fill material (4/07)

To maintain roads, fill material may be needed in areas where "holes" exist or may be expected to develop. This fill material should be placed before trucking begins. Contact the sale administrator regarding the availability of onsite sand or gravel from adjacent State-owned lands.

#### 4.2.4 - Grading (10/16)

For completion of the sale, state forest roads must be graded. In general, this will require a road grader or bulldozer to shape up the roads after forest products have been hauled off site. This includes cleaning of drainage areas, grading, crowning, and filling with gravel, if necessary. The grading equipment to be used must be approved by the Unit Manager or his/her representative.

## 5 - Operations

### 5.2 - Conduct of Operations

#### 5.2.2 - Hazard Trees/Snags

##### 5.2.2.1 - Den trees (10/16)

Obvious hollow and/or den trees shall be protected and left standing unless they are a safety hazard.

#### 5.2.3 - Operating Restrictions

##### 5.2.3.2 - Operating restrictions (9/11)

Within Payment Unit(s) 1 - 3, unless changed by written agreement, all cleanup activities must be completed by the June 15 following harvest completion. This restriction is to allow the area to revegetate before the dry season.

##### 5.2.3.3 - Bark slippage restriction (3/09)

Within Payment Unit(s) 1 - 3, unless changed by written agreement, cutting and skidding are not permitted during the period of April 15 to July 15. This restriction is because of bark slippage.

#### 5.2.30 - Landing/road top soil protection (2/15)

Top soil on landings and new roads must be removed, stockpiled and saved. Upon completion of the timber sale, soil must be evenly distributed back over the area for revegetation. In addition, the area must be seeded and mulched per instructions of the sale administrator.

#### 5.2.32 - Decking/landing restoration (9/13)

All decking and landing areas must have the surface area restored to a condition equal to or better than before. This is to ensure the proper regeneration of the stand. Wood debris, chips, and "cookies" from trimmings must be removed or scattered

away from landing and loading areas and may not be windrowed on the edge.

#### 5.2.38 - No decking against live trees (2/04)

Cut products may not be decked against unmarked or designated leave trees.

### 5.4 - Soil Protection

#### 5.4.1 - Rutting restriction, general (7/16)

Operations are to cease immediately if equipment and weather conditions result in rutting of roads and/or skid trails which is 12 inches or greater in depth and 50 feet in length. The Unit Manager or his/her representative may restrict hauling and/or skidding if ruts exceed the specified depth. With the Unit Manager or his/her representative's approval, the Purchaser may return to the area when the risk of rutting has decreased.

#### 5.4.2 - Skid trails (2/04)

Skid trails up and down slopes should be avoided. If however this is unavoidable, these trails will be left in a non-erodible condition using water bars, logs, and slash. Placing of slash on these skid trails while logging is ongoing may alleviate need for any further action. At the direction of the sale administrator, seed, fertilizer, and mulch may also be required.

### 5.8 - Protection of Endangered Species

#### 5.8.5 - Protection of raptor nests (3/13)

All trees with raptor nests will be protected if found during harvesting operations. Notification will be made to the Unit Manager or his/her representative who will notify the Wildlife Biologist so an on-site evaluation and recommendation can be made, if necessary.

## 6 - Safety and Fire Prevention

### 6.2 - Signing

#### 6.2.1 - Road posting (10/20)

The Purchaser is responsible for posting and maintaining caution signs on the Elm River Tower Road. prior to beginning operations. The road must be posted at appropriate distances from the Sale Area to warn of logging activity and truck traffic. Signs must be removed when harvest operations are suspended or completed. The Purchaser will provide these signs.



# TIMBER SALE MAP

This information provided by authority of Part 525, 1994 PA 451, as amended.

Sale Number	Year
11-008	21

Forest Management Unit Baraga	County Houghton	Mapped By Carlson	Date 3/2/2021	Page 1	of 1
		Cruised By Budweg Forestry			

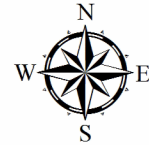
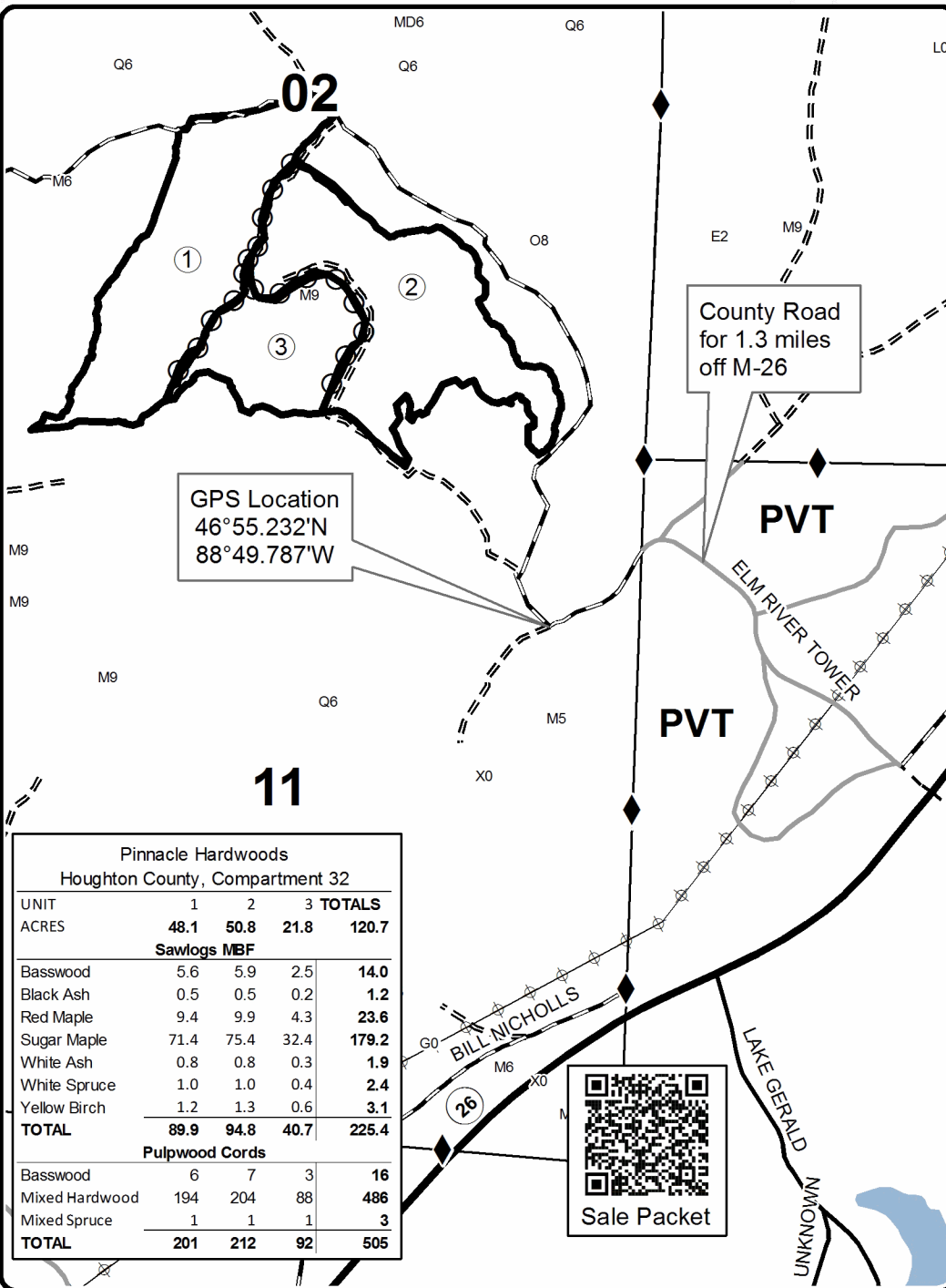
Township 52N	Range 32W	Section(s) and Subdivision(s) Sec 2 - NESW, S1/2SW, SE; Sec 11 - NWNW, NWNE	Scale 1:15,840
-----------------	--------------	--	-------------------

### Cover Type

A = Aspen	H = Hemlock	N = Marsh	U = Upland Brush
B = Paper Birch	J = Jack Pine	O = Oak	UM = Upland Mixed
C = Cedar	L = Lowland Brush	P = Lowland Poplar	V = Bog or Marsh
D = Treed Bog	LM = Lowland Mixed	Q = Mixed Swamp Conifer	W = White Pine
E = Swamp Hdwoods	M = Mpl, Bch, Brch	R = Red Pine	X = Non Stocked
F = Spruce Fir	MC = Mixed Conifer	S = Black Spruce	Z = Water
G = Grass	MD = Mixed Deciduous	T = Tamarack	

### Density

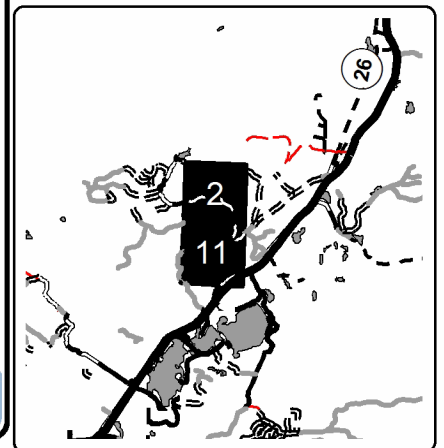
0 = Non Stocked	5 = Pole Timber Medium
1 = Seedling Sapling Poor	6 = Pole Timber Well
2 = Seedling Sapling Medium	7 = Saw Timber Poor
3 = Seedling Sapling Well	8 = Saw Timber Medium
4 = Pole Timber Poor	9 = Saw Timber Well



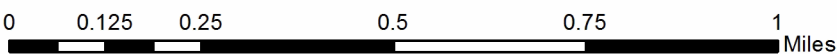
### Legend

- ◆ Survey Corners
- Primary Forest Road
- == Forest Access Route
- Paved Road
- - - Gravel Road
- Private
- ⚡ Powerline
- Against State (Red)
- ⊙ Payment Unit (Red)

Locator Map  
1:200,000



Pinnacle Hardwoods				
Houghton County, Compartment 32				
UNIT	1	2	3	TOTALS
ACRES	48.1	50.8	21.8	120.7
<b>Sawlogs MBF</b>				
Basswood	5.6	5.9	2.5	14.0
Black Ash	0.5	0.5	0.2	1.2
Red Maple	9.4	9.9	4.3	23.6
Sugar Maple	71.4	75.4	32.4	179.2
White Ash	0.8	0.8	0.3	1.9
White Spruce	1.0	1.0	0.4	2.4
Yellow Birch	1.2	1.3	0.6	3.1
<b>TOTAL</b>	<b>89.9</b>	<b>94.8</b>	<b>40.7</b>	<b>225.4</b>
<b>Pulpwood Cords</b>				
Basswood	6	7	3	16
Mixed Hardwood	194	204	88	486
Mixed Spruce	1	1	1	3
<b>TOTAL</b>	<b>201</b>	<b>212</b>	<b>92</b>	<b>505</b>





Free Man Mix (11-004-21)

T47N, R33W, SEC. 28; T47N, R33W, SEC. 32; T47N, R33W, SEC. 33; T47N,

In response to the notice of sale to be held 9:00 a.m. (local time) on May 27, 2021, I am hereby submitting my sealed bid ( firm offer) for the following forest products to be cut. Bids for individual species must be at or above the advertised price. All non-responsive bid forms may be rejected.

<u>PRODUCTS &amp; SPECIES</u>	<u>ESTIMATED VOLUME*</u>	<u>ADVERTISED PRICE</u>	<u>BID PRICE/UNIT</u>
<b>Sawtimber</b>			
Paper Birch	61.2 MBF	\$ 25.00/MBF	\$ _____
Red Maple	131.0 MBF	\$ 63.00/MBF	\$ _____
Sugar Maple	65.1 MBF	\$ 113.00/MBF	\$ _____
Yellow Birch	98.7 MBF	\$ 38.00/MBF	\$ _____
<b>Pulpwood</b>			
Balsam Fir	276 Cords	\$ 3.05/Cord	\$ _____
Mixed Aspen	935 Cords	\$ 6.25/Cord	\$ _____
Mixed Hardwood	2,622 Cords	\$ 4.60/Cord	\$ _____
Mixed Spruce	443 Cords	\$ 3.35/Cord	\$ _____
Paper Birch	531 Cords	\$ 3.55/Cord	\$ _____
Tamarack	14 Cords	\$ 8.60/Cord	\$ _____

\*The volumes are statistically estimated within plus (+) or minus (-) 4.02 percent at 95% confidence level. These estimated volumes are final and not subject to adjustment. Prospective bidders are urged to examine this timber and to make their own estimates of quantity and quality.

I understand that any or all bids may be rejected. All bids must be signed and all bid items must be bid or the bid form may be rejected. I also understand that consideration and awarding a contract will be based upon my past performance and ability to complete the contract based upon equipment and staffing subject to my control.

FEDERAL ID: \_\_\_\_\_ or SOCIAL SECURITY NUMBER: \_\_\_\_\_

Company or individual bidding: \_\_\_\_\_

Company representative's name: \_\_\_\_\_

Address: \_\_\_\_\_

City: \_\_\_\_\_ State: \_\_\_\_\_ Zip: \_\_\_\_\_

IF AVAILABLE, PLEASE PLACE THE PERSONALIZED LABEL FROM YOUR PROSPECTUS IN THE ABOVE BOX.

Individual or company representative's signature: \_\_\_\_\_ Date: \_\_\_\_\_

Phone number : \_\_\_\_\_ Email (optional): \_\_\_\_\_

**THE WINNING BIDDER MUST COMPLETE THE VERIFICATION OF WORKER'S DISABILITY COMPENSATION ACT COMPLIANCE (ON REVERSE SIDE IF DOUBLE SIDED) WITHIN 21 DAYS OF SALE AWARD DATE**



FOR DEPARTMENT USE ONLY	
Sale Number (XX - XXX - XX - XX)	
Forest Management Unit:	

## TIMBER SALE VERIFICATION OF WORKER'S DISABILITY COMPENSATION ACT COMPLIANCE

As required by Act 317, P.A. 1969 (Worker's Compensation) and  
Part 5 of Act 451 of 1994, as amended.

### VERIFICATION OF WORKER'S DISABILITY COMPENSATION ACT COMPLIANCE

- This verification must be completed and submitted within 21 days of contract award and prior to the issuance of the timber sale contract.
- In addition, if boxes 2B or 2C are checked, then Notice of Exclusion or Certificate of Insurance must be submitted within twenty-one (21) days of the contract award and prior to the issuance of the timber sale contract.
- All information must be typed or printed except for written signatures.

Please Check Appropriate Categories:

1. My business is organized as (you **must** check one of the boxes below):
  - A.  Sole Proprietorship (individual)
  - B.  Partnership
  - C.  Corporation
2. You **must** check one of the boxes below:
  - A.  I certify my business is a sole proprietorship and it has no employees but the sole proprietor. I am not subject to the Worker's Compensation Laws.
  - B.  I certify my business has satisfied its obligation to the Worker's Compensation Act through the use of an approved Notice of Exclusion (BWC-337, Rev. 5/96). I will provide a copy of the Notice of Exclusion within 21 days of the contract award. (For questions or a copy of the BWC-337, please call the Worker's Compensation Bureau at 517-322-1195).
  - C.  I certify my business has a Worker's Compensation Policy. I will provide an original Certificate of Insurance within twenty-one (21) days of the contract award.
3. If you have checked item 2(A) or 2(B), you **must** indicate the number of **both** full-time and part-time employees, other than yourself, including family members and active partners (if none, you must enter "0").

\_\_\_\_\_ Full-time Employees

\_\_\_\_\_ Part-time Employees

Name of Business		Federal ID (or) Social Security No.	
Address		Telephone (       )	
City	State	ZIP	

*I hereby certify that the above information is true and correct. I agree to notify the Michigan DNR of any changes that occur in factors affecting my coverage during any of my present and future operations.*

\_\_\_\_\_  
Signature of Owner or Authorized Representative

\_\_\_\_\_  
Title

\_\_\_\_\_  
Date

Please complete the "SEALED BID" information on the next page

Pinnacle Hardwoods (11-008-21)  
T52N, R36W, SEC. 11; T52N, R36W, SEC. 2; Houghton COUNTY

In response to the notice of sale to be held 9:00 a.m. (local time) on May 27, 2021, I am hereby submitting my sealed bid ( firm offer) for the following forest products to be cut. Bids for individual species must be at or above the advertised price. All non-responsive bid forms may be rejected.

<u>PRODUCTS &amp; SPECIES</u>	<u>ESTIMATED VOLUME*</u>	<u>ADVERTISED PRICE</u>	<u>BID PRICE/UNIT</u>
<b>Sawtimber</b>			
Basswood	14.0 MBF	\$ 31.00/MBF	\$ _____
Black Ash	1.2 MBF	\$ 14.00/MBF	\$ _____
Red Maple	23.6 MBF	\$ 63.00/MBF	\$ _____
Sugar Maple	179.2 MBF	\$ 113.00/MBF	\$ _____
White Ash	1.9 MBF	\$ 30.00/MBF	\$ _____
White Spruce	2.4 MBF	\$ 31.00/MBF	\$ _____
Yellow Birch	3.1 MBF	\$ 38.00/MBF	\$ _____
<b>Pulpwood</b>			
Basswood	16 Cords	\$ 3.55/Cord	\$ _____
Mixed Hardwood	486 Cords	\$ 4.60/Cord	\$ _____
White Spruce	3 Cords	\$ 3.35/Cord	\$ _____

\*The volumes are statistically estimated within plus (+) or minus (-) 8.78 percent at 95% confidence level. These estimated volumes are final and not subject to adjustment. Prospective bidders are urged to examine this timber and to make their own estimates of quantity and quality.

I understand that any or all bids may be rejected. All bids must be signed and all bid items must be bid or the bid form may be rejected. I also understand that consideration and awarding a contract will be based upon my past performance and ability to complete the contract based upon equipment and staffing subject to my control.

FEDERAL ID: \_\_\_\_\_ or SOCIAL SECURITY NUMBER: \_\_\_\_\_

Company or individual bidding: \_\_\_\_\_

Company representative's name: \_\_\_\_\_

Address: \_\_\_\_\_

City: \_\_\_\_\_ State: \_\_\_\_\_ Zip: \_\_\_\_\_

IF AVAILABLE, PLEASE PLACE THE PERSONALIZED LABEL FROM YOUR PROSPECTUS IN THE ABOVE BOX.

Individual or company representative's signature: \_\_\_\_\_ Date: \_\_\_\_\_

Phone number : \_\_\_\_\_ Email (optional): \_\_\_\_\_

**THE WINNING BIDDER MUST COMPLETE THE VERIFICATION OF WORKER'S DISABILITY COMPENSATION ACT COMPLIANCE (ON REVERSE SIDE IF DOUBLE SIDED) WITHIN 21 DAYS OF SALE AWARD DATE**



FOR DEPARTMENT USE ONLY	
Sale Number (XX - XXX - XX - XX)	
Forest Management Unit:	

## TIMBER SALE VERIFICATION OF WORKER'S DISABILITY COMPENSATION ACT COMPLIANCE

As required by Act 317, P.A. 1969 (Worker's Compensation) and  
Part 5 of Act 451 of 1994, as amended.

### VERIFICATION OF WORKER'S DISABILITY COMPENSATION ACT COMPLIANCE

- This verification must be completed and submitted within 21 days of contract award and prior to the issuance of the timber sale contract.
- In addition, if boxes 2B or 2C are checked, then Notice of Exclusion or Certificate of Insurance must be submitted within twenty-one (21) days of the contract award and prior to the issuance of the timber sale contract.
- All information must be typed or printed except for written signatures.

Please Check Appropriate Categories:

1. My business is organized as (you **must** check one of the boxes below):
  - A.  Sole Proprietorship (individual)
  - B.  Partnership
  - C.  Corporation
2. You **must** check one of the boxes below:
  - A.  I certify my business is a sole proprietorship and it has no employees but the sole proprietor. I am not subject to the Worker's Compensation Laws.
  - B.  I certify my business has satisfied its obligation to the Worker's Compensation Act through the use of an approved Notice of Exclusion (BWC-337, Rev. 5/96). I will provide a copy of the Notice of Exclusion within 21 days of the contract award. (For questions or a copy of the BWC-337, please call the Worker's Compensation Bureau at 517-322-1195).
  - C.  I certify my business has a Worker's Compensation Policy. I will provide an original Certificate of Insurance within twenty-one (21) days of the contract award.
3. If you have checked item 2(A) or 2(B), you **must** indicate the number of **both** full-time and part-time employees, other than yourself, including family members and active partners (if none, you must enter "0").

\_\_\_\_\_ Full-time Employees

\_\_\_\_\_ Part-time Employees

Name of Business		Federal ID (or) Social Security No.	
Address		Telephone (       )	
City	State	ZIP	

*I hereby certify that the above information is true and correct. I agree to notify the Michigan DNR of any changes that occur in factors affecting my coverage during any of my present and future operations.*

\_\_\_\_\_  
Signature of Owner or Authorized Representative

\_\_\_\_\_  
Title

\_\_\_\_\_  
Date

Please complete the "SEALED BID" information on the next page