



**DEPARTMENT OF NATURAL RESOURCES
STATE OF MICHIGAN**

TIMBER SALE PROSPECTUS #6825

SCHEDULED SALE DATE AND TIME: 8:30 a.m. (local time) on June 9, 2021.

LOCATION: CRYSTAL FALLS MGMT UNIT, 1420 US 2 WEST, CRYSTAL FALLS, MI 49920.

PROSPECTUS NOTE: The bidder is advised to inspect the sale area and review the location, estimated volumes, operating costs and contract terms of proposed sales. Please be aware that some landowners may request 60 days or more notice for access across their land.

Notice is hereby given that bids will be received by the Unit Manager, CRYSTAL FALLS MANAGEMENT UNIT, for certain timber on the following described lands:

New Cruise (12-005-20) / T43N, R28W, SEC. 18, N1/2NW,SWNW,N1/2SW.

Dickinson County, Advertised Price \$22,436.10, 41.3 Acres, Red Pine, Aspen.

SALE NOTE: All units of volume listed for this sale were estimated using the Inventory Manager computer program and the new Michigan taper model. This sale has been cruised by Jake Siler. Bark slip restrictions apply to Payment Units 2 and 3.

A recreation site such as a trail, pathway, or campground is within the sale area or the vicinity. Certain restrictions/specifications may be applicable including time restrictions.

Countyline Chiseler (12-006-20) / T44N, R27W, SEC. 5 , N1/2NW,SE,SW,NWNE,S1/2NE,SE,SW.

T44N, R27W, SEC. 5 , SE.

T44N, R27W, SEC. 8 , NW,NE,NWSW.

T44N, R27W, SEC. 9 , W1/2NW.

Dickinson County, Advertised Price \$114,816.75, 352.9 Acres, Hardwood, Aspen.

SALE NOTE: All forest products in Payment Unit 7 will be scaled.

Hunt Club Hideaway (12-010-20) / T44N, R27W, SEC. 10, SENW,NESW,SE.

T44N, R27W, SEC. 11, NW,W1/2NE,N1/2SW,SWSW.

Dickinson County, Advertised Price \$106,171.00, 162.5 Acres, Red Pine, Aspen.

SALE NOTE: A recreation site such as a trail, pathway, or campground is within the sale area or the vicinity. Certain restrictions/specifications may be applicable including time restrictions. Access may be through private land.

BID INSTRUCTIONS (VER. 07/02/2018):

1. Scheduled Bid Location, Date, and Time (2/11)

Bids must be received by the Unit Manager, CRYSTAL FALLS OFFICE, 1420 US 2 West, Crystal Falls, MI 49920, no later than 8:30 a.m. (local time) on June 9, 2021. For further information concerning this sale, contact Dan McNamee at 906-875-6622.

2. Bidder's Qualifications (5/16)

Purchaser shall obtain workers compensation insurance to cover claims under Michigan's Worker's Disability Compensation Act of 1969 or similar employee benefit act of any other state applicable to an employee. If all or part of a timber sale was prepared by a private contractor, the contractor and that contractor's company are not permitted to bid on the timber sale contract. Bids will not be accepted from individuals or companies appearing on the DNR/FRD No-Bid List. This list contains the names of purchasers who previously failed to execute a contract within 21-days or who have a history of poor performance.

3. Preparation of Sealed Bids (5/16)

Bid Forms may be completed online thru Michigan DNR Timber Sale Online Bidding (OLB) at www.michigan.gov/timberbidding or by completing the hardcopy Bid Form found in the Timber Sale Prospectus. Hardcopy Bid Forms shall be manually signed in ink. Registration in OLB is considered your 'signature' for all bids submitted thru that system. Bid prices must be entered for each species and product in the Bid Price column for all material subject to bidding and all fill-in blanks must be completed. If erasures or other changes appear on the hardcopy Bid Form, each erasure or change must be initialed by the person signing the bid.

4. Submission of Sealed Bids (5/16)

Bid forms may be obtained from the Unit Manager or thru OLB. Bids may be submitted hardcopy or thru OLB. All hardcopy bids must be submitted on the bid form and in an envelope clearly identified as described in this section. NOTE: Only one bid form per bid envelope. Sealed bids must be submitted to the Unit office designated in the prospectus and must be submitted at or prior to the time established in the prospectus. The envelope should show on the outside (a) the sale name or number and (b) the date and time of bid opening, as shown in the prospectus. Bids received after the time specified in the sale prospectus are late bids and will be rejected.

It is possible for a bidder to submit multiple bids on a single sale. For example, a bid may be submitted hardcopy and a bid may be submitted thru OLB. Or, two bidders from the same company could both submit bids on the same sale. If this were to happen, the State would accept all bids received and award the contract accordingly. All bidding and contractual requirements would apply to all bids received.

5. Public Opening of Sealed Bids (7/16)

If conditions permit, the sealed bids will be publicly opened and posted at the time and place set in the prospectus.

If a bidder, present at a bid opening, has submitted bids on more than one sale, that bidder may withdraw their unopened bid envelopes or announce the withdrawal of their online bid after being declared the successful bidder on one sale.

6. Award of Contract (1/11)

Award of the contract will be made to the Bidder whose bid, conforming to the prospectus, is most advantageous to the State of Michigan on the basis of total value at rates bid for the estimated quantities. The State reserves the right to reject any bid or waive any minor irregularity in bids received. A written award mailed (or otherwise furnished) to the successful Bidder shall be deemed to result in a binding contract without further action by either party.

7. Down Payment (1/11)

The Bidder to whom award is made must make a down payment within 21 days of the sale award. The amount of the down payment will be calculated as shown in the Bond and Payment Schedule of this prospectus. Only cash may be used to meet this requirement.

8. Performance Security (1/11)

As guarantee of faithful performance, a cash bond, certificate of deposit, surety bond or irrevocable letter of credit (LOC) is required within 21 days of the sale award. The amount of the performance security is shown in the Bond and

Payment Schedule of this prospectus. If an LOC or surety is used, the coverage must extend for at least 6 months beyond the contract expiration.

9. Timber Sale Contract (7/18)

Additional conditions and requirements common to all timber sales are listed on the timber sale contract (R4031) and are available on line at www.michigan.gov/timber. Contact the Unit Manager for additional information or a sample contract. Within 21 days of the date of the award letter, the bidder must sign the contract and provide the required down payment, performance security, and verification of worker's disability compensation. The down payment and performance security shall be in accordance with the provisions of the timber sale contract, in the sums stated in this prospectus. If these actions are not taken, then the Bidder, the Bidder's corporation, and the corporation's principals may not be permitted to bid on State timber sales for a period of 3 months after the first offense, 6 months after the second offense, and 1 year after the third offense. An offense will only be counted against the Bidder for 5 years. In addition, the Bidder certifies that if awarded this contract, the Bidder will complete the timber sale contract in accordance with its terms and any modifications thereof including requirements to purchase, cut, and remove the included timber by the expiration date.

Payment Unit values in the State Forest Timber Sale Contract are calculated based on the advertised value of the Payment Unit as a percentage of the total advertised value of the contract. The advertised value of each Payment Unit is given in the Description of Timber by Payment Unit table on the Timber Sale Information page. For example, if the value of Payment Unit 1 is advertised as \$1,500 and the total Timber Sale value is advertised as \$10,000, the contract price for Payment Unit 1 will be 15% of the total bid price ($\$1,500/\$10,000 * 100$).

10. Disclaimer of Estimates and Bidder's Warranty of Inspection (7/16)

Before submitting this bid, the Bidder is advised and cautioned to inspect the sale area, review the requirements of the sale contract, and take other steps as may be reasonably necessary to ascertain the location, estimated volumes, construction estimates, and operating costs of the proposed sale. Failure to do so will not relieve the Bidder from responsibility for completing the contract.

The Bidder warrants that this bid is submitted solely on the basis of the Bidder's examination and inspection of the quality and quantity of the timber offered for sale and the Bidder's opinion of the value thereof and the costs of recovery. No reliance should be placed on the State of Michigan's estimates of timber quality, quantity or costs of recovery. Bidder further acknowledges that the State of Michigan: (i) expressly disclaims any warranty of fitness of timber for any purpose; (ii) offers this timber as is without any warranty of quality (merchantability) or quantity and (iii) expressly disclaims any warranty as to the quantity or quality of timber sold.

11. Certification and Chain-of-Custody (10/14)

Unless otherwise indicated in the contract under section 7 – Other Conditions of the Sale Specific Conditions & Requirements, the area encompassed by this timber sale is certified to the standards of the Forest Stewardship Council (FSC) - Certificate #SCS-FM/COC-00090N and the Sustainable Forestry Initiative (SFI) - Certificate #NSF-SFIS-5Y031-SF5. Forest products from this sale may be delivered to the mill as "FSC 100% and / or SFI certified" as long as the contractor hauling the forest products is chain-of-custody (COC) certified or covered under a COC certificate from the destination mill. The purchaser is responsible for maintaining COC after leaving the sale area.

12. Good Neighbor Authority (GNA) Requirements (7/16)

If the name of this timber sales contains the acronym GNA, it is authorized by the Good Neighbor Authority (GNA) and covered by various agreements between the U.S. Forest Service and the State. The timber sale occurs on federal land and the following conditions apply:

GNA contracts on US Forest Service land will not be awarded to purchasers on the Federal list of excluded parties. The System for Award Management (SAM) will be checked for active excluded parties prior to award of contract. In addition, the Bidder to whom award is made must complete an Assurance Regarding Felony Conviction or Tax Delinquent Status for Corporate Applicants (AD-3031).

13. Good Neighbor Authority (GNA) Requirements, con't (9/16)

Bidder certifies, by signing this bid form, that to the best of Bidder's knowledge that the following representations are accurate and complete.

- a. That the Bidder and its principals are not presently debarred, suspended, proposed for debarment, declared ineligible, or voluntary excluded from timber sales (covered transactions) by any Federal department or agency.
- b. That the Bidder and its principals have not within a 3-year period preceding this bid been convicted of or had a civil judgment rendered against them for commission of fraud or a criminal offense in connection with obtaining , attempting to obtain, or performing a public (Federal, State, or local) transaction or contract under a public transaction; violation of Federal or State antitrust statutes or commission of embezzlement, theft, forgery, bribery, falsification or destruction of records, making false statements, or receiving stolen property.
- c. That the Bidder and its principals are not presently indicted for or otherwise criminally or civilly charged by a governmental entity (Federal, State, or local) with commission of any of the offenses enumerated in paragraph b of this certification.
- d. That the Bidder and its principals have not within a 3-year period preceding this bid had one or more public transactions (Federal, State, or local) terminated for breach or default of a timber or forest product contract.

Bidders that cannot certify this requirement, in whole or in part, shall submit an explanation with their bid.

DAN EICHINGER
Director

TIMBER SALE INFORMATION

New Cruise (12-005-20)

T43N, R28W, SEC. 18.

Dickinson County (Advertised Price \$22,436.10)

SALE NOTE: All units of volume listed for this sale were estimated using the Inventory Manager computer program and the new Michigan taper model. This sale has been cruised by Jake Siler. Bark slip restrictions apply to Payment Units 2 and 3.

A recreation site such as a trail, pathway, or campground is within the sale area or the vicinity. Certain restrictions/specifications may be applicable including time restrictions.

A timber sale contract for this lump sum, sealed bid timber sale will be awarded to the responsible bidder offering the highest sealed bid price. All units of volume listed below were estimated using the Inventory Manager computer program and the new Michigan taper model. Bids must be at or above the following advertised price for each product and species:

<u>PRODUCTS & SPECIES</u>	<u>ESTIMATED UNITS*</u>	<u>ADVERTISED PRICE</u>
Sawtimber		
Red Pine	42.4 MBF	\$ 98.00 / MBF
Pulpwood		
Balsam Fir	28 Cords	\$ 12.70 / Cord
Mixed Spruce	19 Cords	\$ 11.30 / Cord
Paper Birch	7 Cords	\$ 8.60 / Cord
Quaking Aspen	258 Cords	\$ 25.05 / Cord
Red Pine	358 Cords	\$ 31.25 / Cord

* The total volume is statistically estimated within plus (+) or minus (-) 9.05 percent. There are an estimated 748 cords on this timber sale, plus or minus 68 cords at the 95% confidence level. The estimated units are final and not subject to adjustment. Prospective bidders are urged to examine this timber and to make their own estimates of quantity and quality.

BOND AND PAYMENT SCHEDULE:

1. A bond in the amount of \$1,795.00 to insure faithful performance of the conditions of the contract will be deposited by the successful bidder within 21 days of the sale award.
2. Cutting in any sale or unit without the required advance payment would be considered a trespass.
3. Total payment must be paid in advance or according to the following schedule :
 - (a) Ten percent (10%) of the sale value must be paid within 21 days of the sale award.
 - (b) The 10% down payment will be credited towards the first unit cut.
 - (c) Payment for each of the following units must be made before cutting begins in that unit:

PAYMENT UNIT NUMBER	PERCENT OF TOTAL SALE VALUE
01	31.6%
02	22.6%
03	45.8%
4. If no cutting takes place, the 10% down payment will not be refunded.
5. Operations on the contract issued will terminate on 07/01/2023.

SALE STATISTICS

Volumes were calculated in cubic feet using the Michigan taper model. Cubic foot volume includes all wood inside bark for the product indicated. For display purposes, cubic feet were converted to cords and MBF using a simple conversion factor, e.g. 79 cubic feet per cord and 185 cubic feet per MBF. The cubic foot volumes are precise; the cords and MBF volumes are not. Cubic foot volume cannot be directly converted to cords or boards with precision.

SALE VOLUMES

The total estimated sale volume may not equal the sum of the species/products due to the nature of statistical calculations associated with double sampling methodology.

VOLUME		STATISTICAL RANGE IN CORDS		
TOTAL CUBIC FEET	TOTAL CORDS	PERCENT ERROR	MINIMUM	MAXIMUM
59,108	748	9.05%	680	816

VDU VOLUMES

A VDU is a Volume Determination Unit. Volumes and their associated statistics are calculated at the VDU level and summarized to the sale level. There is often a one to one relationship between a VDU and a Payment Unit, but not always, depending on the cruise design. Refer to the VDU TO PAYMENT UNIT table.

VDU	VOLUME		PERCENT ERROR	RANGE IN CORDS	
	TOTAL CUBIC FEET	TOTAL CORDS		MINIMUM	MAXIMUM
146	12,341	156	16.38%	131	182
147	24,658	312	18.84%	253	371
153	4,064	51	22.77%	40	63
154	18,548	235	11.81%	207	263
TOTAL:	59,612	755		631	878

VDU TO PAYMENT UNIT

When a VDU is associated with more than one Payment Unit (PU), the VDU volumes are assigned to the PU based on acres of the VDU within the PU.

VDU	VDU ACRES	PU	PU ACRES
146	9.5	2	9.5
147	16.6	1	16.6
153	3.3	3	3.3
154	11.9	3	11.9
TOTAL:	41.3		41.3

DESCRIPTION OF TIMBER BY PAYMENT UNIT (PU)

PU	MARKET GROUP	PRODUCT	QUANTITY	UNIT	ACRES	ADVERTISE PRICE
1	Balsam Fir	Pulpwood	28	Cords	16.6	\$7,093.40
	Mixed Spruce		19	Cords		
	<i>Black Spruce</i>		15	Cords		
	<i>White Spruce</i>		4	Cords		
	Paper Birch		7	Cords		
	<i>Paper Birch</i>		0.6	MBF		
	<i>Paper Birch</i>		6	Cords		
	Quaking Aspen		258	Cords		
2	Red Pine	Sawtimber	5.2	MBF	9.5	\$5,072.10
	Red Pine	Pulpwood	146	Cords		
3	Red Pine	Sawtimber	37.2	MBF	15.2	\$10,270.60
	Red Pine	Pulpwood	212	Cords		
TOTAL:			42.4	MBF		
TOTAL:			670	Cords		

Sale Specific Conditions & Requirements

Sale Name: New Cruise

Sale Number: 12-005-20 Seq#: 2

1 - Sale Area

1.2 - Boundaries

1.2.1 - Painted boundaries (9/19)

The sale boundary and Payment Unit boundaries are marked and identified by red and yellow paint. Exterior sale boundary lines against state are marked with red paint. Interior Payment Unit boundaries are marked with yellow paint. The painted Payment Unit and boundary line trees are not Included Timber and are to be protected unless marked with orange paint.

2 - Timber Specifications

2.1 - Included Timber

2.1.1 - Clearcut unit(s) with unmerchantable trees (6/14)

Within Payment Unit(s) 1, cut all broad-leaved trees that are two (2) inches or more at DBH except leave one cherry per acre, where available. In addition, leave cedar, white pine, red pine and live submerchantable spruce and fir.

2.1.3 - Cut tree marked unit(s) (12/08)

Within Payment Unit(s) 2 & 3, all trees are designated for cutting when marked with orange paint above and below stump height, regardless of merchantability. All other species may be cut except white pine.

4 - Transportation

4.2 - Maintenance

4.2.4 - Grading (10/16)

For completion of the sale, state forest roads must be graded. In general, this will require a road grader or bulldozer to shape up the roads after forest products have been hauled off site. This includes cleaning of drainage areas, grading, crowning, and filling with gravel, if necessary. The grading equipment to be used must be approved by the Unit Manager or his/her representative.

4.3 - Public Right-of-Way

4.3.2 - County R-O-W (12/06)

The county must be contacted prior to decking along the county road R-O-W. This applies to all Payment Units, Turner Road and DeGroot Road.

5 - Operations

5.2 - Conduct of Operations

5.2.3 - Operating Restrictions

5.2.3.3 - Bark slippage restriction (3/09)

Within Payment Unit(s) 2 & 3, unless changed by written agreement, cutting and skidding are not permitted during the period of April 1 to July 15. This restriction is because of bark slippage.

5.4 - Soil Protection

5.4.1 - Rutting restriction, general (7/16)

Operations are to cease immediately if equipment and weather conditions result in rutting of roads and/or skid trails which is 12 inches or greater in depth and 50 feet in length. The Unit Manager or his/her representative may restrict hauling and/or skidding if ruts exceed the specified depth. With the Unit Manager or his/her representative's approval, the Purchaser may return to the area when the risk of rutting has decreased.

6 - Safety and Fire Prevention

6.2 - Signing

6.2.1 - Road posting (9/09)

The Purchaser is responsible for posting and maintaining caution signs on Turner Road prior to beginning operations. The road must be posted at appropriate distances from the Sale Area to warn of logging activity and truck traffic. Signs must be removed when harvest operations are suspended or completed. The Purchaser will provide these signs.



TIMBER SALE MAP

This information provided by authority of Part 525, 1994 PA 451, as amended.

Sale Number	Year
005	2020

Forest Management Unit	County	Mapped By	Date	Page	of
Crystal Falls Management Unit	Dickinson Co.	Debbie Goupell	8/20/2020	1	1
Township	Range	Section(s) and Subdivision(s)	Scale		
43N	28W	Sec 18: NW1/4, N1/2SW	1:15,840		

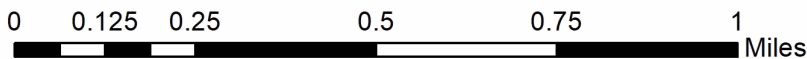
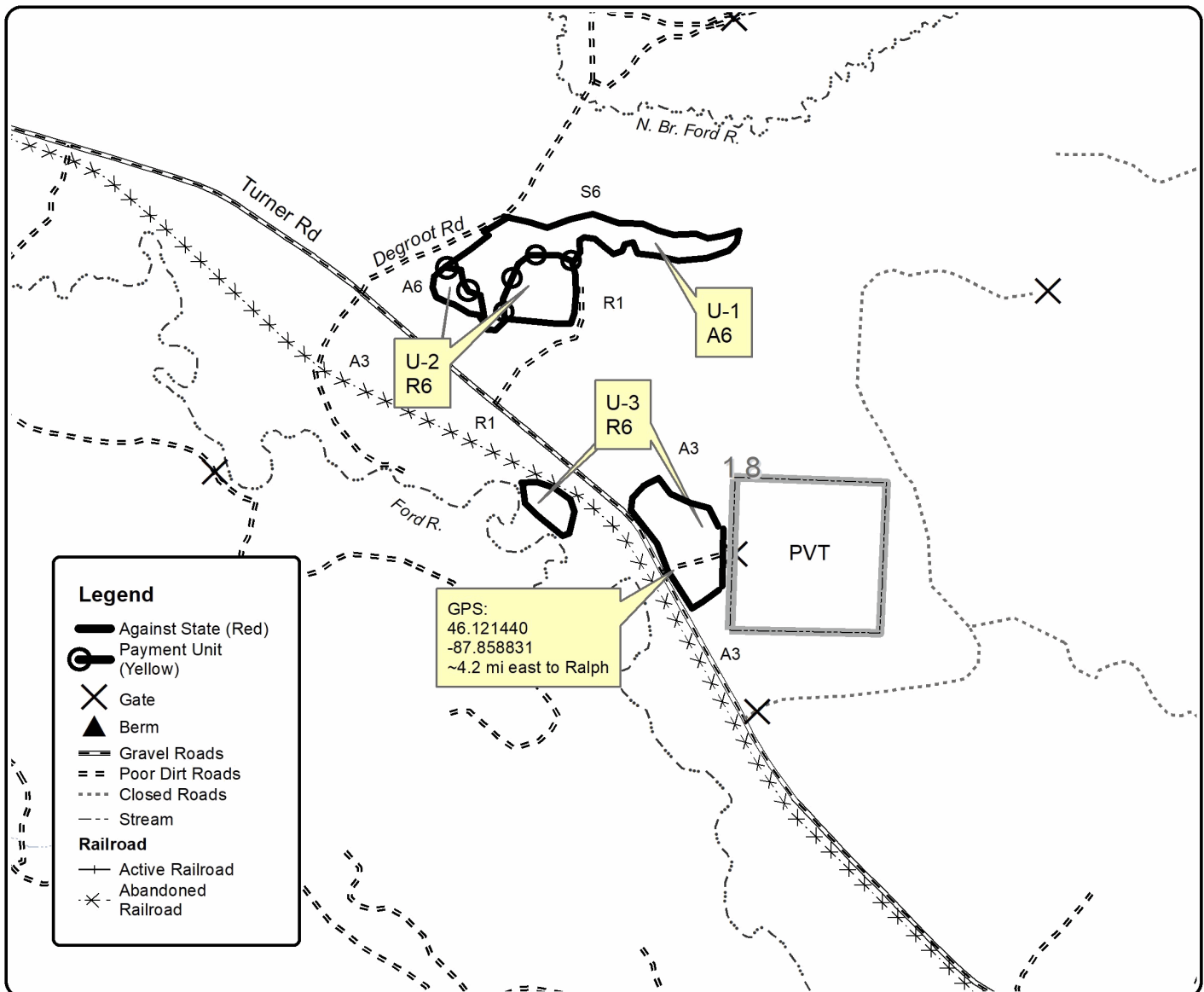
Cover Type				Density	
A = Aspen	H = Hemlock	N = Marsh	U = Upland Brush	0 = Non Stocked	5 = Pole Timber Medium
B = Paper Birch	J = Jack Pine	O = Oak	UM = Upland Mixed	1 = Seedling Sapling Poor	6 = Pole Timber Well
C = Cedar	L = Lowland Brush	P = Lowland Poplar	V = Bog or Marsh	2 = Seedling Sapling Medium	7 = Saw Timber Poor
D = Tread Bog	LM = Lowland Mixed	Q = Mixed Swamp Conifer	W = White Pine	3 = Seedling Sapling Well	8 = Saw Timber Medium
E = Swamp Hdwoods	M = Mpl, Bch, Brch	R = Red Pine	X = Non Stocked	4 = Pole Timber Poor	9 = Saw Timber Well
F = Spruce Fir	MC = Mixed Conifer	S = Black Spruce	Z = Water		
G = Grass	MD = Mixed Deciduous	T = Tamarack			

Unit	Acres
1	16.6
2	9.5
3	15.2

New Cruise Compartment 36 41.3 Acres



Sale Packet



TIMBER SALE INFORMATION

Countyline Chiseler (12-006-20)
 T44N, R27W, SEC. 5; T44N, R27W, SEC. 8; T44N, R27W, SEC. 9.
 Dickinson County (Advertised Price \$114,816.75)

SALE NOTE: All forest products in Payment Unit 7 will be scaled.

A timber sale contract for this mixed, sealed bid timber sale will be awarded to the responsible bidder offering the highest sealed bid price. All units of volume listed below were estimated using the T-Sale computer program and our traditional volume equations. Bids must be at or above the following advertised price for each product and species:

<u>PRODUCTS & SPECIES</u>	<u>ESTIMATED UNITS*</u>	<u>ADVERTISED PRICE</u>
Sawtimber		
Basswood	128.0 MBF	\$ 74.00 / MBF
Sugar Maple	84.4 MBF	\$ 181.00 / MBF
Pulpwood		
Balsam Fir	298 Cords	\$ 15.05 / Cord
Basswood	373 Cords	\$ 7.65 / Cord
Mixed Hardwood	2,343 Cords	\$ 15.65 / Cord
Mixed Spruce	347 Cords	\$ 13.40 / Cord
Quaking Aspen	1,285 Cords	\$ 29.65 / Cord
Tamarack	320 Cords	\$ 10.35 / Cord

* The estimated units are final and not subject to adjustment. Prospective bidders are urged to examine this timber and to make their own estimates of quantity and quality.

BOND AND PAYMENT SCHEDULE:

- A bond in the amount of \$5,741.00 to insure faithful performance of the conditions of the contract will be deposited by the successful bidder within 21 days of the sale award.
- Cutting in any sale or unit without the required advance payment would be considered a trespass.
- Total payment must be paid in advance or according to the following schedule :
 - Ten percent (10%) of the sale value must be paid within 21 days of the sale award.
 - The 10% down payment will be credited towards the first unit cut.
 - Payment for each of the following units must be made before cutting begins in that unit:

<u>PAYMENT UNIT NUMBER</u>	<u>PERCENT OF TOTAL SALE VALUE</u>
01	22.2%
02	10.1%
03	11.1%
04	13.2%
05	9.5%
06	27.8%
07	6.1%
- If no cutting takes place, the 10% down payment will not be refunded.
- Operations on the contract issued will terminate on 06/30/2025.

SALE STATISTICS

SALE VOLUMES

<u>VOLUME</u>		<u>PERCENT ERROR</u>	<u>STATISTICAL RANGE IN CORDS</u>	
<u>TOTAL CUBIC FEET</u>	<u>TOTAL CORDS</u>		<u>MINIMUM</u>	<u>MAXIMUM</u>
426,047	5,393	0.00%	5,393	5,393

VDU VOLUMES

A VDU is a Volume Determination Unit. Volumes and their associated statistics are calculated at the VDU level and summarized to the sale level. There is often a one to one relationship between a VDU and a Payment Unit, but not always, depending on the cruise design. Refer to the VDU TO PAYMENT UNIT table.

VDU	VOLUME		PERCENT ERROR	RANGE IN CORDS	
	TOTAL CUBIC FEET	TOTAL CORDS		MINIMUM	MAXIMUM
1	31,260	396	22.25%	308	484
2	49,565	627	17.47%	518	737
3	38,102	482	15.31%	408	556
4	52,993	671	16.28%	562	780
5	35,210	446	24.28%	337	554
6	116,304	1,472	11.60%	1,301	1,643
7	46,989	595	0.00%	595	595
16	55,640	704	16.82%	586	823
TOTAL:	426,063	5,393		4,615	6,171

VDU TO PAYMENT UNIT

When a VDU is associated with more than one Payment Unit (PU), the VDU volumes are assigned to the PU based on acres of the VDU within the PU.

VDU	VDU ACRES	PU	PU ACRES
1	35.2	1	35.2
2	58.2	2	58.2
3	44.2	3	44.2
4	19.8	4	19.8
5	23.3	5	23.3
6	50.4	6	50.4
7	91.5	7	91.5
16	30.3	1	30.3
TOTAL:	352.9		352.9

DESCRIPTION OF TIMBER BY PAYMENT UNIT (PU)

PU	MARKET GROUP	PRODUCT	QUANTITY	UNIT	ACRES	ADVERTISE PRICE
1	Basswood	Sawtimber	59.5	MBF	65.5	\$25,540.65
	Sugar Maple		33.3	MBF		
	Balsam Fir	Pulpwood	9	Cords		
	Basswood		191	Cords		
	Mixed Hardwood		549	Cords		
	<i>Red Maple</i>	<i>Sawtimber</i>	0.9	<i>MBF</i>		
	<i>White Ash</i>		2.6	<i>MBF</i>		
	<i>Ironwood</i>	<i>Pulpwood</i>	2	<i>Cords</i>		
	<i>Red Maple</i>		40	<i>Cords</i>		
	<i>Sugar Maple</i>		481	<i>Cords</i>		
	<i>White Ash</i>		17	<i>Cords</i>		
	<i>Yellow Birch</i>		2	<i>Cords</i>		
	Quaking Aspen		166	Cords		
	2	Basswood	Sawtimber	31.3		
Sugar Maple			9.3	MBF		
Balsam Fir		Pulpwood	22	Cords		
Basswood			113	Cords		
Mixed Hardwood			410	Cords		
<i>White Ash</i>		<i>Sawtimber</i>	1.6	<i>MBF</i>		
<i>Red Maple</i>		<i>Pulpwood</i>	25	<i>Cords</i>		
<i>Sugar Maple</i>			374	<i>Cords</i>		
<i>White Ash</i>			8	<i>Cords</i>		
3		Basswood	Sawtimber	33.3	MBF	44.2
	Sugar Maple		28.6	MBF		
	Balsam Fir	Pulpwood	6	Cords		
	Basswood		62	Cords		
	Mixed Hardwood		290	Cords		
	<i>Black Cherry</i>		2	<i>Cords</i>		
	<i>Ironwood</i>		3	<i>Cords</i>		
	<i>Sugar Maple</i>		283	<i>Cords</i>		
	<i>Yellow Birch</i>		2	<i>Cords</i>		
	4	Sugar Maple	Sawtimber	7.9	MBF	
Balsam Fir		Pulpwood	17	Cords		
Mixed Hardwood			380	Cords		
<i>Paper Birch</i>		<i>Sawtimber</i>	2.8	<i>MBF</i>		
<i>Red Maple</i>			0.5	<i>MBF</i>		
<i>Paper Birch</i>		<i>Pulpwood</i>	132	<i>Cords</i>		
<i>Red Maple</i>			54	<i>Cords</i>		
<i>Sugar Maple</i>			187	<i>Cords</i>		
Mixed Spruce			6	Cords		
<i>White Spruce</i>			6	<i>Cords</i>		
Quaking Aspen			252	Cords		
5		Sugar Maple	Sawtimber	0.6	MBF	23.3
	Balsam Fir	Pulpwood	37	Cords		
	Mixed Hardwood		99	Cords		
	<i>Paper Birch</i>	<i>Sawtimber</i>	0.6	<i>MBF</i>		
	<i>Balsam Poplar</i>	<i>Pulpwood</i>	48	<i>Cords</i>		
	<i>Black Ash</i>		3	<i>Cords</i>		
	<i>Paper Birch</i>		2	<i>Cords</i>		
	<i>Red Maple</i>		2	<i>Cords</i>		
	<i>Sugar Maple</i>		38	<i>Cords</i>		
	<i>White Ash</i>		2	<i>Cords</i>		
	<i>Yellow Birch</i>		3	<i>Cords</i>		
	Mixed Spruce		22	Cords		
	<i>White Spruce</i>		22	<i>Cords</i>		
	Quaking Aspen		285	Cords		

DESCRIPTION OF TIMBER BY PAYMENT UNIT (PU), CON'T

PU	MARKET GROUP	PRODUCT	QUANTITY	UNIT	ACRES	ADVERTISE PRICE
6	Basswood	Sawtimber	3.9	MBF	50.4	\$31,778.85
	Sugar Maple		4.7	MBF		
	Balsam Fir	Pulpwood	207	Cords		
	Basswood		7	Cords		
	Mixed Hardwood		615	Cords		
	<i>Balsam Poplar</i>		150	<i>Cords</i>		
	<i>Black Cherry</i>		14	<i>Cords</i>		
	<i>Ironwood</i>		1	<i>Cords</i>		
	<i>Paper Birch</i>		79	<i>Cords</i>		
	<i>Red Maple</i>		173	<i>Cords</i>		
	<i>Sugar Maple</i>		196	<i>Cords</i>		
	<i>White Ash</i>		2	<i>Cords</i>		
	Mixed Spruce		44	Cords		
	<i>White Spruce</i>		44	<i>Cords</i>		
Quaking Aspen		582	Cords			
7	Mixed Spruce	Pulpwood	275	Cords	91.5	\$6,997.00
	<i>Black Spruce</i>		275	<i>Cords</i>		
	Tamarack		320	Cords		
TOTAL:			212.4	MBF		
TOTAL:			4,966	Cords		

Sale Specific Conditions & Requirements

Sale Name: Countyline Chiseler

Sale Number: 12-006-20 Seq#: 1

1 - Sale Area

1.2 - Boundaries

1.2.1 - Painted boundaries (9/19)

The sale boundary and Payment Unit boundaries are marked and identified by Red and Purple paint. Exterior sale boundary lines against state are marked with Red paint. Interior Payment Unit boundaries are marked with Purple paint. The painted boundary line trees are not Included Timber and are to be protected unless marked with orange paint. Purple painted trees designating an interior Payment Unit boundary are only to be cut when all surrounding Payment Units have been paid.

2 - Timber Specifications

2.1 - Included Timber

2.1.1 - Clearcut unit(s) with unmerchantable trees (6/14)

Within Payment Unit(s) 1, cut all trees that are two (2) inches or more at DBH except oak and pine.

2.1.2 - Clearcut unit(s) w/o unmerchantable trees (8/11)

Within Payment Unit(s) 4 - 7, cut all trees which meet minimum piece specifications in 2.2 Utilization except cedar, hemlock, oak and pine. Note: Payment Unit 7 volumes will be scaled and sold at contract prices.

2.1.3 - Cut tree marked unit(s) (12/08)

Within Payment Unit(s) 2 and 3, all trees are designated for cutting when marked with Orange paint above and below stump height, regardless of merchantability.

2.2 - Utilization

2.2.3 - Stump heights (4/07)

Stump heights within Payment Unit(s) 1 shall not exceed 6 inches for all trees. This is to facilitate post-harvest scarifying operations. A written waiver of this requirement may be obtained if wet summer weather makes winter logging necessary.

2.2.6 - Roundwood operation required (5/07)

The skidding of whole trees or tree segments with limbs attached is prohibited within Payment Unit(s) 1 and 7. All products must be produced as roundwood and forwarded to existing roads or landing areas in final product length. This spec will protect residual oak in Payment Unit 1 and retain a seed source in Payment Unit 7.

3 - Payments

3.2 - Scaled Sales

3.2.1 - Scale location (2/04)

Forest products will be placed for measurement roadside. This applies to all forest products harvested in Payment Unit 7.

3.3 - Pre-measured Sales

3.3.4 - Dividing payment units (7/14)

Payment Unit(s) may be divided at the request of the Purchaser and upon approval of the Unit Manager. Dividing Payment Units is a contract modification which requires a Timber Sale Contract Amendment. There will be only one division per Payment Unit.

3.4 - Damaged Timber

3.4.1 - Damaged timber (7/16)

General Condition and Requirement 3.4 Damaged Timber, defines liquidated damages for undesignated live merchantable trees which are cut or injured. In addition, extreme care should be taken to avoid damage to tree seedlings and saplings. Within the Sale Area, if more than 25% of the tree seedlings or saplings (1/4" to 4.5" DBH) within a specified portion of the Sale Area are damaged, liquidated damages will be assessed at \$100.00 per acre for all acreage within that specified portion of the Sale Area that was damaged.

No damage is acceptable to undesignated live merchantable trees. Within the Sale Area, if more than 10% of trees (> 4.5" DBH) within a specified area of the sale are damaged, liquidated damages will be assessed for all trees damaged. Rates will be in accordance with General Condition and Requirement 3.4 Damaged Timber.

4 - Transportation

4.1 - Construction

4.1.6 - Road construction (1/09)

Construction of new roads or improvements of existing roads shall be done in such a way as to minimize the environmental and visual impacts. Merchantable trees shall be cut and utilized unless otherwise directed. Non-merchantable trees shall be severed and laid flat on the ground. Slash shall be scattered, and not left in windrows and kept a minimum of 10 feet back from the road edge. Stumps shall be set upright, not left on edge, and be moved at least 10 feet away from the road edge. Disturbed soil shall be feathered into the woods and not left in berms or windrows.

4.1.7 - Road closure (10/11)

All new roads built into the sale must be blocked to vehicle traffic upon completion of the sale. Overgrown roads that are reopened shall be considered new roads. In general, this will require constructing a four (4') foot high berm of stumps and logs covered with earth. These roads must be rendered impassable to cars and trucks. Contact the sale administrator for specific details of design and placement.

4.3 - Public Right-of-Way

4.3.2 - County R-O-W (12/06)

The county must be contacted prior to harvesting near the county road R-O-W. This applies to Payment Units 3 and 4 and the Tower County Road.

5 - Operations

5.2 - Conduct of Operations

5.2.1 - Slash

5.2.1.13 - Dispose of slash as directed (12/05)

Slash is to be disposed of as directed by the sale administrator.

5.2.2 - Hazard Trees/Snags

5.2.2.1 - Den trees (10/16)

Obvious hollow and/or den trees shall be protected and left standing unless they are a safety hazard.

5.2.3 - Operating Restrictions

5.2.3.3 - Bark slippage restriction (3/09)

Within Payment Unit(s) 1 - 3, unless changed by written agreement, cutting and skidding are not permitted during the period of April 15 to July 15. This restriction is because of bark slippage.

5.2.3.4 - Oak wilt restriction, no exceptions (1/18)

Within Payment Unit(s) 1, cutting and skidding within the sale and brushing of access roads to the sale are not permitted during the period of April 15 to July 15. No exceptions will be granted. This is necessary to reduce the spread of oak wilt.

5.2.22 - Operating Caution

5.2.22.1 - Operating caution (6/11)

It is recommended, but not required, that within Payment Unit(s) 5 - 7, cutting, skidding, and hauling occur during dry summer or frozen winter conditions. The reason for the recommendation is due to the wet soils.

5.4 - Soil Protection

5.4.1 - Rutting restriction, general (7/16)

Operations are to cease immediately if equipment and weather conditions result in rutting of roads and/or skid trails which is 12 inches or greater in depth and 50 feet in length. The Unit Manager or his/her representative may restrict hauling and/or

skidding if ruts exceed the specified depth. With the Unit Manager or his/her representative's approval, the Purchaser may return to the area when the risk of rutting has decreased.

6 - Safety and Fire Prevention

6.2 - Signing

6.2.1 - Road posting (9/09)

The Purchaser is responsible for posting and maintaining caution signs on Tower Road prior to beginning operations. The road must be posted at appropriate distances from the Sale Area to warn of logging activity and truck traffic. Signs must be removed when harvest operations are suspended or completed. The Purchaser will provide these signs.

7 - Other Conditions

7.5 - Loss

7.5.1 - Deteriorating timber (7/09)

The sale area has received damage from windthrow, Spruce Budworm, Eastern Larch Beetle, and Eastern Dwarf Mistletoe. The Purchaser should harvest the wood as soon as possible. The Department of Natural Resources is held free of responsibility of any further damage or deterioration due to delay in harvesting.



TIMBER SALE MAP

This information provided by authority of Part 525, 1994 PA 451, as amended.

Forest Management Unit Crystal Falls FMU	County Dickinson	Mapped By Andy Church	Date 07/10/2020	Page 1	of 1
Township 44N	Range 27W	Section(s) and Subdivision(s) Sec 5: N1/2NW,SE,NW,NWNE,S1/2NE,SESW,SE Sec 8: NW,NE,NWSW Sec 9: W1/2NW	Scale 1:15,840		

Cover Type				Density	
A = Aspen	H = Hemlock	N = Marsh	U = Upland Brush	0 = Non Stocked	5 = Pole Timber Medium
B = Paper Birch	J = Jack Pine	O = Oak	UM = Upland Mixed	1 = Seedling Sapling Poor	6 = Pole Timber Well
C = Cedar	L = Lowland Brush	P = Lowland Poplar	V = Bog or Marsh	2 = Seedling Sapling Medium	7 = Saw Timber Poor
D = Treed Bog	LM = Lowland Mixed	Q = Mixed Swamp Conifer	W = White Pine	3 = Seedling Sapling Well	8 = Saw Timber Medium
E = Swamp Hdwoods	M = Mpl, Bch, Brch	R = Red Pine	X = Non Stocked	4 = Pole Timber Poor	9 = Saw Timber Well
F = Spruce Fir	MC = Mixed Conifer	S = Black Spruce	Z = Water		
G = Grass	MD = Mixed Deciduous	T = Tamarack			

PU	Acres	PU	Acres
1	65.5	5	23.3
2	58.2	6	50.4
3	44.2	7	91.5
4	19.8		

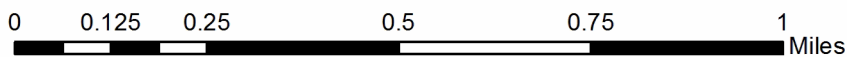
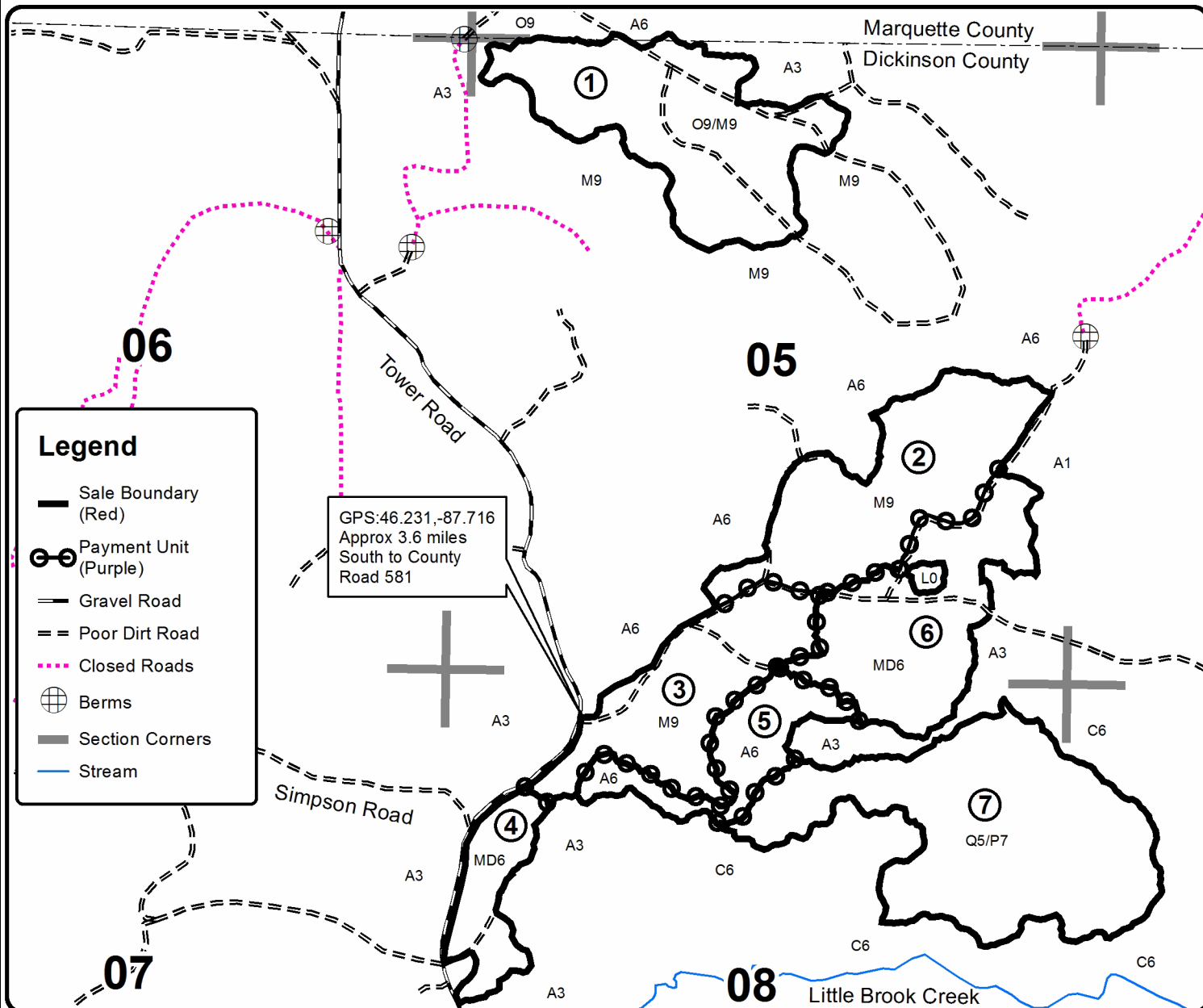
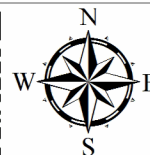
Countyline Chiseler

Compartment 21

352.9 Acres



QR Code for GeoRef PDF



TIMBER SALE INFORMATION

Hunt Club Hideaway (12-010-20)
 T44N, R27W, SEC. 10; T44N, R27W, SEC. 11.
 Dickinson County (Advertised Price \$106,171.00)

SALE NOTE: A recreation site such as a trail, pathway, or campground is within the sale area or the vicinity. Certain restrictions/specifications may be applicable including time restrictions. Access may be through private land.

A timber sale contract for this lump sum, sealed bid timber sale will be awarded to the responsible bidder offering the highest sealed bid price. All units of volume listed below were estimated using the T-Sale computer program and our traditional volume equations. Bids must be at or above the following advertised price for each product and species:

<u>PRODUCTS & SPECIES</u>	<u>ESTIMATED UNITS*</u>	<u>ADVERTISED PRICE</u>
Sawtimber		
Red Pine	562.3 MBF	\$ 98.00 / MBF
White Pine	113.0 MBF	\$ 31.00 / MBF
Pulpwood		
Balsam Fir	79 Cords	\$ 12.70 / Cord
Jack Pine	149 Cords	\$ 23.90 / Cord
Mixed Hardwood	533 Cords	\$ 13.25 / Cord
Mixed Spruce	203 Cords	\$ 11.30 / Cord
Quaking Aspen	638 Cords	\$ 25.05 / Cord
Red Pine	427 Cords	\$ 31.25 / Cord
White Pine	396 Cords	\$ 10.90 / Cord

* The total volume is statistically estimated within plus (+) or minus (-) 11.64 percent. There are an estimated 3,774 cords on this timber sale, plus or minus 439 cords at the 95% confidence level. The estimated units are final and not subject to adjustment. Prospective bidders are urged to examine this timber and to make their own estimates of quantity and quality.

BOND AND PAYMENT SCHEDULE:

1. A bond in the amount of \$5,309.00 to insure faithful performance of the conditions of the contract will be deposited by the successful bidder within 21 days of the sale award.
2. Cutting in any sale or unit without the required advance payment would be considered a trespass.
3. Total payment must be paid in advance or according to the following schedule :
 - (a) Ten percent (10%) of the sale value must be paid within 21 days of the sale award.
 - (b) The 10% down payment will be credited towards the first unit cut.
 - (c) Payment for each of the following units must be made before cutting begins in that unit:

PAYMENT UNIT NUMBER	PERCENT OF TOTAL SALE VALUE
01	12.0%
02	26.2%
03	10.9%
04	14.2%
05	1.2%
06	4.8%
07	13.0%
08	1.3%
09	16.4%
4. If no cutting takes place, the 10% down payment will not be refunded.
5. Operations on the contract issued will terminate on 06/30/2024.

SALE STATISTICS

SALE VOLUMES

VOLUME		STATISTICAL RANGE IN CORDS		
TOTAL CUBIC FEET	TOTAL CORDS	PERCENT ERROR	MINIMUM	MAXIMUM
298,175	3,774	11.64%	3,335	4,214

VDU VOLUMES

A VDU is a Volume Determination Unit. Volumes and their associated statistics are calculated at the VDU level and summarized to the sale level. There is often a one to one relationship between a VDU and a Payment Unit, but not always, depending on the cruise design. Refer to the VDU TO PAYMENT UNIT table.

VDU	VOLUME		PERCENT ERROR	RANGE IN CORDS	
	TOTAL CUBIC FEET	TOTAL CORDS		MINIMUM	MAXIMUM
1	22,784	288	45.80%	156	420
2	52,725	667	35.63%	430	905
3	53,839	682	25.54%	507	856
4	31,734	402	27.58%	291	512
5	7,323	93	38.59%	57	128
6	19,489	247	38.52%	152	342
7	53,586	678	22.88%	523	833
8	5,783	73	48.29%	38	109
9	50,900	644	22.46%	500	789
TOTAL:	298,162	3,774		2,653	4,895

VDU TO PAYMENT UNIT

When a VDU is associated with more than one Payment Unit (PU), the VDU volumes are assigned to the PU based on acres of the VDU within the PU.

VDU	VDU ACRES	PU	PU ACRES
1	5.8	1	5.8
2	15.0	2	15.0
3	20.3	3	20.3
4	5.0	4	5.0
5	8.1	5	8.1
6	24.0	6	24.0
7	37.6	7	37.6
8	7.2	8	7.2
9	39.5	9	39.5
TOTAL:	162.5		162.5

DESCRIPTION OF TIMBER BY PAYMENT UNIT (PU)

PU	MARKET GROUP	PRODUCT	QUANTITY	UNIT	ACRES	ADVERTISE PRICE
1	Red Pine	Sawtimber	105.7	MBF	5.8	\$12,764.85
	Red Pine	Pulpwood	77	Cords		
2	Red Pine	Sawtimber	229.4	MBF	15.0	\$27,829.60
	Balsam Fir	Pulpwood	47	Cords		
	Jack Pine		33	Cords		
	Quaking Aspen		6	Cords		
	Red Pine		122	Cords		
3	Red Pine	Sawtimber	17.7	MBF	20.3	\$11,541.00
	White Pine		107.8	MBF		
	Balsam Fir	Pulpwood	3	Cords		
	Mixed Hardwood		22	Cords		
	<i>Paper Birch</i>		22	Cords		
	Mixed Spruce		8	Cords		
	<i>Black Spruce</i>		2	Cords		
	<i>White Spruce</i>		6	Cords		
	Quaking Aspen		102	Cords		
	Red Pine		14	Cords		
	White Pine		280	Cords		
4	Red Pine	Sawtimber	120.6	MBF	5.0	\$15,097.55
	White Pine		4.4	MBF		
	Red Pine	Pulpwood	73	Cords		
	White Pine		79	Cords		
5	Mixed Hardwood	Pulpwood	94	Cords	8.1	\$1,245.50
	<i>Balsam Poplar</i>		4	Cords		
	<i>Basswood</i>		11	Cords		
	<i>Ironwood</i>		5	Cords		
	<i>Red Maple</i>		45	Cords		
	<i>Sugar Maple</i>		29	Cords		
6	Mixed Hardwood	Pulpwood	74	Cords	24.0	\$5,107.90
	<i>Balsam Poplar</i>		42	Cords		
	<i>Red Maple</i>		29	Cords		
	<i>Sugar Maple</i>		3	Cords		
	Mixed Spruce		15	Cords		
	<i>Black Spruce</i>		5	Cords		
	<i>White Spruce</i>		10	Cords		
	Quaking Aspen		158	Cords		
7	Red Pine	Sawtimber	1.2	MBF	37.6	\$13,768.95
	Balsam Fir	Pulpwood	15	Cords		
	Jack Pine		113	Cords		
	Mixed Hardwood		156	Cords		
	<i>Balsam Poplar</i>		44	Cords		
	<i>Paper Birch</i>		13	Cords		
	<i>Red Maple</i>		99	Cords		
	Mixed Spruce		86	Cords		
	<i>Black Spruce</i>		46	Cords		
	<i>White Spruce</i>		40	Cords		
	Quaking Aspen		302	Cords		
Red Pine		5	Cords			
8	Red Pine	Sawtimber	1.1	MBF	7.2	\$1,368.35
	Jack Pine	Pulpwood	3	Cords		
	Mixed Hardwood		15	Cords		
	<i>Paper Birch</i>		15	Cords		
	Mixed Spruce		25	Cords		
	<i>Black Spruce</i>		18	Cords		
<i>White Spruce</i>		7	Cords			

DESCRIPTION OF TIMBER BY PAYMENT UNIT (PU), CON'T

PU	MARKET GROUP	PRODUCT	QUANTITY	UNIT	ACRES	ADVERTISE PRICE
8 con't	Quaking Aspen	Pulpwood	27	Cords		
	Red Pine		1	Cords		
9	Red Pine	Sawtimber	86.6	MBF	39.5	\$17,447.30
	White Pine		0.8	MBF		
	Balsam Fir	Pulpwood	14	Cords		
	Mixed Hardwood		172	Cords		
	<i>Paper Birch</i>		69	<i>Cords</i>		
	<i>Red Maple</i>		103	<i>Cords</i>		
	Mixed Spruce		69	Cords		
	<i>Black Spruce</i>		54	<i>Cords</i>		
	<i>White Spruce</i>		15	<i>Cords</i>		
	Quaking Aspen		43	Cords		
	Red Pine		135	Cords		
	White Pine		37	Cords		
TOTAL:			675.3	MBF		
TOTAL:			2,425	Cords		

Sale Specific Conditions & Requirements

Sale Name: Hunt Club Hideaway

Sale Number: 12-010-20 Seq#: 1

1 - Sale Area

1.2 - Boundaries

1.2.1 - Painted boundaries (9/19)

The sale boundary and Payment Unit boundaries are marked and identified by blue, red and purple paint. Exterior sale boundary lines against private property are marked with blue paint. Exterior sale boundary lines against state are marked with red paint. Interior Payment Unit boundaries are marked with purple paint. The painted boundary line trees are not Included Timber and are to be protected unless marked with orange paint. Purple painted trees designating an interior Payment Unit boundary are only to be cut when all surrounding Payment Units have been paid.

2 - Timber Specifications

2.1 - Included Timber

2.1.3 - Cut tree marked unit(s) (12/08)

Within Payment Unit(s) 5, all trees are designated for cutting when marked with orange paint above and below stump height, regardless of merchantability.

2.1.4 - Designated timber unit(s) (6/17)

Within Payment Unit(s) 1, red pine and jack pine trees measuring less than 26 inches at DBH are designated for cutting. Leave all other species.

2.1.5 - Overstory removal unit(s) (8/11)

Within Payment Unit(s) 2 - 4 and 6 - 9, all trees with DBH equal to or less than 26 inches which meet minimum piece specifications in 2.2 Utilization, are designated for cutting except cedar and hemlock. In addition:

- Payment Unit 2 and 7: leave white pine
- Payment Unit 6: leave white pine with DBH equal to or greater than 24 inches
- Payment Unit 8 and 9: leave unmarked pine, harvest orange marked pine

2.1.11 - Description of timber note (2/04)

Note that Deb Goupell cruised Payment Units 1 - 4 and 7 - 9. Andy Church cruised Payment Units 5 and 6.

3 - Payments

3.4 - Damaged Timber

3.4.1 - Damaged timber (7/16)

General Condition and Requirement 3.4 Damaged Timber, defines liquidated damages for undesignated live merchantable trees which are cut or injured. No damage is acceptable to undesignated live merchantable trees. Within the Sale Area, if more than 10% of trees (> 4.5" DBH) within a specified area of the sale are damaged, liquidated damages will be assessed for all trees damaged. Rates will be in accordance with General Condition and Requirement 3.4 Damaged Timber.

4 - Transportation

4.1 - Construction

4.1.6 - Road construction (1/09)

Construction of new roads or improvements of existing roads shall be done in such a way as to minimize the environmental and visual impacts. Merchantable trees shall be cut and utilized unless otherwise directed. Non-merchantable trees shall be severed and laid flat on the ground. Slash shall be scattered, and not left in windrows and kept a minimum of 10 feet back from the road edge. Stumps shall be set upright, not left on edge, and be moved at least 10 feet away from the road edge. Disturbed soil shall be feathered into the woods and not left in berms or windrows.

4.4 - Access

4.4.1 - Private property access (3/11)

Permission for access across private land is the responsibility of the Purchaser.

5 - Operations

5.2 - Conduct of Operations

5.2.1 - Slash

5.2.1.13 - Dispose of slash as directed (12/05)

Slash is to be disposed of as directed by the Sale Administrator.

5.2.41 - Snowmobile trail protection (9/11)

The snowmobile trail may be used and is shown on the Timber Sale Map. Do not cut or damage posts with orange trail markers or traffic control signs. If the trail is used, it must be maintained and restored to a condition equal to or better than before the sale. The road maintenance/restoration must be done prior to December 1. If the trail road is to be used for hauling during the snowmobile season, then a snow-covered base must be left on the trail. Maintain a 20-foot-wide slash, debris, and rut free zone daily using the snowmobile trail as the centerline.

5.4 - Soil Protection

5.4.1 - Rutting restriction, general (7/16)

Operations are to cease immediately if equipment and weather conditions result in rutting of roads and/or skid trails which is 12 inches or greater in depth and 50 feet in length. The Unit Manager or his/her representative may restrict hauling and/or skidding if ruts exceed the specified depth. With the Unit Manager or his/her representative's approval, the Purchaser may return to the area when the risk of rutting has decreased.

6 - Safety and Fire Prevention

6.2 - Signing

6.2.2 - Snowmobile trail posting (8/09)

The Purchaser is responsible for posting and maintaining caution signs on the snowmobile trail prior to beginning operations during the snowmobile season (approximately December 1 to March 31). The trail must be posted at appropriate locations to warn of logging activity and truck traffic. Signs must be removed when harvest operations are suspended or completed. The Purchaser will provide these signs.

7 - Other Conditions

7.5 - Loss

7.5.1 - Deteriorating timber (7/09)

The sale area has received damage from windthrow and Spruce Budworm. The Purchaser should harvest the wood as soon as possible. The Department of Natural Resources is held free of responsibility of any further damage or deterioration due to delay in harvesting.



TIMBER SALE MAP

This information provided by authority of Part 525, 1994 PA 451, as amended.

Sale Number	Year
12 - 010	20
Date	Page of
08/24/2020	1 1
Scale	
1:15,840	

Forest Management Unit	County	Mapped By
Crystal Falls FMU	Dickinson	Andy Church
Township	Range	Section(s) and Subdivision(s)
44N	27W	Section 10 SENW,NESW,SE Section 11 NW,W1/2NE,N1/2SW,SWSW
Cruised By		
Debbie Goupell, Church		

Cover Type				Density	
A = Aspen	H = Hemlock	N = Marsh	U = Upland Brush	0 = Non Stocked	5 = Pole Timber Medium
B = Paper Birch	J = Jack Pine	O = Oak	UM = Upland Mixed	1 = Seedling Sapling Poor	6 = Pole Timber Well
C = Cedar	L = Lowland Brush	P = Lowland Poplar	V = Bog or Marsh	2 = Seedling Sapling Medium	7 = Saw Timber Poor
D = Treed Bog	LM = Lowland Mixed	Q = Mixed Swamp Conifer	W = White Pine	3 = Seedling Sapling Well	8 = Saw Timber Medium
E = Swamp Hdwoods	M = Mpl, Bch, Brch	R = Red Pine	X = Non Stocked	4 = Pole Timber Poor	9 = Saw Timber Well
F = Spruce Fir	MC = Mixed Conifer	S = Black Spruce	Z = Water		
G = Grass	MD = Mixed Deciduous	T = Tamarack			

PU	Acres	PU	Acres
1	5.8	6	24.0
2	15.0	7	37.6
3	20.3	8	7.2
4	5.0	9	39.5
5	8.1		

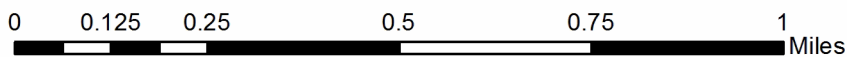
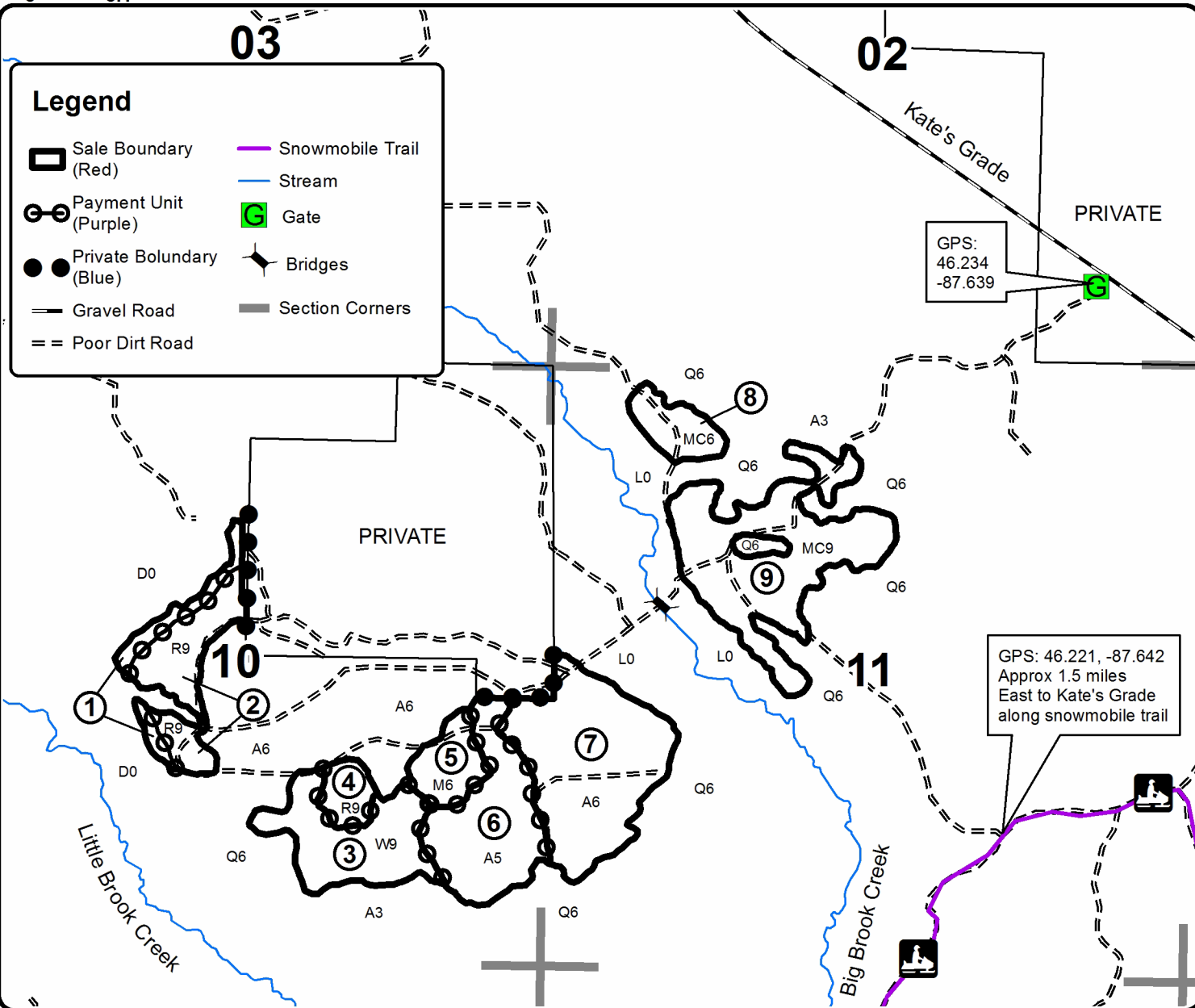
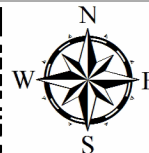
Hunt Club Hideaway

Comp 21 and 22

162.5 Acres



QR Code for GeoRef PDF



Countyline Chiseler (12-006-20)

T44N, R27W, SEC. 5; T44N, R27W, SEC. 8; T44N, R27W, SEC. 9; Dickinson

In response to the notice of sale to be held 8:30 a.m. (local time) on June 9, 2021, I am hereby submitting my sealed bid (firm offer) for the following forest products to be cut. Bids for individual species must be at or above the advertised price. All non-responsive bid forms may be rejected.

<u>PRODUCTS & SPECIES</u>	<u>ESTIMATED VOLUME*</u>	<u>ADVERTISED PRICE</u>	<u>BID PRICE/UNIT</u>
Sawtimber			
Basswood	128.0 MBF	\$ 74.00/MBF	\$ _____
Sugar Maple	84.4 MBF	\$ 181.00/MBF	\$ _____
Pulpwood			
Balsam Fir	298 Cords	\$ 15.05/Cord	\$ _____
Basswood	373 Cords	\$ 7.65/Cord	\$ _____
Mixed Hardwood	2,343 Cords	\$ 15.65/Cord	\$ _____
Mixed Spruce	347 Cords	\$ 13.40/Cord	\$ _____
Quaking Aspen	1,285 Cords	\$ 29.65/Cord	\$ _____
Tamarack	320 Cords	\$ 10.35/Cord	\$ _____

*These estimated volumes are final and not subject to adjustment. Prospective bidders are urged to examine this timber and to make their own estimates of quantity and quality.

I understand that any or all bids may be rejected. All bids must be signed and all bid items must be bid or the bid form may be rejected. I also understand that consideration and awarding a contract will be based upon my past performance and ability to complete the contract based upon equipment and staffing subject to my control.

FEDERAL ID: ____ - ____ - ____ or SOCIAL SECURITY NUMBER: ____ - ____ - ____

Company or individual bidding: _____

Company representative's name: _____

Address: _____

City: _____ State: _____ Zip: _____

IF AVAILABLE, PLEASE PLACE THE PERSONALIZED LABEL FROM YOUR PROSPECTUS IN THE ABOVE BOX.

Individual or company representative's signature: _____ Date: _____

Phone number : _____ Email (optional): _____

THE WINNING BIDDER MUST COMPLETE THE VERIFICATION OF WORKER'S DISABILITY COMPENSATION ACT COMPLIANCE (ON REVERSE SIDE IF DOUBLE SIDED) WITHIN 21 DAYS OF SALE AWARD DATE



FOR DEPARTMENT USE ONLY
Sale Number (XX - XXX - XX - XX)
Forest Management Unit:

TIMBER SALE VERIFICATION OF WORKER'S DISABILITY COMPENSATION ACT COMPLIANCE

*As required by Act 317, P.A. 1969 (Worker's Compensation) and
Part 5 of Act 451 of 1994, as amended.*

VERIFICATION OF WORKER'S DISABILITY COMPENSATION ACT COMPLIANCE

- This verification must be completed and submitted within 21 days of contract award and prior to the issuance of the timber sale contract.
- In addition, if boxes 2B or 2C are checked, then Notice of Exclusion or Certificate of Insurance must be submitted within twenty-one (21) days of the contract award and prior to the issuance of the timber sale contract.
- All information must be typed or printed except for written signatures.

Please Check Appropriate Categories:

1. My business is organized as (you **must** check one of the boxes below):
 - A. Sole Proprietorship (individual)
 - B. Partnership
 - C. Corporation
2. You **must** check one of the boxes below:
 - A. I certify my business is a sole proprietorship and it has no employees but the sole proprietor. I am not subject to the Worker's Compensation Laws.
 - B. I certify my business has satisfied its obligation to the Worker's Compensation Act through the use of an approved Notice of Exclusion (BWC-337, Rev. 5/96). I will provide a copy of the Notice of Exclusion within 21 days of the contract award. (For questions or a copy of the BWC-337, please call the Worker's Compensation Bureau at 517-322-1195).
 - C. I certify my business has a Worker's Compensation Policy. I will provide an original Certificate of Insurance within twenty-one (21) days of the contract award.
3. If you have checked item 2(A) or 2(B), you **must** indicate the number of **both** full-time and part-time employees, other than yourself, including family members and active partners (if none, you must enter "0").

_____ Full-time Employees _____ Part-time Employees

Name of Business		Federal ID (or) Social Security No.	
Address		Telephone ()	
City	State	ZIP	

I hereby certify that the above information is true and correct. I agree to notify the Michigan DNR of any changes that occur in factors affecting my coverage during any of my present and future operations.

Signature of Owner or Authorized Representative

_____ _____
Title Date

Please complete the "SEALED BID" information on the next page

Hunt Club Hideaway (12-010-20)
T44N, R27W, SEC. 10; T44N, R27W, SEC. 11; Dickinson COUNTY

In response to the notice of sale to be held 8:30 a.m. (local time) on June 9, 2021, I am hereby submitting my sealed bid (firm offer) for the following forest products to be cut. Bids for individual species must be at or above the advertised price. All non-responsive bid forms may be rejected.

<u>PRODUCTS & SPECIES</u>	<u>ESTIMATED VOLUME*</u>	<u>ADVERTISED PRICE</u>	<u>BID PRICE/UNIT</u>
Sawtimber			
Red Pine	562.3 MBF	\$ 98.00/MBF	\$ _____
White Pine	113.0 MBF	\$ 31.00/MBF	\$ _____
Pulpwood			
Balsam Fir	79 Cords	\$ 12.70/Cord	\$ _____
Jack Pine	149 Cords	\$ 23.90/Cord	\$ _____
Mixed Hardwood	533 Cords	\$ 13.25/Cord	\$ _____
Mixed Spruce	203 Cords	\$ 11.30/Cord	\$ _____
Quaking Aspen	638 Cords	\$ 25.05/Cord	\$ _____
Red Pine	427 Cords	\$ 31.25/Cord	\$ _____
White Pine	396 Cords	\$ 10.90/Cord	\$ _____

*The volumes are statistically estimated within plus (+) or minus (-) 11.64 percent at 95% confidence level. These estimated volumes are final and not subject to adjustment. Prospective bidders are urged to examine this timber and to make their own estimates of quantity and quality.

I understand that any or all bids may be rejected. All bids must be signed and all bid items must be bid or the bid form may be rejected. I also understand that consideration and awarding a contract will be based upon my past performance and ability to complete the contract based upon equipment and staffing subject to my control.

FEDERAL ID: ____ - ____ - ____ or SOCIAL SECURITY NUMBER: ____ - ____ - ____

Company or individual bidding: _____

Company representative's name: _____

Address: _____

City: _____ State: _____ Zip: _____

IF AVAILABLE, PLEASE PLACE THE PERSONALIZED LABEL FROM YOUR PROSPECTUS IN THE ABOVE BOX.

Individual or company representative's signature: _____ Date: _____

Phone number : _____ Email (optional): _____

THE WINNING BIDDER MUST COMPLETE THE VERIFICATION OF WORKER'S DISABILITY COMPENSATION ACT COMPLIANCE (ON REVERSE SIDE IF DOUBLE SIDED) WITHIN 21 DAYS OF SALE AWARD DATE



FOR DEPARTMENT USE ONLY
Sale Number (XX - XXX - XX - XX)
Forest Management Unit:

TIMBER SALE VERIFICATION OF WORKER'S DISABILITY COMPENSATION ACT COMPLIANCE

*As required by Act 317, P.A. 1969 (Worker's Compensation) and
Part 5 of Act 451 of 1994, as amended.*

VERIFICATION OF WORKER'S DISABILITY COMPENSATION ACT COMPLIANCE

- This verification must be completed and submitted within 21 days of contract award and prior to the issuance of the timber sale contract.
- In addition, if boxes 2B or 2C are checked, then Notice of Exclusion or Certificate of Insurance must be submitted within twenty-one (21) days of the contract award and prior to the issuance of the timber sale contract.
- All information must be typed or printed except for written signatures.

Please Check Appropriate Categories:

1. My business is organized as (you **must** check one of the boxes below):
 - A. Sole Proprietorship (individual)
 - B. Partnership
 - C. Corporation
2. You **must** check one of the boxes below:
 - A. I certify my business is a sole proprietorship and it has no employees but the sole proprietor. I am not subject to the Worker's Compensation Laws.
 - B. I certify my business has satisfied its obligation to the Worker's Compensation Act through the use of an approved Notice of Exclusion (BWC-337, Rev. 5/96). I will provide a copy of the Notice of Exclusion within 21 days of the contract award. (For questions or a copy of the BWC-337, please call the Worker's Compensation Bureau at 517-322-1195).
 - C. I certify my business has a Worker's Compensation Policy. I will provide an original Certificate of Insurance within twenty-one (21) days of the contract award.
3. If you have checked item 2(A) or 2(B), you **must** indicate the number of **both** full-time and part-time employees, other than yourself, including family members and active partners (if none, you must enter "0").

_____ Full-time Employees

_____ Part-time Employees

Name of Business		Federal ID (or) Social Security No.	
Address		Telephone ()	
City	State	ZIP	

I hereby certify that the above information is true and correct. I agree to notify the Michigan DNR of any changes that occur in factors affecting my coverage during any of my present and future operations.

Signature of Owner or Authorized Representative

Title

Date

Please complete the "SEALED BID" information on the next page

New Cruise (12-005-20)
T43N, R28W, SEC. 18; Dickinson COUNTY

In response to the notice of sale to be held 8:30 a.m. (local time) on June 9, 2021, I am hereby submitting my sealed bid (firm offer) for the following forest products to be cut. Bids for individual species must be at or above the advertised price. All non-responsive bid forms may be rejected.

<u>PRODUCTS & SPECIES</u>	<u>ESTIMATED VOLUME*</u>	<u>ADVERTISED PRICE</u>	<u>BID PRICE/UNIT</u>
Sawtimber			
Red Pine	42.4 MBF	\$ 98.00/MBF	\$ _____
Pulpwood			
Balsam Fir	28 Cords	\$ 12.70/Cord	\$ _____
Mixed Spruce	19 Cords	\$ 11.30/Cord	\$ _____
Paper Birch	7 Cords	\$ 8.60/Cord	\$ _____
Quaking Aspen	258 Cords	\$ 25.05/Cord	\$ _____
Red Pine	358 Cords	\$ 31.25/Cord	\$ _____

*The volumes are statistically estimated within plus (+) or minus (-) 9.05 percent at 95% confidence level. These estimated volumes are final and not subject to adjustment. Prospective bidders are urged to examine this timber and to make their own estimates of quantity and quality.

I understand that any or all bids may be rejected. All bids must be signed and all bid items must be bid or the bid form may be rejected. I also understand that consideration and awarding a contract will be based upon my past performance and ability to complete the contract based upon equipment and staffing subject to my control.

FEDERAL ID: _____ - _____ or SOCIAL SECURITY NUMBER: _____ - _____ - _____

Company or individual bidding: _____

Company representative's name: _____

Address: _____

City: _____ State: _____ Zip: _____

IF AVAILABLE, PLEASE PLACE THE PERSONALIZED LABEL FROM YOUR PROSPECTUS IN THE ABOVE BOX.

Individual or company representative's signature: _____ Date: _____

Phone number : _____ Email (optional): _____

THE WINNING BIDDER MUST COMPLETE THE VERIFICATION OF WORKER'S DISABILITY COMPENSATION ACT COMPLIANCE (ON REVERSE SIDE IF DOUBLE SIDED) WITHIN 21 DAYS OF SALE AWARD DATE



FOR DEPARTMENT USE ONLY	
Sale Number (XX - XXX - XX - XX)	
Forest Management Unit:	

TIMBER SALE VERIFICATION OF WORKER'S DISABILITY COMPENSATION ACT COMPLIANCE

As required by Act 317, P.A. 1969 (Worker's Compensation) and
Part 5 of Act 451 of 1994, as amended.

VERIFICATION OF WORKER'S DISABILITY COMPENSATION ACT COMPLIANCE

- This verification must be completed and submitted within 21 days of contract award and prior to the issuance of the timber sale contract.
- In addition, if boxes 2B or 2C are checked, then Notice of Exclusion or Certificate of Insurance must be submitted within twenty-one (21) days of the contract award and prior to the issuance of the timber sale contract.
- All information must be typed or printed except for written signatures.

Please Check Appropriate Categories:

1. My business is organized as (you **must** check one of the boxes below):
 - A. Sole Proprietorship (individual)
 - B. Partnership
 - C. Corporation
2. You **must** check one of the boxes below:
 - A. I certify my business is a sole proprietorship and it has no employees but the sole proprietor. I am not subject to the Worker's Compensation Laws.
 - B. I certify my business has satisfied its obligation to the Worker's Compensation Act through the use of an approved Notice of Exclusion (BWC-337, Rev. 5/96). I will provide a copy of the Notice of Exclusion within 21 days of the contract award. (For questions or a copy of the BWC-337, please call the Worker's Compensation Bureau at 517-322-1195).
 - C. I certify my business has a Worker's Compensation Policy. I will provide an original Certificate of Insurance within twenty-one (21) days of the contract award.
3. If you have checked item 2(A) or 2(B), you **must** indicate the number of **both** full-time and part-time employees, other than yourself, including family members and active partners (if none, you must enter "0").

_____ Full-time Employees

_____ Part-time Employees

Name of Business		Federal ID (or) Social Security No.	
Address		Telephone ()	
City	State	ZIP	

I hereby certify that the above information is true and correct. I agree to notify the Michigan DNR of any changes that occur in factors affecting my coverage during any of my present and future operations.

Signature of Owner or Authorized Representative

Title

Date

Please complete the "SEALED BID" information on the next page