



**DEPARTMENT OF NATURAL RESOURCES  
STATE OF MICHIGAN**

**TIMBER SALE PROSPECTUS #6745**

SCHEDULED SALE DATE AND TIME: 3:00 p.m. (local time) on October 20, 2020.

LOCATION: ESCANABA MGMT UNIT, 6833 HWY'S 2, 41 & M-35, GLADSTONE, MI 49837.

PROSPECTUS NOTE: The bidder is advised to inspect the sale area and review the location, estimated volumes, operating costs and contract terms of proposed sales. Please be aware that some landowners may request 60 days or more notice for access across their land.

Notice is hereby given that bids will be received by the Unit Manager, ESCANABA MANAGEMENT UNIT, for certain timber on the following described lands:

109 Oak Wilt (33-021-20) / T35N, R28W, SEC. 30, E1/2SW,NWSE.

T35N, R28W, SEC. 31, NENW.

T35N, R29W, SEC. 36, SENW,NWNE,S1/2NE,NWSW.

Menominee County, Advertised Price \$138.00, 8.3 Acres, Hardwood, Red Pine.

SALE NOTE: This contract must be completed by June 30, 2021 to treat a number of oak wilt epi-centers. All cutting must be done by April 1, 2021 and all oak hauled off the sale by April 15, 2021.

Snakey Deer Drive (33-023-20) / T34N, R28W, SEC. 8 , E1/2SE.

T34N, R28W, SEC. 9 , SWNW,S1/2NE,N1/2SW,SWSW,N1/2SE.

Menominee County, Advertised Price \$53,508.60, 106.3 Acres, Hardwood, Red Oak.

SALE NOTE: Cutting within Payment Units 1-5 is not permitted between April 15th and July 15th, due to Bark Slippage and Oak Wilt restrictions. Operations within Payment Unit 6 are limited to winter or frozen conditions due to being wet and low (see spec 5.2.3.1 for details). The tamarack is dying within Payment Unit 6, due to the eastern larch beetle. The Purchaser must haul and spread 100 yards of pit run gravel, prior to any hauling taking place.

End of Earl SBW (33-030-20) / T35N, R28W, SEC. 2 , W1/2NW.

T35N, R28W, SEC. 3 , E1/2NE,NESE.

Menominee County, Advertised Price \$15,694.00, 48.0 Acres, Spruce/Fir/Tamarack, Hardwood.

SALE NOTE: The spruce and fir within the sale area has had a significant amount of defoliation caused by the spruce budworm. The Purchaser should harvest the sale as soon as possible, to salvage as much wood as possible. All four Payment Units can be harvested during summer conditions. The state has a legal easement to cross the private property north of County Road 356 heading up to Payment Units 3 and 4. The Purchaser is not required to obtain permission.

## BID INSTRUCTIONS (VER. 07/02/2018):

### 1. Scheduled Bid Location, Date, and Time (2/11)

Bids must be received by the Unit Manager, ESCANABA OFFICE, 6833 Hwy's 2, 41 & M-35, Gladstone, MI 49837, no later than 3:00 p.m. (local time) on October 20, 2020. For further information concerning this sale, contact Eric Thompson at 906-789-8231.

### 2. Bidder's Qualifications (5/16)

Purchaser shall obtain workers compensation insurance to cover claims under Michigan's Worker's Disability Compensation Act of 1969 or similar employee benefit act of any other state applicable to an employee. If all or part of a timber sale was prepared by a private contractor, the contractor and that contractor's company are not permitted to bid on the timber sale contract. Bids will not be accepted from individuals or companies appearing on the DNR/FRD No-Bid List. This list contains the names of purchasers who previously failed to execute a contract within 21-days or who have a history of poor performance.

### 3. Preparation of Sealed Bids (5/16)

Bid Forms may be completed online thru Michigan DNR Timber Sale Online Bidding (OLB) at [www.michigan.gov/timberbidding](http://www.michigan.gov/timberbidding) or by completing the hardcopy Bid Form found in the Timber Sale Prospectus. Hardcopy Bid Forms shall be manually signed in ink. Registration in OLB is considered your 'signature' for all bids submitted thru that system. Bid prices must be entered for each species and product in the Bid Price column for all material subject to bidding and all fill-in blanks must be completed. If erasures or other changes appear on the hardcopy Bid Form, each erasure or change must be initialed by the person signing the bid.

### 4. Submission of Sealed Bids (5/16)

Bid forms may be obtained from the Unit Manager or thru OLB. Bids may be submitted hardcopy or thru OLB. All hardcopy bids must be submitted on the bid form and in an envelope clearly identified as described in this section. NOTE: Only one bid form per bid envelope. Sealed bids must be submitted to the Unit office designated in the prospectus and must be submitted at or prior to the time established in the prospectus. The envelope should show on the outside (a) the sale name or number and (b) the date and time of bid opening, as shown in the prospectus. Bids received after the time specified in the sale prospectus are late bids and will be rejected.

It is possible for a bidder to submit multiple bids on a single sale. For example, a bid may be submitted hardcopy and a bid may be submitted thru OLB. Or, two bidders from the same company could both submit bids on the same sale. If this were to happen, the State would accept all bids received and award the contract accordingly. All bidding and contractual requirements would apply to all bids received.

### 5. Public Opening of Sealed Bids (7/16)

If conditions permit, the sealed bids will be publicly opened and posted at the time and place set in the prospectus.

If a bidder, present at a bid opening, has submitted bids on more than one sale, that bidder may withdraw their unopened bid envelopes or announce the withdrawal of their online bid after being declared the successful bidder on one sale.

### 6. Award of Contract (1/11)

Award of the contract will be made to the Bidder whose bid, conforming to the prospectus, is most advantageous to the State of Michigan on the basis of total value at rates bid for the estimated quantities. The State reserves the right to reject any bid or waive any minor irregularity in bids received. A written award mailed (or otherwise furnished) to the successful Bidder shall be deemed to result in a binding contract without further action by either party.

### 7. Down Payment (1/11)

The Bidder to whom award is made must make a down payment within 21 days of the sale award. The amount of the down payment will be calculated as shown in the Bond and Payment Schedule of this prospectus. Only cash may be used to meet this requirement.

### 8. Performance Security (1/11)

As guarantee of faithful performance, a cash bond, certificate of deposit, surety bond or irrevocable letter of credit (LOC) is required within 21 days of the sale award. The amount of the performance security is shown in the Bond and

Payment Schedule of this prospectus. If an LOC or surety is used, the coverage must extend for at least 6 months beyond the contract expiration.

#### 9. Timber Sale Contract (7/18)

Additional conditions and requirements common to all timber sales are listed on the timber sale contract (R4031) and are available on line at [www.michigan.gov/timber](http://www.michigan.gov/timber). Contact the Unit Manager for additional information or a sample contract. Within 21 days of the date of the award letter, the bidder must sign the contract and provide the required down payment, performance security, and verification of worker's disability compensation. The down payment and performance security shall be in accordance with the provisions of the timber sale contract, in the sums stated in this prospectus. If these actions are not taken, then the Bidder, the Bidder's corporation, and the corporation's principals may not be permitted to bid on State timber sales for a period of 3 months after the first offense, 6 months after the second offense, and 1 year after the third offense. An offense will only be counted against the Bidder for 5 years. In addition, the Bidder certifies that if awarded this contract, the Bidder will complete the timber sale contract in accordance with its terms and any modifications thereof including requirements to purchase, cut, and remove the included timber by the expiration date.

Payment Unit values in the State Forest Timber Sale Contract are calculated based on the advertised value of the Payment Unit as a percentage of the total advertised value of the contract. The advertised value of each Payment Unit is given in the Description of Timber by Payment Unit table on the Timber Sale Information page. For example, if the value of Payment Unit 1 is advertised as \$1,500 and the total Timber Sale value is advertised as \$10,000, the contract price for Payment Unit 1 will be 15% of the total bid price ( $\$1,500/\$10,000 * 100$ ).

#### 10. Disclaimer of Estimates and Bidder's Warranty of Inspection (7/16)

Before submitting this bid, the Bidder is advised and cautioned to inspect the sale area, review the requirements of the sale contract, and take other steps as may be reasonably necessary to ascertain the location, estimated volumes, construction estimates, and operating costs of the proposed sale. Failure to do so will not relieve the Bidder from responsibility for completing the contract.

The Bidder warrants that this bid is submitted solely on the basis of the Bidder's examination and inspection of the quality and quantity of the timber offered for sale and the Bidder's opinion of the value thereof and the costs of recovery. No reliance should be placed on the State of Michigan's estimates of timber quality, quantity or costs of recovery. Bidder further acknowledges that the State of Michigan: (i) expressly disclaims any warranty of fitness of timber for any purpose; (ii) offers this timber as is without any warranty of quality (merchantability) or quantity and (iii) expressly disclaims any warranty as to the quantity or quality of timber sold.

#### 11. Certification and Chain-of-Custody (10/14)

Unless otherwise indicated in the contract under section 7 – Other Conditions of the Sale Specific Conditions & Requirements, the area encompassed by this timber sale is certified to the standards of the Forest Stewardship Council (FSC) - Certificate #SCS-FM/COC-00090N and the Sustainable Forestry Initiative (SFI) - Certificate #NSF-SFIS-5Y031-SF5. Forest products from this sale may be delivered to the mill as "FSC 100% and / or SFI certified" as long as the contractor hauling the forest products is chain-of-custody (COC) certified or covered under a COC certificate from the destination mill. The purchaser is responsible for maintaining COC after leaving the sale area.

#### 12. Good Neighbor Authority (GNA) Requirements (7/16)

If the name of this timber sales contains the acronym GNA, it is authorized by the Good Neighbor Authority (GNA) and covered by various agreements between the U.S. Forest Service and the State. The timber sale occurs on federal land and the following conditions apply:

GNA contracts on US Forest Service land will not be awarded to purchasers on the Federal list of excluded parties. The System for Award Management (SAM) will be checked for active excluded parties prior to award of contract. In addition, the Bidder to whom award is made must complete an Assurance Regarding Felony Conviction or Tax Delinquent Status for Corporate Applicants (AD-3031).

#### 13. Good Neighbor Authority (GNA) Requirements, con't (9/16)

Bidder certifies, by signing this bid form, that to the best of Bidder's knowledge that the following representations are accurate and complete.

- a. That the Bidder and its principals are not presently debarred, suspended, proposed for debarment, declared ineligible, or voluntary excluded from timber sales (covered transactions) by any Federal department or agency.
- b. That the Bidder and its principals have not within a 3-year period preceding this bid been convicted of or had a civil judgment rendered against them for commission of fraud or a criminal offense in connection with obtaining , attempting to obtain, or performing a public (Federal, State, or local) transaction or contract under a public transaction; violation of Federal or State antitrust statutes or commission of embezzlement, theft, forgery, bribery, falsification or destruction of records, making false statements, or receiving stolen property.
- c. That the Bidder and its principals are not presently indicted for or otherwise criminally or civilly charged by a governmental entity (Federal, State, or local) with commission of any of the offenses enumerated in paragraph b of this certification.
- d. That the Bidder and its principals have not within a 3-year period preceding this bid had one or more public transactions (Federal, State, or local) terminated for breach or default of a timber or forest product contract.

Bidders that cannot certify this requirement, in whole or in part, shall submit an explanation with their bid.

DAN EICHINGER  
Director

## TIMBER SALE INFORMATION

109 Oak Wilt (33-021-20)

T35N, R28W, SEC. 30; T35N, R28W, SEC. 31; T35N, R29W, SEC. 36.  
Menominee County (Advertised Price \$138.00)

SALE NOTE: This contract must be completed by June 30, 2021 to treat a number of oak wilt epi-centers. All cutting must be done by April 1, 2021 and all oak hauled off the sale by April 15, 2021.

A timber sale contract for this lump sum, sealed bid timber sale will be awarded to the responsible bidder offering the highest sealed bid price. All units of volume listed below were estimated using the T-Sale computer program and our traditional volume equations. Bids must be at or above the following advertised price for each product and species:

| <u>PRODUCTS &amp; SPECIES</u> | <u>ESTIMATED UNITS*</u> | <u>ADVERTISED PRICE</u> |
|-------------------------------|-------------------------|-------------------------|
| Sawtimber                     |                         |                         |
| Northern Pin Oak              | 3.5 MBF                 | \$ 2.00 / MBF           |
| Pulpwood                      |                         |                         |
| Jack Pine                     | 4 Cords                 | \$ 1.00 / Cord          |
| Mixed Aspen                   | 7 Cords                 | \$ 1.00 / Cord          |
| Mixed Hardwood                | 3 Cords                 | \$ 1.00 / Cord          |
| Northern Pin Oak              | 106 Cords               | \$ 1.00 / Cord          |
| Red Pine                      | 9 Cords                 | \$ 1.00 / Cord          |
| White Pine                    | 2 Cords                 | \$ 1.00 / Cord          |

\* The total volume is statistically estimated within plus (+) or minus (-) 17.66 percent. There are an estimated 134 cords on this timber sale, plus or minus 24 cords at the 95% confidence level. The estimated units are final and not subject to adjustment. Prospective bidders are urged to examine this timber and to make their own estimates of quantity and quality.

### **BOND AND PAYMENT SCHEDULE:**

1. A bond in the amount of \$500.00 to insure faithful performance of the conditions of the contract will be deposited by the successful bidder within 21 days of the sale award.
2. Cutting in any sale or unit without the required advance payment would be considered a trespass.
3. Total payment must be paid in advance or according to the following schedule :
  - (a) Ten percent (10%) of the sale value must be paid within 21 days of the sale award.
  - (b) The remainder is due before cutting begins.
  - (c) Payment for each of the following units must be made before cutting begins in that unit:
 

| PAYMENT UNIT NUMBER | PERCENT OF TOTAL SALE VALUE |
|---------------------|-----------------------------|
| 01                  | 100.0%                      |
4. If no cutting takes place, the 10% down payment will not be refunded.
5. Operations on the contract issued will terminate on 06/30/2021.

### **SALE STATISTICS**

#### **SALE VOLUMES**

| VOLUME           |             | STATISTICAL RANGE IN CORDS |         |         |
|------------------|-------------|----------------------------|---------|---------|
| TOTAL CUBIC FEET | TOTAL CORDS | PERCENT ERROR              | MINIMUM | MAXIMUM |
| 10,580           | 134         | 17.66%                     | 110     | 158     |

**VDU VOLUMES**

A VDU is a Volume Determination Unit. Volumes and their associated statistics are calculated at the VDU level and summarized to the sale level. There is often a one to one relationship between a VDU and a Payment Unit, but not always, depending on the cruise design. Refer to the VDU TO PAYMENT UNIT table.

| VDU           | VOLUME           |             | PERCENT ERROR | RANGE IN CORDS |            |
|---------------|------------------|-------------|---------------|----------------|------------|
|               | TOTAL CUBIC FEET | TOTAL CORDS |               | MINIMUM        | MAXIMUM    |
| 89            | 1,327            | 17          | 7.78%         | 15             | 18         |
| 90            | 790              | 10          | 13.72%        | 9              | 11         |
| 97            | 190              | 2           | 133.33%       | 1              | 6          |
| 115           | 1,406            | 18          | 9.12%         | 16             | 19         |
| 138           | 1,383            | 18          | 57.98%        | 7              | 28         |
| 141           | 2,125            | 27          | 34.66%        | 18             | 36         |
| 147           | 798              | 10          | 51.32%        | 5              | 15         |
| 148           | 2,544            | 32          | 33.12%        | 22             | 43         |
| <b>TOTAL:</b> | <b>10,562</b>    | <b>134</b>  |               | <b>91</b>      | <b>177</b> |

**VDU TO PAYMENT UNIT**

When a VDU is associated with more than one Payment Unit (PU), the VDU volumes are assigned to the PU based on acres of the VDU within the PU.

| VDU           | VDU ACRES  | PU | PU ACRES   |
|---------------|------------|----|------------|
| 89            | 1.6        | 1  | 1.6        |
| 90            | 0.5        | 1  | 0.5        |
| 97            | 0.4        | 1  | 0.4        |
| 115           | 0.8        | 1  | 0.8        |
| 138           | 0.9        | 1  | 0.9        |
| 141           | 1.1        | 1  | 1.1        |
| 147           | 0.9        | 1  | 0.9        |
| 148           | 2.1        | 1  | 2.1        |
| <b>TOTAL:</b> | <b>8.3</b> |    | <b>8.3</b> |

**DESCRIPTION OF TIMBER BY PAYMENT UNIT (PU)**

| PU            | MARKET GROUP         | PRODUCT   | QUANTITY | UNIT         | ACRES | ADVERTISE PRICE |  |  |
|---------------|----------------------|-----------|----------|--------------|-------|-----------------|--|--|
| 1             | Northern Pin Oak     | Sawtimber | 3.5      | MBF          | 8.3   | \$138.00        |  |  |
|               | Jack Pine            | Pulpwood  | 4        | Cords        |       |                 |  |  |
|               | Mixed Aspen          |           | 7        | Cords        |       |                 |  |  |
|               | <i>B. T. Aspen</i>   |           | 6        | <i>Cords</i> |       |                 |  |  |
|               | <i>Quaking Aspen</i> |           | 1        | <i>Cords</i> |       |                 |  |  |
|               | Mixed Hardwood       |           | 3        | Cords        |       |                 |  |  |
|               | <i>Paper Birch</i>   |           | 1        | <i>Cords</i> |       |                 |  |  |
|               | <i>Red Maple</i>     |           | 2        | <i>Cords</i> |       |                 |  |  |
|               | Northern Pin Oak     |           | 106      | Cords        |       |                 |  |  |
|               | Red Pine             |           | 9        | Cords        |       |                 |  |  |
|               | White Pine           |           | 2        | Cords        |       |                 |  |  |
| <b>TOTAL:</b> |                      |           | 3.5      | MBF          |       |                 |  |  |
| <b>TOTAL:</b> |                      |           | 131      | Cords        |       |                 |  |  |

## Sale Specific Conditions & Requirements

Sale Name: 109 Oak Wilt

Sale Number: 33-021-20 Seq#: 4

### 1 - Sale Area

#### 1.2 - Boundaries

##### 1.2.1 - Painted boundaries (9/19)

The sale boundary is marked and identified by red paint. Exterior sale boundary lines against state are marked with red paint. The painted boundary line trees are not Included Timber and are to be protected.

### 2 - Timber Specifications

#### 2.1 - Included Timber

##### 2.1.4 - Designated timber unit(s) (6/17)

Within Payment Unit(s) 1, all oak marked with green paint is designated for cutting. In addition, cut all other trees greater than three (3) inches at DBH. Note that Payment Unit 1 contains several epi-centers of oak wilt that are being treated per the specifications listed below:

A. All wood designated for cutting in Payment Unit 1 must be cut by April 1, 2021, and all wood must be skid and decked by April 15, 2021. Also, all oak must be hauled off site by April 15, 2021.

B. Payment Unit 1 consists of 10 separate portions. Oak trees marked with green paint must be cut and removed prior to cutting any unmarked oak in that part. Green marked oak may not be mixed with the unmarked oak.

C. The Purchaser must inform the Timber Sale Administrator when cutting of the marked oak trees is completed in a payment unit prior to cutting any other trees in that payment unit.

D. Oak marked with green paint must be chipped, taken to a wood processing facility, or sawn into dimensional lumber products at a mill by April 15, 2021. If the Purchaser plans on selling the wood for firewood or is unable to market the wood, the green marked oak may be moved to an area with no oak trees within a mile radius prior to April 15, 2021. If the wood is moved to a location where there is no oak present, it may not be moved again until after July 15, 2021.

E. If any oak marked with green paint can not be processed by April 15, 2021, the wood must be hauled off site at an approved area that has no oak trees within 1 mile, on a site where the wood is covered with a dark plastic tarp. The tarp must cover the wood to the ground and the wood must remain covered from April 15, 2021 to July 15, 2021. After July 15, 2021, the wood can be disposed of at the Purchaser's discretion.

### 4 - Transportation

#### 4.2 - Maintenance

##### 4.2.1 - Hauling restriction (12/08)

Hauling may be restricted on forest roads by the Unit Manager or his/her representative. The restriction may occur during spring breakup or during other wet weather conditions.

##### 4.2.4 - Grading (10/16)

For completion of the sale, state forest roads must be graded. In general, this will require a road grader or bull dozer to shape up the roads after forest products have been hauled off site. This includes cleaning of drainage areas, grading, crowning and filling with gravel, if necessary. The grading equipment to be used must be approved by the Unit Manager or his/her representative.

### 5 - Operations

#### 5.4 - Soil Protection

##### 5.4.1 - Rutting restriction, general (7/16)

Operations are to cease immediately if equipment and weather conditions result in rutting of roads and/or skid trails which is

12 inches or greater in depth and 50 feet in length. The Unit Manager or his/her representative may restrict hauling and/or skidding if ruts exceed the specified depth. With the Unit Manager or his/her representative's approval, the Purchaser may return to the area when the risk of rutting has decreased.



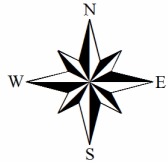


# TIMBER SALE MAP

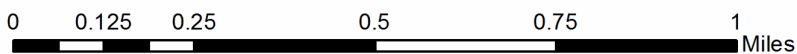
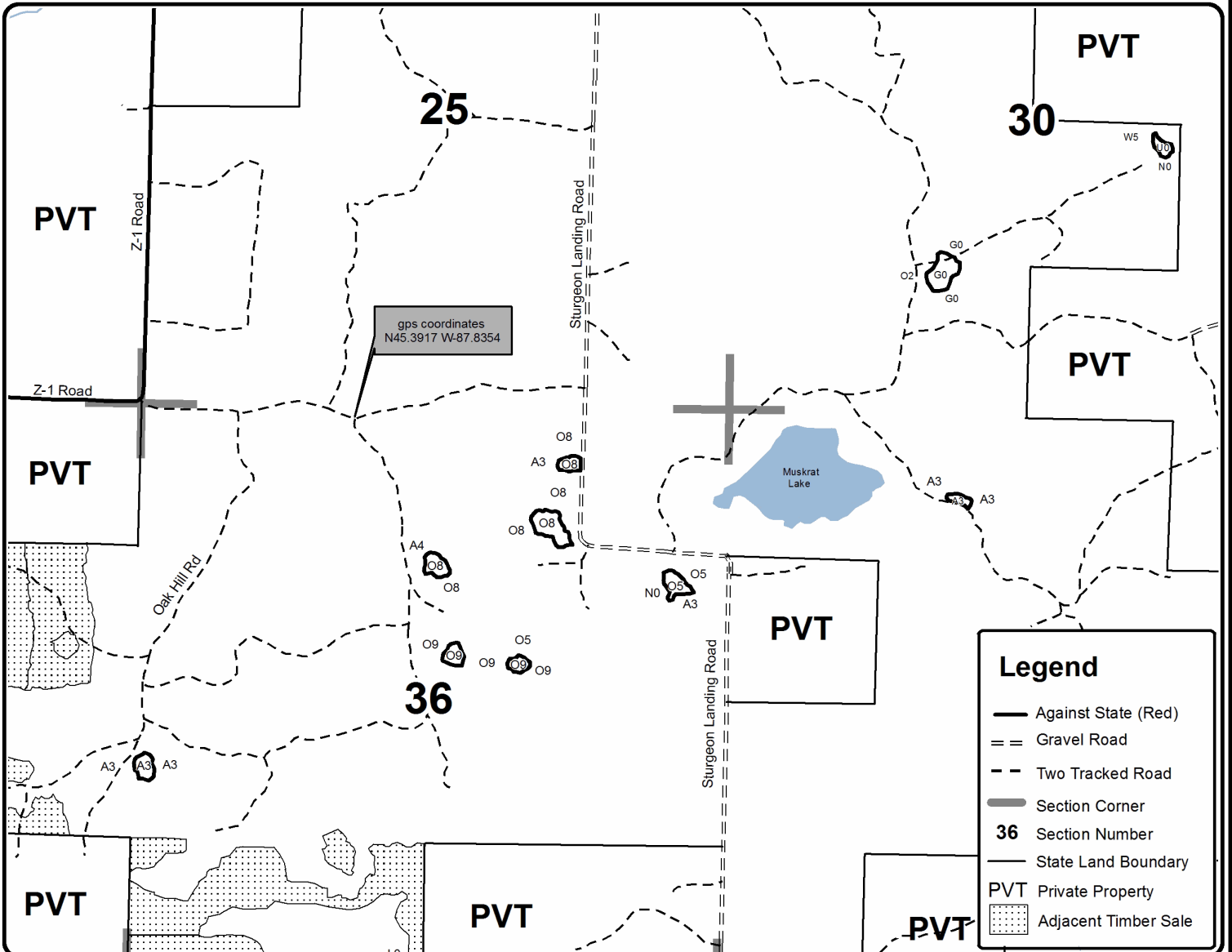
This information provided by authority of Part 525, 1994 PA 451, as amended.

|  |                            |  |                    |           |         |
|--|----------------------------|--|--------------------|-----------|---------|
| Forest Management Unit<br>Escanaba Management Unit | County<br>Menominee County | Mapped By<br>Beaudo  | Date<br>10/16/2019 | Page<br>1 | of<br>1 |
| Township<br>35N                                    | Range<br>28W<br>29W        | Section(s) and Subdivision(s)<br>28W: Sec 30 - E1/2SW, NWSE; Sec 31 - NENW.<br>29W: Sec 36 - SENW, NWNE, S1/2NE, NWSW. | Scale<br>1:15,840  |           |         |

| Cover Type        |                      |                         |                   | Density                     |                        |
|-------------------|----------------------|-------------------------|-------------------|-----------------------------|------------------------|
| A = Aspen         | H = Hemlock          | N = Marsh               | U = Upland Brush  | 0 = Non Stocked             | 5 = Pole Timber Medium |
| B = Paper Birch   | J = Jack Pine        | O = Oak                 | UM = Upland Mixed | 1 = Seedling Sapling Poor   | 6 = Pole Timber Well   |
| C = Cedar         | L = Lowland Brush    | P = Lowland Poplar      | V = Bog or Marsh  | 2 = Seedling Sapling Medium | 7 = Saw Timber Poor    |
| D = Treed Bog     | LM = Lowland Mixed   | Q = Mixed Swamp Conifer | W = White Pine    | 3 = Seedling Sapling Well   | 8 = Saw Timber Medium  |
| E = Swamp Hdwoods | M = Mpl, Bch, Brch   | R = Red Pine            | X = Non Stocked   | 4 = Pole Timber Poor        | 9 = Saw Timber Well    |
| F = Spruce Fir    | MC = Mixed Conifer   | S = Black Spruce        | Z = Water         |                             |                        |
| G = Grass         | MD = Mixed Deciduous | T = Tamarack            |                   |                             |                        |



**109 Oak Wilt**  
**Compartment 109**  
**8.3 Acres**





## TIMBER SALE INFORMATION

### Snakey Deer Drive (33-023-20)

T34N, R28W, SEC. 8; T34N, R28W, SEC. 9.  
Menominee County (Advertised Price \$53,508.60)

SALE NOTE: Cutting within Payment Units 1-5 is not permitted between April 15th and July 15th, due to Bark Slippage and Oak Wilt restrictions. Operations within Payment Unit 6 are limited to winter or frozen conditions due to being wet and low (see spec 5.2.3.1 for details). The tamarack is dying within Payment Unit 6, due to the eastern larch beetle. The Purchaser must haul and spread 100 yards of pit run gravel, prior to any hauling taking place.

A timber sale contract for this lump sum, sealed bid timber sale will be awarded to the responsible bidder offering the highest sealed bid price. All units of volume listed below were estimated using the T-Sale computer program and our traditional volume equations. Bids must be at or above the following advertised price for each product and species:

| <u>PRODUCTS &amp; SPECIES</u> | <u>ESTIMATED UNITS*</u> | <u>ADVERTISED PRICE</u> |
|-------------------------------|-------------------------|-------------------------|
| <b>Sawtimber</b>              |                         |                         |
| Basswood                      | 2.6 MBF                 | \$ 88.00 / MBF          |
| Green Ash                     | 0.8 MBF                 | \$ 44.00 / MBF          |
| Red Maple                     | 46.0 MBF                | \$ 129.00 / MBF         |
| Red Oak                       | 73.7 MBF                | \$ 145.00 / MBF         |
| Sugar Maple                   | 1.2 MBF                 | \$ 178.00 / MBF         |
| White Ash                     | 1.2 MBF                 | \$ 85.00 / MBF          |
| White Oak                     | 16.0 MBF                | \$ 65.00 / MBF          |
| <b>Pulpwood</b>               |                         |                         |
| Balsam Fir                    | 6 Cords                 | \$ 13.95 / Cord         |
| Mixed Aspen                   | 11 Cords                | \$ 20.35 / Cord         |
| Mixed Hardwood                | 1,146 Cords             | \$ 19.80 / Cord         |
| N. White Cedar                | 32 Cords                | \$ 12.70 / Cord         |
| Red Oak                       | 332 Cords               | \$ 23.25 / Cord         |
| Tamarack                      | 60 Cords                | \$ 9.40 / Cord          |
| White Oak                     | 132 Cords               | \$ 23.25 / Cord         |
| White Pine                    | 23 Cords                | \$ 22.25 / Cord         |

\* The total volume is statistically estimated within plus (+) or minus (-) 7.43 percent. There are an estimated 2,026 cords on this timber sale, plus or minus 150 cords at the 95% confidence level. The estimated units are final and not subject to adjustment. Prospective bidders are urged to examine this timber and to make their own estimates of quantity and quality.

### **BOND AND PAYMENT SCHEDULE:**

1. A bond in the amount of \$2,675.00 to insure faithful performance of the conditions of the contract will be deposited by the successful bidder within 21 days of the sale award.
2. Cutting in any sale or unit without the required advance payment would be considered a trespass.
3. Total payment must be paid in advance or according to the following schedule :
  - (a) Ten percent (10%) of the sale value must be paid within 21 days of the sale award.
  - (b) The 10% down payment will be credited towards the first unit cut.
  - (c) Payment for each of the following units must be made before cutting begins in that unit:
 

| PAYMENT UNIT NUMBER | PERCENT OF TOTAL SALE VALUE |
|---------------------|-----------------------------|
| 01                  | 14.5%                       |
| 02                  | 29.5%                       |
| 03                  | 18.2%                       |
| 04                  | 18.3%                       |
| 05                  | 5.5%                        |
| 06                  | 14.0%                       |
4. If no cutting takes place, the 10% down payment will not be refunded.
5. Operations on the contract issued will terminate on 09/30/2023.

### **SALE STATISTICS**

**SALE VOLUMES**

| VOLUME           |             |               | STATISTICAL RANGE IN CORDS |         |
|------------------|-------------|---------------|----------------------------|---------|
| TOTAL CUBIC FEET | TOTAL CORDS | PERCENT ERROR | MINIMUM                    | MAXIMUM |
| 160,015          | 2,026       | 7.43%         | 1,875                      | 2,176   |

**VDU VOLUMES**

A VDU is a Volume Determination Unit. Volumes and their associated statistics are calculated at the VDU level and summarized to the sale level. There is often a one to one relationship between a VDU and a Payment Unit, but not always, depending on the cruise design. Refer to the VDU TO PAYMENT UNIT table.

| VDU           | VOLUME           |              |               | RANGE IN CORDS |              |
|---------------|------------------|--------------|---------------|----------------|--------------|
|               | TOTAL CUBIC FEET | TOTAL CORDS  | PERCENT ERROR | MINIMUM        | MAXIMUM      |
| 23            | 21,978           | 278          | 15.44%        | 235            | 321          |
| 34            | 30,763           | 389          | 22.04%        | 304            | 475          |
| 230           | 8,959            | 113          | 34.38%        | 74             | 152          |
| 231           | 45,867           | 581          | 13.35%        | 503            | 658          |
| 232           | 28,724           | 364          | 15.67%        | 307            | 421          |
| 233           | 23,747           | 301          | 12.83%        | 262            | 339          |
| <b>TOTAL:</b> | <b>160,038</b>   | <b>2,026</b> |               | <b>1,685</b>   | <b>2,367</b> |

**VDU TO PAYMENT UNIT**

When a VDU is associated with more than one Payment Unit (PU), the VDU volumes are assigned to the PU based on acres of the VDU within the PU.

| VDU           | VDU ACRES    | PU | PU ACRES     |
|---------------|--------------|----|--------------|
| 23            | 22.2         | 1  | 22.2         |
| 34            | 19.9         | 6  | 19.9         |
| 230           | 13.1         | 5  | 13.1         |
| 231           | 23.8         | 2  | 23.8         |
| 232           | 16.8         | 3  | 16.8         |
| 233           | 10.5         | 4  | 10.5         |
| <b>TOTAL:</b> | <b>106.3</b> |    | <b>106.3</b> |

**DESCRIPTION OF TIMBER BY PAYMENT UNIT (PU)**

| PU                 | MARKET GROUP         | PRODUCT   | QUANTITY  | UNIT         | ACRES | ADVERTISE PRICE |
|--------------------|----------------------|-----------|-----------|--------------|-------|-----------------|
| 1                  | Red Maple            | Sawtimber | 4.1       | MBF          | 22.2  | \$7,764.80      |
|                    | Red Oak              |           | 14.9      | MBF          |       |                 |
|                    | Mixed Hardwood       | Pulpwood  | 153       | Cords        |       |                 |
|                    | <i>Basswood</i>      |           | 20        | <i>Cords</i> |       |                 |
|                    | <i>Black Ash</i>     |           | 3         | <i>Cords</i> |       |                 |
|                    | <i>Ironwood</i>      |           | 1         | <i>Cords</i> |       |                 |
|                    | <i>Red Maple</i>     |           | 73        | <i>Cords</i> |       |                 |
|                    | <i>Sugar Maple</i>   |           | 15        | <i>Cords</i> |       |                 |
|                    | <i>White Ash</i>     |           | 41        | <i>Cords</i> |       |                 |
|                    | Red Oak              |           | 85        | Cords        |       |                 |
|                    | White Oak            |           | 3         | Cords        |       |                 |
| 2                  | Basswood             | Sawtimber | 0.8       | MBF          | 23.8  | \$15,800.00     |
|                    | Red Maple            |           | 22.6      | MBF          |       |                 |
|                    | Red Oak              | 14.1      | MBF       |              |       |                 |
|                    | Sugar Maple          | 1.2       | MBF       |              |       |                 |
|                    | White Ash            | 1.2       | MBF       |              |       |                 |
|                    | White Oak            | 7.4       | MBF       |              |       |                 |
|                    | Mixed Aspen          | Pulpwood  | 6         | Cords        |       |                 |
|                    | <i>Quaking Aspen</i> |           | 6         | <i>Cords</i> |       |                 |
|                    | Mixed Hardwood       |           | 385       | Cords        |       |                 |
|                    | <i>Basswood</i>      |           | 1         | <i>Cords</i> |       |                 |
|                    | <i>Black Ash</i>     |           | 90        | <i>Cords</i> |       |                 |
|                    | <i>Paper Birch</i>   |           | 4         | <i>Cords</i> |       |                 |
|                    | <i>Red Maple</i>     |           | 244       | <i>Cords</i> |       |                 |
|                    | <i>Sugar Maple</i>   |           | 12        | <i>Cords</i> |       |                 |
|                    | <i>White Ash</i>     |           | 34        | <i>Cords</i> |       |                 |
|                    | Red Oak              |           | 52        | Cords        |       |                 |
|                    | White Oak            |           | 40        | Cords        |       |                 |
|                    | White Pine           |           | 4         | Cords        |       |                 |
|                    | 3                    | Green Ash | Sawtimber | 0.8          |       |                 |
| Red Maple          |                      | 8.9       |           | MBF          |       |                 |
| Red Oak            |                      | 11.4      |           | MBF          |       |                 |
| White Oak          |                      | 0.8       |           | MBF          |       |                 |
| Mixed Aspen        |                      | Pulpwood  | 5         | Cords        |       |                 |
| <i>B. T. Aspen</i> |                      |           | 5         | <i>Cords</i> |       |                 |
| Mixed Hardwood     |                      |           | 155       | Cords        |       |                 |
| <i>Black Ash</i>   |                      |           | 9         | <i>Cords</i> |       |                 |
| <i>Green Ash</i>   |                      |           | 2         | <i>Cords</i> |       |                 |
| <i>Ironwood</i>    |                      |           | 1         | <i>Cords</i> |       |                 |
| <i>Paper Birch</i> |                      |           | 2         | <i>Cords</i> |       |                 |
| <i>Red Maple</i>   |                      |           | 129       | <i>Cords</i> |       |                 |
| <i>Sugar Maple</i> |                      |           | 4         | <i>Cords</i> |       |                 |
| <i>White Ash</i>   |                      |           | 8         | <i>Cords</i> |       |                 |
| Red Oak            |                      | 97        | Cords     |              |       |                 |
| White Oak          |                      | 53        | Cords     |              |       |                 |
| White Pine         |                      | 8         | Cords     |              |       |                 |
| 4                  | Basswood             | Sawtimber | 1.8       | MBF          | 10.5  | \$9,799.45      |
|                    | Red Maple            |           | 3.4       | MBF          |       |                 |
|                    | Red Oak              |           | 27.6      | MBF          |       |                 |
|                    | White Oak            |           | 7.8       | MBF          |       |                 |
|                    | Mixed Hardwood       | Pulpwood  | 114       | Cords        |       |                 |
|                    | <i>Basswood</i>      |           | 3         | <i>Cords</i> |       |                 |
|                    | <i>Beech</i>         |           | 2         | <i>Cords</i> |       |                 |
|                    | <i>Black Ash</i>     |           | 14        | <i>Cords</i> |       |                 |
|                    | <i>Red Maple</i>     |           | 92        | <i>Cords</i> |       |                 |
|                    | <i>Sugar Maple</i>   |           | 1         | <i>Cords</i> |       |                 |

**DESCRIPTION OF TIMBER BY PAYMENT UNIT (PU), CON'T**

| PU      | MARKET GROUP        | PRODUCT         | QUANTITY | UNIT         | ACRES | ADVERTISE PRICE |
|---------|---------------------|-----------------|----------|--------------|-------|-----------------|
| 4 con't | <i>White Ash</i>    | <i>Pulpwood</i> | 2        | <i>Cords</i> |       |                 |
|         | Red Oak             |                 | 69       | Cords        |       |                 |
|         | White Oak           |                 | 31       | Cords        |       |                 |
|         | White Pine          |                 | 5        | Cords        |       |                 |
| 5       | Red Maple           | Sawtimber       | 2.4      | MBF          | 13.1  | \$2,947.35      |
|         | Red Oak             |                 | 3.9      | MBF          |       |                 |
|         | Mixed Hardwood      | <i>Pulpwood</i> | 80       | <i>Cords</i> |       |                 |
|         | <i>Black Ash</i>    |                 | 2        | <i>Cords</i> |       |                 |
|         | <i>Ironwood</i>     |                 | 1        | <i>Cords</i> |       |                 |
|         | <i>Paper Birch</i>  |                 | 3        | <i>Cords</i> |       |                 |
|         | <i>Red Maple</i>    |                 | 59       | <i>Cords</i> |       |                 |
|         | <i>Sugar Maple</i>  |                 | 9        | <i>Cords</i> |       |                 |
|         | <i>White Ash</i>    |                 | 3        | <i>Cords</i> |       |                 |
|         | <i>Yellow Birch</i> |                 | 3        | <i>Cords</i> |       |                 |
|         | Red Oak             |                 | 21       | Cords        |       |                 |
| 6       | Red Maple           | Sawtimber       | 4.6      | MBF          | 19.9  | \$7,472.45      |
|         | Red Oak             |                 | 1.8      | MBF          |       |                 |
|         | Balsam Fir          | <i>Pulpwood</i> | 6        | <i>Cords</i> |       |                 |
|         | Mixed Hardwood      |                 | 259      | <i>Cords</i> |       |                 |
|         | <i>American Elm</i> |                 | 3        | <i>Cords</i> |       |                 |
|         | <i>Black Ash</i>    |                 | 76       | <i>Cords</i> |       |                 |
|         | <i>Ironwood</i>     |                 | 1        | <i>Cords</i> |       |                 |
|         | <i>Paper Birch</i>  |                 | 13       | <i>Cords</i> |       |                 |
|         | <i>Red Maple</i>    |                 | 160      | <i>Cords</i> |       |                 |
|         | <i>Sugar Maple</i>  |                 | 2        | <i>Cords</i> |       |                 |
|         | <i>White Ash</i>    |                 | 2        | <i>Cords</i> |       |                 |
|         | <i>Yellow Birch</i> |                 | 2        | <i>Cords</i> |       |                 |
|         | N. White Cedar      |                 | 32       | Cords        |       |                 |
|         | Red Oak             |                 | 8        | Cords        |       |                 |
|         | Tamarack            |                 | 60       | Cords        |       |                 |
|         | White Oak           |                 | 5        | Cords        |       |                 |
|         | White Pine          |                 | 6        | Cords        |       |                 |
| TOTAL:  |                     |                 | 141.5    | MBF          |       |                 |
| TOTAL:  |                     |                 | 1,742    | Cords        |       |                 |

# Sale Specific Conditions & Requirements

**Sale Name: Snakey Deer Drive**

**Sale Number: 33-023-20 Seq#: 1**

## 1 - Sale Area

### 1.2 - Boundaries

#### 1.2.1 - Painted boundaries (9/19)

The sale boundary and Payment Unit boundaries are marked and identified by blue, red and yellow paint. Exterior sale boundary lines against private property are marked with blue paint. Exterior sale boundary lines against state are marked with red paint. There is no red paint around the (L0) Lowland Brush cover type between Payment Units 1, 2 and 3. Interior Payment Unit boundaries are marked with yellow paint. Retention patches are marked with red paint; no harvesting activities may occur within these areas. The painted boundary line trees are not Included Timber and are to be protected unless marked with orange paint. Yellow painted trees designating an interior Payment Unit boundary are only to be cut when all surrounding Payment Units have been paid for.

## 2 - Timber Specifications

### 2.1 - Included Timber

#### 2.1.1 - Clearcut unit(s) with unmerchantable trees (6/14)

Within Payment Unit(s) 2, 3, 4 and 6, cut all trees that are three (3) inches or more at DBH, except do not cut any white pine less than six (6) inches at DBH or green marked trees.

#### 2.1.3 - Cut tree marked unit(s) (12/08)

Within Payment Unit(s) 1 and 5, all trees are designated for cutting when marked with orange paint above and below stump height, regardless of merchantability.

### 2.2 - Utilization

#### 2.2.4 - Skidding length (2/14)

Skidding of un-limbed tops or lengths over seventeen (17) feet will not be permitted, unless approved by the Unit Manager or their representative.

## 3 - Payments

### 3.3 - Pre-measured Sales

#### 3.3.4 - Dividing payment units (7/14)

Payment Unit(s) \$18,000 in value or greater may be divided at the request of the Purchaser and upon approval of the Unit Manager. Dividing Payment Units is a contract modification which requires a Timber Sale Contract Supplement. There shall be only one division per Payment Unit.

## 4 - Transportation

### 4.1 - Construction

#### 4.1.8 - Road work (1) (8/07)

The following road work is required: the Purchaser must haul and spread one hundred (100) cubic yards of pit run gravel, onto the Snakey Lake Road and other forest roads. Exact locations will be identified during the pre-sale meeting. All road work must be completed prior to any hauling. Gravel is available from a state pit along the Snakey Lake Road.

### 4.2 - Maintenance

#### 4.2.1 - Hauling restriction (12/08)

Hauling may be restricted on forest roads by the Unit Manager or their representative. The restriction may occur during either spring breakup or wet weather conditions.

#### 4.2.3 - Road maintenance (8/13)

The following road maintenance is required: Within 30 days of completion of hauling, or if no hauling occurs for 30 days or at the request of the sale administrator or Unit Manager, the road must be maintained and graded. This includes cleaning of

drainage areas, grading, crowning and filling with gravel, if necessary. Damages will be assessed if grading/repair does not occur. The Snaley Lake Road must be maintained in good condition at all times, if damage is done to this road as a result of logging operations, operations will be suspended until the road is improved or dries out.

#### 4.2.4 - Grading (10/16)

For completion of the sale, state forest roads must be graded. In general, this will require a road grader or bulldozer to shape up the roads after forest products have been hauled off site. This includes cleaning of drainage areas, grading, crowning and filling with gravel, if necessary. The grading equipment to be used must be approved by the Unit Manager or his/her representative.

### 5 - Operations

#### 5.2 - Conduct of Operations

##### 5.2.3 - Operating Restrictions

###### 5.2.3.1 - Operating restrictions (9/11)

Within Payment Unit(s) 6, cutting and skidding are limited to the period of December 1 to March 31, unless there is an extended dry or frozen period and the sale administrator allows harvesting during that period of time. This restriction is because of low wet ground throughout the Payment Unit.

###### 5.2.3.3 - Bark slippage restriction (3/09)

Within Payment Unit(s) 1 and 5, cutting and skidding are not permitted during the period of April 15 to July 15. This restriction is because of bark slippage.

###### 5.2.3.4 - Oak wilt restriction, no exceptions (1/18)

Within Payment Unit(s) 2, 3 and 4, cutting and skidding, are not permitted during the period of April 15 to July 15. No exceptions will be granted. This is necessary to reduce the spread of oak wilt.

##### 5.2.22 - Operating Caution

###### 5.2.22.1 - Operating caution (6/11)

It is recommended, but not required, that within Payment Unit(s) 2, cutting and skidding, occur during dry summer or frozen winter conditions. The reason for the recommendation is because the northern half of the Payment Unit is low and wet, while the remainder of the Payment Unit is a mix of upland and lowland.

#### 5.4 - Soil Protection

##### 5.4.1 - Rutting restriction, general (7/16)

Operations are to cease immediately if equipment and weather conditions result in rutting of roads and/or skid trails which is twelve (12) inches or greater in depth and fifty (50) feet in length. The Unit Manager or his/her representative may restrict hauling and/or skidding if ruts exceed the specified depth. With the Unit Manager or his/her representative's approval, the Purchaser may return to the area when the risk of rutting has decreased.

### 6 - Safety and Fire Prevention

#### 6.2 - Signing

##### 6.2.1 - Road posting (9/09)

The Purchaser is responsible for posting and maintaining caution signs on the Snakey Lake Road prior to beginning operations. The road must be posted at appropriate distances from the sale area to warn of logging activity and truck traffic. Signs must be removed when harvest operations are suspended or completed. The Purchaser shall provide these signs.

### 7 - Other Conditions

#### 7.3 - Contract Modifications

##### 7.3.2 - Modification for oak wilt (2/05)

Within the sale area, there may be patches of oak wilt. If oak wilt is identified within the sale area, this contract may be modified. The following modifications could occur: time of cutting, species to cut, volume to harvest, or various others dealing with the treatment of oak wilt. If a species is not specified in this contract, it shall be paid for at the average price received for that species and product.



## 7.5 - Loss

### 7.5.1 - Deteriorating timber (7/09)

The sale area has received damage from the eastern larch beetle in Payment Unit 6. The Purchaser should harvest the wood as soon as possible. The Department of Natural Resources is held free of responsibility of any further damage or deterioration due to delay in harvesting.



# TIMBER SALE MAP

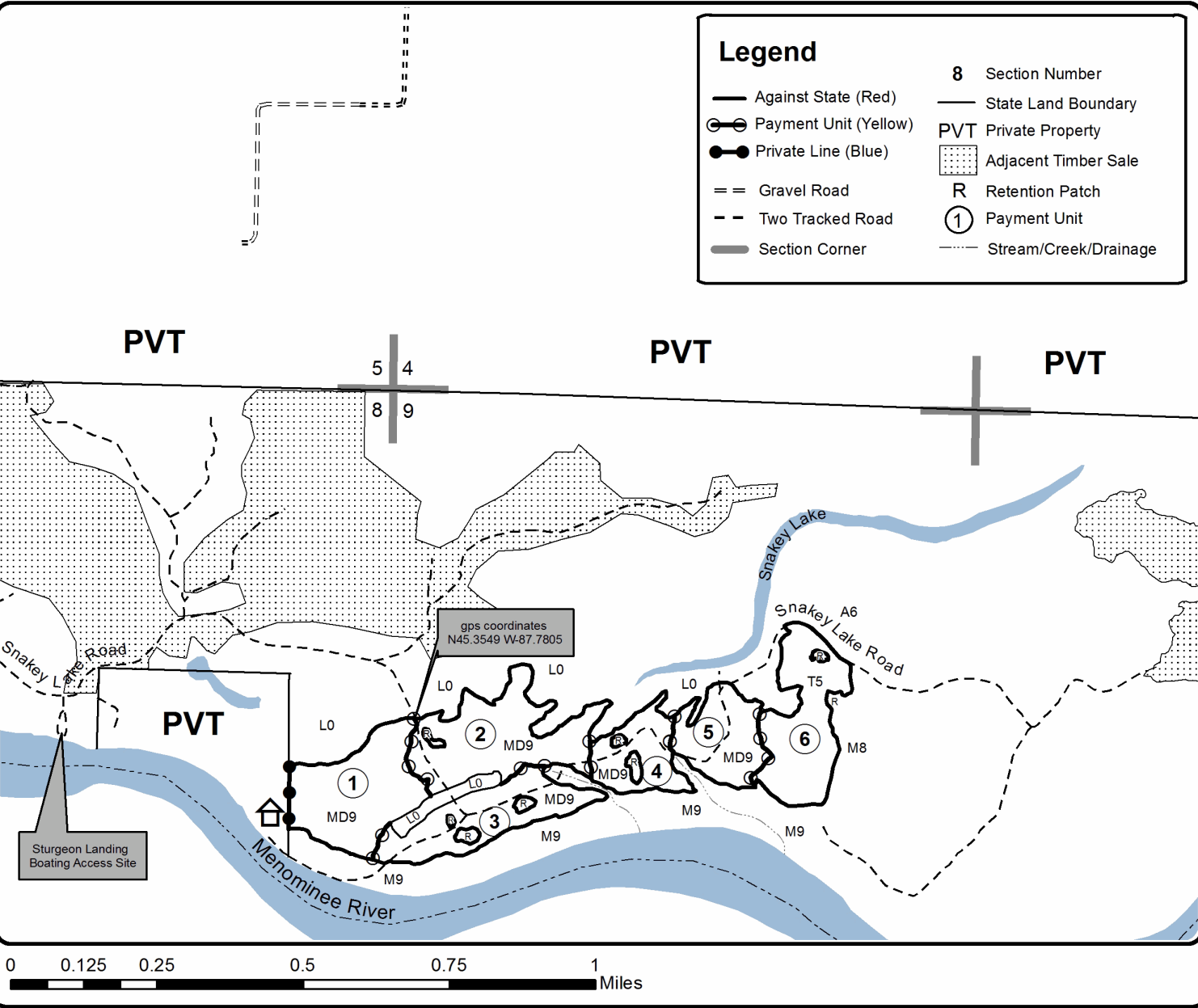
This information provided by authority of Part 525, 1994 PA 451, as amended.

|  |                            |  |                   |           |         |
|--|----------------------------|--|-------------------|-----------|---------|
| Forest Management Unit<br>Escanaba Management Unit | County<br>Menominee County | Mapped By<br>Beaudo  | Date<br>8/10/2020 | Page<br>1 | of<br>1 |
| Township<br>34N                                    | Range<br>28W               | Section(s) and Subdivision(s)<br>Sec 8 - E1/2SE; Sec 9 - SWNW, S1/2NE, N1/2SW, SWSW & N1/2SE | Scale<br>1:15,840 |           |         |
| Cruised By<br>Salter, Beaudo                       |                            |  |                   |           |         |

| Cover Type        |                      |                         |                   | Density                     |                        |
|-------------------|----------------------|-------------------------|-------------------|-----------------------------|------------------------|
| A = Aspen         | H = Hemlock          | N = Marsh               | U = Upland Brush  | 0 = Non Stocked             | 5 = Pole Timber Medium |
| B = Paper Birch   | J = Jack Pine        | O = Oak                 | UM = Upland Mixed | 1 = Seedling Sapling Poor   | 6 = Pole Timber Well   |
| C = Cedar         | L = Lowland Brush    | P = Lowland Poplar      | V = Bog or Marsh  | 2 = Seedling Sapling Medium | 7 = Saw Timber Poor    |
| D = Treed Bog     | LM = Lowland Mixed   | Q = Mixed Swamp Conifer | W = White Pine    | 3 = Seedling Sapling Well   | 8 = Saw Timber Medium  |
| E = Swamp Hdwoods | M = Mpl, Bch, Brch   | R = Red Pine            | X = Non Stocked   | 4 = Pole Timber Poor        | 9 = Saw Timber Well    |
| F = Spruce Fir    | MC = Mixed Conifer   | S = Black Spruce        | Z = Water         |                             |                        |
| G = Grass         | MD = Mixed Deciduous | T = Tamarack            |                   |                             |                        |

| PU | Acres | PU | Acres |
|----|-------|----|-------|
| 1  | 22.2  | 4  | 10.5  |
| 2  | 23.8  | 5  | 13.1  |
| 3  | 16.8  | 6  | 19.9  |

## Snakey Deer Drive Compartment 30 106.3 Acres



## TIMBER SALE INFORMATION

End of Earl SBW (33-030-20)  
 T35N, R28W, SEC. 2; T35N, R28W, SEC. 3.  
 Menominee County (Advertised Price \$15,694.00)

SALE NOTE: The spruce and fir within the sale area has had a significant amount of defoliation caused by the spruce budworm. The Purchaser should harvest the sale as soon as possible, to salvage as much wood as possible. All four Payment Units can be harvested during summer conditions. The state has a legal easement to cross the private property north of County Road 356 heading up to Payment Units 3 and 4. The Purchaser is not required to obtain permission.

A timber sale contract for this lump sum, sealed bid timber sale will be awarded to the responsible bidder offering the highest sealed bid price. All units of volume listed below were estimated using the T-Sale computer program and our traditional volume equations. Bids must be at or above the following advertised price for each product and species:

| <u>PRODUCTS &amp; SPECIES</u> | <u>ESTIMATED UNITS*</u> | <u>ADVERTISED PRICE</u> |
|-------------------------------|-------------------------|-------------------------|
| Sawtimber                     |                         |                         |
| Red Maple                     | 1.2 MBF                 | \$ 129.00 / MBF         |
| Pulpwood                      |                         |                         |
| Balsam Fir                    | 133 Cords               | \$ 13.95 / Cord         |
| Mixed Aspen                   | 113 Cords               | \$ 20.35 / Cord         |
| Mixed Hardwood                | 153 Cords               | \$ 19.80 / Cord         |
| N. White Cedar                | 15 Cords                | \$ 12.70 / Cord         |
| Red Pine                      | 121 Cords               | \$ 34.15 / Cord         |
| White Pine                    | 75 Cords                | \$ 22.25 / Cord         |
| White Spruce                  | 145 Cords               | \$ 16.30 / Cord         |

\* The total volume is statistically estimated within plus (+) or minus (-) 18.71 percent. There are an estimated 756 cords on this timber sale, plus or minus 141 cords at the 95% confidence level. The estimated units are final and not subject to adjustment. Prospective bidders are urged to examine this timber and to make their own estimates of quantity and quality.

### **BOND AND PAYMENT SCHEDULE:**

1. A bond in the amount of \$785.00 to insure faithful performance of the conditions of the contract will be deposited by the successful bidder within 21 days of the sale award.
2. Cutting in any sale or unit without the required advance payment would be considered a trespass.
3. Total payment must be paid in advance or according to the following schedule :
  - (a) Ten percent (10%) of the sale value must be paid within 21 days of the sale award.
  - (b) The 10% down payment will be credited towards the first unit cut.
  - (c) Payment for each of the following units must be made before cutting begins in that unit:

| PAYMENT UNIT NUMBER | PERCENT OF TOTAL SALE VALUE |
|---------------------|-----------------------------|
| 01                  | 30.3%                       |
| 02                  | 25.8%                       |
| 03                  | 40.3%                       |
| 04                  | 3.6%                        |

4. If no cutting takes place, the 10% down payment will not be refunded.
5. Operations on the contract issued will terminate on 09/30/2023.

### **SALE STATISTICS**

#### **SALE VOLUMES**

| VOLUME           |             | STATISTICAL RANGE IN CORDS |         |         |
|------------------|-------------|----------------------------|---------|---------|
| TOTAL CUBIC FEET | TOTAL CORDS | PERCENT ERROR              | MINIMUM | MAXIMUM |
| 59,693           | 756         | 18.71%                     | 614     | 897     |

**VDU VOLUMES**

A VDU is a Volume Determination Unit. Volumes and their associated statistics are calculated at the VDU level and summarized to the sale level. There is often a one to one relationship between a VDU and a Payment Unit, but not always, depending on the cruise design. Refer to the VDU TO PAYMENT UNIT table.

| VDU           | VOLUME           |             | PERCENT ERROR | RANGE IN CORDS |              |
|---------------|------------------|-------------|---------------|----------------|--------------|
|               | TOTAL CUBIC FEET | TOTAL CORDS |               | MINIMUM        | MAXIMUM      |
| 18            | 16,021           | 203         | 30.33%        | 141            | 264          |
| 19            | 12,261           | 155         | 47.66%        | 81             | 229          |
| 23            | 29,104           | 368         | 27.34%        | 268            | 469          |
| 26            | 2,291            | 29          | 82.13%        | 5              | 53           |
| <b>TOTAL:</b> | <b>59,677</b>    | <b>755</b>  |               | <b>495</b>     | <b>1,015</b> |

**VDU TO PAYMENT UNIT**

When a VDU is associated with more than one Payment Unit (PU), the VDU volumes are assigned to the PU based on acres of the VDU within the PU.

| VDU           | VDU ACRES   | PU | PU ACRES    |
|---------------|-------------|----|-------------|
| 18            | 9.7         | 2  | 9.7         |
| 19            | 14.7        | 1  | 14.7        |
| 23            | 20.1        | 3  | 20.1        |
| 26            | 3.5         | 4  | 3.5         |
| <b>TOTAL:</b> | <b>48.0</b> |    | <b>48.0</b> |

**DESCRIPTION OF TIMBER BY PAYMENT UNIT (PU)**

| PU                   | MARKET GROUP         | PRODUCT   | QUANTITY     | UNIT         | ACRES | ADVERTISE PRICE |
|----------------------|----------------------|-----------|--------------|--------------|-------|-----------------|
| 1                    | Mixed Hardwood       | Pulpwood  | 2            | Cords        | 14.7  | \$4,748.45      |
|                      | <i>Black Cherry</i>  |           | 2            | <i>Cords</i> |       |                 |
|                      | Red Pine             |           | 116          | Cords        |       |                 |
|                      | White Pine           |           | 27           | Cords        |       |                 |
|                      | White Spruce         |           | 9            | Cords        |       |                 |
| 2                    | Red Maple            | Sawtimber | 1.2          | MBF          | 9.7   | \$4,047.55      |
|                      | Balsam Fir           | Pulpwood  | 6            | Cords        |       |                 |
|                      | Mixed Aspen          |           | 18           | Cords        |       |                 |
|                      | <i>Balsam Poplar</i> |           | 6            | <i>Cords</i> |       |                 |
|                      | <i>Quaking Aspen</i> |           | 12           | <i>Cords</i> |       |                 |
|                      | Mixed Hardwood       |           | 63           | Cords        |       |                 |
|                      | <i>Black Cherry</i>  |           | 4            | <i>Cords</i> |       |                 |
|                      | <i>Paper Birch</i>   |           | 14           | <i>Cords</i> |       |                 |
|                      | <i>Red Maple</i>     |           | 45           | <i>Cords</i> |       |                 |
|                      | N. White Cedar       |           | 15           | Cords        |       |                 |
|                      | Red Pine             |           | 5            | Cords        |       |                 |
|                      | White Pine           |           | 48           | Cords        |       |                 |
|                      | White Spruce         |           | 47           | Cords        |       |                 |
|                      | 3                    |           | Balsam Fir   | Pulpwood     |       |                 |
| Mixed Aspen          |                      | 73        | Cords        |              |       |                 |
| <i>Balsam Poplar</i> |                      | 3         | <i>Cords</i> |              |       |                 |
| <i>Quaking Aspen</i> |                      | 70        | <i>Cords</i> |              |       |                 |
| Mixed Hardwood       |                      | 85        | Cords        |              |       |                 |
| <i>Black Cherry</i>  |                      | 8         | <i>Cords</i> |              |       |                 |
| <i>Paper Birch</i>   |                      | 8         | <i>Cords</i> |              |       |                 |
| <i>Red Maple</i>     |                      | 69        | <i>Cords</i> |              |       |                 |
| White Spruce         |                      | 86        | Cords        |              |       |                 |
| 4                    | Balsam Fir           | Pulpwood  | 1            | Cords        | 3.5   | \$569.95        |
|                      | Mixed Aspen          |           | 22           | Cords        |       |                 |
|                      | <i>Quaking Aspen</i> |           | 22           | <i>Cords</i> |       |                 |
|                      | Mixed Hardwood       |           | 3            | Cords        |       |                 |
|                      | <i>Black Cherry</i>  |           | 3            | <i>Cords</i> |       |                 |
|                      | White Spruce         |           | 3            | Cords        |       |                 |
| TOTAL:               |                      |           | 1.2          | MBF          |       |                 |
| TOTAL:               |                      |           | 755          | Cords        |       |                 |

## Sale Specific Conditions & Requirements

**Sale Name: End of Earl SBW**

**Sale Number: 33-030-20 Seq#: 1**

### 1 - Sale Area

#### 1.2 - Boundaries

##### 1.2.1 - Painted boundaries (9/19)

The sale boundary and Payment Unit boundaries are marked and identified by blue, red and yellow paint. Exterior sale boundary lines against private property are marked with blue paint. Exterior sale boundary lines against state are marked with red paint. Interior Payment Unit boundaries are marked with yellow paint. The painted boundary line trees are not Included Timber and are to be protected unless marked with orange paint. Yellow painted trees designating an interior Payment Unit boundary are only to be cut when all surrounding Payment Units have been paid for.

### 2 - Timber Specifications

#### 2.1 - Included Timber

##### 2.1.1 - Clearcut unit(s) with unmerchantable trees (6/14)

Within Payment Unit(s) 2 and 4, cut all trees that are three (3) inches or more at DBH, except within Payment Unit 2, do not cut any cedar, hemlock, oak or green marked trees.

Within Payment Unit 3, cut all spruce and fir three (3) inches or more at DBH. In addition cut all aspen, balsam fir, maple, cherry and birch greater than four (4) inches at DBH.

##### 2.1.3 - Cut tree marked unit(s) (12/08)

Within Payment Unit(s) 1, all trees are designated for cutting when marked with orange paint above and below stump height, regardless of merchantability.

#### 2.2 - Utilization

##### 2.2.4 - Skidding length (2/14)

Skidding of un-limbed tops or lengths over seventeen (17) feet will not be permitted within Payment Unit 1.

### 3 - Payments

#### 3.3 - Pre-measured Sales

##### 3.3.4 - Dividing payment units (7/14)

Payment Unit(s) \$18,000 in value and greater may be divided at the request of the Purchaser and upon approval of the Unit Manager. Dividing Payment Units is a contract modification which requires a Timber Sale Contract Supplement. There shall be only one division per Payment Unit.

### 4 - Transportation

#### 4.2 - Maintenance

##### 4.2.1 - Hauling restriction (12/08)

Hauling may be restricted on forest roads by the Unit Manager or their representative. The restriction may occur during either spring breakup or wet weather conditions.

##### 4.2.4 - Grading (10/16)

For completion of the sale, state forest roads must be graded. In general, this will require a road grader or bulldozer to shape up the roads after forest products have been hauled off site. This includes cleaning of drainage areas, grading, crowning and filling with gravel, if necessary. The grading equipment to be used must be approved by the Unit Manager or his/her representative.

#### 4.4 - Access

##### 4.4.1 - Private property access (3/11)

Permission for access across private land north of County Road 356 heading into Payment Units 3 and 4 is covered by an

easement. The Purchaser is not required to get permission from the private landowners, though notification of activity is suggested.

## **5 - Operations**

### 5.2 - Conduct of Operations

#### 5.2.3 - Operating Restrictions

##### 5.2.3.3 - Bark slippage restriction (3/09)

Within Payment Unit(s) 1, unless changed by written agreement, cutting and skidding are not permitted during the period of April 15 to July 15. This restriction is because of bark slippage.

### 5.4 - Soil Protection

#### 5.4.1 - Rutting restriction, general (7/16)

Operations are to cease immediately if equipment and weather conditions result in rutting of roads and/or skid trails which is twelve (12) inches or greater in depth and fifty (50) feet in length. The Unit Manager or his/her representative may restrict hauling and/or skidding if ruts exceed the specified depth. With the Unit Manager or his/her representative's approval, the Purchaser may return to the area when the risk of rutting has decreased.

## **6 - Safety and Fire Prevention**

### 6.2 - Signing

#### 6.2.1 - Road posting (9/09)

The Purchaser is responsible for posting and maintaining caution signs on Earls Lane and the access road off of County Road 356 heading into Payment Units 3 and 4, prior to beginning operations. The road must be posted at appropriate distances from the sale area to warn of logging activity and truck traffic. Signs must be removed when harvest operations are suspended or completed. The Purchaser shall provide these signs.

## **7 - Other Conditions**

### 7.5 - Loss

#### 7.5.1 - Deteriorating timber (7/09)

The sale area has received damage from the spruce budworm. There is a significant amount of spruce and fir defoliation within the sale area. The Purchaser should harvest the wood as soon as possible. The Department of Natural Resources is held free of responsibility of any further damage or deterioration due to delay in harvesting.



# TIMBER SALE MAP

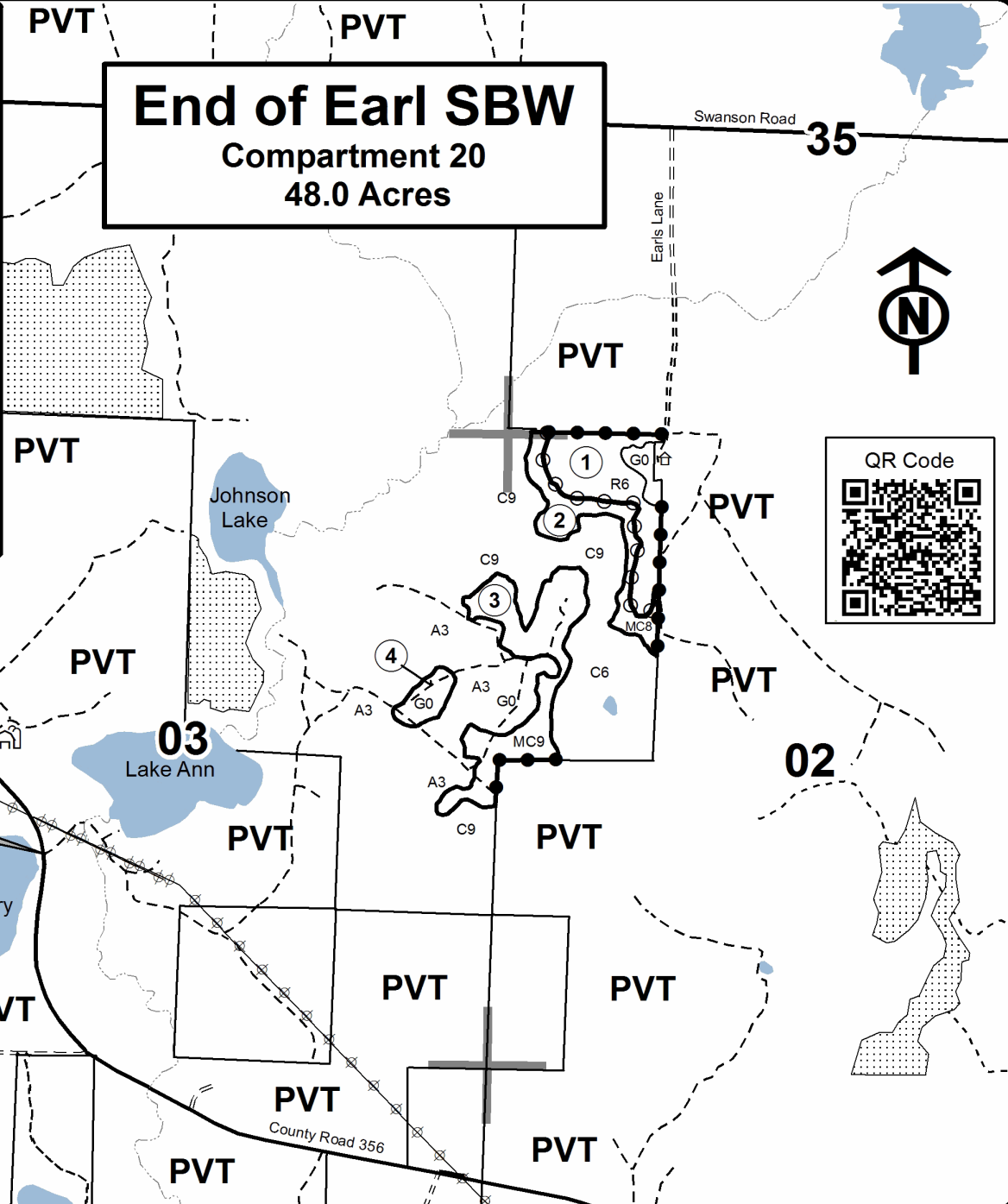
This information provided by authority of Part 525, 1994 PA 451, as amended.

|  |                            |  |                   |           |         |
|--|----------------------------|--|-------------------|-----------|---------|
| Forest Management Unit<br>Escanaba Management Unit | County<br>Menominee County | Mapped By<br>Beaudo  | Date<br>7/22/2020 | Page<br>1 | of<br>1 |
| Township<br>35N                                    | Range<br>28W               | Section(s) and Subdivision(s)<br>Sec 2 - W1/2NW; Sec 3 - E1/2NE, NESE. | Scale<br>1:15,840 |           |         |

| Cover Type        |                      |                         |                   | Density                     |                        |  |  |
|-------------------|----------------------|-------------------------|-------------------|-----------------------------|------------------------|--|--|
| A = Aspen         | H = Hemlock          | N = Marsh               | U = Upland Brush  | 0 = Non Stocked             | 5 = Pole Timber Medium |  |  |
| B = Paper Birch   | J = Jack Pine        | O = Oak                 | UM = Upland Mixed | 1 = Seedling Sapling Poor   | 6 = Pole Timber Well   |  |  |
| C = Cedar         | L = Lowland Brush    | P = Lowland Poplar      | V = Bog or Marsh  | 2 = Seedling Sapling Medium | 7 = Saw Timber Poor    |  |  |
| D = Treed Bog     | LM = Lowland Mixed   | Q = Mixed Swamp Conifer | W = White Pine    | 3 = Seedling Sapling Well   | 8 = Saw Timber Medium  |  |  |
| E = Swamp Hdwoods | M = Mpl, Bch, Brch   | R = Red Pine            | X = Non Stocked   | 4 = Pole Timber Poor        | 9 = Saw Timber Well    |  |  |
| F = Spruce Fir    | MC = Mixed Conifer   | S = Black Spruce        | Z = Water         |                             |                        |  |  |
| G = Grass         | MD = Mixed Deciduous | T = Tamarack            |                   |                             |                        |  |  |

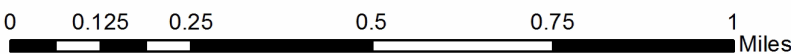
### Legend

- Against State (Red)
- ⊙ Payment Unit (Yellow)
- Private Line (Blue)
- Paved Road
- == Gravel Road
- Two Tracked Road
- Section Corner
- 02** Section Number
- State Land Boundary
- PVT Private Property
- ⊞ Adjacent Timber Sale
- ① Payment Unit
- Stream/Creek/Drainage
- 🏠 Camp
- 🏡 Farm



gps coordinates  
N45.4541 W-87.7541

| PU | Acres |
|----|-------|
| 1  | 14.7  |
| 2  | 9.7   |
| 3  | 20.1  |
| 4  | 3.5   |





109 Oak Wilt (33-021-20)

T35N, R28W, SEC. 30; T35N, R28W, SEC. 31; T35N, R29W, SEC. 36; Menominee

In response to the notice of sale to be held 3:00 p.m. (local time) on October 20, 2020, I am hereby submitting my sealed bid (firm offer) for the following forest products to be cut. Bids for individual species must be at or above the advertised price. All non-responsive bid forms may be rejected.

| <u>PRODUCTS &amp; SPECIES</u> | <u>ESTIMATED VOLUME*</u> | <u>ADVERTISED PRICE</u> | <u>BID PRICE/UNIT</u> |
|-------------------------------|--------------------------|-------------------------|-----------------------|
| <b>Sawtimber</b>              |                          |                         |                       |
| Northern Pin Oak              | 3.5 MBF                  | \$ 2.00/MBF             | \$ _____              |
| <b>Pulpwood</b>               |                          |                         |                       |
| Jack Pine                     | 4 Cords                  | \$ 1.00/Cord            | \$ _____              |
| Mixed Aspen                   | 7 Cords                  | \$ 1.00/Cord            | \$ _____              |
| Mixed Hardwood                | 3 Cords                  | \$ 1.00/Cord            | \$ _____              |
| Northern Pin Oak              | 106 Cords                | \$ 1.00/Cord            | \$ _____              |
| Red Pine                      | 9 Cords                  | \$ 1.00/Cord            | \$ _____              |
| White Pine                    | 2 Cords                  | \$ 1.00/Cord            | \$ _____              |

\*The volumes are statistically estimated within plus (+) or minus (-) 17.66 percent at 95% confidence level. These estimated volumes are final and not subject to adjustment. Prospective bidders are urged to examine this timber and to make their own estimates of quantity and quality.

I understand that any or all bids may be rejected. All bids must be signed and all bid items must be bid or the bid form may be rejected. I also understand that consideration and awarding a contract will be based upon my past performance and ability to complete the contract based upon equipment and staffing subject to my control.

FEDERAL ID: \_\_\_\_ - \_\_\_\_ - \_\_\_\_ or SOCIAL SECURITY NUMBER: \_\_\_\_ - \_\_\_\_ - \_\_\_\_  
 Company or individual bidding: \_\_\_\_\_  
 Company representative's name: \_\_\_\_\_  
 Address: \_\_\_\_\_  
 City: \_\_\_\_\_ State: \_\_\_\_\_ Zip: \_\_\_\_\_

IF AVAILABLE, PLEASE PLACE THE PERSONALIZED LABEL FROM YOUR PROSPECTUS IN THE ABOVE BOX.

Individual or company representative's signature: \_\_\_\_\_ Date: \_\_\_\_\_  
Phone number : \_\_\_\_\_ Email (optional): \_\_\_\_\_

**THE WINNING BIDDER MUST COMPLETE THE VERIFICATION OF WORKER'S DISABILITY COMPENSATION ACT COMPLIANCE (ON REVERSE SIDE IF DOUBLE SIDED) WITHIN 21 DAYS OF SALE AWARD DATE**



|                                  |
|----------------------------------|
| <b>FOR DEPARTMENT USE ONLY</b>   |
| Sale Number (XX - XXX - XX - XX) |
| Forest Management Unit:          |

## TIMBER SALE VERIFICATION OF WORKER'S DISABILITY COMPENSATION ACT COMPLIANCE

*As required by Act 317, P.A. 1969 (Worker's Compensation) and  
Part 5 of Act 451 of 1994, as amended.*

### VERIFICATION OF WORKER'S DISABILITY COMPENSATION ACT COMPLIANCE

- This verification must be completed and submitted within 21 days of contract award and prior to the issuance of the timber sale contract.
- In addition, if boxes 2B or 2C are checked, then Notice of Exclusion or Certificate of Insurance must be submitted within twenty-one (21) days of the contract award and prior to the issuance of the timber sale contract.
- All information must be typed or printed except for written signatures.

Please Check Appropriate Categories:

1. My business is organized as (you **must** check one of the boxes below):
  - A.  Sole Proprietorship (individual)
  - B.  Partnership
  - C.  Corporation
  
2. You **must** check one of the boxes below:
  - A.  I certify my business is a sole proprietorship and it has no employees but the sole proprietor. I am not subject to the Worker's Compensation Laws.
  - B.  I certify my business has satisfied its obligation to the Worker's Compensation Act through the use of an approved Notice of Exclusion (BWC-337, Rev. 5/96). I will provide a copy of the Notice of Exclusion within 21 days of the contract award. (For questions or a copy of the BWC-337, please call the Worker's Compensation Bureau at 517-322-1195).
  - C.  I certify my business has a Worker's Compensation Policy. I will provide an original Certificate of Insurance within twenty-one (21) days of the contract award.
  
3. If you have checked item 2(A) or 2(B), you **must** indicate the number of **both** full-time and part-time employees, other than yourself, including family members and active partners (if none, you must enter "0").

\_\_\_\_\_ Full-time Employees

\_\_\_\_\_ Part-time Employees

|                  |       |                                     |  |
|------------------|-------|-------------------------------------|--|
| Name of Business |       | Federal ID (or) Social Security No. |  |
| Address          |       | Telephone<br>(       )              |  |
| City             | State | ZIP                                 |  |

*I hereby certify that the above information is true and correct. I agree to notify the Michigan DNR of any changes that occur in factors affecting my coverage during any of my present and future operations.*

\_\_\_\_\_  
Signature of Owner or Authorized Representative

\_\_\_\_\_  
Title

\_\_\_\_\_  
Date

**Please complete the "SEALED BID" information on the next page**

End of Earl SBW (33-030-20)  
T35N, R28W, SEC. 2; T35N, R28W, SEC. 3; Menominee COUNTY

In response to the notice of sale to be held 3:00 p.m. (local time) on October 20, 2020, I am hereby submitting my sealed bid (firm offer) for the following forest products to be cut. Bids for individual species must be at or above the advertised price. All non-responsive bid forms may be rejected.

| <u>PRODUCTS &amp; SPECIES</u> | <u>ESTIMATED VOLUME*</u> | <u>ADVERTISED PRICE</u> | <u>BID PRICE/UNIT</u> |
|-------------------------------|--------------------------|-------------------------|-----------------------|
| <b>Sawtimber</b>              |                          |                         |                       |
| Red Maple                     | 1.2 MBF                  | \$ 129.00/MBF           | \$ _____              |
| <b>Pulpwood</b>               |                          |                         |                       |
| Balsam Fir                    | 133 Cords                | \$ 13.95/Cord           | \$ _____              |
| Mixed Aspen                   | 113 Cords                | \$ 20.35/Cord           | \$ _____              |
| Mixed Hardwood                | 153 Cords                | \$ 19.80/Cord           | \$ _____              |
| N. White Cedar                | 15 Cords                 | \$ 12.70/Cord           | \$ _____              |
| Red Pine                      | 121 Cords                | \$ 34.15/Cord           | \$ _____              |
| White Pine                    | 75 Cords                 | \$ 22.25/Cord           | \$ _____              |
| White Spruce                  | 145 Cords                | \$ 16.30/Cord           | \$ _____              |

\*The volumes are statistically estimated within plus (+) or minus (-) 18.71 percent at 95% confidence level. These estimated volumes are final and not subject to adjustment. Prospective bidders are urged to examine this timber and to make their own estimates of quantity and quality.

I understand that any or all bids may be rejected. All bids must be signed and all bid items must be bid or the bid form may be rejected. I also understand that consideration and awarding a contract will be based upon my past performance and ability to complete the contract based upon equipment and staffing subject to my control.

FEDERAL ID: \_\_\_ - \_\_\_ - \_\_\_ or SOCIAL SECURITY NUMBER: \_\_\_ - \_\_\_ - \_\_\_

Company or individual bidding: \_\_\_\_\_

Company representative's name: \_\_\_\_\_

Address: \_\_\_\_\_

City: \_\_\_\_\_ State: \_\_\_\_\_ Zip: \_\_\_\_\_

IF AVAILABLE, PLEASE PLACE THE PERSONALIZED LABEL FROM YOUR PROSPECTUS IN THE ABOVE BOX.

Individual or company representative's signature: \_\_\_\_\_ Date: \_\_\_\_\_

Phone number : \_\_\_\_\_ Email (optional): \_\_\_\_\_

**THE WINNING BIDDER MUST COMPLETE THE VERIFICATION OF WORKER'S DISABILITY COMPENSATION ACT COMPLIANCE (ON REVERSE SIDE IF DOUBLE SIDED) WITHIN 21 DAYS OF SALE AWARD DATE**



# TIMBER SALE VERIFICATION OF WORKER'S DISABILITY COMPENSATION ACT COMPLIANCE

As required by Act 317, P.A. 1969 (Worker's Compensation) and  
Part 5 of Act 451 of 1994, as amended.

| FOR DEPARTMENT USE ONLY          |  |
|----------------------------------|--|
| Sale Number (XX - XXX - XX - XX) |  |
| Forest Management Unit:          |  |

## VERIFICATION OF WORKER'S DISABILITY COMPENSATION ACT COMPLIANCE

- This verification must be completed and submitted within 21 days of contract award and prior to the issuance of the timber sale contract.
- In addition, if boxes 2B or 2C are checked, then Notice of Exclusion or Certificate of Insurance must be submitted within twenty-one (21) days of the contract award and prior to the issuance of the timber sale contract.
- All information must be typed or printed except for written signatures.

Please Check Appropriate Categories:

1. My business is organized as (you **must** check one of the boxes below):
  - A.  Sole Proprietorship (individual)
  - B.  Partnership
  - C.  Corporation
2. You **must** check one of the boxes below:
  - A.  I certify my business is a sole proprietorship and it has no employees but the sole proprietor. I am not subject to the Worker's Compensation Laws.
  - B.  I certify my business has satisfied its obligation to the Worker's Compensation Act through the use of an approved Notice of Exclusion (BWC-337, Rev. 5/96). I will provide a copy of the Notice of Exclusion within 21 days of the contract award. (For questions or a copy of the BWC-337, please call the Worker's Compensation Bureau at 517-322-1195).
  - C.  I certify my business has a Worker's Compensation Policy. I will provide an original Certificate of Insurance within twenty-one (21) days of the contract award.
3. If you have checked item 2(A) or 2(B), you **must** indicate the number of **both** full-time and part-time employees, other than yourself, including family members and active partners (if none, you must enter "0").

\_\_\_\_\_ Full-time Employees

\_\_\_\_\_ Part-time Employees

|                  |       |                                     |  |
|------------------|-------|-------------------------------------|--|
| Name of Business |       | Federal ID (or) Social Security No. |  |
| Address          |       | Telephone<br>(       )              |  |
| City             | State | ZIP                                 |  |

*I hereby certify that the above information is true and correct. I agree to notify the Michigan DNR of any changes that occur in factors affecting my coverage during any of my present and future operations.*

\_\_\_\_\_  
Signature of Owner or Authorized Representative

\_\_\_\_\_  
Title

\_\_\_\_\_  
Date

Please complete the "SEALED BID" information on the next page

Snakey Deer Drive (33-023-20)  
T34N, R28W, SEC. 8; T34N, R28W, SEC. 9; Menominee COUNTY

In response to the notice of sale to be held 3:00 p.m. (local time) on October 20, 2020, I am hereby submitting my sealed bid (firm offer) for the following forest products to be cut. Bids for individual species must be at or above the advertised price. All non-responsive bid forms may be rejected.

| <u>PRODUCTS &amp; SPECIES</u> | <u>ESTIMATED VOLUME*</u> | <u>ADVERTISED PRICE</u> | <u>BID PRICE/UNIT</u> |
|-------------------------------|--------------------------|-------------------------|-----------------------|
| <b>Sawtimber</b>              |                          |                         |                       |
| Basswood                      | 2.6 MBF                  | \$ 88.00/MBF            | \$ _____              |
| Green Ash                     | 0.8 MBF                  | \$ 44.00/MBF            | \$ _____              |
| Red Maple                     | 46.0 MBF                 | \$ 129.00/MBF           | \$ _____              |
| Red Oak                       | 73.7 MBF                 | \$ 145.00/MBF           | \$ _____              |
| Sugar Maple                   | 1.2 MBF                  | \$ 178.00/MBF           | \$ _____              |
| White Ash                     | 1.2 MBF                  | \$ 85.00/MBF            | \$ _____              |
| White Oak                     | 16.0 MBF                 | \$ 65.00/MBF            | \$ _____              |
| <b>Pulpwood</b>               |                          |                         |                       |
| Balsam Fir                    | 6 Cords                  | \$ 13.95/Cord           | \$ _____              |
| Mixed Aspen                   | 11 Cords                 | \$ 20.35/Cord           | \$ _____              |
| Mixed Hardwood                | 1,146 Cords              | \$ 19.80/Cord           | \$ _____              |
| N. White Cedar                | 32 Cords                 | \$ 12.70/Cord           | \$ _____              |
| Red Oak                       | 332 Cords                | \$ 23.25/Cord           | \$ _____              |
| Tamarack                      | 60 Cords                 | \$ 9.40/Cord            | \$ _____              |
| White Oak                     | 132 Cords                | \$ 23.25/Cord           | \$ _____              |
| White Pine                    | 23 Cords                 | \$ 22.25/Cord           | \$ _____              |

\*The volumes are statistically estimated within plus (+) or minus (-) 7.43 percent at 95% confidence level. These estimated volumes are final and not subject to adjustment. Prospective bidders are urged to examine this timber and to make their own estimates of quantity and quality.

I understand that any or all bids may be rejected. All bids must be signed and all bid items must be bid or the bid form may be rejected. I also understand that consideration and awarding a contract will be based upon my past performance and ability to complete the contract based upon equipment and staffing subject to my control.

FEDERAL ID: \_\_\_\_ - \_\_\_\_ - \_\_\_\_ or SOCIAL SECURITY NUMBER: \_\_\_\_ - \_\_\_\_ - \_\_\_\_

Company or individual bidding: \_\_\_\_\_

Company representative's name: \_\_\_\_\_

Address: \_\_\_\_\_

City: \_\_\_\_\_ State: \_\_\_\_\_ Zip: \_\_\_\_\_

IF AVAILABLE, PLEASE PLACE THE PERSONALIZED LABEL FROM YOUR PROSPECTUS IN THE ABOVE BOX.

Individual or company representative's signature: \_\_\_\_\_ Date: \_\_\_\_\_

Phone number : \_\_\_\_\_ Email (optional): \_\_\_\_\_

**THE WINNING BIDDER MUST COMPLETE THE VERIFICATION OF WORKER'S DISABILITY COMPENSATION ACT COMPLIANCE (ON REVERSE SIDE IF DOUBLE SIDED) WITHIN 21 DAYS OF SALE AWARD DATE**



|                                  |
|----------------------------------|
| <b>FOR DEPARTMENT USE ONLY</b>   |
| Sale Number (XX - XXX - XX - XX) |
| Forest Management Unit:          |

## TIMBER SALE VERIFICATION OF WORKER'S DISABILITY COMPENSATION ACT COMPLIANCE

*As required by Act 317, P.A. 1969 (Worker's Compensation) and  
Part 5 of Act 451 of 1994, as amended.*

### VERIFICATION OF WORKER'S DISABILITY COMPENSATION ACT COMPLIANCE

- This verification must be completed and submitted within 21 days of contract award and prior to the issuance of the timber sale contract.
- In addition, if boxes 2B or 2C are checked, then Notice of Exclusion or Certificate of Insurance must be submitted within twenty-one (21) days of the contract award and prior to the issuance of the timber sale contract.
- All information must be typed or printed except for written signatures.

Please Check Appropriate Categories:

1. My business is organized as (you **must** check one of the boxes below):
  - A.  Sole Proprietorship (individual)
  - B.  Partnership
  - C.  Corporation
2. You **must** check one of the boxes below:
  - A.  I certify my business is a sole proprietorship and it has no employees but the sole proprietor. I am not subject to the Worker's Compensation Laws.
  - B.  I certify my business has satisfied its obligation to the Worker's Compensation Act through the use of an approved Notice of Exclusion (BWC-337, Rev. 5/96). I will provide a copy of the Notice of Exclusion within 21 days of the contract award. (For questions or a copy of the BWC-337, please call the Worker's Compensation Bureau at 517-322-1195).
  - C.  I certify my business has a Worker's Compensation Policy. I will provide an original Certificate of Insurance within twenty-one (21) days of the contract award.
3. If you have checked item 2(A) or 2(B), you **must** indicate the number of **both** full-time and part-time employees, other than yourself, including family members and active partners (if none, you must enter "0").

\_\_\_\_\_ Full-time Employees

\_\_\_\_\_ Part-time Employees

|                  |       |                                     |  |
|------------------|-------|-------------------------------------|--|
| Name of Business |       | Federal ID (or) Social Security No. |  |
| Address          |       | Telephone<br>(       )              |  |
| City             | State | ZIP                                 |  |

*I hereby certify that the above information is true and correct. I agree to notify the Michigan DNR of any changes that occur in factors affecting my coverage during any of my present and future operations.*

\_\_\_\_\_  
Signature of Owner or Authorized Representative

\_\_\_\_\_  
Title

\_\_\_\_\_  
Date

**Please complete the "SEALED BID" information on the next page**