



**DEPARTMENT OF NATURAL RESOURCES
STATE OF MICHIGAN**

TIMBER SALE PROSPECTUS #6864

SCHEDULED SALE DATE AND TIME: 9:00 a.m. (local time) on August 6, 2021.

LOCATION: GRAYLING MGMT UNIT, 1955 HARTWICK PINES ROAD, GRAYLING, MI 49738.

PROSPECTUS NOTE: The bidder is advised to inspect the sale area and review the location, estimated volumes, operating costs and contract terms of proposed sales. Please be aware that some landowners may request 60 days or more notice for access across their land.

Notice is hereby given that bids will be received by the Unit Manager, GRAYLING MANAGEMENT UNIT, for certain timber on the following described lands:

Day Tripper Pine (72-019-20) / T25N, R03W, SEC. 13, SESW.

T25N, R03W, SEC. 24, NW,N1/2SW,SESW.

Crawford County, Advertised Price \$21,893.80, 113.8 Acres, Jack Pine, Red Oak.

SALE NOTE: The natural jack pine within many portions of this sale is quickly declining with areas of consistent mortality. The Purchaser is encouraged to expedite harvest operations.

A recreation site such as a trail, pathway, or campground is within the sale area or the vicinity. Certain restrictions/specifications may be applicable including time restrictions.

Rainbow Bend Salvage (72-030-20) / T26N, R01W, SEC. 3 , SWSE.

Crawford County, Advertised Price \$882.90, 7.6 Acres, Hardwood, Jack Pine.

SALE NOTE: The purpose of this salvage harvest is to remove declining, damaged and dead trees from within the boundary of the Rainbow Bend Campground. There is campground infrastructure throughout that must be protected during harvest operations. Harvesting is limited to December 1 through March 1 to avoid the camping season and limit ground disturbance. Embedded hardware is likely to be present in trees within the campsites.

A recreation site such as a trail, pathway, or campground is within the sale area or the vicinity. Certain restrictions/specifications may be applicable including time restrictions.

Canteen Cache Mix (72-033-20) / T25N, R04W, SEC. 31, NENW,SWNW,NWNE,SW,SE.

T25N, R04W, SEC. 32, SWSW.

Crawford County, Advertised Price \$147,213.25, 166.5 Acres, Hardwood, Red Oak.

SALE NOTE: Overstory oak is in decline. Approximately 20-30 BA of pine will be retained in Payment Units 1 - 3. This sale requires oak wilt restrictions. Due to the extensive interface with recreational trails there may be additional hauling restrictions or requirements.

A recreation site such as a trail, pathway, or campground is within the sale area or the vicinity. Certain restrictions/specifications may be applicable including time restrictions.

Narrow Trail Aspen (72-031-19) / T25N, R03W, SEC. 22, S1/2SW.

T25N, R03W, SEC. 27, E1/2NW.

Crawford County, Advertised Price \$29,951.15, 49.8 Acres, Aspen, Hardwood.

SALE NOTE: The sale has an oak wilt seasonal operating restriction that can be addressed by brushing roads and cutting buffers around residual oak prior to April 15.

BID INSTRUCTIONS (VER. 07/02/2018):

1. Scheduled Bid Location, Date, and Time (2/11)

Bids must be received by the Unit Manager, GRAYLING OFFICE, 1955 HARTWICK PINES ROAD, GRAYLING, MI 49738, no later than 9:00 a.m. (local time) on August 6, 2021. For further information concerning this sale, contact Thomas Barnes at 989-348-6371 extension 7440.

2. Bidder's Qualifications (5/16)

Purchaser shall obtain workers compensation insurance to cover claims under Michigan's Worker's Disability Compensation Act of 1969 or similar employee benefit act of any other state applicable to an employee. If all or part of a timber sale was prepared by a private contractor, the contractor and that contractor's company are not permitted to bid on the timber sale contract. Bids will not be accepted from individuals or companies appearing on the DNR/FRD No-Bid List. This list contains the names of purchasers who previously failed to execute a contract within 21-days or who have a history of poor performance.

3. Preparation of Sealed Bids (5/16)

Bid Forms may be completed online thru Michigan DNR Timber Sale Online Bidding (OLB) at www.michigan.gov/timberbidding or by completing the hardcopy Bid Form found in the Timber Sale Prospectus. Hardcopy Bid Forms shall be manually signed in ink. Registration in OLB is considered your 'signature' for all bids submitted thru that system. Bid prices must be entered for each species and product in the Bid Price column for all material subject to bidding and all fill-in blanks must be completed. If erasures or other changes appear on the hardcopy Bid Form, each erasure or change must be initialed by the person signing the bid.

4. Submission of Sealed Bids (5/16)

Bid forms may be obtained from the Unit Manager or thru OLB. Bids may be submitted hardcopy or thru OLB. All hardcopy bids must be submitted on the bid form and in an envelope clearly identified as described in this section. NOTE: Only one bid form per bid envelope. Sealed bids must be submitted to the Unit office designated in the prospectus and must be submitted at or prior to the time established in the prospectus. The envelope should show on the outside (a) the sale name or number and (b) the date and time of bid opening, as shown in the prospectus. Bids received after the time specified in the sale prospectus are late bids and will be rejected.

It is possible for a bidder to submit multiple bids on a single sale. For example, a bid may be submitted hardcopy and a bid may be submitted thru OLB. Or, two bidders from the same company could both submit bids on the same sale. If this were to happen, the State would accept all bids received and award the contract accordingly. All bidding and contractual requirements would apply to all bids received.

5. Public Opening of Sealed Bids (7/16)

If conditions permit, the sealed bids will be publicly opened and posted at the time and place set in the prospectus.

If a bidder, present at a bid opening, has submitted bids on more than one sale, that bidder may withdraw their unopened bid envelopes or announce the withdrawal of their online bid after being declared the successful bidder on one sale.

6. Award of Contract (1/11)

Award of the contract will be made to the Bidder whose bid, conforming to the prospectus, is most advantageous to the State of Michigan on the basis of total value at rates bid for the estimated quantities. The State reserves the right to reject any bid or waive any minor irregularity in bids received. A written award mailed (or otherwise furnished) to the successful Bidder shall be deemed to result in a binding contract without further action by either party.

7. Down Payment (1/11)

The Bidder to whom award is made must make a down payment within 21 days of the sale award. The amount of the down payment will be calculated as shown in the Bond and Payment Schedule of this prospectus. Only cash may be used to meet this requirement.

8. Performance Security (1/11)

As guarantee of faithful performance, a cash bond, certificate of deposit, surety bond or irrevocable letter of credit (LOC) is required within 21 days of the sale award. The amount of the performance security is shown in the Bond and

Payment Schedule of this prospectus. If an LOC or surety is used, the coverage must extend for at least 6 months beyond the contract expiration.

9. Timber Sale Contract (7/18)

Additional conditions and requirements common to all timber sales are listed on the timber sale contract (R4031) and are available on line at www.michigan.gov/timber. Contact the Unit Manager for additional information or a sample contract. Within 21 days of the date of the award letter, the bidder must sign the contract and provide the required down payment, performance security, and verification of worker's disability compensation. The down payment and performance security shall be in accordance with the provisions of the timber sale contract, in the sums stated in this prospectus. If these actions are not taken, then the Bidder, the Bidder's corporation, and the corporation's principals may not be permitted to bid on State timber sales for a period of 3 months after the first offense, 6 months after the second offense, and 1 year after the third offense. An offense will only be counted against the Bidder for 5 years. In addition, the Bidder certifies that if awarded this contract, the Bidder will complete the timber sale contract in accordance with its terms and any modifications thereof including requirements to purchase, cut, and remove the included timber by the expiration date.

Payment Unit values in the State Forest Timber Sale Contract are calculated based on the advertised value of the Payment Unit as a percentage of the total advertised value of the contract. The advertised value of each Payment Unit is given in the Description of Timber by Payment Unit table on the Timber Sale Information page. For example, if the value of Payment Unit 1 is advertised as \$1,500 and the total Timber Sale value is advertised as \$10,000, the contract price for Payment Unit 1 will be 15% of the total bid price ($\$1,500/\$10,000 * 100$).

10. Disclaimer of Estimates and Bidder's Warranty of Inspection (7/16)

Before submitting this bid, the Bidder is advised and cautioned to inspect the sale area, review the requirements of the sale contract, and take other steps as may be reasonably necessary to ascertain the location, estimated volumes, construction estimates, and operating costs of the proposed sale. Failure to do so will not relieve the Bidder from responsibility for completing the contract.

The Bidder warrants that this bid is submitted solely on the basis of the Bidder's examination and inspection of the quality and quantity of the timber offered for sale and the Bidder's opinion of the value thereof and the costs of recovery. No reliance should be placed on the State of Michigan's estimates of timber quality, quantity or costs of recovery. Bidder further acknowledges that the State of Michigan: (i) expressly disclaims any warranty of fitness of timber for any purpose; (ii) offers this timber as is without any warranty of quality (merchantability) or quantity and (iii) expressly disclaims any warranty as to the quantity or quality of timber sold.

11. Certification and Chain-of-Custody (10/14)

Unless otherwise indicated in the contract under section 7 – Other Conditions of the Sale Specific Conditions & Requirements, the area encompassed by this timber sale is certified to the standards of the Forest Stewardship Council (FSC) - Certificate #SCS-FM/COC-00090N and the Sustainable Forestry Initiative (SFI) - Certificate #NSF-SFIS-5Y031-SF5. Forest products from this sale may be delivered to the mill as "FSC 100% and / or SFI certified" as long as the contractor hauling the forest products is chain-of-custody (COC) certified or covered under a COC certificate from the destination mill. The purchaser is responsible for maintaining COC after leaving the sale area.

12. Good Neighbor Authority (GNA) Requirements (7/16)

If the name of this timber sales contains the acronym GNA, it is authorized by the Good Neighbor Authority (GNA) and covered by various agreements between the U.S. Forest Service and the State. The timber sale occurs on federal land and the following conditions apply:

GNA contracts on US Forest Service land will not be awarded to purchasers on the Federal list of excluded parties. The System for Award Management (SAM) will be checked for active excluded parties prior to award of contract. In addition, the Bidder to whom award is made must complete an Assurance Regarding Felony Conviction or Tax Delinquent Status for Corporate Applicants (AD-3031).

13. Good Neighbor Authority (GNA) Requirements, con't (9/16)

Bidder certifies, by signing this bid form, that to the best of Bidder's knowledge that the following representations are accurate and complete.

- a. That the Bidder and its principals are not presently debarred, suspended, proposed for debarment, declared ineligible, or voluntary excluded from timber sales (covered transactions) by any Federal department or agency.
- b. That the Bidder and its principals have not within a 3-year period preceding this bid been convicted of or had a civil judgment rendered against them for commission of fraud or a criminal offense in connection with obtaining , attempting to obtain, or performing a public (Federal, State, or local) transaction or contract under a public transaction; violation of Federal or State antitrust statutes or commission of embezzlement, theft, forgery, bribery, falsification or destruction of records, making false statements, or receiving stolen property.
- c. That the Bidder and its principals are not presently indicted for or otherwise criminally or civilly charged by a governmental entity (Federal, State, or local) with commission of any of the offenses enumerated in paragraph b of this certification.
- d. That the Bidder and its principals have not within a 3-year period preceding this bid had one or more public transactions (Federal, State, or local) terminated for breach or default of a timber or forest product contract.

Bidders that cannot certify this requirement, in whole or in part, shall submit an explanation with their bid.

DAN EICHINGER
Director

TIMBER SALE INFORMATION

Day Tripper Pine (72-019-20)
T25N, R03W, SEC. 13; T25N, R03W, SEC. 24.
Crawford County (Advertised Price \$21,893.80)

SALE NOTE: The natural jack pine within many portions of this sale is quickly declining with areas of consistent mortality. The Purchaser is encouraged to expedite harvest operations.

A recreation site such as a trail, pathway, or campground is within the sale area or the vicinity. Certain restrictions/specifications may be applicable including time restrictions.

A timber sale contract for this lump sum, sealed bid timber sale will be awarded to the responsible bidder offering the highest sealed bid price. All units of volume listed below were estimated using the T-Sale computer program and our traditional volume equations. Bids must be at or above the following advertised price for each product and species:

<u>PRODUCTS & SPECIES</u>	<u>ESTIMATED UNITS*</u>	<u>ADVERTISED PRICE</u>
Sawtimber		
Jack Pine	59.7 MBF	\$ 32.00 / MBF
Quaking Aspen	9.5 MBF	\$ 28.00 / MBF
Red Oak	6.0 MBF	\$ 119.00 / MBF
Red Pine	10.0 MBF	\$ 94.00 / MBF
Pulpwood		
Jack Pine	796 Cords	\$ 15.95 / Cord
Mixed Hardwood	16 Cords	\$ 23.80 / Cord
Quaking Aspen	98 Cords	\$ 13.30 / Cord
Red Oak	131 Cords	\$ 22.50 / Cord
Red Pine	16 Cords	\$ 32.55 / Cord
White Oak	8 Cords	\$ 22.50 / Cord
White Pine	2 Cords	\$ 17.35 / Cord

* The total volume is statistically estimated within plus (+) or minus (-) 13.66 percent. There are an estimated 1,239 cords on this timber sale, plus or minus 169 cords at the 95% confidence level. The estimated units are final and not subject to adjustment. Prospective bidders are urged to examine this timber and to make their own estimates of quantity and quality.

BOND AND PAYMENT SCHEDULE:

1. A bond in the amount of \$1,095.00 to insure faithful performance of the conditions of the contract will be deposited by the successful bidder within 21 days of the sale award.
2. Cutting in any sale or unit without the required advance payment would be considered a trespass.
3. Total payment must be paid in advance or according to the following schedule :
 - (a) Ten percent (10%) of the sale value must be paid within 21 days of the sale award.
 - (b) The 10% down payment will be credited towards the first unit cut.
 - (c) Payment for each of the following units must be made before cutting begins in that unit:

PAYMENT UNIT NUMBER	PERCENT OF TOTAL SALE VALUE
01	36.7%
02	47.4%
03	15.9%
4. If no cutting takes place, the 10% down payment will not be refunded.
5. Operations on the contract issued will terminate on 09/30/2023.

SALE STATISTICS

SALE VOLUMES

VOLUME		STATISTICAL RANGE IN CORDS		
TOTAL CUBIC FEET	TOTAL CORDS	PERCENT ERROR	MINIMUM	MAXIMUM
97,843	1,239	13.66%	1,069	1,408

VDU VOLUMES

A VDU is a Volume Determination Unit. Volumes and their associated statistics are calculated at the VDU level and summarized to the sale level. There is often a one to one relationship between a VDU and a Payment Unit, but not always, depending on the cruise design. Refer to the VDU TO PAYMENT UNIT table.

VDU	VOLUME		PERCENT ERROR	RANGE IN CORDS	
	TOTAL CUBIC FEET	TOTAL CORDS		MINIMUM	MAXIMUM
1	34,784	440	26.52%	324	557
2	46,736	592	14.24%	507	676
3	16,290	206	36.36%	131	281
TOTAL:	97,810	1,238		962	1,514

VDU TO PAYMENT UNIT

When a VDU is associated with more than one Payment Unit (PU), the VDU volumes are assigned to the PU based on acres of the VDU within the PU.

VDU	VDU ACRES	PU	PU ACRES
1	36.9	1	36.9
2	50.6	2	50.6
3	26.3	3	26.3
TOTAL:	113.8		113.8

DESCRIPTION OF TIMBER BY PAYMENT UNIT (PU)

PU	MARKET GROUP	PRODUCT	QUANTITY	UNIT	ACRES	ADVERTISE PRICE
1	Jack Pine	Sawtimber	21.2	MBF	36.9	\$8,039.85
	Red Oak		4.5	MBF		
	Red Pine		1.6	MBF		
	Jack Pine	Pulpwood	309	Cords		
	Mixed Hardwood		13	Cords		
	<i>Red Maple</i>		13	<i>Cords</i>		
	Red Oak		59	Cords		
	Red Pine		2	Cords		
	White Oak		2	Cords		
	<i>White Oak</i>	<i>Sawtimber</i>	0.7	<i>MBF</i>		
	<i>White Oak</i>	<i>Pulpwood</i>	1	<i>Cords</i>		
2	Jack Pine	Sawtimber	32.5	MBF	50.6	\$10,370.50
	Quaking Aspen		4.2	MBF		
	Red Oak		0.7	MBF		
	Red Pine		8.4	MBF		
	Jack Pine	Pulpwood	408	Cords		
	Quaking Aspen		40	Cords		
	Red Oak		30	Cords		
	Red Pine		14	Cords		
	White Oak		6	Cords		
	<i>White Oak</i>		6	<i>Cords</i>		
	White Pine		2	Cords		
3	Jack Pine	Sawtimber	6.0	MBF	26.3	\$3,483.45
	Quaking Aspen		5.3	MBF		
	Red Oak		0.8	MBF		
	Jack Pine	Pulpwood	79	Cords		
	Mixed Hardwood		3	Cords		
	<i>Black Cherry</i>		3	<i>Cords</i>		
	Quaking Aspen		58	Cords		
	Red Oak		42	Cords		
TOTAL:			85.2	MBF		
TOTAL:			1,067	Cords		

Sale Specific Conditions & Requirements

Sale Name: Day Tripper Pine

Sale Number: 72-019-20 Seq#: 1

1 - Sale Area

1.2 - Boundaries

1.2.1 - Painted boundaries (9/19)

The sale boundary and Payment Unit boundaries are marked and identified by blue, red, and yellow paint. Billman Road serves as an unpainted sale boundary for Payment Units 1 and 2. The active underground gas pipeline corridor serves as an unpainted boundary for Payment Units 2 and 3. The locations are identified on the Timber Sale Map. Exterior sale boundary lines against private property are marked with blue paint. Exterior sale boundary lines against state are marked with red paint. Interior Payment Unit lines are marked with yellow paint. Trees marked with yellow paint are only to be cut when all surrounding Payment Units have been paid. Interior retention islands are marked with red painted X's. Boundary excluded retention areas are shown on the Timber Sale Map. No harvesting activities may occur within these areas. Red and blue painted boundary line trees are not Included Timber and are to be protected.

2 - Timber Specifications

2.1 - Included Timber

2.1.1 - Clearcut unit(s) with unmerchantable trees (6/14)

Within Payment Unit(s) 1 - 3, cut all trees that are two (2) inches or more at DBH except do not cut any trees marked with green paint. Also, within Payment Units 1 - 3, do not cut any red pine or oak trees which are twenty-six inches (26") or more at DBH.

Special protection trees identified in accordance with condition 3.4.2, within clearcutting unit boundaries, are not Included Timber and are to be protected.

2.1.11 - Description of timber note (2/04)

Note that mixed hardwood pulp includes the following species: 3 cords of black cherry and 13 cords of red maple.

2.2 - Utilization

2.2.2 - Chipping required (2/18)

Payment Units 1 - 3 must be chip harvested to facilitate subsequent planting operations. The chipping requirement could be waived if market conditions limit the practicality of chipping. Tops and slash would need to be arranged in a way that will not inhibit future planting operations, as directed by the sale administrator. The Purchaser may skid all remaining topwood out of the Payment Units and scatter in locations approved by the sale administrator. If the deadline is not met, damages will be collected determined by the cost to complete this work. A chipping exemption can be obtained if proposed operations are determined to be suitable for planting by reforestation staff. This exemption must be granted in writing. The requirement to retain approximately 1/6 to 1/3 of tree tops and limbs less than four inches in diameter is still applicable (G. C. & R. 2.2).

2.2.3 - Stump heights (4/07)

Stump heights within Payment Units 1 - 3 shall not exceed 6 inches for all trees. This is to facilitate planting operations.

3 - Payments

3.4 - Damaged Timber

3.4.1 - Damaged timber (7/16)

General Condition and Requirement 3.4 Damaged Timber, defines liquidated damages for undesignated live merchantable trees which are cut or injured.

No damage is acceptable to undesignated live merchantable trees and designated retention areas. Within the Sale Area, if more than 5% of trees (> 4.5" DBH) within a specified area of the sale are damaged, liquidated damages will be assessed for all trees damaged. Rates will be in accordance with General Condition and Requirement 3.4 Damaged Timber.

3.4.2 - Special Protection Trees (4/14)

The Purchaser shall not cut live or dead special protection trees within cutting units or clearings. Special protection trees are all green painted trees and any red pine or oak which are twenty-six (26") inches or more at DBH. These are "Legacy

Trees". Legacy trees are defined as having some of the following characteristics: 26" at DBH or greater, fire scars, broken tops/crowns, etc. If the Purchaser's operations have cut or damaged special protection trees through carelessness, the Purchaser shall pay \$500.00 as fixed, agreed and liquidated damages for each special protection tree cut or damaged. Such payment does not constitute ownership of the undesignated timber.

4 - Transportation

4.1 - Construction

4.1.3 - Slash and earthen piles (8/04)

Piles or windrows of earth along roads and landings that have been widened or constructed shall be leveled. Slash from road maintenance or construction, including stumps, shall be dispersed throughout the Sale Area.

4.1.6 - Road construction (1/09)

New roads or improvements of existing roads shall be done in such a way as to minimize the environmental and visual impacts. Merchantable trees shall be cut and utilized unless otherwise directed. Non-merchantable trees shall be severed and laid flat on the ground. Slash shall be scattered, and not left in windrows and kept a minimum of 10 feet back from the road edge. Stumps shall be set upright, not left on edge, and be moved at least 10 feet away from the road edge. Disturbed soil shall be feathered into the woods and not left in berms or windrows.

4.1.7 - Road closure (10/11)

All new roads built into the sale must be blocked to vehicle traffic upon completion of the sale. Overgrown roads that are reopened shall be considered new roads. Some existing roads may also need to be closed, as directed by the sale administrator. In general, this will require constructing a four (4') foot high berm of stumps and logs covered with earth. Stumps and brush must be placed along the remainder of the trail. These roads must be rendered impassable to cars and trucks. All stumps from road building and landing construction must be reserved to block any newly constructed roads upon completion of the sale. These stumps must be scattered along the road system to prohibit vehicular movement. Temporary berms may be required if no sale activity occurs for 30 or more consecutive days. Contact the sale administrator for specific details of design and placement.

4.1.11 - Permits (2/12)

The Purchaser will secure any necessary permits that may be required.

4.2 - Maintenance

4.2.5 - Two wheel drive condition (2/04)

All existing trail roads on and adjacent to the sale area must be passable by two-wheel drive traffic for the duration of the sale.

5 - Operations

5.1 - Notification

5.1.1 - Pre-sale conference (10/16)

A pre-sale conference between the Purchaser and sale administrator is required prior to beginning any operations to determine landing and road locations. The Unit Manager or his/her representative must be contacted at least 5 days in advance to schedule the conference.

5.1.3 - Well heads and natural gas pipelines (11/15)

The Purchaser is responsible for contacting the gas or pipeline company 30 days prior to operating equipment in the vicinity of well heads or natural gas pipelines. The pipeline corridor serves as an unpainted Payment Unit boundary between Payment Units 2 and 3. Contact Linn Operating Inc at (231) 922-7302. Written permission is required before harvest operations begin and must be submitted to the Unit Manager.

5.2 - Conduct of Operations

5.2.2 - Hazard Trees/Snags

5.2.2.1 - Den trees (10/16)

Obvious hollow and/or den trees shall be protected and left standing unless they are a safety hazard.

5.2.32 - Decking/landing restoration (9/13)

All decking and landing areas must have the surface area restored to a condition equal to or better than before. This is to ensure the proper regeneration of the stand. Wood debris, chips, and "cookies" from trimmings must be removed or scattered away from landing and loading areas and may not be windrowed on the edge.

5.2.38 - No decking against live trees (2/04)

Cut products may not be decked against unmarked or designated leave trees.

5.2.39 - ORV trail/route protection (4/18)

The segment of Billman Road that serves as the east boundary for Payment Units 1 - 2 is also an ORV route. The route is named 'West Higgins Route'. Also, Beaver Creek MCCCT motorcycle trail travels through the northern portion of Payment Unit 1. Both routes/trails are shown on the Timber Sale Map. Trees with yellow ORV markers within the Sale Area shall be cut off above the markers and at least 5 feet above ground. All stumps within 5 feet of the trail must be cut flush with the ground. Maintain a 10-foot-wide slash, debris, and rut free zone daily using the ORV trail or route as the centerline. Do not run equipment down the ORV trail or route. Skidding across the trail or route may only occur in locations approved by the sale administrator.

5.4 - Soil Protection

5.4.1 - Rutting restriction, general (7/16)

Operations are to cease immediately if equipment and weather conditions result in rutting of roads and/or skid trails which is 12 inches or greater in depth and 50 feet in length. The Unit Manager or his/her representative may restrict hauling and/or skidding if ruts exceed the specified depth. With the Unit Manager or his/her representative's approval, the Purchaser may return to the area when the risk of rutting has decreased.

5.8 - Protection of Endangered Species

5.8.5 - Protection of raptor nests (3/13)

All trees with raptor nests will be protected if found during harvesting operations. Notification will be made to the Unit Manager or his/her representative who will notify the Wildlife Biologist so an on-site evaluation and recommendation can be made, if necessary.

6 - Safety and Fire Prevention

6.2 - Signing

6.2.1 - Road posting (9/09)

The Purchaser is responsible for posting and maintaining caution signs on haul routes prior to beginning operations. The road must be posted at appropriate distances from the Sale Area to warn of logging activity and truck traffic. Signs must be removed when harvest operations are suspended or completed. The Purchaser will provide these signs.

6.2.3 - Recreational trail posting (2/10)

The Purchaser is responsible for posting and maintaining caution signs on Beaver Creek MCCCT motorcycle trail located within Payment Unit 1 and West Higgins ORV route (which is also Billman Rd) prior to beginning operations. The trail must be posted at appropriate distances from the Sale Area to warn of logging activity and truck traffic at both ends of the trail. Signs must be removed when harvest operations are suspended or completed. The Purchaser will provide these signs.



TIMBER SALE MAP

This information provided by authority of Part 525, 1994 PA 451, as amended.

Forest Management Unit Grayling Management Unit	County Crawford	Mapped By J St. Pierre	Date 7/16/2020	Page 1	of 1
Township 25N	Range 03W	Section(s) and Subdivision(s) Sec.13 SESW Sec.24 NW, N1/2SW, SESW	Scale 1:15,840		

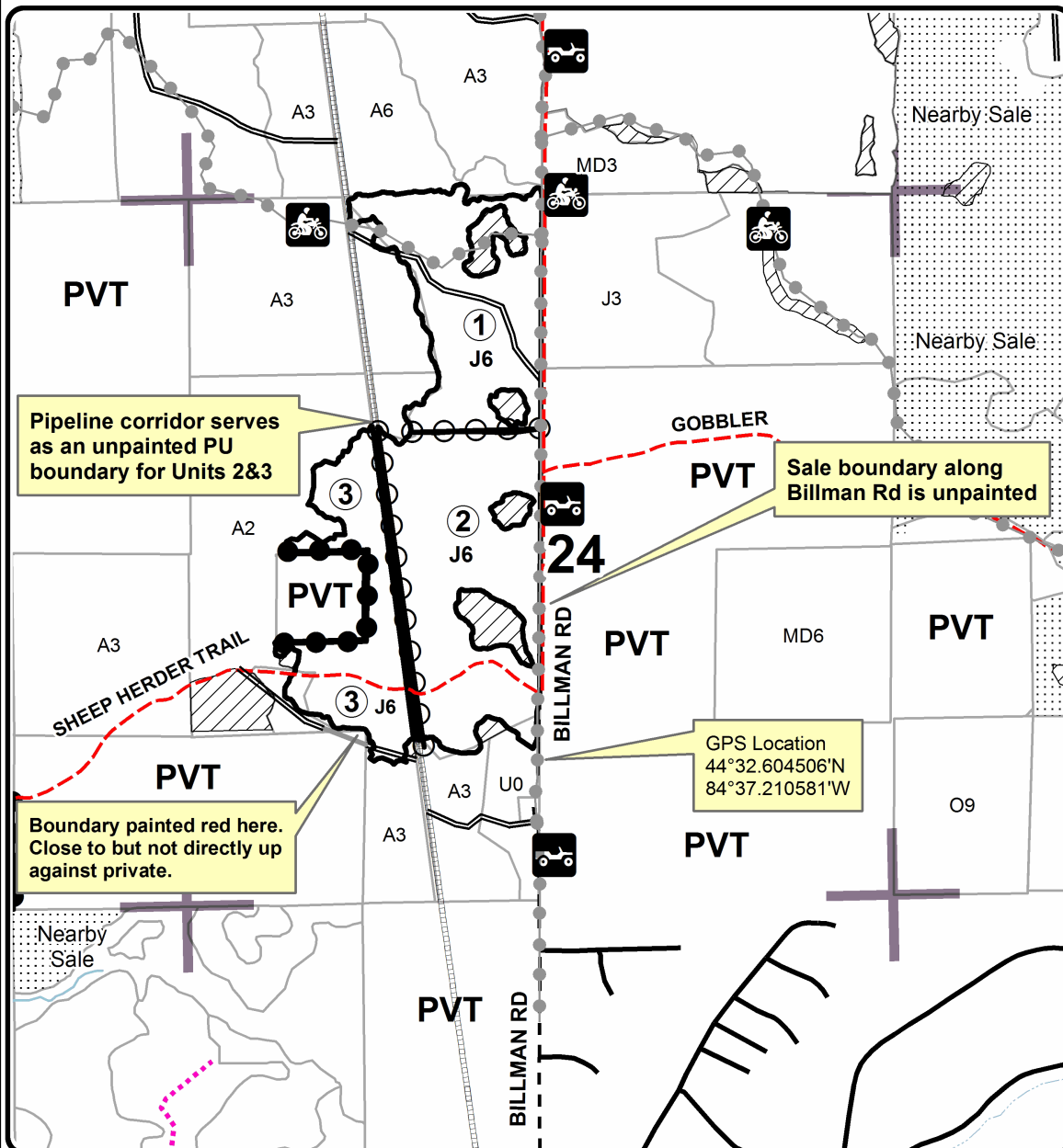
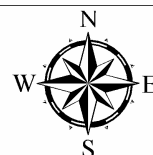
Cover Type				Density	
A = Aspen	H = Hemlock	N = Marsh	U = Upland Brush	0 = Non Stocked	5 = Pole Timber Medium
B = Paper Birch	J = Jack Pine	O = Oak	UM = Upland Mixed	1 = Seedling Sapling Poor	6 = Pole Timber Well
C = Cedar	L = Lowland Brush	P = Lowland Poplar	V = Bog or Marsh	2 = Seedling Sapling Medium	7 = Saw Timber Poor
D = Treed Bog	LM = Lowland Mixed	Q = Mixed Swamp Conifer	W = White Pine	3 = Seedling Sapling Well	8 = Saw Timber Medium
E = Swamp Hdwoods	M = Mpl, Bch, Brch	R = Red Pine	X = Non Stocked	4 = Pole Timber Poor	9 = Saw Timber Well
F = Spruce Fir	MC = Mixed Conifer	S = Black Spruce	Z = Water		
G = Grass	MD = Mixed Deciduous	T = Tamarack			

PU	Acres
1	36.9
2	50.6
3	26.3

Day Tripper Pine

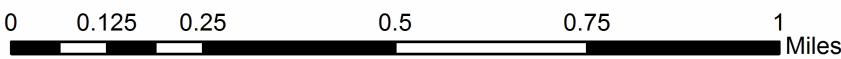
Compartment 229

113.8 Acres



Legend

- Against State (Red & as listed on Map)
- Retention Area (Red X's)
- Payment Unit (Yellow & as listed on Map)
- Private Line (Blue)
- Recreational Trails
- Payment Unit (PU) #
- Pipeline
- Secondary Forest Road
- Paved Road
- Gravel Road
- County Road - Seasonal
- Private
- Temporary Management Access
- Nearby Timber Sale
- Section Corners



TIMBER SALE INFORMATION

Rainbow Bend Salvage (72-030-20)
 T26N, R01W, SEC. 3.
 Crawford County (Advertised Price \$882.90)

SALE NOTE: The purpose of this salvage harvest is to remove declining, damaged and dead trees from within the boundary of the Rainbow Bend Campground. There is campground infrastructure throughout that must be protected during harvest operations. Harvesting is limited to December 1 through March 1 to avoid the camping season and limit ground disturbance. Embedded hardware is likely to be present in trees within the campsites.

A recreation site such as a trail, pathway, or campground is within the sale area or the vicinity. Certain restrictions/specifications may be applicable including time restrictions.

A timber sale contract for this lump sum, sealed bid timber sale will be awarded to the responsible bidder offering the highest sealed bid price. All units of volume listed below were estimated using the T-Sale computer program and our traditional volume equations. Bids must be at or above the following advertised price for each product and species:

<u>PRODUCTS & SPECIES</u>	<u>ESTIMATED UNITS*</u>	<u>ADVERTISED PRICE</u>
Pulpwood		
Black Cherry	3 Cords	\$ 13.00 / Cord
Jack Pine	2 Cords	\$ 8.70 / Cord
Misc. Species 2	6 Cords	\$ 3.00 / Cord
Northern Pin Oak	66 Cords	\$ 12.25 / Cord

* The total volume is statistically estimated within plus (+) or minus (-) 46.67 percent. There are an estimated 76 cords on this timber sale, plus or minus 36 cords at the 95% confidence level. The estimated units are final and not subject to adjustment. Prospective bidders are urged to examine this timber and to make their own estimates of quantity and quality.

BOND AND PAYMENT SCHEDULE:

- A bond in the amount of \$1,000.00 to insure faithful performance of the conditions of the contract will be deposited by the successful bidder within 21 days of the sale award.
- Cutting in any sale or unit without the required advance payment would be considered a trespass.
- Total payment must be paid in advance or according to the following schedule :
 - Ten percent (10%) of the sale value must be paid within 21 days of the sale award.
 - The remainder is due before cutting begins.
 - Payment for each of the following units must be made before cutting begins in that unit:

PAYMENT UNIT NUMBER	PERCENT OF TOTAL SALE VALUE
01	100.0%
- If no cutting takes place, the 10% down payment will not be refunded.
- Operations on the contract issued will terminate on 03/01/2022.

SALE STATISTICS

SALE VOLUMES

VOLUME		STATISTICAL RANGE IN CORDS		
TOTAL CUBIC FEET	TOTAL CORDS	PERCENT ERROR	MINIMUM	MAXIMUM
6,041	76	46.67%	41	112

VDU VOLUMES

A VDU is a Volume Determination Unit. Volumes and their associated statistics are calculated at the VDU level and summarized to the sale level. There is often a one to one relationship between a VDU and a Payment Unit, but not always, depending on the cruise design. Refer to the VDU TO PAYMENT UNIT table.

VDU	VOLUME			RANGE IN CORDS	
	TOTAL CUBIC FEET	TOTAL CORDS	PERCENT ERROR	MINIMUM	MAXIMUM
34	6,036	76	46.67%	41	112
TOTAL:	6,036	76		41	112

VDU TO PAYMENT UNIT

When a VDU is associated with more than one Payment Unit (PU), the VDU volumes are assigned to the PU based on acres of the VDU within the PU.

VDU	VDU ACRES	PU	PU ACRES
34	7.6	1	7.6
TOTAL:	7.6		7.6

DESCRIPTION OF TIMBER BY PAYMENT UNIT (PU)

PU	MARKET GROUP	PRODUCT	QUANTITY	UNIT	ACRES	ADVERTISE PRICE
1	Black Cherry	Pulpwood	3	Cords	7.6	\$882.90
	Jack Pine		2	Cords		
	Misc. Species 2		6	Cords		
	Northern Pin Oak		66	Cords		
TOTAL:			77	Cords		

Sale Specific Conditions & Requirements

Sale Name: Rainbow Bend Salvage

Sale Number: 72-030-20 Seq#: 2

1 - Sale Area

1.2 - Boundaries

1.2.1 - Painted boundaries (9/19)

The sale boundary is marked and identified by red paint in addition to unpainted boundaries. The east exterior sale boundary line against private property is unpainted and designated as the campground fence. Exterior sale boundary lines against state are marked with red paint in addition to the following designated unpainted boundaries: the campground fence along the river is the southeast boundary, and the Midland to Mackinac Hiking Pathway is part of the north boundary. Trees along the pathway are marked with blue triangles and blue paint. The painted boundary line trees are not Included Timber and are to be protected unless marked with orange paint.

2 - Timber Specifications

2.1 - Included Timber

2.1.4 - Designated timber unit(s) (6/17)

Within Payment Unit(s) 1, all northern pin oak trees which are greater than 6 inches at DBH are designated for cutting. In addition, all jack pine, aspen, black cherry, and orange-marked trees are designated for cutting regardless of merchantability. All dead trees are designated for cutting regardless of species or diameter.

2.1.11 - Description of timber note (2/04)

Note that Misc Species 2 = dead oak.

2.2 - Utilization

2.2.3 - Stump heights (4/07)

Stump heights within the Sale Area shall not exceed 6 inches for trees less than 10 inches at DBH and 12 inches for trees larger than that. Taller stumps may be allowed by the sale administrator for multiple-stem and/or oversized oak.

2.2.6 - Roundwood operation required (5/07)

The skidding of whole trees or tree segments with limbs attached is prohibited. All products must be produced as roundwood and forwarded to existing roads or landing areas in final product length.

3 - Payments

3.4 - Damaged Timber

3.4.1 - Damaged timber (7/16)

General Condition and Requirement 3.4 Damaged Timber, defines liquidated damages for undesignated live merchantable trees which are cut or injured. In addition, reasonable care should be taken to avoid damage to tree seedlings and saplings.

Within the Sale Area, if more than 20% of the tree seedlings or saplings (1/4" to 4.5" DBH) within a specified portion of the Sale Area are damaged, liquidated damages will be assessed at \$500 per acre for all acreage within that specified portion of the Sale Area that was damaged. Where operable paths need to be cleared, damages to regeneration will not be charged provided the saplings are cut cleanly and not left bent/broken.

No damage is acceptable to undesignated live merchantable trees. Within the Sale Area, if more than 10% of trees (> 4.5" DBH) within a specified area of the sale are damaged, liquidated damages will be assessed for all trees damaged. Rates will be in accordance with General Condition and Requirement 3.4 Damaged Timber, or at a rate of \$100 per sawtimber tree and \$50 per pole-sized tree, whichever is greater.

3.6 - Payment Unit Cutting Schedule

3.6.8 - Operating period (5/16)

Once cutting begins, operations must continue until all Payment Units are completed. This requirement is for campground management.

4 - Transportation

4.1 - Construction

4.1.6 - Road construction (1/09)

Construction of new roads or improvements of existing roads shall be done in such a way as to minimize the environmental and visual impacts. Merchantable trees shall be cut and utilized unless otherwise directed. Non-merchantable trees shall be severed and laid flat on the ground. Slash shall be scattered, and not left in windrows and kept a minimum of 10 feet back from the road edge. Stumps shall be set upright, not left on edge, and be moved at least 10 feet away from the road edge. Disturbed soil shall be feathered into the woods and not left in berms or windrows.

4.1.7 - Road closure (10/11)

All new roads built into the sale must be blocked to vehicle traffic upon completion of the sale. Overgrown roads that are reopened shall be considered new roads. In general, this closure will require constructing a four (4') foot high berm of stumps and logs covered with earth. Contact the sale administrator for specific details of design and placement.

4.1.11 - Permits (2/12)

The Purchaser will secure any necessary highway and county road permits that may be required.

4.2 - Maintenance

4.2.5 - Two wheel drive condition (2/04)

All existing trail roads on and adjacent to the sale area must be passable by two-wheel drive traffic for the duration of the sale.

5 - Operations

5.1 - Notification

5.1.1 - Pre-sale conference (10/16)

A pre-sale conference on site between the Purchaser and sale administrator is required prior to beginning any operations to determine landing and road locations. The Unit Manager or his/her representative must be contacted at least 5 days in advance to schedule the conference.

5.1.4 - Post-sale conference (10/16)

A post-sale conference on site between the Purchaser and sale administrator is required 5 days prior to the completion of active logging operations to determine clean-up and repair of landings, road edges, and the fulfillment of other contract specifications.

5.1.6 - Utility R.O.W. (4/19)

It is the responsibility of the Purchaser to obtain permission from the utility company to utilize the power line R.O.W. for operations. This applies only to landing operations.

5.2 - Conduct of Operations

5.2.1 - Slash

5.2.1.13 - Dispose of slash as directed (12/05)

Slash is to be disposed of as directed by the sale administrator. Slash management will include removing slash from developed areas of the campground and the cleared power line corridor and flattening taller slash piles outside of those areas.

5.2.3 - Operating Restrictions

5.2.3.1 - Operating restrictions (9/11)

Within Payment Unit(s) 1, cutting, skidding, and hauling are limited to December 1 through March 1. This restriction is needed to avoid the open camping season and to limit ground disturbance within the campground.

5.2.3.4 - Oak wilt restriction, no exceptions (1/18)

Within Payment Unit 1, cutting, skidding, hauling within the sale, and brushing of access roads to the sale are not permitted during the period of April 15 to July 15. No exceptions will be granted. This is necessary to reduce the spread

of oak wilt.

5.2.29 - Shrub protection (1/20)

Do not cut or damage hawthorn or juneberry. These woody-shrub plants are highly beneficial to various wildlife species.

5.2.31 - Landing locations (9/13)

Landing areas must be sited away from campground improvements unless otherwise authorized by the Unit Manager or his/her representative. Decking or landing areas will not be allowed within the AuSable River's RMZ shown on the Timber Sale Map.

5.2.38 - No decking against live trees (2/04)

Cut products may not be decked against unmarked or designated leave trees.

5.2.40 - Pathway protection (10/10)

The Midland to Mackinac Pathway is a hiking trail and is shown on the Timber Sale Map. Do not cut trees or damage posts with blue pathway markers. Maintain a 20-foot-wide slash, debris, and rut free zone daily, using the pathway as the centerline. Do not run equipment down the pathway.

5.4 - Soil Protection

5.4.7 - Rutting restriction, Riparian Management Zone (RMZ) (1/09)

Within the Riparian Management Zone (RMZ), as shown on the attached Timber Sale Map, operations are to cease immediately if equipment and weather conditions result in rutting of skid trails which is 6 inches or greater in depth and 25 feet in length. The Unit Manager or his/her representative may restrict hauling and/or skidding if ruts exceed the specified depth. With the Unit Manager or his/her representative's approval, the Purchaser may return to the area when the risk of rutting has decreased.

5.5 - Protection of Improvements

5.5.3 - Protection of improvements detail (10/13)

Protect campground improvements during harvest operations, ie: outhouses, water wells, signs, fire rings, picnic tables, gates, canoe racks, fences, etc. Barrier posts and rocks may be moved to facilitate safe removal of Included Timber stems. Protect the campground's maintained open areas by minimizing equipment operations and not processing trees within them, to the extent that it is possible to safely do so.

6 - Safety and Fire Prevention

6.2 - Signing

6.2.1 - Road posting (9/09)

The Purchaser is responsible for posting and maintaining caution signs on Conners Flat Road prior to beginning operations. The road must be posted at appropriate distances from the Rainbow Bend access road intersection to warn of logging activity and truck traffic. Signs must be removed when harvest operations are suspended or completed. The Purchaser will provide these signs.

6.2.3 - Recreational trail posting (2/10)

The Purchaser is responsible for posting and maintaining caution signs on the Midland to Mackinac Hiking Pathway prior to beginning operations. The trail must be posted at appropriate distances from the Sale Area to warn of logging activity and truck traffic at both ends of the trail. Signs must be removed when harvest operations are suspended or completed. The Purchaser will provide these signs.

7 - Other Conditions

7.2 - Extensions

7.2.2 - No extensions (3/09)

There will be no extensions granted on this contract. Operations must be completed by March 1 in order to not interfere with the campground's pre-season maintenance.

7.5 - Loss

7.5.1 - Deteriorating timber (7/09)

The sale area has received damage from age-related decline, as well as from soil compaction and mechanical injuries associated with camping use. The Purchaser should harvest the wood as soon as possible. The Department of Natural Resources is held free of responsibility of any further damage or deterioration due to delay in harvesting.

7.10 - Certified Timber

7.10.1 - Non-certified timber (2/16)

The area encompassed by this timber sale is not certified to the standards of the Forest Stewardship Council (FSC) or the Sustainable Forestry Initiative (SFI). Forest products from this sale may not be delivered to the mill as "FSC and / or SFI certified". The lands within this sale are managed as a campground.



TIMBER SALE MAP

This information provided by authority of Part 525, 1994 PA 451, as amended.

Forest Management Unit Grayling		County Crawford	Mapped By Charlebois	Date 10/06/2020	Page 2	of 2
Township 26N	Range 01W	Section(s) and Subdivision(s) Section 3: SWSE		Scale 1:7,920		

Cover Type				Density	
A = Aspen	H = Hemlock	N = Marsh	U = Upland Brush	0 = Non Stocked	5 = Pole Timber Medium
B = Paper Birch	J = Jack Pine	O = Oak	UM = Upland Mixed	1 = Seedling Sapling Poor	6 = Pole Timber Well
C = Cedar	L = Lowland Brush	P = Lowland Poplar	V = Bog or Marsh	2 = Seedling Sapling Medium	7 = Saw Timber Poor
D = Treed Bog	LM = Lowland Mixed	Q = Mixed Swamp Conifer	W = White Pine	3 = Seedling Sapling Well	8 = Saw Timber Medium
E = Swamp Hdwoods	M = Mpl, Bch, Brch	R = Red Pine	X = Non Stocked	4 = Pole Timber Poor	9 = Saw Timber Well
F = Spruce Fir	MC = Mixed Conifer	S = Black Spruce	Z = Water		
G = Grass	MD = Mixed Deciduous	T = Tamarack			

LEGEND

- Sale Boundary**
 - Red Paint
 - Hiking Pathway
 - Campground Fence
 - Payment Unit #
- Other Features**
 - 150-foot RMZ
 - County - Gravel Road
 - DNR - Gravel Road
 - DNR - Poot Dirt Road
 - Private Road
 - Campground Footpath
 - Powerline
 - Pipeline
 - Streams
 - Lakes and Rivers
 - State Boundary
 - Survey Corners
 - Campground
 - Canoe Access Site

Rainbow Bend Salvage

Compartment 283

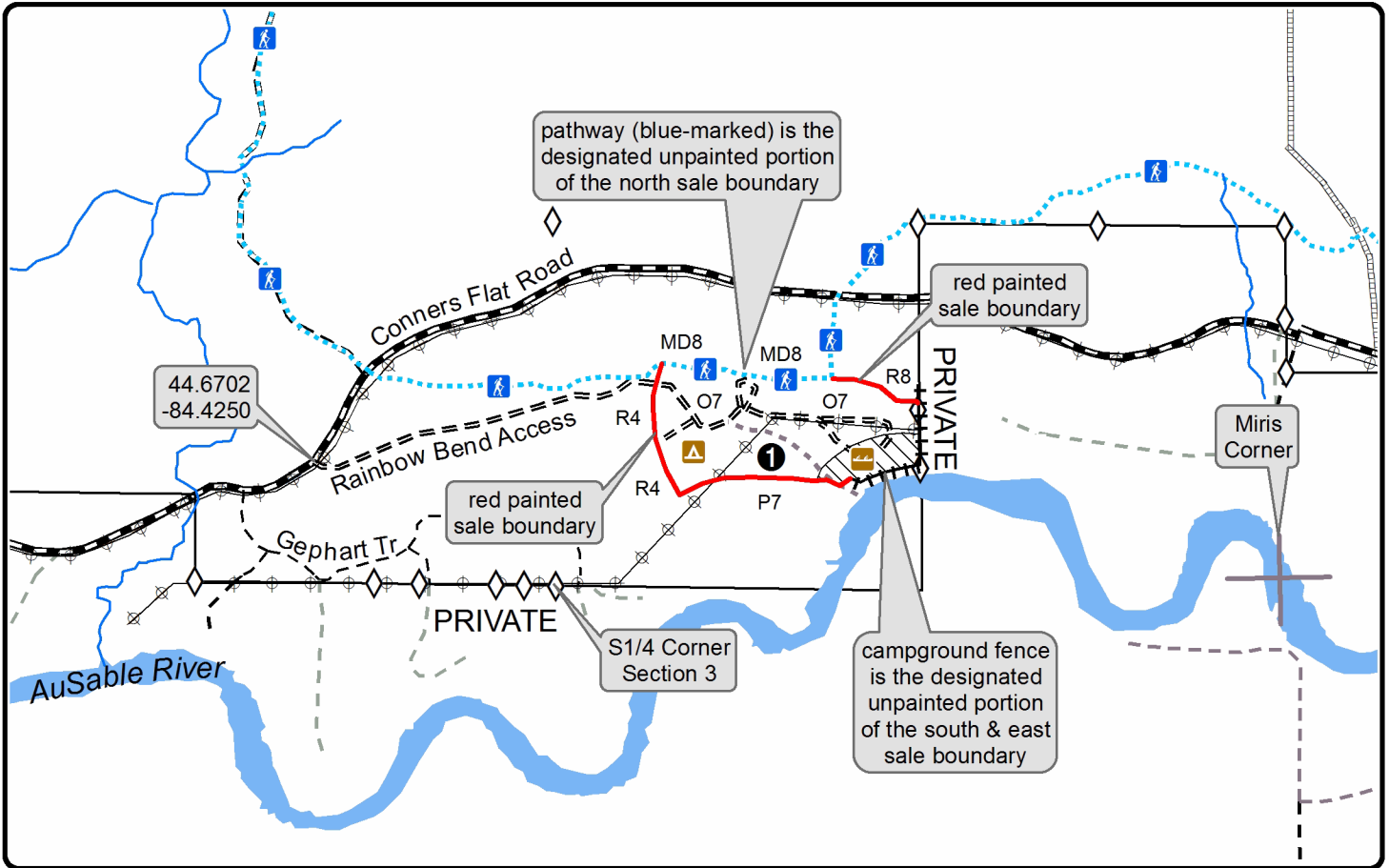
7.6 Acres



PU	Acres
1	7.6



scan for geo-PDF map





TIMBER SALE MAP

This information provided by authority of Part 525, 1994 PA 451, as amended.

Forest Management Unit Grayling		County Crawford	Mapped By Charlebois	Date 10/06/2020	Page 1	of 1
Township 26N	Range 01W	Section(s) and Subdivision(s) Section 3: SWSE		Scale 1:3,920		

Cover Type				Density			
A = Aspen	H = Hemlock	N = Marsh	U = Upland Brush	0 = Non Stocked	5 = Pole Timber Medium		
B = Paper Birch	J = Jack Pine	O = Oak	UM = Upland Mixed	1 = Seedling Sapling Poor	6 = Pole Timber Well		
C = Cedar	L = Lowland Brush	P = Lowland Poplar	V = Bog or Marsh	2 = Seedling Sapling Medium	7 = Saw Timber Poor		
D = Tread Bog	LM = Lowland Mixed	Q = Mixed Swamp Conifer	W = White Pine	3 = Seedling Sapling Well	8 = Saw Timber Medium		
E = Swamp Hdwoods	M = Mpl, Bch, Brch	R = Red Pine	X = Non Stocked	4 = Pole Timber Poor	9 = Saw Timber Well		
F = Spruce Fir	MC = Mixed Conifer	S = Black Spruce	Z = Water				
G = Grass	MD = Mixed Deciduous	T = Tamarack					

LEGEND

- Sale Boundary**
 - Red Paint
 - Hiking Pathway
 - Campground Fence
 - Payment Unit #
- Other Features**
 - 150-foot RMZ
 - County - Gravel Road
 - DNR - Gravel Road
 - DNR - Poot Dirt Road
 - Private Road
 - Campground Footpath
 - Powerline
 - Nearby Harvest
 - Lakes and Rivers All
 - State Boundary
 - Survey Corners
 - Campground
 - Canoe Access Site

Rainbow Bend Salvage

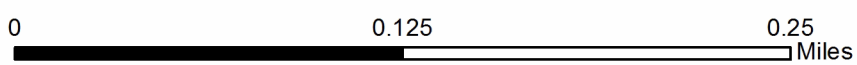
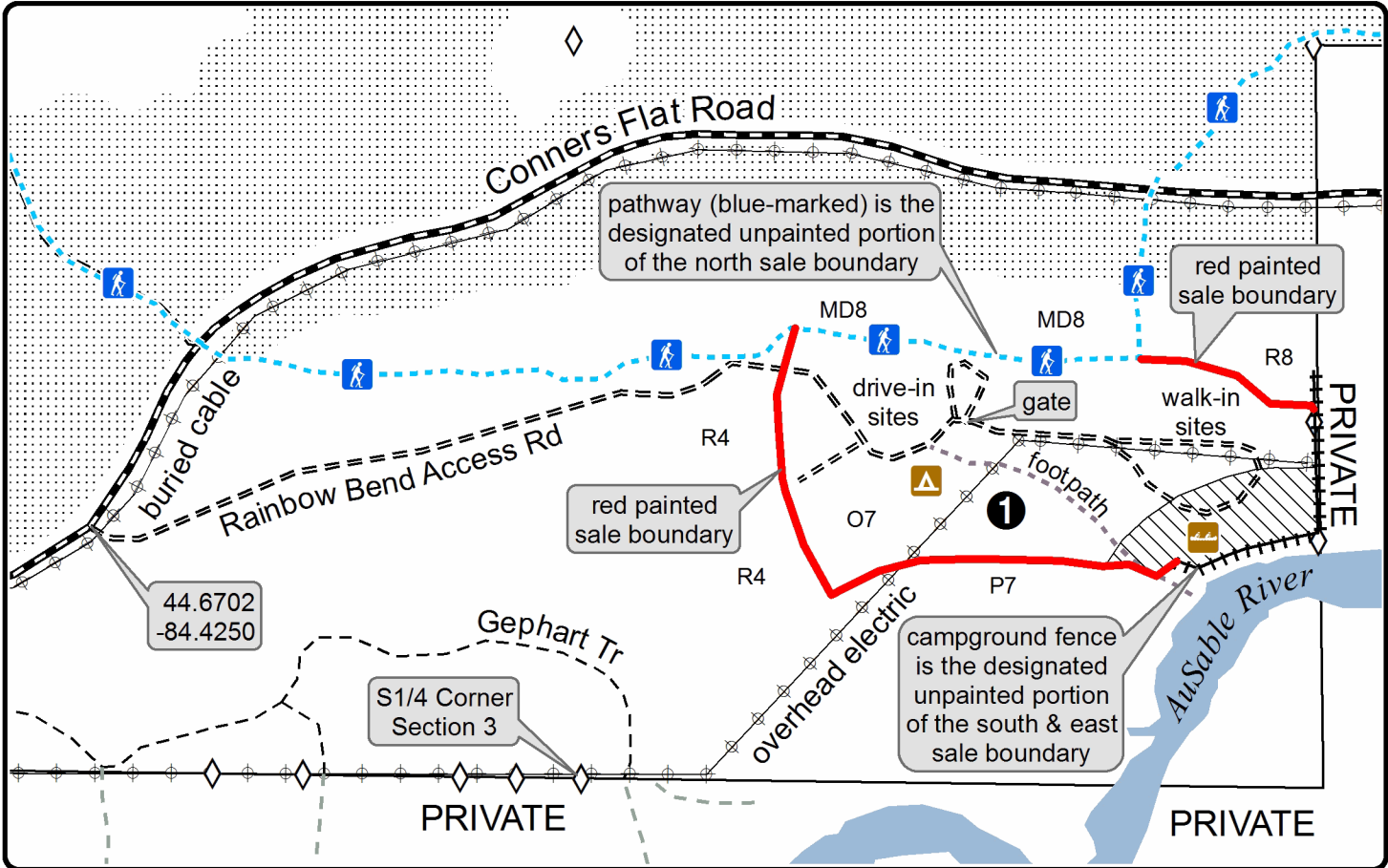
Compartment 283

7.6 Acres



scan for geo-PDF map

PU	Acres
1	7.6



TIMBER SALE INFORMATION

Canteen Cache Mix (72-033-20)
 T25N, R04W, SEC. 31; T25N, R04W, SEC. 32.
 Crawford County (Advertised Price \$147,213.25)

SALE NOTE: Overstory oak is in decline. Approximately 20-30 BA of pine will be retained in Payment Units 1 - 3. This sale requires oak wilt restrictions. Due to the extensive interface with recreational trails there may be additional hauling restrictions or requirements.

A recreation site such as a trail, pathway, or campground is within the sale area or the vicinity. Certain restrictions/specifications may be applicable including time restrictions.

A timber sale contract for this lump sum, sealed bid timber sale will be awarded to the responsible bidder offering the highest sealed bid price. All units of volume listed below were estimated using the T-Sale computer program and our traditional volume equations. Bids must be at or above the following advertised price for each product and species:

<u>PRODUCTS & SPECIES</u>	<u>ESTIMATED UNITS*</u>	<u>ADVERTISED PRICE</u>
Sawtimber		
BI/R/Hybrid Oak	145.9 MBF	\$ 120.00 / MBF
Red Oak	579.6 MBF	\$ 119.00 / MBF
Red Pine	29.5 MBF	\$ 94.00 / MBF
White Oak	69.7 MBF	\$ 72.00 / MBF
Pulpwood		
Mixed Aspen	118 Cords	\$ 13.30 / Cord
Mixed Oak	1,987 Cords	\$ 22.50 / Cord
Red Maple	238 Cords	\$ 23.80 / Cord
Red Pine	19 Cords	\$ 32.55 / Cord
White Pine	22 Cords	\$ 17.35 / Cord

* The total volume is statistically estimated within plus (+) or minus (-) 7.27 percent. There are an estimated 4,583 cords on this timber sale, plus or minus 333 cords at the 95% confidence level. The estimated units are final and not subject to adjustment. Prospective bidders are urged to examine this timber and to make their own estimates of quantity and quality.

BOND AND PAYMENT SCHEDULE:

1. A bond in the amount of \$7,361.00 to insure faithful performance of the conditions of the contract will be deposited by the successful bidder within 21 days of the sale award.
2. Cutting in any sale or unit without the required advance payment would be considered a trespass.
3. Total payment must be paid in advance or according to the following schedule :
 - (a) Ten percent (10%) of the sale value must be paid within 21 days of the sale award.
 - (b) The 10% down payment will be credited towards the first unit cut.
 - (c) Payment for each of the following units must be made before cutting begins in that unit:

PAYMENT UNIT NUMBER	PERCENT OF TOTAL SALE VALUE
01	18.6%
02	14.0%
03	20.9%
04	29.0%
05	17.5%
4. If no cutting takes place, the 10% down payment will not be refunded.
5. Operations on the contract issued will terminate on 09/30/2023.

SALE STATISTICS

SALE VOLUMES

VOLUME		STATISTICAL RANGE IN CORDS		
TOTAL CUBIC FEET	TOTAL CORDS	PERCENT ERROR	MINIMUM	MAXIMUM
362,065	4,583	7.27%	4,250	4,916

VDU VOLUMES

A VDU is a Volume Determination Unit. Volumes and their associated statistics are calculated at the VDU level and summarized to the sale level. There is often a one to one relationship between a VDU and a Payment Unit, but not always, depending on the cruise design. Refer to the VDU TO PAYMENT UNIT table.

VDU	VOLUME		PERCENT ERROR	RANGE IN CORDS	
	TOTAL CUBIC FEET	TOTAL CORDS		MINIMUM	MAXIMUM
6	285,538	3,614	12.05%	3,179	4,050
8	14,054	178	14.31%	152	203
37	516,613	6,539	9.77%	5,901	7,178
42	16,242	206	29.99%	144	267
69	16,795	213	55.59%	94	331
TOTAL:	849,242	10,750		9,470	12,030

VDU TO PAYMENT UNIT

When a VDU is associated with more than one Payment Unit (PU), the VDU volumes are assigned to the PU based on acres of the VDU within the PU.

VDU	VDU ACRES	PU	PU ACRES
6	51.9	4	35.8
		5	16.1
37	90.7	5	5.9
		1	20.5
		2	28.1
42	6.6	3	42.1
		1	6.6
69	11.4	1	11.4
TOTAL:	166.5		166.5

DESCRIPTION OF TIMBER BY PAYMENT UNIT (PU)

PU	MARKET GROUP	PRODUCT	QUANTITY	UNIT	ACRES	ADVERTISE PRICE
1	BI/R/Hybrid Oak	Sawtimber	9.4	MBF	38.5	\$27,395.60
	Red Oak		129.7	MBF		
	White Oak		11.8	MBF		
	Mixed Aspen	Pulpwood	111	Cords		
	<i>B. T. Aspen</i>	<i>Sawtimber</i>	1.4	<i>MBF</i>		
	<i>B. T. Aspen</i>	<i>Pulpwood</i>	108	<i>Cords</i>		
	Mixed Oak		248	Cords		
	<i>BI/R/Hybrid Oak</i>		23	<i>Cords</i>		
	<i>Red Oak</i>		172	<i>Cords</i>		
	<i>White Oak</i>		53	<i>Cords</i>		
	Red Maple		123	Cords		
	<i>Red Maple</i>	<i>Sawtimber</i>	2.1	<i>MBF</i>		
	<i>Red Maple</i>	<i>Pulpwood</i>	119	<i>Cords</i>		
	2	BI/R/Hybrid Oak	Sawtimber	13.0		
Red Oak			105.2	MBF		
White Oak			14.8	MBF		
Mixed Aspen		Pulpwood	2	Cords		
<i>B. T. Aspen</i>			2	<i>Cords</i>		
Mixed Oak			239	Cords		
<i>BI/R/Hybrid Oak</i>			31	<i>Cords</i>		
<i>Red Oak</i>			161	<i>Cords</i>		
<i>White Oak</i>			47	<i>Cords</i>		
3		BI/R/Hybrid Oak	Sawtimber	19.4	MBF	42.1
	Red Oak		157.7	MBF		
	White Oak		22.2	MBF		
	Mixed Aspen	Pulpwood	2	Cords		
	<i>B. T. Aspen</i>		2	<i>Cords</i>		
	Mixed Oak		358	Cords		
	<i>BI/R/Hybrid Oak</i>		46	<i>Cords</i>		
	<i>Red Oak</i>		241	<i>Cords</i>		
	<i>White Oak</i>		71	<i>Cords</i>		
4	BI/R/Hybrid Oak	Sawtimber	71.8	MBF	35.8	\$42,788.00
	Red Oak		121.7	MBF		
	White Oak		12.6	MBF		
	Mixed Oak	Pulpwood	761	Cords		
	<i>BI/R/Hybrid Oak</i>		432	<i>Cords</i>		
	<i>Red Oak</i>		206	<i>Cords</i>		
	<i>White Oak</i>		123	<i>Cords</i>		
	Red Maple		61	Cords		
	<i>Red Maple</i>	<i>Sawtimber</i>	1.1	<i>MBF</i>		
	<i>Red Maple</i>	<i>Pulpwood</i>	59	<i>Cords</i>		
	White Pine		12	Cords		
	<i>White Pine</i>		12	<i>Cords</i>		
	5	BI/R/Hybrid Oak	Sawtimber	32.3		
Red Oak			65.3	MBF		
Red Pine			29.5	MBF		
White Oak			8.3	MBF		
Mixed Aspen		Pulpwood	3	Cords		
<i>Quaking Aspen</i>			3	<i>Cords</i>		
Mixed Oak			381	Cords		
<i>BI/R/Hybrid Oak</i>			196	<i>Cords</i>		
<i>Red Oak</i>			112	<i>Cords</i>		
<i>White Oak</i>			73	<i>Cords</i>		
Red Maple			54	Cords		
<i>Red Maple</i>		<i>Sawtimber</i>	1.0	<i>MBF</i>		
<i>Red Maple</i>		<i>Pulpwood</i>	52	<i>Cords</i>		

DESCRIPTION OF TIMBER BY PAYMENT UNIT (PU), CON'T

PU	MARKET GROUP	PRODUCT	QUANTITY	UNIT	ACRES	ADVERTISE PRICE
5 con't	Red Pine	Pulpwood	19	Cords		
	White Pine		10	Cords		
	<i>White Pine</i>	<i>Sawtimber</i>	1.2	<i>MBF</i>		
	<i>White Pine</i>	<i>Pulpwood</i>	8	<i>Cords</i>		
TOTAL:			824.7	MBF		
TOTAL:			2,384	Cords		

Sale Specific Conditions & Requirements

Sale Name: Canteen Cache Mix

Sale Number: 72-033-20 Seq#: 2

1 - Sale Area

1.2 - Boundaries

1.2.1 - Painted boundaries (9/19)

The sale boundary is marked and identified by red paint. Exterior sale boundary lines against state are marked with red paint. Interior Payment Unit boundaries are identified by forest roads. Retention patches are marked with red paint; no harvesting activities may occur within these areas. The painted boundary line trees are not Included Timber and are to be protected.

2 - Timber Specifications

2.1 - Included Timber

2.1.1 - Clearcut unit(s) with unmerchantable trees (6/14)

Within Payment Unit(s) 1 - 5, cut all trees that are two (2) inches or more at DBH, except leave all pine species in Payment Units 1 - 3.

2.2 - Utilization

2.2.2 - Chipping required (2/18)

Payment Units 1 - 3, and 5 must be chip harvested to facilitate subsequent planting operations and future silvicultural activities. If market conditions limit the practicality of chipping, tops and slash must be arranged in a way that will not inhibit future planting operations, as directed by the sale administrator. A chipping exemption can be obtained if proposed operations are determined to be suitable for planting by reforestation staff. This exemption must be granted in writing. The requirement to retain approximately 1/6 to 1/3 of tree tops and limbs less than four inches in diameter is still applicable (G. C. & R. 2.2).

2.2.3 - Stump heights (4/07)

Stump heights within the Sale Area shall not exceed 6 inches for all trees. This is to facilitate planting operations.

3 - Payments

3.3 - Pre-measured Sales

3.3.4 - Dividing payment units (7/14)

Payment Unit(s) may be divided at the request of the Purchaser and upon approval of the Unit Manager. Dividing Payment Units is a contract modification which requires a Timber Sale Contract Amendment. There will be only one division per Payment Unit.

3.4 - Damaged Timber

3.4.1 - Damaged timber (7/16)

General Condition and Requirement 3.4 Damaged Timber, defines liquidated damages for undesigned live merchantable trees which are cut or injured. In addition, extreme care should be taken to avoid damage to tree seedlings and saplings.

Within Payment Units 1 - 3 if more than 50% of the tree seedlings or saplings (1/4" to 4.5" DBH) within a specified portion of the Sale Area are damaged, liquidated damages will be assessed at \$300.00 per acre for all acreage within that specified portion of the Sale Area that was damaged.

4 - Transportation

4.1 - Construction

4.1.3 - Slash and earthen piles (8/04)

Piles or windrows of earth along roads and landings that have been widened or constructed shall be leveled. Slash from road maintenance or construction, including stumps, shall be dispersed throughout the Sale Area.

4.1.6 - Road construction (1/09)

Construction of new roads or improvements of existing roads shall be done in such a way as to minimize the environmental

and visual impacts. Merchantable trees shall be cut and utilized unless otherwise directed. Non-merchantable trees shall be severed and laid flat on the ground. Slash shall be scattered, and not left in windrows and kept a minimum of 10 feet back from the road edge. Stumps shall be set upright, not left on edge, and be moved at least 10 feet away from the road edge. Disturbed soil shall be feathered into the woods and not left in berms or windrows.

4.1.7 - Road closure (10/11)

All new roads built into the sale must be blocked to vehicle traffic upon completion of the sale. Overgrown roads that are reopened shall be considered new roads. In general, this will require constructing a four (4') foot high berm of stumps and logs covered with earth. These roads must be rendered impassable to cars and trucks. Temporary berms may be required if no sale activity occurs for 30 or more consecutive days. Contact the sale administrator for specific details of design and placement.

4.1.11 - Permits (2/12)

The Purchaser will secure any necessary highway permits that may be required.

5 - Operations

5.1 - Notification

5.1.1 - Pre-sale conference (10/16)

A pre-sale conference between the Purchaser and sale administrator is required prior to beginning any operations. The Unit Manager or his/her representative must be contacted at least 10 days in advance to schedule the conference.

5.1.4 - Post-sale conference (10/16)

A post-sale conference on site between the Purchaser and sale administrator is required 5 days prior to the completion of active logging operations to determine clean-up and repair of landings, road edges, and the fulfillment of other contract specifications.

5.1.6 - Utility R.O.W. (4/19)

It is the responsibility of the Purchaser to obtain permission from the utility company to utilize the power line and pipeline R.O.W. for operations.

5.2 - Conduct of Operations

5.2.2 - Hazard Trees/Snags

5.2.2.1 - Den trees (10/16)

Obvious hollow and/or den trees shall be protected and left standing unless they are a safety hazard.

5.2.3 - Operating Restrictions

5.2.3.5 - Oak wilt restriction (1/18)

Within the sale, unless changed by written agreement, cutting, skidding, hauling within the sale and brushing of access roads to the sale are not permitted during the period of April 15 to July 15. Operations may be allowed if specific steps are taken to prevent damaging uncut oak during the high risk period. Those steps may include completing all road brushing before April 15th and clearing a tree-length buffer along uncut oak cover before April 15th. This is necessary to reduce the spread of oak wilt. For more information, contact the Unit Manager or his/her representative.

5.2.4 - Dead and Down Creation

5.2.4.4 - Dead and down creation, grouse (6/18)

To encourage grouse and other wildlife, in Payment Unit(s) 1 leave one 12" or larger diameter (or largest diameter trees within stand) whole tree on the ground for every 2 acres, preferably a hardwood species such as oak or maple or if no hardwoods are present, a pine species (white or red). These will be located in the eastern half of the Payment Unit only.

5.2.32 - Decking/landing restoration (9/13)

All decking and landing areas must have the surface area restored to a condition equal to or better than before. This is to ensure the proper regeneration of the stand. Wood debris, chips, and "cookies" from trimmings must be removed or scattered away from landing and loading areas and may not be windrowed on the edge.

5.2.37 - No decking areas (12/08)

No decking is allowed within 50 feet of designated recreational trails or routes without permission of the Unit Manager or

his/her representative.

5.2.38 - No decking against live trees (2/04)

Cut products may not be decked against unmarked or designated leave trees.

5.2.39 - ORV trail/route protection (4/18)

The West Higgins Trail is an ORV trail or route and is shown on the Timber Sale Map. Do not cut trees or damage posts with yellow ORV markers. All stumps within 5 feet of the trail must be cut flush with the ground. Maintain a 20-foot-wide slash, debris, and rut free zone daily using the ORV trail or route as the centerline. Do not run equipment down the ORV trail or route. Skidding across the trail or route may only occur in locations approved by the sale administrator.

5.2.41 - Snowmobile trail protection (9/11)

The LP 6 is a snowmobile trail and is shown on the Timber Sale Map. Do not cut or damage posts with orange trail markers or traffic control signs. If the trail is used, it must be maintained and restored to a condition equal to or better than before the sale. The road maintenance/restoration must be done prior to December 1. If the trail is used for hauling, it must be graded to the satisfaction of the Unit Manager or his/her representative prior to December 1. The snowmobile trail may not be used for any timber sale operations from December 1 to March 31 without written approval from the Unit Manager. If the trail road is to be used for hauling during the snowmobile season, then a snow-covered base must be left on the trail. The snowmobile trail may only be crossed at right angles. Maintain a 20-foot-wide slash, debris, and rut free zone daily using the snowmobile trail as the centerline. No decking of forest products will be permitted along the snowmobile trail. In addition, any trees cut within 5 feet of the trail must be cut flush at ground level.

6 - Safety and Fire Prevention

6.2 - Signing

6.2.2 - Snowmobile trail posting (8/09)

The Purchaser is responsible for posting and maintaining caution signs on LP 6 Trail prior to beginning operations during the snowmobile season (approximately December 1 to March 31). The trail must be posted at appropriate distances from the Sale Area to warn of logging activity and truck traffic. Signs must be removed when harvest operations are suspended or completed. The Purchaser will provide these signs.

6.2.3 - Recreational trail posting (2/10)

The Purchaser is responsible for posting and maintaining caution signs on West Higgins Trail prior to beginning operations. The trail must be posted at appropriate distances from the Sale Area to warn of logging activity and truck traffic at both ends of the trail. Signs must be removed when harvest operations are suspended or completed. The Purchaser will provide these signs.



Sale Number	Year
72 - 033	20

TIMBER SALE MAP

This information provided by authority of Part 525, 1994 PA 451, as amended.

Forest Management Unit Grayling	County Crawford	Mapped By Derek Nellis	Date 9/03/2020	Page 1	of 1
Township 25N	Range 04W	Section(s) and Subdivision(s) Sec 32 - SWSW Sec 31 - NENW,SWNW,NWNE,SW,SE	Scale 1:15,840		

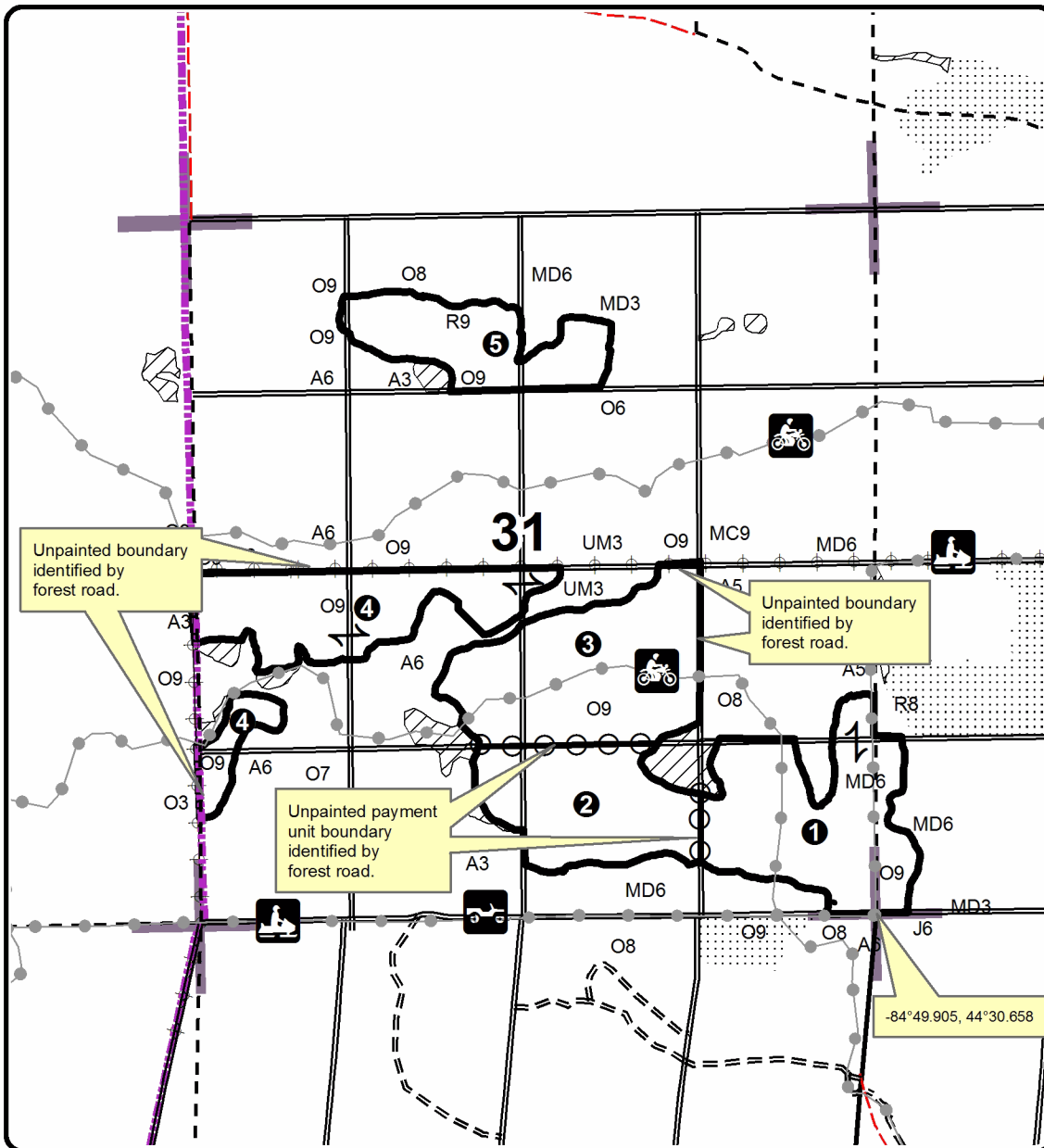
Cover Type				Density	
A = Aspen	H = Hemlock	N = Marsh	U = Upland Brush	0 = Non Stocked	5 = Pole Timber Medium
B = Paper Birch	J = Jack Pine	O = Oak	UM = Upland Mixed	1 = Seedling Sapling Poor	6 = Pole Timber Well
C = Cedar	L = Lowland Brush	P = Lowland Poplar	V = Bog or Marsh	2 = Seedling Sapling Medium	7 = Saw Timber Poor
D = Treed Bog	LM = Lowland Mixed	Q = Mixed Swamp Conifer	W = White Pine	3 = Seedling Sapling Well	8 = Saw Timber Medium
E = Swamp Hdwoods	M = Mpl, Bch, Brch	R = Red Pine	X = Non Stocked	4 = Pole Timber Poor	9 = Saw Timber Well
F = Spruce Fir	MC = Mixed Conifer	S = Black Spruce	Z = Water		
G = Grass	MD = Mixed Deciduous				

PU	Acres	PU	Acres
1	38.5	4	35.8
2	28.1	5	22.0
3	42.1		

Canteen Cache Mix

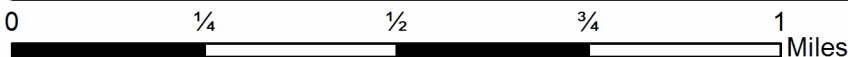
Compartment 193

166.5 Acres



Legend

- Motorcycle Trails
- ORV Routes
- Snowmobile Trails
- Primary Forest Road
- Secondary Forest Road
- Forest Access Route
- Paved Road
- Gravel Road
- County Road - Seasonal
- Private
- Pipeline
- Powerline
- Retention Area
- Payment Unit Label
- Against State (Red)
- Payment Unit
- Nearby Sales
- 31** Section Numbers
- Section Corners



TIMBER SALE INFORMATION

Narrow Trail Aspen (72-031-19)
 T25N, R03W, SEC. 22; T25N, R03W, SEC. 27.
 Crawford County (Advertised Price \$29,951.15)

SALE NOTE: The sale has an oak wilt seasonal operating restriction that can be addressed by brushing roads and cutting buffers around residual oak prior to April 15.

A timber sale contract for this lump sum, sealed bid timber sale will be awarded to the responsible bidder offering the highest sealed bid price. All units of volume listed below were estimated using the T-Sale computer program and our traditional volume equations. Bids must be at or above the following advertised price for each product and species:

<u>PRODUCTS & SPECIES</u>	<u>ESTIMATED UNITS*</u>	<u>ADVERTISED PRICE</u>
Sawtimber		
B. T. Aspen	19.9 MBF	\$ 28.00 / MBF
Bl/R/Hybrid Oak	6.0 MBF	\$ 99.00 / MBF
Northern Pin Oak	5.0 MBF	\$ 88.00 / MBF
Red Maple	7.0 MBF	\$ 48.00 / MBF
Red Oak	37.3 MBF	\$ 119.00 / MBF
White Oak	18.6 MBF	\$ 72.00 / MBF
Pulpwood		
Balsam Fir	7 Cords	\$ 9.20 / Cord
Misc. Species 1	47 Cords	\$ 5.50 / Cord
Mixed Aspen	714 Cords	\$ 13.30 / Cord
Mixed Oak	240 Cords	\$ 22.50 / Cord
Red Maple	268 Cords	\$ 23.80 / Cord
Red Pine	5 Cords	\$ 32.55 / Cord
White Pine	28 Cords	\$ 17.35 / Cord

* The total volume is statistically estimated within plus (+) or minus (-) 11.45 percent. There are an estimated 1,495 cords on this timber sale, plus or minus 171 cords at the 95% confidence level. The estimated units are final and not subject to adjustment. Prospective bidders are urged to examine this timber and to make their own estimates of quantity and quality.

BOND AND PAYMENT SCHEDULE:

1. A bond in the amount of \$1,498.00 to insure faithful performance of the conditions of the contract will be deposited by the successful bidder within 21 days of the sale award.
2. Cutting in any sale or unit without the required advance payment would be considered a trespass.
3. Total payment must be paid in advance or according to the following schedule :
 - (a) Ten percent (10%) of the sale value must be paid within 21 days of the sale award.
 - (b) The 10% down payment will be credited towards the first unit cut.
 - (c) Payment for each of the following units must be made before cutting begins in that unit:

PAYMENT UNIT NUMBER	PERCENT OF TOTAL SALE VALUE
01	26.4%
02	73.6%
4. If no cutting takes place, the 10% down payment will not be refunded.
5. Operations on the contract issued will terminate on 09/30/2023.

SALE STATISTICS

SALE VOLUMES

VOLUME		STATISTICAL RANGE IN CORDS		
TOTAL CUBIC FEET	TOTAL CORDS	PERCENT ERROR	MINIMUM	MAXIMUM
118,089	1,495	11.45%	1,324	1,666

VDU VOLUMES

A VDU is a Volume Determination Unit. Volumes and their associated statistics are calculated at the VDU level and summarized to the sale level. There is often a one to one relationship between a VDU and a Payment Unit, but not always, depending on the cruise design. Refer to the VDU TO PAYMENT UNIT table.

VDU	VOLUME		PERCENT ERROR	RANGE IN CORDS	
	TOTAL CUBIC FEET	TOTAL CORDS		MINIMUM	MAXIMUM
1	75,990	962	14.20%	825	1,098
2	42,099	533	19.35%	430	636
TOTAL:	118,089	1,495		1,255	1,735

VDU TO PAYMENT UNIT

When a VDU is associated with more than one Payment Unit (PU), the VDU volumes are assigned to the PU based on acres of the VDU within the PU.

VDU	VDU ACRES	PU	PU ACRES
1	34.2	2	34.2
2	15.6	1	15.6
TOTAL:	49.8		49.8

DESCRIPTION OF TIMBER BY PAYMENT UNIT (PU)

PU	MARKET GROUP	PRODUCT	QUANTITY	UNIT	ACRES	ADVERTISE PRICE			
1	Northern Pin Oak	Sawtimber	5.0	MBF	15.6	\$7,908.40			
	Red Maple		0.8	MBF					
	Balsam Fir	Pulpwood	7	Cords					
	Mixed Aspen		463	Cords					
	<i>B. T. Aspen</i>		27	<i>Cords</i>					
	<i>Quaking Aspen</i>		436	<i>Cords</i>					
	Mixed Oak		23	Cords					
	<i>Northern Pin Oak</i>		23	<i>Cords</i>					
	Red Maple		29	Cords					
	2	B. T. Aspen	Sawtimber	19.9			MBF	34.2	\$22,042.75
BI/R/Hybrid Oak			6.0	MBF					
Red Maple			6.2	MBF					
Red Oak			37.3	MBF					
White Oak			18.6	MBF					
Misc. Species 1		Pulpwood	47	Cords					
<i>Misc. Species 1</i>		<i>Sawtimber</i>	8.4	<i>MBF</i>					
<i>Misc. Species 1</i>		<i>Pulpwood</i>	30	<i>Cords</i>					
Mixed Aspen			251	Cords					
<i>B. T. Aspen</i>			251	<i>Cords</i>					
Mixed Oak			217	Cords					
<i>BI/R/Hybrid Oak</i>			36	<i>Cords</i>					
<i>Red Oak</i>			83	<i>Cords</i>					
<i>White Oak</i>			98	<i>Cords</i>					
Red Maple			239	Cords					
Red Pine			5	Cords					
<i>Red Pine</i>		<i>Sawtimber</i>	1.9	<i>MBF</i>					
<i>Red Pine</i>		<i>Pulpwood</i>	1	<i>Cords</i>					
White Pine			28	Cords					
<i>White Pine</i>		<i>Sawtimber</i>	3.7	<i>MBF</i>					
<i>White Pine</i>		<i>Pulpwood</i>	21	<i>Cords</i>					
TOTAL:			93.8	MBF					
TOTAL:			1,309	Cords					

Sale Specific Conditions & Requirements

Sale Name: Narrow Trail Aspen

Sale Number: 72-031-19 Seq#: 2

1 - Sale Area

1.2 - Boundaries

1.2.1 - Painted boundaries (9/19)

The sale boundary and Payment Unit boundaries are marked and identified by blue and red paint, in addition to unpainted boundaries. Exterior sale boundary lines against private property are marked with blue paint, except for an unpainted segment on the south edge of Payment Unit 2 designated as the forest road shown on the Timber Sale Map. Exterior sale boundary lines against state are marked with red paint, except for the west boundary of Payment Unit 2 designated as Johnson Road, and part of the south boundary of Payment Unit 2 designated as the forest road shown on the Timber Sale Map. Payment Unit 2's interior retention patch is marked with red paint; no harvesting activities may occur within this area. The rest of Payment Unit 2's retention is excluded from the exterior sale boundary on the north and south sides as described above and shown on the Timber Sale Map. The painted boundary line trees are not Included Timber and are to be protected.

2 - Timber Specifications

2.1 - Included Timber

2.1.1 - Clearcut unit(s) with unmerchantable trees (6/14)

Within Payment Unit(s) 1 and 2, cut all trees that are two (2) inches or more at DBH.

2.1.11 - Description of timber note (2/04)

Note that Misc Species 1 = dead oak.

2.2 - Utilization

2.2.3 - Stump heights (4/07)

Stump heights within the Sale Area shall not exceed 12 inches for all trees. This is to facilitate natural regeneration.

3 - Payments

3.3 - Pre-measured Sales

3.3.4 - Dividing payment units (7/14)

Payment Unit(s) may be divided at the request of the Purchaser and upon approval of the Unit Manager. Dividing Payment Units is a contract modification which requires a Timber Sale Contract Amendment.

4 - Transportation

4.1 - Construction

4.1.3 - Slash and earthen piles (8/04)

Piles or windrows of earth along roads and landings that have been widened or constructed shall be leveled. Slash from road maintenance or construction, including stumps, shall be dispersed into the Sale Area if not needed for road closure.

4.1.6 - Road construction (1/09)

Construction of new roads or improvements of existing roads shall be done in such a way as to minimize the environmental and visual impacts. Merchantable trees shall be cut and utilized unless otherwise directed. Non-merchantable trees shall be severed and laid flat on the ground. Slash shall be scattered, and not left in windrows and kept a minimum of 10 feet back from the road edge. Stumps shall be set upright, not left on edge, and be moved at least 10 feet away from the road edge. Disturbed soil shall be feathered into the woods and not left in berms or windrows.

4.1.7 - Road closure (10/11)

All new roads built into the sale must be blocked to vehicle traffic upon completion of the sale. Overgrown roads that are reopened shall be considered new roads. In general, this closure will require broadcast-spreading stumps and slash across the first 100 feet of road. Contact the sale administrator for specific details of design and placement.

4.1.11 - Permits (2/12)

The Purchaser will secure any necessary road permits that may be required.

5 - Operations

5.1 - Notification

5.1.1 - Pre-sale conference (10/16)

A pre-sale conference on site between the Purchaser and sale administrator is required prior to beginning any operations to determine landing and road locations. The Unit Manager or his/her representative must be contacted at least 5 days in advance to schedule the conference.

5.1.4 - Post-sale conference (10/16)

A post-sale conference on site between the Purchaser and sale administrator is required prior to the completion of active logging operations to determine clean-up and repair of landings, road edges, and the fulfillment of other contract specifications.

5.2 - Conduct of Operations

5.2.1 - Slash

5.2.1.13 - Dispose of slash as directed (12/05)

Slash is to be disposed of as directed by the Sale Administrator, such as flattening taller slash piles near roads and property boundaries.

5.2.2 - Hazard Trees/Snags

5.2.2.1 - Den trees (10/16)

Obvious hollow and/or den trees shall be protected and left standing unless they are a safety hazard.

5.2.3 - Operating Restrictions

5.2.3.5 - Oak wilt restriction (1/18)

Within Payment Unit 2, unless changed by written agreement, cutting, skidding, hauling within the sale and brushing of access roads to the sale are not permitted during the period of April 15 to July 15. Operations may be allowed if specific steps are taken to prevent damaging uncut oak during the high risk period. Those steps may include completing all road brushing before April 15th and clearing a tree-length buffer along uncut oak cover before April 15th. This is necessary to reduce the spread of oak wilt. For more information, contact the Unit Manager or his/her representative.

5.2.4 - Dead and Down Creation

5.2.4.4 - Dead and down creation, grouse (6/18)

To encourage grouse and other wildlife, in Payment Unit(s) 1 and 2, leave one, 12" diameter or larger log-length (8 foot minimum) piece or whole tree on the ground for every 2 acres, preferably a hardwood species such as oak or maple. These pieces will be evenly scattered throughout the Payment Unit, preferably at least two chains from any roads, two-tracks, or trails open to vehicles.

5.2.29 - Shrub protection (1/20)

Do not cut or damage hawthorn, dogwood, or junberry. These woody-shrub plants are highly beneficial to various wildlife species.

5.2.38 - No decking against live trees (2/04)

Cut products may not be decked against unmarked or designated leave trees.

5.2.43 - Opening protection (12/08)

No activities are permitted in openings marked on the Timber Sale Map with the letter "G". Any damage to the openings shall be repaired according to specifications of the Unit Manager or his/her representative.

5.4 - Soil Protection

5.4.1 - Rutting restriction, general (7/16)

Operations are to cease immediately if equipment and weather conditions result in rutting of roads and/or skid trails which is 12 inches or greater in depth and 50 feet in length. The Unit Manager or his/her representative may restrict hauling and/or skidding if ruts exceed the specified depth. With the Unit Manager or his/her representative's approval, the Purchaser may

return to the area when the risk of rutting has decreased.

6 - Safety and Fire Prevention

6.2 - Signing

6.2.1 - Road posting (10/20)

The Purchaser is responsible for posting and maintaining caution signs on the forest road haul route prior to beginning operations. The road must be posted at appropriate distances from the Sale Area to warn of logging activity and truck traffic. Signs must be removed when harvest operations are suspended or completed. The Purchaser will provide these signs.



TIMBER SALE MAP

This information provided by authority of Part 525, 1994 PA 451, as amended.

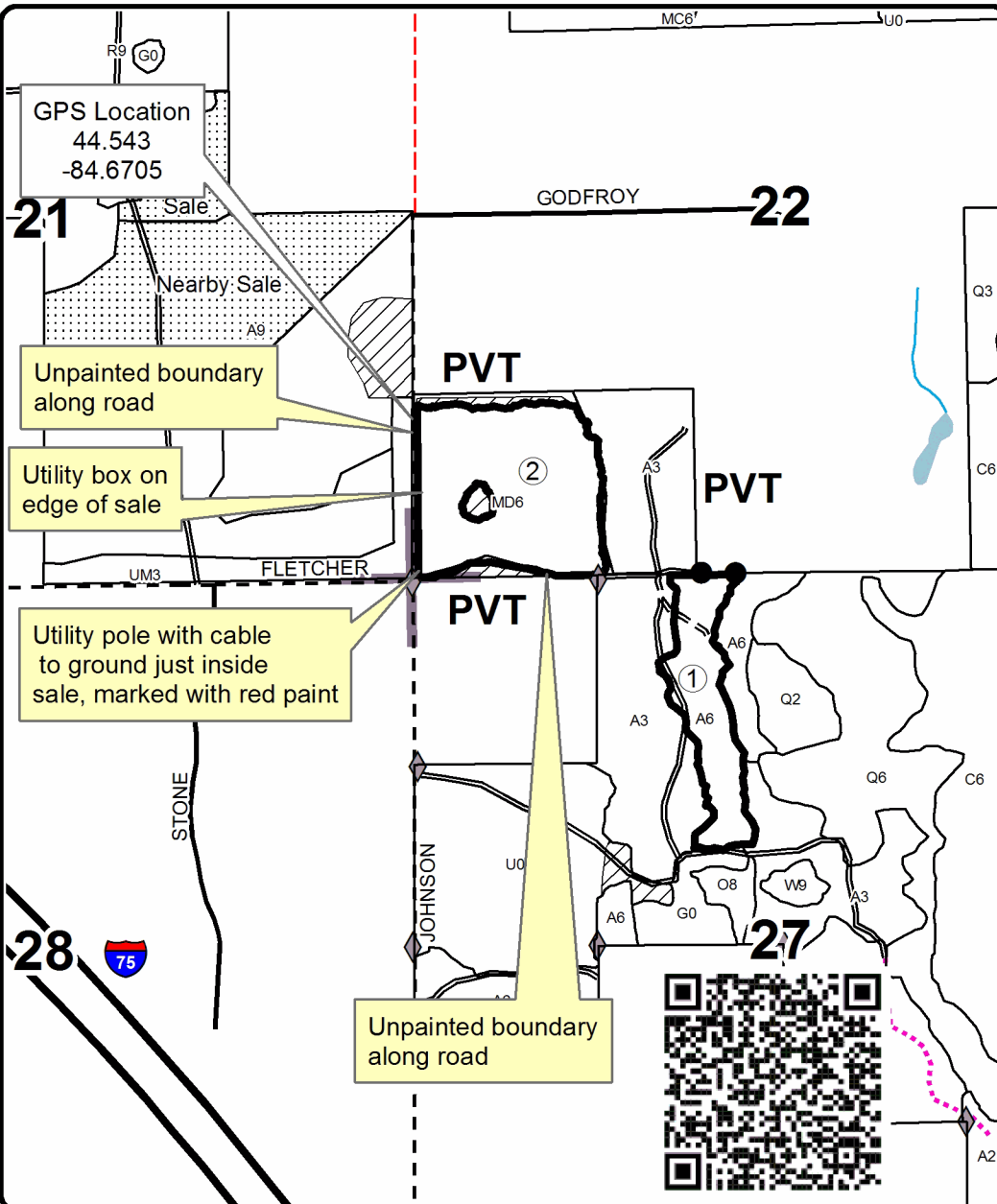
Forest Management Unit Grayling		County Crawford	Mapped By Ehlert, Ewald	Date 10/12/2020	Page 1	of 1
Township 25N	Range 03W	Section(s) and Subdivision(s) Sec 22- S1/2SW; Sec 27- E1/2NW		Scale 1:15,840		

Cover Type				Density	
A = Aspen	H = Hemlock	N = Marsh	U = Upland Brush	0 = Non Stocked	5 = Pole Timber Medium
B = Paper Birch	J = Jack Pine	O = Oak	UM = Upland Mixed	1 = Seedling Sapling Poor	6 = Pole Timber Well
C = Cedar	L = Lowland Brush	P = Lowland Poplar	V = Bog or Marsh	2 = Seedling Sapling Medium	7 = Saw Timber Poor
D = Treed Bog	LM = Lowland Mixed	Q = Mixed Swamp Conifer	W = White Pine	3 = Seedling Sapling Well	8 = Saw Timber Medium
E = Swamp Hdwoods	M = Mpl, Bch, Brch	R = Red Pine	X = Non Stocked	4 = Pole Timber Poor	9 = Saw Timber Well
F = Spruce Fir	MC = Mixed Conifer	S = Black Spruce	Z = Water		
G = Grass	MD = Mixed Deciduous	T = Tamarack			

PU	Acres
1	15.6
2	34.2

Narrow Trail Aspen

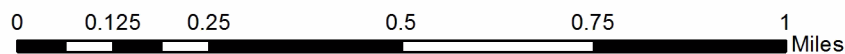
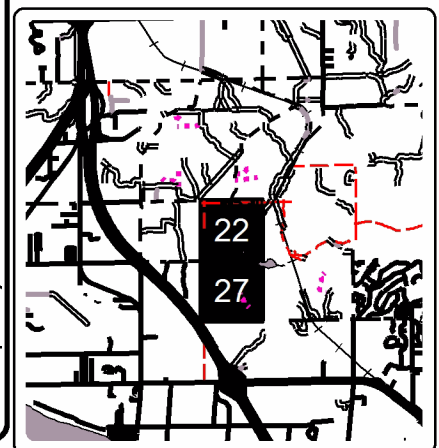
Compartment 228, 229
49.8 Acres



Legend

- Stand Boundaries
- Field Grade Corners
- Highway
- Secondary Forest Road
- Forest Access Route
- Paved Road
- Gravel Road
- County Road - Seasonal
- Temporary Management Access
- Perennial River
- Lakes and Rivers
- Retention Area
- Against State (Red)
- Private Line (Blue)
- Nearby Timber Sales
- Section Corners

Locator Map 1:200,000



Day Tripper Pine (72-019-20)
T25N, R03W, SEC. 13; T25N, R03W, SEC. 24; Crawford COUNTY

In response to the notice of sale to be held 9:00 a.m. (local time) on August 6, 2021, I am hereby submitting my sealed bid (firm offer) for the following forest products to be cut. Bids for individual species must be at or above the advertised price. All non-responsive bid forms may be rejected.

<u>PRODUCTS & SPECIES</u>	<u>ESTIMATED VOLUME*</u>	<u>ADVERTISED PRICE</u>	<u>BID PRICE/UNIT</u>
Sawtimber			
Jack Pine	59.7 MBF	\$ 32.00/MBF	\$ _____
Quaking Aspen	9.5 MBF	\$ 28.00/MBF	\$ _____
Red Oak	6.0 MBF	\$ 119.00/MBF	\$ _____
Red Pine	10.0 MBF	\$ 94.00/MBF	\$ _____
Pulpwood			
Jack Pine	796 Cords	\$ 15.95/Cord	\$ _____
Mixed Hardwood	16 Cords	\$ 23.80/Cord	\$ _____
Quaking Aspen	98 Cords	\$ 13.30/Cord	\$ _____
Red Oak	131 Cords	\$ 22.50/Cord	\$ _____
Red Pine	16 Cords	\$ 32.55/Cord	\$ _____
White Oak	8 Cords	\$ 22.50/Cord	\$ _____
White Pine	2 Cords	\$ 17.35/Cord	\$ _____

*The volumes are statistically estimated within plus (+) or minus (-) 13.66 percent at 95% confidence level. These estimated volumes are final and not subject to adjustment. Prospective bidders are urged to examine this timber and to make their own estimates of quantity and quality.

I understand that any or all bids may be rejected. All bids must be signed and all bid items must be bid or the bid form may be rejected. I also understand that consideration and awarding a contract will be based upon my past performance and ability to complete the contract based upon equipment and staffing subject to my control.

FEDERAL ID: _____ or SOCIAL SECURITY NUMBER: _____
 Company or individual bidding: _____
 Company representative's name: _____
 Address: _____
 City: _____ State: _____ Zip: _____

IF AVAILABLE, PLEASE PLACE THE PERSONALIZED LABEL FROM YOUR PROSPECTUS IN THE ABOVE BOX.

Individual or company representative's signature: _____ Date: _____

Phone number : _____ Email (optional): _____

THE WINNING BIDDER MUST COMPLETE THE VERIFICATION OF WORKER'S DISABILITY COMPENSATION ACT COMPLIANCE (ON REVERSE SIDE IF DOUBLE SIDED) WITHIN 21 DAYS OF SALE AWARD DATE



TIMBER SALE VERIFICATION OF WORKER'S DISABILITY COMPENSATION ACT COMPLIANCE

As required by Act 317, P.A. 1969 (Worker's Compensation) and
Part 5 of Act 451 of 1994, as amended.

FOR DEPARTMENT USE ONLY	
Sale Number (XX - XXX - XX - XX)	
Forest Management Unit:	

VERIFICATION OF WORKER'S DISABILITY COMPENSATION ACT COMPLIANCE

- This verification must be completed and submitted within 21 days of contract award and prior to the issuance of the timber sale contract.
- In addition, if boxes 2B or 2C are checked, then Notice of Exclusion or Certificate of Insurance must be submitted within twenty-one (21) days of the contract award and prior to the issuance of the timber sale contract.
- All information must be typed or printed except for written signatures.

Please Check Appropriate Categories:

1. My business is organized as (you **must** check one of the boxes below):
 - A. Sole Proprietorship (individual)
 - B. Partnership
 - C. Corporation
2. You **must** check one of the boxes below:
 - A. I certify my business is a sole proprietorship and it has no employees but the sole proprietor. I am not subject to the Worker's Compensation Laws.
 - B. I certify my business has satisfied its obligation to the Worker's Compensation Act through the use of an approved Notice of Exclusion (BWC-337, Rev. 5/96). I will provide a copy of the Notice of Exclusion within 21 days of the contract award. (For questions or a copy of the BWC-337, please call the Worker's Compensation Bureau at 517-322-1195).
 - C. I certify my business has a Worker's Compensation Policy. I will provide an original Certificate of Insurance within twenty-one (21) days of the contract award.
3. If you have checked item 2(A) or 2(B), you **must** indicate the number of **both** full-time and part-time employees, other than yourself, including family members and active partners (if none, you must enter "0").

_____ Full-time Employees

_____ Part-time Employees

Name of Business		Federal ID (or) Social Security No.	
Address		Telephone ()	
City	State	ZIP	

I hereby certify that the above information is true and correct. I agree to notify the Michigan DNR of any changes that occur in factors affecting my coverage during any of my present and future operations.

Signature of Owner or Authorized Representative

Title

Date

Please complete the "SEALED BID" information on the next page

Canteen Cache Mix (72-033-20)
T25N, R04W, SEC. 31; T25N, R04W, SEC. 32; Crawford COUNTY

In response to the notice of sale to be held 9:00 a.m. (local time) on August 6, 2021, I am hereby submitting my sealed bid (firm offer) for the following forest products to be cut. Bids for individual species must be at or above the advertised price. All non-responsive bid forms may be rejected.

<u>PRODUCTS & SPECIES</u>	<u>ESTIMATED VOLUME*</u>	<u>ADVERTISED PRICE</u>	<u>BID PRICE/UNIT</u>
Sawtimber			
Bl/R/Hybrid Oak	145.9 MBF	\$ 120.00/MBF	\$ _____
Red Oak	579.6 MBF	\$ 119.00/MBF	\$ _____
Red Pine	29.5 MBF	\$ 94.00/MBF	\$ _____
White Oak	69.7 MBF	\$ 72.00/MBF	\$ _____
Pulpwood			
Mixed Aspen	118 Cords	\$ 13.30/Cord	\$ _____
Mixed Oak	1,987 Cords	\$ 22.50/Cord	\$ _____
Red Maple	238 Cords	\$ 23.80/Cord	\$ _____
Red Pine	19 Cords	\$ 32.55/Cord	\$ _____
White Pine	22 Cords	\$ 17.35/Cord	\$ _____

*The volumes are statistically estimated within plus (+) or minus (-) 7.27 percent at 95% confidence level. These estimated volumes are final and not subject to adjustment. Prospective bidders are urged to examine this timber and to make their own estimates of quantity and quality.

I understand that any or all bids may be rejected. All bids must be signed and all bid items must be bid or the bid form may be rejected. I also understand that consideration and awarding a contract will be based upon my past performance and ability to complete the contract based upon equipment and staffing subject to my control.

FEDERAL ID: ____ - ____ - ____ or SOCIAL SECURITY NUMBER: ____ - ____ - ____

Company or individual bidding: _____

Company representative's name: _____

Address: _____

City: _____ State: _____ Zip: _____

IF AVAILABLE, PLEASE PLACE THE PERSONALIZED LABEL FROM YOUR PROSPECTUS IN THE ABOVE BOX.

Individual or company representative's signature: _____ Date: _____

Phone number : _____ Email (optional): _____

THE WINNING BIDDER MUST COMPLETE THE VERIFICATION OF WORKER'S DISABILITY COMPENSATION ACT COMPLIANCE (ON REVERSE SIDE IF DOUBLE SIDED) WITHIN 21 DAYS OF SALE AWARD DATE



TIMBER SALE VERIFICATION OF WORKER'S DISABILITY COMPENSATION ACT COMPLIANCE

As required by Act 317, P.A. 1969 (Worker's Compensation) and
Part 5 of Act 451 of 1994, as amended.

FOR DEPARTMENT USE ONLY	
Sale Number (XX - XXX - XX - XX)	
Forest Management Unit:	

VERIFICATION OF WORKER'S DISABILITY COMPENSATION ACT COMPLIANCE

- This verification must be completed and submitted within 21 days of contract award and prior to the issuance of the timber sale contract.
- In addition, if boxes 2B or 2C are checked, then Notice of Exclusion or Certificate of Insurance must be submitted within twenty-one (21) days of the contract award and prior to the issuance of the timber sale contract.
- All information must be typed or printed except for written signatures.

Please Check Appropriate Categories:

1. My business is organized as (you **must** check one of the boxes below):
 - A. Sole Proprietorship (individual)
 - B. Partnership
 - C. Corporation
2. You **must** check one of the boxes below:
 - A. I certify my business is a sole proprietorship and it has no employees but the sole proprietor. I am not subject to the Worker's Compensation Laws.
 - B. I certify my business has satisfied its obligation to the Worker's Compensation Act through the use of an approved Notice of Exclusion (BWC-337, Rev. 5/96). I will provide a copy of the Notice of Exclusion within 21 days of the contract award. (For questions or a copy of the BWC-337, please call the Worker's Compensation Bureau at 517-322-1195).
 - C. I certify my business has a Worker's Compensation Policy. I will provide an original Certificate of Insurance within twenty-one (21) days of the contract award.
3. If you have checked item 2(A) or 2(B), you **must** indicate the number of **both** full-time and part-time employees, other than yourself, including family members and active partners (if none, you must enter "0").

_____ Full-time Employees

_____ Part-time Employees

Name of Business		Federal ID (or) Social Security No.	
Address		Telephone ()	
City	State	ZIP	

I hereby certify that the above information is true and correct. I agree to notify the Michigan DNR of any changes that occur in factors affecting my coverage during any of my present and future operations.

Signature of Owner or Authorized Representative

Title

Date

Please complete the "SEALED BID" information on the next page

Rainbow Bend Salvage (72-030-20)
T26N, R01W, SEC. 3; Crawford COUNTY

In response to the notice of sale to be held 9:00 a.m. (local time) on August 6, 2021, I am hereby submitting my sealed bid (firm offer) for the following forest products to be cut. Bids for individual species must be at or above the advertised price. All non-responsive bid forms may be rejected.

<u>PRODUCTS & SPECIES</u>	<u>ESTIMATED VOLUME*</u>	<u>ADVERTISED PRICE</u>	<u>BID PRICE/UNIT</u>
Pulpwood			
Black Cherry	3 Cords	\$ 13.00/Cord	\$ _____
Jack Pine	2 Cords	\$ 8.70/Cord	\$ _____
Misc. Species 2	6 Cords	\$ 3.00/Cord	\$ _____
Northern Pin Oak	66 Cords	\$ 12.25/Cord	\$ _____

*The volumes are statistically estimated within plus (+) or minus (-) 46.67 percent at 95% confidence level. These estimated volumes are final and not subject to adjustment. Prospective bidders are urged to examine this timber and to make their own estimates of quantity and quality.

I understand that any or all bids may be rejected. All bids must be signed and all bid items must be bid or the bid form may be rejected. I also understand that consideration and awarding a contract will be based upon my past performance and ability to complete the contract based upon equipment and staffing subject to my control.

FEDERAL ID: ___ - ___ - ___ or SOCIAL SECURITY NUMBER: ___ - ___ - ___

Company or individual bidding: _____

Company representative's name: _____

Address: _____

City: _____ State: _____ Zip: _____

IF AVAILABLE, PLEASE PLACE THE PERSONALIZED LABEL FROM YOUR PROSPECTUS IN THE ABOVE BOX.

Individual or company representative's signature: _____ Date: _____

Phone number : _____ Email (optional): _____

THE WINNING BIDDER MUST COMPLETE THE VERIFICATION OF WORKER'S DISABILITY COMPENSATION ACT COMPLIANCE (ON REVERSE SIDE IF DOUBLE SIDED) WITHIN 21 DAYS OF SALE AWARD DATE



FOR DEPARTMENT USE ONLY	
Sale Number (XX - XXX - XX - XX)	
Forest Management Unit:	

TIMBER SALE VERIFICATION OF WORKER'S DISABILITY COMPENSATION ACT COMPLIANCE

As required by Act 317, P.A. 1969 (Worker's Compensation) and
Part 5 of Act 451 of 1994, as amended.

VERIFICATION OF WORKER'S DISABILITY COMPENSATION ACT COMPLIANCE

- This verification must be completed and submitted within 21 days of contract award and prior to the issuance of the timber sale contract.
- In addition, if boxes 2B or 2C are checked, then Notice of Exclusion or Certificate of Insurance must be submitted within twenty-one (21) days of the contract award and prior to the issuance of the timber sale contract.
- All information must be typed or printed except for written signatures.

Please Check Appropriate Categories:

1. My business is organized as (you **must** check one of the boxes below):
 - A. Sole Proprietorship (individual)
 - B. Partnership
 - C. Corporation
2. You **must** check one of the boxes below:
 - A. I certify my business is a sole proprietorship and it has no employees but the sole proprietor. I am not subject to the Worker's Compensation Laws.
 - B. I certify my business has satisfied its obligation to the Worker's Compensation Act through the use of an approved Notice of Exclusion (BWC-337, Rev. 5/96). I will provide a copy of the Notice of Exclusion within 21 days of the contract award. (For questions or a copy of the BWC-337, please call the Worker's Compensation Bureau at 517-322-1195).
 - C. I certify my business has a Worker's Compensation Policy. I will provide an original Certificate of Insurance within twenty-one (21) days of the contract award.
3. If you have checked item 2(A) or 2(B), you **must** indicate the number of **both** full-time and part-time employees, other than yourself, including family members and active partners (if none, you must enter "0").

_____ Full-time Employees

_____ Part-time Employees

Name of Business		Federal ID (or) Social Security No.	
Address		Telephone ()	
City	State	ZIP	

I hereby certify that the above information is true and correct. I agree to notify the Michigan DNR of any changes that occur in factors affecting my coverage during any of my present and future operations.

Signature of Owner or Authorized Representative

Title

Date

Please complete the "SEALED BID" information on the next page

Narrow Trail Aspen (72-031-19)
T25N, R03W, SEC. 22; T25N, R03W, SEC. 27; Crawford COUNTY

In response to the notice of sale to be held 9:00 a.m. (local time) on August 6, 2021, I am hereby submitting my sealed bid (firm offer) for the following forest products to be cut. Bids for individual species must be at or above the advertised price. All non-responsive bid forms may be rejected.

<u>PRODUCTS & SPECIES</u>	<u>ESTIMATED VOLUME*</u>	<u>ADVERTISED PRICE</u>	<u>BID PRICE/UNIT</u>
Sawtimber			
B. T. Aspen	19.9 MBF	\$ 28.00/MBF	\$ _____
Bl/R/Hybrid Oak	6.0 MBF	\$ 99.00/MBF	\$ _____
Northern Pin Oak	5.0 MBF	\$ 88.00/MBF	\$ _____
Red Maple	7.0 MBF	\$ 48.00/MBF	\$ _____
Red Oak	37.3 MBF	\$ 119.00/MBF	\$ _____
White Oak	18.6 MBF	\$ 72.00/MBF	\$ _____
Pulpwood			
Balsam Fir	7 Cords	\$ 9.20/Cord	\$ _____
Misc. Species 1	47 Cords	\$ 5.50/Cord	\$ _____
Mixed Aspen	714 Cords	\$ 13.30/Cord	\$ _____
Mixed Oak	240 Cords	\$ 22.50/Cord	\$ _____
Red Maple	268 Cords	\$ 23.80/Cord	\$ _____
Red Pine	5 Cords	\$ 32.55/Cord	\$ _____
White Pine	28 Cords	\$ 17.35/Cord	\$ _____

*The volumes are statistically estimated within plus (+) or minus (-) 11.45 percent at 95% confidence level. These estimated volumes are final and not subject to adjustment. Prospective bidders are urged to examine this timber and to make their own estimates of quantity and quality.

I understand that any or all bids may be rejected. All bids must be signed and all bid items must be bid or the bid form may be rejected. I also understand that consideration and awarding a contract will be based upon my past performance and ability to complete the contract based upon equipment and staffing subject to my control.

FEDERAL ID: _____ or SOCIAL SECURITY NUMBER: _____

Company or individual bidding: _____

Company representative's name: _____

Address: _____

City: _____ State: _____ Zip: _____

IF AVAILABLE, PLEASE PLACE THE PERSONALIZED LABEL FROM YOUR PROSPECTUS IN THE ABOVE BOX.

Individual or company representative's signature: _____ Date: _____

Phone number : _____ Email (optional): _____

THE WINNING BIDDER MUST COMPLETE THE VERIFICATION OF WORKER'S DISABILITY COMPENSATION ACT COMPLIANCE (ON REVERSE SIDE IF DOUBLE SIDED) WITHIN 21 DAYS OF SALE AWARD DATE



FOR DEPARTMENT USE ONLY	
Sale Number (XX - XXX - XX - XX)	
Forest Management Unit:	

TIMBER SALE VERIFICATION OF WORKER'S DISABILITY COMPENSATION ACT COMPLIANCE

As required by Act 317, P.A. 1969 (Worker's Compensation) and
Part 5 of Act 451 of 1994, as amended.

VERIFICATION OF WORKER'S DISABILITY COMPENSATION ACT COMPLIANCE

- This verification must be completed and submitted within 21 days of contract award and prior to the issuance of the timber sale contract.
- In addition, if boxes 2B or 2C are checked, then Notice of Exclusion or Certificate of Insurance must be submitted within twenty-one (21) days of the contract award and prior to the issuance of the timber sale contract.
- All information must be typed or printed except for written signatures.

Please Check Appropriate Categories:

1. My business is organized as (you **must** check one of the boxes below):
 - A. Sole Proprietorship (individual)
 - B. Partnership
 - C. Corporation
2. You **must** check one of the boxes below:
 - A. I certify my business is a sole proprietorship and it has no employees but the sole proprietor. I am not subject to the Worker's Compensation Laws.
 - B. I certify my business has satisfied its obligation to the Worker's Compensation Act through the use of an approved Notice of Exclusion (BWC-337, Rev. 5/96). I will provide a copy of the Notice of Exclusion within 21 days of the contract award. (For questions or a copy of the BWC-337, please call the Worker's Compensation Bureau at 517-322-1195).
 - C. I certify my business has a Worker's Compensation Policy. I will provide an original Certificate of Insurance within twenty-one (21) days of the contract award.
3. If you have checked item 2(A) or 2(B), you **must** indicate the number of **both** full-time and part-time employees, other than yourself, including family members and active partners (if none, you must enter "0").

_____ Full-time Employees

_____ Part-time Employees

Name of Business		Federal ID (or) Social Security No.	
Address		Telephone ()	
City	State	ZIP	

I hereby certify that the above information is true and correct. I agree to notify the Michigan DNR of any changes that occur in factors affecting my coverage during any of my present and future operations.

Signature of Owner or Authorized Representative

Title

Date

Please complete the "SEALED BID" information on the next page