



**DEPARTMENT OF NATURAL RESOURCES
STATE OF MICHIGAN**

TIMBER SALE PROSPECTUS #6806

SCHEDULED SALE DATE AND TIME: 3:00 p.m. (local time) on April 15, 2021.

LOCATION: NEWBERRY MGMT UNIT, 5666 S STATE HWY M 123, NEWBERRY, MI 49868.

PROSPECTUS NOTE: The bidder is advised to inspect the sale area and review the location, estimated volumes, operating costs and contract terms of proposed sales. Please be aware that some landowners may request 60 days or more notice for access across their land.

Notice is hereby given that bids will be received by the Unit Manager, NEWBERRY MANAGEMENT UNIT, for certain timber on the following described lands:

First Creek Mix (42-025-20) / T45N, R09W, SEC. 20, W1/2SW.

T45N, R09W, SEC. 21, SE.

T45N, R09W, SEC. 28, N1/2NW,N1/2NE.

T45N, R09W, SEC. 29, NWNW.

Luce County, Advertised Price \$56,032.25, 167.8 Acres, Hardwood, Spruce/Fir/Tamarack.

SALE NOTE: Permission for access across private land is the responsibility of the Purchaser.

Within Payments 1 and 2, harvesting is not permitted during the period of April 15 to July 15 because of bark slippage.

The McLeod Road is an ORV trail or route and is shown on the Timber Sale Map. See Sale Spec. 5.2.39 for additional information.

The McLeod Road is a snowmobile trail and is shown on the Timber Sale Map. See Sale Spec. 5.2.41 for restrictions.

Payment Unit 7 is optional to harvest due to potential access issues and stream crossings that may be necessary to access the unit. It is recommended, but not required, that harvesting occur during dry summer or frozen winter conditions due to heavy, wet soils. Removing this Payment Unit is a contract modification which requires a Timber Sale Contract Amendment.

A recreation site such as a trail, pathway, or campground is within the sale area or the vicinity. Certain restrictions/specifications may be applicable including time restrictions.

McLeod Mayhem (42-026-20) / T45N, R09W, SEC. 27, NWSW.

T45N, R09W, SEC. 28, SENW,S1/2NE,E1/2SW,SE.

T45N, R09W, SEC. 33, N1/2NW,NWNE,S1/2NE,SE.

Luce County, Advertised Price \$118,341.05, 251.5 Acres, Hardwood, Aspen.

SALE NOTE: It is recommended, but not required, that within Payment Unit 8, harvesting occur during dry summer or frozen winter conditions because of wetter soil types. The McLeod Road is an ORV trail or route and is shown on the Timber Sale Map. See Sale Spec. 5.2.39 for additional information. The McLeod Road is a snowmobile trail and is shown on the Timber Sale Map. See Sale Spec. 5.2.41 for restrictions.

A recreation site such as a trail, pathway, or campground is within the sale area or the vicinity. Certain restrictions/specifications may be applicable including time restrictions.

BID INSTRUCTIONS (VER. 07/02/2018):

1. Scheduled Bid Location, Date, and Time (2/11)

Bids must be received by the Unit Manager, NEWBERRY OFFICE, 5666 S STATE HWY M 123, NEWBERRY, MI 49868, no later than 3:00 p.m. (local time) on April 15, 2021. For further information concerning this sale, contact Keith Magnusson at 906-293-3293 extension 4740.

2. Bidder's Qualifications (5/16)

Purchaser shall obtain workers compensation insurance to cover claims under Michigan's Worker's Disability Compensation Act of 1969 or similar employee benefit act of any other state applicable to an employee. If all or part of a timber sale was prepared by a private contractor, the contractor and that contractor's company are not permitted to bid on the timber sale contract. Bids will not be accepted from individuals or companies appearing on the DNR/FRD No-Bid List. This list contains the names of purchasers who previously failed to execute a contract within 21-days or who have a history of poor performance.

3. Preparation of Sealed Bids (5/16)

Bid Forms may be completed online thru Michigan DNR Timber Sale Online Bidding (OLB) at www.michigan.gov/timberbidding or by completing the hardcopy Bid Form found in the Timber Sale Prospectus. Hardcopy Bid Forms shall be manually signed in ink. Registration in OLB is considered your 'signature' for all bids submitted thru that system. Bid prices must be entered for each species and product in the Bid Price column for all material subject to bidding and all fill-in blanks must be completed. If erasures or other changes appear on the hardcopy Bid Form, each erasure or change must be initialed by the person signing the bid.

4. Submission of Sealed Bids (5/16)

Bid forms may be obtained from the Unit Manager or thru OLB. Bids may be submitted hardcopy or thru OLB. All hardcopy bids must be submitted on the bid form and in an envelope clearly identified as described in this section. NOTE: Only one bid form per bid envelope. Sealed bids must be submitted to the Unit office designated in the prospectus and must be submitted at or prior to the time established in the prospectus. The envelope should show on the outside (a) the sale name or number and (b) the date and time of bid opening, as shown in the prospectus. Bids received after the time specified in the sale prospectus are late bids and will be rejected.

It is possible for a bidder to submit multiple bids on a single sale. For example, a bid may be submitted hardcopy and a bid may be submitted thru OLB. Or, two bidders from the same company could both submit bids on the same sale. If this were to happen, the State would accept all bids received and award the contract accordingly. All bidding and contractual requirements would apply to all bids received.

5. Public Opening of Sealed Bids (7/16)

If conditions permit, the sealed bids will be publicly opened and posted at the time and place set in the prospectus.

If a bidder, present at a bid opening, has submitted bids on more than one sale, that bidder may withdraw their unopened bid envelopes or announce the withdrawal of their online bid after being declared the successful bidder on one sale.

6. Award of Contract (1/11)

Award of the contract will be made to the Bidder whose bid, conforming to the prospectus, is most advantageous to the State of Michigan on the basis of total value at rates bid for the estimated quantities. The State reserves the right to reject any bid or waive any minor irregularity in bids received. A written award mailed (or otherwise furnished) to the successful Bidder shall be deemed to result in a binding contract without further action by either party.

7. Down Payment (1/11)

The Bidder to whom award is made must make a down payment within 21 days of the sale award. The amount of the down payment will be calculated as shown in the Bond and Payment Schedule of this prospectus. Only cash may be used to meet this requirement.

8. Performance Security (1/11)

As guarantee of faithful performance, a cash bond, certificate of deposit, surety bond or irrevocable letter of credit (LOC) is required within 21 days of the sale award. The amount of the performance security is shown in the Bond and

Payment Schedule of this prospectus. If an LOC or surety is used, the coverage must extend for at least 6 months beyond the contract expiration.

9. Timber Sale Contract (7/18)

Additional conditions and requirements common to all timber sales are listed on the timber sale contract (R4031) and are available on line at www.michigan.gov/timber. Contact the Unit Manager for additional information or a sample contract. Within 21 days of the date of the award letter, the bidder must sign the contract and provide the required down payment, performance security, and verification of worker's disability compensation. The down payment and performance security shall be in accordance with the provisions of the timber sale contract, in the sums stated in this prospectus. If these actions are not taken, then the Bidder, the Bidder's corporation, and the corporation's principals may not be permitted to bid on State timber sales for a period of 3 months after the first offense, 6 months after the second offense, and 1 year after the third offense. An offense will only be counted against the Bidder for 5 years. In addition, the Bidder certifies that if awarded this contract, the Bidder will complete the timber sale contract in accordance with its terms and any modifications thereof including requirements to purchase, cut, and remove the included timber by the expiration date.

Payment Unit values in the State Forest Timber Sale Contract are calculated based on the advertised value of the Payment Unit as a percentage of the total advertised value of the contract. The advertised value of each Payment Unit is given in the Description of Timber by Payment Unit table on the Timber Sale Information page. For example, if the value of Payment Unit 1 is advertised as \$1,500 and the total Timber Sale value is advertised as \$10,000, the contract price for Payment Unit 1 will be 15% of the total bid price ($\$1,500/\$10,000 * 100$).

10. Disclaimer of Estimates and Bidder's Warranty of Inspection (7/16)

Before submitting this bid, the Bidder is advised and cautioned to inspect the sale area, review the requirements of the sale contract, and take other steps as may be reasonably necessary to ascertain the location, estimated volumes, construction estimates, and operating costs of the proposed sale. Failure to do so will not relieve the Bidder from responsibility for completing the contract.

The Bidder warrants that this bid is submitted solely on the basis of the Bidder's examination and inspection of the quality and quantity of the timber offered for sale and the Bidder's opinion of the value thereof and the costs of recovery. No reliance should be placed on the State of Michigan's estimates of timber quality, quantity or costs of recovery. Bidder further acknowledges that the State of Michigan: (i) expressly disclaims any warranty of fitness of timber for any purpose; (ii) offers this timber as is without any warranty of quality (merchantability) or quantity and (iii) expressly disclaims any warranty as to the quantity or quality of timber sold.

11. Certification and Chain-of-Custody (10/14)

Unless otherwise indicated in the contract under section 7 – Other Conditions of the Sale Specific Conditions & Requirements, the area encompassed by this timber sale is certified to the standards of the Forest Stewardship Council (FSC) - Certificate #SCS-FM/COC-00090N and the Sustainable Forestry Initiative (SFI) - Certificate #NSF-SFIS-5Y031-SF5. Forest products from this sale may be delivered to the mill as "FSC 100% and / or SFI certified" as long as the contractor hauling the forest products is chain-of-custody (COC) certified or covered under a COC certificate from the destination mill. The purchaser is responsible for maintaining COC after leaving the sale area.

12. Good Neighbor Authority (GNA) Requirements (7/16)

If the name of this timber sales contains the acronym GNA, it is authorized by the Good Neighbor Authority (GNA) and covered by various agreements between the U.S. Forest Service and the State. The timber sale occurs on federal land and the following conditions apply:

GNA contracts on US Forest Service land will not be awarded to purchasers on the Federal list of excluded parties. The System for Award Management (SAM) will be checked for active excluded parties prior to award of contract. In addition, the Bidder to whom award is made must complete an Assurance Regarding Felony Conviction or Tax Delinquent Status for Corporate Applicants (AD-3031).

13. Good Neighbor Authority (GNA) Requirements, con't (9/16)

Bidder certifies, by signing this bid form, that to the best of Bidder's knowledge that the following representations are accurate and complete.

- a. That the Bidder and its principals are not presently debarred, suspended, proposed for debarment, declared ineligible, or voluntary excluded from timber sales (covered transactions) by any Federal department or agency.
- b. That the Bidder and its principals have not within a 3-year period preceding this bid been convicted of or had a civil judgment rendered against them for commission of fraud or a criminal offense in connection with obtaining , attempting to obtain, or performing a public (Federal, State, or local) transaction or contract under a public transaction; violation of Federal or State antitrust statutes or commission of embezzlement, theft, forgery, bribery, falsification or destruction of records, making false statements, or receiving stolen property.
- c. That the Bidder and its principals are not presently indicted for or otherwise criminally or civilly charged by a governmental entity (Federal, State, or local) with commission of any of the offenses enumerated in paragraph b of this certification.
- d. That the Bidder and its principals have not within a 3-year period preceding this bid had one or more public transactions (Federal, State, or local) terminated for breach or default of a timber or forest product contract.

Bidders that cannot certify this requirement, in whole or in part, shall submit an explanation with their bid.

DAN EICHINGER
Director

TIMBER SALE INFORMATION

First Creek Mix (42-025-20)

T45N, R09W, SEC. 20; T45N, R09W, SEC. 21; T45N, R09W, SEC. 28; T45N, R09W, SEC. 29.
Luce County (Advertised Price \$56,032.25)

SALE NOTE: Permission for access across private land is the responsibility of the Purchaser.

Within Payments 1 and 2, harvesting is not permitted during the period of April 15 to July 15 because of bark slippage.

The McLeod Road is an ORV trail or route and is shown on the Timber Sale Map. See Sale Spec. 5.2.39 for additional information.

The McLeod Road is a snowmobile trail and is shown on the Timber Sale Map. See Sale Spec. 5.2.41 for restrictions.

Payment Unit 7 is optional to harvest due to potential access issues and stream crossings that may be necessary to access the unit. It is recommended, but not required, that harvesting occur during dry summer or frozen winter conditions due to heavy, wet soils.

Removing this Payment Unit is a contract modification which requires a Timber Sale Contract Amendment.

A recreation site such as a trail, pathway, or campground is within the sale area or the vicinity. Certain restrictions/specifications may be applicable including time restrictions.

A timber sale contract for this lump sum, sealed bid timber sale will be awarded to the responsible bidder offering the highest sealed bid price. All units of volume listed below were estimated using the T-Sale computer program and our traditional volume equations. Bids must be at or above the following advertised price for each product and species:

<u>PRODUCTS & SPECIES</u>	<u>ESTIMATED UNITS*</u>	<u>ADVERTISED PRICE</u>
Sawtimber		
Black Cherry	19.0 MBF	\$ 106.00 / MBF
Red Maple	56.6 MBF	\$ 60.00 / MBF
Sugar Maple	47.0 MBF	\$ 218.00 / MBF
Yellow Birch	4.5 MBF	\$ 25.00 / MBF
Pulpwood		
Balsam Fir	280 Cords	\$ 9.55 / Cord
Mixed Aspen	551 Cords	\$ 13.70 / Cord
Mixed Hardwood	2,276 Cords	\$ 11.45 / Cord
Mixed Spruce	275 Cords	\$ 11.95 / Cord
White Pine	46 Cords	\$ 15.10 / Cord

* The total volume is statistically estimated within plus (+) or minus (-) 10.79 percent. There are an estimated 3,890 cords on this timber sale, plus or minus 420 cords at the 95% confidence level. The estimated units are final and not subject to adjustment. Prospective bidders are urged to examine this timber and to make their own estimates of quantity and quality.

BOND AND PAYMENT SCHEDULE:

1. A bond in the amount of \$2,802.00 to insure faithful performance of the conditions of the contract will be deposited by the successful bidder within 21 days of the sale award.
2. Cutting in any sale or unit without the required advance payment would be considered a trespass.
3. Total payment must be paid in advance or according to the following schedule :
 - (a) Ten percent (10%) of the sale value must be paid within 21 days of the sale award.
 - (b) The 10% down payment will be credited towards the first unit cut.
 - (c) Payment for each of the following units must be made before cutting begins in that unit:

PAYMENT UNIT NUMBER	PERCENT OF TOTAL SALE VALUE
01	17.0%
02	21.9%
03	11.0%
04	13.5%
05	14.4%
06	16.4%
07	5.8%

4. If no cutting takes place, the 10% down payment will not be refunded.
5. Operations on the contract issued will terminate on 12/31/2025.

SALE STATISTICS**SALE VOLUMES**

VOLUME			STATISTICAL RANGE IN CORDS	
TOTAL CUBIC FEET	TOTAL CORDS	PERCENT ERROR	MINIMUM	MAXIMUM
307,337	3,890	10.79%	3,471	4,310

VDU VOLUMES

A VDU is a Volume Determination Unit. Volumes and their associated statistics are calculated at the VDU level and summarized to the sale level. There is often a one to one relationship between a VDU and a Payment Unit, but not always, depending on the cruise design. Refer to the VDU TO PAYMENT UNIT table.

VDU	VOLUME			RANGE IN CORDS	
	TOTAL CUBIC FEET	TOTAL CORDS	PERCENT ERROR	MINIMUM	MAXIMUM
2	136,212	1,724	11.78%	1,521	1,927
9	179,804	2,276	19.09%	1,842	2,710
14	248,913	3,151	14.18%	2,704	3,598
114	24,861	315	43.16%	179	451
TOTAL:	589,790	7,466		6,245	8,686

VDU TO PAYMENT UNIT

When a VDU is associated with more than one Payment Unit (PU), the VDU volumes are assigned to the PU based on acres of the VDU within the PU.

VDU	VDU ACRES	PU	PU ACRES
2	62.9	1	27.5
		2	35.4
9	40.9	3	18.4
		4	22.5
14	54.3	5	25.4
		6	28.9
114	9.7	7	9.7
TOTAL:	167.8		167.8

DESCRIPTION OF TIMBER BY PAYMENT UNIT (PU)

PU	MARKET GROUP	PRODUCT	QUANTITY	UNIT	ACRES	ADVERTISE PRICE
1	Black Cherry	Sawtimber	8.3	MBF	27.5	\$9,514.80
	Red Maple		13.9	MBF		
	Sugar Maple		20.5	MBF		
	Balsam Fir	Pulpwood	6	Cords		
	Mixed Hardwood		286	Cords		
	<i>Beech</i>		7	<i>Cords</i>		
	<i>Black Cherry</i>		52	<i>Cords</i>		
	<i>Red Maple</i>		107	<i>Cords</i>		
	<i>Sugar Maple</i>		120	<i>Cords</i>		
2	Black Cherry	Sawtimber	10.7	MBF	35.4	\$12,257.75
	Red Maple		17.8	MBF		
	Sugar Maple		26.5	MBF		
	Balsam Fir	Pulpwood	8	Cords		
	Mixed Hardwood		367	Cords		
	<i>Beech</i>		9	<i>Cords</i>		
	<i>Black Cherry</i>		66	<i>Cords</i>		
	<i>Red Maple</i>		137	<i>Cords</i>		
	<i>Sugar Maple</i>		155	<i>Cords</i>		
3	Red Maple	Sawtimber	7.1	MBF	18.4	\$6,185.40
	Yellow Birch		2.0	MBF		
	Balsam Fir	Pulpwood	57	Cords		
	Mixed Aspen		31	Cords		
	<i>Quaking Aspen</i>		31	<i>Cords</i>		
	Mixed Hardwood		355	Cords		
	<i>Beech</i>		5	<i>Cords</i>		
	<i>Black Cherry</i>		6	<i>Cords</i>		
	<i>Red Maple</i>		326	<i>Cords</i>		
	<i>Yellow Birch</i>		18	<i>Cords</i>		
	Mixed Spruce		30	Cords		
	<i>Black Spruce</i>		2	<i>Cords</i>		
	<i>White Spruce</i>		28	<i>Cords</i>		
White Pine		21	Cords			
4	Red Maple	Sawtimber	8.6	MBF	22.5	\$7,544.75
	Yellow Birch		2.5	MBF		
	Balsam Fir	Pulpwood	69	Cords		
	Mixed Aspen		37	Cords		
	<i>Quaking Aspen</i>		37	<i>Cords</i>		
	Mixed Hardwood		435	Cords		
	<i>Beech</i>		6	<i>Cords</i>		
	<i>Black Cherry</i>		8	<i>Cords</i>		
	<i>Red Maple</i>		398	<i>Cords</i>		
	<i>Yellow Birch</i>		23	<i>Cords</i>		
	Mixed Spruce		37	Cords		
	<i>Black Spruce</i>		3	<i>Cords</i>		
	<i>White Spruce</i>		34	<i>Cords</i>		
White Pine		25	Cords			
5	Red Maple	Sawtimber	4.3	MBF	25.4	\$8,084.20
	Balsam Fir	Pulpwood	41	Cords		
	Mixed Aspen		202	Cords		
	<i>B. T. Aspen</i>		24	<i>Cords</i>		
	<i>Balsam Poplar</i>		9	<i>Cords</i>		
	<i>Quaking Aspen</i>		169	<i>Cords</i>		
	Mixed Hardwood		345	Cords		
	<i>Black Ash</i>		24	<i>Cords</i>		
	<i>Black Cherry</i>		5	<i>Cords</i>		
	<i>Paper Birch</i>		12	<i>Cords</i>		

DESCRIPTION OF TIMBER BY PAYMENT UNIT (PU), CON'T

PU	MARKET GROUP	PRODUCT	QUANTITY	UNIT	ACRES	ADVERTISE PRICE
5 con't	<i>Red Maple</i>	<i>Pulpwood</i>	299	<i>Cords</i>		
	<i>Yellow Birch</i>		5	<i>Cords</i>		
	Mixed Spruce		60	<i>Cords</i>		
	<i>Black Spruce</i>		25	<i>Cords</i>		
	<i>White Spruce</i>		35	<i>Cords</i>		
6	Red Maple	Sawtimber	4.9	MBF	28.9	\$9,195.35
	Balsam Fir	Pulpwood	47	Cords		
	Mixed Aspen		230	Cords		
	<i>B. T. Aspen</i>		28	<i>Cords</i>		
	<i>Balsam Poplar</i>		10	<i>Cords</i>		
	<i>Quaking Aspen</i>		192	<i>Cords</i>		
	Mixed Hardwood		391	Cords		
	<i>Black Ash</i>		27	<i>Cords</i>		
	<i>Black Cherry</i>		5	<i>Cords</i>		
	<i>Paper Birch</i>		14	<i>Cords</i>		
	<i>Red Maple</i>		340	<i>Cords</i>		
	<i>Yellow Birch</i>		5	<i>Cords</i>		
	Mixed Spruce		69	Cords		
	<i>Black Spruce</i>		29	<i>Cords</i>		
	<i>White Spruce</i>		40	<i>Cords</i>		
7	Balsam Fir	Pulpwood	52	Cords	9.7	\$3,250.00
	Mixed Aspen		51	Cords		
	<i>Quaking Aspen</i>		51	<i>Cords</i>		
	Mixed Hardwood		97	Cords		
	<i>Black Cherry</i>		5	<i>Cords</i>		
	<i>Red Maple</i>		87	<i>Cords</i>		
	<i>Sugar Maple</i>		5	<i>Cords</i>		
	Mixed Spruce		79	Cords		
<i>White Spruce</i>	79	<i>Cords</i>				
TOTAL:			127.1	MBF		
TOTAL:			3,428	Cords		

Sale Specific Conditions & Requirements

Sale Name: First Creek Mix

Sale Number: 42-025-20 Seq#: 2

1 - Sale Area

1.2 - Boundaries

1.2.1 - Painted boundaries (9/19)

The sale boundary and Payment Unit boundaries are marked and identified by blue, red, and yellow paint. Exterior sale boundary lines against private property are marked with blue paint. Exterior sale boundary lines against state are marked with red paint. Interior Payment Unit boundaries are marked with yellow paint. The painted boundary line trees are not Included Timber and are to be protected unless marked with orange paint. Yellow painted trees designating an interior Payment Unit boundary are only to be cut when all surrounding Payment Units have been paid.

2 - Timber Specifications

2.1 - Included Timber

2.1.3 - Cut tree marked unit(s) (12/08)

Within Payment Unit(s) 1 & 2, all trees are designated for cutting when marked with orange paint above and below stump height, regardless of merchantability.

2.1.5 - Overstory removal unit(s) (8/11)

Within Payment Unit(s) 5-7, all trees which meet minimum piece specifications in 2.2 Utilization, are designated for cutting, except do not cut any hemlock or white pine. In addition, do not cut aspen larger than 18" at DBH. Also, do not cut any cedar within a tree length of hemlock patches to keep the retention patch intact. Scattered cedar can be harvested within specified units for maneuverability (see spec 2.1.9 for additional information).

2.1.7 - Leave tree marked unit(s) (6/14)

Within Payment Unit(s) 3 & 4, all trees which meet minimum piece specifications in 2.2 Utilization are designated for cutting, except do not cut cedar, hemlock, or any trees marked with green paint. In addition, do not cut white pine or yellow birch greater than 18" at DBH.

2.1.9 - Harvest exception (12/08)

Do not cut any cedar trees other than those that are necessary to remove in order to operate within the sale area. Every effort must be made to preserve the existing cedar and to leave an intact stand upon sale completion. All cut cedar shall be piled separately by products and scaled in the woods unless other scaling arrangements are agreed to by the Unit Manager or his/her representative. Stumpage price for cedar shall be \$50.00 per cord.

2.1.11 - Description of timber note (2/04)

Note that Payment Unit 7 is optional to harvest due to potential access issues and stream crossings that may be necessary to access the unit. Removing this Payment Unit is a contract modification which requires a Timber Sale Contract Amendment.

3 - Payments

3.3 - Pre-measured Sales

3.3.4 - Dividing payment units (7/14)

Payment Unit(s) 1, 2, and 4 - 6 may be divided at the request of the Purchaser and upon approval of the Unit Manager. Dividing Payment Units is a contract modification which requires a Timber Sale Contract Amendment. There will be only one division per Payment Unit.

4 - Transportation

4.1 - Construction

4.1.1 - Stream crossings, general (3/11)

All stream crossing structures will be temporary and therefore, shall be provided by the Purchaser, and must be removed upon completion of the sale. All permits for stream crossings will be provided by the Purchaser.

4.1.4 - Timber removed for construction (12/09)

Trees cut or damaged in the process of pre-approved road, landing or skid trail construction will be decked in an area separate from other Designated Timber and not removed until measured by the sale administrator. Payment will be made at the specified Purchase Unit Price.

4.1.6 - Road construction (1/09)

Construction of new roads or improvements of existing roads shall be done in such a way as to minimize the environmental and visual impacts. Merchantable trees shall be cut and utilized unless otherwise directed. Non-merchantable trees shall be severed and laid flat on the ground. Slash shall be scattered, and not left in windrows and kept a minimum of 10 feet back from the road edge. Stumps shall be set upright, not left on edge, and be moved at least 10 feet away from the road edge. Disturbed soil shall be feathered into the woods and not left in berms or windrows.

4.1.7 - Road closure (10/11)

All new roads built into the sale must be blocked to vehicle traffic upon completion of the sale. Overgrown roads that are reopened shall be considered new roads. These roads must be rendered impassable to cars and trucks. Contact the sale administrator for specific details of design and placement.

4.1.11 - Permits (2/12)

The Purchaser will secure any necessary stream crossing permits that may be required.

4.2 - Maintenance

4.2.4 - Grading (10/16)

For completion of the sale, state forest roads must be graded. In general, this will require a road grader or bulldozer to shape up the roads after forest products have been hauled off site. This includes cleaning of drainage areas, grading, crowning, and filling with gravel, if necessary. The grading equipment to be used must be approved by the Unit Manager or his/her representative.

4.2.5 - Two wheel drive condition (2/04)

All existing trail roads on and adjacent to the sale area must be passable by two-wheel drive traffic for the duration of the sale.

4.4 - Access

4.4.1 - Private property access (3/11)

Permission for access across private land is the responsibility of the Purchaser.

5 - Operations

5.2 - Conduct of Operations

5.2.1 - Slash

5.2.1.2 - Slash Removal

5.2.1.2.1 - Slash removal, right-of-way (9/16)

All slash must be removed at least 10 feet from the cleared right-of-way of existing forest roads.

5.2.1.8 - Slash height (12/08)

No slash or tree tops may exceed 24 inches in height.

5.2.2 - Hazard Trees/Snags

5.2.2.1 - Den trees (10/16)

Obvious hollow and/or den trees shall be protected and left standing unless they are a safety hazard.

5.2.3 - Operating Restrictions

5.2.3.1 - Operating restrictions (9/11)

Within Payment Unit(s) Payment Units 5-7, cutting, skidding, and hauling are limited to the period of 10/1 to 3/31. This restriction is because of deer yard / wildlife.

5.2.3.3 - Bark slippage restriction (3/09)

Within Payment Unit(s) 1 & 2, unless changed by written agreement, cutting and skidding are not permitted during the

period of April 15 to July 15. This restriction is because of bark slippage.

5.2.22 - Operating Caution

5.2.22.1 - Operating caution (6/11)

It is recommended, but not required, that within Payment Unit(s) 7, cutting, skidding, and hauling occur during dry summer or frozen winter conditions. The reason for the recommendation is because of heavier soil types that may be damaged during wet seasons.

5.2.38 - No decking against live trees (2/04)

Cut products may not be decked against unmarked or designated leave trees.

5.2.39 - ORV trail/route protection (4/18)

The McLeod Road is an ORV trail or route and is shown on the Timber Sale Map. Do not damage posts with orange ORV markers.

5.2.41 - Snowmobile trail protection (9/11)

The McLeod Road is a snowmobile trail and is shown on the Timber Sale Map. Do not cut or damage posts with orange trail markers or traffic control signs. If the trail is used, it must be maintained and restored to a condition equal to or better than before the sale. The road maintenance/restoration must be done prior to December 1. If the trail is used for hauling, it must be graded to the satisfaction of the Unit Manager or his/her representative prior to December 1. If the trail road is to be used for hauling during the snowmobile season, then a snow-covered base must be left on the trail. Any stumps within 5 feet of the trail must be cut off level with the ground. Maintain a 20-foot-wide slash, debris, and rut free zone daily using the snowmobile trail as the centerline. No decking of forest products will be permitted along the snowmobile trail.

5.4 - Soil Protection

5.4.1 - Rutting restriction, general (7/16)

Operations are to cease immediately if equipment and weather conditions result in rutting of roads and/or skid trails which is 12 inches or greater in depth and 50 feet in length. The Unit Manager or his/her representative may restrict hauling and/or skidding if ruts exceed the specified depth. With the Unit Manager or his/her representative's approval, the Purchaser may return to the area when the risk of rutting has decreased.

5.8 - Protection of Endangered Species

5.8.5 - Protection of raptor nests (3/13)

All trees with raptor nests will be protected if found during harvesting operations. Notification will be made to the Unit Manager or his/her representative who will notify the Wildlife Biologist so an on-site evaluation and recommendation can be made, if necessary.

6 - Safety and Fire Prevention

6.2 - Signing

6.2.1 - Road posting (10/20)

The Purchaser is responsible for posting and maintaining caution signs on the McLeod Road prior to beginning operations. The road must be posted at appropriate distances from the Sale Area to warn of logging activity and truck traffic. Signs must be removed when harvest operations are suspended or completed. The Purchaser will provide these signs.

6.2.2 - Snowmobile trail posting (10/20)

The Purchaser is responsible for posting and maintaining caution signs on the snowmobile trail prior to beginning operations during the snowmobile season (approximately December 1 to March 31). The trail must be posted at appropriate distances from the Sale Area to warn of logging activity and truck traffic. Signs must be removed when harvest operations are suspended or completed. The DNR will provide these signs.

6.2.3 - Recreational trail posting (2/10)

The Purchaser is responsible for posting and maintaining caution signs on ORV Trail prior to beginning operations. The trail must be posted at appropriate distances from the Sale Area to warn of logging activity and truck traffic at both ends of the trail. Signs must be removed when harvest operations are suspended or completed. The DNR will provide these signs.



Michigan Department of Natural Resources - Forest Resources Division

TIMBER SALE MAP

This information provided by authority of Part 525, 1994 PA 451, as amended.

Forest Management Unit Newberry		County Luce	Mapped By Livermore	Sale Number 42-025-20	Year 2020
Range 09W	Section(s) and Subdivision(s) Section 20: W $\frac{1}{2}$ SW Section 21: SE $\frac{1}{4}$ Section 28: N $\frac{1}{2}$ NW, N $\frac{1}{2}$ NE, NWNW	Cruised By Grossman Forestry	Date 10/7/2020	Page 1	of 2
Township 45N	Scale 1:15,840				

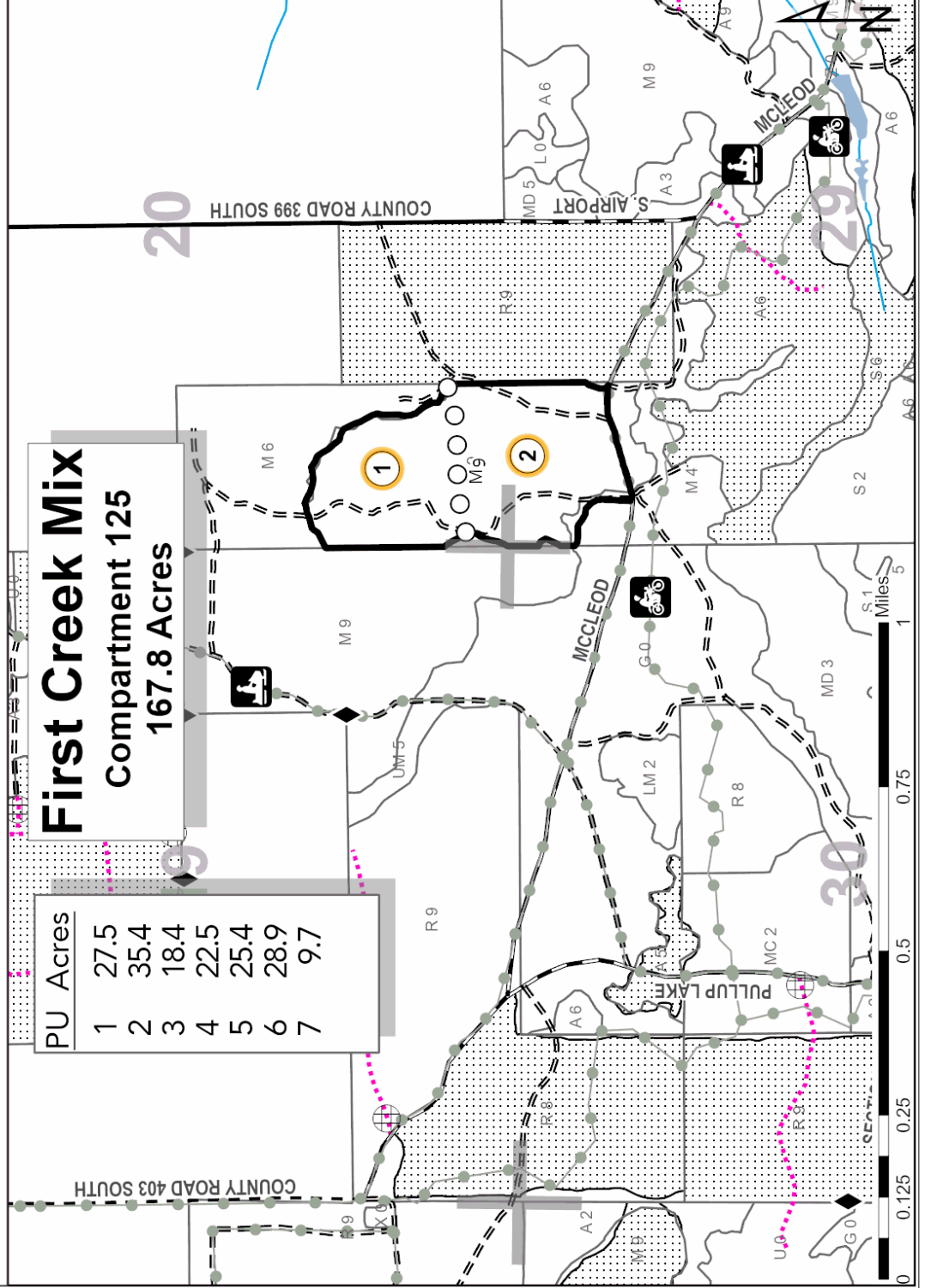
Cover Type		Density
A = Aspen	H = Hemlock	0 = Non Stocked
B = Paper Birch	J = Jack Pine	1 = Seeding Sapling Poor
C = Cedar	L = Lowland Brush	2 = Seeding Sapling Medium
D = Tread Bog	LM = Lowland Mixed	3 = Seeding Sapling Well
E = Swamp Hdwoods	M = Mpl, Bch, Brch	4 = Pole Timber Poor
F = Spruce Fir	MC = Mixed Conifer	5 = Pole Timber Medium
G = Grass	MD = Mixed Deciduous	6 = Pole Timber Well
	N = Marsh	7 = Saw Timber Poor
	O = Oak	8 = Saw Timber Medium
	P = Lowland Poplar	9 = Saw Timber Well
	Q = Mixed Swamp Conifer	
	R = Red Pine	
	S = Black Spruce	
	X = Non Stocked	
	Z = Water	
	T = Tamarack	
	U = Upland Brush	
	UM = Upland Mixed	
	V = Bog or Marsh	
	W = White Pine	

PU Acres	
1	27.5
2	35.4
3	18.4
4	22.5
5	25.4
6	28.9
7	9.7

First Creek Mix
Compartment 125
167.8 Acres

- Against State (Red)
- Payment Unit (Yellow)
- Payment Unit Label
- Motorcycle Trails
- Snowmobile Trails
- Recreational Trail
- Section Numbers
- Section Corners
- Survey Corners
- Berms
- Primary Forest Road
- Secondary Forest Road
- Forest Access Route
- Paved Road
- Gravel Road
- County Road - Seasonal
- Private
- Perennial River
- Lakes and Rivers
- DNR - Management Access
- Temporary Management Access
- Nearby Timber Sale

Locator Map: 1:200,000
 --- Main Map Extent





TIMBER SALE MAP

This information provided by authority of Part 525, 1994 PA 451, as amended.

Forest Management Unit	County	Sale Number	Year
Newberry	Luce	42-025-20	2020
Range	Cruised By	Date	Page of
09W	Grossman Forestry	10/7/2020	2 2
Township	Section(s) and Subdivision(s)	Scale	
45N	Section 20: W $\frac{1}{2}$ SW Section 21: SE $\frac{1}{4}$ Section 28: N $\frac{1}{2}$ NW, N $\frac{1}{2}$ NE, NWNW	1:15,840	

Cover Type

- | | | |
|----------------------|-------------------------|-------------------|
| H = Hemlock | N = Marsh | U = Upland Brush |
| J = Jack Pine | O = Oak | UM = Upland Mixed |
| L = Lowland Birch | P = Lowland Poplar | V = Bog or Marsh |
| LM = Lowland Mixed | Q = Mixed Swamp Conifer | W = White Pine |
| M = Mpl, Bch, Brch | R = Red Pine | X = Non Stocked |
| MC = Mixed Conifer | S = Black Spruce | Z = Water |
| MD = Mixed Deciduous | T = Tamarack | |
| G = Grass | | |

Density

- 0 = Non Stocked
- 1 = Seeding Sapling Poor
- 2 = Seeding Sapling Medium
- 3 = Seeding Sapling Well
- 4 = Pole Timber Poor
- 5 = Pole Timber Medium
- 6 = Pole Timber Well
- 7 = Saw Timber Poor
- 8 = Saw Timber Medium
- 9 = Saw Timber Well

PU Acres

1	27.5
2	35.4
3	18.4
4	22.5
5	25.4
6	28.9
7	9.7

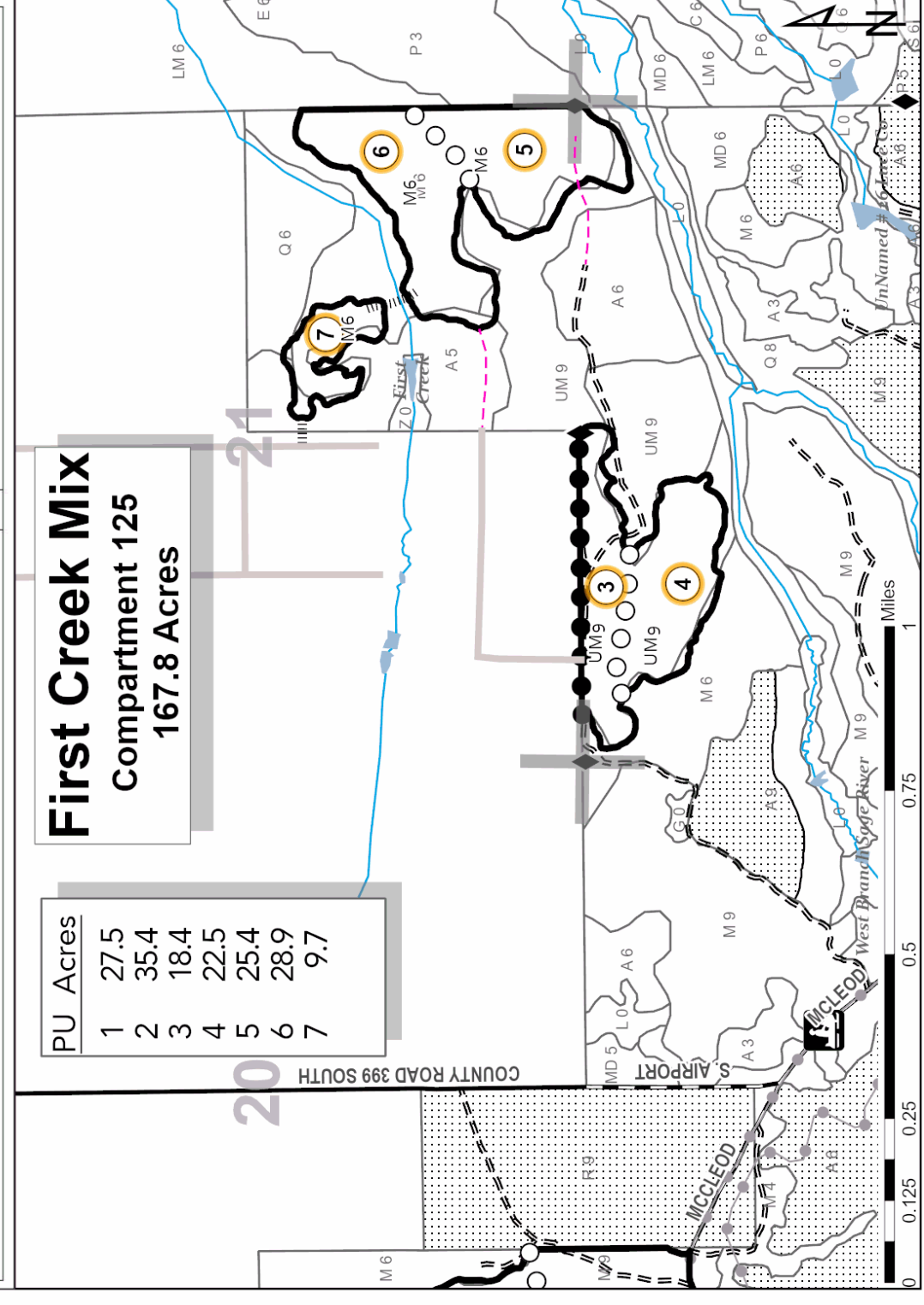
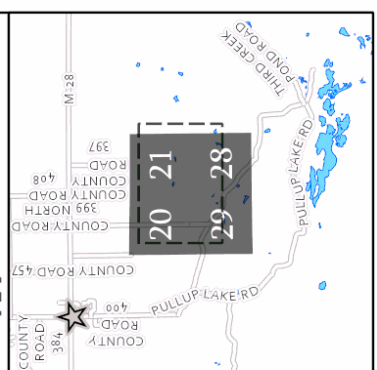
First Creek Mix

Compartment 125

167.8 Acres

- Against State (Red)
- Payment Unit (Yellow)
- Private Line (Blue)
- Payment Unit Label
- Motorcycle Trails
- Snowmobile Trails
- Recreational Trail
- 01 Section Numbers
- Section Corners
- Survey Corners
- Primary Forest Road
- Secondary Forest Road
- Forest Access Route
- Paved Road
- Gravel Road
- County Road - Seasonal
- Private
- Perennial River
- Lakes and Rivers
- DNR - Management Access
- Temporary Management Access
- ||||| Proposed Access
- Nearby Timber Sale

Locator Map: 1:200,000
 - Main Map Extent



TIMBER SALE INFORMATION

McLeod Mayhem (42-026-20)
T45N, R09W, SEC. 27; T45N, R09W, SEC. 28; T45N, R09W, SEC. 33.
Luce County (Advertised Price \$118,341.05)

SALE NOTE: It is recommended, but not required, that within Payment Unit 8, harvesting occur during dry summer or frozen winter conditions because of wetter soil types. The McLeod Road is an ORV trail or route and is shown on the Timber Sale Map. See Sale Spec. 5.2.39 for additional information. The McLeod Road is a snowmobile trail and is shown on the Timber Sale Map. See Sale Spec. 5.2.41 for restrictions.

A recreation site such as a trail, pathway, or campground is within the sale area or the vicinity. Certain restrictions/specifications may be applicable including time restrictions.

A timber sale contract for this lump sum, sealed bid timber sale will be awarded to the responsible bidder offering the highest sealed bid price. All units of volume listed below were estimated using the T-Sale computer program and our traditional volume equations. Bids must be at or above the following advertised price for each product and species:

<u>PRODUCTS & SPECIES</u>	<u>ESTIMATED UNITS*</u>	<u>ADVERTISED PRICE</u>
Sawtimber		
Black Cherry	19.6 MBF	\$ 106.00 / MBF
Paper Birch	11.5 MBF	\$ 24.00 / MBF
Red Maple	84.9 MBF	\$ 60.00 / MBF
Sugar Maple	94.0 MBF	\$ 218.00 / MBF
Pulpwood		
Balsam Fir	297 Cords	\$ 9.55 / Cord
Mixed Aspen	2,882 Cords	\$ 13.70 / Cord
Mixed Hardwood	3,380 Cords	\$ 11.45 / Cord
Mixed Spruce	460 Cords	\$ 11.95 / Cord
N. White Cedar	82 Cords	\$ 4.15 / Cord
Red Pine	26 Cords	\$ 49.75 / Cord
White Pine	149 Cords	\$ 15.10 / Cord

* The total volume is statistically estimated within plus (+) or minus (-) 9.88 percent. There are an estimated 7,764 cords on this timber sale, plus or minus 767 cords at the 95% confidence level. The estimated units are final and not subject to adjustment. Prospective bidders are urged to examine this timber and to make their own estimates of quantity and quality.

BOND AND PAYMENT SCHEDULE:

1. A bond in the amount of \$5,917.00 to insure faithful performance of the conditions of the contract will be deposited by the successful bidder within 21 days of the sale award.
2. Cutting in any sale or unit without the required advance payment would be considered a trespass.
3. Total payment must be paid in advance or according to the following schedule :
 - (a) Ten percent (10%) of the sale value must be paid within 21 days of the sale award.
 - (b) The 10% down payment will be credited towards the first unit cut.
 - (c) Payment for each of the following units must be made before cutting begins in that unit:

PAYMENT UNIT NUMBER	PERCENT OF TOTAL SALE VALUE
01	4.7%
02	9.4%
03	9.7%
04	4.8%
05	7.8%
06	7.2%
07	9.3%
08	9.3%
09	8.7%
10	11.7%
11	11.5%
12	5.9%

4. If no cutting takes place, the 10% down payment will not be refunded.
5. Operations on the contract issued will terminate on 12/31/2025.

SALE STATISTICS

SALE VOLUMES

VOLUME			STATISTICAL RANGE IN CORDS	
TOTAL CUBIC FEET	TOTAL CORDS	PERCENT ERROR	MINIMUM	MAXIMUM
613,344	7,764	9.88%	6,997	8,531

VDU VOLUMES

A VDU is a Volume Determination Unit. Volumes and their associated statistics are calculated at the VDU level and summarized to the sale level. There is often a one to one relationship between a VDU and a Payment Unit, but not always, depending on the cruise design. Refer to the VDU TO PAYMENT UNIT table.

VDU	VOLUME			RANGE IN CORDS	
	TOTAL CUBIC FEET	TOTAL CORDS	PERCENT ERROR	MINIMUM	MAXIMUM
19	33,773	428	34.57%	280	575
40	210,898	2,670	28.28%	1,915	3,425
42	176,470	2,234	16.72%	1,860	2,607
44	196,457	2,487	14.90%	2,116	2,857
50	68,074	862	20.44%	686	1,038
79	192,286	2,434	13.08%	2,116	2,752
81	246,986	3,126	20.92%	2,472	3,780
TOTAL:	1,124,944	14,240		11,444	17,035

VDU TO PAYMENT UNIT

When a VDU is associated with more than one Payment Unit (PU), the VDU volumes are assigned to the PU based on acres of the VDU within the PU.

VDU	VDU ACRES	PU	PU ACRES
19	13.4	1	13.4
40	29.8	6	13.1
		7	16.7
42	36.2	2	17.9
		3	18.3
44	43.6	4	16.6
		5	27.0
50	23.0	8	23.0
79	68.1	11	45.1
		12	23.0
81	37.4	9	15.8
		10	21.6
TOTAL:	251.5		251.5

DESCRIPTION OF TIMBER BY PAYMENT UNIT (PU)

PU	MARKET GROUP	PRODUCT	QUANTITY	UNIT	ACRES	ADVERTISE PRICE
1	Red Maple	Sawtimber	2.1	MBF	13.4	\$5,509.55
	Balsam Fir	Pulpwood	7	Cords		
	Mixed Aspen		244	Cords		
	<i>B. T. Aspen</i>		189	<i>Cords</i>		
	<i>Quaking Aspen</i>		55	<i>Cords</i>		
	Mixed Hardwood		163	Cords		
	<i>Black Cherry</i>		58	<i>Cords</i>		
	<i>Red Maple</i>		105	<i>Cords</i>		
	Mixed Spruce		9	Cords		
	<i>White Spruce</i>		9	<i>Cords</i>		
2	Black Cherry	Sawtimber	5.5	MBF	17.9	\$11,167.20
	Red Maple		2.1	MBF		
	Sugar Maple		21.6	MBF		
	Balsam Fir	Pulpwood	3	Cords		
	Mixed Aspen		47	Cords		
	<i>Quaking Aspen</i>		47	<i>Cords</i>		
	Mixed Hardwood		434	Cords		
	<i>Black Cherry</i>		61	<i>Cords</i>		
	<i>Red Maple</i>		107	<i>Cords</i>		
	<i>Sugar Maple</i>		266	<i>Cords</i>		
	Mixed Spruce		9	Cords		
<i>White Spruce</i>		9	<i>Cords</i>			
3	Black Cherry	Sawtimber	5.7	MBF	18.3	\$11,437.55
	Red Maple		2.1	MBF		
	Sugar Maple		22.1	MBF		
	Balsam Fir	Pulpwood	3	Cords		
	Mixed Aspen		48	Cords		
	<i>Quaking Aspen</i>		48	<i>Cords</i>		
	Mixed Hardwood		444	Cords		
	<i>Black Cherry</i>		63	<i>Cords</i>		
	<i>Red Maple</i>		109	<i>Cords</i>		
	<i>Sugar Maple</i>		272	<i>Cords</i>		
	Mixed Spruce		10	Cords		
<i>White Spruce</i>		10	<i>Cords</i>			
4	Red Maple	Sawtimber	2.7	MBF	16.6	\$5,662.40
	Balsam Fir	Pulpwood	28	Cords		
	Mixed Aspen		207	Cords		
	<i>B. T. Aspen</i>		41	<i>Cords</i>		
	<i>Balsam Poplar</i>		34	<i>Cords</i>		
	<i>Quaking Aspen</i>		132	<i>Cords</i>		
	Mixed Hardwood		177	Cords		
	<i>Beech</i>		7	<i>Cords</i>		
	<i>Black Ash</i>		2	<i>Cords</i>		
	<i>Black Cherry</i>		18	<i>Cords</i>		
	<i>Red Maple</i>		150	<i>Cords</i>		
	Mixed Spruce		31	Cords		
	<i>Black Spruce</i>		17	<i>Cords</i>		
	<i>White Spruce</i>		14	<i>Cords</i>		
5	Red Maple	Sawtimber	4.5	MBF	27.0	\$9,198.05
	Balsam Fir	Pulpwood	45	Cords		
	Mixed Aspen		336	Cords		
	<i>B. T. Aspen</i>		66	<i>Cords</i>		
	<i>Balsam Poplar</i>		55	<i>Cords</i>		
	<i>Quaking Aspen</i>		215	<i>Cords</i>		
	Mixed Hardwood		288	Cords		
	<i>Beech</i>		12	<i>Cords</i>		

DESCRIPTION OF TIMBER BY PAYMENT UNIT (PU), CON'T

PU	MARKET GROUP	PRODUCT	QUANTITY	UNIT	ACRES	ADVERTISE PRICE
5 con't	<i>Black Ash</i>	<i>Pulpwood</i>	2	<i>Cords</i>		
	<i>Black Cherry</i>		30	<i>Cords</i>		
	<i>Red Maple</i>		244	<i>Cords</i>		
	Mixed Spruce		50	<i>Cords</i>		
	<i>Black Spruce</i>		27	<i>Cords</i>		
	<i>White Spruce</i>		23	<i>Cords</i>		
6	Red Maple	Sawtimber	5.2	MBF	13.1	\$8,573.50
	Sugar Maple		6.1	MBF		
	Balsam Fir	Pulpwood	44	Cords		
	Mixed Aspen		206	Cords		
	<i>B. T. Aspen</i>		183	<i>Cords</i>		
	<i>Quaking Aspen</i>		23	<i>Cords</i>		
	Mixed Hardwood		247	Cords		
	<i>Beech</i>		7	<i>Cords</i>		
	<i>Black Cherry</i>		3	<i>Cords</i>		
	<i>Paper Birch</i>		21	<i>Cords</i>		
	<i>Red Maple</i>		130	<i>Cords</i>		
	<i>Sugar Maple</i>		86	<i>Cords</i>		
	Mixed Spruce		43	Cords		
	<i>Black Spruce</i>		14	<i>Cords</i>		
	<i>White Spruce</i>		29	<i>Cords</i>		
	White Pine		23	Cords		
7	Red Maple	Sawtimber	6.7	MBF	16.7	\$10,970.00
	Sugar Maple		7.8	MBF		
	Balsam Fir	Pulpwood	56	Cords		
	Mixed Aspen		264	Cords		
	<i>B. T. Aspen</i>		234	<i>Cords</i>		
	<i>Quaking Aspen</i>		30	<i>Cords</i>		
	Mixed Hardwood		317	Cords		
	<i>Beech</i>		10	<i>Cords</i>		
	<i>Black Cherry</i>		4	<i>Cords</i>		
	<i>Paper Birch</i>		27	<i>Cords</i>		
	<i>Red Maple</i>		166	<i>Cords</i>		
	<i>Sugar Maple</i>		110	<i>Cords</i>		
	Mixed Spruce		53	Cords		
	<i>Black Spruce</i>		17	<i>Cords</i>		
	<i>White Spruce</i>		36	<i>Cords</i>		
	White Pine		30	Cords		
8	Balsam Fir	Pulpwood	108	Cords	23.0	\$11,001.50
	Mixed Aspen		249	Cords		
	<i>B. T. Aspen</i>		223	<i>Cords</i>		
	<i>Quaking Aspen</i>		26	<i>Cords</i>		
	Mixed Hardwood		73	Cords		
	<i>Paper Birch</i>		43	<i>Cords</i>		
	<i>Red Maple</i>		30	<i>Cords</i>		
	Mixed Spruce		255	Cords		
	<i>Black Spruce</i>		160	<i>Cords</i>		
	<i>White Spruce</i>		95	<i>Cords</i>		
	N. White Cedar		82	Cords		
	Red Pine		26	Cords		
	White Pine		69	Cords		
9	Black Cherry	Sawtimber	1.7	MBF	15.8	\$10,239.85
	Red Maple		9.5	MBF		
	Sugar Maple		6.7	MBF		
	Mixed Aspen	Pulpwood	393	Cords		
	<i>B. T. Aspen</i>		315	<i>Cords</i>		

DESCRIPTION OF TIMBER BY PAYMENT UNIT (PU), CON'T

PU	MARKET GROUP	PRODUCT	QUANTITY	UNIT	ACRES	ADVERTISE PRICE
9 con't	<i>Quaking Aspen</i>	<i>Pulpwood</i>	78	<i>Cords</i>		
	Mixed Hardwood		231	<i>Cords</i>		
	<i>Black Cherry</i>		20	<i>Cords</i>		
	<i>Red Maple</i>		142	<i>Cords</i>		
	<i>Sugar Maple</i>		69	<i>Cords</i>		
10	Black Cherry	Sawtimber	2.4	MBF	21.6	\$14,032.55
	Red Maple		13.1	MBF		
	Sugar Maple		9.2	MBF		
	Mixed Aspen	<i>Pulpwood</i>	537	<i>Cords</i>		
	<i>B. T. Aspen</i>		430	<i>Cords</i>		
	<i>Quaking Aspen</i>		107	<i>Cords</i>		
	Mixed Hardwood		317	<i>Cords</i>		
	<i>Black Cherry</i>		28	<i>Cords</i>		
	<i>Red Maple</i>		195	<i>Cords</i>		
	<i>Sugar Maple</i>		94	<i>Cords</i>		
	11		Black Cherry	Sawtimber		
Paper Birch		7.6	MBF			
Red Maple		24.4	MBF			
Sugar Maple		13.6	MBF			
Balsam Fir		<i>Pulpwood</i>	2	<i>Cords</i>		
Mixed Aspen			232	<i>Cords</i>		
<i>B. T. Aspen</i>			191	<i>Cords</i>		
<i>Quaking Aspen</i>			41	<i>Cords</i>		
Mixed Hardwood			456	<i>Cords</i>		
<i>Beech</i>			44	<i>Cords</i>		
<i>Black Cherry</i>			43	<i>Cords</i>		
<i>Ironwood</i>			6	<i>Cords</i>		
<i>Paper Birch</i>			34	<i>Cords</i>		
<i>Red Maple</i>			225	<i>Cords</i>		
<i>Sugar Maple</i>		104	<i>Cords</i>			
White Pine		18	<i>Cords</i>			
12	Black Cherry	Sawtimber	1.5	MBF	23.0	\$6,950.40
	Paper Birch		3.9	MBF		
	Red Maple		12.5	MBF		
	Sugar Maple	6.9	MBF			
	Balsam Fir	<i>Pulpwood</i>	1	<i>Cords</i>		
	Mixed Aspen		119	<i>Cords</i>		
	<i>B. T. Aspen</i>		98	<i>Cords</i>		
	<i>Quaking Aspen</i>		21	<i>Cords</i>		
	Mixed Hardwood		233	<i>Cords</i>		
	<i>Beech</i>		23	<i>Cords</i>		
	<i>Black Cherry</i>		22	<i>Cords</i>		
	<i>Ironwood</i>		3	<i>Cords</i>		
	<i>Paper Birch</i>		17	<i>Cords</i>		
	<i>Red Maple</i>		115	<i>Cords</i>		
	<i>Sugar Maple</i>	53	<i>Cords</i>			
White Pine	9	<i>Cords</i>				
TOTAL:			210.0	MBF		
TOTAL:			7,276	Cords		

Sale Specific Conditions & Requirements

Sale Name: Mcleod Mayhem

Sale Number: 42-026-20 Seq#: 2

1 - Sale Area

1.2 - Boundaries

1.2.1 - Painted boundaries (9/19)

The sale boundary and Payment Unit boundaries are marked and identified by blue, red, and yellow paint. Exterior sale boundary lines against private property are marked with blue paint. Exterior sale boundary lines against state are marked with red paint. Interior Payment Unit boundaries are marked with yellow paint. The painted boundary line trees are not Included Timber and are to be protected unless marked with orange paint. Yellow painted trees designating an interior Payment Unit boundary are only to be cut when all surrounding Payment Units have been paid.

2 - Timber Specifications

2.1 - Included Timber

2.1.1 - Clearcut unit(s) with unmerchantable trees (6/14)

Within Payment Unit(s) 1 and 4-10, cut all deciduous trees that are two (2) inches or more at DBH, except do not cut any paper birch. In addition, cut all coniferous trees that are greater than four (4) inches at DBH, except do not cut any cedar. In addition, the following exceptions apply:

- Within Payment Unit 1, do not cut spruce greater than 12" at DBH, or any white pine.
- Within Payment Units 4 & 5, do not cut white pine greater than 20" at DBH, and spruce greater than 14" at DBH.
- Within Payment Unit 8, do not cut any hemlock.
- Within Payment Units 9 & 10, do not cut any red oak.

2.1.3 - Cut tree marked unit(s) (12/08)

Within Payment Unit(s) 2, 3, 11 & 12, all trees are designated for cutting when marked with orange paint above and below stump height, regardless of merchantability.

3 - Payments

3.3 - Pre-measured Sales

3.3.4 - Dividing payment units (7/14)

Payment Unit(s) may be divided at the request of the Purchaser and upon approval of the Unit Manager. Dividing Payment Units is a contract modification which requires a Timber Sale Contract Amendment. There will be only one division per Payment Unit.

4 - Transportation

4.1 - Construction

4.1.6 - Road construction (1/09)

Construction of new roads or improvements of existing roads shall be done in such a way as to minimize the environmental and visual impacts. Merchantable trees shall be cut and utilized unless otherwise directed. Non-merchantable trees shall be severed and laid flat on the ground. Slash shall be scattered, and not left in windrows and kept a minimum of 10 feet back from the road edge. Stumps shall be set upright, not left on edge, and be moved at least 10 feet away from the road edge. Disturbed soil shall be feathered into the woods and not left in berms or windrows.

4.1.7 - Road closure (10/11)

All new roads built into the sale must be blocked to vehicle traffic upon completion of the sale. Overgrown roads that are reopened shall be considered new roads. These roads must be rendered impassable to cars and trucks. Contact the sale administrator for specific details of design and placement.

4.2 - Maintenance

4.2.4 - Grading (10/16)

For completion of the sale, state forest roads must be graded. In general, this will require a road grader or bulldozer to shape

up the roads after forest products have been hauled off site. This includes cleaning of drainage areas, grading, crowning, and filling with gravel, if necessary. The grading equipment to be used must be approved by the Unit Manager or his/her representative.

4.2.5 - Two wheel drive condition (2/04)

All existing trail roads on and adjacent to the sale area must be passable by two-wheel drive traffic for the duration of the sale.

5 - Operations

5.2 - Conduct of Operations

5.2.1 - Slash

5.2.1.2 - Slash Removal

5.2.1.2.1 - Slash removal, right-of-way (9/16)

All slash must be removed at least 10 feet from the cleared right-of-way of existing forest roads.

5.2.1.8 - Slash height (12/08)

No slash or tree tops may exceed 36 inches in height.

5.2.2 - Hazard Trees/Snags

5.2.2.1 - Den trees (10/16)

Obvious hollow and/or den trees shall be protected and left standing unless they are a safety hazard.

5.2.22 - Operating Caution

5.2.22.1 - Operating caution (6/11)

It is recommended, but not required, that within Payment Unit(s) 8, cutting and skidding occur during dry summer or frozen winter conditions. The reason for the recommendation is because of wetter soil types found throughout this unit.

Tracked equipment may be necessary to avoid rutting.

5.2.39 - ORV trail/route protection (4/18)

The McLeod Truck Trail is an ORV trail or route and is shown on the Timber Sale Map. Do not damage posts with orange ORV markers. All stumps within 5 feet of the trail must be cut flush with the ground. Maintain a 20-foot-wide slash, debris, and rut free zone daily using the ORV trail or route as the centerline.

5.2.41 - Snowmobile trail protection (9/11)

The McLeod Truck Trail is a snowmobile trail and is shown on the Timber Sale Map. Do not cut or damage posts with orange trail markers or traffic control signs. If the trail is used, it must be maintained and restored to a condition equal to or better than before the sale. The road maintenance/restoration must be done prior to December 1. If the trail is used for hauling, it must be graded to the satisfaction of the Unit Manager or his/her representative prior to December 1. If the trail road is to be used for hauling during the snowmobile season, then a snow-covered base must be left on the trail. Maintain a 20-foot-wide slash, debris, and rut free zone daily using the snowmobile trail as the centerline. No decking of forest products will be permitted along the snowmobile trail. All stumps within 5 feet of the snowmobile trail must be cut at ground level.

5.4 - Soil Protection

5.4.1 - Rutting restriction, general (7/16)

Operations are to cease immediately if equipment and weather conditions result in rutting of roads and/or skid trails which is 12 inches or greater in depth and 50 feet in length. The Unit Manager or his/her representative may restrict hauling and/or skidding if ruts exceed the specified depth. With the Unit Manager or his/her representative's approval, the Purchaser may return to the area when the risk of rutting has decreased.

5.8 - Protection of Endangered Species

5.8.5 - Protection of raptor nests (3/13)

All trees with raptor nests will be protected if found during harvesting operations. Notification will be made to the Unit Manager or his/her representative who will notify the Wildlife Biologist so an on-site evaluation and recommendation can be made, if necessary.

6 - Safety and Fire Prevention

6.2 - Signing

6.2.1 - Road posting (10/20)

The Purchaser is responsible for posting and maintaining caution signs on the McLeod Road prior to beginning operations. The road must be posted at appropriate distances from the sale area to warn of logging activity and truck traffic. Signs must be removed when harvest operations are suspended or completed. The Purchaser will provide these signs.

6.2.2 - Snowmobile trail posting (10/20)

The Purchaser is responsible for posting and maintaining caution signs on the snowmobile trail prior to beginning operations during the snowmobile season (approximately December 1 to March 31). The trail must be posted at appropriate distances from the Sale Area to warn of logging activity and truck traffic. Signs must be removed when harvest operations are suspended or completed. The DNR will provide these signs.

6.2.3 - Recreational trail posting (10/20)

The Purchaser is responsible for posting and maintaining caution signs on the ORV Trail prior to beginning operations. The trail must be posted at appropriate distances from the Sale Area to warn of logging activity and truck traffic at both ends of the trail. Signs must be removed when harvest operations are suspended or completed. The DNR will provide these signs.



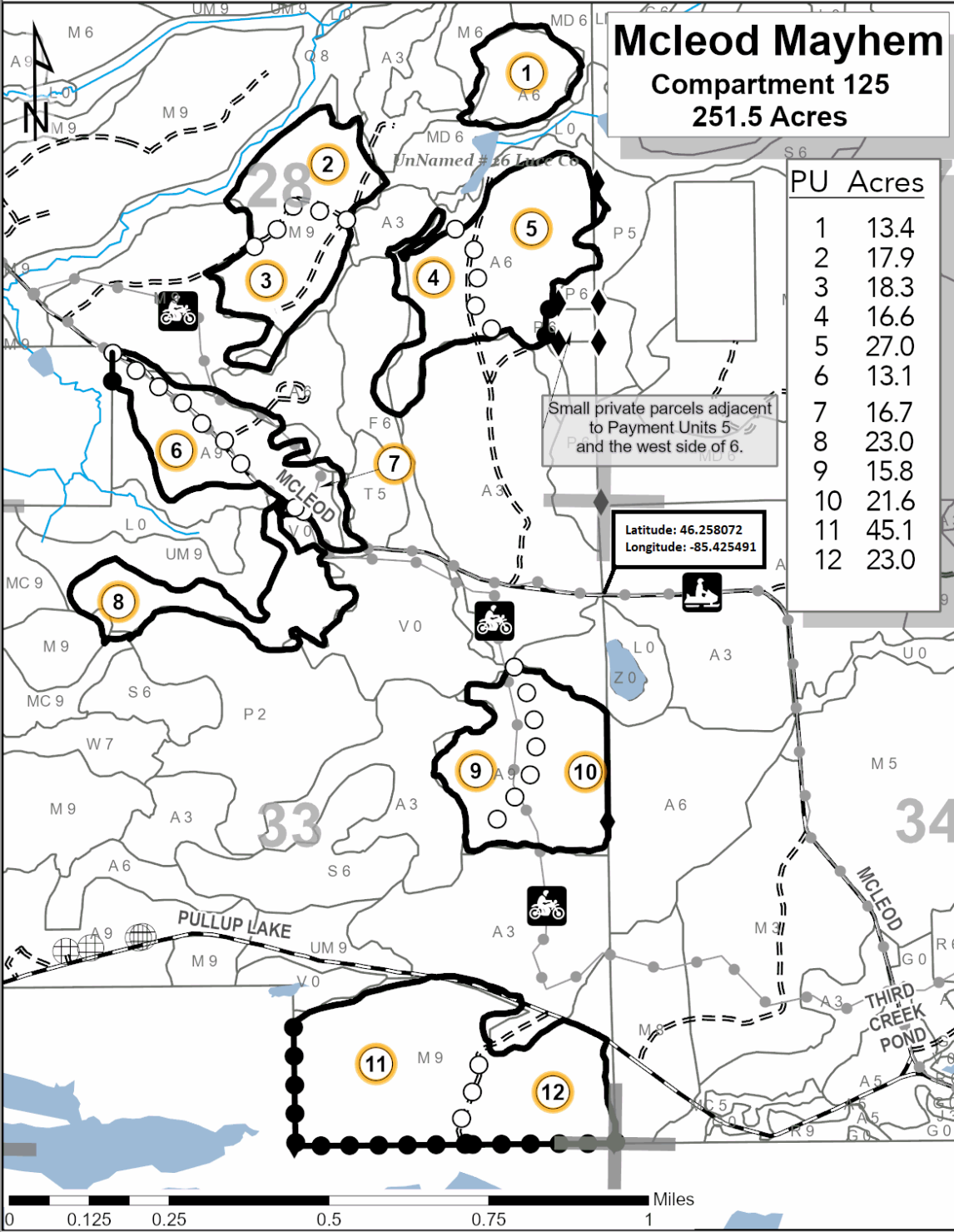
TIMBER SALE MAP

This information provided by authority of Part 525, 1994 PA 451, as amended.

Sale Number	Year
42-026-20	20

Forest Management Unit Newberry	County Luce	Mapped By Livermore	Date 10/3/2020	Page 1	of 1
Township 45N	Range 09W	Section(s) and Subdivision(s) Section 27: NWSW Section 28: SENW, S2NE, E2SW, SE Section 33: N2NW, NWNE, 2NE, SE	Scale 1:15,840		

Cover Type				Density			
A = Aspen	H = Hemlock	N = Marsh	U = Upland Brush	0 = Non Stocked	5 = Pole Timber Medium		
B = Paper Birch	J = Jack Pine	O = Oak	UM = Upland Mixed	1 = Seedling Sapling Poor	6 = Pole Timber Well		
C = Cedar	L = Lowland Brush	P = Lowland Poplar	V = Bog or Marsh	2 = Seedling Sapling Medium	7 = Saw Timber Poor		
D = Tread Bog	LM = Lowland Mixed	Q = Mixed Swamp Conifer	W = White Pine	3 = Seedling Sapling Well	8 = Saw Timber Medium		
E = Swamp Hdwoods	M = Mpl, Bch, Brch	R = Red Pine	X = Non Stocked	4 = Pole Timber Poor	9 = Saw Timber Well		
F = Spruce Fir	MC = Mixed Conifer	S = Black Spruce	Z = Water				
G = Grass	MD = Mixed Deciduous	T = Tamarack					



Mcleod Mayhem
Compartment 125
251.5 Acres

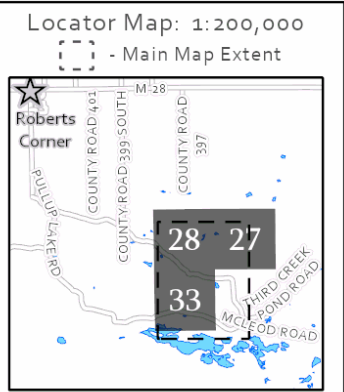


PU	Acres
1	13.4
2	17.9
3	18.3
4	16.6
5	27.0
6	13.1
7	16.7
8	23.0
9	15.8
10	21.6
11	45.1
12	23.0

Small private parcels adjacent to Payment Units 5 and the west side of 6.

Latitude: 46.258072
 Longitude: -85.425491

- Against State (Red)
- Payment Unit (Yellow)
- Private Line (Blue)
- Payment Unit Label
- Motorcycle Trails
- Snowmobile Trails
- Recreational Trail
- Section Numbers
- Section Corners
- Survey Corners
- Berms
- Primary Forest Road
- Secondary Forest Road
- Forest Access Route
- Paved Road
- Gravel Road
- County Road - Seasonal
- Private
- DNR - Management Access
- Temporary Management Access
- Perennial River
- Lakes and Rivers



Mcleod Mayhem (42-026-20)
T45N, R09W, SEC. 27; T45N, R09W, SEC. 28; T45N, R09W, SEC. 33; Luce

In response to the notice of sale to be held 3:00 p.m. (local time) on April 15, 2021, I am hereby submitting my sealed bid (firm offer) for the following forest products to be cut. Bids for individual species must be at or above the advertised price. All non-responsive bid forms may be rejected.

<u>PRODUCTS & SPECIES</u>	<u>ESTIMATED VOLUME*</u>	<u>ADVERTISED PRICE</u>	<u>BID PRICE/UNIT</u>
Sawtimber			
Black Cherry	19.6 MBF	\$ 106.00/MBF	\$ _____
Paper Birch	11.5 MBF	\$ 24.00/MBF	\$ _____
Red Maple	84.9 MBF	\$ 60.00/MBF	\$ _____
Sugar Maple	94.0 MBF	\$ 218.00/MBF	\$ _____
Pulpwood			
Balsam Fir	297 Cords	\$ 9.55/Cord	\$ _____
Mixed Aspen	2,882 Cords	\$ 13.70/Cord	\$ _____
Mixed Hardwood	3,380 Cords	\$ 11.45/Cord	\$ _____
Mixed Spruce	460 Cords	\$ 11.95/Cord	\$ _____
N. White Cedar	82 Cords	\$ 4.15/Cord	\$ _____
Red Pine	26 Cords	\$ 49.75/Cord	\$ _____
White Pine	149 Cords	\$ 15.10/Cord	\$ _____

*The volumes are statistically estimated within plus (+) or minus (-) 9.88 percent at 95% confidence level. These estimated volumes are final and not subject to adjustment. Prospective bidders are urged to examine this timber and to make their own estimates of quantity and quality.

I understand that any or all bids may be rejected. All bids must be signed and all bid items must be bid or the bid form may be rejected. I also understand that consideration and awarding a contract will be based upon my past performance and ability to complete the contract based upon equipment and staffing subject to my control.

FEDERAL ID: _____ or SOCIAL SECURITY NUMBER: _____

Company or individual bidding: _____

Company representative's name: _____

Address: _____

City: _____ State: _____ Zip: _____

IF AVAILABLE, PLEASE PLACE THE PERSONALIZED LABEL FROM YOUR PROSPECTUS IN THE ABOVE BOX.

Individual or company representative's signature: _____ Date: _____

Phone number : _____ Email (optional): _____

THE WINNING BIDDER MUST COMPLETE THE VERIFICATION OF WORKER'S DISABILITY COMPENSATION ACT COMPLIANCE (ON REVERSE SIDE IF DOUBLE SIDED) WITHIN 21 DAYS OF SALE AWARD DATE



FOR DEPARTMENT USE ONLY	
Sale Number (XX - XXX - XX - XX)	
Forest Management Unit:	

TIMBER SALE VERIFICATION OF WORKER'S DISABILITY COMPENSATION ACT COMPLIANCE

As required by Act 317, P.A. 1969 (Worker's Compensation) and
Part 5 of Act 451 of 1994, as amended.

VERIFICATION OF WORKER'S DISABILITY COMPENSATION ACT COMPLIANCE

- This verification must be completed and submitted within 21 days of contract award and prior to the issuance of the timber sale contract.
- In addition, if boxes 2B or 2C are checked, then Notice of Exclusion or Certificate of Insurance must be submitted within twenty-one (21) days of the contract award and prior to the issuance of the timber sale contract.
- All information must be typed or printed except for written signatures.

Please Check Appropriate Categories:

1. My business is organized as (you **must** check one of the boxes below):
 - A. Sole Proprietorship (individual)
 - B. Partnership
 - C. Corporation
2. You **must** check one of the boxes below:
 - A. I certify my business is a sole proprietorship and it has no employees but the sole proprietor. I am not subject to the Worker's Compensation Laws.
 - B. I certify my business has satisfied its obligation to the Worker's Compensation Act through the use of an approved Notice of Exclusion (BWC-337, Rev. 5/96). I will provide a copy of the Notice of Exclusion within 21 days of the contract award. (For questions or a copy of the BWC-337, please call the Worker's Compensation Bureau at 517-322-1195).
 - C. I certify my business has a Worker's Compensation Policy. I will provide an original Certificate of Insurance within twenty-one (21) days of the contract award.
3. If you have checked item 2(A) or 2(B), you **must** indicate the number of **both** full-time and part-time employees, other than yourself, including family members and active partners (if none, you must enter "0").

_____ Full-time Employees

_____ Part-time Employees

Name of Business		Federal ID (or) Social Security No.	
Address		Telephone ()	
City	State	ZIP	

I hereby certify that the above information is true and correct. I agree to notify the Michigan DNR of any changes that occur in factors affecting my coverage during any of my present and future operations.

Signature of Owner or Authorized Representative

Title

Date

Please complete the "SEALED BID" information on the next page

First Creek Mix (42-025-20)
T45N, R09W, SEC. 20; T45N, R09W, SEC. 21; T45N, R09W, SEC. 28; T45N,

In response to the notice of sale to be held 3:00 p.m. (local time) on April 15, 2021, I am hereby submitting my sealed bid (firm offer) for the following forest products to be cut. Bids for individual species must be at or above the advertised price. All non-responsive bid forms may be rejected.

<u>PRODUCTS & SPECIES</u>	<u>ESTIMATED VOLUME*</u>	<u>ADVERTISED PRICE</u>	<u>BID PRICE/UNIT</u>
Sawtimber			
Black Cherry	19.0 MBF	\$ 106.00/MBF	\$ _____
Red Maple	56.6 MBF	\$ 60.00/MBF	\$ _____
Sugar Maple	47.0 MBF	\$ 218.00/MBF	\$ _____
Yellow Birch	4.5 MBF	\$ 25.00/MBF	\$ _____
Pulpwood			
Balsam Fir	280 Cords	\$ 9.55/Cord	\$ _____
Mixed Aspen	551 Cords	\$ 13.70/Cord	\$ _____
Mixed Hardwood	2,276 Cords	\$ 11.45/Cord	\$ _____
Mixed Spruce	275 Cords	\$ 11.95/Cord	\$ _____
White Pine	46 Cords	\$ 15.10/Cord	\$ _____

*The volumes are statistically estimated within plus (+) or minus (-) 10.79 percent at 95% confidence level. These estimated volumes are final and not subject to adjustment. Prospective bidders are urged to examine this timber and to make their own estimates of quantity and quality.

I understand that any or all bids may be rejected. All bids must be signed and all bid items must be bid or the bid form may be rejected. I also understand that consideration and awarding a contract will be based upon my past performance and ability to complete the contract based upon equipment and staffing subject to my control.

FEDERAL ID: ____ - ____ - ____ or SOCIAL SECURITY NUMBER: ____ - ____ - ____

Company or individual bidding: _____

Company representative's name: _____

Address: _____

City: _____ State: _____ Zip: _____

IF AVAILABLE, PLEASE PLACE THE PERSONALIZED LABEL FROM YOUR PROSPECTUS IN THE ABOVE BOX.

Individual or company representative's signature: _____ Date: _____

Phone number : _____ Email (optional): _____

THE WINNING BIDDER MUST COMPLETE THE VERIFICATION OF WORKER'S DISABILITY COMPENSATION ACT COMPLIANCE (ON REVERSE SIDE IF DOUBLE SIDED) WITHIN 21 DAYS OF SALE AWARD DATE

