



DEPARTMENT OF NATURAL RESOURCES  
STATE OF MICHIGAN

TIMBER SALE PROSPECTUS #6768

REVISION NOTICE #1 - November 4, 2020

SCHEDULED SALE DATE AND TIME: 3:00 p.m. (local time) on Tuesday, November 24, 2020

LOCATION: Escanaba Mgmt Unit, 6833 Hwy's 2, 41 & M-35, Gladstone, MI 49837

This prospectus has been modified with the following changes.

The sale conditions for the **GOCJO MIX** timber sale (33-036-20) have been updated:

**Added - Spec 3.4.1 - Damaged timber**

General Condition and Requirement 3.4 Damaged Timber, defines liquidated damages for undesignated live merchantable trees which are cut or injured. In addition, extreme care should be taken to avoid damage to tree seedlings and saplings. Within the sale area, if more than 25% of the tree seedlings or saplings (1/4" to 4.5" DBH) within a specified portion of the sale area are damaged, liquidated damages will be assessed at \$150 per acre for all acreage within that specified portion of the sale area that was damaged.

**Edited - Spec 2.2.4 - Skidding length**

Skidding of unlimbed tops or lengths over 17 feet is not permissible within Payment Units 1, 4, 5, 6 and 7, unless approved by the Unit Manager or his/her representative. If skidding of lengths over 17 feet is approved, and at any point damage exceeds specification 3.4.1, all of the remaining wood must be skid in lengths less than 17 feet.

The sale conditions for the GOCJO MIX timber sale (33-036-20) have been updated. Please use the attached sale conditions when bidding on this sale and disregard the original sale conditions sent with the prospectus.

We apologize for any inconvenience this may have caused. If you need assistance, please contact Eric Thompson at 906-789-8231.



# TIMBER SALE MAP

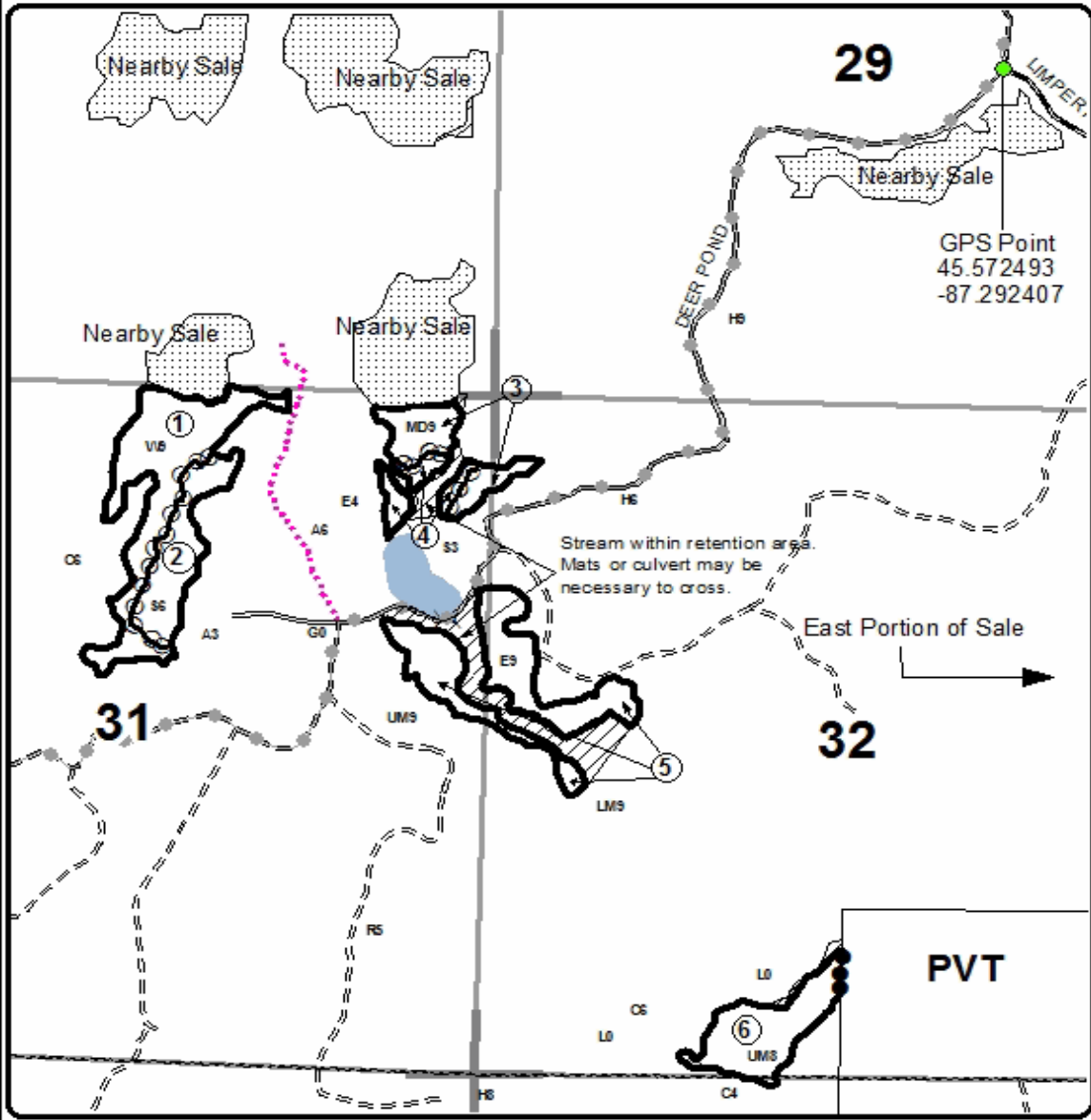
This information provided by authority of Part 525, 1994 PA 451 as amended.

Sale Number	Year
33 - 004	20

Forest Management Unit	County	Mapped By	Date	Page	of
Escanaba	Delta	Urich	07/22/2020	1	2
Township	Range	Section(s) and Subdivision(s)	Scale		
37N	24W	Sec31 E1/2NW,NE Sec32 W1/2NW,NWSW,SESW Sec33 NENW,S1/2NW,N1/2NE, N1/2SW,SWSE	1:15,840		

Cover Type				Density	
A = Aspen	H = Hemlock	N = Marsh	U = Upland Brush	0 = Non Stocked	5 = Pole Timber Medium
B = Paper Birch	J = Jack Pine	O = Oak	UM = Upland Mixed	1 = Seeding Sapling Poor	6 = Pole Timber Well
C = Cedar	L = Lowland Brush	P = Lowland Poplar	V = Bog or Marsh	2 = Seeding Sapling Medium	7 = Saw Timber Poor
D = Tread Bog	LM = Lowland Mixed	Q = Mixed Swamp Conifer	W = White Pine	3 = Seeding Sapling Well	8 = Saw Timber Medium
E = Swamp Hardwoods	M = Mpl. Ech. Birch	R = Red Pine	X = Non Stocked	4 = Pole Timber Poor	9 = Saw Timber Well
F = Spruce Fir	MC = Mixed Conifer	S = Black Spruce	Z = Water		
G = Creas	MD = Mixed Deciduous	T = Tamarack			

PU	Acres	PU	Acres	<b>Limpert South (west stands)</b>	
1	19.6	4	3.8	<b>Compartment 074</b> 149.4 Acres	
2	9.7	5	18.4		
3	7.7	6	11.1		



### Legend

- Recreational Trails
- Highway
- Primary Forest Road
- Secondary Forest Road
- Forest Access Route
- Paved Road
- Gravel Road
- County Road - Seasonal
- Private
- DNR - Management Access
- Temporary Management Access
- Retention Area
- Against State (Red)
- Payment Unit (Yellow)
- Private Line (Blue)
- Section Corners





# TIMBER SALE MAP

This information provided by authority of Part 525, 1994 PA 451 as amended.

Sale Number	Year
33 - 004	20

Forest Management Unit	County	Mapped By	Date	Page	of
Escanaba	Delta	Urich	07/22/2020	2	2

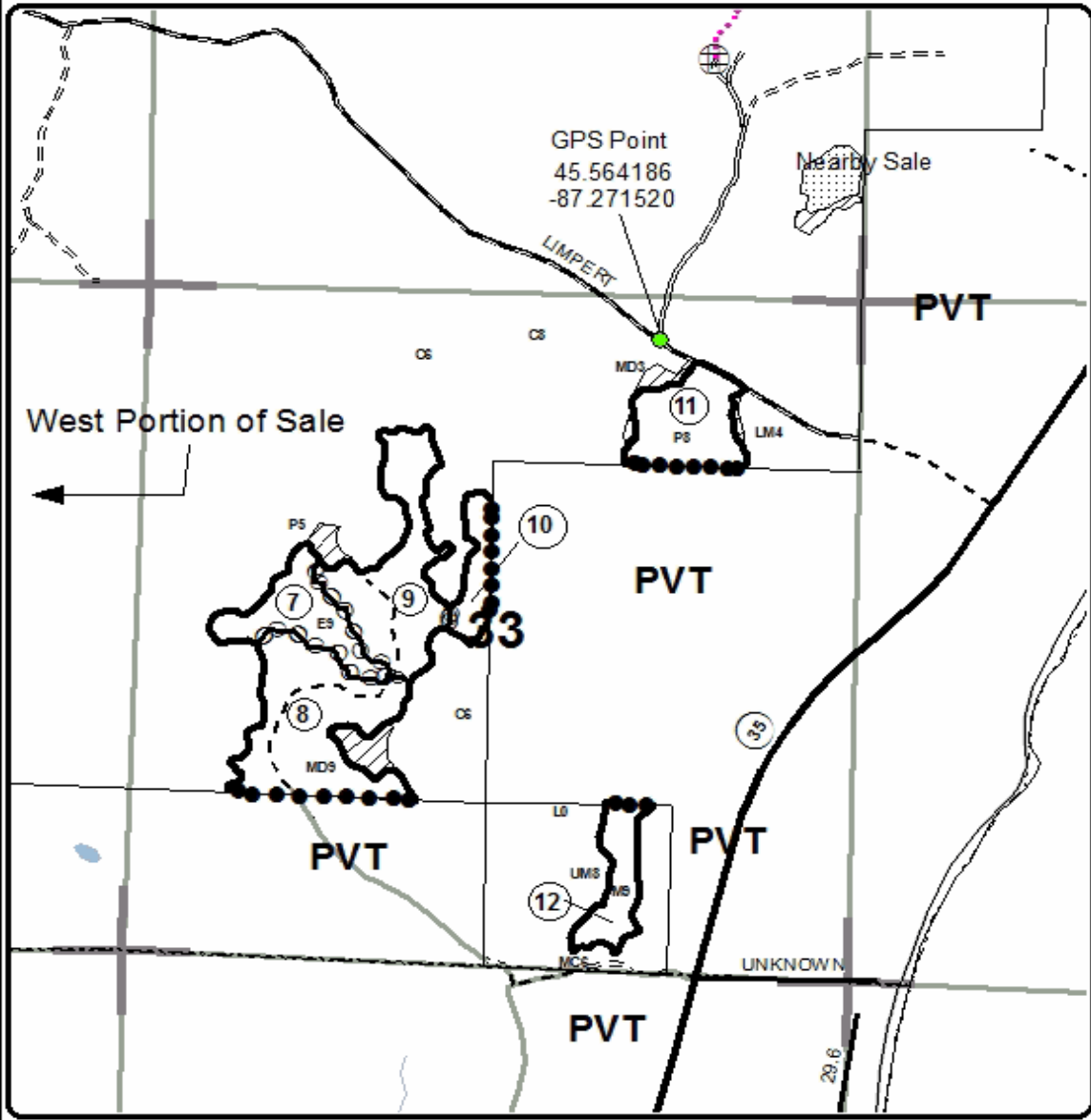
Township	Range	Section(s) and Subdivision(s)	Scale
37N	24W	Sec31 E1/2NW,NE Sec32 W1/2NW,NWSW,SESW Sec33 NENW,S1/2NW,N1/2NE, N1/2SW,SWSE	1:15,840

Cover Type				Density	
A = Aspen	H = Hemlock	N = Marsh	U = Upland Brush	0 = Non Stocked	5 = Pole Timber Medium
B = Paper Birch	J = Jack Pine	O = Oak	UM = Upland Mixed	1 = Seeding Sapling Poor	6 = Pole Timber Well
C = Cedar	L = Lowland Brush	P = Lowland Poplar	V = Bog or Marsh	2 = Seeding Sapling Medium	7 = Saw Timber Poor
D = Tread Bog	LM = Lowland Mixed	Q = Mixed Swamp Conifer	W = White Pine	3 = Seeding Sapling Well	8 = Saw Timber Medium
E = Swamp Hardwoods	M = Mpl. Ech. Birch	R = Red Pine	X = Non Stocked	4 = Pole Timber Poor	9 = Saw Timber Well
F = Spruce Fir	MC = Mixed Conifer	S = Black Spruce	Z = Water		
G = Cress	MD = Mixed Deciduous	T = Tamarack			

PU	Acres	PU	Acres
7	10.7	10	6.9
8	22.9	11	12
9	19.3	12	7.3

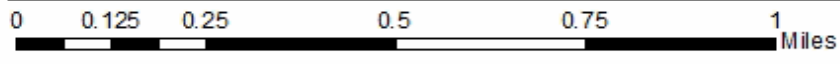
## Limpert South (east stands)

Compartment 074  
149.4 Acres



### Legend

- Highway
- Primary Forest Road
- Secondary Forest Road
- Forest Access Route
- Paved Road
- Gravel Road
- County Road - Seasonal
- Private
- DNR - Management Access
- Temporary Management Access
- Retention Area
- Against State (Red)
- Payment Unit (Yellow)
- Private Line (Blue)
- Section Corners





# TIMBER SALE MAP

This information provided by authority of Part 525, 1994 PA 451 as amended.

Sale Number	33 - 009	Year	20
Date	10/26/20	Page	1 of 2
Township		Range	Section(s) and Subdivision(s)
Escanaba		25W	sec. 34SE, sec. 35NWSW, sec. 36SWNE
Mapped By		Urich	
Cruised By		Urich, Racine	
Scale		1:7,920	

Forest Management Unit	County	Mapped By	Date	Page	of
Escanaba	Menominee	Urich	10/26/20	1	2
Township	Range	Section(s) and Subdivision(s)	Scale		
37N	25W	sec. 34SE, sec. 35NWSW, sec. 36SWNE	1:7,920		

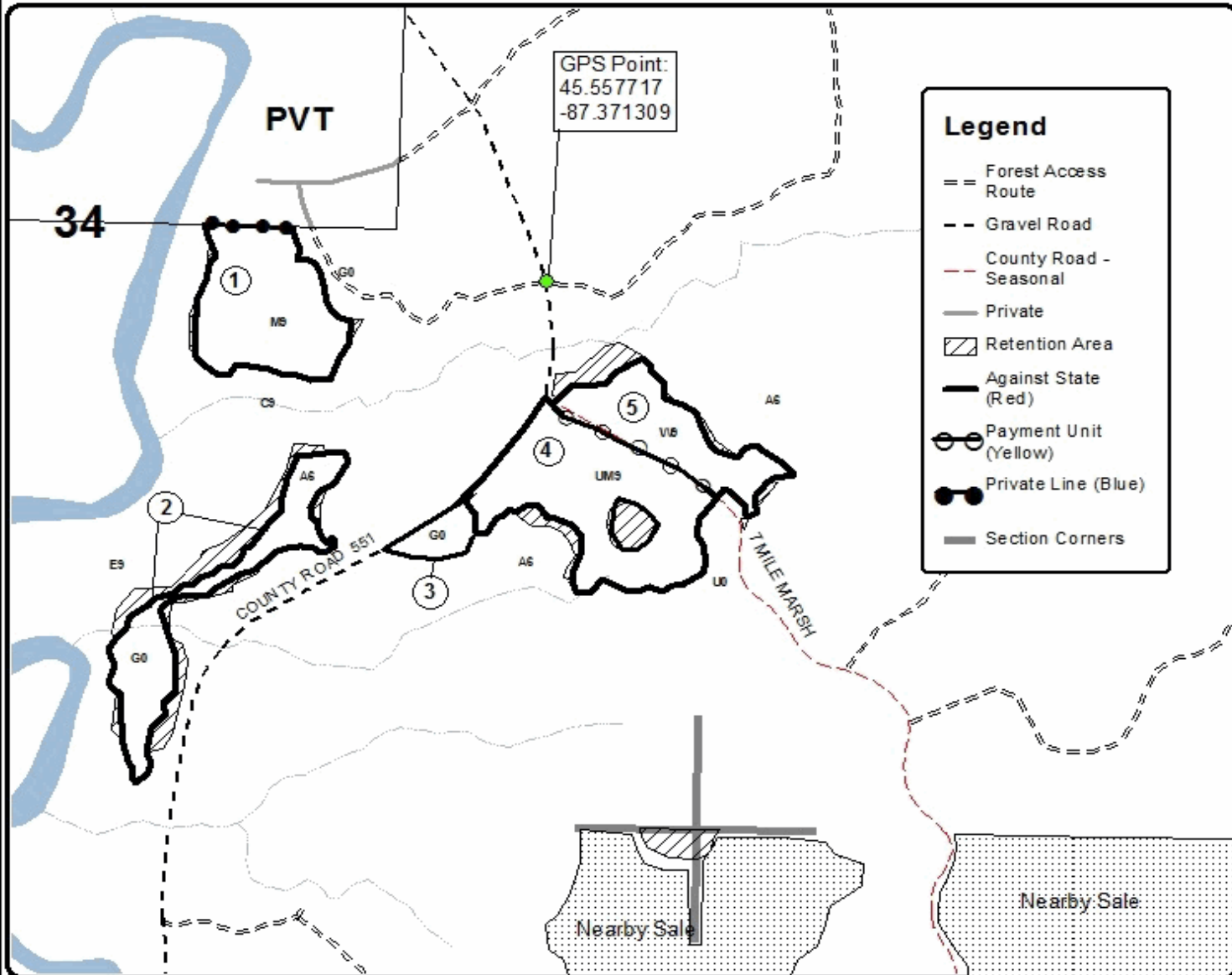
Cover Type				Density	
A = Aspen	H = Hemlock	N = Marsh	U = Upland Brush	0 = Non Stocked	5 = Pole Timber Medium
B = Paper Birch	J = Jack Pine	O = Oak	UM = Upland Mixed	1 = Seeding Sapling Poor	6 = Pole Timber Well
C = Cedar	L = Lowland Brush	P = Lowland Poplar	V = Bog or Marsh	2 = Seeding Sapling Medium	7 = Saw Timber Poor
D = Tread Bog	LM = Lowland Mixed	Q = Mixed Swamp Conifer	W = White Pine	3 = Seeding Sapling Well	8 = Saw Timber Medium
E = Swamp Hardwoods	M = Mpl. Ech. Birch	R = Red Pine	X = Non Stocked	4 = Pole Timber Poor	9 = Saw Timber Well
F = Spruce Fir	MC = Mixed Conifer	S = Black Spruce	Z = Water		
G = Creas	MD = Mixed Deciduous	T = Tamarack			

PU	Acres	PU	Acres
1	7.5	4	10.3
2	5.7	5	4.7
3	1.2	6	12.8

**7 and 551**  
**Compartment 35**  
**42.2 Acres**



GPS Point:  
 45.557717  
 -87.371309



**Legend**

- == Forest Access Route
- Gravel Road
- - - County Road - Seasonal
- Private
- ▨ Retention Area
- Against State (Red)
- Payment Unit (Yellow)
- Private Line (Blue)
- Section Corners





# TIMBER SALE MAP

This information provided by authority of Part 525, 1994 PA 451 as amended.

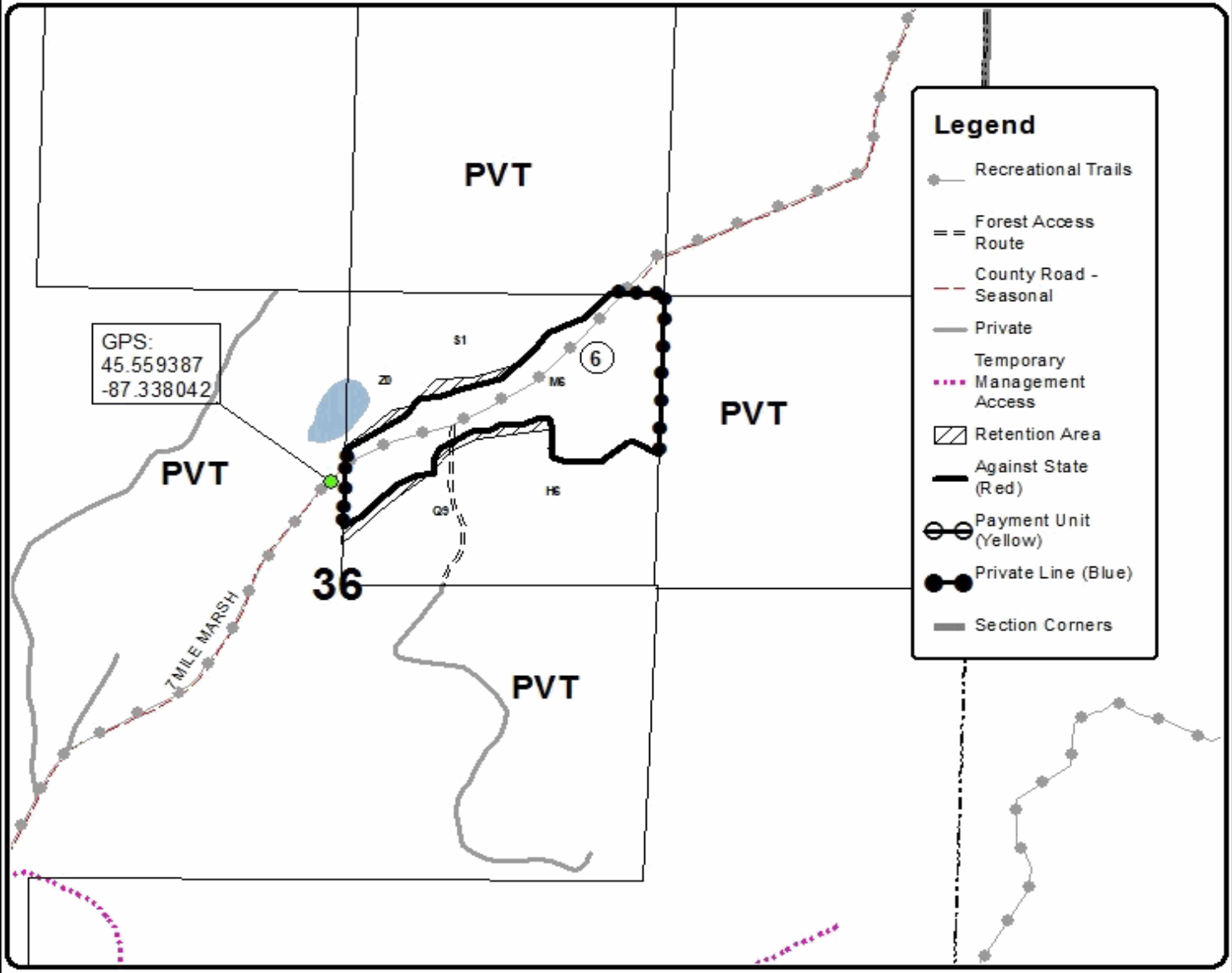
Sale Number	Year
33 - 009	20

Forest Management Unit Escanaba	County Menominee	Mapped By Urlich	Date 10/26/20	Page 2	of 2
Township 37N	Range 25W	Section(s) and Subdivision(s) sec. 34SE, sec. 35NWSW, sec. 36SWNE	Scale 1:7,920		

Cover Type				Density	
A = Aspen	H = Hemlock	N = Marsh	U = Upland Brush	0 = Non Stocked	5 = Pole Timber Medium
B = Paper Birch	J = Jack Pine	O = Oak	UM = Upland Mixed	1 = Seeding Sapling Poor	6 = Pole Timber Well
C = Cedar	L = Lowland Brush	P = Lowland Poplar	V = Bog or Marsh	2 = Seeding Sapling Medium	7 = Saw Timber Poor
D = Tread Bog	LM = Lowland Mixed	Q = Mixed Swamp Conifer	W = White Pine	3 = Seeding Sapling Well	8 = Saw Timber Medium
E = Swamp Hardwoods	M = Mpl. Ech. Birch	R = Red Pine	X = Non Stocked	4 = Pole Timber Poor	9 = Saw Timber Well
F = Spruce Fir	MC = Mixed Conifer	S = Black Spruce	Z = Water		
G = Creas	MD = Mixed Deciduous	T = Tamarack			

PU	Acres	PU	Acres
1	7.5	4	10.3
2	5.7	5	4.7
3	1.2	6	12.8

**7 and 551**  
**Compartment 35**  
**42.2 Acres**



**Legend**

- Recreational Trails
- Forest Access Route
- County Road - Seasonal
- Private
- Temporary Management Access
- Retention Area
- Against State (Red)
- Payment Unit (Yellow)
- Private Line (Blue)
- Section Corners



# TIMBER SALE MAP

This information provided by authority of Part 525, 1994 PA 451 as amended.

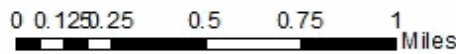
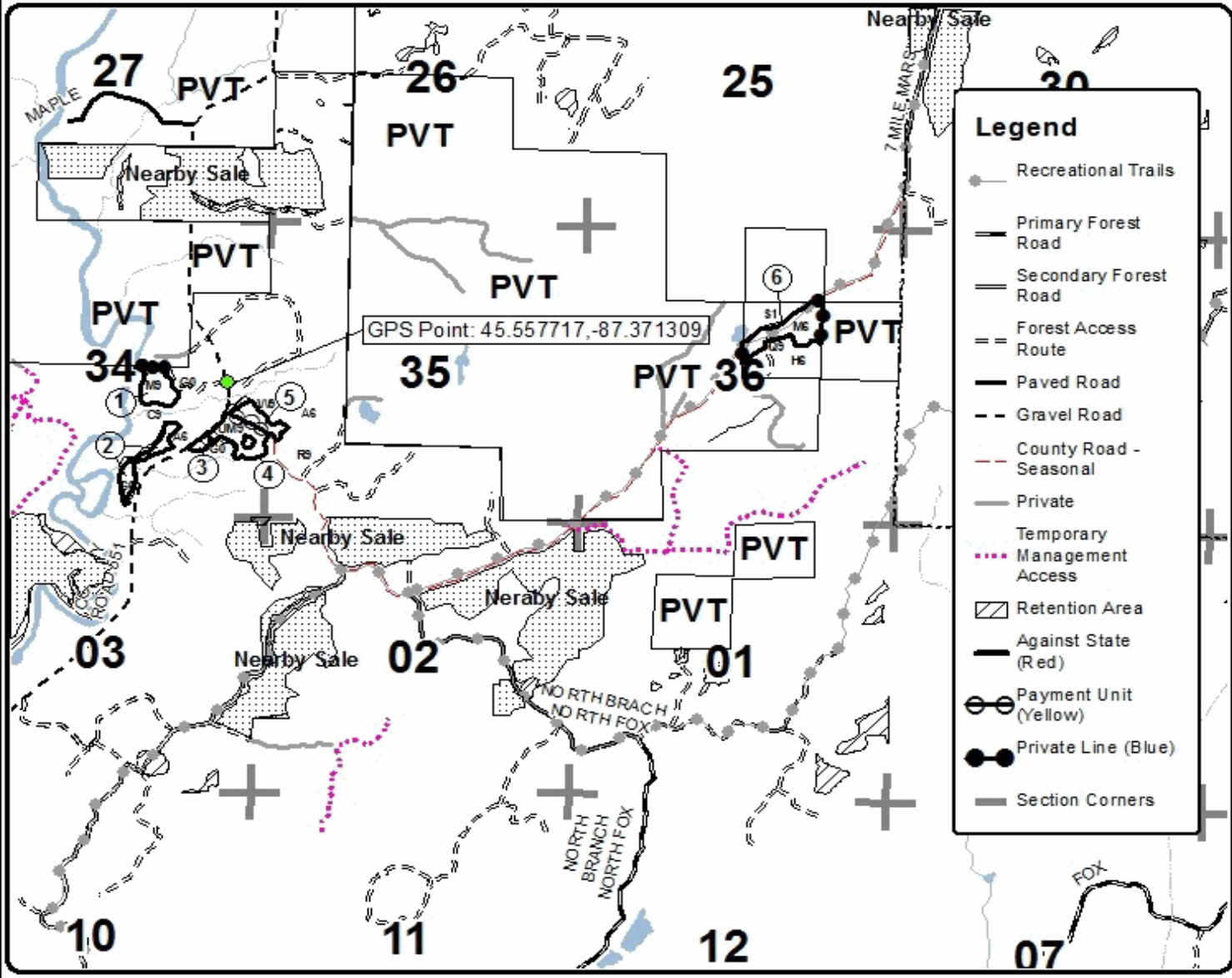
Sale Number	Year
33 - 009	20

Forest Management Unit Escanaba	County Menominee	Mapped By Urich	Date 9/28/2020	Page of
Township 37N	Range 25W	Section(s) and Subdivision(s) sec. 34SE, sec. 35NWSW, sec. 36SWNE	Scale 1:31,680	

Cover Type				Density	
A = Aspen	H = Hemlock	N = Marsh	U = Upland Brush	0 = Non Stocked	5 = Pole Timber Medium
B = Paper Birch	J = Jack Pine	O = Oak	UM = Upland Mixed	1 = Seeding Sapling Poor	6 = Pole Timber Well
C = Cedar	L = Lowland Brush	P = Lowland Poplar	V = Bog or Marsh	2 = Seeding Sapling Medium	7 = Saw Timber Poor
D = Tread Bog	LM = Lowland Mixed	Q = Mixed Swamp Conifer	W = White Pine	3 = Seeding Sapling Well	8 = Saw Timber Medium
E = Swamp Hardwoods	M = Mpl. Ech. Bich	R = Red Pine	X = Non Stocked	4 = Pole Timber Poor	9 = Saw Timber Well
F = Spruce Fir	MC = Mixed Conifer	S = Black Spruce	Z = Water		
G = Creas	MD = Mixed Deciduous	T = Tamarack			

PU	Acres	PU	Acres
1	7.5	4	10.3
2	5.7	5	4.7
3	1.2	6	12.8

**7 and 551**  
**Compartment 35**  
**42.2 Acres**





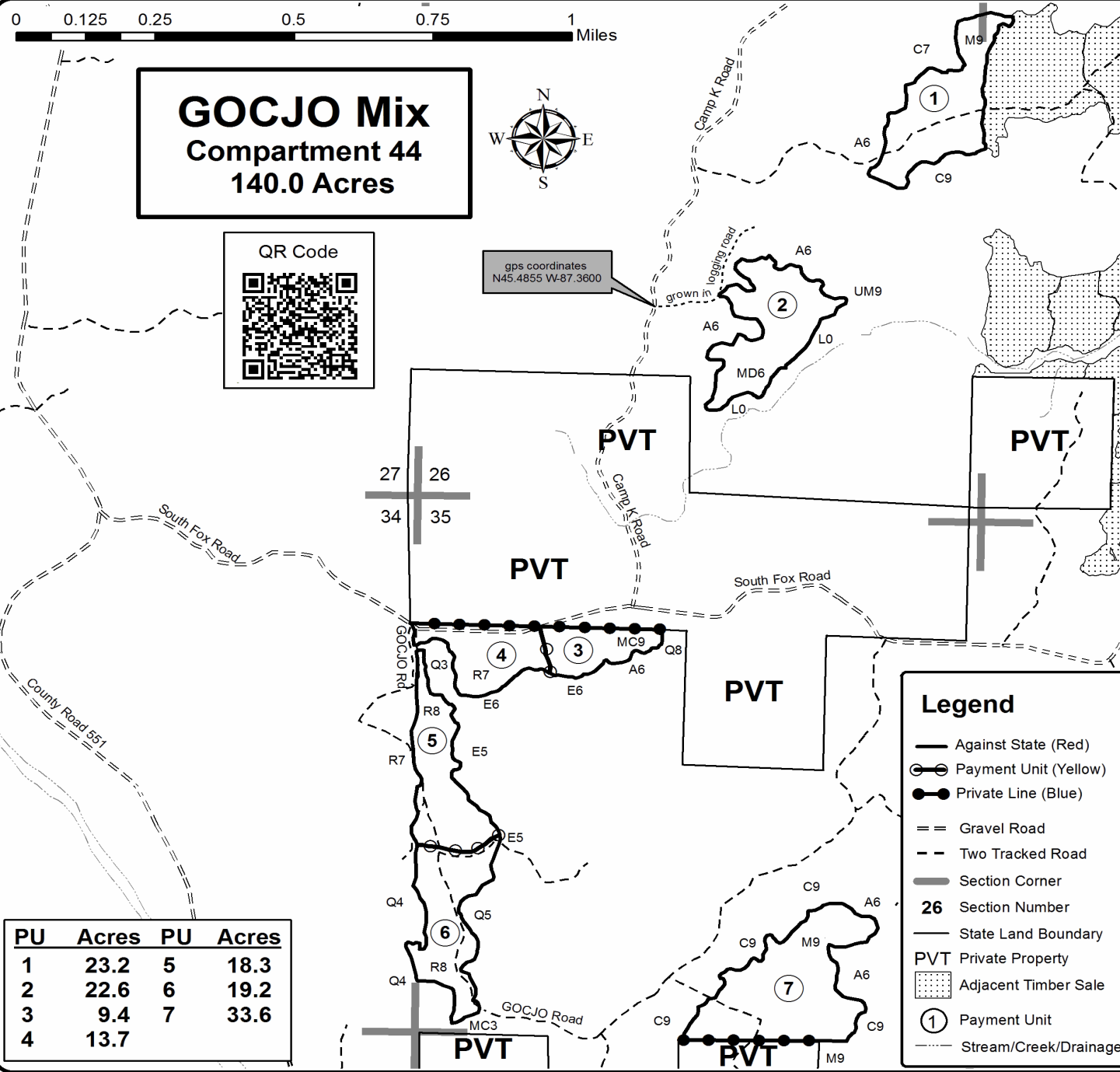
# TIMBER SALE MAP

This information provided by authority of Part 525, 1994 PA 451, as amended.

Sale Number	Year
33-036	20

Forest Management Unit	County	Mapped By	Date	Page	of
Escanaba Management Unit	Menominee County	Beaudo	9/29/2020	1	1
Township	Range	Section(s) and Subdivision(s)	Scale		
36N	25W	Sec 25 - NWNW; Sec 26 - E1/2NE, N1/2SE, SWSE; Sec 34 - E1/2NE, E1/2SE; Sec 35 - S1/2NW, NWSW, S1/2SW, SE.	1:15,840		

Cover Type				Density			
A = Aspen	H = Hemlock	N = Marsh	U = Upland Brush	0 = Non Stocked	5 = Pole Timber Medium		
B = Paper Birch	J = Jack Pine	O = Oak	UM = Upland Mixed	1 = Seedling Sapling Poor	6 = Pole Timber Well		
C = Cedar	L = Lowland Brush	P = Lowland Poplar	V = Bog or Marsh	2 = Seedling Sapling Medium	7 = Saw Timber Poor		
D = Tread Bog	LM = Lowland Mixed	Q = Mixed Swamp Conifer	W = White Pine	3 = Seedling Sapling Well	8 = Saw Timber Medium		
E = Swamp Hdwoods	M = Mpl, Bch, Brch	R = Red Pine	X = Non Stocked	4 = Pole Timber Poor	9 = Saw Timber Well		
F = Spruce Fir	MC = Mixed Conifer	S = Black Spruce	Z = Water				
G = Grass	MD = Mixed Deciduous	T = Tamarack					



## Sale Specific Conditions & Requirements

Sale Name: GOCJO MIX

Sale Number: 33-036-20 Seq#: 1

### 1 - Sale Area

#### 1.2 - Boundaries

##### 1.2.1 - Painted boundaries (9/19)

The sale boundary and Payment Unit boundaries are marked and identified by blue, red and yellow paint. Exterior sale boundary lines against private property are marked with blue paint. Exterior sale boundary lines against state are marked with red paint. Interior Payment Unit boundaries are marked with yellow paint. The painted boundary line trees are not Included Timber and are to be protected unless marked with orange paint. Yellow painted trees designating an interior Payment Unit boundary are only to be cut when all surrounding Payment Units have been paid for.

### 2 - Timber Specifications

#### 2.1 - Included Timber

##### 2.1.1 - Clearcut unit(s) with unmerchantable trees (6/14)

Within Payment Unit(s) 1, cut all trees that are four (4) inches or more at DBH; except do not cut cedar, hemlock and trees marked with green paint.

Within Payment Units(s) 2 and 4, cut all trees that are three (3) inches or more at DBH; except do not cut hemlock. In addition, within Payment Unit 2, do not cut cedar or any trees marked with green paint. Also, within Payment Unit 4, do not cut trees marked with orange paint.

##### 2.1.3 - Cut tree marked unit(s) (12/08)

Within Payment Unit(s) 7, all trees are designated for cutting when marked with orange paint above and below stump height, regardless of merchantability.

Within Payment Unit(s) 3, all red pine are designated for cutting when marked with orange paint above and below stump height, regardless of merchantability. In addition, cut all white pine greater than twelve (12) inches at DBH, except for those marked with green paint. Also, cut all ash, balsam fir, spruce, maple, aspen, balm, and birch greater than four (4) inches at DBH.

##### 2.1.5 - Overstory removal unit(s) (8/11)

Within Payment Unit(s) 5 and 6, all red and white pine with DBH equal to or greater than ten (10) inches which meet minimum piece specifications in 2.2 Utilization, are designated for cutting; except for those trees marked with green paint. In addition, cut all spruce, aspen, balsam fir and maple greater than four (4) inches at DBH.

##### 2.1.16 - Timber along county or forest roads (6/14)

Cut and remove all trees marked with orange paint along the access road between the GO C Jo Road and Payment Unit 7. This wood is included, as part of Payment Unit 7.

#### 2.2 - Utilization

##### 2.2.4 - Skidding length (2/14)

Skidding of unlimbed tops or lengths over 17 feet is not permissible within Payment Units 1, 4, 5, 6 and 7, unless approved by the Unit Manager or his/her representative. If skidding of lengths over 17 feet is approved, and at any point damage exceeds specification 3.4.1, all of the remaining wood must be skid in lengths less than 17 feet.

### 3 - Payments

#### 3.3 - Pre-measured Sales



**3.3.4 - Dividing payment units (7/14)**

Payment Unit(s) \$18,000 in value or greater may be divided at the request of the Purchaser and upon approval of the Unit Manager. Dividing Payment Units is a contract modification which requires a Timber Sale Contract Amendment. There will be only one division per Payment Unit.

**3.4 - Damaged Timber****3.4.1 - Damaged timber (7/16)**

General Condition and Requirement 3.4 Damaged Timber, defines liquidated damages for undesignated live merchantable trees which are cut or injured. In addition, extreme care should be taken to avoid damage to tree seedlings and saplings. Within the sale area, if more than 25% of the tree seedlings or saplings (1/4" to 4.5" DBH) within a specified portion of the sale area are damaged, liquidated damages will be assessed at \$150 per acre for all acreage within that specified portion of the sale area that was damaged.

**4 - Transportation****4.2 - Maintenance****4.2.1 - Hauling restriction (12/08)**

Hauling may be restricted on forest roads by the Unit Manager or his/her representative. The restriction may occur during spring breakup or during other wet weather conditions.

**4.2.4 - Grading (10/16)**

For completion of the sale, state forest roads must be graded. In general, this will require a road grader or bull dozer to shape up the roads after forest products have been hauled off site. This includes cleaning of drainage areas, grading, crowning and filling with gravel, if necessary. The grading equipment to be used must be approved by the Unit Manager or his/her representative.

**5 - Operations****5.2 - Conduct of Operations****5.2.3 - Operating Restrictions****5.2.3.3 - Bark slippage restriction (3/09)**

Within Payment Unit(s) 3 and 7, unless changed by written agreement, cutting and skidding are not permitted during the period of April 15 to July 15. This restriction is because of bark slippage.

**5.2.22 - Operating Caution****5.2.22.1 - Operating caution (6/11)**

It is recommended, but not required, that within Payment Unit(s) 2, 5 and 6, cutting and skidding occur during dry summer or frozen winter conditions. The reason for the recommendation is because of some low wet ground within each of the Payment Units.

**5.4 - Soil Protection****5.4.1 - Rutting restriction, general (7/16)**

Operations are to cease immediately if equipment and weather conditions result in rutting of roads and/or skid trails which is 12 inches or greater in depth and 50 feet in length. The Unit Manager or his/her representative may restrict hauling and/or skidding if ruts exceed the specified depth. With the Unit Manager or his/her representative's approval, the Purchaser may return to the area when the risk of rutting has decreased.

**6 - Safety and Fire Prevention****6.2 - Signing**

6.2.1 - Road posting (9/09)

The Purchaser is responsible for posting and maintaining caution signs on Camp K, South Fox and GO C JO roads prior to beginning operations. The road must be posted at appropriate distances from the sale area to warn of logging activity and truck traffic. Signs must be removed when harvest operations are suspended or completed. The Purchaser will provide these signs.