



**DEPARTMENT OF NATURAL RESOURCES
STATE OF MICHIGAN**

TIMBER SALE PROSPECTUS #6766

SCHEDULED SALE DATE AND TIME: 3:00 p.m. (local time) on December 8, 2020.

LOCATION: ESCANABA MGMT UNIT, 6833 HWY'S 2, 41 & M-35, GLADSTONE, MI 49837.

PROSPECTUS NOTE: The bidder is advised to inspect the sale area and review the location, estimated volumes, operating costs and contract terms of proposed sales. Please be aware that some landowners may request 60 days or more notice for access across their land.

Notice is hereby given that bids will be received by the Unit Manager, ESCANABA MANAGEMENT UNIT, for certain timber on the following described lands:

Miscauna Beaver (33-031-20) / T37N, R28W, SEC. 26, S1/2SW.

T37N, R28W, SEC. 27, E1/2SW,S1/2SE.

T37N, R28W, SEC. 34, NENE.

T37N, R28W, SEC. 35, NWNW.

Menominee County, Advertised Price \$29,928.05, 65.2 Acres, Hardwood, Aspen.

SALE NOTE: All Payment Units on this sale can be harvested during the summer months. There is oak wilt possibly in the sale area, the cutting specs could be modified during the contract to treat the oak wilt.

Nathan Briar (33-032-20) / T37N, R28W, SEC. 26, SWNW,SW,NWSE.

T37N, R28W, SEC. 27, NWNE,S1/2NE,NESE.

Menominee County, Advertised Price \$36,783.75, 115.7 Acres, Hardwood, Red Oak.

SALE NOTE: The tamarack within Payment Units 2 and 4 is dying due to the eastern larch beetle. The spruce budworm is also causing defoliation and mortality throughout the sale area.

Snakey Hardwood (33-033-20) / T34N, R28W, SEC. 8 , NW,NE.

T34N, R28W, SEC. 9 , NW,NWNE.

Menominee County, Advertised Price \$71,578.80, 206.3 Acres, Hardwood, Aspen.

SALE NOTE: The Purchaser must haul and spread 100 cubic yards of gravel, prior to any hauling taking place.

Hopping Vulture (33-034-20) / T37N, R27W, SEC. 32, NE,SE.

T37N, R27W, SEC. 33, SWNW,NWSW.

Menominee County, Advertised Price \$33,179.20, 140.2 Acres, Hardwood, Aspen.

SALE NOTE: The eastern larch beetle and spruce budworm have caused significant defoliation, with some mortality. The Purchaser should harvest this sale as soon as possible. The Purchaser is required to haul and spread 140 cubic yards of pit run gravel on the access roads. A state pit is located along the Wiregrass Lake Road.

Pokovich Pieces (33-035-20) / T37N, R27W, SEC. 31, NESE.

T37N, R27W, SEC. 32, SENW,NWNE,SW,W1/2SE.

Menominee County, Advertised Price \$16,524.80, 66.1 Acres, Hardwood, Spruce/Fir/Tamarack.

SALE NOTE: The spruce budworm has caused a significant amount of spruce and balsam fir defoliation, with some mortality. The eastern larch beetle has caused a significant amount of tamarack mortality. The Purchaser should harvest the wood as soon as possible. The Purchaser must haul and spread 120 cubic yards of pit run gravel. Gravel is available from a state pit, about seven miles away.

BID INSTRUCTIONS (VER. 07/02/2018):

1. Scheduled Bid Location, Date, and Time (2/11)

Bids must be received by the Unit Manager, ESCANABA OFFICE, 6833 Hwy's 2, 41 & M-35, Gladstone, MI 49837, no later than 3:00 p.m. (local time) on December 8, 2020. For further information concerning this sale, contact Eric Thompson at 906-789-8231.

2. Bidder's Qualifications (5/16)

Purchaser shall obtain workers compensation insurance to cover claims under Michigan's Worker's Disability Compensation Act of 1969 or similar employee benefit act of any other state applicable to an employee. If all or part of a timber sale was prepared by a private contractor, the contractor and that contractor's company are not permitted to bid on the timber sale contract. Bids will not be accepted from individuals or companies appearing on the DNR/FRD No-Bid List. This list contains the names of purchasers who previously failed to execute a contract within 21-days or who have a history of poor performance.

3. Preparation of Sealed Bids (5/16)

Bid Forms may be completed online thru Michigan DNR Timber Sale Online Bidding (OLB) at www.michigan.gov/timberbidding or by completing the hardcopy Bid Form found in the Timber Sale Prospectus. Hardcopy Bid Forms shall be manually signed in ink. Registration in OLB is considered your 'signature' for all bids submitted thru that system. Bid prices must be entered for each species and product in the Bid Price column for all material subject to bidding and all fill-in blanks must be completed. If erasures or other changes appear on the hardcopy Bid Form, each erasure or change must be initialed by the person signing the bid.

4. Submission of Sealed Bids (5/16)

Bid forms may be obtained from the Unit Manager or thru OLB. Bids may be submitted hardcopy or thru OLB. All hardcopy bids must be submitted on the bid form and in an envelope clearly identified as described in this section. NOTE: Only one bid form per bid envelope. Sealed bids must be submitted to the Unit office designated in the prospectus and must be submitted at or prior to the time established in the prospectus. The envelope should show on the outside (a) the sale name or number and (b) the date and time of bid opening, as shown in the prospectus. Bids received after the time specified in the sale prospectus are late bids and will be rejected.

It is possible for a bidder to submit multiple bids on a single sale. For example, a bid may be submitted hardcopy and a bid may be submitted thru OLB. Or, two bidders from the same company could both submit bids on the same sale. If this were to happen, the State would accept all bids received and award the contract accordingly. All bidding and contractual requirements would apply to all bids received.

5. Public Opening of Sealed Bids (7/16)

If conditions permit, the sealed bids will be publicly opened and posted at the time and place set in the prospectus.

If a bidder, present at a bid opening, has submitted bids on more than one sale, that bidder may withdraw their unopened bid envelopes or announce the withdrawal of their online bid after being declared the successful bidder on one sale.

6. Award of Contract (1/11)

Award of the contract will be made to the Bidder whose bid, conforming to the prospectus, is most advantageous to the State of Michigan on the basis of total value at rates bid for the estimated quantities. The State reserves the right to reject any bid or waive any minor irregularity in bids received. A written award mailed (or otherwise furnished) to the successful Bidder shall be deemed to result in a binding contract without further action by either party.

7. Down Payment (1/11)

The Bidder to whom award is made must make a down payment within 21 days of the sale award. The amount of the down payment will be calculated as shown in the Bond and Payment Schedule of this prospectus. Only cash may be used to meet this requirement.

8. Performance Security (1/11)

As guarantee of faithful performance, a cash bond, certificate of deposit, surety bond or irrevocable letter of credit (LOC) is required within 21 days of the sale award. The amount of the performance security is shown in the Bond and

Payment Schedule of this prospectus. If an LOC or surety is used, the coverage must extend for at least 6 months beyond the contract expiration.

9. Timber Sale Contract (7/18)

Additional conditions and requirements common to all timber sales are listed on the timber sale contract (R4031) and are available on line at www.michigan.gov/timber. Contact the Unit Manager for additional information or a sample contract. Within 21 days of the date of the award letter, the bidder must sign the contract and provide the required down payment, performance security, and verification of worker's disability compensation. The down payment and performance security shall be in accordance with the provisions of the timber sale contract, in the sums stated in this prospectus. If these actions are not taken, then the Bidder, the Bidder's corporation, and the corporation's principals may not be permitted to bid on State timber sales for a period of 3 months after the first offense, 6 months after the second offense, and 1 year after the third offense. An offense will only be counted against the Bidder for 5 years. In addition, the Bidder certifies that if awarded this contract, the Bidder will complete the timber sale contract in accordance with its terms and any modifications thereof including requirements to purchase, cut, and remove the included timber by the expiration date.

Payment Unit values in the State Forest Timber Sale Contract are calculated based on the advertised value of the Payment Unit as a percentage of the total advertised value of the contract. The advertised value of each Payment Unit is given in the Description of Timber by Payment Unit table on the Timber Sale Information page. For example, if the value of Payment Unit 1 is advertised as \$1,500 and the total Timber Sale value is advertised as \$10,000, the contract price for Payment Unit 1 will be 15% of the total bid price ($\$1,500/\$10,000 * 100$).

10. Disclaimer of Estimates and Bidder's Warranty of Inspection (7/16)

Before submitting this bid, the Bidder is advised and cautioned to inspect the sale area, review the requirements of the sale contract, and take other steps as may be reasonably necessary to ascertain the location, estimated volumes, construction estimates, and operating costs of the proposed sale. Failure to do so will not relieve the Bidder from responsibility for completing the contract.

The Bidder warrants that this bid is submitted solely on the basis of the Bidder's examination and inspection of the quality and quantity of the timber offered for sale and the Bidder's opinion of the value thereof and the costs of recovery. No reliance should be placed on the State of Michigan's estimates of timber quality, quantity or costs of recovery. Bidder further acknowledges that the State of Michigan: (i) expressly disclaims any warranty of fitness of timber for any purpose; (ii) offers this timber as is without any warranty of quality (merchantability) or quantity and (iii) expressly disclaims any warranty as to the quantity or quality of timber sold.

11. Certification and Chain-of-Custody (10/14)

Unless otherwise indicated in the contract under section 7 – Other Conditions of the Sale Specific Conditions & Requirements, the area encompassed by this timber sale is certified to the standards of the Forest Stewardship Council (FSC) - Certificate #SCS-FM/COC-00090N and the Sustainable Forestry Initiative (SFI) - Certificate #NSF-SFIS-5Y031-SF5. Forest products from this sale may be delivered to the mill as "FSC 100% and / or SFI certified" as long as the contractor hauling the forest products is chain-of-custody (COC) certified or covered under a COC certificate from the destination mill. The purchaser is responsible for maintaining COC after leaving the sale area.

12. Good Neighbor Authority (GNA) Requirements (7/16)

If the name of this timber sales contains the acronym GNA, it is authorized by the Good Neighbor Authority (GNA) and covered by various agreements between the U.S. Forest Service and the State. The timber sale occurs on federal land and the following conditions apply:

GNA contracts on US Forest Service land will not be awarded to purchasers on the Federal list of excluded parties. The System for Award Management (SAM) will be checked for active excluded parties prior to award of contract. In addition, the Bidder to whom award is made must complete an Assurance Regarding Felony Conviction or Tax Delinquent Status for Corporate Applicants (AD-3031).

13. Good Neighbor Authority (GNA) Requirements, con't (9/16)

Bidder certifies, by signing this bid form, that to the best of Bidder's knowledge that the following representations are accurate and complete.

- a. That the Bidder and its principals are not presently debarred, suspended, proposed for debarment, declared ineligible, or voluntary excluded from timber sales (covered transactions) by any Federal department or agency.
- b. That the Bidder and its principals have not within a 3-year period preceding this bid been convicted of or had a civil judgment rendered against them for commission of fraud or a criminal offense in connection with obtaining , attempting to obtain, or performing a public (Federal, State, or local) transaction or contract under a public transaction; violation of Federal or State antitrust statutes or commission of embezzlement, theft, forgery, bribery, falsification or destruction of records, making false statements, or receiving stolen property.
- c. That the Bidder and its principals are not presently indicted for or otherwise criminally or civilly charged by a governmental entity (Federal, State, or local) with commission of any of the offenses enumerated in paragraph b of this certification.
- d. That the Bidder and its principals have not within a 3-year period preceding this bid had one or more public transactions (Federal, State, or local) terminated for breach or default of a timber or forest product contract.

Bidders that cannot certify this requirement, in whole or in part, shall submit an explanation with their bid.

DAN EICHINGER
Director

TIMBER SALE INFORMATION

Miscauna Beaver (33-031-20)

T37N, R28W, SEC. 26; T37N, R28W, SEC. 27; T37N, R28W, SEC. 34; T37N, R28W, SEC. 35.

Menominee County (Advertised Price \$29,928.05)

SALE NOTE: All Payment Units on this sale can be harvested during the summer months. There is oak wilt possibly in the sale area, the cutting specs could be modified during the contract to treat the oak wilt.

A timber sale contract for this lump sum, sealed bid timber sale will be awarded to the responsible bidder offering the highest sealed bid price. All units of volume listed below were estimated using the T-Sale computer program and our traditional volume equations. Bids must be at or above the following advertised price for each product and species:

<u>PRODUCTS & SPECIES</u>	<u>ESTIMATED UNITS*</u>	<u>ADVERTISED PRICE</u>
Sawtimber		
Red Maple	2.9 MBF	\$ 96.00 / MBF
Red Oak	3.6 MBF	\$ 133.00 / MBF
Sugar Maple	1.8 MBF	\$ 163.00 / MBF
Pulpwood		
Balsam Fir	54 Cords	\$ 13.10 / Cord
Mixed Aspen	416 Cords	\$ 17.15 / Cord
Mixed Hardwood	656 Cords	\$ 20.15 / Cord
Mixed Spruce	14 Cords	\$ 15.55 / Cord
N. White Cedar	12 Cords	\$ 10.95 / Cord
Red Oak	20 Cords	\$ 20.20 / Cord
Red Pine	11 Cords	\$ 43.15 / Cord
White Pine	382 Cords	\$ 17.25 / Cord

* The total volume is statistically estimated within plus (+) or minus (-) 10.83 percent. There are an estimated 1,581 cords on this timber sale, plus or minus 171 cords at the 95% confidence level. The estimated units are final and not subject to adjustment. Prospective bidders are urged to examine this timber and to make their own estimates of quantity and quality.

BOND AND PAYMENT SCHEDULE:

1. A bond in the amount of \$1,496.00 to insure faithful performance of the conditions of the contract will be deposited by the successful bidder within 21 days of the sale award.
2. Cutting in any sale or unit without the required advance payment would be considered a trespass.
3. Total payment must be paid in advance or according to the following schedule :
 - (a) Ten percent (10%) of the sale value must be paid within 21 days of the sale award.
 - (b) The 10% down payment will be credited towards the first unit cut.
 - (c) Payment for each of the following units must be made before cutting begins in that unit:

PAYMENT UNIT NUMBER	PERCENT OF TOTAL SALE VALUE
01	6.5%
02	16.0%
03	44.3%
04	9.8%
05	23.4%
4. If no cutting takes place, the 10% down payment will not be refunded.
5. Operations on the contract issued will terminate on 09/29/2023.

SALE STATISTICS

SALE VOLUMES

VOLUME		STATISTICAL RANGE IN CORDS		
TOTAL CUBIC FEET	TOTAL CORDS	PERCENT ERROR	MINIMUM	MAXIMUM
124,860	1,581	10.83%	1,409	1,752

VDU VOLUMES

A VDU is a Volume Determination Unit. Volumes and their associated statistics are calculated at the VDU level and summarized to the sale level. There is often a one to one relationship between a VDU and a Payment Unit, but not always, depending on the cruise design. Refer to the VDU TO PAYMENT UNIT table.

VDU	VOLUME		PERCENT ERROR	RANGE IN CORDS	
	TOTAL CUBIC FEET	TOTAL CORDS		MINIMUM	MAXIMUM
20	9,606	122	34.72%	79	164
23	22,160	281	28.28%	201	360
28	50,679	642	14.09%	551	732
29	29,467	373	29.22%	264	482
30	12,948	164	20.98%	130	198
TOTAL:	124,860	1,581		1,225	1,936

VDU TO PAYMENT UNIT

When a VDU is associated with more than one Payment Unit (PU), the VDU volumes are assigned to the PU based on acres of the VDU within the PU.

VDU	VDU ACRES	PU	PU ACRES
20	8.7	1	8.7
23	11.8	2	11.8
28	23.9	3	23.9
29	12.3	5	12.3
30	8.5	4	8.5
TOTAL:	65.2		65.2

DESCRIPTION OF TIMBER BY PAYMENT UNIT (PU)

PU	MARKET GROUP	PRODUCT	QUANTITY	UNIT	ACRES	ADVERTISE PRICE
1	Balsam Fir	Pulpwood	37	Cords	8.7	\$1,945.70
	Mixed Aspen		12	Cords		
	<i>Quaking Aspen</i>		12	Cords		
	Mixed Hardwood		25	Cords		
	<i>Balsam Poplar</i>		19	Cords		
	<i>Black Cherry</i>		2	Cords		
	<i>Red Maple</i>		2	Cords		
	<i>Sugar Maple</i>		2	Cords		
	Mixed Spruce		5	Cords		
	<i>Black Spruce</i>		4	Cords		
	<i>White Spruce</i>		1	Cords		
	N. White Cedar		9	Cords		
	Red Oak		2	Cords		
	White Pine		31	Cords		
2	Balsam Fir	Pulpwood	12	Cords	11.8	\$4,795.40
	Mixed Aspen		200	Cords		
	<i>B. T. Aspen</i>		95	Cords		
	<i>Quaking Aspen</i>		105	Cords		
	Mixed Hardwood		21	Cords		
	<i>Red Maple</i>		21	Cords		
	Mixed Spruce		4	Cords		
	<i>White Spruce</i>		4	Cords		
	N. White Cedar		3	Cords		
	White Pine		40	Cords		
3	Red Maple	Sawtimber	2.9	MBF	23.9	\$13,255.50
	Red Oak	Pulpwood	3.1	MBF		
	Sugar Maple		1.8	MBF		
	Balsam Fir		5	Cords		
	Mixed Aspen		6	Cords		
	<i>Quaking Aspen</i>		6	Cords		
	Mixed Hardwood		507	Cords		
	<i>Balsam Poplar</i>		2	Cords		
	<i>Ironwood</i>		1	Cords		
	<i>Paper Birch</i>		4	Cords		
	<i>Red Maple</i>		417	Cords		
	<i>Sugar Maple</i>		83	Cords		
	Mixed Spruce		5	Cords		
	<i>White Spruce</i>		5	Cords		
	Red Oak		11	Cords		
	White Pine		92	Cords		
4	Mixed Aspen		Pulpwood	127	Cords	8.5
	<i>B. T. Aspen</i>	19		Cords		
	<i>Quaking Aspen</i>	108		Cords		
	Mixed Hardwood	31		Cords		
	<i>Balsam Poplar</i>	6		Cords		
	<i>Paper Birch</i>	2		Cords		
	<i>Red Maple</i>	15		Cords		
	<i>Sugar Maple</i>	8		Cords		
	White Pine	8		Cords		
	5	Red Oak		Sawtimber	0.5	
Mixed Aspen		Pulpwood	71	Cords		
<i>B. T. Aspen</i>			22	Cords		
<i>Quaking Aspen</i>			49	Cords		
Mixed Hardwood			72	Cords		
<i>Paper Birch</i>			2	Cords		
<i>Red Maple</i>			66	Cords		

DESCRIPTION OF TIMBER BY PAYMENT UNIT (PU), CON'T

PU	MARKET GROUP	PRODUCT	QUANTITY	UNIT	ACRES	ADVERTISE PRICE
5 con't	<i>Sugar Maple</i>	<i>Pulpwood</i>	4	<i>Cords</i>		
	Red Oak		7	Cords		
	Red Pine		11	Cords		
	White Pine		211	Cords		
TOTAL:			8.3	MBF		
TOTAL:			1,565	Cords		

Sale Specific Conditions & Requirements

Sale Name: Miscauna Beaver

Sale Number: 33-031-20 Seq#: 1

1 - Sale Area

1.2 - Boundaries

1.2.1 - Painted boundaries (9/19)

The sale boundary and Payment Unit boundaries are marked and identified by blue, red and yellow paint. Exterior sale boundary lines against private property are marked with blue paint. Exterior sale boundary lines against state are marked with red paint. Interior Payment Unit boundaries are marked with yellow paint. Retention patches are marked with red paint; no harvesting activities may occur within these areas. Yellow painted trees designating an interior Payment Unit boundary are only to be cut when all surrounding Payment Units have been paid for.

2 - Timber Specifications

2.1 - Included Timber

2.1.1 - Clearcut unit(s) with unmerchantable trees (6/14)

Within Payment Unit(s) 1, cut all trees that are two (2) inches or more at DBH; except trees marked with green paint.

Within Payment Unit(s) 2, 3, 4 and 5, cut all trees that are three (3) inches or more at DBH. In addition, within Payment Units 3, 4 and 5, do not cut trees marked with green paint. Also, within Payment Unit 3, do not cut cedar.

2.1.16 - Timber along county or forest roads (6/14)

Cut and remove all standing trees three (3) inches at DBH or greater within 33 feet of the center line of the Miscauna Grade. This area to be cut will run from where the access road branches off of the Miscauna Creek Road heading west until reaching the western edge of Payment Unit 1. The wood harvested will be skid and decked separately by species and product. The sale administrator will scale the wood and the Purchaser will be invoiced for the wood, at the contract rates.

3 - Payments

3.3 - Pre-measured Sales

3.3.4 - Dividing payment units (7/14)

Payment Unit(s) \$18,000 in value or greater may be divided at the request of the Purchaser and upon approval of the Unit Manager. Dividing Payment Units is a contract modification which requires a Timber Sale Contract Amendment. There will be only one division per Payment Unit.

4 - Transportation

4.2 - Maintenance

4.2.1 - Hauling restriction (12/08)

Hauling may be restricted on forest roads by the Unit Manager or his/her representative. The restriction may occur during spring breakup or during other wet weather conditions.

4.2.4 - Grading (10/16)

For completion of the sale, state forest roads must be graded. In general, this will require a road grader or bull dozer to shape up the roads after forest products have been hauled off site. This includes cleaning of drainage areas, grading, crowning and filling with gravel, if necessary. The grading equipment to be used must be approved by the Unit Manager or his/her representative.

5 - Operations

5.2 - Conduct of Operations

5.2.3 - Operating Restrictions

5.2.3.5 - Oak wilt restriction (1/18)

Within Payment Unit(s) 3, unless changed by written agreement, cutting, skidding, hauling within the sale and brushing of

access roads to the sale are not permitted during the period of April 15 to July 15. Operations may be allowed if specific steps are taken to prevent damaging uncut oak during the high risk period. Those steps may include completing all road brushing before April 15th and clearing a tree-length buffer along uncut oak cover before April 15th. This is necessary to reduce the spread of oak wilt. For more information, contact the Unit Manager or his/her representative.

5.4 - Soil Protection

5.4.1 - Rutting restriction, general (7/16)

Operations are to cease immediately if equipment and weather conditions result in rutting of roads and/or skid trails which is 12 inches or greater in depth and 50 feet in length. The Unit Manager or his/her representative may restrict hauling and/or skidding if ruts exceed the specified depth. With the Unit Manager or his/her representative's approval, the Purchaser may return to the area when the risk of rutting has decreased.

6 - Safety and Fire Prevention

6.2 - Signing

6.2.1 - Road posting (9/09)

The Purchaser is responsible for posting and maintaining caution signs on the Miscauna Creek Road prior to beginning operations. The road must be posted at appropriate distances from the sale area to warn of logging activity and truck traffic. Signs must be removed when harvest operations are suspended or completed. The Purchaser will provide these signs.

7 - Other Conditions

7.3 - Contract Modifications

7.3.2 - Modification for oak wilt (2/05)

Within the sale area, there may be patches of oak wilt. If oak wilt is identified within the sale area, this contract may be modified. The following modifications could occur: time of cutting, species to cut, volume to harvest, or various others dealing with the treatment of oak wilt. If a species is not specified in this contract, it shall be paid for at the average price received for that species and product.

7.5 - Loss

7.5.1 - Deteriorating timber (7/09)

The sale area has received damage from the spruce budworm. The Purchaser should harvest the wood as soon as possible. The Department of Natural Resources is held free of responsibility of any further damage or deterioration due to delay in harvesting.



TIMBER SALE MAP

This information provided by authority of Part 525, 1994 PA 451, as amended.

Forest Management Unit Escanaba Management Unit	County Menominee County	Mapped By Beaudo	Date 8/10/2020	Page 1	of 1
Township 37N	Range 28W	Section(s) and Subdivision(s) Sec 26 - S1/2SW; Sec 27 - E1/2SW, S1/2SE; Sec 34 - NENE; Sec 35 - NWNW.	Scale 1:15,840		

Cover Type				Density	
A = Aspen	H = Hemlock	N = Marsh	U = Upland Brush	0 = Non Stocked	5 = Pole Timber Medium
B = Paper Birch	J = Jack Pine	O = Oak	UM = Upland Mixed	1 = Seedling Sapling Poor	6 = Pole Timber Well
C = Cedar	L = Lowland Brush	P = Lowland Poplar	V = Bog or Marsh	2 = Seedling Sapling Medium	7 = Saw Timber Poor
D = Treed Bog	LM = Lowland Mixed	Q = Mixed Swamp Conifer	W = White Pine	3 = Seedling Sapling Well	8 = Saw Timber Medium
E = Swamp Hdwoods	M = Mpl, Bch, Brch	R = Red Pine	X = Non Stocked	4 = Pole Timber Poor	9 = Saw Timber Well
F = Spruce Fir	MC = Mixed Conifer	S = Black Spruce	Z = Water		
G = Grass	MD = Mixed Deciduous	T = Tamarack			

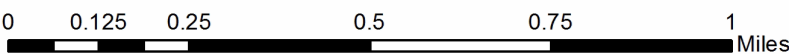
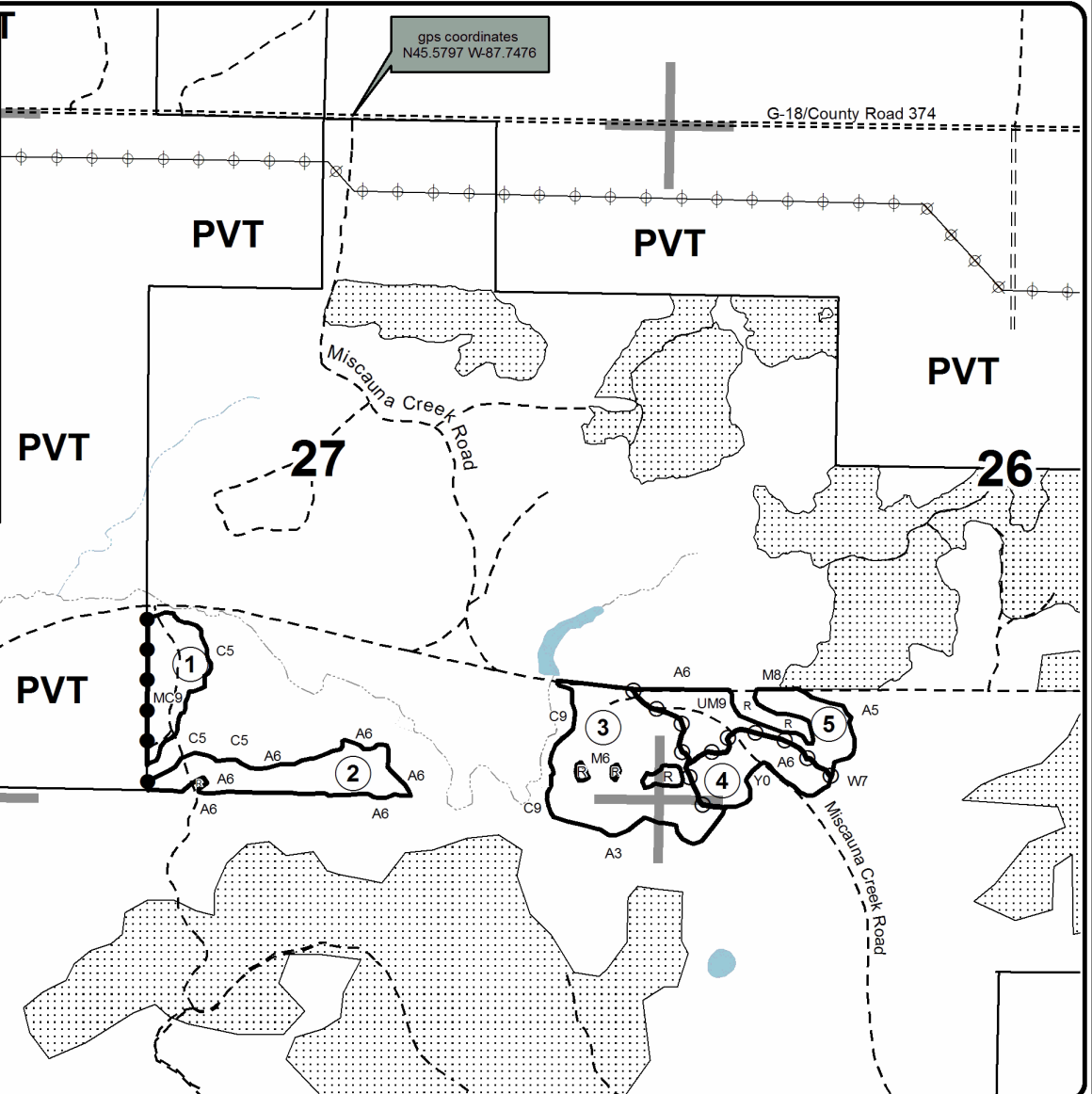
PU	Acres	PU	Acres
1	8.7	4	8.5
2	11.8	5	12.3
3	23.9		

**Miscauna Beaver
Compartment 10
65.2 Acres**



Legend

- Against State (Red)
- ⊙ Payment Unit (Yellow)
- Private Line (Blue)
- == Paved Road
- - Two Tracked Road
- Section Corner
- 26** Section Number
- State Land Boundary
- PVT Private Property
- ▨ Adjacent Timber Sale
- R Retention Patch
- ① Payment Unit
- Stream/Creek/Drainage



TIMBER SALE INFORMATION

Nathan Briar (33-032-20)

T37N, R28W, SEC. 26; T37N, R28W, SEC. 27.
Menominee County (Advertised Price \$36,783.75)

SALE NOTE: The tamarack within Payment Units 2 and 4 is dying due to the eastern larch beetle. The spruce budworm is also causing defoliation and mortality throughout the sale area.

A timber sale contract for this lump sum, sealed bid timber sale will be awarded to the responsible bidder offering the highest sealed bid price. All units of volume listed below were estimated using the T-Sale computer program and our traditional volume equations. Bids must be at or above the following advertised price for each product and species:

<u>PRODUCTS & SPECIES</u>	<u>ESTIMATED UNITS*</u>	<u>ADVERTISED PRICE</u>
Sawtimber		
Red Oak	16.4 MBF	\$ 158.00 / MBF
Pulpwood		
Balsam Fir	30 Cords	\$ 15.50 / Cord
Mixed Aspen	34 Cords	\$ 20.25 / Cord
Mixed Hardwood	740 Cords	\$ 23.80 / Cord
Mixed Spruce	107 Cords	\$ 18.35 / Cord
N. White Cedar	91 Cords	\$ 12.95 / Cord
Red Oak	254 Cords	\$ 23.90 / Cord
Red Pine	11 Cords	\$ 51.00 / Cord
Tamarack	43 Cords	\$ 11.45 / Cord
White Pine	253 Cords	\$ 20.40 / Cord

* The total volume is statistically estimated within plus (+) or minus (-) 10.19 percent. There are an estimated 1,595 cords on this timber sale, plus or minus 163 cords at the 95% confidence level. The estimated units are final and not subject to adjustment. Prospective bidders are urged to examine this timber and to make their own estimates of quantity and quality.

BOND AND PAYMENT SCHEDULE:

1. A bond in the amount of \$1,839.00 to insure faithful performance of the conditions of the contract will be deposited by the successful bidder within 21 days of the sale award.
2. Cutting in any sale or unit without the required advance payment would be considered a trespass.
3. Total payment must be paid in advance or according to the following schedule :
 - (a) Ten percent (10%) of the sale value must be paid within 21 days of the sale award.
 - (b) The 10% down payment will be credited towards the first unit cut.
 - (c) Payment for each of the following units must be made before cutting begins in that unit:

PAYMENT UNIT NUMBER	PERCENT OF TOTAL SALE VALUE
01	13.0%
02	13.9%
03	18.6%
04	6.7%
05	17.5%
06	16.9%
07	13.4%
4. If no cutting takes place, the 10% down payment will not be refunded.
5. Operations on the contract issued will terminate on 07/01/2024.

SALE STATISTICS

SALE VOLUMES

VOLUME			STATISTICAL RANGE IN CORDS	
TOTAL CUBIC FEET	TOTAL CORDS	PERCENT ERROR	MINIMUM	MAXIMUM
126,014	1,595	10.19%	1,433	1,758

VDU VOLUMES

A VDU is a Volume Determination Unit. Volumes and their associated statistics are calculated at the VDU level and summarized to the sale level. There is often a one to one relationship between a VDU and a Payment Unit, but not always, depending on the cruise design. Refer to the VDU TO PAYMENT UNIT table.

VDU	VOLUME		PERCENT ERROR	RANGE IN CORDS	
	TOTAL CUBIC FEET	TOTAL CORDS		MINIMUM	MAXIMUM
5	13,477	171	40.61%	101	240
15	20,587	261	21.15%	205	316
16	19,474	247	24.87%	185	308
35	21,978	278	31.27%	191	365
38	20,659	262	16.91%	217	306
150	12,601	160	36.47%	101	218
380	17,254	218	20.37%	174	263
TOTAL:	126,029	1,595		1,176	2,015

VDU TO PAYMENT UNIT

When a VDU is associated with more than one Payment Unit (PU), the VDU volumes are assigned to the PU based on acres of the VDU within the PU.

VDU	VDU ACRES	PU	PU ACRES
5	17.0	1	17.0
15	7.8	2	7.8
16	18.8	3	18.8
35	20.1	5	20.1
38	23.1	6	23.1
150	8.1	4	8.1
380	20.8	7	20.8
TOTAL:	115.7		115.7

DESCRIPTION OF TIMBER BY PAYMENT UNIT (PU)

PU	MARKET GROUP	PRODUCT	QUANTITY	UNIT	ACRES	ADVERTISE PRICE			
1	Red Oak	Sawtimber	6.3	MBF	17.0	\$4,771.60			
	Red Oak	Pulpwood	158	Cords					
2	Balsam Fir	Pulpwood	2	Cords	7.8	\$5,109.50			
	Mixed Aspen		27	Cords					
	<i>Balsam Poplar</i>		27	Cords					
	Mixed Hardwood		42	Cords					
	<i>Black Ash</i>		26	Cords					
	<i>Paper Birch</i>		7	Cords					
	<i>Red Maple</i>		9	Cords					
	Mixed Spruce		26	Cords					
	<i>Black Spruce</i>		26	Cords					
	N. White Cedar		39	Cords					
	White Pine		125	Cords					
3	Red Oak	Sawtimber	10.1	MBF	18.8	\$6,897.25			
	Balsam Fir	Pulpwood	3	Cords					
	Mixed Hardwood	139	Cords						
	<i>Basswood</i>	6	Cords						
	<i>Black Ash</i>	2	Cords						
	<i>Paper Birch</i>	5	Cords						
	<i>Red Maple</i>	50	Cords						
	<i>Sugar Maple</i>	76	Cords						
	N. White Cedar	3	Cords						
	Red Oak	73	Cords						
	White Pine	8	Cords						
	4	Balsam Fir	Pulpwood	2			Cords	8.1	\$2,448.15
		Mixed Spruce		71			Cords		
<i>Black Spruce</i>		71		Cords					
N. White Cedar		37		Cords					
Tamarack		43		Cords					
White Pine		7		Cords					
5		Balsam Fir		Pulpwood	12	Cords	20.1		
	Mixed Aspen	7	Cords						
	<i>Balsam Poplar</i>	6	Cords						
	<i>Quaking Aspen</i>	1	Cords						
	Mixed Hardwood	240	Cords						
	<i>Basswood</i>	6	Cords						
	<i>Black Ash</i>	137	Cords						
	<i>Paper Birch</i>	15	Cords						
	<i>Red Maple</i>	53	Cords						
	<i>Yellow Birch</i>	29	Cords						
	Mixed Spruce	7	Cords						
	<i>White Spruce</i>	7	Cords						
	White Pine	13	Cords						
	6	Balsam Fir	Pulpwood		4	Cords		23.1	\$6,212.15
Mixed Hardwood		140		Cords					
<i>Basswood</i>		3		Cords					
<i>Red Maple</i>		64		Cords					
<i>Sugar Maple</i>		73		Cords					
Mixed Spruce		3		Cords					
<i>White Spruce</i>		3		Cords					
Red Oak		23		Cords					
Red Pine		11		Cords					
White Pine		81		Cords					
7		Balsam Fir		Pulpwood	7	Cords	20.8		
	Mixed Hardwood	179	Cords						

DESCRIPTION OF TIMBER BY PAYMENT UNIT (PU), CON'T

PU	MARKET GROUP	PRODUCT	QUANTITY	UNIT	ACRES	ADVERTISE PRICE
7 con't	<i>Basswood</i>	<i>Pulpwood</i>	14	<i>Cords</i>		
	<i>Ironwood</i>		1	<i>Cords</i>		
	<i>Red Maple</i>		63	<i>Cords</i>		
	<i>Sugar Maple</i>		98	<i>Cords</i>		
	<i>White Ash</i>		3	<i>Cords</i>		
	N. White Cedar		12	Cords		
	White Pine		19	Cords		
TOTAL:			16.4	MBF		
TOTAL:			1,563	Cords		

Sale Specific Conditions & Requirements

Sale Name: Nathan Briar

Sale Number: 33-032-20 Seq#: 1

1 - Sale Area

1.2 - Boundaries

1.2.1 - Painted boundaries (9/19)

The sale boundary and Payment Unit boundaries are marked and identified by blue, red and yellow paint. Exterior sale boundary lines against private property are marked with blue paint. Exterior sale boundary lines against state are marked with red paint. Interior Payment Unit boundaries are marked with yellow paint. Retention patches are marked with red paint; no harvesting activities may occur within these areas. Yellow painted trees designating an interior Payment Unit boundary are only to be cut when all surrounding Payment Units have been paid for.

2 - Timber Specifications

2.1 - Included Timber

2.1.1 - Clearcut unit(s) with unmerchantable trees (6/14)

Within Payment Unit(s) 2 - 7, cut all trees that are three (3) inches or more at DBH; with the following exceptions:

- Within Payment Unit 2, do not cut hemlock.
- Within Payment Units 3, 6 and 7, do not cut hemlock and trees marked with green paint.
- Within Payment Unit 5, do not cut cedar and hemlock.

2.1.2 - Clearcut unit(s) w/o unmerchantable trees (8/11)

Within Payment Unit(s) 1, cut all oak trees which meet minimum piece specifications in 2.2 Utilization.

2.1.9 - Harvest exception (12/08)

Do not cut any cedar trees within Payment Unit 5 other than those that are necessary to remove in order to operate within the sale area. Every effort must be made to preserve the existing cedar and to leave an intact stand upon sale completion. All cut cedar shall be piled separately by products and scaled in the woods unless other scaling arrangements are agreed to by the Unit Manager or his/her representative. Stumpage price for cedar shall be \$45.00 per cord.

2.2 - Utilization

2.2.4 - Skidding length (2/14)

Skidding of unlimbed tops or lengths over 17 feet is not permissible within Payment Units 1, 6 and 7, to prevent damage to the advanced regeneration within these Payment Units.

3 - Payments

3.3 - Pre-measured Sales

3.3.4 - Dividing payment units (7/14)

Payment Unit(s) \$18,000 in value or greater may be divided at the request of the Purchaser and upon approval of the Unit Manager. Dividing Payment Units is a contract modification which requires a Timber Sale Contract Amendment. There will be only one division per Payment Unit.

4 - Transportation

4.2 - Maintenance

4.2.1 - Hauling restriction (12/08)

Hauling may be restricted on forest roads by the Unit Manager or his/her representative. The restriction may occur during spring breakup or during other wet weather conditions.

4.2.4 - Grading (10/16)

For completion of the sale, state forest roads must be graded. In general, this will require a road grader or bull dozer to shape up the roads after forest products have been hauled off site. This includes cleaning of drainage areas, grading, crowning and filling with gravel, if necessary. The grading equipment to be used must be approved by the Unit Manager or his/her representative.

5 - Operations

5.2 - Conduct of Operations

5.2.3 - Operating Restrictions

5.2.3.1 - Operating restrictions (9/11)

Within Payment Unit(s) 2, 4 and 5, cutting and skidding are limited to the period of December 1 to March 31, unless there is an extended dry or frozen period and the sale administrator allows harvesting during that period of time. This restriction is because of low wet ground throughout these Payment Units.

5.2.17 - Timber Mats and Interlocking Composite Mats (3/18)

Some roads or skid trails may require extra protection such as that afforded by timber mats, interlocking composite mats, or another approved system. Approximately 250 feet of road or trail will need extra protection to access Payment Unit 3, through Payment Unit 2, unless it is accessed during frozen winter conditions. If available, mats may be borrowed from the DNR. A Timber Sale Contract Supplement will be used to document the Purchaser's use of the DNR's mats. Contact the sale administrator regarding availability and pick-up. Timber mats are available from various field offices. Composite mats are only available from the Grayling field office. The Purchaser is responsible for picking up and hauling the mats to and from the site. The composite mats will require DNR staff onsite for installation and removal. Contact the sale administrator to schedule at least 30 days before desired install/removal date. All mats must be cleaned prior to drop off. This may include, but is not limited to, power washing and brushing to remove mud and debris. A charge of \$400.00 per timber mat and \$2,000.00 per composite mat will be assessed for all damaged or non-returned mats. Damage for the crane/timber mats is defined as three or more broken cants. Damage for the composite mats is defined as cracked or broken mats.

5.2.22 - Operating Caution

5.2.22.1 - Operating caution (6/11)

It is recommended, but not required, that within Payment Unit(s) 3, cutting and skidding occur during dry summer or frozen winter conditions. The reason for the recommendation is because of low wet access into the Payment Unit.

5.4 - Soil Protection

5.4.1 - Rutting restriction, general (7/16)

Operations are to cease immediately if equipment and weather conditions result in rutting of roads and/or skid trails which is 12 inches or greater in depth and 50 feet in length. The Unit Manager or his/her representative may restrict hauling and/or skidding if ruts exceed the specified depth. With the Unit Manager or his/her representative's approval, the Purchaser may return to the area when the risk of rutting has decreased.

6 - Safety and Fire Prevention

6.2 - Signing

6.2.1 - Road posting (9/09)

The Purchaser is responsible for posting and maintaining caution signs on Miscauna Creek Road prior to beginning operations. The road must be posted at appropriate distances from the sale area to warn of logging activity and truck traffic. Signs must be removed when harvest operations are suspended or completed. The Purchaser will provide these signs.

7 - Other Conditions

7.3 - Contract Modifications

7.3.2 - Modification for oak wilt (2/05)

Within the sale area, there may be patches of oak wilt. If oak wilt is identified within the sale area, this contract may be modified. The following modifications could occur: time of cutting, species to cut, volume to harvest, or various others dealing with the treatment of oak wilt. If a species is not specified in this contract, it shall be paid for at the average price received for that species and product.

7.5 - Loss

7.5.1 - Deteriorating timber (7/09)

The sale area has received damage from the eastern larch beetle in Payment Units 2 and 4 on the tamarack. There are also

a few possible oak wilt epi-centers within Payment Unit 3. The Purchaser should harvest the wood as soon as possible. The Department of Natural Resources is held free of responsibility of any further damage or deterioration due to delay in harvesting.



TIMBER SALE MAP

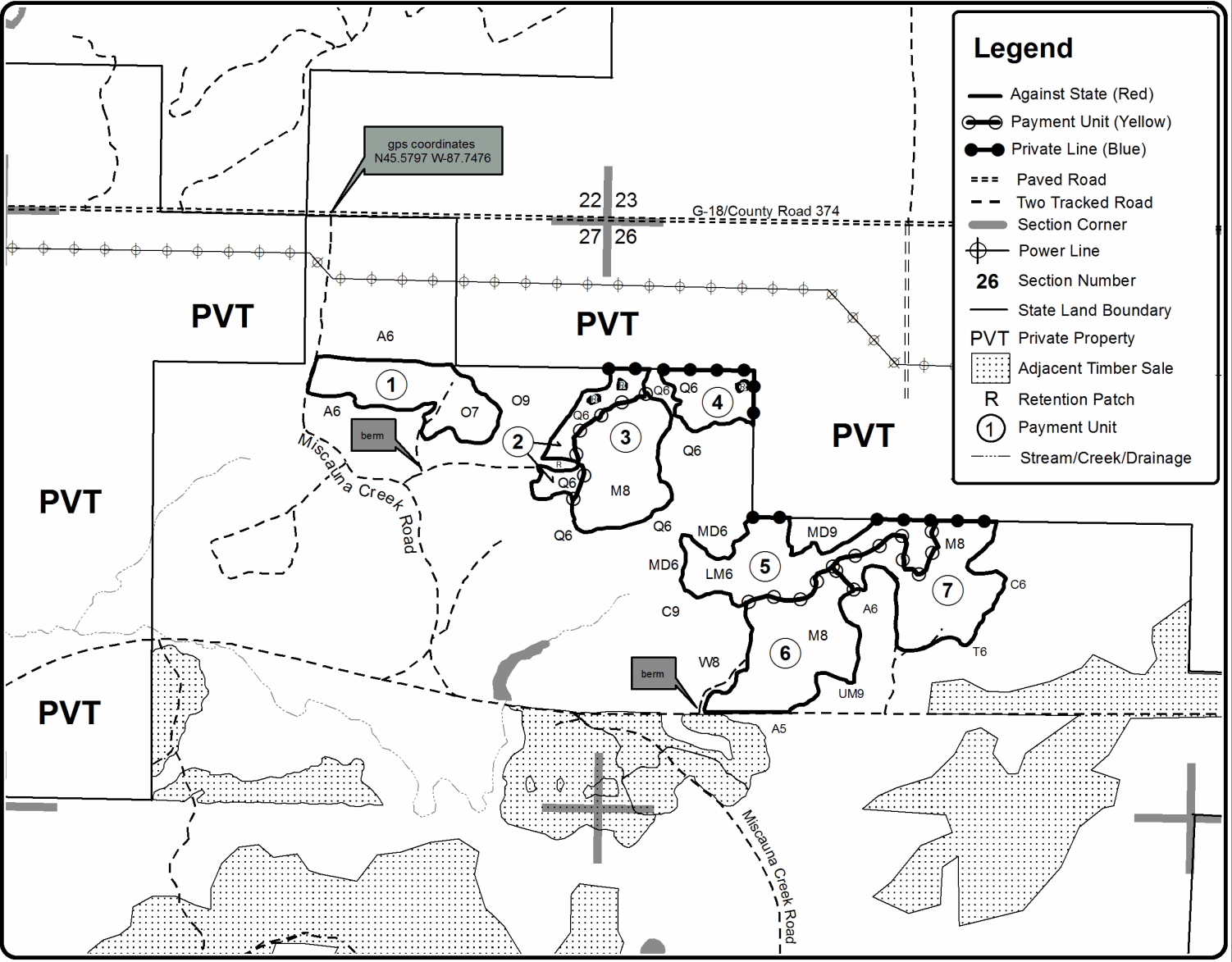
This information provided by authority of Part 525, 1994 PA 451, as amended.

Forest Management Unit Escanaba Management Unit		County Menominee County	Mapped By Beaudo	Date 8/19/2020	Page 1	of 1
Township 37N	Range 28W	Section(s) and Subdivision(s) Sec 26 - SWNW, SW, NWSE; Sec 27 - NWNE, S1/2NE, NESE.		Scale 1:15,840		

Cover Type				Density			
A = Aspen	H = Hemlock	N = Marsh	U = Upland Brush	0 = Non Stocked	5 = Pole Timber Medium		
B = Paper Birch	J = Jack Pine	O = Oak	UM = Upland Mixed	1 = Seedling Sapling Poor	6 = Pole Timber Well		
C = Cedar	L = Lowland Brush	P = Lowland Poplar	V = Bog or Marsh	2 = Seedling Sapling Medium	7 = Saw Timber Poor		
D = Treed Bog	LM = Lowland Mixed	Q = Mixed Swamp Conifer	W = White Pine	3 = Seedling Sapling Well	8 = Saw Timber Medium		
E = Swamp Hdwoods	M = Mpl, Bch, Brch	R = Red Pine	X = Non Stocked	4 = Pole Timber Poor	9 = Saw Timber Well		
F = Spruce Fir	MC = Mixed Conifer	S = Black Spruce	Z = Water				
G = Grass	MD = Mixed Deciduous	T = Tamarack					

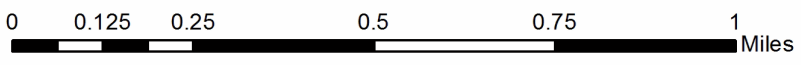
PU	Acres	PU	Acres
1	17.0	5	20.1
2	7.8	6	23.1
3	18.8	7	20.8
4	8.1		

Nathan Briar
Compartment 10
115.7 Acres



Legend

- Against State (Red)
- Payment Unit (Yellow)
- Private Line (Blue)
- Paved Road
- Two Tracked Road
- Section Corner
- Power Line
- 26** Section Number
- State Land Boundary
- PVT** Private Property
- Adjacent Timber Sale
- R** Retention Patch
- Payment Unit
- Stream/Creek/Drainage



TIMBER SALE INFORMATION

Snakey Hardwood (33-033-20)

T34N, R28W, SEC. 8; T34N, R28W, SEC. 9.
Menominee County (Advertised Price \$71,578.80)

SALE NOTE: The Purchaser must haul and spread 100 cubic yards of gravel, prior to any hauling taking place.

A timber sale contract for this lump sum, sealed bid timber sale will be awarded to the responsible bidder offering the highest sealed bid price. All units of volume listed below were estimated using the T-Sale computer program and our traditional volume equations. Bids must be at or above the following advertised price for each product and species:

<u>PRODUCTS & SPECIES</u>	<u>ESTIMATED UNITS*</u>	<u>ADVERTISED PRICE</u>
Sawtimber		
Basswood	16.0 MBF	\$ 72.00 / MBF
Beech	2.3 MBF	\$ 45.00 / MBF
Green Ash	2.6 MBF	\$ 41.00 / MBF
Red Maple	42.6 MBF	\$ 96.00 / MBF
Red Oak	47.5 MBF	\$ 133.00 / MBF
Sugar Maple	9.1 MBF	\$ 163.00 / MBF
White Ash	10.4 MBF	\$ 58.00 / MBF
White Oak	13.6 MBF	\$ 59.00 / MBF
Pulpwood		
Balsam Fir	29 Cords	\$ 13.10 / Cord
Basswood	36 Cords	\$ 9.40 / Cord
Beech	20 Cords	\$ 20.15 / Cord
Ironwood	3 Cords	\$ 20.15 / Cord
Mixed Aspen	117 Cords	\$ 17.15 / Cord
Mixed Hardwood	2,090 Cords	\$ 20.15 / Cord
Mixed Oak	342 Cords	\$ 20.20 / Cord
Mixed Spruce	41 Cords	\$ 15.55 / Cord
N. White Cedar	44 Cords	\$ 10.95 / Cord
Paper Birch	15 Cords	\$ 14.05 / Cord
Red Maple	10 Cords	\$ 20.15 / Cord
Red Pine	16 Cords	\$ 43.15 / Cord
Sugar Maple	49 Cords	\$ 20.15 / Cord
Tamarack	5 Cords	\$ 9.70 / Cord
White Ash	31 Cords	\$ 20.15 / Cord
White Pine	48 Cords	\$ 17.25 / Cord

* The total volume is statistically estimated within plus (+) or minus (-) 7.65 percent. There are an estimated 3,188 cords on this timber sale, plus or minus 244 cords at the 95% confidence level. The estimated units are final and not subject to adjustment. Prospective bidders are urged to examine this timber and to make their own estimates of quantity and quality.

BOND AND PAYMENT SCHEDULE:

1. A bond in the amount of \$3,579.00 to insure faithful performance of the conditions of the contract will be deposited by the successful bidder within 21 days of the sale award.
2. Cutting in any sale or unit without the required advance payment would be considered a trespass.
3. Total payment must be paid in advance or according to the following schedule :
 - (a) Ten percent (10%) of the sale value must be paid within 21 days of the sale award.
 - (b) The 10% down payment will be credited towards the first unit cut.

(c) Payment for each of the following units must be made before cutting begins in that unit:

PAYMENT UNIT NUMBER	PERCENT OF TOTAL SALE VALUE
01	2.3%
02	13.7%
03	13.1%
04	2.7%
05	8.2%
06	11.0%
07	14.9%
08	7.9%
09	8.0%
10	10.8%
11	7.4%

4. If no cutting takes place, the 10% down payment will not be refunded.

5. Operations on the contract issued will terminate on 07/01/2024.

SALE STATISTICS

SALE VOLUMES

VOLUME		STATISTICAL RANGE IN CORDS		
TOTAL CUBIC FEET	TOTAL CORDS	PERCENT ERROR	MINIMUM	MAXIMUM
251,830	3,188	7.65%	2,944	3,432

VDU VOLUMES

A VDU is a Volume Determination Unit. Volumes and their associated statistics are calculated at the VDU level and summarized to the sale level. There is often a one to one relationship between a VDU and a Payment Unit, but not always, depending on the cruise design. Refer to the VDU TO PAYMENT UNIT table.

VDU	VOLUME		PERCENT ERROR	RANGE IN CORDS	
	TOTAL CUBIC FEET	TOTAL CORDS		MINIMUM	MAXIMUM
1	141,363	1,789	11.97%	1,575	2,004
2	7,268	92	33.36%	61	123
10	7,829	99	20.27%	79	119
13	24,545	311	21.54%	244	378
20	19,426	246	20.29%	196	296
130	33,962	430	11.96%	378	481
131	17,475	221	16.46%	185	258
TOTAL:	251,868	3,188		2,719	3,658

VDU TO PAYMENT UNIT

When a VDU is associated with more than one Payment Unit (PU), the VDU volumes are assigned to the PU based on acres of the VDU within the PU.

VDU	VDU ACRES	PU	PU ACRES
1	93.8	2	23.7
		3	22.9
		5	14.3
		9	14.0
		10	18.9
2	6.3	1	6.3
10	20.8	4	20.8
13	22.1	6	22.1
20	17.9	11	17.9
130	25.5	7	25.5
131	19.9	8	19.9
TOTAL:	206.3		206.3

DESCRIPTION OF TIMBER BY PAYMENT UNIT (PU)

PU	MARKET GROUP	PRODUCT	QUANTITY	UNIT	ACRES	ADVERTISE PRICE	
1	Red Oak	Sawtimber	0.5	MBF	6.3	\$1,631.00	
	Balsam Fir	Pulpwood	12	Cords			
	Mixed Aspen		52	Cords			
	<i>Quaking Aspen</i>		52	<i>Cords</i>			
	Mixed Hardwood		8	Cords			
	<i>Red Maple</i>		8	<i>Cords</i>			
	Mixed Oak		16	Cords			
	<i>Red Oak</i>		16	<i>Cords</i>			
	Mixed Spruce		2	Cords			
	<i>White Spruce</i>		2	<i>Cords</i>			
2	Basswood		Sawtimber	0.9	MBF	23.7	\$9,775.50
	Green Ash	Pulpwood	0.7	MBF			
	Red Maple		10.3	MBF			
	Red Oak		1.1	MBF			
	White Oak		3.3	MBF			
	Balsam Fir		3	Cords			
	Mixed Aspen		3	Cords			
	<i>Quaking Aspen</i>		3	<i>Cords</i>			
	Mixed Hardwood		376	Cords			
	<i>American Elm</i>		3	<i>Cords</i>			
	<i>Balsam Poplar</i>		3	<i>Cords</i>			
	<i>Basswood</i>		12	<i>Cords</i>			
	<i>Beech</i>		1	<i>Cords</i>			
	<i>Black Ash</i>		156	<i>Cords</i>			
	<i>Green Ash</i>		46	<i>Cords</i>			
	<i>Paper Birch</i>		2	<i>Cords</i>			
	<i>Red Maple</i>		144	<i>Cords</i>			
	<i>Sugar Maple</i>		6	<i>Cords</i>			
	<i>White Ash</i>		1	<i>Cords</i>			
	<i>Yellow Birch</i>		2	<i>Cords</i>			
	Mixed Oak		21	Cords			
	<i>Red Oak</i>		4	<i>Cords</i>			
	<i>White Oak</i>		17	<i>Cords</i>			
	Mixed Spruce		8	Cords			
	<i>Black Spruce</i>		3	<i>Cords</i>			
	<i>White Spruce</i>		5	<i>Cords</i>			
	N. White Cedar		10	Cords			
	Tamarack		1	Cords			
	White Pine		1	Cords			
	3		Basswood	Sawtimber	0.9		
Green Ash			Pulpwood	0.6	MBF		
Red Maple		10.0		MBF			
Red Oak		1.1		MBF			
White Oak		3.2		MBF			
Balsam Fir		3		Cords			
Mixed Aspen		3		Cords			
<i>Quaking Aspen</i>		3		<i>Cords</i>			
Mixed Hardwood		358		Cords			
<i>American Elm</i>		3		<i>Cords</i>			
<i>Balsam Poplar</i>		2		<i>Cords</i>			
<i>Basswood</i>		12		<i>Cords</i>			
<i>Black Ash</i>		149		<i>Cords</i>			
<i>Green Ash</i>		45		<i>Cords</i>			
<i>Paper Birch</i>		2		<i>Cords</i>			
<i>Red Maple</i>		139		<i>Cords</i>			

DESCRIPTION OF TIMBER BY PAYMENT UNIT (PU), CON'T

PU	MARKET GROUP	PRODUCT	QUANTITY	UNIT	ACRES	ADVERTISE PRICE
3 con't	<i>Sugar Maple</i>	<i>Pulpwood</i>	5	<i>Cords</i>		
	<i>White Ash</i>		1	<i>Cords</i>		
	Mixed Oak		20	<i>Cords</i>		
	<i>Red Oak</i>		4	<i>Cords</i>		
	<i>White Oak</i>		16	<i>Cords</i>		
	Mixed Spruce		7	<i>Cords</i>		
	<i>Black Spruce</i>		2	<i>Cords</i>		
	<i>White Spruce</i>		5	<i>Cords</i>		
	N. White Cedar		11	<i>Cords</i>		
	Tamarack		1	<i>Cords</i>		
	White Pine		1	<i>Cords</i>		
	4		Balsam Fir	<i>Pulpwood</i>		
Mixed Hardwood		93	<i>Cords</i>			
<i>American Elm</i>		5	<i>Cords</i>			
<i>Basswood</i>		3	<i>Cords</i>			
<i>Beech</i>		1	<i>Cords</i>			
<i>Black Ash</i>		62	<i>Cords</i>			
<i>Green Ash</i>		7	<i>Cords</i>			
<i>Paper Birch</i>		5	<i>Cords</i>			
<i>Red Maple</i>		8	<i>Cords</i>			
<i>Sugar Maple</i>		2	<i>Cords</i>			
Tamarack		2	<i>Cords</i>			
5		Basswood	<i>Sawtimber</i>		0.5	MBF
	Green Ash	0.4		MBF		
	Red Maple	6.3		MBF		
	Red Oak	0.7		MBF		
	White Oak	2.0		MBF		
	Balsam Fir	<i>Pulpwood</i>	2	<i>Cords</i>		
	Mixed Aspen		2	<i>Cords</i>		
	<i>Quaking Aspen</i>		2	<i>Cords</i>		
	Mixed Hardwood		224	<i>Cords</i>		
	<i>American Elm</i>		2	<i>Cords</i>		
	<i>Balsam Poplar</i>		2	<i>Cords</i>		
	<i>Basswood</i>		7	<i>Cords</i>		
	<i>Black Ash</i>		93	<i>Cords</i>		
	<i>Green Ash</i>		28	<i>Cords</i>		
	<i>Paper Birch</i>		1	<i>Cords</i>		
	<i>Red Maple</i>		87	<i>Cords</i>		
	<i>Sugar Maple</i>		3	<i>Cords</i>		
	<i>White Ash</i>		1	<i>Cords</i>		
	Mixed Oak		12	<i>Cords</i>		
	<i>Red Oak</i>		2	<i>Cords</i>		
	<i>White Oak</i>		10	<i>Cords</i>		
	Mixed Spruce		4	<i>Cords</i>		
	<i>Black Spruce</i>		1	<i>Cords</i>		
	<i>White Spruce</i>	3	<i>Cords</i>			
	N. White Cedar	7	<i>Cords</i>			
	White Pine	1	<i>Cords</i>			
6	Basswood	<i>Sawtimber</i>	6.0	MBF	22.1	\$7,908.95
	Red Maple		0.8	MBF		
	Red Oak		17.3	MBF		
	Sugar Maple		2.2	MBF		
	White Ash	0.8	MBF			
	Basswood	<i>Pulpwood</i>	36	<i>Cords</i>		
	Beech		20	<i>Cords</i>		
	Ironwood		3	<i>Cords</i>		

DESCRIPTION OF TIMBER BY PAYMENT UNIT (PU), CON'T

PU	MARKET GROUP	PRODUCT	QUANTITY	UNIT	ACRES	ADVERTISE PRICE				
6 con't	Mixed Aspen	Sawtimber	8	Cords						
	<i>B. T. Aspen</i>		6	<i>Cords</i>						
	<i>Quaking Aspen</i>		2	<i>Cords</i>						
	Mixed Hardwood		2	Cords						
	<i>Paper Birch</i>		0.8	<i>MBF</i>						
	Mixed Oak		Pulpwood	83			Cords			
	<i>Red Oak</i>			83			<i>Cords</i>			
	Paper Birch			16			Cords			
	Red Maple			10			Cords			
	Sugar Maple			49			Cords			
White Ash		31	Cords							
7	Basswood	Sawtimber	5.2	MBF	25.5	\$10,763.80				
	Beech		1.8	MBF						
	Red Oak		13.2	MBF						
	Sugar Maple		4.4	MBF						
	White Ash		9.6	MBF						
	Mixed Aspen	Pulpwood	13	Cords						
	<i>B. T. Aspen</i>		13	<i>Cords</i>						
	Mixed Hardwood		283	Cords						
	<i>Basswood</i>		45	<i>Cords</i>						
	<i>Beech</i>		64	<i>Cords</i>						
	<i>Red Maple</i>		16	<i>Cords</i>						
	<i>Sugar Maple</i>		88	<i>Cords</i>						
	<i>White Ash</i>		70	<i>Cords</i>						
	Mixed Oak		67	Cords						
	<i>Red Oak</i>		67	<i>Cords</i>						
	8		Basswood	Sawtimber			0.8	MBF	19.9	\$5,670.55
			Beech				0.5	MBF		
Red Maple		0.8	MBF							
Red Oak		9.5	MBF							
Sugar Maple		2.5	MBF							
Mixed Aspen		Pulpwood	22	Cords						
<i>B. T. Aspen</i>			10	<i>Cords</i>						
<i>Quaking Aspen</i>			12	<i>Cords</i>						
Mixed Hardwood			110	Cords						
<i>Basswood</i>			5	<i>Cords</i>						
<i>Beech</i>			3	<i>Cords</i>						
<i>Black Ash</i>			4	<i>Cords</i>						
<i>Ironwood</i>			1	<i>Cords</i>						
<i>Paper Birch</i>			3	<i>Cords</i>						
<i>Red Maple</i>			40	<i>Cords</i>						
<i>Sugar Maple</i>			49	<i>Cords</i>						
<i>White Ash</i>			5	<i>Cords</i>						
Mixed Oak			52	Cords						
<i>Red Oak</i>			52	<i>Cords</i>						
Red Pine			3	Cords						
White Pine	4	Cords								
9	Basswood	Sawtimber	0.5	MBF	14.0	\$5,700.80				
	Green Ash		0.4	MBF						
	Red Maple		6.1	MBF						
	Red Oak		0.7	MBF						
	White Oak		2.0	MBF						
	Balsam Fir	Pulpwood	2	Cords						
	Mixed Aspen		2	Cords						
	<i>Quaking Aspen</i>		2	<i>Cords</i>						
	Mixed Hardwood		218	Cords						

DESCRIPTION OF TIMBER BY PAYMENT UNIT (PU), CON'T

PU	MARKET GROUP	PRODUCT	QUANTITY	UNIT	ACRES	ADVERTISE PRICE					
9 con't	<i>American Elm</i>	<i>Pulpwood</i>	2	<i>Cords</i>							
	<i>Balsam Poplar</i>		1	<i>Cords</i>							
	<i>Basswood</i>		7	<i>Cords</i>							
	<i>Black Ash</i>		91	<i>Cords</i>							
	<i>Green Ash</i>		27	<i>Cords</i>							
	<i>Paper Birch</i>		1	<i>Cords</i>							
	<i>Red Maple</i>		85	<i>Cords</i>							
	<i>Sugar Maple</i>		3	<i>Cords</i>							
	<i>White Ash</i>		1	<i>Cords</i>							
	Mixed Oak		12	<i>Cords</i>							
	<i>Red Oak</i>		2	<i>Cords</i>							
	<i>White Oak</i>		10	<i>Cords</i>							
	Mixed Spruce		4	<i>Cords</i>							
	<i>Black Spruce</i>		1	<i>Cords</i>							
	<i>White Spruce</i>		3	<i>Cords</i>							
	N. White Cedar		7	<i>Cords</i>							
	White Pine		1	<i>Cords</i>							
10	Basswood	Sawtimber	0.7	MBF	18.9	\$7,745.05					
	Green Ash		0.5	MBF							
	Red Maple		8.3	MBF							
	Red Oak		0.9	MBF							
	White Oak		2.6	MBF							
	Balsam Fir		Pulpwood	2			<i>Cords</i>				
	Mixed Aspen			3			<i>Cords</i>				
	<i>Quaking Aspen</i>			3			<i>Cords</i>				
	Mixed Hardwood			296			<i>Cords</i>				
	<i>American Elm</i>			2			<i>Cords</i>				
	<i>Balsam Poplar</i>			2			<i>Cords</i>				
	<i>Basswood</i>			10			<i>Cords</i>				
	<i>Black Ash</i>			123			<i>Cords</i>				
	<i>Green Ash</i>			37			<i>Cords</i>				
	<i>Paper Birch</i>			2			<i>Cords</i>				
	<i>Red Maple</i>			115			<i>Cords</i>				
	<i>Sugar Maple</i>			4			<i>Cords</i>				
	<i>White Ash</i>			1			<i>Cords</i>				
	Mixed Oak			17			<i>Cords</i>				
	<i>Red Oak</i>			3			<i>Cords</i>				
	<i>White Oak</i>			14			<i>Cords</i>				
	Mixed Spruce			6			<i>Cords</i>				
	<i>Black Spruce</i>			2			<i>Cords</i>				
	<i>White Spruce</i>			4			<i>Cords</i>				
	N. White Cedar			9			<i>Cords</i>				
	Tamarack			1			<i>Cords</i>				
	White Pine			1			<i>Cords</i>				
	11			Basswood			Sawtimber	0.5	MBF	17.9	\$5,267.40
				Red Oak				2.5	MBF		
White Oak		0.5		MBF							
Balsam Fir		Pulpwood		3	<i>Cords</i>						
Mixed Aspen				9	<i>Cords</i>						
<i>B. T. Aspen</i>				4	<i>Cords</i>						
<i>Quaking Aspen</i>				5	<i>Cords</i>						
Mixed Hardwood			121	<i>Cords</i>							
<i>Basswood</i>			12	<i>Cords</i>							
<i>Beech</i>			14	<i>Cords</i>							
<i>Black Ash</i>			14	<i>Cords</i>							
<i>Green Ash</i>			4	<i>Cords</i>							

DESCRIPTION OF TIMBER BY PAYMENT UNIT (PU), CON'T

PU	MARKET GROUP	PRODUCT	QUANTITY	UNIT	ACRES	ADVERTISE PRICE
11 con't	<i>Paper Birch</i>	<i>Pulpwood</i>	4	<i>Cords</i>		
	<i>Red Maple</i>		34	<i>Cords</i>		
	<i>Sugar Maple</i>		39	<i>Cords</i>		
	Mixed Oak		42	<i>Cords</i>		
	<i>Red Oak</i>		35	<i>Cords</i>		
	<i>White Oak</i>		7	<i>Cords</i>		
	Mixed Spruce		10	<i>Cords</i>		
	<i>White Spruce</i>		10	<i>Cords</i>		
	Red Pine		13	<i>Cords</i>		
	White Pine		39	<i>Cords</i>		
TOTAL:			144.1	MBF		
TOTAL:			2,896	Cords		

Sale Specific Conditions & Requirements

Sale Name: Snakey Hardwood

Sale Number: 33-033-20 Seq#: 1

1 - Sale Area

1.2 - Boundaries

1.2.1 - Painted boundaries (9/19)

The sale boundary and Payment Unit boundaries are marked and identified by blue, red and yellow paint. Exterior sale boundary lines against private property are marked with blue paint. Exterior sale boundary lines against state are marked with red paint. Interior Payment Unit boundaries are marked with yellow paint. Retention patches are marked with red paint; no harvesting activities may occur within these areas. The painted boundary line trees are not Included Timber and are to be protected unless marked with orange paint. Yellow painted trees designating an interior Payment Unit boundary are only to be cut when all surrounding Payment Units have been paid for.

2 - Timber Specifications

2.1 - Included Timber

2.1.1 - Clearcut unit(s) with unmerchantable trees (6/14)

Within Payment Unit(s) 1-5 and 9-11, cut all trees that are three (3) inches or more at DBH, with the following exceptions:

- Within Payment Units 2, 3, 5, 9 and 10, do not cut trees marked with green paint.
- Within Payment Unit 4, do not cut spruce, oak and yellow birch.
- Within Payment Unit 11, do not cut hemlock and trees marked with green paint.

2.1.3 - Cut tree marked unit(s) (12/08)

Within Payment Unit(s) 6 - 8, all trees are designated for cutting when marked with orange paint above and below stump height, regardless of merchantability.

2.2 - Utilization

2.2.4 - Skidding length (2/14)

Skidding of unlimbed tops or lengths over 17 feet is not permissible within Payment Units 6 - 8.

3 - Payments

3.3 - Pre-measured Sales

3.3.4 - Dividing payment units (7/14)

Payment Unit(s) \$18,000 in value or greater may be divided at the request of the Purchaser and upon approval of the Unit Manager. Dividing Payment Units is a contract modification which requires a Timber Sale Contract Amendment. There will be only one division per Payment Unit.

4 - Transportation

4.1 - Construction

4.1.8 - Road work (1) (8/07)

The following road work is required: the Purchaser must haul and spread 100 cubic yards of pit run gravel, onto the Snakey Lake Road and other forest roads. The exact locations will be identified during the pre-sale meeting. All road work must be completed prior to any hauling. Gravel is available from a state pit, along the Snakey Lake Road or within Payment Unit 11.

4.2 - Maintenance

4.2.1 - Hauling restriction (12/08)

Hauling may be restricted on forest roads by the Unit Manager or his/her representative. The restriction may occur during spring breakup or during other wet weather conditions.

4.2.3 - Road maintenance (8/13)

The following road maintenance is required: is required: Within 30 days of completion of hauling, or if no hauling occurs for 30 days or at the request of the sale administrator or unit manager, the road must be maintained and graded. This includes

cleaning of drainage areas, grading, crowning and filling with gravel, if necessary. Damages will be assessed if grading/repair does not occur. The Snakey Lake Road must be in good condition at all times - If damage is done to this road by logging operations, the logging operations will be suspended until the road dries out or is improved.

4.2.4 - Grading (10/16)

For completion of the sale, state forest roads must be graded. In general, this will require a road grader or bull dozer to shape up the roads after forest products have been hauled off site. This includes cleaning of drainage areas, grading, crowning and filling with gravel, if necessary. The grading equipment to be used must be approved by the Unit Manager or his/her representative.

5 - Operations

5.2 - Conduct of Operations

5.2.3 - Operating Restrictions

5.2.3.1 - Operating restrictions (9/11)

Within Payment Unit(s) 2 - 5, 9 and 10, cutting and skidding are limited to the period of December 1 to March 31, unless there is an extended dry or frozen period of time and the sale administrator allows harvesting during that period of time. This restriction is because of low wet ground throughout each of the Payment Units.

5.2.3.3 - Bark slippage restriction (3/09)

Within Payment Unit(s) 6 - 8, unless changed by written agreement, cutting and skidding are not permitted during the period of April 15 to July 30. This restriction is because of bark slippage and oak wilt restrictions.

5.4 - Soil Protection

5.4.1 - Rutting restriction, general (7/16)

Operations are to cease immediately if equipment and weather conditions result in rutting of roads and/or skid trails which is 12 inches or greater in depth and 50 feet in length. The Unit Manager or his/her representative may restrict hauling and/or skidding if ruts exceed the specified depth. With the Unit Manager or his/her representative's approval, the Purchaser may return to the area when the risk of rutting has decreased.

6 - Safety and Fire Prevention

6.2 - Signing

6.2.1 - Road posting (9/09)

The Purchaser is responsible for posting and maintaining caution signs on the Snakey Lake Road prior to beginning operations. The road must be posted at appropriate distances from the sale area to warn of logging activity and truck traffic. Signs must be removed when harvest operations are suspended or completed. The Purchaser will provide these signs.

7 - Other Conditions

7.3 - Contract Modifications

7.3.2 - Modification for oak wilt (2/05)

Within the sale area, there may be patches of oak wilt. If oak wilt is identified within the sale area, this contract may be modified. The following modifications could occur: time of cutting, species to cut, volume to harvest, or various others dealing with the treatment of oak wilt. If a species is not specified in this contract, it shall be paid for at the average price received for that species and product.



TIMBER SALE MAP

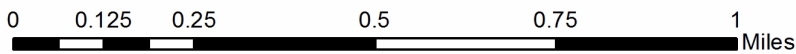
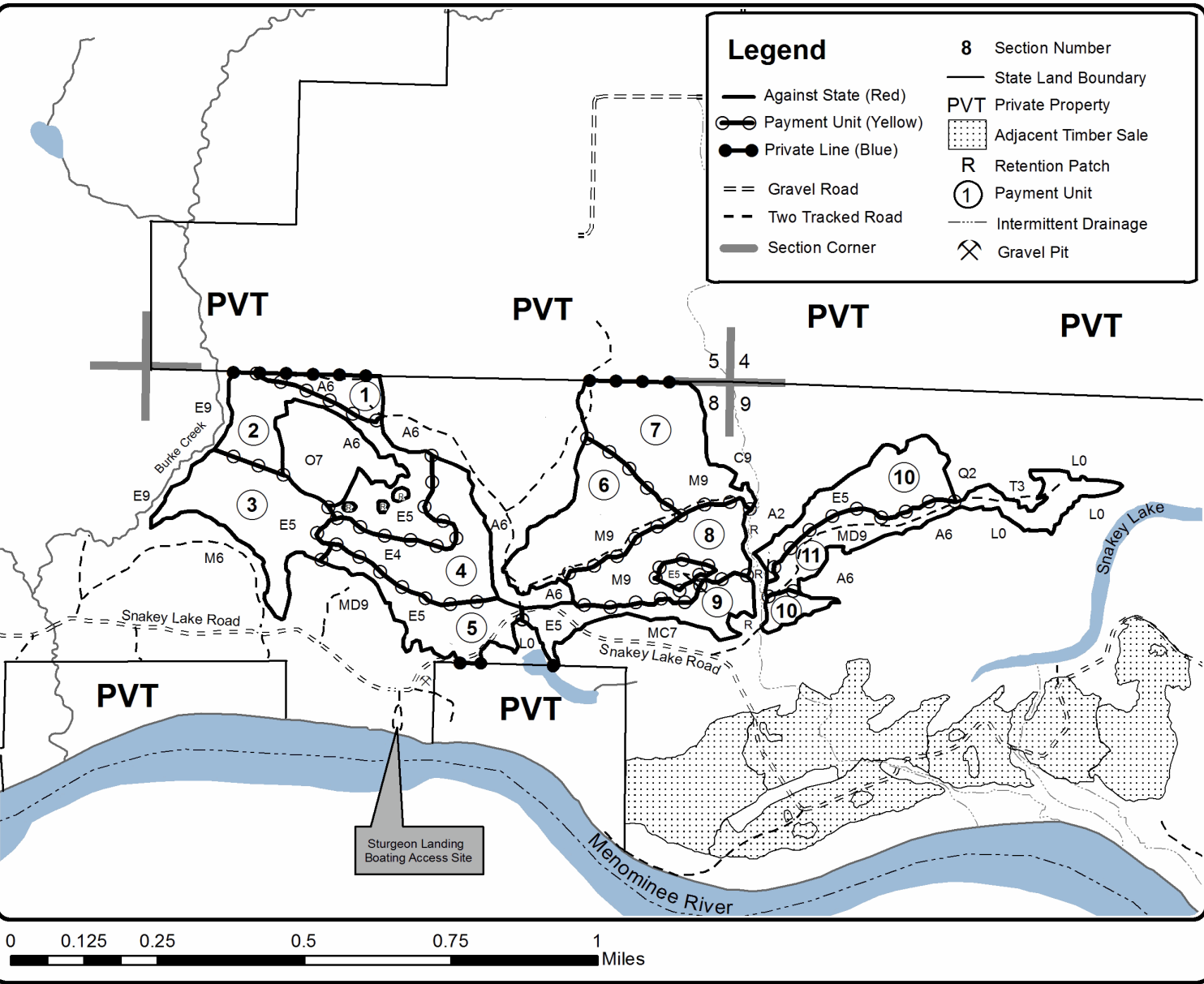
This information provided by authority of Part 525, 1994 PA 451, as amended.

Forest Management Unit Escanaba Management Unit		County Menominee County	Mapped By Beaudo	Date 9/23/2020	Page 1	of 1
Township 34N	Range 28W	Section(s) and Subdivision(s) Sec 8 - NW, NE; Sec 9 - NW, NWNE.		Scale 1:15,840		

Cover Type				Density			
A = Aspen	H = Hemlock	N = Marsh	U = Upland Brush	0 = Non Stocked	5 = Pole Timber Medium		
B = Paper Birch	J = Jack Pine	O = Oak	UM = Upland Mixed	1 = Seedling Sapling Poor	6 = Pole Timber Well		
C = Cedar	L = Lowland Brush	P = Lowland Poplar	V = Bog or Marsh	2 = Seedling Sapling Medium	7 = Saw Timber Poor		
D = Treed Bog	LM = Lowland Mixed	Q = Mixed Swamp Conifer	W = White Pine	3 = Seedling Sapling Well	8 = Saw Timber Medium		
E = Swamp Hdwoods	M = Mpl, Bch, Brch	R = Red Pine	X = Non Stocked	4 = Pole Timber Poor	9 = Saw Timber Well		
F = Spruce Fir	MC = Mixed Conifer	S = Black Spruce	Z = Water				
G = Grass	MD = Mixed Deciduous	T = Tamarack					

PU	Acres	PU	Acres
1	6.3	7	25.5
2	23.7	8	19.9
3	22.9	9	14.0
4	20.8	10	18.9
5	14.3	11	17.9
6	22.1		

Snakey Hardwood
Compartment 30
206.3 Acres



TIMBER SALE INFORMATION

Hopping Vulture (33-034-20)

T37N, R27W, SEC. 32; T37N, R27W, SEC. 33.
Menominee County (Advertised Price \$33,179.20)

SALE NOTE: The eastern larch beetle and spruce budworm have caused significant defoliation, with some mortality. The Purchaser should harvest this sale as soon as possible. The Purchaser is required to haul and spread 140 cubic yards of pit run gravel on the access roads. A state pit is located along the Wiregrass Lake Road.

A timber sale contract for this lump sum, sealed bid timber sale will be awarded to the responsible bidder offering the highest sealed bid price. All units of volume listed below were estimated using the T-Sale computer program and our traditional volume equations. Bids must be at or above the following advertised price for each product and species:

<u>PRODUCTS & SPECIES</u>	<u>ESTIMATED UNITS*</u>	<u>ADVERTISED PRICE</u>
Sawtimber		
Basswood	1.2 MBF	\$ 72.00 / MBF
Red Maple	0.9 MBF	\$ 96.00 / MBF
Sugar Maple	1.4 MBF	\$ 163.00 / MBF
White Ash	1.5 MBF	\$ 58.00 / MBF
Pulpwood		
Balsam Fir	171 Cords	\$ 13.10 / Cord
Mixed Aspen	413 Cords	\$ 17.15 / Cord
Mixed Hardwood	1,007 Cords	\$ 20.15 / Cord
Mixed Spruce	81 Cords	\$ 15.55 / Cord
N. White Cedar	65 Cords	\$ 10.95 / Cord
Tamarack	114 Cords	\$ 9.70 / Cord

* The total volume is statistically estimated within plus (+) or minus (-) 11.53 percent. There are an estimated 1,861 cords on this timber sale, plus or minus 215 cords at the 95% confidence level. The estimated units are final and not subject to adjustment. Prospective bidders are urged to examine this timber and to make their own estimates of quantity and quality.

BOND AND PAYMENT SCHEDULE:

- A bond in the amount of \$1,659.00 to insure faithful performance of the conditions of the contract will be deposited by the successful bidder within 21 days of the sale award.
- Cutting in any sale or unit without the required advance payment would be considered a trespass.
- Total payment must be paid in advance or according to the following schedule :
 - Ten percent (10%) of the sale value must be paid within 21 days of the sale award.
 - The 10% down payment will be credited towards the first unit cut.
 - Payment for each of the following units must be made before cutting begins in that unit:

<u>PAYMENT UNIT NUMBER</u>	<u>PERCENT OF TOTAL SALE VALUE</u>
01	21.9%
02	18.6%
03	14.8%
04	17.0%
05	23.3%
06	4.4%

- If no cutting takes place, the 10% down payment will not be refunded.
- Operations on the contract issued will terminate on 06/30/2024.

SALE STATISTICS

SALE VOLUMES

<u>VOLUME</u>		<u>STATISTICAL RANGE IN CORDS</u>		
<u>TOTAL CUBIC FEET</u>	<u>TOTAL CORDS</u>	<u>PERCENT ERROR</u>	<u>MINIMUM</u>	<u>MAXIMUM</u>
146,995	1,861	11.53%	1,646	2,075

VDU VOLUMES

A VDU is a Volume Determination Unit. Volumes and their associated statistics are calculated at the VDU level and summarized to the sale level. There is often a one to one relationship between a VDU and a Payment Unit, but not always, depending on the cruise design. Refer to the VDU TO PAYMENT UNIT table.

VDU	VOLUME		PERCENT ERROR	RANGE IN CORDS	
	TOTAL CUBIC FEET	TOTAL CORDS		MINIMUM	MAXIMUM
14	56,841	720	20.57%	571	868
21	23,250	294	28.02%	212	377
24	23,945	303	32.32%	205	401
26	36,166	458	16.15%	384	532
27	6,802	86	55.37%	38	134
TOTAL:	147,003	1,861		1,411	2,311

VDU TO PAYMENT UNIT

When a VDU is associated with more than one Payment Unit (PU), the VDU volumes are assigned to the PU based on acres of the VDU within the PU.

VDU	VDU ACRES	PU	PU ACRES
14	70.2	1	38.2
		2	32.0
21	16.4	3	16.4
24	22.8	4	22.8
26	27.5	5	27.5
27	3.3	6	3.3
TOTAL:	140.2		140.2

DESCRIPTION OF TIMBER BY PAYMENT UNIT (PU)

PU	MARKET GROUP	PRODUCT	QUANTITY	UNIT	ACRES	ADVERTISE PRICE
1	Balsam Fir	Pulpwood	7	Cords	38.2	\$7,276.60
	Mixed Aspen		28	Cords		
	<i>Quaking Aspen</i>		28	Cords		
	Mixed Hardwood		302	Cords		
	<i>American Elm</i>		4	Cords		
	<i>Balsam Poplar</i>		5	Cords		
	<i>Basswood</i>		12	Cords		
	<i>Black Ash</i>		160	Cords		
	<i>Green Ash</i>		3	Cords		
	<i>Paper Birch</i>		57	Cords		
	<i>Red Maple</i>		59	Cords		
	<i>Yellow Birch</i>		2	Cords		
	Mixed Spruce		18	Cords		
	<i>Black Spruce</i>		8	Cords		
	<i>White Spruce</i>		10	Cords		
	Tamarack		35	Cords		
2	Balsam Fir	Pulpwood	6	Cords	32.0	\$6,158.55
	Mixed Aspen		24	Cords		
	<i>Quaking Aspen</i>		24	Cords		
	Mixed Hardwood		255	Cords		
	<i>American Elm</i>		4	Cords		
	<i>Balsam Poplar</i>		5	Cords		
	<i>Basswood</i>		10	Cords		
	<i>Black Ash</i>		134	Cords		
	<i>Green Ash</i>		2	Cords		
	<i>Paper Birch</i>		48	Cords		
	<i>Red Maple</i>		50	Cords		
	<i>Yellow Birch</i>		2	Cords		
	Mixed Spruce		16	Cords		
	<i>Black Spruce</i>		7	Cords		
	<i>White Spruce</i>		9	Cords		
	Tamarack		29	Cords		
3	Balsam Fir	Pulpwood	66	Cords	16.4	\$4,902.15
	Mixed Aspen		163	Cords		
	<i>B. T. Aspen</i>		43	Cords		
	<i>Quaking Aspen</i>		120	Cords		
	Mixed Hardwood		54	Cords		
	<i>Balsam Poplar</i>		3	Cords		
	<i>Black Ash</i>		5	Cords		
	<i>Black Cherry</i>		3	Cords		
	<i>Paper Birch</i>		13	Cords		
	<i>Red Maple</i>		28	Cords		
	<i>White Ash</i>		2	Cords		
	Mixed Spruce		6	Cords		
	<i>Black Spruce</i>		3	Cords		
	<i>White Spruce</i>		3	Cords		
	N. White Cedar		2	Cords		
	Tamarack		4	Cords		
4	Basswood	Sawtimber	1.2	MBF	22.8	\$5,635.10
	Sugar Maple		1.4	MBF		
	White Ash		1.5	MBF		
	Balsam Fir	Pulpwood	51	Cords		
	Mixed Aspen		114	Cords		
	<i>B. T. Aspen</i>		79	Cords		
	<i>Quaking Aspen</i>		35	Cords		
	Mixed Hardwood		128	Cords		

DESCRIPTION OF TIMBER BY PAYMENT UNIT (PU), CON'T

PU	MARKET GROUP	PRODUCT	QUANTITY	UNIT	ACRES	ADVERTISE PRICE
4 con't	<i>Balsam Poplar</i>	<i>Pulpwood</i>	1	<i>Cords</i>		
	<i>Basswood</i>		10	<i>Cords</i>		
	<i>Ironwood</i>		5	<i>Cords</i>		
	<i>Paper Birch</i>		3	<i>Cords</i>		
	<i>Sugar Maple</i>		25	<i>Cords</i>		
	<i>White Ash</i>		84	<i>Cords</i>		
	Mixed Spruce		2	<i>Cords</i>		
	<i>White Spruce</i>		2	<i>Cords</i>		
5	Red Maple	Sawtimber	0.9	MBF	27.5	\$7,743.00
	Balsam Fir	Pulpwood	20	Cords		
	Mixed Aspen		40	Cords		
	<i>Quaking Aspen</i>		40	<i>Cords</i>		
	Mixed Hardwood		248	Cords		
	<i>American Elm</i>		2	<i>Cords</i>		
	<i>Balsam Poplar</i>		52	<i>Cords</i>		
	<i>Black Ash</i>		157	<i>Cords</i>		
	<i>Ironwood</i>		2	<i>Cords</i>		
	<i>Paper Birch</i>		16	<i>Cords</i>		
	<i>Red Maple</i>		17	<i>Cords</i>		
	<i>Yellow Birch</i>		2	<i>Cords</i>		
	Mixed Spruce		37	Cords		
	<i>Black Spruce</i>		3	<i>Cords</i>		
	<i>White Spruce</i>		34	<i>Cords</i>		
	N. White Cedar		63	Cords		
	Tamarack		46	Cords		
	6	Balsam Fir	Pulpwood	21		
Mixed Aspen			44	Cords		
<i>Quaking Aspen</i>			44	<i>Cords</i>		
Mixed Hardwood			20	Cords		
<i>Black Ash</i>			2	<i>Cords</i>		
<i>Black Cherry</i>			2	<i>Cords</i>		
<i>Paper Birch</i>			2	<i>Cords</i>		
<i>Red Maple</i>			14	<i>Cords</i>		
Mixed Spruce			2	Cords		
<i>White Spruce</i>			2	<i>Cords</i>		
TOTAL:			5.0	MBF		
TOTAL:			1,851	Cords		

Sale Specific Conditions & Requirements

Sale Name: Hopping Vulture

Sale Number: 33-034-20 Seq#: 1

1 - Sale Area

1.2 - Boundaries

1.2.1 - Painted boundaries (9/19)

The sale boundary and Payment Unit boundaries are marked and identified by blue, red and yellow paint. Exterior sale boundary lines against private property are marked with blue paint. Exterior sale boundary lines against state are marked with red paint. Interior Payment Unit boundaries are marked with yellow paint. Retention patches are marked with red paint; no harvesting activities may occur within these areas. The painted boundary line trees are not Included Timber and are to be protected. Yellow painted trees designating an interior Payment Unit boundary are only to be cut when all surrounding Payment Units have been paid for.

2 - Timber Specifications

2.1 - Included Timber

2.1.1 - Clearcut unit(s) with unmerchantable trees (6/14)

Within Payment Unit(s) 1 - 6, cut all trees that are three (3) inches or more at DBH, with the following exceptions:

- Within Payment Units 1 & 2, do not cut cedar. Also, do not cut black spruce less than seven (7) inches at DBH.
- Within Payment Unit 4, do not cut cedar and beech.

3 - Payments

3.3 - Pre-measured Sales

3.3.4 - Dividing payment units (7/14)

Payment Unit(s) \$18,000 in value or greater may be divided at the request of the Purchaser and upon approval of the Unit Manager. Dividing Payment Units is a contract modification which requires a Timber Sale Contract Amendment. There will be only one division per Payment Unit.

4 - Transportation

4.1 - Construction

4.1.8 - Road work (1) (8/07)

The following road work is required: the Purchaser must haul and spread 140 cubic yards of pit run gravel on the access roads. The gravel is available from a state pit located along the Wiregrass Lake Road. All roadwork must be completed prior to any hauling taking place.

4.2 - Maintenance

4.2.1 - Hauling restriction (12/08)

Hauling may be restricted on forest roads by the Unit Manager or his/her representative. The restriction may occur during spring breakup or during other wet weather conditions.

4.2.3 - Road maintenance (8/13)

The following road maintenance is required: Within 60 days of completion of hauling, or if no hauling occurs for 60 days, the road must be maintained and graded. This includes cleaning of drainage areas, grading, crowning and filling with gravel, if necessary. Damages will be assessed if grading/repair does not occur.

4.2.4 - Grading (10/16)

For completion of the sale, state forest roads must be graded. In general, this will require a road grader or bull dozer to shape up the roads after forest products have been hauled off site. This includes cleaning of drainage areas, grading, crowning and filling with gravel, if necessary. The grading equipment to be used must be approved by the Unit Manager or his/her representative.

5 - Operations

5.2 - Conduct of Operations

5.2.3 - Operating Restrictions

5.2.3.1 - Operating restrictions (9/11)

Within Payment Unit(s) 1, 2 and 5, cutting and skidding are limited to the period of December 1 to March 31, unless there is an extended dry or frozen period and the sale administrator allows harvesting during that period of time. This restriction is because of low wet ground throughout each of the Payment Units.

5.4 - Soil Protection

5.4.1 - Rutting restriction, general (7/16)

Operations are to cease immediately if equipment and weather conditions result in rutting of roads and/or skid trails which is 12 inches or greater in depth and 50 feet in length. The Unit Manager or his/her representative may restrict hauling and/or skidding if ruts exceed the specified depth. With the Unit Manager or his/her representative's approval, the Purchaser may return to the area when the risk of rutting has decreased.

6 - Safety and Fire Prevention

6.2 - Signing

6.2.1 - Road posting (9/09)

The Purchaser is responsible for posting and maintaining caution signs on the Wiregrass Lake Road prior to beginning operations. The road must be posted at appropriate distances from the sale area to warn of logging activity and truck traffic. Signs must be removed when harvest operations are suspended or completed. The Purchaser will provide these signs.

7 - Other Conditions

7.5 - Loss

7.5.1 - Deteriorating timber (7/09)

The sale area has received damage from the eastern larch beetle and the spruce budworm. Each of these pests has caused defoliation and some mortality. The Purchaser should harvest the wood as soon as possible. The Department of Natural Resources is held free of responsibility of any further damage or deterioration due to delay in harvesting.



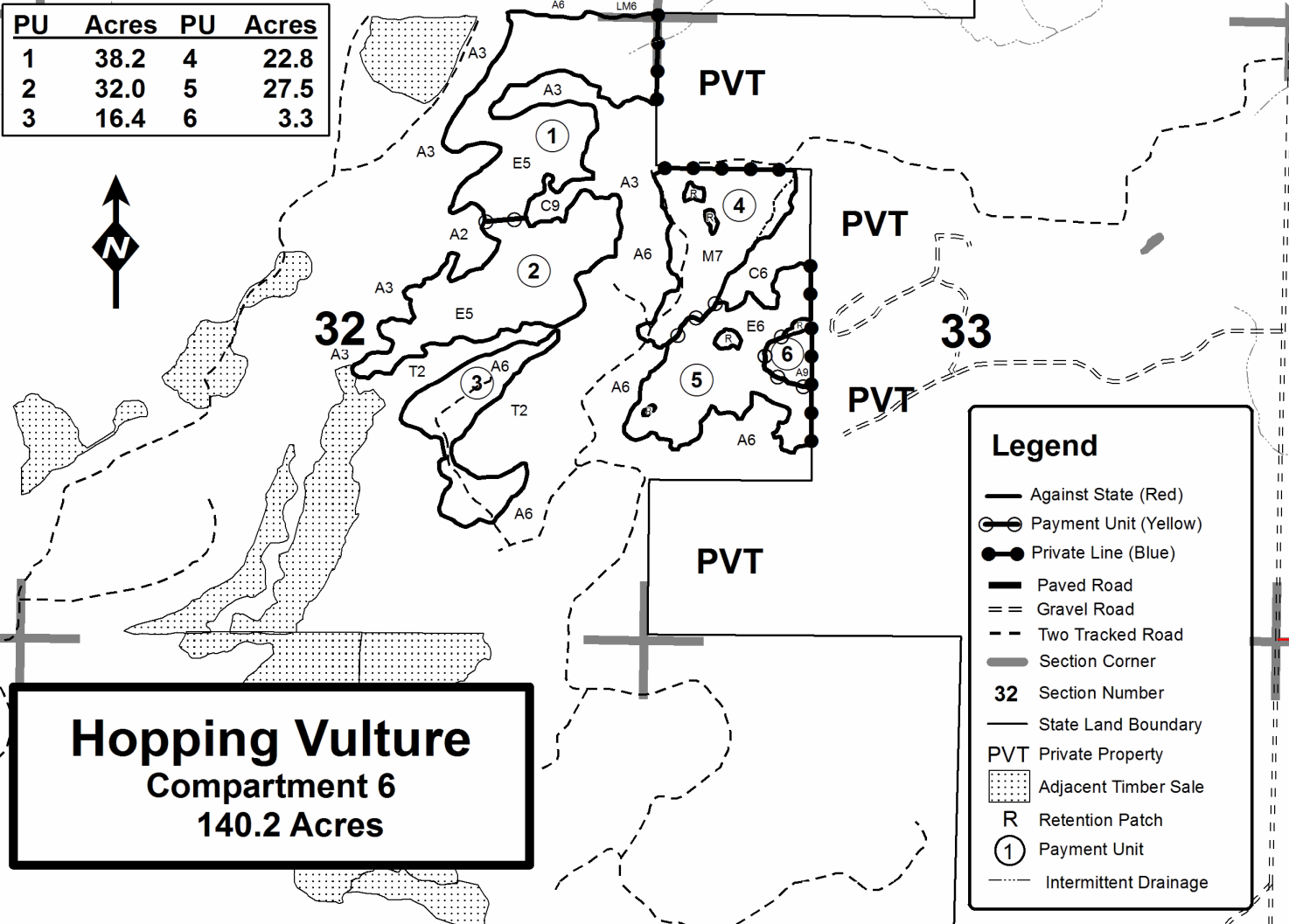
TIMBER SALE MAP

This information provided by authority of Part 525, 1994 PA 451, as amended.

Forest Management Unit Escanaba Management Unit		County Menominee County	Mapped By Beaudo	Date 9/24/2020	Page 1 of 1	
Township 37N	Range 27W	Section(s) and Subdivision(s) Sec 32 - NE, SE; Sec 33 - SWNW, NWSW.		Scale 1:15,840		

Cover Type				Density			
A = Aspen	H = Hemlock	N = Marsh	U = Upland Brush	0 = Non Stocked	5 = Pole Timber Medium		
B = Paper Birch	J = Jack Pine	O = Oak	UM = Upland Mixed	1 = Seedling Sapling Poor	6 = Pole Timber Well		
C = Cedar	L = Lowland Brush	P = Lowland Poplar	V = Bog or Marsh	2 = Seedling Sapling Medium	7 = Saw Timber Poor		
D = Treed Bog	LM = Lowland Mixed	Q = Mixed Swamp Conifer	W = White Pine	3 = Seedling Sapling Well	8 = Saw Timber Medium		
E = Swamp Hdwoods	M = Mpl, Bch, Brch	R = Red Pine	X = Non Stocked	4 = Pole Timber Poor	9 = Saw Timber Well		
F = Spruce Fir	MC = Mixed Conifer	S = Black Spruce	Z = Water				
G = Grass	MD = Mixed Deciduous	T = Tamarack					

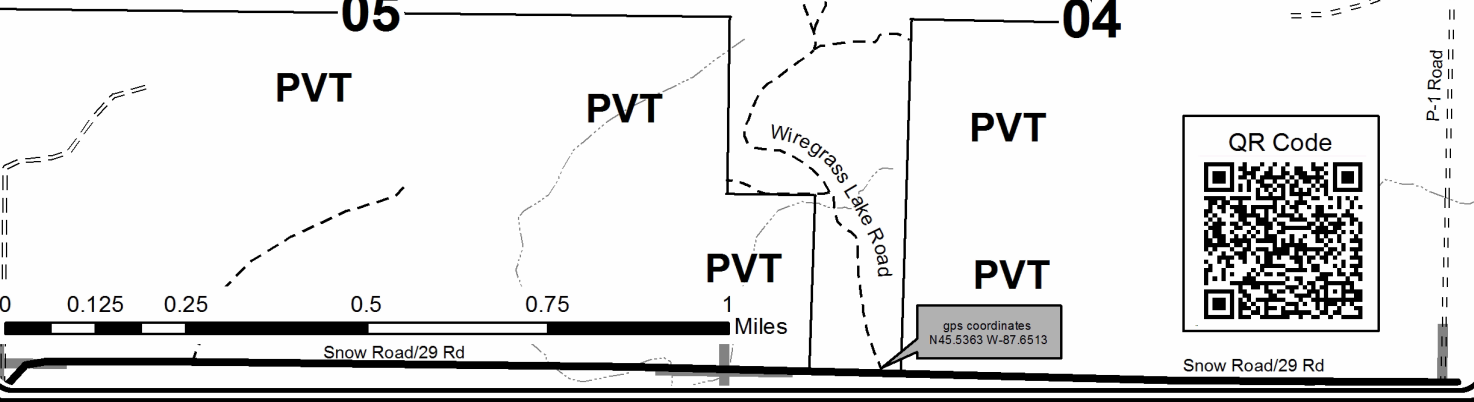
PU	Acres	PU	Acres
1	38.2	4	22.8
2	32.0	5	27.5
3	16.4	6	3.3



Hopping Vulture
Compartment 6
140.2 Acres

Legend

- Against State (Red)
- Payment Unit (Yellow)
- Private Line (Blue)
- Paved Road
- == Gravel Road
- - Two Tracked Road
- Section Corner
- 32 Section Number
- State Land Boundary
- PVT Private Property
- ▨ Adjacent Timber Sale
- R Retention Patch
- ① Payment Unit
- - - Intermittent Drainage



TIMBER SALE INFORMATION

Pokovich Pieces (33-035-20)
 T37N, R27W, SEC. 31; T37N, R27W, SEC. 32.
 Menominee County (Advertised Price \$16,524.80)

SALE NOTE: The spruce budworm has caused a significant amount of spruce and balsam fir defoliation, with some mortality. The eastern larch beetle has caused a significant amount of tamarack mortality. The Purchaser should harvest the wood as soon as possible. The Purchaser must haul and spread 120 cubic yards of pit run gravel. Gravel is available from a state pit, about seven miles away.

A timber sale contract for this lump sum, sealed bid timber sale will be awarded to the responsible bidder offering the highest sealed bid price. All units of volume listed below were estimated using the T-Sale computer program and our traditional volume equations. Bids must be at or above the following advertised price for each product and species:

<u>PRODUCTS & SPECIES</u>	<u>ESTIMATED UNITS*</u>	<u>ADVERTISED PRICE</u>
Sawtimber		
Basswood	6.1 MBF	\$ 72.00 / MBF
White Ash	15.4 MBF	\$ 58.00 / MBF
Pulpwood		
Balsam Fir	77 Cords	\$ 13.10 / Cord
Mixed Aspen	181 Cords	\$ 17.15 / Cord
Mixed Hardwood	362 Cords	\$ 20.15 / Cord
Mixed Spruce	149 Cords	\$ 15.55 / Cord
N. White Cedar	96 Cords	\$ 10.95 / Cord
Tamarack	43 Cords	\$ 9.70 / Cord

* The total volume is statistically estimated within plus (+) or minus (-) 14.28 percent. There are an estimated 959 cords on this timber sale, plus or minus 137 cords at the 95% confidence level. The estimated units are final and not subject to adjustment. Prospective bidders are urged to examine this timber and to make their own estimates of quantity and quality.

BOND AND PAYMENT SCHEDULE:

1. A bond in the amount of \$826.00 to insure faithful performance of the conditions of the contract will be deposited by the successful bidder within 21 days of the sale award.
 2. Cutting in any sale or unit without the required advance payment would be considered a trespass.
 3. Total payment must be paid in advance or according to the following schedule :
 - (a) Ten percent (10%) of the sale value must be paid within 21 days of the sale award.
 - (b) The 10% down payment will be credited towards the first unit cut.
 - (c) Payment for each of the following units must be made before cutting begins in that unit:
- | PAYMENT UNIT NUMBER | PERCENT OF TOTAL SALE VALUE |
|---------------------|-----------------------------|
| 01 | 10.1% |
| 02 | 4.4% |
| 03 | 11.2% |
| 04 | 25.0% |
| 05 | 24.1% |
| 06 | 7.8% |
| 07 | 17.4% |
4. If no cutting takes place, the 10% down payment will not be refunded.
 5. Operations on the contract issued will terminate on 06/30/2024.

SALE STATISTICS

SALE VOLUMES

VOLUME			STATISTICAL RANGE IN CORDS	
TOTAL CUBIC FEET	TOTAL CORDS	PERCENT ERROR	MINIMUM	MAXIMUM
75,730	959	14.28%	822	1,096

VDU VOLUMES

A VDU is a Volume Determination Unit. Volumes and their associated statistics are calculated at the VDU level and summarized to the sale level. There is often a one to one relationship between a VDU and a Payment Unit, but not always, depending on the cruise design. Refer to the VDU TO PAYMENT UNIT table.

VDU	VOLUME		PERCENT ERROR	RANGE IN CORDS	
	TOTAL CUBIC FEET	TOTAL CORDS		MINIMUM	MAXIMUM
2	7,134	90	32.31%	61	119
3	2,702	34	75.80%	8	60
5	8,090	102	50.87%	50	154
8	19,932	252	33.50%	168	337
13	13,944	177	34.28%	116	237
18	23,937	303	19.89%	243	363
TOTAL:	75,737	959		646	1,271

VDU TO PAYMENT UNIT

When a VDU is associated with more than one Payment Unit (PU), the VDU volumes are assigned to the PU based on acres of the VDU within the PU.

VDU	VDU ACRES	PU	PU ACRES
2	4.9	1	4.9
3	3.1	2	3.1
5	7.7	3	7.7
8	10.8	4	10.8
13	11.5	5	11.5
18	28.1	6	8.7
		7	19.4
TOTAL:	66.1		66.1

DESCRIPTION OF TIMBER BY PAYMENT UNIT (PU)

PU	MARKET GROUP	PRODUCT	QUANTITY	UNIT	ACRES	ADVERTISE PRICE
1	Mixed Hardwood	Pulpwood	64	Cords	4.9	\$1,673.75
	<i>Balsam Poplar</i>		34	Cords		
	<i>Basswood</i>		6	Cords		
	<i>Black Ash</i>		11	Cords		
	<i>Green Ash</i>		12	Cords		
	<i>Sugar Maple</i>		1	Cords		
	Mixed Spruce		24	Cords		
	<i>White Spruce</i>		24	Cords		
	N. White Cedar		1	Cords		
2	Basswood	Sawtimber	0.6	MBF	3.1	\$722.30
	Mixed Aspen	Pulpwood	2	Cords		
	<i>Quaking Aspen</i>		2	Cords		
	Mixed Hardwood		32	Cords		
	<i>Basswood</i>		19	Cords		
	<i>Beech</i>		2	Cords		
	<i>Ironwood</i>		1	Cords		
	<i>Sugar Maple</i>		10	Cords		
	3		Mixed Hardwood	Pulpwood		
<i>American Elm</i>		1	Cords			
<i>Balsam Poplar</i>		12	Cords			
<i>Black Ash</i>		39	Cords			
<i>Green Ash</i>		17	Cords			
<i>Paper Birch</i>		3	Cords			
<i>Red Maple</i>		5	Cords			
<i>Yellow Birch</i>		2	Cords			
Mixed Spruce		15	Cords			
<i>Black Spruce</i>		15	Cords			
Tamarack		2	Cords			
4	Balsam Fir	Pulpwood	64	Cords	10.8	\$4,127.25
	Mixed Aspen		149	Cords		
	<i>B. T. Aspen</i>		23	Cords		
	<i>Quaking Aspen</i>		126	Cords		
	Mixed Hardwood		33	Cords		
	<i>Black Cherry</i>		1	Cords		
	<i>Ironwood</i>		1	Cords		
	<i>Paper Birch</i>		1	Cords		
	<i>Red Maple</i>		30	Cords		
	Mixed Spruce		3	Cords		
	<i>White Spruce</i>		3	Cords		
	N. White Cedar		2	Cords		
5	Basswood	Sawtimber	5.5	MBF	11.5	\$3,985.45
	White Ash	Pulpwood	15.4	MBF		
	Mixed Aspen		8	Cords		
	<i>B. T. Aspen</i>		8	Cords		
	Mixed Hardwood		127	Cords		
	<i>Basswood</i>		27	Cords		
	<i>Ironwood</i>		9	Cords		
	<i>Sugar Maple</i>		28	Cords		
	<i>White Ash</i>		63	Cords		
6	Balsam Fir	Pulpwood	4	Cords	8.7	\$1,290.45
	Mixed Aspen		7	Cords		
	<i>B. T. Aspen</i>		7	Cords		
	Mixed Hardwood		8	Cords		
	<i>Basswood</i>		1	Cords		
	<i>Black Ash</i>		3	Cords		
	<i>Paper Birch</i>		3	Cords		

DESCRIPTION OF TIMBER BY PAYMENT UNIT (PU), CON'T

PU	MARKET GROUP	PRODUCT	QUANTITY	UNIT	ACRES	ADVERTISE PRICE				
6 con't	<i>White Ash</i>	<i>Pulpwood</i>	1	<i>Cords</i>						
	Mixed Spruce		33	<i>Cords</i>						
	<i>Black Spruce</i>		31	<i>Cords</i>						
	<i>White Spruce</i>		2	<i>Cords</i>						
	N. White Cedar		29	<i>Cords</i>						
	Tamarack		13	<i>Cords</i>						
7	Balsam Fir	Pulpwood	9	<i>Cords</i>	19.4	\$2,881.10				
	Mixed Aspen		15	<i>Cords</i>						
	<i>B. T. Aspen</i>		15	<i>Cords</i>						
	Mixed Hardwood		19	<i>Cords</i>						
	<i>Basswood</i>		1	<i>Cords</i>						
	<i>Black Ash</i>		8	<i>Cords</i>						
	<i>Black Cherry</i>		1	<i>Cords</i>						
	<i>Paper Birch</i>		7	<i>Cords</i>						
	<i>White Ash</i>		2	<i>Cords</i>						
	Mixed Spruce		74	<i>Cords</i>						
	<i>Black Spruce</i>		70	<i>Cords</i>						
	<i>White Spruce</i>		4	<i>Cords</i>						
	N. White Cedar		64	<i>Cords</i>						
	Tamarack		28	<i>Cords</i>						
	TOTAL:			21.5			MBF			
	TOTAL:			908			Cords			

Sale Specific Conditions & Requirements

Sale Name: Pokovich Pieces

Sale Number: 33-035-20 Seq#: 1

1 - Sale Area

1.2 - Boundaries

1.2.1 - Painted boundaries (9/19)

The sale boundary and Payment Unit boundaries are marked and identified by blue and red paint. Exterior sale boundary lines against private property are marked with blue paint. Exterior sale boundary lines against state are marked with red paint. The painted boundary line trees are not Included Timber and are to be protected unless marked with orange paint.

2 - Timber Specifications

2.1 - Included Timber

2.1.1 - Clearcut unit(s) with unmerchantable trees (6/14)

Within Payment Unit(s) 1, 3, 4, 6 and 7, cut all trees that are three (3) inches or more at DBH, except within Payment Unit 3, do not cut cedar.

2.1.3 - Cut tree marked unit(s) (12/08)

Within Payment Unit(s) 2 and 5, all trees are designated for cutting when marked with orange paint above and below stump height, regardless of merchantability.

2.2 - Utilization

2.2.4 - Skidding length (2/14)

Skidding of unlimbed tops or lengths over 17 feet is not permissible, within Payment Units 2 and 5, unless approved by the Unit Manager or his/her representative.

3 - Payments

3.3 - Pre-measured Sales

3.3.4 - Dividing payment units (7/14)

Payment Unit(s) \$18,000 in value or greater may be divided at the request of the Purchaser and upon approval of the Unit Manager. Dividing Payment Units is a contract modification which requires a Timber Sale Contract Amendment. There will be only one division per Payment Unit.

4 - Transportation

4.1 - Construction

4.1.8 - Road work (1) (8/07)

The following road work is required: the Purchaser must haul and spread 120 cubic yards of pit run gravel on the Pokovich Road going back to Payment Unit 5. All roadwork must be completed prior to any hauling taking place. The exact locations for the gravel will be identified during the pre-sale meeting. Gravel is available from a state pit located about 7 miles north off of County Road G-18.

4.2 - Maintenance

4.2.1 - Hauling restriction (12/08)

Hauling may be restricted on forest roads by the Unit Manager or his/her representative. The restriction may occur during spring breakup or during other wet weather conditions.

4.2.4 - Grading (10/16)

For completion of the sale, state forest roads must be graded. In general, this will require a road grader or bull dozer to shape up the roads after forest products have been hauled off site. This includes cleaning of drainage areas, grading, crowning and filling with gravel, if necessary. The grading equipment to be used must be approved by the Unit Manager or his/her representative.

5 - Operations

5.2 - Conduct of Operations

5.2.3 - Operating Restrictions

5.2.3.1 - Operating restrictions (9/11)

Within Payment Unit(s) 1, 3 and 7, cutting and skidding are limited to the period of December 1 to March 31, unless there is an extended dry or frozen period of time and the sale administrator allows harvesting during that period of time. This restriction is because of low wet ground throughout these Payment Units.

5.2.3.2 - Operating restrictions (9/11)

Within Payment Unit(s) 1 and 2, cutting, skidding and hauling are limited to the period of July 15 to March 31 if access will be on the road through state land coming in from the north. If access is obtained from an adjacent private landowner to the west or south, these Payment Units can be cut when the other cutting restrictions are met.

This restriction is because the access road through state land runs through the Carney Fen Natural Area and disturbance needs to be minimized during the active flowering period.

5.2.3.3 - Bark slippage restriction (3/09)

Within Payment Unit(s) 2 and 5, unless changed by written agreement, cutting and skidding are not permitted during the period of April 15 to July 15. This restriction is because of bark slippage.

5.2.22 - Operating Caution

5.2.22.1 - Operating caution (6/11)

It is recommended, but not required, that within Payment Unit(s) 6, cutting and skidding, occur during dry summer or frozen winter conditions. The reason for the recommendation is because most of the Payment Unit is dry during the summer months, with the exception of a few small wet areas.

5.4 - Soil Protection

5.4.1 - Rutting restriction, general (7/16)

Operations are to cease immediately if equipment and weather conditions result in rutting of roads and/or skid trails which is 12 inches or greater in depth and 50 feet in length. The Unit Manager or his/her representative may restrict hauling and/or skidding if ruts exceed the specified depth. With the Unit Manager or his/her representative's approval, the Purchaser may return to the area when the risk of rutting has decreased.

6 - Safety and Fire Prevention

6.2 - Signing

6.2.1 - Road posting (9/09)

The Purchaser is responsible for posting and maintaining caution signs on the Pokovich Road prior to beginning operations. The road must be posted at appropriate distances from the sale area to warn of logging activity and truck traffic. Signs must be removed when harvest operations are suspended or completed. The Purchaser will provide these signs.

7 - Other Conditions

7.5 - Loss

7.5.1 - Deteriorating timber (7/09)

The sale area has received damage from the spruce budworm and the eastern larch beetle. The spruce budworm has caused a significant amount of spruce and balsam fir defoliation, with some mortality. The eastern larch beetle has caused a significant amount of tamarack mortality. The Purchaser should harvest the wood as soon as possible. The Department of Natural Resources is held free of responsibility of any further damage or deterioration due to delay in harvesting.



TIMBER SALE MAP

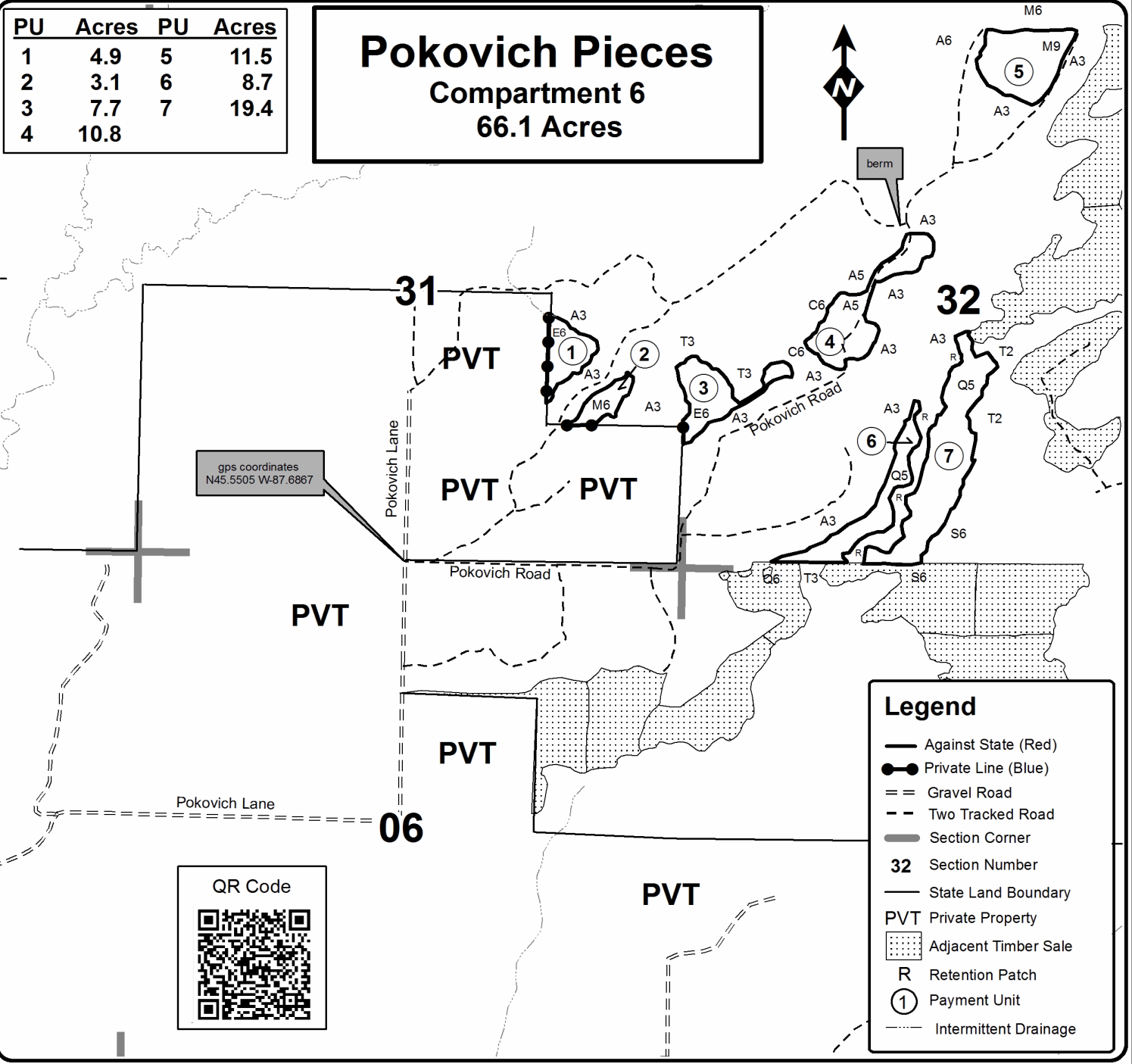
This information provided by authority of Part 525, 1994 PA 451, as amended.

Forest Management Unit Escanaba Management Unit		County Menominee County	Mapped By Beaudo	Date 9/28/2020	Page 1	of 1
Township 37N	Range 27W	Section(s) and Subdivision(s) Sec 31 - NESE; Sec 32 - SENW, NWNE, SW, W1/2SE.		Scale 1:15,840		

Cover Type				Density			
A = Aspen	H = Hemlock	N = Marsh	U = Upland Brush	0 = Non Stocked	5 = Pole Timber Medium		
B = Paper Birch	J = Jack Pine	O = Oak	UM = Upland Mixed	1 = Seedling Sapling Poor	6 = Pole Timber Well		
C = Cedar	L = Lowland Brush	P = Lowland Poplar	V = Bog or Marsh	2 = Seedling Sapling Medium	7 = Saw Timber Poor		
D = Treed Bog	LM = Lowland Mixed	Q = Mixed Swamp Conifer	W = White Pine	3 = Seedling Sapling Well	8 = Saw Timber Medium		
E = Swamp Hdwoods	M = Mpl, Bch, Brch	R = Red Pine	X = Non Stocked	4 = Pole Timber Poor	9 = Saw Timber Well		
F = Spruce Fir	MC = Mixed Conifer	S = Black Spruce	Z = Water				
G = Grass	MD = Mixed Deciduous	T = Tamarack					

PU	Acres	PU	Acres
1	4.9	5	11.5
2	3.1	6	8.7
3	7.7	7	19.4
4	10.8		

Pokovich Pieces
Compartment 6
66.1 Acres

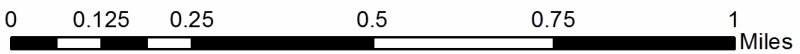


gps coordinates
N45.5505 W-87.6867



Legend

- Against State (Red)
- Private Line (Blue)
- Gravel Road
- Two Tracked Road
- Section Corner
- 32** Section Number
- State Land Boundary
- PVT** Private Property
- Adjacent Timber Sale
- R** Retention Patch
- 1** Payment Unit
- Intermittent Drainage



Miscauna Beaver (33-031-20)

T37N, R28W, SEC. 26; T37N, R28W, SEC. 27; T37N, R28W, SEC. 34; T37N,

In response to the notice of sale to be held 3:00 p.m. (local time) on December 8, 2020, I am hereby submitting my sealed bid (firm offer) for the following forest products to be cut. Bids for individual species must be at or above the advertised price. All non-responsive bid forms may be rejected.

<u>PRODUCTS & SPECIES</u>	<u>ESTIMATED VOLUME*</u>	<u>ADVERTISED PRICE</u>	<u>BID PRICE/UNIT</u>
Sawtimber			
Red Maple	2.9 MBF	\$ 96.00/MBF	\$ _____
Red Oak	3.6 MBF	\$ 133.00/MBF	\$ _____
Sugar Maple	1.8 MBF	\$ 163.00/MBF	\$ _____
Pulpwood			
Balsam Fir	54 Cords	\$ 13.10/Cord	\$ _____
Mixed Aspen	416 Cords	\$ 17.15/Cord	\$ _____
Mixed Hardwood	656 Cords	\$ 20.15/Cord	\$ _____
Mixed Spruce	14 Cords	\$ 15.55/Cord	\$ _____
N. White Cedar	12 Cords	\$ 10.95/Cord	\$ _____
Red Oak	20 Cords	\$ 20.20/Cord	\$ _____
Red Pine	11 Cords	\$ 43.15/Cord	\$ _____
White Pine	382 Cords	\$ 17.25/Cord	\$ _____

*The volumes are statistically estimated within plus (+) or minus (-) 10.83 percent at 95% confidence level. These estimated volumes are final and not subject to adjustment. Prospective bidders are urged to examine this timber and to make their own estimates of quantity and quality.

I understand that any or all bids may be rejected. All bids must be signed and all bid items must be bid or the bid form may be rejected. I also understand that consideration and awarding a contract will be based upon my past performance and ability to complete the contract based upon equipment and staffing subject to my control.

FEDERAL ID: _____ or SOCIAL SECURITY NUMBER: _____

Company or individual bidding: _____

Company representative's name: _____

Address: _____

City: _____ State: _____ Zip: _____

IF AVAILABLE, PLEASE PLACE THE PERSONALIZED LABEL FROM YOUR PROSPECTUS IN THE ABOVE BOX.

Individual or company representative's signature: _____ Date: _____

Phone number : _____ Email (optional): _____

THE WINNING BIDDER MUST COMPLETE THE VERIFICATION OF WORKER'S DISABILITY COMPENSATION ACT COMPLIANCE (ON REVERSE SIDE IF DOUBLE SIDED) WITHIN 21 DAYS OF SALE AWARD DATE



FOR DEPARTMENT USE ONLY
Sale Number (XX - XXX - XX - XX)
Forest Management Unit:

TIMBER SALE VERIFICATION OF WORKER'S DISABILITY COMPENSATION ACT COMPLIANCE

*As required by Act 317, P.A. 1969 (Worker's Compensation) and
Part 5 of Act 451 of 1994, as amended.*

VERIFICATION OF WORKER'S DISABILITY COMPENSATION ACT COMPLIANCE

- This verification must be completed and submitted within 21 days of contract award and prior to the issuance of the timber sale contract.
- In addition, if boxes 2B or 2C are checked, then Notice of Exclusion or Certificate of Insurance must be submitted within twenty-one (21) days of the contract award and prior to the issuance of the timber sale contract.
- All information must be typed or printed except for written signatures.

Please Check Appropriate Categories:

1. My business is organized as (you **must** check one of the boxes below):
 - A. Sole Proprietorship (individual)
 - B. Partnership
 - C. Corporation
2. You **must** check one of the boxes below:
 - A. I certify my business is a sole proprietorship and it has no employees but the sole proprietor. I am not subject to the Worker's Compensation Laws.
 - B. I certify my business has satisfied its obligation to the Worker's Compensation Act through the use of an approved Notice of Exclusion (BWC-337, Rev. 5/96). I will provide a copy of the Notice of Exclusion within 21 days of the contract award. (For questions or a copy of the BWC-337, please call the Worker's Compensation Bureau at 517-322-1195).
 - C. I certify my business has a Worker's Compensation Policy. I will provide an original Certificate of Insurance within twenty-one (21) days of the contract award.
3. If you have checked item 2(A) or 2(B), you **must** indicate the number of **both** full-time and part-time employees, other than yourself, including family members and active partners (if none, you must enter "0").

_____ Full-time Employees

_____ Part-time Employees

Name of Business		Federal ID (or) Social Security No.	
Address		Telephone ()	
City	State	ZIP	

I hereby certify that the above information is true and correct. I agree to notify the Michigan DNR of any changes that occur in factors affecting my coverage during any of my present and future operations.

Signature of Owner or Authorized Representative

Title

Date

Please complete the "SEALED BID" information on the next page

Nathan Briar (33-032-20)
T37N, R28W, SEC. 26; T37N, R28W, SEC. 27; Menominee COUNTY

In response to the notice of sale to be held 3:00 p.m. (local time) on December 8, 2020, I am hereby submitting my sealed bid (firm offer) for the following forest products to be cut. Bids for individual species must be at or above the advertised price. All non-responsive bid forms may be rejected.

<u>PRODUCTS & SPECIES</u>	<u>ESTIMATED VOLUME*</u>	<u>ADVERTISED PRICE</u>	<u>BID PRICE/UNIT</u>
Sawtimber			
Red Oak	16.4 MBF	\$ 158.00/MBF	\$ _____
Pulpwood			
Balsam Fir	30 Cords	\$ 15.50/Cord	\$ _____
Mixed Aspen	34 Cords	\$ 20.25/Cord	\$ _____
Mixed Hardwood	740 Cords	\$ 23.80/Cord	\$ _____
Mixed Spruce	107 Cords	\$ 18.35/Cord	\$ _____
N. White Cedar	91 Cords	\$ 12.95/Cord	\$ _____
Red Oak	254 Cords	\$ 23.90/Cord	\$ _____
Red Pine	11 Cords	\$ 51.00/Cord	\$ _____
Tamarack	43 Cords	\$ 11.45/Cord	\$ _____
White Pine	253 Cords	\$ 20.40/Cord	\$ _____

*The volumes are statistically estimated within plus (+) or minus (-) 10.19 percent at 95% confidence level. These estimated volumes are final and not subject to adjustment. Prospective bidders are urged to examine this timber and to make their own estimates of quantity and quality.

I understand that any or all bids may be rejected. All bids must be signed and all bid items must be bid or the bid form may be rejected. I also understand that consideration and awarding a contract will be based upon my past performance and ability to complete the contract based upon equipment and staffing subject to my control.

FEDERAL ID: _____ or SOCIAL SECURITY NUMBER: _____

Company or individual bidding: _____

Company representative's name: _____

Address: _____

City: _____ State: _____ Zip: _____

IF AVAILABLE, PLEASE PLACE THE PERSONALIZED LABEL FROM YOUR PROSPECTUS IN THE ABOVE BOX.

Individual or company representative's signature: _____ Date: _____

Phone number : _____ Email (optional): _____

THE WINNING BIDDER MUST COMPLETE THE VERIFICATION OF WORKER'S DISABILITY COMPENSATION ACT COMPLIANCE (ON REVERSE SIDE IF DOUBLE SIDED) WITHIN 21 DAYS OF SALE AWARD DATE



FOR DEPARTMENT USE ONLY
Sale Number (XX - XXX - XX - XX)
Forest Management Unit:

TIMBER SALE VERIFICATION OF WORKER'S DISABILITY COMPENSATION ACT COMPLIANCE

*As required by Act 317, P.A. 1969 (Worker's Compensation) and
Part 5 of Act 451 of 1994, as amended.*

VERIFICATION OF WORKER'S DISABILITY COMPENSATION ACT COMPLIANCE

- This verification must be completed and submitted within 21 days of contract award and prior to the issuance of the timber sale contract.
- In addition, if boxes 2B or 2C are checked, then Notice of Exclusion or Certificate of Insurance must be submitted within twenty-one (21) days of the contract award and prior to the issuance of the timber sale contract.
- All information must be typed or printed except for written signatures.

Please Check Appropriate Categories:

1. My business is organized as (you **must** check one of the boxes below):
 - A. Sole Proprietorship (individual)
 - B. Partnership
 - C. Corporation
2. You **must** check one of the boxes below:
 - A. I certify my business is a sole proprietorship and it has no employees but the sole proprietor. I am not subject to the Worker's Compensation Laws.
 - B. I certify my business has satisfied its obligation to the Worker's Compensation Act through the use of an approved Notice of Exclusion (BWC-337, Rev. 5/96). I will provide a copy of the Notice of Exclusion within 21 days of the contract award. (For questions or a copy of the BWC-337, please call the Worker's Compensation Bureau at 517-322-1195).
 - C. I certify my business has a Worker's Compensation Policy. I will provide an original Certificate of Insurance within twenty-one (21) days of the contract award.
3. If you have checked item 2(A) or 2(B), you **must** indicate the number of **both** full-time and part-time employees, other than yourself, including family members and active partners (if none, you must enter "0").

_____ Full-time Employees

_____ Part-time Employees

Name of Business		Federal ID (or) Social Security No.	
Address		Telephone ()	
City	State	ZIP	

I hereby certify that the above information is true and correct. I agree to notify the Michigan DNR of any changes that occur in factors affecting my coverage during any of my present and future operations.

Signature of Owner or Authorized Representative

Title

Date

Please complete the "SEALED BID" information on the next page

Snakey Hardwood (33-033-20)
T34N, R28W, SEC. 8; T34N, R28W, SEC. 9; Menominee COUNTY

In response to the notice of sale to be held 3:00 p.m. (local time) on December 8, 2020, I am hereby submitting my sealed bid (firm offer) for the following forest products to be cut. Bids for individual species must be at or above the advertised price. All non-responsive bid forms may be rejected.

<u>PRODUCTS & SPECIES</u>	<u>ESTIMATED VOLUME*</u>	<u>ADVERTISED PRICE</u>	<u>BID PRICE/UNIT</u>
Sawtimber			
Basswood	16.0 MBF	\$ 72.00/MBF	\$ _____
Beech	2.3 MBF	\$ 45.00/MBF	\$ _____
Green Ash	2.6 MBF	\$ 41.00/MBF	\$ _____
Red Maple	42.6 MBF	\$ 96.00/MBF	\$ _____
Red Oak	47.5 MBF	\$ 133.00/MBF	\$ _____
Sugar Maple	9.1 MBF	\$ 163.00/MBF	\$ _____
White Ash	10.4 MBF	\$ 58.00/MBF	\$ _____
White Oak	13.6 MBF	\$ 59.00/MBF	\$ _____
Pulpwood			
Balsam Fir	29 Cords	\$ 13.10/Cord	\$ _____
Basswood	36 Cords	\$ 9.40/Cord	\$ _____
Beech	20 Cords	\$ 20.15/Cord	\$ _____
Ironwood	3 Cords	\$ 20.15/Cord	\$ _____
Mixed Aspen	117 Cords	\$ 17.15/Cord	\$ _____
Mixed Hardwood	2,090 Cords	\$ 20.15/Cord	\$ _____
Mixed Oak	342 Cords	\$ 20.20/Cord	\$ _____
Mixed Spruce	41 Cords	\$ 15.55/Cord	\$ _____
N. White Cedar	44 Cords	\$ 10.95/Cord	\$ _____
Paper Birch	15 Cords	\$ 14.05/Cord	\$ _____
Red Maple	10 Cords	\$ 20.15/Cord	\$ _____
Red Pine	16 Cords	\$ 43.15/Cord	\$ _____
Sugar Maple	49 Cords	\$ 20.15/Cord	\$ _____
Tamarack	5 Cords	\$ 9.70/Cord	\$ _____
White Ash	31 Cords	\$ 20.15/Cord	\$ _____
White Pine	48 Cords	\$ 17.25/Cord	\$ _____

*The volumes are statistically estimated within plus (+) or minus (-) 7.65 percent at 95% confidence level. These estimated volumes are final and not subject to adjustment. Prospective bidders are urged to examine this timber and to make their own estimates of quantity and quality.

I understand that any or all bids may be rejected. All bids must be signed and all bid items must be bid or the bid form may be rejected. I also understand that consideration and awarding a contract will be based upon my past performance and ability to complete the contract based upon equipment and staffing subject to my control.

FEDERAL ID: ____ - ____ - ____ or SOCIAL SECURITY NUMBER: ____ - ____ - ____

Company or individual bidding: _____

Company representative's name: _____

Address: _____

City: _____ State: _____ Zip: _____

IF AVAILABLE, PLEASE PLACE THE PERSONALIZED LABEL FROM YOUR PROSPECTUS IN THE ABOVE BOX.

Individual or company representative's signature: _____ Date: _____

Phone number : _____ Email (optional): _____

THE WINNING BIDDER MUST COMPLETE THE VERIFICATION OF WORKER'S DISABILITY COMPENSATION ACT COMPLIANCE (ON REVERSE SIDE IF DOUBLE SIDED) WITHIN 21 DAYS OF SALE AWARD DATE



FOR DEPARTMENT USE ONLY
Sale Number (XX - XXX - XX - XX)
Forest Management Unit:

TIMBER SALE VERIFICATION OF WORKER'S DISABILITY COMPENSATION ACT COMPLIANCE

*As required by Act 317, P.A. 1969 (Worker's Compensation) and
Part 5 of Act 451 of 1994, as amended.*

VERIFICATION OF WORKER'S DISABILITY COMPENSATION ACT COMPLIANCE

- This verification must be completed and submitted within 21 days of contract award and prior to the issuance of the timber sale contract.
- In addition, if boxes 2B or 2C are checked, then Notice of Exclusion or Certificate of Insurance must be submitted within twenty-one (21) days of the contract award and prior to the issuance of the timber sale contract.
- All information must be typed or printed except for written signatures.

Please Check Appropriate Categories:

1. My business is organized as (you **must** check one of the boxes below):
 - A. Sole Proprietorship (individual)
 - B. Partnership
 - C. Corporation
2. You **must** check one of the boxes below:
 - A. I certify my business is a sole proprietorship and it has no employees but the sole proprietor. I am not subject to the Worker's Compensation Laws.
 - B. I certify my business has satisfied its obligation to the Worker's Compensation Act through the use of an approved Notice of Exclusion (BWC-337, Rev. 5/96). I will provide a copy of the Notice of Exclusion within 21 days of the contract award. (For questions or a copy of the BWC-337, please call the Worker's Compensation Bureau at 517-322-1195).
 - C. I certify my business has a Worker's Compensation Policy. I will provide an original Certificate of Insurance within twenty-one (21) days of the contract award.
3. If you have checked item 2(A) or 2(B), you **must** indicate the number of **both** full-time and part-time employees, other than yourself, including family members and active partners (if none, you must enter "0").

_____ Full-time Employees

_____ Part-time Employees

Name of Business		Federal ID (or) Social Security No.	
Address		Telephone ()	
City	State	ZIP	

I hereby certify that the above information is true and correct. I agree to notify the Michigan DNR of any changes that occur in factors affecting my coverage during any of my present and future operations.

Signature of Owner or Authorized Representative

Title

Date

Please complete the "SEALED BID" information on the next page

Hopping Vulture (33-034-20)
T37N, R27W, SEC. 32; T37N, R27W, SEC. 33; Menominee COUNTY

In response to the notice of sale to be held 3:00 p.m. (local time) on December 8, 2020, I am hereby submitting my sealed bid (firm offer) for the following forest products to be cut. Bids for individual species must be at or above the advertised price. All non-responsive bid forms may be rejected.

<u>PRODUCTS & SPECIES</u>	<u>ESTIMATED VOLUME*</u>	<u>ADVERTISED PRICE</u>	<u>BID PRICE/UNIT</u>
Sawtimber			
Basswood	1.2 MBF	\$ 72.00/MBF	\$ _____
Red Maple	0.9 MBF	\$ 96.00/MBF	\$ _____
Sugar Maple	1.4 MBF	\$ 163.00/MBF	\$ _____
White Ash	1.5 MBF	\$ 58.00/MBF	\$ _____
Pulpwood			
Balsam Fir	171 Cords	\$ 13.10/Cord	\$ _____
Mixed Aspen	413 Cords	\$ 17.15/Cord	\$ _____
Mixed Hardwood	1,007 Cords	\$ 20.15/Cord	\$ _____
Mixed Spruce	81 Cords	\$ 15.55/Cord	\$ _____
N. White Cedar	65 Cords	\$ 10.95/Cord	\$ _____
Tamarack	114 Cords	\$ 9.70/Cord	\$ _____

*The volumes are statistically estimated within plus (+) or minus (-) 11.53 percent at 95% confidence level. These estimated volumes are final and not subject to adjustment. Prospective bidders are urged to examine this timber and to make their own estimates of quantity and quality.

I understand that any or all bids may be rejected. All bids must be signed and all bid items must be bid or the bid form may be rejected. I also understand that consideration and awarding a contract will be based upon my past performance and ability to complete the contract based upon equipment and staffing subject to my control.

FEDERAL ID: _____ or SOCIAL SECURITY NUMBER: _____

Company or individual bidding: _____

Company representative's name: _____

Address: _____

City: _____ State: _____ Zip: _____

IF AVAILABLE, PLEASE PLACE THE PERSONALIZED LABEL FROM YOUR PROSPECTUS IN THE ABOVE BOX.

Individual or company representative's signature: _____ Date: _____

Phone number : _____ Email (optional): _____

THE WINNING BIDDER MUST COMPLETE THE VERIFICATION OF WORKER'S DISABILITY COMPENSATION ACT COMPLIANCE (ON REVERSE SIDE IF DOUBLE SIDED) WITHIN 21 DAYS OF SALE AWARD DATE



FOR DEPARTMENT USE ONLY
Sale Number (XX - XXX - XX - XX)
Forest Management Unit:

TIMBER SALE VERIFICATION OF WORKER'S DISABILITY COMPENSATION ACT COMPLIANCE

*As required by Act 317, P.A. 1969 (Worker's Compensation) and
Part 5 of Act 451 of 1994, as amended.*

VERIFICATION OF WORKER'S DISABILITY COMPENSATION ACT COMPLIANCE

- This verification must be completed and submitted within 21 days of contract award and prior to the issuance of the timber sale contract.
- In addition, if boxes 2B or 2C are checked, then Notice of Exclusion or Certificate of Insurance must be submitted within twenty-one (21) days of the contract award and prior to the issuance of the timber sale contract.
- All information must be typed or printed except for written signatures.

Please Check Appropriate Categories:

1. My business is organized as (you **must** check one of the boxes below):
 - A. Sole Proprietorship (individual)
 - B. Partnership
 - C. Corporation

2. You **must** check one of the boxes below:
 - A. I certify my business is a sole proprietorship and it has no employees but the sole proprietor. I am not subject to the Worker's Compensation Laws.
 - B. I certify my business has satisfied its obligation to the Worker's Compensation Act through the use of an approved Notice of Exclusion (BWC-337, Rev. 5/96). I will provide a copy of the Notice of Exclusion within 21 days of the contract award. (For questions or a copy of the BWC-337, please call the Worker's Compensation Bureau at 517-322-1195).
 - C. I certify my business has a Worker's Compensation Policy. I will provide an original Certificate of Insurance within twenty-one (21) days of the contract award.

3. If you have checked item 2(A) or 2(B), you **must** indicate the number of **both** full-time and part-time employees, other than yourself, including family members and active partners (if none, you must enter "0").

_____ Full-time Employees

_____ Part-time Employees

Name of Business		Federal ID (or) Social Security No.	
Address		Telephone ()	
City	State	ZIP	

I hereby certify that the above information is true and correct. I agree to notify the Michigan DNR of any changes that occur in factors affecting my coverage during any of my present and future operations.

Signature of Owner or Authorized Representative

Title

Date

Please complete the "SEALED BID" information on the next page

Pokovich Pieces (33-035-20)
T37N, R27W, SEC. 31; T37N, R27W, SEC. 32; Menominee COUNTY

In response to the notice of sale to be held 3:00 p.m. (local time) on December 8, 2020, I am hereby submitting my sealed bid (firm offer) for the following forest products to be cut. Bids for individual species must be at or above the advertised price. All non-responsive bid forms may be rejected.

<u>PRODUCTS & SPECIES</u>	<u>ESTIMATED VOLUME*</u>	<u>ADVERTISED PRICE</u>	<u>BID PRICE/UNIT</u>
Sawtimber			
Basswood	6.1 MBF	\$ 72.00/MBF	\$ _____
White Ash	15.4 MBF	\$ 58.00/MBF	\$ _____
Pulpwood			
Balsam Fir	77 Cords	\$ 13.10/Cord	\$ _____
Mixed Aspen	181 Cords	\$ 17.15/Cord	\$ _____
Mixed Hardwood	362 Cords	\$ 20.15/Cord	\$ _____
Mixed Spruce	149 Cords	\$ 15.55/Cord	\$ _____
N. White Cedar	96 Cords	\$ 10.95/Cord	\$ _____
Tamarack	43 Cords	\$ 9.70/Cord	\$ _____

*The volumes are statistically estimated within plus (+) or minus (-) 14.28 percent at 95% confidence level. These estimated volumes are final and not subject to adjustment. Prospective bidders are urged to examine this timber and to make their own estimates of quantity and quality.

I understand that any or all bids may be rejected. All bids must be signed and all bid items must be bid or the bid form may be rejected. I also understand that consideration and awarding a contract will be based upon my past performance and ability to complete the contract based upon equipment and staffing subject to my control.

FEDERAL ID: ____ - ____ - ____ or SOCIAL SECURITY NUMBER: ____ - ____ - ____

Company or individual bidding: _____

Company representative's name: _____

Address: _____

City: _____ State: _____ Zip: _____

IF AVAILABLE, PLEASE PLACE THE PERSONALIZED LABEL FROM YOUR PROSPECTUS IN THE ABOVE BOX.

Individual or company representative's signature: _____ Date: _____

Phone number : _____ Email (optional): _____

THE WINNING BIDDER MUST COMPLETE THE VERIFICATION OF WORKER'S DISABILITY COMPENSATION ACT COMPLIANCE (ON REVERSE SIDE IF DOUBLE SIDED) WITHIN 21 DAYS OF SALE AWARD DATE



FOR DEPARTMENT USE ONLY	
Sale Number (XX - XXX - XX - XX)	
Forest Management Unit:	

TIMBER SALE VERIFICATION OF WORKER'S DISABILITY COMPENSATION ACT COMPLIANCE

As required by Act 317, P.A. 1969 (Worker's Compensation) and
Part 5 of Act 451 of 1994, as amended.

VERIFICATION OF WORKER'S DISABILITY COMPENSATION ACT COMPLIANCE

- This verification must be completed and submitted within 21 days of contract award and prior to the issuance of the timber sale contract.
- In addition, if boxes 2B or 2C are checked, then Notice of Exclusion or Certificate of Insurance must be submitted within twenty-one (21) days of the contract award and prior to the issuance of the timber sale contract.
- All information must be typed or printed except for written signatures.

Please Check Appropriate Categories:

1. My business is organized as (you **must** check one of the boxes below):
 - A. Sole Proprietorship (individual)
 - B. Partnership
 - C. Corporation
2. You **must** check one of the boxes below:
 - A. I certify my business is a sole proprietorship and it has no employees but the sole proprietor. I am not subject to the Worker's Compensation Laws.
 - B. I certify my business has satisfied its obligation to the Worker's Compensation Act through the use of an approved Notice of Exclusion (BWC-337, Rev. 5/96). I will provide a copy of the Notice of Exclusion within 21 days of the contract award. (For questions or a copy of the BWC-337, please call the Worker's Compensation Bureau at 517-322-1195).
 - C. I certify my business has a Worker's Compensation Policy. I will provide an original Certificate of Insurance within twenty-one (21) days of the contract award.
3. If you have checked item 2(A) or 2(B), you **must** indicate the number of **both** full-time and part-time employees, other than yourself, including family members and active partners (if none, you must enter "0").

_____ Full-time Employees

_____ Part-time Employees

Name of Business		Federal ID (or) Social Security No.	
Address		Telephone ()	
City	State	ZIP	

I hereby certify that the above information is true and correct. I agree to notify the Michigan DNR of any changes that occur in factors affecting my coverage during any of my present and future operations.

Signature of Owner or Authorized Representative

Title

Date

Please complete the "SEALED BID" information on the next page