



**DEPARTMENT OF NATURAL RESOURCES
STATE OF MICHIGAN**

TIMBER SALE PROSPECTUS #6815

SCHEDULED SALE DATE AND TIME: 8:30 a.m. (local time) on January 13, 2021.

LOCATION: CRYSTAL FALLS MGMT UNIT, 1420 US 2 WEST, CRYSTAL FALLS, MI 49920.

PROSPECTUS NOTE: The bidder is advised to inspect the sale area and review the location, estimated volumes, operating costs and contract terms of proposed sales. Please be aware that some landowners may request 60 days or more notice for access across their land.

Notice is hereby given that bids will be received by the Unit Manager, CRYSTAL FALLS MANAGEMENT UNIT, for certain timber on the following described lands:

Parsnip Trail (12-057-20) / T42N, R31W, SEC. 24, E1/2NW,NWNE,S1/2NE,SE.
Iron County, Advertised Price \$107,101.05, 129.0 Acres, Aspen, Hardwood.

SALE NOTE: Access may be through private land.

Cook Out Hwds. (12-058-20) / T42N, R31W, SEC. 23, NWNE,NWSE.
T42N, R31W, SEC. 26, W1/2NW,NWSW,S1/2SW,N1/2SE,SWSE.
Iron County, Advertised Price \$60,347.55, 204.5 Acres, Hardwood, Aspen.

SALE NOTE: Access may be through private land.

Upper Dam Mix (12-059-20) / T42N, R31W, SEC. 28, E1/2SW.
T42N, R31W, SEC. 33, N1/2SW.
T42N, R31W, SEC. 34, N1/2SW,NESE.
Iron County, Advertised Price \$25,720.30, 72.0 Acres, Aspen, Hardwood.

SALE NOTE: Access may be through private land.

Two Sox Mix (12-061-20) / T42N, R31W, SEC. 10, SENW,S1/2NE,SESW,NWSE.
Iron County, Advertised Price \$41,141.35, 78.9 Acres, Red Pine, Aspen.

SALE NOTE: Access may be through private land.

BID INSTRUCTIONS (VER. 07/02/2018):

1. Scheduled Bid Location, Date, and Time (2/11)

Bids must be received by the Unit Manager, CRYSTAL FALLS OFFICE, 1420 US 2 West, Crystal Falls, MI 49920, no later than 8:30 a.m. (local time) on January 13, 2021. For further information concerning this sale, contact Dan McNamee at 906-875-6622.

2. Bidder's Qualifications (5/16)

Purchaser shall obtain workers compensation insurance to cover claims under Michigan's Worker's Disability Compensation Act of 1969 or similar employee benefit act of any other state applicable to an employee. If all or part of a timber sale was prepared by a private contractor, the contractor and that contractor's company are not permitted to bid on the timber sale contract. Bids will not be accepted from individuals or companies appearing on the DNR/FRD No-Bid List. This list contains the names of purchasers who previously failed to execute a contract within 21-days or who have a history of poor performance.

3. Preparation of Sealed Bids (5/16)

Bid Forms may be completed online thru Michigan DNR Timber Sale Online Bidding (OLB) at www.michigan.gov/timberbidding or by completing the hardcopy Bid Form found in the Timber Sale Prospectus. Hardcopy Bid Forms shall be manually signed in ink. Registration in OLB is considered your 'signature' for all bids submitted thru that system. Bid prices must be entered for each species and product in the Bid Price column for all material subject to bidding and all fill-in blanks must be completed. If erasures or other changes appear on the hardcopy Bid Form, each erasure or change must be initialed by the person signing the bid.

4. Submission of Sealed Bids (5/16)

Bid forms may be obtained from the Unit Manager or thru OLB. Bids may be submitted hardcopy or thru OLB. All hardcopy bids must be submitted on the bid form and in an envelope clearly identified as described in this section. NOTE: Only one bid form per bid envelope. Sealed bids must be submitted to the Unit office designated in the prospectus and must be submitted at or prior to the time established in the prospectus. The envelope should show on the outside (a) the sale name or number and (b) the date and time of bid opening, as shown in the prospectus. Bids received after the time specified in the sale prospectus are late bids and will be rejected.

It is possible for a bidder to submit multiple bids on a single sale. For example, a bid may be submitted hardcopy and a bid may be submitted thru OLB. Or, two bidders from the same company could both submit bids on the same sale. If this were to happen, the State would accept all bids received and award the contract accordingly. All bidding and contractual requirements would apply to all bids received.

5. Public Opening of Sealed Bids (7/16)

If conditions permit, the sealed bids will be publicly opened and posted at the time and place set in the prospectus.

If a bidder, present at a bid opening, has submitted bids on more than one sale, that bidder may withdraw their unopened bid envelopes or announce the withdrawal of their online bid after being declared the successful bidder on one sale.

6. Award of Contract (1/11)

Award of the contract will be made to the Bidder whose bid, conforming to the prospectus, is most advantageous to the State of Michigan on the basis of total value at rates bid for the estimated quantities. The State reserves the right to reject any bid or waive any minor irregularity in bids received. A written award mailed (or otherwise furnished) to the successful Bidder shall be deemed to result in a binding contract without further action by either party.

7. Down Payment (1/11)

The Bidder to whom award is made must make a down payment within 21 days of the sale award. The amount of the down payment will be calculated as shown in the Bond and Payment Schedule of this prospectus. Only cash may be used to meet this requirement.

8. Performance Security (1/11)

As guarantee of faithful performance, a cash bond, certificate of deposit, surety bond or irrevocable letter of credit (LOC) is required within 21 days of the sale award. The amount of the performance security is shown in the Bond and

Payment Schedule of this prospectus. If an LOC or surety is used, the coverage must extend for at least 6 months beyond the contract expiration.

9. Timber Sale Contract (7/18)

Additional conditions and requirements common to all timber sales are listed on the timber sale contract (R4031) and are available on line at www.michigan.gov/timber. Contact the Unit Manager for additional information or a sample contract. Within 21 days of the date of the award letter, the bidder must sign the contract and provide the required down payment, performance security, and verification of worker's disability compensation. The down payment and performance security shall be in accordance with the provisions of the timber sale contract, in the sums stated in this prospectus. If these actions are not taken, then the Bidder, the Bidder's corporation, and the corporation's principals may not be permitted to bid on State timber sales for a period of 3 months after the first offense, 6 months after the second offense, and 1 year after the third offense. An offense will only be counted against the Bidder for 5 years. In addition, the Bidder certifies that if awarded this contract, the Bidder will complete the timber sale contract in accordance with its terms and any modifications thereof including requirements to purchase, cut, and remove the included timber by the expiration date.

Payment Unit values in the State Forest Timber Sale Contract are calculated based on the advertised value of the Payment Unit as a percentage of the total advertised value of the contract. The advertised value of each Payment Unit is given in the Description of Timber by Payment Unit table on the Timber Sale Information page. For example, if the value of Payment Unit 1 is advertised as \$1,500 and the total Timber Sale value is advertised as \$10,000, the contract price for Payment Unit 1 will be 15% of the total bid price ($\$1,500/\$10,000 * 100$).

10. Disclaimer of Estimates and Bidder's Warranty of Inspection (7/16)

Before submitting this bid, the Bidder is advised and cautioned to inspect the sale area, review the requirements of the sale contract, and take other steps as may be reasonably necessary to ascertain the location, estimated volumes, construction estimates, and operating costs of the proposed sale. Failure to do so will not relieve the Bidder from responsibility for completing the contract.

The Bidder warrants that this bid is submitted solely on the basis of the Bidder's examination and inspection of the quality and quantity of the timber offered for sale and the Bidder's opinion of the value thereof and the costs of recovery. No reliance should be placed on the State of Michigan's estimates of timber quality, quantity or costs of recovery. Bidder further acknowledges that the State of Michigan: (i) expressly disclaims any warranty of fitness of timber for any purpose; (ii) offers this timber as is without any warranty of quality (merchantability) or quantity and (iii) expressly disclaims any warranty as to the quantity or quality of timber sold.

11. Certification and Chain-of-Custody (10/14)

Unless otherwise indicated in the contract under section 7 – Other Conditions of the Sale Specific Conditions & Requirements, the area encompassed by this timber sale is certified to the standards of the Forest Stewardship Council (FSC) - Certificate #SCS-FM/COC-00090N and the Sustainable Forestry Initiative (SFI) - Certificate #NSF-SFIS-5Y031-SF5. Forest products from this sale may be delivered to the mill as "FSC 100% and / or SFI certified" as long as the contractor hauling the forest products is chain-of-custody (COC) certified or covered under a COC certificate from the destination mill. The purchaser is responsible for maintaining COC after leaving the sale area.

12. Good Neighbor Authority (GNA) Requirements (7/16)

If the name of this timber sales contains the acronym GNA, it is authorized by the Good Neighbor Authority (GNA) and covered by various agreements between the U.S. Forest Service and the State. The timber sale occurs on federal land and the following conditions apply:

GNA contracts on US Forest Service land will not be awarded to purchasers on the Federal list of excluded parties. The System for Award Management (SAM) will be checked for active excluded parties prior to award of contract. In addition, the Bidder to whom award is made must complete an Assurance Regarding Felony Conviction or Tax Delinquent Status for Corporate Applicants (AD-3031).

13. Good Neighbor Authority (GNA) Requirements, con't (9/16)

Bidder certifies, by signing this bid form, that to the best of Bidder's knowledge that the following representations are accurate and complete.

- a. That the Bidder and its principals are not presently debarred, suspended, proposed for debarment, declared ineligible, or voluntary excluded from timber sales (covered transactions) by any Federal department or agency.
- b. That the Bidder and its principals have not within a 3-year period preceding this bid been convicted of or had a civil judgment rendered against them for commission of fraud or a criminal offense in connection with obtaining , attempting to obtain, or performing a public (Federal, State, or local) transaction or contract under a public transaction; violation of Federal or State antitrust statutes or commission of embezzlement, theft, forgery, bribery, falsification or destruction of records, making false statements, or receiving stolen property.
- c. That the Bidder and its principals are not presently indicted for or otherwise criminally or civilly charged by a governmental entity (Federal, State, or local) with commission of any of the offenses enumerated in paragraph b of this certification.
- d. That the Bidder and its principals have not within a 3-year period preceding this bid had one or more public transactions (Federal, State, or local) terminated for breach or default of a timber or forest product contract.

Bidders that cannot certify this requirement, in whole or in part, shall submit an explanation with their bid.

DAN EICHINGER
Director

TIMBER SALE INFORMATION

Parsnip Trail (12-057-20)
 T42N, R31W, SEC. 24.
 Iron County (Advertised Price \$107,101.05)

SALE NOTE: Access may be through private land.

A timber sale contract for this lump sum, sealed bid timber sale will be awarded to the responsible bidder offering the highest sealed bid price. All units of volume listed below were estimated using the T-Sale computer program and our traditional volume equations. Bids must be at or above the following advertised price for each product and species:

<u>PRODUCTS & SPECIES</u>	<u>ESTIMATED UNITS*</u>	<u>ADVERTISED PRICE</u>
Sawtimber		
Basswood	7.8 MBF	\$ 76.00 / MBF
Paper Birch	1.1 MBF	\$ 59.00 / MBF
Red Maple	26.4 MBF	\$ 93.00 / MBF
Sugar Maple	4.2 MBF	\$ 188.00 / MBF
White Ash	7.4 MBF	\$ 53.00 / MBF
Yellow Birch	1.1 MBF	\$ 53.00 / MBF
Pulpwood		
Balsam Fir	29 Cords	\$ 13.95 / Cord
Mixed Aspen	3,051 Cords	\$ 28.75 / Cord
Mixed Hardwood	765 Cords	\$ 16.95 / Cord
White Spruce	135 Cords	\$ 12.30 / Cord

* The total volume is statistically estimated within plus (+) or minus (-) 7.05 percent. There are an estimated 4,078 cords on this timber sale, plus or minus 288 cords at the 95% confidence level. The estimated units are final and not subject to adjustment. Prospective bidders are urged to examine this timber and to make their own estimates of quantity and quality.

BOND AND PAYMENT SCHEDULE:

1. A bond in the amount of \$7,497.00 to insure faithful performance of the conditions of the contract will be deposited by the successful bidder within 21 days of the sale award.
2. Cutting in any sale or unit without the required advance payment would be considered a trespass.
3. Total payment must be paid in advance or according to the following schedule :
 - (a) Ten percent (10%) of the sale value must be paid within 21 days of the sale award.
 - (b) The 10% down payment will be credited towards the first unit cut.
 - (c) Payment for each of the following units must be made before cutting begins in that unit:

PAYMENT UNIT NUMBER	PERCENT OF TOTAL SALE VALUE
01	21.9%
02	20.0%
03	27.4%
04	13.6%
05	17.1%
4. If no cutting takes place, the 10% down payment will not be refunded.
5. Operations on the contract issued will terminate on 06/30/2023.

SALE STATISTICS

SALE VOLUMES

VOLUME			STATISTICAL RANGE IN CORDS	
TOTAL CUBIC FEET	TOTAL CORDS	PERCENT ERROR	MINIMUM	MAXIMUM
322,171	4,078	7.05%	3,791	4,366

VDU VOLUMES

A VDU is a Volume Determination Unit. Volumes and their associated statistics are calculated at the VDU level and summarized to the sale level. There is often a one to one relationship between a VDU and a Payment Unit, but not always, depending on the cruise design. Refer to the VDU TO PAYMENT UNIT table.

VDU	VOLUME		PERCENT ERROR	RANGE IN CORDS	
	TOTAL CUBIC FEET	TOTAL CORDS		MINIMUM	MAXIMUM
14	131,496	1,665	9.69%	1,503	1,826
30	55,126	698	18.73%	567	828
34	135,540	1,716	8.85%	1,564	1,868
TOTAL:	322,162	4,078		3,634	4,522

VDU TO PAYMENT UNIT

When a VDU is associated with more than one Payment Unit (PU), the VDU volumes are assigned to the PU based on acres of the VDU within the PU.

VDU	VDU ACRES	PU	PU ACRES
14	55.6	1	29.1
		2	26.5
30	34.5	5	34.5
34	38.9	3	26.0
		4	12.9
TOTAL:	129.0		129.0

DESCRIPTION OF TIMBER BY PAYMENT UNIT (PU)

PU	MARKET GROUP	PRODUCT	QUANTITY	UNIT	ACRES	ADVERTISE PRICE
1	Balsam Fir	Pulpwood	7	Cords	29.1	\$23,502.15
	Mixed Aspen		756	Cords		
	<i>B. T. Aspen</i>		53	Cords		
	<i>Balsam Poplar</i>		20	Cords		
	<i>Quaking Aspen</i>		683	Cords		
	Mixed Hardwood		76	Cords		
	<i>Basswood</i>		14	Cords		
	<i>Black Cherry</i>		3	Cords		
	<i>Red Maple</i>		5	Cords		
	<i>Sugar Maple</i>		54	Cords		
	White Spruce		31	Cords		
	2		Balsam Fir	Pulpwood		
Mixed Aspen		690	Cords			
<i>B. T. Aspen</i>		49	Cords			
<i>Balsam Poplar</i>		19	Cords			
<i>Quaking Aspen</i>		622	Cords			
Mixed Hardwood		70	Cords			
<i>Basswood</i>		12	Cords			
<i>Black Cherry</i>		3	Cords			
<i>Red Maple</i>		5	Cords			
<i>Sugar Maple</i>		50	Cords			
White Spruce		28	Cords			
3		Balsam Fir	Pulpwood		10	Cords
	Mixed Aspen	857		Cords		
	<i>B. T. Aspen</i>	427		Cords		
	<i>Balsam Poplar</i>	12		Cords		
	<i>Quaking Aspen</i>	418		Cords		
	Mixed Hardwood	231		Cords		
	<i>Basswood</i>	3		Cords		
	<i>Paper Birch</i>	15		Cords		
	<i>Red Maple</i>	183		Cords		
	<i>Sugar Maple</i>	21		Cords		
	<i>Yellow Birch</i>	9		Cords		
	White Spruce	48		Cords		
4	Balsam Fir	Pulpwood	5	Cords	12.9	\$14,527.80
	Mixed Aspen		426	Cords		
	<i>B. T. Aspen</i>		212	Cords		
	<i>Balsam Poplar</i>		6	Cords		
	<i>Quaking Aspen</i>		208	Cords		
	Mixed Hardwood		113	Cords		
	<i>Basswood</i>		1	Cords		
	<i>Paper Birch</i>		7	Cords		
	<i>Red Maple</i>		91	Cords		
	<i>Sugar Maple</i>		10	Cords		
	<i>Yellow Birch</i>		4	Cords		
	White Spruce		24	Cords		
5	Basswood	Sawtimber	7.8	MBF	34.5	\$18,320.95
	Paper Birch		1.1	MBF		
	Red Maple		26.4	MBF		
	Sugar Maple		4.2	MBF		
	White Ash		7.4	MBF		
	Yellow Birch		1.1	MBF		
	Mixed Aspen	Pulpwood	322	Cords		
	<i>B. T. Aspen</i>		322	Cords		
	Mixed Hardwood		275	Cords		
	<i>Basswood</i>		18	Cords		

DESCRIPTION OF TIMBER BY PAYMENT UNIT (PU), CON'T

PU	MARKET GROUP	PRODUCT	QUANTITY	UNIT	ACRES	ADVERTISE PRICE
5 con't	<i>Ironwood</i>	<i>Pulpwood</i>	3	<i>Cords</i>		
	<i>Paper Birch</i>		4	<i>Cords</i>		
	<i>Red Maple</i>		141	<i>Cords</i>		
	<i>Sugar Maple</i>		50	<i>Cords</i>		
	<i>White Ash</i>		24	<i>Cords</i>		
	<i>Yellow Birch</i>		35	<i>Cords</i>		
	White Spruce		4	Cords		
TOTAL:			48.0	MBF		
TOTAL:			3,980	Cords		

Sale Specific Conditions & Requirements

Sale Name: Parsnip Trail

Sale Number: 12-057-20 Seq#: 1

1 - Sale Area

1.2 - Boundaries

1.2.1 - Painted boundaries (9/19)

The sale boundary and Payment Unit boundaries are marked and identified by blue and red paint. Exterior sale boundary lines against private property are marked with blue paint. Exterior sale boundary lines against state are marked with red paint. Interior Payment Unit boundaries are marked with red slashes. Retention patches are marked with red paint; no harvesting activities may occur within these areas. The painted boundary line trees are not Included Timber and are to be protected unless marked with orange paint. Trees marked with red slashes, designating an interior Payment Unit boundary are only to be cut when all surrounding Payment Units have been paid.

2 - Timber Specifications

2.1 - Included Timber

2.1.1 - Clearcut unit(s) with unmerchantable trees (6/14)

Within Payment Unit(s) 1-4, cut all aspen and maple trees that are two (2) inches or more at DBH. In addition, cut all spruce, balsam, tamarack, jack pine, and mixed hardwood trees which meet minimum piece specifications in 2.2 Utilization (one 100" stick with a 4.5" diameter top and larger), except do not cut any oak.

2.1.3 - Cut tree marked unit(s) (12/08)

Within Payment Unit(s) 5, all trees are designated for cutting when marked with orange paint above and below stump height, regardless of merchantability. In addition to marked trees, cut all aspen, spruce and balsam with two or more pulpwood sticks.

2.2 - Utilization

2.2.11 - Chipping restriction (9/14)

If chipping occurs on this sale, then no woody debris present on the ground at the start of the sale may be chipped. In addition, brush or chips may not be stored or stockpiled on-site for more than 60 days past sale expiration date. Residual chip depth may not exceed 4 inches.

4 - Transportation

4.1 - Construction

4.1.5 - Culverts (5/14)

Roads may require the installation of culverts for cross drainage or at natural drainage-ways. If culverts are needed in these locations, their placement will be specified by the sale administrator and they shall be installed prior to hauling. The culverts shall be new, corrugated metal or plastic gauge. Culverts will be a minimum of 18 inches in diameter and 24 feet in length.

4.4 - Access

4.4.1 - Private property access (3/11)

Permission for access across private land is the responsibility of the Purchaser.

5 - Operations

5.2 - Conduct of Operations

5.2.1 - Slash

5.2.1.2 - Slash Removal

5.2.1.2.6 - Slash removal, general (7/05)

All slash must be removed from the hunter walking trail within Payment Units 1 and 2.

5.2.1.8 - Slash height (12/08)

No slash or tree tops may exceed 36 inches in height.

5.2.3 - Operating Restrictions

5.2.3.1 - Operating restrictions (9/11)

Within Payment Unit(s) 1 and 2, unless changed by written agreement, cutting and skidding are limited to the period of December 1 through March 31. This restriction is because of the presence of wild parsnip in these units.

5.2.3.3 - Bark slippage restriction (3/09)

Within Payment Unit(s) 5, unless changed by written agreement, cutting and skidding are not permitted during the period of April 15 to July 15. This restriction is because of bark slippage.

5.2.22 - Operating Caution

5.2.22.1 - Operating caution (6/11)

It is recommended, but not required, that within Payment Unit(s) 3, cutting and skidding occur during dry summer or frozen winter conditions. The reason for the recommendation is because of seasonal wet areas.

5.4 - Soil Protection

5.4.1 - Rutting restriction, general (7/16)

Operations are to cease immediately if equipment and weather conditions result in rutting of roads and/or skid trails which is 12 inches or greater in depth and 50 feet in length. The Unit Manager or his/her representative may restrict hauling and/or skidding if ruts exceed the specified depth. With the Unit Manager or his/her representative's approval, the Purchaser may return to the area when the risk of rutting has decreased.

5.8 - Protection of Endangered Species

5.8.5 - Protection of raptor nests (3/13)

All trees with raptor nests will be protected if found during harvesting operations. Notification will be made to the Unit Manager or his/her representative who will notify the Wildlife Biologist so an on-site evaluation and recommendation can be made, if necessary.



TIMBER SALE MAP

This information provided by authority of Part 525, 1994 PA 451, as amended.

Forest Management Unit Crystal Falls		County Iron	Mapped By Scott Sebero	Date 09/10/2020	Page 1	of 1
Township 42N	Range 31W	Section(s) and Subdivision(s) 24 E1/2NW,NWNE,S1/2NE,SE		Scale 4 inches = 1 mile		
			Cruised By Scott Sebero			

Cover Type

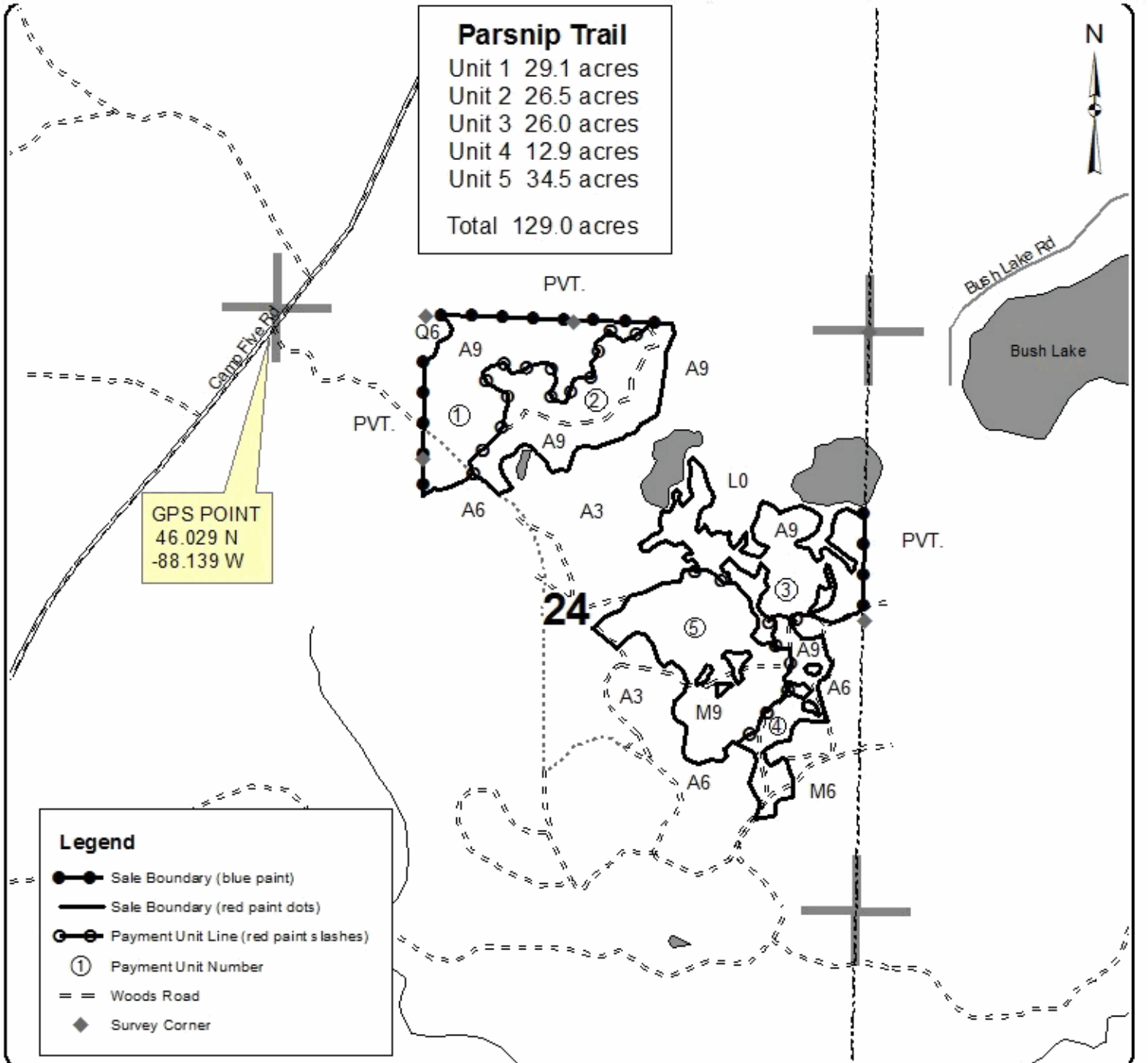
A = Aspen	H = Hemlock	N = Marsh	U = Upland Brush
B = Paper Birch	J = Jack Pine	O = Oak	UM = Upland Mixed
C = Cedar	L = Lowland Brush	P = Lowland Poplar	V = Bog or Marsh
D = Tread Bog	LM = Lowland Mixed	Q = Mixed Swamp Conifer	W = White Pine
E = Swamp Hdwoods	M = Mpl, Bch, Brch	R = Red Pine	X = Non Stocked
F = Spruce Fir	MC = Mixed Conifer	S = Black Spruce	Z = Water
G = Grass	MD = Mixed Deciduous	T = Tamarack	

Density

0 = Non Stocked	5 = Pole Timber Medium
1 = Seedling Sapling Poor	6 = Pole Timber Well
2 = Seedling Sapling Medium	7 = Saw Timber Poor
3 = Seedling Sapling Well	8 = Saw Timber Medium
4 = Pole Timber Poor	9 = Saw Timber Well

Parsnip Trail

Unit 1 29.1 acres
 Unit 2 26.5 acres
 Unit 3 26.0 acres
 Unit 4 12.9 acres
 Unit 5 34.5 acres
 Total 129.0 acres



TIMBER SALE INFORMATION

Cook Out Hwds. (12-058-20)
 T42N, R31W, SEC. 23; T42N, R31W, SEC. 26.
 Iron County (Advertised Price \$60,347.55)

SALE NOTE: Access may be through private land.

A timber sale contract for this lump sum, sealed bid timber sale will be awarded to the responsible bidder offering the highest sealed bid price. All units of volume listed below were estimated using the T-Sale computer program and our traditional volume equations. Bids must be at or above the following advertised price for each product and species:

<u>PRODUCTS & SPECIES</u>	<u>ESTIMATED UNITS*</u>	<u>ADVERTISED PRICE</u>
Sawtimber		
Basswood	91.7 MBF	\$ 76.00 / MBF
Paper Birch	0.5 MBF	\$ 59.00 / MBF
Red Maple	28.3 MBF	\$ 93.00 / MBF
Sugar Maple	35.8 MBF	\$ 188.00 / MBF
White Ash	1.1 MBF	\$ 53.00 / MBF
Yellow Birch	4.2 MBF	\$ 53.00 / MBF
Pulpwood		
Balsam Fir	198 Cords	\$ 13.95 / Cord
Basswood	294 Cords	\$ 5.40 / Cord
Mixed Hardwood	1,832 Cords	\$ 16.95 / Cord
Quaking Aspen	267 Cords	\$ 28.75 / Cord
White Spruce	51 Cords	\$ 12.30 / Cord

* The total volume is statistically estimated within plus (+) or minus (-) 7.19 percent. There are an estimated 2,967 cords on this timber sale, plus or minus 213 cords at the 95% confidence level. The estimated units are final and not subject to adjustment. Prospective bidders are urged to examine this timber and to make their own estimates of quantity and quality.

BOND AND PAYMENT SCHEDULE:

- A bond in the amount of \$4,224.00 to insure faithful performance of the conditions of the contract will be deposited by the successful bidder within 21 days of the sale award.
- Cutting in any sale or unit without the required advance payment would be considered a trespass.
- Total payment must be paid in advance or according to the following schedule :
 - Ten percent (10%) of the sale value must be paid within 21 days of the sale award.
 - The 10% down payment will be credited towards the first unit cut.
 - Payment for each of the following units must be made before cutting begins in that unit:

PAYMENT UNIT NUMBER	PERCENT OF TOTAL SALE VALUE
01	17.9%
02	19.8%
03	17.5%
04	16.8%
05	7.6%
06	20.4%
- If no cutting takes place, the 10% down payment will not be refunded.
- Operations on the contract issued will terminate on 06/30/2023.

SALE STATISTICS

SALE VOLUMES

VOLUME			STATISTICAL RANGE IN CORDS	
TOTAL CUBIC FEET	TOTAL CORDS	PERCENT ERROR	MINIMUM	MAXIMUM
234,421	2,967	7.19%	2,754	3,181

VDU VOLUMES

A VDU is a Volume Determination Unit. Volumes and their associated statistics are calculated at the VDU level and summarized to the sale level. There is often a one to one relationship between a VDU and a Payment Unit, but not always, depending on the cruise design. Refer to the VDU TO PAYMENT UNIT table.

VDU	VOLUME		PERCENT ERROR	RANGE IN CORDS	
	TOTAL CUBIC FEET	TOTAL CORDS		MINIMUM	MAXIMUM
1	42,747	541	14.56%	462	620
2	7,947	101	32.25%	68	133
3	44,050	558	18.64%	454	662
7	15,460	196	14.00%	168	223
8	41,285	523	14.18%	448	597
23	66,012	836	11.77%	737	934
25	16,890	214	21.26%	168	259
TOTAL:	234,393	2,967		2,507	3,427

VDU TO PAYMENT UNIT

When a VDU is associated with more than one Payment Unit (PU), the VDU volumes are assigned to the PU based on acres of the VDU within the PU.

VDU	VDU ACRES	PU	PU ACRES
1	34.9	1	34.9
2	9.1	2	9.1
3	22.2	6	22.2
7	12.7	6	12.7
8	30.4	2	30.4
23	83.1	3	42.5
		4	40.6
25	12.1	5	12.1
TOTAL:	204.5		204.5

DESCRIPTION OF TIMBER BY PAYMENT UNIT (PU)

PU	MARKET GROUP	PRODUCT	QUANTITY	UNIT	ACRES	ADVERTISE PRICE
1	Basswood	Sawtimber	9.0	MBF	34.9	\$10,776.45
	Red Maple		6.7	MBF		
	Sugar Maple		3.2	MBF		
	Yellow Birch		1.7	MBF		
	Balsam Fir		Pulpwood	4		
	Basswood	47		Cords		
	Mixed Hardwood	338		Cords		
	<i>Ironwood</i>	5		<i>Cords</i>		
	<i>Paper Birch</i>	2		<i>Cords</i>		
	<i>Red Maple</i>	258		<i>Cords</i>		
	<i>Sugar Maple</i>	67		<i>Cords</i>		
	<i>Yellow Birch</i>	6		<i>Cords</i>		
	Quaking Aspen	85		Cords		
	White Spruce	24	Cords			
2	Basswood	Sawtimber	6.4	MBF	39.5	\$11,963.15
	Paper Birch		0.5	MBF		
	Red Maple		18.3	MBF		
	Sugar Maple		1.5	MBF		
	White Ash		1.1	MBF		
	Yellow Birch	0.7	MBF			
	Balsam Fir	Pulpwood	8	Cords		
	Basswood		22	Cords		
	Mixed Hardwood		534	Cords		
	<i>Ironwood</i>		7	<i>Cords</i>		
	<i>Paper Birch</i>		26	<i>Cords</i>		
	<i>Red Maple</i>		361	<i>Cords</i>		
	<i>Sugar Maple</i>		124	<i>Cords</i>		
	<i>White Ash</i>		6	<i>Cords</i>		
<i>Yellow Birch</i>	10		<i>Cords</i>			
Quaking Aspen	3	Cords				
3	Basswood	Sawtimber	39.0	MBF	42.5	\$10,575.10
	Red Maple		1.7	MBF		
	Sugar Maple		15.9	MBF		
	Yellow Birch		0.9	MBF		
	Basswood	Pulpwood	98	Cords		
	Mixed Hardwood		192	Cords		
	<i>Ironwood</i>		12	<i>Cords</i>		
	<i>Red Maple</i>		51	<i>Cords</i>		
	<i>Sugar Maple</i>		122	<i>Cords</i>		
	<i>Yellow Birch</i>		7	<i>Cords</i>		
	Quaking Aspen		22	Cords		
4	Basswood	Sawtimber	37.3	MBF	40.6	\$10,113.65
	Red Maple		1.6	MBF		
	Sugar Maple		15.2	MBF		
	Yellow Birch		0.9	MBF		
	Basswood	Pulpwood	93	Cords		
	Mixed Hardwood		184	Cords		
	<i>Ironwood</i>		11	<i>Cords</i>		
	<i>Red Maple</i>		49	<i>Cords</i>		
	<i>Sugar Maple</i>		117	<i>Cords</i>		
	<i>Yellow Birch</i>		7	<i>Cords</i>		
Quaking Aspen	21	Cords				
5	Balsam Fir	Pulpwood	12	Cords	12.1	\$4,596.80
	Mixed Hardwood		114	Cords		
	<i>Paper Birch</i>		13	<i>Cords</i>		
	<i>Red Maple</i>		99	<i>Cords</i>		

DESCRIPTION OF TIMBER BY PAYMENT UNIT (PU), CON'T

PU	MARKET GROUP	PRODUCT	QUANTITY	UNIT	ACRES	ADVERTISE PRICE
5 con't	<i>Sugar Maple</i>	<i>Pulpwood</i>	2	<i>Cords</i>		
	Quaking Aspen		86	Cords		
	White Spruce		2	Cords		
6	Balsam Fir	Pulpwood	174	Cords	34.9	\$12,322.40
	Basswood		34	Cords		
	Mixed Hardwood		470	Cords		
	<i>Ironwood</i>		3	<i>Cords</i>		
	<i>Paper Birch</i>		12	<i>Cords</i>		
	<i>Red Maple</i>		277	<i>Cords</i>		
	<i>Sugar Maple</i>		153	<i>Cords</i>		
	<i>Yellow Birch</i>		25	<i>Cords</i>		
	Quaking Aspen		50	Cords		
	White Spruce		25	Cords		
	TOTAL:			161.6		
TOTAL:			2,642	Cords		

Sale Specific Conditions & Requirements

Sale Name: Cook Out Hwds.

Sale Number: 12-058-20 Seq#: 1

1 - Sale Area

1.2 - Boundaries

1.2.1 - Painted boundaries (9/19)

The sale boundary and Payment Unit boundaries are marked and identified by blue and red paint. Exterior sale boundary lines against private property are marked with blue paint. Exterior sale boundary lines against state are marked with red paint. Interior Payment Unit boundaries are marked with red slashes. Retention patches are marked with red paint; no harvesting activities may occur within these areas. The painted boundary line trees are not Included Timber and are to be protected unless marked with orange paint. Trees marked with red slashes, designating an interior Payment Unit boundary, are only to be cut when all surrounding Payment Units have been paid.

2 - Timber Specifications

2.1 - Included Timber

2.1.1 - Clearcut unit(s) with unmerchantable trees (6/14)

Within Payment Unit(s) 5 and 6, cut all aspen and maple trees that are two (2) inches or more at DBH. In addition, cut all spruce, balsam, and mixed hardwood trees which meet minimum piece specifications in 2.2 Utilization (one 100" stick with a 4.5" diameter top and larger), except do not cut oak.

2.1.3 - Cut tree marked unit(s) (12/08)

Within Payment Unit(s) 1-4, all trees are designated for cutting when marked with orange paint above and below stump height, regardless of merchantability. In addition to marked trees, cut all spruce and balsam with two or more pulpwood sticks.

4 - Transportation

4.1 - Construction

4.1.4 - Timber removed for construction (12/09)

Trees cut or damaged in the process of pre-approved road, landing or skid trail construction will be decked in an area separate from other Designated Timber and not removed until measured by the sale administrator. Payment will be made at the specified Purchase Unit Price.

4.1.6 - Road construction (1/09)

Construction of new roads or improvements of existing roads shall be done in such a way as to minimize the environmental and visual impacts. Merchantable trees shall be cut and utilized unless otherwise directed. Non-merchantable trees shall be severed and laid flat on the ground. Slash shall be scattered, and not left in windrows and kept a minimum of 10 feet back from the road edge. Stumps shall be set upright, not left on edge, and be moved at least 10 feet away from the road edge. Disturbed soil shall be feathered into the woods and not left in berms or windrows.

4.1.7 - Road closure (10/11)

All new roads built into the sale must be blocked to vehicle traffic upon completion of the sale. In general, this will require constructing a four (4') foot high berm of stumps and logs covered with earth. Contact the sale administrator for specific details of design and placement.

5 - Operations

5.2 - Conduct of Operations

5.2.1 - Slash

5.2.1.8 - Slash height (12/08)

No slash or tree tops may exceed 36 inches in height.

5.2.3 - Operating Restrictions

5.2.3.3 - Bark slippage restriction (3/09)

Within Payment Unit(s) 1-4, unless changed by written agreement, cutting and skidding are not permitted during the period of April 15 to July 15. This restriction is because of bark slippage.

5.2.3.4 - Oak wilt restriction, no exceptions (1/18)

Within Payment Unit(s) 5 and 6, cutting and skidding and brushing of access roads to the sale are not permitted during the period of April 15 to July 15. No exceptions will be granted. This is necessary to reduce the spread of oak wilt.

5.4 - Soil Protection

5.4.1 - Rutting restriction, general (7/16)

Operations are to cease immediately if equipment and weather conditions result in rutting of roads and/or skid trails which is 12 inches or greater in depth and 50 feet in length. The Unit Manager or his/her representative may restrict hauling and/or skidding if ruts exceed the specified depth. With the Unit Manager or his/her representative's approval, the Purchaser may return to the area when the risk of rutting has decreased.

5.8 - Protection of Endangered Species

5.8.5 - Protection of raptor nests (3/13)

All trees with raptor nests will be protected if found during harvesting operations. Notification will be made to the Unit Manager or his/her representative who will notify the Wildlife Biologist so an on-site evaluation and recommendation can be made, if necessary.

6 - Safety and Fire Prevention

6.2 - Signing

6.2.1 - Road posting (9/09)

The Purchaser is responsible for posting and maintaining caution signs on Camp Five Road prior to beginning operations. The road must be posted 200 feet from the sale area to warn of logging activity and truck traffic. Signs must be removed when harvest operations are suspended or completed. The Purchaser will provide these signs.



TIMBER SALE MAP

This information provided by authority of Part 525, 1994 PA 451, as amended.

Forest Management Unit Crystal Falls	County Iron	Mapped By Scott Sebero	Date 09/03/2020	Page 1	of 2
Township 42N	Range 31W	Section(s) and Subdivision(s) 23 NWNE, NWSE	Cruised By Scott Sebero		
Scale 4 inches = 1 mile					

Cover Type

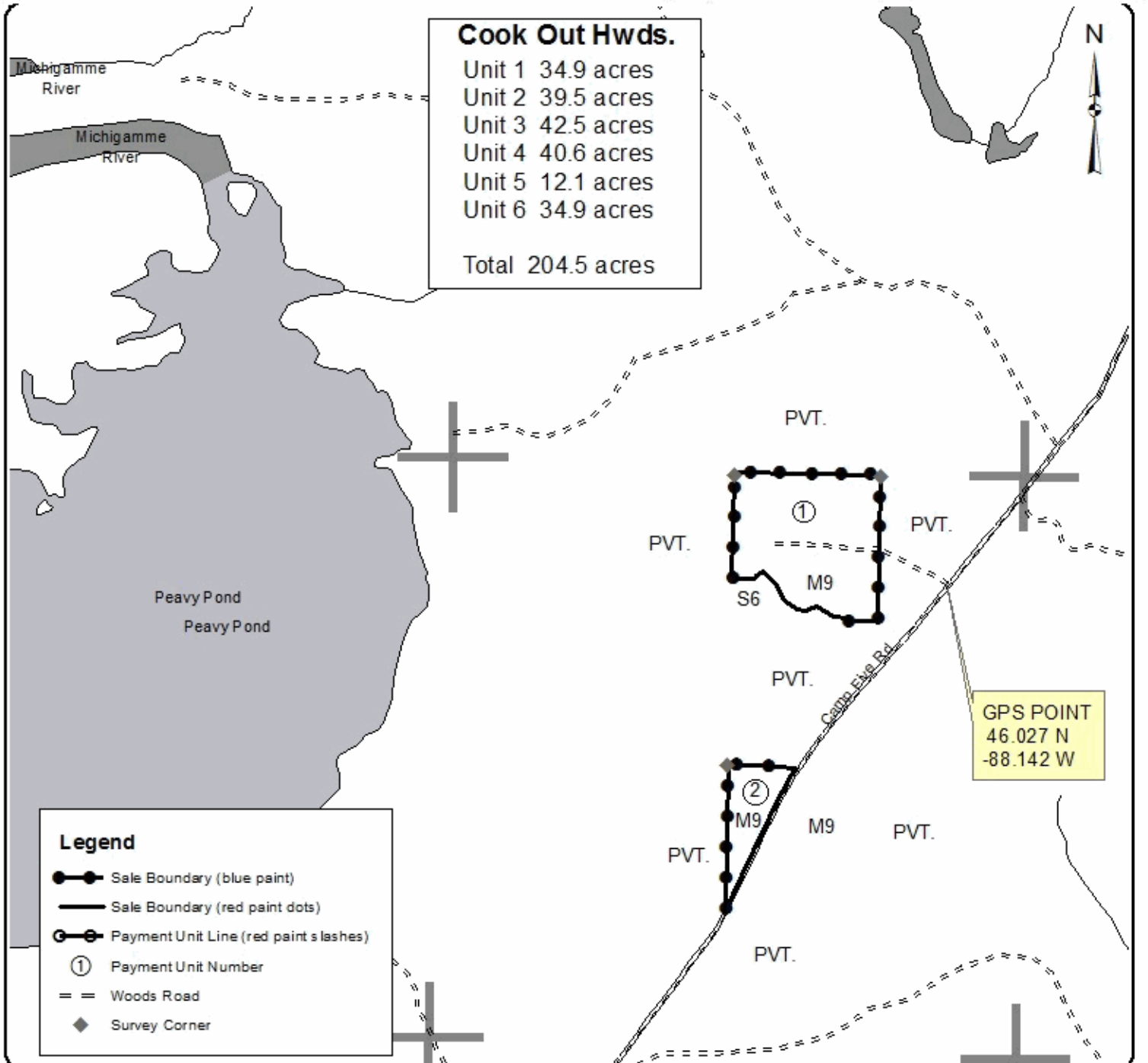
A = Aspen	H = Hemlock	N = Marsh	U = Upland Brush
B = Paper Birch	J = Jack Pine	O = Oak	UM = Upland Mixed
C = Cedar	L = Lowland Brush	P = Lowland Poplar	V = Bog or Marsh
D = Tread Bog	LM = Lowland Mixed	Q = Mixed Swamp Conifer	W = White Pine
E = Swamp Hdwoods	M = Mpl, Bch, Brch	R = Red Pine	X = Non Stocked
F = Spruce Fir	MC = Mixed Conifer	S = Black Spruce	Z = Water
G = Grass	MD = Mixed Deciduous	T = Tamarack	

Density

0 = Non Stocked	5 = Pole Timber Medium
1 = Seedling Sapling Poor	6 = Pole Timber Well
2 = Seedling Sapling Medium	7 = Saw Timber Poor
3 = Seedling Sapling Well	8 = Saw Timber Medium
4 = Pole Timber Poor	9 = Saw Timber Well

Cook Out Hwds.

Unit 1	34.9 acres
Unit 2	39.5 acres
Unit 3	42.5 acres
Unit 4	40.6 acres
Unit 5	12.1 acres
Unit 6	34.9 acres
Total	204.5 acres





TIMBER SALE MAP

This information provided by authority of Part 525, 1994 PA 451, as amended.

Forest Management Unit Crystal Falls	County Iron	Mapped By Scott Sebero	Date 09/03/2020	Page 2	of 2
Township 42N	Range 31W	Section(s) and Subdivision(s) 23 NWNE, NWSE	Scale 4 inches = 1 mile		
		Cruised By Scott Sebero			
		Section(s) and Subdivision(s) 26 W1/2NW, NWSW, S1/2SW, N1/2SE, SWSE			

Cover Type

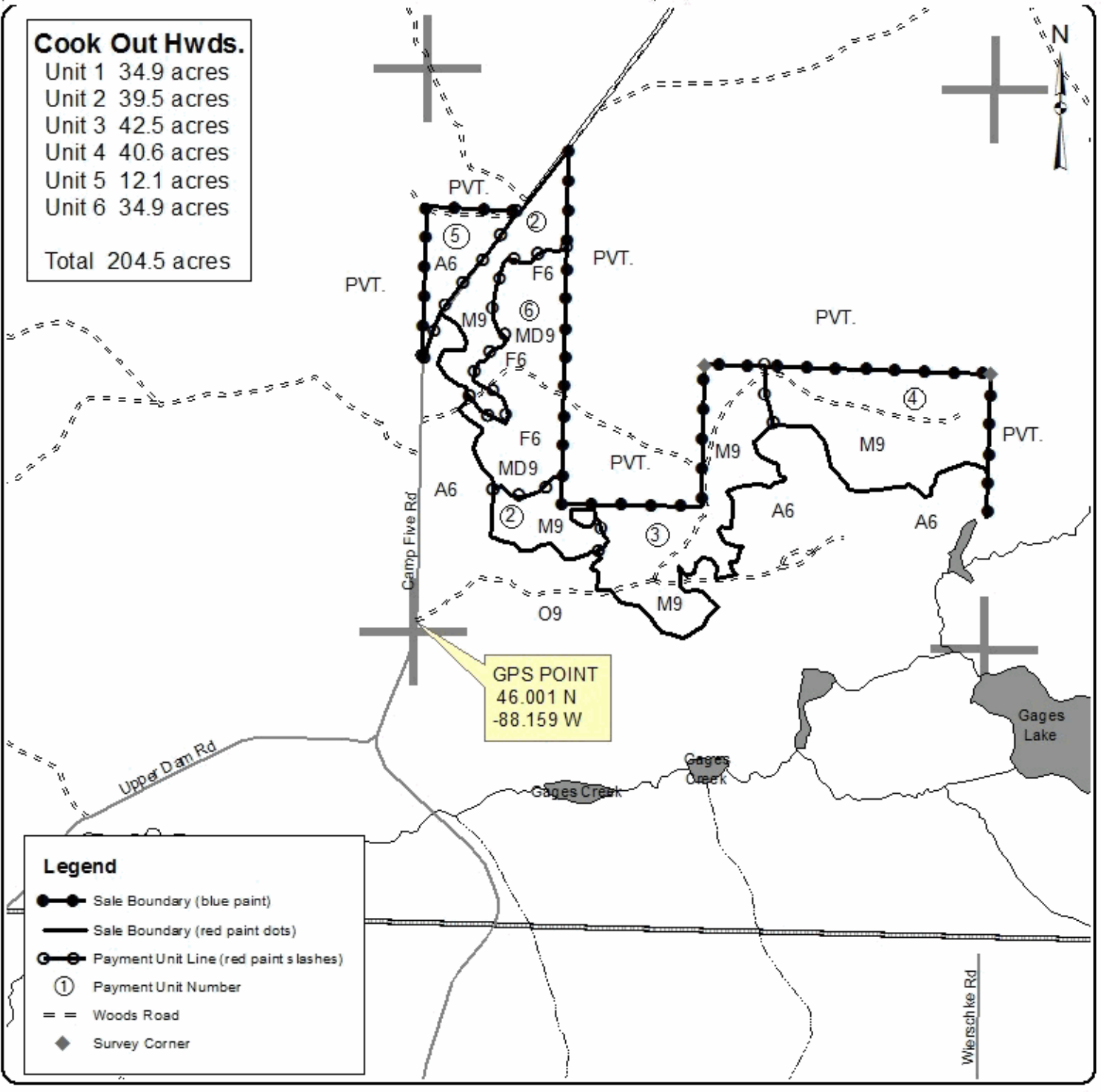
A = Aspen	H = Hemlock	N = Marsh	U = Upland Brush
B = Paper Birch	J = Jack Pine	O = Oak	UM = Upland Mixed
C = Cedar	L = Lowland Brush	P = Lowland Poplar	V = Bog or Marsh
D = Treed Bog	LM = Lowland Mixed	Q = Mixed Swamp Conifer	W = White Pine
E = Swamp Howwoods	M = Mpl, Boh, Brch	R = Red Pine	X = Non Stocked
F = Spruce Fir	MC = Mixed Conifer	S = Black Spruce	Z = Water
G = Grass	MD = Mixed Deciduous	T = Tamarack	

Density

0 = Non Stocked	5 = Pole Timber Medium
1 = Seedling Sapling Poor	6 = Pole Timber Well
2 = Seedling Sapling Medium	7 = Saw Timber Poor
3 = Seedling Sapling Well	8 = Saw Timber Medium
4 = Pole Timber Poor	9 = Saw Timber Well

Cook Out Hwds.

Unit 1	34.9 acres
Unit 2	39.5 acres
Unit 3	42.5 acres
Unit 4	40.6 acres
Unit 5	12.1 acres
Unit 6	34.9 acres
Total	204.5 acres



Legend

- Sale Boundary (blue point)
- Sale Boundary (red paint dots)
- Payment Unit Line (red paint slashes)
- Payment Unit Number
- Woods Road
- Survey Corner

TIMBER SALE INFORMATION

Upper Dam Mix (12-059-20)
 T42N, R31W, SEC. 28; T42N, R31W, SEC. 33; T42N, R31W, SEC. 34.
 Iron County (Advertised Price \$25,720.30)

SALE NOTE: Access may be through private land.

A timber sale contract for this lump sum, sealed bid timber sale will be awarded to the responsible bidder offering the highest sealed bid price. All units of volume listed below were estimated using the T-Sale computer program and our traditional volume equations. Bids must be at or above the following advertised price for each product and species:

<u>PRODUCTS & SPECIES</u>	<u>ESTIMATED UNITS*</u>	<u>ADVERTISED PRICE</u>
Sawtimber		
Basswood	9.9 MBF	\$ 76.00 / MBF
Red Maple	9.2 MBF	\$ 93.00 / MBF
Sugar Maple	3.5 MBF	\$ 188.00 / MBF
White Ash	0.8 MBF	\$ 53.00 / MBF
Yellow Birch	0.5 MBF	\$ 53.00 / MBF
Pulpwood		
Balsam Fir	16 Cords	\$ 13.95 / Cord
Mixed Aspen	551 Cords	\$ 28.75 / Cord
Mixed Hardwood	325 Cords	\$ 16.95 / Cord
Mixed Spruce	142 Cords	\$ 12.30 / Cord
Tamarack	8 Cords	\$ 8.20 / Cord

* The total volume is statistically estimated within plus (+) or minus (-) 9.00 percent. There are an estimated 1,091 cords on this timber sale, plus or minus 98 cords at the 95% confidence level. The estimated units are final and not subject to adjustment. Prospective bidders are urged to examine this timber and to make their own estimates of quantity and quality.

BOND AND PAYMENT SCHEDULE:

- A bond in the amount of \$1,800.00 to insure faithful performance of the conditions of the contract will be deposited by the successful bidder within 21 days of the sale award.
- Cutting in any sale or unit without the required advance payment would be considered a trespass.
- Total payment must be paid in advance or according to the following schedule :
 - Ten percent (10%) of the sale value must be paid within 21 days of the sale award.
 - The 10% down payment will be credited towards the first unit cut.
 - Payment for each of the following units must be made before cutting begins in that unit:

PAYMENT UNIT NUMBER	PERCENT OF TOTAL SALE VALUE
01	14.9%
02	50.0%
03	13.6%
04	21.5%
- If no cutting takes place, the 10% down payment will not be refunded.
- Operations on the contract issued will terminate on 06/30/2023.

SALE STATISTICS

SALE VOLUMES

VOLUME		PERCENT ERROR	STATISTICAL RANGE IN CORDS	
TOTAL CUBIC FEET	TOTAL CORDS		MINIMUM	MAXIMUM
86,225	1,091	9.00%	993	1,190

VDU VOLUMES

A VDU is a Volume Determination Unit. Volumes and their associated statistics are calculated at the VDU level and summarized to the sale level. There is often a one to one relationship between a VDU and a Payment Unit, but not always, depending on the cruise design. Refer to the VDU TO PAYMENT UNIT table.

VDU	VOLUME		PERCENT ERROR	RANGE IN CORDS	
	TOTAL CUBIC FEET	TOTAL CORDS		MINIMUM	MAXIMUM
9	18,004	228	19.15%	184	272
20	11,779	149	18.85%	121	177
67	22,239	282	10.07%	253	310
68	14,915	189	25.09%	141	236
75	19,292	244	23.78%	186	302
TOTAL:	86,229	1,092		886	1,297

VDU TO PAYMENT UNIT

When a VDU is associated with more than one Payment Unit (PU), the VDU volumes are assigned to the PU based on acres of the VDU within the PU.

VDU	VDU ACRES	PU	PU ACRES
9	8.9	1	8.9
20	18.3	3	18.3
67	13.8	2	13.8
68	8.0	2	8.0
75	23.0	4	23.0
TOTAL:	72.0		72.0

DESCRIPTION OF TIMBER BY PAYMENT UNIT (PU)

PU	MARKET GROUP	PRODUCT	QUANTITY	UNIT	ACRES	ADVERTISE PRICE
1	Balsam Fir	Pulpwood	13	Cords	8.9	\$3,840.55
	Mixed Aspen		47	Cords		
	<i>Balsam Poplar</i>		4	<i>Cords</i>		
	<i>Quaking Aspen</i>		43	<i>Cords</i>		
	Mixed Hardwood		59	Cords		
	<i>Black Cherry</i>		8	<i>Cords</i>		
	<i>Paper Birch</i>		11	<i>Cords</i>		
	<i>Red Maple</i>		40	<i>Cords</i>		
	Mixed Spruce		101	Cords		
	<i>Black Spruce</i>		101	<i>Cords</i>		
	Tamarack		8	Cords		
2	Balsam Fir	Pulpwood	2	Cords	21.8	\$12,850.65
	Mixed Aspen		429	Cords		
	<i>Quaking Aspen</i>		429	<i>Cords</i>		
	Mixed Hardwood		2	Cords		
	<i>Red Maple</i>		2	<i>Cords</i>		
	Mixed Spruce		37	Cords		
	<i>White Spruce</i>		37	<i>Cords</i>		
3	Basswood	Sawtimber	6.4	MBF	18.3	\$3,506.45
	Red Maple		3.9	MBF		
	Sugar Maple		3.0	MBF		
	White Ash		0.8	MBF		
	Mixed Hardwood	Pulpwood	121	Cords		
	<i>Basswood</i>		17	<i>Cords</i>		
	<i>Red Maple</i>		51	<i>Cords</i>		
	<i>Sugar Maple</i>		48	<i>Cords</i>		
	<i>White Ash</i>		3	<i>Cords</i>		
	<i>Yellow Birch</i>		2	<i>Cords</i>		
	4		Basswood	Sawtimber		
Red Maple		5.3	MBF			
Sugar Maple		0.5	MBF			
Yellow Birch		0.5	MBF			
Balsam Fir		Pulpwood	1	Cords		
Mixed Aspen			75	Cords		
<i>B. T. Aspen</i>			75	<i>Cords</i>		
Mixed Hardwood			143	Cords		
<i>Basswood</i>			6	<i>Cords</i>		
<i>Ironwood</i>			1	<i>Cords</i>		
<i>Paper Birch</i>			18	<i>Cords</i>		
<i>Red Maple</i>			69	<i>Cords</i>		
<i>Sugar Maple</i>			43	<i>Cords</i>		
<i>White Ash</i>			2	<i>Cords</i>		
<i>Yellow Birch</i>			4	<i>Cords</i>		
Mixed Spruce			4	Cords		
<i>White Spruce</i>			4	<i>Cords</i>		
TOTAL:			23.9	MBF		
TOTAL:			1,042	Cords		

Sale Specific Conditions & Requirements

Sale Name: Upper Dam Mix

Sale Number: 12-059-20 Seq#: 1

1 - Sale Area

1.2 - Boundaries

1.2.1 - Painted boundaries (9/19)

The sale boundary and Payment Unit boundaries are marked and identified by blue and red paint. Exterior sale boundary lines against private property are marked with blue paint. Exterior sale boundary lines against state are marked with red paint. Interior Payment Unit boundaries are marked with red slashes. Retention patches are marked with red paint; no harvesting activities may occur within these areas. The painted boundary line trees are not Included Timber and are to be protected unless marked with orange paint. Trees marked with red slashes, designating an interior Payment Unit boundary, are only to be cut when all surrounding Payment Units have been paid.

2 - Timber Specifications

2.1 - Included Timber

2.1.1 - Clearcut unit(s) with unmerchantable trees (6/14)

Within Payment Unit(s) 1 and 2, cut all aspen and maple trees that are two (2) inches or more at DBH. In addition, cut all spruce, balsam, and mixed hardwood trees which meet minimum piece specifications in 2.2 Utilization (one 100" stick with a 4.5" diameter top and larger), except do not cut oak.

2.1.3 - Cut tree marked unit(s) (12/08)

Within Payment Unit(s) 3 and 4, all trees are designated for cutting when marked with orange paint above and below stump height, regardless of merchantability. In addition to marked trees, cut all spruce, balsam and aspen trees with two or more pulpwood sticks.

4 - Transportation

4.4 - Access

4.4.1 - Private property access (3/11)

Permission for access across private land is the responsibility of the Purchaser. The best access to Payment Unit 4 is through private property.

5 - Operations

5.2 - Conduct of Operations

5.2.1 - Slash

5.2.1.8 - Slash height (12/08)

No slash or tree tops may exceed 36 inches in height.

5.2.3 - Operating Restrictions

5.2.3.3 - Bark slippage restriction (3/09)

Within Payment Unit(s) 3 and 4, unless changed by written agreement, cutting and skidding are not permitted during the period of April 15 to July 15. This restriction is because of bark slippage.

5.2.3.5 - Oak wilt restriction (1/18)

Within Payment Units 3 and 4 unless changed by written agreement, cutting, skidding, hauling within the sale and brushing of access roads to the sale are not permitted during the period of April 15 to July 15. Operations may be allowed if specific steps are taken to prevent damaging uncut oak during the high risk period. Those steps may include completing all road brushing before April 15th and clearing a tree-length buffer along uncut oak cover before April 15th. This is necessary to reduce the spread of oak wilt. For more information, contact the Unit Manager or his/her representative.

5.4 - Soil Protection

5.4.1 - Rutting restriction, general (7/16)

Operations are to cease immediately if equipment and weather conditions result in rutting of roads and/or skid trails which is 12 inches or greater in depth and 50 feet in length. The Unit Manager or his/her representative may restrict hauling and/or skidding if ruts exceed the specified depth. With the Unit Manager or his/her representative's approval, the Purchaser may return to the area when the risk of rutting has decreased.

5.8 - Protection of Endangered Species

5.8.5 - Protection of raptor nests (3/13)

All trees with raptor nests will be protected if found during harvesting operations. Notification will be made to the Unit Manager or his/her representative who will notify the Wildlife Biologist so an on-site evaluation and recommendation can be made, if necessary.

6 - Safety and Fire Prevention

6.2 - Signing

6.2.1 - Road posting (9/09)

The Purchaser is responsible for posting and maintaining caution signs on Upper Dam Road prior to beginning operations. The road must be posted 200 feet from the sale area to warn of logging activity and truck traffic. Signs must be removed when harvest operations are suspended or completed. The Purchaser will provide these signs.



TIMBER SALE MAP

This information provided by authority of Part 525, 1994 PA 451, as amended.

Sale Number	Year
12-059-20	2020

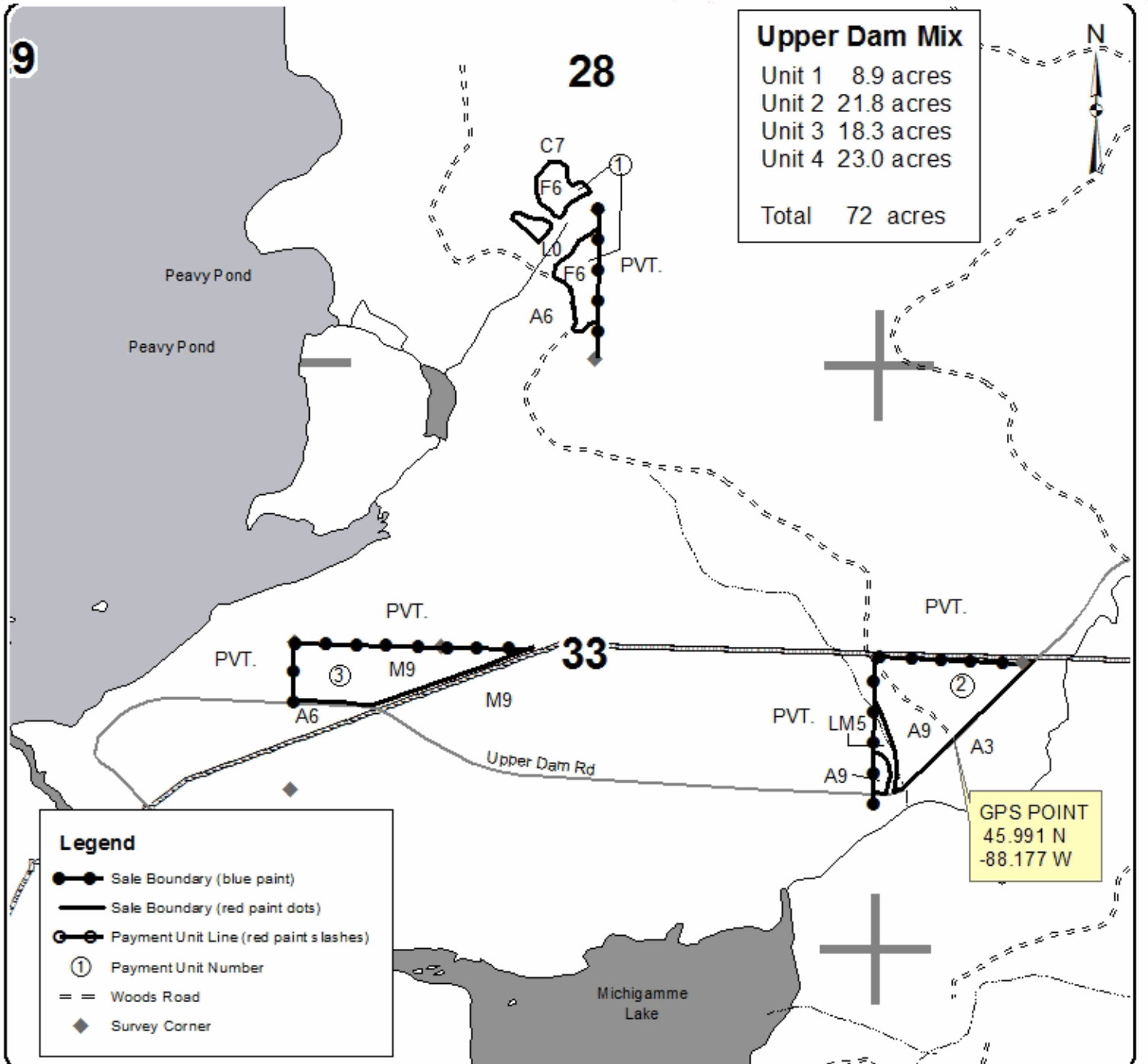
Forest Management Unit Crystal Falls	County Iron	Mapped By Scott Sebero	Date 09/03/2020	Page 1	of 2
Township 42N	Range 31W	Section(s) and Subdivision(s) 28 E1/2SW 33 N1/2SW 34 N1/2SW,NESE	Scale 4 inches = 1 mile		
Cruised By Scott Sebero					

Cover Type

A = Aspen	H = Hemlock	N = Marsh	U = Upland Brush
B = Paper Birch	J = Jack Pine	O = Oak	UM = Upland Mixed
C = Cedar	L = Lowland Brush	P = Lowland Poplar	V = Bog or Marsh
D = Treed Bog	LM = Lowland Mixed	Q = Mixed Swamp Conifer	W = White Pine
E = Swamp Hdwoods	M = Mpl, Bch, Brch	R = Red Pine	X = Non Stocked
F = Spruce Fir	MC = Mixed Conifer	S = Black Spruce	Z = Water
G = Grass	MD = Mixed Deciduous	T = Tamarack	

Density

0 = Non Stocked	5 = Pole Timber Medium
1 = Seedling Sapling Poor	6 = Pole Timber Well
2 = Seedling Sapling Medium	7 = Saw Timber Poor
3 = Seedling Sapling Well	8 = Saw Timber Medium
4 = Pole Timber Poor	9 = Saw Timber Well



Upper Dam Mix	
Unit 1	8.9 acres
Unit 2	21.8 acres
Unit 3	18.3 acres
Unit 4	23.0 acres
Total	72 acres

Legend	
	Sale Boundary (blue paint)
	Sale Boundary (red paint dots)
	Payment Unit Line (red paint slashes)
	Payment Unit Number
	Woods Road
	Survey Corner



TIMBER SALE MAP

This information provided by authority of Part 525, 1994 PA 451, as amended.

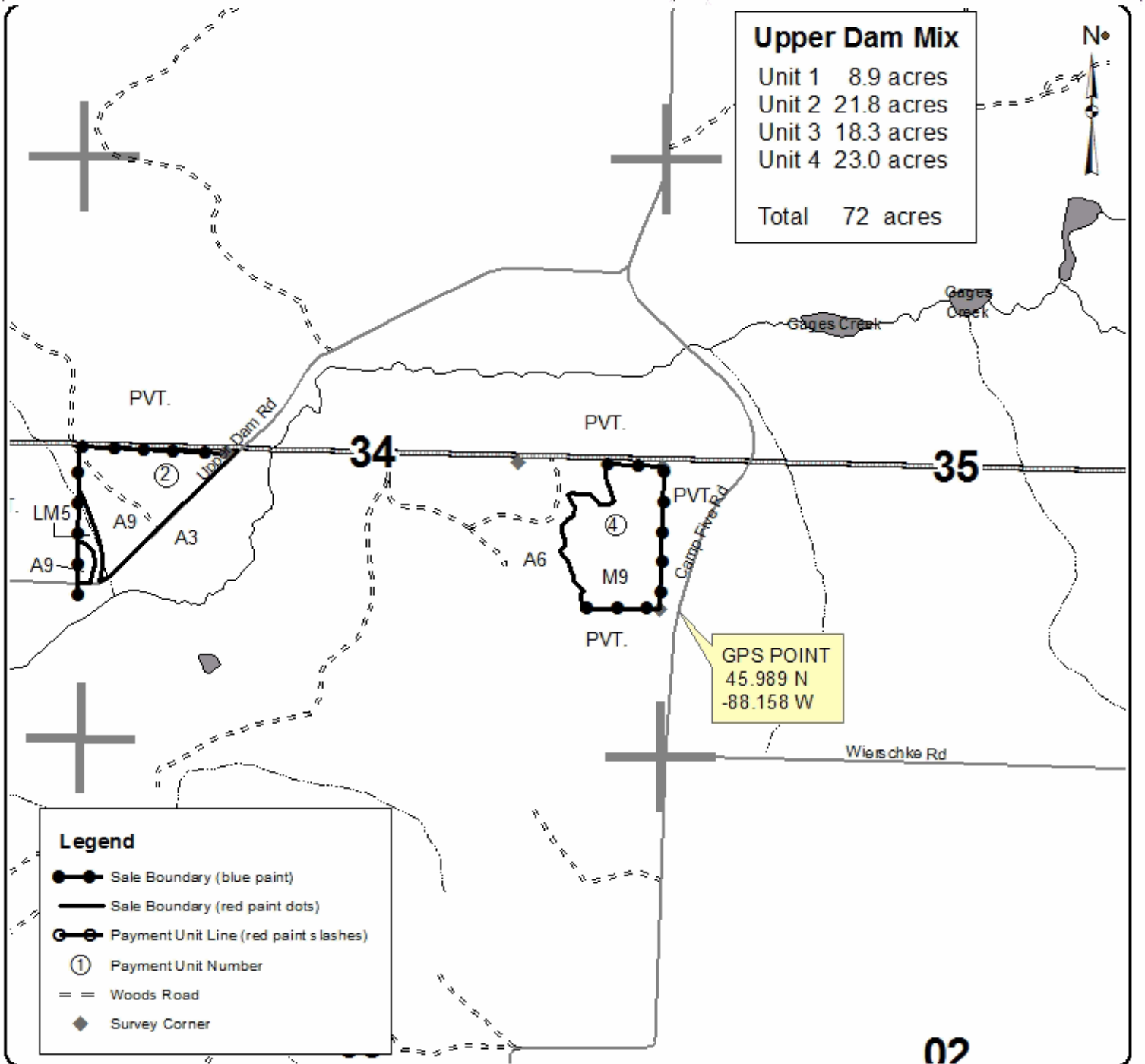
Forest Management Unit Crystal Falls		County Iron	Mapped By Scott Sebero	Date 09/03/2020	Page 2	of 2
Township 42N	Range 31W	Section(s) and Subdivision(s) 28 E1/2SW 33 N1/2SW 34 N1/2SW, NESE		Scale 4 inches = 1 mile		
Cruised By Scott Sebero						

Cover Type

A = Aspen	H = Hemlock	N = Marsh	U = Upland Brush
B = Paper Birch	J = Jack Pine	O = Oak	UM = Upland Mixed
C = Cedar	L = Lowland Brush	P = Lowland Poplar	V = Bog or Marsh
D = Tread Bog	LM = Lowland Mixed	Q = Mixed Swamp Conifer	W = White Pine
E = Swamp Howwoods	M = Mpl, Bch, Brch	R = Red Pine	X = Non Stocked
F = Spruce Fir	MC = Mixed Conifer	S = Black Spruce	Z = Water
G = Grass	MD = Mixed Deciduous	T = Tamarack	

Density

0 = Non Stocked	5 = Pole Timber Medium
1 = Seedling Sapling Poor	6 = Pole Timber Well
2 = Seedling Sapling Medium	7 = Saw Timber Poor
3 = Seedling Sapling Well	8 = Saw Timber Medium
4 = Pole Timber Poor	9 = Saw Timber Well



Upper Dam Mix

Unit 1 8.9 acres
 Unit 2 21.8 acres
 Unit 3 18.3 acres
 Unit 4 23.0 acres

Total 72 acres

GPS POINT
 45.989 N
 -88.158 W

Legend

- Sale Boundary (blue paint)
- Sale Boundary (red paint dots)
- Payment Unit Line (red paint slashes)
- Payment Unit Number
- Woods Road
- Survey Corner

02

TIMBER SALE INFORMATION

Two Sox Mix (12-061-20)
 T42N, R31W, SEC. 10.
 Iron County (Advertised Price \$41,141.35)

SALE NOTE: Access may be through private land.

A timber sale contract for this lump sum, sealed bid timber sale will be awarded to the responsible bidder offering the highest sealed bid price. All units of volume listed below were estimated using the T-Sale computer program and our traditional volume equations. Bids must be at or above the following advertised price for each product and species:

<u>PRODUCTS & SPECIES</u>	<u>ESTIMATED UNITS*</u>	<u>ADVERTISED PRICE</u>
Sawtimber		
Red Pine	112.4 MBF	\$ 90.00 / MBF
Pulpwood		
Balsam Fir	30 Cords	\$ 13.95 / Cord
Black Spruce	59 Cords	\$ 12.30 / Cord
Jack Pine	9 Cords	\$ 26.95 / Cord
Mixed Hardwood	48 Cords	\$ 16.95 / Cord
Quaking Aspen	419 Cords	\$ 28.75 / Cord
Red Pine	433 Cords	\$ 38.75 / Cord

* The total volume is statistically estimated within plus (+) or minus (-) 8.53 percent. There are an estimated 1,221 cords on this timber sale, plus or minus 104 cords at the 95% confidence level. The estimated units are final and not subject to adjustment. Prospective bidders are urged to examine this timber and to make their own estimates of quantity and quality.

BOND AND PAYMENT SCHEDULE:

1. A bond in the amount of \$2,880.00 to insure faithful performance of the conditions of the contract will be deposited by the successful bidder within 21 days of the sale award.
2. Cutting in any sale or unit without the required advance payment would be considered a trespass.
3. Total payment must be paid in advance or according to the following schedule :
 - (a) Ten percent (10%) of the sale value must be paid within 21 days of the sale award.
 - (b) The 10% down payment will be credited towards the first unit cut.
 - (c) Payment for each of the following units must be made before cutting begins in that unit:

PAYMENT UNIT NUMBER	PERCENT OF TOTAL SALE VALUE
01	26.0%
02	34.7%
03	29.8%
04	9.5%
4. If no cutting takes place, the 10% down payment will not be refunded.
5. Operations on the contract issued will terminate on 06/30/2023.

SALE STATISTICS

SALE VOLUMES

VOLUME		STATISTICAL RANGE IN CORDS		
TOTAL CUBIC FEET	TOTAL CORDS	PERCENT ERROR	MINIMUM	MAXIMUM
96,446	1,221	8.53%	1,117	1,325

VDU VOLUMES

A VDU is a Volume Determination Unit. Volumes and their associated statistics are calculated at the VDU level and summarized to the sale level. There is often a one to one relationship between a VDU and a Payment Unit, but not always, depending on the cruise design. Refer to the VDU TO PAYMENT UNIT table.

VDU	VOLUME		PERCENT ERROR	RANGE IN CORDS	
	TOTAL CUBIC FEET	TOTAL CORDS		MINIMUM	MAXIMUM
2	32,659	413	13.01%	360	467
18	37,991	481	15.85%	405	557
19	12,087	153	24.12%	116	190
21	5,759	73	19.77%	58	87
22	7,955	101	23.44%	77	124
TOTAL:	96,451	1,221		1,016	1,426

VDU TO PAYMENT UNIT

When a VDU is associated with more than one Payment Unit (PU), the VDU volumes are assigned to the PU based on acres of the VDU within the PU.

VDU	VDU ACRES	PU	PU ACRES
2	20.7	1	20.7
18	31.8	2	20.6
		3	11.2
19	11.2	3	11.2
21	6.2	2	6.2
22	9.0	4	9.0
TOTAL:	78.9		78.9

DESCRIPTION OF TIMBER BY PAYMENT UNIT (PU)

PU	MARKET GROUP	PRODUCT	QUANTITY	UNIT	ACRES	ADVERTISE PRICE	
1	Balsam Fir	Pulpwood	30	Cords	20.7	\$10,685.65	
	Black Spruce		45	Cords			
	Jack Pine		5	Cords			
	Mixed Hardwood		2	Cords			
	<i>Black Cherry</i>		2	<i>Cords</i>			
	Quaking Aspen		332	Cords			
2	Red Pine	Sawtimber	56.4	MBF	26.8	\$14,277.95	
	Black Spruce	Pulpwood	5	Cords			
	Jack Pine		3	Cords			
	Mixed Hardwood		28	Cords			
	<i>Paper Birch</i>		22	<i>Cords</i>			
	<i>Red Maple</i>		6	<i>Cords</i>			
	Quaking Aspen		56	Cords			
	Red Pine		180	Cords			
3	Red Pine		Sawtimber	40.3	MBF	22.4	\$12,263.85
	Black Spruce	Pulpwood	1	Cords			
	Jack Pine		1	Cords			
	Mixed Hardwood		18	Cords			
	<i>Paper Birch</i>		15	<i>Cords</i>			
	<i>Red Maple</i>		3	<i>Cords</i>			
	Quaking Aspen		31	Cords			
	Red Pine		191	Cords			
	4		Red Pine	Sawtimber	15.7		
Black Spruce			Pulpwood	8	Cords		
Red Pine		62		Cords			
TOTAL:				112.4	MBF		
TOTAL:			998	Cords			

Sale Specific Conditions & Requirements

Sale Name: Two Sox Mix

Sale Number: 12-061-20 Seq#: 1

1 - Sale Area

1.2 - Boundaries

1.2.1 - Painted boundaries (9/19)

The sale boundary and Payment Unit boundaries are marked and identified by blue and red paint. Exterior sale boundary lines against private property are marked with blue paint. Exterior sale boundary lines against state are marked with red paint. Interior Payment Unit boundaries are marked with red slashes. Retention patches are marked with red paint; no harvesting activities may occur within these areas. The painted boundary line trees are not Included Timber and are to be protected unless marked with orange paint. Trees marked with red slashes, designating an interior Payment Unit boundary, are only to be cut when all surrounding Payment Units have been paid.

2 - Timber Specifications

2.1 - Included Timber

2.1.1 - Clearcut unit(s) with unmerchantable trees (6/14)

Within Payment Unit(s) 1, cut all aspen and maple trees that are two (2) inches or more at DBH. In addition, cut all spruce, balsam, tamarack, jack pine, and mixed hardwood trees which meet minimum piece specifications in 2.2 Utilization (one 100" stick with a 4.5" diameter top and larger), except do not cut oak.

2.1.3 - Cut tree marked unit(s) (12/08)

Within Payment Unit(s) 2, 3 and 4, all trees are designated for cutting when marked with orange paint above and below stump height, regardless of merchantability. In addition to marked trees, cut spruce, balsam, aspen, and mixed hardwood trees with two or more pulpwood sticks, except do not cut oak.

4 - Transportation

4.4 - Access

4.4.1 - Private property access (3/11)

Permission for access across private land is the responsibility of the Purchaser.

5 - Operations

5.2 - Conduct of Operations

5.2.1 - Slash

5.2.1.8 - Slash height (12/08)

No slash or tree tops may exceed 36 inches in height.

5.4 - Soil Protection

5.4.1 - Rutting restriction, general (7/16)

Operations are to cease immediately if equipment and weather conditions result in rutting of roads and/or skid trails which is 12 inches or greater in depth and 50 feet in length. The Unit Manager or his/her representative may restrict hauling and/or skidding if ruts exceed the specified depth. With the Unit Manager or his/her representative's approval, the Purchaser may return to the area when the risk of rutting has decreased.

5.8 - Protection of Endangered Species

5.8.5 - Protection of raptor nests (3/13)

All trees with raptor nests will be protected if found during harvesting operations. Notification will be made to the Unit Manager or his/her representative who will notify the Wildlife Biologist so an on-site evaluation and recommendation can be made, if necessary.



TIMBER SALE MAP

This information provided by authority of Part 525, 1994 PA 451, as amended.

Forest Management Unit Crystal Falls	County Iron	Mapped By Scott Sebero	Date 09/03/2020	Page 1	of 1
Township 42N	Range 31W	Section(s) and Subdivision(s) 10 SENW,S1/2NE,NWSE	Scale 4 inches = 1 mile		
		Cruised By Scott Sebero			

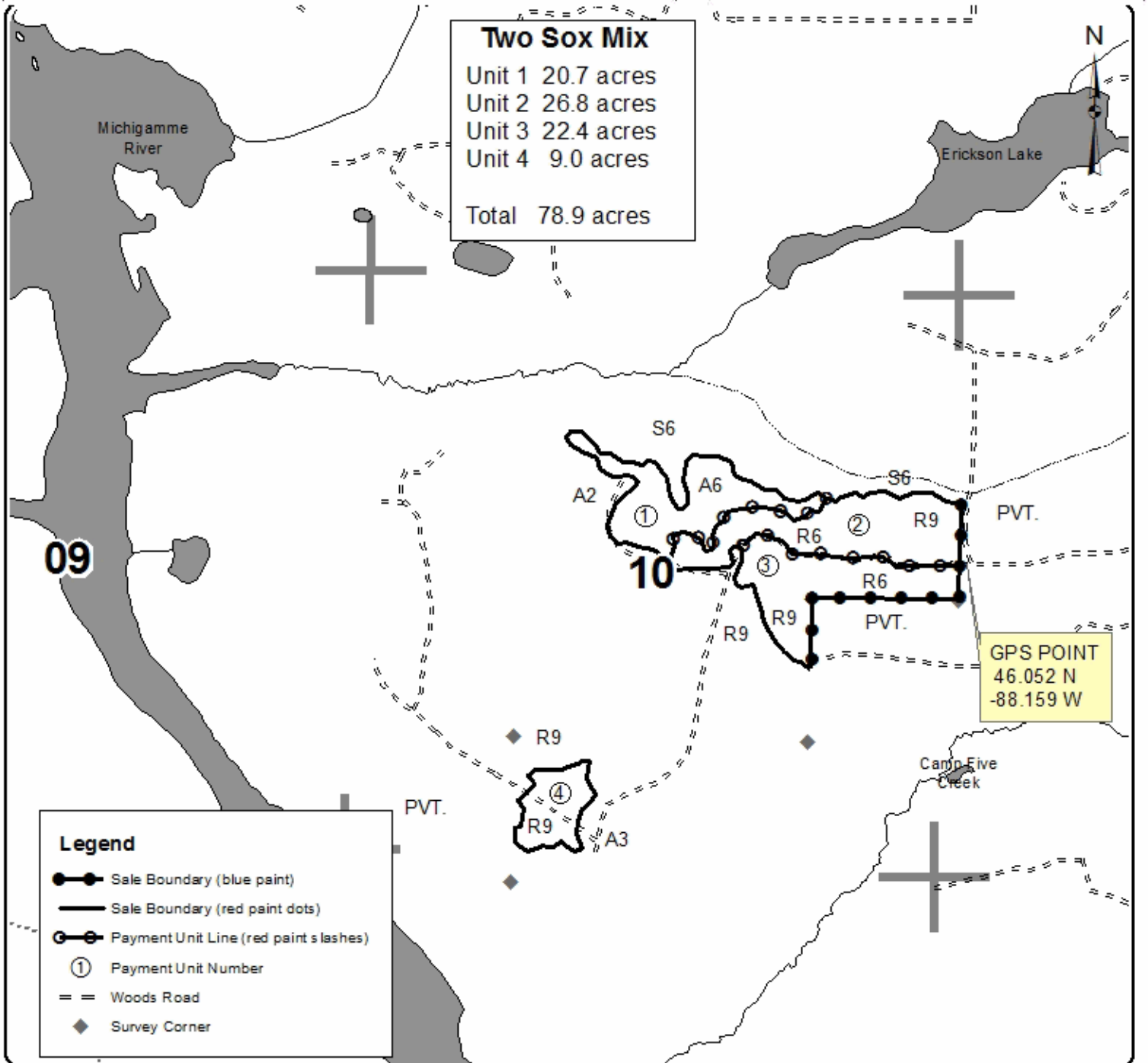
Cover Type

A = Aspen	H = Hemlock	N = Marsh	U = Upland Brush
B = Paper Birch	J = Jack Pine	O = Oak	UM = Upland Mixed
C = Cedar	L = Lowland Brush	P = Lowland Poplar	V = Bog or Marsh
D = Tread Bog	LM = Lowland Mixed	Q = Mixed Swamp Conifer	W = White Pine
E = Swamp Hdwoods	M = Mpl, Bch, Brch	R = Red Pine	X = Non Stocked
F = Spruce Fir	MC = Mixed Conifer	S = Black Spruce	Z = Water
G = Grass	MD = Mixed Deciduous	T = Tamarack	

Density

0 = Non Stocked	5 = Pole Timber Medium
1 = Seedling Sapling Poor	6 = Pole Timber Well
2 = Seedling Sapling Medium	7 = Saw Timber Poor
3 = Seedling Sapling Well	8 = Saw Timber Medium
4 = Pole Timber Poor	9 = Saw Timber Well

Two Sox Mix
 Unit 1 20.7 acres
 Unit 2 26.8 acres
 Unit 3 22.4 acres
 Unit 4 9.0 acres
 Total 78.9 acres



Legend

- Sale Boundary (blue point)
- Sale Boundary (red paint dots)
- Payment Unit Line (red paint slashes)
- Payment Unit Number
- Woods Road
- Survey Corner

Parsnip Trail (12-057-20)
T42N, R31W, SEC. 24; Iron COUNTY

In response to the notice of sale to be held 8:30 a.m. (local time) on January 13, 2021, I am hereby submitting my sealed bid (firm offer) for the following forest products to be cut. Bids for individual species must be at or above the advertised price. All non-responsive bid forms may be rejected.

<u>PRODUCTS & SPECIES</u>	<u>ESTIMATED VOLUME*</u>	<u>ADVERTISED PRICE</u>	<u>BID PRICE/UNIT</u>
Sawtimber			
Basswood	7.8 MBF	\$ 76.00/MBF	\$ _____
Paper Birch	1.1 MBF	\$ 59.00/MBF	\$ _____
Red Maple	26.4 MBF	\$ 93.00/MBF	\$ _____
Sugar Maple	4.2 MBF	\$ 188.00/MBF	\$ _____
White Ash	7.4 MBF	\$ 53.00/MBF	\$ _____
Yellow Birch	1.1 MBF	\$ 53.00/MBF	\$ _____
Pulpwood			
Balsam Fir	29 Cords	\$ 13.95/Cord	\$ _____
Mixed Aspen	3,051 Cords	\$ 28.75/Cord	\$ _____
Mixed Hardwood	765 Cords	\$ 16.95/Cord	\$ _____
White Spruce	135 Cords	\$ 12.30/Cord	\$ _____

*The volumes are statistically estimated within plus (+) or minus (-) 7.05 percent at 95% confidence level. These estimated volumes are final and not subject to adjustment. Prospective bidders are urged to examine this timber and to make their own estimates of quantity and quality.

I understand that any or all bids may be rejected. All bids must be signed and all bid items must be bid or the bid form may be rejected. I also understand that consideration and awarding a contract will be based upon my past performance and ability to complete the contract based upon equipment and staffing subject to my control.

FEDERAL ID: _____ or SOCIAL SECURITY NUMBER: _____

Company or individual bidding: _____

Company representative's name: _____

Address: _____

City: _____ State: _____ Zip: _____

IF AVAILABLE, PLEASE PLACE THE PERSONALIZED LABEL FROM YOUR PROSPECTUS IN THE ABOVE BOX.

Individual or company representative's signature: _____ Date: _____

Phone number : _____ Email (optional): _____

THE WINNING BIDDER MUST COMPLETE THE VERIFICATION OF WORKER'S DISABILITY COMPENSATION ACT COMPLIANCE (ON REVERSE SIDE IF DOUBLE SIDED) WITHIN 21 DAYS OF SALE AWARD DATE



FOR DEPARTMENT USE ONLY	
Sale Number (XX - XXX - XX - XX)	
Forest Management Unit:	

TIMBER SALE VERIFICATION OF WORKER'S DISABILITY COMPENSATION ACT COMPLIANCE

As required by Act 317, P.A. 1969 (Worker's Compensation) and
Part 5 of Act 451 of 1994, as amended.

VERIFICATION OF WORKER'S DISABILITY COMPENSATION ACT COMPLIANCE

- This verification must be completed and submitted within 21 days of contract award and prior to the issuance of the timber sale contract.
- In addition, if boxes 2B or 2C are checked, then Notice of Exclusion or Certificate of Insurance must be submitted within twenty-one (21) days of the contract award and prior to the issuance of the timber sale contract.
- All information must be typed or printed except for written signatures.

Please Check Appropriate Categories:

1. My business is organized as (you **must** check one of the boxes below):
 - A. Sole Proprietorship (individual)
 - B. Partnership
 - C. Corporation
2. You **must** check one of the boxes below:
 - A. I certify my business is a sole proprietorship and it has no employees but the sole proprietor. I am not subject to the Worker's Compensation Laws.
 - B. I certify my business has satisfied its obligation to the Worker's Compensation Act through the use of an approved Notice of Exclusion (BWC-337, Rev. 5/96). I will provide a copy of the Notice of Exclusion within 21 days of the contract award. (For questions or a copy of the BWC-337, please call the Worker's Compensation Bureau at 517-322-1195).
 - C. I certify my business has a Worker's Compensation Policy. I will provide an original Certificate of Insurance within twenty-one (21) days of the contract award.
3. If you have checked item 2(A) or 2(B), you **must** indicate the number of **both** full-time and part-time employees, other than yourself, including family members and active partners (if none, you must enter "0").

_____ Full-time Employees

_____ Part-time Employees

Name of Business		Federal ID (or) Social Security No.	
Address		Telephone ()	
City	State	ZIP	

I hereby certify that the above information is true and correct. I agree to notify the Michigan DNR of any changes that occur in factors affecting my coverage during any of my present and future operations.

Signature of Owner or Authorized Representative

Title

Date

Please complete the "SEALED BID" information on the next page

Cook Out Hwds. (12-058-20)
T42N, R31W, SEC. 23; T42N, R31W, SEC. 26; Iron COUNTY

In response to the notice of sale to be held 8:30 a.m. (local time) on January 13, 2021, I am hereby submitting my sealed bid (firm offer) for the following forest products to be cut. Bids for individual species must be at or above the advertised price. All non-responsive bid forms may be rejected.

<u>PRODUCTS & SPECIES</u>	<u>ESTIMATED VOLUME*</u>	<u>ADVERTISED PRICE</u>	<u>BID PRICE/UNIT</u>
Sawtimber			
Basswood	91.7 MBF	\$ 76.00/MBF	\$ _____
Paper Birch	0.5 MBF	\$ 59.00/MBF	\$ _____
Red Maple	28.3 MBF	\$ 93.00/MBF	\$ _____
Sugar Maple	35.8 MBF	\$ 188.00/MBF	\$ _____
White Ash	1.1 MBF	\$ 53.00/MBF	\$ _____
Yellow Birch	4.2 MBF	\$ 53.00/MBF	\$ _____
Pulpwood			
Balsam Fir	198 Cords	\$ 13.95/Cord	\$ _____
Basswood	294 Cords	\$ 5.40/Cord	\$ _____
Mixed Hardwood	1,832 Cords	\$ 16.95/Cord	\$ _____
Quaking Aspen	267 Cords	\$ 28.75/Cord	\$ _____
White Spruce	51 Cords	\$ 12.30/Cord	\$ _____

*The volumes are statistically estimated within plus (+) or minus (-) 7.19 percent at 95% confidence level. These estimated volumes are final and not subject to adjustment. Prospective bidders are urged to examine this timber and to make their own estimates of quantity and quality.

I understand that any or all bids may be rejected. All bids must be signed and all bid items must be bid or the bid form may be rejected. I also understand that consideration and awarding a contract will be based upon my past performance and ability to complete the contract based upon equipment and staffing subject to my control.

FEDERAL ID: _____ - _____ or SOCIAL SECURITY NUMBER: _____ - _____ - _____

Company or individual bidding: _____

Company representative's name: _____

Address: _____

City: _____ State: _____ Zip: _____

IF AVAILABLE, PLEASE PLACE THE PERSONALIZED LABEL FROM YOUR PROSPECTUS IN THE ABOVE BOX.

Individual or company representative's signature: _____ Date: _____

Phone number : _____ Email (optional): _____

THE WINNING BIDDER MUST COMPLETE THE VERIFICATION OF WORKER'S DISABILITY COMPENSATION ACT COMPLIANCE (ON REVERSE SIDE IF DOUBLE SIDED) WITHIN 21 DAYS OF SALE AWARD DATE



TIMBER SALE VERIFICATION OF WORKER'S DISABILITY COMPENSATION ACT COMPLIANCE

As required by Act 317, P.A. 1969 (Worker's Compensation) and
Part 5 of Act 451 of 1994, as amended.

FOR DEPARTMENT USE ONLY	
Sale Number (XX - XXX - XX - XX)	
Forest Management Unit:	

VERIFICATION OF WORKER'S DISABILITY COMPENSATION ACT COMPLIANCE

- This verification must be completed and submitted within 21 days of contract award and prior to the issuance of the timber sale contract.
- In addition, if boxes 2B or 2C are checked, then Notice of Exclusion or Certificate of Insurance must be submitted within twenty-one (21) days of the contract award and prior to the issuance of the timber sale contract.
- All information must be typed or printed except for written signatures.

Please Check Appropriate Categories:

1. My business is organized as (you **must** check one of the boxes below):
 - A. Sole Proprietorship (individual)
 - B. Partnership
 - C. Corporation
2. You **must** check one of the boxes below:
 - A. I certify my business is a sole proprietorship and it has no employees but the sole proprietor. I am not subject to the Worker's Compensation Laws.
 - B. I certify my business has satisfied its obligation to the Worker's Compensation Act through the use of an approved Notice of Exclusion (BWC-337, Rev. 5/96). I will provide a copy of the Notice of Exclusion within 21 days of the contract award. (For questions or a copy of the BWC-337, please call the Worker's Compensation Bureau at 517-322-1195).
 - C. I certify my business has a Worker's Compensation Policy. I will provide an original Certificate of Insurance within twenty-one (21) days of the contract award.
3. If you have checked item 2(A) or 2(B), you **must** indicate the number of **both** full-time and part-time employees, other than yourself, including family members and active partners (if none, you must enter "0").

_____ Full-time Employees

_____ Part-time Employees

Name of Business		Federal ID (or) Social Security No.	
Address		Telephone ()	
City	State	ZIP	

I hereby certify that the above information is true and correct. I agree to notify the Michigan DNR of any changes that occur in factors affecting my coverage during any of my present and future operations.

Signature of Owner or Authorized Representative

Title

Date

Please complete the "SEALED BID" information on the next page

Upper Dam Mix (12-059-20)

T42N, R31W, SEC. 28; T42N, R31W, SEC. 33; T42N, R31W, SEC. 34; Iron

In response to the notice of sale to be held 8:30 a.m. (local time) on January 13, 2021, I am hereby submitting my sealed bid (firm offer) for the following forest products to be cut. Bids for individual species must be at or above the advertised price. All non-responsive bid forms may be rejected.

<u>PRODUCTS & SPECIES</u>	<u>ESTIMATED VOLUME*</u>	<u>ADVERTISED PRICE</u>	<u>BID PRICE/UNIT</u>
Sawtimber			
Basswood	9.9 MBF	\$ 76.00/MBF	\$ _____
Red Maple	9.2 MBF	\$ 93.00/MBF	\$ _____
Sugar Maple	3.5 MBF	\$ 188.00/MBF	\$ _____
White Ash	0.8 MBF	\$ 53.00/MBF	\$ _____
Yellow Birch	0.5 MBF	\$ 53.00/MBF	\$ _____
Pulpwood			
Balsam Fir	16 Cords	\$ 13.95/Cord	\$ _____
Mixed Aspen	551 Cords	\$ 28.75/Cord	\$ _____
Mixed Hardwood	325 Cords	\$ 16.95/Cord	\$ _____
Mixed Spruce	142 Cords	\$ 12.30/Cord	\$ _____
Tamarack	8 Cords	\$ 8.20/Cord	\$ _____

*The volumes are statistically estimated within plus (+) or minus (-) 9.00 percent at 95% confidence level. These estimated volumes are final and not subject to adjustment. Prospective bidders are urged to examine this timber and to make their own estimates of quantity and quality.

I understand that any or all bids may be rejected. All bids must be signed and all bid items must be bid or the bid form may be rejected. I also understand that consideration and awarding a contract will be based upon my past performance and ability to complete the contract based upon equipment and staffing subject to my control.

FEDERAL ID: _____ or SOCIAL SECURITY NUMBER: _____

Company or individual bidding: _____

Company representative's name: _____

Address: _____

City: _____ State: _____ Zip: _____

IF AVAILABLE, PLEASE PLACE THE PERSONALIZED LABEL FROM YOUR PROSPECTUS IN THE ABOVE BOX.

Individual or company representative's signature: _____ Date: _____

Phone number : _____ Email (optional): _____

THE WINNING BIDDER MUST COMPLETE THE VERIFICATION OF WORKER'S DISABILITY COMPENSATION ACT COMPLIANCE (ON REVERSE SIDE IF DOUBLE SIDED) WITHIN 21 DAYS OF SALE AWARD DATE



FOR DEPARTMENT USE ONLY	
Sale Number (XX - XXX - XX - XX)	
Forest Management Unit:	

TIMBER SALE VERIFICATION OF WORKER'S DISABILITY COMPENSATION ACT COMPLIANCE

As required by Act 317, P.A. 1969 (Worker's Compensation) and
Part 5 of Act 451 of 1994, as amended.

VERIFICATION OF WORKER'S DISABILITY COMPENSATION ACT COMPLIANCE

- This verification must be completed and submitted within 21 days of contract award and prior to the issuance of the timber sale contract.
- In addition, if boxes 2B or 2C are checked, then Notice of Exclusion or Certificate of Insurance must be submitted within twenty-one (21) days of the contract award and prior to the issuance of the timber sale contract.
- All information must be typed or printed except for written signatures.

Please Check Appropriate Categories:

1. My business is organized as (you **must** check one of the boxes below):
 - A. Sole Proprietorship (individual)
 - B. Partnership
 - C. Corporation
2. You **must** check one of the boxes below:
 - A. I certify my business is a sole proprietorship and it has no employees but the sole proprietor. I am not subject to the Worker's Compensation Laws.
 - B. I certify my business has satisfied its obligation to the Worker's Compensation Act through the use of an approved Notice of Exclusion (BWC-337, Rev. 5/96). I will provide a copy of the Notice of Exclusion within 21 days of the contract award. (For questions or a copy of the BWC-337, please call the Worker's Compensation Bureau at 517-322-1195).
 - C. I certify my business has a Worker's Compensation Policy. I will provide an original Certificate of Insurance within twenty-one (21) days of the contract award.
3. If you have checked item 2(A) or 2(B), you **must** indicate the number of **both** full-time and part-time employees, other than yourself, including family members and active partners (if none, you must enter "0").

_____ Full-time Employees

_____ Part-time Employees

Name of Business		Federal ID (or) Social Security No.	
Address		Telephone ()	
City	State	ZIP	

I hereby certify that the above information is true and correct. I agree to notify the Michigan DNR of any changes that occur in factors affecting my coverage during any of my present and future operations.

Signature of Owner or Authorized Representative

Title

Date

Please complete the "SEALED BID" information on the next page

Two Sox Mix (12-061-20)
T42N, R31W, SEC. 10; Iron COUNTY

In response to the notice of sale to be held 8:30 a.m. (local time) on January 13, 2021, I am hereby submitting my sealed bid (firm offer) for the following forest products to be cut. Bids for individual species must be at or above the advertised price. All non-responsive bid forms may be rejected.

<u>PRODUCTS & SPECIES</u>	<u>ESTIMATED VOLUME*</u>	<u>ADVERTISED PRICE</u>	<u>BID PRICE/UNIT</u>
Sawtimber			
Red Pine	112.4 MBF	\$ 90.00/MBF	\$ _____
Pulpwood			
Balsam Fir	30 Cords	\$ 13.95/Cord	\$ _____
Black Spruce	59 Cords	\$ 12.30/Cord	\$ _____
Jack Pine	9 Cords	\$ 26.95/Cord	\$ _____
Mixed Hardwood	48 Cords	\$ 16.95/Cord	\$ _____
Quaking Aspen	419 Cords	\$ 28.75/Cord	\$ _____
Red Pine	433 Cords	\$ 38.75/Cord	\$ _____

*The volumes are statistically estimated within plus (+) or minus (-) 8.53 percent at 95% confidence level. These estimated volumes are final and not subject to adjustment. Prospective bidders are urged to examine this timber and to make their own estimates of quantity and quality.

I understand that any or all bids may be rejected. All bids must be signed and all bid items must be bid or the bid form may be rejected. I also understand that consideration and awarding a contract will be based upon my past performance and ability to complete the contract based upon equipment and staffing subject to my control.

FEDERAL ID: _____ or SOCIAL SECURITY NUMBER: _____
 Company or individual bidding: _____
 Company representative's name: _____
 Address: _____
 City: _____ State: _____ Zip: _____

IF AVAILABLE, PLEASE PLACE THE PERSONALIZED LABEL FROM YOUR PROSPECTUS IN THE ABOVE BOX.

Individual or company representative's signature: _____ Date: _____
Phone number : _____ Email (optional): _____

THE WINNING BIDDER MUST COMPLETE THE VERIFICATION OF WORKER'S DISABILITY COMPENSATION ACT COMPLIANCE (ON REVERSE SIDE IF DOUBLE SIDED) WITHIN 21 DAYS OF SALE AWARD DATE



FOR DEPARTMENT USE ONLY
Sale Number (XX - XXX - XX - XX)
Forest Management Unit:

TIMBER SALE VERIFICATION OF WORKER'S DISABILITY COMPENSATION ACT COMPLIANCE

*As required by Act 317, P.A. 1969 (Worker's Compensation) and
Part 5 of Act 451 of 1994, as amended.*

VERIFICATION OF WORKER'S DISABILITY COMPENSATION ACT COMPLIANCE

- This verification must be completed and submitted within 21 days of contract award and prior to the issuance of the timber sale contract.
- In addition, if boxes 2B or 2C are checked, then Notice of Exclusion or Certificate of Insurance must be submitted within twenty-one (21) days of the contract award and prior to the issuance of the timber sale contract.
- All information must be typed or printed except for written signatures.

Please Check Appropriate Categories:

1. My business is organized as (you **must** check one of the boxes below):
 - A. Sole Proprietorship (individual)
 - B. Partnership
 - C. Corporation
2. You **must** check one of the boxes below:
 - A. I certify my business is a sole proprietorship and it has no employees but the sole proprietor. I am not subject to the Worker's Compensation Laws.
 - B. I certify my business has satisfied its obligation to the Worker's Compensation Act through the use of an approved Notice of Exclusion (BWC-337, Rev. 5/96). I will provide a copy of the Notice of Exclusion within 21 days of the contract award. (For questions or a copy of the BWC-337, please call the Worker's Compensation Bureau at 517-322-1195).
 - C. I certify my business has a Worker's Compensation Policy. I will provide an original Certificate of Insurance within twenty-one (21) days of the contract award.
3. If you have checked item 2(A) or 2(B), you **must** indicate the number of **both** full-time and part-time employees, other than yourself, including family members and active partners (if none, you must enter "0").

_____ Full-time Employees _____ Part-time Employees

Name of Business		Federal ID (or) Social Security No.	
Address		Telephone ()	
City	State	ZIP	

I hereby certify that the above information is true and correct. I agree to notify the Michigan DNR of any changes that occur in factors affecting my coverage during any of my present and future operations.

Signature of Owner or Authorized Representative

Title

Date

Please complete the "SEALED BID" information on the next page