



**DEPARTMENT OF NATURAL RESOURCES
STATE OF MICHIGAN**

TIMBER SALE PROSPECTUS #6801

SCHEDULED SALE DATE AND TIME: 3:00 p.m. (local time) on February 11, 2021.

LOCATION: NEWBERRY MGMT UNIT, 5666 S STATE HWY M 123, NEWBERRY, MI 49868.

PROSPECTUS NOTE: The bidder is advised to inspect the sale area and review the location, estimated volumes, operating costs and contract terms of proposed sales. Please be aware that some landowners may request 60 days or more notice for access across their land.

Notice is hereby given that bids will be received by the Unit Manager, NEWBERRY MANAGEMENT UNIT, for certain timber on the following described lands:

Headquarters Red Pine (42-012-20) / T49N, R10W, SEC. 19, SW,W1/2SE.

T49N, R10W, SEC. 30, NENW,NWNE.

Luce County, Advertised Price \$20,226.85, 58.4 Acres, Red Pine, White Pine.

SALE NOTE: Most red and white pine within the sale are sawlog sized. All trees were cruised as pulp.

No new roads will be permitted in any Payment Unit. All operations are limited to existing roads. Back-in spurs off of existing roads will be allowed.

The Pine Ridge ORV trail is shown on the Timber Sale Map. See Sale Spec. 5.2.39 for additional information.

The Headquarters Lake Trail is a horse and is shown on the Timber Sale Map. See Sale Spec. 5.2.40 for restrictions.

A recreation site such as a trail, pathway, or campground is within the sale area or the vicinity. Certain restrictions/specifications may be applicable including time restrictions.

Trailhead Pine (42-013-20) / T49N, R10W, SEC. 30, S1/2NW,W1/2NE,N1/2SW,NWSE.
T49N, R11W, SEC. 26, E1/2NE.

Luce County, Advertised Price \$66,526.55, 108.8 Acres, Red Pine, Jack Pine.

SALE NOTE: Many of the red and white pine are sawlog sized. All red and white pine sawlog sized trees were cruised as pulp.

No new roads will be permitted in any Payment Unit. All operations are limited to existing roads. Back-in spurs off of existing roads will be allowed.

Harvesting is limited to the period of April 15 to December 31 due to the need to cut low stumps.

The Pine Ridge Trail is an ORV trail or route and is shown on the Timber Sale Map. See Sale 5.2.39 for additional information.

The Headquarters Equestrian Trail is a horse trail and is shown on the Timber Sale Map. See Sale Spec. 5.2.40 for restrictions.

A recreation site such as a trail, pathway, or campground is within the sale area or the vicinity. Certain restrictions/specifications may be applicable including time restrictions.

BID INSTRUCTIONS (VER. 07/02/2018):

1. Scheduled Bid Location, Date, and Time (2/11)

Bids must be received by the Unit Manager, NEWBERRY OFFICE, 5666 S STATE HWY M 123, NEWBERRY, MI 49868, no later than 3:00 p.m. (local time) on February 11, 2021. For further information concerning this sale, contact Keith Magnusson at 906-293-3293 extension 4740.

2. Bidder's Qualifications (5/16)

Purchaser shall obtain workers compensation insurance to cover claims under Michigan's Worker's Disability Compensation Act of 1969 or similar employee benefit act of any other state applicable to an employee. If all or part of a timber sale was prepared by a private contractor, the contractor and that contractor's company are not permitted to bid on the timber sale contract. Bids will not be accepted from individuals or companies appearing on the DNR/FRD No-Bid List. This list contains the names of purchasers who previously failed to execute a contract within 21-days or who have a history of poor performance.

3. Preparation of Sealed Bids (5/16)

Bid Forms may be completed online thru Michigan DNR Timber Sale Online Bidding (OLB) at www.michigan.gov/timberbidding or by completing the hardcopy Bid Form found in the Timber Sale Prospectus. Hardcopy Bid Forms shall be manually signed in ink. Registration in OLB is considered your 'signature' for all bids submitted thru that system. Bid prices must be entered for each species and product in the Bid Price column for all material subject to bidding and all fill-in blanks must be completed. If erasures or other changes appear on the hardcopy Bid Form, each erasure or change must be initialed by the person signing the bid.

4. Submission of Sealed Bids (5/16)

Bid forms may be obtained from the Unit Manager or thru OLB. Bids may be submitted hardcopy or thru OLB. All hardcopy bids must be submitted on the bid form and in an envelope clearly identified as described in this section. NOTE: Only one bid form per bid envelope. Sealed bids must be submitted to the Unit office designated in the prospectus and must be submitted at or prior to the time established in the prospectus. The envelope should show on the outside (a) the sale name or number and (b) the date and time of bid opening, as shown in the prospectus. Bids received after the time specified in the sale prospectus are late bids and will be rejected.

It is possible for a bidder to submit multiple bids on a single sale. For example, a bid may be submitted hardcopy and a bid may be submitted thru OLB. Or, two bidders from the same company could both submit bids on the same sale. If this were to happen, the State would accept all bids received and award the contract accordingly. All bidding and contractual requirements would apply to all bids received.

5. Public Opening of Sealed Bids (7/16)

If conditions permit, the sealed bids will be publicly opened and posted at the time and place set in the prospectus.

If a bidder, present at a bid opening, has submitted bids on more than one sale, that bidder may withdraw their unopened bid envelopes or announce the withdrawal of their online bid after being declared the successful bidder on one sale.

6. Award of Contract (1/11)

Award of the contract will be made to the Bidder whose bid, conforming to the prospectus, is most advantageous to the State of Michigan on the basis of total value at rates bid for the estimated quantities. The State reserves the right to reject any bid or waive any minor irregularity in bids received. A written award mailed (or otherwise furnished) to the successful Bidder shall be deemed to result in a binding contract without further action by either party.

7. Down Payment (1/11)

The Bidder to whom award is made must make a down payment within 21 days of the sale award. The amount of the down payment will be calculated as shown in the Bond and Payment Schedule of this prospectus. Only cash may be used to meet this requirement.

8. Performance Security (1/11)

As guarantee of faithful performance, a cash bond, certificate of deposit, surety bond or irrevocable letter of credit (LOC) is required within 21 days of the sale award. The amount of the performance security is shown in the Bond and

Payment Schedule of this prospectus. If an LOC or surety is used, the coverage must extend for at least 6 months beyond the contract expiration.

9. Timber Sale Contract (7/18)

Additional conditions and requirements common to all timber sales are listed on the timber sale contract (R4031) and are available on line at www.michigan.gov/timber. Contact the Unit Manager for additional information or a sample contract. Within 21 days of the date of the award letter, the bidder must sign the contract and provide the required down payment, performance security, and verification of worker's disability compensation. The down payment and performance security shall be in accordance with the provisions of the timber sale contract, in the sums stated in this prospectus. If these actions are not taken, then the Bidder, the Bidder's corporation, and the corporation's principals may not be permitted to bid on State timber sales for a period of 3 months after the first offense, 6 months after the second offense, and 1 year after the third offense. An offense will only be counted against the Bidder for 5 years. In addition, the Bidder certifies that if awarded this contract, the Bidder will complete the timber sale contract in accordance with its terms and any modifications thereof including requirements to purchase, cut, and remove the included timber by the expiration date.

Payment Unit values in the State Forest Timber Sale Contract are calculated based on the advertised value of the Payment Unit as a percentage of the total advertised value of the contract. The advertised value of each Payment Unit is given in the Description of Timber by Payment Unit table on the Timber Sale Information page. For example, if the value of Payment Unit 1 is advertised as \$1,500 and the total Timber Sale value is advertised as \$10,000, the contract price for Payment Unit 1 will be 15% of the total bid price ($\$1,500/\$10,000 * 100$).

10. Disclaimer of Estimates and Bidder's Warranty of Inspection (7/16)

Before submitting this bid, the Bidder is advised and cautioned to inspect the sale area, review the requirements of the sale contract, and take other steps as may be reasonably necessary to ascertain the location, estimated volumes, construction estimates, and operating costs of the proposed sale. Failure to do so will not relieve the Bidder from responsibility for completing the contract.

The Bidder warrants that this bid is submitted solely on the basis of the Bidder's examination and inspection of the quality and quantity of the timber offered for sale and the Bidder's opinion of the value thereof and the costs of recovery. No reliance should be placed on the State of Michigan's estimates of timber quality, quantity or costs of recovery. Bidder further acknowledges that the State of Michigan: (i) expressly disclaims any warranty of fitness of timber for any purpose; (ii) offers this timber as is without any warranty of quality (merchantability) or quantity and (iii) expressly disclaims any warranty as to the quantity or quality of timber sold.

11. Certification and Chain-of-Custody (10/14)

Unless otherwise indicated in the contract under section 7 – Other Conditions of the Sale Specific Conditions & Requirements, the area encompassed by this timber sale is certified to the standards of the Forest Stewardship Council (FSC) - Certificate #SCS-FM/COC-00090N and the Sustainable Forestry Initiative (SFI) - Certificate #NSF-SFIS-5Y031-SF5. Forest products from this sale may be delivered to the mill as "FSC 100% and / or SFI certified" as long as the contractor hauling the forest products is chain-of-custody (COC) certified or covered under a COC certificate from the destination mill. The purchaser is responsible for maintaining COC after leaving the sale area.

12. Good Neighbor Authority (GNA) Requirements (7/16)

If the name of this timber sales contains the acronym GNA, it is authorized by the Good Neighbor Authority (GNA) and covered by various agreements between the U.S. Forest Service and the State. The timber sale occurs on federal land and the following conditions apply:

GNA contracts on US Forest Service land will not be awarded to purchasers on the Federal list of excluded parties. The System for Award Management (SAM) will be checked for active excluded parties prior to award of contract. In addition, the Bidder to whom award is made must complete an Assurance Regarding Felony Conviction or Tax Delinquent Status for Corporate Applicants (AD-3031).

13. Good Neighbor Authority (GNA) Requirements, con't (9/16)

Bidder certifies, by signing this bid form, that to the best of Bidder's knowledge that the following representations are accurate and complete.

- a. That the Bidder and its principals are not presently debarred, suspended, proposed for debarment, declared ineligible, or voluntary excluded from timber sales (covered transactions) by any Federal department or agency.
- b. That the Bidder and its principals have not within a 3-year period preceding this bid been convicted of or had a civil judgment rendered against them for commission of fraud or a criminal offense in connection with obtaining , attempting to obtain, or performing a public (Federal, State, or local) transaction or contract under a public transaction; violation of Federal or State antitrust statutes or commission of embezzlement, theft, forgery, bribery, falsification or destruction of records, making false statements, or receiving stolen property.
- c. That the Bidder and its principals are not presently indicted for or otherwise criminally or civilly charged by a governmental entity (Federal, State, or local) with commission of any of the offenses enumerated in paragraph b of this certification.
- d. That the Bidder and its principals have not within a 3-year period preceding this bid had one or more public transactions (Federal, State, or local) terminated for breach or default of a timber or forest product contract.

Bidders that cannot certify this requirement, in whole or in part, shall submit an explanation with their bid.

DAN EICHINGER
Director

TIMBER SALE INFORMATION

Headquarters Red Pine (42-012-20)
T49N, R10W, SEC. 19; T49N, R10W, SEC. 30.
Luce County (Advertised Price \$20,226.85)

SALE NOTE: Most red and white pine within the sale are sawlog sized. All trees were cruised as pulp.

No new roads will be permitted in any Payment Unit. All operations are limited to existing roads. Back-in spurs off of existing roads will be allowed.

The Pine Ridge ORV trail is shown on the Timber Sale Map. See Sale Spec. 5.2.39 for additional information.

The Headquarters Lake Trail is a horse and is shown on the Timber Sale Map. See Sale Spec. 5.2.40 for restrictions.

A recreation site such as a trail, pathway, or campground is within the sale area or the vicinity. Certain restrictions/specifications may be applicable including time restrictions.

A timber sale contract for this lump sum, sealed bid timber sale will be awarded to the responsible bidder offering the highest sealed bid price. All units of volume listed below were estimated using the T-Sale computer program and our traditional volume equations. Bids must be at or above the following advertised price for each product and species:

<u>PRODUCTS & SPECIES</u>	<u>ESTIMATED UNITS*</u>	<u>ADVERTISED PRICE</u>
Pulpwood		
Black Spruce	2 Cords	\$ 12.25 / Cord
Jack Pine	11 Cords	\$ 25.15 / Cord
Paper Birch	37 Cords	\$ 10.10 / Cord
Red Pine	360 Cords	\$ 50.80 / Cord
White Pine	79 Cords	\$ 16.00 / Cord

* The total volume is statistically estimated within plus (+) or minus (-) 18.58 percent. There are an estimated 488 cords on this timber sale, plus or minus 91 cords at the 95% confidence level. The estimated units are final and not subject to adjustment. Prospective bidders are urged to examine this timber and to make their own estimates of quantity and quality.

BOND AND PAYMENT SCHEDULE:

1. A bond in the amount of \$1,011.00 to insure faithful performance of the conditions of the contract will be deposited by the successful bidder within 21 days of the sale award.
2. Cutting in any sale or unit without the required advance payment would be considered a trespass.
3. Total payment must be paid in advance or according to the following schedule :
 - (a) Ten percent (10%) of the sale value must be paid within 21 days of the sale award.
 - (b) The 10% down payment will be credited towards the first unit cut.
 - (c) Payment for each of the following units must be made before cutting begins in that unit:

PAYMENT UNIT NUMBER	PERCENT OF TOTAL SALE VALUE
01	69.2%
02	30.8%
4. If no cutting takes place, the 10% down payment will not be refunded.
5. Operations on the contract issued will terminate on 12/31/2023.

SALE STATISTICS

SALE VOLUMES

VOLUME		STATISTICAL RANGE IN CORDS		
TOTAL CUBIC FEET	TOTAL CORDS	PERCENT ERROR	MINIMUM	MAXIMUM
38,580	488	18.58%	398	579

VDU VOLUMES

A VDU is a Volume Determination Unit. Volumes and their associated statistics are calculated at the VDU level and summarized to the sale level. There is often a one to one relationship between a VDU and a Payment Unit, but not always, depending on the cruise design. Refer to the VDU TO PAYMENT UNIT table.

VDU	VOLUME		PERCENT ERROR	RANGE IN CORDS	
	TOTAL CUBIC FEET	TOTAL CORDS		MINIMUM	MAXIMUM
2	38,584	488	18.58%	398	579
TOTAL:	38,584	488		398	579

VDU TO PAYMENT UNIT

When a VDU is associated with more than one Payment Unit (PU), the VDU volumes are assigned to the PU based on acres of the VDU within the PU.

VDU	VDU ACRES	PU	PU ACRES
2	58.4	1	40.4
		2	18.0
TOTAL:	58.4		58.4

DESCRIPTION OF TIMBER BY PAYMENT UNIT (PU)

PU	MARKET GROUP	PRODUCT	QUANTITY	UNIT	ACRES	ADVERTISE PRICE
1	Black Spruce	Pulpwood	1	Cords	40.4	\$14,005.25
	Jack Pine		8	Cords		
	Paper Birch		26	Cords		
	Red Pine		249	Cords		
	White Pine		55	Cords		
2	Black Spruce	Pulpwood	1	Cords	18.0	\$6,221.60
	Jack Pine		3	Cords		
	Paper Birch		11	Cords		
	Red Pine		111	Cords		
	White Pine		24	Cords		
TOTAL:			489	Cords		

Sale Specific Conditions & Requirements

Sale Name: Headquarters Red Pine

Sale Number: 42-012-20 Seq#: 1

1 - Sale Area

1.2 - Boundaries

1.2.1 - Painted boundaries (9/19)

The sale boundary and Payment Unit boundaries are marked and identified by red paint. Exterior sale boundary lines against state are marked with red paint. Interior Payment Unit boundaries are marked with green paint. Green painted trees designating an interior Payment Unit boundary are only to be cut when all surrounding Payment Units have been paid.

2 - Timber Specifications

2.1 - Included Timber

2.1.3 - Cut tree marked unit(s) (12/08)

Within Payment Unit(s) 1 & 2, all trees are designated for cutting when marked with orange paint above and below stump height, regardless of merchantability. In addition, cut all jack pine, spruce and paper birch.

2.1.11 - Description of timber note (2/04)

Note that most red and white pine within the sale are sawlog sized. All trees were cruised as pulp.

2.2 - Utilization

2.2.3 - Stump heights (4/07)

Stump heights within the Sale Area shall not exceed 12 inches for trees greater than 10 inches DBH and 4 inches for trees smaller than 10 inches DBH.

4 - Transportation

4.1 - Construction

4.1.3 - Slash and earthen piles (8/04)

Piles or windrows of earth along roads and landings that have been widened or constructed shall be leveled. Slash from road maintenance or construction, including stumps, shall be dispersed throughout the sale.

4.1.7 - Road closure (10/11)

All new spur roads built into the sale must be blocked to vehicle traffic upon completion of the sale. All stumps from road building and landing construction must be reserved to block any newly constructed spurs upon completion of the sale. These stumps must be scattered along the road system to prohibit vehicular movement. Contact the sale administrator for specific details of design and placement.

4.1.12 - No new roads (1/12)

No new roads will be permitted in any Payment Unit. All operations are limited to existing roads. Back-in spurs off of existing roads will be allowed.

4.2 - Maintenance

4.2.4 - Grading (10/16)

For completion of the sale, state forest roads must be graded. In general, this will require a road grader or bull dozer to shape up the roads after forest products have been hauled off site. This includes cleaning of drainage areas, grading, crowning and filling with gravel, if necessary. The grading equipment to be used must be approved by the Unit Manager or his/her representative.

5 - Operations

5.2 - Conduct of Operations

5.2.1 - Slash

5.2.1.2 - Slash Removal

5.2.1.2.1 - Slash removal, right-of-way (9/16)

All slash must be removed at least 10 feet from the cleared right-of-way of existing forest roads.

5.2.1.8 - Slash height (12/08)

No slash may exceed 24 inches in height.

5.2.2 - Hazard Trees/Snags

5.2.2.1 - Den trees (10/16)

Obvious hollow and/or den trees shall be protected and left standing unless they are a safety hazard.

5.2.3 - Operating Restrictions

5.2.3.6 - Bark beetle restriction (12/08)

In the event drought creates a high risk of pine bark beetle infestation, pine is not to be cut during the period March 1 through July 1, unless all portions of trees greater than two inches in diameter are removed from the sale area, reduced to chips, or treated to the satisfaction of the Unit Manager or his/her representative, within fifteen days of being severed from the stump. Pine log decks, pulpwood piles and treetops that are piled for chipping in the fall or winter within a 1/4 mile of susceptible sites must be removed before March 15. Residual slash must not be placed in piles or rows and must be spread over the site for quick drying. The Department of Natural Resources will exercise this specification if the risk of damage warrants.

5.2.32 - Decking/landing restoration (9/13)

All decking and landing areas must have the surface area restored to a condition equal to or better than before. This is to ensure the proper regeneration of the stand. Wood debris, chips and "cookies" from trimmings must be removed or scattered away from landing and loading areas and may not be windrowed on the edge.

5.2.38 - No decking against live trees (2/04)

Cut products may not be decked against unmarked or designated leave trees.

5.2.39 - ORV trail/route protection (4/18)

The Pine Ridge ORV trail is shown on the Timber Sale Map. Do not cut trees or damage posts with orange ORV markers. All stumps within 5 feet of the trail must be cut flush with the ground. Maintain a 20 foot wide slash, debris, and rut free zone daily using the ORV trail or route as the centerline. Do not run equipment down the ORV trail or route. Any rutting damage caused by equipment must be leveled out on the same day it occurred.

5.2.40 - Pathway protection (10/10)

The Headquarters Lake Trail is a horse and is shown on the Timber Sale Map. Maintain a 20-foot wide slash, debris, and rut free zone daily, using the pathway as the centerline. Please use caution and be courteous to riders that are passing through.

5.4 - Soil Protection

5.4.2 - Skid trails (2/04)

Skid trails up and down slopes should be avoided. If however this is unavoidable, these trails will be left in a non-erodible condition using water bars, logs, and slash. Placing of slash on these skid trails while logging is ongoing may alleviate need for any further action. At the direction of the sale administrator, seed, fertilizer, and mulch may also be required.

5.8 - Protection of Endangered Species

5.8.5 - Protection of raptor nests (3/13)

All trees with raptor nests will be protected if found during harvesting operations. Notification will be made to the Unit Manager or his/her representative who will notify the Wildlife Biologist so an on-site evaluation and recommendation can be made, if necessary.

6 - Safety and Fire Prevention

6.2 - Signing

6.2.1 - Road posting (9/09)

The Purchaser is responsible for posting and maintaining caution signs on County Roads 410 and 407 prior to beginning operations. The road must be posted at appropriate distances from the sale area to warn of logging activity and truck traffic. Signs must be removed when harvest operations are suspended or completed. The Purchaser will provide these signs.

6.2.3 - Recreational trail posting (2/10)

The Purchaser is responsible for posting and maintaining caution signs on Pine Ridge ORV Trail and Headquarters Lake Equestrian Trails prior to beginning operations. The trail must be posted at appropriate distances from the sale area to warn of logging activity and truck traffic at both ends of the trail. Signs must be removed when harvest operations are suspended or completed. The DNR will provide these signs.



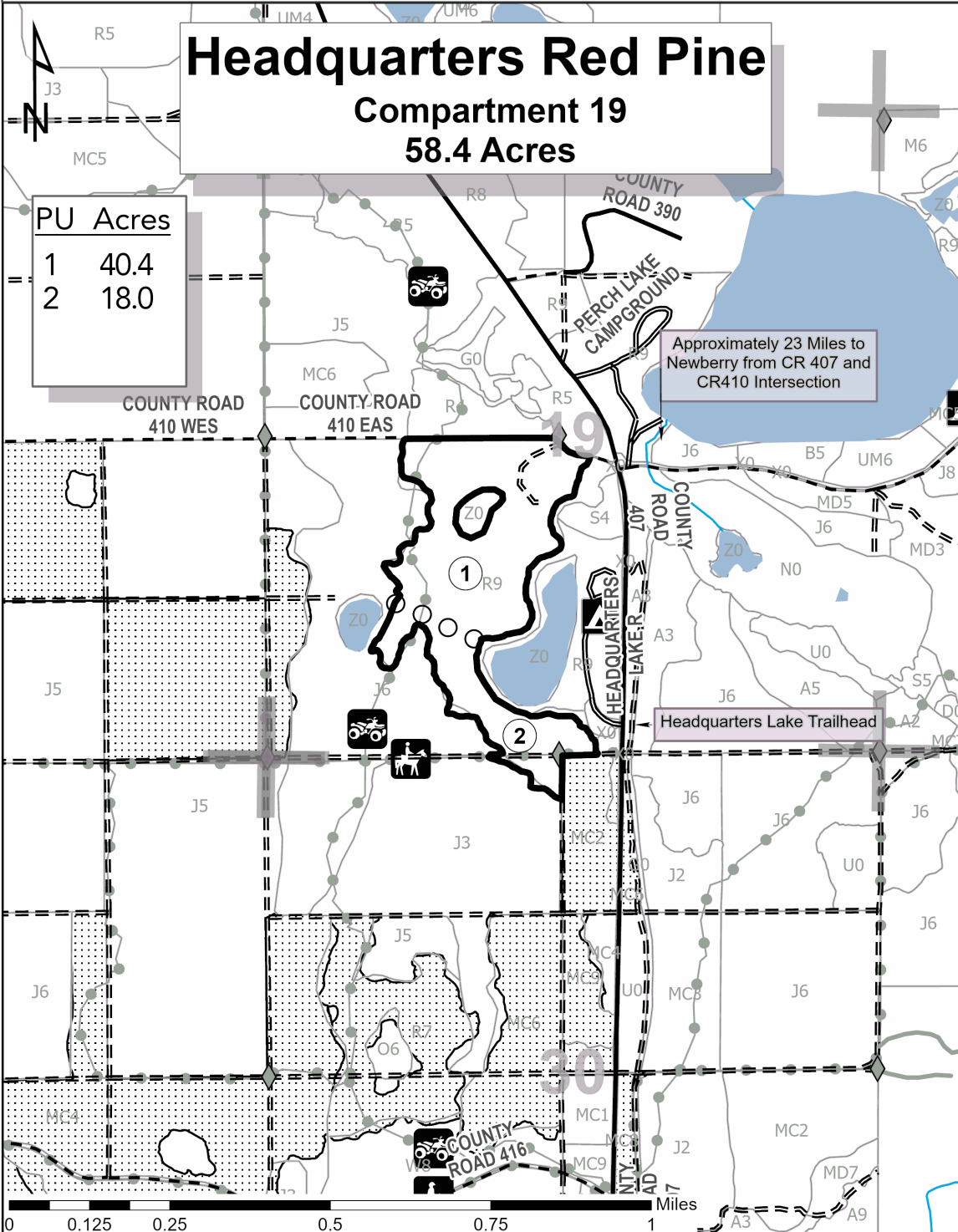
TIMBER SALE MAP

This information provided by authority of Part 525, 1994 PA 451, as amended.

Sale Number	Year
42-012-20	20

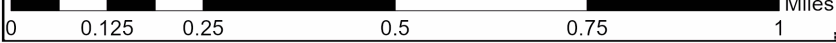
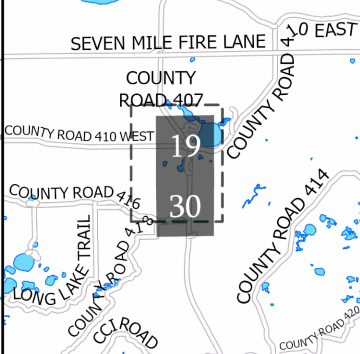
Forest Management Unit Newberry	County Luce	Mapped By Livermore	Date 8/12/2020	Page 1	of 1
Township 49N	Range 10W	Section(s) and Subdivision(s) Section 19:SW, W½SE Section 30:NENW, NWNE	Scale 1:15,840		

Cover Type				Density	
A = Aspen	H = Hemlock	N = Marsh	U = Upland Brush	0 = Non Stocked	5 = Pole Timber Medium
B = Paper Birch	J = Jack Pine	O = Oak	UM = Upland Mixed	1 = Seedling Sapling Poor	6 = Pole Timber Well
C = Cedar	L = Lowland Brush	P = Lowland Poplar	V = Bog or Marsh	2 = Seedling Sapling Medium	7 = Saw Timber Poor
D = Tread Bog	LM = Lowland Mixed	Q = Mixed Swamp Conifer	W = White Pine	3 = Seedling Sapling Well	8 = Saw Timber Medium
E = Swamp Hdwoods	M = Mpl, Bch, Brch	R = Red Pine	X = Non Stocked	4 = Pole Timber Poor	9 = Saw Timber Well
F = Spruce Fir	MC = Mixed Conifer	S = Black Spruce	Z = Water		
G = Grass	MD = Mixed Deciduous	T = Tamarack			



- Against State (Red)
- Payment Unit (Green)
- Payment Unit Label
- Horse Trails
- ORV Trails
- Snowmobile Trails
- Recreational Trail
- 01** Section Numbers
- Section Corners
- State Forest Campground
- Field Grade Corners
- Primary Forest Road
- Secondary Forest Road
- Forest Access Route
- Paved Road
- Gravel Road
- County Road - Seasonal
- Private
- Temporary Management Access
- Perennial River
- Lakes and Rivers
- Nearby Timber Sales
- Stand Covertype

Locator Map: 1:200,000
 - Main Map Extent



TIMBER SALE INFORMATION

Trailhead Pine (42-013-20)

T49N, R10W, SEC. 30; T49N, R11W, SEC. 26.
Luce County (Advertised Price \$66,526.55)

SALE NOTE: Many of the red and white pine are sawlog sized. All red and white pine sawlog sized trees were cruised as pulp.

No new roads will be permitted in any Payment Unit. All operations are limited to existing roads. Back-in spurs off of existing roads will be allowed.

Harvesting is limited to the period of April 15 to December 31 due to the need to cut low stumps.

The Pine Ridge Trail is an ORV trail or route and is shown on the Timber Sale Map. See Sale 5.2.39 for additional information.

The Headquarters Equestrian Trail is a horse trail and is shown on the Timber Sale Map. See Sale Spec. 5.2.40 for restrictions.

A recreation site such as a trail, pathway, or campground is within the sale area or the vicinity. Certain restrictions/specifications may be applicable including time restrictions.

A timber sale contract for this lump sum, sealed bid timber sale will be awarded to the responsible bidder offering the highest sealed bid price. All units of volume listed below were estimated using the T-Sale computer program and our traditional volume equations. Bids must be at or above the following advertised price for each product and species:

<u>PRODUCTS & SPECIES</u>	<u>ESTIMATED UNITS*</u>	<u>ADVERTISED PRICE</u>
Pulpwood		
Jack Pine	383 Cords	\$ 25.15 / Cord
Mixed Hardwood	10 Cords	\$ 11.70 / Cord
Quaking Aspen	2 Cords	\$ 13.85 / Cord
Red Pine	679 Cords	\$ 50.80 / Cord
Scotch Pine	876 Cords	\$ 20.95 / Cord
White Pine	244 Cords	\$ 16.00 / Cord

* The total volume is statistically estimated within plus (+) or minus (-) 13.33 percent. There are an estimated 2,193 cords on this timber sale, plus or minus 292 cords at the 95% confidence level. The estimated units are final and not subject to adjustment. Prospective bidders are urged to examine this timber and to make their own estimates of quantity and quality.

BOND AND PAYMENT SCHEDULE:

1. A bond in the amount of \$3,326.00 to insure faithful performance of the conditions of the contract will be deposited by the successful bidder within 21 days of the sale award.
2. Cutting in any sale or unit without the required advance payment would be considered a trespass.
3. Total payment must be paid in advance or according to the following schedule :
 - (a) Ten percent (10%) of the sale value must be paid within 21 days of the sale award.
 - (b) The 10% down payment will be credited towards the first unit cut.
 - (c) Payment for each of the following units must be made before cutting begins in that unit:

PAYMENT UNIT NUMBER	PERCENT OF TOTAL SALE VALUE
01	18.8%
02	26.5%
03	13.7%
04	26.4%
05	11.1%
06	3.5%
4. If no cutting takes place, the 10% down payment will not be refunded.
5. Operations on the contract issued will terminate on 12/31/2023.

SALE STATISTICS

SALE VOLUMES

VOLUME		STATISTICAL RANGE IN CORDS		
TOTAL CUBIC FEET	TOTAL CORDS	PERCENT ERROR	MINIMUM	MAXIMUM
173,226	2,193	13.33%	1,900	2,485

VDU VOLUMES

A VDU is a Volume Determination Unit. Volumes and their associated statistics are calculated at the VDU level and summarized to the sale level. There is often a one to one relationship between a VDU and a Payment Unit, but not always, depending on the cruise design. Refer to the VDU TO PAYMENT UNIT table.

VDU	VOLUME		PERCENT ERROR	RANGE IN CORDS	
	TOTAL CUBIC FEET	TOTAL CORDS		MINIMUM	MAXIMUM
10	7,529	95	43.21%	54	136
11	15,373	195	23.10%	150	240
12	76,243	965	11.42%	855	1,075
16	32,264	408	39.59%	247	570
39	41,823	529	15.70%	446	613
TOTAL:	173,231	2,193		1,752	2,634

VDU TO PAYMENT UNIT

When a VDU is associated with more than one Payment Unit (PU), the VDU volumes are assigned to the PU based on acres of the VDU within the PU.

VDU	VDU ACRES	PU	PU ACRES
10	13.9	6	13.9
11	7.4	4	0.5
		5	6.9
12	29.5	3	10.3
		4	19.2
16	31.1	2	31.1
39	26.9	1	26.9
TOTAL:	108.8		108.8

DESCRIPTION OF TIMBER BY PAYMENT UNIT (PU)

PU	MARKET GROUP	PRODUCT	QUANTITY	UNIT	ACRES	ADVERTISE PRICE
1	Jack Pine Red Pine Scotch Pine White Pine	Pulpwood	133 34 333 30	Cords Cords Cords Cords	26.9	\$12,528.50
2	Jack Pine Mixed Hardwood <i>Paper Birch</i> <i>Red Maple</i> Red Pine White Pine	Pulpwood	9 9 6 3 316 74	Cords Cords <i>Cords</i> <i>Cords</i> Cords Cords	31.1	\$17,568.45
3	Jack Pine Red Pine Scotch Pine White Pine	Pulpwood	77 63 169 28	Cords Cords Cords Cords	10.3	\$9,125.50
4	Jack Pine Red Pine Scotch Pine White Pine	Pulpwood	144 127 316 54	Cords Cords Cords Cords	19.7	\$17,557.40
5	Mixed Hardwood <i>Paper Birch</i> Red Pine Scotch Pine White Pine	Pulpwood	1 1 127 15 39	Cords <i>Cords</i> Cords Cords Cords	6.9	\$7,401.55
6	Jack Pine Quaking Aspen Red Pine Scotch Pine White Pine	Pulpwood	20 2 12 43 19	Cords Cords Cords Cords Cords	13.9	\$2,345.15
TOTAL:			2,194	Cords		

Sale Specific Conditions & Requirements

Sale Name: Trailhead Pine

Sale Number: 42-013-20 Seq#: 1

1 - Sale Area

1.2 - Boundaries

1.2.1 - Painted boundaries (9/19)

The sale boundary and Payment Unit boundaries are marked and identified by red and green paint, along with county roads. Exterior sale boundary lines against state are marked with red paint, with the exception of the southern boundary of Payment Unit 1 and the eastern boundaries of Payment Units 5 & 6, which are unpainted and identified by County Roads 416 & 407. Interior Payment Unit boundaries are marked with green paint. Retention patches are marked with red paint; no harvesting activities may occur within these areas. The painted boundary line trees are not Included Timber and are to be protected.

2 - Timber Specifications

2.1 - Included Timber

2.1.1 - Clearcut unit(s) with unmerchantable trees (6/14)

Within Payment Unit(s) 1 - 6, cut all trees that are two (2) inches or more at DBH.

2.1.11 - Description of timber note (2/04)

Note that many of the red and white pine are sawlog sized. All red and white pine sawlog sized trees were cruised as pulp.

2.2 - Utilization

2.2.3 - Stump heights (4/07)

Stump heights within the Sale Area shall not exceed 6 inches for all trees. This is in order to facilitate planting operations.

4 - Transportation

4.1 - Construction

4.1.3 - Slash and earthen piles (8/04)

Piles or windrows of earth along roads and landings that have been widened or constructed shall be leveled. Slash from road maintenance or construction, including stumps, shall be dispersed throughout the sale.

4.1.7 - Road closure (10/11)

All new spur roads built into the sale must be blocked to vehicle traffic upon completion of the sale. All stumps from road building and landing construction must be reserved to block any newly constructed spurs upon completion of the sale. These stumps must be scattered along the road system to prohibit vehicular movement. Contact the sale administrator for specific details of design and placement.

4.1.12 - No new roads (1/12)

No new roads will be permitted in any Payment Unit. All operations are limited to existing roads. Back-in spurs off of existing roads will be allowed.

4.2 - Maintenance

4.2.4 - Grading (10/16)

For completion of the sale, state forest roads must be leveled. In general, this will require a road grader or bull dozer to shape up the roads after forest products have been hauled off site. This includes grading, crowning and filling with gravel, as necessary. The grading equipment to be used must be approved by the Unit Manager or his/her representative.

5 - Operations

5.2 - Conduct of Operations

5.2.1 - Slash

5.2.1.2 - Slash Removal

5.2.1.2.1 - Slash removal, right-of-way (9/16)

All slash must be removed at least 10 feet from the cleared right-of-way of existing forest roads.

5.2.1.8 - Slash height (12/08)

No slash or tree tops may exceed 24 inches in height.

5.2.2 - Hazard Trees/Snags

5.2.2.1 - Den trees (10/16)

Obvious hollow and/or den trees shall be protected and left standing unless they are a safety hazard.

5.2.3 - Operating Restrictions

5.2.3.1 - Operating restrictions (9/11)

Within Payment Unit(s) 1 - 6, unless changed by written agreement, cutting is limited to the period of April 15th to December 31st. This restriction is because of the need to cut low stumps (See Spec. 2.2.3 for details).

5.2.3.6 - Bark beetle restriction (12/08)

In the event drought creates a high risk of pine bark beetle infestation, pine is not to be cut during the period March 1 through July 1, unless all portions of trees greater than two inches in diameter are removed from the sale area, reduced to chips, or treated to the satisfaction of the Unit Manager or his/her representative, within fifteen days of being severed from the stump. Pine log decks, pulpwood piles and treetops that are piled for chipping in the fall or winter within a 1/4 mile of susceptible sites must be removed before March 15. Residual slash must not be placed in piles or rows and must be spread over the site for quick drying. The Department of Natural Resources will exercise this specification if the risk of damage warrants.

5.2.32 - Decking/landing restoration (9/13)

All decking and landing areas must have the surface area restored to a condition equal to or better than before. This is to ensure the proper regeneration of the stand. Wood debris, chips and "cookies" from trimmings must be removed or scattered away from landing and loading areas and may not be windrowed on the edge.

5.2.38 - No decking against live trees (2/04)

Cut products may not be decked against unmarked or designated leave trees.

5.2.39 - ORV trail/route protection (4/18)

The Pine Ridge Trail is an ORV trail or route and is shown on the Timber Sale Map. All stumps within 5 feet of the trail must be cut flush with the ground. Maintain a 20 foot wide slash, debris, and rut free zone daily using the ORV trail or route as the centerline. Do not run equipment down the ORV trail or route.

5.2.40 - Pathway protection (10/10)

The Headquarters Equestrian Trail is a horse trail and is shown on the Timber Sale Map. Maintain a 20-foot wide slash, debris, and rut free zone daily, using the pathway as the centerline. Please use caution and be courteous to riders that are passing through.

5.8 - Protection of Endangered Species

5.8.5 - Protection of raptor nests (3/13)

All trees with raptor nests will be protected if found during harvesting operations. Notification will be made to the Unit Manager or his/her representative who will notify the Wildlife Biologist so an on-site evaluation and recommendation can be made, if necessary.

6 - Safety and Fire Prevention

6.2 - Signing

6.2.1 - Road posting (9/09)

The Purchaser is responsible for posting and maintaining caution signs on County Roads 407 and 416 prior to beginning operations. The road must be posted at appropriate distances from the sale area to warn of logging activity and truck traffic. Signs must be removed when harvest operations are suspended or completed. The Purchaser will provide these signs.

6.2.3 - Recreational trail posting (2/10)

The Purchaser is responsible for posting and maintaining caution signs on ORV and Equestrian Trails prior to beginning

operations. The trail must be posted at appropriate distances from the sale area to warn of logging activity and truck traffic at both ends of the trail. Signs must be removed when harvest operations are suspended or completed. The DNR will provide these signs.



TIMBER SALE MAP

This information provided by authority of Part 525, 1994 PA 451, as amended.

Sale Number	42-013-20	Year	20
-------------	-----------	------	----

Forest Management Unit	Newberry	County	Luce	Maped By	Livermore	Date	8/12/2020	Page	1	of	1
Township	49N	Range	10W / 11W	Section(s) and Subdivision(s)	Section 30: S1/2NW1/4NE, N1/2SW, NWSE Section 26: N1/2NE	Scale	1:15,840				

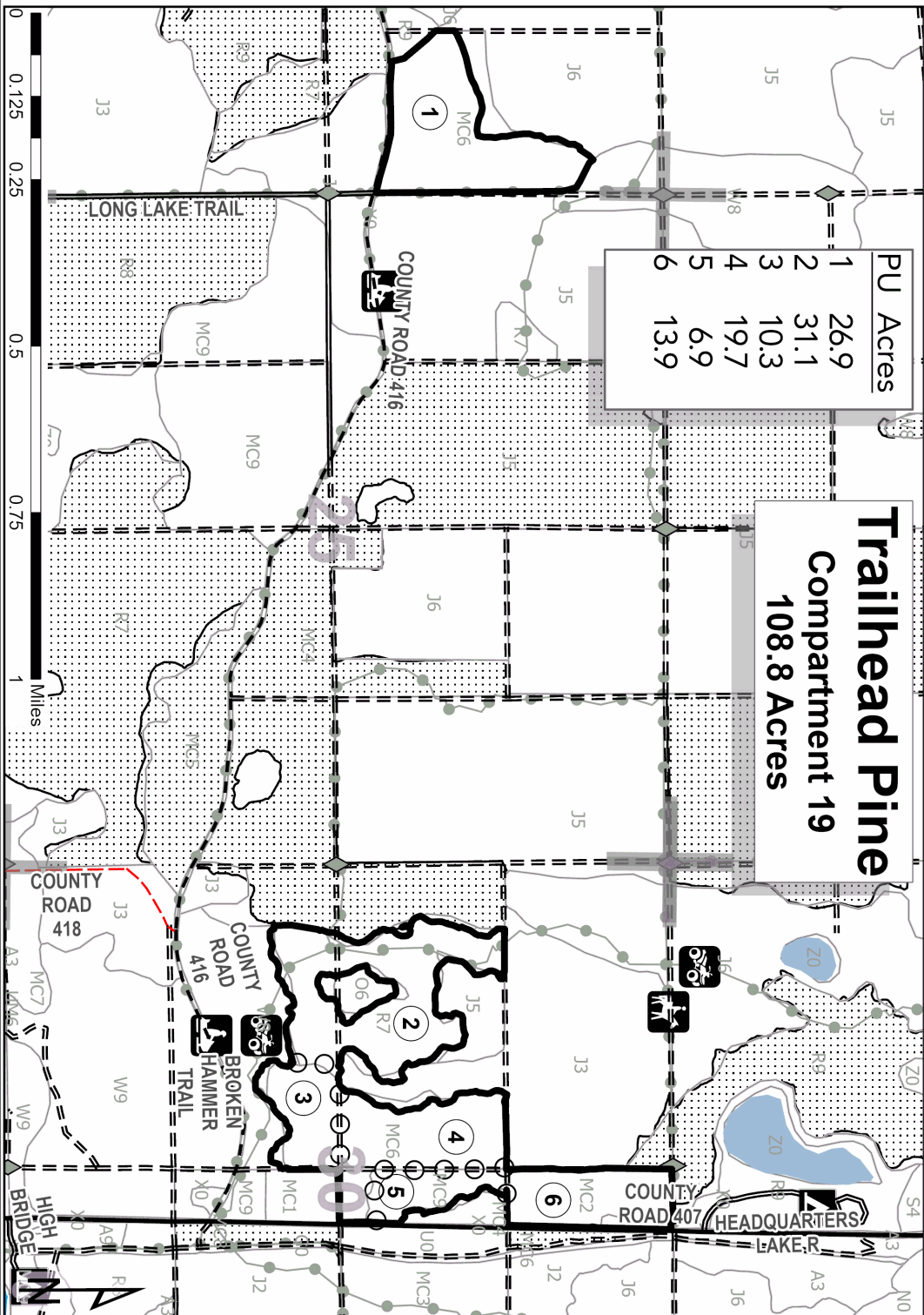
Cover Type	Density
<ul style="list-style-type: none"> A = Aspen B = Paper Birch C = Cedar D = Tread Bog E = Swamp Hardwoods F = Spruce Fir G = Grass H = Hemlock J = Jack Pine L = Lowland Brush LM = Lowland Mixed M = Mpl, Bct, Birch MC = Mixed Conifer MD = Mixed Deciduous N = Marsh O = Oak P = Lowland Poplar Q = Mixed Swamp Conifer R = Red Pine S = Black Spruce T = Tamarack U = Upland Brush UM = Upland Mixed V = Bog or Marsh W = White Pine X = Non Stocked Z = Water 	<ul style="list-style-type: none"> 0 = Non Stocked 1 = Seeding Sapling Poor 2 = Seeding Sapling Medium 3 = Seeding Sapling Well 4 = Pole Timber Poor 5 = Pole Timber Medium 6 = Pole Timber Well 7 = Saw Timber Poor 8 = Saw Timber Medium 9 = Saw Timber Well

PU Acres
1 26.9
2 31.1
3 10.3
4 19.7
5 6.9
6 13.9

Trailhead Pine

Compartment 19

108.8 Acres



- Against State (Red)
- Payment Unit (Green)
- Horse Trails
- ORV Trails
- Snowmobile Trails
- Recreational Trail
- Section Numbers
- Section Corners
- State Forest Campground
- Field Grade Corners
- Primary Forest Road
- Secondary Forest Road
- Forest Access Route
- Paved Road
- Gravel Road
- County Road - Seasonal
- Private
- Temporary Management Access
- Perennial River
- Lakes and Rivers
- Nearby Timber Sales
- Stand Covertype

Locator Map: 1:200,000

- Main Map Extent

SEVEN MILE FIRE LANE

Headquarters Red Pine (42-012-20)
T49N, R10W, SEC. 19; T49N, R10W, SEC. 30; Luce COUNTY

In response to the notice of sale to be held 3:00 p.m. (local time) on February 11, 2021, I am hereby submitting my sealed bid (firm offer) for the following forest products to be cut. Bids for individual species must be at or above the advertised price. All non-responsive bid forms may be rejected.

<u>PRODUCTS & SPECIES</u>	<u>ESTIMATED VOLUME*</u>	<u>ADVERTISED PRICE</u>	<u>BID PRICE/UNIT</u>
Pulpwood			
Black Spruce	2 Cords	\$ 12.25/Cord	\$ _____
Jack Pine	11 Cords	\$ 25.15/Cord	\$ _____
Paper Birch	37 Cords	\$ 10.10/Cord	\$ _____
Red Pine	360 Cords	\$ 50.80/Cord	\$ _____
White Pine	79 Cords	\$ 16.00/Cord	\$ _____

*The volumes are statistically estimated within plus (+) or minus (-) 18.58 percent at 95% confidence level. These estimated volumes are final and not subject to adjustment. Prospective bidders are urged to examine this timber and to make their own estimates of quantity and quality.

I understand that any or all bids may be rejected. All bids must be signed and all bid items must be bid or the bid form may be rejected. I also understand that consideration and awarding a contract will be based upon my past performance and ability to complete the contract based upon equipment and staffing subject to my control.

FEDERAL ID: _____ - _____ or SOCIAL SECURITY NUMBER: _____ - _____ - _____

Company or individual bidding: _____

Company representative's name: _____

Address: _____

City: _____ State: _____ Zip: _____

IF AVAILABLE, PLEASE PLACE THE PERSONALIZED LABEL FROM YOUR PROSPECTUS IN THE ABOVE BOX.

Individual or company representative's signature: _____ Date: _____

Phone number : _____ Email (optional): _____

THE WINNING BIDDER MUST COMPLETE THE VERIFICATION OF WORKER'S DISABILITY COMPENSATION ACT COMPLIANCE (ON REVERSE SIDE IF DOUBLE SIDED) WITHIN 21 DAYS OF SALE AWARD DATE



FOR DEPARTMENT USE ONLY
Sale Number (XX - XXX - XX - XX)
Forest Management Unit:

TIMBER SALE VERIFICATION OF WORKER'S DISABILITY COMPENSATION ACT COMPLIANCE

*As required by Act 317, P.A. 1969 (Worker's Compensation) and
Part 5 of Act 451 of 1994, as amended.*

VERIFICATION OF WORKER'S DISABILITY COMPENSATION ACT COMPLIANCE

- This verification must be completed and submitted within 21 days of contract award and prior to the issuance of the timber sale contract.
- In addition, if boxes 2B or 2C are checked, then Notice of Exclusion or Certificate of Insurance must be submitted within twenty-one (21) days of the contract award and prior to the issuance of the timber sale contract.
- All information must be typed or printed except for written signatures.

Please Check Appropriate Categories:

1. My business is organized as (you **must** check one of the boxes below):
 - A. Sole Proprietorship (individual)
 - B. Partnership
 - C. Corporation
2. You **must** check one of the boxes below:
 - A. I certify my business is a sole proprietorship and it has no employees but the sole proprietor. I am not subject to the Worker's Compensation Laws.
 - B. I certify my business has satisfied its obligation to the Worker's Compensation Act through the use of an approved Notice of Exclusion (BWC-337, Rev. 5/96). I will provide a copy of the Notice of Exclusion within 21 days of the contract award. (For questions or a copy of the BWC-337, please call the Worker's Compensation Bureau at 517-322-1195).
 - C. I certify my business has a Worker's Compensation Policy. I will provide an original Certificate of Insurance within twenty-one (21) days of the contract award.
3. If you have checked item 2(A) or 2(B), you **must** indicate the number of **both** full-time and part-time employees, other than yourself, including family members and active partners (if none, you must enter "0").

_____ Full-time Employees

_____ Part-time Employees

Name of Business		Federal ID (or) Social Security No.	
Address		Telephone ()	
City	State	ZIP	

I hereby certify that the above information is true and correct. I agree to notify the Michigan DNR of any changes that occur in factors affecting my coverage during any of my present and future operations.

Signature of Owner or Authorized Representative

Title

Date

Please complete the "SEALED BID" information on the next page

Trailhead Pine (42-013-20)
T49N, R10W, SEC. 30; T49N, R11W, SEC. 26; Luce COUNTY

In response to the notice of sale to be held 3:00 p.m. (local time) on February 11, 2021, I am hereby submitting my sealed bid (firm offer) for the following forest products to be cut. Bids for individual species must be at or above the advertised price. All non-responsive bid forms may be rejected.

<u>PRODUCTS & SPECIES</u>	<u>ESTIMATED VOLUME*</u>	<u>ADVERTISED PRICE</u>	<u>BID PRICE/UNIT</u>
Pulpwood			
Jack Pine	383 Cords	\$ 25.15/Cord	\$ _____
Mixed Hardwood	10 Cords	\$ 11.70/Cord	\$ _____
Quaking Aspen	2 Cords	\$ 13.85/Cord	\$ _____
Red Pine	679 Cords	\$ 50.80/Cord	\$ _____
Scotch Pine	876 Cords	\$ 20.95/Cord	\$ _____
White Pine	244 Cords	\$ 16.00/Cord	\$ _____

*The volumes are statistically estimated within plus (+) or minus (-) 13.33 percent at 95% confidence level. These estimated volumes are final and not subject to adjustment. Prospective bidders are urged to examine this timber and to make their own estimates of quantity and quality.

I understand that any or all bids may be rejected. All bids must be signed and all bid items must be bid or the bid form may be rejected. I also understand that consideration and awarding a contract will be based upon my past performance and ability to complete the contract based upon equipment and staffing subject to my control.

FEDERAL ID: ____ - ____ - ____ or SOCIAL SECURITY NUMBER: ____ - ____ - ____

Company or individual bidding: _____

Company representative's name: _____

Address: _____

City: _____ State: _____ Zip: _____

IF AVAILABLE, PLEASE PLACE THE PERSONALIZED LABEL FROM YOUR PROSPECTUS IN THE ABOVE BOX.

Individual or company representative's signature: _____ Date: _____

Phone number : _____ Email (optional): _____

THE WINNING BIDDER MUST COMPLETE THE VERIFICATION OF WORKER'S DISABILITY COMPENSATION ACT COMPLIANCE (ON REVERSE SIDE IF DOUBLE SIDED) WITHIN 21 DAYS OF SALE AWARD DATE



FOR DEPARTMENT USE ONLY	
Sale Number (XX - XXX - XX - XX)	
Forest Management Unit:	

TIMBER SALE VERIFICATION OF WORKER'S DISABILITY COMPENSATION ACT COMPLIANCE

As required by Act 317, P.A. 1969 (Worker's Compensation) and
Part 5 of Act 451 of 1994, as amended.

VERIFICATION OF WORKER'S DISABILITY COMPENSATION ACT COMPLIANCE

- This verification must be completed and submitted within 21 days of contract award and prior to the issuance of the timber sale contract.
- In addition, if boxes 2B or 2C are checked, then Notice of Exclusion or Certificate of Insurance must be submitted within twenty-one (21) days of the contract award and prior to the issuance of the timber sale contract.
- All information must be typed or printed except for written signatures.

Please Check Appropriate Categories:

1. My business is organized as (you **must** check one of the boxes below):
 - A. Sole Proprietorship (individual)
 - B. Partnership
 - C. Corporation
2. You **must** check one of the boxes below:
 - A. I certify my business is a sole proprietorship and it has no employees but the sole proprietor. I am not subject to the Worker's Compensation Laws.
 - B. I certify my business has satisfied its obligation to the Worker's Compensation Act through the use of an approved Notice of Exclusion (BWC-337, Rev. 5/96). I will provide a copy of the Notice of Exclusion within 21 days of the contract award. (For questions or a copy of the BWC-337, please call the Worker's Compensation Bureau at 517-322-1195).
 - C. I certify my business has a Worker's Compensation Policy. I will provide an original Certificate of Insurance within twenty-one (21) days of the contract award.
3. If you have checked item 2(A) or 2(B), you **must** indicate the number of **both** full-time and part-time employees, other than yourself, including family members and active partners (if none, you must enter "0").

_____ Full-time Employees

_____ Part-time Employees

Name of Business		Federal ID (or) Social Security No.	
Address		Telephone ()	
City	State	ZIP	

I hereby certify that the above information is true and correct. I agree to notify the Michigan DNR of any changes that occur in factors affecting my coverage during any of my present and future operations.

Signature of Owner or Authorized Representative

Title

Date

Please complete the "SEALED BID" information on the next page