



**DEPARTMENT OF NATURAL RESOURCES  
STATE OF MICHIGAN**

**TIMBER SALE PROSPECTUS #6848**

SCHEDULED SALE DATE AND TIME: 2:00 p.m. (local time) on March 3, 2021.

LOCATION: SHINGLETON MGMT UNIT, PO BOX 67, M 28 WEST, SHINGLETON, MI 49884.

PROSPECTUS NOTE: The bidder is advised to inspect the sale area and review the location, estimated volumes, operating costs and contract terms of proposed sales. Please be aware that some landowners may request 60 days or more notice for access across their land.

Notice is hereby given that bids will be received by the Unit Manager, SHINGLETON MANAGEMENT UNIT, for certain timber on the following described lands:

GNA2 Muleshoe (41-817-21) / T43N, R17W, SEC. 16, NW,NWNE,SW,NWSE,S1/2SE.

T43N, R17W, SEC. 17, N1/2NW,E1/2SE.

T43N, R17W, SEC. 18, NENE.

T43N, R17W, SEC. 20, NENE.

T43N, R17W, SEC. 21, N1/2NW,N1/2NE.

T43N, R17W, SEC. 4 , SW.

T43N, R17W, SEC. 7 , E1/2NW,SWNE,E1/2SW,SE.

T43N, R17W, SEC. 8 , S1/2SW.

T43N, R17W, SEC. 9 , E1/2NW,SWNE,E1/2SW,W1/2SE.

Schoolcraft County, Advertised Price \$242,740.60, 439.7 Acres, Aspen, Hardwood.

SALE NOTE: This is a Good Neighbor Authority (GNA) timber sale on national forest land. This timber sale was set-up and is being advertised by the Michigan DNR for the US Forest Service. The contract will be awarded and administered by the Michigan DNR. Note the additional Sale Specific Conditions & Requirements containing the acronym 'GNA'.

Special Protection Areas must be protected, see spec 3.4.3 for details.

For alternate access information, see spec 4.4.2.

For information on utilizing the power line R.O.W., see spec 5.1.6.

Within Payment Units 6 & 8, harvesting is not permitted between February 15 to July 15, see spec 5.2.3.1 for details.

Within Payment Units 2, 7, 14 & 17, harvesting is limited to 6" of frozen ground or 12" of compacted snow to protect sensitive soils, see spec 5.2.3.2.

For bark slip restrictions, see spec 5.2.3.3.

For equipment width restrictions, see spec 5.2.20.

For equipment cleaning requirements, see spec 5.6.2.

A recreation site such as a trail, pathway, or campground is within the sale area or the vicinity. Certain restrictions/specifications may be applicable including time restrictions. Access may be through other public land.

Go Pack Go (41-013-20) / T49N, R15W, SEC. 30, SESW.

T49N, R15W, SEC. 31, NW,S1/2NE,SW,N1/2SE,SWSE.

T49N, R15W, SEC. 32, SWNW,NWSW.

Alger County, Advertised Price \$135,364.40, 313.3 Acres, Red Pine, White Pine.

SALE NOTE: Road work is required on this sale. See Sale Spec. 4.1.8 for details.

The county must be contacted prior to crossing or harvesting in the county road R-O-W. This applies to H-58.

The Fox River Pathway is a hiking trail shown on the Timber Sale Map. See Sale Spec. 5.2.40 for restrictions.

H-58 is a snowmobile trail and is shown on the Timber Sale Map. See Sale Spec. 5.2.41 for additional information.

The Purchaser shall not cut live or dead trees or operate equipment within historical sites. Historical sites are marked with an "H" on the Timber Sale Map. This is outside of the red line in Payment Unit 2. See Sale Spec. 5.7.1 for requirements.

A recreation site such as a trail, pathway, or campground is within the sale area or the vicinity. Certain restrictions/specifications may be applicable including time restrictions.

South Goes North Pine (41-014-20) / T49N, R15W, SEC. 28, SWSW,S1/2SE.

T49N, R15W, SEC. 32, SWNW,NENE,S1/2NE,SW,SE.

T49N, R15W, SEC. 33, NW,NE,N1/2SW,SWSW.

Alger County, Advertised Price \$194,066.80, 489.3 Acres, Red Pine, White Pine.

SALE NOTE: The county must be contacted prior to crossing or harvesting in the county road R-O-W. This applies to H-58 and the Hurricane Truck Trail.

H-58 and the Hurricane Truck Trail are snowmobile trails. See Sale Spec. 5.2.41 for additional details.

A recreation site such as a trail, pathway, or campground is within the sale area or the vicinity. Certain restrictions/specifications may be applicable including time restrictions.

## BID INSTRUCTIONS (VER. 07/02/2018):

### 1. Scheduled Bid Location, Date, and Time (2/11)

Bids must be received by the Unit Manager, SHINGLETON OFFICE, PO Box 67 M 28 West, Shingleton, MI 49884, no later than 2:00 p.m. (local time) on March 3, 2021. For further information concerning this sale, contact Robert Burnham at 906-452-6227 extension 240.

### 2. Bidder's Qualifications (5/16)

Purchaser shall obtain workers compensation insurance to cover claims under Michigan's Worker's Disability Compensation Act of 1969 or similar employee benefit act of any other state applicable to an employee. If all or part of a timber sale was prepared by a private contractor, the contractor and that contractor's company are not permitted to bid on the timber sale contract. Bids will not be accepted from individuals or companies appearing on the DNR/FRD No-Bid List. This list contains the names of purchasers who previously failed to execute a contract within 21-days or who have a history of poor performance.

### 3. Preparation of Sealed Bids (5/16)

Bid Forms may be completed online thru Michigan DNR Timber Sale Online Bidding (OLB) at [www.michigan.gov/timberbidding](http://www.michigan.gov/timberbidding) or by completing the hardcopy Bid Form found in the Timber Sale Prospectus. Hardcopy Bid Forms shall be manually signed in ink. Registration in OLB is considered your 'signature' for all bids submitted thru that system. Bid prices must be entered for each species and product in the Bid Price column for all material subject to bidding and all fill-in blanks must be completed. If erasures or other changes appear on the hardcopy Bid Form, each erasure or change must be initialed by the person signing the bid.

### 4. Submission of Sealed Bids (5/16)

Bid forms may be obtained from the Unit Manager or thru OLB. Bids may be submitted hardcopy or thru OLB. All hardcopy bids must be submitted on the bid form and in an envelope clearly identified as described in this section. NOTE: Only one bid form per bid envelope. Sealed bids must be submitted to the Unit office designated in the prospectus and must be submitted at or prior to the time established in the prospectus. The envelope should show on the outside (a) the sale name or number and (b) the date and time of bid opening, as shown in the prospectus. Bids received after the time specified in the sale prospectus are late bids and will be rejected.

It is possible for a bidder to submit multiple bids on a single sale. For example, a bid may be submitted hardcopy and a bid may be submitted thru OLB. Or, two bidders from the same company could both submit bids on the same sale. If this were to happen, the State would accept all bids received and award the contract accordingly. All bidding and contractual requirements would apply to all bids received.

### 5. Public Opening of Sealed Bids (7/16)

If conditions permit, the sealed bids will be publicly opened and posted at the time and place set in the prospectus.

If a bidder, present at a bid opening, has submitted bids on more than one sale, that bidder may withdraw their unopened bid envelopes or announce the withdrawal of their online bid after being declared the successful bidder on one sale.

### 6. Award of Contract (1/11)

Award of the contract will be made to the Bidder whose bid, conforming to the prospectus, is most advantageous to the State of Michigan on the basis of total value at rates bid for the estimated quantities. The State reserves the right to reject any bid or waive any minor irregularity in bids received. A written award mailed (or otherwise furnished) to the successful Bidder shall be deemed to result in a binding contract without further action by either party.

### 7. Down Payment (1/11)

The Bidder to whom award is made must make a down payment within 21 days of the sale award. The amount of the down payment will be calculated as shown in the Bond and Payment Schedule of this prospectus. Only cash may be used to meet this requirement.

### 8. Performance Security (1/11)

As guarantee of faithful performance, a cash bond, certificate of deposit, surety bond or irrevocable letter of credit (LOC) is required within 21 days of the sale award. The amount of the performance security is shown in the Bond and

Payment Schedule of this prospectus. If an LOC or surety is used, the coverage must extend for at least 6 months beyond the contract expiration.

#### 9. Timber Sale Contract (7/18)

Additional conditions and requirements common to all timber sales are listed on the timber sale contract (R4031) and are available on line at [www.michigan.gov/timber](http://www.michigan.gov/timber). Contact the Unit Manager for additional information or a sample contract. Within 21 days of the date of the award letter, the bidder must sign the contract and provide the required down payment, performance security, and verification of worker's disability compensation. The down payment and performance security shall be in accordance with the provisions of the timber sale contract, in the sums stated in this prospectus. If these actions are not taken, then the Bidder, the Bidder's corporation, and the corporation's principals may not be permitted to bid on State timber sales for a period of 3 months after the first offense, 6 months after the second offense, and 1 year after the third offense. An offense will only be counted against the Bidder for 5 years. In addition, the Bidder certifies that if awarded this contract, the Bidder will complete the timber sale contract in accordance with its terms and any modifications thereof including requirements to purchase, cut, and remove the included timber by the expiration date.

Payment Unit values in the State Forest Timber Sale Contract are calculated based on the advertised value of the Payment Unit as a percentage of the total advertised value of the contract. The advertised value of each Payment Unit is given in the Description of Timber by Payment Unit table on the Timber Sale Information page. For example, if the value of Payment Unit 1 is advertised as \$1,500 and the total Timber Sale value is advertised as \$10,000, the contract price for Payment Unit 1 will be 15% of the total bid price ( $\$1,500/\$10,000 * 100$ ).

#### 10. Disclaimer of Estimates and Bidder's Warranty of Inspection (7/16)

Before submitting this bid, the Bidder is advised and cautioned to inspect the sale area, review the requirements of the sale contract, and take other steps as may be reasonably necessary to ascertain the location, estimated volumes, construction estimates, and operating costs of the proposed sale. Failure to do so will not relieve the Bidder from responsibility for completing the contract.

The Bidder warrants that this bid is submitted solely on the basis of the Bidder's examination and inspection of the quality and quantity of the timber offered for sale and the Bidder's opinion of the value thereof and the costs of recovery. No reliance should be placed on the State of Michigan's estimates of timber quality, quantity or costs of recovery. Bidder further acknowledges that the State of Michigan: (i) expressly disclaims any warranty of fitness of timber for any purpose; (ii) offers this timber as is without any warranty of quality (merchantability) or quantity and (iii) expressly disclaims any warranty as to the quantity or quality of timber sold.

#### 11. Certification and Chain-of-Custody (10/14)

Unless otherwise indicated in the contract under section 7 – Other Conditions of the Sale Specific Conditions & Requirements, the area encompassed by this timber sale is certified to the standards of the Forest Stewardship Council (FSC) - Certificate #SCS-FM/COC-00090N and the Sustainable Forestry Initiative (SFI) - Certificate #NSF-SFIS-5Y031-SF5. Forest products from this sale may be delivered to the mill as "FSC 100% and / or SFI certified" as long as the contractor hauling the forest products is chain-of-custody (COC) certified or covered under a COC certificate from the destination mill. The purchaser is responsible for maintaining COC after leaving the sale area.

#### 12. Good Neighbor Authority (GNA) Requirements (7/16)

If the name of this timber sales contains the acronym GNA, it is authorized by the Good Neighbor Authority (GNA) and covered by various agreements between the U.S. Forest Service and the State. The timber sale occurs on federal land and the following conditions apply:

GNA contracts on US Forest Service land will not be awarded to purchasers on the Federal list of excluded parties. The System for Award Management (SAM) will be checked for active excluded parties prior to award of contract. In addition, the Bidder to whom award is made must complete an Assurance Regarding Felony Conviction or Tax Delinquent Status for Corporate Applicants (AD-3031).

#### 13. Good Neighbor Authority (GNA) Requirements, con't (9/16)

Bidder certifies, by signing this bid form, that to the best of Bidder's knowledge that the following representations are accurate and complete.

- a. That the Bidder and its principals are not presently debarred, suspended, proposed for debarment, declared ineligible, or voluntary excluded from timber sales (covered transactions) by any Federal department or agency.
- b. That the Bidder and its principals have not within a 3-year period preceding this bid been convicted of or had a civil judgment rendered against them for commission of fraud or a criminal offense in connection with obtaining , attempting to obtain, or performing a public (Federal, State, or local) transaction or contract under a public transaction; violation of Federal or State antitrust statutes or commission of embezzlement, theft, forgery, bribery, falsification or destruction of records, making false statements, or receiving stolen property.
- c. That the Bidder and its principals are not presently indicted for or otherwise criminally or civilly charged by a governmental entity (Federal, State, or local) with commission of any of the offenses enumerated in paragraph b of this certification.
- d. That the Bidder and its principals have not within a 3-year period preceding this bid had one or more public transactions (Federal, State, or local) terminated for breach or default of a timber or forest product contract.

Bidders that cannot certify this requirement, in whole or in part, shall submit an explanation with their bid.

DAN EICHINGER  
Director



# TIMBER SALE INFORMATION

## GNA2 Muleshoe (41-817-21)

T43N, R17W, SEC. 16; T43N, R17W, SEC. 17; T43N, R17W, SEC. 18; T43N, R17W, SEC. 20; T43N, R17W, SEC. 21; T43N, R17W, SEC. 4; T43N, R17W, SEC. 7; T43N, R17W, SEC. 8; T43N, R17W, SEC. 9.

SALE NOTE: This is a Good Neighbor Authority (GNA) timber sale on national forest land. This timber sale was set-up and is being advertised by the Michigan DNR for the US Forest Service. The contract will be awarded and administered by the Michigan DNR. Note the additional Sale Specific Conditions & Requirements containing the acronym 'GNA'.

Special Protection Areas must be protected, see spec 3.4.3 for details.

For alternate access information, see spec 4.4.2.

For information on utilizing the power line R.O.W., see spec 5.1.6.

Within Payment Units 6 & 8, harvesting is not permitted between February 15 to July 15, see spec 5.2.3.1 for details.

Within Payment Units 2, 7, 14 & 17, harvesting is limited to 6" of frozen ground or 12" of compacted snow to protect sensitive soils, see spec 5.2.3.2.

For bark slip restrictions, see spec 5.2.3.3.

For equipment width restrictions, see spec 5.2.20.

For equipment cleaning requirements, see spec 5.6.2.

A recreation site such as a trail, pathway, or campground is within the sale area or the vicinity. Certain restrictions/specifications may be applicable including time restrictions. Access may be through other public land.

A timber sale contract for this lump sum, sealed bid timber sale will be awarded to the responsible bidder offering the highest sealed bid price. All units of volume listed below were estimated using the T-Sale computer program and our traditional volume equations. Bids must be at or above the following advertised price for each product and species:

<u>PRODUCTS &amp; SPECIES</u>	<u>ESTIMATED UNITS*</u>	<u>ADVERTISED PRICE</u>
Sawtimber		
Black Cherry	0.6 MBF	\$ 98.00 / MBF
Paper Birch	0.2 MBF	\$ 53.00 / MBF
Red Maple	25.5 MBF	\$ 96.00 / MBF
Sugar Maple	27.6 MBF	\$ 265.00 / MBF
Pulpwood		
Balsam Fir	78 Cords	\$ 13.35 / Cord
Hemlock	25 Cords	\$ 13.75 / Cord
Jack Pine	138 Cords	\$ 27.30 / Cord
Mixed Aspen	6,187 Cords	\$ 22.15 / Cord
Mixed Hardwood	1,854 Cords	\$ 17.15 / Cord
Mixed Spruce	11 Cords	\$ 11.30 / Cord
Paper Birch	237 Cords	\$ 13.55 / Cord
Red Oak	15 Cords	\$ 16.55 / Cord
Red Pine	970 Cords	\$ 47.15 / Cord
White Pine	568 Cords	\$ 16.90 / Cord

\* The estimated units are final and not subject to adjustment. Prospective bidders are urged to examine this timber and to make their own estimates of quantity and quality.

### **BOND AND PAYMENT SCHEDULE:**

1. A bond in the amount of \$12,137.00 to insure faithful performance of the conditions of the contract will be deposited by the successful bidder within 21 days of the sale award.
2. Cutting in any sale or unit without the required advance payment would be considered a trespass.
3. Total payment must be paid in advance or according to the following schedule:
  - (a) Ten percent (10%) of the sale value must be paid within 21 days of the sale award.
  - (b) The 10% down payment will be credited towards the first unit cut.

(c) Payment for each of the following units must be made before cutting begins in that unit:

PAYMENT UNIT NUMBER	PERCENT OF TOTAL SALE VALUE
01	4.5%
02	3.5%
03	4.2%
04	7.9%
05	10.6%
06	10.2%
07	2.0%
08	6.4%
09	6.0%
10	0.9%
11	7.6%
12	4.0%
13	2.2%
14	0.7%
15	8.6%
16	3.4%
17	2.0%
18	7.8%
19	3.1%
20	2.1%
21	1.7%
22	0.6%

- 4. If no cutting takes place, the 10% down payment will not be refunded.
- 5. Operations on the contract issued will terminate on 06/30/2024.

**SALE STATISTICS**

**SALE VOLUMES**

VOLUME		PERCENT ERROR	STATISTICAL RANGE IN CORDS	
TOTAL CUBIC FEET	TOTAL CORDS		MINIMUM	MAXIMUM
804,922	10,189	0.00%	10,189	10,189



**VDU VOLUMES**

A VDU is a Volume Determination Unit. Volumes and their associated statistics are calculated at the VDU level and summarized to the sale level. There is often a one to one relationship between a VDU and a Payment Unit, but not always, depending on the cruise design. Refer to the VDU TO PAYMENT UNIT table.

VDU	VOLUME		PERCENT ERROR	RANGE IN CORDS	
	TOTAL CUBIC FEET	TOTAL CORDS		MINIMUM	MAXIMUM
1	25,849	327	0.00%	327	327
2	26,742	339	0.00%	339	339
3	41,254	522	29.98%	366	679
4	67,348	853	26.53%	626	1,079
5	96,443	1,221	29.16%	865	1,577
6	90,202	1,142	36.68%	723	1,561
7	13,967	177	27.61%	128	226
8	46,476	588	57.04%	253	924
9	47,921	607	22.00%	473	740
10	6,051	77	59.24%	31	122
11	39,824	504	18.46%	411	597
12	36,403	461	40.56%	274	648
13	18,676	236	48.18%	123	350
14	5,743	73	63.86%	26	119
15	75,769	959	26.80%	702	1,216
16	15,152	192	26.60%	141	243
17	16,479	209	50.71%	103	314
18	72,933	923	20.78%	731	1,115
19	19,221	243	26.46%	179	308
20	21,464	272	26.93%	199	345
21	15,476	196	32.81%	132	260
22	5,570	71	0.00%	71	71
<b>TOTAL:</b>	<b>804,963</b>	<b>10,189</b>		<b>7,221</b>	<b>13,158</b>

**VDU TO PAYMENT UNIT**

When a VDU is associated with more than one Payment Unit (PU), the VDU volumes are assigned to the PU based on acres of the VDU within the PU.

VDU	VDU ACRES	PU	PU ACRES
1	30.1	1	30.1
2	36.2	2	36.2
3	13.0	3	13.0
4	35.4	4	35.4
5	40.4	5	40.4
6	34.9	6	34.9
7	11.9	7	11.9
8	18.5	8	18.5
9	14.9	9	14.9
10	4.9	10	4.9
11	32.7	11	32.7
12	17.9	12	17.9
13	9.2	13	9.2
14	6.7	14	6.7
15	35.1	15	35.1
16	18.5	16	18.5
17	6.8	17	6.8
18	35.5	18	35.5
19	14.6	19	14.6
20	14.1	20	14.1
21	6.6	21	6.6
22	1.8	22	1.8
<b>TOTAL:</b>	<b>439.7</b>		<b>439.7</b>

**DESCRIPTION OF TIMBER BY PAYMENT UNIT (PU)**

PU	MARKET GROUP	PRODUCT	QUANTITY	UNIT	ACRES	ADVERTISE PRICE	
1	Black Cherry	Sawtimber	0.4	MBF	30.1	\$10,827.35	
	Paper Birch		0.1	MBF			
	Red Maple		11.9	MBF			
	Sugar Maple		19.3	MBF			
	Balsam Fir		Pulpwood	4			Cords
	Mixed Hardwood			260			Cords
	<i>Beech</i>			10			Cords
	<i>Black Cherry</i>			1			Cords
	<i>Red Maple</i>			91			Cords
	<i>Sugar Maple</i>			158			Cords
	Paper Birch			1			Cords
2	Black Cherry	Sawtimber	0.2	MBF	36.2	\$8,538.70	
	Paper Birch		0.1	MBF			
	Red Maple		13.6	MBF			
	Sugar Maple		8.3	MBF			
	Balsam Fir		Pulpwood	5			Cords
	Mixed Hardwood			285			Cords
	<i>Beech</i>			19			Cords
	<i>Black Cherry</i>			1			Cords
	<i>Red Maple</i>			174			Cords
	<i>Sugar Maple</i>			91			Cords
	Paper Birch			4			Cords
3	Balsam Fir	Pulpwood	20	Cords	13.0	\$10,315.10	
	Hemlock		12	Cords			
	Mixed Aspen		342	Cords			
	<i>B. T. Aspen</i>		342	Cords			
	Mixed Hardwood		84	Cords			
	<i>Beech</i>		7	Cords			
	<i>Red Maple</i>		51	Cords			
	<i>Sugar Maple</i>		21	Cords			
	<i>Yellow Birch</i>		5	Cords			
	Paper Birch		64	Cords			
	4		Balsam Fir	Pulpwood			4
Jack Pine		11	Cords				
Mixed Aspen		664	Cords				
<i>B. T. Aspen</i>		664	Cords				
Mixed Hardwood		104	Cords				
<i>Red Maple</i>		104	Cords				
Red Pine		37	Cords				
White Pine		33	Cords				
5	Mixed Aspen	Pulpwood	981	Cords	40.4	\$25,804.90	
	<i>B. T. Aspen</i>		981	Cords			
	Mixed Hardwood		227	Cords			
	<i>Beech</i>		7	Cords			
	<i>Red Maple</i>		220	Cords			
	Paper Birch		6	Cords			
White Pine	6	Cords					
6	Jack Pine	Pulpwood	14	Cords	34.9	\$24,792.10	
	Mixed Aspen		905	Cords			
	<i>B. T. Aspen</i>		905	Cords			
	Mixed Hardwood		149	Cords			
	<i>Red Maple</i>		149	Cords			
	Paper Birch		23	Cords			
	Red Pine		21	Cords			
White Pine	30	Cords					

## DESCRIPTION OF TIMBER BY PAYMENT UNIT (PU), CON'T

PU	MARKET GROUP	PRODUCT	QUANTITY	UNIT	ACRES	ADVERTISE PRICE
7	Jack Pine Mixed Aspen <i>B. T. Aspen</i> Mixed Hardwood <i>Red Maple</i> Red Pine White Pine	Pulpwood	21 104 104 10 10 35 7	Cords Cords Cords Cords Cords Cords Cords	11.9	\$4,816.95
8	Mixed Aspen <i>B. T. Aspen</i> Mixed Hardwood <i>Beech</i> <i>Red Maple</i> Red Pine	Pulpwood	455 455 27 8 19 106	Cords Cords Cords Cords Cords Cords	18.5	\$15,539.20
9	Mixed Aspen <i>B. T. Aspen</i> Mixed Hardwood <i>Red Maple</i> Paper Birch Red Pine White Pine	Pulpwood	432 432 75 75 7 69 23	Cords Cords Cords Cords Cords Cords Cords	14.9	\$14,591.95
10	Hemlock Mixed Aspen <i>B. T. Aspen</i> Mixed Hardwood <i>Red Maple</i> Red Pine White Pine	Pulpwood	9 21 21 1 1 24 23	Cords Cords Cords Cords Cords Cords Cords	4.9	\$2,126.35
11	Balsam Fir Hemlock Mixed Aspen <i>B. T. Aspen</i> Mixed Hardwood <i>Red Maple</i> Red Pine White Pine	Pulpwood	1 4 62 62 28 28 317 92	Cords Cords Cords Cords Cords Cords Cords Cords	32.7	\$18,423.20
12	Mixed Aspen <i>B. T. Aspen</i> Mixed Hardwood <i>Red Maple</i> White Pine	Pulpwood	381 381 72 72 9	Cords Cords Cords Cords Cords	17.9	\$9,826.05
13	Balsam Fir Jack Pine Mixed Aspen <i>B. T. Aspen</i> <i>Quaking Aspen</i> Mixed Hardwood <i>Red Maple</i> Red Pine White Pine	Pulpwood	4 7 192 187 5 18 18 7 8	Cords Cords Cords Cords Cords Cords Cords Cords Cords	9.2	\$5,271.25
14	Balsam Fir Mixed Aspen <i>B. T. Aspen</i> Mixed Hardwood <i>Red Maple</i> Red Pine	Pulpwood	5 24 24 31 31 10	Cords Cords Cords Cords Cords Cords	6.7	\$1,635.30

**DESCRIPTION OF TIMBER BY PAYMENT UNIT (PU), CON'T**

PU	MARKET GROUP	PRODUCT	QUANTITY	UNIT	ACRES	ADVERTISE PRICE			
14 con't	White Pine	Pulpwood	2	Cords					
15	Balsam Fir	Pulpwood	6	Cords	35.1	\$20,945.70			
	Jack Pine		5	Cords					
	Mixed Aspen		815	Cords					
	<i>B. T. Aspen</i>		815	Cords					
	Mixed Hardwood		97	Cords					
	<i>Red Maple</i>		97	Cords					
	Red Oak		15	Cords					
	Red Pine		13	Cords					
	White Pine		9	Cords					
16	Jack Pine	Pulpwood	35	Cords	18.5	\$8,250.40			
	Red Pine		154	Cords					
	White Pine		2	Cords					
17	Balsam Fir	Pulpwood	12	Cords	6.8	\$4,975.50			
	Jack Pine		15	Cords					
	Mixed Aspen		99	Cords					
	<i>B. T. Aspen</i>		8	Cords					
	<i>Quaking Aspen</i>		91	Cords					
	Mixed Hardwood		18	Cords					
	<i>Red Maple</i>		18	Cords					
	Mixed Spruce		8	Cords					
	<i>White Spruce</i>		8	Cords					
	Paper Birch		17	Cords					
	Red Pine		30	Cords					
	White Pine		10	Cords					
18	Balsam Fir		Pulpwood	11			Cords	35.5	\$18,867.55
	Jack Pine	22		Cords					
	Mixed Aspen	455		Cords					
	<i>B. T. Aspen</i>	45		Cords					
	<i>Quaking Aspen</i>	410		Cords					
	Mixed Hardwood	231		Cords					
	<i>Beech</i>	9		Cords					
	<i>Red Maple</i>	222		Cords					
	Paper Birch	64		Cords					
	Red Pine	28		Cords					
	White Pine	112		Cords					
19	Jack Pine	Pulpwood		8	Cords	14.6	\$7,414.65		
	Mixed Aspen			32	Cords				
	<i>B. T. Aspen</i>		14	Cords					
	<i>Quaking Aspen</i>		18	Cords					
	Mixed Hardwood		6	Cords					
	<i>Beech</i>		2	Cords					
	<i>Red Maple</i>		4	Cords					
	Red Pine		101	Cords					
	White Pine		96	Cords					
20	Balsam Fir	Pulpwood	2	Cords	14.1	\$5,057.10			
	Mixed Aspen		52	Cords					
	<i>B. T. Aspen</i>		14	Cords					
	<i>Quaking Aspen</i>		38	Cords					
	Mixed Hardwood		91	Cords					
	<i>Beech</i>		53	Cords					
	<i>Red Maple</i>		38	Cords					
	Mixed Spruce		3	Cords					
	<i>Black Spruce</i>		3	Cords					
	Paper Birch		29	Cords					

**DESCRIPTION OF TIMBER BY PAYMENT UNIT (PU), CON'T**

PU	MARKET GROUP	PRODUCT	QUANTITY	UNIT	ACRES	ADVERTISE PRICE
20 con't	Red Pine	Pulpwood	10	Cords		
	White Pine		84	Cords		
21	Mixed Aspen	Pulpwood	107	Cords	6.6	\$4,052.45
	<i>B. T. Aspen</i>		102	<i>Cords</i>		
	<i>Quaking Aspen</i>		5	<i>Cords</i>		
	Mixed Hardwood		40	Cords		
	<i>Beech</i>		18	<i>Cords</i>		
	<i>Red Maple</i>		22	<i>Cords</i>		
	Paper Birch		22	Cords		
	Red Pine		8	Cords		
	White Pine		19	Cords		
	22		Balsam Fir	Pulpwood		
Mixed Aspen		64	Cords			
<i>B. T. Aspen</i>		64	<i>Cords</i>			
White Pine		3	Cords			
TOTAL:			53.9	MBF		
TOTAL:			10,083	Cords		

## Sale Specific Conditions & Requirements

Sale Name: GNA2 Muleshoe

Sale Number: 41-817-21 Seq#: 1

### 1 - Sale Area

#### 1.2 - Boundaries

##### 1.2.1 - Painted boundaries (9/19)

The sale boundary and Payment Unit boundaries are marked and identified by red and orange paint. Exterior sale boundary lines against private property are marked with red paint. Exterior sale boundary lines against Federal are marked with orange paint. Interior Payment Unit boundaries are marked with orange paint.

### 2 - Timber Specifications

#### 2.1 - Included Timber

##### 2.1.2 - Clearcut unit(s) w/o unmerchantable trees (8/11)

Within Payment Unit(s) 19 & 20, cut all trees which meet minimum piece specifications in 2.2 Utilization, except do not cut hemlock, oak, and trees marked with green paint.

##### 2.1.3 - Cut tree marked unit(s) (12/08)

Within Payment Unit(s) 1, 2, 7, 10, 11, 14 & 16, all trees are designated for cutting when marked with blue paint above and below stump height, regardless of merchantability.

##### 2.1.4 - Designated timber unit(s) (6/17)

Within Payment Unit(s) 4, 5, 6, 8, 12, 13 & 15, all aspen, maple, fir, and trees marked with blue paint are designated for cutting, regardless of merchantability. In addition, within Payment Units 6, 8, 12, 13 & 15, cut all jack pine.

##### 2.1.7 - Leave tree marked unit(s) (6/14)

Within Payment Unit(s) 3, 9, 17, 18, 21 & 22, cut all trees that are two (2) inches or more at DBH, except do not cut trees marked with green paint above and below stump height. In addition, do not cut any hemlock within Payment Unit 21. Special protection areas identified in accordance with condition 3.4.3, within clearcutting unit boundaries, are not Included Timber and are to be protected.

#### 2.2 - Utilization

##### 2.2.3 - Stump heights (4/07)

Stump heights within Payment Unit(s) 16 shall not exceed 12 inches for trees greater than 10 inches DBH and 4 inches for trees smaller than 10 inches DBH.

##### 2.2.12 - GNA, cut and remove Included Timber (3/18)

Unless provided otherwise herein, the DNR agrees to sell and permit Purchaser to cut and remove Included Timber and Purchaser agrees to purchase, cut, and remove Included Timber.

### 3 - Payments

#### 3.3 - Pre-measured Sales

##### 3.3.4 - Dividing payment units (7/14)

Payment Unit(s) exceeding \$20,000 may be divided at the request of the Purchaser and upon approval of the Unit Manager. Dividing Payment Units is a contract modification which requires a Timber Sale Contract Amendment.

#### 3.4 - Damaged Timber

##### 3.4.1 - Damaged timber (7/16)

General Condition and Requirement 3.4 Damaged Timber, defines liquidated damages for undesignated live merchantable trees which are cut or injured. In addition, within Payment Units 10 & 11, extreme care should be taken to avoid damage to hemlock and white pine tree seedlings and saplings.

Within the sale area, if more than 25% of the tree seedlings or saplings (1/4" to 4.5" DBH) within a specified portion of the sale area are damaged, liquidated damages will be assessed at \$500 per acre for all acreage within that specified portion of

the sale area that was damaged.

#### 3.4.3 - Special Protection Areas (8/11)

The Purchaser shall protect special protection areas from damage by the Purchaser's operations. Special protection areas are excluded with the orange boundary lines and indicated on the Timber Sale Map. The Purchaser shall not operate equipment within, fell trees within or cut live or dead trees within special protection areas. If the Purchaser's operations have cut or damaged special protection areas through carelessness, the Purchaser shall pay \$10,000 as fixed, agreed and liquidated damages for each acre or part thereof cut or damaged. Such payment does not constitute ownership of the undesignated timber.

### 4 - Transportation

#### 4.1 - Construction

##### 4.1.3 - Slash and earthen piles (8/04)

Piles or windrows of earth along roads and landings that have been widened or constructed shall be leveled. Slash from road maintenance or construction, including stumps, shall be dispersed throughout the sale.

##### 4.1.4 - Timber removed for construction (12/09)

Trees cut or damaged in the process of pre-approved road, landing or skid trail construction will be decked in an area separate from other Designated Timber and not removed until measured by the sale administrator. Payment will be made at the specified Purchase Unit Price.

##### 4.1.6 - Road construction (1/09)

Construction of new roads or improvements of existing roads shall be done in such a way as to minimize the environmental and visual impacts. Merchantable trees shall be cut and utilized unless otherwise directed. Non-merchantable trees shall be severed and laid flat on the ground. Slash shall be scattered, and not left in windrows and kept a minimum of 10 feet back from the road edge. Stumps shall be set upright, not left on edge, and be moved at least 10 feet away from the road edge. Disturbed soil shall be feathered into the woods and not left in berms or windrows.

##### 4.1.7 - Road closure (10/11)

All new roads built into the sale must be blocked to vehicle traffic upon completion of the sale. Overgrown roads that are reopened shall be considered new roads. Some existing roads also need to be closed, see the Timber Sale Map for specific locations. In general, this will require constructing double earthen berms at strategic locations. Stumps, slash and brush must be placed along the remainder of the trail. These roads must be rendered impassable to cars and trucks. All stumps from road building and landing construction must be reserved to block any newly constructed roads upon completion of the sale. These stumps must be scattered along the road system to prohibit vehicular movement. Contact the sale administrator for specific details of design and placement.

#### 4.2 - Maintenance

##### 4.2.4 - Grading (10/16)

For completion of the sale, Forest Service roads must be graded. In general, this will require a road grader or bull dozer to shape up the roads after forest products have been hauled off site. This includes cleaning of drainage areas, grading, crowning and filling with gravel, if necessary. The grading equipment to be used must be approved by the Unit Manager or his/her representative.

#### 4.3 - Public Right-of-Way

##### 4.3.2 - County R-O-W (12/06)

The county must be contacted prior to crossing or harvesting in the county road R-O-W. This applies to County Road 437.

#### 4.4 - Access

##### 4.4.2 - Alternate route on private property (2/04)

It is the Purchaser's responsibility to obtain access across private land for any routes other than the route shown on the Timber Sale Map.

### 5 - Operations

#### 5.1 - Notification



#### 5.1.1 - Pre-sale conference (10/16)

A pre-sale conference on site between the Purchaser and sale administrator is required prior to beginning any operations. The Unit Manager or his/her representative must be contacted at least 5 days in advance to schedule the conference.

#### 5.1.4 - Post-sale conference (10/16)

A post-sale conference on site between the Purchaser and sale administrator is required 5 days prior to the completion of active logging operations to determine clean-up and repair of landings, road edges, and the fulfillment of other contract specifications.

#### 5.1.6 - Utility R.O.W. (4/19)

It is the responsibility of the Purchaser to obtain permission from the utility company to utilize the power line R.O.W. for operations.

### 5.2 - Conduct of Operations

#### 5.2.2 - Hazard Trees/Snags

##### 5.2.2.1 - Den trees (10/16)

Obvious hollow and/or den trees shall be protected and left standing unless they are a safety hazard.

#### 5.2.3 - Operating Restrictions

##### 5.2.3.1 - Operating restrictions (9/11)

Within Payment Unit(s) 6 & 8, unless changed by written agreement, cutting, skidding, and hauling are not permitted during the period of February 15 to July 15. This restriction is required by the Forest Service.

##### 5.2.3.2 - Operating restrictions (9/11)

Within Payment Unit(s) 2, 7, 14 & 17, unless changed by written agreement, cutting, skidding, and hauling are limited to six (6) inches of frozen ground or twelve (12) inches of compacted snow. This restriction is to protect sensitive soils.

##### 5.2.3.3 - Bark slippage restriction (3/09)

Within Payment Unit(s) 1 & 2, unless changed by written agreement, cutting and skidding are not permitted during the period of April 15 to July 15. This restriction is because of bark slippage.

##### 5.2.3.6 - Bark beetle restriction (12/08)

In the event drought creates a high risk of pine bark beetle infestation, pine is not to be cut during the period March 1 through July 1, unless all portions of trees greater than two inches in diameter are removed from the sale area, reduced to chips, or treated to the satisfaction of the Unit Manager or his/her representative, within fifteen days of being severed from the stump. Pine log decks, pulpwood piles and treetops that are piled for chipping in the fall or winter within a 1/4 mile of susceptible sites must be removed before March 15. Residual slash must not be placed in piles or rows and must be spread over the site for quick drying. The Department of Natural Resources will exercise this specification if the risk of damage warrants.

#### 5.2.20 - Equipment width (2/04)

Only equipment having a maximum width outside tires of 114 inches is to be used in Payment Units 6 and 8. Equipment used to remove designated rows must be capable of moving through cut rows without damaging residual trees. In addition, no product longer than 17 feet can be removed.

#### 5.2.32 - Decking/landing restoration (9/13)

All decking and landing areas must have the surface area restored to a condition equal to or better than before. This is to ensure the proper regeneration of the stand. Wood debris, chips and "cookies" from trimmings must be removed or scattered away from landing and loading areas and may not be windrowed on the edge.

#### 5.2.37 - No decking areas (12/08)

No decking is allowed on Bass Lake Road.

#### 5.2.38 - No decking against live trees (2/04)

Cut products may not be decked against unmarked or designated leave trees.

### 5.4 - Soil Protection

#### 5.4.1 - Rutting restriction, general (7/16)

Operations are to cease immediately if equipment and weather conditions result in rutting of roads and/or skid trails which is 12 inches or greater in depth and 50 feet in length. The Unit Manager or his/her representative may restrict hauling and/or skidding if ruts exceed the specified depth. With the Unit Manager or his/her representative's approval, the Purchaser may return to the area when the risk of rutting has decreased.

#### 5.4.4 - Slope protection (9/19)

Skid trails and roads on slopes shall be water barred with slash and stumps as soon as use is complete to prevent erosion.

#### 5.4.7 - Rutting restriction, Riparian Management Zone (RMZ) (1/09)

Payment Units adjacent to streams will require extra protections from rutting. Operations are to cease immediately if equipment and weather conditions result in rutting of roads and skid trails greater than 6 inches in depth and 25 feet long. The Unit Manager or his/her representative may restrict hauling and/or skidding if ruts exceed the specified depth. With the Unit Manager or his/her representative's approval, the Purchaser may return to the area when the risk of rutting has decreased.

### 5.6 - Debris and Waste Material

#### 5.6.2 - GNA, equipment cleaning (1/16)

(a) Areas, known by the DNR prior to timber sale advertisement, that are infested with invasive species of concern are shown on the Timber Sale Map. A current list of invasive species of concern and a map showing the extent of known infestations is available from the DNR. For purposes of this provision, "Off-Road Equipment" includes all logging and construction machinery, except for log trucks, chip vans, service vehicles, water trucks, pickup trucks, cars, and similar vehicles.

(b) Purchaser shall adhere to the following requirements with regard to cleaning "Off-Road Equipment":

(i) Prior to moving Off-Road Equipment onto the Sale Area, Purchaser shall identify the location of the equipment's most recent operation. Purchaser shall not move any Off-Road Equipment that last operated in an area infested with one or more invasive species of concern onto Sale Area without having cleaned such equipment of seeds, soil, vegetative matter, and other debris that could contain or hold seeds, and having notified the DNR, as provided in (iii). If the location of prior operation cannot be identified, then Purchaser shall assume that the location is infested with invasive species of concern.

(ii) Prior to moving Off-Road Equipment from a cutting unit that is shown on the Timber Sale Map to be infested with invasive species of concern to, or through any other area that is shown as being free of invasive species of concern, or infested with a different invasive species, Purchaser shall clean such equipment of seeds, soil, vegetative matter, and other debris that could contain or hold seeds, and shall notify the DNR, as provided in (iii).

(iii) Prior to moving any Off-Road Equipment subject to the cleaning requirements set forth above, Purchaser shall advise DNR of its cleaning measures and make the equipment available for inspection. DNR shall have 2 days, excluding weekends and State holidays, to inspect equipment after it has been made available. After satisfactory inspection or after such 2 day period, Purchaser may move the equipment as planned. Equipment shall be considered clean when a visual inspection does not disclose seeds, soil, vegetative matter, and other debris that could contain or hold seeds. Purchaser shall not be required to disassemble equipment unless so directed by the DNR after inspection.

(iv) If Purchaser desires to clean Off-Road Equipment on National Forest land, such as at the end of a project or prior to moving to, or through an area that is free of invasive species of concern, Purchaser shall obtain prior approval from the Unit Manager or his/her representative as to the location for such cleaning and measures, if any, for controlling impacts.

(v) Unit Manager or his/her representative may order delay, interruption, or modification of this Contract pursuant to Condition & Requirement 7.3 or 7.3.4.

(c) Nothing contained in this Condition & Requirement shall be interpreted as creating any warranty on the part of the DNR that all locations of invasive species of concern have been described herein, elsewhere in this Contract, or designated on the ground. Following sale advertisement, additional locations may be described or designated, and other species may be added to the list of invasive species of concern. In such event, the Unit Manager or his/her representative may order delay, interruption, or modification of this Contract pursuant to Condition & Requirement 7.3 or 7.3.4.

(d) The parties shall promptly communicate with one another with respect to description or designation of additional locations;

discovery of locations of new species or new infestation; and, addition of species to the list of invasive species of concern.

## 5.7 - Protection of Historical Sites

### 5.7.1 - Historical sites (7/12)

The Purchaser shall not cut live or dead trees or operate equipment within historical sites. Historical sites are marked with orange boundary line, and identified on the Timber Sale Map as Special Protection Areas. The Purchaser shall protect historical sites from damage by the Purchaser's operations. If Purchaser's operations have cut or damaged historical sites through carelessness, the Purchaser shall pay \$10,000 as fixed, agreed and liquidated damages for each acre or part thereof cut or damaged.

## 5.8 - Protection of Endangered Species

### 5.8.3 - Red shoulder hawk or goshawk (2/16)

In the event that an active red shoulder hawk or goshawk nest is found, the contract may be amended to protect the nest site until the nest is determined to be inactive. The value of the trees in this excluded area will be refunded or credited to the Purchaser. The nest will be buffered with a five-chain radius (eight acre) protection area, centered on the nest tree, in which there will be no cutting or new roads constructed. Avoid human disturbance, including loading and skidding, in the protection area.

An additional zone of five chains (ten chains centered on the active nest tree) will be established in which there is no management activity from April 1 to July 30. Limit biomass harvesting and chipping operations within this ten-chain zone, retain the maximum one-third of residues per the Woody Biomass Harvesting Guidelines (Michigan DNR 2010). Nests determined to be inactive will be protected with a one-chain no-harvest buffer.

## 6 - Safety and Fire Prevention

### 6.2 - Signing

#### 6.2.1 - Road posting (10/20)

The Purchaser is responsible for posting and maintaining caution signs on system roads prior to beginning operations. The road must be posted at appropriate distances from the sale area to warn of logging activity and truck traffic. Signs must be removed when harvest operations are suspended or completed. The Purchaser will provide these signs.

## 7 - Other Conditions

### SKIP

#### 7.1.1 - GNA, title (7/16)

General Condition & Requirement 7.1 is inapplicable. The following applies to this contract.

All right, title, and interest in and to any Included Timber shall remain in USDA Forest Service with the State of Michigan acting on behalf of the USDA Forest Service under this GNA contract, until it has been Measured, removed from Sale Area or other authorized cutting area, and paid for, at which time title shall vest in Purchaser. Title to any Included Timber that has been Measured and paid for, but not removed from Sale Area or other authorized cutting area by Purchaser on or prior to Termination Date, shall remain in USDA Forest Service.

### 7.3 - Contract Modifications

#### 7.3.4 - GNA, contract suspension and modification (5/16)

(a) The Unit Manager may, by written order, delay or interrupt authorized operations under this contract or, notwithstanding Condition & Requirement 7.3, modify this contract, in whole or in part:

(i) To prevent environmental degradation or resource damage, including, but not limited to, harm to habitat, plants, animals, cultural resources, or cave resources;

(ii) To ensure consistency with land and resource management plans or other documents prepared pursuant to the National Environmental Policy Act of 1969, 42 USC 4321-4347;

(iii) To conduct environmental analysis, including, but not limited to, engaging in consultation pursuant to the Endangered

Species Act of 1973, 16 USC 1531, et seq.; or

(iv) Upon agreement of the Forest Service, due to administrative appeal or litigation, regardless of whether the Unit Manager's order is required by a court order or this contract is named in such a proceeding.

(b) In the event of an order delaying or interrupting Purchaser's Operations under this Condition & Requirement, Purchaser's remedy shall be:

(i) a no cost contract extension,

(ii) reimbursement for Out-of-Pocket Expenses,

however, the foregoing remedies shall be available only to the extent that the Unit Manager's order was the sole and exclusive cause of the delay or interruption of Purchaser's operations.

(c) Remedies awarded to the Purchaser shall not be duplicative, and the Unit Manager shall have the right to structure remedies provided herein to avoid duplicative compensation.

(d) Purchaser agrees that this Condition & Requirement, and the remedies provided herein shall apply regardless of any finding by any court that the DNR failed to comply with any statute, regulation and/or policy in connection with awarding, advertising, or authorizing this sale, or a similar sale.

## 7.5 - Loss

### 7.5.2 - GNA, liability for loss (7/16)

If Included Timber is destroyed or damaged by an unexpected event that changes the nature of Included Timber, such as wind, flood, insects, disease, or similar cause, the Purchaser shall bear the timber value loss resulting from such destruction or damage.

Deterioration or loss of timber value due to delay or interruption under 7.3.4 - GNA, contract suspension and modification, shall be borne by the party holding title. In this event, Included Timber to which USDA Forest Service holds title, Purchaser of the State GNA contract will not be obligated to remove and pay for such timber. This Subsection shall not be construed to relieve either party of liability for negligence.



# TIMBER SALE MAP

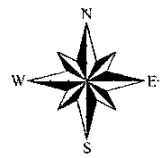
This information provided by authority of Part 5, 1994 PA 451, as amended.

Sale Number	Year
41-817-20-01	2020

Forest Management Shingleton	County Alger	Mapped By Molin	Date 9/29/20	Page 1	of 3
		Cruised By UPLM			

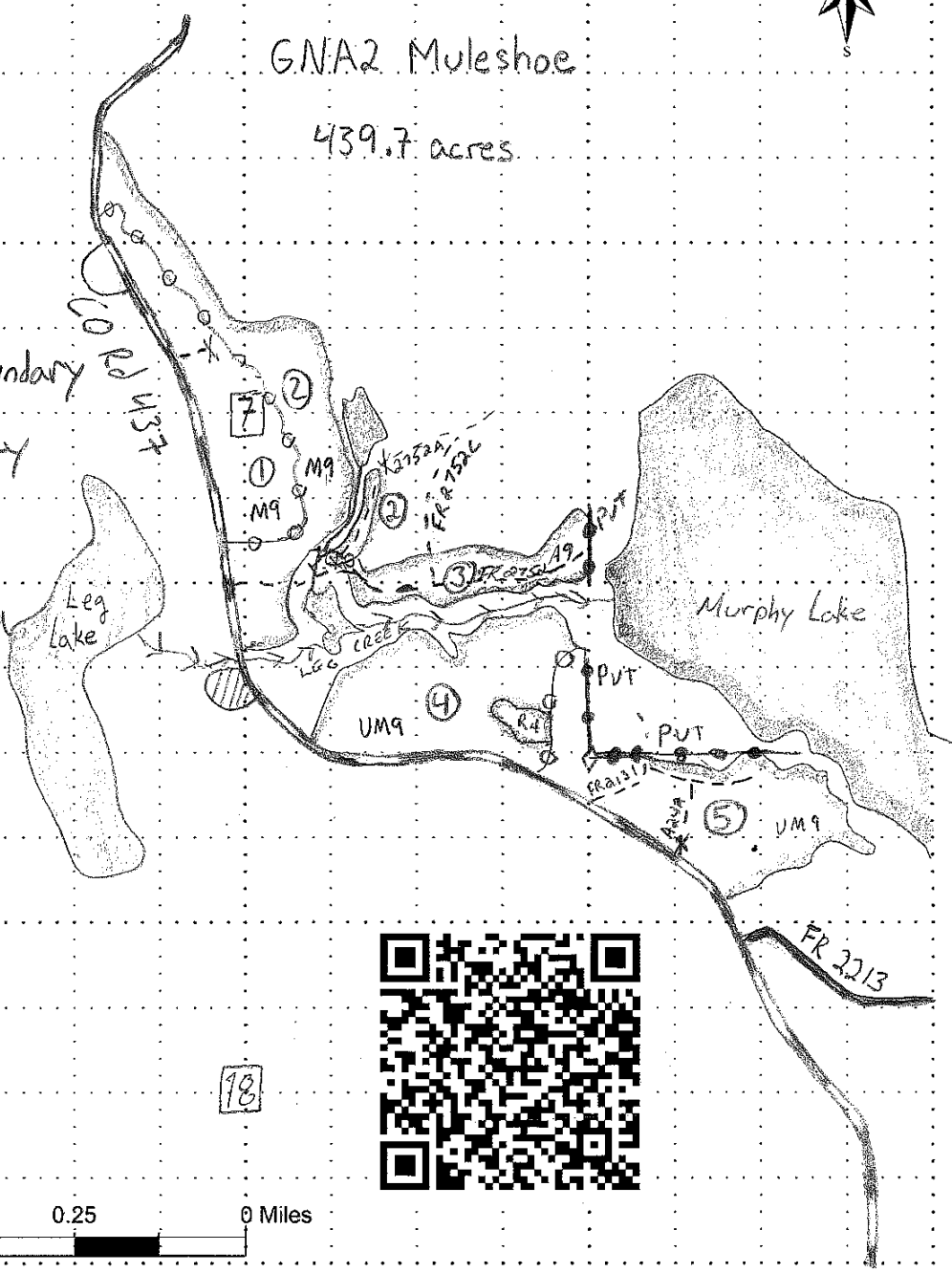
Compartment Number GNA	Township 43N	Range 17W	Section(s) and Subdivision(s) 4-SW. 7-E1/2NW, SWNE, E1/2SW, SE. 8-S1/2SW. 9- E1/2NW, SWNE, E1/2SW, W1/2SE. 16- NW, NWNE, SW, NWSE, S1/2SE. 17-N1/2NW, E1/2SE. 18-NENE. 20NENE. 21-N1/2NW, N1/2NE
---------------------------	-----------------	--------------	---

Cover Type				Density	
A = Aspen	J = Jack Pine	O = Oak	U = Upland Brush	0 = Non Stocked	5 = Pole Timber Medium
B = Paper Birch	K = Rock	P = Lowland Poplar	UM = Upland Mix Forest	1 = Seedling Sapling Poor	6 = Pole Timber Well
C = Cedar	L = Lowland Brush	Q = Mixed Swamp Conifer	V = Bog or Marsh	2 = Seedling Sapling Medium	7 = Saw Timber Poor
D = Treed Bog	LM = Lowland Mix Forest	R = Red Pine	W = White Pine	3 = Seedling Sapling Well	8 = Saw Timber Medium
E = Swamp Hardwoods	M = Maple, Beech, Birch	S = Black Spruce	X = Non Stocked	4 = Pole Timber Poor	9 = Saw Timber Well
F = Spruce/Fir	MC = Mixed Conifer	T = Tamarack	Y = Sand		
G = Grass	MD = Mixed Deciduous		Z = Water		
H = Hemlock	N = Mash				



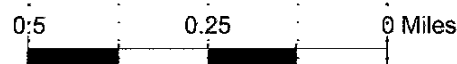
- County Rd
- Forest Service Rd
- 2-track
- orange Sale boundary
- orange (King) Unit boundary
- Red Private boundary
- Survey corner
- Special protection area
- Payment Unit
- BERM LOCATION (FUTURE)

GNA2 Muleshoe  
439.7 acres



- Unit
- 1 - 30.1 Ac
  - 2 - 36.2 Ac
  - 3 - 13 Ac
  - 4 - 35.4 Ac
  - 5 - 40.4 Ac

18





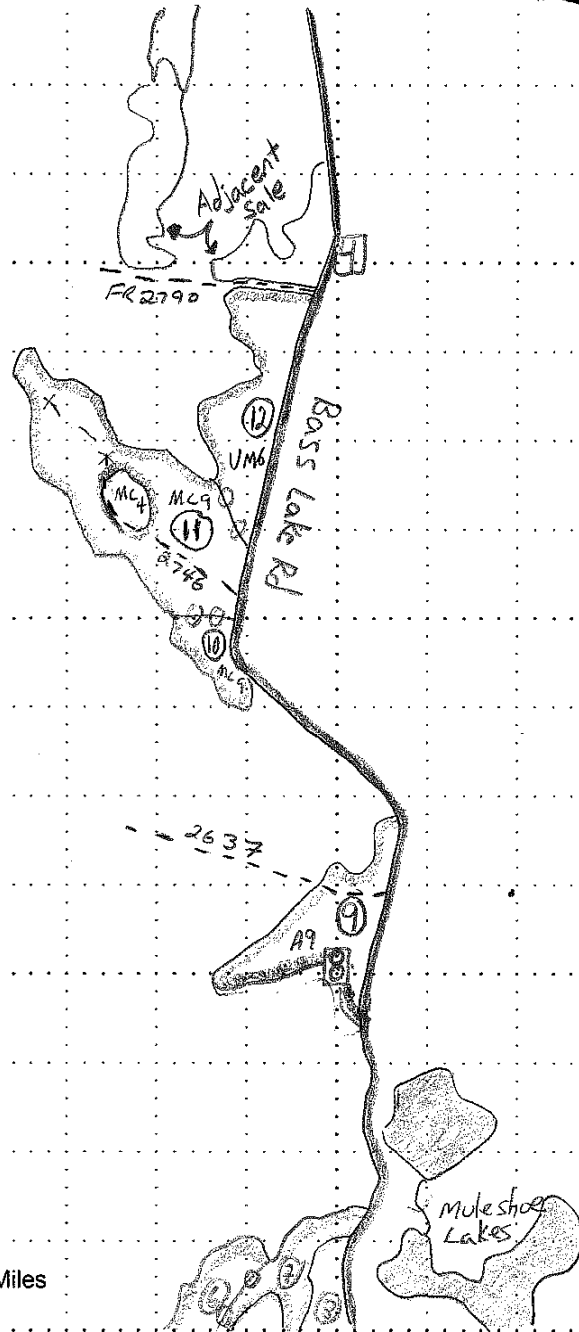
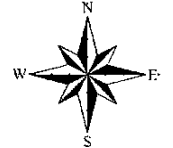
# TIMBER SALE MAP

This information provided by authority of Part 5, 1994 PA 451, as amended.

Sale Number	Year
41-817-20-01	2020

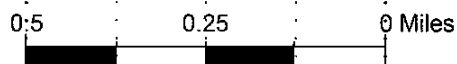
Forest Management Shingleton	County Alger	Mapped By Molin	Date 9/29/20	Page 2	of 3
Compartment Number GNA	Township 43N	Range 17W	Section(s) and Subdivision(s) 4-SW. 7-E1/2NW, SWNE, E1/2SW, SE. 8-S1/2SW. 9- E1/2NW, SWNE, E1/2SW, W1/2SE. 16- NW, NWNE, SW, NWSE, S1/2SE. 17-N1/2NW, E1/2SE. 18-NENE. 20NENE. 21-N1/2NW, N1/2NE		

Cover Type				Density	
A = Aspen	J = Jack Pine	O = Oak	U = Upland Brush	0 = Non Stocked	5 = Pole Timber Medium
B = Paper Birch	K = Rock	P = Lowland Poplar	UM = Upland Mix Forest	1 = Seedling Sapling Poor	6 = Pole Timber Well
C = Cedar	L = Lowland Brush	Q = Mixed Swamp Conifer	W = White Pine	2 = Seedling Sapling Medium	7 = Saw Timber Poor
D = Treed Bog	LM = Lowland Mix Forest	R = Red Pine	V = Bog or Marsh	3 = Seedling Sapling Well	8 = Saw Timber Medium
E = Swamp Hardwoods	M = Maple, Beech, Birch	S = Black Spruce	X = Non Stocked	4 = Pole Timber Poor	9 = Saw Timber Well
F = Spruce/Fir	MC = Mixed Conifer	T = Tamarack	Y = Sand		
G = Grass	MD = Mixed Deciduous		Z = Water		
H = Hemlock	N = Mash				



Unit

- 9 = 11.9 AC
- 10 = 4.9 AC
- 11 = 32.7 AC
- 12 = 17.9 AC





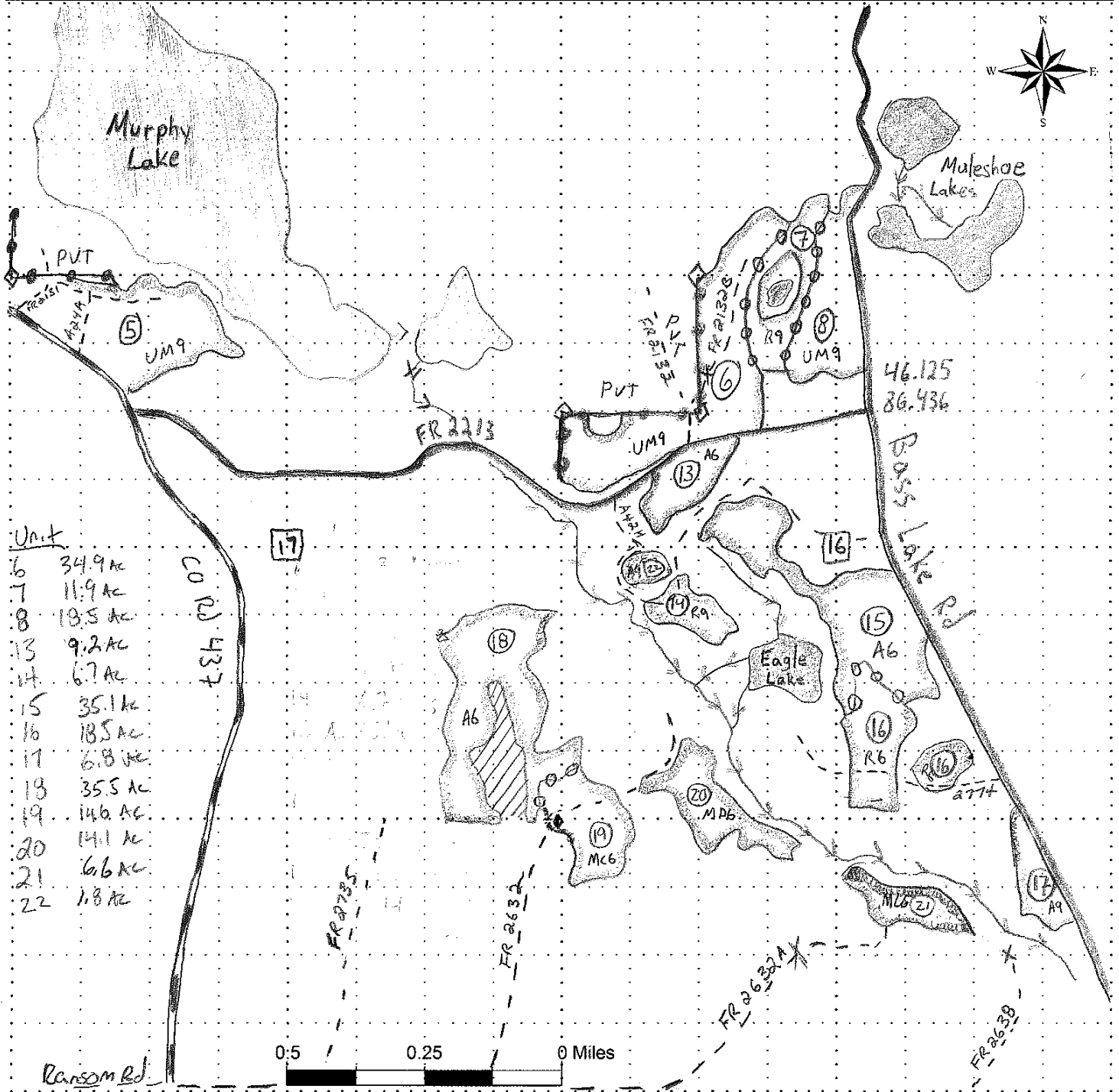
# TIMBER SALE MAP

This information provided by authority of Part 5, 1994 PA 451, as amended.

Sale Number	Year
41-817-20-01	2020

Forest Management Shingleton	County Alger	Mapped By Cruised By	Molin UPLM	Date 9/29/20	Page 3	of 13
Compartment Number GNA	Township 43N	Range 17W	Section(s) and Subdivision(s) 4-SW. 7-E1/2NW, SWNE, E1/2SW, SE. 8-S1/2SW. 9- E1/2NW, SWNE, E1/2SW, W1/2SE. 16- NW, NWNE, SW, NWSE, S1/2SE. 17-N1/2NW, E1/2SE. 18-NENE. 20NENE. 21-N1/2NW, N1/2NE			

Cover Type				Density	
A = Aspen	J = Jack Pine	O = Oak	U = Upland Brush	0 = Non Stocked	5 = Pole Timber Medium
B = Paper Birch	K = Rock	P = Lowland Poplar	UM = Upland Mix Forest	1 = Seedling Sapling Poor	6 = Pole Timber Well
C = Cedar	L = Lowland Brush	Q = Mixed Swamp Conifer	V = Bog or Marsh	2 = Seedling Sapling Medium	7 = Saw Timber Poor
D = Tread Bog	LM = Lowland Mix Forest	R = Red Pine	W = White Pine	3 = Seedling Sapling Well	8 = Saw Timber Medium
E = Swamp Hardwoods	M = Maple, Beech, Birch	S = Black Spruce	X = Non Stocked	4 = Pole Timber Poor	9 = Saw Timber Well
F = Spruce/Fir	MC = Mixed Conifer	T = Tamarack	Y = Sand		
G = Grass	MD = Mixed Deciduous		Z = Water		
H = Hemlock	N = Mash				



Unit

6	34.9 ac
7	11.9 ac
8	13.5 ac
13	9.2 ac
14	6.7 ac
15	35.1 ac
16	18.5 ac
17	6.8 ac
18	35.5 ac
19	14.6 ac
20	14.1 ac
21	6.6 ac
22	1.3 ac





## TIMBER SALE INFORMATION

### Go Pack Go (41-013-20)

T49N, R15W, SEC. 30; T49N, R15W, SEC. 31; T49N, R15W, SEC. 32.  
Alger County (Advertised Price \$135,364.40)

SALE NOTE: Road work is required on this sale. See Sale Spec. 4.1.8 for details.

The county must be contacted prior to crossing or harvesting in the county road R-O-W. This applies to H-58.

The Fox River Pathway is a hiking trail shown on the Timber Sale Map. See Sale Spec. 5.2.40 for restrictions.

H-58 is a snowmobile trail and is shown on the Timber Sale Map. See Sale Spec. 5.2.41 for additional information.

The Purchaser shall not cut live or dead trees or operate equipment within historical sites. Historical sites are marked with an "H" on the Timber Sale Map. This is outside of the red line in Payment Unit 2. See Sale Spec. 5.7.1 for requirements.

A recreation site such as a trail, pathway, or campground is within the sale area or the vicinity. Certain restrictions/specifications may be applicable including time restrictions.

A timber sale contract for this lump sum, sealed bid timber sale will be awarded to the responsible bidder offering the highest sealed bid price. All units of volume listed below were estimated using the T-Sale computer program and our traditional volume equations. Bids must be at or above the following advertised price for each product and species:

<u>PRODUCTS &amp; SPECIES</u>	<u>ESTIMATED UNITS*</u>	<u>ADVERTISED PRICE</u>
Pulpwood		
Hemlock	17 Cords	\$ 13.75 / Cord
Jack Pine	19 Cords	\$ 27.30 / Cord
Paper Birch	26 Cords	\$ 13.55 / Cord
Quaking Aspen	4 Cords	\$ 22.15 / Cord
Red Maple	35 Cords	\$ 17.15 / Cord
Red Pine	2,406 Cords	\$ 47.15 / Cord
White Pine	1,191 Cords	\$ 16.90 / Cord

\* The total volume is statistically estimated within plus (+) or minus (-) 14.07 percent. There are an estimated 3,699 cords on this timber sale, plus or minus 520 cords at the 95% confidence level. The estimated units are final and not subject to adjustment. Prospective bidders are urged to examine this timber and to make their own estimates of quantity and quality.

### **BOND AND PAYMENT SCHEDULE:**

1. A bond in the amount of \$6,768.00 to insure faithful performance of the conditions of the contract will be deposited by the successful bidder within 21 days of the sale award.
2. Cutting in any sale or unit without the required advance payment would be considered a trespass.
3. Total payment must be paid in advance or according to the following schedule :
  - (a) Ten percent (10%) of the sale value must be paid within 21 days of the sale award.
  - (b) The 10% down payment will be credited towards the first unit cut.

(c) Payment for each of the following units must be made before cutting begins in that unit:

PAYMENT UNIT NUMBER	PERCENT OF TOTAL SALE VALUE
01	3.9%
02	0.5%
03	1.5%
04	7.2%
05	9.1%
06	3.3%
07	9.6%
08	4.6%
09	18.7%
10	4.1%
11	4.3%
12	19.6%
13	13.6%

4. If no cutting takes place, the 10% down payment will not be refunded.
5. Operations on the contract issued will terminate on 12/31/2024.

**SALE STATISTICS****SALE VOLUMES**

VOLUME			STATISTICAL RANGE IN CORDS	
TOTAL CUBIC FEET	TOTAL CORDS	PERCENT ERROR	MINIMUM	MAXIMUM
292,244	3,699	14.07%	3,179	4,220

**VDU VOLUMES**

A VDU is a Volume Determination Unit. Volumes and their associated statistics are calculated at the VDU level and summarized to the sale level. There is often a one to one relationship between a VDU and a Payment Unit, but not always, depending on the cruise design. Refer to the VDU TO PAYMENT UNIT table.

VDU	VOLUME			RANGE IN CORDS	
	TOTAL CUBIC FEET	TOTAL CORDS	PERCENT ERROR	MINIMUM	MAXIMUM
1	9,117	115	39.10%	70	161
2	2,307	29	91.71%	2	56
3	3,563	45	55.51%	20	70
4	18,289	232	22.58%	179	284
5	25,296	320	36.40%	204	437
6	9,235	117	52.43%	56	178
7	22,333	283	35.86%	181	384
8	10,847	137	26.01%	102	173
9	62,197	787	12.92%	686	889
10	11,384	144	46.00%	78	210
11	10,159	129	38.83%	79	179
12	56,390	714	20.46%	568	860
13	51,145	647	26.26%	477	817
<b>TOTAL:</b>	<b>292,261</b>	<b>3,700</b>		<b>2,701</b>	<b>4,698</b>

**VDU TO PAYMENT UNIT**

When a VDU is associated with more than one Payment Unit (PU), the VDU volumes are assigned to the PU based on acres of the VDU within the PU.

VDU	VDU ACRES	PU	PU ACRES
1	21.2	1	21.2
2	11.2	2	11.2
3	5.6	3	5.6
4	22.2	4	22.2
5	84.7	5	84.7
6	17.7	6	17.7
7	30.3	7	30.3
8	19.1	8	19.1
9	20.0	9	20.0
10	20.8	10	20.8
11	10.9	11	10.9
12	24.3	12	24.3
13	25.3	13	25.3
<b>TOTAL:</b>	<b>313.3</b>		<b>313.3</b>

**DESCRIPTION OF TIMBER BY PAYMENT UNIT (PU)**

PU	MARKET GROUP	PRODUCT	QUANTITY	UNIT	ACRES	ADVERTISE PRICE
1	Red Maple Red Pine White Pine	Pulpwood	1 110 5	Cords Cords Cords	21.2	\$5,288.15
2	Red Pine White Pine	Pulpwood	6 24	Cords Cords	11.2	\$688.50
3	Red Pine White Pine	Pulpwood	44 1	Cords Cords	5.6	\$2,091.50
4	Paper Birch Red Pine White Pine	Pulpwood	1 192 38	Cords Cords Cords	22.2	\$9,708.55
5	Jack Pine Quaking Aspen Red Pine White Pine	Pulpwood	18 4 222 76	Cords Cords Cords Cords	84.7	\$12,331.70
6	Red Pine White Pine	Pulpwood	82 35	Cords Cords	17.7	\$4,457.80
7	Red Pine White Pine	Pulpwood	274 8	Cords Cords	30.3	\$13,054.30
8	Red Pine White Pine	Pulpwood	128 9	Cords Cords	19.1	\$6,187.30
9	Paper Birch Red Pine White Pine	Pulpwood	8 398 381	Cords Cords Cords	20.0	\$25,313.00
10	Red Pine White Pine	Pulpwood	104 40	Cords Cords	20.8	\$5,579.60
11	Jack Pine Paper Birch Red Pine White Pine	Pulpwood	1 2 123 1	Cords Cords Cords Cords	10.9	\$5,870.75
12	Red Pine White Pine	Pulpwood	472 242	Cords Cords	24.3	\$26,344.60
13	Hemlock Paper Birch Red Maple Red Pine White Pine	Pulpwood	17 15 34 251 331	Cords Cords Cords Cords Cords	25.3	\$18,448.65
TOTAL:			3,698	Cords		

## Sale Specific Conditions & Requirements

**Sale Name: Go Pack Go**

**Sale Number: 41-013-20 Seq#: 1**

### 1 - Sale Area

#### 1.2 - Boundaries

##### 1.2.1 - Painted boundaries (9/19)

The sale boundary and Payment Unit boundaries are marked and identified by red and yellow paint. Exterior sale boundary lines against state are marked with red paint. Interior Payment Unit boundaries are marked with yellow paint. The painted boundary line trees are not Included Timber and are to be protected unless marked with orange paint. Yellow painted trees designating an interior Payment Unit boundary are only to be cut when all surrounding Payment Units have been paid.

### 2 - Timber Specifications

#### 2.1 - Included Timber

##### 2.1.1 - Clearcut unit(s) with unmerchantable trees (6/14)

Within Payment Unit(s) 9, 12 & 13, cut all trees that are two (2) inches or more at DBH. In addition, cut all snags.

##### 2.1.2 - Clearcut unit(s) w/o unmerchantable trees (8/11)

Within Payment Unit(s) 2 and 5, cut all trees which meet minimum piece specifications in 2.2 Utilization, except do not cut oak and hemlock.

##### 2.1.3 - Cut tree marked unit(s) (12/08)

Within Payment Unit(s) 1, 3, 4, 6-8, 10, and 11, all trees are designated for cutting when marked with orange paint above and below stump height, regardless of merchantability.

#### 2.2 - Utilization

##### 2.2.3 - Stump heights (4/07)

Stump heights within Payment Units 1, 3, 4, and 6-13 shall not exceed 12 inches for trees greater than 10 inches DBH and 4 inches for trees smaller than 10 inches DBH. This is in order to facilitate future planting operations.

### 3 - Payments

#### 3.3 - Pre-measured Sales

##### 3.3.4 - Dividing payment units (7/14)

Payment Unit(s) with a value over \$20,000 may be divided at the request of the Purchaser and upon approval of the Unit Manager. Dividing Payment Units is a contract modification which requires a Timber Sale Contract Amendment.

### 4 - Transportation

#### 4.1 - Construction

##### 4.1.3 - Slash and earthen piles (8/04)

Piles or windrows of earth along roads and landings that have been widened or constructed shall be leveled. Slash from road maintenance or construction, including stumps, shall be dispersed throughout the sale.

##### 4.1.4 - Timber removed for construction (12/09)

Trees cut or damaged in the process of pre-approved road, landing or skid trail construction will be decked in an area separate from other Designated Timber and not removed until measured by the sale administrator. Payment will be made at the specified Purchase Unit Price.

##### 4.1.6 - Road construction (1/09)

Construction of new roads or improvements of existing roads shall be done in such a way as to minimize the environmental and visual impacts. Merchantable trees shall be cut and utilized unless otherwise directed. Non-merchantable trees shall be severed and laid flat on the ground. Slash shall be scattered, and not left in windrows and kept a minimum of 10 feet back from the road edge. Stumps shall be set upright, not left on edge, and be moved at least 10 feet away from the road edge. Disturbed soil shall be feathered into the woods and not left in berms or windrows.

#### 4.1.7 - Road closure (10/11)

Some new roads built into the sale must be blocked to vehicle traffic upon completion of the sale. Overgrown roads that are reopened shall be considered new roads. These roads must be rendered impassable to trucks and cars. In general, this will require constructing a four (4') foot high berm of stumps and logs covered with earth. Contact the sale administrator for specific details of design and placement.

#### 4.1.8 - Road work (1) (8/07)

The following road work is required: 200 cubic yards of breaker run gravel must be purchased, hauled and spread between the sale area and H-58. All work is at the Purchaser's expense and no deductions will be given. Exact locations will be determined at the Pre-Sale meeting. All work must be completed before trucking can begin.

#### 4.1.10 - Oversight (12/08)

The Unit Manager, or his/her representative, must be present when the road improvement project is initiated.

### 4.2 - Maintenance

#### 4.2.4 - Grading (10/16)

For completion of the sale, state forest roads must be graded. In general, this will require a road grader or bull dozer to shape up the roads after forest products have been hauled off site. This includes cleaning of drainage areas, grading, crowning and filling with gravel, if necessary. The grading equipment to be used must be approved by the Unit Manager or his/her representative.

### 4.3 - Public Right-of-Way

#### 4.3.2 - County R-O-W (12/06)

The county must be contacted prior to crossing or harvesting in the county road R-O-W. This applies to H-58.

## 5 - Operations

### 5.2 - Conduct of Operations

#### 5.2.1 - Slash

##### 5.2.1.11 - Slash for reforestation (5/07)

To facilitate reforestation, Payment Unit(s) 9, 12, and 13 shall be left with slash evenly distributed. Bunched tops within the cutting area shall be broken up and scattered. Stumps shall be cut low to the ground. Processing sites shall not be left with a compacted layer of slash; tops from these sites shall be hauled back into the cut area and scattered. Harvesting operations must allow for subsequent planting operations, as determined by the sale administrator.

#### 5.2.2 - Hazard Trees/Snags

##### 5.2.2.1 - Den trees (10/16)

Obvious hollow and/or den trees shall be protected and left standing unless they are a safety hazard. This specification does not apply to Payment Units 9, 12 and 13.

#### 5.2.3 - Operating Restrictions

##### 5.2.3.6 - Bark beetle restriction (12/08)

In the event drought creates a high risk of pine bark beetle infestation, pine is not to be cut during the period March 1 through July 1, unless all portions of trees greater than two inches in diameter are removed from the sale area, reduced to chips, or treated to the satisfaction of the Unit Manager or his/her representative, within fifteen days of being severed from the stump. Pine log decks, pulpwood piles and treetops that are piled for chipping in the fall or winter within a 1/4 mile of susceptible sites must be removed before March 15. Residual slash must not be placed in piles or rows and must be spread over the site for quick drying. The Department of Natural Resources will exercise this specification if the risk of damage warrants.

##### 5.2.32 - Decking/landing restoration (9/13)

All decking and landing areas must have the surface area restored to a condition equal to or better than before. This is to ensure the proper regeneration of the stand. Wood debris, chips and "cookies" from trimmings must be removed or scattered away from landing and loading areas and may not be windrowed on the edge.

#### 5.2.38 - No decking against live trees (2/04)

Cut products may not be decked against unmarked or designated leave trees.

#### 5.2.40 - Pathway protection (10/10)

The Fox River Pathway is a hiking trail and is shown on the Timber Sale Map. Do not cut trees or damage posts with blue pathway markers. Maintain a 20-foot wide slash, debris, and rut free zone daily, using the pathway as the centerline. Do not run equipment down the pathway.

#### 5.2.41 - Snowmobile trail protection (9/11)

H-58 is a snowmobile trail and is shown on the Timber Sale Map. Do not cut or damage posts with orange trail markers or traffic control signs. The snowmobile trail may not be used for any timber sale operations from December 1 to March 31.

### 5.4 - Soil Protection

#### 5.4.1 - Rutting restriction, general (7/16)

Operations are to cease immediately if equipment and weather conditions result in rutting of roads and/or skid trails which is 12 inches or greater in depth and 50 feet in length. The Unit Manager or his/her representative may restrict hauling and/or skidding if ruts exceed the specified depth. With the Unit Manager or his/her representative's approval, the Purchaser may return to the area when the risk of rutting has decreased.

### 5.7 - Protection of Historical Sites

#### 5.7.1 - Historical sites (7/12)

The Purchaser shall not cut live or dead trees or operate equipment within historical sites. Historical sites are marked with an "H" on the map. This is outside of the redline in Payment Unit 2. The Purchaser shall protect historical sites from damage by the Purchaser's operations. If Purchaser's operations have cut or damaged historical sites through carelessness, the Purchaser shall pay \$1000 as fixed, agreed and liquidated damages for each acre or part thereof cut or damaged.

### 5.8 - Protection of Endangered Species

#### 5.8.3 - Red shoulder hawk or goshawk (2/16)

In the event that an active red shoulder hawk or goshawk nest is found, the contract may be amended to protect the nest site until the nest is determined to be inactive. The value of the trees in this excluded area will be refunded or credited to the Purchaser. The nest will be buffered with a five-chain radius (eight acre) protection area, centered on the nest tree, in which there will be no cutting or new roads constructed. Avoid human disturbance, including loading and skidding, in the protection area.

An additional zone of five chains (ten chains centered on the active nest tree) will be established in which there is no management activity from April 1 to July 30. Limit biomass harvesting and chipping operations within this ten-chain zone, retain the maximum one-third of residues per the Woody Biomass Harvesting Guidelines (Michigan DNR 2010). Nests determined to be inactive will be protected with a one-chain no-harvest buffer.

## 6 - Safety and Fire Prevention

### 6.2 - Signing

#### 6.2.1 - Road posting (10/20)

The Purchaser is responsible for posting and maintaining caution signs on H-58 prior to beginning operations. The road must be posted at appropriate distances from the sale area to warn of logging activity and truck traffic. Signs must be removed when harvest operations are suspended or completed. The Purchaser will provide these signs.

#### 6.2.3 - Recreational trail posting (2/10)

The Purchaser is responsible for posting and maintaining caution signs on the Fox River Pathway prior to beginning operations. The trail must be posted at appropriate distances from the sale area to warn of logging activity and truck traffic at both ends of the trail. Signs must be removed when harvest operations are suspended or completed. The Purchaser will provide these signs.

## 7 - Other Conditions

### 7.3 - Contract Modifications

7.3.3 - Modification for reforestation (8/05)

When contractual work of Purchaser has been accepted for any Payment Unit identified on Sale Area Map, Payment Unit will be eliminated from the Sale Area on written notice so that reforestation operations can begin.



# TIMBER SALE MAP

This information provided by authority of Part 5, 1994 PA 451, as amended.

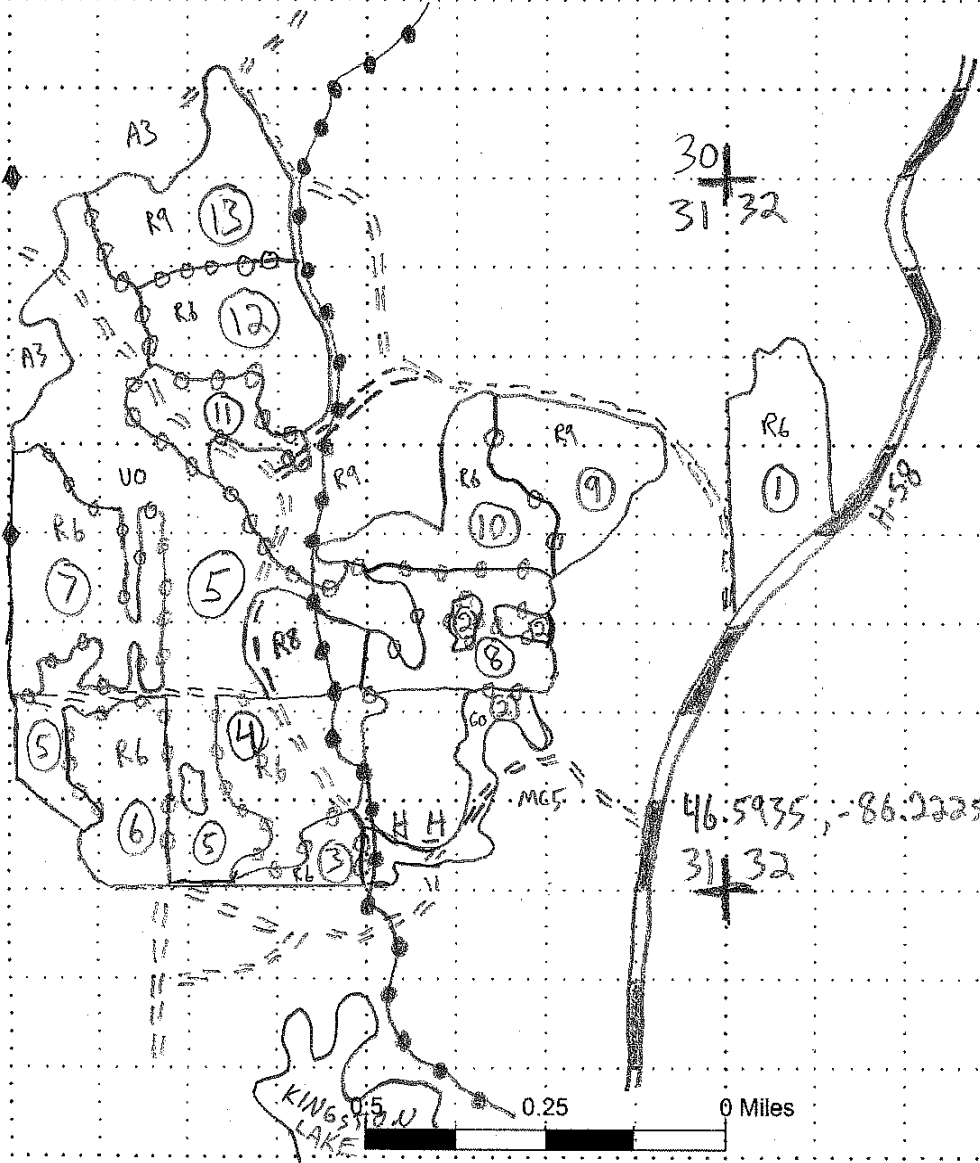
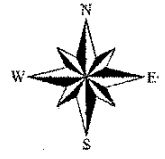
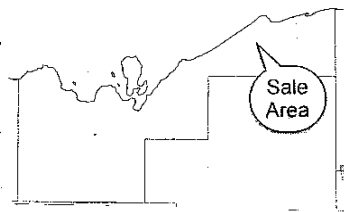
Sale Number	13	Year	20
-------------	----	------	----

Forest Management Unit Shingleton	County Alger	Mapped By Petrelus	Date 9-27-20	Page 1	of 1
Compartment Number 134	Township 49N	Range 15W	Section(s) and Subdivision(s) 32: SW1/4, NW1/4, NW1/4 30: SE1/4, SE1/4, NE1/4, NE1/4		

Cover Type				Density	
A = Aspen	J = Jack Pine	O = Oak	U = Upland Brush	0 = Non Stocked	5 = Pole Timber Medium
B = Paper Birch	K = Rock	P = Lowland Poplar	UM = Upland Mix Forest	1 = Seedling Sapling Poor	6 = Pole Timber Well
C = Cedar	L = Lowland Brush	Q = Mixed Swamp Conifer	V = Bog or Marsh	2 = Seedling Sapling Medium	7 = Saw Timber Poor
D = Treed Bog	LM = Lowland Mix Forest	R = Red Pine	W = White Pine	3 = Seedling Sapling Well	8 = Saw Timber Medium
E = Swamp Hardwoods	M = Maple, Beech, Birch	S = Black Spruce	X = Non Stocked	4 = Pole Timber Poor	9 = Saw Timber Well
F = Spruce/Fir	MC = Mixed Conifer	T = Tamarack	Y = Sand		
G = Grass	MD = Mixed Deciduous		Z = Water		
H = Hemlock	N = Marsh				



## 313.3 Acres



### Legend

- Red paint
- Yellow paint
- woods road
- Payment Units
- Survey corners
- Fox River Pathway
- Historical Area

### Unit Acres

1	21.2
2	11.2
3	5.6
4	22.2
5	84.7
6	17.7
7	30.3
8	19.1
9	20.0
10	20.8
11	10.4
12	24.3
13	25.3



## TIMBER SALE INFORMATION

South Goes North Pine (41-014-20)  
 T49N, R15W, SEC. 28; T49N, R15W, SEC. 32; T49N, R15W, SEC. 33.  
 Alger County (Advertised Price \$194,066.80)

SALE NOTE: The county must be contacted prior to crossing or harvesting in the county road R-O-W. This applies to H-58 and the Hurricane Truck Trail.

H-58 and the Hurricane Truck Trail are snowmobile trails. See Sale Spec. 5.2.41 for additional details.

A recreation site such as a trail, pathway, or campground is within the sale area or the vicinity. Certain restrictions/specifications may be applicable including time restrictions.

A timber sale contract for this lump sum, sealed bid timber sale will be awarded to the responsible bidder offering the highest sealed bid price. All units of volume listed below were estimated using the T-Sale computer program and our traditional volume equations. Bids must be at or above the following advertised price for each product and species:

<u>PRODUCTS &amp; SPECIES</u>	<u>ESTIMATED UNITS*</u>	<u>ADVERTISED PRICE</u>
Pulpwood		
B. T. Aspen	10 Cords	\$ 22.15 / Cord
Jack Pine	137 Cords	\$ 27.30 / Cord
Paper Birch	40 Cords	\$ 13.55 / Cord
Red Maple	11 Cords	\$ 17.15 / Cord
Red Pine	3,301 Cords	\$ 47.15 / Cord
White Pine	1,996 Cords	\$ 16.90 / Cord

\* The estimated units are final and not subject to adjustment. Prospective bidders are urged to examine this timber and to make their own estimates of quantity and quality.

**BOND AND PAYMENT SCHEDULE:**

1. A bond in the amount of \$9,703.00 to insure faithful performance of the conditions of the contract will be deposited by the successful bidder within 21 days of the sale award.
2. Cutting in any sale or unit without the required advance payment would be considered a trespass.
3. Total payment must be paid in advance or according to the following schedule :
  - (a) Ten percent (10%) of the sale value must be paid within 21 days of the sale award.
  - (b) The 10% down payment will be credited towards the first unit cut.
  - (c) Payment for each of the following units must be made before cutting begins in that unit:

PAYMENT UNIT NUMBER	PERCENT OF TOTAL SALE VALUE
01	4.9%
02	2.5%
03	2.3%
04	1.2%
05	1.3%
06	2.0%
07	1.7%
08	1.9%
09	3.7%
10	1.7%
11	3.2%
12	2.8%
13	2.7%
14	3.2%
15	6.6%
16	6.5%
17	8.2%
18	1.1%
19	1.3%
20	11.8%
21	11.4%
22	10.6%
23	7.4%

4. If no cutting takes place, the 10% down payment will not be refunded.
5. Operations on the contract issued will terminate on 12/31/2024.

**SALE STATISTICS**

**SALE VOLUMES**

VOLUME			STATISTICAL RANGE IN CORDS	
TOTAL CUBIC FEET	TOTAL CORDS	PERCENT ERROR	MINIMUM	MAXIMUM
434,096	5,495	0.00%	5,495	5,495

**VDU VOLUMES**

A VDU is a Volume Determination Unit. Volumes and their associated statistics are calculated at the VDU level and summarized to the sale level. There is often a one to one relationship between a VDU and a Payment Unit, but not always, depending on the cruise design. Refer to the VDU TO PAYMENT UNIT table.

VDU	VOLUME			RANGE IN CORDS	
	TOTAL CUBIC FEET	TOTAL CORDS	PERCENT ERROR	MINIMUM	MAXIMUM
1	16,242	206	38.52%	126	285
2	8,034	102	43.18%	58	146
3	7,418	94	49.21%	48	140
4	4,171	53	36.36%	34	72
5	5,886	75	38.63%	46	103
6	7,979	101	37.04%	64	138
7	5,483	69	47.06%	37	102
8	7,616	96	38.72%	59	134
9	17,522	222	24.21%	168	275
10	6,075	77	35.04%	50	104
11	11,368	144	27.35%	105	183
12	9,741	123	16.54%	103	144
13	9,978	126	29.00%	90	163
14	65,341	827	18.06%	678	976
15	33,646	426	26.50%	313	539
16	4,622	59	29.41%	41	76
17	8,090	102	29.27%	72	132
18	50,750	642	16.90%	534	751
19	154,121	1,951	15.03%	1,658	2,244
<b>TOTAL:</b>	<b>434,081</b>	<b>5,495</b>		<b>4,282</b>	<b>6,708</b>

**VDU TO PAYMENT UNIT**

When a VDU is associated with more than one Payment Unit (PU), the VDU volumes are assigned to the PU based on acres of the VDU within the PU.

VDU	VDU ACRES	PU	PU ACRES
1	27.2	1	27.2
2	8.8	2	8.8
3	7.5	3	7.5
4	8.5	4	8.5
5	8.1	5	8.1
6	13.6	6	13.6
7	10.2	7	10.2
8	11.2	8	11.2
9	28.0	9	28.0
10	11.2	10	11.2
11	27.3	11	27.3
12	6.2	12	6.2
13	20.4	13	20.4
14	80.2	14	15.7
		15	32.5
		16	32.0
15	41.3	17	41.3
16	8.7	18	8.7
17	21.9	19	21.9
18	34.9	20	34.9
19	114.1	21	44.3
		22	41.1
		23	28.7
<b>TOTAL:</b>	<b>489.3</b>		<b>489.3</b>

**DESCRIPTION OF TIMBER BY PAYMENT UNIT (PU)**

PU	MARKET GROUP	PRODUCT	QUANTITY	UNIT	ACRES	ADVERTISE PRICE
1	Jack Pine	Pulpwood	9	Cords	27.2	\$9,534.25
	Red Pine		197	Cords		
2	Red Pine	Pulpwood	102	Cords	8.8	\$4,809.30
3	Red Pine	Pulpwood	94	Cords	7.5	\$4,432.10
4	Red Pine	Pulpwood	49	Cords	8.5	\$2,377.95
	White Pine		4	Cords		
5	Red Pine	Pulpwood	41	Cords	8.1	\$2,507.75
	White Pine		34	Cords		
6	Red Pine	Pulpwood	73	Cords	13.6	\$3,915.15
	White Pine		28	Cords		
7	Red Pine	Pulpwood	69	Cords	10.2	\$3,253.35
8	Red Maple	Pulpwood	1	Cords	11.2	\$3,770.40
	Red Pine		71	Cords		
	White Pine		24	Cords		
9	Jack Pine	Pulpwood	3	Cords	28.0	\$7,115.05
	Paper Birch		3	Cords		
	Red Maple		5	Cords		
	Red Pine		111	Cords		
	White Pine		99	Cords		
10	Red Pine	Pulpwood	68	Cords	11.2	\$3,358.30
	White Pine		9	Cords		
11	Jack Pine	Pulpwood	2	Cords	27.3	\$6,206.65
	Red Maple		5	Cords		
	Red Pine		124	Cords		
	White Pine		13	Cords		
12	Red Pine	Pulpwood	109	Cords	6.2	\$5,375.95
	White Pine		14	Cords		
13	Red Pine	Pulpwood	106	Cords	20.4	\$5,335.90
	White Pine		20	Cords		
14	B. T. Aspen	Pulpwood	2	Cords	15.7	\$6,173.90
	Jack Pine		23	Cords		
	Paper Birch		6	Cords		
	Red Pine		106	Cords		
	White Pine		25	Cords		
15	B. T. Aspen	Pulpwood	4	Cords	32.5	\$12,810.05
	Jack Pine		48	Cords		
	Paper Birch		13	Cords		
	Red Pine		220	Cords		
	White Pine		51	Cords		
16	B. T. Aspen	Pulpwood	4	Cords	32.0	\$12,580.60
	Jack Pine		47	Cords		
	Paper Birch		12	Cords		
	Red Pine		216	Cords		
	White Pine		51	Cords		
17	Jack Pine	Pulpwood	5	Cords	41.3	\$15,986.90
	Paper Birch		6	Cords		
	Red Pine		290	Cords		
	White Pine		124	Cords		
18	Red Pine	Pulpwood	37	Cords	8.7	\$2,099.45
	White Pine		21	Cords		
19	Red Pine	Pulpwood	26	Cords	21.9	\$2,527.20
	White Pine		77	Cords		
20	Red Pine	Pulpwood	396	Cords	34.9	\$22,862.60
	White Pine		248	Cords		

**DESCRIPTION OF TIMBER BY PAYMENT UNIT (PU), CON'T**

PU	MARKET GROUP	PRODUCT	QUANTITY	UNIT	ACRES	ADVERTISE PRICE
21	Red Pine	Pulpwood	309	Cords	44.3	\$22,140.55
	White Pine		448	Cords		
22	Red Pine	Pulpwood	287	Cords	41.1	\$20,562.45
	White Pine		416	Cords		
23	Red Pine	Pulpwood	200	Cords	28.7	\$14,331.00
	White Pine		290	Cords		
TOTAL:			5,495	Cords		

# Sale Specific Conditions & Requirements

**Sale Name: South Goes North Pine**

**Sale Number: 41-014-20 Seq#: 1**

## 1 - Sale Area

### 1.2 - Boundaries

#### 1.2.1 - Painted boundaries (9/19)

The sale boundary and Payment Unit boundaries are marked and identified by blue, red and yellow paint. Exterior sale boundary lines against private property are marked with blue paint. Exterior sale boundary lines against state are marked with red paint. Interior Payment Unit boundaries are marked with yellow paint. The painted boundary line trees are not Included Timber and are to be protected unless marked with orange paint. Yellow painted trees designating an interior Payment Unit boundary are only to be cut when all surrounding Payment Units have been paid.

## 2 - Timber Specifications

### 2.1 - Included Timber

#### 2.1.1 - Clearcut unit(s) with unmerchantable trees (6/14)

Within Payment Unit(s) 12 and 20, cut all trees that are two (2) inches or more at DBH. In addition, cut all snags.

#### 2.1.3 - Cut tree marked unit(s) (12/08)

Within Payment Unit(s) 1-11 and 13-19, all trees are designated for cutting when marked with orange paint above and below stump height, regardless of merchantability.

#### 2.1.7 - Leave tree marked unit(s) (6/14)

Within Payment Unit(s) 21, 22, and 23, all trees which meet minimum piece specifications in 2.2 Utilization are designated for cutting, except do not cut oak, hemlock, white birch, and trees marked with green paint above and below stump height. Special protection trees identified in accordance with condition 3.4.2, within clearcutting unit boundaries, are not Included Timber and are to be protected.

### 2.2 - Utilization

#### 2.2.3 - Stump heights (4/07)

Stump heights within the Sale Area shall not exceed 12 inches for trees greater than 10 inches DBH and 4 inches for trees smaller than 10 inches DBH. This is in order to facilitate planting operations.

## 3 - Payments

### 3.4 - Damaged Timber

#### 3.4.1 - Damaged timber (7/16)

General Condition and Requirement 3.4 Damaged Timber, defines liquidated damages for undesignated live merchantable trees which are cut or injured. In addition, extreme care should be taken to avoid damage to tree seedlings and saplings.

Within Payment Units 21, 22, and 23, if more than 25% of the tree seedlings or saplings (1/4" to 4.5" DBH) within a specified portion of the sale area are damaged, liquidated damages will be assessed at \$400 per acre for all acreage within that specified portion of the sale area that was damaged.

#### 3.4.2 - Special Protection Trees (4/14)

The Purchaser shall not cut live or dead special protection trees within cutting units or clearings. Special protection trees are hemlock and oak. If the Purchaser's operations have cut or damaged special protection trees through carelessness, the Purchaser shall pay \$100 as fixed, agreed and liquidated damages for each special protection tree cut or damaged. Such payment does not constitute ownership of the undesignated timber. Note that this specification does not apply to Payment Units 12 and 20.

## 4 - Transportation

### 4.1 - Construction

#### 4.1.3 - Slash and earthen piles (8/04)

Piles or windrows of earth along roads and landings that have been widened or constructed shall be leveled. Slash from road maintenance or construction, including stumps, shall be dispersed throughout the sale.

#### 4.1.6 - Road construction (1/09)

Construction of new roads or improvements of existing roads shall be done in such a way as to minimize the environmental and visual impacts. Merchantable trees shall be cut and utilized unless otherwise directed. Non-merchantable trees shall be severed and laid flat on the ground. Slash shall be scattered, and not left in windrows and kept a minimum of 10 feet back from the road edge. Stumps shall be set upright, not left on edge, and be moved at least 10 feet away from the road edge. Disturbed soil shall be feathered into the woods and not left in berms or windrows.

#### 4.1.7 - Road closure (10/11)

All new roads built into the sale must be blocked to vehicle traffic upon completion of the sale. Overgrown roads that are reopened shall be considered new roads. In general, this will require constructing a four (4') foot high berm of stumps and logs covered with earth. These roads must be rendered impassable to cars and trucks. Contact the sale administrator for specific details of design and placement.

### 4.2 - Maintenance

#### 4.2.4 - Grading (10/16)

For completion of the sale, state forest roads must be graded. In general, this will require a road grader or bull dozer to shape up the roads after forest products have been hauled off site. This includes cleaning of drainage areas, grading, crowning and filling with gravel, if necessary. The grading equipment to be used must be approved by the Unit Manager or his/her representative.

### 4.3 - Public Right-of-Way

#### 4.3.2 - County R-O-W (12/06)

The county must be contacted prior to crossing or harvesting in the county road R-O-W. This applies to H-58 and the Hurricane Truck Trail.

## 5 - Operations

### 5.2 - Conduct of Operations

#### 5.2.1 - Slash

##### 5.2.1.11 - Slash for reforestation (5/07)

To facilitate reforestation, the sale area shall be left with slash evenly distributed. Bunched tops within the cutting area shall be broken up and scattered. Stumps shall be cut low to the ground. Processing sites shall not be left with a compacted layer of slash; tops from these sites shall be hauled back into the cut area and scattered. Harvesting operations must allow for subsequent planting operations, as determined by the sale administrator.

#### 5.2.2 - Hazard Trees/Snags

##### 5.2.2.1 - Den trees (10/16)

Obvious hollow and/or den trees shall be protected and left standing unless they are a safety hazard. Note that this specification does not apply to Payment Units 12 and 20.

#### 5.2.3 - Operating Restrictions

##### 5.2.3.6 - Bark beetle restriction (12/08)

In the event drought creates a high risk of pine bark beetle infestation, pine is not to be cut during the period March 1 through July 1, unless all portions of trees greater than two inches in diameter are removed from the sale area, reduced to chips, or treated to the satisfaction of the Unit Manager or his/her representative, within fifteen days of being severed from the stump. Pine log decks, pulpwood piles and treetops that are piled for chipping in the fall or winter within a 1/4 mile of susceptible sites must be removed before March 15. Residual slash must not be placed in piles or rows and must be spread over the site for quick drying. The Department of Natural Resources will exercise this specification if the risk of damage warrants.

##### 5.2.32 - Decking/landing restoration (9/13)

All decking and landing areas must have the surface area restored to a condition equal to or better than before. This is to

ensure the proper regeneration of the stand. Wood debris, chips and "cookies" from trimmings must be removed or scattered away from landing and loading areas and may not be windrowed on the edge.

#### 5.2.38 - No decking against live trees (2/04)

Cut products may not be decked against unmarked or designated leave trees.

#### 5.2.41 - Snowmobile trail protection (9/11)

H-58 and the Hurricane Truck Trail are snowmobile trails. Do not cut or damage posts with orange trail markers or traffic control signs. The snowmobile trail may not be used for any timber sale operations from December 1 to March 31.

### 5.4 - Soil Protection

#### 5.4.1 - Rutting restriction, general (7/16)

Operations are to cease immediately if equipment and weather conditions result in rutting of roads and/or skid trails which is 12 inches or greater in depth and 50 feet in length. The Unit Manager or his/her representative may restrict hauling and/or skidding if ruts exceed the specified depth. With the Unit Manager or his/her representative's approval, the Purchaser may return to the area when the risk of rutting has decreased.

### 5.8 - Protection of Endangered Species

#### 5.8.3 - Red shoulder hawk or goshawk (2/16)

In the event that an active red shoulder hawk or goshawk nest is found, the contract may be amended to protect the nest site until the nest is determined to be inactive. The value of the trees in this excluded area will be refunded or credited to the Purchaser. The nest will be buffered with a five-chain radius (eight acre) protection area, centered on the nest tree, in which there will be no cutting or new roads constructed. Avoid human disturbance, including loading and skidding, in the protection area.

An additional zone of five chains (ten chains centered on the active nest tree) will be established in which there is no management activity from April 1 to July 30. Limit biomass harvesting and chipping operations within this ten-chain zone, retain the maximum one-third of residues per the Woody Biomass Harvesting Guidelines (Michigan DNR 2010). Nests determined to be inactive will be protected with a one-chain no-harvest buffer.

## 6 - Safety and Fire Prevention

### 6.2 - Signing

#### 6.2.1 - Road posting (9/09)

The Purchaser is responsible for posting and maintaining caution signs on H-58 prior to beginning operations. The road must be posted at appropriate distances from the sale area to warn of logging activity and truck traffic. Signs must be removed when harvest operations are suspended or completed. The Purchaser will provide these signs.





# TIMBER SALE MAP

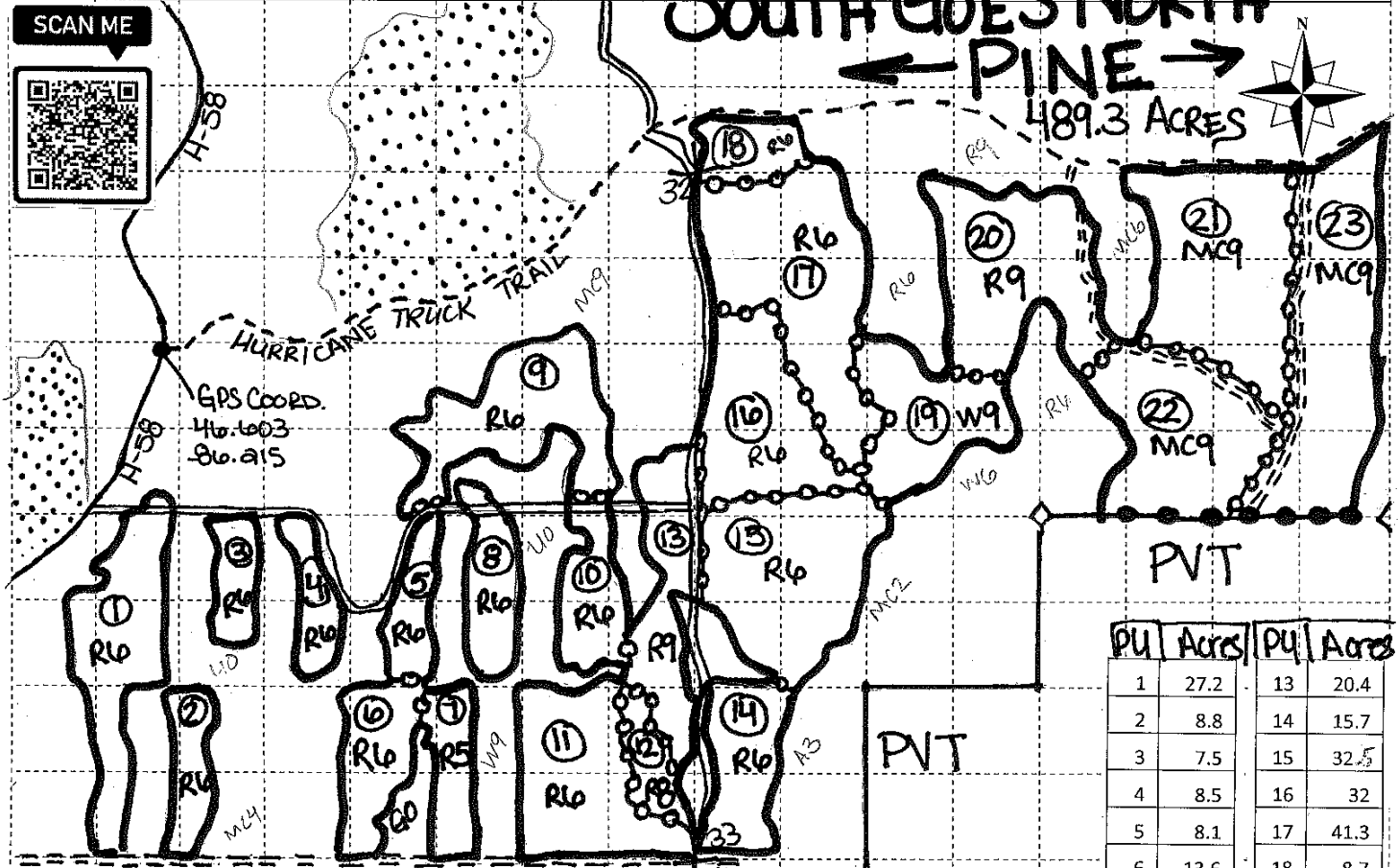
This information provided by authority of Part 5, 1994 PA 451, as amended.

Sale Number	Year
41-014	20

Forest Management Unit Shingleton	County Schoolcraft	Mapped By Irving	Date 10/2/20	Page of 1   1
Compartment Number 134	Township 49N	Range 15W	Section(s) and Subdivision(s) 28-SWSW, SWSE 32-SWNW, NENE, S1/2NE, SWSE 33-NW..	Scale:  ...4".....  = 1 mile

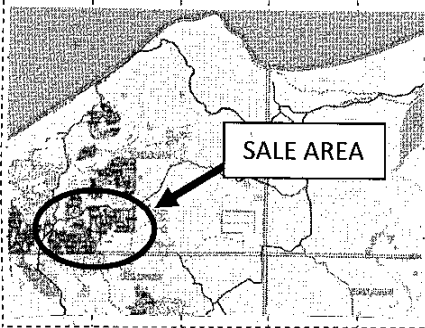
Cover Type			
A = Aspen	J = Jack Pine	O = Oak	U = Upland Brush
B = Paper Birch	K = Rock	P = Lowland Poplar	UM = Upland Mix Forest
C = Cedar	L = Lowland Brush	Q = Mixed Swamp Conifer	V = Bog or Marsh
D = Treed Bog	LM = Lowland Mix Forest	R = Red Pine	W = White Pine
E = Swamp Hardwoods	M = Maple, Beech, Birch	S = Black Spruce	X = Non Stocked
F = Spruce/Fir	MC = Mixed Conifer	T = Tamarack	Y = Sand
G = Grass	MD = Mixed Deciduous		Z = Water
H = Hemlock	N = Marsh		

Density	
0 = Non Stocked	5 = Pole Timber Medium
1 = Seedling Sapling Poor	6 = Pole Timber Well
2 = Seedling Sapling Medium	7 = Saw Timber Poor
3 = Seedling Sapling Well	8 = Saw Timber Medium
4 = Pole Timber Poor	9 = Saw Timber Well



PU	Acres	PU	Acres
1	27.2	13	20.4
2	8.8	14	15.7
3	7.5	15	32.5
4	8.5	16	32
5	8.1	17	41.3
6	13.6	18	8.7
7	10.2	19	21.9
8	11.2	20	34.9
9	28	21	44.3
10	11.2	22	41.1
11	27.3	23	28.7
12	6.2		

- LEGEND**
- Against State (Red)
  - Payment Unit (Yellow)
  - Private Line (Blue)
  - Nearby Timber Sale
  - Section Corner
  - Survey Corner
  - Highway
  - County Road
  - Secondary Forest Road
  - Forest Access Route





Go Pack Go (41-013-20)

T49N, R15W, SEC. 30; T49N, R15W, SEC. 31; T49N, R15W, SEC. 32; Alger

In response to the notice of sale to be held 2:00 p.m. (local time) on March 3, 2021, I am hereby submitting my sealed bid ( firm offer) for the following forest products to be cut. Bids for individual species must be at or above the advertised price. All non-responsive bid forms may be rejected.

<u>PRODUCTS &amp; SPECIES</u>	<u>ESTIMATED VOLUME*</u>	<u>ADVERTISED PRICE</u>	<u>BID PRICE/UNIT</u>
Pulpwood			
Hemlock	17 Cords	\$ 13.75/Cord	\$ _____
Jack Pine	19 Cords	\$ 27.30/Cord	\$ _____
Paper Birch	26 Cords	\$ 13.55/Cord	\$ _____
Quaking Aspen	4 Cords	\$ 22.15/Cord	\$ _____
Red Maple	35 Cords	\$ 17.15/Cord	\$ _____
Red Pine	2,406 Cords	\$ 47.15/Cord	\$ _____
White Pine	1,191 Cords	\$ 16.90/Cord	\$ _____

\*The volumes are statistically estimated within plus (+) or minus (-) 14.07 percent at 95% confidence level. These estimated volumes are final and not subject to adjustment. Prospective bidders are urged to examine this timber and to make their own estimates of quantity and quality.

I understand that any or all bids may be rejected. All bids must be signed and all bid items must be bid or the bid form may be rejected. I also understand that consideration and awarding a contract will be based upon my past performance and ability to complete the contract based upon equipment and staffing subject to my control.

FEDERAL ID: \_\_\_\_ - \_\_\_\_ - \_\_\_\_ or SOCIAL SECURITY NUMBER: \_\_\_\_ - \_\_\_\_ - \_\_\_\_

Company or individual bidding: \_\_\_\_\_

Company representative's name: \_\_\_\_\_

Address: \_\_\_\_\_

City: \_\_\_\_\_ State: \_\_\_\_\_ Zip: \_\_\_\_\_

IF AVAILABLE, PLEASE PLACE THE PERSONALIZED LABEL FROM YOUR PROSPECTUS IN THE ABOVE BOX.

Individual or company representative's signature: \_\_\_\_\_ Date: \_\_\_\_\_

Phone number : \_\_\_\_\_ Email (optional): \_\_\_\_\_

**THE WINNING BIDDER MUST COMPLETE THE VERIFICATION OF WORKER'S DISABILITY COMPENSATION ACT COMPLIANCE (ON REVERSE SIDE IF DOUBLE SIDED) WITHIN 21 DAYS OF SALE AWARD DATE**



<b>FOR DEPARTMENT USE ONLY</b>	
Sale Number (XX - XXX - XX - XX)	
Forest Management Unit:	

# TIMBER SALE VERIFICATION OF WORKER'S DISABILITY COMPENSATION ACT COMPLIANCE

As required by Act 317, P.A. 1969 (Worker's Compensation) and  
Part 5 of Act 451 of 1994, as amended.

## VERIFICATION OF WORKER'S DISABILITY COMPENSATION ACT COMPLIANCE

- This verification must be completed and submitted within 21 days of contract award and prior to the issuance of the timber sale contract.
- In addition, if boxes 2B or 2C are checked, then Notice of Exclusion or Certificate of Insurance must be submitted within twenty-one (21) days of the contract award and prior to the issuance of the timber sale contract.
- All information must be typed or printed except for written signatures.

Please Check Appropriate Categories:

1. My business is organized as (you **must** check one of the boxes below):
  - A.  Sole Proprietorship (individual)
  - B.  Partnership
  - C.  Corporation
2. You **must** check one of the boxes below:
  - A.  I certify my business is a sole proprietorship and it has no employees but the sole proprietor. I am not subject to the Worker's Compensation Laws.
  - B.  I certify my business has satisfied its obligation to the Worker's Compensation Act through the use of an approved Notice of Exclusion (BWC-337, Rev. 5/96). I will provide a copy of the Notice of Exclusion within 21 days of the contract award. (For questions or a copy of the BWC-337, please call the Worker's Compensation Bureau at 517-322-1195).
  - C.  I certify my business has a Worker's Compensation Policy. I will provide an original Certificate of Insurance within twenty-one (21) days of the contract award.
3. If you have checked item 2(A) or 2(B), you **must** indicate the number of **both** full-time and part-time employees, other than yourself, including family members and active partners (if none, you must enter "0").

\_\_\_\_\_ Full-time Employees

\_\_\_\_\_ Part-time Employees

Name of Business		Federal ID (or) Social Security No.	
Address		Telephone (       )	
City	State	ZIP	

*I hereby certify that the above information is true and correct. I agree to notify the Michigan DNR of any changes that occur in factors affecting my coverage during any of my present and future operations.*

\_\_\_\_\_  
Signature of Owner or Authorized Representative

\_\_\_\_\_  
Title

\_\_\_\_\_  
Date

Please complete the "SEALED BID" information on the next page

South Goes North Pine (41-014-20)  
T49N, R15W, SEC. 28; T49N, R15W, SEC. 32; T49N, R15W, SEC. 33; Alger

In response to the notice of sale to be held 2:00 p.m. (local time) on March 3, 2021, I am hereby submitting my sealed bid ( firm offer) for the following forest products to be cut. Bids for individual species must be at or above the advertised price. All non-responsive bid forms may be rejected.

<u>PRODUCTS &amp; SPECIES</u>	<u>ESTIMATED VOLUME*</u>	<u>ADVERTISED PRICE</u>	<u>BID PRICE/UNIT</u>
Pulpwood			
B. T. Aspen	10 Cords	\$ 22.15/Cord	\$ _____
Jack Pine	137 Cords	\$ 27.30/Cord	\$ _____
Paper Birch	40 Cords	\$ 13.55/Cord	\$ _____
Red Maple	11 Cords	\$ 17.15/Cord	\$ _____
Red Pine	3,301 Cords	\$ 47.15/Cord	\$ _____
White Pine	1,996 Cords	\$ 16.90/Cord	\$ _____

\*These estimated volumes are final and not subject to adjustment. Prospective bidders are urged to examine this timber and to make their own estimates of quantity and quality.

I understand that any or all bids may be rejected. All bids must be signed and all bid items must be bid or the bid form may be rejected. I also understand that consideration and awarding a contract will be based upon my past performance and ability to complete the contract based upon equipment and staffing subject to my control.

FEDERAL ID: \_\_\_\_ - \_\_\_\_ - \_\_\_\_ or SOCIAL SECURITY NUMBER: \_\_\_\_ - \_\_\_\_ - \_\_\_\_

Company or individual bidding: \_\_\_\_\_

Company representative's name: \_\_\_\_\_

Address: \_\_\_\_\_

City: \_\_\_\_\_ State: \_\_\_\_\_ Zip: \_\_\_\_\_

IF AVAILABLE, PLEASE PLACE THE PERSONALIZED LABEL FROM YOUR PROSPECTUS IN THE ABOVE BOX.

Individual or company representative's signature: \_\_\_\_\_ Date: \_\_\_\_\_

Phone number : \_\_\_\_\_ Email (optional): \_\_\_\_\_

**THE WINNING BIDDER MUST COMPLETE THE VERIFICATION OF WORKER'S DISABILITY COMPENSATION ACT COMPLIANCE (ON REVERSE SIDE IF DOUBLE SIDED) WITHIN 21 DAYS OF SALE AWARD DATE**



<b>FOR DEPARTMENT USE ONLY</b>
Sale Number (XX - XXX - XX - XX)
Forest Management Unit:

## TIMBER SALE VERIFICATION OF WORKER'S DISABILITY COMPENSATION ACT COMPLIANCE

*As required by Act 317, P.A. 1969 (Worker's Compensation) and  
Part 5 of Act 451 of 1994, as amended.*

### VERIFICATION OF WORKER'S DISABILITY COMPENSATION ACT COMPLIANCE

- This verification must be completed and submitted within 21 days of contract award and prior to the issuance of the timber sale contract.
- In addition, if boxes 2B or 2C are checked, then Notice of Exclusion or Certificate of Insurance must be submitted within twenty-one (21) days of the contract award and prior to the issuance of the timber sale contract.
- All information must be typed or printed except for written signatures.

Please Check Appropriate Categories:

1. My business is organized as (you **must** check one of the boxes below):
  - A.  Sole Proprietorship (individual)
  - B.  Partnership
  - C.  Corporation
  
2. You **must** check one of the boxes below:
  - A.  I certify my business is a sole proprietorship and it has no employees but the sole proprietor. I am not subject to the Worker's Compensation Laws.
  - B.  I certify my business has satisfied its obligation to the Worker's Compensation Act through the use of an approved Notice of Exclusion (BWC-337, Rev. 5/96). I will provide a copy of the Notice of Exclusion within 21 days of the contract award. (For questions or a copy of the BWC-337, please call the Worker's Compensation Bureau at 517-322-1195).
  - C.  I certify my business has a Worker's Compensation Policy. I will provide an original Certificate of Insurance within twenty-one (21) days of the contract award.
  
3. If you have checked item 2(A) or 2(B), you **must** indicate the number of **both** full-time and part-time employees, other than yourself, including family members and active partners (if none, you must enter "0").

\_\_\_\_\_ Full-time Employees

\_\_\_\_\_ Part-time Employees

Name of Business		Federal ID (or) Social Security No.	
Address		Telephone (       )	
City	State	ZIP	

*I hereby certify that the above information is true and correct. I agree to notify the Michigan DNR of any changes that occur in factors affecting my coverage during any of my present and future operations.*

\_\_\_\_\_  
Signature of Owner or Authorized Representative

\_\_\_\_\_  
Title

\_\_\_\_\_  
Date

**Please complete the "SEALED BID" information on the next page**

GNA2 Muleshoe (41-817-21)  
T43N, R17W, SEC. 16; T43N, R17W, SEC. 17; T43N, R17W, SEC. 18; T43N,

In response to the notice of sale to be held 2:00 p.m. (local time) on March 3, 2021, I am hereby submitting my sealed bid ( firm offer) for the following forest products to be cut. Bids for individual species must be at or above the advertised price. All non-responsive bid forms may be rejected.

<u>PRODUCTS &amp; SPECIES</u>	<u>ESTIMATED VOLUME*</u>	<u>ADVERTISED PRICE</u>	<u>BID PRICE/UNIT</u>
<b>Sawtimber</b>			
Black Cherry	0.6 MBF	\$ 98.00/MBF	\$ _____
Paper Birch	0.2 MBF	\$ 53.00/MBF	\$ _____
Red Maple	25.5 MBF	\$ 96.00/MBF	\$ _____
Sugar Maple	27.6 MBF	\$ 265.00/MBF	\$ _____
<b>Pulpwood</b>			
Balsam Fir	78 Cords	\$ 13.35/Cord	\$ _____
Hemlock	25 Cords	\$ 13.75/Cord	\$ _____
Jack Pine	138 Cords	\$ 27.30/Cord	\$ _____
Mixed Aspen	6,187 Cords	\$ 22.15/Cord	\$ _____
Mixed Hardwood	1,854 Cords	\$ 17.15/Cord	\$ _____
Mixed Spruce	11 Cords	\$ 11.30/Cord	\$ _____
Paper Birch	237 Cords	\$ 13.55/Cord	\$ _____
Red Oak	15 Cords	\$ 16.55/Cord	\$ _____
Red Pine	970 Cords	\$ 47.15/Cord	\$ _____
White Pine	568 Cords	\$ 16.90/Cord	\$ _____

\*These estimated volumes are final and not subject to adjustment. Prospective bidders are urged to examine this timber and to make their own estimates of quantity and quality.

I understand that any or all bids may be rejected. All bids must be signed and all bid items must be bid or the bid form may be rejected. I also understand that consideration and awarding a contract will be based upon my past performance and ability to complete the contract based upon equipment and staffing subject to my control.

FEDERAL ID: \_\_\_\_ - \_\_\_\_ - \_\_\_\_ or SOCIAL SECURITY NUMBER: \_\_\_\_ - \_\_\_\_ - \_\_\_\_

Company or individual bidding: \_\_\_\_\_

Company representative's name: \_\_\_\_\_

Address: \_\_\_\_\_

City: \_\_\_\_\_ State: \_\_\_\_\_ Zip: \_\_\_\_\_

IF AVAILABLE, PLEASE PLACE THE PERSONALIZED LABEL FROM YOUR PROSPECTUS IN THE ABOVE BOX.

Individual or company representative's signature: \_\_\_\_\_ Date: \_\_\_\_\_

Phone number : \_\_\_\_\_ Email (optional): \_\_\_\_\_

**THE WINNING BIDDER MUST COMPLETE THE VERIFICATION OF WORKER'S DISABILITY COMPENSATION ACT COMPLIANCE (ON REVERSE SIDE IF DOUBLE SIDED) WITHIN 21 DAYS OF SALE AWARD DATE**



FOR DEPARTMENT USE ONLY	
Sale Number (XX - XXX - XX - XX)	
Forest Management Unit:	

## TIMBER SALE VERIFICATION OF WORKER'S DISABILITY COMPENSATION ACT COMPLIANCE

As required by Act 317, P.A. 1969 (Worker's Compensation) and  
Part 5 of Act 451 of 1994, as amended.

### VERIFICATION OF WORKER'S DISABILITY COMPENSATION ACT COMPLIANCE

- This verification must be completed and submitted within 21 days of contract award and prior to the issuance of the timber sale contract.
- In addition, if boxes 2B or 2C are checked, then Notice of Exclusion or Certificate of Insurance must be submitted within twenty-one (21) days of the contract award and prior to the issuance of the timber sale contract.
- All information must be typed or printed except for written signatures.

Please Check Appropriate Categories:

1. My business is organized as (you **must** check one of the boxes below):
  - A.  Sole Proprietorship (individual)
  - B.  Partnership
  - C.  Corporation
2. You **must** check one of the boxes below:
  - A.  I certify my business is a sole proprietorship and it has no employees but the sole proprietor. I am not subject to the Worker's Compensation Laws.
  - B.  I certify my business has satisfied its obligation to the Worker's Compensation Act through the use of an approved Notice of Exclusion (BWC-337, Rev. 5/96). I will provide a copy of the Notice of Exclusion within 21 days of the contract award. (For questions or a copy of the BWC-337, please call the Worker's Compensation Bureau at 517-322-1195).
  - C.  I certify my business has a Worker's Compensation Policy. I will provide an original Certificate of Insurance within twenty-one (21) days of the contract award.
3. If you have checked item 2(A) or 2(B), you **must** indicate the number of **both** full-time and part-time employees, other than yourself, including family members and active partners (if none, you must enter "0").

\_\_\_\_\_ Full-time Employees

\_\_\_\_\_ Part-time Employees

Name of Business		Federal ID (or) Social Security No.	
Address		Telephone (       )	
City	State	ZIP	

*I hereby certify that the above information is true and correct. I agree to notify the Michigan DNR of any changes that occur in factors affecting my coverage during any of my present and future operations.*

\_\_\_\_\_  
Signature of Owner or Authorized Representative

\_\_\_\_\_  
Title

\_\_\_\_\_  
Date

Please complete the "SEALED BID" information on the next page