



**DEPARTMENT OF NATURAL RESOURCES
STATE OF MICHIGAN**

TIMBER SALE PROSPECTUS #6841

SCHEDULED SALE DATE AND TIME: 3:00 p.m. (local time) on March 22, 2021.

LOCATION: ESCANABA MGMT UNIT, 6833 HWY'S 2, 41 & M-35, GLADSTONE, MI 49837.

PROSPECTUS NOTE: The bidder is advised to inspect the sale area and review the location, estimated volumes, operating costs and contract terms of proposed sales. Please be aware that some landowners may request 60 days or more notice for access across their land.

Notice is hereby given that bids will be received by the Unit Manager, ESCANABA MANAGEMENT UNIT, for certain timber on the following described lands:

Last Cruise SBW (33-023-21) / T37N, R28W, SEC. 25, SWSW, NESE.

T37N, R28W, SEC. 26, SESW, NESE, S1/2SE.

T37N, R28W, SEC. 35, NENW, NWNW.

Menominee County, Advertised Price \$19,406.80, 75.3 Acres, Aspen, Spruce/Fir/Tamarack.

SALE NOTE: Eastern larch beetle and spruce budworm have caused extensive defoliation and mortality of tamarack, balsam fir and spruce. Payment Units 1 - 3 will be accessed through state land. Payment Unit 4 will be accessed through private land. The landowner has indicated they would allow access, but it is up to prospective bidders and the Purchaser to get permission. Contact the sale administrator for the landowners contact information.

Fruiting Thornapple (33-024-21) / T37N, R28W, SEC. 21, NW, N1/2SW, N1/2SE, SWSE.

T37N, R28W, SEC. 22, NWSW.

Menominee County, Advertised Price \$22,032.00, 61.8 Acres, Aspen, White Pine.

SALE NOTE: The Purchaser will need to haul and spread 120 cubic yards of gravel on the access roads, prior to any hauling taking place. Spruce budworm has caused a significant amount of spruce/fir defoliation and mortality throughout the Sale Area.

A recreation site such as a trail, pathway, or campground is within the sale area or the vicinity. Certain restrictions/specifications may be applicable including time restrictions.

North Lake Hardwoods (33-025-21) / T35N, R26W, SEC. 25, NESW, S1/2SW.

T35N, R26W, SEC. 26, SESE.

T35N, R26W, SEC. 35, NENE.

T35N, R26W, SEC. 36, NWNW.

Menominee County, Advertised Price \$18,042.55, 70.8 Acres, Hardwood, Sugar Maple.

SALE NOTE: Access into the Sale Area will be across 1/4 mile of marsh. The marsh will need to be frozen in order to access the Sale Area. The Sale Area is upland hardwoods. DNR personnel can assist with the initial freeze down of the winter road. Contact Dan or Dustin for details.

BID INSTRUCTIONS (VER. 07/02/2018):

1. Scheduled Bid Location, Date, and Time (2/11)

Bids must be received by the Unit Manager, ESCANABA OFFICE, 6833 Hwy's 2, 41 & M-35, Gladstone, MI 49837, no later than 3:00 p.m. (local time) on March 22, 2021. For further information concerning this sale, contact Eric Thompson at 906-789-8231.

2. Bidder's Qualifications (5/16)

Purchaser shall obtain workers compensation insurance to cover claims under Michigan's Worker's Disability Compensation Act of 1969 or similar employee benefit act of any other state applicable to an employee. If all or part of a timber sale was prepared by a private contractor, the contractor and that contractor's company are not permitted to bid on the timber sale contract. Bids will not be accepted from individuals or companies appearing on the DNR/FRD No-Bid List. This list contains the names of purchasers who previously failed to execute a contract within 21-days or who have a history of poor performance.

3. Preparation of Sealed Bids (5/16)

Bid Forms may be completed online thru Michigan DNR Timber Sale Online Bidding (OLB) at www.michigan.gov/timberbidding or by completing the hardcopy Bid Form found in the Timber Sale Prospectus. Hardcopy Bid Forms shall be manually signed in ink. Registration in OLB is considered your 'signature' for all bids submitted thru that system. Bid prices must be entered for each species and product in the Bid Price column for all material subject to bidding and all fill-in blanks must be completed. If erasures or other changes appear on the hardcopy Bid Form, each erasure or change must be initialed by the person signing the bid.

4. Submission of Sealed Bids (5/16)

Bid forms may be obtained from the Unit Manager or thru OLB. Bids may be submitted hardcopy or thru OLB. All hardcopy bids must be submitted on the bid form and in an envelope clearly identified as described in this section. NOTE: Only one bid form per bid envelope. Sealed bids must be submitted to the Unit office designated in the prospectus and must be submitted at or prior to the time established in the prospectus. The envelope should show on the outside (a) the sale name or number and (b) the date and time of bid opening, as shown in the prospectus. Bids received after the time specified in the sale prospectus are late bids and will be rejected.

It is possible for a bidder to submit multiple bids on a single sale. For example, a bid may be submitted hardcopy and a bid may be submitted thru OLB. Or, two bidders from the same company could both submit bids on the same sale. If this were to happen, the State would accept all bids received and award the contract accordingly. All bidding and contractual requirements would apply to all bids received.

5. Public Opening of Sealed Bids (7/16)

If conditions permit, the sealed bids will be publicly opened and posted at the time and place set in the prospectus.

If a bidder, present at a bid opening, has submitted bids on more than one sale, that bidder may withdraw their unopened bid envelopes or announce the withdrawal of their online bid after being declared the successful bidder on one sale.

6. Award of Contract (1/11)

Award of the contract will be made to the Bidder whose bid, conforming to the prospectus, is most advantageous to the State of Michigan on the basis of total value at rates bid for the estimated quantities. The State reserves the right to reject any bid or waive any minor irregularity in bids received. A written award mailed (or otherwise furnished) to the successful Bidder shall be deemed to result in a binding contract without further action by either party.

7. Down Payment (1/11)

The Bidder to whom award is made must make a down payment within 21 days of the sale award. The amount of the down payment will be calculated as shown in the Bond and Payment Schedule of this prospectus. Only cash may be used to meet this requirement.

8. Performance Security (1/11)

As guarantee of faithful performance, a cash bond, certificate of deposit, surety bond or irrevocable letter of credit (LOC) is required within 21 days of the sale award. The amount of the performance security is shown in the Bond and

Payment Schedule of this prospectus. If an LOC or surety is used, the coverage must extend for at least 6 months beyond the contract expiration.

9. Timber Sale Contract (7/18)

Additional conditions and requirements common to all timber sales are listed on the timber sale contract (R4031) and are available on line at www.michigan.gov/timber. Contact the Unit Manager for additional information or a sample contract. Within 21 days of the date of the award letter, the bidder must sign the contract and provide the required down payment, performance security, and verification of worker's disability compensation. The down payment and performance security shall be in accordance with the provisions of the timber sale contract, in the sums stated in this prospectus. If these actions are not taken, then the Bidder, the Bidder's corporation, and the corporation's principals may not be permitted to bid on State timber sales for a period of 3 months after the first offense, 6 months after the second offense, and 1 year after the third offense. An offense will only be counted against the Bidder for 5 years. In addition, the Bidder certifies that if awarded this contract, the Bidder will complete the timber sale contract in accordance with its terms and any modifications thereof including requirements to purchase, cut, and remove the included timber by the expiration date.

Payment Unit values in the State Forest Timber Sale Contract are calculated based on the advertised value of the Payment Unit as a percentage of the total advertised value of the contract. The advertised value of each Payment Unit is given in the Description of Timber by Payment Unit table on the Timber Sale Information page. For example, if the value of Payment Unit 1 is advertised as \$1,500 and the total Timber Sale value is advertised as \$10,000, the contract price for Payment Unit 1 will be 15% of the total bid price ($\$1,500/\$10,000 * 100$).

10. Disclaimer of Estimates and Bidder's Warranty of Inspection (7/16)

Before submitting this bid, the Bidder is advised and cautioned to inspect the sale area, review the requirements of the sale contract, and take other steps as may be reasonably necessary to ascertain the location, estimated volumes, construction estimates, and operating costs of the proposed sale. Failure to do so will not relieve the Bidder from responsibility for completing the contract.

The Bidder warrants that this bid is submitted solely on the basis of the Bidder's examination and inspection of the quality and quantity of the timber offered for sale and the Bidder's opinion of the value thereof and the costs of recovery. No reliance should be placed on the State of Michigan's estimates of timber quality, quantity or costs of recovery. Bidder further acknowledges that the State of Michigan: (i) expressly disclaims any warranty of fitness of timber for any purpose; (ii) offers this timber as is without any warranty of quality (merchantability) or quantity and (iii) expressly disclaims any warranty as to the quantity or quality of timber sold.

11. Certification and Chain-of-Custody (10/14)

Unless otherwise indicated in the contract under section 7 – Other Conditions of the Sale Specific Conditions & Requirements, the area encompassed by this timber sale is certified to the standards of the Forest Stewardship Council (FSC) - Certificate #SCS-FM/COC-00090N and the Sustainable Forestry Initiative (SFI) - Certificate #NSF-SFIS-5Y031-SF5. Forest products from this sale may be delivered to the mill as "FSC 100% and / or SFI certified" as long as the contractor hauling the forest products is chain-of-custody (COC) certified or covered under a COC certificate from the destination mill. The purchaser is responsible for maintaining COC after leaving the sale area.

12. Good Neighbor Authority (GNA) Requirements (7/16)

If the name of this timber sales contains the acronym GNA, it is authorized by the Good Neighbor Authority (GNA) and covered by various agreements between the U.S. Forest Service and the State. The timber sale occurs on federal land and the following conditions apply:

GNA contracts on US Forest Service land will not be awarded to purchasers on the Federal list of excluded parties. The System for Award Management (SAM) will be checked for active excluded parties prior to award of contract. In addition, the Bidder to whom award is made must complete an Assurance Regarding Felony Conviction or Tax Delinquent Status for Corporate Applicants (AD-3031).

13. Good Neighbor Authority (GNA) Requirements, con't (9/16)

Bidder certifies, by signing this bid form, that to the best of Bidder's knowledge that the following representations are accurate and complete.

- a. That the Bidder and its principals are not presently debarred, suspended, proposed for debarment, declared ineligible, or voluntary excluded from timber sales (covered transactions) by any Federal department or agency.
- b. That the Bidder and its principals have not within a 3-year period preceding this bid been convicted of or had a civil judgment rendered against them for commission of fraud or a criminal offense in connection with obtaining , attempting to obtain, or performing a public (Federal, State, or local) transaction or contract under a public transaction; violation of Federal or State antitrust statutes or commission of embezzlement, theft, forgery, bribery, falsification or destruction of records, making false statements, or receiving stolen property.
- c. That the Bidder and its principals are not presently indicted for or otherwise criminally or civilly charged by a governmental entity (Federal, State, or local) with commission of any of the offenses enumerated in paragraph b of this certification.
- d. That the Bidder and its principals have not within a 3-year period preceding this bid had one or more public transactions (Federal, State, or local) terminated for breach or default of a timber or forest product contract.

Bidders that cannot certify this requirement, in whole or in part, shall submit an explanation with their bid.

DAN EICHINGER
Director

TIMBER SALE INFORMATION

Last Cruise SBW (33-023-21)
 T37N, R28W, SEC. 25; T37N, R28W, SEC. 26; T37N, R28W, SEC. 35.
 Menominee County (Advertised Price \$19,406.80)

SALE NOTE: Eastern larch beetle and spruce budworm have caused extensive defoliation and mortality of tamarack, balsam fir and spruce. Payment Units 1 - 3 will be accessed through state land. Payment Unit 4 will be accessed through private land. The landowner has indicated they would allow access, but it is up to prospective bidders and the Purchaser to get permission. Contact the sale administrator for the landowners contact information.

A timber sale contract for this lump sum, sealed bid timber sale will be awarded to the responsible bidder offering the highest sealed bid price. All units of volume listed below were estimated using the T-Sale computer program and our traditional volume equations. Bids must be at or above the following advertised price for each product and species:

<u>PRODUCTS & SPECIES</u>	<u>ESTIMATED UNITS*</u>	<u>ADVERTISED PRICE</u>
Sawtimber		
Paper Birch	0.5 MBF	\$ 47.00 / MBF
Red Maple	1.0 MBF	\$ 76.00 / MBF
Red Oak	0.9 MBF	\$ 129.00 / MBF
Sugar Maple	1.2 MBF	\$ 113.00 / MBF
Pulpwood		
Balsam Fir	123 Cords	\$ 12.70 / Cord
Jack Pine	2 Cords	\$ 26.90 / Cord
Mixed Aspen	443 Cords	\$ 17.50 / Cord
Mixed Hardwood	268 Cords	\$ 16.95 / Cord
Mixed Spruce	79 Cords	\$ 13.90 / Cord
N. White Cedar	77 Cords	\$ 11.55 / Cord
Red Oak	12 Cords	\$ 18.50 / Cord
Red Pine	16 Cords	\$ 41.95 / Cord
Tamarack	129 Cords	\$ 11.70 / Cord
White Pine	43 Cords	\$ 17.55 / Cord

* The total volume is statistically estimated within plus (+) or minus (-) 15.27 percent. There are an estimated 1,201 cords on this timber sale, plus or minus 183 cords at the 95% confidence level. The estimated units are final and not subject to adjustment. Prospective bidders are urged to examine this timber and to make their own estimates of quantity and quality.

BOND AND PAYMENT SCHEDULE:

1. A bond in the amount of \$970.00 to insure faithful performance of the conditions of the contract will be deposited by the successful bidder within 21 days of the sale award.
2. Cutting in any sale or unit without the required advance payment would be considered a trespass.
3. Total payment must be paid in advance or according to the following schedule :
 - (a) Ten percent (10%) of the sale value must be paid within 21 days of the sale award.
 - (b) The 10% down payment will be credited towards the first unit cut.
 - (c) Payment for each of the following units must be made before cutting begins in that unit:

PAYMENT UNIT NUMBER	PERCENT OF TOTAL SALE VALUE
01	40.0%
02	13.8%
03	25.4%
04	20.8%
4. If no cutting takes place, the 10% down payment will not be refunded.
5. Operations on the contract issued will terminate on 09/30/2024.

SALE STATISTICS

SALE VOLUMES

VOLUME		STATISTICAL RANGE IN CORDS		
TOTAL CUBIC FEET	TOTAL CORDS	PERCENT ERROR	MINIMUM	MAXIMUM
94,904	1,201	15.27%	1,018	1,385

VDU VOLUMES

A VDU is a Volume Determination Unit. Volumes and their associated statistics are calculated at the VDU level and summarized to the sale level. There is often a one to one relationship between a VDU and a Payment Unit, but not always, depending on the cruise design. Refer to the VDU TO PAYMENT UNIT table.

VDU	VOLUME		PERCENT ERROR	RANGE IN CORDS	
	TOTAL CUBIC FEET	TOTAL CORDS		MINIMUM	MAXIMUM
41	34,823	441	25.09%	330	551
47	17,096	216	44.51%	120	313
49	23,115	293	23.79%	223	362
51	19,876	252	30.61%	175	329
TOTAL:	94,911	1,201		848	1,555

VDU TO PAYMENT UNIT

When a VDU is associated with more than one Payment Unit (PU), the VDU volumes are assigned to the PU based on acres of the VDU within the PU.

VDU	VDU ACRES	PU	PU ACRES
41	28.0	1	28.0
47	18.7	2	18.7
49	12.8	3	12.8
51	15.8	4	15.8
TOTAL:	75.3		75.3

DESCRIPTION OF TIMBER BY PAYMENT UNIT (PU)

PU	MARKET GROUP	PRODUCT	QUANTITY	UNIT	ACRES	ADVERTISE PRICE
1	Red Maple	Sawtimber	0.5	MBF	28.0	\$7,760.40
	Balsam Fir	Pulpwood	34	Cords		
	Mixed Aspen		219	Cords		
	<i>Quaking Aspen</i>		219	<i>Cords</i>		
	Mixed Hardwood		131	Cords		
	<i>Black Ash</i>		6	<i>Cords</i>		
	<i>Black Cherry</i>		15	<i>Cords</i>		
	<i>Paper Birch</i>		6	<i>Cords</i>		
	<i>Red Maple</i>		104	<i>Cords</i>		
	Mixed Spruce		16	Cords		
	<i>Black Spruce</i>		4	<i>Cords</i>		
	<i>White Spruce</i>		12	<i>Cords</i>		
	Red Oak		2	Cords		
	Red Pine		13	Cords		
	Tamarack		4	Cords		
White Pine		22	Cords			
2	Balsam Fir	Pulpwood	4	Cords	18.7	\$2,672.45
	Mixed Aspen		4	Cords		
	<i>Quaking Aspen</i>		4	<i>Cords</i>		
	Mixed Hardwood		13	Cords		
	<i>Balsam Poplar</i>		2	<i>Cords</i>		
	<i>Paper Birch</i>		4	<i>Cords</i>		
	<i>Red Maple</i>		7	<i>Cords</i>		
	Mixed Spruce		18	Cords		
	<i>Black Spruce</i>		18	<i>Cords</i>		
	N. White Cedar		49	Cords		
	Tamarack		125	Cords		
	White Pine		3	Cords		
3	Paper Birch	Sawtimber	0.5	MBF	12.8	\$4,934.75
	Red Maple		0.5	MBF		
	Red Oak		0.9	MBF		
	Sugar Maple		1.2	MBF		
	Balsam Fir	Pulpwood	59	Cords		
	Mixed Aspen		134	Cords		
	<i>B. T. Aspen</i>		16	<i>Cords</i>		
	<i>Quaking Aspen</i>		118	<i>Cords</i>		
	Mixed Hardwood		44	Cords		
	<i>Basswood</i>		12	<i>Cords</i>		
	<i>Black Cherry</i>		3	<i>Cords</i>		
	<i>Ironwood</i>		4	<i>Cords</i>		
	<i>Paper Birch</i>		4	<i>Cords</i>		
	<i>Red Maple</i>		10	<i>Cords</i>		
	<i>Sugar Maple</i>		11	<i>Cords</i>		
	Mixed Spruce		8	Cords		
	<i>White Spruce</i>		8	<i>Cords</i>		
	N. White Cedar		22	Cords		
	Red Oak		10	Cords		
Red Pine		3	Cords			
White Pine		6	Cords			
4	Balsam Fir	Pulpwood	26	Cords	15.8	\$4,039.20
	Jack Pine		2	Cords		
	Mixed Aspen		86	Cords		
	<i>B. T. Aspen</i>		38	<i>Cords</i>		
	<i>Quaking Aspen</i>		48	<i>Cords</i>		
	Mixed Hardwood		80	Cords		
	<i>Balsam Poplar</i>		2	<i>Cords</i>		

DESCRIPTION OF TIMBER BY PAYMENT UNIT (PU), CON'T

PU	MARKET GROUP	PRODUCT	QUANTITY	UNIT	ACRES	ADVERTISE PRICE
4 con't	<i>Black Cherry</i>	<i>Pulpwood</i>	3	<i>Cords</i>		
	<i>Ironwood</i>		4	<i>Cords</i>		
	<i>Paper Birch</i>		5	<i>Cords</i>		
	<i>Red Maple</i>		13	<i>Cords</i>		
	<i>Sugar Maple</i>		50	<i>Cords</i>		
	<i>White Ash</i>		3	<i>Cords</i>		
	Mixed Spruce		37	<i>Cords</i>		
	<i>Black Spruce</i>		7	<i>Cords</i>		
	<i>White Spruce</i>		30	<i>Cords</i>		
	N. White Cedar		6	<i>Cords</i>		
	White Pine		12	<i>Cords</i>		
TOTAL:			3.6	MBF		
TOTAL:			1,192	Cords		

Sale Specific Conditions & Requirements

Sale Name: Last Cruise SBW

Sale Number: 33-023-21 Seq#: 1

1 - Sale Area

1.2 - Boundaries

1.2.1 - Painted boundaries (9/19)

The sale boundary and Payment Unit boundaries are marked and identified by blue, red, and yellow paint. Exterior sale boundary lines against private property are marked with blue paint. Exterior sale boundary lines against state are marked with red paint. Interior Payment Unit boundaries are marked with yellow paint. The painted boundary line trees are not Included Timber and are to be protected. Yellow painted trees designating an interior Payment Unit boundary are only to be cut when all surrounding Payment Units have been paid for.

2 - Timber Specifications

2.1 - Included Timber

2.1.1 - Clearcut unit(s) with unmerchantable trees (6/14)

Within Payment Unit(s) 1 - 4, cut all trees that are three (3) inches or more at DBH. In addition the following exceptions apply:

- Within Payment Units 1, 2 and 3, do not cut trees marked with green paint.
- Within Payment Unit 4, do not cut oak.

3 - Payments

3.3 - Pre-measured Sales

3.3.4 - Dividing payment units (7/14)

Payment Unit(s) \$18,000 in value or greater may be divided at the request of the Purchaser and upon approval of the Unit Manager. Dividing Payment Units is a contract modification which requires a Timber Sale Contract Amendment. There will be only one division per Payment Unit.

4 - Transportation

4.1 - Construction

4.1.8 - Road work (1) (8/07)

The following road work is required: Once cutting and skidding is completed within Payment Units 2 and 3, the Purchaser must create two broad based dips along the grade to allow water to drain from side to side. No gravel needs to be placed in them, but they need to be shallow enough to allow ORV traffic to cross them. The exact locations will be determined by the timber sale administrator.

4.2 - Maintenance

4.2.1 - Hauling restriction (12/08)

Hauling may be restricted on forest roads by the Unit Manager or his/her representative. The restriction may occur during spring breakup or during other wet weather conditions.

4.2.4 - Grading (10/16)

For completion of the sale, state forest roads must be graded. In general, this will require a road grader or bulldozer to shape up the roads after forest products have been hauled off site. This includes cleaning of drainage areas, grading, crowning, and filling with gravel, if necessary. The grading equipment to be used must be approved by the Unit Manager or his/her representative.

4.4 - Access

4.4.1 - Private property access (3/11)

Permission for access across private land to access Payment Unit 4, is the responsibility of the Purchaser. The landowner has indicated they would allow a logger to cross their property, but they must contact the landowner to get approval. Contact the timber sale administrator for the landowners contact information.

5 - Operations

5.2 - Conduct of Operations

5.2.3 - Operating Restrictions

5.2.3.1 - Operating restrictions (9/11)

Within Payment Unit(s) 2, cutting and skidding are limited to the period of December 1 to March 31, unless there is an extended dry or frozen period, and the timber sale administrator allows harvesting during that period. This restriction is because of low wet ground throughout the Payment Unit.

6 - Safety and Fire Prevention

6.2 - Signing

6.2.1 - Road posting (10/20)

The Purchaser is responsible for posting and maintaining caution signs on the forest access road off the Miscauna Grade Road prior to beginning operations. The road must be posted at appropriate distances from the Sale Area to warn of logging activity and truck traffic. Signs must be removed when harvest operations are suspended or completed. The Purchaser will provide these signs.

7 - Other Conditions

7.5 - Loss

7.5.1 - Deteriorating timber (7/09)

The sale area has received damage from spruce budworm and eastern larch beetle. The Purchaser should harvest the wood as soon as possible. The Department of Natural Resources is held free of responsibility of any further damage or deterioration due to delay in harvesting.



TIMBER SALE MAP

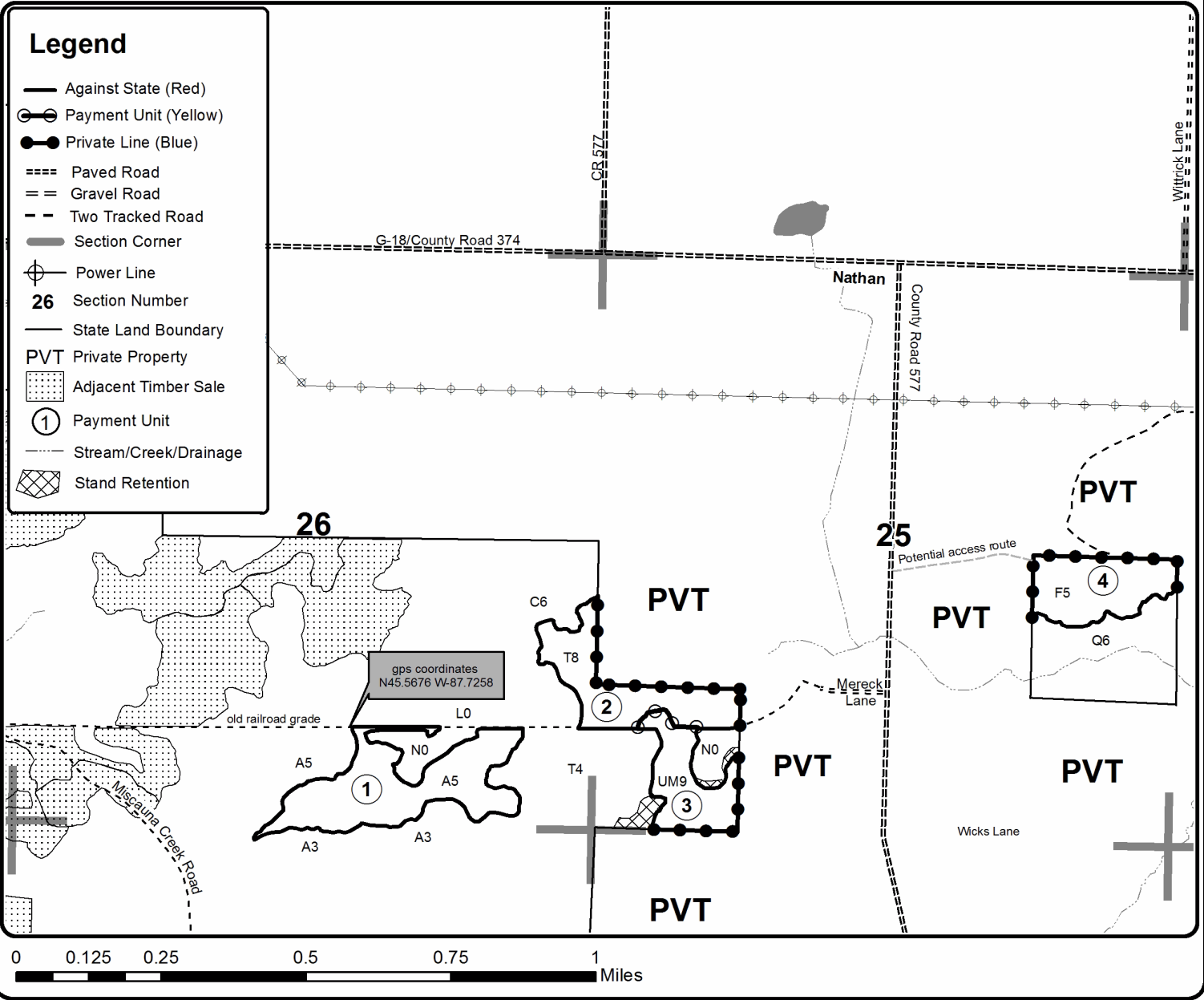
This information provided by authority of Part 525, 1994 PA 451, as amended.

Forest Management Unit Escanaba Management Unit	County Menominee County	Mapped By Beaudo	Date 11/19/2020	Page 1	of 1
Township 37N	Range 28W	Section(s) and Subdivision(s) Sec 25 - NESE, SWSW; Sec 26 - NESE, S1/2SE, SESW; Sec 35 - NWNE, NENW.	Scale 1:15,840		
Cruised By Salter, Beaudo					

Cover Type				Density			
A = Aspen	H = Hemlock	N = Marsh	U = Upland Brush	0 = Non Stocked	5 = Pole Timber Medium		
B = Paper Birch	J = Jack Pine	O = Oak	UM = Upland Mixed	1 = Seedling Sapling Poor	6 = Pole Timber Well		
C = Cedar	L = Lowland Brush	P = Lowland Poplar	V = Bog or Marsh	2 = Seedling Sapling Medium	7 = Saw Timber Poor		
D = Treed Bog	LM = Lowland Mixed	Q = Mixed Swamp Conifer	W = White Pine	3 = Seedling Sapling Well	8 = Saw Timber Medium		
E = Swamp Hdwoods	M = Mpl, Bch, Brch	R = Red Pine	X = Non Stocked	4 = Pole Timber Poor	9 = Saw Timber Well		
F = Spruce Fir	MC = Mixed Conifer	S = Black Spruce	Z = Water				
G = Grass	MD = Mixed Deciduous	T = Tamarack					

PU	Acres	PU	Acres
1	28.0	3	12.8
2	18.7	4	15.8

Last Cruise SBW
Compartment 10
75.3 Acres



TIMBER SALE INFORMATION

Fruiting Thornapple (33-024-21)
 T37N, R28W, SEC. 21; T37N, R28W, SEC. 22.
 Menominee County (Advertised Price \$22,032.00)

SALE NOTE: The Purchaser will need to haul and spread 120 cubic yards of gravel on the access roads, prior to any hauling taking place. Spruce budworm has caused a significant amount of spruce/fir defoliation and mortality throughout the Sale Area.

A recreation site such as a trail, pathway, or campground is within the sale area or the vicinity. Certain restrictions/specifications may be applicable including time restrictions.

A timber sale contract for this lump sum, sealed bid timber sale will be awarded to the responsible bidder offering the highest sealed bid price. All units of volume listed below were estimated using the T-Sale computer program and our traditional volume equations. Bids must be at or above the following advertised price for each product and species:

<u>PRODUCTS & SPECIES</u>	<u>ESTIMATED UNITS*</u>	<u>ADVERTISED PRICE</u>
Sawtimber		
Paper Birch	0.8 MBF	\$ 47.00 / MBF
Red Oak	3.9 MBF	\$ 129.00 / MBF
Pulpwood		
Balsam Fir	43 Cords	\$ 12.70 / Cord
Mixed Aspen	311 Cords	\$ 17.50 / Cord
Mixed Hardwood	152 Cords	\$ 16.95 / Cord
Mixed Oak	24 Cords	\$ 18.50 / Cord
N. White Cedar	16 Cords	\$ 11.55 / Cord
Red Pine	162 Cords	\$ 41.95 / Cord
White Pine	262 Cords	\$ 17.55 / Cord
White Spruce	65 Cords	\$ 13.90 / Cord

* The total volume is statistically estimated within plus (+) or minus (-) 11.16 percent. There are an estimated 1,043 cords on this timber sale, plus or minus 116 cords at the 95% confidence level. The estimated units are final and not subject to adjustment. Prospective bidders are urged to examine this timber and to make their own estimates of quantity and quality.

BOND AND PAYMENT SCHEDULE:

1. A bond in the amount of \$1,102.00 to insure faithful performance of the conditions of the contract will be deposited by the successful bidder within 21 days of the sale award.
2. Cutting in any sale or unit without the required advance payment would be considered a trespass.
3. Total payment must be paid in advance or according to the following schedule :
 - (a) Ten percent (10%) of the sale value must be paid within 21 days of the sale award.
 - (b) The 10% down payment will be credited towards the first unit cut.
 - (c) Payment for each of the following units must be made before cutting begins in that unit:

PAYMENT UNIT NUMBER	PERCENT OF TOTAL SALE VALUE
01	8.0%
02	22.5%
03	27.6%
04	7.3%
05	18.3%
06	16.3%

4. If no cutting takes place, the 10% down payment will not be refunded.
5. Operations on the contract issued will terminate on 09/30/2024.

SALE STATISTICS

SALE VOLUMES

VOLUME			STATISTICAL RANGE IN CORDS	
TOTAL CUBIC FEET	TOTAL CORDS	PERCENT ERROR	MINIMUM	MAXIMUM
82,425	1,043	11.16%	927	1,160

VDU VOLUMES

A VDU is a Volume Determination Unit. Volumes and their associated statistics are calculated at the VDU level and summarized to the sale level. There is often a one to one relationship between a VDU and a Payment Unit, but not always, depending on the cruise design. Refer to the VDU TO PAYMENT UNIT table.

VDU	VOLUME		PERCENT ERROR	RANGE IN CORDS	
	TOTAL CUBIC FEET	TOTAL CORDS		MINIMUM	MAXIMUM
61	6,431	81	31.82%	55	107
64	87,437	1,107	14.61%	945	1,269
66	3,121	40	47.06%	21	58
67	12,924	164	33.58%	109	219
68	16,274	206	26.53%	151	261
TOTAL:	126,187	1,597		1,282	1,913

VDU TO PAYMENT UNIT

When a VDU is associated with more than one Payment Unit (PU), the VDU volumes are assigned to the PU based on acres of the VDU within the PU.

VDU	VDU ACRES	PU	PU ACRES
61	6.2	1	6.2
64	33.6	2	15.2
		3	18.4
66	2.8	4	2.8
67	10.1	5	10.1
68	9.1	6	9.1
TOTAL:	61.8		61.8

DESCRIPTION OF TIMBER BY PAYMENT UNIT (PU)

PU	MARKET GROUP	PRODUCT	QUANTITY	UNIT	ACRES	ADVERTISE PRICE	
1	Mixed Hardwood	Pulpwood	2	Cords	6.2	\$1,766.00	
	<i>Paper Birch</i>		2	<i>Cords</i>			
	Mixed Oak		5	Cords			
	<i>Red Oak</i>		5	<i>Cords</i>			
	Red Pine		14	Cords			
	White Pine		56	Cords			
	White Spruce		5	Cords			
2	Paper Birch	Sawtimber	0.4	MBF	15.2	\$4,949.60	
	Red Oak		0.2	MBF			
	Balsam Fir	Pulpwood	8	Cords			
	Mixed Aspen		89	Cords			
	<i>B. T. Aspen</i>		6	<i>Cords</i>			
	<i>Balsam Poplar</i>		2	<i>Cords</i>			
	<i>Quaking Aspen</i>		81	<i>Cords</i>			
	Mixed Hardwood		49	Cords			
	<i>Basswood</i>		1	<i>Cords</i>			
	<i>Black Ash</i>		3	<i>Cords</i>			
	<i>Paper Birch</i>		6	<i>Cords</i>			
	<i>Red Maple</i>		39	<i>Cords</i>			
	Mixed Oak		1	Cords			
	<i>Red Oak</i>		1	<i>Cords</i>			
	N. White Cedar		4	Cords			
	Red Pine		31	Cords			
	White Pine		44	Cords			
	White Spruce		20	Cords			
	3		Paper Birch	Sawtimber			0.4
Red Oak				0.3	MBF		
Balsam Fir		Pulpwood	10	Cords			
Mixed Aspen			109	Cords			
<i>B. T. Aspen</i>			8	<i>Cords</i>			
<i>Balsam Poplar</i>			2	<i>Cords</i>			
<i>Quaking Aspen</i>			99	<i>Cords</i>			
Mixed Hardwood			61	Cords			
<i>Basswood</i>			2	<i>Cords</i>			
<i>Black Ash</i>			4	<i>Cords</i>			
<i>Paper Birch</i>			8	<i>Cords</i>			
<i>Red Maple</i>			47	<i>Cords</i>			
Mixed Oak			1	Cords			
<i>Red Oak</i>			1	<i>Cords</i>			
N. White Cedar			5	Cords			
Red Pine			38	Cords			
White Pine			54	Cords			
White Spruce	25	Cords					
4	Red Pine	Pulpwood	38	Cords	2.8	\$1,611.65	
	White Pine		1	Cords			
5	Red Oak	Sawtimber	2.6	MBF	10.1	\$4,024.15	
	Balsam Fir	Pulpwood	2	Cords			
	Mixed Aspen		7	Cords			
	<i>Quaking Aspen</i>		7	<i>Cords</i>			
	Mixed Hardwood		5	Cords			
	<i>Red Maple</i>		5	<i>Cords</i>			
	Mixed Oak		9	Cords			
	<i>Red Oak</i>		7	<i>Cords</i>			
	<i>White Oak</i>		2	<i>Cords</i>			
	Red Pine		37	Cords			
	White Pine		99	Cords			

DESCRIPTION OF TIMBER BY PAYMENT UNIT (PU), CON'T

PU	MARKET GROUP	PRODUCT	QUANTITY	UNIT	ACRES	ADVERTISE PRICE
6	Red Oak	Sawtimber	0.8	MBF	9.1	\$3,589.10
	Balsam Fir	Pulpwood	23	Cords		
	Mixed Aspen		106	Cords		
	<i>B. T. Aspen</i>		22	<i>Cords</i>		
	<i>Balsam Poplar</i>		9	<i>Cords</i>		
	<i>Quaking Aspen</i>		75	<i>Cords</i>		
	Mixed Hardwood		35	Cords		
	<i>Black Ash</i>		8	<i>Cords</i>		
	<i>Red Maple</i>		27	<i>Cords</i>		
	Mixed Oak		8	Cords		
	<i>Red Oak</i>		8	<i>Cords</i>		
	N. White Cedar		7	Cords		
	Red Pine		4	Cords		
	White Pine		8	Cords		
	White Spruce		15	Cords		
TOTAL:			4.7	MBF		
TOTAL:			1,035	Cords		

Sale Specific Conditions & Requirements

Sale Name: Fruiting Thornapple

Sale Number: 33-024-21 Seq#: 1

1 - Sale Area

1.2 - Boundaries

1.2.1 - Painted boundaries (9/19)

The sale boundary and Payment Unit boundaries are marked and identified by blue, red, and yellow paint. Exterior sale boundary lines against private property are marked with blue paint. Exterior sale boundary lines against state are marked with red paint. Interior Payment Unit boundaries are marked with yellow paint. Retention patches are marked with red paint; no harvesting activities may occur within these areas. The painted boundary line trees are not Included Timber and are to be protected unless marked with orange paint. Yellow painted trees designating an interior Payment Unit boundary are only to be cut when all surrounding Payment Units have been paid for.

2 - Timber Specifications

2.1 - Included Timber

2.1.1 - Clearcut unit(s) with unmerchantable trees (6/14)

Within Payment Unit(s) 6, cut all trees that are three (3) inches or more at DBH, except do not cut trees marked with green paint.

2.1.2 - Clearcut unit(s) w/o unmerchantable trees (8/11)

Within Payment Unit(s) 5, cut all trees which meet minimum piece specifications in 2.2 Utilization; except do not cut trees marked with green paint.

2.1.3 - Cut tree marked unit(s) (12/08)

Within Payment Unit(s) 1-4, all white pine, red pine, cedar, and oak are designated for cutting when marked with orange paint above and below stump height, regardless of merchantability. In addition, cut all other species which meet minimum piece specifications in 2.2 Utilization.

2.2 - Utilization

2.2.4 - Skidding length (2/14)

Skidding of lengths over 17 feet is permissible if the timber sale administrator approves the method and machinery used. If at any point damage exceeds specification 3.4.1, all the remaining wood must be skid in lengths less than 17 feet.

3 - Payments

3.3 - Pre-measured Sales

3.3.4 - Dividing payment units (7/14)

Payment Unit(s) \$18,000 in value or greater may be divided at the request of the Purchaser and upon approval of the Unit Manager. Dividing Payment Units is a contract modification which requires a Timber Sale Contract Amendment. There will be only one division per Payment Unit.

4 - Transportation

4.1 - Construction

4.1.8 - Road work (1) (8/07)

The following road work is required: The Purchaser must haul and spread 120 cubic yards of gravel on the access roads. The exact gravel locations will be identified during the pre-sale meeting. All roadwork must be completed prior to any hauling takes place. Gravel is available from a state pit about 2.5 miles north on the North State Road.

4.2 - Maintenance

4.2.1 - Hauling restriction (12/08)

Hauling may be restricted on forest roads by the Unit Manager or his/her representative. The restriction may occur during spring breakup or during other wet weather conditions.

4.2.4 - Grading (10/16)

For completion of the sale, state forest roads must be graded. In general, this will require a road grader or bulldozer to shape up the roads after forest products have been hauled off site. This includes cleaning of drainage areas, grading, crowning, and filling with gravel, if necessary. The grading equipment to be used must be approved by the Unit Manager or his/her representative.

5 - Operations

5.2 - Conduct of Operations

5.2.3 - Operating Restrictions

5.2.3.3 - Bark slippage restriction (3/09)

Within Payment Unit(s) 1-4, unless changed by written agreement, cutting and skidding are not permitted during the period of April 15 to July 15. This restriction is because of bark slippage.

5.2.22 - Operating Caution

5.2.22.1 - Operating caution (6/11)

It is recommended, but not required, that within Payment Unit(s) 6, cutting and skidding occur during dry summer or frozen winter conditions. The reason for the recommendation is because about 3 acres of the Payment Unit is lower wet ground.

6 - Safety and Fire Prevention

6.2 - Signing

6.2.1 - Road posting (10/20)

The Purchaser is responsible for posting and maintaining caution signs on the North State Road prior to beginning operations. The road must be posted at appropriate distances from the Sale Area to warn of logging activity and truck traffic. Signs must be removed when harvest operations are suspended or completed. The Purchaser will provide these signs.

7 - Other Conditions

7.5 - Loss

7.5.1 - Deteriorating timber (7/09)

The sale area has received damage from spruce budworm. The Purchaser should harvest the wood as soon as possible. The Department of Natural Resources is held free of responsibility of any further damage or deterioration due to delay in harvesting.



TIMBER SALE MAP

This information provided by authority of Part 525, 1994 PA 451, as amended.

Sale Number	Year
33-024	21

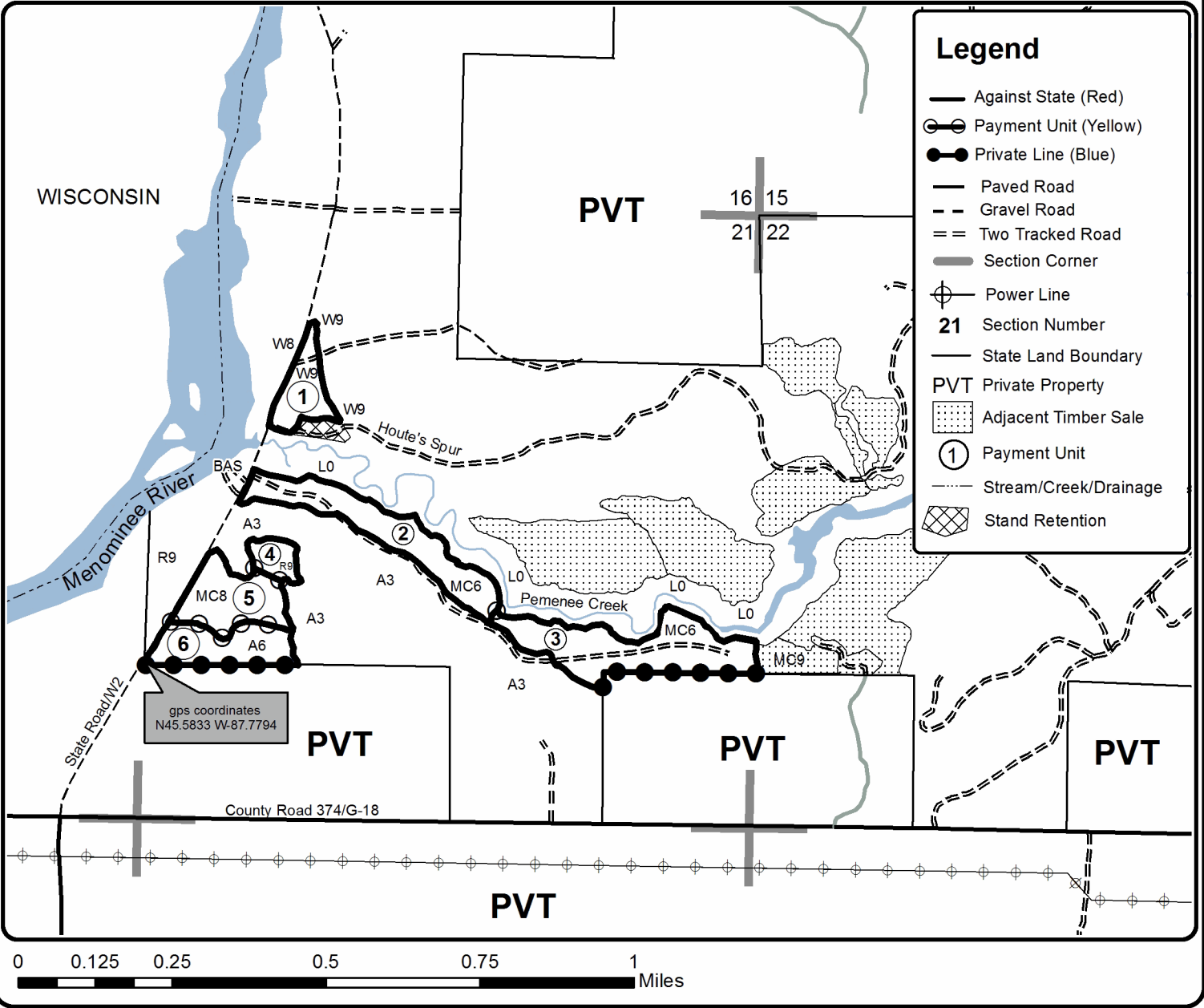
Forest Management Unit	County	Mapped By	Date	Page	of
Escanaba Management Unit	Menominee County	Beudo	12/22/2020	1	1
		Cruised By			
		Salter, Beudo			

Township	Range	Section(s) and Subdivision(s)	Scale
37N	28W	Sec 21 - NW, N1/2SW, N1/2SE, SWSE; Sec 22 - NWSW.	1:15,840

Cover Type				Density	
A = Aspen	H = Hemlock	N = Marsh	U = Upland Brush	0 = Non Stocked	5 = Pole Timber Medium
B = Paper Birch	J = Jack Pine	O = Oak	UM = Upland Mixed	1 = Seedling Sapling Poor	6 = Pole Timber Well
C = Cedar	L = Lowland Brush	P = Lowland Poplar	V = Bog or Marsh	2 = Seedling Sapling Medium	7 = Saw Timber Poor
D = Treed Bog	LM = Lowland Mixed	Q = Mixed Swamp Conifer	W = White Pine	3 = Seedling Sapling Well	8 = Saw Timber Medium
E = Swamp Hdwoods	M = Mpl, Bch, Brch	R = Red Pine	X = Non Stocked	4 = Pole Timber Poor	9 = Saw Timber Well
F = Spruce Fir	MC = Mixed Conifer	S = Black Spruce	Z = Water		
G = Grass	MD = Mixed Deciduous	T = Tamarack			

PU	Acres	PU	Acres
1	6.2	4	2.8
2	15.2	5	10.1
3	18.4	6	9.1

Fruiting Thornapple
Compartment 113
61.8 Acres



TIMBER SALE INFORMATION

North Lake Hardwoods (33-025-21)

T35N, R26W, SEC. 25; T35N, R26W, SEC. 26; T35N, R26W, SEC. 35; T35N, R26W, SEC. 36.
Menominee County (Advertised Price \$18,042.55)

SALE NOTE: Access into the Sale Area will be across 1/4 mile of marsh. The marsh will need to be frozen in order to access the Sale Area. The Sale Area is upland hardwoods. DNR personnel can assist with the initial freeze down of the winter road. Contact Dan or Dustin for details.

A timber sale contract for this lump sum, sealed bid timber sale will be awarded to the responsible bidder offering the highest sealed bid price. All units of volume listed below were estimated using the T-Sale computer program and our traditional volume equations. Bids must be at or above the following advertised price for each product and species:

<u>PRODUCTS & SPECIES</u>	<u>ESTIMATED UNITS*</u>	<u>ADVERTISED PRICE</u>
Sawtimber		
Basswood	60.9 MBF	\$ 40.00 / MBF
Beech	13.4 MBF	\$ 44.00 / MBF
Green Ash	1.9 MBF	\$ 49.00 / MBF
Red Maple	12.1 MBF	\$ 69.00 / MBF
Sugar Maple	17.3 MBF	\$ 103.00 / MBF
White Ash	38.3 MBF	\$ 36.00 / MBF
Yellow Birch	6.8 MBF	\$ 38.00 / MBF
Pulpwood		
B. T. Aspen	3 Cords	\$ 15.90 / Cord
Balsam Fir	5 Cords	\$ 11.55 / Cord
Mixed Hardwood	686 Cords	\$ 15.40 / Cord

* The total volume is statistically estimated within plus (+) or minus (-) 14.34 percent. There are an estimated 995 cords on this timber sale, plus or minus 143 cords at the 95% confidence level. The estimated units are final and not subject to adjustment. Prospective bidders are urged to examine this timber and to make their own estimates of quantity and quality.

BOND AND PAYMENT SCHEDULE:

1. A bond in the amount of \$902.00 to insure faithful performance of the conditions of the contract will be deposited by the successful bidder within 21 days of the sale award.
2. Cutting in any sale or unit without the required advance payment would be considered a trespass.
3. Total payment must be paid in advance or according to the following schedule :
 - (a) Ten percent (10%) of the sale value must be paid within 21 days of the sale award.
 - (b) The 10% down payment will be credited towards the first unit cut.
 - (c) Payment for each of the following units must be made before cutting begins in that unit:

PAYMENT UNIT NUMBER	PERCENT OF TOTAL SALE VALUE
01	30.1%
02	29.0%
03	25.3%
04	15.6%
4. If no cutting takes place, the 10% down payment will not be refunded.
5. Operations on the contract issued will terminate on 06/30/2025.

SALE STATISTICS

SALE VOLUMES

VOLUME		STATISTICAL RANGE IN CORDS		
TOTAL CUBIC FEET	TOTAL CORDS	PERCENT ERROR	MINIMUM	MAXIMUM
78,624	995	14.34%	853	1,138

VDU VOLUMES

A VDU is a Volume Determination Unit. Volumes and their associated statistics are calculated at the VDU level and summarized to the sale level. There is often a one to one relationship between a VDU and a Payment Unit, but not always, depending on the cruise design. Refer to the VDU TO PAYMENT UNIT table.

VDU	VOLUME		PERCENT ERROR	RANGE IN CORDS	
	TOTAL CUBIC FEET	TOTAL CORDS		MINIMUM	MAXIMUM
35	314,483	3,981	14.34%	3,410	4,552
TOTAL:	314,483	3,981		3,410	4,552

VDU TO PAYMENT UNIT

When a VDU is associated with more than one Payment Unit (PU), the VDU volumes are assigned to the PU based on acres of the VDU within the PU.

VDU	VDU ACRES	PU	PU ACRES
35	70.8	1	21.2
		2	20.5
		3	17.9
		4	11.2
TOTAL:	70.8		70.8

DESCRIPTION OF TIMBER BY PAYMENT UNIT (PU)

PU	MARKET GROUP	PRODUCT	QUANTITY	UNIT	ACRES	ADVERTISE PRICE
1	Basswood	Sawtimber	18.3	MBF	21.2	\$5,429.70
	Beech		4.0	MBF		
	Green Ash		0.5	MBF		
	Red Maple		3.6	MBF		
	Sugar Maple		5.2	MBF		
	White Ash		11.4	MBF		
	Yellow Birch		2.0	MBF		
	B. T. Aspen		Pulpwood	1		
	Balsam Fir	2		Cords		
	Mixed Hardwood	207		Cords		
	<i>Basswood</i>	43		<i>Cords</i>		
	<i>Beech</i>	26		<i>Cords</i>		
	<i>Black Ash</i>	7		<i>Cords</i>		
	<i>Green Ash</i>	1		<i>Cords</i>		
	<i>Ironwood</i>	1		<i>Cords</i>		
	<i>Paper Birch</i>	1		<i>Cords</i>		
	<i>Red Maple</i>	21		<i>Cords</i>		
	<i>Sugar Maple</i>	53		<i>Cords</i>		
	<i>White Ash</i>	37		<i>Cords</i>		
	<i>Yellow Birch</i>	17	<i>Cords</i>			
2	Basswood	Sawtimber	17.6	MBF	20.5	\$5,229.15
	Beech		3.9	MBF		
	Green Ash		0.6	MBF		
	Red Maple		3.5	MBF		
	Sugar Maple		5.0	MBF		
	White Ash		11.1	MBF		
	Yellow Birch		2.0	MBF		
	B. T. Aspen		Pulpwood	1		
	Balsam Fir	1		Cords		
	Mixed Hardwood	199		Cords		
	<i>Basswood</i>	41		<i>Cords</i>		
	<i>Beech</i>	25		<i>Cords</i>		
	<i>Black Ash</i>	7		<i>Cords</i>		
	<i>Green Ash</i>	1		<i>Cords</i>		
	<i>Ironwood</i>	1		<i>Cords</i>		
	<i>Paper Birch</i>	1		<i>Cords</i>		
	<i>Red Maple</i>	20		<i>Cords</i>		
	<i>Sugar Maple</i>	52		<i>Cords</i>		
	<i>White Ash</i>	36		<i>Cords</i>		
	<i>Yellow Birch</i>	15	<i>Cords</i>			
3	Basswood	Sawtimber	15.4	MBF	17.9	\$4,562.65
	Beech		3.4	MBF		
	Green Ash		0.5	MBF		
	Red Maple		3.1	MBF		
	Sugar Maple		4.4	MBF		
	White Ash		9.7	MBF		
	Yellow Birch		1.7	MBF		
	B. T. Aspen		Pulpwood	1		
	Balsam Fir	1		Cords		
	Mixed Hardwood	173		Cords		
	<i>Basswood</i>	36		<i>Cords</i>		
	<i>Beech</i>	21		<i>Cords</i>		
	<i>Black Ash</i>	6		<i>Cords</i>		
	<i>Green Ash</i>	1		<i>Cords</i>		
	<i>Ironwood</i>	1		<i>Cords</i>		
	<i>Paper Birch</i>	1		<i>Cords</i>		

DESCRIPTION OF TIMBER BY PAYMENT UNIT (PU), CON'T

PU	MARKET GROUP	PRODUCT	QUANTITY	UNIT	ACRES	ADVERTISE PRICE			
3 con't	<i>Red Maple</i>	<i>Pulpwood</i>	18	<i>Cords</i>					
	<i>Sugar Maple</i>		45	<i>Cords</i>					
	<i>White Ash</i>		31	<i>Cords</i>					
	<i>Yellow Birch</i>		13	<i>Cords</i>					
4	Basswood	Sawtimber	9.6	MBF	11.2	\$2,821.05			
	Beech		2.1	MBF					
	Green Ash		0.3	MBF					
	Red Maple		1.9	MBF					
	Sugar Maple		2.7	MBF					
	White Ash		6.1	MBF					
	Yellow Birch		1.1	MBF					
	Balsam Fir		Pulpwood	1			Cords		
	Mixed Hardwood			107			Cords		
	<i>Basswood</i>	22		<i>Cords</i>					
	<i>Beech</i>	13		<i>Cords</i>					
	<i>Black Ash</i>	4		<i>Cords</i>					
	<i>Ironwood</i>	1		<i>Cords</i>					
	<i>Red Maple</i>	11		<i>Cords</i>					
	<i>Sugar Maple</i>	28		<i>Cords</i>					
	<i>White Ash</i>	20		<i>Cords</i>					
	<i>Yellow Birch</i>	8		<i>Cords</i>					
	TOTAL:			150.7			MBF		
	TOTAL:			694			Cords		

Sale Specific Conditions & Requirements

Sale Name: North Lake Hardwoods

Sale Number: 33-025-21 Seq#: 1

1 - Sale Area

1.2 - Boundaries

1.2.1 - Painted boundaries (9/19)

The sale boundary and Payment Unit boundaries are marked and identified by red and yellow paint. Exterior sale boundary lines against state are marked with red paint. Interior Payment Unit boundaries are marked with yellow paint. The painted boundary line trees are not Included Timber and are to be protected unless marked with orange paint. Yellow painted trees designating an interior Payment Unit boundary are only to be cut when all surrounding Payment Units have been paid for.

2 - Timber Specifications

2.1 - Included Timber

2.1.3 - Cut tree marked unit(s) (12/08)

Within Payment Unit(s) 1 - 4, all trees are designated for cutting when marked with orange paint above and below stump height, regardless of merchantability.

2.2 - Utilization

2.2.4 - Skidding length (2/14)

Skidding of unlimbed tops or lengths over 17 feet is not permissible, unless approved by the Unit Manager or his/her representative.

3 - Payments

3.3 - Pre-measured Sales

3.3.4 - Dividing payment units (7/14)

Payment Unit(s) \$18,000 in value or greater may be divided at the request of the Purchaser and upon approval of the Unit Manager. Dividing Payment Units is a contract modification which requires a Timber Sale Contract Amendment. There will be only one division per Payment Unit.

4 - Transportation

4.2 - Maintenance

4.2.1 - Hauling restriction (12/08)

Hauling may be restricted on forest roads by the Unit Manager or his/her representative. The restriction may occur during spring break up or during other wet weather conditions.

4.2.4 - Grading (10/16)

For completion of the sale, state forest roads must be graded. In general, this will require a road grader or bulldozer to shape up the roads after forest products have been hauled off site. This includes cleaning of drainage areas, grading, crowning, and filling with gravel, if necessary. The grading equipment to be used must be approved by the Unit Manager or his/her representative.

4.3 - Public Right-of-Way

4.3.2 - County R-O-W (12/06)

The county must be contacted prior to accessing the Sale Area off County Road G - 12 through the county road R-O-W. This applies to the entire sale.

5 - Operations

5.2 - Conduct of Operations

5.2.3 - Operating Restrictions

5.2.3.1 - Operating restrictions (9/11)

Within Payment Unit(s) 1 - 4, cutting, skidding, and hauling are limited to the period of December 1 to March 31, unless there is an extended frozen period, and the sale administrator allows operations during that period of time. This restriction is due to limited of access into the Sale Area. The Purchaser must freeze in about 1/4 of a mile of road through a swamp to access the sale. The Sale Area is all high ground and could be cut during most time periods, but due to wet access the sale is restricted.

6 - Safety and Fire Prevention

6.2 - Signing

6.2.1 - Road posting (10/20)

The Purchaser is responsible for posting and maintaining caution signs on County Road G-12 prior to beginning operations. The road must be posted at appropriate distances from the Sale Area to warn of logging activity and truck traffic. Signs must be removed when harvest operations are suspended or completed. The Purchaser will provide these signs and contact the Menominee County Road Commission to determine the proper placement of the signs.

7 - Other Conditions

7.2 - Extensions

7.2.5 - Weather related extension (1/13)

If weather conditions during the operating period of this contract prevent harvesting, this sale may qualify for a weather related extension. If approved, the normal extension fee would be waived. To qualify, there must be a documented attempt each year to harvest in the difficult portion of the sale.



TIMBER SALE MAP

This information provided by authority of Part 525, 1994 PA 451, as amended.

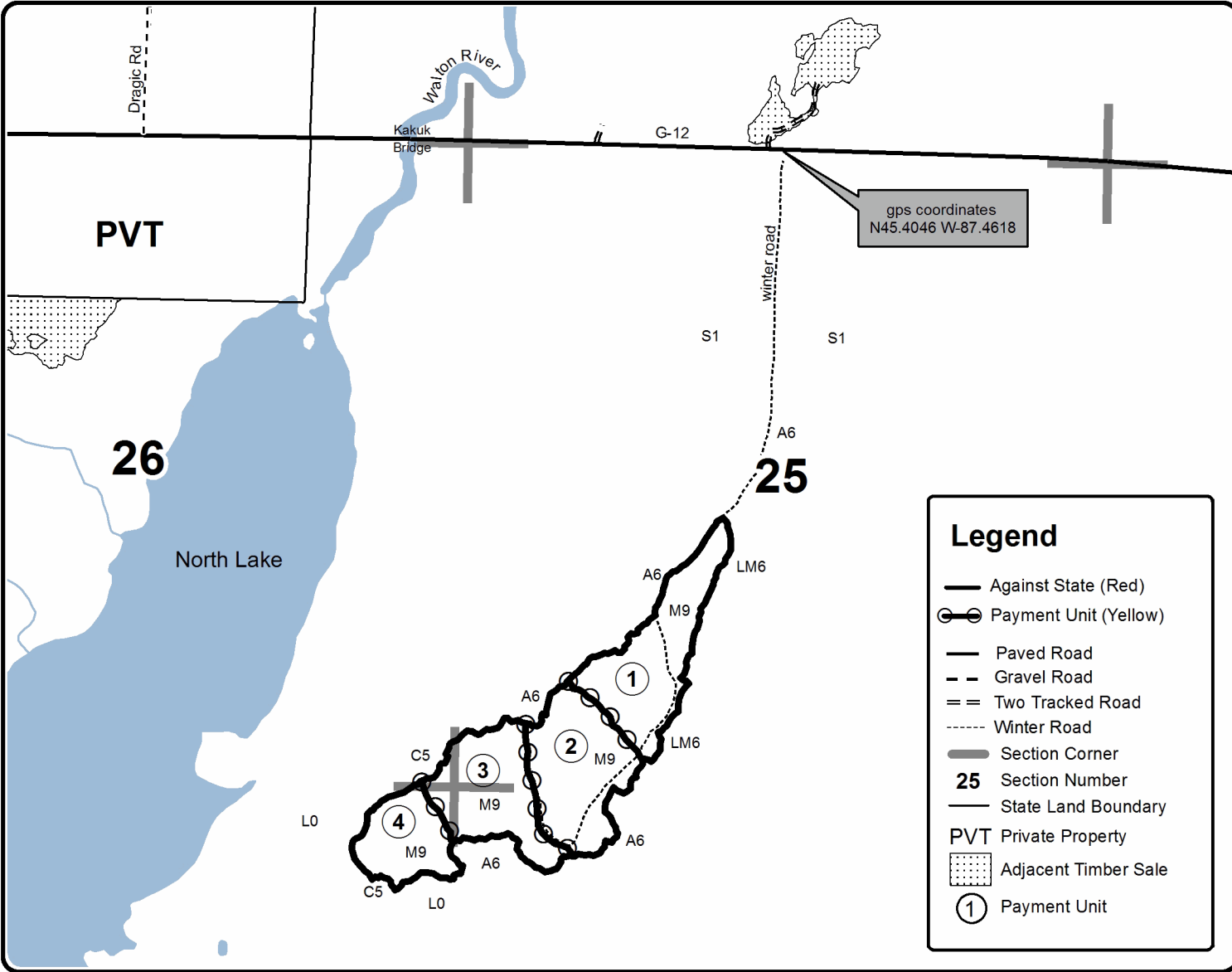
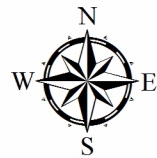
Sale Number	Year
33-025	21

Forest Management Unit	County	Mapped By	Date	Page	of
Escanaba Management Unit	Menominee County	Beudo	1/25/2021	1	1
Township	Range	Section(s) and Subdivision(s)	Scale		
35N	26W	Sec 25 - S1/2SW, NESW; Sec 26 - SESE; Sec 35 - NENE; Sec 36 - NWNW.	1:15,840		

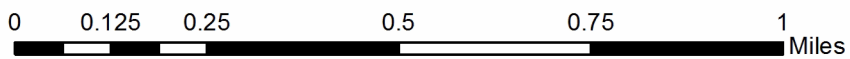
Cover Type				Density	
A = Aspen	H = Hemlock	N = Marsh	U = Upland Brush	0 = Non Stocked	5 = Pole Timber Medium
B = Paper Birch	J = Jack Pine	O = Oak	UM = Upland Mixed	1 = Seedling Sapling Poor	6 = Pole Timber Well
C = Cedar	L = Lowland Brush	P = Lowland Poplar	V = Bog or Marsh	2 = Seedling Sapling Medium	7 = Saw Timber Poor
D = Treed Bog	LM = Lowland Mixed	Q = Mixed Swamp Conifer	W = White Pine	3 = Seedling Sapling Well	8 = Saw Timber Medium
E = Swamp Hdwoods	M = Mpl, Bch, Brch	R = Red Pine	X = Non Stocked	4 = Pole Timber Poor	9 = Saw Timber Well
F = Spruce Fir	MC = Mixed Conifer	S = Black Spruce	Z = Water		
G = Grass	MD = Mixed Deciduous	T = Tamarack			

PU	Acres
1	21.2
2	20.5
3	17.9
4	11.2

North Lake Hardwoods
Compartment 59
70.8 Acres



Legend	
	Against State (Red)
	Payment Unit (Yellow)
	Paved Road
	Gravel Road
	Two Tracked Road
	Winter Road
	Section Corner
25	Section Number
	State Land Boundary
PVT	Private Property
	Adjacent Timber Sale
	Payment Unit



Last Cruise SBW (33-023-21)

T37N, R28W, SEC. 25; T37N, R28W, SEC. 26; T37N, R28W, SEC. 35; Menominee

In response to the notice of sale to be held 3:00 p.m. (local time) on March 22, 2021, I am hereby submitting my sealed bid (firm offer) for the following forest products to be cut. Bids for individual species must be at or above the advertised price. All non-responsive bid forms may be rejected.

<u>PRODUCTS & SPECIES</u>	<u>ESTIMATED VOLUME*</u>	<u>ADVERTISED PRICE</u>	<u>BID PRICE/UNIT</u>
Sawtimber			
Paper Birch	0.5 MBF	\$ 47.00/MBF	\$ _____
Red Maple	1.0 MBF	\$ 76.00/MBF	\$ _____
Red Oak	0.9 MBF	\$ 129.00/MBF	\$ _____
Sugar Maple	1.2 MBF	\$ 113.00/MBF	\$ _____
Pulpwood			
Balsam Fir	123 Cords	\$ 12.70/Cord	\$ _____
Jack Pine	2 Cords	\$ 26.90/Cord	\$ _____
Mixed Aspen	443 Cords	\$ 17.50/Cord	\$ _____
Mixed Hardwood	268 Cords	\$ 16.95/Cord	\$ _____
Mixed Spruce	79 Cords	\$ 13.90/Cord	\$ _____
N. White Cedar	77 Cords	\$ 11.55/Cord	\$ _____
Red Oak	12 Cords	\$ 18.50/Cord	\$ _____
Red Pine	16 Cords	\$ 41.95/Cord	\$ _____
Tamarack	129 Cords	\$ 11.70/Cord	\$ _____
White Pine	43 Cords	\$ 17.55/Cord	\$ _____

*The volumes are statistically estimated within plus (+) or minus (-) 15.27 percent at 95% confidence level. These estimated volumes are final and not subject to adjustment. Prospective bidders are urged to examine this timber and to make their own estimates of quantity and quality.

I understand that any or all bids may be rejected. All bids must be signed and all bid items must be bid or the bid form may be rejected. I also understand that consideration and awarding a contract will be based upon my past performance and ability to complete the contract based upon equipment and staffing subject to my control .

FEDERAL ID: _____ - _____ or SOCIAL SECURITY NUMBER: _____ - _____ - _____

Company or individual bidding: _____

Company representative's name: _____

Address: _____

City: _____ State: _____ Zip: _____

IF AVAILABLE, PLEASE PLACE THE PERSONALIZED LABEL FROM YOUR PROSPECTUS IN THE ABOVE BOX.

Individual or company representative's signature: _____ Date: _____

Phone number : _____ Email (optional): _____

THE WINNING BIDDER MUST COMPLETE THE VERIFICATION OF WORKER'S DISABILITY COMPENSATION ACT COMPLIANCE (ON REVERSE SIDE IF DOUBLE SIDED) WITHIN 21 DAYS OF SALE AWARD DATE



TIMBER SALE VERIFICATION OF WORKER'S DISABILITY COMPENSATION ACT COMPLIANCE

As required by Act 317, P.A. 1969 (Worker's Compensation) and
Part 5 of Act 451 of 1994, as amended.

FOR DEPARTMENT USE ONLY	
Sale Number (XX - XXX - XX - XX)	
Forest Management Unit:	

VERIFICATION OF WORKER'S DISABILITY COMPENSATION ACT COMPLIANCE

- This verification must be completed and submitted within 21 days of contract award and prior to the issuance of the timber sale contract.
- In addition, if boxes 2B or 2C are checked, then Notice of Exclusion or Certificate of Insurance must be submitted within twenty-one (21) days of the contract award and prior to the issuance of the timber sale contract.
- All information must be typed or printed except for written signatures.

Please Check Appropriate Categories:

1. My business is organized as (you **must** check one of the boxes below):
 - A. Sole Proprietorship (individual)
 - B. Partnership
 - C. Corporation
2. You **must** check one of the boxes below:
 - A. I certify my business is a sole proprietorship and it has no employees but the sole proprietor. I am not subject to the Worker's Compensation Laws.
 - B. I certify my business has satisfied its obligation to the Worker's Compensation Act through the use of an approved Notice of Exclusion (BWC-337, Rev. 5/96). I will provide a copy of the Notice of Exclusion within 21 days of the contract award. (For questions or a copy of the BWC-337, please call the Worker's Compensation Bureau at 517-322-1195).
 - C. I certify my business has a Worker's Compensation Policy. I will provide an original Certificate of Insurance within twenty-one (21) days of the contract award.
3. If you have checked item 2(A) or 2(B), you **must** indicate the number of **both** full-time and part-time employees, other than yourself, including family members and active partners (if none, you must enter "0").

_____ Full-time Employees

_____ Part-time Employees

Name of Business		Federal ID (or) Social Security No.	
Address		Telephone ()	
City	State	ZIP	

I hereby certify that the above information is true and correct. I agree to notify the Michigan DNR of any changes that occur in factors affecting my coverage during any of my present and future operations.

Signature of Owner or Authorized Representative

Title

Date

Please complete the "SEALED BID" information on the next page

Fruiting Thornapple (33-024-21)
T37N, R28W, SEC. 21; T37N, R28W, SEC. 22; Menominee COUNTY

In response to the notice of sale to be held 3:00 p.m. (local time) on March 22, 2021, I am hereby submitting my sealed bid (firm offer) for the following forest products to be cut. Bids for individual species must be at or above the advertised price. All non-responsive bid forms may be rejected.

<u>PRODUCTS & SPECIES</u>	<u>ESTIMATED VOLUME*</u>	<u>ADVERTISED PRICE</u>	<u>BID PRICE/UNIT</u>
Sawtimber			
Paper Birch	0.8 MBF	\$ 47.00/MBF	\$ _____
Red Oak	3.9 MBF	\$ 129.00/MBF	\$ _____
Pulpwood			
Balsam Fir	43 Cords	\$ 12.70/Cord	\$ _____
Mixed Aspen	311 Cords	\$ 17.50/Cord	\$ _____
Mixed Hardwood	152 Cords	\$ 16.95/Cord	\$ _____
Mixed Oak	24 Cords	\$ 18.50/Cord	\$ _____
N. White Cedar	16 Cords	\$ 11.55/Cord	\$ _____
Red Pine	162 Cords	\$ 41.95/Cord	\$ _____
White Pine	262 Cords	\$ 17.55/Cord	\$ _____
White Spruce	65 Cords	\$ 13.90/Cord	\$ _____

*The volumes are statistically estimated within plus (+) or minus (-) 11.16 percent at 95% confidence level. These estimated volumes are final and not subject to adjustment. Prospective bidders are urged to examine this timber and to make their own estimates of quantity and quality.

I understand that any or all bids may be rejected. All bids must be signed and all bid items must be bid or the bid form may be rejected. I also understand that consideration and awarding a contract will be based upon my past performance and ability to complete the contract based upon equipment and staffing subject to my control.

FEDERAL ID: _____ - _____ or SOCIAL SECURITY NUMBER: _____ - _____ - _____

Company or individual bidding: _____

Company representative's name: _____

Address: _____

City: _____ State: _____ Zip: _____

IF AVAILABLE, PLEASE PLACE THE PERSONALIZED LABEL FROM YOUR PROSPECTUS IN THE ABOVE BOX.

Individual or company representative's signature: _____ Date: _____

Phone number : _____ Email (optional): _____

THE WINNING BIDDER MUST COMPLETE THE VERIFICATION OF WORKER'S DISABILITY COMPENSATION ACT COMPLIANCE (ON REVERSE SIDE IF DOUBLE SIDED) WITHIN 21 DAYS OF SALE AWARD DATE



FOR DEPARTMENT USE ONLY
Sale Number (XX - XXX - XX - XX)
Forest Management Unit:

TIMBER SALE VERIFICATION OF WORKER'S DISABILITY COMPENSATION ACT COMPLIANCE

*As required by Act 317, P.A. 1969 (Worker's Compensation) and
Part 5 of Act 451 of 1994, as amended.*

VERIFICATION OF WORKER'S DISABILITY COMPENSATION ACT COMPLIANCE

- This verification must be completed and submitted within 21 days of contract award and prior to the issuance of the timber sale contract.
- In addition, if boxes 2B or 2C are checked, then Notice of Exclusion or Certificate of Insurance must be submitted within twenty-one (21) days of the contract award and prior to the issuance of the timber sale contract.
- All information must be typed or printed except for written signatures.

Please Check Appropriate Categories:

1. My business is organized as (you **must** check one of the boxes below):
 - A. Sole Proprietorship (individual)
 - B. Partnership
 - C. Corporation

2. You **must** check one of the boxes below:
 - A. I certify my business is a sole proprietorship and it has no employees but the sole proprietor. I am not subject to the Worker's Compensation Laws.
 - B. I certify my business has satisfied its obligation to the Worker's Compensation Act through the use of an approved Notice of Exclusion (BWC-337, Rev. 5/96). I will provide a copy of the Notice of Exclusion within 21 days of the contract award. (For questions or a copy of the BWC-337, please call the Worker's Compensation Bureau at 517-322-1195).
 - C. I certify my business has a Worker's Compensation Policy. I will provide an original Certificate of Insurance within twenty-one (21) days of the contract award.

3. If you have checked item 2(A) or 2(B), you **must** indicate the number of **both** full-time and part-time employees, other than yourself, including family members and active partners (if none, you must enter "0").

_____ Full-time Employees

_____ Part-time Employees

Name of Business		Federal ID (or) Social Security No.	
Address		Telephone ()	
City	State	ZIP	

I hereby certify that the above information is true and correct. I agree to notify the Michigan DNR of any changes that occur in factors affecting my coverage during any of my present and future operations.

Signature of Owner or Authorized Representative

Title

Date

Please complete the "SEALED BID" information on the next page

North Lake Hardwoods (33-025-21)
T35N, R26W, SEC. 25; T35N, R26W, SEC. 26; T35N, R26W, SEC. 35; T35N,

In response to the notice of sale to be held 3:00 p.m. (local time) on March 22, 2021, I am hereby submitting my sealed bid (firm offer) for the following forest products to be cut. Bids for individual species must be at or above the advertised price. All non-responsive bid forms may be rejected.

<u>PRODUCTS & SPECIES</u>	<u>ESTIMATED VOLUME*</u>	<u>ADVERTISED PRICE</u>	<u>BID PRICE/UNIT</u>
Sawtimber			
Basswood	60.9 MBF	\$ 40.00/MBF	\$ _____
Beech	13.4 MBF	\$ 44.00/MBF	\$ _____
Green Ash	1.9 MBF	\$ 49.00/MBF	\$ _____
Red Maple	12.1 MBF	\$ 69.00/MBF	\$ _____
Sugar Maple	17.3 MBF	\$ 103.00/MBF	\$ _____
White Ash	38.3 MBF	\$ 36.00/MBF	\$ _____
Yellow Birch	6.8 MBF	\$ 38.00/MBF	\$ _____
Pulpwood			
B. T. Aspen	3 Cords	\$ 15.90/Cord	\$ _____
Balsam Fir	5 Cords	\$ 11.55/Cord	\$ _____
Mixed Hardwood	686 Cords	\$ 15.40/Cord	\$ _____

*The volumes are statistically estimated within plus (+) or minus (-) 14.34 percent at 95% confidence level. These estimated volumes are final and not subject to adjustment. Prospective bidders are urged to examine this timber and to make their own estimates of quantity and quality.

I understand that any or all bids may be rejected. All bids must be signed and all bid items must be bid or the bid form may be rejected. I also understand that consideration and awarding a contract will be based upon my past performance and ability to complete the contract based upon equipment and staffing subject to my control.

FEDERAL ID: _____ - _____ or SOCIAL SECURITY NUMBER: _____ - _____ - _____

Company or individual bidding: _____

Company representative's name: _____

Address: _____

City: _____ State: _____ Zip: _____

IF AVAILABLE, PLEASE PLACE THE PERSONALIZED LABEL FROM YOUR PROSPECTUS IN THE ABOVE BOX.

Individual or company representative's signature: _____ Date: _____

Phone number : _____ Email (optional): _____

THE WINNING BIDDER MUST COMPLETE THE VERIFICATION OF WORKER'S DISABILITY COMPENSATION ACT COMPLIANCE (ON REVERSE SIDE IF DOUBLE SIDED) WITHIN 21 DAYS OF SALE AWARD DATE



FOR DEPARTMENT USE ONLY	
Sale Number (XX - XXX - XX - XX)	
Forest Management Unit:	

TIMBER SALE VERIFICATION OF WORKER'S DISABILITY COMPENSATION ACT COMPLIANCE

As required by Act 317, P.A. 1969 (Worker's Compensation) and
Part 5 of Act 451 of 1994, as amended.

VERIFICATION OF WORKER'S DISABILITY COMPENSATION ACT COMPLIANCE

- This verification must be completed and submitted within 21 days of contract award and prior to the issuance of the timber sale contract.
- In addition, if boxes 2B or 2C are checked, then Notice of Exclusion or Certificate of Insurance must be submitted within twenty-one (21) days of the contract award and prior to the issuance of the timber sale contract.
- All information must be typed or printed except for written signatures.

Please Check Appropriate Categories:

1. My business is organized as (you **must** check one of the boxes below):
 - A. Sole Proprietorship (individual)
 - B. Partnership
 - C. Corporation
2. You **must** check one of the boxes below:
 - A. I certify my business is a sole proprietorship and it has no employees but the sole proprietor. I am not subject to the Worker's Compensation Laws.
 - B. I certify my business has satisfied its obligation to the Worker's Compensation Act through the use of an approved Notice of Exclusion (BWC-337, Rev. 5/96). I will provide a copy of the Notice of Exclusion within 21 days of the contract award. (For questions or a copy of the BWC-337, please call the Worker's Compensation Bureau at 517-322-1195).
 - C. I certify my business has a Worker's Compensation Policy. I will provide an original Certificate of Insurance within twenty-one (21) days of the contract award.
3. If you have checked item 2(A) or 2(B), you **must** indicate the number of **both** full-time and part-time employees, other than yourself, including family members and active partners (if none, you must enter "0").

_____ Full-time Employees

_____ Part-time Employees

Name of Business		Federal ID (or) Social Security No.	
Address		Telephone ()	
City	State	ZIP	

I hereby certify that the above information is true and correct. I agree to notify the Michigan DNR of any changes that occur in factors affecting my coverage during any of my present and future operations.

Signature of Owner or Authorized Representative

Title

Date

Please complete the "SEALED BID" information on the next page