



**DEPARTMENT OF NATURAL RESOURCES
STATE OF MICHIGAN**

TIMBER SALE PROSPECTUS #6881

SCHEDULED SALE DATE AND TIME: 10:00 a.m. (local time) on May 19, 2021.

LOCATION: GLADWIN MGMT UNIT, 801 NORTH SILVERLEAF, GLADWIN, MI 48624.

PROSPECTUS NOTE: The bidder is advised to inspect the sale area and review the location, estimated volumes, operating costs and contract terms of proposed sales. Please be aware that some landowners may request 60 days or more notice for access across their land.

Notice is hereby given that bids will be received by the Unit Manager, GLADWIN MANAGEMENT UNIT, for certain timber on the following described lands:

Ferngully's Mix (73-005-20) / T18N, R06W, SEC. 5 , W1/2SW,S1/2SE.

T18N, R06W, SEC. 6 , NESE.

T18N, R06W, SEC. 7 , SE.

T18N, R06W, SEC. 8 , NW,N1/2NE,SWNE,NESW,NWSE.

Clare County, Advertised Price \$36,024.40, 123.4 Acres, Aspen, Hardwood.

SALE NOTE: Sale is located in Clare county with access from M-115 for Payment Units 1 - 3. All Payment Units are final harvests. There are areas of low saturated soils throughout the Payment Units.

Marticki Aspen (73-011-20) / T20N, R03W, SEC. 18, N1/2NE,SENE.

T20N, R04W, SEC. 12, SENE.

T20N, R04W, SEC. 24, NW,N1/2SW.

Clare County, Advertised Price \$178,508.80, 226.0 Acres, Aspen, Hardwood.

BID INSTRUCTIONS (VER. 07/02/2018):

1. Scheduled Bid Location, Date, and Time (2/11)

Bids must be received by the Unit Manager, GLADWIN OFFICE, 801 NORTH SILVERLEAF, GLADWIN, MI 48624, no later than 10:00 a.m. (local time) on May 19, 2021. For further information concerning this sale, contact Patrick Mohney at 989-426-9205 extension 7640.

2. Bidder's Qualifications (5/16)

Purchaser shall obtain workers compensation insurance to cover claims under Michigan's Worker's Disability Compensation Act of 1969 or similar employee benefit act of any other state applicable to an employee. If all or part of a timber sale was prepared by a private contractor, the contractor and that contractor's company are not permitted to bid on the timber sale contract. Bids will not be accepted from individuals or companies appearing on the DNR/FRD No-Bid List. This list contains the names of purchasers who previously failed to execute a contract within 21-days or who have a history of poor performance.

3. Preparation of Sealed Bids (5/16)

Bid Forms may be completed online thru Michigan DNR Timber Sale Online Bidding (OLB) at www.michigan.gov/timberbidding or by completing the hardcopy Bid Form found in the Timber Sale Prospectus. Hardcopy Bid Forms shall be manually signed in ink. Registration in OLB is considered your 'signature' for all bids submitted thru that system. Bid prices must be entered for each species and product in the Bid Price column for all material subject to bidding and all fill-in blanks must be completed. If erasures or other changes appear on the hardcopy Bid Form, each erasure or change must be initialed by the person signing the bid.

4. Submission of Sealed Bids (5/16)

Bid forms may be obtained from the Unit Manager or thru OLB. Bids may be submitted hardcopy or thru OLB. All hardcopy bids must be submitted on the bid form and in an envelope clearly identified as described in this section. NOTE: Only one bid form per bid envelope. Sealed bids must be submitted to the Unit office designated in the prospectus and must be submitted at or prior to the time established in the prospectus. The envelope should show on the outside (a) the sale name or number and (b) the date and time of bid opening, as shown in the prospectus. Bids received after the time specified in the sale prospectus are late bids and will be rejected.

It is possible for a bidder to submit multiple bids on a single sale. For example, a bid may be submitted hardcopy and a bid may be submitted thru OLB. Or, two bidders from the same company could both submit bids on the same sale. If this were to happen, the State would accept all bids received and award the contract accordingly. All bidding and contractual requirements would apply to all bids received.

5. Public Opening of Sealed Bids (7/16)

If conditions permit, the sealed bids will be publicly opened and posted at the time and place set in the prospectus.

If a bidder, present at a bid opening, has submitted bids on more than one sale, that bidder may withdraw their unopened bid envelopes or announce the withdrawal of their online bid after being declared the successful bidder on one sale.

6. Award of Contract (1/11)

Award of the contract will be made to the Bidder whose bid, conforming to the prospectus, is most advantageous to the State of Michigan on the basis of total value at rates bid for the estimated quantities. The State reserves the right to reject any bid or waive any minor irregularity in bids received. A written award mailed (or otherwise furnished) to the successful Bidder shall be deemed to result in a binding contract without further action by either party.

7. Down Payment (1/11)

The Bidder to whom award is made must make a down payment within 21 days of the sale award. The amount of the down payment will be calculated as shown in the Bond and Payment Schedule of this prospectus. Only cash may be used to meet this requirement.

8. Performance Security (1/11)

As guarantee of faithful performance, a cash bond, certificate of deposit, surety bond or irrevocable letter of credit (LOC) is required within 21 days of the sale award. The amount of the performance security is shown in the Bond and

Payment Schedule of this prospectus. If an LOC or surety is used, the coverage must extend for at least 6 months beyond the contract expiration.

9. Timber Sale Contract (7/18)

Additional conditions and requirements common to all timber sales are listed on the timber sale contract (R4031) and are available on line at www.michigan.gov/timber. Contact the Unit Manager for additional information or a sample contract. Within 21 days of the date of the award letter, the bidder must sign the contract and provide the required down payment, performance security, and verification of worker's disability compensation. The down payment and performance security shall be in accordance with the provisions of the timber sale contract, in the sums stated in this prospectus. If these actions are not taken, then the Bidder, the Bidder's corporation, and the corporation's principals may not be permitted to bid on State timber sales for a period of 3 months after the first offense, 6 months after the second offense, and 1 year after the third offense. An offense will only be counted against the Bidder for 5 years. In addition, the Bidder certifies that if awarded this contract, the Bidder will complete the timber sale contract in accordance with its terms and any modifications thereof including requirements to purchase, cut, and remove the included timber by the expiration date.

Payment Unit values in the State Forest Timber Sale Contract are calculated based on the advertised value of the Payment Unit as a percentage of the total advertised value of the contract. The advertised value of each Payment Unit is given in the Description of Timber by Payment Unit table on the Timber Sale Information page. For example, if the value of Payment Unit 1 is advertised as \$1,500 and the total Timber Sale value is advertised as \$10,000, the contract price for Payment Unit 1 will be 15% of the total bid price ($\$1,500/\$10,000 * 100$).

10. Disclaimer of Estimates and Bidder's Warranty of Inspection (7/16)

Before submitting this bid, the Bidder is advised and cautioned to inspect the sale area, review the requirements of the sale contract, and take other steps as may be reasonably necessary to ascertain the location, estimated volumes, construction estimates, and operating costs of the proposed sale. Failure to do so will not relieve the Bidder from responsibility for completing the contract.

The Bidder warrants that this bid is submitted solely on the basis of the Bidder's examination and inspection of the quality and quantity of the timber offered for sale and the Bidder's opinion of the value thereof and the costs of recovery. No reliance should be placed on the State of Michigan's estimates of timber quality, quantity or costs of recovery. Bidder further acknowledges that the State of Michigan: (i) expressly disclaims any warranty of fitness of timber for any purpose; (ii) offers this timber as is without any warranty of quality (merchantability) or quantity and (iii) expressly disclaims any warranty as to the quantity or quality of timber sold.

11. Certification and Chain-of-Custody (10/14)

Unless otherwise indicated in the contract under section 7 – Other Conditions of the Sale Specific Conditions & Requirements, the area encompassed by this timber sale is certified to the standards of the Forest Stewardship Council (FSC) - Certificate #SCS-FM/COC-00090N and the Sustainable Forestry Initiative (SFI) - Certificate # NSF-SFIS-5Y031-SF5. Forest products from this sale may be delivered to the mill as "FSC 100% and / or SFI certified" as long as the contractor hauling the forest products is chain-of-custody (COC) certified or covered under a COC certificate from the destination mill. The purchaser is responsible for maintaining COC after leaving the sale area.

12. Good Neighbor Authority (GNA) Requirements (7/16)

If the name of this timber sales contains the acronym GNA, it is authorized by the Good Neighbor Authority (GNA) and covered by various agreements between the U.S. Forest Service and the State. The timber sale occurs on federal land and the following conditions apply:

GNA contracts on US Forest Service land will not be awarded to purchasers on the Federal list of excluded parties. The System for Award Management (SAM) will be checked for active excluded parties prior to award of contract. In addition, the Bidder to whom award is made must complete an Assurance Regarding Felony Conviction or Tax Delinquent Status for Corporate Applicants (AD-3031).

13. Good Neighbor Authority (GNA) Requirements, con't (9/16)

Bidder certifies, by signing this bid form, that to the best of Bidder's knowledge that the following representations are accurate and complete.

- a. That the Bidder and its principals are not presently debarred, suspended, proposed for debarment, declared ineligible, or voluntary excluded from timber sales (covered transactions) by any Federal department or agency.
- b. That the Bidder and its principals have not within a 3-year period preceding this bid been convicted of or had a civil judgment rendered against them for commission of fraud or a criminal offense in connection with obtaining , attempting to obtain, or performing a public (Federal, State, or local) transaction or contract under a public transaction; violation of Federal or State antitrust statutes or commission of embezzlement, theft, forgery, bribery, falsification or destruction of records, making false statements, or receiving stolen property.
- c. That the Bidder and its principals are not presently indicted for or otherwise criminally or civilly charged by a governmental entity (Federal, State, or local) with commission of any of the offenses enumerated in paragraph b of this certification.
- d. That the Bidder and its principals have not within a 3-year period preceding this bid had one or more public transactions (Federal, State, or local) terminated for breach or default of a timber or forest product contract.

Bidders that cannot certify this requirement, in whole or in part, shall submit an explanation with their bid.

DAN EICHINGER
Director

TIMBER SALE INFORMATION

Ferngully's Mix (73-005-20)

T18N, R06W, SEC. 5; T18N, R06W, SEC. 6; T18N, R06W, SEC. 7; T18N, R06W, SEC. 8.
Clare County (Advertised Price \$36,024.40)

SALE NOTE: Sale is located in Clare county with access from M-115 for Payment Units 1 - 3. All Payment Units are final harvests. There are areas of low saturated soils throughout the Payment Units.

A timber sale contract for this lump sum, sealed bid timber sale will be awarded to the responsible bidder offering the highest sealed bid price. All units of volume listed below were estimated using the T-Sale computer program and our traditional volume equations. Bids must be at or above the following advertised price for each product and species:

<u>PRODUCTS & SPECIES</u>	<u>ESTIMATED UNITS*</u>	<u>ADVERTISED PRICE</u>
Sawtimber		
Mixed Aspen	59.1 MBF	\$ 56.00 / MBF
Northern Pin Oak	11.1 MBF	\$ 90.00 / MBF
Red Maple	25.4 MBF	\$ 33.00 / MBF
Red Pine	13.0 MBF	\$ 92.00 / MBF
White Pine	27.2 MBF	\$ 38.00 / MBF
Pulpwood		
Balsam Fir	326 Cords	\$ 14.95 / Cord
Black Cherry	67 Cords	\$ 12.00 / Cord
Mixed Aspen	725 Cords	\$ 15.90 / Cord
Mixed Spruce	19 Cords	\$ 13.50 / Cord
Northern Pin Oak	137 Cords	\$ 13.25 / Cord
Paper Birch	55 Cords	\$ 12.70 / Cord
Red Maple	385 Cords	\$ 12.00 / Cord
Red Pine	56 Cords	\$ 39.55 / Cord
Scotch Pine	13 Cords	\$ 14.35 / Cord
White Pine	96 Cords	\$ 16.45 / Cord
Yellow Birch	6 Cords	\$ 12.00 / Cord

* The total volume is statistically estimated within plus (+) or minus (-) 8.77 percent. There are an estimated 2,158 cords on this timber sale, plus or minus 189 cords at the 95% confidence level. The estimated units are final and not subject to adjustment. Prospective bidders are urged to examine this timber and to make their own estimates of quantity and quality.

BOND AND PAYMENT SCHEDULE:

1. A bond in the amount of \$1,801.00 to insure faithful performance of the conditions of the contract will be deposited by the successful bidder within 21 days of the sale award.
2. Cutting in any sale or unit without the required advance payment would be considered a trespass.
3. Total payment must be paid in advance or according to the following schedule :
 - (a) Ten percent (10%) of the sale value must be paid within 21 days of the sale award.
 - (b) The 10% down payment will be credited towards the first unit cut.
 - (c) Payment for each of the following units must be made before cutting begins in that unit:

PAYMENT UNIT NUMBER	PERCENT OF TOTAL SALE VALUE
01	27.4%
02	25.9%
03	19.3%
04	20.9%
05	2.5%
06	4.0%
4. If no cutting takes place, the 10% down payment will not be refunded.
5. Operations on the contract issued will terminate on 06/30/2024.

SALE STATISTICS

SALE VOLUMES

VOLUME		STATISTICAL RANGE IN CORDS		
TOTAL CUBIC FEET	TOTAL CORDS	PERCENT ERROR	MINIMUM	MAXIMUM
170,472	2,158	8.77%	1,969	2,347

VDU VOLUMES

A VDU is a Volume Determination Unit. Volumes and their associated statistics are calculated at the VDU level and summarized to the sale level. There is often a one to one relationship between a VDU and a Payment Unit, but not always, depending on the cruise design. Refer to the VDU TO PAYMENT UNIT table.

VDU	VOLUME		PERCENT ERROR	RANGE IN CORDS	
	TOTAL CUBIC FEET	TOTAL CORDS		MINIMUM	MAXIMUM
132	4,400	56	56.59%	24	87
164	72,388	916	16.24%	767	1,065
169	39,247	497	15.60%	419	574
208	45,694	578	11.71%	511	646
218	8,745	111	29.29%	78	143
TOTAL:	170,474	2,158		1,800	2,516

VDU TO PAYMENT UNIT

When a VDU is associated with more than one Payment Unit (PU), the VDU volumes are assigned to the PU based on acres of the VDU within the PU.

VDU	VDU ACRES	PU	PU ACRES
132	5.8	5	5.8
164	47.5	2	27.3
		3	20.2
169	30.6	4	30.6
208	33.7	1	33.7
218	5.8	6	5.8
TOTAL:	123.4		123.4

DESCRIPTION OF TIMBER BY PAYMENT UNIT (PU)

PU	MARKET GROUP	PRODUCT	QUANTITY	UNIT	ACRES	ADVERTISE PRICE			
1	Mixed Aspen	Sawtimber	37.0	MBF	33.7	\$9,868.90			
	<i>Quaking Aspen</i>		37.0	<i>MBF</i>					
	Northern Pin Oak		4.4	MBF					
	Red Maple		10.7	MBF					
	Red Pine		0.8	MBF					
	White Pine		0.5	MBF					
	Balsam Fir	Pulpwood	67	Cords					
	Black Cherry		21	Cords					
	<i>Black Cherry</i>	<i>Sawtimber</i>	0.4	<i>MBF</i>					
	<i>Black Cherry</i>	<i>Pulpwood</i>	20	<i>Cords</i>					
	Mixed Aspen		254	Cords					
	<i>Quaking Aspen</i>		254	<i>Cords</i>					
	Northern Pin Oak		26	Cords					
	Paper Birch		20	Cords					
	Red Maple		76	Cords					
	Red Pine		2	Cords					
	White Pine		3	Cords					
	Yellow Birch		2	Cords					
	2	Mixed Aspen	Sawtimber	11.1			MBF	27.3	\$9,329.25
		<i>B. T. Aspen</i>		11.1			<i>MBF</i>		
Northern Pin Oak			2.1	MBF					
Red Maple			0.5	MBF					
Red Pine			7.0	MBF					
White Pine			10.7	MBF					
Balsam Fir		Pulpwood	55	Cords					
Black Cherry			7	Cords					
<i>Black Cherry</i>			7	<i>Cords</i>					
Mixed Aspen			242	Cords					
<i>B. T. Aspen</i>			242	<i>Cords</i>					
Northern Pin Oak			36	Cords					
Paper Birch			7	Cords					
Red Maple			64	Cords					
Red Pine			22	Cords					
White Pine			30	Cords					
3		Mixed Aspen	Sawtimber	8.2	MBF	20.2	\$6,948.75		
	<i>B. T. Aspen</i>		8.2	<i>MBF</i>					
	Northern Pin Oak		1.6	MBF					
	Red Maple		0.4	MBF					
	Red Pine		5.2	MBF					
	White Pine		7.9	MBF					
	Balsam Fir	Pulpwood	41	Cords					
	Black Cherry		6	Cords					
	<i>Black Cherry</i>		6	<i>Cords</i>					
	Mixed Aspen		179	Cords					
	<i>B. T. Aspen</i>		179	<i>Cords</i>					
	Northern Pin Oak		26	Cords					
	Paper Birch		5	Cords					
	Red Maple		47	Cords					
	Red Pine		17	Cords					
	White Pine		23	Cords					
4	Mixed Aspen	Sawtimber	1.1	MBF	30.6	\$7,541.30			
	<i>Quaking Aspen</i>		1.1	<i>MBF</i>					
	Northern Pin Oak		1.7	MBF					
	Red Maple		9.7	MBF					
	White Pine		7.6	MBF					
	Balsam Fir	Pulpwood	135	Cords					

DESCRIPTION OF TIMBER BY PAYMENT UNIT (PU), CON'T

PU	MARKET GROUP	PRODUCT	QUANTITY	UNIT	ACRES	ADVERTISE PRICE
4 con't	Black Cherry	Pulpwood	33	Cords		
	<i>Black Cherry</i>	<i>Sawtimber</i>	1.6	<i>MBF</i>		
	<i>Black Cherry</i>	<i>Pulpwood</i>	30	<i>Cords</i>		
	Mixed Aspen		37	Cords		
	<i>Quaking Aspen</i>		37	<i>Cords</i>		
	Mixed Spruce		18	Cords		
	<i>Norway Spruce</i>	<i>Sawtimber</i>	0.8	<i>MBF</i>		
	<i>Norway Spruce</i>	<i>Pulpwood</i>	16	<i>Cords</i>		
	Northern Pin Oak		31	Cords		
	Paper Birch		18	Cords		
	Red Maple		115	Cords		
	Red Pine		15	Cords		
	Scotch Pine		13	Cords		
	White Pine		38	Cords		
	Yellow Birch		4	Cords		
	5	Northern Pin Oak	Sawtimber	1.3	MBF	5.8
White Pine			0.5	MBF		
Balsam Fir		Pulpwood	26	Cords		
Mixed Aspen			11	Cords		
<i>B. T. Aspen</i>			11	<i>Cords</i>		
Northern Pin Oak			12	Cords		
Paper Birch			1	Cords		
White Pine			2	Cords		
6	Mixed Aspen	Sawtimber	1.7	MBF	5.8	\$1,432.00
	<i>B. T. Aspen</i>		1.0	<i>MBF</i>		
	<i>Quaking Aspen</i>		0.7	<i>MBF</i>		
	Red Maple		4.1	MBF		
	Balsam Fir	Pulpwood	2	Cords		
	Mixed Aspen		2	Cords		
	<i>B. T. Aspen</i>		1	<i>Cords</i>		
	<i>Quaking Aspen</i>		1	<i>Cords</i>		
	Mixed Spruce		1	Cords		
	<i>Black Spruce</i>		1	<i>Cords</i>		
	Northern Pin Oak		6	Cords		
	Paper Birch		4	Cords		
	Red Maple		83	Cords		
TOTAL:			135.8	MBF		
TOTAL:			1,885	Cords		

Sale Specific Conditions & Requirements

Sale Name: Ferngully's Mix

Sale Number: 73-005-20 Seq#: 1

1 - Sale Area

1.2 - Boundaries

1.2.1 - Painted boundaries (9/19)

The sale boundary and Payment Unit boundaries are marked and identified by red paint. Exterior sale boundary lines against state are marked with red paint. Retention patches are marked with red paint; no harvesting activities may occur within these areas. The painted boundary line trees are not Included Timber and are to be protected.

2 - Timber Specifications

2.1 - Included Timber

2.1.1 - Clearcut unit(s) with unmerchantable trees (6/14)

Within Payment Unit(s) 1 - 6, cut all trees that are two (2) inches or more at DBH, except for trees marked with green paint above and below stump height.

3 - Payments

3.3 - Pre-measured Sales

3.3.4 - Dividing payment units (7/14)

Payment Unit(s) may be divided at the request of the Purchaser and upon approval of the Unit Manager. Dividing Payment Units is a contract modification which requires a Timber Sale Contract Amendment. There will be only one division per Payment Unit.

4 - Transportation

4.1 - Construction

4.1.6 - Road construction (1/09)

Construction of new roads or improvements of existing roads shall be done in such a way as to minimize the environmental and visual impacts. Merchantable trees shall be cut and utilized unless otherwise directed. Non-merchantable trees shall be severed and laid flat on the ground. Slash shall be scattered, and not left in windrows and kept a minimum of 10 feet back from the road edge. Stumps shall be set upright, not left on edge, and be moved at least 10 feet away from the road edge. Disturbed soil shall be feathered into the woods and not left in berms or windrows.

4.1.7 - Road closure (10/11)

All new roads built into the sale must be blocked to vehicle traffic upon completion of the sale. Overgrown roads that are reopened shall be considered new roads. In general, this will require constructing a four (4') foot high berm of stumps and logs covered with earth. Stumps and brush must be placed along the remainder of the trail. These roads must be rendered impassable to cars and trucks. Contact the sale administrator for specific details of design and placement.

5 - Operations

5.1 - Notification

5.1.1 - Pre-sale conference (10/16)

A pre-sale conference between the Purchaser and sale administrator is required prior to beginning any operations to determine landing and road locations. The Unit Manager or his/her representative must be contacted at least 5 days in advance to schedule the conference.

5.2 - Conduct of Operations

5.2.1 - Slash

5.2.1.8 - Slash height (12/08)

No slash or tree tops may exceed 36 inches in height.

5.2.2 - Hazard Trees/Snags

5.2.2.1 - Den trees (10/16)

Obvious hollow and/or den trees shall be protected and left standing unless they are a safety hazard.

5.2.4 - Dead and Down Creation

5.2.4.4 - Dead and down creation, grouse (6/18)

To encourage grouse and other wildlife, in Payment Unit(s) 1 - 3, leave one, 12" diameter or larger log-length (8 foot minimum) piece on the ground for every 2 acres. These trees will be evenly scattered throughout the Payment Unit, preferably at least two chains from any roads, two-tracks, or trails open to vehicles. This can be an unmerchantable piece or a full tree.

5.2.22 - Operating Caution

5.2.22.1 - Operating caution (6/11)

It is recommended, but not required, that within Payment Unit(s) 1 - 4 & 6, cutting, skidding, and hauling occur during dry summer or frozen winter conditions. The reason for the recommendation is because of saturated soils.

5.2.32 - Decking/landing restoration (9/13)

All decking and landing areas must have the surface area restored to a condition equal to or better than before. This is to ensure the proper regeneration of the stand. Wood debris, chips, and "cookies" from trimmings must be removed or scattered away from landing and loading areas and may not be windrowed on the edge.

5.2.38 - No decking against live trees (2/04)

Cut products may not be decked against unmarked or designated leave trees.

5.4 - Soil Protection

5.4.1 - Rutting restriction, general (7/16)

Operations are to cease immediately if equipment and weather conditions result in rutting of roads and/or skid trails which is 12 inches or greater in depth and 50 feet in length. The Unit Manager or his/her representative may restrict hauling and/or skidding if ruts exceed the specified depth. With the Unit Manager or his/her representative's approval, the Purchaser may return to the area when the risk of rutting has decreased.

6 - Safety and Fire Prevention

6.2 - Signing

6.2.1 - Road posting (9/09)

The Purchaser is responsible for posting and maintaining caution signs on M-115 & Twin Lakes Avenue prior to beginning operations. The road must be posted at appropriate distances from the Sale Area to warn of logging activity and truck traffic. Signs must be removed when harvest operations are suspended or completed. The Purchaser will provide these signs.



TIMBER SALE MAP

This information provided by authority of Part 525, 1994 PA 451, as amended.

Forest Management Unit	County	Mapped By	Date	Page	of
Gladwin Management Unit	Clare County	Behrmann	07/27/2020	1	1
Township	Range	Section(s) and Subdivision(s)	Scale		
18N	06W	Sec. 5 NWSW, Sec. 7 SE, Sec. 8 NW, N1/2NE, SWNE, NESW	NWSE	1:15,840	

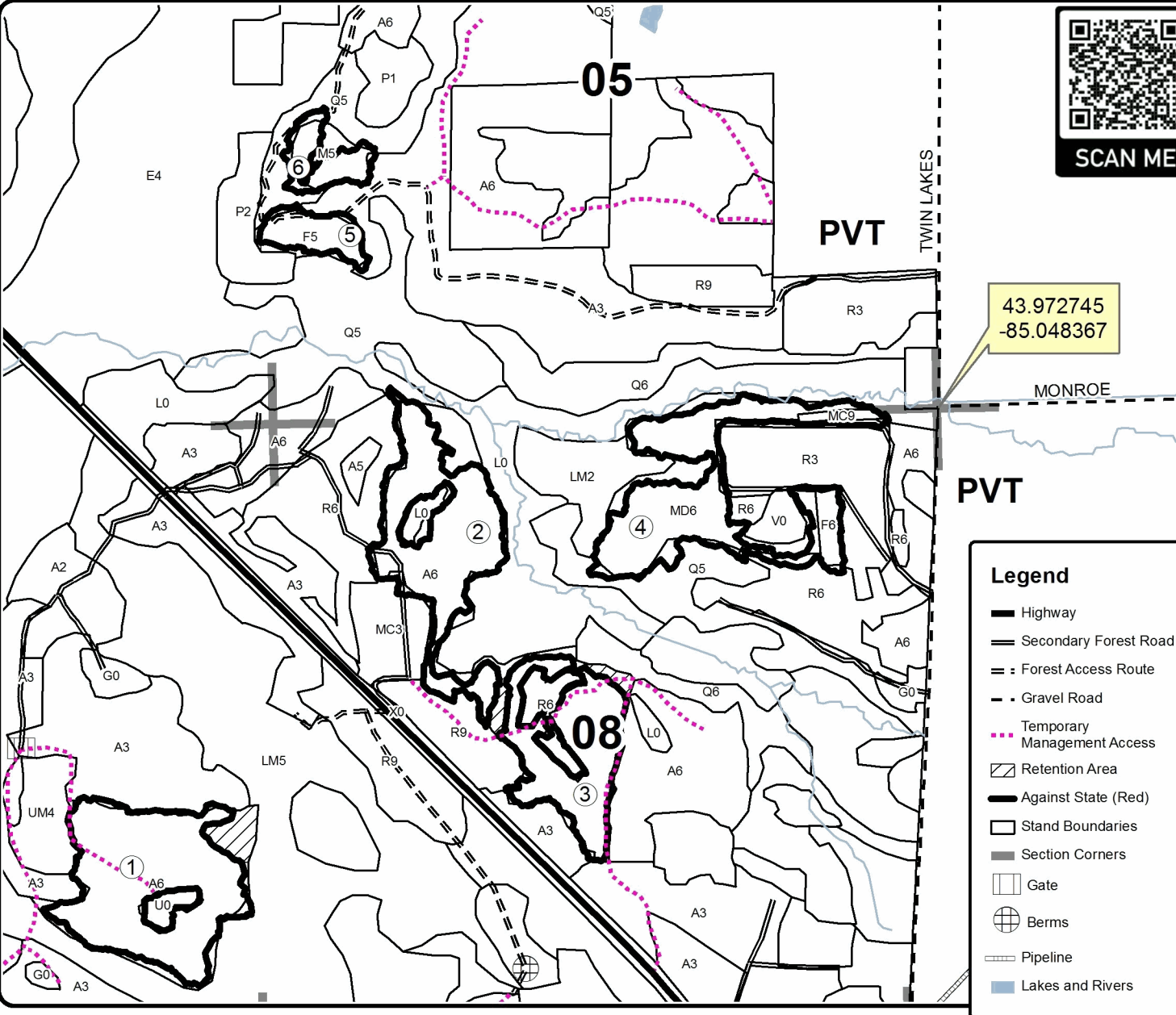
Cover Type				Density	
A = Aspen	H = Hemlock	N = Marsh	U = Upland Brush	0 = Non Stocked	5 = Pole Timber Medium
B = Paper Birch	J = Jack Pine	O = Oak	UM = Upland Mixed	1 = Seedling Sapling Poor	6 = Pole Timber Well
C = Cedar	L = Lowland Brush	P = Lowland Poplar	V = Bog or Marsh	2 = Seedling Sapling Medium	7 = Saw Timber Poor
D = Treed Bog	LM = Lowland Mixed	Q = Mixed Swamp Conifer	W = White Pine	3 = Seedling Sapling Well	8 = Saw Timber Medium
E = Swamp Hdwoods	M = Mpl, Bch, Brch	R = Red Pine	X = Non Stocked	4 = Pole Timber Poor	9 = Saw Timber Well
F = Spruce Fir	MC = Mixed Conifer	S = Black Spruce	Z = Water		
G = Grass	MD = Mixed Deciduous	T = Tamarack			

PU	Acres	PU	Acres
1	33.7	4	30.6
2	27.3	5	5.8
3	20.2	6	5.8

Ferngullys Mix

Compartment 16

123.4 Acres



43.972745
-85.048367

Legend	
	Highway
	Secondary Forest Road
	Forest Access Route
	Gravel Road
	Temporary Management Access
	Retention Area
	Against State (Red)
	Stand Boundaries
	Section Corners
	Gate
	Berms
	Pipeline
	Lakes and Rivers

TIMBER SALE INFORMATION

Marticki Aspen (73-011-20)

T20N, R03W, SEC. 18; T20N, R04W, SEC. 12; T20N, R04W, SEC. 24.
Clare County (Advertised Price \$178,508.80)

A timber sale contract for this lump sum, sealed bid timber sale will be awarded to the responsible bidder offering the highest sealed bid price. All units of volume listed below were estimated using the T-Sale computer program and our traditional volume equations. Bids must be at or above the following advertised price for each product and species:

<u>PRODUCTS & SPECIES</u>	<u>ESTIMATED UNITS*</u>	<u>ADVERTISED PRICE</u>
Sawtimber		
Mixed Aspen	561.6 MBF	\$ 56.00 / MBF
Northern Pin Oak	155.3 MBF	\$ 90.00 / MBF
Red Maple	129.4 MBF	\$ 33.00 / MBF
Red Pine	198.7 MBF	\$ 92.00 / MBF
White Oak	18.2 MBF	\$ 86.00 / MBF
Pulpwood		
Black Cherry	25 Cords	\$ 12.00 / Cord
Mixed Aspen	4,773 Cords	\$ 15.90 / Cord
Mixed Oak	849 Cords	\$ 13.25 / Cord
Paper Birch	15 Cords	\$ 12.70 / Cord
Red Maple	1,221 Cords	\$ 12.00 / Cord
Red Pine	169 Cords	\$ 39.55 / Cord

* The total volume is statistically estimated within plus (+) or minus (-) 7.05 percent. There are an estimated 9,178 cords on this timber sale, plus or minus 647 cords at the 95% confidence level. The estimated units are final and not subject to adjustment. Prospective bidders are urged to examine this timber and to make their own estimates of quantity and quality.

BOND AND PAYMENT SCHEDULE:

1. A bond in the amount of \$8,925.00 to insure faithful performance of the conditions of the contract will be deposited by the successful bidder within 21 days of the sale award.
2. Cutting in any sale or unit without the required advance payment would be considered a trespass.
3. Total payment must be paid in advance or according to the following schedule :
 - (a) Ten percent (10%) of the sale value must be paid within 21 days of the sale award.
 - (b) The 10% down payment will be credited towards the first unit cut.
 - (c) Payment for each of the following units must be made before cutting begins in that unit:

PAYMENT UNIT NUMBER	PERCENT OF TOTAL SALE VALUE
01	8.2%
02	7.9%
03	8.5%
04	11.6%
05	18.8%
06	16.6%
07	28.4%
4. If no cutting takes place, the 10% down payment will not be refunded.
5. Operations on the contract issued will terminate on 06/30/2023.

SALE STATISTICS

SALE VOLUMES

VOLUME		STATISTICAL RANGE IN CORDS		
TOTAL CUBIC FEET	TOTAL CORDS	PERCENT ERROR	MINIMUM	MAXIMUM
725,075	9,178	7.05%	8,531	9,825

VDU VOLUMES

A VDU is a Volume Determination Unit. Volumes and their associated statistics are calculated at the VDU level and summarized to the sale level. There is often a one to one relationship between a VDU and a Payment Unit, but not always, depending on the cruise design. Refer to the VDU TO PAYMENT UNIT table.

VDU	VOLUME		PERCENT ERROR	RANGE IN CORDS	
	TOTAL CUBIC FEET	TOTAL CORDS		MINIMUM	MAXIMUM
39	507,338	6,422	8.20%	5,895	6,949
75	59,645	755	19.35%	609	901
108	158,095	2,001	15.32%	1,695	2,308
TOTAL:	725,078	9,178		8,199	10,157

VDU TO PAYMENT UNIT

When a VDU is associated with more than one Payment Unit (PU), the VDU volumes are assigned to the PU based on acres of the VDU within the PU.

VDU	VDU ACRES	PU	PU ACRES
39	151.3	5	44.6
		6	39.3
		7	67.4
75	20.7	1	20.7
108	54.0	2	15.3
		3	16.4
		4	22.3
TOTAL:	226.0		226.0

DESCRIPTION OF TIMBER BY PAYMENT UNIT (PU)

PU	MARKET GROUP	PRODUCT	QUANTITY	UNIT	ACRES	ADVERTISE PRICE				
1	Mixed Aspen	Sawtimber	80.5	MBF	20.7	\$14,672.55				
	<i>B. T. Aspen</i>		57.2	<i>MBF</i>						
	<i>Quaking Aspen</i>		23.3	<i>MBF</i>						
	Northern Pin Oak		24.5	MBF						
	Red Maple		21.1	MBF						
	Mixed Aspen	Pulpwood	300	Cords						
	<i>B. T. Aspen</i>		107	<i>Cords</i>						
	<i>Quaking Aspen</i>		193	<i>Cords</i>						
	Mixed Oak		47	Cords						
	<i>Northern Pin Oak</i>		47	<i>Cords</i>						
	Paper Birch		15	Cords						
	Red Maple		140	Cords						
	2		Mixed Aspen	Sawtimber			18.3	MBF	15.3	\$14,186.00
			<i>B. T. Aspen</i>				16.6	<i>MBF</i>		
<i>Quaking Aspen</i>		1.7	<i>MBF</i>							
Northern Pin Oak		8.1	MBF							
Red Maple		8.5	MBF							
Red Pine		56.3	MBF							
White Oak		2.8	MBF							
Mixed Aspen		Pulpwood	201		Cords					
<i>B. T. Aspen</i>			146		<i>Cords</i>					
<i>Quaking Aspen</i>			55		<i>Cords</i>					
Mixed Oak			52		Cords					
<i>Northern Pin Oak</i>			44		<i>Cords</i>					
<i>White Oak</i>			8		<i>Cords</i>					
Red Maple			79		Cords					
Red Pine	48	Cords								
3	Mixed Aspen	Sawtimber	19.7	MBF	16.4	\$15,164.40				
	<i>B. T. Aspen</i>		17.8	<i>MBF</i>						
	<i>Quaking Aspen</i>		1.9	<i>MBF</i>						
	Northern Pin Oak		8.7	MBF						
	Red Maple		9.1	MBF						
	Red Pine		60.3	MBF						
	White Oak		3.0	MBF						
	Mixed Aspen		Pulpwood	215			Cords			
	<i>B. T. Aspen</i>			156			<i>Cords</i>			
	<i>Quaking Aspen</i>			59			<i>Cords</i>			
	Mixed Oak			55			Cords			
	<i>Northern Pin Oak</i>			47			<i>Cords</i>			
	<i>White Oak</i>			8			<i>Cords</i>			
	Red Maple			84			Cords			
Red Pine	51	Cords								
4	Mixed Aspen	Sawtimber	26.7	MBF	22.3	\$20,648.65				
	<i>B. T. Aspen</i>		24.2	<i>MBF</i>						
	<i>Quaking Aspen</i>		2.5	<i>MBF</i>						
	Northern Pin Oak		11.8	MBF						
	Red Maple		12.4	MBF						
	Red Pine		82.1	MBF						
	White Oak		4.0	MBF						
	Mixed Aspen		Pulpwood	292			Cords			
	<i>B. T. Aspen</i>			212			<i>Cords</i>			
	<i>Quaking Aspen</i>			80			<i>Cords</i>			
	Mixed Oak			75			Cords			
	<i>Northern Pin Oak</i>			64			<i>Cords</i>			
	<i>White Oak</i>			11			<i>Cords</i>			
	Red Maple			115			Cords			

DESCRIPTION OF TIMBER BY PAYMENT UNIT (PU), CON'T

PU	MARKET GROUP	PRODUCT	QUANTITY	UNIT	ACRES	ADVERTISE PRICE
4 con't	Red Pine	Pulpwood	70	Cords		
5	Mixed Aspen	Sawtimber	122.7	MBF	44.6	\$33,571.25
	<i>B. T. Aspen</i>		116.6	<i>MBF</i>		
	<i>Quaking Aspen</i>		6.1	<i>MBF</i>		
	Northern Pin Oak		30.1	MBF		
	Red Maple		23.1	MBF		
	White Oak		2.5	MBF		
	Black Cherry	Pulpwood	8	Cords		
	<i>Black Cherry</i>	<i>Sawtimber</i>	0.8	<i>MBF</i>		
	<i>Black Cherry</i>	<i>Pulpwood</i>	6	<i>Cords</i>		
	Mixed Aspen		1,110	Cords		
	<i>B. T. Aspen</i>		1,048	<i>Cords</i>		
	<i>Quaking Aspen</i>		62	<i>Cords</i>		
	Mixed Oak		183	Cords		
	<i>Northern Pin Oak</i>		172	<i>Cords</i>		
	<i>White Oak</i>		11	<i>Cords</i>		
	Red Maple		237	Cords		
	6	Mixed Aspen	Sawtimber	108.2		
<i>B. T. Aspen</i>			102.8	<i>MBF</i>		
<i>Quaking Aspen</i>			5.4	<i>MBF</i>		
Northern Pin Oak			26.5	MBF		
Red Maple			20.3	MBF		
White Oak			2.2	MBF		
Black Cherry		Pulpwood	6	Cords		
<i>Black Cherry</i>		<i>Sawtimber</i>	0.7	<i>MBF</i>		
<i>Black Cherry</i>		<i>Pulpwood</i>	5	<i>Cords</i>		
Mixed Aspen			978	Cords		
<i>B. T. Aspen</i>			923	<i>Cords</i>		
<i>Quaking Aspen</i>			55	<i>Cords</i>		
Mixed Oak			161	Cords		
<i>Northern Pin Oak</i>			151	<i>Cords</i>		
<i>White Oak</i>			10	<i>Cords</i>		
Red Maple			209	Cords		
7		Mixed Aspen	Sawtimber	185.5	MBF	67.4
	<i>B. T. Aspen</i>		176.3	<i>MBF</i>		
	<i>Quaking Aspen</i>		9.2	<i>MBF</i>		
	Northern Pin Oak		45.6	MBF		
	Red Maple		34.9	MBF		
	White Oak		3.7	MBF		
	Black Cherry	Pulpwood	11	Cords		
	<i>Black Cherry</i>	<i>Sawtimber</i>	1.3	<i>MBF</i>		
	<i>Black Cherry</i>	<i>Pulpwood</i>	8	<i>Cords</i>		
	Mixed Aspen		1,677	Cords		
	<i>B. T. Aspen</i>		1,583	<i>Cords</i>		
	<i>Quaking Aspen</i>		94	<i>Cords</i>		
	Mixed Oak		276	Cords		
	<i>Northern Pin Oak</i>		260	<i>Cords</i>		
	<i>White Oak</i>		16	<i>Cords</i>		
	Red Maple		357	Cords		
	TOTAL:			1,063.2	MBF	
TOTAL:			7,052	Cords		

Sale Specific Conditions & Requirements

Sale Name: Marticki Aspen

Sale Number: 73-011-20 Seq#: 1

1 - Sale Area

1.2 - Boundaries

1.2.1 - Painted boundaries (9/19)

The sale boundary and Payment Unit boundaries are marked and identified by blue, red, and yellow paint. Exterior sale boundary lines against private property are marked with blue paint. Exterior sale boundary lines against state are marked with red paint. Interior Payment Unit boundaries are marked with yellow paint. Retention patches are marked with red paint; no harvesting activities may occur within these areas. The painted boundary line trees are not Included Timber and are to be protected. Yellow painted trees designating an interior Payment Unit boundary are only to be cut when all surrounding Payment Units have been paid.

2 - Timber Specifications

2.1 - Included Timber

2.1.1 - Clearcut unit(s) with unmerchantable trees (6/14)

Within Payment Unit(s) 1 - 7, cut all trees that are two (2) inches or more at DBH, except trees marked with green paint above and below stump height.

2.2 - Utilization

2.2.3 - Stump heights (4/07)

Stump heights within the Sale Area shall not exceed 12 inches for trees greater than 10 inches at DBH and 4 inches for trees smaller than 10 inches at DBH. A written waiver of this requirement may be obtained if wet summer weather makes winter logging necessary.

3 - Payments

3.3 - Pre-measured Sales

3.3.4 - Dividing payment units (7/14)

Payment Unit(s) may be divided at the request of the Purchaser and upon approval of the Unit Manager. Dividing Payment Units is a contract modification which requires a Timber Sale Contract Amendment. There will be only one division per Payment Unit.

4 - Transportation

4.1 - Construction

4.1.6 - Road construction (1/09)

Construction of new roads or improvements of existing roads shall be done in such a way as to minimize the environmental and visual impacts. Merchantable trees shall be cut and utilized unless otherwise directed. Non-merchantable trees shall be severed and laid flat on the ground. Slash shall be scattered, and not left in windrows and kept a minimum of 10 feet back from the road edge. Stumps shall be set upright, not left on edge, and be moved at least 10 feet away from the road edge. Disturbed soil shall be feathered into the woods and not left in berms or windrows.

4.1.7 - Road closure (10/11)

All new roads built into the sale must be blocked to vehicle traffic upon completion of the sale. Overgrown roads that are reopened shall be considered new roads. In general, this will require constructing a four (4') foot high berm of stumps and logs covered with earth. Stumps and brush must be placed along the remainder of the trail. These roads must be rendered impassable to cars and trucks. Contact the sale administrator for specific details of design and placement.

4.2 - Maintenance

4.2.3 - Road maintenance (8/13)

The following road maintenance may be needed: Within 60 days of completion of hauling, or if no hauling occurs for 60 days,

the road must be maintained and graded. This includes cleaning of drainage areas, grading, crowning, and filling with gravel, if necessary. Damages will be assessed if grading/repair does not occur.

4.2.5 - Two wheel drive condition (2/04)

All existing trail roads on and adjacent to the sale area must be passable by two-wheel drive traffic for the duration of the sale.

5 - Operations

5.1 - Notification

5.1.1 - Pre-sale conference (10/16)

A pre-sale conference between the Purchaser and sale administrator is required prior to beginning any operations to determine landing and road locations. The Unit Manager or his/her representative must be contacted at least 5 days in advance to schedule the conference.

5.2 - Conduct of Operations

5.2.1 - Slash

5.2.1.8 - Slash height (12/08)

No slash or tree tops may exceed 36 inches in height.

5.2.3 - Operating Restrictions

5.2.3.5 - Oak wilt restriction (1/18)

For Payment Units 5 - 7, unless changed by written agreement, cutting, skidding, hauling within the sale and brushing of access roads to the sale are not permitted during the period of April 15 to July 15. Operations may be allowed if specific steps are taken to prevent damaging uncut oak during the high risk period. Those steps may include completing all road brushing before April 15th and clearing a tree-length buffer along uncut oak cover before April 15th. This is necessary to reduce the spread of oak wilt. For more information, contact the Unit Manager or his/her representative.

5.2.3.11 - Coppice regeneration protection (4/10)

Timber harvesting in any Payment Unit must be completed before significant aspen sprouting occurs in that Payment Unit to minimize damage to the new regeneration. Any post-harvest operations, such as chipping, must be completed before sprouting of regeneration occurs. If it is anticipated that chipping will be delayed, then tops shall be carried to one central location or left unchipped. The Unit Manager or his/her representative may cease such operations if sprouting occurs before the operation is complete.

5.2.4 - Dead and Down Creation

5.2.4.4 - Dead and down creation, grouse (6/18)

To encourage grouse and other wildlife, in Payment Unit(s) 1 - 7, leave one 12" diameter or larger log-length (8 foot minimum) piece on the ground for every 2 acres. These trees will be evenly scattered throughout the Payment Unit, preferably at least two chains from any roads, two-tracks, or trails open to vehicles. This can be an unmerchantable piece or a full tree.

5.2.22 - Operating Caution

5.2.22.1 - Operating caution (6/11)

It is recommended, but not required, that within Payment Unit(s) 5 - 7, cutting, skidding, and hauling occur during dry summer or frozen winter conditions. The reason for the recommendation is because of heavy soils in these Payment Units.

5.2.32 - Decking/landing restoration (9/13)

All decking and landing areas must have the surface area restored to a condition equal to or better than before. This is to ensure the proper regeneration of the stand. Wood debris, chips, and "cookies" from trimmings must be removed or scattered away from landing and loading areas and may not be windrowed on the edge.

5.2.38 - No decking against live trees (2/04)

Cut products may not be decked against unmarked or designated leave trees.

5.4 - Soil Protection

5.4.1 - Rutting restriction, general (7/16)

Operations are to cease immediately if equipment and weather conditions result in rutting of roads and/or skid trails which is 12 inches or greater in depth and 50 feet in length. The Unit Manager or his/her representative may restrict hauling and/or skidding if ruts exceed the specified depth. With the Unit Manager or his/her representative's approval, the Purchaser may return to the area when the risk of rutting has decreased.

6 - Safety and Fire Prevention

6.2 - Signing

6.2.1 - Road posting (9/09)

The Purchaser is responsible for posting and maintaining caution signs on Cornwell Ave., Riske Rd., and Haskell Lake Rd. prior to beginning operations. The road must be posted at appropriate distances from the Sale Area to warn of logging activity and truck traffic. Signs must be removed when harvest operations are suspended or completed. The Purchaser will provide these signs.



TIMBER SALE MAP

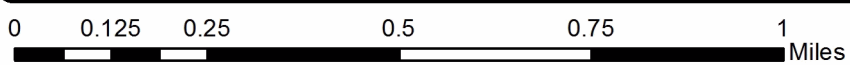
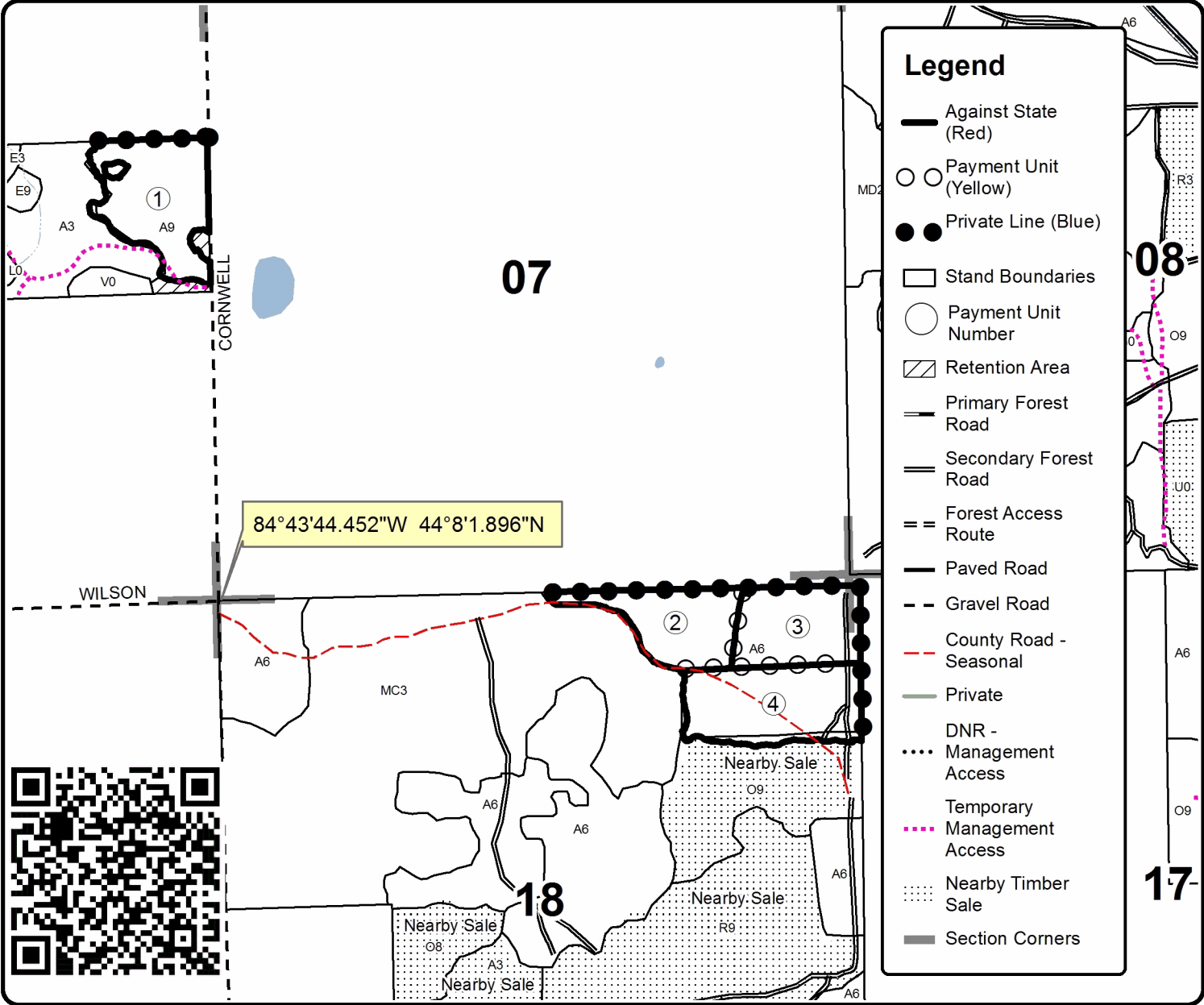
This information provided by authority of Part 525, 1994 PA 451, as amended.

Forest Management Unit Gladwin	County Clare	Mapped By Martell	Date 9/9/20	Page 1	of 2
Township 20N	Range 03W, 04W	Section(s) and Subdivision(s) Sec. 18 - N1/2NE, SENE; Sec. 12 - SENE, Sec. 24 - NW, N1/2SW	Scale 1:15,840		

Cover Type				Density	
A = Aspen	H = Hemlock	N = Marsh	U = Upland Brush	0 = Non Stocked	5 = Pole Timber Medium
B = Paper Birch	J = Jack Pine	O = Oak	UM = Upland Mixed	1 = Seedling Sapling Poor	6 = Pole Timber Well
C = Cedar	L = Lowland Brush	P = Lowland Poplar	V = Bog or Marsh	2 = Seedling Sapling Medium	7 = Saw Timber Poor
D = Treed Bog	LM = Lowland Mixed	Q = Mixed Swamp Conifer	W = White Pine	3 = Seedling Sapling Well	8 = Saw Timber Medium
E = Swamp Hdwoods	M = Mpl, Bch, Brch	R = Red Pine	X = Non Stocked	4 = Pole Timber Poor	9 = Saw Timber Well
F = Spruce Fir	MC = Mixed Conifer	S = Black Spruce	Z = Water		
G = Grass	MD = Mixed Deciduous	T = Tamarack			

PU	Acres	PU	Acres
1	20.7	5	44.6
2	15.3	6	39.3
3	16.4	7	67.4
4	22.3		

Marticki Aspen Compartment 3 226.0 Acres





TIMBER SALE MAP

This information provided by authority of Part 525, 1994 PA 451, as amended.

Forest Management Unit Gladwin		County Clare	Mapped By Martell	Date 9/9/20	Page 2	of 2
Township 20N	Range 03W, 04W	Section(s) and Subdivision(s) Sec. 18 - N1/2NE, SENE; Sec. 12 - SENE, Sec. 24 - NW, N1/2SW		Scale 1:15,840		

Cover Type

A = Aspen	H = Hemlock	N = Marsh	U = Upland Brush
B = Paper Birch	J = Jack Pine	O = Oak	UM = Upland Mixed
C = Cedar	L = Lowland Brush	P = Lowland Poplar	V = Bog or Marsh
D = Treed Bog	LM = Lowland Mixed	Q = Mixed Swamp Conifer	W = White Pine
E = Swamp Hdwoods	M = Mpl. Bch, Brch	R = Red Pine	X = Non Stocked
F = Spruce Fir	MC = Mixed Conifer	S = Black Spruce	Z = Water
G = Grass	MD = Mixed Deciduous	T = Tamarack	

Density

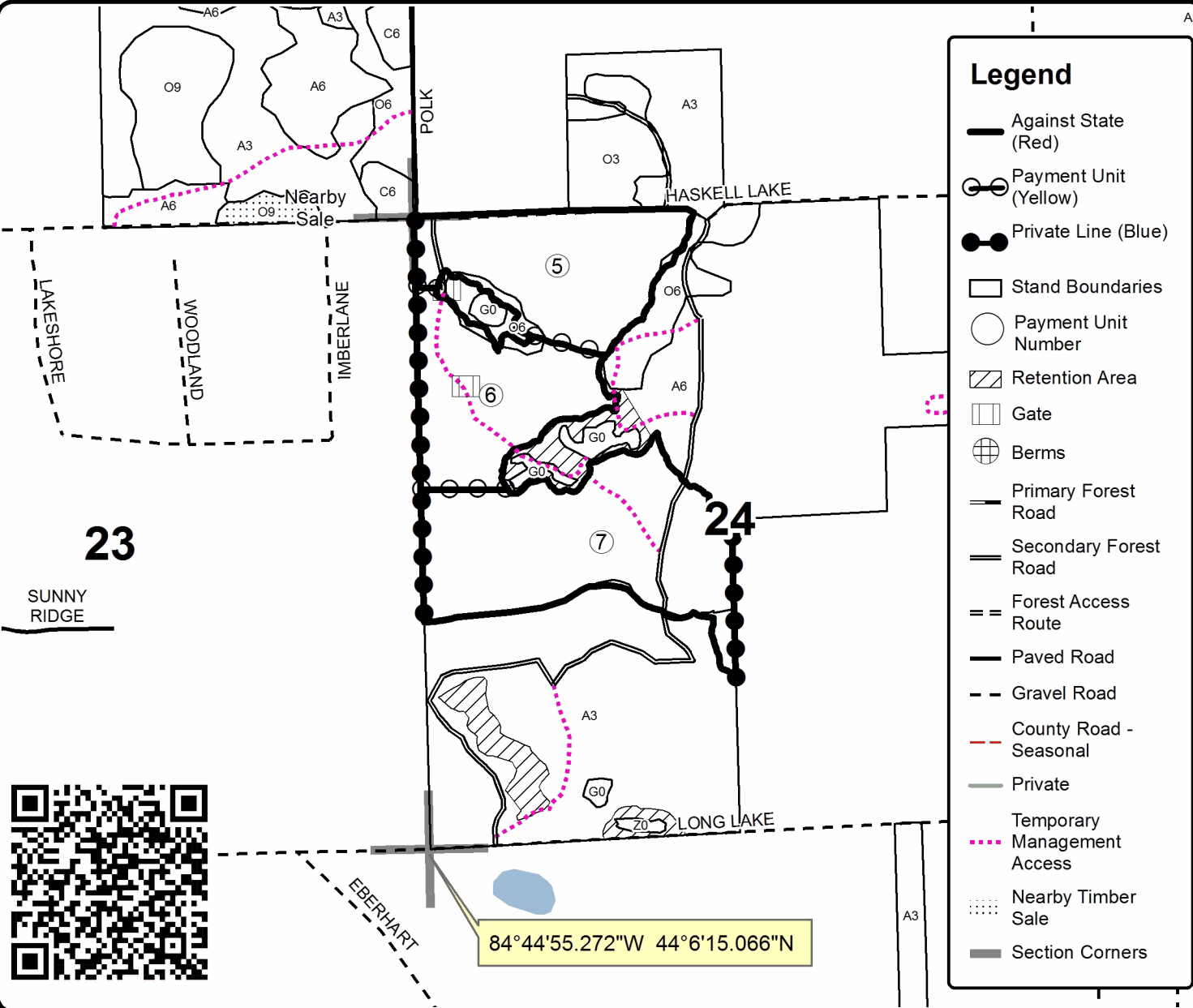
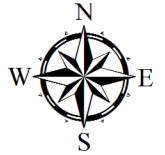
0 = Non Stocked	5 = Pole Timber Medium
1 = Seedling Sapling Poor	6 = Pole Timber Well
2 = Seedling Sapling Medium	7 = Saw Timber Poor
3 = Seedling Sapling Well	8 = Saw Timber Medium
4 = Pole Timber Poor	9 = Saw Timber Well

PU	Acres	PU	Acres
1	20.7	5	44.6
2	15.3	6	39.3
3	16.4	7	67.4
4	22.3		

Marticki Aspen

Compartment 3

226.0 Acres



Ferngully's Mix (73-005-20)

T18N, R06W, SEC. 5; T18N, R06W, SEC. 6; T18N, R06W, SEC. 7; T18N, R06W,

In response to the notice of sale to be held 10:00 a.m. (local time) on May 19, 2021, I am hereby submitting my sealed bid (firm offer) for the following forest products to be cut. Bids for individual species must be at or above the advertised price. All non-responsive bid forms may be rejected.

<u>PRODUCTS & SPECIES</u>	<u>ESTIMATED VOLUME*</u>	<u>ADVERTISED PRICE</u>	<u>BID PRICE/UNIT</u>
Sawtimber			
Mixed Aspen	59.1 MBF	\$ 56.00/MBF	\$ _____
Northern Pin Oak	11.1 MBF	\$ 90.00/MBF	\$ _____
Red Maple	25.4 MBF	\$ 33.00/MBF	\$ _____
Red Pine	13.0 MBF	\$ 92.00/MBF	\$ _____
White Pine	27.2 MBF	\$ 38.00/MBF	\$ _____
Pulpwood			
Balsam Fir	326 Cords	\$ 14.95/Cord	\$ _____
Black Cherry	67 Cords	\$ 12.00/Cord	\$ _____
Mixed Aspen	725 Cords	\$ 15.90/Cord	\$ _____
Mixed Spruce	19 Cords	\$ 13.50/Cord	\$ _____
Northern Pin Oak	137 Cords	\$ 13.25/Cord	\$ _____
Paper Birch	55 Cords	\$ 12.70/Cord	\$ _____
Red Maple	385 Cords	\$ 12.00/Cord	\$ _____
Red Pine	56 Cords	\$ 39.55/Cord	\$ _____
Scotch Pine	13 Cords	\$ 14.35/Cord	\$ _____
White Pine	96 Cords	\$ 16.45/Cord	\$ _____
Yellow Birch	6 Cords	\$ 12.00/Cord	\$ _____

*The volumes are statistically estimated within plus (+) or minus (-) 8.77 percent at 95% confidence level. These estimated volumes are final and not subject to adjustment. Prospective bidders are urged to examine this timber and to make their own estimates of quantity and quality.

I understand that any or all bids may be rejected. All bids must be signed and all bid items must be bid or the bid form may be rejected. I also understand that consideration and awarding a contract will be based upon my past performance and ability to complete the contract based upon equipment and staffing subject to my control.

FEDERAL ID: ____ - ____ - ____ or SOCIAL SECURITY NUMBER: ____ - ____ - ____

Company or individual bidding: _____

Company representative's name: _____

Address: _____

City: _____ State: _____ Zip: _____

IF AVAILABLE, PLEASE PLACE THE PERSONALIZED LABEL FROM YOUR PROSPECTUS IN THE ABOVE BOX.

Individual or company representative's signature: _____ Date: _____

Phone number : _____ Email (optional): _____

THE WINNING BIDDER MUST COMPLETE THE VERIFICATION OF WORKER'S DISABILITY COMPENSATION ACT COMPLIANCE (ON REVERSE SIDE IF DOUBLE SIDED) WITHIN 21 DAYS OF SALE AWARD DATE



TIMBER SALE VERIFICATION OF WORKER'S DISABILITY COMPENSATION ACT COMPLIANCE

As required by Act 317, P.A. 1969 (Worker's Compensation) and
Part 5 of Act 451 of 1994, as amended.

FOR DEPARTMENT USE ONLY	
Sale Number (XX - XXX - XX - XX)	
Forest Management Unit:	

VERIFICATION OF WORKER'S DISABILITY COMPENSATION ACT COMPLIANCE

- This verification must be completed and submitted within 21 days of contract award and prior to the issuance of the timber sale contract.
- In addition, if boxes 2B or 2C are checked, then Notice of Exclusion or Certificate of Insurance must be submitted within twenty-one (21) days of the contract award and prior to the issuance of the timber sale contract.
- All information must be typed or printed except for written signatures.

Please Check Appropriate Categories:

1. My business is organized as (you **must** check one of the boxes below):
 - A. Sole Proprietorship (individual)
 - B. Partnership
 - C. Corporation
2. You **must** check one of the boxes below:
 - A. I certify my business is a sole proprietorship and it has no employees but the sole proprietor. I am not subject to the Worker's Compensation Laws.
 - B. I certify my business has satisfied its obligation to the Worker's Compensation Act through the use of an approved Notice of Exclusion (BWC-337, Rev. 5/96). I will provide a copy of the Notice of Exclusion within 21 days of the contract award. (For questions or a copy of the BWC-337, please call the Worker's Compensation Bureau at 517-322-1195).
 - C. I certify my business has a Worker's Compensation Policy. I will provide an original Certificate of Insurance within twenty-one (21) days of the contract award.
3. If you have checked item 2(A) or 2(B), you **must** indicate the number of **both** full-time and part-time employees, other than yourself, including family members and active partners (if none, you must enter "0").

_____ Full-time Employees

_____ Part-time Employees

Name of Business		Federal ID (or) Social Security No.	
Address		Telephone ()	
City	State	ZIP	

I hereby certify that the above information is true and correct. I agree to notify the Michigan DNR of any changes that occur in factors affecting my coverage during any of my present and future operations.

Signature of Owner or Authorized Representative

Title

Date

Please complete the "SEALED BID" information on the next page

Marticki Aspen (73-011-20)

T20N, R03W, SEC. 18; T20N, R04W, SEC. 12; T20N, R04W, SEC. 24; Clare

In response to the notice of sale to be held 10:00 a.m. (local time) on May 19, 2021, I am hereby submitting my sealed bid (firm offer) for the following forest products to be cut. Bids for individual species must be at or above the advertised price. All non-responsive bid forms may be rejected.

<u>PRODUCTS & SPECIES</u>	<u>ESTIMATED VOLUME*</u>	<u>ADVERTISED PRICE</u>	<u>BID PRICE/UNIT</u>
Sawtimber			
Mixed Aspen	561.6 MBF	\$ 56.00/MBF	\$ _____
Northern Pin Oak	155.3 MBF	\$ 90.00/MBF	\$ _____
Red Maple	129.4 MBF	\$ 33.00/MBF	\$ _____
Red Pine	198.7 MBF	\$ 92.00/MBF	\$ _____
White Oak	18.2 MBF	\$ 86.00/MBF	\$ _____
Pulpwood			
Black Cherry	25 Cords	\$ 12.00/Cord	\$ _____
Mixed Aspen	4,773 Cords	\$ 15.90/Cord	\$ _____
Mixed Oak	849 Cords	\$ 13.25/Cord	\$ _____
Paper Birch	15 Cords	\$ 12.70/Cord	\$ _____
Red Maple	1,221 Cords	\$ 12.00/Cord	\$ _____
Red Pine	169 Cords	\$ 39.55/Cord	\$ _____

*The volumes are statistically estimated within plus (+) or minus (-) 7.05 percent at 95% confidence level. These estimated volumes are final and not subject to adjustment. Prospective bidders are urged to examine this timber and to make their own estimates of quantity and quality.

I understand that any or all bids may be rejected. All bids must be signed and all bid items must be bid or the bid form may be rejected. I also understand that consideration and awarding a contract will be based upon my past performance and ability to complete the contract based upon equipment and staffing subject to my control.

FEDERAL ID: _____ or SOCIAL SECURITY NUMBER: _____

Company or individual bidding: _____

Company representative's name: _____

Address: _____

City: _____ State: _____ Zip: _____

IF AVAILABLE, PLEASE PLACE THE PERSONALIZED LABEL FROM YOUR PROSPECTUS IN THE ABOVE BOX.

Individual or company representative's signature: _____ Date: _____

Phone number : _____ Email (optional): _____

THE WINNING BIDDER MUST COMPLETE THE VERIFICATION OF WORKER'S DISABILITY COMPENSATION ACT COMPLIANCE (ON REVERSE SIDE IF DOUBLE SIDED) WITHIN 21 DAYS OF SALE AWARD DATE



FOR DEPARTMENT USE ONLY	
Sale Number (XX - XXX - XX - XX)	
Forest Management Unit:	

TIMBER SALE VERIFICATION OF WORKER'S DISABILITY COMPENSATION ACT COMPLIANCE

As required by Act 317, P.A. 1969 (Worker's Compensation) and
Part 5 of Act 451 of 1994, as amended.

VERIFICATION OF WORKER'S DISABILITY COMPENSATION ACT COMPLIANCE

- This verification must be completed and submitted within 21 days of contract award and prior to the issuance of the timber sale contract.
- In addition, if boxes 2B or 2C are checked, then Notice of Exclusion or Certificate of Insurance must be submitted within twenty-one (21) days of the contract award and prior to the issuance of the timber sale contract.
- All information must be typed or printed except for written signatures.

Please Check Appropriate Categories:

1. My business is organized as (you **must** check one of the boxes below):
 - A. Sole Proprietorship (individual)
 - B. Partnership
 - C. Corporation
2. You **must** check one of the boxes below:
 - A. I certify my business is a sole proprietorship and it has no employees but the sole proprietor. I am not subject to the Worker's Compensation Laws.
 - B. I certify my business has satisfied its obligation to the Worker's Compensation Act through the use of an approved Notice of Exclusion (BWC-337, Rev. 5/96). I will provide a copy of the Notice of Exclusion within 21 days of the contract award. (For questions or a copy of the BWC-337, please call the Worker's Compensation Bureau at 517-322-1195).
 - C. I certify my business has a Worker's Compensation Policy. I will provide an original Certificate of Insurance within twenty-one (21) days of the contract award.
3. If you have checked item 2(A) or 2(B), you **must** indicate the number of **both** full-time and part-time employees, other than yourself, including family members and active partners (if none, you must enter "0").

_____ Full-time Employees

_____ Part-time Employees

Name of Business		Federal ID (or) Social Security No.	
Address		Telephone ()	
City	State	ZIP	

I hereby certify that the above information is true and correct. I agree to notify the Michigan DNR of any changes that occur in factors affecting my coverage during any of my present and future operations.

Signature of Owner or Authorized Representative

Title

Date

Please complete the "SEALED BID" information on the next page