



**DEPARTMENT OF NATURAL RESOURCES
STATE OF MICHIGAN**

TIMBER SALE PROSPECTUS #6886

SCHEDULED SALE DATE AND TIME: 2:00 p.m. (local time) on June 16, 2021.

LOCATION: SHINGLETON MGMT UNIT, PO BOX 67, M 28 WEST, SHINGLETON, MI 49884.

PROSPECTUS NOTE: The bidder is advised to inspect the sale area and review the location, estimated volumes, operating costs and contract terms of proposed sales. Please be aware that some landowners may request 60 days or more notice for access across their land.

Notice is hereby given that bids will be received by the Unit Manager, SHINGLETON MANAGEMENT UNIT, for certain timber on the following described lands:

C-178 Contract Hardwood (41-015-20) / T47N, R17W, SEC. 20, S1/2NW,SW,NWSE,S1/2SE.

T47N, R17W, SEC. 21, SWSW.

T47N, R17W, SEC. 28, W1/2NW,NWSW.

T47N, R17W, SEC. 29, E1/2NW,NE,SW,N1/2SE,SWSE.

T47N, R17W, SEC. 30, SWNE,N1/2SE,SESE.

T47N, R17W, SEC. 31, NENE.

T47N, R17W, SEC. 32, NWNW,NWNE.

Alger County, Advertised Price \$494,474.95, 790.2 Acres, Hardwood, Sugar Maple.

SALE NOTE: Road work is required on this sale. See Sale Spec. 4.1.8 for more information.

Harvesting is not permitted during the period of April 15 to July 15 due to bark slippage.

No harvesting operations are to take place within drainage areas in Payment Units 8 and 9. These areas are indicated on the Timber Sale Map.

Macho Man Mix (41-016-20) / T48N, R15W, SEC. 10, NW,SW.

T48N, R15W, SEC. 11, SWSW.

T48N, R15W, SEC. 14, W1/2NW,NWSW.

T48N, R15W, SEC. 15, NW,NE,N1/2SW,N1/2SE.

T48N, R15W, SEC. 16, NE,NESE.

T48N, R15W, SEC. 3, S1/2SW.

T48N, R15W, SEC. 9, NESE,S1/2SE.

Alger County, Advertised Price \$32,951.60, 807.0 Acres, White Pine, Hardwood.

SALE NOTE: Note that Payment Units 8 and 9 are being sold by the acre.

Within Payment Unit(s) 8 and 9, harvesting is not permitted during the period of March 15 through July 15 to protect Sharptail Grouse during the breeding season.

Within Payment Unit(s) 1 and 2, harvesting should occur during dry summer or frozen winter conditions because of the seasonal saturation of the soils.

The Fox River Pathway is a hiking trail and is shown on the Timber Sale Map. See Sale Spec. 5.2.40 for restrictions.

A recreation site such as a trail, pathway, or campground is within the sale area or the vicinity. Certain restrictions/specifications may be applicable including time restrictions.

Peg-Leg Pine (41-007-19) / T47N, R14W, SEC. 18, NW,W1/2SE.

T47N, R14W, SEC. 7 , NW,SW.

T47N, R15W, SEC. 12, SESE.

T47N, R15W, SEC. 13, SENE.

Schoolcraft County, Advertised Price \$85,912.15, 296.1 Acres, Red Pine, White Pine.

SALE NOTE: Road work is required on this sale. See Sale Spec 4.1.8 for additional information.

The County Bridge at Wagner Taylor Dam Road currently has a weight restriction , but there are plans to upgrade this bridge in the summer of 2021.

Trail 43 is a snowmobile trail and is shown on the Timber Sale Map. See Sale Spec 5.2.41 for restrictions.

A recreation site such as a trail, pathway, or campground is within the sale area or the vicinity. Certain restrictions/specifications may be applicable including time restrictions.

BID INSTRUCTIONS (VER. 07/02/2018):

1. Scheduled Bid Location, Date, and Time (2/11)

Bids must be received by the Unit Manager, SHINGLETON OFFICE, PO Box 67 M 28 West, Shingleton, MI 49884, no later than 2:00 p.m. (local time) on June 16, 2021. For further information concerning this sale, contact PJ Costa at 906-630-0513 extension .

2. Bidder's Qualifications (5/16)

Purchaser shall obtain workers compensation insurance to cover claims under Michigan's Worker's Disability Compensation Act of 1969 or similar employee benefit act of any other state applicable to an employee. If all or part of a timber sale was prepared by a private contractor, the contractor and that contractor's company are not permitted to bid on the timber sale contract. Bids will not be accepted from individuals or companies appearing on the DNR/FRD No-Bid List. This list contains the names of purchasers who previously failed to execute a contract within 21-days or who have a history of poor performance.

3. Preparation of Sealed Bids (5/16)

Bid Forms may be completed online thru Michigan DNR Timber Sale Online Bidding (OLB) at www.michigan.gov/timberbidding or by completing the hardcopy Bid Form found in the Timber Sale Prospectus . Hardcopy Bid Forms shall be manually signed in ink. Registration in OLB is considered your 'signature' for all bids submitted thru that system. Bid prices must be entered for each species and product in the Bid Price column for all material subject to bidding and all fill-in blanks must be completed. If erasures or other changes appear on the hardcopy Bid Form, each erasure or change must be initialed by the person signing the bid.

4. Submission of Sealed Bids (5/16)

Bid forms may be obtained from the Unit Manager or thru OLB. Bids may be submitted hardcopy or thru OLB. All hardcopy bids must be submitted on the bid form and in an envelope clearly identified as described in this section. NOTE: Only one bid form per bid envelope. Sealed bids must be submitted to the Unit office designated in the prospectus and must be submitted at or prior to the time established in the prospectus. The envelope should show on the outside (a) the sale name or number and (b) the date and time of bid opening, as shown in the prospectus. Bids received after the time specified in the sale prospectus are late bids and will be rejected.

It is possible for a bidder to submit multiple bids on a single sale. For example, a bid may be submitted hardcopy and a bid may be submitted thru OLB. Or, two bidders from the same company could both submit bids on the same sale. If this were to happen, the State would accept all bids received and award the contract accordingly. All bidding and contractual requirements would apply to all bids received.

5. Public Opening of Sealed Bids (7/16)

If conditions permit, the sealed bids will be publicly opened and posted at the time and place set in the prospectus.

If a bidder, present at a bid opening, has submitted bids on more than one sale, that bidder may withdraw their unopened bid envelopes or announce the withdrawal of their online bid after being declared the successful bidder on one sale.

6. Award of Contract (1/11)

Award of the contract will be made to the Bidder whose bid, conforming to the prospectus, is most advantageous to the State of Michigan on the basis of total value at rates bid for the estimated quantities. The State reserves the right to reject any bid or waive any minor irregularity in bids received. A written award mailed (or otherwise furnished) to the successful Bidder shall be deemed to result in a binding contract without further action by either party.

7. Down Payment (1/11)

The Bidder to whom award is made must make a down payment within 21 days of the sale award. The amount of the down payment will be calculated as shown in the Bond and Payment Schedule of this prospectus. Only cash may be used to meet this requirement.

8. Performance Security (1/11)

As guarantee of faithful performance, a cash bond, certificate of deposit, surety bond or irrevocable letter of credit (LOC) is required within 21 days of the sale award. The amount of the performance security is shown in the Bond and

Payment Schedule of this prospectus. If an LOC or surety is used, the coverage must extend for at least 6 months beyond the contract expiration.

9. Timber Sale Contract (7/18)

Additional conditions and requirements common to all timber sales are listed on the timber sale contract (R4031) and are available on line at www.michigan.gov/timber. Contact the Unit Manager for additional information or a sample contract. Within 21 days of the date of the award letter, the bidder must sign the contract and provide the required down payment, performance security, and verification of worker's disability compensation. The down payment and performance security shall be in accordance with the provisions of the timber sale contract, in the sums stated in this prospectus. If these actions are not taken, then the Bidder, the Bidder's corporation, and the corporation's principals may not be permitted to bid on State timber sales for a period of 3 months after the first offense, 6 months after the second offense, and 1 year after the third offense. An offense will only be counted against the Bidder for 5 years. In addition, the Bidder certifies that if awarded this contract, the Bidder will complete the timber sale contract in accordance with its terms and any modifications thereof including requirements to purchase, cut, and remove the included timber by the expiration date.

Payment Unit values in the State Forest Timber Sale Contract are calculated based on the advertised value of the Payment Unit as a percentage of the total advertised value of the contract. The advertised value of each Payment Unit is given in the Description of Timber by Payment Unit table on the Timber Sale Information page. For example, if the value of Payment Unit 1 is advertised as \$1,500 and the total Timber Sale value is advertised as \$10,000, the contract price for Payment Unit 1 will be 15% of the total bid price ($\$1,500/\$10,000 * 100$).

10. Disclaimer of Estimates and Bidder's Warranty of Inspection (7/16)

Before submitting this bid, the Bidder is advised and cautioned to inspect the sale area, review the requirements of the sale contract, and take other steps as may be reasonably necessary to ascertain the location, estimated volumes, construction estimates, and operating costs of the proposed sale. Failure to do so will not relieve the Bidder from responsibility for completing the contract.

The Bidder warrants that this bid is submitted solely on the basis of the Bidder's examination and inspection of the quality and quantity of the timber offered for sale and the Bidder's opinion of the value thereof and the costs of recovery. No reliance should be placed on the State of Michigan's estimates of timber quality, quantity or costs of recovery. Bidder further acknowledges that the State of Michigan: (i) expressly disclaims any warranty of fitness of timber for any purpose; (ii) offers this timber as is without any warranty of quality (merchantability) or quantity and (iii) expressly disclaims any warranty as to the quantity or quality of timber sold.

11. Certification and Chain-of-Custody (10/14)

Unless otherwise indicated in the contract under section 7 – Other Conditions of the Sale Specific Conditions & Requirements, the area encompassed by this timber sale is certified to the standards of the Forest Stewardship Council (FSC) - Certificate #SCS-FM/COC-00090N and the Sustainable Forestry Initiative (SFI) - Certificate #NSF-SFIS-5Y031-SF5. Forest products from this sale may be delivered to the mill as "FSC 100% and / or SFI certified" as long as the contractor hauling the forest products is chain-of-custody (COC) certified or covered under a COC certificate from the destination mill. The purchaser is responsible for maintaining COC after leaving the sale area.

12. Good Neighbor Authority (GNA) Requirements (7/16)

If the name of this timber sales contains the acronym GNA, it is authorized by the Good Neighbor Authority (GNA) and covered by various agreements between the U.S. Forest Service and the State. The timber sale occurs on federal land and the following conditions apply:

GNA contracts on US Forest Service land will not be awarded to purchasers on the Federal list of excluded parties. The System for Award Management (SAM) will be checked for active excluded parties prior to award of contract. In addition, the Bidder to whom award is made must complete an Assurance Regarding Felony Conviction or Tax Delinquent Status for Corporate Applicants (AD-3031).

13. Good Neighbor Authority (GNA) Requirements, con't (9/16)

Bidder certifies, by signing this bid form, that to the best of Bidder's knowledge that the following representations are accurate and complete.

- a. That the Bidder and its principals are not presently debarred, suspended, proposed for debarment, declared ineligible, or voluntary excluded from timber sales (covered transactions) by any Federal department or agency.
- b. That the Bidder and its principals have not within a 3-year period preceding this bid been convicted of or had a civil judgment rendered against them for commission of fraud or a criminal offense in connection with obtaining , attempting to obtain, or performing a public (Federal, State, or local) transaction or contract under a public transaction; violation of Federal or State antitrust statutes or commission of embezzlement, theft, forgery, bribery, falsification or destruction of records, making false statements, or receiving stolen property.
- c. That the Bidder and its principals are not presently indicted for or otherwise criminally or civilly charged by a governmental entity (Federal, State, or local) with commission of any of the offenses enumerated in paragraph b of this certification.
- d. That the Bidder and its principals have not within a 3-year period preceding this bid had one or more public transactions (Federal, State, or local) terminated for breach or default of a timber or forest product contract.

Bidders that cannot certify this requirement, in whole or in part, shall submit an explanation with their bid.

DAN EICHINGER
Director

TIMBER SALE INFORMATION

C-178 Contract Hardwood (41-015-20)

T47N, R17W, SEC. 20; T47N, R17W, SEC. 21; T47N, R17W, SEC. 28; T47N, R17W, SEC. 29; T47N, R17W, SEC. 30; T47N, R17W, SEC. 31; T47N, R17W, SEC. 32.

SALE NOTE: Road work is required on this sale. See Sale Spec. 4.1.8 for more information.

Harvesting is not permitted during the period of April 15 to July 15 due to bark slippage.

No harvesting operations are to take place within drainage areas in Payment Units 8 and 9. These areas are indicated on the Timber Sale Map.

A timber sale contract for this lump sum, sealed bid timber sale will be awarded to the responsible bidder offering the highest sealed bid price. All units of volume listed below were estimated using the T-Sale computer program and our traditional volume equations. Bids must be at or above the following advertised price for each product and species:

<u>PRODUCTS & SPECIES</u>	<u>ESTIMATED UNITS*</u>	<u>ADVERTISED PRICE</u>
Sawtimber		
Basswood	203.6 MBF	\$ 84.00 / MBF
Paper Birch	2.3 MBF	\$ 54.00 / MBF
Red Maple	82.6 MBF	\$ 96.00 / MBF
Sugar Maple	1,433.3 MBF	\$ 266.00 / MBF
Pulpwood		
Balsam Fir	85 Cords	\$ 13.00 / Cord
Basswood	290 Cords	\$ 5.60 / Cord
Black Spruce	54 Cords	\$ 10.35 / Cord
Mixed Hardwood	4,945 Cords	\$ 16.50 / Cord
Paper Birch	27 Cords	\$ 14.50 / Cord
Quaking Aspen	121 Cords	\$ 23.05 / Cord

* The estimated units are final and not subject to adjustment. Prospective bidders are urged to examine this timber and to make their own estimates of quantity and quality.

BOND AND PAYMENT SCHEDULE:

1. A bond in the amount of \$24,724.00 to insure faithful performance of the conditions of the contract will be deposited by the successful bidder within 21 days of the sale award.
2. Cutting in any sale or unit without the required advance payment would be considered a trespass.
3. Total payment must be paid in advance or according to the following schedule :
 - (a) Ten percent (10%) of the sale value must be paid within 21 days of the sale award.
 - (b) The 10% down payment will be credited towards the first unit cut.
 - (c) Payment for each of the following units must be made before cutting begins in that unit:

PAYMENT UNIT NUMBER	PERCENT OF TOTAL SALE VALUE
01	6.3%
02	4.6%
03	1.9%
04	12.0%
05	14.8%
06	16.8%
07	17.1%
08	9.6%
09	11.3%
10	1.4%
11	3.5%
12	0.2%
13	0.5%

4. If no cutting takes place, the 10% down payment will not be refunded.
5. Operations on the contract issued will terminate on 06/30/2024.

SALE STATISTICS

SALE VOLUMES

VOLUME			STATISTICAL RANGE IN CORDS	
TOTAL CUBIC FEET	TOTAL CORDS	PERCENT ERROR	MINIMUM	MAXIMUM
708,168	8,964	0.00%	8,964	8,964

VDU VOLUMES

A VDU is a Volume Determination Unit. Volumes and their associated statistics are calculated at the VDU level and summarized to the sale level. There is often a one to one relationship between a VDU and a Payment Unit, but not always, depending on the cruise design. Refer to the VDU TO PAYMENT UNIT table.

	VOLUME			RANGE IN CORDS	
VDU	TOTAL CUBIC FEET	TOTAL CORDS	PERCENT ERROR	MINIMUM	MAXIMUM
1	49,944	632	0.00%	632	632
2	49,596	628	0.00%	628	628
3	20,153	255	0.00%	255	255
4	77,499	981	0.00%	981	981
5	89,468	1,133	0.00%	1,133	1,133
6	105,157	1,331	0.00%	1,331	1,331
7	124,251	1,573	0.00%	1,573	1,573
8	53,420	676	0.00%	676	676
9	70,081	887	0.00%	887	887
10	22,555	286	0.00%	286	286
11	30,889	391	0.00%	391	391
12	5,506	70	69.69%	21	118
13	9,662	122	49.71%	62	183
TOTAL:	708,180	8,964		8,855	9,074

VDU TO PAYMENT UNIT

When a VDU is associated with more than one Payment Unit (PU), the VDU volumes are assigned to the PU based on acres of the VDU within the PU.

VDU	VDU ACRES	PU	PU ACRES
1	80.4	1	80.0
		2	0.3
		5	0.1
2	70.7	1	0.2
		2	70.2
		3	0.1
		4	0.2
3	37.3	3	37.1
		6	0.2
4	93.5	4	93.0
		5	0.2
		6	0.1
		7	0.2
		4	0.4
		5	90.2
		8	0.4
6	82.0	6	81.8
		7	0.2
		5	0.1
7	83.9	7	83.5
		8	0.3
		8	73.9
		5	0.4
9	105.4	8	0.8
		9	104.2
		10	28.3
11	30.2	11	30.2
12	3.0	12	3.0
13	9.8	13	9.8
TOTAL:	790.2		790.2

DESCRIPTION OF TIMBER BY PAYMENT UNIT (PU)

PU	MARKET GROUP	PRODUCT	QUANTITY	UNIT	ACRES	ADVERTISE PRICE
1	Basswood	Sawtimber	2.8	MBF	80.2	\$31,116.50
	Paper Birch		2.3	MBF		
	Red Maple		11.4	MBF		
	Sugar Maple	85.0	MBF			
	Basswood	Pulpwood	2	Cords		
	Mixed Hardwood		425	Cords		
	<i>Beech</i>		276	<i>Cords</i>		
	<i>Red Maple</i>		41	<i>Cords</i>		
	<i>Sugar Maple</i>		108	<i>Cords</i>		
	Paper Birch		2	Cords		
2	Basswood	Sawtimber	12.0	MBF	70.5	\$22,529.60
	Red Maple		5.7	MBF		
	Sugar Maple		49.4	MBF		
	Balsam Fir	Pulpwood	27	Cords		
	Basswood		15	Cords		
	Mixed Hardwood		437	Cords		
	<i>Beech</i>		240	<i>Cords</i>		
	<i>Red Maple</i>		70	<i>Cords</i>		
	<i>Sugar Maple</i>		127	<i>Cords</i>		
	Paper Birch		13	Cords		
3	Red Maple	Sawtimber	1.2	MBF	37.2	\$9,192.80
	Sugar Maple		21.1	MBF		
	Mixed Hardwood	Pulpwood	210	Cords		
	<i>Beech</i>		173	<i>Cords</i>		
	<i>Red Maple</i>		1	<i>Cords</i>		
	<i>Sugar Maple</i>		36	<i>Cords</i>		
4	Basswood	Sawtimber	30.0	MBF	93.6	\$59,142.80
	Red Maple		8.5	MBF		
	Sugar Maple		178.1	MBF		
	Balsam Fir	Pulpwood	17	Cords		
	Basswood		52	Cords		
	Mixed Hardwood		480	Cords		
	<i>Beech</i>		84	<i>Cords</i>		
	<i>Red Maple</i>		8	<i>Cords</i>		
	<i>Sugar Maple</i>		388	<i>Cords</i>		
5	Basswood	Sawtimber	14.7	MBF	91.0	\$73,057.20
	Red Maple		7.8	MBF		
	Sugar Maple		229.7	MBF		
	Basswood	Pulpwood	19	Cords		
	Mixed Hardwood		598	Cords		
	<i>Beech</i>		7	<i>Cords</i>		
	<i>Red Maple</i>		9	<i>Cords</i>		
	<i>Sugar Maple</i>		553	<i>Cords</i>		
	<i>Yellow Birch</i>		29	<i>Cords</i>		
6	Basswood	Sawtimber	77.3	MBF	82.1	\$83,226.40
	Red Maple		11.4	MBF		
	Sugar Maple		246.1	MBF		
	Basswood	Pulpwood	67	Cords		
	Mixed Hardwood		594	Cords		
	<i>Beech</i>		22	<i>Cords</i>		
	<i>Red Maple</i>		19	<i>Cords</i>		
	<i>Sugar Maple</i>		553	<i>Cords</i>		
7	Basswood	Sawtimber	48.0	MBF	83.9	\$85,439.45
	Red Maple		21.0	MBF		
	Sugar Maple		241.8	MBF		

DESCRIPTION OF TIMBER BY PAYMENT UNIT (PU), CON'T

PU	MARKET GROUP	PRODUCT	QUANTITY	UNIT	ACRES	ADVERTISE PRICE
7 con't	Balsam Fir Basswood Mixed Hardwood <i>Beech</i> <i>Black Cherry</i> <i>Red Maple</i> <i>Sugar Maple</i> Quaking Aspen	Pulpwood	12 61 854 78 5 52 719 21	Cords Cords Cords Cords Cords Cords Cords Cords		
8	Basswood Red Maple Sugar Maple Balsam Fir Basswood Mixed Hardwood <i>Beech</i> <i>Red Maple</i> <i>Sugar Maple</i>	Sawtimber Pulpwood	13.2 8.4 149.9 12 10 328 39 24 265	MBF MBF MBF Cords Cords Cords Cords Cords Cords	75.4	\$47,412.60
9	Basswood Red Maple Sugar Maple Balsam Fir Basswood Mixed Hardwood <i>Beech</i> <i>Red Maple</i> <i>Sugar Maple</i> <i>Yellow Birch</i>	Sawtimber Pulpwood	4.1 3.0 176.4 3 3 514 76 25 402 11	MBF MBF MBF Cords Cords Cords Cords Cords Cords Cords	105.0	\$56,091.60
10	Basswood Red Maple Sugar Maple Basswood Mixed Hardwood <i>Beech</i> <i>Black Cherry</i> <i>Red Maple</i> <i>Sugar Maple</i> Quaking Aspen	Sawtimber Pulpwood	0.4 2.1 8.9 22 222 15 35 8 164 19	MBF MBF MBF Cords Cords Cords Cords Cords Cords Cords	28.3	\$6,826.75
11	Basswood Red Maple Sugar Maple Basswood Mixed Hardwood <i>Beech</i> <i>Black Cherry</i> <i>Red Maple</i> <i>Sugar Maple</i> Quaking Aspen	Sawtimber Pulpwood	1.1 2.1 46.9 39 247 5 14 5 223 5	MBF MBF MBF Cords Cords Cords Cords Cords Cords Cords	30.2	\$17,178.55
12	Balsam Fir Black Spruce Mixed Hardwood <i>Black Cherry</i> <i>Sugar Maple</i> Paper Birch Quaking Aspen	Pulpwood	3 38 6 2 4 12 11	Cords Cords Cords Cords Cords Cords Cords	3.0	\$958.85
13	Balsam Fir	Pulpwood	11	Cords	9.8	\$2,301.85

DESCRIPTION OF TIMBER BY PAYMENT UNIT (PU), CON'T

PU	MARKET GROUP	PRODUCT	QUANTITY	UNIT	ACRES	ADVERTISE PRICE
13 con't	Black Spruce	Pulpwood	16	Cords		
	Mixed Hardwood		30	Cords		
	<i>Black Cherry</i>		9	<i>Cords</i>		
	<i>Red Maple</i>		21	<i>Cords</i>		
	Quaking Aspen		65	Cords		
TOTAL:			1,721.8	MBF		
TOTAL:			5,522	Cords		

Sale Specific Conditions & Requirements

Sale Name: C-178 Contract Hardwood

Sale Number: 41-015-20 Seq#: 3

1 - Sale Area

1.2 - Boundaries

1.2.1 - Painted boundaries (9/19)

The sale boundary and Payment Unit boundaries are marked and identified by blue, red, and yellow paint. Exterior sale boundary lines against private property are marked with blue paint. Exterior sale boundary lines against state are marked with red paint. Interior Payment Unit boundaries are marked with yellow paint. The painted boundary line trees are not Included Timber and are to be protected unless marked with orange paint.

2 - Timber Specifications

2.1 - Included Timber

2.1.1 - Clearcut unit(s) with unmerchantable trees (6/14)

Within Payment Unit(s) 12 and 13, cut all trees that are two (2) inches or more at DBH, except do not cut black cherry in Payment Unit 12. Special protection trees identified in accordance with condition 3.4.2, within clearcutting unit boundaries, are not Included Timber and are to be protected.

2.1.3 - Cut tree marked unit(s) (12/08)

Within Payment Unit(s) 1 - 11, all trees are designated for cutting when marked with orange paint above and below stump height, regardless of merchantability. In Payment Units 4 - 11 all merchantable beech is designated for cutting.

3 - Payments

3.3 - Pre-measured Sales

3.3.4 - Dividing payment units (7/14)

Payment Unit(s) exceeding \$20,000 may be divided at the request of the Purchaser and upon approval of the Unit Manager. Dividing Payment Units is a contract modification which requires a Timber Sale Contract Amendment.

3.4 - Damaged Timber

3.4.2 - Special Protection Trees (4/14)

The Purchaser shall not cut live or dead special protection trees within cutting units or clearings. Special protection trees are hemlock and oak. If the Purchaser's operations have cut or damaged special protection trees through carelessness, the Purchaser shall pay \$100 as fixed, agreed and liquidated damages for each special protection tree cut or damaged. Such payment does not constitute ownership of the undesignated timber.

4 - Transportation

4.1 - Construction

4.1.3 - Slash and earthen piles (8/04)

Piles or windrows of earth along roads and landings that have been widened or constructed shall be leveled. Slash from road maintenance or construction, including stumps, shall be dispersed throughout the sale.

4.1.6 - Road construction (1/09)

Construction of new roads or improvements of existing roads shall be done in such a way as to minimize the environmental and visual impacts. Merchantable trees shall be cut and utilized unless otherwise directed. Non-merchantable trees shall be severed and laid flat on the ground. Slash shall be scattered, and not left in windrows and kept a minimum of 10 feet back from the road edge. Stumps shall be set upright, not left on edge, and be moved at least 10 feet away from the road edge. Disturbed soil shall be feathered into the woods and not left in berms or windrows.

4.1.7 - Road closure (10/11)

All new roads built into the sale must be blocked to vehicle traffic upon completion of the sale. Overgrown roads that are reopened shall be considered new roads. In general, this will require constructing a four (4') foot high berm of stumps and logs covered with earth. These roads must be rendered impassable to cars and trucks. All stumps from road building and

landing construction must be reserved to block any newly constructed roads upon completion of the sale. These stumps must be scattered along the road system to prohibit vehicular movement. Contact the sale administrator for specific details of design and placement.

4.1.8 - Road work (1) (8/07)

The following road work is required: 500 cubic yards of breaker run gravel must be purchased hauled and spread between the Sale Area and H-58 on the Noble Lake Road. Exact locations of the work will be determined at the Pre-Sale meeting. All work is at the Purchaser's expense and must be complete before hauling begins unless approved by the Unit Manager.

4.1.10 - Oversight (12/08)

The Unit Manager, or his/her representative, must be present when the road improvement project is initiated.

4.2 - Maintenance

4.2.4 - Grading (10/16)

For completion of the sale, state forest roads must be graded. In general, this will require a road grader or bulldozer to shape up the roads after forest products have been hauled off site. This includes cleaning of drainage areas, grading, crowning, and filling with gravel, if necessary. The grading equipment to be used must be approved by the Unit Manager or his/her representative.

5 - Operations

5.2 - Conduct of Operations

5.2.2 - Hazard Trees/Snags

5.2.2.1 - Den trees (10/16)

Obvious hollow and/or den trees shall be protected and left standing unless they are a safety hazard.

5.2.3 - Operating Restrictions

5.2.3.3 - Bark slippage restriction (3/09)

Within Payment Unit(s) 1 - 11, unless changed by written agreement, cutting and skidding are not permitted during the period of April 15 to July 15. This restriction is because of bark slippage.

5.2.32 - Decking/landing restoration (9/13)

All decking and landing areas must have the surface area restored to a condition equal to or better than before. This is to ensure the proper regeneration of the stand. Wood debris, chips, and "cookies" from trimmings must be removed or scattered away from landing and loading areas and may not be windrowed on the edge.

5.2.38 - No decking against live trees (2/04)

Cut products may not be decked against unmarked or designated leave trees.

5.4 - Soil Protection

5.4.1 - Rutting restriction, general (7/16)

Operations are to cease immediately if equipment and weather conditions result in rutting of roads and/or skid trails which is 12 inches or greater in depth and 50 feet in length. The Unit Manager or his/her representative may restrict hauling and/or skidding if ruts exceed the specified depth. With the Unit Manager or his/her representative's approval, the Purchaser may return to the area when the risk of rutting has decreased.

5.4.6 - Wet area protection (5/10)

No harvesting operations, including skidding and felling, are to take place within drainage areas in Payment Units 8 and 9. These areas are indicated on the Timber Sale Map. Care must be taken by the Purchaser to identify and avoid operating in these areas of the timber sale.

5.8 - Protection of Endangered Species

5.8.3 - Red shoulder hawk or goshawk (2/16)

In the event that an active red shoulder hawk or goshawk nest is found, the contract may be amended to protect the nest site until the nest is determined to be inactive. The value of the trees in this excluded area will be refunded or credited to the Purchaser. The nest will be buffered with a five-chain radius (eight acre) protection area, centered on the nest tree, in which

there will be no cutting or new roads constructed. Avoid human disturbance, including loading and skidding, in the protection area.

An additional zone of five chains (ten chains centered on the active nest tree) will be established in which there is no management activity from April 1 to July 30. Limit biomass harvesting and chipping operations within this ten-chain zone, retain the maximum one-third of residues per the Woody Biomass Harvesting Guidelines (Michigan DNR 2010). Nests determined to be inactive will be protected with a one-chain no-harvest buffer.

6 - Safety and Fire Prevention

6.2 - Signing

6.2.1 - Road posting (9/09)

The Purchaser is responsible for posting and maintaining caution signs on H-58 prior to beginning operations. The road must be posted 350 feet from the H-58 and Noble Lake Road intersection to warn of logging activity and truck traffic. Signs must be removed when harvest operations are suspended or completed. The Purchaser will provide these signs.



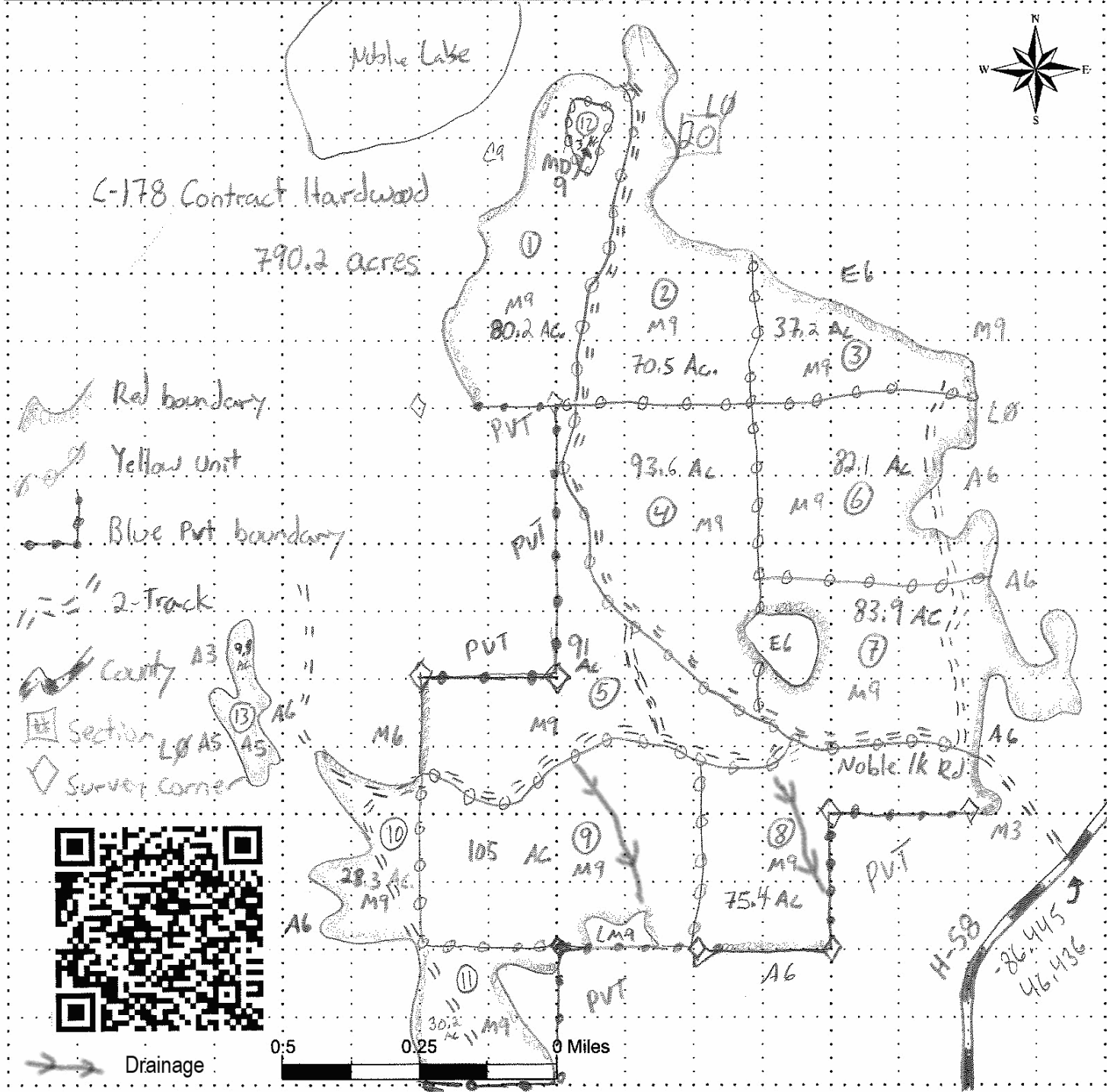
TIMBER SALE MAP

This information provided by authority of Part 5, 1994 PA 451, as amended.

Sale Number	Year
41-015-20-01	2020

Forest Management Shingleton	County Alger	Mapped By Molin	Date 9/29/20	Page 1	of 1
Compartment Number 178	Township 42N	Range 19W	Section(s) and Subdivision(s) 20- S1/2NW,SW,NWSE,S1/2SE 21- SWSW 28- W1/2NW,NWSW 29- E1/2NW,NE,SW,N1/2SE,SWSE 30- SWNE, N1/2SE,SESE 31- NENE 32- NWNW,NWNE		

Cover Type				Density	
A = Aspen	J = Jack Pine	O = Oak	U = Upland Brush	0 = Non Stocked	5 = Pole Timber Medium
B = Paper Birch	K = Rock	P = Lowland Poplar	UM = Upland Mix Forest	1 = Seedling Sapling Poor	6 = Pole Timber Well
C = Cedar	L = Lowland Brush	Q = Mixed Swamp Conifer	V = Bog or Marsh	2 = Seedling Sapling Medium	7 = Saw Timber Poor
D = Treed Bog	LM = Lowland Mix Forest	R = Red Pine	W = White Pine	3 = Seedling Sapling Well	8 = Saw Timber Medium
E = Swamp Hardwoods	M = Maple, Beech, Birch	S = Black Spruce	X = Non Stocked	4 = Pole Timber Poor	9 = Saw Timber Well
F = Spruce/Fir	MC = Mixed Conifer	T = Tamarack	Y = Sand		
G = Grass	MD = Mixed Deciduous		Z = Water		
H = Hemlock	N = Mash				



TIMBER SALE INFORMATION

Macho Man Mix (41-016-20)

T48N, R15W, SEC. 10; T48N, R15W, SEC. 11; T48N, R15W, SEC. 14; T48N, R15W, SEC. 15; T48N, R15W, SEC. 16; T48N, R15W, SEC. 3; T48N, R15W, SEC. 9.

SALE NOTE: Note that Payment Units 8 and 9 are being sold by the acre.

Within Payment Unit(s) 8 and 9, harvesting is not permitted during the period of March 15 through July 15 to protect Sharptail Grouse during the breeding season.

Within Payment Unit(s) 1 and 2, harvesting should occur during dry summer or frozen winter conditions because of the seasonal saturation of the soils.

The Fox River Pathway is a hiking trail and is shown on the Timber Sale Map. See Sale Spec. 5.2.40 for restrictions.

A recreation site such as a trail, pathway, or campground is within the sale area or the vicinity. Certain restrictions/specifications may be applicable including time restrictions.

A timber sale contract for this lump sum, sealed bid timber sale will be awarded to the responsible bidder offering the highest sealed bid price. All units of volume listed below were estimated using the T-Sale computer program and our traditional volume equations. Bids must be at or above the following advertised price for each product and species:

<u>PRODUCTS & SPECIES</u>	<u>ESTIMATED UNITS*</u>	<u>ADVERTISED PRICE</u>
Pulpwood		
Balsam Fir	21 Cords	\$ 13.25 / Cord
Black Spruce	50 Cords	\$ 10.55 / Cord
Jack Pine	26 Cords	\$ 27.80 / Cord
Mixed Hardwood	139 Cords	\$ 16.85 / Cord
Mixed Hardwood	693.8 Acres	\$ 1.00 / Acre
Paper Birch	189 Cords	\$ 14.80 / Cord
Red Pine	216 Cords	\$ 47.55 / Cord
Tamarack	10 Cords	\$ 3.05 / Cord
White Pine	921 Cords	\$ 16.60 / Cord

* The total volume is statistically estimated within plus (+) or minus (-) 9.60 percent. There are an estimated 1,571 cords on this timber sale, plus or minus 151 cords at the 95% confidence level. The estimated units are final and not subject to adjustment. Prospective bidders are urged to examine this timber and to make their own estimates of quantity and quality.

BOND AND PAYMENT SCHEDULE:

1. A bond in the amount of \$1,648.00 to insure faithful performance of the conditions of the contract will be deposited by the successful bidder within 21 days of the sale award.
2. Cutting in any sale or unit without the required advance payment would be considered a trespass.
3. Total payment must be paid in advance or according to the following schedule :
 - (a) Ten percent (10%) of the sale value must be paid within 21 days of the sale award.
 - (b) The 10% down payment will be credited towards the first unit cut.
 - (c) Payment for each of the following units must be made before cutting begins in that unit:

PAYMENT UNIT NUMBER	PERCENT OF TOTAL SALE VALUE
01	10.0%
02	55.2%
03	9.8%
04	0.3%
05	9.5%
06	3.3%
07	11.9%
08	0.0%
09	0.0%

4. If no cutting takes place, the 10% down payment will not be refunded.
5. Operations on the contract issued will terminate on 12/31/2024.

SALE STATISTICS

SALE VOLUMES

VOLUME			STATISTICAL RANGE IN CORDS	
TOTAL CUBIC FEET	TOTAL CORDS	PERCENT ERROR	MINIMUM	MAXIMUM
124,125	1,571	9.60%	1,420	1,722

VDU VOLUMES

A VDU is a Volume Determination Unit. Volumes and their associated statistics are calculated at the VDU level and summarized to the sale level. There is often a one to one relationship between a VDU and a Payment Unit, but not always, depending on the cruise design. Refer to the VDU TO PAYMENT UNIT table.

VDU	VOLUME			RANGE IN CORDS	
	TOTAL CUBIC FEET	TOTAL CORDS	PERCENT ERROR	MINIMUM	MAXIMUM
5	16,321	207	18.02%	169	244
9	506	6	93.33%	0	12
13	66,597	843	13.14%	732	954
21	14,844	188	22.28%	146	230
26	13,880	176	30.05%	123	228
43	5,419	69	49.57%	35	103
49	6,557	83	24.05%	63	103
401	0	0	0.00%	0	0
404	0	0	0.00%	0	0
TOTAL:	124,125	1,571		1,269	1,874

VDU TO PAYMENT UNIT

When a VDU is associated with more than one Payment Unit (PU), the VDU volumes are assigned to the PU based on acres of the VDU within the PU.

VDU	VDU ACRES	PU	PU ACRES
5	17.3	1	17.3
9	1.7	4	1.7
13	56.2	2	56.2
21	18.6	3	18.6
26	9.1	5	9.1
43	4.7	6	4.7
49	5.6	7	5.6
401	450.4	9	450.4
404	243.4	8	243.4
TOTAL:	807.0		807.0

DESCRIPTION OF TIMBER BY PAYMENT UNIT (PU)

PU	MARKET GROUP	PRODUCT	QUANTITY	UNIT	ACRES	ADVERTISE PRICE
1	Balsam Fir	Pulpwood	9	Cords	17.3	\$3,294.25
	Black Spruce		9	Cords		
	Mixed Hardwood		9	Cords		
	<i>Red Maple</i>		9	<i>Cords</i>		
	Paper Birch		3	Cords		
	Tamarack		4	Cords		
	White Pine		173	Cords		
2	Black Spruce	Pulpwood	34	Cords	56.2	\$17,501.65
	Jack Pine		11	Cords		
	Mixed Hardwood		5	Cords		
	<i>Red Maple</i>		5	<i>Cords</i>		
	Paper Birch		93	Cords		
	Red Pine		124	Cords		
	Tamarack		6	Cords		
	White Pine		570	Cords		
3	Jack Pine	Pulpwood	13	Cords	18.6	\$3,234.60
	Mixed Hardwood		11	Cords		
	<i>Red Maple</i>		11	<i>Cords</i>		
	Paper Birch		80	Cords		
	Red Pine		3	Cords		
	White Pine		82	Cords		
4	Mixed Hardwood	Pulpwood	6	Cords	1.7	\$101.10
	<i>Beech</i>		6	<i>Cords</i>		
5	Balsam Fir	Pulpwood	6	Cords	9.1	\$3,130.75
	Black Spruce		7	Cords		
	Mixed Hardwood		96	Cords		
	<i>Beech</i>		22	<i>Cords</i>		
	<i>Red Maple</i>		74	<i>Cords</i>		
	Red Pine		8	Cords		
	White Pine		59	Cords		
6	Balsam Fir	Pulpwood	6	Cords	4.7	\$1,088.30
	Mixed Hardwood		12	Cords		
	<i>Red Maple</i>		12	<i>Cords</i>		
	Paper Birch		13	Cords		
	White Pine		37	Cords		
7	Jack Pine	Pulpwood	2	Cords	5.6	\$3,907.15
	Red Pine		81	Cords		
TOTAL:			1,572	Cords		

Sale Specific Conditions & Requirements

Sale Name: Macho Man Mix

Sale Number: 41-016-20 Seq#: 1

1 - Sale Area

1.2 - Boundaries

1.2.1 - Painted boundaries (9/19)

The sale boundary and Payment Unit boundaries are marked and identified by blue, red, yellow, and green paint. In addition, Payment Unit 8 and 9 are Virtual Paint lines in which there is no paint. The cutting boundaries will be determined using Avenza Maps which is a free download. Exterior sale boundary lines against private property are marked with blue paint. Exterior sale boundary lines against state are marked with red paint. Interior Payment Unit boundaries are marked with yellow paint. Retention patches are marked with green paint; no harvesting activities may occur within these areas. The painted boundary line trees are not Included Timber and are to be protected unless marked with orange paint.

2 - Timber Specifications

2.1 - Included Timber

2.1.2 - Clearcut unit(s) w/o unmerchantable trees (8/11)

Within Payment Unit(s) 2, 3, 5, 6, 8 & 9, cut all trees which meet minimum piece specifications in 2.2 Utilization except hemlock, oak and trees marked with green paint. Special protection trees identified in accordance with condition 3.4.2, within clearcutting Payment Unit boundaries, are not Included Timber and are to be protected.

2.1.3 - Cut tree marked unit(s) (12/08)

Within Payment Unit(s) 4 and 7, all trees are designated for cutting when marked with orange paint above and below stump height, regardless of merchantability.

2.1.7 - Leave tree marked unit(s) (6/14)

Within Payment Unit(s) 1, cut all trees that are 7 inches or greater at DBH. Also do not cut trees marked with green paint. Special protection trees identified in accordance with condition 3.4.2, within clearcutting unit boundaries, are not Included Timber and are to be protected.

2.1.11 - Description of timber note (2/04)

Note that Payment Units 8 and 9 are being sold by the acre.

2.2 - Utilization

2.2.3 - Stump heights (4/07)

Stump heights within Payment Unit 7 shall not exceed 12 inches for trees greater than 10 inches at DBH and 4 inches for trees smaller than 10 inches at DBH. This is to facilitate future planting operations.

3 - Payments

3.3 - Pre-measured Sales

3.3.4 - Dividing payment units (7/14)

Payment Unit(s) that are \$15,000 or greater in value, may be divided at the request of the Purchaser and upon approval of the Unit Manager. Dividing Payment Units is a contract modification which requires a Timber Sale Contract Amendment.

3.4 - Damaged Timber

3.4.1 - Damaged timber (7/16)

General Condition and Requirement 3.4 Damaged Timber, defines liquidated damages for undesignated live merchantable trees which are cut or injured. In addition, extreme care should be taken to avoid damage to tree seedlings and saplings.

Within the Sale Area, if more than 25% of the tree seedlings or saplings (1/4" to 4.5" DBH) within a specified portion of the Sale Area are damaged, liquidated damages will be assessed at \$400 per acre for all acreage within that specified portion of the Sale Area that was damaged. This specification applies to Payment Units 1 and 2.

3.4.2 - Special Protection Trees (4/14)

The Purchaser shall not cut live or dead special protection trees within cutting units or clearings. Special protection trees are hemlock and oak. If the Purchaser's operations have cut or damaged special protection trees through carelessness, the Purchaser shall pay \$100 as fixed, agreed and liquidated damages for each special protection tree cut or damaged. Such payment does not constitute ownership of the undesignated timber.

4 - Transportation

4.1 - Construction

4.1.3 - Slash and earthen piles (8/04)

Piles or windrows of earth along roads and landings that have been widened or constructed shall be leveled. Slash from road maintenance or construction, including stumps, shall be dispersed throughout the sale.

4.1.6 - Road construction (1/09)

Construction of new roads or improvements of existing roads shall be done in such a way as to minimize the environmental and visual impacts. Merchantable trees shall be cut and utilized unless otherwise directed. Non-merchantable trees shall be severed and laid flat on the ground. Slash shall be scattered, and not left in windrows and kept a minimum of 10 feet back from the road edge. Stumps shall be set upright, not left on edge, and be moved at least 10 feet away from the road edge. Disturbed soil shall be feathered into the woods and not left in berms or windrows.

4.1.7 - Road closure (10/11)

All new roads built into the sale must be blocked to vehicle traffic upon completion of the sale. Overgrown roads that are reopened shall be considered new roads. In general, this will require constructing a four (4') foot high berm of stumps and logs covered with earth. Stumps and brush must be placed along the remainder of the trail. These roads must be rendered impassable to cars and trucks. All stumps from road building and landing construction must be reserved to block any newly constructed roads upon completion of the sale. These stumps must be scattered along the road system to prohibit vehicular movement. Contact the sale administrator for specific details of design and placement.

4.2 - Maintenance

4.2.4 - Grading (10/16)

For completion of the sale, state forest roads must be graded. In general, this will require a road grader or bulldozer to shape up the roads after forest products have been hauled off site. This includes cleaning of drainage areas, grading, crowning, and filling with gravel, if necessary. The grading equipment to be used must be approved by the Unit Manager or his/her representative.

5 - Operations

5.1 - Notification

5.1.1 - Pre-sale conference (10/16)

A pre-sale conference on site between the Purchaser and sale administrator is required prior to beginning any operations to determine landing and road locations. The Unit Manager or his/her representative must be contacted at least 5 days in advance to schedule the conference.

5.2 - Conduct of Operations

5.2.2 - Hazard Trees/Snags

5.2.2.1 - Den trees (10/16)

Obvious hollow and/or den trees shall be protected and left standing unless they are a safety hazard.

5.2.3 - Operating Restrictions

5.2.3.1 - Operating restrictions (9/11)

Within Payment Unit(s) 8 and 9, unless changed by written agreement, cutting, skidding, and hauling are not permitted during the period of March 15 through July 15. This restriction is to protect Sharptail Grouse during the breeding season.

5.2.3.6 - Bark beetle restriction (12/08)

In the event drought creates a high risk of pine bark beetle infestation, pine is not to be cut during the period March 1 through July 1, unless all portions of trees greater than two inches in diameter are removed from the sale area, reduced to

chips, or treated to the satisfaction of the Unit Manager or his/her representative, within fifteen days of being severed from the stump. Pine log decks, pulpwood piles and treetops that are piled for chipping in the fall or winter within a 1/4 mile of susceptible sites must be removed before March 15. Residual slash must not be placed in piles or rows and must be spread over the site for quick drying. The Department of Natural Resources will exercise this specification if the risk of damage warrants.

5.2.22 - Operating Caution

5.2.22.1 - Operating caution (6/11)

It is recommended, but not required, that within Payment Unit(s) 1 and 2, cutting, skidding, and hauling occur during dry summer or frozen winter conditions. The reason for the recommendation is because of the sometimes-seasonal saturation of the soils within these Payment Units.

5.2.32 - Decking/landing restoration (9/13)

All decking and landing areas must have the surface area restored to a condition equal to or better than before. This is to ensure the proper regeneration of the stand. Wood debris, chips, and "cookies" from trimmings must be removed or scattered away from landing and loading areas and may not be windrowed on the edge.

5.2.38 - No decking against live trees (2/04)

Cut products may not be decked against unmarked or designated leave trees.

5.2.40 - Pathway protection (10/10)

The Fox River Pathway is a hiking trail and is shown on the Timber Sale Map. Do not cut trees or damage posts with blue pathway markers. Maintain a 20-foot-wide slash, debris, and rut free zone daily, using the pathway as the centerline. Do not run equipment down the pathway.

5.4 - Soil Protection

5.4.1 - Rutting restriction, general (7/16)

Operations are to cease immediately if equipment and weather conditions result in rutting of roads and/or skid trails which is 12 inches or greater in depth and 50 feet in length. The Unit Manager or his/her representative may restrict hauling and/or skidding if ruts exceed the specified depth. With the Unit Manager or his/her representative's approval, the Purchaser may return to the area when the risk of rutting has decreased.

5.7 - Protection of Historical Sites

5.7.1 - Historical sites (7/12)

The Purchaser shall not cut live or dead trees or operate equipment within historical sites. Historical sites are known in or around this area. The Purchaser shall protect historical sites from damage by the Purchaser's operations. If Purchaser's operations have cut or damaged historical sites through carelessness, the Purchaser shall pay replacement costs as fixed, agreed and liquidated damages for each acre or part thereof cut or damaged.

5.8 - Protection of Endangered Species

5.8.3 - Red shoulder hawk or goshawk (2/16)

In the event that an active red shoulder hawk or goshawk nest is found, the contract may be amended to protect the nest site until the nest is determined to be inactive. The value of the trees in this excluded area will be refunded or credited to the Purchaser. The nest will be buffered with a five-chain radius (eight acre) protection area, centered on the nest tree, in which there will be no cutting or new roads constructed. Avoid human disturbance, including loading and skidding, in the protection area.

An additional zone of five chains (ten chains centered on the active nest tree) will be established in which there is no management activity from April 1 to July 30. Limit biomass harvesting and chipping operations within this ten-chain zone, retain the maximum one-third of residues per the Woody Biomass Harvesting Guidelines (Michigan DNR 2010). Nests determined to be inactive will be protected with a one-chain no-harvest buffer.

6 - Safety and Fire Prevention

6.2 - Signing

6.2.3 - Recreational trail posting (10/20)

The Purchaser is responsible for posting and maintaining caution signs on the Fox River Pathway prior to beginning operations. The trail must be posted at appropriate distances from the Sale Area to warn of logging activity and truck traffic at both ends of the trail. Signs must be removed when harvest operations are suspended or completed. The Purchaser will provide these signs.



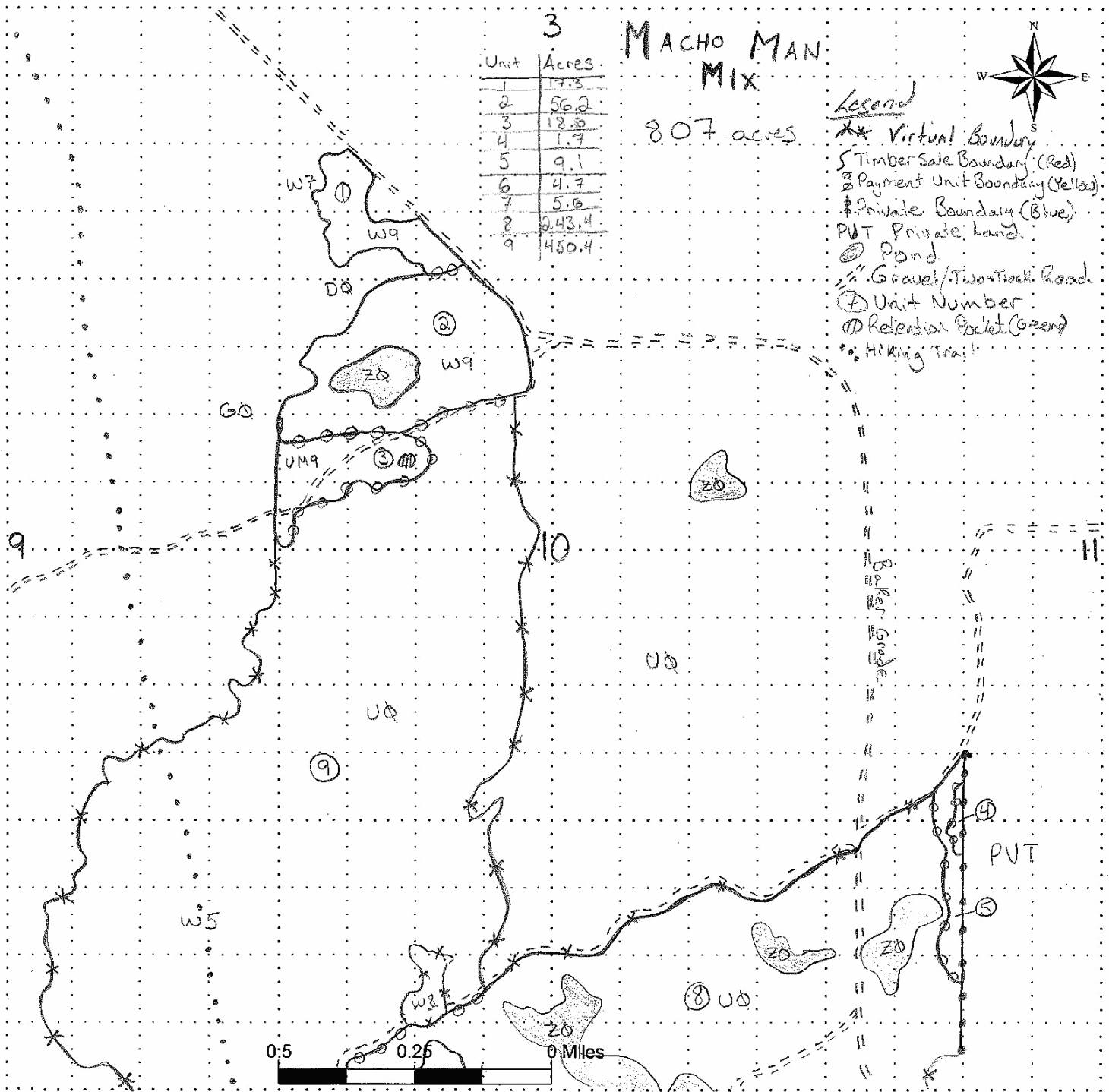
Sale Number	Year
41-016	20

TIMBER SALE MAP

This information provided by authority of Part 5, 1994 PA 451, as amended.

Forest Management Unit Shingleton	County Alger	Mapped By ONR Staff	Date 9/28/20	Page 2	of 2
Compartment Number 138	Township 48N	Cruised By DNR Staff	Range 15W	Section(s) and Subdivision(s) 3, 9, 10, 11, 16, 15, 14	

Cover Type			Density	
A = Aspen	J = Jack Pine	O = Oak	U = Upland Brush	0 = Non Stocked
B = Paper Birch	K = Rock	P = Lowland Poplar	UM = Upland Mix Forest	1 = Seedling Sapling Poor
C = Cedar	L = Lowland Brush	Q = Mixed Swamp Conifer	V = Bog or Marsh	2 = Seedling Sapling Medium
D = Treed Bog	LM = Lowland Mix Forest	R = Red Pine	W = White Pine	3 = Seedling Sapling Well
E = Swamp Hardwoods	M = Maple, Beech, Birch	S = Black Spruce	X = Non Stocked	4 = Pole Timber Poor
F = Spruce/Fir	MC = Mixed Conifer	T = Tamarack	Y = Sand	5 = Pole Timber Medium
G = Grass	MD = Mixed Deciduous		Z = Water	6 = Pole Timber Well
H = Hemlock	N = Marsh			7 = Saw Timber Poor
				8 = Saw Timber Medium
				9 = Saw Timber Well





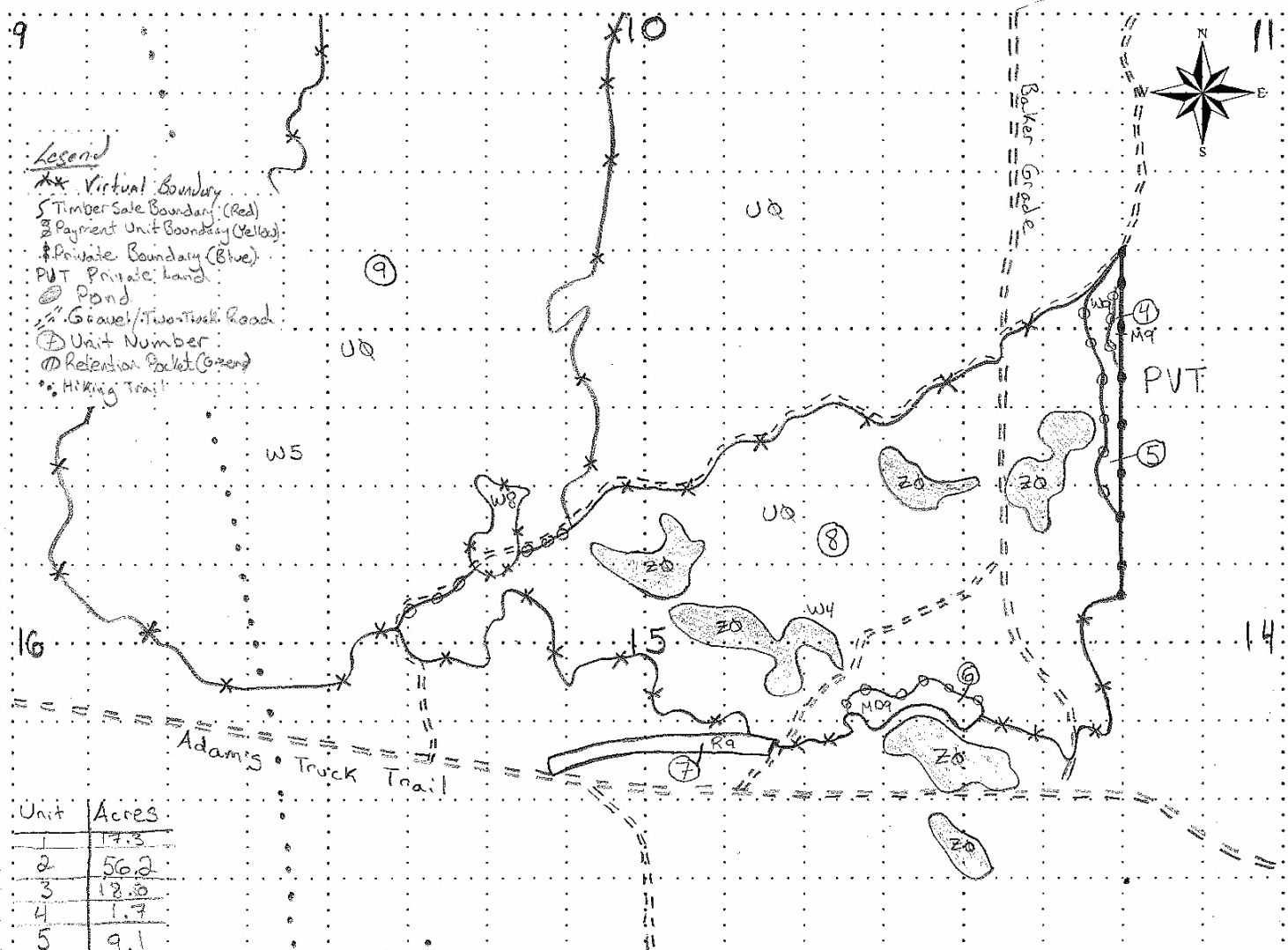
Sale Number	Year
41-016	20

TIMBER SALE MAP

This information provided by authority of Part 5, 1994 PA 451, as amended.

Forest Management Unit Shingleton	County Alger	Mapped By DNR Staff	Date 9/28/20	Page 1	of 2
Compartment Number 138	Township 48N	Range 15W	Section(s) and Subdivision(s) 3, 9, 10, 11, 16, 15, 14		

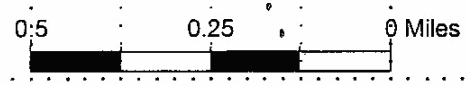
Cover Type				Density	
A = Aspen	J = Jack Pine	O = Oak	U = Upland Brush	0 = Non Stocked	5 = Pole Timber Medium
B = Paper Birch	K = Rock	P = Lowland Poplar	UM = Upland Mix Forest	1 = Seedling Sapling Poor	6 = Pole Timber Well
C = Cedar	L = Lowland Brush	Q = Mixed Swamp Conifer	V = Bog or Marsh	2 = Seedling Sapling Medium	7 = Saw Timber Poor
D = Treed Bog	LM = Lowland Mix Forest	R = Red Pine	W = White Pine	3 = Seedling Sapling Well	8 = Saw Timber Medium
E = Swamp Hardwoods	M = Maple, Beech, Birch	S = Black Spruce	X = Non Stocked	4 = Pole Timber Poor	9 = Saw Timber Well
F = Spruce/Fir	MC = Mixed Conifer	T = Tamarack	Y = Sand		
G = Grass	MD = Mixed Deciduous		Z = Water		
H = Hemlock	N = Marsh				



Unit	Acres
1	17.3
2	56.2
3	12.0
4	1.7
5	9.1
6	4.7
7	5.6
8	243.4
9	450.4

Macho Man
Mix

80.7 acres



TIMBER SALE INFORMATION

Peg-Leg Pine (41-007-19)

T47N, R14W, SEC. 18; T47N, R14W, SEC. 7; T47N, R15W, SEC. 12; T47N, R15W, SEC. 13.
Schoolcraft County (Advertised Price \$85,912.15)

SALE NOTE: Road work is required on this sale. See Sale Spec 4.1.8 for additional information.

The County Bridge at Wagner Taylor Dam Road currently has a weight restriction, but there are plans to upgrade this bridge in the summer of 2021.

Trail 43 is a snowmobile trail and is shown on the Timber Sale Map. See Sale Spec 5.2.41 for restrictions.

A recreation site such as a trail, pathway, or campground is within the sale area or the vicinity. Certain restrictions/specifications may be applicable including time restrictions.

A timber sale contract for this lump sum, sealed bid timber sale will be awarded to the responsible bidder offering the highest sealed bid price. All units of volume listed below were estimated using the T-Sale computer program and our traditional volume equations. Bids must be at or above the following advertised price for each product and species:

<u>PRODUCTS & SPECIES</u>	<u>ESTIMATED UNITS*</u>	<u>ADVERTISED PRICE</u>
Pulpwood		
Jack Pine	39 Cords	\$ 22.05 / Cord
Quaking Aspen	11 Cords	\$ 18.65 / Cord
Red Maple	47 Cords	\$ 13.35 / Cord
Red Pine	2,038 Cords	\$ 37.75 / Cord
White Pine	554 Cords	\$ 13.15 / Cord

* The total volume is statistically estimated within plus (+) or minus (-) 13.29 percent. There are an estimated 2,691 cords on this timber sale, plus or minus 358 cords at the 95% confidence level. The estimated units are final and not subject to adjustment. Prospective bidders are urged to examine this timber and to make their own estimates of quantity and quality.

BOND AND PAYMENT SCHEDULE:

1. A bond in the amount of \$4,296.00 to insure faithful performance of the conditions of the contract will be deposited by the successful bidder within 21 days of the sale award.
2. Cutting in any sale or unit without the required advance payment would be considered a trespass.
3. Total payment must be paid in advance or according to the following schedule :
 - (a) Ten percent (10%) of the sale value must be paid within 21 days of the sale award.
 - (b) The 10% down payment will be credited towards the first unit cut.
 - (c) Payment for each of the following units must be made before cutting begins in that unit:

PAYMENT UNIT NUMBER	PERCENT OF TOTAL SALE VALUE
01	10.8%
02	3.9%
03	3.7%
04	1.3%
05	6.1%
06	10.5%
07	8.5%
08	7.8%
09	3.0%
10	10.4%
11	5.6%
12	13.4%
13	15.0%

4. If no cutting takes place, the 10% down payment will not be refunded.
5. Operations on the contract issued will terminate on 06/30/2023.

SALE STATISTICS

SALE VOLUMES

VOLUME			STATISTICAL RANGE IN CORDS	
TOTAL CUBIC FEET	TOTAL CORDS	PERCENT ERROR	MINIMUM	MAXIMUM
212,557	2,691	13.29%	2,333	3,048

VDU VOLUMES

A VDU is a Volume Determination Unit. Volumes and their associated statistics are calculated at the VDU level and summarized to the sale level. There is often a one to one relationship between a VDU and a Payment Unit, but not always, depending on the cruise design. Refer to the VDU TO PAYMENT UNIT table.

VDU	VOLUME			RANGE IN CORDS	
	TOTAL CUBIC FEET	TOTAL CORDS	PERCENT ERROR	MINIMUM	MAXIMUM
1	20,619	261	42.83%	149	373
2	7,244	92	58.86%	38	146
3	7,236	92	55.88%	40	143
4	2,307	29	43.51%	16	42
5	19,355	245	55.95%	108	382
6	18,770	238	46.08%	128	347
7	16,400	208	32.50%	140	275
8	21,314	270	42.91%	154	386
9	5,356	68	62.33%	26	110
10	21,425	271	33.47%	180	362
11	17,530	222	63.54%	81	363
12	25,557	324	25.43%	241	406
13	29,443	373	19.09%	302	444
TOTAL:	212,557	2,691		1,604	3,777

VDU TO PAYMENT UNIT

When a VDU is associated with more than one Payment Unit (PU), the VDU volumes are assigned to the PU based on acres of the VDU within the PU.

VDU	VDU ACRES	PU	PU ACRES
1	22.4	1	22.4
2	16.8	2	16.8
3	8.3	3	8.3
4	6.2	4	6.2
5	30.1	5	30.1
6	23.0	6	23.0
7	33.5	7	33.5
8	26.8	7	0.2
		8	26.5
		10	0.1
9	11.5	9	11.5
10	32.8	10	32.8
11	25.6	11	25.6
12	39.6	12	39.6
13	19.5	13	19.5
TOTAL:	296.1		296.1

DESCRIPTION OF TIMBER BY PAYMENT UNIT (PU)

PU	MARKET GROUP	PRODUCT	QUANTITY	UNIT	ACRES	ADVERTISE PRICE
1	Red Maple Red Pine White Pine	Pulpwood	5 239 17	Cords Cords Cords	22.4	\$9,312.55
2	Quaking Aspen Red Maple Red Pine	Pulpwood	3 3 86	Cords Cords Cords	16.8	\$3,342.50
3	Red Pine White Pine	Pulpwood	80 12	Cords Cords	8.3	\$3,177.80
4	Red Pine	Pulpwood	29	Cords	6.2	\$1,094.75
5	Red Maple Red Pine White Pine	Pulpwood	11 84 149	Cords Cords Cords	30.1	\$5,277.20
6	Red Pine	Pulpwood	238	Cords	23.0	\$8,984.50
7	Jack Pine Red Maple Red Pine White Pine	Pulpwood	22 4 175 9	Cords Cords Cords Cords	33.7	\$7,263.10
8	Jack Pine Red Pine White Pine	Pulpwood	7 128 132	Cords Cords Cords	26.5	\$6,722.15
9	Red Pine	Pulpwood	68	Cords	11.5	\$2,567.00
10	Red Pine White Pine	Pulpwood	217 54	Cords Cords	32.9	\$8,901.85
11	Red Maple Red Pine White Pine	Pulpwood	24 76 122	Cords Cords Cords	25.6	\$4,793.70
12	Red Pine White Pine	Pulpwood	294 29	Cords Cords	39.6	\$11,479.85
13	Jack Pine Quaking Aspen Red Pine White Pine	Pulpwood	10 8 324 30	Cords Cords Cords Cords	19.5	\$12,995.20
TOTAL:			2,689	Cords		

Sale Specific Conditions & Requirements

Sale Name: Peg-Leg Pine

Sale Number: 41-007-19 Seq#: 1

1 - Sale Area

1.2 - Boundaries

1.2.1 - Painted boundaries (1/14)

The sale boundary and Payment Unit boundaries are marked and identified by red and yellow paint. Exterior sale boundary lines against state are marked with red paint. Interior Payment Unit boundaries are marked with yellow paint. The painted boundary line trees are not Included Timber and are to be protected.

2 - Timber Specifications

2.1 - Included Timber

2.1.3 - Cut tree marked unit(s) (12/08)

Within Payment Unit(s) 1 - 13, all trees are designated for cutting when marked with orange paint above and below stump height, regardless of merchantability.

2.2 - Utilization

2.2.3 - Stump heights (4/07)

Stump heights within the Sale Area shall not exceed 12 inches for trees greater than 10 inches at DBH and 4 inches for trees smaller than 10 inches at DBH. This is to facilitate future planting operations.

3 - Payments

3.3 - Pre-measured Sales

3.3.4 - Dividing payment units (7/14)

Payment Unit(s) that are \$15,000 or more in value, may be divided at the request of the Purchaser and upon approval of the Unit Manager. Dividing Payment Units is a contract modification which requires a Timber Sale Contract Amendment.

3.4 - Damaged Timber

3.4.2 - Special Protection Trees (4/14)

The Purchaser shall not cut live or dead special protection trees within cutting units or clearings. Special protection trees are oak and hemlock. If the Purchaser's operations have cut or damaged special protection trees through carelessness, the Purchaser shall pay \$100 as fixed, agreed and liquidated damages for each special protection tree cut or damaged. Such payment does not constitute ownership of the undesignated timber.

3.4.3 - Special Protection Areas (8/11)

The Purchaser shall protect special protection areas from damage by the Purchaser's operations. Special protection areas are identified on the map and excluded with red paint. The Purchaser shall not cut live or dead trees within special protection areas. If the Purchaser's operations have cut or damaged special protection areas through carelessness, the Purchaser shall pay \$1000 as fixed, agreed and liquidated damages for each acre or part thereof cut or damaged. Such payment does not constitute ownership of the undesignated timber.

4 - Transportation

4.1 - Construction

4.1.3 - Slash and earthen piles (8/04)

Piles or windrows of earth along roads and landings that have been widened or constructed shall be leveled. Slash from road maintenance or construction, including stumps, shall be dispersed throughout the sale.

4.1.6 - Road construction (1/09)

Construction of new roads or improvements of existing roads shall be done in such a way as to minimize the environmental and visual impacts. Merchantable trees shall be cut and utilized unless otherwise directed. Non-merchantable trees shall be severed and laid flat on the ground. Slash shall be scattered, and not left in windrows and kept a minimum of 10 feet back

from the road edge. Stumps shall be set upright, not left on edge, and be moved at least 10 feet away from the road edge. Disturbed soil shall be feathered into the woods and not left in berms or windrows.

4.1.7 - Road closure (10/11)

All new roads built into the sale must be blocked to vehicle traffic upon completion of the sale. Overgrown roads that are reopened shall be considered new roads. In general, this will require constructing a four (4') foot high berm of stumps and logs covered with earth. These roads must be rendered impassable to cars and trucks. All stumps from road building and landing construction must be reserved to block any newly constructed roads upon completion of the sale. These stumps must be scattered along the road system to prohibit vehicular movement. Contact the sale administrator for specific details of design and placement.

4.1.8 - Road work (1) (8/07)

The following road work is required: 500 cubic yards of breaker run gravel containing rock no larger than 3" must be purchased, hauled, and spread on Trail 43 between the Sale Area and Wagner Taylor Dam Road. All costs associated with the work are at the Purchasers expense, no deductions will be given. Specific gravel locations will be determined by the sale administrator and all work must be done before hauling can begin unless approved by the Unit Manager.

4.1.10 - Oversight (12/08)

The Unit Manager, or his/her representative, must be present when the road improvement project is initiated.

4.2 - Maintenance

4.2.4 - Grading (10/16)

For completion of the sale, state forest roads must be graded. In general, this will require a road grader or bulldozer to shape up the roads after forest products have been hauled off site. This includes cleaning of drainage areas, grading, crowning, and filling with gravel, if necessary. The grading equipment to be used must be approved by the Unit Manager or his/her representative.

5 - Operations

5.1 - Notification

5.1.1 - Pre-sale conference (10/16)

A pre-sale conference on site between the Purchaser and sale administrator is required prior to beginning any operations to determine landing and road locations. The Unit Manager or his/her representative must be contacted at least 5 days in advance to schedule the conference.

5.2 - Conduct of Operations

5.2.2 - Hazard Trees/Snags

5.2.2.1 - Den trees (10/16)

Obvious hollow and/or den trees shall be protected and left standing unless they are a safety hazard.

5.2.3 - Operating Restrictions

5.2.3.6 - Bark beetle restriction (12/08)

In the event drought creates a high risk of pine bark beetle infestation, pine is not to be cut during the period March 1 through July 1, unless all portions of trees greater than two inches in diameter are removed from the sale area, reduced to chips, or treated to the satisfaction of the Unit Manager or his/her representative, within fifteen days of being severed from the stump. Pine log decks, pulpwood piles and treetops that are piled for chipping in the fall or winter within a 1/4 mile of susceptible sites must be removed before March 15. Residual slash must not be placed in piles or rows and must be spread over the site for quick drying. The Department of Natural Resources will exercise this specification if the risk of damage warrants.

5.2.32 - Decking/landing restoration (9/13)

All decking and landing areas must have the surface area restored to a condition equal to or better than before. This is to ensure the proper regeneration of the stand. Wood debris, chips, and "cookies" from trimmings must be removed or scattered away from landing and loading areas and may not be windrowed on the edge.

5.2.38 - No decking against live trees (2/04)

Cut products may not be decked against unmarked or designated leave trees.

5.2.41 - Snowmobile trail protection (9/11)

Trail 43 is a snowmobile trail and is shown on the Timber Sale Map. Do not cut or damage posts with orange trail markers or traffic control signs. If the trail is used for hauling, it must be graded to the satisfaction of the Unit Manager or his/her representative prior to December 1. The snowmobile trail may not be used for any timber sale operations from December 1 to March 31. Maintain a 20-foot-wide slash, debris, and rut free zone daily using the snowmobile trail as the centerline. All stumps within 20 feet of the snowmobile trail must be cut at ground level.

5.4 - Soil Protection

5.4.1 - Rutting restriction, general (7/16)

Operations are to cease immediately if equipment and weather conditions result in rutting of roads and/or skid trails which is 12 inches or greater in depth and 50 feet in length. The Unit Manager or his/her representative may restrict hauling and/or skidding if ruts exceed the specified depth. With the Unit Manager or his/her representative's approval, the Purchaser may return to the area when the risk of rutting has decreased.

5.8 - Protection of Endangered Species

5.8.3 - Red shoulder hawk or goshawk (2/16)

In the event that an active red shoulder hawk or goshawk nest is found, the contract may be amended to protect the nest site until the nest is determined to be inactive. The value of the trees in this excluded area will be refunded or credited to the Purchaser. The nest will be buffered with a five-chain radius (eight acre) protection area, centered on the nest tree, in which there will be no cutting or new roads constructed. Avoid human disturbance, including loading and skidding, in the protection area.

An additional zone of five chains (ten chains centered on the active nest tree) will be established in which there is no management activity from April 1 to July 30 (UP). Limit biomass harvesting and chipping operations within this ten-chain zone, retain the maximum one-third of residues per the Woody Biomass Harvesting Guidelines (Michigan DNR 2010). Nests determined to be inactive will be protected with a one-chain no-harvest buffer.



Sale Number	Year
41-007	19

TIMBER SALE MAP

This information provided by authority of Part 5, 1994 PA 451, as amended.

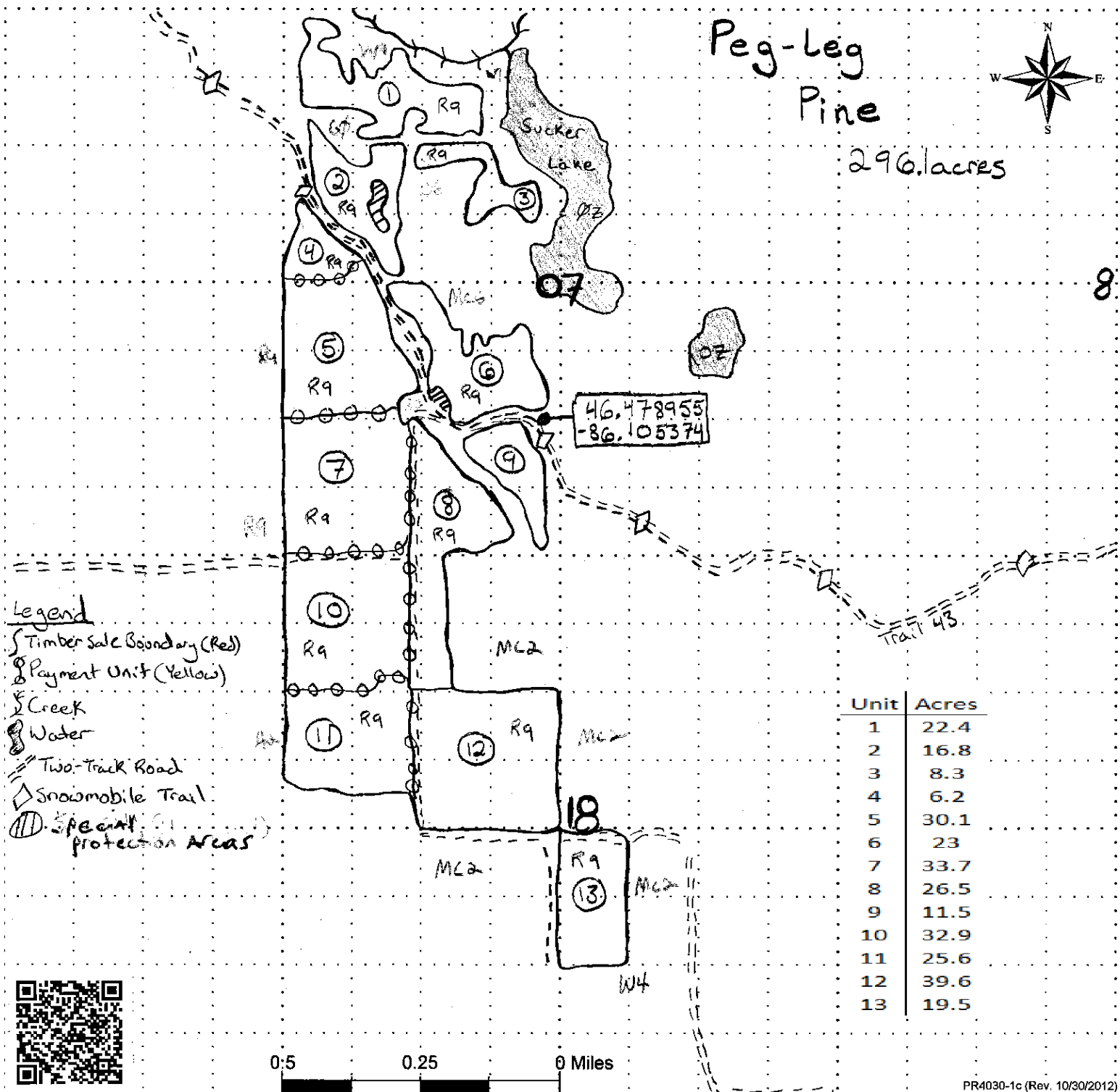
Forest Management Unit Shingleton	County Schoolcraft	Mapped By S. Kentner	Date 3/29/19	Page 1	of 1
Township 47N	Range 14W	Section(s) and Subdivision(s) 7: NW, SW 18: NW, NWSE			

Cover Type

A = Aspen	J = Jack Pine	O = Oak	U = Upland Brush
B = Paper Birch	K = Rock	P = Lowland Poplar	UM = Upland Mix Forest
C = Cedar	L = Lowland Brush	Q = Mixed Swamp Conifer	V = Bog or Marsh
D = Treed Bog	LM = Lowland Mix Forest	R = Red Pine	W = White Pine
E = Swamp Hardwoods	M = Maple, Beech, Birch	S = Black Spruce	X = Non Stocked
F = Spruce/Fir	MC = Mixed Conifer	T = Tamarack	Y = Sand
G = Grass	MD = Mixed Deciduous	Z = Water	
H = Hemlock	N = Marsh		

Density

0 = Non Stocked	5 = Pole Timber Medium
1 = Seedling Sapling Poor	6 = Pole Timber Well
2 = Seedling Sapling Medium	7 = Saw Timber Poor
3 = Seedling Sapling Well	8 = Saw Timber Medium
4 = Pole Timber Poor	9 = Saw Timber Well



Peg-Leg Pine (41-007-19)

T47N, R14W, SEC. 18; T47N, R14W, SEC. 7; T47N, R15W, SEC. 12; T47N, R15W,

In response to the notice of sale to be held 2:00 p.m. (local time) on June 16, 2021, I am hereby submitting my sealed bid (firm offer) for the following forest products to be cut. Bids for individual species must be at or above the advertised price. All non-responsive bid forms may be rejected.

<u>PRODUCTS & SPECIES</u>	<u>ESTIMATED VOLUME*</u>	<u>ADVERTISED PRICE</u>	<u>BID PRICE/UNIT</u>
Pulpwood			
Jack Pine	39 Cords	\$ 22.05/Cord	\$ _____
Quaking Aspen	11 Cords	\$ 18.65/Cord	\$ _____
Red Maple	47 Cords	\$ 13.35/Cord	\$ _____
Red Pine	2,038 Cords	\$ 37.75/Cord	\$ _____
White Pine	554 Cords	\$ 13.15/Cord	\$ _____

*The volumes are statistically estimated within plus (+) or minus (-) 13.29 percent at 95% confidence level. These estimated volumes are final and not subject to adjustment. Prospective bidders are urged to examine this timber and to make their own estimates of quantity and quality.

I understand that any or all bids may be rejected. All bids must be signed and all bid items must be bid or the bid form may be rejected. I also understand that consideration and awarding a contract will be based upon my past performance and ability to complete the contract based upon equipment and staffing subject to my control .

FEDERAL ID: _____ - _____ or SOCIAL SECURITY NUMBER: _____ - _____ - _____

Company or individual bidding: _____

Company representative's name: _____

Address: _____

City: _____ State: _____ Zip: _____

IF AVAILABLE, PLEASE PLACE THE PERSONALIZED LABEL FROM YOUR PROSPECTUS IN THE ABOVE BOX.

Individual or company representative's signature: _____ Date: _____

Phone number : _____ Email (optional): _____

THE WINNING BIDDER MUST COMPLETE THE VERIFICATION OF WORKER'S DISABILITY COMPENSATION ACT COMPLIANCE (ON REVERSE SIDE IF DOUBLE SIDED) WITHIN 21 DAYS OF SALE AWARD DATE



FOR DEPARTMENT USE ONLY	
Sale Number (XX - XXX - XX - XX)	
Forest Management Unit:	

TIMBER SALE VERIFICATION OF WORKER'S DISABILITY COMPENSATION ACT COMPLIANCE

As required by Act 317, P.A. 1969 (Worker's Compensation) and
Part 5 of Act 451 of 1994, as amended.

VERIFICATION OF WORKER'S DISABILITY COMPENSATION ACT COMPLIANCE

- This verification must be completed and submitted within 21 days of contract award and prior to the issuance of the timber sale contract.
- In addition, if boxes 2B or 2C are checked, then Notice of Exclusion or Certificate of Insurance must be submitted within twenty-one (21) days of the contract award and prior to the issuance of the timber sale contract.
- All information must be typed or printed except for written signatures.

Please Check Appropriate Categories:

1. My business is organized as (you **must** check one of the boxes below):
 - A. Sole Proprietorship (individual)
 - B. Partnership
 - C. Corporation
2. You **must** check one of the boxes below:
 - A. I certify my business is a sole proprietorship and it has no employees but the sole proprietor. I am not subject to the Worker's Compensation Laws.
 - B. I certify my business has satisfied its obligation to the Worker's Compensation Act through the use of an approved Notice of Exclusion (BWC-337, Rev. 5/96). I will provide a copy of the Notice of Exclusion within 21 days of the contract award. (For questions or a copy of the BWC-337, please call the Worker's Compensation Bureau at 517-322-1195).
 - C. I certify my business has a Worker's Compensation Policy. I will provide an original Certificate of Insurance within twenty-one (21) days of the contract award.
3. If you have checked item 2(A) or 2(B), you **must** indicate the number of **both** full-time and part-time employees, other than yourself, including family members and active partners (if none, you must enter "0").

_____ Full-time Employees

_____ Part-time Employees

Name of Business		Federal ID (or) Social Security No.	
Address		Telephone ()	
City	State	ZIP	

I hereby certify that the above information is true and correct. I agree to notify the Michigan DNR of any changes that occur in factors affecting my coverage during any of my present and future operations.

Signature of Owner or Authorized Representative

Title

Date

Please complete the "SEALED BID" information on the next page

Macho Man Mix (41-016-20)
T48N, R15W, SEC. 10; T48N, R15W, SEC. 11; T48N, R15W, SEC. 14; T48N,

In response to the notice of sale to be held 2:00 p.m. (local time) on June 16, 2021, I am hereby submitting my sealed bid (firm offer) for the following forest products to be cut. Bids for individual species must be at or above the advertised price. All non-responsive bid forms may be rejected.

<u>PRODUCTS & SPECIES</u>	<u>ESTIMATED VOLUME*</u>	<u>ADVERTISED PRICE</u>	<u>BID PRICE/UNIT</u>
Pulpwood			
Balsam Fir	21 Cords	\$ 13.25/Cord	\$ _____
Black Spruce	50 Cords	\$ 10.55/Cord	\$ _____
Jack Pine	26 Cords	\$ 27.80/Cord	\$ _____
Mixed Hardwood	139 Cords	\$ 16.85/Cord	\$ _____
Mixed Hardwood	693.8 Acres	\$ 1.00/Acres	\$ _____
Paper Birch	189 Cords	\$ 14.80/Cord	\$ _____
Red Pine	216 Cords	\$ 47.55/Cord	\$ _____
Tamarack	10 Cords	\$ 3.05/Cord	\$ _____
White Pine	921 Cords	\$ 16.60/Cord	\$ _____

*The volumes are statistically estimated within plus (+) or minus (-) 9.60 percent at 95% confidence level. These estimated volumes are final and not subject to adjustment. Prospective bidders are urged to examine this timber and to make their own estimates of quantity and quality.

I understand that any or all bids may be rejected. All bids must be signed and all bid items must be bid or the bid form may be rejected. I also understand that consideration and awarding a contract will be based upon my past performance and ability to complete the contract based upon equipment and staffing subject to my control.

FEDERAL ID: ____ - ____ - ____ or SOCIAL SECURITY NUMBER: ____ - ____ - ____

Company or individual bidding: _____

Company representative's name: _____

Address: _____

City: _____ State: _____ Zip: _____

IF AVAILABLE, PLEASE PLACE THE PERSONALIZED LABEL FROM YOUR PROSPECTUS IN THE ABOVE BOX.

Individual or company representative's signature: _____ Date: _____

Phone number : _____ Email (optional): _____

THE WINNING BIDDER MUST COMPLETE THE VERIFICATION OF WORKER'S DISABILITY COMPENSATION ACT COMPLIANCE (ON REVERSE SIDE IF DOUBLE SIDED) WITHIN 21 DAYS OF SALE AWARD DATE



FOR DEPARTMENT USE ONLY	
Sale Number (XX - XXX - XX - XX)	
Forest Management Unit:	

TIMBER SALE VERIFICATION OF WORKER'S DISABILITY COMPENSATION ACT COMPLIANCE

As required by Act 317, P.A. 1969 (Worker's Compensation) and
Part 5 of Act 451 of 1994, as amended.

VERIFICATION OF WORKER'S DISABILITY COMPENSATION ACT COMPLIANCE

- This verification must be completed and submitted within 21 days of contract award and prior to the issuance of the timber sale contract.
- In addition, if boxes 2B or 2C are checked, then Notice of Exclusion or Certificate of Insurance must be submitted within twenty-one (21) days of the contract award and prior to the issuance of the timber sale contract.
- All information must be typed or printed except for written signatures.

Please Check Appropriate Categories:

1. My business is organized as (you **must** check one of the boxes below):
 - A. Sole Proprietorship (individual)
 - B. Partnership
 - C. Corporation
2. You **must** check one of the boxes below:
 - A. I certify my business is a sole proprietorship and it has no employees but the sole proprietor. I am not subject to the Worker's Compensation Laws.
 - B. I certify my business has satisfied its obligation to the Worker's Compensation Act through the use of an approved Notice of Exclusion (BWC-337, Rev. 5/96). I will provide a copy of the Notice of Exclusion within 21 days of the contract award. (For questions or a copy of the BWC-337, please call the Worker's Compensation Bureau at 517-322-1195).
 - C. I certify my business has a Worker's Compensation Policy. I will provide an original Certificate of Insurance within twenty-one (21) days of the contract award.
3. If you have checked item 2(A) or 2(B), you **must** indicate the number of **both** full-time and part-time employees, other than yourself, including family members and active partners (if none, you must enter "0").

_____ Full-time Employees

_____ Part-time Employees

Name of Business		Federal ID (or) Social Security No.	
Address		Telephone ()	
City	State	ZIP	

I hereby certify that the above information is true and correct. I agree to notify the Michigan DNR of any changes that occur in factors affecting my coverage during any of my present and future operations.

Signature of Owner or Authorized Representative

Title

Date

Please complete the "SEALED BID" information on the next page

C-178 Contract Hardwood (41-015-20)
T47N, R17W, SEC. 20; T47N, R17W, SEC. 21; T47N, R17W, SEC. 28; T47N,

In response to the notice of sale to be held 2:00 p.m. (local time) on June 16, 2021, I am hereby submitting my sealed bid (firm offer) for the following forest products to be cut. Bids for individual species must be at or above the advertised price. All non-responsive bid forms may be rejected.

<u>PRODUCTS & SPECIES</u>	<u>ESTIMATED VOLUME*</u>	<u>ADVERTISED PRICE</u>	<u>BID PRICE/UNIT</u>
Sawtimber			
Basswood	203.6 MBF	\$ 84.00/MBF	\$ _____
Paper Birch	2.3 MBF	\$ 54.00/MBF	\$ _____
Red Maple	82.6 MBF	\$ 96.00/MBF	\$ _____
Sugar Maple	1,433.3 MBF	\$ 266.00/MBF	\$ _____
Pulpwood			
Balsam Fir	85 Cords	\$ 13.00/Cord	\$ _____
Basswood	290 Cords	\$ 5.60/Cord	\$ _____
Black Spruce	54 Cords	\$ 10.35/Cord	\$ _____
Mixed Hardwood	4,945 Cords	\$ 16.50/Cord	\$ _____
Paper Birch	27 Cords	\$ 14.50/Cord	\$ _____
Quaking Aspen	121 Cords	\$ 23.05/Cord	\$ _____

*These estimated volumes are final and not subject to adjustment. Prospective bidders are urged to examine this timber and to make their own estimates of quantity and quality.

I understand that any or all bids may be rejected. All bids must be signed and all bid items must be bid or the bid form may be rejected. I also understand that consideration and awarding a contract will be based upon my past performance and ability to complete the contract based upon equipment and staffing subject to my control.

FEDERAL ID: _____ - _____ or SOCIAL SECURITY NUMBER: _____ - _____ - _____

Company or individual bidding: _____

Company representative's name: _____

Address: _____

City: _____ State: _____ Zip: _____

IF AVAILABLE, PLEASE PLACE THE PERSONALIZED LABEL FROM YOUR PROSPECTUS IN THE ABOVE BOX.

Individual or company representative's signature: _____ Date: _____

Phone number : _____ Email (optional): _____

THE WINNING BIDDER MUST COMPLETE THE VERIFICATION OF WORKER'S DISABILITY COMPENSATION ACT COMPLIANCE (ON REVERSE SIDE IF DOUBLE SIDED) WITHIN 21 DAYS OF SALE AWARD DATE



FOR DEPARTMENT USE ONLY
Sale Number (XX – XXX – XX – XX)
Forest Management Unit:

TIMBER SALE VERIFICATION OF WORKER'S DISABILITY COMPENSATION ACT COMPLIANCE

*As required by Act 317, P.A. 1969 (Worker's Compensation) and
Part 5 of Act 451 of 1994, as amended.*

VERIFICATION OF WORKER'S DISABILITY COMPENSATION ACT COMPLIANCE

- This verification must be completed and submitted within 21 days of contract award and prior to the issuance of the timber sale contract.
- In addition, if boxes 2B or 2C are checked, then Notice of Exclusion or Certificate of Insurance must be submitted within twenty-one (21) days of the contract award and prior to the issuance of the timber sale contract.
- All information must be typed or printed except for written signatures.

Please Check Appropriate Categories:

1. My business is organized as (you **must** check one of the boxes below):
 - A. Sole Proprietorship (individual)
 - B. Partnership
 - C. Corporation
2. You **must** check one of the boxes below:
 - A. I certify my business is a sole proprietorship and it has no employees but the sole proprietor. I am not subject to the Worker's Compensation Laws.
 - B. I certify my business has satisfied its obligation to the Worker's Compensation Act through the use of an approved Notice of Exclusion (BWC-337, Rev. 5/96). I will provide a copy of the Notice of Exclusion within 21 days of the contract award. (For questions or a copy of the BWC-337, please call the Worker's Compensation Bureau at 517-322-1195).
 - C. I certify my business has a Worker's Compensation Policy. I will provide an original Certificate of Insurance within twenty-one (21) days of the contract award.
3. If you have checked item 2(A) or 2(B), you **must** indicate the number of **both** full-time and part-time employees, other than yourself, including family members and active partners (if none, you must enter "0").

_____ Full-time Employees

_____ Part-time Employees

Name of Business		Federal ID (or) Social Security No.	
Address		Telephone ()	
City	State	ZIP	

I hereby certify that the above information is true and correct. I agree to notify the Michigan DNR of any changes that occur in factors affecting my coverage during any of my present and future operations.

Signature of Owner or Authorized Representative

Title

Date

Please complete the "SEALED BID" information on the next page