



**DEPARTMENT OF NATURAL RESOURCES  
STATE OF MICHIGAN**

**TIMBER SALE PROSPECTUS #6887**

SCHEDULED SALE DATE AND TIME: 10:00 a.m. (local time) on June 23, 2021.

LOCATION: GLADWIN MGMT UNIT, 801 NORTH SILVERLEAF, GLADWIN, MI 48624.

PROSPECTUS NOTE: The bidder is advised to inspect the sale area and review the location, estimated volumes, operating costs and contract terms of proposed sales. Please be aware that some landowners may request 60 days or more notice for access across their land.

Notice is hereby given that bids will be received by the Unit Manager, GLADWIN MANAGEMENT UNIT, for certain timber on the following described lands:

Mosquito Crossing (73-001-20) / T19N, R01E, SEC. 25, SENW,S1/2NE,SW,N1/2SE.

T19N, R01E, SEC. 36, N1/2NW,SWNW.

T19N, R02E, SEC. 29, S1/2SE.

T19N, R02E, SEC. 30, S1/2NW,SWNE,SW,NWSE,S1/2SE.

T19N, R02E, SEC. 31, NENW,N1/2NE.

T19N, R02E, SEC. 32, NENW,W1/2NE.

Gladwin County, Advertised Price \$154,953.35, 353.6 Acres, Aspen, Hardwood.

SALE NOTE: The sale is located along Three Rivers and Mosquito Alley Truck Trail. The access to the Payment Units is good with very little road work needed. In Payment Units 1 and 2 there is a seasonal drain that will need to be crossed. The soils are variable within each Payment Unit with some areas of low wet ground which will be prone to rutting. Some Payment Units are restricted to dry or frozen conditions.

A recreation site such as a trail, pathway, or campground is within the sale area or the vicinity. Certain restrictions/specifications may be applicable including time restrictions.

Wilder Woods (73-003-20) / T18N, R01E, SEC. 1 , S1/2NW,SWNE,SW,W1/2SE.

T18N, R02E, SEC. 6 , SWNE.

T19N, R01E, SEC. 25, S1/2SE.

T19N, R01E, SEC. 36, N1/2NE,E1/2SW,SE.

T19N, R02E, SEC. 31, SENW,NWNE,S1/2NE,SW,SE.

Gladwin County, Advertised Price \$74,081.60, 349.4 Acres, Aspen, Hardwood.

SALE NOTE: The sale units are a mixture of uplands and lowlands. The lowlands are prone to rutting and care will be needed to avoid damaging the soil. The access for some of the Payment Units will require culverts to be installed and removed according to the BMP manual. In addition, some of the access trails will need to be maintained and some work will be needed to get them to a condition that logging trucks can use them. Some of the access trails are over a mile and a half long. Lastly, Wildwood Road south of Ridge Road is a seasonal county road. It is not useable for long periods of the year because of standing water where the road bisects lowland types.

## BID INSTRUCTIONS (VER. 07/02/2018):

### 1. Scheduled Bid Location, Date, and Time (2/11)

Bids must be received by the Unit Manager, GLADWIN OFFICE, 801 NORTH SILVERLEAF, GLADWIN, MI 48624, no later than 10:00 a.m. (local time) on June 23, 2021. For further information concerning this sale, contact Patrick Mohney at 989-426-9205 extension 7640.

### 2. Bidder's Qualifications (5/16)

Purchaser shall obtain workers compensation insurance to cover claims under Michigan's Worker's Disability Compensation Act of 1969 or similar employee benefit act of any other state applicable to an employee. If all or part of a timber sale was prepared by a private contractor, the contractor and that contractor's company are not permitted to bid on the timber sale contract. Bids will not be accepted from individuals or companies appearing on the DNR/FRD No-Bid List. This list contains the names of purchasers who previously failed to execute a contract within 21-days or who have a history of poor performance.

### 3. Preparation of Sealed Bids (5/16)

Bid Forms may be completed online thru Michigan DNR Timber Sale Online Bidding (OLB) at [www.michigan.gov/timberbidding](http://www.michigan.gov/timberbidding) or by completing the hardcopy Bid Form found in the Timber Sale Prospectus. Hardcopy Bid Forms shall be manually signed in ink. Registration in OLB is considered your 'signature' for all bids submitted thru that system. Bid prices must be entered for each species and product in the Bid Price column for all material subject to bidding and all fill-in blanks must be completed. If erasures or other changes appear on the hardcopy Bid Form, each erasure or change must be initialed by the person signing the bid.

### 4. Submission of Sealed Bids (5/16)

Bid forms may be obtained from the Unit Manager or thru OLB. Bids may be submitted hardcopy or thru OLB. All hardcopy bids must be submitted on the bid form and in an envelope clearly identified as described in this section. NOTE: Only one bid form per bid envelope. Sealed bids must be submitted to the Unit office designated in the prospectus and must be submitted at or prior to the time established in the prospectus. The envelope should show on the outside (a) the sale name or number and (b) the date and time of bid opening, as shown in the prospectus. Bids received after the time specified in the sale prospectus are late bids and will be rejected.

It is possible for a bidder to submit multiple bids on a single sale. For example, a bid may be submitted hardcopy and a bid may be submitted thru OLB. Or, two bidders from the same company could both submit bids on the same sale. If this were to happen, the State would accept all bids received and award the contract accordingly. All bidding and contractual requirements would apply to all bids received.

### 5. Public Opening of Sealed Bids (7/16)

If conditions permit, the sealed bids will be publicly opened and posted at the time and place set in the prospectus.

If a bidder, present at a bid opening, has submitted bids on more than one sale, that bidder may withdraw their unopened bid envelopes or announce the withdrawal of their online bid after being declared the successful bidder on one sale.

### 6. Award of Contract (1/11)

Award of the contract will be made to the Bidder whose bid, conforming to the prospectus, is most advantageous to the State of Michigan on the basis of total value at rates bid for the estimated quantities. The State reserves the right to reject any bid or waive any minor irregularity in bids received. A written award mailed (or otherwise furnished) to the successful Bidder shall be deemed to result in a binding contract without further action by either party.

### 7. Down Payment (1/11)

The Bidder to whom award is made must make a down payment within 21 days of the sale award. The amount of the down payment will be calculated as shown in the Bond and Payment Schedule of this prospectus. Only cash may be used to meet this requirement.

### 8. Performance Security (1/11)

As guarantee of faithful performance, a cash bond, certificate of deposit, surety bond or irrevocable letter of credit (LOC) is required within 21 days of the sale award. The amount of the performance security is shown in the Bond and

Payment Schedule of this prospectus. If an LOC or surety is used, the coverage must extend for at least 6 months beyond the contract expiration.

#### 9. Timber Sale Contract (7/18)

Additional conditions and requirements common to all timber sales are listed on the timber sale contract (R4031) and are available on line at [www.michigan.gov/timber](http://www.michigan.gov/timber). Contact the Unit Manager for additional information or a sample contract. Within 21 days of the date of the award letter, the bidder must sign the contract and provide the required down payment, performance security, and verification of worker's disability compensation. The down payment and performance security shall be in accordance with the provisions of the timber sale contract, in the sums stated in this prospectus. If these actions are not taken, then the Bidder, the Bidder's corporation, and the corporation's principals may not be permitted to bid on State timber sales for a period of 3 months after the first offense, 6 months after the second offense, and 1 year after the third offense. An offense will only be counted against the Bidder for 5 years. In addition, the Bidder certifies that if awarded this contract, the Bidder will complete the timber sale contract in accordance with its terms and any modifications thereof including requirements to purchase, cut, and remove the included timber by the expiration date.

Payment Unit values in the State Forest Timber Sale Contract are calculated based on the advertised value of the Payment Unit as a percentage of the total advertised value of the contract. The advertised value of each Payment Unit is given in the Description of Timber by Payment Unit table on the Timber Sale Information page. For example, if the value of Payment Unit 1 is advertised as \$1,500 and the total Timber Sale value is advertised as \$10,000, the contract price for Payment Unit 1 will be 15% of the total bid price ( $\$1,500/\$10,000 * 100$ ).

#### 10. Disclaimer of Estimates and Bidder's Warranty of Inspection (7/16)

Before submitting this bid, the Bidder is advised and cautioned to inspect the sale area, review the requirements of the sale contract, and take other steps as may be reasonably necessary to ascertain the location, estimated volumes, construction estimates, and operating costs of the proposed sale. Failure to do so will not relieve the Bidder from responsibility for completing the contract.

The Bidder warrants that this bid is submitted solely on the basis of the Bidder's examination and inspection of the quality and quantity of the timber offered for sale and the Bidder's opinion of the value thereof and the costs of recovery. No reliance should be placed on the State of Michigan's estimates of timber quality, quantity or costs of recovery. Bidder further acknowledges that the State of Michigan: (i) expressly disclaims any warranty of fitness of timber for any purpose; (ii) offers this timber as is without any warranty of quality (merchantability) or quantity and (iii) expressly disclaims any warranty as to the quantity or quality of timber sold.

#### 11. Certification and Chain-of-Custody (10/14)

Unless otherwise indicated in the contract under section 7 – Other Conditions of the Sale Specific Conditions & Requirements, the area encompassed by this timber sale is certified to the standards of the Forest Stewardship Council (FSC) - Certificate #SCS-FM/COC-00090N and the Sustainable Forestry Initiative (SFI) - Certificate #NSF-SFIS-5Y031-SF5. Forest products from this sale may be delivered to the mill as "FSC 100% and / or SFI certified" as long as the contractor hauling the forest products is chain-of-custody (COC) certified or covered under a COC certificate from the destination mill. The purchaser is responsible for maintaining COC after leaving the sale area.

#### 12. Good Neighbor Authority (GNA) Requirements (7/16)

If the name of this timber sales contains the acronym GNA, it is authorized by the Good Neighbor Authority (GNA) and covered by various agreements between the U.S. Forest Service and the State. The timber sale occurs on federal land and the following conditions apply:

GNA contracts on US Forest Service land will not be awarded to purchasers on the Federal list of excluded parties. The System for Award Management (SAM) will be checked for active excluded parties prior to award of contract. In addition, the Bidder to whom award is made must complete an Assurance Regarding Felony Conviction or Tax Delinquent Status for Corporate Applicants (AD-3031).

#### 13. Good Neighbor Authority (GNA) Requirements, con't (9/16)

Bidder certifies, by signing this bid form, that to the best of Bidder's knowledge that the following representations are accurate and complete.

- a. That the Bidder and its principals are not presently debarred, suspended, proposed for debarment, declared ineligible, or voluntary excluded from timber sales (covered transactions) by any Federal department or agency.
- b. That the Bidder and its principals have not within a 3-year period preceding this bid been convicted of or had a civil judgment rendered against them for commission of fraud or a criminal offense in connection with obtaining , attempting to obtain, or performing a public (Federal, State, or local) transaction or contract under a public transaction; violation of Federal or State antitrust statutes or commission of embezzlement, theft, forgery, bribery, falsification or destruction of records, making false statements, or receiving stolen property.
- c. That the Bidder and its principals are not presently indicted for or otherwise criminally or civilly charged by a governmental entity (Federal, State, or local) with commission of any of the offenses enumerated in paragraph b of this certification.
- d. That the Bidder and its principals have not within a 3-year period preceding this bid had one or more public transactions (Federal, State, or local) terminated for breach or default of a timber or forest product contract.

Bidders that cannot certify this requirement, in whole or in part, shall submit an explanation with their bid.

DAN EICHINGER  
Director

## TIMBER SALE INFORMATION

### Mosquito Crossing (73-001-20)

T19N, R01E, SEC. 25; T19N, R01E, SEC. 36; T19N, R02E, SEC. 29; T19N, R02E, SEC. 30; T19N, R02E, SEC. 31; T19N, R02E, SEC. 32.

SALE NOTE: The sale is located along Three Rivers and Mosquito Alley Truck Trail. The access to the Payment Units is good with very little road work needed. In Payment Units 1 and 2 there is a seasonal drain that will need to be crossed. The soils are variable within each Payment Unit with some areas of low wet ground which will be prone to rutting. Some Payment Units are restricted to dry or frozen conditions.

A recreation site such as a trail, pathway, or campground is within the sale area or the vicinity. Certain restrictions/specifications may be applicable including time restrictions.

A timber sale contract for this lump sum, sealed bid timber sale will be awarded to the responsible bidder offering the highest sealed bid price. All units of volume listed below were estimated using the T-Sale computer program and our traditional volume equations. Bids must be at or above the following advertised price for each product and species:

<u>PRODUCTS &amp; SPECIES</u>	<u>ESTIMATED UNITS*</u>	<u>ADVERTISED PRICE</u>
Sawtimber		
Bl/R/Hybrid Oak	58.6 MBF	\$ 119.00 / MBF
Mixed Aspen	66.9 MBF	\$ 77.00 / MBF
Red Maple	27.8 MBF	\$ 47.00 / MBF
Red Pine	83.2 MBF	\$ 123.00 / MBF
White Oak	2.9 MBF	\$ 113.00 / MBF
Pulpwood		
Jack Pine	44 Cords	\$ 22.75 / Cord
Mixed Aspen	2,587 Cords	\$ 23.85 / Cord
Mixed Hardwood	920 Cords	\$ 18.20 / Cord
Mixed Oak	399 Cords	\$ 19.75 / Cord
Paper Birch	42 Cords	\$ 18.45 / Cord
Red Pine	823 Cords	\$ 51.85 / Cord
Tamarack	6 Cords	\$ 13.85 / Cord
White Pine	5 Cords	\$ 21.00 / Cord

\* The total volume is statistically estimated within plus (+) or minus (-) 9.06 percent. There are an estimated 5,306 cords on this timber sale, plus or minus 481 cords at the 95% confidence level. The estimated units are final and not subject to adjustment. Prospective bidders are urged to examine this timber and to make their own estimates of quantity and quality.

#### **BOND AND PAYMENT SCHEDULE:**

1. A bond in the amount of \$7,748.00 to insure faithful performance of the conditions of the contract will be deposited by the successful bidder within 21 days of the sale award.
2. Cutting in any sale or unit without the required advance payment would be considered a trespass.
3. Total payment must be paid in advance or according to the following schedule:
  - (a) Ten percent (10%) of the sale value must be paid within 21 days of the sale award.
  - (b) The 10% down payment will be credited towards the first unit cut.

(c) Payment for each of the following units must be made before cutting begins in that unit:

PAYMENT UNIT NUMBER	PERCENT OF TOTAL SALE VALUE
01	11.5%
02	8.8%
03	10.0%
04	1.3%
05	0.9%
06	4.1%
07	2.3%
08	9.1%
09	16.8%
10	7.3%
11	1.9%
12	2.5%
13	3.1%
14	4.6%
15	4.6%
16	7.7%
17	3.5%

4. If no cutting takes place, the 10% down payment will not be refunded.

5. Operations on the contract issued will terminate on 09/30/2023.

**SALE STATISTICS**

**SALE VOLUMES**

VOLUME		STATISTICAL RANGE IN CORDS		
TOTAL CUBIC FEET	TOTAL CORDS	PERCENT ERROR	MINIMUM	MAXIMUM
419,172	5,306	9.06%	4,825	5,787

**VDU VOLUMES**

A VDU is a Volume Determination Unit. Volumes and their associated statistics are calculated at the VDU level and summarized to the sale level. There is often a one to one relationship between a VDU and a Payment Unit, but not always, depending on the cruise design. Refer to the VDU TO PAYMENT UNIT table.

VDU	VOLUME		PERCENT ERROR	RANGE IN CORDS	
	TOTAL CUBIC FEET	TOTAL CORDS		MINIMUM	MAXIMUM
99	5,972	76	59.69%	30	121
101	7,963	101	23.86%	77	125
110	46,191	585	26.41%	430	739
111	11,969	152	39.44%	92	211
114	38,544	488	18.68%	397	579
117	50,102	634	18.24%	519	750
126	10,815	137	45.23%	75	199
136	205,337	2,599	21.30%	2,046	3,153
243	36,127	457	28.00%	329	585
249	10,396	132	46.78%	70	193
250	13,809	175	38.00%	108	241
253	22,167	281	27.34%	204	357
254	14,568	184	33.10%	123	245
265	21,472	272	25.78%	202	342
413	18,210	231	31.97%	157	304
418	8,192	104	31.24%	71	136
<b>TOTAL:</b>	<b>521,835</b>	<b>6,606</b>		<b>4,930</b>	<b>8,281</b>

**VDU TO PAYMENT UNIT**

When a VDU is associated with more than one Payment Unit (PU), the VDU volumes are assigned to the PU based on acres of the VDU within the PU.

VDU	VDU ACRES	PU	PU ACRES
99	11.5	5	11.5
101	7.7	4	7.7
110	34.9	8	34.9
111	24.0	7	24.0
114	25.6	9	25.6
117	38.5	3	38.5
126	5.5	6	5.5
136	49.8	1	28.1
		2	21.7
243	43.0	10	43.0
249	19.3	11	19.3
250	17.0	12	17.0
253	17.5	14	17.5
254	15.4	13	15.4
265	22.9	15	22.9
413	14.2	16	14.2
418	6.8	17	6.8
<b>TOTAL:</b>	<b>353.6</b>		<b>353.6</b>

**DESCRIPTION OF TIMBER BY PAYMENT UNIT (PU)**

PU	MARKET GROUP	PRODUCT	QUANTITY	UNIT	ACRES	ADVERTISE PRICE
1	BI/R/Hybrid Oak	Sawtimber	12.1	MBF	28.1	\$17,766.00
	Mixed Aspen		13.5	MBF		
	<i>Quaking Aspen</i>		13.5	<i>MBF</i>		
	Red Maple		1.7	MBF		
	Mixed Aspen	Pulpwood	484	Cords		
	<i>Quaking Aspen</i>		484	<i>Cords</i>		
	Mixed Hardwood		134	Cords		
	<i>Black Cherry</i>		7	<i>Cords</i>		
	<i>Red Elm</i>		3	<i>Cords</i>		
	<i>Red Maple</i>		124	<i>Cords</i>		
	Mixed Oak		62	Cords		
	<i>BI/R/Hybrid Oak</i>		62	<i>Cords</i>		
	2	BI/R/Hybrid Oak	Sawtimber	9.3		
Mixed Aspen			10.4	MBF		
<i>Quaking Aspen</i>			10.4	<i>MBF</i>		
Red Maple			1.3	MBF		
Mixed Aspen		Pulpwood	373	Cords		
<i>Quaking Aspen</i>			373	<i>Cords</i>		
Mixed Hardwood			103	Cords		
<i>Black Cherry</i>			5	<i>Cords</i>		
<i>Red Elm</i>			2	<i>Cords</i>		
<i>Red Maple</i>			96	<i>Cords</i>		
Mixed Oak			47	Cords		
<i>BI/R/Hybrid Oak</i>			47	<i>Cords</i>		
3		BI/R/Hybrid Oak	Sawtimber	4.3	MBF	38.5
	Mixed Aspen		20.2	MBF		
	<i>B. T. Aspen</i>		0.8	<i>MBF</i>		
	<i>Quaking Aspen</i>		19.4	<i>MBF</i>		
	Red Maple		4.6	MBF		
	Jack Pine	Pulpwood	4	Cords		
	<i>Jack Pine</i>		4	<i>Cords</i>		
	Mixed Aspen		460	Cords		
	<i>B. T. Aspen</i>		32	<i>Cords</i>		
	<i>Quaking Aspen</i>		428	<i>Cords</i>		
	Mixed Hardwood		78	Cords		
	<i>Black Cherry</i>		13	<i>Cords</i>		
	<i>Green Ash</i>		2	<i>Cords</i>		
	<i>Red Maple</i>		63	<i>Cords</i>		
	Mixed Oak		29	Cords		
	<i>BI/R/Hybrid Oak</i>		29	<i>Cords</i>		
	Paper Birch		3	Cords		
	White Pine		2	Cords		
	4	Red Maple	Sawtimber	2.7	MBF	
Jack Pine		Pulpwood	6	Cords		
<i>Jack Pine</i>			6	<i>Cords</i>		
Mixed Aspen			30	Cords		
<i>Quaking Aspen</i>			30	<i>Cords</i>		
Mixed Hardwood			50	Cords		
<i>Red Maple</i>			50	<i>Cords</i>		
Paper Birch			7	Cords		
Tamarack			3	Cords		
<i>Tamarack</i>		Sawtimber	0.4	<i>MBF</i>		
<i>Tamarack</i>		Pulpwood	2	<i>Cords</i>		
5	Red Maple	Sawtimber	7.5	MBF	11.5	\$1,464.20
	Mixed Hardwood	Pulpwood	55	Cords		
	<i>Red Maple</i>		55	<i>Cords</i>		



## DESCRIPTION OF TIMBER BY PAYMENT UNIT (PU), CON'T

PU	MARKET GROUP	PRODUCT	QUANTITY	UNIT	ACRES	ADVERTISE PRICE
5 con't	Paper Birch	Pulpwood	6	Cords		
6	Red Pine	Sawtimber	21.8	MBF	5.5	\$6,334.75
	Jack Pine	Pulpwood	34	Cords		
	<i>Jack Pine</i>	<i>Sawtimber</i>	1.5	<i>MBF</i>		
	<i>Jack Pine</i>	<i>Pulpwood</i>	31	<i>Cords</i>		
	Mixed Aspen		4	Cords		
	<i>Quaking Aspen</i>		4	<i>Cords</i>		
	Mixed Hardwood		2	Cords		
	<i>Black Cherry</i>		2	<i>Cords</i>		
	Red Pine		53	Cords		
7	Mixed Aspen	Pulpwood	136	Cords	24.0	\$3,524.35
	<i>Quaking Aspen</i>		136	<i>Cords</i>		
	Mixed Hardwood		10	Cords		
	<i>Black Cherry</i>		10	<i>Cords</i>		
	Mixed Oak		5	Cords		
	<i>BI/R/Hybrid Oak</i>		5	<i>Cords</i>		
8	BI/R/Hybrid Oak	Sawtimber	2.0	MBF	34.9	\$14,177.70
	Mixed Aspen		4.1	MBF		
	<i>Quaking Aspen</i>		4.1	<i>MBF</i>		
	Red Maple		6.6	MBF		
	Red Pine		1.5	MBF		
	Mixed Aspen	Pulpwood	389	Cords		
	<i>Quaking Aspen</i>		389	<i>Cords</i>		
	Mixed Hardwood		102	Cords		
	<i>Black Cherry</i>		4	<i>Cords</i>		
	<i>Red Maple</i>		98	<i>Cords</i>		
	Mixed Oak		32	Cords		
	<i>BI/R/Hybrid Oak</i>		32	<i>Cords</i>		
	Paper Birch		7	Cords		
	Red Pine		23	Cords		
	Tamarack		3	Cords		
	<i>Tamarack</i>		3	<i>Cords</i>		
9	Red Pine	Sawtimber	34.2	MBF	25.6	\$25,983.60
	Red Pine	Pulpwood	420	Cords		
10	BI/R/Hybrid Oak	Sawtimber	12.5	MBF	43.0	\$11,326.05
	Mixed Aspen		7.1	MBF		
	<i>Quaking Aspen</i>		7.1	<i>MBF</i>		
	Mixed Aspen	Pulpwood	281	Cords		
	<i>Quaking Aspen</i>		281	<i>Cords</i>		
	Mixed Hardwood		73	Cords		
	<i>Black Cherry</i>		6	<i>Cords</i>		
	<i>Red Maple</i>		67	<i>Cords</i>		
	Mixed Oak		62	Cords		
	<i>BI/R/Hybrid Oak</i>		61	<i>Cords</i>		
	<i>White Oak</i>		1	<i>Cords</i>		
	Paper Birch		2	Cords		
11	Red Maple	Sawtimber	0.7	MBF	19.3	\$2,958.80
	Mixed Aspen	Pulpwood	98	Cords		
	<i>Quaking Aspen</i>		98	<i>Cords</i>		
	Mixed Hardwood		28	Cords		
	<i>Black Cherry</i>		2	<i>Cords</i>		
	<i>Red Maple</i>		26	<i>Cords</i>		
	Mixed Oak		4	Cords		
	<i>BI/R/Hybrid Oak</i>		4	<i>Cords</i>		
12	BI/R/Hybrid Oak	Sawtimber	0.6	MBF	17.0	\$3,864.00

## DESCRIPTION OF TIMBER BY PAYMENT UNIT (PU), CON'T

PU	MARKET GROUP	PRODUCT	QUANTITY	UNIT	ACRES	ADVERTISE PRICE
12 con't	Mixed Aspen	Sawtimber	1.9	MBF		
	<i>Quaking Aspen</i>		1.9	<i>MBF</i>		
	Mixed Aspen	Pulpwood	93	Cords		
	<i>Quaking Aspen</i>		93	<i>Cords</i>		
	Mixed Hardwood		58	Cords		
	<i>Red Maple</i>		58	<i>Cords</i>		
	Mixed Oak		17	Cords		
	<i>BI/R/Hybrid Oak</i>		17	<i>Cords</i>		
Paper Birch		2	Cords			
13	BI/R/Hybrid Oak	Sawtimber	7.0	MBF	15.4	\$4,754.30
	Mixed Aspen		7.9	MBF		
	<i>B. T. Aspen</i>		7.9	<i>MBF</i>		
	Red Maple		2.2	MBF		
	Red Pine		1.9	MBF		
	Mixed Aspen	Pulpwood	35	Cords		
	<i>B. T. Aspen</i>		21	<i>Cords</i>		
	<i>Quaking Aspen</i>		14	<i>Cords</i>		
	Mixed Hardwood		52	Cords		
	<i>Red Maple</i>		52	<i>Cords</i>		
	Mixed Oak		56	Cords		
	<i>BI/R/Hybrid Oak</i>		56	<i>Cords</i>		
	Paper Birch		2	Cords		
Red Pine		1	Cords			
14	BI/R/Hybrid Oak	Sawtimber	2.0	MBF	17.5	\$7,062.10
	Mixed Aspen		1.8	MBF		
	<i>B. T. Aspen</i>		1.8	<i>MBF</i>		
	Red Maple		0.5	MBF		
	Red Pine		4.3	MBF		
	White Oak		2.9	MBF		
	Mixed Aspen	Pulpwood	109	Cords		
	<i>B. T. Aspen</i>		36	<i>Cords</i>		
	<i>Quaking Aspen</i>		73	<i>Cords</i>		
	Mixed Hardwood		92	Cords		
	<i>Red Maple</i>		92	<i>Cords</i>		
	Mixed Oak		35	Cords		
	<i>BI/R/Hybrid Oak</i>		27	<i>Cords</i>		
	<i>White Oak</i>		8	<i>Cords</i>		
Paper Birch		9	Cords			
Red Pine		13	Cords			
15	BI/R/Hybrid Oak	Sawtimber	8.8	MBF	22.9	\$7,129.40
	Red Pine		3.1	MBF		
	Mixed Aspen	Pulpwood	95	Cords		
	<i>Quaking Aspen</i>		95	<i>Cords</i>		
	Mixed Hardwood		82	Cords		
	<i>Red Maple</i>		82	<i>Cords</i>		
	Mixed Oak		50	Cords		
	<i>BI/R/Hybrid Oak</i>		50	<i>Cords</i>		
	Paper Birch		4	Cords		
Red Pine		17	Cords			
16	Red Pine	Sawtimber	10.2	MBF	14.2	\$11,965.05
	Mixed Hardwood	Pulpwood	1	Cords		
	<i>Red Maple</i>		1	<i>Cords</i>		
	Red Pine		205	Cords		
	White Pine		3	Cords		
17	Red Pine	Sawtimber	6.2	MBF	6.8	\$5,480.95
	Red Pine	Pulpwood	91	Cords		

TOTAL:	239.4	MBF
--------	-------	-----

TOTAL:	4,826	Cords
--------	-------	-------

# Sale Specific Conditions & Requirements

**Sale Name: Mosquito Crossing**

**Sale Number: 73-001-20 Seq#: 1**

## 1 - Sale Area

### 1.2 - Boundaries

#### 1.2.1 - Painted boundaries (9/19)

The sale boundary and Payment Unit boundaries are marked and identified by red, blue, and yellow paint. Exterior sale boundary lines against state are marked with red paint. Exterior sale boundary lines against private are marked with blue paint. Interior Payment Unit boundaries are marked with yellow paint. The boundary tree can be cut if also marked with orange paint above and below stump height. Yellow painted trees designating an interior Payment Unit boundary are only to be cut when all surrounding Payment Units have been paid unless painted with green paint above and below stump height.

## 2 - Timber Specifications

### 2.1 - Included Timber

#### 2.1.1 - Clearcut unit(s) with unmerchantable trees (6/14)

Within Payment Unit(s) 1 - 4, 6 - 8, and 10 - 15, cut all trees that are two (2) inches or more at DBH except, do not cut any trees marked with green paint above and below stump height. In addition, within Payment Unit 10 do not cut any pine trees.

#### 2.1.3 - Cut tree marked unit(s) (12/08)

Within Payment Unit(s) 5, 9, 16, and 17, all trees are designated for cutting when marked with orange paint above and below stump height, regardless of merchantability.

### 2.2 - Utilization

#### 2.2.3 - Stump heights (4/07)

Stump heights within the Sale Area shall not exceed 12 inches for trees greater than 10 inches at DBH and 4 inches for trees smaller than 10 inches at DBH.

## 3 - Payments

### 3.4 - Damaged Timber

#### 3.4.1 - Damaged timber (7/16)

General Condition and Requirement 3.4 Damaged Timber, defines liquidated damages for undesignated live merchantable trees which are cut or injured. In addition, extreme care should be taken to avoid damage to tree seedlings and saplings.

Within Payment Unit 5, if more than 25% of the tree seedlings or saplings (1/4" to 4.5" DBH) within a specified portion of the Sale Area are damaged, liquidated damages will be assessed at \$300 per acre for all acreage within that specified portion of the Sale Area that was damaged.

No damage is acceptable to undesignated live merchantable trees. Within the Sale Area, if more than 5% of trees (> 4.5" DBH) within a specified area of the sale are damaged, liquidated damages will be assessed for all trees damaged. Rates will be in accordance with General Condition and Requirement 3.4 Damaged Timber.

## 4 - Transportation

### 4.1 - Construction

#### 4.1.12 - No new roads (1/12)

No new roads will be permitted in any Payment Unit. All operations are limited to existing roads. Skid trails only will be allowed.

### 4.2 - Maintenance

#### 4.2.5 - Two wheel drive condition (2/04)

All existing trail roads on and adjacent to the sale area must be passable by two-wheel drive traffic for the duration of the

sale.

## 5 - Operations

### 5.2 - Conduct of Operations

#### 5.2.2 - Hazard Trees/Snags

##### 5.2.2.1 - Den trees (10/16)

Obvious hollow and/or den trees shall be protected and left standing unless they are a safety hazard.

#### 5.2.3 - Operating Restrictions

##### 5.2.3.3 - Bark slippage restriction (3/09)

Within Payment Unit(s) 9, 16, and 17, unless changed by written agreement, cutting and skidding are not permitted during the period of April 15 to July 15. This restriction is because of bark slippage.

##### 5.2.3.6 - Bark beetle restriction (12/08)

In the event drought creates a high risk of pine bark beetle infestation, pine is not to be cut during the period March 1 through July 1, unless all portions of trees greater than two inches in diameter are removed from the sale area, reduced to chips, or treated to the satisfaction of the Unit Manager or his/her representative, within fifteen days of being severed from the stump. Pine log decks, pulpwood piles and treetops that are piled for chipping in the fall or winter within a 1/4 mile of susceptible sites must be removed before March 15. Residual slash must not be placed in piles or rows and must be spread over the site for quick drying. The Department of Natural Resources will exercise this specification if the risk of damage warrants.

#### 5.2.4 - Dead and Down Creation

##### 5.2.4.4 - Dead and down creation, grouse (6/18)

To encourage grouse and other wildlife, in Payment Unit(s) 1 - 4, 7, 8, and 10 - 15 leave one 12" or larger diameter whole tree on the ground for every 3 acres. Trees should be scattered throughout the Sale Area and at least two chains from any roads, two-tracks, or trails open to vehicles, or positioned per the sale administrators instructions. Stumps must be at least 3 feet tall.

#### 5.2.22 - Operating Caution

##### 5.2.22.1 - Operating caution (6/11)

It is recommended, but not required, that within Payment Unit(s) 1 - 8 and 10 - 15, cutting, skidding, and hauling occur during dry summer or frozen winter conditions. The reason for the recommendation is because soils are seasonable wet and are prone to rutting.

#### 5.2.40 - Pathway protection (10/10)

The Midland to Mackinac is a hiking trail and is shown on the Timber Sale Map and goes thru Payment Units 1, 13, and 14. Do not cut trees or damage posts with blue pathway markers and paint. Maintain a 20-foot-wide slash, debris, and rut free zone daily, using the pathway as the centerline. Skidding across or on the trail may only occur in locations approved by the sale administrator.

### 5.4 - Soil Protection

#### 5.4.1 - Rutting restriction, general (7/16)

Operations are to cease immediately if equipment and weather conditions result in rutting of roads and/or skid trails which is 12 inches or greater in depth and 50 feet in length. The Unit Manager or his/her representative may restrict hauling and/or skidding if ruts exceed the specified depth. With the Unit Manager or his/her representative's approval, the Purchaser may return to the area when the risk of rutting has decreased.



# TIMBER SALE MAP

This information provided by authority of Part 525, 1994 PA 451, as amended.

Sale Number	Year
73 - 001	20

Forest Management Unit	County	Mapped By	Date	Page	of
Gladwin Management Unit	Gladwin	Steven Nyhoff	06/24/2020	1	3
		Cruised By			
		Steven Nyhoff			

Township	Range	Section(s) and Subdivision(s)	Scale
19N	1 & 2E	1E Sections 25, 36: 2E Section 29-32	1:15,840

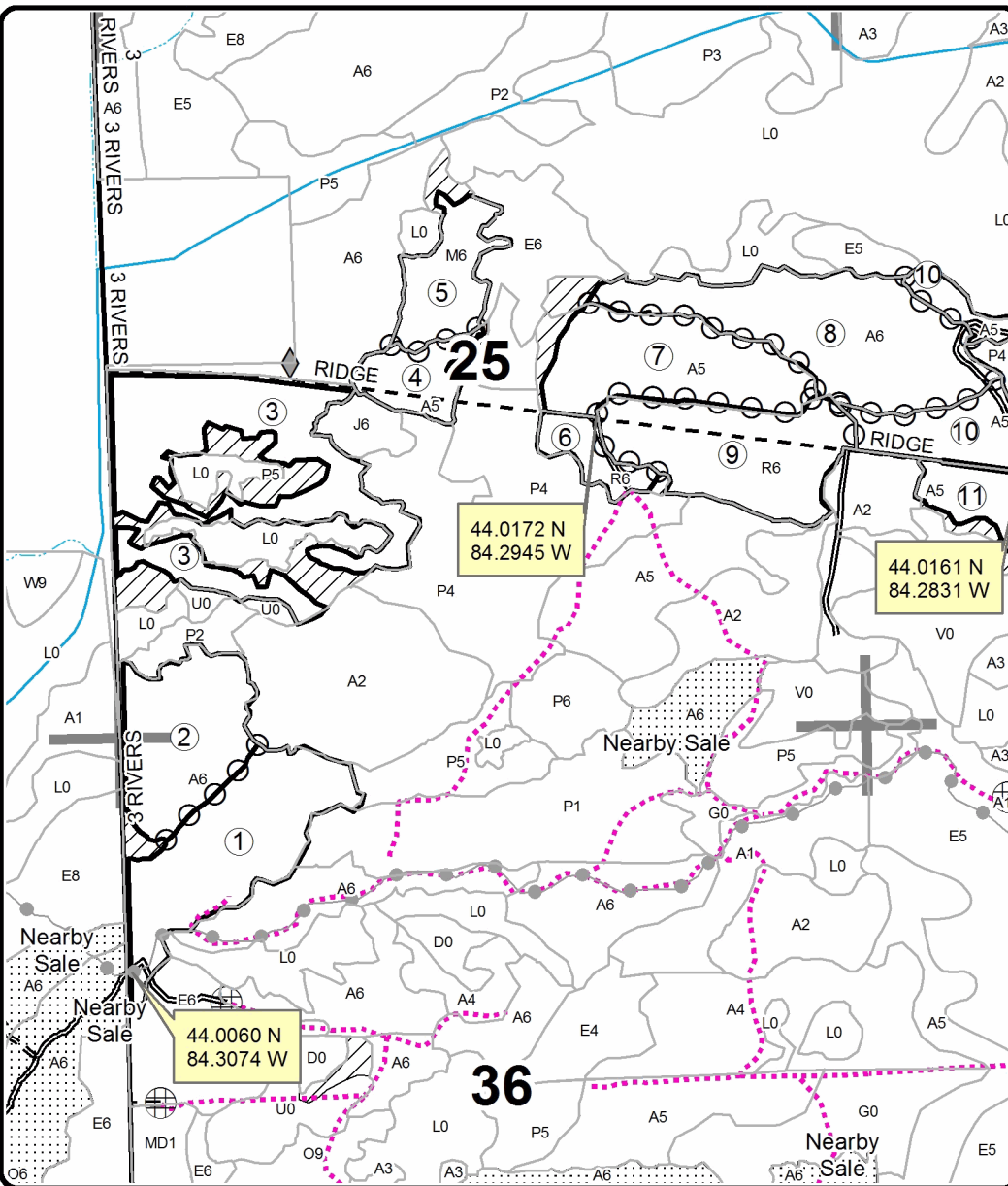
Cover Type				Density			
A = Aspen	H = Hemlock	N = Marsh	U = Upland Brush	0 = Non Stocked	5 = Pole Timber Medium		
B = Paper Birch	J = Jack Pine	O = Oak	UM = Upland Mixed	1 = Seedling Sapling Poor	6 = Pole Timber Well		
C = Cedar	L = Lowland Brush	P = Lowland Poplar	V = Bog or Marsh	2 = Seedling Sapling Medium	7 = Saw Timber Poor		
D = Treed Bog	LM = Lowland Mixed	Q = Mixed Swamp Conifer	W = White Pine	3 = Seedling Sapling Well	8 = Saw Timber Medium		
E = Swamp Hdwoods	M = Mpl, Bch, Brch	R = Red Pine	X = Non Stocked	4 = Pole Timber Poor	9 = Saw Timber Well		
F = Spruce Fir	MC = Mixed Conifer	S = Black Spruce	Z = Water				
G = Grass	MD = Mixed Deciduous	T = Tamarack					

### PU Acres

1	28.1	6	5.5	11	19.3	16	14.2
2	21.7	7	24.0	12	17.0	17	6.8
3	38.5	8	34.9	13	15.4		
4	7.7	9	25.6	14	17.5		
5	11.5	10	43.0	15	22.9		

## Mosquito Crossing

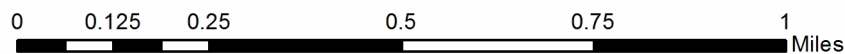
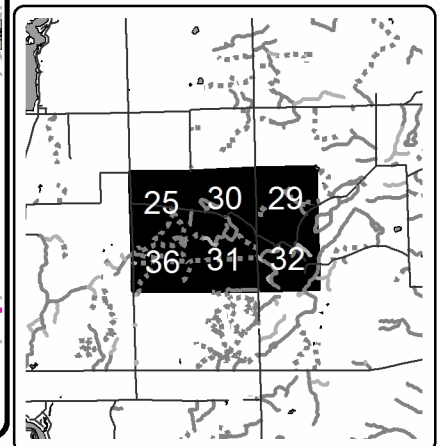
### Compartment 52 353.6 Acres



### Legend

- Stand Boundaries
- Recreational Trail
- Field Grade Corners
- Secondary Forest Road
- Forest Access Route
- Paved Road
- Gravel Road
- Temporary Management Access
- Intermittent Stream
- Perennial River
- Retention Area
- Against State (Red)
- Payment Unit (Yellow)
- Nearby Timber Sales
- Section Corners

### Locator Map 1:200,000





# TIMBER SALE MAP

This information provided by authority of Part 525, 1994 PA 451, as amended.

Sale Number	Year
73 - 001	20

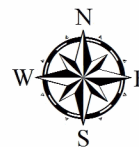
Forest Management Unit Gladwin Management Unit	County Gladwin	Mapped By Steven Nyhoff	Date 06/24/2020	Page 2	of 3
Township 19N	Range 1 & 2E	Section(s) and Subdivision(s) 1E Sections 25, 36: 2E Section 29-32	Scale 1:15,840		

Cover Type				Density			
A = Aspen	H = Hemlock	N = Marsh	U = Upland Brush	0 = Non Stocked	5 = Pole Timber Medium		
B = Paper Birch	J = Jack Pine	O = Oak	UM = Upland Mixed	1 = Seedling Sapling Poor	6 = Pole Timber Well		
C = Cedar	L = Lowland Brush	P = Lowland Poplar	V = Bog or Marsh	2 = Seedling Sapling Medium	7 = Saw Timber Poor		
D = Treed Bog	LM = Lowland Mixed	Q = Mixed Swamp Conifer	W = White Pine	3 = Seedling Sapling Well	8 = Saw Timber Medium		
E = Swamp Hdwoods	M = Mpl, Bch, Brch	R = Red Pine	X = Non Stocked	4 = Pole Timber Poor	9 = Saw Timber Well		
F = Spruce Fir	MC = Mixed Conifer	S = Black Spruce	Z = Water				
G = Grass	MD = Mixed Deciduous	T = Tamarack					

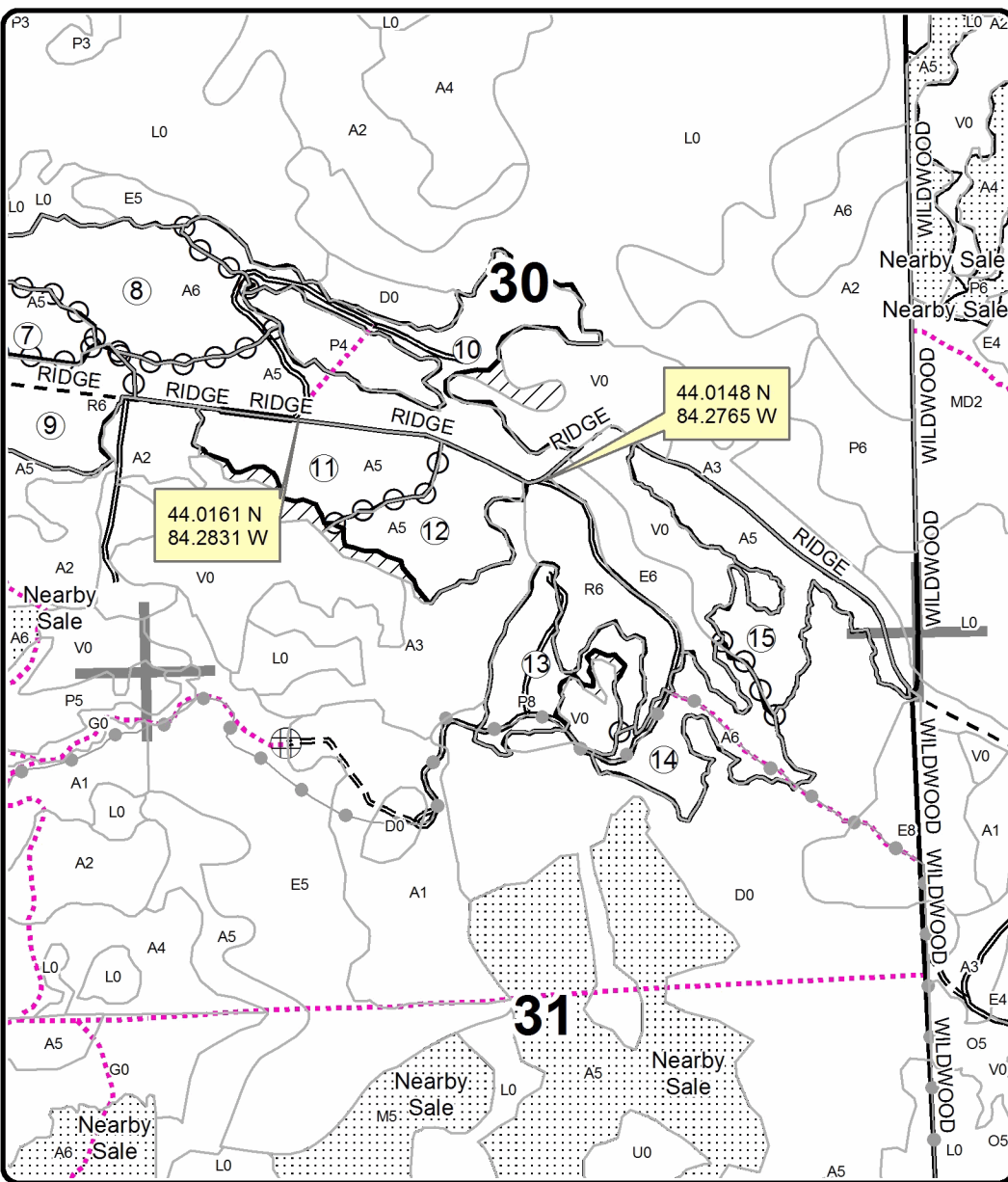
## Mosquito Crossing

Compartment 52

353.6 Acres



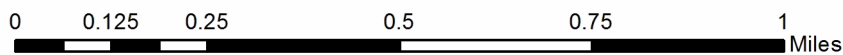
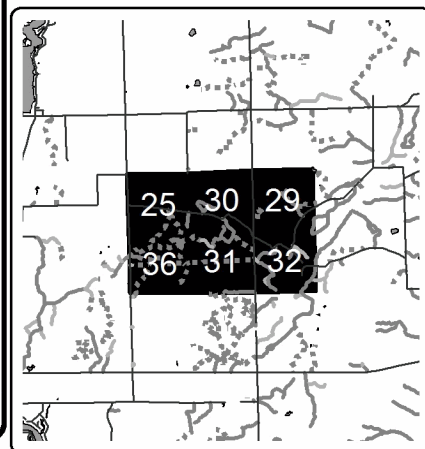
PU Acres	PU Acres	PU Acres	PU Acres
1 28.1	6 5.5	11 19.3	16 14.2
2 21.7	7 24.0	12 17.0	17 6.8
3 38.5	8 34.9	13 15.4	
4 7.7	9 25.6	14 17.5	
5 11.5	10 43.0	15 22.9	



### Legend

- Stand Boundaries
- Recreational Trail
- Secondary Forest Road
- == Forest Access Route
- Paved Road
- - Gravel Road
- ⋯ Temporary Management Access
- ▨ Retention Area
- Against State (Red)
- Payment Unit (Yellow)
- ▤ Nearby Timber Sales
- Section Corners

Locator Map  
1:200,000





# TIMBER SALE MAP

This information provided by authority of Part 525, 1994 PA 451, as amended.

Sale Number	Year
73 - 001	20

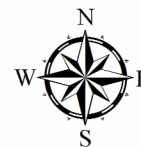
Forest Management Unit Gladwin Management Unit	County Gladwin	Mapped By Steven Nyhoff	Date 06/24/2020	Page 3	of 3
Township 19N	Range 1 & 2E	Section(s) and Subdivision(s) 1E Sections 25, 36: 2E Section 29-32	Scale 1:15,840		

Cover Type				Density			
A = Aspen	H = Hemlock	N = Marsh	U = Upland Brush	0 = Non Stocked	5 = Pole Timber Medium		
B = Paper Birch	J = Jack Pine	O = Oak	UM = Upland Mixed	1 = Seedling Sapling Poor	6 = Pole Timber Well		
C = Cedar	L = Lowland Brush	P = Lowland Poplar	V = Bog or Marsh	2 = Seedling Sapling Medium	7 = Saw Timber Poor		
D = Tread Bog	LM = Lowland Mixed	Q = Mixed Swamp Conifer	W = White Pine	3 = Seedling Sapling Well	8 = Saw Timber Medium		
E = Swamp Hdwoods	M = Mpl, Bch, Brch	R = Red Pine	X = Non Stocked	4 = Pole Timber Poor	9 = Saw Timber Well		
F = Spruce Fir	MC = Mixed Conifer	S = Black Spruce	Z = Water				
G = Grass	MD = Mixed Deciduous	T = Tamarack					

## Mosquito Crossing

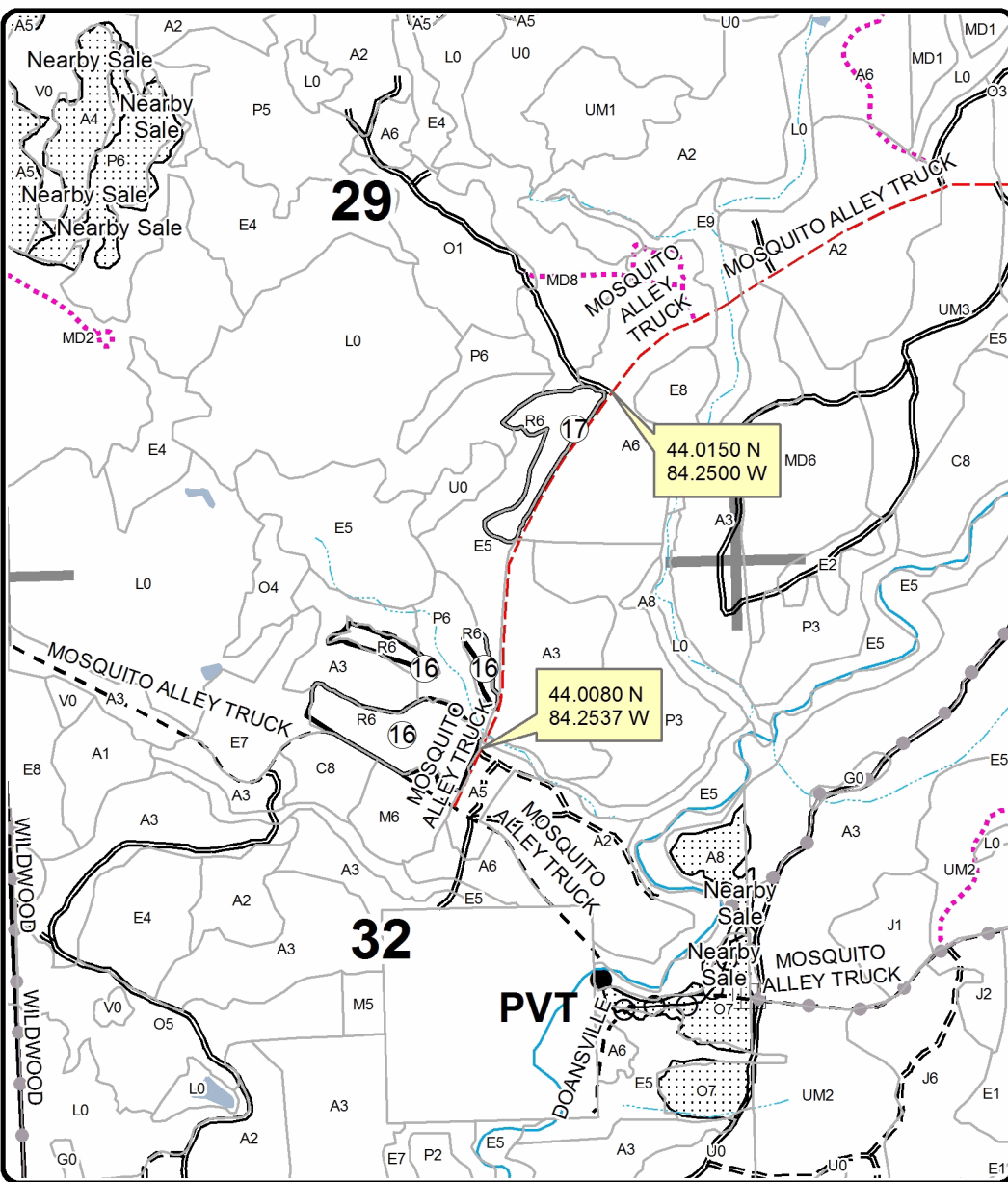
### Compartment 52

### 353.6 Acres



PU Acres   PU Acres   PU Acres   PU Acres

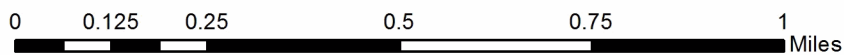
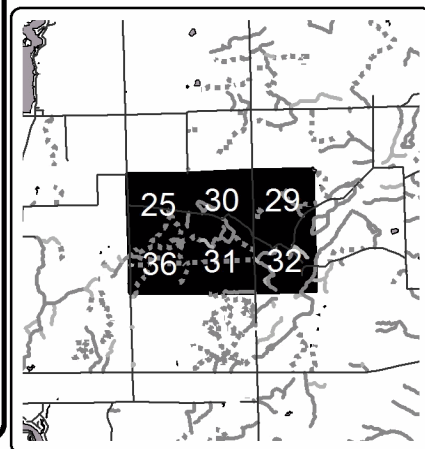
1	28.1	6	5.5	11	19.3	16	14.2
2	21.7	7	24.0	12	17.0	17	6.8
3	38.5	8	34.9	13	15.4		
4	7.7	9	25.6	14	17.5		
5	11.5	10	43.0	15	22.9		



### Legend

- Stand Boundaries
- Recreational Trail
- Secondary Forest Road
- Forest Access Route
- Paved Road
- Gravel Road
- County Road - Seasonal
- Temporary Management Access
- Intermittent Stream
- Perennial River
- Lakes and Rivers
- Retention Area
- Against State (Red)
- Payment Unit (Yellow)
- Private Line (Blue)
- Nearby Timber Sales
- Section Corners

Locator Map  
1:200,000





## TIMBER SALE INFORMATION

### Wilder Woods (73-003-20)

T18N, R01E, SEC. 1; T18N, R02E, SEC. 6; T19N, R01E, SEC. 25; T19N, R01E, SEC. 36; T19N, R02E, SEC. 31.  
Gladwin County (Advertised Price \$74,081.60)

SALE NOTE: The sale units are a mixture of uplands and lowlands. The lowlands are prone to rutting and care will be needed to avoid damaging the soil. The access for some of the Payment Units will require culverts to be installed and removed according to the BMP manual. In addition, some of the access trails will need to be maintained and some work will be needed to get them to a condition that logging trucks can use them. Some of the access trails are over a mile and a half long. Lastly, Wildwood Road south of Ridge Road is a seasonal county road. It is not useable for long periods of the year because of standing water where the road bisects lowland types.

A timber sale contract for this lump sum, sealed bid timber sale will be awarded to the responsible bidder offering the highest sealed bid price. All units of volume listed below were estimated using the T-Sale computer program and our traditional volume equations. Bids must be at or above the following advertised price for each product and species:

<u>PRODUCTS &amp; SPECIES</u>	<u>ESTIMATED UNITS*</u>	<u>ADVERTISED PRICE</u>
Sawtimber		
BI/R/Hybrid Oak	67.9 MBF	\$ 93.00 / MBF
Mixed Aspen	58.0 MBF	\$ 61.00 / MBF
Red Maple	69.5 MBF	\$ 37.00 / MBF
Pulpwood		
Mixed Aspen	1,842 Cords	\$ 18.75 / Cord
Mixed Hardwood	1,250 Cords	\$ 14.30 / Cord
Mixed Oak	384 Cords	\$ 15.55 / Cord
Paper Birch	34 Cords	\$ 14.50 / Cord
Tamarack	243 Cords	\$ 10.90 / Cord
White Pine	8 Cords	\$ 16.50 / Cord

\* The total volume is statistically estimated within plus (+) or minus (-) 8.72 percent. There are an estimated 4,148 cords on this timber sale, plus or minus 362 cords at the 95% confidence level. The estimated units are final and not subject to adjustment. Prospective bidders are urged to examine this timber and to make their own estimates of quantity and quality.

### **BOND AND PAYMENT SCHEDULE:**

1. A bond in the amount of \$3,704.00 to insure faithful performance of the conditions of the contract will be deposited by the successful bidder within 21 days of the sale award.
2. Cutting in any sale or unit without the required advance payment would be considered a trespass.
3. Total payment must be paid in advance or according to the following schedule :
  - (a) Ten percent (10%) of the sale value must be paid within 21 days of the sale award.
  - (b) The 10% down payment will be credited towards the first unit cut.
  - (c) Payment for each of the following units must be made before cutting begins in that unit:

PAYMENT UNIT NUMBER	PERCENT OF TOTAL SALE VALUE
01	8.3%
02	6.1%
03	8.3%
04	7.6%
05	6.7%
06	4.5%
07	8.7%
08	4.8%
09	7.3%
10	7.3%
11	3.6%
12	2.0%
13	5.8%
14	7.4%
15	1.1%
16	10.5%

4. If no cutting takes place, the 10% down payment will not be refunded.
5. Operations on the contract issued will terminate on 03/31/2024.

### **SALE STATISTICS**

**SALE VOLUMES**

VOLUME			STATISTICAL RANGE IN CORDS	
TOTAL CUBIC FEET	TOTAL CORDS	PERCENT ERROR	MINIMUM	MAXIMUM
327,679	4,148	8.72%	3,786	4,510

**VDU VOLUMES**

A VDU is a Volume Determination Unit. Volumes and their associated statistics are calculated at the VDU level and summarized to the sale level. There is often a one to one relationship between a VDU and a Payment Unit, but not always, depending on the cruise design. Refer to the VDU TO PAYMENT UNIT table.

VDU	VOLUME			RANGE IN CORDS	
	TOTAL CUBIC FEET	TOTAL CORDS	PERCENT ERROR	MINIMUM	MAXIMUM
38	25,438	322	33.50%	214	430
61	197,492	2,500	23.44%	1,914	3,086
133	14,576	185	44.20%	103	266
175	89,128	1,128	27.17%	822	1,435
183	23,068	292	25.18%	218	366
184	95,637	1,211	18.04%	992	1,429
190	13,201	167	28.93%	119	215
197	7,347	93	61.21%	36	150
205	25,462	322	26.78%	236	409
207	20,643	261	19.26%	211	312
210	36,395	461	26.14%	340	581
288	3,381	43	43.28%	24	61
<b>TOTAL:</b>	<b>551,768</b>	<b>6,984</b>		<b>5,230</b>	<b>8,739</b>

**VDU TO PAYMENT UNIT**

When a VDU is associated with more than one Payment Unit (PU), the VDU volumes are assigned to the PU based on acres of the VDU within the PU.

VDU	VDU ACRES	PU	PU ACRES
38	20.9	1	20.9
61	98.0	2	27.5
		3	36.9
		4	33.6
133	11.1	6	11.1
175	40.0	7	25.7
		8	14.3
183	24.9	5	24.9
184	42.4	9	21.3
		10	21.1
190	13.7	11	13.7
197	7.8	12	7.8
205	33.3	14	33.3
207	21.1	13	21.1
210	25.8	16	25.8
288	10.4	15	10.4
<b>TOTAL:</b>	<b>349.4</b>		<b>349.4</b>

**DESCRIPTION OF TIMBER BY PAYMENT UNIT (PU)**

PU	MARKET GROUP	PRODUCT	QUANTITY	UNIT	ACRES	ADVERTISE PRICE
1	BI/R/Hybrid Oak	Sawtimber	4.6	MBF	20.9	\$6,113.90
	Mixed Aspen		3.2	MBF		
	<i>Quaking Aspen</i>		3.2	<i>MBF</i>		
	Mixed Aspen	Pulpwood	243	Cords		
	<i>B. T. Aspen</i>		130	<i>Cords</i>		
	<i>Quaking Aspen</i>		113	<i>Cords</i>		
	Mixed Hardwood		36	Cords		
	<i>Black Cherry</i>	Sawtimber	1.0	<i>MBF</i>		
	<i>Black Cherry</i>	Pulpwood	3	<i>Cords</i>		
	<i>Red Maple</i>		31	<i>Cords</i>		
	Mixed Oak		27	Cords		
	<i>BI/R/Hybrid Oak</i>		24	<i>Cords</i>		
	<i>White Oak</i>		3	<i>Cords</i>		
	2	BI/R/Hybrid Oak	Sawtimber	7.3		
Mixed Aspen			7.0	MBF		
<i>B. T. Aspen</i>			6.1	<i>MBF</i>		
<i>Quaking Aspen</i>			0.9	<i>MBF</i>		
Red Maple			2.9	MBF		
Mixed Aspen		Pulpwood	118	Cords		
<i>B. T. Aspen</i>			38	<i>Cords</i>		
<i>Quaking Aspen</i>			80	<i>Cords</i>		
Mixed Hardwood			29	Cords		
<i>Black Cherry</i>			3	<i>Cords</i>		
<i>Red Maple</i>			26	<i>Cords</i>		
Mixed Oak			35	Cords		
<i>BI/R/Hybrid Oak</i>			35	<i>Cords</i>		
Paper Birch			1	Cords		
Tamarack			14	Cords		
<i>Tamarack</i>		Sawtimber	0.6	<i>MBF</i>		
<i>Tamarack</i>		Pulpwood	13	<i>Cords</i>		
3	BI/R/Hybrid Oak	Sawtimber	9.8	MBF	36.9	\$6,160.20
	Mixed Aspen		9.4	MBF		
	<i>B. T. Aspen</i>		8.2	<i>MBF</i>		
	<i>Quaking Aspen</i>		1.2	<i>MBF</i>		
	Red Maple		3.9	MBF		
	Mixed Aspen	Pulpwood	159	Cords		
	<i>B. T. Aspen</i>		51	<i>Cords</i>		
	<i>Quaking Aspen</i>		108	<i>Cords</i>		
	Mixed Hardwood		40	Cords		
	<i>Black Cherry</i>		5	<i>Cords</i>		
	<i>Red Maple</i>		35	<i>Cords</i>		
	Mixed Oak		47	Cords		
	<i>BI/R/Hybrid Oak</i>		47	<i>Cords</i>		
	Paper Birch		2	Cords		
	Tamarack		20	Cords		
	<i>Tamarack</i>	Sawtimber	0.9	<i>MBF</i>		
<i>Tamarack</i>	Pulpwood	18	<i>Cords</i>			
4	BI/R/Hybrid Oak	Sawtimber	8.9	MBF	33.6	\$5,594.15
	Mixed Aspen		8.6	MBF		
	<i>B. T. Aspen</i>		7.5	<i>MBF</i>		
	<i>Quaking Aspen</i>		1.1	<i>MBF</i>		
	Red Maple		3.6	MBF		
	Mixed Aspen	Pulpwood	144	Cords		
	<i>B. T. Aspen</i>		46	<i>Cords</i>		
	<i>Quaking Aspen</i>		98	<i>Cords</i>		
	Mixed Hardwood		36	Cords		

## DESCRIPTION OF TIMBER BY PAYMENT UNIT (PU), CON'T

PU	MARKET GROUP	PRODUCT	QUANTITY	UNIT	ACRES	ADVERTISE PRICE
4 con't	<i>Black Cherry</i>	<i>Pulpwood</i>	4	<i>Cords</i>		
	<i>Red Maple</i>		32	<i>Cords</i>		
	Mixed Oak		43	<i>Cords</i>		
	<i>BI/R/Hybrid Oak</i>		43	<i>Cords</i>		
	Paper Birch		2	<i>Cords</i>		
	Tamarack		18	<i>Cords</i>		
	<i>Tamarack</i>	<i>Sawtimber</i>	0.8	<i>MBF</i>		
	<i>Tamarack</i>	<i>Pulpwood</i>	16	<i>Cords</i>		
5	BI/R/Hybrid Oak	Sawtimber	5.4	MBF	24.9	\$4,941.75
	Mixed Aspen		1.0	MBF		
	<i>B. T. Aspen</i>		1.0	<i>MBF</i>		
	Red Maple		25.1	MBF		
	Mixed Aspen	Pulpwood	24	Cords		
	<i>B. T. Aspen</i>		4	<i>Cords</i>		
	<i>Quaking Aspen</i>		20	<i>Cords</i>		
	Mixed Hardwood		148	Cords		
	<i>Red Maple</i>		148	<i>Cords</i>		
	Mixed Oak		39	Cords		
	<i>BI/R/Hybrid Oak</i>		39	<i>Cords</i>		
	Paper Birch		10	Cords		
	White Pine		8	Cords		
	<i>White Pine</i>	<i>Sawtimber</i>	1.4	<i>MBF</i>		
	<i>White Pine</i>	<i>Pulpwood</i>	5	<i>Cords</i>		
6	Mixed Aspen	Sawtimber	1.7	MBF	11.1	\$3,322.70
	<i>B. T. Aspen</i>		1.7	<i>MBF</i>		
	Red Maple		0.7	MBF		
	Mixed Aspen	Pulpwood	138	Cords		
	<i>B. T. Aspen</i>		99	<i>Cords</i>		
	<i>Quaking Aspen</i>		39	<i>Cords</i>		
	Mixed Hardwood		38	Cords		
	<i>Black Cherry</i>		4	<i>Cords</i>		
	<i>Red Maple</i>		34	<i>Cords</i>		
	Mixed Oak		4	Cords		
	<i>BI/R/Hybrid Oak</i>		4	<i>Cords</i>		
7	BI/R/Hybrid Oak	Sawtimber	1.8	MBF	25.7	\$6,427.55
	Mixed Aspen		5.2	MBF		
	<i>B. T. Aspen</i>		5.2	<i>MBF</i>		
	Red Maple		1.7	MBF		
	Mixed Aspen	Pulpwood	210	Cords		
	<i>B. T. Aspen</i>		69	<i>Cords</i>		
	<i>Quaking Aspen</i>		141	<i>Cords</i>		
	Mixed Hardwood		122	Cords		
	<i>Red Maple</i>		120	<i>Cords</i>		
	<i>Rock Elm</i>		2	<i>Cords</i>		
	Mixed Oak		9	Cords		
	<i>BI/R/Hybrid Oak</i>		9	<i>Cords</i>		
Paper Birch		4	Cords			
8	BI/R/Hybrid Oak	Sawtimber	1.0	MBF	14.3	\$3,557.35
	Mixed Aspen		2.9	MBF		
	<i>B. T. Aspen</i>		2.9	<i>MBF</i>		
	Red Maple		0.9	MBF		
	Mixed Aspen	Pulpwood	116	Cords		
	<i>B. T. Aspen</i>		38	<i>Cords</i>		
	<i>Quaking Aspen</i>		78	<i>Cords</i>		
	Mixed Hardwood		68	Cords		
	<i>Red Maple</i>		67	<i>Cords</i>		

**DESCRIPTION OF TIMBER BY PAYMENT UNIT (PU), CON'T**

PU	MARKET GROUP	PRODUCT	QUANTITY	UNIT	ACRES	ADVERTISE PRICE
8 con't	<i>Rock Elm</i> Mixed Oak <i>Bl/R/Hybrid Oak</i> Paper Birch	<i>Pulpwood</i>	1 5 5 2	<i>Cords</i> Cords <i>Cords</i> Cords		
9	Bl/R/Hybrid Oak Mixed Aspen <i>B. T. Aspen</i> <i>Quaking Aspen</i> Mixed Hardwood <i>Red Maple</i> Mixed Oak <i>Bl/R/Hybrid Oak</i>	Sawtimber Pulpwood	2.3 202 107 95 81 81 18 18	MBF Cords <i>Cords</i> <i>Cords</i> Cords <i>Cords</i> Cords <i>Cords</i>	21.3	\$5,439.60
10	Bl/R/Hybrid Oak Mixed Aspen <i>B. T. Aspen</i> <i>Quaking Aspen</i> Mixed Hardwood <i>Red Maple</i> Mixed Oak <i>Bl/R/Hybrid Oak</i>	Sawtimber Pulpwood	2.3 200 106 94 80 80 17 17	MBF Cords <i>Cords</i> <i>Cords</i> Cords <i>Cords</i> Cords <i>Cords</i>	21.1	\$5,372.25
11	Mixed Aspen <i>Quaking Aspen</i> Red Maple Mixed Aspen <i>Quaking Aspen</i> Mixed Hardwood <i>Red Maple</i> Mixed Oak <i>Bl/R/Hybrid Oak</i> Paper Birch Tamarack <i>Tamarack</i>	Sawtimber Pulpwood	2.1 2.1 9.7 20 20 109 109 11 11 3 1 1	MBF <i>MBF</i> MBF Cords <i>Cords</i> Cords <i>Cords</i> Cords <i>Cords</i> Cords Cords <i>Cords</i>	13.7	\$2,646.15
12	Red Maple Mixed Aspen <i>Quaking Aspen</i> Mixed Hardwood <i>Red Maple</i> Mixed Oak <i>Bl/R/Hybrid Oak</i> Paper Birch	Sawtimber Pulpwood	2.6 27 27 47 47 11 11 3	MBF Cords <i>Cords</i> Cords <i>Cords</i> Cords <i>Cords</i> Cords	7.8	\$1,489.10
13	Bl/R/Hybrid Oak Red Maple Mixed Aspen <i>B. T. Aspen</i> <i>Quaking Aspen</i> Mixed Hardwood <i>Red Maple</i> Mixed Oak <i>Bl/R/Hybrid Oak</i> Paper Birch Tamarack <i>Tamarack</i>	Sawtimber Pulpwood	9.7 2.9 7 1 6 102 102 64 64 1 62 62	MBF MBF Cords <i>Cords</i> <i>Cords</i> Cords <i>Cords</i> Cords <i>Cords</i> Cords Cords <i>Cords</i>	21.1	\$4,284.75
14	Bl/R/Hybrid Oak Red Maple Mixed Aspen	Sawtimber Pulpwood	10.4 3.5 110	MBF MBF Cords	33.3	\$5,461.55

**DESCRIPTION OF TIMBER BY PAYMENT UNIT (PU), CON'T**

PU	MARKET GROUP	PRODUCT	QUANTITY	UNIT	ACRES	ADVERTISE PRICE
14 con't	<i>B. T. Aspen</i>	<i>Pulpwood</i>	2	<i>Cords</i>		
	<i>Quaking Aspen</i>		108	<i>Cords</i>		
	Mixed Hardwood		33	<i>Cords</i>		
	<i>Black Cherry</i>		9	<i>Cords</i>		
	<i>Red Maple</i>		24	<i>Cords</i>		
	Mixed Oak		35	<i>Cords</i>		
	<i>BI/R/Hybrid Oak</i>		35	<i>Cords</i>		
	Tamarack		118	<i>Cords</i>		
	<i>Tamarack</i>	<i>Sawtimber</i>	0.4	<i>MBF</i>		
	<i>Tamarack</i>	<i>Pulpwood</i>	117	<i>Cords</i>		
15	<i>BI/R/Hybrid Oak</i>	<i>Sawtimber</i>	1.6	<i>MBF</i>	10.4	\$783.50
	Red Maple		0.4	<i>MBF</i>		
	Mixed Aspen	<i>Pulpwood</i>	17	<i>Cords</i>		
	<i>B. T. Aspen</i>		1	<i>Cords</i>		
	<i>Quaking Aspen</i>		16	<i>Cords</i>		
	Mixed Hardwood		8	<i>Cords</i>		
	<i>Black Cherry</i>	<i>Sawtimber</i>	0.4	<i>MBF</i>		
	<i>Black Cherry</i>	<i>Pulpwood</i>	1	<i>Cords</i>		
	<i>Red Maple</i>		6	<i>Cords</i>		
	Mixed Oak		5	<i>Cords</i>		
	<i>BI/R/Hybrid Oak</i>		5	<i>Cords</i>		
	Tamarack		10	<i>Cords</i>		
	<i>Tamarack</i>		10	<i>Cords</i>		
16	<i>BI/R/Hybrid Oak</i>	<i>Sawtimber</i>	2.8	<i>MBF</i>	25.8	\$7,935.35
	Mixed Aspen		16.9	<i>MBF</i>		
	<i>B. T. Aspen</i>		1.6	<i>MBF</i>		
	<i>Quaking Aspen</i>		15.3	<i>MBF</i>		
	Red Maple		11.6	<i>MBF</i>		
	Mixed Aspen	<i>Pulpwood</i>	107	<i>Cords</i>		
	<i>B. T. Aspen</i>		6	<i>Cords</i>		
	<i>Quaking Aspen</i>		101	<i>Cords</i>		
	Mixed Hardwood		273	<i>Cords</i>		
	<i>Red Maple</i>		273	<i>Cords</i>		
	Mixed Oak		14	<i>Cords</i>		
	<i>BI/R/Hybrid Oak</i>		14	<i>Cords</i>		
	Paper Birch		6	<i>Cords</i>		
	TOTAL:			195.4		
TOTAL:			3,761	<i>Cords</i>		

# Sale Specific Conditions & Requirements

**Sale Name: Wilder Woods**

**Sale Number: 73-003-20 Seq#: 1**

## 1 - Sale Area

### 1.2 - Boundaries

#### 1.2.1 - Painted boundaries (9/19)

The sale boundary and Payment Unit boundaries are marked and identified by red and yellow paint. Exterior sale boundary lines against state are marked with red paint. Interior Payment Unit boundaries are marked with yellow paint. Retention patches are marked with red paint; no harvesting activities may occur within these areas. Yellow painted trees designating an interior Payment Unit boundary are only to be cut when all surrounding Payment Units have been paid unless marked with green paint above and below stump height.

## 2 - Timber Specifications

### 2.1 - Included Timber

#### 2.1.1 - Clearcut unit(s) with unmerchantable trees (6/14)

Within Payment Unit(s) 1, 6 - 10, and 12 - 16, cut all trees that are 2 inches or more at DBH except, do not cut trees marked with green paint above and below stump height and within Payment Units 9 and 10 do not cut any conifers.

#### 2.1.2 - Clearcut unit(s) w/o unmerchantable trees (8/11)

Within Payment Unit(s) 2 - 5, cut all trees which meet minimum piece specifications in 2.2 Utilization except, do not cut trees marked with green paint above and below stump height. In addition, within Payment Units 2 - 4 cut all aspen that are greater than 2 inches at DBH.

#### 2.1.7 - Leave tree marked unit(s) (6/14)

Within Payment Unit(s) 11, cut all trees that are two (2) inches or more at DBH, except trees marked with green paint above and below stump height.

### 2.2 - Utilization

#### 2.2.3 - Stump heights (4/07)

Stump heights within the Sale Area shall not exceed 12 inches for trees greater than 10 inches at DBH and 4 inches for trees smaller than 10 inches at DBH.

## 3 - Payments

### 3.4 - Damaged Timber

#### 3.4.1 - Damaged timber (7/16)

General Condition and Requirement 3.4 Damaged Timber, defines liquidated damages for undesignated live merchantable trees which are cut or injured. In addition, extreme care should be taken to avoid damage to tree seedlings and saplings.

Within Payment Units 2 - 5, if more than 25% of the tree seedlings or saplings (1/4" to 4.5" DBH) within a specified portion of the Sale Area are damaged, liquidated damages will be assessed at \$300 per acre for all acreage within that specified portion of the Sale Area that was damaged.

No damage is acceptable to undesignated live merchantable trees. Within the Sale Area, if more than 5% of trees (> 4.5" DBH) within a specified area of the sale are damaged, liquidated damages will be assessed for all trees damaged. Rates will be in accordance with General Condition and Requirement 3.4 Damaged Timber.

## 4 - Transportation

### 4.1 - Construction

#### 4.1.5 - Culverts (5/14)

The alternate access route may require the installation of culverts for cross drainage or at natural drainage-ways. If culverts are needed in these locations, their placement will be specified by the sale administrator and they shall be installed prior to

hauling. The culverts shall be corrugated metal or plastic gauge. Culverts will be a minimum of 24 inches in diameter and 24 feet in length. The culverts are to be removed; fill shall be removed from wetland soils as specified. Soils shall be maintained and left in a non-erodible condition, with water bars, seed, fertilizer, mulch, and slash installed as directed by the sale administrator and as specified in the BMP manual.

#### 4.1.7 - Road closure (10/11)

All new roads built into the sale must be blocked to vehicle traffic upon completion of the sale. Overgrown roads that are reopened shall be considered new roads. These roads must be rendered impassable to cars and trucks unless access is already controlled by a gate. All stumps from road building and landing construction must be reserved to block any newly constructed roads upon completion of the sale. These stumps must be scattered along the road system to prohibit vehicular movement. Contact the sale administrator for specific details of design and placement.

### 4.2 - Maintenance

#### 4.2.5 - Two wheel drive condition (2/04)

All existing trail roads on and adjacent to the sale area must be passable by two-wheel drive traffic for the duration of the sale.

### 4.4 - Access

#### 4.4.3 - Access gate (12/08)

The access gate must be locked at the completion of each day unless otherwise approved by the Unit Manager or his/her representative.

## 5 - Operations

### 5.2 - Conduct of Operations

#### 5.2.2 - Hazard Trees/Snags

##### 5.2.2.1 - Den trees (10/16)

Obvious hollow and/or den trees shall be protected and left standing unless they are a safety hazard.

#### 5.2.3 - Operating Restrictions

##### 5.2.3.5 - Oak wilt restriction (1/18)

Within Payment Unit(s) 2 - 5, and 11 unless changed by written agreement, cutting, skidding, hauling within the sale and brushing of access roads to the sale are not permitted during the period of April 15 to July 15. Operations may be allowed if specific steps are taken to prevent damaging uncut oak during the high risk period. Those steps may include completing all road brushing before April 15th and clearing a tree-length buffer along uncut oak cover before April 15th. This is necessary to reduce the spread of oak wilt. For more information, contact the Unit Manager or his/her representative.

#### 5.2.4 - Dead and Down Creation

##### 5.2.4.4 - Dead and down creation, grouse (6/18)

To encourage grouse and other wildlife, in Payment Unit(s) leave one 12" or larger diameter whole tree on the ground for every 3 acres. Trees should be scattered throughout the sale and at least two chains from any roads, two-tracks, or trails open to vehicles, or positioned per the sale administrators' instructions. Stumps must be at least 3 feet tall.

#### 5.2.22 - Operating Caution

##### 5.2.22.1 - Operating caution (6/11)

It is recommended, but not required, that within Payment Unit(s) 1 - 16, cutting, skidding, and hauling occur during dry summer or frozen winter conditions. The reason for the recommendation is because all Payment Units have significant areas of low wet ground that will be prone to rutting.

### 5.4 - Soil Protection

#### 5.4.1 - Rutting restriction, general (7/16)

Operations are to cease immediately if equipment and weather conditions result in rutting of roads and/or skid trails which is 12 inches or greater in depth and 50 feet in length. The Unit Manager or his/her representative may restrict hauling and/or skidding if ruts exceed the specified depth. With the Unit Manager or his/her representative's approval, the Purchaser may



return to the area when the risk of rutting has decreased.



# TIMBER SALE MAP

This information provided by authority of Part 525, 1994 PA 451, as amended.

Sale Number	Year
73 - 003	20

Forest Management Unit	County	Mapped By	Date	Page	of
Gladwin Management Unit	Gladwin	Steven Nyhoff	08/25/2020	1	3
		Cruised By			
		Steven Nyhoff			

Township	Range	Section(s) and Subdivision(s)	Scale
18 & 19N	1 & 2E	Various	1:15,840

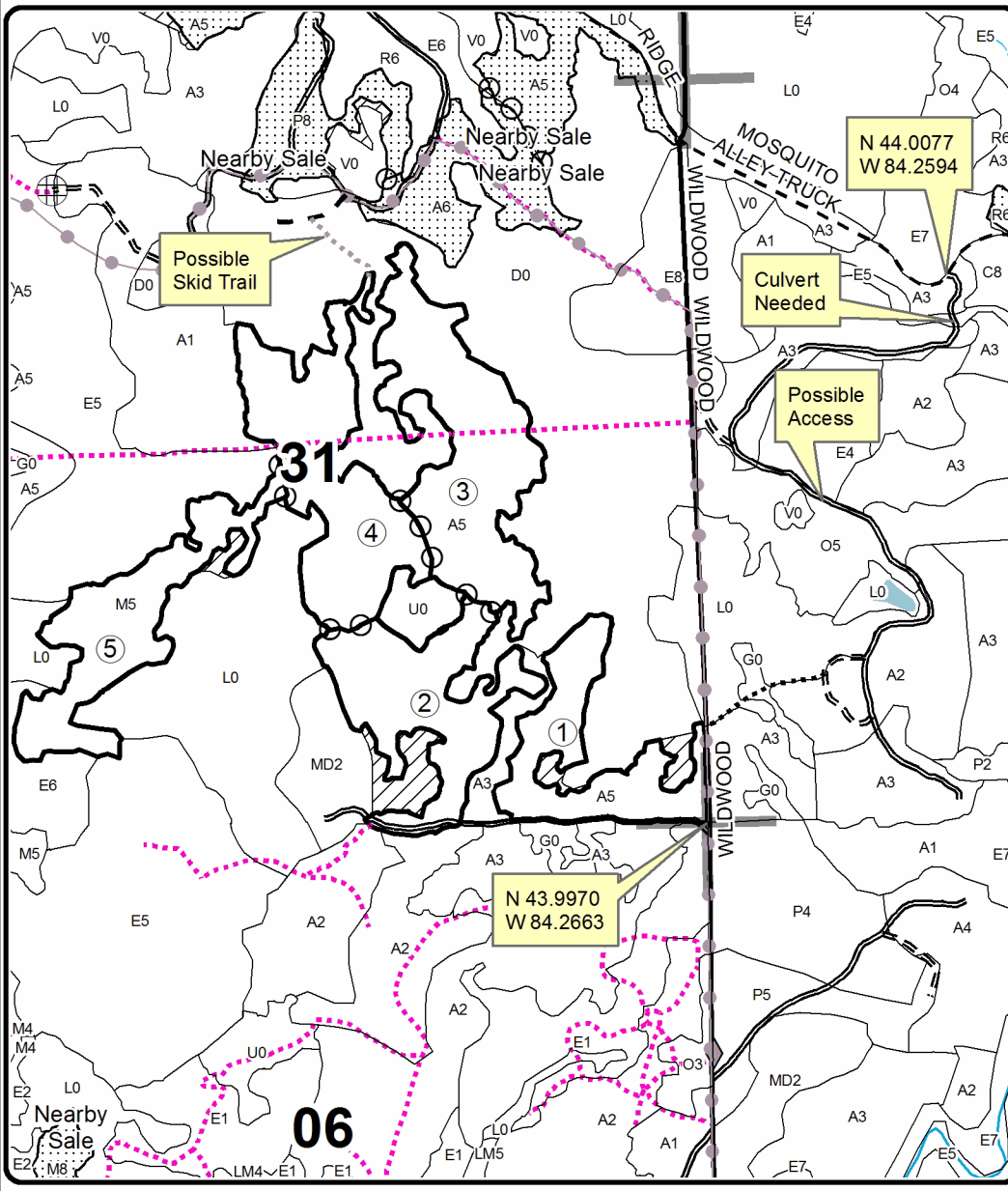
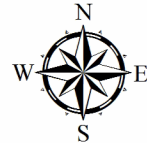
Cover Type				Density			
A = Aspen	H = Hemlock	N = Marsh	U = Upland Brush	0 = Non Stocked	5 = Pole Timber Medium		
B = Paper Birch	J = Jack Pine	O = Oak	UM = Upland Mixed	1 = Seedling Sapling Poor	6 = Pole Timber Well		
C = Cedar	L = Lowland Brush	P = Lowland Poplar	V = Bog or Marsh	2 = Seedling Sapling Medium	7 = Saw Timber Poor		
D = Treed Bog	LM = Lowland Mixed	Q = Mixed Swamp Conifer	W = White Pine	3 = Seedling Sapling Well	8 = Saw Timber Medium		
E = Swamp Hdwoods	M = Mpl, Bch, Brch	R = Red Pine	X = Non Stocked	4 = Pole Timber Poor	9 = Saw Timber Well		
F = Spruce Fir	MC = Mixed Conifer	S = Black Spruce	Z = Water				
G = Grass	MD = Mixed Deciduous	T = Tamarack					

PU	Acres	PU	Acres	PU	Acres	PU	Acres
1	20.9	5	24.9	9	21.3	13	21.1
2	27.5	6	11.1	10	21.1	14	33.3
3	36.9	7	25.7	11	13.7	15	10.4
4	33.6	8	14.3	12	7.8	16	25.8

## Wilder Woods

### Compartment 52

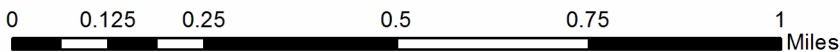
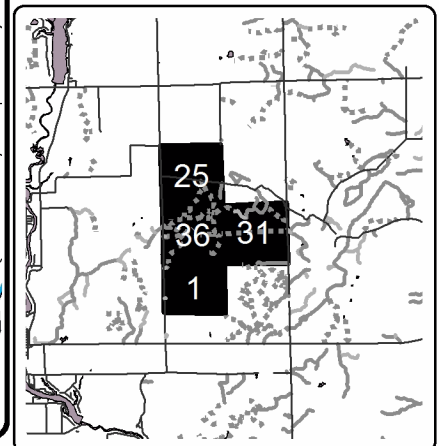
### 349.4 Acres



### Legend

- Stand Boundaries
- Recreational Trail
- Field Grade Corners
- Secondary Forest Road
- Forest Access Route
- Paved Road
- Gravel Road
- Temporary Management Access
- Intermittent Stream
- Perennial River
- Lakes and Rivers
- Retention Area
- Against State (Red)
- Payment Unit (Yellow)
- Nearby Timber Sales
- Section Corners

Locator Map  
1:200,000





# TIMBER SALE MAP

This information provided by authority of Part 525, 1994 PA 451, as amended.

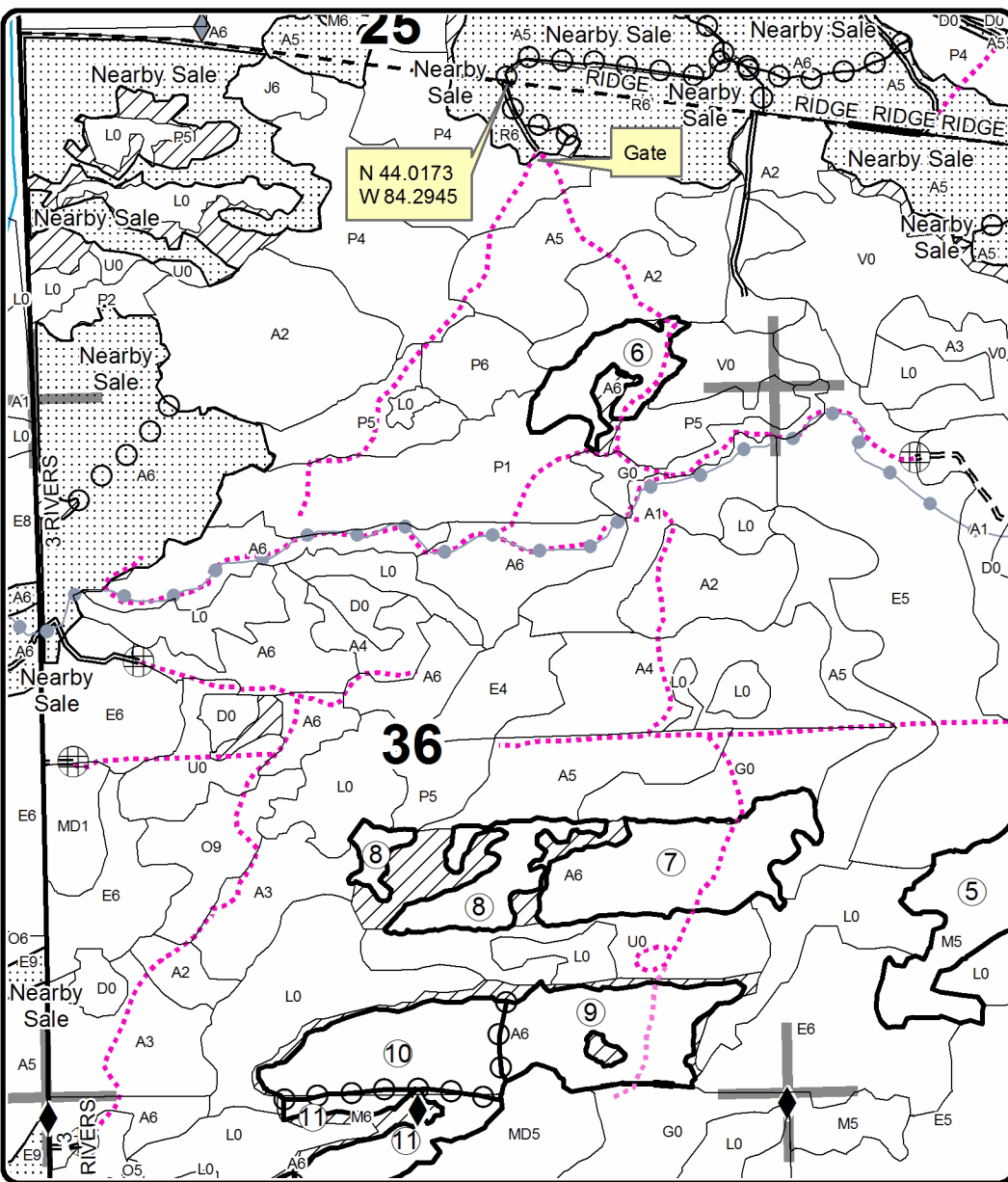
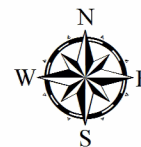
Sale Number	Year
73 - 003	20

Forest Management Unit Gladwin Management Unit	County Gladwin	Mapped By Steven Nyhoff	Date 08/25/2020	Page 2	of 3
Township 18 & 19N	Range 1 & 2E	Section(s) and Subdivision(s) Various	Scale 1:15,840		

Cover Type				Density	
A = Aspen	H = Hemlock	N = Marsh	U = Upland Brush	0 = Non Stocked	5 = Pole Timber Medium
B = Paper Birch	J = Jack Pine	O = Oak	UM = Upland Mixed	1 = Seedling Sapling Poor	6 = Pole Timber Well
C = Cedar	L = Lowland Brush	P = Lowland Poplar	V = Bog or Marsh	2 = Seedling Sapling Medium	7 = Saw Timber Poor
D = Treed Bog	LM = Lowland Mixed	Q = Mixed Swamp Conifer	W = White Pine	3 = Seedling Sapling Well	8 = Saw Timber Medium
E = Swamp Hdwoods	M = Mpl, Bch, Brch	R = Red Pine	X = Non Stocked	4 = Pole Timber Poor	9 = Saw Timber Well
F = Spruce Fir	MC = Mixed Conifer	S = Black Spruce	Z = Water		
G = Grass	MD = Mixed Deciduous	T = Tamarack			

PU	Acres	PU	Acres	PU	Acres	PU	Acres
1	20.9	5	24.9	9	21.3	13	21.1
2	27.5	6	11.1	10	21.1	14	33.3
3	36.9	7	25.7	11	13.7	15	10.4
4	33.6	8	14.3	12	7.8	16	25.8

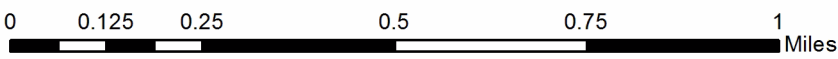
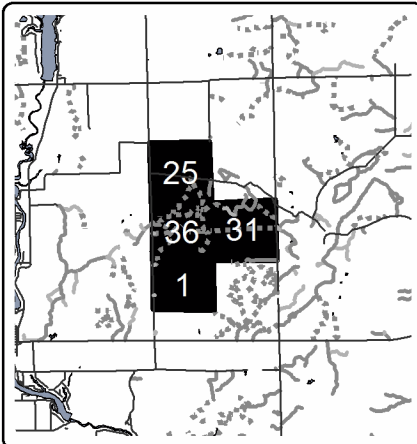
## Wilder Woods Compartment 52 349.4 Acres



### Legend

- Stand Boundaries
- Recreational Trail
- Survey Corners
- Field Grade Corners
- Secondary Forest Road
- Forest Access Route
- Paved Road
- Gravel Road
- Temporary Management Access
- Intermittent Stream
- Perennial River
- Retention Area
- Against State (Red)
- Payment Unit (Yellow)
- Nearby Timber Sales
- Section Corners

Locator Map  
1:200,000





# TIMBER SALE MAP

This information provided by authority of Part 525, 1994 PA 451, as amended.

Sale Number	Year
73 - 003	20

Forest Management Unit Gladwin Management Unit	County Gladwin	Mapped By Steven Nyhoff	Date 08/25/2020	Page 3	of 3
Township 18 & 19N	Range 1 & 2E	Section(s) and Subdivision(s) Various	Scale 1:15,840		

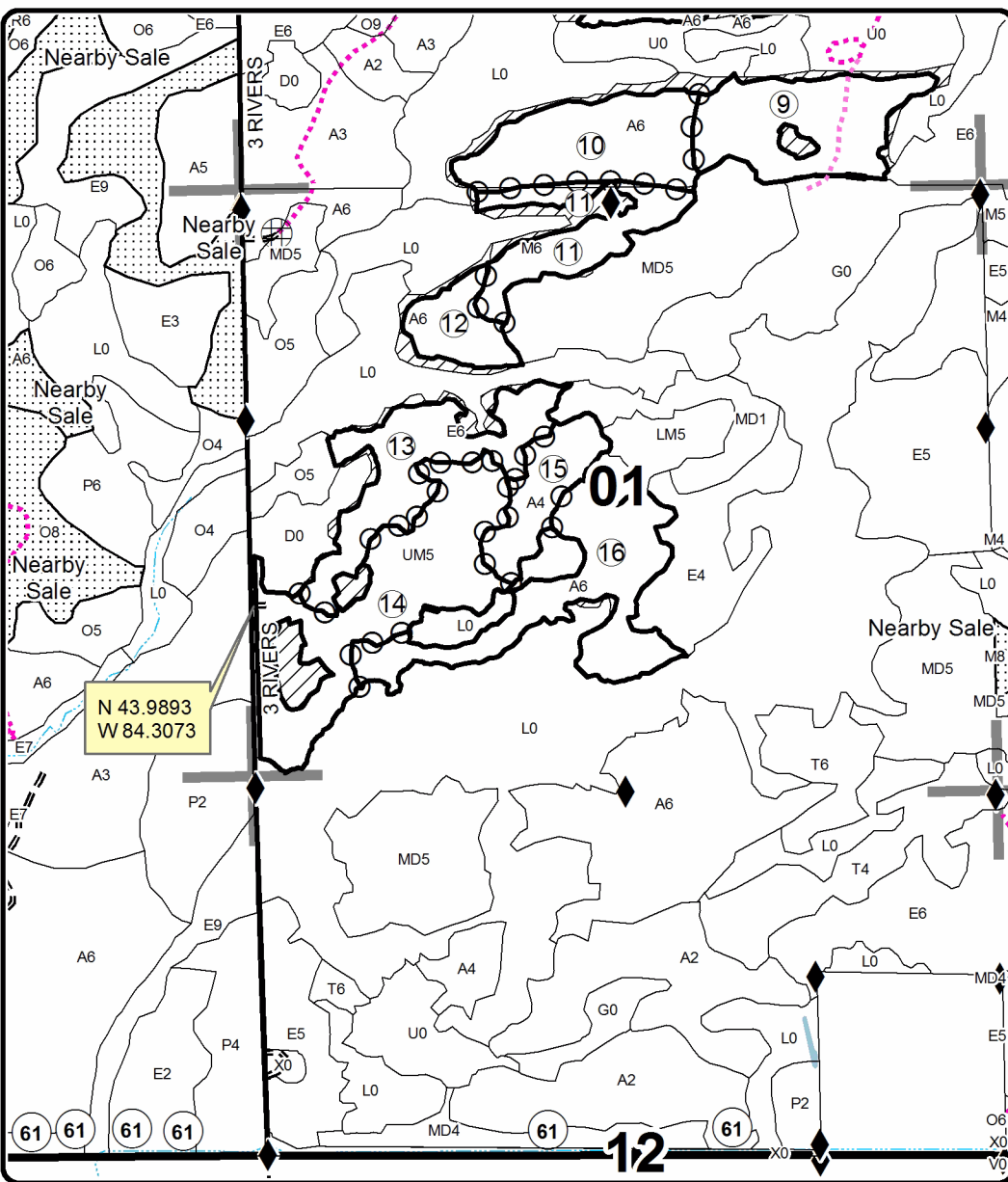
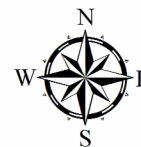
Cover Type				Density			
A = Aspen	H = Hemlock	N = Marsh	U = Upland Brush	0 = Non Stocked	5 = Pole Timber Medium		
B = Paper Birch	J = Jack Pine	O = Oak	UM = Upland Mixed	1 = Seedling Sapling Poor	6 = Pole Timber Well		
C = Cedar	L = Lowland Brush	P = Lowland Poplar	V = Bog or Marsh	2 = Seedling Sapling Medium	7 = Saw Timber Poor		
D = Treed Bog	LM = Lowland Mixed	Q = Mixed Swamp Conifer	W = White Pine	3 = Seedling Sapling Well	8 = Saw Timber Medium		
E = Swamp Hdwoods	M = Mpl, Bch, Brch	R = Red Pine	X = Non Stocked	4 = Pole Timber Poor	9 = Saw Timber Well		
F = Spruce Fir	MC = Mixed Conifer	S = Black Spruce	Z = Water				
G = Grass	MD = Mixed Deciduous	T = Tamarack					

PU	Acres	PU	Acres	PU	Acres	PU	Acres
1	20.9	5	24.9	9	21.3	13	21.1
2	27.5	6	11.1	10	21.1	14	33.3
3	36.9	7	25.7	11	13.7	15	10.4
4	33.6	8	14.3	12	7.8	16	25.8

## Wilder Woods

### Compartment 52

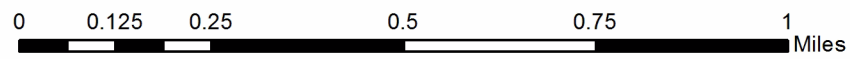
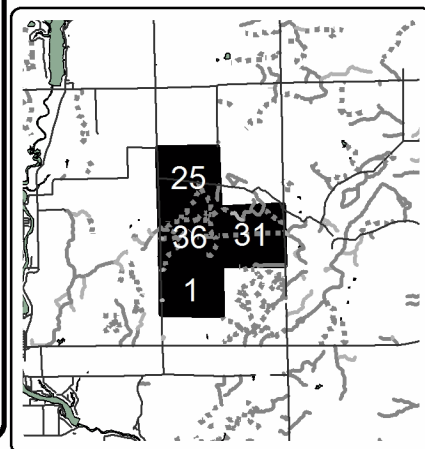
### 349.4 Acres



### Legend

- Stand Boundaries
- Survey Corners
- Field Grade Corners
- Highway
- Forest Access Route
- Paved Road
- Gravel Road
- Temporary Management Access
- Intermittent Stream
- Lakes and Rivers
- Retention Area
- Against State (Red)
- Payment Unit (Yellow)
- Nearby Timber Sales
- Section Corners

### Locator Map 1:200,000



Wilder Woods (73-003-20)

T18N, R01E, SEC. 1; T18N, R02E, SEC. 6; T19N, R01E, SEC. 25; T19N, R01E,

In response to the notice of sale to be held 10:00 a.m. (local time) on June 23, 2021, I am hereby submitting my sealed bid ( firm offer) for the following forest products to be cut. Bids for individual species must be at or above the advertised price. All non-responsive bid forms may be rejected.

<u>PRODUCTS &amp; SPECIES</u>	<u>ESTIMATED VOLUME*</u>	<u>ADVERTISED PRICE</u>	<u>BID PRICE/UNIT</u>
<b>Sawtimber</b>			
Bl/R/Hybrid Oak	67.9 MBF	\$ 93.00/MBF	\$ _____
Mixed Aspen	58.0 MBF	\$ 61.00/MBF	\$ _____
Red Maple	69.5 MBF	\$ 37.00/MBF	\$ _____
<b>Pulpwood</b>			
Mixed Aspen	1,842 Cords	\$ 18.75/Cord	\$ _____
Mixed Hardwood	1,250 Cords	\$ 14.30/Cord	\$ _____
Mixed Oak	384 Cords	\$ 15.55/Cord	\$ _____
Paper Birch	34 Cords	\$ 14.50/Cord	\$ _____
Tamarack	243 Cords	\$ 10.90/Cord	\$ _____
White Pine	8 Cords	\$ 16.50/Cord	\$ _____

\*The volumes are statistically estimated within plus (+) or minus (-) 8.72 percent at 95% confidence level. These estimated volumes are final and not subject to adjustment. Prospective bidders are urged to examine this timber and to make their own estimates of quantity and quality.

I understand that any or all bids may be rejected. All bids must be signed and all bid items must be bid or the bid form may be rejected. I also understand that consideration and awarding a contract will be based upon my past performance and ability to complete the contract based upon equipment and staffing subject to my control.

FEDERAL ID: \_\_\_\_ - \_\_\_\_ - \_\_\_\_ or SOCIAL SECURITY NUMBER: \_\_\_\_ - \_\_\_\_ - \_\_\_\_

Company or individual bidding: \_\_\_\_\_

Company representative's name: \_\_\_\_\_

Address: \_\_\_\_\_

City: \_\_\_\_\_ State: \_\_\_\_\_ Zip: \_\_\_\_\_

IF AVAILABLE, PLEASE PLACE THE PERSONALIZED LABEL FROM YOUR PROSPECTUS IN THE ABOVE BOX.

Individual or company representative's signature: \_\_\_\_\_ Date: \_\_\_\_\_

Phone number : \_\_\_\_\_ Email (optional): \_\_\_\_\_

**THE WINNING BIDDER MUST COMPLETE THE VERIFICATION OF WORKER'S DISABILITY COMPENSATION ACT COMPLIANCE (ON REVERSE SIDE IF DOUBLE SIDED) WITHIN 21 DAYS OF SALE AWARD DATE**



<b>FOR DEPARTMENT USE ONLY</b>	
Sale Number (XX - XXX - XX - XX)	
Forest Management Unit:	

# TIMBER SALE VERIFICATION OF WORKER'S DISABILITY COMPENSATION ACT COMPLIANCE

As required by Act 317, P.A. 1969 (Worker's Compensation) and  
Part 5 of Act 451 of 1994, as amended.

## VERIFICATION OF WORKER'S DISABILITY COMPENSATION ACT COMPLIANCE

- This verification must be completed and submitted within 21 days of contract award and prior to the issuance of the timber sale contract.
- In addition, if boxes 2B or 2C are checked, then Notice of Exclusion or Certificate of Insurance must be submitted within twenty-one (21) days of the contract award and prior to the issuance of the timber sale contract.
- All information must be typed or printed except for written signatures.

Please Check Appropriate Categories:

1. My business is organized as (you **must** check one of the boxes below):
  - A.  Sole Proprietorship (individual)
  - B.  Partnership
  - C.  Corporation
2. You **must** check one of the boxes below:
  - A.  I certify my business is a sole proprietorship and it has no employees but the sole proprietor. I am not subject to the Worker's Compensation Laws.
  - B.  I certify my business has satisfied its obligation to the Worker's Compensation Act through the use of an approved Notice of Exclusion (BWC-337, Rev. 5/96). I will provide a copy of the Notice of Exclusion within 21 days of the contract award. (For questions or a copy of the BWC-337, please call the Worker's Compensation Bureau at 517-322-1195).
  - C.  I certify my business has a Worker's Compensation Policy. I will provide an original Certificate of Insurance within twenty-one (21) days of the contract award.
3. If you have checked item 2(A) or 2(B), you **must** indicate the number of **both** full-time and part-time employees, other than yourself, including family members and active partners (if none, you must enter "0").

\_\_\_\_\_ Full-time Employees

\_\_\_\_\_ Part-time Employees

Name of Business		Federal ID (or) Social Security No.	
Address		Telephone (       )	
City	State	ZIP	

*I hereby certify that the above information is true and correct. I agree to notify the Michigan DNR of any changes that occur in factors affecting my coverage during any of my present and future operations.*

\_\_\_\_\_  
Signature of Owner or Authorized Representative

\_\_\_\_\_  
Title

\_\_\_\_\_  
Date

Please complete the "SEALED BID" information on the next page

Mosquito Crossing (73-001-20)

T19N, R01E, SEC. 25; T19N, R01E, SEC. 36; T19N, R02E, SEC. 29; T19N, R02E,

In response to the notice of sale to be held 10:00 a.m. (local time) on June 23, 2021, I am hereby submitting my sealed bid ( firm offer) for the following forest products to be cut. Bids for individual species must be at or above the advertised price. All non-responsive bid forms may be rejected.

<u>PRODUCTS &amp; SPECIES</u>	<u>ESTIMATED VOLUME*</u>	<u>ADVERTISED PRICE</u>	<u>BID PRICE/UNIT</u>
<b>Sawtimber</b>			
Bl/R/Hybrid Oak	58.6 MBF	\$ 119.00/MBF	\$ _____
Mixed Aspen	66.9 MBF	\$ 77.00/MBF	\$ _____
Red Maple	27.8 MBF	\$ 47.00/MBF	\$ _____
Red Pine	83.2 MBF	\$ 123.00/MBF	\$ _____
White Oak	2.9 MBF	\$ 113.00/MBF	\$ _____
<b>Pulpwood</b>			
Jack Pine	44 Cords	\$ 22.75/Cord	\$ _____
Mixed Aspen	2,587 Cords	\$ 23.85/Cord	\$ _____
Mixed Hardwood	920 Cords	\$ 18.20/Cord	\$ _____
Mixed Oak	399 Cords	\$ 19.75/Cord	\$ _____
Paper Birch	42 Cords	\$ 18.45/Cord	\$ _____
Red Pine	823 Cords	\$ 51.85/Cord	\$ _____
Tamarack	6 Cords	\$ 13.85/Cord	\$ _____
White Pine	5 Cords	\$ 21.00/Cord	\$ _____

\*The volumes are statistically estimated within plus (+) or minus (-) 9.06 percent at 95% confidence level. These estimated volumes are final and not subject to adjustment. Prospective bidders are urged to examine this timber and to make their own estimates of quantity and quality.

I understand that any or all bids may be rejected. All bids must be signed and all bid items must be bid or the bid form may be rejected. I also understand that consideration and awarding a contract will be based upon my past performance and ability to complete the contract based upon equipment and staffing subject to my control.

FEDERAL ID: \_\_\_\_\_ or SOCIAL SECURITY NUMBER: \_\_\_\_\_

Company or individual bidding: \_\_\_\_\_

Company representative's name: \_\_\_\_\_

Address: \_\_\_\_\_

City: \_\_\_\_\_ State: \_\_\_\_\_ Zip: \_\_\_\_\_

IF AVAILABLE, PLEASE PLACE THE PERSONALIZED LABEL FROM YOUR PROSPECTUS IN THE ABOVE BOX.

Individual or company representative's signature: \_\_\_\_\_ Date: \_\_\_\_\_

Phone number : \_\_\_\_\_ Email (optional): \_\_\_\_\_

**THE WINNING BIDDER MUST COMPLETE THE VERIFICATION OF WORKER'S DISABILITY COMPENSATION ACT COMPLIANCE (ON REVERSE SIDE IF DOUBLE SIDED) WITHIN 21 DAYS OF SALE AWARD DATE**



FOR DEPARTMENT USE ONLY	
Sale Number (XX - XXX - XX - XX)	
Forest Management Unit:	

## TIMBER SALE VERIFICATION OF WORKER'S DISABILITY COMPENSATION ACT COMPLIANCE

As required by Act 317, P.A. 1969 (Worker's Compensation) and  
Part 5 of Act 451 of 1994, as amended.

### VERIFICATION OF WORKER'S DISABILITY COMPENSATION ACT COMPLIANCE

- This verification must be completed and submitted within 21 days of contract award and prior to the issuance of the timber sale contract.
- In addition, if boxes 2B or 2C are checked, then Notice of Exclusion or Certificate of Insurance must be submitted within twenty-one (21) days of the contract award and prior to the issuance of the timber sale contract.
- All information must be typed or printed except for written signatures.

Please Check Appropriate Categories:

1. My business is organized as (you **must** check one of the boxes below):
  - A.  Sole Proprietorship (individual)
  - B.  Partnership
  - C.  Corporation
2. You **must** check one of the boxes below:
  - A.  I certify my business is a sole proprietorship and it has no employees but the sole proprietor. I am not subject to the Worker's Compensation Laws.
  - B.  I certify my business has satisfied its obligation to the Worker's Compensation Act through the use of an approved Notice of Exclusion (BWC-337, Rev. 5/96). I will provide a copy of the Notice of Exclusion within 21 days of the contract award. (For questions or a copy of the BWC-337, please call the Worker's Compensation Bureau at 517-322-1195).
  - C.  I certify my business has a Worker's Compensation Policy. I will provide an original Certificate of Insurance within twenty-one (21) days of the contract award.
3. If you have checked item 2(A) or 2(B), you **must** indicate the number of **both** full-time and part-time employees, other than yourself, including family members and active partners (if none, you must enter "0").

\_\_\_\_\_ Full-time Employees

\_\_\_\_\_ Part-time Employees

Name of Business		Federal ID (or) Social Security No.	
Address		Telephone (      )	
City	State	ZIP	

*I hereby certify that the above information is true and correct. I agree to notify the Michigan DNR of any changes that occur in factors affecting my coverage during any of my present and future operations.*

\_\_\_\_\_  
Signature of Owner or Authorized Representative

\_\_\_\_\_  
Title

\_\_\_\_\_  
Date

Please complete the "SEALED BID" information on the next page