



**DEPARTMENT OF NATURAL RESOURCES
STATE OF MICHIGAN**

TIMBER SALE PROSPECTUS #6884

SCHEDULED SALE DATE AND TIME: 3:00 p.m. (local time) on June 29, 2021.

LOCATION: ESCANABA MGMT UNIT, 6833 HWY'S 2, 41 & M-35, GLADSTONE, MI 49837.

PROSPECTUS NOTE: The bidder is advised to inspect the sale area and review the location, estimated volumes, operating costs and contract terms of proposed sales. Please be aware that some landowners may request 60 days or more notice for access across their land.

Notice is hereby given that bids will be received by the Unit Manager, ESCANABA MANAGEMENT UNIT, for certain timber on the following described lands:

Cherry Ridge Hardwoods (33-001-21) / T35N, R25W, SEC. 29, SESW,S1/2SE.

T35N, R25W, SEC. 31, E1/2SW.

T35N, R25W, SEC. 32, N1/2NE,SENE,NESE.

T35N, R25W, SEC. 33, NW,NE,W1/2SW,NESE.

Menominee County, Advertised Price \$140,111.80, 236.0 Acres, Hardwood, Spruce/Fir/Tamarack.

SALE NOTE: This sale may require installation of a culvert and/or crane mats to access certain roads throughout the harvest area. This sale will also require private access for a portion of the harvest, the landowner has indicated they are willing to give permission; however, it is the responsibility of the purchaser to confirm and obtain this permission.

Access may be through private land.

Spring Aspen (33-026-21) / T37N, R28W, SEC. 28, E1/2SW,W1/2SE.

Menominee County, Advertised Price \$31,086.75, 52.4 Acres, Aspen, Red Oak.

SALE NOTE: Aspen sale that can be harvested during most periods of time. The old railroad grade will be used to access the sale. The best access is off of the Miscauna Creek Road. Some roadwork will be required, prior to any hauling taking place. Gravel is located about a mile from the Sale Area.

Access may be through private land.

Learning Curve Mix (33-027-21) / T37N, R28W, SEC. 32, NESE,S1/2SE.

T37N, R28W, SEC. 33, SENW,SWNE,SW,NWSE.

Menominee County, Advertised Price \$75,941.45, 166.5 Acres, Aspen, Hardwood.

SALE NOTE: The entire sale can be accessed through state land, but the best access into Payment Units 1 and 2 is through private property. Payment Units 6 and 7 are the only two units that are restricted to frozen ground conditions.

BID INSTRUCTIONS (VER. 07/02/2018):

1. Scheduled Bid Location, Date, and Time (2/11)

Bids must be received by the Unit Manager, ESCANABA OFFICE, 6833 Hwy's 2, 41 & M-35, Gladstone, MI 49837, no later than 3:00 p.m. (local time) on June 29, 2021. For further information concerning this sale, contact Eric Thompson at 906-789-8231.

2. Bidder's Qualifications (5/16)

Purchaser shall obtain workers compensation insurance to cover claims under Michigan's Worker's Disability Compensation Act of 1969 or similar employee benefit act of any other state applicable to an employee. If all or part of a timber sale was prepared by a private contractor, the contractor and that contractor's company are not permitted to bid on the timber sale contract. Bids will not be accepted from individuals or companies appearing on the DNR/FRD No-Bid List. This list contains the names of purchasers who previously failed to execute a contract within 21-days or who have a history of poor performance.

3. Preparation of Sealed Bids (5/16)

Bid Forms may be completed online thru Michigan DNR Timber Sale Online Bidding (OLB) at www.michigan.gov/timberbidding or by completing the hardcopy Bid Form found in the Timber Sale Prospectus. Hardcopy Bid Forms shall be manually signed in ink. Registration in OLB is considered your 'signature' for all bids submitted thru that system. Bid prices must be entered for each species and product in the Bid Price column for all material subject to bidding and all fill-in blanks must be completed. If erasures or other changes appear on the hardcopy Bid Form, each erasure or change must be initialed by the person signing the bid.

4. Submission of Sealed Bids (5/16)

Bid forms may be obtained from the Unit Manager or thru OLB. Bids may be submitted hardcopy or thru OLB. All hardcopy bids must be submitted on the bid form and in an envelope clearly identified as described in this section. NOTE: Only one bid form per bid envelope. Sealed bids must be submitted to the Unit office designated in the prospectus and must be submitted at or prior to the time established in the prospectus. The envelope should show on the outside (a) the sale name or number and (b) the date and time of bid opening, as shown in the prospectus. Bids received after the time specified in the sale prospectus are late bids and will be rejected.

It is possible for a bidder to submit multiple bids on a single sale. For example, a bid may be submitted hardcopy and a bid may be submitted thru OLB. Or, two bidders from the same company could both submit bids on the same sale. If this were to happen, the State would accept all bids received and award the contract accordingly. All bidding and contractual requirements would apply to all bids received.

5. Public Opening of Sealed Bids (7/16)

If conditions permit, the sealed bids will be publicly opened and posted at the time and place set in the prospectus.

If a bidder, present at a bid opening, has submitted bids on more than one sale, that bidder may withdraw their unopened bid envelopes or announce the withdrawal of their online bid after being declared the successful bidder on one sale.

6. Award of Contract (1/11)

Award of the contract will be made to the Bidder whose bid, conforming to the prospectus, is most advantageous to the State of Michigan on the basis of total value at rates bid for the estimated quantities. The State reserves the right to reject any bid or waive any minor irregularity in bids received. A written award mailed (or otherwise furnished) to the successful Bidder shall be deemed to result in a binding contract without further action by either party.

7. Down Payment (1/11)

The Bidder to whom award is made must make a down payment within 21 days of the sale award. The amount of the down payment will be calculated as shown in the Bond and Payment Schedule of this prospectus. Only cash may be used to meet this requirement.

8. Performance Security (1/11)

As guarantee of faithful performance, a cash bond, certificate of deposit, surety bond or irrevocable letter of credit (LOC) is required within 21 days of the sale award. The amount of the performance security is shown in the Bond and

Payment Schedule of this prospectus. If an LOC or surety is used, the coverage must extend for at least 6 months beyond the contract expiration.

9. Timber Sale Contract (7/18)

Additional conditions and requirements common to all timber sales are listed on the timber sale contract (R4031) and are available on line at www.michigan.gov/timber. Contact the Unit Manager for additional information or a sample contract. Within 21 days of the date of the award letter, the bidder must sign the contract and provide the required down payment, performance security, and verification of worker's disability compensation. The down payment and performance security shall be in accordance with the provisions of the timber sale contract, in the sums stated in this prospectus. If these actions are not taken, then the Bidder, the Bidder's corporation, and the corporation's principals may not be permitted to bid on State timber sales for a period of 3 months after the first offense, 6 months after the second offense, and 1 year after the third offense. An offense will only be counted against the Bidder for 5 years. In addition, the Bidder certifies that if awarded this contract, the Bidder will complete the timber sale contract in accordance with its terms and any modifications thereof including requirements to purchase, cut, and remove the included timber by the expiration date.

Payment Unit values in the State Forest Timber Sale Contract are calculated based on the advertised value of the Payment Unit as a percentage of the total advertised value of the contract. The advertised value of each Payment Unit is given in the Description of Timber by Payment Unit table on the Timber Sale Information page. For example, if the value of Payment Unit 1 is advertised as \$1,500 and the total Timber Sale value is advertised as \$10,000, the contract price for Payment Unit 1 will be 15% of the total bid price ($\$1,500/\$10,000 * 100$).

10. Disclaimer of Estimates and Bidder's Warranty of Inspection (7/16)

Before submitting this bid, the Bidder is advised and cautioned to inspect the sale area, review the requirements of the sale contract, and take other steps as may be reasonably necessary to ascertain the location, estimated volumes, construction estimates, and operating costs of the proposed sale. Failure to do so will not relieve the Bidder from responsibility for completing the contract.

The Bidder warrants that this bid is submitted solely on the basis of the Bidder's examination and inspection of the quality and quantity of the timber offered for sale and the Bidder's opinion of the value thereof and the costs of recovery. No reliance should be placed on the State of Michigan's estimates of timber quality, quantity or costs of recovery. Bidder further acknowledges that the State of Michigan: (i) expressly disclaims any warranty of fitness of timber for any purpose; (ii) offers this timber as is without any warranty of quality (merchantability) or quantity and (iii) expressly disclaims any warranty as to the quantity or quality of timber sold.

11. Certification and Chain-of-Custody (10/14)

Unless otherwise indicated in the contract under section 7 – Other Conditions of the Sale Specific Conditions & Requirements, the area encompassed by this timber sale is certified to the standards of the Forest Stewardship Council (FSC) - Certificate #SCS-FM/COC-00090N and the Sustainable Forestry Initiative (SFI) - Certificate #NSF-SFIS-5Y031-SF5. Forest products from this sale may be delivered to the mill as "FSC 100% and / or SFI certified" as long as the contractor hauling the forest products is chain-of-custody (COC) certified or covered under a COC certificate from the destination mill. The purchaser is responsible for maintaining COC after leaving the sale area.

12. Good Neighbor Authority (GNA) Requirements (7/16)

If the name of this timber sales contains the acronym GNA, it is authorized by the Good Neighbor Authority (GNA) and covered by various agreements between the U.S. Forest Service and the State. The timber sale occurs on federal land and the following conditions apply:

GNA contracts on US Forest Service land will not be awarded to purchasers on the Federal list of excluded parties. The System for Award Management (SAM) will be checked for active excluded parties prior to award of contract. In addition, the Bidder to whom award is made must complete an Assurance Regarding Felony Conviction or Tax Delinquent Status for Corporate Applicants (AD-3031).

13. Good Neighbor Authority (GNA) Requirements, con't (9/16)

Bidder certifies, by signing this bid form, that to the best of Bidder's knowledge that the following representations are accurate and complete.

- a. That the Bidder and its principals are not presently debarred, suspended, proposed for debarment, declared ineligible, or voluntary excluded from timber sales (covered transactions) by any Federal department or agency.
- b. That the Bidder and its principals have not within a 3-year period preceding this bid been convicted of or had a civil judgment rendered against them for commission of fraud or a criminal offense in connection with obtaining , attempting to obtain, or performing a public (Federal, State, or local) transaction or contract under a public transaction; violation of Federal or State antitrust statutes or commission of embezzlement, theft, forgery, bribery, falsification or destruction of records, making false statements, or receiving stolen property.
- c. That the Bidder and its principals are not presently indicted for or otherwise criminally or civilly charged by a governmental entity (Federal, State, or local) with commission of any of the offenses enumerated in paragraph b of this certification.
- d. That the Bidder and its principals have not within a 3-year period preceding this bid had one or more public transactions (Federal, State, or local) terminated for breach or default of a timber or forest product contract.

Bidders that cannot certify this requirement, in whole or in part, shall submit an explanation with their bid.

DAN EICHINGER
Director

TIMBER SALE INFORMATION

Cherry Ridge Hardwoods (33-001-21)

T35N, R25W, SEC. 29; T35N, R25W, SEC. 31; T35N, R25W, SEC. 32; T35N, R25W, SEC. 33.
Menominee County (Advertised Price \$140,111.80)

SALE NOTE: This sale may require installation of a culvert and/or crane mats to access certain roads throughout the harvest area. This sale will also require private access for a portion of the harvest, the landowner has indicated they are willing to give permission; however, it is the responsibility of the purchaser to confirm and obtain this permission.

Access may be through private land.

A timber sale contract for this lump sum, sealed bid timber sale will be awarded to the responsible bidder offering the highest sealed bid price. All units of volume listed below were estimated using the Inventory Manager computer program and the new Michigan taper model. Bids must be at or above the following advertised price for each product and species:

<u>PRODUCTS & SPECIES</u>	<u>ESTIMATED UNITS*</u>	<u>ADVERTISED PRICE</u>
Sawtimber		
Beech	38.3 MBF	\$ 51.00 / MBF
Black Ash	27.9 MBF	\$ 14.00 / MBF
Black Cherry	3.5 MBF	\$ 77.00 / MBF
Green Ash	563.0 MBF	\$ 51.00 / MBF
Paper Birch	1.1 MBF	\$ 47.00 / MBF
Red Maple	642.0 MBF	\$ 80.00 / MBF
Sugar Maple	10.7 MBF	\$ 118.00 / MBF
Yellow Birch	7.0 MBF	\$ 26.00 / MBF
Pulpwood		
Balsam Fir	74 Cords	\$ 12.20 / Cord
Mixed Hardwood	3,282 Cords	\$ 16.25 / Cord
Paper Birch	34 Cords	\$ 13.90 / Cord
Quaking Aspen	27 Cords	\$ 16.30 / Cord
White Pine	21 Cords	\$ 18.30 / Cord
White Spruce	31 Cords	\$ 12.80 / Cord

* The total volume is statistically estimated within plus (+) or minus (-) 3.62 percent. There are an estimated 6,722 cords on this timber sale, plus or minus 244 cords at the 95% confidence level. The estimated units are final and not subject to adjustment. Prospective bidders are urged to examine this timber and to make their own estimates of quantity and quality.

BOND AND PAYMENT SCHEDULE:

1. A bond in the amount of \$7,006.00 to insure faithful performance of the conditions of the contract will be deposited by the successful bidder within 21 days of the sale award.
2. Cutting in any sale or unit without the required advance payment would be considered a trespass.
3. Total payment must be paid in advance or according to the following schedule :
 - (a) Ten percent (10%) of the sale value must be paid within 21 days of the sale award.
 - (b) The 10% down payment will be credited towards the first unit cut.
 - (c) Payment for each of the following units must be made before cutting begins in that unit:

PAYMENT UNIT NUMBER	PERCENT OF TOTAL SALE VALUE
01	2.5%
02	1.5%
03	5.3%
04	26.8%
05	14.3%
06	16.3%
07	22.5%
08	10.8%
4. If no cutting takes place, the 10% down payment will not be refunded.
5. Operations on the contract issued will terminate on 06/30/2025.

SALE STATISTICS

Volumes were calculated in cubic feet using the Michigan taper model. Cubic foot volume includes all wood inside bark for the product indicated. For display purposes, cubic feet were converted to cords and MBF using a simple conversion factor, e.g. 79 cubic feet per cord and 185 cubic feet per MBF. The cubic foot volumes are precise; the cords and MBF volumes are not. Cubic foot volume cannot be directly converted to cords or boards with precision.

SALE VOLUMES

The total estimated sale volume may not equal the sum of the species/products due to the nature of statistical calculations associated with double sampling methodology.

VOLUME			STATISTICAL RANGE IN CORDS	
TOTAL CUBIC FEET	TOTAL CORDS	PERCENT ERROR	MINIMUM	MAXIMUM
531,033	6,722	3.62%	6,478	6,966

VDU VOLUMES

A VDU is a Volume Determination Unit. Volumes and their associated statistics are calculated at the VDU level and summarized to the sale level. There is often a one to one relationship between a VDU and a Payment Unit, but not always, depending on the cruise design. Refer to the VDU TO PAYMENT UNIT table.

VDU	VOLUME			RANGE IN CORDS	
	TOTAL CUBIC FEET	TOTAL CORDS	PERCENT ERROR	MINIMUM	MAXIMUM
7	11,716	148	14.95%	126	170
45	28,651	363	12.45%	318	408
49	7,770	98	17.41%	81	115
53	778,943	9,860	5.10%	9,358	10,362
61	511,785	6,478	6.10%	6,083	6,873
TOTAL:	1,338,866	16,948		15,966	17,929

VDU TO PAYMENT UNIT

When a VDU is associated with more than one Payment Unit (PU), the VDU volumes are assigned to the PU based on acres of the VDU within the PU.

VDU	VDU ACRES	PU	PU ACRES
7	17.1	1	17.1
45	11.0	3	11.0
49	17.0	2	17.0
53	114.1	4	36.8
		6	32.4
		7	44.9
61	76.8	4	19.1
		5	32.8
		8	24.9
TOTAL:	236.0		236.0

DESCRIPTION OF TIMBER BY PAYMENT UNIT (PU)

PU	MARKET GROUP	PRODUCT	QUANTITY	UNIT	ACRES	ADVERTISE PRICE
1	Beech	Sawtimber	28.6	MBF	17.1	\$3,470.30
	Sugar Maple		6.1	MBF		
	Balsam Fir	Pulpwood	2	Cords		
	Mixed Hardwood		78	Cords		
	<i>Beech</i>		48	<i>Cords</i>		
	<i>Black Ash</i>		10	<i>Cords</i>		
	<i>Ironwood</i>		2	<i>Cords</i>		
	<i>Red Maple</i>		7	<i>Cords</i>		
	<i>Sugar Maple</i>		11	<i>Cords</i>		
	2	Beech	Sawtimber	4.7		
Green Ash			1.6	MBF		
Red Maple			0.6	MBF		
Sugar Maple			4.6	MBF		
Mixed Hardwood		Pulpwood	69	Cords		
<i>Beech</i>			37	<i>Cords</i>		
<i>Green Ash</i>			5	<i>Cords</i>		
<i>Red Maple</i>			10	<i>Cords</i>		
<i>Sugar Maple</i>			17	<i>Cords</i>		
Paper Birch			7	Cords		
3		Black Ash	Sawtimber	5.4	MBF	11.0
	Green Ash		20.9	MBF		
	Red Maple		27.7	MBF		
	Balsam Fir	Pulpwood	3	Cords		
	Mixed Hardwood		251	Cords		
	<i>Black Ash</i>		97	<i>Cords</i>		
	<i>Green Ash</i>		40	<i>Cords</i>		
<i>Red Maple</i>		114	<i>Cords</i>			
4	Beech	Sawtimber	1.5	MBF	55.9	\$37,493.95
	Black Ash		6.1	MBF		
	Black Cherry		0.9	MBF		
	Green Ash		147.7	MBF		
	Paper Birch		0.3	MBF		
	Red Maple		189.6	MBF		
	Yellow Birch		1.7	MBF		
	Balsam Fir	Pulpwood	21	Cords		
	Mixed Hardwood		847	Cords		
	<i>Beech</i>		15	<i>Cords</i>		
	<i>Black Ash</i>		91	<i>Cords</i>		
	<i>Green Ash</i>		256	<i>Cords</i>		
	<i>Red Maple</i>		479	<i>Cords</i>		
	<i>Yellow Birch</i>		6	<i>Cords</i>		
	Paper Birch		7	Cords		
	Quaking Aspen		8	Cords		
	White Pine		7	Cords		
White Spruce		10	Cords			
5	Beech	Sawtimber	0.5	MBF	32.8	\$20,049.50
	Black Ash		6.6	MBF		
	Black Cherry		1.5	MBF		
	Green Ash		154.2	MBF		
	Paper Birch		0.4	MBF		
	Red Maple		48.3	MBF		
	Yellow Birch		3.0	MBF		
	Balsam Fir	Pulpwood	7	Cords		
	Mixed Hardwood		476	Cords		
	<i>Beech</i>		3	<i>Cords</i>		
	<i>Black Ash</i>		108	<i>Cords</i>		

DESCRIPTION OF TIMBER BY PAYMENT UNIT (PU), CON'T

PU	MARKET GROUP	PRODUCT	QUANTITY	UNIT	ACRES	ADVERTISE PRICE	
5 con't	<i>Black Cherry</i>	<i>Pulpwood</i>	1	<i>Cords</i>			
	<i>Green Ash</i>		243	<i>Cords</i>			
	<i>Red Maple</i>		119	<i>Cords</i>			
	<i>Yellow Birch</i>		2	<i>Cords</i>			
	Paper Birch		6	Cords			
	Quaking Aspen		3	Cords			
	White Spruce		3	Cords			
	6		Beech	Sawtimber			1.1
Black Ash		2.0	MBF				
Green Ash		51.0	MBF				
Red Maple		142.2	MBF				
Balsam Fir		Pulpwood	15		Cords		
Mixed Hardwood			504		Cords		
<i>Beech</i>			12		<i>Cords</i>		
<i>Black Ash</i>			26		<i>Cords</i>		
<i>Green Ash</i>			101		<i>Cords</i>		
<i>Red Maple</i>			360		<i>Cords</i>		
<i>Yellow Birch</i>			5		<i>Cords</i>		
Paper Birch			4		Cords		
Quaking Aspen		6	Cords				
White Pine		6	Cords				
White Spruce		7	Cords				
7		Beech	Sawtimber		1.5	MBF	44.9
	Black Ash	2.7		MBF			
	Green Ash	70.6		MBF			
	Red Maple	196.9		MBF			
	Balsam Fir	Pulpwood		21	Cords		
	Mixed Hardwood			697	Cords		
	<i>Beech</i>			16	<i>Cords</i>		
	<i>Black Ash</i>			35	<i>Cords</i>		
	<i>Green Ash</i>			140	<i>Cords</i>		
	<i>Red Maple</i>			500	<i>Cords</i>		
	<i>Yellow Birch</i>			6	<i>Cords</i>		
	Paper Birch			6	Cords		
	Quaking Aspen	8		Cords			
	White Pine	8		Cords			
	White Spruce	9		Cords			
	8	Beech		Sawtimber	0.4	MBF	
Black Ash		5.1	MBF				
Black Cherry		1.1	MBF				
Green Ash		117.0	MBF				
Paper Birch		0.4	MBF				
Red Maple		36.7	MBF				
Yellow Birch		2.3	MBF				
Balsam Fir		Pulpwood	5		Cords		
Mixed Hardwood			360		Cords		
<i>Beech</i>			3		<i>Cords</i>		
<i>Black Ash</i>			81		<i>Cords</i>		
<i>Black Cherry</i>			1		<i>Cords</i>		
<i>Green Ash</i>			184		<i>Cords</i>		
<i>Red Maple</i>			90		<i>Cords</i>		
<i>Yellow Birch</i>			1		<i>Cords</i>		
Paper Birch			4		Cords		
Quaking Aspen			2		Cords		
White Spruce			2		Cords		

TOTAL:	1,293.5	MBF
--------	---------	-----

TOTAL:	3,469	Cords
--------	-------	-------

Sale Specific Conditions & Requirements

Sale Name: Cherry Ridge Hardwoods

Sale Number: 33-001-21 Seq#: 1

1 - Sale Area

1.2 - Boundaries

1.2.1 - Painted boundaries (9/19)

The sale boundary and Payment Unit boundaries are marked and identified by blue, red, and yellow paint. Exterior sale boundary lines against private property are marked with blue paint. Exterior sale boundary lines against state are marked with red paint. Interior Payment Unit boundaries are marked with yellow paint. Retention patches are marked with red paint; no harvesting activities may occur within these areas. The painted boundary line trees are not Included Timber and are to be protected unless marked with orange paint. Yellow painted trees designating an interior Payment Unit boundary are only to be cut when all surrounding Payment Units have been paid.

2 - Timber Specifications

2.1 - Included Timber

2.1.1 - Clearcut unit(s) with unmerchantable trees (6/14)

Within Payment Unit(s) 3 - 8, cut all trees that are three (3) inches or more at DBH, except cedar and hemlock. Within Payment Unit(s) 4, 6, and 7, also leave any trees that are marked with green paint above and below stump height.

2.1.3 - Cut tree marked unit(s) (12/08)

Within Payment Unit(s) 1, all trees are designated for cutting when marked with orange paint above and below stump height, regardless of merchantability.

2.1.7 - Leave tree marked unit(s) (6/14)

Within Payment Unit(s) 2, cut all beech trees that are three (3) inches or more at DBH, except beech trees that are marked with green paint above and below stump height. Also, all trees marked with orange paint above and below stump height are designated to be cut.

2.1.9 - Harvest exception (12/08)

Do not cut any cedar or hemlock trees other than those that are necessary to remove in order to operate within the sale area. Every effort must be made to preserve the existing cedar and hemlock and to leave an intact stand upon sale completion. All cut cedar and hemlock shall be piled separately by products and scaled in the woods unless other scaling arrangements are agreed to by the Unit Manager or his/her representative. Stumpage prices for both species shall be \$50.00 per cord for posts and pulpwood, and \$100 per cord for bolts and sawlogs.

3 - Payments

3.3 - Pre-measured Sales

3.3.4 - Dividing payment units (7/14)

Payment Unit(s) with a purchase value of \$18,000 or more may be divided at the request of the Purchaser and upon approval of the Unit Manager. Dividing Payment Units is a contract modification which requires a Timber Sale Contract Amendment. There will be only one division per Payment Unit.

4 - Transportation

4.1 - Construction

4.1.5 - Culverts (5/14)

Roads may require the installation of culverts for cross drainage or at natural drainage-ways. If culverts are needed in these locations, their placement will be specified by the sale administrator and they shall be installed prior to hauling. The culverts shall be new, corrugated metal or plastic gauge. Culverts will be a minimum of 18 inches in diameter and 24 feet in length. If culverts are removed, fill shall be removed from wetland soils as specified. Soils shall be maintained and left in a non-erodible condition, with water bars, seed, fertilizer, mulch, and slash installed as directed by the sale administrator and as specified in the BMP manual. Stream crossing permits, if needed, will be obtained by the DNR.

4.1.6 - Road construction (1/09)

Construction of new roads or improvements of existing roads shall be done in such a way as to minimize the environmental and visual impacts. Merchantable trees shall be cut and utilized unless otherwise directed. Non-merchantable trees shall be severed and laid flat on the ground. Slash shall be scattered, and not left in windrows and kept a minimum of 10 feet back from the road edge. Stumps shall be set upright, not left on edge, and be moved at least 10 feet away from the road edge. Disturbed soil shall be feathered into the woods and not left in berms or windrows.

4.1.7 - Road closure (10/11)

All new roads built into the sale must be blocked to vehicle traffic upon completion of the sale. Overgrown roads that are reopened shall be considered new roads. In general, this will require constructing a four (4') foot high berm of stumps and logs covered with earth. These roads must be rendered impassable to cars and trucks. Contact the sale administrator for specific details of design and placement.

4.2 - Maintenance

4.2.3 - Road maintenance (8/13)

The following road maintenance is required: Within 60 days of completion of hauling, or if no hauling occurs for 60 days, the road must be maintained and graded. This includes cleaning of drainage areas, grading, crowning, and filling with gravel, if necessary. Damages will be assessed if grading/repair does not occur.

4.4 - Access

4.4.1 - Private property access (3/11)

Permission for access across private land is the responsibility of the Purchaser.

5 - Operations

5.2 - Conduct of Operations

5.2.2 - Hazard Trees/Snags

5.2.2.1 - Den trees (10/16)

Obvious hollow and/or den trees shall be protected and left standing unless they are a safety hazard.

5.2.3 - Operating Restrictions

5.2.3.1 - Operating restrictions (9/11)

Within Payment Unit(s) 3 - 5 and 8, cutting, skidding, and hauling are limited to the period of December 1 to March 31, unless there is an extended period of dry or frozen conditions, and the sale administrator approves harvesting activities. This restriction is because of low and wet conditions in these Payment Units.

5.2.3.3 - Bark slippage restriction (3/09)

Within Payment Unit(s) 1 and 2, unless changed by written agreement, cutting and skidding are not permitted during the period of April 15 to July 15. This restriction is because of bark slippage.

5.2.17 - Timber Mats and Interlocking Composite Mats (10/20)

Some roads or skid trails may require extra protection such as that afforded by timber mats, interlocking composite mats, or another approved system. If used, approximately 250 to 300 feet of road or trail will need extra protection at locations shown on the Timber Sale Map. If available, mats may be borrowed from the DNR. A Timber Sale Contract Supplement will be used to document the Purchaser's use of the DNR's mats. Contact the sale administrator regarding availability and pick-up. Timber mats are available from various field offices. Composite mats are only available from the Grayling field office and the Marquette ICC. The Purchaser is responsible for picking up and hauling the mats to and from the site. The composite mats will require DNR staff onsite for installation and removal. Contact the sale administrator to schedule at least 30 days before desired install/removal date. All mats must be cleaned prior to drop off. This may include, but is not limited to, power washing and brushing to remove mud and debris. A charge of \$700.00 per timber mat and \$2,000.00 per composite mat will be assessed for all damaged or non-returned mats. Damage for the crane/timber mats is defined as three or more broken cants. Damage for the composite mats is defined as cracked or broken mats.

5.2.38 - No decking against live trees (2/04)

Cut products may not be decked against unmarked or designated leave trees.

5.4 - Soil Protection

5.4.1 - Rutting restriction, general (7/16)

Operations are to cease immediately if equipment and weather conditions result in rutting of roads and/or skid trails which is 12 inches or greater in depth and 50 feet in length. The Unit Manager or his/her representative may restrict hauling and/or skidding if ruts exceed the specified depth. With the Unit Manager or his/her representative's approval, the Purchaser may return to the area when the risk of rutting has decreased.

6 - Safety and Fire Prevention

6.2 - Signing

6.2.1 - Road posting (10/20)

The Purchaser is responsible for posting and maintaining caution signs on public roads prior to beginning operations. The road must be posted at appropriate distances from the Sale Area to warn of logging activity and truck traffic. Signs must be removed when harvest operations are suspended or completed. The Purchaser will provide these signs.

Specifically, signage will be required along Jimtown F3 Road during operations on Payment Unit 1.



TIMBER SALE MAP

This information provided by authority of Part 525, 1994 PA 451, as amended.

Forest Management Unit Escanaba	County Menominee	Mapped By Urlich	Date 04/14/2021	Page 1	of 1
Township 35N	Range 25W	Section(s) and Subdivision(s) SES.W.S1/2SE Sec29, E1/2SW Sec31, N1/2NE,SENE,NESE Sec32, NW,NE,W1/2SW,NESE Sec33	Scale 1:7,920		

Cover Type				Density	
A = Aspen	H = Hemlock	N = Marsh	U = Upland Brush	0 = Non Stocked	5 = Pole Timber Medium
B = Paper Birch	J = Jack Pine	O = Oak	UM = Upland Mixed	1 = Seedling Sapling Poor	6 = Pole Timber Well
C = Cedar	L = Lowland Brush	P = Lowland Poplar	V = Bog or Marsh	2 = Seedling Sapling Medium	7 = Saw Timber Poor
D = Tread Bog	LM = Lowland Mixed	Q = Mixed Swamp Conifer	W = White Pine	3 = Seedling Sapling Well	8 = Saw Timber Medium
E = Swamp Hardwoods	M = Mpl. Ech. Birch	R = Red Pine	X = Non Stocked	4 = Pole Timber Poor	9 = Saw Timber Well
F = Spruce Fir	MC = Mixed Conifer	S = Black Spruce	Z = Water		
G = Creas	MD = Mixed Deciduous	T = Tamarack			

PU	Acres
1	17.1



Cherry Ridge Hardwoods Unit 1

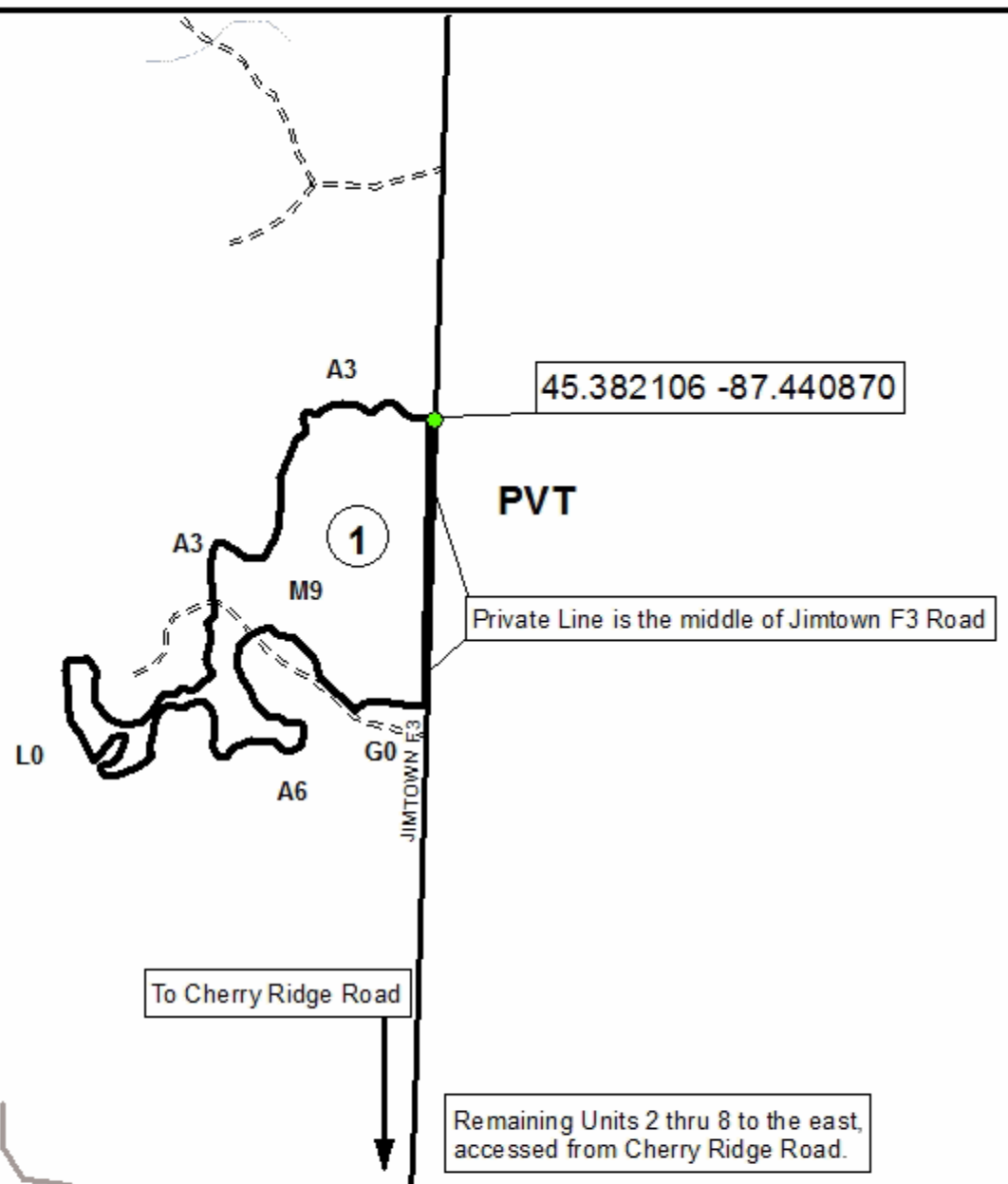
Compartment 56 & 57

236 Acres



Legend

- == Forest Access Route
- Paved Road
- Private
- Against State (Red)
- ⊖ Payment Unit (Yellow)
- Private Line (Blue)





Sale Number	Year
33 - 001	21

TIMBER SALE MAP

This information provided by authority of Part 525, 1994 PA 451 as amended.

Forest Management Unit Escanaba	County Menominee	Mapped By Urlich	Date 04/08/2021	Page 1	of 1
Township 35N	Range 25W	Section(s) and Subdivision(s) SESW, S1/2SE Sec29, E1/2SW Sec31 N1/2NE SENE NESE Sec32, NW/NE W1/2SW NESE Sec33	Scale 1:6,110		

Cover Type				Density	
A = Aspen	H = Hemlock	N = Marsh	U = Upland Brush	0 = Non Stocked	5 = Pole Timber Medium
B = Paper Birch	J = Jack Pine	O = Oak	UM = Upland Mixed	1 = Seeding Sapling Poor	6 = Pole Timber Well
C = Cedar	L = Lowland Brush	P = Lowland Poplar	V = Bog or Marsh	2 = Seeding Sapling Medium	7 = Saw Timber Poor
D = Tread Bog	LM = Lowland Mixed	Q = Mixed Swamp Conifer	W = White Pine	3 = Seeding Sapling Well	8 = Saw Timber Medium
E = Swamp Hardwoods	M = Mpl. Ech. Birch	R = Red Pine	X = Non Stocked	4 = Pole Timber Poor	9 = Saw Timber Well
F = Spruce Fir	MC = Mixed Conifer	S = Black Spruce	Z = Water		
C = Cress	MD = Mixed Deciduous	T = Tamarack			

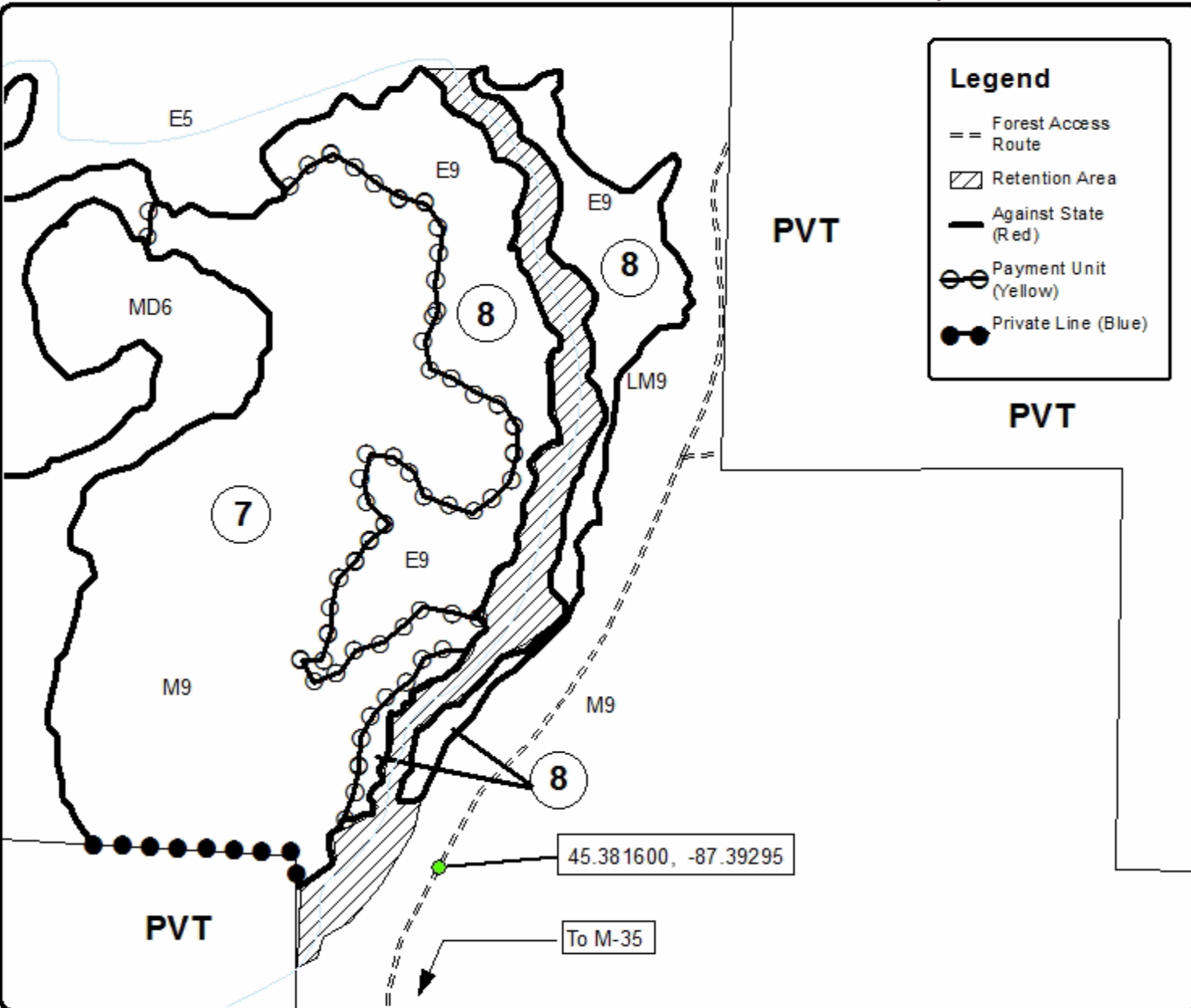
PU	Acres
7	44.9
8	24.9



Cherry Ridge Hardwoods

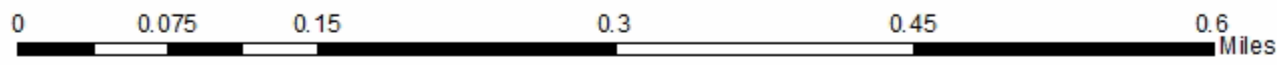
Compartment 56 & 57

236 Acres



Legend

- Forest Access Route
- ▨ Retention Area
- Against State (Red)
- Payment Unit (Yellow)
- Private Line (Blue)





TIMBER SALE MAP

This information provided by authority of Part 525, 1994 PA 451, as amended.

Sale Number	Year
33 - 001	21

Forest Management Unit Escanaba	County Menominee	Mapped By Urlich	Date 04/14/2021	Page 1	of 1
Township 35N	Range 25W	Section(s) and Subdivision(s) SES W 51/2SE Sec29, E 1/2SW Sec31, N 1/2NE, SENE, NESE Sec32, NW, NE, W 1/2SW, NESE Sec33	Scale 1:15,840		

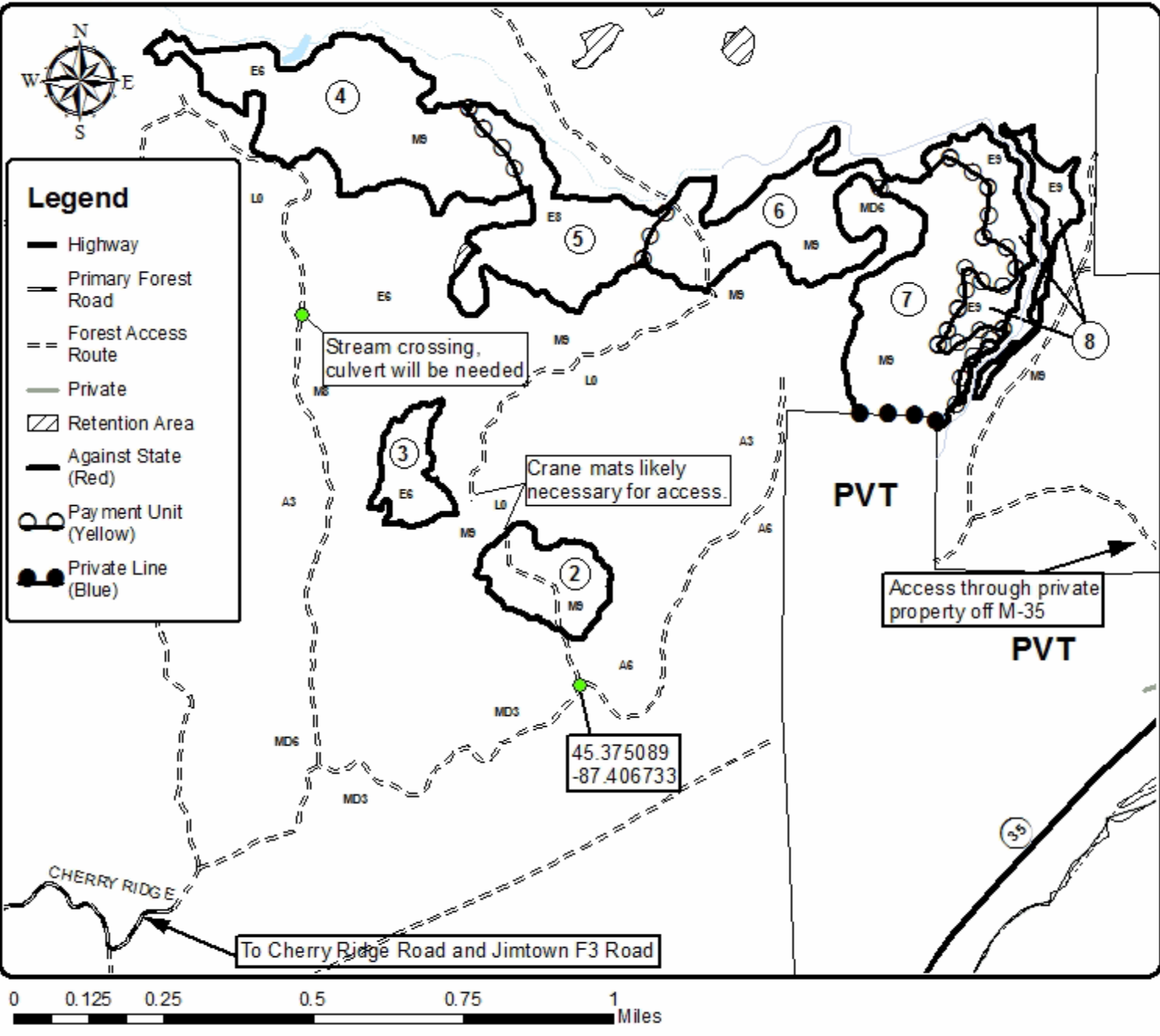
Cover Type				Density			
A = Aspen	H = Hemlock	N = Marsh	U = Upland Brush	0 = Non Stocked	5 = Pole Timber Medium		
B = Paper Birch	J = Jack Pine	O = Oak	UM = Upland Mixed	1 = Seeding Sapling Poor	6 = Pole Timber Well		
C = Cedar	L = Lowland Brush	P = Lowland Poplar	V = Bog or Marsh	2 = Seeding Sapling Medium	7 = Saw Timber Poor		
D = Tread Bog	LM = Lowland Mixed	Q = Mixed Swamp Conifer	W = White Pine	3 = Seeding Sapling Well	8 = Saw Timber Medium		
E = Swamp Hardwoods	M = Mpl. Ech. Bch	R = Red Pine	X = Non Stocked	4 = Pole Timber Poor	9 = Saw Timber Well		
F = Spruce Fir	MC = Mixed Conifer	S = Black Spruce	Z = Water				
G = Cress	MD = Mixed Deciduous	T = Tamarack					

PU	Acres	PU	Acres
2	17	6	32.4
3	11	7	44.9
4	55.9	8	24.9
5	32.8		

Cherry Ridge Hardwoods (East)

Compartment 56 & 57

236 Acres



TIMBER SALE INFORMATION

Spring Aspen (33-026-21)

T37N, R28W, SEC. 28.

Menominee County (Advertised Price \$31,086.75)

SALE NOTE: Aspen sale that can be harvested during most periods of time. The old railroad grade will be used to access the sale. The best access is off of the Miscauna Creek Road. Some roadwork will be required, prior to any hauling taking place. Gravel is located about a mile from the Sale Area.

Access may be through private land.

A timber sale contract for this lump sum, sealed bid timber sale will be awarded to the responsible bidder offering the highest sealed bid price. All units of volume listed below were estimated using the Inventory Manager computer program and the new Michigan taper model. Bids must be at or above the following advertised price for each product and species:

<u>PRODUCTS & SPECIES</u>	<u>ESTIMATED UNITS*</u>	<u>ADVERTISED PRICE</u>
Sawtimber		
Red Oak	39.1 MBF	\$ 128.00 / MBF
Pulpwood		
Balsam Fir	45 Cords	\$ 12.20 / Cord
Black Spruce	7 Cords	\$ 12.80 / Cord
Mixed Aspen	1,424 Cords	\$ 16.30 / Cord
Mixed Hardwood	84 Cords	\$ 16.25 / Cord
Red Oak	47 Cords	\$ 18.45 / Cord

* The total volume is statistically estimated within plus (+) or minus (-) 7.11 percent. There are an estimated 1,535 cords on this timber sale, plus or minus 109 cords at the 95% confidence level. The estimated units are final and not subject to adjustment. Prospective bidders are urged to examine this timber and to make their own estimates of quantity and quality.

BOND AND PAYMENT SCHEDULE:

- A bond in the amount of \$1,554.00 to insure faithful performance of the conditions of the contract will be deposited by the successful bidder within 21 days of the sale award.
- Cutting in any sale or unit without the required advance payment would be considered a trespass.
- Total payment must be paid in advance or according to the following schedule :
 - Ten percent (10%) of the sale value must be paid within 21 days of the sale award.
 - The 10% down payment will be credited towards the first unit cut.
 - Payment for each of the following units must be made before cutting begins in that unit:

PAYMENT UNIT NUMBER	PERCENT OF TOTAL SALE VALUE
01	19.1%
02	24.8%
03	27.1%
04	29.0%
- If no cutting takes place, the 10% down payment will not be refunded.
- Operations on the contract issued will terminate on 09/30/2024.

SALE STATISTICS

Volumes were calculated in cubic feet using the Michigan taper model. Cubic foot volume includes all wood inside bark for the product indicated. For display purposes, cubic feet were converted to cords and MBF using a simple conversion factor, e.g. 79 cubic feet per cord and 185 cubic feet per MBF. The cubic foot volumes are precise; the cords and MBF volumes are not. Cubic foot volume cannot be directly converted to cords or boards with precision.

SALE VOLUMES

The total estimated sale volume may not equal the sum of the species/products due to the nature of statistical calculations associated with double sampling methodology.

VOLUME		STATISTICAL RANGE IN CORDS		
TOTAL CUBIC FEET	TOTAL CORDS	PERCENT ERROR	MINIMUM	MAXIMUM
121,295	1,535	7.11%	1,426	1,645

VDU VOLUMES

A VDU is a Volume Determination Unit. Volumes and their associated statistics are calculated at the VDU level and summarized to the sale level. There is often a one to one relationship between a VDU and a Payment Unit, but not always, depending on the cruise design. Refer to the VDU TO PAYMENT UNIT table.

VDU	VOLUME		PERCENT ERROR	RANGE IN CORDS	
	TOTAL CUBIC FEET	TOTAL CORDS		MINIMUM	MAXIMUM
2	531,973	6,734	7.12%	6,255	7,213
TOTAL:	531,973	6,734		6,255	7,213

VDU TO PAYMENT UNIT

When a VDU is associated with more than one Payment Unit (PU), the VDU volumes are assigned to the PU based on acres of the VDU within the PU.

VDU	VDU ACRES	PU	PU ACRES
2	52.4	1	10.0
		2	13.0
		3	14.2
		4	15.2
TOTAL:	52.4		52.4

DESCRIPTION OF TIMBER BY PAYMENT UNIT (PU)

PU	MARKET GROUP	PRODUCT	QUANTITY	UNIT	ACRES	ADVERTISE PRICE
1	Red Oak	Sawtimber	7.5	MBF	10.0	\$5,942.25
	Balsam Fir	Pulpwood	9	Cords		
	Black Spruce		1	Cords		
	Mixed Aspen		272	Cords		
	<i>B. T. Aspen</i>		175	<i>Cords</i>		
	<i>Quaking Aspen</i>		97	<i>Cords</i>		
	Mixed Hardwood		16	Cords		
	<i>Red Maple</i>		15	<i>Cords</i>		
	<i>White Ash</i>		1	<i>Cords</i>		
	Red Oak		9	Cords		
2	Red Oak	Sawtimber	9.7	MBF	13.0	\$7,718.00
	Balsam Fir	Pulpwood	11	Cords		
	Black Spruce		2	Cords		
	Mixed Aspen		354	Cords		
	<i>B. T. Aspen</i>		228	<i>Cords</i>		
	<i>Quaking Aspen</i>		126	<i>Cords</i>		
	Mixed Hardwood		20	Cords		
	<i>Red Maple</i>		19	<i>Cords</i>		
	<i>White Ash</i>		1	<i>Cords</i>		
	Red Oak		12	Cords		
3	Red Oak	Sawtimber	10.6	MBF	14.2	\$8,434.20
	Balsam Fir	Pulpwood	12	Cords		
	Black Spruce		2	Cords		
	Mixed Aspen		386	Cords		
	<i>B. T. Aspen</i>		249	<i>Cords</i>		
	<i>Quaking Aspen</i>		137	<i>Cords</i>		
	Mixed Hardwood		23	Cords		
	<i>Red Maple</i>		21	<i>Cords</i>		
	<i>White Ash</i>		2	<i>Cords</i>		
	Red Oak		13	Cords		
4	Red Oak	Sawtimber	11.3	MBF	15.2	\$8,992.30
	Balsam Fir	Pulpwood	13	Cords		
	Black Spruce		2	Cords		
	Mixed Aspen		412	Cords		
	<i>B. T. Aspen</i>		266	<i>Cords</i>		
	<i>Quaking Aspen</i>		146	<i>Cords</i>		
	Mixed Hardwood		25	Cords		
	<i>Red Maple</i>		23	<i>Cords</i>		
	<i>White Ash</i>		2	<i>Cords</i>		
	Red Oak		13	Cords		
TOTAL:			39.1	MBF		
TOTAL:			1,607	Cords		

Sale Specific Conditions & Requirements

Sale Name: Spring Aspen

Sale Number: 33-026-21 Seq#: 1

1 - Sale Area

1.2 - Boundaries

1.2.1 - Painted boundaries (9/19)

The sale boundary and Payment Unit boundaries are marked and identified by blue, red, and yellow paint. Exterior sale boundary lines against private property are marked with blue paint. Exterior sale boundary lines against state are marked with red paint. Interior Payment Unit boundaries are marked with yellow paint. Retention patches are marked with red paint; no harvesting activities may occur within these areas. The painted boundary line trees are not Included Timber and are to be protected. Yellow painted trees designating an interior Payment Unit boundary are only to be cut when all surrounding Payment Units have been paid for.

2 - Timber Specifications

2.1 - Included Timber

2.1.1 - Clearcut unit(s) with unmerchantable trees (6/14)

Within Payment Unit(s) 1 - 4, cut all trees that are three (3) inches or more at DBH; except do not cut red and white pine.

3 - Payments

3.3 - Pre-measured Sales

3.3.4 - Dividing payment units (7/14)

Payment Unit(s) \$18,000 in value or greater may be divided at the request of the Purchaser and upon approval of the Unit Manager. Dividing Payment Units is a contract modification which requires a Timber Sale Contract Amendment. There will be only one division per Payment Unit.

4 - Transportation

4.1 - Construction

4.1.8 - Road work (1) (8/07)

The following road work is required: the Purchaser must haul and spread 70 cubic yards of gravel on the access road, from the old railroad grade up to the north end of Payment Unit 2. With two loads needing to be placed over the existing culvert just north of the old grade. Gravel is available from a state pit, which is about one mile from the Sale Area. All road work must be completed prior to any hauling taking place.

The old railroad grade may be used to access the sale. The portion of the grade that will be used to haul on, will need to be leveled prior to use.

4.2 - Maintenance

4.2.1 - Hauling restriction (12/08)

Hauling may be restricted on forest roads by the Unit Manager or his/her representative. The restriction may occur during spring breakup or during other wet weather conditions.

4.2.4 - Grading (10/16)

For completion of the sale, state forest roads must be graded. In general, this will require a road grader or bulldozer to shape up the roads after forest products have been hauled off site. This includes cleaning of drainage areas, grading, crowning, and filling with gravel, if necessary. The grading equipment to be used must be approved by the Unit Manager or his/her representative.

6 - Safety and Fire Prevention

6.2 - Signing

6.2.1 - Road posting (10/20)

The Purchaser is responsible for posting and maintaining caution signs on the old railroad grade prior to beginning operations. The road must be posted at appropriate distances from the Sale Area to warn of logging activity and truck traffic. Signs must be removed when harvest operations are suspended or completed. The Purchaser will provide these signs.

7 - Other Conditions

7.3 - Contract Modifications

7.3.2 - Modification for oak wilt (2/05)

Within the sale area, there may be patches of oak wilt. If oak wilt is identified within the sale area, this contract may be modified. The following modifications could occur: time of cutting, species to cut, volume to harvest, or various others dealing with the treatment of oak wilt. If a species is not specified in this contract, it shall be paid for at the average price received for that species and product.



TIMBER SALE MAP

This information provided by authority of Part 525, 1994 PA 451, as amended.

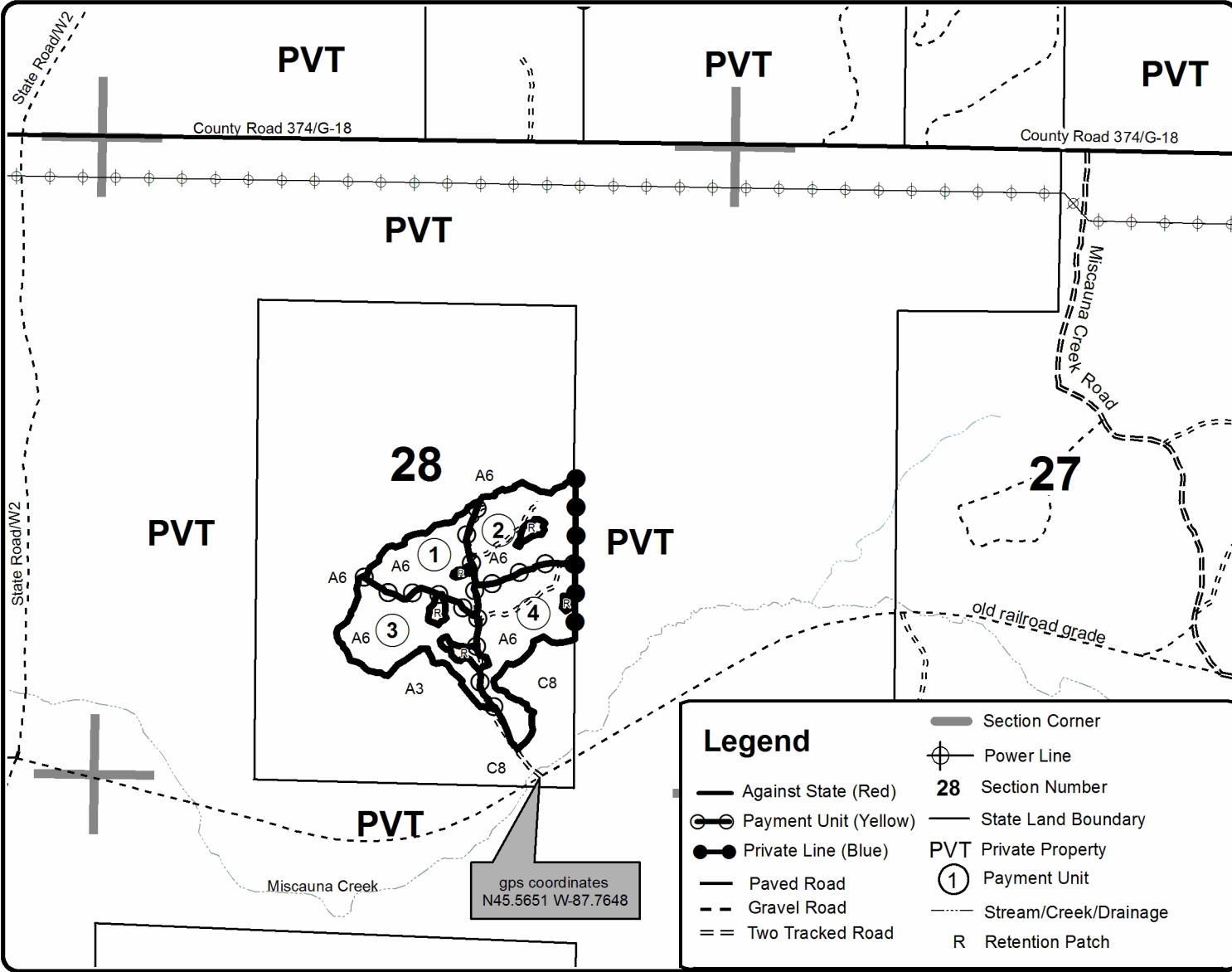
Sale Number	Year
33-026	21

Forest Management Unit	County	Mapped By	Date	Page	of
Escanaba Management Unit	Menominee County	Beudo	4/14/2021	1	1
Township	Range	Section(s) and Subdivision(s)	Scale		
37N	28W	Sec 28 - E1/2SW, W1/2SE.	1:15,840		

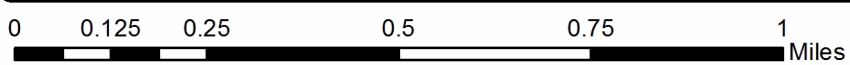
Cover Type				Density	
A = Aspen	H = Hemlock	N = Marsh	U = Upland Brush	0 = Non Stocked	5 = Pole Timber Medium
B = Paper Birch	J = Jack Pine	O = Oak	UM = Upland Mixed	1 = Seedling Sapling Poor	6 = Pole Timber Well
C = Cedar	L = Lowland Brush	P = Lowland Poplar	V = Bog or Marsh	2 = Seedling Sapling Medium	7 = Saw Timber Poor
D = Treed Bog	LM = Lowland Mixed	Q = Mixed Swamp Conifer	W = White Pine	3 = Seedling Sapling Well	8 = Saw Timber Medium
E = Swamp Hdwoods	M = Mpl, Bch, Brch	R = Red Pine	X = Non Stocked	4 = Pole Timber Poor	9 = Saw Timber Well
F = Spruce Fir	MC = Mixed Conifer	S = Black Spruce	Z = Water		
G = Grass	MD = Mixed Deciduous	T = Tamarack			

PU	Acres	PU	Acres
1	10.0	3	14.2
2	13.0	4	15.2

Spring Aspen
Compartment 12
52.4 Acres



gps coordinates
N45.5651 W-87.7648



TIMBER SALE INFORMATION

Learning Curve Mix (33-027-21)
T37N, R28W, SEC. 32; T37N, R28W, SEC. 33.
Menominee County (Advertised Price \$75,941.45)

SALE NOTE: The entire sale can be accessed through state land, but the best access into Payment Units 1 and 2 is through private property. Payment Units 6 and 7 are the only two units that are restricted to frozen ground conditions.

A timber sale contract for this lump sum, sealed bid timber sale will be awarded to the responsible bidder offering the highest sealed bid price. All units of volume listed below were estimated using the Inventory Manager computer program and the new Michigan taper model. Bids must be at or above the following advertised price for each product and species:

<u>PRODUCTS & SPECIES</u>	<u>ESTIMATED UNITS*</u>	<u>ADVERTISED PRICE</u>
Sawtimber		
Black Ash	3.0 MBF	\$ 14.00 / MBF
Northern Pin Oak	2.6 MBF	\$ 79.00 / MBF
Paper Birch	2.5 MBF	\$ 47.00 / MBF
Red Maple	16.6 MBF	\$ 80.00 / MBF
Red Oak	126.8 MBF	\$ 128.00 / MBF
Pulpwood		
Balsam Fir	163 Cords	\$ 12.20 / Cord
Mixed Aspen	2,238 Cords	\$ 16.30 / Cord
Mixed Hardwood	420 Cords	\$ 16.25 / Cord
Mixed Oak	165 Cords	\$ 18.45 / Cord
Mixed Spruce	46 Cords	\$ 12.80 / Cord
N. White Cedar	59 Cords	\$ 10.40 / Cord
Red Pine	71 Cords	\$ 42.40 / Cord
Tamarack	3 Cords	\$ 11.00 / Cord
White Pine	297 Cords	\$ 18.30 / Cord

* The total volume is statistically estimated within plus (+) or minus (-) 4.41 percent. There are an estimated 3,439 cords on this timber sale, plus or minus 152 cords at the 95% confidence level. The estimated units are final and not subject to adjustment. Prospective bidders are urged to examine this timber and to make their own estimates of quantity and quality.

BOND AND PAYMENT SCHEDULE:

1. A bond in the amount of \$3,797.00 to insure faithful performance of the conditions of the contract will be deposited by the successful bidder within 21 days of the sale award.
2. Cutting in any sale or unit without the required advance payment would be considered a trespass.
3. Total payment must be paid in advance or according to the following schedule :
 - (a) Ten percent (10%) of the sale value must be paid within 21 days of the sale award.
 - (b) The 10% down payment will be credited towards the first unit cut.
 - (c) Payment for each of the following units must be made before cutting begins in that unit:

PAYMENT UNIT NUMBER	PERCENT OF TOTAL SALE VALUE
01	18.9%
02	16.5%
03	16.8%
04	14.0%
05	22.7%
06	4.7%
07	2.0%
08	2.2%
09	2.2%

4. If no cutting takes place, the 10% down payment will not be refunded.
5. Operations on the contract issued will terminate on 09/30/2024.

SALE STATISTICS

Volumes were calculated in cubic feet using the Michigan taper model. Cubic foot volume includes all wood inside bark for the product indicated. For display purposes, cubic feet were converted to cords and MBF using a simple conversion factor, e.g. 79 cubic feet per cord and 185 cubic feet per MBF. The cubic foot volumes are precise; the cords and MBF volumes are not. Cubic foot volume cannot be directly converted to cords or boards with precision.

SALE VOLUMES

The total estimated sale volume may not equal the sum of the species/products due to the nature of statistical calculations associated with double sampling methodology.

VOLUME			STATISTICAL RANGE IN CORDS	
TOTAL CUBIC FEET	TOTAL CORDS	PERCENT ERROR	MINIMUM	MAXIMUM
271,712	3,439	4.41%	3,287	3,591

VDU VOLUMES

A VDU is a Volume Determination Unit. Volumes and their associated statistics are calculated at the VDU level and summarized to the sale level. There is often a one to one relationship between a VDU and a Payment Unit, but not always, depending on the cruise design. Refer to the VDU TO PAYMENT UNIT table.

	VOLUME			RANGE IN CORDS	
VDU	TOTAL CUBIC FEET	TOTAL CORDS	PERCENT ERROR	MINIMUM	MAXIMUM
6	864,990	10,949	5.51%	10,346	11,552
11	39,595	501	8.82%	457	545
17	16,671	211	23.31%	162	260
21	9,109	115	10.35%	103	127
22	7,459	94	22.84%	73	116
23	8,208	104	24.76%	78	130
TOTAL:	946,032	11,975		11,220	12,731

VDU TO PAYMENT UNIT

When a VDU is associated with more than one Payment Unit (PU), the VDU volumes are assigned to the PU based on acres of the VDU within the PU.

VDU	VDU ACRES	PU	PU ACRES
6	93.8	1	26.8
		2	23.4
		3	23.8
		4	19.8
11	22.0	5	22.0
17	18.8	6	18.8
21	4.2	7	4.2
22	12.8	8	12.8
23	14.9	9	14.9
TOTAL:	166.5		166.5

DESCRIPTION OF TIMBER BY PAYMENT UNIT (PU)

PU	MARKET GROUP	PRODUCT	QUANTITY	UNIT	ACRES	ADVERTISE PRICE
1	Northern Pin Oak	Sawtimber	0.8	MBF	26.8	\$14,382.60
		Red Maple	2.6	MBF		
		Red Oak	14.3	MBF		
		Balsam Fir	17	Cords		
		Mixed Aspen	620	Cords		
		<i>B. T. Aspen</i>	369	<i>Cords</i>		
		<i>Balsam Poplar</i>	2	<i>Cords</i>		
		<i>Quaking Aspen</i>	249	<i>Cords</i>		
		Mixed Hardwood	48	Cords		
		<i>Red Maple</i>	48	<i>Cords</i>		
		Mixed Oak	18	Cords		
		<i>Northern Pin Oak</i>	1	<i>Cords</i>		
		<i>Red Oak</i>	17	<i>Cords</i>		
		Mixed Spruce	4	Cords		
		<i>Black Spruce</i>	1	<i>Cords</i>		
		<i>White Spruce</i>	3	<i>Cords</i>		
		Red Pine	3	Cords		
		White Pine	37	Cords		
		2	Northern Pin Oak	Sawtimber		
Red Maple	2.3			MBF		
Red Oak	12.5			MBF		
Balsam Fir	14			Cords		
Mixed Aspen	542			Cords		
<i>B. T. Aspen</i>	323			<i>Cords</i>		
<i>Balsam Poplar</i>	1			<i>Cords</i>		
<i>Quaking Aspen</i>	218			<i>Cords</i>		
Mixed Hardwood	42			Cords		
<i>Red Maple</i>	42			<i>Cords</i>		
Mixed Oak	16			Cords		
<i>Northern Pin Oak</i>	1			<i>Cords</i>		
<i>Red Oak</i>	15			<i>Cords</i>		
Mixed Spruce	3			Cords		
<i>Black Spruce</i>	1			<i>Cords</i>		
<i>White Spruce</i>	2			<i>Cords</i>		
Red Pine	2			Cords		
White Pine	32			Cords		
3	Northern Pin Oak			Sawtimber	0.7	MBF
		Red Maple	2.3	MBF		
		Red Oak	12.7	MBF		
		Balsam Fir	15	Cords		
		Mixed Aspen	552	Cords		
		<i>B. T. Aspen</i>	328	<i>Cords</i>		
		<i>Balsam Poplar</i>	2	<i>Cords</i>		
		<i>Quaking Aspen</i>	222	<i>Cords</i>		
		Mixed Hardwood	43	Cords		
		<i>Red Maple</i>	43	<i>Cords</i>		
		Mixed Oak	16	Cords		
		<i>Northern Pin Oak</i>	1	<i>Cords</i>		
		<i>Red Oak</i>	15	<i>Cords</i>		
		Mixed Spruce	3	Cords		
		<i>Black Spruce</i>	1	<i>Cords</i>		
		<i>White Spruce</i>	2	<i>Cords</i>		
		Red Pine	3	Cords		
		White Pine	32	Cords		
		4	Northern Pin Oak	Sawtimber	0.5	MBF
Red Maple	1.9			MBF		

DESCRIPTION OF TIMBER BY PAYMENT UNIT (PU), CON'T

PU	MARKET GROUP	PRODUCT	QUANTITY	UNIT	ACRES	ADVERTISE PRICE
4 con't	Red Oak	Sawtimber	10.6	MBF		
	Balsam Fir	Pulpwood	12	Cords		
	Mixed Aspen		458	Cords		
	<i>B. T. Aspen</i>		273	<i>Cords</i>		
	<i>Balsam Poplar</i>		1	<i>Cords</i>		
	<i>Quaking Aspen</i>		184	<i>Cords</i>		
	Mixed Hardwood		36	Cords		
	<i>Red Maple</i>		36	<i>Cords</i>		
	Mixed Oak		13	Cords		
	<i>Northern Pin Oak</i>		1	<i>Cords</i>		
	<i>Red Oak</i>		12	<i>Cords</i>		
	Mixed Spruce		3	Cords		
	<i>Black Spruce</i>		1	<i>Cords</i>		
	<i>White Spruce</i>		2	<i>Cords</i>		
	Red Pine		2	Cords		
	White Pine		27	Cords		
5	Red Maple		Sawtimber	7.0	MBF	22.0
	Red Oak	Pulpwood	76.7	MBF		
	Mixed Aspen		51	Cords		
	<i>B. T. Aspen</i>		51	<i>Cords</i>		
	Mixed Hardwood		107	Cords		
	<i>Red Maple</i>		107	<i>Cords</i>		
	Mixed Oak		99	Cords		
	<i>Red Oak</i>		99	<i>Cords</i>		
	Red Pine		44	Cords		
	White Pine		34	Cords		
6	Black Ash		Sawtimber	3.0	MBF	18.8
	Paper Birch	Pulpwood	0.7	MBF		
	Balsam Fir		6	Cords		
	Mixed Aspen		8	Cords		
	<i>Balsam Poplar</i>		8	<i>Cords</i>		
	Mixed Hardwood		61	Cords		
	<i>Black Ash</i>		27	<i>Cords</i>		
	<i>Paper Birch</i>		18	<i>Cords</i>		
	<i>Red Maple</i>		12	<i>Cords</i>		
	<i>Sugar Maple</i>		4	<i>Cords</i>		
	Mixed Spruce		19	Cords		
	<i>Black Spruce</i>		19	<i>Cords</i>		
	Tamarack		3	Cords		
	White Pine		109	Cords		
7	Mixed Hardwood		Pulpwood	61	Cords	4.2
	<i>Black Ash</i>		61	<i>Cords</i>		
	N. White Cedar		54	Cords		
8	Balsam Fir	Pulpwood	51	Cords	12.8	\$1,651.35
	Mixed Oak		3	Cords		
	<i>Northern Pin Oak</i>		3	<i>Cords</i>		
	Mixed Spruce		13	Cords		
	<i>White Spruce</i>		13	<i>Cords</i>		
	Red Pine		13	Cords		
	White Pine		14	Cords		
9	Paper Birch	Sawtimber	1.8	MBF	14.9	\$1,635.80
	Red Maple	Pulpwood	0.5	MBF		
	Balsam Fir		48	Cords		
	Mixed Aspen		7	Cords		
	<i>Quaking Aspen</i>		7	<i>Cords</i>		
	Mixed Hardwood		22	Cords		

DESCRIPTION OF TIMBER BY PAYMENT UNIT (PU), CON'T

PU	MARKET GROUP	PRODUCT	QUANTITY	UNIT	ACRES	ADVERTISE PRICE
9 con't	<i>Black Cherry</i>	<i>Pulpwood</i>	4	<i>Cords</i>		
	<i>Paper Birch</i>		10	<i>Cords</i>		
	<i>Red Maple</i>		8	<i>Cords</i>		
	Mixed Spruce		1	Cords		
	<i>Black Spruce</i>		1	<i>Cords</i>		
	N. White Cedar		5	Cords		
	Red Pine		4	Cords		
	White Pine		12	Cords		
TOTAL:			151.5	MBF		
TOTAL:			3,462	Cords		

Sale Specific Conditions & Requirements

Sale Name: Learning Curve Mix

Sale Number: 33-027-21 Seq#: 1

1 - Sale Area

1.2 - Boundaries

1.2.1 - Painted boundaries (9/19)

The sale boundary and Payment Unit boundaries are marked and identified by blue, red, and yellow paint. Exterior sale boundary lines against private property are marked with blue paint. Exterior sale boundary lines against state are marked with red paint. Interior Payment Unit boundaries are marked with yellow paint. Retention patches are marked with red paint; no harvesting activities may occur within these areas. The painted boundary line trees are not Included Timber and are to be protected. Yellow painted trees designating an interior Payment Unit boundary are only to be cut when all surrounding Payment Units have been paid for.

2 - Timber Specifications

2.1 - Included Timber

2.1.1 - Clearcut unit(s) with unmerchantable trees (6/14)

Within Payment Unit(s) 1 - 4, 6 and 7, cut all trees that are three (3) inches or more at DBH, with the following exceptions:

- Within Payment Units 1 - 6, do not cut trees marked with green paint.
- Within Payment Unit 6, do not cut cedar.

Within Payment Unit 9, cut all trees that are four (4) inches or more at DBH; except do not cut trees marked with green paint.

2.1.2 - Clearcut unit(s) w/o unmerchantable trees (8/11)

Within Payment Unit(s) 8, cut all spruce and balsam fir trees which meet minimum piece specifications in 2.2 Utilization. In addition, cut all pine greater than ten (10) inches at DBH; except for those marked with green paint. Also, cut all oak marked with orange paint.

2.1.5 - Overstory removal unit(s) (8/11)

Within Payment Unit(s) 5, all trees which meet minimum piece specifications in 2.2 Utilization, are designated for cutting; except do not cut trees marked with green paint.

2.1.9 - Harvest exception (12/08)

Do not cut any cedar trees with Payment Unit 6, other than those that are necessary to remove in order to operate within the sale area. Every effort must be made to preserve the existing cedar and to leave an intact stand upon sale completion. All cut cedar shall be piled separately by products and scaled in the woods unless other scaling arrangements are agreed to by the Unit Manager or his/her representative. Stumpage price for cedar shall be \$45.00 per cord.

2.2 - Utilization

2.2.4 - Skidding length (2/14)

Skidding of unlimbed tops or lengths over 17 feet is not permissible within Payment Units 5, 6, and 8.

3 - Payments

3.3 - Pre-measured Sales

3.3.4 - Dividing payment units (7/14)

Payment Unit(s) \$18,000 in value or greater may be divided at the request of the Purchaser and upon approval of the Unit Manager. Dividing Payment Units is a contract modification which requires a Timber Sale Contract Amendment. There will be only one division per Payment Unit.

4 - Transportation

4.2 - Maintenance

4.2.1 - Hauling restriction (12/08)

Hauling may be restricted on forest roads by the Unit Manager or his/her representative. The restriction may occur during spring breakup or during other wet weather conditions.

4.2.4 - Grading (10/16)

For completion of the sale, state forest roads must be graded. In general, this will require a road grader or bulldozer to shape up the roads after forest products have been hauled off site. This includes cleaning of drainage areas, grading, crowning, and filling with gravel, if necessary. The grading equipment to be used must be approved by the Unit Manager or his/her representative.

4.4 - Access

4.4.2 - Alternate route on private property (2/04)

It is the Purchaser's responsibility to obtain access across private land for any routes other than the route shown on the Timber Sale Map.

5 - Operations

5.2 - Conduct of Operations

5.2.3 - Operating Restrictions

5.2.3.1 - Operating restrictions (9/11)

Within Payment Unit(s) 6 and 7, cutting and skidding are limited to the period of December 1 to March 31, unless there is an extended dry or frozen period, and the sale administrator allows harvesting during that period of time. This restriction is because of low wet ground within both Payment Units. A portion of Payment Unit 6 might get dry enough to harvest during the dry summer months.

5.2.3.4 - Oak wilt restriction, no exceptions (1/18)

Within Payment Unit(s) 5, cutting and skidding are not permitted during the period of April 15 to July 15. No exceptions will be granted. This is necessary to reduce the spread of oak wilt.

6 - Safety and Fire Prevention

6.2 - Signing

6.2.1 - Road posting (10/20)

The Purchaser is responsible for posting and maintaining caution signs on the Miscuana Creek Road prior to beginning operations. The road must be posted at appropriate distances from the Sale Area to warn of logging activity and truck traffic. Signs must be removed when harvest operations are suspended or completed. The Purchaser will provide these signs.

7 - Other Conditions

7.3 - Contract Modifications

7.3.2 - Modification for oak wilt (2/05)

Within the sale area, there may be patches of oak wilt. If oak wilt is identified within the sale area, this contract may be modified. The following modifications could occur: time of cutting, species to cut, volume to harvest, or various others dealing with the treatment of oak wilt. If a species is not specified in this contract, it shall be paid for at the average price received for that species and product.

7.5 - Loss

7.5.1 - Deteriorating timber (7/09)

The sale area has received damage from the spruce budworm and oak wilt. The Purchaser should harvest the wood as soon as possible. The Department of Natural Resources is held free of responsibility of any further damage or deterioration due to delay in harvesting.



TIMBER SALE MAP

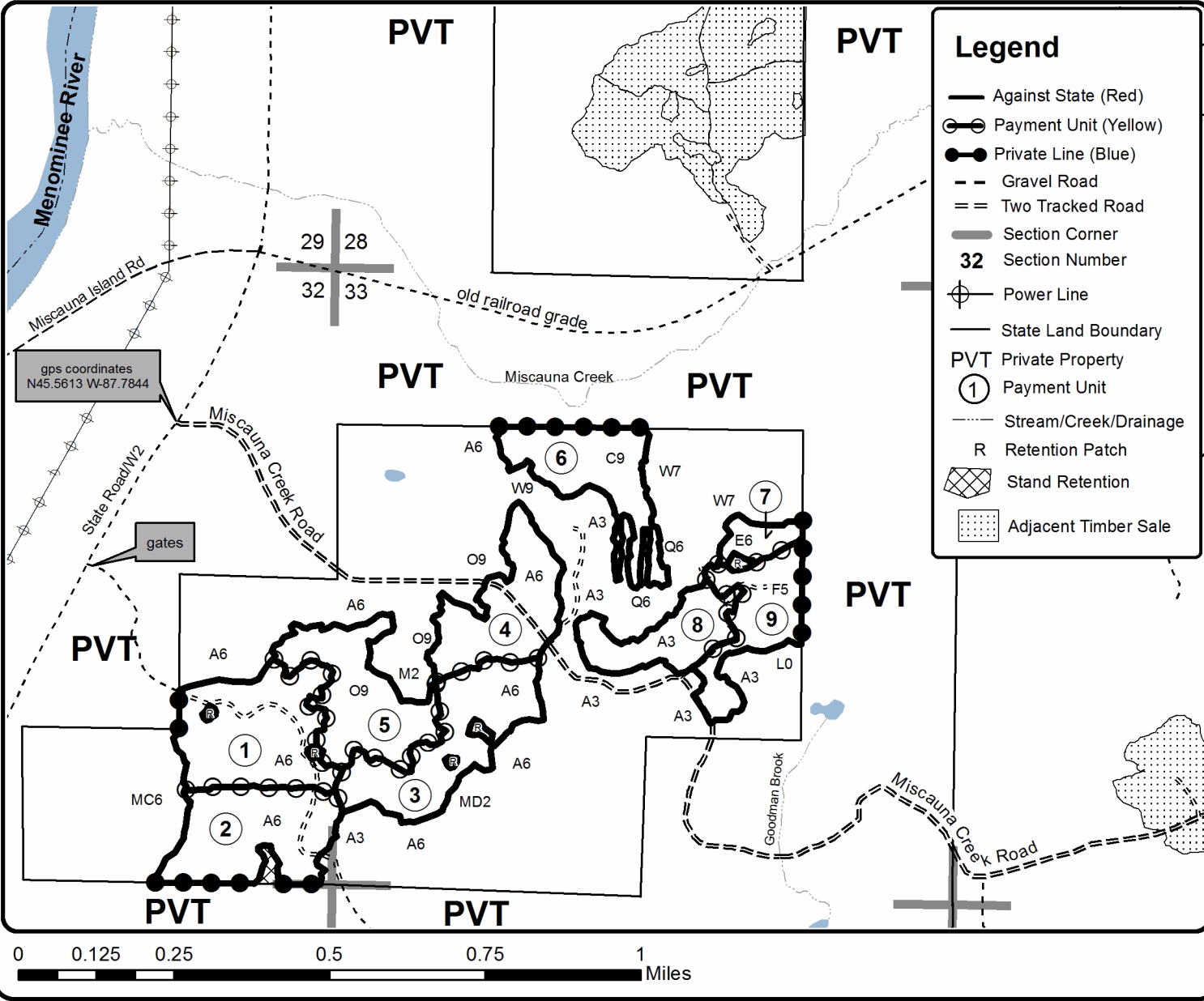
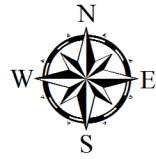
This information provided by authority of Part 525, 1994 PA 451, as amended.

Forest Management Unit Escanaba Management Unit	County Menominee County	Mapped By Beudo	Date 5/4/2021	Page 1	of 1
Township 37N	Range 28W	Section(s) and Subdivision(s) Sec 32 - NESE, S1/2SE; Sec 33 - SENW, SWNE, SW, NWSE.	Scale 1:15,840		

Cover Type				Density	
A = Aspen	H = Hemlock	N = Marsh	U = Upland Brush	0 = Non Stocked	5 = Pole Timber Medium
B = Paper Birch	J = Jack Pine	O = Oak	UM = Upland Mixed	1 = Seedling Sapling Poor	6 = Pole Timber Well
C = Cedar	L = Lowland Brush	P = Lowland Poplar	V = Bog or Marsh	2 = Seedling Sapling Medium	7 = Saw Timber Poor
D = Treed Bog	LM = Lowland Mixed	Q = Mixed Swamp Conifer	W = White Pine	3 = Seedling Sapling Well	8 = Saw Timber Medium
E = Swamp Hdwoods	M = Mpl, Bch, Brch	R = Red Pine	X = Non Stocked	4 = Pole Timber Poor	9 = Saw Timber Well
F = Spruce Fir	MC = Mixed Conifer	S = Black Spruce	Z = Water		
G = Grass	MD = Mixed Deciduous	T = Tamarack			

PU	Acres	PU	Acres
1	26.8	6	18.8
2	23.4	7	4.2
3	23.8	8	12.8
4	19.8	9	14.9
5	22.0		

Learning Curve Mix
 Compartment 12
 166.5 Acres



Cherry Ridge Hardwoods (33-001-21)
T35N, R25W, SEC. 29; T35N, R25W, SEC. 31; T35N, R25W, SEC. 32; T35N,

In response to the notice of sale to be held 3:00 p.m. (local time) on June 29, 2021, I am hereby submitting my sealed bid (firm offer) for the following forest products to be cut. Bids for individual species must be at or above the advertised price. All non-responsive bid forms may be rejected.

<u>PRODUCTS & SPECIES</u>	<u>ESTIMATED VOLUME*</u>	<u>ADVERTISED PRICE</u>	<u>BID PRICE/UNIT</u>
Sawtimber			
Beech	38.3 MBF	\$ 51.00/MBF	\$ _____
Black Ash	27.9 MBF	\$ 14.00/MBF	\$ _____
Black Cherry	3.5 MBF	\$ 77.00/MBF	\$ _____
Green Ash	563.0 MBF	\$ 51.00/MBF	\$ _____
Paper Birch	1.1 MBF	\$ 47.00/MBF	\$ _____
Red Maple	642.0 MBF	\$ 80.00/MBF	\$ _____
Sugar Maple	10.7 MBF	\$ 118.00/MBF	\$ _____
Yellow Birch	7.0 MBF	\$ 26.00/MBF	\$ _____
Pulpwood			
Balsam Fir	74 Cords	\$ 12.20/Cord	\$ _____
Mixed Hardwood	3,282 Cords	\$ 16.25/Cord	\$ _____
Paper Birch	34 Cords	\$ 13.90/Cord	\$ _____
Quaking Aspen	27 Cords	\$ 16.30/Cord	\$ _____
White Pine	21 Cords	\$ 18.30/Cord	\$ _____
White Spruce	31 Cords	\$ 12.80/Cord	\$ _____

*The volumes are statistically estimated within plus (+) or minus (-) 3.62 percent at 95% confidence level. These estimated volumes are final and not subject to adjustment. Prospective bidders are urged to examine this timber and to make their own estimates of quantity and quality.

I understand that any or all bids may be rejected. All bids must be signed and all bid items must be bid or the bid form may be rejected. I also understand that consideration and awarding a contract will be based upon my past performance and ability to complete the contract based upon equipment and staffing subject to my control .

FEDERAL ID: _____ - _____ or SOCIAL SECURITY NUMBER: _____ - _____ - _____

Company or individual bidding: _____

Company representative's name: _____

Address: _____

City: _____ State: _____ Zip: _____

IF AVAILABLE, PLEASE PLACE THE PERSONALIZED LABEL FROM YOUR PROSPECTUS IN THE ABOVE BOX.

Individual or company representative's signature: _____ Date: _____

Phone number : _____ Email (optional): _____

THE WINNING BIDDER MUST COMPLETE THE VERIFICATION OF WORKER'S DISABILITY COMPENSATION ACT COMPLIANCE (ON REVERSE SIDE IF DOUBLE SIDED) WITHIN 21 DAYS OF SALE AWARD DATE



FOR DEPARTMENT USE ONLY	
Sale Number (XX - XXX - XX - XX)	
Forest Management Unit:	

TIMBER SALE VERIFICATION OF WORKER'S DISABILITY COMPENSATION ACT COMPLIANCE

As required by Act 317, P.A. 1969 (Worker's Compensation) and
Part 5 of Act 451 of 1994, as amended.

VERIFICATION OF WORKER'S DISABILITY COMPENSATION ACT COMPLIANCE

- This verification must be completed and submitted within 21 days of contract award and prior to the issuance of the timber sale contract.
- In addition, if boxes 2B or 2C are checked, then Notice of Exclusion or Certificate of Insurance must be submitted within twenty-one (21) days of the contract award and prior to the issuance of the timber sale contract.
- All information must be typed or printed except for written signatures.

Please Check Appropriate Categories:

1. My business is organized as (you **must** check one of the boxes below):
 - A. Sole Proprietorship (individual)
 - B. Partnership
 - C. Corporation
2. You **must** check one of the boxes below:
 - A. I certify my business is a sole proprietorship and it has no employees but the sole proprietor. I am not subject to the Worker's Compensation Laws.
 - B. I certify my business has satisfied its obligation to the Worker's Compensation Act through the use of an approved Notice of Exclusion (BWC-337, Rev. 5/96). I will provide a copy of the Notice of Exclusion within 21 days of the contract award. (For questions or a copy of the BWC-337, please call the Worker's Compensation Bureau at 517-322-1195).
 - C. I certify my business has a Worker's Compensation Policy. I will provide an original Certificate of Insurance within twenty-one (21) days of the contract award.
3. If you have checked item 2(A) or 2(B), you **must** indicate the number of **both** full-time and part-time employees, other than yourself, including family members and active partners (if none, you must enter "0").

_____ Full-time Employees

_____ Part-time Employees

Name of Business		Federal ID (or) Social Security No.	
Address		Telephone ()	
City	State	ZIP	

I hereby certify that the above information is true and correct. I agree to notify the Michigan DNR of any changes that occur in factors affecting my coverage during any of my present and future operations.

Signature of Owner or Authorized Representative

Title

Date

Please complete the "SEALED BID" information on the next page

Spring Aspen (33-026-21)
T37N, R28W, SEC. 28; Menominee COUNTY

In response to the notice of sale to be held 3:00 p.m. (local time) on June 29, 2021, I am hereby submitting my sealed bid (firm offer) for the following forest products to be cut. Bids for individual species must be at or above the advertised price. All non-responsive bid forms may be rejected.

<u>PRODUCTS & SPECIES</u>	<u>ESTIMATED VOLUME*</u>	<u>ADVERTISED PRICE</u>	<u>BID PRICE/UNIT</u>
Sawtimber			
Red Oak	39.1 MBF	\$ 128.00/MBF	\$ _____
Pulpwood			
Balsam Fir	45 Cords	\$ 12.20/Cord	\$ _____
Black Spruce	7 Cords	\$ 12.80/Cord	\$ _____
Mixed Aspen	1,424 Cords	\$ 16.30/Cord	\$ _____
Mixed Hardwood	84 Cords	\$ 16.25/Cord	\$ _____
Red Oak	47 Cords	\$ 18.45/Cord	\$ _____

*The volumes are statistically estimated within plus (+) or minus (-) 7.11 percent at 95% confidence level. These estimated volumes are final and not subject to adjustment. Prospective bidders are urged to examine this timber and to make their own estimates of quantity and quality.

I understand that any or all bids may be rejected. All bids must be signed and all bid items must be bid or the bid form may be rejected. I also understand that consideration and awarding a contract will be based upon my past performance and ability to complete the contract based upon equipment and staffing subject to my control.

FEDERAL ID: _____ - _____ or SOCIAL SECURITY NUMBER: _____ - _____ - _____

Company or individual bidding: _____

Company representative's name: _____

Address: _____

City: _____ State: _____ Zip: _____

IF AVAILABLE, PLEASE PLACE THE PERSONALIZED LABEL FROM YOUR PROSPECTUS IN THE ABOVE BOX.

Individual or company representative's signature: _____ Date: _____

Phone number : _____ Email (optional): _____

THE WINNING BIDDER MUST COMPLETE THE VERIFICATION OF WORKER'S DISABILITY COMPENSATION ACT COMPLIANCE (ON REVERSE SIDE IF DOUBLE SIDED) WITHIN 21 DAYS OF SALE AWARD DATE



FOR DEPARTMENT USE ONLY	
Sale Number (XX - XXX - XX - XX)	
Forest Management Unit:	

TIMBER SALE VERIFICATION OF WORKER'S DISABILITY COMPENSATION ACT COMPLIANCE

As required by Act 317, P.A. 1969 (Worker's Compensation) and
Part 5 of Act 451 of 1994, as amended.

VERIFICATION OF WORKER'S DISABILITY COMPENSATION ACT COMPLIANCE

- This verification must be completed and submitted within 21 days of contract award and prior to the issuance of the timber sale contract.
- In addition, if boxes 2B or 2C are checked, then Notice of Exclusion or Certificate of Insurance must be submitted within twenty-one (21) days of the contract award and prior to the issuance of the timber sale contract.
- All information must be typed or printed except for written signatures.

Please Check Appropriate Categories:

1. My business is organized as (you **must** check one of the boxes below):
 - A. Sole Proprietorship (individual)
 - B. Partnership
 - C. Corporation
2. You **must** check one of the boxes below:
 - A. I certify my business is a sole proprietorship and it has no employees but the sole proprietor. I am not subject to the Worker's Compensation Laws.
 - B. I certify my business has satisfied its obligation to the Worker's Compensation Act through the use of an approved Notice of Exclusion (BWC-337, Rev. 5/96). I will provide a copy of the Notice of Exclusion within 21 days of the contract award. (For questions or a copy of the BWC-337, please call the Worker's Compensation Bureau at 517-322-1195).
 - C. I certify my business has a Worker's Compensation Policy. I will provide an original Certificate of Insurance within twenty-one (21) days of the contract award.
3. If you have checked item 2(A) or 2(B), you **must** indicate the number of **both** full-time and part-time employees, other than yourself, including family members and active partners (if none, you must enter "0").

_____ Full-time Employees

_____ Part-time Employees

Name of Business		Federal ID (or) Social Security No.	
Address		Telephone ()	
City	State	ZIP	

I hereby certify that the above information is true and correct. I agree to notify the Michigan DNR of any changes that occur in factors affecting my coverage during any of my present and future operations.

Signature of Owner or Authorized Representative

Title

Date

Please complete the "SEALED BID" information on the next page

Learning Curve Mix (33-027-21)
T37N, R28W, SEC. 32; T37N, R28W, SEC. 33; Menominee COUNTY

In response to the notice of sale to be held 3:00 p.m. (local time) on June 29, 2021, I am hereby submitting my sealed bid (firm offer) for the following forest products to be cut. Bids for individual species must be at or above the advertised price. All non-responsive bid forms may be rejected.

<u>PRODUCTS & SPECIES</u>	<u>ESTIMATED VOLUME*</u>	<u>ADVERTISED PRICE</u>	<u>BID PRICE/UNIT</u>
Sawtimber			
Black Ash	3.0 MBF	\$ 14.00/MBF	\$ _____
Northern Pin Oak	2.6 MBF	\$ 79.00/MBF	\$ _____
Paper Birch	2.5 MBF	\$ 47.00/MBF	\$ _____
Red Maple	16.6 MBF	\$ 80.00/MBF	\$ _____
Red Oak	126.8 MBF	\$ 128.00/MBF	\$ _____
Pulpwood			
Balsam Fir	163 Cords	\$ 12.20/Cord	\$ _____
Mixed Aspen	2,238 Cords	\$ 16.30/Cord	\$ _____
Mixed Hardwood	420 Cords	\$ 16.25/Cord	\$ _____
Mixed Oak	165 Cords	\$ 18.45/Cord	\$ _____
Mixed Spruce	46 Cords	\$ 12.80/Cord	\$ _____
N. White Cedar	59 Cords	\$ 10.40/Cord	\$ _____
Red Pine	71 Cords	\$ 42.40/Cord	\$ _____
Tamarack	3 Cords	\$ 11.00/Cord	\$ _____
White Pine	297 Cords	\$ 18.30/Cord	\$ _____

*The volumes are statistically estimated within plus (+) or minus (-) 4.41 percent at 95% confidence level. These estimated volumes are final and not subject to adjustment. Prospective bidders are urged to examine this timber and to make their own estimates of quantity and quality.

I understand that any or all bids may be rejected. All bids must be signed and all bid items must be bid or the bid form may be rejected. I also understand that consideration and awarding a contract will be based upon my past performance and ability to complete the contract based upon equipment and staffing subject to my control .

FEDERAL ID: _____ - _____ or SOCIAL SECURITY NUMBER: _____ - _____ - _____

Company or individual bidding: _____

Company representative's name: _____

Address: _____

City: _____ State: _____ Zip: _____

IF AVAILABLE, PLEASE PLACE THE PERSONALIZED LABEL FROM YOUR PROSPECTUS IN THE ABOVE BOX.

Individual or company representative's signature: _____ Date: _____

Phone number : _____ Email (optional): _____

THE WINNING BIDDER MUST COMPLETE THE VERIFICATION OF WORKER'S DISABILITY COMPENSATION ACT COMPLIANCE (ON REVERSE SIDE IF DOUBLE SIDED) WITHIN 21 DAYS OF SALE AWARD DATE



FOR DEPARTMENT USE ONLY
Sale Number (XX - XXX - XX - XX)
Forest Management Unit:

TIMBER SALE VERIFICATION OF WORKER'S DISABILITY COMPENSATION ACT COMPLIANCE

*As required by Act 317, P.A. 1969 (Worker's Compensation) and
Part 5 of Act 451 of 1994, as amended.*

VERIFICATION OF WORKER'S DISABILITY COMPENSATION ACT COMPLIANCE

- This verification must be completed and submitted within 21 days of contract award and prior to the issuance of the timber sale contract.
- In addition, if boxes 2B or 2C are checked, then Notice of Exclusion or Certificate of Insurance must be submitted within twenty-one (21) days of the contract award and prior to the issuance of the timber sale contract.
- All information must be typed or printed except for written signatures.

Please Check Appropriate Categories:

1. My business is organized as (you **must** check one of the boxes below):
 - A. Sole Proprietorship (individual)
 - B. Partnership
 - C. Corporation
2. You **must** check one of the boxes below:
 - A. I certify my business is a sole proprietorship and it has no employees but the sole proprietor. I am not subject to the Worker's Compensation Laws.
 - B. I certify my business has satisfied its obligation to the Worker's Compensation Act through the use of an approved Notice of Exclusion (BWC-337, Rev. 5/96). I will provide a copy of the Notice of Exclusion within 21 days of the contract award. (For questions or a copy of the BWC-337, please call the Worker's Compensation Bureau at 517-322-1195).
 - C. I certify my business has a Worker's Compensation Policy. I will provide an original Certificate of Insurance within twenty-one (21) days of the contract award.
3. If you have checked item 2(A) or 2(B), you **must** indicate the number of **both** full-time and part-time employees, other than yourself, including family members and active partners (if none, you must enter "0").

_____ Full-time Employees

_____ Part-time Employees

Name of Business		Federal ID (or) Social Security No.	
Address		Telephone ()	
City	State	ZIP	

I hereby certify that the above information is true and correct. I agree to notify the Michigan DNR of any changes that occur in factors affecting my coverage during any of my present and future operations.

Signature of Owner or Authorized Representative

Title

Date

Please complete the "SEALED BID" information on the next page