



**DEPARTMENT OF NATURAL RESOURCES  
STATE OF MICHIGAN**

**TIMBER SALE PROSPECTUS #6814**

SCHEDULED SALE DATE AND TIME: 3:00 p.m. (local time) on August 26, 2021.

LOCATION: NEWBERRY MGMT UNIT, 5666 S STATE HWY M 123, NEWBERRY, MI 49868.

PROSPECTUS NOTE: The bidder is advised to inspect the sale area and review the location, estimated volumes, operating costs and contract terms of proposed sales. Please be aware that some landowners may request 60 days or more notice for access across their land.

Notice is hereby given that bids will be received by the Unit Manager, NEWBERRY MANAGEMENT UNIT, for certain timber on the following described lands:

Crisp Point Mix (42-027-20) / T50N, R07W, SEC. 18, NENW,N1/2NE.

T50N, R07W, SEC. 7 , S1/2NW,S1/2NE,N1/2SW,SESW,SE.

Chippewa County, Advertised Price \$87,163.50, 231.2 Acres, Hardwood, Spruce/Fir/Tamarack.

SALE NOTE: Crossing Brown's Creek will require the installation of a portable bridge or large culvert to access Payment Units 3 - 7. See Sale Spec 4.1.2 for additional requirements.

Permission for access across private land is the responsibility of the Purchaser. See Sale Spec 4.4.1 for additional details regarding access.

Within Payment Unit(s) 1 - 4, 6, and 7, harvesting is not permitted during the period of April 15 to July 15 because of bark slippage.

Some roads or skid trails may require extra protection such as that afforded by timber mats, interlocking composite mats, or another approved system. See Sale Spec 5.2.17 for additional information.

It is recommended that harvesting occur during dry summer or frozen winter conditions due to heavy soils in the sale area.

County Road 412 is a snowmobile trail in winter and is shown on the Timber Sale Map. See Sale Spec 5.2.41 for additional details.

A recreation site such as a trail, pathway, or campground is within the sale area or the vicinity. Certain restrictions/specifications may be applicable including time restrictions.

Three Mile Creek Pine (42-028-20) / T50N, R08W, SEC. 11, SW,W1/2SE.

T50N, R08W, SEC. 15, NENW,S1/2NW,NESW.

T50N, R08W, SEC. 16, S1/2NW,N1/2SW.

Luce County, Advertised Price \$53,054.60, 152.0 Acres, Hardwood, Red Pine.

SALE NOTE: Do not cut any hemlock trees in Payment Unit 7, other than those that are necessary to remove in order to operate within the sale area. See Sale Spec 2.1.9 for additional information.

Within Payment Unit 7, harvesting is not permitted during the period of April 15 to July 15 because of bark slippage.

County Road 412 is a snowmobile trail and is shown on the Timber Sale Map. See Sale Spec 5.2.41 for additional information.

A recreation site such as a trail, pathway, or campground is within the sale area or the vicinity. Certain restrictions/specifications may be applicable including time restrictions.

## BID INSTRUCTIONS (VER. 07/02/2018):

### 1. Scheduled Bid Location, Date, and Time (2/11)

Bids must be received by the Unit Manager, NEWBERRY OFFICE, 5666 S STATE HWY M 123, NEWBERRY, MI 49868, no later than 3:00 p.m. (local time) on August 26, 2021. For further information concerning this sale, contact Keith Magnusson at 906-293-3293 extension 4740.

### 2. Bidder's Qualifications (5/16)

Purchaser shall obtain workers compensation insurance to cover claims under Michigan's Worker's Disability Compensation Act of 1969 or similar employee benefit act of any other state applicable to an employee. If all or part of a timber sale was prepared by a private contractor, the contractor and that contractor's company are not permitted to bid on the timber sale contract. Bids will not be accepted from individuals or companies appearing on the DNR/FRD No-Bid List. This list contains the names of purchasers who previously failed to execute a contract within 21-days or who have a history of poor performance.

### 3. Preparation of Sealed Bids (5/16)

Bid Forms may be completed online thru Michigan DNR Timber Sale Online Bidding (OLB) at [www.michigan.gov/timberbidding](http://www.michigan.gov/timberbidding) or by completing the hardcopy Bid Form found in the Timber Sale Prospectus. Hardcopy Bid Forms shall be manually signed in ink. Registration in OLB is considered your 'signature' for all bids submitted thru that system. Bid prices must be entered for each species and product in the Bid Price column for all material subject to bidding and all fill-in blanks must be completed. If erasures or other changes appear on the hardcopy Bid Form, each erasure or change must be initialed by the person signing the bid.

### 4. Submission of Sealed Bids (5/16)

Bid forms may be obtained from the Unit Manager or thru OLB. Bids may be submitted hardcopy or thru OLB. All hardcopy bids must be submitted on the bid form and in an envelope clearly identified as described in this section. NOTE: Only one bid form per bid envelope. Sealed bids must be submitted to the Unit office designated in the prospectus and must be submitted at or prior to the time established in the prospectus. The envelope should show on the outside (a) the sale name or number and (b) the date and time of bid opening, as shown in the prospectus. Bids received after the time specified in the sale prospectus are late bids and will be rejected.

It is possible for a bidder to submit multiple bids on a single sale. For example, a bid may be submitted hardcopy and a bid may be submitted thru OLB. Or, two bidders from the same company could both submit bids on the same sale. If this were to happen, the State would accept all bids received and award the contract accordingly. All bidding and contractual requirements would apply to all bids received.

### 5. Public Opening of Sealed Bids (7/16)

If conditions permit, the sealed bids will be publicly opened and posted at the time and place set in the prospectus.

If a bidder, present at a bid opening, has submitted bids on more than one sale, that bidder may withdraw their unopened bid envelopes or announce the withdrawal of their online bid after being declared the successful bidder on one sale.

### 6. Award of Contract (1/11)

Award of the contract will be made to the Bidder whose bid, conforming to the prospectus, is most advantageous to the State of Michigan on the basis of total value at rates bid for the estimated quantities. The State reserves the right to reject any bid or waive any minor irregularity in bids received. A written award mailed (or otherwise furnished) to the successful Bidder shall be deemed to result in a binding contract without further action by either party.

### 7. Down Payment (1/11)

The Bidder to whom award is made must make a down payment within 21 days of the sale award. The amount of the down payment will be calculated as shown in the Bond and Payment Schedule of this prospectus. Only cash may be used to meet this requirement.

### 8. Performance Security (1/11)

As guarantee of faithful performance, a cash bond, certificate of deposit, surety bond or irrevocable letter of credit (LOC) is required within 21 days of the sale award. The amount of the performance security is shown in the Bond and

Payment Schedule of this prospectus. If an LOC or surety is used, the coverage must extend for at least 6 months beyond the contract expiration.

#### 9. Timber Sale Contract (7/18)

Additional conditions and requirements common to all timber sales are listed on the timber sale contract (R4031) and are available on line at [www.michigan.gov/timber](http://www.michigan.gov/timber). Contact the Unit Manager for additional information or a sample contract. Within 21 days of the date of the award letter, the bidder must sign the contract and provide the required down payment, performance security, and verification of worker's disability compensation. The down payment and performance security shall be in accordance with the provisions of the timber sale contract, in the sums stated in this prospectus. If these actions are not taken, then the Bidder, the Bidder's corporation, and the corporation's principals may not be permitted to bid on State timber sales for a period of 3 months after the first offense, 6 months after the second offense, and 1 year after the third offense. An offense will only be counted against the Bidder for 5 years. In addition, the Bidder certifies that if awarded this contract, the Bidder will complete the timber sale contract in accordance with its terms and any modifications thereof including requirements to purchase, cut, and remove the included timber by the expiration date.

Payment Unit values in the State Forest Timber Sale Contract are calculated based on the advertised value of the Payment Unit as a percentage of the total advertised value of the contract. The advertised value of each Payment Unit is given in the Description of Timber by Payment Unit table on the Timber Sale Information page. For example, if the value of Payment Unit 1 is advertised as \$1,500 and the total Timber Sale value is advertised as \$10,000, the contract price for Payment Unit 1 will be 15% of the total bid price ( $\$1,500/\$10,000 * 100$ ).

#### 10. Disclaimer of Estimates and Bidder's Warranty of Inspection (7/16)

Before submitting this bid, the Bidder is advised and cautioned to inspect the sale area, review the requirements of the sale contract, and take other steps as may be reasonably necessary to ascertain the location, estimated volumes, construction estimates, and operating costs of the proposed sale. Failure to do so will not relieve the Bidder from responsibility for completing the contract.

The Bidder warrants that this bid is submitted solely on the basis of the Bidder's examination and inspection of the quality and quantity of the timber offered for sale and the Bidder's opinion of the value thereof and the costs of recovery. No reliance should be placed on the State of Michigan's estimates of timber quality, quantity or costs of recovery. Bidder further acknowledges that the State of Michigan: (i) expressly disclaims any warranty of fitness of timber for any purpose; (ii) offers this timber as is without any warranty of quality (merchantability) or quantity and (iii) expressly disclaims any warranty as to the quantity or quality of timber sold.

#### 11. Certification and Chain-of-Custody (10/14)

Unless otherwise indicated in the contract under section 7 – Other Conditions of the Sale Specific Conditions & Requirements, the area encompassed by this timber sale is certified to the standards of the Forest Stewardship Council (FSC) - Certificate #SCS-FM/COC-00090N and the Sustainable Forestry Initiative (SFI) - Certificate #NSF-SFIS-5Y031-SF5. Forest products from this sale may be delivered to the mill as "FSC 100% and / or SFI certified" as long as the contractor hauling the forest products is chain-of-custody (COC) certified or covered under a COC certificate from the destination mill. The purchaser is responsible for maintaining COC after leaving the sale area.

#### 12. Good Neighbor Authority (GNA) Requirements (7/16)

If the name of this timber sales contains the acronym GNA, it is authorized by the Good Neighbor Authority (GNA) and covered by various agreements between the U.S. Forest Service and the State. The timber sale occurs on federal land and the following conditions apply:

GNA contracts on US Forest Service land will not be awarded to purchasers on the Federal list of excluded parties. The System for Award Management (SAM) will be checked for active excluded parties prior to award of contract. In addition, the Bidder to whom award is made must complete an Assurance Regarding Felony Conviction or Tax Delinquent Status for Corporate Applicants (AD-3031).

#### 13. Good Neighbor Authority (GNA) Requirements, con't (9/16)

Bidder certifies, by signing this bid form, that to the best of Bidder's knowledge that the following representations are accurate and complete.

- a. That the Bidder and its principals are not presently debarred, suspended, proposed for debarment, declared ineligible, or voluntary excluded from timber sales (covered transactions) by any Federal department or agency.
- b. That the Bidder and its principals have not within a 3-year period preceding this bid been convicted of or had a civil judgment rendered against them for commission of fraud or a criminal offense in connection with obtaining , attempting to obtain, or performing a public (Federal, State, or local) transaction or contract under a public transaction; violation of Federal or State antitrust statutes or commission of embezzlement, theft, forgery, bribery, falsification or destruction of records, making false statements, or receiving stolen property.
- c. That the Bidder and its principals are not presently indicted for or otherwise criminally or civilly charged by a governmental entity (Federal, State, or local) with commission of any of the offenses enumerated in paragraph b of this certification.
- d. That the Bidder and its principals have not within a 3-year period preceding this bid had one or more public transactions (Federal, State, or local) terminated for breach or default of a timber or forest product contract.

Bidders that cannot certify this requirement, in whole or in part, shall submit an explanation with their bid.

DAN EICHINGER  
Director



# TIMBER SALE INFORMATION

Crisp Point Mix (42-027-20)  
 T50N, R07W, SEC. 18; T50N, R07W, SEC. 7.  
 Chippewa County (Advertised Price \$87,163.50)

SALE NOTE: Crossing Brown's Creek will require the installation of a portable bridge or large culvert to access Payment Units 3 - 7. See Sale Spec 4.1.2 for additional requirements.

Permission for access across private land is the responsibility of the Purchaser. See Sale Spec 4.4.1 for additional details regarding access.

Within Payment Unit(s) 1 - 4, 6, and 7, harvesting is not permitted during the period of April 15 to July 15 because of bark slippage.

Some roads or skid trails may require extra protection such as that afforded by timber mats, interlocking composite mats, or another approved system. See Sale Spec 5.2.17 for additional information.

It is recommended that harvesting occur during dry summer or frozen winter conditions due to heavy soils in the sale area.

County Road 412 is a snowmobile trail in winter and is shown on the Timber Sale Map. See Sale Spec 5.2.41 for additional details.

A recreation site such as a trail, pathway, or campground is within the sale area or the vicinity. Certain restrictions/specifications may be applicable including time restrictions.

A timber sale contract for this lump sum, sealed bid timber sale will be awarded to the responsible bidder offering the highest sealed bid price. All units of volume listed below were estimated using the T-Sale computer program and our traditional volume equations. Bids must be at or above the following advertised price for each product and species:

<u>PRODUCTS &amp; SPECIES</u>	<u>ESTIMATED UNITS*</u>	<u>ADVERTISED PRICE</u>
<b>Sawtimber</b>		
Beech	2.8 MBF	\$ 29.00 / MBF
Paper Birch	1.4 MBF	\$ 24.00 / MBF
Red Maple	84.1 MBF	\$ 67.00 / MBF
Sugar Maple	123.4 MBF	\$ 197.00 / MBF
<b>Pulpwood</b>		
Balsam Fir	607 Cords	\$ 9.00 / Cord
Jack Pine	30 Cords	\$ 19.90 / Cord
Mixed Hardwood	3,551 Cords	\$ 10.30 / Cord
Mixed Spruce	710 Cords	\$ 18.60 / Cord
N. White Cedar	28 Cords	\$ 4.85 / Cord
White Pine	78 Cords	\$ 14.45 / Cord

\* The total volume is statistically estimated within plus (+) or minus (-) 10.40 percent. There are an estimated 5,492 cords on this timber sale, plus or minus 571 cords at the 95% confidence level. The estimated units are final and not subject to adjustment. Prospective bidders are urged to examine this timber and to make their own estimates of quantity and quality.

**BOND AND PAYMENT SCHEDULE:**

1. A bond in the amount of \$4,358.00 to insure faithful performance of the conditions of the contract will be deposited by the successful bidder within 21 days of the sale award.
2. Cutting in any sale or unit without the required advance payment would be considered a trespass.
3. Total payment must be paid in advance or according to the following schedule :
  - (a) Ten percent (10%) of the sale value must be paid within 21 days of the sale award.
  - (b) The 10% down payment will be credited towards the first unit cut.
  - (c) Payment for each of the following units must be made before cutting begins in that unit:

<u>PAYMENT UNIT NUMBER</u>	<u>PERCENT OF TOTAL SALE VALUE</u>
01	7.7%
02	11.8%
03	22.1%
04	19.3%
05	27.4%
06	5.1%
07	6.6%

4. If no cutting takes place, the 10% down payment will not be refunded.
5. Operations on the contract issued will terminate on 12/31/2024.

## **SALE STATISTICS**

### **SALE VOLUMES**

VOLUME			STATISTICAL RANGE IN CORDS	
TOTAL CUBIC FEET	TOTAL CORDS	PERCENT ERROR	MINIMUM	MAXIMUM
433,866	5,492	10.40%	4,921	6,063

### **VDU VOLUMES**

A VDU is a Volume Determination Unit. Volumes and their associated statistics are calculated at the VDU level and summarized to the sale level. There is often a one to one relationship between a VDU and a Payment Unit, but not always, depending on the cruise design. Refer to the VDU TO PAYMENT UNIT table.

VDU	VOLUME			RANGE IN CORDS	
	TOTAL CUBIC FEET	TOTAL CORDS	PERCENT ERROR	MINIMUM	MAXIMUM
19	133,787	1,694	14.56%	1,447	1,940
21	189,845	2,403	11.04%	2,138	2,668
27	34,128	432	23.14%	332	532
44	76,109	963	17.38%	796	1,131
<b>TOTAL:</b>	<b>433,868</b>	<b>5,492</b>		<b>4,713</b>	<b>6,271</b>

### **VDU TO PAYMENT UNIT**

When a VDU is associated with more than one Payment Unit (PU), the VDU volumes are assigned to the PU based on acres of the VDU within the PU.

VDU	VDU ACRES	PU	PU ACRES
19	40.7	5	40.7
21	105.8	3	50.3
		4	43.9
		6	11.6
27	15.2	7	15.2
44	69.5	1	27.5
		2	42.0
<b>TOTAL:</b>	<b>231.2</b>		<b>231.2</b>



**DESCRIPTION OF TIMBER BY PAYMENT UNIT (PU)**

PU	MARKET GROUP	PRODUCT	QUANTITY	UNIT	ACRES	ADVERTISE PRICE
1	Red Maple	Sawtimber	11.0	MBF	27.5	\$6,730.10
	Sugar Maple		12.4	MBF		
	Balsam Fir	Pulpwood	19	Cords		
	Mixed Hardwood		301	Cords		
	<i>Quaking Aspen</i>		4	<i>Cords</i>		
	<i>Red Maple</i>		178	<i>Cords</i>		
	<i>Sugar Maple</i>		117	<i>Cords</i>		
	<i>Yellow Birch</i>		2	<i>Cords</i>		
	Mixed Spruce		15	Cords		
	<i>White Spruce</i>		15	<i>Cords</i>		
2	Red Maple	Sawtimber	16.9	MBF	42.0	\$10,271.90
	Sugar Maple		19.0	MBF		
	Balsam Fir	Pulpwood	30	Cords		
	Mixed Hardwood		458	Cords		
	<i>Quaking Aspen</i>		5	<i>Cords</i>		
	<i>Red Maple</i>		273	<i>Cords</i>		
	<i>Sugar Maple</i>		178	<i>Cords</i>		
	<i>Yellow Birch</i>		2	<i>Cords</i>		
	Mixed Spruce		22	Cords		
	<i>White Spruce</i>		22	<i>Cords</i>		
3	Beech	Sawtimber	1.3	MBF	50.3	\$19,281.90
	Red Maple		15.3	MBF		
	Sugar Maple		38.3	MBF		
	Balsam Fir	Pulpwood	68	Cords		
	Mixed Hardwood		948	Cords		
	<i>Beech</i>		11	<i>Cords</i>		
	<i>Quaking Aspen</i>		6	<i>Cords</i>		
	<i>Red Maple</i>		261	<i>Cords</i>		
	<i>Sugar Maple</i>		660	<i>Cords</i>		
	<i>Yellow Birch</i>		10	<i>Cords</i>		
Mixed Spruce		16	Cords			
<i>White Spruce</i>		16	<i>Cords</i>			
4	Beech	Sawtimber	1.2	MBF	43.9	\$16,841.20
	Red Maple		13.4	MBF		
	Sugar Maple		33.4	MBF		
	Balsam Fir	Pulpwood	60	Cords		
	Mixed Hardwood		828	Cords		
	<i>Beech</i>		10	<i>Cords</i>		
	<i>Quaking Aspen</i>		6	<i>Cords</i>		
	<i>Red Maple</i>		228	<i>Cords</i>		
	<i>Sugar Maple</i>		576	<i>Cords</i>		
	<i>Yellow Birch</i>		8	<i>Cords</i>		
Mixed Spruce		14	Cords			
<i>White Spruce</i>		14	<i>Cords</i>			
5	Paper Birch	Sawtimber	1.4	MBF	40.7	\$23,810.30
	Red Maple		16.7	MBF		
	Sugar Maple		5.7	MBF		
	Balsam Fir	Pulpwood	335	Cords		
	Jack Pine		30	Cords		
	Mixed Hardwood		478	Cords		
	<i>Beech</i>		4	<i>Cords</i>		
	<i>Paper Birch</i>		69	<i>Cords</i>		
	<i>Red Maple</i>		378	<i>Cords</i>		
	<i>Sugar Maple</i>		27	<i>Cords</i>		
Mixed Spruce		631	Cords			
<i>Black Spruce</i>		45	<i>Cords</i>			

**DESCRIPTION OF TIMBER BY PAYMENT UNIT (PU), CON'T**

PU	MARKET GROUP	PRODUCT	QUANTITY	UNIT	ACRES	ADVERTISE PRICE	
5 con't	<i>White Spruce</i>	<i>Pulpwood</i>	586	<i>Cords</i>			
	N. White Cedar		28	Cords			
	White Pine		78	Cords			
6	Beech	Sawtimber	0.3	MBF	11.6	\$4,450.90	
	Red Maple	Pulpwood	3.5	MBF			
	Sugar Maple		8.8	MBF			
	Balsam Fir		16	Cords			
	Mixed Hardwood		219	Cords			
	<i>Beech</i>		3	<i>Cords</i>			
	<i>Quaking Aspen</i>		2	<i>Cords</i>			
	<i>Red Maple</i>		60	<i>Cords</i>			
	<i>Sugar Maple</i>		152	<i>Cords</i>			
	<i>Yellow Birch</i>		2	<i>Cords</i>			
	Mixed Spruce		4	Cords			
	<i>White Spruce</i>		4	<i>Cords</i>			
	7		Red Maple	Sawtimber			7.3
Sugar Maple			Pulpwood	5.8	MBF		
Balsam Fir		79		Cords			
Mixed Hardwood		319		Cords			
<i>Red Maple</i>		181		<i>Cords</i>			
<i>Sugar Maple</i>		138		<i>Cords</i>			
Mixed Spruce		8		Cords			
<i>White Spruce</i>		8		<i>Cords</i>			
TOTAL:				211.7	MBF		
TOTAL:				5,004	Cords		

## Sale Specific Conditions & Requirements

**Sale Name: Crisp Point Mix**

**Sale Number: 42-027-20 Seq#: 1**

### 1 - Sale Area

#### 1.2 - Boundaries

##### 1.2.1 - Painted boundaries (9/19)

The sale boundary and Payment Unit boundaries are marked and identified by red, blue, and yellow paint. Exterior sale boundary lines against state are marked with red paint. Exterior sale boundary lines against private land are marked with blue paint. Interior Payment Unit boundaries are marked with yellow paint. The painted boundary line trees are not Included Timber and are to be protected unless marked with orange paint.

### 2 - Timber Specifications

#### 2.1 - Included Timber

##### 2.1.2 - Clearcut unit(s) w/o unmerchantable trees (8/11)

Within Payment Unit(s) 5, cut all trees which meet minimum piece specifications in 2.2 Utilization. Leave 1 - 2 large diameter white spruce per acre near creek buffer. Leave all hemlock. Any trees marked with green paint are not to be cut and to be left as retention.

##### 2.1.3 - Cut tree marked unit(s) (12/08)

Within Payment Unit(s) 1-4, 6 and 7, all trees are designated for cutting when marked with orange paint above and below stump height, regardless of merchantability. Cut all merchantable beech, balsam, and aspen, unless marked with green paint, trees marked with green paint are to be protected. Leave all hemlock.

### 3 - Payments

#### 3.3 - Pre-measured Sales

##### 3.3.4 - Dividing payment units (7/14)

Payment Unit(s) 3 - 5 may be divided at the request of the Purchaser and upon approval of the Unit Manager. Dividing Payment Units is a contract modification which requires a Timber Sale Contract Amendment. There will be only one division per Payment Unit.

### 4 - Transportation

#### 4.1 - Construction

##### 4.1.2 - Stream crossings, specific (3/11)

Crossing Browns Creek will require the installation of a portable bridge or large culvert to access Payment Units 3 - 7, permit is being applied for. The DNR will provide the portable bridge if that is what is needed. The Purchaser will install and remove the portable bridge per permit requirements. If a large culvert is needed, the Purchaser will provide, install, and possibly remove the culvert. Crane mats may be needed to access Payment Unit 2, the DNR can provide them if available. This installation will be performed in accordance with the specifications on the appropriate permits that will be provided by the DNR.

##### 4.1.4 - Timber removed for construction (12/09)

Trees cut or damaged in the process of pre-approved road, landing or skid trail construction will be decked in an area separate from other Designated Timber and not removed until measured by the sale administrator. Payment will be made at the specified Purchase Unit Price.

##### 4.1.6 - Road construction (1/09)

Construction of new roads or improvements of existing roads shall be done in such a way as to minimize the environmental and visual impacts. Merchantable trees shall be cut and utilized unless otherwise directed. Non-merchantable trees shall be severed and laid flat on the ground. Slash shall be scattered, and not left in windrows and kept a minimum of 10 feet back from the road edge. Stumps shall be set upright, not left on edge, and be moved at least 10 feet away from the road edge. Disturbed soil shall be feathered into the woods and not left in berms or windrows.

#### 4.1.7 - Road closure (10/11)

All new roads built into the sale must be blocked to vehicle traffic upon completion of the sale. Overgrown roads that are reopened shall be considered new roads. In general, this will require constructing a four (4') foot high berm of stumps and logs covered with earth. These roads must be rendered impassable to cars and trucks. Contact the sale administrator for specific details of design and placement.

#### 4.2 - Maintenance

##### 4.2.1 - Hauling restriction (12/08)

Hauling may be restricted on sale access roads by the Unit Manager or his/her representative as well as Luce County Road Commission. The restriction may occur during spring breakup or during wet weather conditions.

##### 4.2.3 - Road maintenance (8/13)

The following road maintenance may be needed: cleaning of drainage areas, grading, crowning, and filling with gravel, if necessary.

##### 4.2.5 - Two wheel drive condition (2/04)

All existing trail roads on and adjacent to the sale area must be passable by two-wheel drive traffic for the duration of the sale.

#### 4.4 - Access

##### 4.4.1 - Private property access (3/11)

Permission for access across private land is the responsibility of the Purchaser. Access may be better going south across Hancock Forest property towards County Road 506 to avoid traffic on County Road 412. Permission from Hancock Forest Management to use this route would be necessary.

### 5 - Operations

#### 5.2 - Conduct of Operations

##### 5.2.1 - Slash

###### 5.2.1.2 - Slash Removal

###### 5.2.1.2.1 - Slash removal, right-of-way (9/16)

All slash must be removed at least 10 feet from the cleared right-of-way of existing forest roads.

###### 5.2.1.8 - Slash height (12/08)

No slash or tree tops may exceed 36 inches in height.

##### 5.2.2 - Hazard Trees/Snags

###### 5.2.2.1 - Den trees (10/16)

Obvious hollow and/or den trees shall be protected and left standing unless they are a safety hazard.

##### 5.2.3 - Operating Restrictions

###### 5.2.3.3 - Bark slippage restriction (3/09)

Within Payment Unit(s) 1 - 4, 6, and 7, unless changed by written agreement, cutting and skidding are not permitted during the period of April 15 to July 15. This restriction is because of bark slippage.

##### 5.2.17 - Timber Mats and Interlocking Composite Mats (3/18)

Some roads or skid trails may require extra protection such as that afforded by timber mats, interlocking composite mats, or another approved system. If available, mats may be borrowed from the DNR. A Timber Sale Contract Supplement will be used to document the Purchaser's use of the DNR's mats. Contact the sale administrator regarding availability and pick-up. Timber mats are available from various field offices. Composite mats are only available from the Grayling field office. The Purchaser is responsible for picking up and hauling the mats to and from the site. The composite mats will require DNR staff onsite for installation and removal. Contact the sale administrator to schedule at least 30 days before desired install/removal date. All mats must be cleaned prior to drop off. This may include, but is not limited to, power washing and brushing to remove mud and debris. A charge of \$400.00 per timber mat and \$2,000.00 per composite mat will be assessed for all damaged or non-returned mats. Damage for the crane/timber mats is defined as three or more broken cants. Damage for

the composite mats is defined as cracked or broken mats.

#### 5.2.22 - Operating Caution

##### 5.2.22.1 - Operating caution (6/11)

It is recommended, but not required, that within Payment Unit(s) 1 - 7, cutting, skidding, and hauling occur during dry summer or frozen winter conditions. The reason for the recommendation is because of the heavy soils and location of the Sale Area.

#### 5.2.32 - Decking/landing restoration (9/13)

All decking and landing areas must have the surface area restored to a condition equal to or better than before. This is to ensure the proper regeneration of the stand. Wood debris, chips, and "cookies" from trimmings must be removed or scattered away from landing and loading areas and may not be windrowed on the edge.

#### 5.2.38 - No decking against live trees (2/04)

Cut products may not be decked against unmarked or designated leave trees.

#### 5.2.41 - Snowmobile trail protection (9/11)

County Road 412 is a snowmobile trail in winter and is shown on the Timber Sale Map. Do not cut or damage posts with orange trail markers or traffic control signs. If the trail is used, it must be maintained and restored to a condition equal to or better than before the sale. If the trail is used for hauling, it must be graded to the satisfaction of the Unit Manager or his/her representative prior to December 1. If the trail road is to be used for hauling during the snowmobile season, then a snow-covered base must be left on the trail. No decking of forest products will be permitted along the snowmobile trail.

### 5.4 - Soil Protection

#### 5.4.1 - Rutting restriction, general (7/16)

Operations are to cease immediately if equipment and weather conditions result in rutting of roads and/or skid trails which is 12 inches or greater in depth and 50 feet in length. The Unit Manager or his/her representative may restrict hauling and/or skidding if ruts exceed the specified depth. With the Unit Manager or his/her representative's approval, the Purchaser may return to the area when the risk of rutting has decreased.

#### 5.4.2 - Skid trails (2/04)

Skid trails up and down slopes should be avoided. If however this is unavoidable, these trails will be left in a non-erodible condition using water bars, logs, and slash. Placing of slash on these skid trails while logging is ongoing may alleviate need for any further action. At the direction of the sale administrator, seed, fertilizer, and mulch may also be required.

### 5.8 - Protection of Endangered Species

#### 5.8.5 - Protection of raptor nests (3/13)

All trees with raptor nests will be protected if found during harvesting operations. Notification will be made to the Unit Manager or his/her representative who will notify the Wildlife Biologist so an on-site evaluation and recommendation can be made, if necessary.

## 6 - Safety and Fire Prevention

### 6.2 - Signing

#### 6.2.1 - Road posting (9/09)

The Purchaser is responsible for posting and maintaining caution signs on County Road 412 prior to beginning operations. The road must be posted at appropriate distances from the Sale Area to warn of logging activity and truck traffic. Signs must be removed when harvest operations are suspended or completed. The Purchaser will provide these signs.

#### 6.2.2 - Snowmobile trail posting (10/20)

The Purchaser is responsible for posting and maintaining caution signs on snowmobile trail prior to beginning operations during the snowmobile season (approximately December 1 to March 31). The trail must be posted at locations designated on the map at appropriate distances from the Sale Area to warn of logging activity and truck traffic. Signs must be removed when harvest operations are suspended or completed. The DNR will provide these signs.



# TIMBER SALE MAP

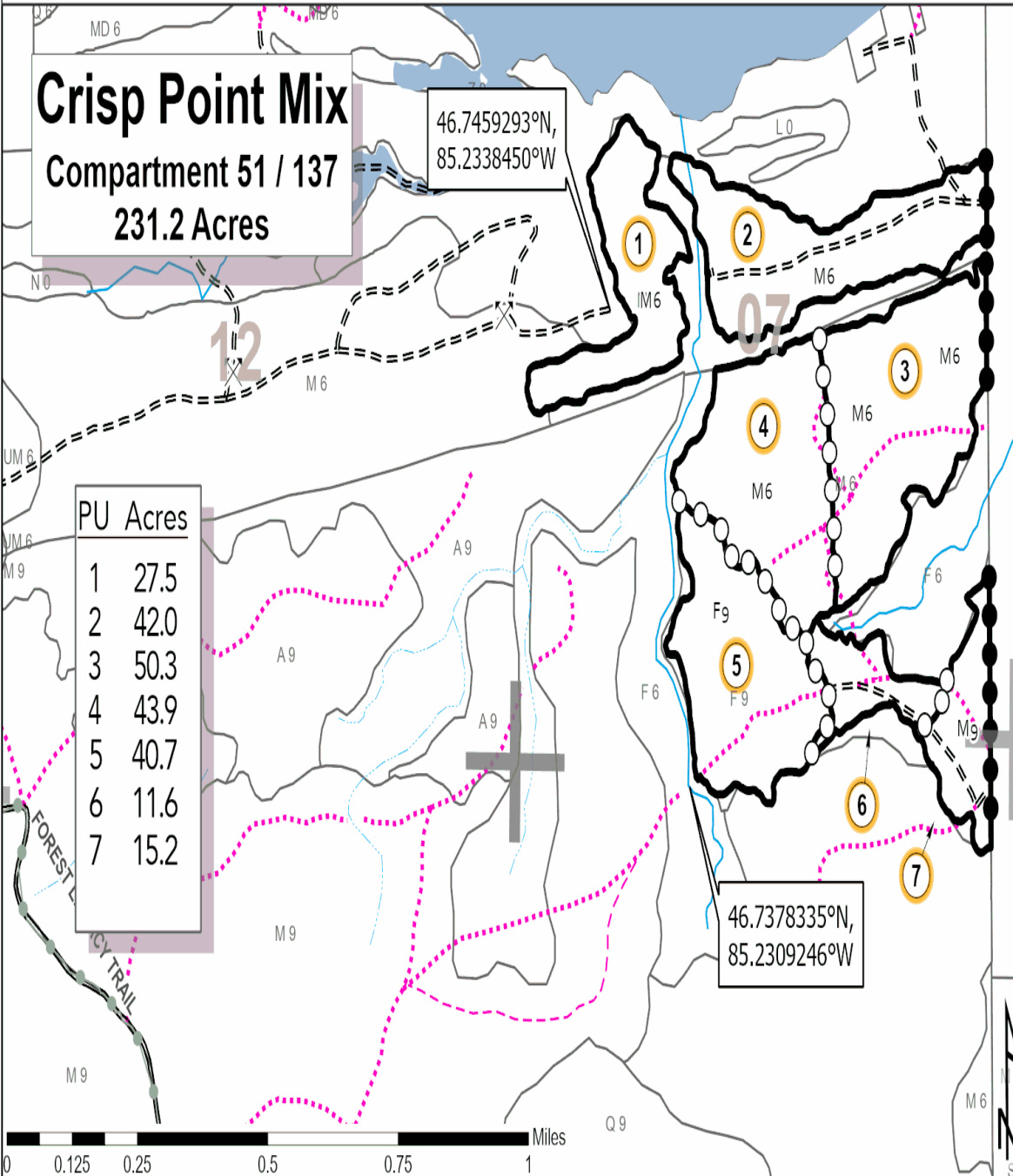
This information provided by authority of Part 525, 1994 PA 451, as amended.

Forest Management Unit Newberry	County Chippewa	Mapped By Livermore	Date 9/28/2020	Page 1	of 1
Cruised By Grossman Forestry					

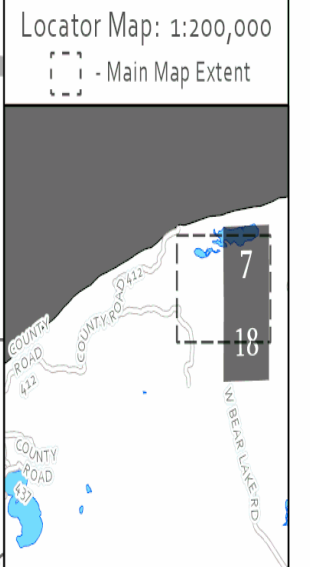
Township 50N	Range 07W	Section(s) and Subdivision(s) Section 18: NENW, N½NE Section 7: S½NW, S½NE, N½SW, SESW, SE¼	Scale 1:15,840
-----------------	--------------	---	-------------------



Cover Type				Density			
A = Aspen	H = Hemlock	N = Marsh	U = Upland Brush	0 = Non Stocked	5 = Pole Timber Medium		
B = Paper Birch	J = Jack Pine	O = Oak	UM = Upland Mixed	1 = Seedling Sapling Poor	6 = Pole Timber Well		
C = Cedar	L = Lowland Brush	P = Lowland Poplar	V = Bog or Marsh	2 = Seedling Sapling Medium	7 = Saw Timber Poor		
D = Treed Bog	LM = Lowland Mixed	Q = Mixed Swamp Conifer	W = White Pine	3 = Seedling Sapling Well	8 = Saw Timber Medium		
E = Swamp Hdwoods	M = Mpl, Bch, Brch	R = Red Pine	X = Non Stocked	4 = Pole Timber Poor	9 = Saw Timber Well		
F = Spruce Fir	MC = Mixed Conifer	S = Black Spruce	Z = Water				
G = Grass	MD = Mixed Deciduous	T = Tamarack					



- Against State (Red)
- Payment Unit (Yellow)
- Private Line (Blue)
- Payment Unit Label
- Recreational Trail
- 01 Section Numbers
- Section Corners
- × Gravel Pits
- Primary Forest Road
- Secondary Forest Road
- == Forest Access Route
- Paved Road
- - Gravel Road
- - County Road - Seasonal
- Private
- Intermittent Stream
- Perennial River
- Lakes and Rivers
- ... DNR - Management Access
- ... Temporary Management Access



## TIMBER SALE INFORMATION

### Three Mile Creek Pine (42-028-20)

T50N, R08W, SEC. 11; T50N, R08W, SEC. 15; T50N, R08W, SEC. 16.  
Luce County (Advertised Price \$53,054.60)

SALE NOTE: Do not cut any hemlock trees in Payment Unit 7, other than those that are necessary to remove in order to operate within the sale area. See Sale Spec 2.1.9 for additional information.

Within Payment Unit 7, harvesting is not permitted during the period of April 15 to July 15 because of bark slippage.

County Road 412 is a snowmobile trail and is shown on the Timber Sale Map. See Sale Spec 5.2.41 for additional information.

A recreation site such as a trail, pathway, or campground is within the sale area or the vicinity. Certain restrictions/specifications may be applicable including time restrictions.

A timber sale contract for this lump sum, sealed bid timber sale will be awarded to the responsible bidder offering the highest sealed bid price. All units of volume listed below were estimated using the T-Sale computer program and our traditional volume equations. Bids must be at or above the following advertised price for each product and species:

<u>PRODUCTS &amp; SPECIES</u>	<u>ESTIMATED UNITS*</u>	<u>ADVERTISED PRICE</u>
Sawtimber		
Paper Birch	2.1 MBF	\$ 24.00 / MBF
Red Maple	27.6 MBF	\$ 67.00 / MBF
Yellow Birch	1.2 MBF	\$ 37.00 / MBF
Pulpwood		
Balsam Fir	328 Cords	\$ 9.00 / Cord
Jack Pine	69 Cords	\$ 19.90 / Cord
Mixed Hardwood	869 Cords	\$ 10.30 / Cord
Mixed Spruce	172 Cords	\$ 18.60 / Cord
N. White Cedar	6 Cords	\$ 4.85 / Cord
Red Pine	676 Cords	\$ 42.60 / Cord
White Pine	402 Cords	\$ 14.45 / Cord

\* The total volume is statistically estimated within plus (+) or minus (-) 9.77 percent. There are an estimated 2,583 cords on this timber sale, plus or minus 252 cords at the 95% confidence level. The estimated units are final and not subject to adjustment. Prospective bidders are urged to examine this timber and to make their own estimates of quantity and quality.

### **BOND AND PAYMENT SCHEDULE:**

1. A bond in the amount of \$2,653.00 to insure faithful performance of the conditions of the contract will be deposited by the successful bidder within 21 days of the sale award.
2. Cutting in any sale or unit without the required advance payment would be considered a trespass.
3. Total payment must be paid in advance or according to the following schedule :
  - (a) Ten percent (10%) of the sale value must be paid within 21 days of the sale award.
  - (b) The 10% down payment will be credited towards the first unit cut.
  - (c) Payment for each of the following units must be made before cutting begins in that unit:
 

PAYMENT UNIT NUMBER	PERCENT OF TOTAL SALE VALUE
01	9.1%
02	7.0%
03	28.8%
04	21.3%
05	15.3%
06	4.4%
07	14.1%
4. If no cutting takes place, the 10% down payment will not be refunded.
5. Operations on the contract issued will terminate on 12/31/2024.

### **SALE STATISTICS**

**SALE VOLUMES**

VOLUME			STATISTICAL RANGE IN CORDS	
TOTAL CUBIC FEET	TOTAL CORDS	PERCENT ERROR	MINIMUM	MAXIMUM
204,070	2,583	9.77%	2,331	2,836

**VDU VOLUMES**

A VDU is a Volume Determination Unit. Volumes and their associated statistics are calculated at the VDU level and summarized to the sale level. There is often a one to one relationship between a VDU and a Payment Unit, but not always, depending on the cruise design. Refer to the VDU TO PAYMENT UNIT table.

VDU	VOLUME		PERCENT ERROR	RANGE IN CORDS	
	TOTAL CUBIC FEET	TOTAL CORDS		MINIMUM	MAXIMUM
2	19,837	251	54.30%	115	387
6	32,872	416	17.98%	341	491
7	33,322	422	18.02%	346	498
27	48,680	616	24.52%	465	767
34	69,362	878	10.99%	782	974
<b>TOTAL:</b>	<b>204,073</b>	<b>2,583</b>		<b>2,048</b>	<b>3,118</b>

**VDU TO PAYMENT UNIT**

When a VDU is associated with more than one Payment Unit (PU), the VDU volumes are assigned to the PU based on acres of the VDU within the PU.

VDU	VDU ACRES	PU	PU ACRES
2	6.4	1	3.6
		2	2.8
6	13.5	3	13.5
7	18.2	4	18.2
27	62.5	7	62.5
34	51.4	5	40.0
		6	11.4
<b>TOTAL:</b>	<b>152.0</b>		<b>152.0</b>



**DESCRIPTION OF TIMBER BY PAYMENT UNIT (PU)**

PU	MARKET GROUP	PRODUCT	QUANTITY	UNIT	ACRES	ADVERTISE PRICE
1	Jack Pine	Pulpwood	39	Cords	3.6	\$4,851.00
	Mixed Spruce		6	Cords		
	<i>White Spruce</i>		6	Cords		
	Red Pine		91	Cords		
	White Pine		6	Cords		
2	Jack Pine	Pulpwood	30	Cords	2.8	\$3,729.80
	Mixed Spruce		5	Cords		
	<i>White Spruce</i>		5	Cords		
	Red Pine		70	Cords		
	White Pine		4	Cords		
3	Mixed Hardwood	Pulpwood	1	Cords	13.5	\$15,296.55
	<i>Paper Birch</i>		1	Cords		
	Red Pine		330	Cords		
	White Pine		85	Cords		
4	Mixed Hardwood	Pulpwood	10	Cords	18.2	\$11,278.60
	<i>Paper Birch</i>		6	Cords		
	<i>Red Maple</i>		4	Cords		
	Red Pine		185	Cords		
	White Pine		228	Cords		
5	Paper Birch	Sawtimber	1.6	MBF	40.0	\$8,110.00
	Red Maple		6.1	MBF		
	Yellow Birch		0.9	MBF		
	Balsam Fir	Pulpwood	86	Cords		
	Mixed Hardwood		435	Cords		
	<i>Paper Birch</i>		37	Cords		
	<i>Red Maple</i>		385	Cords		
	<i>Sugar Maple</i>		2	Cords		
	<i>Yellow Birch</i>		11	Cords		
	Mixed Spruce		79	Cords		
	<i>Black Spruce</i>		27	Cords		
	<i>White Spruce</i>		52	Cords		
	N. White Cedar		5	Cords		
	White Pine	61	Cords			
	6	Paper Birch	Sawtimber	0.5		
Red Maple			1.7	MBF		
Yellow Birch			0.3	MBF		
Balsam Fir		Pulpwood	25	Cords		
Mixed Hardwood			123	Cords		
<i>Paper Birch</i>			10	Cords		
<i>Red Maple</i>			110	Cords		
<i>Yellow Birch</i>			3	Cords		
Mixed Spruce			23	Cords		
<i>Black Spruce</i>			8	Cords		
<i>White Spruce</i>			15	Cords		
N. White Cedar			1	Cords		
White Pine			18	Cords		
7	Red Maple	Sawtimber	19.8	MBF	62.5	\$7,467.00
	Balsam Fir	Pulpwood	217	Cords		
	Mixed Hardwood		300	Cords		
	<i>Beech</i>		5	Cords		
	<i>Red Maple</i>		295	Cords		
	Mixed Spruce		59	Cords		
	<i>White Spruce</i>		59	Cords		
TOTAL:			30.9	MBF		

TOTAL:	2,522 Cords
--------	-------------

## Sale Specific Conditions & Requirements

Sale Name: Three Mile Creek Pine

Sale Number: 42-028-20 Seq#: 1

### 1 - Sale Area

#### 1.2 - Boundaries

##### 1.2.1 - Painted boundaries (9/19)

The sale boundary and Payment Unit boundaries are marked and identified by red and yellow paint. Exterior sale boundary lines against state are marked with red paint. Interior Payment Unit boundaries are marked with yellow paint. The painted boundary line trees are not Included Timber and are to be protected unless marked with orange paint. Yellow painted trees designating an interior Payment Unit boundary are only to be cut when all surrounding Payment Units have been paid.

### 2 - Timber Specifications

#### 2.1 - Included Timber

##### 2.1.2 - Clearcut unit(s) w/o unmerchantable trees (8/11)

Within Payment Unit(s) 1, 2, 5, and 6, cut all trees which meet minimum piece specifications in 2.2 Utilization. Within Payment Units 5 and 6, do not cut any white pine over 20 inches in diameter.

##### 2.1.3 - Cut tree marked unit(s) (12/08)

Within Payment Unit(s) 7, all trees are designated for cutting when marked with orange paint above and below stump height, regardless of merchantability. Additionally, beech, aspen, and balsam fir are designated for cutting in this Payment Unit.

##### 2.1.7 - Leave tree marked unit(s) (6/14)

Within Payment Unit(s) 3 and 4, all trees, which meet minimum piece specifications in 2.2 Utilization, are designated for cutting except trees marked with green paint above and below stump height.

##### 2.1.9 - Harvest exception (12/08)

Do not cut any hemlock trees in Payment Unit 7, other than those that are necessary to remove in order to operate within the sale area. Every effort must be made to preserve the existing hemlock and to leave an intact stand upon sale completion. All cut hemlock shall be piled separately by products and scaled in the woods unless other scaling arrangements are agreed to by the Unit Manager or his/her representative. Stumpage price for hemlock shall be \$50.00 per cord for pulpwood and \$100.00 per cord for sawlogs.

#### 2.2 - Utilization

##### 2.2.3 - Stump heights (4/07)

Stump heights within Payment Unit(s) 1 - 4 shall not exceed 6 inches for all trees. This is to facilitate planting operations.

### 3 - Payments

#### 3.3 - Pre-measured Sales

##### 3.3.4 - Dividing payment units (7/14)

Payment Unit(s) 3 - 5 and 7 may be divided at the request of the Purchaser and upon approval of the Unit Manager. Dividing Payment Units is a contract modification which requires a Timber Sale Contract Amendment. There will be only one division per Payment Unit.

### 4 - Transportation

#### 4.1 - Construction

##### 4.1.6 - Road construction (1/09)

Construction of new roads or improvements of existing roads shall be done in such a way as to minimize the environmental and visual impacts. Merchantable trees shall be cut and utilized unless otherwise directed. Non-merchantable trees shall be severed and laid flat on the ground. Slash shall be scattered, and not left in windrows and kept a minimum of 10 feet back from the road edge. Stumps shall be set upright, not left on edge, and be moved at least 10 feet away from the road edge. Disturbed soil shall be feathered into the woods and not left in berms or windrows. Road construction will be limited to spur roads from the main road into the Sale Area.

#### 4.1.7 - Road closure (10/11)

All new roads built into the sale must be blocked to vehicle traffic upon completion of the sale. Overgrown roads that are reopened shall be considered new roads. In general, this will require constructing a four (4') foot high berm of stumps and logs covered with earth. These roads must be rendered impassable to cars and trucks. Contact the sale administrator for specific details of design and placement.

### 4.2 - Maintenance

#### 4.2.1 - Hauling restriction (12/08)

Hauling may be restricted on forest roads by the Unit Manager or his/her representative as well as the Luce County Road Commission. The restriction during wet weather conditions or if the road deteriorates due to heavy truck traffic.

#### 4.2.3 - Road maintenance (8/13)

The following road maintenance may be needed: cleaning of drainage areas, grading, crowning, and filling with gravel, if necessary. Damages will be assessed if grading/repair does not occur.

#### 4.2.5 - Two wheel drive condition (2/04)

All existing trail roads on and adjacent to the sale area must be passable by two-wheel drive traffic for the duration of the sale.

## 5 - Operations

### 5.2 - Conduct of Operations

#### 5.2.1 - Slash

##### 5.2.1.8 - Slash height (12/08)

No slash or tree tops may exceed 24 inches in height.

#### 5.2.2 - Hazard Trees/Snags

##### 5.2.2.1 - Den trees (10/16)

Obvious hollow and/or den trees shall be protected and left standing unless they are a safety hazard.

#### 5.2.3 - Operating Restrictions

##### 5.2.3.3 - Bark slippage restriction (3/09)

Within Payment Unit(s) 7, unless changed by written agreement, cutting and skidding are not permitted during the period of April 15 to July 15. This restriction is because of bark slippage.

#### 5.2.32 - Decking/landing restoration (9/13)

All decking and landing areas must have the surface area restored to a condition equal to or better than before. This is to ensure the proper regeneration of the stand. Wood debris, chips, and "cookies" from trimmings must be removed or scattered away from landing and loading areas and may not be windrowed on the edge.

#### 5.2.38 - No decking against live trees (2/04)

Cut products may not be decked against unmarked or designated leave trees.

#### 5.2.41 - Snowmobile trail protection (9/11)

County Road 412 is a snowmobile trail and is shown on the Timber Sale Map. Do not cut or damage posts with orange trail markers or traffic control signs. If the trail is used, it must be maintained and restored to a condition equal to or better than before the sale. If the trail is used for hauling, it must be graded to the satisfaction of the Unit Manager or his/her representative prior to December 1. If the trail road is to be used for hauling during the snowmobile season, then a snow-covered base must be left on the trail. No decking of forest products will be permitted along the snowmobile trail.

### 5.4 - Soil Protection

#### 5.4.1 - Rutting restriction, general (7/16)

Operations are to cease immediately if equipment and weather conditions result in rutting of roads and/or skid trails which is 12 inches or greater in depth and 50 feet in length. The Unit Manager or his/her representative may restrict hauling and/or skidding if ruts exceed the specified depth. With the Unit Manager or his/her representative's approval, the Purchaser may return to the area when the risk of rutting has decreased.

## 5.8 - Protection of Endangered Species

### 5.8.5 - Protection of raptor nests (3/13)

All trees with raptor nests will be protected if found during harvesting operations. Notification will be made to the Unit Manager or his/her representative who will notify the Wildlife Biologist so an on-site evaluation and recommendation can be made, if necessary.

## 6 - Safety and Fire Prevention

### 6.2 - Signing

#### 6.2.1 - Road posting (9/09)

The Purchaser is responsible for posting and maintaining caution signs on County Road 412 prior to beginning operations. The road must be posted at appropriate distances from the Sale Area to warn of logging activity and truck traffic. Signs must be removed when harvest operations are suspended or completed. The Purchaser will provide these signs.

#### 6.2.2 - Snowmobile trail posting (10/20)

The Purchaser is responsible for posting and maintaining caution signs on snowmobile trail name prior to beginning operations during the snowmobile season (approximately December 1 to March 31). The trail must be posted at locations designated on the map at appropriate distances from the Sale Area to warn of logging activity and truck traffic. Signs must be removed when harvest operations are suspended or completed. The DNR will provide these signs.



# TIMBER SALE MAP

This information provided by authority of Part 525, 1994 PA 451, as amended.

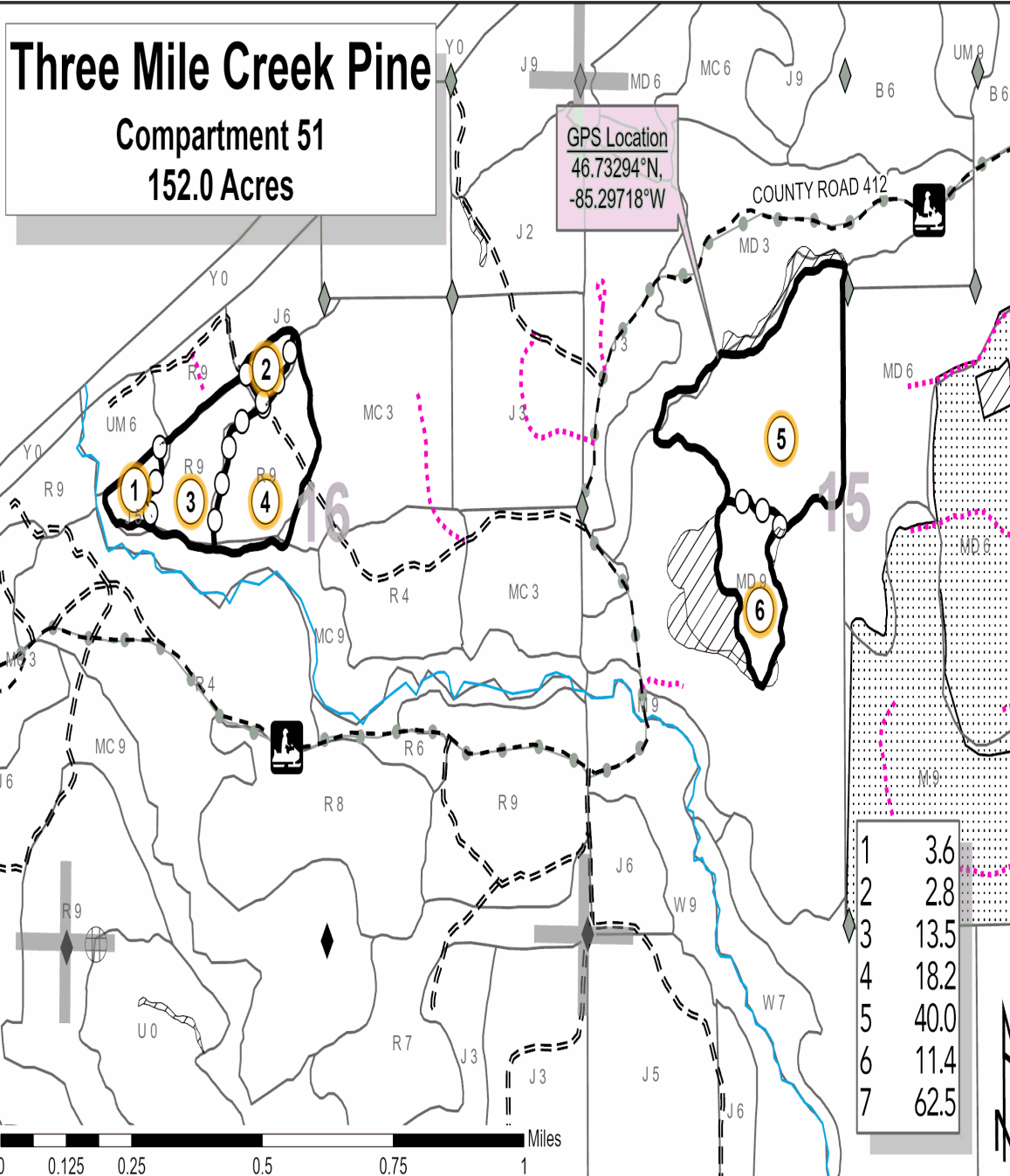
Forest Management Unit Newberry	County Luce	Mapped By Livermore	Date 7/22/2021	Page 1	of 2
Cruised By Grossman Forestry					

Township 50N	Range 08W	Section(s) and Subdivision(s) Section 11: SW, W½SE Section 15: NENW, S½NW, NESW Section 16: S½NW, N½SW	Scale 1:15,840
-----------------	--------------	---	-------------------

Cover Type				Density			
A = Aspen	H = Hemlock	N = Marsh	U = Upland Brush	0 = Non Stocked	5 = Pole Timber Medium		
B = Paper Birch	J = Jack Pine	O = Oak	UM = Upland Mixed	1 = Seedling Sapling Poor	6 = Pole Timber Well		
C = Cedar	L = Lowland Brush	P = Lowland Poplar	V = Bog or Marsh	2 = Seedling Sapling Medium	7 = Saw Timber Poor		
D = Treed Bog	LM = Lowland Mixed	Q = Mixed Swamp Conifer	W = White Pine	3 = Seedling Sapling Well	8 = Saw Timber Medium		
E = Swamp Hdwoods	M = Mpl, Bch, Brch	R = Red Pine	X = Non Stocked	4 = Pole Timber Poor	9 = Saw Timber Well		
F = Spruce Fir	MC = Mixed Conifer	S = Black Spruce	Z = Water				
G = Grass	MD = Mixed Deciduous	T = Tamarack					

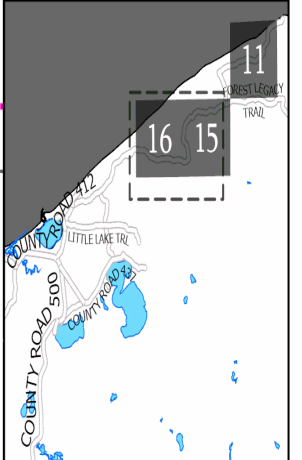


## Three Mile Creek Pine Compartment 51 152.0 Acres



- Payment Unit Label
- Against State (Red)
- Payment Unit (Yellow)
- Private Line (Blue)
- Snowmobile Trails
- Recreational Trail
- Section Numbers
- Section Corners
- Survey Corners
- Field Grade Corners
- Berms
- Perennial River
- Retention Area
- Highway
- Primary Forest Road
- Secondary Forest Road
- Forest Access Route
- Paved Road
- Gravel Road
- County Road - Seasonal
- Private
- DNR - Management Access
- Nearby Timber Sale selection

Locator Map: 1:200,000  
 - Main Map Extent





# TIMBER SALE MAP

This information provided by authority of Part 525, 1994 PA 451, as amended.

Sale Number	Year
42-028	20

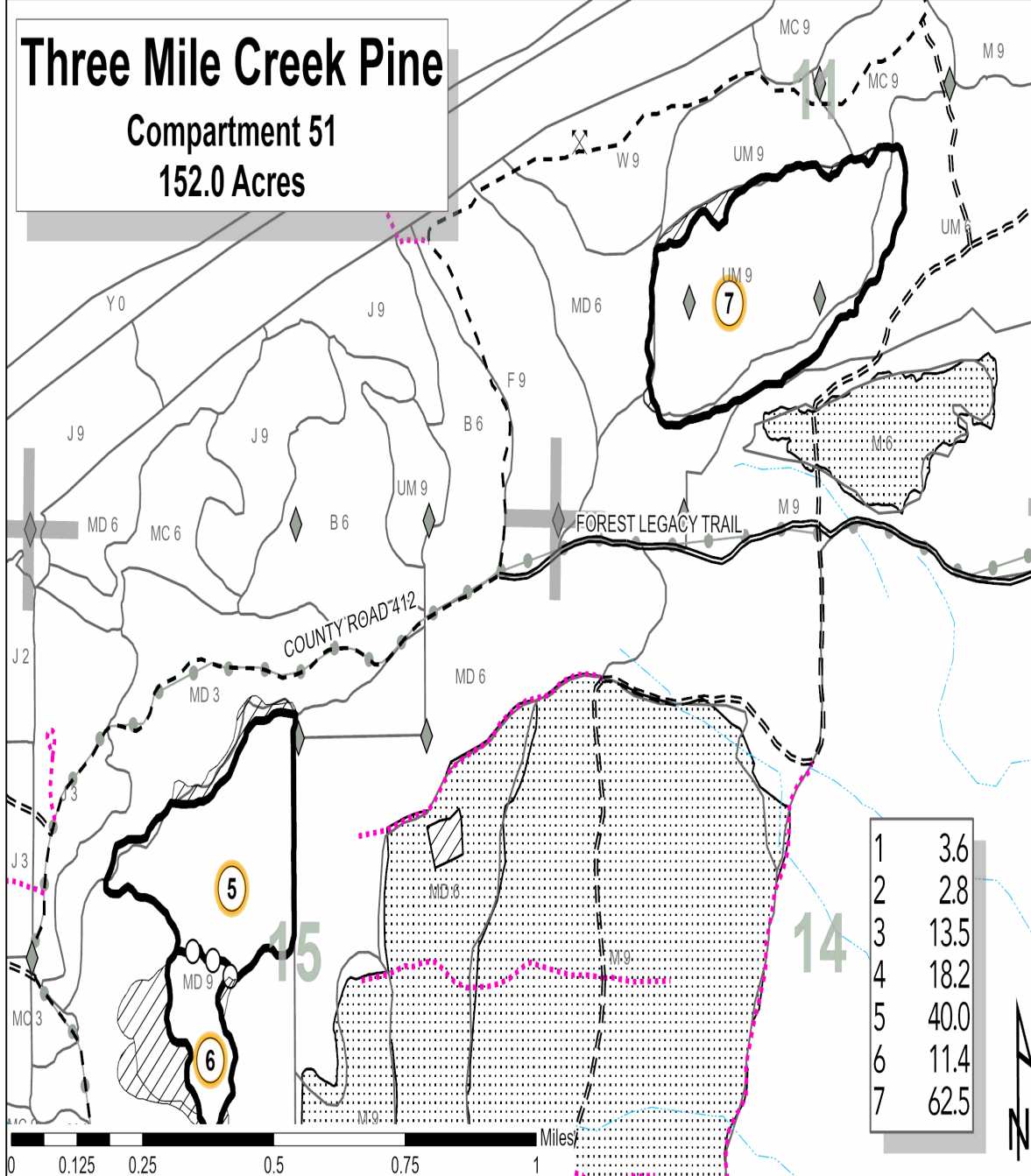
Forest Management Unit	County	Mapped By	Date	Page	of
Newberry	Luce	Livermore	7/22/2021	2	2
		Cruised By			
		Grossman Forestry			

Township	Range	Section(s) and Subdivision(s)	Scale
50N	08W	Section 11: SW, W½SE Section 15: NENW, S½NW, NESW Section 16: S½NW, N½SW	1:15,840

Cover Type				Density			
A = Aspen	H = Hemlock	N = Marsh	U = Upland Brush	0 = Non Stocked	5 = Pole Timber Medium		
B = Paper Birch	J = Jack Pine	O = Oak	UM = Upland Mixed	1 = Seedling Sapling Poor	6 = Pole Timber Well		
C = Cedar	L = Lowland Brush	P = Lowland Poplar	V = Bog or Marsh	2 = Seedling Sapling Medium	7 = Saw Timber Poor		
D = Treed Bog	LM = Lowland Mixed	Q = Mixed Swamp Conifer	W = White Pine	3 = Seedling Sapling Well	8 = Saw Timber Medium		
E = Swamp Hdwoods	M = Mpl, Bch, Brch	R = Red Pine	X = Non Stocked	4 = Pole Timber Poor	9 = Saw Timber Well		
F = Spruce Fir	MC = Mixed Conifer	S = Black Spruce	Z = Water				
G = Grass	MD = Mixed Deciduous	T = Tamarack					

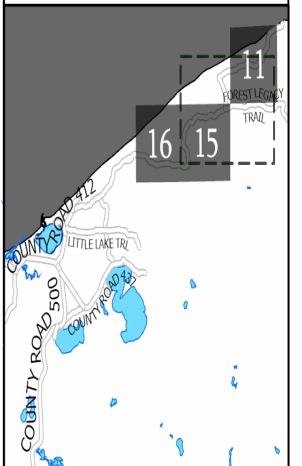


**Three Mile Creek Pine**  
**Compartment 51**  
**152.0 Acres**

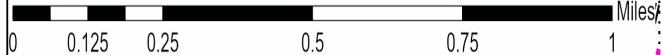


- Payment Unit Label
- Against State (Red)
- Payment Unit (Yellow)
- Private Line (Blue)
- Recreational Trail
- 01** Section Numbers
- Section Corners
- Field Grade Corners
- OFS Minerals
- Intermittent Stream
- Perennial River
- Retention Area
- Highway
- Primary Forest Road
- Secondary Forest Road
- Forest Access Route
- Paved Road
- Gravel Road
- County Road - Seasonal
- Private
- DNR - Management Access
- Nearby Timber Sale selection

Locator Map: 1:200,000  
 - Main Map Extent



1	3.6
2	2.8
3	13.5
4	18.2
5	40.0
6	11.4
7	62.5







Crisp Point Mix (42-027-20)  
T50N, R07W, SEC. 18; T50N, R07W, SEC. 7; Chippewa COUNTY

In response to the notice of sale to be held 3:00 p.m. (local time) on August 26, 2021, I am hereby submitting my sealed bid (firm offer) for the following forest products to be cut. Bids for individual species must be at or above the advertised price. All non-responsive bid forms may be rejected.

<u>PRODUCTS &amp; SPECIES</u>	<u>ESTIMATED VOLUME*</u>	<u>ADVERTISED PRICE</u>	<u>BID PRICE/UNIT</u>
<b>Sawtimber</b>			
Beech	2.8 MBF	\$ 29.00/MBF	\$ _____
Paper Birch	1.4 MBF	\$ 24.00/MBF	\$ _____
Red Maple	84.1 MBF	\$ 67.00/MBF	\$ _____
Sugar Maple	123.4 MBF	\$ 197.00/MBF	\$ _____
<b>Pulpwood</b>			
Balsam Fir	607 Cords	\$ 9.00/Cord	\$ _____
Jack Pine	30 Cords	\$ 19.90/Cord	\$ _____
Mixed Hardwood	3,551 Cords	\$ 10.30/Cord	\$ _____
Mixed Spruce	710 Cords	\$ 18.60/Cord	\$ _____
N. White Cedar	28 Cords	\$ 4.85/Cord	\$ _____
White Pine	78 Cords	\$ 14.45/Cord	\$ _____

\*The volumes are statistically estimated within plus (+) or minus (-) 10.40 percent at 95% confidence level. These estimated volumes are final and not subject to adjustment. Prospective bidders are urged to examine this timber and to make their own estimates of quantity and quality.

I understand that any or all bids may be rejected. All bids must be signed and all bid items must be bid or the bid form may be rejected. I also understand that consideration and awarding a contract will be based upon my past performance and ability to complete the contract based upon equipment and staffing subject to my control.

FEDERAL ID: \_\_\_\_\_ or SOCIAL SECURITY NUMBER: \_\_\_\_\_

Company or individual bidding: \_\_\_\_\_

Company representative's name: \_\_\_\_\_

Address: \_\_\_\_\_

City: \_\_\_\_\_ State: \_\_\_\_\_ Zip: \_\_\_\_\_

IF AVAILABLE, PLEASE PLACE THE PERSONALIZED LABEL FROM YOUR PROSPECTUS IN THE ABOVE BOX.

Individual or company representative's signature: \_\_\_\_\_ Date: \_\_\_\_\_

Phone number : \_\_\_\_\_ Email (optional): \_\_\_\_\_

**THE WINNING BIDDER MUST COMPLETE THE VERIFICATION OF WORKER'S DISABILITY COMPENSATION ACT COMPLIANCE (ON REVERSE SIDE IF DOUBLE SIDED) WITHIN 21 DAYS OF SALE AWARD DATE**



<b>FOR DEPARTMENT USE ONLY</b>	
Sale Number (XX - XXX - XX - XX)	
Forest Management Unit:	

# TIMBER SALE VERIFICATION OF WORKER'S DISABILITY COMPENSATION ACT COMPLIANCE

As required by Act 317, P.A. 1969 (Worker's Compensation) and  
Part 5 of Act 451 of 1994, as amended.

## VERIFICATION OF WORKER'S DISABILITY COMPENSATION ACT COMPLIANCE

- This verification must be completed and submitted within 21 days of contract award and prior to the issuance of the timber sale contract.
- In addition, if boxes 2B or 2C are checked, then Notice of Exclusion or Certificate of Insurance must be submitted within twenty-one (21) days of the contract award and prior to the issuance of the timber sale contract.
- All information must be typed or printed except for written signatures.

Please Check Appropriate Categories:

1. My business is organized as (you **must** check one of the boxes below):
  - A.  Sole Proprietorship (individual)
  - B.  Partnership
  - C.  Corporation
2. You **must** check one of the boxes below:
  - A.  I certify my business is a sole proprietorship and it has no employees but the sole proprietor. I am not subject to the Worker's Compensation Laws.
  - B.  I certify my business has satisfied its obligation to the Worker's Compensation Act through the use of an approved Notice of Exclusion (BWC-337, Rev. 5/96). I will provide a copy of the Notice of Exclusion within 21 days of the contract award. (For questions or a copy of the BWC-337, please call the Worker's Compensation Bureau at 517-322-1195).
  - C.  I certify my business has a Worker's Compensation Policy. I will provide an original Certificate of Insurance within twenty-one (21) days of the contract award.
3. If you have checked item 2(A) or 2(B), you **must** indicate the number of **both** full-time and part-time employees, other than yourself, including family members and active partners (if none, you must enter "0").

\_\_\_\_\_ Full-time Employees

\_\_\_\_\_ Part-time Employees

Name of Business		Federal ID (or) Social Security No.	
Address		Telephone (       )	
City	State	ZIP	

*I hereby certify that the above information is true and correct. I agree to notify the Michigan DNR of any changes that occur in factors affecting my coverage during any of my present and future operations.*

\_\_\_\_\_  
Signature of Owner or Authorized Representative

\_\_\_\_\_  
Title

\_\_\_\_\_  
Date

Please complete the "SEALED BID" information on the next page

Three Mile Creek Pine (42-028-20)  
T50N, R08W, SEC. 11; T50N, R08W, SEC. 15; T50N, R08W, SEC. 16; Luce

In response to the notice of sale to be held 3:00 p.m. (local time) on August 26, 2021, I am hereby submitting my sealed bid (firm offer) for the following forest products to be cut. Bids for individual species must be at or above the advertised price. All non-responsive bid forms may be rejected.

<u>PRODUCTS &amp; SPECIES</u>	<u>ESTIMATED VOLUME*</u>	<u>ADVERTISED PRICE</u>	<u>BID PRICE/UNIT</u>
<b>Sawtimber</b>			
Paper Birch	2.1 MBF	\$ 24.00/MBF	\$ _____
Red Maple	27.6 MBF	\$ 67.00/MBF	\$ _____
Yellow Birch	1.2 MBF	\$ 37.00/MBF	\$ _____
<b>Pulpwood</b>			
Balsam Fir	328 Cords	\$ 9.00/Cord	\$ _____
Jack Pine	69 Cords	\$ 19.90/Cord	\$ _____
Mixed Hardwood	869 Cords	\$ 10.30/Cord	\$ _____
Mixed Spruce	172 Cords	\$ 18.60/Cord	\$ _____
N. White Cedar	6 Cords	\$ 4.85/Cord	\$ _____
Red Pine	676 Cords	\$ 42.60/Cord	\$ _____
White Pine	402 Cords	\$ 14.45/Cord	\$ _____

\*The volumes are statistically estimated within plus (+) or minus (-) 9.77 percent at 95% confidence level. These estimated volumes are final and not subject to adjustment. Prospective bidders are urged to examine this timber and to make their own estimates of quantity and quality.

I understand that any or all bids may be rejected. All bids must be signed and all bid items must be bid or the bid form may be rejected. I also understand that consideration and awarding a contract will be based upon my past performance and ability to complete the contract based upon equipment and staffing subject to my control.

FEDERAL ID: \_\_\_\_\_ - \_\_\_\_\_ or SOCIAL SECURITY NUMBER: \_\_\_\_\_ - \_\_\_\_\_ - \_\_\_\_\_

Company or individual bidding: \_\_\_\_\_

Company representative's name: \_\_\_\_\_

Address: \_\_\_\_\_

City: \_\_\_\_\_ State: \_\_\_\_\_ Zip: \_\_\_\_\_

IF AVAILABLE, PLEASE PLACE THE PERSONALIZED LABEL FROM YOUR PROSPECTUS IN THE ABOVE BOX.

Individual or company representative's signature: \_\_\_\_\_ Date: \_\_\_\_\_

Phone number : \_\_\_\_\_ Email (optional): \_\_\_\_\_

**THE WINNING BIDDER MUST COMPLETE THE VERIFICATION OF WORKER'S DISABILITY COMPENSATION ACT COMPLIANCE (ON REVERSE SIDE IF DOUBLE SIDED) WITHIN 21 DAYS OF SALE AWARD DATE**



<b>FOR DEPARTMENT USE ONLY</b>
Sale Number (XX – XXX – XX – XX)
Forest Management Unit:

## TIMBER SALE VERIFICATION OF WORKER'S DISABILITY COMPENSATION ACT COMPLIANCE

As required by Act 317, P.A. 1969 (Worker's Compensation) and  
Part 5 of Act 451 of 1994, as amended.

### VERIFICATION OF WORKER'S DISABILITY COMPENSATION ACT COMPLIANCE

- This verification must be completed and submitted within 21 days of contract award and prior to the issuance of the timber sale contract.
- In addition, if boxes 2B or 2C are checked, then Notice of Exclusion or Certificate of Insurance must be submitted within twenty-one (21) days of the contract award and prior to the issuance of the timber sale contract.
- All information must be typed or printed except for written signatures.

Please Check Appropriate Categories:

- My business is organized as (you **must** check one of the boxes below):
  - Sole Proprietorship (individual)
  - Partnership
  - Corporation
- You **must** check one of the boxes below:
  - I certify my business is a sole proprietorship and it has no employees but the sole proprietor. I am not subject to the Worker's Compensation Laws.
  - I certify my business has satisfied its obligation to the Worker's Compensation Act through the use of an approved Notice of Exclusion (BWC-337, Rev. 5/96). I will provide a copy of the Notice of Exclusion within 21 days of the contract award. (For questions or a copy of the BWC-337, please call the Worker's Compensation Bureau at 517-322-1195).
  - I certify my business has a Worker's Compensation Policy. I will provide an original Certificate of Insurance within twenty-one (21) days of the contract award.
- If you have checked item 2(A) or 2(B), you **must** indicate the number of **both** full-time and part-time employees, other than yourself, including family members and active partners (if none, you must enter "0").

\_\_\_\_\_ Full-time Employees

\_\_\_\_\_ Part-time Employees

Name of Business		Federal ID (or) Social Security No.	
Address		Telephone (       )	
City	State	ZIP	

*I hereby certify that the above information is true and correct. I agree to notify the Michigan DNR of any changes that occur in factors affecting my coverage during any of my present and future operations.*

\_\_\_\_\_  
Signature of Owner or Authorized Representative

\_\_\_\_\_  
Title

\_\_\_\_\_  
Date

Please complete the "SEALED BID" information on the next page