



**DEPARTMENT OF NATURAL RESOURCES
STATE OF MICHIGAN**

TIMBER SALE PROSPECTUS #6831

SCHEDULED SALE DATE AND TIME: 3:00 p.m. (local time) on August 31, 2021.

LOCATION: NAUBINWAY FIELD OFFICE, PO BOX 287, US 2 W11569, NAUBINWAY, MI 49762.

PROSPECTUS NOTE: The bidder is advised to inspect the sale area and review the location, estimated volumes, operating costs and contract terms of proposed sales. Please be aware that some landowners may request 60 days or more notice for access across their land.

Notice is hereby given that bids will be received by the Unit Manager, SAULT STE MARIE MANAGEMENT UNIT, for certain timber on the following described lands:

34 Krause (45-113-20) / T44N, R10W, SEC. 2 , SESW.

T44N, R10W, SEC. 3 , NWNW,N1/2SE.

T45N, R10W, SEC. 34, SWSW.

Mackinac County, Advertised Price \$7,905.05, 26.0 Acres, Spruce/Fir/Tamarack, White Pine.

SALE NOTE: A recreation site such as a trail, pathway, or campground is within the sale area or the vicinity. Certain restrictions/specifications may be applicable including time restrictions.

Big Dollar HW (45-115-20) / T44N, R08W, SEC. 17, SWSE.

T44N, R08W, SEC. 20, E1/2NW,NE.

T44N, R08W, SEC. 21, NWNW,S1/2NW,S1/2NE,E1/2SW,SE.

T44N, R08W, SEC. 22, W1/2SW.

T44N, R08W, SEC. 27, NWNW.

T44N, R08W, SEC. 28, NENE.

Mackinac County, Advertised Price \$74,614.80, 187.3 Acres, Hardwood, Sugar Maple.

SALE NOTE: Dollar Lake Road is a seasonal county road.

A recreation site such as a trail, pathway, or campground is within the sale area or the vicinity. Certain restrictions/specifications may be applicable including time restrictions.

Hog Island SBW (45-116-20) / T43N, R08W, SEC. 34, NENE.

T43N, R08W, SEC. 35, S1/2NW,E1/2NE,E1/2SW,W1/2SE.

T43N, R08W, SEC. 36, NWNW.

Mackinac County, Advertised Price \$13,426.00, 59.5 Acres, Spruce/Fir/Tamarack, Hardwood.

SALE NOTE: Hog Island Road is load restricted year round and will require a permit from the Mackinac County Road Commission.

A recreation site such as a trail, pathway, or campground is within the sale area or the vicinity. Certain restrictions/specifications may be applicable including time restrictions.

BID INSTRUCTIONS (VER. 07/02/2018):

1. Scheduled Bid Location, Date, and Time (2/11)

Bids must be received by the Unit Manager, NAUBINWAY OFFICE, PO Box 287 US 2 W11569, Naubinway, MI 49762, no later than 3:00 p.m. (local time) on August 31, 2021. For further information concerning this sale, contact Karen Rodock at 906-477-6048 extension 2040.

2. Bidder's Qualifications (5/16)

Purchaser shall obtain workers compensation insurance to cover claims under Michigan's Worker's Disability Compensation Act of 1969 or similar employee benefit act of any other state applicable to an employee. If all or part of a timber sale was prepared by a private contractor, the contractor and that contractor's company are not permitted to bid on the timber sale contract. Bids will not be accepted from individuals or companies appearing on the DNR/FRD No-Bid List. This list contains the names of purchasers who previously failed to execute a contract within 21-days or who have a history of poor performance.

3. Preparation of Sealed Bids (5/16)

Bid Forms may be completed online thru Michigan DNR Timber Sale Online Bidding (OLB) at www.michigan.gov/timberbidding or by completing the hardcopy Bid Form found in the Timber Sale Prospectus. Hardcopy Bid Forms shall be manually signed in ink. Registration in OLB is considered your 'signature' for all bids submitted thru that system. Bid prices must be entered for each species and product in the Bid Price column for all material subject to bidding and all fill-in blanks must be completed. If erasures or other changes appear on the hardcopy Bid Form, each erasure or change must be initialed by the person signing the bid.

4. Submission of Sealed Bids (5/16)

Bid forms may be obtained from the Unit Manager or thru OLB. Bids may be submitted hardcopy or thru OLB. All hardcopy bids must be submitted on the bid form and in an envelope clearly identified as described in this section. NOTE: Only one bid form per bid envelope. Sealed bids must be submitted to the Unit office designated in the prospectus and must be submitted at or prior to the time established in the prospectus. The envelope should show on the outside (a) the sale name or number and (b) the date and time of bid opening, as shown in the prospectus. Bids received after the time specified in the sale prospectus are late bids and will be rejected.

It is possible for a bidder to submit multiple bids on a single sale. For example, a bid may be submitted hardcopy and a bid may be submitted thru OLB. Or, two bidders from the same company could both submit bids on the same sale. If this were to happen, the State would accept all bids received and award the contract accordingly. All bidding and contractual requirements would apply to all bids received.

5. Public Opening of Sealed Bids (7/16)

If conditions permit, the sealed bids will be publicly opened and posted at the time and place set in the prospectus.

If a bidder, present at a bid opening, has submitted bids on more than one sale, that bidder may withdraw their unopened bid envelopes or announce the withdrawal of their online bid after being declared the successful bidder on one sale.

6. Award of Contract (1/11)

Award of the contract will be made to the Bidder whose bid, conforming to the prospectus, is most advantageous to the State of Michigan on the basis of total value at rates bid for the estimated quantities. The State reserves the right to reject any bid or waive any minor irregularity in bids received. A written award mailed (or otherwise furnished) to the successful Bidder shall be deemed to result in a binding contract without further action by either party.

7. Down Payment (1/11)

The Bidder to whom award is made must make a down payment within 21 days of the sale award. The amount of the down payment will be calculated as shown in the Bond and Payment Schedule of this prospectus. Only cash may be used to meet this requirement.

8. Performance Security (1/11)

As guarantee of faithful performance, a cash bond, certificate of deposit, surety bond or irrevocable letter of credit (LOC) is required within 21 days of the sale award. The amount of the performance security is shown in the Bond and

Payment Schedule of this prospectus. If an LOC or surety is used, the coverage must extend for at least 6 months beyond the contract expiration.

9. Timber Sale Contract (7/18)

Additional conditions and requirements common to all timber sales are listed on the timber sale contract (R4031) and are available on line at www.michigan.gov/timber. Contact the Unit Manager for additional information or a sample contract. Within 21 days of the date of the award letter, the bidder must sign the contract and provide the required down payment, performance security, and verification of worker's disability compensation. The down payment and performance security shall be in accordance with the provisions of the timber sale contract, in the sums stated in this prospectus. If these actions are not taken, then the Bidder, the Bidder's corporation, and the corporation's principals may not be permitted to bid on State timber sales for a period of 3 months after the first offense, 6 months after the second offense, and 1 year after the third offense. An offense will only be counted against the Bidder for 5 years. In addition, the Bidder certifies that if awarded this contract, the Bidder will complete the timber sale contract in accordance with its terms and any modifications thereof including requirements to purchase, cut, and remove the included timber by the expiration date.

Payment Unit values in the State Forest Timber Sale Contract are calculated based on the advertised value of the Payment Unit as a percentage of the total advertised value of the contract. The advertised value of each Payment Unit is given in the Description of Timber by Payment Unit table on the Timber Sale Information page. For example, if the value of Payment Unit 1 is advertised as \$1,500 and the total Timber Sale value is advertised as \$10,000, the contract price for Payment Unit 1 will be 15% of the total bid price ($\$1,500/\$10,000 * 100$).

10. Disclaimer of Estimates and Bidder's Warranty of Inspection (7/16)

Before submitting this bid, the Bidder is advised and cautioned to inspect the sale area, review the requirements of the sale contract, and take other steps as may be reasonably necessary to ascertain the location, estimated volumes, construction estimates, and operating costs of the proposed sale. Failure to do so will not relieve the Bidder from responsibility for completing the contract.

The Bidder warrants that this bid is submitted solely on the basis of the Bidder's examination and inspection of the quality and quantity of the timber offered for sale and the Bidder's opinion of the value thereof and the costs of recovery. No reliance should be placed on the State of Michigan's estimates of timber quality, quantity or costs of recovery. Bidder further acknowledges that the State of Michigan: (i) expressly disclaims any warranty of fitness of timber for any purpose; (ii) offers this timber as is without any warranty of quality (merchantability) or quantity and (iii) expressly disclaims any warranty as to the quantity or quality of timber sold.

11. Certification and Chain-of-Custody (10/14)

Unless otherwise indicated in the contract under section 7 – Other Conditions of the Sale Specific Conditions & Requirements, the area encompassed by this timber sale is certified to the standards of the Forest Stewardship Council (FSC) - Certificate #SCS-FM/COC-00090N and the Sustainable Forestry Initiative (SFI) - Certificate #NSF-SFIS-5Y031-SF5. Forest products from this sale may be delivered to the mill as "FSC 100% and / or SFI certified" as long as the contractor hauling the forest products is chain-of-custody (COC) certified or covered under a COC certificate from the destination mill. The purchaser is responsible for maintaining COC after leaving the sale area.

12. Good Neighbor Authority (GNA) Requirements (7/16)

If the name of this timber sales contains the acronym GNA, it is authorized by the Good Neighbor Authority (GNA) and covered by various agreements between the U.S. Forest Service and the State. The timber sale occurs on federal land and the following conditions apply:

GNA contracts on US Forest Service land will not be awarded to purchasers on the Federal list of excluded parties. The System for Award Management (SAM) will be checked for active excluded parties prior to award of contract. In addition, the Bidder to whom award is made must complete an Assurance Regarding Felony Conviction or Tax Delinquent Status for Corporate Applicants (AD-3031).

13. Good Neighbor Authority (GNA) Requirements, con't (9/16)

Bidder certifies, by signing this bid form, that to the best of Bidder's knowledge that the following representations are accurate and complete.

- a. That the Bidder and its principals are not presently debarred, suspended, proposed for debarment, declared ineligible, or voluntary excluded from timber sales (covered transactions) by any Federal department or agency.
- b. That the Bidder and its principals have not within a 3-year period preceding this bid been convicted of or had a civil judgment rendered against them for commission of fraud or a criminal offense in connection with obtaining , attempting to obtain, or performing a public (Federal, State, or local) transaction or contract under a public transaction; violation of Federal or State antitrust statutes or commission of embezzlement, theft, forgery, bribery, falsification or destruction of records, making false statements, or receiving stolen property.
- c. That the Bidder and its principals are not presently indicted for or otherwise criminally or civilly charged by a governmental entity (Federal, State, or local) with commission of any of the offenses enumerated in paragraph b of this certification.
- d. That the Bidder and its principals have not within a 3-year period preceding this bid had one or more public transactions (Federal, State, or local) terminated for breach or default of a timber or forest product contract.

Bidders that cannot certify this requirement, in whole or in part, shall submit an explanation with their bid.

DAN EICHINGER
Director

TIMBER SALE INFORMATION

34 Krause (45-113-20)

T44N, R10W, SEC. 2; T44N, R10W, SEC. 3; T45N, R10W, SEC. 34.
Mackinac County (Advertised Price \$7,905.05)

SALE NOTE: A recreation site such as a trail, pathway, or campground is within the sale area or the vicinity. Certain restrictions/specifications may be applicable including time restrictions.

A timber sale contract for this lump sum, sealed bid timber sale will be awarded to the responsible bidder offering the highest sealed bid price. All units of volume listed below were estimated using the T-Sale computer program and our traditional volume equations. Bids must be at or above the following advertised price for each product and species:

<u>PRODUCTS & SPECIES</u>	<u>ESTIMATED UNITS*</u>	<u>ADVERTISED PRICE</u>
Sawtimber		
Red Maple	5.3 MBF	\$ 107.00 / MBF
White Pine	8.6 MBF	\$ 41.00 / MBF
Pulpwood		
Balsam Fir	35 Cords	\$ 10.25 / Cord
Mixed Aspen	84 Cords	\$ 14.55 / Cord
Mixed Hardwood	74 Cords	\$ 12.35 / Cord
Mixed Spruce	158 Cords	\$ 20.95 / Cord
N. White Cedar	2 Cords	\$ 4.55 / Cord
Paper Birch	61 Cords	\$ 9.70 / Cord
White Pine	69 Cords	\$ 8.40 / Cord

* The total volume is statistically estimated within plus (+) or minus (-) 20.36 percent. There are an estimated 552 cords on this timber sale, plus or minus 112 cords at the 95% confidence level. The estimated units are final and not subject to adjustment. Prospective bidders are urged to examine this timber and to make their own estimates of quantity and quality.

BOND AND PAYMENT SCHEDULE:

1. A bond in the amount of \$632.00 to insure faithful performance of the conditions of the contract will be deposited by the successful bidder within 21 days of the sale award.
2. Cutting in any sale or unit without the required advance payment would be considered a trespass.
3. Total payment must be paid in advance or according to the following schedule :
 - (a) Ten percent (10%) of the sale value must be paid within 21 days of the sale award.
 - (b) The 10% down payment will be credited towards the first unit cut.
 - (c) Payment for each of the following units must be made before cutting begins in that unit:

PAYMENT UNIT NUMBER	PERCENT OF TOTAL SALE VALUE
01	23.1%
02	25.2%
03	51.7%
4. If no cutting takes place, the 10% down payment will not be refunded.
5. Operations on the contract issued will terminate on 06/30/2024.

SALE STATISTICS

SALE VOLUMES

VOLUME		STATISTICAL RANGE IN CORDS		
TOTAL CUBIC FEET	TOTAL CORDS	PERCENT ERROR	MINIMUM	MAXIMUM
43,589	552	20.36%	439	664

VDU VOLUMES

A VDU is a Volume Determination Unit. Volumes and their associated statistics are calculated at the VDU level and summarized to the sale level. There is often a one to one relationship between a VDU and a Payment Unit, but not always, depending on the cruise design. Refer to the VDU TO PAYMENT UNIT table.

VDU	VOLUME		PERCENT ERROR	RANGE IN CORDS	
	TOTAL CUBIC FEET	TOTAL CORDS		MINIMUM	MAXIMUM
2	13,098	166	33.83%	110	222
32	12,387	157	54.67%	71	243
43	18,067	229	22.69%	177	281
TOTAL:	43,553	551		358	745

VDU TO PAYMENT UNIT

When a VDU is associated with more than one Payment Unit (PU), the VDU volumes are assigned to the PU based on acres of the VDU within the PU.

VDU	VDU ACRES	PU	PU ACRES
2	7.9	1	7.9
32	8.4	2	8.4
43	9.7	3	9.7
TOTAL:	26.0		26.0

DESCRIPTION OF TIMBER BY PAYMENT UNIT (PU)

PU	MARKET GROUP	PRODUCT	QUANTITY	UNIT	ACRES	ADVERTISE PRICE			
1	Balsam Fir	Pulpwood	17	Cords	7.9	\$1,829.45			
	Mixed Aspen		38	Cords					
	<i>Quaking Aspen</i>	<i>Sawtimber</i>	4.2	<i>MBF</i>					
	<i>Quaking Aspen</i>	<i>Pulpwood</i>	30	<i>Cords</i>					
	Mixed Hardwood		29	Cords					
	<i>Black Cherry</i>		8	<i>Cords</i>					
	<i>Red Maple</i>		21	<i>Cords</i>					
	Mixed Spruce		17	Cords					
	<i>Black Spruce</i>		13	<i>Cords</i>					
	<i>White Spruce</i>		4	<i>Cords</i>					
	Paper Birch		40	Cords					
	<i>Paper Birch</i>	<i>Sawtimber</i>	0.7	<i>MBF</i>					
	<i>Paper Birch</i>	<i>Pulpwood</i>	39	<i>Cords</i>					
	2	White Pine	Sawtimber	8.6			MBF	8.4	\$1,990.70
Balsam Fir		Pulpwood	3	Cords					
Mixed Aspen			19	Cords					
<i>Quaking Aspen</i>		<i>Sawtimber</i>	1.8	<i>MBF</i>					
<i>Quaking Aspen</i>		<i>Pulpwood</i>	15	<i>Cords</i>					
Mixed Hardwood			15	Cords					
<i>Red Maple</i>			15	<i>Cords</i>					
Mixed Spruce			21	Cords					
<i>Black Spruce</i>			21	<i>Cords</i>					
Paper Birch			13	Cords					
<i>Paper Birch</i>			13	<i>Cords</i>					
White Pine			69	Cords					
3		Red Maple	Sawtimber	5.3	MBF	9.7	\$4,084.90		
		Balsam Fir	Pulpwood	15	Cords				
	Mixed Aspen		27	Cords					
	<i>B. T. Aspen</i>	<i>Sawtimber</i>	1.7	<i>MBF</i>					
	<i>B. T. Aspen</i>	<i>Pulpwood</i>	4	<i>Cords</i>					
	<i>Quaking Aspen</i>		20	<i>Cords</i>					
	Mixed Hardwood		30	Cords					
	<i>Red Maple</i>		25	<i>Cords</i>					
	<i>Yellow Birch</i>		5	<i>Cords</i>					
	Mixed Spruce		120	Cords					
	<i>Black Spruce</i>	<i>Sawtimber</i>	7.2	<i>MBF</i>					
	<i>White Spruce</i>		7.6	<i>MBF</i>					
	<i>Black Spruce</i>	<i>Pulpwood</i>	53	<i>Cords</i>					
	<i>White Spruce</i>		38	<i>Cords</i>					
	N. White Cedar		2	Cords					
	Paper Birch		8	Cords					
	<i>Paper Birch</i>	<i>Sawtimber</i>	0.8	<i>MBF</i>					
	<i>Paper Birch</i>	<i>Pulpwood</i>	6	<i>Cords</i>					
TOTAL:			13.9	MBF					
TOTAL:			483	Cords					

Sale Specific Conditions & Requirements

Sale Name: 34 Krause

Sale Number: 45-113-20 Seq#: 1

1 - Sale Area

1.2 - Boundaries

1.2.1 - Painted boundaries (9/19)

The sale boundary and Payment Unit boundaries are marked and identified red paint. Exterior sale boundary lines against state are marked with red paint. The painted boundary line trees are not Included Timber and are to be protected.

2 - Timber Specifications

2.1 - Included Timber

2.1.1 - Clearcut unit(s) with unmerchantable trees (6/14)

Within Payment Unit(s) 1-3, cut all deciduous trees that are two (2) inches or more at DBH and all conifer trees four (4) inches or more at DBH, except do not cut cedar, yellow birch, red pine, or white pine. Also leave one representative, healthy, mature tree spaced every 75 feet.

4 - Transportation

4.1 - Construction

4.1.6 - Road construction (1/09)

Construction of new roads or improvements of existing roads shall be done in such a way as to minimize the environmental and visual impacts. Merchantable trees shall be cut and utilized unless otherwise directed. Non-merchantable trees shall be severed and laid flat on the ground. Slash shall be scattered, and not left in windrows and kept a minimum of 10 feet back from the road edge. Stumps shall be set upright, not left on edge, and be moved at least 10 feet away from the road edge. Disturbed soil shall be feathered into the woods and not left in berms or windrows.

4.1.7 - Road closure (10/11)

All new roads built into the Sale Area must be blocked to vehicle traffic within 30 days of completion of hauling. Overgrown roads that are reopened shall be considered new roads. In general, this will require constructing a four (4') foot high berm of stumps and logs covered with earth. Stumps and brush must be placed along the remainder of the trail. These roads must be rendered impassable to cars and trucks. All stumps from road building and landing construction must be reserved to block any newly constructed roads upon completion of the sale. These stumps must be scattered along the road system to prohibit vehicular movement. Contact the sale administrator for specific details of design and placement.

4.2 - Maintenance

4.2.5 - Two wheel drive condition (2/04)

All existing trail roads on and adjacent to the sale area must be passable by two-wheel drive traffic for the duration of the sale.

5 - Operations

5.2 - Conduct of Operations

5.2.1 - Slash

5.2.1.8 - Slash height (12/08)

No slash or tree tops may exceed 24 inches in height.

5.2.2 - Hazard Trees/Snags

5.2.2.1 - Den trees (10/16)

Obvious hollow and/or den trees shall be protected and left standing unless they are a safety hazard.

5.2.4 - Dead and Down Creation

5.2.4.3 - Dead and down creation, dead trees (6/07)

Except as provided for in General Condition and Requirement 5.2.2, no dead trees, standing or down, are to be cut, skidded, or processed.

5.2.32 - Decking/landing restoration (9/13)

All decking and landing areas must have the surface area restored to a condition equal to or better than before. This is to ensure the proper regeneration of the stand. Wood debris, chips, and "cookies" from trimmings must be removed or scattered away from landing and loading areas and may not be windrowed on the edge.

5.2.38 - No decking against live trees (2/04)

Cut products may not be decked against unmarked or designated leave trees.

5.2.39 - ORV trail/route protection (4/18)

The Section 34 Road is an ORV trail or route and is shown on the Timber Sale Map. Do not cut trees or damage posts with yellow ORV markers. All stumps within 5 feet of the trail must be cut flush with the ground. Maintain a 20-foot-wide slash, debris, and rut free zone daily using the ORV trail or route as the centerline. Do not run equipment down the ORV trail or route.

5.2.41 - Snowmobile trail protection (9/11)

The Section 34 Road is a snowmobile trail and is shown on the Timber Sale Map. Do not cut or damage posts with orange trail markers or traffic control signs. If the trail is used, it must be maintained and restored to a condition equal to or better than before the sale. The road maintenance/restoration must be done prior to December 1. If the trail is used for hauling, it must be graded to the satisfaction of the Unit Manager or his/her representative prior to December 1. If the trail road is to be used for hauling during the snowmobile season, then a snow-covered base must be left on the trail. Maintain a 20-foot-wide slash, debris, and rut free zone daily using the snowmobile trail as the centerline. No decking of forest products will be permitted along the snowmobile trail. All stumps within 20 feet of the snowmobile trail must be cut at ground level.

5.4 - Soil Protection

5.4.1 - Rutting restriction, general (7/16)

Operations are to cease immediately if equipment and weather conditions result in rutting of roads and/or skid trails which is 12 inches or greater in depth and 50 feet in length. The Unit Manager or his/her representative may restrict hauling and/or skidding if ruts exceed the specified depth. With the Unit Manager or his/her representative's approval, the Purchaser may return to the area when the risk of rutting has decreased.

5.4.2 - Skid trails (2/04)

Skid trails up and down slopes should be avoided. If however this is unavoidable, these trails will be left in a non-erodible condition using water bars, logs, and slash. Placing of slash on these skid trails while logging is ongoing may alleviate need for any further action. At the direction of the sale administrator, seed, fertilizer, and mulch may also be required.

5.8 - Protection of Endangered Species

5.8.5 - Protection of raptor nests (3/13)

All trees with raptor nests will be protected if found during harvesting operations. Notification will be made to the Unit Manager or his/her representative who will notify the Wildlife Biologist so an on-site evaluation and recommendation can be made, if necessary.

6 - Safety and Fire Prevention

6.2 - Signing

6.2.1 - Road posting (9/09)

The Purchaser is responsible for posting and maintaining caution signs on Krause Road and Section 34 Road prior to beginning operations. The road must be posted at appropriate distances from the Sale Area to warn of logging activity and truck traffic. Signs must be removed when harvest operations are suspended or completed. The Purchaser will provide these signs.



TIMBER SALE MAP

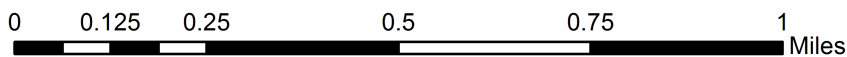
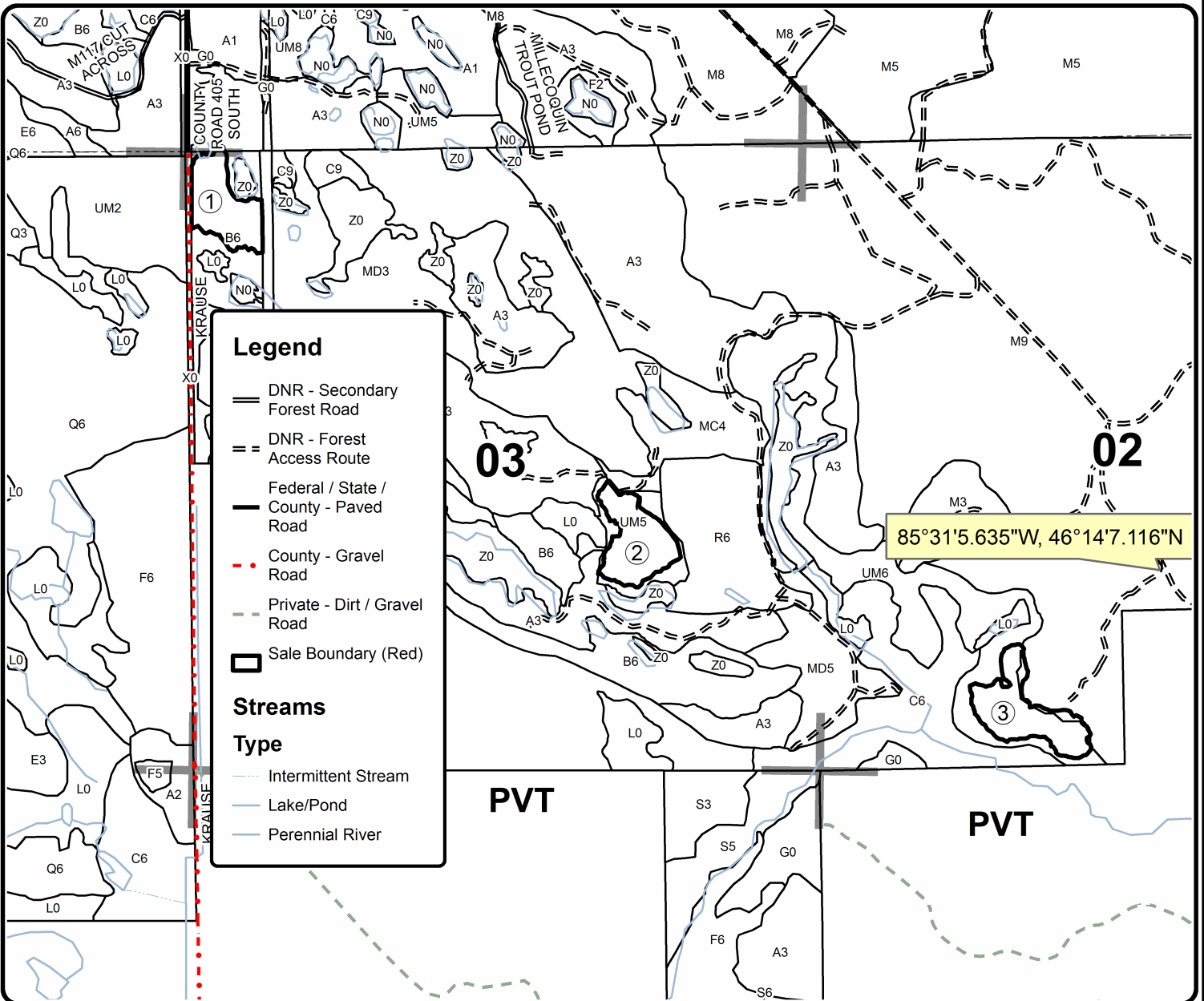
This information provided by authority of Part 525, 1994 PA 451, as amended.

Forest Management Unit Sault Ste Marie	County Mackinac	Mapped By A Krugh	Date 8/13/2020	Page 1	of 1
Township 44N & 45N	Range 10W	Section(s) and Subdivision(s) 2: SESW 3: NWNW, N1/2SE 34: SWSW	Scale 1:15,840		

Cover Type				Density	
A = Aspen	H = Hemlock	N = Marsh	U = Upland Brush	0 = Non Stocked	5 = Pole Timber Medium
B = Paper Birch	J = Jack Pine	O = Oak	UM = Upland Mixed	1 = Seedling Sapling Poor	6 = Pole Timber Well
C = Cedar	L = Lowland Brush	P = Lowland Poplar	V = Bog or Marsh	2 = Seedling Sapling Medium	7 = Saw Timber Poor
D = Treed Bog	LM = Lowland Mixed	Q = Mixed Swamp Conifer	W = White Pine	3 = Seedling Sapling Well	8 = Saw Timber Medium
E = Swamp Hdwoods	M = Mpl, Bch, Brch	R = Red Pine	X = Non Stocked	4 = Pole Timber Poor	9 = Saw Timber Well
F = Spruce Fir	MC = Mixed Conifer	S = Black Spruce	Z = Water		
G = Grass	MD = Mixed Deciduous	T = Tamarack			

PU	Acres
1	7.9
2	8.4
3	9.7

34 Krause
Compartment 178
26 Acres



TIMBER SALE INFORMATION

Big Dollar HW (45-115-20)

T44N, R08W, SEC. 17; T44N, R08W, SEC. 20; T44N, R08W, SEC. 21; T44N, R08W, SEC. 22; T44N, R08W, SEC. 27; T44N, R08W, SEC. 28.

SALE NOTE: Dollar Lake Road is a seasonal county road.

A recreation site such as a trail, pathway, or campground is within the sale area or the vicinity. Certain restrictions/specifications may be applicable including time restrictions.

A timber sale contract for this lump sum, sealed bid timber sale will be awarded to the responsible bidder offering the highest sealed bid price. All units of volume listed below were estimated using the T-Sale computer program and our traditional volume equations. Bids must be at or above the following advertised price for each product and species:

<u>PRODUCTS & SPECIES</u>	<u>ESTIMATED UNITS*</u>	<u>ADVERTISED PRICE</u>
Sawtimber		
Black Cherry	4.3 MBF	\$ 105.00 / MBF
Red Maple	29.5 MBF	\$ 107.00 / MBF
Sugar Maple	183.5 MBF	\$ 305.00 / MBF
Pulpwood		
Mixed Aspen	66 Cords	\$ 14.55 / Cord
Mixed Hardwood	1,140 Cords	\$ 12.35 / Cord

* The total volume is statistically estimated within plus (+) or minus (-) 9.89 percent. There are an estimated 1,640 cords on this timber sale, plus or minus 162 cords at the 95% confidence level. The estimated units are final and not subject to adjustment. Prospective bidders are urged to examine this timber and to make their own estimates of quantity and quality.

BOND AND PAYMENT SCHEDULE:

1. A bond in the amount of \$5,969.00 to insure faithful performance of the conditions of the contract will be deposited by the successful bidder within 21 days of the sale award.
2. Cutting in any sale or unit without the required advance payment would be considered a trespass.
3. Total payment must be paid in advance or according to the following schedule :
 - (a) Ten percent (10%) of the sale value must be paid within 21 days of the sale award.
 - (b) The 10% down payment will be credited towards the first unit cut.
 - (c) Payment for each of the following units must be made before cutting begins in that unit:

<u>PAYMENT UNIT NUMBER</u>	<u>PERCENT OF TOTAL SALE VALUE</u>
01	7.2%
02	11.2%
03	0.7%
04	1.6%
05	1.8%
06	0.6%
07	2.2%
08	17.9%
09	26.2%
10	12.2%
11	18.4%

4. If no cutting takes place, the 10% down payment will not be refunded.
5. Operations on the contract issued will terminate on 06/30/2024.

SALE STATISTICS

SALE VOLUMES

<u>VOLUME</u>		<u>STATISTICAL RANGE IN CORDS</u>		
<u>TOTAL CUBIC FEET</u>	<u>TOTAL CORDS</u>	<u>PERCENT ERROR</u>	<u>MINIMUM</u>	<u>MAXIMUM</u>
129,549	1,640	9.89%	1,478	1,802

VDU VOLUMES

A VDU is a Volume Determination Unit. Volumes and their associated statistics are calculated at the VDU level and summarized to the sale level. There is often a one to one relationship between a VDU and a Payment Unit, but not always, depending on the cruise design. Refer to the VDU TO PAYMENT UNIT table.

VDU	VOLUME		PERCENT ERROR	RANGE IN CORDS	
	TOTAL CUBIC FEET	TOTAL CORDS		MINIMUM	MAXIMUM
6	4,306	55	45.70%	30	79
11	2,923	37	77.52%	8	66
20	5,988	76	64.20%	27	124
36	1,817	23	82.05%	4	42
37	31,853	403	19.48%	325	482
41	3,974	50	40.57%	30	71
449	78,684	996	12.07%	876	1,116
TOTAL:	129,544	1,640		1,300	1,980

VDU TO PAYMENT UNIT

When a VDU is associated with more than one Payment Unit (PU), the VDU volumes are assigned to the PU based on acres of the VDU within the PU.

VDU	VDU ACRES	PU	PU ACRES
6	7.9	5	7.9
11	10.4	3	10.4
20	9.7	4	9.7
36	5.9	6	5.9
37	43.7	1	17.1
		2	26.6
41	5.1	7	5.1
449	104.6	8	25.0
		9	36.7
		10	17.1
		11	25.8
TOTAL:	187.3		187.3

DESCRIPTION OF TIMBER BY PAYMENT UNIT (PU)

PU	MARKET GROUP	PRODUCT	QUANTITY	UNIT	ACRES	ADVERTISE PRICE
1	Black Cherry	Sawtimber	1.7	MBF	17.1	\$5,358.80
	Red Maple		2.0	MBF		
	Sugar Maple		11.1	MBF		
	Mixed Hardwood	Pulpwood	128	Cords		
	<i>American Elm</i>	<i>Sawtimber</i>	0.7	<i>MBF</i>		
	<i>American Elm</i>	<i>Pulpwood</i>	3	<i>Cords</i>		
	<i>Black Cherry</i>		15	<i>Cords</i>		
	<i>Red Maple</i>		32	<i>Cords</i>		
	<i>Sugar Maple</i>		77	<i>Cords</i>		
2	Black Cherry	Sawtimber	2.6	MBF	26.6	\$8,320.70
	Red Maple		3.1	MBF		
	Sugar Maple		17.2	MBF		
	Mixed Hardwood	Pulpwood	200	Cords		
	<i>American Elm</i>	<i>Sawtimber</i>	1.0	<i>MBF</i>		
	<i>American Elm</i>	<i>Pulpwood</i>	4	<i>Cords</i>		
	<i>Black Cherry</i>		24	<i>Cords</i>		
	<i>Red Maple</i>		51	<i>Cords</i>		
	<i>Sugar Maple</i>		119	<i>Cords</i>		
3	Red Maple	Sawtimber	0.5	MBF	10.4	\$498.10
	Mixed Hardwood	Pulpwood	36	Cords		
	<i>Paper Birch</i>	<i>Sawtimber</i>	0.5	<i>MBF</i>		
	<i>Black Cherry</i>	<i>Pulpwood</i>	5	<i>Cords</i>		
	<i>Paper Birch</i>		2	<i>Cords</i>		
	<i>Red Maple</i>		12	<i>Cords</i>		
	<i>Sugar Maple</i>		16	<i>Cords</i>		
4	Sugar Maple	Sawtimber	0.6	MBF	9.7	\$1,169.50
	Mixed Aspen	Pulpwood	33	Cords		
	<i>Quaking Aspen</i>		33	<i>Cords</i>		
	Mixed Hardwood		41	Cords		
	<i>Sugar Maple</i>		41	<i>Cords</i>		
5	Sugar Maple	Sawtimber	2.1	MBF	7.9	\$1,331.95
	Mixed Aspen	Pulpwood	28	Cords		
	<i>B. T. Aspen</i>		11	<i>Cords</i>		
	<i>Quaking Aspen</i>		17	<i>Cords</i>		
	Mixed Hardwood		23	Cords		
	<i>Paper Birch</i>		5	<i>Cords</i>		
	<i>Sugar Maple</i>		18	<i>Cords</i>		
6	Sugar Maple	Sawtimber	0.6	MBF	5.9	\$454.70
	Mixed Hardwood	Pulpwood	22	Cords		
	<i>Sugar Maple</i>		22	<i>Cords</i>		
7	Red Maple	Sawtimber	2.3	MBF	5.1	\$1,660.90
	Sugar Maple		3.1	MBF		
	Mixed Hardwood	Pulpwood	38	Cords		
	<i>Beech</i>		9	<i>Cords</i>		
	<i>Red Maple</i>		3	<i>Cords</i>		
	<i>Sugar Maple</i>		26	<i>Cords</i>		
8	Red Maple	Sawtimber	5.2	MBF	25.0	\$13,355.55
	Sugar Maple		35.6	MBF		
	Mixed Aspen	Pulpwood	1	Cords		
	<i>Quaking Aspen</i>		1	<i>Cords</i>		
	Mixed Hardwood		156	Cords		
	<i>Beech</i>	<i>Sawtimber</i>	0.1	<i>MBF</i>		
	<i>Beech</i>	<i>Pulpwood</i>	5	<i>Cords</i>		
	<i>Black Cherry</i>		2	<i>Cords</i>		
	<i>Red Maple</i>		27	<i>Cords</i>		

DESCRIPTION OF TIMBER BY PAYMENT UNIT (PU), CON'T

PU	MARKET GROUP	PRODUCT	QUANTITY	UNIT	ACRES	ADVERTISE PRICE
8 con't	<i>Sugar Maple</i>	<i>Pulpwood</i>	122	<i>Cords</i>		
9	Red Maple	Sawtimber	7.6	MBF	36.7	\$19,603.80
	Sugar Maple		52.2	MBF		
	Mixed Aspen	Pulpwood	2	Cords		
	<i>Quaking Aspen</i>		2	<i>Cords</i>		
	Mixed Hardwood		230	Cords		
	<i>Beech</i>	<i>Sawtimber</i>	0.2	<i>MBF</i>		
	<i>Beech</i>	<i>Pulpwood</i>	7	<i>Cords</i>		
	<i>Black Cherry</i>		3	<i>Cords</i>		
	<i>Red Maple</i>		39	<i>Cords</i>		
	<i>Sugar Maple</i>		179	<i>Cords</i>		
	<i>Yellow Birch</i>		2	<i>Cords</i>		
10	Red Maple	Sawtimber	3.5	MBF	17.1	\$9,097.30
	Sugar Maple		24.3	MBF		
	Mixed Aspen	Pulpwood	1	Cords		
	<i>Quaking Aspen</i>		1	<i>Cords</i>		
	Mixed Hardwood		105	Cords		
	<i>Beech</i>	<i>Sawtimber</i>	0.1	<i>MBF</i>		
	<i>Beech</i>	<i>Pulpwood</i>	3	<i>Cords</i>		
	<i>Black Cherry</i>		1	<i>Cords</i>		
	<i>Red Maple</i>		18	<i>Cords</i>		
	<i>Sugar Maple</i>		83	<i>Cords</i>		
11	Red Maple	Sawtimber	5.3	MBF		
	Sugar Maple		36.7	MBF		
	Mixed Aspen	Pulpwood	1	Cords		
	<i>Quaking Aspen</i>		1	<i>Cords</i>		
	Mixed Hardwood		160	Cords		
	<i>Beech</i>	<i>Sawtimber</i>	0.1	<i>MBF</i>		
	<i>Beech</i>	<i>Pulpwood</i>	5	<i>Cords</i>		
	<i>Black Cherry</i>		2	<i>Cords</i>		
	<i>Red Maple</i>		27	<i>Cords</i>		
	<i>Sugar Maple</i>		126	<i>Cords</i>		
TOTAL:			217.3	MBF		
TOTAL:			1,205	Cords		

Sale Specific Conditions & Requirements

Sale Name: Big Dollar HW

Sale Number: 45-115-20 Seq#: 1

1 - Sale Area

1.2 - Boundaries

1.2.1 - Painted boundaries (9/19)

The sale boundary and Payment Unit boundaries are marked and identified by red and yellow paint. Exterior sale boundary lines against state are marked with red paint. Interior Payment Unit boundaries are marked with yellow paint. The painted boundary line trees are not Included Timber and are to be protected unless marked with orange paint. Yellow painted trees designating an interior Payment Unit boundary are only to be cut when all surrounding Payment Units have been paid and is marked with orange paint.

2 - Timber Specifications

2.1 - Included Timber

2.1.3 - Cut tree marked unit(s) (12/08)

Within Payment Unit(s) 1 - 11, all trees are designated for cutting when marked with orange paint above and below stump height, regardless of merchantability.

2.2 - Utilization

2.2.6 - Roundwood operation required (5/07)

The skidding of whole trees or tree segments with limbs attached is prohibited within Payment Units 1 - 11. All products must be produced as roundwood and forwarded to existing roads or landing areas in final product length.

2.2.7 - Uncut designated trees (2/04)

Liquidated damages of \$5.00 per tree will be assessed for every marked tree not cut.

3 - Payments

3.3 - Pre-measured Sales

3.3.4 - Dividing payment units (7/14)

Payment Unit(s) 8, 9, and 11 may be divided at the request of the Purchaser and upon approval of the Unit Manager.

Dividing Payment Units is a contract modification which requires a Timber Sale Contract Amendment. There will be only one division per Payment Unit.

4 - Transportation

4.1 - Construction

4.1.6 - Road construction (1/09)

Construction of new roads or improvements of existing roads shall be done in such a way as to minimize the environmental and visual impacts. Merchantable trees shall be cut and utilized unless otherwise directed. Non-merchantable trees shall be severed and laid flat on the ground. Slash shall be scattered, and not left in windrows and kept a minimum of 10 feet back from the road edge. Stumps shall be set upright, not left on edge, and be moved at least 10 feet away from the road edge. Disturbed soil shall be feathered into the woods and not left in berms or windrows.

4.1.7 - Road closure (10/11)

All new roads built into the sale must be blocked to vehicle traffic within 30 days of completion of hauling. Overgrown roads that are reopened shall be considered new roads. In general, this will require constructing a four (4') foot high berm of stumps and logs covered with earth. Stumps and brush must be placed along the remainder of the trail. These roads must be rendered impassable to cars and trucks. All stumps from road building and landing construction must be reserved to block any newly constructed roads upon completion of the sale. These stumps must be scattered along the road system to prohibit vehicular movement. Contact the sale administrator for specific details of design and placement.

4.2 - Maintenance

4.2.5 - Two wheel drive condition (2/04)

All existing trail roads on and adjacent to the sale area must be passable by two-wheel drive traffic for the duration of the sale.

5 - Operations

5.2 - Conduct of Operations

5.2.2 - Hazard Trees/Snags

5.2.2.1 - Den trees (10/16)

Obvious hollow and/or den trees shall be protected and left standing unless they are a safety hazard.

5.2.3 - Operating Restrictions

5.2.3.2 - Operating restrictions (9/11)

Within Payment Unit(s) 1 - 7 and 9, unless changed by written agreement, cutting, skidding, and hauling are limited to the period of December 1 to March 31. This restriction is to create tops for winter deer browse.

5.2.3.3 - Bark slippage restriction (3/09)

Within Payment Unit(s) 1 - 11, unless changed by written agreement, cutting and skidding are not permitted during the period of May 1 to June 30. This restriction is because of bark slippage.

5.2.4 - Dead and Down Creation

5.2.4.3 - Dead and down creation, dead trees (6/07)

Except as provided for in General Condition and Requirement 5.2.2, no dead trees, standing or down, are to be cut, skidded, or processed.

5.2.32 - Decking/landing restoration (9/13)

All decking and landing areas must have the surface area restored to a condition equal to or better than before. This is to ensure the proper regeneration of the stand. Wood debris, chips, and "cookies" from trimmings must be removed or scattered away from landing and loading areas and may not be windrowed on the edge.

5.2.38 - No decking against live trees (2/04)

Cut products may not be decked against unmarked or designated leave trees.

5.2.39 - ORV trail/route protection (4/18)

An ORV trail or route is shown on the Timber Sale Map. Do not cut trees or damage posts with yellow ORV markers. Trees with yellow ORV markers shall be cut off above the markers and at least 5 feet above ground, if marked with orange paint. All stumps within 5 feet of the trail must be cut flush with the ground. Maintain a 20-foot-wide slash, debris, and rut free zone daily using the ORV trail or route as the centerline. Do not run equipment down the ORV trail or route. Skidding across the trail or route may only occur in locations approved by the sale administrator.

5.2.41 - Snowmobile trail protection (9/11)

The UP 2 is a snowmobile trail and is shown on the Timber Sale Map. Do not cut or damage posts with orange trail markers or traffic control signs. If the trail is used, it must be maintained and restored to a condition equal to or better than before the sale. The road maintenance/restoration must be done prior to December 1. If the trail is used for hauling, it must be graded to the satisfaction of the Unit Manager or his/her representative prior to December 1. If the trail road is to be used for hauling during the snowmobile season, then a snow-covered base must be left on the trail. Maintain a 20-foot-wide slash, debris, and rut free zone daily using the snowmobile trail as the centerline. All stumps within 20 feet of the snowmobile trail must be cut at ground level.

5.4 - Soil Protection

5.4.1 - Rutting restriction, general (7/16)

Operations are to cease immediately if equipment and weather conditions result in rutting of roads and/or skid trails which is 12 inches or greater in depth and 50 feet in length. The Unit Manager or his/her representative may restrict hauling and/or skidding if ruts exceed the specified depth. With the Unit Manager or his/her representative's approval, the Purchaser may return to the area when the risk of rutting has decreased.

5.8 - Protection of Endangered Species

5.8.5 - Protection of raptor nests (3/13)

All trees with raptor nests will be protected if found during harvesting operations. Notification will be made to the Unit Manager or his/her representative who will notify the Wildlife Biologist so an on-site evaluation and recommendation can be made, if necessary.

6 - Safety and Fire Prevention

6.2 - Signing

6.2.1 - Road posting (9/09)

The Purchaser is responsible for posting and maintaining caution signs on Dollar Lake Road prior to beginning operations. The road must be posted at appropriate distances from the Sale Area to warn of logging activity and truck traffic. Signs must be removed when harvest operations are suspended or completed. The Purchaser will provide these signs.

6.2.3 - Recreational trail posting (2/10)

The Purchaser is responsible for posting and maintaining caution signs on all recreational trails within active Payment Units, prior to beginning operations. The trail must be posted at appropriate distances from the Sale Area to warn of logging activity and truck traffic at both ends of the trail. Signs must be removed when harvest operations are suspended or completed. The Purchaser will provide these signs.



TIMBER SALE MAP

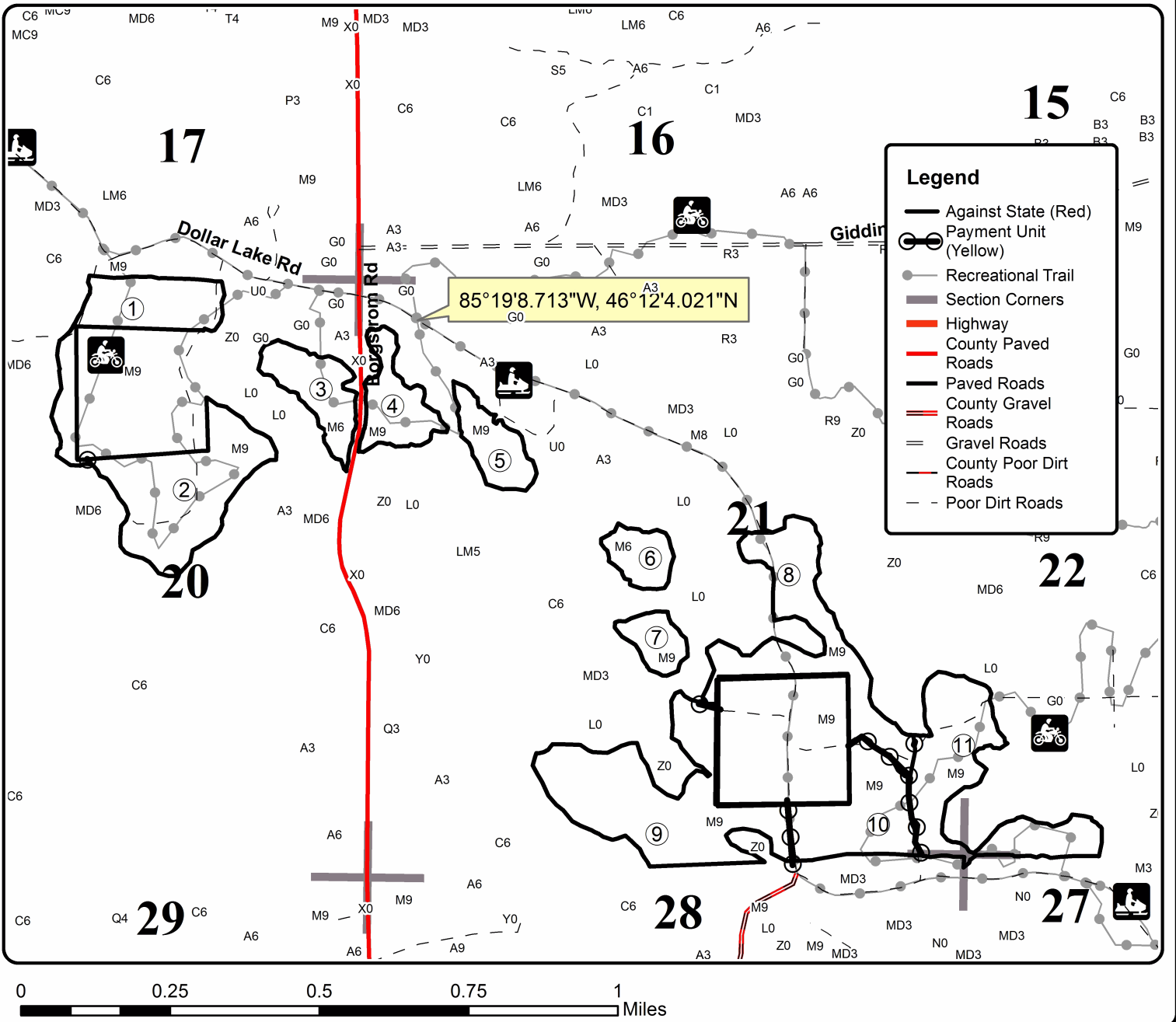
This information provided by authority of Part 525, 1994 PA 451, as amended.

Forest Management Unit Sault Ste Marie Management Unit		County Mackinac	Mapped By A. Krugh		Date 09/03/2020	Page 1	of 1
Township 44N	Range 8W	Section(s) and Subdivision(s) 17: SWSE 20: E1/2NW, NE 21: NWNW, SE 22: W1/2SW 27: NWNW 28:NENE			Scale 1:15,840		
		Cruised By Grossman Forestry					

Cover Type				Density			
A = Aspen	H = Hemlock	N = Marsh	U = Upland Brush	0 = Non Stocked	5 = Pole Timber Medium		
B = Paper Birch	J = Jack Pine	O = Oak	UM = Upland Mixed	1 = Seedling Sapling Poor	6 = Pole Timber Well		
C = Cedar	L = Lowland Brush	P = Lowland Poplar	V = Bog or Marsh	2 = Seedling Sapling Medium	7 = Saw Timber Poor		
LM = Lowland Mixed	M = Mpl, Bch, Brch	Q = Mixed Swamp Conifer	W = White Pine	3 = Seedling Sapling Well	8 = Saw Timber Medium		
D = Treed Bog	MC = Mixed Conifer	R = Red Pine	X = Non Stocked	4 = Pole Timber Poor	9 = Saw Timber Well		
E = Swamp Hdwoods	T = Tamarack	S = Black Spruce	Z = Water				
F = Spruce Fir							
G = Grass							

Big Dollar HW Compartment 156 187.3 Acres

PU	Acres	PU	Acres	PU	Acres
1	17.1	5	7.9	9	36.7
2	26.6	6	5.9	10	17.1
3	10.4	7	5.1	11	25.8
4	9.7	8	25		



TIMBER SALE INFORMATION

Hog Island SBW (45-116-20)
 T43N, R08W, SEC. 34; T43N, R08W, SEC. 35; T43N, R08W, SEC. 36.
 Mackinac County (Advertised Price \$13,426.00)

SALE NOTE: Hog Island Road is load restricted year round and will require a permit from the Mackinac County Road Commission.

A recreation site such as a trail, pathway, or campground is within the sale area or the vicinity. Certain restrictions/specifications may be applicable including time restrictions.

A timber sale contract for this lump sum, sealed bid timber sale will be awarded to the responsible bidder offering the highest sealed bid price. All units of volume listed below were estimated using the T-Sale computer program and our traditional volume equations. Bids must be at or above the following advertised price for each product and species:

<u>PRODUCTS & SPECIES</u>	<u>ESTIMATED UNITS*</u>	<u>ADVERTISED PRICE</u>
Pulpwood		
Balsam Fir	77 Cords	\$ 10.25 / Cord
Mixed Aspen	51 Cords	\$ 14.55 / Cord
Mixed Hardwood	361 Cords	\$ 12.35 / Cord
Mixed Spruce	333 Cords	\$ 20.95 / Cord
Tamarack	115 Cords	\$ 4.00 / Cord

* The total volume is statistically estimated within plus (+) or minus (-) 12.08 percent. There are an estimated 1,194 cords on this timber sale, plus or minus 144 cords at the 95% confidence level. The estimated units are final and not subject to adjustment. Prospective bidders are urged to examine this timber and to make their own estimates of quantity and quality.

BOND AND PAYMENT SCHEDULE:

- A bond in the amount of \$1,074.00 to insure faithful performance of the conditions of the contract will be deposited by the successful bidder within 21 days of the sale award.
- Cutting in any sale or unit without the required advance payment would be considered a trespass.
- Total payment must be paid in advance or according to the following schedule :
 - Ten percent (10%) of the sale value must be paid within 21 days of the sale award.
 - The 10% down payment will be credited towards the first unit cut.
 - Payment for each of the following units must be made before cutting begins in that unit:

PAYMENT UNIT NUMBER	PERCENT OF TOTAL SALE VALUE
01	10.5%
02	29.1%
03	14.3%
04	21.3%
05	24.8%
- If no cutting takes place, the 10% down payment will not be refunded.
- Operations on the contract issued will terminate on 06/30/2025.

SALE STATISTICS

SALE VOLUMES

VOLUME		STATISTICAL RANGE IN CORDS		
TOTAL CUBIC FEET	TOTAL CORDS	PERCENT ERROR	MINIMUM	MAXIMUM
94,289	1,194	12.08%	1,049	1,338

VDU VOLUMES

A VDU is a Volume Determination Unit. Volumes and their associated statistics are calculated at the VDU level and summarized to the sale level. There is often a one to one relationship between a VDU and a Payment Unit, but not always, depending on the cruise design. Refer to the VDU TO PAYMENT UNIT table.

VDU	VOLUME		PERCENT ERROR	RANGE IN CORDS	
	TOTAL CUBIC FEET	TOTAL CORDS		MINIMUM	MAXIMUM
5	26,038	330	22.12%	257	403
18	9,117	115	29.72%	81	150
19	7,260	92	58.68%	38	146
24	7,094	90	17.88%	74	106
26	14,852	188	17.15%	156	220
28	8,888	113	39.16%	68	157
34	5,965	76	10.88%	67	84
105	15,089	191	35.20%	124	258
TOTAL:	94,302	1,194		865	1,523

VDU TO PAYMENT UNIT

When a VDU is associated with more than one Payment Unit (PU), the VDU volumes are assigned to the PU based on acres of the VDU within the PU.

VDU	VDU ACRES	PU	PU ACRES
5	21.3	2	21.3
18	6.1	4	6.1
19	4.8	3	4.8
24	3.6	5	3.6
26	10.7	3	4.3
		4	6.4
28	4.3	5	4.3
34	3.7	5	3.7
105	5.0	1	5.0
TOTAL:	59.5		59.5

DESCRIPTION OF TIMBER BY PAYMENT UNIT (PU)

PU	MARKET GROUP	PRODUCT	QUANTITY	UNIT	ACRES	ADVERTISE PRICE
1	Balsam Fir	Pulpwood	4	Cords	5.0	\$1,411.85
	Mixed Hardwood		111	Cords		
	<i>Paper Birch</i>	<i>Sawtimber</i>	2.3	<i>MBF</i>		
	<i>Red Maple</i>		3.8	<i>MBF</i>		
	<i>Paper Birch</i>	<i>Pulpwood</i>	15	<i>Cords</i>		
	<i>Red Maple</i>		80	<i>Cords</i>		
	<i>Yellow Birch</i>		3	<i>Cords</i>		
2	Balsam Fir	Pulpwood	18	Cords	21.3	\$3,899.95
	Mixed Hardwood		12	Cords		
	<i>Paper Birch</i>		3	<i>Cords</i>		
	<i>Red Maple</i>		6	<i>Cords</i>		
	<i>Yellow Birch</i>		3	<i>Cords</i>		
	Mixed Spruce		155	Cords		
	<i>Black Spruce</i>		155	<i>Cords</i>		
	Tamarack		80	Cords		
3	Balsam Fir	Pulpwood	24	Cords	9.1	\$1,913.85
	Mixed Aspen		9	Cords		
	<i>B. T. Aspen</i>		9	<i>Cords</i>		
	Mixed Hardwood		22	Cords		
	<i>Paper Birch</i>		16	<i>Cords</i>		
	<i>Red Maple</i>		6	<i>Cords</i>		
	Mixed Spruce		56	Cords		
	<i>Black Spruce</i>		55	<i>Cords</i>		
	<i>White Spruce</i>		1	<i>Cords</i>		
	Tamarack		23	Cords		
4	Balsam Fir	Pulpwood	23	Cords	12.5	\$2,862.10
	Mixed Aspen		14	Cords		
	<i>B. T. Aspen</i>		14	<i>Cords</i>		
	Mixed Hardwood		43	Cords		
	<i>Paper Birch</i>		17	<i>Cords</i>		
	<i>Red Maple</i>		26	<i>Cords</i>		
	Mixed Spruce		88	Cords		
	<i>Black Spruce</i>		87	<i>Cords</i>		
	<i>White Spruce</i>		1	<i>Cords</i>		
	Tamarack		12	Cords		
5	Balsam Fir	Pulpwood	8	Cords	11.6	\$3,336.05
	Mixed Aspen		27	Cords		
	<i>Quaking Aspen</i>	<i>Sawtimber</i>	4.7	<i>MBF</i>		
	<i>Quaking Aspen</i>	<i>Pulpwood</i>	18	<i>Cords</i>		
	Mixed Hardwood		174	Cords		
	<i>Paper Birch</i>	<i>Sawtimber</i>	5.2	<i>MBF</i>		
	<i>Red Maple</i>		9.3	<i>MBF</i>		
	<i>Paper Birch</i>	<i>Pulpwood</i>	84	<i>Cords</i>		
	<i>Red Maple</i>		58	<i>Cords</i>		
	<i>Yellow Birch</i>		3	<i>Cords</i>		
	Mixed Spruce		34	Cords		
	<i>Black Spruce</i>	<i>Sawtimber</i>	1.6	<i>MBF</i>		
	<i>Black Spruce</i>	<i>Pulpwood</i>	25	<i>Cords</i>		
<i>White Spruce</i>		6	<i>Cords</i>			
TOTAL:			937	Cords		

Sale Specific Conditions & Requirements

Sale Name: Hog Island SBW

Sale Number: 45-116-20 Seq#: 1

1 - Sale Area

1.2 - Boundaries

1.2.1 - Painted boundaries (9/19)

The sale boundary and Payment Unit boundaries are marked and identified by red and yellow paint. Exterior sale boundary lines against state are marked with red paint. Interior Payment Unit boundaries are marked with yellow paint. The painted boundary line trees are not Included Timber and are to be protected unless marked with orange paint. Yellow painted trees designating an interior Payment Unit boundary are only to be cut when all surrounding Payment Units have been paid.

2 - Timber Specifications

2.1 - Included Timber

2.1.1 - Clearcut unit(s) with unmerchantable trees (6/14)

Within Payment Unit(s) 1 - 5, cut all trees that are two (2) inches or more at DBH for deciduous and four (4) inches or more at DBH for conifers, except do not cut cedar, hemlock, or white pine. Additionally, in Payment Units 2 - 5 leave one healthy, mature, and representative tree every 75 feet throughout the Payment Unit. Do not reach into cedar and hemlock patches to removed other species in Payment Units 2 - 5.

3 - Payments

3.3 - Pre-measured Sales

3.3.4 - Dividing payment units (7/14)

Payment Unit(s) 2 - 5 may be divided at the request of the Purchaser and upon approval of the Unit Manager. Dividing Payment Units is a contract modification which requires a Timber Sale Contract Amendment. There will be only one division per Payment Unit.

4 - Transportation

4.1 - Construction

4.1.6 - Road construction (1/09)

Construction of new roads or improvements of existing roads shall be done in such a way as to minimize the environmental and visual impacts. Merchantable trees shall be cut and utilized unless otherwise directed. Non-merchantable trees shall be severed and laid flat on the ground. Slash shall be scattered, and not left in windrows and kept a minimum of 10 feet back from the road edge. Stumps shall be set upright, not left on edge, and be moved at least 10 feet away from the road edge. Disturbed soil shall be feathered into the woods and not left in berms or windrows.

4.1.7 - Road closure (10/11)

All new roads built into the sale must be blocked to vehicle traffic upon completion of the sale. Overgrown roads that are reopened shall be considered new roads. In general, this will require constructing double earthen berms at strategic locations. Stumps and brush must be placed along the remainder of the trail. These roads must be rendered impassable to cars and trucks. All stumps from road building and landing construction must be reserved to block any newly constructed roads upon completion of the sale. These stumps must be scattered along the road system to prohibit vehicular movement. Contact the sale administrator for specific details of design and placement.

4.2 - Maintenance

4.2.5 - Two wheel drive condition (2/04)

All existing trail roads on and adjacent to the sale area must be passable by two-wheel drive traffic for the duration of the sale.

5 - Operations

5.2 - Conduct of Operations

5.2.2 - Hazard Trees/Snags

5.2.2.1 - Den trees (10/16)

Obvious hollow and/or den trees shall be protected and left standing unless they are a safety hazard.

5.2.3 - Operating Restrictions

5.2.3.1 - Operating restrictions (9/11)

Within Payment Unit(s) 1 - 5, unless changed by written agreement, cutting, skidding, and hauling are limited to the period of December 1 to March 31. This restriction is because of the deer yard and wet soil conditions.

5.2.4 - Dead and Down Creation

5.2.4.2 - Dead and down creation, hare and grouse (1/14)

To improve habitat for snowshoe hare, grouse, and other species, the Purchaser is to leave one brush pile, at least six (6) feet in height and twelve (12) feet in diameter, on the ground for every five acres (about 8 piles) within Payment Unit(s) 2 - 4. They should be scattered throughout the Sale Area, preferably along the edges or positioned per the sale administrators' instructions.

5.2.4.3 - Dead and down creation, dead trees (6/07)

Except as provided for in General Condition and Requirement 5.2.2, no dead trees, standing or down, are to be cut, skidded, or processed.

5.2.4.1 - Snowmobile trail protection (9/11)

The snowmobile trail will be used for hauling wood from Payment Unit 5. Do not cut or damage posts with orange trail markers or traffic control signs. If the trail road is to be used for hauling during the snowmobile season, then a snow-covered base must be left on the trail. No decking of forest products will be permitted along the snowmobile trail.

5.3 - Stream Protection

5.3.1 - Operating near stream (7/04)

No tracked or wheeled vehicles shall be operated within 100 feet of streams or creeks. No crossings will be approved.

5.4 - Soil Protection

5.4.1 - Rutting restriction, general (7/16)

Operations are to cease immediately if equipment and weather conditions result in rutting of roads and/or skid trails which is 12 inches or greater in depth and 50 feet in length. The Unit Manager or his/her representative may restrict hauling and/or skidding if ruts exceed the specified depth. With the Unit Manager or his/her representative's approval, the Purchaser may return to the area when the risk of rutting has decreased.

5.8 - Protection of Endangered Species

5.8.5 - Protection of raptor nests (3/13)

All trees with raptor nests will be protected if found during harvesting operations. Notification will be made to the Unit Manager or his/her representative who will notify the Wildlife Biologist so an on-site evaluation and recommendation can be made, if necessary.

6 - Safety and Fire Prevention

6.2 - Signing

6.2.3 - Recreational trail posting (2/10)

The Purchaser is responsible for posting and maintaining caution signs on Sand Lake Road prior to beginning operations. The trail must be posted at appropriate distances from the Sale Area to warn of logging activity and truck traffic at both ends of the trail. Signs must be removed when harvest operations are suspended or completed. The Purchaser will provide these signs.



TIMBER SALE MAP

This information provided by authority of Part 525, 1994 PA 451, as amended.

Forest Management Unit Sault Ste Marie FMU	County Mackinac	Mapped By Fanelli	Date 09/21/2020	Page 1	of 1
Township 43N	Range 08W	Section(s) and Subdivision(s) Sec 34: NENE; Sec 35: S1/2NW, E1/2NE, E1/2SW, W1/2SE; Sec 36: NWNW	Scale 1:15,840		

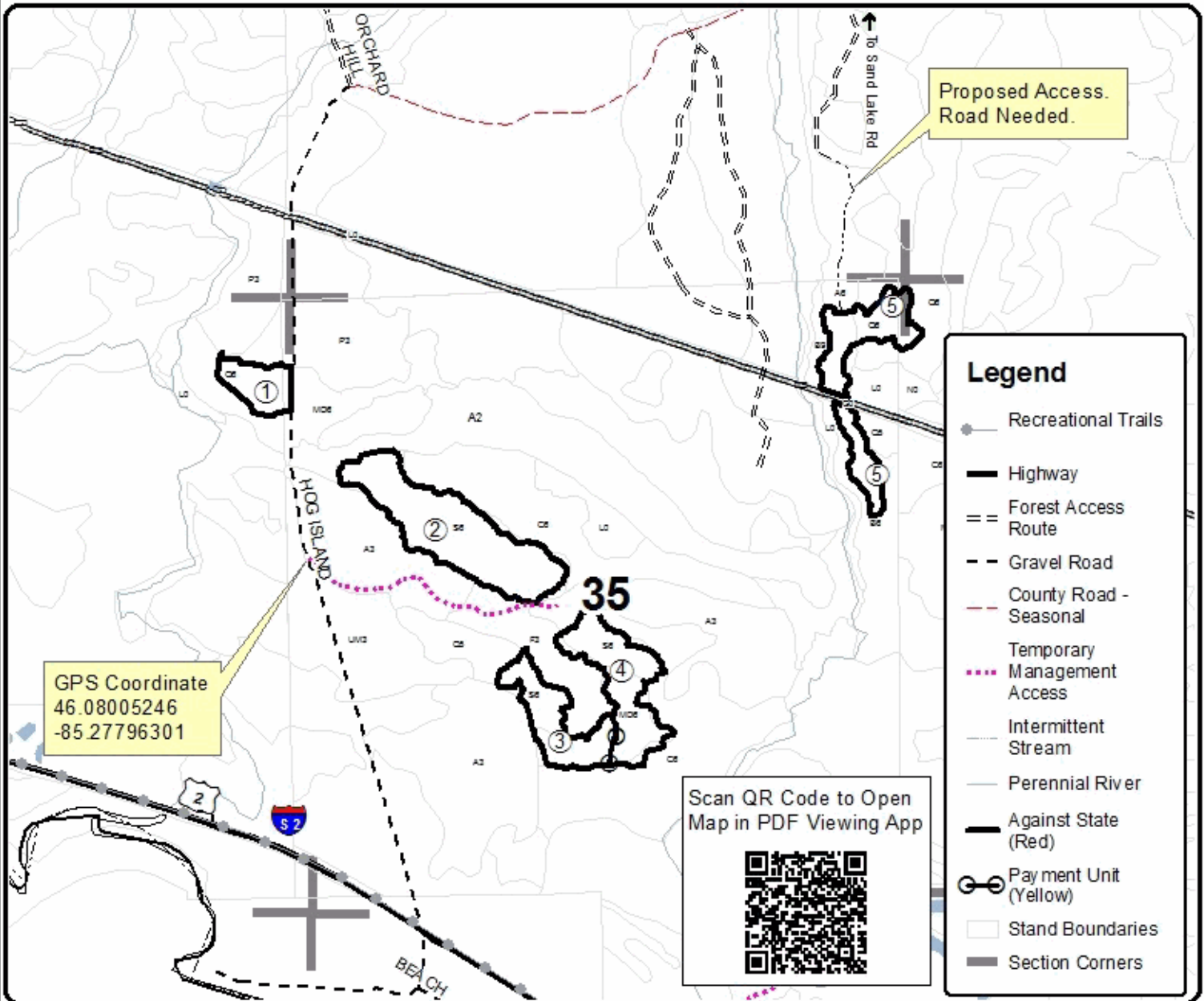
Cover Type				Density	
A = Aspen	H = Hemlock	N = Marsh	U = Upland Brush	0 = Non Stocked	5 = Pole Timber Medium
B = Paper Birch	J = Jack Pine	O = Oak	UM = Upland Mixed	1 = Seedling Sapling Poor	6 = Pole Timber Well
C = Cedar	L = Lowland Brush	P = Lowland Poplar	V = Bog or Marsh	2 = Seedling Sapling Medium	7 = Saw Timber Poor
D = Treed Bog	LM = Lowland Mixed	Q = Mixed Swamp Conifer	W = White Pine	3 = Seedling Sapling Well	8 = Saw Timber Medium
E = Swamp Hdwoods	M = Mpl, Bch, Brch	R = Red Pine	X = Non Stocked	4 = Pole Timber Poor	9 = Saw Timber Well
F = Spruce Fir	MC = Mixed Conifer	S = Black Spruce	Z = Water		
G = Grass	MD = Mixed Deciduous	T = Tamarack			

PU	Acres	PU	Acres
1	5.0	4	12.5
2	21.3	5	11.6
3	9.1		

Hog Island SBW

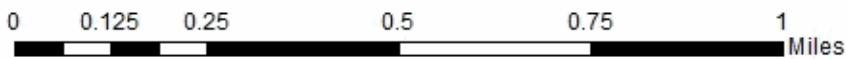
Compartment 143/161

59.5 Acres



Legend

- Recreational Trails
- Highway
- Forest Access Route
- Gravel Road
- County Road - Seasonal
- Temporary Management Access
- Intermittent Stream
- Perennial River
- Against State (Red)
- Payment Unit (Yellow)
- Stand Boundaries
- Section Corners



34 Krause (45-113-20)

T44N, R10W, SEC. 2; T44N, R10W, SEC. 3; T45N, R10W, SEC. 34; Mackinac

In response to the notice of sale to be held 3:00 p.m. (local time) on August 31, 2021, I am hereby submitting my sealed bid (firm offer) for the following forest products to be cut. Bids for individual species must be at or above the advertised price. All non-responsive bid forms may be rejected.

<u>PRODUCTS & SPECIES</u>	<u>ESTIMATED VOLUME*</u>	<u>ADVERTISED PRICE</u>	<u>BID PRICE/UNIT</u>
Sawtimber			
Red Maple	5.3 MBF	\$ 107.00/MBF	\$ _____
White Pine	8.6 MBF	\$ 41.00/MBF	\$ _____
Pulpwood			
Balsam Fir	35 Cords	\$ 10.25/Cord	\$ _____
Mixed Aspen	84 Cords	\$ 14.55/Cord	\$ _____
Mixed Hardwood	74 Cords	\$ 12.35/Cord	\$ _____
Mixed Spruce	158 Cords	\$ 20.95/Cord	\$ _____
N. White Cedar	2 Cords	\$ 4.55/Cord	\$ _____
Paper Birch	61 Cords	\$ 9.70/Cord	\$ _____
White Pine	69 Cords	\$ 8.40/Cord	\$ _____

*The volumes are statistically estimated within plus (+) or minus (-) 20.36 percent at 95% confidence level. These estimated volumes are final and not subject to adjustment. Prospective bidders are urged to examine this timber and to make their own estimates of quantity and quality.

I understand that any or all bids may be rejected. All bids must be signed and all bid items must be bid or the bid form may be rejected. I also understand that consideration and awarding a contract will be based upon my past performance and ability to complete the contract based upon equipment and staffing subject to my control.

FEDERAL ID: ____ - ____ - ____ or SOCIAL SECURITY NUMBER: ____ - ____ - ____

Company or individual bidding: _____

Company representative's name: _____

Address: _____

City: _____ State: _____ Zip: _____

IF AVAILABLE, PLEASE PLACE THE PERSONALIZED LABEL FROM YOUR PROSPECTUS IN THE ABOVE BOX.

Individual or company representative's signature: _____ Date: _____

Phone number : _____ Email (optional): _____

THE WINNING BIDDER MUST COMPLETE THE VERIFICATION OF WORKER'S DISABILITY COMPENSATION ACT COMPLIANCE (ON REVERSE SIDE IF DOUBLE SIDED) WITHIN 21 DAYS OF SALE AWARD DATE



FOR DEPARTMENT USE ONLY	
Sale Number (XX - XXX - XX - XX)	
Forest Management Unit:	

TIMBER SALE VERIFICATION OF WORKER'S DISABILITY COMPENSATION ACT COMPLIANCE

As required by Act 317, P.A. 1969 (Worker's Compensation) and
Part 5 of Act 451 of 1994, as amended.

VERIFICATION OF WORKER'S DISABILITY COMPENSATION ACT COMPLIANCE

- This verification must be completed and submitted within 21 days of contract award and prior to the issuance of the timber sale contract.
- In addition, if boxes 2B or 2C are checked, then Notice of Exclusion or Certificate of Insurance must be submitted within twenty-one (21) days of the contract award and prior to the issuance of the timber sale contract.
- All information must be typed or printed except for written signatures.

Please Check Appropriate Categories:

1. My business is organized as (you **must** check one of the boxes below):
 - A. Sole Proprietorship (individual)
 - B. Partnership
 - C. Corporation
2. You **must** check one of the boxes below:
 - A. I certify my business is a sole proprietorship and it has no employees but the sole proprietor. I am not subject to the Worker's Compensation Laws.
 - B. I certify my business has satisfied its obligation to the Worker's Compensation Act through the use of an approved Notice of Exclusion (BWC-337, Rev. 5/96). I will provide a copy of the Notice of Exclusion within 21 days of the contract award. (For questions or a copy of the BWC-337, please call the Worker's Compensation Bureau at 517-322-1195).
 - C. I certify my business has a Worker's Compensation Policy. I will provide an original Certificate of Insurance within twenty-one (21) days of the contract award.
3. If you have checked item 2(A) or 2(B), you **must** indicate the number of **both** full-time and part-time employees, other than yourself, including family members and active partners (if none, you must enter "0").

_____ Full-time Employees

_____ Part-time Employees

Name of Business		Federal ID (or) Social Security No.	
Address		Telephone ()	
City	State	ZIP	

I hereby certify that the above information is true and correct. I agree to notify the Michigan DNR of any changes that occur in factors affecting my coverage during any of my present and future operations.

Signature of Owner or Authorized Representative

Title

Date

Please complete the "SEALED BID" information on the next page

Big Dollar HW (45-115-20)

T44N, R08W, SEC. 17; T44N, R08W, SEC. 20; T44N, R08W, SEC. 21; T44N,

In response to the notice of sale to be held 3:00 p.m. (local time) on August 31, 2021, I am hereby submitting my sealed bid (firm offer) for the following forest products to be cut. Bids for individual species must be at or above the advertised price. All non-responsive bid forms may be rejected.

<u>PRODUCTS & SPECIES</u>	<u>ESTIMATED VOLUME*</u>	<u>ADVERTISED PRICE</u>	<u>BID PRICE/UNIT</u>
Sawtimber			
Black Cherry	4.3 MBF	\$ 105.00/MBF	\$ _____
Red Maple	29.5 MBF	\$ 107.00/MBF	\$ _____
Sugar Maple	183.5 MBF	\$ 305.00/MBF	\$ _____
Pulpwood			
Mixed Aspen	66 Cords	\$ 14.55/Cord	\$ _____
Mixed Hardwood	1,140 Cords	\$ 12.35/Cord	\$ _____

*The volumes are statistically estimated within plus (+) or minus (-) 9.89 percent at 95% confidence level. These estimated volumes are final and not subject to adjustment. Prospective bidders are urged to examine this timber and to make their own estimates of quantity and quality.

I understand that any or all bids may be rejected. All bids must be signed and all bid items must be bid or the bid form may be rejected. I also understand that consideration and awarding a contract will be based upon my past performance and ability to complete the contract based upon equipment and staffing subject to my control.

FEDERAL ID: ____ - ____ or SOCIAL SECURITY NUMBER: ____ - ____ - ____

Company or individual bidding: _____

Company representative's name: _____

Address: _____

City: _____ State: _____ Zip: _____

IF AVAILABLE, PLEASE PLACE THE PERSONALIZED LABEL FROM YOUR PROSPECTUS IN THE ABOVE BOX.

Individual or company representative's signature: _____ Date: _____

Phone number : _____ Email (optional): _____

THE WINNING BIDDER MUST COMPLETE THE VERIFICATION OF WORKER'S DISABILITY COMPENSATION ACT COMPLIANCE (ON REVERSE SIDE IF DOUBLE SIDED) WITHIN 21 DAYS OF SALE AWARD DATE



FOR DEPARTMENT USE ONLY
Sale Number (XX - XXX - XX - XX)
Forest Management Unit:

TIMBER SALE VERIFICATION OF WORKER'S DISABILITY COMPENSATION ACT COMPLIANCE

*As required by Act 317, P.A. 1969 (Worker's Compensation) and
Part 5 of Act 451 of 1994, as amended.*

VERIFICATION OF WORKER'S DISABILITY COMPENSATION ACT COMPLIANCE

- This verification must be completed and submitted within 21 days of contract award and prior to the issuance of the timber sale contract.
- In addition, if boxes 2B or 2C are checked, then Notice of Exclusion or Certificate of Insurance must be submitted within twenty-one (21) days of the contract award and prior to the issuance of the timber sale contract.
- All information must be typed or printed except for written signatures.

Please Check Appropriate Categories:

1. My business is organized as (you **must** check one of the boxes below):
 - A. Sole Proprietorship (individual)
 - B. Partnership
 - C. Corporation

2. You **must** check one of the boxes below:
 - A. I certify my business is a sole proprietorship and it has no employees but the sole proprietor. I am not subject to the Worker's Compensation Laws.
 - B. I certify my business has satisfied its obligation to the Worker's Compensation Act through the use of an approved Notice of Exclusion (BWC-337, Rev. 5/96). I will provide a copy of the Notice of Exclusion within 21 days of the contract award. (For questions or a copy of the BWC-337, please call the Worker's Compensation Bureau at 517-322-1195).
 - C. I certify my business has a Worker's Compensation Policy. I will provide an original Certificate of Insurance within twenty-one (21) days of the contract award.

3. If you have checked item 2(A) or 2(B), you **must** indicate the number of **both** full-time and part-time employees, other than yourself, including family members and active partners (if none, you must enter "0").

_____ Full-time Employees

_____ Part-time Employees

Name of Business		Federal ID (or) Social Security No.	
Address		Telephone ()	
City	State	ZIP	

I hereby certify that the above information is true and correct. I agree to notify the Michigan DNR of any changes that occur in factors affecting my coverage during any of my present and future operations.

Signature of Owner or Authorized Representative

Title

Date

Please complete the "SEALED BID" information on the next page

Hog Island SBW (45-116-20)
T43N, R08W, SEC. 34; T43N, R08W, SEC. 35; T43N, R08W, SEC. 36; Mackinac

In response to the notice of sale to be held 3:00 p.m. (local time) on August 31, 2021, I am hereby submitting my sealed bid (firm offer) for the following forest products to be cut. Bids for individual species must be at or above the advertised price. All non-responsive bid forms may be rejected.

<u>PRODUCTS & SPECIES</u>	<u>ESTIMATED VOLUME*</u>	<u>ADVERTISED PRICE</u>	<u>BID PRICE/UNIT</u>
Pulpwood			
Balsam Fir	77 Cords	\$ 10.25/Cord	\$ _____
Mixed Aspen	51 Cords	\$ 14.55/Cord	\$ _____
Mixed Hardwood	361 Cords	\$ 12.35/Cord	\$ _____
Mixed Spruce	333 Cords	\$ 20.95/Cord	\$ _____
Tamarack	115 Cords	\$ 4.00/Cord	\$ _____

*The volumes are statistically estimated within plus (+) or minus (-) 12.08 percent at 95% confidence level. These estimated volumes are final and not subject to adjustment. Prospective bidders are urged to examine this timber and to make their own estimates of quantity and quality.

I understand that any or all bids may be rejected. All bids must be signed and all bid items must be bid or the bid form may be rejected. I also understand that consideration and awarding a contract will be based upon my past performance and ability to complete the contract based upon equipment and staffing subject to my control.

FEDERAL ID: _____ - _____ or SOCIAL SECURITY NUMBER: _____ - _____ - _____

Company or individual bidding: _____

Company representative's name: _____

Address: _____

City: _____ State: _____ Zip: _____

IF AVAILABLE, PLEASE PLACE THE PERSONALIZED LABEL FROM YOUR PROSPECTUS IN THE ABOVE BOX.

Individual or company representative's signature: _____ Date: _____

Phone number : _____ Email (optional): _____

THE WINNING BIDDER MUST COMPLETE THE VERIFICATION OF WORKER'S DISABILITY COMPENSATION ACT COMPLIANCE (ON REVERSE SIDE IF DOUBLE SIDED) WITHIN 21 DAYS OF SALE AWARD DATE



FOR DEPARTMENT USE ONLY	
Sale Number (XX - XXX - XX - XX)	
Forest Management Unit:	

TIMBER SALE VERIFICATION OF WORKER'S DISABILITY COMPENSATION ACT COMPLIANCE

As required by Act 317, P.A. 1969 (Worker's Compensation) and
Part 5 of Act 451 of 1994, as amended.

VERIFICATION OF WORKER'S DISABILITY COMPENSATION ACT COMPLIANCE

- This verification must be completed and submitted within 21 days of contract award and prior to the issuance of the timber sale contract.
- In addition, if boxes 2B or 2C are checked, then Notice of Exclusion or Certificate of Insurance must be submitted within twenty-one (21) days of the contract award and prior to the issuance of the timber sale contract.
- All information must be typed or printed except for written signatures.

Please Check Appropriate Categories:

1. My business is organized as (you **must** check one of the boxes below):
 - A. Sole Proprietorship (individual)
 - B. Partnership
 - C. Corporation
2. You **must** check one of the boxes below:
 - A. I certify my business is a sole proprietorship and it has no employees but the sole proprietor. I am not subject to the Worker's Compensation Laws.
 - B. I certify my business has satisfied its obligation to the Worker's Compensation Act through the use of an approved Notice of Exclusion (BWC-337, Rev. 5/96). I will provide a copy of the Notice of Exclusion within 21 days of the contract award. (For questions or a copy of the BWC-337, please call the Worker's Compensation Bureau at 517-322-1195).
 - C. I certify my business has a Worker's Compensation Policy. I will provide an original Certificate of Insurance within twenty-one (21) days of the contract award.
3. If you have checked item 2(A) or 2(B), you **must** indicate the number of **both** full-time and part-time employees, other than yourself, including family members and active partners (if none, you must enter "0").

_____ Full-time Employees

_____ Part-time Employees

Name of Business		Federal ID (or) Social Security No.	
Address		Telephone ()	
City	State	ZIP	

I hereby certify that the above information is true and correct. I agree to notify the Michigan DNR of any changes that occur in factors affecting my coverage during any of my present and future operations.

Signature of Owner or Authorized Representative

Title

Date

Please complete the "SEALED BID" information on the next page