



**DEPARTMENT OF NATURAL RESOURCES
STATE OF MICHIGAN**

TIMBER SALE PROSPECTUS #6889

SCHEDULED SALE DATE AND TIME: 4:00 p.m. (local time) on September 23, 2021.

LOCATION: TRAVERSE CITY MGMT UNIT, 2122 M 37 SOUTH, TRAVERSE CITY, MI 49685.

PROSPECTUS NOTE: The bidder is advised to inspect the sale area and review the location, estimated volumes, operating costs and contract terms of proposed sales. Please be aware that some landowners may request 60 days or more notice for access across their land.

Notice is hereby given that bids will be received by the Unit Manager, TRAVERSE CITY MANAGEMENT UNIT, for certain timber on the following described lands:

Hey 19 Mix (61-001-21) / T26N, R10W, SEC. 19, N1/2NW, SENW, NWNE, S1/2NE, NESE.
T26N, R11W, SEC. 24, NENE.

Grand Traverse County, Advertised Price \$25,442.00, 55.2 Acres, Red Pine, Hardwood.

SALE NOTE: All units of volume listed for this sale were estimated using the Inventory Manager computer program and the new Michigan taper model.

A recreation site such as a trail, pathway, or campground is within the sale area or the vicinity. Certain restrictions/specifications may be applicable including time restrictions.

Tennessee Jed Pine (61-019-21) / T24N, R13W, SEC. 19, S1/2SW.
T24N, R14W, SEC. 24, SESE.

Manistee County, Advertised Price \$58,054.15, 44.3 Acres, Red Pine, Jack Pine.

SALE NOTE: All units of volume listed for this sale were estimated using the Inventory Manager computer program and the new Michigan taper model.

Old Grade Mix (61-029-21) / T24N, R14W, SEC. 22, S1/2NW, SWNE, N1/2SW, SESW, W1/2SE.
Manistee County, Advertised Price \$29,431.15, 45.3 Acres, Aspen, Hardwood.

SALE NOTE: All units of volume listed for this sale were estimated using the Inventory Manager computer program and the new Michigan taper model.

Open Aspen Pine (61-030-21) / T24N, R14W, SEC. 13, NWNE, S1/2NE, N1/2SE.

Manistee County, Advertised Price \$16,480.45, 59.5 Acres, Aspen, Hardwood.

SALE NOTE: All units of volume listed for this sale were estimated using the Inventory Manager computer program and the new Michigan taper model.

James River Red Pine (61-045-21) / T25N, R09W, SEC. 30, SESW,S1/2SE.

T25N, R09W, SEC. 31, NENW,N1/2NE.

T25N, R09W, SEC. 32, NWNW.

Grand Traverse County, Advertised Price \$72,012.80, 77.1 Acres, Hardwood, Red Pine.

SALE NOTE: All units of volume listed for this sale were estimated using the Inventory Manager computer program and the new Michigan taper model.

A recreation site such as a trail, pathway, or campground is within the sale area or the vicinity. Certain restrictions/specifications may be applicable including time restrictions.

BID INSTRUCTIONS (VER. 07/02/2018):

1. Scheduled Bid Location, Date, and Time (2/11)

Bids must be received by the Unit Manager, TRAVERSE CITY OFFICE, 2122 M 37 South, Traverse City, MI 49685, no later than 4:00 p.m. (local time) on September 23, 2021. For further information concerning this sale, contact David Lemmien at 231-922-6040.

2. Bidder's Qualifications (5/16)

Purchaser shall obtain workers compensation insurance to cover claims under Michigan's Worker's Disability Compensation Act of 1969 or similar employee benefit act of any other state applicable to an employee. If all or part of a timber sale was prepared by a private contractor, the contractor and that contractor's company are not permitted to bid on the timber sale contract. Bids will not be accepted from individuals or companies appearing on the DNR/FRD No-Bid List. This list contains the names of purchasers who previously failed to execute a contract within 21-days or who have a history of poor performance.

3. Preparation of Sealed Bids (5/16)

Bid Forms may be completed online thru Michigan DNR Timber Sale Online Bidding (OLB) at www.michigan.gov/timberbidding or by completing the hardcopy Bid Form found in the Timber Sale Prospectus. Hardcopy Bid Forms shall be manually signed in ink. Registration in OLB is considered your 'signature' for all bids submitted thru that system. Bid prices must be entered for each species and product in the Bid Price column for all material subject to bidding and all fill-in blanks must be completed. If erasures or other changes appear on the hardcopy Bid Form, each erasure or change must be initialed by the person signing the bid.

4. Submission of Sealed Bids (5/16)

Bid forms may be obtained from the Unit Manager or thru OLB. Bids may be submitted hardcopy or thru OLB. All hardcopy bids must be submitted on the bid form and in an envelope clearly identified as described in this section. NOTE: Only one bid form per bid envelope. Sealed bids must be submitted to the Unit office designated in the prospectus and must be submitted at or prior to the time established in the prospectus. The envelope should show on the outside (a) the sale name or number and (b) the date and time of bid opening, as shown in the prospectus. Bids received after the time specified in the sale prospectus are late bids and will be rejected.

It is possible for a bidder to submit multiple bids on a single sale. For example, a bid may be submitted hardcopy and a bid may be submitted thru OLB. Or, two bidders from the same company could both submit bids on the same sale. If this were to happen, the State would accept all bids received and award the contract accordingly. All bidding and contractual requirements would apply to all bids received.

5. Public Opening of Sealed Bids (7/16)

If conditions permit, the sealed bids will be publicly opened and posted at the time and place set in the prospectus.

If a bidder, present at a bid opening, has submitted bids on more than one sale, that bidder may withdraw their unopened bid envelopes or announce the withdrawal of their online bid after being declared the successful bidder on one sale.

6. Award of Contract (1/11)

Award of the contract will be made to the Bidder whose bid, conforming to the prospectus, is most advantageous to the State of Michigan on the basis of total value at rates bid for the estimated quantities. The State reserves the right to reject any bid or waive any minor irregularity in bids received. A written award mailed (or otherwise furnished) to the successful Bidder shall be deemed to result in a binding contract without further action by either party.

7. Down Payment (1/11)

The Bidder to whom award is made must make a down payment within 21 days of the sale award. The amount of the down payment will be calculated as shown in the Bond and Payment Schedule of this prospectus. Only cash may be used to meet this requirement.

8. Performance Security (1/11)

As guarantee of faithful performance, a cash bond, certificate of deposit, surety bond or irrevocable letter of credit (LOC) is required within 21 days of the sale award. The amount of the performance security is shown in the Bond and

Payment Schedule of this prospectus. If an LOC or surety is used, the coverage must extend for at least 6 months beyond the contract expiration.

9. Timber Sale Contract (7/18)

Additional conditions and requirements common to all timber sales are listed on the timber sale contract (R4031) and are available on line at www.michigan.gov/timber. Contact the Unit Manager for additional information or a sample contract. Within 21 days of the date of the award letter, the bidder must sign the contract and provide the required down payment, performance security, and verification of worker's disability compensation. The down payment and performance security shall be in accordance with the provisions of the timber sale contract, in the sums stated in this prospectus. If these actions are not taken, then the Bidder, the Bidder's corporation, and the corporation's principals may not be permitted to bid on State timber sales for a period of 3 months after the first offense, 6 months after the second offense, and 1 year after the third offense. An offense will only be counted against the Bidder for 5 years. In addition, the Bidder certifies that if awarded this contract, the Bidder will complete the timber sale contract in accordance with its terms and any modifications thereof including requirements to purchase, cut, and remove the included timber by the expiration date.

Payment Unit values in the State Forest Timber Sale Contract are calculated based on the advertised value of the Payment Unit as a percentage of the total advertised value of the contract. The advertised value of each Payment Unit is given in the Description of Timber by Payment Unit table on the Timber Sale Information page. For example, if the value of Payment Unit 1 is advertised as \$1,500 and the total Timber Sale value is advertised as \$10,000, the contract price for Payment Unit 1 will be 15% of the total bid price ($\$1,500/\$10,000 * 100$).

10. Disclaimer of Estimates and Bidder's Warranty of Inspection (7/16)

Before submitting this bid, the Bidder is advised and cautioned to inspect the sale area, review the requirements of the sale contract, and take other steps as may be reasonably necessary to ascertain the location, estimated volumes, construction estimates, and operating costs of the proposed sale. Failure to do so will not relieve the Bidder from responsibility for completing the contract.

The Bidder warrants that this bid is submitted solely on the basis of the Bidder's examination and inspection of the quality and quantity of the timber offered for sale and the Bidder's opinion of the value thereof and the costs of recovery. No reliance should be placed on the State of Michigan's estimates of timber quality, quantity or costs of recovery. Bidder further acknowledges that the State of Michigan: (i) expressly disclaims any warranty of fitness of timber for any purpose; (ii) offers this timber as is without any warranty of quality (merchantability) or quantity and (iii) expressly disclaims any warranty as to the quantity or quality of timber sold.

11. Certification and Chain-of-Custody (10/14)

Unless otherwise indicated in the contract under section 7 – Other Conditions of the Sale Specific Conditions & Requirements, the area encompassed by this timber sale is certified to the standards of the Forest Stewardship Council (FSC) - Certificate #SCS-FM/COC-00090N and the Sustainable Forestry Initiative (SFI) - Certificate #NSF-SFIS-5Y031-SF5. Forest products from this sale may be delivered to the mill as "FSC 100% and / or SFI certified" as long as the contractor hauling the forest products is chain-of-custody (COC) certified or covered under a COC certificate from the destination mill. The purchaser is responsible for maintaining COC after leaving the sale area.

12. Good Neighbor Authority (GNA) Requirements (7/16)

If the name of this timber sales contains the acronym GNA, it is authorized by the Good Neighbor Authority (GNA) and covered by various agreements between the U.S. Forest Service and the State. The timber sale occurs on federal land and the following conditions apply:

GNA contracts on US Forest Service land will not be awarded to purchasers on the Federal list of excluded parties. The System for Award Management (SAM) will be checked for active excluded parties prior to award of contract. In addition, the Bidder to whom award is made must complete an Assurance Regarding Felony Conviction or Tax Delinquent Status for Corporate Applicants (AD-3031).

13. Good Neighbor Authority (GNA) Requirements, con't (9/16)

Bidder certifies, by signing this bid form, that to the best of Bidder's knowledge that the following representations are accurate and complete.

- a. That the Bidder and its principals are not presently debarred, suspended, proposed for debarment, declared ineligible, or voluntary excluded from timber sales (covered transactions) by any Federal department or agency.
- b. That the Bidder and its principals have not within a 3-year period preceding this bid been convicted of or had a civil judgment rendered against them for commission of fraud or a criminal offense in connection with obtaining , attempting to obtain, or performing a public (Federal, State, or local) transaction or contract under a public transaction; violation of Federal or State antitrust statutes or commission of embezzlement, theft, forgery, bribery, falsification or destruction of records, making false statements, or receiving stolen property.
- c. That the Bidder and its principals are not presently indicted for or otherwise criminally or civilly charged by a governmental entity (Federal, State, or local) with commission of any of the offenses enumerated in paragraph b of this certification.
- d. That the Bidder and its principals have not within a 3-year period preceding this bid had one or more public transactions (Federal, State, or local) terminated for breach or default of a timber or forest product contract.

Bidders that cannot certify this requirement, in whole or in part, shall submit an explanation with their bid.

DAN EICHINGER
Director

TIMBER SALE INFORMATION

Hey 19 Mix (61-001-21)
T26N, R10W, SEC. 19; T26N, R11W, SEC. 24.
Grand Traverse County (Advertised Price \$25,442.00)

SALE NOTE: All units of volume listed for this sale were estimated using the Inventory Manager computer program and the new Michigan taper model.

A recreation site such as a trail, pathway, or campground is within the sale area or the vicinity. Certain restrictions/specifications may be applicable including time restrictions.

A timber sale contract for this lump sum, sealed bid timber sale will be awarded to the responsible bidder offering the highest sealed bid price. All units of volume listed below were estimated using the Inventory Manager computer program and the new Michigan taper model. Bids must be at or above the following advertised price for each product and species:

<u>PRODUCTS & SPECIES</u>	<u>ESTIMATED UNITS*</u>	<u>ADVERTISED PRICE</u>
Sawtimber		
B. T. Aspen	8.5 MBF	\$ 90.00 / MBF
Beech	0.7 MBF	\$ 63.00 / MBF
Red Maple	9.0 MBF	\$ 116.00 / MBF
Red Pine	7.0 MBF	\$ 80.00 / MBF
Sugar Maple	10.7 MBF	\$ 164.00 / MBF
White Pine	1.1 MBF	\$ 37.00 / MBF
Pulpwood		
Mixed Aspen	67 Cords	\$ 12.80 / Cord
Mixed Hardwood	136 Cords	\$ 12.35 / Cord
Red Pine	626 Cords	\$ 29.80 / Cord
White Pine	3 Cords	\$ 13.80 / Cord

* The total volume is statistically estimated within plus (+) or minus (-) 9.20 percent. There are an estimated 924 cords on this timber sale, plus or minus 85 cords at the 95% confidence level. The estimated units are final and not subject to adjustment. Prospective bidders are urged to examine this timber and to make their own estimates of quantity and quality.

BOND AND PAYMENT SCHEDULE:

1. A bond in the amount of \$1,272.00 to insure faithful performance of the conditions of the contract will be deposited by the successful bidder within 21 days of the sale award.
2. Cutting in any sale or unit without the required advance payment would be considered a trespass.
3. Total payment must be paid in advance or according to the following schedule :
 - (a) Ten percent (10%) of the sale value must be paid within 21 days of the sale award.
 - (b) The 10% down payment will be credited towards the first unit cut.
 - (c) Payment for each of the following units must be made before cutting begins in that unit:

PAYMENT UNIT NUMBER	PERCENT OF TOTAL SALE VALUE
01	18.9%
02	6.6%
03	74.5%
4. If no cutting takes place, the 10% down payment will not be refunded.
5. Operations on the contract issued will terminate on 12/31/2023.

SALE STATISTICS

Volumes were calculated in cubic feet using the Michigan taper model. Cubic foot volume includes all wood inside bark for the product indicated. For display purposes, cubic feet were converted to cords and MBF using a simple conversion factor, e.g. 79 cubic feet per cord and 185 cubic feet per MBF. The cubic foot volumes are precise; the cords and MBF volumes are not. Cubic foot volume cannot be directly converted to cords or boards with precision.

SALE VOLUMES

The total estimated sale volume may not equal the sum of the species/products due to the nature of statistical calculations associated with double sampling methodology.

VOLUME		STATISTICAL RANGE IN CORDS		
TOTAL CUBIC FEET	TOTAL CORDS	PERCENT ERROR	MINIMUM	MAXIMUM
72,990	924	9.20%	839	1,009

VDU VOLUMES

A VDU is a Volume Determination Unit. Volumes and their associated statistics are calculated at the VDU level and summarized to the sale level. There is often a one to one relationship between a VDU and a Payment Unit, but not always, depending on the cruise design. Refer to the VDU TO PAYMENT UNIT table.

VDU	VOLUME		PERCENT ERROR	RANGE IN CORDS	
	TOTAL CUBIC FEET	TOTAL CORDS		MINIMUM	MAXIMUM
5	3,462	44	37.54%	27	60
7	8,124	103	21.67%	81	125
32	2,719	34	19.95%	28	41
50	50,017	633	11.51%	560	706
205	7,346	93	31.18%	64	122
TOTAL:	71,669	907		760	1,055

VDU TO PAYMENT UNIT

When a VDU is associated with more than one Payment Unit (PU), the VDU volumes are assigned to the PU based on acres of the VDU within the PU.

VDU	VDU ACRES	PU	PU ACRES
5	7.1	2	7.1
7	19.3	1	19.3
32	9.8	2	9.8
50	16.4	3	16.4
205	2.6	1	2.6
TOTAL:	55.2		55.2

DESCRIPTION OF TIMBER BY PAYMENT UNIT (PU)

PU	MARKET GROUP	PRODUCT	QUANTITY	UNIT	ACRES	ADVERTISE PRICE
1	B. T. Aspen	Sawtimber	8.5	MBF	21.9	\$4,801.55
	Red Maple		4.7	MBF		
	Sugar Maple	9.8	MBF			
	White Pine	1.1	MBF			
	Mixed Aspen	Pulpwood	59	Cords		
	<i>B. T. Aspen</i>		53	<i>Cords</i>		
	<i>Quaking Aspen</i>		6	<i>Cords</i>		
	Mixed Hardwood		87	Cords		
	<i>Black Cherry</i>		5	<i>Cords</i>		
	<i>Ironwood</i>		3	<i>Cords</i>		
	<i>Red Maple</i>		33	<i>Cords</i>		
	<i>Sugar Maple</i>		46	<i>Cords</i>		
	White Pine		1	Cords		
	2		Beech	Sawtimber		
Red Maple		4.3	MBF			
Red Pine		1.2	MBF			
Sugar Maple		0.9	MBF			
Mixed Aspen		Pulpwood	8	Cords		
<i>B. T. Aspen</i>			7	<i>Cords</i>		
<i>Quaking Aspen</i>			1	<i>Cords</i>		
Mixed Hardwood			49	Cords		
<i>Beech</i>			3	<i>Cords</i>		
<i>Black Cherry</i>			5	<i>Cords</i>		
<i>Ironwood</i>			7	<i>Cords</i>		
<i>Red Maple</i>			21	<i>Cords</i>		
<i>Sugar Maple</i>			13	<i>Cords</i>		
Red Pine			5	Cords		
White Pine	2	Cords				
3	Red Pine	Sawtimber	5.8	MBF	16.4	\$18,969.80
	Red Pine	Pulpwood	621	Cords		
TOTAL:			37.0	MBF		
TOTAL:			832	Cords		

Sale Specific Conditions & Requirements

Sale Name: Hey 19 Mix

Sale Number: 61-001-21 Seq#: 1

1 - Sale Area

1.2 - Boundaries

1.2.1 - Painted boundaries (9/19)

The sale boundary and Payment Unit boundaries are marked and identified by blue, red, and yellow paint. Exterior sale boundary lines against private property are marked with blue paint. Exterior sale boundary lines against state land are marked with red paint. Interior Payment Unit boundaries are marked with yellow paint. The painted boundary line trees are not Included Timber and are to be protected unless marked with orange paint.

2 - Timber Specifications

2.1 - Included Timber

2.1.1 - Clearcut unit(s) with unmerchantable trees (6/14)

Within Payment Unit(s) 3, cut all trees that are two (2) inches or more at DBH.

2.1.3 - Cut tree marked unit(s) (12/08)

Within Payment Unit(s) 2, all trees are designated for cutting when marked with orange paint above and below stump height, regardless of merchantability.

2.1.7 - Leave tree marked unit(s) (6/14)

Within Payment Unit(s) 1, cut all trees that are three (3) inches or more at DBH, except oak, basswood, and any trees marked with green paint above and below stump height.

2.2 - Utilization

2.2.2 - Chipping required (2/18)

Payment Unit 3 must be chip harvested to facilitate subsequent planting operations. The Purchaser has the option to produce sawlogs or pulpwood bolts, but the remaining portion of the trees must be chipped and hauled. If market conditions limit the practicality of chipping, the Purchaser may skid all remaining topwood out of this Payment Unit and scatter or pile in locations approved by the sale administrator. If the deadline is not met, damages will be collected determined by the cost to complete this work. The requirement to retain approximately 1/6 to 1/3 of tree tops and limbs less than four inches in diameter is still applicable (G. C. & R. 2.2).

2.2.3 - Stump heights (4/07)

Stump heights within Payment Unit 3 shall not exceed 4 inches for all trees. This is to facilitate planting operations.

2.2.4 - Skidding length (2/14)

Skidding of unlimbed tops or lengths over 17 feet is not permissible within Payment Unit 2 unless approved by the Unit Manager or his/her representative.

4 - Transportation

4.1 - Construction

4.1.3 - Slash and earthen piles (8/04)

Piles or windrows of earth along roads and landings that have been widened or constructed shall be leveled. Slash from road maintenance or construction, including stumps, shall be chipped, utilized, or dispersed throughout the sale.

4.1.12 - No new roads (1/12)

No new roads will be permitted in any Payment Unit. All operations are limited to existing roads. Skid trails only will be allowed.

4.2 - Maintenance

4.2.4 - Grading (10/16)

For completion of the sale, state forest roads must be graded. In general, this will require a road grader or bulldozer to shape

up the roads after forest products have been hauled off site. This includes cleaning of drainage areas, grading, crowning, and filling with gravel, if necessary. The grading equipment to be used must be approved by the Unit Manager or his/her representative.

5 - Operations

5.1 - Notification

5.1.3 - Well heads and natural gas pipelines (11/15)

The Purchaser is responsible for contacting the pipeline company 20 days prior to operating equipment in the vicinity of well heads or natural gas pipelines. Contact Karla Shawhan-Bonnee of DTE Energy at 231-590-0126. The Purchaser is also responsible for contacting MISS DIG for any necessary buried utility location.

5.2 - Conduct of Operations

5.2.1 - Slash

5.2.1.8 - Slash height (12/08)

No slash or tree tops may exceed 36 inches in height.

5.2.3 - Operating Restrictions

5.2.3.3 - Bark slippage restriction (3/09)

Within Payment Unit(s) 2, unless changed by written agreement, cutting and skidding are not permitted during the period of April 15 to July 15. This restriction is because of bark slippage.

5.2.3.4 - Oak wilt restriction, no exceptions (1/18)

Within Payment Units 1 and 2, cutting, skidding, hauling within the sale and brushing of access roads to the sale are not permitted during the period of April 15 to July 15. No exceptions will be granted. This is necessary to reduce the spread of oak wilt.

5.2.3.6 - Bark beetle restriction (12/08)

In the event drought creates a high risk of pine bark beetle infestation, pine is not to be cut during the period March 1 through July 1, unless all portions of trees greater than two inches in diameter are removed from the sale area, reduced to chips, or treated to the satisfaction of the Unit Manager or his/her representative, within fifteen days of being severed from the stump. Pine log decks, pulpwood piles and treetops that are piled for chipping in the fall or winter within a 1/4 mile of susceptible sites must be removed before March 15. Residual slash must not be placed in piles or rows and must be spread over the site for quick drying. The Department of Natural Resources will exercise this specification if the risk of damage warrants.

5.2.4 - Dead and Down Creation

5.2.4.1 - Dead and down creation, marked trees (10/13)

All trees marked with an orange "X" must be felled and left on site for wildlife. Either cut these trees at 4 feet above ground level and place the cut trunk against the resulting high stump or cut at ground level and place the cut trunk against a small nearby tree retained for this purpose.

5.2.38 - No decking against live trees (2/04)

Cut products may not be decked against unmarked or designated leave trees.

5.2.40 - Pathway protection (10/10)

The Shore-to-Shore riding/hiking trail is shown on the Timber Sale Map. Do not cut trees or damage posts with blue pathway markers. Maintain a 20-foot-wide slash, debris, and rut free zone daily, using the pathway as the centerline. If an organized trail ride is to occur while the sale is active, the sale administrator has the authority to limit harvest and hauling activities on the day of the ride. The sale administrator will provide at least 1 week notice if this is to occur.

5.2.41 - Snowmobile trail protection (9/11)

A snowmobile trail is shown on the Timber Sale Map, coincident with the road abutting the south side of the timber sale. Do not cut or damage posts with orange trail markers or traffic control signs. The trail must be maintained and restored to a condition equal to or better than before the sale. The road maintenance/restoration must be done prior to December 1. The snowmobile trail may not be used for any timber sale operations from December 1 to March 31 unless approved by the timber

sale administrator. If the trail road is to be used for hauling during the snowmobile season, then a snow-covered base must be left on the trail. Maintain a 20-foot-wide slash, debris, and rut free zone daily using the snowmobile trail as the centerline. All stumps within 20 feet of the snowmobile trail must be cut at ground level. In addition, any trees cut within 5 feet of the trail must have the stumps removed and be disposed of according to the direction of the Unit Manager or his/her representative.

5.4 - Soil Protection

5.4.3 - Erosion control (12/08)

Skid trails or haul roads may require erosion control structures or berms per direction of the Unit Manager or his/her representative.

6 - Safety and Fire Prevention

6.2 - Signing

6.2.1 - Road posting (10/20)

The Purchaser is responsible for posting and maintaining caution signs on sale access roads and on the Shore-to-Shore trail prior to beginning operations. The road must be posted at appropriate distances from the Sale Area to warn of logging activity and truck traffic. Signs must be removed when harvest operations are suspended or completed. The Purchaser will provide these signs.



TIMBER SALE MAP

This information provided by authority of Part 525, 1994 PA 451, as amended.

Sale Number	Year
61-001	21

Forest Management Unit	County	Mapped By	Date	Page	of
Traverse City	Grand Traverse	Tim Webb	01/26/2021	1	1
		Cruised By			
		Tim Webb			

Township	Range	Section(s) and Subdivision(s)	Scale
26N	10W, 11W	S.19: N1/2NW,SENW,NWNE,S1/2NE,NESE; S.24: NENE	1:15,840

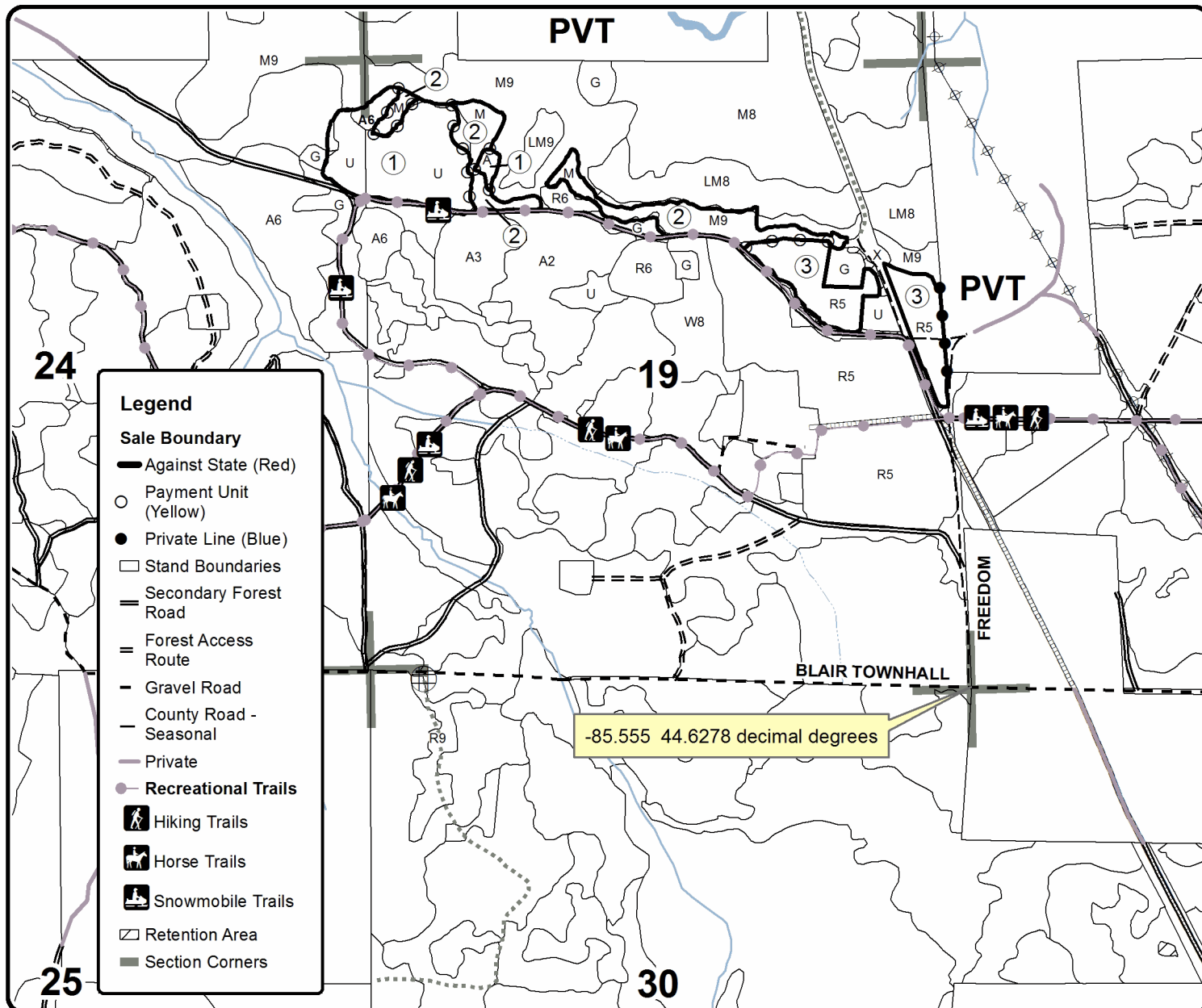
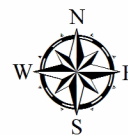
Cover Type				Density	
A = Aspen	H = Hemlock	N = Marsh	U = Upland Brush	0 = Non Stocked	5 = Pole Timber Medium
B = Paper Birch	J = Jack Pine	O = Oak	UM = Upland Mixed	1 = Seedling Sapling Poor	6 = Pole Timber Well
C = Cedar	L = Lowland Brush	P = Lowland Poplar	V = Bog or Marsh	2 = Seedling Sapling Medium	7 = Saw Timber Poor
D = Treed Bog	LM = Lowland Mixed	Q = Mixed Swamp Conifer	W = White Pine	3 = Seedling Sapling Well	8 = Saw Timber Medium
E = Swamp Hdwoods	M = Mpl, Bch, Brch	R = Red Pine	X = Non Stocked	4 = Pole Timber Poor	9 = Saw Timber Well
F = Spruce Fir	MC = Mixed Conifer	S = Black Spruce	Z = Water		
G = Grass	MD = Mixed Deciduous	T = Tamarack			

PU	Acres
1	21.9
2	16.9
3	16.4

Hey 19 Mix

Compartment 61050

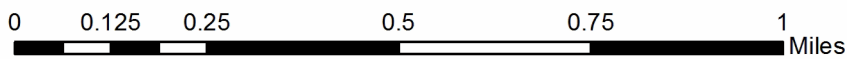
55.2 Acres



Legend

Sale Boundary

- Against State (Red)
- Payment Unit (Yellow)
- Private Line (Blue)
- Stand Boundaries
- == Secondary Forest Road
- = Forest Access Route
- Gravel Road
- County Road - Seasonal
- Private
- Recreational Trails
- 🚶 Hiking Trails
- 🐎 Horse Trails
- 🚙 Snowmobile Trails
- ▭ Retention Area
- Section Corners



TIMBER SALE INFORMATION

Tennessee Jed Pine (61-019-21)
T24N, R13W, SEC. 19; T24N, R14W, SEC. 24.
Manistee County (Advertised Price \$58,054.15)

SALE NOTE: All units of volume listed for this sale were estimated using the Inventory Manager computer program and the new Michigan taper model.

A timber sale contract for this lump sum, sealed bid timber sale will be awarded to the responsible bidder offering the highest sealed bid price. All units of volume listed below were estimated using the Inventory Manager computer program and the new Michigan taper model. Bids must be at or above the following advertised price for each product and species:

<u>PRODUCTS & SPECIES</u>	<u>ESTIMATED UNITS*</u>	<u>ADVERTISED PRICE</u>
Sawtimber		
Red Pine	344.0 MBF	\$ 80.00 / MBF
Pulpwood		
Black Cherry	133 Cords	\$ 12.35 / Cord
Jack Pine	136 Cords	\$ 8.35 / Cord
Red Pine	924 Cords	\$ 29.80 / Cord
White Pine	16 Cords	\$ 13.80 / Cord

* The total volume is statistically estimated within plus (+) or minus (-) 6.37 percent. There are an estimated 1,928 cords on this timber sale, plus or minus 123 cords at the 95% confidence level. The estimated units are final and not subject to adjustment. Prospective bidders are urged to examine this timber and to make their own estimates of quantity and quality.

BOND AND PAYMENT SCHEDULE:

1. A bond in the amount of \$2,903.00 to insure faithful performance of the conditions of the contract will be deposited by the successful bidder within 21 days of the sale award.
2. Cutting in any sale or unit without the required advance payment would be considered a trespass.
3. Total payment must be paid in advance or according to the following schedule :
 - (a) Ten percent (10%) of the sale value must be paid within 21 days of the sale award.
 - (b) The 10% down payment will be credited towards the first unit cut.
 - (c) Payment for each of the following units must be made before cutting begins in that unit:

PAYMENT UNIT NUMBER	PERCENT OF TOTAL SALE VALUE
01	54.4%
02	45.6%
4. If no cutting takes place, the 10% down payment will not be refunded.
5. Operations on the contract issued will terminate on 12/31/2023.

SALE STATISTICS

Volumes were calculated in cubic feet using the Michigan taper model. Cubic foot volume includes all wood inside bark for the product indicated. For display purposes, cubic feet were converted to cords and MBF using a simple conversion factor, e.g. 79 cubic feet per cord and 185 cubic feet per MBF. The cubic foot volumes are precise; the cords and MBF volumes are not. Cubic foot volume cannot be directly converted to cords or boards with precision.

SALE VOLUMES

The total estimated sale volume may not equal the sum of the species/products due to the nature of statistical calculations associated with double sampling methodology.

VOLUME		STATISTICAL RANGE IN CORDS		
TOTAL CUBIC FEET	TOTAL CORDS	PERCENT ERROR	MINIMUM	MAXIMUM
152,317	1,928	6.37%	1,805	2,051

VDU VOLUMES

A VDU is a Volume Determination Unit. Volumes and their associated statistics are calculated at the VDU level and summarized to the sale level. There is often a one to one relationship between a VDU and a Payment Unit, but not always, depending on the cruise design. Refer to the VDU TO PAYMENT UNIT table.

VDU	VOLUME		PERCENT ERROR	RANGE IN CORDS	
	TOTAL CUBIC FEET	TOTAL CORDS		MINIMUM	MAXIMUM
131	136,919	1,733	6.79%	1,615	1,851
132	13,034	165	17.55%	136	194
TOTAL:	149,953	1,898		1,751	2,045

VDU TO PAYMENT UNIT

When a VDU is associated with more than one Payment Unit (PU), the VDU volumes are assigned to the PU based on acres of the VDU within the PU.

VDU	VDU ACRES	PU	PU ACRES
131	33.2	1	17.9
		2	15.3
132	11.1	1	8.4
		2	2.7
TOTAL:	44.3		44.3

DESCRIPTION OF TIMBER BY PAYMENT UNIT (PU)

PU	MARKET GROUP	PRODUCT	QUANTITY	UNIT	ACRES	ADVERTISE PRICE
1	Red Pine	Sawtimber	185.5	MBF	26.3	\$31,614.15
	Black Cherry	Pulpwood	78	Cords		
	<i>Black Cherry</i>	<i>Sawtimber</i>	20.6	<i>MBF</i>		
	<i>Black Cherry</i>	<i>Pulpwood</i>	37	<i>Cords</i>		
	Jack Pine		103	Cords		
	<i>Jack Pine</i>	<i>Sawtimber</i>	3.9	<i>MBF</i>		
	<i>Jack Pine</i>	<i>Pulpwood</i>	95	<i>Cords</i>		
	Red Pine		498	Cords		
	White Pine		8	Cords		
	<i>White Pine</i>	<i>Sawtimber</i>	2.2	<i>MBF</i>		
<i>White Pine</i>	<i>Pulpwood</i>	4	<i>Cords</i>			
2	Red Pine	Sawtimber	158.5	MBF	18.0	\$26,448.35
	Black Cherry	Pulpwood	55	Cords		
	<i>Black Cherry</i>	<i>Sawtimber</i>	16.2	<i>MBF</i>		
	<i>Black Cherry</i>	<i>Pulpwood</i>	23	<i>Cords</i>		
	Jack Pine		34	Cords		
	<i>Jack Pine</i>	<i>Sawtimber</i>	1.3	<i>MBF</i>		
	<i>Jack Pine</i>	<i>Pulpwood</i>	31	<i>Cords</i>		
	Red Pine		426	Cords		
	White Pine		8	Cords		
	<i>White Pine</i>	<i>Sawtimber</i>	1.8	<i>MBF</i>		
<i>White Pine</i>	<i>Pulpwood</i>	4	<i>Cords</i>			
TOTAL:			344.0	MBF		
TOTAL:			1,210	Cords		

Sale Specific Conditions & Requirements

Sale Name: Tennessee Jed Pine

Sale Number: 61-019-21 Seq#: 1

1 - Sale Area

1.2 - Boundaries

1.2.1 - Painted boundaries (9/19)

The sale boundary and Payment Unit boundaries are marked and identified by red paint. Exterior sale boundary lines against state are marked with red paint. Interior Payment Unit boundary is Thompsonville Road.

2 - Timber Specifications

2.1 - Included Timber

2.1.1 - Clearcut unit(s) with unmerchantable trees (6/14)

Within Payment Unit(s) 1 and 2, cut all trees that are two (2) inches or more at DBH, except green marked trees.

2.2 - Utilization

2.2.2 - Chipping required (2/18)

Payment Units 1 and 2 must be chip harvested to facilitate subsequent planting operations. The Purchaser has the option to produce sawlogs or pulpwood bolts, but the remaining portion of the trees must be chipped and hauled. Products may be produced as roundwood and forwarded to decking areas in final product length, but the tops must be left intact and skidded to the landing for chipping to minimize the amount of residual slash. If market conditions limit the practicality of chipping, tops and slash must be arranged in a way that will not inhibit future planting operations, as directed by the sale administrator. A chipping exemption can be obtained if proposed operations are determined to be suitable for planting by reforestation staff. This exemption must be granted in writing. If market conditions limit the practicality of chipping, the Purchaser may skid all remaining topwood out of these Payment Units and scatter in locations approved by the sale administrator. If the deadline is not met, damages will be collected determined by the cost to complete this work. The requirement to retain approximately 1/6 to 1/3 of tree tops and limbs less than four inches in diameter does not apply (G. C. & R. 2.2). This is to facilitate subsequent planting operations more easily.

2.2.3 - Stump heights (4/07)

Stump heights within the Sale Area shall not exceed 6 inches for all trees. This is to facilitate planting operations.

4 - Transportation

4.1 - Construction

4.1.11 - Permits (2/12)

The Purchaser will secure any necessary permits that may be required.

4.1.12 - No new roads (1/12)

No new roads will be permitted in any Payment Unit. All operations are limited to existing roads. Skid trails only will be allowed.

5 - Operations

5.2 - Conduct of Operations

5.2.16 - Equipment recommended (11/18)

Feller bunchers would be the recommended equipment to use on this sale. The use of this equipment will allow the Purchaser to cut low stump heights and "mow" existing deciduous regeneration, all to facilitate planting operations more easily.

5.2.31 - Landing locations (9/13)

Landing areas for Payment Units 1 and 2 should be located on the south side of each Payment Unit, at appropriate distances from Thompsonville Road. Final landing area placement must be approved by the sale administrator. This will ensure that jack pine trees/tops are not skidded across entire sale and will reduce the amount of jack pine seedlings that regenerate throughout Sale Area, all of which is prescribed to be planted to red pine.

5.2.41 - Snowmobile trail protection (9/11)

The snowmobile trail is shown on the Timber Sale Map. Do not cut or damage posts with orange trail markers or traffic control signs. If the trail is used for hauling, it must be graded to the satisfaction of the Unit Manager or his/her representative prior to December 1. If the trail road is to be used for hauling during the snowmobile season, then a snow-covered base must be left on the trail. The trail itself is not within or directly adjacent to Sale Area and would only be affected by potential haul route to the north. Hauling options for sale are using Thompsonville Road south to 13 Mile Road. If Thompsonville Road is taken to the north then the haul route will include a small section of snowmobile trail which lies on Thompsonville Road.

5.4 - Soil Protection

5.4.1 - Rutting restriction, general (7/16)

Operations are to cease immediately if equipment and weather conditions result in rutting of roads and/or skid trails which is 12 inches or greater in depth and 50 feet in length. The Unit Manager or his/her representative may restrict hauling and/or skidding if ruts exceed the specified depth. With the Unit Manager or his/her representative's approval, the Purchaser may return to the area when the risk of rutting has decreased.

6 - Safety and Fire Prevention

6.2 - Signing

6.2.1 - Road posting (10/20)

The Purchaser is responsible for posting and maintaining caution signs on Thompsonville Road prior to beginning operations. The road must be posted at appropriate distances from the Sale Area to warn of logging activity and truck traffic. Signs must be removed when harvest operations are suspended or completed. The Purchaser will provide these signs.



TIMBER SALE MAP

This information provided by authority of Part 525, 1994 PA 451, as amended.

Forest Management Unit Traverse City FMU	County Manistee	Mapped By Patrick Cotant	Date 03/16/2021	Page 1	of 1
Township 24N	Range 13W & 14W	Section(s) and Subdivision(s) 24N14W sec 24-SESE 24N13W sec 9-S1/2SW	Scale 1:15,840		

Cover Type

A = Aspen	H = Hemlock	N = Marsh	U = Upland Brush
B = Paper Birch	J = Jack Pine	O = Oak	UM = Upland Mixed
C = Cedar	L = Lowland Brush	P = Lowland Poplar	V = Bog or Marsh
D = Treed Bog	LM = Lowland Mixed	Q = Mixed Swamp Conifer	W = White Pine
E = Swamp Hdwoods	M = Mpl, Bch, Brch	R = Red Pine	X = Non Stocked
F = Spruce Fir	MC = Mixed Conifer	S = Black Spruce	Z = Water
G = Grass	MD = Mixed Deciduous	T = Tamarack	

Density

0 = Non Stocked	5 = Pole Timber Medium
1 = Seedling Sapling Poor	6 = Pole Timber Well
2 = Seedling Sapling Medium	7 = Saw Timber Poor
3 = Seedling Sapling Well	8 = Saw Timber Medium
4 = Pole Timber Poor	9 = Saw Timber Well

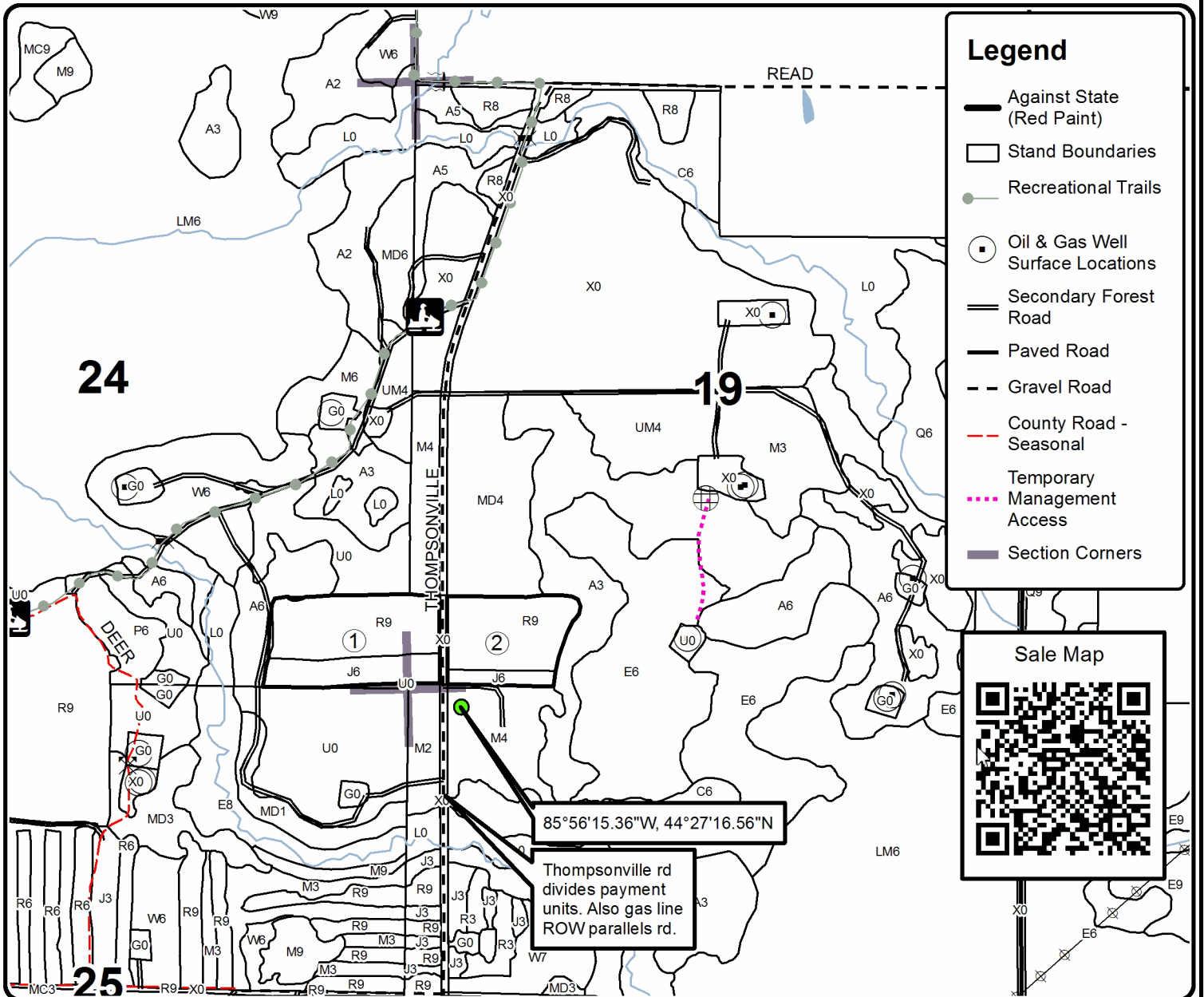
PU Acres

1	26.3
2	18

Tennessee Jed Pine

Compartment 036

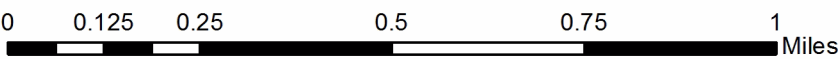
44.3 Acres



Legend

- Against State (Red Paint)
- Stand Boundaries
- Recreational Trails
- Oil & Gas Well Surface Locations
- Secondary Forest Road
- Paved Road
- Gravel Road
- County Road - Seasonal
- Temporary Management Access
- Section Corners

Sale Map



TIMBER SALE INFORMATION

Old Grade Mix (61-029-21)

T24N, R14W, SEC. 22.

Manistee County (Advertised Price \$29,431.15)

SALE NOTE: All units of volume listed for this sale were estimated using the Inventory Manager computer program and the new Michigan taper model.

A timber sale contract for this lump sum, sealed bid timber sale will be awarded to the responsible bidder offering the highest sealed bid price. All units of volume listed below were estimated using the Inventory Manager computer program and the new Michigan taper model. Bids must be at or above the following advertised price for each product and species:

<u>PRODUCTS & SPECIES</u>	<u>ESTIMATED UNITS*</u>	<u>ADVERTISED PRICE</u>
Sawtimber		
Black Cherry	36.3 MBF	\$ 153.00 / MBF
Quaking Aspen	23.9 MBF	\$ 90.00 / MBF
Red Maple	45.6 MBF	\$ 116.00 / MBF
Sugar Maple	5.6 MBF	\$ 164.00 / MBF
Pulpwood		
Mixed Hardwood	367 Cords	\$ 12.35 / Cord
Quaking Aspen	551 Cords	\$ 12.80 / Cord
White Pine	285 Cords	\$ 13.80 / Cord

* The total volume is statistically estimated within plus (+) or minus (-) 8.55 percent. There are an estimated 1,524 cords on this timber sale, plus or minus 130 cords at the 95% confidence level. The estimated units are final and not subject to adjustment. Prospective bidders are urged to examine this timber and to make their own estimates of quantity and quality.

BOND AND PAYMENT SCHEDULE:

1. A bond in the amount of \$1,472.00 to insure faithful performance of the conditions of the contract will be deposited by the successful bidder within 21 days of the sale award.
2. Cutting in any sale or unit without the required advance payment would be considered a trespass.
3. Total payment must be paid in advance or according to the following schedule :
 - (a) Ten percent (10%) of the sale value must be paid within 21 days of the sale award.
 - (b) The 10% down payment will be credited towards the first unit cut.
 - (c) Payment for each of the following units must be made before cutting begins in that unit:

PAYMENT UNIT NUMBER	PERCENT OF TOTAL SALE VALUE
01	41.2%
02	16.6%
03	42.2%
4. If no cutting takes place, the 10% down payment will not be refunded.
5. Operations on the contract issued will terminate on 12/31/2023.

SALE STATISTICS

Volumes were calculated in cubic feet using the Michigan taper model. Cubic foot volume includes all wood inside bark for the product indicated. For display purposes, cubic feet were converted to cords and MBF using a simple conversion factor, e.g. 79 cubic feet per cord and 185 cubic feet per MBF. The cubic foot volumes are precise; the cords and MBF volumes are not. Cubic foot volume cannot be directly converted to cords or boards with precision.

SALE VOLUMES

The total estimated sale volume may not equal the sum of the species/products due to the nature of statistical calculations associated with double sampling methodology.

VOLUME		STATISTICAL RANGE IN CORDS		
TOTAL CUBIC FEET	TOTAL CORDS	PERCENT ERROR	MINIMUM	MAXIMUM
120,378	1,524	8.55%	1,393	1,654

VDU VOLUMES

A VDU is a Volume Determination Unit. Volumes and their associated statistics are calculated at the VDU level and summarized to the sale level. There is often a one to one relationship between a VDU and a Payment Unit, but not always, depending on the cruise design. Refer to the VDU TO PAYMENT UNIT table.

VDU	VOLUME		PERCENT ERROR	RANGE IN CORDS	
	TOTAL CUBIC FEET	TOTAL CORDS		MINIMUM	MAXIMUM
39	24,669	312	16.39%	261	363
40	26,465	335	22.51%	260	410
51	61,454	778	10.26%	698	858
TOTAL:	112,588	1,425		1,219	1,632

VDU TO PAYMENT UNIT

When a VDU is associated with more than one Payment Unit (PU), the VDU volumes are assigned to the PU based on acres of the VDU within the PU.

VDU	VDU ACRES	PU	PU ACRES
39	17.7	2	17.7
40	9.2	1	9.2
51	18.4	3	18.4
TOTAL:	45.3		45.3

DESCRIPTION OF TIMBER BY PAYMENT UNIT (PU)

PU	MARKET GROUP	PRODUCT	QUANTITY	UNIT	ACRES	ADVERTISE PRICE
1	Black Cherry	Sawtimber	29.3	MBF	9.2	\$12,121.00
	Red Maple		37.7	MBF		
	Sugar Maple		5.6	MBF		
	Mixed Hardwood	Pulpwood	190	Cords		
	<i>Black Cherry</i>		22	<i>Cords</i>		
	<i>Red Maple</i>		131	<i>Cords</i>		
	<i>Sugar Maple</i>		37	<i>Cords</i>		
2	Black Cherry	Sawtimber	3.5	MBF	17.7	\$4,886.50
	Red Maple		1.9	MBF		
	Mixed Hardwood	Pulpwood	16	Cords		
	<i>Black Cherry</i>		15	<i>Cords</i>		
	<i>Red Maple</i>		1	<i>Cords</i>		
	White Pine		285	Cords		
	<i>White Pine</i>	<i>Sawtimber</i>	19.0	<i>MBF</i>		
<i>White Pine</i>	<i>Pulpwood</i>	247	<i>Cords</i>			
3	Black Cherry	Sawtimber	3.5	MBF	18.4	\$12,423.65
	Quaking Aspen		23.9	MBF		
	Red Maple		6.0	MBF		
	Mixed Hardwood	Pulpwood	161	Cords		
	<i>Black Cherry</i>		51	<i>Cords</i>		
	<i>Red Maple</i>		110	<i>Cords</i>		
	Quaking Aspen		551	Cords		
TOTAL:			111.4	MBF		
TOTAL:			1,203	Cords		

Sale Specific Conditions & Requirements

Sale Name: Old Grade Mix

Sale Number: 61-029-21 Seq#: 1

1 - Sale Area

1.2 - Boundaries

1.2.1 - Painted boundaries (9/19)

The sale boundary and Payment Unit boundaries are marked and identified by red and yellow paint. Exterior sale boundary lines against state are marked with red paint. Interior Payment Unit boundaries are marked with yellow paint. The painted boundary line trees are not Included Timber and are to be protected unless marked with orange paint. Yellow painted trees designating an interior Payment Unit boundary are only to be cut when all surrounding Payment Units have been paid.

2 - Timber Specifications

2.1 - Included Timber

2.1.1 - Clearcut unit(s) with unmerchantable trees (6/14)

Within Payment Unit(s) 3, cut all trees that are two (2) inches or more at DBH, except all conifer species and individual trees marked with green paint.

2.1.3 - Cut tree marked unit(s) (12/08)

Within Payment Unit(s) 1, all trees are designated for cutting when marked with orange paint above and below stump height, regardless of merchantability.

2.1.8 - Designated plantation row unit(s) (12/08)

Within Payment Unit(s) 2, all trees which meet minimum piece specifications in 2.2 Utilization, within designated plantation rows are designated for cutting. Designated plantation rows follow a take two, leave two pattern. Because of the variability of row direction, it shall be the responsibility of the Purchaser to maintain the take two/leave two sequence. In addition, all trees marked with orange paint within Payment Unit 2 are designated for harvesting.

2.2 - Utilization

2.2.3 - Stump heights (4/07)

Stump heights within the Sale Area shall not exceed 12 inches for trees greater than 10 inches at DBH and 4 inches for trees smaller than 10 inches at DBH.

2.2.6 - Roundwood operation required (3/21)

The skidding of whole trees or tree segments with limbs attached is prohibited within Payment Unit(s) 1 and 2. All products must be produced as roundwood and forwarded to existing roads or landing areas in final product length.

3 - Payments

3.4 - Damaged Timber

3.4.1 - Damaged timber (7/16)

General Condition and Requirement 3.4 Damaged Timber, defines liquidated damages for undesignated live merchantable trees which are cut or injured. No damage is acceptable to undesignated live merchantable trees. Within the Sale Area, if more than 10% of trees (> 4.5" DBH) within a specified area of the sale are damaged, liquidated damages will be assessed for all trees damaged. Rates will be in accordance with General Condition and Requirement 3.4 Damaged Timber.

4 - Transportation

4.1 - Construction

4.1.11 - Permits (2/12)

The Purchaser will secure any necessary permits that may be required.

4.1.12 - No new roads (1/12)

No new roads will be permitted in any Payment Unit. All operations are limited to existing roads. Skid trails only will be allowed.

5 - Operations

5.2 - Conduct of Operations

5.2.1 - Slash

5.2.1.8 - Slash height (12/08)

No slash or tree tops may exceed 24 inches in height.

5.2.2 - Hazard Trees/Snags

5.2.2.1 - Den trees (10/16)

Obvious hollow and/or den trees shall be protected and left standing unless they are a safety hazard.

5.2.3 - Operating Restrictions

5.2.3.3 - Bark slippage restriction (3/09)

Within Payment Unit(s) 1 and 2, unless changed by written agreement, cutting and skidding are not permitted during the period of April 15 to July 15. This restriction is because of bark slippage.

5.2.29 - Shrub protection (1/20)

Do not cut or damage hawthorn, witch-hazel, dogwood, or juneberry. These woody-shrub plants are highly beneficial to various wildlife species.

5.4 - Soil Protection

5.4.1 - Rutting restriction, general (7/16)

Operations are to cease immediately if equipment and weather conditions result in rutting of roads and/or skid trails which is 12 inches or greater in depth and 50 feet in length. The Unit Manager or his/her representative may restrict hauling and/or skidding if ruts exceed the specified depth. With the Unit Manager or his/her representative's approval, the Purchaser may return to the area when the risk of rutting has decreased.

5.4.7 - Rutting restriction, Riparian Management Zone (RMZ) (1/09)

Within the Riparian Management Zone (RMZ), as shown on the attached Timber Sale Map, operations are to cease immediately if equipment and weather conditions result in rutting of roads and skid trails which is 6 inches or greater in depth and 25 feet in length. The Unit Manager or his/her representative may restrict hauling and/or skidding if ruts exceed the specified depth. With the Unit Manager or his/her representative's approval, the Purchaser may return to the area when the risk of rutting has decreased.



TIMBER SALE MAP

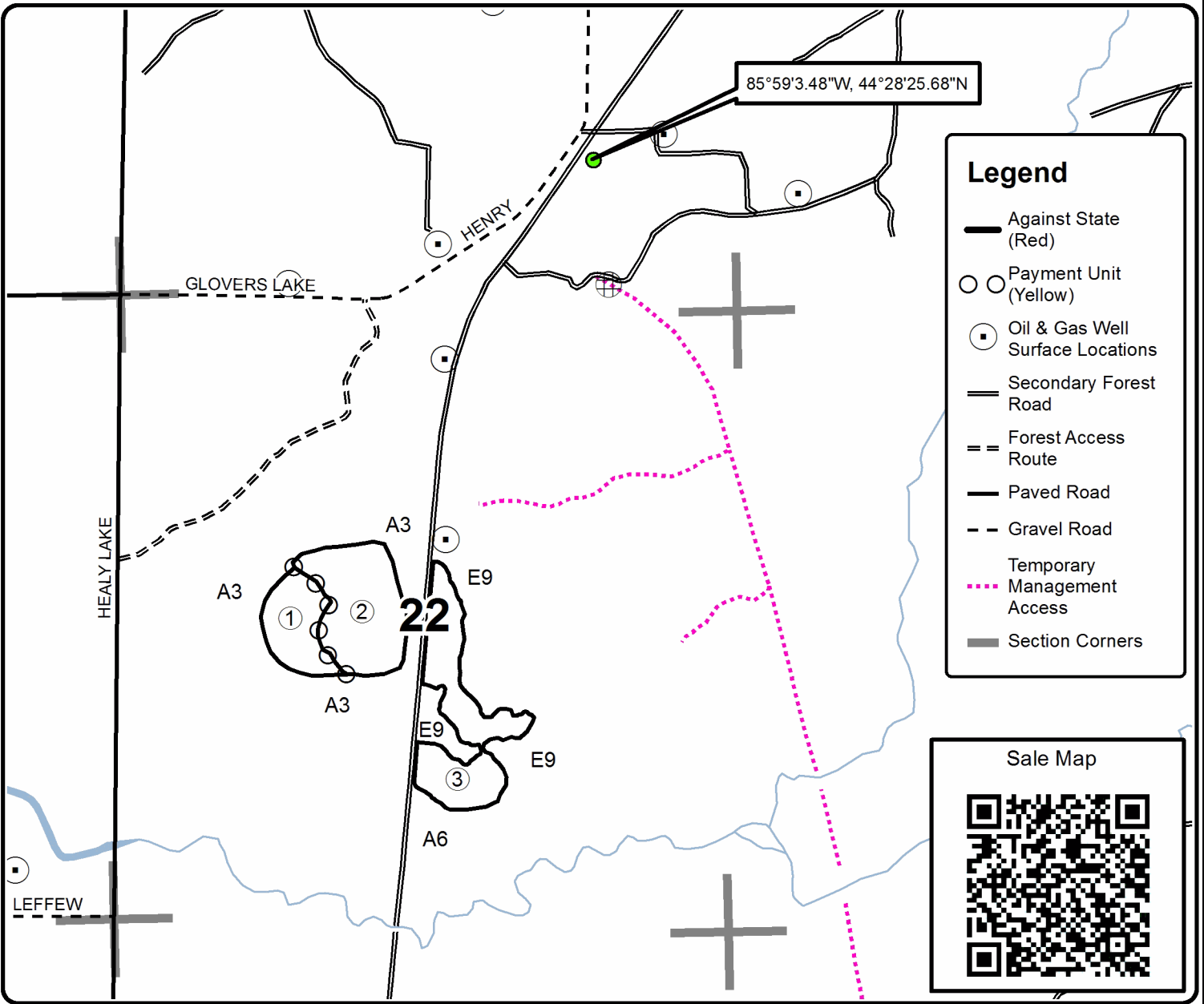
This information provided by authority of Part 525, 1994 PA 451, as amended.

Forest Management Unit Traverse City FMU	County Manistee	Mapped By Patrick Cotant	Date 04/26/2021	Page 1	of 1
Township 24N	Range 14W	Section(s) and Subdivision(s) S1/2NW, SWNE, N1/2SW, SESW, W1/2SE	Scale 1:15,840		

Cover Type				Density	
A = Aspen	H = Hemlock	N = Marsh	U = Upland Brush	0 = Non Stocked	5 = Pole Timber Medium
B = Paper Birch	J = Jack Pine	O = Oak	UM = Upland Mixed	1 = Seedling Sapling Poor	6 = Pole Timber Well
C = Cedar	L = Lowland Brush	P = Lowland Poplar	V = Bog or Marsh	2 = Seedling Sapling Medium	7 = Saw Timber Poor
D = Treed Bog	LM = Lowland Mixed	Q = Mixed Swamp Conifer	W = White Pine	3 = Seedling Sapling Well	8 = Saw Timber Medium
E = Swamp Hdwoods	M = Mpl, Bch, Brch	R = Red Pine	X = Non Stocked	4 = Pole Timber Poor	9 = Saw Timber Well
F = Spruce Fir	MC = Mixed Conifer	S = Black Spruce	Z = Water		
G = Grass	MD = Mixed Deciduous	T = Tamarack			

PU	Acres
1	9.2
2	17.7
3	18.4

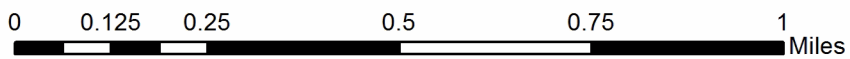
Old Grade Mix Compartment 036 45.3 Acres



Legend

- Against State (Red)
- Payment Unit (Yellow)
- Oil & Gas Well Surface Locations
- Secondary Forest Road
- Forest Access Route
- Paved Road
- Gravel Road
- Temporary Management Access
- Section Corners

Sale Map



TIMBER SALE INFORMATION

Open Aspen Pine (61-030-21)

T24N, R14W, SEC. 13.

Manistee County (Advertised Price \$16,480.45)

SALE NOTE: All units of volume listed for this sale were estimated using the Inventory Manager computer program and the new Michigan taper model.

A timber sale contract for this lump sum, sealed bid timber sale will be awarded to the responsible bidder offering the highest sealed bid price. All units of volume listed below were estimated using the Inventory Manager computer program and the new Michigan taper model. Bids must be at or above the following advertised price for each product and species:

<u>PRODUCTS & SPECIES</u>	<u>ESTIMATED UNITS*</u>	<u>ADVERTISED PRICE</u>
Sawtimber		
Black Cherry	12.4 MBF	\$ 153.00 / MBF
Red Maple	14.9 MBF	\$ 116.00 / MBF
Red Pine	19.3 MBF	\$ 80.00 / MBF
Pulpwood		
Jack Pine	7 Cords	\$ 8.35 / Cord
Mixed Aspen	501 Cords	\$ 12.80 / Cord
Mixed Hardwood	176 Cords	\$ 12.35 / Cord
Red Pine	89 Cords	\$ 29.80 / Cord
White Pine	1 Cords	\$ 13.80 / Cord

* The total volume is statistically estimated within plus (+) or minus (-) 10.04 percent. There are an estimated 901 cords on this timber sale, plus or minus 91 cords at the 95% confidence level. The estimated units are final and not subject to adjustment. Prospective bidders are urged to examine this timber and to make their own estimates of quantity and quality.

BOND AND PAYMENT SCHEDULE:

1. A bond in the amount of \$824.00 to insure faithful performance of the conditions of the contract will be deposited by the successful bidder within 21 days of the sale award.
2. Cutting in any sale or unit without the required advance payment would be considered a trespass.
3. Total payment must be paid in advance or according to the following schedule :
 - (a) Ten percent (10%) of the sale value must be paid within 21 days of the sale award.
 - (b) The 10% down payment will be credited towards the first unit cut.
 - (c) Payment for each of the following units must be made before cutting begins in that unit:

PAYMENT UNIT NUMBER	PERCENT OF TOTAL SALE VALUE
01	15.0%
02	60.4%
03	24.6%
4. If no cutting takes place, the 10% down payment will not be refunded.
5. Operations on the contract issued will terminate on 12/31/2023.

SALE STATISTICS

Volumes were calculated in cubic feet using the Michigan taper model. Cubic foot volume includes all wood inside bark for the product indicated. For display purposes, cubic feet were converted to cords and MBF using a simple conversion factor, e.g. 79 cubic feet per cord and 185 cubic feet per MBF. The cubic foot volumes are precise; the cords and MBF volumes are not. Cubic foot volume cannot be directly converted to cords or boards with precision.

SALE VOLUMES

The total estimated sale volume may not equal the sum of the species/products due to the nature of statistical calculations associated with double sampling methodology.

VOLUME		STATISTICAL RANGE IN CORDS		
TOTAL CUBIC FEET	TOTAL CORDS	PERCENT ERROR	MINIMUM	MAXIMUM
71,165	901	10.04%	810	991

VDU VOLUMES

A VDU is a Volume Determination Unit. Volumes and their associated statistics are calculated at the VDU level and summarized to the sale level. There is often a one to one relationship between a VDU and a Payment Unit, but not always, depending on the cruise design. Refer to the VDU TO PAYMENT UNIT table.

VDU	VOLUME		PERCENT ERROR	RANGE IN CORDS	
	TOTAL CUBIC FEET	TOTAL CORDS		MINIMUM	MAXIMUM
80	8,913	113	23.27%	87	139
93	49,821	631	13.14%	548	713
110	9,830	124	7.20%	115	133
TOTAL:	68,563	868		750	986

VDU TO PAYMENT UNIT

When a VDU is associated with more than one Payment Unit (PU), the VDU volumes are assigned to the PU based on acres of the VDU within the PU.

VDU	VDU ACRES	PU	PU ACRES
80	19.5	1	19.5
93	32.6	2	32.6
110	7.4	3	7.4
TOTAL:	59.5		59.5

DESCRIPTION OF TIMBER BY PAYMENT UNIT (PU)

PU	MARKET GROUP	PRODUCT	QUANTITY	UNIT	ACRES	ADVERTISE PRICE
1	Black Cherry	Sawtimber	4.1	MBF	19.5	\$2,470.30
	Red Maple		5.3	MBF		
	Red Pine		1.3	MBF		
	Jack Pine	Pulpwood	7	Cords		
	Mixed Aspen		21	Cords		
	<i>Quaking Aspen</i>		21	<i>Cords</i>		
	Mixed Hardwood		61	Cords		
	<i>Black Cherry</i>		47	<i>Cords</i>		
	<i>Red Maple</i>		14	<i>Cords</i>		
	Red Pine		1	Cords		
	White Pine		1	Cords		
2	Black Cherry	Sawtimber	8.3	MBF	32.6	\$9,947.75
	Red Maple		9.6	MBF		
	Mixed Aspen	Pulpwood	480	Cords		
	<i>Quaking Aspen</i>	<i>Sawtimber</i>	5.5	<i>MBF</i>		
	<i>Quaking Aspen</i>	<i>Pulpwood</i>	469	<i>Cords</i>		
	Mixed Hardwood		115	Cords		
	<i>Black Cherry</i>		70	<i>Cords</i>		
<i>Red Maple</i>		45	<i>Cords</i>			
3	Red Pine	Sawtimber	18.0	MBF	7.4	\$4,062.40
	Red Pine	Pulpwood	88	Cords		
TOTAL:			46.6	MBF		
TOTAL:			774	Cords		

Sale Specific Conditions & Requirements

Sale Name: Open Aspen Pine

Sale Number: 61-030-21 Seq#: 1

1 - Sale Area

1.2 - Boundaries

1.2.1 - Painted boundaries (9/19)

The sale boundary and Payment Unit boundaries are marked and identified by blue, red, and yellow paint. Exterior sale boundary lines against private property are marked with blue paint. Exterior sale boundary lines against state are marked with red paint. Interior Payment Unit boundaries are marked with yellow paint. The painted boundary line trees are not Included Timber and are to be protected unless marked with orange paint. Yellow painted trees designating an interior Payment Unit boundary are only to be cut when all surrounding Payment Units have been paid.

2 - Timber Specifications

2.1 - Included Timber

2.1.1 - Clearcut unit(s) with unmerchantable trees (6/14)

Within Payment Unit(s) 1 and 2, cut all trees that are two (2) inches or more at DBH, except in Payment Unit 1, do not cut any trees marked with a green "W". Within Payment Unit 2, do not cut any sugar maple or any merchantable conifers. Within Payment Unit 1, NO slash is allowed to accumulate. ALL slash from cutting within Payment Unit 1 shall be skidded outside of the Unit boundary and scattered within Payment Unit 2.

2.1.3 - Cut tree marked unit(s) (12/08)

Within Payment Unit(s) 3, all trees are designated for cutting when marked with orange paint above and below stump height, regardless of merchantability.

2.2 - Utilization

2.2.3 - Stump heights (4/07)

Stump heights within Payment Unit(s) 2 and 3 shall not exceed 12 inches for trees greater than 10 inches at DBH and 4 inches for trees smaller than at 10 inches DBH. Within Payment Unit 1, stumps should be cut as flush to the ground as possible.

2.2.6 - Roundwood operation required (3/21)

The skidding of whole trees or tree segments with limbs attached is prohibited within Payment Unit 3. All products must be produced as roundwood and forwarded to existing roads or landing areas in final product length. Trees must be harvested with in-woods processor (feller bunching harvester will need to be approved by the sale administrator) to retain existing understory.

4 - Transportation

4.1 - Construction

4.1.11 - Permits (2/12)

The Purchaser will secure any necessary permits that may be required.

4.1.12 - No new roads (1/12)

No new roads will be permitted in any Payment Unit. All operations are limited to existing roads. Skid trails only will be allowed.

5 - Operations

5.2 - Conduct of Operations

5.2.1 - Slash

5.2.1.8 - Slash height (12/08)

No slash or tree tops may exceed 24 inches in height. Please note that no slash will be permitted to accumulate in Payment Unit 1 per spec 2.1.1.

5.2.2 - Hazard Trees/Snags

5.2.2.1 - Den trees (10/16)

Obvious hollow and/or den trees shall be protected and left standing unless they are a safety hazard.

5.2.3 - Operating Restrictions

5.2.3.3 - Bark slippage restriction (3/09)

Within Payment Unit(s) 3, unless approved by sale administrator, cutting and skidding are not permitted during the period of April 15 to July 15. This restriction is because of bark slippage.

5.2.29 - Shrub protection (1/20)

Do not cut or damage hawthorn, witch-hazel, or juneberry. These woody-shrub plants are highly beneficial to various wildlife species.

5.4 - Soil Protection

5.4.1 - Rutting restriction, general (7/16)

Operations are to cease immediately if equipment and weather conditions result in rutting of roads and/or skid trails which is 12 inches or greater in depth and 50 feet in length. The Unit Manager or his/her representative may restrict hauling and/or skidding if ruts exceed the specified depth. With the Unit Manager or his/her representative's approval, the Purchaser may return to the area when the risk of rutting has decreased.



TIMBER SALE MAP

This information provided by authority of Part 525, 1994 PA 451, as amended.

Forest Management Unit Traverse City FMU	County Manistee	Mapped By Patrick Cotant	Date 4/13/2021	Page 1	of 1
Township 24N	Range 14W	Section(s) and Subdivision(s) Sec 13 - NWNE, S1/2NE, N1/2SE	Scale 1:7,920		

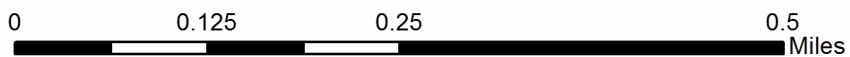
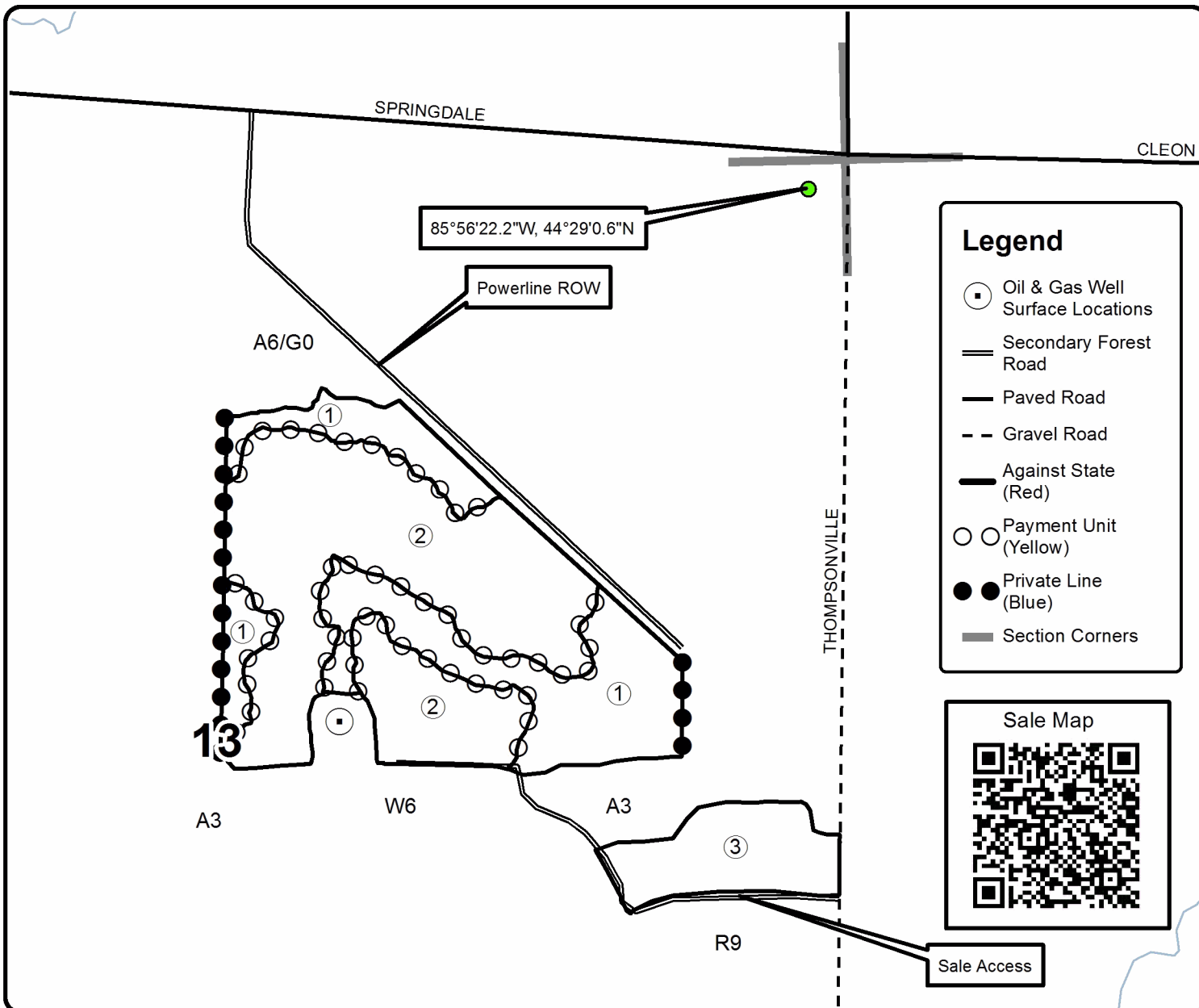
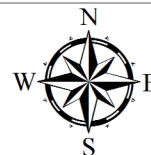
Cover Type				Density	
A = Aspen	H = Hemlock	N = Marsh	U = Upland Brush	0 = Non Stocked	5 = Pole Timber Medium
B = Paper Birch	J = Jack Pine	O = Oak	UM = Upland Mixed	1 = Seedling Sapling Poor	6 = Pole Timber Well
C = Cedar	L = Lowland Brush	P = Lowland Poplar	V = Bog or Marsh	2 = Seedling Sapling Medium	7 = Saw Timber Poor
D = Treed Bog	LM = Lowland Mixed	Q = Mixed Swamp Conifer	W = White Pine	3 = Seedling Sapling Well	8 = Saw Timber Medium
E = Swamp Hdwoods	M = Mpl, Bch, Brch	R = Red Pine	X = Non Stocked	4 = Pole Timber Poor	9 = Saw Timber Well
F = Spruce Fir	MC = Mixed Conifer	S = Black Spruce	Z = Water		
G = Grass	MD = Mixed Deciduous	T = Tamarack			

PU	Acres
1	19.5
2	32.6
3	7.4

Open Aspen Pine

Compartment 036

59.5 Acres



TIMBER SALE INFORMATION

James River Red Pine (61-045-21)

T25N, R09W, SEC. 30; T25N, R09W, SEC. 31; T25N, R09W, SEC. 32.
Grand Traverse County (Advertised Price \$72,012.80)

SALE NOTE: All units of volume listed for this sale were estimated using the Inventory Manager computer program and the new Michigan taper model.

A recreation site such as a trail, pathway, or campground is within the sale area or the vicinity. Certain restrictions/specifications may be applicable including time restrictions.

A timber sale contract for this lump sum, sealed bid timber sale will be awarded to the responsible bidder offering the highest sealed bid price. All units of volume listed below were estimated using the Inventory Manager computer program and the new Michigan taper model. Bids must be at or above the following advertised price for each product and species:

<u>PRODUCTS & SPECIES</u>	<u>ESTIMATED UNITS*</u>	<u>ADVERTISED PRICE</u>
Sawtimber		
Northern Pin Oak	91.1 MBF	\$ 70.00 / MBF
Red Maple	58.3 MBF	\$ 116.00 / MBF
Red Pine	427.9 MBF	\$ 80.00 / MBF
White Oak	61.3 MBF	\$ 75.00 / MBF
White Pine	98.4 MBF	\$ 37.00 / MBF
Pulpwood		
Jack Pine	33 Cords	\$ 8.35 / Cord
Mixed Aspen	23 Cords	\$ 12.80 / Cord
Mixed Hardwood	391 Cords	\$ 12.35 / Cord
Mixed Oak	247 Cords	\$ 12.30 / Cord
Red Pine	221 Cords	\$ 29.80 / Cord
White Pine	100 Cords	\$ 13.80 / Cord

* The total volume is statistically estimated within plus (+) or minus (-) 4.84 percent. There are an estimated 2,764 cords on this timber sale, plus or minus 134 cords at the 95% confidence level. The estimated units are final and not subject to adjustment. Prospective bidders are urged to examine this timber and to make their own estimates of quantity and quality.

BOND AND PAYMENT SCHEDULE:

1. A bond in the amount of \$3,601.00 to insure faithful performance of the conditions of the contract will be deposited by the successful bidder within 21 days of the sale award.
2. Cutting in any sale or unit without the required advance payment would be considered a trespass.
3. Total payment must be paid in advance or according to the following schedule :
 - (a) Ten percent (10%) of the sale value must be paid within 21 days of the sale award.
 - (b) The 10% down payment will be credited towards the first unit cut.
 - (c) Payment for each of the following units must be made before cutting begins in that unit:

PAYMENT UNIT NUMBER	PERCENT OF TOTAL SALE VALUE
01	52.0%
02	48.0%
4. If no cutting takes place, the 10% down payment will not be refunded.
5. Operations on the contract issued will terminate on 03/30/2024.

SALE STATISTICS

Volumes were calculated in cubic feet using the Michigan taper model. Cubic foot volume includes all wood inside bark for the product indicated. For display purposes, cubic feet were converted to cords and MBF using a simple conversion factor, e.g. 79 cubic feet per cord and 185 cubic feet per MBF. The cubic foot volumes are precise; the cords and MBF volumes are not. Cubic foot volume cannot be directly converted to cords or boards with precision.

SALE VOLUMES

The total estimated sale volume may not equal the sum of the species/products due to the nature of statistical calculations associated with double sampling methodology.

VOLUME			STATISTICAL RANGE IN CORDS	
TOTAL CUBIC FEET	TOTAL CORDS	PERCENT ERROR	MINIMUM	MAXIMUM
218,360	2,764	4.84%	2,630	2,898

VDU VOLUMES

A VDU is a Volume Determination Unit. Volumes and their associated statistics are calculated at the VDU level and summarized to the sale level. There is often a one to one relationship between a VDU and a Payment Unit, but not always, depending on the cruise design. Refer to the VDU TO PAYMENT UNIT table.

	VOLUME			RANGE IN CORDS	
VDU	TOTAL CUBIC FEET	TOTAL CORDS	PERCENT ERROR	MINIMUM	MAXIMUM
90	4,582	58	18.92%	47	69
105	184,575	2,336	5.04%	2,219	2,454
106	7,328	93	23.81%	71	115
TOTAL:	196,485	2,487		2,336	2,638

VDU TO PAYMENT UNIT

When a VDU is associated with more than one Payment Unit (PU), the VDU volumes are assigned to the PU based on acres of the VDU within the PU.

VDU	VDU ACRES	PU	PU ACRES
90	5.8	1	5.8
105	68.2	1	36.2
		2	32.0
106	3.1	2	3.1
TOTAL:	77.1		77.1

DESCRIPTION OF TIMBER BY PAYMENT UNIT (PU)

PU	MARKET GROUP	PRODUCT	QUANTITY	UNIT	ACRES	ADVERTISE PRICE			
1	Northern Pin Oak	Sawtimber	46.9	MBF	42.0	\$37,451.60			
	Red Maple		30.9	MBF					
	Red Pine		221.1	MBF					
	White Oak		32.5	MBF					
	White Pine		49.4	MBF					
	Jack Pine	Pulpwood	12	Cords					
	<i>Jack Pine</i>	<i>Sawtimber</i>	2.2	<i>MBF</i>					
	<i>Jack Pine</i>	<i>Pulpwood</i>	8	<i>Cords</i>					
	Mixed Aspen		13	Cords					
	<i>B. T. Aspen</i>	<i>Sawtimber</i>	1.8	<i>MBF</i>					
	<i>B. T. Aspen</i>	<i>Pulpwood</i>	7	<i>Cords</i>					
	<i>Quaking Aspen</i>		2	<i>Cords</i>					
	Mixed Hardwood		224	Cords					
	<i>Black Cherry</i>	<i>Sawtimber</i>	6.0	<i>MBF</i>					
	<i>Black Cherry</i>	<i>Pulpwood</i>	4	<i>Cords</i>					
	<i>Red Maple</i>		208	<i>Cords</i>					
	Mixed Oak		123	Cords					
	<i>Northern Pin Oak</i>		70	<i>Cords</i>					
	<i>White Oak</i>		53	<i>Cords</i>					
	Red Pine		113	Cords					
	White Pine		52	Cords					
	2	Northern Pin Oak	Sawtimber	44.2			MBF	35.1	\$34,561.20
Red Maple			27.4	MBF					
Red Pine			206.8	MBF					
White Oak			28.8	MBF					
White Pine			49.0	MBF					
Jack Pine		Pulpwood	21	Cords					
<i>Jack Pine</i>		<i>Sawtimber</i>	1.9	<i>MBF</i>					
<i>Jack Pine</i>		<i>Pulpwood</i>	17	<i>Cords</i>					
Mixed Aspen			10	Cords					
<i>B. T. Aspen</i>		<i>Sawtimber</i>	1.5	<i>MBF</i>					
<i>B. T. Aspen</i>		<i>Pulpwood</i>	7	<i>Cords</i>					
Mixed Hardwood			167	Cords					
<i>Red Maple</i>			167	<i>Cords</i>					
Mixed Oak			124	Cords					
<i>Northern Pin Oak</i>			66	<i>Cords</i>					
<i>White Oak</i>			58	<i>Cords</i>					
Red Pine			108	Cords					
White Pine			48	Cords					
TOTAL:			737.0	MBF					
TOTAL:			1,015	Cords					

Sale Specific Conditions & Requirements

Sale Name: James River Red Pine

Sale Number: 61-045-21 Seq#: 1

1 - Sale Area

1.2 - Boundaries

1.2.1 - Painted boundaries (9/19)

The sale boundary and Payment Unit boundaries are marked and identified by red and yellow paint. Exterior sale boundary lines against state are marked with red paint. Interior Payment Unit boundaries are marked with yellow paint. The painted boundary line trees are not Included Timber and are to be protected. Yellow painted trees designating an interior Payment Unit boundary are only to be cut when all surrounding Payment Units have been paid.

2 - Timber Specifications

2.1 - Included Timber

2.1.1 - Clearcut unit(s) with unmerchantable trees (6/14)

Within Payment Unit(s) 1 and 2, cut all trees that are two (2) inches or more at DBH, except trees marked with green paint (all concentrated along eastern edge of Payment Unit 2). In addition, within sub-unit 1A, all conifers' trees are to be retained.

2.2 - Utilization

2.2.3 - Stump heights (4/07)

Stump heights within the Sale Area shall not exceed 6 inches for all trees. This is to facilitate planting operations.

2.2.8 - Utilization and removal (5/14)

All products meeting standards set forth in General Condition and Requirement 2.2 - Utilization must be removed from the Sale Area. Retain on site less than 1/6 of the slash from harvested trees (tree tops and limbs less than four inches in diameter). This is because the Sale Area is prescribed to be replanted to red pine following harvest.

3 - Payments

3.3 - Pre-measured Sales

3.3.4 - Dividing payment units (7/14)

Payment Unit(s) 1 and 2 may be divided at the request of the Purchaser and upon approval of the Unit Manager. Dividing Payment Units is a contract modification which requires a Timber Sale Contract Amendment. There will be only one division per Payment Unit.

4 - Transportation

4.1 - Construction

4.1.11 - Permits (2/12)

The Purchaser will secure any necessary permits that may be required.

4.1.12 - No new roads (1/12)

No new roads will be permitted in any Payment Unit. All operations are limited to existing roads. Skid trails only will be allowed.

5 - Operations

5.2 - Conduct of Operations

5.2.1 - Slash

5.2.1.11 - Slash for reforestation (3/21)

Within Payment Unit(s) 1 and 2, chipping is encouraged as it is the most effective and efficient way to mitigate slash for reforestation. Other tactics to mitigate slash for site preparation would need to be approved by the Unit Manager or his/her representative. Liquidated damages may be assessed at \$250 per acre if it is determined that slash mitigation was inadequate, and mastication is needed for the DNR to conduct site preparation for planting.

5.2.18 - Equipment requirements (1/09)

It is recommended that Payment Units 1 and 2 be harvested using a feller buncher to meet 6" or less stump height requirements and also to keep whole trees intact and tops concentrated for chipping or other approved slash mitigation tactics.

5.2.39 - ORV trail/route protection (4/18)

The MCCCT trail/route is shown on the Timber Sale Map. Do not cut trees or damage posts with yellow ORV markers. Maintain a 20-foot-wide slash, debris, and rut free zone daily using the ORV trail or route as the centerline. If the forest road that the trail lies on is used for hauling then the trail must be graded daily on the sections used as the haul route.

5.4 - Soil Protection

5.4.1 - Rutting restriction, general (7/16)

Operations are to cease immediately if equipment and weather conditions result in rutting of roads and/or skid trails which is 12 inches or greater in depth and 50 feet in length. The Unit Manager or his/her representative may restrict hauling and/or skidding if ruts exceed the specified depth. With the Unit Manager or his/her representative's approval, the Purchaser may return to the area when the risk of rutting has decreased.

6 - Safety and Fire Prevention

6.2 - Signing

6.2.3 - Recreational trail posting (10/20)

The Purchaser is responsible for posting and maintaining caution signs on the MCCCT trail prior to beginning operations. The trail must be posted at appropriate distances from the Sale Area to warn of logging activity and truck traffic at both ends of the trail. Signs must be removed when harvest operations are suspended or completed. The Purchaser will provide these signs.



Sale Number	Year
61-045	21

TIMBER SALE MAP

This information provided by authority of Part 525, 1994 PA 451, as amended.

Forest Management Unit	County	Mapped By	Date	Page	of
Traverse City FMU	Grand Traverse	Patrick Cotant	08/05/2021	1	1
		Cruised By			
		Patrick Cotant			

Township	Range	Section(s) and Subdivision(s)	Scale
25N	09W	Sec 30 - SESW Sec 31 - N1/2NE	1:7,920

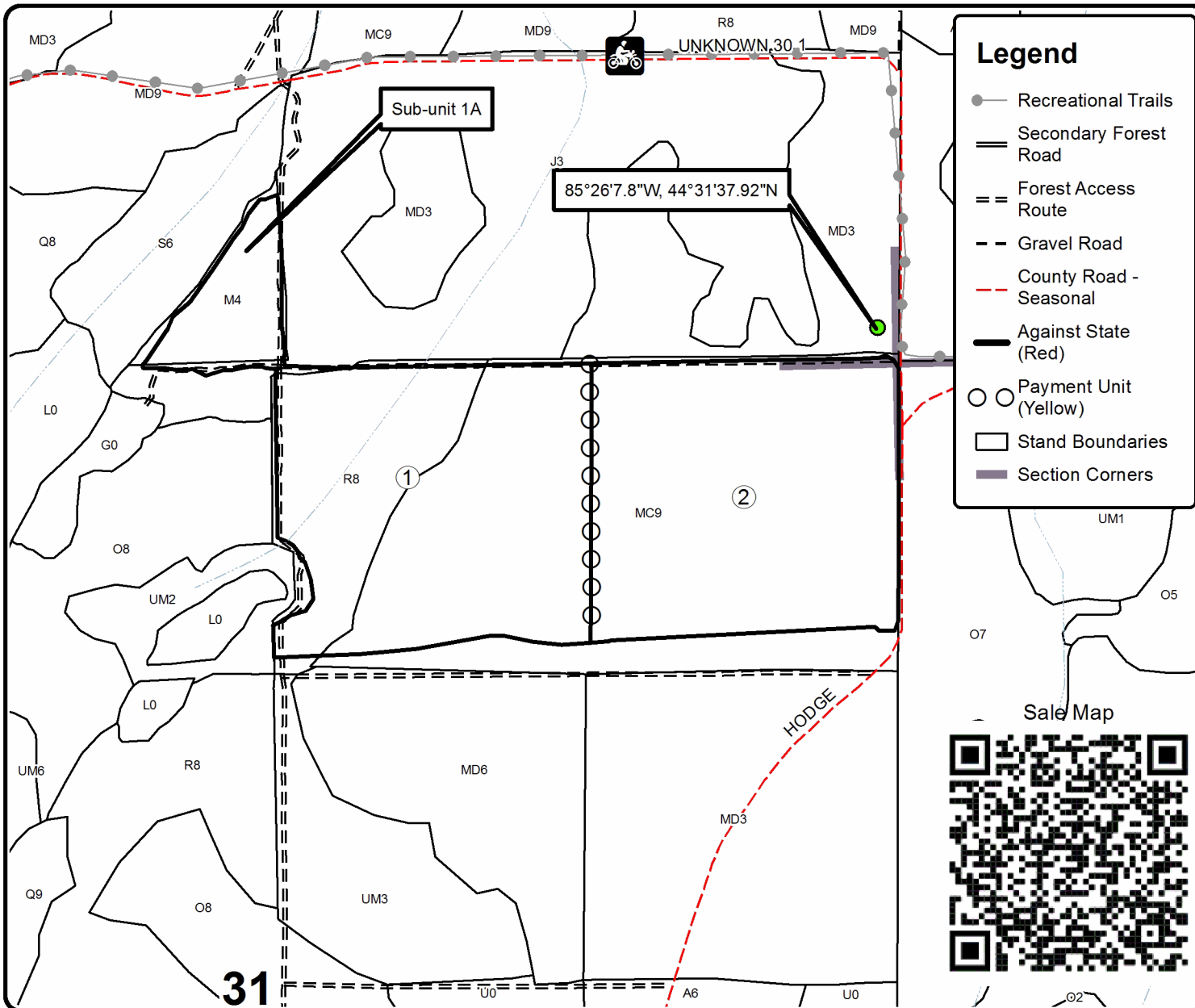
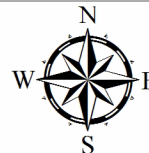
Cover Type				Density	
A = Aspen	H = Hemlock	N = Marsh	U = Upland Brush	0 = Non Stocked	5 = Pole Timber Medium
B = Paper Birch	J = Jack Pine	O = Oak	UM = Upland Mixed	1 = Seedling Sapling Poor	6 = Pole Timber Well
C = Cedar	L = Lowland Brush	P = Lowland Poplar	V = Bog or Marsh	2 = Seedling Sapling Medium	7 = Saw Timber Poor
D = Treed Bog	LM = Lowland Mixed	Q = Mixed Swamp Conifer	W = White Pine	3 = Seedling Sapling Well	8 = Saw Timber Medium
E = Swamp Hdwoods	M = Mpl, Bch, Brch	R = Red Pine	X = Non Stocked	4 = Pole Timber Poor	9 = Saw Timber Well
F = Spruce Fir	MC = Mixed Conifer	S = Black Spruce	Z = Water		
G = Grass	MD = Mixed Deciduous	T = Tamarack			

PU	Acres
1	42
2	35.1

James River Red Pine

Compartment 058

77.1 Acres



Hey 19 Mix (61-001-21)
T26N, R10W, SEC. 19; T26N, R11W, SEC. 24; Grand Traverse COUNTY

In response to the notice of sale to be held 4:00 p.m. (local time) on September 23, 2021, I am hereby submitting my sealed bid (firm offer) for the following forest products to be cut. Bids for individual species must be at or above the advertised price. All non-responsive bid forms may be rejected.

<u>PRODUCTS & SPECIES</u>	<u>ESTIMATED VOLUME*</u>	<u>ADVERTISED PRICE</u>	<u>BID PRICE/UNIT</u>
Sawtimber			
B. T. Aspen	8.5 MBF	\$ 90.00/MBF	\$ _____
Beech	0.7 MBF	\$ 63.00/MBF	\$ _____
Red Maple	9.0 MBF	\$ 116.00/MBF	\$ _____
Red Pine	7.0 MBF	\$ 80.00/MBF	\$ _____
Sugar Maple	10.7 MBF	\$ 164.00/MBF	\$ _____
White Pine	1.1 MBF	\$ 37.00/MBF	\$ _____
Pulpwood			
Mixed Aspen	67 Cords	\$ 12.80/Cord	\$ _____
Mixed Hardwood	136 Cords	\$ 12.35/Cord	\$ _____
Red Pine	626 Cords	\$ 29.80/Cord	\$ _____
White Pine	3 Cords	\$ 13.80/Cord	\$ _____

*The volumes are statistically estimated within plus (+) or minus (-) 9.20 percent at 95% confidence level. These estimated volumes are final and not subject to adjustment. Prospective bidders are urged to examine this timber and to make their own estimates of quantity and quality.

I understand that any or all bids may be rejected. All bids must be signed and all bid items must be bid or the bid form may be rejected. I also understand that consideration and awarding a contract will be based upon my past performance and ability to complete the contract based upon equipment and staffing subject to my control.

FEDERAL ID: _____ or SOCIAL SECURITY NUMBER: _____

Company or individual bidding: _____

Company representative's name: _____

Address: _____

City: _____ State: _____ Zip: _____

IF AVAILABLE, PLEASE PLACE THE PERSONALIZED LABEL FROM YOUR PROSPECTUS IN THE ABOVE BOX.

Individual or company representative's signature: _____ Date: _____

Phone number : _____ Email (optional): _____

THE WINNING BIDDER MUST COMPLETE THE VERIFICATION OF WORKER'S DISABILITY COMPENSATION ACT COMPLIANCE (ON REVERSE SIDE IF DOUBLE SIDED) WITHIN 21 DAYS OF SALE AWARD DATE



FOR DEPARTMENT USE ONLY	
Sale Number (XX - XXX - XX - XX)	
Forest Management Unit:	

TIMBER SALE VERIFICATION OF WORKER'S DISABILITY COMPENSATION ACT COMPLIANCE

As required by Act 317, P.A. 1969 (Worker's Compensation) and
Part 5 of Act 451 of 1994, as amended.

VERIFICATION OF WORKER'S DISABILITY COMPENSATION ACT COMPLIANCE

- This verification must be completed and submitted within 21 days of contract award and prior to the issuance of the timber sale contract.
- In addition, if boxes 2B or 2C are checked, then Notice of Exclusion or Certificate of Insurance must be submitted within twenty-one (21) days of the contract award and prior to the issuance of the timber sale contract.
- All information must be typed or printed except for written signatures.

Please Check Appropriate Categories:

1. My business is organized as (you **must** check one of the boxes below):
 - A. Sole Proprietorship (individual)
 - B. Partnership
 - C. Corporation
2. You **must** check one of the boxes below:
 - A. I certify my business is a sole proprietorship and it has no employees but the sole proprietor. I am not subject to the Worker's Compensation Laws.
 - B. I certify my business has satisfied its obligation to the Worker's Compensation Act through the use of an approved Notice of Exclusion (BWC-337, Rev. 5/96). I will provide a copy of the Notice of Exclusion within 21 days of the contract award. (For questions or a copy of the BWC-337, please call the Worker's Compensation Bureau at 517-322-1195).
 - C. I certify my business has a Worker's Compensation Policy. I will provide an original Certificate of Insurance within twenty-one (21) days of the contract award.
3. If you have checked item 2(A) or 2(B), you **must** indicate the number of **both** full-time and part-time employees, other than yourself, including family members and active partners (if none, you must enter "0").

_____ Full-time Employees

_____ Part-time Employees

Name of Business		Federal ID (or) Social Security No.	
Address		Telephone ()	
City	State	ZIP	

I hereby certify that the above information is true and correct. I agree to notify the Michigan DNR of any changes that occur in factors affecting my coverage during any of my present and future operations.

Signature of Owner or Authorized Representative

Title

Date

Please complete the "SEALED BID" information on the next page

Tennessee Jed Pine (61-019-21)
T24N, R13W, SEC. 19; T24N, R14W, SEC. 24; Manistee COUNTY

In response to the notice of sale to be held 4:00 p.m. (local time) on September 23, 2021, I am hereby submitting my sealed bid (firm offer) for the following forest products to be cut. Bids for individual species must be at or above the advertised price. All non-responsive bid forms may be rejected.

<u>PRODUCTS & SPECIES</u>	<u>ESTIMATED VOLUME*</u>	<u>ADVERTISED PRICE</u>	<u>BID PRICE/UNIT</u>
Sawtimber			
Red Pine	344.0 MBF	\$ 80.00/MBF	\$ _____
Pulpwood			
Black Cherry	133 Cords	\$ 12.35/Cord	\$ _____
Jack Pine	136 Cords	\$ 8.35/Cord	\$ _____
Red Pine	924 Cords	\$ 29.80/Cord	\$ _____
White Pine	16 Cords	\$ 13.80/Cord	\$ _____

*The volumes are statistically estimated within plus (+) or minus (-) 6.37 percent at 95% confidence level. These estimated volumes are final and not subject to adjustment. Prospective bidders are urged to examine this timber and to make their own estimates of quantity and quality.

I understand that any or all bids may be rejected. All bids must be signed and all bid items must be bid or the bid form may be rejected. I also understand that consideration and awarding a contract will be based upon my past performance and ability to complete the contract based upon equipment and staffing subject to my control.

FEDERAL ID: _____ - _____ or SOCIAL SECURITY NUMBER: _____ - _____ - _____

Company or individual bidding: _____

Company representative's name: _____

Address: _____

City: _____ State: _____ Zip: _____

IF AVAILABLE, PLEASE PLACE THE PERSONALIZED LABEL FROM YOUR PROSPECTUS IN THE ABOVE BOX.

Individual or company representative's signature: _____ Date: _____

Phone number : _____ Email (optional): _____

THE WINNING BIDDER MUST COMPLETE THE VERIFICATION OF WORKER'S DISABILITY COMPENSATION ACT COMPLIANCE (ON REVERSE SIDE IF DOUBLE SIDED) WITHIN 21 DAYS OF SALE AWARD DATE

Open Aspen Pine (61-030-21)
T24N, R14W, SEC. 13; Manistee COUNTY

In response to the notice of sale to be held 4:00 p.m. (local time) on September 23, 2021, I am hereby submitting my sealed bid (firm offer) for the following forest products to be cut. Bids for individual species must be at or above the advertised price. All non-responsive bid forms may be rejected.

<u>PRODUCTS & SPECIES</u>	<u>ESTIMATED VOLUME*</u>	<u>ADVERTISED PRICE</u>	<u>BID PRICE/UNIT</u>
Sawtimber			
Black Cherry	12.4 MBF	\$ 153.00/MBF	\$ _____
Red Maple	14.9 MBF	\$ 116.00/MBF	\$ _____
Red Pine	19.3 MBF	\$ 80.00/MBF	\$ _____
Pulpwood			
Jack Pine	7 Cords	\$ 8.35/Cord	\$ _____
Mixed Aspen	501 Cords	\$ 12.80/Cord	\$ _____
Mixed Hardwood	176 Cords	\$ 12.35/Cord	\$ _____
Red Pine	89 Cords	\$ 29.80/Cord	\$ _____
White Pine	1 Cords	\$ 13.80/Cord	\$ _____

*The volumes are statistically estimated within plus (+) or minus (-) 10.04 percent at 95% confidence level. These estimated volumes are final and not subject to adjustment. Prospective bidders are urged to examine this timber and to make their own estimates of quantity and quality.

I understand that any or all bids may be rejected. All bids must be signed and all bid items must be bid or the bid form may be rejected. I also understand that consideration and awarding a contract will be based upon my past performance and ability to complete the contract based upon equipment and staffing subject to my control.

FEDERAL ID: ____ - ____ - ____ or SOCIAL SECURITY NUMBER: ____ - ____ - ____

Company or individual bidding: _____

Company representative's name: _____

Address: _____

City: _____ State: _____ Zip: _____

IF AVAILABLE, PLEASE PLACE THE PERSONALIZED LABEL FROM YOUR PROSPECTUS IN THE ABOVE BOX.

Individual or company representative's signature: _____ Date: _____

Phone number : _____ Email (optional): _____

THE WINNING BIDDER MUST COMPLETE THE VERIFICATION OF WORKER'S DISABILITY COMPENSATION ACT COMPLIANCE (ON REVERSE SIDE IF DOUBLE SIDED) WITHIN 21 DAYS OF SALE AWARD DATE



FOR DEPARTMENT USE ONLY
Sale Number (XX - XXX - XX - XX)
Forest Management Unit:

TIMBER SALE VERIFICATION OF WORKER'S DISABILITY COMPENSATION ACT COMPLIANCE

*As required by Act 317, P.A. 1969 (Worker's Compensation) and
Part 5 of Act 451 of 1994, as amended.*

VERIFICATION OF WORKER'S DISABILITY COMPENSATION ACT COMPLIANCE

- This verification must be completed and submitted within 21 days of contract award and prior to the issuance of the timber sale contract.
- In addition, if boxes 2B or 2C are checked, then Notice of Exclusion or Certificate of Insurance must be submitted within twenty-one (21) days of the contract award and prior to the issuance of the timber sale contract.
- All information must be typed or printed except for written signatures.

Please Check Appropriate Categories:

1. My business is organized as (you **must** check one of the boxes below):
 - A. Sole Proprietorship (individual)
 - B. Partnership
 - C. Corporation

2. You **must** check one of the boxes below:
 - A. I certify my business is a sole proprietorship and it has no employees but the sole proprietor. I am not subject to the Worker's Compensation Laws.
 - B. I certify my business has satisfied its obligation to the Worker's Compensation Act through the use of an approved Notice of Exclusion (BWC-337, Rev. 5/96). I will provide a copy of the Notice of Exclusion within 21 days of the contract award. (For questions or a copy of the BWC-337, please call the Worker's Compensation Bureau at 517-322-1195).
 - C. I certify my business has a Worker's Compensation Policy. I will provide an original Certificate of Insurance within twenty-one (21) days of the contract award.

3. If you have checked item 2(A) or 2(B), you **must** indicate the number of **both** full-time and part-time employees, other than yourself, including family members and active partners (if none, you must enter "0").

_____ Full-time Employees

_____ Part-time Employees

Name of Business		Federal ID (or) Social Security No.	
Address		Telephone ()	
City	State	ZIP	

I hereby certify that the above information is true and correct. I agree to notify the Michigan DNR of any changes that occur in factors affecting my coverage during any of my present and future operations.

Signature of Owner or Authorized Representative

Title

Date

Please complete the "SEALED BID" information on the next page

Old Grade Mix (61-029-21)
T24N, R14W, SEC. 22; Manistee COUNTY

In response to the notice of sale to be held 4:00 p.m. (local time) on September 23, 2021, I am hereby submitting my sealed bid (firm offer) for the following forest products to be cut. Bids for individual species must be at or above the advertised price. All non-responsive bid forms may be rejected.

<u>PRODUCTS & SPECIES</u>	<u>ESTIMATED VOLUME*</u>	<u>ADVERTISED PRICE</u>	<u>BID PRICE/UNIT</u>
Sawtimber			
Black Cherry	36.3 MBF	\$ 153.00/MBF	\$ _____
Quaking Aspen	23.9 MBF	\$ 90.00/MBF	\$ _____
Red Maple	45.6 MBF	\$ 116.00/MBF	\$ _____
Sugar Maple	5.6 MBF	\$ 164.00/MBF	\$ _____
Pulpwood			
Mixed Hardwood	367 Cords	\$ 12.35/Cord	\$ _____
Quaking Aspen	551 Cords	\$ 12.80/Cord	\$ _____
White Pine	285 Cords	\$ 13.80/Cord	\$ _____

*The volumes are statistically estimated within plus (+) or minus (-) 8.55 percent at 95% confidence level. These estimated volumes are final and not subject to adjustment. Prospective bidders are urged to examine this timber and to make their own estimates of quantity and quality.

I understand that any or all bids may be rejected. All bids must be signed and all bid items must be bid or the bid form may be rejected. I also understand that consideration and awarding a contract will be based upon my past performance and ability to complete the contract based upon equipment and staffing subject to my control.

FEDERAL ID: _____ or SOCIAL SECURITY NUMBER: _____

Company or individual bidding: _____

Company representative's name: _____

Address: _____

City: _____ State: _____ Zip: _____

IF AVAILABLE, PLEASE PLACE THE PERSONALIZED LABEL FROM YOUR PROSPECTUS IN THE ABOVE BOX.

Individual or company representative's signature: _____ Date: _____
Phone number : _____ Email (optional): _____

THE WINNING BIDDER MUST COMPLETE THE VERIFICATION OF WORKER'S DISABILITY COMPENSATION ACT COMPLIANCE (ON REVERSE SIDE IF DOUBLE SIDED) WITHIN 21 DAYS OF SALE AWARD DATE



FOR DEPARTMENT USE ONLY	
Sale Number (XX - XXX - XX - XX)	
Forest Management Unit:	

TIMBER SALE VERIFICATION OF WORKER'S DISABILITY COMPENSATION ACT COMPLIANCE

As required by Act 317, P.A. 1969 (Worker's Compensation) and
Part 5 of Act 451 of 1994, as amended.

VERIFICATION OF WORKER'S DISABILITY COMPENSATION ACT COMPLIANCE

- This verification must be completed and submitted within 21 days of contract award and prior to the issuance of the timber sale contract.
- In addition, if boxes 2B or 2C are checked, then Notice of Exclusion or Certificate of Insurance must be submitted within twenty-one (21) days of the contract award and prior to the issuance of the timber sale contract.
- All information must be typed or printed except for written signatures.

Please Check Appropriate Categories:

1. My business is organized as (you **must** check one of the boxes below):
 - A. Sole Proprietorship (individual)
 - B. Partnership
 - C. Corporation
2. You **must** check one of the boxes below:
 - A. I certify my business is a sole proprietorship and it has no employees but the sole proprietor. I am not subject to the Worker's Compensation Laws.
 - B. I certify my business has satisfied its obligation to the Worker's Compensation Act through the use of an approved Notice of Exclusion (BWC-337, Rev. 5/96). I will provide a copy of the Notice of Exclusion within 21 days of the contract award. (For questions or a copy of the BWC-337, please call the Worker's Compensation Bureau at 517-322-1195).
 - C. I certify my business has a Worker's Compensation Policy. I will provide an original Certificate of Insurance within twenty-one (21) days of the contract award.
3. If you have checked item 2(A) or 2(B), you **must** indicate the number of **both** full-time and part-time employees, other than yourself, including family members and active partners (if none, you must enter "0").

_____ Full-time Employees

_____ Part-time Employees

Name of Business		Federal ID (or) Social Security No.	
Address		Telephone ()	
City	State	ZIP	

I hereby certify that the above information is true and correct. I agree to notify the Michigan DNR of any changes that occur in factors affecting my coverage during any of my present and future operations.

Signature of Owner or Authorized Representative

Title

Date

Please complete the "SEALED BID" information on the next page

James River Red Pine (61-045-21)
T25N, R09W, SEC. 30; T25N, R09W, SEC. 31; T25N, R09W, SEC. 32; Grand

In response to the notice of sale to be held 4:00 p.m. (local time) on September 23, 2021, I am hereby submitting my sealed bid (firm offer) for the following forest products to be cut. Bids for individual species must be at or above the advertised price. All non-responsive bid forms may be rejected.

<u>PRODUCTS & SPECIES</u>	<u>ESTIMATED VOLUME*</u>	<u>ADVERTISED PRICE</u>	<u>BID PRICE/UNIT</u>
Sawtimber			
Northern Pin Oak	91.1 MBF	\$ 70.00/MBF	\$ _____
Red Maple	58.3 MBF	\$ 116.00/MBF	\$ _____
Red Pine	427.9 MBF	\$ 80.00/MBF	\$ _____
White Oak	61.3 MBF	\$ 75.00/MBF	\$ _____
White Pine	98.4 MBF	\$ 37.00/MBF	\$ _____
Pulpwood			
Jack Pine	33 Cords	\$ 8.35/Cord	\$ _____
Mixed Aspen	23 Cords	\$ 12.80/Cord	\$ _____
Mixed Hardwood	391 Cords	\$ 12.35/Cord	\$ _____
Mixed Oak	247 Cords	\$ 12.30/Cord	\$ _____
Red Pine	221 Cords	\$ 29.80/Cord	\$ _____
White Pine	100 Cords	\$ 13.80/Cord	\$ _____

*The volumes are statistically estimated within plus (+) or minus (-) 4.84 percent at 95% confidence level. These estimated volumes are final and not subject to adjustment. Prospective bidders are urged to examine this timber and to make their own estimates of quantity and quality.

I understand that any or all bids may be rejected. All bids must be signed and all bid items must be bid or the bid form may be rejected. I also understand that consideration and awarding a contract will be based upon my past performance and ability to complete the contract based upon equipment and staffing subject to my control.

FEDERAL ID: _____ or SOCIAL SECURITY NUMBER: _____

Company or individual bidding: _____

Company representative's name: _____

Address: _____

City: _____ State: _____ Zip: _____

IF AVAILABLE, PLEASE PLACE THE PERSONALIZED LABEL FROM YOUR PROSPECTUS IN THE ABOVE BOX.

Individual or company representative's signature: _____ Date: _____

Phone number : _____ Email (optional): _____

THE WINNING BIDDER MUST COMPLETE THE VERIFICATION OF WORKER'S DISABILITY COMPENSATION ACT COMPLIANCE (ON REVERSE SIDE IF DOUBLE SIDED) WITHIN 21 DAYS OF SALE AWARD DATE



TIMBER SALE VERIFICATION OF WORKER'S DISABILITY COMPENSATION ACT COMPLIANCE

As required by Act 317, P.A. 1969 (Worker's Compensation) and
Part 5 of Act 451 of 1994, as amended.

FOR DEPARTMENT USE ONLY	
Sale Number (XX - XXX - XX - XX)	
Forest Management Unit:	

VERIFICATION OF WORKER'S DISABILITY COMPENSATION ACT COMPLIANCE

- This verification must be completed and submitted within 21 days of contract award and prior to the issuance of the timber sale contract.
- In addition, if boxes 2B or 2C are checked, then Notice of Exclusion or Certificate of Insurance must be submitted within twenty-one (21) days of the contract award and prior to the issuance of the timber sale contract.
- All information must be typed or printed except for written signatures.

Please Check Appropriate Categories:

1. My business is organized as (you **must** check one of the boxes below):
 - A. Sole Proprietorship (individual)
 - B. Partnership
 - C. Corporation
2. You **must** check one of the boxes below:
 - A. I certify my business is a sole proprietorship and it has no employees but the sole proprietor. I am not subject to the Worker's Compensation Laws.
 - B. I certify my business has satisfied its obligation to the Worker's Compensation Act through the use of an approved Notice of Exclusion (BWC-337, Rev. 5/96). I will provide a copy of the Notice of Exclusion within 21 days of the contract award. (For questions or a copy of the BWC-337, please call the Worker's Compensation Bureau at 517-322-1195).
 - C. I certify my business has a Worker's Compensation Policy. I will provide an original Certificate of Insurance within twenty-one (21) days of the contract award.
3. If you have checked item 2(A) or 2(B), you **must** indicate the number of **both** full-time and part-time employees, other than yourself, including family members and active partners (if none, you must enter "0").

_____ Full-time Employees

_____ Part-time Employees

Name of Business		Federal ID (or) Social Security No.	
Address		Telephone ()	
City	State	ZIP	

I hereby certify that the above information is true and correct. I agree to notify the Michigan DNR of any changes that occur in factors affecting my coverage during any of my present and future operations.

Signature of Owner or Authorized Representative

Title

Date

Please complete the "SEALED BID" information on the next page