



**DEPARTMENT OF NATURAL RESOURCES  
STATE OF MICHIGAN**

**TIMBER SALE PROSPECTUS #6978**

SCHEDULED SALE DATE AND TIME: 3:00 p.m. (local time) on December 27, 2021.

LOCATION: **BALDWIN OFFICE, 2468 W 24TH STREET, BALDWIN, MI 49304.**

PROSPECTUS NOTE: The bidder is advised to inspect the sale area and review the location, estimated volumes, operating costs and contract terms of proposed sales. Please be aware that some landowners may request 60 days or more notice for access across their land.

Notice is hereby given that bids will be received by the Unit Manager, CADILLAC MANAGEMENT UNIT, for certain timber on the following described lands:

Hawk Hills Red Pine (63-006-21) / T23N, R09W, SEC. 25, S1/2NW,N1/2SW,SWSW.

T23N, R09W, SEC. 26, SENE,SW,SE.

T23N, R09W, SEC. 27, E1/2SE.

T23N, R09W, SEC. 35, N1/2NE.

Wexford County, Advertised Price \$116,350.40, 139.3 Acres, Red Pine, Red Oak.

SALE NOTE: All units of volume listed for this sale were estimated using the Inventory Manager computer program and the new Michigan taper model.

A recreation site such as a trail, pathway, or campground is within the sale area or the vicinity. Certain restrictions/specifications may be applicable including time restrictions.

Half Mile Skid Aspen (63-014-21) / T24N, R09W, SEC. 24, SESW,NWSE,S1/2SE.

T24N, R09W, SEC. 25, NENE.

Wexford County, Advertised Price \$36,513.75, 42.1 Acres, Aspen, Hardwood.

SALE NOTE: All units of volume listed for this sale were estimated using the Inventory Manager computer program and the new Michigan taper model.

Access through Private only. As well crane mat temporary bridge will be needed to skid wood from Unit 1 to landing in Unit 2.

Access may be through private land.

Mt. Wex Aspen (63-015-21) / T23N, R09W, SEC. 34, E1/2NW,NE,NWSE.

Wexford County, Advertised Price \$97,629.85, 83.6 Acres, Aspen, Hardwood.

SALE NOTE: All units of volume listed for this sale were estimated using the Inventory Manager computer program and the new Michigan taper model.

A recreation site such as a trail, pathway, or campground is within the sale area or the vicinity. Certain restrictions/specifications may be applicable including time restrictions.

## BID INSTRUCTIONS (VER. 07/02/2018):

### 1. Scheduled Bid Location, Date, and Time (2/11)

Bids must be received by the Unit Manager, BALDWIN OFFICE, 2468 W 24th Street, Baldwin, MI 49304, no later than 3:00 p.m. (local time) on December 27, 2021. For further information concerning this sale, contact Joe Ventimiglia at 231-878-0047 extension .

### 2. Bidder's Qualifications (5/16)

Purchaser shall obtain workers compensation insurance to cover claims under Michigan's Worker's Disability Compensation Act of 1969 or similar employee benefit act of any other state applicable to an employee. If all or part of a timber sale was prepared by a private contractor, the contractor and that contractor's company are not permitted to bid on the timber sale contract. Bids will not be accepted from individuals or companies appearing on the DNR/FRD No-Bid List. This list contains the names of purchasers who previously failed to execute a contract within 21-days or who have a history of poor performance.

### 3. Preparation of Sealed Bids (5/16)

Bid Forms may be completed online thru Michigan DNR Timber Sale Online Bidding (OLB) at [www.michigan.gov/timberbidding](http://www.michigan.gov/timberbidding) or by completing the hardcopy Bid Form found in the Timber Sale Prospectus . Hardcopy Bid Forms shall be manually signed in ink. Registration in OLB is considered your 'signature' for all bids submitted thru that system. Bid prices must be entered for each species and product in the Bid Price column for all material subject to bidding and all fill-in blanks must be completed. If erasures or other changes appear on the hardcopy Bid Form, each erasure or change must be initialed by the person signing the bid.

### 4. Submission of Sealed Bids (5/16)

Bid forms may be obtained from the Unit Manager or thru OLB. Bids may be submitted hardcopy or thru OLB. All hardcopy bids must be submitted on the bid form and in an envelope clearly identified as described in this section. NOTE: Only one bid form per bid envelope. Sealed bids must be submitted to the Unit office designated in the prospectus and must be submitted at or prior to the time established in the prospectus. The envelope should show on the outside (a) the sale name or number and (b) the date and time of bid opening, as shown in the prospectus. Bids received after the time specified in the sale prospectus are late bids and will be rejected.

It is possible for a bidder to submit multiple bids on a single sale. For example, a bid may be submitted hardcopy and a bid may be submitted thru OLB. Or, two bidders from the same company could both submit bids on the same sale. If this were to happen, the State would accept all bids received and award the contract accordingly. All bidding and contractual requirements would apply to all bids received.

### 5. Public Opening of Sealed Bids (7/16)

If conditions permit, the sealed bids will be publicly opened and posted at the time and place set in the prospectus.

If a bidder, present at a bid opening, has submitted bids on more than one sale, that bidder may withdraw their unopened bid envelopes or announce the withdrawal of their online bid after being declared the successful bidder on one sale.

### 6. Award of Contract (1/11)

Award of the contract will be made to the Bidder whose bid, conforming to the prospectus, is most advantageous to the State of Michigan on the basis of total value at rates bid for the estimated quantities. The State reserves the right to reject any bid or waive any minor irregularity in bids received. A written award mailed (or otherwise furnished) to the successful Bidder shall be deemed to result in a binding contract without further action by either party.

### 7. Down Payment (1/11)

The Bidder to whom award is made must make a down payment within 21 days of the sale award. The amount of the down payment will be calculated as shown in the Bond and Payment Schedule of this prospectus. Only cash may be used to meet this requirement.

### 8. Performance Security (1/11)

As guarantee of faithful performance, a cash bond, certificate of deposit, surety bond or irrevocable letter of credit (LOC) is required within 21 days of the sale award. The amount of the performance security is shown in the Bond and

Payment Schedule of this prospectus. If an LOC or surety is used, the coverage must extend for at least 6 months beyond the contract expiration.

#### 9. Timber Sale Contract (7/18)

Additional conditions and requirements common to all timber sales are listed on the timber sale contract (R4031) and are available on line at [www.michigan.gov/timber](http://www.michigan.gov/timber). Contact the Unit Manager for additional information or a sample contract. Within 21 days of the date of the award letter, the bidder must sign the contract and provide the required down payment, performance security, and verification of worker's disability compensation. The down payment and performance security shall be in accordance with the provisions of the timber sale contract, in the sums stated in this prospectus. If these actions are not taken, then the Bidder, the Bidder's corporation, and the corporation's principals may not be permitted to bid on State timber sales for a period of 3 months after the first offense, 6 months after the second offense, and 1 year after the third offense. An offense will only be counted against the Bidder for 5 years. In addition, the Bidder certifies that if awarded this contract, the Bidder will complete the timber sale contract in accordance with its terms and any modifications thereof including requirements to purchase, cut, and remove the included timber by the expiration date.

Payment Unit values in the State Forest Timber Sale Contract are calculated based on the advertised value of the Payment Unit as a percentage of the total advertised value of the contract. The advertised value of each Payment Unit is given in the Description of Timber by Payment Unit table on the Timber Sale Information page. For example, if the value of Payment Unit 1 is advertised as \$1,500 and the total Timber Sale value is advertised as \$10,000, the contract price for Payment Unit 1 will be 15% of the total bid price ( $\$1,500/\$10,000 * 100$ ).

#### 10. Disclaimer of Estimates and Bidder's Warranty of Inspection (7/16)

Before submitting this bid, the Bidder is advised and cautioned to inspect the sale area, review the requirements of the sale contract, and take other steps as may be reasonably necessary to ascertain the location, estimated volumes, construction estimates, and operating costs of the proposed sale. Failure to do so will not relieve the Bidder from responsibility for completing the contract.

The Bidder warrants that this bid is submitted solely on the basis of the Bidder's examination and inspection of the quality and quantity of the timber offered for sale and the Bidder's opinion of the value thereof and the costs of recovery. No reliance should be placed on the State of Michigan's estimates of timber quality, quantity or costs of recovery. Bidder further acknowledges that the State of Michigan: (i) expressly disclaims any warranty of fitness of timber for any purpose; (ii) offers this timber as is without any warranty of quality (merchantability) or quantity and (iii) expressly disclaims any warranty as to the quantity or quality of timber sold.

#### 11. Certification and Chain-of-Custody (10/14)

Unless otherwise indicated in the contract under section 7 – Other Conditions of the Sale Specific Conditions & Requirements, the area encompassed by this timber sale is certified to the standards of the Forest Stewardship Council (FSC) - Certificate #SCS-FM/COC-00090N and the Sustainable Forestry Initiative (SFI) - Certificate #NSF-SFIS-5Y031-SF5. Forest products from this sale may be delivered to the mill as "FSC 100% and / or SFI certified" as long as the contractor hauling the forest products is chain-of-custody (COC) certified or covered under a COC certificate from the destination mill. The purchaser is responsible for maintaining COC after leaving the sale area.

#### 12. Good Neighbor Authority (GNA) Requirements (7/16)

If the name of this timber sales contains the acronym GNA, it is authorized by the Good Neighbor Authority (GNA) and covered by various agreements between the U.S. Forest Service and the State. The timber sale occurs on federal land and the following conditions apply:

GNA contracts on US Forest Service land will not be awarded to purchasers on the Federal list of excluded parties. The System for Award Management (SAM) will be checked for active excluded parties prior to award of contract. In addition, the Bidder to whom award is made must complete an Assurance Regarding Felony Conviction or Tax Delinquent Status for Corporate Applicants (AD-3031).

#### 13. Good Neighbor Authority (GNA) Requirements, con't (9/16)

Bidder certifies, by signing this bid form, that to the best of Bidder's knowledge that the following representations are accurate and complete.

- a. That the Bidder and its principals are not presently debarred, suspended, proposed for debarment, declared ineligible, or voluntary excluded from timber sales (covered transactions) by any Federal department or agency.
- b. That the Bidder and its principals have not within a 3-year period preceding this bid been convicted of or had a civil judgment rendered against them for commission of fraud or a criminal offense in connection with obtaining , attempting to obtain, or performing a public (Federal, State, or local) transaction or contract under a public transaction; violation of Federal or State antitrust statutes or commission of embezzlement, theft, forgery, bribery, falsification or destruction of records, making false statements, or receiving stolen property.
- c. That the Bidder and its principals are not presently indicted for or otherwise criminally or civilly charged by a governmental entity (Federal, State, or local) with commission of any of the offenses enumerated in paragraph b of this certification.
- d. That the Bidder and its principals have not within a 3-year period preceding this bid had one or more public transactions (Federal, State, or local) terminated for breach or default of a timber or forest product contract.

Bidders that cannot certify this requirement, in whole or in part, shall submit an explanation with their bid.

DAN EICHINGER  
Director

## TIMBER SALE INFORMATION

### Hawk Hills Red Pine (63-006-21)

T23N, R09W, SEC. 25; T23N, R09W, SEC. 26; T23N, R09W, SEC. 27; T23N, R09W, SEC. 35.  
Wexford County (Advertised Price \$116,350.40)

SALE NOTE: All units of volume listed for this sale were estimated using the Inventory Manager computer program and the new Michigan taper model.

A recreation site such as a trail, pathway, or campground is within the sale area or the vicinity. Certain restrictions/specifications may be applicable including time restrictions.

A timber sale contract for this lump sum, sealed bid timber sale will be awarded to the responsible bidder offering the highest sealed bid price. All units of volume listed below were estimated using the Inventory Manager computer program and the new Michigan taper model. Bids must be at or above the following advertised price for each product and species:

<u>PRODUCTS &amp; SPECIES</u>	<u>ESTIMATED UNITS*</u>	<u>ADVERTISED PRICE</u>
Sawtimber		
Red Oak	14.9 MBF	\$ 160.00 / MBF
Red Pine	182.4 MBF	\$ 82.00 / MBF
Pulpwood		
Quaking Aspen	18 Cords	\$ 14.45 / Cord
Red Oak	31 Cords	\$ 15.05 / Cord
Red Pine	2,875 Cords	\$ 34.00 / Cord
White Pine	51 Cords	\$ 10.45 / Cord

\* The total volume is statistically estimated within plus (+) or minus (-) 6.28 percent. There are an estimated 3,431 cords on this timber sale, plus or minus 216 cords at the 95% confidence level. The estimated units are final and not subject to adjustment. Prospective bidders are urged to examine this timber and to make their own estimates of quantity and quality.

### **BOND AND PAYMENT SCHEDULE:**

1. A bond in the amount of \$5,818.00 to insure faithful performance of the conditions of the contract will be deposited by the successful bidder within 21 days of the sale award.
2. Cutting in any sale or unit without the required advance payment would be considered a trespass.
3. Total payment must be paid in advance or according to the following schedule :
  - (a) Ten percent (10%) of the sale value must be paid within 21 days of the sale award.
  - (b) The 10% down payment will be credited towards the first unit cut.
  - (c) Payment for each of the following units must be made before cutting begins in that unit:
 

PAYMENT UNIT NUMBER	PERCENT OF TOTAL SALE VALUE
01	12.5%
02	13.5%
03	7.7%
04	2.9%
05	15.5%
06	33.3%
07	14.6%
4. If no cutting takes place, the 10% down payment will not be refunded.
5. Operations on the contract issued will terminate on 12/31/2023.

### **SALE STATISTICS**

Volumes were calculated in cubic feet using the Michigan taper model. Cubic foot volume includes all wood inside bark for the product indicated. For display purposes, cubic feet were converted to cords and MBF using a simple conversion factor, e.g. 79 cubic feet per cord and 185 cubic feet per MBF. The cubic foot volumes are precise; the cords and MBF volumes are not. Cubic foot volume cannot be directly converted to cords or boards with precision.

## SALE VOLUMES

The total estimated sale volume may not equal the sum of the species/products due to the nature of statistical calculations associated with double sampling methodology.

VOLUME			STATISTICAL RANGE IN CORDS	
TOTAL CUBIC FEET	TOTAL CORDS	PERCENT ERROR	MINIMUM	MAXIMUM
271,081	3,431	6.28%	3,216	3,647

## VDU VOLUMES

A VDU is a Volume Determination Unit. Volumes and their associated statistics are calculated at the VDU level and summarized to the sale level. There is often a one to one relationship between a VDU and a Payment Unit, but not always, depending on the cruise design. Refer to the VDU TO PAYMENT UNIT table.

	VOLUME			RANGE IN CORDS	
VDU	TOTAL CUBIC FEET	TOTAL CORDS	PERCENT ERROR	MINIMUM	MAXIMUM
10	33,485	424	13.64%	366	482
33	36,144	458	12.16%	402	513
37	20,316	257	6.68%	240	274
51	8,797	111	25.09%	83	139
60	41,291	523	16.07%	439	607
62	87,590	1,109	13.95%	954	1,263
78	38,459	487	15.96%	409	565
<b>TOTAL:</b>	<b>266,081</b>	<b>3,368</b>		<b>2,893</b>	<b>3,843</b>

## VDU TO PAYMENT UNIT

When a VDU is associated with more than one Payment Unit (PU), the VDU volumes are assigned to the PU based on acres of the VDU within the PU.

VDU	VDU ACRES	PU	PU ACRES
10	21.5	1	21.5
33	17.0	2	17.0
37	7.5	3	7.5
51	6.9	4	6.9
60	22.6	5	22.6
62	47.5	6	47.5
78	16.3	7	16.3
<b>TOTAL:</b>	<b>139.3</b>		<b>139.3</b>

**DESCRIPTION OF TIMBER BY PAYMENT UNIT (PU)**

PU	MARKET GROUP	PRODUCT	QUANTITY	UNIT	ACRES	ADVERTISE PRICE
1	Red Pine	Sawtimber	22.3	MBF	21.5	\$14,538.65
	Quaking Aspen	Pulpwood	9	Cords		
	Red Pine		370	Cords		
2	Red Pine	Sawtimber	11.0	MBF	17.0	\$15,726.00
	Red Pine	Pulpwood	436	Cords		
3	Red Pine	Sawtimber	13.6	MBF	7.5	\$8,935.20
	Red Pine	Pulpwood	230	Cords		
4	Red Oak	Sawtimber	14.9	MBF	6.9	\$3,383.50
	Red Oak	Pulpwood	31	Cords		
	White Pine		51	Cords		
	<i>White Pine</i>	<i>Sawtimber</i>	<i>5.4</i>	<i>MBF</i>		
	<i>White Pine</i>	<i>Pulpwood</i>	<i>40</i>	<i>Cords</i>		
5	Red Pine	Sawtimber	15.0	MBF	22.6	\$17,992.00
	Red Pine	Pulpwood	493	Cords		
6	Red Pine	Sawtimber	93.1	MBF	47.5	\$38,840.25
	Quaking Aspen	Pulpwood	9	Cords		
	Red Pine		914	Cords		
7	Red Pine	Sawtimber	27.4	MBF	16.3	\$16,934.80
	Red Pine	Pulpwood	432	Cords		
TOTAL:			197.3	MBF		
TOTAL:			2,975	Cords		

# Sale Specific Conditions & Requirements

**Sale Name: Hawk Hills Red Pine**

**Sale Number: 63-006-21 Seq#: 1**

## 1 - Sale Area

### 1.2 - Boundaries

#### 1.2.1 - Painted boundaries (9/19)

The sale boundary is marked in red and blue paint. Exterior sale boundary lines against state are marked with red paint. Hawk buffer is marked with blue paint. This buffer only exists in Payment Unit 6. The painted boundary line trees are not Included Timber and are to be protected unless marked with orange paint.

## 2 - Timber Specifications

### 2.1 - Included Timber

#### 2.1.3 - Cut tree marked unit(s) (12/08)

Within Payment Unit(s) 1,2, and 5-7, all trees are designated for cutting when marked with orange paint above and below stump height, regardless of merchantability.

#### 2.1.4 - Designated timber unit(s) (6/17)

Within Payment Unit(s) 4, all oak is designated for cutting which is 12" at DBH and greater. In addition, cut all orange marked trees.

#### 2.1.8 - Designated plantation row unit(s) (12/08)

Within Payment Unit(s) 3, all trees which meet minimum piece specifications in 2.2 Utilization, within designated plantation rows are designated for cutting. Designated plantation rows are take two leave four pattern, begin with the second row in from the outside of the plantation, then take two leave four pattern. Because of the variability of row direction, it shall be the responsibility of the Purchaser to maintain the third-row sequence.

### 2.2 - Utilization

#### 2.2.6 - Roundwood operation required (3/21)

The skidding of whole trees or tree segments with limbs attached is prohibited. All products must be produced as roundwood and forwarded to existing roads or landing areas in final product length.

## 4 - Transportation

### 4.1 - Construction

#### 4.1.12 - No new roads (1/12)

No new roads will be permitted in any Payment Unit. All operations are limited to existing roads. Skid trails only will be allowed.

### 4.2 - Maintenance

#### 4.2.5 - Two wheel drive condition (2/04)

All existing trail roads on and adjacent to the sale area must be passable by two-wheel drive traffic for the duration of the sale.

## 5 - Operations

### 5.1 - Notification

#### 5.1.1 - Pre-sale conference (10/16)

A pre-sale conference on site between the Purchaser and sale administrator is required prior to beginning a Payment Unit to determine landing. The Unit Manager or his/her representative must be contacted at least 3 days in advance to schedule the conference.

### 5.2 - Conduct of Operations

#### 5.2.3 - Operating Restrictions



### 5.2.3.3 - Bark slippage restriction (3/09)

Within Payment Unit(s) 1-3 and 5-7, unless changed by written agreement, cutting and skidding are not permitted during the period of April 15 to July 15. This restriction is because of bark slippage.

### 5.2.39 - ORV trail/route protection (4/18)

ORV trails run throughout sale as shown on Timber Sale Map. Do not cut trees or damage posts with yellow ORV markers. All stumps within 5 feet of the trail must be cut flush with the ground. Maintain a 20-foot-wide slash, debris, and rut free zone daily using the ORV trail or route as the centerline. Do not run equipment down the ORV trail or route. Skidding across the trail or route may only occur in locations approved by the sale administrator.

## 5.8 - Protection of Endangered Species

### 5.8.3 - Red shoulder hawk or goshawk (2/16)

In the event that an active red shoulder hawk or goshawk nest is found, the contract may be amended to protect the nest site until the nest is determined to be inactive. The value of the trees in this excluded area will be refunded or credited to the Purchaser. The nest will be buffered with a five-chain radius (eight acre) protection area, centered on the nest tree, in which there will be no cutting or new roads constructed. Avoid human disturbance, including loading and skidding, in the protection area.

An additional zone of five chains (ten chains centered on the active nest tree) will be established in which there is no management activity from March 15 to July 15 (NLP). A red shoulder hawk nest was found and excluded with blue paint in Payment Unit 6 as shown on Timber Sale Map. As a result, no cutting or hauling can occur in Payment Unit 6 from March 15 to July 15. Limit biomass harvesting and chipping operations within this ten-chain zone, retain the maximum one-third of residues per the Woody Biomass Harvesting Guidelines (Michigan DNR 2010). Nests determined to be inactive will be protected with a one-chain no-harvest buffer.

## 6 - Safety and Fire Prevention

### 6.2 - Signing

#### 6.2.1 - Road posting (10/20)

The Purchaser is responsible for posting and maintaining caution signs on access roads prior to beginning operations. The road must be posted at appropriate distances from the Sale Area to warn of logging activity and truck traffic. Signs must be removed when harvest operations are suspended or completed. The Purchaser will provide these signs.

#### 6.2.3 - Recreational trail posting (10/20)

The Purchaser is responsible for posting and maintaining caution signs on ORV trails prior to beginning operations. The trail must be posted at appropriate distances from the Sale Area to warn of logging activity and truck traffic at both ends of the trail. Signs must be removed when harvest operations are suspended or completed. The Purchaser will provide these signs.



# TIMBER SALE MAP

This information provided by authority of Part 525, 1994 PA 451, as amended.

Forest Management Unit Cadillac		County Wexford	Mapped By Ventimiglia	Date 06/22/2021	Page 1	of 1
Township 23N	Range 09W	Section(s) and Subdivision(s) Section 25, 26, 27, 35		Scale 1:15,840		

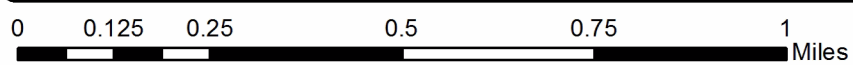
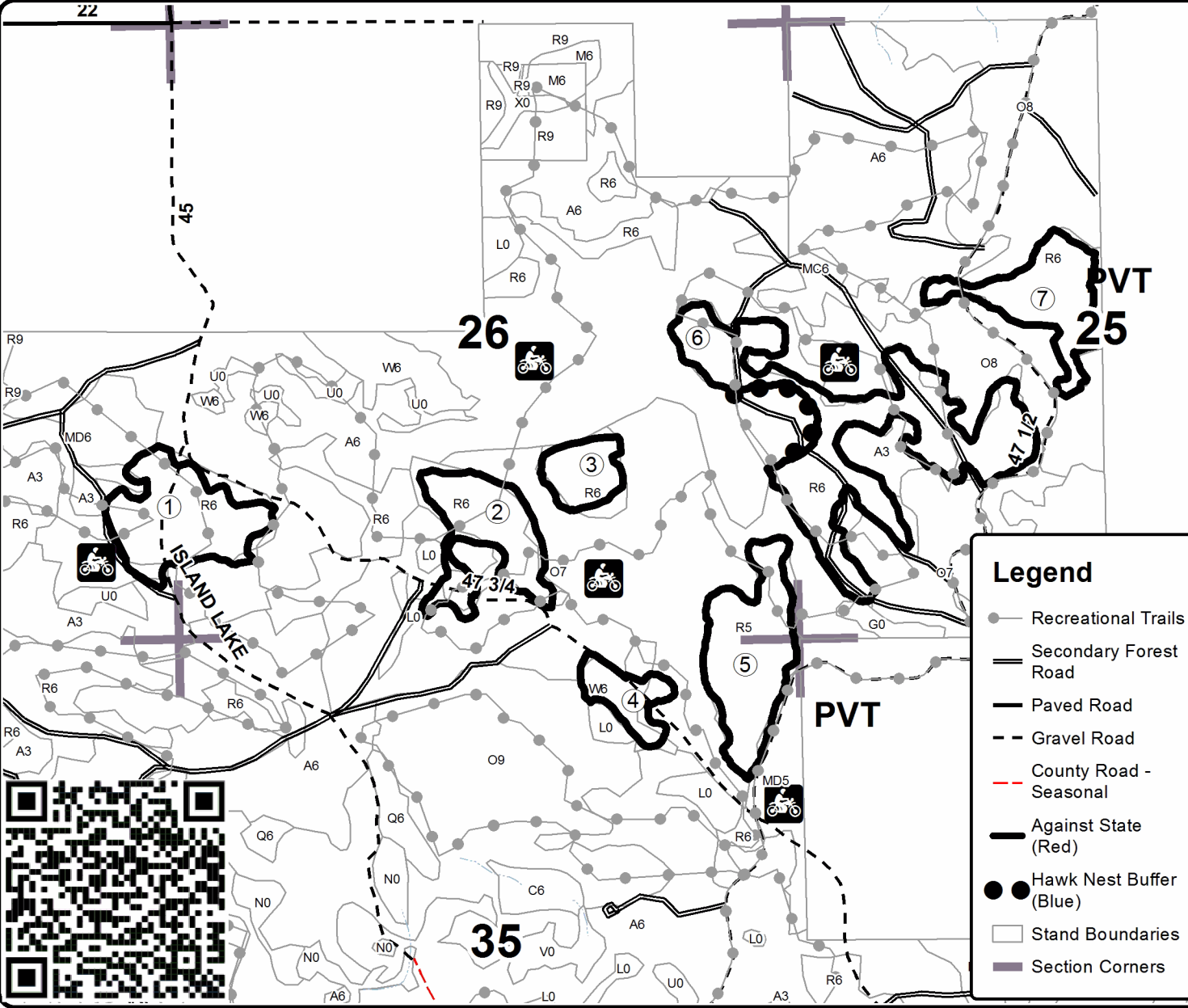
Cover Type				Density	
A = Aspen	H = Hemlock	N = Marsh	U = Upland Brush	0 = Non Stocked	5 = Pole Timber Medium
B = Paper Birch	J = Jack Pine	O = Oak	UM = Upland Mixed	1 = Seedling Sapling Poor	6 = Pole Timber Well
C = Cedar	L = Lowland Brush	P = Lowland Poplar	V = Bog or Marsh	2 = Seedling Sapling Medium	7 = Saw Timber Poor
D = Treed Bog	LM = Lowland Mixed	Q = Mixed Swamp Conifer	W = White Pine	3 = Seedling Sapling Well	8 = Saw Timber Medium
E = Swamp Hdwoods	M = Mpl. Bch, Brch	R = Red Pine	X = Non Stocked	4 = Pole Timber Poor	9 = Saw Timber Well
F = Spruce Fir	MC = Mixed Conifer	S = Black Spruce	Z = Water		
G = Grass	MD = Mixed Deciduous	T = Tamarack			

1	21.5	5	22.6
2	17	6	47.5
3	7.5	7	16.3
4	6.9		

## Hawk Hills Red Pine

### Compartment 140

139.2 Acres



## TIMBER SALE INFORMATION

Half Mile Skid Aspen (63-014-21)  
T24N, R09W, SEC. 24; T24N, R09W, SEC. 25.  
Wexford County (Advertised Price \$36,513.75)

SALE NOTE: All units of volume listed for this sale were estimated using the Inventory Manager computer program and the new Michigan taper model.

Access through Private only. As well crane mat temporary bridge will be needed to skid wood from Unit 1 to landing in Unit 2.

Access may be through private land.

A timber sale contract for this lump sum, sealed bid timber sale will be awarded to the responsible bidder offering the highest sealed bid price. All units of volume listed below were estimated using the Inventory Manager computer program and the new Michigan taper model. Bids must be at or above the following advertised price for each product and species:

<u>PRODUCTS &amp; SPECIES</u>	<u>ESTIMATED UNITS*</u>	<u>ADVERTISED PRICE</u>
Sawtimber		
B. T. Aspen	366.9 MBF	\$ 69.00 / MBF
White Pine	41.2 MBF	\$ 43.00 / MBF
Pulpwood		
B. T. Aspen	597 Cords	\$ 11.80 / Cord
Balsam Fir	21 Cords	\$ 5.55 / Cord
Mixed Hardwood	178 Cords	\$ 9.65 / Cord
White Pine	64 Cords	\$ 8.55 / Cord

\* The total volume is statistically estimated within plus (+) or minus (-) 10.65 percent. There are an estimated 1,615 cords on this timber sale, plus or minus 172 cords at the 95% confidence level. The estimated units are final and not subject to adjustment. Prospective bidders are urged to examine this timber and to make their own estimates of quantity and quality.

### **BOND AND PAYMENT SCHEDULE:**

1. A bond in the amount of \$1,826.00 to insure faithful performance of the conditions of the contract will be deposited by the successful bidder within 21 days of the sale award.
2. Cutting in any sale or unit without the required advance payment would be considered a trespass.
3. Total payment must be paid in advance or according to the following schedule :
  - (a) Ten percent (10%) of the sale value must be paid within 21 days of the sale award.
  - (b) The 10% down payment will be credited towards the first unit cut.
  - (c) Payment for each of the following units must be made before cutting begins in that unit:

PAYMENT UNIT NUMBER	PERCENT OF TOTAL SALE VALUE
01	58.9%
02	41.1%
4. If no cutting takes place, the 10% down payment will not be refunded.
5. Operations on the contract issued will terminate on 12/31/2024.

### **SALE STATISTICS**

Volumes were calculated in cubic feet using the Michigan taper model. Cubic foot volume includes all wood inside bark for the product indicated. For display purposes, cubic feet were converted to cords and MBF using a simple conversion factor, e.g. 79 cubic feet per cord and 185 cubic feet per MBF. The cubic foot volumes are precise; the cords and MBF volumes are not. Cubic foot volume cannot be directly converted to cords or boards with precision.

### **SALE VOLUMES**

The total estimated sale volume may not equal the sum of the species/products due to the nature of statistical calculations associated with double sampling methodology.

VOLUME		STATISTICAL RANGE IN CORDS		
TOTAL CUBIC FEET	TOTAL CORDS	PERCENT ERROR	MINIMUM	MAXIMUM
127,574	1,615	10.65%	1,443	1,787

**VDU VOLUMES**

A VDU is a Volume Determination Unit. Volumes and their associated statistics are calculated at the VDU level and summarized to the sale level. There is often a one to one relationship between a VDU and a Payment Unit, but not always, depending on the cruise design. Refer to the VDU TO PAYMENT UNIT table.

VDU	VOLUME		PERCENT ERROR	RANGE IN CORDS	
	TOTAL CUBIC FEET	TOTAL CORDS		MINIMUM	MAXIMUM
74	80,257	1,016	15.02%	863	1,168
83	52,200	661	14.38%	566	756
<b>TOTAL:</b>	<b>132,457</b>	<b>1,677</b>		<b>1,429</b>	<b>1,924</b>

**VDU TO PAYMENT UNIT**

When a VDU is associated with more than one Payment Unit (PU), the VDU volumes are assigned to the PU based on acres of the VDU within the PU.

VDU	VDU ACRES	PU	PU ACRES
74	22.3	1	22.3
83	19.8	2	19.8
<b>TOTAL:</b>	<b>42.1</b>		<b>42.1</b>

**DESCRIPTION OF TIMBER BY PAYMENT UNIT (PU)**

PU	MARKET GROUP	PRODUCT	QUANTITY	UNIT	ACRES	ADVERTISE PRICE
1	B. T. Aspen	Sawtimber	200.5	MBF	22.3	\$21,515.15
	White Pine		41.2	MBF		
	B. T. Aspen	Pulpwood	406	Cords		
	Balsam Fir		9	Cords		
	<i>Balsam Fir</i>	<i>Sawtimber</i>	2.3	<i>MBF</i>		
	<i>Balsam Fir</i>	<i>Pulpwood</i>	4	<i>Cords</i>		
	Mixed Hardwood		54	Cords		
	<i>Black Cherry</i>		10	<i>Cords</i>		
	<i>Red Maple</i>		44	<i>Cords</i>		
	White Pine		64	Cords		
2	B. T. Aspen	Sawtimber	166.4	MBF	19.8	\$14,998.60
	B. T. Aspen	Pulpwood	191	Cords		
	Balsam Fir		12	Cords		
	<i>Balsam Fir</i>		12	<i>Cords</i>		
	Mixed Hardwood		124	Cords		
	<i>Red Maple</i>		124	<i>Cords</i>		
TOTAL:			408.1	MBF		
TOTAL:			860	Cords		

## Sale Specific Conditions & Requirements

**Sale Name: Half Mile Skid Aspen**

**Sale Number: 63-014-21 Seq#: 1**

### 1 - Sale Area

#### 1.2 - Boundaries

##### 1.2.1 - Painted boundaries (9/19)

The sale boundary are marked and identified by red paint. Exterior sale boundary lines against state are marked with red paint with an exception to interior portion of Payment Unit 1 where cover type change along opening (UO) and can be used. The painted boundary line trees are not Included Timber and are to be protected.

### 2 - Timber Specifications

#### 2.1 - Included Timber

##### 2.1.1 - Clearcut unit(s) with unmerchantable trees (6/14)

Within Payment Unit(s) 1 and 2, cut all trees that are two (2) inches or more at DBH, except leave all white pine in Payment Unit 2. Also leave any cedar and hemlock found in sale.

#### 2.2 - Utilization

##### 2.2.6 - Roundwood operation required (3/21)

The skidding of whole trees or tree segments with limbs attached is prohibited. All products must be produced as roundwood and forwarded to existing roads or landing areas in final product length. This is a result of a temporary stream crossing needed to access Payment Unit 1.

### 4 - Transportation

#### 4.1 - Construction

##### 4.1.1 - Stream crossings, general (3/11)

All stream crossing structures will be temporary and therefore, shall be provided by the Purchaser, and must be removed upon completion of the sale. All permits for stream crossings will be provided by the DNR.

##### 4.1.12 - No new roads (1/12)

No new roads will be permitted in any Payment Unit. All operations are limited to existing roads. Skid trails only will be allowed.

#### 4.2 - Maintenance

##### 4.2.5 - Two wheel drive condition (2/04)

All existing trail roads on and adjacent to the sale area must be passable by two-wheel drive traffic for the duration of the sale.

#### 4.4 - Access

##### 4.4.1 - Private property access (3/11)

Permission for access across private land is the responsibility of the Purchaser. The only access to the sale is through private property, as showed on the Timber Sale Map, a copy of the written permission from the private land-owner may be required by the DNR. Contact Manton DNR forester for contact information of landowner.

### 5 - Operations

#### 5.1 - Notification

##### 5.1.1 - Pre-sale conference (10/16)

A pre-sale conference on site between the Purchaser and sale administrator is required prior to beginning any operations in a Payment Unit to determine landing and road locations. The Unit Manager or his/her representative must be contacted at least 3 days in advance to schedule the conference.

##### 5.1.4 - Post-sale conference (10/16)

A post-sale conference on site between the Purchaser and sale administrator is required 3 days prior to the completion of active logging operations to determine clean-up and repair of landings, road edges, and the fulfillment of other contract specifications.

## 5.2 - Conduct of Operations

### 5.2.2 - Hazard Trees/Snags

#### 5.2.2.1 - Den trees (10/16)

Obvious hollow and/or den trees shall be protected and left standing unless they are a safety hazard.

### 5.2.4 - Dead and Down Creation

#### 5.2.4.2 - Dead and down creation, hare and grouse (1/14)

To improve habitat for snowshoe hare, grouse, and other species, the Purchaser is to leave two 10-inch diameter or larger log size pieces on the ground for every four acres. They should be scattered throughout the sale or positioned per the sale administrator's instructions. If possible, the logs or trees should be felled so they overlap. Note these pieces should have a minimum length of five feet. They can be of any tree species and can be an un-merchantable piece of wood or a full tree.

### 5.2.17 - Timber Mats and Interlocking Composite Mats (10/20)

There is an area between Payment Units 1 and 2 that require extra protection such as that afforded by timber mats, interlocking composite mats, or another approved system. If available, mats may be borrowed from the DNR. A Timber Sale Contract Supplement will be used to document the Purchaser's use of the DNR's mats. Contact the sale administrator regarding availability and pick-up. Timber mats are available from various field offices. The Purchaser is responsible for picking up and hauling the mats to and from the site. The composite mats will require DNR staff onsite for installation and removal. Contact the sale administrator to schedule at least 30 days before desired install/removal date. All mats must be cleaned prior to drop off. This may include, but is not limited to, power washing and brushing to remove mud and debris. A charge of \$700.00 per timber mat and \$2,000.00 per composite mat will be assessed for all damaged or non-returned mats. Damage for the crane/timber mats is defined as three or more broken cants. Damage for the composite mats is defined as cracked or broken mats.

## 5.4 - Soil Protection

### 5.4.1 - Rutting restriction, general (7/16)

Operations are to cease immediately if equipment and weather conditions result in rutting of roads and/or skid trails which is 12 inches or greater in depth and 50 feet in length. In addition, operations are to cease immediately if equipment and weather conditions result in rutting on skid trails which is 12 inches or greater in depth and 50 feet in length. The Unit Manager or his/her representative may restrict hauling and/or skidding if ruts exceed the specified depth. With the Unit Manager or his/her representative's approval, the Purchaser may return to the area when the risk of rutting has decreased.

## 6 - Safety and Fire Prevention

### 6.2 - Signing

#### 6.2.1 - Road posting (10/20)

The Purchaser is responsible for posting and maintaining caution signs on timber access roads prior to beginning operations. The road must be posted at appropriate distances from the Sale Area to warn of logging activity and truck traffic. Signs must be removed when harvest operations are suspended or completed. The Purchaser will provide these signs.



# TIMBER SALE MAP

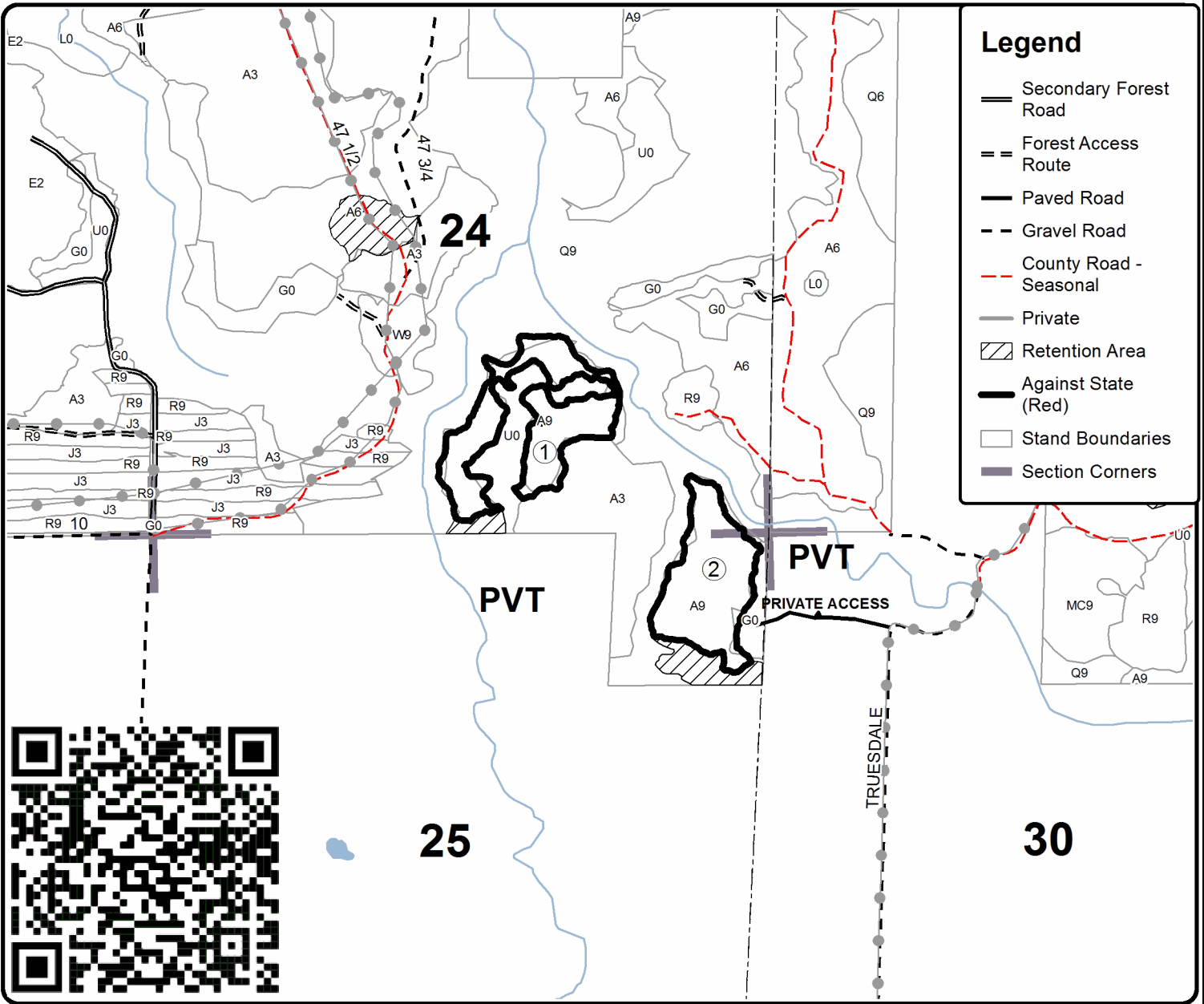
This information provided by authority of Part 525, 1994 PA 451, as amended.

Forest Management Unit Cadillac	County Wexford	Mapped By Ventimiglia	Date 08/06/21	Page 1	of 1
Township 24N	Range 09W	Section(s) and Subdivision(s) Section 24 and 25	Scale 1:15,840		

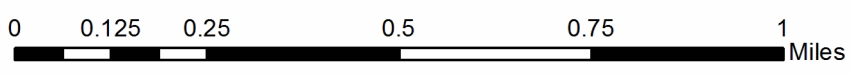
Cover Type				Density	
A = Aspen	H = Hemlock	N = Marsh	U = Upland Brush	0 = Non Stocked	5 = Pole Timber Medium
B = Paper Birch	J = Jack Pine	O = Oak	UM = Upland Mixed	1 = Seedling Sapling Poor	6 = Pole Timber Well
C = Cedar	L = Lowland Brush	P = Lowland Poplar	V = Bog or Marsh	2 = Seedling Sapling Medium	7 = Saw Timber Poor
D = Treed Bog	LM = Lowland Mixed	Q = Mixed Swamp Conifer	W = White Pine	3 = Seedling Sapling Well	8 = Saw Timber Medium
E = Swamp Hdwoods	M = Mpl, Bch, Brch	R = Red Pine	X = Non Stocked	4 = Pole Timber Poor	9 = Saw Timber Well
F = Spruce Fir	MC = Mixed Conifer	S = Black Spruce	Z = Water		
G = Grass	MD = Mixed Deciduous	T = Tamarack			

PU	Acres
1	22.3
2	19.8

## Half Mile Skid Aspen Compartment 138 42 Acres



Legend	
	Secondary Forest Road
	Forest Access Route
	Paved Road
	Gravel Road
	County Road - Seasonal
	Private
	Retention Area
	Against State (Red)
	Stand Boundaries
	Section Corners







## TIMBER SALE INFORMATION

Mt. Wex Aspen (63-015-21)

T23N, R09W, SEC. 34.

Wexford County (Advertised Price \$97,629.85)

SALE NOTE: All units of volume listed for this sale were estimated using the Inventory Manager computer program and the new Michigan taper model.

A recreation site such as a trail, pathway, or campground is within the sale area or the vicinity. Certain restrictions/specifications may be applicable including time restrictions.

A timber sale contract for this lump sum, sealed bid timber sale will be awarded to the responsible bidder offering the highest sealed bid price. All units of volume listed below were estimated using the Inventory Manager computer program and the new Michigan taper model. Bids must be at or above the following advertised price for each product and species:

<u>PRODUCTS &amp; SPECIES</u>	<u>ESTIMATED UNITS*</u>	<u>ADVERTISED PRICE</u>
Sawtimber		
B. T. Aspen	425.7 MBF	\$ 50.00 / MBF
Red Maple	97.1 MBF	\$ 52.00 / MBF
Red Oak	222.7 MBF	\$ 160.00 / MBF
Red Pine	21.8 MBF	\$ 82.00 / MBF
Pulpwood		
B. T. Aspen	879 Cords	\$ 14.45 / Cord
Mixed Hardwood	561 Cords	\$ 11.80 / Cord
Mixed Oak	574 Cords	\$ 15.05 / Cord
Red Pine	174 Cords	\$ 34.00 / Cord

\* The total volume is statistically estimated within plus (+) or minus (-) 5.64 percent. There are an estimated 3,845 cords on this timber sale, plus or minus 217 cords at the 95% confidence level. The estimated units are final and not subject to adjustment. Prospective bidders are urged to examine this timber and to make their own estimates of quantity and quality.

### **BOND AND PAYMENT SCHEDULE:**

1. A bond in the amount of \$4,881.00 to insure faithful performance of the conditions of the contract will be deposited by the successful bidder within 21 days of the sale award.
2. Cutting in any sale or unit without the required advance payment would be considered a trespass.
3. Total payment must be paid in advance or according to the following schedule :
  - (a) Ten percent (10%) of the sale value must be paid within 21 days of the sale award.
  - (b) The 10% down payment will be credited towards the first unit cut.
  - (c) Payment for each of the following units must be made before cutting begins in that unit:

PAYMENT UNIT NUMBER	PERCENT OF TOTAL SALE VALUE
01	51.8%
02	25.0%
03	23.2%

4. If no cutting takes place, the 10% down payment will not be refunded.
5. Operations on the contract issued will terminate on 12/31/2023.

### **SALE STATISTICS**

Volumes were calculated in cubic feet using the Michigan taper model. Cubic foot volume includes all wood inside bark for the product indicated. For display purposes, cubic feet were converted to cords and MBF using a simple conversion factor, e.g. 79 cubic feet per cord and 185 cubic feet per MBF. The cubic foot volumes are precise; the cords and MBF volumes are not. Cubic foot volume cannot be directly converted to cords or boards with precision.

### **SALE VOLUMES**

The total estimated sale volume may not equal the sum of the species/products due to the nature of statistical calculations associated with double sampling methodology.

VOLUME		STATISTICAL RANGE IN CORDS		
TOTAL CUBIC FEET	TOTAL CORDS	PERCENT ERROR	MINIMUM	MAXIMUM
303,769	3,845	5.64%	3,628	4,062

**VDU VOLUMES**

A VDU is a Volume Determination Unit. Volumes and their associated statistics are calculated at the VDU level and summarized to the sale level. There is often a one to one relationship between a VDU and a Payment Unit, but not always, depending on the cruise design. Refer to the VDU TO PAYMENT UNIT table.

VDU	VOLUME		PERCENT ERROR	RANGE IN CORDS	
	TOTAL CUBIC FEET	TOTAL CORDS		MINIMUM	MAXIMUM
24	232,083	2,938	6.41%	2,750	3,126
30	62,103	786	11.91%	693	880
<b>TOTAL:</b>	<b>294,186</b>	<b>3,724</b>		<b>3,442</b>	<b>4,006</b>

**VDU TO PAYMENT UNIT**

When a VDU is associated with more than one Payment Unit (PU), the VDU volumes are assigned to the PU based on acres of the VDU within the PU.

VDU	VDU ACRES	PU	PU ACRES
24	68.2	1	47.3
		2	20.9
30	15.4	2	1.3
		3	14.1
<b>TOTAL:</b>	<b>83.6</b>		<b>83.6</b>

**DESCRIPTION OF TIMBER BY PAYMENT UNIT (PU)**

PU	MARKET GROUP	PRODUCT	QUANTITY	UNIT	ACRES	ADVERTISE PRICE
1	B. T. Aspen	Sawtimber	271.1	MBF	47.3	\$50,543.35
	Red Maple		13.9	MBF		
	Red Oak		96.3	MBF		
	Red Pine		15.1	MBF		
	B. T. Aspen	Pulpwood	591	Cords		
	Mixed Hardwood		325	Cords		
	<i>Beech</i>		26	<i>Cords</i>		
	<i>Red Maple</i>		299	<i>Cords</i>		
	Mixed Oak		208	Cords		
	<i>BI/R/Hybrid Oak</i>	<i>Sawtimber</i>	20.5	<i>MBF</i>		
	<i>BI/R/Hybrid Oak</i>	<i>Pulpwood</i>	8	<i>Cords</i>		
	<i>Red Oak</i>		159	<i>Cords</i>		
	Red Pine		121	Cords		
	2	B. T. Aspen	Sawtimber	122.8		
Red Maple			12.7	MBF		
Red Oak			49.6	MBF		
Red Pine			6.7	MBF		
B. T. Aspen		Pulpwood	263	Cords		
Mixed Hardwood			151	Cords		
<i>Beech</i>			11	<i>Cords</i>		
<i>Red Maple</i>			140	<i>Cords</i>		
Mixed Oak			115	Cords		
<i>BI/R/Hybrid Oak</i>		<i>Sawtimber</i>	10.4	<i>MBF</i>		
<i>BI/R/Hybrid Oak</i>		<i>Pulpwood</i>	4	<i>Cords</i>		
<i>Red Oak</i>			90	<i>Cords</i>		
Red Pine			53	Cords		
3		B. T. Aspen	Sawtimber	31.8	MBF	14.1
	Red Maple		70.5	MBF		
	Red Oak		76.8	MBF		
	B. T. Aspen	Pulpwood	25	Cords		
	Mixed Hardwood		85	Cords		
	<i>Red Maple</i>		85	<i>Cords</i>		
	Mixed Oak		251	Cords		
	<i>BI/R/Hybrid Oak</i>	<i>Sawtimber</i>	14.5	<i>MBF</i>		
	<i>BI/R/Hybrid Oak</i>	<i>Pulpwood</i>	5	<i>Cords</i>		
	<i>Red Oak</i>		217	<i>Cords</i>		
TOTAL:			767.3	MBF		
TOTAL:			2,188	Cords		

## Sale Specific Conditions & Requirements

**Sale Name: Mt. Wex Aspen**

**Sale Number: 63-015-21 Seq#: 1**

### 1 - Sale Area

#### 1.2 - Boundaries

##### 1.2.1 - Painted boundaries (9/19)

The sale boundary and Payment Unit boundaries are marked and identified by blue, red, and yellow paint. Exterior sale boundary lines against private property are marked with blue paint. The north and west boundaries of Payment Unit 1 have a natural boundary against a landfill and were left unpainted as represented on the Timber Sale Map. Exterior sale boundary lines against state are marked with red paint. Interior Payment Unit boundaries are marked with yellow paint. Retention patches are marked with red paint; no harvesting activities may occur within these areas. The painted boundary line trees are not Included Timber and are to be protected unless marked with orange paint.

### 2 - Timber Specifications

#### 2.1 - Included Timber

##### 2.1.2 - Clearcut unit(s) w/o unmerchantable trees (8/11)

Within Payment Unit(s) 1-3, cut all trees which meet minimum piece specifications in 2.2 Utilization, except white pine over 24" at DBH and hemlock.

### 3 - Payments

#### 3.3 - Pre-measured Sales

##### 3.3.4 - Dividing payment units (7/14)

Payment Unit(s) 1 may be divided at the request of the Purchaser and upon approval of the Unit Manager. Dividing Payment Units is a contract modification which requires a Timber Sale Contract Amendment. There will be only one division per Payment Unit.

### 4 - Transportation

#### 4.2 - Maintenance

##### 4.2.5 - Two wheel drive condition (2/04)

All existing trail roads on and adjacent to the sale area must be passable by two-wheel drive traffic for the duration of the sale.

### 5 - Operations

#### 5.1 - Notification

##### 5.1.1 - Pre-sale conference (10/16)

A pre-sale conference on site between the Purchaser and sale administrator is required prior to beginning any operations. The Unit Manager or his/her representative must be contacted at least 5 days in advance to schedule the conference.

##### 5.1.4 - Post-sale conference (10/16)

A post-sale conference on site between the Purchaser and sale administrator is required 5 days prior to the completion of active logging operations to determine clean-up and repair of landings, road edges, and the fulfillment of other contract specifications.

#### 5.2 - Conduct of Operations

##### 5.2.1 - Slash

###### 5.2.1.8 - Slash height (12/08)

No slash or tree tops may exceed 24 inches in height.

##### 5.2.3 - Operating Restrictions

#### 5.2.3.5 - Oak wilt restriction (1/18)

Within Payment Unit(s) 1-3 unless changed by written agreement, cutting, skidding, hauling within the sale and brushing of access roads to the sale are not permitted during the period of April 15 to July 15. Operations may be allowed if specific steps are taken to prevent damaging uncut oak during the high risk period. Those steps may include completing all road brushing before April 15th and clearing a tree-length buffer along uncut oak cover before April 15th. This is necessary to reduce the spread of oak wilt. For more information, contact the Unit Manager or his/her representative.

#### 5.2.4 - Dead and Down Creation

##### 5.2.4.4 - Dead and down creation, grouse (6/18)

To encourage grouse and other wildlife, in Payment Unit(s) 1-3, leave one, 12" diameter or larger log-length (8 foot minimum) piece on the ground for every 2 acres. These will be evenly scattered throughout the Payment Unit. This can be an unmerchantable piece or a full tree. Each log must be clearly identified by a piece of blue flagging.

##### 5.2.38 - No decking against live trees (2/04)

Cut products may not be decked against unmarked or designated leave trees.

##### 5.2.39 - ORV trail/route protection (4/18)

The Long Lake Motorcycle Trail is an ORV trail or route and is shown on the Timber Sale Map. Do not cut trees or damage posts with yellow ORV markers. Trees with yellow ORV markers shall be cut off above the markers and at least 5 feet above ground. All stumps within 5 feet of the trail must be cut flush with the ground. Maintain a 20-foot-wide slash, debris, and rut free zone daily using the ORV trail or route as the centerline. Do not run equipment down the ORV trail or route. Skidding across the trail or route may only occur in locations approved by the sale administrator.

#### 5.4 - Soil Protection

##### 5.4.1 - Rutting restriction, general (7/16)

Operations are to cease immediately if equipment and weather conditions result in rutting of roads and/or skid trails which is 12 inches or greater in depth and 50 feet in length. The Unit Manager or his/her representative may restrict hauling and/or skidding if ruts exceed the specified depth. With the Unit Manager or his/her representative's approval, the Purchaser may return to the area when the risk of rutting has decreased.

### 6 - Safety and Fire Prevention

#### 6.2 - Signing

##### 6.2.1 - Road posting (10/20)

The Purchaser is responsible for posting and maintaining caution signs on Long Lake Road (24 3/4 Road) prior to beginning operations. The road must be posted at appropriate distances from the Sale Area to warn of logging activity and truck traffic. Signs must be removed when harvest operations are suspended or completed. The Purchaser will provide these signs.

##### 6.2.3 - Recreational trail posting (10/20)

The Purchaser is responsible for posting and maintaining caution signs on the Long Lake Motorcycle Trail prior to beginning operations. The trail must be posted at appropriate distances from the Sale Area to warn of logging activity and truck traffic at both ends of the trail. Signs must be removed when harvest operations are suspended or completed. The Purchaser will provide these signs.



Sale Number	Year
63-015	21

# TIMBER SALE MAP

This information provided by authority of Part 525, 1994 PA 451 as amended.

Forest Management Unit Cadillac Management Unit	County Wexford	Mapped By Tweedale	Date 08/10/2021	Page 1	of 1
Township 23N	Range 09W	Section(s) and Subdivision(s) Sec. 34 E 1/2NW, NE, NWSE	Scale 1:15,840		

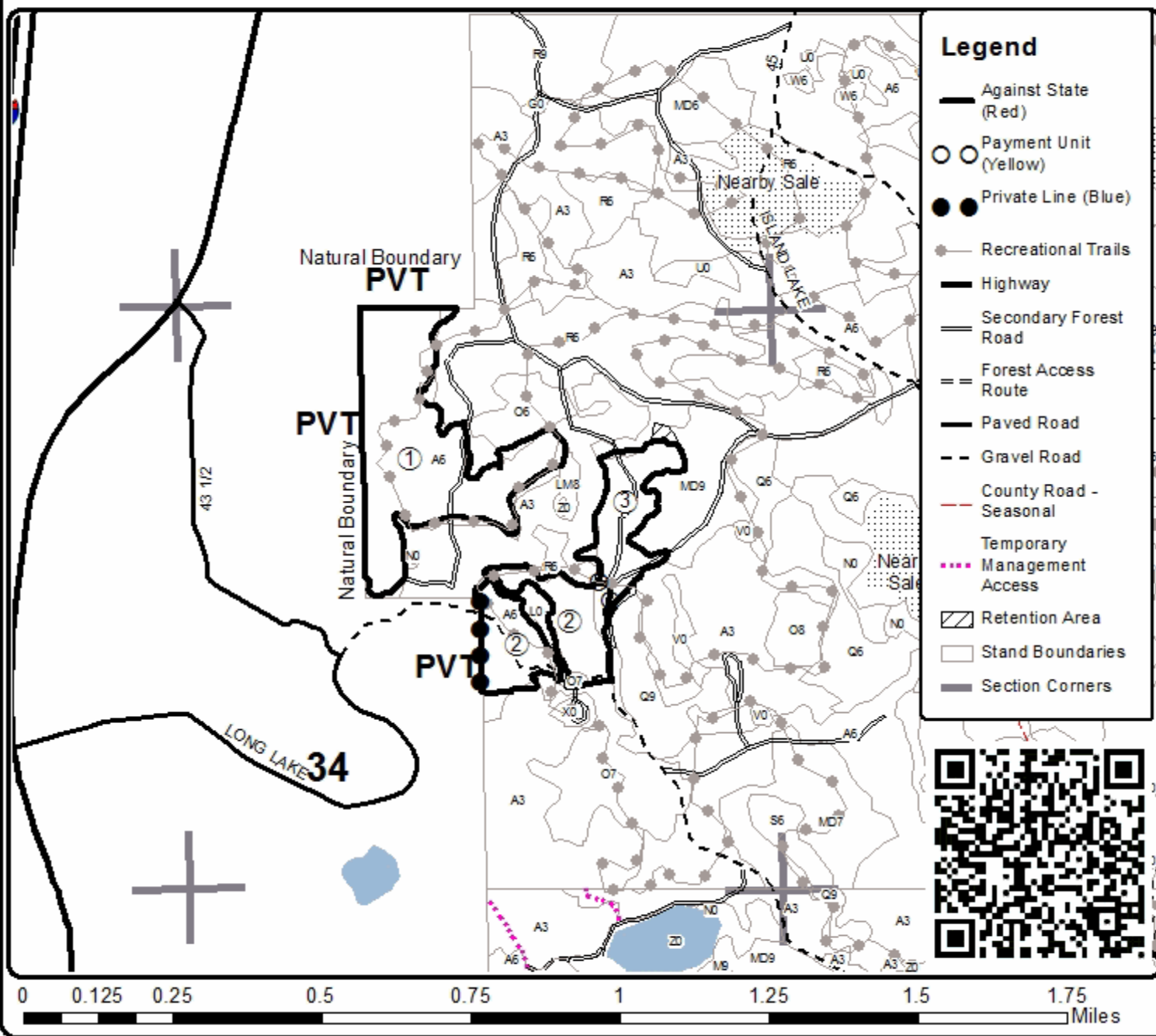
Cover Type				Density	
A = Aspen	H = Hemlock	N = Marsh	U = Upland Brush	0 = Non Stocked	5 = Pole Timber Medium
B = Paper Birch	J = Jack Pine	O = Oak	UM = Upland Mixed	1 = Seeding Sapling Poor	6 = Pole Timber Well
C = Cedar	L = Lowland Brush	P = Lowland Poplar	V = Bog or Marsh	2 = Seeding Sapling Medium	7 = Saw Timber Poor
D = Treed Bog	LM = Lowland Mixed	Q = Mixed Swamp Conifer	W = White Pine	3 = Seeding Sapling Well	8 = Saw Timber Medium
E = Swamp Hardwoods	M = Mpl. Ech. Birch	R = Red Pine	X = Non Stocked	4 = Pole Timber Poor	9 = Saw Timber Well
F = Spruce Fir	MC = Mixed Conifer	S = Black Spruce	Z = Water		
G = Creas	MD = Mixed Deciduous	T = Tamarack			

PU	Acres
1	47.3
2	22.2
3	14.1

## Mt. Wex Aspen

### Compartment 140

83.6 Acres



Hawk Hills Red Pine (63-006-21)  
T23N, R09W, SEC. 25; T23N, R09W, SEC. 26; T23N, R09W, SEC. 27; T23N,

In response to the notice of sale to be held 3:00 p.m. (local time) on December 27, 2021, I am hereby submitting my sealed bid (firm offer) for the following forest products to be cut. Bids for individual species must be at or above the advertised price. All non-responsive bid forms may be rejected.

<u>PRODUCTS &amp; SPECIES</u>	<u>ESTIMATED VOLUME*</u>	<u>ADVERTISED PRICE</u>	<u>BID PRICE/UNIT</u>
<b>Sawtimber</b>			
Red Oak	14.9 MBF	\$ 160.00/MBF	\$ _____
Red Pine	182.4 MBF	\$ 82.00/MBF	\$ _____
<b>Pulpwood</b>			
Quaking Aspen	18 Cords	\$ 14.45/Cord	\$ _____
Red Oak	31 Cords	\$ 15.05/Cord	\$ _____
Red Pine	2,875 Cords	\$ 34.00/Cord	\$ _____
White Pine	51 Cords	\$ 10.45/Cord	\$ _____

\*The volumes are statistically estimated within plus (+) or minus (-) 6.28 percent at 95% confidence level. These estimated volumes are final and not subject to adjustment. Prospective bidders are urged to examine this timber and to make their own estimates of quantity and quality.

I understand that any or all bids may be rejected. All bids must be signed and all bid items must be bid or the bid form may be rejected. I also understand that consideration and awarding a contract will be based upon my past performance and ability to complete the contract based upon equipment and staffing subject to my control.

FEDERAL ID: \_\_\_\_\_ - \_\_\_\_\_ or SOCIAL SECURITY NUMBER: \_\_\_\_\_ - \_\_\_\_\_ - \_\_\_\_\_

Company or individual bidding: \_\_\_\_\_

Company representative's name: \_\_\_\_\_

Address: \_\_\_\_\_

City: \_\_\_\_\_ State: \_\_\_\_\_ Zip: \_\_\_\_\_

IF AVAILABLE, PLEASE PLACE THE PERSONALIZED LABEL FROM YOUR PROSPECTUS IN THE ABOVE BOX.

Individual or company representative's signature: \_\_\_\_\_ Date: \_\_\_\_\_

Phone number : \_\_\_\_\_ Email (optional): \_\_\_\_\_

**THE WINNING BIDDER MUST COMPLETE THE VERIFICATION OF WORKER'S DISABILITY COMPENSATION ACT COMPLIANCE (ON REVERSE SIDE IF DOUBLE SIDED) WITHIN 21 DAYS OF SALE AWARD DATE**



FOR DEPARTMENT USE ONLY	
Sale Number (XX - XXX - XX - XX)	
Forest Management Unit:	

## TIMBER SALE VERIFICATION OF WORKER'S DISABILITY COMPENSATION ACT COMPLIANCE

As required by Act 317, P.A. 1969 (Worker's Compensation) and  
Part 5 of Act 451 of 1994, as amended.

### VERIFICATION OF WORKER'S DISABILITY COMPENSATION ACT COMPLIANCE

- This verification must be completed and submitted within 21 days of contract award and prior to the issuance of the timber sale contract.
- In addition, if boxes 2B or 2C are checked, then Notice of Exclusion or Certificate of Insurance must be submitted within twenty-one (21) days of the contract award and prior to the issuance of the timber sale contract.
- All information must be typed or printed except for written signatures.

Please Check Appropriate Categories:

1. My business is organized as (you **must** check one of the boxes below):
  - A.  Sole Proprietorship (individual)
  - B.  Partnership
  - C.  Corporation
2. You **must** check one of the boxes below:
  - A.  I certify my business is a sole proprietorship and it has no employees but the sole proprietor. I am not subject to the Worker's Compensation Laws.
  - B.  I certify my business has satisfied its obligation to the Worker's Compensation Act through the use of an approved Notice of Exclusion (BWC-337, Rev. 5/96). I will provide a copy of the Notice of Exclusion within 21 days of the contract award. (For questions or a copy of the BWC-337, please call the Worker's Compensation Bureau at 517-322-1195).
  - C.  I certify my business has a Worker's Compensation Policy. I will provide an original Certificate of Insurance within twenty-one (21) days of the contract award.
3. If you have checked item 2(A) or 2(B), you **must** indicate the number of **both** full-time and part-time employees, other than yourself, including family members and active partners (if none, you must enter "0").

\_\_\_\_\_ Full-time Employees

\_\_\_\_\_ Part-time Employees

Name of Business		Federal ID (or) Social Security No.	
Address		Telephone (       )	
City	State	ZIP	

*I hereby certify that the above information is true and correct. I agree to notify the Michigan DNR of any changes that occur in factors affecting my coverage during any of my present and future operations.*

\_\_\_\_\_  
Signature of Owner or Authorized Representative

\_\_\_\_\_  
Title

\_\_\_\_\_  
Date

Please complete the "SEALED BID" information on the next page



Half Mile Skid Aspen (63-014-21)  
T24N, R09W, SEC. 24; T24N, R09W, SEC. 25; Wexford COUNTY

In response to the notice of sale to be held 3:00 p.m. (local time) on December 27, 2021, I am hereby submitting my sealed bid (firm offer) for the following forest products to be cut. Bids for individual species must be at or above the advertised price. All non-responsive bid forms may be rejected.

<u>PRODUCTS &amp; SPECIES</u>	<u>ESTIMATED VOLUME*</u>	<u>ADVERTISED PRICE</u>	<u>BID PRICE/UNIT</u>
<b>Sawtimber</b>			
B. T. Aspen	366.9 MBF	\$ 69.00/MBF	\$ _____
White Pine	41.2 MBF	\$ 43.00/MBF	\$ _____
<b>Pulpwood</b>			
B. T. Aspen	597 Cords	\$ 11.80/Cord	\$ _____
Balsam Fir	21 Cords	\$ 5.55/Cord	\$ _____
Mixed Hardwood	178 Cords	\$ 9.65/Cord	\$ _____
White Pine	64 Cords	\$ 8.55/Cord	\$ _____

\*The volumes are statistically estimated within plus (+) or minus (-) 10.65 percent at 95% confidence level. These estimated volumes are final and not subject to adjustment. Prospective bidders are urged to examine this timber and to make their own estimates of quantity and quality.

I understand that any or all bids may be rejected. All bids must be signed and all bid items must be bid or the bid form may be rejected. I also understand that consideration and awarding a contract will be based upon my past performance and ability to complete the contract based upon equipment and staffing subject to my control.

FEDERAL ID: \_\_\_\_\_ - \_\_\_\_\_ or SOCIAL SECURITY NUMBER: \_\_\_\_\_ - \_\_\_\_\_ - \_\_\_\_\_

Company or individual bidding: \_\_\_\_\_

Company representative's name: \_\_\_\_\_

Address: \_\_\_\_\_

City: \_\_\_\_\_ State: \_\_\_\_\_ Zip: \_\_\_\_\_

IF AVAILABLE, PLEASE PLACE THE PERSONALIZED LABEL FROM YOUR PROSPECTUS IN THE ABOVE BOX.

Individual or company representative's signature: \_\_\_\_\_ Date: \_\_\_\_\_

Phone number : \_\_\_\_\_ Email (optional): \_\_\_\_\_

**THE WINNING BIDDER MUST COMPLETE THE VERIFICATION OF WORKER'S DISABILITY COMPENSATION ACT COMPLIANCE (ON REVERSE SIDE IF DOUBLE SIDED) WITHIN 21 DAYS OF SALE AWARD DATE**



Mt. Wex Aspen (63-015-21)  
T23N, R09W, SEC. 34; Wexford COUNTY

In response to the notice of sale to be held 3:00 p.m. (local time) on December 27, 2021, I am hereby submitting my sealed bid (firm offer) for the following forest products to be cut. Bids for individual species must be at or above the advertised price. All non-responsive bid forms may be rejected.

<u>PRODUCTS &amp; SPECIES</u>	<u>ESTIMATED VOLUME*</u>	<u>ADVERTISED PRICE</u>	<u>BID PRICE/UNIT</u>
<b>Sawtimber</b>			
B. T. Aspen	425.7 MBF	\$ 50.00/MBF	\$ _____
Red Maple	97.1 MBF	\$ 52.00/MBF	\$ _____
Red Oak	222.7 MBF	\$ 160.00/MBF	\$ _____
Red Pine	21.8 MBF	\$ 82.00/MBF	\$ _____
<b>Pulpwood</b>			
B. T. Aspen	879 Cords	\$ 14.45/Cord	\$ _____
Mixed Hardwood	561 Cords	\$ 11.80/Cord	\$ _____
Mixed Oak	574 Cords	\$ 15.05/Cord	\$ _____
Red Pine	174 Cords	\$ 34.00/Cord	\$ _____

\*The volumes are statistically estimated within plus (+) or minus (-) 5.64 percent at 95% confidence level. These estimated volumes are final and not subject to adjustment. Prospective bidders are urged to examine this timber and to make their own estimates of quantity and quality.

I understand that any or all bids may be rejected. All bids must be signed and all bid items must be bid or the bid form may be rejected. I also understand that consideration and awarding a contract will be based upon my past performance and ability to complete the contract based upon equipment and staffing subject to my control.

FEDERAL ID: \_\_\_\_ - \_\_\_\_ - \_\_\_\_ or SOCIAL SECURITY NUMBER: \_\_\_\_ - \_\_\_\_ - \_\_\_\_

Company or individual bidding: \_\_\_\_\_

Company representative's name: \_\_\_\_\_

Address: \_\_\_\_\_

City: \_\_\_\_\_ State: \_\_\_\_\_ Zip: \_\_\_\_\_

IF AVAILABLE, PLEASE PLACE THE PERSONALIZED LABEL FROM YOUR PROSPECTUS IN THE ABOVE BOX.

Individual or company representative's signature: \_\_\_\_\_ Date: \_\_\_\_\_

Phone number : \_\_\_\_\_ Email (optional): \_\_\_\_\_

**THE WINNING BIDDER MUST COMPLETE THE VERIFICATION OF WORKER'S DISABILITY COMPENSATION ACT COMPLIANCE (ON REVERSE SIDE IF DOUBLE SIDED) WITHIN 21 DAYS OF SALE AWARD DATE**



<b>FOR DEPARTMENT USE ONLY</b>
Sale Number (XX - XXX - XX - XX)
Forest Management Unit:

## TIMBER SALE VERIFICATION OF WORKER'S DISABILITY COMPENSATION ACT COMPLIANCE

*As required by Act 317, P.A. 1969 (Worker's Compensation) and  
Part 5 of Act 451 of 1994, as amended.*

### VERIFICATION OF WORKER'S DISABILITY COMPENSATION ACT COMPLIANCE

- This verification must be completed and submitted within 21 days of contract award and prior to the issuance of the timber sale contract.
- In addition, if boxes 2B or 2C are checked, then Notice of Exclusion or Certificate of Insurance must be submitted within twenty-one (21) days of the contract award and prior to the issuance of the timber sale contract.
- All information must be typed or printed except for written signatures.

Please Check Appropriate Categories:

1. My business is organized as (you **must** check one of the boxes below):
  - A.  Sole Proprietorship (individual)
  - B.  Partnership
  - C.  Corporation
2. You **must** check one of the boxes below:
  - A.  I certify my business is a sole proprietorship and it has no employees but the sole proprietor. I am not subject to the Worker's Compensation Laws.
  - B.  I certify my business has satisfied its obligation to the Worker's Compensation Act through the use of an approved Notice of Exclusion (BWC-337, Rev. 5/96). I will provide a copy of the Notice of Exclusion within 21 days of the contract award. (For questions or a copy of the BWC-337, please call the Worker's Compensation Bureau at 517-322-1195).
  - C.  I certify my business has a Worker's Compensation Policy. I will provide an original Certificate of Insurance within twenty-one (21) days of the contract award.
3. If you have checked item 2(A) or 2(B), you **must** indicate the number of **both** full-time and part-time employees, other than yourself, including family members and active partners (if none, you must enter "0").

\_\_\_\_\_ Full-time Employees

\_\_\_\_\_ Part-time Employees

Name of Business		Federal ID (or) Social Security No.	
Address		Telephone (       )	
City	State	ZIP	

*I hereby certify that the above information is true and correct. I agree to notify the Michigan DNR of any changes that occur in factors affecting my coverage during any of my present and future operations.*

\_\_\_\_\_  
Signature of Owner or Authorized Representative

\_\_\_\_\_  
Title

\_\_\_\_\_  
Date

**Please complete the "SEALED BID" information on the next page**