



**DEPARTMENT OF NATURAL RESOURCES
STATE OF MICHIGAN
TIMBER SALE PROSPECTUS #7078**

SCHEDULED SALE DATE AND TIME: 10:00 a.m. (local time) on July 15, 2022.

LOCATION: SE REGION-WILD, 3580 STATE PARK DRIVE, BAY CITY, MI 48706.

PROSPECTUS NOTE: The bidder is advised to inspect the sale area and review the location, estimated volumes, operating costs and contract terms of proposed sales. Please be aware that some landowners may request 60 days or more notice for access across their land.

Notice is hereby given that bids will be received by the Game Area Manager, CASS CITY FIELD OFFICE, for certain timber on the following described lands:

Hi-Lo Aspen (55-137-22) / T13N, R11E, SEC. 31, N1/2NE,N1/2SW.
T13N, R11E, SEC. 33, SENW,NESW,NWSE,S1/2SE.
Tuscola County, Advertised Price \$43,518.10, 105.7 Acres, Aspen, Hardwood.

SALE NOTE: All units of volume listed for this sale were estimated using the Inventory Manager computer program and the new Michigan taper model.

Access may be through other public land.

Bigfoot Aspen (55-138-22) / T14N, R12E, SEC. 10, S1/2SE.
T14N, R12E, SEC. 11, SWSW.
T14N, R12E, SEC. 22, NE,NESE.
T14N, R12E, SEC. 23, N1/2NW,SWNW,NWSW,N1/2SE.
Sanilac County, Advertised Price \$85,766.00, 134.1 Acres, Aspen, Hardwood.

SALE NOTE: All units of volume listed for this sale were estimated using the Inventory Manager computer program and the new Michigan taper model.

See sale spec 5.2.3.1 for information for operating restrictions.

Access may be through other public land.

Chambers Aspen (55-139-22) / T12N, R09E, SEC. 29, E1/2NW,NWNE,SW,NWSE.
T12N, R09E, SEC. 30, E1/2NW,SW,N1/2SE.
Tuscola County, Advertised Price \$82,684.45, 146.3 Acres, Aspen, Hardwood.

SALE NOTE: All units of volume listed for this sale were estimated using the Inventory Manager computer program and the new Michigan taper model.

Access may be through other public land.

BID INSTRUCTIONS (VER. 07/02/2018):

1. Scheduled Bid Location, Date, and Time (2/11)

Bids must be received by the Unit Manager, BAY CITY OFFICE, 3580 State Park Drive, Bay City, MI 48706, no later than 10:00 a.m. (local time) on July 15, 2022. For further information concerning this sale, contact Don Bonnette at 989-385-5616.

2. Bidder's Qualifications (5/16)

Purchaser shall obtain workers compensation insurance to cover claims under Michigan's Worker's Disability Compensation Act of 1969 or similar employee benefit act of any other state applicable to an employee. If all or part of a timber sale was prepared by a private contractor, the contractor and that contractor's company are not permitted to bid on the timber sale contract. Bids will not be accepted from individuals or companies appearing on the DNR/FRD No-Bid List. This list contains the names of purchasers who previously failed to execute a contract within 21-days or who have a history of poor performance.

3. Preparation of Sealed Bids (5/16)

Bid Forms may be completed online thru Michigan DNR Timber Sale Online Bidding (OLB) at www.michigan.gov/timberbidding or by completing the hardcopy Bid Form found in the Timber Sale Prospectus. Hardcopy Bid Forms shall be manually signed in ink. Registration in OLB is considered your 'signature' for all bids submitted thru that system. Bid prices must be entered for each species and product in the Bid Price column for all material subject to bidding and all fill-in blanks must be completed. If erasures or other changes appear on the hardcopy Bid Form, each erasure or change must be initialed by the person signing the bid.

4. Submission of Sealed Bids (5/16)

Bid forms may be obtained from the Unit Manager or thru OLB. Bids may be submitted hardcopy or thru OLB. All hardcopy bids must be submitted on the bid form and in an envelope clearly identified as described in this section. NOTE: Only one bid form per bid envelope. Sealed bids must be submitted to the Unit office designated in the prospectus and must be submitted at or prior to the time established in the prospectus. The envelope should show on the outside (a) the sale name or number and (b) the date and time of bid opening, as shown in the prospectus. Bids received after the time specified in the sale prospectus are late bids and will be rejected.

It is possible for a bidder to submit multiple bids on a single sale. For example, a bid may be submitted hardcopy and a bid may be submitted thru OLB. Or, two bidders from the same company could both submit bids on the same sale. If this were to happen, the State would accept all bids received and award the contract accordingly. All bidding and contractual requirements would apply to all bids received.

5. Public Opening of Sealed Bids (7/16)

If conditions permit, the sealed bids will be publicly opened and posted at the time and place set in the prospectus.

If a bidder, present at a bid opening, has submitted bids on more than one sale, that bidder may withdraw their unopened bid envelopes or announce the withdrawal of their online bid after being declared the successful bidder on one sale.

6. Award of Contract (1/11)

Award of the contract will be made to the Bidder whose bid, conforming to the prospectus, is most advantageous to the State of Michigan on the basis of total value at rates bid for the estimated quantities. The State reserves the right to reject any bid or waive any minor irregularity in bids received. A written award mailed (or otherwise furnished) to the successful Bidder shall be deemed to result in a binding contract without further action by either party.

7. Down Payment (1/11)

The Bidder to whom award is made must make a down payment within 21 days of the sale award. The amount of the down payment will be calculated as shown in the Bond and Payment Schedule of this prospectus. Only cash may be used to meet this requirement.

8. Performance Security (1/11)

As guarantee of faithful performance, a cash bond, certificate of deposit, surety bond or irrevocable letter of credit (LOC) is required within 21 days of the sale award. The amount of the performance security is shown in the Bond and

Payment Schedule of this prospectus. If an LOC or surety is used, the coverage must extend for at least 6 months beyond the contract expiration.

9. Timber Sale Contract (7/18)

Additional conditions and requirements common to all timber sales are listed on the timber sale contract (R4031) and are available on line at www.michigan.gov/timber. Contact the Unit Manager for additional information or a sample contract. Within 21 days of the date of the award letter, the bidder must sign the contract and provide the required down payment, performance security, and verification of worker's disability compensation. The down payment and performance security shall be in accordance with the provisions of the timber sale contract, in the sums stated in this prospectus. If these actions are not taken, then the Bidder, the Bidder's corporation, and the corporation's principals may not be permitted to bid on State timber sales for a period of 3 months after the first offense, 6 months after the second offense, and 1 year after the third offense. An offense will only be counted against the Bidder for 5 years. In addition, the Bidder certifies that if awarded this contract, the Bidder will complete the timber sale contract in accordance with its terms and any modifications thereof including requirements to purchase, cut, and remove the included timber by the expiration date.

Payment Unit values in the State Forest Timber Sale Contract are calculated based on the advertised value of the Payment Unit as a percentage of the total advertised value of the contract. The advertised value of each Payment Unit is given in the Description of Timber by Payment Unit table on the Timber Sale Information page. For example, if the value of Payment Unit 1 is advertised as \$1,500 and the total Timber Sale value is advertised as \$10,000, the contract price for Payment Unit 1 will be 15% of the total bid price ($\$1,500/\$10,000 * 100$).

10. Disclaimer of Estimates and Bidder's Warranty of Inspection (7/16)

Before submitting this bid, the Bidder is advised and cautioned to inspect the sale area, review the requirements of the sale contract, and take other steps as may be reasonably necessary to ascertain the location, estimated volumes, construction estimates, and operating costs of the proposed sale. Failure to do so will not relieve the Bidder from responsibility for completing the contract.

The Bidder warrants that this bid is submitted solely on the basis of the Bidder's examination and inspection of the quality and quantity of the timber offered for sale and the Bidder's opinion of the value thereof and the costs of recovery. No reliance should be placed on the State of Michigan's estimates of timber quality, quantity or costs of recovery. Bidder further acknowledges that the State of Michigan: (i) expressly disclaims any warranty of fitness of timber for any purpose; (ii) offers this timber as is without any warranty of quality (merchantability) or quantity and (iii) expressly disclaims any warranty as to the quantity or quality of timber sold.

11. Certification and Chain-of-Custody (10/14)

Unless otherwise indicated in the contract under section 7 – Other Conditions of the Sale Specific Conditions & Requirements, the area encompassed by this timber sale is certified to the standards of the Forest Stewardship Council (FSC) - Certificate #SCS-FM/COC-00090N and the Sustainable Forestry Initiative (SFI) - Certificate #NSF-SFIS-5Y031-SF5. Forest products from this sale may be delivered to the mill as "FSC 100% and / or SFI certified" as long as the contractor hauling the forest products is chain-of-custody (COC) certified or covered under a COC certificate from the destination mill. The purchaser is responsible for maintaining COC after leaving the sale area.

12. Good Neighbor Authority (GNA) Requirements (7/16)

If the name of this timber sales contains the acronym GNA, it is authorized by the Good Neighbor Authority (GNA) and covered by various agreements between the U.S. Forest Service and the State. The timber sale occurs on federal land and the following conditions apply:

GNA contracts on US Forest Service land will not be awarded to purchasers on the Federal list of excluded parties. The System for Award Management (SAM) will be checked for active excluded parties prior to award of contract. In addition, the Bidder to whom award is made must complete an Assurance Regarding Felony Conviction or Tax Delinquent Status for Corporate Applicants (AD-3031).

13. Good Neighbor Authority (GNA) Requirements, con't (9/16)

Bidder certifies, by signing this bid form, that to the best of Bidder's knowledge that the following representations are accurate and complete.

- a. That the Bidder and its principals are not presently debarred, suspended, proposed for debarment, declared ineligible, or voluntary excluded from timber sales (covered transactions) by any Federal department or agency.
- b. That the Bidder and its principals have not within a 3-year period preceding this bid been convicted of or had a civil judgment rendered against them for commission of fraud or a criminal offense in connection with obtaining , attempting to obtain, or performing a public (Federal, State, or local) transaction or contract under a public transaction; violation of Federal or State antitrust statutes or commission of embezzlement, theft, forgery, bribery, falsification or destruction of records, making false statements, or receiving stolen property.
- c. That the Bidder and its principals are not presently indicted for or otherwise criminally or civilly charged by a governmental entity (Federal, State, or local) with commission of any of the offenses enumerated in paragraph b of this certification.
- d. That the Bidder and its principals have not within a 3-year period preceding this bid had one or more public transactions (Federal, State, or local) terminated for breach or default of a timber or forest product contract.

Bidders that cannot certify this requirement, in whole or in part, shall submit an explanation with their bid.

DAN EICHINGER
Director

TIMBER SALE INFORMATION

Hi-Lo Aspen (55-137-22)

T13N, R11E, SEC. 31; T13N, R11E, SEC. 33.
Tuscola County (Advertised Price \$43,518.10)

SALE NOTE: All units of volume listed for this sale were estimated using the Inventory Manager computer program and the new Michigan taper model.

Access may be through other public land.

A timber sale contract for this lump sum, sealed bid timber sale will be awarded to the responsible bidder offering the highest sealed bid price. All units of volume listed below were estimated using the Inventory Manager computer program and the new Michigan taper model. Bids must be at or above the following advertised price for each product and species:

<u>PRODUCTS & SPECIES</u>	<u>ESTIMATED UNITS*</u>	<u>ADVERTISED PRICE</u>
Sawtimber		
Mixed Aspen	466.4 MBF	\$ 32.00 / MBF
Red Maple	104.4 MBF	\$ 34.00 / MBF
Pulpwood		
Mixed Aspen	1,203 Cords	\$ 11.00 / Cord
Mixed Hardwood	1,193 Cords	\$ 9.90 / Cord

* The total volume is statistically estimated within plus (+) or minus (-) 6.44 percent. There are an estimated 3,597 cords on this timber sale, plus or minus 232 cords at the 95% confidence level. The estimated units are final and not subject to adjustment. Prospective bidders are urged to examine this timber and to make their own estimates of quantity and quality.

BOND AND PAYMENT SCHEDULE:

1. A bond in the amount of \$2,176.00 to insure faithful performance of the conditions of the contract will be deposited by the successful bidder within 21 days of the sale award.
2. Cutting in any sale or unit without the required advance payment would be considered a trespass.
3. Total payment must be paid in advance or according to the following schedule :
 - (a) Ten percent (10%) of the sale value must be paid within 21 days of the sale award.
 - (b) The 10% down payment will be credited towards the first unit cut.
 - (c) Payment for each of the following units must be made before cutting begins in that unit:

PAYMENT UNIT NUMBER	PERCENT OF TOTAL SALE VALUE
01	21.0%
02	26.0%
03	13.4%
04	21.5%
05	18.1%
4. If no cutting takes place, the 10% down payment will not be refunded.
5. Operations on the contract issued will terminate on 12/31/2024.

SALE STATISTICS

Volumes were calculated in cubic feet using the Michigan taper model. Cubic foot volume includes all wood inside bark for the product indicated. For display purposes, cubic feet were converted to cords and MBF using a simple conversion factor, e.g. 79 cubic feet per cord and 185 cubic feet per MBF. The cubic foot volumes are precise; the cords and MBF volumes are not. Cubic foot volume cannot be directly converted to cords or boards with precision.

SALE VOLUMES

The total estimated sale volume may not equal the sum of the species/products due to the nature of statistical calculations associated with double sampling methodology.

VOLUME		STATISTICAL RANGE IN CORDS		
TOTAL CUBIC FEET	TOTAL CORDS	PERCENT ERROR	MINIMUM	MAXIMUM
284,146	3,597	6.44%	3,365	3,829

VDU VOLUMES

A VDU is a Volume Determination Unit. Volumes and their associated statistics are calculated at the VDU level and summarized to the sale level. There is often a one to one relationship between a VDU and a Payment Unit, but not always, depending on the cruise design. Refer to the VDU TO PAYMENT UNIT table.

VDU	VOLUME		PERCENT ERROR	RANGE IN CORDS	
	TOTAL CUBIC FEET	TOTAL CORDS		MINIMUM	MAXIMUM
1	131,229	1,661	8.07%	1,527	1,795
2	34,229	433	18.60%	353	514
3	30,437	385	30.63%	267	503
4	26,889	340	17.74%	280	401
5	61,362	777	13.96%	668	885
TOTAL:	284,146	3,597		3,095	4,098

VDU TO PAYMENT UNIT

When a VDU is associated with more than one Payment Unit (PU), the VDU volumes are assigned to the PU based on acres of the VDU within the PU.

VDU	VDU ACRES	PU	PU ACRES
1	46.7	1	20.9
		2	25.8
2	11.5	3	11.5
3	13.3	5	13.3
4	9.7	5	9.7
5	24.5	4	24.5
TOTAL:	105.7		105.7

DESCRIPTION OF TIMBER BY PAYMENT UNIT (PU)

PU	MARKET GROUP	PRODUCT	QUANTITY	UNIT	ACRES	ADVERTISE PRICE
1	Mixed Aspen	Sawtimber	80.0	MBF	20.9	\$9,156.30
	<i>B. T. Aspen</i>		80.0	MBF		
	Red Maple		40.3	MBF		
	Mixed Aspen	Pulpwood	260	Cords		
	<i>B. T. Aspen</i>		260	Cords		
	Mixed Hardwood		239	Cords		
	<i>Black Cherry</i>		2	Cords		
	<i>Paper Birch</i>		38	Cords		
	<i>Red Maple</i>		199	Cords		
2	Mixed Aspen	Sawtimber	98.7	MBF	25.8	\$11,298.60
	<i>B. T. Aspen</i>		98.7	MBF		
	Red Maple		49.7	MBF		
	Mixed Aspen	Pulpwood	320	Cords		
	<i>B. T. Aspen</i>		320	Cords		
	Mixed Hardwood		296	Cords		
	<i>Black Cherry</i>		3	Cords		
	<i>Paper Birch</i>		47	Cords		
	<i>Red Maple</i>		246	Cords		
3	Mixed Aspen	Sawtimber	125.7	MBF	11.5	\$5,811.00
	<i>B. T. Aspen</i>		125.7	MBF		
	Mixed Aspen	Pulpwood	87	Cords		
	<i>B. T. Aspen</i>		87	Cords		
	Mixed Hardwood		84	Cords		
<i>Red Maple</i>	84	Cords				
4	Mixed Aspen	Sawtimber	58.8	MBF	24.5	\$9,363.80
	<i>B. T. Aspen</i>		41.9	MBF		
	<i>Cottonwood</i>		9.7	MBF		
	<i>Quaking Aspen</i>		7.2	MBF		
	Mixed Aspen	Pulpwood	457	Cords		
	<i>B. T. Aspen</i>		116	Cords		
	<i>Cottonwood</i>		7	Cords		
	<i>Quaking Aspen</i>		334	Cords		
	Mixed Hardwood		248	Cords		
	<i>American Elm</i>		5	Cords		
	<i>Black Cherry</i>		4	Cords		
	<i>Red Maple</i>		239	Cords		
5	Mixed Aspen	Sawtimber	103.2	MBF	23.0	\$7,888.40
	<i>B. T. Aspen</i>		8.4	MBF		
	<i>Cottonwood</i>		36.2	MBF		
	<i>Quaking Aspen</i>		58.6	MBF		
	Red Maple		14.4	MBF		
	Mixed Aspen	Pulpwood	79	Cords		
	<i>B. T. Aspen</i>		4	Cords		
	<i>Cottonwood</i>		31	Cords		
	<i>Quaking Aspen</i>		44	Cords		
	Mixed Hardwood		326	Cords		
	<i>American Elm</i>		14	Cords		
	<i>Black Cherry</i>		11	Cords		
	<i>Green Ash</i>		6	Cords		
	<i>Red Maple</i>		295	Cords		
TOTAL:			570.8	MBF		
TOTAL:			2,396	Cords		

Sale Specific Conditions & Requirements

Sale Name: Hi-Lo Aspen

Sale Number: 55-137-22 Seq#: 1

1 - Sale Area

1.2 - Boundaries

1.2.1 - Painted boundaries (9/19)

The sale boundary and Payment Unit boundaries are marked and identified by blue, red, and yellow paint. Exterior sale boundary lines against private property are marked with blue paint. Exterior sale boundary lines against state are marked with red paint. Interior Payment Unit boundaries are marked with yellow paint. Retention patches are marked with red paint; no harvesting activities may occur within these areas. The painted boundary line trees are not Included Timber and are to be protected unless marked with orange paint. Yellow painted trees designating an interior Payment Unit boundary are only to be cut when all surrounding Payment Units have been paid.

2 - Timber Specifications

2.1 - Included Timber

2.1.1 - Clearcut unit(s) with unmerchantable trees (6/14)

Within Payment Unit(s) 1-5, cut all trees that are two (2) inches or more at DBH, except oak, apple, white pine, red pine, white spruce, hemlock, and trees marked with green paint. Special protection trees identified in accordance with condition 3.4.2, within clearcutting unit boundaries, are not Included Timber and are to be protected.

2.2 - Utilization

2.2.3 - Stump heights (4/07)

Stump heights within the Sale Area shall not exceed 6 inches for all trees.

2.2.4 - Skidding length (2/14)

Skidding of unlimbed tops is not permissible.

3 - Payments

3.4 - Damaged Timber

3.4.2 - Special Protection Trees (4/14)

The Purchaser shall not cut live or dead special protection trees within cutting units or clearings. Special protection trees are oak, apple, hemlock, and trees marked with green paint. If the Purchaser's operations have cut or damaged special protection trees through carelessness, the Purchaser shall pay \$200 as fixed, agreed and liquidated damages for each special protection tree cut or damaged. Such payment does not constitute ownership of the undesignated timber.

3.6 - Payment Unit Cutting Schedule

3.6.2 - One active unit (12/08)

Each Payment Unit must be completed to the satisfaction of the Unit Manager or his/her representative before the next unit may be opened.

4 - Transportation

4.1 - Construction

4.1.1 - Stream crossings, general (3/11)

All stream crossing structures will be temporary and therefore, shall be provided by the Purchaser, and must be removed upon completion of the sale. All permits for stream crossings will be provided by the DNR. A small intermittent stream is located between the east and west portions of Payment Unit 5 and must be crossed to access the west portion.

4.1.3 - Slash and earthen piles (8/04)

Piles or windrows of earth along roads and landings that have been widened or constructed shall be leveled. Slash from road maintenance or construction, including stumps, shall be dispersed throughout the sale.

4.1.7 - Road closure (10/11)

All skid trails used to access any Payment Unit must be blocked to vehicle traffic upon completion of the sale. In general, this will require constructing a four (4') foot high berm of stumps and logs covered with earth. Additionally, any temporary driveways and culverts must be removed upon completion of the sale. Any vehicle barriers removed prior to beginning operations must be replaced in their original location and in their original condition. The Purchaser is responsible for supplying any replacement posts, chains, gates, locking posts etc. that are damaged during removal. Contact the sale administrator for specific details of design and placement.

4.1.11 - Permits (2/12)

The Purchaser will secure any necessary temporary driveway permits that may be required.

4.1.12 - No new roads (1/12)

No new roads will be permitted in any Payment Unit. Operations must be confined to existing skid trails in Payment Units 1-3 and 5. Skid trails only will be allowed in Payment Unit 4.

4.2 - Maintenance

4.2.4 - Grading (10/16)

For completion of the sale, skid trails and parking areas used to access any Payment Unit must be graded. In general, this will require a bulldozer to shape up the skid trail and/or parking areas after forest products have been hauled off site. This includes cleaning of drainage areas, grading, crowning, and filling with gravel, if necessary. The grading equipment to be used must be approved by the Unit Manager or his/her representative.

4.4 - Access

4.4.3 - Access gate (12/08)

The access gate to Payment Units 1-3 must be placed back in its original location and its original condition if it is removed during operations. Other vehicle barriers (boulders posts, etc.) must be replaced in their original locations at the completion of operations. The Purchaser is responsible for any damages to gates, posts and chains and is responsible for supplying any necessary replacements. Should the Purchaser choose not to remove the gate, the gate must be locked at the end of each day.

5 - Operations

5.1 - Notification

5.1.1 - Pre-sale conference (10/16)

A pre-sale conference between the Purchaser and sale administrator is required prior to beginning any operations to determine landing and skid trail locations. The Unit Manager or his/her representative must be contacted at least 10 days in advance to schedule the conference.

5.2 - Conduct of Operations

5.2.1 - Slash

5.2.1.8 - Slash height (12/08)

No slash or tree tops may exceed 24 inches in height.

5.2.1.11 - Slash for reforestation (3/21)

To facilitate reforestation, the Sale Area shall be left with slash evenly distributed. Bunched tops within the cutting area shall be broken up and scattered. Stumps shall be cut low to the ground. Processing sites shall not leave windrows of slash. Slash must be scattered throughout the Sale Area.

5.2.2 - Hazard Trees/Snags

5.2.2.1 - Den trees (10/16)

Obvious hollow and/or den trees shall be protected and left standing unless they are a safety hazard. All standing dead trees and snags must be protected unless they are a safety hazard.

5.2.3 - Operating Restrictions

5.2.3.1 - Operating restrictions (9/11)

Within Payment Unit(s) 2, 4, and 5 cutting, skidding, and hauling are not permitted during the period of March 1 to July 15 and is limited to dry or frozen ground conditions at any other time. The sale administrator will determine what constitutes dry or frozen ground conditions. This restriction is due to poorly drained soils within these Payment Units.

5.2.3.12 - Hunting operating restriction (1/18)

No Payment Unit may be started during the period of September 25 to October 10 or November 1 to November 30 without permission of the Unit Manager or his/her representative.

5.2.31 - Landing locations (9/13)

The location of landings will be determined in the pre-sale conference. In general, landings are limited to a "T" turnaround which will accommodate a truck with a 50-foot trailer.

5.2.32 - Decking/landing restoration (9/13)

All decking and landing areas must have the surface area restored to a condition equal to or better than before. This is to ensure the proper regeneration of the stand. Wood debris, chips, and "cookies" from trimmings must be removed or scattered away from landing and loading areas and may not be windrowed on the edge.

5.2.37 - No decking areas (12/08)

No decking is allowed in any designated parking area. Additionally, no equipment storage is allowed in any designated parking area.

5.2.38 - No decking against live trees (2/04)

Cut products may not be decked against unmarked or designated leave trees.

5.2.40 - Pathway protection (10/10)

The walking trail through Payment Units 1-3 is shown on the Timber Sale Map. Maintain a 15-foot-wide slash, debris, and rut free zone daily, using the pathway as the centerline.

5.4 - Soil Protection

5.4.1 - Rutting restriction, general (7/16)

Operations are to cease immediately if equipment and weather conditions result in rutting of roads and/or skid trails which is 12 inches or greater in depth and 50 feet in length. The Unit Manager or his/her representative may restrict hauling and/or skidding if ruts exceed the specified depth. With the Unit Manager or his/her representative's approval, the Purchaser may return to the area when the risk of rutting has decreased.

5.4.2 - Skid trails (2/04)

Skid trails up and down slopes should be avoided. If however this is unavoidable, these trails will be left in a non-erodible condition using water bars, logs, and slash. Placing of slash on these skid trails while logging is ongoing may alleviate need for any further action. At the direction of the sale administrator, seed, fertilizer, and mulch may also be required.

5.7 - Protection of Historical Sites

5.7.2 - Potential historical site(s) (9/06)

The State Historic Preservation Office has identified the potential for a historic site within the boundary of this timber sale. Note that if the site is discovered during operations, General Condition and Requirement 5.7 - Protection of Historical Sites will apply.

7 - Other Conditions

7.10 - Certified Timber

7.10.1 - Non-certified timber (2/16)

The area encompassed by this timber sale is not certified to the standards of the Forest Stewardship Council (FSC) or the Sustainable Forestry Initiative (SFI). Forest products from this sale may not be delivered to the mill as "FSC and / or SFI certified". The lands within this sale are managed as a State Game Area.

99 - Unique

SKIP

99.1 - Unique Sale Condition (5/19)

No operating feller bunchers in any Payment Unit before 7 AM and after 9 PM daily. This is required due to the proximity of residences to the Sale Area.



TIMBER SALE MAP

This information provided by authority of Part 525, 1994 PA 451, as amended.

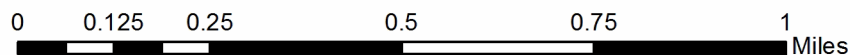
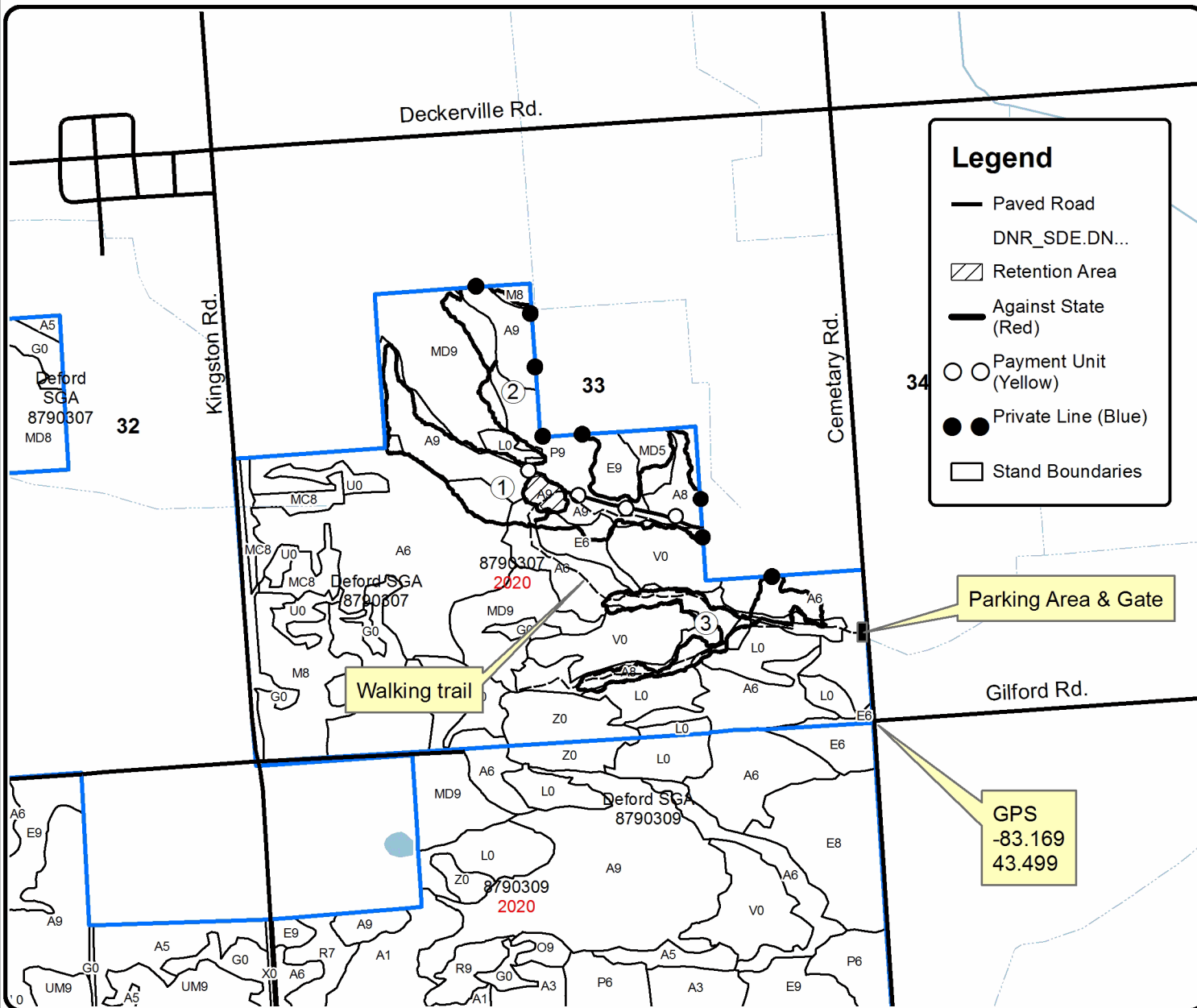
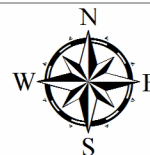
Forest Management Unit Deford State Game Area	County Tuscola	Mapped By Bonnette	Date 02/02/2022	Page 1	of 2
Township 13N	Range 11E	Section(s) and Subdivision(s) Section 33 SENW,NESW,NWSE,S1/2SE	Scale 1:15,840		

Cover Type				Density	
A = Aspen	H = Hemlock	N = Marsh	U = Upland Brush	0 = Non Stocked	5 = Pole Timber Medium
B = Paper Birch	J = Jack Pine	O = Oak	UM = Upland Mixed	1 = Seedling Sapling Poor	6 = Pole Timber Well
C = Cedar	L = Lowland Brush	P = Lowland Poplar	V = Bog or Marsh	2 = Seedling Sapling Medium	7 = Saw Timber Poor
D = Treed Bog	LM = Lowland Mixed	Q = Mixed Swamp Conifer	W = White Pine	3 = Seedling Sapling Well	8 = Saw Timber Medium
E = Swamp Hdwoods	M = Mpl, Bch, Brch	R = Red Pine	X = Non Stocked	4 = Pole Timber Poor	9 = Saw Timber Well
F = Spruce Fir	MC = Mixed Conifer	S = Black Spruce	Z = Water		
G = Grass	MD = Mixed Deciduous	T = Tamarack			

PU	Acres	PU	Acres
1	20.9	4	24.5
2	25.8	5	23.0
3	11.5		

Hi-Lo Aspen

105.7 Acres





TIMBER SALE MAP

This information provided by authority of Part 525, 1994 PA 451, as amended.

Sale Number	Year
55-137-22	2022

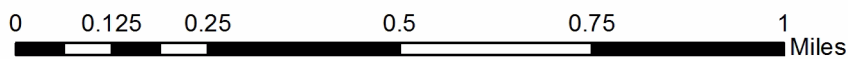
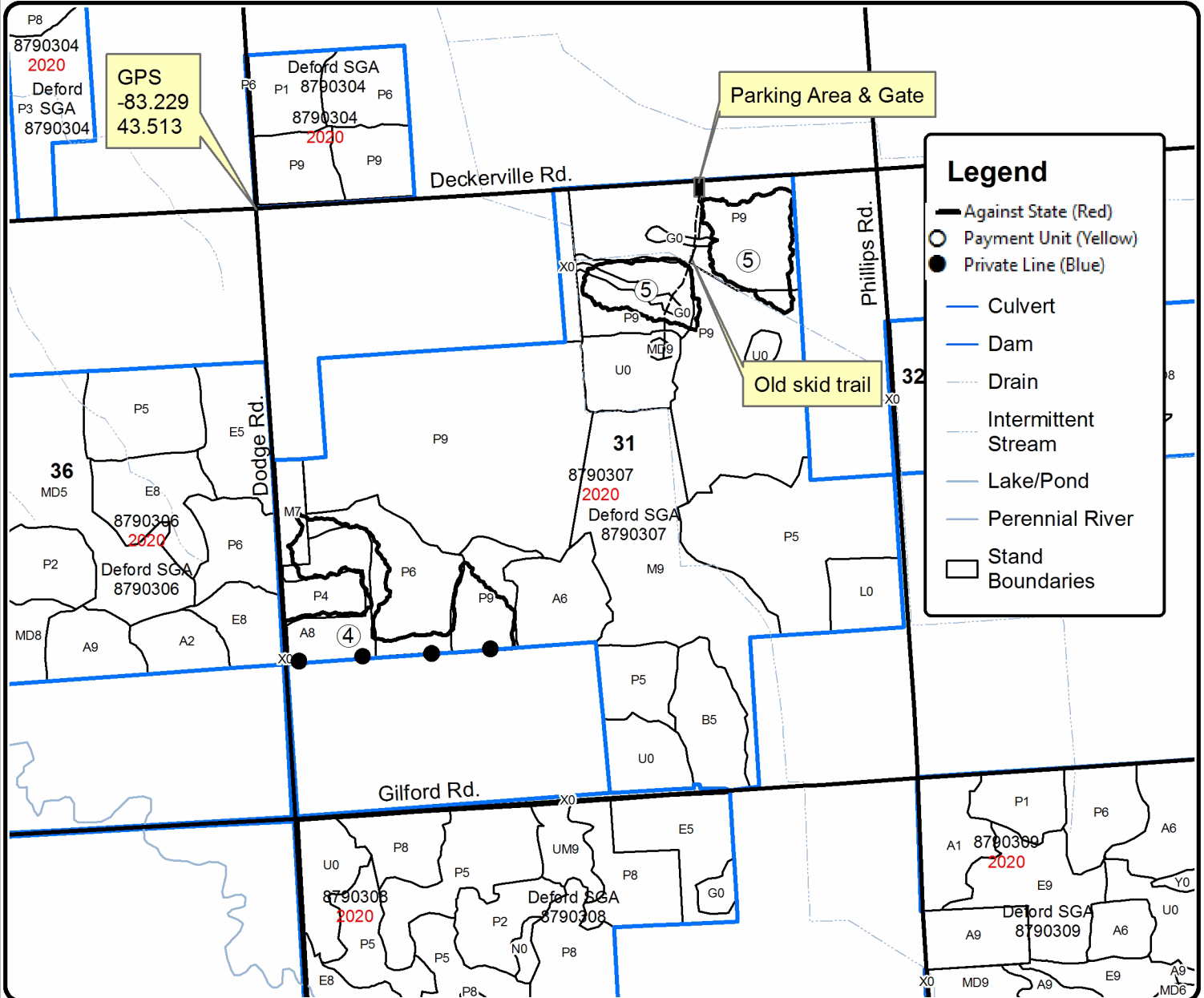
Forest Management Unit Deford State Game Area	County Tuscola	Mapped By Bonnette	Date 02/02/2022	Page 2	of 2
Township 13N	Range 11E	Section(s) and Subdivision(s) Section 31 N1/2NE,N1/2SW	Scale 1:15,840		

Cover Type				Density			
A = Aspen	H = Hemlock	N = Marsh	U = Upland Brush	0 = Non Stocked	5 = Pole Timber Medium		
B = Paper Birch	J = Jack Pine	O = Oak	UM = Upland Mixed	1 = Seedling Sapling Poor	6 = Pole Timber Well		
C = Cedar	L = Lowland Brush	P = Lowland Poplar	V = Bog or Marsh	2 = Seedling Sapling Medium	7 = Saw Timber Poor		
D = Treed Bog	LM = Lowland Mixed	Q = Mixed Swamp Conifer	W = White Pine	3 = Seedling Sapling Well	8 = Saw Timber Medium		
E = Swamp Hdwoods	M = Mpl. Bch, Brch	R = Red Pine	X = Non Stocked	4 = Pole Timber Poor	9 = Saw Timber Well		
F = Spruce Fir	MC = Mixed Conifer	S = Black Spruce	Z = Water				
G = Grass	MD = Mixed Deciduous	T = Tamarack					

PU	Acres	PU	Acres
1	20.9	4	24.5
2	25.8	5	23.0
3	11.5		

Hi-Lo Aspen

105.7 Acres



TIMBER SALE INFORMATION

Bigfoot Aspen (55-138-22)

T14N, R12E, SEC. 10; T14N, R12E, SEC. 11; T14N, R12E, SEC. 22; T14N, R12E, SEC. 23.
Sanilac County (Advertised Price \$85,766.00)

SALE NOTE: All units of volume listed for this sale were estimated using the Inventory Manager computer program and the new Michigan taper model.

See sale spec 5.2.3.1 for information for operating restrictions.

Access may be through other public land.

A timber sale contract for this lump sum, sealed bid timber sale will be awarded to the responsible bidder offering the highest sealed bid price. All units of volume listed below were estimated using the Inventory Manager computer program and the new Michigan taper model. Bids must be at or above the following advertised price for each product and species:

<u>PRODUCTS & SPECIES</u>	<u>ESTIMATED UNITS*</u>	<u>ADVERTISED PRICE</u>
Sawtimber		
Basswood	66.2 MBF	\$ 36.00 / MBF
Black Cherry	107.0 MBF	\$ 61.00 / MBF
Green Ash	31.0 MBF	\$ 23.00 / MBF
Mixed Aspen	1,016.1 MBF	\$ 27.00 / MBF
Paper Birch	3.1 MBF	\$ 27.00 / MBF
Red Maple	6.5 MBF	\$ 33.00 / MBF
Sugar Maple	29.2 MBF	\$ 58.00 / MBF
White Ash	47.8 MBF	\$ 33.00 / MBF
Pulpwood		
Mixed Aspen	3,153 Cords	\$ 11.00 / Cord
Mixed Hardwood	1,149 Cords	\$ 9.10 / Cord

* The total volume is statistically estimated within plus (+) or minus (-) 4.66 percent. There are an estimated 6,985 cords on this timber sale, plus or minus 326 cords at the 95% confidence level. The estimated units are final and not subject to adjustment. Prospective bidders are urged to examine this timber and to make their own estimates of quantity and quality.

BOND AND PAYMENT SCHEDULE:

1. A bond in the amount of \$4,288.00 to insure faithful performance of the conditions of the contract will be deposited by the successful bidder within 21 days of the sale award.
2. Cutting in any sale or unit without the required advance payment would be considered a trespass.
3. Total payment must be paid in advance or according to the following schedule :
 - (a) Ten percent (10%) of the sale value must be paid within 21 days of the sale award.
 - (b) The 10% down payment will be credited towards the first unit cut.
 - (c) Payment for each of the following units must be made before cutting begins in that unit:

PAYMENT UNIT NUMBER	PERCENT OF TOTAL SALE VALUE
01	9.2%
02	14.7%
03	23.7%
04	22.2%
05	16.4%
06	13.8%

4. If no cutting takes place, the 10% down payment will not be refunded.
5. Operations on the contract issued will terminate on 12/31/2024.

SALE STATISTICS

Volumes were calculated in cubic feet using the Michigan taper model. Cubic foot volume includes all wood inside bark for the product indicated. For display purposes, cubic feet were converted to cords and MBF using a simple conversion factor, e.g. 79 cubic feet per cord and 185 cubic feet per MBF. The cubic foot volumes are precise; the cords and MBF volumes are not. Cubic foot volume cannot be directly converted to cords or boards with precision.

SALE VOLUMES

The total estimated sale volume may not equal the sum of the species/products due to the nature of statistical calculations associated with double sampling methodology.

VOLUME			STATISTICAL RANGE IN CORDS	
TOTAL CUBIC FEET	TOTAL CORDS	PERCENT ERROR	MINIMUM	MAXIMUM
551,783	6,985	4.66%	6,659	7,310

VDU VOLUMES

A VDU is a Volume Determination Unit. Volumes and their associated statistics are calculated at the VDU level and summarized to the sale level. There is often a one to one relationship between a VDU and a Payment Unit, but not always, depending on the cruise design. Refer to the VDU TO PAYMENT UNIT table.

	VOLUME			RANGE IN CORDS	
VDU	TOTAL CUBIC FEET	TOTAL CORDS	PERCENT ERROR	MINIMUM	MAXIMUM
1	440,912	5,581	5.35%	5,283	5,880
2	43,314	548	11.41%	486	611
65	12,088	153	44.41%	85	221
117	55,470	702	13.02%	611	794
TOTAL:	551,783	6,985		6,464	7,505

VDU TO PAYMENT UNIT

When a VDU is associated with more than one Payment Unit (PU), the VDU volumes are assigned to the PU based on acres of the VDU within the PU.

VDU	VDU ACRES	PU	PU ACRES
1	90.5	2	5.3
		3	26.5
		4	24.9
		5	18.4
		6	15.4
		2	14.6
2	14.6	2	14.6
65	5.2	2	5.2
117	23.8	1	23.8
TOTAL:	134.1		134.1

DESCRIPTION OF TIMBER BY PAYMENT UNIT (PU)

PU	MARKET GROUP	PRODUCT	QUANTITY	UNIT	ACRES	ADVERTISE PRICE	
1	Green Ash	Sawtimber	11.6	MBF	23.8	\$7,862.50	
	Mixed Aspen		100.2	MBF			
	<i>B. T. Aspen</i>		74.9	<i>MBF</i>			
	<i>Cottonwood</i>		16.5	<i>MBF</i>			
	<i>Quaking Aspen</i>		8.8	<i>MBF</i>			
	Paper Birch	3.1	MBF				
	Mixed Aspen	Pulpwood	250	Cords			
	<i>B. T. Aspen</i>		168	<i>Cords</i>			
	<i>Balsam Poplar</i>		31	<i>Cords</i>			
	<i>Cottonwood</i>		13	<i>Cords</i>			
	<i>Quaking Aspen</i>		38	<i>Cords</i>			
	Mixed Hardwood		226	Cords			
	<i>American Elm</i>		9	<i>Cords</i>			
	<i>Basswood</i>		16	<i>Cords</i>			
	<i>Black Cherry</i>		108	<i>Cords</i>			
	<i>Green Ash</i>		41	<i>Cords</i>			
	<i>Paper Birch</i>		30	<i>Cords</i>			
	<i>Red Maple</i>		22	<i>Cords</i>			
	2		Basswood	Sawtimber			26.4
Black Cherry			17.1		MBF		
Green Ash		19.4	MBF				
Mixed Aspen		141.5	MBF				
<i>B. T. Aspen</i>		40.0	<i>MBF</i>				
<i>Balsam Poplar</i>		19.1	<i>MBF</i>				
<i>Cottonwood</i>		9.5	<i>MBF</i>				
<i>Quaking Aspen</i>		72.9	<i>MBF</i>				
Red Maple		6.5	MBF				
Sugar Maple		1.7	MBF				
White Ash		2.8	MBF				
Mixed Aspen		Pulpwood	347	Cords			
<i>B. T. Aspen</i>			146	<i>Cords</i>			
<i>Balsam Poplar</i>			14	<i>Cords</i>			
<i>Cottonwood</i>			2	<i>Cords</i>			
<i>Quaking Aspen</i>			185	<i>Cords</i>			
Mixed Hardwood			236	Cords			
<i>American Elm</i>			28	<i>Cords</i>			
<i>Basswood</i>			25	<i>Cords</i>			
<i>Black Cherry</i>			31	<i>Cords</i>			
<i>Green Ash</i>			31	<i>Cords</i>			
<i>Ironwood</i>			9	<i>Cords</i>			
<i>Paper Birch</i>			55	<i>Cords</i>			
<i>Red Maple</i>	46		<i>Cords</i>				
<i>Sugar Maple</i>	9	<i>Cords</i>					
<i>White Ash</i>	2	<i>Cords</i>					
3	Basswood	Sawtimber	12.4	MBF	26.5	\$20,308.50	
	Black Cherry		27.9	MBF			
	Mixed Aspen		241.0	MBF			
	<i>B. T. Aspen</i>		200.3	<i>MBF</i>			
	<i>Cottonwood</i>		0.8	<i>MBF</i>			
	<i>Quaking Aspen</i>		39.9	<i>MBF</i>			
	Sugar Maple		8.6	MBF			
	White Ash	14.0	MBF				
	Mixed Aspen	Pulpwood	795	Cords			
	<i>B. T. Aspen</i>		728	<i>Cords</i>			
	<i>Cottonwood</i>		2	<i>Cords</i>			
	<i>Quaking Aspen</i>		65	<i>Cords</i>			

DESCRIPTION OF TIMBER BY PAYMENT UNIT (PU), CON'T

PU	MARKET GROUP	PRODUCT	QUANTITY	UNIT	ACRES	ADVERTISE PRICE			
3 con't	Mixed Hardwood	Pulpwood	214	Cords					
	<i>American Elm</i>		12	<i>Cords</i>					
	<i>Basswood</i>		9	<i>Cords</i>					
	<i>Black Cherry</i>		80	<i>Cords</i>					
	<i>Green Ash</i>		16	<i>Cords</i>					
	<i>Paper Birch</i>		14	<i>Cords</i>					
	<i>Red Maple</i>		30	<i>Cords</i>					
	<i>Sugar Maple</i>		43	<i>Cords</i>					
	<i>White Ash</i>		10	<i>Cords</i>					
	4	Basswood	Sawtimber	11.6			MBF	24.9	\$19,068.60
Black Cherry			26.3	MBF					
Mixed Aspen			226.3	MBF					
<i>B. T. Aspen</i>			188.1	<i>MBF</i>					
<i>Cottonwood</i>			0.7	<i>MBF</i>					
<i>Quaking Aspen</i>			37.5	<i>MBF</i>					
Sugar Maple			8.0	MBF					
White Ash			13.2	MBF					
Mixed Aspen		Pulpwood	747	Cords					
<i>B. T. Aspen</i>			684	<i>Cords</i>					
<i>Cottonwood</i>			2	<i>Cords</i>					
<i>Quaking Aspen</i>			61	<i>Cords</i>					
Mixed Hardwood			200	Cords					
<i>American Elm</i>			11	<i>Cords</i>					
<i>Basswood</i>			9	<i>Cords</i>					
<i>Black Cherry</i>			75	<i>Cords</i>					
<i>Green Ash</i>			15	<i>Cords</i>					
<i>Paper Birch</i>			13	<i>Cords</i>					
<i>Red Maple</i>			28	<i>Cords</i>					
<i>Sugar Maple</i>			40	<i>Cords</i>					
<i>White Ash</i>			9	<i>Cords</i>					
5		Basswood	Sawtimber	8.6	MBF	18.4	\$14,088.50		
		Black Cherry		19.4	MBF				
	Mixed Aspen		167.2	MBF					
	<i>B. T. Aspen</i>		139.0	<i>MBF</i>					
	<i>Cottonwood</i>		0.5	<i>MBF</i>					
	<i>Quaking Aspen</i>		27.7	<i>MBF</i>					
	Sugar Maple		5.9	MBF					
	White Ash		9.7	MBF					
	Mixed Aspen	Pulpwood	552	Cords					
	<i>B. T. Aspen</i>		505	<i>Cords</i>					
	<i>Cottonwood</i>		2	<i>Cords</i>					
	<i>Quaking Aspen</i>		45	<i>Cords</i>					
	Mixed Hardwood		148	Cords					
	<i>American Elm</i>		8	<i>Cords</i>					
	<i>Basswood</i>		6	<i>Cords</i>					
	<i>Black Cherry</i>		55	<i>Cords</i>					
	<i>Green Ash</i>		11	<i>Cords</i>					
	<i>Paper Birch</i>		10	<i>Cords</i>					
	<i>Red Maple</i>		21	<i>Cords</i>					
	<i>Sugar Maple</i>		30	<i>Cords</i>					
	<i>White Ash</i>		7	<i>Cords</i>					
	6	Basswood	Sawtimber	7.2	MBF			15.4	\$11,807.60
		Black Cherry		16.3	MBF				
Mixed Aspen			139.9	MBF					
<i>B. T. Aspen</i>			116.3	<i>MBF</i>					
<i>Cottonwood</i>			0.4	<i>MBF</i>					

DESCRIPTION OF TIMBER BY PAYMENT UNIT (PU), CON'T

PU	MARKET GROUP	PRODUCT	QUANTITY	UNIT	ACRES	ADVERTISE PRICE
6 con't	<i>Quaking Aspen</i>	<i>Sawtimber</i>	23.2	<i>MBF</i>		
	Sugar Maple		5.0	MBF		
	White Ash		8.1	MBF		
	Mixed Aspen		462	Cords		
	<i>B. T. Aspen</i>		423	<i>Cords</i>		
	<i>Cottonwood</i>		1	<i>Cords</i>		
	<i>Quaking Aspen</i>		38	<i>Cords</i>		
	Mixed Hardwood		125	Cords		
	<i>American Elm</i>		7	<i>Cords</i>		
	<i>Basswood</i>		5	<i>Cords</i>		
	<i>Black Cherry</i>		46	<i>Cords</i>		
	<i>Green Ash</i>		10	<i>Cords</i>		
	<i>Paper Birch</i>		8	<i>Cords</i>		
	<i>Red Maple</i>		18	<i>Cords</i>		
	<i>Sugar Maple</i>		25	<i>Cords</i>		
	<i>White Ash</i>		6	<i>Cords</i>		
TOTAL:			1,306.9	MBF		
TOTAL:			4,302	Cords		

Sale Specific Conditions & Requirements

Sale Name: Bigfoot Aspen

Sale Number: 55-138-22 Seq#: 1

1 - Sale Area

1.2 - Boundaries

1.2.1 - Painted boundaries (9/19)

The sale boundary and Payment Unit boundaries are marked and identified by blue and red paint. Exterior sale boundary lines against private property are marked with blue paint. Exterior sale boundary lines against state are marked with red paint. The painted boundary line trees are not Included Timber and are to be protected.

2 - Timber Specifications

2.1 - Included Timber

2.1.1 - Clearcut unit(s) with unmerchantable trees (6/14)

Within Payment Unit(s) 1-6, cut all trees that are two (2) inches or more at DBH, except oak, hickory, white pine, hemlock, apple, beech, and trees marked with green paint. Special protection trees identified in accordance with condition 3.4.2, within clearcutting unit boundaries, are not Included Timber and are to be protected.

2.2 - Utilization

2.2.3 - Stump heights (4/07)

Stump heights within the Sale Area shall not exceed 6 inches for all trees.

2.2.4 - Skidding length (2/14)

Skidding of unlimbed tops is not permissible.

3 - Payments

3.4 - Damaged Timber

3.4.2 - Special Protection Trees (4/14)

The Purchaser shall not cut live or dead special protection trees within cutting units or clearings. Special protection trees are oak, hickory, white pine, hemlock, apple, and green marked trees. If the Purchaser's operations have cut or damaged special protection trees through carelessness, the Purchaser shall pay \$250 as fixed, agreed and liquidated damages for each special protection tree cut or damaged. Such payment does not constitute ownership of the undesignated timber.

3.6 - Payment Unit Cutting Schedule

3.6.2 - One active unit (12/08)

Each Payment Unit must be completed to the satisfaction of the Unit Manager or his/her representative before the next unit may be opened. The Purchaser must give a one week notice before finishing a Payment Unit to allow for inspection.

4 - Transportation

4.1 - Construction

4.1.1 - Stream crossings, general (3/11)

All stream crossing structures will be temporary and therefore, shall be provided by the Purchaser, and must be removed upon completion of the sale. All permits for stream crossings will be provided by the DNR.

4.1.3 - Slash and earthen piles (8/04)

Piles or windrows of earth along roads and landings that have been widened or constructed shall be leveled. Slash from road maintenance or construction, including stumps, shall be dispersed throughout the sale.

4.1.7 - Road closure (10/11)

Any skid trail into the sale must be blocked to vehicle traffic upon completion of the sale. In general, this will require constructing a four (4') foot high berm of stumps and logs covered with earth. These roads must be rendered impassable to cars and trucks. Any vehicle barriers removed prior to beginning operations must be replaced in their original location and in

their original condition. The Purchaser is responsible for supplying any replacement posts, chains, gates, locking posts etc. that are damaged during removal. Contact the sale administrator for specific details of design and placement.

4.1.12 - No new roads (1/12)

No new roads will be permitted in any Payment Unit. All operations are limited to existing skid trails.

4.2 - Maintenance

4.2.4 - Grading (10/16)

For completion of the sale, skid trails and parking areas used to access any Payment Unit must be graded. In general, this will require a bulldozer to shape up the roads after forest products have been hauled off site. This includes cleaning of drainage areas, grading, crowning, and filling with gravel, if necessary. The grading equipment to be used must be approved by the Unit Manager or his/her representative.

The grading equipment to be used must be approved by the Unit Manager or his/her representative.

4.4 - Access

4.4.3 - Access gate (12/08)

The access gate to Payment Unit 6 must be locked at the completion of each day unless otherwise approved by the Unit Manager or his/her representative. Any vehicle barrier posts that are removed must be replaced in their original location. Any damage to the access gate or barrier posts is the responsibility of the Purchaser.

5 - Operations

5.1 - Notification

5.1.1 - Pre-sale conference (10/16)

A pre-sale conference on site between the Purchaser and sale administrator is required prior to beginning any operations to determine landing and road locations. The Unit Manager or his/her representative must be contacted at least 10 days in advance to schedule the conference.

5.2 - Conduct of Operations

5.2.1 - Slash

5.2.1.8 - Slash height (12/08)

No slash or tree tops may exceed 24 inches in height.

5.2.1.10 - No slash in openings (5/10)

No brush or logging debris is to be left in the maintained wildlife opening which is indicated by G0 or U0 on the Timber Sale Map. Any damage to the opening shall be repaired according to specifications of the Unit Manager or his/her representative.

5.2.1.11 - Slash for reforestation (3/21)

To facilitate reforestation, the Sale Area shall be left with slash evenly distributed. Bunched and processed tops within the cutting area shall be broken up and scattered. Stumps shall be cut low to the ground. Processing sites shall not be left with a compacted layer of slash; tops from these sites shall be hauled back into the cut area and scattered.

5.2.2 - Hazard Trees/Snags

5.2.2.1 - Den trees (10/16)

Obvious hollow and/or den trees shall be protected and left standing unless they are a safety hazard. In addition, all standing dead trees shall be protected and left standing unless they are a safety hazard.

5.2.3 - Operating Restrictions

5.2.3.1 - Operating restrictions (9/11)

Within Payment Unit(s) 1-6 cutting, skidding, and hauling are not permitted from March 15 to July 1. At any other time, harvesting is limited to dry or frozen ground conditions. The sale administrator will determine what constitutes dry or frozen ground conditions. This restriction is because of breeding and nesting wildlife and to protect poorly drained soils in throughout the Sale Area.

5.2.3.12 - Hunting operating restriction (1/18)

No Payment Unit may be started during the period of September 29 to October 10 or November 1 to November 30 without permission of the Unit Manager or his/her representative.

5.2.31 - Landing locations (9/13)

The location of landings will be determined in the pre-sale conference. In general, landings are limited to a "T" turnaround which will accommodate a truck with a 50-foot trailer.

5.2.32 - Decking/landing restoration (9/13)

All decking and landing areas must have the surface area restored to a condition equal to or better than before. This is to ensure the proper regeneration of the stand. Wood debris, chips, and "cookies" from trimmings must be removed or scattered away from landing and loading areas and may not be windrowed on the edge.

5.2.37 - No decking areas (12/08)

No decking is allowed in any parking area. Additionally, no equipment storage is permitted in any parking area.

5.2.43 - Opening protection (2/21)

No activities are permitted in openings marked on the Timber Sale Map with the letter "G". Any damage to the openings shall be repaired according to specifications of the Unit Manager or his/her representative.

5.4 - Soil Protection

5.4.1 - Rutting restriction, general (7/16)

Operations are to cease immediately if equipment and weather conditions result in rutting of roads and/or skid trails which is 12 inches or greater in depth and 50 feet in length. The Unit Manager or his/her representative may restrict hauling and/or skidding if ruts exceed the specified depth. With the Unit Manager or his/her representative's approval, the Purchaser may return to the area when the risk of rutting has decreased.

5.4.3 - Erosion control (12/08)

Skid trails or haul roads may require erosion control structures or berms per direction of the Unit Manager or his/her representative.

5.4.4 - Slope protection (9/19)

Skid trails and roads on slopes shall be water barred with slash, stumps, and/or clean straw bales native to the area as soon as use is complete to prevent erosion.

5.4.6 - Wet area protection (5/10)

No harvesting operations, including skidding and felling, are to take place within the vernal pond areas or drainages. When harvesting occurs, there should be no disturbance to the vernal pond depression. All equipment, trees and tops should be kept out of this area. Within 100 feet of the pond, equipment should only be used when the soil is in a dry or frozen condition. Care must be taken by the Purchaser to identify and avoid operating in these areas of the timber sale.

5.7 - Protection of Historical Sites

5.7.2 - Potential historical site(s) (9/06)

The State Historic Preservation Office has identified the potential for a historic site within the boundary of this timber sale. Note that if the site is discovered during operations, General Condition and Requirement 5.7 - Protection of Historical Sites will apply.

7 - Other Conditions

7.10 - Certified Timber

7.10.1 - Non-certified timber (2/16)

The area encompassed by this timber sale is not certified to the standards of the Forest Stewardship Council (FSC) or the Sustainable Forestry Initiative (SFI). Forest products from this sale may not be delivered to the mill as "FSC and / or SFI certified". The lands within this sale are managed as a State Game Area.



TIMBER SALE MAP

This information provided by authority of Part 525, 1994 PA 451, as amended.

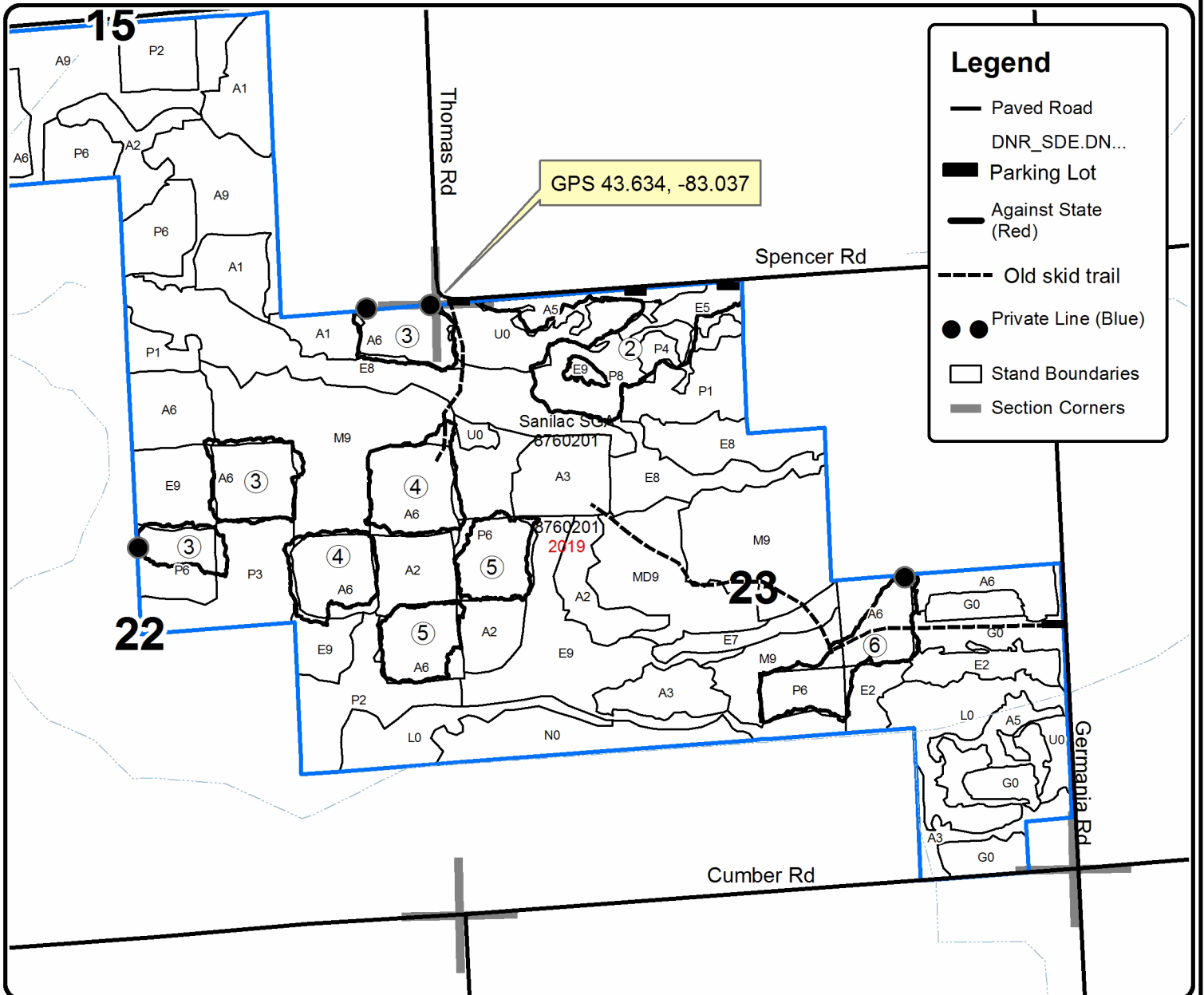
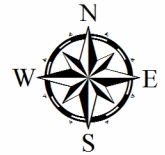
Forest Management Unit Sanilac State Game Area	County Sanilac	Mapped By Bonnette	Date 05/06/2022	Page 1	of 2
Township 14N	Range 12E	Section(s) and Subdivision(s) Sec 10, 11, 22 and 23	Scale 1:15,840		

Cover Type				Density	
A = Aspen	H = Hemlock	N = Marsh	U = Upland Brush	0 = Non Stocked	5 = Pole Timber Medium
B = Paper Birch	J = Jack Pine	O = Oak	UM = Upland Mixed	1 = Seedling Sapling Poor	6 = Pole Timber Well
C = Cedar	L = Lowland Brush	P = Lowland Poplar	V = Bog or Marsh	2 = Seedling Sapling Medium	7 = Saw Timber Poor
D = Treed Bog	LM = Lowland Mixed	Q = Mixed Swamp Conifer	W = White Pine	3 = Seedling Sapling Well	8 = Saw Timber Medium
E = Swamp Hdwoods	M = Mpl, Bch, Brch	R = Red Pine	X = Non Stocked	4 = Pole Timber Poor	9 = Saw Timber Well
F = Spruce Fir	MC = Mixed Conifer	S = Black Spruce	Z = Water		
G = Grass	MD = Mixed Deciduous	T = Tamarack			

PU	Acres	PU	Acres
1	23.8	4	24.9
2	25.1	5	18.4
3	26.5	6	15.4

Bigfoot Aspen

134.1 Acres



Legend

- Paved Road
- DNR_SDE.DN...
- Parking Lot
- Against State (Red)
- - - Old skid trail
- ● Private Line (Blue)
- Stand Boundaries
- Section Corners



TIMBER SALE MAP

This information provided by authority of Part 525, 1994 PA 451, as amended.

Sale Number	Year
55-138-22	2022

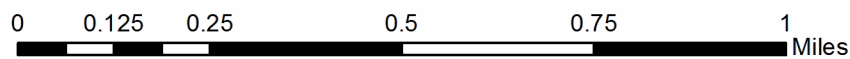
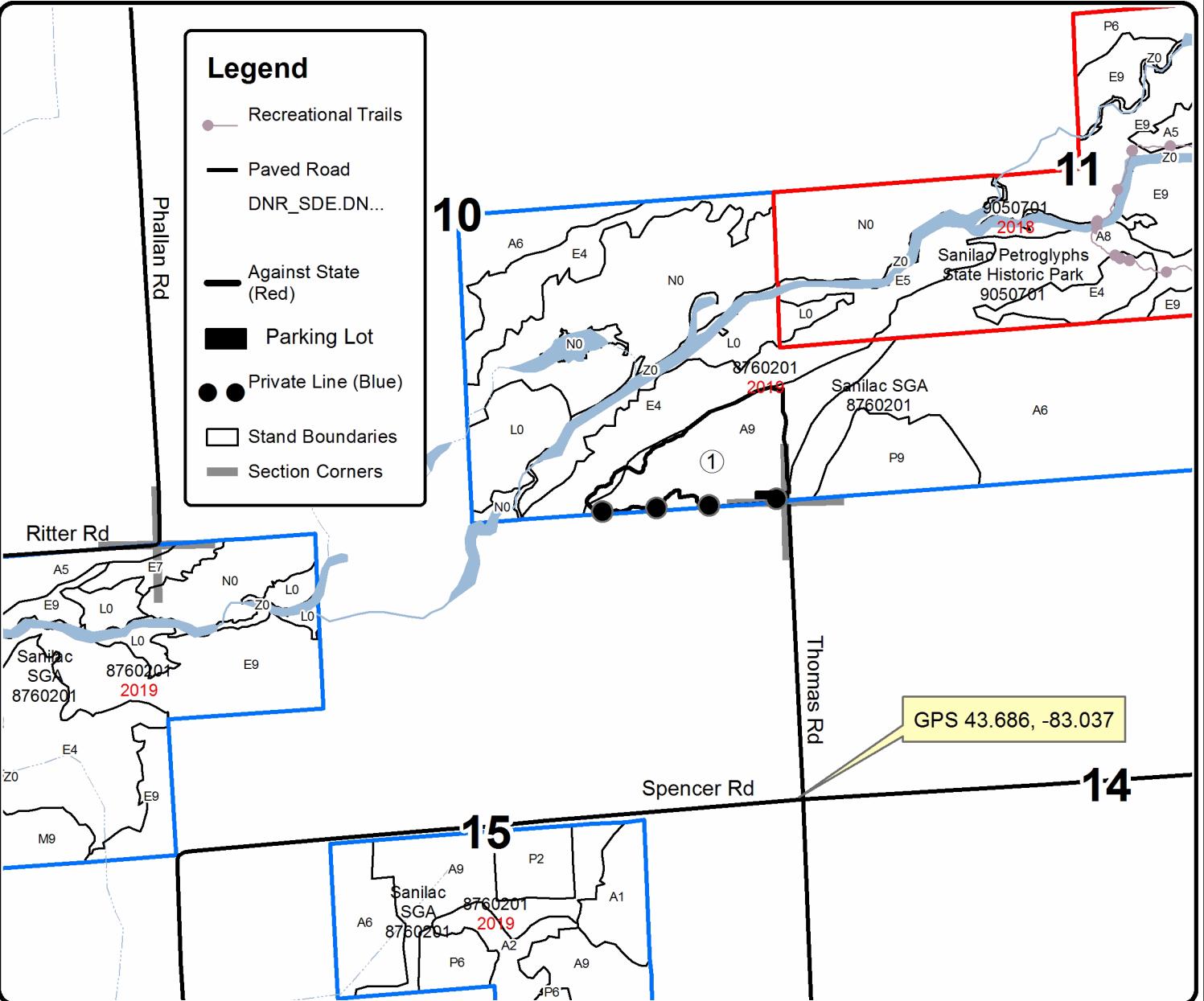
Forest Management Unit	County	Mapped By	Date	Page	of
Sanilac State Game Area	Sanilac	Bonnette	05/06/2022	2	2
Township	Range	Section(s) and Subdivision(s)	Scale		
14N	12E	Sec 10, 11, 22 and 23	1:15,840		

Cover Type				Density	
A = Aspen	H = Hemlock	N = Marsh	U = Upland Brush	0 = Non Stocked	5 = Pole Timber Medium
B = Paper Birch	J = Jack Pine	O = Oak	UM = Upland Mixed	1 = Seedling Sapling Poor	6 = Pole Timber Well
C = Cedar	L = Lowland Brush	P = Lowland Poplar	V = Bog or Marsh	2 = Seedling Sapling Medium	7 = Saw Timber Poor
D = Treed Bog	LM = Lowland Mixed	Q = Mixed Swamp Conifer	W = White Pine	3 = Seedling Sapling Well	8 = Saw Timber Medium
E = Swamp Hdwoods	M = Mpl. Bch, Brch	R = Red Pine	X = Non Stocked	4 = Pole Timber Poor	9 = Saw Timber Well
F = Spruce Fir	MC = Mixed Conifer	S = Black Spruce	Z = Water		
G = Grass	MD = Mixed Deciduous	T = Tamarack			

PU	Acres	PU	Acres
1	23.8	4	24.9
2	25.1	5	18.4
3	26.5	6	15.4

Bigfoot Aspen

134.1 Acres



TIMBER SALE INFORMATION

Chambers Aspen (55-139-22)
 T12N, R09E, SEC. 29; T12N, R09E, SEC. 30.
 Tuscola County (Advertised Price \$82,684.45)

SALE NOTE: All units of volume listed for this sale were estimated using the Inventory Manager computer program and the new Michigan taper model.

Access may be through other public land.

A timber sale contract for this lump sum, sealed bid timber sale will be awarded to the responsible bidder offering the highest sealed bid price. All units of volume listed below were estimated using the Inventory Manager computer program and the new Michigan taper model. Bids must be at or above the following advertised price for each product and species:

<u>PRODUCTS & SPECIES</u>	<u>ESTIMATED UNITS*</u>	<u>ADVERTISED PRICE</u>
Sawtimber		
Black Cherry	36.9 MBF	\$ 61.00 / MBF
Green Ash	1.4 MBF	\$ 29.00 / MBF
Jack Pine	93.9 MBF	\$ 21.00 / MBF
Mixed Aspen	944.6 MBF	\$ 32.00 / MBF
Red Maple	101.9 MBF	\$ 33.00 / MBF
Pulpwood		
Jack Pine	535 Cords	\$ 10.45 / Cord
Mixed Aspen	2,105 Cords	\$ 11.00 / Cord
Mixed Hardwood	1,577 Cords	\$ 10.20 / Cord

* The total volume is statistically estimated within plus (+) or minus (-) 4.46 percent. There are an estimated 6,884 cords on this timber sale, plus or minus 308 cords at the 95% confidence level. The estimated units are final and not subject to adjustment. Prospective bidders are urged to examine this timber and to make their own estimates of quantity and quality.

BOND AND PAYMENT SCHEDULE:

1. A bond in the amount of \$4,134.00 to insure faithful performance of the conditions of the contract will be deposited by the successful bidder within 21 days of the sale award.
2. Cutting in any sale or unit without the required advance payment would be considered a trespass.
3. Total payment must be paid in advance or according to the following schedule :
 - (a) Ten percent (10%) of the sale value must be paid within 21 days of the sale award.
 - (b) The 10% down payment will be credited towards the first unit cut.
 - (c) Payment for each of the following units must be made before cutting begins in that unit:

PAYMENT UNIT NUMBER	PERCENT OF TOTAL SALE VALUE
01	12.1%
02	13.6%
03	16.7%
04	9.9%
05	20.6%
06	27.1%
4. If no cutting takes place, the 10% down payment will not be refunded.
5. Operations on the contract issued will terminate on 12/31/2024.

SALE STATISTICS

Volumes were calculated in cubic feet using the Michigan taper model. Cubic foot volume includes all wood inside bark for the product indicated. For display purposes, cubic feet were converted to cords and MBF using a simple conversion factor, e.g. 79 cubic feet per cord and 185 cubic feet per MBF. The cubic foot volumes are precise; the cords and MBF volumes are not. Cubic foot volume cannot be directly converted to cords or boards with precision.

SALE VOLUMES

The total estimated sale volume may not equal the sum of the species/products due to the nature of statistical calculations associated with double sampling methodology.

VOLUME			STATISTICAL RANGE IN CORDS	
TOTAL CUBIC FEET	TOTAL CORDS	PERCENT ERROR	MINIMUM	MAXIMUM
543,834	6,884	4.46%	6,576	7,192

VDU VOLUMES

A VDU is a Volume Determination Unit. Volumes and their associated statistics are calculated at the VDU level and summarized to the sale level. There is often a one to one relationship between a VDU and a Payment Unit, but not always, depending on the cruise design. Refer to the VDU TO PAYMENT UNIT table.

	VOLUME			RANGE IN CORDS	
VDU	TOTAL CUBIC FEET	TOTAL CORDS	PERCENT ERROR	MINIMUM	MAXIMUM
1	220,088	2,786	6.84%	2,595	2,977
2	48,802	618	13.29%	536	700
3	89,769	1,136	11.35%	1,007	1,265
4	185,175	2,344	7.97%	2,157	2,531
TOTAL:	543,834	6,884		6,295	7,473

VDU TO PAYMENT UNIT

When a VDU is associated with more than one Payment Unit (PU), the VDU volumes are assigned to the PU based on acres of the VDU within the PU.

VDU	VDU ACRES	PU	PU ACRES
1	50.1	1	14.3
		2	16.1
		3	19.7
2	17.7	4	17.7
3	27.7	5	27.7
4	50.8	5	9.0
		6	41.8
TOTAL:	146.3		146.3

DESCRIPTION OF TIMBER BY PAYMENT UNIT (PU)

PU	MARKET GROUP	PRODUCT	QUANTITY	UNIT	ACRES	ADVERTISE PRICE	
1	Black Cherry	Sawtimber	1.6	MBF	14.3	\$10,029.00	
	Mixed Aspen		172.5	MBF			
	<i>B. T. Aspen</i>		172.5	<i>MBF</i>			
	Red Maple		1.8	MBF			
	Mixed Aspen		Pulpwood	289			Cords
	<i>B. T. Aspen</i>			289			<i>Cords</i>
	Mixed Hardwood			115			Cords
	<i>Black Cherry</i>			2			<i>Cords</i>
	<i>Paper Birch</i>			5			<i>Cords</i>
	<i>Red Maple</i>			108			<i>Cords</i>
2	Black Cherry	Sawtimber	1.8	MBF	16.1	\$11,274.00	
	Mixed Aspen		194.3	MBF			
	<i>B. T. Aspen</i>		194.3	<i>MBF</i>			
	Red Maple		2.0	MBF			
	Mixed Aspen		Pulpwood	325			Cords
	<i>B. T. Aspen</i>			325			<i>Cords</i>
	Mixed Hardwood			128			Cords
	<i>Black Cherry</i>			2			<i>Cords</i>
	<i>Paper Birch</i>			5			<i>Cords</i>
	<i>Red Maple</i>			121			<i>Cords</i>
3	Black Cherry	Sawtimber	2.2	MBF	19.7	\$13,819.60	
	Mixed Aspen		237.7	MBF			
	<i>B. T. Aspen</i>		237.7	<i>MBF</i>			
	Red Maple		2.4	MBF			
	Mixed Aspen		Pulpwood	398			Cords
	<i>B. T. Aspen</i>			398			<i>Cords</i>
	Mixed Hardwood			159			Cords
	<i>Black Cherry</i>			3			<i>Cords</i>
	<i>Paper Birch</i>			7			<i>Cords</i>
	<i>Red Maple</i>			149			<i>Cords</i>
4	Black Cherry	Sawtimber	28.0	MBF	17.7	\$8,224.30	
	Mixed Aspen		66.3	MBF			
	<i>B. T. Aspen</i>		66.3	<i>MBF</i>			
	Red Maple		21.7	MBF			
	Mixed Aspen		Pulpwood	174			Cords
	<i>B. T. Aspen</i>			174			<i>Cords</i>
	Mixed Hardwood			173			Cords
	<i>Black Cherry</i>			21			<i>Cords</i>
	<i>Red Maple</i>			152			<i>Cords</i>
	5			Black Cherry			Sawtimber
Green Ash		1.4	MBF				
Jack Pine		93.9	MBF				
Mixed Aspen		67.0	MBF				
<i>B. T. Aspen</i>		52.3	<i>MBF</i>				
<i>Cottonwood</i>		2.8	<i>MBF</i>				
<i>Quaking Aspen</i>		11.9	<i>MBF</i>				
Red Maple		13.1	MBF				
Jack Pine		Pulpwood	535	Cords			
Mixed Aspen			235	Cords			
<i>B. T. Aspen</i>			178	<i>Cords</i>			
<i>Cottonwood</i>			1	<i>Cords</i>			
<i>Quaking Aspen</i>			56	<i>Cords</i>			
Mixed Hardwood			401	Cords			
<i>Black Cherry</i>			48	<i>Cords</i>			
<i>Green Ash</i>			5	<i>Cords</i>			
<i>Red Maple</i>	348	<i>Cords</i>					

DESCRIPTION OF TIMBER BY PAYMENT UNIT (PU), CON'T

PU	MARKET GROUP	PRODUCT	QUANTITY	UNIT	ACRES	ADVERTISE PRICE			
6	Mixed Aspen	Sawtimber	206.8	MBF	41.8	\$22,281.50			
	<i>B. T. Aspen</i>		167.0	<i>MBF</i>					
	<i>Cottonwood</i>		13.2	<i>MBF</i>					
	<i>Quaking Aspen</i>		26.6	<i>MBF</i>					
	Red Maple		60.9	MBF					
	Mixed Aspen	Pulpwood	684	Cords					
	<i>B. T. Aspen</i>		585	<i>Cords</i>					
	<i>Cottonwood</i>		7	<i>Cords</i>					
	<i>Quaking Aspen</i>		92	<i>Cords</i>					
	Mixed Hardwood		601	Cords					
	<i>Black Cherry</i>		79	<i>Cords</i>					
	<i>Red Maple</i>		522	<i>Cords</i>					
	TOTAL:			1,178.7			MBF		
	TOTAL:			4,217			Cords		

Sale Specific Conditions & Requirements

Sale Name: Chambers Aspen

Sale Number: 55-139-22 Seq#: 1

1 - Sale Area

1.2 - Boundaries

1.2.1 - Painted boundaries (9/19)

The sale boundary and Payment Unit boundaries are marked and identified by blue, red, and orange paint. Exterior sale boundary lines against private property are marked with blue paint. Exterior sale boundary lines against state are marked with red or orange paint. Retention patches are marked with red or orange paint; no harvesting activities may occur within these areas. The painted boundary line trees are not Included Timber and are to be protected.

2 - Timber Specifications

2.1 - Included Timber

2.1.1 - Clearcut unit(s) with unmerchantable trees (6/14)

Within Payment Unit(s) 1-6, cut all trees that are two (2) inches or more at DBH, except white pine, hemlock, red pine, white spruce, oak, apple, beech, and trees marked with green paint. Special protection trees identified in accordance with condition 3.4.2, within clearcutting unit boundaries, are not Included Timber and are to be protected. Special protection areas identified in accordance with condition 3.4.3, within clearcutting unit boundaries, are not Included Timber and are to be protected.

2.2 - Utilization

2.2.3 - Stump heights (4/07)

Stump heights within the Sale Area shall not exceed 6 inches for all trees.

2.2.4 - Skidding length (2/14)

Skidding of unlimbed tops is not permissible.

3 - Payments

3.4 - Damaged Timber

3.4.2 - Special Protection Trees (4/14)

The Purchaser shall not cut live or dead special protection trees within cutting units or clearings. Special protection trees are oak, apple, white pine, hemlock, and green marked trees. If the Purchaser's operations have cut or damaged special protection trees through carelessness, the Purchaser shall pay \$200 as fixed, agreed and liquidated damages for each special protection tree cut or damaged. Such payment does not constitute ownership of the undesignated timber.

3.6 - Payment Unit Cutting Schedule

3.6.2 - One active unit (12/08)

Each Payment Unit must be completed to the satisfaction of the Unit Manager or his/her representative before the next unit may be opened.

4 - Transportation

4.1 - Construction

4.1.3 - Slash and earthen piles (8/04)

Piles or windrows of earth along roads and landings that have been widened or constructed shall be leveled. Slash from road maintenance or construction, including stumps, shall be dispersed throughout the sale.

4.1.7 - Road closure (10/11)

Any skid trail into the sale must be blocked to vehicle traffic upon completion of the sale. In general, this will require constructing a four (4') foot high berm of stumps and logs covered with earth. These roads must be rendered impassable to cars and trucks. Any vehicle barriers removed prior to beginning operations must be replaced in their original location and in their original condition. The Purchaser is responsible for supplying any replacement posts, chains, gates, locking posts etc. that are damaged during removal. Contact the sale administrator for specific details of design and placement.

4.1.12 - No new roads (1/12)

No new roads will be permitted in any Payment Unit. All operations are limited to existing skid trails.

4.2 - Maintenance

4.2.4 - Grading (10/16)

For completion of the sale, skid trails and parking areas used to access any Payment Unit must be graded. In general, this will require a bulldozer to shape up the roads after forest products have been hauled off site. This includes cleaning of drainage areas, grading, crowning, and filling with gravel, if necessary. The grading equipment to be used must be approved by the Unit Manager or his/her representative.

4.4 - Access

4.4.3 - Access gate (12/08)

The access gate to Payment Units 1-3 must be placed back in its original location and its original condition if it is removed during operations. Should the Purchaser choose not to remove the gate, the gate must be locked at the end of each day. Other vehicle barriers (boulders, posts, berms, stumps etc.) in any Payment Unit must be replaced in their original locations at the completion of operations. The Purchaser is responsible for any damages to gates, posts and chains and is responsible for supplying any necessary replacements.

5 - Operations

5.1 - Notification

5.1.1 - Pre-sale conference (10/16)

A pre-sale conference between the Purchaser and sale administrator is required prior to beginning any operations to determine landing and road locations. The Unit Manager or his/her representative must be contacted at least 10 days in advance to schedule the conference.

5.2 - Conduct of Operations

5.2.1 - Slash

5.2.1.8 - Slash height (12/08)

No slash or tree tops may exceed 24 inches in height.

5.2.1.10 - No slash in openings (5/10)

No brush or logging debris is to be left in any opening which is indicated by G0 on the Timber Sale Map. Any damage to the opening shall be repaired according to specifications of the Unit Manager or his/her representative.

5.2.1.11 - Slash for reforestation (3/21)

To facilitate reforestation, the Sale Area shall be left with slash evenly distributed. Bunched tops within the cutting area shall be broken up and scattered. Stumps shall be cut low to the ground. Processing sites shall not be left with a compacted layer of slash; tops from these sites shall be hauled back into the cut area and scattered.

5.2.2 - Hazard Trees/Snags

5.2.2.1 - Den trees (10/16)

Obvious hollow and/or den trees shall be protected and left standing unless they are a safety hazard. All standing dead trees and snags must be protected unless they are a safety hazard.

5.2.3 - Operating Restrictions

5.2.3.2 - Operating restrictions (9/11)

Within Payment Unit(s) 1-3 cutting, skidding, and hauling are not permitted during the period of May 1 to July 15. Within Payment Units 4-6 cutting, skidding, and hauling are not permitted during the period of March 10 to July 15. Regardless of Payment Unit, harvesting is limited to dry or frozen ground conditions at any other time. The sale administrator will determine what constitutes dry or frozen ground conditions. This restriction is because of breeding and nesting wildlife, oak wilt prevention and to protect poorly drained soils in Payment Units 4-6.

5.2.3.12 - Hunting operating restriction (1/18)

No Payment Unit may be started during the period of September 25 to October 10 or November 1 to November 30 without permission of the Unit Manager or his/her representative.

5.2.31 - Landing locations (9/13)

The location of landings will be determined in the pre-sale conference. In general, landings are limited to a "T" turnaround which will accommodate a truck with a 50-foot trailer.

5.2.32 - Decking/landing restoration (9/13)

All decking and landing areas must have the surface area restored to a condition equal to or better than before. This is to ensure the proper regeneration of the stand. Wood debris, chips and "cookies" from trimmings must be removed or scattered away from landing and loading areas and may not be windrowed on the edge.

5.2.37 - No decking areas (12/08)

No decking is allowed in any designated parking areas. Additionally, no equipment storage is allowed in any designated parking area.

5.4 - Soil Protection

5.4.1 - Rutting restriction, general (7/16)

Operations are to cease immediately if equipment and weather conditions result in rutting of roads and/or skid trails which is 12 inches or greater in depth and 50 feet in length. The Unit Manager or his/her representative may restrict hauling and/or skidding if ruts exceed the specified depth. With the Unit Manager or his/her representative's approval, the Purchaser may return to the area when the risk of rutting has decreased.

5.4.6 - Wet area protection (5/10)

No harvesting operations, including skidding and felling, are to take place within the vernal pond areas or drainages. When harvesting occurs, there should be no disturbance to the vernal pond depression. All equipment, trees and tops should be kept out of this area. Within 100 feet of the pond, equipment should only be used when the soil is in a dry or frozen condition. Care must be taken by the Purchaser to identify and avoid operating in these areas of the timber sale.

5.7 - Protection of Historical Sites

5.7.2 - Potential historical site(s) (9/06)

The State Historic Preservation Office has identified the potential for a historic site within the boundary of this timber sale. Note that if the site is discovered during operations, General Condition and Requirement 5.7 - Protection of Historical Sites will apply.

7 - Other Conditions

7.10 - Certified Timber

7.10.1 - Non-certified timber (2/16)

The area encompassed by this timber sale is not certified to the standards of the Forest Stewardship Council (FSC) or the Sustainable Forestry Initiative (SFI). Forest products from this sale may not be delivered to the mill as "FSC and / or SFI certified". The lands within this sale are managed as a State Game Area.

99 - Unique

SKIP

99.1 - Unique Sale Condition (5/19)

No operating feller bunchers in any Payment Unit before 7 AM and after 9 PM daily. This is required due to the proximity of residences to the Sale Area.



TIMBER SALE MAP

This information provided by authority of Part 525, 1994 PA 451, as amended.

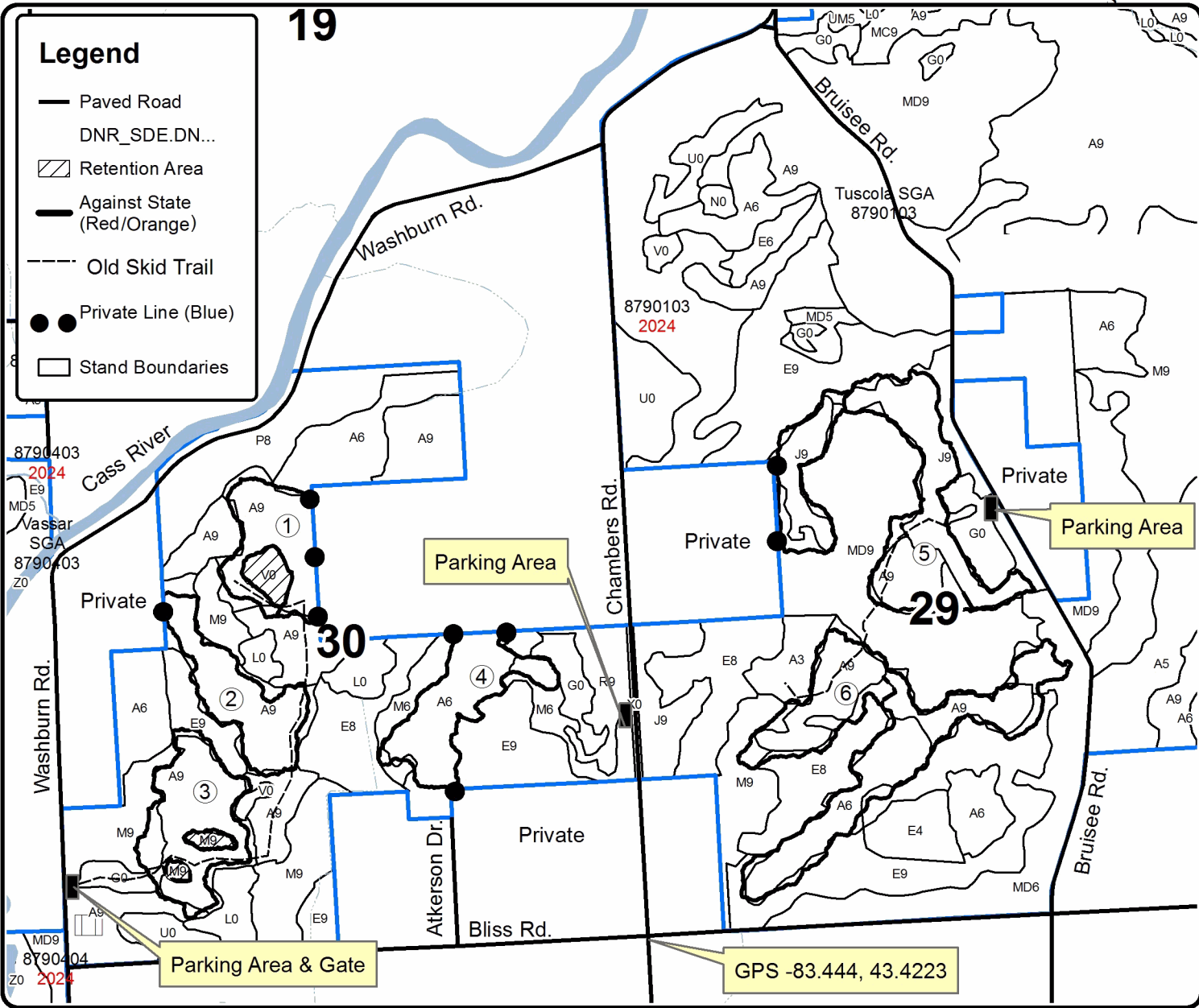
Forest Management Unit Tuscola State Game Area	County Tuscola	Mapped By DJ Bonnette	Date 03/29/2022	Page 1	of 1
Township 12N	Range 09E	Section(s) and Subdivision(s) Sec 29 E1/2NW,NWNE,SW,NWSE; Sec. 30 E1/2NW,SW,N1/2SE	Scale 1:15,840		

Cover Type				Density	
A = Aspen	H = Hemlock	N = Marsh	U = Upland Brush	0 = Non Stocked	5 = Pole Timber Medium
B = Paper Birch	J = Jack Pine	O = Oak	UM = Upland Mixed	1 = Seedling Sapling Poor	6 = Pole Timber Well
C = Cedar	L = Lowland Brush	P = Lowland Poplar	V = Bog or Marsh	2 = Seedling Sapling Medium	7 = Saw Timber Poor
D = Treed Bog	LM = Lowland Mixed	Q = Mixed Swamp Conifer	W = White Pine	3 = Seedling Sapling Well	8 = Saw Timber Medium
E = Swamp Hdwoods	M = Mpl, Bch, Brch	R = Red Pine	X = Non Stocked	4 = Pole Timber Poor	9 = Saw Timber Well
F = Spruce Fir	MC = Mixed Conifer	S = Black Spruce	Z = Water		
G = Grass	MD = Mixed Deciduous	T = Tamarack			

PU	Acres	PU	Acres
1	14.3	4	17.7
2	16.1	5	36.7
3	19.7	6	41.8

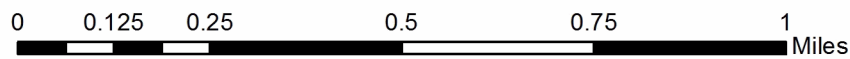
Chambers Aspen

146.3 Acres



Legend

- Paved Road
- DNR_SDE.DN...
- Retention Area
- Against State (Red/Orange)
- Old Skid Trail
- Private Line (Blue)
- Stand Boundaries



Hi-Lo Aspen (55-137-22)
T13N, R11E, SEC. 31; T13N, R11E, SEC. 33; Tuscola COUNTY

In response to the notice of sale to be held 10:00 a.m. (local time) on July 15, 2022, I am hereby submitting my sealed bid (firm offer) for the following forest products to be cut. Bids for individual species must be at or above the advertised price. All non-responsive bid forms may be rejected.

<u>PRODUCTS & SPECIES</u>	<u>ESTIMATED VOLUME*</u>	<u>ADVERTISED PRICE</u>	<u>BID PRICE/UNIT</u>
Sawtimber			
Mixed Aspen	466.4 MBF	\$ 32.00/MBF	\$ _____
Red Maple	104.4 MBF	\$ 34.00/MBF	\$ _____
Pulpwood			
Mixed Aspen	1,203 Cords	\$ 11.00/Cord	\$ _____
Mixed Hardwood	1,193 Cords	\$ 9.90/Cord	\$ _____

*The volumes are statistically estimated within plus (+) or minus (-) 6.44 percent at 95% confidence level. These estimated volumes are final and not subject to adjustment. Prospective bidders are urged to examine this timber and to make their own estimates of quantity and quality.

I understand that any or all bids may be rejected. All bids must be signed and all bid items must be bid or the bid form may be rejected. I also understand that consideration and awarding a contract will be based upon my past performance and ability to complete the contract based upon equipment and staffing subject to my control.

FEDERAL ID: _____ or SOCIAL SECURITY NUMBER: _____

Company or individual bidding: _____

Company representative's name: _____

Address: _____

City: _____ State: _____ Zip: _____

IF AVAILABLE, PLEASE PLACE THE PERSONALIZED LABEL FROM YOUR PROSPECTUS IN THE ABOVE BOX.

Individual or company representative's signature: _____ Date: _____

Phone number : _____ Email (optional): _____

THE WINNING BIDDER MUST COMPLETE THE VERIFICATION OF WORKER'S DISABILITY COMPENSATION ACT COMPLIANCE (ON REVERSE SIDE IF DOUBLE SIDED) WITHIN 21 DAYS OF SALE AWARD DATE



TIMBER SALE VERIFICATION OF WORKER'S DISABILITY COMPENSATION ACT COMPLIANCE

As required by Act 317, P.A. 1969 (Worker's Compensation) and
Part 5 of Act 451 of 1994, as amended.

FOR DEPARTMENT USE ONLY	
Sale Number (XX - XXX - XX - XX)	
Forest Management Unit:	

VERIFICATION OF WORKER'S DISABILITY COMPENSATION ACT COMPLIANCE

- This verification must be completed and submitted within 21 days of contract award and prior to the issuance of the timber sale contract.
- In addition, if boxes 2B or 2C are checked, then Notice of Exclusion or Certificate of Insurance must be submitted within twenty-one (21) days of the contract award and prior to the issuance of the timber sale contract.
- All information must be typed or printed except for written signatures.

Please Check Appropriate Categories:

1. My business is organized as (you **must** check one of the boxes below):
 - A. Sole Proprietorship (individual)
 - B. Partnership
 - C. Corporation
2. You **must** check one of the boxes below:
 - A. I certify my business is a sole proprietorship and it has no employees but the sole proprietor. I am not subject to the Worker's Compensation Laws.
 - B. I certify my business has satisfied its obligation to the Worker's Compensation Act through the use of an approved Notice of Exclusion (BWC-337, Rev. 5/96). I will provide a copy of the Notice of Exclusion within 21 days of the contract award. (For questions or a copy of the BWC-337, please call the Worker's Compensation Bureau at 517-322-1195).
 - C. I certify my business has a Worker's Compensation Policy. I will provide an original Certificate of Insurance within twenty-one (21) days of the contract award.
3. If you have checked item 2(A) or 2(B), you **must** indicate the number of **both** full-time and part-time employees, other than yourself, including family members and active partners (if none, you must enter "0").

_____ Full-time Employees

_____ Part-time Employees

Name of Business		Federal ID (or) Social Security No.	
Address		Telephone ()	
City	State	ZIP	

I hereby certify that the above information is true and correct. I agree to notify the Michigan DNR of any changes that occur in factors affecting my coverage during any of my present and future operations.

Signature of Owner or Authorized Representative

Title

Date

Please complete the "SEALED BID" information on the next page

Bigfoot Aspen (55-138-22)

T14N, R12E, SEC. 10; T14N, R12E, SEC. 11; T14N, R12E, SEC. 22; T14N, R12E,

In response to the notice of sale to be held 10:00 a.m. (local time) on July 15, 2022, I am hereby submitting my sealed bid (firm offer) for the following forest products to be cut. Bids for individual species must be at or above the advertised price. All non-responsive bid forms may be rejected.

<u>PRODUCTS & SPECIES</u>	<u>ESTIMATED VOLUME*</u>	<u>ADVERTISED PRICE</u>	<u>BID PRICE/UNIT</u>
Sawtimber			
Basswood	66.2 MBF	\$ 36.00/MBF	\$ _____
Black Cherry	107.0 MBF	\$ 61.00/MBF	\$ _____
Green Ash	31.0 MBF	\$ 23.00/MBF	\$ _____
Mixed Aspen	1,016.1 MBF	\$ 27.00/MBF	\$ _____
Paper Birch	3.1 MBF	\$ 27.00/MBF	\$ _____
Red Maple	6.5 MBF	\$ 33.00/MBF	\$ _____
Sugar Maple	29.2 MBF	\$ 58.00/MBF	\$ _____
White Ash	47.8 MBF	\$ 33.00/MBF	\$ _____
Pulpwood			
Mixed Aspen	3,153 Cords	\$ 11.00/Cord	\$ _____
Mixed Hardwood	1,149 Cords	\$ 9.10/Cord	\$ _____

*The volumes are statistically estimated within plus (+) or minus (-) 4.66 percent at 95% confidence level. These estimated volumes are final and not subject to adjustment. Prospective bidders are urged to examine this timber and to make their own estimates of quantity and quality.

I understand that any or all bids may be rejected. All bids must be signed and all bid items must be bid or the bid form may be rejected. I also understand that consideration and awarding a contract will be based upon my past performance and ability to complete the contract based upon equipment and staffing subject to my control.

FEDERAL ID: _____ or SOCIAL SECURITY NUMBER: _____

Company or individual bidding: _____

Company representative's name: _____

Address: _____

City: _____ State: _____ Zip: _____

IF AVAILABLE, PLEASE PLACE THE PERSONALIZED LABEL FROM YOUR PROSPECTUS IN THE ABOVE BOX.

Individual or company representative's signature: _____ Date: _____

Phone number : _____ Email (optional): _____

THE WINNING BIDDER MUST COMPLETE THE VERIFICATION OF WORKER'S DISABILITY COMPENSATION ACT COMPLIANCE (ON REVERSE SIDE IF DOUBLE SIDED) WITHIN 21 DAYS OF SALE AWARD DATE



TIMBER SALE VERIFICATION OF WORKER'S DISABILITY COMPENSATION ACT COMPLIANCE

As required by Act 317, P.A. 1969 (Worker's Compensation) and
Part 5 of Act 451 of 1994, as amended.

FOR DEPARTMENT USE ONLY	
Sale Number (XX - XXX - XX - XX)	
Forest Management Unit:	

VERIFICATION OF WORKER'S DISABILITY COMPENSATION ACT COMPLIANCE

- This verification must be completed and submitted within 21 days of contract award and prior to the issuance of the timber sale contract.
- In addition, if boxes 2B or 2C are checked, then Notice of Exclusion or Certificate of Insurance must be submitted within twenty-one (21) days of the contract award and prior to the issuance of the timber sale contract.
- All information must be typed or printed except for written signatures.

Please Check Appropriate Categories:

1. My business is organized as (you **must** check one of the boxes below):
 - A. Sole Proprietorship (individual)
 - B. Partnership
 - C. Corporation
2. You **must** check one of the boxes below:
 - A. I certify my business is a sole proprietorship and it has no employees but the sole proprietor. I am not subject to the Worker's Compensation Laws.
 - B. I certify my business has satisfied its obligation to the Worker's Compensation Act through the use of an approved Notice of Exclusion (BWC-337, Rev. 5/96). I will provide a copy of the Notice of Exclusion within 21 days of the contract award. (For questions or a copy of the BWC-337, please call the Worker's Compensation Bureau at 517-322-1195).
 - C. I certify my business has a Worker's Compensation Policy. I will provide an original Certificate of Insurance within twenty-one (21) days of the contract award.
3. If you have checked item 2(A) or 2(B), you **must** indicate the number of **both** full-time and part-time employees, other than yourself, including family members and active partners (if none, you must enter "0").

_____ Full-time Employees

_____ Part-time Employees

Name of Business		Federal ID (or) Social Security No.	
Address		Telephone ()	
City	State	ZIP	

I hereby certify that the above information is true and correct. I agree to notify the Michigan DNR of any changes that occur in factors affecting my coverage during any of my present and future operations.

Signature of Owner or Authorized Representative

Title

Date

Please complete the "SEALED BID" information on the next page

Chambers Aspen (55-139-22)
T12N, R09E, SEC. 29; T12N, R09E, SEC. 30; Tuscola COUNTY

In response to the notice of sale to be held 10:00 a.m. (local time) on July 15, 2022, I am hereby submitting my sealed bid (firm offer) for the following forest products to be cut. Bids for individual species must be at or above the advertised price. All non-responsive bid forms may be rejected.

<u>PRODUCTS & SPECIES</u>	<u>ESTIMATED VOLUME*</u>	<u>ADVERTISED PRICE</u>	<u>BID PRICE/UNIT</u>
Sawtimber			
Black Cherry	36.9 MBF	\$ 61.00/MBF	\$ _____
Green Ash	1.4 MBF	\$ 29.00/MBF	\$ _____
Jack Pine	93.9 MBF	\$ 21.00/MBF	\$ _____
Mixed Aspen	944.6 MBF	\$ 32.00/MBF	\$ _____
Red Maple	101.9 MBF	\$ 33.00/MBF	\$ _____
Pulpwood			
Jack Pine	535 Cords	\$ 10.45/Cord	\$ _____
Mixed Aspen	2,105 Cords	\$ 11.00/Cord	\$ _____
Mixed Hardwood	1,577 Cords	\$ 10.20/Cord	\$ _____

*The volumes are statistically estimated within plus (+) or minus (-) 4.46 percent at 95% confidence level. These estimated volumes are final and not subject to adjustment. Prospective bidders are urged to examine this timber and to make their own estimates of quantity and quality.

I understand that any or all bids may be rejected. All bids must be signed and all bid items must be bid or the bid form may be rejected. I also understand that consideration and awarding a contract will be based upon my past performance and ability to complete the contract based upon equipment and staffing subject to my control.

FEDERAL ID: ____ - ____ - ____ or SOCIAL SECURITY NUMBER: ____ - ____ - ____

Company or individual bidding: _____

Company representative's name: _____

Address: _____

City: _____ State: _____ Zip: _____

IF AVAILABLE, PLEASE PLACE THE PERSONALIZED LABEL FROM YOUR PROSPECTUS IN THE ABOVE BOX.

Individual or company representative's signature: _____ Date: _____

Phone number : _____ Email (optional): _____

THE WINNING BIDDER MUST COMPLETE THE VERIFICATION OF WORKER'S DISABILITY COMPENSATION ACT COMPLIANCE (ON REVERSE SIDE IF DOUBLE SIDED) WITHIN 21 DAYS OF SALE AWARD DATE



FOR DEPARTMENT USE ONLY
Sale Number (XX - XXX - XX - XX)
Forest Management Unit:

TIMBER SALE VERIFICATION OF WORKER'S DISABILITY COMPENSATION ACT COMPLIANCE

*As required by Act 317, P.A. 1969 (Worker's Compensation) and
Part 5 of Act 451 of 1994, as amended.*

VERIFICATION OF WORKER'S DISABILITY COMPENSATION ACT COMPLIANCE

- This verification must be completed and submitted within 21 days of contract award and prior to the issuance of the timber sale contract.
- In addition, if boxes 2B or 2C are checked, then Notice of Exclusion or Certificate of Insurance must be submitted within twenty-one (21) days of the contract award and prior to the issuance of the timber sale contract.
- All information must be typed or printed except for written signatures.

Please Check Appropriate Categories:

1. My business is organized as (you **must** check one of the boxes below):
 - A. Sole Proprietorship (individual)
 - B. Partnership
 - C. Corporation

2. You **must** check one of the boxes below:
 - A. I certify my business is a sole proprietorship and it has no employees but the sole proprietor. I am not subject to the Worker's Compensation Laws.
 - B. I certify my business has satisfied its obligation to the Worker's Compensation Act through the use of an approved Notice of Exclusion (BWC-337, Rev. 5/96). I will provide a copy of the Notice of Exclusion within 21 days of the contract award. (For questions or a copy of the BWC-337, please call the Worker's Compensation Bureau at 517-322-1195).
 - C. I certify my business has a Worker's Compensation Policy. I will provide an original Certificate of Insurance within twenty-one (21) days of the contract award.

3. If you have checked item 2(A) or 2(B), you **must** indicate the number of **both** full-time and part-time employees, other than yourself, including family members and active partners (if none, you must enter "0").

_____ Full-time Employees

_____ Part-time Employees

Name of Business		Federal ID (or) Social Security No.	
Address		Telephone ()	
City	State	ZIP	

I hereby certify that the above information is true and correct. I agree to notify the Michigan DNR of any changes that occur in factors affecting my coverage during any of my present and future operations.

Signature of Owner or Authorized Representative

Title

Date

Please complete the "SEALED BID" information on the next page