



**DEPARTMENT OF NATURAL RESOURCES
STATE OF MICHIGAN**

TIMBER SALE PROSPECTUS #7031

SCHEDULED SALE DATE AND TIME: 9:00 a.m. (local time) on March 4, 2022.

LOCATION: GAYLORD MGMT UNIT, 1732 WEST M 32, GAYLORD, MI 49735.

PROSPECTUS NOTE: All bid openings for the Gaylord Management Unit (Gaylord Field Office and Indian River Field Office) will be held at the Gaylord Field Office regardless of sale location within the unit. All payments and contract executions will now be handled through the Gaylord Field Office. The Indian River Field Office will no longer accept payments or hard paper copies of timber sale bids. Payments for all contracts, use permits, bonds, etc. should be sent to the Gaylord Field Office.

The bidder is advised to inspect the sale area and review the location, estimated volumes, operating costs and contract terms of proposed sales. Please be aware that some landowners may request 60 days or more notice for access across their land.

Two-Track Mind Mix (52-119-21) / T34N, R03W, SEC. 11, N1/2NW, SENW, NWNE, E1/2SW.

T34N, R03W, SEC. 2, S1/2SW.

Cheboygan County, Advertised Price \$34,590.55, 90.8 Acres, Hardwood, Jack Pine.

SALE NOTE: All units of volume listed for this sale were estimated using the Inventory Manager computer program and the new Michigan taper model.

- See sale spec 5.2.3.4 for information on oak wilt restrictions.
- See sale spec 5.2.3.1 for information on snow-off conditions.
- See sale spec 2.2.3, 5.2.1.8, and 5.2.1.11 for information on stump heights and slash treatment requirements.

A recreation site such as a trail, pathway, or campground is within the sale area or the vicinity. Certain restrictions/specifications may be applicable including time restrictions.

Roberts Lake Mix (52-125-21) / T35N, R02W, SEC. 28, NW, NENE, S1/2NE, SW, N1/2SE.

T35N, R02W, SEC. 29, SENE, E1/2SE.

Cheboygan County, Advertised Price \$63,617.85, 107.6 Acres, Aspen, Red Pine.

SALE NOTE: All units of volume listed for this sale were estimated using the Inventory Manager computer program and the new Michigan taper model.

- See sale spec 5.2.3.5 for information on oak wilt requirements.
- Sale area has good access.

Scrupulous Aspen (52-127-21) / T36N, R01W, SEC. 30, SENW,NE.

Cheboygan County, Advertised Price \$61,236.15, 63.7 Acres, Aspen, Hardwood.

SALE NOTE: All units of volume listed for this sale were estimated using the Inventory Manager computer program and the new Michigan taper model.

- See sale spec 5.2.3.1 for information on seasonal operational restrictions.

- See sale spec 8.3.2 for information on optional Payment Unit.

All Reddy Pine and Hardwood (52-129-21) / T34N, R03W, SEC. 20, SWNW.

Cheboygan County, Advertised Price \$56,240.20, 36.4 Acres, Red Pine, Hardwood.

SALE NOTE: All units of volume listed for this sale were estimated using the Inventory Manager computer program and the new Michigan taper model.

- See sale spec 5.2.3.3 for information on bark slip restrictions.

- See sale spec 2.2.4 for information on tree skidding requirements.

BID INSTRUCTIONS (VER. 07/02/2018):

1. Scheduled Bid Location, Date, and Time (2/11)

Bids must be received by the Unit Manager, GAYLORD OFFICE, 1732 West M 32, Gaylord, MI 49735, no later than 9:00 a.m. (local time) on March 4, 2022. For further information concerning this sale, contact Lucas Merrick at 989-732-3541 extension 5440.

2. Bidder's Qualifications (5/16)

Purchaser shall obtain workers compensation insurance to cover claims under Michigan's Worker's Disability Compensation Act of 1969 or similar employee benefit act of any other state applicable to an employee. If all or part of a timber sale was prepared by a private contractor, the contractor and that contractor's company are not permitted to bid on the timber sale contract. Bids will not be accepted from individuals or companies appearing on the DNR/FRD No-Bid List. This list contains the names of purchasers who previously failed to execute a contract within 21-days or who have a history of poor performance.

3. Preparation of Sealed Bids (5/16)

Bid Forms may be completed online thru Michigan DNR Timber Sale Online Bidding (OLB) at www.michigan.gov/timberbidding or by completing the hardcopy Bid Form found in the Timber Sale Prospectus. Hardcopy Bid Forms shall be manually signed in ink. Registration in OLB is considered your 'signature' for all bids submitted thru that system. Bid prices must be entered for each species and product in the Bid Price column for all material subject to bidding and all fill-in blanks must be completed. If erasures or other changes appear on the hardcopy Bid Form, each erasure or change must be initialed by the person signing the bid.

4. Submission of Sealed Bids (5/16)

Bid forms may be obtained from the Unit Manager or thru OLB. Bids may be submitted hardcopy or thru OLB. All hardcopy bids must be submitted on the bid form and in an envelope clearly identified as described in this section. NOTE: Only one bid form per bid envelope. Sealed bids must be submitted to the Unit office designated in the prospectus and must be submitted at or prior to the time established in the prospectus. The envelope should show on the outside (a) the sale name or number and (b) the date and time of bid opening, as shown in the prospectus. Bids received after the time specified in the sale prospectus are late bids and will be rejected.

It is possible for a bidder to submit multiple bids on a single sale. For example, a bid may be submitted hardcopy and a bid may be submitted thru OLB. Or, two bidders from the same company could both submit bids on the same sale. If this were to happen, the State would accept all bids received and award the contract accordingly. All bidding and contractual requirements would apply to all bids received.

5. Public Opening of Sealed Bids (7/16)

If conditions permit, the sealed bids will be publicly opened and posted at the time and place set in the prospectus.

If a bidder, present at a bid opening, has submitted bids on more than one sale, that bidder may withdraw their unopened bid envelopes or announce the withdrawal of their online bid after being declared the successful bidder on one sale.

6. Award of Contract (1/11)

Award of the contract will be made to the Bidder whose bid, conforming to the prospectus, is most advantageous to the State of Michigan on the basis of total value at rates bid for the estimated quantities. The State reserves the right to reject any bid or waive any minor irregularity in bids received. A written award mailed (or otherwise furnished) to the successful Bidder shall be deemed to result in a binding contract without further action by either party.

7. Down Payment (1/11)

The Bidder to whom award is made must make a down payment within 21 days of the sale award. The amount of the down payment will be calculated as shown in the Bond and Payment Schedule of this prospectus. Only cash may be used to meet this requirement.

8. Performance Security (1/11)

As guarantee of faithful performance, a cash bond, certificate of deposit, surety bond or irrevocable letter of credit (LOC) is required within 21 days of the sale award. The amount of the performance security is shown in the Bond and

Payment Schedule of this prospectus. If an LOC or surety is used, the coverage must extend for at least 6 months beyond the contract expiration.

9. Timber Sale Contract (7/18)

Additional conditions and requirements common to all timber sales are listed on the timber sale contract (R4031) and are available on line at www.michigan.gov/timber. Contact the Unit Manager for additional information or a sample contract. Within 21 days of the date of the award letter, the bidder must sign the contract and provide the required down payment, performance security, and verification of worker's disability compensation. The down payment and performance security shall be in accordance with the provisions of the timber sale contract, in the sums stated in this prospectus. If these actions are not taken, then the Bidder, the Bidder's corporation, and the corporation's principals may not be permitted to bid on State timber sales for a period of 3 months after the first offense, 6 months after the second offense, and 1 year after the third offense. An offense will only be counted against the Bidder for 5 years. In addition, the Bidder certifies that if awarded this contract, the Bidder will complete the timber sale contract in accordance with its terms and any modifications thereof including requirements to purchase, cut, and remove the included timber by the expiration date.

Payment Unit values in the State Forest Timber Sale Contract are calculated based on the advertised value of the Payment Unit as a percentage of the total advertised value of the contract. The advertised value of each Payment Unit is given in the Description of Timber by Payment Unit table on the Timber Sale Information page. For example, if the value of Payment Unit 1 is advertised as \$1,500 and the total Timber Sale value is advertised as \$10,000, the contract price for Payment Unit 1 will be 15% of the total bid price ($\$1,500/\$10,000 * 100$).

10. Disclaimer of Estimates and Bidder's Warranty of Inspection (7/16)

Before submitting this bid, the Bidder is advised and cautioned to inspect the sale area, review the requirements of the sale contract, and take other steps as may be reasonably necessary to ascertain the location, estimated volumes, construction estimates, and operating costs of the proposed sale. Failure to do so will not relieve the Bidder from responsibility for completing the contract.

The Bidder warrants that this bid is submitted solely on the basis of the Bidder's examination and inspection of the quality and quantity of the timber offered for sale and the Bidder's opinion of the value thereof and the costs of recovery. No reliance should be placed on the State of Michigan's estimates of timber quality, quantity or costs of recovery. Bidder further acknowledges that the State of Michigan: (i) expressly disclaims any warranty of fitness of timber for any purpose; (ii) offers this timber as is without any warranty of quality (merchantability) or quantity and (iii) expressly disclaims any warranty as to the quantity or quality of timber sold.

11. Certification and Chain-of-Custody (10/14)

Unless otherwise indicated in the contract under section 7 – Other Conditions of the Sale Specific Conditions & Requirements, the area encompassed by this timber sale is certified to the standards of the Forest Stewardship Council (FSC) - Certificate #SCS-FM/COC-00090N and the Sustainable Forestry Initiative (SFI) - Certificate #NSF-SFIS-5Y031-SF5. Forest products from this sale may be delivered to the mill as "FSC 100% and / or SFI certified" as long as the contractor hauling the forest products is chain-of-custody (COC) certified or covered under a COC certificate from the destination mill. The purchaser is responsible for maintaining COC after leaving the sale area.

12. Good Neighbor Authority (GNA) Requirements (7/16)

If the name of this timber sales contains the acronym GNA, it is authorized by the Good Neighbor Authority (GNA) and covered by various agreements between the U.S. Forest Service and the State. The timber sale occurs on federal land and the following conditions apply:

GNA contracts on US Forest Service land will not be awarded to purchasers on the Federal list of excluded parties. The System for Award Management (SAM) will be checked for active excluded parties prior to award of contract. In addition, the Bidder to whom award is made must complete an Assurance Regarding Felony Conviction or Tax Delinquent Status for Corporate Applicants (AD-3031).

13. Good Neighbor Authority (GNA) Requirements, con't (9/16)

Bidder certifies, by signing this bid form, that to the best of Bidder's knowledge that the following representations are accurate and complete.

- a. That the Bidder and its principals are not presently debarred, suspended, proposed for debarment, declared ineligible, or voluntary excluded from timber sales (covered transactions) by any Federal department or agency.
- b. That the Bidder and its principals have not within a 3-year period preceding this bid been convicted of or had a civil judgment rendered against them for commission of fraud or a criminal offense in connection with obtaining , attempting to obtain, or performing a public (Federal, State, or local) transaction or contract under a public transaction; violation of Federal or State antitrust statutes or commission of embezzlement, theft, forgery, bribery, falsification or destruction of records, making false statements, or receiving stolen property.
- c. That the Bidder and its principals are not presently indicted for or otherwise criminally or civilly charged by a governmental entity (Federal, State, or local) with commission of any of the offenses enumerated in paragraph b of this certification.
- d. That the Bidder and its principals have not within a 3-year period preceding this bid had one or more public transactions (Federal, State, or local) terminated for breach or default of a timber or forest product contract.

Bidders that cannot certify this requirement, in whole or in part, shall submit an explanation with their bid.

DAN EICHINGER
Director

TIMBER SALE INFORMATION

Two-Track Mind Mix (52-119-21)
 T34N, R03W, SEC. 11; T34N, R03W, SEC. 2.
 Cheboygan County (Advertised Price \$34,590.55)

SALE NOTE: All units of volume listed for this sale were estimated using the Inventory Manager computer program and the new Michigan taper model.

- See sale spec 5.2.3.4 for information on oak wilt restrictions.
- See sale spec 5.2.3.1 for information on snow-off conditions.
- See sale spec 2.2.3, 5.2.1.8, and 5.2.1.11 for information on stump heights and slash treatment requirements.

A recreation site such as a trail, pathway, or campground is within the sale area or the vicinity. Certain restrictions/specifications may be applicable including time restrictions.

A timber sale contract for this lump sum, sealed bid timber sale will be awarded to the responsible bidder offering the highest sealed bid price. All units of volume listed below were estimated using the Inventory Manager computer program and the new Michigan taper model. Bids must be at or above the following advertised price for each product and species:

<u>PRODUCTS & SPECIES</u>	<u>ESTIMATED UNITS*</u>	<u>ADVERTISED PRICE</u>
Sawtimber		
Jack Pine	45.5 MBF	\$ 35.00 / MBF
Northern Pin Oak	64.9 MBF	\$ 58.00 / MBF
Red Pine	28.0 MBF	\$ 84.00 / MBF
White Oak	25.7 MBF	\$ 72.00 / MBF
White Pine	25.8 MBF	\$ 36.00 / MBF
Pulpwood		
B. T. Aspen	196 Cords	\$ 17.50 / Cord
Jack Pine	414 Cords	\$ 16.55 / Cord
Northern Pin Oak	353 Cords	\$ 19.65 / Cord
Red Maple	21 Cords	\$ 16.50 / Cord
Red Pine	82 Cords	\$ 36.65 / Cord
White Oak	93 Cords	\$ 19.65 / Cord
White Pine	95 Cords	\$ 17.95 / Cord

* The total volume is statistically estimated within plus (+) or minus (-) 7.10 percent. There are an estimated 1,760 cords on this timber sale, plus or minus 125 cords at the 95% confidence level. The estimated units are final and not subject to adjustment. Prospective bidders are urged to examine this timber and to make their own estimates of quantity and quality.

BOND AND PAYMENT SCHEDULE:

1. A bond in the amount of \$1,730.00 to insure faithful performance of the conditions of the contract will be deposited by the successful bidder within 21 days of the sale award.
2. Cutting in any sale or unit without the required advance payment would be considered a trespass.
3. Total payment must be paid in advance or according to the following schedule :
 - (a) Ten percent (10%) of the sale value must be paid within 21 days of the sale award.
 - (b) The 10% down payment will be credited towards the first unit cut.
 - (c) Payment for each of the following units must be made before cutting begins in that unit:

PAYMENT UNIT NUMBER	PERCENT OF TOTAL SALE VALUE
01	67.9%
02	32.1%
4. If no cutting takes place, the 10% down payment will not be refunded.
5. Operations on the contract issued will terminate on 03/31/2025.

SALE STATISTICS

Volumes were calculated in cubic feet using the Michigan taper model. Cubic foot volume includes all wood inside bark for the product indicated. For display purposes, cubic feet were converted to cords and MBF using a simple conversion factor, e.g. 79 cubic feet per cord and 185 cubic feet per MBF. The cubic foot volumes are precise; the cords and MBF volumes are not. Cubic foot volume cannot be directly converted to cords or boards with precision.

SALE VOLUMES

The total estimated sale volume may not equal the sum of the species/products due to the nature of statistical calculations associated with double sampling methodology.

VOLUME			STATISTICAL RANGE IN CORDS	
TOTAL CUBIC FEET	TOTAL CORDS	PERCENT ERROR	MINIMUM	MAXIMUM
139,038	1,760	7.10%	1,635	1,885

VDU VOLUMES

A VDU is a Volume Determination Unit. Volumes and their associated statistics are calculated at the VDU level and summarized to the sale level. There is often a one to one relationship between a VDU and a Payment Unit, but not always, depending on the cruise design. Refer to the VDU TO PAYMENT UNIT table.

	VOLUME			RANGE IN CORDS	
VDU	TOTAL CUBIC FEET	TOTAL CORDS	PERCENT ERROR	MINIMUM	MAXIMUM
40	2,547	32	0.00%	32	32
41	36,282	459	16.30%	384	534
46	44,312	561	10.59%	502	620
55	36,828	466	12.35%	409	524
56	697	9	26.22%	7	11
57	8,241	104	29.49%	74	135
TOTAL:	128,907	1,632		1,407	1,857

VDU TO PAYMENT UNIT

When a VDU is associated with more than one Payment Unit (PU), the VDU volumes are assigned to the PU based on acres of the VDU within the PU.

VDU	VDU ACRES	PU	PU ACRES
40	3.5	1	3.5
41	26.1	1	26.1
46	27.8	1	27.8
55	23.1	2	23.1
56	1.3	2	1.3
57	9.0	2	9.0
TOTAL:	90.8		90.8

DESCRIPTION OF TIMBER BY PAYMENT UNIT (PU)

PU	MARKET GROUP	PRODUCT	QUANTITY	UNIT	ACRES	ADVERTISE PRICE			
1	Jack Pine	Sawtimber	14.7	MBF	57.4	\$23,500.25			
	Northern Pin Oak		43.3	MBF					
	<i>Northern Pin Oak</i>		37.2	<i>MBF</i>					
	<i>Red Oak</i>		6.1	<i>MBF</i>					
	Red Pine		20.6	MBF					
	White Oak		24.5	MBF					
	White Pine		10.8	MBF					
	B. T. Aspen		Pulpwood	156			Cords		
	<i>B. T. Aspen</i>			<i>Sawtimber</i>			2.4	<i>MBF</i>	
	<i>B. T. Aspen</i>		<i>Pulpwood</i>	151			<i>Cords</i>		
	Jack Pine		145	Cords					
	Northern Pin Oak		296	Cords					
	<i>Northern Pin Oak</i>		289	<i>Cords</i>					
	<i>Red Oak</i>		7	<i>Cords</i>					
	Red Maple		14	Cords					
	Red Pine		74	Cords					
	White Oak		90	Cords					
	White Pine		52	Cords					
	2		Jack Pine	Sawtimber			30.8	MBF	33.4
		Northern Pin Oak	21.6				MBF		
<i>Northern Pin Oak</i>		21.6	<i>MBF</i>						
Red Pine		7.4	MBF						
White Oak		1.2	MBF						
White Pine		15.0	MBF						
B. T. Aspen		Pulpwood	40		Cords				
<i>B. T. Aspen</i>			<i>Sawtimber</i>		14.0	<i>MBF</i>			
<i>B. T. Aspen</i>		<i>Pulpwood</i>	12		<i>Cords</i>				
Jack Pine		269	Cords						
Northern Pin Oak		57	Cords						
<i>Northern Pin Oak</i>		57	<i>Cords</i>						
Red Maple		7	Cords						
Red Pine		8	Cords						
White Oak		3	Cords						
White Pine		43	Cords						
TOTAL:			189.9	MBF					
TOTAL:			1,254	Cords					

Sale Specific Conditions & Requirements

Sale Name: Two-Track Mind Mix

Sale Number: 52-119-21 Seq#: 1

1 - Sale Area

1.2 - Boundaries

1.2.1 - Painted boundaries (9/19)

The sale boundary and Payment Unit boundaries are marked and identified by blue and red paint. Exterior sale boundary lines against private property are marked with blue paint. Exterior sale boundary lines against state are marked with red paint. Retention patches are marked with red paint; no harvesting activities may occur within these areas. The painted boundary line trees are not Included Timber and are to be protected.

2 - Timber Specifications

2.1 - Included Timber

2.1.1 - Clearcut unit(s) with unmerchantable trees (6/14)

Within Payment Unit(s) 2, cut all trees that are two (2) inches or more at DBH.

2.1.2 - Clearcut unit(s) w/o unmerchantable trees (8/11)

Within Payment Unit(s) 1, cut all trees which meet minimum piece specifications in 2.2 Utilization, except any teal marked trees. Non-merchantable trees (<4.5" DBH) are not Included Timber within Payment Unit 1 and may only be harvested if necessary for operations.

2.2 - Utilization

2.2.3 - Stump heights (4/07)

Stump heights within Payment Unit 2 shall not exceed 6 inches for all trees. This is to facilitate planting operations.

4 - Transportation

4.1 - Construction

4.1.3 - Slash and earthen piles (8/04)

Piles or windrows of earth along roads and landings that have been widened or constructed shall be leveled. Slash from road maintenance or construction, including stumps, shall be evenly dispersed or utilized.

4.2 - Maintenance

4.2.5 - Two wheel drive condition (2/04)

All existing trail roads on and adjacent to the sale area must be passable by two-wheel drive traffic for the duration of the sale.

5 - Operations

5.2 - Conduct of Operations

5.2.1 - Slash

5.2.1.8 - Slash height (12/08)

No slash within Payment Unit 2 may exceed 24 inches in height.

5.2.1.11 - Slash for reforestation (3/21)

Within Payment Unit 2, chipping is encouraged as it is the most effective and efficient way to mitigate slash for reforestation. Other tactics to mitigate slash for site preparation will be in accordance with Specification 5.2.1.8. Liquidated damages may be assessed at \$250 per acre if it is determined that slash mitigation was inadequate, and mastication is needed for the DNR to conduct site preparation for planting.

5.2.2 - Hazard Trees/Snags

5.2.2.1 - Den trees (10/16)

Obvious hollow and/or den trees shall be protected and left standing unless they are a safety hazard.

5.2.3 - Operating Restrictions

5.2.3.1 - Operating restrictions (9/11)

Within Payment Unit(s) 1, cutting and skidding are limited to snow-off conditions. This restriction is to promote scarification for natural regeneration.

5.2.3.4 - Oak wilt restriction, no exceptions (1/18)

Within Payment Unit(s) 1 and 2, cutting, skidding, hauling within the sale and brushing of access roads to the sale are not permitted during the period of April 15 to July 15. No exceptions will be granted. This is necessary to reduce the spread of oak wilt.

5.2.32 - Decking/landing restoration (9/13)

All decking and landing areas must have the surface area restored to a condition equal to or better than before. This is to ensure the proper regeneration of the stand. Wood debris, chips, and "cookies" from trimmings must be removed or scattered away from landing and loading areas and may not be windrowed on the edge.

5.2.39 - ORV trail/route protection (4/18)

Blueberry Trail and the Tomahawk Trail A Loop are ORV trails and are shown on the Timber Sale Map. Do not cut trees or damage posts with yellow ORV markers. All stumps within 5 feet of the trails must be cut flush with the ground or cut at or above 4 feet above ground level.

5.2.41 - Snowmobile trail protection (9/11)

Blueberry Trail is a snowmobile trail and is shown on the Timber Sale Map. Do not cut or damage posts with orange trail markers or traffic control signs. It must be maintained and restored to a condition equal to or better than before the sale. The road maintenance/restoration must be done prior to December 1. If the trail road is to be used for hauling during the snowmobile season, then a snow-covered base must be left on the trail. No decking of forest products will be permitted along the snowmobile trail.

5.4 - Soil Protection

5.4.5 - Soil caution (11/04)

Care must be taken to minimize soil damage due to the sandy soils along access routes. This may require the addition of fill material at the expense of the Purchaser.

6 - Safety and Fire Prevention

6.2 - Signing

6.2.1 - Road posting (10/20)

The Purchaser is responsible for posting and maintaining caution signs on Blueberry Trail prior to beginning operations. The road must be posted at appropriate distances from the Sale Area to warn of logging activity and truck traffic. Signs must be removed when harvest operations are suspended or completed. The Purchaser will provide these signs.

6.2.3 - Recreational trail posting (10/20)

The Purchaser is responsible for posting and maintaining caution signs on the Snowmobile Trail (Blueberry Trail) and the ORV Trail prior to beginning operations. The trail must be posted at appropriate distances from the Sale Area to warn of logging activity and truck traffic at both ends of the trail. Signs must be removed when harvest operations are suspended or completed. The Purchaser will provide these signs.



TIMBER SALE MAP

This information provided by authority of Part 525, 1994 PA 451, as amended.

Sale Number	Year
52 - 119	21

Forest Management Unit Gaylord	County Cheboygan	Mapped By TSP	Date 08/23/2021	Page 1	of 1
Cruised By TSP					

Township 34N	Range 03W	Section(s) and Subdivision(s) 02: S1/2SW; 11: N1/2NW, SENW, NWNE, E1/2SW	Scale 1:15,840
-----------------	--------------	---	-------------------

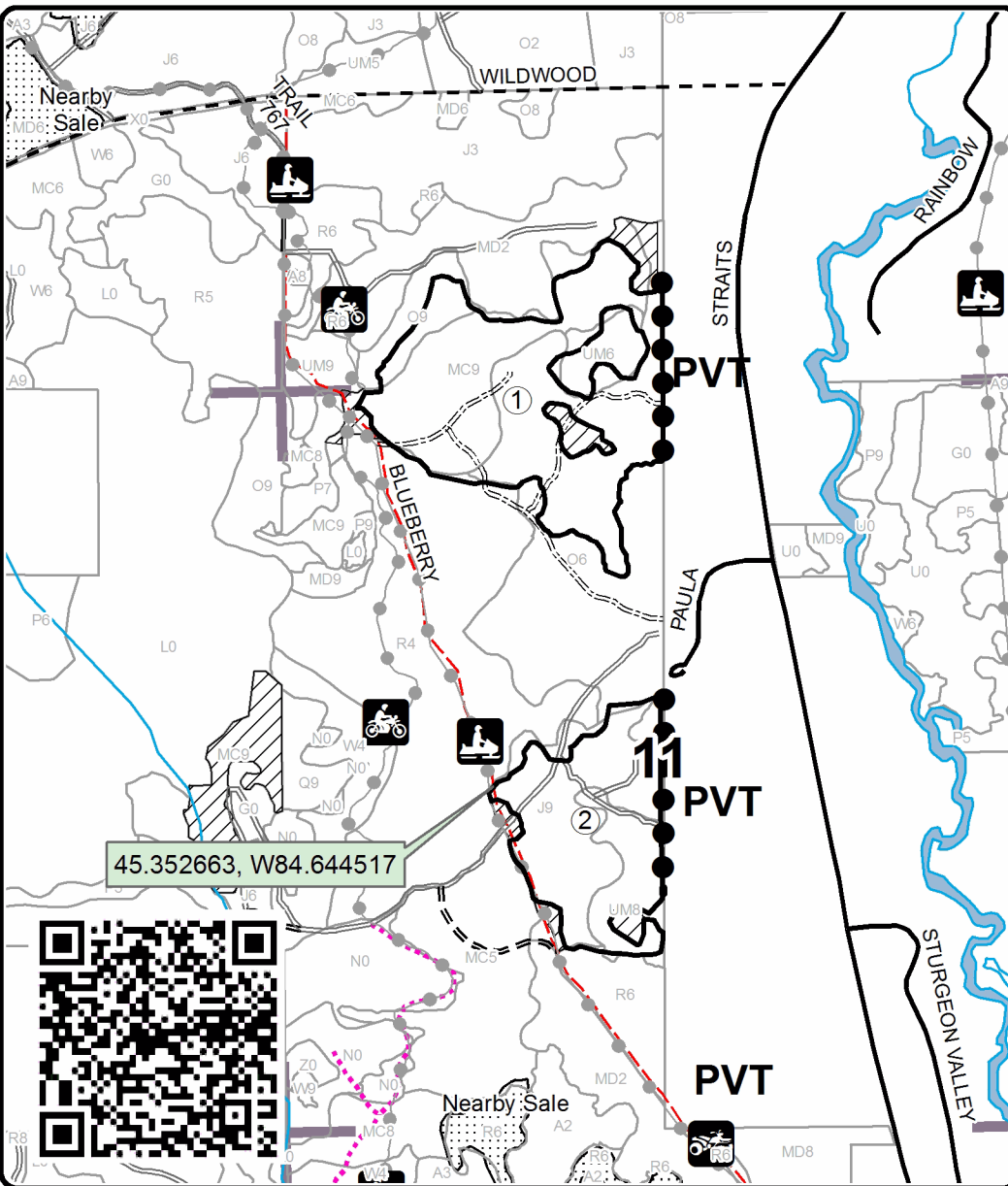
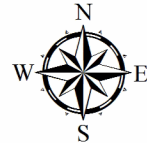
Cover Type				Density	
A = Aspen	H = Hemlock	N = Marsh	U = Upland Brush	0 = Non Stocked	5 = Pole Timber Medium
B = Paper Birch	J = Jack Pine	O = Oak	UM = Upland Mixed	1 = Seedling Sapling Poor	6 = Pole Timber Well
C = Cedar	L = Lowland Brush	P = Lowland Poplar	V = Bog or Marsh	2 = Seedling Sapling Medium	7 = Saw Timber Poor
D = Treed Bog	LM = Lowland Mixed	Q = Mixed Swamp Conifer	W = White Pine	3 = Seedling Sapling Well	8 = Saw Timber Medium
E = Swamp Hdwoods	M = Mpl, Bch, Brch	R = Red Pine	X = Non Stocked	4 = Pole Timber Poor	9 = Saw Timber Well
F = Spruce Fir	MC = Mixed Conifer	S = Black Spruce	Z = Water		
G = Grass	MD = Mixed Deciduous	T = Tamarack			

PU	Acres
1	57.4
2	33.4

Two-Track Mind Mix

Compartment 153

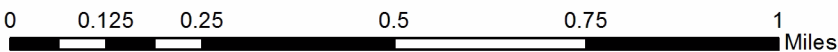
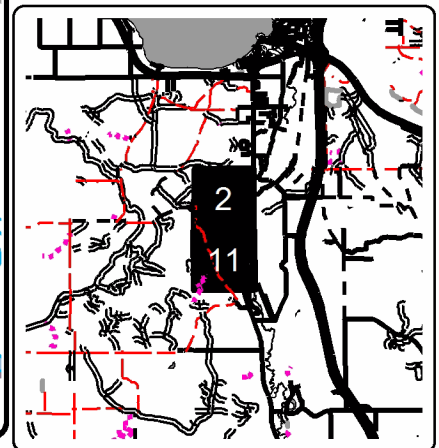
90.8 Acres



Legend

- Against State (Red)
- Private Line (Blue)
- Recreational Trail
- Unofficial Two-Tracks
- Secondary Forest Road
- Forest Access Route
- Paved Road
- Gravel Road
- County Road - Seasonal
- Temporary Management Access
- Intermittent Stream
- Perennial River
- Lakes and Rivers
- Retention Area
- Stand Boundaries
- Nearby Timber Sales
- Section Corners

Locator Map
1:200,000



TIMBER SALE INFORMATION

Roberts Lake Mix (52-125-21)
T35N, R02W, SEC. 28; T35N, R02W, SEC. 29.
Cheboygan County (Advertised Price \$63,617.85)

SALE NOTE: All units of volume listed for this sale were estimated using the Inventory Manager computer program and the new Michigan taper model.

- See sale spec 5.2.3.5 for information on oak wilt requirements.

- Sale area has good access.

A timber sale contract for this lump sum, sealed bid timber sale will be awarded to the responsible bidder offering the highest sealed bid price. All units of volume listed below were estimated using the Inventory Manager computer program and the new Michigan taper model. Bids must be at or above the following advertised price for each product and species:

<u>PRODUCTS & SPECIES</u>	<u>ESTIMATED UNITS*</u>	<u>ADVERTISED PRICE</u>
Sawtimber		
B. T. Aspen	61.2 MBF	\$ 44.00 / MBF
BI/R/Hybrid Oak	44.9 MBF	\$ 58.00 / MBF
Jack Pine	9.2 MBF	\$ 33.00 / MBF
Red Oak	1.3 MBF	\$ 63.00 / MBF
Red Pine	59.2 MBF	\$ 84.00 / MBF
White Pine	4.8 MBF	\$ 36.00 / MBF
Pulpwood		
B. T. Aspen	804 Cords	\$ 17.50 / Cord
BI/R/Hybrid Oak	393 Cords	\$ 19.65 / Cord
Jack Pine	70 Cords	\$ 16.55 / Cord
Red Maple	73 Cords	\$ 16.50 / Cord
Red Oak	5 Cords	\$ 19.65 / Cord
Red Pine	737 Cords	\$ 36.65 / Cord
White Pine	81 Cords	\$ 17.95 / Cord
White Spruce	7 Cords	\$ 10.15 / Cord

* The total volume is statistically estimated within plus (+) or minus (-) 5.90 percent. There are an estimated 2,623 cords on this timber sale, plus or minus 155 cords at the 95% confidence level. The estimated units are final and not subject to adjustment. Prospective bidders are urged to examine this timber and to make their own estimates of quantity and quality.

BOND AND PAYMENT SCHEDULE:

1. A bond in the amount of \$6,362.00 to insure faithful performance of the conditions of the contract will be deposited by the successful bidder within 21 days of the sale award.
2. Cutting in any sale or unit without the required advance payment would be considered a trespass.
3. Total payment must be paid in advance or according to the following schedule :
 - (a) Ten percent (10%) of the sale value must be paid within 21 days of the sale award.
 - (b) The 10% down payment will be credited towards the first unit cut.
 - (c) Payment for each of the following units must be made before cutting begins in that unit:

PAYMENT UNIT NUMBER	PERCENT OF TOTAL SALE VALUE
01	4.4%
02	3.7%
03	4.4%
04	18.3%
05	10.4%
06	28.1%
07	30.7%

4. If no cutting takes place, the 10% down payment will not be refunded.
5. Operations on the contract issued will terminate on 06/30/2025.

SALE STATISTICS

Volumes were calculated in cubic feet using the Michigan taper model. Cubic foot volume includes all wood inside bark for the product indicated. For display purposes, cubic feet were converted to cords and MBF using a simple conversion factor, e.g. 79 cubic feet per cord and 185 cubic feet per MBF. The cubic foot volumes are precise; the cords and MBF volumes are not. Cubic foot volume cannot be directly converted to cords or boards with precision.

SALE VOLUMES

The total estimated sale volume may not equal the sum of the species/products due to the nature of statistical calculations associated with double sampling methodology.

VOLUME			STATISTICAL RANGE IN CORDS	
TOTAL CUBIC FEET	TOTAL CORDS	PERCENT ERROR	MINIMUM	MAXIMUM
207,240	2,623	5.90%	2,468	2,778

VDU VOLUMES

A VDU is a Volume Determination Unit. Volumes and their associated statistics are calculated at the VDU level and summarized to the sale level. There is often a one to one relationship between a VDU and a Payment Unit, but not always, depending on the cruise design. Refer to the VDU TO PAYMENT UNIT table.

VDU	VOLUME		PERCENT ERROR	RANGE IN CORDS	
	TOTAL CUBIC FEET	TOTAL CORDS		MINIMUM	MAXIMUM
45	5,830	74	30.43%	51	96
63	4,986	63	44.42%	35	91
64	24,981	316	12.79%	276	357
78	13,819	175	26.14%	129	221
99	76,746	971	7.52%	898	1,044
125	67,724	857	12.52%	750	965
151	5,884	74	26.23%	55	94
TOTAL:	199,972	2,531		2,195	2,868

VDU TO PAYMENT UNIT

When a VDU is associated with more than one Payment Unit (PU), the VDU volumes are assigned to the PU based on acres of the VDU within the PU.

VDU	VDU ACRES	PU	PU ACRES
45	5.7	1	5.7
63	4.5	2	4.5
64	18.0	4	18.0
78	11.4	5	11.4
99	32.0	7	32.0
125	32.5	6	32.5
151	3.5	3	3.5
TOTAL:	107.6		107.6

DESCRIPTION OF TIMBER BY PAYMENT UNIT (PU)

PU	MARKET GROUP	PRODUCT	QUANTITY	UNIT	ACRES	ADVERTISE PRICE	
1	Red Pine	Sawtimber	4.6	MBF	5.7	\$2,768.65	
	Red Pine	Pulpwood	65	Cords			
2	Red Pine	Sawtimber	5.1	MBF	4.5	\$2,370.85	
	Red Pine	Pulpwood	53	Cords			
3	Red Pine	Sawtimber	5.2	MBF	3.5	\$2,782.40	
	Red Pine	Pulpwood	64	Cords			
4	Red Pine	Sawtimber	8.5	MBF	18.0	\$11,672.35	
	Red Pine	Pulpwood	299	Cords			
5	Red Pine	Sawtimber	17.8	MBF	11.4	\$6,589.55	
	Red Pine	Pulpwood	139	Cords			
6	B. T. Aspen	Sawtimber	34.2	MBF	32.5	\$17,872.50	
	BI/R/Hybrid Oak		28.4	MBF			
	Red Oak		1.3	MBF			
	Red Pine		11.7	MBF			
	B. T. Aspen		Pulpwood	400			Cords
	BI/R/Hybrid Oak			173			Cords
	Jack Pine	49		Cords			
	Red Maple	18		Cords			
	Red Oak	5		Cords			
	Red Pine	54		Cords			
	White Spruce	7	Cords				
	7	B. T. Aspen	Sawtimber	27.0			MBF
BI/R/Hybrid Oak		16.5		MBF			
Jack Pine		9.2		MBF			
Red Pine		6.3		MBF			
White Pine		4.8		MBF			
B. T. Aspen		Pulpwood		404	Cords		
BI/R/Hybrid Oak			220	Cords			
Jack Pine			21	Cords			
Red Maple			55	Cords			
Red Pine			63	Cords			
White Pine			81	Cords			
TOTAL:			180.6	MBF			
TOTAL:			2,170	Cords			

Sale Specific Conditions & Requirements

Sale Name: Roberts Lake Mix

Sale Number: 52-125-21 Seq#: 1

1 - Sale Area

1.2 - Boundaries

1.2.1 - Painted boundaries (9/19)

The sale boundary and Payment Unit boundaries are marked and identified by red paint. Exterior sale boundary lines against state are marked with red paint. Retention patches are marked with teal paint; no harvesting activities may occur within these areas. Some individual retention trees are also mark with teal paint. The painted boundary line trees are not Included Timber and are to be protected.

2 - Timber Specifications

2.1 - Included Timber

2.1.1 - Clearcut unit(s) with unmerchantable trees (6/14)

Within Payment Unit(s) 1-5, cut all trees that are two (2) inches or more at DBH.

2.1.2 - Clearcut unit(s) w/o unmerchantable trees (8/11)

Within Payment Unit(s) 6 and 7, cut all trees which meet minimum piece specifications in 2.2 Utilization except for the following:

- Within Payment Unit 6 do not cut teal marked trees, white oak, or trees > 26 inches at DBH;
- Within Payment Unit 7 do not cut teal marked trees.

3 - Payments

3.6 - Payment Unit Cutting Schedule

3.6.1 - Order of cutting (1/09)

Payment Units shall be cut in numerical order unless the sale is paid in full or approved by the Unit Manager or his/her representative.

4 - Transportation

4.1 - Construction

4.1.3 - Slash and earthen piles (8/04)

Piles or windrows of earth along roads and landings that have been widened or constructed shall be leveled. Slash from road maintenance or construction, including stumps, shall be dispersed throughout the sale.

4.1.12 - No new roads (1/12)

No new roads will be permitted in any Payment Unit. All operations are limited to existing roads. Skid trails only will be allowed.

4.2 - Maintenance

4.2.4 - Grading (10/16)

For completion of the sale, state forest roads must be graded. In general, this will require a road grader or bulldozer to shape up the roads after forest products have been hauled off site. This includes cleaning of drainage areas, grading, crowning, and filling with gravel, if necessary. The grading equipment to be used must be approved by the Unit Manager or his/her representative.

4.2.5 - Two wheel drive condition (2/04)

All existing trail roads on and adjacent to the sale area must be passable by two-wheel drive traffic for the duration of the sale.

5 - Operations

5.1 - Notification

5.1.1 - Pre-sale conference (10/16)

A pre-sale conference on site between the Purchaser and sale administrator is required prior to beginning any operations to determine landing and road locations. The Unit Manager or his/her representative must be contacted at least 2 days in advance to schedule the conference.

5.1.4 - Post-sale conference (10/16)

A post-sale conference on site between the Purchaser and sale administrator is required 5 days prior to the completion of active logging operations to determine clean-up and repair of landings, road edges, and the fulfillment of other contract specifications.

5.2 - Conduct of Operations

5.2.1 - Slash

5.2.1.13 - Dispose of slash as directed (12/05)

Slash is to be disposed of as directed by the Sale Administrator.

5.2.2 - Hazard Trees/Snags

5.2.2.1 - Den trees (10/16)

Obvious hollow and/or den trees shall be protected and left standing unless they are a safety hazard.

5.2.3 - Operating Restrictions

5.2.3.5 - Oak wilt restriction (1/18)

Within Payment Units 6 and 7, unless changed by written agreement, cutting, skidding, hauling within the sale and brushing of access roads to the sale are not permitted during the period of April 15 to July 15. Operations may be allowed if specific steps are taken to prevent damaging uncut oak during the high risk period. Those steps may include completing all road brushing before April 15th and clearing a tree-length buffer along uncut oak cover before April 15th. This is necessary to reduce the spread of oak wilt. For more information, contact the Unit Manager or his/her representative.

5.2.32 - Decking/landing restoration (9/13)

All decking and landing areas must have the surface area restored to a condition equal to or better than before. This is to ensure the proper regeneration of the stand. Wood debris, chips, and "cookies" from trimmings must be removed or scattered away from landing and loading areas and may not be windrowed on the edge.

5.4 - Soil Protection

5.4.1 - Rutting restriction, general (7/16)

Operations are to cease immediately if equipment and weather conditions result in rutting of roads and/or skid trails which is 12 inches or greater in depth and 50 feet in length. The Unit Manager or his/her representative may restrict hauling and/or skidding if ruts exceed the specified depth. With the Unit Manager or his/her representative's approval, the Purchaser may return to the area when the risk of rutting has decreased.

5.8 - Protection of Endangered Species

5.8.5 - Protection of raptor nests (3/13)

All trees with raptor nests will be protected if found during harvesting operations. Notification will be made to the Unit Manager or his/her representative who will notify the Wildlife Biologist so an on-site evaluation and recommendation can be made, if necessary.

6 - Safety and Fire Prevention

6.2 - Signing

6.2.1 - Road posting (10/20)

The Purchaser is responsible for posting and maintaining caution signs on adjacent unnamed roads and trails prior to beginning operations. The road must be posted at appropriate distances from the Sale Area to warn of logging activity and truck traffic. Signs must be removed when harvest operations are suspended or completed. The Purchaser will provide these signs.



TIMBER SALE MAP

This information provided by authority of Part 525, 1994 PA 451, as amended.

Forest Management Unit Gaylord Management Unit	County Cheboygan	Mapped By John Scheele	Date 09/24/2021	Page 1	of 1
Township 35N	Range 02W	Section(s) and Subdivision(s) Section 28 NW, NENE, S1/2NE, SW, N1/2SE Section 29 SENE, E1/2 SE	Scale 1:15,840		

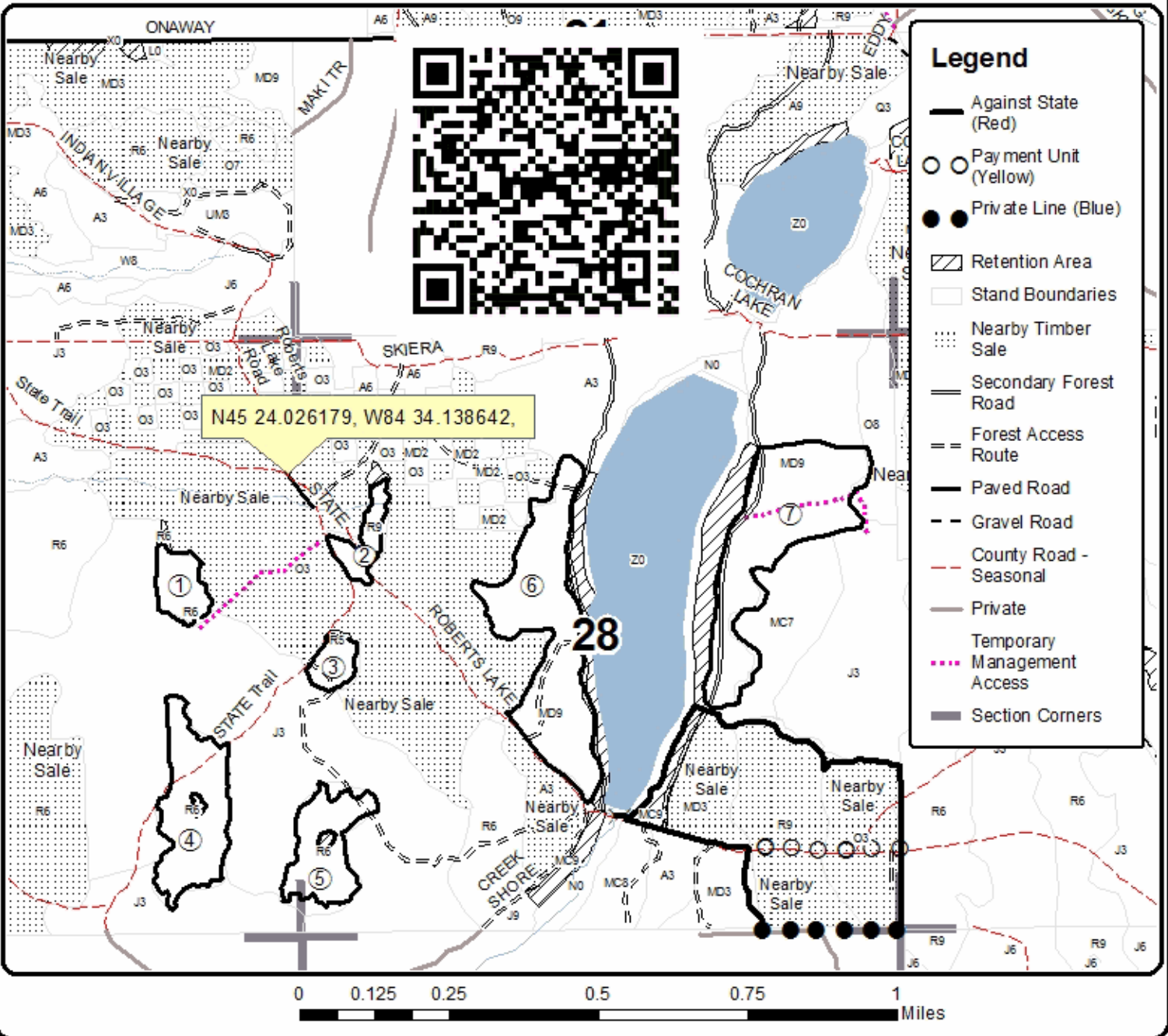
Cover Type				Density	
A = Aspen	H = Hemlock	N = Marsh	U = Upland Brush	0 = Non Stocked	5 = Pole Timber Medium
B = Paper Birch	J = Jack Pine	O = Oak	UM = Upland Mixed	1 = Seeding Sapling Poor	6 = Pole Timber Well
C = Cedar	L = Lowland Brush	P = Lowland Poplar	V = Bog or Marsh	2 = Seeding Sapling Medium	7 = Saw Timber Poor
D = Treed Bog	LM = Lowland Mixed	Q = Mixed Swamp Conifer	W = White Pine	3 = Seeding Sapling Well	8 = Saw Timber Medium
E = Swamp Hdwoods	M = Mpl, Bch, Brch	R = Red Pine	X = Non Stocked	4 = Pole Timber Poor	9 = Saw Timber Well
F = Spruce Fir	MC = Mixed Conifer	S = Black Spruce	Z = Water		
G = Grass	MD = Mixed Deciduous	T = Tamarack			

PU	Acres	PU	Acres
1	5.7	5	11.4
2	4.5	6	32.5
3	3.5	7	32.0
4	18.0		

Roberts Lake Mix

Compartment 168

107.6 Acres



TIMBER SALE INFORMATION

Scrupulous Aspen (52-127-21)

T36N, R01W, SEC. 30.

Cheboygan County (Advertised Price \$61,236.15)

SALE NOTE: All units of volume listed for this sale were estimated using the Inventory Manager computer program and the new Michigan taper model.

- See sale spec 5.2.3.1 for information on seasonal operational restrictions.

- See sale spec 8.3.2 for information on optional Payment Unit.

A timber sale contract for this lump sum, sealed bid timber sale will be awarded to the responsible bidder offering the highest sealed bid price. All units of volume listed below were estimated using the Inventory Manager computer program and the new Michigan taper model. Bids must be at or above the following advertised price for each product and species:

<u>PRODUCTS & SPECIES</u>	<u>ESTIMATED UNITS*</u>	<u>ADVERTISED PRICE</u>
Sawtimber		
Mixed Aspen	267.2 MBF	\$ 44.00 / MBF
Red Maple	67.1 MBF	\$ 79.00 / MBF
Sugar Maple	67.9 MBF	\$ 376.00 / MBF
Pulpwood		
Balsam Fir	24 Cords	\$ 16.70 / Cord
Basswood	9 Cords	\$ 8.55 / Cord
Ironwood	3 Cords	\$ 16.50 / Cord
Mixed Aspen	407 Cords	\$ 17.50 / Cord
Paper Birch	97 Cords	\$ 6.90 / Cord
Red Maple	366 Cords	\$ 16.50 / Cord
Sugar Maple	260 Cords	\$ 16.50 / Cord

* The total volume is statistically estimated within plus (+) or minus (-) 7.76 percent. There are an estimated 2,105 cords on this timber sale, plus or minus 164 cords at the 95% confidence level. The estimated units are final and not subject to adjustment. Prospective bidders are urged to examine this timber and to make their own estimates of quantity and quality.

BOND AND PAYMENT SCHEDULE:

1. A bond in the amount of \$3,062.00 to insure faithful performance of the conditions of the contract will be deposited by the successful bidder within 21 days of the sale award.
2. Cutting in any sale or unit without the required advance payment would be considered a trespass.
3. Total payment must be paid in advance or according to the following schedule :
 - (a) Ten percent (10%) of the sale value must be paid within 21 days of the sale award.
 - (b) The 10% down payment will be credited towards the first unit cut.
 - (c) Payment for each of the following units must be made before cutting begins in that unit:

PAYMENT UNIT NUMBER	PERCENT OF TOTAL SALE VALUE
01	81.5%
02	8.3%
03	10.2%

4. If no cutting takes place, the 10% down payment will not be refunded.
5. Operations on the contract issued will terminate on 03/31/2025.

SALE STATISTICS

Volumes were calculated in cubic feet using the Michigan taper model. Cubic foot volume includes all wood inside bark for the product indicated. For display purposes, cubic feet were converted to cords and MBF using a simple conversion factor, e.g. 79 cubic feet per cord and 185 cubic feet per MBF. The cubic foot volumes are precise; the cords and MBF volumes are not. Cubic foot volume cannot be directly converted to cords or boards with precision.

SALE VOLUMES

The total estimated sale volume may not equal the sum of the species/products due to the nature of statistical calculations associated with double sampling methodology.

VOLUME			STATISTICAL RANGE IN CORDS	
TOTAL CUBIC FEET	TOTAL CORDS	PERCENT ERROR	MINIMUM	MAXIMUM
166,324	2,105	7.76%	1,942	2,269

VDU VOLUMES

A VDU is a Volume Determination Unit. Volumes and their associated statistics are calculated at the VDU level and summarized to the sale level. There is often a one to one relationship between a VDU and a Payment Unit, but not always, depending on the cruise design. Refer to the VDU TO PAYMENT UNIT table.

	VOLUME			RANGE IN CORDS	
VDU	TOTAL CUBIC FEET	TOTAL CORDS	PERCENT ERROR	MINIMUM	MAXIMUM
8	23,521	298	18.34%	243	352
68	15,693	199	15.75%	167	230
70	118,613	1,501	9.42%	1,360	1,643
TOTAL:	157,827	1,998		1,770	2,225

VDU TO PAYMENT UNIT

When a VDU is associated with more than one Payment Unit (PU), the VDU volumes are assigned to the PU based on acres of the VDU within the PU.

VDU	VDU ACRES	PU	PU ACRES
8	14.4	1	1.0
		3	13.4
68	5.9	2	5.9
70	43.4	1	42.9
		3	0.5
TOTAL:	63.7		63.7

DESCRIPTION OF TIMBER BY PAYMENT UNIT (PU)

PU	MARKET GROUP	PRODUCT	QUANTITY	UNIT	ACRES	ADVERTISE PRICE
1	Mixed Aspen	Sawtimber	227.4	MBF	43.9	\$49,882.25
	<i>B. T. Aspen</i>		202.1	<i>MBF</i>		
	<i>Balsam Poplar</i>		0.2	<i>MBF</i>		
	<i>Quaking Aspen</i>		25.1	<i>MBF</i>		
	Red Maple		41.0	MBF		
	Sugar Maple		62.7	MBF		
	Balsam Fir	Pulpwood	12	Cords		
	<i>Balsam Fir</i>		8	<i>Cords</i>		
	<i>Scotch Pine</i>		4	<i>Cords</i>		
	Basswood		9	Cords		
	<i>Basswood</i>	<i>Sawtimber</i>	3.5	<i>MBF</i>		
	<i>Basswood</i>	<i>Pulpwood</i>	2	<i>Cords</i>		
	Ironwood		3	Cords		
	Mixed Aspen		315	Cords		
	<i>B. T. Aspen</i>		195	<i>Cords</i>		
	<i>Quaking Aspen</i>		120	<i>Cords</i>		
	Paper Birch		64	Cords		
	<i>Paper Birch</i>	<i>Sawtimber</i>	1.2	<i>MBF</i>		
	<i>Paper Birch</i>	<i>Pulpwood</i>	62	<i>Cords</i>		
	Red Maple		230	Cords		
	Sugar Maple		181	Cords		
2	Mixed Aspen	Sawtimber	18.9	MBF	5.9	\$5,087.30
	<i>B. T. Aspen</i>		18.9	<i>MBF</i>		
	Sugar Maple		4.5	MBF		
	Balsam Fir	Pulpwood	6	Cords		
	<i>Balsam Fir</i>		6	<i>Cords</i>		
	Mixed Aspen		71	Cords		
	<i>B. T. Aspen</i>		45	<i>Cords</i>		
	<i>Quaking Aspen</i>		26	<i>Cords</i>		
	Red Maple		5	Cords		
Sugar Maple		69	Cords			
3	Mixed Aspen	Sawtimber	20.9	MBF	13.9	\$6,259.70
	<i>B. T. Aspen</i>		6.6	<i>MBF</i>		
	<i>Balsam Poplar</i>		2.7	<i>MBF</i>		
	<i>Quaking Aspen</i>		11.6	<i>MBF</i>		
	Red Maple		26.1	MBF		
	Sugar Maple		0.7	MBF		
	Balsam Fir	Pulpwood	6	Cords		
	<i>Balsam Fir</i>		6	<i>Cords</i>		
	Mixed Aspen		21	Cords		
	<i>B. T. Aspen</i>		4	<i>Cords</i>		
	<i>Balsam Poplar</i>		4	<i>Cords</i>		
	<i>Quaking Aspen</i>		13	<i>Cords</i>		
	Paper Birch		32	Cords		
	<i>Paper Birch</i>	<i>Sawtimber</i>	2.2	<i>MBF</i>		
	<i>Paper Birch</i>	<i>Pulpwood</i>	28	<i>Cords</i>		
Red Maple		131	Cords			
Sugar Maple		10	Cords			
TOTAL:			402.2	MBF		
TOTAL:			1,165	Cords		

Sale Specific Conditions & Requirements

Sale Name: Scrupulous Aspen

Sale Number: 52-127-21 Seq#: 1

1 - Sale Area

1.2 - Boundaries

1.2.1 - Painted boundaries (9/19)

The sale boundary and Payment Unit boundaries are marked and identified by blue, red, and yellow paint. Exterior sale boundary lines against private property are marked with blue paint. Exterior sale boundary lines against state are marked with red paint. Interior Payment Unit boundaries are marked with yellow paint. Retention patches are marked with red paint; no harvesting activities may occur within these areas. The painted boundary line trees are not Included Timber and are to be protected. Yellow painted trees designating an interior Payment Unit boundary are only to be cut when all surrounding Payment Units have been paid.

2 - Timber Specifications

2.1 - Included Timber

2.1.1 - Clearcut unit(s) with unmerchantable trees (6/14)

Within Payment Unit(s) 1-3, cut all trees that are two (2) inches or more at DBH, except any trees which are >26" DBH, red pine, white pine, oak, cedar or hemlock.

4 - Transportation

4.1 - Construction

4.1.12 - No new roads (1/12)

No new roads will be permitted in any Payment Unit. All operations are limited to existing roads. Skid trails only will be allowed.

4.2 - Maintenance

4.2.5 - Two wheel drive condition (2/04)

All existing trail roads on and adjacent to the sale area must be passable by two-wheel drive traffic for the duration of the sale.

5 - Operations

5.2 - Conduct of Operations

5.2.2 - Hazard Trees/Snags

5.2.2.1 - Den trees (10/16)

Obvious hollow and/or den trees shall be protected and left standing unless they are a safety hazard.

5.2.3 - Operating Restrictions

5.2.3.1 - Operating restrictions (9/11)

Within Payment Unit(s) 3, cutting, skidding, and hauling are limited to dry or frozen conditions. This restriction is to minimize rutting potential in sensitive soils.

5.4 - Soil Protection

5.4.5 - Soil caution (11/04)

Care must be taken to minimize soil damage due to saturated soils in Payment Unit 3.

5.8 - Protection of Endangered Species

5.8.5 - Protection of raptor nests (3/13)

All trees with raptor nests will be protected if found during harvesting operations. Notification will be made to the Unit Manager or his/her representative who will notify the Wildlife Biologist so an on-site evaluation and recommendation can be

made, if necessary.

8 - Performance and Settlement

8.3 - Uncompleted or Terminated Contracts

8.3.2 - Completion of contract, other (11/16)

Areas of this sale may be difficult to log. Per General Condition & Requirement 3.5 - Adjustment of Quantity, there will be no adjustment to contract volume, but unharvested timber may not be considered a violation of General Condition & Requirement 8.3 - Uncompleted or Terminated Contract. Payment Unit 3 is an optional Payment Unit and may be too wet and/or sensitive for operations. Damages will not be assessed for any or all unharvested portions of Payment Unit 3. Furthermore, no refund will be given for unharvested portions if the Payment Unit is paid in full.



TIMBER SALE MAP

This information provided by authority of Part 525, 1994 PA 451, as amended.

Forest Management Unit Gaylord		County Cheboygan	Mapped By TSP	Date 09/02/2021	Page 1	of 1
Township 36N	Range 01W	Section(s) and Subdivision(s) Sec 30: SENW, NE		Scale 1:15,840		

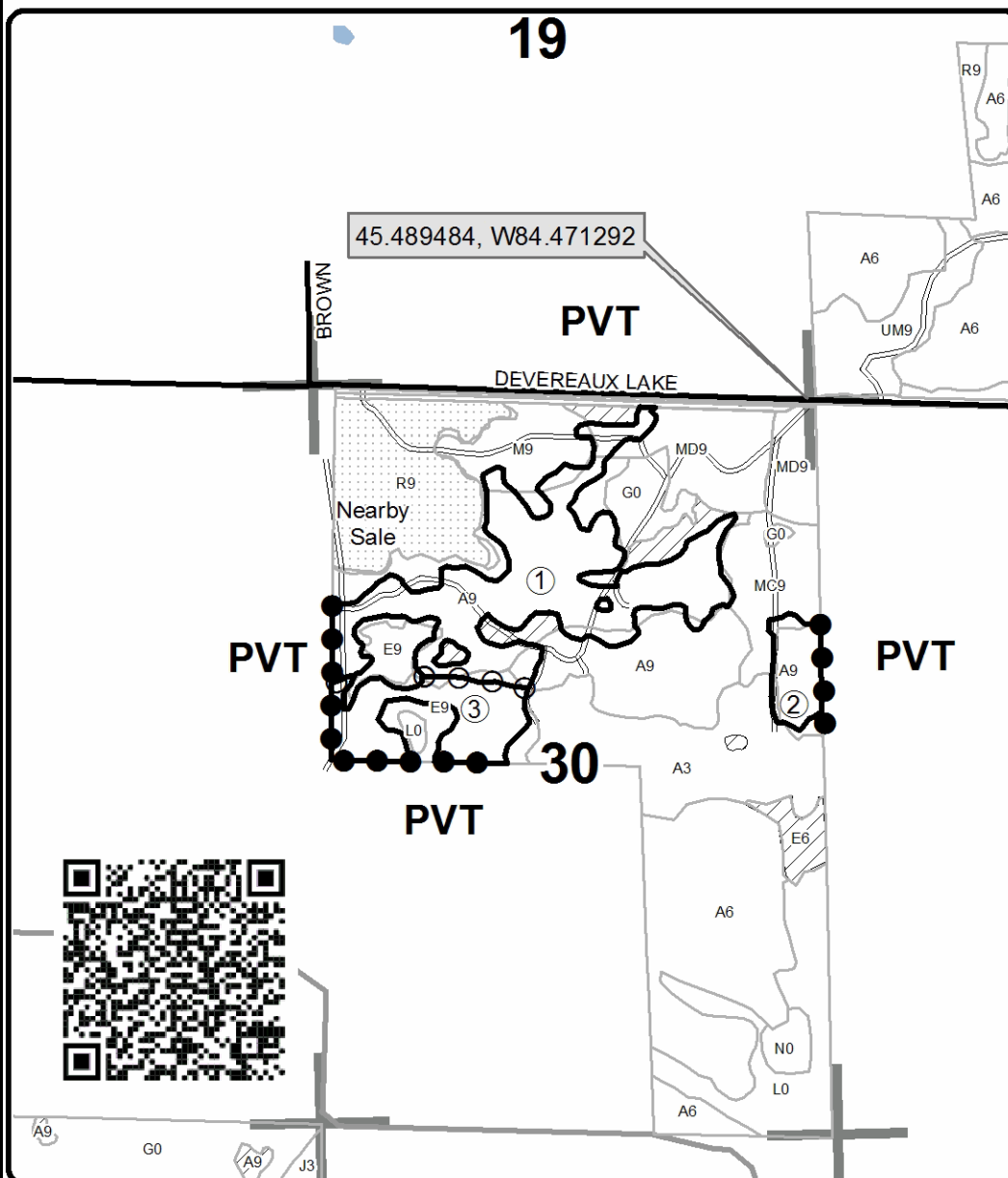
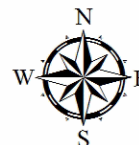
Cover Type				Density			
A = Aspen	H = Hemlock	N = Marsh	U = Upland Brush	0 = Non Stocked	5 = Pole Timber Medium		
B = Paper Birch	J = Jack Pine	O = Oak	UM = Upland Mixed	1 = Seedling Sapling Poor	6 = Pole Timber Well		
C = Cedar	L = Lowland Brush	P = Lowland Poplar	V = Bog or Marsh	2 = Seedling Sapling Medium	7 = Saw Timber Poor		
D = Treed Bog	LM = Lowland Mixed	Q = Mixed Swamp Conifer	W = White Pine	3 = Seedling Sapling Well	8 = Saw Timber Medium		
E = Swamp Hdwoods	M = Mpl, Bch, Brch	R = Red Pine	X = Non Stocked	4 = Pole Timber Poor	9 = Saw Timber Well		
F = Spruce Fir	MC = Mixed Conifer	S = Black Spruce	Z = Water				
G = Grass	MD = Mixed Deciduous	T = Tamarack					

PU	Acres
1	43.9
2	5.9
3	13.9

Scrupulous Aspen

Compartment 179

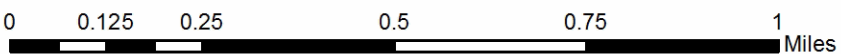
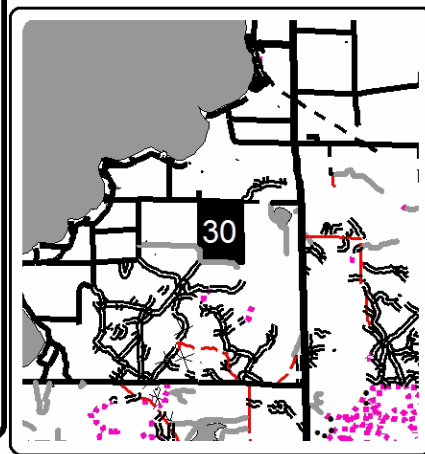
63.7 Acres



Legend

- Against State (Red)
- Payment Unit (Yellow)
- Private Line (Blue)
- ▨ Retention Area
- ▤ Nearby Timber Sales
- ▭ Stand Boundaries
- Paved Road
- - Gravel Road
- Private
- Secondary Forest Road
- Section Corners

Locator Map
1:200,000



TIMBER SALE INFORMATION

All Reddy Pine and Hardwood (52-129-21)
T34N, R03W, SEC. 20.
Cheboygan County (Advertised Price \$56,240.20)

SALE NOTE: All units of volume listed for this sale were estimated using the Inventory Manager computer program and the new Michigan taper model.

- See sale spec 5.2.3.3 for information on bark slip restrictions.

- See sale spec 2.2.4 for information on tree skidding requirements.

A timber sale contract for this lump sum, sealed bid timber sale will be awarded to the responsible bidder offering the highest sealed bid price. All units of volume listed below were estimated using the Inventory Manager computer program and the new Michigan taper model. Bids must be at or above the following advertised price for each product and species:

<u>PRODUCTS & SPECIES</u>	<u>ESTIMATED UNITS*</u>	<u>ADVERTISED PRICE</u>
Sawtimber		
Red Pine	193.4 MBF	\$ 107.00 / MBF
Pulpwood		
B. T. Aspen	47 Cords	\$ 22.25 / Cord
Basswood	149 Cords	\$ 10.90 / Cord
Mixed Hardwood	81 Cords	\$ 21.00 / Cord
Red Pine	567 Cords	\$ 46.65 / Cord
Sugar Maple	225 Cords	\$ 21.00 / Cord

* The total volume is statistically estimated within plus (+) or minus (-) 8.32 percent. There are an estimated 1,511 cords on this timber sale, plus or minus 126 cords at the 95% confidence level. The estimated units are final and not subject to adjustment. Prospective bidders are urged to examine this timber and to make their own estimates of quantity and quality.

BOND AND PAYMENT SCHEDULE:

1. A bond in the amount of \$2,812.00 to insure faithful performance of the conditions of the contract will be deposited by the successful bidder within 21 days of the sale award.
2. Cutting in any sale or unit without the required advance payment would be considered a trespass.
3. Total payment must be paid in advance or according to the following schedule :
 - (a) Ten percent (10%) of the sale value must be paid within 21 days of the sale award.
 - (b) The 10% down payment will be credited towards the first unit cut.

(c) Payment for each of the following units must be made before cutting begins in that unit:

PAYMENT UNIT NUMBER	PERCENT OF TOTAL SALE VALUE
01	3.6%
02	96.4%

4. If no cutting takes place, the 10% down payment will not be refunded.
5. Operations on the contract issued will terminate on 06/30/2025.

SALE STATISTICS

Volumes were calculated in cubic feet using the Michigan taper model. Cubic foot volume includes all wood inside bark for the product indicated. For display purposes, cubic feet were converted to cords and MBF using a simple conversion factor, e.g. 79 cubic feet per cord and 185 cubic feet per MBF. The cubic foot volumes are precise; the cords and MBF volumes are not. Cubic foot volume cannot be directly converted to cords or boards with precision.

SALE VOLUMES

The total estimated sale volume may not equal the sum of the species/products due to the nature of statistical calculations associated with double sampling methodology.

VOLUME		STATISTICAL RANGE IN CORDS		
TOTAL CUBIC FEET	TOTAL CORDS	PERCENT ERROR	MINIMUM	MAXIMUM
119,364	1,511	8.32%	1,385	1,637

VDU VOLUMES

A VDU is a Volume Determination Unit. Volumes and their associated statistics are calculated at the VDU level and summarized to the sale level. There is often a one to one relationship between a VDU and a Payment Unit, but not always, depending on the cruise design. Refer to the VDU TO PAYMENT UNIT table.

VDU	VOLUME		PERCENT ERROR	RANGE IN CORDS	
	TOTAL CUBIC FEET	TOTAL CORDS		MINIMUM	MAXIMUM
1	30,112	381	12.15%	335	427
2	44,889	568	17.01%	472	665
3	6,837	87	28.28%	62	111
301	28,987	367	12.20%	322	412
302	3,226	41	23.08%	31	50
303	888	11	0.00%	11	11
TOTAL:	114,939	1,455		1,233	1,677

VDU TO PAYMENT UNIT

When a VDU is associated with more than one Payment Unit (PU), the VDU volumes are assigned to the PU based on acres of the VDU within the PU.

VDU	VDU ACRES	PU	PU ACRES
1	5.7	2	5.7
2	9.9	2	9.9
3	4.6	1	4.6
301	13.6	2	13.6
302	2.0	1	2.0
303	0.6	2	0.6
TOTAL:	36.4		36.4

DESCRIPTION OF TIMBER BY PAYMENT UNIT (PU)

PU	MARKET GROUP	PRODUCT	QUANTITY	UNIT	ACRES	ADVERTISE PRICE			
1	Basswood	Pulpwood	59	Cords	6.6	\$2,050.10			
	<i>Basswood</i>	<i>Sawtimber</i>	7.1	<i>MBF</i>					
	<i>Basswood</i>	<i>Pulpwood</i>	45	<i>Cords</i>					
	Mixed Hardwood		6	Cords					
	<i>Red Maple</i>		6	<i>Cords</i>					
	Sugar Maple		61	Cords					
	<i>Sugar Maple</i>	<i>Sawtimber</i>	2.2	<i>MBF</i>					
	<i>Sugar Maple</i>	<i>Pulpwood</i>	57	<i>Cords</i>					
	2	Red Pine	Sawtimber	193.4			MBF	29.8	\$54,190.10
B. T. Aspen		Pulpwood	47	Cords					
<i>B. T. Aspen</i>		<i>Sawtimber</i>	17.3	<i>MBF</i>					
<i>B. T. Aspen</i>		<i>Pulpwood</i>	8	<i>Cords</i>					
<i>Quaking Aspen</i>			4	<i>Cords</i>					
Basswood			90	Cords					
<i>Basswood</i>		<i>Sawtimber</i>	17.9	<i>MBF</i>					
<i>Basswood</i>		<i>Pulpwood</i>	54	<i>Cords</i>					
Mixed Hardwood			75	Cords					
<i>Black Cherry</i>		<i>Sawtimber</i>	0.9	<i>MBF</i>					
<i>Red Maple</i>			3.2	<i>MBF</i>					
<i>American Elm</i>		<i>Pulpwood</i>	10	<i>Cords</i>					
<i>Black Cherry</i>			11	<i>Cords</i>					
<i>Ironwood</i>			11	<i>Cords</i>					
<i>Red Maple</i>			35	<i>Cords</i>					
Red Pine			567	Cords					
Sugar Maple			164	Cords					
<i>Sugar Maple</i>		<i>Sawtimber</i>	25.1	<i>MBF</i>					
<i>Sugar Maple</i>		<i>Pulpwood</i>	114	<i>Cords</i>					
TOTAL:			193.4	MBF					
TOTAL:			1,069	Cords					

Sale Specific Conditions & Requirements

Sale Name: All Reddy Pine and Hardwood

Sale Number: 52-129-21 Seq#: 1

1 - Sale Area

1.2 - Boundaries

1.2.1 - Painted boundaries (9/19)

The sale boundary and Payment Unit boundaries are marked and identified by blue, red, and yellow paint. Exterior sale boundary lines against private property are marked with blue paint. Exterior sale boundary lines against state are marked with red paint. Interior Payment Unit boundaries are marked with yellow paint. Retention patches are marked with red paint; no harvesting activities may occur within these areas. The painted boundary line trees are not Included Timber and are to be protected.

2 - Timber Specifications

2.1 - Included Timber

2.1.2 - Clearcut unit(s) w/o unmerchantable trees (8/11)

Within Payment Unit(s) 2, cut all trees which meet minimum piece specifications in 2.2 Utilization.

2.1.3 - Cut tree marked unit(s) (12/08)

Within Payment Unit(s) 1, all trees are designated for cutting when marked with orange paint above and below stump height, regardless of merchantability.

2.2 - Utilization

2.2.3 - Stump heights (4/07)

Stump heights within Payment Unit 2 shall not exceed 6 inches for all trees. This is to facilitate possible planting operations.

2.2.4 - Skidding length (2/14)

Tree length skidding is required for red pine within Payment Unit 2 to promote soil scarification and red pine seed dispersal. Tops are to be evenly dispersed across the site and not left on the landing if not otherwise utilized by the Purchaser.

3 - Payments

3.4 - Damaged Timber

3.4.1 - Damaged timber (7/16)

General Condition and Requirement 3.4 Damaged Timber, defines liquidated damages for undesignated live merchantable trees which are cut or injured. No damage is acceptable to undesignated live merchantable trees within Payment Unit 1. If more than 5% of trees (> 4.5" DBH) within a specified area of the Payment Unit are damaged, liquidated damages will be assessed for all trees damaged. Rates will be in accordance with General Condition and Requirement 3.4 Damaged Timber.

5 - Operations

5.2 - Conduct of Operations

5.2.1 - Slash

5.2.1.11 - Slash for reforestation (3/21)

To facilitate reforestation, Payment Unit 2 shall be left with slash evenly distributed. Bunched tops within the cutting area shall be broken up and scattered. Stumps shall be cut low to the ground. Processing sites shall not be left with a compacted layer of slash; tops from these sites shall be hauled back into the cut area and scattered.

5.2.3 - Operating Restrictions

5.2.3.3 - Bark slippage restriction (3/09)

Within Payment Unit(s) 1, unless changed by written agreement, cutting and skidding are not permitted during the period of April 15 to July 15. This restriction is because of bark slippage.

5.2.29 - Shrub protection (1/20)

Do not cut or damage hawthorn, witch-hazel, dogwood, or juneberry. These woody-shrub plants are highly beneficial to various wildlife species.

5.2.38 - No decking against live trees (2/04)

Cut products may not be decked against unmarked or designated leave trees.

5.8 - Protection of Endangered Species

5.8.5 - Protection of raptor nests (3/13)

All trees with raptor nests will be protected if found during harvesting operations. Notification will be made to the Unit Manager or his/her representative who will notify the Wildlife Biologist so an on-site evaluation and recommendation can be made, if necessary.

6 - Safety and Fire Prevention

6.2 - Signing

6.2.1 - Road posting (10/20)

The Purchaser is responsible for posting and maintaining caution signs on Reams Road prior to beginning operations. The road must be posted at appropriate distances from the Sale Area to warn of logging activity and truck traffic. Signs must be removed when harvest operations are suspended or completed. The Purchaser will provide these signs.



Sale Number	Year
52 - 129	21

TIMBER SALE MAP

This information provided by authority of Part 525, 1994 PA 451, as amended.

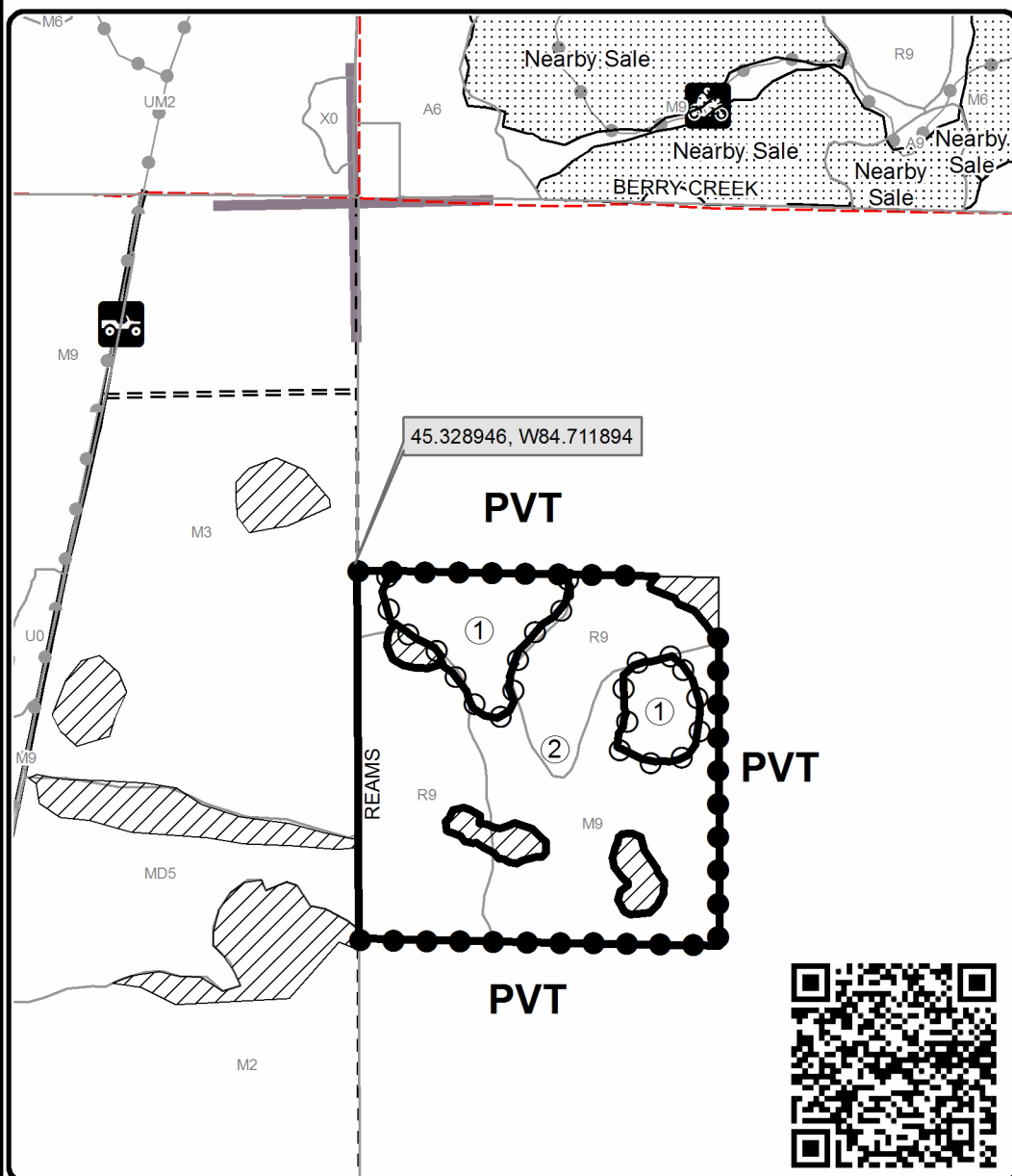
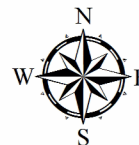
Forest Management Unit Gaylord		County Cheboygan	Mapped By TSP	Date 09/10/2021	Page 1	of 1
Township 34N	Range 03W	Section(s) and Subdivision(s) Sec 20: SWNW		Scale 1:7,920		

Cover Type				Density			
A = Aspen	H = Hemlock	N = Marsh	U = Upland Brush	0 = Non Stocked	5 = Pole Timber Medium		
B = Paper Birch	J = Jack Pine	O = Oak	UM = Upland Mixed	1 = Seedling Sapling Poor	6 = Pole Timber Well		
C = Cedar	L = Lowland Brush	P = Lowland Poplar	V = Bog or Marsh	2 = Seedling Sapling Medium	7 = Saw Timber Poor		
D = Treed Bog	LM = Lowland Mixed	Q = Mixed Swamp Conifer	W = White Pine	3 = Seedling Sapling Well	8 = Saw Timber Medium		
E = Swamp Hdwoods	M = Mpl, Bch, Brch	R = Red Pine	X = Non Stocked	4 = Pole Timber Poor	9 = Saw Timber Well		
F = Spruce Fir	MC = Mixed Conifer	S = Black Spruce	Z = Water				
G = Grass	MD = Mixed Deciduous	T = Tamarack					

PU	Acres
1	6.6
2	29.8

All Reddy Pine and Hardwood

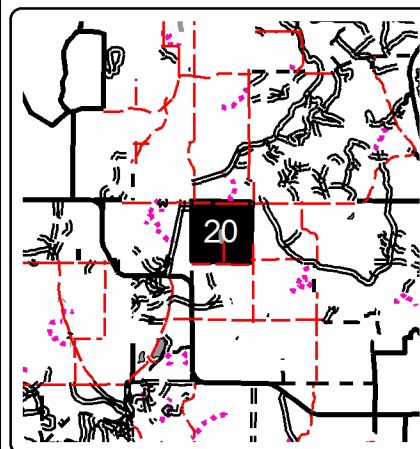
Compartment 149
36.4 Acres



Legend

- Against State (Red)
- Payment Unit (Yellow)
- Private Line (Blue)
- Retention Area
- Stand Boundaries
- Nearby Timber Sales
- Recreational Trail
- Secondary Forest Road
- Forest Access Route
- Gravel Road
- County Road - Seasonal
- Section Corners

Locator Map
1:200,000



Two-Track Mind Mix (52-119-21)
T34N, R03W, SEC. 11; T34N, R03W, SEC. 2; Cheboygan COUNTY

In response to the notice of sale to be held 9:00 a.m. (local time) on March 4, 2022, I am hereby submitting my sealed bid (firm offer) for the following forest products to be cut. Bids for individual species must be at or above the advertised price. All non-responsive bid forms may be rejected.

<u>PRODUCTS & SPECIES</u>	<u>ESTIMATED VOLUME*</u>	<u>ADVERTISED PRICE</u>	<u>BID PRICE/UNIT</u>
Sawtimber			
Jack Pine	45.5 MBF	\$ 35.00/MBF	\$ _____
Northern Pin Oak	64.9 MBF	\$ 58.00/MBF	\$ _____
Red Pine	28.0 MBF	\$ 84.00/MBF	\$ _____
White Oak	25.7 MBF	\$ 72.00/MBF	\$ _____
White Pine	25.8 MBF	\$ 36.00/MBF	\$ _____
Pulpwood			
B. T. Aspen	196 Cords	\$ 17.50/Cord	\$ _____
Jack Pine	414 Cords	\$ 16.55/Cord	\$ _____
Northern Pin Oak	353 Cords	\$ 19.65/Cord	\$ _____
Red Maple	21 Cords	\$ 16.50/Cord	\$ _____
Red Pine	82 Cords	\$ 36.65/Cord	\$ _____
White Oak	93 Cords	\$ 19.65/Cord	\$ _____
White Pine	95 Cords	\$ 17.95/Cord	\$ _____

*The volumes are statistically estimated within plus (+) or minus (-) 7.10 percent at 95% confidence level. These estimated volumes are final and not subject to adjustment. Prospective bidders are urged to examine this timber and to make their own estimates of quantity and quality.

I understand that any or all bids may be rejected. All bids must be signed and all bid items must be bid or the bid form may be rejected. I also understand that consideration and awarding a contract will be based upon my past performance and ability to complete the contract based upon equipment and staffing subject to my control.

FEDERAL ID: ____ - ____ - ____ or SOCIAL SECURITY NUMBER: ____ - ____ - ____

Company or individual bidding: _____

Company representative's name: _____

Address: _____

City: _____ State: _____ Zip: _____

IF AVAILABLE, PLEASE PLACE THE PERSONALIZED LABEL FROM YOUR PROSPECTUS IN THE ABOVE BOX.

Individual or company representative's signature: _____ Date: _____

Phone number : _____ Email (optional): _____

THE WINNING BIDDER MUST COMPLETE THE VERIFICATION OF WORKER'S DISABILITY COMPENSATION ACT COMPLIANCE (ON REVERSE SIDE IF DOUBLE SIDED) WITHIN 21 DAYS OF SALE AWARD DATE



FOR DEPARTMENT USE ONLY
Sale Number (XX - XXX - XX - XX)
Forest Management Unit:

TIMBER SALE VERIFICATION OF WORKER'S DISABILITY COMPENSATION ACT COMPLIANCE

As required by Act 317, P.A. 1969 (Worker's Compensation) and
Part 5 of Act 451 of 1994, as amended.

VERIFICATION OF WORKER'S DISABILITY COMPENSATION ACT COMPLIANCE

- This verification must be completed and submitted within 21 days of contract award and prior to the issuance of the timber sale contract.
- In addition, if boxes 2B or 2C are checked, then Notice of Exclusion or Certificate of Insurance must be submitted within twenty-one (21) days of the contract award and prior to the issuance of the timber sale contract.
- All information must be typed or printed except for written signatures.

Please Check Appropriate Categories:

- My business is organized as (you **must** check one of the boxes below):
 - Sole Proprietorship (individual)
 - Partnership
 - Corporation
- You **must** check one of the boxes below:
 - I certify my business is a sole proprietorship and it has no employees but the sole proprietor. I am not subject to the Worker's Compensation Laws.
 - I certify my business has satisfied its obligation to the Worker's Compensation Act through the use of an approved Notice of Exclusion (BWC-337, Rev. 5/96). I will provide a copy of the Notice of Exclusion within 21 days of the contract award. (For questions or a copy of the BWC-337, please call the Worker's Compensation Bureau at 517-322-1195).
 - I certify my business has a Worker's Compensation Policy. I will provide an original Certificate of Insurance within twenty-one (21) days of the contract award.
- If you have checked item 2(A) or 2(B), you **must** indicate the number of **both** full-time and part-time employees, other than yourself, including family members and active partners (if none, you must enter "0").

_____ Full-time Employees

_____ Part-time Employees

Name of Business		Federal ID (or) Social Security No.	
Address		Telephone ()	
City	State	ZIP	

I hereby certify that the above information is true and correct. I agree to notify the Michigan DNR of any changes that occur in factors affecting my coverage during any of my present and future operations.

Signature of Owner or Authorized Representative

Title

Date

Please complete the "SEALED BID" information on the next page

Scrupulous Aspen (52-127-21)
T36N, R01W, SEC. 30; Cheboygan COUNTY

In response to the notice of sale to be held 9:00 a.m. (local time) on March 4, 2022, I am hereby submitting my sealed bid (firm offer) for the following forest products to be cut. Bids for individual species must be at or above the advertised price. All non-responsive bid forms may be rejected.

<u>PRODUCTS & SPECIES</u>	<u>ESTIMATED VOLUME*</u>	<u>ADVERTISED PRICE</u>	<u>BID PRICE/UNIT</u>
Sawtimber			
Mixed Aspen	267.2 MBF	\$ 44.00/MBF	\$ _____
Red Maple	67.1 MBF	\$ 79.00/MBF	\$ _____
Sugar Maple	67.9 MBF	\$ 376.00/MBF	\$ _____
Pulpwood			
Balsam Fir	24 Cords	\$ 16.70/Cord	\$ _____
Basswood	9 Cords	\$ 8.55/Cord	\$ _____
Ironwood	3 Cords	\$ 16.50/Cord	\$ _____
Mixed Aspen	407 Cords	\$ 17.50/Cord	\$ _____
Paper Birch	97 Cords	\$ 6.90/Cord	\$ _____
Red Maple	366 Cords	\$ 16.50/Cord	\$ _____
Sugar Maple	260 Cords	\$ 16.50/Cord	\$ _____

*The volumes are statistically estimated within plus (+) or minus (-) 7.76 percent at 95% confidence level. These estimated volumes are final and not subject to adjustment. Prospective bidders are urged to examine this timber and to make their own estimates of quantity and quality.

I understand that any or all bids may be rejected. All bids must be signed and all bid items must be bid or the bid form may be rejected. I also understand that consideration and awarding a contract will be based upon my past performance and ability to complete the contract based upon equipment and staffing subject to my control.

FEDERAL ID: _____ or SOCIAL SECURITY NUMBER: _____

Company or individual bidding: _____

Company representative's name: _____

Address: _____

City: _____ State: _____ Zip: _____

IF AVAILABLE, PLEASE PLACE THE PERSONALIZED LABEL FROM YOUR PROSPECTUS IN THE ABOVE BOX.

Individual or company representative's signature: _____ Date: _____

Phone number : _____ Email (optional): _____

THE WINNING BIDDER MUST COMPLETE THE VERIFICATION OF WORKER'S DISABILITY COMPENSATION ACT COMPLIANCE (ON REVERSE SIDE IF DOUBLE SIDED) WITHIN 21 DAYS OF SALE AWARD DATE



FOR DEPARTMENT USE ONLY	
Sale Number (XX - XXX - XX - XX)	
Forest Management Unit:	

TIMBER SALE VERIFICATION OF WORKER'S DISABILITY COMPENSATION ACT COMPLIANCE

As required by Act 317, P.A. 1969 (Worker's Compensation) and
Part 5 of Act 451 of 1994, as amended.

VERIFICATION OF WORKER'S DISABILITY COMPENSATION ACT COMPLIANCE

- This verification must be completed and submitted within 21 days of contract award and prior to the issuance of the timber sale contract.
- In addition, if boxes 2B or 2C are checked, then Notice of Exclusion or Certificate of Insurance must be submitted within twenty-one (21) days of the contract award and prior to the issuance of the timber sale contract.
- All information must be typed or printed except for written signatures.

Please Check Appropriate Categories:

1. My business is organized as (you **must** check one of the boxes below):
 - A. Sole Proprietorship (individual)
 - B. Partnership
 - C. Corporation
2. You **must** check one of the boxes below:
 - A. I certify my business is a sole proprietorship and it has no employees but the sole proprietor. I am not subject to the Worker's Compensation Laws.
 - B. I certify my business has satisfied its obligation to the Worker's Compensation Act through the use of an approved Notice of Exclusion (BWC-337, Rev. 5/96). I will provide a copy of the Notice of Exclusion within 21 days of the contract award. (For questions or a copy of the BWC-337, please call the Worker's Compensation Bureau at 517-322-1195).
 - C. I certify my business has a Worker's Compensation Policy. I will provide an original Certificate of Insurance within twenty-one (21) days of the contract award.
3. If you have checked item 2(A) or 2(B), you **must** indicate the number of **both** full-time and part-time employees, other than yourself, including family members and active partners (if none, you must enter "0").

_____ Full-time Employees

_____ Part-time Employees

Name of Business		Federal ID (or) Social Security No.	
Address		Telephone ()	
City	State	ZIP	

I hereby certify that the above information is true and correct. I agree to notify the Michigan DNR of any changes that occur in factors affecting my coverage during any of my present and future operations.

Signature of Owner or Authorized Representative

Title

Date

Please complete the "SEALED BID" information on the next page

Roberts Lake Mix (52-125-21)
T35N, R02W, SEC. 28; T35N, R02W, SEC. 29; Cheboygan COUNTY

In response to the notice of sale to be held 9:00 a.m. (local time) on March 4, 2022, I am hereby submitting my sealed bid (firm offer) for the following forest products to be cut. Bids for individual species must be at or above the advertised price. All non-responsive bid forms may be rejected.

<u>PRODUCTS & SPECIES</u>	<u>ESTIMATED VOLUME*</u>	<u>ADVERTISED PRICE</u>	<u>BID PRICE/UNIT</u>
Sawtimber			
B. T. Aspen	61.2 MBF	\$ 44.00/MBF	\$ _____
Bl/R/Hybrid Oak	44.9 MBF	\$ 58.00/MBF	\$ _____
Jack Pine	9.2 MBF	\$ 33.00/MBF	\$ _____
Red Oak	1.3 MBF	\$ 63.00/MBF	\$ _____
Red Pine	59.2 MBF	\$ 84.00/MBF	\$ _____
White Pine	4.8 MBF	\$ 36.00/MBF	\$ _____
Pulpwood			
B. T. Aspen	804 Cords	\$ 17.50/Cord	\$ _____
Bl/R/Hybrid Oak	393 Cords	\$ 19.65/Cord	\$ _____
Jack Pine	70 Cords	\$ 16.55/Cord	\$ _____
Red Maple	73 Cords	\$ 16.50/Cord	\$ _____
Red Oak	5 Cords	\$ 19.65/Cord	\$ _____
Red Pine	737 Cords	\$ 36.65/Cord	\$ _____
White Pine	81 Cords	\$ 17.95/Cord	\$ _____
White Spruce	7 Cords	\$ 10.15/Cord	\$ _____

*The volumes are statistically estimated within plus (+) or minus (-) 5.90 percent at 95% confidence level. These estimated volumes are final and not subject to adjustment. Prospective bidders are urged to examine this timber and to make their own estimates of quantity and quality.

I understand that any or all bids may be rejected. All bids must be signed and all bid items must be bid or the bid form may be rejected. I also understand that consideration and awarding a contract will be based upon my past performance and ability to complete the contract based upon equipment and staffing subject to my control .

FEDERAL ID: _____ - _____ or SOCIAL SECURITY NUMBER: _____ - _____ - _____

Company or individual bidding: _____

Company representative's name: _____

Address: _____

City: _____ State: _____ Zip: _____

IF AVAILABLE, PLEASE PLACE THE PERSONALIZED LABEL FROM YOUR PROSPECTUS IN THE ABOVE BOX.

Individual or company representative's signature: _____ Date: _____

Phone number : _____ Email (optional): _____

THE WINNING BIDDER MUST COMPLETE THE VERIFICATION OF WORKER'S DISABILITY COMPENSATION ACT COMPLIANCE (ON REVERSE SIDE IF DOUBLE SIDED) WITHIN 21 DAYS OF SALE AWARD DATE



FOR DEPARTMENT USE ONLY
Sale Number (XX - XXX - XX - XX)
Forest Management Unit:

TIMBER SALE VERIFICATION OF WORKER'S DISABILITY COMPENSATION ACT COMPLIANCE

*As required by Act 317, P.A. 1969 (Worker's Compensation) and
Part 5 of Act 451 of 1994, as amended.*

VERIFICATION OF WORKER'S DISABILITY COMPENSATION ACT COMPLIANCE

- This verification must be completed and submitted within 21 days of contract award and prior to the issuance of the timber sale contract.
- In addition, if boxes 2B or 2C are checked, then Notice of Exclusion or Certificate of Insurance must be submitted within twenty-one (21) days of the contract award and prior to the issuance of the timber sale contract.
- All information must be typed or printed except for written signatures.

Please Check Appropriate Categories:

1. My business is organized as (you **must** check one of the boxes below):
 - A. Sole Proprietorship (individual)
 - B. Partnership
 - C. Corporation

2. You **must** check one of the boxes below:
 - A. I certify my business is a sole proprietorship and it has no employees but the sole proprietor. I am not subject to the Worker's Compensation Laws.
 - B. I certify my business has satisfied its obligation to the Worker's Compensation Act through the use of an approved Notice of Exclusion (BWC-337, Rev. 5/96). I will provide a copy of the Notice of Exclusion within 21 days of the contract award. (For questions or a copy of the BWC-337, please call the Worker's Compensation Bureau at 517-322-1195).
 - C. I certify my business has a Worker's Compensation Policy. I will provide an original Certificate of Insurance within twenty-one (21) days of the contract award.

3. If you have checked item 2(A) or 2(B), you **must** indicate the number of **both** full-time and part-time employees, other than yourself, including family members and active partners (if none, you must enter "0").

_____ Full-time Employees

_____ Part-time Employees

Name of Business		Federal ID (or) Social Security No.	
Address		Telephone ()	
City	State	ZIP	

I hereby certify that the above information is true and correct. I agree to notify the Michigan DNR of any changes that occur in factors affecting my coverage during any of my present and future operations.

Signature of Owner or Authorized Representative

Title

Date

Please complete the "SEALED BID" information on the next page

All Reddy Pine and Hardwood (52-129-21)
T34N, R03W, SEC. 20; Cheboygan COUNTY

In response to the notice of sale to be held 9:00 a.m. (local time) on March 4, 2022, I am hereby submitting my sealed bid (firm offer) for the following forest products to be cut. Bids for individual species must be at or above the advertised price. All non-responsive bid forms may be rejected.

<u>PRODUCTS & SPECIES</u>	<u>ESTIMATED VOLUME*</u>	<u>ADVERTISED PRICE</u>	<u>BID PRICE/UNIT</u>
Sawtimber			
Red Pine	193.4 MBF	\$ 107.00/MBF	\$ _____
Pulpwood			
B. T. Aspen	47 Cords	\$ 22.25/Cord	\$ _____
Basswood	149 Cords	\$ 10.90/Cord	\$ _____
Mixed Hardwood	81 Cords	\$ 21.00/Cord	\$ _____
Red Pine	567 Cords	\$ 46.65/Cord	\$ _____
Sugar Maple	225 Cords	\$ 21.00/Cord	\$ _____

*The volumes are statistically estimated within plus (+) or minus (-) 8.32 percent at 95% confidence level. These estimated volumes are final and not subject to adjustment. Prospective bidders are urged to examine this timber and to make their own estimates of quantity and quality.

I understand that any or all bids may be rejected. All bids must be signed and all bid items must be bid or the bid form may be rejected. I also understand that consideration and awarding a contract will be based upon my past performance and ability to complete the contract based upon equipment and staffing subject to my control.

FEDERAL ID: _____ - _____ or SOCIAL SECURITY NUMBER: _____ - _____ - _____

Company or individual bidding: _____

Company representative's name: _____

Address: _____

City: _____ State: _____ Zip: _____

IF AVAILABLE, PLEASE PLACE THE PERSONALIZED LABEL FROM YOUR PROSPECTUS IN THE ABOVE BOX.

Individual or company representative's signature: _____ Date: _____

Phone number : _____ Email (optional): _____

THE WINNING BIDDER MUST COMPLETE THE VERIFICATION OF WORKER'S DISABILITY COMPENSATION ACT COMPLIANCE (ON REVERSE SIDE IF DOUBLE SIDED) WITHIN 21 DAYS OF SALE AWARD DATE



FOR DEPARTMENT USE ONLY	
Sale Number (XX - XXX - XX - XX)	
Forest Management Unit:	

TIMBER SALE VERIFICATION OF WORKER'S DISABILITY COMPENSATION ACT COMPLIANCE

As required by Act 317, P.A. 1969 (Worker's Compensation) and
Part 5 of Act 451 of 1994, as amended.

VERIFICATION OF WORKER'S DISABILITY COMPENSATION ACT COMPLIANCE

- This verification must be completed and submitted within 21 days of contract award and prior to the issuance of the timber sale contract.
- In addition, if boxes 2B or 2C are checked, then Notice of Exclusion or Certificate of Insurance must be submitted within twenty-one (21) days of the contract award and prior to the issuance of the timber sale contract.
- All information must be typed or printed except for written signatures.

Please Check Appropriate Categories:

1. My business is organized as (you **must** check one of the boxes below):
 - A. Sole Proprietorship (individual)
 - B. Partnership
 - C. Corporation
2. You **must** check one of the boxes below:
 - A. I certify my business is a sole proprietorship and it has no employees but the sole proprietor. I am not subject to the Worker's Compensation Laws.
 - B. I certify my business has satisfied its obligation to the Worker's Compensation Act through the use of an approved Notice of Exclusion (BWC-337, Rev. 5/96). I will provide a copy of the Notice of Exclusion within 21 days of the contract award. (For questions or a copy of the BWC-337, please call the Worker's Compensation Bureau at 517-322-1195).
 - C. I certify my business has a Worker's Compensation Policy. I will provide an original Certificate of Insurance within twenty-one (21) days of the contract award.
3. If you have checked item 2(A) or 2(B), you **must** indicate the number of **both** full-time and part-time employees, other than yourself, including family members and active partners (if none, you must enter "0").

_____ Full-time Employees

_____ Part-time Employees

Name of Business		Federal ID (or) Social Security No.	
Address		Telephone ()	
City	State	ZIP	

I hereby certify that the above information is true and correct. I agree to notify the Michigan DNR of any changes that occur in factors affecting my coverage during any of my present and future operations.

Signature of Owner or Authorized Representative

Title

Date

Please complete the "SEALED BID" information on the next page