



**DEPARTMENT OF NATURAL RESOURCES  
STATE OF MICHIGAN**

**TIMBER SALE PROSPECTUS #6992**

SCHEDULED SALE DATE AND TIME: 9:00 a.m. (local time) on January 24, 2022.

LOCATION: GRAYLING MGMT UNIT, 1955 HARTWICK PINES ROAD, GRAYLING, MI 49738.

PROSPECTUS NOTE: The bidder is advised to inspect the sale area and review the location, estimated volumes, operating costs and contract terms of proposed sales. Please be aware that some landowners may request 60 days or more notice for access across their land.

Notice is hereby given that bids will be received by the Unit Manager, GRAYLING MANAGEMENT UNIT, for certain timber on the following described lands:

Roth Exp Re-Sale (72-010-22) / T25N, R02W, SEC. 9 , W1/2SE.

T25N, R03W, SEC. 12, NENW,NWNE.

T25N, R04W, SEC. 19, E1/2SE.

T25N, R04W, SEC. 29, SWNW.

Crawford County, Advertised Price \$41.50, 41.5 Acres, Jack Pine.

SALE NOTE: All units of volume listed for this sale were estimated using the Inventory Manager computer program and the new Michigan taper model.

Contract duration is only 1 year. Four small 10 acre blocks of sub-merchantable jack pine.

Pallet Abduction Mix (72-609-21) / T27N, R02W, SEC. 5 , N1/2NW.

T28N, R02W, SEC. 29, SWSE.

T28N, R02W, SEC. 32, N1/2NW,N1/2NE,SWNE,S1/2SW.

T28N, R02W, SEC. 32, NWSE,SESE.

Crawford County, Advertised Price \$23,169.50, 74.7 Acres, Jack Pine, Hardwood.

SALE NOTE: All units of volume listed for this sale were estimated using the Inventory Manager computer program and the new Michigan taper model.

- See sale specs 5.1.5 and 5.2.3.7 for information on military restrictions.

- See sale specs 2.2.2 and 2.2.3 for chipping and stump requirements.

- See sale spec 5.2.3.4 for requirements due to oak wilt.

A recreation site such as a trail, pathway, or campground is within the sale area or the vicinity. Certain restrictions/specifications may be applicable including time restrictions.

Foxhole Oak (72-627-21) / T26N, R04W, SEC. 31, NW,SWNE,SW.

Crawford County, Advertised Price \$65,568.60, 160.5 Acres, Hardwood, Red Oak.

SALE NOTE: All units of volume listed for this sale were estimated using the Inventory Manager computer program and the new Michigan taper model.

- Military training conducted on sale see sale spec 5.2.3.7 for more information.
- See sale spec 5.2.22.1 for information on military foxholes in the area.
- See sale spec 2.1.11 for information on potential cutting hazards.
- See sale spec 6.4 for instructions in dealing with unexploded ordinances.

Roswell Jack (72-639-21) / T28N, R02W, SEC. 31, NENW,S1/2NW,SWNE,N1/2SW,SESW.

T28N, R02W, SEC. 31, W1/2SE.

Crawford County, Advertised Price \$20,920.10, 81.6 Acres, Jack Pine, Hardwood.

SALE NOTE: All units of volume listed for this sale were estimated using the Inventory Manager computer program and the new Michigan taper model.

Sale is located on non-certified military land. Low stumps and chipping required. Sale contains oak wilt and military timing restrictions.

Crop Circle Oak (72-640-21) / T27N, R02W, SEC. 6 , NENE.

T28N, R02W, SEC. 31, SENE,SE.

T28N, R02W, SEC. 32, NWNW,NWSW.

Crawford County, Advertised Price \$47,356.05, 132.0 Acres, Hardwood, Red Pine.

SALE NOTE: All units of volume listed for this sale were estimated using the Inventory Manager computer program and the new Michigan taper model.

- Sale is on non-certified land see spec 7.10.1 for more information.
- See sale spec 5.2.3.7 for restriction on military land.
- See Sale spec 5.2.3.4 for restriction due to oak wilt.

A recreation site such as a trail, pathway, or campground is within the sale area or the vicinity. Certain restrictions/specifications may be applicable including time restrictions.

## BID INSTRUCTIONS (VER. 07/02/2018):

### 1. Scheduled Bid Location, Date, and Time (2/11)

Bids must be received by the Unit Manager, GRAYLING OFFICE, 1955 HARTWICK PINES ROAD, GRAYLING, MI 49738, no later than 9:00 a.m. (local time) on January 24, 2022. For further information concerning this sale, contact Thomas Barnes at 989-348-6371 extension 7440.

### 2. Bidder's Qualifications (5/16)

Purchaser shall obtain workers compensation insurance to cover claims under Michigan's Worker's Disability Compensation Act of 1969 or similar employee benefit act of any other state applicable to an employee. If all or part of a timber sale was prepared by a private contractor, the contractor and that contractor's company are not permitted to bid on the timber sale contract. Bids will not be accepted from individuals or companies appearing on the DNR/FRD No-Bid List. This list contains the names of purchasers who previously failed to execute a contract within 21-days or who have a history of poor performance.

### 3. Preparation of Sealed Bids (5/16)

Bid Forms may be completed online thru Michigan DNR Timber Sale Online Bidding (OLB) at [www.michigan.gov/timberbidding](http://www.michigan.gov/timberbidding) or by completing the hardcopy Bid Form found in the Timber Sale Prospectus. Hardcopy Bid Forms shall be manually signed in ink. Registration in OLB is considered your 'signature' for all bids submitted thru that system. Bid prices must be entered for each species and product in the Bid Price column for all material subject to bidding and all fill-in blanks must be completed. If erasures or other changes appear on the hardcopy Bid Form, each erasure or change must be initialed by the person signing the bid.

### 4. Submission of Sealed Bids (5/16)

Bid forms may be obtained from the Unit Manager or thru OLB. Bids may be submitted hardcopy or thru OLB. All hardcopy bids must be submitted on the bid form and in an envelope clearly identified as described in this section. NOTE: Only one bid form per bid envelope. Sealed bids must be submitted to the Unit office designated in the prospectus and must be submitted at or prior to the time established in the prospectus. The envelope should show on the outside (a) the sale name or number and (b) the date and time of bid opening, as shown in the prospectus. Bids received after the time specified in the sale prospectus are late bids and will be rejected.

It is possible for a bidder to submit multiple bids on a single sale. For example, a bid may be submitted hardcopy and a bid may be submitted thru OLB. Or, two bidders from the same company could both submit bids on the same sale. If this were to happen, the State would accept all bids received and award the contract accordingly. All bidding and contractual requirements would apply to all bids received.

### 5. Public Opening of Sealed Bids (7/16)

If conditions permit, the sealed bids will be publicly opened and posted at the time and place set in the prospectus.

If a bidder, present at a bid opening, has submitted bids on more than one sale, that bidder may withdraw their unopened bid envelopes or announce the withdrawal of their online bid after being declared the successful bidder on one sale.

### 6. Award of Contract (1/11)

Award of the contract will be made to the Bidder whose bid, conforming to the prospectus, is most advantageous to the State of Michigan on the basis of total value at rates bid for the estimated quantities. The State reserves the right to reject any bid or waive any minor irregularity in bids received. A written award mailed (or otherwise furnished) to the successful Bidder shall be deemed to result in a binding contract without further action by either party.

### 7. Down Payment (1/11)

The Bidder to whom award is made must make a down payment within 21 days of the sale award. The amount of the down payment will be calculated as shown in the Bond and Payment Schedule of this prospectus. Only cash may be used to meet this requirement.

### 8. Performance Security (1/11)

As guarantee of faithful performance, a cash bond, certificate of deposit, surety bond or irrevocable letter of credit (LOC) is required within 21 days of the sale award. The amount of the performance security is shown in the Bond and

Payment Schedule of this prospectus. If an LOC or surety is used, the coverage must extend for at least 6 months beyond the contract expiration.

#### 9. Timber Sale Contract (7/18)

Additional conditions and requirements common to all timber sales are listed on the timber sale contract (R4031) and are available on line at [www.michigan.gov/timber](http://www.michigan.gov/timber). Contact the Unit Manager for additional information or a sample contract. Within 21 days of the date of the award letter, the bidder must sign the contract and provide the required down payment, performance security, and verification of worker's disability compensation. The down payment and performance security shall be in accordance with the provisions of the timber sale contract, in the sums stated in this prospectus. If these actions are not taken, then the Bidder, the Bidder's corporation, and the corporation's principals may not be permitted to bid on State timber sales for a period of 3 months after the first offense, 6 months after the second offense, and 1 year after the third offense. An offense will only be counted against the Bidder for 5 years. In addition, the Bidder certifies that if awarded this contract, the Bidder will complete the timber sale contract in accordance with its terms and any modifications thereof including requirements to purchase, cut, and remove the included timber by the expiration date.

Payment Unit values in the State Forest Timber Sale Contract are calculated based on the advertised value of the Payment Unit as a percentage of the total advertised value of the contract. The advertised value of each Payment Unit is given in the Description of Timber by Payment Unit table on the Timber Sale Information page. For example, if the value of Payment Unit 1 is advertised as \$1,500 and the total Timber Sale value is advertised as \$10,000, the contract price for Payment Unit 1 will be 15% of the total bid price ( $\$1,500/\$10,000 * 100$ ).

#### 10. Disclaimer of Estimates and Bidder's Warranty of Inspection (7/16)

Before submitting this bid, the Bidder is advised and cautioned to inspect the sale area, review the requirements of the sale contract, and take other steps as may be reasonably necessary to ascertain the location, estimated volumes, construction estimates, and operating costs of the proposed sale. Failure to do so will not relieve the Bidder from responsibility for completing the contract.

The Bidder warrants that this bid is submitted solely on the basis of the Bidder's examination and inspection of the quality and quantity of the timber offered for sale and the Bidder's opinion of the value thereof and the costs of recovery. No reliance should be placed on the State of Michigan's estimates of timber quality, quantity or costs of recovery. Bidder further acknowledges that the State of Michigan: (i) expressly disclaims any warranty of fitness of timber for any purpose; (ii) offers this timber as is without any warranty of quality (merchantability) or quantity and (iii) expressly disclaims any warranty as to the quantity or quality of timber sold.

#### 11. Certification and Chain-of-Custody (10/14)

Unless otherwise indicated in the contract under section 7 – Other Conditions of the Sale Specific Conditions & Requirements, the area encompassed by this timber sale is certified to the standards of the Forest Stewardship Council (FSC) - Certificate #SCS-FM/COC-00090N and the Sustainable Forestry Initiative (SFI) - Certificate #NSF-SFIS-5Y031-SF5. Forest products from this sale may be delivered to the mill as "FSC 100% and / or SFI certified" as long as the contractor hauling the forest products is chain-of-custody (COC) certified or covered under a COC certificate from the destination mill. The purchaser is responsible for maintaining COC after leaving the sale area.

#### 12. Good Neighbor Authority (GNA) Requirements (7/16)

If the name of this timber sales contains the acronym GNA, it is authorized by the Good Neighbor Authority (GNA) and covered by various agreements between the U.S. Forest Service and the State. The timber sale occurs on federal land and the following conditions apply:

GNA contracts on US Forest Service land will not be awarded to purchasers on the Federal list of excluded parties. The System for Award Management (SAM) will be checked for active excluded parties prior to award of contract. In addition, the Bidder to whom award is made must complete an Assurance Regarding Felony Conviction or Tax Delinquent Status for Corporate Applicants (AD-3031).

#### 13. Good Neighbor Authority (GNA) Requirements, con't (9/16)

Bidder certifies, by signing this bid form, that to the best of Bidder's knowledge that the following representations are accurate and complete.

- a. That the Bidder and its principals are not presently debarred, suspended, proposed for debarment, declared ineligible, or voluntary excluded from timber sales (covered transactions) by any Federal department or agency.
- b. That the Bidder and its principals have not within a 3-year period preceding this bid been convicted of or had a civil judgment rendered against them for commission of fraud or a criminal offense in connection with obtaining , attempting to obtain, or performing a public (Federal, State, or local) transaction or contract under a public transaction; violation of Federal or State antitrust statutes or commission of embezzlement, theft, forgery, bribery, falsification or destruction of records, making false statements, or receiving stolen property.
- c. That the Bidder and its principals are not presently indicted for or otherwise criminally or civilly charged by a governmental entity (Federal, State, or local) with commission of any of the offenses enumerated in paragraph b of this certification.
- d. That the Bidder and its principals have not within a 3-year period preceding this bid had one or more public transactions (Federal, State, or local) terminated for breach or default of a timber or forest product contract.

Bidders that cannot certify this requirement, in whole or in part, shall submit an explanation with their bid.

DAN EICHINGER  
Director



# TIMBER SALE INFORMATION

Roth Exp Re-Sale (72-010-22)

T25N, R02W, SEC. 9; T25N, R03W, SEC. 12; T25N, R04W, SEC. 19; T25N, R04W, SEC. 29.

Crawford County (Advertised Price \$41.50)

SALE NOTE: All units of volume listed for this sale were estimated using the Inventory Manager computer program and the new Michigan taper model.

Contract duration is only 1 year. Four small 10 acre blocks of sub-merchantable jack pine.

A timber sale contract for this lump sum, sealed bid timber sale will be awarded to the responsible bidder offering the highest sealed bid price. All units of volume listed below were estimated using the Inventory Manager computer program and the new Michigan taper model. Bids must be at or above the following advertised price for each product and species:

<u>PRODUCTS &amp; SPECIES</u>	<u>ESTIMATED UNITS*</u>	<u>ADVERTISED PRICE</u>
Pulpwood		
Misc. Species 1	41.5 Acres	\$ 1.00 / Acre

\* The estimated units are final and not subject to adjustment. Prospective bidders are urged to examine this timber and to make their own estimates of quantity and quality.

### **BOND AND PAYMENT SCHEDULE:**

1. A bond in the amount of \$1,000.00 to insure faithful performance of the conditions of the contract will be deposited by the successful bidder within 21 days of the sale award.
2. Cutting in any sale or unit without the required advance payment would be considered a trespass.
3. Total payment must be paid in advance or according to the following schedule :
  - (a) Ten percent (10%) of the sale value must be paid within 21 days of the sale award.
  - (b) The remainder is due before cutting begins.
  - (c) Payment for each of the following units must be made before cutting begins in that unit:
 

PAYMENT UNIT NUMBER	PERCENT OF TOTAL SALE VALUE
01	100.0%
4. If no cutting takes place, the 10% down payment will not be refunded.
5. Operations on the contract issued will terminate on 03/31/2023.

### **SALE STATISTICS**

Volumes were calculated in cubic feet using the Michigan taper model. Cubic foot volume includes all wood inside bark for the product indicated. For display purposes, cubic feet were converted to cords and MBF using a simple conversion factor, e.g. 79 cubic feet per cord and 185 cubic feet per MBF. The cubic foot volumes are precise; the cords and MBF volumes are not. Cubic foot volume cannot be directly converted to cords or boards with precision.

### **SALE VOLUMES**

The total estimated sale volume may not equal the sum of the species/products due to the nature of statistical calculations associated with double sampling methodology.

VOLUME		STATISTICAL RANGE IN CORDS		
TOTAL CUBIC FEET	TOTAL CORDS	PERCENT ERROR	MINIMUM	MAXIMUM
825	10	N/A	10	10
41.50 acres are being sold by the acre and do not have cubic foot or cord volumes.				

**VDU VOLUMES**

A VDU is a Volume Determination Unit. Volumes and their associated statistics are calculated at the VDU level and summarized to the sale level. There is often a one to one relationship between a VDU and a Payment Unit, but not always, depending on the cruise design. Refer to the VDU TO PAYMENT UNIT table.

VDU	VOLUME		PERCENT ERROR	RANGE IN CORDS	
	TOTAL CUBIC FEET	TOTAL CORDS		MINIMUM	MAXIMUM
11 *			N/A		
12 *			N/A		
46 *			N/A		
47 *			N/A		
<b>TOTAL:</b>	N/A	N/A		N/A	N/A

\* This VDU is being sold by the acre. There are no cruise statistics available.

**VDU TO PAYMENT UNIT**

When a VDU is associated with more than one Payment Unit (PU), the VDU volumes are assigned to the PU based on acres of the VDU within the PU.

VDU	VDU ACRES	PU	PU ACRES
11	10.2	1	10.2
12	10.2	1	10.2
46	11.1	1	11.1
47	10.0	1	10.0
<b>TOTAL:</b>	<b>41.5</b>		<b>41.5</b>

**DESCRIPTION OF TIMBER BY PAYMENT UNIT (PU)**

PU	MARKET GROUP	PRODUCT	QUANTITY	UNIT	ACRES	ADVERTISE PRICE
1	Misc. Species 1	Pulpwood	41.5	Acres	41.5	\$41.50
<b>TOTAL:</b>			41.5	Acres		



## Sale Specific Conditions & Requirements

**Sale Name: Roth Exp Re-Sale**

**Sale Number: 72-010-22 Seq#: 1**

### 1 - Sale Area

#### 1.2 - Boundaries

##### 1.2.1 - Painted boundaries (9/19)

The sale boundary is marked and identified by red paint. Exterior sale boundary lines against state are marked with red paint.

### 2 - Timber Specifications

#### 2.1 - Included Timber

##### 2.1.1 - Clearcut unit(s) with unmerchantable trees (6/14)

Within Payment Unit(s) 1, cut all trees that are one (1) inch or more at DBH.

##### 2.1.11 - Description of timber note (2/04)

Note that stems are sub-merchantable jack pine.

#### 2.2 - Utilization

##### 2.2.2 - Chipping required (2/18)

This area must be chip harvested to facilitate future silvicultural activities. The Purchaser has the option to produce sawlogs or pulpwood bolts, but the remaining portion of the trees must be chipped and hauled. The requirement to retain approximately 1/6 to 1/3 of tree tops and limbs less than four inches in diameter does not apply (G. C. & R. 2.2). This is because the cutting units are part of the Rothstein Research Project.

##### 2.2.3 - Stump heights (4/07)

Stump heights within the Sale Area shall not exceed 6 inches for all trees. A written waiver of this requirement may be obtained if wet summer weather makes winter logging necessary.

### 4 - Transportation

#### 4.1 - Construction

##### 4.1.6 - Road construction (1/09)

Construction of new roads or improvements of existing roads shall be done in such a way as to minimize the environmental and visual impacts. Merchantable trees shall be cut and utilized unless otherwise directed. Non-merchantable trees shall be severed and laid flat on the ground. Slash shall be chipped, utilized, or otherwise removed from the sale. Stumps shall be set upright, not left on edge, and be moved at least 10 feet away from the road edge. Disturbed soil shall be feathered into the woods and not left in berms or windrows.

##### 4.1.7 - Road closure (10/11)

All new roads built into the sale must be blocked to vehicle traffic upon completion of the sale. Overgrown roads that are reopened shall be considered new roads. In general, this will require constructing a four (4') foot high berm of stumps and logs covered with earth. Stumps and brush must be placed along the remainder of the trail. These roads must be rendered impassable to cars and trucks. All stumps from road building and landing construction must be reserved to block any newly constructed roads upon completion of the sale. These stumps must be scattered along the road system to prohibit vehicular movement. Contact the sale administrator for specific details of design and placement.

##### 4.1.11 - Permits (2/12)

The Purchaser will secure any necessary permits that may be required.

#### 4.2 - Maintenance

##### 4.2.5 - Two wheel drive condition (2/04)

All existing trail roads on and adjacent to the sale area must be passable by two-wheel drive traffic for the duration of the sale.

### 5 - Operations

## 5.1 - Notification

### 5.1.1 - Pre-sale conference (10/16)

A pre-sale conference on site between the Purchaser and sale administrator is required prior to beginning any operations to determine landing and road locations. The Unit Manager or his/her representative must be contacted at least 10 days in advance to schedule the conference. This is a timber sale for biomass research purposes. Sharing of information about production rates, fuel consumption, and machine hours would be much appreciated.

### 5.1.3 - Well heads and natural gas pipelines (11/15)

The Purchaser is responsible for contacting the gas or pipeline company 30 days prior to operating equipment in the vicinity of well heads or natural gas pipelines. Contact Breitburn at 888-251-1681. Written permission is required before harvest operations begin and must be submitted to the Unit Manager.

### 5.1.4 - Post-sale conference (10/16)

A post-sale conference on site between the Purchaser and sale administrator is required 5 days prior to the completion of active logging operations to determine clean-up and repair of landings, road edges, and the fulfillment of other contract specifications.

## 5.2 - Conduct of Operations

### 5.2.1 - Slash

#### 5.2.1.8 - Slash height (12/08)

No slash or tree tops may exceed 24 inches in height.

#### 5.2.38 - No decking against live trees (2/04)

Cut products may not be decked against unmarked or designated leave trees.

## 5.4 - Soil Protection

### 5.4.1 - Rutting restriction, general (7/16)

Operations are to cease immediately if equipment and weather conditions result in rutting of roads and/or skid trails which is 12 inches or greater in depth and 50 feet in length. The Unit Manager or his/her representative may restrict hauling and/or skidding if ruts exceed the specified depth. With the Unit Manager or his/her representative's approval, the Purchaser may return to the area when the risk of rutting has decreased.

## 5.8 - Protection of Endangered Species

### 5.8.1 - Kirtland's warbler (1) (10/12)

This sale is adjacent to a young jack pine stand which may be used by the endangered Kirtland's Warbler. The Department reserves the right to temporarily restrict all harvesting operations in a buffer zone of up to 500 feet if it is determined that Warbler territory has been established in the adjacent stand. The restricted period, if put into effect, would apply from May 1 to August 15.

## 6 - Safety and Fire Prevention

### 6.2 - Signing

#### 6.2.1 - Road posting (10/20)

The Purchaser is responsible for posting and maintaining caution signs on all forest or public roads prior to beginning operations. The road must be posted at appropriate distances from the Sale Area to warn of logging activity and truck traffic. Signs must be removed when harvest operations are suspended or completed. The Purchaser will provide these signs.



# TIMBER SALE MAP

This information provided by authority of Part 525, 1994 PA 451, as amended.

Sale Number	Year
72-008	16

Forest Management Unit	County	Mapped By	Barnes	Date	Page	of
Grayling	Crawford	Cruised By	Barnes	08/23/2016	1	3
Township	Range	Section(s) and Subdivision(s)		Scale		
25N	04W	Sec 19 - E1/2SE; Sec 29 - SWNW		1:15,840		

Cover Type				Density			
A = Aspen	H = Hemlock	N = Marsh	U = Upland Brush	0 = Non Stocked	5 = Pole Timber Medium		
B = Paper Birch	J = Jack Pine	O = Oak	UM = Upland Mixed	1 = Seedling Sapling Poor	6 = Pole Timber Well		
C = Cedar	L = Lowland Brush	P = Lowland Poplar	V = Bog or Marsh	2 = Seedling Sapling Medium	7 = Saw Timber Poor		
D = Treed Bog	LM = Lowland Mixed	Q = Mixed Swamp Conifer	W = White Pine	3 = Seedling Sapling Well	8 = Saw Timber Medium		
E = Swamp Hdwoods	M = Mpl, Bch, Brch	R = Red Pine	X = Non Stocked	4 = Pole Timber Poor	9 = Saw Timber Well		
F = Spruce Fir	MC = Mixed Conifer	S = Black Spruce	Z = Water				
G = Grass	MD = Mixed Deciduous	T = Tamarack					

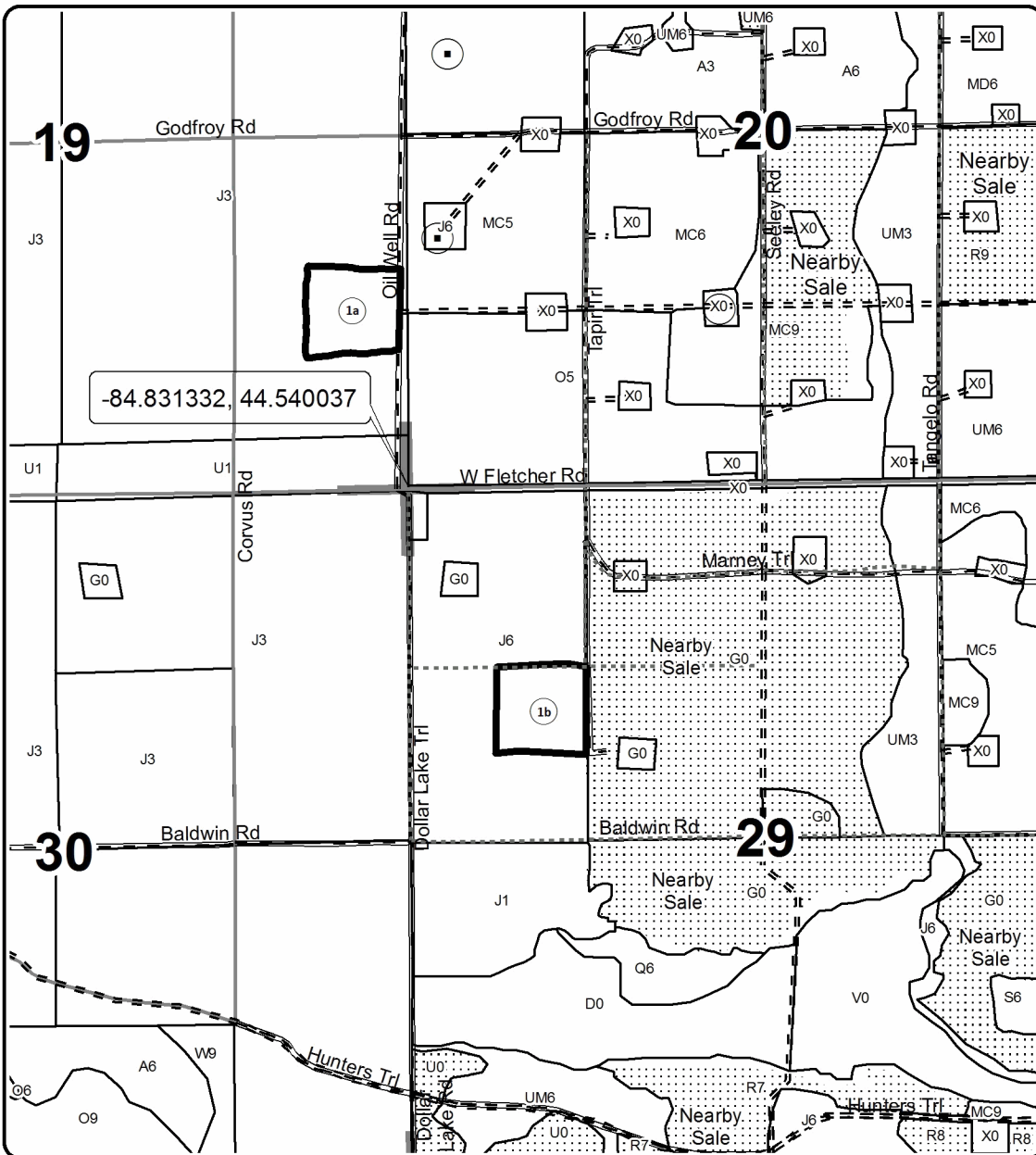
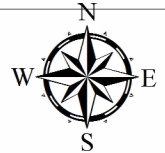
### PU Acres PU Acres

1a	10.2
1b	10

## Roth Exp Sale

Compartment 189, 191, 232, 297

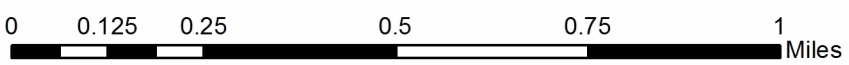
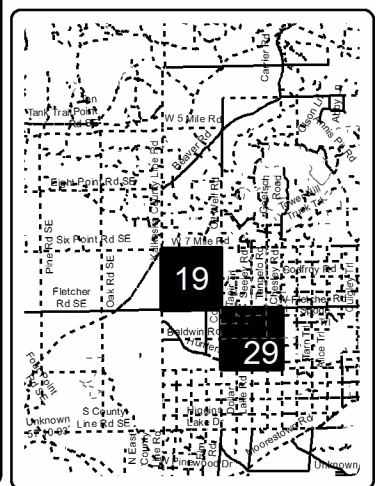
### 41.5 Acres



### Legend

- Against State (Red)
- PU\_Label
- Nearby Timber Sale
- Section Corners
- Stand Boundaries
- Paved Roads
- Gravel Roads
- Poor Dirt Roads
- Closed Roads
- Oil & Gas Well
- Surface Locations
- Pipeline; Powerline

Locator Map  
1:200,000





# TIMBER SALE MAP

This information provided by authority of Part 525, 1994 PA 451, as amended.

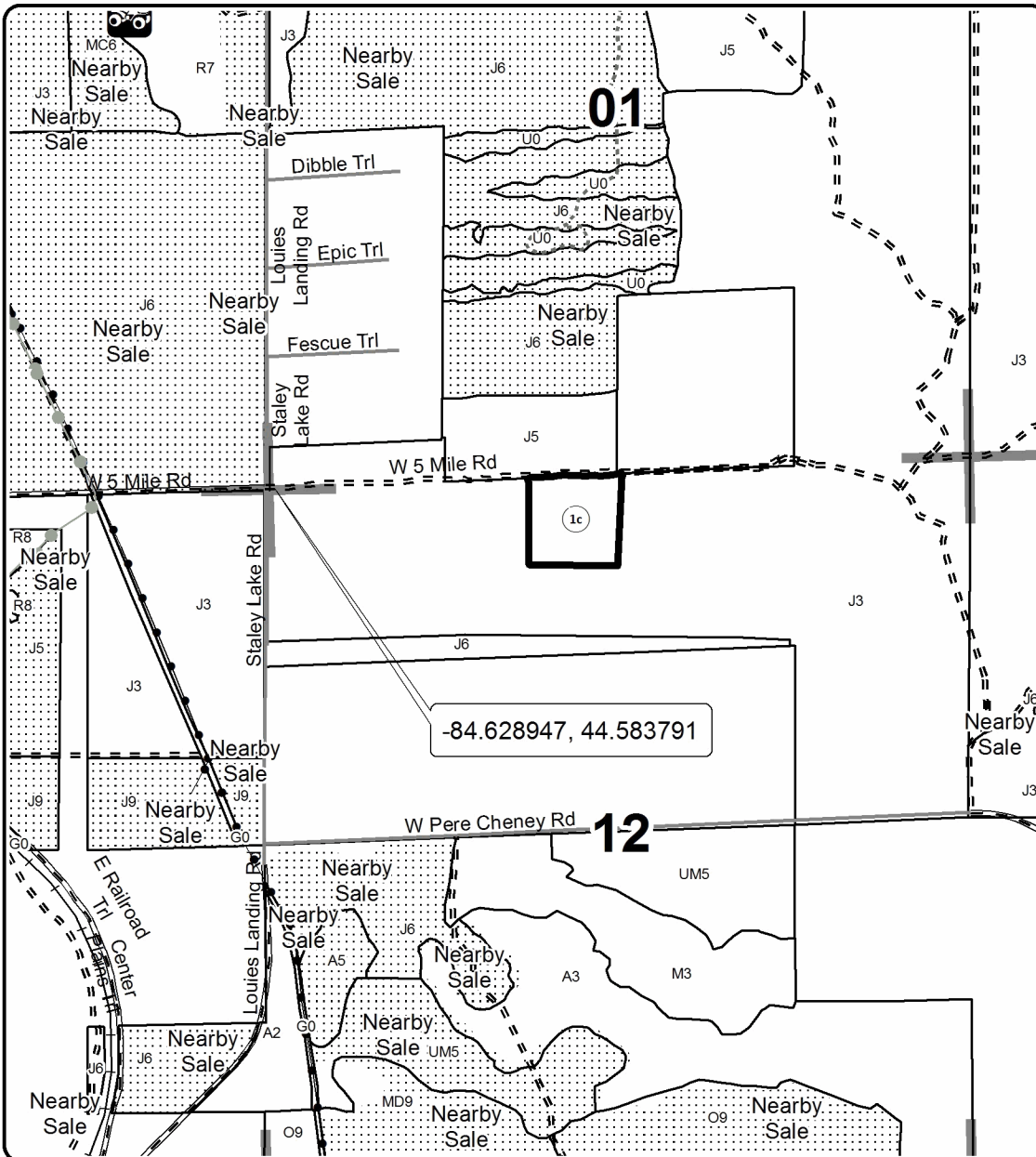
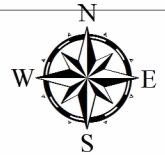
Sale Number	Year
72-008	16

Forest Management Unit <b>Grayling</b>	County <b>Crawford</b>	Mapped By <b>Barnes</b>	Date <b>08/23/2016</b>	Page <b>2</b>	of <b>3</b>
Township <b>25N</b>	Range <b>03W</b>	Section(s) and Subdivision(s) <b>Sec 12 - NENW</b>	Scale <b>1:15,840</b>		
<b>Cover Type</b>			<b>Density</b>		
A = Aspen B = Paper Birch C = Cedar D = Treed Bog E = Swamp Hdwoods F = Spruce Fir G = Grass	H = Hemlock J = Jack Pine L = Lowland Brush LM = Lowland Mixed M = Mpl, Bch, Brch MC = Mixed Conifer MD = Mixed Deciduous	N = Marsh O = Oak P = Lowland Poplar Q = Mixed Swamp Conifer R = Red Pine S = Black Spruce T = Tamarack	U = Upland Brush UM = Upland Mixed V = Bog or Marsh W = White Pine X = Non Stocked Z = Water	0 = Non Stocked 1 = Seedling Sapling Poor 2 = Seedling Sapling Medium 3 = Seedling Sapling Well 4 = Pole Timber Poor	5 = Pole Timber Medium 6 = Pole Timber Well 7 = Saw Timber Poor 8 = Saw Timber Medium 9 = Saw Timber Well

**PU Acres PU Acres**  
**1c 10.2**

## Roth Exp Sale

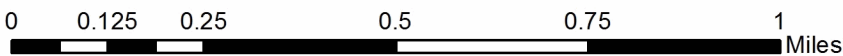
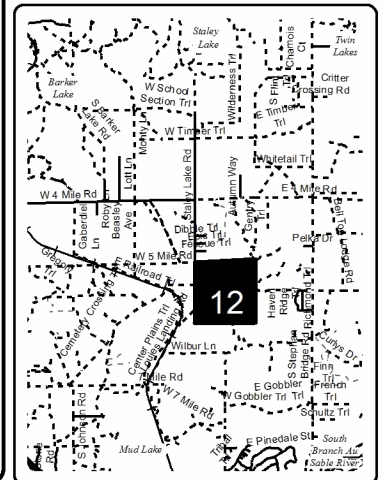
Compartment 189, 191, 232, 297  
**41.5 Acres**



**Legend**

- Against State (Red)
- PU\_Label
- Nearby Timber Sale
- Section Corners
- Stand Boundaries
- Paved Roads
- Gravel Roads
- Poor Dirt Roads
- Closed Roads
- Pipeline; Powerline

Locator Map  
1:200,000





# TIMBER SALE MAP

This information provided by authority of Part 525, 1994 PA 451, as amended.

Sale Number	Year
72-008	16

Forest Management Unit	County	Mapped By	Date	Page	of
Grayling	Crawford	Barnes	08/23/2016	3	3
		Cruised By			
		Barnes			

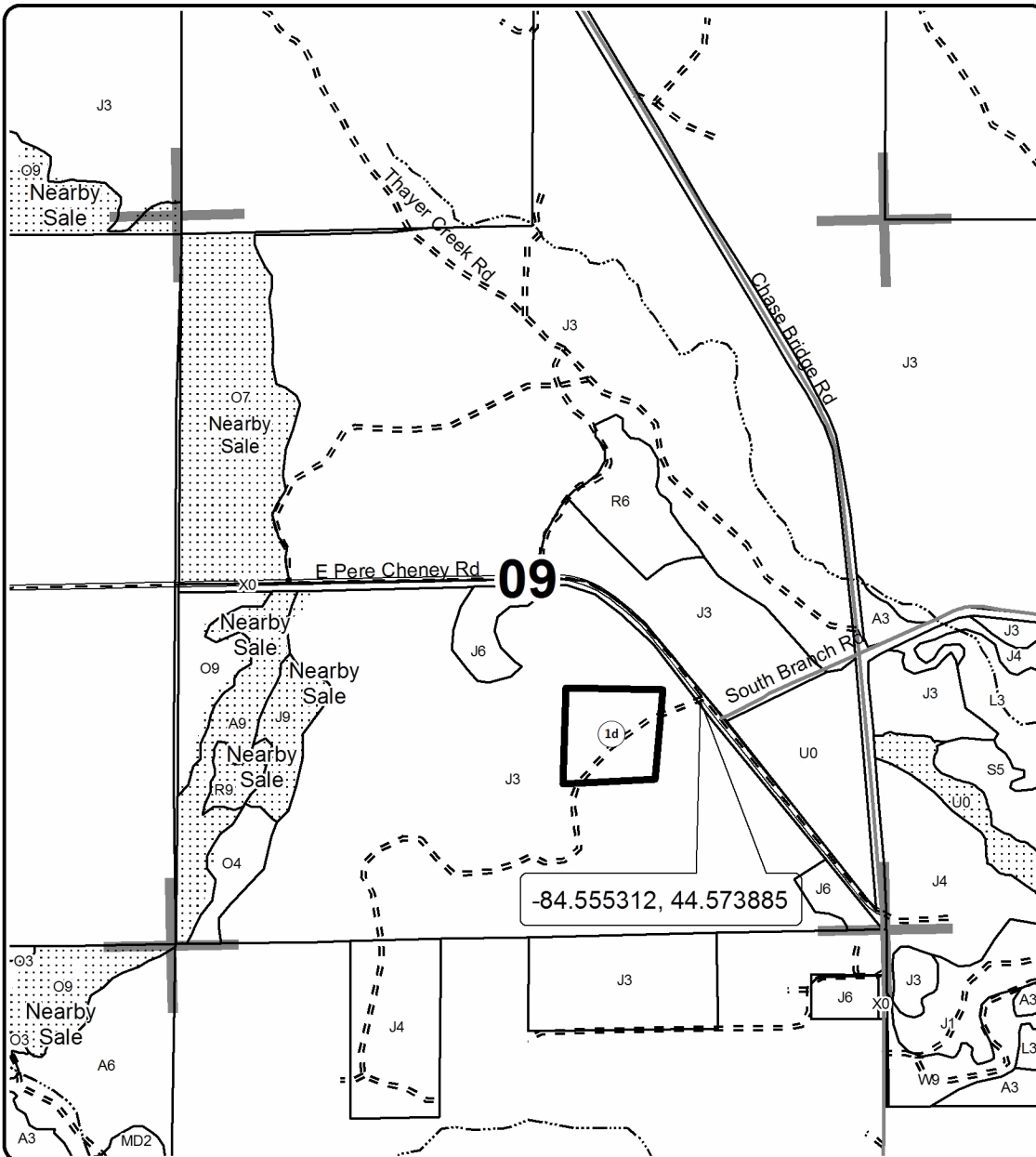
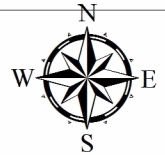
Township	Range	Section(s) and Subdivision(s)	Scale
25N	02W	Sec 09 - W1/2SE	1:15,840

Cover Type				Density			
A = Aspen	H = Hemlock	N = Marsh	U = Upland Brush	0 = Non Stocked	5 = Pole Timber Medium		
B = Paper Birch	J = Jack Pine	O = Oak	UM = Upland Mixed	1 = Seedling Sapling Poor	6 = Pole Timber Well		
C = Cedar	L = Lowland Brush	P = Lowland Poplar	V = Bog or Marsh	2 = Seedling Sapling Medium	7 = Saw Timber Poor		
D = Treed Bog	LM = Lowland Mixed	Q = Mixed Swamp Conifer	W = White Pine	3 = Seedling Sapling Well	8 = Saw Timber Medium		
E = Swamp Hdwoods	M = Mpl, Bch, Brch	R = Red Pine	X = Non Stocked	4 = Pole Timber Poor	9 = Saw Timber Well		
F = Spruce Fir	MC = Mixed Conifer	S = Black Spruce	Z = Water				
G = Grass	MD = Mixed Deciduous	T = Tamarack					

PU	Acres	PU	Acres
1d	11.1		

## Roth Exp Sale

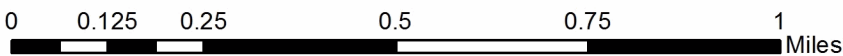
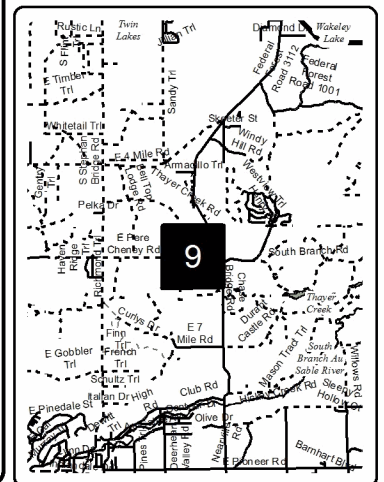
Compartment 189, 191, 232, 297  
41.5 Acres



**Legend**

- Against State (Red)
- PU\_Label
- Nearby Timber Sale
- Section Corners
- Stand Boundaries
- Paved Roads
- Gravel Roads
- Poor Dirt Roads

Locator Map  
1:200,000







## TIMBER SALE INFORMATION

### Pallet Abduction Mix (72-609-21)

T27N, R02W, SEC. 5; T28N, R02W, SEC. 29; T28N, R02W, SEC. 32.  
Crawford County (Advertised Price \$23,169.50)

SALE NOTE: All units of volume listed for this sale were estimated using the Inventory Manager computer program and the new Michigan taper model.

- See sale specs 5.1.5 and 5.2.3.7 for information on military restrictions.
- See sale specs 2.2.2 and 2.2.3 for chipping and stump requirements.
- See sale spec 5.2.3.4 for requirements due to oak wilt.

A recreation site such as a trail, pathway, or campground is within the sale area or the vicinity. Certain restrictions/specifications may be applicable including time restrictions.

A timber sale contract for this lump sum, sealed bid timber sale will be awarded to the responsible bidder offering the highest sealed bid price. All units of volume listed below were estimated using the Inventory Manager computer program and the new Michigan taper model. Bids must be at or above the following advertised price for each product and species:

<u>PRODUCTS &amp; SPECIES</u>	<u>ESTIMATED UNITS*</u>	<u>ADVERTISED PRICE</u>
<b>Sawtimber</b>		
Jack Pine	50.1 MBF	\$ 32.00 / MBF
Mixed Oak	29.4 MBF	\$ 109.00 / MBF
Red Pine	53.3 MBF	\$ 95.00 / MBF
White Pine	9.3 MBF	\$ 42.00 / MBF
<b>Pulpwood</b>		
Black Cherry	8 Cords	\$ 24.50 / Cord
Jack Pine	440 Cords	\$ 16.00 / Cord
Misc. Species 1	21 Cords	\$ 5.50 / Cord
Mixed Oak	128 Cords	\$ 23.35 / Cord
Quaking Aspen	43 Cords	\$ 23.60 / Cord
Red Pine	30 Cords	\$ 31.80 / Cord
White Pine	35 Cords	\$ 17.10 / Cord

\* The total volume is statistically estimated within plus (+) or minus (-) 8.09 percent. There are an estimated 1,039 cords on this timber sale, plus or minus 84 cords at the 95% confidence level. The estimated units are final and not subject to adjustment. Prospective bidders are urged to examine this timber and to make their own estimates of quantity and quality.

### **BOND AND PAYMENT SCHEDULE:**

1. A bond in the amount of \$1,158.00 to insure faithful performance of the conditions of the contract will be deposited by the successful bidder within 21 days of the sale award.
2. Cutting in any sale or unit without the required advance payment would be considered a trespass.
3. Total payment must be paid in advance or according to the following schedule :
  - (a) Ten percent (10%) of the sale value must be paid within 21 days of the sale award.
  - (b) The 10% down payment will be credited towards the first unit cut.
  - (c) Payment for each of the following units must be made before cutting begins in that unit:
 

PAYMENT UNIT NUMBER	PERCENT OF TOTAL SALE VALUE
01	7.5%
02	47.9%
03	10.1%
04	22.5%
05	12.0%
4. If no cutting takes place, the 10% down payment will not be refunded.
5. Operations on the contract issued will terminate on 03/31/2024.

### **SALE STATISTICS**

Volumes were calculated in cubic feet using the Michigan taper model. Cubic foot volume includes all wood inside bark for the product indicated. For display purposes, cubic feet were converted to cords and MBF using a simple conversion factor, e.g. 79 cubic feet per cord and 185 cubic feet per MBF. The cubic foot volumes are precise; the cords and MBF volumes are not. Cubic foot volume cannot be directly converted to cords or boards with precision.

### SALE VOLUMES

The total estimated sale volume may not equal the sum of the species/products due to the nature of statistical calculations associated with double sampling methodology.

VOLUME			STATISTICAL RANGE IN CORDS	
TOTAL CUBIC FEET	TOTAL CORDS	PERCENT ERROR	MINIMUM	MAXIMUM
82,099	1,039	8.09%	955	1,123

### VDU VOLUMES

A VDU is a Volume Determination Unit. Volumes and their associated statistics are calculated at the VDU level and summarized to the sale level. There is often a one to one relationship between a VDU and a Payment Unit, but not always, depending on the cruise design. Refer to the VDU TO PAYMENT UNIT table.

VDU	VOLUME			RANGE IN CORDS	
	TOTAL CUBIC FEET	TOTAL CORDS	PERCENT ERROR	MINIMUM	MAXIMUM
22	19,883	252	15.21%	213	290
31	6,267	79	24.02%	60	98
36	7,072	90	19.76%	72	107
40	7,190	91	34.76%	59	123
51	4,693	59	30.57%	41	78
135	33,068	419	12.83%	365	472
<b>TOTAL:</b>	<b>78,173</b>	<b>990</b>		<b>811</b>	<b>1,168</b>

### VDU TO PAYMENT UNIT

When a VDU is associated with more than one Payment Unit (PU), the VDU volumes are assigned to the PU based on acres of the VDU within the PU.

VDU	VDU ACRES	PU	PU ACRES
22	20.7	4	20.7
31	7.6	1	7.6
36	6.0	3	6.0
40	6.3	5	6.3
51	2.2	2	2.2
135	31.9	2	31.9
<b>TOTAL:</b>	<b>74.7</b>		<b>74.7</b>



**DESCRIPTION OF TIMBER BY PAYMENT UNIT (PU)**

PU	MARKET GROUP	PRODUCT	QUANTITY	UNIT	ACRES	ADVERTISE PRICE	
1	Jack Pine	Sawtimber	7.8	MBF	7.6	\$1,745.45	
	Mixed Oak		2.3	MBF			
	<i>BI/R/Hybrid Oak</i>		2.3	<i>MBF</i>			
	Red Pine		1.8	MBF			
	Black Cherry		Pulpwood	6			Cords
	<i>Black Cherry</i>			0.4			<i>MBF</i>
	<i>Black Cherry</i>			5			<i>Cords</i>
	Jack Pine			35			Cords
	Mixed Oak			13			Cords
	<i>BI/R/Hybrid Oak</i>			4			<i>Cords</i>
	<i>White Oak</i>			9			<i>Cords</i>
	Red Pine			2			Cords
2	Jack Pine	Sawtimber		21.9	MBF	34.1	\$11,111.15
	Mixed Oak			13.1	MBF		
	<i>Northern Pin Oak</i>			13.1	<i>MBF</i>		
	Red Pine			24.0	MBF		
	Black Cherry		Pulpwood	2	Cords		
	<i>Black Cherry</i>			2	<i>Cords</i>		
	Jack Pine			224	Cords		
	Mixed Oak			77	Cords		
	<i>Northern Pin Oak</i>			77	<i>Cords</i>		
	Quaking Aspen			14	Cords		
	Red Pine			14	Cords		
	White Pine			29	Cords		
3	Jack Pine	Sawtimber		2.2	MBF	6.0	\$2,331.00
	Red Pine			8.4	MBF		
	White Pine			9.3	MBF		
	Jack Pine			Pulpwood	8		
	Mixed Oak		4		Cords		
	<i>Northern Pin Oak</i>		2		<i>Cords</i>		
	<i>White Oak</i>		2		<i>Cords</i>		
	Quaking Aspen		29		Cords		
	Red Pine		2		Cords		
	White Pine		6		Cords		
4	Jack Pine	Sawtimber	18.2		MBF	20.7	\$5,203.45
	Mixed Oak		12.8		MBF		
	<i>Northern Pin Oak</i>		12.8		<i>MBF</i>		
	Red Pine		2.4	MBF			
	Jack Pine		Pulpwood	130	Cords		
	Misc. Species 1			21	Cords		
	<i>Misc. Species 1</i>			3.1	<i>MBF</i>		
	<i>Misc. Species 1</i>			15	<i>Cords</i>		
	Mixed Oak			33	Cords		
	<i>Northern Pin Oak</i>			33	<i>Cords</i>		
Red Pine	1	Cords					
5	Mixed Oak	Sawtimber		1.2	MBF	6.3	\$2,778.45
	<i>BI/R/Hybrid Oak</i>			1.2	<i>MBF</i>		
	Red Pine			16.7	MBF		
	Jack Pine		Pulpwood	43	Cords		
	Mixed Oak			1	Cords		
	<i>BI/R/Hybrid Oak</i>			1	<i>Cords</i>		
	Red Pine			11	Cords		
TOTAL:				142.1	MBF		
TOTAL:			705	Cords			

## Sale Specific Conditions & Requirements

Sale Name: Pallet Abduction Mix

Sale Number: 72-609-21 Seq#: 2

### 1 - Sale Area

#### 1.2 - Boundaries

##### 1.2.1 - Painted boundaries (9/19)

The sale boundary and Payment Unit boundaries are marked and identified by blue and red paint or are unmarked and identified by existing roads. Exterior sale boundary lines against private property are marked with blue paint except the north boundaries of Payment Units 1 and 2 are unmarked and identified by County Road 612. Exterior sale boundary lines against state are marked with red paint with the following exceptions: The northeast corner of Payment Unit 2 is unmarked and identified by K P Lake Road, the west boundaries of Payment Units 2 and 3 are unmarked and identified by Stephan Bridge Road, the east boundary of Payment Unit 4 is unmarked and identified by Stephan Bridge Road, the south boundary of Payment Unit 4 is unmarked and identified by the snowmobile trail. The painted boundary line trees are not Included Timber and are to be protected.

### 2 - Timber Specifications

#### 2.1 - Included Timber

##### 2.1.1 - Clearcut unit(s) with unmerchantable trees (6/14)

Within Payment Unit(s) 3, cut all trees that are two (2) inches or more at DBH, except do not cut the white pine marked with green paint.

##### 2.1.2 - Clearcut unit(s) w/o unmerchantable trees (8/11)

Within Payment Unit(s) 1, 2, 4, and 5, cut all trees which meet minimum piece specifications in 2.2 Utilization, except within Payment Units 1, 2, and 4 do not cut green marked trees and within Payment Units 2 and 4 do not cut white oak. Cut all trees within 1 chain of powerline regardless of size, species, or merchantability.

##### 2.1.11 - Description of timber note (2/04)

Note that Misc. Species 1 = dead oak.

#### 2.2 - Utilization

##### 2.2.2 - Chipping required (2/18)

This area must be chip harvested to meet National Guard requirements. However, the chipping requirement could be waived with military approval if chip markets are depressed. The Purchaser has the option to produce sawlogs or pulpwood bolts, but the remaining portion of the trees must be chipped and hauled. The requirement to retain approximately 1/6 to 1/3 of tree tops and limbs less than four inches in diameter does not apply (G. C. & R. 2.2). This is because this is military land.

##### 2.2.3 - Stump heights (4/07)

Stump heights within the Sale Area shall not exceed 6 inches for all trees. This is to facilitate military requirements. A written waiver of this requirement may be obtained if wet summer weather makes winter logging necessary.

### 3 - Payments

#### 3.3 - Pre-measured Sales

##### 3.3.4 - Dividing payment units (7/14)

Payment Unit(s) may be divided at the request of the Purchaser and upon approval of the Unit Manager. Dividing Payment Units is a contract modification which requires a Timber Sale Contract Amendment.

#### 3.4 - Damaged Timber

##### 3.4.1 - Damaged timber (7/16)

General Condition and Requirement 3.4 Damaged Timber, defines liquidated damages for undesignated live merchantable trees which are cut or injured. In addition, extreme care should be taken to avoid damage to tree seedlings and saplings in Payment Units 1, 2, 4, and 5.

Within the Payment Units 1, 2, 4, and 5, if more than 30% of the tree seedlings or saplings (1/4" to 4.5" DBH) within a

specified portion of the Sale Area are damaged, liquidated damages will be assessed at \$300 per acre for all acreage within that specified portion of the Sale Area that was damaged. Saplings cut cleanly in skid rows will not count as damaged timber. Within the Sale Area, if more than 5% of trees (> 4.5" DBH) within a specified area of the sale are damaged, liquidated damages will be assessed for all trees damaged. Rates will be in accordance with General Condition and Requirement 3.4 Damaged Timber.

## 4 - Transportation

### 4.1 - Construction

#### 4.1.6 - Road construction (1/09)

Construction of new roads or improvements of existing roads shall be done in such a way as to minimize the environmental and visual impacts. Merchantable trees shall be cut and utilized unless otherwise directed. Non-merchantable trees shall be severed and laid flat on the ground. Slash shall be scattered, and not left in windrows and kept a minimum of 10 feet back from the road edge. Stumps shall be set upright, not left on edge, and be moved at least 10 feet away from the road edge. Disturbed soil shall be feathered into the woods and not left in berms or windrows.

#### 4.1.7 - Road closure (10/11)

All new roads built into the sale must be blocked to vehicle traffic upon completion of the sale. Overgrown roads that are reopened shall be considered new roads. In general, this will require constructing a four (4') foot high berm of stumps and logs covered with earth. Stumps and brush must be placed along the remainder of the trail. These roads must be rendered impassable to cars and trucks. All stumps from road building and landing construction must be reserved to block any newly constructed roads upon completion of the sale. These stumps must be scattered along the road system to prohibit vehicular movement. Contact the sale administrator for specific details of design and placement.

#### 4.1.11 - Permits (2/12)

The Purchaser will secure any necessary permits that may be required.

## 5 - Operations

### 5.1 - Notification

#### 5.1.5 - National Guard notification (2/15)

This sale is upon lands utilized for training by the Michigan National Guard - Camp Grayling. A minimum of five (5) business days prior to opening this sale, the producer must request that the sale administrator contact the military for information regarding training plans that may impact sale operations.

### 5.2 - Conduct of Operations

#### 5.2.2 - Hazard Trees/Snags

##### 5.2.2.1 - Den trees (10/16)

Obvious hollow and/or den trees shall be protected and left standing unless they are a safety hazard.

#### 5.2.3 - Operating Restrictions

##### 5.2.3.4 - Oak wilt restriction, no exceptions (1/18)

Within Payment Unit(s) 1, 2, 4, and 5, cutting and skidding within the sale and brushing of access roads to the sale are not permitted during the period of April 15 to July 15. No exceptions will be granted. Hauling may be permitted if brushing of access roads is completed prior to restricted period. This is necessary to reduce the spread of oak wilt.

##### 5.2.3.7 - National Guard training restriction (1/09)

Operations on this contract may not be allowed during National Guard training operations. Typically, the restricted period is from May 1 to October 31. The contractor must check with the Unit Manager who will coordinate the cutting schedule with the Military.

#### 5.2.4 - Dead and Down Creation

##### 5.2.4.4 - Dead and down creation, grouse (6/18)

To encourage grouse and other wildlife, in Payment Unit(s) 3, leave one 12" or larger diameter (or largest diameter trees within stand) whole tree on the ground for every 2 acres, preferably a hardwood species such as oak or maple or if no

hardwoods are present, a pine species (white or red). These trees will be evenly scattered throughout the Payment Unit, preferably at least two chains from any roads, two-tracks, or trails open to vehicles.

#### 5.2.29 - Shrub protection (1/20)

Reasonable care should be taken to avoid cutting or damaging hawthorn or juneberry. These woody-shrub plants are highly beneficial to various wildlife species.

#### 5.2.31 - Landing locations (9/13)

A MNFI occurrence for hill's thistle is in Payment Unit 2 and should be avoided if identified at pre-sale meeting when determining landing location.

#### 5.2.32 - Decking/landing restoration (9/13)

All decking and landing areas must have the surface area restored to a condition equal to or better than before. This is to ensure the proper regeneration of the stand. Wood debris, chips, and "cookies" from trimmings must be removed or scattered away from landing and loading areas and may not be windrowed on the edge.

#### 5.2.41 - Snowmobile trail protection (9/11)

The trail LP47 is a snowmobile trail and is shown on the Timber Sale Map. Do not cut or damage posts with orange trail markers or traffic control signs. If the trail is used, it must be maintained and restored to a condition equal to or better than before the sale. The road maintenance/restoration must be done prior to December 1. If the trail is used for hauling, it must be graded to the satisfaction of the Unit Manager or his/her representative prior to December 1. If the trail road is to be used for hauling during the snowmobile season, then a snow-covered base must be left on the trail. The snowmobile trail may not be used for any timber sale operations from December 1 to March 31 without written approval from the Unit Manager. The snowmobile trail may only be crossed at right angles. Maintain a 20-foot-wide slash, debris, and rut free zone daily using the snowmobile trail as the centerline. No decking of forest products will be permitted along the snowmobile trail. All stumps within 5 feet of the snowmobile trail must be cut at ground level.

## 6 - Safety and Fire Prevention

### 6.2 - Signing

#### 6.2.1 - Road posting (10/20)

The Purchaser is responsible for posting and maintaining caution signs on County Road 612 prior to beginning operations. The road must be posted at appropriate distances from the Sale Area to warn of logging activity and truck traffic. Signs must be removed when harvest operations are suspended or completed. The Purchaser will provide these signs.

#### 6.2.2 - Snowmobile trail posting (10/20)

The Purchaser is responsible for posting and maintaining caution signs on the snowmobile trail prior to beginning operations during the snowmobile season (approximately December 1 to March 31). The trail must be posted at appropriate distances from the Sale Area to warn of logging activity and truck traffic. Signs must be removed when harvest operations are suspended or completed. The Purchaser will provide these signs.

SKIP

#### 6.4 - Unexploded ordinance (7/15)

Be aware that the sale area could contain UXO (unexploded ordinances). Do not touch, or drive over any metal objects. If any objects are found, please flag the area and notify the Unit Manager or his/her representative, so that they can make arrangements with the Military.

## 7 - Other Conditions

### 7.10 - Certified Timber

#### 7.10.1 - Non-certified timber (2/16)

The area encompassed by this timber sale is not certified to the standards of the Forest Stewardship Council (FSC) or the Sustainable Forestry Initiative (SFI). Forest products from this sale may not be delivered to the mill as "FSC and / or SFI certified". The lands within this sale are managed for military training.



# TIMBER SALE MAP

This information provided by authority of Part 525, 1994 PA 451, as amended.

Forest Management Unit Grayling	County Crawford	Mapped By Scott McClarren/Money bros	Date 10/12/2021	Page 1	of 1
Township 27N 28N	Range 02W 02W	Section(s) and Subdivision(s) Sec. 5: N1/2NW, Sec. 29: SWSE, Sec. 32: N1/2NW,N1/2NE,SWNE,S1/2SW, NWSE,SESE	Scale 1:15,840		

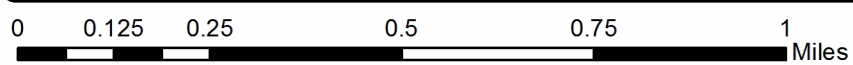
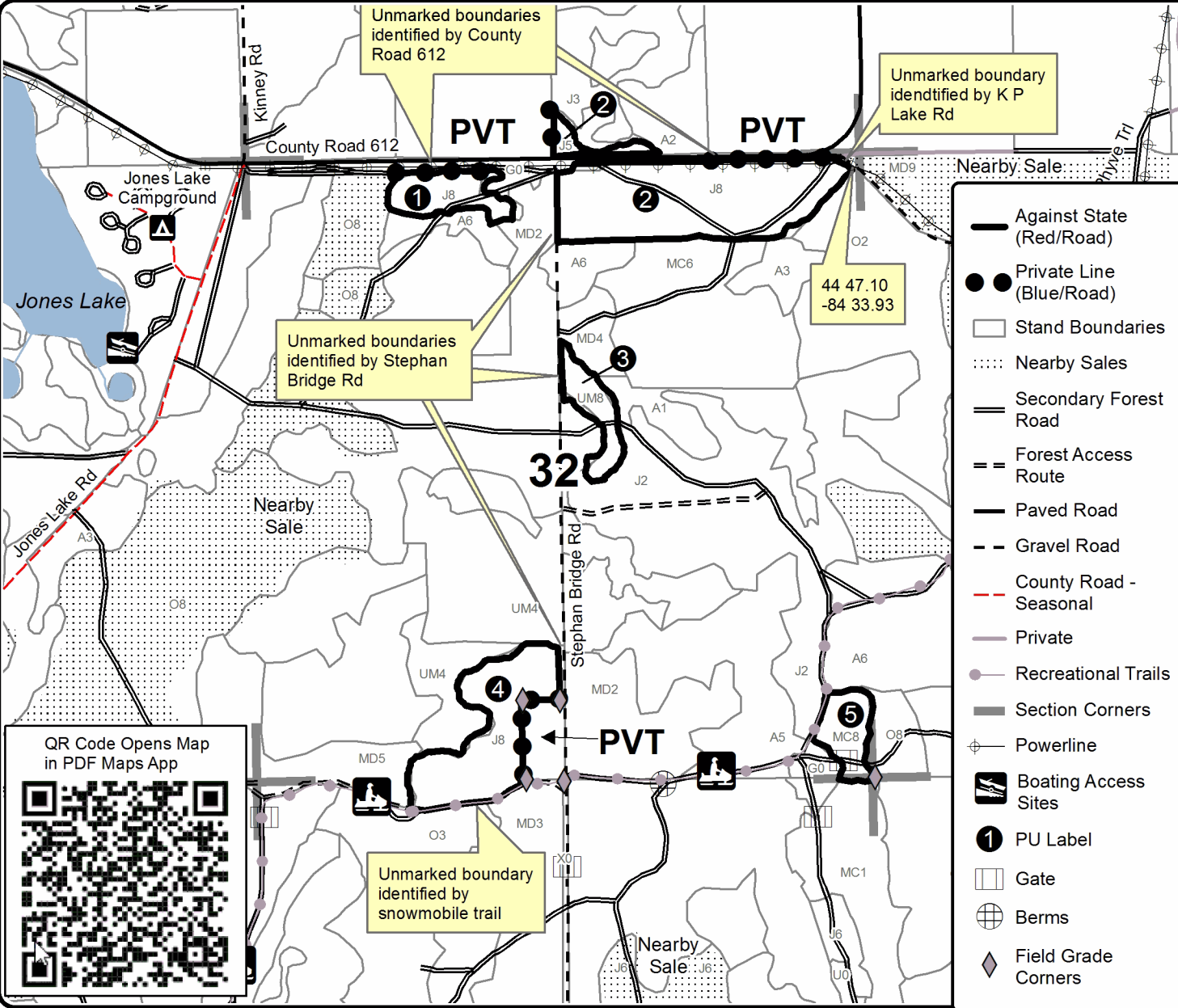
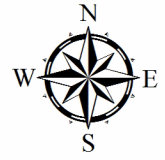
Cover Type				Density	
A = Aspen	H = Hemlock	N = Marsh	U = Upland Brush	0 = Non Stocked	5 = Pole Timber Medium
B = Paper Birch	J = Jack Pine	O = Oak	UM = Upland Mixed	1 = Seedling Sapling Poor	6 = Pole Timber Well
C = Cedar	L = Lowland Brush	P = Lowland Poplar	V = Bog or Marsh	2 = Seedling Sapling Medium	7 = Saw Timber Poor
D = Treed Bog	LM = Lowland Mixed	Q = Mixed Swamp Conifer	W = White Pine	3 = Seedling Sapling Well	8 = Saw Timber Medium
E = Swamp Hdwoods	M = Mpl, Bch, Brch	R = Red Pine	X = Non Stocked	4 = Pole Timber Poor	9 = Saw Timber Well
F = Spruce Fir	MC = Mixed Conifer	S = Black Spruce	Z = Water		
G = Grass	MD = Mixed Deciduous	T = Tamarack			

PU	Acres	PU	Acres
1	7.6	4	20.7
2	34.1	5	6.3
3	6		

## Pallet Abduction Mix

### Compartment 251

74.7 Acres





## TIMBER SALE INFORMATION

Foxhole Oak (72-627-21)

T26N, R04W, SEC. 31.

Crawford County (Advertised Price \$65,568.60)

SALE NOTE: All units of volume listed for this sale were estimated using the Inventory Manager computer program and the new Michigan taper model.

- Military training conducted on sale see sale spec 5.2.3.7 for more information.
- See sale spec 5.2.22.1 for information on military foxholes in the area.
- See sale spec 2.1.11 for information on potential cutting hazards.
- See sale spec 6.4 for instructions in dealing with unexploded ordinances.

A timber sale contract for this lump sum, sealed bid timber sale will be awarded to the responsible bidder offering the highest sealed bid price. All units of volume listed below were estimated using the Inventory Manager computer program and the new Michigan taper model. Bids must be at or above the following advertised price for each product and species:

<u>PRODUCTS &amp; SPECIES</u>	<u>ESTIMATED UNITS*</u>	<u>ADVERTISED PRICE</u>
Sawtimber		
BI/R/Hybrid Oak	47.8 MBF	\$ 109.00 / MBF
Northern Pin Oak	55.0 MBF	\$ 109.00 / MBF
Red Oak	230.4 MBF	\$ 140.00 / MBF
White Oak	21.7 MBF	\$ 80.00 / MBF
Pulpwood		
Jack Pine	18 Cords	\$ 16.00 / Cord
Misc. Species 1	307 Cords	\$ 5.50 / Cord
Mixed Aspen	15 Cords	\$ 23.60 / Cord
Mixed Hardwood	94 Cords	\$ 24.50 / Cord
Mixed Oak	674 Cords	\$ 23.35 / Cord

\* The total volume is statistically estimated within plus (+) or minus (-) 5.13 percent. There are an estimated 1,916 cords on this timber sale, plus or minus 98 cords at the 95% confidence level. The estimated units are final and not subject to adjustment. Prospective bidders are urged to examine this timber and to make their own estimates of quantity and quality.

### **BOND AND PAYMENT SCHEDULE:**

1. A bond in the amount of \$3,278.00 to insure faithful performance of the conditions of the contract will be deposited by the successful bidder within 21 days of the sale award.
2. Cutting in any sale or unit without the required advance payment would be considered a trespass.
3. Total payment must be paid in advance or according to the following schedule :
  - (a) Ten percent (10%) of the sale value must be paid within 21 days of the sale award.
  - (b) The 10% down payment will be credited towards the first unit cut.
  - (c) Payment for each of the following units must be made before cutting begins in that unit:

PAYMENT UNIT NUMBER	PERCENT OF TOTAL SALE VALUE
01	21.3%
02	22.9%
03	15.2%
04	40.6%

4. If no cutting takes place, the 10% down payment will not be refunded.
5. Operations on the contract issued will terminate on 03/31/2025.

### **SALE STATISTICS**

Volumes were calculated in cubic feet using the Michigan taper model. Cubic foot volume includes all wood inside bark for the product indicated. For display purposes, cubic feet were converted to cords and MBF using a simple conversion factor, e.g. 79 cubic feet per cord and 185 cubic feet per MBF. The cubic foot volumes are precise; the cords and MBF volumes are not. Cubic foot volume cannot be directly converted to cords or boards with precision.

## SALE VOLUMES

The total estimated sale volume may not equal the sum of the species/products due to the nature of statistical calculations associated with double sampling methodology.

VOLUME			STATISTICAL RANGE IN CORDS	
TOTAL CUBIC FEET	TOTAL CORDS	PERCENT ERROR	MINIMUM	MAXIMUM
151,360	1,916	5.13%	1,818	2,014

## VDU VOLUMES

A VDU is a Volume Determination Unit. Volumes and their associated statistics are calculated at the VDU level and summarized to the sale level. There is often a one to one relationship between a VDU and a Payment Unit, but not always, depending on the cruise design. Refer to the VDU TO PAYMENT UNIT table.

	VOLUME			RANGE IN CORDS	
VDU	TOTAL CUBIC FEET	TOTAL CORDS	PERCENT ERROR	MINIMUM	MAXIMUM
9	29,860	378	10.30%	339	417
10	44,973	569	8.24%	522	616
11	19,478	247	18.43%	201	292
46	32,924	417	10.38%	374	460
91	16,455	208	15.86%	175	241
<b>TOTAL:</b>	<b>143,691</b>	<b>1,819</b>		<b>1,611</b>	<b>2,026</b>

## VDU TO PAYMENT UNIT

When a VDU is associated with more than one Payment Unit (PU), the VDU volumes are assigned to the PU based on acres of the VDU within the PU.

VDU	VDU ACRES	PU	PU ACRES
9	30.1	1	30.1
10	46.2	4	46.2
11	16.4	4	16.4
46	46.3	2	27.6
		3	18.7
91	21.5	2	13.4
		3	8.1
<b>TOTAL:</b>	<b>160.5</b>		<b>160.5</b>



**DESCRIPTION OF TIMBER BY PAYMENT UNIT (PU)**

PU	MARKET GROUP	PRODUCT	QUANTITY	UNIT	ACRES	ADVERTISE PRICE
1	BI/R/Hybrid Oak	Sawtimber	16.2	MBF	30.1	\$13,934.90
	Northern Pin Oak		1.9	MBF		
	Red Oak		39.9	MBF		
	White Oak		21.7	MBF		
	Jack Pine	Pulpwood	2	Cords		
	Misc. Species 1		27	Cords		
	Mixed Hardwood		20	Cords		
	<i>Red Maple</i>	<i>Sawtimber</i>	1.0	<i>MBF</i>		
	<i>Red Maple</i>	<i>Pulpwood</i>	18	<i>Cords</i>		
	Mixed Oak		170	Cords		
	<i>BI/R/Hybrid Oak</i>		29	<i>Cords</i>		
	<i>Northern Pin Oak</i>		13	<i>Cords</i>		
	<i>Red Oak</i>		30	<i>Cords</i>		
	<i>White Oak</i>		98	<i>Cords</i>		
	2	BI/R/Hybrid Oak	Sawtimber	12.3		
Northern Pin Oak			16.9	MBF		
Red Oak			53.8	MBF		
Jack Pine		Pulpwood	10	Cords		
Misc. Species 1			31	Cords		
Mixed Aspen			8	Cords		
<i>B. T. Aspen</i>			6	<i>Cords</i>		
<i>Quaking Aspen</i>			2	<i>Cords</i>		
Mixed Hardwood			29	Cords		
<i>Black Cherry</i>			1	<i>Cords</i>		
<i>Red Maple</i>			28	<i>Cords</i>		
Mixed Oak			132	Cords		
<i>BI/R/Hybrid Oak</i>			14	<i>Cords</i>		
<i>Northern Pin Oak</i>			62	<i>Cords</i>		
<i>Red Oak</i>			56	<i>Cords</i>		
3	BI/R/Hybrid Oak	Sawtimber	8.2	MBF	26.8	\$9,994.85
	Northern Pin Oak		11.0	MBF		
	Red Oak		36.3	MBF		
	Jack Pine	Pulpwood	6	Cords		
	Misc. Species 1		20	Cords		
	Mixed Aspen		6	Cords		
	<i>B. T. Aspen</i>		4	<i>Cords</i>		
	<i>Quaking Aspen</i>		2	<i>Cords</i>		
	Mixed Hardwood		18	Cords		
	<i>Red Maple</i>		18	<i>Cords</i>		
	Mixed Oak		87	Cords		
	<i>BI/R/Hybrid Oak</i>		10	<i>Cords</i>		
	<i>Northern Pin Oak</i>		39	<i>Cords</i>		
	<i>Red Oak</i>		38	<i>Cords</i>		
	4	BI/R/Hybrid Oak	Sawtimber	11.1		
Northern Pin Oak			25.2	MBF		
Red Oak			100.4	MBF		
Misc. Species 1		Pulpwood	229	Cords		
Mixed Aspen			1	Cords		
<i>B. T. Aspen</i>			1	<i>Cords</i>		
Mixed Hardwood			27	Cords		
<i>Black Cherry</i>			1	<i>Cords</i>		
<i>Red Maple</i>			26	<i>Cords</i>		
Mixed Oak			285	Cords		
<i>BI/R/Hybrid Oak</i>			97	<i>Cords</i>		
<i>Northern Pin Oak</i>			100	<i>Cords</i>		
<i>Red Oak</i>			88	<i>Cords</i>		

TOTAL:	354.9	MBF
--------	-------	-----

TOTAL:	1,108	Cords
--------	-------	-------

## Sale Specific Conditions & Requirements

**Sale Name: Foxhole Oak**

**Sale Number: 72-627-21 Seq#: 2**

### 1 - Sale Area

#### 1.2 - Boundaries

##### 1.2.1 - Painted boundaries (9/19)

The sale boundary and Payment Unit boundaries are marked and identified by red and yellow paint and designated unpainted boundaries. Exterior sale boundary lines against state are marked with red paint. Interior Payment Unit boundaries are marked with yellow paint in addition to unpainted boundaries designated as the mapped forest roads indicated on the Timber Sale Map. Do not cut red painted boundary line trees. Yellow painted boundary line trees may be cut when all surrounding Payment Units have been paid for.

### 2 - Timber Specifications

#### 2.1 - Included Timber

##### 2.1.2 - Clearcut unit(s) w/o unmerchantable trees (8/11)

Within Payment Unit(s) 1, cut all trees which meet minimum piece specifications in 2.2 Utilization, except red pine and white pine. Standing dead northern pin oak that the top hasn't broke out of are designated for cutting. Do not cut white oak snags. Within Payment Units 2-4, cut all trees which meet minimum piece specifications in 2.2 Utilization ,except white oak, red pine, and white pine. Standing dead northern pin oak that the top hasn't broke out of are designated for cutting. Do not cut white oak snags.

##### 2.1.11 - Description of timber note (2/04)

Note that Misc Species 1 = standing dead northern pin oak that the top hasn't broke out of. Note also that there is the potential to encounter embedded bullets, shrapnel, and other metal in the trees.

#### 2.2 - Utilization

##### 2.2.2 - Chipping required (2/18)

This area must be chip harvested to meet National Guard requirements. However, the chipping requirement could be waived, with Military approval, if chip markets are depressed. This exemption must be granted in writing. The Purchaser has the option to produce sawlogs or pulpwood bolts, but the remaining portion of the trees must be chipped and hauled. The requirement to retain approximately 1/6 to 1/3 of tree tops and limbs less than four inches in diameter does not apply (G. C. & R. 2.2) because the sale is on lands managed for Military training.

##### 2.2.3 - Stump heights (4/07)

Stump heights within the Sale Area shall not exceed 6 inches for trees less than 18 inches at DBH and 18 inches for trees larger than that. This is to meet Military requirements while also taking into consideration the component of very large diameter oak.

### 3 - Payments

#### 3.3 - Pre-measured Sales

##### 3.3.4 - Dividing payment units (7/14)

Payment Unit(s) may be divided at the request of the Purchaser and upon approval of the Unit Manager. Dividing Payment Units is a contract modification which requires a Timber Sale Contract Amendment.

#### 3.4 - Damaged Timber

##### 3.4.1 - Damaged timber (7/16)

General Condition and Requirement 3.4 Damaged Timber, defines liquidated damages for undesignated live merchantable trees which are cut or injured. In addition, reasonable care should be taken to avoid damage to tree seedlings and saplings. Within the Sale Area, if more than 25% of the tree seedlings or saplings (1/4" to 4.5" DBH) within a specified portion of the Sale Area are damaged, liquidated damages will be assessed at \$500 per acre for all acreage within that specified portion of the Sale Area that was damaged. Operational paths will need to be cut through patches of dense regen. If those paths are cut cleanly, not leaving bent/broken stems, they will not be assessed as damaged areas.

No damage is acceptable to undesignated live merchantable trees. Within the Sale Area, if more than 10% of trees (> 4.5" DBH) within a specified area of the sale are damaged, liquidated damages will be assessed for all trees damaged. Rates will be in accordance with General Condition and Requirement 3.4 Damaged Timber, or at a rate of \$50 per sawtimber tree and \$20 per pole sized tree, whichever is greater.

## **4 - Transportation**

### 4.1 - Construction

#### 4.1.3 - Slash and earthen piles (8/04)

Piles or windrows of earth along roads and landings that have been widened or constructed shall be leveled. Slash from road maintenance or construction, including stumps, shall be chipped, utilized, or dispersed into the sale.

#### 4.1.6 - Road construction (1/09)

Construction of new roads or improvements of existing roads shall be done in such a way as to minimize the environmental and visual impacts. Merchantable trees shall be cut and utilized unless otherwise directed. Non-merchantable trees shall be severed and laid flat on the ground. Slash shall be chipped, utilized or scattered a minimum of 10 feet back from the road edge. Stumps shall be set upright, not left on edge, and be moved at least 10 feet away from the road edge. Disturbed soil shall be feathered into the woods and not left in berms or windrows.

#### 4.1.7 - Road closure (10/11)

All new roads built into the sale must be blocked to vehicle traffic upon completion of the sale. Overgrown roads that are reopened shall be considered new roads. In general, this will require constructing a four (4') foot high berm of stumps and logs covered with earth. Stumps and brush must also be placed along the first 50 feet of trail behind the berm. These roads must be rendered impassable to cars and trucks. Contact the sale administrator for specific details of design and placement.

#### 4.1.11 - Permits (2/12)

The Purchaser will secure any necessary permits that may be required.

## **5 - Operations**

### 5.1 - Notification

#### 5.1.1 - Pre-sale conference (10/16)

A pre-sale conference between the Purchaser and sale administrator is required prior to beginning any operations. The Unit Manager or his/her representative must be contacted at least 5 days in advance to schedule the conference.

#### 5.1.4 - Post-sale conference (10/16)

A post-sale conference on site between the Purchaser and sale administrator is required prior to the completion of active logging operations to determine clean-up and repair of landings, road edges, and the fulfillment of other contract specifications.

#### 5.1.5 - National Guard notification (2/15)

This sale is upon lands utilized for training by the Michigan National Guard - Camp Grayling. A minimum of five (5) business days prior to opening this sale, the producer must request that the sale administrator contact the military for information regarding training plans that may impact sale operations.

### 5.2 - Conduct of Operations

#### 5.2.2 - Hazard Trees/Snags

##### 5.2.2.1 - Den trees (10/16)

Obvious hollow and/or den trees shall be protected and left standing unless they are a safety hazard. This spec is intended to protect the standing dead northern pin oak that had their tops broke out, and all white oak snags.

#### 5.2.3 - Operating Restrictions

##### 5.2.3.4 - Oak wilt restriction, no exceptions (1/18)

Within Payment Units 1-4, cutting, skidding, and brushing of access roads to the sale are not permitted during the period of April 15 to July 15. No exceptions will be granted. This is necessary to reduce the spread of oak wilt.

##### 5.2.3.7 - National Guard training restriction (1/09)

Operations on this contract may not be allowed during National Guard training operations. Typically, the restricted period

is from May 1 to October 31. Regardless of the time of year, the contractor must check with the Sale Administrator who will coordinate the cutting schedule with the Military. All harvest equipment and timber products may need to be removed from the Sale Area during the period of May 1 to October 31.

#### 5.2.22 - Operating Caution

##### 5.2.22.1 - Operating caution (6/11)

It is recommended, but not required, that within Payment Unit(s) 1-4, cutting and skidding occur during snow-free conditions. The reason for the recommendation is because the foxholes may be difficult to recognize when buried in snow. Those earthworks do not need to be protected, but equipment operators will want to avoid the deeper ones that could cause roll-overs.

#### 5.2.29 - Shrub protection (1/20)

Do not cut or damage juneberry. These woody-shrub plants are highly beneficial to various wildlife species.

#### 5.2.38 - No decking against live trees (2/04)

Cut products may not be decked against unmarked or designated leave trees.

### 5.4 - Soil Protection

#### 5.4.1 - Rutting restriction, general (7/16)

Operations are to cease immediately if equipment and weather conditions result in rutting of roads and/or skid trails which is 12 inches or greater in depth and 50 feet in length. The Unit Manager or his/her representative may restrict hauling and/or skidding if ruts exceed the specified depth. With the Unit Manager or his/her representative's approval, the Purchaser may return to the area when the risk of rutting has decreased.

## 6 - Safety and Fire Prevention

SKIP

#### 6.4 - Unexploded ordinance (7/15)

Be aware that the sale area could contain UXO (unexploded ordinances). Do not touch, or drive over any metal objects. If any objects are found, please flag the area and notify the Unit Manager or his/her representative, so that they can make arrangements with the Military.

## 7 - Other Conditions

#### 7.10 - Certified Timber

##### 7.10.1 - Non-certified timber (2/16)

The area encompassed by this timber sale is not certified to the standards of the Forest Stewardship Council (FSC) or the Sustainable Forestry Initiative (SFI). Forest products from this sale may not be delivered to the mill as "FSC and / or SFI certified". The lands within this sale are managed for Military training.

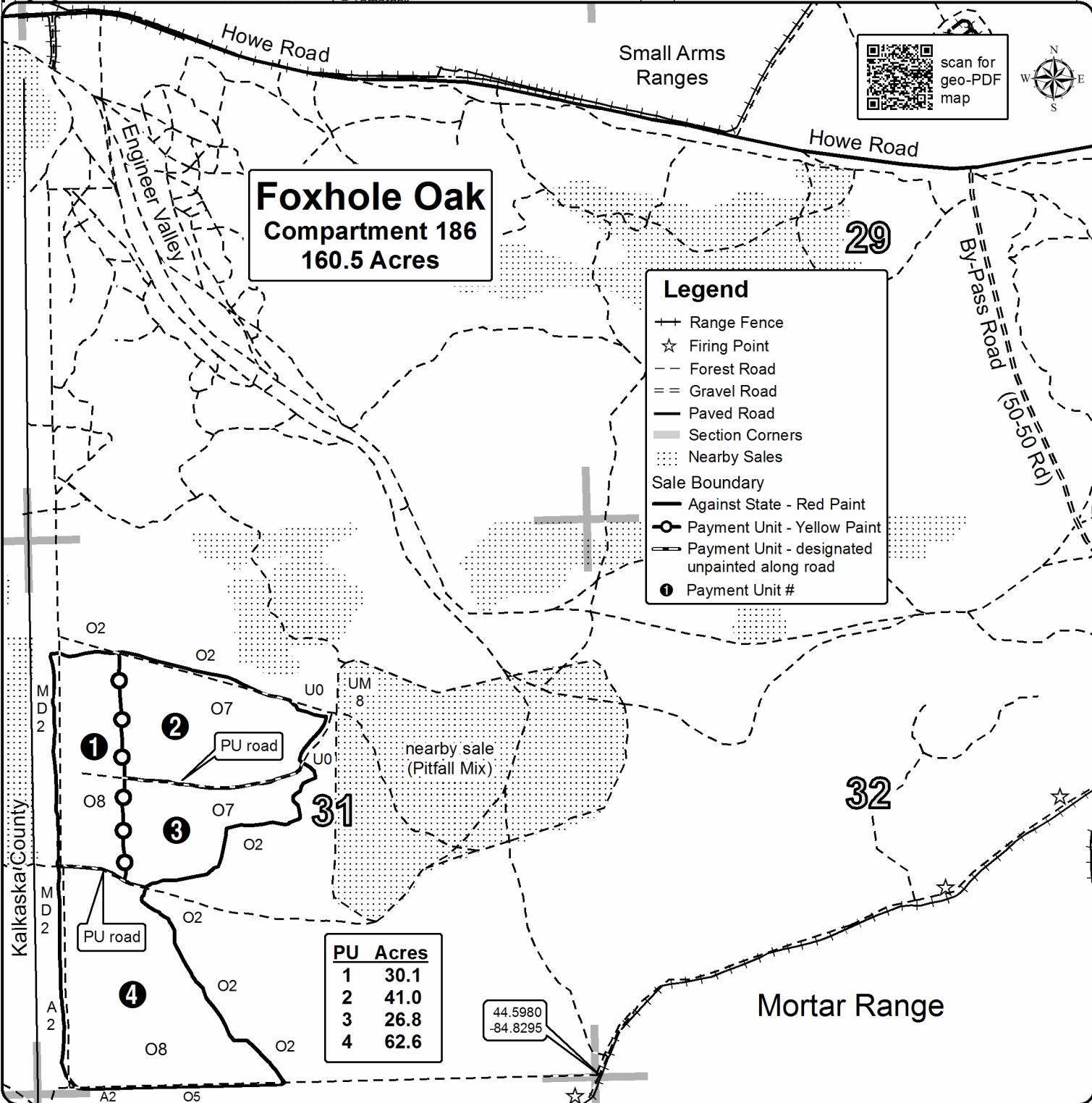


# TIMBER SALE MAP

This information provided by authority of Part 525, 1994 PA 451, as amended.

Forest Management Unit Graying	County Crawford	Mapped By Charlebois	Date 09/29/2021	Page 1	of 1
Township 26N	Range 04W	Section(s) and Subdivision(s) Sec 31: W1/2, SWNE	Scale 1:15,840		

Cover Type				Density	
A = Aspen	H = Hemlock	N = Marsh	U = Upland Brush	0 = Non Stocked	5 = Pole Timber Medium
B = Paper Birch	J = Jack Pine	O = Oak	UM = Upland Mixed	1 = Seedling Sapling Poor	6 = Pole Timber Well
C = Cedar	L = Lowland Brush	P = Lowland Poplar	V = Bog or Marsh	2 = Seedling Sapling Medium	7 = Saw Timber Poor
D = Treed Bog	LM = Lowland Mixed	Q = Mixed Swamp Conifer	W = White Pine	3 = Seedling Sapling Well	8 = Saw Timber Medium
E = Swamp Hdwoods	M = Mpl, Bch, Brch	R = Red Pine	X = Non Stocked	4 = Pole Timber Poor	9 = Saw Timber Well
F = Spruce Fir	MC = Mixed Conifer	S = Black Spruce	Z = Water		
	MD = Mixed Deciduous	T = Tamarack			



**TIMBER SALE INFORMATION**

Roswell Jack (72-639-21)

T28N, R02W, SEC. 31.

Crawford County (Advertised Price \$20,920.10)

SALE NOTE: All units of volume listed for this sale were estimated using the Inventory Manager computer program and the new Michigan taper model.

Sale is located on non-certified military land. Low stumps and chipping required. Sale contains oak wilt and military timing restrictions.

A timber sale contract for this lump sum, sealed bid timber sale will be awarded to the responsible bidder offering the highest sealed bid price. All units of volume listed below were estimated using the Inventory Manager computer program and the new Michigan taper model. Bids must be at or above the following advertised price for each product and species:

<u>PRODUCTS &amp; SPECIES</u>	<u>ESTIMATED UNITS*</u>	<u>ADVERTISED PRICE</u>
Sawtimber		
Northern Pin Oak	26.3 MBF	\$ 109.00 / MBF
Red Pine	8.3 MBF	\$ 95.00 / MBF
Pulpwood		
Jack Pine	751 Cords	\$ 16.00 / Cord
Misc. Species 1	57 Cords	\$ 5.50 / Cord
Mixed Hardwood	13 Cords	\$ 24.50 / Cord
Northern Pin Oak	164 Cords	\$ 23.35 / Cord
Red Pine	21 Cords	\$ 31.80 / Cord
White Pine	7 Cords	\$ 17.10 / Cord

\* The total volume is statistically estimated within plus (+) or minus (-) 6.68 percent. There are an estimated 1,114 cords on this timber sale, plus or minus 74 cords at the 95% confidence level. The estimated units are final and not subject to adjustment. Prospective bidders are urged to examine this timber and to make their own estimates of quantity and quality.

**BOND AND PAYMENT SCHEDULE:**

- A bond in the amount of \$1,046.00 to insure faithful performance of the conditions of the contract will be deposited by the successful bidder within 21 days of the sale award.
- Cutting in any sale or unit without the required advance payment would be considered a trespass.
- Total payment must be paid in advance or according to the following schedule :
  - Ten percent (10%) of the sale value must be paid within 21 days of the sale award.
  - The 10% down payment will be credited towards the first unit cut.
  - Payment for each of the following units must be made before cutting begins in that unit:
 

PAYMENT UNIT NUMBER	PERCENT OF TOTAL SALE VALUE
01	37.2%
02	50.6%
03	12.2%
- If no cutting takes place, the 10% down payment will not be refunded.
- Operations on the contract issued will terminate on 03/31/2024.

**SALE STATISTICS**

Volumes were calculated in cubic feet using the Michigan taper model. Cubic foot volume includes all wood inside bark for the product indicated. For display purposes, cubic feet were converted to cords and MBF using a simple conversion factor, e.g. 79 cubic feet per cord and 185 cubic feet per MBF. The cubic foot volumes are precise; the cords and MBF volumes are not. Cubic foot volume cannot be directly converted to cords or boards with precision.

**SALE VOLUMES**

The total estimated sale volume may not equal the sum of the species/products due to the nature of statistical calculations associated with double sampling methodology.

VOLUME		STATISTICAL RANGE IN CORDS		
TOTAL CUBIC FEET	TOTAL CORDS	PERCENT ERROR	MINIMUM	MAXIMUM
87,980	1,114	6.68%	1,039	1,188

**VDU VOLUMES**

A VDU is a Volume Determination Unit. Volumes and their associated statistics are calculated at the VDU level and summarized to the sale level. There is often a one to one relationship between a VDU and a Payment Unit, but not always, depending on the cruise design. Refer to the VDU TO PAYMENT UNIT table.

VDU	VOLUME		PERCENT ERROR	RANGE IN CORDS	
	TOTAL CUBIC FEET	TOTAL CORDS		MINIMUM	MAXIMUM
8	85,548	1,083	6.68%	1,011	1,155
<b>TOTAL:</b>	<b>85,548</b>	<b>1,083</b>		<b>1,011</b>	<b>1,155</b>

**VDU TO PAYMENT UNIT**

When a VDU is associated with more than one Payment Unit (PU), the VDU volumes are assigned to the PU based on acres of the VDU within the PU.

VDU	VDU ACRES	PU	PU ACRES
8	81.6	1	30.4
		2	41.2
		3	10.0
<b>TOTAL:</b>	<b>81.6</b>		<b>81.6</b>



**DESCRIPTION OF TIMBER BY PAYMENT UNIT (PU)**

PU	MARKET GROUP	PRODUCT	QUANTITY	UNIT	ACRES	ADVERTISE PRICE
1	Northern Pin Oak	Sawtimber	9.8	MBF	30.4	\$7,786.25
	Red Pine		3.1	MBF		
	Jack Pine	Pulpwood	280	Cords		
	<i>Jack Pine</i>	<i>Sawtimber</i>	32.3	<i>MBF</i>		
	<i>Jack Pine</i>	<i>Pulpwood</i>	215	<i>Cords</i>		
	Misc. Species 1		21	Cords		
	<i>Misc. Species 1</i>	<i>Sawtimber</i>	1.5	<i>MBF</i>		
	<i>Misc. Species 1</i>	<i>Pulpwood</i>	18	<i>Cords</i>		
	Mixed Hardwood		4	Cords		
	<i>Black Cherry</i>		1	<i>Cords</i>		
	<i>Red Maple</i>		3	<i>Cords</i>		
	Northern Pin Oak		61	Cords		
	Red Pine		8	Cords		
	White Pine		3	Cords		
2	Northern Pin Oak	Sawtimber	13.3	MBF	41.2	\$10,591.55
	Red Pine		4.2	MBF		
	Jack Pine	Pulpwood	380	Cords		
	<i>Jack Pine</i>	<i>Sawtimber</i>	43.8	<i>MBF</i>		
	<i>Jack Pine</i>	<i>Pulpwood</i>	292	<i>Cords</i>		
	Misc. Species 1		29	Cords		
	<i>Misc. Species 1</i>	<i>Sawtimber</i>	2.1	<i>MBF</i>		
	<i>Misc. Species 1</i>	<i>Pulpwood</i>	25	<i>Cords</i>		
	Mixed Hardwood		8	Cords		
	<i>Black Cherry</i>		3	<i>Cords</i>		
	<i>Red Maple</i>		5	<i>Cords</i>		
	Northern Pin Oak		83	Cords		
	Red Pine		10	Cords		
	White Pine		3	Cords		
3	Northern Pin Oak	Sawtimber	3.2	MBF	10.0	\$2,558.30
	Red Pine		1.0	MBF		
	Jack Pine	Pulpwood	92	Cords		
	<i>Jack Pine</i>	<i>Sawtimber</i>	10.6	<i>MBF</i>		
	<i>Jack Pine</i>	<i>Pulpwood</i>	71	<i>Cords</i>		
	Misc. Species 1		7	Cords		
	<i>Misc. Species 1</i>	<i>Sawtimber</i>	0.5	<i>MBF</i>		
	<i>Misc. Species 1</i>	<i>Pulpwood</i>	6	<i>Cords</i>		
	Mixed Hardwood		1	Cords		
	<i>Red Maple</i>		1	<i>Cords</i>		
	Northern Pin Oak		20	Cords		
	Red Pine		3	Cords		
	White Pine		1	Cords		
	TOTAL:			34.6		
TOTAL:			1,014	Cords		

## Sale Specific Conditions & Requirements

**Sale Name: Roswell Jack**

**Sale Number: 72-639-21 Seq#: 2**

### 1 - Sale Area

#### 1.2 - Boundaries

##### 1.2.1 - Painted boundaries (9/19)

The sale boundary and Payment Unit boundaries are marked and identified by red paint or are unpainted and designated by existing roads. Exterior sale boundary lines against state are marked with red paint. Interior Payment Unit boundaries are unmarked and identified by an unnamed forest road and Jones Lake Road. Retention patches are marked with red paint; no harvesting activities may occur within these areas. The painted boundary line trees are not Included Timber and are to be protected.

### 2 - Timber Specifications

#### 2.1 - Included Timber

##### 2.1.2 - Clearcut unit(s) w/o unmerchantable trees (8/11)

Within Payment Unit(s) 1-3, cut all trees which meet minimum piece specifications in 2.2 Utilization except do not cut white oak.

#### 2.2 - Utilization

##### 2.2.2 - Chipping required (2/18)

This area must be chip harvested to meet National Guard requirements. However, the chipping requirement could be waived with military approval if chip markets are depressed. The Purchaser has the option to produce sawlogs or pulpwood bolts, but the remaining portion of the trees must be chipped and hauled. The requirement to retain approximately 1/6 to 1/3 of tree tops and limbs less than four inches in diameter does not apply (G. C. & R. 2.2). This is because this is military land.

##### 2.2.3 - Stump heights (4/07)

Stump heights within the Sale Area shall not exceed 6 inches for all trees. This is to facilitate military requirements. A written waiver of this requirement may be obtained if wet summer weather makes winter logging necessary.

### 3 - Payments

#### 3.3 - Pre-measured Sales

##### 3.3.4 - Dividing payment units (7/14)

Payment Unit(s) may be divided at the request of the Purchaser and upon approval of the Unit Manager. Dividing Payment Units is a contract modification which requires a Timber Sale Contract Amendment.

#### 3.4 - Damaged Timber

##### 3.4.1 - Damaged timber (7/16)

General Condition and Requirement 3.4 Damaged Timber, defines liquidated damages for undesignated live merchantable trees which are cut or injured. In addition, extreme care should be taken to avoid damage to tree seedlings and saplings.

Within the Sale Area, if more than 5% of the tree seedlings or saplings (1/4" to 4.5" DBH) within a specified portion of the Sale Area are damaged, liquidated damages will be assessed at \$300 per acre for all acreage within that specified portion of the Sale Area that was damaged.

### 4 - Transportation

#### 4.1 - Construction

##### 4.1.6 - Road construction (1/09)

Construction of new roads or improvements of existing roads shall be done in such a way as to minimize the environmental and visual impacts. Merchantable trees shall be cut and utilized unless otherwise directed. Non-merchantable trees shall be severed and laid flat on the ground. Slash shall be scattered, and not left in windrows and kept a minimum of 10 feet back from the road edge. Stumps shall be set upright, not left on edge, and be moved at least 10 feet away from the road edge.

Disturbed soil shall be feathered into the woods and not left in berms or windrows.

#### 4.1.7 - Road closure (10/11)

All new roads built into the sale must be blocked to vehicle traffic upon completion of the sale. Overgrown roads that are reopened shall be considered new roads. In general, this will require constructing a four (4') foot high berm of stumps and logs covered with earth. Stumps and brush must be placed along the remainder of the trail. These roads must be rendered impassable to cars and trucks. All stumps from road building and landing construction must be reserved to block any newly constructed roads upon completion of the sale. These stumps must be scattered along the road system to prohibit vehicular movement. Contact the sale administrator for specific details of design and placement.

#### 4.1.11 - Permits (2/12)

The Purchaser will secure any necessary permits that may be required.

## 5 - Operations

### 5.1 - Notification

#### 5.1.5 - National Guard notification (2/15)

This sale is upon lands utilized for training by the Michigan National Guard - Camp Grayling. A minimum of five (5) business days prior to opening this sale, the producer must request that the sale administrator contact the military for information regarding training plans that may impact sale operations.

### 5.2 - Conduct of Operations

#### 5.2.2 - Hazard Trees/Snags

##### 5.2.2.1 - Den trees (10/16)

Obvious hollow and/or den trees shall be protected and left standing unless they are a safety hazard.

#### 5.2.3 - Operating Restrictions

##### 5.2.3.4 - Oak wilt restriction, no exceptions (1/18)

Within Payment Unit(s) 1-3, cutting and skidding within the sale and brushing of access roads to the sale are not permitted during the period of April 15 to July 15. No exceptions will be granted. Hauling may be permitted if access roads are brushed prior to restricted period. This is necessary to reduce the spread of oak wilt.

##### 5.2.3.7 - National Guard training restriction (1/09)

Operations on this contract may not be allowed during National Guard training operations. Typically, the restricted period is from May 1 to October 31. The contractor must check with the Unit Manager who will coordinate the cutting schedule with the Military.

#### 5.2.29 - Shrub protection (1/20)

Reasonable care should be taken to avoid cutting or damaging hawthorn, dogwood, or junberry. These woody-shrub plants are highly beneficial to various wildlife species.

#### 5.2.32 - Decking/landing restoration (9/13)

All decking and landing areas must have the surface area restored to a condition equal to or better than before. This is to ensure the proper regeneration of the stand. Wood debris, chips, and "cookies" from trimmings must be removed or scattered away from landing and loading areas and may not be windrowed on the edge.

## 6 - Safety and Fire Prevention

### 6.2 - Signing

#### 6.2.1 - Road posting (10/20)

The Purchaser is responsible for posting and maintaining caution signs on Jones Lake Road prior to beginning operations. The road must be posted at appropriate distances from the Sale Area to warn of logging activity and truck traffic. Signs must be removed when harvest operations are suspended or completed. The Purchaser will provide these signs.

SKIP

#### 6.4 - Unexploded ordinance (7/15)

Be aware that the sale area could contain UXO (unexploded ordinances). Do not touch, or drive over any metal objects. If any objects are found, please flag the area and notify the Unit Manager or his/her representative, so that they can make arrangements with the Military.

## **7 - Other Conditions**

### 7.10 - Certified Timber

#### 7.10.1 - Non-certified timber (2/16)

The area encompassed by this timber sale is not certified to the standards of the Forest Stewardship Council (FSC) or the Sustainable Forestry Initiative (SFI). Forest products from this sale may not be delivered to the mill as "FSC and / or SFI certified". The lands within this sale are managed for military training.



# TIMBER SALE MAP

This information provided by authority of Part 525, 1994 PA 451, as amended.

Forest Management Unit Grayling	County Crawford	Mapped By Scott McClarren/Money bros	Date 10/08/2021	Page 1	of 1
Township 28N	Range 02W	Section(s) and Subdivision(s) Sec. 31: W1/2SE, NENW, S1/2NW, SWNE, N1/2SW, SESW	Scale 1:7,920		

### Cover Type

A = Aspen	H = Hemlock	N = Marsh	U = Upland Brush
B = Paper Birch	J = Jack Pine	O = Oak	UM = Upland Mixed
C = Cedar	L = Lowland Brush	P = Lowland Poplar	V = Bog or Marsh
D = Treed Bog	LM = Lowland Mixed	Q = Mixed Swamp Conifer	W = White Pine
E = Swamp Hdwoods	M = Mpl, Bch, Brch	R = Red Pine	X = Non Stocked
F = Spruce Fir	MC = Mixed Conifer	S = Black Spruce	Z = Water
G = Grass	MD = Mixed Deciduous	T = Tamarack	

### Density

0 = Non Stocked	5 = Pole Timber Medium
1 = Seedling Sapling Poor	6 = Pole Timber Well
2 = Seedling Sapling Medium	7 = Saw Timber Poor
3 = Seedling Sapling Well	8 = Saw Timber Medium
4 = Pole Timber Poor	9 = Saw Timber Well

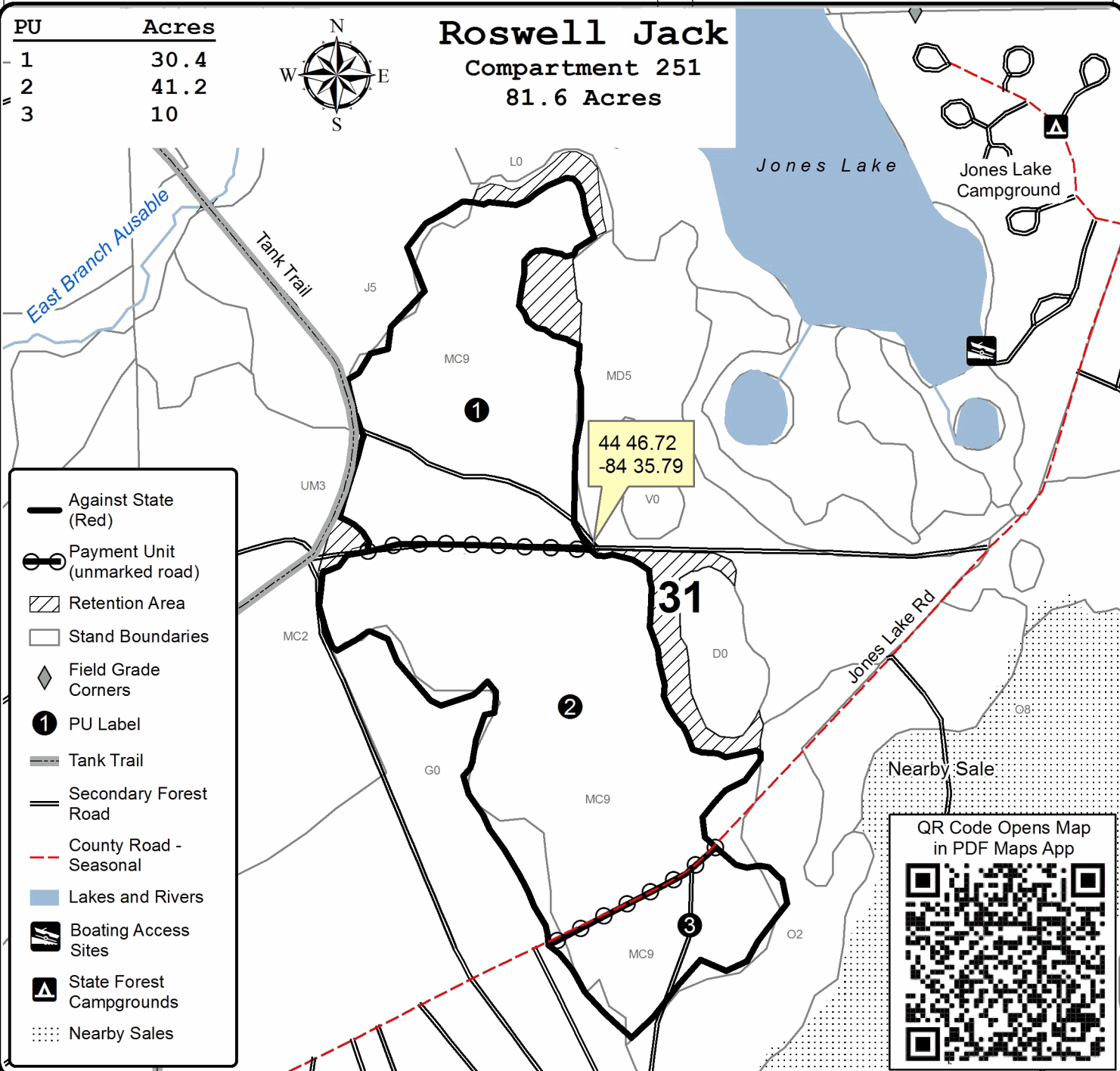
PU	Acres
1	30.4
2	41.2
3	10



## Roswell Jack

### Compartment 251

81.6 Acres





## TIMBER SALE INFORMATION

### Crop Circle Oak (72-640-21)

T27N, R02W, SEC. 6; T28N, R02W, SEC. 31; T28N, R02W, SEC. 32.  
Crawford County (Advertised Price \$47,356.05)

SALE NOTE: All units of volume listed for this sale were estimated using the Inventory Manager computer program and the new Michigan taper model.

- Sale is on non-certified land see spec 7.10.1 for more information.
- See sale spec 5.2.3.7 for restriction on military land.
- See Sale spec 5.2.3.4 for restriction due to oak wilt.

A recreation site such as a trail, pathway, or campground is within the sale area or the vicinity. Certain restrictions/specifications may be applicable including time restrictions.

A timber sale contract for this lump sum, sealed bid timber sale will be awarded to the responsible bidder offering the highest sealed bid price. All units of volume listed below were estimated using the Inventory Manager computer program and the new Michigan taper model. Bids must be at or above the following advertised price for each product and species:

<u>PRODUCTS &amp; SPECIES</u>	<u>ESTIMATED UNITS*</u>	<u>ADVERTISED PRICE</u>
Sawtimber		
Mixed Oak	90.4 MBF	\$ 109.00 / MBF
Red Pine	23.1 MBF	\$ 95.00 / MBF
White Oak	86.9 MBF	\$ 80.00 / MBF
Pulpwood		
B. T. Aspen	92 Cords	\$ 23.60 / Cord
Jack Pine	28 Cords	\$ 16.00 / Cord
Misc. Species 1	124 Cords	\$ 5.50 / Cord
Mixed Oak	907 Cords	\$ 23.35 / Cord
Red Maple	48 Cords	\$ 24.50 / Cord
Red Pine	79 Cords	\$ 31.80 / Cord
White Pine	11 Cords	\$ 17.10 / Cord

\* The total volume is statistically estimated within plus (+) or minus (-) 7.15 percent. There are an estimated 1,799 cords on this timber sale, plus or minus 129 cords at the 95% confidence level. The estimated units are final and not subject to adjustment. Prospective bidders are urged to examine this timber and to make their own estimates of quantity and quality.

### **BOND AND PAYMENT SCHEDULE:**

1. A bond in the amount of \$2,368.00 to insure faithful performance of the conditions of the contract will be deposited by the successful bidder within 21 days of the sale award.
2. Cutting in any sale or unit without the required advance payment would be considered a trespass.
3. Total payment must be paid in advance or according to the following schedule :
  - (a) Ten percent (10%) of the sale value must be paid within 21 days of the sale award.
  - (b) The 10% down payment will be credited towards the first unit cut.
  - (c) Payment for each of the following units must be made before cutting begins in that unit:
 

PAYMENT UNIT NUMBER	PERCENT OF TOTAL SALE VALUE
01	30.0%
02	23.4%
03	23.2%
04	23.4%
4. If no cutting takes place, the 10% down payment will not be refunded.
5. Operations on the contract issued will terminate on 03/31/2025.

### **SALE STATISTICS**

Volumes were calculated in cubic feet using the Michigan taper model. Cubic foot volume includes all wood inside bark for the product indicated. For display purposes, cubic feet were converted to cords and MBF using a simple conversion factor, e.g. 79 cubic feet per cord and 185 cubic feet per MBF. The cubic foot volumes are precise; the cords and MBF volumes are not. Cubic foot volume cannot be directly converted to cords or boards with precision.

## SALE VOLUMES

The total estimated sale volume may not equal the sum of the species/products due to the nature of statistical calculations associated with double sampling methodology.

VOLUME			STATISTICAL RANGE IN CORDS	
TOTAL CUBIC FEET	TOTAL CORDS	PERCENT ERROR	MINIMUM	MAXIMUM
142,125	1,799	7.15%	1,670	1,928

## VDU VOLUMES

A VDU is a Volume Determination Unit. Volumes and their associated statistics are calculated at the VDU level and summarized to the sale level. There is often a one to one relationship between a VDU and a Payment Unit, but not always, depending on the cruise design. Refer to the VDU TO PAYMENT UNIT table.

	VOLUME			RANGE IN CORDS	
VDU	TOTAL CUBIC FEET	TOTAL CORDS	PERCENT ERROR	MINIMUM	MAXIMUM
16	94,375	1,195	8.74%	1,090	1,299
30	10,043	127	21.92%	99	155
32	20,884	264	18.61%	215	314
130	8,036	102	19.63%	82	122
<b>TOTAL:</b>	<b>133,338</b>	<b>1,688</b>		<b>1,486</b>	<b>1,889</b>

## VDU TO PAYMENT UNIT

When a VDU is associated with more than one Payment Unit (PU), the VDU volumes are assigned to the PU based on acres of the VDU within the PU.

VDU	VDU ACRES	PU	PU ACRES
16	93.4	1	0.7
		2	31.0
		3	30.7
		4	31.0
30	9.7	1	9.7
32	23.5	1	23.5
130	5.4	1	5.4
<b>TOTAL:</b>	<b>132.0</b>		<b>132.0</b>



**DESCRIPTION OF TIMBER BY PAYMENT UNIT (PU)**

PU	MARKET GROUP	PRODUCT	QUANTITY	UNIT	ACRES	ADVERTISE PRICE		
1	Mixed Oak	Sawtimber	23.2	MBF	39.3	\$14,213.10		
	<i>B/R/Hybrid Oak</i>		22.7	<i>MBF</i>				
	<i>Red Oak</i>		0.5	<i>MBF</i>				
	Red Pine		11.2	MBF				
	White Oak		19.5	MBF				
	B. T. Aspen		Pulpwood	86			Cords	
	<i>B. T. Aspen</i>			<i>Sawtimber</i>			8.9	<i>MBF</i>
	<i>B. T. Aspen</i>			<i>Pulpwood</i>			68	<i>Cords</i>
	Jack Pine			28			Cords	
	<i>Jack Pine</i>		<i>Sawtimber</i>	0.5			<i>MBF</i>	
	<i>Jack Pine</i>	<i>Pulpwood</i>	27	<i>Cords</i>				
	Misc. Species 1		18	Cords				
	<i>Misc. Species 1</i>	<i>Sawtimber</i>	6.5	<i>MBF</i>				
	<i>Misc. Species 1</i>	<i>Pulpwood</i>	5	<i>Cords</i>				
	Mixed Oak		184	Cords				
	<i>B/R/Hybrid Oak</i>		74	<i>Cords</i>				
	<i>Red Oak</i>		5	<i>Cords</i>				
	<i>White Oak</i>		105	<i>Cords</i>				
	Red Maple		18	Cords				
	Red Pine		49	Cords				
White Pine	11		Cords					
2	Mixed Oak		Sawtimber	22.4	MBF	31.0	\$11,059.65	
	<i>Red Oak</i>			22.4	<i>MBF</i>			
	Red Pine			4.0	MBF			
	White Oak	22.6	MBF					
	B. T. Aspen	Pulpwood	2	Cords				
	<i>B. T. Aspen</i>		2	<i>Cords</i>				
	Misc. Species 1		35	Cords				
	<i>Misc. Species 1</i>	<i>Sawtimber</i>	3.8	<i>MBF</i>				
	<i>Misc. Species 1</i>	<i>Pulpwood</i>	27	<i>Cords</i>				
	Mixed Oak		241	Cords				
	<i>Red Oak</i>	119	<i>Cords</i>					
	<i>White Oak</i>	122	<i>Cords</i>					
	Red Maple	10	Cords					
Red Pine	10	Cords						
3	Mixed Oak	Sawtimber	22.3	MBF	30.7	\$10,991.90		
	<i>Red Oak</i>		22.3	<i>MBF</i>				
	Red Pine		3.9	MBF				
	White Oak	22.3	MBF					
	B. T. Aspen	Pulpwood	2	Cords				
	<i>B. T. Aspen</i>		2	<i>Cords</i>				
	Misc. Species 1		35	Cords				
	<i>Misc. Species 1</i>	<i>Sawtimber</i>	3.7	<i>MBF</i>				
	<i>Misc. Species 1</i>	<i>Pulpwood</i>	28	<i>Cords</i>				
	Mixed Oak		240	Cords				
	<i>Red Oak</i>	119	<i>Cords</i>					
	<i>White Oak</i>	121	<i>Cords</i>					
	Red Maple	10	Cords					
Red Pine	10	Cords						
4	Mixed Oak	Sawtimber	22.5	MBF	31.0	\$11,091.40		
	<i>Red Oak</i>		22.5	<i>MBF</i>				
	Red Pine		4.0	MBF				
	White Oak	22.5	MBF					
	B. T. Aspen	Pulpwood	2	Cords				
	<i>B. T. Aspen</i>		2	<i>Cords</i>				
	Misc. Species 1	36	Cords					

**DESCRIPTION OF TIMBER BY PAYMENT UNIT (PU), CON'T**

PU	MARKET GROUP	PRODUCT	QUANTITY	UNIT	ACRES	ADVERTISE PRICE
4 con't	<i>Misc. Species 1</i>	<i>Sawtimber</i>	3.8	<i>MBF</i>		
	<i>Misc. Species 1</i>	<i>Pulpwood</i>	28	<i>Cords</i>		
	Mixed Oak		242	Cords		
	<i>Red Oak</i>		120	<i>Cords</i>		
	<i>White Oak</i>		122	<i>Cords</i>		
	Red Maple		10	Cords		
	Red Pine		10	Cords		
TOTAL:			200.4	MBF		
TOTAL:			1,289	Cords		

## Sale Specific Conditions & Requirements

**Sale Name: Crop Circle Oak**

**Sale Number: 72-640-21 Seq#: 2**

### 1 - Sale Area

#### 1.2 - Boundaries

##### 1.2.1 - Painted boundaries (9/19)

The sale boundary and Payment Unit boundaries are marked and identified by red and yellow paint or are unmarked and identified by existing roads. Exterior sale boundary lines against state are marked with red paint except the north boundary of Payment Unit 1 and is identified by County Road 612. Interior Payment Unit boundaries are marked with yellow paint except between Payment Units 3 and 4 is unmarked and identified by the unnamed forest road. Retention patches are marked with red paint; no harvesting activities may occur within these areas. The painted boundary line trees are not Included Timber and are to be protected. Yellow painted trees designating an interior Payment Unit boundary are only to be cut when all surrounding Payment Units have been paid.

### 2 - Timber Specifications

#### 2.1 - Included Timber

##### 2.1.2 - Clearcut unit(s) w/o unmerchantable trees (8/11)

Within Payment Unit(s) 1-4, cut all trees which meet minimum piece specifications in 2.2 Utilization, except do not cut trees marked with green paint.

##### 2.1.11 - Description of timber note (2/04)

Note that Misc. Species 1 = dead oak.

#### 2.2 - Utilization

##### 2.2.2 - Chipping required (2/18)

This area must be chip harvested to meet National Guard requirements. However, the chipping requirement could be waived with military approval if chip markets are depressed. The Purchaser has the option to produce sawlogs or pulpwood bolts, but the remaining portion of the trees must be chipped and hauled. The requirement to retain approximately 1/6 to 1/3 of tree tops and limbs less than four inches in diameter does not apply (G. C. & R. 2.2). This is because this is military land.

##### 2.2.3 - Stump heights (4/07)

Stump heights within the Sale Area shall not exceed 6 inches for all trees. This is to facilitate military requirements. A written waiver of this requirement may be obtained if wet summer weather makes winter logging necessary.

### 3 - Payments

#### 3.3 - Pre-measured Sales

##### 3.3.4 - Dividing payment units (7/14)

Payment Unit(s) may be divided at the request of the Purchaser and upon approval of the Unit Manager. Dividing Payment Units is a contract modification which requires a Timber Sale Contract Amendment.

#### 3.4 - Damaged Timber

##### 3.4.1 - Damaged timber (7/16)

General Condition and Requirement 3.4 Damaged Timber, defines liquidated damages for undesignated live merchantable trees which are cut or injured. In addition, extreme care should be taken to avoid damage to tree seedlings and saplings. Within the Sale Area, if more than 30% of the tree seedlings or saplings (1/4" to 4.5" DBH) within a specified portion of the Sale Area are damaged, liquidated damages will be assessed at \$300 per acre for all acreage within that specified portion of the Sale Area that was damaged. Saplings cut cleanly in skid trails will not be counted as damage.

Within the Sale Area, if more than 5% of trees (> 4.5" DBH) within a specified area of the sale are damaged, liquidated damages will be assessed for all trees damaged. Rates will be in accordance with General Condition and Requirement 3.4 Damaged Timber.

### 4 - Transportation

## 4.1 - Construction

### 4.1.6 - Road construction (1/09)

Construction of new roads or improvements of existing roads shall be done in such a way as to minimize the environmental and visual impacts. Merchantable trees shall be cut and utilized unless otherwise directed. Non-merchantable trees shall be severed and laid flat on the ground. Slash shall be scattered, and not left in windrows and kept a minimum of 10 feet back from the road edge. Stumps shall be set upright, not left on edge, and be moved at least 10 feet away from the road edge. Disturbed soil shall be feathered into the woods and not left in berms or windrows.

### 4.1.7 - Road closure (10/11)

All new roads built into the sale must be blocked to vehicle traffic upon completion of the sale. Overgrown roads that are reopened shall be considered new roads. In general, this will require constructing a four (4') foot high berm of stumps and logs covered with earth. Stumps and brush must be placed along the remainder of the trail. These roads must be rendered impassable to cars and trucks. All stumps from road building and landing construction must be reserved to block any newly constructed roads upon completion of the sale. These stumps must be scattered along the road system to prohibit vehicular movement. Contact the sale administrator for specific details of design and placement.

### 4.1.11 - Permits (2/12)

The Purchaser will secure any necessary permits that may be required.

## 5 - Operations

### 5.1 - Notification

#### 5.1.5 - National Guard notification (2/15)

This sale is upon lands utilized for training by the Michigan National Guard - Camp Grayling. A minimum of five (5) business days prior to opening this sale, the producer must request that the sale administrator contact the military for information regarding training plans that may impact sale operations.

### 5.2 - Conduct of Operations

#### 5.2.2 - Hazard Trees/Snags

##### 5.2.2.1 - Den trees (10/16)

Obvious hollow and/or den trees shall be protected and left standing unless they are a safety hazard.

#### 5.2.3 - Operating Restrictions

##### 5.2.3.4 - Oak wilt restriction, no exceptions (1/18)

Within Payment Unit(s) 1-4, cutting and skidding within the sale and brushing of access roads to the sale are not permitted during the period of April 15 to July 15. No exceptions will be granted. Hauling may be permitted if brushing of access roads into the Sale Area has been completed prior to restrictions coming on. This is necessary to reduce the spread of oak wilt.

##### 5.2.3.7 - National Guard training restriction (1/09)

Operations on this contract may not be allowed during National Guard training operations. Typically, the restricted period is from May 1 to October 31. The contractor must check with the Unit Manager who will coordinate the cutting schedule with the Military.

#### 5.2.29 - Shrub protection (1/20)

Reasonable care should be taken to avoid cutting or damaging hawthorn or juneberry. These woody-shrub plants are highly beneficial to various wildlife species.

#### 5.2.32 - Decking/landing restoration (9/13)

All decking and landing areas must have the surface area restored to a condition equal to or better than before. This is to ensure the proper regeneration of the stand. Wood debris, chips, and "cookies" from trimmings must be removed or scattered away from landing and loading areas and may not be windrowed on the edge.

#### 5.2.38 - No decking against live trees (2/04)

Cut products may not be decked against unmarked or designated leave trees.

#### 5.2.41 - Snowmobile trail protection (9/11)

The trail LP47 is a snowmobile trail and is shown on the Timber Sale Map. The trail may be rerouted through Payment Units 3 and 4 before or during the logging operations. Do not cut or damage posts with orange trail markers or traffic control signs. If the trail is used, it must be maintained and restored to a condition equal to or better than before the sale. The road maintenance/restoration must be done prior to December 1. If the trail is used for hauling, it must be graded to the satisfaction of the Unit Manager or his/her representative prior to December 1. If the trail road is to be used for hauling during the snowmobile season, then a snow-covered base must be left on the trail. The snowmobile trail may not be used for any timber sale operations from December 1 to March 31 without Unit Manager approval. The snowmobile trail may only be crossed at right angles. Maintain a 20-foot-wide slash, debris, and rut free zone daily using the snowmobile trail as the centerline. No decking of forest products will be permitted along the snowmobile trail. All stumps within 5 feet of the snowmobile trail must be cut at ground level.

#### 5.4 - Soil Protection

##### 5.4.2 - Skid trails (2/04)

Skid trails up and down slopes should be avoided. If however this is unavoidable, these trails will be left in a non-erodible condition using water bars, logs, and slash. Placing of slash on these skid trails while logging is ongoing may alleviate need for any further action. At the direction of the sale administrator, seed, fertilizer, and mulch may also be required.

### 6 - Safety and Fire Prevention

#### 6.2 - Signing

##### 6.2.1 - Road posting (10/20)

The Purchaser is responsible for posting and maintaining caution signs on haul roads prior to beginning operations. The road must be posted at appropriate distances from the Sale Area to warn of logging activity and truck traffic. Signs must be removed when harvest operations are suspended or completed. The Purchaser will provide these signs.

##### 6.2.2 - Snowmobile trail posting (10/20)

The Purchaser is responsible for posting and maintaining caution signs on the snowmobile trail prior to beginning operations during the snowmobile season (approximately December 1 to March 31). The trail must be posted at appropriate distances from the Sale Area to warn of logging activity and truck traffic. Signs must be removed when harvest operations are suspended or completed. The Purchaser will provide these signs.

SKIP

##### 6.4 - Unexploded ordinance (7/15)

Be aware that the sale area could contain UXO (unexploded ordinances). Do not touch, or drive over any metal objects. If any objects are found, please flag the area and notify the Unit Manager or his/her representative, so that they can make arrangements with the Military.

### 7 - Other Conditions

#### 7.10 - Certified Timber

##### 7.10.1 - Non-certified timber (2/16)

The area encompassed by this timber sale is not certified to the standards of the Forest Stewardship Council (FSC) or the Sustainable Forestry Initiative (SFI). Forest products from this sale may not be delivered to the mill as "FSC and / or SFI certified". The lands within this sale are managed for military training.



# TIMBER SALE MAP

This information provided by authority of Part 525, 1994 PA 451, as amended.

Forest Management Unit Grayling		County Crawford	Mapped By Scott McClarren/Money bros	Date 10/12/2021	Page 1	of 1
Township 28N 27N	Range 02W 02W	Section(s) and Subdivision(s) Sec. 6: NENE Sec. 31: SENE,SE, Sec. 32: NWNW,NWSW		Scale 1:15,840		

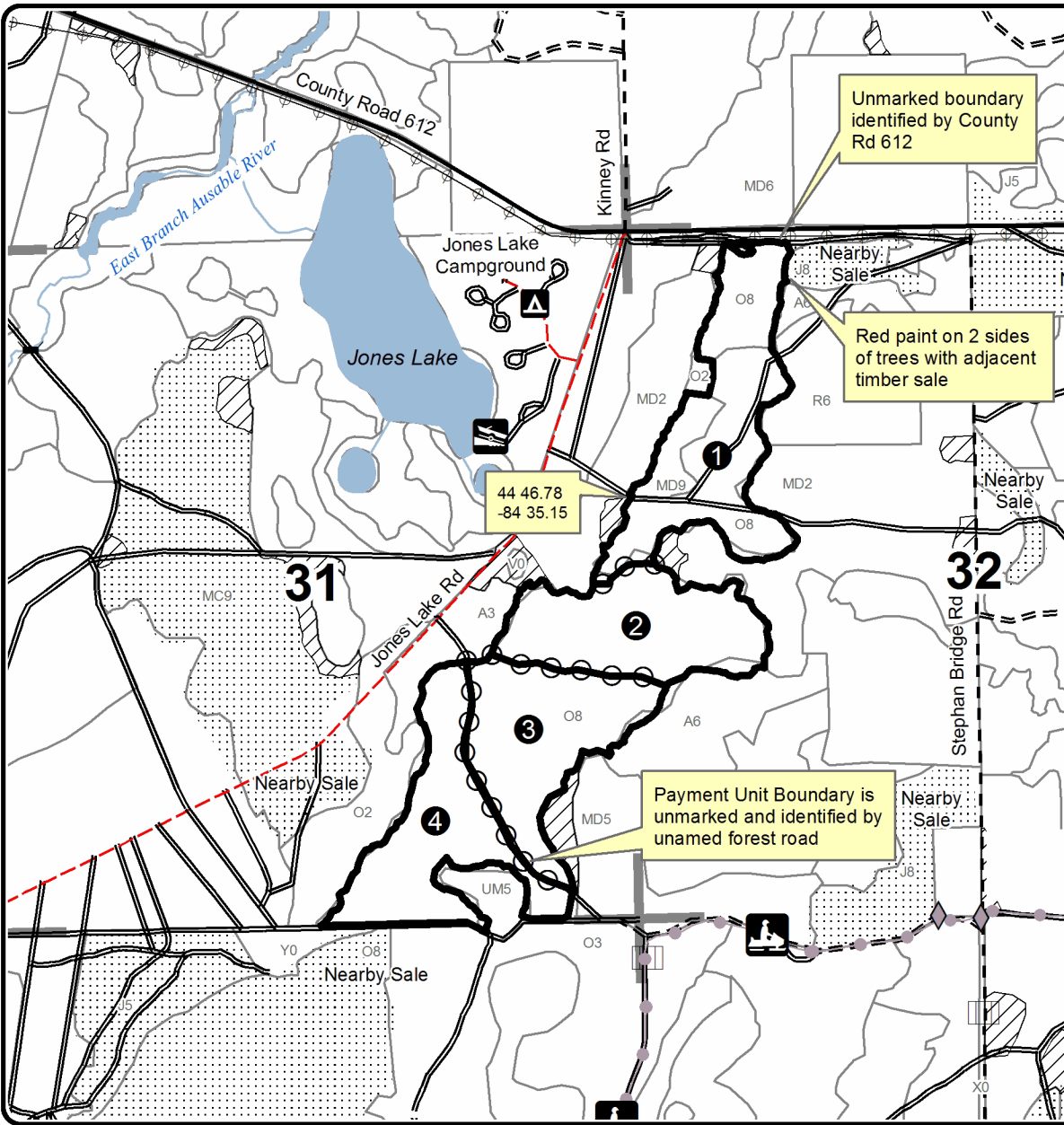
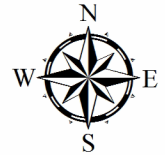
Cover Type				Density			
A = Aspen	H = Hemlock	N = Marsh	U = Upland Brush	0 = Non Stocked	5 = Pole Timber Medium		
B = Paper Birch	J = Jack Pine	O = Oak	UM = Upland Mixed	1 = Seedling Sapling Poor	6 = Pole Timber Well		
C = Cedar	L = Lowland Brush	P = Lowland Poplar	V = Bog or Marsh	2 = Seedling Sapling Medium	7 = Saw Timber Poor		
D = Treed Bog	LM = Lowland Mixed	Q = Mixed Swamp Conifer	W = White Pine	3 = Seedling Sapling Well	8 = Saw Timber Medium		
E = Swamp Hdwoods	M = Mpl, Bch, Brch	R = Red Pine	X = Non Stocked	4 = Pole Timber Poor	9 = Saw Timber Well		
F = Spruce Fir	MC = Mixed Conifer	S = Black Spruce	Z = Water				
G = Grass	MD = Mixed Deciduous	T = Tamarack					

PU	Acres	PU	Acres
1	39.3	4	31
2	31		
3	30.7		

## Crop Circle Oak

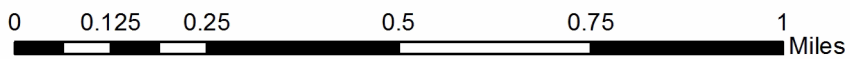
### Compartment 251

### 132 Acres



QR Code Opens Map in PDF Maps App

- Against State (Red/Road)
- Payment Unit (Yellow/Road)
- ▨ Retention Area
- Stand Boundaries
- Recreational Trails
- Secondary Forest Road
- == Forest Access Route
- Paved Road
- - Gravel Road
- - County Road - Seasonal
- Private
- Section Corners
- ⊕ Powerline
- ◆ Field Corners
- ① PU Label
- Lakes and Rivers
- Gate
- ⊗ Bridge
- ▲ State Forest Campgrounds
- ⊗ Boating Access Sites
- ⋯ Nearby Sales



Crop Circle Oak (72-640-21)  
T27N, R02W, SEC. 6; T28N, R02W, SEC. 31; T28N, R02W, SEC. 32; Crawford

In response to the notice of sale to be held 9:00 a.m. (local time) on January 24, 2022, I am hereby submitting my sealed bid (firm offer) for the following forest products to be cut. Bids for individual species must be at or above the advertised price. All non-responsive bid forms may be rejected.

<u>PRODUCTS &amp; SPECIES</u>	<u>ESTIMATED VOLUME*</u>	<u>ADVERTISED PRICE</u>	<u>BID PRICE/UNIT</u>
<b>Sawtimber</b>			
Mixed Oak	90.4 MBF	\$ 109.00/MBF	\$ _____
Red Pine	23.1 MBF	\$ 95.00/MBF	\$ _____
White Oak	86.9 MBF	\$ 80.00/MBF	\$ _____
<b>Pulpwood</b>			
B. T. Aspen	92 Cords	\$ 23.60/Cord	\$ _____
Jack Pine	28 Cords	\$ 16.00/Cord	\$ _____
Misc. Species 1	124 Cords	\$ 5.50/Cord	\$ _____
Mixed Oak	907 Cords	\$ 23.35/Cord	\$ _____
Red Maple	48 Cords	\$ 24.50/Cord	\$ _____
Red Pine	79 Cords	\$ 31.80/Cord	\$ _____
White Pine	11 Cords	\$ 17.10/Cord	\$ _____

\*The volumes are statistically estimated within plus (+) or minus (-) 7.15 percent at 95% confidence level. These estimated volumes are final and not subject to adjustment. Prospective bidders are urged to examine this timber and to make their own estimates of quantity and quality.

I understand that any or all bids may be rejected. All bids must be signed and all bid items must be bid or the bid form may be rejected. I also understand that consideration and awarding a contract will be based upon my past performance and ability to complete the contract based upon equipment and staffing subject to my control.

FEDERAL ID: \_\_\_\_\_ - \_\_\_\_\_ or SOCIAL SECURITY NUMBER: \_\_\_\_\_ - \_\_\_\_\_ - \_\_\_\_\_

Company or individual bidding: \_\_\_\_\_

Company representative's name: \_\_\_\_\_

Address: \_\_\_\_\_

City: \_\_\_\_\_ State: \_\_\_\_\_ Zip: \_\_\_\_\_

IF AVAILABLE, PLEASE PLACE THE PERSONALIZED LABEL FROM YOUR PROSPECTUS IN THE ABOVE BOX.

Individual or company representative's signature: \_\_\_\_\_ Date: \_\_\_\_\_

Phone number : \_\_\_\_\_ Email (optional): \_\_\_\_\_

**THE WINNING BIDDER MUST COMPLETE THE VERIFICATION OF WORKER'S DISABILITY COMPENSATION ACT COMPLIANCE (ON REVERSE SIDE IF DOUBLE SIDED) WITHIN 21 DAYS OF SALE AWARD DATE**



FOR DEPARTMENT USE ONLY	
Sale Number (XX - XXX - XX - XX)	
Forest Management Unit:	

# TIMBER SALE VERIFICATION OF WORKER'S DISABILITY COMPENSATION ACT COMPLIANCE

As required by Act 317, P.A. 1969 (Worker's Compensation) and  
Part 5 of Act 451 of 1994, as amended.

## VERIFICATION OF WORKER'S DISABILITY COMPENSATION ACT COMPLIANCE

- This verification must be completed and submitted within 21 days of contract award and prior to the issuance of the timber sale contract.
- In addition, if boxes 2B or 2C are checked, then Notice of Exclusion or Certificate of Insurance must be submitted within twenty-one (21) days of the contract award and prior to the issuance of the timber sale contract.
- All information must be typed or printed except for written signatures.

Please Check Appropriate Categories:

1. My business is organized as (you **must** check one of the boxes below):
  - A.  Sole Proprietorship (individual)
  - B.  Partnership
  - C.  Corporation
2. You **must** check one of the boxes below:
  - A.  I certify my business is a sole proprietorship and it has no employees but the sole proprietor. I am not subject to the Worker's Compensation Laws.
  - B.  I certify my business has satisfied its obligation to the Worker's Compensation Act through the use of an approved Notice of Exclusion (BWC-337, Rev. 5/96). I will provide a copy of the Notice of Exclusion within 21 days of the contract award. (For questions or a copy of the BWC-337, please call the Worker's Compensation Bureau at 517-322-1195).
  - C.  I certify my business has a Worker's Compensation Policy. I will provide an original Certificate of Insurance within twenty-one (21) days of the contract award.
3. If you have checked item 2(A) or 2(B), you **must** indicate the number of **both** full-time and part-time employees, other than yourself, including family members and active partners (if none, you must enter "0").

\_\_\_\_\_ Full-time Employees

\_\_\_\_\_ Part-time Employees

Name of Business		Federal ID (or) Social Security No.	
Address		Telephone (       )	
City	State	ZIP	

*I hereby certify that the above information is true and correct. I agree to notify the Michigan DNR of any changes that occur in factors affecting my coverage during any of my present and future operations.*

\_\_\_\_\_  
Signature of Owner or Authorized Representative

\_\_\_\_\_  
Title

\_\_\_\_\_  
Date

Please complete the "SEALED BID" information on the next page



Pallet Abduction Mix (72-609-21)  
T27N, R02W, SEC. 5; T28N, R02W, SEC. 29; T28N, R02W, SEC. 32; Crawford

In response to the notice of sale to be held 9:00 a.m. (local time) on January 24, 2022, I am hereby submitting my sealed bid (firm offer) for the following forest products to be cut. Bids for individual species must be at or above the advertised price. All non-responsive bid forms may be rejected.

<u>PRODUCTS &amp; SPECIES</u>	<u>ESTIMATED VOLUME*</u>	<u>ADVERTISED PRICE</u>	<u>BID PRICE/UNIT</u>
<b>Sawtimber</b>			
Jack Pine	50.1 MBF	\$ 32.00/MBF	\$ _____
Mixed Oak	29.4 MBF	\$ 109.00/MBF	\$ _____
Red Pine	53.3 MBF	\$ 95.00/MBF	\$ _____
White Pine	9.3 MBF	\$ 42.00/MBF	\$ _____
<b>Pulpwood</b>			
Black Cherry	8 Cords	\$ 24.50/Cord	\$ _____
Jack Pine	440 Cords	\$ 16.00/Cord	\$ _____
Misc. Species 1	21 Cords	\$ 5.50/Cord	\$ _____
Mixed Oak	128 Cords	\$ 23.35/Cord	\$ _____
Quaking Aspen	43 Cords	\$ 23.60/Cord	\$ _____
Red Pine	30 Cords	\$ 31.80/Cord	\$ _____
White Pine	35 Cords	\$ 17.10/Cord	\$ _____

\*The volumes are statistically estimated within plus (+) or minus (-) 8.09 percent at 95% confidence level. These estimated volumes are final and not subject to adjustment. Prospective bidders are urged to examine this timber and to make their own estimates of quantity and quality.

I understand that any or all bids may be rejected. All bids must be signed and all bid items must be bid or the bid form may be rejected. I also understand that consideration and awarding a contract will be based upon my past performance and ability to complete the contract based upon equipment and staffing subject to my control.

FEDERAL ID: \_\_\_\_\_ or SOCIAL SECURITY NUMBER: \_\_\_\_\_

Company or individual bidding: \_\_\_\_\_

Company representative's name: \_\_\_\_\_

Address: \_\_\_\_\_

City: \_\_\_\_\_ State: \_\_\_\_\_ Zip: \_\_\_\_\_

IF AVAILABLE, PLEASE PLACE THE PERSONALIZED LABEL FROM YOUR PROSPECTUS IN THE ABOVE BOX.

Individual or company representative's signature: \_\_\_\_\_ Date: \_\_\_\_\_

Phone number : \_\_\_\_\_ Email (optional): \_\_\_\_\_

**THE WINNING BIDDER MUST COMPLETE THE VERIFICATION OF WORKER'S DISABILITY COMPENSATION ACT COMPLIANCE (ON REVERSE SIDE IF DOUBLE SIDED) WITHIN 21 DAYS OF SALE AWARD DATE**



<b>FOR DEPARTMENT USE ONLY</b>	
Sale Number (XX - XXX - XX - XX)	
Forest Management Unit:	

## TIMBER SALE VERIFICATION OF WORKER'S DISABILITY COMPENSATION ACT COMPLIANCE

As required by Act 317, P.A. 1969 (Worker's Compensation) and  
Part 5 of Act 451 of 1994, as amended.

### VERIFICATION OF WORKER'S DISABILITY COMPENSATION ACT COMPLIANCE

- This verification must be completed and submitted within 21 days of contract award and prior to the issuance of the timber sale contract.
- In addition, if boxes 2B or 2C are checked, then Notice of Exclusion or Certificate of Insurance must be submitted within twenty-one (21) days of the contract award and prior to the issuance of the timber sale contract.
- All information must be typed or printed except for written signatures.

Please Check Appropriate Categories:

1. My business is organized as (you **must** check one of the boxes below):
  - A.  Sole Proprietorship (individual)
  - B.  Partnership
  - C.  Corporation
2. You **must** check one of the boxes below:
  - A.  I certify my business is a sole proprietorship and it has no employees but the sole proprietor. I am not subject to the Worker's Compensation Laws.
  - B.  I certify my business has satisfied its obligation to the Worker's Compensation Act through the use of an approved Notice of Exclusion (BWC-337, Rev. 5/96). I will provide a copy of the Notice of Exclusion within 21 days of the contract award. (For questions or a copy of the BWC-337, please call the Worker's Compensation Bureau at 517-322-1195).
  - C.  I certify my business has a Worker's Compensation Policy. I will provide an original Certificate of Insurance within twenty-one (21) days of the contract award.
3. If you have checked item 2(A) or 2(B), you **must** indicate the number of **both** full-time and part-time employees, other than yourself, including family members and active partners (if none, you must enter "0").

\_\_\_\_\_ Full-time Employees

\_\_\_\_\_ Part-time Employees

Name of Business		Federal ID (or) Social Security No.	
Address		Telephone (       )	
City	State	ZIP	

*I hereby certify that the above information is true and correct. I agree to notify the Michigan DNR of any changes that occur in factors affecting my coverage during any of my present and future operations.*

\_\_\_\_\_  
Signature of Owner or Authorized Representative

\_\_\_\_\_  
Title

\_\_\_\_\_  
Date

Please complete the "SEALED BID" information on the next page

Roswell Jack (72-639-21)  
T28N, R02W, SEC. 31; Crawford COUNTY

In response to the notice of sale to be held 9:00 a.m. (local time) on January 24, 2022, I am hereby submitting my sealed bid (firm offer) for the following forest products to be cut. Bids for individual species must be at or above the advertised price. All non-responsive bid forms may be rejected.

<u>PRODUCTS &amp; SPECIES</u>	<u>ESTIMATED VOLUME*</u>	<u>ADVERTISED PRICE</u>	<u>BID PRICE/UNIT</u>
<b>Sawtimber</b>			
Northern Pin Oak	26.3 MBF	\$ 109.00/MBF	\$ _____
Red Pine	8.3 MBF	\$ 95.00/MBF	\$ _____
<b>Pulpwood</b>			
Jack Pine	751 Cords	\$ 16.00/Cord	\$ _____
Misc. Species 1	57 Cords	\$ 5.50/Cord	\$ _____
Mixed Hardwood	13 Cords	\$ 24.50/Cord	\$ _____
Northern Pin Oak	164 Cords	\$ 23.35/Cord	\$ _____
Red Pine	21 Cords	\$ 31.80/Cord	\$ _____
White Pine	7 Cords	\$ 17.10/Cord	\$ _____

\*The volumes are statistically estimated within plus (+) or minus (-) 6.68 percent at 95% confidence level. These estimated volumes are final and not subject to adjustment. Prospective bidders are urged to examine this timber and to make their own estimates of quantity and quality.

I understand that any or all bids may be rejected. All bids must be signed and all bid items must be bid or the bid form may be rejected. I also understand that consideration and awarding a contract will be based upon my past performance and ability to complete the contract based upon equipment and staffing subject to my control.

FEDERAL ID: \_\_\_\_ - \_\_\_\_ - \_\_\_\_ or SOCIAL SECURITY NUMBER: \_\_\_\_ - \_\_\_\_ - \_\_\_\_

Company or individual bidding: \_\_\_\_\_

Company representative's name: \_\_\_\_\_

Address: \_\_\_\_\_

City: \_\_\_\_\_ State: \_\_\_\_\_ Zip: \_\_\_\_\_

IF AVAILABLE, PLEASE PLACE THE PERSONALIZED LABEL FROM YOUR PROSPECTUS IN THE ABOVE BOX.

Individual or company representative's signature: \_\_\_\_\_ Date: \_\_\_\_\_

Phone number : \_\_\_\_\_ Email (optional): \_\_\_\_\_

**THE WINNING BIDDER MUST COMPLETE THE VERIFICATION OF WORKER'S DISABILITY COMPENSATION ACT COMPLIANCE (ON REVERSE SIDE IF DOUBLE SIDED) WITHIN 21 DAYS OF SALE AWARD DATE**



FOR DEPARTMENT USE ONLY	
Sale Number (XX - XXX - XX - XX)	
Forest Management Unit:	

## TIMBER SALE VERIFICATION OF WORKER'S DISABILITY COMPENSATION ACT COMPLIANCE

As required by Act 317, P.A. 1969 (Worker's Compensation) and  
Part 5 of Act 451 of 1994, as amended.

### VERIFICATION OF WORKER'S DISABILITY COMPENSATION ACT COMPLIANCE

- This verification must be completed and submitted within 21 days of contract award and prior to the issuance of the timber sale contract.
- In addition, if boxes 2B or 2C are checked, then Notice of Exclusion or Certificate of Insurance must be submitted within twenty-one (21) days of the contract award and prior to the issuance of the timber sale contract.
- All information must be typed or printed except for written signatures.

Please Check Appropriate Categories:

1. My business is organized as (you **must** check one of the boxes below):
  - A.  Sole Proprietorship (individual)
  - B.  Partnership
  - C.  Corporation
2. You **must** check one of the boxes below:
  - A.  I certify my business is a sole proprietorship and it has no employees but the sole proprietor. I am not subject to the Worker's Compensation Laws.
  - B.  I certify my business has satisfied its obligation to the Worker's Compensation Act through the use of an approved Notice of Exclusion (BWC-337, Rev. 5/96). I will provide a copy of the Notice of Exclusion within 21 days of the contract award. (For questions or a copy of the BWC-337, please call the Worker's Compensation Bureau at 517-322-1195).
  - C.  I certify my business has a Worker's Compensation Policy. I will provide an original Certificate of Insurance within twenty-one (21) days of the contract award.
3. If you have checked item 2(A) or 2(B), you **must** indicate the number of **both** full-time and part-time employees, other than yourself, including family members and active partners (if none, you must enter "0").

\_\_\_\_\_ Full-time Employees

\_\_\_\_\_ Part-time Employees

Name of Business		Federal ID (or) Social Security No.	
Address		Telephone (       )	
City	State	ZIP	

*I hereby certify that the above information is true and correct. I agree to notify the Michigan DNR of any changes that occur in factors affecting my coverage during any of my present and future operations.*

\_\_\_\_\_  
Signature of Owner or Authorized Representative

\_\_\_\_\_  
Title

\_\_\_\_\_  
Date

Please complete the "SEALED BID" information on the next page

Roth Exp Re-Sale (72-010-22)

T25N, R02W, SEC. 9; T25N, R03W, SEC. 12; T25N, R04W, SEC. 19; T25N, R04W,

In response to the notice of sale to be held 9:00 a.m. (local time) on January 24, 2022, I am hereby submitting my sealed bid (firm offer) for the following forest products to be cut. Bids for individual species must be at or above the advertised price. All non-responsive bid forms may be rejected.

<u>PRODUCTS &amp; SPECIES</u>	<u>ESTIMATED VOLUME*</u>	<u>ADVERTISED PRICE</u>	<u>BID PRICE/UNIT</u>
Pulpwood Misc. Species 1	41.5 Acres	\$ 1.00/Acres	\$ _____

\*These estimated volumes are final and not subject to adjustment. Prospective bidders are urged to examine this timber and to make their own estimates of quantity and quality.

I understand that any or all bids may be rejected. All bids must be signed and all bid items must be bid or the bid form may be rejected. I also understand that consideration and awarding a contract will be based upon my past performance and ability to complete the contract based upon equipment and staffing subject to my control.

FEDERAL ID: \_\_\_-\_\_\_\_-\_\_\_\_ or SOCIAL SECURITY NUMBER: \_\_\_-\_\_\_\_-\_\_\_\_

Company or individual bidding: \_\_\_\_\_

Company representative's name: \_\_\_\_\_

Address: \_\_\_\_\_

City: \_\_\_\_\_ State: \_\_\_\_\_ Zip: \_\_\_\_\_

IF AVAILABLE, PLEASE PLACE THE PERSONALIZED LABEL FROM YOUR PROSPECTUS IN THE ABOVE BOX.

Individual or company representative's signature: \_\_\_\_\_ Date: \_\_\_\_\_

Phone number : \_\_\_\_\_ Email (optional): \_\_\_\_\_

**THE WINNING BIDDER MUST COMPLETE THE VERIFICATION OF WORKER'S DISABILITY COMPENSATION ACT COMPLIANCE (ON REVERSE SIDE IF DOUBLE SIDED) WITHIN 21 DAYS OF SALE AWARD DATE**



FOR DEPARTMENT USE ONLY	
Sale Number (XX - XXX - XX - XX)	
Forest Management Unit:	

## TIMBER SALE VERIFICATION OF WORKER'S DISABILITY COMPENSATION ACT COMPLIANCE

As required by Act 317, P.A. 1969 (Worker's Compensation) and  
Part 5 of Act 451 of 1994, as amended.

### VERIFICATION OF WORKER'S DISABILITY COMPENSATION ACT COMPLIANCE

- This verification must be completed and submitted within 21 days of contract award and prior to the issuance of the timber sale contract.
- In addition, if boxes 2B or 2C are checked, then Notice of Exclusion or Certificate of Insurance must be submitted within twenty-one (21) days of the contract award and prior to the issuance of the timber sale contract.
- All information must be typed or printed except for written signatures.

Please Check Appropriate Categories:

1. My business is organized as (you **must** check one of the boxes below):
  - A.  Sole Proprietorship (individual)
  - B.  Partnership
  - C.  Corporation
2. You **must** check one of the boxes below:
  - A.  I certify my business is a sole proprietorship and it has no employees but the sole proprietor. I am not subject to the Worker's Compensation Laws.
  - B.  I certify my business has satisfied its obligation to the Worker's Compensation Act through the use of an approved Notice of Exclusion (BWC-337, Rev. 5/96). I will provide a copy of the Notice of Exclusion within 21 days of the contract award. (For questions or a copy of the BWC-337, please call the Worker's Compensation Bureau at 517-322-1195).
  - C.  I certify my business has a Worker's Compensation Policy. I will provide an original Certificate of Insurance within twenty-one (21) days of the contract award.
3. If you have checked item 2(A) or 2(B), you **must** indicate the number of **both** full-time and part-time employees, other than yourself, including family members and active partners (if none, you must enter "0").

\_\_\_\_\_ Full-time Employees

\_\_\_\_\_ Part-time Employees

Name of Business		Federal ID (or) Social Security No.	
Address		Telephone (       )	
City	State	ZIP	

*I hereby certify that the above information is true and correct. I agree to notify the Michigan DNR of any changes that occur in factors affecting my coverage during any of my present and future operations.*

\_\_\_\_\_  
Signature of Owner or Authorized Representative

\_\_\_\_\_  
Title

\_\_\_\_\_  
Date

Please complete the "SEALED BID" information on the next page

Foxhole Oak (72-627-21)  
T26N, R04W, SEC. 31; Crawford COUNTY

In response to the notice of sale to be held 9:00 a.m. (local time) on January 24, 2022, I am hereby submitting my sealed bid (firm offer) for the following forest products to be cut. Bids for individual species must be at or above the advertised price. All non-responsive bid forms may be rejected.

<u>PRODUCTS &amp; SPECIES</u>	<u>ESTIMATED VOLUME*</u>	<u>ADVERTISED PRICE</u>	<u>BID PRICE/UNIT</u>
<b>Sawtimber</b>			
Bl/R/Hybrid Oak	47.8 MBF	\$ 109.00/MBF	\$ _____
Northern Pin Oak	55.0 MBF	\$ 109.00/MBF	\$ _____
Red Oak	230.4 MBF	\$ 140.00/MBF	\$ _____
White Oak	21.7 MBF	\$ 80.00/MBF	\$ _____
<b>Pulpwood</b>			
Jack Pine	18 Cords	\$ 16.00/Cord	\$ _____
Misc. Species 1	307 Cords	\$ 5.50/Cord	\$ _____
Mixed Aspen	15 Cords	\$ 23.60/Cord	\$ _____
Mixed Hardwood	94 Cords	\$ 24.50/Cord	\$ _____
Mixed Oak	674 Cords	\$ 23.35/Cord	\$ _____

\*The volumes are statistically estimated within plus (+) or minus (-) 5.13 percent at 95% confidence level. These estimated volumes are final and not subject to adjustment. Prospective bidders are urged to examine this timber and to make their own estimates of quantity and quality.

I understand that any or all bids may be rejected. All bids must be signed and all bid items must be bid or the bid form may be rejected. I also understand that consideration and awarding a contract will be based upon my past performance and ability to complete the contract based upon equipment and staffing subject to my control.

FEDERAL ID: \_\_\_\_ - \_\_\_\_ - \_\_\_\_ or SOCIAL SECURITY NUMBER: \_\_\_\_ - \_\_\_\_ - \_\_\_\_

Company or individual bidding: \_\_\_\_\_

Company representative's name: \_\_\_\_\_

Address: \_\_\_\_\_

City: \_\_\_\_\_ State: \_\_\_\_\_ Zip: \_\_\_\_\_

IF AVAILABLE, PLEASE PLACE THE PERSONALIZED LABEL FROM YOUR PROSPECTUS IN THE ABOVE BOX.

Individual or company representative's signature: \_\_\_\_\_ Date: \_\_\_\_\_

Phone number : \_\_\_\_\_ Email (optional): \_\_\_\_\_

**THE WINNING BIDDER MUST COMPLETE THE VERIFICATION OF WORKER'S DISABILITY COMPENSATION ACT COMPLIANCE (ON REVERSE SIDE IF DOUBLE SIDED) WITHIN 21 DAYS OF SALE AWARD DATE**



<b>FOR DEPARTMENT USE ONLY</b>
Sale Number (XX - XXX - XX - XX)
Forest Management Unit:

## TIMBER SALE VERIFICATION OF WORKER'S DISABILITY COMPENSATION ACT COMPLIANCE

*As required by Act 317, P.A. 1969 (Worker's Compensation) and  
Part 5 of Act 451 of 1994, as amended.*

### VERIFICATION OF WORKER'S DISABILITY COMPENSATION ACT COMPLIANCE

- This verification must be completed and submitted within 21 days of contract award and prior to the issuance of the timber sale contract.
- In addition, if boxes 2B or 2C are checked, then Notice of Exclusion or Certificate of Insurance must be submitted within twenty-one (21) days of the contract award and prior to the issuance of the timber sale contract.
- All information must be typed or printed except for written signatures.

Please Check Appropriate Categories:

1. My business is organized as (you **must** check one of the boxes below):
  - A.  Sole Proprietorship (individual)
  - B.  Partnership
  - C.  Corporation
2. You **must** check one of the boxes below:
  - A.  I certify my business is a sole proprietorship and it has no employees but the sole proprietor. I am not subject to the Worker's Compensation Laws.
  - B.  I certify my business has satisfied its obligation to the Worker's Compensation Act through the use of an approved Notice of Exclusion (BWC-337, Rev. 5/96). I will provide a copy of the Notice of Exclusion within 21 days of the contract award. (For questions or a copy of the BWC-337, please call the Worker's Compensation Bureau at 517-322-1195).
  - C.  I certify my business has a Worker's Compensation Policy. I will provide an original Certificate of Insurance within twenty-one (21) days of the contract award.
3. If you have checked item 2(A) or 2(B), you **must** indicate the number of **both** full-time and part-time employees, other than yourself, including family members and active partners (if none, you must enter "0").

\_\_\_\_\_ Full-time Employees

\_\_\_\_\_ Part-time Employees

Name of Business		Federal ID (or) Social Security No.	
Address		Telephone (       )	
City	State	ZIP	

*I hereby certify that the above information is true and correct. I agree to notify the Michigan DNR of any changes that occur in factors affecting my coverage during any of my present and future operations.*

\_\_\_\_\_  
Signature of Owner or Authorized Representative

\_\_\_\_\_  
Title

\_\_\_\_\_  
Date

**Please complete the "SEALED BID" information on the next page**