



**DEPARTMENT OF NATURAL RESOURCES
STATE OF MICHIGAN**

TIMBER SALE PROSPECTUS #6888

SCHEDULED SALE DATE AND TIME: 4:00 p.m. (local time) on October 18, 2021.

LOCATION: KALKASKA FIELD OFFICE, 2089 NORTH BIRCH STREET, KALKASKA, MI 49646.

PROSPECTUS NOTE: The bidder is advised to inspect the sale area and review the location, estimated volumes, operating costs and contract terms of proposed sales. Please be aware that some landowners may request 60 days or more notice for access across their land.

Notice is hereby given that bids will be received by the Unit Manager, TRAVERSE CITY MANAGEMENT UNIT, for certain timber on the following described lands:

Horse Fly Aspen (61-108-21) / T27N, R07W, SEC. 19, NESW,S1/2SW.

Kalkaska County, Advertised Price \$27,577.30, 27.1 Acres, Hardwood, Aspen.

SALE NOTE: All units of volume listed for this sale were estimated using the Inventory Manager computer program and the new Michigan taper model.

Bug Bite Mix (61-109-21) / T27N, R08W, SEC. 22, N1/2NW,NWNE,SESE.

T27N, R08W, SEC. 23, S1/2SW.

Kalkaska County, Advertised Price \$20,566.55, 58.5 Acres, Jack Pine, Red Pine.

SALE NOTE: All units of volume listed for this sale were estimated using the Inventory Manager computer program and the new Michigan taper model.

A recreation site such as a trail, pathway, or campground is within the sale area or the vicinity. Certain restrictions/specifications may be applicable including time restrictions.

Crib Climber Mix (61-110-21) / T27N, R08W, SEC. 24, S1/2NW,NE,SW,N1/2SE,SWSE.

Kalkaska County, Advertised Price \$68,738.35, 202.3 Acres, Red Pine, Hardwood.

SALE NOTE: All units of volume listed for this sale were estimated using the Inventory Manager computer program and the new Michigan taper model.

A recreation site such as a trail, pathway, or campground is within the sale area or the vicinity. Certain restrictions/specifications may be applicable including time restrictions.

Big Buck Swamp Mix (61-112-21) / T25N, R06W, SEC. 18, N1/2NW,N1/2NE.

T25N, R06W, SEC. 7, S1/2SW,S1/2SE.

Kalkaska County, Advertised Price \$38,685.95, 60.2 Acres, White Pine, Spruce/Fir/Tamarack.

SALE NOTE: All units of volume listed for this sale were estimated using the Inventory Manager computer program and the new Michigan taper model.

Bear Lake Hardwoods (61-125-21) / T27N, R05W, SEC. 11, S1/2SW,SWSE.

T27N, R05W, SEC. 13, SWNW,W1/2SW.

T27N, R05W, SEC. 14, N1/2NW,NE,SE.

T27N, R05W, SEC. 23, N1/2NE.

T27N, R05W, SEC. 24, NWNW.

Kalkaska County, Advertised Price \$232,743.90, 261.1 Acres, Hardwood, Sugar Maple.

SALE NOTE: All units of volume listed for this sale were estimated using the Inventory Manager computer program and the new Michigan taper model.

A recreation site such as a trail, pathway, or campground is within the sale area or the vicinity. Certain restrictions/specifications may be applicable including time restrictions.

BID INSTRUCTIONS (VER. 07/02/2018):

1. Scheduled Bid Location, Date, and Time (2/11)

Bids must be received by the Unit Manager, KALKASKA OFFICE, 2089 North Birch Street, Kalkaska, MI 49646, no later than 4:00 p.m. (local time) on October 18, 2021. For further information concerning this sale, contact David Lemmien at 231-922-6040.

2. Bidder's Qualifications (5/16)

Purchaser shall obtain workers compensation insurance to cover claims under Michigan's Worker's Disability Compensation Act of 1969 or similar employee benefit act of any other state applicable to an employee. If all or part of a timber sale was prepared by a private contractor, the contractor and that contractor's company are not permitted to bid on the timber sale contract. Bids will not be accepted from individuals or companies appearing on the DNR/FRD No-Bid List. This list contains the names of purchasers who previously failed to execute a contract within 21-days or who have a history of poor performance.

3. Preparation of Sealed Bids (5/16)

Bid Forms may be completed online thru Michigan DNR Timber Sale Online Bidding (OLB) at www.michigan.gov/timberbidding or by completing the hardcopy Bid Form found in the Timber Sale Prospectus. Hardcopy Bid Forms shall be manually signed in ink. Registration in OLB is considered your 'signature' for all bids submitted thru that system. Bid prices must be entered for each species and product in the Bid Price column for all material subject to bidding and all fill-in blanks must be completed. If erasures or other changes appear on the hardcopy Bid Form, each erasure or change must be initialed by the person signing the bid.

4. Submission of Sealed Bids (5/16)

Bid forms may be obtained from the Unit Manager or thru OLB. Bids may be submitted hardcopy or thru OLB. All hardcopy bids must be submitted on the bid form and in an envelope clearly identified as described in this section. NOTE: Only one bid form per bid envelope. Sealed bids must be submitted to the Unit office designated in the prospectus and must be submitted at or prior to the time established in the prospectus. The envelope should show on the outside (a) the sale name or number and (b) the date and time of bid opening, as shown in the prospectus. Bids received after the time specified in the sale prospectus are late bids and will be rejected.

It is possible for a bidder to submit multiple bids on a single sale. For example, a bid may be submitted hardcopy and a bid may be submitted thru OLB. Or, two bidders from the same company could both submit bids on the same sale. If this were to happen, the State would accept all bids received and award the contract accordingly. All bidding and contractual requirements would apply to all bids received.

5. Public Opening of Sealed Bids (7/16)

If conditions permit, the sealed bids will be publicly opened and posted at the time and place set in the prospectus.

If a bidder, present at a bid opening, has submitted bids on more than one sale, that bidder may withdraw their unopened bid envelopes or announce the withdrawal of their online bid after being declared the successful bidder on one sale.

6. Award of Contract (1/11)

Award of the contract will be made to the Bidder whose bid, conforming to the prospectus, is most advantageous to the State of Michigan on the basis of total value at rates bid for the estimated quantities. The State reserves the right to reject any bid or waive any minor irregularity in bids received. A written award mailed (or otherwise furnished) to the successful Bidder shall be deemed to result in a binding contract without further action by either party.

7. Down Payment (1/11)

The Bidder to whom award is made must make a down payment within 21 days of the sale award. The amount of the down payment will be calculated as shown in the Bond and Payment Schedule of this prospectus. Only cash may be used to meet this requirement.

8. Performance Security (1/11)

As guarantee of faithful performance, a cash bond, certificate of deposit, surety bond or irrevocable letter of credit (LOC) is required within 21 days of the sale award. The amount of the performance security is shown in the Bond and

Payment Schedule of this prospectus. If an LOC or surety is used, the coverage must extend for at least 6 months beyond the contract expiration.

9. Timber Sale Contract (7/18)

Additional conditions and requirements common to all timber sales are listed on the timber sale contract (R4031) and are available on line at www.michigan.gov/timber. Contact the Unit Manager for additional information or a sample contract. Within 21 days of the date of the award letter, the bidder must sign the contract and provide the required down payment, performance security, and verification of worker's disability compensation. The down payment and performance security shall be in accordance with the provisions of the timber sale contract, in the sums stated in this prospectus. If these actions are not taken, then the Bidder, the Bidder's corporation, and the corporation's principals may not be permitted to bid on State timber sales for a period of 3 months after the first offense, 6 months after the second offense, and 1 year after the third offense. An offense will only be counted against the Bidder for 5 years. In addition, the Bidder certifies that if awarded this contract, the Bidder will complete the timber sale contract in accordance with its terms and any modifications thereof including requirements to purchase, cut, and remove the included timber by the expiration date.

Payment Unit values in the State Forest Timber Sale Contract are calculated based on the advertised value of the Payment Unit as a percentage of the total advertised value of the contract. The advertised value of each Payment Unit is given in the Description of Timber by Payment Unit table on the Timber Sale Information page. For example, if the value of Payment Unit 1 is advertised as \$1,500 and the total Timber Sale value is advertised as \$10,000, the contract price for Payment Unit 1 will be 15% of the total bid price ($\$1,500/\$10,000 * 100$).

10. Disclaimer of Estimates and Bidder's Warranty of Inspection (7/16)

Before submitting this bid, the Bidder is advised and cautioned to inspect the sale area, review the requirements of the sale contract, and take other steps as may be reasonably necessary to ascertain the location, estimated volumes, construction estimates, and operating costs of the proposed sale. Failure to do so will not relieve the Bidder from responsibility for completing the contract.

The Bidder warrants that this bid is submitted solely on the basis of the Bidder's examination and inspection of the quality and quantity of the timber offered for sale and the Bidder's opinion of the value thereof and the costs of recovery. No reliance should be placed on the State of Michigan's estimates of timber quality, quantity or costs of recovery. Bidder further acknowledges that the State of Michigan: (i) expressly disclaims any warranty of fitness of timber for any purpose; (ii) offers this timber as is without any warranty of quality (merchantability) or quantity and (iii) expressly disclaims any warranty as to the quantity or quality of timber sold.

11. Certification and Chain-of-Custody (10/14)

Unless otherwise indicated in the contract under section 7 – Other Conditions of the Sale Specific Conditions & Requirements, the area encompassed by this timber sale is certified to the standards of the Forest Stewardship Council (FSC) - Certificate #SCS-FM/COC-00090N and the Sustainable Forestry Initiative (SFI) - Certificate #NSF-SFIS-5Y031-SF5. Forest products from this sale may be delivered to the mill as "FSC 100% and / or SFI certified" as long as the contractor hauling the forest products is chain-of-custody (COC) certified or covered under a COC certificate from the destination mill. The purchaser is responsible for maintaining COC after leaving the sale area.

12. Good Neighbor Authority (GNA) Requirements (7/16)

If the name of this timber sales contains the acronym GNA, it is authorized by the Good Neighbor Authority (GNA) and covered by various agreements between the U.S. Forest Service and the State. The timber sale occurs on federal land and the following conditions apply:

GNA contracts on US Forest Service land will not be awarded to purchasers on the Federal list of excluded parties. The System for Award Management (SAM) will be checked for active excluded parties prior to award of contract. In addition, the Bidder to whom award is made must complete an Assurance Regarding Felony Conviction or Tax Delinquent Status for Corporate Applicants (AD-3031).

13. Good Neighbor Authority (GNA) Requirements, con't (9/16)

Bidder certifies, by signing this bid form, that to the best of Bidder's knowledge that the following representations are accurate and complete.

- a. That the Bidder and its principals are not presently debarred, suspended, proposed for debarment, declared ineligible, or voluntary excluded from timber sales (covered transactions) by any Federal department or agency.
- b. That the Bidder and its principals have not within a 3-year period preceding this bid been convicted of or had a civil judgment rendered against them for commission of fraud or a criminal offense in connection with obtaining , attempting to obtain, or performing a public (Federal, State, or local) transaction or contract under a public transaction; violation of Federal or State antitrust statutes or commission of embezzlement, theft, forgery, bribery, falsification or destruction of records, making false statements, or receiving stolen property.
- c. That the Bidder and its principals are not presently indicted for or otherwise criminally or civilly charged by a governmental entity (Federal, State, or local) with commission of any of the offenses enumerated in paragraph b of this certification.
- d. That the Bidder and its principals have not within a 3-year period preceding this bid had one or more public transactions (Federal, State, or local) terminated for breach or default of a timber or forest product contract.

Bidders that cannot certify this requirement, in whole or in part, shall submit an explanation with their bid.

DAN EICHINGER
Director

TIMBER SALE INFORMATION

Horse Fly Aspen (61-108-21)
T27N, R07W, SEC. 19.
Kalkaska County (Advertised Price \$27,577.30)

SALE NOTE: All units of volume listed for this sale were estimated using the Inventory Manager computer program and the new Michigan taper model.

A timber sale contract for this lump sum, sealed bid timber sale will be awarded to the responsible bidder offering the highest sealed bid price. All units of volume listed below were estimated using the Inventory Manager computer program and the new Michigan taper model. Bids must be at or above the following advertised price for each product and species:

| <u>PRODUCTS & SPECIES</u> | <u>ESTIMATED UNITS*</u> | <u>ADVERTISED PRICE</u> |
|-------------------------------|-------------------------|-------------------------|
| Sawtimber | | |
| B. T. Aspen | 67.8 MBF | \$ 131.00 / MBF |
| Red Maple | 63.7 MBF | \$ 169.00 / MBF |
| Red Oak | 2.7 MBF | \$ 172.00 / MBF |
| Red Pine | 8.7 MBF | \$ 116.00 / MBF |
| White Pine | 14.2 MBF | \$ 53.00 / MBF |
| Pulpwood | | |
| B. T. Aspen | 99 Cords | \$ 18.60 / Cord |
| Mixed Hardwood | 185 Cords | \$ 18.00 / Cord |
| Red Oak | 16 Cords | \$ 17.85 / Cord |
| Red Pine | 2 Cords | \$ 43.30 / Cord |
| White Pine | 8 Cords | \$ 20.05 / Cord |

* The total volume is statistically estimated within plus (+) or minus (-) 13.63 percent. There are an estimated 707 cords on this timber sale, plus or minus 96 cords at the 95% confidence level. The estimated units are final and not subject to adjustment. Prospective bidders are urged to examine this timber and to make their own estimates of quantity and quality.

BOND AND PAYMENT SCHEDULE:

1. A bond in the amount of \$1,379.00 to insure faithful performance of the conditions of the contract will be deposited by the successful bidder within 21 days of the sale award.
2. Cutting in any sale or unit without the required advance payment would be considered a trespass.
3. Total payment must be paid in advance or according to the following schedule :
 - (a) Ten percent (10%) of the sale value must be paid within 21 days of the sale award.
 - (b) The remainder is due before cutting begins.
 - (c) Payment for each of the following units must be made before cutting begins in that unit:

| PAYMENT UNIT NUMBER | PERCENT OF TOTAL SALE VALUE |
|---------------------|-----------------------------|
| 01 | 100.0% |
4. If no cutting takes place, the 10% down payment will not be refunded.
5. Operations on the contract issued will terminate on 12/31/2023.

SALE STATISTICS

Volumes were calculated in cubic feet using the Michigan taper model. Cubic foot volume includes all wood inside bark for the product indicated. For display purposes, cubic feet were converted to cords and MBF using a simple conversion factor, e.g. 79 cubic feet per cord and 185 cubic feet per MBF. The cubic foot volumes are precise; the cords and MBF volumes are not. Cubic foot volume cannot be directly converted to cords or boards with precision.

SALE VOLUMES

The total estimated sale volume may not equal the sum of the species/products due to the nature of statistical calculations associated with double sampling methodology.

| VOLUME | | | STATISTICAL RANGE IN CORDS | |
|------------------|-------------|---------------|----------------------------|---------|
| TOTAL CUBIC FEET | TOTAL CORDS | PERCENT ERROR | MINIMUM | MAXIMUM |
| 55,849 | 707 | 13.63% | 611 | 803 |

VDU VOLUMES

A VDU is a Volume Determination Unit. Volumes and their associated statistics are calculated at the VDU level and summarized to the sale level. There is often a one to one relationship between a VDU and a Payment Unit, but not always, depending on the cruise design. Refer to the VDU TO PAYMENT UNIT table.

| VDU | VOLUME | | PERCENT ERROR | RANGE IN CORDS | |
|---------------|------------------|-------------|---------------|----------------|------------|
| | TOTAL CUBIC FEET | TOTAL CORDS | | MINIMUM | MAXIMUM |
| 71 | 49,379 | 625 | 13.64% | 540 | 710 |
| TOTAL: | 49,379 | 625 | | 540 | 710 |

VDU TO PAYMENT UNIT

When a VDU is associated with more than one Payment Unit (PU), the VDU volumes are assigned to the PU based on acres of the VDU within the PU.

| VDU | VDU ACRES | PU | PU ACRES |
|---------------|-------------|----|-------------|
| 71 | 27.1 | 1 | 27.1 |
| TOTAL: | 27.1 | | 27.1 |

DESCRIPTION OF TIMBER BY PAYMENT UNIT (PU)

| PU | MARKET GROUP | PRODUCT | QUANTITY | UNIT | ACRES | ADVERTISE PRICE |
|--------|---------------------|-----------|----------|--------------|-------|-----------------|
| 1 | B. T. Aspen | Sawtimber | 67.8 | MBF | 27.1 | \$27,577.30 |
| | Red Maple | | 63.7 | MBF | | |
| | Red Oak | | 2.7 | MBF | | |
| | Red Pine | | 8.7 | MBF | | |
| | White Pine | | 14.2 | MBF | | |
| | B. T. Aspen | Pulpwood | 99 | Cords | | |
| | Mixed Hardwood | | 185 | Cords | | |
| | <i>Black Cherry</i> | | 20 | <i>Cords</i> | | |
| | <i>Red Maple</i> | | 165 | <i>Cords</i> | | |
| | Red Oak | | 16 | Cords | | |
| | Red Pine | | 2 | Cords | | |
| | White Pine | | 8 | Cords | | |
| | TOTAL: | | | 157.1 | | |
| TOTAL: | | | 310 | Cords | | |

Sale Specific Conditions & Requirements

Sale Name: Horse Fly Aspen

Sale Number: 61-108-21 Seq#: 1

1 - Sale Area

1.2 - Boundaries

1.2.1 - Painted boundaries (9/19)

The sale boundary and Payment Unit boundaries are marked and identified by blue and red paint. Exterior sale boundary lines against private property are marked with blue paint. Exterior sale boundary lines against state are marked with red paint. The painted boundary line trees are not Included Timber.

2 - Timber Specifications

2.1 - Included Timber

2.1.1 - Clearcut unit(s) with unmerchantable trees (6/14)

Within Payment Unit(s) 1, cut all trees that are two (2) inches or more at DBH.

2.2 - Utilization

2.2.3 - Stump heights (4/07)

Stump heights within the Sale Area shall not exceed 12 inches for all trees.

3 - Payments

3.3 - Pre-measured Sales

3.3.4 - Dividing payment units (7/14)

Payment Unit(s) 1 may be divided at the request of the Purchaser and upon approval of the Unit Manager. Dividing Payment Units is a contract modification which requires a Timber Sale Contract Amendment. There will be only one division per Payment Unit.

4 - Transportation

4.1 - Construction

4.1.11 - Permits (2/12)

The Purchaser will secure any necessary highway or county road permits that may be required.

4.1.12 - No new roads (1/12)

No new roads will be permitted in any Payment Unit. All operations are limited to existing roads. Skid trails only will be allowed.

4.2 - Maintenance

4.2.5 - Two wheel drive condition (2/04)

All existing trail roads on and adjacent to the sale area must be passable by two-wheel drive traffic for the duration of the sale.

5 - Operations

5.1 - Notification

5.1.1 - Pre-sale conference (10/16)

A pre-sale conference on site between the Purchaser and sale administrator is required prior to beginning any operations to determine landing and road locations. The Unit Manager or his/her representative must be contacted at least 3 days in advance to schedule the conference.

5.1.3 - Well heads and natural gas pipelines (11/15)

The Purchaser is responsible for contacting the gas or pipeline company 30 days prior to operating equipment in the vicinity of well heads or natural gas pipelines. Written permission is required before harvest operations begin and must be submitted to

the Unit Manager.

5.2 - Conduct of Operations

5.2.1 - Slash

5.2.1.8 - Slash height (12/08)

No slash or tree tops may exceed 24 inches in height.

5.2.3 - Operating Restrictions

5.2.3.5 - Oak wilt restriction (1/18)

Within Payment Unit(s) 1's, unless changed by written agreement, cutting, skidding, hauling within the sale and brushing of access roads to the sale are not permitted during the period of April 15 to July 15. Operations may be allowed if specific steps are taken to prevent damaging uncut oak during the high risk period. Those steps may include completing all road brushing before April 15th and clearing a tree-length buffer along uncut oak cover before April 15th. This is necessary to reduce the spread of oak wilt. For more information, contact the Unit Manager or his/her representative.

5.2.4 - Dead and Down Creation

5.2.4.4 - Dead and down creation, grouse (6/18)

To encourage grouse and other wildlife, in Payment Unit(s) 1, leave one, 12" diameter or larger log-length (8 foot minimum) piece on the ground for every 2 acres for grouse drumming and at least six (6) large tops per two acres for rabbit habitat. These will be evenly scattered throughout the Payment Unit.

5.2.32 - Decking/landing restoration (9/13)

All decking and landing areas must have the surface area restored to a condition equal to or better than before. This is to ensure the proper regeneration of the stand. Wood debris, chips, and "cookies" from trimmings must be removed or scattered away from landing and loading areas and may not be windrowed on the edge.

5.4 - Soil Protection

5.4.1 - Rutting restriction, general (7/16)

Operations are to cease immediately if equipment and weather conditions result in rutting of roads and/or skid trails which is 12 inches or greater in depth and 50 feet in length. The Unit Manager or his/her representative may restrict hauling and/or skidding if ruts exceed the specified depth. With the Unit Manager or his/her representative's approval, the Purchaser may return to the area when the risk of rutting has decreased.

6 - Safety and Fire Prevention

6.2 - Signing

6.2.1 - Road posting (10/20)

The Purchaser is responsible for posting and maintaining caution signs on any state or county road prior to beginning operations. The road must be posted at appropriate distances from the Sale Area to warn of logging activity and truck traffic. Signs must be removed when harvest operations are suspended or completed. The Purchaser will provide these signs.



TIMBER SALE MAP

This information provided by authority of Part 525, 1994 PA 451, as amended.

| | | | | | |
|-------------------------------|-----------------|-------------------------------|-----------|------|----|
| Forest Management Unit | County | Mapped By | Date | Page | of |
| Traverse City Management Unit | Kalkaska County | Tom Peterson | 6/18/2021 | 1 | 1 |
| Township | Range | Section(s) and Subdivision(s) | Scale | | |
| 27N | 07W | Section 19: NESW & S1/2SW | 1:15,840 | | |

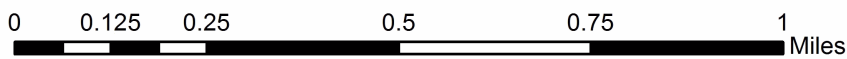
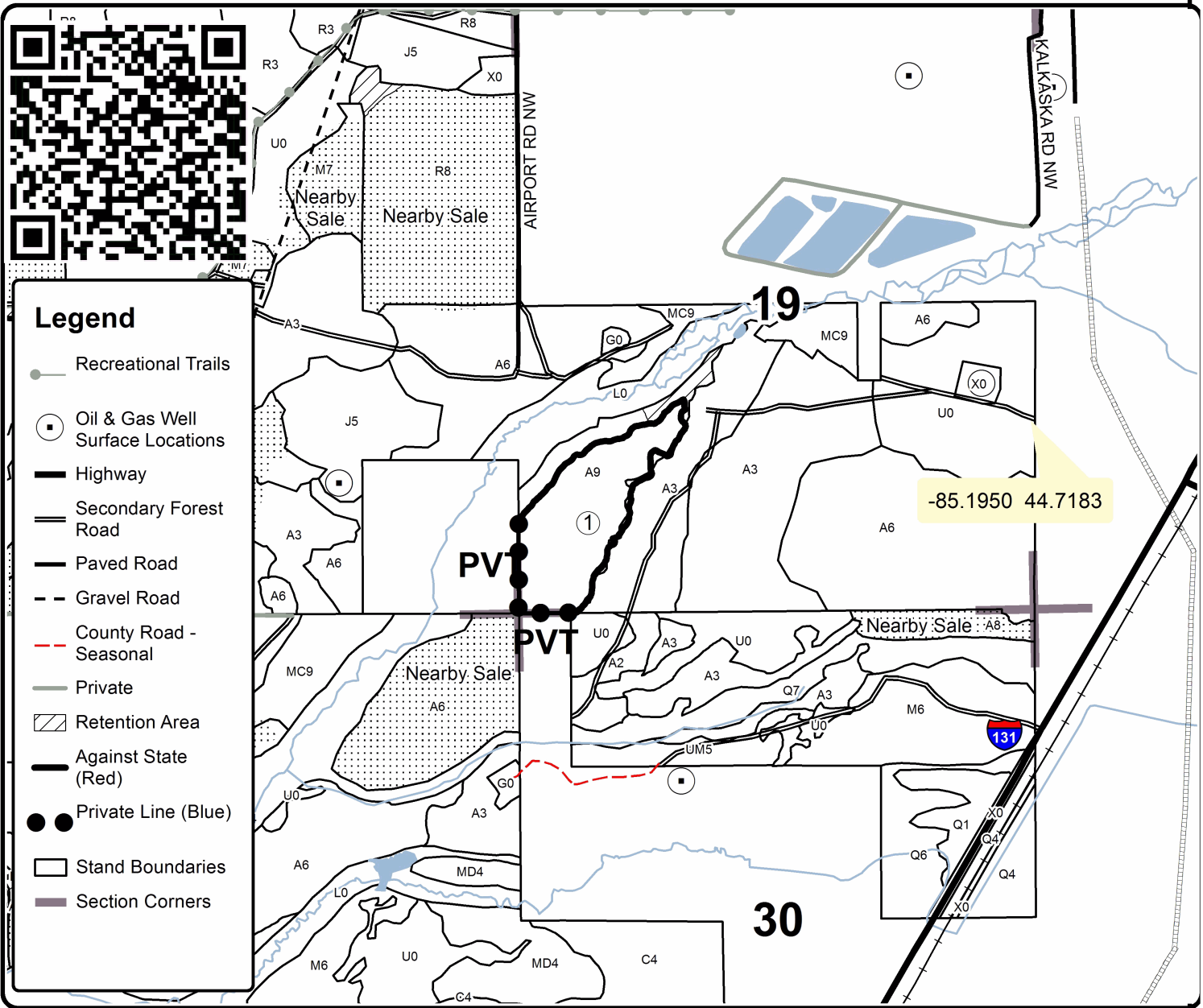
| Cover Type | | | | Density | |
|-------------------|----------------------|-------------------------|-------------------|-----------------------------|------------------------|
| A = Aspen | H = Hemlock | N = Marsh | U = Upland Brush | 0 = Non Stocked | 5 = Pole Timber Medium |
| B = Paper Birch | J = Jack Pine | O = Oak | UM = Upland Mixed | 1 = Seedling Sapling Poor | 6 = Pole Timber Well |
| C = Cedar | L = Lowland Brush | P = Lowland Poplar | V = Bog or Marsh | 2 = Seedling Sapling Medium | 7 = Saw Timber Poor |
| D = Treed Bog | LM = Lowland Mixed | Q = Mixed Swamp Conifer | W = White Pine | 3 = Seedling Sapling Well | 8 = Saw Timber Medium |
| E = Swamp Hdwoods | M = Mpl, Bch, Brch | R = Red Pine | X = Non Stocked | 4 = Pole Timber Poor | 9 = Saw Timber Well |
| F = Spruce Fir | MC = Mixed Conifer | S = Black Spruce | Z = Water | | |
| G = Grass | MD = Mixed Deciduous | T = Tamarack | | | |

PU Acres
1 27.1

Horse Fly Aspen

Compartment 61162

27.1 Acres



TIMBER SALE INFORMATION

Bug Bite Mix (61-109-21)

T27N, R08W, SEC. 22; T27N, R08W, SEC. 23.
Kalkaska County (Advertised Price \$20,566.55)

SALE NOTE: All units of volume listed for this sale were estimated using the Inventory Manager computer program and the new Michigan taper model.

A recreation site such as a trail, pathway, or campground is within the sale area or the vicinity. Certain restrictions/specifications may be applicable including time restrictions.

A timber sale contract for this lump sum, sealed bid timber sale will be awarded to the responsible bidder offering the highest sealed bid price. All units of volume listed below were estimated using the Inventory Manager computer program and the new Michigan taper model. Bids must be at or above the following advertised price for each product and species:

| <u>PRODUCTS & SPECIES</u> | <u>ESTIMATED UNITS*</u> | <u>ADVERTISED PRICE</u> |
|-------------------------------|-------------------------|-------------------------|
| Sawtimber | | |
| Jack Pine | 29.8 MBF | \$ 17.00 / MBF |
| Red Oak | 50.6 MBF | \$ 119.00 / MBF |
| Red Pine | 82.0 MBF | \$ 80.00 / MBF |
| White Pine | 21.5 MBF | \$ 37.00 / MBF |
| Pulpwood | | |
| B. T. Aspen | 5 Cords | \$ 12.80 / Cord |
| Black Cherry | 10 Cords | \$ 12.35 / Cord |
| Jack Pine | 227 Cords | \$ 8.35 / Cord |
| Red Maple | 10 Cords | \$ 12.35 / Cord |
| Red Oak | 78 Cords | \$ 12.30 / Cord |
| Red Pine | 87 Cords | \$ 29.80 / Cord |
| White Pine | 67 Cords | \$ 13.80 / Cord |

* The total volume is statistically estimated within plus (+) or minus (-) 7.46 percent. There are an estimated 914 cords on this timber sale, plus or minus 68 cords at the 95% confidence level. The estimated units are final and not subject to adjustment. Prospective bidders are urged to examine this timber and to make their own estimates of quantity and quality.

BOND AND PAYMENT SCHEDULE:

1. A bond in the amount of \$1,028.00 to insure faithful performance of the conditions of the contract will be deposited by the successful bidder within 21 days of the sale award.
2. Cutting in any sale or unit without the required advance payment would be considered a trespass.
3. Total payment must be paid in advance or according to the following schedule :
 - (a) Ten percent (10%) of the sale value must be paid within 21 days of the sale award.
 - (b) The 10% down payment will be credited towards the first unit cut.
 - (c) Payment for each of the following units must be made before cutting begins in that unit:

| PAYMENT UNIT NUMBER | PERCENT OF TOTAL SALE VALUE |
|---------------------|-----------------------------|
| 01 | 54.5% |
| 02 | 6.6% |
| 03 | 25.0% |
| 04 | 13.9% |

4. If no cutting takes place, the 10% down payment will not be refunded.
5. Operations on the contract issued will terminate on 12/31/2023.

SALE STATISTICS

Volumes were calculated in cubic feet using the Michigan taper model. Cubic foot volume includes all wood inside bark for the product indicated. For display purposes, cubic feet were converted to cords and MBF using a simple conversion factor, e.g. 79 cubic feet per cord and 185 cubic feet per MBF. The cubic foot volumes are precise; the cords and MBF volumes are not. Cubic foot volume cannot be directly converted to cords or boards with precision.

SALE VOLUMES

The total estimated sale volume may not equal the sum of the species/products due to the nature of statistical calculations associated with double sampling methodology.

| VOLUME | | | STATISTICAL RANGE IN CORDS | |
|------------------|-------------|---------------|----------------------------|---------|
| TOTAL CUBIC FEET | TOTAL CORDS | PERCENT ERROR | MINIMUM | MAXIMUM |
| 72,231 | 914 | 7.46% | 846 | 983 |

VDU VOLUMES

A VDU is a Volume Determination Unit. Volumes and their associated statistics are calculated at the VDU level and summarized to the sale level. There is often a one to one relationship between a VDU and a Payment Unit, but not always, depending on the cruise design. Refer to the VDU TO PAYMENT UNIT table.

| | VOLUME | | | RANGE IN CORDS | |
|---------------|------------------|-------------|---------------|----------------|------------|
| VDU | TOTAL CUBIC FEET | TOTAL CORDS | PERCENT ERROR | MINIMUM | MAXIMUM |
| 1 | 29,454 | 373 | 9.49% | 337 | 408 |
| 18 | 7,912 | 100 | 33.61% | 66 | 134 |
| 36 | 12,619 | 160 | 15.97% | 134 | 185 |
| 37 | 17,476 | 221 | 13.99% | 190 | 252 |
| TOTAL: | 67,460 | 854 | | 728 | 979 |

VDU TO PAYMENT UNIT

When a VDU is associated with more than one Payment Unit (PU), the VDU volumes are assigned to the PU based on acres of the VDU within the PU.

| VDU | VDU ACRES | PU | PU ACRES |
|---------------|-------------|----|-------------|
| 1 | 15.7 | 1 | 15.7 |
| 18 | 7.9 | 2 | 7.9 |
| 36 | 8.9 | 3 | 8.9 |
| 37 | 26.0 | 4 | 26.0 |
| TOTAL: | 58.5 | | 58.5 |

DESCRIPTION OF TIMBER BY PAYMENT UNIT (PU)

| PU | MARKET GROUP | PRODUCT | QUANTITY | UNIT | ACRES | ADVERTISE PRICE |
|------------------|---------------------|------------------|------------|--------------|-------|-----------------|
| 1 | Jack Pine | Sawtimber | 8.4 | MBF | 15.7 | \$11,208.70 |
| | Red Oak | | 50.6 | MBF | | |
| | Red Pine | | 24.6 | MBF | | |
| | White Pine | | 16.5 | MBF | | |
| | B. T. Aspen | Pulpwood | 5 | Cords | | |
| | Jack Pine | | 45 | Cords | | |
| | Red Maple | | 3 | Cords | | |
| | <i>Red Maple</i> | | 3 | <i>Cords</i> | | |
| | Red Oak | | 78 | Cords | | |
| | Red Pine | | 29 | Cords | | |
| | White Pine | | 12 | Cords | | |
| | 2 | Jack Pine | Sawtimber | 3.9 | | |
| Jack Pine | | Pulpwood | 25 | Cords | | |
| Red Maple | | | 7 | Cords | | |
| <i>Red Maple</i> | | <i>Sawtimber</i> | <i>0.7</i> | <i>MBF</i> | | |
| <i>Red Maple</i> | | <i>Pulpwood</i> | <i>6</i> | <i>Cords</i> | | |
| Red Pine | | | 11 | Cords | | |
| White Pine | | | 48 | Cords | | |
| 3 | Red Pine | Sawtimber | 48.2 | MBF | 8.9 | \$5,144.10 |
| | White Pine | | 3.9 | MBF | | |
| | Jack Pine | Pulpwood | 20 | Cords | | |
| | Red Pine | | 30 | Cords | | |
| | White Pine | | 6 | Cords | | |
| 4 | Jack Pine | Sawtimber | 17.5 | MBF | 26.0 | \$2,862.05 |
| | Red Pine | | 9.2 | MBF | | |
| | White Pine | | 1.1 | MBF | | |
| | Black Cherry | Pulpwood | 10 | Cords | | |
| | <i>Black Cherry</i> | <i>Sawtimber</i> | <i>3.0</i> | <i>MBF</i> | | |
| | <i>Black Cherry</i> | <i>Pulpwood</i> | <i>4</i> | <i>Cords</i> | | |
| | Jack Pine | | 137 | Cords | | |
| | Red Pine | | 17 | Cords | | |
| | White Pine | | 1 | Cords | | |
| TOTAL: | | | 183.9 | MBF | | |
| TOTAL: | | | 484 | Cords | | |

Sale Specific Conditions & Requirements

Sale Name: Bug Bite Mix

Sale Number: 61-109-21 Seq#: 1

1 - Sale Area

1.2 - Boundaries

1.2.1 - Painted boundaries (9/19)

The sale boundary and Payment Unit boundaries are marked and identified by blue, red, and yellow paint. Exterior sale boundary lines against private property are marked with blue paint. Exterior sale boundary lines against state are marked with red paint. Interior Payment Unit boundaries are marked with yellow paint. The painted boundary line trees are not Included Timber. Yellow painted trees designating an interior Payment Unit boundary are only to be cut when all surrounding Payment Units have been paid.

2 - Timber Specifications

2.1 - Included Timber

2.1.1 - Clearcut unit(s) with unmerchantable trees (6/14)

Within Payment Unit(s) 2 and 4, cut all trees that are two (2) inches or more at DBH

2.1.5 - Overstory removal unit(s) (8/11)

Within Payment Unit(s) 1 and 3, all trees with DBH equal to or greater than 6 inches which meet minimum piece specifications in 2.2 Utilization, are designated for cutting. Protect all regeneration in these Payment Units.

2.2 - Utilization

2.2.3 - Stump heights (4/07)

Stump heights within the Sale Area shall not exceed 12 inches for trees greater than 10 inches at DBH and 4 inches for trees smaller than 10 inches at DBH.

2.2.10 - No chipping tops and limbs (8/16)

Within Payment Unit(s) 2 and 4, chipping of limbs or tops is not permitted. Limbs and the remaining top must be left on site and scattered. Pine cone dispersal to spread seeds and regenerate stand back to jack pine is reason behind this spec. If logger can get desired pine cone dispersal tops may be chipped. In addition to pine cone dispersal, Purchaser must cut Payment Unit with snow off conditions to promote scarification.

4 - Transportation

4.1 - Construction

4.1.11 - Permits (2/12)

The Purchaser will secure any necessary county road permits that may be required.

4.1.12 - No new roads (1/12)

No new roads will be permitted in any Payment Unit. All operations are limited to existing roads. Skid trails only will be allowed.

4.2 - Maintenance

4.2.5 - Two wheel drive condition (2/04)

All existing trail roads on and adjacent to the sale area must be passable by two-wheel drive traffic for the duration of the sale.

5 - Operations

5.1 - Notification

5.1.1 - Pre-sale conference (10/16)

A pre-sale conference on site between the Purchaser and sale administrator is required prior to beginning any operations to determine landing and road locations. The Unit Manager or his/her representative must be contacted at least 3 days in

advance to schedule the conference.

5.1.3 - Well heads and natural gas pipelines (11/15)

The Purchaser is responsible for contacting the gas or pipeline company 30 days prior to operating equipment in the vicinity of well heads or natural gas pipelines.

5.2 - Conduct of Operations

5.2.1 - Slash

5.2.1.8 - Slash height (12/08)

No slash or tree tops may exceed 24 inches in height.

5.2.3 - Operating Restrictions

5.2.3.4 - Oak wilt restriction, no exceptions (1/18)

Within Payment Unit(s) 1, cutting, skidding, and brushing of access roads to the sale are not permitted during the period of April 15 to July 15. No exceptions will be granted. This is necessary to reduce the spread of oak wilt. Hauling can occur if proper measuring were taking to brush road prior to April 15.

5.2.32 - Decking/landing restoration (9/13)

All decking and landing areas must have the surface area restored to a condition equal to or better than before. This is to ensure the proper regeneration of the stand. Wood debris, chips, and "cookies" from trimmings must be removed or scattered away from landing and loading areas and may not be windrowed on the edge.

5.2.41 - Snowmobile trail protection (9/11)

A snowmobile trail is shown on the Timber Sale Map. Do not cut or damage posts with orange trail markers or traffic control signs. If the trail is used, it must be maintained and restored to a condition equal to or better than before the sale. The road maintenance/restoration must be done prior to December 1. If the trail is used for hauling, it must be graded to the satisfaction of the Unit Manager or his/her representative prior to December 1. The snowmobile trail may not be used for any timber sale operations from December 1 to March 31. Snowmobile trail is only needed for hauling no other logging operations will occur near snowmobile trail. There are other access roads to get to timber sale.

5.4 - Soil Protection

5.4.1 - Rutting restriction, general (7/16)

Operations are to cease immediately if equipment and weather conditions result in rutting of roads and/or skid trails which is 12 inches or greater in depth and 50 feet in length. The Unit Manager or his/her representative may restrict hauling and/or skidding if ruts exceed the specified depth. With the Unit Manager or his/her representative's approval, the Purchaser may return to the area when the risk of rutting has decreased.

5.8 - Protection of Endangered Species

5.8.1 - Kirtland's warbler (1) (10/12)

This sale is adjacent to a young jack pine stand which may be used by the endangered Kirtland's Warbler. The Department reserves the right to temporarily restrict all harvesting operations in a buffer zone of up to 500 feet if it is determined that Warbler territory has been established in the adjacent stand. The restricted period, if put into effect, would apply from May 1 to August 15. This spec would apply to Payment Units 3 and 4 only.

6 - Safety and Fire Prevention

6.2 - Signing

6.2.1 - Road posting (10/20)

The Purchaser is responsible for posting and maintaining caution signs on county or state roads prior to beginning operations. The road must be posted at appropriate distances from the Sale Area to warn of logging activity and truck traffic. Signs must be removed when harvest operations are suspended or completed. The Purchaser will provide these signs.

6.2.3 - Recreational trail posting (10/20)

The Purchaser is responsible for posting and maintaining caution signs on snowmobile trail prior to beginning operations. The trail must be posted at appropriate distances from the Sale Area to warn of logging activity and truck traffic at both ends of the trail. Signs must be removed when harvest operations are suspended or completed. The Purchaser will provide these

signs. This spec only applies if logger uses snowmobile trail for hauling wood. Logging operations won't affect snowmobile trail.



TIMBER SALE MAP

This information provided by authority of Part 525, 1994 PA 451, as amended.

| | | | | | |
|-------------------------------|-----------------|---|-----------|------|----|
| Forest Management Unit | County | Mapped By | Date | Page | of |
| Traverse City Management Unit | Kalkaska County | Tom Peterson | 6/18/2021 | 1 | 1 |
| Township | Range | Section(s) and Subdivision(s) | Scale | | |
| 27N | 08W | Sec 22: N1/2NW, NWNE & SESE. Sec 23: S1/2SW | 1:15,840 | | |

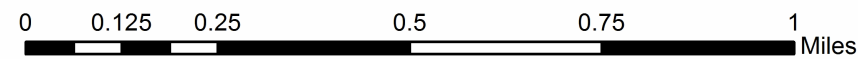
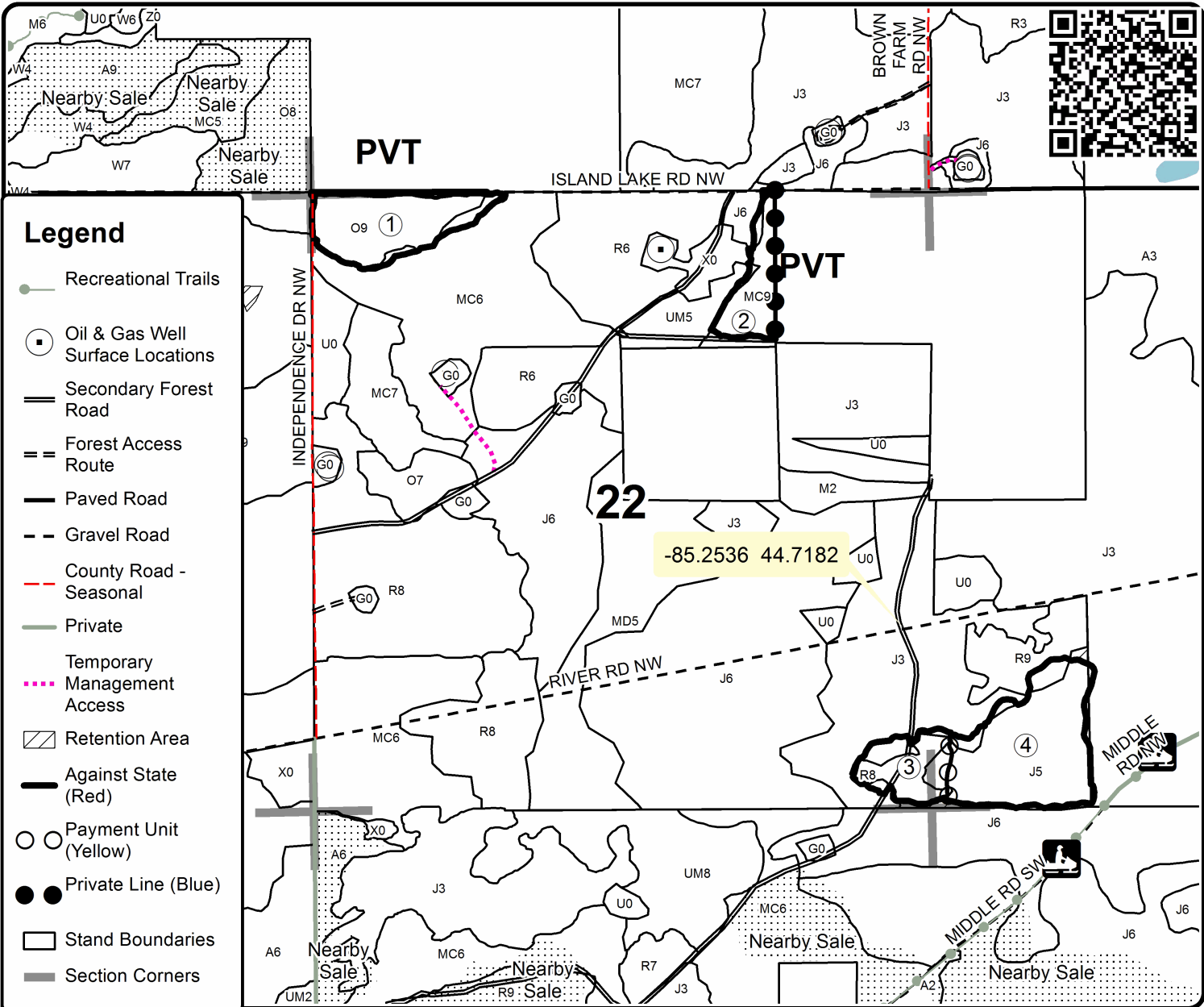
| Cover Type | | | | Density | |
|-------------------|----------------------|-------------------------|-------------------|-----------------------------|------------------------|
| A = Aspen | H = Hemlock | N = Marsh | U = Upland Brush | 0 = Non Stocked | 5 = Pole Timber Medium |
| B = Paper Birch | J = Jack Pine | O = Oak | UM = Upland Mixed | 1 = Seedling Sapling Poor | 6 = Pole Timber Well |
| C = Cedar | L = Lowland Brush | P = Lowland Poplar | V = Bog or Marsh | 2 = Seedling Sapling Medium | 7 = Saw Timber Poor |
| D = Treed Bog | LM = Lowland Mixed | Q = Mixed Swamp Conifer | W = White Pine | 3 = Seedling Sapling Well | 8 = Saw Timber Medium |
| E = Swamp Hdwoods | M = Mpl, Bch, Brch | R = Red Pine | X = Non Stocked | 4 = Pole Timber Poor | 9 = Saw Timber Well |
| F = Spruce Fir | MC = Mixed Conifer | S = Black Spruce | Z = Water | | |
| G = Grass | MD = Mixed Deciduous | T = Tamarack | | | |

| PU | Acres | PU | Acres |
|----|-------|----|-------|
| 1 | 15.7 | 4 | 26.0 |
| 2 | 7.9 | | |
| 3 | 8.9 | | |

Bug Bite Mix

Compartment 61-109-21

58.5 Acres



TIMBER SALE INFORMATION

Crib Climber Mix (61-110-21)

T27N, R08W, SEC. 24.

Kalkaska County (Advertised Price \$68,738.35)

SALE NOTE: All units of volume listed for this sale were estimated using the Inventory Manager computer program and the new Michigan taper model.

A recreation site such as a trail, pathway, or campground is within the sale area or the vicinity. Certain restrictions/specifications may be applicable including time restrictions.

A timber sale contract for this lump sum, sealed bid timber sale will be awarded to the responsible bidder offering the highest sealed bid price. All units of volume listed below were estimated using the Inventory Manager computer program and the new Michigan taper model. Bids must be at or above the following advertised price for each product and species:

| <u>PRODUCTS & SPECIES</u> | <u>ESTIMATED UNITS*</u> | <u>ADVERTISED PRICE</u> |
|-------------------------------|-------------------------|-------------------------|
| Sawtimber | | |
| B. T. Aspen | 7.3 MBF | \$ 90.00 / MBF |
| Black Cherry | 21.0 MBF | \$ 153.00 / MBF |
| Jack Pine | 30.5 MBF | \$ 17.00 / MBF |
| Red Maple | 29.4 MBF | \$ 116.00 / MBF |
| Red Pine | 539.4 MBF | \$ 80.00 / MBF |
| White Pine | 3.0 MBF | \$ 37.00 / MBF |
| Pulpwood | | |
| B. T. Aspen | 36 Cords | \$ 12.80 / Cord |
| Jack Pine | 285 Cords | \$ 8.35 / Cord |
| Mixed Hardwood | 270 Cords | \$ 12.35 / Cord |
| Mixed Oak | 8 Cords | \$ 12.30 / Cord |
| Red Pine | 372 Cords | \$ 29.80 / Cord |
| White Pine | 23 Cords | \$ 13.80 / Cord |

* The total volume is statistically estimated within plus (+) or minus (-) 6.28 percent. There are an estimated 2,394 cords on this timber sale, plus or minus 151 cords at the 95% confidence level. The estimated units are final and not subject to adjustment. Prospective bidders are urged to examine this timber and to make their own estimates of quantity and quality.

BOND AND PAYMENT SCHEDULE:

1. A bond in the amount of \$3,437.00 to insure faithful performance of the conditions of the contract will be deposited by the successful bidder within 21 days of the sale award.
2. Cutting in any sale or unit without the required advance payment would be considered a trespass.
3. Total payment must be paid in advance or according to the following schedule :
 - (a) Ten percent (10%) of the sale value must be paid within 21 days of the sale award.
 - (b) The 10% down payment will be credited towards the first unit cut.
 - (c) Payment for each of the following units must be made before cutting begins in that unit:

| PAYMENT UNIT NUMBER | PERCENT OF TOTAL SALE VALUE |
|---------------------|-----------------------------|
| 01 | 8.2% |
| 02 | 11.7% |
| 03 | 6.8% |
| 04 | 73.3% |

4. If no cutting takes place, the 10% down payment will not be refunded.

5. Operations on the contract issued will terminate on 12/31/2023.

SALE STATISTICS

Volumes were calculated in cubic feet using the Michigan taper model. Cubic foot volume includes all wood inside bark for the product indicated. For display purposes, cubic feet were converted to cords and MBF using a simple conversion factor, e.g. 79 cubic feet per cord and 185 cubic feet per MBF. The cubic foot volumes are precise; the cords and MBF volumes are not. Cubic foot volume cannot be directly converted to cords or boards with precision.

SALE VOLUMES

The total estimated sale volume may not equal the sum of the species/products due to the nature of statistical calculations associated with double sampling methodology.

| VOLUME | | | STATISTICAL RANGE IN CORDS | |
|------------------|-------------|---------------|----------------------------|---------|
| TOTAL CUBIC FEET | TOTAL CORDS | PERCENT ERROR | MINIMUM | MAXIMUM |
| 189,116 | 2,394 | 6.28% | 2,243 | 2,544 |

VDU VOLUMES

A VDU is a Volume Determination Unit. Volumes and their associated statistics are calculated at the VDU level and summarized to the sale level. There is often a one to one relationship between a VDU and a Payment Unit, but not always, depending on the cruise design. Refer to the VDU TO PAYMENT UNIT table.

| | VOLUME | | | RANGE IN CORDS | |
|---------------|------------------|--------------|---------------|----------------|--------------|
| VDU | TOTAL CUBIC FEET | TOTAL CORDS | PERCENT ERROR | MINIMUM | MAXIMUM |
| 48 | 29,782 | 377 | 15.93% | 317 | 437 |
| 56 | 23,711 | 300 | 13.72% | 259 | 341 |
| 60 | 16,659 | 211 | 15.04% | 179 | 243 |
| 67 | 107,977 | 1,367 | 8.62% | 1,249 | 1,485 |
| TOTAL: | 178,129 | 2,255 | | 2,004 | 2,506 |

VDU TO PAYMENT UNIT

When a VDU is associated with more than one Payment Unit (PU), the VDU volumes are assigned to the PU based on acres of the VDU within the PU.

| VDU | VDU ACRES | PU | PU ACRES |
|---------------|--------------|----|--------------|
| 48 | 39.3 | 1 | 39.3 |
| 56 | 89.4 | 2 | 89.4 |
| 60 | 17.6 | 3 | 17.6 |
| 67 | 56.0 | 4 | 56.0 |
| TOTAL: | 202.3 | | 202.3 |

DESCRIPTION OF TIMBER BY PAYMENT UNIT (PU)

| PU | MARKET GROUP | PRODUCT | QUANTITY | UNIT | ACRES | ADVERTISE PRICE |
|--------|---------------------|-----------|----------|-------|-------|-----------------|
| 1 | B. T. Aspen | Sawtimber | 3.8 | MBF | 39.3 | \$5,628.45 |
| | Jack Pine | | 12.7 | MBF | | |
| | Red Maple | | 2.1 | MBF | | |
| | Red Pine | | 13.2 | MBF | | |
| | White Pine | | 3.0 | MBF | | |
| | B. T. Aspen | Pulpwood | 34 | Cords | | |
| | Jack Pine | | 217 | Cords | | |
| | Mixed Hardwood | | 8 | Cords | | |
| | <i>Black Cherry</i> | | 6 | Cords | | |
| | <i>Red Maple</i> | | 2 | Cords | | |
| | Red Pine | | 39 | Cords | | |
| | White Pine | | 11 | Cords | | |
| 2 | Black Cherry | Sawtimber | 21.0 | MBF | 89.4 | \$8,027.05 |
| | Jack Pine | | 12.0 | MBF | | |
| | Red Maple | | 5.0 | MBF | | |
| | Red Pine | | 21.8 | MBF | | |
| | Jack Pine | | Pulpwood | 6 | | |
| | Mixed Hardwood | 155 | | Cords | | |
| | <i>Black Cherry</i> | 106 | | Cords | | |
| | <i>Red Maple</i> | 49 | | Cords | | |
| | Mixed Oak | 3 | | Cords | | |
| | <i>Red Oak</i> | 3 | | Cords | | |
| | Red Pine | 4 | | Cords | | |
| | White Pine | 12 | Cords | | | |
| 3 | B. T. Aspen | Sawtimber | 3.5 | MBF | 17.6 | \$4,664.75 |
| | Jack Pine | | 5.8 | MBF | | |
| | Red Maple | | 22.3 | MBF | | |
| | B. T. Aspen | Pulpwood | 2 | Cords | | |
| | Jack Pine | | 38 | Cords | | |
| | Mixed Hardwood | | 107 | Cords | | |
| | <i>Black Cherry</i> | | 46 | Cords | | |
| | <i>Red Maple</i> | | 61 | Cords | | |
| 4 | Red Pine | Sawtimber | 504.4 | MBF | 56.0 | \$50,418.10 |
| | Jack Pine | Pulpwood | 24 | Cords | | |
| | Mixed Oak | | 5 | Cords | | |
| | <i>White Oak</i> | | 5 | Cords | | |
| | Red Pine | | 329 | Cords | | |
| TOTAL: | | | 630.6 | MBF | | |
| TOTAL: | | | 994 | Cords | | |

Sale Specific Conditions & Requirements

Sale Name: Crib Climber Mix

Sale Number: 61-110-21 Seq#: 1

1 - Sale Area

1.2 - Boundaries

1.2.1 - Painted boundaries (9/19)

The sale boundary and Payment Unit boundaries are marked and identified by red and yellow paint. Exterior sale boundary lines against state are marked with red paint. Interior Payment Unit boundaries are marked with yellow paint. The painted boundary line trees are not Included Timber. Yellow painted trees designating an interior Payment Unit boundary are only to be cut when all surrounding Payment Units have been paid.

2 - Timber Specifications

2.1 - Included Timber

2.1.1 - Clearcut unit(s) with unmerchantable trees (6/14)

Within Payment Unit(s) 1 and 2, cut all trees that are two (1) inches or more at DBH.

2.1.5 - Overstory removal unit(s) (8/11)

Within Payment Unit(s) 4, all which meet minimum piece specifications in 2.2 Utilization, are designated for cutting. All advanced regeneration needs to be protected.

2.1.7 - Leave tree marked unit(s) (6/14)

Within Payment Unit(s) 3, cut all trees that are two (2) inches or more at DBH, except do not cut any white pine, red pine, oak, or trees marked with green paint above and below stump height.

2.2 - Utilization

2.2.2 - Chipping required (2/18)

Payment Unit 2 must be chip harvested to facilitate subsequent planting operations. The Purchaser has the option to produce sawlogs or pulpwood bolts, but the remaining portion of the trees must be chipped and hauled. If market conditions limit the practicality of chipping, tops and slash must be arranged in a way that will not inhibit future planting operations, as directed by the sale administrator. A chipping exemption can be obtained if proposed operations are determined to be suitable for planting by reforestation staff. This exemption must be granted in writing. If market conditions limit the practicality of chipping, the Purchaser may cut remaining topwood in 3-foot sections and scatter throughout the Payment Unit. If the deadline is not met, damages will be collected determined by the cost to complete this work. The requirement to retain approximately 1/6 to 1/3 of tree tops and limbs less than two inches in diameter is still applicable (G. C. & R. 2.2).

2.2.3 - Stump heights (4/07)

Stump heights within the Sale Area shall not exceed 6 inches for all trees. This is to facilitate planting operations.

2.2.10 - No chipping tops and limbs (8/16)

Within Payment Unit(s) 1, chipping of limbs or tops is not permitted. Limbs and the remaining top must be left on site and scattered. Pine cone dispersal to spread seeds and regenerate stand back to Jack Pine is reason behind this spec. If logger can get desired pine cone dispersal tops may be chipped. In addition, to pine cone dispersal logger must cut Payment Unit with snow off conditions to promote scarification.

3 - Payments

3.3 - Pre-measured Sales

3.3.4 - Dividing payment units (7/14)

Payment Unit(s) Greater than \$25,000 may be divided at the request of the Purchaser and upon approval of the Unit Manager. Dividing Payment Units is a contract modification which requires a Timber Sale Contract Amendment. There will be only one division per Payment Unit.

3.4 - Damaged Timber

3.4.1 - Damaged timber (7/16)

General Condition and Requirement 3.4 Damaged Timber, defines liquidated damages for undesignated live merchantable trees which are cut or injured. In addition, extreme care should be taken to avoid damage to tree seedlings and saplings.

Within the Sale Area, if more than 25% of the tree seedlings or saplings (1/4" to 4.5" DBH) within a specified portion of the Sale Area are damaged, liquidated damages will be assessed at \$200 per acre for all acreage within that specified portion of the Sale Area that was damaged.

4 - Transportation

4.1 - Construction

4.1.12 - No new roads (1/12)

No new roads will be permitted in any Payment Unit. All operations are limited to existing roads. Skid trails only will be allowed.

4.2 - Maintenance

4.2.5 - Two wheel drive condition (2/04)

All existing trail roads on and adjacent to the sale area must be passable by two-wheel drive traffic for the duration of the sale.

5 - Operations

5.1 - Notification

5.1.1 - Pre-sale conference (10/16)

A pre-sale conference on site between the Purchaser and sale administrator is required prior to beginning any operations to determine landing and road locations. The Unit Manager or his/her representative must be contacted at least 3 days in advance to schedule the conference.

5.1.3 - Well heads and natural gas pipelines (11/15)

The Purchaser is responsible for contacting the gas or pipeline company 15 days prior to operating equipment in the vicinity of well heads or natural gas pipelines. Written permission is required before harvest operations begin and must be submitted to the Unit Manager.

5.2 - Conduct of Operations

5.2.1 - Slash

5.2.1.8 - Slash height (12/08)

No slash or tree tops may exceed 24 inches in height.

5.2.1.12 - Slash for prescribed burning (1/05)

To facilitate prescribed burning, slash shall be moved at least 50 feet inside the sale boundary. Slash cannot be piled or placed near residual trees. This Spec only applies to Payment Unit 3.

5.2.3 - Operating Restrictions

5.2.3.4 - Oak wilt restriction, no exceptions (1/18)

Within Payment Unit(s) 3 and 4, cutting, skidding, and brushing of access roads to the sale are not permitted during the period of April 15 to July 15. No exceptions will be granted. This is necessary to reduce the spread of oak wilt.

5.2.32 - Decking/landing restoration (9/13)

All decking and landing areas must have the surface area restored to a condition equal to or better than before. This is to ensure the proper regeneration of the stand. Wood debris, chips, and "cookies" from trimmings must be removed or scattered away from landing and loading areas and may not be windrowed on the edge.

5.2.41 - Snowmobile trail protection (9/11)

The snowmobile trail is shown on the Timber Sale Map. Do not cut or damage posts with orange trail markers or traffic control signs. If the trail is used, it must be maintained and restored to a condition equal to or better than before the sale. The road maintenance/restoration must be done prior to December 1. If the trail is used for hauling, it must be graded to the satisfaction of the Unit Manager or his/her representative prior to December 1. The snowmobile trail may not be used for any

timber sale operations from December 1 to March 31, unless changed with written permission and proper mitigations in place to protect snowmobile trail. Maintain a 20-foot-wide slash, debris, and rut free zone daily using the snowmobile trail as the centerline. No decking of forest products will be permitted along the snowmobile trail. All stumps within 20 feet of the snowmobile trail must be cut at ground level. In addition, any trees cut within 5 feet of the trail must have the stumps removed and be disposed of according to the direction of the Unit Manager or his/her representative.

5.4 - Soil Protection

5.4.1 - Rutting restriction, general (7/16)

Operations are to cease immediately if equipment and weather conditions result in rutting of roads and/or skid trails which is 12 inches or greater in depth and 50 feet in length. The Unit Manager or his/her representative may restrict hauling and/or skidding if ruts exceed the specified depth. With the Unit Manager or his/her representative's approval, the Purchaser may return to the area when the risk of rutting has decreased.

6 - Safety and Fire Prevention

6.2 - Signing

6.2.1 - Road posting (10/20)

The Purchaser is responsible for posting and maintaining caution signs on all county roads and state two tracks prior to beginning operations. The road must be posted at appropriate distances from the Sale Area to warn of logging activity and truck traffic. Signs must be removed when harvest operations are suspended or completed. The Purchaser will provide these signs.

6.2.2 - Snowmobile trail posting (10/20)

The Purchaser is responsible for posting and maintaining caution signs on snowmobile trail name prior to beginning operations during the snowmobile season (approximately December 1 to March 31). The trail must be posted at appropriate distances from the Sale Area to warn of logging activity and truck traffic. Signs must be removed when harvest operations are suspended or completed. The Purchaser will provide these signs.



| | |
|-------------|------|
| Sale Number | Year |
| 61-110 | 21 |

TIMBER SALE MAP

This information provided by authority of Part 525, 1994 PA 451, as amended.

| | | | | | |
|-------------------------------|-----------------|---|----------|------|----|
| Forest Management Unit | County | Mapped By | Date | Page | of |
| Traverse City Management Unit | Kalkaska County | Tom Peterson | 7/7/2021 | 1 | 1 |
| Township | Range | Section(s) and Subdivision(s) | Scale | | |
| 27N | 08W | Section 24: S1/2NW, NE, SW, N1/2SE & SWSE | 1:15,840 | | |

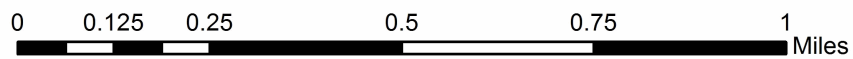
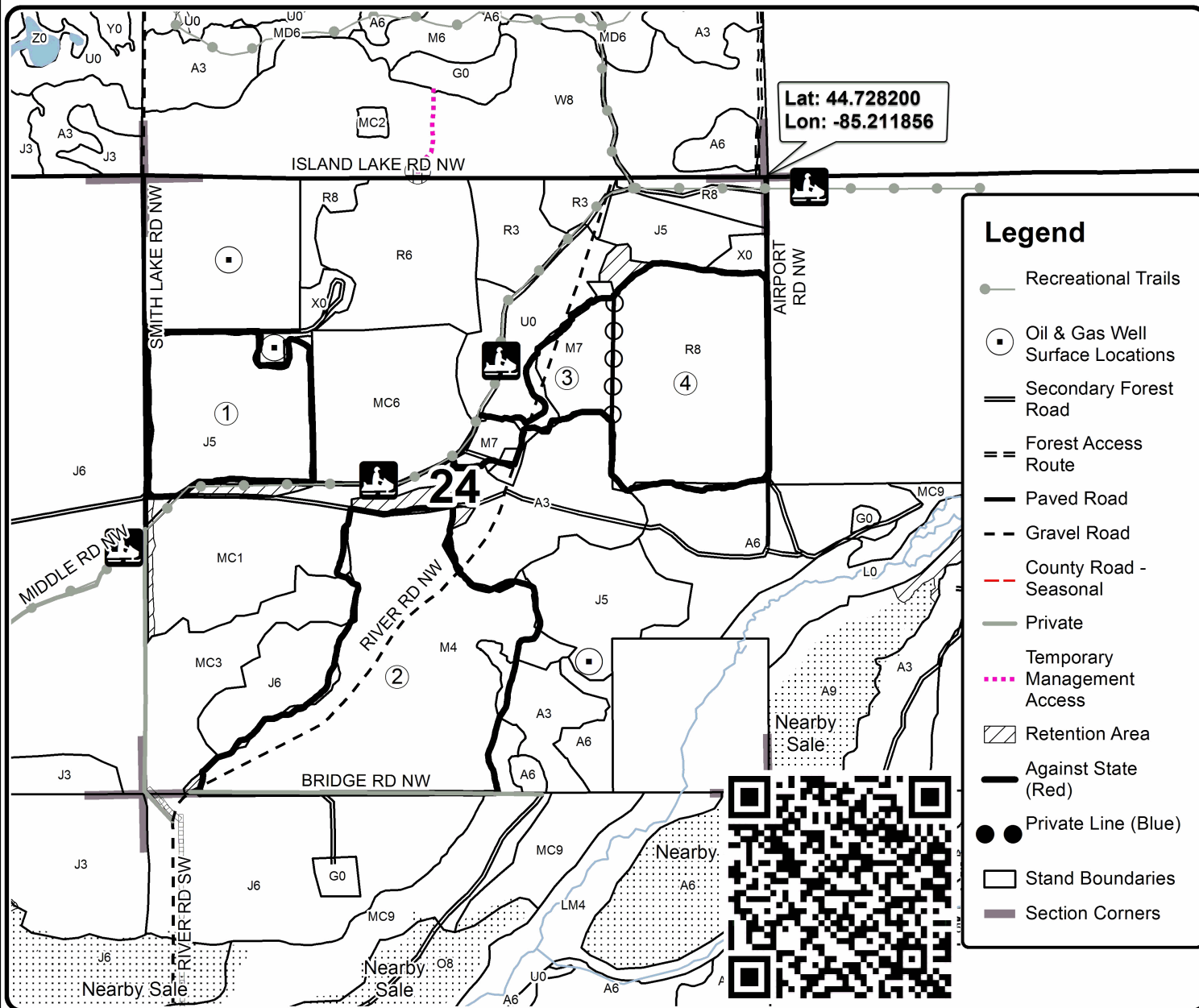
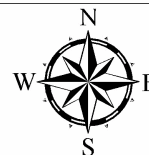
| Cover Type | | | | Density | |
|-------------------|----------------------|-------------------------|-------------------|-----------------------------|------------------------|
| A = Aspen | H = Hemlock | N = Marsh | U = Upland Brush | 0 = Non Stocked | 5 = Pole Timber Medium |
| B = Paper Birch | J = Jack Pine | O = Oak | UM = Upland Mixed | 1 = Seedling Sapling Poor | 6 = Pole Timber Well |
| C = Cedar | L = Lowland Brush | P = Lowland Poplar | V = Bog or Marsh | 2 = Seedling Sapling Medium | 7 = Saw Timber Poor |
| D = Treed Bog | LM = Lowland Mixed | Q = Mixed Swamp Conifer | W = White Pine | 3 = Seedling Sapling Well | 8 = Saw Timber Medium |
| E = Swamp Hdwoods | M = Mpl, Bch, Brch | R = Red Pine | X = Non Stocked | 4 = Pole Timber Poor | 9 = Saw Timber Well |
| F = Spruce Fir | MC = Mixed Conifer | S = Black Spruce | Z = Water | | |
| G = Grass | MD = Mixed Deciduous | T = Tamarack | | | |

| PU | Acres | PU | Acres |
|----|-------|----|-------|
| 1 | 39.3 | 4 | 56.0 |
| 2 | 89.4 | | |
| 3 | 17.6 | | |

Crib Climber Mix

Compartment 61162

202.3 Acres



TIMBER SALE INFORMATION

Big Buck Swamp Mix (61-112-21)

T25N, R06W, SEC. 18; T25N, R06W, SEC. 7.
Kalkaska County (Advertised Price \$38,685.95)

SALE NOTE: All units of volume listed for this sale were estimated using the Inventory Manager computer program and the new Michigan taper model.

A timber sale contract for this lump sum, sealed bid timber sale will be awarded to the responsible bidder offering the highest sealed bid price. All units of volume listed below were estimated using the Inventory Manager computer program and the new Michigan taper model. Bids must be at or above the following advertised price for each product and species:

| <u>PRODUCTS & SPECIES</u> | <u>ESTIMATED UNITS*</u> | <u>ADVERTISED PRICE</u> |
|-------------------------------|-------------------------|-------------------------|
| Sawtimber | | |
| Black Spruce | 15.2 MBF | \$ 38.00 / MBF |
| Jack Pine | 11.8 MBF | \$ 17.00 / MBF |
| Mixed Aspen | 31.8 MBF | \$ 90.00 / MBF |
| Paper Birch | 1.3 MBF | \$ 32.00 / MBF |
| Red Maple | 66.6 MBF | \$ 116.00 / MBF |
| Red Pine | 66.4 MBF | \$ 80.00 / MBF |
| White Pine | 165.1 MBF | \$ 37.00 / MBF |
| Pulpwood | | |
| Balsam Fir | 60 Cords | \$ 8.70 / Cord |
| Black Spruce | 294 Cords | \$ 18.95 / Cord |
| Jack Pine | 13 Cords | \$ 8.35 / Cord |
| Mixed Aspen | 16 Cords | \$ 12.80 / Cord |
| Northern Pin Oak | 4 Cords | \$ 12.30 / Cord |
| Paper Birch | 12 Cords | \$ 8.30 / Cord |
| Red Maple | 304 Cords | \$ 12.35 / Cord |
| Red Pine | 19 Cords | \$ 29.80 / Cord |
| Tamarack | 69 Cords | \$ 6.20 / Cord |
| White Pine | 330 Cords | \$ 13.80 / Cord |

* The total volume is statistically estimated within plus (+) or minus (-) 9.77 percent. There are an estimated 1,889 cords on this timber sale, plus or minus 185 cords at the 95% confidence level. The estimated units are final and not subject to adjustment. Prospective bidders are urged to examine this timber and to make their own estimates of quantity and quality.

BOND AND PAYMENT SCHEDULE:

1. A bond in the amount of \$1,934.00 to insure faithful performance of the conditions of the contract will be deposited by the successful bidder within 21 days of the sale award.
2. Cutting in any sale or unit without the required advance payment would be considered a trespass.
3. Total payment must be paid in advance or according to the following schedule :
 - (a) Ten percent (10%) of the sale value must be paid within 21 days of the sale award.
 - (b) The 10% down payment will be credited towards the first unit cut.
 - (c) Payment for each of the following units must be made before cutting begins in that unit:

| PAYMENT UNIT NUMBER | PERCENT OF TOTAL SALE VALUE |
|---------------------|-----------------------------|
| 01 | 20.2% |
| 02 | 65.8% |
| 03 | 14.0% |
4. If no cutting takes place, the 10% down payment will not be refunded.
5. Operations on the contract issued will terminate on 12/31/2024.

SALE STATISTICS

Volumes were calculated in cubic feet using the Michigan taper model. Cubic foot volume includes all wood inside bark for the product indicated. For display purposes, cubic feet were converted to cords and MBF using a simple conversion factor, e.g. 79 cubic feet per cord and 185 cubic feet per MBF. The cubic foot volumes are precise; the cords and MBF volumes are not. Cubic foot volume cannot be directly converted to cords or boards with precision.

SALE VOLUMES

The total estimated sale volume may not equal the sum of the species/products due to the nature of statistical calculations associated with double sampling methodology.

| VOLUME | | | STATISTICAL RANGE IN CORDS | |
|------------------|-------------|---------------|----------------------------|---------|
| TOTAL CUBIC FEET | TOTAL CORDS | PERCENT ERROR | MINIMUM | MAXIMUM |
| 149,242 | 1,889 | 9.77% | 1,704 | 2,074 |

VDU VOLUMES

A VDU is a Volume Determination Unit. Volumes and their associated statistics are calculated at the VDU level and summarized to the sale level. There is often a one to one relationship between a VDU and a Payment Unit, but not always, depending on the cruise design. Refer to the VDU TO PAYMENT UNIT table.

| | VOLUME | | | RANGE IN CORDS | |
|---------------|------------------|--------------|---------------|----------------|--------------|
| VDU | TOTAL CUBIC FEET | TOTAL CORDS | PERCENT ERROR | MINIMUM | MAXIMUM |
| 29 | 35,251 | 446 | 17.80% | 367 | 526 |
| 35 | 76,276 | 966 | 11.88% | 851 | 1,080 |
| 37 | 11,778 | 149 | 51.12% | 73 | 225 |
| 44 | 21,874 | 277 | 30.86% | 191 | 362 |
| TOTAL: | 145,179 | 1,838 | | 1,482 | 2,194 |

VDU TO PAYMENT UNIT

When a VDU is associated with more than one Payment Unit (PU), the VDU volumes are assigned to the PU based on acres of the VDU within the PU.

| VDU | VDU ACRES | PU | PU ACRES |
|---------------|-------------|----|-------------|
| 29 | 17.6 | 1 | 17.6 |
| 35 | 25.5 | 2 | 25.5 |
| 37 | 5.8 | 2 | 5.8 |
| 44 | 11.3 | 3 | 11.3 |
| TOTAL: | 60.2 | | 60.2 |

DESCRIPTION OF TIMBER BY PAYMENT UNIT (PU)

| PU | MARKET GROUP | PRODUCT | QUANTITY | UNIT | ACRES | ADVERTISE PRICE | | | |
|----------------------|--------------|--------------|-----------|--------------|-------|-----------------|------------|------|-------------|
| 1 | Paper Birch | Sawtimber | 1.3 | MBF | 17.6 | \$7,801.00 | | | |
| | Red Maple | | 11.4 | MBF | | | | | |
| | White Pine | | 26.2 | MBF | | | | | |
| | Balsam Fir | Pulpwood | 17 | Cords | | | | | |
| | Black Spruce | | 220 | Cords | | | | | |
| | Paper Birch | | 12 | Cords | | | | | |
| | Red Maple | | 46 | Cords | | | | | |
| | Tamarack | | 69 | Cords | | | | | |
| | White Pine | | 4 | Cords | | | | | |
| | 2 | Black Spruce | Sawtimber | 15.2 | | | MBF | 31.3 | \$25,487.80 |
| Jack Pine | | | 11.8 | MBF | | | | | |
| Mixed Aspen | | | 31.8 | MBF | | | | | |
| <i>B. T. Aspen</i> | | | 28.5 | <i>MBF</i> | | | | | |
| <i>Quaking Aspen</i> | | | 3.3 | <i>MBF</i> | | | | | |
| Red Maple | | | 36.1 | MBF | | | | | |
| Red Pine | | | 65.0 | MBF | | | | | |
| White Pine | | | 138.9 | MBF | | | | | |
| Balsam Fir | | Pulpwood | 29 | Cords | | | | | |
| Black Spruce | | | 56 | Cords | | | | | |
| Jack Pine | | | 13 | Cords | | | | | |
| Mixed Aspen | | | 16 | Cords | | | | | |
| <i>B. T. Aspen</i> | | | 7 | <i>Cords</i> | | | | | |
| <i>Quaking Aspen</i> | | | 9 | <i>Cords</i> | | | | | |
| Northern Pin Oak | | | 4 | Cords | | | | | |
| Red Maple | | | 59 | Cords | | | | | |
| Red Pine | | | 14 | Cords | | | | | |
| White Pine | | | 326 | Cords | | | | | |
| 3 | | Red Maple | Sawtimber | 19.1 | MBF | 11.3 | \$5,397.15 | | |
| | | Red Pine | | 1.4 | MBF | | | | |
| | Balsam Fir | Pulpwood | 14 | Cords | | | | | |
| | Black Spruce | | 18 | Cords | | | | | |
| | Red Maple | | 199 | Cords | | | | | |
| | Red Pine | | 5 | Cords | | | | | |
| TOTAL: | | | 358.2 | MBF | | | | | |
| TOTAL: | | | 1,121 | Cords | | | | | |

Sale Specific Conditions & Requirements

Sale Name: Big Buck Swamp Mix

Sale Number: 61-112-21 Seq#: 1

1 - Sale Area

1.2 - Boundaries

1.2.1 - Painted boundaries (9/19)

The sale boundary and Payment Unit boundaries are marked and identified by red paint. Exterior sale boundary lines against state are marked with red paint. Interior Payment Unit boundaries are marked with red paint. Retention patches are marked with red paint; no harvesting activities may occur within these areas. The painted boundary line trees are not Included Timber and are to be protected.

2 - Timber Specifications

2.1 - Included Timber

2.1.1 - Clearcut unit(s) with unmerchantable trees (6/14)

Within Payment Unit(s) 1, cut all trees that are two (2) inches or more at DBH, except do not cut any spruce under 4 inches or green marked trees.

2.1.7 - Leave tree marked unit(s) (6/14)

Within Payment Unit(s) 2 and 3, cut all trees that are two (2) inches or more at DBH, except do not cut trees marked with green paint above and below stump height.

2.2 - Utilization

2.2.3 - Stump heights (4/07)

Stump heights within the Sale Area shall not exceed 12 inches for trees greater than 10 inches at DBH and 4 inches for trees smaller than 10 inches at DBH.

4 - Transportation

4.1 - Construction

4.1.3 - Slash and earthen piles (8/04)

Piles or windrows of earth along roads and landings that have been widened or constructed shall be leveled. Slash from road maintenance or construction, including stumps, shall be dispersed throughout the sale.

4.1.6 - Road construction (1/09)

Construction of new roads or improvements of existing roads shall be done in such a way as to minimize the environmental and visual impacts. Merchantable trees shall be cut and utilized unless otherwise directed. Non-merchantable trees shall be severed and laid flat on the ground. Slash shall be scattered, and not left in windrows and kept a minimum of 10 feet back from the road edge. Stumps shall be set upright, not left on edge, and be moved at least 10 feet away from the road edge. Disturbed soil shall be feathered into the woods and not left in berms or windrows.

4.1.7 - Road closure (10/11)

All new roads built into the sale must be blocked to vehicle traffic within 30 days of completion of hauling. In general, this will require constructing a four (4') foot high berm of stumps and logs covered with earth. Stumps and brush must be placed along the remainder of the trail. These roads must be rendered impassable to cars and trucks. All stumps from road building and landing construction must be reserved to block any newly constructed roads upon completion of the sale. These stumps must be scattered along the road system to prohibit vehicular movement. Temporary berms may be required if no sale activity occurs for 30 or more consecutive days. Contact the sale administrator for specific details of design and placement.

4.1.11 - Permits (2/12)

The Purchaser will secure any necessary County Road permits that may be required.

4.2 - Maintenance

4.2.5 - Two wheel drive condition (2/04)

All existing trail roads on and adjacent to the sale area must be passable by two-wheel drive traffic for the duration of the

sale.

5 - Operations

5.1 - Notification

5.1.1 - Pre-sale conference (10/16)

A pre-sale conference on site between the Purchaser and sale administrator is required prior to beginning any operations to determine landing and road locations. The Unit Manager or his/her representative must be contacted at least 5 days in advance to schedule the conference.

5.2 - Conduct of Operations

5.2.1 - Slash

5.2.1.8 - Slash height (12/08)

No slash or tree tops may exceed 24 inches in height.

5.2.17 - Timber Mats and Interlocking Composite Mats (10/20)

Some roads or skid trails may require extra protection such as that afforded by timber mats, interlocking composite mats, or another approved system. Approximately [350] feet of road or trail will need extra protection at locations shown on the Timber Sale Map. If available, mats may be borrowed from the DNR. A Timber Sale Contract Supplement will be used to document the Purchaser's use of the DNR's mats. Contact the sale administrator regarding availability and pick-up. Timber mats are available from various field offices. Composite mats are only available from the Grayling field office and the Marquette ICC. The Purchaser is responsible for picking up and hauling the mats to and from the site. The composite mats will require DNR staff onsite for installation and removal. Contact the sale administrator to schedule at least 30 days before desired install/removal date. All mats must be cleaned prior to drop off. This may include, but is not limited to, power washing and brushing to remove mud and debris. A charge of \$700.00 per timber mat and \$2,000.00 per composite mat will be assessed for all damaged or non-returned mats. Damage for the crane/timber mats is defined as three or more broken cants. Damage for the composite mats is defined as cracked or broken mats.

5.2.22 - Operating Caution

5.2.22.1 - Operating caution (6/11)

It is recommended, but not required, that within Payment Unit(s) 1-3, cutting, skidding, and hauling occur during dry summer or frozen winter conditions. The reason for the recommendation is due to wet ground and to minimize rutting.

5.2.32 - Decking/landing restoration (9/13)

All decking and landing areas must have the surface area restored to a condition equal to or better than before. This is to ensure the proper regeneration of the stand. Wood debris, chips, and "cookies" from trimmings must be removed or scattered away from landing and loading areas and may not be windrowed on the edge.

5.4 - Soil Protection

5.4.1 - Rutting restriction, general (7/16)

Operations are to cease immediately if equipment and weather conditions result in rutting of roads and/or skid trails which is 12 inches or greater in depth and 50 feet in length. The Unit Manager or his/her representative may restrict hauling and/or skidding if ruts exceed the specified depth. With the Unit Manager or his/her representative's approval, the Purchaser may return to the area when the risk of rutting has decreased.

6 - Safety and Fire Prevention

6.2 - Signing

6.2.1 - Road posting (10/20)

The Purchaser is responsible for posting and maintaining caution signs on state and county roads prior to beginning operations. The road must be posted at appropriate distances from the Sale Area to warn of logging activity and truck traffic. Signs must be removed when harvest operations are suspended or completed. The Purchaser will provide these signs.



TIMBER SALE MAP

This information provided by authority of Part 525, 1994 PA 451, as amended.

| | | | | | |
|-------------------------------|-----------------|---|-----------|------|----|
| Forest Management Unit | County | Mapped By | Date | Page | of |
| Traverse City Management Unit | Kalkaska County | T. Peterson | 6/11/2021 | 1 | 1 |
| Township | Range | Section(s) and Subdivision(s) | Scale | | |
| 25N | 06W | Section 7: S1/2SW, S1/2SE & Section 18 N1/2NW, N1/2NE | 1:15,840 | | |

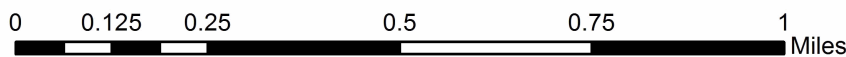
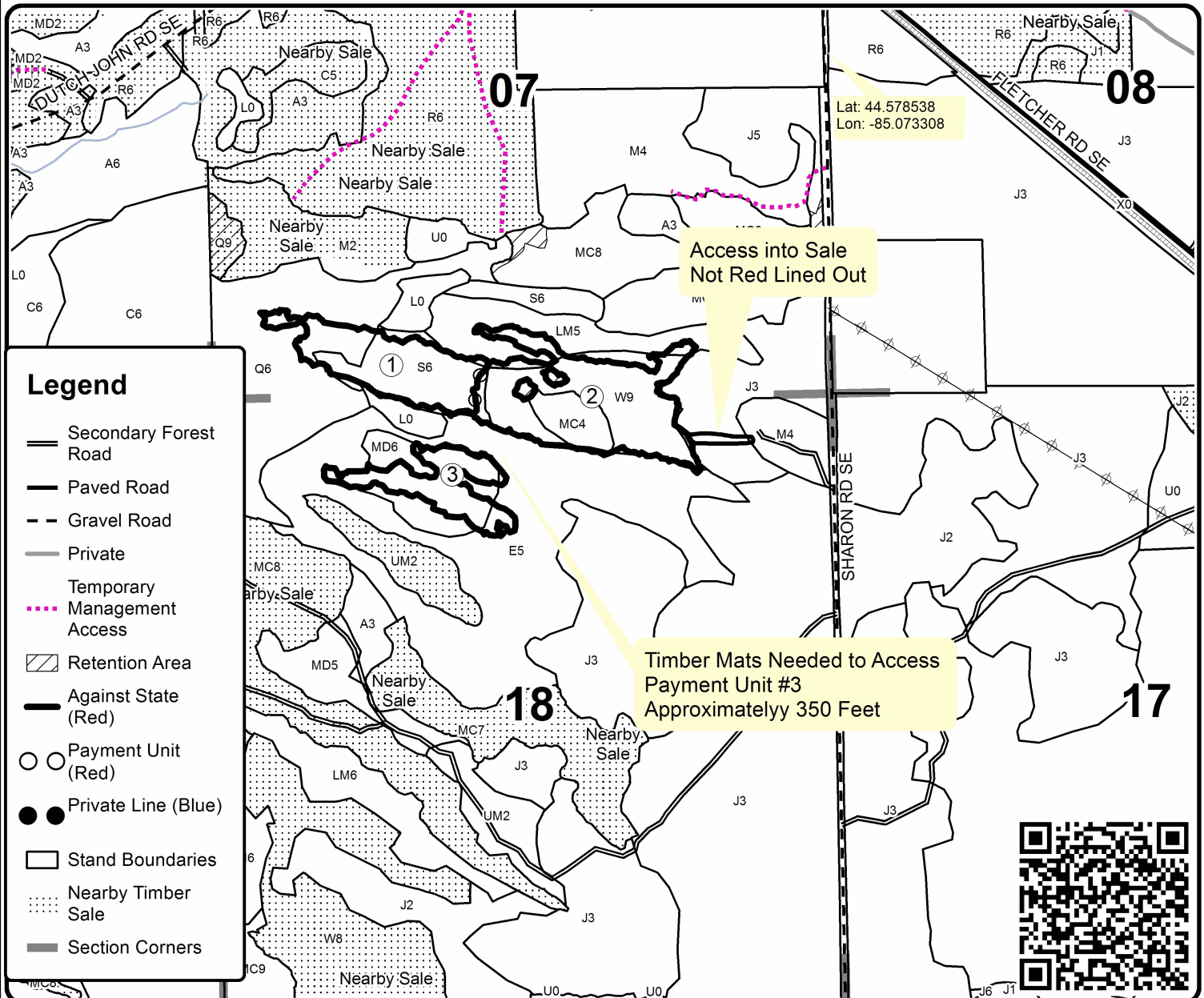
| Cover Type | | | | Density | |
|-------------------|----------------------|-------------------------|-------------------|-----------------------------|------------------------|
| A = Aspen | H = Hemlock | N = Marsh | U = Upland Brush | 0 = Non Stocked | 5 = Pole Timber Medium |
| B = Paper Birch | J = Jack Pine | O = Oak | UM = Upland Mixed | 1 = Seedling Sapling Poor | 6 = Pole Timber Well |
| C = Cedar | L = Lowland Brush | P = Lowland Poplar | V = Bog or Marsh | 2 = Seedling Sapling Medium | 7 = Saw Timber Poor |
| D = Treed Bog | LM = Lowland Mixed | Q = Mixed Swamp Conifer | W = White Pine | 3 = Seedling Sapling Well | 8 = Saw Timber Medium |
| E = Swamp Hdwoods | M = Mpl, Bch, Brch | R = Red Pine | X = Non Stocked | 4 = Pole Timber Poor | 9 = Saw Timber Well |
| F = Spruce Fir | MC = Mixed Conifer | S = Black Spruce | Z = Water | | |
| G = Grass | MD = Mixed Deciduous | T = Tamarack | | | |

| PU | Acres |
|----|-------|
| 1 | 17.6 |
| 2 | 31.3 |
| 3 | 11.3 |

Big Buck Swamp Mix

Compartment 61135

60.2 Acres



TIMBER SALE INFORMATION

Bear Lake Hardwoods (61-125-21)

T27N, R05W, SEC. 11; T27N, R05W, SEC. 13; T27N, R05W, SEC. 14; T27N, R05W, SEC. 23; T27N, R05W, SEC. 24.
Kalkaska County (Advertised Price \$232,743.90)

SALE NOTE: All units of volume listed for this sale were estimated using the Inventory Manager computer program and the new Michigan taper model.

A recreation site such as a trail, pathway, or campground is within the sale area or the vicinity. Certain restrictions/specifications may be applicable including time restrictions.

A timber sale contract for this lump sum, sealed bid timber sale will be awarded to the responsible bidder offering the highest sealed bid price. All units of volume listed below were estimated using the Inventory Manager computer program and the new Michigan taper model. Bids must be at or above the following advertised price for each product and species:

| <u>PRODUCTS & SPECIES</u> | <u>ESTIMATED UNITS*</u> | <u>ADVERTISED PRICE</u> |
|-------------------------------|-------------------------|-------------------------|
| Sawtimber | | |
| Beech | 34.8 MBF | \$ 81.00 / MBF |
| Black Cherry | 8.4 MBF | \$ 195.00 / MBF |
| Red Maple | 112.6 MBF | \$ 148.00 / MBF |
| Sugar Maple | 880.2 MBF | \$ 209.00 / MBF |
| Pulpwood | | |
| Mixed Aspen | 7 Cords | \$ 16.25 / Cord |
| Mixed Hardwood | 1,749 Cords | \$ 15.75 / Cord |

* The total volume is statistically estimated within plus (+) or minus (-) 5.29 percent. There are an estimated 5,238 cords on this timber sale, plus or minus 277 cords at the 95% confidence level. The estimated units are final and not subject to adjustment. Prospective bidders are urged to examine this timber and to make their own estimates of quantity and quality.

BOND AND PAYMENT SCHEDULE:

1. A bond in the amount of \$11,637.00 to insure faithful performance of the conditions of the contract will be deposited by the successful bidder within 21 days of the sale award.
2. Cutting in any sale or unit without the required advance payment would be considered a trespass.
3. Total payment must be paid in advance or according to the following schedule :
 - (a) Ten percent (10%) of the sale value must be paid within 21 days of the sale award.
 - (b) The 10% down payment will be credited towards the first unit cut.
 - (c) Payment for each of the following units must be made before cutting begins in that unit:

| PAYMENT UNIT NUMBER | PERCENT OF TOTAL SALE VALUE |
|---------------------|-----------------------------|
| 01 | 17.6% |
| 02 | 11.3% |
| 03 | 12.5% |
| 04 | 13.0% |
| 05 | 1.5% |
| 06 | 14.4% |
| 07 | 16.8% |
| 08 | 12.9% |
4. If no cutting takes place, the 10% down payment will not be refunded.
5. Operations on the contract issued will terminate on 12/31/2024.

SALE STATISTICS

Volumes were calculated in cubic feet using the Michigan taper model. Cubic foot volume includes all wood inside bark for the product indicated. For display purposes, cubic feet were converted to cords and MBF using a simple conversion factor, e.g. 79 cubic feet per cord and 185 cubic feet per MBF. The cubic foot volumes are precise; the cords and MBF volumes are not. Cubic foot volume cannot be directly converted to cords or boards with precision.

SALE VOLUMES

The total estimated sale volume may not equal the sum of the species/products due to the nature of statistical calculations associated with double sampling methodology.

| VOLUME | | | STATISTICAL RANGE IN CORDS | |
|------------------|-------------|---------------|----------------------------|---------|
| TOTAL CUBIC FEET | TOTAL CORDS | PERCENT ERROR | MINIMUM | MAXIMUM |
| 413,777 | 5,238 | 5.29% | 4,960 | 5,515 |

VDU VOLUMES

A VDU is a Volume Determination Unit. Volumes and their associated statistics are calculated at the VDU level and summarized to the sale level. There is often a one to one relationship between a VDU and a Payment Unit, but not always, depending on the cruise design. Refer to the VDU TO PAYMENT UNIT table.

| | VOLUME | | | RANGE IN CORDS | |
|---------------|------------------|--------------|---------------|----------------|--------------|
| VDU | TOTAL CUBIC FEET | TOTAL CORDS | PERCENT ERROR | MINIMUM | MAXIMUM |
| 1 | 140,604 | 1,780 | 8.32% | 1,632 | 1,928 |
| 2 | 11,913 | 151 | 16.43% | 126 | 176 |
| 5 | 154,917 | 1,961 | 9.18% | 1,781 | 2,141 |
| 7 | 66,511 | 842 | 10.55% | 753 | 931 |
| TOTAL: | 373,945 | 4,733 | | 4,292 | 5,175 |

VDU TO PAYMENT UNIT

When a VDU is associated with more than one Payment Unit (PU), the VDU volumes are assigned to the PU based on acres of the VDU within the PU.

| VDU | VDU ACRES | PU | PU ACRES |
|---------------|--------------|----|--------------|
| 1 | 96.7 | 2 | 29.8 |
| | | 3 | 32.8 |
| | | 4 | 34.1 |
| | | 5 | 7.1 |
| 5 | 115.4 | 6 | 37.6 |
| | | 7 | 44.0 |
| | | 8 | 33.8 |
| | | 1 | 41.9 |
| 7 | 41.9 | | |
| TOTAL: | 261.1 | | 261.1 |

DESCRIPTION OF TIMBER BY PAYMENT UNIT (PU)

| PU | MARKET GROUP | PRODUCT | QUANTITY | UNIT | ACRES | ADVERTISE PRICE |
|----------------------|----------------------|------------------|--------------|--------------|-------|-----------------|
| 1 | Black Cherry | Sawtimber | 1.8 | MBF | 41.9 | \$40,826.80 |
| | Red Maple | | 24.9 | MBF | | |
| | Sugar Maple | | 150.4 | MBF | | |
| | Mixed Aspen | Pulpwood | 4 | Cords | | |
| | <i>Quaking Aspen</i> | <i>Sawtimber</i> | 1.0 | <i>MBF</i> | | |
| | <i>Quaking Aspen</i> | <i>Pulpwood</i> | 2 | <i>Cords</i> | | |
| | Mixed Hardwood | | 336 | Cords | | |
| | <i>Black Cherry</i> | | 1 | <i>Cords</i> | | |
| | <i>Ironwood</i> | | 12 | <i>Cords</i> | | |
| | <i>Red Maple</i> | | 43 | <i>Cords</i> | | |
| | <i>Sugar Maple</i> | | 280 | <i>Cords</i> | | |
| 2 | Beech | Sawtimber | 9.9 | MBF | 29.8 | \$26,396.05 |
| | Black Cherry | | 0.8 | MBF | | |
| | Red Maple | | 18.1 | MBF | | |
| | Sugar Maple | | 93.9 | MBF | | |
| | Mixed Hardwood | Pulpwood | 199 | Cords | | |
| | <i>Beech</i> | | 10 | <i>Cords</i> | | |
| | <i>Black Cherry</i> | | 2 | <i>Cords</i> | | |
| | <i>Ironwood</i> | | 1 | <i>Cords</i> | | |
| | <i>Red Maple</i> | | 17 | <i>Cords</i> | | |
| | <i>Sugar Maple</i> | | 169 | <i>Cords</i> | | |
| | 3 | Beech | Sawtimber | 10.9 | | |
| Black Cherry | | | 0.8 | MBF | | |
| Red Maple | | | 19.9 | MBF | | |
| Sugar Maple | | | 103.4 | MBF | | |
| Mixed Hardwood | | Pulpwood | 221 | Cords | | |
| <i>Beech</i> | | | 12 | <i>Cords</i> | | |
| <i>Black Cherry</i> | | | 3 | <i>Cords</i> | | |
| <i>Ironwood</i> | | | 1 | <i>Cords</i> | | |
| <i>Red Maple</i> | | | 19 | <i>Cords</i> | | |
| <i>Sugar Maple</i> | | | 186 | <i>Cords</i> | | |
| 4 | | Beech | Sawtimber | 11.3 | MBF | 34.1 |
| | Black Cherry | | 0.9 | MBF | | |
| | Red Maple | | 20.7 | MBF | | |
| | Sugar Maple | | 107.5 | MBF | | |
| | Mixed Hardwood | Pulpwood | 230 | Cords | | |
| | <i>Beech</i> | | 13 | <i>Cords</i> | | |
| | <i>Black Cherry</i> | | 3 | <i>Cords</i> | | |
| | <i>Ironwood</i> | | 1 | <i>Cords</i> | | |
| | <i>Red Maple</i> | | 20 | <i>Cords</i> | | |
| | <i>Sugar Maple</i> | | 193 | <i>Cords</i> | | |
| | 5 | Beech | Sawtimber | 0.6 | MBF | |
| Black Cherry | | | 4.1 | MBF | | |
| Red Maple | | | 4.1 | MBF | | |
| Sugar Maple | | | 2.9 | MBF | | |
| Mixed Aspen | | Pulpwood | 3 | Cords | | |
| <i>Quaking Aspen</i> | | <i>Sawtimber</i> | 1.1 | <i>MBF</i> | | |
| <i>Quaking Aspen</i> | | <i>Pulpwood</i> | 1 | <i>Cords</i> | | |
| Mixed Hardwood | | | 94 | Cords | | |
| <i>Beech</i> | | | 2 | <i>Cords</i> | | |
| <i>Black Cherry</i> | | | 15 | <i>Cords</i> | | |
| <i>Ironwood</i> | | | 7 | <i>Cords</i> | | |
| <i>Red Maple</i> | | 9 | <i>Cords</i> | | | |
| <i>Sugar Maple</i> | | 61 | <i>Cords</i> | | | |
| 6 | Beech | Sawtimber | 0.7 | MBF | 37.6 | \$33,410.75 |
| | Red Maple | | 8.1 | MBF | | |

DESCRIPTION OF TIMBER BY PAYMENT UNIT (PU), CON'T

| PU | MARKET GROUP | PRODUCT | QUANTITY | UNIT | ACRES | ADVERTISE PRICE |
|---------------------|---------------------|-----------|-----------|--------------|-------|-----------------|
| 6 con't | Sugar Maple | Sawtimber | 137.5 | MBF | | |
| | Mixed Hardwood | Pulpwood | 217 | Cords | | |
| | <i>Black Cherry</i> | | 4 | <i>Cords</i> | | |
| | <i>Ironwood</i> | | 2 | <i>Cords</i> | | |
| | <i>Red Maple</i> | | 17 | <i>Cords</i> | | |
| | <i>Sugar Maple</i> | | 194 | <i>Cords</i> | | |
| 7 | Beech | Sawtimber | 0.8 | MBF | 44.0 | \$39,136.05 |
| | Red Maple | | 9.5 | MBF | | |
| | Sugar Maple | | 161.0 | MBF | | |
| | Mixed Hardwood | Pulpwood | 255 | Cords | | |
| | <i>Black Cherry</i> | | 5 | <i>Cords</i> | | |
| | <i>Ironwood</i> | | 3 | <i>Cords</i> | | |
| | <i>Red Maple</i> | | 20 | <i>Cords</i> | | |
| | <i>Sugar Maple</i> | | 227 | <i>Cords</i> | | |
| | 8 | Beech | Sawtimber | 0.6 | | |
| Red Maple | | | 7.3 | MBF | | |
| Sugar Maple | | | 123.6 | MBF | | |
| Mixed Hardwood | | Pulpwood | 197 | Cords | | |
| <i>Black Cherry</i> | | | 4 | <i>Cords</i> | | |
| <i>Ironwood</i> | | | 2 | <i>Cords</i> | | |
| <i>Red Maple</i> | | | 16 | <i>Cords</i> | | |
| <i>Sugar Maple</i> | | | 175 | <i>Cords</i> | | |
| TOTAL: | | | 1,036.0 | MBF | | |
| TOTAL: | | | 1,756 | Cords | | |

Sale Specific Conditions & Requirements

Sale Name: Bear Lake Hardwoods

Sale Number: 61-125-21 Seq#: 1

1 - Sale Area

1.2 - Boundaries

1.2.1 - Painted boundaries (9/19)

The sale boundary and Payment Unit boundaries are marked and identified by red and yellow paint. Exterior sale boundary lines against state are marked with red paint. Interior Payment Unit boundaries are marked with yellow paint. The painted boundary line trees are not Included Timber and are to be protected unless marked with orange paint. Yellow painted trees designating an interior Payment Unit boundary are only to be cut when marked with orange paint.

2 - Timber Specifications

2.1 - Included Timber

2.1.3 - Cut tree marked unit(s) (12/08)

Within Payment Unit(s) 1 - 8, all trees are designated for cutting when marked with orange paint above and below stump height, regardless of merchantability. Regeneration gaps are also scattered throughout Sale Area. Regeneration gaps are marked with pink paint. Pink trees are not included in timber sale unless marked with orange paint. Cut all trees down to 1 inch in DBH within these gaps. Protect any sugar maple regeneration within gap. See map for details where gaps are located.

2.2 - Utilization

2.2.3 - Stump heights (4/07)

Stump heights within the Sale Area shall not exceed 12 inches for trees greater than 10 inches at DBH and 4 inches for trees smaller than 10 inches at DBH.

3 - Payments

3.3 - Pre-measured Sales

3.3.4 - Dividing payment units (7/14)

Payment Unit(s) greater than \$25,000 may be divided at the request of the Purchaser and upon approval of the Unit Manager. Dividing Payment Units is a contract modification which requires a Timber Sale Contract Amendment. There will be only one division per Payment Unit.

4 - Transportation

4.1 - Construction

4.1.3 - Slash and earthen piles (8/04)

Piles or windrows of earth along roads and landings that have been widened or constructed shall be leveled. Slash from road maintenance or construction, including stumps, shall be dispersed throughout the sale.

4.1.7 - Road closure (10/11)

All forest access roads must be closed upon completion of sale. See map for location of these roads. In general, this will require constructing a four (4') foot high berm of stumps and logs covered with earth. Stumps and brush must be placed along the remainder of the trail. These roads must be rendered impassable to cars and trucks. All stumps from road building and landing construction must be reserved to block any newly constructed roads upon completion of the sale. These stumps must be scattered along the road system to prohibit vehicular movement. Temporary berms may be required if no sale activity occurs for 30 or more consecutive days. Contact the sale administrator for specific details of design and placement.

4.1.11 - Permits (2/12)

The Purchaser will secure any necessary highway and county road permits that may be required.

4.1.12 - No new roads (1/12)

No new roads will be permitted. All operations are limited to existing roads. Skid trails only will be allowed.

4.2 - Maintenance

4.2.5 - Two wheel drive condition (2/04)

All existing trail roads on and adjacent to the sale area must be passable by two-wheel drive traffic for the duration of the sale.

5 - Operations

5.1 - Notification

5.1.1 - Pre-sale conference (10/16)

A pre-sale conference on site between the Purchaser and sale administrator is required prior to beginning any operations to determine landing and road locations. The Unit Manager or his/her representative must be contacted at least 5 days in advance to schedule the conference.

5.2 - Conduct of Operations

5.2.1 - Slash

5.2.1.8 - Slash height (12/08)

No slash or tree tops may exceed 24 inches in height.

5.2.3 - Operating Restrictions

5.2.3.1 - Operating restrictions (9/11)

Within Payment Unit(s) 1 - 8, cutting, skidding, and hauling are limited the period of October 1 to March 31, during dry or frozen ground conditions. These dates may be altered if a given year's weather pattern makes snakes active early or later in the year. This restriction is because the area has been designated as Eastern Massasauga Rattlesnake Habitat and to protect against oak wilt.

5.2.3.4 - Oak wilt restriction, no exceptions (1/18)

Within all Payment Unit(s), cutting, skidding, within the sale and brushing of access roads to the sale are not permitted during the period of April 15 to July 15. No exceptions will be granted. This is necessary to reduce the spread of oak wilt. Hauling can occur during this time if proper brushing of roads takes place prior to April 15.

5.2.32 - Decking/landing restoration (9/13)

All decking and landing areas must have the surface area restored to a condition equal to or better than before. This is to ensure the proper regeneration of the stand. Wood debris, chips, and "cookies" from trimmings must be removed or scattered away from landing and loading areas and may not be windrowed on the edge.

5.2.38 - No decking against live trees (2/04)

Cut products may not be decked against unmarked or designated leave trees.

5.2.39 - ORV trail/route protection (4/18)

The ORV trail is shown on the Timber Sale Map. Do not cut trees or damage posts with yellow markers. Trees with yellow markers shall be cut off above the markers and at least 5 feet above ground only when marked with orange paint. All stumps within 5 feet of the trail must be cut flush with the ground. Maintain a 20-foot-wide slash, debris, and rut free zone daily using the ORV trail route as the centerline. Do not run equipment down the ORV trail. Skidding across the trail or route may only occur in locations approved by the sale administrator.

5.2.40 - Pathway protection (10/10)

The horse trail is shown on the Timber Sale Map. Do not cut trees or damage posts with blue pathway markers. Maintain a 20-foot-wide slash, debris, and rut free zone daily, using the pathway as the centerline. Do not run equipment down the pathway. Skidding across the trail may only occur in locations approved by the sale administrator.

5.4 - Soil Protection

5.4.1 - Rutting restriction, general (7/16)

Operations are to cease immediately if equipment and weather conditions result in rutting of roads and/or skid trails which is 12 inches or greater in depth and 50 feet in length. The Unit Manager or his/her representative may restrict hauling and/or skidding if ruts exceed the specified depth. With the Unit Manager or his/her representative's approval, the Purchaser may

return to the area when the risk of rutting has decreased.

6 - Safety and Fire Prevention

6.2 - Signing

6.2.1 - Road posting (10/20)

The Purchaser is responsible for posting and maintaining caution signs on all county and state roads prior to beginning operations. The road must be posted at appropriate distances from the Sale Area to warn of logging activity and truck traffic. Signs must be removed when harvest operations are suspended or completed. The Purchaser will provide these signs.

6.2.3 - Recreational trail posting (10/20)

The Purchaser is responsible for posting and maintaining caution signs on ORV trail and Equestrian Trail prior to beginning operations. The trail must be posted at appropriate distances from the Sale Area to warn of logging activity and truck traffic at both ends of the trail. Signs must be removed when harvest operations are suspended or completed. The Purchaser will provide these signs.



TIMBER SALE MAP

This information provided by authority of Part 525, 1994 PA 451, as amended.

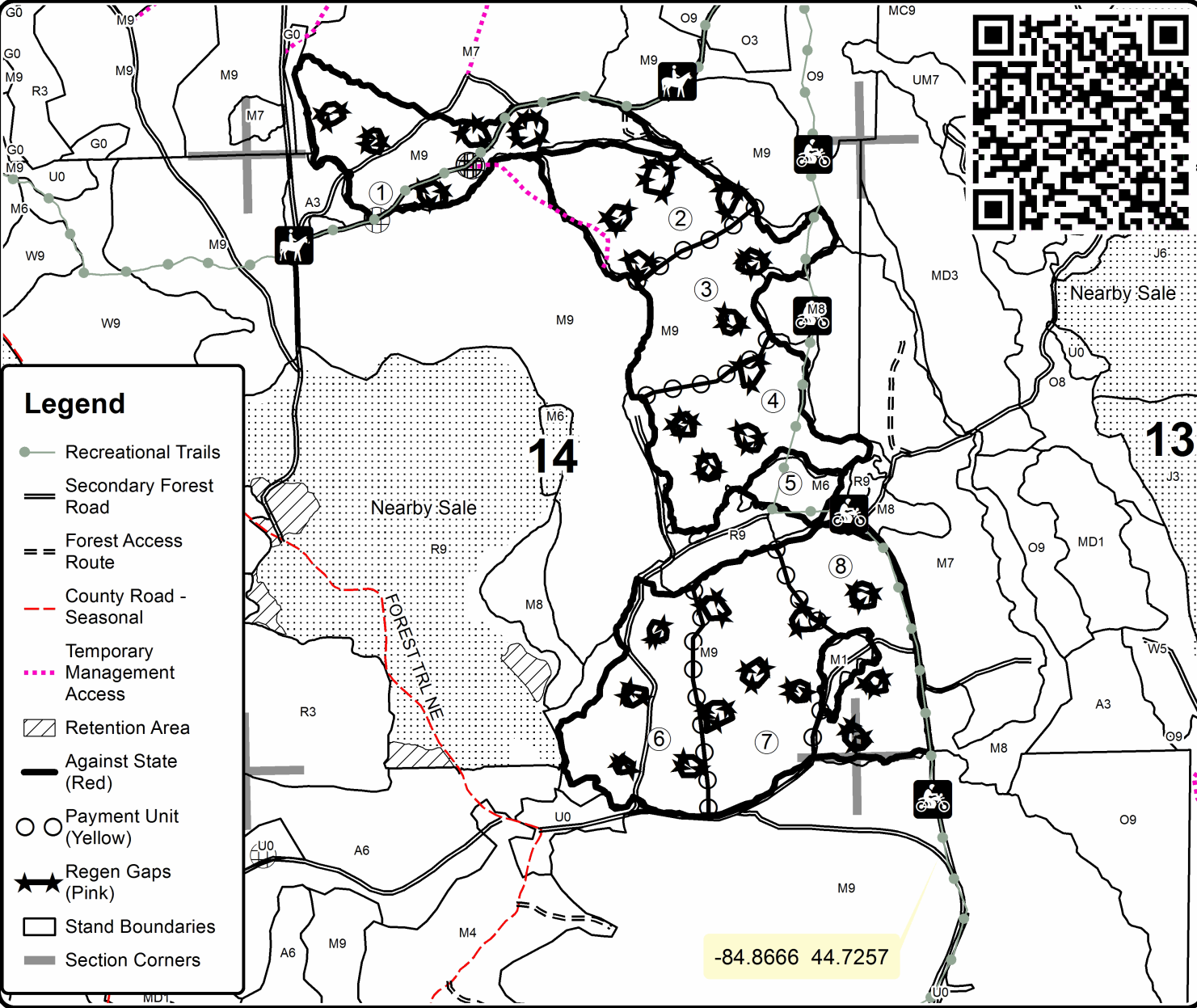
| | | | | | |
|-------------------------------|-----------------|---------------------------------------|----------|------|----|
| Forest Management Unit | County | Mapped By | Date | Page | of |
| Traverse City Management Unit | Kalkaska County | Tom Peterson | 6/8/2021 | 1 | 1 |
| Township | Range | Section(s) and Subdivision(s) | Scale | | |
| 27N | 05W | Sections: 11, 13, 14, 23 & 24 Various | 1:15,840 | | |

| Cover Type | | | | Density | |
|-------------------|----------------------|-------------------------|-------------------|-----------------------------|------------------------|
| A = Aspen | H = Hemlock | N = Marsh | U = Upland Brush | 0 = Non Stocked | 5 = Pole Timber Medium |
| B = Paper Birch | J = Jack Pine | O = Oak | UM = Upland Mixed | 1 = Seedling Sapling Poor | 6 = Pole Timber Well |
| C = Cedar | L = Lowland Brush | P = Lowland Poplar | V = Bog or Marsh | 2 = Seedling Sapling Medium | 7 = Saw Timber Poor |
| D = Treed Bog | LM = Lowland Mixed | Q = Mixed Swamp Conifer | W = White Pine | 3 = Seedling Sapling Well | 8 = Saw Timber Medium |
| E = Swamp Hdwoods | M = Mpl, Bch, Brch | R = Red Pine | X = Non Stocked | 4 = Pole Timber Poor | 9 = Saw Timber Well |
| F = Spruce Fir | MC = Mixed Conifer | S = Black Spruce | Z = Water | | |
| G = Grass | MD = Mixed Deciduous | T = Tamarack | | | |

| PU Acres | PU Acres | PU Acres |
|----------|----------|----------|
| 1 41.9 | 4 34.1 | 7 44.0 |
| 2 29.8 | 5 7.1 | 8 33.8 |
| 3 32.8 | 6 37.6 | |

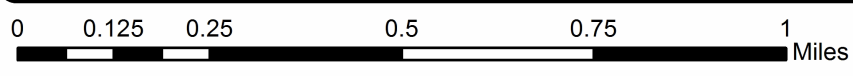
Bear Lake Hardwoods

Compartment 63113
261.1 Acres



Legend

- Recreational Trails
- Secondary Forest Road
- Forest Access Route
- County Road - Seasonal
- Temporary Management Access
- Retention Area
- Against State (Red)
- Payment Unit (Yellow)
- Regen Gaps (Pink)
- Stand Boundaries
- Section Corners



Bear Lake Hardwoods (61-125-21)

T27N, R05W, SEC. 11; T27N, R05W, SEC. 13; T27N, R05W, SEC. 14; T27N,

In response to the notice of sale to be held 4:00 p.m. (local time) on October 18, 2021, I am hereby submitting my sealed bid (firm offer) for the following forest products to be cut. Bids for individual species must be at or above the advertised price. All non-responsive bid forms may be rejected.

| <u>PRODUCTS & SPECIES</u> | <u>ESTIMATED VOLUME*</u> | <u>ADVERTISED PRICE</u> | <u>BID PRICE/UNIT</u> |
|-------------------------------|--------------------------|-------------------------|-----------------------|
| Sawtimber | | | |
| Beech | 34.8 MBF | \$ 81.00/MBF | \$ _____ |
| Black Cherry | 8.4 MBF | \$ 195.00/MBF | \$ _____ |
| Red Maple | 112.6 MBF | \$ 148.00/MBF | \$ _____ |
| Sugar Maple | 880.2 MBF | \$ 209.00/MBF | \$ _____ |
| Pulpwood | | | |
| Mixed Aspen | 7 Cords | \$ 16.25/Cord | \$ _____ |
| Mixed Hardwood | 1,749 Cords | \$ 15.75/Cord | \$ _____ |

*The volumes are statistically estimated within plus (+) or minus (-) 5.29 percent at 95% confidence level. These estimated volumes are final and not subject to adjustment. Prospective bidders are urged to examine this timber and to make their own estimates of quantity and quality.

I understand that any or all bids may be rejected. All bids must be signed and all bid items must be bid or the bid form may be rejected. I also understand that consideration and awarding a contract will be based upon my past performance and ability to complete the contract based upon equipment and staffing subject to my control.

FEDERAL ID: _____ - _____ or SOCIAL SECURITY NUMBER: _____ - _____ - _____

Company or individual bidding: _____

Company representative's name: _____

Address: _____

City: _____ State: _____ Zip: _____

IF AVAILABLE, PLEASE PLACE THE PERSONALIZED LABEL FROM YOUR PROSPECTUS IN THE ABOVE BOX.

Individual or company representative's signature: _____ Date: _____

Phone number : _____ Email (optional): _____

THE WINNING BIDDER MUST COMPLETE THE VERIFICATION OF WORKER'S DISABILITY COMPENSATION ACT COMPLIANCE (ON REVERSE SIDE IF DOUBLE SIDED) WITHIN 21 DAYS OF SALE AWARD DATE



| |
|----------------------------------|
| FOR DEPARTMENT USE ONLY |
| Sale Number (XX - XXX - XX - XX) |
| Forest Management Unit: |

TIMBER SALE VERIFICATION OF WORKER'S DISABILITY COMPENSATION ACT COMPLIANCE

*As required by Act 317, P.A. 1969 (Worker's Compensation) and
Part 5 of Act 451 of 1994, as amended.*

VERIFICATION OF WORKER'S DISABILITY COMPENSATION ACT COMPLIANCE

- This verification must be completed and submitted within 21 days of contract award and prior to the issuance of the timber sale contract.
- In addition, if boxes 2B or 2C are checked, then Notice of Exclusion or Certificate of Insurance must be submitted within twenty-one (21) days of the contract award and prior to the issuance of the timber sale contract.
- All information must be typed or printed except for written signatures.

Please Check Appropriate Categories:

1. My business is organized as (you **must** check one of the boxes below):
 - A. Sole Proprietorship (individual)
 - B. Partnership
 - C. Corporation
2. You **must** check one of the boxes below:
 - A. I certify my business is a sole proprietorship and it has no employees but the sole proprietor. I am not subject to the Worker's Compensation Laws.
 - B. I certify my business has satisfied its obligation to the Worker's Compensation Act through the use of an approved Notice of Exclusion (BWC-337, Rev. 5/96). I will provide a copy of the Notice of Exclusion within 21 days of the contract award. (For questions or a copy of the BWC-337, please call the Worker's Compensation Bureau at 517-322-1195).
 - C. I certify my business has a Worker's Compensation Policy. I will provide an original Certificate of Insurance within twenty-one (21) days of the contract award.
3. If you have checked item 2(A) or 2(B), you **must** indicate the number of **both** full-time and part-time employees, other than yourself, including family members and active partners (if none, you must enter "0").

_____ Full-time Employees

_____ Part-time Employees

| | | | |
|------------------|-------|-------------------------------------|--|
| Name of Business | | Federal ID (or) Social Security No. | |
| Address | | Telephone () | |
| City | State | ZIP | |

I hereby certify that the above information is true and correct. I agree to notify the Michigan DNR of any changes that occur in factors affecting my coverage during any of my present and future operations.

Signature of Owner or Authorized Representative

Title

Date

Please complete the "SEALED BID" information on the next page

Big Buck Swamp Mix (61-112-21)
T25N, R06W, SEC. 18; T25N, R06W, SEC. 7; Kalkaska COUNTY

In response to the notice of sale to be held 4:00 p.m. (local time) on October 18, 2021, I am hereby submitting my sealed bid (firm offer) for the following forest products to be cut. Bids for individual species must be at or above the advertised price. All non-responsive bid forms may be rejected.

| <u>PRODUCTS & SPECIES</u> | <u>ESTIMATED VOLUME*</u> | <u>ADVERTISED PRICE</u> | <u>BID PRICE/UNIT</u> |
|-------------------------------|--------------------------|-------------------------|-----------------------|
| Sawtimber | | | |
| Black Spruce | 15.2 MBF | \$ 38.00/MBF | \$ _____ |
| Jack Pine | 11.8 MBF | \$ 17.00/MBF | \$ _____ |
| Mixed Aspen | 31.8 MBF | \$ 90.00/MBF | \$ _____ |
| Paper Birch | 1.3 MBF | \$ 32.00/MBF | \$ _____ |
| Red Maple | 66.6 MBF | \$ 116.00/MBF | \$ _____ |
| Red Pine | 66.4 MBF | \$ 80.00/MBF | \$ _____ |
| White Pine | 165.1 MBF | \$ 37.00/MBF | \$ _____ |
| Pulpwood | | | |
| Balsam Fir | 60 Cords | \$ 8.70/Cord | \$ _____ |
| Black Spruce | 294 Cords | \$ 18.95/Cord | \$ _____ |
| Jack Pine | 13 Cords | \$ 8.35/Cord | \$ _____ |
| Mixed Aspen | 16 Cords | \$ 12.80/Cord | \$ _____ |
| Northern Pin Oak | 4 Cords | \$ 12.30/Cord | \$ _____ |
| Paper Birch | 12 Cords | \$ 8.30/Cord | \$ _____ |
| Red Maple | 304 Cords | \$ 12.35/Cord | \$ _____ |
| Red Pine | 19 Cords | \$ 29.80/Cord | \$ _____ |
| Tamarack | 69 Cords | \$ 6.20/Cord | \$ _____ |
| White Pine | 330 Cords | \$ 13.80/Cord | \$ _____ |

*The volumes are statistically estimated within plus (+) or minus (-) 9.77 percent at 95% confidence level. These estimated volumes are final and not subject to adjustment. Prospective bidders are urged to examine this timber and to make their own estimates of quantity and quality.

I understand that any or all bids may be rejected. All bids must be signed and all bid items must be bid or the bid form may be rejected. I also understand that consideration and awarding a contract will be based upon my past performance and ability to complete the contract based upon equipment and staffing subject to my control.

FEDERAL ID: _____ or SOCIAL SECURITY NUMBER: _____

Company or individual bidding: _____

Company representative's name: _____

Address: _____

City: _____ State: _____ Zip: _____

IF AVAILABLE, PLEASE PLACE THE PERSONALIZED LABEL FROM YOUR PROSPECTUS IN THE ABOVE BOX.

Individual or company representative's signature: _____ Date: _____

Phone number : _____ Email (optional): _____

THE WINNING BIDDER MUST COMPLETE THE VERIFICATION OF WORKER'S DISABILITY COMPENSATION ACT COMPLIANCE (ON REVERSE SIDE IF DOUBLE SIDED) WITHIN 21 DAYS OF SALE AWARD DATE



| | |
|----------------------------------|--|
| FOR DEPARTMENT USE ONLY | |
| Sale Number (XX - XXX - XX - XX) | |
| Forest Management Unit: | |

TIMBER SALE VERIFICATION OF WORKER'S DISABILITY COMPENSATION ACT COMPLIANCE

As required by Act 317, P.A. 1969 (Worker's Compensation) and
Part 5 of Act 451 of 1994, as amended.

VERIFICATION OF WORKER'S DISABILITY COMPENSATION ACT COMPLIANCE

- This verification must be completed and submitted within 21 days of contract award and prior to the issuance of the timber sale contract.
- In addition, if boxes 2B or 2C are checked, then Notice of Exclusion or Certificate of Insurance must be submitted within twenty-one (21) days of the contract award and prior to the issuance of the timber sale contract.
- All information must be typed or printed except for written signatures.

Please Check Appropriate Categories:

1. My business is organized as (you **must** check one of the boxes below):
 - A. Sole Proprietorship (individual)
 - B. Partnership
 - C. Corporation
2. You **must** check one of the boxes below:
 - A. I certify my business is a sole proprietorship and it has no employees but the sole proprietor. I am not subject to the Worker's Compensation Laws.
 - B. I certify my business has satisfied its obligation to the Worker's Compensation Act through the use of an approved Notice of Exclusion (BWC-337, Rev. 5/96). I will provide a copy of the Notice of Exclusion within 21 days of the contract award. (For questions or a copy of the BWC-337, please call the Worker's Compensation Bureau at 517-322-1195).
 - C. I certify my business has a Worker's Compensation Policy. I will provide an original Certificate of Insurance within twenty-one (21) days of the contract award.
3. If you have checked item 2(A) or 2(B), you **must** indicate the number of **both** full-time and part-time employees, other than yourself, including family members and active partners (if none, you must enter "0").

_____ Full-time Employees

_____ Part-time Employees

| | | | |
|------------------|-------|-------------------------------------|--|
| Name of Business | | Federal ID (or) Social Security No. | |
| Address | | Telephone () | |
| City | State | ZIP | |

I hereby certify that the above information is true and correct. I agree to notify the Michigan DNR of any changes that occur in factors affecting my coverage during any of my present and future operations.

Signature of Owner or Authorized Representative

Title

Date

Please complete the "SEALED BID" information on the next page

Bug Bite Mix (61-109-21)
T27N, R08W, SEC. 22; T27N, R08W, SEC. 23; Kalkaska COUNTY

In response to the notice of sale to be held 4:00 p.m. (local time) on October 18, 2021, I am hereby submitting my sealed bid (firm offer) for the following forest products to be cut. Bids for individual species must be at or above the advertised price. All non-responsive bid forms may be rejected.

| <u>PRODUCTS & SPECIES</u> | <u>ESTIMATED VOLUME*</u> | <u>ADVERTISED PRICE</u> | <u>BID PRICE/UNIT</u> |
|-------------------------------|--------------------------|-------------------------|-----------------------|
| Sawtimber | | | |
| Jack Pine | 29.8 MBF | \$ 17.00/MBF | \$ _____ |
| Red Oak | 50.6 MBF | \$ 119.00/MBF | \$ _____ |
| Red Pine | 82.0 MBF | \$ 80.00/MBF | \$ _____ |
| White Pine | 21.5 MBF | \$ 37.00/MBF | \$ _____ |
| Pulpwood | | | |
| B. T. Aspen | 5 Cords | \$ 12.80/Cord | \$ _____ |
| Black Cherry | 10 Cords | \$ 12.35/Cord | \$ _____ |
| Jack Pine | 227 Cords | \$ 8.35/Cord | \$ _____ |
| Red Maple | 10 Cords | \$ 12.35/Cord | \$ _____ |
| Red Oak | 78 Cords | \$ 12.30/Cord | \$ _____ |
| Red Pine | 87 Cords | \$ 29.80/Cord | \$ _____ |
| White Pine | 67 Cords | \$ 13.80/Cord | \$ _____ |

*The volumes are statistically estimated within plus (+) or minus (-) 7.46 percent at 95% confidence level. These estimated volumes are final and not subject to adjustment. Prospective bidders are urged to examine this timber and to make their own estimates of quantity and quality.

I understand that any or all bids may be rejected. All bids must be signed and all bid items must be bid or the bid form may be rejected. I also understand that consideration and awarding a contract will be based upon my past performance and ability to complete the contract based upon equipment and staffing subject to my control.

FEDERAL ID: _____ - _____ or SOCIAL SECURITY NUMBER: _____ - _____ - _____

Company or individual bidding: _____

Company representative's name: _____

Address: _____

City: _____ State: _____ Zip: _____

IF AVAILABLE, PLEASE PLACE THE PERSONALIZED LABEL FROM YOUR PROSPECTUS IN THE ABOVE BOX.

Individual or company representative's signature: _____ Date: _____

Phone number : _____ Email (optional): _____

THE WINNING BIDDER MUST COMPLETE THE VERIFICATION OF WORKER'S DISABILITY COMPENSATION ACT COMPLIANCE (ON REVERSE SIDE IF DOUBLE SIDED) WITHIN 21 DAYS OF SALE AWARD DATE



TIMBER SALE VERIFICATION OF WORKER'S DISABILITY COMPENSATION ACT COMPLIANCE

As required by Act 317, P.A. 1969 (Worker's Compensation) and
Part 5 of Act 451 of 1994, as amended.

| FOR DEPARTMENT USE ONLY | |
|----------------------------------|--|
| Sale Number (XX - XXX - XX - XX) | |
| Forest Management Unit: | |

VERIFICATION OF WORKER'S DISABILITY COMPENSATION ACT COMPLIANCE

- This verification must be completed and submitted within 21 days of contract award and prior to the issuance of the timber sale contract.
- In addition, if boxes 2B or 2C are checked, then Notice of Exclusion or Certificate of Insurance must be submitted within twenty-one (21) days of the contract award and prior to the issuance of the timber sale contract.
- All information must be typed or printed except for written signatures.

Please Check Appropriate Categories:

1. My business is organized as (you **must** check one of the boxes below):
 - A. Sole Proprietorship (individual)
 - B. Partnership
 - C. Corporation
2. You **must** check one of the boxes below:
 - A. I certify my business is a sole proprietorship and it has no employees but the sole proprietor. I am not subject to the Worker's Compensation Laws.
 - B. I certify my business has satisfied its obligation to the Worker's Compensation Act through the use of an approved Notice of Exclusion (BWC-337, Rev. 5/96). I will provide a copy of the Notice of Exclusion within 21 days of the contract award. (For questions or a copy of the BWC-337, please call the Worker's Compensation Bureau at 517-322-1195).
 - C. I certify my business has a Worker's Compensation Policy. I will provide an original Certificate of Insurance within twenty-one (21) days of the contract award.
3. If you have checked item 2(A) or 2(B), you **must** indicate the number of **both** full-time and part-time employees, other than yourself, including family members and active partners (if none, you must enter "0").

_____ Full-time Employees

_____ Part-time Employees

| | | | |
|------------------|-------|-------------------------------------|--|
| Name of Business | | Federal ID (or) Social Security No. | |
| Address | | Telephone () | |
| City | State | ZIP | |

I hereby certify that the above information is true and correct. I agree to notify the Michigan DNR of any changes that occur in factors affecting my coverage during any of my present and future operations.

Signature of Owner or Authorized Representative

Title

Date

Please complete the "SEALED BID" information on the next page

Horse Fly Aspen (61-108-21)
T27N, R07W, SEC. 19; Kalkaska COUNTY

In response to the notice of sale to be held 4:00 p.m. (local time) on October 18, 2021, I am hereby submitting my sealed bid (firm offer) for the following forest products to be cut. Bids for individual species must be at or above the advertised price. All non-responsive bid forms may be rejected.

| <u>PRODUCTS & SPECIES</u> | <u>ESTIMATED VOLUME*</u> | <u>ADVERTISED PRICE</u> | <u>BID PRICE/UNIT</u> |
|-------------------------------|--------------------------|-------------------------|-----------------------|
| Sawtimber | | | |
| B. T. Aspen | 67.8 MBF | \$ 131.00/MBF | \$ _____ |
| Red Maple | 63.7 MBF | \$ 169.00/MBF | \$ _____ |
| Red Oak | 2.7 MBF | \$ 172.00/MBF | \$ _____ |
| Red Pine | 8.7 MBF | \$ 116.00/MBF | \$ _____ |
| White Pine | 14.2 MBF | \$ 53.00/MBF | \$ _____ |
| Pulpwood | | | |
| B. T. Aspen | 99 Cords | \$ 18.60/Cord | \$ _____ |
| Mixed Hardwood | 185 Cords | \$ 18.00/Cord | \$ _____ |
| Red Oak | 16 Cords | \$ 17.85/Cord | \$ _____ |
| Red Pine | 2 Cords | \$ 43.30/Cord | \$ _____ |
| White Pine | 8 Cords | \$ 20.05/Cord | \$ _____ |

*The volumes are statistically estimated within plus (+) or minus (-) 13.63 percent at 95% confidence level. These estimated volumes are final and not subject to adjustment. Prospective bidders are urged to examine this timber and to make their own estimates of quantity and quality.

I understand that any or all bids may be rejected. All bids must be signed and all bid items must be bid or the bid form may be rejected. I also understand that consideration and awarding a contract will be based upon my past performance and ability to complete the contract based upon equipment and staffing subject to my control.

FEDERAL ID: _____ or SOCIAL SECURITY NUMBER: _____

Company or individual bidding: _____

Company representative's name: _____

Address: _____

City: _____ State: _____ Zip: _____

IF AVAILABLE, PLEASE PLACE THE PERSONALIZED LABEL FROM YOUR PROSPECTUS IN THE ABOVE BOX.

Individual or company representative's signature: _____ Date: _____

Phone number : _____ Email (optional): _____

THE WINNING BIDDER MUST COMPLETE THE VERIFICATION OF WORKER'S DISABILITY COMPENSATION ACT COMPLIANCE (ON REVERSE SIDE IF DOUBLE SIDED) WITHIN 21 DAYS OF SALE AWARD DATE



| |
|----------------------------------|
| FOR DEPARTMENT USE ONLY |
| Sale Number (XX - XXX - XX - XX) |
| Forest Management Unit: |

TIMBER SALE VERIFICATION OF WORKER'S DISABILITY COMPENSATION ACT COMPLIANCE

*As required by Act 317, P.A. 1969 (Worker's Compensation) and
Part 5 of Act 451 of 1994, as amended.*

VERIFICATION OF WORKER'S DISABILITY COMPENSATION ACT COMPLIANCE

- This verification must be completed and submitted within 21 days of contract award and prior to the issuance of the timber sale contract.
- In addition, if boxes 2B or 2C are checked, then Notice of Exclusion or Certificate of Insurance must be submitted within twenty-one (21) days of the contract award and prior to the issuance of the timber sale contract.
- All information must be typed or printed except for written signatures.

Please Check Appropriate Categories:

1. My business is organized as (you **must** check one of the boxes below):
 - A. Sole Proprietorship (individual)
 - B. Partnership
 - C. Corporation

2. You **must** check one of the boxes below:
 - A. I certify my business is a sole proprietorship and it has no employees but the sole proprietor. I am not subject to the Worker's Compensation Laws.
 - B. I certify my business has satisfied its obligation to the Worker's Compensation Act through the use of an approved Notice of Exclusion (BWC-337, Rev. 5/96). I will provide a copy of the Notice of Exclusion within 21 days of the contract award. (For questions or a copy of the BWC-337, please call the Worker's Compensation Bureau at 517-322-1195).
 - C. I certify my business has a Worker's Compensation Policy. I will provide an original Certificate of Insurance within twenty-one (21) days of the contract award.

3. If you have checked item 2(A) or 2(B), you **must** indicate the number of **both** full-time and part-time employees, other than yourself, including family members and active partners (if none, you must enter "0").

_____ Full-time Employees

_____ Part-time Employees

| | | | |
|------------------|-------|-------------------------------------|--|
| Name of Business | | Federal ID (or) Social Security No. | |
| Address | | Telephone () | |
| City | State | ZIP | |

I hereby certify that the above information is true and correct. I agree to notify the Michigan DNR of any changes that occur in factors affecting my coverage during any of my present and future operations.

Signature of Owner or Authorized Representative

Title

Date

Please complete the "SEALED BID" information on the next page

Crib Climber Mix (61-110-21)
T27N, R08W, SEC. 24; Kalkaska COUNTY

In response to the notice of sale to be held 4:00 p.m. (local time) on October 18, 2021, I am hereby submitting my sealed bid (firm offer) for the following forest products to be cut. Bids for individual species must be at or above the advertised price. All non-responsive bid forms may be rejected.

| <u>PRODUCTS & SPECIES</u> | <u>ESTIMATED VOLUME*</u> | <u>ADVERTISED PRICE</u> | <u>BID PRICE/UNIT</u> |
|-------------------------------|--------------------------|-------------------------|-----------------------|
| Sawtimber | | | |
| B. T. Aspen | 7.3 MBF | \$ 90.00/MBF | \$ _____ |
| Black Cherry | 21.0 MBF | \$ 153.00/MBF | \$ _____ |
| Jack Pine | 30.5 MBF | \$ 17.00/MBF | \$ _____ |
| Red Maple | 29.4 MBF | \$ 116.00/MBF | \$ _____ |
| Red Pine | 539.4 MBF | \$ 80.00/MBF | \$ _____ |
| White Pine | 3.0 MBF | \$ 37.00/MBF | \$ _____ |
| Pulpwood | | | |
| B. T. Aspen | 36 Cords | \$ 12.80/Cord | \$ _____ |
| Jack Pine | 285 Cords | \$ 8.35/Cord | \$ _____ |
| Mixed Hardwood | 270 Cords | \$ 12.35/Cord | \$ _____ |
| Mixed Oak | 8 Cords | \$ 12.30/Cord | \$ _____ |
| Red Pine | 372 Cords | \$ 29.80/Cord | \$ _____ |
| White Pine | 23 Cords | \$ 13.80/Cord | \$ _____ |

*The volumes are statistically estimated within plus (+) or minus (-) 6.28 percent at 95% confidence level. These estimated volumes are final and not subject to adjustment. Prospective bidders are urged to examine this timber and to make their own estimates of quantity and quality.

I understand that any or all bids may be rejected. All bids must be signed and all bid items must be bid or the bid form may be rejected. I also understand that consideration and awarding a contract will be based upon my past performance and ability to complete the contract based upon equipment and staffing subject to my control.

FEDERAL ID: ____ - ____ - ____ or SOCIAL SECURITY NUMBER: ____ - ____ - ____

Company or individual bidding: _____

Company representative's name: _____

Address: _____

City: _____ State: _____ Zip: _____

IF AVAILABLE, PLEASE PLACE THE PERSONALIZED LABEL FROM YOUR PROSPECTUS IN THE ABOVE BOX.

Individual or company representative's signature: _____ Date: _____

Phone number : _____ Email (optional): _____

THE WINNING BIDDER MUST COMPLETE THE VERIFICATION OF WORKER'S DISABILITY COMPENSATION ACT COMPLIANCE (ON REVERSE SIDE IF DOUBLE SIDED) WITHIN 21 DAYS OF SALE AWARD DATE

