



**DEPARTMENT OF NATURAL RESOURCES
STATE OF MICHIGAN**

TIMBER SALE PROSPECTUS #6939

SCHEDULED SALE DATE AND TIME: 10:00 a.m. (local time) on November 9, 2021.

LOCATION: SE REGION-WILD, 3580 STATE PARK DRIVE, BAY CITY, MI 48706.

PROSPECTUS NOTE: The bidder is advised to inspect the sale area and review the location, estimated volumes, operating costs and contract terms of proposed sales. Please be aware that some landowners may request 60 days or more notice for access across their land.

Notice is hereby given that bids will be received by the Game Area Manager, ALLEGAN SGA, for certain timber on the following described lands:

Bravo Pine (19-001-21) / T01N, R15W, SEC. 4, NWNE.

T02N, R15W, SEC. 28, NWSW,S1/2SW.

T02N, R15W, SEC. 33, E1/2NW,SWSE.

Allegan County, Advertised Price \$56,232.05, 58.1 Acres, Red Pine, Hardwood.

SALE NOTE: All units of volume listed for this sale were estimated using the Inventory Manager computer program and the new Michigan taper model.

Access may be through other public land.

Pullman Sale (19-002-21) / T01N, R15W, SEC. 4, SW.

Allegan County, Advertised Price \$61,588.40, 82.0 Acres, Hardwood, Red Pine.

SALE NOTE: All units of volume listed for this sale were estimated using the Inventory Manager computer program and the new Michigan taper model.

Access may be through other public land.

108th and 49th Oak (19-003-21) / T01N, R15W, SEC. 1, NE.

T01N, R15W, SEC. 11, NWSE,S1/2SE.

Allegan County, Advertised Price \$102,165.30, 81.0 Acres, Hardwood.

SALE NOTE: All units of volume listed for this sale were estimated using the Inventory Manager computer program and the new Michigan taper model.

Access may be through other public land.

118th Sale (19-004-21) / T02N, R14W, SEC. 16, SWSW,E1/2SE.

T02N, R14W, SEC. 17, SESE.

T02N, R14W, SEC. 20, NENE.

Allegan County, Advertised Price \$57,222.35, 40.6 Acres, Red Pine, Aspen.

SALE NOTE: All units of volume listed for this sale were estimated using the Inventory Manager computer program and the new Michigan taper model.

A recreation site such as a trail, pathway, or campground is within the sale area or the vicinity. Certain restrictions/specifications may be applicable including time restrictions. Access may be through other public land.

Savanna Test (19-005-21) / T02N, R14W, SEC. 21, SESE.

T02N, R14W, SEC. 28, NW,NENE.

Allegan County, Advertised Price \$68,139.95, 69.4 Acres, Red Pine, Hardwood.

SALE NOTE: All units of volume listed for this sale were estimated using the Inventory Manager computer program and the new Michigan taper model.

A recreation site such as a trail, pathway, or campground is within the sale area or the vicinity. Certain restrictions/specifications may be applicable including time restrictions. Access may be through other public land.

BID INSTRUCTIONS (VER. 07/02/2018):

1. Scheduled Bid Location, Date, and Time (2/11)

Bids must be received by the Unit Manager, BAY CITY OFFICE, 3580 State Park Drive, Bay City, MI 48706, no later than 10:00 a.m. (local time) on November 9, 2021. For further information concerning this sale, contact Jesse Bramer at 231-670-4586.

2. Bidder's Qualifications (5/16)

Purchaser shall obtain workers compensation insurance to cover claims under Michigan's Worker's Disability Compensation Act of 1969 or similar employee benefit act of any other state applicable to an employee. If all or part of a timber sale was prepared by a private contractor, the contractor and that contractor's company are not permitted to bid on the timber sale contract. Bids will not be accepted from individuals or companies appearing on the DNR/FRD No-Bid List. This list contains the names of purchasers who previously failed to execute a contract within 21-days or who have a history of poor performance.

3. Preparation of Sealed Bids (5/16)

Bid Forms may be completed online thru Michigan DNR Timber Sale Online Bidding (OLB) at www.michigan.gov/timberbidding or by completing the hardcopy Bid Form found in the Timber Sale Prospectus. Hardcopy Bid Forms shall be manually signed in ink. Registration in OLB is considered your 'signature' for all bids submitted thru that system. Bid prices must be entered for each species and product in the Bid Price column for all material subject to bidding and all fill-in blanks must be completed. If erasures or other changes appear on the hardcopy Bid Form, each erasure or change must be initialed by the person signing the bid.

4. Submission of Sealed Bids (5/16)

Bid forms may be obtained from the Unit Manager or thru OLB. Bids may be submitted hardcopy or thru OLB. All hardcopy bids must be submitted on the bid form and in an envelope clearly identified as described in this section. NOTE: Only one bid form per bid envelope. Sealed bids must be submitted to the Unit office designated in the prospectus and must be submitted at or prior to the time established in the prospectus. The envelope should show on the outside (a) the sale name or number and (b) the date and time of bid opening, as shown in the prospectus. Bids received after the time specified in the sale prospectus are late bids and will be rejected.

It is possible for a bidder to submit multiple bids on a single sale. For example, a bid may be submitted hardcopy and a bid may be submitted thru OLB. Or, two bidders from the same company could both submit bids on the same sale. If this were to happen, the State would accept all bids received and award the contract accordingly. All bidding and contractual requirements would apply to all bids received.

5. Public Opening of Sealed Bids (7/16)

If conditions permit, the sealed bids will be publicly opened and posted at the time and place set in the prospectus.

If a bidder, present at a bid opening, has submitted bids on more than one sale, that bidder may withdraw their unopened bid envelopes or announce the withdrawal of their online bid after being declared the successful bidder on one sale.

6. Award of Contract (1/11)

Award of the contract will be made to the Bidder whose bid, conforming to the prospectus, is most advantageous to the State of Michigan on the basis of total value at rates bid for the estimated quantities. The State reserves the right to reject any bid or waive any minor irregularity in bids received. A written award mailed (or otherwise furnished) to the successful Bidder shall be deemed to result in a binding contract without further action by either party.

7. Down Payment (1/11)

The Bidder to whom award is made must make a down payment within 21 days of the sale award. The amount of the down payment will be calculated as shown in the Bond and Payment Schedule of this prospectus. Only cash may be used to meet this requirement.

8. Performance Security (1/11)

As guarantee of faithful performance, a cash bond, certificate of deposit, surety bond or irrevocable letter of credit (LOC) is required within 21 days of the sale award. The amount of the performance security is shown in the Bond and

Payment Schedule of this prospectus. If an LOC or surety is used, the coverage must extend for at least 6 months beyond the contract expiration.

9. Timber Sale Contract (7/18)

Additional conditions and requirements common to all timber sales are listed on the timber sale contract (R4031) and are available on line at www.michigan.gov/timber. Contact the Unit Manager for additional information or a sample contract. Within 21 days of the date of the award letter, the bidder must sign the contract and provide the required down payment, performance security, and verification of worker's disability compensation. The down payment and performance security shall be in accordance with the provisions of the timber sale contract, in the sums stated in this prospectus. If these actions are not taken, then the Bidder, the Bidder's corporation, and the corporation's principals may not be permitted to bid on State timber sales for a period of 3 months after the first offense, 6 months after the second offense, and 1 year after the third offense. An offense will only be counted against the Bidder for 5 years. In addition, the Bidder certifies that if awarded this contract, the Bidder will complete the timber sale contract in accordance with its terms and any modifications thereof including requirements to purchase, cut, and remove the included timber by the expiration date.

Payment Unit values in the State Forest Timber Sale Contract are calculated based on the advertised value of the Payment Unit as a percentage of the total advertised value of the contract. The advertised value of each Payment Unit is given in the Description of Timber by Payment Unit table on the Timber Sale Information page. For example, if the value of Payment Unit 1 is advertised as \$1,500 and the total Timber Sale value is advertised as \$10,000, the contract price for Payment Unit 1 will be 15% of the total bid price ($\$1,500/\$10,000 * 100$).

10. Disclaimer of Estimates and Bidder's Warranty of Inspection (7/16)

Before submitting this bid, the Bidder is advised and cautioned to inspect the sale area, review the requirements of the sale contract, and take other steps as may be reasonably necessary to ascertain the location, estimated volumes, construction estimates, and operating costs of the proposed sale. Failure to do so will not relieve the Bidder from responsibility for completing the contract.

The Bidder warrants that this bid is submitted solely on the basis of the Bidder's examination and inspection of the quality and quantity of the timber offered for sale and the Bidder's opinion of the value thereof and the costs of recovery. No reliance should be placed on the State of Michigan's estimates of timber quality, quantity or costs of recovery. Bidder further acknowledges that the State of Michigan: (i) expressly disclaims any warranty of fitness of timber for any purpose; (ii) offers this timber as is without any warranty of quality (merchantability) or quantity and (iii) expressly disclaims any warranty as to the quantity or quality of timber sold.

11. Certification and Chain-of-Custody (10/14)

Unless otherwise indicated in the contract under section 7 – Other Conditions of the Sale Specific Conditions & Requirements, the area encompassed by this timber sale is certified to the standards of the Forest Stewardship Council (FSC) - Certificate #SCS-FM/COC-00090N and the Sustainable Forestry Initiative (SFI) - Certificate #NSF-SFIS-5Y031-SF5. Forest products from this sale may be delivered to the mill as "FSC 100% and / or SFI certified" as long as the contractor hauling the forest products is chain-of-custody (COC) certified or covered under a COC certificate from the destination mill. The purchaser is responsible for maintaining COC after leaving the sale area.

12. Good Neighbor Authority (GNA) Requirements (7/16)

If the name of this timber sales contains the acronym GNA, it is authorized by the Good Neighbor Authority (GNA) and covered by various agreements between the U.S. Forest Service and the State. The timber sale occurs on federal land and the following conditions apply:

GNA contracts on US Forest Service land will not be awarded to purchasers on the Federal list of excluded parties. The System for Award Management (SAM) will be checked for active excluded parties prior to award of contract. In addition, the Bidder to whom award is made must complete an Assurance Regarding Felony Conviction or Tax Delinquent Status for Corporate Applicants (AD-3031).

13. Good Neighbor Authority (GNA) Requirements, con't (9/16)

Bidder certifies, by signing this bid form, that to the best of Bidder's knowledge that the following representations are accurate and complete.

- a. That the Bidder and its principals are not presently debarred, suspended, proposed for debarment, declared ineligible, or voluntary excluded from timber sales (covered transactions) by any Federal department or agency.
- b. That the Bidder and its principals have not within a 3-year period preceding this bid been convicted of or had a civil judgment rendered against them for commission of fraud or a criminal offense in connection with obtaining , attempting to obtain, or performing a public (Federal, State, or local) transaction or contract under a public transaction; violation of Federal or State antitrust statutes or commission of embezzlement, theft, forgery, bribery, falsification or destruction of records, making false statements, or receiving stolen property.
- c. That the Bidder and its principals are not presently indicted for or otherwise criminally or civilly charged by a governmental entity (Federal, State, or local) with commission of any of the offenses enumerated in paragraph b of this certification.
- d. That the Bidder and its principals have not within a 3-year period preceding this bid had one or more public transactions (Federal, State, or local) terminated for breach or default of a timber or forest product contract.

Bidders that cannot certify this requirement, in whole or in part, shall submit an explanation with their bid.

DAN EICHINGER
Director

TIMBER SALE INFORMATION

Bravo Pine (19-001-21)
 T01N, R15W, SEC. 4; T02N, R15W, SEC. 28; T02N, R15W, SEC. 33.
 Allegan County (Advertised Price \$56,232.05)

SALE NOTE: All units of volume listed for this sale were estimated using the Inventory Manager computer program and the new Michigan taper model.

Access may be through other public land.

A timber sale contract for this lump sum, sealed bid timber sale will be awarded to the responsible bidder offering the highest sealed bid price. All units of volume listed below were estimated using the Inventory Manager computer program and the new Michigan taper model. Bids must be at or above the following advertised price for each product and species:

| <u>PRODUCTS & SPECIES</u> | <u>ESTIMATED UNITS*</u> | <u>ADVERTISED PRICE</u> |
|-------------------------------|-------------------------|-------------------------|
| Sawtimber | | |
| Red Maple | 46.7 MBF | \$ 97.00 / MBF |
| Red Pine | 484.7 MBF | \$ 79.00 / MBF |
| Pulpwood | | |
| B. T. Aspen | 16 Cords | \$ 13.60 / Cord |
| Jack Pine | 32 Cords | \$ 9.65 / Cord |
| Mixed Hardwood | 202 Cords | \$ 11.90 / Cord |
| Red Pine | 321 Cords | \$ 32.65 / Cord |

* The total volume is statistically estimated within plus (+) or minus (-) 13.14 percent. There are an estimated 1,790 cords on this timber sale, plus or minus 235 cords at the 95% confidence level. The estimated units are final and not subject to adjustment. Prospective bidders are urged to examine this timber and to make their own estimates of quantity and quality.

BOND AND PAYMENT SCHEDULE:

1. A bond in the amount of \$2,812.00 to insure faithful performance of the conditions of the contract will be deposited by the successful bidder within 21 days of the sale award.
2. Cutting in any sale or unit without the required advance payment would be considered a trespass.
3. Total payment must be paid in advance or according to the following schedule :
 - (a) Ten percent (10%) of the sale value must be paid within 21 days of the sale award.
 - (b) The remainder is due before cutting begins.
 - (c) Payment for each of the following units must be made before cutting begins in that unit:

| PAYMENT UNIT NUMBER | PERCENT OF TOTAL SALE VALUE |
|---------------------|-----------------------------|
| 01 | 100.0% |
4. If no cutting takes place, the 10% down payment will not be refunded.
5. Operations on the contract issued will terminate on 03/01/2023.

SALE STATISTICS

Volumes were calculated in cubic feet using the Michigan taper model. Cubic foot volume includes all wood inside bark for the product indicated. For display purposes, cubic feet were converted to cords and MBF using a simple conversion factor, e.g. 79 cubic feet per cord and 185 cubic feet per MBF. The cubic foot volumes are precise; the cords and MBF volumes are not. Cubic foot volume cannot be directly converted to cords or boards with precision.

SALE VOLUMES

The total estimated sale volume may not equal the sum of the species/products due to the nature of statistical calculations associated with double sampling methodology.

| VOLUME | | STATISTICAL RANGE IN CORDS | | |
|------------------|-------------|----------------------------|---------|---------|
| TOTAL CUBIC FEET | TOTAL CORDS | PERCENT ERROR | MINIMUM | MAXIMUM |
| 141,430 | 1,790 | 13.14% | 1,555 | 2,026 |

VDU VOLUMES

A VDU is a Volume Determination Unit. Volumes and their associated statistics are calculated at the VDU level and summarized to the sale level. There is often a one to one relationship between a VDU and a Payment Unit, but not always, depending on the cruise design. Refer to the VDU TO PAYMENT UNIT table.

| VDU | VOLUME | | PERCENT ERROR | RANGE IN CORDS | |
|---------------|------------------|--------------|---------------|----------------|--------------|
| | TOTAL CUBIC FEET | TOTAL CORDS | | MINIMUM | MAXIMUM |
| 1 | 39,943 | 506 | 18.26% | 413 | 598 |
| 2 | 89,015 | 1,127 | 17.21% | 933 | 1,321 |
| TOTAL: | 128,958 | 1,632 | | 1,346 | 1,919 |

VDU TO PAYMENT UNIT

When a VDU is associated with more than one Payment Unit (PU), the VDU volumes are assigned to the PU based on acres of the VDU within the PU.

| VDU | VDU ACRES | PU | PU ACRES |
|---------------|-------------|----|-------------|
| 1 | 9.5 | 1 | 9.5 |
| 2 | 48.6 | 1 | 48.6 |
| TOTAL: | 58.1 | | 58.1 |

DESCRIPTION OF TIMBER BY PAYMENT UNIT (PU)

| PU | MARKET GROUP | PRODUCT | QUANTITY | UNIT | ACRES | ADVERTISE PRICE |
|---------------|------------------|-----------|----------|--------------|-------|-----------------|
| 1 | Red Maple | Sawtimber | 46.7 | MBF | 58.1 | \$56,232.05 |
| | Red Pine | | 484.7 | MBF | | |
| | B. T. Aspen | Pulpwood | 16 | Cords | | |
| | Jack Pine | | 32 | Cords | | |
| | Mixed Hardwood | | 202 | Cords | | |
| | <i>Red Maple</i> | | 176 | <i>Cords</i> | | |
| | <i>Sassafras</i> | | 26 | <i>Cords</i> | | |
| | Red Pine | | 321 | Cords | | |
| TOTAL: | | | 531.4 | MBF | | |
| TOTAL: | | | 571 | Cords | | |

Sale Specific Conditions & Requirements

Sale Name: Bravo Pine

Sale Number: 19-001-21 Seq#: 1

1 - Sale Area

1.2 - Boundaries

1.2.1 - Painted boundaries (9/19)

The sale boundary is marked and identified with red paint. The painted boundary line trees are not Included Timber and are to be protected.

2 - Timber Specifications

2.1 - Included Timber

2.1.5 - Overstory removal unit(s) (8/11)

Within Payment Unit(s) 1, all red pine, jack pine, scotch pine, spruce, aspen, and red maple trees which meet minimum piece specifications in 2.2 Utilization, are designated for cutting.

2.2 - Utilization

2.2.3 - Stump heights (4/07)

Stump heights within the Sale Area shall not exceed 12 inches for trees greater than 10 inches at DBH and 4 inches for trees smaller than 10 inches at DBH.

4 - Transportation

4.3 - Public Right-of-Way

4.3.2 - County R-O-W (12/06)

The county must be contacted prior to crossing or harvesting in the county road R-O-W.

4.4 - Access

4.4.3 - Access gate (12/08)

The access gate must be locked at the completion of each day unless otherwise approved by the Unit Manager or his/her representative.

5 - Operations

5.1 - Notification

5.1.1 - Pre-sale conference (10/16)

A pre-sale conference on site between the Purchaser and sale administrator is required prior to beginning any operations to determine landing and road locations.

5.2 - Conduct of Operations

5.2.2 - Hazard Trees/Snags

5.2.2.1 - Den trees (10/16)

Obvious hollow and/or den trees shall be protected and left standing unless they are a safety hazard.

5.2.3 - Operating Restrictions

5.2.3.4 - Oak wilt restriction, no exceptions (1/18)

Within Payment Unit(s) 1, cutting, skidding, hauling within the sale and brushing of access roads to the sale are not permitted during the period of April 15 to July 15. No exceptions will be granted. This is necessary to reduce the spread of oak wilt.

5.2.32 - Decking/landing restoration (9/13)

All decking and landing areas must have the surface area restored to a condition equal to or better than before. This is to

ensure the proper regeneration of the stand. Wood debris, chips, and "cookies" from trimmings must be removed or scattered away from landing and loading areas and may not be windrowed on the edge.

5.2.38 - No decking against live trees (2/04)

Cut products may not be decked against unmarked or designated leave trees.

5.4 - Soil Protection

5.4.1 - Rutting restriction, general (7/16)

Operations are to cease immediately if equipment and weather conditions result in rutting of roads and/or skid trails which is 12 inches or greater in depth and 50 feet in length. The Unit Manager or his/her representative may restrict hauling and/or skidding if ruts exceed the specified depth. With the Unit Manager or his/her representative's approval, the Purchaser may return to the area when the risk of rutting has decreased.

5.8 - Protection of Endangered Species

5.8.5 - Protection of raptor nests (3/13)

All trees with raptor nests will be protected if found during harvesting operations. Notification will be made to the Unit Manager or his/her representative who will notify the Wildlife Biologist so an on-site evaluation and recommendation can be made, if necessary.

6 - Safety and Fire Prevention

6.2 - Signing

6.2.1 - Road posting (10/20)

The Purchaser is responsible for posting and maintaining caution signs on adjacent roads prior to beginning operations. The road must be posted at appropriate distances from the Sale Area to warn of logging activity and truck traffic. Signs must be removed when harvest operations are suspended or completed. The Purchaser will provide these signs.

7 - Other Conditions

7.10 - Certified Timber

7.10.1 - Non-certified timber (2/16)

The area encompassed by this timber sale is not certified to the standards of the Forest Stewardship Council (FSC) or the Sustainable Forestry Initiative (SFI). Forest products from this sale may not be delivered to the mill as "FSC and / or SFI certified". The lands within this sale are managed as a State Game Area.



TIMBER SALE MAP

This information provided by authority of Part 525, 1994 PA 451, as amended.

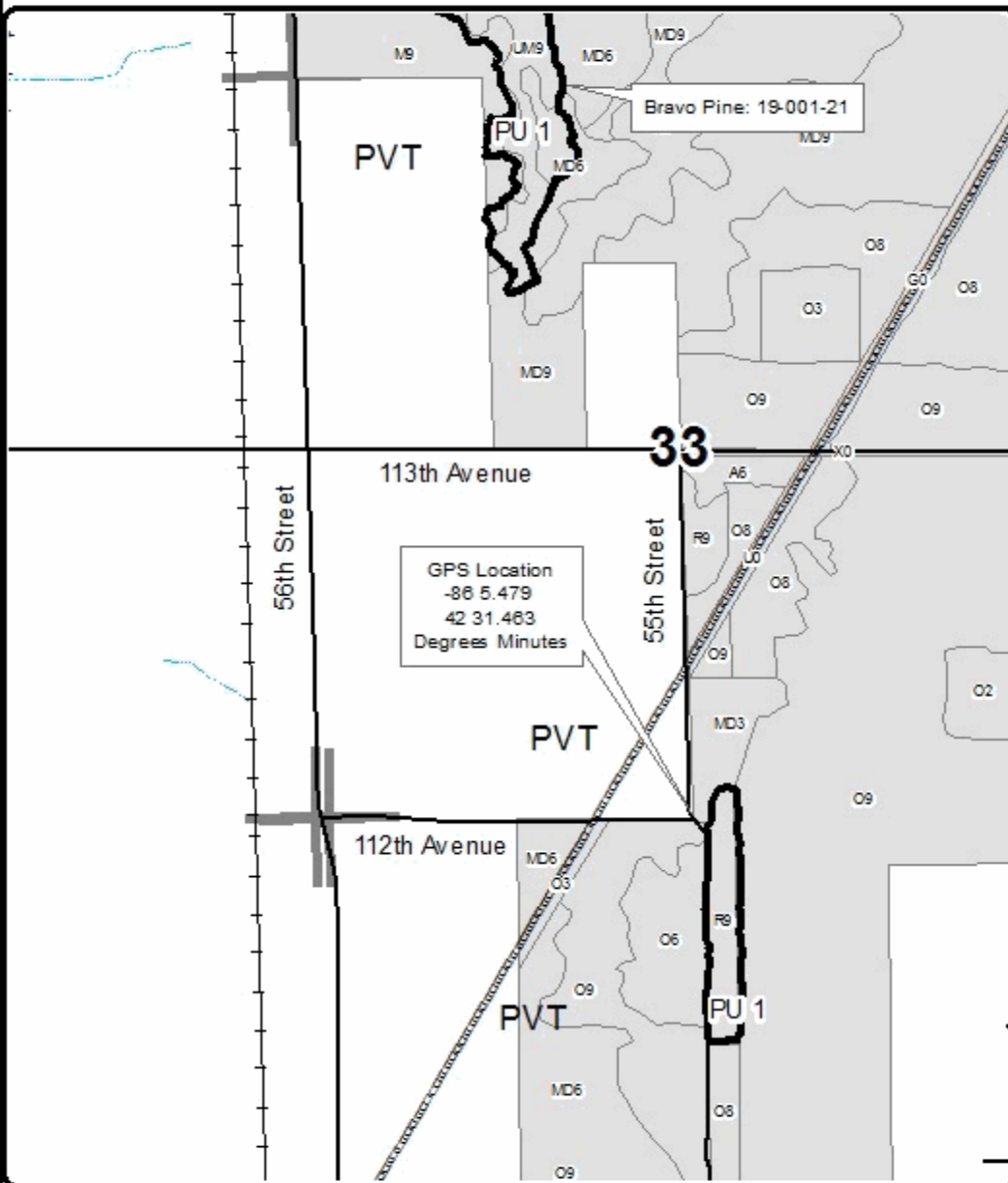
| | |
|-------------|------|
| Sale Number | Year |
| 19-001 | 21 |

| | | | | | |
|-----------------------------------|-------------------|---|--------------------|-----------|---------|
| Forest Management Unit Allegan | County Allegan | Mapped By J. Brammer | Date 09/23/2021 | Page 2 | of 2 |
| Township 01N,02N | Range 15W | Section(s) and Subdivision(s) Sections 4,28,33 | Scale 1:15,840 | | |

| Cover Type | | | | Density | |
|---------------------|----------------------|-------------------------|-------------------|-----------------------------|------------------------|
| A = Aspen | H = Hemlock | N = Marsh | U = Upland Brush | 0 = Non Stocked | 5 = Pole Timber Medium |
| D = Paper Birch | J = Jack Pine | O = Oak | UM = Upland Mixed | 1 = Seedling Sapling Poor | 6 = Pole Timber Well |
| C = Cedar | L = Lowland Brush | P = Lowland Poplar | V = Bog or Marsh | 2 = Seedling Sapling Medium | 7 = Saw Timber Poor |
| D = Treed Bog | LM = Lowland Mixed | Q = Mixed Swamp Conifer | W = White Pine | 3 = Seedling Sapling Well | 8 = Saw Timber Medium |
| E = Swamp Hardwoods | M = Mpl. Dec. Dec. | R = Red Pine | X = Non Stocked | 4 = Pole Timber Poor | 9 = Saw Timber Well |
| F = Spruce Fir | MC = Mixed Conifer | S = Black Spruce | Z = Water | | |
| G = Grass | MD = Mixed Deciduous | T = Tamarack | | | |

| PU | Acres |
|----|-------|
| 1 | 58.1 |

Bravo Pine
58.1 Acres
Compartment 19

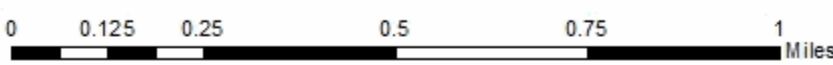


Legend

- Timber Sale Area (Red & Blue Paint)
- Road
- Stand Boundaries
- State Game Area
- Intermittent Stream



QR code opens map in Avenza App.



TIMBER SALE INFORMATION

Pullman Sale (19-002-21)

T01N, R15W, SEC. 4.

Allegan County (Advertised Price \$61,588.40)

SALE NOTE: All units of volume listed for this sale were estimated using the Inventory Manager computer program and the new Michigan taper model.

Access may be through other public land.

A timber sale contract for this lump sum, sealed bid timber sale will be awarded to the responsible bidder offering the highest sealed bid price. All units of volume listed below were estimated using the Inventory Manager computer program and the new Michigan taper model. Bids must be at or above the following advertised price for each product and species:

| <u>PRODUCTS & SPECIES</u> | <u>ESTIMATED UNITS*</u> | <u>ADVERTISED PRICE</u> |
|-------------------------------|-------------------------|-------------------------|
| Sawtimber | | |
| B. T. Aspen | 18.5 MBF | \$ 86.00 / MBF |
| Bl/R/Hybrid Oak | 235.1 MBF | \$ 124.00 / MBF |
| Red Maple | 1.9 MBF | \$ 97.00 / MBF |
| Red Pine | 142.1 MBF | \$ 81.00 / MBF |
| White Oak | 70.8 MBF | \$ 73.00 / MBF |
| Pulpwood | | |
| B. T. Aspen | 223 Cords | \$ 13.65 / Cord |
| Mixed Hardwood | 211 Cords | \$ 11.85 / Cord |
| Mixed Oak | 436 Cords | \$ 12.90 / Cord |
| Red Pine | 85 Cords | \$ 33.10 / Cord |

* The total volume is statistically estimated within plus (+) or minus (-) 9.18 percent. There are an estimated 2,083 cords on this timber sale, plus or minus 191 cords at the 95% confidence level. The estimated units are final and not subject to adjustment. Prospective bidders are urged to examine this timber and to make their own estimates of quantity and quality.

BOND AND PAYMENT SCHEDULE:

- A bond in the amount of \$3,079.00 to insure faithful performance of the conditions of the contract will be deposited by the successful bidder within 21 days of the sale award.
- Cutting in any sale or unit without the required advance payment would be considered a trespass.
- Total payment must be paid in advance or according to the following schedule :
 - Ten percent (10%) of the sale value must be paid within 21 days of the sale award.
 - The 10% down payment will be credited towards the first unit cut.
 - Payment for each of the following units must be made before cutting begins in that unit:

| PAYMENT UNIT NUMBER | PERCENT OF TOTAL SALE VALUE |
|---------------------|-----------------------------|
| 01 | 66.5% |
| 02 | 33.5% |
- If no cutting takes place, the 10% down payment will not be refunded.
- Operations on the contract issued will terminate on 03/01/2023.

SALE STATISTICS

Volumes were calculated in cubic feet using the Michigan taper model. Cubic foot volume includes all wood inside bark for the product indicated. For display purposes, cubic feet were converted to cords and MBF using a simple conversion factor, e.g. 79 cubic feet per cord and 185 cubic feet per MBF. The cubic foot volumes are precise; the cords and MBF volumes are not. Cubic foot volume cannot be directly converted to cords or boards with precision.

SALE VOLUMES

The total estimated sale volume may not equal the sum of the species/products due to the nature of statistical calculations associated with double sampling methodology.

| VOLUME | | STATISTICAL RANGE IN CORDS | | |
|------------------|-------------|----------------------------|---------|---------|
| TOTAL CUBIC FEET | TOTAL CORDS | PERCENT ERROR | MINIMUM | MAXIMUM |
| 164,563 | 2,083 | 9.18% | 1,892 | 2,274 |

VDU VOLUMES

A VDU is a Volume Determination Unit. Volumes and their associated statistics are calculated at the VDU level and summarized to the sale level. There is often a one to one relationship between a VDU and a Payment Unit, but not always, depending on the cruise design. Refer to the VDU TO PAYMENT UNIT table.

| VDU | VOLUME | | PERCENT ERROR | RANGE IN CORDS | |
|---------------|------------------|--------------|---------------|----------------|--------------|
| | TOTAL CUBIC FEET | TOTAL CORDS | | MINIMUM | MAXIMUM |
| 1 | 6,229 | 79 | 42.86% | 45 | 113 |
| 2 | 38,968 | 493 | 23.01% | 380 | 607 |
| 3 | 56,902 | 720 | 12.75% | 628 | 812 |
| 4 | 2,355 | 30 | 42.86% | 17 | 43 |
| 5 | 44,928 | 569 | 16.65% | 474 | 663 |
| TOTAL: | 149,382 | 1,891 | | 1,544 | 2,237 |

VDU TO PAYMENT UNIT

When a VDU is associated with more than one Payment Unit (PU), the VDU volumes are assigned to the PU based on acres of the VDU within the PU.

| VDU | VDU ACRES | PU | PU ACRES |
|---------------|-------------|----|-------------|
| 1 | 4.2 | 2 | 4.2 |
| 2 | 12.8 | 1 | 12.8 |
| 3 | 35.0 | 1 | 0.1 |
| | | 2 | 34.9 |
| 4 | 3.6 | 2 | 3.6 |
| 5 | 26.4 | 1 | 26.4 |
| TOTAL: | 82.0 | | 82.0 |

DESCRIPTION OF TIMBER BY PAYMENT UNIT (PU)

| PU | MARKET GROUP | PRODUCT | QUANTITY | UNIT | ACRES | ADVERTISE PRICE | | | | | |
|------------------------|------------------------|-----------|----------|-----------------|-------|-----------------|--------------|------|-----|------|-------------|
| 1 | BI/R/Hybrid Oak | Sawtimber | 173.7 | MBF | 39.3 | \$40,979.95 | | | | | |
| | Red Pine | | 142.1 | MBF | | | | | | | |
| | White Oak | | 13.2 | MBF | | | | | | | |
| | B. T. Aspen | | Pulpwood | 57 | | | Cords | | | | |
| | Mixed Hardwood | | | 16 | | | Cords | | | | |
| | <i>Red Maple</i> | | | 8 | | | <i>Cords</i> | | | | |
| | <i>Sassafras</i> | | | 8 | | | <i>Cords</i> | | | | |
| | Mixed Oak | | | 247 | | | Cords | | | | |
| | <i>BI/R/Hybrid Oak</i> | | | 219 | | | <i>Cords</i> | | | | |
| | <i>White Oak</i> | | | 28 | | | <i>Cords</i> | | | | |
| | Red Pine | | | 85 | | | Cords | | | | |
| | 2 | | | B. T. Aspen | | | Sawtimber | 18.5 | MBF | 42.7 | \$20,608.45 |
| | | | | BI/R/Hybrid Oak | | | | 61.4 | MBF | | |
| Red Maple | | 1.9 | MBF | | | | | | | | |
| White Oak | | 57.6 | MBF | | | | | | | | |
| B. T. Aspen | | Pulpwood | 166 | Cords | | | | | | | |
| Mixed Hardwood | | | 195 | Cords | | | | | | | |
| <i>Red Maple</i> | | | 56 | <i>Cords</i> | | | | | | | |
| <i>Sassafras</i> | | | 139 | <i>Cords</i> | | | | | | | |
| Mixed Oak | | | 189 | Cords | | | | | | | |
| <i>BI/R/Hybrid Oak</i> | | | 110 | <i>Cords</i> | | | | | | | |
| <i>White Oak</i> | | | 79 | <i>Cords</i> | | | | | | | |
| TOTAL: | | | 468.4 | MBF | | | | | | | |
| TOTAL: | | | 955 | Cords | | | | | | | |

Sale Specific Conditions & Requirements

Sale Name: Pullman Sale

Sale Number: 19-002-21 Seq#: 1

1 - Sale Area

1.2 - Boundaries

1.2.1 - Painted boundaries (9/19)

The sale boundary and Payment Unit boundaries are marked and identified by blue, red, and yellow paint. Exterior sale boundary lines against private property are marked with blue paint. Exterior sale boundary lines against state are marked with red paint. Interior Payment Unit boundaries are marked with yellow paint. The painted boundary line trees are not Included Timber and are to be protected. Yellow painted trees designating an interior Payment Unit boundary are only to be cut when all surrounding Payment Units have been paid.

2 - Timber Specifications

2.1 - Included Timber

2.1.5 - Overstory removal unit(s) (8/11)

Within Payment Unit(s) 1, all trees which meet minimum piece specifications in 2.2 Utilization, are designated for cutting, except white pine, beech, oak with a DBH less than 10 inches, and trees marked with green paint.

2.1.7 - Leave tree marked unit(s) (6/14)

Within Payment Unit(s) 2, cut all trees that are two (2) inches or more at DBH , except white pine, beech, and trees marked with green paint above and below stump height.

Within the smaller, separate stand of this Payment Unit that is SW of the utility line along 50th Street and shown on the Timber Sale Map, take whatever down timber is salvageable.

2.2 - Utilization

2.2.3 - Stump heights (4/07)

Stump heights within the Sale Area shall not exceed 12 inches for trees greater than 10 inches at DBH and 4 inches for trees smaller than 10 inches at DBH.

4 - Transportation

4.2 - Maintenance

4.2.5 - Two wheel drive condition (2/04)

All existing trail roads on and adjacent to the sale area must be passable by two-wheel drive traffic for the duration of the sale.

4.3 - Public Right-of-Way

4.3.2 - County R-O-W (12/06)

The county must be contacted prior to crossing or harvesting in the county road R-O-W.

5 - Operations

5.1 - Notification

5.1.6 - Utility R.O.W. (4/19)

It is the responsibility of the Purchaser to obtain permission from the utility company to utilize the gas and/or power line R.O.W. for operations.

5.2 - Conduct of Operations

5.2.1 - Slash

5.2.1.2 - Slash Removal

5.2.1.2.1 - Slash removal, right-of-way (9/16)

All slash must be removed at least 10 feet from the cleared right-of-way of roads and utility lines.

5.2.1.10 - No slash in openings (5/10)

No brush or logging debris is to be left in the maintained wildlife opening which is indicated by G0 on the Timber Sale Map. Any damage to the opening shall be repaired according to specifications of the Unit Manager or his/her representative.

5.2.1.12 - Slash for prescribed burning (1/05)

To facilitate prescribed burning, slash shall be moved at least 10 feet inside the sale boundary. Slash cannot be piled or placed near residual trees.

5.2.2 - Hazard Trees/Snags

5.2.2.1 - Den trees (10/16)

Obvious hollow and/or den trees shall be protected and left standing unless they are a safety hazard.

5.2.3 - Operating Restrictions

5.2.3.4 - Oak wilt restriction, no exceptions (1/18)

Within Payment Unit(s) 1 and 2, cutting, skidding, hauling within the sale and brushing of access roads to the sale are not permitted during the period of April 15 to July 15. No exceptions will be granted. This is necessary to reduce the spread of oak wilt.

5.2.32 - Decking/landing restoration (9/13)

All decking and landing areas must have the surface area restored to a condition equal to or better than before. This is to ensure the proper regeneration of the stand. Wood debris, chips, and "cookies" from trimmings must be removed or scattered away from landing and loading areas and may not be windrowed on the edge.

5.2.38 - No decking against live trees (2/04)

Cut products may not be decked against unmarked or designated leave trees.

5.8 - Protection of Endangered Species

5.8.5 - Protection of raptor nests (3/13)

All trees with raptor nests will be protected if found during harvesting operations. Notification will be made to the Unit Manager or his/her representative who will notify the Wildlife Biologist so an on-site evaluation and recommendation can be made, if necessary.

6 - Safety and Fire Prevention

6.2 - Signing

6.2.1 - Road posting (10/20)

The Purchaser is responsible for posting and maintaining caution signs on nearby roads prior to beginning operations. The road must be posted at appropriate distances from the Sale Area to warn of logging activity and truck traffic. Signs must be removed when harvest operations are suspended or completed. The Purchaser will provide these signs.

7 - Other Conditions

7.5 - Loss

7.5.1 - Deteriorating timber (7/09)

The sale area has received damage from other wildlife treatments. The Purchaser should harvest the wood as soon as possible. The Department of Natural Resources is held free of responsibility of any further damage or deterioration due to delay in harvesting. This area is concentrated in Payment Unit 2 within the smaller separate parcel that is SW of the Utility Line.

7.10 - Certified Timber

7.10.1 - Non-certified timber (2/16)

The area encompassed by this timber sale is not certified to the standards of the Forest Stewardship Council (FSC) or the Sustainable Forestry Initiative (SFI). Forest products from this sale may not be delivered to the mill as "FSC and / or SFI

certified". The lands within this sale are managed as a State Game Area.



TIMBER SALE MAP

This information provided by authority of Part 525, 1994 PA 451, as amended.

| | |
|-------------|------|
| Sale Number | Year |
| 19-002 | 21 |

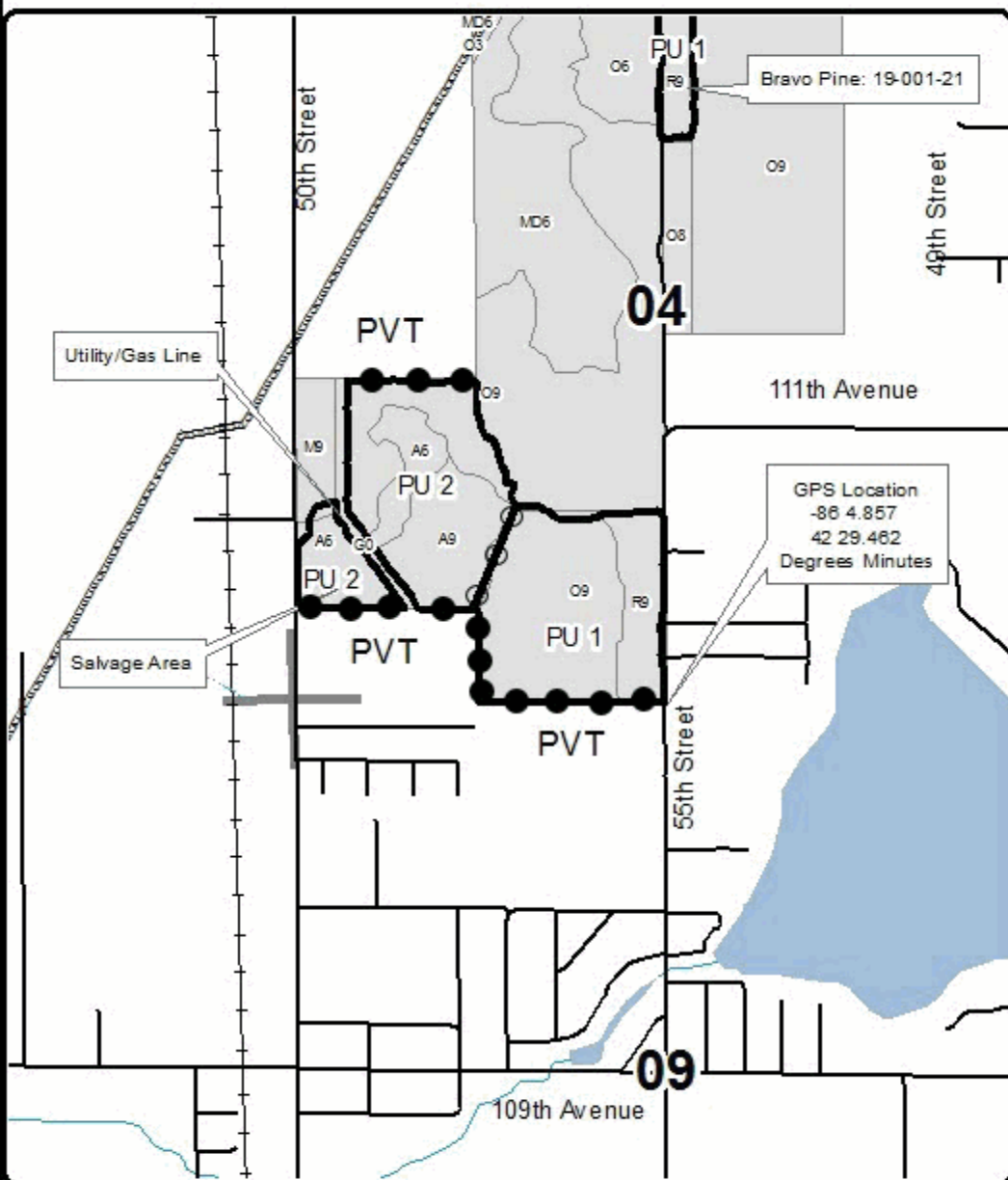
| | | | | | |
|-----------------------------------|-------------------|---|--------------------|-----------|---------|
| Forest Management Unit Allegan | County Allegan | Mapped By J. Bramer | Date 09/10/2021 | Page 1 | of 1 |
| Township 01N | Range 15W | Section(s) and Subdivision(s) Sections 4 | Scale 1:15,840 | | |
| Cruised By J. Bramer | | | | | |

| Cover Type | | | | Density | |
|-------------------|----------------------|-------------------------|-------------------|-----------------------------|------------------------|
| A = Aspen | H = Hemlock | N = Marsh | U = Upland Brush | 0 = Non Stocked | 5 = Pole Timber Medium |
| D = Paper Birch | J = Jack Pine | O = Oak | UM = Upland Mixed | 1 = Seedling Sapling Poor | 6 = Pole Timber Well |
| C = Cedar | L = Lowland Brush | P = Lowland Poplar | V = Bog or Marsh | 2 = Seedling Sapling Medium | 7 = Saw Timber Poor |
| D = Treed Bog | LM = Lowland Mixed | Q = Mixed Swamp Conifer | W = White Pine | 3 = Seedling Sapling Well | 8 = Saw Timber Medium |
| E = Swamp Hdwoods | M = Mpl. Dec. Decid | R = Red Pine | X = Non Stocked | 4 = Pole Timber Poor | 9 = Saw Timber Well |
| F = Spruce Fir | MC = Mixed Conifer | S = Black Spruce | Z = Water | | |
| G = Grass | MD = Mixed Deciduous | T = Tamarack | | | |

PU Acres
 1 39.3
 2 42.7

Pullman Sale

82 Acres
 Compartment 19

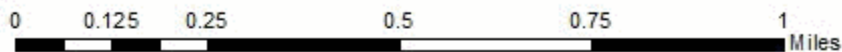


Legend

- Boundaries Against State (Red)
- Boundaries Against Private (Blue)
- Interior Payment Boundaries (Yellow)
- Road
- Stand Boundaries
- State Game Area
- Perennial River
- Lakes and Rivers



QR code opens map in Avenza App.



TIMBER SALE INFORMATION

108th and 49th Oak (19-003-21)
 T01N, R15W, SEC. 1; T01N, R15W, SEC. 11.
 Allegan County (Advertised Price \$102,165.30)

SALE NOTE: All units of volume listed for this sale were estimated using the Inventory Manager computer program and the new Michigan taper model.

Access may be through other public land.

A timber sale contract for this lump sum, sealed bid timber sale will be awarded to the responsible bidder offering the highest sealed bid price. All units of volume listed below were estimated using the Inventory Manager computer program and the new Michigan taper model. Bids must be at or above the following advertised price for each product and species:

| <u>PRODUCTS & SPECIES</u> | <u>ESTIMATED UNITS*</u> | <u>ADVERTISED PRICE</u> |
|-------------------------------|-------------------------|-------------------------|
| Sawtimber | | |
| BI/R/Hybrid Oak | 689.7 MBF | \$ 124.00 / MBF |
| Black Cherry | 14.5 MBF | \$ 148.00 / MBF |
| Red Maple | 18.5 MBF | \$ 97.00 / MBF |
| White Oak | 76.5 MBF | \$ 73.00 / MBF |
| Pulpwood | | |
| Mixed Hardwood | 91 Cords | \$ 11.85 / Cord |
| Mixed Oak | 489 Cords | \$ 12.35 / Cord |

* The total volume is statistically estimated within plus (+) or minus (-) 8.98 percent. There are an estimated 2,423 cords on this timber sale, plus or minus 218 cords at the 95% confidence level. The estimated units are final and not subject to adjustment. Prospective bidders are urged to examine this timber and to make their own estimates of quantity and quality.

BOND AND PAYMENT SCHEDULE:

1. A bond in the amount of \$5,108.00 to insure faithful performance of the conditions of the contract will be deposited by the successful bidder within 21 days of the sale award.
2. Cutting in any sale or unit without the required advance payment would be considered a trespass.
3. Total payment must be paid in advance or according to the following schedule :
 - (a) Ten percent (10%) of the sale value must be paid within 21 days of the sale award.
 - (b) The 10% down payment will be credited towards the first unit cut.
 - (c) Payment for each of the following units must be made before cutting begins in that unit:

| PAYMENT UNIT NUMBER | PERCENT OF TOTAL SALE VALUE |
|---------------------|-----------------------------|
| 01 | 44.4% |
| 02 | 55.6% |
4. If no cutting takes place, the 10% down payment will not be refunded.
5. Operations on the contract issued will terminate on 03/01/2023.

SALE STATISTICS

Volumes were calculated in cubic feet using the Michigan taper model. Cubic foot volume includes all wood inside bark for the product indicated. For display purposes, cubic feet were converted to cords and MBF using a simple conversion factor, e.g. 79 cubic feet per cord and 185 cubic feet per MBF. The cubic foot volumes are precise; the cords and MBF volumes are not. Cubic foot volume cannot be directly converted to cords or boards with precision.

SALE VOLUMES

The total estimated sale volume may not equal the sum of the species/products due to the nature of statistical calculations associated with double sampling methodology.

| VOLUME | | STATISTICAL RANGE IN CORDS | | |
|------------------|-------------|----------------------------|---------|---------|
| TOTAL CUBIC FEET | TOTAL CORDS | PERCENT ERROR | MINIMUM | MAXIMUM |
| 191,428 | 2,423 | 8.98% | 2,205 | 2,641 |

VDU VOLUMES

A VDU is a Volume Determination Unit. Volumes and their associated statistics are calculated at the VDU level and summarized to the sale level. There is often a one to one relationship between a VDU and a Payment Unit, but not always, depending on the cruise design. Refer to the VDU TO PAYMENT UNIT table.

| VDU | VOLUME | | PERCENT ERROR | RANGE IN CORDS | |
|---------------|------------------|--------------|---------------|----------------|--------------|
| | TOTAL CUBIC FEET | TOTAL CORDS | | MINIMUM | MAXIMUM |
| 1 | 11,730 | 148 | 45.64% | 81 | 216 |
| 2 | 71,186 | 901 | 11.28% | 799 | 1,003 |
| 3 | 20,553 | 260 | 23.90% | 198 | 322 |
| 4 | 68,672 | 869 | 16.02% | 730 | 1,008 |
| TOTAL: | 172,141 | 2,179 | | 1,808 | 2,550 |

VDU TO PAYMENT UNIT

When a VDU is associated with more than one Payment Unit (PU), the VDU volumes are assigned to the PU based on acres of the VDU within the PU.

| VDU | VDU ACRES | PU | PU ACRES |
|---------------|-------------|----|-------------|
| 1 | 5.9 | 1 | 5.9 |
| 2 | 28.6 | 1 | 28.6 |
| 3 | 8.4 | 2 | 8.4 |
| 4 | 38.1 | 2 | 38.1 |
| TOTAL: | 81.0 | | 81.0 |

DESCRIPTION OF TIMBER BY PAYMENT UNIT (PU)

| PU | MARKET GROUP | PRODUCT | QUANTITY | UNIT | ACRES | ADVERTISE PRICE |
|---------------|------------------------|-----------|----------|--------------|-------|-----------------|
| 1 | BI/R/Hybrid Oak | Sawtimber | 260.7 | MBF | 34.5 | \$45,371.40 |
| | Black Cherry | | 14.5 | MBF | | |
| | Red Maple | | 18.5 | MBF | | |
| | White Oak | | 71.2 | MBF | | |
| | Mixed Hardwood | Pulpwood | 91 | Cords | | |
| | <i>Black Cherry</i> | | 15 | <i>Cords</i> | | |
| | <i>Red Maple</i> | | 76 | <i>Cords</i> | | |
| | Mixed Oak | | 229 | Cords | | |
| | <i>BI/R/Hybrid Oak</i> | | 154 | <i>Cords</i> | | |
| | <i>White Oak</i> | | 75 | <i>Cords</i> | | |
| 2 | BI/R/Hybrid Oak | Sawtimber | 429.0 | MBF | 46.5 | \$56,793.90 |
| | White Oak | | 5.3 | MBF | | |
| | Mixed Oak | Pulpwood | 260 | Cords | | |
| | <i>BI/R/Hybrid Oak</i> | | 240 | <i>Cords</i> | | |
| | <i>White Oak</i> | | 20 | <i>Cords</i> | | |
| TOTAL: | | | 799.2 | MBF | | |
| TOTAL: | | | 580 | Cords | | |

Sale Specific Conditions & Requirements

Sale Name: 108th and 49th Oak

Sale Number: 19-003-21 Seq#: 1

1 - Sale Area

1.2 - Boundaries

1.2.1 - Painted boundaries (9/19)

The sale boundary and Payment Unit boundaries are marked and identified by blue and red paint. Exterior sale boundary lines against private property are marked with blue paint. Exterior sale boundary lines against state are marked with red paint.

2 - Timber Specifications

2.1 - Included Timber

2.1.7 - Leave tree marked unit(s) (6/14)

Within Payment Unit(s) 1 and 2, cut all aspen, red maple, black cherry, and sassafras that are two (2) inches or more at DBH, and cut all oak over 10 inches or more at DBH, except oak marked with green paint above and below stump height.

2.2 - Utilization

2.2.3 - Stump heights (4/07)

Stump heights within the Sale Area shall not exceed 12 inches for trees greater than 10 inches at DBH and 4 inches for trees smaller than 10 inches at DBH.

4 - Transportation

4.1 - Construction

4.1.12 - No new roads (1/12)

No new roads will be permitted in any Payment Unit. All operations are limited to existing roads. Skid trails only will be allowed.

4.2 - Maintenance

4.2.5 - Two wheel drive condition (2/04)

All existing trail roads on and adjacent to the sale area must be passable by two-wheel drive traffic for the duration of the sale.

4.3 - Public Right-of-Way

4.3.2 - County R-O-W (12/06)

The county must be contacted prior to crossing or harvesting in the county road R-O-W.

5 - Operations

5.1 - Notification

5.1.1 - Pre-sale conference (10/16)

A pre-sale conference on site between the Purchaser and sale administrator is required prior to beginning any operations to determine landing and road locations. The Unit Manager or his/her representative must be contacted at least 10 days in advance to schedule the conference.

5.1.3 - Well heads and natural gas pipelines (11/15)

The Purchaser is responsible for contacting the gas or pipeline company prior to operating equipment in the vicinity of well heads or natural gas pipelines.

5.1.4 - Post-sale conference (10/16)

A post-sale conference on site between the Purchaser and sale administrator is required 5 days prior to the completion of active logging operations to determine clean-up and repair of landings, road edges, and the fulfillment of other contract specifications.

5.1.6 - Utility R.O.W. (4/19)

It is the responsibility of the Purchaser to obtain permission from the utility company to utilize the power line R.O.W. for operations.

5.2 - Conduct of Operations

5.2.1 - Slash

5.2.1.2 - Slash Removal

5.2.1.2.1 - Slash removal, right-of-way (9/16)

All slash must be removed at least 10 feet from the cleared right-of-way of county roads and utility lines.

5.2.1.10 - No slash in openings (5/10)

No brush or logging debris is to be left in the maintained wildlife opening which is indicated by G0 on the Timber Sale Map. Any damage to the opening shall be repaired according to specifications of the Unit Manager or his/her representative.

5.2.1.12 - Slash for prescribed burning (1/05)

To facilitate prescribed burning, slash shall be moved at least 10 feet inside the sale boundary. Slash cannot be piled or placed near residual trees.

5.2.2 - Hazard Trees/Snags

5.2.2.1 - Den trees (10/16)

Obvious hollow and/or den trees shall be protected and left standing unless they are a safety hazard.

5.2.3 - Operating Restrictions

5.2.3.4 - Oak wilt restriction, no exceptions (1/18)

Within Payment Unit(s) 1 and 2, cutting, skidding, hauling within the sale and brushing of access roads to the sale are not permitted during the period of April 15 to July 15. No exceptions will be granted. This is necessary to reduce the spread of oak wilt.

5.2.32 - Decking/landing restoration (9/13)

All decking and landing areas must have the surface area restored to a condition equal to or better than before. This is to ensure the proper regeneration of the stand. Wood debris, chips, and "cookies" from trimmings must be removed or scattered away from landing and loading areas and may not be windrowed on the edge.

5.2.38 - No decking against live trees (2/04)

Cut products may not be decked against unmarked or designated leave trees.

5.4 - Soil Protection

5.4.1 - Rutting restriction, general (7/16)

Operations are to cease immediately if equipment and weather conditions result in rutting of roads and/or skid trails which is 12 inches or greater in depth and 50 feet in length. The Unit Manager or his/her representative may restrict hauling and/or skidding if ruts exceed the specified depth. With the Unit Manager or his/her representative's approval, the Purchaser may return to the area when the risk of rutting has decreased.

5.8 - Protection of Endangered Species

5.8.5 - Protection of raptor nests (3/13)

All trees with raptor nests will be protected if found during harvesting operations. Notification will be made to the Unit Manager or his/her representative who will notify the Wildlife Biologist so an on-site evaluation and recommendation can be made, if necessary.

6 - Safety and Fire Prevention

6.2 - Signing

6.2.1 - Road posting (10/20)

The Purchaser is responsible for posting and maintaining caution signs on adjacent roads prior to beginning operations. The road must be posted at appropriate distances from the Sale Area to warn of logging activity and truck traffic. Signs must be removed when harvest operations are suspended or completed. The Purchaser will provide these signs.

7 - Other Conditions

7.10 - Certified Timber

7.10.1 - Non-certified timber (2/16)

The area encompassed by this timber sale is not certified to the standards of the Forest Stewardship Council (FSC) or the Sustainable Forestry Initiative (SFI). Forest products from this sale may not be delivered to the mill as "FSC and / or SFI certified". The lands within this sale are managed as a State Game Area.



TIMBER SALE MAP

This information provided by authority of Part 525, 1994 PA 451, as amended.

| | |
|-------------|------|
| Sale Number | Year |
| 19-003 | 21 |

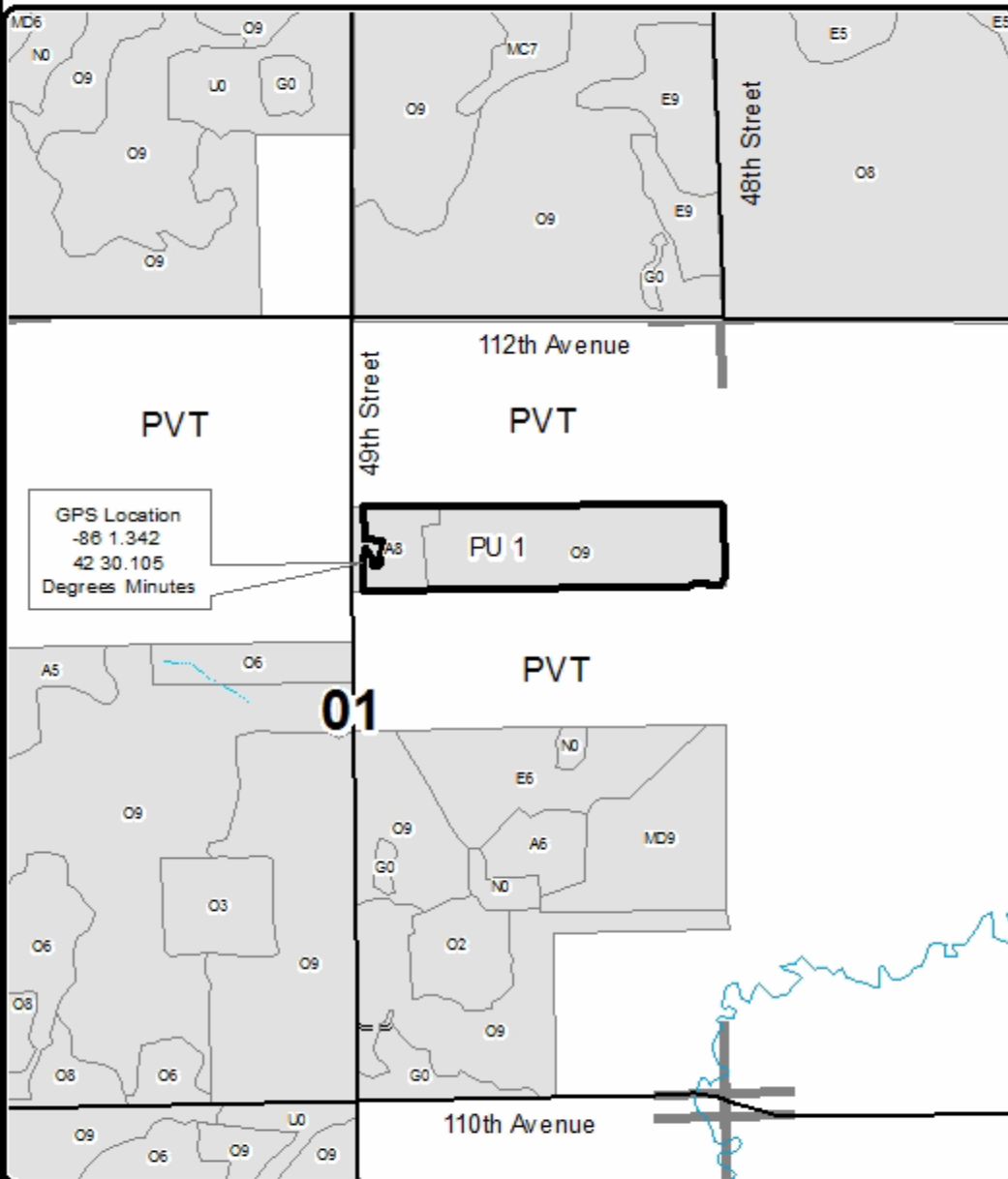
| | | | | | |
|-----------------------------------|-------------------|---|--------------------|-----------|---------|
| Forest Management Unit Allegan | County Allegan | Mapped By J. Bramer | Date 09/10/2021 | Page 1 | of 3 |
| Township 01N | Range 15W | Section(s) and Subdivision(s) Sections 1, 11 | Scale 1:15,840 | | |

| Cover Type | | | | Density | |
|-------------------|----------------------|-------------------------|-------------------|-----------------------------|------------------------|
| A = Aspen | H = Hemlock | N = Marsh | U = Upland Brush | 0 = Non Stocked | 5 = Pole Timber Medium |
| D = Paper Birch | J = Jack Pine | O = Oak | UM = Upland Mixed | 1 = Seedling Sapling Poor | 6 = Pole Timber Well |
| C = Cedar | L = Lowland Brush | P = Lowland Poplar | V = Bog or Marsh | 2 = Seedling Sapling Medium | 7 = Saw Timber Poor |
| D = Tread Bog | LM = Lowland Mixed | Q = Mixed Swamp Conifer | W = White Pine | 3 = Seedling Sapling Well | 8 = Saw Timber Medium |
| E = Swamp Hdwoods | M = Mpl. Och. Birch | R = Red Pine | X = Non Stocked | 4 = Pole Timber Poor | 9 = Saw Timber Well |
| F = Spruce Fir | MC = Mixed Conifer | S = Black Spruce | Z = Water | | |
| G = Grass | MD = Mixed Deciduous | T = Tamarack | | | |

108th and 49th Oak

PU Acres
1 34.5
2 46.5

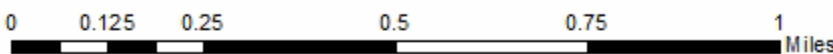
81 Acres
Compartment 19



GPS Location
 -86 1.342
 42 30.105
 Degrees Minutes

Legend

- Timber Sale Area (Red & Blue Paint)
- DNR - Forest Access Route
- Road
- Stand Boundaries
- State Game Area
- Perennial River





TIMBER SALE MAP

This information provided by authority of Part 525, 1994 PA 451, as amended.

| | |
|-------------|------|
| Sale Number | Year |
| 19-003 | 21 |

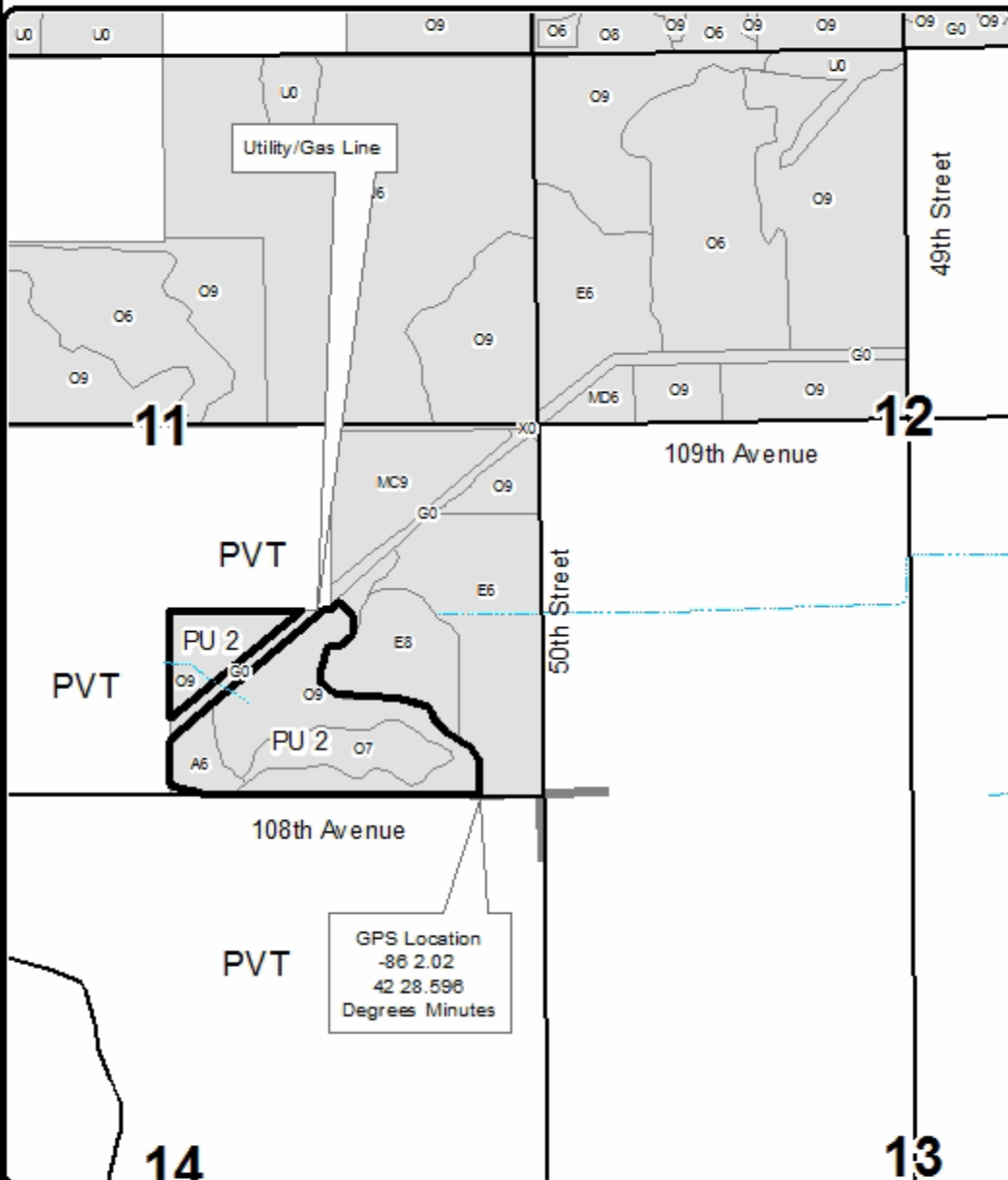
| | | | | | |
|-----------------------------------|-------------------|---|--------------------|-----------|---------|
| Forest Management Unit Allegan | County Allegan | Mapped By J. Bramer | Date 09/10/2021 | Page 2 | of 3 |
| Township 01N | Range 15W | Section(s) and Subdivision(s) Sections 1, 11 | Scale 1:15,840 | | |

| Cover Type | | | | Density | |
|---------------------|----------------------|-----------------------------|-------------------|-----------------------------|------------------------|
| A = Aspen | H = Hemlock | N = Marsh | U = Upland Brush | 0 = Non Stocked | 5 = Pole Timber Medium |
| D = Paper Birch | J = Jack Pine | O = Oak | UM = Upland Mixed | 1 = Seedling Sapling Poor | 6 = Pole Timber Well |
| C = Cedar | L = Lowland Brush | P = Lowland Poplar | V = Bog or Marsh | 2 = Seedling Sapling Medium | 7 = Saw Timber Poor |
| D = Tread Bog | LM = Lowland Mixed | Q = Mixed Swampland Conifer | W = White Pine | 3 = Seedling Sapling Well | 8 = Saw Timber Medium |
| E = Swamp Hardwoods | M = Mpl. Dec. Birch | R = Red Pine | X = Non Stocked | 4 = Pole Timber Poor | 9 = Saw Timber Well |
| F = Spruce Fir | MC = Mixed Conifer | S = Black Spruce | Z = Water | | |
| G = Grass | MD = Mixed Deciduous | T = Tamarack | | | |

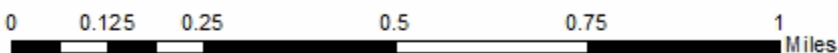
108th and 49th Oak

| |
|----------|
| PU Acres |
| 1 34.5 |
| 2 46.5 |

81 Acres
Compartment 19



| Legend | |
|--------|-------------------------------------|
| | Timber Sale Area (Red & Blue Paint) |
| | Road |
| | Stand Boundaries |
| | State Game Area |
| | Intermittent Stream |





TIMBER SALE MAP

This information provided by authority of Part 525, 1994 PA 451, as amended.

| | |
|-------------|------|
| Sale Number | Year |
| 19-003 | 21 |

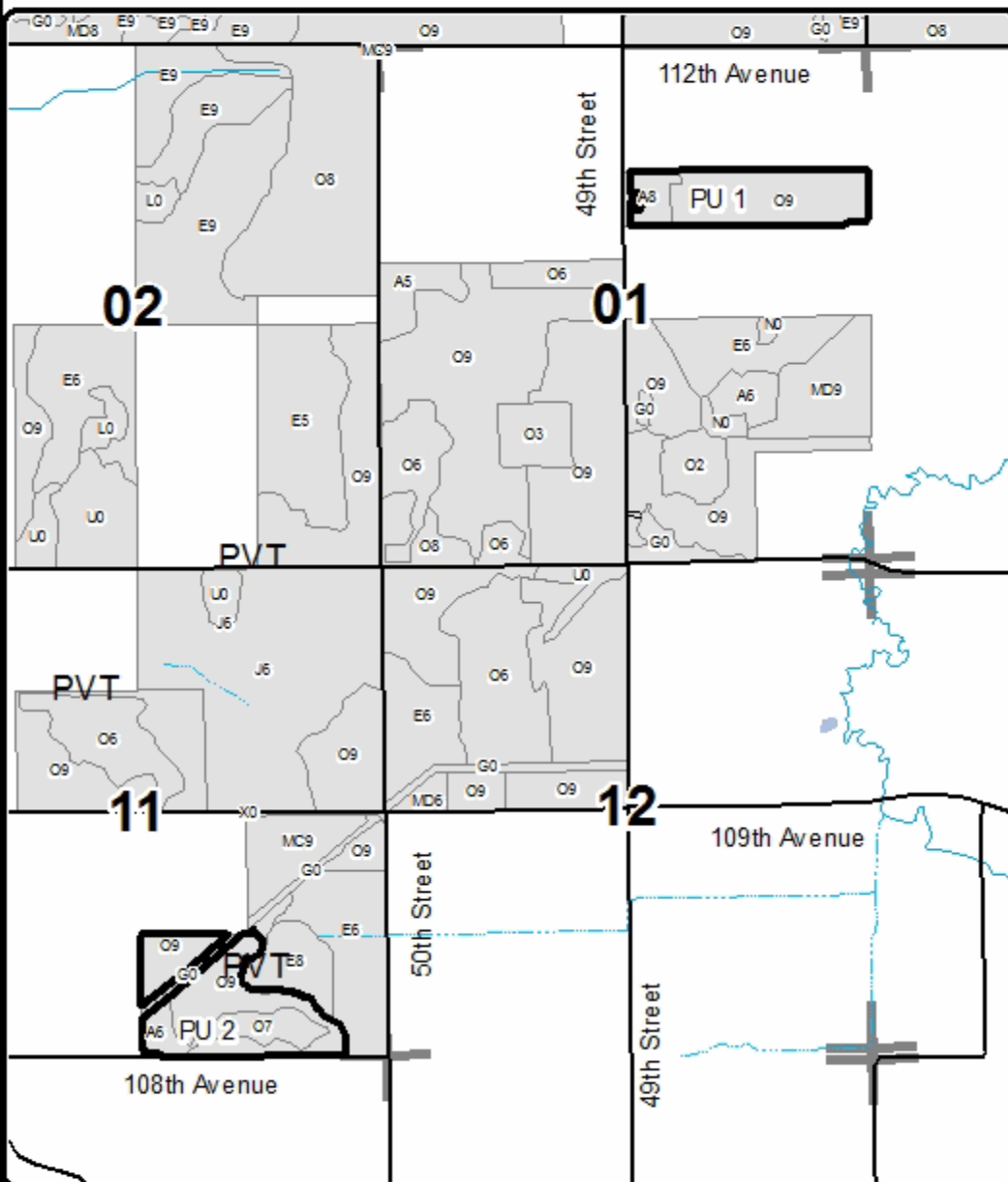
| | | | | | |
|-----------------------------------|-------------------|---|--------------------|-----------|---------|
| Forest Management Unit Allegan | County Allegan | Mapped By J. Bramer | Date 09/10/2021 | Page 3 | of 3 |
| Township 01N | Range 15W | Section(s) and Subdivision(s) Sections 1, 11 | Scale 1:24,000 | | |

| Cover Type | | | | Density | |
|---------------------|----------------------|-------------------------|-------------------|-----------------------------|------------------------|
| A = Aspen | H = Hemlock | N = Marsh | U = Upland Brush | 0 = Non Stocked | 5 = Pole Timber Medium |
| D = Paper Birch | J = Jack Pine | O = Oak | UM = Upland Mixed | 1 = Seedling Sapling Poor | 6 = Pole Timber Well |
| C = Cedar | L = Lowland Brush | P = Lowland Poplar | V = Bog or Marsh | 2 = Seedling Sapling Medium | 7 = Saw Timber Poor |
| D = Tread Bog | LM = Lowland Mixed | Q = Mixed Swamp Conifer | W = White Pine | 3 = Seedling Sapling Well | 8 = Saw Timber Medium |
| E = Swamp Hardwoods | M = Mpl. Dch. Drch | R = Red Pine | X = Non Stocked | 4 = Pole Timber Poor | 9 = Saw Timber Well |
| F = Spruce Fir | MC = Mixed Conifer | S = Black Spruce | Z = Water | | |
| G = Grass | MD = Mixed Deciduous | T = Tamarack | | | |

108th and 49th Oak

PU Acres
1 34.5
2 46.5

81 Acres
Compartment 19

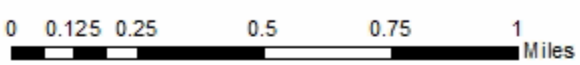


Legend

- Timber Sale Area (Red & Blue Paint)
- DNR - Forest Access Route
- Road
- Stand Boundaries
- State Game Area
- Intermittent Stream
- Perennial River
- Lakes and Rivers



QR code opens map in Avenza App.



TIMBER SALE INFORMATION

118th Sale (19-004-21)

T02N, R14W, SEC. 16; T02N, R14W, SEC. 17; T02N, R14W, SEC. 20.
Allegan County (Advertised Price \$57,222.35)

SALE NOTE: All units of volume listed for this sale were estimated using the Inventory Manager computer program and the new Michigan taper model.

A recreation site such as a trail, pathway, or campground is within the sale area or the vicinity. Certain restrictions/specifications may be applicable including time restrictions. Access may be through other public land.

A timber sale contract for this lump sum, sealed bid timber sale will be awarded to the responsible bidder offering the highest sealed bid price. All units of volume listed below were estimated using the Inventory Manager computer program and the new Michigan taper model. Bids must be at or above the following advertised price for each product and species:

| <u>PRODUCTS & SPECIES</u> | <u>ESTIMATED UNITS*</u> | <u>ADVERTISED PRICE</u> |
|-------------------------------|-------------------------|-------------------------|
| Sawtimber | | |
| B. T. Aspen | 78.7 MBF | \$ 83.00 / MBF |
| Black Cherry | 6.2 MBF | \$ 148.00 / MBF |
| Jack Pine | 12.0 MBF | \$ 17.00 / MBF |
| Red Oak | 4.7 MBF | \$ 135.00 / MBF |
| Red Pine | 394.3 MBF | \$ 83.00 / MBF |
| Pulpwood | | |
| B. T. Aspen | 188 Cords | \$ 13.35 / Cord |
| Jack Pine | 44 Cords | \$ 8.60 / Cord |
| Mixed Hardwood | 125 Cords | \$ 11.75 / Cord |
| Red Pine | 378 Cords | \$ 31.35 / Cord |

* The total volume is statistically estimated within plus (+) or minus (-) 9.98 percent. There are an estimated 1,897 cords on this timber sale, plus or minus 189 cords at the 95% confidence level. The estimated units are final and not subject to adjustment. Prospective bidders are urged to examine this timber and to make their own estimates of quantity and quality.

BOND AND PAYMENT SCHEDULE:

1. A bond in the amount of \$2,861.00 to insure faithful performance of the conditions of the contract will be deposited by the successful bidder within 21 days of the sale award.
2. Cutting in any sale or unit without the required advance payment would be considered a trespass.
3. Total payment must be paid in advance or according to the following schedule :
 - (a) Ten percent (10%) of the sale value must be paid within 21 days of the sale award.
 - (b) The 10% down payment will be credited towards the first unit cut.
 - (c) Payment for each of the following units must be made before cutting begins in that unit:

| PAYMENT UNIT NUMBER | PERCENT OF TOTAL SALE VALUE |
|---------------------|-----------------------------|
| 01 | 16.0% |
| 02 | 84.0% |
4. If no cutting takes place, the 10% down payment will not be refunded.
5. Operations on the contract issued will terminate on 03/01/2023.

SALE STATISTICS

Volumes were calculated in cubic feet using the Michigan taper model. Cubic foot volume includes all wood inside bark for the product indicated. For display purposes, cubic feet were converted to cords and MBF using a simple conversion factor, e.g. 79 cubic feet per cord and 185 cubic feet per MBF. The cubic foot volumes are precise; the cords and MBF volumes are not. Cubic foot volume cannot be directly converted to cords or boards with precision.

SALE VOLUMES

The total estimated sale volume may not equal the sum of the species/products due to the nature of statistical calculations associated with double sampling methodology.

| VOLUME | | STATISTICAL RANGE IN CORDS | | |
|------------------|-------------|----------------------------|---------|---------|
| TOTAL CUBIC FEET | TOTAL CORDS | PERCENT ERROR | MINIMUM | MAXIMUM |
| 149,829 | 1,897 | 9.98% | 1,707 | 2,086 |

VDU VOLUMES

A VDU is a Volume Determination Unit. Volumes and their associated statistics are calculated at the VDU level and summarized to the sale level. There is often a one to one relationship between a VDU and a Payment Unit, but not always, depending on the cruise design. Refer to the VDU TO PAYMENT UNIT table.

| VDU | VOLUME | | PERCENT ERROR | RANGE IN CORDS | |
|---------------|------------------|--------------|---------------|----------------|--------------|
| | TOTAL CUBIC FEET | TOTAL CORDS | | MINIMUM | MAXIMUM |
| 1 | 29,774 | 377 | 0.00% | 377 | 377 |
| 2 | 70,699 | 895 | 13.29% | 776 | 1,014 |
| 3 | 18,030 | 228 | 25.00% | 171 | 285 |
| 4 | 17,976 | 228 | 52.62% | 108 | 347 |
| TOTAL: | 136,480 | 1,728 | | 1,432 | 2,023 |

VDU TO PAYMENT UNIT

When a VDU is associated with more than one Payment Unit (PU), the VDU volumes are assigned to the PU based on acres of the VDU within the PU.

| VDU | VDU ACRES | PU | PU ACRES |
|---------------|-------------|----|-------------|
| 1 | 2.8 | 2 | 2.8 |
| 2 | 18.3 | 2 | 18.3 |
| 3 | 11.3 | 1 | 11.3 |
| 4 | 8.2 | 1 | 8.2 |
| TOTAL: | 40.6 | | 40.6 |

DESCRIPTION OF TIMBER BY PAYMENT UNIT (PU)

| PU | MARKET GROUP | PRODUCT | QUANTITY | UNIT | ACRES | ADVERTISE PRICE |
|------------------|---------------------|--------------|----------|--------------|-------|-----------------|
| 1 | B. T. Aspen | Sawtimber | 41.7 | MBF | 19.5 | \$9,160.30 |
| | Black Cherry | | 6.2 | MBF | | |
| | Jack Pine | | 12.0 | MBF | | |
| | Red Oak | | 4.7 | MBF | | |
| | B. T. Aspen | Pulpwood | 157 | Cords | | |
| | Jack Pine | | 44 | Cords | | |
| | Mixed Hardwood | | 125 | Cords | | |
| | <i>Black Cherry</i> | | 6 | <i>Cords</i> | | |
| | <i>Red Maple</i> | | 50 | <i>Cords</i> | | |
| | <i>Red Oak</i> | | 33 | <i>Cords</i> | | |
| <i>Sassafras</i> | 36 | <i>Cords</i> | | | | |
| 2 | B. T. Aspen | Sawtimber | 37.0 | MBF | 21.1 | \$48,062.05 |
| | Red Pine | | 394.3 | MBF | | |
| | B. T. Aspen | Pulpwood | 31 | Cords | | |
| | Red Pine | | 378 | Cords | | |
| TOTAL: | | | 495.9 | MBF | | |
| TOTAL: | | | 735 | Cords | | |

Sale Specific Conditions & Requirements

Sale Name: 118th Sale

Sale Number: 19-004-21 Seq#: 1

1 - Sale Area

1.2 - Boundaries

1.2.1 - Painted boundaries (9/19)

The sale boundaries are marked and identified by blue and red paint. Exterior sale boundary lines against private property are marked with blue paint. Exterior sale boundary lines against state are marked with red paint.

2 - Timber Specifications

2.1 - Included Timber

2.1.1 - Clearcut unit(s) with unmerchantable trees (6/14)

Within Payment Unit(s) 1, cut all trees that are two (2) inches or more at DBH, except white pine, hemlock, beech, and oak trees over 20 inches at DBH.

2.1.5 - Overstory removal unit(s) (8/11)

Within Payment Unit(s) 2, all red pine, scotch pine, jack pine, and aspen which meet minimum piece specifications in 2.2 Utilization, are designated for cutting.

2.2 - Utilization

2.2.3 - Stump heights (4/07)

Stump heights within the Sale Area shall not exceed 12 inches for trees greater than 10 inches at DBH and 4 inches for trees smaller than 10 inches at DBH.

4 - Transportation

4.3 - Public Right-of-Way

4.3.2 - County R-O-W (12/06)

The county must be contacted prior to crossing or harvesting in the county road R-O-W.

5 - Operations

5.1 - Notification

5.1.6 - Utility R.O.W. (4/19)

It is the responsibility of the Purchaser to obtain permission from the utility company to utilize the power line R.O.W. for operations.

5.2 - Conduct of Operations

5.2.2 - Hazard Trees/Snags

5.2.2.1 - Den trees (10/16)

Obvious hollow and/or den trees shall be protected and left standing unless they are a safety hazard.

5.2.3 - Operating Restrictions

5.2.3.4 - Oak wilt restriction, no exceptions (1/18)

Within Payment Unit(s) 1-2, cutting, skidding, hauling within the sale and brushing of access roads to the sale are not permitted during the period of April 15 to July 15. No exceptions will be granted. This is necessary to reduce the spread of oak wilt.

5.2.32 - Decking/landing restoration (9/13)

All decking and landing areas must have the surface area restored to a condition equal to or better than before. This is to ensure the proper regeneration of the stand. Wood debris, chips, and "cookies" from trimmings must be removed or scattered away from landing and loading areas and may not be windrowed on the edge.

5.2.38 - No decking against live trees (2/04)

Cut products may not be decked against unmarked or designated leave trees.

5.2.40 - Pathway protection (10/10)

Recreational hiking, biking, and equestrian trails exist in Payment Unit 2. Do not cut trees or damage posts that contain pathway markers. Maintain a 20-foot-wide slash, debris, and rut free zone daily, using the pathway as the centerline. Do not run equipment down the pathway. Cross pathway at right angles.

5.4 - Soil Protection

5.4.1 - Rutting restriction, general (7/16)

Operations are to cease immediately if equipment and weather conditions result in rutting of roads and/or skid trails which is 12 inches or greater in depth and 50 feet in length. The Unit Manager or his/her representative may restrict hauling and/or skidding if ruts exceed the specified depth. With the Unit Manager or his/her representative's approval, the Purchaser may return to the area when the risk of rutting has decreased.

5.8 - Protection of Endangered Species

5.8.5 - Protection of raptor nests (3/13)

All trees with raptor nests will be protected if found during harvesting operations. Notification will be made to the Unit Manager or his/her representative who will notify the Wildlife Biologist so an on-site evaluation and recommendation can be made, if necessary.

6 - Safety and Fire Prevention

6.2 - Signing

6.2.1 - Road posting (10/20)

The Purchaser is responsible for posting and maintaining caution signs on adjacent roads prior to beginning operations. The road must be posted at appropriate distances from the Sale Area to warn of logging activity and truck traffic. Signs must be removed when harvest operations are suspended or completed. The Purchaser will provide these signs.

7 - Other Conditions

7.10 - Certified Timber

7.10.1 - Non-certified timber (2/16)

The area encompassed by this timber sale is not certified to the standards of the Forest Stewardship Council (FSC) or the Sustainable Forestry Initiative (SFI). Forest products from this sale may not be delivered to the mill as "FSC and / or SFI certified". The lands within this sale are managed as a State Game Area.



TIMBER SALE MAP

This information provided by authority of Part 525, 1994 PA 451, as amended.

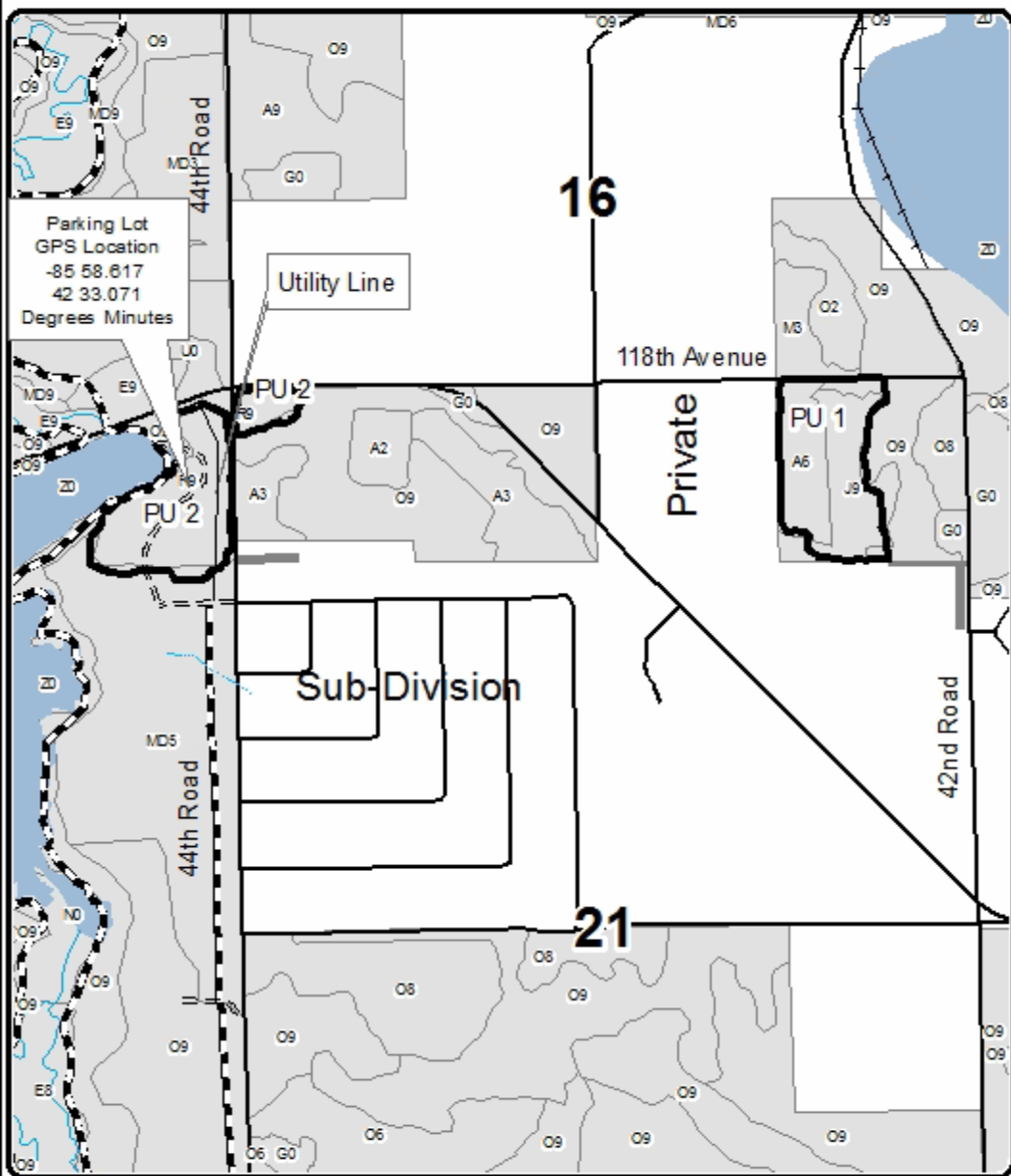
| | |
|-------------|------|
| Sale Number | Year |
| 19-004 | 21 |

| | | | | | |
|--------------------------------------|-------------------|--|--------------------|-----------|---------|
| Forest Management Unit 118th Sale | County Allegan | Mapped By J. Bramer | Date 07/29/2021 | Page 1 | of 1 |
| Township 02N | Range 14W | Section(s) and Subdivision(s) Sections 16,17,20 | Scale 1:15,840 | | |

| Cover Type | | | | Density | |
|-------------------|----------------------|-------------------------|-------------------|-----------------------------|------------------------|
| A = Aspen | H = Hemlock | N = Marsh | U = Upland Brush | 0 = Non Stocked | 5 = Pole Timber Medium |
| D = Paper Birch | J = Jack Pine | O = Oak | UM = Upland Mixed | 1 = Seedling Sapling Poor | 6 = Pole Timber Well |
| C = Cedar | L = Lowland Brush | P = Lowland Poplar | V = Bog or Marsh | 2 = Seedling Sapling Medium | 7 = Saw Timber Poor |
| D = Treed Bog | LM = Lowland Mixed | Q = Mixed Swamo Conifer | W = White Pine | 3 = Seedling Sapling Well | 8 = Saw Timber Medium |
| E = Swamp Hdwoods | M = Mpl. Och. Birch | R = Red Pine | X = Non Stocked | 4 = Pole Timber Poor | 9 = Saw Timber Well |
| F = Spruce Fir | MC = Mixed Conifer | S = Black Spruce | Z = Water | | |
| G = Grass | MD = Mixed Deciduous | T = Tamarack | | | |

118th Sale
40.6 Acres
Compartment 17

PU Acres
1 19.5
2 21.1

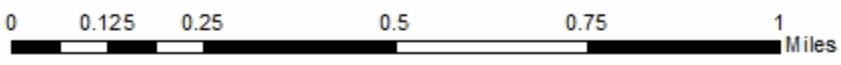


Legend

- Timber Sale Area (Red & Blue Paint)
- DNR - Forest Access Route
- Recreation Trail
- Road
- Stand Boundaries
- State Game Area
- Perennial River
- Lakes and Rivers Large
- Lakes and Rivers



QR code opens map in Avenza App.



TIMBER SALE INFORMATION

Savanna Test (19-005-21)

T02N, R14W, SEC. 21; T02N, R14W, SEC. 28.
Allegan County (Advertised Price \$68,139.95)

SALE NOTE: All units of volume listed for this sale were estimated using the Inventory Manager computer program and the new Michigan taper model.

A recreation site such as a trail, pathway, or campground is within the sale area or the vicinity. Certain restrictions/specifications may be applicable including time restrictions. Access may be through other public land.

A timber sale contract for this lump sum, sealed bid timber sale will be awarded to the responsible bidder offering the highest sealed bid price. All units of volume listed below were estimated using the Inventory Manager computer program and the new Michigan taper model. Bids must be at or above the following advertised price for each product and species:

| <u>PRODUCTS & SPECIES</u> | <u>ESTIMATED UNITS*</u> | <u>ADVERTISED PRICE</u> |
|-------------------------------|-------------------------|-------------------------|
| Sawtimber | | |
| B. T. Aspen | 43.8 MBF | \$ 85.00 / MBF |
| Black Cherry | 11.6 MBF | \$ 148.00 / MBF |
| Jack Pine | 4.6 MBF | \$ 17.00 / MBF |
| Red Oak | 55.4 MBF | \$ 124.00 / MBF |
| Red Pine | 294.4 MBF | \$ 83.00 / MBF |
| White Oak | 63.8 MBF | \$ 73.00 / MBF |
| Pulpwood | | |
| B. T. Aspen | 182 Cords | \$ 13.55 / Cord |
| Jack Pine | 111 Cords | \$ 8.60 / Cord |
| Mixed Hardwood | 51 Cords | \$ 11.80 / Cord |
| Mixed Oak | 325 Cords | \$ 12.35 / Cord |
| Red Pine | 595 Cords | \$ 31.30 / Cord |

* The total volume is statistically estimated within plus (+) or minus (-) 8.83 percent. There are an estimated 2,299 cords on this timber sale, plus or minus 203 cords at the 95% confidence level. The estimated units are final and not subject to adjustment. Prospective bidders are urged to examine this timber and to make their own estimates of quantity and quality.

BOND AND PAYMENT SCHEDULE:

1. A bond in the amount of \$3,407.00 to insure faithful performance of the conditions of the contract will be deposited by the successful bidder within 21 days of the sale award.
2. Cutting in any sale or unit without the required advance payment would be considered a trespass.
3. Total payment must be paid in advance or according to the following schedule :
 - (a) Ten percent (10%) of the sale value must be paid within 21 days of the sale award.
 - (b) The 10% down payment will be credited towards the first unit cut.
 - (c) Payment for each of the following units must be made before cutting begins in that unit:

| PAYMENT UNIT NUMBER | PERCENT OF TOTAL SALE VALUE |
|---------------------|-----------------------------|
| 01 | 10.7% |
| 02 | 89.3% |

4. If no cutting takes place, the 10% down payment will not be refunded.
5. Operations on the contract issued will terminate on 03/01/2023.

SALE STATISTICS

Volumes were calculated in cubic feet using the Michigan taper model. Cubic foot volume includes all wood inside bark for the product indicated. For display purposes, cubic feet were converted to cords and MBF using a simple conversion factor, e.g. 79 cubic feet per cord and 185 cubic feet per MBF. The cubic foot volumes are precise; the cords and MBF volumes are not. Cubic foot volume cannot be directly converted to cords or boards with precision.

SALE VOLUMES

The total estimated sale volume may not equal the sum of the species/products due to the nature of statistical calculations associated with double sampling methodology.

| VOLUME | | | STATISTICAL RANGE IN CORDS | |
|------------------|-------------|---------------|----------------------------|---------|
| TOTAL CUBIC FEET | TOTAL CORDS | PERCENT ERROR | MINIMUM | MAXIMUM |
| 181,623 | 2,299 | 8.83% | 2,096 | 2,502 |

VDU VOLUMES

A VDU is a Volume Determination Unit. Volumes and their associated statistics are calculated at the VDU level and summarized to the sale level. There is often a one to one relationship between a VDU and a Payment Unit, but not always, depending on the cruise design. Refer to the VDU TO PAYMENT UNIT table.

| | VOLUME | | | RANGE IN CORDS | |
|---------------|------------------|--------------|---------------|----------------|--------------|
| VDU | TOTAL CUBIC FEET | TOTAL CORDS | PERCENT ERROR | MINIMUM | MAXIMUM |
| 1 | 8,234 | 104 | 27.36% | 76 | 133 |
| 2 | 2,161 | 27 | 33.33% | 18 | 36 |
| 3 | 12,002 | 152 | 43.75% | 85 | 218 |
| 4 | 36,775 | 466 | 13.69% | 402 | 529 |
| 5 | 33,401 | 423 | 20.87% | 335 | 511 |
| 6 | 30,176 | 382 | 19.84% | 306 | 458 |
| 7 | 34,297 | 434 | 25.51% | 323 | 545 |
| 8 | 17,547 | 222 | 27.22% | 162 | 283 |
| TOTAL: | 174,594 | 2,210 | | 1,707 | 2,713 |

VDU TO PAYMENT UNIT

When a VDU is associated with more than one Payment Unit (PU), the VDU volumes are assigned to the PU based on acres of the VDU within the PU.

| VDU | VDU ACRES | PU | PU ACRES |
|---------------|-------------|----|-------------|
| 1 | 5.3 | 1 | 5.3 |
| 2 | 1.5 | 1 | 1.5 |
| 3 | 13.3 | 1 | 13.3 |
| 4 | 8.5 | 2 | 8.5 |
| 5 | 14.4 | 2 | 14.4 |
| 6 | 13.8 | 2 | 13.8 |
| 7 | 7.2 | 2 | 7.2 |
| 8 | 5.4 | 2 | 5.4 |
| TOTAL: | 69.4 | | 69.4 |

DESCRIPTION OF TIMBER BY PAYMENT UNIT (PU)

| PU | MARKET GROUP | PRODUCT | QUANTITY | UNIT | ACRES | ADVERTISE PRICE |
|--------|---------------------|-----------|----------|--------------|-------|-----------------|
| 1 | Jack Pine | Sawtimber | 4.6 | MBF | 20.1 | \$7,292.20 |
| | Red Oak | | 31.0 | MBF | | |
| | White Oak | | 20.8 | MBF | | |
| | Jack Pine | Pulpwood | 65 | Cords | | |
| | Mixed Hardwood | | 30 | Cords | | |
| | <i>Black Cherry</i> | | 30 | <i>Cords</i> | | |
| | Mixed Oak | | 76 | Cords | | |
| | <i>Red Oak</i> | | 21 | <i>Cords</i> | | |
| | <i>White Oak</i> | | 55 | <i>Cords</i> | | |
| 2 | B. T. Aspen | Sawtimber | 43.8 | MBF | 49.3 | \$60,847.75 |
| | Black Cherry | | 11.6 | MBF | | |
| | Red Oak | | 24.4 | MBF | | |
| | Red Pine | | 294.4 | MBF | | |
| | White Oak | | 43.0 | MBF | | |
| | B. T. Aspen | Pulpwood | 182 | Cords | | |
| | Jack Pine | | 46 | Cords | | |
| | Mixed Hardwood | | 21 | Cords | | |
| | <i>Black Cherry</i> | | 11 | <i>Cords</i> | | |
| | <i>Black Walnut</i> | | 10 | <i>Cords</i> | | |
| | Mixed Oak | | 249 | Cords | | |
| | <i>Red Oak</i> | | 108 | <i>Cords</i> | | |
| | <i>White Oak</i> | | 141 | <i>Cords</i> | | |
| | Red Pine | | 595 | Cords | | |
| | TOTAL: | | | 473.6 | | |
| TOTAL: | | | 1,264 | Cords | | |

Sale Specific Conditions & Requirements

Sale Name: Savanna Test

Sale Number: 19-005-21 Seq#: 1

1 - Sale Area

1.2 - Boundaries

1.2.1 - Painted boundaries (9/19)

The sale boundaries are marked and identified red paint.

2 - Timber Specifications

2.1 - Included Timber

2.1.1 - Clearcut unit(s) with unmerchantable trees (6/14)

Within Payment Unit(s) 2, cut all trees that are two (2) inches or more at DBH, except white pine, beech, hemlock, and oak over 20 inches at DBH.

2.1.3 - Cut tree marked unit(s) (12/08)

Within Payment Unit(s) 1, all trees are designated for cutting when marked with green paint above and below stump height, regardless of merchantability.

2.2 - Utilization

2.2.3 - Stump heights (4/07)

Stump heights within the Sale Area shall not exceed 6 inches for all trees. A written waiver of this requirement may be obtained if wet summer weather makes winter logging necessary.

2.2.8 - Utilization and removal (5/14)

Within Payment 1, all products meeting standards set forth in General Condition and Requirement 2.2 - Utilization must be removed from the Sale Area. This is because of a need to assist in future open maintenance and prescribed burning.

2.2.11 - Chipping restriction (9/14)

If chipping occurs on this sale, then no woody debris present on the ground at the start of the sale may be chipped. In addition, brush or chips may not be stored or stockpiled on-site for more than 30 days.

4 - Transportation

4.3 - Public Right-of-Way

4.3.2 - County R-O-W (12/06)

The county must be contacted prior to crossing or harvesting in the county road R-O-W.

4.4 - Access

4.4.3 - Access gate (12/08)

The access gate must be locked at the completion of each day unless otherwise approved by the Unit Manager or his/her representative.

5 - Operations

5.2 - Conduct of Operations

5.2.1 - Slash

5.2.1.11 - Slash for reforestation (3/21)

Within the Sale Area, chipping is encouraged as it is the most effective and efficient way to mitigate slash for opening maintenance. Other tactics to mitigate slash for site preparation would need to be approved by the Unit Manager or his/her representative.

5.2.1.12 - Slash for prescribed burning (1/05)

To facilitate prescribed burning, slash shall be moved at least 10 feet inside the sale boundary. Slash cannot be piled or

placed near residual trees.

5.2.2 - Hazard Trees/Snags

5.2.2.1 - Den trees (10/16)

Obvious hollow and/or den trees shall be protected and left standing unless they are a safety hazard.

5.2.3 - Operating Restrictions

5.2.3.4 - Oak wilt restriction, no exceptions (1/18)

Within Payment Unit(s) 1 and 2, cutting, skidding, hauling within the sale and brushing of access roads to the sale are not permitted during the period of April 15 to July 15. No exceptions will be granted. This is necessary to reduce the spread of oak wilt.

5.2.32 - Decking/landing restoration (9/13)

All decking and landing areas must have the surface area restored to a condition equal to or better than before. This is to ensure the proper regeneration of the stand. Wood debris, chips, and "cookies" from trimmings must be removed or scattered away from landing and loading areas and may not be windrowed on the edge.

5.2.38 - No decking against live trees (2/04)

Cut products may not be decked against unmarked or designated leave trees.

5.2.40 - Pathway protection (10/10)

There is a recreational trail within Payment Unit 2 and is shown on the Timber Sale Map. Do not cut trees or damage posts with blue pathway markers. Maintain a 20-foot-wide slash, debris, and rut free zone daily, using the pathway as the centerline.

5.4 - Soil Protection

5.4.1 - Rutting restriction, general (7/16)

Operations are to cease immediately if equipment and weather conditions result in rutting of roads and/or skid trails which is 12 inches or greater in depth and 50 feet in length. The Unit Manager or his/her representative may restrict hauling and/or skidding if ruts exceed the specified depth. With the Unit Manager or his/her representative's approval, the Purchaser may return to the area when the risk of rutting has decreased.

5.8 - Protection of Endangered Species

5.8.5 - Protection of raptor nests (3/13)

All trees with raptor nests will be protected if found during harvesting operations. Notification will be made to the Unit Manager or his/her representative who will notify the Wildlife Biologist so an on-site evaluation and recommendation can be made, if necessary.

6 - Safety and Fire Prevention

6.2 - Signing

6.2.1 - Road posting (10/20)

The Purchaser is responsible for posting and maintaining caution signs on adjacent roads prior to beginning operations. The road must be posted at appropriate distances from the Sale Area to warn of logging activity and truck traffic. Signs must be removed when harvest operations are suspended or completed. The Purchaser will provide these signs.

6.2.3 - Recreational trail posting (10/20)

The Purchaser is responsible for posting and maintaining caution signs on the recreational trail prior to beginning operations. The trail must be posted at appropriate distances from the Sale Area to warn of logging activity and truck traffic at both ends of the trail. Signs must be removed when harvest operations are suspended or completed. The Purchaser will provide these signs.

7 - Other Conditions

7.10 - Certified Timber

7.10.1 - Non-certified timber (2/16)

The area encompassed by this timber sale is not certified to the standards of the Forest Stewardship Council (FSC) or the Sustainable Forestry Initiative (SFI). Forest products from this sale may not be delivered to the mill as "FSC and / or SFI certified". The lands within this sale are managed as a State Game Area.



TIMBER SALE MAP

This information provided by authority of Part 525, 1994 PA 451, as amended.

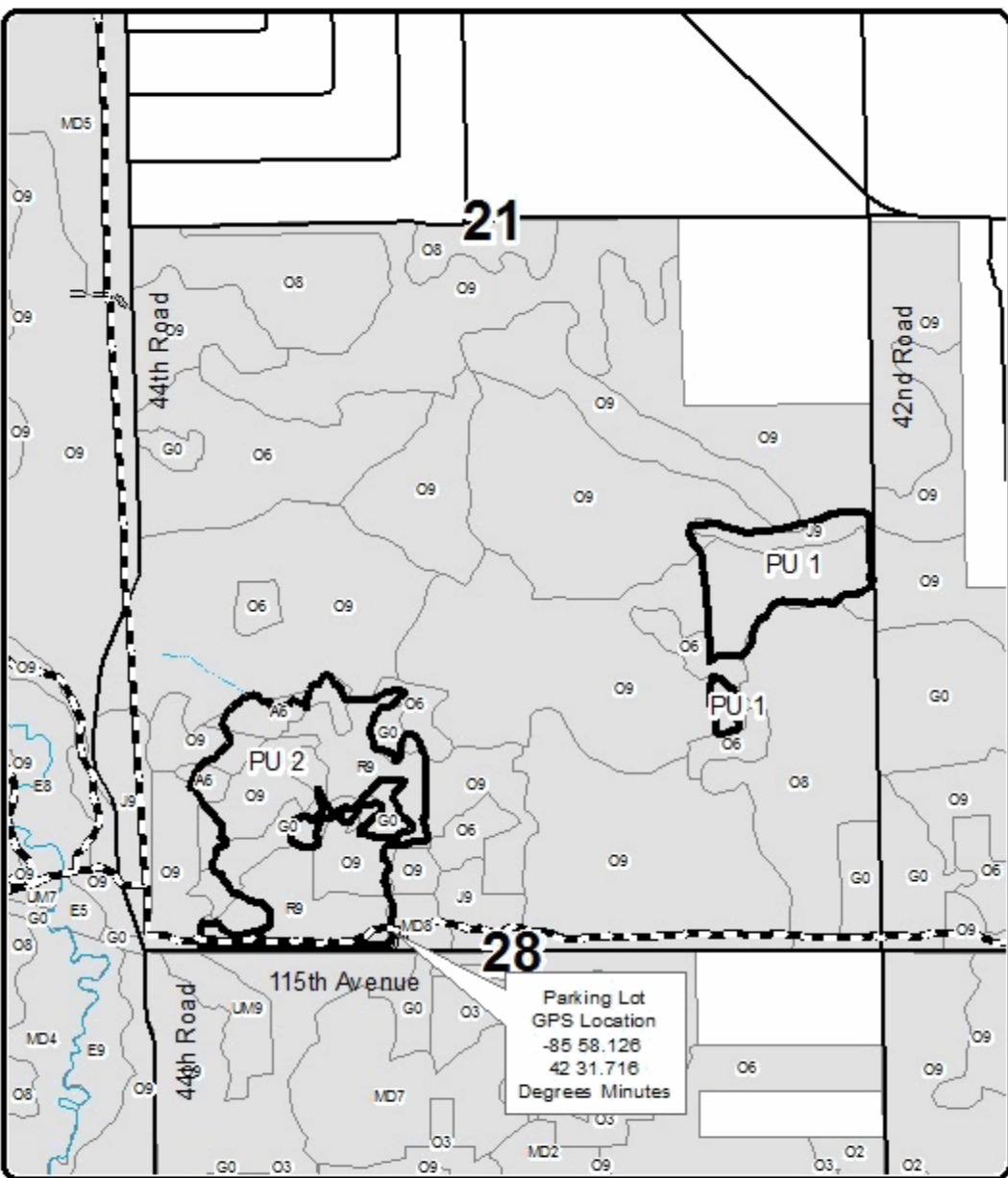
| | |
|-------------|------|
| Sale Number | Year |
| 19-005 | 21 |

| | | | | | |
|------------------------------------|--------------------|---|--------------------|-----------|---------|
| Forest Management Unit Alleghan | County Alleghan | Mapped By J. Bramer | Date 08/05/2021 | Page 1 | of 1 |
| Township 02N | Range 14W | Section(s) and Subdivision(s) Sections 21,28 | Scale 1:15,840 | | |

| Cover Type | | | | Density | |
|-------------------|----------------------|------------------------|-------------------|-----------------------------|------------------------|
| A = Aspen | H = Hemlock | N = Marsh | U = Upland Brush | 0 = Non Stocked | 5 = Pole Timber Medium |
| D = Paper Birch | J = Jack Pine | O = Oak | UM = Upland Mixed | 1 = Seedling Sapling Poor | 6 = Pole Timber Well |
| C = Cedar | L = Lowland Brush | P = Lowland Poplar | V = Bog or Marsh | 2 = Seedling Sapling Medium | 7 = Saw Timber Poor |
| D = Tread Bog | LM = Lowland Mixed | Q = Mixed Swam Conifer | W = White Pine | 3 = Seedling Sapling Well | 8 = Saw Timber Medium |
| E = Swamp Hdwoods | M = Mpl. Dch, Drch | R = Red Pine | X = Non Stocked | 4 = Pole Timber Poor | 9 = Saw Timber Well |
| F = Spruce Fir | MC = Mixed Conifer | S = Black Spruce | Z = Water | | |
| G = Grass | MD = Mixed Deciduous | T = Tamarack | | | |

Savanna Test
69.4 Acres
Compartment 17

PU Acres
 1 20.1
 2 49.3



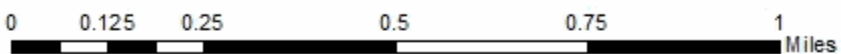
Legend

- Timber Sale Area (Red Paint)
- DNR - Forest Access Route
- Recreation Trail
- Road
- Stand Boundaries
- State Game Area
- Perennial River



QR code opens map in Avenza App.

Parking Lot
 GPS Location
 -85 58.126
 42 31.716
 Degrees Minutes



Bravo Pine (19-001-21)

T01N, R15W, SEC. 4; T02N, R15W, SEC. 28; T02N, R15W, SEC. 33; Allegan

In response to the notice of sale to be held 10:00 a.m. (local time) on November 9, 2021, I am hereby submitting my sealed bid (firm offer) for the following forest products to be cut. Bids for individual species must be at or above the advertised price. All non-responsive bid forms may be rejected.

| <u>PRODUCTS & SPECIES</u> | <u>ESTIMATED VOLUME*</u> | <u>ADVERTISED PRICE</u> | <u>BID PRICE/UNIT</u> |
|-------------------------------|--------------------------|-------------------------|-----------------------|
| Sawtimber | | | |
| Red Maple | 46.7 MBF | \$ 97.00/MBF | \$ _____ |
| Red Pine | 484.7 MBF | \$ 79.00/MBF | \$ _____ |
| Pulpwood | | | |
| B. T. Aspen | 16 Cords | \$ 13.60/Cord | \$ _____ |
| Jack Pine | 32 Cords | \$ 9.65/Cord | \$ _____ |
| Mixed Hardwood | 202 Cords | \$ 11.90/Cord | \$ _____ |
| Red Pine | 321 Cords | \$ 32.65/Cord | \$ _____ |

*The volumes are statistically estimated within plus (+) or minus (-) 13.14 percent at 95% confidence level. These estimated volumes are final and not subject to adjustment. Prospective bidders are urged to examine this timber and to make their own estimates of quantity and quality.

I understand that any or all bids may be rejected. All bids must be signed and all bid items must be bid or the bid form may be rejected. I also understand that consideration and awarding a contract will be based upon my past performance and ability to complete the contract based upon equipment and staffing subject to my control.

FEDERAL ID: _____ - _____ or SOCIAL SECURITY NUMBER: _____ - _____ - _____

Company or individual bidding: _____

Company representative's name: _____

Address: _____

City: _____ State: _____ Zip: _____

IF AVAILABLE, PLEASE PLACE THE PERSONALIZED LABEL FROM YOUR PROSPECTUS IN THE ABOVE BOX.

Individual or company representative's signature: _____ Date: _____

Phone number : _____ Email (optional): _____

THE WINNING BIDDER MUST COMPLETE THE VERIFICATION OF WORKER'S DISABILITY COMPENSATION ACT COMPLIANCE (ON REVERSE SIDE IF DOUBLE SIDED) WITHIN 21 DAYS OF SALE AWARD DATE



| FOR DEPARTMENT USE ONLY | |
|----------------------------------|--|
| Sale Number (XX - XXX - XX - XX) | |
| Forest Management Unit: | |

TIMBER SALE VERIFICATION OF WORKER'S DISABILITY COMPENSATION ACT COMPLIANCE

As required by Act 317, P.A. 1969 (Worker's Compensation) and
Part 5 of Act 451 of 1994, as amended.

VERIFICATION OF WORKER'S DISABILITY COMPENSATION ACT COMPLIANCE

- This verification must be completed and submitted within 21 days of contract award and prior to the issuance of the timber sale contract.
- In addition, if boxes 2B or 2C are checked, then Notice of Exclusion or Certificate of Insurance must be submitted within twenty-one (21) days of the contract award and prior to the issuance of the timber sale contract.
- All information must be typed or printed except for written signatures.

Please Check Appropriate Categories:

1. My business is organized as (you **must** check one of the boxes below):
 - A. Sole Proprietorship (individual)
 - B. Partnership
 - C. Corporation
2. You **must** check one of the boxes below:
 - A. I certify my business is a sole proprietorship and it has no employees but the sole proprietor. I am not subject to the Worker's Compensation Laws.
 - B. I certify my business has satisfied its obligation to the Worker's Compensation Act through the use of an approved Notice of Exclusion (BWC-337, Rev. 5/96). I will provide a copy of the Notice of Exclusion within 21 days of the contract award. (For questions or a copy of the BWC-337, please call the Worker's Compensation Bureau at 517-322-1195).
 - C. I certify my business has a Worker's Compensation Policy. I will provide an original Certificate of Insurance within twenty-one (21) days of the contract award.
3. If you have checked item 2(A) or 2(B), you **must** indicate the number of **both** full-time and part-time employees, other than yourself, including family members and active partners (if none, you must enter "0").

_____ Full-time Employees

_____ Part-time Employees

| | | | |
|------------------|-------|-------------------------------------|--|
| Name of Business | | Federal ID (or) Social Security No. | |
| Address | | Telephone () | |
| City | State | ZIP | |

I hereby certify that the above information is true and correct. I agree to notify the Michigan DNR of any changes that occur in factors affecting my coverage during any of my present and future operations.

Signature of Owner or Authorized Representative

Title

Date

Please complete the "SEALED BID" information on the next page

Pullman Sale (19-002-21)
T01N, R15W, SEC. 4; Allegan COUNTY

In response to the notice of sale to be held 10:00 a.m. (local time) on November 9, 2021, I am hereby submitting my sealed bid (firm offer) for the following forest products to be cut. Bids for individual species must be at or above the advertised price. All non-responsive bid forms may be rejected.

| <u>PRODUCTS & SPECIES</u> | <u>ESTIMATED VOLUME*</u> | <u>ADVERTISED PRICE</u> | <u>BID PRICE/UNIT</u> |
|-------------------------------|--------------------------|-------------------------|-----------------------|
| Sawtimber | | | |
| B. T. Aspen | 18.5 MBF | \$ 86.00/MBF | \$ _____ |
| Bl/R/Hybrid Oak | 235.1 MBF | \$ 124.00/MBF | \$ _____ |
| Red Maple | 1.9 MBF | \$ 97.00/MBF | \$ _____ |
| Red Pine | 142.1 MBF | \$ 81.00/MBF | \$ _____ |
| White Oak | 70.8 MBF | \$ 73.00/MBF | \$ _____ |
| Pulpwood | | | |
| B. T. Aspen | 223 Cords | \$ 13.65/Cord | \$ _____ |
| Mixed Hardwood | 211 Cords | \$ 11.85/Cord | \$ _____ |
| Mixed Oak | 436 Cords | \$ 12.90/Cord | \$ _____ |
| Red Pine | 85 Cords | \$ 33.10/Cord | \$ _____ |

*The volumes are statistically estimated within plus (+) or minus (-) 9.18 percent at 95% confidence level. These estimated volumes are final and not subject to adjustment. Prospective bidders are urged to examine this timber and to make their own estimates of quantity and quality.

I understand that any or all bids may be rejected. All bids must be signed and all bid items must be bid or the bid form may be rejected. I also understand that consideration and awarding a contract will be based upon my past performance and ability to complete the contract based upon equipment and staffing subject to my control.

FEDERAL ID: ____ - ____ - ____ or SOCIAL SECURITY NUMBER: ____ - ____ - ____

Company or individual bidding: _____

Company representative's name: _____

Address: _____

City: _____ State: _____ Zip: _____

IF AVAILABLE, PLEASE PLACE THE PERSONALIZED LABEL FROM YOUR PROSPECTUS IN THE ABOVE BOX.

Individual or company representative's signature: _____ Date: _____

Phone number : _____ Email (optional): _____

THE WINNING BIDDER MUST COMPLETE THE VERIFICATION OF WORKER'S DISABILITY COMPENSATION ACT COMPLIANCE (ON REVERSE SIDE IF DOUBLE SIDED) WITHIN 21 DAYS OF SALE AWARD DATE



TIMBER SALE VERIFICATION OF WORKER'S DISABILITY COMPENSATION ACT COMPLIANCE

As required by Act 317, P.A. 1969 (Worker's Compensation) and
Part 5 of Act 451 of 1994, as amended.

| FOR DEPARTMENT USE ONLY | |
|----------------------------------|--|
| Sale Number (XX - XXX - XX - XX) | |
| Forest Management Unit: | |

VERIFICATION OF WORKER'S DISABILITY COMPENSATION ACT COMPLIANCE

- This verification must be completed and submitted within 21 days of contract award and prior to the issuance of the timber sale contract.
- In addition, if boxes 2B or 2C are checked, then Notice of Exclusion or Certificate of Insurance must be submitted within twenty-one (21) days of the contract award and prior to the issuance of the timber sale contract.
- All information must be typed or printed except for written signatures.

Please Check Appropriate Categories:

1. My business is organized as (you **must** check one of the boxes below):
 - A. Sole Proprietorship (individual)
 - B. Partnership
 - C. Corporation
2. You **must** check one of the boxes below:
 - A. I certify my business is a sole proprietorship and it has no employees but the sole proprietor. I am not subject to the Worker's Compensation Laws.
 - B. I certify my business has satisfied its obligation to the Worker's Compensation Act through the use of an approved Notice of Exclusion (BWC-337, Rev. 5/96). I will provide a copy of the Notice of Exclusion within 21 days of the contract award. (For questions or a copy of the BWC-337, please call the Worker's Compensation Bureau at 517-322-1195).
 - C. I certify my business has a Worker's Compensation Policy. I will provide an original Certificate of Insurance within twenty-one (21) days of the contract award.
3. If you have checked item 2(A) or 2(B), you **must** indicate the number of **both** full-time and part-time employees, other than yourself, including family members and active partners (if none, you must enter "0").

_____ Full-time Employees

_____ Part-time Employees

| | | | |
|------------------|-------|-------------------------------------|--|
| Name of Business | | Federal ID (or) Social Security No. | |
| Address | | Telephone () | |
| City | State | ZIP | |

I hereby certify that the above information is true and correct. I agree to notify the Michigan DNR of any changes that occur in factors affecting my coverage during any of my present and future operations.

Signature of Owner or Authorized Representative

Title

Date

Please complete the "SEALED BID" information on the next page

108th and 49th Oak (19-003-21)
T01N, R15W, SEC. 1; T01N, R15W, SEC. 11; Allegan COUNTY

In response to the notice of sale to be held 10:00 a.m. (local time) on November 9, 2021, I am hereby submitting my sealed bid (firm offer) for the following forest products to be cut. Bids for individual species must be at or above the advertised price. All non-responsive bid forms may be rejected.

| <u>PRODUCTS & SPECIES</u> | <u>ESTIMATED VOLUME*</u> | <u>ADVERTISED PRICE</u> | <u>BID PRICE/UNIT</u> |
|-------------------------------|--------------------------|-------------------------|-----------------------|
| Sawtimber | | | |
| BI/R/Hybrid Oak | 689.7 MBF | \$ 124.00/MBF | \$ _____ |
| Black Cherry | 14.5 MBF | \$ 148.00/MBF | \$ _____ |
| Red Maple | 18.5 MBF | \$ 97.00/MBF | \$ _____ |
| White Oak | 76.5 MBF | \$ 73.00/MBF | \$ _____ |
| Pulpwood | | | |
| Mixed Hardwood | 91 Cords | \$ 11.85/Cord | \$ _____ |
| Mixed Oak | 489 Cords | \$ 12.35/Cord | \$ _____ |

*The volumes are statistically estimated within plus (+) or minus (-) 8.98 percent at 95% confidence level. These estimated volumes are final and not subject to adjustment. Prospective bidders are urged to examine this timber and to make their own estimates of quantity and quality.

I understand that any or all bids may be rejected. All bids must be signed and all bid items must be bid or the bid form may be rejected. I also understand that consideration and awarding a contract will be based upon my past performance and ability to complete the contract based upon equipment and staffing subject to my control.

FEDERAL ID: _____ - _____ or SOCIAL SECURITY NUMBER: _____ - _____ - _____

Company or individual bidding: _____

Company representative's name: _____

Address: _____

City: _____ State: _____ Zip: _____

IF AVAILABLE, PLEASE PLACE THE PERSONALIZED LABEL FROM YOUR PROSPECTUS IN THE ABOVE BOX.

Individual or company representative's signature: _____ Date: _____

Phone number : _____ Email (optional): _____

THE WINNING BIDDER MUST COMPLETE THE VERIFICATION OF WORKER'S DISABILITY COMPENSATION ACT COMPLIANCE (ON REVERSE SIDE IF DOUBLE SIDED) WITHIN 21 DAYS OF SALE AWARD DATE



| FOR DEPARTMENT USE ONLY | |
|----------------------------------|--|
| Sale Number (XX - XXX - XX - XX) | |
| Forest Management Unit: | |

TIMBER SALE VERIFICATION OF WORKER'S DISABILITY COMPENSATION ACT COMPLIANCE

As required by Act 317, P.A. 1969 (Worker's Compensation) and
Part 5 of Act 451 of 1994, as amended.

VERIFICATION OF WORKER'S DISABILITY COMPENSATION ACT COMPLIANCE

- This verification must be completed and submitted within 21 days of contract award and prior to the issuance of the timber sale contract.
- In addition, if boxes 2B or 2C are checked, then Notice of Exclusion or Certificate of Insurance must be submitted within twenty-one (21) days of the contract award and prior to the issuance of the timber sale contract.
- All information must be typed or printed except for written signatures.

Please Check Appropriate Categories:

1. My business is organized as (you **must** check one of the boxes below):
 - A. Sole Proprietorship (individual)
 - B. Partnership
 - C. Corporation
2. You **must** check one of the boxes below:
 - A. I certify my business is a sole proprietorship and it has no employees but the sole proprietor. I am not subject to the Worker's Compensation Laws.
 - B. I certify my business has satisfied its obligation to the Worker's Compensation Act through the use of an approved Notice of Exclusion (BWC-337, Rev. 5/96). I will provide a copy of the Notice of Exclusion within 21 days of the contract award. (For questions or a copy of the BWC-337, please call the Worker's Compensation Bureau at 517-322-1195).
 - C. I certify my business has a Worker's Compensation Policy. I will provide an original Certificate of Insurance within twenty-one (21) days of the contract award.
3. If you have checked item 2(A) or 2(B), you **must** indicate the number of **both** full-time and part-time employees, other than yourself, including family members and active partners (if none, you must enter "0").

_____ Full-time Employees

_____ Part-time Employees

| | | | |
|------------------|-------|-------------------------------------|--|
| Name of Business | | Federal ID (or) Social Security No. | |
| Address | | Telephone () | |
| City | State | ZIP | |

I hereby certify that the above information is true and correct. I agree to notify the Michigan DNR of any changes that occur in factors affecting my coverage during any of my present and future operations.

Signature of Owner or Authorized Representative

Title

Date

Please complete the "SEALED BID" information on the next page

118th Sale (19-004-21)

T02N, R14W, SEC. 16; T02N, R14W, SEC. 17; T02N, R14W, SEC. 20; Allegan

In response to the notice of sale to be held 10:00 a.m. (local time) on November 9, 2021, I am hereby submitting my sealed bid (firm offer) for the following forest products to be cut. Bids for individual species must be at or above the advertised price. All non-responsive bid forms may be rejected.

| <u>PRODUCTS & SPECIES</u> | <u>ESTIMATED VOLUME*</u> | <u>ADVERTISED PRICE</u> | <u>BID PRICE/UNIT</u> |
|-------------------------------|--------------------------|-------------------------|-----------------------|
| Sawtimber | | | |
| B. T. Aspen | 78.7 MBF | \$ 83.00/MBF | \$ _____ |
| Black Cherry | 6.2 MBF | \$ 148.00/MBF | \$ _____ |
| Jack Pine | 12.0 MBF | \$ 17.00/MBF | \$ _____ |
| Red Oak | 4.7 MBF | \$ 135.00/MBF | \$ _____ |
| Red Pine | 394.3 MBF | \$ 83.00/MBF | \$ _____ |
| Pulpwood | | | |
| B. T. Aspen | 188 Cords | \$ 13.35/Cord | \$ _____ |
| Jack Pine | 44 Cords | \$ 8.60/Cord | \$ _____ |
| Mixed Hardwood | 125 Cords | \$ 11.75/Cord | \$ _____ |
| Red Pine | 378 Cords | \$ 31.35/Cord | \$ _____ |

*The volumes are statistically estimated within plus (+) or minus (-) 9.98 percent at 95% confidence level. These estimated volumes are final and not subject to adjustment. Prospective bidders are urged to examine this timber and to make their own estimates of quantity and quality.

I understand that any or all bids may be rejected. All bids must be signed and all bid items must be bid or the bid form may be rejected. I also understand that consideration and awarding a contract will be based upon my past performance and ability to complete the contract based upon equipment and staffing subject to my control.

FEDERAL ID: ____ - ____ - ____ or SOCIAL SECURITY NUMBER: ____ - ____ - ____

Company or individual bidding: _____

Company representative's name: _____

Address: _____

City: _____ State: _____ Zip: _____

IF AVAILABLE, PLEASE PLACE THE PERSONALIZED LABEL FROM YOUR PROSPECTUS IN THE ABOVE BOX.

Individual or company representative's signature: _____ Date: _____

Phone number : _____ Email (optional): _____

THE WINNING BIDDER MUST COMPLETE THE VERIFICATION OF WORKER'S DISABILITY COMPENSATION ACT COMPLIANCE (ON REVERSE SIDE IF DOUBLE SIDED) WITHIN 21 DAYS OF SALE AWARD DATE



| FOR DEPARTMENT USE ONLY | |
|----------------------------------|--|
| Sale Number (XX - XXX - XX - XX) | |
| Forest Management Unit: | |

TIMBER SALE VERIFICATION OF WORKER'S DISABILITY COMPENSATION ACT COMPLIANCE

As required by Act 317, P.A. 1969 (Worker's Compensation) and
Part 5 of Act 451 of 1994, as amended.

VERIFICATION OF WORKER'S DISABILITY COMPENSATION ACT COMPLIANCE

- This verification must be completed and submitted within 21 days of contract award and prior to the issuance of the timber sale contract.
- In addition, if boxes 2B or 2C are checked, then Notice of Exclusion or Certificate of Insurance must be submitted within twenty-one (21) days of the contract award and prior to the issuance of the timber sale contract.
- All information must be typed or printed except for written signatures.

Please Check Appropriate Categories:

1. My business is organized as (you **must** check one of the boxes below):
 - A. Sole Proprietorship (individual)
 - B. Partnership
 - C. Corporation
2. You **must** check one of the boxes below:
 - A. I certify my business is a sole proprietorship and it has no employees but the sole proprietor. I am not subject to the Worker's Compensation Laws.
 - B. I certify my business has satisfied its obligation to the Worker's Compensation Act through the use of an approved Notice of Exclusion (BWC-337, Rev. 5/96). I will provide a copy of the Notice of Exclusion within 21 days of the contract award. (For questions or a copy of the BWC-337, please call the Worker's Compensation Bureau at 517-322-1195).
 - C. I certify my business has a Worker's Compensation Policy. I will provide an original Certificate of Insurance within twenty-one (21) days of the contract award.
3. If you have checked item 2(A) or 2(B), you **must** indicate the number of **both** full-time and part-time employees, other than yourself, including family members and active partners (if none, you must enter "0").

_____ Full-time Employees

_____ Part-time Employees

| | | | |
|------------------|-------|-------------------------------------|--|
| Name of Business | | Federal ID (or) Social Security No. | |
| Address | | Telephone () | |
| City | State | ZIP | |

I hereby certify that the above information is true and correct. I agree to notify the Michigan DNR of any changes that occur in factors affecting my coverage during any of my present and future operations.

Signature of Owner or Authorized Representative

Title

Date

Please complete the "SEALED BID" information on the next page

Savanna Test (19-005-21)
T02N, R14W, SEC. 21; T02N, R14W, SEC. 28; Allegan COUNTY

In response to the notice of sale to be held 10:00 a.m. (local time) on November 9, 2021, I am hereby submitting my sealed bid (firm offer) for the following forest products to be cut. Bids for individual species must be at or above the advertised price. All non-responsive bid forms may be rejected.

| <u>PRODUCTS & SPECIES</u> | <u>ESTIMATED VOLUME*</u> | <u>ADVERTISED PRICE</u> | <u>BID PRICE/UNIT</u> |
|-------------------------------|--------------------------|-------------------------|-----------------------|
| Sawtimber | | | |
| B. T. Aspen | 43.8 MBF | \$ 85.00/MBF | \$ _____ |
| Black Cherry | 11.6 MBF | \$ 148.00/MBF | \$ _____ |
| Jack Pine | 4.6 MBF | \$ 17.00/MBF | \$ _____ |
| Red Oak | 55.4 MBF | \$ 124.00/MBF | \$ _____ |
| Red Pine | 294.4 MBF | \$ 83.00/MBF | \$ _____ |
| White Oak | 63.8 MBF | \$ 73.00/MBF | \$ _____ |
| Pulpwood | | | |
| B. T. Aspen | 182 Cords | \$ 13.55/Cord | \$ _____ |
| Jack Pine | 111 Cords | \$ 8.60/Cord | \$ _____ |
| Mixed Hardwood | 51 Cords | \$ 11.80/Cord | \$ _____ |
| Mixed Oak | 325 Cords | \$ 12.35/Cord | \$ _____ |
| Red Pine | 595 Cords | \$ 31.30/Cord | \$ _____ |

*The volumes are statistically estimated within plus (+) or minus (-) 8.83 percent at 95% confidence level. These estimated volumes are final and not subject to adjustment. Prospective bidders are urged to examine this timber and to make their own estimates of quantity and quality.

I understand that any or all bids may be rejected. All bids must be signed and all bid items must be bid or the bid form may be rejected. I also understand that consideration and awarding a contract will be based upon my past performance and ability to complete the contract based upon equipment and staffing subject to my control.

FEDERAL ID: _____ or SOCIAL SECURITY NUMBER: _____

Company or individual bidding: _____

Company representative's name: _____

Address: _____

City: _____ State: _____ Zip: _____

IF AVAILABLE, PLEASE PLACE THE PERSONALIZED LABEL FROM YOUR PROSPECTUS IN THE ABOVE BOX.

Individual or company representative's signature: _____ Date: _____

Phone number : _____ Email (optional): _____

THE WINNING BIDDER MUST COMPLETE THE VERIFICATION OF WORKER'S DISABILITY COMPENSATION ACT COMPLIANCE (ON REVERSE SIDE IF DOUBLE SIDED) WITHIN 21 DAYS OF SALE AWARD DATE



| FOR DEPARTMENT USE ONLY | |
|----------------------------------|--|
| Sale Number (XX - XXX - XX - XX) | |
| Forest Management Unit: | |

TIMBER SALE VERIFICATION OF WORKER'S DISABILITY COMPENSATION ACT COMPLIANCE

As required by Act 317, P.A. 1969 (Worker's Compensation) and
Part 5 of Act 451 of 1994, as amended.

VERIFICATION OF WORKER'S DISABILITY COMPENSATION ACT COMPLIANCE

- This verification must be completed and submitted within 21 days of contract award and prior to the issuance of the timber sale contract.
- In addition, if boxes 2B or 2C are checked, then Notice of Exclusion or Certificate of Insurance must be submitted within twenty-one (21) days of the contract award and prior to the issuance of the timber sale contract.
- All information must be typed or printed except for written signatures.

Please Check Appropriate Categories:

1. My business is organized as (you **must** check one of the boxes below):
 - A. Sole Proprietorship (individual)
 - B. Partnership
 - C. Corporation
2. You **must** check one of the boxes below:
 - A. I certify my business is a sole proprietorship and it has no employees but the sole proprietor. I am not subject to the Worker's Compensation Laws.
 - B. I certify my business has satisfied its obligation to the Worker's Compensation Act through the use of an approved Notice of Exclusion (BWC-337, Rev. 5/96). I will provide a copy of the Notice of Exclusion within 21 days of the contract award. (For questions or a copy of the BWC-337, please call the Worker's Compensation Bureau at 517-322-1195).
 - C. I certify my business has a Worker's Compensation Policy. I will provide an original Certificate of Insurance within twenty-one (21) days of the contract award.
3. If you have checked item 2(A) or 2(B), you **must** indicate the number of **both** full-time and part-time employees, other than yourself, including family members and active partners (if none, you must enter "0").

_____ Full-time Employees

_____ Part-time Employees

| | | | |
|------------------|-------|-------------------------------------|--|
| Name of Business | | Federal ID (or) Social Security No. | |
| Address | | Telephone () | |
| City | State | ZIP | |

I hereby certify that the above information is true and correct. I agree to notify the Michigan DNR of any changes that occur in factors affecting my coverage during any of my present and future operations.

Signature of Owner or Authorized Representative

Title

Date

Please complete the "SEALED BID" information on the next page