



**DEPARTMENT OF NATURAL RESOURCES  
STATE OF MICHIGAN**

**TIMBER SALE PROSPECTUS #6944**

SCHEDULED SALE DATE AND TIME: 10:00 a.m. (local time) on November 9, 2021.

LOCATION: SE REGION-WILD, 3580 STATE PARK DRIVE, BAY CITY, MI 48706.

PROSPECTUS NOTE: The bidder is advised to inspect the sale area and review the location, estimated volumes, operating costs and contract terms of proposed sales. Please be aware that some landowners may request 60 days or more notice for access across their land.

Notice is hereby given that bids will be received by the Game Area Manager, LAPEER SGA, for certain timber on the following described lands:

Roods Lake Mix (28-003-21) / T08N, R10E, SEC. 10, N1/2NW,NE.

Lapeer County, Advertised Price \$21,795.20, 62.3 Acres, Aspen, Hardwood.

SALE NOTE: All units of volume listed for this sale were estimated using the Inventory Manager computer program and the new Michigan taper model.

Access may be through other public land.

7 Block Mix (55-132-21) / T13N, R10E, SEC. 11, S1/2SE.

T13N, R10E, SEC. 14, NW,N1/2NE,W1/2SW,E1/2SE.

T13N, R10E, SEC. 23, NWNW.

Tuscola County, Advertised Price \$33,456.50, 81.6 Acres, Hardwood, Aspen.

SALE NOTE: All units of volume listed for this sale were estimated using the Inventory Manager computer program and the new Michigan taper model.

Access may be through other public land.

Minden 4 block Aspen (55-133-21) / T13N, R14E, SEC. 4 , SWSW.

T13N, R14E, SEC. 5 , SESE.

T13N, R14E, SEC. 8 , E1/2NE.

T13N, R14E, SEC. 9 , NWNW,W1/2SE.

Sanilac County, Advertised Price \$25,688.35, 55.6 Acres, Aspen, Hardwood.

SALE NOTE: All units of volume listed for this sale were estimated using the Inventory Manager computer program and the new Michigan taper model.

Access may be through other public land.

Ryan Ridges Mix (55-134-21) / T12N, R09E, SEC. 14, E1/2SW,W1/2SE.

T12N, R09E, SEC. 23, SENW,S1/2NE,SW,SE.

T12N, R09E, SEC. 24, NWSW,S1/2SW.

T12N, R09E, SEC. 26, NENW,N1/2NE.

Tuscola County, Advertised Price \$53,576.70, 124.4 Acres, Aspen, Hardwood.

SALE NOTE: All units of volume listed for this sale were estimated using the Inventory Manager computer program and the new Michigan taper model.

Access may be through other public land.

Beaver Dam Aspen (55-135-21) / T13N, R13E, SEC. 1 , E1/2NE,NESE.

T13N, R14E, SEC. 6 , W1/2NW.

T14N, R13E, SEC. 36, SESE.

T14N, R14E, SEC. 31, SWNW,W1/2SW.

Sanilac County, Advertised Price \$36,576.80, 56.4 Acres, Aspen, Hardwood.

SALE NOTE: All units of volume listed for this sale were estimated using the Inventory Manager computer program and the new Michigan taper model.

Access may be through other public land.

Verona Maple Mix (55-136-21) / T15N, R14E, SEC. 4 , NW,W1/2NE.

T15N, R14E, SEC. 5 , NENE.

T16N, R14E, SEC. 28, NESW,W1/2SE.

Huron County, Advertised Price \$33,330.55, 121.9 Acres, Hardwood, Aspen.

SALE NOTE: All units of volume listed for this sale were estimated using the Inventory Manager computer program and the new Michigan taper model.

Access may be through other public land.

## BID INSTRUCTIONS (VER. 07/02/2018):

### 1. Scheduled Bid Location, Date, and Time (2/11)

Bids must be received by the Unit Manager, BAY CITY OFFICE, 3580 State Park Drive, Bay City, MI 48706, no later than 10:00 a.m. (local time) on November 9, 2021. For further information concerning this sale, contact Don Bonnette at 989-385-5616.

### 2. Bidder's Qualifications (5/16)

Purchaser shall obtain workers compensation insurance to cover claims under Michigan's Worker's Disability Compensation Act of 1969 or similar employee benefit act of any other state applicable to an employee. If all or part of a timber sale was prepared by a private contractor, the contractor and that contractor's company are not permitted to bid on the timber sale contract. Bids will not be accepted from individuals or companies appearing on the DNR/FRD No-Bid List. This list contains the names of purchasers who previously failed to execute a contract within 21-days or who have a history of poor performance.

### 3. Preparation of Sealed Bids (5/16)

Bid Forms may be completed online thru Michigan DNR Timber Sale Online Bidding (OLB) at [www.michigan.gov/timberbidding](http://www.michigan.gov/timberbidding) or by completing the hardcopy Bid Form found in the Timber Sale Prospectus. Hardcopy Bid Forms shall be manually signed in ink. Registration in OLB is considered your 'signature' for all bids submitted thru that system. Bid prices must be entered for each species and product in the Bid Price column for all material subject to bidding and all fill-in blanks must be completed. If erasures or other changes appear on the hardcopy Bid Form, each erasure or change must be initialed by the person signing the bid.

### 4. Submission of Sealed Bids (5/16)

Bid forms may be obtained from the Unit Manager or thru OLB. Bids may be submitted hardcopy or thru OLB. All hardcopy bids must be submitted on the bid form and in an envelope clearly identified as described in this section. NOTE: Only one bid form per bid envelope. Sealed bids must be submitted to the Unit office designated in the prospectus and must be submitted at or prior to the time established in the prospectus. The envelope should show on the outside (a) the sale name or number and (b) the date and time of bid opening, as shown in the prospectus. Bids received after the time specified in the sale prospectus are late bids and will be rejected.

It is possible for a bidder to submit multiple bids on a single sale. For example, a bid may be submitted hardcopy and a bid may be submitted thru OLB. Or, two bidders from the same company could both submit bids on the same sale. If this were to happen, the State would accept all bids received and award the contract accordingly. All bidding and contractual requirements would apply to all bids received.

### 5. Public Opening of Sealed Bids (7/16)

If conditions permit, the sealed bids will be publicly opened and posted at the time and place set in the prospectus.

If a bidder, present at a bid opening, has submitted bids on more than one sale, that bidder may withdraw their unopened bid envelopes or announce the withdrawal of their online bid after being declared the successful bidder on one sale.

### 6. Award of Contract (1/11)

Award of the contract will be made to the Bidder whose bid, conforming to the prospectus, is most advantageous to the State of Michigan on the basis of total value at rates bid for the estimated quantities. The State reserves the right to reject any bid or waive any minor irregularity in bids received. A written award mailed (or otherwise furnished) to the successful Bidder shall be deemed to result in a binding contract without further action by either party.

### 7. Down Payment (1/11)

The Bidder to whom award is made must make a down payment within 21 days of the sale award. The amount of the down payment will be calculated as shown in the Bond and Payment Schedule of this prospectus. Only cash may be used to meet this requirement.

### 8. Performance Security (1/11)

As guarantee of faithful performance, a cash bond, certificate of deposit, surety bond or irrevocable letter of credit (LOC) is required within 21 days of the sale award. The amount of the performance security is shown in the Bond and

Payment Schedule of this prospectus. If an LOC or surety is used, the coverage must extend for at least 6 months beyond the contract expiration.

#### 9. Timber Sale Contract (7/18)

Additional conditions and requirements common to all timber sales are listed on the timber sale contract (R4031) and are available on line at [www.michigan.gov/timber](http://www.michigan.gov/timber). Contact the Unit Manager for additional information or a sample contract. Within 21 days of the date of the award letter, the bidder must sign the contract and provide the required down payment, performance security, and verification of worker's disability compensation. The down payment and performance security shall be in accordance with the provisions of the timber sale contract, in the sums stated in this prospectus. If these actions are not taken, then the Bidder, the Bidder's corporation, and the corporation's principals may not be permitted to bid on State timber sales for a period of 3 months after the first offense, 6 months after the second offense, and 1 year after the third offense. An offense will only be counted against the Bidder for 5 years. In addition, the Bidder certifies that if awarded this contract, the Bidder will complete the timber sale contract in accordance with its terms and any modifications thereof including requirements to purchase, cut, and remove the included timber by the expiration date.

Payment Unit values in the State Forest Timber Sale Contract are calculated based on the advertised value of the Payment Unit as a percentage of the total advertised value of the contract. The advertised value of each Payment Unit is given in the Description of Timber by Payment Unit table on the Timber Sale Information page. For example, if the value of Payment Unit 1 is advertised as \$1,500 and the total Timber Sale value is advertised as \$10,000, the contract price for Payment Unit 1 will be 15% of the total bid price ( $\$1,500/\$10,000 * 100$ ).

#### 10. Disclaimer of Estimates and Bidder's Warranty of Inspection (7/16)

Before submitting this bid, the Bidder is advised and cautioned to inspect the sale area, review the requirements of the sale contract, and take other steps as may be reasonably necessary to ascertain the location, estimated volumes, construction estimates, and operating costs of the proposed sale. Failure to do so will not relieve the Bidder from responsibility for completing the contract.

The Bidder warrants that this bid is submitted solely on the basis of the Bidder's examination and inspection of the quality and quantity of the timber offered for sale and the Bidder's opinion of the value thereof and the costs of recovery. No reliance should be placed on the State of Michigan's estimates of timber quality, quantity or costs of recovery. Bidder further acknowledges that the State of Michigan: (i) expressly disclaims any warranty of fitness of timber for any purpose; (ii) offers this timber as is without any warranty of quality (merchantability) or quantity and (iii) expressly disclaims any warranty as to the quantity or quality of timber sold.

#### 11. Certification and Chain-of-Custody (10/14)

Unless otherwise indicated in the contract under section 7 – Other Conditions of the Sale Specific Conditions & Requirements, the area encompassed by this timber sale is certified to the standards of the Forest Stewardship Council (FSC) - Certificate #SCS-FM/COC-00090N and the Sustainable Forestry Initiative (SFI) - Certificate #NSF-SFIS-5Y031-SF5. Forest products from this sale may be delivered to the mill as "FSC 100% and / or SFI certified" as long as the contractor hauling the forest products is chain-of-custody (COC) certified or covered under a COC certificate from the destination mill. The purchaser is responsible for maintaining COC after leaving the sale area.

#### 12. Good Neighbor Authority (GNA) Requirements (7/16)

If the name of this timber sales contains the acronym GNA, it is authorized by the Good Neighbor Authority (GNA) and covered by various agreements between the U.S. Forest Service and the State. The timber sale occurs on federal land and the following conditions apply:

GNA contracts on US Forest Service land will not be awarded to purchasers on the Federal list of excluded parties. The System for Award Management (SAM) will be checked for active excluded parties prior to award of contract. In addition, the Bidder to whom award is made must complete an Assurance Regarding Felony Conviction or Tax Delinquent Status for Corporate Applicants (AD-3031).

#### 13. Good Neighbor Authority (GNA) Requirements, con't (9/16)

Bidder certifies, by signing this bid form, that to the best of Bidder's knowledge that the following representations are accurate and complete.

- a. That the Bidder and its principals are not presently debarred, suspended, proposed for debarment, declared ineligible, or voluntary excluded from timber sales (covered transactions) by any Federal department or agency.
- b. That the Bidder and its principals have not within a 3-year period preceding this bid been convicted of or had a civil judgment rendered against them for commission of fraud or a criminal offense in connection with obtaining , attempting to obtain, or performing a public (Federal, State, or local) transaction or contract under a public transaction; violation of Federal or State antitrust statutes or commission of embezzlement, theft, forgery, bribery, falsification or destruction of records, making false statements, or receiving stolen property.
- c. That the Bidder and its principals are not presently indicted for or otherwise criminally or civilly charged by a governmental entity (Federal, State, or local) with commission of any of the offenses enumerated in paragraph b of this certification.
- d. That the Bidder and its principals have not within a 3-year period preceding this bid had one or more public transactions (Federal, State, or local) terminated for breach or default of a timber or forest product contract.

Bidders that cannot certify this requirement, in whole or in part, shall submit an explanation with their bid.

DAN EICHINGER  
Director



# TIMBER SALE INFORMATION

Roods Lake Mix (28-003-21)  
T08N, R10E, SEC. 10.  
Lapeer County (Advertised Price \$21,795.20)

SALE NOTE: All units of volume listed for this sale were estimated using the Inventory Manager computer program and the new Michigan taper model.

Access may be through other public land.

A timber sale contract for this lump sum, sealed bid timber sale will be awarded to the responsible bidder offering the highest sealed bid price. All units of volume listed below were estimated using the Inventory Manager computer program and the new Michigan taper model. Bids must be at or above the following advertised price for each product and species:

<u>PRODUCTS &amp; SPECIES</u>	<u>ESTIMATED UNITS*</u>	<u>ADVERTISED PRICE</u>
Sawtimber		
Mixed Aspen	276.8 MBF	\$ 28.00 / MBF
Red Pine	61.6 MBF	\$ 37.00 / MBF
Pulpwood		
Mixed Aspen	436 Cords	\$ 11.55 / Cord
Mixed Hardwood	377 Cords	\$ 8.80 / Cord
Red Pine	188 Cords	\$ 18.15 / Cord

\* The total volume is statistically estimated within plus (+) or minus (-) 8.84 percent. There are an estimated 1,632 cords on this timber sale, plus or minus 144 cords at the 95% confidence level. The estimated units are final and not subject to adjustment. Prospective bidders are urged to examine this timber and to make their own estimates of quantity and quality.

### BOND AND PAYMENT SCHEDULE:

1. A bond in the amount of \$1,090.00 to insure faithful performance of the conditions of the contract will be deposited by the successful bidder within 21 days of the sale award.
2. Cutting in any sale or unit without the required advance payment would be considered a trespass.
3. Total payment must be paid in advance or according to the following schedule :
  - (a) Ten percent (10%) of the sale value must be paid within 21 days of the sale award.
  - (b) The 10% down payment will be credited towards the first unit cut.
  - (c) Payment for each of the following units must be made before cutting begins in that unit:
 

PAYMENT UNIT NUMBER	PERCENT OF TOTAL SALE VALUE
01	47.0%
02	16.7%
03	36.3%
4. If no cutting takes place, the 10% down payment will not be refunded.
5. Operations on the contract issued will terminate on 12/31/2023.

### SALE STATISTICS

Volumes were calculated in cubic feet using the Michigan taper model. Cubic foot volume includes all wood inside bark for the product indicated. For display purposes, cubic feet were converted to cords and MBF using a simple conversion factor, e.g. 79 cubic feet per cord and 185 cubic feet per MBF. The cubic foot volumes are precise; the cords and MBF volumes are not. Cubic foot volume cannot be directly converted to cords or boards with precision.

### SALE VOLUMES

The total estimated sale volume may not equal the sum of the species/products due to the nature of statistical calculations associated with double sampling methodology.

VOLUME		STATISTICAL RANGE IN CORDS		
TOTAL CUBIC FEET	TOTAL CORDS	PERCENT ERROR	MINIMUM	MAXIMUM
128,929	1,632	8.84%	1,488	1,776

**VDU VOLUMES**

A VDU is a Volume Determination Unit. Volumes and their associated statistics are calculated at the VDU level and summarized to the sale level. There is often a one to one relationship between a VDU and a Payment Unit, but not always, depending on the cruise design. Refer to the VDU TO PAYMENT UNIT table.

VDU	VOLUME		PERCENT ERROR	RANGE IN CORDS	
	TOTAL CUBIC FEET	TOTAL CORDS		MINIMUM	MAXIMUM
3	69,879	885	12.66%	773	997
25	19,771	250	21.82%	196	305
27	19,333	245	23.50%	187	302
78	23,504	298	19.16%	241	355
<b>TOTAL:</b>	<b>132,486</b>	<b>1,677</b>		<b>1,396</b>	<b>1,958</b>

**VDU TO PAYMENT UNIT**

When a VDU is associated with more than one Payment Unit (PU), the VDU volumes are assigned to the PU based on acres of the VDU within the PU.

VDU	VDU ACRES	PU	PU ACRES
3	21.8	1	21.8
25	10.3	3	10.3
27	11.4	3	11.4
78	18.8	2	18.8
<b>TOTAL:</b>	<b>62.3</b>		<b>62.3</b>



**DESCRIPTION OF TIMBER BY PAYMENT UNIT (PU)**

PU	MARKET GROUP	PRODUCT	QUANTITY	UNIT	ACRES	ADVERTISE PRICE
1	Mixed Aspen	Sawtimber	148.7	MBF	21.8	\$10,253.75
	<i>B. T. Aspen</i>		144.5	<i>MBF</i>		
	<i>Cottonwood</i>		4.2	<i>MBF</i>		
	Mixed Aspen	Pulpwood	333	Cords		
	<i>B. T. Aspen</i>		316	<i>Cords</i>		
	<i>Cottonwood</i>		17	<i>Cords</i>		
	Mixed Hardwood		255	Cords		
	<i>Black Cherry</i>		27	<i>Cords</i>		
	<i>Paper Birch</i>		5	<i>Cords</i>		
	<i>Red Maple</i>		131	<i>Cords</i>		
	<i>Sassafras</i>		92	<i>Cords</i>		
	2		Mixed Aspen	Sawtimber		
<i>B. T. Aspen</i>		86.3	<i>MBF</i>			
Mixed Aspen		Pulpwood	45	Cords		
<i>B. T. Aspen</i>			45	<i>Cords</i>		
Mixed Hardwood			80	Cords		
<i>Black Cherry</i>			7	<i>Cords</i>		
<i>Ironwood</i>			4	<i>Cords</i>		
<i>Sassafras</i>			69	<i>Cords</i>		
3	Mixed Aspen	Sawtimber	41.8	MBF	21.7	\$7,901.30
	<i>B. T. Aspen</i>		41.8	<i>MBF</i>		
	Red Pine	Pulpwood	61.6	MBF		
	Mixed Aspen		58	Cords		
	<i>B. T. Aspen</i>		58	<i>Cords</i>		
	Mixed Hardwood		42	Cords		
	<i>Black Cherry</i>		26	<i>Cords</i>		
	<i>Red Maple</i>		16	<i>Cords</i>		
Red Pine	188	Cords				
TOTAL:			338.4	MBF		
TOTAL:			1,001	Cords		

# Sale Specific Conditions & Requirements

**Sale Name: Roods Lake Mix**

**Sale Number: 28-003-21 Seq#: 1**

## 1 - Sale Area

### 1.2 - Boundaries

#### 1.2.1 - Painted boundaries (9/19)

The sale boundary and Payment Unit boundaries are marked and identified by blue, red and yellow paint. Exterior sale boundary lines against private property are marked with blue paint. Exterior sale boundary lines against state are marked with red paint. Interior Payment Unit boundaries are marked with yellow paint. The painted boundary line trees are not Included Timber and are to be protected. Yellow painted trees designating an interior Payment Unit boundary are only to be cut when all surrounding Payment Units have been paid.

## 2 - Timber Specifications

### 2.1 - Included Timber

#### 2.1.1 - Clearcut unit(s) with unmerchantable trees (6/14)

Within Payment Unit(s) 1-3, cut all red pine and oak marked with orange paint and other trees that are two (2) inches or more at DBH, except white pine, hickory, beech, apple, walnut, and trees marked with green paint. Special protection trees identified in accordance with condition 3.4.2, within clearcutting unit boundaries, are not Included Timber and are to be protected.

### 2.2 - Utilization

#### 2.2.3 - Stump heights (4/07)

Stump heights within the Sale Area shall not exceed 6 inches for all trees.

#### 2.2.4 - Skidding length (2/14)

Skidding of unlimbed tops is not permissible.

#### 2.2.10 - No chipping tops and limbs (8/16)

Within Payment Unit(s) 1-3, chipping of the bole, 2-inches in diameter or greater, is allowed. Chipping of limbs or portions of the tree less than 2-inches in diameter is not permitted. Limbs and the remaining top must be left on site and scattered.

## 3 - Payments

### 3.4 - Damaged Timber

#### 3.4.1 - Damaged timber (7/16)

General Condition and Requirement 3.4 Damaged Timber, defines liquidated damages for undesignated live merchantable trees which are cut or injured.

Within Payment Unit 3, if more than 25% of oak tree seedlings or saplings (1/4" to 4.5" DBH) are damaged, liquidated damages will be assessed at \$100 per acre for all acreage within that specified portion of the Sale Area that was damaged.

#### 3.4.2 - Special Protection Trees (4/14)

The Purchaser shall not cut live or dead special protection trees within cutting units or clearings. Special protection trees are un-marked oak, un-marked red pine, hickory, walnut, apple, and trees marked with green paint. If the Purchaser's operations have cut or damaged special protection trees through carelessness, the Purchaser shall pay \$200 as fixed, agreed and liquidated damages for each special protection tree cut or damaged. Such payment does not constitute ownership of the undesignated timber.

### 3.6 - Payment Unit Cutting Schedule

#### 3.6.2 - One active unit (12/08)

Each Payment Unit must be completed to the satisfaction of the Unit Manager or his/her representative before the next unit may be opened. The Purchaser must give a one week notice before finishing a Payment Unit to allow for inspection.

## 4 - Transportation

#### 4.1 - Construction

##### 4.1.3 - Slash and earthen piles (8/04)

Piles or windrows of earth along roads and landings that have been widened or constructed shall be leveled. Slash from road maintenance or construction, including stumps, shall be dispersed throughout the sale.

##### 4.1.12 - No new roads (1/12)

No new roads will be permitted in any Payment Unit. All operations are limited to existing roads. Skid trails only will be allowed.

#### 4.2 - Maintenance

##### 4.2.3 - Road maintenance (8/13)

The following road maintenance is required. Within 60 days of completion of hauling, or if no hauling occurs for 60 days, the road must be maintained and graded. This includes cleaning of drainage areas, grading, crowning, and filling with gravel, if necessary. Damages will be assessed if grading/repair does not occur.

##### 4.2.4 - Grading (10/16)

For completion of the sale, state game area roads must be graded. In general, this will require a road grader or bulldozer to shape up the roads after forest products have been hauled off site. This includes cleaning of drainage areas, grading, crowning, and filling with gravel, if necessary. The grading equipment to be used must be approved by the Unit Manager or his/her representative.

##### 4.2.5 - Two wheel drive condition (2/04)

All existing trail roads on and adjacent to the sale area must be passable by two-wheel drive traffic for the duration of the sale.

#### 4.4 - Access

##### 4.4.3 - Access gate (12/08)

The access gate at the end of Roods Lake Road and at the corner of Sawdust Corners Road must be locked at all times. This is to prevent someone other than the Purchaser from going through the gate and being locked in and to prevent damage to infrastructure and natural resources.

##### 4.4.4 - Restricted access (10/05)

Any vehicle barriers (gates, guard rail, berms etc.) removed during the course of operations shall be replaced in their original location and in their original condition. Any damage to gates, guard rail, or vehicle barriers is the responsibility of the Purchaser.

### 5 - Operations

#### 5.1 - Notification

##### 5.1.1 - Pre-sale conference (10/16)

A pre-sale conference on site between the Purchaser and sale administrator is required prior to beginning any operations to determine landing and road locations. The sale administrator or his/her representative must be contacted at least 10 days in advance to schedule the conference.

#### 5.2 - Conduct of Operations

##### 5.2.1 - Slash

###### 5.2.1.8 - Slash height (12/08)

No slash or tree tops may exceed 24 inches in height.

###### 5.2.1.10 - No slash in openings (5/10)

No brush or logging debris is to be left in any maintained wildlife opening which is indicated by G0 or U0 on the Timber Sale Map. Any damage to the opening shall be repaired according to specifications of the Unit Manager or his/her representative.

###### 5.2.1.11 - Slash for reforestation (3/21)

To facilitate reforestation, the Sale Area or Payment Unit(s) shall be left with slash evenly distributed. Bunched tops

within the cutting area shall be broken up and scattered. Stumps shall be cut low to the ground. Processing sites shall not be left with a compacted layer of slash; tops from these sites shall be hauled back into the cut area and scattered.

#### 5.2.2 - Hazard Trees/Snags

##### 5.2.2.1 - Den trees (10/16)

Obvious hollow and/or den trees shall be protected and left standing unless they are a safety hazard. All standing dead trees (snags) shall be protected and left standing unless they are a safety hazard.

#### 5.2.3 - Operating Restrictions

##### 5.2.3.4 - Oak wilt restriction, no exceptions (1/18)

Within all Payment Units, cutting, skidding, hauling within the sale and brushing of access roads to the sale are not permitted during the period of April 15 to July 15. No exceptions will be granted. This is necessary to reduce the spread of oak wilt.

##### 5.2.3.12 - Hunting operating restriction (1/18)

No Payment Unit may be started during the period of September 25 - October 10 or November 1 - November 30, without permission of the Unit Manager or his/her representative.

##### 5.2.31 - Landing locations (9/13)

The location of landings will be determined in the pre-sale conference. Landings must be confined to designated sites unless otherwise authorized by the Unit Manager or his/her representative. In general, landings are limited to a "T" turnaround which will accommodate a truck with a 50-foot trailer.

##### 5.2.32 - Decking/landing restoration (9/13)

All decking and landing areas must have the surface area restored to a condition equal to or better than before. This is to ensure the proper regeneration of the stand. Wood debris, chips, and "cookies" from trimmings must be removed or scattered away from landing and loading areas and may not be windrowed on the edge.

##### 5.2.37 - No decking areas (12/08)

No decking is allowed in any designated parking area. Additionally, no equipment storage is allowed in any designated parking area.

##### 5.2.38 - No decking against live trees (2/04)

Cut products may not be decked against unmarked or designated leave trees.

#### 5.4 - Soil Protection

##### 5.4.1 - Rutting restriction, general (7/16)

Operations are to cease immediately if equipment and weather conditions result in rutting of roads and/or skid trails which is 12 inches or greater in depth and 50 feet in length. The Unit Manager or his/her representative may restrict hauling and/or skidding if ruts exceed the specified depth. With the Unit Manager or his/her representative's approval, the Purchaser may return to the area when the risk of rutting has decreased.

##### 5.4.2 - Skid trails (2/04)

Skid trails up and down slopes should be avoided. If however this is unavoidable, these trails will be left in a non-erodible condition using water bars, logs, and slash. Placing of slash on these skid trails while logging is ongoing may alleviate need for any further action. At the direction of the sale administrator, seed, fertilizer, and mulch may also be required.

#### 5.8 - Protection of Endangered Species

##### 5.8.5 - Protection of raptor nests (3/13)

All trees with raptor nests will be protected if found during harvesting operations. Notification will be made to the Unit Manager or his/her representative who will notify the Wildlife Biologist so an on-site evaluation and recommendation can be made, if necessary.

### 7 - Other Conditions

#### 7.10 - Certified Timber

##### 7.10.1 - Non-certified timber (2/16)

The area encompassed by this timber sale is not certified to the standards of the Forest Stewardship Council (FSC) or the Sustainable Forestry Initiative (SFI). Forest products from this sale may not be delivered to the mill as "FSC and / or SFI certified". The lands within this sale are managed as a State Game Area.



# TIMBER SALE MAP

This information provided by authority of Part 525, 1994 PA 451, as amended.

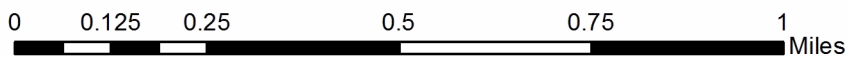
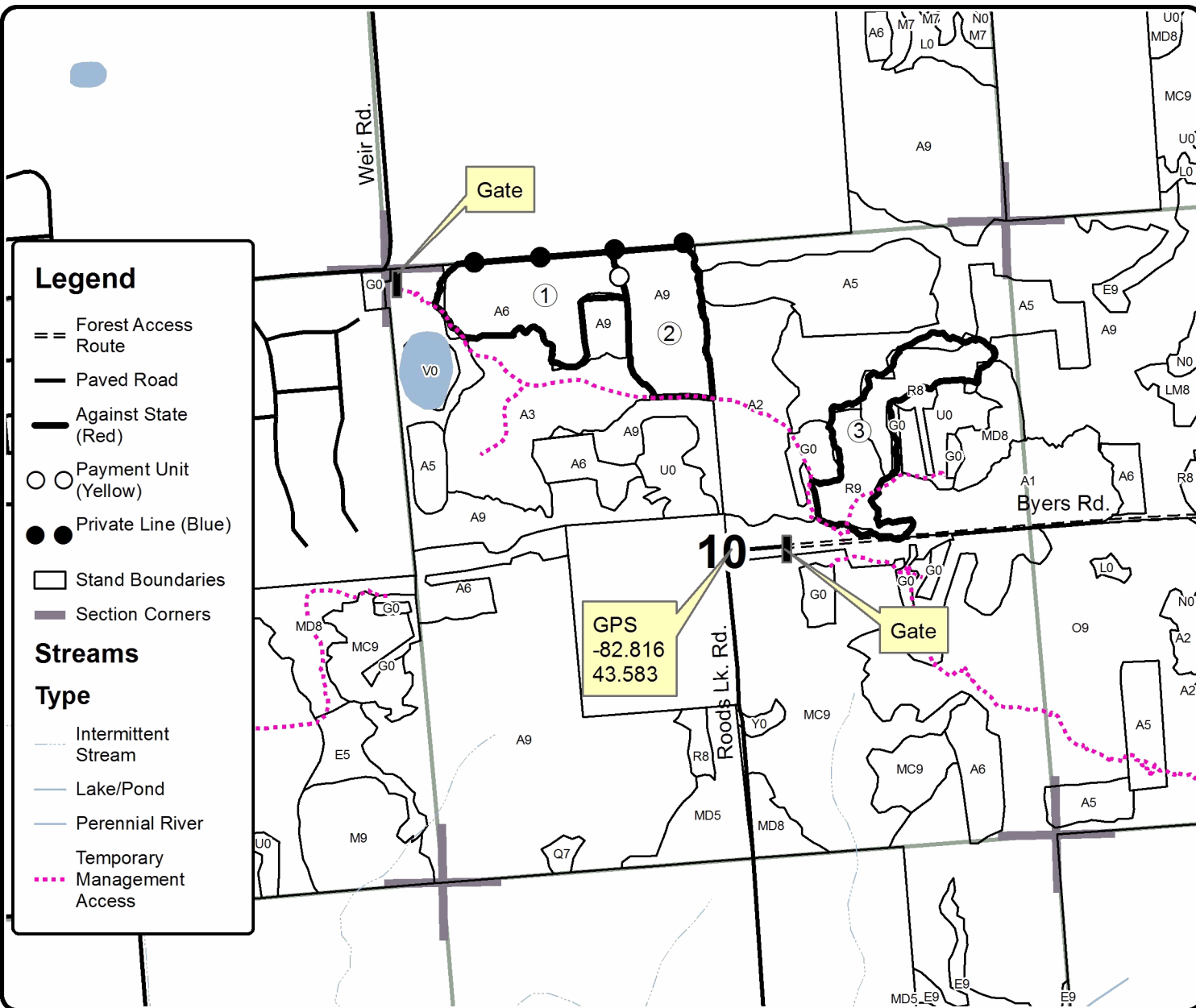
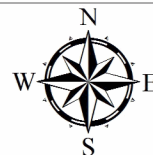
Forest Management Unit Lapeer State Game Area	County Lapeer	Mapped By Bonnette	Date 02/22/2021	Page 1	of 1
Township 08N	Range 10E	Section(s) and Subdivision(s) Sec. 10 N1/2NW,NE	Scale 1:15,840		

Cover Type				Density	
A = Aspen	H = Hemlock	N = Marsh	U = Upland Brush	0 = Non Stocked	5 = Pole Timber Medium
B = Paper Birch	J = Jack Pine	O = Oak	UM = Upland Mixed	1 = Seedling Sapling Poor	6 = Pole Timber Well
C = Cedar	L = Lowland Brush	P = Lowland Poplar	V = Bog or Marsh	2 = Seedling Sapling Medium	7 = Saw Timber Poor
D = Treed Bog	LM = Lowland Mixed	Q = Mixed Swamp Conifer	W = White Pine	3 = Seedling Sapling Well	8 = Saw Timber Medium
E = Swamp Hdwoods	M = Mpl, Bch, Brch	R = Red Pine	X = Non Stocked	4 = Pole Timber Poor	9 = Saw Timber Well
F = Spruce Fir	MC = Mixed Conifer	S = Black Spruce	Z = Water		
G = Grass	MD = Mixed Deciduous	T = Tamarack			

PU	Acres
1	21.8
2	18.8
3	21.7

## Roods Lake Mix

62.3 Acres



## BID INSTRUCTIONS (VER. 07/02/2018):

### 1. Scheduled Bid Location, Date, and Time (2/11)

Bids must be received by the Unit Manager, BAY CITY OFFICE, 3580 State Park Drive, Bay City, MI 48706, no later than 10:00 a.m. (local time) on November 9, 2021. For further information concerning this sale, contact Don Bonnette at 989-385-5616.

### 2. Bidder's Qualifications (5/16)

Purchaser shall obtain workers compensation insurance to cover claims under Michigan's Worker's Disability Compensation Act of 1969 or similar employee benefit act of any other state applicable to an employee. If all or part of a timber sale was prepared by a private contractor, the contractor and that contractor's company are not permitted to bid on the timber sale contract. Bids will not be accepted from individuals or companies appearing on the DNR/FRD No-Bid List. This list contains the names of purchasers who previously failed to execute a contract within 21-days or who have a history of poor performance.

### 3. Preparation of Sealed Bids (5/16)

Bid Forms may be completed online thru Michigan DNR Timber Sale Online Bidding (OLB) at [www.michigan.gov/timberbidding](http://www.michigan.gov/timberbidding) or by completing the hardcopy Bid Form found in the Timber Sale Prospectus. Hardcopy Bid Forms shall be manually signed in ink. Registration in OLB is considered your 'signature' for all bids submitted thru that system. Bid prices must be entered for each species and product in the Bid Price column for all material subject to bidding and all fill-in blanks must be completed. If erasures or other changes appear on the hardcopy Bid Form, each erasure or change must be initialed by the person signing the bid.

### 4. Submission of Sealed Bids (5/16)

Bid forms may be obtained from the Unit Manager or thru OLB. Bids may be submitted hardcopy or thru OLB. All hardcopy bids must be submitted on the bid form and in an envelope clearly identified as described in this section. NOTE: Only one bid form per bid envelope. Sealed bids must be submitted to the Unit office designated in the prospectus and must be submitted at or prior to the time established in the prospectus. The envelope should show on the outside (a) the sale name or number and (b) the date and time of bid opening, as shown in the prospectus. Bids received after the time specified in the sale prospectus are late bids and will be rejected.

It is possible for a bidder to submit multiple bids on a single sale. For example, a bid may be submitted hardcopy and a bid may be submitted thru OLB. Or, two bidders from the same company could both submit bids on the same sale. If this were to happen, the State would accept all bids received and award the contract accordingly. All bidding and contractual requirements would apply to all bids received.

### 5. Public Opening of Sealed Bids (7/16)

If conditions permit, the sealed bids will be publicly opened and posted at the time and place set in the prospectus.

If a bidder, present at a bid opening, has submitted bids on more than one sale, that bidder may withdraw their unopened bid envelopes or announce the withdrawal of their online bid after being declared the successful bidder on one sale.

### 6. Award of Contract (1/11)

Award of the contract will be made to the Bidder whose bid, conforming to the prospectus, is most advantageous to the State of Michigan on the basis of total value at rates bid for the estimated quantities. The State reserves the right to reject any bid or waive any minor irregularity in bids received. A written award mailed (or otherwise furnished) to the successful Bidder shall be deemed to result in a binding contract without further action by either party.

### 7. Down Payment (1/11)

The Bidder to whom award is made must make a down payment within 21 days of the sale award. The amount of the down payment will be calculated as shown in the Bond and Payment Schedule of this prospectus. Only cash may be used to meet this requirement.

### 8. Performance Security (1/11)

As guarantee of faithful performance, a cash bond, certificate of deposit, surety bond or irrevocable letter of credit (LOC) is required within 21 days of the sale award. The amount of the performance security is shown in the Bond and

Payment Schedule of this prospectus. If an LOC or surety is used, the coverage must extend for at least 6 months beyond the contract expiration.

#### 9. Timber Sale Contract (7/18)

Additional conditions and requirements common to all timber sales are listed on the timber sale contract (R4031) and are available on line at [www.michigan.gov/timber](http://www.michigan.gov/timber). Contact the Unit Manager for additional information or a sample contract. Within 21 days of the date of the award letter, the bidder must sign the contract and provide the required down payment, performance security, and verification of worker's disability compensation. The down payment and performance security shall be in accordance with the provisions of the timber sale contract, in the sums stated in this prospectus. If these actions are not taken, then the Bidder, the Bidder's corporation, and the corporation's principals may not be permitted to bid on State timber sales for a period of 3 months after the first offense, 6 months after the second offense, and 1 year after the third offense. An offense will only be counted against the Bidder for 5 years. In addition, the Bidder certifies that if awarded this contract, the Bidder will complete the timber sale contract in accordance with its terms and any modifications thereof including requirements to purchase, cut, and remove the included timber by the expiration date.

Payment Unit values in the State Forest Timber Sale Contract are calculated based on the advertised value of the Payment Unit as a percentage of the total advertised value of the contract. The advertised value of each Payment Unit is given in the Description of Timber by Payment Unit table on the Timber Sale Information page. For example, if the value of Payment Unit 1 is advertised as \$1,500 and the total Timber Sale value is advertised as \$10,000, the contract price for Payment Unit 1 will be 15% of the total bid price ( $\$1,500/\$10,000 * 100$ ).

#### 10. Disclaimer of Estimates and Bidder's Warranty of Inspection (7/16)

Before submitting this bid, the Bidder is advised and cautioned to inspect the sale area, review the requirements of the sale contract, and take other steps as may be reasonably necessary to ascertain the location, estimated volumes, construction estimates, and operating costs of the proposed sale. Failure to do so will not relieve the Bidder from responsibility for completing the contract.

The Bidder warrants that this bid is submitted solely on the basis of the Bidder's examination and inspection of the quality and quantity of the timber offered for sale and the Bidder's opinion of the value thereof and the costs of recovery. No reliance should be placed on the State of Michigan's estimates of timber quality, quantity or costs of recovery. Bidder further acknowledges that the State of Michigan: (i) expressly disclaims any warranty of fitness of timber for any purpose; (ii) offers this timber as is without any warranty of quality (merchantability) or quantity and (iii) expressly disclaims any warranty as to the quantity or quality of timber sold.

#### 11. Certification and Chain-of-Custody (10/14)

Unless otherwise indicated in the contract under section 7 – Other Conditions of the Sale Specific Conditions & Requirements, the area encompassed by this timber sale is certified to the standards of the Forest Stewardship Council (FSC) - Certificate #SCS-FM/COC-00090N and the Sustainable Forestry Initiative (SFI) - Certificate # NSF-SFIS-5Y031-SF5. Forest products from this sale may be delivered to the mill as "FSC 100% and / or SFI certified" as long as the contractor hauling the forest products is chain-of-custody (COC) certified or covered under a COC certificate from the destination mill. The purchaser is responsible for maintaining COC after leaving the sale area.

#### 12. Good Neighbor Authority (GNA) Requirements (7/16)

If the name of this timber sales contains the acronym GNA, it is authorized by the Good Neighbor Authority (GNA) and covered by various agreements between the U.S. Forest Service and the State. The timber sale occurs on federal land and the following conditions apply:

GNA contracts on US Forest Service land will not be awarded to purchasers on the Federal list of excluded parties. The System for Award Management (SAM) will be checked for active excluded parties prior to award of contract. In addition, the Bidder to whom award is made must complete an Assurance Regarding Felony Conviction or Tax Delinquent Status for Corporate Applicants (AD-3031).

#### 13. Good Neighbor Authority (GNA) Requirements, con't (9/16)

Bidder certifies, by signing this bid form, that to the best of Bidder's knowledge that the following representations are accurate and complete.



- a. That the Bidder and its principals are not presently debarred, suspended, proposed for debarment, declared ineligible, or voluntary excluded from timber sales (covered transactions) by any Federal department or agency.
- b. That the Bidder and its principals have not within a 3-year period preceding this bid been convicted of or had a civil judgment rendered against them for commission of fraud or a criminal offense in connection with obtaining , attempting to obtain, or performing a public (Federal, State, or local) transaction or contract under a public transaction; violation of Federal or State antitrust statutes or commission of embezzlement, theft, forgery, bribery, falsification or destruction of records, making false statements, or receiving stolen property.
- c. That the Bidder and its principals are not presently indicted for or otherwise criminally or civilly charged by a governmental entity (Federal, State, or local) with commission of any of the offenses enumerated in paragraph b of this certification.
- d. That the Bidder and its principals have not within a 3-year period preceding this bid had one or more public transactions (Federal, State, or local) terminated for breach or default of a timber or forest product contract.

Bidders that cannot certify this requirement, in whole or in part, shall submit an explanation with their bid.

DAN EICHINGER  
Director



# TIMBER SALE INFORMATION

7 Block Mix (55-132-21)

T13N, R10E, SEC. 11; T13N, R10E, SEC. 14; T13N, R10E, SEC. 23.

Tuscola County (Advertised Price \$33,456.50)

SALE NOTE: All units of volume listed for this sale were estimated using the Inventory Manager computer program and the new Michigan taper model.

Access may be through other public land.

A timber sale contract for this lump sum, sealed bid timber sale will be awarded to the responsible bidder offering the highest sealed bid price. All units of volume listed below were estimated using the Inventory Manager computer program and the new Michigan taper model. Bids must be at or above the following advertised price for each product and species:

<u>PRODUCTS &amp; SPECIES</u>	<u>ESTIMATED UNITS*</u>	<u>ADVERTISED PRICE</u>
<b>Sawtimber</b>		
American Elm	8.3 MBF	\$ 28.00 / MBF
Black Cherry	21.0 MBF	\$ 69.00 / MBF
Jack Pine	2.2 MBF	\$ 25.00 / MBF
Mixed Aspen	349.4 MBF	\$ 28.00 / MBF
Paper Birch	0.9 MBF	\$ 26.00 / MBF
Red Maple	73.5 MBF	\$ 30.00 / MBF
Red Pine	48.5 MBF	\$ 37.00 / MBF
Sugar Maple	7.1 MBF	\$ 69.00 / MBF
White Ash	10.1 MBF	\$ 28.00 / MBF
<b>Pulpwood</b>		
Jack Pine	4 Cords	\$ 7.70 / Cord
Mixed Aspen	673 Cords	\$ 10.45 / Cord
Mixed Hardwood	1,058 Cords	\$ 8.80 / Cord
Red Pine	45 Cords	\$ 17.05 / Cord

\* The total volume is statistically estimated within plus (+) or minus (-) 6.07 percent. There are an estimated 2,910 cords on this timber sale, plus or minus 177 cords at the 95% confidence level. The estimated units are final and not subject to adjustment. Prospective bidders are urged to examine this timber and to make their own estimates of quantity and quality.

**BOND AND PAYMENT SCHEDULE:**

1. A bond in the amount of \$1,673.00 to insure faithful performance of the conditions of the contract will be deposited by the successful bidder within 21 days of the sale award.
2. Cutting in any sale or unit without the required advance payment would be considered a trespass.
3. Total payment must be paid in advance or according to the following schedule :
  - (a) Ten percent (10%) of the sale value must be paid within 21 days of the sale award.
  - (b) The 10% down payment will be credited towards the first unit cut.
  - (c) Payment for each of the following units must be made before cutting begins in that unit:

PAYMENT UNIT NUMBER	PERCENT OF TOTAL SALE VALUE
01	18.6%
02	23.0%
03	31.4%
04	27.0%

4. If no cutting takes place, the 10% down payment will not be refunded.
5. Operations on the contract issued will terminate on 12/31/2023.

**SALE STATISTICS**

Volumes were calculated in cubic feet using the Michigan taper model. Cubic foot volume includes all wood inside bark for the product indicated. For display purposes, cubic feet were converted to cords and MBF using a simple conversion factor, e.g. 79 cubic feet per cord and 185 cubic feet per MBF. The cubic foot volumes are precise; the cords and MBF volumes are not. Cubic foot volume cannot be directly converted to cords or boards with precision.

## SALE VOLUMES

The total estimated sale volume may not equal the sum of the species/products due to the nature of statistical calculations associated with double sampling methodology.

VOLUME			STATISTICAL RANGE IN CORDS	
TOTAL CUBIC FEET	TOTAL CORDS	PERCENT ERROR	MINIMUM	MAXIMUM
229,897	2,910	6.07%	2,733	3,087

## VDU VOLUMES

A VDU is a Volume Determination Unit. Volumes and their associated statistics are calculated at the VDU level and summarized to the sale level. There is often a one to one relationship between a VDU and a Payment Unit, but not always, depending on the cruise design. Refer to the VDU TO PAYMENT UNIT table.

	VOLUME			RANGE IN CORDS	
VDU	TOTAL CUBIC FEET	TOTAL CORDS	PERCENT ERROR	MINIMUM	MAXIMUM
26	3,010	38	23.57%	29	47
29	3,145	40	9.12%	36	43
30	14,167	179	32.27%	121	237
32	63,765	807	10.80%	720	894
38	44,295	561	16.46%	468	653
73	23,788	301	13.05%	262	340
101	23,721	300	17.45%	248	353
120	27,640	350	16.52%	292	408
546	19,082	242	14.91%	206	278
<b>TOTAL:</b>	<b>222,613</b>	<b>2,818</b>		<b>2,382</b>	<b>3,253</b>

## VDU TO PAYMENT UNIT

When a VDU is associated with more than one Payment Unit (PU), the VDU volumes are assigned to the PU based on acres of the VDU within the PU.

VDU	VDU ACRES	PU	PU ACRES
26	1.5	1	1.5
29	1.2	3	1.2
30	8.6	1	8.6
32	22.0	4	22.0
38	13.2	2	13.2
73	6.1	1	6.1
101	9.7	3	9.7
120	10.8	3	10.8
546	8.5	3	8.5
<b>TOTAL:</b>	<b>81.6</b>		<b>81.6</b>

**DESCRIPTION OF TIMBER BY PAYMENT UNIT (PU)**

PU	MARKET GROUP	PRODUCT	QUANTITY	UNIT	ACRES	ADVERTISE PRICE	
1	American Elm	Sawtimber	3.8	MBF	16.2	\$6,219.65	
	Black Cherry		1.3	MBF			
	Jack Pine		2.2	MBF			
	Mixed Aspen		95.5	MBF			
	<i>B. T. Aspen</i>		95.5	<i>MBF</i>			
	Red Maple		15.9	MBF			
	Red Pine		6.3	MBF			
	Jack Pine		Pulpwood	4			Cords
	Mixed Aspen			89			Cords
	<i>B. T. Aspen</i>			63			<i>Cords</i>
	<i>Quaking Aspen</i>			26			<i>Cords</i>
	Mixed Hardwood			169			Cords
	<i>American Elm</i>			13			<i>Cords</i>
	<i>Black Cherry</i>			12			<i>Cords</i>
	<i>Green Ash</i>	6		<i>Cords</i>			
	<i>Paper Birch</i>	22		<i>Cords</i>			
	<i>Pin Cherry</i>	3		<i>Cords</i>			
	<i>Red Maple</i>	109		<i>Cords</i>			
	<i>Sugar Maple</i>	4		<i>Cords</i>			
	Red Pine	8		Cords			
2	Mixed Aspen	Sawtimber		90.9	MBF	13.2	\$7,691.65
	<i>B. T. Aspen</i>			90.9	<i>MBF</i>		
	Red Maple			12.9	MBF		
	Red Pine		33.5	MBF			
	Sugar Maple		7.1	MBF			
	White Ash		10.1	MBF			
	Mixed Aspen		Pulpwood	166	Cords		
	<i>B. T. Aspen</i>			166	<i>Cords</i>		
	Mixed Hardwood			55	Cords		
	<i>Red Maple</i>			8	<i>Cords</i>		
	<i>Sugar Maple</i>			24	<i>Cords</i>		
	<i>White Ash</i>			23	<i>Cords</i>		
Red Pine	31	Cords					
3	American Elm	Sawtimber	4.5	MBF	30.2	\$10,527.70	
	Black Cherry		6.1	MBF			
	Mixed Aspen		86.3	MBF			
	<i>B. T. Aspen</i>		47.8	<i>MBF</i>			
	<i>Cottonwood</i>		10.0	<i>MBF</i>			
	<i>Quaking Aspen</i>		28.5	<i>MBF</i>			
	Red Maple		44.7	MBF			
	Red Pine		8.7	MBF			
	Mixed Aspen		Pulpwood	176			Cords
	<i>B. T. Aspen</i>			23			<i>Cords</i>
	<i>Cottonwood</i>			4			<i>Cords</i>
	<i>Quaking Aspen</i>			149			<i>Cords</i>
	Mixed Hardwood			450			Cords
	<i>American Elm</i>			21			<i>Cords</i>
	<i>Black Cherry</i>			12			<i>Cords</i>
	<i>Paper Birch</i>			26			<i>Cords</i>
	<i>Red Maple</i>			391			<i>Cords</i>
	Red Pine			6			Cords
4	Black Cherry	Sawtimber	13.6	MBF	22.0	\$9,017.50	
	Mixed Aspen		76.7	MBF			
	<i>Cottonwood</i>		6.1	<i>MBF</i>			
	<i>Quaking Aspen</i>		70.6	<i>MBF</i>			
	Paper Birch		0.9	MBF			

**DESCRIPTION OF TIMBER BY PAYMENT UNIT (PU), CON'T**

PU	MARKET GROUP	PRODUCT	QUANTITY	UNIT	ACRES	ADVERTISE PRICE
4 con't	Mixed Aspen	Pulpwood	242	Cords		
	<i>Cottonwood</i>		2	<i>Cords</i>		
	<i>Quaking Aspen</i>		240	<i>Cords</i>		
	Mixed Hardwood		384	Cords		
	<i>Black Cherry</i>		28	<i>Cords</i>		
	<i>Green Ash</i>		28	<i>Cords</i>		
	<i>Paper Birch</i>		20	<i>Cords</i>		
	<i>Red Maple</i>		308	<i>Cords</i>		
TOTAL:			521.0	MBF		
TOTAL:			1,780	Cords		

## Sale Specific Conditions & Requirements

**Sale Name: 7 Block Mix**

**Sale Number: 55-132-21 Seq#: 1**

### 1 - Sale Area

#### 1.2 - Boundaries

##### 1.2.1 - Painted boundaries (9/19)

The sale boundaries are marked and identified by blue and red paint. Exterior sale boundary lines against private property are marked with blue paint. Exterior sale boundary lines against state are marked with red paint. The painted boundary line trees are not Included Timber and are to be protected.

### 2 - Timber Specifications

#### 2.1 - Included Timber

##### 2.1.1 - Clearcut unit(s) with unmerchantable trees (6/14)

Within Payment Unit(s) 1-4, cut all trees that are two (2) inches or more at DBH, except oak, hemlock, cedar, hickory, apple, and trees marked with green paint. In addition, within Payment Units 1 and 3, cut all red pine marked with orange paint. Special protection trees identified in accordance with condition 3.4.2, within clearcutting unit boundaries, are not Included Timber and are to be protected.

#### 2.2 - Utilization

##### 2.2.3 - Stump heights (4/07)

Stump heights within the Sale Area shall not exceed 6 inches for all trees.

##### 2.2.4 - Skidding length (2/14)

Skidding of unlimbed tops is not permissible.

##### 2.2.10 - No chipping tops and limbs (8/16)

Within Payment Unit(s) 1-4, chipping of the bole, 2-inches in diameter or greater, is allowed. Chipping of limbs or portions of the tree less than 2-inches in diameter is not permitted. Limbs and the remaining top must be left on site and scattered.

### 3 - Payments

#### 3.4 - Damaged Timber

##### 3.4.2 - Special Protection Trees (4/14)

The Purchaser shall not cut live or dead special protection trees within cutting units or clearings. Special protection trees are un-marked red pine within Payment Units 1 and 3 and oak, hickory, apple, and green marked trees in all Payment Units. If the Purchaser's operations have cut or damaged special protection trees through carelessness, the Purchaser shall pay \$200 as fixed, agreed and liquidated damages for each special protection tree cut or damaged. Such payment does not constitute ownership of the undesignated timber.

#### 3.6 - Payment Unit Cutting Schedule

##### 3.6.2 - One active unit (12/08)

Each Payment Unit must be completed to the satisfaction of the Unit Manager or his/her representative before the next unit may be opened. The Purchaser must give a one week notice before finishing a Payment Unit to allow for inspection.

### 4 - Transportation

#### 4.1 - Construction

##### 4.1.3 - Slash and earthen piles (8/04)

Piles or windrows of earth along roads and landings that have been widened or constructed shall be leveled. Slash from road maintenance or construction, including stumps, shall be dispersed throughout the sale.

##### 4.1.12 - No new roads (1/12)

No new roads will be permitted in any Payment Unit. All operations are limited to existing roads. Skid trails only will be

allowed.

## 4.2 - Maintenance

### 4.2.4 - Grading (10/16)

For completion of the sale, skid trails and designated parking areas used to access any Payment Unit must be graded. In general, this will require a road grader or bulldozer to shape up skid trails and parking areas after forest products have been hauled off site. This includes cleaning of drainage areas, grading, crowning, and filling with gravel, if necessary. The grading equipment to be used must be approved by the Unit Manager or his/her representative.

## 4.4 - Access

### 4.4.4 - Restricted access (10/05)

Any vehicle barriers (gates, guard rail, berms etc.) removed during the course of operations shall be replaced in their original location and in their original condition. Any damage to gates, guard rail or vehicle barriers is the responsibility of the Purchaser.

## 5 - Operations

### 5.1 - Notification

#### 5.1.1 - Pre-sale conference (10/16)

A pre-sale conference between the Purchaser and sale administrator is required prior to beginning any operations to determine landing and skid trail locations. The Unit Manager or his/her representative must be contacted at least 10 days in advance to schedule the conference.

### 5.2 - Conduct of Operations

#### 5.2.1 - Slash

##### 5.2.1.8 - Slash height (12/08)

No slash or tree tops may exceed 24 inches in height.

##### 5.2.1.10 - No slash in openings (5/10)

No brush or logging debris is to be left in any maintained wildlife opening which is indicated by G0 or U0 on the Timber Sale Map. Any damage to the opening shall be repaired according to specifications of the Unit Manager or his/her representative.

##### 5.2.1.11 - Slash for reforestation (3/21)

To facilitate reforestation, the Sale Area shall be left with slash evenly distributed. Bunched tops within the cutting area shall be broken up and scattered. Stumps shall be cut low to the ground. Processing sites shall not be left with a compacted layer of slash; tops from these sites shall be hauled back into the cut area and scattered.

#### 5.2.2 - Hazard Trees/Snags

##### 5.2.2.1 - Den trees (10/16)

Obvious hollow and/or den trees shall be protected and left standing unless they are a safety hazard. All standing dead trees (snags) shall be protected and left standing unless they are a safety hazard.

#### 5.2.3 - Operating Restrictions

##### 5.2.3.1 - Operating restrictions (9/11)

Within Payment Unit(s) 3 and 4 cutting, skidding, and hauling are limited to dry or frozen ground conditions. This restriction is due to poor soil drainage within these Payment Units.

##### 5.2.3.4 - Oak wilt restriction, no exceptions (1/18)

Within all Payment Units cutting, skidding, hauling within the sale and brushing of access roads to the sale are not permitted during the period of April 15 to July 15. No exceptions will be granted. This is necessary to reduce the spread of oak wilt.

##### 5.2.3.12 - Hunting operating restriction (1/18)

No Payment Unit may be started during the period of September 25 - October 1 or November 1 - November 30 without



permission of the Unit Manager or his/her representative.

#### 5.2.31 - Landing locations (9/13)

The location of landings will be determined in the pre-sale conference. Landings must be confined to these designated sites unless otherwise authorized by the Unit Manager or his/her representative. In general, landings are limited to a "T" turnaround which will accommodate a truck with a 50-foot trailer.

#### 5.2.32 - Decking/landing restoration (9/13)

All decking and landing areas must have the surface area restored to a condition equal to or better than before. This is to ensure the proper regeneration of the stand. Wood debris, chips, and "cookies" from trimmings must be removed or scattered away from landing and loading areas and may not be windrowed on the edge.

#### 5.2.37 - No decking areas (12/08)

No decking is allowed in any designated parking area. Additionally, no equipment storage is allowed in any designated parking area.

#### 5.2.38 - No decking against live trees (2/04)

Cut products may not be decked against unmarked or designated leave trees.

### 5.4 - Soil Protection

#### 5.4.1 - Rutting restriction, general (7/16)

Operations are to cease immediately if equipment and weather conditions result in rutting of roads and/or skid trails which is 12 inches or greater in depth and 50 feet in length. The Unit Manager or his/her representative may restrict hauling and/or skidding if ruts exceed the specified depth. With the Unit Manager or his/her representative's approval, the Purchaser may return to the area when the risk of rutting has decreased.

#### 5.4.6 - Wet area protection (5/10)

No harvesting operations, including skidding and felling, are to take place within the vernal pond areas or drainages. When harvesting occurs, there should be no disturbance to the vernal pond depression. All equipment, trees, and tops should be kept out of this area. Within 100 feet of the pond, equipment should only be used when the soil is in a dry or frozen condition. Care must be taken by the Purchaser to identify and avoid operating in these areas of the timber sale.

### 5.8 - Protection of Endangered Species

#### 5.8.5 - Protection of raptor nests (3/13)

All trees with raptor nests will be protected if found during harvesting operations. Notification will be made to the Unit Manager or his/her representative who will notify the Wildlife Biologist so an on-site evaluation and recommendation can be made, if necessary.

## 7 - Other Conditions

### 7.10 - Certified Timber

#### 7.10.1 - Non-certified timber (2/16)

The area encompassed by this timber sale is not certified to the standards of the Forest Stewardship Council (FSC) or the Sustainable Forestry Initiative (SFI). Forest products from this sale may not be delivered to the mill as "FSC and / or SFI certified". The lands within this sale are managed as a State Game Area.

## 99 - Unique

### SKIP

#### 99.1 - Unique Sale Condition (5/19)

No operating feller bunchers in any Payment Unit before 7 AM and after 9 PM daily. This is required due to the close proximity of residences to the Sale Area.



# TIMBER SALE MAP

This information provided by authority of Part 525, 1994 PA 451, as amended.

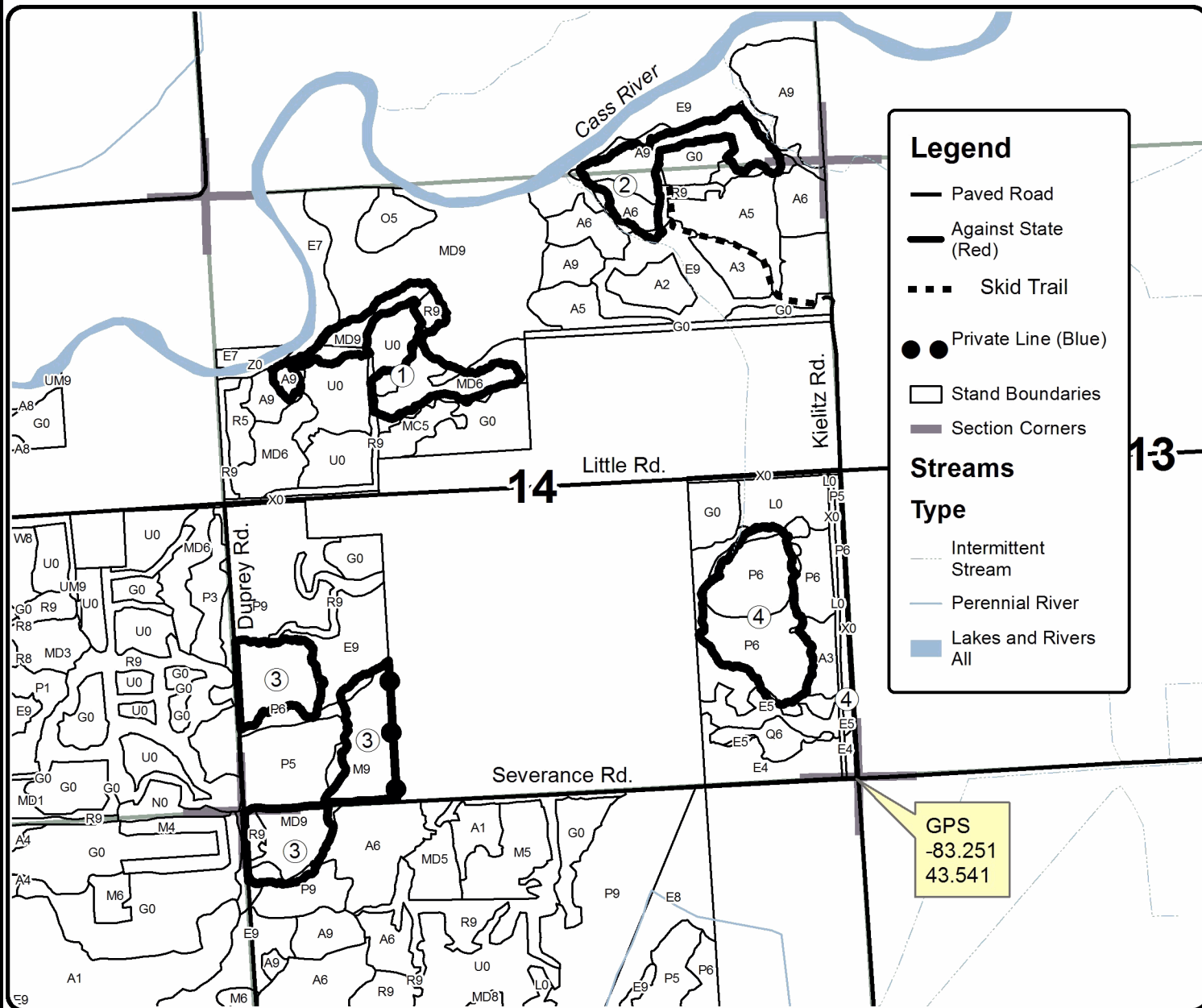
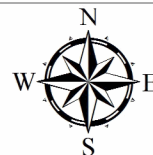
Forest Management Unit Deford State Game Area	County Tuscola	Mapped By Bonnette	Date 02/22/2021	Page 1	of 1
Township 13N	Range 10E	Section(s) and Subdivision(s) Sec. 11 S1/2SE; Sec. 14 NW,N1/2NE, W1/2SW,E1/2SE; Sec. 23 NWNW	Scale 1:15,840		

Cover Type				Density	
A = Aspen	H = Hemlock	N = Marsh	U = Upland Brush	0 = Non Stocked	5 = Pole Timber Medium
B = Paper Birch	J = Jack Pine	O = Oak	UM = Upland Mixed	1 = Seedling Sapling Poor	6 = Pole Timber Well
C = Cedar	L = Lowland Brush	P = Lowland Poplar	V = Bog or Marsh	2 = Seedling Sapling Medium	7 = Saw Timber Poor
D = Treed Bog	LM = Lowland Mixed	Q = Mixed Swamp Conifer	W = White Pine	3 = Seedling Sapling Well	8 = Saw Timber Medium
E = Swamp Hdwoods	M = Mpl, Bch, Brch	R = Red Pine	X = Non Stocked	4 = Pole Timber Poor	9 = Saw Timber Well
F = Spruce Fir	MC = Mixed Conifer	S = Black Spruce	Z = Water		
G = Grass	MD = Mixed Deciduous	T = Tamarack			

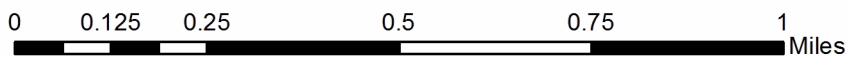
PU	Acres	PU	Acres
1	16.2	4	22.0
2	13.2		
3	30.2		

## 7 Block Mix

81.6 Acres



GPS  
-83.251  
43.541



## TIMBER SALE INFORMATION

### Minden 4 block Aspen (55-133-21)

T13N, R14E, SEC. 4; T13N, R14E, SEC. 5; T13N, R14E, SEC. 8; T13N, R14E, SEC. 9.  
Sanilac County (Advertised Price \$25,688.35)

SALE NOTE: All units of volume listed for this sale were estimated using the Inventory Manager computer program and the new Michigan taper model.

Access may be through other public land.

A timber sale contract for this lump sum, sealed bid timber sale will be awarded to the responsible bidder offering the highest sealed bid price. All units of volume listed below were estimated using the Inventory Manager computer program and the new Michigan taper model. Bids must be at or above the following advertised price for each product and species:

<u>PRODUCTS &amp; SPECIES</u>	<u>ESTIMATED UNITS*</u>	<u>ADVERTISED PRICE</u>
Sawtimber		
Black Cherry	34.5 MBF	\$ 69.00 / MBF
Green Ash	5.8 MBF	\$ 26.00 / MBF
Mixed Aspen	438.9 MBF	\$ 28.00 / MBF
Paper Birch	4.7 MBF	\$ 27.00 / MBF
Red Maple	33.0 MBF	\$ 30.00 / MBF
Pulpwood		
Mixed Aspen	683 Cords	\$ 10.45 / Cord
Mixed Hardwood	297 Cords	\$ 8.80 / Cord

\* The total volume is statistically estimated within plus (+) or minus (-) 9.96 percent. There are an estimated 1,899 cords on this timber sale, plus or minus 189 cords at the 95% confidence level. The estimated units are final and not subject to adjustment. Prospective bidders are urged to examine this timber and to make their own estimates of quantity and quality.

### **BOND AND PAYMENT SCHEDULE:**

1. A bond in the amount of \$1,284.00 to insure faithful performance of the conditions of the contract will be deposited by the successful bidder within 21 days of the sale award.
2. Cutting in any sale or unit without the required advance payment would be considered a trespass.
3. Total payment must be paid in advance or according to the following schedule :
  - (a) Ten percent (10%) of the sale value must be paid within 21 days of the sale award.
  - (b) The 10% down payment will be credited towards the first unit cut.
  - (c) Payment for each of the following units must be made before cutting begins in that unit:
 

PAYMENT UNIT NUMBER	PERCENT OF TOTAL SALE VALUE
01	31.8%
02	38.5%
03	29.7%
4. If no cutting takes place, the 10% down payment will not be refunded.
5. Operations on the contract issued will terminate on 12/31/2023.

### **SALE STATISTICS**

Volumes were calculated in cubic feet using the Michigan taper model. Cubic foot volume includes all wood inside bark for the product indicated. For display purposes, cubic feet were converted to cords and MBF using a simple conversion factor, e.g. 79 cubic feet per cord and 185 cubic feet per MBF. The cubic foot volumes are precise; the cords and MBF volumes are not. Cubic foot volume cannot be directly converted to cords or boards with precision.

### **SALE VOLUMES**

The total estimated sale volume may not equal the sum of the species/products due to the nature of statistical calculations associated with double sampling methodology.

VOLUME		STATISTICAL RANGE IN CORDS		
TOTAL CUBIC FEET	TOTAL CORDS	PERCENT ERROR	MINIMUM	MAXIMUM
149,999	1,899	9.96%	1,709	2,088

**VDU VOLUMES**

A VDU is a Volume Determination Unit. Volumes and their associated statistics are calculated at the VDU level and summarized to the sale level. There is often a one to one relationship between a VDU and a Payment Unit, but not always, depending on the cruise design. Refer to the VDU TO PAYMENT UNIT table.

VDU	VOLUME		PERCENT ERROR	RANGE IN CORDS	
	TOTAL CUBIC FEET	TOTAL CORDS		MINIMUM	MAXIMUM
241	48,294	611	22.62%	473	750
245	64,847	821	15.14%	697	945
282	46,026	583	14.53%	498	667
<b>TOTAL:</b>	<b>159,168</b>	<b>2,015</b>		<b>1,668</b>	<b>2,362</b>

**VDU TO PAYMENT UNIT**

When a VDU is associated with more than one Payment Unit (PU), the VDU volumes are assigned to the PU based on acres of the VDU within the PU.

VDU	VDU ACRES	PU	PU ACRES
241	14.7	1	14.7
245	21.3	2	21.3
282	19.6	3	19.6
<b>TOTAL:</b>	<b>55.6</b>		<b>55.6</b>

**DESCRIPTION OF TIMBER BY PAYMENT UNIT (PU)**

PU	MARKET GROUP	PRODUCT	QUANTITY	UNIT	ACRES	ADVERTISE PRICE	
1	Black Cherry	Sawtimber	27.6	MBF	14.7	\$8,158.45	
	Mixed Aspen		84.8	MBF			
	<i>B. T. Aspen</i>		81.9	<i>MBF</i>			
	<i>Cottonwood</i>		2.9	<i>MBF</i>			
	Red Maple	3.5	MBF				
	Mixed Aspen	Pulpwood	261	Cords			
	<i>B. T. Aspen</i>		188	<i>Cords</i>			
	<i>Cottonwood</i>		6	<i>Cords</i>			
	<i>Quaking Aspen</i>		67	<i>Cords</i>			
	Mixed Hardwood		119	Cords			
	<i>American Elm</i>		17	<i>Cords</i>			
	<i>Black Cherry</i>		85	<i>Cords</i>			
	<i>Green Ash</i>		13	<i>Cords</i>			
	<i>Red Maple</i>		1	<i>Cords</i>			
	<i>Willow</i>		3	<i>Cords</i>			
	2		Mixed Aspen	Sawtimber			184.5
<i>Cottonwood</i>			8.0		<i>MBF</i>		
<i>Quaking Aspen</i>		176.5	<i>MBF</i>				
Red Maple		17.5	MBF				
Mixed Aspen		Pulpwood	338	Cords			
<i>Cottonwood</i>			3	<i>Cords</i>			
<i>Quaking Aspen</i>			335	<i>Cords</i>			
Mixed Hardwood			78	Cords			
<i>American Elm</i>			7	<i>Cords</i>			
<i>Black Cherry</i>			9	<i>Cords</i>			
<i>Green Ash</i>			9	<i>Cords</i>			
<i>Paper Birch</i>			10	<i>Cords</i>			
<i>Red Maple</i>			43	<i>Cords</i>			
3			Black Cherry	Sawtimber	6.9	MBF	19.6
	Green Ash	5.8	MBF				
	Mixed Aspen	169.6	MBF				
	<i>B. T. Aspen</i>	72.7	<i>MBF</i>				
	<i>Quaking Aspen</i>	96.9	<i>MBF</i>				
	Paper Birch	4.7	MBF				
	Red Maple	12.0	MBF				
	Mixed Aspen	Pulpwood	84	Cords			
	<i>B. T. Aspen</i>		35	<i>Cords</i>			
	<i>Quaking Aspen</i>		49	<i>Cords</i>			
	Mixed Hardwood		100	Cords			
	<i>American Elm</i>		5	<i>Cords</i>			
	<i>Black Cherry</i>		32	<i>Cords</i>			
	<i>Green Ash</i>		21	<i>Cords</i>			
	<i>Paper Birch</i>		6	<i>Cords</i>			
	<i>Red Maple</i>		36	<i>Cords</i>			
TOTAL:			516.9	MBF			
TOTAL:			980	Cords			

## Sale Specific Conditions & Requirements

**Sale Name: Minden 4 block Aspen**

**Sale Number: 55-133-21 Seq#: 1**

### 1 - Sale Area

#### 1.2 - Boundaries

##### 1.2.1 - Painted boundaries (9/19)

The sale boundaries are marked and identified by blue and red paint. Exterior sale boundary lines against private property are marked with blue paint. Exterior sale boundary lines against state are marked with red paint. The painted boundary line trees are not Included Timber and are to be protected.

### 2 - Timber Specifications

#### 2.1 - Included Timber

##### 2.1.1 - Clearcut unit(s) with unmerchantable trees (6/14)

Within Payment Unit(s) 1-3, cut all trees that are two (2) inches or more at DBH, except oak, hemlock, white pine, hickory, and trees marked with green paint. Special protection trees identified in accordance with condition 3.4.2, within clearcutting unit boundaries, are not Included Timber and are to be protected.

#### 2.2 - Utilization

##### 2.2.3 - Stump heights (4/07)

Stump heights within the Sale Area shall not exceed 6 inches for all trees.

##### 2.2.4 - Skidding length (2/14)

Skidding of unlimbed tops is not permissible.

##### 2.2.10 - No chipping tops and limbs (8/16)

Within Payment Unit(s) 1-3, chipping of the bole, 2-inches in diameter or greater, is allowed. Chipping of limbs or portions of the tree less than 2-inches in diameter is not permitted. Limbs and the remaining top must be left on site and scattered.

### 3 - Payments

#### 3.4 - Damaged Timber

##### 3.4.2 - Special Protection Trees (4/14)

The Purchaser shall not cut live or dead special protection trees within cutting units or clearings. Special protection trees are oak, hickory, white pine, cedar, hemlock, and trees marked with green paint. If the Purchaser's operations have cut or damaged special protection trees through carelessness, the Purchaser shall pay \$200 as fixed, agreed and liquidated damages for each special protection tree cut or damaged. Such payment does not constitute ownership of the undesignated timber.

#### 3.6 - Payment Unit Cutting Schedule

##### 3.6.2 - One active unit (12/08)

Each Payment Unit must be completed to the satisfaction of the Unit Manager or his/her representative before the next unit may be opened. The Purchaser must give a one week notice before finishing a Payment Unit to allow for inspection.

### 4 - Transportation

#### 4.1 - Construction

##### 4.1.3 - Slash and earthen piles (8/04)

Piles or windrows of earth along roads and landings that have been widened or constructed shall be leveled. Slash from road maintenance or construction, including stumps, shall be dispersed throughout the sale.

##### 4.1.5 - Culverts (5/14)

A culvert will be necessary to access the north portion of Payment Unit 2. A DNR owned culvert and fill are located on site in the designated parking area at this location. It is the responsibility of the Purchaser to install the culvert to access the Payment Unit. At the Unit Managers discretion, the Purchaser may be responsible for removing the culvert at the conclusion

of operations. See sale administrator for details.

#### 4.1.11 - Permits (2/12)

The Purchaser will secure any necessary driveway permits that may be required.

#### 4.1.12 - No new roads (1/12)

No new roads will be permitted in any Payment Unit. All operations are limited to existing roads. Skid trails only will be allowed.

### 4.2 - Maintenance

#### 4.2.4 - Grading (10/16)

For completion of the sale, skid trails and designated parking areas used to access any Payment Unit must be graded. In general, this will require a road grader or bulldozer to shape up skid trails after forest products have been hauled off site. This includes cleaning of drainage areas, grading, crowning, and filling with gravel, if necessary. The grading equipment to be used must be approved by the Unit Manager or his/her representative.

### 4.4 - Access

#### 4.4.4 - Restricted access (10/05)

Any vehicle barriers (gates, guard rail, berms etc.) removed during the course of operations shall be replaced in their original location and in their original condition. Any damage to gates, guard rail or vehicle barriers is the responsibility of the Purchaser.

## 5 - Operations

### 5.1 - Notification

#### 5.1.1 - Pre-sale conference (10/16)

A pre-sale conference between the Purchaser and sale administrator is required prior to beginning any operations to determine landing and skid trail locations. The Unit Manager or his/her representative must be contacted at least 10 days in advance to schedule the conference.

### 5.2 - Conduct of Operations

#### 5.2.1 - Slash

##### 5.2.1.8 - Slash height (12/08)

No slash or tree tops may exceed 24 inches in height.

##### 5.2.1.11 - Slash for reforestation (3/21)

To facilitate reforestation, the Sale Area shall be left with slash evenly distributed. Bunched tops within the cutting area shall be broken up and scattered. Stumps shall be cut low to the ground. Processing sites shall not be left with a compacted layer of slash; tops from these sites shall be hauled back into the cut area and scattered.

#### 5.2.2 - Hazard Trees/Snags

##### 5.2.2.1 - Den trees (10/16)

Obvious hollow and/or den trees shall be protected and left standing unless they are a safety hazard. All standing dead trees (snags) shall be protected and left standing unless they are a safety hazard.

#### 5.2.3 - Operating Restrictions

##### 5.2.3.1 - Operating restrictions (9/11)

Within Payment Unit(s) 1-3 cutting, skidding, and hauling are not permitted during the period of March 15 to July 1. Additionally, operations are limited to dry or frozen ground conditions at any other time. This restriction is intended to reduce the risk of rutting due to poorly drained soils throughout the sale.

##### 5.2.3.12 - Hunting operating restriction (1/18)

No Payment Unit may be started during the period of September 25 - October 10 or November 1 - November 30 without permission of the Unit Manager or his/her representative.

#### 5.2.31 - Landing locations (9/13)

The location of landings will be determined in the pre-sale conference. Landings must be confined to these designated sites unless otherwise authorized by the Unit Manager or his/her representative. In general, landings are limited to a "T" turnaround which will accommodate a truck with a 50-foot trailer.

#### 5.2.32 - Decking/landing restoration (9/13)

All decking and landing areas must have the surface area restored to a condition equal to or better than before. This is to ensure the proper regeneration of the stand. Wood debris, chips, and "cookies" from trimmings must be removed or scattered away from landing and loading areas and may not be windrowed on the edge.

#### 5.2.37 - No decking areas (12/08)

No decking is allowed in any designated parking area. Additionally, no equipment storage is allowed in any designated parking area.

#### 5.2.38 - No decking against live trees (2/04)

Cut products may not be decked against unmarked or designated leave trees.

### 5.4 - Soil Protection

#### 5.4.1 - Rutting restriction, general (7/16)

Operations are to cease immediately if equipment and weather conditions result in rutting of skid trails which is 12 inches or greater in depth and 50 feet in length. The Unit Manager or his/her representative may restrict hauling and/or skidding if ruts exceed the specified depth. With the Unit Manager or his/her representative's approval, the Purchaser may return to the area when the risk of rutting has decreased.

### 5.8 - Protection of Endangered Species

#### 5.8.5 - Protection of raptor nests (3/13)

All trees with raptor nests will be protected if found during harvesting operations. Notification will be made to the Unit Manager or his/her representative who will notify the Wildlife Biologist so an on-site evaluation and recommendation can be made, if necessary.

## 7 - Other Conditions

### 7.10 - Certified Timber

#### 7.10.1 - Non-certified timber (2/16)

The area encompassed by this timber sale is not certified to the standards of the Forest Stewardship Council (FSC) or the Sustainable Forestry Initiative (SFI). Forest products from this sale may not be delivered to the mill as "FSC and / or SFI certified". The lands within this sale are managed as a State Game Area.





# TIMBER SALE MAP

This information provided by authority of Part 525, 1994 PA 451, as amended.

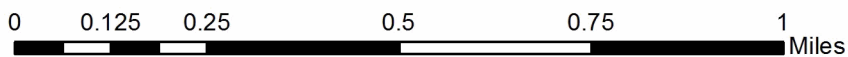
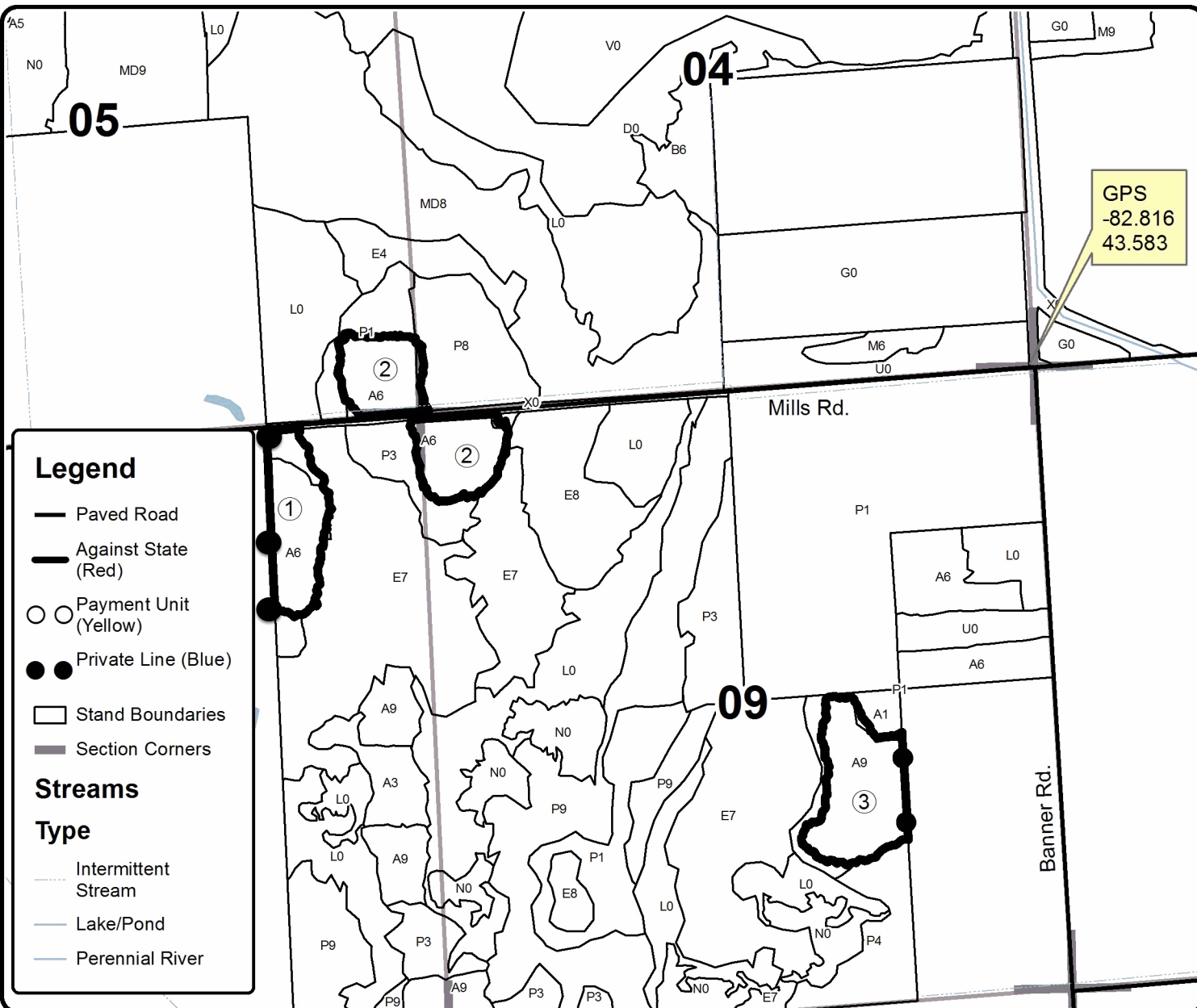
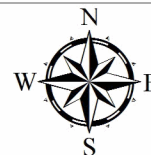
Forest Management Unit Minden City State Game Area	County Sanilac	Mapped By Bonnette	Date 02/22/2021	Page 1	of 1
Township 13N	Range 14E	Section(s) and Subdivision(s) Sec. 4 SWSW; Sec. 5 SESE; Sec. 8 E1/2NE; Sec. 9 NWNW, W1/2SE	Scale 1:15,840		

Cover Type				Density	
A = Aspen	H = Hemlock	N = Marsh	U = Upland Brush	0 = Non Stocked	5 = Pole Timber Medium
B = Paper Birch	J = Jack Pine	O = Oak	UM = Upland Mixed	1 = Seedling Sapling Poor	6 = Pole Timber Well
C = Cedar	L = Lowland Brush	P = Lowland Poplar	V = Bog or Marsh	2 = Seedling Sapling Medium	7 = Saw Timber Poor
D = Tread Bog	LM = Lowland Mixed	Q = Mixed Swamp Conifer	W = White Pine	3 = Seedling Sapling Well	8 = Saw Timber Medium
E = Swamp Hdwoods	M = Mpl, Bch, Brch	R = Red Pine	X = Non Stocked	4 = Pole Timber Poor	9 = Saw Timber Well
F = Spruce Fir	MC = Mixed Conifer	S = Black Spruce	Z = Water		
G = Grass	MD = Mixed Deciduous	T = Tamarack			

PU	Acres
1	14.7
2	21.3
3	19.6

## Minden 4 Block Aspen

55.6 Acres





## TIMBER SALE INFORMATION

### Ryan Ridges Mix (55-134-21)

T12N, R09E, SEC. 14; T12N, R09E, SEC. 23; T12N, R09E, SEC. 24; T12N, R09E, SEC. 26.  
Tuscola County (Advertised Price \$53,576.70)

SALE NOTE: All units of volume listed for this sale were estimated using the Inventory Manager computer program and the new Michigan taper model.

Access may be through other public land.

A timber sale contract for this lump sum, sealed bid timber sale will be awarded to the responsible bidder offering the highest sealed bid price. All units of volume listed below were estimated using the Inventory Manager computer program and the new Michigan taper model. Bids must be at or above the following advertised price for each product and species:

<u>PRODUCTS &amp; SPECIES</u>	<u>ESTIMATED UNITS*</u>	<u>ADVERTISED PRICE</u>
Sawtimber		
Black Cherry	2.2 MBF	\$ 69.00 / MBF
Green Ash	3.7 MBF	\$ 26.00 / MBF
Mixed Aspen	564.4 MBF	\$ 28.00 / MBF
Paper Birch	3.9 MBF	\$ 27.00 / MBF
Red Maple	277.2 MBF	\$ 30.00 / MBF
Red Pine	108.8 MBF	\$ 39.00 / MBF
Sugar Maple	11.5 MBF	\$ 69.00 / MBF
Pulpwood		
Jack Pine	266 Cords	\$ 7.45 / Cord
Mixed Aspen	838 Cords	\$ 10.45 / Cord
Mixed Hardwood	1,099 Cords	\$ 8.80 / Cord
Red Pine	190 Cords	\$ 19.25 / Cord

\* The total volume is statistically estimated within plus (+) or minus (-) 6.95 percent. There are an estimated 4,741 cords on this timber sale, plus or minus 330 cords at the 95% confidence level. The estimated units are final and not subject to adjustment. Prospective bidders are urged to examine this timber and to make their own estimates of quantity and quality.

### **BOND AND PAYMENT SCHEDULE:**

1. A bond in the amount of \$2,679.00 to insure faithful performance of the conditions of the contract will be deposited by the successful bidder within 21 days of the sale award.
2. Cutting in any sale or unit without the required advance payment would be considered a trespass.
3. Total payment must be paid in advance or according to the following schedule :
  - (a) Ten percent (10%) of the sale value must be paid within 21 days of the sale award.
  - (b) The 10% down payment will be credited towards the first unit cut.
  - (c) Payment for each of the following units must be made before cutting begins in that unit:

PAYMENT UNIT NUMBER	PERCENT OF TOTAL SALE VALUE
01	22.7%
02	16.0%
03	17.3%
04	11.0%
05	13.9%
06	19.1%

4. If no cutting takes place, the 10% down payment will not be refunded.
5. Operations on the contract issued will terminate on 12/31/2023.

### **SALE STATISTICS**

Volumes were calculated in cubic feet using the Michigan taper model. Cubic foot volume includes all wood inside bark for the product indicated. For display purposes, cubic feet were converted to cords and MBF using a simple conversion factor, e.g. 79 cubic feet per cord and 185 cubic feet per MBF. The cubic foot volumes are precise; the cords and MBF volumes are not. Cubic foot volume cannot be directly converted to cords or boards with precision.

## SALE VOLUMES

The total estimated sale volume may not equal the sum of the species/products due to the nature of statistical calculations associated with double sampling methodology.

VOLUME			STATISTICAL RANGE IN CORDS	
TOTAL CUBIC FEET	TOTAL CORDS	PERCENT ERROR	MINIMUM	MAXIMUM
374,506	4,741	6.95%	4,411	5,070

## VDU VOLUMES

A VDU is a Volume Determination Unit. Volumes and their associated statistics are calculated at the VDU level and summarized to the sale level. There is often a one to one relationship between a VDU and a Payment Unit, but not always, depending on the cruise design. Refer to the VDU TO PAYMENT UNIT table.

VDU	VOLUME			RANGE IN CORDS	
	TOTAL CUBIC FEET	TOTAL CORDS	PERCENT ERROR	MINIMUM	MAXIMUM
5	42,007	532	21.91%	415	648
11	36,293	459	20.45%	365	553
17	59,181	749	10.80%	668	830
43	33,916	429	33.45%	286	573
63	53,053	672	16.42%	561	782
137	14,303	181	27.68%	131	231
142	11,050	140	39.74%	84	195
146	21,608	274	23.40%	210	338
147	12,934	164	5.25%	155	172
148	19,045	241	31.62%	165	317
150	14,472	183	43.56%	103	263
151	24,714	313	27.22%	228	398
<b>TOTAL:</b>	<b>342,575</b>	<b>4,336</b>		<b>3,372</b>	<b>5,301</b>

## VDU TO PAYMENT UNIT

When a VDU is associated with more than one Payment Unit (PU), the VDU volumes are assigned to the PU based on acres of the VDU within the PU.

VDU	VDU ACRES	PU	PU ACRES
5	12.3	1	12.3
11	13.1	1	13.1
17	19.9	2	19.9
43	13.3	3	13.3
63	15.1	6	15.1
137	5.3	5	5.3
142	4.8	6	4.8
146	10.0	5	10.0
147	5.4	5	5.4
148	8.8	4	8.8
150	5.6	4	5.6
151	10.8	3	10.8
<b>TOTAL:</b>	<b>124.4</b>		<b>124.4</b>

## DESCRIPTION OF TIMBER BY PAYMENT UNIT (PU)

PU	MARKET GROUP	PRODUCT	QUANTITY	UNIT	ACRES	ADVERTISE PRICE	
1	Mixed Aspen	Sawtimber	173.6	MBF	25.4	\$12,178.35	
	<i>B. T. Aspen</i>		173.6	<i>MBF</i>			
	Red Maple		82.6	MBF			
	Sugar Maple		7.0	MBF			
	Mixed Aspen		Pulpwood	171			Cords
	<i>B. T. Aspen</i>			171			<i>Cords</i>
	Mixed Hardwood			292			Cords
	<i>Paper Birch</i>			22			<i>Cords</i>
	<i>Red Maple</i>			266			<i>Cords</i>
	<i>Sugar Maple</i>			4			<i>Cords</i>
2	Mixed Aspen	Sawtimber	83.8	MBF	19.9	\$8,566.80	
	<i>B. T. Aspen</i>		83.8	<i>MBF</i>			
	Red Maple		66.4	MBF			
	Mixed Aspen		Pulpwood	168			Cords
	<i>B. T. Aspen</i>			168			<i>Cords</i>
	Mixed Hardwood			281			Cords
	<i>Paper Birch</i>			12			<i>Cords</i>
	<i>Red Maple</i>		269	<i>Cords</i>			
3	Mixed Aspen	Sawtimber	74.7	MBF	24.1	\$9,270.55	
	<i>B. T. Aspen</i>		63.2	<i>MBF</i>			
	<i>Quaking Aspen</i>		11.5	<i>MBF</i>			
	Red Pine		39.8	MBF			
	Jack Pine		Pulpwood	186			Cords
	Mixed Aspen			62			Cords
	<i>B. T. Aspen</i>			43			<i>Cords</i>
	<i>Quaking Aspen</i>			19			<i>Cords</i>
	Mixed Hardwood			148			Cords
	<i>Black Cherry</i>			27			<i>Cords</i>
	<i>Paper Birch</i>			28			<i>Cords</i>
	<i>Red Maple</i>		93	<i>Cords</i>			
	Red Pine		119	Cords			
4	Paper Birch	Sawtimber	3.9	MBF	14.4	\$5,894.25	
	Red Pine		69.0	MBF			
	Jack Pine		Pulpwood	80			Cords
	Mixed Hardwood			129			Cords
	<i>Black Cherry</i>			18			<i>Cords</i>
	<i>Paper Birch</i>			5			<i>Cords</i>
	<i>Red Maple</i>			106			<i>Cords</i>
	Red Pine			71			Cords
5	Black Cherry	Sawtimber	2.2	MBF	20.7	\$7,457.85	
	Green Ash		3.7	MBF			
	Mixed Aspen		88.2	MBF			
	<i>B. T. Aspen</i>		32.4	<i>MBF</i>			
	<i>Quaking Aspen</i>		55.8	<i>MBF</i>			
	Red Maple		54.7	MBF			
	Mixed Aspen		Pulpwood	177			Cords
	<i>B. T. Aspen</i>			96			<i>Cords</i>
	<i>Quaking Aspen</i>			81			<i>Cords</i>
	Mixed Hardwood			142			Cords
	<i>Black Cherry</i>			9			<i>Cords</i>
	<i>Green Ash</i>			4			<i>Cords</i>
	<i>Paper Birch</i>			8			<i>Cords</i>
<i>Red Maple</i>	121	<i>Cords</i>					
6	Mixed Aspen	Sawtimber	144.1	MBF	19.9	\$10,208.90	
	<i>B. T. Aspen</i>		144.1	<i>MBF</i>			
	Red Maple		73.5	MBF			

**DESCRIPTION OF TIMBER BY PAYMENT UNIT (PU), CON'T**

PU	MARKET GROUP	PRODUCT	QUANTITY	UNIT	ACRES	ADVERTISE PRICE
6 con't	Sugar Maple	Sawtimber	4.5	MBF		
	Mixed Aspen	Pulpwood	260	Cords		
	<i>B. T. Aspen</i>		260	<i>Cords</i>		
	Mixed Hardwood		107	Cords		
	<i>Red Maple</i>		100	<i>Cords</i>		
	<i>Sugar Maple</i>		7	<i>Cords</i>		
TOTAL:			971.7	MBF		
TOTAL:			2,393	Cords		

# Sale Specific Conditions & Requirements

**Sale Name: Ryan Ridges Mix**

**Sale Number: 55-134-21 Seq#: 1**

## 1 - Sale Area

### 1.2 - Boundaries

#### 1.2.1 - Painted boundaries (9/19)

The sale boundary and Payment Unit boundaries are marked and identified by blue and red paint. Exterior sale boundary lines against private property are marked with blue paint. Exterior sale boundary lines against state are marked with red paint. The painted boundary line trees are not Included Timber and are to be protected.

## 2 - Timber Specifications

### 2.1 - Included Timber

#### 2.1.1 - Clearcut unit(s) with unmerchantable trees (6/14)

Within Payment Unit(s) 1-6, cut all red pine marked with orange or yellow paint and all other trees that are two (2) inches or more at DBH, except oak, hickory, white pine, white spruce, un-marked red pine, apple, cedar, hemlock, and trees marked with green paint. Special protection trees identified in accordance with condition 3.4.2, within clearcutting unit boundaries, are not Included Timber and are to be protected.

### 2.2 - Utilization

#### 2.2.3 - Stump heights (4/07)

Stump heights within the Sale Area shall not exceed 6 inches for all trees.

#### 2.2.4 - Skidding length (2/14)

Skidding of unlimbed tops is not permissible.

#### 2.2.10 - No chipping tops and limbs (8/16)

Within Payment Unit(s) 1-6, chipping of the bole, 2-inches in diameter or greater, is allowed. Chipping of limbs or portions of the tree less than 2-inches in diameter is not permitted. Limbs and the remaining top must be left on site and scattered.

## 3 - Payments

### 3.4 - Damaged Timber

#### 3.4.2 - Special Protection Trees (4/14)

The Purchaser shall not cut live or dead special protection trees within cutting units or clearings. Special protection trees are oak, hickory, white pine, un-marked red pine, apple, cedar, hemlock, and trees marked with green paint. If the Purchaser's operations have cut or damaged special protection trees through carelessness, the Purchaser shall pay \$200 as fixed, agreed and liquidated damages for each special protection tree cut or damaged. Such payment does not constitute ownership of the undesignated timber.

### 3.6 - Payment Unit Cutting Schedule

#### 3.6.2 - One active unit (12/08)

Each Payment Unit must be completed to the satisfaction of the Unit Manager or his/her representative before the next unit may be opened. The Purchaser must give a one week notice before finishing a Payment Unit to allow for inspection.

## 4 - Transportation

### 4.1 - Construction

#### 4.1.3 - Slash and earthen piles (8/04)

Piles or windrows of earth along roads and landings that have been widened or constructed shall be leveled. Slash from road maintenance or construction, including stumps, shall be dispersed throughout the sale.

#### 4.1.11 - Permits (2/12)

The Purchaser will secure any necessary road or highway permits that may be required.

#### 4.1.12 - No new roads (1/12)

No new roads will be permitted in any Payment Unit. All operations are limited to existing roads. Skid trails only will be allowed.

### 4.2 - Maintenance

#### 4.2.3 - Road maintenance (8/13)

The following road maintenance is required: Within 30 days of completion of hauling, or if no hauling occurs for 30 days, the road must be maintained and graded. This includes cleaning of drainage areas, grading, crowning, and filling with gravel, if necessary. Damages will be assessed if grading/repair does not occur.

#### 4.2.4 - Grading (10/16)

For completion of the sale, access roads and skid trails must be graded. In general, this will require a road grader or bulldozer to shape up the roads and skid trails after forest products have been hauled off site. This includes cleaning of drainage areas, grading, crowning, and filling with gravel, if necessary. The grading equipment to be used must be approved by the Unit Manager or his/her representative.

### 4.4 - Access

#### 4.4.3 - Access gate (12/08)

Any access gate used to access any Payment Unit must be locked at the completion of each day unless otherwise approved by the Unit Manager or his/her representative.

#### 4.4.4 - Restricted access (10/05)

Access for Payment Unit 1 will be through the Tuscola County Road Commission equipment storage yard on the east side of M24. Contact sale administrator for details at least 10 days prior to the start of operations to arrange for access. In all Payment Units, any vehicle barriers (gates, guard rail, berms, posts etc.) removed during operations shall be replaced in their original location and in their original condition. Any damage to gates, guard rail or vehicle barriers is the responsibility of the Purchaser.

## 5 - Operations

### 5.1 - Notification

#### 5.1.1 - Pre-sale conference (10/16)

A pre-sale conference between the Purchaser and sale administrator is required prior to beginning any operations to determine landing and skid trail locations. The Unit Manager or his/her representative must be contacted at least 10 days in advance to schedule the conference.

#### 5.1.6 - Utility R.O.W. (4/19)

It is the responsibility of the Purchaser to obtain permission from the utility company to utilize the power line R.O.W. for operations. Contact Thumb Electric Cooperative at (800) 327-0166 or email [tec@tecmi.coop](mailto:tec@tecmi.coop).

### 5.2 - Conduct of Operations

#### 5.2.1 - Slash

##### 5.2.1.8 - Slash height (12/08)

No slash or tree tops may exceed 24 inches in height.

##### 5.2.1.10 - No slash in openings (5/10)

No brush or logging debris is to be left in any wildlife opening which is indicated by G0 or U0 on the Timber Sale Map. Any damage to the opening shall be repaired according to specifications of the Unit Manager or his/her representative.

##### 5.2.1.11 - Slash for reforestation (3/21)

To facilitate reforestation, the Sale Area shall be left with slash evenly distributed. Bunched tops within the cutting area shall be broken up and scattered. Stumps shall be cut low to the ground. Processing sites shall not be left with a compacted layer of slash; tops from these sites shall be hauled back into the cut area and scattered.

#### 5.2.2 - Hazard Trees/Snags

##### 5.2.2.1 - Den trees (10/16)



Obvious hollow and/or den trees shall be protected and left standing unless they are a safety hazard. All standing dead trees (snags) shall be left standing unless they pose a safety hazard.

### 5.2.3 - Operating Restrictions

#### 5.2.3.1 - Operating restrictions (9/11)

Within Payment Unit(s) 4 and 5, cutting, skidding, and hauling are restricted to dry or frozen ground conditions only. This restriction is due to poorly drained soils within these Payment Units.

#### 5.2.3.4 - Oak wilt restriction, no exceptions (1/18)

Within all Payment Units cutting, skidding, hauling within the sale and brushing of access roads to the sale are not permitted during the period of April 15 to July 15. No exceptions will be granted. This is necessary to reduce the spread of oak wilt.

#### 5.2.3.12 - Hunting operating restriction (1/18)

No Payment Unit may be started during the period of September 25 - October 10 or November 1 - November 30 without permission of the Unit Manager or his/her representative.

#### 5.2.31 - Landing locations (9/13)

Landing area locations will be determined in the pre-sale conference. Landings must be confined to these designated sites unless otherwise authorized by the Unit Manager or his/her representative. In general, landings are limited to a "T" turnaround which will accommodate a truck with a 50-foot trailer.

#### 5.2.32 - Decking/landing restoration (9/13)

All decking and landing areas must have the surface area restored to a condition equal to or better than before. This is to ensure the proper regeneration of the stand. Wood debris, chips, and "cookies" from trimmings must be removed or scattered away from landing and loading areas and may not be windrowed on the edge.

#### 5.2.37 - No decking areas (12/08)

No decking is allowed in any designated parking area. No equipment storage is allowed in any designated parking area.

#### 5.2.38 - No decking against live trees (2/04)

Cut products may not be decked against unmarked or designated leave trees.

### 5.4 - Soil Protection

#### 5.4.1 - Rutting restriction, general (7/16)

Operations are to cease immediately if equipment and weather conditions result in rutting of roads, skid trails or within the Sale Area which is 12 inches or greater in depth and 50 feet in length. The Unit Manager or his/her representative may restrict hauling and/or skidding if ruts exceed the specified depth. With the Unit Manager or his/her representative's approval, the Purchaser may return to the area when the risk of rutting has decreased.

### 5.7 - Protection of Historical Sites

#### 5.7.2 - Potential historical site(s) (9/06)

The State Historic Preservation Office has identified the potential for a historic site within the boundary of this timber sale. Note that if the site is discovered during operations, General Condition and Requirement 5.7 - Protection of Historical Sites will apply.

### 5.8 - Protection of Endangered Species

#### 5.8.5 - Protection of raptor nests (3/13)

All trees with raptor nests will be protected if found during harvesting operations. Notification will be made to the Unit Manager or his/her representative who will notify the Wildlife Biologist so an on-site evaluation and recommendation can be made, if necessary.

## 7 - Other Conditions

### 7.10 - Certified Timber

#### 7.10.1 - Non-certified timber (2/16)

The area encompassed by this timber sale is not certified to the standards of the Forest Stewardship Council (FSC) or the

Sustainable Forestry Initiative (SFI). Forest products from this sale may not be delivered to the mill as "FSC and / or SFI certified". The lands within this sale are managed as a State Game Area.

## **99 - Unique**

SKIP

99.1 - Unique Sale Condition (5/19)

Per Indianfields Township ordinance, no operating feller bunchers in any Payment Unit before 7 AM and after 9 PM daily. This is required due to the close proximity of residences to the Sale Area.



# TIMBER SALE MAP

This information provided by authority of Part 525, 1994 PA 451, as amended.

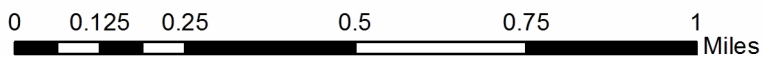
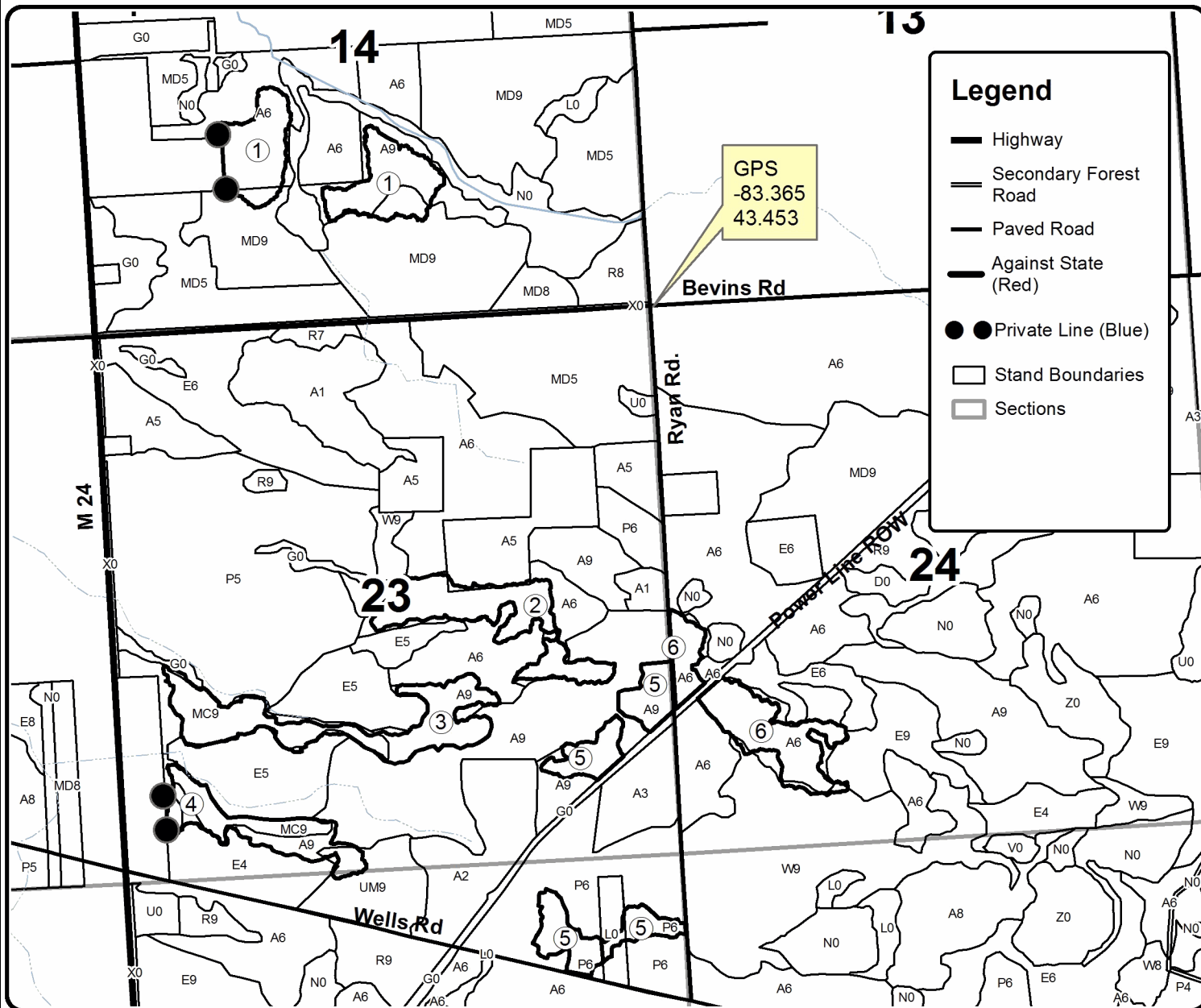
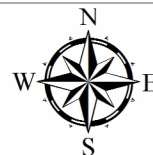
Forest Management Unit Tuscola State Game Area		County Tuscola	Mapped By Bonnette	Date 08/26/2021	Page 1	of 1
Township 12N	Range 09E	Section(s) and Subdivision(s) Sec. 14 E1/2SW,W1/2SE; Sec. 23 SENW,S1/2NE,SW,SE; Sec. 24 NWSW,S1/2SW; Sec. 26 NENW,N1/2NE		Scale 1:17,840		

Cover Type				Density	
A = Aspen	H = Hemlock	N = Marsh	U = Upland Brush	0 = Non Stocked	5 = Pole Timber Medium
B = Paper Birch	J = Jack Pine	O = Oak	UM = Upland Mixed	1 = Seedling Sapling Poor	6 = Pole Timber Well
C = Cedar	L = Lowland Brush	P = Lowland Poplar	V = Bog or Marsh	2 = Seedling Sapling Medium	7 = Saw Timber Poor
D = Treed Bog	LM = Lowland Mixed	Q = Mixed Swamp Conifer	W = White Pine	3 = Seedling Sapling Well	8 = Saw Timber Medium
E = Swamp Hdwoods	M = Mpl, Bch, Brch	R = Red Pine	X = Non Stocked	4 = Pole Timber Poor	9 = Saw Timber Well
F = Spruce Fir	MC = Mixed Conifer	S = Black Spruce	Z = Water		
G = Grass	MD = Mixed Deciduous	T = Tamarack			

PU	Acres	PU	Acres
1	25.4	4	14.4
2	19.9	5	20.7
3	24.1	6	19.9

## Ryan Ridges Mix

124.4 Acres





## TIMBER SALE INFORMATION

Beaver Dam Aspen (55-135-21)

T13N, R13E, SEC. 1; T13N, R14E, SEC. 6; T14N, R13E, SEC. 36; T14N, R14E, SEC. 31.  
Sanilac County (Advertised Price \$36,576.80)

SALE NOTE: All units of volume listed for this sale were estimated using the Inventory Manager computer program and the new Michigan taper model.

Access may be through other public land.

A timber sale contract for this lump sum, sealed bid timber sale will be awarded to the responsible bidder offering the highest sealed bid price. All units of volume listed below were estimated using the Inventory Manager computer program and the new Michigan taper model. Bids must be at or above the following advertised price for each product and species:

<u>PRODUCTS &amp; SPECIES</u>	<u>ESTIMATED UNITS*</u>	<u>ADVERTISED PRICE</u>
Sawtimber		
Black Cherry	48.5 MBF	\$ 69.00 / MBF
Green Ash	9.7 MBF	\$ 26.00 / MBF
Mixed Aspen	504.5 MBF	\$ 28.00 / MBF
Red Maple	117.6 MBF	\$ 30.00 / MBF
Pulpwood		
Mixed Aspen	802 Cords	\$ 10.45 / Cord
Mixed Hardwood	789 Cords	\$ 8.80 / Cord

\* The total volume is statistically estimated within plus (+) or minus (-) 8.12 percent. There are an estimated 3,014 cords on this timber sale, plus or minus 245 cords at the 95% confidence level. The estimated units are final and not subject to adjustment. Prospective bidders are urged to examine this timber and to make their own estimates of quantity and quality.

### **BOND AND PAYMENT SCHEDULE:**

1. A bond in the amount of \$1,829.00 to insure faithful performance of the conditions of the contract will be deposited by the successful bidder within 21 days of the sale award.
2. Cutting in any sale or unit without the required advance payment would be considered a trespass.
3. Total payment must be paid in advance or according to the following schedule :
  - (a) Ten percent (10%) of the sale value must be paid within 21 days of the sale award.
  - (b) The 10% down payment will be credited towards the first unit cut.
  - (c) Payment for each of the following units must be made before cutting begins in that unit:
 

PAYMENT UNIT NUMBER	PERCENT OF TOTAL SALE VALUE
01	13.1%
02	15.5%
03	21.9%
04	18.0%
05	31.5%
4. If no cutting takes place, the 10% down payment will not be refunded.
5. Operations on the contract issued will terminate on 12/31/2023.

### **SALE STATISTICS**

Volumes were calculated in cubic feet using the Michigan taper model. Cubic foot volume includes all wood inside bark for the product indicated. For display purposes, cubic feet were converted to cords and MBF using a simple conversion factor, e.g. 79 cubic feet per cord and 185 cubic feet per MBF. The cubic foot volumes are precise; the cords and MBF volumes are not. Cubic foot volume cannot be directly converted to cords or boards with precision.

### **SALE VOLUMES**

The total estimated sale volume may not equal the sum of the species/products due to the nature of statistical calculations associated with double sampling methodology.

VOLUME		STATISTICAL RANGE IN CORDS		
TOTAL CUBIC FEET	TOTAL CORDS	PERCENT ERROR	MINIMUM	MAXIMUM
238,075	3,014	8.12%	2,769	3,258

## VDU VOLUMES

A VDU is a Volume Determination Unit. Volumes and their associated statistics are calculated at the VDU level and summarized to the sale level. There is often a one to one relationship between a VDU and a Payment Unit, but not always, depending on the cruise design. Refer to the VDU TO PAYMENT UNIT table.

VDU	VOLUME		PERCENT ERROR	RANGE IN CORDS	
	TOTAL CUBIC FEET	TOTAL CORDS		MINIMUM	MAXIMUM
44	40,878	517	22.94%	399	636
45	44,551	564	13.94%	485	643
96	30,718	389	12.20%	341	436
110	38,494	487	12.53%	426	548
141	78,783	997	17.65%	821	1,173
<b>TOTAL:</b>	<b>233,424</b>	<b>2,955</b>		<b>2,473</b>	<b>3,437</b>

## VDU TO PAYMENT UNIT

When a VDU is associated with more than one Payment Unit (PU), the VDU volumes are assigned to the PU based on acres of the VDU within the PU.

VDU	VDU ACRES	PU	PU ACRES
44	10.1	4	10.1
45	10.7	3	10.7
96	7.3	1	7.3
110	9.0	2	9.0
141	19.3	5	19.3
<b>TOTAL:</b>	<b>56.4</b>		<b>56.4</b>

**DESCRIPTION OF TIMBER BY PAYMENT UNIT (PU)**

PU	MARKET GROUP	PRODUCT	QUANTITY	UNIT	ACRES	ADVERTISE PRICE	
1	Black Cherry	Sawtimber	10.0	MBF	7.3	\$4,792.60	
	Mixed Aspen		56.0	MBF			
	<i>B. T. Aspen</i>		56.0	<i>MBF</i>			
	Red Maple		10.2	MBF			
	Mixed Aspen		Pulpwood	92			Cords
	<i>B. T. Aspen</i>			18			<i>Cords</i>
	<i>Quaking Aspen</i>			74			<i>Cords</i>
	Mixed Hardwood			144			Cords
	<i>Basswood</i>			11			<i>Cords</i>
	<i>Black Cherry</i>			17			<i>Cords</i>
	<i>Green Ash</i>			3			<i>Cords</i>
	<i>Paper Birch</i>			39			<i>Cords</i>
	<i>Red Maple</i>			74			<i>Cords</i>
	2			Green Ash			Sawtimber
Mixed Aspen		64.7	MBF				
<i>Quaking Aspen</i>		64.7	<i>MBF</i>				
Red Maple		35.3	MBF				
Mixed Aspen		Pulpwood	122	Cords			
<i>Quaking Aspen</i>			122	<i>Cords</i>			
Mixed Hardwood			145	Cords			
<i>American Elm</i>			11	<i>Cords</i>			
<i>Black Cherry</i>			27	<i>Cords</i>			
<i>Green Ash</i>			22	<i>Cords</i>			
<i>Red Maple</i>			85	<i>Cords</i>			
3			Black Cherry	Sawtimber	26.0	MBF	
	Mixed Aspen	116.3	MBF				
	<i>B. T. Aspen</i>	88.9	<i>MBF</i>				
	<i>Cottonwood</i>	7.3	<i>MBF</i>				
	<i>Quaking Aspen</i>	20.1	<i>MBF</i>				
	Red Maple	22.0	MBF				
	Mixed Aspen	Pulpwood	143		Cords		
	<i>B. T. Aspen</i>		113		<i>Cords</i>		
	<i>Cottonwood</i>		5		<i>Cords</i>		
	<i>Quaking Aspen</i>		25		<i>Cords</i>		
	Mixed Hardwood		92		Cords		
	<i>Black Cherry</i>		8		<i>Cords</i>		
	<i>Green Ash</i>		15		<i>Cords</i>		
	<i>Red Maple</i>		69		<i>Cords</i>		
4	Black Cherry	Sawtimber	12.5	MBF	10.1	\$6,572.15	
	Mixed Aspen		112.4	MBF			
	<i>B. T. Aspen</i>		112.4	<i>MBF</i>			
	Red Maple		4.4	MBF			
	Mixed Aspen		Pulpwood	97			Cords
	<i>B. T. Aspen</i>			97			<i>Cords</i>
	Mixed Hardwood			161			Cords
	<i>Black Cherry</i>			64			<i>Cords</i>
	<i>Paper Birch</i>			27			<i>Cords</i>
	<i>Red Maple</i>		70	<i>Cords</i>			
	5		Mixed Aspen	Sawtimber			155.1
<i>B. T. Aspen</i>		71.5	<i>MBF</i>				
<i>Cottonwood</i>		4.5	<i>MBF</i>				
<i>Quaking Aspen</i>		79.1	<i>MBF</i>				
Red Maple		45.7	MBF				
Mixed Aspen		Pulpwood	348		Cords		
<i>B. T. Aspen</i>			177		<i>Cords</i>		
<i>Cottonwood</i>	5		<i>Cords</i>				

**DESCRIPTION OF TIMBER BY PAYMENT UNIT (PU), CON'T**

PU	MARKET GROUP	PRODUCT	QUANTITY	UNIT	ACRES	ADVERTISE PRICE
5 con't	<i>Quaking Aspen</i>	<i>Pulpwood</i>	166	<i>Cords</i>		
	Mixed Hardwood		247	<i>Cords</i>		
	<i>Black Cherry</i>		67	<i>Cords</i>		
	<i>Green Ash</i>		25	<i>Cords</i>		
	<i>Paper Birch</i>		15	<i>Cords</i>		
	<i>Red Maple</i>		140	<i>Cords</i>		
TOTAL:			680.3	MBF		
TOTAL:			1,591	Cords		



# Sale Specific Conditions & Requirements

**Sale Name: Beaver Dam Aspen**

**Sale Number: 55-135-21 Seq#: 1**

## 1 - Sale Area

### 1.2 - Boundaries

#### 1.2.1 - Painted boundaries (9/19)

The sale boundaries are marked and identified by red paint. Exterior sale boundary lines against state are marked with red paint. The painted boundary line trees are not Included Timber and are to be protected.

## 2 - Timber Specifications

### 2.1 - Included Timber

#### 2.1.1 - Clearcut unit(s) with unmerchantable trees (6/14)

Within Payment Unit(s) 1-5, cut all trees that are two (2) inches or more at DBH, except oak, apple, hickory, hemlock, white pine, and trees marked with green paint. Special protection trees identified in accordance with condition 3.4.2, within clearcutting unit boundaries, are not Included Timber and are to be protected.

### 2.2 - Utilization

#### 2.2.3 - Stump heights (4/07)

Stump heights within the Sale Area shall not exceed 6 inches for all trees.

#### 2.2.4 - Skidding length (2/14)

Skidding of unlimbed tops is not permissible.

#### 2.2.10 - No chipping tops and limbs (8/16)

Within Payment Unit(s) 1-5, chipping of the bole, 2-inches in diameter or greater, is allowed. Chipping of limbs or portions of the tree less than 2-inches in diameter is not permitted. Limbs and the remaining top must be left on site and scattered.

## 3 - Payments

### 3.4 - Damaged Timber

#### 3.4.2 - Special Protection Trees (4/14)

The Purchaser shall not cut live or dead special protection trees within cutting units or clearings. Special protection trees are oak, apple, hickory, hemlock, white pine, and trees marked with green paint. If the Purchaser's operations have cut or damaged special protection trees through carelessness, the Purchaser shall pay \$200 as fixed, agreed and liquidated damages for each special protection tree cut or damaged. Such payment does not constitute ownership of the undesignated timber.

### 3.6 - Payment Unit Cutting Schedule

#### 3.6.2 - One active unit (12/08)

Each Payment Unit must be completed to the satisfaction of the Unit Manager or his/her representative before the next unit may be opened. The Purchaser must give a one week notice before finishing a Payment Unit to allow for inspection.

## 4 - Transportation

### 4.1 - Construction

#### 4.1.3 - Slash and earthen piles (8/04)

Piles or windrows of earth along roads and landings that have been widened or constructed shall be leveled. Slash from road maintenance or construction, including stumps, shall be dispersed throughout the sale.

#### 4.1.12 - No new roads (1/12)

No new roads will be permitted in any Payment Unit. All operations are limited to existing roads. Skid trails only will be allowed.

### 4.2 - Maintenance

#### 4.2.3 - Road maintenance (8/13)

The following road maintenance is required: Within 30 days of completion of hauling, or if no hauling occurs for 30 days, the road must be maintained and graded. This includes cleaning of drainage areas, grading, crowning, and filling with gravel, if necessary. Damages will be assessed if grading/repair does not occur.

#### 4.2.4 - Grading (10/16)

For completion of the sale, skid trails must be graded. In general, this will require a road grader or bulldozer to shape up the roads and skid trails after forest products have been hauled off site. This includes cleaning of drainage areas, grading, crowning, and filling with gravel, if necessary. The grading equipment to be used must be approved by the Unit Manager or his/her representative.

#### 4.2.5 - Two wheel drive condition (2/04)

All existing trail roads on and adjacent to the sale area must be passable by two-wheel drive traffic for the duration of the sale.

### 4.4 - Access

#### 4.4.3 - Access gate (12/08)

The access gate at the end of Reinelt Road must be locked at the completion of each day.

#### 4.4.4 - Restricted access (10/05)

Any vehicle barriers (gates, guard rail, berms etc.) removed during the course of operations shall be replaced in their original location and in their original condition. Any damage to gates, guard rail or vehicle barriers is the responsibility of the Purchaser.

## 5 - Operations

### 5.1 - Notification

#### 5.1.1 - Pre-sale conference (10/16)

A pre-sale conference between the Purchaser and sale administrator is required prior to beginning any operations to determine landing and skid trail locations. The Unit Manager or his/her representative must be contacted at least 10 days in advance to schedule the conference.

### 5.2 - Conduct of Operations

#### 5.2.1 - Slash

##### 5.2.1.8 - Slash height (12/08)

No slash or tree tops may exceed 24 inches in height.

##### 5.2.1.10 - No slash in openings (5/10)

No brush or logging debris is to be left in any maintained wildlife opening which is indicated by G0 or U0 on the Timber Sale Map. Any damage to the opening shall be repaired according to specifications of the Unit Manager or his/her representative.

##### 5.2.1.11 - Slash for reforestation (3/21)

To facilitate reforestation, the Sale Area shall be left with slash evenly distributed. Bunched tops within the cutting area shall be broken up and scattered. Stumps shall be cut low to the ground. Processing sites shall not be left with a compacted layer of slash; tops from these sites shall be hauled back into the cut area and scattered.

#### 5.2.2 - Hazard Trees/Snags

##### 5.2.2.1 - Den trees (10/16)

Obvious hollow and/or den trees shall be protected and left standing unless they are a safety hazard. All standing dead trees (snags) shall be protected and left standing unless they are a safety hazard.

#### 5.2.3 - Operating Restrictions

##### 5.2.3.1 - Operating restrictions (9/11)

Within Payment Unit(s) 1-5 cutting, skidding, and hauling are not permitted during the period of March 15 to July 1. All operations are limited to dry or frozen ground conditions at any other time. This restriction is necessary to protect the

road network and reduce the risk of rutting due to poorly drained soils throughout the Sale Area.

#### 5.2.3.12 - Hunting operating restriction (1/18)

No Payment Unit may be started during the period of September 25 - October 10 or November 1 - November 30 without permission of the Unit Manager or his/her representative.

#### 5.2.31 - Landing locations (9/13)

The location of landings will be determined in the pre-sale conference. Landings must be confined to these designated sites unless otherwise authorized by the Unit Manager or his/her representative. In general, landings are limited to a "T" turnaround which will accommodate a truck with a 50-foot trailer.

#### 5.2.32 - Decking/landing restoration (9/13)

All decking and landing areas must have the surface area restored to a condition equal to or better than before. This is to ensure the proper regeneration of the stand. Wood debris, chips, and "cookies" from trimmings must be removed or scattered away from landing and loading areas and may not be windrowed on the edge.

#### 5.2.38 - No decking against live trees (2/04)

Cut products may not be decked against unmarked or designated leave trees.

### 5.4 - Soil Protection

#### 5.4.1 - Rutting restriction, general (7/16)

Operations are to cease immediately if equipment and weather conditions result in rutting of roads, skid trails or within the Sale Area which is 12 inches or greater in depth and/or 50 feet in length. The Unit Manager or his/her representative may restrict hauling and/or skidding if ruts exceed the specified depth. With the Unit Manager or his/her representative's approval, the Purchaser may return to the area when the risk of rutting has decreased.

#### 5.4.6 - Wet area protection (5/10)

No harvesting operations, including skidding and felling, are to take place within the beaver pond. The beaver dam may not be removed or disturbed during harvesting operations. All equipment, trees and tops should be kept out of this area. Within 100 feet of the pond, equipment should only be used when the soil is in a dry or frozen condition. Care must be taken by the Purchaser to identify and avoid operating in these areas of the timber sale.

### 5.8 - Protection of Endangered Species

#### 5.8.5 - Protection of raptor nests (3/13)

All trees with raptor nests will be protected if found during harvesting operations. Notification will be made to the Unit Manager or his/her representative who will notify the Wildlife Biologist so an on-site evaluation and recommendation can be made, if necessary.

## 7 - Other Conditions

### 7.2 - Extensions

#### 7.2.5 - Weather related extension (1/13)

If weather conditions during the operating period of this contract prevent harvesting, this sale may qualify for a weather related extension. If approved, the normal extension fee would be waived. To qualify, there must be a documented attempt each year to harvest in the difficult portion of the sale.

### 7.5 - Loss

#### 7.5.1 - Deteriorating timber (7/09)

The sale area has received damage from beavers; particularly in Payment Units 3, 4, and 5. The Purchaser should harvest the wood as soon as possible. The Department of Natural Resources is held free of responsibility of any further damage or deterioration due to delay in harvesting.

### 7.10 - Certified Timber

#### 7.10.1 - Non-certified timber (2/16)

The area encompassed by this timber sale is not certified to the standards of the Forest Stewardship Council (FSC) or the Sustainable Forestry Initiative (SFI). Forest products from this sale may not be delivered to the mill as "FSC and / or SFI certified". The lands within this sale are managed as a State Game Area.





# TIMBER SALE MAP

This information provided by authority of Part 525, 1994 PA 451, as amended.

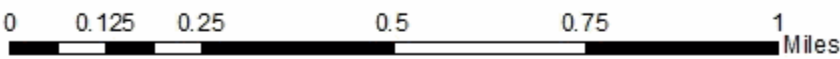
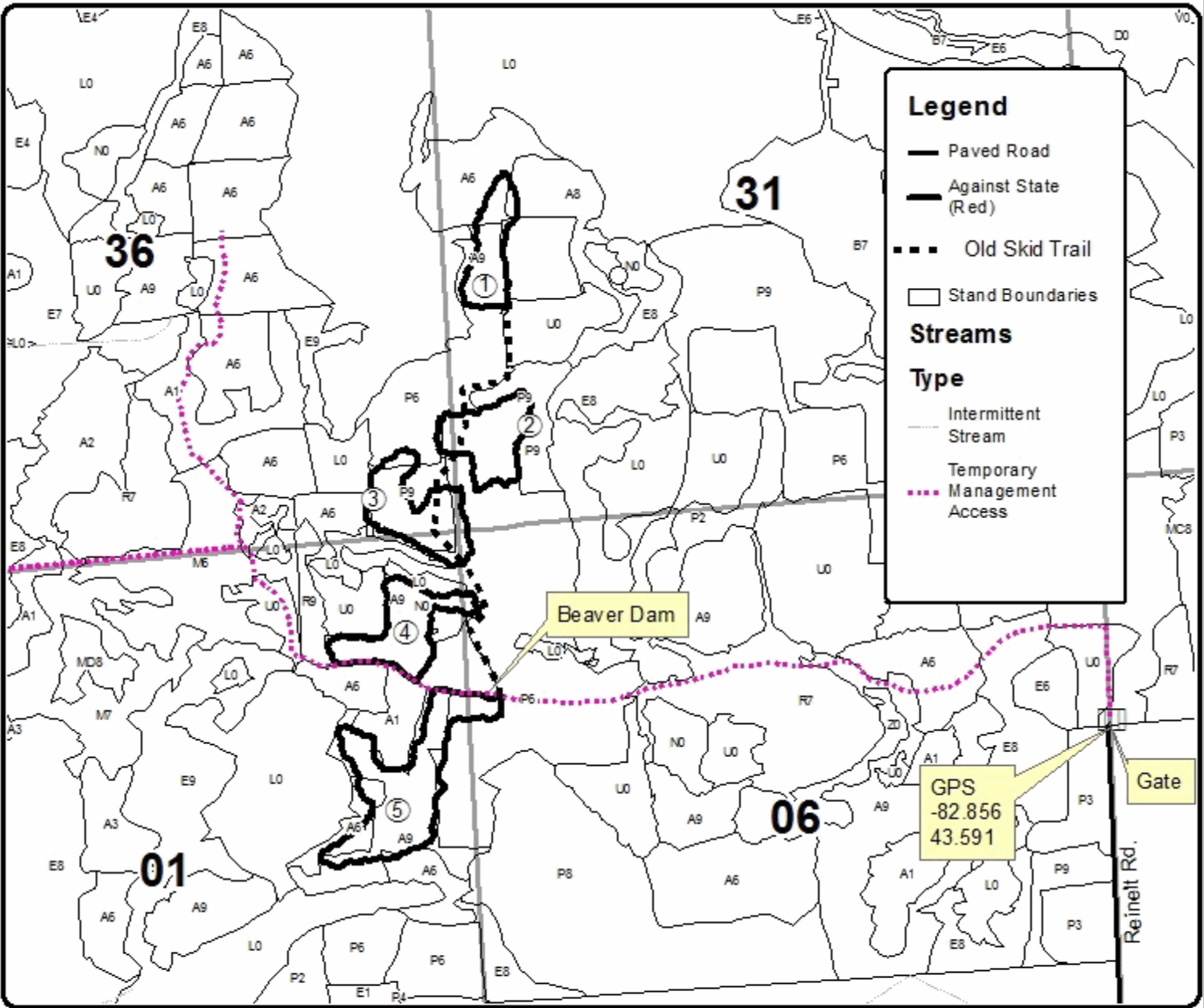
Forest Management Unit Minden City State Game Area	County Sanilac	Mapped By Bonnette	Date 08/26/2021	Page 1	of 1
Township 13N & 14N	Range 13E & 14E	Section(s) and Subdivision(s) Sec. 1 E1/2NE, NESE; Sec. 6 W1/2NW; Sec. 36 SESE; Sec. 31 SWNW,W1/2SW	Scale 1:15,840		

Cover Type				Density	
A = Aspen	H = Hemlock	N = Marsh	U = Upland Brush	0 = Non Stocked	5 = Pole Timber Medium
B = Paper Birch	J = Jack Pine	O = Oak	UM = Upland Mixed	1 = Seedling Sapling Poor	6 = Pole Timber Well
C = Cedar	L = Lowland Brush	P = Lowland Poplar	V = Bog or Marsh	2 = Seedling Sapling Medium	7 = Saw Timber Poor
D = Treed Bog	LM = Lowland Mixed	Q = Mixed Swamp Conifer	W = White Pine	3 = Seedling Sapling Well	8 = Saw Timber Medium
E = Swamp Hardwoods	M = Mpl. Ech. Birch	R = Red Pine	X = Non Stocked	4 = Pole Timber Poor	9 = Saw Timber Well
F = Spruce Fir	MC = Mixed Conifer	S = Black Spruce	Z = Water		
G = Cress	MD = Mixed Deciduous	T = Tamarack			

PU	Acres	PU	Acres
1	7.3	4	10.1
2	9.0	5	19.3
3	10.7		

## Beaver Dam Aspen

56.4 Acres





## TIMBER SALE INFORMATION

### Verona Maple Mix (55-136-21)

T15N, R14E, SEC. 4; T15N, R14E, SEC. 5; T16N, R14E, SEC. 28.  
Huron County (Advertised Price \$33,330.55)

SALE NOTE: All units of volume listed for this sale were estimated using the Inventory Manager computer program and the new Michigan taper model.

Access may be through other public land.

A timber sale contract for this lump sum, sealed bid timber sale will be awarded to the responsible bidder offering the highest sealed bid price. All units of volume listed below were estimated using the Inventory Manager computer program and the new Michigan taper model. Bids must be at or above the following advertised price for each product and species:

<u>PRODUCTS &amp; SPECIES</u>	<u>ESTIMATED UNITS*</u>	<u>ADVERTISED PRICE</u>
Sawtimber		
American Elm	31.2 MBF	\$ 26.00 / MBF
Basswood	3.4 MBF	\$ 29.00 / MBF
Green Ash	14.9 MBF	\$ 25.00 / MBF
Mixed Aspen	105.1 MBF	\$ 26.00 / MBF
Paper Birch	22.8 MBF	\$ 26.00 / MBF
Silver Maple	560.6 MBF	\$ 27.00 / MBF
Pulpwood		
Mixed Aspen	193 Cords	\$ 8.25 / Cord
Mixed Hardwood	264 Cords	\$ 8.80 / Cord
Silver Maple	1,256 Cords	\$ 7.70 / Cord

\* The total volume is statistically estimated within plus (+) or minus (-) 7.38 percent. There are an estimated 3,339 cords on this timber sale, plus or minus 247 cords at the 95% confidence level. The estimated units are final and not subject to adjustment. Prospective bidders are urged to examine this timber and to make their own estimates of quantity and quality.

### **BOND AND PAYMENT SCHEDULE:**

1. A bond in the amount of \$1,667.00 to insure faithful performance of the conditions of the contract will be deposited by the successful bidder within 21 days of the sale award.
2. Cutting in any sale or unit without the required advance payment would be considered a trespass.
3. Total payment must be paid in advance or according to the following schedule :
  - (a) Ten percent (10%) of the sale value must be paid within 21 days of the sale award.
  - (b) The 10% down payment will be credited towards the first unit cut.
  - (c) Payment for each of the following units must be made before cutting begins in that unit:

PAYMENT UNIT NUMBER	PERCENT OF TOTAL SALE VALUE
01	10.9%
02	12.7%
03	6.1%
04	25.3%
05	23.3%
06	21.7%

4. If no cutting takes place, the 10% down payment will not be refunded.
5. Operations on the contract issued will terminate on 12/31/2023.

### **SALE STATISTICS**

Volumes were calculated in cubic feet using the Michigan taper model. Cubic foot volume includes all wood inside bark for the product indicated. For display purposes, cubic feet were converted to cords and MBF using a simple conversion factor, e.g. 79 cubic feet per cord and 185 cubic feet per MBF. The cubic foot volumes are precise; the cords and MBF volumes are not. Cubic foot volume cannot be directly converted to cords or boards with precision.

## SALE VOLUMES

The total estimated sale volume may not equal the sum of the species/products due to the nature of statistical calculations associated with double sampling methodology.

VOLUME			STATISTICAL RANGE IN CORDS	
TOTAL CUBIC FEET	TOTAL CORDS	PERCENT ERROR	MINIMUM	MAXIMUM
263,767	3,339	7.38%	3,092	3,585

## VDU VOLUMES

A VDU is a Volume Determination Unit. Volumes and their associated statistics are calculated at the VDU level and summarized to the sale level. There is often a one to one relationship between a VDU and a Payment Unit, but not always, depending on the cruise design. Refer to the VDU TO PAYMENT UNIT table.

	VOLUME			RANGE IN CORDS	
VDU	TOTAL CUBIC FEET	TOTAL CORDS	PERCENT ERROR	MINIMUM	MAXIMUM
297	59,064	748	10.84%	667	829
369	176,887	2,239	9.15%	2,034	2,444
411	16,073	203	43.22%	116	291
<b>TOTAL:</b>	<b>252,023</b>	<b>3,190</b>		<b>2,816</b>	<b>3,564</b>

## VDU TO PAYMENT UNIT

When a VDU is associated with more than one Payment Unit (PU), the VDU volumes are assigned to the PU based on acres of the VDU within the PU.

VDU	VDU ACRES	PU	PU ACRES
297	37.3	1	17.2
		2	20.1
369	73.9	4	26.6
		5	24.5
		6	22.8
411	10.7	3	10.7
<b>TOTAL:</b>	<b>121.9</b>		<b>121.9</b>



**DESCRIPTION OF TIMBER BY PAYMENT UNIT (PU)**

PU	MARKET GROUP	PRODUCT	QUANTITY	UNIT	ACRES	ADVERTISE PRICE	
1	American Elm	Sawtimber	6.1	MBF	17.2	\$3,641.25	
	Basswood		1.6	MBF			
	Mixed Aspen		45.5	MBF			
	<i>Cottonwood</i>		31.4	<i>MBF</i>			
	<i>Quaking Aspen</i>		14.1	<i>MBF</i>			
	Paper Birch		10.5	MBF			
	Silver Maple		14.9	MBF			
	Mixed Aspen		Pulpwood	61			Cords
	<i>Balsam Poplar</i>			3			<i>Cords</i>
	<i>Cottonwood</i>			16			<i>Cords</i>
	<i>Quaking Aspen</i>	42		<i>Cords</i>			
	Mixed Hardwood	88		Cords			
	<i>American Elm</i>	35		<i>Cords</i>			
	<i>Basswood</i>	1		<i>Cords</i>			
	<i>Black Cherry</i>	7		<i>Cords</i>			
	<i>Green Ash</i>	31		<i>Cords</i>			
	<i>Paper Birch</i>	12		<i>Cords</i>			
	<i>Red Maple</i>	2	<i>Cords</i>				
	Silver Maple	39	Cords				
	2	American Elm	Sawtimber	7.3			MBF
Basswood		1.8		MBF			
Mixed Aspen		53.2		MBF			
<i>Cottonwood</i>		36.8		<i>MBF</i>			
<i>Quaking Aspen</i>		16.4		<i>MBF</i>			
Paper Birch		12.3		MBF			
Silver Maple		17.4		MBF			
Mixed Aspen		Pulpwood		68	Cords		
<i>Balsam Poplar</i>				3	<i>Cords</i>		
<i>Cottonwood</i>				18	<i>Cords</i>		
<i>Quaking Aspen</i>			47	<i>Cords</i>			
Mixed Hardwood			103	Cords			
<i>American Elm</i>			39	<i>Cords</i>			
<i>Basswood</i>			2	<i>Cords</i>			
<i>Black Cherry</i>			9	<i>Cords</i>			
<i>Green Ash</i>			36	<i>Cords</i>			
<i>Paper Birch</i>			14	<i>Cords</i>			
<i>Red Maple</i>		3	<i>Cords</i>				
Silver Maple		45	Cords				
3		Silver Maple	Sawtimber	39.0	MBF	10.7	\$2,029.80
	Mixed Hardwood	Pulpwood	6	Cords			
	<i>American Elm</i>		6	<i>Cords</i>			
	Silver Maple		120	Cords			
4	American Elm	Sawtimber	6.4	MBF	26.6	\$8,427.45	
	Green Ash		5.4	MBF			
	Mixed Aspen		2.3	MBF			
	<i>Cottonwood</i>		2.3	<i>MBF</i>			
	Silver Maple		176.1	MBF			
	Mixed Aspen	Pulpwood	23	Cords			
	<i>Cottonwood</i>		1	<i>Cords</i>			
	<i>Quaking Aspen</i>		22	<i>Cords</i>			
	Mixed Hardwood		24	Cords			
	<i>American Elm</i>		14	<i>Cords</i>			
	<i>Box Elder</i>		5	<i>Cords</i>			
	<i>Green Ash</i>		5	<i>Cords</i>			
	Silver Maple		378	Cords			
	5		American Elm	Sawtimber			5.9

**DESCRIPTION OF TIMBER BY PAYMENT UNIT (PU), CON'T**

PU	MARKET GROUP	PRODUCT	QUANTITY	UNIT	ACRES	ADVERTISE PRICE	
5 con't	Green Ash	Sawtimber	4.9	MBF			
	Mixed Aspen		2.1	MBF			
	<i>Cottonwood</i>		2.1	<i>MBF</i>			
	Silver Maple		162.2	MBF			
	Mixed Aspen	Pulpwood	21	Cords			
	<i>Cottonwood</i>		1	<i>Cords</i>			
	<i>Quaking Aspen</i>		20	<i>Cords</i>			
	Mixed Hardwood		23	Cords			
	<i>American Elm</i>		13	<i>Cords</i>			
	<i>Box Elder</i>		5	<i>Cords</i>			
	<i>Green Ash</i>		5	<i>Cords</i>			
	Silver Maple		349	Cords			
	6		American Elm	Sawtimber			5.5
Green Ash			4.6		MBF		
Mixed Aspen		2.0	MBF				
<i>Cottonwood</i>		2.0	<i>MBF</i>				
Silver Maple			151.0	MBF			
Mixed Aspen		Pulpwood	20	Cords			
<i>Cottonwood</i>			1	<i>Cords</i>			
<i>Quaking Aspen</i>			19	<i>Cords</i>			
Mixed Hardwood			20	Cords			
<i>American Elm</i>			12	<i>Cords</i>			
<i>Box Elder</i>			4	<i>Cords</i>			
<i>Green Ash</i>			4	<i>Cords</i>			
Silver Maple			325	Cords			
TOTAL:			738.0	MBF			
TOTAL:			1,713	Cords			

# Sale Specific Conditions & Requirements

**Sale Name: Verona Maple Mix**

**Sale Number: 55-136-21 Seq#: 1**

## 1 - Sale Area

### 1.2 - Boundaries

#### 1.2.1 - Painted boundaries (9/19)

The sale boundary and Payment Unit boundaries are marked and identified by blue, red, and yellow paint. Exterior sale boundary lines against private property are marked with blue paint. Exterior sale boundary lines against state are marked with red paint. Interior Payment Unit boundaries are marked with yellow paint. The painted boundary line trees are not Included Timber and are to be protected. Yellow painted trees designating an interior Payment Unit boundary are only to be cut when all surrounding Payment Units have been paid.

## 2 - Timber Specifications

### 2.1 - Included Timber

#### 2.1.1 - Clearcut unit(s) with unmerchantable trees (6/14)

Within Payment Unit(s) 1 and 2, cut all trees that are two (2) inches or more at DBH, except apple, white pine, cedar, and trees marked with green paint. Within Payment Units 3-6, cut all maple and elm greater than 4 inches at DBH and less than 18 inches at DBH and all other trees that are four (4) inches or more at DBH, except apple and trees marked with green paint. Special protection trees identified in accordance with condition 3.4.2, within clearcutting unit boundaries, are not Included Timber and are to be protected.

### 2.2 - Utilization

#### 2.2.3 - Stump heights (4/07)

Stump heights within the Sale Area shall not exceed 6 inches for all trees.

#### 2.2.4 - Skidding length (2/14)

Skidding of unlimbed tops is not permissible.

#### 2.2.10 - No chipping tops and limbs (8/16)

Within Payment Unit(s) 1-6, chipping of the bole, 2-inches in diameter or greater, is allowed. Chipping of limbs or portions of the tree less than 2-inches in diameter is not permitted. Limbs and the remaining top must be left on site and scattered.

## 3 - Payments

### 3.4 - Damaged Timber

#### 3.4.2 - Special Protection Trees (4/14)

The Purchaser shall not cut live or dead special protection trees within cutting units or clearings. Special protection trees are maple and elm greater than or equal to 18 inches at DBH, apple and trees marked with green paint. If the Purchaser's operations have cut or damaged special protection trees through carelessness, the Purchaser shall pay \$200 as fixed, agreed and liquidated damages for each special protection tree cut or damaged. Such payment does not constitute ownership of the undesignated timber.

### 3.6 - Payment Unit Cutting Schedule

#### 3.6.1 - Order of cutting (1/09)

Payment Units shall be cut in numerical order unless weather and ground conditions suggest otherwise.

#### 3.6.2 - One active unit (12/08)

Each Payment Unit must be completed to the satisfaction of the Unit Manager or his/her representative before the next unit may be opened. The Purchaser must give a one week notice before finishing a Payment Unit to allow for inspection.

## 4 - Transportation

### 4.1 - Construction

#### 4.1.3 - Slash and earthen piles (8/04)

Piles or windrows of earth along roads and landings that have been widened or constructed shall be leveled. Slash from road maintenance or construction, including stumps, shall be dispersed throughout the sale.

#### 4.1.11 - Permits (2/12)

The Purchaser will secure any necessary temporary driveway permits that may be required.

#### 4.1.12 - No new roads (1/12)

No new roads will be permitted in any Payment Unit. Skid trails only will be allowed.

### 4.2 - Maintenance

#### 4.2.4 - Grading (10/16)

For completion of the sale, skid trails must be graded. In general, this will require a bulldozer to shape up the skid trails after forest products have been hauled off site. This includes cleaning of drainage areas, grading, crowning, and filling with gravel, if necessary. The grading equipment to be used must be approved by the Unit Manager or his/her representative.

## 5 - Operations

### 5.1 - Notification

#### 5.1.1 - Pre-sale conference (10/16)

A pre-sale conference between the Purchaser and sale administrator is required prior to beginning any operations to determine landing and skid trail locations. The Unit Manager or his/her representative must be contacted at least 10 days in advance to schedule the conference.

### 5.2 - Conduct of Operations

#### 5.2.1 - Slash

##### 5.2.1.8 - Slash height (12/08)

No slash or tree tops may exceed 24 inches in height.

##### 5.2.1.10 - No slash in openings (5/10)

No brush or logging debris is to be left in any farmed field or opening which is indicated by G0 or U0 on the Timber Sale Map. Any damage to the opening shall be repaired according to specifications of the Unit Manager or his/her representative.

##### 5.2.1.11 - Slash for reforestation (3/21)

To facilitate reforestation, the Sale Area shall be left with slash evenly distributed. Bunched tops within the cutting area shall be broken up and scattered. Stumps shall be cut low to the ground. Processing sites shall not be left with a compacted layer of slash; tops from these sites shall be hauled back into the cut area and scattered.

#### 5.2.2 - Hazard Trees/Snags

##### 5.2.2.1 - Den trees (10/16)

Obvious hollow and/or den trees shall be protected and left standing unless they are a safety hazard. All standing dead trees (snags) shall be protected and left standing unless they are a safety hazard.

#### 5.2.3 - Operating Restrictions

##### 5.2.3.1 - Operating restrictions (9/11)

Within Payment Unit(s) 1-6 cutting, skidding, and hauling are not permitted during the period of March 15 to July 15 and is limited to dry or frozen ground conditions at any other time. The sale administrator will determine what constitutes dry or frozen ground conditions. This restriction is due to poorly drained soils throughout the Sale Area.

##### 5.2.3.12 - Hunting operating restriction (1/18)

No Payment Unit may be started during the period of September 25 - October 10 or November 1 - November 30 without permission of the Unit Manager or his/her representative.

#### 5.2.31 - Landing locations (9/13)

The location of landings will be determined in the pre-sale conference. Landings must be confined to these designated sites

unless otherwise authorized by the Unit Manager or his/her representative. In general, landings are limited to a "T" turnaround which will accommodate a truck with a 50-foot trailer.

#### 5.2.32 - Decking/landing restoration (9/13)

All decking and landing areas must have the surface area restored to a condition equal to or better than before. This is to ensure the proper regeneration of the stand. Wood debris, chips, and "cookies" from trimmings must be removed from landing and loading areas and scattered within the sale boundaries and may not be windrowed on the edge.

#### 5.2.37 - No decking areas (12/08)

No decking is allowed in any designated parking area. No equipment storage is allowed in any designated parking area.

#### 5.2.38 - No decking against live trees (2/04)

Cut products may not be decked against unmarked or designated leave trees.

### 5.4 - Soil Protection

#### 5.4.1 - Rutting restriction, general (7/16)

Operations are to cease immediately if equipment and weather conditions result in rutting of the Sale Area, roads and/or skid trails which are 12 inches or greater in depth and 50 feet in length. The Unit Manager or his/her representative may restrict hauling and/or skidding if ruts exceed the specified depth. With the Unit Manager or his/her representative's approval, the Purchaser may return to the area when the risk of rutting has decreased.

#### 5.4.5 - Soil caution (11/04)

Care must be taken to minimize soil damage due to poor soil drainage throughout the sale. Care must also be taken when operating around designated leave trees to minimize damage to shallow roots.

#### 5.4.6 - Wet area protection (5/10)

No harvesting operations, including skidding and felling, are to take place within any vernal pond areas or drainages. When harvesting occurs, there should be no disturbance to the vernal pond depression. All equipment, trees, and tops should be kept out of this area. Within 100 feet of the pond, equipment should only be used when the soil is in a dry or frozen condition. Care must be taken by the Purchaser to identify and avoid operating in these areas of the timber sale.

### 5.8 - Protection of Endangered Species

#### 5.8.5 - Protection of raptor nests (3/13)

All trees with raptor nests will be protected if found during harvesting operations. Notification will be made to the Unit Manager or his/her representative who will notify the Wildlife Biologist so an on-site evaluation and recommendation can be made, if necessary.

## 7 - Other Conditions

### 7.2 - Extensions

#### 7.2.5 - Weather related extension (1/13)

If weather conditions during the operating period of this contract prevent harvesting, this sale may qualify for a weather related extension. If approved, the normal extension fee would be waived. To qualify, there must be a documented attempt each year to harvest in the difficult portion of the sale.

### 7.10 - Certified Timber

#### 7.10.1 - Non-certified timber (2/16)

The area encompassed by this timber sale is not certified to the standards of the Forest Stewardship Council (FSC) or the Sustainable Forestry Initiative (SFI). Forest products from this sale may not be delivered to the mill as "FSC and / or SFI certified". The lands within this sale are managed as a State Game Area.



# TIMBER SALE MAP

This information provided by authority of Part 525, 1994 PA 451, as amended.

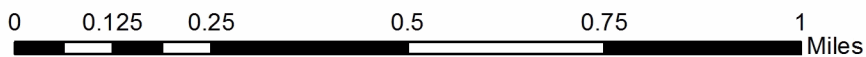
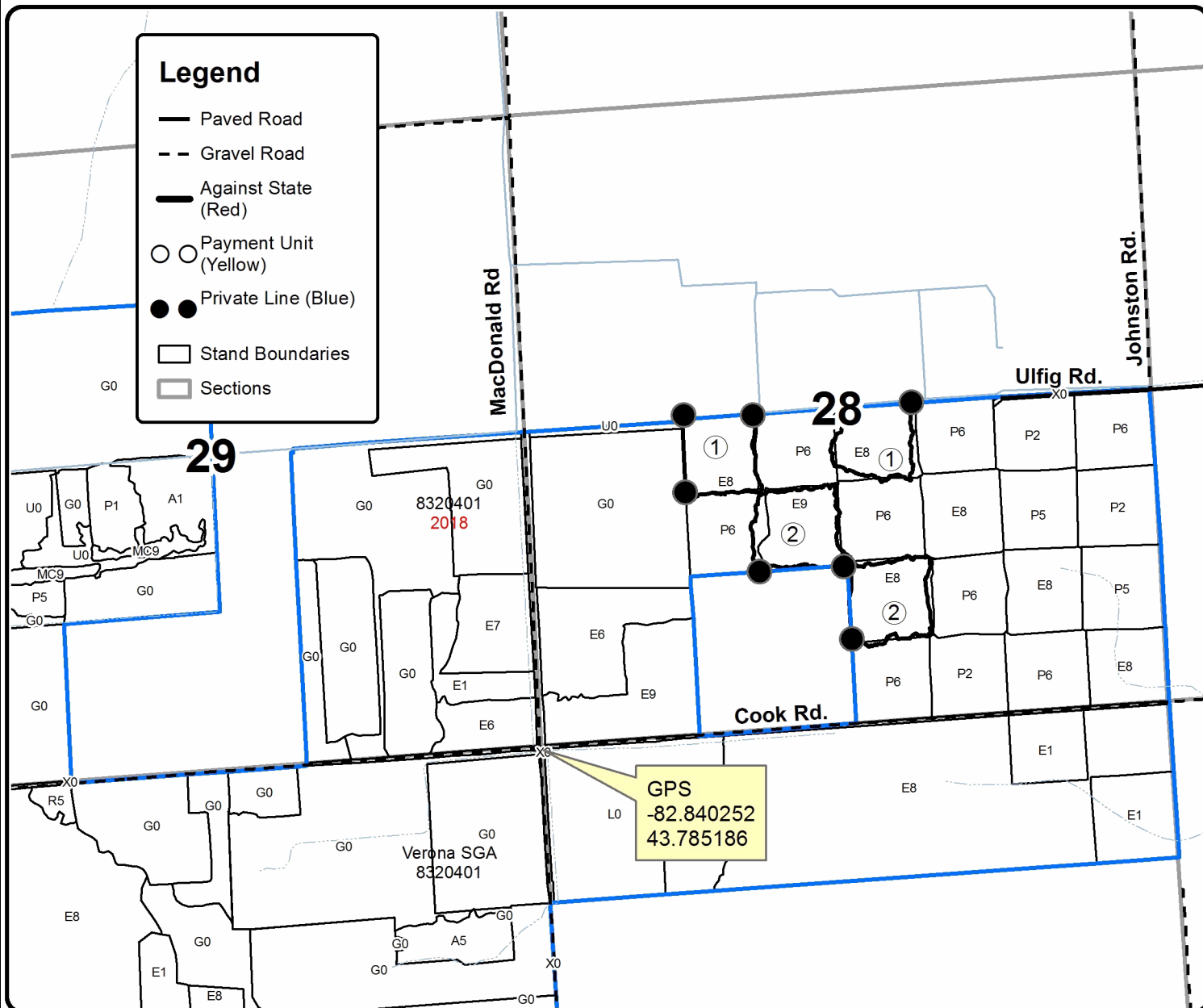
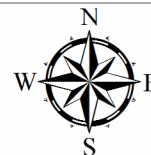
Forest Management Unit Verona State Game Area	County Huron	Mapped By Bonnette	Date 09/03/2021	Page 1	of 2
Township 16N	Range 14E	Section(s) and Subdivision(s) Sec. 28 NESW,W1/2SE	Scale 1:15,480		

Cover Type				Density	
A = Aspen	H = Hemlock	N = Marsh	U = Upland Brush	0 = Non Stocked	5 = Pole Timber Medium
B = Paper Birch	J = Jack Pine	O = Oak	UM = Upland Mixed	1 = Seedling Sapling Poor	6 = Pole Timber Well
C = Cedar	L = Lowland Brush	P = Lowland Poplar	V = Bog or Marsh	2 = Seedling Sapling Medium	7 = Saw Timber Poor
D = Treed Bog	LM = Lowland Mixed	Q = Mixed Swamp Conifer	W = White Pine	3 = Seedling Sapling Well	8 = Saw Timber Medium
E = Swamp Hdwoods	M = Mpl, Bch, Brch	R = Red Pine	X = Non Stocked	4 = Pole Timber Poor	9 = Saw Timber Well
F = Spruce Fir	MC = Mixed Conifer	S = Black Spruce	Z = Water		
G = Grass	MD = Mixed Deciduous	T = Tamarack			

PU	Acres	PU	Acres
1	17.2	4	26.6
2	20.1	5	24.5
3	10.7	6	22.8

## Verona Maple Mix

121.9 Acres





# TIMBER SALE MAP

This information provided by authority of Part 525, 1994 PA 451, as amended.

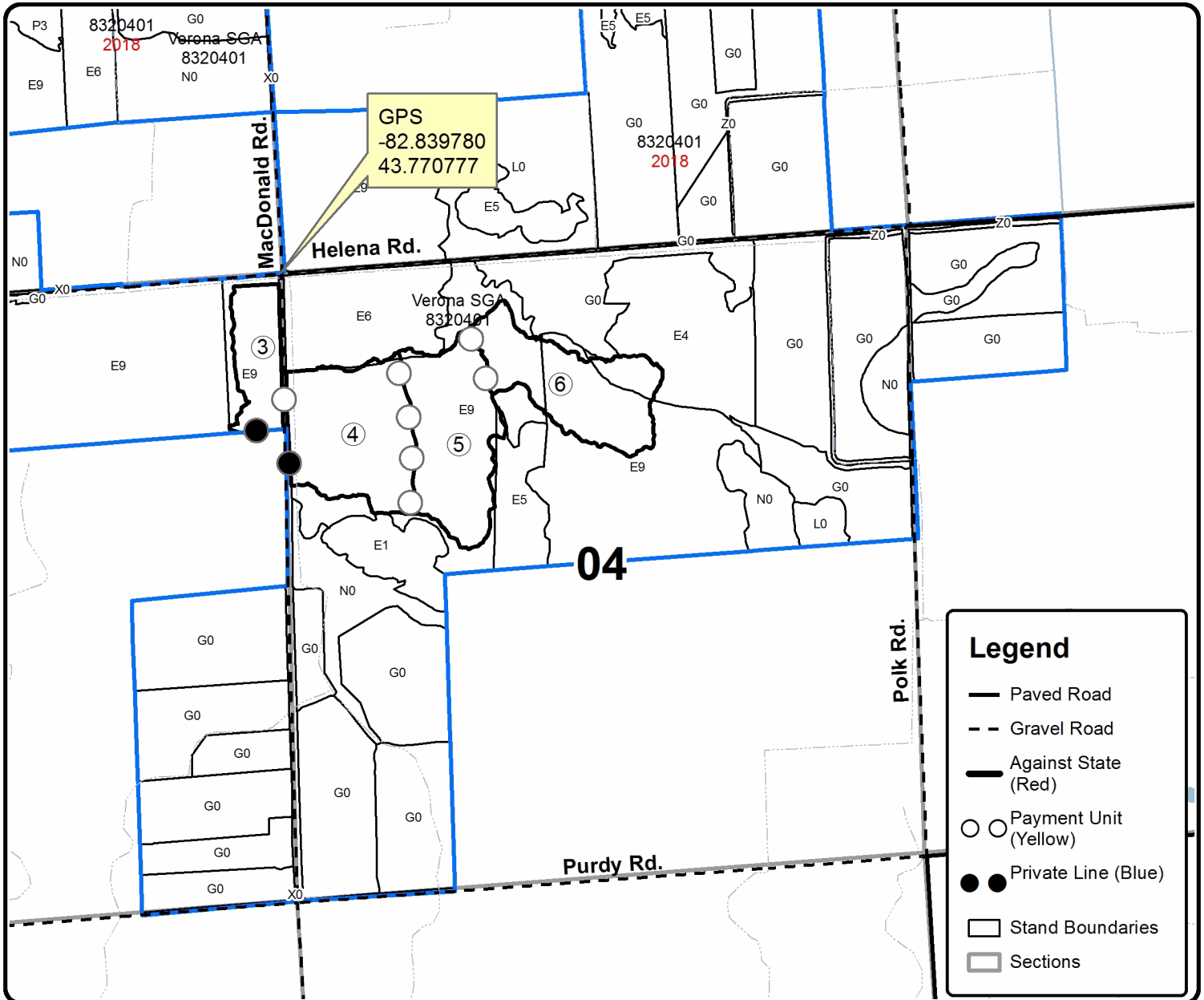
Forest Management Unit Verona State Game Area		County Huron	Mapped By Bonnette	Date 09/03/2021	Page 2	of 2
Township 16N	Range 14E	Section(s) and Subdivision(s) Sec. 28 NESW,W1/2SE		Scale 1:15,480		

Cover Type				Density	
A = Aspen	H = Hemlock	N = Marsh	U = Upland Brush	0 = Non Stocked	5 = Pole Timber Medium
B = Paper Birch	J = Jack Pine	O = Oak	UM = Upland Mixed	1 = Seedling Sapling Poor	6 = Pole Timber Well
C = Cedar	L = Lowland Brush	P = Lowland Poplar	V = Bog or Marsh	2 = Seedling Sapling Medium	7 = Saw Timber Poor
D = Treed Bog	LM = Lowland Mixed	Q = Mixed Swamp Conifer	W = White Pine	3 = Seedling Sapling Well	8 = Saw Timber Medium
E = Swamp Hdwoods	M = Mpl. Bch, Brch	R = Red Pine	X = Non Stocked	4 = Pole Timber Poor	9 = Saw Timber Well
F = Spruce Fir	MC = Mixed Conifer	S = Black Spruce	Z = Water		
G = Grass	MD = Mixed Deciduous	T = Tamarack			

PU	Acres	PU	Acres
1	17.2	4	26.6
2	20.1	5	24.5
3	10.7	6	22.8

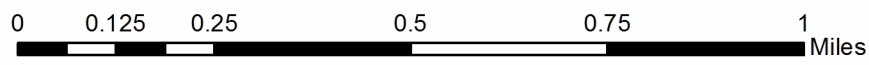
## Verona Maple Mix

121.9 Acres



**Legend**

- Paved Road
- - Gravel Road
- Against State (Red)
- ○ Payment Unit (Yellow)
- ● Private Line (Blue)
- Stand Boundaries
- Sections







Roods Lake Mix (28-003-21)  
T08N, R10E, SEC. 10; Lapeer COUNTY

In response to the notice of sale to be held 10:00 a.m. (local time) on November 9, 2021, I am hereby submitting my sealed bid (firm offer) for the following forest products to be cut. Bids for individual species must be at or above the advertised price. All non-responsive bid forms may be rejected.

<u>PRODUCTS &amp; SPECIES</u>	<u>ESTIMATED VOLUME*</u>	<u>ADVERTISED PRICE</u>	<u>BID PRICE/UNIT</u>
<b>Sawtimber</b>			
Mixed Aspen	276.8 MBF	\$ 28.00/MBF	\$ _____
Red Pine	61.6 MBF	\$ 37.00/MBF	\$ _____
<b>Pulpwood</b>			
Mixed Aspen	436 Cords	\$ 11.55/Cord	\$ _____
Mixed Hardwood	377 Cords	\$ 8.80/Cord	\$ _____
Red Pine	188 Cords	\$ 18.15/Cord	\$ _____

\*The volumes are statistically estimated within plus (+) or minus (-) 8.84 percent at 95% confidence level. These estimated volumes are final and not subject to adjustment. Prospective bidders are urged to examine this timber and to make their own estimates of quantity and quality.

I understand that any or all bids may be rejected. All bids must be signed and all bid items must be bid or the bid form may be rejected. I also understand that consideration and awarding a contract will be based upon my past performance and ability to complete the contract based upon equipment and staffing subject to my control.

FEDERAL ID: \_\_\_\_\_ - \_\_\_\_\_ or SOCIAL SECURITY NUMBER: \_\_\_\_\_ - \_\_\_\_\_ - \_\_\_\_\_

Company or individual bidding: \_\_\_\_\_

Company representative's name: \_\_\_\_\_

Address: \_\_\_\_\_

City: \_\_\_\_\_ State: \_\_\_\_\_ Zip: \_\_\_\_\_

IF AVAILABLE, PLEASE PLACE THE PERSONALIZED LABEL FROM YOUR PROSPECTUS IN THE ABOVE BOX.

Individual or company representative's signature: \_\_\_\_\_ Date: \_\_\_\_\_

Phone number : \_\_\_\_\_ Email (optional): \_\_\_\_\_

**THE WINNING BIDDER MUST COMPLETE THE VERIFICATION OF WORKER'S DISABILITY COMPENSATION ACT COMPLIANCE (ON REVERSE SIDE IF DOUBLE SIDED) WITHIN 21 DAYS OF SALE AWARD DATE**



<b>FOR DEPARTMENT USE ONLY</b>
Sale Number (XX - XXX - XX - XX)
Forest Management Unit:

## TIMBER SALE VERIFICATION OF WORKER'S DISABILITY COMPENSATION ACT COMPLIANCE

*As required by Act 317, P.A. 1969 (Worker's Compensation) and  
Part 5 of Act 451 of 1994, as amended.*

### VERIFICATION OF WORKER'S DISABILITY COMPENSATION ACT COMPLIANCE

- This verification must be completed and submitted within 21 days of contract award and prior to the issuance of the timber sale contract.
- In addition, if boxes 2B or 2C are checked, then Notice of Exclusion or Certificate of Insurance must be submitted within twenty-one (21) days of the contract award and prior to the issuance of the timber sale contract.
- All information must be typed or printed except for written signatures.

Please Check Appropriate Categories:

1. My business is organized as (you **must** check one of the boxes below):
  - A.  Sole Proprietorship (individual)
  - B.  Partnership
  - C.  Corporation
2. You **must** check one of the boxes below:
  - A.  I certify my business is a sole proprietorship and it has no employees but the sole proprietor. I am not subject to the Worker's Compensation Laws.
  - B.  I certify my business has satisfied its obligation to the Worker's Compensation Act through the use of an approved Notice of Exclusion (BWC-337, Rev. 5/96). I will provide a copy of the Notice of Exclusion within 21 days of the contract award. (For questions or a copy of the BWC-337, please call the Worker's Compensation Bureau at 517-322-1195).
  - C.  I certify my business has a Worker's Compensation Policy. I will provide an original Certificate of Insurance within twenty-one (21) days of the contract award.
3. If you have checked item 2(A) or 2(B), you **must** indicate the number of **both** full-time and part-time employees, other than yourself, including family members and active partners (if none, you must enter "0").

\_\_\_\_\_ Full-time Employees

\_\_\_\_\_ Part-time Employees

Name of Business		Federal ID (or) Social Security No.	
Address		Telephone (       )	
City	State	ZIP	

*I hereby certify that the above information is true and correct. I agree to notify the Michigan DNR of any changes that occur in factors affecting my coverage during any of my present and future operations.*

\_\_\_\_\_  
Signature of Owner or Authorized Representative

\_\_\_\_\_  
Title

\_\_\_\_\_  
Date

**Please complete the "SEALED BID" information on the next page**

7 Block Mix (55-132-21)

T13N, R10E, SEC. 11; T13N, R10E, SEC. 14; T13N, R10E, SEC. 23; Tuscola

In response to the notice of sale to be held 10:00 a.m. (local time) on November 9, 2021, I am hereby submitting my sealed bid (firm offer) for the following forest products to be cut. Bids for individual species must be at or above the advertised price. All non-responsive bid forms may be rejected.

<u>PRODUCTS &amp; SPECIES</u>	<u>ESTIMATED VOLUME*</u>	<u>ADVERTISED PRICE</u>	<u>BID PRICE/UNIT</u>
<b>Sawtimber</b>			
American Elm	8.3 MBF	\$ 28.00/MBF	\$ _____
Black Cherry	21.0 MBF	\$ 69.00/MBF	\$ _____
Jack Pine	2.2 MBF	\$ 25.00/MBF	\$ _____
Mixed Aspen	349.4 MBF	\$ 28.00/MBF	\$ _____
Paper Birch	0.9 MBF	\$ 26.00/MBF	\$ _____
Red Maple	73.5 MBF	\$ 30.00/MBF	\$ _____
Red Pine	48.5 MBF	\$ 37.00/MBF	\$ _____
Sugar Maple	7.1 MBF	\$ 69.00/MBF	\$ _____
White Ash	10.1 MBF	\$ 28.00/MBF	\$ _____
<b>Pulpwood</b>			
Jack Pine	4 Cords	\$ 7.70/Cord	\$ _____
Mixed Aspen	673 Cords	\$ 10.45/Cord	\$ _____
Mixed Hardwood	1,058 Cords	\$ 8.80/Cord	\$ _____
Red Pine	45 Cords	\$ 17.05/Cord	\$ _____

\*The volumes are statistically estimated within plus (+) or minus (-) 6.07 percent at 95% confidence level. These estimated volumes are final and not subject to adjustment. Prospective bidders are urged to examine this timber and to make their own estimates of quantity and quality.

I understand that any or all bids may be rejected. All bids must be signed and all bid items must be bid or the bid form may be rejected. I also understand that consideration and awarding a contract will be based upon my past performance and ability to complete the contract based upon equipment and staffing subject to my control.

FEDERAL ID: \_\_\_\_\_ or SOCIAL SECURITY NUMBER: \_\_\_\_\_

Company or individual bidding: \_\_\_\_\_

Company representative's name: \_\_\_\_\_

Address: \_\_\_\_\_

City: \_\_\_\_\_ State: \_\_\_\_\_ Zip: \_\_\_\_\_

IF AVAILABLE, PLEASE PLACE THE PERSONALIZED LABEL FROM YOUR PROSPECTUS IN THE ABOVE BOX.

Individual or company representative's signature: \_\_\_\_\_ Date: \_\_\_\_\_

Phone number : \_\_\_\_\_ Email (optional): \_\_\_\_\_

**THE WINNING BIDDER MUST COMPLETE THE VERIFICATION OF WORKER'S DISABILITY COMPENSATION ACT COMPLIANCE (ON REVERSE SIDE IF DOUBLE SIDED) WITHIN 21 DAYS OF SALE AWARD DATE**



<b>FOR DEPARTMENT USE ONLY</b>
Sale Number (XX - XXX - XX - XX)
Forest Management Unit:

## TIMBER SALE VERIFICATION OF WORKER'S DISABILITY COMPENSATION ACT COMPLIANCE

*As required by Act 317, P.A. 1969 (Worker's Compensation) and  
Part 5 of Act 451 of 1994, as amended.*

### VERIFICATION OF WORKER'S DISABILITY COMPENSATION ACT COMPLIANCE

- This verification must be completed and submitted within 21 days of contract award and prior to the issuance of the timber sale contract.
- In addition, if boxes 2B or 2C are checked, then Notice of Exclusion or Certificate of Insurance must be submitted within twenty-one (21) days of the contract award and prior to the issuance of the timber sale contract.
- All information must be typed or printed except for written signatures.

Please Check Appropriate Categories:

1. My business is organized as (you **must** check one of the boxes below):
  - A.  Sole Proprietorship (individual)
  - B.  Partnership
  - C.  Corporation
2. You **must** check one of the boxes below:
  - A.  I certify my business is a sole proprietorship and it has no employees but the sole proprietor. I am not subject to the Worker's Compensation Laws.
  - B.  I certify my business has satisfied its obligation to the Worker's Compensation Act through the use of an approved Notice of Exclusion (BWC-337, Rev. 5/96). I will provide a copy of the Notice of Exclusion within 21 days of the contract award. (For questions or a copy of the BWC-337, please call the Worker's Compensation Bureau at 517-322-1195).
  - C.  I certify my business has a Worker's Compensation Policy. I will provide an original Certificate of Insurance within twenty-one (21) days of the contract award.
3. If you have checked item 2(A) or 2(B), you **must** indicate the number of **both** full-time and part-time employees, other than yourself, including family members and active partners (if none, you must enter "0").

\_\_\_\_\_ Full-time Employees

\_\_\_\_\_ Part-time Employees

Name of Business		Federal ID (or) Social Security No.	
Address		Telephone (       )	
City	State	ZIP	

*I hereby certify that the above information is true and correct. I agree to notify the Michigan DNR of any changes that occur in factors affecting my coverage during any of my present and future operations.*

\_\_\_\_\_  
Signature of Owner or Authorized Representative

\_\_\_\_\_  
Title

\_\_\_\_\_  
Date

**Please complete the "SEALED BID" information on the next page**

Minden 4 block Aspen (55-133-21)

T13N, R14E, SEC. 4; T13N, R14E, SEC. 5; T13N, R14E, SEC. 8; T13N, R14E,

In response to the notice of sale to be held 10:00 a.m. (local time) on November 9, 2021, I am hereby submitting my sealed bid (firm offer) for the following forest products to be cut. Bids for individual species must be at or above the advertised price. All non-responsive bid forms may be rejected.

<u>PRODUCTS &amp; SPECIES</u>	<u>ESTIMATED VOLUME*</u>	<u>ADVERTISED PRICE</u>	<u>BID PRICE/UNIT</u>
<b>Sawtimber</b>			
Black Cherry	34.5 MBF	\$ 69.00/MBF	\$ _____
Green Ash	5.8 MBF	\$ 26.00/MBF	\$ _____
Mixed Aspen	438.9 MBF	\$ 28.00/MBF	\$ _____
Paper Birch	4.7 MBF	\$ 27.00/MBF	\$ _____
Red Maple	33.0 MBF	\$ 30.00/MBF	\$ _____
<b>Pulpwood</b>			
Mixed Aspen	683 Cords	\$ 10.45/Cord	\$ _____
Mixed Hardwood	297 Cords	\$ 8.80/Cord	\$ _____

\*The volumes are statistically estimated within plus (+) or minus (-) 9.96 percent at 95% confidence level. These estimated volumes are final and not subject to adjustment. Prospective bidders are urged to examine this timber and to make their own estimates of quantity and quality.

I understand that any or all bids may be rejected. All bids must be signed and all bid items must be bid or the bid form may be rejected. I also understand that consideration and awarding a contract will be based upon my past performance and ability to complete the contract based upon equipment and staffing subject to my control.

FEDERAL ID: \_\_\_\_\_ or SOCIAL SECURITY NUMBER: \_\_\_\_\_

Company or individual bidding: \_\_\_\_\_

Company representative's name: \_\_\_\_\_

Address: \_\_\_\_\_

City: \_\_\_\_\_ State: \_\_\_\_\_ Zip: \_\_\_\_\_

IF AVAILABLE, PLEASE PLACE THE PERSONALIZED LABEL FROM YOUR PROSPECTUS IN THE ABOVE BOX.

Individual or company representative's signature: \_\_\_\_\_ Date: \_\_\_\_\_

Phone number : \_\_\_\_\_ Email (optional): \_\_\_\_\_

**THE WINNING BIDDER MUST COMPLETE THE VERIFICATION OF WORKER'S DISABILITY COMPENSATION ACT COMPLIANCE (ON REVERSE SIDE IF DOUBLE SIDED) WITHIN 21 DAYS OF SALE AWARD DATE**



<b>FOR DEPARTMENT USE ONLY</b>	
Sale Number (XX - XXX - XX - XX)	
Forest Management Unit:	

# TIMBER SALE VERIFICATION OF WORKER'S DISABILITY COMPENSATION ACT COMPLIANCE

As required by Act 317, P.A. 1969 (Worker's Compensation) and  
Part 5 of Act 451 of 1994, as amended.

## VERIFICATION OF WORKER'S DISABILITY COMPENSATION ACT COMPLIANCE

- This verification must be completed and submitted within 21 days of contract award and prior to the issuance of the timber sale contract.
- In addition, if boxes 2B or 2C are checked, then Notice of Exclusion or Certificate of Insurance must be submitted within twenty-one (21) days of the contract award and prior to the issuance of the timber sale contract.
- All information must be typed or printed except for written signatures.

Please Check Appropriate Categories:

1. My business is organized as (you **must** check one of the boxes below):
  - A.  Sole Proprietorship (individual)
  - B.  Partnership
  - C.  Corporation
2. You **must** check one of the boxes below:
  - A.  I certify my business is a sole proprietorship and it has no employees but the sole proprietor. I am not subject to the Worker's Compensation Laws.
  - B.  I certify my business has satisfied its obligation to the Worker's Compensation Act through the use of an approved Notice of Exclusion (BWC-337, Rev. 5/96). I will provide a copy of the Notice of Exclusion within 21 days of the contract award. (For questions or a copy of the BWC-337, please call the Worker's Compensation Bureau at 517-322-1195).
  - C.  I certify my business has a Worker's Compensation Policy. I will provide an original Certificate of Insurance within twenty-one (21) days of the contract award.
3. If you have checked item 2(A) or 2(B), you **must** indicate the number of **both** full-time and part-time employees, other than yourself, including family members and active partners (if none, you must enter "0").

\_\_\_\_\_ Full-time Employees

\_\_\_\_\_ Part-time Employees

Name of Business		Federal ID (or) Social Security No.	
Address		Telephone (       )	
City	State	ZIP	

*I hereby certify that the above information is true and correct. I agree to notify the Michigan DNR of any changes that occur in factors affecting my coverage during any of my present and future operations.*

\_\_\_\_\_  
Signature of Owner or Authorized Representative

\_\_\_\_\_  
Title

\_\_\_\_\_  
Date

Please complete the "SEALED BID" information on the next page

Ryan Ridges Mix (55-134-21)

T12N, R09E, SEC. 14; T12N, R09E, SEC. 23; T12N, R09E, SEC. 24; T12N, R09E,

In response to the notice of sale to be held 10:00 a.m. (local time) on November 9, 2021, I am hereby submitting my sealed bid (firm offer) for the following forest products to be cut. Bids for individual species must be at or above the advertised price. All non-responsive bid forms may be rejected.

<u>PRODUCTS &amp; SPECIES</u>	<u>ESTIMATED VOLUME*</u>	<u>ADVERTISED PRICE</u>	<u>BID PRICE/UNIT</u>
<b>Sawtimber</b>			
Black Cherry	2.2 MBF	\$ 69.00/MBF	\$ _____
Green Ash	3.7 MBF	\$ 26.00/MBF	\$ _____
Mixed Aspen	564.4 MBF	\$ 28.00/MBF	\$ _____
Paper Birch	3.9 MBF	\$ 27.00/MBF	\$ _____
Red Maple	277.2 MBF	\$ 30.00/MBF	\$ _____
Red Pine	108.8 MBF	\$ 39.00/MBF	\$ _____
Sugar Maple	11.5 MBF	\$ 69.00/MBF	\$ _____
<b>Pulpwood</b>			
Jack Pine	266 Cords	\$ 7.45/Cord	\$ _____
Mixed Aspen	838 Cords	\$ 10.45/Cord	\$ _____
Mixed Hardwood	1,099 Cords	\$ 8.80/Cord	\$ _____
Red Pine	190 Cords	\$ 19.25/Cord	\$ _____

\*The volumes are statistically estimated within plus (+) or minus (-) 6.95 percent at 95% confidence level. These estimated volumes are final and not subject to adjustment. Prospective bidders are urged to examine this timber and to make their own estimates of quantity and quality.

I understand that any or all bids may be rejected. All bids must be signed and all bid items must be bid or the bid form may be rejected. I also understand that consideration and awarding a contract will be based upon my past performance and ability to complete the contract based upon equipment and staffing subject to my control.

FEDERAL ID: \_\_\_\_\_ or SOCIAL SECURITY NUMBER: \_\_\_\_\_

Company or individual bidding: \_\_\_\_\_

Company representative's name: \_\_\_\_\_

Address: \_\_\_\_\_

City: \_\_\_\_\_ State: \_\_\_\_\_ Zip: \_\_\_\_\_

IF AVAILABLE, PLEASE PLACE THE PERSONALIZED LABEL FROM YOUR PROSPECTUS IN THE ABOVE BOX.

Individual or company representative's signature: \_\_\_\_\_ Date: \_\_\_\_\_

Phone number : \_\_\_\_\_ Email (optional): \_\_\_\_\_

**THE WINNING BIDDER MUST COMPLETE THE VERIFICATION OF WORKER'S DISABILITY COMPENSATION ACT COMPLIANCE (ON REVERSE SIDE IF DOUBLE SIDED) WITHIN 21 DAYS OF SALE AWARD DATE**



<b>FOR DEPARTMENT USE ONLY</b>	
Sale Number (XX - XXX - XX - XX)	
Forest Management Unit:	

# TIMBER SALE VERIFICATION OF WORKER'S DISABILITY COMPENSATION ACT COMPLIANCE

As required by Act 317, P.A. 1969 (Worker's Compensation) and  
Part 5 of Act 451 of 1994, as amended.

## VERIFICATION OF WORKER'S DISABILITY COMPENSATION ACT COMPLIANCE

- This verification must be completed and submitted within 21 days of contract award and prior to the issuance of the timber sale contract.
- In addition, if boxes 2B or 2C are checked, then Notice of Exclusion or Certificate of Insurance must be submitted within twenty-one (21) days of the contract award and prior to the issuance of the timber sale contract.
- All information must be typed or printed except for written signatures.

Please Check Appropriate Categories:

1. My business is organized as (you **must** check one of the boxes below):
  - A.  Sole Proprietorship (individual)
  - B.  Partnership
  - C.  Corporation
2. You **must** check one of the boxes below:
  - A.  I certify my business is a sole proprietorship and it has no employees but the sole proprietor. I am not subject to the Worker's Compensation Laws.
  - B.  I certify my business has satisfied its obligation to the Worker's Compensation Act through the use of an approved Notice of Exclusion (BWC-337, Rev. 5/96). I will provide a copy of the Notice of Exclusion within 21 days of the contract award. (For questions or a copy of the BWC-337, please call the Worker's Compensation Bureau at 517-322-1195).
  - C.  I certify my business has a Worker's Compensation Policy. I will provide an original Certificate of Insurance within twenty-one (21) days of the contract award.
3. If you have checked item 2(A) or 2(B), you **must** indicate the number of **both** full-time and part-time employees, other than yourself, including family members and active partners (if none, you must enter "0").

\_\_\_\_\_ Full-time Employees

\_\_\_\_\_ Part-time Employees

Name of Business		Federal ID (or) Social Security No.	
Address		Telephone (       )	
City	State	ZIP	

*I hereby certify that the above information is true and correct. I agree to notify the Michigan DNR of any changes that occur in factors affecting my coverage during any of my present and future operations.*

\_\_\_\_\_  
Signature of Owner or Authorized Representative

\_\_\_\_\_  
Title

\_\_\_\_\_  
Date

Please complete the "SEALED BID" information on the next page



Beaver Dam Aspen (55-135-21)

T13N, R13E, SEC. 1; T13N, R14E, SEC. 6; T14N, R13E, SEC. 36; T14N, R14E,

In response to the notice of sale to be held 10:00 a.m. (local time) on November 9, 2021, I am hereby submitting my sealed bid (firm offer) for the following forest products to be cut. Bids for individual species must be at or above the advertised price. All non-responsive bid forms may be rejected.

<u>PRODUCTS &amp; SPECIES</u>	<u>ESTIMATED VOLUME*</u>	<u>ADVERTISED PRICE</u>	<u>BID PRICE/UNIT</u>
<b>Sawtimber</b>			
Black Cherry	48.5 MBF	\$ 69.00/MBF	\$ _____
Green Ash	9.7 MBF	\$ 26.00/MBF	\$ _____
Mixed Aspen	504.5 MBF	\$ 28.00/MBF	\$ _____
Red Maple	117.6 MBF	\$ 30.00/MBF	\$ _____
<b>Pulpwood</b>			
Mixed Aspen	802 Cords	\$ 10.45/Cord	\$ _____
Mixed Hardwood	789 Cords	\$ 8.80/Cord	\$ _____

\*The volumes are statistically estimated within plus (+) or minus (-) 8.12 percent at 95% confidence level. These estimated volumes are final and not subject to adjustment. Prospective bidders are urged to examine this timber and to make their own estimates of quantity and quality.

I understand that any or all bids may be rejected. All bids must be signed and all bid items must be bid or the bid form may be rejected. I also understand that consideration and awarding a contract will be based upon my past performance and ability to complete the contract based upon equipment and staffing subject to my control.

FEDERAL ID: \_\_\_\_\_ - \_\_\_\_\_ or SOCIAL SECURITY NUMBER: \_\_\_\_\_ - \_\_\_\_\_ - \_\_\_\_\_

Company or individual bidding: \_\_\_\_\_

Company representative's name: \_\_\_\_\_

Address: \_\_\_\_\_

City: \_\_\_\_\_ State: \_\_\_\_\_ Zip: \_\_\_\_\_

IF AVAILABLE, PLEASE PLACE THE PERSONALIZED LABEL FROM YOUR PROSPECTUS IN THE ABOVE BOX.

Individual or company representative's signature: \_\_\_\_\_ Date: \_\_\_\_\_

Phone number : \_\_\_\_\_ Email (optional): \_\_\_\_\_

**THE WINNING BIDDER MUST COMPLETE THE VERIFICATION OF WORKER'S DISABILITY COMPENSATION ACT COMPLIANCE (ON REVERSE SIDE IF DOUBLE SIDED) WITHIN 21 DAYS OF SALE AWARD DATE**



FOR DEPARTMENT USE ONLY	
Sale Number (XX - XXX - XX - XX)	
Forest Management Unit:	

# TIMBER SALE VERIFICATION OF WORKER'S DISABILITY COMPENSATION ACT COMPLIANCE

As required by Act 317, P.A. 1969 (Worker's Compensation) and  
Part 5 of Act 451 of 1994, as amended.

## VERIFICATION OF WORKER'S DISABILITY COMPENSATION ACT COMPLIANCE

- This verification must be completed and submitted within 21 days of contract award and prior to the issuance of the timber sale contract.
- In addition, if boxes 2B or 2C are checked, then Notice of Exclusion or Certificate of Insurance must be submitted within twenty-one (21) days of the contract award and prior to the issuance of the timber sale contract.
- All information must be typed or printed except for written signatures.

Please Check Appropriate Categories:

1. My business is organized as (you **must** check one of the boxes below):
  - A.  Sole Proprietorship (individual)
  - B.  Partnership
  - C.  Corporation
2. You **must** check one of the boxes below:
  - A.  I certify my business is a sole proprietorship and it has no employees but the sole proprietor. I am not subject to the Worker's Compensation Laws.
  - B.  I certify my business has satisfied its obligation to the Worker's Compensation Act through the use of an approved Notice of Exclusion (BWC-337, Rev. 5/96). I will provide a copy of the Notice of Exclusion within 21 days of the contract award. (For questions or a copy of the BWC-337, please call the Worker's Compensation Bureau at 517-322-1195).
  - C.  I certify my business has a Worker's Compensation Policy. I will provide an original Certificate of Insurance within twenty-one (21) days of the contract award.
3. If you have checked item 2(A) or 2(B), you **must** indicate the number of **both** full-time and part-time employees, other than yourself, including family members and active partners (if none, you must enter "0").

\_\_\_\_\_ Full-time Employees

\_\_\_\_\_ Part-time Employees

Name of Business		Federal ID (or) Social Security No.	
Address		Telephone (       )	
City	State	ZIP	

*I hereby certify that the above information is true and correct. I agree to notify the Michigan DNR of any changes that occur in factors affecting my coverage during any of my present and future operations.*

\_\_\_\_\_  
Signature of Owner or Authorized Representative

\_\_\_\_\_  
Title

\_\_\_\_\_  
Date

Please complete the "SEALED BID" information on the next page

Verona Maple Mix (55-136-21)

T15N, R14E, SEC. 4; T15N, R14E, SEC. 5; T16N, R14E, SEC. 28; Huron COUNTY

In response to the notice of sale to be held 10:00 a.m. (local time) on November 9, 2021, I am hereby submitting my sealed bid (firm offer) for the following forest products to be cut. Bids for individual species must be at or above the advertised price. All non-responsive bid forms may be rejected.

<u>PRODUCTS &amp; SPECIES</u>	<u>ESTIMATED VOLUME*</u>	<u>ADVERTISED PRICE</u>	<u>BID PRICE/UNIT</u>
<b>Sawtimber</b>			
American Elm	31.2 MBF	\$ 26.00/MBF	\$ _____
Basswood	3.4 MBF	\$ 29.00/MBF	\$ _____
Green Ash	14.9 MBF	\$ 25.00/MBF	\$ _____
Mixed Aspen	105.1 MBF	\$ 26.00/MBF	\$ _____
Paper Birch	22.8 MBF	\$ 26.00/MBF	\$ _____
Silver Maple	560.6 MBF	\$ 27.00/MBF	\$ _____
<b>Pulpwood</b>			
Mixed Aspen	193 Cords	\$ 8.25/Cord	\$ _____
Mixed Hardwood	264 Cords	\$ 8.80/Cord	\$ _____
Silver Maple	1,256 Cords	\$ 7.70/Cord	\$ _____

\*The volumes are statistically estimated within plus (+) or minus (-) 7.38 percent at 95% confidence level. These estimated volumes are final and not subject to adjustment. Prospective bidders are urged to examine this timber and to make their own estimates of quantity and quality.

I understand that any or all bids may be rejected. All bids must be signed and all bid items must be bid or the bid form may be rejected. I also understand that consideration and awarding a contract will be based upon my past performance and ability to complete the contract based upon equipment and staffing subject to my control.

FEDERAL ID: \_\_\_\_ - \_\_\_\_ - \_\_\_\_ or SOCIAL SECURITY NUMBER: \_\_\_\_ - \_\_\_\_ - \_\_\_\_

Company or individual bidding: \_\_\_\_\_

Company representative's name: \_\_\_\_\_

Address: \_\_\_\_\_

City: \_\_\_\_\_ State: \_\_\_\_\_ Zip: \_\_\_\_\_

IF AVAILABLE, PLEASE PLACE THE PERSONALIZED LABEL FROM YOUR PROSPECTUS IN THE ABOVE BOX.

Individual or company representative's signature: \_\_\_\_\_ Date: \_\_\_\_\_

Phone number : \_\_\_\_\_ Email (optional): \_\_\_\_\_

**THE WINNING BIDDER MUST COMPLETE THE VERIFICATION OF WORKER'S DISABILITY COMPENSATION ACT COMPLIANCE (ON REVERSE SIDE IF DOUBLE SIDED) WITHIN 21 DAYS OF SALE AWARD DATE**



<b>FOR DEPARTMENT USE ONLY</b>
Sale Number (XX – XXX – XX – XX)
Forest Management Unit:

## TIMBER SALE VERIFICATION OF WORKER'S DISABILITY COMPENSATION ACT COMPLIANCE

*As required by Act 317, P.A. 1969 (Worker's Compensation) and  
Part 5 of Act 451 of 1994, as amended.*

### VERIFICATION OF WORKER'S DISABILITY COMPENSATION ACT COMPLIANCE

- This verification must be completed and submitted within 21 days of contract award and prior to the issuance of the timber sale contract.
- In addition, if boxes 2B or 2C are checked, then Notice of Exclusion or Certificate of Insurance must be submitted within twenty-one (21) days of the contract award and prior to the issuance of the timber sale contract.
- All information must be typed or printed except for written signatures.

Please Check Appropriate Categories:

1. My business is organized as (you **must** check one of the boxes below):
  - A.  Sole Proprietorship (individual)
  - B.  Partnership
  - C.  Corporation
2. You **must** check one of the boxes below:
  - A.  I certify my business is a sole proprietorship and it has no employees but the sole proprietor. I am not subject to the Worker's Compensation Laws.
  - B.  I certify my business has satisfied its obligation to the Worker's Compensation Act through the use of an approved Notice of Exclusion (BWC-337, Rev. 5/96). I will provide a copy of the Notice of Exclusion within 21 days of the contract award. (For questions or a copy of the BWC-337, please call the Worker's Compensation Bureau at 517-322-1195).
  - C.  I certify my business has a Worker's Compensation Policy. I will provide an original Certificate of Insurance within twenty-one (21) days of the contract award.
3. If you have checked item 2(A) or 2(B), you **must** indicate the number of **both** full-time and part-time employees, other than yourself, including family members and active partners (if none, you must enter "0").

\_\_\_\_\_ Full-time Employees

\_\_\_\_\_ Part-time Employees

Name of Business		Federal ID (or) Social Security No.	
Address		Telephone (       )	
City	State	ZIP	

*I hereby certify that the above information is true and correct. I agree to notify the Michigan DNR of any changes that occur in factors affecting my coverage during any of my present and future operations.*

\_\_\_\_\_  
Signature of Owner or Authorized Representative

\_\_\_\_\_  
Title

\_\_\_\_\_  
Date