



**DEPARTMENT OF NATURAL RESOURCES
STATE OF MICHIGAN**

TIMBER SALE PROSPECTUS #6934

SCHEDULED SALE DATE AND TIME: 8:30 a.m. (local time) on November 10, 2021.

LOCATION: CRYSTAL FALLS MGMT UNIT, 1420 US 2 WEST, CRYSTAL FALLS, MI 49920.

PROSPECTUS NOTE: The bidder is advised to inspect the sale area and review the location, estimated volumes, operating costs and contract terms of proposed sales. Please be aware that some landowners may request 60 days or more notice for access across their land.

Notice is hereby given that bids will be received by the Unit Manager, CRYSTAL FALLS MANAGEMENT UNIT, for certain timber on the following described lands:

Two Mile Split (12-002-21) / T44N, R29W, SEC. 10, W1/2SW.

T44N, R29W, SEC. 15, S1/2NW.

T44N, R29W, SEC. 16, N1/2NW,SWNW,N1/2NE,SWNE,SW.

T44N, R29W, SEC. 16, W1/2SE.

T44N, R29W, SEC. 17, SE.

T44N, R29W, SEC. 21, NE,NESE.

T44N, R29W, SEC. 22, SWNW.

T44N, R29W, SEC. 8 , SENW,SWNE,NESW,SE.

T44N, R29W, SEC. 9 , S1/2NW,SWNE,NWSW,S1/2SW,SE.

Dickinson County, Advertised Price \$197,291.30, 435.4 Acres, Aspen, Hardwood.

SALE NOTE: All units of volume listed for this sale were estimated using the Inventory Manager computer program and the new Michigan taper model.

This sale has areas of difficult access. Purchaser should make sure they have an access plan and necessary permissions before purchasing sale.

- See sale spec 4.4.1 for information on access through private property.

- See sale specs 4.1.2 and 4.1.11 for information on permit for mat bridge crossing.

Access may be through private or other public land.

Climo Dino (12-003-21) / T43N, R30W, SEC. 18, NWNW,S1/2NW,N1/2SW,SESW.

T43N, R30W, SEC. 19, S1/2NW,SW.

Dickinson County, Advertised Price \$50,141.30, 96.6 Acres, Aspen, Hardwood.

SALE NOTE: All units of volume listed for this sale were estimated using the Inventory Manager computer program and the new Michigan taper model.

- See sale spec 4.1.2 for temporary bridge information.

- See sale spec 4.1.7 for details on temporary berms on new roads.

Early Ursa (12-006-21) / T40N, R29W, SEC. 23, SENE,NESE,S1/2SE.

T40N, R29W, SEC. 24, NW,SW.

T40N, R29W, SEC. 26, S1/2SE.

T40N, R29W, SEC. 35, E1/2NW,NE,N1/2SW.

Dickinson County, Advertised Price \$83,436.85, 203.3 Acres, Aspen, Hardwood.

SALE NOTE: All units of volume listed for this sale were estimated using the Inventory Manager computer program and the new Michigan taper model.

A recreation site such as a trail, pathway, or campground is within the sale area or the vicinity. Certain restrictions/specifications may be applicable including time restrictions.

Extra Corners (12-007-21) / T40N, R29W, SEC. 5 , SWSW.

T40N, R29W, SEC. 6 , SENW,S1/2NE,S1/2SE.

T40N, R29W, SEC. 7 , NE.

T40N, R29W, SEC. 8 , W1/2NW.

T41N, R29W, SEC. 19, S1/2SW.

Dickinson County, Advertised Price \$65,536.30, 239.0 Acres, Hardwood, Aspen.

SALE NOTE: All units of volume listed for this sale were estimated using the Inventory Manager computer program and the new Michigan taper model.

Buyer might decide to build a road into Payment Units 3 and 4. Road work will be required, this includes hauling at least 200 yards of gravel and placing a cross drainage culvert.

A recreation site such as a trail, pathway, or campground is within the sale area or the vicinity. Certain restrictions/specifications may be applicable including time restrictions.

BID INSTRUCTIONS (VER. 07/02/2018):

1. Scheduled Bid Location, Date, and Time (2/11)

Bids must be received by the Unit Manager, CRYSTAL FALLS OFFICE, 1420 US 2 West, Crystal Falls, MI 49920, no later than 8:30 a.m. (local time) on November 10, 2021. For further information concerning this sale, contact Dan McNamee at 906-875-6622.

2. Bidder's Qualifications (5/16)

Purchaser shall obtain workers compensation insurance to cover claims under Michigan's Worker's Disability Compensation Act of 1969 or similar employee benefit act of any other state applicable to an employee. If all or part of a timber sale was prepared by a private contractor, the contractor and that contractor's company are not permitted to bid on the timber sale contract. Bids will not be accepted from individuals or companies appearing on the DNR/FRD No-Bid List. This list contains the names of purchasers who previously failed to execute a contract within 21-days or who have a history of poor performance.

3. Preparation of Sealed Bids (5/16)

Bid Forms may be completed online thru Michigan DNR Timber Sale Online Bidding (OLB) at www.michigan.gov/timberbidding or by completing the hardcopy Bid Form found in the Timber Sale Prospectus. Hardcopy Bid Forms shall be manually signed in ink. Registration in OLB is considered your 'signature' for all bids submitted thru that system. Bid prices must be entered for each species and product in the Bid Price column for all material subject to bidding and all fill-in blanks must be completed. If erasures or other changes appear on the hardcopy Bid Form, each erasure or change must be initialed by the person signing the bid.

4. Submission of Sealed Bids (5/16)

Bid forms may be obtained from the Unit Manager or thru OLB. Bids may be submitted hardcopy or thru OLB. All hardcopy bids must be submitted on the bid form and in an envelope clearly identified as described in this section. NOTE: Only one bid form per bid envelope. Sealed bids must be submitted to the Unit office designated in the prospectus and must be submitted at or prior to the time established in the prospectus. The envelope should show on the outside (a) the sale name or number and (b) the date and time of bid opening, as shown in the prospectus. Bids received after the time specified in the sale prospectus are late bids and will be rejected.

It is possible for a bidder to submit multiple bids on a single sale. For example, a bid may be submitted hardcopy and a bid may be submitted thru OLB. Or, two bidders from the same company could both submit bids on the same sale. If this were to happen, the State would accept all bids received and award the contract accordingly. All bidding and contractual requirements would apply to all bids received.

5. Public Opening of Sealed Bids (7/16)

If conditions permit, the sealed bids will be publicly opened and posted at the time and place set in the prospectus.

If a bidder, present at a bid opening, has submitted bids on more than one sale, that bidder may withdraw their unopened bid envelopes or announce the withdrawal of their online bid after being declared the successful bidder on one sale.

6. Award of Contract (1/11)

Award of the contract will be made to the Bidder whose bid, conforming to the prospectus, is most advantageous to the State of Michigan on the basis of total value at rates bid for the estimated quantities. The State reserves the right to reject any bid or waive any minor irregularity in bids received. A written award mailed (or otherwise furnished) to the successful Bidder shall be deemed to result in a binding contract without further action by either party.

7. Down Payment (1/11)

The Bidder to whom award is made must make a down payment within 21 days of the sale award. The amount of the down payment will be calculated as shown in the Bond and Payment Schedule of this prospectus. Only cash may be used to meet this requirement.

8. Performance Security (1/11)

As guarantee of faithful performance, a cash bond, certificate of deposit, surety bond or irrevocable letter of credit (LOC) is required within 21 days of the sale award. The amount of the performance security is shown in the Bond and

Payment Schedule of this prospectus. If an LOC or surety is used, the coverage must extend for at least 6 months beyond the contract expiration.

9. Timber Sale Contract (7/18)

Additional conditions and requirements common to all timber sales are listed on the timber sale contract (R4031) and are available on line at www.michigan.gov/timber. Contact the Unit Manager for additional information or a sample contract. Within 21 days of the date of the award letter, the bidder must sign the contract and provide the required down payment, performance security, and verification of worker's disability compensation. The down payment and performance security shall be in accordance with the provisions of the timber sale contract, in the sums stated in this prospectus. If these actions are not taken, then the Bidder, the Bidder's corporation, and the corporation's principals may not be permitted to bid on State timber sales for a period of 3 months after the first offense, 6 months after the second offense, and 1 year after the third offense. An offense will only be counted against the Bidder for 5 years. In addition, the Bidder certifies that if awarded this contract, the Bidder will complete the timber sale contract in accordance with its terms and any modifications thereof including requirements to purchase, cut, and remove the included timber by the expiration date.

Payment Unit values in the State Forest Timber Sale Contract are calculated based on the advertised value of the Payment Unit as a percentage of the total advertised value of the contract. The advertised value of each Payment Unit is given in the Description of Timber by Payment Unit table on the Timber Sale Information page. For example, if the value of Payment Unit 1 is advertised as \$1,500 and the total Timber Sale value is advertised as \$10,000, the contract price for Payment Unit 1 will be 15% of the total bid price ($\$1,500/\$10,000 * 100$).

10. Disclaimer of Estimates and Bidder's Warranty of Inspection (7/16)

Before submitting this bid, the Bidder is advised and cautioned to inspect the sale area, review the requirements of the sale contract, and take other steps as may be reasonably necessary to ascertain the location, estimated volumes, construction estimates, and operating costs of the proposed sale. Failure to do so will not relieve the Bidder from responsibility for completing the contract.

The Bidder warrants that this bid is submitted solely on the basis of the Bidder's examination and inspection of the quality and quantity of the timber offered for sale and the Bidder's opinion of the value thereof and the costs of recovery. No reliance should be placed on the State of Michigan's estimates of timber quality, quantity or costs of recovery. Bidder further acknowledges that the State of Michigan: (i) expressly disclaims any warranty of fitness of timber for any purpose; (ii) offers this timber as is without any warranty of quality (merchantability) or quantity and (iii) expressly disclaims any warranty as to the quantity or quality of timber sold.

11. Certification and Chain-of-Custody (10/14)

Unless otherwise indicated in the contract under section 7 – Other Conditions of the Sale Specific Conditions & Requirements, the area encompassed by this timber sale is certified to the standards of the Forest Stewardship Council (FSC) - Certificate #SCS-FM/COC-00090N and the Sustainable Forestry Initiative (SFI) - Certificate #NSF-SFIS-5Y031-SF5. Forest products from this sale may be delivered to the mill as "FSC 100% and / or SFI certified" as long as the contractor hauling the forest products is chain-of-custody (COC) certified or covered under a COC certificate from the destination mill. The purchaser is responsible for maintaining COC after leaving the sale area.

12. Good Neighbor Authority (GNA) Requirements (7/16)

If the name of this timber sales contains the acronym GNA, it is authorized by the Good Neighbor Authority (GNA) and covered by various agreements between the U.S. Forest Service and the State. The timber sale occurs on federal land and the following conditions apply:

GNA contracts on US Forest Service land will not be awarded to purchasers on the Federal list of excluded parties. The System for Award Management (SAM) will be checked for active excluded parties prior to award of contract. In addition, the Bidder to whom award is made must complete an Assurance Regarding Felony Conviction or Tax Delinquent Status for Corporate Applicants (AD-3031).

13. Good Neighbor Authority (GNA) Requirements, con't (9/16)

Bidder certifies, by signing this bid form, that to the best of Bidder's knowledge that the following representations are accurate and complete.

- a. That the Bidder and its principals are not presently debarred, suspended, proposed for debarment, declared ineligible, or voluntary excluded from timber sales (covered transactions) by any Federal department or agency.
- b. That the Bidder and its principals have not within a 3-year period preceding this bid been convicted of or had a civil judgment rendered against them for commission of fraud or a criminal offense in connection with obtaining , attempting to obtain, or performing a public (Federal, State, or local) transaction or contract under a public transaction; violation of Federal or State antitrust statutes or commission of embezzlement, theft, forgery, bribery, falsification or destruction of records, making false statements, or receiving stolen property.
- c. That the Bidder and its principals are not presently indicted for or otherwise criminally or civilly charged by a governmental entity (Federal, State, or local) with commission of any of the offenses enumerated in paragraph b of this certification.
- d. That the Bidder and its principals have not within a 3-year period preceding this bid had one or more public transactions (Federal, State, or local) terminated for breach or default of a timber or forest product contract.

Bidders that cannot certify this requirement, in whole or in part, shall submit an explanation with their bid.

DAN EICHINGER
Director

TIMBER SALE INFORMATION

Two Mile Split (12-002-21)

T44N, R29W, SEC. 10; T44N, R29W, SEC. 15; T44N, R29W, SEC. 16; T44N, R29W, SEC. 17; T44N, R29W, SEC. 21; T44N, R29W, SEC. 22; T44N, R29W, SEC. 8; T44N, R29W, SEC. 9.

SALE NOTE: All units of volume listed for this sale were estimated using the Inventory Manager computer program and the new Michigan taper model.

This sale has areas of difficult access. Purchaser should make sure they have an access plan and necessary permissions before purchasing sale.

- See sale spec 4.4.1 for information on access through private property.

- See sale specs 4.1.2 and 4.1.11 for information on permit for mat bridge crossing.

Access may be through private or other public land.

A timber sale contract for this lump sum, sealed bid timber sale will be awarded to the responsible bidder offering the highest sealed bid price. All units of volume listed below were estimated using the Inventory Manager computer program and the new Michigan taper model. Bids must be at or above the following advertised price for each product and species:

<u>PRODUCTS & SPECIES</u>	<u>ESTIMATED UNITS*</u>	<u>ADVERTISED PRICE</u>
Sawtimber		
Basswood	24.7 MBF	\$ 54.00 / MBF
Paper Birch	123.6 MBF	\$ 94.00 / MBF
Red Maple	92.2 MBF	\$ 96.00 / MBF
Sugar Maple	257.0 MBF	\$ 172.00 / MBF
Yellow Birch	9.4 MBF	\$ 52.00 / MBF
Pulpwood		
Balsam Fir	395 Cords	\$ 7.60 / Cord
Mixed Aspen	4,471 Cords	\$ 20.30 / Cord
Mixed Hardwood	2,710 Cords	\$ 13.10 / Cord
Mixed Spruce	178 Cords	\$ 8.60 / Cord

* The total volume is statistically estimated within plus (+) or minus (-) 3.10 percent. There are an estimated 8,623 cords on this timber sale, plus or minus 268 cords at the 95% confidence level. The estimated units are final and not subject to adjustment. Prospective bidders are urged to examine this timber and to make their own estimates of quantity and quality.

BOND AND PAYMENT SCHEDULE:

1. A bond in the amount of \$13,810.00 to insure faithful performance of the conditions of the contract will be deposited by the successful bidder within 21 days of the sale award.
2. Cutting in any sale or unit without the required advance payment would be considered a trespass.
3. Total payment must be paid in advance or according to the following schedule :
 - (a) Ten percent (10%) of the sale value must be paid within 21 days of the sale award.
 - (b) The 10% down payment will be credited towards the first unit cut.
 - (c) Payment for each of the following units must be made before cutting begins in that unit:

PAYMENT UNIT NUMBER	PERCENT OF TOTAL SALE VALUE
01	9.7%
02	12.3%
03	3.1%
04	5.2%
05	8.6%
06	4.2%
07	3.4%
08	6.5%
09	9.6%
10	6.8%
11	3.0%
12	2.3%
13	2.1%
14	16.2%
15	7.0%

4. If no cutting takes place, the 10% down payment will not be refunded.
5. Operations on the contract issued will terminate on 06/30/2025.

SALE STATISTICS

Volumes were calculated in cubic feet using the Michigan taper model. Cubic foot volume includes all wood inside bark for the product indicated. For display purposes, cubic feet were converted to cords and MBF using a simple conversion factor, e.g. 79 cubic feet per cord and 185 cubic feet per MBF. The cubic foot volumes are precise; the cords and MBF volumes are not. Cubic foot volume cannot be directly converted to cords or boards with precision.

SALE VOLUMES

The total estimated sale volume may not equal the sum of the species/products due to the nature of statistical calculations associated with double sampling methodology.

VOLUME			STATISTICAL RANGE IN CORDS	
TOTAL CUBIC FEET	TOTAL CORDS	PERCENT ERROR	MINIMUM	MAXIMUM
681,190	8,623	3.10%	8,355	8,891

VDU VOLUMES

A VDU is a Volume Determination Unit. Volumes and their associated statistics are calculated at the VDU level and summarized to the sale level. There is often a one to one relationship between a VDU and a Payment Unit, but not always, depending on the cruise design. Refer to the VDU TO PAYMENT UNIT table.

VDU	VOLUME		PERCENT ERROR	RANGE IN CORDS	
	TOTAL CUBIC FEET	TOTAL CORDS		MINIMUM	MAXIMUM
9	26,852	340	11.29%	302	378
10	25,184	319	9.15%	290	348
15	16,745	212	15.50%	179	245
22	25,691	325	8.91%	296	354
28	76,785	972	12.01%	855	1,089
31	94,798	1,200	10.55%	1,073	1,327
33	38,328	485	10.46%	434	536
35	25,376	321	16.71%	268	375
43	43,376	549	10.06%	494	604
54	133,689	1,692	6.98%	1,574	1,810
55	25,248	320	14.60%	273	366
62	52,219	661	11.66%	584	738
63	18,584	235	9.45%	213	257
68	15,363	194	17.53%	160	229
336	74,457	942	9.98%	848	1,037
TOTAL:	692,694	8,768		7,844	9,693

VDU TO PAYMENT UNIT

When a VDU is associated with more than one Payment Unit (PU), the VDU volumes are assigned to the PU based on acres of the VDU within the PU.

VDU	VDU ACRES	PU	PU ACRES
9	32.7	4	32.7
10	19.2	3	19.2
15	20.4	11	20.4
22	23.2	6	23.2
28	35.1	9	35.1
31	33.0	2	33.0
33	44.1	10	44.1
35	28.5	15	28.5
43	50.0	5	50.0
54	53.7	14	53.7
55	28.5	7	28.5
62	17.5	8	17.5
63	8.6	13	8.6
68	10.4	12	10.4
336	30.5	1	30.5
TOTAL:	435.4		435.4

DESCRIPTION OF TIMBER BY PAYMENT UNIT (PU)

PU	MARKET GROUP	PRODUCT	QUANTITY	UNIT	ACRES	ADVERTISE PRICE
1	Paper Birch	Sawtimber	32.3	MBF	30.5	\$19,182.80
	Red Maple		8.3	MBF		
	Sugar Maple		2.4	MBF		
	Balsam Fir	Pulpwood	31	Cords		
	Mixed Aspen		574	Cords		
	<i>Balsam Poplar</i>		59	Cords		
	<i>Quaking Aspen</i>		515	Cords		
	Mixed Hardwood		196	Cords		
	<i>Black Ash</i>		8	Cords		
	<i>Paper Birch</i>		97	Cords		
	<i>Red Maple</i>		56	Cords		
	<i>Sugar Maple</i>		35	Cords		
	Mixed Spruce		56	Cords		
	<i>Black Spruce</i>		12	Cords		
	<i>White Spruce</i>		44	Cords		
2	Paper Birch	Sawtimber	19.3	MBF	33.0	\$24,207.40
	Sugar Maple		6.6	MBF		
	Balsam Fir	Pulpwood	57	Cords		
	Mixed Aspen		913	Cords		
	<i>Balsam Poplar</i>		149	Cords		
	<i>Quaking Aspen</i>		764	Cords		
	Mixed Hardwood		167	Cords		
	<i>Black Ash</i>		8	Cords		
	<i>Paper Birch</i>		51	Cords		
	<i>Red Maple</i>		81	Cords		
	<i>Sugar Maple</i>		18	Cords		
	<i>Yellow Birch</i>		9	Cords		
	Mixed Spruce		12	Cords		
	<i>White Spruce</i>		12	Cords		
	3	Paper Birch	Sawtimber	4.3		
Balsam Fir		Pulpwood	1	Cords		
Mixed Aspen			234	Cords		
<i>Balsam Poplar</i>			31	Cords		
<i>Quaking Aspen</i>			203	Cords		
Mixed Hardwood			46	Cords		
<i>Black Cherry</i>			10	Cords		
<i>Paper Birch</i>			36	Cords		
Mixed Spruce			30	Cords		
<i>Black Spruce</i>			18	Cords		
<i>White Spruce</i>			12	Cords		
4		Red Maple	Sawtimber	9.9	MBF	32.7
	Sugar Maple		33.7	MBF		
	Mixed Aspen	Pulpwood	26	Cords		
	<i>Balsam Poplar</i>		26	Cords		
	Mixed Hardwood		227	Cords		
	<i>Black Ash</i>	Sawtimber	1.6	MBF		
	<i>Black Ash</i>	Pulpwood	2	Cords		
	<i>Ironwood</i>		1	Cords		
	<i>Red Maple</i>		33	Cords		
	<i>Sugar Maple</i>		188	Cords		
	5	Basswood	Sawtimber	11.7	MBF	
Paper Birch			2.7	MBF		
Red Maple			13.9	MBF		
Sugar Maple			56.4	MBF		
Mixed Aspen		Pulpwood	11	Cords		
<i>Balsam Poplar</i>			4	Cords		

DESCRIPTION OF TIMBER BY PAYMENT UNIT (PU), CON'T

PU	MARKET GROUP	PRODUCT	QUANTITY	UNIT	ACRES	ADVERTISE PRICE
5 con't	<i>Quaking Aspen</i>	<i>Pulpwood</i>	7	<i>Cords</i>		
	Mixed Hardwood		367	Cords		
	<i>Basswood</i>		5	<i>Cords</i>		
	<i>Paper Birch</i>		8	<i>Cords</i>		
	<i>Red Maple</i>		79	<i>Cords</i>		
	<i>Sugar Maple</i>		275	<i>Cords</i>		
6	Basswood	Sawtimber	2.1	MBF	23.2	\$8,313.30
	Paper Birch		9.5	MBF		
	Sugar Maple		21.5	MBF		
	Mixed Aspen	Pulpwood	40	Cords		
	<i>Balsam Poplar</i>		7	<i>Cords</i>		
	<i>Quaking Aspen</i>		33	<i>Cords</i>		
	Mixed Hardwood		203	Cords		
	<i>Basswood</i>		1	<i>Cords</i>		
	<i>Black Cherry</i>		4	<i>Cords</i>		
	<i>Ironwood</i>		3	<i>Cords</i>		
	<i>Paper Birch</i>		22	<i>Cords</i>		
	<i>Red Maple</i>		18	<i>Cords</i>		
	<i>Sugar Maple</i>		155	<i>Cords</i>		
	Mixed Spruce		16	Cords		
	<i>White Spruce</i>		16	<i>Cords</i>		
	7		Sugar Maple	Sawtimber		
Yellow Birch		3.3	MBF			
Balsam Fir		Pulpwood	24	Cords		
Mixed Aspen			5	Cords		
<i>Quaking Aspen</i>			5	<i>Cords</i>		
Mixed Hardwood			248	Cords		
<i>Ironwood</i>			2	<i>Cords</i>		
<i>Sugar Maple</i>			239	<i>Cords</i>		
<i>Yellow Birch</i>			7	<i>Cords</i>		
8			Balsam Fir	Pulpwood	32	Cords
	Mixed Aspen	620	Cords			
	<i>Balsam Poplar</i>	47	<i>Cords</i>			
	<i>Quaking Aspen</i>	573	<i>Cords</i>			
	Mixed Hardwood	3	Cords			
	<i>Black Cherry</i>	3	<i>Cords</i>			
	Mixed Spruce	5	Cords			
	<i>White Spruce</i>	5	<i>Cords</i>			
9	Paper Birch	Sawtimber	16.3	MBF	35.1	\$18,967.10
	Red Maple		15.5	MBF		
	Balsam Fir	Pulpwood	47	Cords		
	Mixed Aspen		615	Cords		
	<i>B. T. Aspen</i>		12	<i>Cords</i>		
	<i>Balsam Poplar</i>		50	<i>Cords</i>		
	<i>Quaking Aspen</i>		553	<i>Cords</i>		
	Mixed Hardwood		218	Cords		
	<i>Ironwood</i>		4	<i>Cords</i>		
	<i>Paper Birch</i>		49	<i>Cords</i>		
	<i>Red Maple</i>		77	<i>Cords</i>		
	<i>Sugar Maple</i>		88	<i>Cords</i>		
	Mixed Spruce		29	Cords		
	<i>White Spruce</i>		29	<i>Cords</i>		
10	Basswood	Sawtimber	8.4	MBF	44.1	\$13,381.20
	Paper Birch		0.9	MBF		
	Red Maple		23.1	MBF		
	Sugar Maple		34.7	MBF		

DESCRIPTION OF TIMBER BY PAYMENT UNIT (PU), CON'T

PU	MARKET GROUP	PRODUCT	QUANTITY	UNIT	ACRES	ADVERTISE PRICE
10 con't	Mixed Aspen	Pulpwood	10	Cords		
	<i>Balsam Poplar</i>		10	<i>Cords</i>		
	Mixed Hardwood		340	Cords		
	<i>Basswood</i>		24	<i>Cords</i>		
	<i>Ironwood</i>		4	<i>Cords</i>		
	<i>Paper Birch</i>		2	<i>Cords</i>		
	<i>Red Maple</i>		52	<i>Cords</i>		
	<i>Sugar Maple</i>		258	<i>Cords</i>		
11	Paper Birch	Sawtimber	4.0	MBF	20.4	\$5,915.70
	Red Maple		3.0	MBF		
	Sugar Maple		18.9	MBF		
	Yellow Birch		2.7	MBF		
	Balsam Fir	Pulpwood	26	Cords		
	Mixed Hardwood		123	Cords		
	<i>Ironwood</i>		3	<i>Cords</i>		
	<i>Paper Birch</i>		6	<i>Cords</i>		
	<i>Red Maple</i>		19	<i>Cords</i>		
	<i>Sugar Maple</i>		93	<i>Cords</i>		
	<i>Yellow Birch</i>		2	<i>Cords</i>		
	Mixed Spruce		6	Cords		
<i>White Spruce</i>	6	<i>Cords</i>				
12	Paper Birch	Sawtimber	15.9	MBF	10.4	\$4,476.30
	Red Maple		4.0	MBF		
	Sugar Maple		3.4	MBF		
	Yellow Birch		0.8	MBF		
	Balsam Fir	Pulpwood	25	Cords		
	Mixed Aspen		31	Cords		
	<i>Balsam Poplar</i>		10	<i>Cords</i>		
	<i>Quaking Aspen</i>		21	<i>Cords</i>		
	Mixed Hardwood		84	Cords		
	<i>Paper Birch</i>		33	<i>Cords</i>		
	<i>Red Maple</i>		17	<i>Cords</i>		
	<i>Sugar Maple</i>		32	<i>Cords</i>		
	<i>Yellow Birch</i>		2	<i>Cords</i>		
	Mixed Spruce		6	Cords		
	<i>White Spruce</i>		6	<i>Cords</i>		
	13		Paper Birch	Sawtimber		
Red Maple		2.9	MBF			
Sugar Maple		0.8	MBF			
Yellow Birch		0.5	MBF			
Balsam Fir		Pulpwood	25	Cords		
Mixed Aspen			104	Cords		
<i>Quaking Aspen</i>			104	<i>Cords</i>		
Mixed Hardwood			74	Cords		
<i>Ironwood</i>			2	<i>Cords</i>		
<i>Paper Birch</i>			24	<i>Cords</i>		
<i>Red Maple</i>			24	<i>Cords</i>		
<i>Sugar Maple</i>			14	<i>Cords</i>		
<i>Yellow Birch</i>			10	<i>Cords</i>		
Mixed Spruce			18	Cords		
<i>White Spruce</i>			18	<i>Cords</i>		
14			Paper Birch	Sawtimber	13.3	MBF
	Red Maple	2.0	MBF			
	Sugar Maple	2.1	MBF			
	Balsam Fir	Pulpwood	127	Cords		
	Mixed Aspen		1,280	Cords		

DESCRIPTION OF TIMBER BY PAYMENT UNIT (PU), CON'T

PU	MARKET GROUP	PRODUCT	QUANTITY	UNIT	ACRES	ADVERTISE PRICE
14 con't	<i>Balsam Poplar</i>	<i>Pulpwood</i>	55	<i>Cords</i>		
	<i>Quaking Aspen</i>		1,225	<i>Cords</i>		
	Mixed Hardwood		250	<i>Cords</i>		
	<i>Ironwood</i>		2	<i>Cords</i>		
	<i>Paper Birch</i>		142	<i>Cords</i>		
	<i>Red Maple</i>		97	<i>Cords</i>		
	<i>Sugar Maple</i>		9	<i>Cords</i>		
15	Basswood	Sawtimber	2.5	MBF	28.5	\$13,742.20
	Paper Birch		1.8	MBF		
	Red Maple		9.6	MBF		
	Sugar Maple		58.7	MBF		
	Yellow Birch		2.1	MBF		
	Mixed Aspen	Pulpwood	8	<i>Cords</i>		
	<i>Quaking Aspen</i>		8	<i>Cords</i>		
	Mixed Hardwood		164	<i>Cords</i>		
	<i>Basswood</i>		2	<i>Cords</i>		
	<i>Ironwood</i>		7	<i>Cords</i>		
	<i>Paper Birch</i>		1	<i>Cords</i>		
	<i>Red Maple</i>		16	<i>Cords</i>		
	<i>Sugar Maple</i>		136	<i>Cords</i>		
	<i>Yellow Birch</i>		2	<i>Cords</i>		
	TOTAL:			506.9		
TOTAL:			7,754	Cords		

Sale Specific Conditions & Requirements

Sale Name: Two Mile Split

Sale Number: 12-002-21 Seq#: 1

1 - Sale Area

1.2 - Boundaries

1.2.1 - Painted boundaries (9/19)

The sale boundary and Payment Unit boundaries are marked and identified by blue, red and yellow paint. Exterior sale boundary lines against private property are marked with blue paint. Exterior sale boundary lines against state are marked with red paint. Interior Payment Unit boundaries are marked with yellow paint. The painted boundary line trees are not Included Timber and are to be protected unless marked with orange paint. Yellow painted trees designating an interior Payment Unit boundary are only to be cut when all surrounding Payment Units have been paid.

2 - Timber Specifications

2.1 - Included Timber

2.1.1 - Clearcut unit(s) with unmerchantable trees (6/14)

Within Payment Unit(s) 1-3, cut all trees that are two (2) inches or more at DBH, except pine and cedar. In addition, do not cut trees marked with green paint above and below stump in Payment Unit 3.

Within Payment Unit(s), 8 and 9, cut all trees that are two (2) inches or more at DBH, except cedar, hemlock, oak, red pine, and white pine. In addition, cut all spruce, balsam fir, tamarack, and jack pine with two or more pulpwood sticks.

Within Payment Unit(s) 14, cut all trees that are two (2) inches or more at DBH, except cedar, hemlock, oak, black ash, cherry, red pine, and white pine. In addition, cut all spruce, balsam fir, tamarack, and jack pine with two or more pulpwood sticks.

Within Payment Unit(s) 13, cut all aspen, balsam poplar and maple with one or more pulpwood sticks. Additionally, cut all spruce, paper birch and balsam fir with two or more pulpwood sticks. Do not cut trees marked with green paint above and below stump height, cedar, hemlock, oak, red pine, or white pine.

2.1.3 - Cut tree marked unit(s) (12/08)

Within Payment Unit(s) 4-7, 10, 11, and 15, all trees are designated for cutting when marked with orange paint above and below stump height, regardless of merchantability. In addition:

- Within Payment Unit(s) 5, 7, 11 and 15, cut all aspen, balsam poplar, spruce, and balsam fir with two or more pulpwood sticks. Do not cut trees marked with green paint above and below stump height in Payment Unit 5, 7 and 15.

- Within Payment Unit(s) 6, cut all aspen, balsam poplar, spruce, paper birch, and balsam fir with two or more pulpwood sticks. Do not cut trees marked with green paint above and below stump height.

- Within Payment Unit(s) 10, cut all aspen and balsam poplar with one or more pulpwood sticks.

3 - Payments

3.3 - Pre-measured Sales

3.3.4 - Dividing payment units (7/14)

Payment Unit(s) 5, 10, and 14 may be divided at the request of the Purchaser and upon approval of the Unit Manager.

Dividing Payment Units is a contract modification which requires a Timber Sale Contract Amendment. There will be only one division per Payment Unit.

3.4 - Damaged Timber

3.4.1 - Damaged timber (7/16)

General Condition and Requirement 3.4 Damaged Timber, defines liquidated damages for undesignated live merchantable trees which are cut or injured. In addition, extreme care should be taken to avoid damage to tree seedlings and saplings.

No damage is acceptable to undesignated live merchantable trees. Within the Sale Area, if more than 10% of trees (> 4.5" DBH) within a specified area of the sale are damaged, liquidated damages will be assessed for all trees damaged. Rates will be in accordance with General Condition and Requirement 3.4 Damaged Timber.

4 - Transportation

4.1 - Construction

4.1.2 - Stream crossings, specific (3/11)

The unnamed stream crossing, labeled on the sale map north of Payment Unit 9, will require the installation of a timber mat bridge. The timber mat bridge will not be crossed with log or conventional trucks and is limited to frozen ground conditions. The installation will be performed in accordance with the specifications on the appropriate permits which shall be provided by the DNR. Crossing of unnamed stream dividing Payment Unit 9 will not be permitted.

4.1.5 - Culverts (5/14)

Roads may require the installation of culverts for cross drainage or at natural drainage-ways. If culverts are needed in these locations, their placement will be specified by the sale administrator. The culverts shall be new, corrugated metal or plastic gauge and at least 24 feet in length. Culvert diameter will be determined by sale administrator. If culverts are removed, soils shall be maintained and left in a non-erodible condition, with water bars, seed, fertilizer, mulch, and slash installed as directed by the sale administrator and as specified in the BMP manual. Stream crossing permits, if needed, will be obtained by the DNR.

4.1.6 - Road construction (1/09)

Construction of new roads or improvements of existing roads shall be done in such a way as to minimize the environmental and visual impacts. Merchantable trees shall be cut and utilized unless otherwise directed. Non-merchantable trees shall be severed and laid flat on the ground. Slash shall be scattered, and not left in windrows and kept a minimum of 10 feet back from the road edge, be chipped, utilized, or otherwise removed from the sale. Stumps shall be set upright, not left on edge, and be moved at least 10 feet away from the road edge. Disturbed soil shall be feathered into the woods and not left in berms or windrows.

4.1.7 - Road closure (10/11)

All new roads built into the sale must be blocked to vehicle traffic upon completion of the sale, unless otherwise stated by sale administrator. Overgrown roads that are reopened shall be considered new roads. In general, this will require constructing a four (4') foot high berm of stumps and logs covered with earth.

4.1.11 - Permits (2/12)

The DNR will secure any necessary stream crossing permits that may be required.

4.2 - Maintenance

4.2.1 - Hauling restriction (12/08)

Hauling may be restricted on forest roads by the Unit Manager or his/her representative. The restriction may occur during wet weather conditions.

4.2.2 - Fill material (4/07)

To maintain roads, fill material may be needed in areas where "holes" exist or may be expected to develop. This fill material should be placed before trucking begins. Contact the sale administrator regarding the availability of on site sand or gravel from adjacent State-owned lands.

4.4 - Access

4.4.1 - Private property access (3/11)

Permission for access across private land is the responsibility of the Purchaser. Should the Purchaser desire to cross private land, a copy of the written permission from the private land-owner may be required by the DNR.

5 - Operations

5.2 - Conduct of Operations

5.2.1 - Slash

5.2.1.13 - Dispose of slash as directed (12/05)

Slash is to be disposed of as directed by the sale administrator.

5.2.3 - Operating Restrictions

5.2.3.2 - Operating restrictions (9/11)

Within Payment Unit(s) 9, unless changed by written agreement, cutting, skidding, and hauling are limited to frozen ground

conditions, as determined by timber sale administrator. This restriction is because of wet ground.

5.2.3.3 - Bark slippage restriction (3/09)

Within Payment Unit(s) 4-7, 10, 11, and 15, unless changed by written agreement, cutting and skidding are not permitted during the period of April 15 to July 15. This restriction is because of bark slippage.

5.2.22 - Operating Caution

5.2.22.1 - Operating caution (6/11)

It is recommended, but not required, that within Payment Unit(s) 1-5, 7, 8, and 10-14, cutting, skidding, and hauling occur during dry summer or frozen winter conditions. The reason for the recommendation is because wet ground within the Payment Unit or wet ground along access roads.

5.2.41 - Snowmobile trail protection (9/11)

The Big Wheel Road is a snowmobile trail and is shown on the Timber Sale Map. Do not cut or damage posts with orange trail markers or traffic control signs. If the trail is used, it must be maintained and restored to a condition equal to or better than before the sale. The road maintenance/restoration may be required prior to December 1. If the trail road is to be used for hauling during the snowmobile season, then a snow-covered base must be left on the trail. Maintain a 20-foot-wide slash, debris, and rut free zone daily using the snowmobile trail as the centerline.

5.4 - Soil Protection

5.4.3 - Erosion control (12/08)

Skid trails or haul roads may require erosion control structures or berms per direction of the Unit Manager or his/her representative.

6 - Safety and Fire Prevention

6.2 - Signing

6.2.1 - Road posting (10/20)

The Purchaser is responsible for posting and maintaining caution signs on the Big Wheel Road prior to beginning operations. The road must be posted at appropriate distances from the Sale Area to warn of logging activity and truck traffic. Signs must be removed when harvest operations are suspended or completed. The Purchaser will provide these signs.



Sale Number	Year
12 - 002	21

TIMBER SALE MAP

This information provided by authority of Part 525, 1994 PA 451, as amended.

Forest Management Unit	County	Mapped By	Date	Page	of
Crystal Falls FMU	Dickinson	Jacob Siler	02/05/21	1	3
Township	Range	Section(s) and Subdivision(s)	Scale		
44N	29W	Sections: 8, 9, 10, 15, 16, 21, 22	1:15,840		

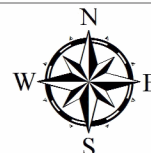
Cover Type				Density	
A = Aspen	H = Hemlock	N = Marsh	U = Upland Brush	0 = Non Stocked	5 = Pole Timber Medium
B = Paper Birch	J = Jack Pine	O = Oak	UM = Upland Mixed	1 = Seedling Sapling Poor	6 = Pole Timber Well
C = Cedar	L = Lowland Brush	P = Lowland Poplar	V = Bog or Marsh	2 = Seedling Sapling Medium	7 = Saw Timber Poor
D = Treed Bog	LM = Lowland Mixed	Q = Mixed Swamp Conifer	W = White Pine	3 = Seedling Sapling Well	8 = Saw Timber Medium
E = Swamp Hdwoods	M = Mpl. Bch, Brch	R = Red Pine	X = Non Stocked	4 = Pole Timber Poor	9 = Saw Timber Well
F = Spruce Fir	MC = Mixed Conifer	S = Black Spruce	Z = Water		
G = Grass	MD = Mixed Deciduous	T = Tamarack			

PU	Acres	PU	Acres	PU	Acres
1	30.5	6	23.2	11	20.4
2	33.0	7	28.5	12	10.4
3	19.2	8	17.5	13	8.6
4	32.7	9	35.1	14	53.7
5	50.0	10	44.1	15	28.5

Two Mile Creek Split

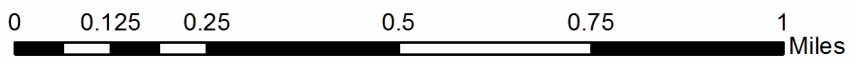
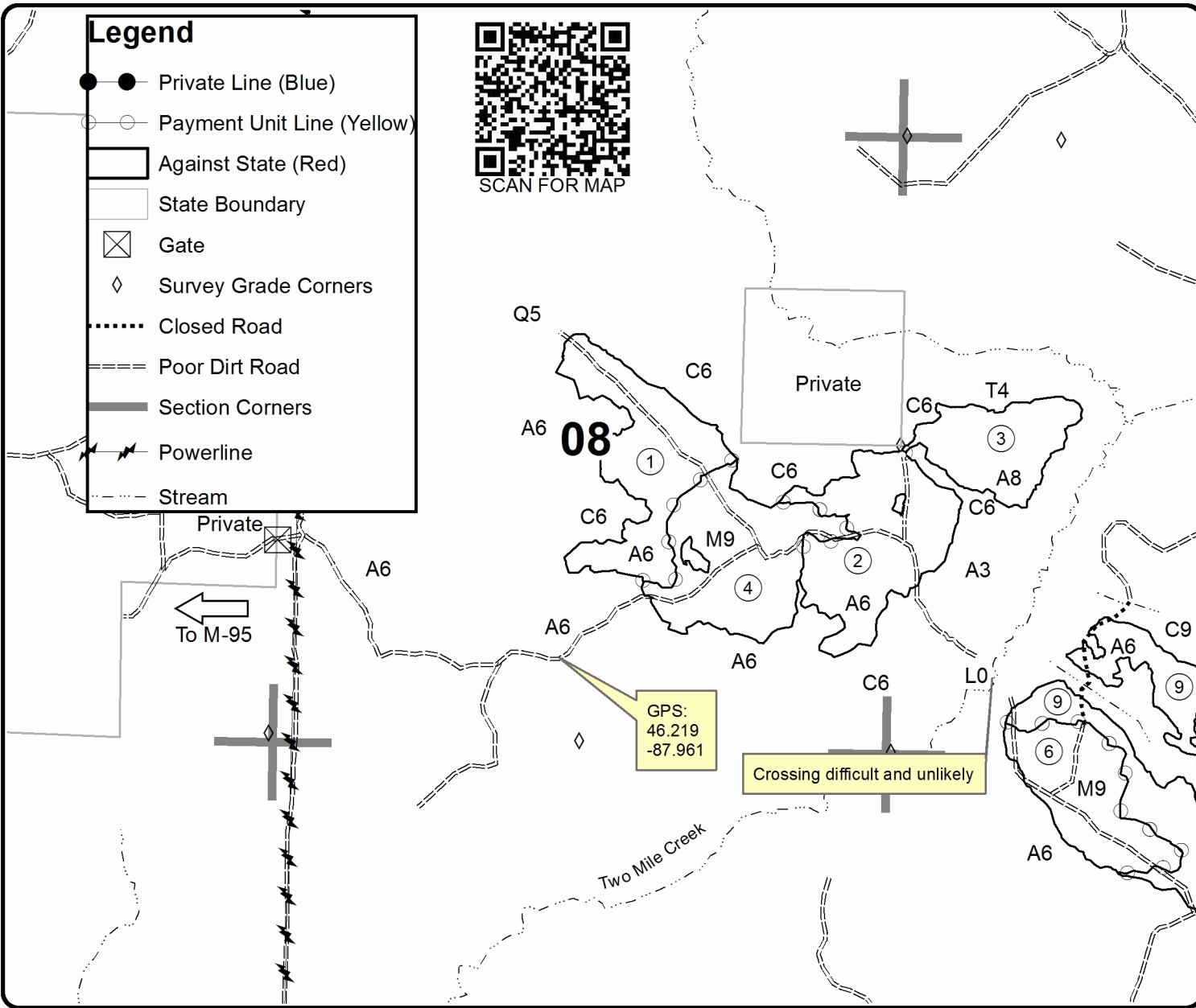
Compartment 6 & 7

435.4 Acres



Legend

- Private Line (Blue)
- Payment Unit Line (Yellow)
- ▭ Against State (Red)
- ▭ State Boundary
- ⊠ Gate
- ◇ Survey Grade Corners
- ⋯ Closed Road
- ⋯ Poor Dirt Road
- Section Corners
- ⚡ Powerline
- ⋯ Stream





TIMBER SALE MAP

This information provided by authority of Part 525, 1994 PA 451, as amended.

Sale Number	Year
12 - 002	21

Forest Management Unit	County	Mapped By	Date	Page	of
Crystal Falls FMU	Dickinson	Jacob Siler	02/05/21	2	3
Township	Range	Section(s) and Subdivision(s)	Scale		
44N	29W	Sections: 8, 9, 10, 15, 16, 21, 22	1:15,840		

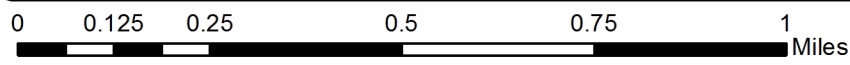
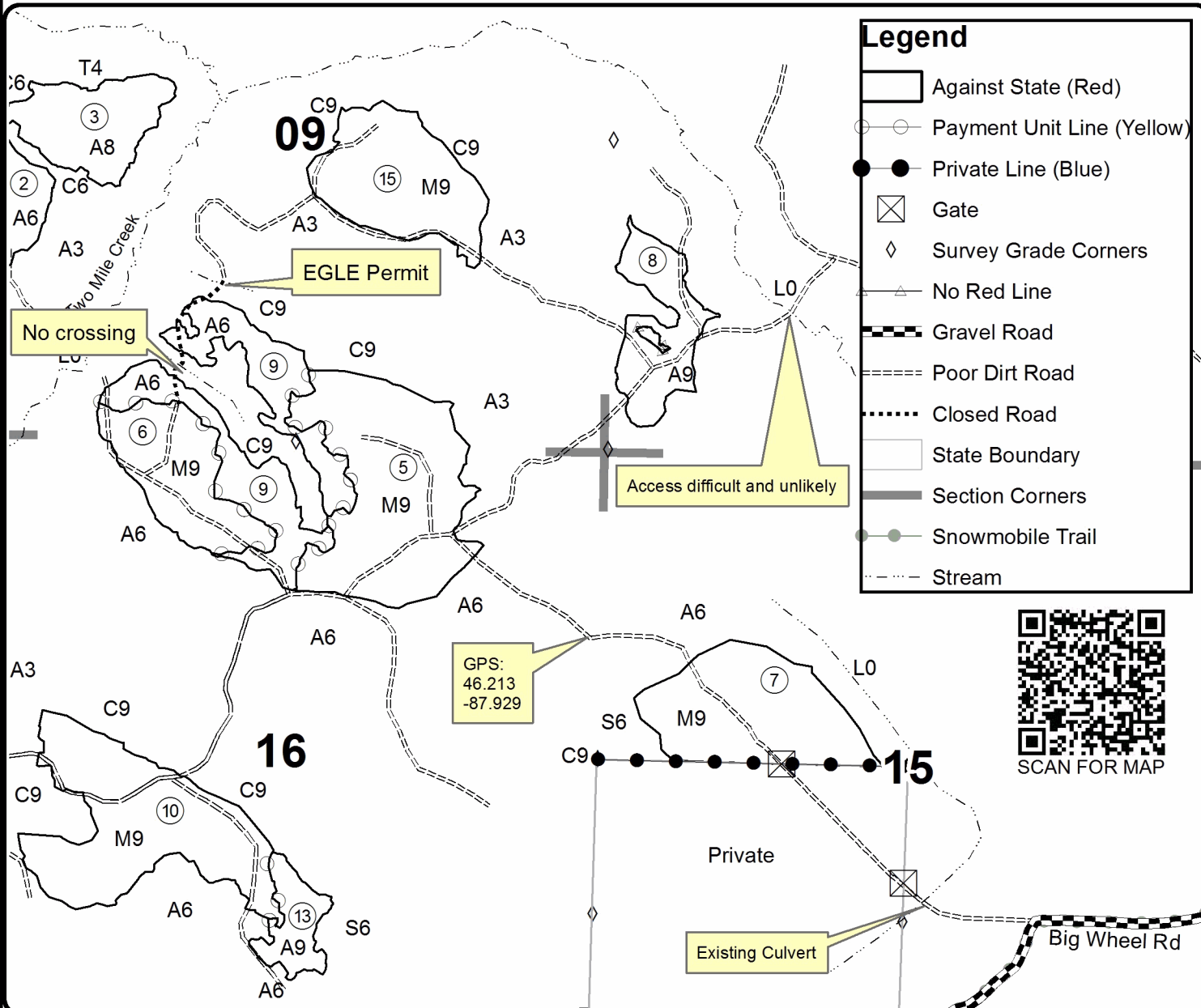
Cover Type				Density			
A = Aspen	H = Hemlock	N = Marsh	U = Upland Brush	0 = Non Stocked	5 = Pole Timber Medium		
B = Paper Birch	J = Jack Pine	O = Oak	UM = Upland Mixed	1 = Seedling Sapling Poor	6 = Pole Timber Well		
C = Cedar	L = Lowland Brush	P = Lowland Poplar	V = Bog or Marsh	2 = Seedling Sapling Medium	7 = Saw Timber Poor		
D = Treed Bog	LM = Lowland Mixed	Q = Mixed Swamp Conifer	W = White Pine	3 = Seedling Sapling Well	8 = Saw Timber Medium		
E = Swamp Hdwoods	M = Mpl. Bch. Brch	R = Red Pine	X = Non Stocked	4 = Pole Timber Poor	9 = Saw Timber Well		
F = Spruce Fir	MC = Mixed Conifer	S = Black Spruce	Z = Water				
G = Grass	MD = Mixed Deciduous	T = Tamarack					

PU	Acres	PU	Acres	PU	Acres
1	30.5	6	23.2	11	20.4
2	33.0	7	28.5	12	10.4
3	19.2	8	17.5	13	8.6
4	32.7	9	35.1	14	53.7
5	50.0	10	44.1	15	28.5

Two Mile Creek Split

Compartment 6 & 7

435.4 Acres





Sale Number	Year
12 - 002	21

TIMBER SALE MAP

This information provided by authority of Part 525, 1994 PA 451, as amended.

Forest Management Unit Crystal Falls FMU	County Dickinson	Mapped By Jacob Siler	Date 02/05/21	Page 3	of 3
Township 44N	Range 29W	Section(s) and Subdivision(s) Sections: 8, 9, 10, 15, 16, 21, 22	Scale 1:15,840		

Cover Type

A = Aspen	H = Hemlock	N = Marsh	U = Upland Brush
B = Paper Birch	J = Jack Pine	O = Oak	UM = Upland Mixed
C = Cedar	L = Lowland Brush	P = Lowland Poplar	V = Bog or Marsh
D = Treed Bog	LM = Lowland Mixed	Q = Mixed Swamp Conifer	W = White Pine
E = Swamp Hdwoods	M = Mpl. Bch. Brch	R = Red Pine	X = Non Stocked
F = Spruce Fir	MC = Mixed Conifer	S = Black Spruce	Z = Water
G = Grass	MD = Mixed Deciduous	T = Tamarack	

Density

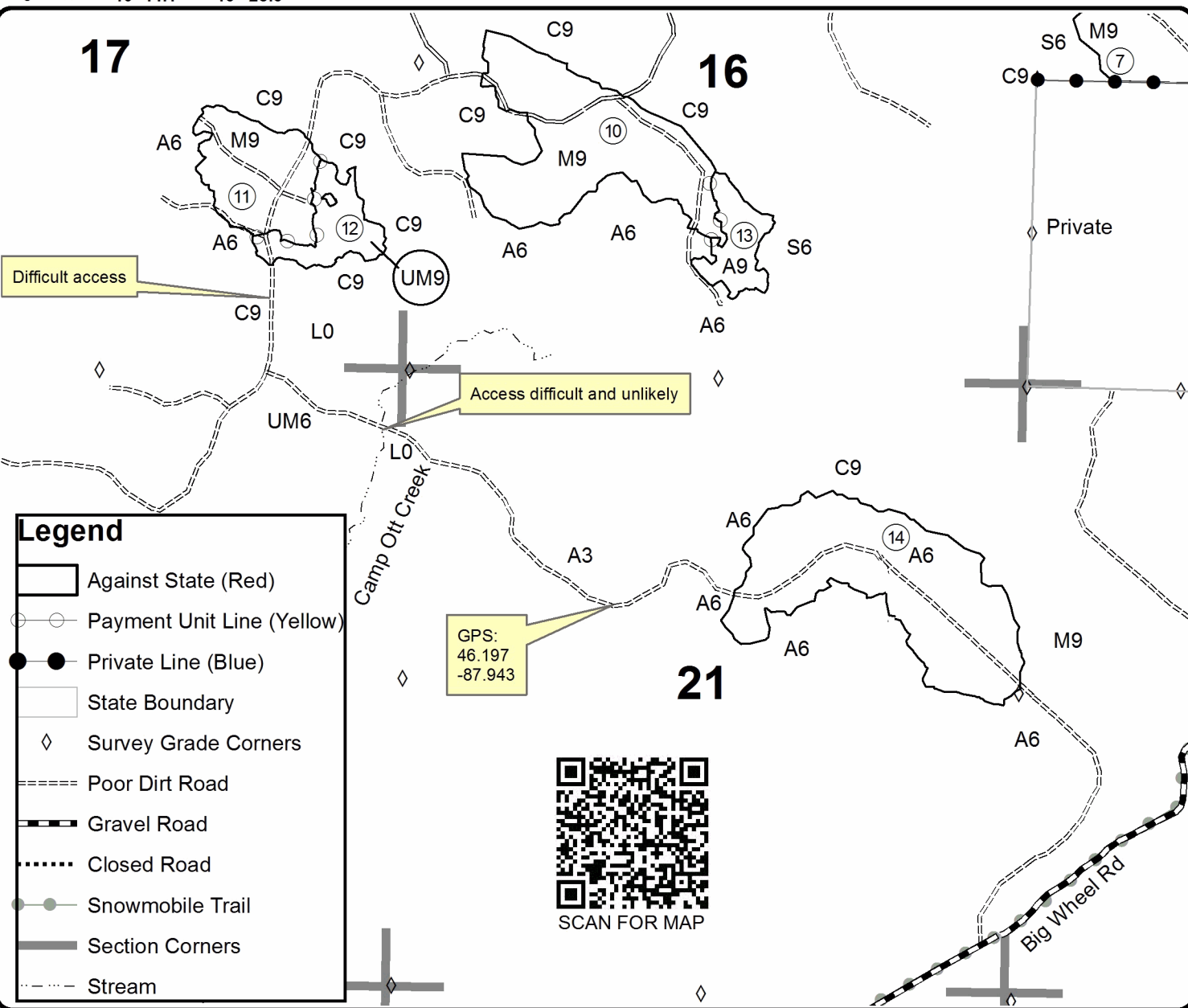
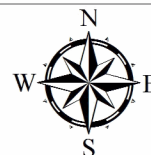
0 = Non Stocked	5 = Pole Timber Medium
1 = Seedling Sapling Poor	6 = Pole Timber Well
2 = Seedling Sapling Medium	7 = Saw Timber Poor
3 = Seedling Sapling Well	8 = Saw Timber Medium
4 = Pole Timber Poor	9 = Saw Timber Well

PU	Acres	PU	Acres	PU	Acres
1	30.5	6	23.2	11	20.4
2	33.0	7	28.5	12	10.4
3	19.2	8	17.5	13	8.6
4	32.7	9	35.1	14	53.7
5	50.0	10	44.1	15	28.5

Two Mile Creek Split

Compartment 6 & 7

435.4 Acres



TIMBER SALE INFORMATION

Clino Dino (12-003-21)

T43N, R30W, SEC. 18; T43N, R30W, SEC. 19.
Dickinson County (Advertised Price \$50,141.30)

SALE NOTE: All units of volume listed for this sale were estimated using the Inventory Manager computer program and the new Michigan taper model.

- See sale spec 4.1.2 for temporary bridge information.

- See sale spec 4.1.7 for details on temporary berms on new roads.

A timber sale contract for this lump sum, sealed bid timber sale will be awarded to the responsible bidder offering the highest sealed bid price. All units of volume listed below were estimated using the Inventory Manager computer program and the new Michigan taper model. Bids must be at or above the following advertised price for each product and species:

<u>PRODUCTS & SPECIES</u>	<u>ESTIMATED UNITS*</u>	<u>ADVERTISED PRICE</u>
Sawtimber		
Basswood	9.6 MBF	\$ 54.00 / MBF
Black Ash	17.0 MBF	\$ 17.00 / MBF
Paper Birch	2.8 MBF	\$ 94.00 / MBF
Red Maple	40.2 MBF	\$ 96.00 / MBF
Sugar Maple	10.2 MBF	\$ 172.00 / MBF
Pulpwood		
Balsam Fir	122 Cords	\$ 7.60 / Cord
Mixed Aspen	1,400 Cords	\$ 20.30 / Cord
Mixed Hardwood	1,029 Cords	\$ 13.10 / Cord
Mixed Spruce	60 Cords	\$ 8.60 / Cord
Tamarack	24 Cords	\$ 4.75 / Cord

* The total volume is statistically estimated within plus (+) or minus (-) 7.07 percent. There are an estimated 2,705 cords on this timber sale, plus or minus 191 cords at the 95% confidence level. The estimated units are final and not subject to adjustment. Prospective bidders are urged to examine this timber and to make their own estimates of quantity and quality.

BOND AND PAYMENT SCHEDULE:

1. A bond in the amount of \$3,510.00 to insure faithful performance of the conditions of the contract will be deposited by the successful bidder within 21 days of the sale award.
2. Cutting in any sale or unit without the required advance payment would be considered a trespass.
3. Total payment must be paid in advance or according to the following schedule :
 - (a) Ten percent (10%) of the sale value must be paid within 21 days of the sale award.
 - (b) The 10% down payment will be credited towards the first unit cut.
 - (c) Payment for each of the following units must be made before cutting begins in that unit:

PAYMENT UNIT NUMBER	PERCENT OF TOTAL SALE VALUE
01	4.7%
02	21.6%
03	19.5%
04	52.9%
05	1.3%

4. If no cutting takes place, the 10% down payment will not be refunded.

5. Operations on the contract issued will terminate on 06/30/2024.

SALE STATISTICS

Volumes were calculated in cubic feet using the Michigan taper model. Cubic foot volume includes all wood inside bark for the product indicated. For display purposes, cubic feet were converted to cords and MBF using a simple conversion factor, e.g. 79 cubic feet per cord and 185 cubic feet per MBF. The cubic foot volumes are precise; the cords and MBF volumes are not. Cubic foot volume cannot be directly converted to cords or boards with precision.

SALE VOLUMES

The total estimated sale volume may not equal the sum of the species/products due to the nature of statistical calculations associated with double sampling methodology.

VOLUME			STATISTICAL RANGE IN CORDS	
TOTAL CUBIC FEET	TOTAL CORDS	PERCENT ERROR	MINIMUM	MAXIMUM
213,698	2,705	7.07%	2,514	2,896

VDU VOLUMES

A VDU is a Volume Determination Unit. Volumes and their associated statistics are calculated at the VDU level and summarized to the sale level. There is often a one to one relationship between a VDU and a Payment Unit, but not always, depending on the cruise design. Refer to the VDU TO PAYMENT UNIT table.

	VOLUME			RANGE IN CORDS	
VDU	TOTAL CUBIC FEET	TOTAL CORDS	PERCENT ERROR	MINIMUM	MAXIMUM
2	42,067	532	12.96%	463	602
3	970	12	14.29%	11	14
14	5,114	65	36.06%	41	88
15	119,828	1,517	10.25%	1,361	1,672
22	44,973	569	16.57%	475	664
29	7,878	100	20.09%	80	120
TOTAL:	220,829	2,795		2,431	3,159

VDU TO PAYMENT UNIT

When a VDU is associated with more than one Payment Unit (PU), the VDU volumes are assigned to the PU based on acres of the VDU within the PU.

VDU	VDU ACRES	PU	PU ACRES
2	16.2	3	16.2
3	2.7	1	2.7
14	3.3	5	3.3
15	52.2	4	52.2
22	18.9	2	18.9
29	3.3	1	3.3
TOTAL:	96.6		96.6

DESCRIPTION OF TIMBER BY PAYMENT UNIT (PU)

PU	MARKET GROUP	PRODUCT	QUANTITY	UNIT	ACRES	ADVERTISE PRICE
1	Red Maple	Sawtimber	0.6	MBF	6.0	\$2,338.10
	Sugar Maple		5.8	MBF		
	Balsam Fir	Pulpwood	1	Cords		
	Mixed Aspen		2	Cords		
	<i>B. T. Aspen</i>		2	<i>Cords</i>		
	Mixed Hardwood		89	Cords		
	<i>Red Maple</i>		30	<i>Cords</i>		
	<i>Sugar Maple</i>		59	<i>Cords</i>		
	Mixed Spruce		8	Cords		
	<i>White Spruce</i>		8	<i>Cords</i>		
2	Red Maple	Sawtimber	3.2	MBF	18.9	\$10,837.00
	Mixed Aspen	Pulpwood	445	Cords		
	<i>B. T. Aspen</i>		10	<i>Cords</i>		
	<i>Balsam Poplar</i>		22	<i>Cords</i>		
	<i>Quaking Aspen</i>		413	<i>Cords</i>		
	Mixed Hardwood		107	Cords		
	<i>Red Maple</i>		54	<i>Cords</i>		
	<i>Sugar Maple</i>		37	<i>Cords</i>		
	<i>Yellow Birch</i>		16	<i>Cords</i>		
	Mixed Spruce		11	Cords		
	<i>White Spruce</i>		11	<i>Cords</i>		
3	Balsam Fir	Pulpwood	27	Cords	16.2	\$9,793.40
	Mixed Aspen		426	Cords		
	<i>Balsam Poplar</i>		54	<i>Cords</i>		
	<i>Quaking Aspen</i>		372	<i>Cords</i>		
	Mixed Hardwood		58	Cords		
	<i>Red Maple</i>		58	<i>Cords</i>		
	Mixed Spruce		21	Cords		
	<i>Black Spruce</i>		21	<i>Cords</i>		
4	Basswood	Sawtimber	9.6	MBF	52.2	\$26,515.20
	Black Ash		17.0	MBF		
	Paper Birch		2.8	MBF		
	Red Maple		35.7	MBF		
	Sugar Maple		4.4	MBF		
	Balsam Fir	Pulpwood	91	Cords		
	Mixed Aspen		527	Cords		
	<i>B. T. Aspen</i>		138	<i>Cords</i>		
	<i>Quaking Aspen</i>		389	<i>Cords</i>		
	Mixed Hardwood		743	Cords		
	<i>Basswood</i>		12	<i>Cords</i>		
	<i>Black Ash</i>		31	<i>Cords</i>		
	<i>Paper Birch</i>		29	<i>Cords</i>		
	<i>Red Maple</i>		556	<i>Cords</i>		
	<i>Sugar Maple</i>		115	<i>Cords</i>		
	Mixed Spruce		16	Cords		
	<i>Black Spruce</i>		10	<i>Cords</i>		
<i>White Spruce</i>		6	<i>Cords</i>			
5	Red Maple	Sawtimber	0.7	MBF	3.3	\$657.60
	Balsam Fir	Pulpwood	3	Cords		
	Mixed Hardwood		32	Cords		
	<i>Paper Birch</i>		7	<i>Cords</i>		
	<i>Red Maple</i>		25	<i>Cords</i>		
	Mixed Spruce		4	Cords		
	<i>Black Spruce</i>		4	<i>Cords</i>		
	Tamarack		24	Cords		

TOTAL:	79.8	MBF
--------	------	-----

TOTAL:	2,635	Cords
--------	-------	-------

Sale Specific Conditions & Requirements

Sale Name: Clino Dino

Sale Number: 12-003-21 Seq#: 1

1 - Sale Area

1.2 - Boundaries

1.2.1 - Painted boundaries (9/19)

The sale boundary and Payment Unit boundaries are marked and identified by blue, red, and yellow paint. Exterior sale boundary lines against private property are marked with blue paint. Exterior sale boundary lines against state are marked with red paint. Interior Payment Unit boundaries are marked with yellow paint. Retention patches are marked with red paint, no harvesting activities may occur within these areas. The painted boundary line trees are not Included Timber and are to be protected unless marked with orange paint. Yellow painted trees designating an interior Payment Unit boundary are only to be cut when all surrounding Payment Units have been paid.

2 - Timber Specifications

2.1 - Included Timber

2.1.1 - Clearcut unit(s) with unmerchantable trees (6/14)

Within Payment Unit(s) 2-4, cut all trees that are two (2) inches or more at DBH, except cedar, hemlock, red pine, and white pine. Do not cut spruce and fir with 1 or less pulp sticks in Payment Units 2 and 3.

2.1.2 - Clearcut unit(s) w/o unmerchantable trees (8/11)

Within Payment Unit(s) 5, cut all trees with one or more pulp wood sticks: trees which meet minimum piece specifications in 2.2 Utilization, except, do not cut white pine, cedar, and hemlock.

2.1.3 - Cut tree marked unit(s) (12/08)

Within Payment Unit(s) 1, all trees are designated for cutting when marked with orange paint above and below stump height, regardless of merchantability. Additionally, cut all spruce, fir, and aspen with 1 or more pulp wood sticks: trees which meet minimum piece specifications in 2.2 Utilization.

4 - Transportation

4.1 - Construction

4.1.2 - Stream crossings, specific (3/11)

The Ford River Tributary crossing, labeled on the Timber Sale Map, will require the installation of a portable bridge. This installation will be performed in accordance with the specifications on the appropriate permits which shall be provided by the DNR.

4.1.6 - Road construction (1/09)

Construction of new roads or improvements of existing roads shall be done in such a way as to minimize the environmental and visual impacts. Merchantable trees shall be cut and utilized unless otherwise directed. Non-merchantable trees shall be severed and laid flat on the ground. Slash shall be scattered, and not left in windrows and kept a minimum of 10 feet back from the road edge or be chipped, utilized, scattered or otherwise removed from the sale. Stumps shall be set upright, not left on edge, and be moved at least 10 feet away from the road edge. Disturbed soil shall be feathered into the woods and not left in berms or windrows. All new roads must be approved by the timber sale administrator.

4.1.7 - Road closure (10/11)

All new roads built into the sale must be blocked to vehicle traffic upon completion of the sale. Overgrown roads that are reopened shall be considered new roads. Some existing roads may also need to be closed, see the Timber Sale Map for locations. In general, this will require constructing a four (4') foot high berm of stumps and logs covered with earth. Temporary berms may be required if no sale activity occurs for 30 or more consecutive days. Contact the Sale Administrator for specific details of design and placement.

5 - Operations

5.2 - Conduct of Operations

5.2.1 - Slash

5.2.1.13 - Dispose of slash as directed (12/05)

Slash is to be disposed of as directed by the sale administrator.

5.2.3 - Operating Restrictions

5.2.3.1 - Operating restrictions (9/11)

Within Payment Unit(s) 5, unless changed by written agreement, cutting and skidding are limited to frozen ground conditions. This restriction is because of wet ground conditions.

5.2.3.3 - Bark slippage restriction (3/09)

Within Payment Unit(s) 1, unless changed by written agreement, cutting and skidding are not permitted during the period of April 15 to July 15. This restriction is because of bark slippage.

5.2.22 - Operating Caution

5.2.22.1 - Operating caution (6/11)

It is recommended, but not required, that within Payment Unit(s) 3, cutting, skidding, and hauling occur during dry summer or frozen winter conditions. The reason for the recommendation is because of wet ground conditions.

5.4 - Soil Protection

5.4.1 - Rutting restriction, general (7/16)

Operations may be ceased immediately if equipment and weather conditions result in rutting of roads and/or skid trails which is 12 inches or greater in depth and 50 feet in length. The Unit Manager or his/her representative may restrict hauling and/or skidding if ruts exceed the specified depth. With the Unit Manager or his/her representative's approval, the Purchaser may return to the area when the risk of rutting has decreased.

5.5 - Protection of Improvements

5.5.3 - Protection of improvements detail (10/13)

The following are specific protection measures for this sale. An additional berm will be placed 66 feet north of the temporary bridge location. To protect against erosion, 3 slash piles will be placed on the road south of the temporary bridge location. Berm location and erosion mitigation may be subject to change by the Sale Administrator. Contact the Sale Administrator for more details.



TIMBER SALE MAP

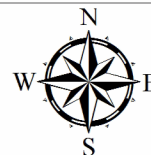
This information provided by authority of Part 525, 1994 PA 451, as amended.

Forest Management Unit Crystal Falls FMU	County Dickinson	Mapped By Jacob Siler	Date 03/04/2021	Page 1	of 2
Township 43N	Range 30W	Section(s) and Subdivision(s) NWNW,S1/2NW,N1/2SW,SESW of S18 & S1/2NW,SW of S19	Scale 1:15,840		

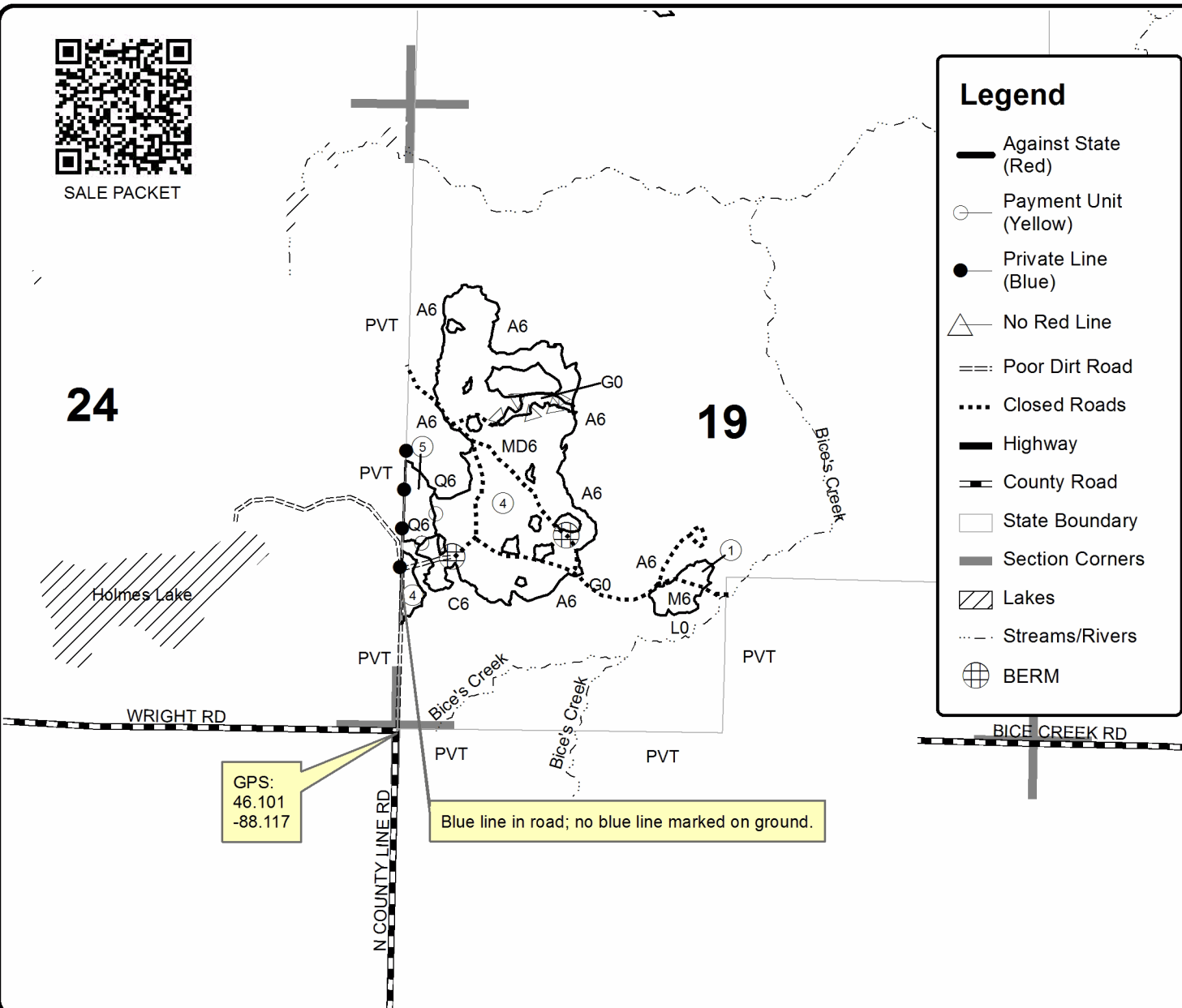
Cover Type				Density	
A = Aspen	H = Hemlock	N = Marsh	U = Upland Brush	0 = Non Stocked	5 = Pole Timber Medium
B = Paper Birch	J = Jack Pine	O = Oak	UM = Upland Mixed	1 = Seedling Sapling Poor	6 = Pole Timber Well
C = Cedar	L = Lowland Brush	P = Lowland Poplar	V = Bog or Marsh	2 = Seedling Sapling Medium	7 = Saw Timber Poor
D = Treed Bog	LM = Lowland Mixed	Q = Mixed Swamp Conifer	W = White Pine	3 = Seedling Sapling Well	8 = Saw Timber Medium
E = Swamp Hdwoods	M = Mpl, Bch, Brch	R = Red Pine	X = Non Stocked	4 = Pole Timber Poor	9 = Saw Timber Well
F = Spruce Fir	MC = Mixed Conifer	S = Black Spruce	Z = Water		
G = Grass	MD = Mixed Deciduous	T = Tamarack			

PU	Acres	PU	Acres
1	6.0	4	52.2
2	18.9	5	3.3
3	16.2		

Clino Dino Compartment 46 96.6 Acres

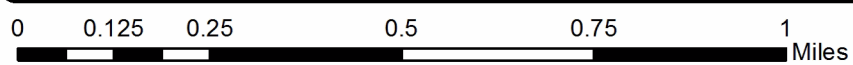


SALE PACKET



GPS:
46.101
-88.117

Blue line in road; no blue line marked on ground.





Sale Number	Year
12 - 003	21

TIMBER SALE MAP

This information provided by authority of Part 525, 1994 PA 451, as amended.

Forest Management Unit Crystal Falls FMU	County Dickinson	Mapped By Jacob Siler	Date 03/04/2021	Page 2	of 2
Township 43N	Range 30W	Section(s) and Subdivision(s) NWNW,S1/2NW,N1/2SW,SESW of S18 & S1/2NW,SW of S19	Scale 1:15,840		

Cover Type

A = Aspen	H = Hemlock	N = Marsh	U = Upland Brush
B = Paper Birch	J = Jack Pine	O = Oak	UM = Upland Mixed
C = Cedar	L = Lowland Brush	P = Lowland Poplar	V = Bog or Marsh
D = Treed Bog	LM = Lowland Mixed	Q = Mixed Swamp Conifer	W = White Pine
E = Swamp Hdwoods	M = Mpl. Bch, Brch	R = Red Pine	X = Non Stocked
F = Spruce Fir	MC = Mixed Conifer	S = Black Spruce	Z = Water
G = Grass	MD = Mixed Deciduous	T = Tamarack	

Density

0 = Non Stocked	5 = Pole Timber Medium
1 = Seedling Sapling Poor	6 = Pole Timber Well
2 = Seedling Sapling Medium	7 = Saw Timber Poor
3 = Seedling Sapling Well	8 = Saw Timber Medium
4 = Pole Timber Poor	9 = Saw Timber Well

PU	Acres	PU	Acres
1	6.0	4	52.2
2	18.9	5	3.3
3	16.2		

Clino Dino

Compartment 46

96.6 Acres

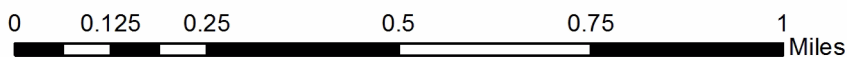
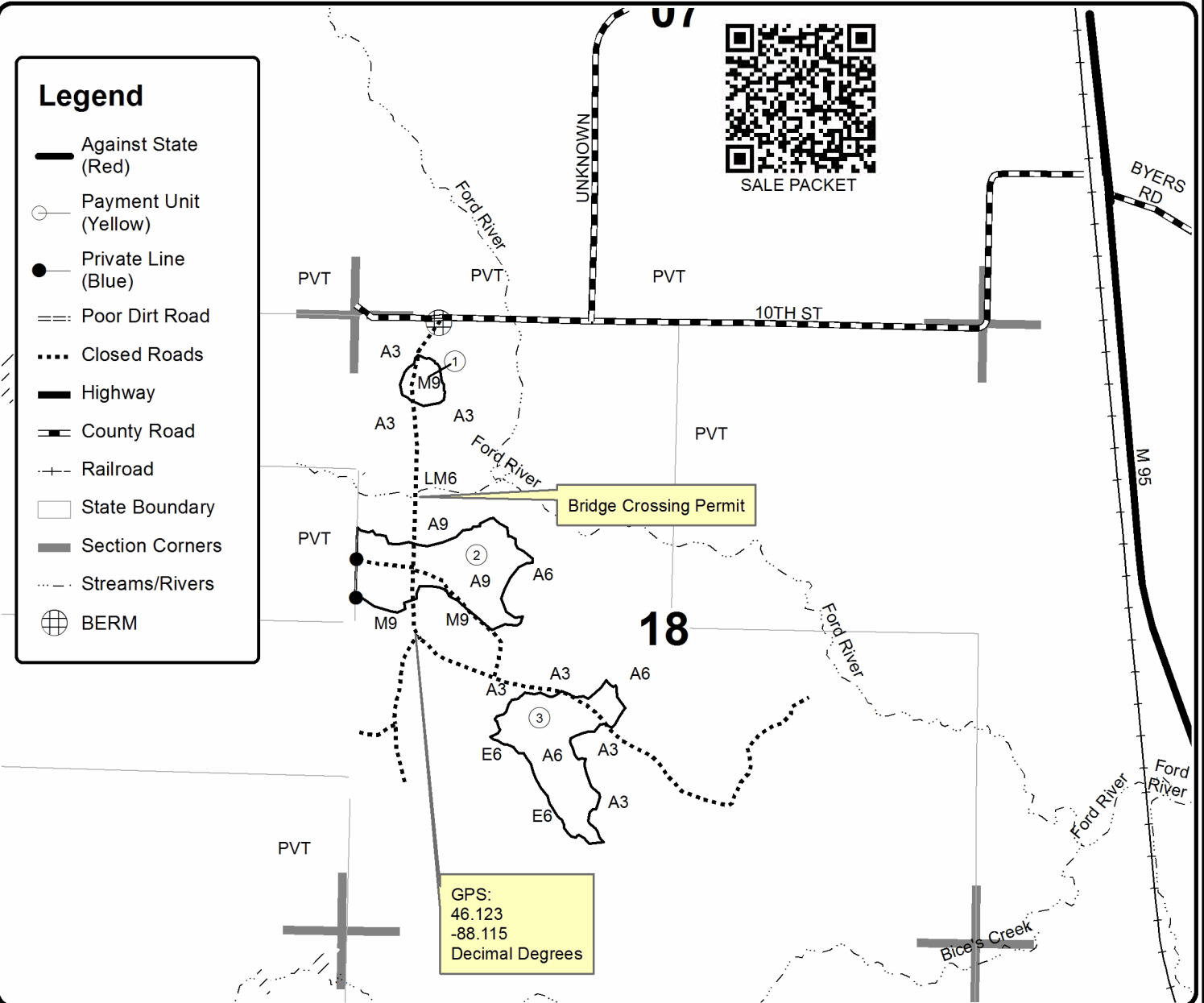


Legend

- Against State (Red)
- Payment Unit (Yellow)
- Private Line (Blue)
- Poor Dirt Road
- Closed Roads
- Highway
- County Road
- Railroad
- State Boundary
- Section Corners
- Streams/Rivers
- BERM



SALE PACKET



TIMBER SALE INFORMATION

Early Ursa (12-006-21)

T40N, R29W, SEC. 23; T40N, R29W, SEC. 24; T40N, R29W, SEC. 26; T40N, R29W, SEC. 35.
Dickinson County (Advertised Price \$83,436.85)

SALE NOTE: All units of volume listed for this sale were estimated using the Inventory Manager computer program and the new Michigan taper model.

A recreation site such as a trail, pathway, or campground is within the sale area or the vicinity. Certain restrictions/specifications may be applicable including time restrictions.

A timber sale contract for this lump sum, sealed bid timber sale will be awarded to the responsible bidder offering the highest sealed bid price. All units of volume listed below were estimated using the Inventory Manager computer program and the new Michigan taper model. Bids must be at or above the following advertised price for each product and species:

<u>PRODUCTS & SPECIES</u>	<u>ESTIMATED UNITS*</u>	<u>ADVERTISED PRICE</u>
Sawtimber		
Basswood	48.4 MBF	\$ 54.00 / MBF
Paper Birch	5.1 MBF	\$ 94.00 / MBF
Red Maple	66.3 MBF	\$ 96.00 / MBF
Sugar Maple	42.6 MBF	\$ 172.00 / MBF
White Ash	15.3 MBF	\$ 53.00 / MBF
Pulpwood		
Balsam Fir	410 Cords	\$ 7.60 / Cord
Basswood	158 Cords	\$ 7.30 / Cord
Mixed Aspen	2,214 Cords	\$ 20.30 / Cord
Mixed Hardwood	1,214 Cords	\$ 13.10 / Cord
Tamarack	13 Cords	\$ 4.75 / Cord
White Spruce	77 Cords	\$ 8.60 / Cord

* The total volume is statistically estimated within plus (+) or minus (-) 6.01 percent. There are an estimated 4,443 cords on this timber sale, plus or minus 267 cords at the 95% confidence level. The estimated units are final and not subject to adjustment. Prospective bidders are urged to examine this timber and to make their own estimates of quantity and quality.

BOND AND PAYMENT SCHEDULE:

1. A bond in the amount of \$8,344.00 to insure faithful performance of the conditions of the contract will be deposited by the successful bidder within 21 days of the sale award.
2. Cutting in any sale or unit without the required advance payment would be considered a trespass.
3. Total payment must be paid in advance or according to the following schedule :
 - (a) Ten percent (10%) of the sale value must be paid within 21 days of the sale award.
 - (b) The 10% down payment will be credited towards the first unit cut.
 - (c) Payment for each of the following units must be made before cutting begins in that unit:

PAYMENT UNIT NUMBER	PERCENT OF TOTAL SALE VALUE
01	1.2%
02	1.6%
03	8.7%
04	3.4%
05	11.7%
06	2.4%
07	34.2%
08	29.1%
09	0.6%
10	2.8%
11	4.3%

4. If no cutting takes place, the 10% down payment will not be refunded.
5. Operations on the contract issued will terminate on 06/30/2025.

SALE STATISTICS

Volumes were calculated in cubic feet using the Michigan taper model. Cubic foot volume includes all wood inside bark for the product indicated. For display purposes, cubic feet were converted to cords and MBF using a simple conversion factor, e.g. 79 cubic feet per cord and 185 cubic feet per MBF. The cubic foot volumes are precise; the cords and MBF volumes are not. Cubic foot volume cannot be directly converted to cords or boards with precision.

SALE VOLUMES

The total estimated sale volume may not equal the sum of the species/products due to the nature of statistical calculations associated with double sampling methodology.

VOLUME			STATISTICAL RANGE IN CORDS	
TOTAL CUBIC FEET	TOTAL CORDS	PERCENT ERROR	MINIMUM	MAXIMUM
350,965	4,443	6.01%	4,175	4,710

VDU VOLUMES

A VDU is a Volume Determination Unit. Volumes and their associated statistics are calculated at the VDU level and summarized to the sale level. There is often a one to one relationship between a VDU and a Payment Unit, but not always, depending on the cruise design. Refer to the VDU TO PAYMENT UNIT table.

VDU	VOLUME			RANGE IN CORDS	
	TOTAL CUBIC FEET	TOTAL CORDS	PERCENT ERROR	MINIMUM	MAXIMUM
1	2,532	32	47.38%	17	47
2	105,788	1,339	13.41%	1,160	1,519
18	5,269	67	27.27%	49	85
19	6,506	82	32.07%	56	109
21	31,061	393	20.49%	313	474
25	11,792	149	19.05%	121	178
33	44,772	567	12.50%	496	638
36	8,773	111	27.96%	80	142
61	108,768	1,377	9.88%	1,241	1,513
69	16,730	212	22.40%	164	259
71	8,998	114	56.41%	50	178
TOTAL:	350,988	4,443		3,745	5,141

VDU TO PAYMENT UNIT

When a VDU is associated with more than one Payment Unit (PU), the VDU volumes are assigned to the PU based on acres of the VDU within the PU.

VDU	VDU ACRES	PU	PU ACRES
1	2.6	9	2.6
2	58.4	8	58.4
18	7.9	1	7.9
19	12.7	2	12.7
21	24.7	3	24.7
25	5.2	4	5.2
33	25.9	5	25.9
36	4.0	6	4.0
61	41.4	7	41.4
69	8.3	11	8.3
71	12.2	10	12.2
TOTAL:	203.3		203.3

DESCRIPTION OF TIMBER BY PAYMENT UNIT (PU)

PU	MARKET GROUP	PRODUCT	QUANTITY	UNIT	ACRES	ADVERTISE PRICE	
1	Basswood	Pulpwood	4	Cords	7.9	\$1,028.60	
	Mixed Aspen		26	Cords			
	<i>Quaking Aspen</i>		26	<i>Cords</i>			
	Mixed Hardwood		36	Cords			
	<i>Ironwood</i>		5	<i>Cords</i>			
	<i>Paper Birch</i>		4	<i>Cords</i>			
	<i>Sugar Maple</i>		27	<i>Cords</i>			
2	Basswood	Sawtimber	2.4	MBF	12.7	\$1,348.90	
	Red Maple	Pulpwood	1.8	MBF			
	Sugar Maple		1.2	MBF			
	Balsam Fir		19	Cords			
	Basswood		2	Cords			
	Mixed Aspen		8	Cords			
	<i>B. T. Aspen</i>		8	<i>Cords</i>			
	Mixed Hardwood		35	Cords			
	<i>Paper Birch</i>		14	<i>Cords</i>			
	<i>Red Maple</i>		16	<i>Cords</i>			
	<i>Sugar Maple</i>		5	<i>Cords</i>			
	White Spruce		7	Cords			
3	Balsam Fir		Pulpwood	6	Cords	24.7	\$7,222.70
	Basswood	19		Cords			
	Mixed Aspen	308		Cords			
	<i>B. T. Aspen</i>	219		<i>Cords</i>			
	<i>Quaking Aspen</i>	89		<i>Cords</i>			
	Mixed Hardwood	60		Cords			
	<i>Sugar Maple</i>	60		<i>Cords</i>			
4	Paper Birch	Sawtimber	3.8	MBF	5.2	\$2,862.80	
	Red Maple	Pulpwood	1.2	MBF			
	Sugar Maple		1.9	MBF			
	White Ash		2.6	MBF			
	Balsam Fir		4	Cords			
	Mixed Aspen		34	Cords			
	<i>B. T. Aspen</i>		9	<i>Cords</i>			
	<i>Quaking Aspen</i>		25	<i>Cords</i>			
	Mixed Hardwood		92	Cords			
	<i>Paper Birch</i>		34	<i>Cords</i>			
	<i>Red Maple</i>		28	<i>Cords</i>			
	<i>Sugar Maple</i>		27	<i>Cords</i>			
	<i>White Ash</i>		3	<i>Cords</i>			
5	Red Maple		Sawtimber	1.8	MBF	25.9	\$9,741.20
	Sugar Maple	Pulpwood	1.2	MBF			
	Balsam Fir		27	Cords			
	Basswood		11	Cords			
	Mixed Aspen		334	Cords			
	<i>B. T. Aspen</i>		17	<i>Cords</i>			
	<i>Balsam Poplar</i>		8	<i>Cords</i>			
	<i>Quaking Aspen</i>		309	<i>Cords</i>			
	Mixed Hardwood		151	Cords			
	<i>Black Ash</i>		<i>Sawtimber</i>	1.7	<i>MBF</i>		
	<i>Black Ash</i>		<i>Pulpwood</i>	10	<i>Cords</i>		
	<i>Ironwood</i>		3	<i>Cords</i>			
	<i>Red Maple</i>		22	<i>Cords</i>			
	<i>Sugar Maple</i>		101	<i>Cords</i>			
	<i>White Ash</i>		12	<i>Cords</i>			
	White Spruce		37	Cords			
6	Sugar Maple		Sawtimber	1.9	MBF	4.0	\$1,964.90

DESCRIPTION OF TIMBER BY PAYMENT UNIT (PU), CON'T

PU	MARKET GROUP	PRODUCT	QUANTITY	UNIT	ACRES	ADVERTISE PRICE
6 con't	Balsam Fir	Pulpwood	17	Cords		
	Mixed Aspen		44	Cords		
	<i>B. T. Aspen</i>		18	<i>Cords</i>		
	<i>Quaking Aspen</i>		26	<i>Cords</i>		
	Mixed Hardwood		47	Cords		
	<i>Paper Birch</i>		13	<i>Cords</i>		
	<i>Sugar Maple</i>		34	<i>Cords</i>		
7	Basswood	Sawtimber	41.2	MBF	41.4	\$28,590.70
	Red Maple	Pulpwood	26.9	MBF		
	Sugar Maple		30.0	MBF		
	White Ash		10.4	MBF		
	Balsam Fir		112	Cords		
	Basswood		68	Cords		
	Mixed Aspen		538	Cords		
	<i>B. T. Aspen</i>		187	<i>Cords</i>		
	<i>Quaking Aspen</i>		351	<i>Cords</i>		
	Mixed Hardwood		443	Cords		
	<i>Black Cherry</i>		13	<i>Cords</i>		
	<i>Ironwood</i>		21	<i>Cords</i>		
	<i>Red Maple</i>		167	<i>Cords</i>		
	<i>Sugar Maple</i>		227	<i>Cords</i>		
	<i>White Ash</i>		15	<i>Cords</i>		
8	Basswood		Sawtimber	4.4	MBF	58.4
	Red Maple	Pulpwood	32.5	MBF		
	Sugar Maple		6.4	MBF		
	White Ash		1.9	MBF		
	Balsam Fir		207	Cords		
	Basswood		53	Cords		
	Mixed Aspen		685	Cords		
	<i>B. T. Aspen</i>		440	<i>Cords</i>		
	<i>Quaking Aspen</i>		245	<i>Cords</i>		
	Mixed Hardwood		280	Cords		
	<i>Black Cherry</i>		4	<i>Cords</i>		
	<i>Red Maple</i>		116	<i>Cords</i>		
	<i>Sugar Maple</i>		155	<i>Cords</i>		
	<i>White Ash</i>		5	<i>Cords</i>		
	Tamarack		13	Cords		
White Spruce	11		Cords			
9	Basswood	Sawtimber	0.4	MBF	2.6	\$527.30
	Paper Birch	Pulpwood	1.3	MBF		
	White Ash		0.4	MBF		
	Basswood		1	Cords		
	Mixed Aspen		2	Cords		
	<i>Quaking Aspen</i>		2	<i>Cords</i>		
	Mixed Hardwood		24	Cords		
	<i>Ironwood</i>		2	<i>Cords</i>		
	<i>Paper Birch</i>		2	<i>Cords</i>		
	<i>Sugar Maple</i>		12	<i>Cords</i>		
<i>White Ash</i>	8		<i>Cords</i>			
10	Mixed Aspen	Pulpwood	114	Cords	12.2	\$2,314.20
	<i>B. T. Aspen</i>		48	<i>Cords</i>		
	<i>Quaking Aspen</i>		66	<i>Cords</i>		
11	Red Maple	Sawtimber	2.1	MBF	8.3	\$3,586.50
	Balsam Fir	Pulpwood	18	Cords		
	Mixed Aspen		121	Cords		
	<i>Quaking Aspen</i>		121	<i>Cords</i>		

DESCRIPTION OF TIMBER BY PAYMENT UNIT (PU), CON'T

PU	MARKET GROUP	PRODUCT	QUANTITY	UNIT	ACRES	ADVERTISE PRICE
11 con't	Mixed Hardwood	Pulpwood	46	Cords		
	<i>American Elm</i>		9	<i>Cords</i>		
	<i>Paper Birch</i>		7	<i>Cords</i>		
	<i>Red Maple</i>		30	<i>Cords</i>		
	White Spruce		22	Cords		
TOTAL:			177.7	MBF		
TOTAL:			4,086	Cords		

Sale Specific Conditions & Requirements

Sale Name: Early Ursa

Sale Number: 12-006-21 Seq#: 1

1 - Sale Area

1.2 - Boundaries

1.2.1 - Painted boundaries (9/19)

The sale boundary and Payment Unit boundaries are marked and identified by blue, red, and yellow paint. Exterior sale boundary lines against private property are marked with blue paint. Exterior sale boundary lines against state are marked with red paint. Interior Payment Unit boundaries are marked with yellow paint. Retention patches are marked with red paint, no harvesting activities may occur within these areas. The painted boundary line trees are not Included Timber and are to be protected. Yellow painted trees designating an interior Payment Unit boundary are only to be cut when all surrounding Payment Units have been paid.

2 - Timber Specifications

2.1 - Included Timber

2.1.1 - Clearcut unit(s) with unmerchantable trees (6/14)

Within Payment Unit(s) 2, 4-8, and 11, cut all trees that are two (2) inches or more at DBH, except do not cut cedar, hemlock, oak, and pine. In addition:

- Within Payment Unit 2 and 4, do not cut spruce/fir under two 100-inch pulpwood sticks.
- Within Payment Unit 5, do not cut spruce/fir 4" at DBH (4.5 feet above the ground) or less.
- Within Payment Unit 7, do not cut birch and spruce/fir 4" at DBH (4.5 above the ground) or less.
- Within Payment Unit 8, do not cut birch.
- Within Payment Unit 11, do not cut cherry.

2.1.3 - Cut tree marked unit(s) (12/08)

Within Payment Unit(s) 1, 3, and 9, all trees are designated for cutting when marked with orange paint above and below stump height, regardless of merchantability. In addition, all aspen are designated to be cut.

2.1.4 - Designated timber unit(s) (6/17)

Within Payment Unit(s) 10, all aspen are designated for cutting which meet minimum piece specifications in 2.2 - Utilization regardless of merchantability. No other species are to be harvested.

3 - Payments

3.3 - Pre-measured Sales

3.3.4 - Dividing payment units (7/14)

Payment Unit(s) 8 may be divided at the request of the Purchaser and upon approval of the Unit Manager. Dividing Payment Units is a contract modification which requires a Timber Sale Contract Amendment. There will be only one division per Payment Unit.

4 - Transportation

4.1 - Construction

4.1.7 - Road closure (10/11)

All new roads built into the sale must be blocked to vehicle traffic upon completion of the sale. Overgrown roads that are reopened shall be considered new roads. These roads must be rendered impassable to cars and trucks. Contact the sale administrator for specific details of design and placement.

4.3 - Public Right-of-Way

4.3.2 - County R-O-W (12/06)

The county must be contacted prior to crossing or harvesting in the county road R-O-W. This applies to Payment Units 6 and 11 and the Norway Truck Trail. Dickinson County Road Commission may require a permit.

4.4 - Access

4.4.3 - Access gate (12/08)

The access gate for the hunter walking trail, must be locked at the completion of each day unless otherwise approved by the Unit Manager or his/her representative.

5 - Operations

5.2 - Conduct of Operations

5.2.1 - Slash

5.2.1.13 - Dispose of slash as directed (12/05)

Slash is to be disposed of as directed by the sale administrator.

5.2.3 - Operating Restrictions

5.2.3.1 - Operating restrictions (9/11)

Within Payment Unit(s) 1-4 unless changed by written agreement, cutting, skidding, and hauling are limited to the period of frozen ground conditions only. This restriction is because of the hunter walking trail.

5.2.3.3 - Bark slippage restriction (3/09)

Within Payment Unit(s) 2 and 3, unless changed by written agreement, cutting and skidding are not permitted during the period of April 1 to July 15. This restriction is because of bark slippage.

5.2.32 - Decking/landing restoration (9/13)

All decking and landing areas must have the surface area restored to a condition equal to or better than before. This is to ensure the proper regeneration of the stand. Wood debris, chips, and "cookies" from trimmings must be removed or scattered away from landing and loading areas and may not be windrowed on the edge. Dirt is not to be left in piles but feathered out.

5.2.38 - No decking against live trees (2/04)

Cut products may not be decked against unmarked or designated leave trees.

5.2.39 - ORV trail/route protection (4/18)

The Black Creek Route is an ORV route and is shown on the Timber Sale Map. Do not cut trees or damage posts with yellow ORV markers. Trees with yellow ORV markers shall be cut off above the markers and at least 5 feet above ground. All stumps within 5 feet of the route must be cut flush with the ground. Maintain a 20-foot-wide slash, debris, and rut free zone daily using the ORV route as the centerline. Do not run equipment down the ORV route. Skidding across the route may only occur in locations approved by the sale administrator.

5.4 - Soil Protection

5.4.1 - Rutting restriction, general (7/16)

Operations are to cease immediately if equipment and weather conditions result in rutting of roads and/or skid trails which is 12 inches or greater in depth and 50 feet in length. The Unit Manager or his/her representative may restrict hauling and/or skidding if ruts exceed the specified depth. With the Unit Manager or his/her representative's approval, the Purchaser may return to the area when the risk of rutting has decreased.

6 - Safety and Fire Prevention

6.2 - Signing

6.2.1 - Road posting (10/20)

The Purchaser is responsible for posting and maintaining caution signs on the Norway Truck Trail prior to beginning operations. The road must be posted at appropriate distances from the Sale Area to warn of logging activity and truck traffic. Signs must be removed when harvest operations are suspended or completed. The Purchaser will provide these signs.

6.2.3 - Recreational trail posting (10/20)

The Purchaser is responsible for posting and maintaining caution signs on Black Creek recreational trail prior to beginning operations. The trail must be posted at appropriate distances from the Sale Area to warn of logging activity and truck traffic at both ends of the trail. Signs must be removed when harvest operations are suspended or completed. The Purchaser will

provide these signs.



Sale Number	Year
12-006-21	2021

TIMBER SALE MAP

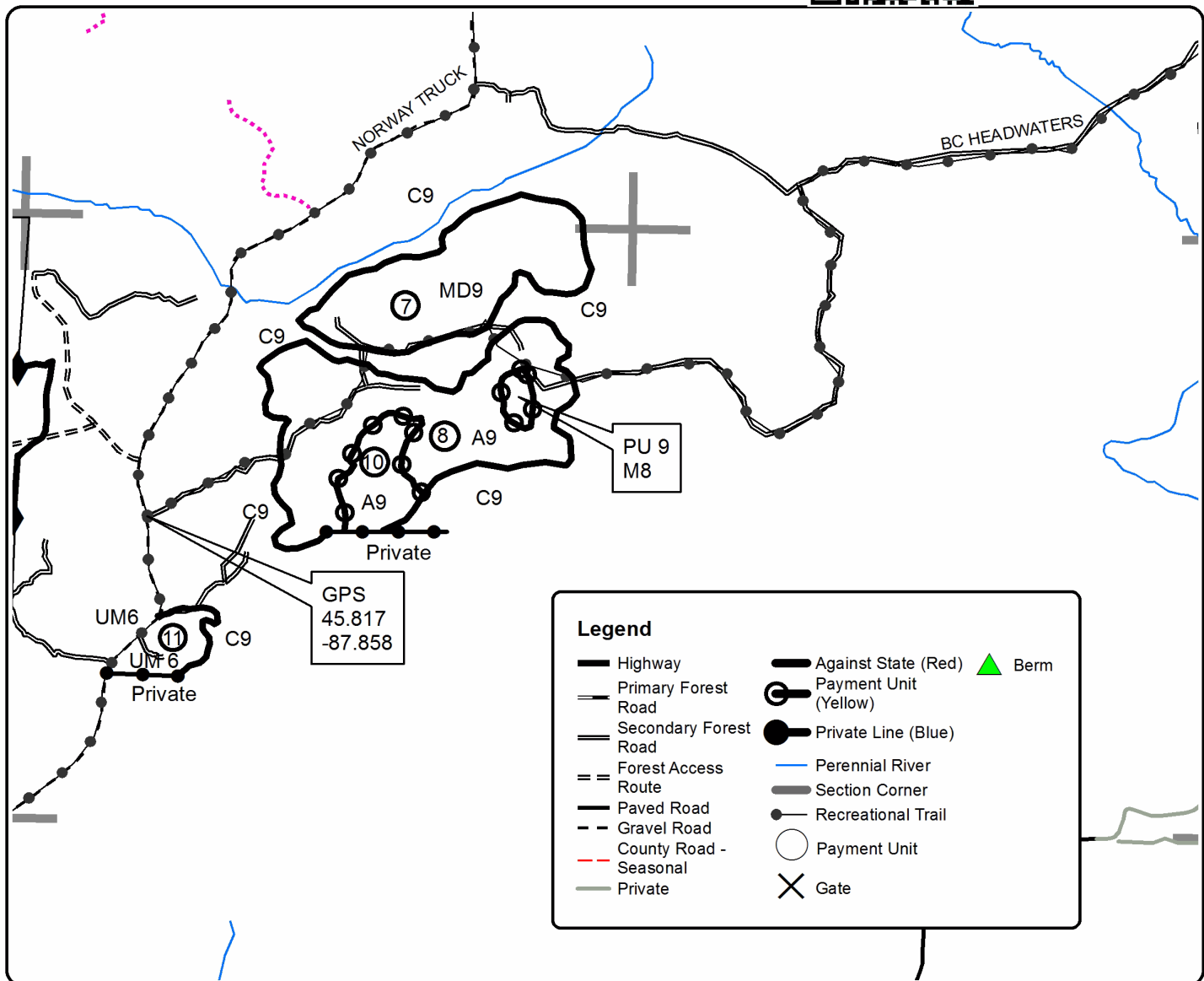
This information provided by authority of Part 525, 1994 PA 451, as amended.

Forest Management Unit Crystal Falls Management Unit	County Dickinson Co.	Mapped By Dickie Goupell	Date 6-28-2021	Page 1	of 2
Township 40N	Range 29W	Section(s) and Subdivision(s) Sec 23 SENE, NESE S 1/2SE, 24 NW, SW, 26 S1/2 SE, 35 E1/2 NW, NE, N 1/2 SW	Scale 1:15,840		

Cover Type				Density	
A = Aspen	H = Hemlock	N = Marsh	U = Upland Brush	0 = Non Stocked	5 = Pole Timber Medium
B = Paper Birch	J = Jack Pine	O = Oak	UM = Upland Mixed	1 = Seedling Sapling Poor	6 = Pole Timber Well
C = Cedar	L = Lowland Brush	P = Lowland Poplar	V = Bog or Marsh	2 = Seedling Sapling Medium	7 = Saw Timber Poor
D = Tread Bog	LM = Lowland Mixed	Q = Mixed Swamp Conifer	W = White Pine	3 = Seedling Sapling Well	8 = Saw Timber Medium
E = Swamp Hdwoods	M = Mpl, Bch, Brch	R = Red Pine	X = Non Stocked	4 = Pole Timber Poor	9 = Saw Timber Well
F = Spruce Fir	MC = Mixed Conifer	S = Black Spruce	Z = Water		
G = Grass	MD = Mixed Deciduous	T = Tamarack			

PU	Acres	PU	Acres
1	7.9	7	41.4
2	12.7	8	58.4
3	24.7	9	2.6
4	5.2	10	12.2
5	25.9	11	8.3
6	4.0		

Early Ursa Compartment 106 Acres 203.3





TIMBER SALE MAP

This information provided by authority of Part 525, 1994 PA 451, as amended.

Sale Number	Year
12-006-21	2021

Forest Management Unit	County	Mapped By
Crystal Falls Management Unit	Dickinson Co.	Dickie Goupell
		Cruised By
		Dickie Goupell

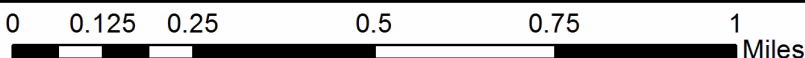
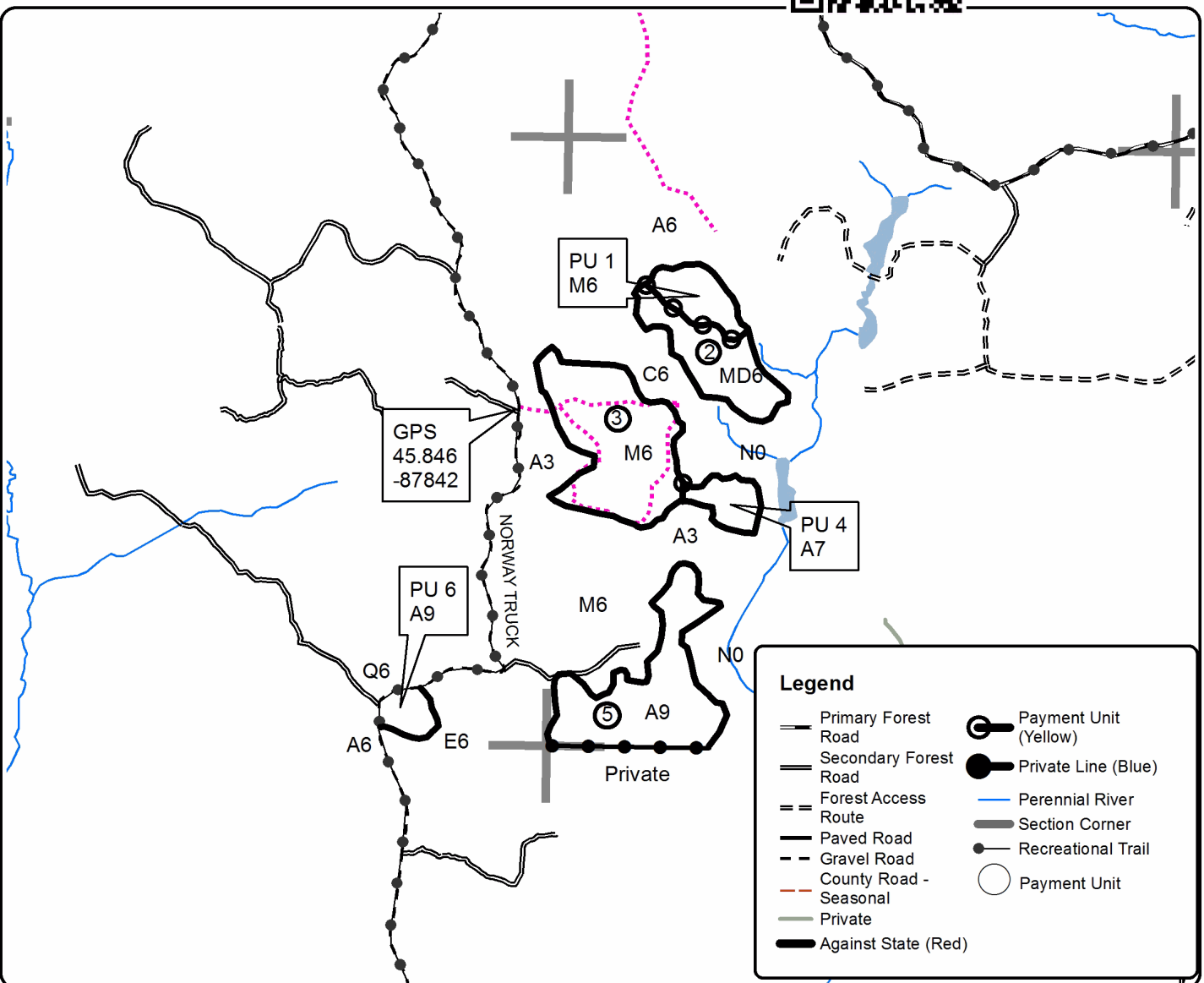
Date	Page	of
6-28-2021	1	2

Township	Range	Section(s) and Subdivision(s)	Scale
40N	29W	Sec 23 SENE, NESE, S 1/2 SE, 24 NW, SW 26 S1/2 SE, 35 E 1/2/ NW, NE, N 1/2 SW	1:15,840

Cover Type				Density	
A = Aspen	H = Hemlock	N = Marsh	U = Upland Brush	0 = Non Stocked	5 = Pole Timber Medium
B = Paper Birch	J = Jack Pine	O = Oak	UM = Upland Mixed	1 = Seedling Sapling Poor	6 = Pole Timber Well
C = Cedar	L = Lowland Brush	P = Lowland Poplar	V = Bog or Marsh	2 = Seedling Sapling Medium	7 = Saw Timber Poor
D = Treed Bog	LM = Lowland Mixed	Q = Mixed Swamp Conifer	W = White Pine	3 = Seedling Sapling Well	8 = Saw Timber Medium
E = Swamp Hdwoods	M = Mpl, Bch, Brch	R = Red Pine	X = Non Stocked	4 = Pole Timber Poor	9 = Saw Timber Well
F = Spruce Fir	MC = Mixed Conifer	S = Black Spruce	Z = Water		
G = Grass	MD = Mixed Deciduous	T = Tamarack			

PU	Acres	PU	Acres
1	7.9	7	41.4
2	12.7	8	58.4
3	24.7	9	2.6
4	5.2	10	12.2
5	25.9	11	8.3
6	4.0		

Early Ursa Compartment 106 Acres 203.3



TIMBER SALE INFORMATION

Extra Corners (12-007-21)

T40N, R29W, SEC. 5; T40N, R29W, SEC. 6; T40N, R29W, SEC. 7; T40N, R29W, SEC. 8; T41N, R29W, SEC. 19.
Dickinson County (Advertised Price \$65,536.30)

SALE NOTE: All units of volume listed for this sale were estimated using the Inventory Manager computer program and the new Michigan taper model.

Buyer might decide to build a road into Payment Units 3 and 4. Road work will be required, this includes hauling at least 200 yards of gravel and placing a cross drainage culvert.

A recreation site such as a trail, pathway, or campground is within the sale area or the vicinity. Certain restrictions/specifications may be applicable including time restrictions.

A timber sale contract for this lump sum, sealed bid timber sale will be awarded to the responsible bidder offering the highest sealed bid price. All units of volume listed below were estimated using the Inventory Manager computer program and the new Michigan taper model. Bids must be at or above the following advertised price for each product and species:

<u>PRODUCTS & SPECIES</u>	<u>ESTIMATED UNITS*</u>	<u>ADVERTISED PRICE</u>
Sawtimber		
Basswood	244.4 MBF	\$ 50.00 / MBF
Black Ash	8.4 MBF	\$ 15.00 / MBF
Paper Birch	8.2 MBF	\$ 88.00 / MBF
Red Maple	4.3 MBF	\$ 89.00 / MBF
Sugar Maple	110.7 MBF	\$ 160.00 / MBF
White Ash	206.5 MBF	\$ 49.00 / MBF
Yellow Birch	6.9 MBF	\$ 48.00 / MBF
Pulpwood		
Balsam Fir	33 Cords	\$ 7.10 / Cord
Basswood	352 Cords	\$ 6.80 / Cord
Mixed Aspen	252 Cords	\$ 18.85 / Cord
Mixed Hardwood	1,348 Cords	\$ 12.15 / Cord
White Spruce	21 Cords	\$ 8.00 / Cord

* The total volume is statistically estimated within plus (+) or minus (-) 4.89 percent. There are an estimated 3,457 cords on this timber sale, plus or minus 169 cords at the 95% confidence level. The estimated units are final and not subject to adjustment. Prospective bidders are urged to examine this timber and to make their own estimates of quantity and quality.

BOND AND PAYMENT SCHEDULE:

1. A bond in the amount of \$6,554.00 to insure faithful performance of the conditions of the contract will be deposited by the successful bidder within 21 days of the sale award.
2. Cutting in any sale or unit without the required advance payment would be considered a trespass.
3. Total payment must be paid in advance or according to the following schedule :
 - (a) Ten percent (10%) of the sale value must be paid within 21 days of the sale award.
 - (b) The 10% down payment will be credited towards the first unit cut.
 - (c) Payment for each of the following units must be made before cutting begins in that unit:

PAYMENT UNIT NUMBER	PERCENT OF TOTAL SALE VALUE
01	24.4%
02	8.9%
03	13.9%
04	28.9%
05	8.9%
06	8.7%
07	1.3%
08	5.0%

4. If no cutting takes place, the 10% down payment will not be refunded.
5. Operations on the contract issued will terminate on 06/30/2025.

SALE STATISTICS

Volumes were calculated in cubic feet using the Michigan taper model. Cubic foot volume includes all wood inside bark for the product indicated. For display purposes, cubic feet were converted to cords and MBF using a simple conversion factor, e.g. 79 cubic feet per cord and 185 cubic feet per MBF. The cubic foot volumes are precise; the cords and MBF volumes are not. Cubic foot volume cannot be directly converted to cords or boards with precision.

SALE VOLUMES

The total estimated sale volume may not equal the sum of the species/products due to the nature of statistical calculations associated with double sampling methodology.

VOLUME			STATISTICAL RANGE IN CORDS	
TOTAL CUBIC FEET	TOTAL CORDS	PERCENT ERROR	MINIMUM	MAXIMUM
273,090	3,457	4.89%	3,288	3,626

VDU VOLUMES

A VDU is a Volume Determination Unit. Volumes and their associated statistics are calculated at the VDU level and summarized to the sale level. There is often a one to one relationship between a VDU and a Payment Unit, but not always, depending on the cruise design. Refer to the VDU TO PAYMENT UNIT table.

VDU	VOLUME			RANGE IN CORDS	
	TOTAL CUBIC FEET	TOTAL CORDS	PERCENT ERROR	MINIMUM	MAXIMUM
1	65,030	823	10.38%	738	909
2	6,483	82	21.93%	64	100
3	18,765	238	16.26%	199	276
4	35,067	444	9.48%	402	486
5	54,413	689	11.30%	611	767
6	24,571	311	17.19%	258	365
7	25,168	319	18.87%	258	379
8	4,329	55	20.79%	43	66
9	17,923	227	10.36%	203	250
TOTAL:	251,748	3,187		2,776	3,597

VDU TO PAYMENT UNIT

When a VDU is associated with more than one Payment Unit (PU), the VDU volumes are assigned to the PU based on acres of the VDU within the PU.

VDU	VDU ACRES	PU	PU ACRES
1	51.8	1	51.8
2	7.7	2	7.7
3	20.0	2	20.0
4	23.0	3	23.0
5	37.8	4	37.8
6	44.5	5	44.5
7	27.0	6	27.0
8	21.1	7	21.1
9	6.1	8	6.1
TOTAL:	239.0		239.0

DESCRIPTION OF TIMBER BY PAYMENT UNIT (PU)

PU	MARKET GROUP	PRODUCT	QUANTITY	UNIT	ACRES	ADVERTISE PRICE	
1	Basswood	Sawtimber	76.1	MBF	51.8	\$15,992.20	
	Black Ash		4.7	MBF			
	Sugar Maple		13.3	MBF			
	White Ash		113.3	MBF			
	Yellow Birch		2.1	MBF			
	Balsam Fir		Pulpwood	5			Cords
	Basswood			100			Cords
	Mixed Hardwood			298			Cords
	<i>Black Ash</i>			18			Cords
	<i>Red Maple</i>			13			Cords
	<i>Sugar Maple</i>			82			Cords
	<i>White Ash</i>			172			Cords
	<i>Yellow Birch</i>			13			Cords
2	Basswood	Sawtimber	22.8	MBF	27.7	\$5,800.20	
	Paper Birch		1.0	MBF			
	Red Maple		2.9	MBF			
	Sugar Maple		2.3	MBF			
	White Ash		37.5	MBF			
	Yellow Birch		0.5	MBF			
	Balsam Fir		Pulpwood	9			Cords
	Basswood			22			Cords
	Mixed Hardwood			154			Cords
	<i>Ironwood</i>			2			Cords
	<i>Paper Birch</i>			4			Cords
	<i>Red Maple</i>			14			Cords
	<i>Sugar Maple</i>			73			Cords
<i>White Ash</i>	60	Cords					
<i>Yellow Birch</i>	1	Cords					
3	Basswood	Sawtimber	25.3	MBF	23.0	\$9,119.05	
	Black Ash		1.7	MBF			
	Paper Birch		6.2	MBF			
	Red Maple		0.6	MBF			
	Sugar Maple		19.8	MBF			
	White Ash		11.8	MBF			
	Yellow Birch		1.2	MBF			
	Basswood		Pulpwood	86			Cords
	Mixed Aspen			16			Cords
	<i>Quaking Aspen</i>			16			Cords
	Mixed Hardwood			209			Cords
	<i>Black Ash</i>			2			Cords
	<i>Ironwood</i>			3			Cords
	<i>Paper Birch</i>			11			Cords
	<i>Red Maple</i>			30			Cords
	<i>Sugar Maple</i>		153	Cords			
<i>White Ash</i>	7	Cords					
<i>Yellow Birch</i>	3	Cords					
4	Basswood	Sawtimber	42.7	MBF	37.8	\$18,948.90	
	Paper Birch		1.0	MBF			
	Sugar Maple		66.8	MBF			
	White Ash		21.6	MBF			
	Yellow Birch		3.1	MBF			
	Balsam Fir		Pulpwood	10			Cords
	Basswood			64			Cords
	Mixed Aspen			18			Cords
	<i>Quaking Aspen</i>			18			Cords
	Mixed Hardwood			328			Cords

DESCRIPTION OF TIMBER BY PAYMENT UNIT (PU), CON'T

PU	MARKET GROUP	PRODUCT	QUANTITY	UNIT	ACRES	ADVERTISE PRICE
4 con't	<i>American Elm</i>	<i>Sawtimber</i>	3.0	<i>MBF</i>		
	<i>American Elm</i>	<i>Pulpwood</i>	5	<i>Cords</i>		
	<i>Black Ash</i>		6	<i>Cords</i>		
	<i>Paper Birch</i>		4	<i>Cords</i>		
	<i>Red Maple</i>		15	<i>Cords</i>		
	<i>Sugar Maple</i>		244	<i>Cords</i>		
	<i>White Ash</i>		36	<i>Cords</i>		
	<i>Yellow Birch</i>		12	<i>Cords</i>		
5	Basswood	Sawtimber	51.9	MBF	44.5	\$5,847.25
	Sugar Maple		3.4	MBF		
	White Ash		17.3	MBF		
	Basswood	Pulpwood	52	Cords		
	Mixed Aspen		20	Cords		
	<i>Quaking Aspen</i>		20	<i>Cords</i>		
	Mixed Hardwood		93	Cords		
	<i>Red Maple</i>		3	<i>Cords</i>		
	<i>Sugar Maple</i>		64	<i>Cords</i>		
	<i>White Ash</i>		26	<i>Cords</i>		
6	Basswood	Sawtimber	16.2	MBF	27.0	\$5,732.85
	Sugar Maple		5.1	MBF		
	White Ash		5.0	MBF		
	Basswood	Pulpwood	15	Cords		
	Mixed Aspen		106	Cords		
	<i>Balsam Poplar</i>		6	<i>Cords</i>		
	<i>Quaking Aspen</i>		100	<i>Cords</i>		
	Mixed Hardwood		145	Cords		
	<i>Sugar Maple</i>		72	<i>Cords</i>		
	<i>White Ash</i>		73	<i>Cords</i>		
7	Basswood	Sawtimber	9.4	MBF	21.1	\$837.85
	Basswood	Pulpwood	13	Cords		
	Mixed Hardwood		23	Cords		
	<i>Paper Birch</i>		6	<i>Cords</i>		
	<i>Red Maple</i>		5	<i>Cords</i>		
	<i>Sugar Maple</i>		12	<i>Cords</i>		
8	Black Ash	Sawtimber	2.0	MBF	6.1	\$3,258.00
	Red Maple		0.8	MBF		
	Balsam Fir	Pulpwood	9	Cords		
	Mixed Aspen		92	Cords		
	<i>Quaking Aspen</i>		92	<i>Cords</i>		
	Mixed Hardwood		98	Cords		
	<i>American Elm</i>		4	<i>Cords</i>		
	<i>Black Ash</i>		55	<i>Cords</i>		
	<i>Ironwood</i>		1	<i>Cords</i>		
	<i>Paper Birch</i>		13	<i>Cords</i>		
	<i>Red Maple</i>		21	<i>Cords</i>		
	<i>Sugar Maple</i>		3	<i>Cords</i>		
	<i>Yellow Birch</i>		1	<i>Cords</i>		
	White Spruce		21	Cords		
	TOTAL:			589.4		
TOTAL:			2,006	Cords		

Sale Specific Conditions & Requirements

Sale Name: Extra Corners

Sale Number: 12-007-21 Seq#: 1

1 - Sale Area

1.2 - Boundaries

1.2.1 - Painted boundaries (9/19)

The sale boundary and Payment Unit boundaries are marked and identified by blue, red, and yellow paint. Exterior sale boundary lines against private property are marked with blue paint. Exterior sale boundary lines against state are marked with red paint. Interior Payment Unit boundaries are marked with yellow paint. The painted boundary line trees are not Included Timber and are to be protected unless marked with orange paint. Yellow painted trees designating an interior Payment Unit boundary are only to be cut when all surrounding Payment Units have been paid and marked with orange paint.

2 - Timber Specifications

2.1 - Included Timber

2.1.1 - Clearcut unit(s) with unmerchantable trees (6/14)

Within Payment Unit(s) 8, cut all species trees that are two (2) inches or more at DBH, except cedar, hemlock, oak, and pine.

2.1.3 - Cut tree marked unit(s) (12/08)

Within Payment Unit(s) 1,2, and 5-7, all trees are designated for cutting when marked with orange paint above and below stump height, regardless of merchantability.

2.1.7 - Leave tree marked unit(s) (6/14)

Within Payment Unit(s) 3 and 4, harvest all trees within one chain of all hemlock, white pine and red oak.

All trees, which meet minimum piece specifications in 2.2 Utilization, are designated for cutting, except conifers and red oak and trees marked with green paint above and below stump height.

4 - Transportation

4.1 - Construction

4.1.6 - Road construction (1/09)

Construction of new roads or improvements of existing roads shall be done in such a way as to minimize the environmental and visual impacts. Merchantable trees shall be cut and utilized unless otherwise directed. Non-merchantable trees shall be severed and laid flat on the ground. Slash shall be scattered, and not left in windrows and kept a minimum of 10 feet back from the road edge. Stumps shall be set upright, not left on edge, and be moved at least 10 feet away from the road edge. Disturbed soil shall be feathered into the woods and not left in berms or windrows.

4.1.7 - Road closure (10/11)

All new roads built into the sale must be blocked to vehicle traffic upon completion of the sale. All new roads built into the sale must be blocked to vehicle traffic within 30 days of completion of hauling. Overgrown roads that are reopened shall be considered new roads. In general, this will require constructing double earthen berms at strategic locations. In general, this will require constructing a four (4') foot high berm of stumps and logs covered with earth. Stumps and brush must be placed along the remainder of the trail. These roads must be rendered impassable to cars and trucks. Contact the sale administrator for specific details of design and placement.

4.2 - Maintenance

4.2.4 - Grading (10/16)

For completion of the sale, state forest roads must be graded. In general, this will require a road grader or bulldozer to shape up the roads after forest products have been hauled off site. This includes cleaning of drainage areas, grading, crowning, and filling with gravel, if necessary. The grading equipment to be used must be approved by the Unit Manager or his/her representative.

4.3 - Public Right-of-Way

4.3.2 - County R-O-W (12/06)

The county must be contacted prior to crossing or harvesting in the county road R-O-W. This applies to Payment Unit 1 and the Merriman Truck Trail.

5 - Operations

5.2 - Conduct of Operations

5.2.1 - Slash

5.2.1.13 - Dispose of slash as directed (12/05)

Slash is to be disposed of as directed by the sale administrator.

5.2.3 - Operating Restrictions

5.2.3.3 - Bark slippage restriction (3/09)

Within Payment Unit(s) 1-7, unless changed by written agreement, cutting and skidding are not permitted during the period of April 15 to July 15. This restriction is because of bark slippage.

5.2.18 - Equipment requirements (1/09)

Within Payment Units 3 and 4 summer only harvest with tracked machines to help with scarification.

5.2.32 - Decking/landing restoration (9/13)

All decking and landing areas must have the surface area restored to a condition equal to or better than before. This is to ensure the proper regeneration of the stand. Wood debris, chips, and "cookies" from trimmings must be removed or scattered away from landing and loading areas and may not be windrowed on the edge.

5.2.38 - No decking against live trees (2/04)

Cut products may not be decked against unmarked or designated leave trees.

5.2.39 - ORV trail/route protection (4/18)

The Carney Lake Road is an ORV trail or route and is shown on the Timber Sale Map. Do not cut trees or damage posts with yellow ORV markers. All stumps within 5 feet of the trail must be cut flush with the ground. Maintain a 20-foot-wide slash, debris, and rut free zone daily using the ORV trail or route as the centerline.

5.2.41 - Snowmobile trail protection (9/11)

The Carney Lake Road (Trail #5) trail is a snowmobile trail and is shown on the Timber Sale Map. Do not cut or damage posts with orange trail markers or traffic control signs. If the trail is used, it must be maintained and restored to a condition equal to or better than before the sale. If the trail is used for hauling, it must be graded to the satisfaction of the Unit Manager or his/her representative prior to December 1. If the trail road is to be used for hauling during the snowmobile season, then a snow-covered base must be left on the trail. The snowmobile trail may only be crossed at right angles. Maintain a 20-foot-wide slash, debris, and rut free zone daily using the snowmobile trail as the centerline. No decking of forest products will be permitted along the snowmobile trail. All stumps within 20 feet of the snowmobile trail must be cut at ground level.

5.4 - Soil Protection

5.4.1 - Rutting restriction, general (7/16)

Operations are to cease immediately if equipment and weather conditions result in rutting of roads and/or skid trails which is 12 inches or greater in depth and 50 feet in length. The Unit Manager or his/her representative may restrict hauling and/or skidding if ruts exceed the specified depth. With the Unit Manager or his/her representative's approval, the Purchaser may return to the area when the risk of rutting has decreased.

6 - Safety and Fire Prevention

6.2 - Signing

6.2.2 - Snowmobile trail posting (10/20)

The Purchaser is responsible for posting and maintaining caution signs on Carney Lake snowmobile trail prior to beginning operations during the snowmobile season (approximately December 1 to March 31). The trail must be posted at appropriate distances from the Sale Area to warn of logging activity and truck traffic. Signs must be removed when harvest operations are suspended or completed. The Purchaser will provide these signs.

6.2.3 - Recreational trail posting (10/20)

The Purchaser is responsible for posting and maintaining caution signs on Carney Lake trail prior to beginning operations. The trail must be posted at appropriate distances from the Sale Area to warn of logging activity and truck traffic at both ends of the trail. Signs must be removed when harvest operations are suspended or completed. The Purchaser will provide these signs.



Sale Number	Year
12-007	2021

TIMBER SALE MAP

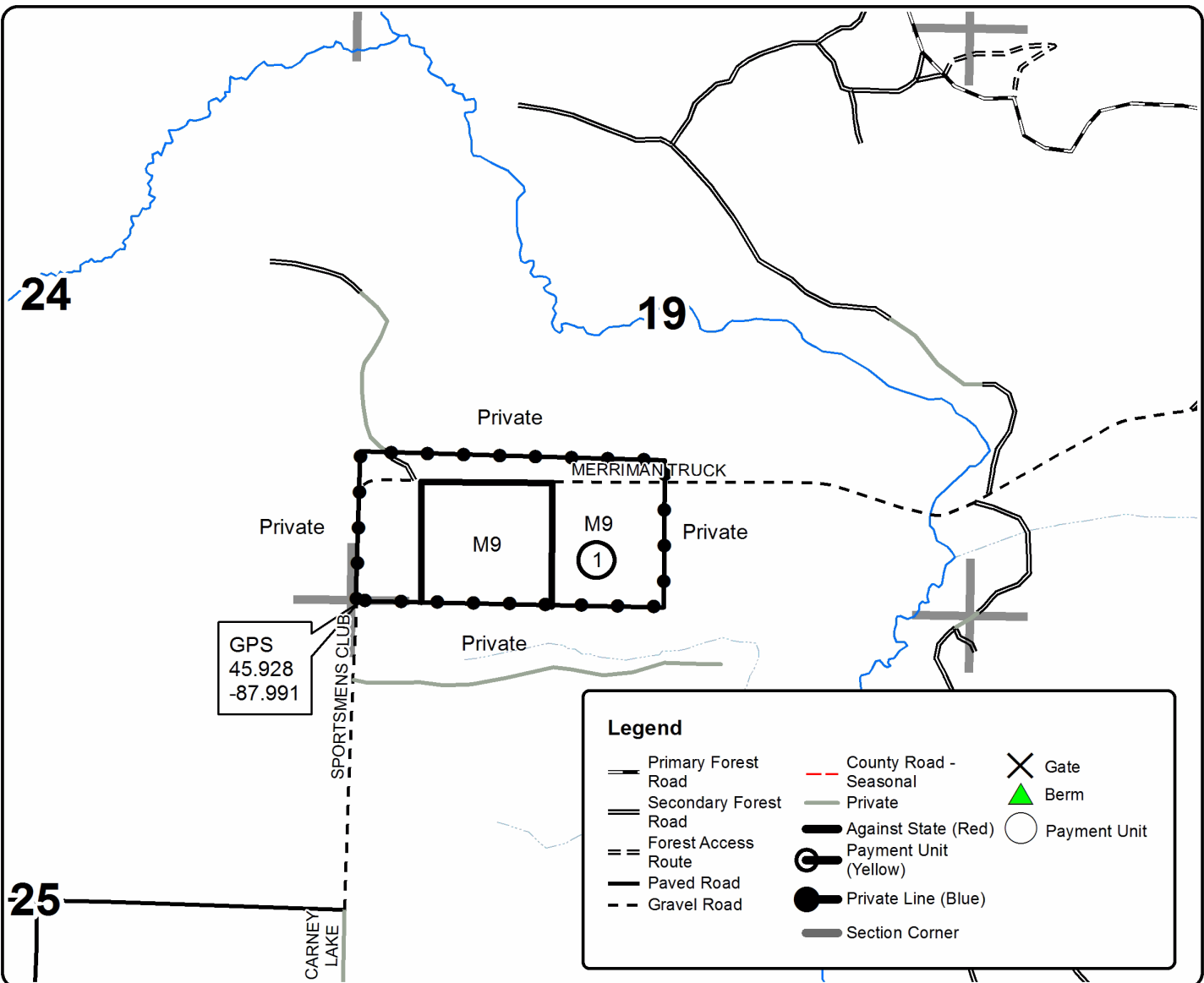
This information provided by authority of Part 525, 1994 PA 451, as amended.

Forest Management Unit	County	Mapped By	Date	Page	of
Crystal Falls Management Unit	Dickinson Co.	Dickie Goupell, Contractor	6/23/2021	1	2
Township	Range	Section(s) and Subdivision(s)	Scale		
40 & 41 N	29W	Sec 5 SWSW, 6 SENW, S1/2NE, S1/2SE, 7 NE, 8 W1/2 NW 19 S1/2SW	1:15,840		

Cover Type				Density	
A = Aspen	H = Hemlock	N = Marsh	U = Upland Brush	0 = Non Stocked	5 = Pole Timber Medium
B = Paper Birch	J = Jack Pine	O = Oak	UM = Upland Mixed	1 = Seedling Sapling Poor	6 = Pole Timber Well
C = Cedar	L = Lowland Brush	P = Lowland Poplar	V = Bog or Marsh	2 = Seedling Sapling Medium	7 = Saw Timber Poor
D = Tread Bog	LM = Lowland Mixed	Q = Mixed Swamp Conifer	W = White Pine	3 = Seedling Sapling Well	8 = Saw Timber Medium
E = Swamp Hdwoods	M = Mpl, Bch, Brch	R = Red Pine	X = Non Stocked	4 = Pole Timber Poor	9 = Saw Timber Well
F = Spruce Fir	MC = Mixed Conifer	S = Black Spruce	Z = Water		
G = Grass	MD = Mixed Deciduous	T = Tamarack			

PU	Acres	PU	Acres
1	51.8	5	44.5
2	27.7	6	27.0
3	23.0	7	21.1
4	37.8	8	6.1

Extra Corners Compartments 80 & 100 Acres 239





TIMBER SALE MAP

This information provided by authority of Part 525, 1994 PA 451, as amended.

Sale Number	Year
12-007	2021

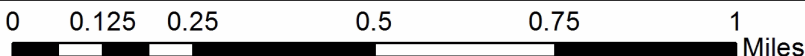
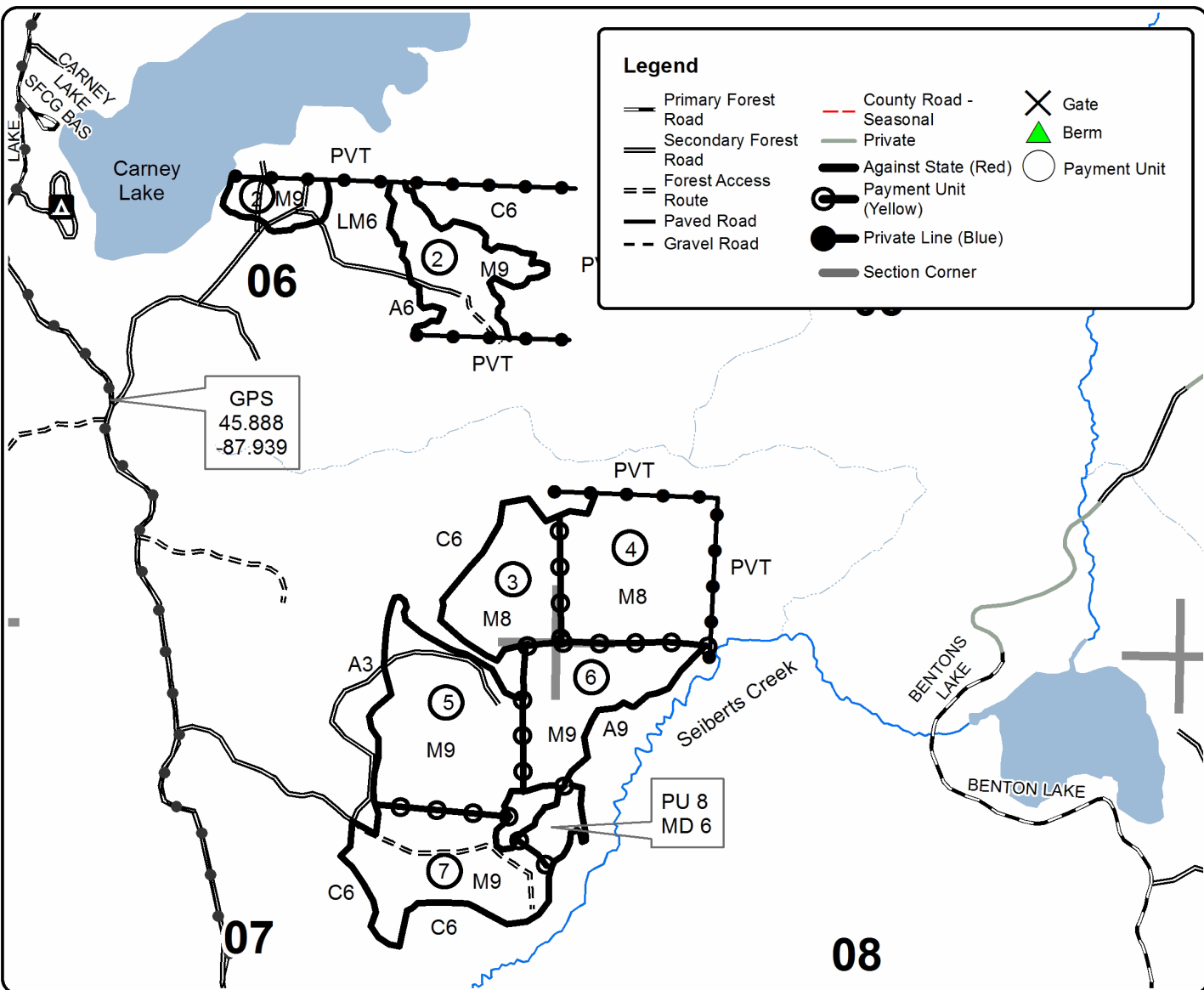
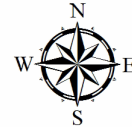
Forest Management Unit	County	Mapped By	Date	Page	of
Crystal Falls Management Unit	Dickinson Co.	Dickie Goupell, Contractor	6/23/2021	2	2
		Cruised By			
		Dickie Goupell, Contractor			

Township	Range	Section(s) and Subdivision(s)	Scale
40 & 41 N	29W	Sec 5 SWSW, 6 SEW, S1/2NE, S1/2SE, 7 NE, 8 W1/2 NW 19 S1/2SW	1:15,840

Cover Type				Density			
A = Aspen	H = Hemlock	N = Marsh	U = Upland Brush	0 = Non Stocked	5 = Pole Timber Medium		
B = Paper Birch	J = Jack Pine	O = Oak	UM = Upland Mixed	1 = Seedling Sapling Poor	6 = Pole Timber Well		
C = Cedar	L = Lowland Brush	P = Lowland Poplar	V = Bog or Marsh	2 = Seedling Sapling Medium	7 = Saw Timber Poor		
D = Tread Bog	LM = Lowland Mixed	Q = Mixed Swamp Conifer	W = White Pine	3 = Seedling Sapling Well	8 = Saw Timber Medium		
E = Swamp Hdwoods	M = Mpl, Bch, Brch	R = Red Pine	X = Non Stocked	4 = Pole Timber Poor	9 = Saw Timber Well		
F = Spruce Fir	MC = Mixed Conifer	S = Black Spruce	Z = Water				
G = Grass	MD = Mixed Deciduous	T = Tamarack					

PU	Acres	PU	Acres
1	51.8	5	44.5
2	27.7	6	27.0
3	23.0	7	21.1
4	37.8	8	6.1

Extra Corners
Compartments 80 & 100
Acres 239



Two Mile Split (12-002-21)

T44N, R29W, SEC. 10; T44N, R29W, SEC. 15; T44N, R29W, SEC. 16; T44N,

In response to the notice of sale to be held 8:30 a.m. (local time) on November 10, 2021, I am hereby submitting my sealed bid (firm offer) for the following forest products to be cut. Bids for individual species must be at or above the advertised price. All non-responsive bid forms may be rejected.

<u>PRODUCTS & SPECIES</u>	<u>ESTIMATED VOLUME*</u>	<u>ADVERTISED PRICE</u>	<u>BID PRICE/UNIT</u>
Sawtimber			
Basswood	24.7 MBF	\$ 54.00/MBF	\$ _____
Paper Birch	123.6 MBF	\$ 94.00/MBF	\$ _____
Red Maple	92.2 MBF	\$ 96.00/MBF	\$ _____
Sugar Maple	257.0 MBF	\$ 172.00/MBF	\$ _____
Yellow Birch	9.4 MBF	\$ 52.00/MBF	\$ _____
Pulpwood			
Balsam Fir	395 Cords	\$ 7.60/Cord	\$ _____
Mixed Aspen	4,471 Cords	\$ 20.30/Cord	\$ _____
Mixed Hardwood	2,710 Cords	\$ 13.10/Cord	\$ _____
Mixed Spruce	178 Cords	\$ 8.60/Cord	\$ _____

*The volumes are statistically estimated within plus (+) or minus (-) 3.10 percent at 95% confidence level. These estimated volumes are final and not subject to adjustment. Prospective bidders are urged to examine this timber and to make their own estimates of quantity and quality.

I understand that any or all bids may be rejected. All bids must be signed and all bid items must be bid or the bid form may be rejected. I also understand that consideration and awarding a contract will be based upon my past performance and ability to complete the contract based upon equipment and staffing subject to my control.

FEDERAL ID: ____ - ____ - ____ or SOCIAL SECURITY NUMBER: ____ - ____ - ____

Company or individual bidding: _____

Company representative's name: _____

Address: _____

City: _____ State: _____ Zip: _____

IF AVAILABLE, PLEASE PLACE THE PERSONALIZED LABEL FROM YOUR PROSPECTUS IN THE ABOVE BOX.

Individual or company representative's signature: _____ Date: _____

Phone number : _____ Email (optional): _____

THE WINNING BIDDER MUST COMPLETE THE VERIFICATION OF WORKER'S DISABILITY COMPENSATION ACT COMPLIANCE (ON REVERSE SIDE IF DOUBLE SIDED) WITHIN 21 DAYS OF SALE AWARD DATE



FOR DEPARTMENT USE ONLY
Sale Number (XX - XXX - XX - XX)
Forest Management Unit:

TIMBER SALE VERIFICATION OF WORKER'S DISABILITY COMPENSATION ACT COMPLIANCE

*As required by Act 317, P.A. 1969 (Worker's Compensation) and
Part 5 of Act 451 of 1994, as amended.*

VERIFICATION OF WORKER'S DISABILITY COMPENSATION ACT COMPLIANCE

- This verification must be completed and submitted within 21 days of contract award and prior to the issuance of the timber sale contract.
- In addition, if boxes 2B or 2C are checked, then Notice of Exclusion or Certificate of Insurance must be submitted within twenty-one (21) days of the contract award and prior to the issuance of the timber sale contract.
- All information must be typed or printed except for written signatures.

Please Check Appropriate Categories:

1. My business is organized as (you **must** check one of the boxes below):
 - A. Sole Proprietorship (individual)
 - B. Partnership
 - C. Corporation

2. You **must** check one of the boxes below:
 - A. I certify my business is a sole proprietorship and it has no employees but the sole proprietor. I am not subject to the Worker's Compensation Laws.
 - B. I certify my business has satisfied its obligation to the Worker's Compensation Act through the use of an approved Notice of Exclusion (BWC-337, Rev. 5/96). I will provide a copy of the Notice of Exclusion within 21 days of the contract award. (For questions or a copy of the BWC-337, please call the Worker's Compensation Bureau at 517-322-1195).
 - C. I certify my business has a Worker's Compensation Policy. I will provide an original Certificate of Insurance within twenty-one (21) days of the contract award.

3. If you have checked item 2(A) or 2(B), you **must** indicate the number of **both** full-time and part-time employees, other than yourself, including family members and active partners (if none, you must enter "0").

_____ Full-time Employees

_____ Part-time Employees

Name of Business		Federal ID (or) Social Security No.	
Address		Telephone ()	
City	State	ZIP	

I hereby certify that the above information is true and correct. I agree to notify the Michigan DNR of any changes that occur in factors affecting my coverage during any of my present and future operations.

Signature of Owner or Authorized Representative

Title

Date

Please complete the "SEALED BID" information on the next page

Clino Dino (12-003-21)

T43N, R30W, SEC. 18; T43N, R30W, SEC. 19; Dickinson COUNTY

In response to the notice of sale to be held 8:30 a.m. (local time) on November 10, 2021, I am hereby submitting my sealed bid (firm offer) for the following forest products to be cut. Bids for individual species must be at or above the advertised price. All non-responsive bid forms may be rejected.

<u>PRODUCTS & SPECIES</u>	<u>ESTIMATED VOLUME*</u>	<u>ADVERTISED PRICE</u>	<u>BID PRICE/UNIT</u>
Sawtimber			
Basswood	9.6 MBF	\$ 54.00/MBF	\$ _____
Black Ash	17.0 MBF	\$ 17.00/MBF	\$ _____
Paper Birch	2.8 MBF	\$ 94.00/MBF	\$ _____
Red Maple	40.2 MBF	\$ 96.00/MBF	\$ _____
Sugar Maple	10.2 MBF	\$ 172.00/MBF	\$ _____
Pulpwood			
Balsam Fir	122 Cords	\$ 7.60/Cord	\$ _____
Mixed Aspen	1,400 Cords	\$ 20.30/Cord	\$ _____
Mixed Hardwood	1,029 Cords	\$ 13.10/Cord	\$ _____
Mixed Spruce	60 Cords	\$ 8.60/Cord	\$ _____
Tamarack	24 Cords	\$ 4.75/Cord	\$ _____

*The volumes are statistically estimated within plus (+) or minus (-) 7.07 percent at 95% confidence level. These estimated volumes are final and not subject to adjustment. Prospective bidders are urged to examine this timber and to make their own estimates of quantity and quality.

I understand that any or all bids may be rejected. All bids must be signed and all bid items must be bid or the bid form may be rejected. I also understand that consideration and awarding a contract will be based upon my past performance and ability to complete the contract based upon equipment and staffing subject to my control.

FEDERAL ID: _____ - _____ or SOCIAL SECURITY NUMBER: _____ - _____ - _____

Company or individual bidding: _____

Company representative's name: _____

Address: _____

City: _____ State: _____ Zip: _____

IF AVAILABLE, PLEASE PLACE THE PERSONALIZED LABEL FROM YOUR PROSPECTUS IN THE ABOVE BOX.

Individual or company representative's signature: _____ Date: _____

Phone number : _____ Email (optional): _____

THE WINNING BIDDER MUST COMPLETE THE VERIFICATION OF WORKER'S DISABILITY COMPENSATION ACT COMPLIANCE (ON REVERSE SIDE IF DOUBLE SIDED) WITHIN 21 DAYS OF SALE AWARD DATE



FOR DEPARTMENT USE ONLY	
Sale Number (XX - XXX - XX - XX)	
Forest Management Unit:	

TIMBER SALE VERIFICATION OF WORKER'S DISABILITY COMPENSATION ACT COMPLIANCE

As required by Act 317, P.A. 1969 (Worker's Compensation) and
Part 5 of Act 451 of 1994, as amended.

VERIFICATION OF WORKER'S DISABILITY COMPENSATION ACT COMPLIANCE

- This verification must be completed and submitted within 21 days of contract award and prior to the issuance of the timber sale contract.
- In addition, if boxes 2B or 2C are checked, then Notice of Exclusion or Certificate of Insurance must be submitted within twenty-one (21) days of the contract award and prior to the issuance of the timber sale contract.
- All information must be typed or printed except for written signatures.

Please Check Appropriate Categories:

1. My business is organized as (you **must** check one of the boxes below):
 - A. Sole Proprietorship (individual)
 - B. Partnership
 - C. Corporation
2. You **must** check one of the boxes below:
 - A. I certify my business is a sole proprietorship and it has no employees but the sole proprietor. I am not subject to the Worker's Compensation Laws.
 - B. I certify my business has satisfied its obligation to the Worker's Compensation Act through the use of an approved Notice of Exclusion (BWC-337, Rev. 5/96). I will provide a copy of the Notice of Exclusion within 21 days of the contract award. (For questions or a copy of the BWC-337, please call the Worker's Compensation Bureau at 517-322-1195).
 - C. I certify my business has a Worker's Compensation Policy. I will provide an original Certificate of Insurance within twenty-one (21) days of the contract award.
3. If you have checked item 2(A) or 2(B), you **must** indicate the number of **both** full-time and part-time employees, other than yourself, including family members and active partners (if none, you must enter "0").

_____ Full-time Employees

_____ Part-time Employees

Name of Business		Federal ID (or) Social Security No.	
Address		Telephone ()	
City	State	ZIP	

I hereby certify that the above information is true and correct. I agree to notify the Michigan DNR of any changes that occur in factors affecting my coverage during any of my present and future operations.

Signature of Owner or Authorized Representative

Title

Date

Please complete the "SEALED BID" information on the next page

Extra Corners (12-007-21)

T40N, R29W, SEC. 5; T40N, R29W, SEC. 6; T40N, R29W, SEC. 7; T40N, R29W,

In response to the notice of sale to be held 8:30 a.m. (local time) on November 10, 2021, I am hereby submitting my sealed bid (firm offer) for the following forest products to be cut. Bids for individual species must be at or above the advertised price. All non-responsive bid forms may be rejected.

<u>PRODUCTS & SPECIES</u>	<u>ESTIMATED VOLUME*</u>	<u>ADVERTISED PRICE</u>	<u>BID PRICE/UNIT</u>
Sawtimber			
Basswood	244.4 MBF	\$ 50.00/MBF	\$ _____
Black Ash	8.4 MBF	\$ 15.00/MBF	\$ _____
Paper Birch	8.2 MBF	\$ 88.00/MBF	\$ _____
Red Maple	4.3 MBF	\$ 89.00/MBF	\$ _____
Sugar Maple	110.7 MBF	\$ 160.00/MBF	\$ _____
White Ash	206.5 MBF	\$ 49.00/MBF	\$ _____
Yellow Birch	6.9 MBF	\$ 48.00/MBF	\$ _____
Pulpwood			
Balsam Fir	33 Cords	\$ 7.10/Cord	\$ _____
Basswood	352 Cords	\$ 6.80/Cord	\$ _____
Mixed Aspen	252 Cords	\$ 18.85/Cord	\$ _____
Mixed Hardwood	1,348 Cords	\$ 12.15/Cord	\$ _____
White Spruce	21 Cords	\$ 8.00/Cord	\$ _____

*The volumes are statistically estimated within plus (+) or minus (-) 4.89 percent at 95% confidence level. These estimated volumes are final and not subject to adjustment. Prospective bidders are urged to examine this timber and to make their own estimates of quantity and quality.

I understand that any or all bids may be rejected. All bids must be signed and all bid items must be bid or the bid form may be rejected. I also understand that consideration and awarding a contract will be based upon my past performance and ability to complete the contract based upon equipment and staffing subject to my control.

FEDERAL ID: ____ - ____ - ____ or SOCIAL SECURITY NUMBER: ____ - ____ - ____

Company or individual bidding: _____

Company representative's name: _____

Address: _____

City: _____ State: _____ Zip: _____

IF AVAILABLE, PLEASE PLACE THE PERSONALIZED LABEL FROM YOUR PROSPECTUS IN THE ABOVE BOX.

Individual or company representative's signature: _____ Date: _____

Phone number : _____ Email (optional): _____

THE WINNING BIDDER MUST COMPLETE THE VERIFICATION OF WORKER'S DISABILITY COMPENSATION ACT COMPLIANCE (ON REVERSE SIDE IF DOUBLE SIDED) WITHIN 21 DAYS OF SALE AWARD DATE



FOR DEPARTMENT USE ONLY
Sale Number (XX - XXX - XX - XX)
Forest Management Unit:

TIMBER SALE VERIFICATION OF WORKER'S DISABILITY COMPENSATION ACT COMPLIANCE

*As required by Act 317, P.A. 1969 (Worker's Compensation) and
Part 5 of Act 451 of 1994, as amended.*

VERIFICATION OF WORKER'S DISABILITY COMPENSATION ACT COMPLIANCE

- This verification must be completed and submitted within 21 days of contract award and prior to the issuance of the timber sale contract.
- In addition, if boxes 2B or 2C are checked, then Notice of Exclusion or Certificate of Insurance must be submitted within twenty-one (21) days of the contract award and prior to the issuance of the timber sale contract.
- All information must be typed or printed except for written signatures.

Please Check Appropriate Categories:

1. My business is organized as (you **must** check one of the boxes below):
 - A. Sole Proprietorship (individual)
 - B. Partnership
 - C. Corporation

2. You **must** check one of the boxes below:
 - A. I certify my business is a sole proprietorship and it has no employees but the sole proprietor. I am not subject to the Worker's Compensation Laws.
 - B. I certify my business has satisfied its obligation to the Worker's Compensation Act through the use of an approved Notice of Exclusion (BWC-337, Rev. 5/96). I will provide a copy of the Notice of Exclusion within 21 days of the contract award. (For questions or a copy of the BWC-337, please call the Worker's Compensation Bureau at 517-322-1195).
 - C. I certify my business has a Worker's Compensation Policy. I will provide an original Certificate of Insurance within twenty-one (21) days of the contract award.

3. If you have checked item 2(A) or 2(B), you **must** indicate the number of **both** full-time and part-time employees, other than yourself, including family members and active partners (if none, you must enter "0").

_____ Full-time Employees

_____ Part-time Employees

Name of Business		Federal ID (or) Social Security No.	
Address		Telephone ()	
City	State	ZIP	

I hereby certify that the above information is true and correct. I agree to notify the Michigan DNR of any changes that occur in factors affecting my coverage during any of my present and future operations.

Signature of Owner or Authorized Representative

Title

Date

Please complete the "SEALED BID" information on the next page

Early Ursa (12-006-21)

T40N, R29W, SEC. 23; T40N, R29W, SEC. 24; T40N, R29W, SEC. 26; T40N,

In response to the notice of sale to be held 8:30 a.m. (local time) on November 10, 2021, I am hereby submitting my sealed bid (firm offer) for the following forest products to be cut. Bids for individual species must be at or above the advertised price. All non-responsive bid forms may be rejected.

<u>PRODUCTS & SPECIES</u>	<u>ESTIMATED VOLUME*</u>	<u>ADVERTISED PRICE</u>	<u>BID PRICE/UNIT</u>
Sawtimber			
Basswood	48.4 MBF	\$ 54.00/MBF	\$ _____
Paper Birch	5.1 MBF	\$ 94.00/MBF	\$ _____
Red Maple	66.3 MBF	\$ 96.00/MBF	\$ _____
Sugar Maple	42.6 MBF	\$ 172.00/MBF	\$ _____
White Ash	15.3 MBF	\$ 53.00/MBF	\$ _____
Pulpwood			
Balsam Fir	410 Cords	\$ 7.60/Cord	\$ _____
Basswood	158 Cords	\$ 7.30/Cord	\$ _____
Mixed Aspen	2,214 Cords	\$ 20.30/Cord	\$ _____
Mixed Hardwood	1,214 Cords	\$ 13.10/Cord	\$ _____
Tamarack	13 Cords	\$ 4.75/Cord	\$ _____
White Spruce	77 Cords	\$ 8.60/Cord	\$ _____

*The volumes are statistically estimated within plus (+) or minus (-) 6.01 percent at 95% confidence level. These estimated volumes are final and not subject to adjustment. Prospective bidders are urged to examine this timber and to make their own estimates of quantity and quality.

I understand that any or all bids may be rejected. All bids must be signed and all bid items must be bid or the bid form may be rejected. I also understand that consideration and awarding a contract will be based upon my past performance and ability to complete the contract based upon equipment and staffing subject to my control.

FEDERAL ID: _____ or SOCIAL SECURITY NUMBER: _____

Company or individual bidding: _____

Company representative's name: _____

Address: _____

City: _____ State: _____ Zip: _____

IF AVAILABLE, PLEASE PLACE THE PERSONALIZED LABEL FROM YOUR PROSPECTUS IN THE ABOVE BOX.

Individual or company representative's signature: _____ Date: _____

Phone number : _____ Email (optional): _____

THE WINNING BIDDER MUST COMPLETE THE VERIFICATION OF WORKER'S DISABILITY COMPENSATION ACT COMPLIANCE (ON REVERSE SIDE IF DOUBLE SIDED) WITHIN 21 DAYS OF SALE AWARD DATE



FOR DEPARTMENT USE ONLY	
Sale Number (XX - XXX - XX - XX)	
Forest Management Unit:	

TIMBER SALE VERIFICATION OF WORKER'S DISABILITY COMPENSATION ACT COMPLIANCE

As required by Act 317, P.A. 1969 (Worker's Compensation) and
Part 5 of Act 451 of 1994, as amended.

VERIFICATION OF WORKER'S DISABILITY COMPENSATION ACT COMPLIANCE

- This verification must be completed and submitted within 21 days of contract award and prior to the issuance of the timber sale contract.
- In addition, if boxes 2B or 2C are checked, then Notice of Exclusion or Certificate of Insurance must be submitted within twenty-one (21) days of the contract award and prior to the issuance of the timber sale contract.
- All information must be typed or printed except for written signatures.

Please Check Appropriate Categories:

1. My business is organized as (you **must** check one of the boxes below):
 - A. Sole Proprietorship (individual)
 - B. Partnership
 - C. Corporation
2. You **must** check one of the boxes below:
 - A. I certify my business is a sole proprietorship and it has no employees but the sole proprietor. I am not subject to the Worker's Compensation Laws.
 - B. I certify my business has satisfied its obligation to the Worker's Compensation Act through the use of an approved Notice of Exclusion (BWC-337, Rev. 5/96). I will provide a copy of the Notice of Exclusion within 21 days of the contract award. (For questions or a copy of the BWC-337, please call the Worker's Compensation Bureau at 517-322-1195).
 - C. I certify my business has a Worker's Compensation Policy. I will provide an original Certificate of Insurance within twenty-one (21) days of the contract award.
3. If you have checked item 2(A) or 2(B), you **must** indicate the number of **both** full-time and part-time employees, other than yourself, including family members and active partners (if none, you must enter "0").

_____ Full-time Employees

_____ Part-time Employees

Name of Business		Federal ID (or) Social Security No.	
Address		Telephone ()	
City	State	ZIP	

I hereby certify that the above information is true and correct. I agree to notify the Michigan DNR of any changes that occur in factors affecting my coverage during any of my present and future operations.

Signature of Owner or Authorized Representative

Title

Date

Please complete the "SEALED BID" information on the next page