



**DEPARTMENT OF NATURAL RESOURCES
STATE OF MICHIGAN**

TIMBER SALE PROSPECTUS #6948

SCHEDULED SALE DATE AND TIME: 3:00 p.m. (local time) on December 2, 2021.

LOCATION: ESCANABA MGMT UNIT, 6833 HWY'S 2, 41 & M-35, GLADSTONE, MI 49837.

PROSPECTUS NOTE: The bidder is advised to inspect the sale area and review the location, estimated volumes, operating costs and contract terms of proposed sales. Please be aware that some landowners may request 60 days or more notice for access across their land.

Notice is hereby given that bids will be received by the Unit Manager, ESCANABA MANAGEMENT UNIT, for certain timber on the following described lands:

NO FOWLER (33-007-21) / T34N, R26W, SEC. 23, S1/2SE.

T34N, R26W, SEC. 26, NE.

Menominee County, Advertised Price \$42,679.75, 106.4 Acres, Hardwood, Aspen.

SALE NOTE: All units of volume listed for this sale were estimated using the Inventory Manager computer program and the new Michigan taper model.

See sale spec 7.5.1 for information on deteriorating timber due to insect damage.

Orange Hornet SBW (33-032-21) / T36N, R27W, SEC. 10, S1/2SW,SE.

T36N, R27W, SEC. 11, W1/2SW.

T36N, R27W, SEC. 14, NWNW.

T36N, R27W, SEC. 15, N1/2NW,NWNE,S1/2NE.

Menominee County, Advertised Price \$24,217.60, 100.8 Acres, Hardwood, N White Cedar.

SALE NOTE: All units of volume listed for this sale were estimated using the Inventory Manager computer program and the new Michigan taper model.

- See sale spec 4.4.1 for information on access to Payment Units 2-7 through private land.

- See sale spec 4.1.8 for information on required road work.

- See sale spec 7.5.1 for information on deteriorating timber.

Rusty Blue Ribbon (33-033-21) / T37N, R28W, SEC. 16, E1/2NW,W1/2NE,E1/2SW,NWSE.

T37N, R28W, SEC. 8, SENE,NESE.

T37N, R28W, SEC. 9, SWNW,NE,NWSW,SESW,NESE,SWSE.

Menominee County, Advertised Price \$43,849.25, 161.5 Acres, Aspen, Hardwood.

SALE NOTE: All units of volume listed for this sale were estimated using the Inventory Manager computer program and the new Michigan taper model.

- See sale spec 7.5.1 for information about deteriorating timber due to insects.

- See sale spec 4.1.8 for road work requirements.

- See sale spec 5.2.3.1 for information on cutting and skidding restrictions.

Kading Creek Blend (33-034-21) / T37N, R28W, SEC. 4 , SWNW,NESW,W1/2SE.

T37N, R28W, SEC. 5 , SWNW,N1/2SW,SESW,N1/2SE.

T37N, R28W, SEC. 8 , E1/2NE.

Menominee County, Advertised Price \$20,976.40, 87.5 Acres, Aspen, Hardwood.

SALE NOTE: All units of volume listed for this sale were estimated using the Inventory Manager computer program and the new Michigan taper model.

- See sale spec 7.5.1 for information on spruce budworm and eastern larch beetle damage.

- See sale spec 4.1.2 and 4.4.1 for information on better site access through private land or alternative access.

Blom Creek SBW (33-035-21) / T37N, R28W, SEC. 10, N1/2NW,SWNW.

T37N, R28W, SEC. 3 , E1/2NW,SW.

T37N, R28W, SEC. 4 , SENW,S1/2NE,E1/2SE.

Menominee County, Advertised Price \$45,218.90, 189.4 Acres, Aspen, Spruce/Fir/Tamarack.

SALE NOTE: All units of volume listed for this sale were estimated using the Inventory Manager computer program and the new Michigan taper model.

- See sale spec 4.4.1 for access to sale through private land.

- See sale spec 7.5.1 for information on deteriorating timber due to insect damage.

BID INSTRUCTIONS (VER. 07/02/2018):

1. Scheduled Bid Location, Date, and Time (2/11)

Bids must be received by the Unit Manager, ESCANABA OFFICE, 6833 Hwy's 2, 41 & M-35, Gladstone, MI 49837, no later than 3:00 p.m. (local time) on December 2, 2021. For further information concerning this sale, contact Eric Thompson at 906-789-8231.

2. Bidder's Qualifications (5/16)

Purchaser shall obtain workers compensation insurance to cover claims under Michigan's Worker's Disability Compensation Act of 1969 or similar employee benefit act of any other state applicable to an employee. If all or part of a timber sale was prepared by a private contractor, the contractor and that contractor's company are not permitted to bid on the timber sale contract. Bids will not be accepted from individuals or companies appearing on the DNR/FRD No-Bid List. This list contains the names of purchasers who previously failed to execute a contract within 21-days or who have a history of poor performance.

3. Preparation of Sealed Bids (5/16)

Bid Forms may be completed online thru Michigan DNR Timber Sale Online Bidding (OLB) at www.michigan.gov/timberbidding or by completing the hardcopy Bid Form found in the Timber Sale Prospectus. Hardcopy Bid Forms shall be manually signed in ink. Registration in OLB is considered your 'signature' for all bids submitted thru that system. Bid prices must be entered for each species and product in the Bid Price column for all material subject to bidding and all fill-in blanks must be completed. If erasures or other changes appear on the hardcopy Bid Form, each erasure or change must be initialed by the person signing the bid.

4. Submission of Sealed Bids (5/16)

Bid forms may be obtained from the Unit Manager or thru OLB. Bids may be submitted hardcopy or thru OLB. All hardcopy bids must be submitted on the bid form and in an envelope clearly identified as described in this section. NOTE: Only one bid form per bid envelope. Sealed bids must be submitted to the Unit office designated in the prospectus and must be submitted at or prior to the time established in the prospectus. The envelope should show on the outside (a) the sale name or number and (b) the date and time of bid opening, as shown in the prospectus. Bids received after the time specified in the sale prospectus are late bids and will be rejected.

It is possible for a bidder to submit multiple bids on a single sale. For example, a bid may be submitted hardcopy and a bid may be submitted thru OLB. Or, two bidders from the same company could both submit bids on the same sale. If this were to happen, the State would accept all bids received and award the contract accordingly. All bidding and contractual requirements would apply to all bids received.

5. Public Opening of Sealed Bids (7/16)

If conditions permit, the sealed bids will be publicly opened and posted at the time and place set in the prospectus.

If a bidder, present at a bid opening, has submitted bids on more than one sale, that bidder may withdraw their unopened bid envelopes or announce the withdrawal of their online bid after being declared the successful bidder on one sale.

6. Award of Contract (1/11)

Award of the contract will be made to the Bidder whose bid, conforming to the prospectus, is most advantageous to the State of Michigan on the basis of total value at rates bid for the estimated quantities. The State reserves the right to reject any bid or waive any minor irregularity in bids received. A written award mailed (or otherwise furnished) to the successful Bidder shall be deemed to result in a binding contract without further action by either party.

7. Down Payment (1/11)

The Bidder to whom award is made must make a down payment within 21 days of the sale award. The amount of the down payment will be calculated as shown in the Bond and Payment Schedule of this prospectus. Only cash may be used to meet this requirement.

8. Performance Security (1/11)

As guarantee of faithful performance, a cash bond, certificate of deposit, surety bond or irrevocable letter of credit (LOC) is required within 21 days of the sale award. The amount of the performance security is shown in the Bond and

Payment Schedule of this prospectus. If an LOC or surety is used, the coverage must extend for at least 6 months beyond the contract expiration.

9. Timber Sale Contract (7/18)

Additional conditions and requirements common to all timber sales are listed on the timber sale contract (R4031) and are available on line at www.michigan.gov/timber. Contact the Unit Manager for additional information or a sample contract. Within 21 days of the date of the award letter, the bidder must sign the contract and provide the required down payment, performance security, and verification of worker's disability compensation. The down payment and performance security shall be in accordance with the provisions of the timber sale contract, in the sums stated in this prospectus. If these actions are not taken, then the Bidder, the Bidder's corporation, and the corporation's principals may not be permitted to bid on State timber sales for a period of 3 months after the first offense, 6 months after the second offense, and 1 year after the third offense. An offense will only be counted against the Bidder for 5 years. In addition, the Bidder certifies that if awarded this contract, the Bidder will complete the timber sale contract in accordance with its terms and any modifications thereof including requirements to purchase, cut, and remove the included timber by the expiration date.

Payment Unit values in the State Forest Timber Sale Contract are calculated based on the advertised value of the Payment Unit as a percentage of the total advertised value of the contract. The advertised value of each Payment Unit is given in the Description of Timber by Payment Unit table on the Timber Sale Information page. For example, if the value of Payment Unit 1 is advertised as \$1,500 and the total Timber Sale value is advertised as \$10,000, the contract price for Payment Unit 1 will be 15% of the total bid price ($\$1,500/\$10,000 * 100$).

10. Disclaimer of Estimates and Bidder's Warranty of Inspection (7/16)

Before submitting this bid, the Bidder is advised and cautioned to inspect the sale area, review the requirements of the sale contract, and take other steps as may be reasonably necessary to ascertain the location, estimated volumes, construction estimates, and operating costs of the proposed sale. Failure to do so will not relieve the Bidder from responsibility for completing the contract.

The Bidder warrants that this bid is submitted solely on the basis of the Bidder's examination and inspection of the quality and quantity of the timber offered for sale and the Bidder's opinion of the value thereof and the costs of recovery. No reliance should be placed on the State of Michigan's estimates of timber quality, quantity or costs of recovery. Bidder further acknowledges that the State of Michigan: (i) expressly disclaims any warranty of fitness of timber for any purpose; (ii) offers this timber as is without any warranty of quality (merchantability) or quantity and (iii) expressly disclaims any warranty as to the quantity or quality of timber sold.

11. Certification and Chain-of-Custody (10/14)

Unless otherwise indicated in the contract under section 7 – Other Conditions of the Sale Specific Conditions & Requirements, the area encompassed by this timber sale is certified to the standards of the Forest Stewardship Council (FSC) - Certificate #SCS-FM/COC-00090N and the Sustainable Forestry Initiative (SFI) - Certificate #NSF-SFIS-5Y031-SF5. Forest products from this sale may be delivered to the mill as "FSC 100% and / or SFI certified" as long as the contractor hauling the forest products is chain-of-custody (COC) certified or covered under a COC certificate from the destination mill. The purchaser is responsible for maintaining COC after leaving the sale area.

12. Good Neighbor Authority (GNA) Requirements (7/16)

If the name of this timber sales contains the acronym GNA, it is authorized by the Good Neighbor Authority (GNA) and covered by various agreements between the U.S. Forest Service and the State. The timber sale occurs on federal land and the following conditions apply:

GNA contracts on US Forest Service land will not be awarded to purchasers on the Federal list of excluded parties. The System for Award Management (SAM) will be checked for active excluded parties prior to award of contract. In addition, the Bidder to whom award is made must complete an Assurance Regarding Felony Conviction or Tax Delinquent Status for Corporate Applicants (AD-3031).

13. Good Neighbor Authority (GNA) Requirements, con't (9/16)

Bidder certifies, by signing this bid form, that to the best of Bidder's knowledge that the following representations are accurate and complete.

- a. That the Bidder and its principals are not presently debarred, suspended, proposed for debarment, declared ineligible, or voluntary excluded from timber sales (covered transactions) by any Federal department or agency.
- b. That the Bidder and its principals have not within a 3-year period preceding this bid been convicted of or had a civil judgment rendered against them for commission of fraud or a criminal offense in connection with obtaining , attempting to obtain, or performing a public (Federal, State, or local) transaction or contract under a public transaction; violation of Federal or State antitrust statutes or commission of embezzlement, theft, forgery, bribery, falsification or destruction of records, making false statements, or receiving stolen property.
- c. That the Bidder and its principals are not presently indicted for or otherwise criminally or civilly charged by a governmental entity (Federal, State, or local) with commission of any of the offenses enumerated in paragraph b of this certification.
- d. That the Bidder and its principals have not within a 3-year period preceding this bid had one or more public transactions (Federal, State, or local) terminated for breach or default of a timber or forest product contract.

Bidders that cannot certify this requirement, in whole or in part, shall submit an explanation with their bid.

DAN EICHINGER
Director

TIMBER SALE INFORMATION

NO FOWLER (33-007-21)

T34N, R26W, SEC. 23; T34N, R26W, SEC. 26.

Menominee County (Advertised Price \$42,679.75)

SALE NOTE: All units of volume listed for this sale were estimated using the Inventory Manager computer program and the new Michigan taper model.

See sale spec 7.5.1 for information on deteriorating timber due to insect damage.

A timber sale contract for this lump sum, sealed bid timber sale will be awarded to the responsible bidder offering the highest sealed bid price. All units of volume listed below were estimated using the Inventory Manager computer program and the new Michigan taper model. Bids must be at or above the following advertised price for each product and species:

<u>PRODUCTS & SPECIES</u>	<u>ESTIMATED UNITS*</u>	<u>ADVERTISED PRICE</u>
Sawtimber		
Green Ash	23.1 MBF	\$ 30.00 / MBF
Paper Birch	4.6 MBF	\$ 54.00 / MBF
Red Maple	45.1 MBF	\$ 73.00 / MBF
Pulpwood		
Balsam Fir	317 Cords	\$ 12.05 / Cord
Mixed Aspen	834 Cords	\$ 16.60 / Cord
Mixed Hardwood	1,301 Cords	\$ 14.85 / Cord
N. White Cedar	58 Cords	\$ 9.05 / Cord
Tamarack	23 Cords	\$ 10.35 / Cord
White Spruce	60 Cords	\$ 11.65 / Cord

* The total volume is statistically estimated within plus (+) or minus (-) 5.74 percent. There are an estimated 2,971 cords on this timber sale, plus or minus 171 cords at the 95% confidence level. The estimated units are final and not subject to adjustment. Prospective bidders are urged to examine this timber and to make their own estimates of quantity and quality.

BOND AND PAYMENT SCHEDULE:

1. A bond in the amount of \$2,134.00 to insure faithful performance of the conditions of the contract will be deposited by the successful bidder within 21 days of the sale award.
2. Cutting in any sale or unit without the required advance payment would be considered a trespass.
3. Total payment must be paid in advance or according to the following schedule :
 - (a) Ten percent (10%) of the sale value must be paid within 21 days of the sale award.
 - (b) The 10% down payment will be credited towards the first unit cut.
 - (c) Payment for each of the following units must be made before cutting begins in that unit:

PAYMENT UNIT NUMBER	PERCENT OF TOTAL SALE VALUE
01	3.3%
02	7.1%
03	44.3%
04	23.7%
05	5.7%
06	15.9%
4. If no cutting takes place, the 10% down payment will not be refunded.
5. Operations on the contract issued will terminate on 12/31/2024.

SALE STATISTICS

Volumes were calculated in cubic feet using the Michigan taper model. Cubic foot volume includes all wood inside bark for the product indicated. For display purposes, cubic feet were converted to cords and MBF using a simple conversion factor, e.g. 79 cubic feet per cord and 185 cubic feet per MBF. The cubic foot volumes are precise; the cords and MBF volumes are not. Cubic foot volume cannot be directly converted to cords or boards with precision.

SALE VOLUMES

The total estimated sale volume may not equal the sum of the species/products due to the nature of statistical calculations associated with double sampling methodology.

VOLUME		STATISTICAL RANGE IN CORDS		
TOTAL CUBIC FEET	TOTAL CORDS	PERCENT ERROR	MINIMUM	MAXIMUM
234,714	2,971	5.74%	2,800	3,142

VDU VOLUMES

A VDU is a Volume Determination Unit. Volumes and their associated statistics are calculated at the VDU level and summarized to the sale level. There is often a one to one relationship between a VDU and a Payment Unit, but not always, depending on the cruise design. Refer to the VDU TO PAYMENT UNIT table.

VDU	VOLUME		PERCENT ERROR	RANGE IN CORDS	
	TOTAL CUBIC FEET	TOTAL CORDS		MINIMUM	MAXIMUM
12	94,682	1,199	6.61%	1,119	1,278
19	75,136	951	8.90%	866	1,036
20	11,280	143	21.70%	112	174
47	45,671	578	19.63%	465	692
TOTAL:	226,770	2,871		2,562	3,179

VDU TO PAYMENT UNIT

When a VDU is associated with more than one Payment Unit (PU), the VDU volumes are assigned to the PU based on acres of the VDU within the PU.

VDU	VDU ACRES	PU	PU ACRES
12	42.2	3	42.2
19	38.7	1	3.8
		2	8.0
		4	26.9
20	5.9	5	5.9
47	19.6	6	19.6
TOTAL:	106.4		106.4

DESCRIPTION OF TIMBER BY PAYMENT UNIT (PU)

PU	MARKET GROUP	PRODUCT	QUANTITY	UNIT	ACRES	ADVERTISE PRICE
1	Green Ash	Sawtimber	1.6	MBF	3.8	\$1,423.75
	Paper Birch		0.2	MBF		
	Red Maple		2.0	MBF		
	Balsam Fir	Pulpwood	10	Cords		
	Mixed Aspen		10	Cords		
	<i>Balsam Poplar</i>		2	<i>Cords</i>		
	<i>Quaking Aspen</i>		8	<i>Cords</i>		
	Mixed Hardwood		58	Cords		
	<i>Black Ash</i>		2	<i>Cords</i>		
	<i>Green Ash</i>		22	<i>Cords</i>		
	<i>Paper Birch</i>		3	<i>Cords</i>		
	<i>Red Maple</i>		29	<i>Cords</i>		
	<i>Yellow Birch</i>		2	<i>Cords</i>		
	N. White Cedar		4	Cords		
	White Spruce		3	Cords		
2	Green Ash	Sawtimber	3.4	MBF	8.0	\$3,028.95
	Paper Birch		0.5	MBF		
	Red Maple		4.2	MBF		
	Balsam Fir	Pulpwood	22	Cords		
	Mixed Aspen		22	Cords		
	<i>Balsam Poplar</i>		5	<i>Cords</i>		
	<i>Quaking Aspen</i>		17	<i>Cords</i>		
	Mixed Hardwood		122	Cords		
	<i>Black Ash</i>		4	<i>Cords</i>		
	<i>Green Ash</i>		47	<i>Cords</i>		
	<i>Paper Birch</i>		7	<i>Cords</i>		
	<i>Red Maple</i>		60	<i>Cords</i>		
	<i>Yellow Birch</i>		4	<i>Cords</i>		
	N. White Cedar		9	Cords		
	White Spruce		6	Cords		
3	Green Ash	Sawtimber	4.9	MBF	42.2	\$18,881.45
	Paper Birch		2.3	MBF		
	Red Maple		14.8	MBF		
	Balsam Fir	Pulpwood	169	Cords		
	Mixed Aspen		592	Cords		
	<i>B. T. Aspen</i>		274	<i>Cords</i>		
	<i>Balsam Poplar</i>		38	<i>Cords</i>		
	<i>Quaking Aspen</i>		280	<i>Cords</i>		
	Mixed Hardwood		357	Cords		
	<i>Green Ash</i>		92	<i>Cords</i>		
	<i>Paper Birch</i>		3	<i>Cords</i>		
	<i>Red Maple</i>		262	<i>Cords</i>		
	N. White Cedar		14	Cords		
	Tamarack		23	Cords		
	4	Green Ash	Sawtimber	11.5		
Paper Birch			1.6	MBF		
Red Maple			14.0	MBF		
Balsam Fir		Pulpwood	74	Cords		
Mixed Aspen			73	Cords		
<i>Balsam Poplar</i>			17	<i>Cords</i>		
<i>Quaking Aspen</i>			56	<i>Cords</i>		
Mixed Hardwood			409	Cords		
<i>Black Ash</i>			12	<i>Cords</i>		
<i>Green Ash</i>			158	<i>Cords</i>		
<i>Paper Birch</i>			24	<i>Cords</i>		
<i>Red Maple</i>			202	<i>Cords</i>		

DESCRIPTION OF TIMBER BY PAYMENT UNIT (PU), CON'T

PU	MARKET GROUP	PRODUCT	QUANTITY	UNIT	ACRES	ADVERTISE PRICE	
4 con't	<i>Yellow Birch</i>	<i>Pulpwood</i>	13	<i>Cords</i>			
	N. White Cedar		31	Cords			
	White Spruce		19	Cords			
5	Red Maple	Sawtimber	7.5	MBF	5.9	\$2,437.10	
	Balsam Fir	Pulpwood	4	Cords			
	Mixed Hardwood		124	Cords			
	<i>Paper Birch</i>		12	<i>Cords</i>			
	<i>Red Maple</i>		112	<i>Cords</i>			
6	Green Ash	Sawtimber	1.7	MBF	19.6	\$6,776.05	
	Red Maple		2.6	MBF			
	Balsam Fir	Pulpwood	38	Cords			
	Mixed Aspen		137	Cords			
	<i>B. T. Aspen</i>		52	<i>Cords</i>			
	<i>Balsam Poplar</i>		10	<i>Cords</i>			
	<i>Quaking Aspen</i>		75	<i>Cords</i>			
	Mixed Hardwood		231	Cords			
	<i>Black Ash</i>		13	<i>Cords</i>			
	<i>Green Ash</i>		97	<i>Cords</i>			
	<i>Paper Birch</i>		60	<i>Cords</i>			
	<i>Red Maple</i>		61	<i>Cords</i>			
	White Spruce		32	Cords			
	TOTAL:			72.8			MBF
TOTAL:			2,593	Cords			

Sale Specific Conditions & Requirements

Sale Name: NO FOWLER

Sale Number: 33-007-21 Seq#: 1

1 - Sale Area

1.2 - Boundaries

1.2.1 - Painted boundaries (9/19)

The sale boundary and Payment Unit boundaries are marked and identified by blue, red, and yellow paint. Exterior sale boundary lines against private property are marked with blue paint. Exterior sale boundary lines against state are marked with red paint. Interior Payment Unit boundaries are marked with yellow paint. Retention patches are marked with red paint, no harvesting activities may occur within these areas. Yellow painted trees designating an interior Payment Unit boundary are only to be cut when all surrounding Payment Units have been paid.

2 - Timber Specifications

2.1 - Included Timber

2.1.1 - Clearcut unit(s) with unmerchantable trees (6/14)

Within Payment Unit(s) 1-6, cut all trees that are three (3) inches or more at DBH, except do not cut any cedar other than those cedar trees referenced in Harvest exception 2.1.9, or any hemlock within Payment Unit 6.

2.1.9 - Harvest exception (12/08)

Do not cut any cedar trees other than those that are necessary to remove in order to operate within the sale area. Every effort must be made to preserve the existing cedar and to leave an intact stand upon sale completion. All cut cedar shall be piled separately by products and scaled in the woods unless other scaling arrangements are agreed to by the Unit Manager or his/her representative. Stumpage price for cedar shall be \$50.00 per cord for posts and pulpwood, and \$100.00 per cord for bolts and sawlogs.

3 - Payments

3.3 - Pre-measured Sales

3.3.4 - Dividing payment units (7/14)

Payment Unit(s) with a contract bid value of \$18,000 dollars or greater may be divided at the request of the Purchaser and upon approval of the Unit Manager. Dividing Payment Units is a contract modification which requires a Timber Sale Contract Amendment.

4 - Transportation

4.1 - Construction

4.1.1 - Stream crossings, general (3/11)

All stream crossing structures will be temporary and therefore, shall be provided by the Purchaser, and must be removed upon completion of the sale. All permits for stream crossings will be provided by the DNR if necessary.

4.1.5 - Culverts (5/14)

Roads may require the installation of culverts for cross drainage or at natural drainage-ways. If culverts are needed in these locations, their placement will be specified by the sale administrator, and they shall be installed prior to hauling. The culverts shall be new, corrugated metal or plastic gauge. Culverts will be a minimum of 12 inches in diameter and 24 feet in length. If culverts are removed, fill shall be removed from wetland soils as specified. Soils shall be maintained and left in a non-erodible condition, with water bars, seed, fertilizer, mulch, and slash installed as directed by the sale administrator and as specified in the BMP manual. Stream crossing permits, if needed, will be obtained by the DNR.

4.1.6 - Road construction (1/09)

Construction of new roads or improvements of existing roads shall be done in such a way as to minimize the environmental and visual impacts. Merchantable trees shall be cut and utilized unless otherwise directed. Non-merchantable trees shall be severed and laid flat on the ground. Slash shall be scattered, and not left in windrows and kept a minimum of 10 feet back from the road edge. Stumps shall be set upright, not left on edge, and be moved at least 10 feet away from the road edge. Disturbed soil shall be feathered into the woods and not left in berms or windrows.

4.1.7 - Road closure (10/11)

All new roads built into the sale must be blocked to vehicle traffic upon completion of the sale. Overgrown roads that are reopened shall be considered new roads. In general, this will require constructing a four (4') foot high berm of stumps and logs covered with earth. These roads must be rendered impassable to cars and trucks. Contact the sale administrator for specific details of design and placement.

4.2 - Maintenance

4.2.1 - Hauling restriction (12/08)

Hauling may be restricted on forest roads by the Unit Manager or his/her representative. The restriction may occur during spring break up and may occur during wet weather conditions.

4.2.2 - Fill material (4/07)

To maintain roads, fill material may be needed in areas where "holes" exist or may be expected to develop. This fill material should be placed before trucking begins. Contact the sale administrator regarding the availability of onsite sand or gravel from adjacent State-owned lands.

5 - Operations

5.2 - Conduct of Operations

5.2.2 - Hazard Trees/Snags

5.2.2.1 - Den trees (10/16)

Obvious hollow and/or den trees shall be protected and left standing unless they are a safety hazard.

5.2.22 - Operating Caution

5.2.22.1 - Operating caution (6/11)

It is recommended, but not required, that within Payment Unit(s) 1, 2, and 4-6, cutting, skidding, and hauling occur during dry summer or frozen winter conditions. The reason for the recommendation is because the areas within these Payment Units and access to these Payment Units are low and wet.

5.2.37 - No decking areas (12/08)

No decking is allowed within 50 feet of County Road 338 without permission of the Menomonee County Road Commission and of the Unit Manager or his/her representative.

5.4 - Soil Protection

5.4.1 - Rutting restriction, general (7/16)

Operations are to cease immediately if equipment and weather conditions result in rutting of roads and/or skid trails which is 12 inches or greater in depth and 50 feet in length. The Unit Manager or his/her representative may restrict hauling and/or skidding if ruts exceed the specified depth. With the Unit Manager or his/her representative's approval, the Purchaser may return to the area when the risk of rutting has decreased.

6 - Safety and Fire Prevention

6.2 - Signing

6.2.1 - Road posting (10/20)

The Purchaser is responsible for posting and maintaining caution signs on County Road 338 prior to beginning operations. The road must be posted at appropriate distances from the Sale Area to warn of logging activity and truck traffic. Signs must be removed when harvest operations are suspended or completed. The Purchaser will provide these signs.

7 - Other Conditions

7.5 - Loss

7.5.1 - Deteriorating timber (7/09)

The sale area has received damage from Emerald Ash Borer and Spruce Budworm. The Purchaser should harvest the wood as soon as possible. The Department of Natural Resources is held free of responsibility of any further damage or

deterioration due to delay in harvesting.



TIMBER SALE MAP

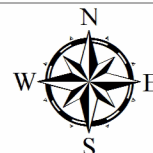
This information provided by authority of Part 525, 1994 PA 451, as amended.

Forest Management Unit Escanaba	County Menominee	Mapped By Racine	Date 09/27/2021	Page 1	of 1
Township 34N	Range 26W	Section(s) and Subdivision(s) 23) S1/2SE 26) NE	Scale 1:15,840		

Cover Type				Density	
A = Aspen	H = Hemlock	N = Marsh	U = Upland Brush	0 = Non Stocked	5 = Pole Timber Medium
B = Paper Birch	J = Jack Pine	O = Oak	UM = Upland Mixed	1 = Seedling Sapling Poor	6 = Pole Timber Well
C = Cedar	L = Lowland Brush	P = Lowland Poplar	V = Bog or Marsh	2 = Seedling Sapling Medium	7 = Saw Timber Poor
D = Treed Bog	LM = Lowland Mixed	Q = Mixed Swamp Conifer	W = White Pine	3 = Seedling Sapling Well	8 = Saw Timber Medium
E = Swamp Hdwoods	M = Mpl, Bch, Brch	R = Red Pine	X = Non Stocked	4 = Pole Timber Poor	9 = Saw Timber Well
F = Spruce Fir	MC = Mixed Conifer	S = Black Spruce	Z = Water		
G = Grass	MD = Mixed Deciduous	T = Tamarack			

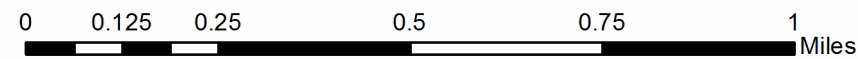
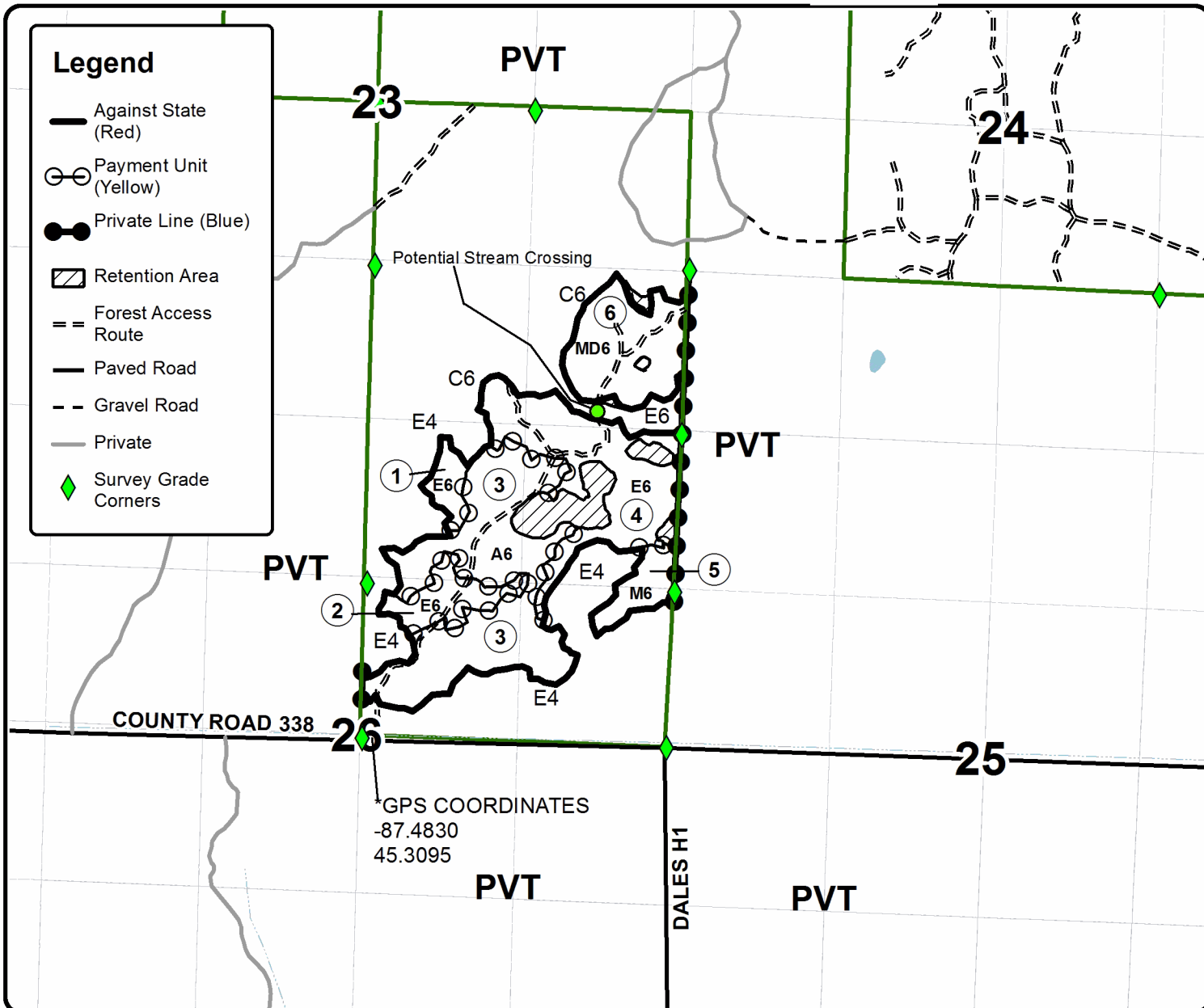
PU	Acres	PU	Acres
1	3.8	4	26.9
2	8.0	5	5.9
3	42.2	6	19.6

NO FOWLER
Compartment 062
106.4 Acres



Legend

- Against State (Red)
- Payment Unit (Yellow)
- Private Line (Blue)
- Retention Area
- Forest Access Route
- Paved Road
- Gravel Road
- Private
- Survey Grade Corners



TIMBER SALE INFORMATION

Orange Hornet SBW (33-032-21)

T36N, R27W, SEC. 10; T36N, R27W, SEC. 11; T36N, R27W, SEC. 14; T36N, R27W, SEC. 15.
Menominee County (Advertised Price \$24,217.60)

SALE NOTE: All units of volume listed for this sale were estimated using the Inventory Manager computer program and the new Michigan taper model.

- See sale spec 4.4.1 for information on access to Payment Units 2-7 through private land.
- See sale spec 4.1.8 for information on required road work.
- See sale spec 7.5.1 for information on deteriorating timber.

A timber sale contract for this lump sum, sealed bid timber sale will be awarded to the responsible bidder offering the highest sealed bid price. All units of volume listed below were estimated using the Inventory Manager computer program and the new Michigan taper model. Bids must be at or above the following advertised price for each product and species:

<u>PRODUCTS & SPECIES</u>	<u>ESTIMATED UNITS*</u>	<u>ADVERTISED PRICE</u>
Sawtimber		
Basswood	6.5 MBF	\$ 33.00 / MBF
Black Ash	20.4 MBF	\$ 16.00 / MBF
Paper Birch	7.1 MBF	\$ 54.00 / MBF
Red Maple	23.2 MBF	\$ 73.00 / MBF
Sugar Maple	5.1 MBF	\$ 119.00 / MBF
White Ash	7.6 MBF	\$ 30.00 / MBF
Pulpwood		
Balsam Fir	62 Cords	\$ 12.05 / Cord
Mixed Aspen	158 Cords	\$ 16.60 / Cord
Mixed Hardwood	700 Cords	\$ 14.85 / Cord
Mixed Spruce	238 Cords	\$ 11.65 / Cord
N. White Cedar	407 Cords	\$ 9.05 / Cord
Tamarack	40 Cords	\$ 10.35 / Cord
White Pine	7 Cords	\$ 18.55 / Cord

* The total volume is statistically estimated within plus (+) or minus (-) 6.39 percent. There are an estimated 1,901 cords on this timber sale, plus or minus 122 cords at the 95% confidence level. The estimated units are final and not subject to adjustment. Prospective bidders are urged to examine this timber and to make their own estimates of quantity and quality.

BOND AND PAYMENT SCHEDULE:

1. A bond in the amount of \$1,211.00 to insure faithful performance of the conditions of the contract will be deposited by the successful bidder within 21 days of the sale award.
2. Cutting in any sale or unit without the required advance payment would be considered a trespass.
3. Total payment must be paid in advance or according to the following schedule :
 - (a) Ten percent (10%) of the sale value must be paid within 21 days of the sale award.
 - (b) The 10% down payment will be credited towards the first unit cut.
 - (c) Payment for each of the following units must be made before cutting begins in that unit:

PAYMENT UNIT NUMBER	PERCENT OF TOTAL SALE VALUE
01	14.1%
02	12.6%
03	3.2%
04	11.0%
05	6.9%
06	20.6%
07	4.9%
08	24.9%
09	1.8%

4. If no cutting takes place, the 10% down payment will not be refunded.
5. Operations on the contract issued will terminate on 09/30/2024.

SALE STATISTICS

Volumes were calculated in cubic feet using the Michigan taper model. Cubic foot volume includes all wood inside bark for the product indicated. For display purposes, cubic feet were converted to cords and MBF using a simple conversion factor, e.g. 79 cubic feet per cord and 185 cubic feet per MBF. The cubic foot volumes are precise; the cords and MBF volumes are not. Cubic foot volume cannot be directly converted to cords or boards with precision.

SALE VOLUMES

The total estimated sale volume may not equal the sum of the species/products due to the nature of statistical calculations associated with double sampling methodology.

VOLUME			STATISTICAL RANGE IN CORDS	
TOTAL CUBIC FEET	TOTAL CORDS	PERCENT ERROR	MINIMUM	MAXIMUM
150,178	1,901	6.39%	1,779	2,023

VDU VOLUMES

A VDU is a Volume Determination Unit. Volumes and their associated statistics are calculated at the VDU level and summarized to the sale level. There is often a one to one relationship between a VDU and a Payment Unit, but not always, depending on the cruise design. Refer to the VDU TO PAYMENT UNIT table.

VDU	VOLUME			RANGE IN CORDS	
	TOTAL CUBIC FEET	TOTAL CORDS	PERCENT ERROR	MINIMUM	MAXIMUM
3	4,294	54	21.28%	43	66
4	21,550	273	16.28%	228	317
8	13,270	168	24.87%	126	210
16	12,789	162	17.19%	134	190
24	28,428	360	15.33%	305	415
27	8,029	102	35.21%	66	137
34	9,859	125	9.63%	113	137
61	38,054	482	12.27%	423	541
64	2,036	26	17.41%	21	30
TOTAL:	138,309	1,751		1,459	2,043

VDU TO PAYMENT UNIT

When a VDU is associated with more than one Payment Unit (PU), the VDU volumes are assigned to the PU based on acres of the VDU within the PU.

VDU	VDU ACRES	PU	PU ACRES
3	3.8	3	3.8
4	15.3	2	15.3
8	9.6	1	9.6
16	19.6	4	19.6
24	19.2	6	19.2
27	4.9	7	4.9
34	8.7	5	8.7
61	17.5	8	17.5
64	2.2	9	2.2
TOTAL:	100.8		100.8

DESCRIPTION OF TIMBER BY PAYMENT UNIT (PU)

PU	MARKET GROUP	PRODUCT	QUANTITY	UNIT	ACRES	ADVERTISE PRICE
1	Red Maple	Sawtimber	20.4	MBF	9.6	\$3,403.15
	Sugar Maple		1.7	MBF		
	Balsam Fir	Pulpwood	4	Cords		
	Mixed Hardwood		98	Cords		
	<i>Basswood</i>		1	<i>Cords</i>		
	<i>Black Ash</i>		23	<i>Cords</i>		
	<i>Paper Birch</i>		7	<i>Cords</i>		
	<i>Red Maple</i>		42	<i>Cords</i>		
	<i>Sugar Maple</i>		5	<i>Cords</i>		
	<i>White Ash</i>		10	<i>Cords</i>		
	<i>Yellow Birch</i>		10	<i>Cords</i>		
	N. White Cedar		23	Cords		
2	Black Ash	Sawtimber	2.5	MBF	15.3	\$3,054.25
	Paper Birch		0.7	MBF		
	Mixed Aspen	Pulpwood	4	Cords		
	<i>Balsam Poplar</i>		4	<i>Cords</i>		
	Mixed Hardwood		36	Cords		
	<i>Black Ash</i>		32	<i>Cords</i>		
	<i>Paper Birch</i>		4	<i>Cords</i>		
	Mixed Spruce		108	Cords		
	<i>Black Spruce</i>		108	<i>Cords</i>		
	N. White Cedar		88	Cords		
	Tamarack		31	Cords		
3	Balsam Fir	Pulpwood	2	Cords	3.8	\$763.00
	Mixed Aspen		34	Cords		
	<i>B. T. Aspen</i>		8	<i>Cords</i>		
	<i>Quaking Aspen</i>		26	<i>Cords</i>		
	Mixed Hardwood		2	Cords		
	<i>White Ash</i>		2	<i>Cords</i>		
	N. White Cedar		16	Cords		
4	Basswood	Sawtimber	6.5	MBF	19.6	\$2,670.45
	Red Maple		1.4	MBF		
	Sugar Maple		2.9	MBF		
	White Ash		7.6	MBF		
	Balsam Fir	Pulpwood	27	Cords		
	Mixed Hardwood		98	Cords		
	<i>Basswood</i>		2	<i>Cords</i>		
	<i>Beech</i>		9	<i>Cords</i>		
	<i>Red Maple</i>		4	<i>Cords</i>		
	<i>Sugar Maple</i>		62	<i>Cords</i>		
	<i>White Ash</i>		21	<i>Cords</i>		
5	Red Maple	Sawtimber	1.4	MBF	8.7	\$1,679.35
	Balsam Fir	Pulpwood	19	Cords		
	Mixed Aspen		41	Cords		
	<i>Balsam Poplar</i>		19	<i>Cords</i>		
	<i>Quaking Aspen</i>		22	<i>Cords</i>		
	Mixed Hardwood		17	Cords		
	<i>Black Ash</i>		3	<i>Cords</i>		
	<i>Paper Birch</i>		7	<i>Cords</i>		
	<i>Red Maple</i>		7	<i>Cords</i>		
	Mixed Spruce		10	Cords		
	<i>Black Spruce</i>		2	<i>Cords</i>		
	<i>White Spruce</i>		8	<i>Cords</i>		
	N. White Cedar		33	Cords		
6	Paper Birch	Sawtimber	6.0	MBF	19.2	\$4,994.60
	Balsam Fir	Pulpwood	4	Cords		

DESCRIPTION OF TIMBER BY PAYMENT UNIT (PU), CON'T

PU	MARKET GROUP	PRODUCT	QUANTITY	UNIT	ACRES	ADVERTISE PRICE				
6 con't	Mixed Aspen	Pulpwood	69	Cords						
	<i>Balsam Poplar</i>		15	<i>Cords</i>						
	<i>Quaking Aspen</i>		54	<i>Cords</i>						
	Mixed Hardwood		150	Cords						
	<i>Black Ash</i>		43	<i>Cords</i>						
	<i>Black Cherry</i>		4	<i>Cords</i>						
	<i>Paper Birch</i>		96	<i>Cords</i>						
	<i>Red Maple</i>		7	<i>Cords</i>						
	Mixed Spruce		38	Cords						
	<i>Black Spruce</i>		33	<i>Cords</i>						
	<i>White Spruce</i>		5	<i>Cords</i>						
	N. White Cedar		83	Cords						
	White Pine		3	Cords						
	7		Mixed Aspen	Pulpwood			10	Cords	4.9	\$1,192.60
<i>Balsam Poplar</i>		3	<i>Cords</i>							
<i>Quaking Aspen</i>		7	<i>Cords</i>							
Mixed Spruce		60	Cords							
<i>Black Spruce</i>		60	<i>Cords</i>							
N. White Cedar		28	Cords							
White Pine		4	Cords							
8		Black Ash	Sawtimber		17.9	MBF	17.5	\$6,017.05		
	Balsam Fir	Pulpwood	5	Cords						
	Mixed Hardwood		277	Cords						
	<i>Black Ash</i>		242	<i>Cords</i>						
	<i>Red Maple</i>		31	<i>Cords</i>						
	<i>Yellow Birch</i>		4	<i>Cords</i>						
	Mixed Spruce		20	Cords						
	<i>Black Spruce</i>		20	<i>Cords</i>						
	N. White Cedar		136	Cords						
	Tamarack		9	Cords						
9	Paper Birch		Sawtimber	0.4	MBF	2.2	\$443.15			
	Sugar Maple	Pulpwood	0.5	MBF						
	Balsam Fir		1	Cords						
	Mixed Hardwood		22	Cords						
	<i>Basswood</i>		1	<i>Cords</i>						
	<i>Black Cherry</i>		1	<i>Cords</i>						
	<i>Ironwood</i>		1	<i>Cords</i>						
	<i>Paper Birch</i>		2	<i>Cords</i>						
	<i>Red Maple</i>		10	<i>Cords</i>						
	<i>Sugar Maple</i>		7	<i>Cords</i>						
	Mixed Spruce		2	Cords						
	<i>White Spruce</i>		2	<i>Cords</i>						
	TOTAL:			69.9	MBF					
	TOTAL:			1,612	Cords					

Sale Specific Conditions & Requirements

Sale Name: Orange Hornet SBW

Sale Number: 33-032-21 Seq#: 1

1 - Sale Area

1.2 - Boundaries

1.2.1 - Painted boundaries (9/19)

The sale boundary and Payment Unit boundaries are marked and identified by blue, red, and yellow paint. Exterior sale boundary lines against private property are marked with blue paint. Exterior sale boundary lines against state are marked with red paint. Interior Payment Unit boundaries are marked with yellow paint. Retention patches are marked with red paint, no harvesting activities may occur within these areas. The painted boundary line trees are not Included Timber and are to be protected unless marked with orange paint. Yellow painted trees designating an interior Payment Unit boundary are only to be cut when all surrounding Payment Units have been paid for.

2 - Timber Specifications

2.1 - Included Timber

2.1.1 - Clearcut unit(s) with unmerchantable trees (6/14)

Within Payment Unit(s) 1-3 and 5-8, cut all trees that are three (3) inches or more at DBH, except within Payment Unit 1, do not cut trees marked with green paint and within Payment Unit 6 and 7, only cut those cedar less than nine (9) inches at DBH.

2.1.3 - Cut tree marked unit(s) (12/08)

Within Payment Unit(s) 4 and 9, all trees are designated for cutting when marked with orange paint above and below stump height, regardless of merchantability. In addition, within Payment Unit 4, cut all spruce/fir greater than three (3) inches at DBH and within Payment Unit 9, cut all spruce/fir, aspen and balm greater than four (4) inches at DBH.

2.2 - Utilization

2.2.4 - Skidding length (2/14)

Skidding of unlimbed tops or lengths over 17 feet is not permissible within Payment Units 4, 6, and 9.

3 - Payments

3.3 - Pre-measured Sales

3.3.4 - Dividing payment units (7/14)

Payment Unit(s) \$18,000 in value or greater may be divided at the request of the Purchaser and upon approval of the Unit Manager. Dividing Payment Units is a contract modification which requires a Timber Sale Contract Amendment. There will be only one division per Payment Unit.

4 - Transportation

4.1 - Construction

4.1.2 - Stream crossings, specific (3/11)

There is an intermittent drain/creek within Payment Unit 6, as shown on the Timber Sale Map. The Purchaser will need to install a temporary winter crossing to access all areas within Payment Unit 6. This same temporary crossing will need to be used to access Payment Unit 7. This crossing will need to be approved by the sale administrator prior to installation.

4.1.8 - Road work (1) (8/07)

The following road work is required: the Purchaser must haul and spread 120 cubic yards of gravel on the access road into Payment Unit 5. The required roadwork must be done, prior to any hauling taking place from Payment Unit 5. Gravel is available from a state pit about 1/2 mile south of Payment Unit 8.

Additional road work will be required if the Purchaser accesses Payment Units 2-7 through state land. There is a lower portion of road between Payment Units 5 and 6 that will require the installation of a new corrugated steel culvert 18" X 24'. The Purchaser will provide this culvert. The Purchaser must also haul and spread 100 cubic yards of gravel through this stretch of road, with a minimum of twelve (12) inches of gravel being placed over the culvert. The culvert location will be

identified during the pre-sale meeting. All roadwork must be completed prior to any hauling taking place from Payment Units 2-7 unless access is through private land to the north of these Payment Units.

4.2 - Maintenance

4.2.1 - Hauling restriction (12/08)

Hauling may be restricted on forest roads by the Unit Manager or his/her representative. The restriction may occur during spring breakup or during other wet weather conditions.

4.2.4 - Grading (10/16)

For completion of the sale, state forest roads must be graded. In general, this will require a road grader or bulldozer to shape up the roads after forest products have been hauled off site. This includes cleaning of drainage areas, grading, crowning, and filling with gravel, if necessary. The grading equipment to be used must be approved by the Unit Manager or his/her representative.

4.4 - Access

4.4.1 - Private property access (3/11)

Permission for access across private land is the responsibility of the Purchaser. All Payment Units can be accessed through state land, but the best access into Payment Units 2-7 is through private property to the north of Payment Unit 4.

4.4.2 - Alternate route on private property (2/04)

It is the Purchaser's responsibility to obtain access across private land for any routes other than the route shown on the Timber Sale Map.

5 - Operations

5.2 - Conduct of Operations

5.2.3 - Operating Restrictions

5.2.3.1 - Operating restrictions (9/11)

Within Payment Unit(s) 2, 7, and 8, cutting and skidding are limited to the period of December 1 to March 31, unless there is an extended dry or frozen period, and the sale administrator allows harvesting during that period of time. This restriction is because of low wet ground through each of the Payment Units. See spec 5.8.6, regarding additional restrictions for Payment Unit 8.

5.2.3.3 - Bark slippage restriction (3/09)

Within Payment Unit(s) 4 and 9, unless changed by written agreement, cutting and skidding are not permitted during the period of April 15 to July 15. This restriction is because of bark slippage. See spec 5.8.6, for additional restrictions on Payment Unit 9.

5.2.22 - Operating Caution

5.2.22.1 - Operating caution (6/11)

It is recommended, but not required, that within Payment Unit(s) 1, 5, and 6, cutting and skidding occur during dry summer or frozen winter conditions. The reason for the recommendation is because of some low wet areas within each of the Payment Units.

5.4 - Soil Protection

5.4.1 - Rutting restriction, general (7/16)

Operations are to cease immediately if equipment and weather conditions result in rutting of roads and/or skid trails which is 12 inches or greater in depth and 50 feet in length. Operations are to cease immediately if equipment and weather conditions result in rutting of roads which is 12 inches or greater in depth and 50 feet in length. In addition, operations are to cease immediately if equipment and weather conditions result in rutting on skid trails which is 12 inches or greater in depth and 50 feet in length. The Unit Manager or his/her representative may restrict hauling and/or skidding if ruts exceed the specified depth. With the Unit Manager or his/her representative's approval, the Purchaser may return to the area when the risk of rutting has decreased.

5.8 - Protection of Endangered Species

5.8.6 - Protection of eagle nests (5/12)

To protect an active eagle's nest, all harvesting operations within Payment Units 8 and 9 are limited to the period of September 1 through December 31. This specification may be modified if the nest is not active during a given period.

7 - Other Conditions

7.5 - Loss

7.5.1 - Deteriorating timber (7/09)

The sale area has received damage from the spruce budworm and the eastern larch beetle. The pests have caused spruce/fir and tamarack mortality. The Purchaser should harvest the wood as soon as possible. The Department of Natural Resources is held free of responsibility of any further damage or deterioration due to delay in harvesting.



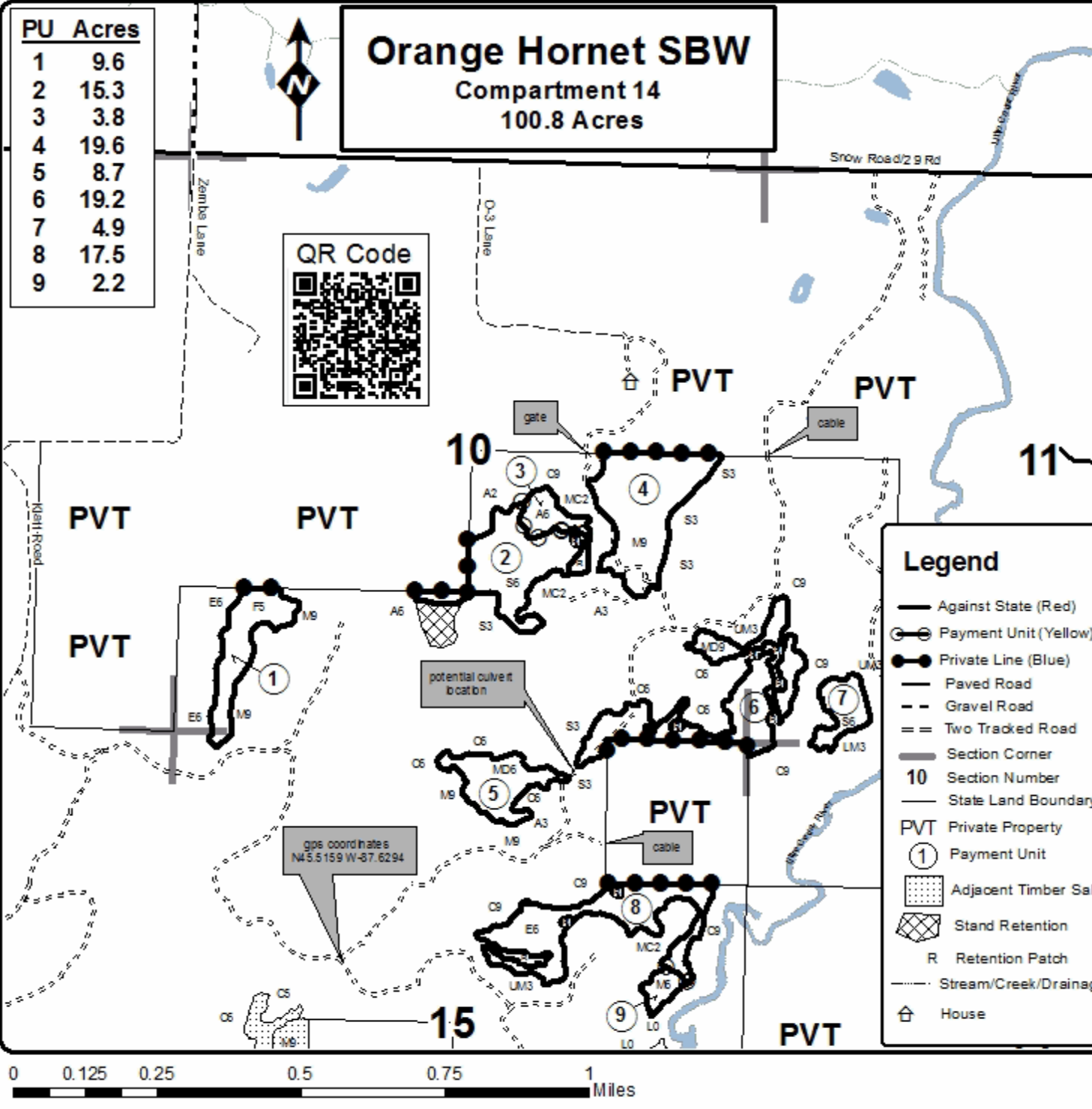
Sale Number	Year
33-032	21

TIMBER SALE MAP

This information provided by authority of Part 525, 1994 PA 451, as amended.

Forest Management Unit Escanaba Management Unit	County Menominee County	Mapped By Beaudo	Date 8/9/2021	Page 1	of 1
Township 36N	Range 27W	Section(s) and Subdivision(s) Sec 10 - S1/2SW, SE; Sec 11 - W1/2SW; Sec 14 - NWNW; Sec 15 - N1/2NW, NWNE, S1/2NE.	Scale 1:15,840		

Cover Type				Density	
A = Aspen	H = Hemlock	N = Marsh	U = Upland Brush	0 = Non Stocked	5 = Pole Timber Medium
B = Paper Birch	J = Jack Pine	O = Oak	UM = Upland Mixed	1 = Seeding Sapling Poor	6 = Pole Timber Well
C = Cedar	L = Lowland Brush	P = Lowland Poplar	V = Bog or Marsh	2 = Seeding Sapling Medium	7 = Saw Timber Poor
D = Treed Bog	LM = Lowland Mixed	Q = Mixed Swamp Conifer	W = White Pine	3 = Seeding Sapling Well	8 = Saw Timber Medium
E = Swamp Hardwoods	M = Mpl. Ech. Birch	R = Red Pine	X = Non Stocked	4 = Pole Timber Poor	9 = Saw Timber Well
F = Spruce Fir	MC = Mixed Conifer	S = Black Spruce	Z = Water		
G = Creas	MD = Mixed Deciduous	T = Tamarack			



TIMBER SALE INFORMATION

Rusty Blue Ribbon (33-033-21)
 T37N, R28W, SEC. 16; T37N, R28W, SEC. 8; T37N, R28W, SEC. 9.
 Menominee County (Advertised Price \$43,849.25)

SALE NOTE: All units of volume listed for this sale were estimated using the Inventory Manager computer program and the new Michigan taper model.

- See sale spec 7.5.1 for information about deteriorating timber due to insects.
- See sale spec 4.1.8 for road work requirements.
- See sale spec 5.2.3.1 for information on cutting and skidding restrictions.

A timber sale contract for this lump sum, sealed bid timber sale will be awarded to the responsible bidder offering the highest sealed bid price. All units of volume listed below were estimated using the Inventory Manager computer program and the new Michigan taper model. Bids must be at or above the following advertised price for each product and species:

<u>PRODUCTS & SPECIES</u>	<u>ESTIMATED UNITS*</u>	<u>ADVERTISED PRICE</u>
Sawtimber		
Black Cherry	0.4 MBF	\$ 75.00 / MBF
Northern Pin Oak	4.9 MBF	\$ 79.00 / MBF
Paper Birch	2.3 MBF	\$ 54.00 / MBF
Red Maple	24.8 MBF	\$ 73.00 / MBF
Red Oak	47.3 MBF	\$ 99.00 / MBF
White Oak	0.8 MBF	\$ 74.00 / MBF
White Pine	7.9 MBF	\$ 42.00 / MBF
Pulpwood		
Balsam Fir	126 Cords	\$ 12.05 / Cord
Mixed Aspen	1,253 Cords	\$ 16.60 / Cord
Mixed Hardwood	343 Cords	\$ 14.85 / Cord
Mixed Oak	90 Cords	\$ 17.45 / Cord
Mixed Spruce	122 Cords	\$ 11.65 / Cord
N. White Cedar	18 Cords	\$ 9.05 / Cord
Red Pine	38 Cords	\$ 43.15 / Cord
Tamarack	110 Cords	\$ 10.35 / Cord
White Pine	166 Cords	\$ 18.55 / Cord

* The total volume is statistically estimated within plus (+) or minus (-) 5.20 percent. There are an estimated 2,368 cords on this timber sale, plus or minus 123 cords at the 95% confidence level. The estimated units are final and not subject to adjustment. Prospective bidders are urged to examine this timber and to make their own estimates of quantity and quality.

BOND AND PAYMENT SCHEDULE:

1. A bond in the amount of \$2,192.00 to insure faithful performance of the conditions of the contract will be deposited by the successful bidder within 21 days of the sale award.
2. Cutting in any sale or unit without the required advance payment would be considered a trespass.
3. Total payment must be paid in advance or according to the following schedule :
 - (a) Ten percent (10%) of the sale value must be paid within 21 days of the sale award.
 - (b) The 10% down payment will be credited towards the first unit cut.
 - (c) Payment for each of the following units must be made before cutting begins in that unit:

PAYMENT UNIT NUMBER	PERCENT OF TOTAL SALE VALUE
01	9.9%
02	15.4%
03	16.4%
04	10.1%
05	3.2%
06	18.7%
07	12.3%
08	6.5%
09	7.5%

4. If no cutting takes place, the 10% down payment will not be refunded.
5. Operations on the contract issued will terminate on 09/30/2024.

SALE STATISTICS

Volumes were calculated in cubic feet using the Michigan taper model. Cubic foot volume includes all wood inside bark for the product indicated. For display purposes, cubic feet were converted to cords and MBF using a simple conversion factor, e.g. 79 cubic feet per cord and 185 cubic feet per MBF. The cubic foot volumes are precise; the cords and MBF volumes are not. Cubic foot volume cannot be directly converted to cords or boards with precision.

SALE VOLUMES

The total estimated sale volume may not equal the sum of the species/products due to the nature of statistical calculations associated with double sampling methodology.

VOLUME			STATISTICAL RANGE IN CORDS	
TOTAL CUBIC FEET	TOTAL CORDS	PERCENT ERROR	MINIMUM	MAXIMUM
187,104	2,368	5.20%	2,245	2,492

VDU VOLUMES

A VDU is a Volume Determination Unit. Volumes and their associated statistics are calculated at the VDU level and summarized to the sale level. There is often a one to one relationship between a VDU and a Payment Unit, but not always, depending on the cruise design. Refer to the VDU TO PAYMENT UNIT table.

VDU	VOLUME			RANGE IN CORDS	
	TOTAL CUBIC FEET	TOTAL CORDS	PERCENT ERROR	MINIMUM	MAXIMUM
41	20,509	260	18.84%	211	309
44	67,154	850	7.68%	785	915
47	18,153	230	11.73%	203	257
48	6,409	81	26.97%	59	103
49	25,179	319	18.55%	260	378
53	33,587	425	9.61%	384	466
57	21,836	276	19.29%	223	330
TOTAL:	192,828	2,441		2,125	2,757

VDU TO PAYMENT UNIT

When a VDU is associated with more than one Payment Unit (PU), the VDU volumes are assigned to the PU based on acres of the VDU within the PU.

VDU	VDU ACRES	PU	PU ACRES
41	19.6	1	19.6
44	38.9	2	18.8
		3	20.1
47	21.9	4	21.9
48	8.2	5	8.2
49	29.0	6	29.0
53	33.9	8	15.7
		9	18.2
57	10.0	7	10.0
TOTAL:	161.5		161.5

DESCRIPTION OF TIMBER BY PAYMENT UNIT (PU)

PU	MARKET GROUP	PRODUCT	QUANTITY	UNIT	ACRES	ADVERTISE PRICE
1	Red Maple	Sawtimber	6.0	MBF	19.6	\$4,346.40
	Balsam Fir	Pulpwood	29	Cords		
	Mixed Aspen		169	Cords		
	<i>B. T. Aspen</i>		4	<i>Cords</i>		
	<i>Balsam Poplar</i>		7	<i>Cords</i>		
	<i>Quaking Aspen</i>		158	<i>Cords</i>		
	Mixed Hardwood		42	Cords		
	<i>Red Maple</i>		42	<i>Cords</i>		
	White Pine		7	Cords		
2	Balsam Fir	Pulpwood	15	Cords	18.8	\$6,735.10
	Mixed Aspen		385	Cords		
	<i>B. T. Aspen</i>		172	<i>Cords</i>		
	<i>Quaking Aspen</i>		213	<i>Cords</i>		
	Mixed Hardwood		11	Cords		
	<i>Paper Birch</i>		5	<i>Cords</i>		
	<i>Red Maple</i>		6	<i>Cords</i>		
	3	Balsam Fir	Pulpwood	16		
Mixed Aspen			411	Cords		
<i>B. T. Aspen</i>			183	<i>Cords</i>		
<i>Quaking Aspen</i>			228	<i>Cords</i>		
Mixed Hardwood			12	Cords		
<i>Paper Birch</i>			5	<i>Cords</i>		
<i>Red Maple</i>			7	<i>Cords</i>		
4		Red Maple	Sawtimber	1.5	MBF	21.9
	Red Oak		13.2	MBF		
	Balsam Fir	Pulpwood	57	Cords		
	Mixed Aspen		68	Cords		
	<i>Balsam Poplar</i>		24	<i>Cords</i>		
	<i>Quaking Aspen</i>		44	<i>Cords</i>		
	Mixed Hardwood		33	Cords		
	<i>Black Ash</i>		2	<i>Cords</i>		
	<i>Red Maple</i>		28	<i>Cords</i>		
	<i>Sugar Maple</i>		3	<i>Cords</i>		
	Mixed Oak		28	Cords		
	<i>Red Oak</i>		28	<i>Cords</i>		
	Mixed Spruce		9	Cords		
	<i>White Spruce</i>		9	<i>Cords</i>		
	White Pine		6	Cords		
5	Paper Birch	Sawtimber	1.1	MBF	8.2	\$1,414.05
	Red Maple		0.8	MBF		
	Red Oak		1.3	MBF		
	Mixed Aspen	Pulpwood	37	Cords		
	<i>B. T. Aspen</i>		13	<i>Cords</i>		
	<i>Balsam Poplar</i>		4	<i>Cords</i>		
	<i>Quaking Aspen</i>		20	<i>Cords</i>		
	Mixed Hardwood		22	Cords		
	<i>Black Ash</i>		2	<i>Cords</i>		
	<i>Paper Birch</i>		5	<i>Cords</i>		
	<i>Red Maple</i>		15	<i>Cords</i>		
	Mixed Oak		3	Cords		
	<i>Red Oak</i>		3	<i>Cords</i>		
	Mixed Spruce		7	Cords		
	<i>White Spruce</i>		7	<i>Cords</i>		
White Pine		5	Cords			
6	Northern Pin Oak	Sawtimber	3.4	MBF	29.0	\$8,177.00
	Red Maple		11.4	MBF		

DESCRIPTION OF TIMBER BY PAYMENT UNIT (PU), CON'T

PU	MARKET GROUP	PRODUCT	QUANTITY	UNIT	ACRES	ADVERTISE PRICE
6 con't	Red Oak	Sawtimber	32.8	MBF		
	White Oak		0.8	MBF		
	White Pine		7.9	MBF		
	Balsam Fir	Pulpwood	3	Cords		
	Mixed Aspen		13	Cords		
	<i>Quaking Aspen</i>		13	<i>Cords</i>		
	Mixed Hardwood		66	Cords		
	<i>Black Ash</i>		4	<i>Cords</i>		
	<i>Red Maple</i>		62	<i>Cords</i>		
	Mixed Oak		48	Cords		
	<i>Northern Pin Oak</i>		4	<i>Cords</i>		
	<i>Red Oak</i>		42	<i>Cords</i>		
	<i>White Oak</i>		2	<i>Cords</i>		
	Mixed Spruce		16	Cords		
	<i>White Spruce</i>		16	<i>Cords</i>		
	N. White Cedar		18	Cords		
	Red Pine		9	Cords		
	White Pine		34	Cords		
7	Red Maple	Sawtimber	2.2	MBF	10.0	\$5,409.95
	Mixed Aspen	Pulpwood	88	Cords		
	<i>B. T. Aspen</i>		31	<i>Cords</i>		
	<i>Balsam Poplar</i>		6	<i>Cords</i>		
	<i>Quaking Aspen</i>		51	<i>Cords</i>		
	Mixed Hardwood		68	Cords		
	<i>Black Ash</i>		19	<i>Cords</i>		
	<i>Red Maple</i>		49	<i>Cords</i>		
	Mixed Oak		6	Cords		
	<i>Red Oak</i>		6	<i>Cords</i>		
	Red Pine		25	Cords		
	White Pine		86	Cords		
8	Black Cherry	Sawtimber	0.2	MBF	15.7	\$2,852.90
	Northern Pin Oak		0.7	MBF		
	Paper Birch		0.6	MBF		
	Red Maple		1.3	MBF		
	Balsam Fir	Pulpwood	3	Cords		
	Mixed Aspen		38	Cords		
	<i>Balsam Poplar</i>		19	<i>Cords</i>		
	<i>Quaking Aspen</i>		19	<i>Cords</i>		
	Mixed Hardwood		41	Cords		
	<i>Black Ash</i>		11	<i>Cords</i>		
	<i>Black Cherry</i>		1	<i>Cords</i>		
	<i>Paper Birch</i>		21	<i>Cords</i>		
	<i>Red Maple</i>		8	<i>Cords</i>		
	Mixed Oak		2	Cords		
	<i>Northern Pin Oak</i>		2	<i>Cords</i>		
	Mixed Spruce		42	Cords		
	<i>Black Spruce</i>		40	<i>Cords</i>		
	<i>White Spruce</i>		2	<i>Cords</i>		
	Red Pine		2	Cords		
	Tamarack		51	Cords		
White Pine		13	Cords			
9	Black Cherry	Sawtimber	0.2	MBF	18.2	\$3,293.50
	Northern Pin Oak		0.8	MBF		
	Paper Birch		0.6	MBF		
	Red Maple		1.6	MBF		
	Balsam Fir	Pulpwood	3	Cords		

DESCRIPTION OF TIMBER BY PAYMENT UNIT (PU), CON'T

PU	MARKET GROUP	PRODUCT	QUANTITY	UNIT	ACRES	ADVERTISE PRICE
9 con't	Mixed Aspen	Pulpwood	44	Cords		
	<i>Balsam Poplar</i>		23	<i>Cords</i>		
	<i>Quaking Aspen</i>		21	<i>Cords</i>		
	Mixed Hardwood		48	Cords		
	<i>Black Ash</i>		13	<i>Cords</i>		
	<i>Black Cherry</i>		2	<i>Cords</i>		
	<i>Paper Birch</i>		24	<i>Cords</i>		
	<i>Red Maple</i>		9	<i>Cords</i>		
	Mixed Oak		3	Cords		
	<i>Northern Pin Oak</i>		3	<i>Cords</i>		
	Mixed Spruce		48	Cords		
	<i>Black Spruce</i>		46	<i>Cords</i>		
	<i>White Spruce</i>		2	<i>Cords</i>		
	Red Pine		2	Cords		
	Tamarack		59	Cords		
	White Pine		15	Cords		
	TOTAL:			88.4	MBF	
TOTAL:			2,266	Cords		

Sale Specific Conditions & Requirements

Sale Name: Rusty Blue Ribbon

Sale Number: 33-033-21 Seq#: 1

1 - Sale Area

1.2 - Boundaries

1.2.1 - Painted boundaries (9/19)

The sale boundary and Payment Unit boundaries are marked and identified by blue, red, and yellow paint. Exterior sale boundary lines against private property are marked with blue paint. Exterior sale boundary lines against state are marked with red paint. Interior Payment Unit boundaries are marked with yellow paint. Retention patches are marked with red paint, no harvesting activities may occur within these areas. The painted boundary line trees are not Included Timber and are to be protected. Yellow painted trees designating an interior Payment Unit boundary are only to be cut when all surrounding Payment Units have been paid for.

2 - Timber Specifications

2.1 - Included Timber

2.1.1 - Clearcut unit(s) with unmerchantable trees (6/14)

Within Payment Unit(s) 1-5 and 7-9, cut all trees that are three (3) inches or more at DBH, except:

- Within Payment Units 1, 4, and 7, do not cut trees marked with green paint.
- Within Payment Unit 2 and 3, do not cut white pine, red pine, and oak.
- Within Payment Unit 5, do not cut cedar and trees marked with green paint.
- Within Payment Units 8 and 9, do not cut cedar.

Within Payment Unit 6, cut all trees that are four (4) inches or more at DBH, except do not cut trees marked with green paint.

2.1.9 - Harvest exception (12/08)

Do not cut any cedar trees within Payment Units 8 and 9, other than those that are necessary to remove in order to operate within the sale area. Every effort must be made to preserve the existing cedar and to leave an intact stand upon sale completion. All cut cedar shall be piled separately by products and scaled in the woods unless other scaling arrangements are agreed to by the Unit Manager or his/her representative. Stumpage price for cedar shall be \$40.00 per cord.

2.2 - Utilization

2.2.4 - Skidding length (2/14)

Skidding of unlimbed tops or lengths over 17 feet is not permissible within Payment Units 5, 6, 8 and 9. Payment Units 5, 8 and 9 have areas with dense cedar that need to be protected, while in Payment Unit 6 has a dense understory of advanced regeneration that needs to be protected.

3 - Payments

3.3 - Pre-measured Sales

3.3.4 - Dividing payment units (7/14)

Payment Unit(s) \$18,000 in value and greater may be divided at the request of the Purchaser and upon approval of the Unit Manager. Dividing Payment Units is a contract modification which requires a Timber Sale Contract Amendment. There will be only one division per Payment Unit.

4 - Transportation

4.1 - Construction

4.1.8 - Road work (1) (8/07)

The following road work is required: the Purchaser must haul and spread 100 cubic yards of gravel on the access road going back to Payment Units 2 and 3. The locations of where gravel will be placed, will be identified during the pre-sale meeting. All roadwork must be completed, prior to any hauling occurring from Payment Units 2 and 3. Gravel is available from a state pit, approximately one mile north off the North State Road.

4.2 - Maintenance

4.2.1 - Hauling restriction (12/08)

Hauling may be restricted on forest roads by the Unit Manager or his/her representative. The restriction may occur during spring breakup or during other wet weather conditions.

4.2.4 - Grading (10/16)

For completion of the sale, state forest roads must be graded. In general, this will require a road grader or bulldozer to shape up the roads after forest products have been hauled off site. This includes cleaning of drainage areas, grading, crowning, and filling with gravel, if necessary. The grading equipment to be used must be approved by the Unit Manager or his/her representative.

5 - Operations

5.2 - Conduct of Operations

5.2.3 - Operating Restrictions

5.2.3.1 - Operating restrictions (9/11)

Within Payment Unit(s) 8 and 9, cutting and skidding are limited to the period of December 1 to March 31, unless there is an extended dry or frozen period, and the sale administrator allows harvesting during that period of time. This restriction is because of low wet ground throughout the Payment Units.

5.2.22 - Operating Caution

5.2.22.1 - Operating caution (6/11)

It is recommended, but not required, that within Payment Unit(s) 5, cutting and skidding occur during dry summer or frozen winter conditions. The reason for the recommendation is because of some low wet areas of within the Payment Unit. During a dry summer this Payment Unit should be dry enough to harvest.

5.4 - Soil Protection

5.4.1 - Rutting restriction, general (7/16)

Operations are to cease immediately if equipment and weather conditions result in rutting of roads and/or skid trails which is 12 inches or greater in depth and 50 feet in length. Operations are to cease immediately if equipment and weather conditions result in rutting of roads which is 12 inches or greater in depth and 50 feet in length. In addition, operations are to cease immediately if equipment and weather conditions result in rutting on skid trails which is 12 inches or greater in depth and 50 feet in length. The Unit Manager or his/her representative may restrict hauling and/or skidding if ruts exceed the specified depth. With the Unit Manager or his/her representative's approval, the Purchaser may return to the area when the risk of rutting has decreased.

5.7 - Protection of Historical Sites

5.7.1 - Historical sites (7/12)

The Purchaser shall not cut live or dead trees or operate equipment within historical sites. Historical sites are located within Payment Unit 1 and are marked with a red boundary line. The Purchaser shall protect historical sites from damage by the Purchaser's operations. If Purchaser's operations have cut or damaged historical sites through carelessness, the Purchaser shall pay \$500.00 as fixed, agreed and liquidated damages for each acre or part thereof cut or damaged.

5.8 - Protection of Endangered Species

5.8.6 - Protection of eagle nests (5/12)

To protect an active eagle's nest, all harvesting operations within the area north of the retention in Payment Unit 1, are limited to the period of September 1 through December 31. Unless the nest is inactive in a given year and it is approved to allow harvesting during a different period.

6 - Safety and Fire Prevention

6.2 - Signing

6.2.1 - Road posting (10/20)

The Purchaser is responsible for posting and maintaining caution signs on the North State Road prior to beginning operations. The road must be posted at appropriate distances from the Sale Area to warn of logging activity and truck traffic. Signs must

be removed when harvest operations are suspended or completed. The Purchaser will provide these signs.

7 - Other Conditions

7.5 - Loss

7.5.1 - Deteriorating timber (7/09)

The sale area has received damage from the spruce budworm and the eastern larch beetle. The insects have caused spruce, balsam fir and tamarack defoliation and mortality. The Purchaser should harvest the wood as soon as possible. The Department of Natural Resources is held free of responsibility of any further damage or deterioration due to delay in harvesting.



TIMBER SALE MAP

This information provided by authority of Part 525, 1994 PA 451 as amended.

Sale Number	Year
33-033	21

Forest Management Unit	County	Mapped By	Date	Page	of
Escanaba Management Unit	Menominee County	Beudo	8/27/2021	1	1
Township	Range	Section(s) and Subdivision(s)	Scale		
37N	28W	Sec 8 - SENE, NESE; Sec 9 - SWNW, NE, NWSW, SESW, NESE, SWSE; Sec 16 - E1/2NW, W1/2NE, E1/2SW, NWSE.	1:15,840		

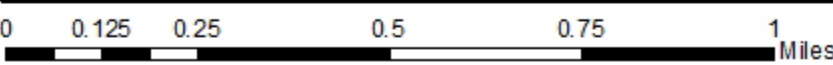
Cover Type				Density	
A = Aspen	H = Hemlock	N = Marsh	U = Upland Brush	0 = Non Stocked	5 = Pole Timber Medium
B = Paper Birch	J = Jack Pine	O = Oak	UM = Upland Mixed	1 = Seeding Sapling Poor	6 = Pole Timber Well
C = Cedar	L = Lowland Brush	P = Lowland Poplar	V = Bog or Marsh	2 = Seeding Sapling Medium	7 = Saw Timber Poor
D = Treed Bog	LM = Lowland Mixed	Q = Mixed Swamp Conifer	W = White Pine	3 = Seeding Sapling Well	8 = Saw Timber Medium
E = Swamp Hardwoods	M = Mpl. Ech. Birch	R = Red Pine	X = Non Stocked	4 = Pole Timber Poor	9 = Saw Timber Well
F = Spruce Fir	MC = Mixed Conifer	S = Black Spruce	Z = Water		
G = Creas	MD = Mixed Deciduous	T = Tamarack			

PU	Acres
1	19.6
2	18.8
3	20.1
4	21.9
5	8.2
6	29.0
7	10.0
8	15.7
9	18.2

Rusty Blue Ribbon
 Compartment 113
 161.5 Acres

Legend	
	Against State (Red)
	Payment Unit (Yellow)
	Private Line (Blue)
	Gravel Road
	Two Tracked Road
	Section Corner
	Section Number
	State Land Boundary
	Private Property
	Payment Unit
	Adjacent Timber Sale
	Retention Patch
	Stream/Creek/Drainage

gps coordinates
 N45.5965 W-87.7733



TIMBER SALE INFORMATION

Kading Creek Blend (33-034-21)
 T37N, R28W, SEC. 4; T37N, R28W, SEC. 5; T37N, R28W, SEC. 8.
 Menominee County (Advertised Price \$20,976.40)

SALE NOTE: All units of volume listed for this sale were estimated using the Inventory Manager computer program and the new Michigan taper model.

- See sale spec 7.5.1 for information on spruce budworm and eastern larch beetle damage.
- See sale spec 4.1.2 and 4.4.1 for information on better site access through private land or alterative access.

A timber sale contract for this lump sum, sealed bid timber sale will be awarded to the responsible bidder offering the highest sealed bid price. All units of volume listed below were estimated using the Inventory Manager computer program and the new Michigan taper model. Bids must be at or above the following advertised price for each product and species:

<u>PRODUCTS & SPECIES</u>	<u>ESTIMATED UNITS*</u>	<u>ADVERTISED PRICE</u>
Sawtimber		
Black Ash	2.6 MBF	\$ 30.00 / MBF
Paper Birch	5.5 MBF	\$ 54.00 / MBF
Red Maple	32.3 MBF	\$ 73.00 / MBF
Red Oak	4.4 MBF	\$ 99.00 / MBF
White Oak	0.9 MBF	\$ 74.00 / MBF
Pulpwood		
Balsam Fir	62 Cords	\$ 12.05 / Cord
Mixed Aspen	361 Cords	\$ 16.60 / Cord
Mixed Hardwood	319 Cords	\$ 14.85 / Cord
Mixed Oak	6 Cords	\$ 17.45 / Cord
Mixed Spruce	198 Cords	\$ 11.65 / Cord
N. White Cedar	132 Cords	\$ 9.05 / Cord
Red Pine	38 Cords	\$ 43.15 / Cord
Tamarack	59 Cords	\$ 10.35 / Cord
White Pine	22 Cords	\$ 18.55 / Cord

* The total volume is statistically estimated within plus (+) or minus (-) 6.65 percent. There are an estimated 1,234 cords on this timber sale, plus or minus 82 cords at the 95% confidence level. The estimated units are final and not subject to adjustment. Prospective bidders are urged to examine this timber and to make their own estimates of quantity and quality.

BOND AND PAYMENT SCHEDULE:

1. A bond in the amount of \$1,049.00 to insure faithful performance of the conditions of the contract will be deposited by the successful bidder within 21 days of the sale award.
2. Cutting in any sale or unit without the required advance payment would be considered a trespass.
3. Total payment must be paid in advance or according to the following schedule :
 - (a) Ten percent (10%) of the sale value must be paid within 21 days of the sale award.
 - (b) The 10% down payment will be credited towards the first unit cut.
 - (c) Payment for each of the following units must be made before cutting begins in that unit:

PAYMENT UNIT NUMBER	PERCENT OF TOTAL SALE VALUE
01	26.7%
02	5.2%
03	14.9%
04	11.1%
05	8.1%
06	2.2%
07	26.7%
08	5.1%
4. If no cutting takes place, the 10% down payment will not be refunded.
5. Operations on the contract issued will terminate on 09/30/2024.

SALE STATISTICS

Volumes were calculated in cubic feet using the Michigan taper model. Cubic foot volume includes all wood inside bark for the product indicated. For display purposes, cubic feet were converted to cords and MBF using a simple conversion factor, e.g. 79 cubic feet per cord and 185 cubic feet per MBF. The cubic foot volumes are precise; the cords and MBF volumes are not. Cubic foot volume cannot be directly converted to cords or boards with precision.

SALE VOLUMES

The total estimated sale volume may not equal the sum of the species/products due to the nature of statistical calculations associated with double sampling methodology.

VOLUME			STATISTICAL RANGE IN CORDS	
TOTAL CUBIC FEET	TOTAL CORDS	PERCENT ERROR	MINIMUM	MAXIMUM
97,503	1,234	6.65%	1,152	1,316

VDU VOLUMES

A VDU is a Volume Determination Unit. Volumes and their associated statistics are calculated at the VDU level and summarized to the sale level. There is often a one to one relationship between a VDU and a Payment Unit, but not always, depending on the cruise design. Refer to the VDU TO PAYMENT UNIT table.

VDU	VOLUME			RANGE IN CORDS	
	TOTAL CUBIC FEET	TOTAL CORDS	PERCENT ERROR	MINIMUM	MAXIMUM
2	23,753	301	14.20%	258	343
5	27,815	352	17.30%	291	413
8	10,241	130	18.18%	106	153
10	5,762	73	14.29%	63	83
19	3,183	40	21.52%	32	49
26	28,792	364	9.19%	331	398
40	2,208	28	16.78%	23	33
TOTAL:	101,754	1,288		1,104	1,472

VDU TO PAYMENT UNIT

When a VDU is associated with more than one Payment Unit (PU), the VDU volumes are assigned to the PU based on acres of the VDU within the PU.

VDU	VDU ACRES	PU	PU ACRES
2	27.8	1	27.8
5	25.7	2	6.8
		3	18.9
8	8.7	4	8.7
10	2.9	5	2.9
19	1.6	6	1.6
26	17.8	7	17.8
40	3.0	8	3.0
TOTAL:	87.5		87.5

DESCRIPTION OF TIMBER BY PAYMENT UNIT (PU)

PU	MARKET GROUP	PRODUCT	QUANTITY	UNIT	ACRES	ADVERTISE PRICE
1	Black Ash	Sawtimber	1.1	MBF	27.8	\$5,597.95
	Red Maple		29.0	MBF		
	White Oak		0.9	MBF		
	Balsam Fir	Pulpwood	34	Cords		
	Mixed Aspen		21	Cords		
	<i>B. T. Aspen</i>		3	<i>Cords</i>		
	<i>Quaking Aspen</i>		18	<i>Cords</i>		
	Mixed Hardwood		159	Cords		
	<i>Black Ash</i>		15	<i>Cords</i>		
	<i>Black Cherry</i>		3	<i>Cords</i>		
	<i>Red Maple</i>		141	<i>Cords</i>		
	Mixed Oak		1	Cords		
	<i>White Oak</i>		1	<i>Cords</i>		
	Mixed Spruce		7	Cords		
	<i>Black Spruce</i>		6	<i>Cords</i>		
	<i>White Spruce</i>		1	<i>Cords</i>		
	N. White Cedar		18	Cords		
2	Black Ash	Sawtimber	0.2	MBF	6.8	\$1,096.10
	Red Maple		0.3	MBF		
	Balsam Fir	Pulpwood	4	Cords		
	Mixed Aspen		9	Cords		
	<i>Balsam Poplar</i>		4	<i>Cords</i>		
	<i>Quaking Aspen</i>		5	<i>Cords</i>		
	Mixed Hardwood		8	Cords		
	<i>Black Ash</i>		3	<i>Cords</i>		
	<i>Paper Birch</i>		1	<i>Cords</i>		
	<i>Red Maple</i>		4	<i>Cords</i>		
	Mixed Spruce		38	Cords		
	<i>Black Spruce</i>		38	<i>Cords</i>		
	N. White Cedar		17	Cords		
	Tamarack		15	Cords		
3	Black Ash	Sawtimber	0.5	MBF	18.9	\$3,116.40
	Red Maple		0.9	MBF		
	Balsam Fir	Pulpwood	12	Cords		
	Mixed Aspen		24	Cords		
	<i>Balsam Poplar</i>		10	<i>Cords</i>		
	<i>Quaking Aspen</i>		14	<i>Cords</i>		
	Mixed Hardwood		26	Cords		
	<i>Black Ash</i>		8	<i>Cords</i>		
	<i>Black Cherry</i>		1	<i>Cords</i>		
	<i>Paper Birch</i>		4	<i>Cords</i>		
	<i>Red Maple</i>		13	<i>Cords</i>		
	Mixed Spruce		107	Cords		
	<i>Black Spruce</i>		107	<i>Cords</i>		
	N. White Cedar		47	Cords		
	Tamarack		42	Cords		
4	Paper Birch	Sawtimber	5.5	MBF	8.7	\$2,319.35
	Red Maple		2.1	MBF		
	Red Oak		2.0	MBF		
	Mixed Aspen	Pulpwood	17	Cords		
	<i>B. T. Aspen</i>		4	<i>Cords</i>		
	<i>Quaking Aspen</i>		13	<i>Cords</i>		
	Mixed Hardwood		90	Cords		
	<i>Paper Birch</i>		42	<i>Cords</i>		
	<i>Red Maple</i>		48	<i>Cords</i>		
	Mixed Oak		3	Cords		

DESCRIPTION OF TIMBER BY PAYMENT UNIT (PU), CON'T

PU	MARKET GROUP	PRODUCT	QUANTITY	UNIT	ACRES	ADVERTISE PRICE
4 con't	<i>Red Oak</i>	<i>Pulpwood</i>	3	<i>Cords</i>		
5	Red Oak	Sawtimber	2.4	MBF	2.9	\$1,698.70
	Balsam Fir	Pulpwood	5	Cords		
	Mixed Aspen		10	Cords		
	<i>Quaking Aspen</i>		10	<i>Cords</i>		
	Mixed Hardwood		8	Cords		
	<i>Red Maple</i>		8	<i>Cords</i>		
	Mixed Oak		2	Cords		
	<i>Red Oak</i>		2	<i>Cords</i>		
	N. White Cedar		9	Cords		
	Red Pine		15	Cords		
	White Pine		19	Cords		
6	Mixed Spruce	Pulpwood	30	Cords	1.6	\$451.65
	<i>Black Spruce</i>		30	<i>Cords</i>		
	N. White Cedar		9	Cords		
	Tamarack		2	Cords		
7	Black Ash	Sawtimber	0.8	MBF	17.8	\$5,622.55
	Balsam Fir	Pulpwood	7	Cords		
	Mixed Aspen		276	Cords		
	<i>Balsam Poplar</i>		84	<i>Cords</i>		
	<i>Quaking Aspen</i>		192	<i>Cords</i>		
	Mixed Hardwood		27	Cords		
	<i>Black Ash</i>		27	<i>Cords</i>		
	Mixed Spruce		16	Cords		
	<i>Black Spruce</i>		14	<i>Cords</i>		
	<i>White Spruce</i>		2	<i>Cords</i>		
	N. White Cedar		32	Cords		
	White Pine		3	Cords		
8	Mixed Aspen	Pulpwood	4	Cords	3.0	\$1,073.70
	<i>Balsam Poplar</i>		3	<i>Cords</i>		
	<i>Quaking Aspen</i>		1	<i>Cords</i>		
	Mixed Hardwood		1	Cords		
	<i>Black Cherry</i>		1	<i>Cords</i>		
	Red Pine		23	Cords		
TOTAL:			45.7	MBF		
TOTAL:			1,197	Cords		

Sale Specific Conditions & Requirements

Sale Name: Kading Creek Blend

Sale Number: 33-034-21 Seq#: 1

1 - Sale Area

1.2 - Boundaries

1.2.1 - Painted boundaries (9/19)

The sale boundary and Payment Unit boundaries are marked and identified by blue, red, and yellow paint. Exterior sale boundary lines against private property are marked with blue paint. Exterior sale boundary lines against state are marked with red paint. The double dot red paint trees along the State Road in Payment Units 5 and 8 are included timber and should be harvested. Interior Payment Unit boundaries are marked with yellow paint. Retention patches are marked with red paint; no harvesting activities may occur within these areas. The painted boundary line trees are not Included Timber and are to be protected. Yellow painted trees designating an interior Payment Unit boundary are only to be cut when all surrounding Payment Units have been paid for.

2 - Timber Specifications

2.1 - Included Timber

2.1.1 - Clearcut unit(s) with unmerchantable trees (6/14)

Within Payment Unit(s) 2-8, cut all trees that are three (3) inches or more at DBH, except within Payment Units 4 and 5, do not cut trees marked with green paint and within Payment Unit 8, cut only pine marked with orange paint above and below stump height.

Within Payment Unit 1, cut all trees that are four (4) inches or more at DBH; except do not cut white pine greater than eighteen (18) inches at DBH.

2.2 - Utilization

2.2.4 - Skidding length (2/14)

Skidding of unlimbed tops or lengths over 17 feet is not permissible within Payment Units 1 and 8. Payment Unit 1 has a dense understory of aspen and conifer regeneration that needs to be protected. Payment Unit 8, will have a residual density of 80 basal area, that will need to be protected.

3 - Payments

3.3 - Pre-measured Sales

3.3.4 - Dividing payment units (7/14)

Payment Unit(s) \$18,000 in value or greater may be divided at the request of the Purchaser and upon approval of the Unit Manager. Dividing Payment Units is a contract modification which requires a Timber Sale Contract Amendment. There will be only one division per Payment Unit.

4 - Transportation

4.1 - Construction

4.1.2 - Stream crossings, specific (3/11)

If the Kading Creek is crossed to access Payment Units 1 and 2, it will require the installation of a temporary culvert or portable bridge. This installation will be performed in accordance with the specifications on the appropriate permits which shall be provided by the Purchaser. There is access into these Payment Units through private property to the north, but the Purchaser will need to obtain permission.

4.2 - Maintenance

4.2.1 - Hauling restriction (12/08)

Hauling may be restricted on forest roads by the Unit Manager or his/her representative. The restriction may occur during spring break up or during other wet weather conditions.

4.2.4 - Grading (10/16)

For completion of the sale, state forest roads must be graded. In general, this will require a road grader or bulldozer to shape up the roads after forest products have been hauled off site. This includes cleaning of drainage areas, grading, crowning and filling with gravel, if necessary. The grading equipment to be used must be approved by the Unit Manager or his/her representative.

4.4 - Access

4.4.1 - Private property access (3/11)

Permission for access across private land into Payment Units 1 and 2 is the responsibility of the Purchaser. The best access into Payment Units 1 and 2 is through private property to the north of the Payment Units. If permission cannot be obtained from the private landowners, refer to spec 4.1.2 for an additional access route.

5 - Operations

5.2 - Conduct of Operations

5.2.3 - Operating Restrictions

5.2.3.1 - Operating restrictions (9/11)

Within Payment Unit(s) 2, 3 and 6, cutting and skidding are limited to the period of December 1 to March 31, unless there is an extended dry or frozen period and the sale administrator allows harvesting during that time. This restriction is because of low wet ground throughout the Payment Units.

5.2.22 - Operating Caution

5.2.22.1 - Operating caution (6/11)

It is recommended, but not required, that within Payment Unit(s) 7, cutting and skidding occur during dry summer or frozen winter conditions. The reason for the recommendation is because of some low wet ground around the perimeter of the Payment Unit.

5.3 - Stream Protection

5.3.1 - Operating near stream (7/04)

No tracked or wheeled vehicles shall be operated within 50 feet of Kading Creek except at an approved crossing.

5.4 - Soil Protection

5.4.1 - Rutting restriction, general (7/16)

Operations are to cease immediately if equipment and weather conditions result in rutting of roads and/or skid trails which is 12 inches or greater in depth and 50 feet in length. Operations are to cease immediately if equipment and weather conditions result in rutting of roads which is 12 inches or greater in depth and 50 feet in length. In addition, operations are to cease immediately if equipment and weather conditions result in rutting on skid trails which is 12 inches or greater in depth and 50 feet in length. The Unit Manager or his/her representative may restrict hauling and/or skidding if ruts exceed the specified depth. With the Unit Manager or his/her representative's approval, the Purchaser may return to the area when the risk of rutting has decreased.

5.8 - Protection of Endangered Species

5.8.6 - Protection of eagle nests (5/12)

To protect an active eagle's nest, all harvesting operations within Payment Unit 8 are limited to the period of September 1 through December 31.

6 - Safety and Fire Prevention

6.2 - Signing

6.2.1 - Road posting (10/20)

The Purchaser is responsible for posting and maintaining caution signs on the State Road prior to beginning operations. The road must be posted at appropriate distances from the Sale Area to warn of logging activity and truck traffic. Signs must be removed when harvest operations are suspended or completed. The Purchaser will provide these signs.

7 - Other Conditions

7.5 - Loss

7.5.1 - Deteriorating timber (7/09)

The sale area has received damage from the spruce budworm and the eastern larch beetle. The budworm and beetle have caused a significant amount of defoliation and some mortality of the balsam fir, spruce, and tamarack. The Purchaser should harvest the wood as soon as possible. The Department of Natural Resources is held free of responsibility of any further damage or deterioration due to delay in harvesting.



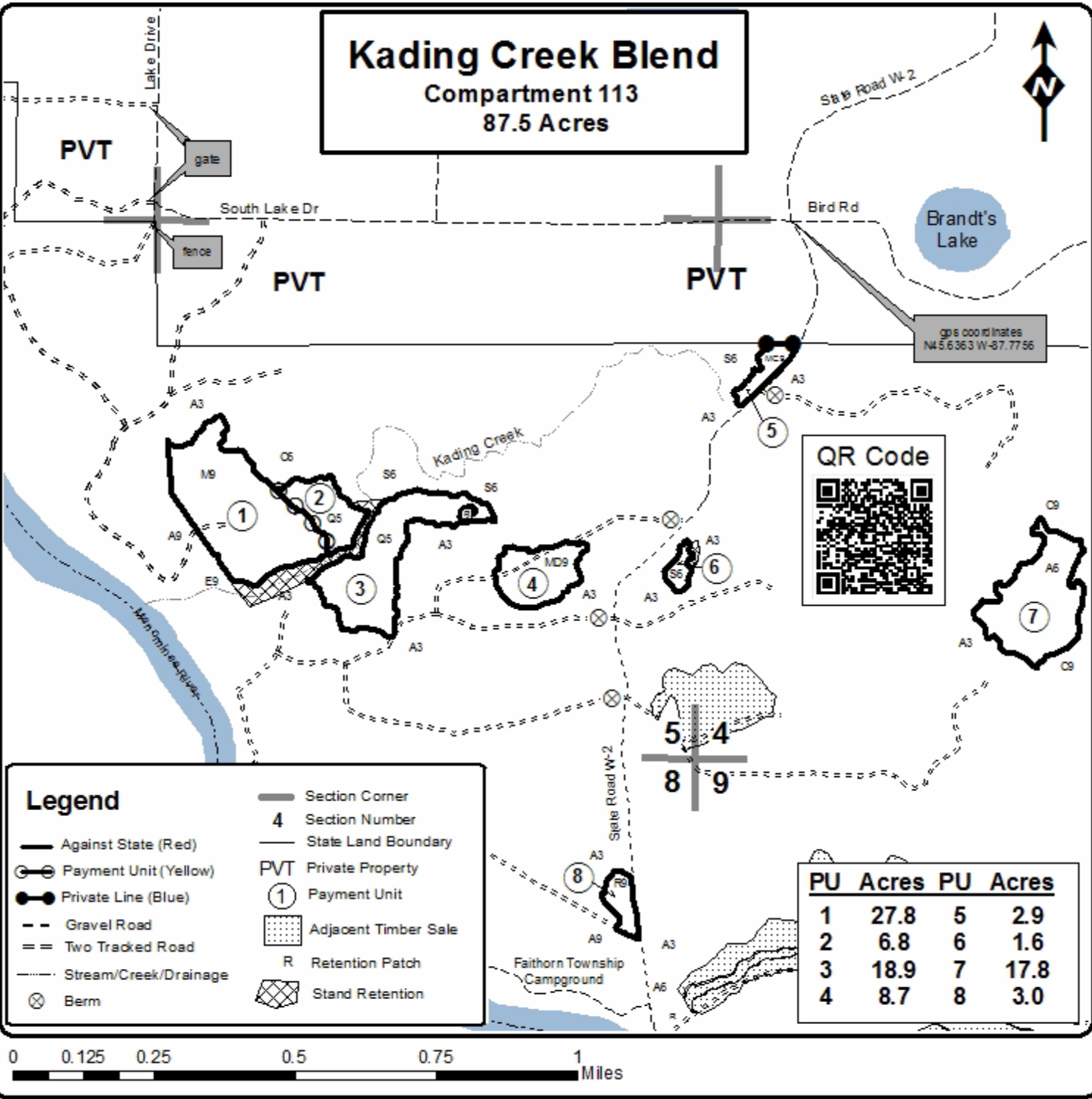
TIMBER SALE MAP

This information provided by authority of Part 525, 1994 PA 451, as amended.

Sale Number	Year
33-034	21

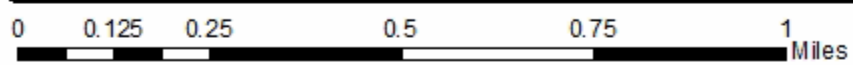
Forest Management Unit	County	Mapped By	Date	Page	of
Escanaba Management Unit	Menominee County	Beudo	9/21/2021	1	1
Township	Range	Section(s) and Subdivision(s)	Scale		
37N	28W	Sec 4 - SWNW, NESW, W1/2SE; Sec 5 - SWNW, N1/2SW, SESW, N1/2SE; Sec 8 - E1/2NE.	1:15,840		

Cover Type				Density	
A = Aspen	H = Hemlock	N = Marsh	U = Upland Brush	0 = Non Stocked	5 = Pole Timber Medium
B = Paper Birch	J = Jack Pine	O = Oak	UM = Upland Mixed	1 = Seeding Sapling Poor	6 = Pole Timber Well
C = Cedar	L = Lowland Brush	P = Lowland Poplar	V = Bog or Marsh	2 = Seeding Sapling Medium	7 = Saw Timber Poor
D = Treed Bog	LM = Lowland Mixed	Q = Mixed Swamp Conifer	W = White Pine	3 = Seeding Sapling Well	8 = Saw Timber Medium
E = Swamp Hardwoods	M = Mpl. Ech. Birch	R = Red Pine	X = Non Stocked	4 = Pole Timber Poor	9 = Saw Timber Well
F = Spruce Fir	MC = Mixed Conifer	S = Black Spruce	Z = Water		
G = Cress	MD = Mixed Deciduous	T = Tamarack			



Legend	
	Against State (Red)
	Payment Unit (Yellow)
	Private Line (Blue)
	Gravel Road
	Two Tracked Road
	Stream/Creek/Drainage
	Berm
	Section Corner
	Section Number
	State Land Boundary
	Private Property
	Payment Unit
	Adjacent Timber Sale
	Retention Patch
	Stand Retention

PU	Acres	PU	Acres
1	27.8	5	2.9
2	6.8	6	1.6
3	18.9	7	17.8
4	8.7	8	3.0



TIMBER SALE INFORMATION

Blom Creek SBW (33-035-21)
T37N, R28W, SEC. 10; T37N, R28W, SEC. 3; T37N, R28W, SEC. 4.
Menominee County (Advertised Price \$45,218.90)

SALE NOTE: All units of volume listed for this sale were estimated using the Inventory Manager computer program and the new Michigan taper model.

- See sale spec 4.4.1 for access to sale through private land.

- See sale spec 7.5.1 for information on deteriorating timber due to insect damage.

A timber sale contract for this lump sum, sealed bid timber sale will be awarded to the responsible bidder offering the highest sealed bid price. All units of volume listed below were estimated using the Inventory Manager computer program and the new Michigan taper model. Bids must be at or above the following advertised price for each product and species:

<u>PRODUCTS & SPECIES</u>	<u>ESTIMATED UNITS*</u>	<u>ADVERTISED PRICE</u>
Sawtimber		
Black Ash	4.4 MBF	\$ 30.00 / MBF
Red Maple	1.3 MBF	\$ 73.00 / MBF
Red Oak	7.8 MBF	\$ 99.00 / MBF
Sugar Maple	10.4 MBF	\$ 119.00 / MBF
White Ash	4.6 MBF	\$ 30.00 / MBF
Pulpwood		
Balsam Fir	90 Cords	\$ 12.05 / Cord
Mixed Aspen	1,665 Cords	\$ 16.60 / Cord
Mixed Hardwood	338 Cords	\$ 14.85 / Cord
Mixed Spruce	383 Cords	\$ 11.65 / Cord
N. White Cedar	37 Cords	\$ 9.05 / Cord
Red Oak	26 Cords	\$ 17.45 / Cord
Red Pine	44 Cords	\$ 43.15 / Cord
Tamarack	56 Cords	\$ 10.35 / Cord
White Pine	74 Cords	\$ 18.55 / Cord

* The total volume is statistically estimated within plus (+) or minus (-) 3.94 percent. There are an estimated 2,616 cords on this timber sale, plus or minus 103 cords at the 95% confidence level. The estimated units are final and not subject to adjustment. Prospective bidders are urged to examine this timber and to make their own estimates of quantity and quality.

BOND AND PAYMENT SCHEDULE:

1. A bond in the amount of \$2,261.00 to insure faithful performance of the conditions of the contract will be deposited by the successful bidder within 21 days of the sale award.
2. Cutting in any sale or unit without the required advance payment would be considered a trespass.
3. Total payment must be paid in advance or according to the following schedule :
 - (a) Ten percent (10%) of the sale value must be paid within 21 days of the sale award.
 - (b) The 10% down payment will be credited towards the first unit cut.
 - (c) Payment for each of the following units must be made before cutting begins in that unit:

PAYMENT UNIT NUMBER	PERCENT OF TOTAL SALE VALUE
01	8.0%
02	6.4%
03	5.1%
04	8.8%
05	9.9%
06	1.1%
07	3.4%
08	2.7%
09	27.2%
10	19.4%
11	8.0%

4. If no cutting takes place, the 10% down payment will not be refunded.
5. Operations on the contract issued will terminate on 09/30/2024.

SALE STATISTICS

Volumes were calculated in cubic feet using the Michigan taper model. Cubic foot volume includes all wood inside bark for the product indicated. For display purposes, cubic feet were converted to cords and MBF using a simple conversion factor, e.g. 79 cubic feet per cord and 185 cubic feet per MBF. The cubic foot volumes are precise; the cords and MBF volumes are not. Cubic foot volume cannot be directly converted to cords or boards with precision.

SALE VOLUMES

The total estimated sale volume may not equal the sum of the species/products due to the nature of statistical calculations associated with double sampling methodology.

VOLUME			STATISTICAL RANGE IN CORDS	
TOTAL CUBIC FEET	TOTAL CORDS	PERCENT ERROR	MINIMUM	MAXIMUM
206,678	2,616	3.94%	2,513	2,719

VDU VOLUMES

A VDU is a Volume Determination Unit. Volumes and their associated statistics are calculated at the VDU level and summarized to the sale level. There is often a one to one relationship between a VDU and a Payment Unit, but not always, depending on the cruise design. Refer to the VDU TO PAYMENT UNIT table.

VDU	VOLUME			RANGE IN CORDS	
	TOTAL CUBIC FEET	TOTAL CORDS	PERCENT ERROR	MINIMUM	MAXIMUM
12	15,659	198	13.94%	171	226
15	15,791	200	18.58%	163	237
17	9,958	126	5.35%	119	133
30	22,400	284	16.75%	236	331
31	20,073	254	20.43%	202	306
34	24,029	304	11.71%	269	340
36	99,640	1,261	4.60%	1,203	1,319
37	11,611	147	10.78%	131	163
TOTAL:	219,160	2,774		2,494	3,055

VDU TO PAYMENT UNIT

When a VDU is associated with more than one Payment Unit (PU), the VDU volumes are assigned to the PU based on acres of the VDU within the PU.

VDU	VDU ACRES	PU	PU ACRES
12	17.4	1	17.4
15	10.8	2	10.8
17	8.5	3	8.5
30	34.4	6	5.5
		7	16.2
		8	12.7
31	16.4	4	16.4
34	28.0	5	28.0
36	63.4	9	37.0
		10	26.4
37	10.5	11	10.5
TOTAL:	189.4		189.4

DESCRIPTION OF TIMBER BY PAYMENT UNIT (PU)

PU	MARKET GROUP	PRODUCT	QUANTITY	UNIT	ACRES	ADVERTISE PRICE
1	Red Oak	Sawtimber	3.0	MBF	17.4	\$3,627.95
	Sugar Maple		4.3	MBF		
	White Ash		4.6	MBF		
	Balsam Fir	Pulpwood	8	Cords		
	Mixed Aspen		33	Cords		
	<i>B. T. Aspen</i>		25	Cords		
	<i>Quaking Aspen</i>		8	Cords		
	Mixed Hardwood		105	Cords		
	<i>Ironwood</i>		1	Cords		
	<i>Paper Birch</i>		2	Cords		
	<i>Red Maple</i>		7	Cords		
	<i>Sugar Maple</i>		66	Cords		
	<i>White Ash</i>		29	Cords		
	Mixed Spruce		2	Cords		
	<i>White Spruce</i>		2	Cords		
	N. White Cedar		2	Cords		
	Red Oak		8	Cords		
	White Pine		16	Cords		
2	Black Ash	Sawtimber	4.4	MBF	10.8	\$2,912.95
	Balsam Fir	Pulpwood	2	Cords		
	Mixed Aspen		68	Cords		
	<i>Balsam Poplar</i>		61	Cords		
	<i>Quaking Aspen</i>		7	Cords		
	Mixed Hardwood		91	Cords		
	<i>Black Ash</i>		63	Cords		
	<i>Paper Birch</i>		2	Cords		
	<i>Red Maple</i>		13	Cords		
	<i>Sugar Maple</i>		11	Cords		
	<i>Yellow Birch</i>		2	Cords		
	Mixed Spruce		2	Cords		
	<i>Black Spruce</i>		2	Cords		
N. White Cedar		28	Cords			
3	Sugar Maple	Sawtimber	5.3	MBF	8.5	\$2,290.45
	Balsam Fir	Pulpwood	34	Cords		
	Mixed Aspen		10	Cords		
	<i>B. T. Aspen</i>		4	Cords		
	<i>Quaking Aspen</i>		6	Cords		
	Mixed Hardwood		73	Cords		
	<i>Basswood</i>		18	Cords		
	<i>Ironwood</i>		2	Cords		
	<i>Paper Birch</i>		3	Cords		
	<i>Sugar Maple</i>		46	Cords		
	<i>White Ash</i>		4	Cords		
	4	Balsam Fir	Pulpwood	10		
Mixed Aspen			190	Cords		
<i>B. T. Aspen</i>			8	Cords		
<i>Quaking Aspen</i>			182	Cords		
Mixed Hardwood			24	Cords		
<i>American Elm</i>			3	Cords		
<i>Paper Birch</i>			6	Cords		
<i>Red Maple</i>			8	Cords		
<i>Sugar Maple</i>			7	Cords		
Mixed Spruce			23	Cords		
<i>White Spruce</i>			23	Cords		
N. White Cedar			7	Cords		
5	Balsam Fir	Pulpwood	1	Cords	28.0	\$4,464.80

DESCRIPTION OF TIMBER BY PAYMENT UNIT (PU), CON'T

PU	MARKET GROUP	PRODUCT	QUANTITY	UNIT	ACRES	ADVERTISE PRICE
5 con't	Mixed Aspen	Pulpwood	188	Cords		
	<i>B. T. Aspen</i>		2	<i>Cords</i>		
	<i>Quaking Aspen</i>		186	<i>Cords</i>		
	Mixed Spruce		109	Cords		
	<i>Black Spruce</i>		50	<i>Cords</i>		
	<i>White Spruce</i>		59	<i>Cords</i>		
	Tamarack		6	Cords		
6	Mixed Hardwood	Pulpwood	1	Cords	5.5	\$505.40
	<i>Black Cherry</i>		1	<i>Cords</i>		
	Mixed Spruce		35	Cords		
	<i>Black Spruce</i>		35	<i>Cords</i>		
	Tamarack		8	Cords		
7	Balsam Fir	Pulpwood	1	Cords	16.2	\$1,533.20
	Mixed Aspen		1	Cords		
	<i>Balsam Poplar</i>		1	<i>Cords</i>		
	Mixed Hardwood		3	Cords		
	<i>Black Cherry</i>		2	<i>Cords</i>		
	<i>Paper Birch</i>		1	<i>Cords</i>		
	Mixed Spruce		104	Cords		
	<i>Black Spruce</i>		104	<i>Cords</i>		
	Tamarack		24	Cords		
	8		Balsam Fir	Pulpwood		
Mixed Aspen		1	Cords			
<i>Balsam Poplar</i>		1	<i>Cords</i>			
Mixed Hardwood		2	Cords			
<i>Black Cherry</i>		1	<i>Cords</i>			
<i>Paper Birch</i>		1	<i>Cords</i>			
Mixed Spruce		82	Cords			
<i>Black Spruce</i>		82	<i>Cords</i>			
Tamarack		18	Cords			
9	Red Maple	Sawtimber	0.3	MBF	37.0	\$12,357.15
	Red Oak		2.8	MBF		
	Sugar Maple		0.5	MBF		
	Balsam Fir	Pulpwood	19	Cords		
	Mixed Aspen		663	Cords		
	<i>B. T. Aspen</i>		87	<i>Cords</i>		
	<i>Balsam Poplar</i>		1	<i>Cords</i>		
	<i>Quaking Aspen</i>		575	<i>Cords</i>		
	Mixed Hardwood		20	Cords		
	<i>Red Maple</i>		15	<i>Cords</i>		
	<i>Sugar Maple</i>		5	<i>Cords</i>		
	Mixed Spruce		13	Cords		
	<i>Black Spruce</i>		1	<i>Cords</i>		
	<i>White Spruce</i>	12	<i>Cords</i>			
	Red Oak		11	Cords		
	Red Pine		2	Cords		
	White Pine		2	Cords		
10	Red Maple	Sawtimber	0.2	MBF	26.4	\$8,767.15
	Red Oak		2.0	MBF		
	Sugar Maple		0.3	MBF		
	Balsam Fir	Pulpwood	14	Cords		
	Mixed Aspen		474	Cords		
	<i>B. T. Aspen</i>		62	<i>Cords</i>		
	<i>Balsam Poplar</i>		1	<i>Cords</i>		
	<i>Quaking Aspen</i>		411	<i>Cords</i>		
	Mixed Hardwood		13	Cords		

DESCRIPTION OF TIMBER BY PAYMENT UNIT (PU), CON'T

PU	MARKET GROUP	PRODUCT	QUANTITY	UNIT	ACRES	ADVERTISE PRICE
10 con't	<i>Red Maple</i>	<i>Pulpwood</i>	10	<i>Cords</i>		
	<i>Sugar Maple</i>		3	<i>Cords</i>		
	Mixed Spruce		9	Cords		
	<i>Black Spruce</i>		1	<i>Cords</i>		
	<i>White Spruce</i>		8	<i>Cords</i>		
	Red Oak		7	Cords		
	Red Pine		1	Cords		
	White Pine		1	Cords		
11	Red Maple	Sawtimber	0.8	MBF	10.5	\$3,597.70
	Mixed Aspen	Pulpwood	37	Cords		
	<i>B. T. Aspen</i>		7	<i>Cords</i>		
	<i>Quaking Aspen</i>		30	<i>Cords</i>		
	Mixed Hardwood		6	Cords		
	<i>Red Maple</i>		4	<i>Cords</i>		
	<i>Sugar Maple</i>		2	<i>Cords</i>		
	Mixed Spruce		4	Cords		
	<i>White Spruce</i>		4	<i>Cords</i>		
	Red Pine		41	Cords		
	White Pine		55	Cords		
TOTAL:			28.5	MBF		
TOTAL:			2,713	Cords		

Sale Specific Conditions & Requirements

Sale Name: Blom Creek SBW

Sale Number: 33-035-21 Seq#: 1

1 - Sale Area

1.2 - Boundaries

1.2.1 - Painted boundaries (9/19)

The sale boundary and Payment Unit boundaries are marked and identified by blue, red, and yellow paint. Exterior sale boundary lines against private property are marked with blue paint. Exterior sale boundary lines against state are marked with red paint. Interior Payment Unit boundaries are marked with yellow paint. Retention patches are marked with red paint, no harvesting activities may occur within these areas. The painted boundary line trees are not Included Timber and are to be protected unless marked with orange paint. Yellow painted trees designating an interior Payment Unit boundary are only to be cut when all surrounding Payment Units have been paid for.

2 - Timber Specifications

2.1 - Included Timber

2.1.1 - Clearcut unit(s) with unmerchantable trees (6/14)

Within Payment Unit(s) 1-10, cut all trees that are three (3) inches or more at DBH, with the following exceptions:

- Within Payment Units 1, 2, 3, 9 and 10, do not cut trees marked with green paint.
- Within Payment Unit 5, do not cut white pine.
- Within Payment Units 6, 7 and 8, do not cut cedar.

2.1.3 - Cut tree marked unit(s) (12/08)

Within Payment Unit(s) 11, all trees are designated for cutting when marked with orange paint above and below stump height, regardless of merchantability. In addition, cut all merchantable aspen, maple, and spruce/fir.

2.1.9 - Harvest exception (12/08)

Do not cut any cedar trees within Payment Units 6, 7, and 8, other than those that are necessary to remove in order to operate within the sale area. Every effort must be made to preserve the existing cedar and to leave an intact stand upon sale completion. All cut cedar shall be piled separately by products and scaled in the woods unless other scaling arrangements are agreed to by the Unit Manager or his/her representative. The stumpage price for cedar shall be \$35.00 per cord.

2.2 - Utilization

2.2.4 - Skidding length (2/14)

Skidding of unlimbed tops or lengths over 17 feet is not permissible within Payment Unit 11.

3 - Payments

3.3 - Pre-measured Sales

3.3.4 - Dividing payment units (7/14)

Payment Unit(s) \$18,000 in value or greater may be divided at the request of the Purchaser and upon approval of the Unit Manager. Dividing Payment Units is a contract modification which requires a Timber Sale Contract Amendment. There will be only one division per Payment Unit.

4 - Transportation

4.1 - Construction

4.1.2 - Stream crossings, specific (3/11)

If the Purchaser cannot get permission to access Payment Units 5 and 6 through private property, the Blom Creek may be crossed. This crossing will require the installation of a culvert or portable bridge. The DNR may have a portable bridge available to use. This installation will be performed in accordance with the specifications on the appropriate permits which shall be provided by the Purchaser.

4.2 - Maintenance

4.2.1 - Hauling restriction (12/08)

Hauling may be restricted on forest roads by the Unit Manager or his/her representative. The restriction may occur during spring breakup or during other wet weather conditions.

4.2.4 - Grading (10/16)

For completion of the sale, state forest roads must be graded. In general, this will require a road grader or bulldozer to shape up the roads after forest products have been hauled off site. This includes cleaning of drainage areas, grading, crowning, and filling with gravel, if necessary. The grading equipment to be used must be approved by the Unit Manager or his/her representative.

4.4 - Access

4.4.1 - Private property access (3/11)

Permission for access across private land is the responsibility of the Purchaser. The best access into Payment Units 2, 3, 5, and 6 are through private property. One landowner would need to allow access into Payment Units 2 and 3. This landowner has allowed Purchasers in the past to access state sales through his property. Another landowner would need to allow access into Payment Units 5 and 6. If this landowner won't allow access, the Purchaser may install a temporary crossing across Blom Creek. See spec 4.1.2 for more information.

To obtain the landowners contact information contact Dustin 906-399-1828 or Dan at 906-399-0879.

5 - Operations

5.2 - Conduct of Operations

5.2.3 - Operating Restrictions

5.2.3.1 - Operating restrictions (9/11)

Within Payment Unit(s) 2, 6, 7, and 8, cutting and skidding are limited to the period of December 1 to March 31, unless there is an extended dry or frozen period, and the sale administrator allows harvesting during that period of time. This restriction is because of low wet ground throughout each of the Payment Units.

5.2.3.3 - Bark slippage restriction (3/09)

Within Payment Unit(s) 11, cutting and skidding are not permitted during the period of April 1 to July 30. This restriction is because of bark slippage.

5.2.3.4 - Oak wilt restriction, no exceptions (1/18)

Within Payment Unit(s) 1, cutting and skidding are not permitted during the period of April 15 to July 15. No exceptions will be granted. This is necessary to reduce the spread of oak wilt.

5.4 - Soil Protection

5.4.1 - Rutting restriction, general (7/16)

Operations are to cease immediately if equipment and weather conditions result in rutting of roads and/or skid trails which is 12 inches or greater in depth and 50 feet in length. Operations are to cease immediately if equipment and weather conditions result in rutting of roads which is 12 inches or greater in depth and 50 feet in length. In addition, operations are to cease immediately if equipment and weather conditions result in rutting on skid trails which is 12 inches or greater in depth and 50 feet in length. The Unit Manager or his/her representative may restrict hauling and/or skidding if ruts exceed the specified depth. With the Unit Manager or his/her representative's approval, the Purchaser may return to the area when the risk of rutting has decreased.

5.8 - Protection of Endangered Species

5.8.3 - Red shoulder hawk or goshawk (2/16)

In the event that an active red shoulder hawk or goshawk nest is found, the contract may be amended to protect the nest site until the nest is determined to be inactive. The value of the trees in this excluded area will be refunded or credited to the Purchaser. The nest will be buffered with a five-chain radius (eight acre) protection area, centered on the nest tree, in which there will be no cutting or new roads constructed. Avoid human disturbance, including loading and skidding, in the protection area.

An additional zone of five chains (ten chains centered on the active nest tree) will be established in which there is no

management activity from April 1 to July 30 (UP). Limit biomass harvesting and chipping operations within this ten-chain zone, retain the maximum one-third of residues per the Woody Biomass Harvesting Guidelines (Michigan DNR 2010). Nests determined to be inactive will be protected with a one-chain no-harvest buffer.

6 - Safety and Fire Prevention

6.2 - Signing

6.2.1 - Road posting (10/20)

The Purchaser is responsible for posting and maintaining caution signs on Bird Road and the access road going into Payment Units 9-11, prior to beginning operations. The road must be posted at appropriate distances from the Sale Area to warn of logging activity and truck traffic. Signs must be removed when harvest operations are suspended or completed. The Purchaser will provide these signs.

7 - Other Conditions

7.5 - Loss

7.5.1 - Deteriorating timber (7/09)

The sale area has received damage from the spruce budworm and the eastern larch beetle. The budworm and beetle have caused a significant amount of defoliation and some mortality of the balsam fir, spruce, and tamarack. The Purchaser should harvest the wood as soon as possible. The Department of Natural Resources is held free of responsibility of any further damage or deterioration due to delay in harvesting.

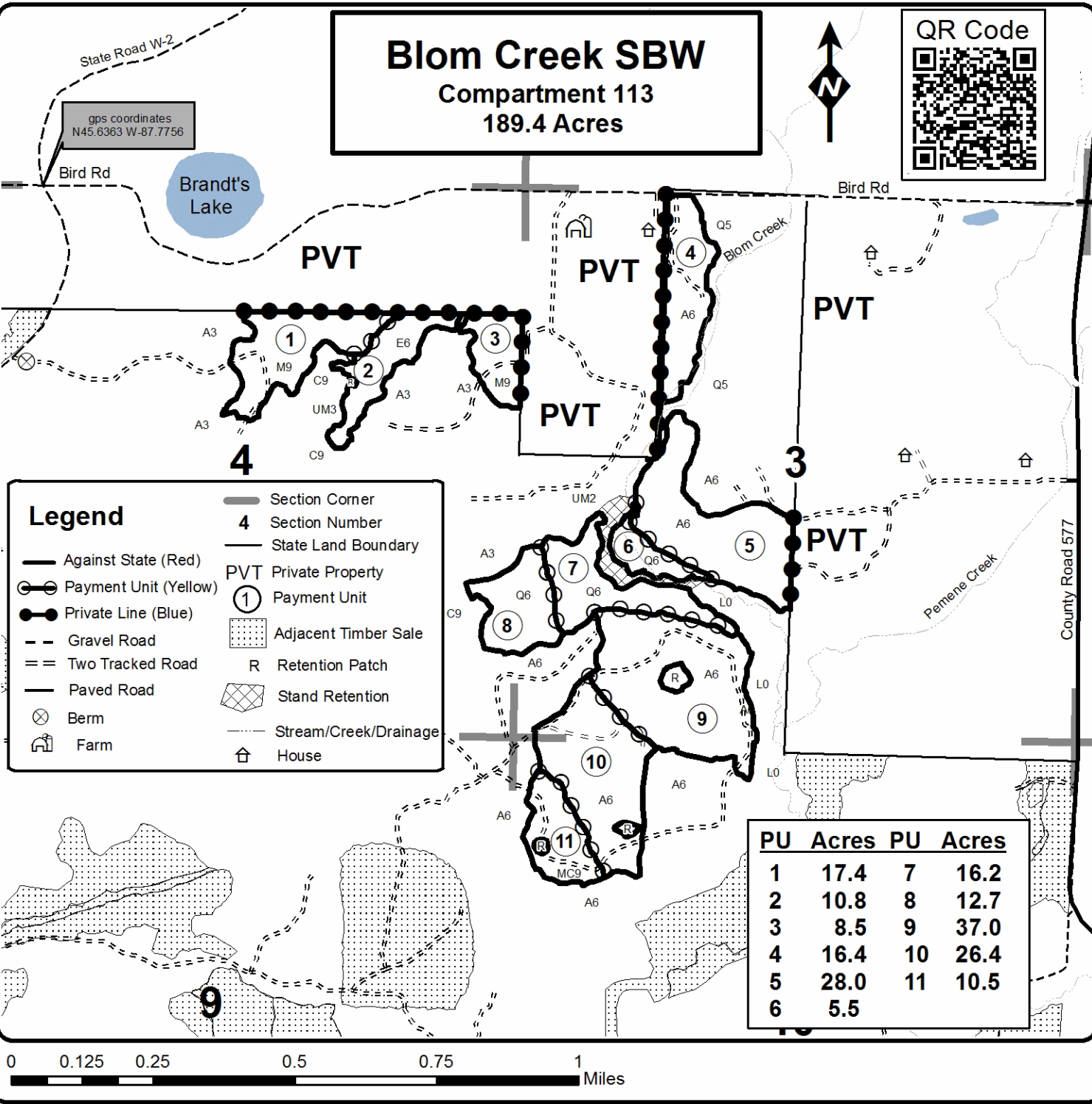


TIMBER SALE MAP

This information provided by authority of Part 525, 1994 PA 451, as amended.

Forest Management Unit Escanaba Management Unit	County Menominee County	Mapped By Beaudou	Date 9/29/2021	Page 1	of 1
Township 37N	Range 28W	Section(s) and Subdivision(s) Sec 3 - E1/2NW, SW; Sec 4 - SENW, S1/2NE, E1/2SE; Sec 10 - N1/2NW, SWNW.	Scale 1:15,840		

Cover Type				Density	
A = Aspen	H = Hemlock	N = Marsh	U = Upland Brush	0 = Non Stocked	5 = Pole Timber Medium
B = Paper Birch	J = Jack Pine	O = Oak	UM = Upland Mixed	1 = Seedling Sapling Poor	6 = Pole Timber Well
C = Cedar	L = Lowland Brush	P = Lowland Poplar	V = Bog or Marsh	2 = Seedling Sapling Medium	7 = Saw Timber Poor
D = Treed Bog	LM = Lowland Mixed	Q = Mixed Swamp Conifer	W = White Pine	3 = Seedling Sapling Well	8 = Saw Timber Medium
E = Swamp Hdwoods	M = Mpl, Bch, Brch	R = Red Pine	X = Non Stocked	4 = Pole Timber Poor	9 = Saw Timber Well
F = Spruce Fir	MC = Mixed Conifer	S = Black Spruce	Z = Water		
G = Grass	MD = Mixed Deciduous	T = Tamarack			



Orange Hornet SBW (33-032-21)
T36N, R27W, SEC. 10; T36N, R27W, SEC. 11; T36N, R27W, SEC. 14; T36N,

In response to the notice of sale to be held 3:00 p.m. (local time) on December 2, 2021, I am hereby submitting my sealed bid (firm offer) for the following forest products to be cut. Bids for individual species must be at or above the advertised price. All non-responsive bid forms may be rejected.

<u>PRODUCTS & SPECIES</u>	<u>ESTIMATED VOLUME*</u>	<u>ADVERTISED PRICE</u>	<u>BID PRICE/UNIT</u>
Sawtimber			
Basswood	6.5 MBF	\$ 33.00/MBF	\$ _____
Black Ash	20.4 MBF	\$ 16.00/MBF	\$ _____
Paper Birch	7.1 MBF	\$ 54.00/MBF	\$ _____
Red Maple	23.2 MBF	\$ 73.00/MBF	\$ _____
Sugar Maple	5.1 MBF	\$ 119.00/MBF	\$ _____
White Ash	7.6 MBF	\$ 30.00/MBF	\$ _____
Pulpwood			
Balsam Fir	62 Cords	\$ 12.05/Cord	\$ _____
Mixed Aspen	158 Cords	\$ 16.60/Cord	\$ _____
Mixed Hardwood	700 Cords	\$ 14.85/Cord	\$ _____
Mixed Spruce	238 Cords	\$ 11.65/Cord	\$ _____
N. White Cedar	407 Cords	\$ 9.05/Cord	\$ _____
Tamarack	40 Cords	\$ 10.35/Cord	\$ _____
White Pine	7 Cords	\$ 18.55/Cord	\$ _____

*The volumes are statistically estimated within plus (+) or minus (-) 6.39 percent at 95% confidence level. These estimated volumes are final and not subject to adjustment. Prospective bidders are urged to examine this timber and to make their own estimates of quantity and quality.

I understand that any or all bids may be rejected. All bids must be signed and all bid items must be bid or the bid form may be rejected. I also understand that consideration and awarding a contract will be based upon my past performance and ability to complete the contract based upon equipment and staffing subject to my control.

FEDERAL ID: _____ or SOCIAL SECURITY NUMBER: _____

Company or individual bidding: _____

Company representative's name: _____

Address: _____

City: _____ State: _____ Zip: _____

IF AVAILABLE, PLEASE PLACE THE PERSONALIZED LABEL FROM YOUR PROSPECTUS IN THE ABOVE BOX.

Individual or company representative's signature: _____ Date: _____

Phone number : _____ Email (optional): _____

THE WINNING BIDDER MUST COMPLETE THE VERIFICATION OF WORKER'S DISABILITY COMPENSATION ACT COMPLIANCE (ON REVERSE SIDE IF DOUBLE SIDED) WITHIN 21 DAYS OF SALE AWARD DATE



FOR DEPARTMENT USE ONLY
Sale Number (XX – XXX – XX – XX)
Forest Management Unit:

TIMBER SALE VERIFICATION OF WORKER'S DISABILITY COMPENSATION ACT COMPLIANCE

*As required by Act 317, P.A. 1969 (Worker's Compensation) and
Part 5 of Act 451 of 1994, as amended.*

VERIFICATION OF WORKER'S DISABILITY COMPENSATION ACT COMPLIANCE

- This verification must be completed and submitted within 21 days of contract award and prior to the issuance of the timber sale contract.
- In addition, if boxes 2B or 2C are checked, then Notice of Exclusion or Certificate of Insurance must be submitted within twenty-one (21) days of the contract award and prior to the issuance of the timber sale contract.
- All information must be typed or printed except for written signatures.

Please Check Appropriate Categories:

1. My business is organized as (you **must** check one of the boxes below):
 - A. Sole Proprietorship (individual)
 - B. Partnership
 - C. Corporation
2. You **must** check one of the boxes below:
 - A. I certify my business is a sole proprietorship and it has no employees but the sole proprietor. I am not subject to the Worker's Compensation Laws.
 - B. I certify my business has satisfied its obligation to the Worker's Compensation Act through the use of an approved Notice of Exclusion (BWC-337, Rev. 5/96). I will provide a copy of the Notice of Exclusion within 21 days of the contract award. (For questions or a copy of the BWC-337, please call the Worker's Compensation Bureau at 517-322-1195).
 - C. I certify my business has a Worker's Compensation Policy. I will provide an original Certificate of Insurance within twenty-one (21) days of the contract award.
3. If you have checked item 2(A) or 2(B), you **must** indicate the number of **both** full-time and part-time employees, other than yourself, including family members and active partners (if none, you must enter "0").

_____ Full-time Employees

_____ Part-time Employees

Name of Business		Federal ID (or) Social Security No.	
Address		Telephone ()	
City	State	ZIP	

I hereby certify that the above information is true and correct. I agree to notify the Michigan DNR of any changes that occur in factors affecting my coverage during any of my present and future operations.

Signature of Owner or Authorized Representative

Title

Date

Please complete the "SEALED BID" information on the next page

Rusty Blue Ribbon (33-033-21)

T37N, R28W, SEC. 16; T37N, R28W, SEC. 8; T37N, R28W, SEC. 9; Menominee

In response to the notice of sale to be held 3:00 p.m. (local time) on December 2, 2021, I am hereby submitting my sealed bid (firm offer) for the following forest products to be cut. Bids for individual species must be at or above the advertised price. All non-responsive bid forms may be rejected.

<u>PRODUCTS & SPECIES</u>	<u>ESTIMATED VOLUME*</u>	<u>ADVERTISED PRICE</u>	<u>BID PRICE/UNIT</u>
Sawtimber			
Black Cherry	0.4 MBF	\$ 75.00/MBF	\$ _____
Northern Pin Oak	4.9 MBF	\$ 79.00/MBF	\$ _____
Paper Birch	2.3 MBF	\$ 54.00/MBF	\$ _____
Red Maple	24.8 MBF	\$ 73.00/MBF	\$ _____
Red Oak	47.3 MBF	\$ 99.00/MBF	\$ _____
White Oak	0.8 MBF	\$ 74.00/MBF	\$ _____
White Pine	7.9 MBF	\$ 42.00/MBF	\$ _____
Pulpwood			
Balsam Fir	126 Cords	\$ 12.05/Cord	\$ _____
Mixed Aspen	1,253 Cords	\$ 16.60/Cord	\$ _____
Mixed Hardwood	343 Cords	\$ 14.85/Cord	\$ _____
Mixed Oak	90 Cords	\$ 17.45/Cord	\$ _____
Mixed Spruce	122 Cords	\$ 11.65/Cord	\$ _____
N. White Cedar	18 Cords	\$ 9.05/Cord	\$ _____
Red Pine	38 Cords	\$ 43.15/Cord	\$ _____
Tamarack	110 Cords	\$ 10.35/Cord	\$ _____
White Pine	166 Cords	\$ 18.55/Cord	\$ _____

*The volumes are statistically estimated within plus (+) or minus (-) 5.20 percent at 95% confidence level. These estimated volumes are final and not subject to adjustment. Prospective bidders are urged to examine this timber and to make their own estimates of quantity and quality.

I understand that any or all bids may be rejected. All bids must be signed and all bid items must be bid or the bid form may be rejected. I also understand that consideration and awarding a contract will be based upon my past performance and ability to complete the contract based upon equipment and staffing subject to my control.

FEDERAL ID: ____ - ____ - ____ or SOCIAL SECURITY NUMBER: ____ - ____ - ____

Company or individual bidding: _____

Company representative's name: _____

Address: _____

City: _____ State: _____ Zip: _____

IF AVAILABLE, PLEASE PLACE THE PERSONALIZED LABEL FROM YOUR PROSPECTUS IN THE ABOVE BOX.

Individual or company representative's signature: _____ Date: _____

Phone number : _____ Email (optional): _____

THE WINNING BIDDER MUST COMPLETE THE VERIFICATION OF WORKER'S DISABILITY COMPENSATION ACT COMPLIANCE (ON REVERSE SIDE IF DOUBLE SIDED) WITHIN 21 DAYS OF SALE AWARD DATE



FOR DEPARTMENT USE ONLY
Sale Number (XX - XXX - XX - XX)
Forest Management Unit:

TIMBER SALE VERIFICATION OF WORKER'S DISABILITY COMPENSATION ACT COMPLIANCE

*As required by Act 317, P.A. 1969 (Worker's Compensation) and
Part 5 of Act 451 of 1994, as amended.*

VERIFICATION OF WORKER'S DISABILITY COMPENSATION ACT COMPLIANCE

- This verification must be completed and submitted within 21 days of contract award and prior to the issuance of the timber sale contract.
- In addition, if boxes 2B or 2C are checked, then Notice of Exclusion or Certificate of Insurance must be submitted within twenty-one (21) days of the contract award and prior to the issuance of the timber sale contract.
- All information must be typed or printed except for written signatures.

Please Check Appropriate Categories:

- My business is organized as (you **must** check one of the boxes below):
 - Sole Proprietorship (individual)
 - Partnership
 - Corporation
- You **must** check one of the boxes below:
 - I certify my business is a sole proprietorship and it has no employees but the sole proprietor. I am not subject to the Worker's Compensation Laws.
 - I certify my business has satisfied its obligation to the Worker's Compensation Act through the use of an approved Notice of Exclusion (BWC-337, Rev. 5/96). I will provide a copy of the Notice of Exclusion within 21 days of the contract award. (For questions or a copy of the BWC-337, please call the Worker's Compensation Bureau at 517-322-1195).
 - I certify my business has a Worker's Compensation Policy. I will provide an original Certificate of Insurance within twenty-one (21) days of the contract award.
- If you have checked item 2(A) or 2(B), you **must** indicate the number of **both** full-time and part-time employees, other than yourself, including family members and active partners (if none, you must enter "0").

_____ Full-time Employees

_____ Part-time Employees

Name of Business		Federal ID (or) Social Security No.	
Address		Telephone ()	
City	State	ZIP	

I hereby certify that the above information is true and correct. I agree to notify the Michigan DNR of any changes that occur in factors affecting my coverage during any of my present and future operations.

Signature of Owner or Authorized Representative

Title

Date

Please complete the "SEALED BID" information on the next page

Kading Creek Blend (33-034-21)

T37N, R28W, SEC. 4; T37N, R28W, SEC. 5; T37N, R28W, SEC. 8; Menominee

In response to the notice of sale to be held 3:00 p.m. (local time) on December 2, 2021, I am hereby submitting my sealed bid (firm offer) for the following forest products to be cut. Bids for individual species must be at or above the advertised price. All non-responsive bid forms may be rejected.

<u>PRODUCTS & SPECIES</u>	<u>ESTIMATED VOLUME*</u>	<u>ADVERTISED PRICE</u>	<u>BID PRICE/UNIT</u>
Sawtimber			
Black Ash	2.6 MBF	\$ 30.00/MBF	\$ _____
Paper Birch	5.5 MBF	\$ 54.00/MBF	\$ _____
Red Maple	32.3 MBF	\$ 73.00/MBF	\$ _____
Red Oak	4.4 MBF	\$ 99.00/MBF	\$ _____
White Oak	0.9 MBF	\$ 74.00/MBF	\$ _____
Pulpwood			
Balsam Fir	62 Cords	\$ 12.05/Cord	\$ _____
Mixed Aspen	361 Cords	\$ 16.60/Cord	\$ _____
Mixed Hardwood	319 Cords	\$ 14.85/Cord	\$ _____
Mixed Oak	6 Cords	\$ 17.45/Cord	\$ _____
Mixed Spruce	198 Cords	\$ 11.65/Cord	\$ _____
N. White Cedar	132 Cords	\$ 9.05/Cord	\$ _____
Red Pine	38 Cords	\$ 43.15/Cord	\$ _____
Tamarack	59 Cords	\$ 10.35/Cord	\$ _____
White Pine	22 Cords	\$ 18.55/Cord	\$ _____

*The volumes are statistically estimated within plus (+) or minus (-) 6.65 percent at 95% confidence level. These estimated volumes are final and not subject to adjustment. Prospective bidders are urged to examine this timber and to make their own estimates of quantity and quality.

I understand that any or all bids may be rejected. All bids must be signed and all bid items must be bid or the bid form may be rejected. I also understand that consideration and awarding a contract will be based upon my past performance and ability to complete the contract based upon equipment and staffing subject to my control.

FEDERAL ID: _____ or SOCIAL SECURITY NUMBER: _____

Company or individual bidding: _____

Company representative's name: _____

Address: _____

City: _____ State: _____ Zip: _____

IF AVAILABLE, PLEASE PLACE THE PERSONALIZED LABEL FROM YOUR PROSPECTUS IN THE ABOVE BOX.

Individual or company representative's signature: _____ Date: _____

Phone number : _____ Email (optional): _____

THE WINNING BIDDER MUST COMPLETE THE VERIFICATION OF WORKER'S DISABILITY COMPENSATION ACT COMPLIANCE (ON REVERSE SIDE IF DOUBLE SIDED) WITHIN 21 DAYS OF SALE AWARD DATE



FOR DEPARTMENT USE ONLY
Sale Number (XX - XXX - XX - XX)
Forest Management Unit:

TIMBER SALE VERIFICATION OF WORKER'S DISABILITY COMPENSATION ACT COMPLIANCE

*As required by Act 317, P.A. 1969 (Worker's Compensation) and
Part 5 of Act 451 of 1994, as amended.*

VERIFICATION OF WORKER'S DISABILITY COMPENSATION ACT COMPLIANCE

- This verification must be completed and submitted within 21 days of contract award and prior to the issuance of the timber sale contract.
- In addition, if boxes 2B or 2C are checked, then Notice of Exclusion or Certificate of Insurance must be submitted within twenty-one (21) days of the contract award and prior to the issuance of the timber sale contract.
- All information must be typed or printed except for written signatures.

Please Check Appropriate Categories:

1. My business is organized as (you **must** check one of the boxes below):
 - A. Sole Proprietorship (individual)
 - B. Partnership
 - C. Corporation
2. You **must** check one of the boxes below:
 - A. I certify my business is a sole proprietorship and it has no employees but the sole proprietor. I am not subject to the Worker's Compensation Laws.
 - B. I certify my business has satisfied its obligation to the Worker's Compensation Act through the use of an approved Notice of Exclusion (BWC-337, Rev. 5/96). I will provide a copy of the Notice of Exclusion within 21 days of the contract award. (For questions or a copy of the BWC-337, please call the Worker's Compensation Bureau at 517-322-1195).
 - C. I certify my business has a Worker's Compensation Policy. I will provide an original Certificate of Insurance within twenty-one (21) days of the contract award.
3. If you have checked item 2(A) or 2(B), you **must** indicate the number of **both** full-time and part-time employees, other than yourself, including family members and active partners (if none, you must enter "0").

_____ Full-time Employees

_____ Part-time Employees

Name of Business		Federal ID (or) Social Security No.	
Address		Telephone ()	
City	State	ZIP	

I hereby certify that the above information is true and correct. I agree to notify the Michigan DNR of any changes that occur in factors affecting my coverage during any of my present and future operations.

Signature of Owner or Authorized Representative

Title

Date

Please complete the "SEALED BID" information on the next page

NO FOWLER (33-007-21)

T34N, R26W, SEC. 23; T34N, R26W, SEC. 26; Menominee COUNTY

In response to the notice of sale to be held 3:00 p.m. (local time) on December 2, 2021, I am hereby submitting my sealed bid (firm offer) for the following forest products to be cut. Bids for individual species must be at or above the advertised price. All non-responsive bid forms may be rejected.

<u>PRODUCTS & SPECIES</u>	<u>ESTIMATED VOLUME*</u>	<u>ADVERTISED PRICE</u>	<u>BID PRICE/UNIT</u>
Sawtimber			
Green Ash	23.1 MBF	\$ 30.00/MBF	\$ _____
Paper Birch	4.6 MBF	\$ 54.00/MBF	\$ _____
Red Maple	45.1 MBF	\$ 73.00/MBF	\$ _____
Pulpwood			
Balsam Fir	317 Cords	\$ 12.05/Cord	\$ _____
Mixed Aspen	834 Cords	\$ 16.60/Cord	\$ _____
Mixed Hardwood	1,301 Cords	\$ 14.85/Cord	\$ _____
N. White Cedar	58 Cords	\$ 9.05/Cord	\$ _____
Tamarack	23 Cords	\$ 10.35/Cord	\$ _____
White Spruce	60 Cords	\$ 11.65/Cord	\$ _____

*The volumes are statistically estimated within plus (+) or minus (-) 5.74 percent at 95% confidence level. These estimated volumes are final and not subject to adjustment. Prospective bidders are urged to examine this timber and to make their own estimates of quantity and quality.

I understand that any or all bids may be rejected. All bids must be signed and all bid items must be bid or the bid form may be rejected. I also understand that consideration and awarding a contract will be based upon my past performance and ability to complete the contract based upon equipment and staffing subject to my control.

FEDERAL ID: ____ - ____ - ____ or SOCIAL SECURITY NUMBER: ____ - ____ - ____

Company or individual bidding: _____

Company representative's name: _____

Address: _____

City: _____ State: _____ Zip: _____

IF AVAILABLE, PLEASE PLACE THE PERSONALIZED LABEL FROM YOUR PROSPECTUS IN THE ABOVE BOX.

Individual or company representative's signature: _____ Date: _____

Phone number : _____ Email (optional): _____

THE WINNING BIDDER MUST COMPLETE THE VERIFICATION OF WORKER'S DISABILITY COMPENSATION ACT COMPLIANCE (ON REVERSE SIDE IF DOUBLE SIDED) WITHIN 21 DAYS OF SALE AWARD DATE



FOR DEPARTMENT USE ONLY
Sale Number (XX - XXX - XX - XX)
Forest Management Unit:

TIMBER SALE VERIFICATION OF WORKER'S DISABILITY COMPENSATION ACT COMPLIANCE

*As required by Act 317, P.A. 1969 (Worker's Compensation) and
Part 5 of Act 451 of 1994, as amended.*

VERIFICATION OF WORKER'S DISABILITY COMPENSATION ACT COMPLIANCE

- This verification must be completed and submitted within 21 days of contract award and prior to the issuance of the timber sale contract.
- In addition, if boxes 2B or 2C are checked, then Notice of Exclusion or Certificate of Insurance must be submitted within twenty-one (21) days of the contract award and prior to the issuance of the timber sale contract.
- All information must be typed or printed except for written signatures.

Please Check Appropriate Categories:

1. My business is organized as (you **must** check one of the boxes below):
 - A. Sole Proprietorship (individual)
 - B. Partnership
 - C. Corporation

2. You **must** check one of the boxes below:
 - A. I certify my business is a sole proprietorship and it has no employees but the sole proprietor. I am not subject to the Worker's Compensation Laws.
 - B. I certify my business has satisfied its obligation to the Worker's Compensation Act through the use of an approved Notice of Exclusion (BWC-337, Rev. 5/96). I will provide a copy of the Notice of Exclusion within 21 days of the contract award. (For questions or a copy of the BWC-337, please call the Worker's Compensation Bureau at 517-322-1195).
 - C. I certify my business has a Worker's Compensation Policy. I will provide an original Certificate of Insurance within twenty-one (21) days of the contract award.

3. If you have checked item 2(A) or 2(B), you **must** indicate the number of **both** full-time and part-time employees, other than yourself, including family members and active partners (if none, you must enter "0").

_____ Full-time Employees

_____ Part-time Employees

Name of Business		Federal ID (or) Social Security No.	
Address		Telephone ()	
City	State	ZIP	

I hereby certify that the above information is true and correct. I agree to notify the Michigan DNR of any changes that occur in factors affecting my coverage during any of my present and future operations.

Signature of Owner or Authorized Representative

Title

Date

Please complete the "SEALED BID" information on the next page

Blom Creek SBW (33-035-21)
T37N, R28W, SEC. 10; T37N, R28W, SEC. 3; T37N, R28W, SEC. 4; Menominee

In response to the notice of sale to be held 3:00 p.m. (local time) on December 2, 2021, I am hereby submitting my sealed bid (firm offer) for the following forest products to be cut. Bids for individual species must be at or above the advertised price. All non-responsive bid forms may be rejected.

<u>PRODUCTS & SPECIES</u>	<u>ESTIMATED VOLUME*</u>	<u>ADVERTISED PRICE</u>	<u>BID PRICE/UNIT</u>
Sawtimber			
Black Ash	4.4 MBF	\$ 30.00/MBF	\$ _____
Red Maple	1.3 MBF	\$ 73.00/MBF	\$ _____
Red Oak	7.8 MBF	\$ 99.00/MBF	\$ _____
Sugar Maple	10.4 MBF	\$ 119.00/MBF	\$ _____
White Ash	4.6 MBF	\$ 30.00/MBF	\$ _____
Pulpwood			
Balsam Fir	90 Cords	\$ 12.05/Cord	\$ _____
Mixed Aspen	1,665 Cords	\$ 16.60/Cord	\$ _____
Mixed Hardwood	338 Cords	\$ 14.85/Cord	\$ _____
Mixed Spruce	383 Cords	\$ 11.65/Cord	\$ _____
N. White Cedar	37 Cords	\$ 9.05/Cord	\$ _____
Red Oak	26 Cords	\$ 17.45/Cord	\$ _____
Red Pine	44 Cords	\$ 43.15/Cord	\$ _____
Tamarack	56 Cords	\$ 10.35/Cord	\$ _____
White Pine	74 Cords	\$ 18.55/Cord	\$ _____

*The volumes are statistically estimated within plus (+) or minus (-) 3.94 percent at 95% confidence level. These estimated volumes are final and not subject to adjustment. Prospective bidders are urged to examine this timber and to make their own estimates of quantity and quality.

I understand that any or all bids may be rejected. All bids must be signed and all bid items must be bid or the bid form may be rejected. I also understand that consideration and awarding a contract will be based upon my past performance and ability to complete the contract based upon equipment and staffing subject to my control.

FEDERAL ID: _____ - _____ or SOCIAL SECURITY NUMBER: _____ - _____ - _____

Company or individual bidding: _____

Company representative's name: _____

Address: _____

City: _____ State: _____ Zip: _____

IF AVAILABLE, PLEASE PLACE THE PERSONALIZED LABEL FROM YOUR PROSPECTUS IN THE ABOVE BOX.

Individual or company representative's signature: _____ Date: _____

Phone number : _____ Email (optional): _____

THE WINNING BIDDER MUST COMPLETE THE VERIFICATION OF WORKER'S DISABILITY COMPENSATION ACT COMPLIANCE (ON REVERSE SIDE IF DOUBLE SIDED) WITHIN 21 DAYS OF SALE AWARD DATE



TIMBER SALE VERIFICATION OF WORKER'S DISABILITY COMPENSATION ACT COMPLIANCE

As required by Act 317, P.A. 1969 (Worker's Compensation) and
Part 5 of Act 451 of 1994, as amended.

FOR DEPARTMENT USE ONLY	
Sale Number (XX - XXX - XX - XX)	
Forest Management Unit:	

VERIFICATION OF WORKER'S DISABILITY COMPENSATION ACT COMPLIANCE

- This verification must be completed and submitted within 21 days of contract award and prior to the issuance of the timber sale contract.
- In addition, if boxes 2B or 2C are checked, then Notice of Exclusion or Certificate of Insurance must be submitted within twenty-one (21) days of the contract award and prior to the issuance of the timber sale contract.
- All information must be typed or printed except for written signatures.

Please Check Appropriate Categories:

1. My business is organized as (you **must** check one of the boxes below):
 - A. Sole Proprietorship (individual)
 - B. Partnership
 - C. Corporation
2. You **must** check one of the boxes below:
 - A. I certify my business is a sole proprietorship and it has no employees but the sole proprietor. I am not subject to the Worker's Compensation Laws.
 - B. I certify my business has satisfied its obligation to the Worker's Compensation Act through the use of an approved Notice of Exclusion (BWC-337, Rev. 5/96). I will provide a copy of the Notice of Exclusion within 21 days of the contract award. (For questions or a copy of the BWC-337, please call the Worker's Compensation Bureau at 517-322-1195).
 - C. I certify my business has a Worker's Compensation Policy. I will provide an original Certificate of Insurance within twenty-one (21) days of the contract award.
3. If you have checked item 2(A) or 2(B), you **must** indicate the number of **both** full-time and part-time employees, other than yourself, including family members and active partners (if none, you must enter "0").

_____ Full-time Employees

_____ Part-time Employees

Name of Business		Federal ID (or) Social Security No.	
Address		Telephone ()	
City	State	ZIP	

I hereby certify that the above information is true and correct. I agree to notify the Michigan DNR of any changes that occur in factors affecting my coverage during any of my present and future operations.

Signature of Owner or Authorized Representative

Title

Date

Please complete the "SEALED BID" information on the next page