



**DEPARTMENT OF NATURAL RESOURCES  
STATE OF MICHIGAN**

**TIMBER SALE PROSPECTUS #6986**

SCHEDULED SALE DATE AND TIME: 9:00 a.m. (local time) on January 18, 2022.

LOCATION: GAYLORD MGMT UNIT, 1732 WEST M 32, GAYLORD, MI 49735.

PROSPECTUS NOTE: All bid openings for the Gaylord Management Unit (Gaylord Field Office and Indian River Field Office) will be held at the Gaylord Field Office regardless of sale location within the unit. All payments and contract executions will now be handled through the Gaylord Field Office. The Indian River Field Office will no longer accept payments or hard paper copies of timber sale bids. Payments for all contracts, use permits, bonds, etc. should be sent to the Gaylord Field Office.

The bidder is advised to inspect the sale area and review the location, estimated volumes, operating costs and contract terms of proposed sales. Please be aware that some landowners may request 60 days or more notice for access across their land.

Low Volume Pine Mix (52-122-21) / T36N, R01W, SEC. 31, SENW,S1/2NE,NESW,N1/2SE.

T36N, R02W, SEC. 36, SENE.

Cheboygan County, Advertised Price \$11,979.25, 40.4 Acres, Red Pine, White Pine.

SALE NOTE: All units of volume listed for this sale were estimated using the Inventory Manager computer program and the new Michigan taper model.

See sale spec 2.1.1 for information on tree removal.

Payments 2 and 3 have limited merchantable volume.

Kateri Lane Mix (52-124-21) / T35N, R02W, SEC. 32, E1/2SW,SE.

Cheboygan County, Advertised Price \$27,853.30, 68.0 Acres, Jack Pine, Red Pine.

SALE NOTE: All units of volume listed for this sale were estimated using the Inventory Manager computer program and the new Michigan taper model.

See sale specs 5.2.3.1 for operating restrictions.

Whole Lotta Oak Mix (52-126-21) / T35N, R02W, SEC. 20, NENW.

T35N, R02W, SEC. 21, N1/2SE,SWSE.

T35N, R02W, SEC. 21, NENW,S1/2NW,E1/2NE,E1/2SW.

T35N, R02W, SEC. 22, NWSW.

Cheboygan County, Advertised Price \$70,087.35, 131.7 Acres, Aspen, Hardwood.

SALE NOTE: All units of volume listed for this sale were estimated using the Inventory Manager computer program and the new Michigan taper model.

Good access to sale area.

See sale spec 5.2.3.5 for information on oak wilt restrictions.

MD HILLS MIX (52-125-19) / T34N, R01W, SEC. 13, SENW,NE.

T34N, R01W, SEC. 14, S1/2SE.

Cheboygan County, Advertised Price \$47,102.35, 83.9 Acres, Aspen, White Pine.

SALE NOTE: Nice quality and volume of timber in Payment Unit 2. Access to all Payment Units will cross private property.

Access may be through private land.

## BID INSTRUCTIONS (VER. 07/02/2018):

### 1. Scheduled Bid Location, Date, and Time (2/11)

Bids must be received by the Unit Manager, GAYLORD OFFICE, 1732 West M 32, Gaylord, MI 49735, no later than 9:00 a.m. (local time) on January 18, 2022. For further information concerning this sale, contact Lucas Merrick at 989-732-3541 extension 5440.

### 2. Bidder's Qualifications (5/16)

Purchaser shall obtain workers compensation insurance to cover claims under Michigan's Worker's Disability Compensation Act of 1969 or similar employee benefit act of any other state applicable to an employee. If all or part of a timber sale was prepared by a private contractor, the contractor and that contractor's company are not permitted to bid on the timber sale contract. Bids will not be accepted from individuals or companies appearing on the DNR/FRD No-Bid List. This list contains the names of purchasers who previously failed to execute a contract within 21-days or who have a history of poor performance.

### 3. Preparation of Sealed Bids (5/16)

Bid Forms may be completed online thru Michigan DNR Timber Sale Online Bidding (OLB) at [www.michigan.gov/timberbidding](http://www.michigan.gov/timberbidding) or by completing the hardcopy Bid Form found in the Timber Sale Prospectus. Hardcopy Bid Forms shall be manually signed in ink. Registration in OLB is considered your 'signature' for all bids submitted thru that system. Bid prices must be entered for each species and product in the Bid Price column for all material subject to bidding and all fill-in blanks must be completed. If erasures or other changes appear on the hardcopy Bid Form, each erasure or change must be initialed by the person signing the bid.

### 4. Submission of Sealed Bids (5/16)

Bid forms may be obtained from the Unit Manager or thru OLB. Bids may be submitted hardcopy or thru OLB. All hardcopy bids must be submitted on the bid form and in an envelope clearly identified as described in this section. NOTE: Only one bid form per bid envelope. Sealed bids must be submitted to the Unit office designated in the prospectus and must be submitted at or prior to the time established in the prospectus. The envelope should show on the outside (a) the sale name or number and (b) the date and time of bid opening, as shown in the prospectus. Bids received after the time specified in the sale prospectus are late bids and will be rejected.

It is possible for a bidder to submit multiple bids on a single sale. For example, a bid may be submitted hardcopy and a bid may be submitted thru OLB. Or, two bidders from the same company could both submit bids on the same sale. If this were to happen, the State would accept all bids received and award the contract accordingly. All bidding and contractual requirements would apply to all bids received.

### 5. Public Opening of Sealed Bids (7/16)

If conditions permit, the sealed bids will be publicly opened and posted at the time and place set in the prospectus.

If a bidder, present at a bid opening, has submitted bids on more than one sale, that bidder may withdraw their unopened bid envelopes or announce the withdrawal of their online bid after being declared the successful bidder on one sale.

### 6. Award of Contract (1/11)

Award of the contract will be made to the Bidder whose bid, conforming to the prospectus, is most advantageous to the State of Michigan on the basis of total value at rates bid for the estimated quantities. The State reserves the right to reject any bid or waive any minor irregularity in bids received. A written award mailed (or otherwise furnished) to the successful Bidder shall be deemed to result in a binding contract without further action by either party.

### 7. Down Payment (1/11)

The Bidder to whom award is made must make a down payment within 21 days of the sale award. The amount of the down payment will be calculated as shown in the Bond and Payment Schedule of this prospectus. Only cash may be used to meet this requirement.

### 8. Performance Security (1/11)

As guarantee of faithful performance, a cash bond, certificate of deposit, surety bond or irrevocable letter of credit (LOC) is required within 21 days of the sale award. The amount of the performance security is shown in the Bond and

Payment Schedule of this prospectus. If an LOC or surety is used, the coverage must extend for at least 6 months beyond the contract expiration.

#### 9. Timber Sale Contract (7/18)

Additional conditions and requirements common to all timber sales are listed on the timber sale contract (R4031) and are available on line at [www.michigan.gov/timber](http://www.michigan.gov/timber). Contact the Unit Manager for additional information or a sample contract. Within 21 days of the date of the award letter, the bidder must sign the contract and provide the required down payment, performance security, and verification of worker's disability compensation. The down payment and performance security shall be in accordance with the provisions of the timber sale contract, in the sums stated in this prospectus. If these actions are not taken, then the Bidder, the Bidder's corporation, and the corporation's principals may not be permitted to bid on State timber sales for a period of 3 months after the first offense, 6 months after the second offense, and 1 year after the third offense. An offense will only be counted against the Bidder for 5 years. In addition, the Bidder certifies that if awarded this contract, the Bidder will complete the timber sale contract in accordance with its terms and any modifications thereof including requirements to purchase, cut, and remove the included timber by the expiration date.

Payment Unit values in the State Forest Timber Sale Contract are calculated based on the advertised value of the Payment Unit as a percentage of the total advertised value of the contract. The advertised value of each Payment Unit is given in the Description of Timber by Payment Unit table on the Timber Sale Information page. For example, if the value of Payment Unit 1 is advertised as \$1,500 and the total Timber Sale value is advertised as \$10,000, the contract price for Payment Unit 1 will be 15% of the total bid price ( $\$1,500/\$10,000 * 100$ ).

#### 10. Disclaimer of Estimates and Bidder's Warranty of Inspection (7/16)

Before submitting this bid, the Bidder is advised and cautioned to inspect the sale area, review the requirements of the sale contract, and take other steps as may be reasonably necessary to ascertain the location, estimated volumes, construction estimates, and operating costs of the proposed sale. Failure to do so will not relieve the Bidder from responsibility for completing the contract.

The Bidder warrants that this bid is submitted solely on the basis of the Bidder's examination and inspection of the quality and quantity of the timber offered for sale and the Bidder's opinion of the value thereof and the costs of recovery. No reliance should be placed on the State of Michigan's estimates of timber quality, quantity or costs of recovery. Bidder further acknowledges that the State of Michigan: (i) expressly disclaims any warranty of fitness of timber for any purpose; (ii) offers this timber as is without any warranty of quality (merchantability) or quantity and (iii) expressly disclaims any warranty as to the quantity or quality of timber sold.

#### 11. Certification and Chain-of-Custody (10/14)

Unless otherwise indicated in the contract under section 7 – Other Conditions of the Sale Specific Conditions & Requirements, the area encompassed by this timber sale is certified to the standards of the Forest Stewardship Council (FSC) - Certificate #SCS-FM/COC-00090N and the Sustainable Forestry Initiative (SFI) - Certificate #NSF-SFIS-5Y031-SF5. Forest products from this sale may be delivered to the mill as "FSC 100% and / or SFI certified" as long as the contractor hauling the forest products is chain-of-custody (COC) certified or covered under a COC certificate from the destination mill. The purchaser is responsible for maintaining COC after leaving the sale area.

#### 12. Good Neighbor Authority (GNA) Requirements (7/16)

If the name of this timber sales contains the acronym GNA, it is authorized by the Good Neighbor Authority (GNA) and covered by various agreements between the U.S. Forest Service and the State. The timber sale occurs on federal land and the following conditions apply:

GNA contracts on US Forest Service land will not be awarded to purchasers on the Federal list of excluded parties. The System for Award Management (SAM) will be checked for active excluded parties prior to award of contract. In addition, the Bidder to whom award is made must complete an Assurance Regarding Felony Conviction or Tax Delinquent Status for Corporate Applicants (AD-3031).

#### 13. Good Neighbor Authority (GNA) Requirements, con't (9/16)

Bidder certifies, by signing this bid form, that to the best of Bidder's knowledge that the following representations are accurate and complete.

- a. That the Bidder and its principals are not presently debarred, suspended, proposed for debarment, declared ineligible, or voluntary excluded from timber sales (covered transactions) by any Federal department or agency.
- b. That the Bidder and its principals have not within a 3-year period preceding this bid been convicted of or had a civil judgment rendered against them for commission of fraud or a criminal offense in connection with obtaining , attempting to obtain, or performing a public (Federal, State, or local) transaction or contract under a public transaction; violation of Federal or State antitrust statutes or commission of embezzlement, theft, forgery, bribery, falsification or destruction of records, making false statements, or receiving stolen property.
- c. That the Bidder and its principals are not presently indicted for or otherwise criminally or civilly charged by a governmental entity (Federal, State, or local) with commission of any of the offenses enumerated in paragraph b of this certification.
- d. That the Bidder and its principals have not within a 3-year period preceding this bid had one or more public transactions (Federal, State, or local) terminated for breach or default of a timber or forest product contract.

Bidders that cannot certify this requirement, in whole or in part, shall submit an explanation with their bid.

DAN EICHINGER  
Director



# TIMBER SALE INFORMATION

Low Volume Pine Mix (52-122-21)  
T36N, R01W, SEC. 31; T36N, R02W, SEC. 36.  
Cheboygan County (Advertised Price \$11,979.25)

SALE NOTE: All units of volume listed for this sale were estimated using the Inventory Manager computer program and the new Michigan taper model.

See sale spec 2.1.1 for information on tree removal.

Payments 2 and 3 have limited merchantable volume.

A timber sale contract for this lump sum, sealed bid timber sale will be awarded to the responsible bidder offering the highest sealed bid price. All units of volume listed below were estimated using the Inventory Manager computer program and the new Michigan taper model. Bids must be at or above the following advertised price for each product and species:

<u>PRODUCTS &amp; SPECIES</u>	<u>ESTIMATED UNITS*</u>	<u>ADVERTISED PRICE</u>
<b>Sawtimber</b>		
B. T. Aspen	2.5 MBF	\$ 46.00 / MBF
Red Oak	10.1 MBF	\$ 86.00 / MBF
Red Pine	73.5 MBF	\$ 72.00 / MBF
White Pine	1.1 MBF	\$ 35.00 / MBF
<b>Pulpwood</b>		
B. T. Aspen	37 Cords	\$ 17.35 / Cord
Balsam Fir	1 Cords	\$ 17.60 / Cord
Jack Pine	38 Cords	\$ 12.70 / Cord
Misc. Species 1	15.3 Acres	\$ 3.00 / Acre
Mixed Oak	25 Cords	\$ 10.05 / Cord
Red Maple	11 Cords	\$ 16.35 / Cord
Red Pine	92 Cords	\$ 35.25 / Cord
White Pine	44 Cords	\$ 18.25 / Cord

\* The total volume is statistically estimated within plus (+) or minus (-) 11.40 percent. There are an estimated 499 cords on this timber sale, plus or minus 57 cords at the 95% confidence level. The estimated units are final and not subject to adjustment. Prospective bidders are urged to examine this timber and to make their own estimates of quantity and quality.

**BOND AND PAYMENT SCHEDULE:**

1. A bond in the amount of \$1,198.00 to insure faithful performance of the conditions of the contract will be deposited by the successful bidder within 21 days of the sale award.
2. Cutting in any sale or unit without the required advance payment would be considered a trespass.
3. Total payment must be paid in advance or according to the following schedule :
  - (a) Ten percent (10%) of the sale value must be paid within 21 days of the sale award.
  - (b) The 10% down payment will be credited towards the first unit cut.
  - (c) Payment for each of the following units must be made before cutting begins in that unit:

PAYMENT UNIT NUMBER	PERCENT OF TOTAL SALE VALUE
01	90.1%
02	0.2%
03	0.2%
04	9.5%
4. If no cutting takes place, the 10% down payment will not be refunded.
5. Operations on the contract issued will terminate on 03/31/2025.

**SALE STATISTICS**

Volumes were calculated in cubic feet using the Michigan taper model. Cubic foot volume includes all wood inside bark for the product indicated. For display purposes, cubic feet were converted to cords and MBF using a simple conversion factor, e.g. 79 cubic feet per cord and 185 cubic feet per MBF. The cubic foot volumes are precise; the cords and MBF volumes are not. Cubic foot volume cannot be directly converted to cords or boards with precision.

## SALE VOLUMES

The total estimated sale volume may not equal the sum of the species/products due to the nature of statistical calculations associated with double sampling methodology.

VOLUME			STATISTICAL RANGE IN CORDS	
TOTAL CUBIC FEET	TOTAL CORDS	PERCENT ERROR	MINIMUM	MAXIMUM
39,429	499	11.40%	442	556
15.30 acres are being sold by the acre and do not have cubic foot or cord volumes.				

## VDU VOLUMES

A VDU is a Volume Determination Unit. Volumes and their associated statistics are calculated at the VDU level and summarized to the sale level. There is often a one to one relationship between a VDU and a Payment Unit, but not always, depending on the cruise design. Refer to the VDU TO PAYMENT UNIT table.

VDU	VOLUME			RANGE IN CORDS	
	TOTAL CUBIC FEET	TOTAL CORDS	PERCENT ERROR	MINIMUM	MAXIMUM
25	28,651	363	15.03%	308	417
29 *			N/A		
58 *			N/A		
60	4,659	59	13.85%	51	67
<b>TOTAL:</b>	<b>33,310</b>	<b>422</b>		<b>359</b>	<b>484</b>

\* This VDU is being sold by the acre. There are no cruise statistics available.

## VDU TO PAYMENT UNIT

When a VDU is associated with more than one Payment Unit (PU), the VDU volumes are assigned to the PU based on acres of the VDU within the PU.

VDU	VDU ACRES	PU	PU ACRES
25	13.6	1	13.6
29	6.9	3	6.9
58	8.4	2	8.4
60	11.5	4	11.5
<b>TOTAL:</b>	<b>40.4</b>		<b>40.4</b>



**DESCRIPTION OF TIMBER BY PAYMENT UNIT (PU)**

PU	MARKET GROUP	PRODUCT	QUANTITY	UNIT	ACRES	ADVERTISE PRICE
1	B. T. Aspen	Sawtimber	2.5	MBF	13.6	\$10,794.55
	Red Oak		9.1	MBF		
	Red Pine		70.9	MBF		
	B. T. Aspen	Pulpwood	37	Cords		
	Jack Pine		23	Cords		
	Mixed Oak		17	Cords		
	<i>Red Oak</i>		17	<i>Cords</i>		
	Red Pine		87	Cords		
	White Pine		34	Cords		
2	Misc. Species 1	Pulpwood	8.4	Acres	8.4	\$25.20
3	Misc. Species 1	Pulpwood	6.9	Acres	6.9	\$20.70
4	Red Oak	Sawtimber	1.0	MBF	11.5	\$1,138.80
	Red Pine		2.6	MBF		
	White Pine		1.1	MBF		
	Balsam Fir	Pulpwood	1	Cords		
	Jack Pine		15	Cords		
	Mixed Oak		8	Cords		
	<i>Red Oak</i>		6	<i>Cords</i>		
	<i>White Oak</i>		2	<i>Cords</i>		
	Red Maple		11	Cords		
	Red Pine		5	Cords		
	White Pine		10	Cords		
	TOTAL:			87.2		
TOTAL:			248	Cords		
TOTAL:			15.3	Acres		

# Sale Specific Conditions & Requirements

**Sale Name: Low Volume Pine Mix**

**Sale Number: 52-122-21 Seq#: 1**

## 1 - Sale Area

### 1.2 - Boundaries

#### 1.2.1 - Painted boundaries (9/19)

The sale boundary and Payment Unit boundaries are marked and identified by red and yellow paint. Exterior sale boundary lines against state are marked with red paint. Interior Payment Unit boundaries are marked with yellow paint. The painted boundary line trees are not Included Timber and are to be protected. Yellow painted trees designating an interior Payment Unit boundary are only to be cut when all surrounding Payment Units have been paid.

## 2 - Timber Specifications

### 2.1 - Included Timber

#### 2.1.1 - Clearcut unit(s) with unmerchantable trees (6/14)

Within Payment Unit(s) 1-4, cut all trees that are two (2) inches or more at DBH, except any red pine trees > 26 inches at DBH in Payment Unit 4.

### 2.2 - Utilization

#### 2.2.3 - Stump heights (4/07)

Stump heights within the Sale Area shall not exceed 12 inches for trees greater than 10 inches at DBH and 4 inches for trees smaller than 10 inches at DBH. This is to facilitate planting operations.

## 3 - Payments

### 3.6 - Payment Unit Cutting Schedule

#### 3.6.1 - Order of cutting (1/09)

Payment Units shall be cut in numerical order, unless approved by the Unit Manager or his/her representative.

## 4 - Transportation

### 4.1 - Construction

#### 4.1.3 - Slash and earthen piles (8/04)

Piles or windrows of earth along roads and landings that have been widened or constructed shall be leveled. Slash from road maintenance or construction, including stumps, shall be dispersed throughout the sale.

#### 4.1.12 - No new roads (1/12)

No new roads will be permitted in any Payment Unit. All operations are limited to existing roads. Skid trails only will be allowed.

### 4.2 - Maintenance

#### 4.2.4 - Grading (10/16)

For completion of the sale, state forest roads must be graded. In general, this will require a road grader or bulldozer to shape up the roads after forest products have been hauled off site. This includes cleaning of drainage areas, grading, crowning, and filling with gravel, if necessary. The grading equipment to be used must be approved by the Unit Manager or his/her representative.

## 5 - Operations

### 5.1 - Notification

#### 5.1.1 - Pre-sale conference (10/16)

A pre-sale conference on site between the Purchaser and sale administrator is required prior to beginning any operations to determine landing locations. The Unit Manager or his/her representative must be contacted at least 2 days in advance to schedule the conference.

#### 5.1.4 - Post-sale conference (10/16)

A post-sale conference on site between the Purchaser and sale administrator is required 5 days prior to the completion of active logging operations to determine clean-up and repair of landings, road edges, and the fulfillment of other contract specifications.

### 5.2 - Conduct of Operations

#### 5.2.1 - Slash

##### 5.2.1.8 - Slash height (12/08)

No slash or tree tops may exceed 24 inches in height.

##### 5.2.1.11 - Slash for reforestation (3/21)

To facilitate reforestation, the Sale Area shall be left with slash evenly distributed. Bunched tops within the cutting area shall be broken up and scattered. Stumps shall be cut low to the ground. Processing sites shall not be left with a compacted layer of slash; tops from these sites shall be hauled back into the cut area and scattered.

##### 5.2.1.13 - Dispose of slash as directed (12/05)

Slash is to be disposed of as directed by the sale administrator.

#### 5.2.2 - Hazard Trees/Snags

##### 5.2.2.1 - Den trees (10/16)

Obvious hollow and/or den trees shall be protected and left standing unless they are a safety hazard.

### 5.4 - Soil Protection

#### 5.4.1 - Rutting restriction, general (7/16)

Operations are to cease immediately if equipment and weather conditions result in rutting of roads and/or skid trails which is 12 inches or greater in depth and 50 feet in length. The Unit Manager or his/her representative may restrict hauling and/or skidding if ruts exceed the specified depth. With the Unit Manager or his/her representative's approval, the Purchaser may return to the area when the risk of rutting has decreased.

### 5.8 - Protection of Endangered Species

#### 5.8.5 - Protection of raptor nests (3/13)

All trees with raptor nests will be protected if found during harvesting operations. Notification will be made to the Unit Manager or his/her representative who will notify the Wildlife Biologist so an on-site evaluation and recommendation can be made, if necessary.



# TIMBER SALE MAP

This information provided by authority of Part 525, 1994 PA 451, as amended.

Forest Management Unit <b>Gaylord Management Unit</b>	County <b>Cheboygan</b>	Mapped By <b>John Scheele</b>	Date <b>09/23/2021</b>	Page <b>1</b>	of <b>1</b>
Cruised By <b>John Scheele</b>					

Township <b>36N</b>	Range <b>02W</b>	Section(s) and Subdivision(s) <b>Section 31 SENW, S1/2 NE, NE SW, N1/2 SE</b>	Scale <b>1:15,840</b>
------------------------	---------------------	--	--------------------------

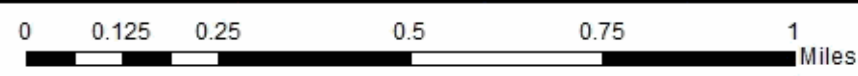
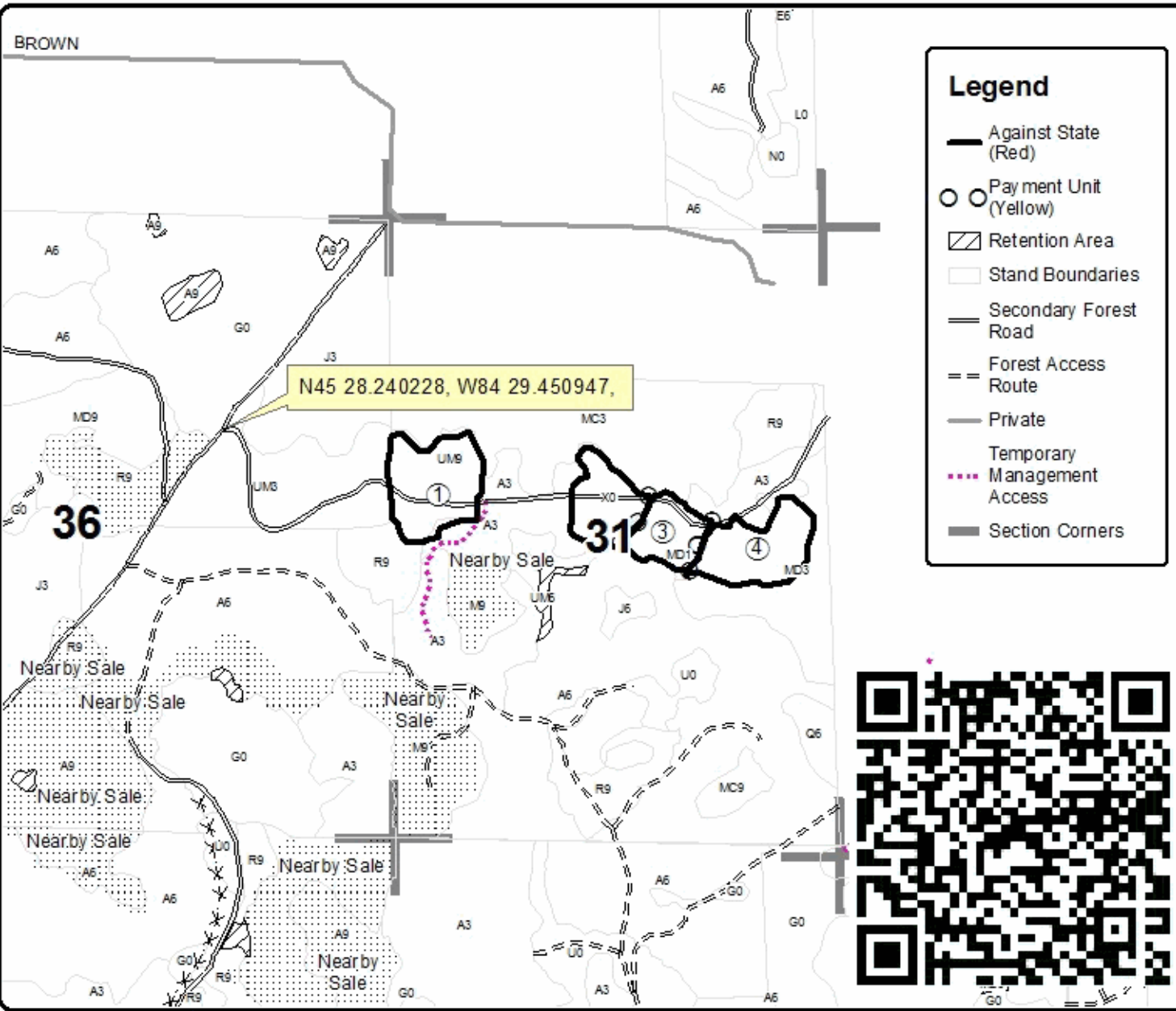
Cover Type				Density	
A = Aspen	H = Hemlock	N = Marsh	U = Upland Brush	0 = Non Stocked	5 = Pole Timber Medium
B = Paper Birch	J = Jack Pine	O = Oak	UM = Upland Mixed	1 = Seedling Sapling Poor	6 = Pole Timber Well
C = Cedar	L = Lowland Brush	P = Lowland Poplar	V = Bog or Marsh	2 = Seedling Sapling Medium	7 = Saw Timber Poor
D = Treed Bog	LM = Lowland Mixed	Q = Mixed Swamp Conifer	W = White Pine	3 = Seedling Sapling Well	8 = Saw Timber Medium
E = Swamp Hdwoods	M = Mpl, Bch, Brch	R = Red Pine	X = Non Stocked	4 = Pole Timber Poor	9 = Saw Timber Well
F = Spruce Fir	MC = Mixed Conifer	S = Black Spruce	Z = Water		
G = Grass	MD = Mixed Deciduous	T = Tamarack			

PU	Acres	PU	Acres
1	13.6	4	11.5
2	8.4		
3	6.9		

## Low Volume Pine Mix

### Compartment 179

#### 40.4 Acres



## TIMBER SALE INFORMATION

Kateri Lane Mix (52-124-21)

T35N, R02W, SEC. 32.

Cheboygan County (Advertised Price \$27,853.30)

SALE NOTE: All units of volume listed for this sale were estimated using the Inventory Manager computer program and the new Michigan taper model.

See sale specs 5.2.3.1 for operating restrictions.

A timber sale contract for this lump sum, sealed bid timber sale will be awarded to the responsible bidder offering the highest sealed bid price. All units of volume listed below were estimated using the Inventory Manager computer program and the new Michigan taper model. Bids must be at or above the following advertised price for each product and species:

<u>PRODUCTS &amp; SPECIES</u>	<u>ESTIMATED UNITS*</u>	<u>ADVERTISED PRICE</u>
Sawtimber		
Jack Pine	2.3 MBF	\$ 25.00 / MBF
Mixed Aspen	14.6 MBF	\$ 46.00 / MBF
Red Pine	46.4 MBF	\$ 72.00 / MBF
Pulpwood		
Bl/R/Hybrid Oak	210 Cords	\$ 10.05 / Cord
Jack Pine	485 Cords	\$ 12.70 / Cord
Mixed Aspen	269 Cords	\$ 17.35 / Cord
Red Pine	302 Cords	\$ 35.25 / Cord
White Pine	11 Cords	\$ 18.25 / Cord

\* The total volume is statistically estimated within plus (+) or minus (-) 6.81 percent. There are an estimated 1,447 cords on this timber sale, plus or minus 99 cords at the 95% confidence level. The estimated units are final and not subject to adjustment. Prospective bidders are urged to examine this timber and to make their own estimates of quantity and quality.

### **BOND AND PAYMENT SCHEDULE:**

1. A bond in the amount of \$2,785.00 to insure faithful performance of the conditions of the contract will be deposited by the successful bidder within 21 days of the sale award.
2. Cutting in any sale or unit without the required advance payment would be considered a trespass.
3. Total payment must be paid in advance or according to the following schedule :
  - (a) Ten percent (10%) of the sale value must be paid within 21 days of the sale award.
  - (b) The 10% down payment will be credited towards the first unit cut.
  - (c) Payment for each of the following units must be made before cutting begins in that unit:

PAYMENT UNIT NUMBER	PERCENT OF TOTAL SALE VALUE
01	24.3%
02	3.0%
03	19.6%
04	7.4%
05	3.0%
06	4.7%
07	16.5%
08	21.5%

4. If no cutting takes place, the 10% down payment will not be refunded.
5. Operations on the contract issued will terminate on 06/30/2025.

### **SALE STATISTICS**

Volumes were calculated in cubic feet using the Michigan taper model. Cubic foot volume includes all wood inside bark for the product indicated. For display purposes, cubic feet were converted to cords and MBF using a simple conversion factor, e.g. 79 cubic feet per cord and 185 cubic feet per MBF. The cubic foot volumes are precise; the cords and MBF volumes are not. Cubic foot volume cannot be directly converted to cords or boards with precision.

## SALE VOLUMES

The total estimated sale volume may not equal the sum of the species/products due to the nature of statistical calculations associated with double sampling methodology.

VOLUME			STATISTICAL RANGE IN CORDS	
TOTAL CUBIC FEET	TOTAL CORDS	PERCENT ERROR	MINIMUM	MAXIMUM
114,310	1,447	6.81%	1,348	1,546

## VDU VOLUMES

A VDU is a Volume Determination Unit. Volumes and their associated statistics are calculated at the VDU level and summarized to the sale level. There is often a one to one relationship between a VDU and a Payment Unit, but not always, depending on the cruise design. Refer to the VDU TO PAYMENT UNIT table.

	VOLUME			RANGE IN CORDS	
VDU	TOTAL CUBIC FEET	TOTAL CORDS	PERCENT ERROR	MINIMUM	MAXIMUM
98	36,024	456	14.00%	392	520
102	14,504	184	17.20%	152	215
106	4,531	57	21.64%	45	70
109	23,578	298	18.31%	244	353
112	6,352	80	27.00%	59	102
116	10,220	129	13.04%	112	146
118	13,386	169	16.33%	142	197
130	2,134	27	22.88%	21	33
<b>TOTAL:</b>	<b>110,729</b>	<b>1,402</b>		<b>1,167</b>	<b>1,637</b>

## VDU TO PAYMENT UNIT

When a VDU is associated with more than one Payment Unit (PU), the VDU volumes are assigned to the PU based on acres of the VDU within the PU.

VDU	VDU ACRES	PU	PU ACRES
98	23.4	1	23.4
102	12.3	4	12.3
106	2.4	5	2.4
109	8.2	3	8.2
112	4.7	6	4.7
116	6.5	7	6.5
118	7.8	8	7.8
130	2.7	2	2.7
<b>TOTAL:</b>	<b>68.0</b>		<b>68.0</b>

**DESCRIPTION OF TIMBER BY PAYMENT UNIT (PU)**

PU	MARKET GROUP	PRODUCT	QUANTITY	UNIT	ACRES	ADVERTISE PRICE
1	Jack Pine	Sawtimber	2.3	MBF	23.4	\$6,754.30
	Mixed Aspen		8.3	MBF		
	<i>B. T. Aspen</i>		8.3	<i>MBF</i>		
	Jack Pine	Pulpwood	265	Cords		
	Mixed Aspen		170	Cords		
	<i>B. T. Aspen</i>		170	<i>Cords</i>		
2	Red Pine	Sawtimber	2.3	MBF	2.7	\$841.05
	Jack Pine	Pulpwood	6	Cords		
	Red Pine		17	Cords		
3	Red Pine	Sawtimber	2.7	MBF	8.2	\$5,467.40
	BI/R/Hybrid Oak	Pulpwood	84	Cords		
	Jack Pine		93	Cords		
	Mixed Aspen		47	Cords		
	<i>B. T. Aspen</i>		47	<i>Cords</i>		
	Red Pine		69	Cords		
4	BI/R/Hybrid Oak	Pulpwood	107	Cords	12.3	\$2,053.25
	Jack Pine		77	Cords		
5	Mixed Aspen	Sawtimber	4.4	MBF	2.4	\$834.80
	<i>B. T. Aspen</i>		4.4	<i>MBF</i>		
	BI/R/Hybrid Oak	Pulpwood	19	Cords		
	Jack Pine		17	Cords		
	Mixed Aspen		13	Cords		
<i>B. T. Aspen</i>		13	<i>Cords</i>			
6	Mixed Aspen	Sawtimber	1.9	MBF	4.7	\$1,307.70
	<i>Quaking Aspen</i>		1.9	<i>MBF</i>		
	Jack Pine	Pulpwood	27	Cords		
	Mixed Aspen		39	Cords		
	<i>Quaking Aspen</i>		39	<i>Cords</i>		
White Pine		11	Cords			
7	Red Pine	Sawtimber	21.7	MBF	6.5	\$4,593.90
	Red Pine	Pulpwood	86	Cords		
8	Red Pine	Sawtimber	19.7	MBF	7.8	\$6,000.90
	Red Pine	Pulpwood	130	Cords		
TOTAL:			63.3	MBF		
TOTAL:			1,277	Cords		

# Sale Specific Conditions & Requirements

**Sale Name: Kateri Lane Mix**

**Sale Number: 52-124-21 Seq#: 1**

## 1 - Sale Area

### 1.2 - Boundaries

#### 1.2.1 - Painted boundaries (9/19)

The sale boundary and Payment Unit boundaries are marked and identified by blue, red, and yellow paint. Exterior sale boundary lines against private property are marked with blue paint. Exterior sale boundary lines against state are marked with red paint. Interior Payment Unit boundaries are marked with yellow paint. Retention patches are marked with teal paint; no harvesting activities may occur within these areas. The painted boundary line trees are not Included Timber and are to be protected. Yellow painted trees designating an interior Payment Unit boundary are only to be cut when all surrounding Payment Units have been paid.

## 2 - Timber Specifications

### 2.1 - Included Timber

#### 2.1.2 - Clearcut unit(s) w/o unmerchantable trees (8/11)

Within Payment Unit(s) 1 and 4-6, cut all trees which meet minimum piece specifications in 2.2 Utilization except for the following:

- Within Payment Unit 1 and 4 do not cut red and white pine;
- Within Payment Unit 5 do not cut white pine or white oak;
- Within Payment Unit 6 do not cut pine species > 14 inches at DBH.

#### 2.1.8 - Designated plantation row unit(s) (12/08)

Within Payment Unit(s) 2, 3, 7, and 8, all trees which meet minimum piece specifications in 2.2 Utilization, within designated plantation rows are designated for cutting. Designated plantation rows begin with the third row in from the outside of the plantation, then continue every third-row. Because of the variability of row direction, it shall be the responsibility of the Purchaser to maintain the third row sequence. In addition, remove all species except red pine outside of designated rows in Payment Units 2, 3, and 7.

## 3 - Payments

### 3.4 - Damaged Timber

#### 3.4.1 - Damaged timber (7/16)

General Condition and Requirement 3.4 Damaged Timber, defines liquidated damages for undesignated live merchantable trees which are cut or injured. No damage is acceptable to undesignated live merchantable trees. Within the Sale Area, if more than 5% of trees (> 4.5" DBH) within a specified area of the sale are damaged, liquidated damages will be assessed for all trees damaged. Rates will be in accordance with General Condition and Requirement 3.4 Damaged Timber.

### 3.6 - Payment Unit Cutting Schedule

#### 3.6.1 - Order of cutting (1/09)

Payment Units shall be cut in numerical order unless the sale is paid in full or unless approved by the Unit Manager or his/her representative.

## 4 - Transportation

### 4.1 - Construction

#### 4.1.3 - Slash and earthen piles (8/04)

Piles or windrows of earth along roads and landings that have been widened or constructed shall be leveled. Slash from road maintenance or construction, including stumps, shall be dispersed throughout the sale.

#### 4.1.12 - No new roads (1/12)

No new roads will be permitted. All operations are limited to existing roads. Skid trails only will be allowed.



## 4.2 - Maintenance

### 4.2.4 - Grading (10/16)

For completion of the sale, state forest roads must be graded. In general, this will require a road grader or bulldozer to shape up the roads after forest products have been hauled off site. This includes cleaning of drainage areas, grading, crowning, and filling with gravel, if necessary. The grading equipment to be used must be approved by the Unit Manager or his/her representative.

### 4.2.5 - Two wheel drive condition (2/04)

All existing trail roads on and adjacent to the sale area must be passable by two-wheel drive traffic for the duration of the sale.

## 5 - Operations

### 5.1 - Notification

#### 5.1.1 - Pre-sale conference (10/16)

A pre-sale conference on site between the Purchaser and sale administrator is required prior to beginning any operations to determine landing locations. The Unit Manager or his/her representative must be contacted at least 2 days in advance to schedule the conference.

#### 5.1.3 - Well heads and natural gas pipelines (11/15)

The Purchaser is responsible for contacting the gas or pipeline company 30 days prior to operating equipment in the vicinity of well heads or natural gas pipelines. Contact Enbridge at 989-667-2510. Contact sale administrator for assistance with contacting Enbridge.

#### 5.1.4 - Post-sale conference (10/16)

A post-sale conference on site between the Purchaser and sale administrator is required 5 days prior to the completion of active logging operations to determine clean-up and repair of landings, road edges, and the fulfillment of other contract specifications.

### 5.2 - Conduct of Operations

#### 5.2.1 - Slash

##### 5.2.1.13 - Dispose of slash as directed (12/05)

Slash is to be disposed of as directed by the sale administrator.

#### 5.2.2 - Hazard Trees/Snags

##### 5.2.2.1 - Den trees (10/16)

Obvious hollow and/or den trees shall be protected and left standing unless they are a safety hazard.

#### 5.2.3 - Operating Restrictions

##### 5.2.3.1 - Operating restrictions (9/11)

Within Payment Unit(s) 1, unless changed by written agreement, cutting, skidding, and hauling are not permitted during frozen or snow cover conditions. This restriction is to promote soil scarification for natural jack pine regeneration.

##### 5.2.32 - Decking/landing restoration (9/13)

All decking and landing areas must have the surface area restored to a condition equal to or better than before. This is to ensure the proper regeneration of the stand. Wood debris, chips, and "cookies" from trimmings must be removed or scattered away from landing and loading areas and may not be windrowed on the edge.

##### 5.2.39 - ORV trail/route protection (4/18)

The MCCCT is located on Crumley Creek Road and is shown on the Timber Sale Map. Do not cut trees or damage posts with markers. Trees with markers shall be cut off above the markers and at least 5 feet above ground. All stumps within 5 feet of the trail must be cut flush with the ground.

### 5.4 - Soil Protection

#### 5.4.1 - Rutting restriction, general (7/16)

Operations are to cease immediately if equipment and weather conditions result in rutting of roads and/or skid trails which is 12 inches or greater in depth and 50 feet in length. The Unit Manager or his/her representative may restrict hauling and/or skidding if ruts exceed the specified depth. With the Unit Manager or his/her representative's approval, the Purchaser may return to the area when the risk of rutting has decreased.

#### 5.8 - Protection of Endangered Species

##### 5.8.5 - Protection of raptor nests (3/13)

All trees with raptor nests will be protected if found during harvesting operations. Notification will be made to the Unit Manager or his/her representative who will notify the Wildlife Biologist so an on-site evaluation and recommendation can be made, if necessary.

### **6 - Safety and Fire Prevention**

#### 6.2 - Signing

##### 6.2.1 - Road posting (10/20)

The Purchaser is responsible for posting and maintaining caution signs on Crumley Creek Road (motorcycle trail) and any DNR forest roads prior to beginning operations. The road must be posted at appropriate distances from the Sale Area to warn of logging activity and truck traffic. Signs must be removed when harvest operations are suspended or completed. The Purchaser will provide these signs.



# TIMBER SALE MAP

This information provided by authority of Part 525, 1994 PA 451, as amended.

Forest Management Unit <b>Gaylord Management Unit</b>	County <b>Cheboygan</b>	Mapped By <b>John Scheele</b>	Date <b>09/23/2021</b>	Page <b>1</b>	of <b>1</b>
Township <b>35N</b>	Range <b>02W</b>	Section(s) and Subdivision(s) <b>Section 32 E1/2 SW, SE</b>	Scale <b>1:15,840</b>		

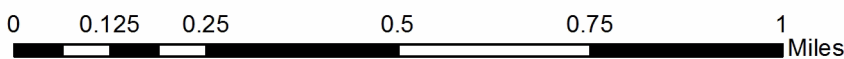
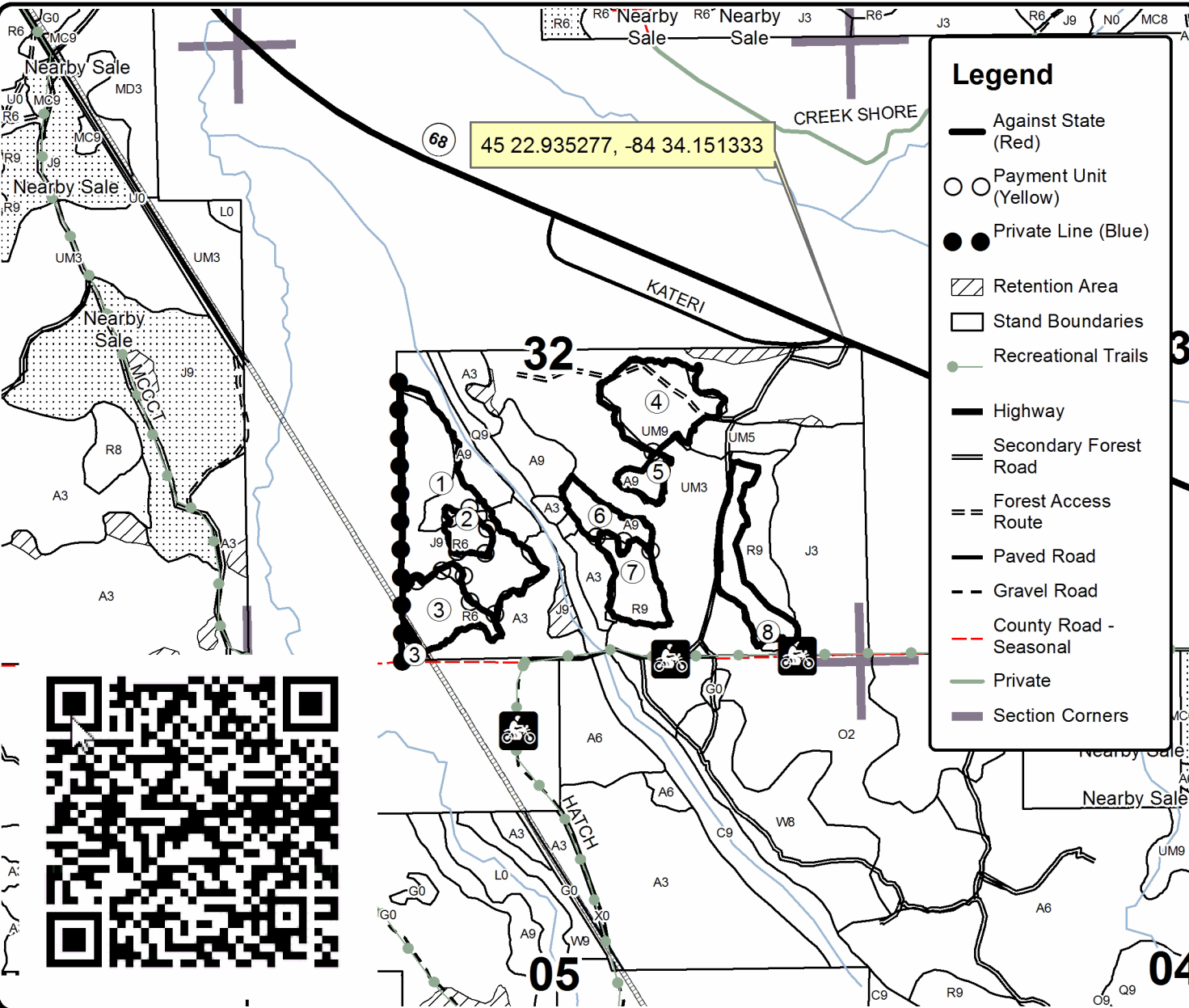
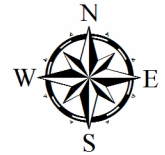
Cover Type				Density	
A = Aspen	H = Hemlock	N = Marsh	U = Upland Brush	0 = Non Stocked	5 = Pole Timber Medium
B = Paper Birch	J = Jack Pine	O = Oak	UM = Upland Mixed	1 = Seedling Sapling Poor	6 = Pole Timber Well
C = Cedar	L = Lowland Brush	P = Lowland Poplar	V = Bog or Marsh	2 = Seedling Sapling Medium	7 = Saw Timber Poor
D = Treed Bog	LM = Lowland Mixed	Q = Mixed Swamp Conifer	W = White Pine	3 = Seedling Sapling Well	8 = Saw Timber Medium
E = Swamp Hdwoods	M = Mpl, Bch, Brch	R = Red Pine	X = Non Stocked	4 = Pole Timber Poor	9 = Saw Timber Well
F = Spruce Fir	MC = Mixed Conifer	S = Black Spruce	Z = Water		
G = Grass	MD = Mixed Deciduous	T = Tamarack			

PU	Acres	PU	Acres
1	23.4	5	2.4
2	2.7	6	4.7
3	8.2	7	6.5
4	12.3	8	7.8

## Kateri Lane Mix

### Compartment 168

#### 68.0 Acres





## TIMBER SALE INFORMATION

### Whole Lotta Oak Mix (52-126-21)

T35N, R02W, SEC. 20; T35N, R02W, SEC. 21; T35N, R02W, SEC. 22.  
Cheboygan County (Advertised Price \$70,087.35)

SALE NOTE: All units of volume listed for this sale were estimated using the Inventory Manager computer program and the new Michigan taper model.

Good access to sale area.

See sale spec 5.2.3.5 for information on oak wilt restrictions.

A timber sale contract for this lump sum, sealed bid timber sale will be awarded to the responsible bidder offering the highest sealed bid price. All units of volume listed below were estimated using the Inventory Manager computer program and the new Michigan taper model. Bids must be at or above the following advertised price for each product and species:

<u>PRODUCTS &amp; SPECIES</u>	<u>ESTIMATED UNITS*</u>	<u>ADVERTISED PRICE</u>
<b>Sawtimber</b>		
B. T. Aspen	96.7 MBF	\$ 46.00 / MBF
BI/R/Hybrid Oak	9.3 MBF	\$ 61.00 / MBF
Red Maple	1.9 MBF	\$ 79.00 / MBF
Red Oak	168.8 MBF	\$ 86.00 / MBF
Red Pine	45.4 MBF	\$ 72.00 / MBF
White Oak	53.1 MBF	\$ 77.00 / MBF
White Pine	4.4 MBF	\$ 35.00 / MBF
<b>Pulpwood</b>		
B. T. Aspen	1,194 Cords	\$ 17.35 / Cord
Balsam Fir	44 Cords	\$ 17.60 / Cord
Jack Pine	13 Cords	\$ 12.70 / Cord
Mixed Oak	883 Cords	\$ 10.05 / Cord
Red Maple	284 Cords	\$ 16.35 / Cord
Red Pine	160 Cords	\$ 35.25 / Cord
White Pine	114 Cords	\$ 18.25 / Cord

\* The total volume is statistically estimated within plus (+) or minus (-) 5.72 percent. There are an estimated 3,508 cords on this timber sale, plus or minus 201 cords at the 95% confidence level. The estimated units are final and not subject to adjustment. Prospective bidders are urged to examine this timber and to make their own estimates of quantity and quality.

### **BOND AND PAYMENT SCHEDULE:**

1. A bond in the amount of \$7,009.00 to insure faithful performance of the conditions of the contract will be deposited by the successful bidder within 21 days of the sale award.
2. Cutting in any sale or unit without the required advance payment would be considered a trespass.
3. Total payment must be paid in advance or according to the following schedule :
  - (a) Ten percent (10%) of the sale value must be paid within 21 days of the sale award.
  - (b) The 10% down payment will be credited towards the first unit cut.
  - (c) Payment for each of the following units must be made before cutting begins in that unit:
 

PAYMENT UNIT NUMBER	PERCENT OF TOTAL SALE VALUE
01	16.7%
02	11.5%
03	14.7%
04	13.8%
05	30.0%
06	13.3%
4. If no cutting takes place, the 10% down payment will not be refunded.
5. Operations on the contract issued will terminate on 06/30/2024.

### **SALE STATISTICS**

Volumes were calculated in cubic feet using the Michigan taper model. Cubic foot volume includes all wood inside bark for the product indicated. For display purposes, cubic feet were converted to cords and MBF using a simple conversion factor, e.g. 79 cubic feet per cord and 185 cubic feet per MBF. The cubic foot volumes are precise; the cords and MBF volumes are not. Cubic foot volume cannot be directly converted to cords or boards with precision.

### SALE VOLUMES

The total estimated sale volume may not equal the sum of the species/products due to the nature of statistical calculations associated with double sampling methodology.

VOLUME			STATISTICAL RANGE IN CORDS	
TOTAL CUBIC FEET	TOTAL CORDS	PERCENT ERROR	MINIMUM	MAXIMUM
277,158	3,508	5.72%	3,307	3,709

### VDU VOLUMES

A VDU is a Volume Determination Unit. Volumes and their associated statistics are calculated at the VDU level and summarized to the sale level. There is often a one to one relationship between a VDU and a Payment Unit, but not always, depending on the cruise design. Refer to the VDU TO PAYMENT UNIT table.

VDU	VOLUME		PERCENT ERROR	RANGE IN CORDS	
	TOTAL CUBIC FEET	TOTAL CORDS		MINIMUM	MAXIMUM
10	43,717	553	12.23%	486	621
44	31,527	399	18.69%	325	474
55	44,059	558	11.70%	492	623
66	36,969	468	15.05%	398	538
82	94,463	1,196	10.34%	1,072	1,319
88	21,836	276	16.44%	231	322
<b>TOTAL:</b>	<b>272,571</b>	<b>3,450</b>		<b>3,003</b>	<b>3,897</b>

### VDU TO PAYMENT UNIT

When a VDU is associated with more than one Payment Unit (PU), the VDU volumes are assigned to the PU based on acres of the VDU within the PU.

VDU	VDU ACRES	PU	PU ACRES
10	21.3	1	21.3
44	11.9	2	11.9
55	22.6	3	22.6
66	30.6	4	30.6
82	27.8	5	27.8
88	17.5	6	17.5
<b>TOTAL:</b>	<b>131.7</b>		<b>131.7</b>

**DESCRIPTION OF TIMBER BY PAYMENT UNIT (PU)**

PU	MARKET GROUP	PRODUCT	QUANTITY	UNIT	ACRES	ADVERTISE PRICE	
1	B. T. Aspen	Sawtimber	7.4	MBF	21.3	\$11,674.25	
	Red Maple		1.9	MBF			
	Red Oak		67.5	MBF			
	White Oak		15.3	MBF			
	B. T. Aspen		Pulpwood	38			Cords
	Balsam Fir			5			Cords
	Mixed Oak			302			Cords
	<i>Red Oak</i>			246			<i>Cords</i>
	<i>White Oak</i>			56			<i>Cords</i>
	Red Maple			20			Cords
	White Pine			5			Cords
2	B. T. Aspen	Sawtimber	28.6	MBF	11.9	\$8,055.85	
	Red Oak		21.9	MBF			
	B. T. Aspen		Pulpwood	156			Cords
	Balsam Fir			9			Cords
	Mixed Oak			29			Cords
	<i>Red Oak</i>			29			<i>Cords</i>
	Red Maple			104			Cords
	3		B. T. Aspen	Sawtimber			3.3
BI/R/Hybrid Oak		9.3	MBF				
Red Oak		19.9	MBF				
White Oak		22.7	MBF				
White Pine		1.4	MBF				
B. T. Aspen		Pulpwood	143		Cords		
Jack Pine			5		Cords		
Mixed Oak			224		Cords		
<i>BI/R/Hybrid Oak</i>			77		<i>Cords</i>		
<i>Red Oak</i>			66		<i>Cords</i>		
<i>White Oak</i>			81		<i>Cords</i>		
Red Maple			12		Cords		
White Pine			61		Cords		
4	Red Oak	Sawtimber	53.9	MBF	30.6	\$9,642.35	
	White Oak		15.1	MBF			
	White Pine		3.0	MBF			
	B. T. Aspen		Pulpwood	11			Cords
	Balsam Fir			7			Cords
	Mixed Oak			258			Cords
	<i>BI/R/Hybrid Oak</i>			105			<i>Cords</i>
	<i>Red Oak</i>			111			<i>Cords</i>
	<i>White Oak</i>			42			<i>Cords</i>
	Red Maple			23			Cords
	White Pine			25			Cords
5	B. T. Aspen	Sawtimber	57.4	MBF	27.8	\$21,039.75	
	Red Oak		5.6	MBF			
	B. T. Aspen		Pulpwood	821			Cords
	Balsam Fir			23			Cords
	Jack Pine			8			Cords
	Mixed Oak			70			Cords
	<i>BI/R/Hybrid Oak</i>			26			<i>Cords</i>
	<i>Red Oak</i>			44			<i>Cords</i>
	Red Maple			125			Cords
	White Pine			23			Cords
	6		Red Pine	Sawtimber			45.4
B. T. Aspen		Pulpwood	25	Cords			
Red Pine			160	Cords			

TOTAL:	379.6	MBF
--------	-------	-----

TOTAL:	2,692	Cords
--------	-------	-------



# Sale Specific Conditions & Requirements

**Sale Name: Whole Lotta Oak Mix**

**Sale Number: 52-126-21 Seq#: 1**

## 1 - Sale Area

### 1.2 - Boundaries

#### 1.2.1 - Painted boundaries (9/19)

The sale boundary and Payment Unit boundaries are marked and identified by blue, red, and yellow paint. Exterior sale boundary lines against private property are marked with blue paint. Exterior sale boundary lines against state are marked with red paint. Interior Payment Unit boundaries are marked with yellow paint. Retention patches are marked with teal paint; no harvesting activities may occur within these areas. Individual retention trees are also marked with teal paint. The painted boundary line trees are not Included Timber and are to be protected. Yellow painted trees designating an interior Payment Unit boundary are only to be cut when all surrounding Payment Units have been paid.

## 2 - Timber Specifications

### 2.1 - Included Timber

#### 2.1.2 - Clearcut unit(s) w/o unmerchantable trees (8/11)

Within Payment Unit(s) 1-5, cut all trees which meet minimum piece specifications in 2.2 Utilization except for the following:

- Within Payment Unit 1 do not cut teal marked trees;
- Within Payment Unit 2 do not cut teal marked trees and white oak;
- Within Payment Unit 3 do not cut teal marked trees and red pine;
- Within Payment Unit 4 do not cut red pine and trees > 26 inches at DBH;
- Within Payment Unit 5 do not cut teal marked trees, white oak and white pine trees > 8 inches at DBH.

#### 2.1.8 - Designated plantation row unit(s) (12/08)

Within Payment Unit(s) 6, all trees which meet minimum piece specifications in 2.2 Utilization, within designated plantation rows are designated for cutting. Designated plantation rows begin with the third row in from the outside of the plantation, then continue every third-row. Because of the variability of row direction, it shall be the responsibility of the Purchaser to maintain the third row sequence. Also remove all aspen and maple species, outside of the designated rows. Lastly, do not cut oak species or red pine trees > 18 inches at DBH.

## 3 - Payments

### 3.4 - Damaged Timber

#### 3.4.1 - Damaged timber (7/16)

General Condition and Requirement 3.4 Damaged Timber, defines liquidated damages for undesignated live merchantable trees which are cut or injured. No damage is acceptable to undesignated live merchantable trees. Within the Sale Area, if more than 5% of trees (> 4.5" DBH) within a specified area of the sale are damaged, liquidated damages will be assessed for all trees damaged. Rates will be in accordance with General Condition and Requirement 3.4 Damaged Timber.

## 4 - Transportation

### 4.1 - Construction

#### 4.1.3 - Slash and earthen piles (8/04)

Piles or windrows of earth along roads and landings that have been widened or constructed shall be leveled. Slash from road maintenance or construction, including stumps, shall be dispersed throughout the sale.

#### 4.1.6 - Road construction (1/09)

Construction of new roads or improvements of existing roads shall be done in such a way as to minimize the environmental and visual impacts. Merchantable trees shall be cut and utilized unless otherwise directed. Non-merchantable trees shall be severed and laid flat on the ground. Slash shall be scattered, and not left in windrows and kept a minimum of 10 feet back from the road edge. Stumps shall be set upright, not left on edge, and be moved at least 10 feet away from the road edge. Disturbed soil shall be feathered into the woods and not left in berms or windrows.

#### 4.1.7 - Road closure (10/11)

All new roads built into the sale must be blocked to vehicle traffic upon completion of the sale. In general, this will require constructing a four (4') foot high berm of stumps and logs covered with earth. Stumps and brush must be placed along the remainder of the trail. These roads must be rendered impassable to cars and trucks. Contact the sale administrator for specific details of design and placement.

#### 4.2 - Maintenance

##### 4.2.4 - Grading (10/16)

For completion of the sale, state forest roads must be graded. In general, this will require a road grader or bulldozer to shape up the roads after forest products have been hauled off site. This includes cleaning of drainage areas, grading, crowning, and filling with gravel, if necessary. The grading equipment to be used must be approved by the Unit Manager or his/her representative.

##### 4.2.5 - Two wheel drive condition (2/04)

All existing trail roads on and adjacent to the sale area must be passable by two-wheel drive traffic for the duration of the sale.

### 5 - Operations

#### 5.1 - Notification

##### 5.1.1 - Pre-sale conference (10/16)

A pre-sale conference on site between the Purchaser and sale administrator is required prior to beginning any operations to determine landing and road locations. The Unit Manager or his/her representative must be contacted at least 2 days in advance to schedule the conference.

##### 5.1.4 - Post-sale conference (10/16)

A post-sale conference on site between the Purchaser and sale administrator is required 5 days prior to the completion of active logging operations to determine clean-up and repair of landings, road edges, and the fulfillment of other contract specifications.

#### 5.2 - Conduct of Operations

##### 5.2.1 - Slash

###### 5.2.1.13 - Dispose of slash as directed (12/05)

Slash is to be disposed of as directed by the sale administrator.

##### 5.2.2 - Hazard Trees/Snags

###### 5.2.2.1 - Den trees (10/16)

Obvious hollow and/or den trees shall be protected and left standing unless they are a safety hazard.

##### 5.2.3 - Operating Restrictions

###### 5.2.3.5 - Oak wilt restriction (1/18)

Within Payment Unit(s) 1-6, unless changed by written agreement, cutting, skidding, hauling within the sale and brushing of access roads to the sale are not permitted during the period of April 15 to July 15. Operations may be allowed if specific steps are taken to prevent damaging uncut oak during the high risk period. Those steps may include completing all road brushing before April 15th and clearing a tree-length buffer along uncut oak cover before April 15th. This is necessary to reduce the spread of oak wilt. For more information, contact the Unit Manager or his/her representative.

###### 5.2.32 - Decking/landing restoration (9/13)

All decking and landing areas must have the surface area restored to a condition equal to or better than before. This is to ensure the proper regeneration of the stand. Wood debris, chips, and "cookies" from trimmings must be removed or scattered away from landing and loading areas and may not be windrowed on the edge.

#### 5.4 - Soil Protection

##### 5.4.1 - Rutting restriction, general (7/16)

Operations are to cease immediately if equipment and weather conditions result in rutting of roads and/or skid trails which is 12 inches or greater in depth and 50 feet in length. The Unit Manager or his/her representative may restrict hauling and/or

skidding if ruts exceed the specified depth. With the Unit Manager or his/her representative's approval, the Purchaser may return to the area when the risk of rutting has decreased.

#### 5.8 - Protection of Endangered Species

##### 5.8.5 - Protection of raptor nests (3/13)

All trees with raptor nests will be protected if found during harvesting operations. Notification will be made to the Unit Manager or his/her representative who will notify the Wildlife Biologist so an on-site evaluation and recommendation can be made, if necessary.

### **6 - Safety and Fire Prevention**

#### 6.2 - Signing

##### 6.2.1 - Road posting (10/20)

The Purchaser is responsible for posting and maintaining caution signs on all county and DNR roads, including East Mullett Lake Road and Old Onaway Road, prior to beginning operations. The road must be posted at appropriate distances from the Sale Area to warn of logging activity and truck traffic. Signs must be removed when harvest operations are suspended or completed.



# TIMBER SALE MAP

This information provided by authority of Part 525, 1994 PA 451, as amended.

Forest Management Unit <b>Gaylord Management Unit</b>		County <b>Cheboygan</b>	Mapped By <b>John Scheele</b>	Date <b>09/24/2021</b>	Page <b>1</b>	of <b>1</b>
Township <b>35N</b>	Range <b>02W</b>	Section(s) and Subdivision(s) <b>Section 20 NENW</b>		Scale <b>1:15,840</b>		
		Section 21 N1/2SE, SWSE, NENW, S1/2NW, E1/2NE, E1/2SW				

### Cover Type

A = Aspen	H = Hemlock	N = Marsh	U = Upland Brush
B = Paper Birch	J = Jack Pine	O = Oak	UM = Upland Mixed
C = Cedar	L = Lowland Brush	P = Lowland Poplar	V = Bog or Marsh
D = Treed Bog	LM = Lowland Mixed	Q = Mixed Swamp Conifer	W = White Pine
E = Swamp Hdwoods	M = Mpl, Bch, Brch	R = Red Pine	X = Non Stocked
F = Spruce Fir	MC = Mixed Conifer	S = Black Spruce	Z = Water
G = Grass	MD = Mixed Deciduous	T = Tamarack	

### Density

0 = Non Stocked	5 = Pole Timber Medium
1 = Seedling Sapling Poor	6 = Pole Timber Well
2 = Seedling Sapling Medium	7 = Saw Timber Poor
3 = Seedling Sapling Well	8 = Saw Timber Medium
4 = Pole Timber Poor	9 = Saw Timber Well

PU	Acres	PU	Acres
1	21.3	5	27.8
2	11.9	6	17.5
3	22.6		
4	30.6		

## Whole Lotta Oak Mix

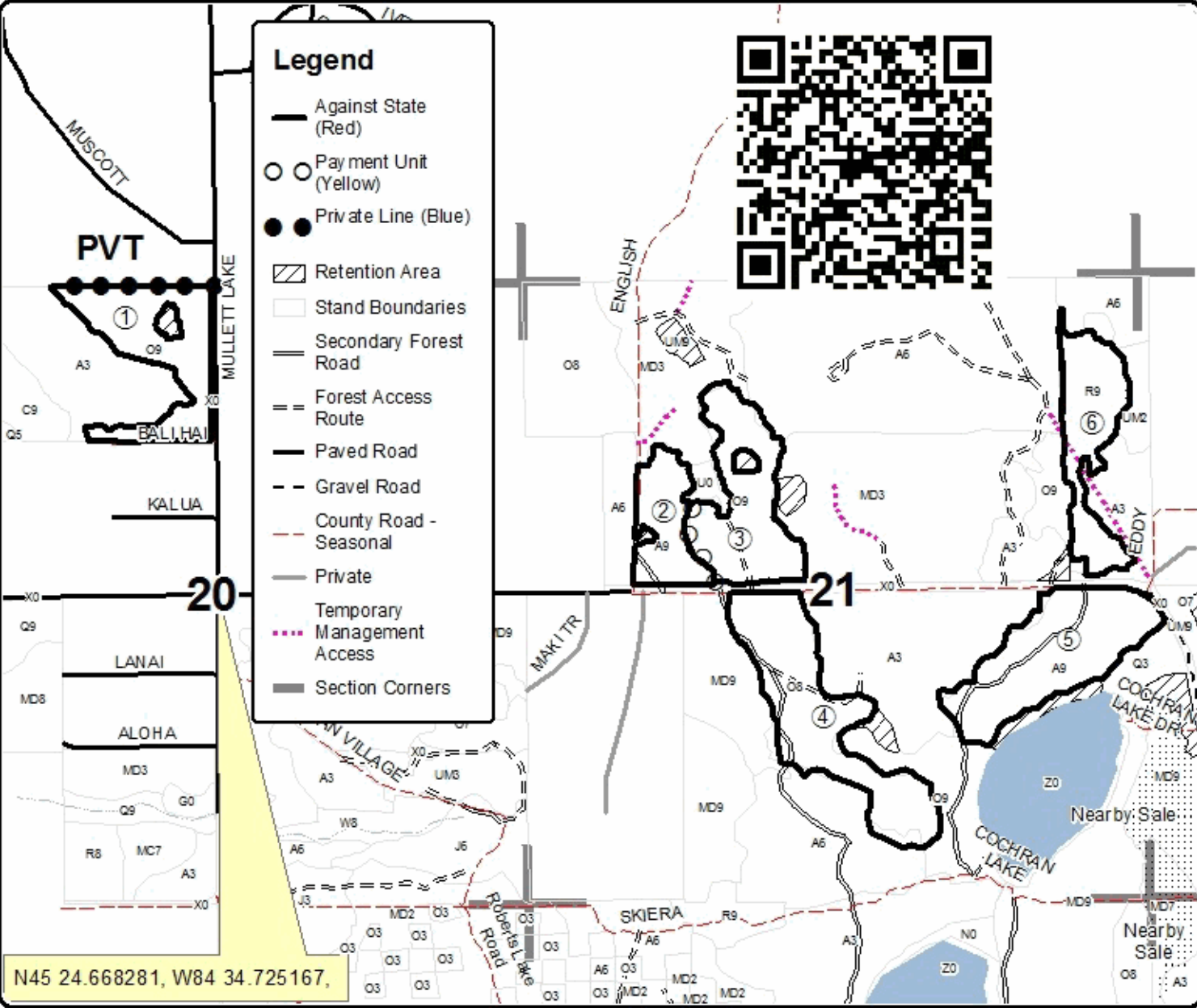
### Compartment 168

131.7 Acres

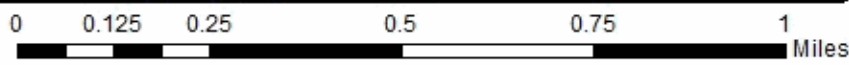


### Legend

- Against State (Red)
- Payment Unit (Yellow)
- Private Line (Blue)
- Retention Area
- Stand Boundaries
- Secondary Forest Road
- Forest Access Route
- Paved Road
- Gravel Road
- County Road - Seasonal
- Private
- Temporary Management Access
- Section Corners



N45 24.668281, W84 34.725167,



## TIMBER SALE INFORMATION

### MD HILLS MIX (52-125-19)

T34N, R01W, SEC. 13; T34N, R01W, SEC. 14.  
Cheboygan County (Advertised Price \$47,102.35)

SALE NOTE: Nice quality and volume of timber in Payment Unit 2. Access to all Payment Units will cross private property.

Access may be through private land.

A timber sale contract for this lump sum, sealed bid timber sale will be awarded to the responsible bidder offering the highest sealed bid price. All units of volume listed below were estimated using the T-Sale computer program and our traditional volume equations. Bids must be at or above the following advertised price for each product and species:

<u>PRODUCTS &amp; SPECIES</u>	<u>ESTIMATED UNITS*</u>	<u>ADVERTISED PRICE</u>
Sawtimber		
Mixed Aspen	69.8 MBF	\$ 46.00 / MBF
Red Pine	110.5 MBF	\$ 72.00 / MBF
White Pine	51.6 MBF	\$ 34.00 / MBF
Pulpwood		
Balsam Fir	65 Cords	\$ 17.60 / Cord
Basswood	18 Cords	\$ 8.10 / Cord
Mixed Aspen	706 Cords	\$ 17.35 / Cord
Mixed Hardwood	267 Cords	\$ 16.35 / Cord
Paper Birch	52 Cords	\$ 7.45 / Cord
Red Pine	232 Cords	\$ 35.25 / Cord
White Pine	416 Cords	\$ 18.25 / Cord
White Spruce	12 Cords	\$ 9.95 / Cord

\* The total volume is statistically estimated within plus (+) or minus (-) 13.13 percent. There are an estimated 2,232 cords on this timber sale, plus or minus 293 cords at the 95% confidence level. The estimated units are final and not subject to adjustment. Prospective bidders are urged to examine this timber and to make their own estimates of quantity and quality.

### **BOND AND PAYMENT SCHEDULE:**

1. A bond in the amount of \$4,710.00 to insure faithful performance of the conditions of the contract will be deposited by the successful bidder within 21 days of the sale award.
2. Cutting in any sale or unit without the required advance payment would be considered a trespass.
3. Total payment must be paid in advance or according to the following schedule :
  - (a) Ten percent (10%) of the sale value must be paid within 21 days of the sale award.
  - (b) The 10% down payment will be credited towards the first unit cut.
  - (c) Payment for each of the following units must be made before cutting begins in that unit:
 

PAYMENT UNIT NUMBER	PERCENT OF TOTAL SALE VALUE
01	14.0%
02	73.0%
03	13.0%
4. If no cutting takes place, the 10% down payment will not be refunded.
5. Operations on the contract issued will terminate on 03/31/2025.

### **SALE STATISTICS**

#### **SALE VOLUMES**

VOLUME		STATISTICAL RANGE IN CORDS		
TOTAL CUBIC FEET	TOTAL CORDS	PERCENT ERROR	MINIMUM	MAXIMUM
176,323	2,232	13.13%	1,939	2,525

**VDU VOLUMES**

A VDU is a Volume Determination Unit. Volumes and their associated statistics are calculated at the VDU level and summarized to the sale level. There is often a one to one relationship between a VDU and a Payment Unit, but not always, depending on the cruise design. Refer to the VDU TO PAYMENT UNIT table.

VDU	VOLUME		PERCENT ERROR	RANGE IN CORDS	
	TOTAL CUBIC FEET	TOTAL CORDS		MINIMUM	MAXIMUM
77	29,080	368	24.04%	280	457
83	117,710	1,490	18.32%	1,217	1,763
84	29,538	374	25.95%	277	471
<b>TOTAL:</b>	<b>176,328</b>	<b>2,232</b>		<b>1,774</b>	<b>2,690</b>

**VDU TO PAYMENT UNIT**

When a VDU is associated with more than one Payment Unit (PU), the VDU volumes are assigned to the PU based on acres of the VDU within the PU.

VDU	VDU ACRES	PU	PU ACRES
77	13.4	1	13.4
83	56.6	2	56.6
84	13.9	3	13.9
<b>TOTAL:</b>	<b>83.9</b>		<b>83.9</b>

**DESCRIPTION OF TIMBER BY PAYMENT UNIT (PU)**

PU	MARKET GROUP	PRODUCT	QUANTITY	UNIT	ACRES	ADVERTISE PRICE
1	Mixed Aspen	Sawtimber	24.1	MBF	13.4	\$6,594.25
	<i>B. T. Aspen</i>		3.2	<i>MBF</i>		
	<i>Quaking Aspen</i>		20.9	<i>MBF</i>		
	White Pine	3.4	MBF			
	Balsam Fir	Pulpwood	60	Cords		
	Mixed Aspen		167	Cords		
	<i>B. T. Aspen</i>		12	<i>Cords</i>		
	<i>Quaking Aspen</i>		155	<i>Cords</i>		
	Mixed Hardwood		63	Cords		
	<i>Red Maple</i>		11	<i>Cords</i>		
	<i>Sugar Maple</i>		52	<i>Cords</i>		
	White Pine		19	Cords		
	White Spruce		4	Cords		
	2		Mixed Aspen	Sawtimber		
<i>B. T. Aspen</i>		30.4	<i>MBF</i>			
<i>Quaking Aspen</i>		2.3	<i>MBF</i>			
Red Pine		110.5	MBF			
White Pine		46.7	MBF			
Mixed Aspen		Pulpwood	436	Cords		
<i>B. T. Aspen</i>			402	<i>Cords</i>		
<i>Quaking Aspen</i>			34	<i>Cords</i>		
Mixed Hardwood			84	Cords		
<i>Red Maple</i>			74	<i>Cords</i>		
<i>Sugar Maple</i>			10	<i>Cords</i>		
Paper Birch			27	Cords		
Red Pine			232	Cords		
White Pine			331	Cords		
3	Mixed Aspen		Sawtimber	13.0	MBF	13.9
	<i>B. T. Aspen</i>	6.8		<i>MBF</i>		
	<i>Quaking Aspen</i>	6.2		<i>MBF</i>		
	White Pine	1.5	MBF			
	Balsam Fir	Pulpwood	5	Cords		
	Basswood		18	Cords		
	Mixed Aspen		103	Cords		
	<i>B. T. Aspen</i>		35	<i>Cords</i>		
	<i>Quaking Aspen</i>		68	<i>Cords</i>		
	Mixed Hardwood		120	Cords		
	<i>Red Maple</i>		91	<i>Cords</i>		
	<i>Sugar Maple</i>		29	<i>Cords</i>		
	Paper Birch		25	Cords		
	White Pine		66	Cords		
White Spruce	8	Cords				
TOTAL:			231.9	MBF		
TOTAL:			1,768	Cords		

## Sale Specific Conditions & Requirements

**Sale Name: MD HILLS MIX**

**Sale Number: 52-125-19 Seq#: 2**

### 1 - Sale Area

#### 1.2 - Boundaries

##### 1.2.1 - Painted boundaries (9/19)

The sale boundary and Payment Unit boundaries are marked and identified by blue and red paint. Exterior sale boundary lines against private property are marked with blue paint. Exterior sale boundary lines against state are marked with red paint.

### 2 - Timber Specifications

#### 2.1 - Included Timber

##### 2.1.2 - Clearcut unit(s) w/o unmerchantable trees (8/11)

Within Payment Unit(s) 1, cut all trees which meet minimum piece specifications in 2.2 Utilization except oak species and red pine.

##### 2.1.7 - Leave tree marked unit(s) (6/14)

Within Payment Unit(s) 2 and 3, all trees, which meet minimum piece specifications in 2.2 Utilization, are designated for cutting, except oak species and trees marked with teal paint above and below stump height. Also, do not cut red pine in Payment Unit 3.

### 3 - Payments

#### 3.3 - Pre-measured Sales

##### 3.3.4 - Dividing payment units (7/14)

Payment Unit(s) 2 may be divided at the request of the Purchaser and upon approval of the Unit Manager. Dividing Payment Units is a contract modification which requires a Timber Sale Contract Amendment.

### 4 - Transportation

#### 4.1 - Construction

##### 4.1.3 - Slash and earthen piles (8/04)

Piles or windrows of earth along roads and landings that have been widened or constructed shall be leveled. Slash from road maintenance or construction, including stumps, shall be dispersed throughout the sale.

##### 4.1.6 - Road construction (1/09)

Construction of new roads or improvements of existing roads shall be done in such a way as to minimize the environmental and visual impacts. Merchantable trees shall be cut and utilized unless otherwise directed. Non-merchantable trees shall be severed and laid flat on the ground. Slash shall be scattered, and not left in windrows and kept a minimum of 10 feet back from the road edge. Stumps shall be set upright, not left on edge, and be moved at least 10 feet away from the road edge. Disturbed soil shall be feathered into the woods and not left in berms or windrows.

##### 4.1.7 - Road closure (10/11)

All new roads built into the sale must be blocked to vehicle traffic upon completion of the sale. Overgrown roads that are reopened shall be considered new roads. In general, this will require constructing a four (4') foot high berm of stumps and logs covered with earth. Contact the sale administrator for specific details of design and placement.

#### 4.2 - Maintenance

##### 4.2.4 - Grading (10/16)

For completion of the sale, state forest roads and any private roads must be graded. In general, this will require a road grader or bulldozer to shape up the roads after forest products have been hauled off site. This includes cleaning of drainage areas, grading, crowning, and filling with gravel, if necessary. The grading equipment to be used must be approved by the Unit Manager or his/her representative.

#### 4.4 - Access



#### 4.4.1 - Private property access (3/11)

Permission for access across private land for Payment Unit 1 is the responsibility of the Purchaser.

### 5 - Operations

#### 5.1 - Notification

##### 5.1.1 - Pre-sale conference (10/16)

A pre-sale conference on site between the Purchaser and sale administrator is required prior to beginning any operations to determine landing and road locations. The Unit Manager or his/her representative must be contacted at least 3 days in advance to schedule the conference.

##### 5.1.4 - Post-sale conference (10/16)

A post-sale conference on site between the Purchaser and sale administrator is required 5 days prior to the completion of active logging operations to determine clean-up and repair of landings, road edges, and the fulfillment of other contract specifications.

#### 5.2 - Conduct of Operations

##### 5.2.1 - Slash

###### 5.2.1.13 - Dispose of slash as directed (12/05)

Slash is to be disposed of as directed by the sale administrator.

##### 5.2.2 - Hazard Trees/Snags

###### 5.2.2.1 - Den trees (10/16)

Obvious hollow and/or den trees shall be protected and left standing unless they are a safety hazard.

##### 5.2.3 - Operating Restrictions

###### 5.2.3.5 - Oak wilt restriction (1/18)

Within Payment Unit(s) 2 and 3, unless changed by written agreement, cutting, skidding, hauling within the sale and brushing of access roads to the sale are not permitted during the period of April 15 to July 15. Operations may be allowed if specific steps are taken to prevent damaging uncut oak during the high risk period. Those steps may include completing all road brushing before April 15th and clearing a tree-length buffer along uncut oak cover before April 15th. This is necessary to reduce the spread of oak wilt. For more information, contact the Unit Manager or his/her representative.

##### 5.2.22 - Operating Caution

###### 5.2.22.1 - Operating caution (6/11)

It is recommended, but not required, that within Payment Unit(s) 2, cutting, skidding, and hauling occur during snow off conditions. The reason for the recommendation is because of the steep slopes and to encourage soil scarification for natural regeneration of pine species.

##### 5.2.32 - Decking/landing restoration (9/13)

All decking and landing areas must have the surface area restored to a condition equal to or better than before. This is to ensure the proper regeneration of the stand. Wood debris, chips, and "cookies" from trimmings must be removed or scattered away from landing and loading areas and may not be windrowed on the edge.

#### 5.4 - Soil Protection

##### 5.4.1 - Rutting restriction, general (7/16)

Operations are to cease immediately if equipment and weather conditions result in rutting of roads and/or skid trails which is 12 inches or greater in depth and 50 feet in length. The Unit Manager or his/her representative may restrict hauling and/or skidding if ruts exceed the specified depth. With the Unit Manager or his/her representative's approval, the Purchaser may return to the area when the risk of rutting has decreased.

##### 5.4.2 - Skid trails (2/04)

Skid trails up and down slopes should be avoided. If however this is unavoidable, these trails will be left in a non-erodible condition using water bars, logs, and slash. Placing of slash on these skid trails while logging is ongoing may alleviate need for any further action. At the direction of the sale administrator, seed, fertilizer, and mulch may also be required.

#### 5.4.3 - Erosion control (12/08)

Skid trails or haul roads may require erosion control structures or berms per direction of the Unit Manager or his/her representative.

#### 5.4.4 - Slope protection (9/19)

Skid trails and roads on slopes shall be water barred with slash and stumps as soon as use is complete to prevent erosion.

### 5.7 - Protection of Historical Sites

#### 5.7.1 - Historical sites (7/12)

The Purchaser shall not cut live or dead trees or operate equipment within historical sites. Historical sites are documented outside of the Sale Area. The Purchaser shall protect historical sites from damage by the Purchaser's operations. If Purchaser's operations have cut or damaged historical sites through carelessness, the Purchaser shall pay \$5000 as fixed, agreed and liquidated damages for each acre or part thereof cut or damaged.

### 5.8 - Protection of Endangered Species

#### 5.8.5 - Protection of raptor nests (3/13)

All trees with raptor nests will be protected if found during harvesting operations. Notification will be made to the Unit Manager or his/her representative who will notify the Wildlife Biologist so an on-site evaluation and recommendation can be made, if necessary.



# TIMBER SALE MAP

This information provided by authority of Part 525, 1994 PA 451, as amended.

Sale Number	Year
52-125-19-01	19

Forest Management Unit <b>GAYLORD MANAGEMENT UNIT</b>	County <b>CHEBOYGAN</b>	Mapped By <b>SCHEELE</b>	Date <b>09/26/2019</b>	Page <b>1</b>	of <b>1</b>
Township <b>34N</b>	Range <b>01W</b>	Section(s) and Subdivision(s) <b>SECTION 13 SENW, NE SECTION 14 S1/2SE</b>	Scale <b>1:15,840</b>		

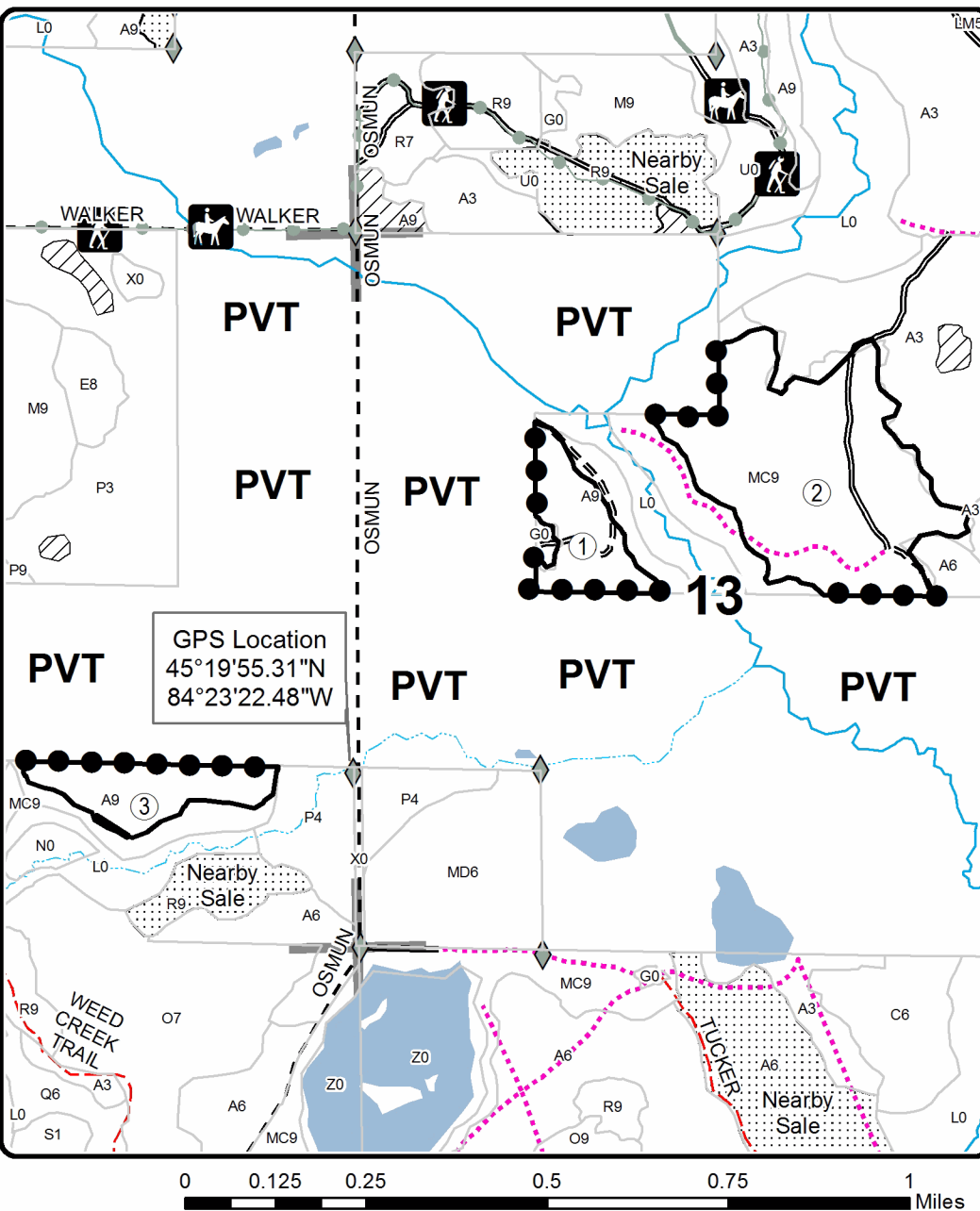
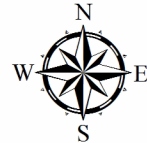
Cover Type				Density	
A = Aspen	H = Hemlock	N = Marsh	U = Upland Brush	0 = Non Stocked	5 = Pole Timber Medium
B = Paper Birch	J = Jack Pine	O = Oak	UM = Upland Mixed	1 = Seedling Sapling Poor	6 = Pole Timber Well
C = Cedar	L = Lowland Brush	P = Lowland Poplar	V = Bog or Marsh	2 = Seedling Sapling Medium	7 = Saw Timber Poor
D = Tread Bog	LM = Lowland Mixed	Q = Mixed Swamp Conifer	W = White Pine	3 = Seedling Sapling Well	8 = Saw Timber Medium
E = Swamp Hdwoods	M = Mpl, Bch, Brch	R = Red Pine	X = Non Stocked	4 = Pole Timber Poor	9 = Saw Timber Well
F = Spruce Fir	MC = Mixed Conifer	S = Black Spruce	Z = Water		
G = Grass	MD = Mixed Deciduous	T = Tamarack			

PU	Acres
1	13.4
2	56.6
3	13.9

## MD HILLS MIX

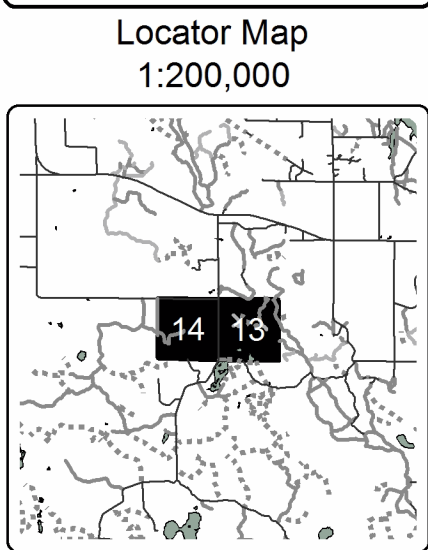
### Compartment 183

83.9 Acres



### Legend

- Against State (Red)
- Private Line (Blue)
- Nearby Timber Sales
- Retention Area
- Stand Boundaries
- Recreation Trail
- Field Grade Corners
- Secondary Forest Road
- Forest Access Route
- Gravel Road
- County Road - Seasonal
- Private
- Temporary Management Access
- Intermittent Stream
- Perennial River
- Lakes and Rivers
- Section Corners





Low Volume Pine Mix (52-122-21)  
T36N, R01W, SEC. 31; T36N, R02W, SEC. 36; Cheboygan COUNTY

In response to the notice of sale to be held 9:00 a.m. (local time) on January 18, 2022, I am hereby submitting my sealed bid (firm offer) for the following forest products to be cut. Bids for individual species must be at or above the advertised price. All non-responsive bid forms may be rejected.

<u>PRODUCTS &amp; SPECIES</u>	<u>ESTIMATED VOLUME*</u>	<u>ADVERTISED PRICE</u>	<u>BID PRICE/UNIT</u>
<b>Sawtimber</b>			
B. T. Aspen	2.5 MBF	\$ 46.00/MBF	\$ _____
Red Oak	10.1 MBF	\$ 86.00/MBF	\$ _____
Red Pine	73.5 MBF	\$ 72.00/MBF	\$ _____
White Pine	1.1 MBF	\$ 35.00/MBF	\$ _____
<b>Pulpwood</b>			
B. T. Aspen	37 Cords	\$ 17.35/Cord	\$ _____
Balsam Fir	1 Cords	\$ 17.60/Cord	\$ _____
Jack Pine	38 Cords	\$ 12.70/Cord	\$ _____
Misc. Species 1	15.3 Acres	\$ 3.00/Acres	\$ _____
Mixed Oak	25 Cords	\$ 10.05/Cord	\$ _____
Red Maple	11 Cords	\$ 16.35/Cord	\$ _____
Red Pine	92 Cords	\$ 35.25/Cord	\$ _____
White Pine	44 Cords	\$ 18.25/Cord	\$ _____

\*The volumes are statistically estimated within plus (+) or minus (-) 11.40 percent at 95% confidence level. These estimated volumes are final and not subject to adjustment. Prospective bidders are urged to examine this timber and to make their own estimates of quantity and quality.

I understand that any or all bids may be rejected. All bids must be signed and all bid items must be bid or the bid form may be rejected. I also understand that consideration and awarding a contract will be based upon my past performance and ability to complete the contract based upon equipment and staffing subject to my control.

FEDERAL ID: \_\_\_\_ - \_\_\_\_ - \_\_\_\_ or SOCIAL SECURITY NUMBER: \_\_\_\_ - \_\_\_\_ - \_\_\_\_

Company or individual bidding: \_\_\_\_\_

Company representative's name: \_\_\_\_\_

Address: \_\_\_\_\_

City: \_\_\_\_\_ State: \_\_\_\_\_ Zip: \_\_\_\_\_

IF AVAILABLE, PLEASE PLACE THE PERSONALIZED LABEL FROM YOUR PROSPECTUS IN THE ABOVE BOX.

Individual or company representative's signature: \_\_\_\_\_ Date: \_\_\_\_\_

Phone number : \_\_\_\_\_ Email (optional): \_\_\_\_\_

**THE WINNING BIDDER MUST COMPLETE THE VERIFICATION OF WORKER'S DISABILITY COMPENSATION ACT COMPLIANCE (ON REVERSE SIDE IF DOUBLE SIDED) WITHIN 21 DAYS OF SALE AWARD DATE**



Kateri Lane Mix (52-124-21)  
T35N, R02W, SEC. 32; Cheboygan COUNTY

In response to the notice of sale to be held 9:00 a.m. (local time) on January 18, 2022, I am hereby submitting my sealed bid (firm offer) for the following forest products to be cut. Bids for individual species must be at or above the advertised price. All non-responsive bid forms may be rejected.

<u>PRODUCTS &amp; SPECIES</u>	<u>ESTIMATED VOLUME*</u>	<u>ADVERTISED PRICE</u>	<u>BID PRICE/UNIT</u>
<b>Sawtimber</b>			
Jack Pine	2.3 MBF	\$ 25.00/MBF	\$ _____
Mixed Aspen	14.6 MBF	\$ 46.00/MBF	\$ _____
Red Pine	46.4 MBF	\$ 72.00/MBF	\$ _____
<b>Pulpwood</b>			
Bl/R/Hybrid Oak	210 Cords	\$ 10.05/Cord	\$ _____
Jack Pine	485 Cords	\$ 12.70/Cord	\$ _____
Mixed Aspen	269 Cords	\$ 17.35/Cord	\$ _____
Red Pine	302 Cords	\$ 35.25/Cord	\$ _____
White Pine	11 Cords	\$ 18.25/Cord	\$ _____

\*The volumes are statistically estimated within plus (+) or minus (-) 6.81 percent at 95% confidence level. These estimated volumes are final and not subject to adjustment. Prospective bidders are urged to examine this timber and to make their own estimates of quantity and quality.

I understand that any or all bids may be rejected. All bids must be signed and all bid items must be bid or the bid form may be rejected. I also understand that consideration and awarding a contract will be based upon my past performance and ability to complete the contract based upon equipment and staffing subject to my control.

FEDERAL ID: \_\_\_\_ - \_\_\_\_ - \_\_\_\_ or SOCIAL SECURITY NUMBER: \_\_\_\_ - \_\_\_\_ - \_\_\_\_

Company or individual bidding: \_\_\_\_\_

Company representative's name: \_\_\_\_\_

Address: \_\_\_\_\_

City: \_\_\_\_\_ State: \_\_\_\_\_ Zip: \_\_\_\_\_

IF AVAILABLE, PLEASE PLACE THE PERSONALIZED LABEL FROM YOUR PROSPECTUS IN THE ABOVE BOX.

Individual or company representative's signature: \_\_\_\_\_ Date: \_\_\_\_\_

Phone number : \_\_\_\_\_ Email (optional): \_\_\_\_\_

**THE WINNING BIDDER MUST COMPLETE THE VERIFICATION OF WORKER'S DISABILITY COMPENSATION ACT COMPLIANCE (ON REVERSE SIDE IF DOUBLE SIDED) WITHIN 21 DAYS OF SALE AWARD DATE**



<b>FOR DEPARTMENT USE ONLY</b>	
Sale Number (XX - XXX - XX - XX)	
Forest Management Unit:	

# TIMBER SALE VERIFICATION OF WORKER'S DISABILITY COMPENSATION ACT COMPLIANCE

As required by Act 317, P.A. 1969 (Worker's Compensation) and  
Part 5 of Act 451 of 1994, as amended.

## VERIFICATION OF WORKER'S DISABILITY COMPENSATION ACT COMPLIANCE

- This verification must be completed and submitted within 21 days of contract award and prior to the issuance of the timber sale contract.
- In addition, if boxes 2B or 2C are checked, then Notice of Exclusion or Certificate of Insurance must be submitted within twenty-one (21) days of the contract award and prior to the issuance of the timber sale contract.
- All information must be typed or printed except for written signatures.

Please Check Appropriate Categories:

1. My business is organized as (you **must** check one of the boxes below):
  - A.  Sole Proprietorship (individual)
  - B.  Partnership
  - C.  Corporation
2. You **must** check one of the boxes below:
  - A.  I certify my business is a sole proprietorship and it has no employees but the sole proprietor. I am not subject to the Worker's Compensation Laws.
  - B.  I certify my business has satisfied its obligation to the Worker's Compensation Act through the use of an approved Notice of Exclusion (BWC-337, Rev. 5/96). I will provide a copy of the Notice of Exclusion within 21 days of the contract award. (For questions or a copy of the BWC-337, please call the Worker's Compensation Bureau at 517-322-1195).
  - C.  I certify my business has a Worker's Compensation Policy. I will provide an original Certificate of Insurance within twenty-one (21) days of the contract award.
3. If you have checked item 2(A) or 2(B), you **must** indicate the number of **both** full-time and part-time employees, other than yourself, including family members and active partners (if none, you must enter "0").

\_\_\_\_\_ Full-time Employees

\_\_\_\_\_ Part-time Employees

Name of Business		Federal ID (or) Social Security No.	
Address		Telephone (       )	
City	State	ZIP	

*I hereby certify that the above information is true and correct. I agree to notify the Michigan DNR of any changes that occur in factors affecting my coverage during any of my present and future operations.*

\_\_\_\_\_  
Signature of Owner or Authorized Representative

\_\_\_\_\_  
Title

\_\_\_\_\_  
Date

Please complete the "SEALED BID" information on the next page



Whole Lotta Oak Mix (52-126-21)

T35N, R02W, SEC. 20; T35N, R02W, SEC. 21; T35N, R02W, SEC. 22; Cheboygan

In response to the notice of sale to be held 9:00 a.m. (local time) on January 18, 2022, I am hereby submitting my sealed bid (firm offer) for the following forest products to be cut. Bids for individual species must be at or above the advertised price. All non-responsive bid forms may be rejected.

<u>PRODUCTS &amp; SPECIES</u>	<u>ESTIMATED VOLUME*</u>	<u>ADVERTISED PRICE</u>	<u>BID PRICE/UNIT</u>
<b>Sawtimber</b>			
B. T. Aspen	96.7 MBF	\$ 46.00/MBF	\$ _____
Bl/R/Hybrid Oak	9.3 MBF	\$ 61.00/MBF	\$ _____
Red Maple	1.9 MBF	\$ 79.00/MBF	\$ _____
Red Oak	168.8 MBF	\$ 86.00/MBF	\$ _____
Red Pine	45.4 MBF	\$ 72.00/MBF	\$ _____
White Oak	53.1 MBF	\$ 77.00/MBF	\$ _____
White Pine	4.4 MBF	\$ 35.00/MBF	\$ _____
<b>Pulpwood</b>			
B. T. Aspen	1,194 Cords	\$ 17.35/Cord	\$ _____
Balsam Fir	44 Cords	\$ 17.60/Cord	\$ _____
Jack Pine	13 Cords	\$ 12.70/Cord	\$ _____
Mixed Oak	883 Cords	\$ 10.05/Cord	\$ _____
Red Maple	284 Cords	\$ 16.35/Cord	\$ _____
Red Pine	160 Cords	\$ 35.25/Cord	\$ _____
White Pine	114 Cords	\$ 18.25/Cord	\$ _____

\*The volumes are statistically estimated within plus (+) or minus (-) 5.72 percent at 95% confidence level. These estimated volumes are final and not subject to adjustment. Prospective bidders are urged to examine this timber and to make their own estimates of quantity and quality.

I understand that any or all bids may be rejected. All bids must be signed and all bid items must be bid or the bid form may be rejected. I also understand that consideration and awarding a contract will be based upon my past performance and ability to complete the contract based upon equipment and staffing subject to my control.

FEDERAL ID: \_\_\_\_\_ or SOCIAL SECURITY NUMBER: \_\_\_\_\_

Company or individual bidding: \_\_\_\_\_

Company representative's name: \_\_\_\_\_

Address: \_\_\_\_\_

City: \_\_\_\_\_ State: \_\_\_\_\_ Zip: \_\_\_\_\_

IF AVAILABLE, PLEASE PLACE THE PERSONALIZED LABEL FROM YOUR PROSPECTUS IN THE ABOVE BOX.

Individual or company representative's signature: \_\_\_\_\_ Date: \_\_\_\_\_

Phone number : \_\_\_\_\_ Email (optional): \_\_\_\_\_

**THE WINNING BIDDER MUST COMPLETE THE VERIFICATION OF WORKER'S DISABILITY COMPENSATION ACT COMPLIANCE (ON REVERSE SIDE IF DOUBLE SIDED) WITHIN 21 DAYS OF SALE AWARD DATE**



MD HILLS MIX (52-125-19)  
T34N, R01W, SEC. 13; T34N, R01W, SEC. 14; Cheboygan COUNTY

In response to the notice of sale to be held 9:00 a.m. (local time) on January 18, 2022, I am hereby submitting my sealed bid (firm offer) for the following forest products to be cut. Bids for individual species must be at or above the advertised price. All non-responsive bid forms may be rejected.

<u>PRODUCTS &amp; SPECIES</u>	<u>ESTIMATED VOLUME*</u>	<u>ADVERTISED PRICE</u>	<u>BID PRICE/UNIT</u>
<b>Sawtimber</b>			
Mixed Aspen	69.8 MBF	\$ 46.00/MBF	\$ _____
Red Pine	110.5 MBF	\$ 72.00/MBF	\$ _____
White Pine	51.6 MBF	\$ 34.00/MBF	\$ _____
<b>Pulpwood</b>			
Balsam Fir	65 Cords	\$ 17.60/Cord	\$ _____
Basswood	18 Cords	\$ 8.10/Cord	\$ _____
Mixed Aspen	706 Cords	\$ 17.35/Cord	\$ _____
Mixed Hardwood	267 Cords	\$ 16.35/Cord	\$ _____
Paper Birch	52 Cords	\$ 7.45/Cord	\$ _____
Red Pine	232 Cords	\$ 35.25/Cord	\$ _____
White Pine	416 Cords	\$ 18.25/Cord	\$ _____
White Spruce	12 Cords	\$ 9.95/Cord	\$ _____

\*The volumes are statistically estimated within plus (+) or minus (-) 13.13 percent at 95% confidence level. These estimated volumes are final and not subject to adjustment. Prospective bidders are urged to examine this timber and to make their own estimates of quantity and quality.

I understand that any or all bids may be rejected. All bids must be signed and all bid items must be bid or the bid form may be rejected. I also understand that consideration and awarding a contract will be based upon my past performance and ability to complete the contract based upon equipment and staffing subject to my control.

FEDERAL ID: \_\_\_\_\_ or SOCIAL SECURITY NUMBER: \_\_\_\_\_

Company or individual bidding: \_\_\_\_\_

Company representative's name: \_\_\_\_\_

Address: \_\_\_\_\_

City: \_\_\_\_\_ State: \_\_\_\_\_ Zip: \_\_\_\_\_

IF AVAILABLE, PLEASE PLACE THE PERSONALIZED LABEL FROM YOUR PROSPECTUS IN THE ABOVE BOX.

Individual or company representative's signature: \_\_\_\_\_ Date: \_\_\_\_\_

Phone number : \_\_\_\_\_ Email (optional): \_\_\_\_\_

**THE WINNING BIDDER MUST COMPLETE THE VERIFICATION OF WORKER'S DISABILITY COMPENSATION ACT COMPLIANCE (ON REVERSE SIDE IF DOUBLE SIDED) WITHIN 21 DAYS OF SALE AWARD DATE**



FOR DEPARTMENT USE ONLY	
Sale Number (XX - XXX - XX - XX)	
Forest Management Unit:	

# TIMBER SALE VERIFICATION OF WORKER'S DISABILITY COMPENSATION ACT COMPLIANCE

As required by Act 317, P.A. 1969 (Worker's Compensation) and  
Part 5 of Act 451 of 1994, as amended.

## VERIFICATION OF WORKER'S DISABILITY COMPENSATION ACT COMPLIANCE

- This verification must be completed and submitted within 21 days of contract award and prior to the issuance of the timber sale contract.
- In addition, if boxes 2B or 2C are checked, then Notice of Exclusion or Certificate of Insurance must be submitted within twenty-one (21) days of the contract award and prior to the issuance of the timber sale contract.
- All information must be typed or printed except for written signatures.

Please Check Appropriate Categories:

1. My business is organized as (you **must** check one of the boxes below):
  - A.  Sole Proprietorship (individual)
  - B.  Partnership
  - C.  Corporation
2. You **must** check one of the boxes below:
  - A.  I certify my business is a sole proprietorship and it has no employees but the sole proprietor. I am not subject to the Worker's Compensation Laws.
  - B.  I certify my business has satisfied its obligation to the Worker's Compensation Act through the use of an approved Notice of Exclusion (BWC-337, Rev. 5/96). I will provide a copy of the Notice of Exclusion within 21 days of the contract award. (For questions or a copy of the BWC-337, please call the Worker's Compensation Bureau at 517-322-1195).
  - C.  I certify my business has a Worker's Compensation Policy. I will provide an original Certificate of Insurance within twenty-one (21) days of the contract award.
3. If you have checked item 2(A) or 2(B), you **must** indicate the number of **both** full-time and part-time employees, other than yourself, including family members and active partners (if none, you must enter "0").

\_\_\_\_\_ Full-time Employees

\_\_\_\_\_ Part-time Employees

Name of Business		Federal ID (or) Social Security No.	
Address		Telephone (       )	
City	State	ZIP	

*I hereby certify that the above information is true and correct. I agree to notify the Michigan DNR of any changes that occur in factors affecting my coverage during any of my present and future operations.*

\_\_\_\_\_  
Signature of Owner or Authorized Representative

\_\_\_\_\_  
Title

\_\_\_\_\_  
Date

Please complete the "SEALED BID" information on the next page