



**DEPARTMENT OF NATURAL RESOURCES  
STATE OF MICHIGAN**

**TIMBER SALE PROSPECTUS #6999**

SCHEDULED SALE DATE AND TIME: 3:00 p.m. (local time) on April 28, 2022.

LOCATION: NEWBERRY MGMT UNIT, 5666 S STATE HWY M 123, NEWBERRY, MI 49868.

PROSPECTUS NOTE: The bidder is advised to inspect the sale area and review the location, estimated volumes, operating costs and contract terms of proposed sales. Please be aware that some landowners may request 60 days or more notice for access across their land.

Notice is hereby given that bids will be received by the Unit Manager, NEWBERRY MANAGEMENT UNIT, for certain timber on the following described lands:

Fire and Ice Pine (42-001-22) / T50N, R06W, SEC. 21, E1/2NW,W1/2NE.

Chippewa County, Advertised Price \$30,273.40, 49.7 Acres, Red Pine, White Pine.

SALE NOTE: All units of volume listed for this sale were estimated using the Inventory Manager computer program and the new Michigan taper model.

No new roads will be permitted in any Payment Unit. See Sale Spec 4.1.12 for additional information.

Road maintenance may be needed. See Sale Spec. 4.2.3 for details.

Within Payment Unit(s) 4, harvesting must be completed by December 31, 2022 in order to take advantage of the natural regen that will occur due to a recent fire in Sale Area.

Toilet Bowl Aspen (42-003-21) / T45N, R09W, SEC. 28, W1/2NW.

T45N, R09W, SEC. 29, N1/2SW,N1/2SE,SWSE.

T45N, R09W, SEC. 29, NWNW,S1/2NW,NENE,S1/2NE.

Luce County, Advertised Price \$53,675.75, 112.0 Acres, Aspen, Spruce/Fir/Tamarack.

SALE NOTE: All units of volume listed for this sale were estimated using the Inventory Manager computer program and the new Michigan taper model.

The following road maintenance may be needed: cleaning of drainage areas, grading, crowning, and filling with gravel, if necessary.

McLeod Road is an ORV trail or route and is shown on the Timber Sale Map. Sale Spec. 5.2.39 for additional information.

The Newberry-Rexton Motorcycle Trail is a motorcycle trail and is shown on the Timber Sale Map. See Sale Spec. 5.2.40 for restrictions.

The McLeod Road is a snowmobile trail and is shown on the Timber Sale Map. See Sale Spec. 5.2.41 for additional details.

Unique sale conditions occur on this sale. See Sale Spec. 99.1 for more information.

A recreation site such as a trail, pathway, or campground is within the sale area or the vicinity. Certain restrictions/specifications may be applicable including time restrictions.

Hunting Blind City (42-004-21) / T45N, R09W, SEC. 29, SWSW.

T45N, R09W, SEC. 31, SENE.

T45N, R09W, SEC. 32, NW,NWSW,S1/2SW,N1/2SE.

T45N, R09W, SEC. 33, NWSW.

Luce County, Advertised Price \$118,029.50, 171.3 Acres, Aspen, Hardwood.

SALE NOTE: All units of volume listed for this sale were estimated using the Inventory Manager computer program and the new Michigan taper model.

The following road maintenance may be needed: cleaning of drainage areas, grading, crowning and filling with gravel, if necessary.

Permission for access across private land is the responsibility of the Purchaser. See Sale Spec. 4.4.1 for additional information.

Within Payment Unit(s) 3, harvesting is not permitted during the period of April 15 to July 15 because of bark slippage.

The McLeod Road is a snowmobile trail and will be used to access this timber sale. See Sale Spec. 5.2.41 for additional information.

A recreation site such as a trail, pathway, or campground is within the sale area or the vicinity. Certain restrictions/specifications may be applicable including time restrictions. Access may be through private or other public land.

Who Let the Cows Out (42-028-21) / T45N, R10W, SEC. 4 , SWNW.

T45N, R10W, SEC. 5 , NWNW,SENE.

T45N, R10W, SEC. 6 , SENE.

Luce County, Advertised Price \$10,281.00, 44.6 Acres, Spruce/Fir/Tamarack, N White Cedar.

SALE NOTE: This sale has been reduced by approximately 45% due to "NO BID" on 1-20-22. All units of volume listed for this sale were estimated using the Inventory Manager computer program and the new Michigan taper model.

Permission for access across private land is the responsibility of the Purchaser. A copy of written permission must be provided to the DNR (Newberry Unit) prior to bid opening. If this permission is not provided, the bid will be rejected.

Note that mixed Aspen includes quaking and big tooth. Mixed Hardwoods includes red maple, ironwood and paper birch.

The sale area cannot be accessed without permission from the adjacent landowner bordering the sale. See Sale Spec. 4.4.4 and 4.4.3 for specifics.

Within Payment Unit(s) #'s 2 and 3, harvesting is limited to the period of December 15 to April 1 because of low, wet ground.

Access may be through private land.

## BID INSTRUCTIONS (VER. 07/02/2018):

### 1. Scheduled Bid Location, Date, and Time (2/11)

Bids must be received by the Unit Manager, NEWBERRY OFFICE, 5666 S STATE HWY M 123, NEWBERRY, MI 49868, no later than 3:00 p.m. (local time) on April 28, 2022. For further information concerning this sale, contact Keith Magnusson at 906-291-0120 extension n/a.

### 2. Bidder's Qualifications (5/16)

Purchaser shall obtain workers compensation insurance to cover claims under Michigan's Worker's Disability Compensation Act of 1969 or similar employee benefit act of any other state applicable to an employee. If all or part of a timber sale was prepared by a private contractor, the contractor and that contractor's company are not permitted to bid on the timber sale contract. Bids will not be accepted from individuals or companies appearing on the DNR/FRD No-Bid List. This list contains the names of purchasers who previously failed to execute a contract within 21-days or who have a history of poor performance.

### 3. Preparation of Sealed Bids (5/16)

Bid Forms may be completed online thru Michigan DNR Timber Sale Online Bidding (OLB) at [www.michigan.gov/timberbidding](http://www.michigan.gov/timberbidding) or by completing the hardcopy Bid Form found in the Timber Sale Prospectus. Hardcopy Bid Forms shall be manually signed in ink. Registration in OLB is considered your 'signature' for all bids submitted thru that system. Bid prices must be entered for each species and product in the Bid Price column for all material subject to bidding and all fill-in blanks must be completed. If erasures or other changes appear on the hardcopy Bid Form, each erasure or change must be initialed by the person signing the bid.

### 4. Submission of Sealed Bids (5/16)

Bid forms may be obtained from the Unit Manager or thru OLB. Bids may be submitted hardcopy or thru OLB. All hardcopy bids must be submitted on the bid form and in an envelope clearly identified as described in this section. NOTE: Only one bid form per bid envelope. Sealed bids must be submitted to the Unit office designated in the prospectus and must be submitted at or prior to the time established in the prospectus. The envelope should show on the outside (a) the sale name or number and (b) the date and time of bid opening, as shown in the prospectus. Bids received after the time specified in the sale prospectus are late bids and will be rejected.

It is possible for a bidder to submit multiple bids on a single sale. For example, a bid may be submitted hardcopy and a bid may be submitted thru OLB. Or, two bidders from the same company could both submit bids on the same sale. If this were to happen, the State would accept all bids received and award the contract accordingly. All bidding and contractual requirements would apply to all bids received.

### 5. Public Opening of Sealed Bids (7/16)

If conditions permit, the sealed bids will be publicly opened and posted at the time and place set in the prospectus.

If a bidder, present at a bid opening, has submitted bids on more than one sale, that bidder may withdraw their unopened bid envelopes or announce the withdrawal of their online bid after being declared the successful bidder on one sale.

### 6. Award of Contract (1/11)

Award of the contract will be made to the Bidder whose bid, conforming to the prospectus, is most advantageous to the State of Michigan on the basis of total value at rates bid for the estimated quantities. The State reserves the right to reject any bid or waive any minor irregularity in bids received. A written award mailed (or otherwise furnished) to the successful Bidder shall be deemed to result in a binding contract without further action by either party.

### 7. Down Payment (1/11)

The Bidder to whom award is made must make a down payment within 21 days of the sale award. The amount of the down payment will be calculated as shown in the Bond and Payment Schedule of this prospectus. Only cash may be used to meet this requirement.

### 8. Performance Security (1/11)

As guarantee of faithful performance, a cash bond, certificate of deposit, surety bond or irrevocable letter of credit (LOC) is required within 21 days of the sale award. The amount of the performance security is shown in the Bond and

Payment Schedule of this prospectus. If an LOC or surety is used, the coverage must extend for at least 6 months beyond the contract expiration.

#### 9. Timber Sale Contract (7/18)

Additional conditions and requirements common to all timber sales are listed on the timber sale contract (R4031) and are available on line at [www.michigan.gov/timber](http://www.michigan.gov/timber). Contact the Unit Manager for additional information or a sample contract. Within 21 days of the date of the award letter, the bidder must sign the contract and provide the required down payment, performance security, and verification of worker's disability compensation. The down payment and performance security shall be in accordance with the provisions of the timber sale contract, in the sums stated in this prospectus. If these actions are not taken, then the Bidder, the Bidder's corporation, and the corporation's principals may not be permitted to bid on State timber sales for a period of 3 months after the first offense, 6 months after the second offense, and 1 year after the third offense. An offense will only be counted against the Bidder for 5 years. In addition, the Bidder certifies that if awarded this contract, the Bidder will complete the timber sale contract in accordance with its terms and any modifications thereof including requirements to purchase, cut, and remove the included timber by the expiration date.

Payment Unit values in the State Forest Timber Sale Contract are calculated based on the advertised value of the Payment Unit as a percentage of the total advertised value of the contract. The advertised value of each Payment Unit is given in the Description of Timber by Payment Unit table on the Timber Sale Information page. For example, if the value of Payment Unit 1 is advertised as \$1,500 and the total Timber Sale value is advertised as \$10,000, the contract price for Payment Unit 1 will be 15% of the total bid price ( $\$1,500/\$10,000 * 100$ ).

#### 10. Disclaimer of Estimates and Bidder's Warranty of Inspection (7/16)

Before submitting this bid, the Bidder is advised and cautioned to inspect the sale area, review the requirements of the sale contract, and take other steps as may be reasonably necessary to ascertain the location, estimated volumes, construction estimates, and operating costs of the proposed sale. Failure to do so will not relieve the Bidder from responsibility for completing the contract.

The Bidder warrants that this bid is submitted solely on the basis of the Bidder's examination and inspection of the quality and quantity of the timber offered for sale and the Bidder's opinion of the value thereof and the costs of recovery. No reliance should be placed on the State of Michigan's estimates of timber quality, quantity or costs of recovery. Bidder further acknowledges that the State of Michigan: (i) expressly disclaims any warranty of fitness of timber for any purpose; (ii) offers this timber as is without any warranty of quality (merchantability) or quantity and (iii) expressly disclaims any warranty as to the quantity or quality of timber sold.

#### 11. Certification and Chain-of-Custody (10/14)

Unless otherwise indicated in the contract under section 7 – Other Conditions of the Sale Specific Conditions & Requirements, the area encompassed by this timber sale is certified to the standards of the Forest Stewardship Council (FSC) - Certificate #SCS-FM/COC-00090N and the Sustainable Forestry Initiative (SFI) - Certificate #NSF-SFIS-5Y031-SF5. Forest products from this sale may be delivered to the mill as "FSC 100% and / or SFI certified" as long as the contractor hauling the forest products is chain-of-custody (COC) certified or covered under a COC certificate from the destination mill. The purchaser is responsible for maintaining COC after leaving the sale area.

#### 12. Good Neighbor Authority (GNA) Requirements (7/16)

If the name of this timber sales contains the acronym GNA, it is authorized by the Good Neighbor Authority (GNA) and covered by various agreements between the U.S. Forest Service and the State. The timber sale occurs on federal land and the following conditions apply:

GNA contracts on US Forest Service land will not be awarded to purchasers on the Federal list of excluded parties. The System for Award Management (SAM) will be checked for active excluded parties prior to award of contract. In addition, the Bidder to whom award is made must complete an Assurance Regarding Felony Conviction or Tax Delinquent Status for Corporate Applicants (AD-3031).

#### 13. Good Neighbor Authority (GNA) Requirements, con't (9/16)

Bidder certifies, by signing this bid form, that to the best of Bidder's knowledge that the following representations are accurate and complete.

- a. That the Bidder and its principals are not presently debarred, suspended, proposed for debarment, declared ineligible, or voluntary excluded from timber sales (covered transactions) by any Federal department or agency.
- b. That the Bidder and its principals have not within a 3-year period preceding this bid been convicted of or had a civil judgment rendered against them for commission of fraud or a criminal offense in connection with obtaining , attempting to obtain, or performing a public (Federal, State, or local) transaction or contract under a public transaction; violation of Federal or State antitrust statutes or commission of embezzlement, theft, forgery, bribery, falsification or destruction of records, making false statements, or receiving stolen property.
- c. That the Bidder and its principals are not presently indicted for or otherwise criminally or civilly charged by a governmental entity (Federal, State, or local) with commission of any of the offenses enumerated in paragraph b of this certification.
- d. That the Bidder and its principals have not within a 3-year period preceding this bid had one or more public transactions (Federal, State, or local) terminated for breach or default of a timber or forest product contract.

Bidders that cannot certify this requirement, in whole or in part, shall submit an explanation with their bid.

DAN EICHINGER  
Director



# TIMBER SALE INFORMATION

Fire and Ice Pine (42-001-22)  
T50N, R06W, SEC. 21.  
Chippewa County (Advertised Price \$30,273.40)

SALE NOTE: All units of volume listed for this sale were estimated using the Inventory Manager computer program and the new Michigan taper model.

No new roads will be permitted in any Payment Unit. See Sale Spec 4.1.12 for additional information.

Road maintenance may be needed. See Sale Spec. 4.2.3 for details.

Within Payment Unit(s) 4, harvesting must be completed by December 31, 2022 in order to take advantage of the natural regen that will occur due to a recent fire in Sale Area.

A timber sale contract for this lump sum, sealed bid timber sale will be awarded to the responsible bidder offering the highest sealed bid price. All units of volume listed below were estimated using the Inventory Manager computer program and the new Michigan taper model. Bids must be at or above the following advertised price for each product and species:

| <u>PRODUCTS &amp; SPECIES</u> | <u>ESTIMATED UNITS*</u> | <u>ADVERTISED PRICE</u> |
|-------------------------------|-------------------------|-------------------------|
| Pulpwood                      |                         |                         |
| B. T. Aspen                   | 16 Cords                | \$ 19.10 / Cord         |
| Red Pine                      | 671 Cords               | \$ 43.30 / Cord         |
| White Pine                    | 70 Cords                | \$ 13.05 / Cord         |

\* The total volume is statistically estimated within plus (+) or minus (-) 11.74 percent. There are an estimated 550 cords on this timber sale, plus or minus 65 cords at the 95% confidence level. The estimated units are final and not subject to adjustment. Prospective bidders are urged to examine this timber and to make their own estimates of quantity and quality.

**BOND AND PAYMENT SCHEDULE:**

1. A bond in the amount of \$1,514.00 to insure faithful performance of the conditions of the contract will be deposited by the successful bidder within 21 days of the sale award.
2. Cutting in any sale or unit without the required advance payment would be considered a trespass.
3. Total payment must be paid in advance or according to the following schedule :
  - (a) Ten percent (10%) of the sale value must be paid within 21 days of the sale award.
  - (b) The 10% down payment will be credited towards the first unit cut.
  - (c) Payment for each of the following units must be made before cutting begins in that unit:

| PAYMENT UNIT NUMBER | PERCENT OF TOTAL SALE VALUE |
|---------------------|-----------------------------|
| 01                  | 15.4%                       |
| 02                  | 23.7%                       |
| 03                  | 41.9%                       |
| 04                  | 19.0%                       |
4. If no cutting takes place, the 10% down payment will not be refunded.
5. Operations on the contract issued will terminate on 12/31/2024.

**SALE STATISTICS**

Volumes were calculated in cubic feet using the Michigan taper model. Cubic foot volume includes all wood inside bark for the product indicated. For display purposes, cubic feet were converted to cords and MBF using a simple conversion factor, e.g. 79 cubic feet per cord and 185 cubic feet per MBF. The cubic foot volumes are precise; the cords and MBF volumes are not. Cubic foot volume cannot be directly converted to cords or boards with precision.

**SALE VOLUMES**

The total estimated sale volume may not equal the sum of the species/products due to the nature of statistical calculations associated with double sampling methodology.

| VOLUME           |             | STATISTICAL RANGE IN CORDS |         |         |
|------------------|-------------|----------------------------|---------|---------|
| TOTAL CUBIC FEET | TOTAL CORDS | PERCENT ERROR              | MINIMUM | MAXIMUM |
| 43,484           | 550         | 11.74%                     | 486     | 615     |

## VDU VOLUMES

A VDU is a Volume Determination Unit. Volumes and their associated statistics are calculated at the VDU level and summarized to the sale level. There is often a one to one relationship between a VDU and a Payment Unit, but not always, depending on the cruise design. Refer to the VDU TO PAYMENT UNIT table.

| VDU           | VOLUME           |             | PERCENT ERROR | RANGE IN CORDS |            |
|---------------|------------------|-------------|---------------|----------------|------------|
|               | TOTAL CUBIC FEET | TOTAL CORDS |               | MINIMUM        | MAXIMUM    |
| 210           | 14,402           | 182         | 17.82%        | 150            | 215        |
| 212           | 22,234           | 281         | 12.41%        | 247            | 316        |
| 312           | 23,142           | 293         | 21.05%        | 231            | 355        |
| <b>TOTAL:</b> | <b>59,778</b>    | <b>757</b>  |               | <b>628</b>     | <b>886</b> |

## VDU TO PAYMENT UNIT

When a VDU is associated with more than one Payment Unit (PU), the VDU volumes are assigned to the PU based on acres of the VDU within the PU.

| VDU           | VDU ACRES   | PU | PU ACRES    |
|---------------|-------------|----|-------------|
| 210           | 8.1         | 4  | 8.1         |
| 212           | 28.3        | 1  | 11.2        |
|               |             | 2  | 17.1        |
| 312           | 13.3        | 3  | 13.3        |
| <b>TOTAL:</b> | <b>49.7</b> |    | <b>49.7</b> |

## DESCRIPTION OF TIMBER BY PAYMENT UNIT (PU)

| PU            | MARKET GROUP            | PRODUCT  | QUANTITY | UNIT  | ACRES | ADVERTISE PRICE |
|---------------|-------------------------|----------|----------|-------|-------|-----------------|
| 1             | B. T. Aspen<br>Red Pine | Pulpwood | 6        | Cords | 11.2  | \$4,661.10      |
|               |                         |          | 105      | Cords |       |                 |
| 2             | B. T. Aspen<br>Red Pine | Pulpwood | 10       | Cords | 17.1  | \$7,162.30      |
|               |                         |          | 161      | Cords |       |                 |
| 3             | Red Pine                | Pulpwood | 293      | Cords | 13.3  | \$12,686.90     |
| 4             | Red Pine<br>White Pine  | Pulpwood | 112      | Cords | 8.1   | \$5,763.10      |
|               |                         |          | 70       | Cords |       |                 |
| <b>TOTAL:</b> |                         |          | 757      | Cords |       |                 |



# Sale Specific Conditions & Requirements

**Sale Name: Fire and Ice Pine**

**Sale Number: 42-001-22 Seq#: 1**

## 1 - Sale Area

### 1.2 - Boundaries

#### 1.2.1 - Painted boundaries (9/19)

The sale boundary and Payment Unit boundaries are marked and identified by red and yellow paint. Exterior sale boundary lines against state are marked with red paint. Interior Payment Unit boundaries are marked with yellow paint. The painted boundary line trees are not Included Timber and are to be protected. Yellow painted trees designating an interior Payment Unit boundary are only to be cut when all surrounding Payment Units have been paid.

\*\*Existing old boundary paint exists within Payment Unit 2 and should be disregarded as current timber sale boundary.

## 2 - Timber Specifications

### 2.1 - Included Timber

#### 2.1.7 - Leave tree marked unit(s) (6/14)

Within Payment Unit(s) 1-4, all trees, which meet minimum piece specifications in 2.2 Utilization, are designated for cutting except trees marked with green paint above and below stump height. Additionally, within Payment Unit 4, leave all oak and within Payment Units 1-3, leave all white pine and oak.

### 2.2 - Utilization

#### 2.2.3 - Stump heights (4/07)

Stump heights within the Sale Area shall not exceed 6 inches for all trees. This is to facilitate cultivation operations.

## 4 - Transportation

### 4.1 - Construction

#### 4.1.3 - Slash and earthen piles (8/04)

Piles or windrows of earth along roads and landings that have been widened or constructed shall be leveled. Slash from road maintenance or construction, including stumps, shall be dispersed throughout the sale.

#### 4.1.12 - No new roads (1/12)

No new roads will be permitted in any Payment Unit. All operations are limited to existing roads. Skid trails only will be allowed.

### 4.2 - Maintenance

#### 4.2.3 - Road maintenance (8/13)

The following road maintenance may be needed: cleaning of drainage areas, grading, crowning, and filling with gravel, if necessary. Damages will be assessed if grading/repair does not occur.

#### 4.2.4 - Grading (10/16)

For completion of the sale, state forest roads must be graded. In general, this will require a road grader or bulldozer to shape up the roads after forest products have been hauled off site. This includes cleaning of drainage areas, grading, crowning, and filling with gravel, if necessary. The grading equipment to be used must be approved by the Unit Manager or his/her representative.

#### 4.2.5 - Two wheel drive condition (2/04)

All existing trail roads on and adjacent to the sale area must be passable by two-wheel drive traffic for the duration of the sale.

## 5 - Operations

### 5.2 - Conduct of Operations

#### 5.2.1 - Slash

#### 5.2.1.8 - Slash height (12/08)

No slash or tree tops may exceed 24 inches in height.

### 5.2.3 - Operating Restrictions

#### 5.2.3.1 - Operating restrictions (9/11)

Within Payment Unit(s) 4, unless changed by written agreement, cutting and skidding must be completed by 12/31/2022. This restriction is because of the desire to take advantage of the recent fire and let natural regeneration processes occur.

#### 5.2.3.6 - Bark beetle restriction (12/08)

In the event drought creates a high risk of pine bark beetle infestation, pine is not to be cut during the period March 1 through July 1, unless all portions of trees greater than two inches in diameter are removed from the sale area, reduced to chips, or treated to the satisfaction of the Unit Manager or his/her representative, within fifteen days of being severed from the stump. Pine log decks, pulpwood piles and treetops that are piled for chipping in the fall or winter within a 1/4 mile of susceptible sites must be removed before March 15. Residual slash must not be placed in piles or rows and must be spread over the site for quick drying. The Department of Natural Resources will exercise this specification if the risk of damage warrants.

### 5.2.4 - Dead and Down Creation

#### 5.2.4.2 - Dead and down creation, hare and grouse (1/14)

To improve habitat for snowshoe hare, grouse, and other species, the Purchaser is to leave two 14 inch diameter or larger log size piecewise trees, nine (9) inches or larger in diameter on the ground for every two acres. They should be scattered throughout the sale or positioned per the sale administrators instructions. If possible, the logs or trees should be felled so they overlap. Note these pieces should have a minimum length of five feet. twenty feet. They can be of any tree species and can be an un-merchantable piece of wood or a full tree.

#### 5.2.32 - Decking/landing restoration (9/13)

All decking and landing areas must have the surface area restored to a condition equal to or better than before. This is to ensure the proper regeneration of the stand. Wood debris, chips, and "cookies" from trimmings must be removed or scattered away from landing and loading areas and may not be windrowed on the edge.

#### 5.2.38 - No decking against live trees (2/04)

Cut products may not be decked against unmarked or designated leave trees.

### 5.4 - Soil Protection

#### 5.4.1 - Rutting restriction, general (7/16)

Operations are to cease immediately if equipment and weather conditions result in rutting of roads and/or skid trails which is 12 inches or greater in depth and 50 feet in length. The Unit Manager or his/her representative may restrict hauling and/or skidding if ruts exceed the specified depth. With the Unit Manager or his/her representative's approval, the Purchaser may return to the area when the risk of rutting has decreased.

### 5.8 - Protection of Endangered Species

#### 5.8.5 - Protection of raptor nests (3/13)

All trees with raptor nests will be protected if found during harvesting operations. Notification will be made to the Unit Manager or his/her representative who will notify the Wildlife Biologist so an on-site evaluation and recommendation can be made, if necessary.

## 6 - Safety and Fire Prevention

### 6.2 - Signing

#### 6.2.1 - Road posting (10/20)

The Purchaser is responsible for posting and maintaining caution signs on the Vermillion Road prior to beginning operations. The road must be posted at appropriate locations to warn of logging activity and truck traffic. Signs must be removed when harvest operations are suspended or completed. The Purchaser will provide these signs.

## 7 - Other Conditions

### 7.3 - Contract Modifications

### 7.3.3 - Modification for reforestation (8/05)

When contractual work of Purchaser has been accepted for any Payment Unit identified on Sale Area Map, Payment Unit will be eliminated from the Sale Area on written notice so that reforestation operations can begin.

## 7.5 - Loss

### 7.5.1 - Deteriorating timber (7/09)

The sale area has received damage from a wildfire during late summer of 2021 within Payment Unit 4. The Purchaser should harvest the wood as soon as possible. The Department of Natural Resources is held free of responsibility of any further damage or deterioration due to delay in harvesting.



# TIMBER SALE MAP

This information provided by authority of Part 525, 1994 PA 451, as amended.

|             |      |
|-------------|------|
| Sale Number | Year |
| 42-001      | 22   |

|                                    |                    |   |                   |           |         |
|------------------------------------|--------------------|---|-------------------|-----------|---------|
| Forest Management Unit<br>Newberry | County<br>Chippewa | Mapped By<br>L. Livermore                               | Date<br>11/9/2021 | Page<br>1 | of<br>1 |
| Township<br>50N                    | Range<br>06W       | Section(s) and Subdivision(s)<br>Section 21: E½NW, W½NE | Scale<br>1:15,840 |           |         |

| Cover Type        |                      |                         |                   | Density                     |                        |  |
|-------------------|----------------------|-------------------------|-------------------|-----------------------------|------------------------|--|
| A = Aspen         | H = Hemlock          | N = Marsh               | U = Upland Brush  | 0 = Non Stocked             | 5 = Pole Timber Medium |  |
| B = Paper Birch   | J = Jack Pine        | O = Oak                 | UM = Upland Mixed | 1 = Seedling Sapling Poor   | 6 = Pole Timber Well   |  |
| C = Cedar         | L = Lowland Brush    | P = Lowland Poplar      | V = Bog or Marsh  | 2 = Seedling Sapling Medium | 7 = Saw Timber Poor    |  |
| D = Tread Bog     | LM = Lowland Mixed   | Q = Mixed Swamp Conifer | W = White Pine    | 3 = Seedling Sapling Well   | 8 = Saw Timber Medium  |  |
| E = Swamp Hdwoods | M = Mpl, Bch, Brch   | R = Red Pine            | X = Non Stocked   | 4 = Pole Timber Poor        | 9 = Saw Timber Well    |  |
| F = Spruce Fir    | MC = Mixed Conifer   | S = Black Spruce        | Z = Water         |                             |                        |  |
| G = Grass         | MD = Mixed Deciduous | T = Tamarack            |                   |                             |                        |  |

**Fire and Ice Pine**  
**Compartment 059**  
**Acres 49.7**

| PU | Acres |
|----|-------|
| 1  | 11.2  |
| 2  | 17.1  |
| 3  | 13.3  |
| 4  | 8.1   |

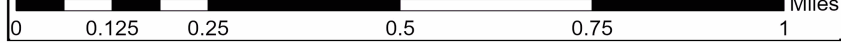
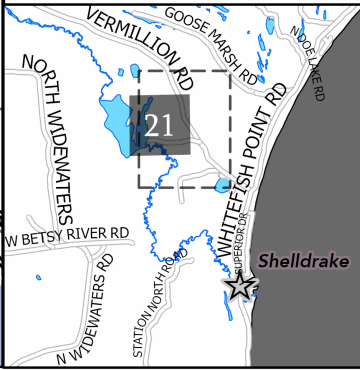


Road as unit boundary between PU1 & PU2

GPS Location  
 46.7184093°N  
 85.0629315°W

- Payment Unit Label
- Against State (Red)
- Payment Unit (Yellow)
- Recreational Trail
- Section Numbers
- Section Corners
- State Forest Campground
- Perennial River
- Lakes and Rivers
- Secondary Forest Road
- Forest Access Route
- Gravel Road
- County Road - Seasonal
- Private
- Temporary Management Access

Locator Map: 1:200,000  
 - Main Map Extent



## TIMBER SALE INFORMATION

Toilet Bowl Aspen (42-003-21)  
 T45N, R09W, SEC. 28; T45N, R09W, SEC. 29.  
 Luce County (Advertised Price \$53,675.75)

SALE NOTE: All units of volume listed for this sale were estimated using the Inventory Manager computer program and the new Michigan taper model.

The following road maintenance may be needed: cleaning of drainage areas, grading, crowning, and filling with gravel, if necessary.

McLeod Road is an ORV trail or route and is shown on the Timber Sale Map. Sale Spec. 5.2.39 for additional information.

The Newberry-Rexton Motorcycle Trail is a motorcycle trail and is shown on the Timber Sale Map. See Sale Spec. 5.2.40 for restrictions.

The McLeod Road is a snowmobile trail and is shown on the Timber Sale Map. See Sale Spec. 5.2.41 for additional details.

Unique sale conditions occur on this sale. See Sale Spec. 99.1 for more information.

A recreation site such as a trail, pathway, or campground is within the sale area or the vicinity. Certain restrictions/specifications may be applicable including time restrictions.

A timber sale contract for this lump sum, sealed bid timber sale will be awarded to the responsible bidder offering the highest sealed bid price. All units of volume listed below were estimated using the Inventory Manager computer program and the new Michigan taper model. Bids must be at or above the following advertised price for each product and species:

| <u>PRODUCTS &amp; SPECIES</u> | <u>ESTIMATED UNITS*</u> | <u>ADVERTISED PRICE</u> |
|-------------------------------|-------------------------|-------------------------|
| Sawtimber                     |                         |                         |
| Black Cherry                  | 1.3 MBF                 | \$ 80.00 / MBF          |
| Red Maple                     | 7.4 MBF                 | \$ 77.00 / MBF          |
| Pulpwood                      |                         |                         |
| Balsam Fir                    | 223 Cords               | \$ 9.05 / Cord          |
| Jack Pine                     | 2 Cords                 | \$ 16.25 / Cord         |
| Mixed Aspen                   | 2,094 Cords             | \$ 19.10 / Cord         |
| Mixed Hardwood                | 243 Cords               | \$ 10.85 / Cord         |
| Mixed Spruce                  | 278 Cords               | \$ 18.60 / Cord         |
| Red Pine                      | 26 Cords                | \$ 43.30 / Cord         |
| White Pine                    | 155 Cords               | \$ 13.05 / Cord         |

\* The total volume is statistically estimated within plus (+) or minus (-) 5.50 percent. There are an estimated 2,976 cords on this timber sale, plus or minus 164 cords at the 95% confidence level. The estimated units are final and not subject to adjustment. Prospective bidders are urged to examine this timber and to make their own estimates of quantity and quality.

**BOND AND PAYMENT SCHEDULE:**

1. A bond in the amount of \$2,684.00 to insure faithful performance of the conditions of the contract will be deposited by the successful bidder within 21 days of the sale award.
2. Cutting in any sale or unit without the required advance payment would be considered a trespass.
3. Total payment must be paid in advance or according to the following schedule :
  - (a) Ten percent (10%) of the sale value must be paid within 21 days of the sale award.
  - (b) The 10% down payment will be credited towards the first unit cut.

(c) Payment for each of the following units must be made before cutting begins in that unit:

| PAYMENT UNIT NUMBER | PERCENT OF TOTAL SALE VALUE |
|---------------------|-----------------------------|
| 01                  | 20.2%                       |
| 02                  | 23.7%                       |
| 03                  | 23.4%                       |
| 04                  | 9.7%                        |
| 05                  | 23.0%                       |

4. If no cutting takes place, the 10% down payment will not be refunded.
5. Operations on the contract issued will terminate on 12/31/2025.

## SALE STATISTICS

Volumes were calculated in cubic feet using the Michigan taper model. Cubic foot volume includes all wood inside bark for the product indicated. For display purposes, cubic feet were converted to cords and MBF using a simple conversion factor, e.g. 79 cubic feet per cord and 185 cubic feet per MBF. The cubic foot volumes are precise; the cords and MBF volumes are not. Cubic foot volume cannot be directly converted to cords or boards with precision.

## **SALE VOLUMES**

The total estimated sale volume may not equal the sum of the species/products due to the nature of statistical calculations associated with double sampling methodology.

| VOLUME           |             |               | STATISTICAL RANGE IN CORDS |         |
|------------------|-------------|---------------|----------------------------|---------|
| TOTAL CUBIC FEET | TOTAL CORDS | PERCENT ERROR | MINIMUM                    | MAXIMUM |
| 235,103          | 2,976       | 5.50%         | 2,812                      | 3,140   |

## **VDU VOLUMES**

A VDU is a Volume Determination Unit. Volumes and their associated statistics are calculated at the VDU level and summarized to the sale level. There is often a one to one relationship between a VDU and a Payment Unit, but not always, depending on the cruise design. Refer to the VDU TO PAYMENT UNIT table.

|               | VOLUME           |              |               | RANGE IN CORDS |              |
|---------------|------------------|--------------|---------------|----------------|--------------|
| VDU           | TOTAL CUBIC FEET | TOTAL CORDS  | PERCENT ERROR | MINIMUM        | MAXIMUM      |
| 7             | 55,456           | 702          | 9.71%         | 634            | 770          |
| 31            | 101,934          | 1,290        | 9.18%         | 1,172          | 1,409        |
| 35            | 82,843           | 1,049        | 9.13%         | 953            | 1,144        |
| <b>TOTAL:</b> | <b>240,233</b>   | <b>3,041</b> |               | <b>2,759</b>   | <b>3,323</b> |

## **VDU TO PAYMENT UNIT**

When a VDU is associated with more than one Payment Unit (PU), the VDU volumes are assigned to the PU based on acres of the VDU within the PU.

| VDU           | VDU ACRES    | PU | PU ACRES     |
|---------------|--------------|----|--------------|
| 7             | 18.2         | 5  | 18.2         |
| 31            | 59.2         | 1  | 27.2         |
|               |              | 2  | 32.0         |
| 35            | 34.6         | 3  | 24.5         |
|               |              | 4  | 10.1         |
| <b>TOTAL:</b> | <b>112.0</b> |    | <b>112.0</b> |

**DESCRIPTION OF TIMBER BY PAYMENT UNIT (PU)**

| PU                | MARKET GROUP         | PRODUCT          | QUANTITY     | UNIT         | ACRES | ADVERTISE PRICE |
|-------------------|----------------------|------------------|--------------|--------------|-------|-----------------|
| 1                 | Red Maple            | Sawtimber        | 2.5          | MBF          | 27.2  | \$10,844.10     |
|                   | Balsam Fir           | Pulpwood         | 32           | Cords        |       |                 |
|                   | Mixed Aspen          |                  | 432          | Cords        |       |                 |
|                   | <i>B. T. Aspen</i>   | <i>Sawtimber</i> | 10.4         | <i>MBF</i>   |       |                 |
|                   | <i>Quaking Aspen</i> |                  | 21.0         | <i>MBF</i>   |       |                 |
|                   | <i>B. T. Aspen</i>   | <i>Pulpwood</i>  | 205          | <i>Cords</i> |       |                 |
|                   | <i>Quaking Aspen</i> |                  | 164          | <i>Cords</i> |       |                 |
|                   | Mixed Hardwood       |                  | 42           | Cords        |       |                 |
|                   | <i>Black Cherry</i>  |                  | 9            | <i>Cords</i> |       |                 |
|                   | <i>Pin Cherry</i>    |                  | 1            | <i>Cords</i> |       |                 |
|                   | <i>Red Maple</i>     |                  | 32           | <i>Cords</i> |       |                 |
|                   | Mixed Spruce         |                  | 40           | Cords        |       |                 |
|                   | <i>White Spruce</i>  | <i>Sawtimber</i> | 1.1          | <i>MBF</i>   |       |                 |
|                   | <i>Black Spruce</i>  | <i>Pulpwood</i>  | 10           | <i>Cords</i> |       |                 |
|                   | <i>White Spruce</i>  |                  | 28           | <i>Cords</i> |       |                 |
|                   | Red Pine             |                  | 12           | Cords        |       |                 |
|                   | <i>Red Pine</i>      | <i>Sawtimber</i> | 4.8          | <i>MBF</i>   |       |                 |
|                   | <i>Red Pine</i>      | <i>Pulpwood</i>  | 2            | <i>Cords</i> |       |                 |
|                   | White Pine           |                  | 30           | Cords        |       |                 |
|                   | <i>White Pine</i>    | <i>Sawtimber</i> | 4.1          | <i>MBF</i>   |       |                 |
| <i>White Pine</i> | <i>Pulpwood</i>      | 22               | <i>Cords</i> |              |       |                 |
| 2                 | Red Maple            | Sawtimber        | 2.9          | MBF          | 32.0  | \$12,749.65     |
|                   | Balsam Fir           | Pulpwood         | 38           | Cords        |       |                 |
|                   | Mixed Aspen          |                  | 508          | Cords        |       |                 |
|                   | <i>B. T. Aspen</i>   | <i>Sawtimber</i> | 12.3         | <i>MBF</i>   |       |                 |
|                   | <i>Quaking Aspen</i> |                  | 24.6         | <i>MBF</i>   |       |                 |
|                   | <i>B. T. Aspen</i>   | <i>Pulpwood</i>  | 242          | <i>Cords</i> |       |                 |
|                   | <i>Quaking Aspen</i> |                  | 192          | <i>Cords</i> |       |                 |
|                   | Mixed Hardwood       |                  | 50           | Cords        |       |                 |
|                   | <i>Black Cherry</i>  |                  | 11           | <i>Cords</i> |       |                 |
|                   | <i>Pin Cherry</i>    |                  | 2            | <i>Cords</i> |       |                 |
|                   | <i>Red Maple</i>     |                  | 37           | <i>Cords</i> |       |                 |
|                   | Mixed Spruce         |                  | 47           | Cords        |       |                 |
|                   | <i>White Spruce</i>  | <i>Sawtimber</i> | 1.3          | <i>MBF</i>   |       |                 |
|                   | <i>Black Spruce</i>  | <i>Pulpwood</i>  | 12           | <i>Cords</i> |       |                 |
|                   | <i>White Spruce</i>  |                  | 32           | <i>Cords</i> |       |                 |
|                   | Red Pine             |                  | 14           | Cords        |       |                 |
|                   | <i>Red Pine</i>      | <i>Sawtimber</i> | 5.6          | <i>MBF</i>   |       |                 |
|                   | <i>Red Pine</i>      | <i>Pulpwood</i>  | 3            | <i>Cords</i> |       |                 |
|                   | White Pine           |                  | 35           | Cords        |       |                 |
|                   | <i>White Pine</i>    | <i>Sawtimber</i> | 4.9          | <i>MBF</i>   |       |                 |
| <i>White Pine</i> | <i>Pulpwood</i>      | 25               | <i>Cords</i> |              |       |                 |
| 3                 | Red Maple            | Sawtimber        | 1.4          | MBF          | 24.5  | \$12,564.05     |
|                   | Balsam Fir           | Pulpwood         | 72           | Cords        |       |                 |
|                   | Jack Pine            |                  | 1            | Cords        |       |                 |
|                   | Mixed Aspen          |                  | 411          | Cords        |       |                 |
|                   | <i>B. T. Aspen</i>   |                  | 128          | <i>Cords</i> |       |                 |
|                   | <i>Quaking Aspen</i> |                  | 283          | <i>Cords</i> |       |                 |
|                   | Mixed Hardwood       |                  | 58           | Cords        |       |                 |
|                   | <i>Black Cherry</i>  |                  | 23           | <i>Cords</i> |       |                 |
|                   | <i>Red Maple</i>     |                  | 32           | <i>Cords</i> |       |                 |
|                   | <i>Sugar Maple</i>   |                  | 3            | <i>Cords</i> |       |                 |
|                   | Mixed Spruce         |                  | 133          | Cords        |       |                 |
|                   | <i>Black Spruce</i>  |                  | 36           | <i>Cords</i> |       |                 |
|                   | <i>White Spruce</i>  |                  | 97           | <i>Cords</i> |       |                 |
|                   | White Pine           |                  | 64           | Cords        |       |                 |

**DESCRIPTION OF TIMBER BY PAYMENT UNIT (PU), CON'T**

| PU      | MARKET GROUP         | PRODUCT          | QUANTITY | UNIT         | ACRES | ADVERTISE PRICE |
|---------|----------------------|------------------|----------|--------------|-------|-----------------|
| 3 con't | <i>White Pine</i>    | <i>Pulpwood</i>  | 64       | <i>Cords</i> |       |                 |
| 4       | Red Maple            | Sawtimber        | 0.6      | MBF          | 10.1  | \$5,192.80      |
|         | Balsam Fir           | Pulpwood         | 30       | Cords        |       |                 |
|         | Jack Pine            |                  | 1        | Cords        |       |                 |
|         | Mixed Aspen          |                  | 170      | Cords        |       |                 |
|         | <i>B. T. Aspen</i>   |                  | 53       | <i>Cords</i> |       |                 |
|         | <i>Quaking Aspen</i> |                  | 117      | <i>Cords</i> |       |                 |
|         | Mixed Hardwood       |                  | 23       | Cords        |       |                 |
|         | <i>Black Cherry</i>  |                  | 9        | <i>Cords</i> |       |                 |
|         | <i>Red Maple</i>     |                  | 13       | <i>Cords</i> |       |                 |
|         | <i>Sugar Maple</i>   |                  | 1        | <i>Cords</i> |       |                 |
|         | Mixed Spruce         |                  | 55       | Cords        |       |                 |
|         | <i>Black Spruce</i>  |                  | 15       | <i>Cords</i> |       |                 |
|         | <i>White Spruce</i>  |                  | 40       | <i>Cords</i> |       |                 |
|         | White Pine           |                  | 26       | Cords        |       |                 |
|         | <i>White Pine</i>    |                  | 26       | <i>Cords</i> |       |                 |
| 5       | Black Cherry         | Sawtimber        | 1.3      | MBF          | 18.2  |                 |
|         | Balsam Fir           | Pulpwood         | 51       | Cords        |       |                 |
|         | Mixed Aspen          |                  | 574      | Cords        |       |                 |
|         | <i>B. T. Aspen</i>   | <i>Sawtimber</i> | 43.0     | <i>MBF</i>   |       |                 |
|         | <i>Quaking Aspen</i> |                  | 40.2     | <i>MBF</i>   |       |                 |
|         | <i>B. T. Aspen</i>   | <i>Pulpwood</i>  | 154      | <i>Cords</i> |       |                 |
|         | <i>Quaking Aspen</i> |                  | 254      | <i>Cords</i> |       |                 |
|         | Mixed Hardwood       |                  | 70       | Cords        |       |                 |
|         | <i>Black Cherry</i>  |                  | 39       | <i>Cords</i> |       |                 |
|         | <i>Red Maple</i>     |                  | 19       | <i>Cords</i> |       |                 |
|         | <i>Sugar Maple</i>   |                  | 9        | <i>Cords</i> |       |                 |
|         | <i>Yellow Birch</i>  |                  | 3        | <i>Cords</i> |       |                 |
|         | Mixed Spruce         |                  | 3        | Cords        |       |                 |
|         | <i>White Spruce</i>  |                  | 3        | <i>Cords</i> |       |                 |
| TOTAL:  |                      |                  | 8.7      | MBF          |       |                 |
| TOTAL:  |                      |                  | 3,022    | Cords        |       |                 |



# Sale Specific Conditions & Requirements

**Sale Name: Toilet Bowl Aspen**

**Sale Number: 42-003-21 Seq#: 1**

## 1 - Sale Area

### 1.2 - Boundaries

#### 1.2.1 - Painted boundaries (9/19)

The sale boundary and Payment Unit boundaries are marked and identified by red and yellow paint. Exterior sale boundary lines against state are marked with red paint. Interior Payment Unit boundaries are marked with yellow paint. The painted boundary line trees are not Included Timber and are to be protected unless marked with orange paint. Yellow painted trees designating an interior Payment Unit boundary are only to be cut when all surrounding Payment Units have been paid.

## 2 - Timber Specifications

### 2.1 - Included Timber

#### 2.1.1 - Clearcut unit(s) with unmerchantable trees (6/14)

Within Payment Unit(s) 1-5, cut all deciduous trees that are two (2) inches or more at DBH and all conifer trees that are four (4) inches or more at DBH, except with Payment Units 3 and 4, leave all white pine that are greater than 20 inches at DBH.

## 4 - Transportation

### 4.1 - Construction

#### 4.1.3 - Slash and earthen piles (8/04)

Piles or windrows of earth along roads and landings that have been widened or constructed shall be leveled. Slash from road maintenance or construction, including stumps, shall be dispersed throughout the sale.

#### 4.1.4 - Timber removed for construction (12/09)

Trees cut or damaged in the process of pre-approved road, landing or skid trail construction will be decked in an area separate from other Designated Timber and not removed until measured by the sale administrator. Payment will be made at the specified Purchase Unit Price.

#### 4.1.6 - Road construction (1/09)

Improvements of existing roads shall be done in such a way as to minimize the environmental and visual impacts. Merchantable trees shall be cut and utilized unless otherwise directed. Non-merchantable trees shall be severed and laid flat on the ground. Slash shall be scattered, and not left in windrows and kept a minimum of 10 feet back from the road edge. Stumps shall be set upright, not left on edge, and be moved at least 10 feet away from the road edge. Disturbed soil shall be feathered into the woods and not left in berms or windrows.

#### 4.1.12 - No new roads (1/12)

No new roads will be permitted in any Payment Unit. All operations are limited to existing roads. Skid trails only will be allowed.

### 4.2 - Maintenance

#### 4.2.3 - Road maintenance (8/13)

The following road maintenance may be needed: cleaning of drainage areas, grading, crowning, and filling with gravel, if necessary. Damages will be assessed if grading/repair does not occur.

#### 4.2.5 - Two wheel drive condition (2/04)

All existing trail roads on and adjacent to the sale area must be passable by two-wheel drive traffic for the duration of the sale.

## 5 - Operations

### 5.2 - Conduct of Operations

#### 5.2.1 - Slash

#### 5.2.1.8 - Slash height (12/08)

No slash or tree tops may exceed 36 inches in height.

#### 5.2.2 - Hazard Trees/Snags

##### 5.2.2.1 - Den trees (10/16)

Obvious hollow and/or den trees shall be protected and left standing unless they are a safety hazard.

##### 5.2.32 - Decking/landing restoration (9/13)

All decking and landing areas must have the surface area restored to a condition equal to or better than before. This is to ensure the proper regeneration of the stand. Wood debris, chips, and "cookies" from trimmings must be removed or scattered away from landing and loading areas and may not be windrowed on the edge.

##### 5.2.38 - No decking against live trees (2/04)

Cut products may not be decked against unmarked or designated leave trees.

##### 5.2.39 - ORV trail/route protection (4/18)

McLeod Road is an ORV trail or route and is shown on the Timber Sale Map. Do not cut trees or damage posts with yellow ORV markers. All stumps within 5 feet of the trail must be cut flush with the ground. Maintain a 20-foot-wide slash, debris, and rut free zone daily using the ORV trail or route as the centerline.

##### 5.2.40 - Pathway protection (10/10)

The Newberry-Rexton Motorcycle Trail is a motorcycle trail and is shown on the Timber Sale Map. Do not cut trees or damage posts with orange pathway markers. Maintain a 20-foot-wide slash, debris, and rut free zone daily, using the pathway as the centerline. Do not run equipment down the pathway. All stumps within 5 feet of the trail should be cut flush with the ground.

##### 5.2.41 - Snowmobile trail protection (9/11)

The McLeod Road is a snowmobile trail and is shown on the Timber Sale Map. Do not cut or damage posts with orange trail markers or traffic control signs. If the trail is used, it must be maintained and restored to a condition equal to or better than before the sale. If the trail road is to be used for hauling during the snowmobile season, then a snow-covered base must be left on the trail. Maintain a 20-foot-wide slash, debris, and rut free zone daily using the snowmobile trail as the centerline. No decking of forest products will be permitted along the snowmobile trail. All stumps within 20 feet of the snowmobile trail must be cut at ground level.

#### 5.4 - Soil Protection

##### 5.4.1 - Rutting restriction, general (7/16)

Operations are to cease immediately if equipment and weather conditions result in rutting of roads and/or skid trails which is 12 inches or greater in depth and 50 feet in length. The Unit Manager or his/her representative may restrict hauling and/or skidding if ruts exceed the specified depth. With the Unit Manager or his/her representative's approval, the Purchaser may return to the area when the risk of rutting has decreased.

#### 5.8 - Protection of Endangered Species

##### 5.8.5 - Protection of raptor nests (3/13)

All trees with raptor nests will be protected if found during harvesting operations. Notification will be made to the Unit Manager or his/her representative who will notify the Wildlife Biologist so an on-site evaluation and recommendation can be made, if necessary.

### 6 - Safety and Fire Prevention

#### 6.2 - Signing

##### 6.2.1 - Road posting (10/20)

The Purchaser is responsible for posting and maintaining caution signs on McLeod Road and County Road 399 South prior to beginning operations. The road must be posted at appropriate distances from the Sale Area to warn of logging activity and truck traffic. Signs must be removed when harvest operations are suspended or completed. The Purchaser will provide these signs.

##### 6.2.3 - Recreational trail posting (10/20)

The Purchaser is responsible for posting and maintaining caution signs on The Newberry-Rexton Motorcycle Trail prior to beginning operations. The trail must be posted approximately 350 feet from the Sale Area to warn of logging activity and truck traffic at both ends of the trail. Signs must be removed when harvest operations are suspended or completed. The DNR will provide these signs.

## **99 - Unique**

SKIP

### 99.1 - Unique Sale Condition (5/19)

Within Payment Units 1 and 2, create drumming logs by hinge cutting or tipping over 10 trees of any species scattered across the stand that are 9-15 inches in diameter and within site of the red boundary line where there might be mature aspen left.

Within Payment Units 3 and 4, create drumming logs by hinge cutting or tipping over 8 trees of any species scattered across the stand that are 9-15 inches in diameter and within site of the red boundary line where there might be mature aspen left.

Within Payment Unit 5, create drumming logs by hinge cutting or tipping over 5 trees of any species scattered across the stand that are 9-15 inches in diameter and within site of the red boundary line where there might be mature aspen left.



# TIMBER SALE MAP

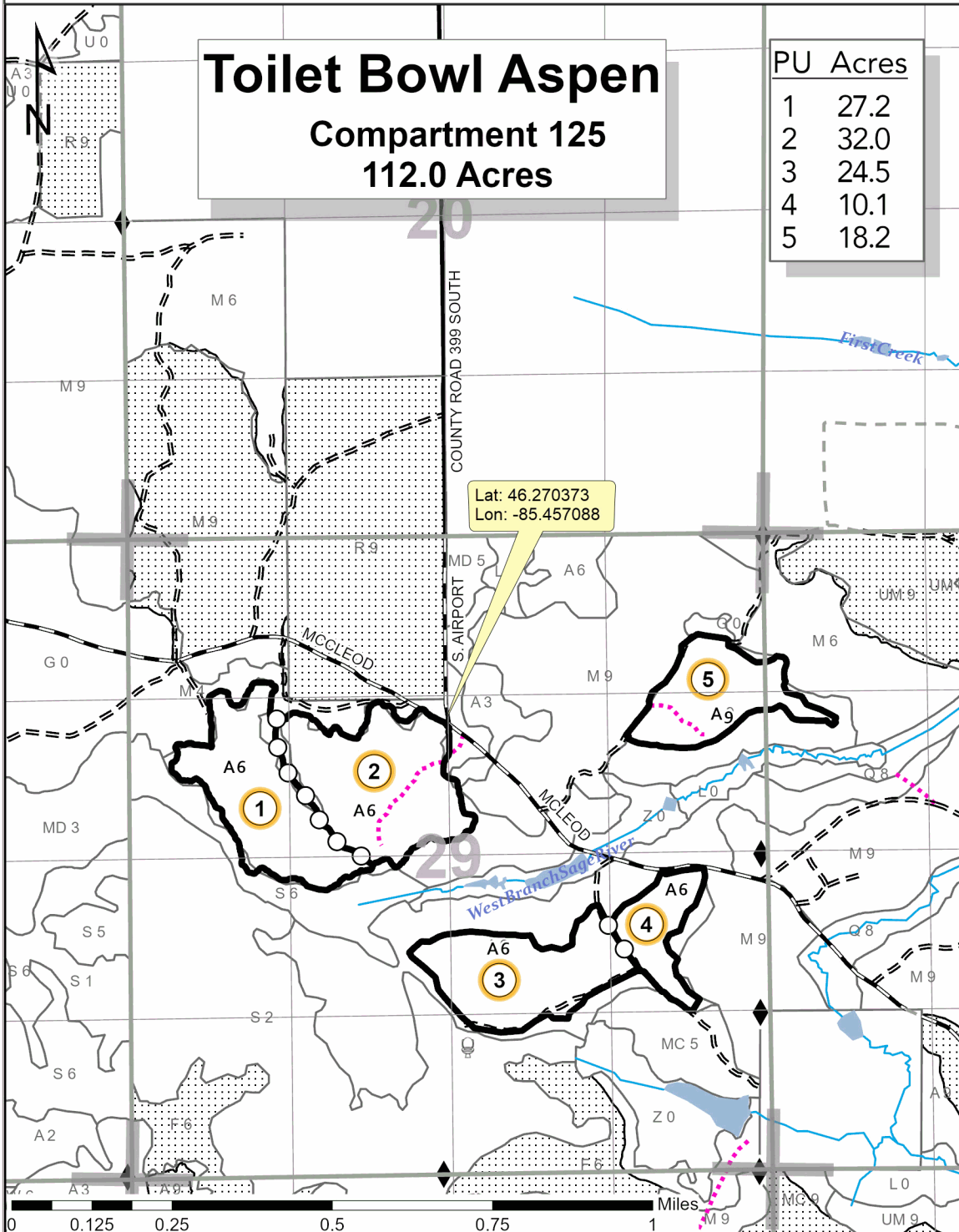
This information provided by authority of Part 525, 1994 PA 451, as amended.

|                                    |                |  |                   |           |         |
|------------------------------------|----------------|--|-------------------|-----------|---------|
| Forest Management Unit<br>Newberry | County<br>Luce | Mapped By<br>Livermore   | Date<br>1/19/2021 | Page<br>1 | of<br>1 |
| Township<br>45N                    | Range<br>09W   | Section(s) and Subdivision(s)<br>Section 28: W½NW Section 29: NWNW, S½NW, N½SW, NENE, SENE, N½SE, SWSE | Scale<br>1:15,840 |           |         |
| Cruised By<br>Kriehn, Livermore    |                |  |                   |           |         |

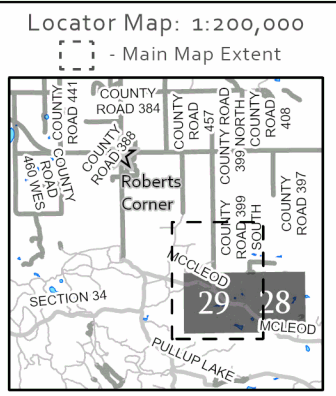
| Cover Type        |                      |                         |                   | Density                     |                        |
|-------------------|----------------------|-------------------------|-------------------|-----------------------------|------------------------|
| A = Aspen         | H = Hemlock          | N = Marsh               | U = Upland Brush  | 0 = Non Stocked             | 5 = Pole Timber Medium |
| B = Paper Birch   | J = Jack Pine        | O = Oak                 | UM = Upland Mixed | 1 = Seedling Sapling Poor   | 6 = Pole Timber Well   |
| C = Cedar         | L = Lowland Brush    | P = Lowland Poplar      | V = Bog or Marsh  | 2 = Seedling Sapling Medium | 7 = Saw Timber Poor    |
| D = Tread Bog     | LM = Lowland Mixed   | Q = Mixed Swamp Conifer | W = White Pine    | 3 = Seedling Sapling Well   | 8 = Saw Timber Medium  |
| E = Swamp Hdwoods | M = Mpl, Bch, Brch   | R = Red Pine            | X = Non Stocked   | 4 = Pole Timber Poor        | 9 = Saw Timber Well    |
| F = Spruce Fir    | MC = Mixed Conifer   | S = Black Spruce        | Z = Water         |                             |                        |
| G = Grass         | MD = Mixed Deciduous | T = Tamarack            |                   |                             |                        |

**Toilet Bowl Aspen**  
**Compartment 125**  
**112.0 Acres**

| PU | Acres |
|----|-------|
| 1  | 27.2  |
| 2  | 32.0  |
| 3  | 24.5  |
| 4  | 10.1  |
| 5  | 18.2  |



- Against State (Red)
- Payment Unit (Yellow)
- Payment Unit Label
- Section Numbers
- Section Corners
- Sections
- Quarter Quarter Sections
- Survey Corners
- Perennial River
- Lakes and Rivers
- Nearby Timber Sale
- DNR - Primary Forest Road
- DNR - Forest Access Route
- Federal / State / County - Paved Road
- Private - Dirt / Gravel Road
- DNR - Temporary Management Access



## TIMBER SALE INFORMATION

### Hunting Blind City (42-004-21)

T45N, R09W, SEC. 29; T45N, R09W, SEC. 31; T45N, R09W, SEC. 32; T45N, R09W, SEC. 33.  
Luce County (Advertised Price \$ 118,029.50)

SALE NOTE: All units of volume listed for this sale were estimated using the Inventory Manager computer program and the new Michigan taper model.

The following road maintenance may be needed: cleaning of drainage areas, grading, crowning and filling with gravel, if necessary.

Permission for access across private land is the responsibility of the Purchaser. See Sale Spec. 4.4.1 for additional information.

Within Payment Unit(s) 3, harvesting is not permitted during the period of April 15 to July 15 because of bark slippage.

The McLeod Road is a snowmobile trail and will be used to access this timber sale. See Sale Spec. 5.2.41 for additional information.

A recreation site such as a trail, pathway, or campground is within the sale area or the vicinity. Certain restrictions/specifications may be applicable including time restrictions. Access may be through private or other public land.

A timber sale contract for this lump sum, sealed bid timber sale will be awarded to the responsible bidder offering the highest sealed bid price. All units of volume listed below were estimated using the Inventory Manager computer program and the new Michigan taper model. Bids must be at or above the following advertised price for each product and species:

| <u>PRODUCTS &amp; SPECIES</u> | <u>ESTIMATED UNITS*</u> | <u>ADVERTISED PRICE</u> |
|-------------------------------|-------------------------|-------------------------|
| Sawtimber                     |                         |                         |
| Black Cherry                  | 11.3 MBF                | \$ 80.00 / MBF          |
| Paper Birch                   | 9.1 MBF                 | \$ 36.00 / MBF          |
| Red Maple                     | 164.0 MBF               | \$ 77.00 / MBF          |
| Sugar Maple                   | 70.6 MBF                | \$ 217.00 / MBF         |
| White Pine                    | 84.9 MBF                | \$ 45.00 / MBF          |
| Yellow Birch                  | 9.6 MBF                 | \$ 70.00 / MBF          |
| Pulpwood                      |                         |                         |
| Balsam Fir                    | 185 Cords               | \$ 9.05 / Cord          |
| Jack Pine                     | 32 Cords                | \$ 16.25 / Cord         |
| Mixed Aspen                   | 2,997 Cords             | \$ 19.10 / Cord         |
| Mixed Hardwood                | 1,485 Cords             | \$ 10.85 / Cord         |
| Red Pine                      | 36 Cords                | \$ 43.30 / Cord         |
| White Pine                    | 460 Cords               | \$ 13.05 / Cord         |
| White Spruce                  | 67 Cords                | \$ 18.60 / Cord         |

\* The total volume is statistically estimated within plus (+) or minus (-) 3.71 percent. There are an estimated 6,105 cords on this timber sale, plus or minus 227 cords at the 95% confidence level. The estimated units are final and not subject to adjustment. Prospective bidders are urged to examine this timber and to make their own estimates of quantity and quality.

### **BOND AND PAYMENT SCHEDULE:**

1. A bond in the amount of \$5,901.00 to insure faithful performance of the conditions of the contract will be deposited by the successful bidder within 21 days of the sale award.
2. Cutting in any sale or unit without the required advance payment would be considered a trespass.
3. Total payment must be paid in advance or according to the following schedule :
  - (a) Ten percent (10%) of the sale value must be paid within 21 days of the sale award.
  - (b) The 10% down payment will be credited towards the first unit cut.
  - (c) Payment for each of the following units must be made before cutting begins in that unit:

| PAYMENT UNIT NUMBER | PERCENT OF TOTAL SALE VALUE |
|---------------------|-----------------------------|
| 01                  | 9.4%                        |
| 02                  | 10.7%                       |
| 03                  | 8.4%                        |
| 04                  | 4.2%                        |
| 05                  | 17.0%                       |
| 06                  | 14.2%                       |
| 07                  | 12.9%                       |
| 08                  | 23.2%                       |

4. If no cutting takes place, the 10% down payment will not be refunded.
5. Operations on the contract issued will terminate on 12/31/2025.

### **SALE STATISTICS**

Volumes were calculated in cubic feet using the Michigan taper model. Cubic foot volume includes all wood inside bark for the product indicated. For display purposes, cubic feet were converted to cords and MBF using a simple conversion factor, e.g. 79 cubic feet per cord and 185 cubic feet per MBF. The cubic foot volumes are precise; the cords and MBF volumes are not. Cubic foot volume cannot be directly converted to cords or boards with precision.

### **SALE VOLUMES**

The total estimated sale volume may not equal the sum of the species/products due to the nature of statistical calculations associated with double sampling methodology.

| VOLUME           |             |               | STATISTICAL RANGE IN CORDS |         |
|------------------|-------------|---------------|----------------------------|---------|
| TOTAL CUBIC FEET | TOTAL CORDS | PERCENT ERROR | MINIMUM                    | MAXIMUM |
| 482,277          | 6,105       | 3.71%         | 5,878                      | 6,332   |

### **VDU VOLUMES**

A VDU is a Volume Determination Unit. Volumes and their associated statistics are calculated at the VDU level and summarized to the sale level. There is often a one to one relationship between a VDU and a Payment Unit, but not always, depending on the cruise design. Refer to the VDU TO PAYMENT UNIT table.

| VDU           | VOLUME           |              |               | RANGE IN CORDS |              |
|---------------|------------------|--------------|---------------|----------------|--------------|
|               | TOTAL CUBIC FEET | TOTAL CORDS  | PERCENT ERROR | MINIMUM        | MAXIMUM      |
| 48            | 21,187           | 268          | 9.72%         | 242            | 294          |
| 58            | 98,960           | 1,253        | 6.43%         | 1,172          | 1,333        |
| 60            | 22,452           | 284          | 13.73%        | 245            | 323          |
| 62            | 143,496          | 1,816        | 6.64%         | 1,696          | 1,937        |
| 64            | 185,170          | 2,344        | 6.87%         | 2,183          | 2,505        |
| <b>TOTAL:</b> | <b>471,264</b>   | <b>5,965</b> |               | <b>5,538</b>   | <b>6,393</b> |

### **VDU TO PAYMENT UNIT**

When a VDU is associated with more than one Payment Unit (PU), the VDU volumes are assigned to the PU based on acres of the VDU within the PU.

| VDU           | VDU ACRES    | PU | PU ACRES     |
|---------------|--------------|----|--------------|
| 48            | 7.9          | 4  | 7.9          |
| 58            | 41.0         | 1  | 19.2         |
|               |              | 2  | 21.8         |
| 60            | 19.5         | 3  | 19.5         |
| 62            | 48.6         | 5  | 26.5         |
|               |              | 6  | 22.1         |
| 64            | 54.3         | 7  | 19.4         |
|               |              | 8  | 34.9         |
| <b>TOTAL:</b> | <b>171.3</b> |    | <b>171.3</b> |

**DESCRIPTION OF TIMBER BY PAYMENT UNIT (PU)**

| PU | MARKET GROUP         | PRODUCT          | QUANTITY | UNIT         | ACRES | ADVERTISE PRICE |
|----|----------------------|------------------|----------|--------------|-------|-----------------|
| 1  | Paper Birch          | Sawtimber        | 1.0      | MBF          | 19.2  | \$11,064.10     |
|    | Red Maple            |                  | 13.3     | MBF          |       |                 |
|    | Sugar Maple          |                  | 3.9      | MBF          |       |                 |
|    | Balsam Fir           | Pulpwood         | 13       | Cords        |       |                 |
|    | Jack Pine            |                  | 2        | Cords        |       |                 |
|    | <i>Jack Pine</i>     |                  | 2        | <i>Cords</i> |       |                 |
|    | Mixed Aspen          |                  | 358      | Cords        |       |                 |
|    | <i>B. T. Aspen</i>   |                  | 47       | <i>Cords</i> |       |                 |
|    | <i>Quaking Aspen</i> |                  | 311      | <i>Cords</i> |       |                 |
|    | Mixed Hardwood       |                  | 99       | Cords        |       |                 |
|    | <i>Paper Birch</i>   |                  | 4        | <i>Cords</i> |       |                 |
|    | <i>Red Maple</i>     |                  | 68       | <i>Cords</i> |       |                 |
|    | <i>Sugar Maple</i>   |                  | 27       | <i>Cords</i> |       |                 |
|    | White Pine           |                  | 64       | Cords        |       |                 |
|    | White Spruce         |                  | 14       | Cords        |       |                 |
| 2  | Paper Birch          | Sawtimber        | 1.2      | MBF          | 21.8  | \$12,573.00     |
|    | Red Maple            |                  | 15.1     | MBF          |       |                 |
|    | Sugar Maple          |                  | 4.5      | MBF          |       |                 |
|    | Balsam Fir           | Pulpwood         | 14       | Cords        |       |                 |
|    | Jack Pine            |                  | 2        | Cords        |       |                 |
|    | <i>Jack Pine</i>     |                  | 2        | <i>Cords</i> |       |                 |
|    | Mixed Aspen          |                  | 407      | Cords        |       |                 |
|    | <i>B. T. Aspen</i>   |                  | 54       | <i>Cords</i> |       |                 |
|    | <i>Quaking Aspen</i> |                  | 353      | <i>Cords</i> |       |                 |
|    | Mixed Hardwood       |                  | 113      | Cords        |       |                 |
|    | <i>Paper Birch</i>   |                  | 5        | <i>Cords</i> |       |                 |
|    | <i>Red Maple</i>     |                  | 78       | <i>Cords</i> |       |                 |
|    | <i>Sugar Maple</i>   |                  | 30       | <i>Cords</i> |       |                 |
|    | White Pine           |                  | 73       | Cords        |       |                 |
|    | White Spruce         |                  | 15       | Cords        |       |                 |
| 3  | Black Cherry         | Sawtimber        | 11.3     | MBF          | 19.5  | \$9,887.10      |
|    | Red Maple            |                  | 23.1     | MBF          |       |                 |
|    | Sugar Maple          |                  | 25.1     | MBF          |       |                 |
|    | Mixed Hardwood       | Pulpwood         | 162      | Cords        |       |                 |
|    | <i>Black Cherry</i>  |                  | 12       | <i>Cords</i> |       |                 |
|    | <i>Red Maple</i>     |                  | 65       | <i>Cords</i> |       |                 |
|    | <i>Sugar Maple</i>   |                  | 85       | <i>Cords</i> |       |                 |
| 4  | Red Maple            | Sawtimber        | 3.0      | MBF          | 7.9   | \$4,971.80      |
|    | White Pine           |                  | 47.3     | MBF          |       |                 |
|    | Balsam Fir           | Pulpwood         | 10       | Cords        |       |                 |
|    | Jack Pine            |                  | 28       | Cords        |       |                 |
|    | <i>Jack Pine</i>     | <i>Sawtimber</i> | 4.2      | <i>MBF</i>   |       |                 |
|    | <i>Jack Pine</i>     | <i>Pulpwood</i>  | 20       | <i>Cords</i> |       |                 |
|    | Mixed Aspen          |                  | 71       | Cords        |       |                 |
|    | <i>B. T. Aspen</i>   |                  | 71       | <i>Cords</i> |       |                 |
|    | Mixed Hardwood       |                  | 21       | Cords        |       |                 |
|    | <i>Red Maple</i>     |                  | 21       | <i>Cords</i> |       |                 |
|    | White Pine           |                  | 37       | Cords        |       |                 |
| 5  | Paper Birch          | Sawtimber        | 1.3      | MBF          | 26.5  | \$20,112.95     |
|    | Red Maple            |                  | 40.0     | MBF          |       |                 |
|    | Sugar Maple          |                  | 11.1     | MBF          |       |                 |
|    | White Pine           |                  | 12.9     | MBF          |       |                 |
|    | Yellow Birch         |                  | 4.0      | MBF          |       |                 |
|    | Balsam Fir           | Pulpwood         | 28       | Cords        |       |                 |
|    | Mixed Aspen          |                  | 441      | Cords        |       |                 |
|    | <i>B. T. Aspen</i>   |                  | 101      | <i>Cords</i> |       |                 |

## DESCRIPTION OF TIMBER BY PAYMENT UNIT (PU), CON'T

| PU      | MARKET GROUP         | PRODUCT          | QUANTITY | UNIT         | ACRES | ADVERTISE PRICE |
|---------|----------------------|------------------|----------|--------------|-------|-----------------|
| 5 con't | <i>Quaking Aspen</i> | <i>Pulpwood</i>  | 340      | <i>Cords</i> |       |                 |
|         | Mixed Hardwood       |                  | 240      | Cords        |       |                 |
|         | <i>Beech</i>         |                  | 5        | <i>Cords</i> |       |                 |
|         | <i>Black Cherry</i>  |                  | 8        | <i>Cords</i> |       |                 |
|         | <i>Ironwood</i>      |                  | 5        | <i>Cords</i> |       |                 |
|         | <i>Paper Birch</i>   |                  | 4        | <i>Cords</i> |       |                 |
|         | <i>Red Maple</i>     |                  | 176      | <i>Cords</i> |       |                 |
|         | <i>Sugar Maple</i>   |                  | 37       | <i>Cords</i> |       |                 |
|         | <i>Yellow Birch</i>  |                  | 5        | <i>Cords</i> |       |                 |
|         | Red Pine             |                  | 15       | Cords        |       |                 |
|         | <i>Red Pine</i>      |                  | 15       | <i>Cords</i> |       |                 |
|         | White Pine           |                  | 107      | Cords        |       |                 |
|         | White Spruce         |                  | 21       | Cords        |       |                 |
| 6       | Paper Birch          | Sawtimber        | 1.0      | MBF          | 22.1  | \$16,750.40     |
|         | Red Maple            |                  | 33.4     | MBF          |       |                 |
|         | Sugar Maple          |                  | 9.3      | MBF          |       |                 |
|         | White Pine           |                  | 10.7     | MBF          |       |                 |
|         | Yellow Birch         |                  | 3.4      | MBF          |       |                 |
|         | Balsam Fir           | Pulpwood         | 24       | Cords        |       |                 |
|         | Mixed Aspen          |                  | 367      | Cords        |       |                 |
|         | <i>B. T. Aspen</i>   |                  | 84       | <i>Cords</i> |       |                 |
|         | <i>Quaking Aspen</i> |                  | 283      | <i>Cords</i> |       |                 |
|         | Mixed Hardwood       |                  | 201      | Cords        |       |                 |
|         | <i>Beech</i>         |                  | 4        | <i>Cords</i> |       |                 |
|         | <i>Black Cherry</i>  |                  | 7        | <i>Cords</i> |       |                 |
|         | <i>Ironwood</i>      |                  | 5        | <i>Cords</i> |       |                 |
|         | <i>Paper Birch</i>   |                  | 3        | <i>Cords</i> |       |                 |
|         | <i>Red Maple</i>     |                  | 147      | <i>Cords</i> |       |                 |
|         | <i>Sugar Maple</i>   |                  | 30       | <i>Cords</i> |       |                 |
|         | <i>Yellow Birch</i>  |                  | 5        | <i>Cords</i> |       |                 |
|         | Red Pine             |                  | 12       | Cords        |       |                 |
|         | <i>Red Pine</i>      |                  | 12       | <i>Cords</i> |       |                 |
|         | White Pine           |                  | 89       | Cords        |       |                 |
|         | White Spruce         |                  | 17       | Cords        |       |                 |
| 7       | Paper Birch          | Sawtimber        | 1.6      | MBF          | 19.4  | \$15,261.55     |
|         | Red Maple            |                  | 12.9     | MBF          |       |                 |
|         | Sugar Maple          |                  | 6.0      | MBF          |       |                 |
|         | White Pine           |                  | 5.0      | MBF          |       |                 |
|         | Yellow Birch         |                  | 0.8      | MBF          |       |                 |
|         | Balsam Fir           | Pulpwood         | 34       | Cords        |       |                 |
|         | Mixed Aspen          |                  | 484      | Cords        |       |                 |
|         | <i>B. T. Aspen</i>   | <i>Sawtimber</i> | 2.5      | <i>MBF</i>   |       |                 |
|         | <i>B. T. Aspen</i>   | <i>Pulpwood</i>  | 237      | <i>Cords</i> |       |                 |
|         | <i>Quaking Aspen</i> |                  | 242      | <i>Cords</i> |       |                 |
|         | Mixed Hardwood       |                  | 233      | Cords        |       |                 |
|         | <i>Beech</i>         | <i>Sawtimber</i> | 1.8      | <i>MBF</i>   |       |                 |
|         | <i>Beech</i>         | <i>Pulpwood</i>  | 24       | <i>Cords</i> |       |                 |
|         | <i>Black Cherry</i>  |                  | 20       | <i>Cords</i> |       |                 |
|         | <i>Paper Birch</i>   |                  | 3        | <i>Cords</i> |       |                 |
|         | <i>Red Maple</i>     |                  | 153      | <i>Cords</i> |       |                 |
|         | <i>Sugar Maple</i>   |                  | 28       | <i>Cords</i> |       |                 |
|         | <i>Yellow Birch</i>  |                  | 1        | <i>Cords</i> |       |                 |
|         | Red Pine             |                  | 3        | Cords        |       |                 |
|         | <i>Red Pine</i>      | <i>Sawtimber</i> | 1.4      | <i>MBF</i>   |       |                 |
|         | White Pine           | Pulpwood         | 32       | Cords        |       |                 |
| 8       | Paper Birch          | Sawtimber        | 3.0      | MBF          | 34.9  | \$27,408.60     |



**DESCRIPTION OF TIMBER BY PAYMENT UNIT (PU), CON'T**

| PU      | MARKET GROUP         | PRODUCT          | QUANTITY | UNIT         | ACRES | ADVERTISE PRICE |
|---------|----------------------|------------------|----------|--------------|-------|-----------------|
| 8 con't | Red Maple            | Sawtimber        | 23.2     | MBF          |       |                 |
|         | Sugar Maple          |                  | 10.7     | MBF          |       |                 |
|         | White Pine           |                  | 9.0      | MBF          |       |                 |
|         | Yellow Birch         |                  | 1.4      | MBF          |       |                 |
|         | Balsam Fir           | Pulpwood         | 62       | Cords        |       |                 |
|         | Mixed Aspen          |                  | 869      | Cords        |       |                 |
|         | <i>B. T. Aspen</i>   | <i>Sawtimber</i> | 4.5      | <i>MBF</i>   |       |                 |
|         | <i>B. T. Aspen</i>   | <i>Pulpwood</i>  | 426      | <i>Cords</i> |       |                 |
|         | <i>Quaking Aspen</i> |                  | 434      | <i>Cords</i> |       |                 |
|         | Mixed Hardwood       |                  | 416      | Cords        |       |                 |
|         | <i>Beech</i>         | <i>Sawtimber</i> | 3.1      | <i>MBF</i>   |       |                 |
|         | <i>Beech</i>         | <i>Pulpwood</i>  | 44       | <i>Cords</i> |       |                 |
|         | <i>Black Cherry</i>  |                  | 36       | <i>Cords</i> |       |                 |
|         | <i>Paper Birch</i>   |                  | 5        | <i>Cords</i> |       |                 |
|         | <i>Red Maple</i>     |                  | 275      | <i>Cords</i> |       |                 |
|         | <i>Sugar Maple</i>   |                  | 49       | <i>Cords</i> |       |                 |
|         | <i>Yellow Birch</i>  |                  | 1        | <i>Cords</i> |       |                 |
|         | Red Pine             |                  | 6        | Cords        |       |                 |
|         | <i>Red Pine</i>      | <i>Sawtimber</i> | 2.4      | <i>MBF</i>   |       |                 |
|         | <i>Red Pine</i>      | <i>Pulpwood</i>  | 1        | <i>Cords</i> |       |                 |
|         | White Pine           |                  | 58       | Cords        |       |                 |
| TOTAL:  |                      |                  | 349.5    | MBF          |       |                 |
| TOTAL:  |                      |                  | 5,262    | Cords        |       |                 |

# Sale Specific Conditions & Requirements

**Sale Name: Hunting Blind City**

**Sale Number: 42-004-21 Seq#: 1**

## 1 - Sale Area

### 1.2 - Boundaries

#### 1.2.1 - Painted boundaries (9/19)

The sale boundary and Payment Unit boundaries are marked and identified by blue, red, and yellow paint. Exterior sale boundary lines against private property are marked with blue paint. Exterior sale boundary lines against state are marked with red paint. Interior Payment Unit boundaries are marked with yellow paint. Retention patches are marked with red paint; no harvesting activities may occur within these areas. The painted boundary line trees are not Included Timber and are to be protected unless marked with orange paint. Yellow painted trees designating an interior Payment Unit boundary are only to be cut when all surrounding Payment Units have been paid.

## 2 - Timber Specifications

### 2.1 - Included Timber

#### 2.1.1 - Clearcut unit(s) with unmerchantable trees (6/14)

Within Payment Unit(s) 1, 2, and 4-8, cut all deciduous trees that are two (2) inches or more at DBH and all conifer trees that are four (4) inches or more at DBH. Leave any hemlock in all Payment Units.

Additionally:

Within Payment Units 1 and 2, leave a total of 21 white pine trees that are over 18 inches at DBH scattered throughout both Payment Units.

Within Payment Unit 4, leave a total of 4 white pine trees that are over 18 inches at DBH scattered throughout the Payment Unit.

Within Payment Units 5 and 6, leave all white pine trees that are over 20 inches at DBH.

#### 2.1.3 - Cut tree marked unit(s) (12/08)

Within Payment Unit(s) 3, all trees are designated for cutting when marked with orange paint above and below stump height, regardless of merchantability. Also, within Payment Unit 3, cut all beech.

## 4 - Transportation

### 4.1 - Construction

#### 4.1.6 - Road construction (1/09)

Construction of new roads or improvements of existing roads shall be done in such a way as to minimize the environmental and visual impacts. Merchantable trees shall be cut and utilized unless otherwise directed. Non-merchantable trees shall be severed and laid flat on the ground. Slash shall be scattered, and not left in windrows and kept a minimum of 10 feet back from the road edge. Stumps shall be set upright, not left on edge, and be moved at least 10 feet away from the road edge. Disturbed soil shall be feathered into the woods and not left in berms or windrows.

#### 4.1.7 - Road closure (10/11)

All new roads built into the sale must be blocked to vehicle traffic upon completion of the sale. Overgrown roads that are reopened shall be considered new roads. In general, this will require constructing double earthen berms at strategic locations. These roads must be rendered impassable to cars and trucks. Contact the sale administrator for specific details of design and placement.

#### 4.1.12 - No new roads (1/12)

No new roads will be permitted in any Payment Unit, except for Payment Units 5 and 6. All other operations are limited to existing roads.

### 4.2 - Maintenance

#### 4.2.3 - Road maintenance (8/13)

The following road maintenance may be needed: cleaning of drainage areas, grading, crowning, and filling with gravel, if necessary. Damages will be assessed if grading/repair does not occur.

#### 4.2.5 - Two wheel drive condition (2/04)

All existing trail roads on and adjacent to the sale area must be passable by two-wheel drive traffic for the duration of the sale.

#### 4.4 - Access

##### 4.4.1 - Private property access (3/11)

Permission for access across private land is the responsibility of the Purchaser. A portion of the Pullup Lakes Road that leads to Payment Units 7 and 8 crosses the Hiawatha Sportsman Club. If that route is used, permission will be necessary to use the road. Contact info can be obtained from the DNR.

### 5 - Operations

#### 5.2 - Conduct of Operations

##### 5.2.1 - Slash

###### 5.2.1.8 - Slash height (12/08)

No slash or tree tops may exceed 36 inches in height.

##### 5.2.2 - Hazard Trees/Snags

###### 5.2.2.1 - Den trees (10/16)

Obvious hollow and/or den trees shall be protected and left standing unless they are a safety hazard.

##### 5.2.3 - Operating Restrictions

###### 5.2.3.3 - Bark slippage restriction (3/09)

Within Payment Unit(s) 3, unless changed by written agreement, cutting and skidding are not permitted during the period of April 15 to July 15. This restriction is because of bark slippage.

##### 5.2.32 - Decking/landing restoration (9/13)

All decking and landing areas must have the surface area restored to a condition equal to or better than before. This is to ensure the proper regeneration of the stand. Wood debris, chips, and "cookies" from trimmings must be removed or scattered away from landing and loading areas and may not be windrowed on the edge.

##### 5.2.38 - No decking against live trees (2/04)

Cut products may not be decked against unmarked or designated leave trees.

##### 5.2.41 - Snowmobile trail protection (9/11)

The McLeod Road is a snowmobile trail and will be used to access this timber sale. Do not cut or damage posts with orange trail markers or traffic control signs. If the trail is used, it must be maintained and restored to a condition equal to or better than before the sale. If the trail road is to be used for hauling during the snowmobile season, then a snow-covered base must be left on the trail. Maintain a 20-foot-wide slash, debris, and rut free zone daily using the snowmobile trail as the centerline. No decking of forest products will be permitted along the snowmobile trail.

#### 5.4 - Soil Protection

##### 5.4.1 - Rutting restriction, general (7/16)

Operations are to cease immediately if equipment and weather conditions result in rutting of roads and/or skid trails which is 12 inches or greater in depth and 50 feet in length. The Unit Manager or his/her representative may restrict hauling and/or skidding if ruts exceed the specified depth. With the Unit Manager or his/her representative's approval, the Purchaser may return to the area when the risk of rutting has decreased.

#### 5.8 - Protection of Endangered Species

##### 5.8.5 - Protection of raptor nests (3/13)

All trees with raptor nests will be protected if found during harvesting operations. Notification will be made to the Unit Manager or his/her representative who will notify the Wildlife Biologist so an on-site evaluation and recommendation can be made, if necessary.

### 6 - Safety and Fire Prevention

## 6.2 - Signing

### 6.2.1 - Road posting (10/20)

The Purchaser is responsible for posting and maintaining caution signs on Pullup Lake Road prior to beginning operations. The road must be posted at appropriate distances from the Sale Area to warn of logging activity and truck traffic. Signs must be removed when harvest operations are suspended or completed. The Purchaser will provide these signs.

### 6.2.2 - Snowmobile trail posting (10/20)

The Purchaser is responsible for posting and maintaining caution signs on the snowmobile trail prior to beginning operations during the snowmobile season (approximately December 1 to March 31). The trail must be posted at appropriate distances from the Sale Area to warn of logging activity and truck traffic. Signs must be removed when harvest operations are suspended or completed. The DNR will provide these signs.



# TIMBER SALE MAP

This information provided by authority of Part 525, 1994 PA 451, as amended.

|             |      |
|-------------|------|
| Sale Number | Year |
| 42-004      | 21   |

|                                    |                |  |                   |           |         |
|------------------------------------|----------------|--|-------------------|-----------|---------|
| Forest Management Unit<br>Newberry | County<br>Luce | Mapped By<br>Livermore   | Date<br>1/26/2021 | Page<br>1 | of<br>1 |
| Township<br>45N                    | Range<br>09W   | Section(s) and Subdivision(s)<br>Section 29: SWSW Section 31: SENE Section 32: NW, NWSW, S½SW, N½SE Section 33: NWSW | Scale<br>1:15,840 |           |         |

| Cover Type        |                      |                         |                   | Density                     |                        |  |
|-------------------|----------------------|-------------------------|-------------------|-----------------------------|------------------------|--|
| A = Aspen         | H = Hemlock          | N = Marsh               | U = Upland Brush  | 0 = Non Stocked             | 5 = Pole Timber Medium |  |
| B = Paper Birch   | J = Jack Pine        | O = Oak                 | UM = Upland Mixed | 1 = Seedling Sapling Poor   | 6 = Pole Timber Well   |  |
| C = Cedar         | L = Lowland Brush    | P = Lowland Poplar      | V = Bog or Marsh  | 2 = Seedling Sapling Medium | 7 = Saw Timber Poor    |  |
| D = Tread Bog     | LM = Lowland Mixed   | Q = Mixed Swamp Conifer | W = White Pine    | 3 = Seedling Sapling Well   | 8 = Saw Timber Medium  |  |
| E = Swamp Hdwoods | M = Mpl, Bch, Brch   | R = Red Pine            | X = Non Stocked   | 4 = Pole Timber Poor        | 9 = Saw Timber Well    |  |
| F = Spruce Fir    | MC = Mixed Conifer   | S = Black Spruce        | Z = Water         |                             |                        |  |
| G = Grass         | MD = Mixed Deciduous | T = Tamarack            |                   |                             |                        |  |

**Hunting Blind City**  
 Compartment 124 / 125  
 171.3 Acres

| PU | Acres |
|----|-------|
| 1  | 19.2  |
| 2  | 21.8  |
| 3  | 19.5  |
| 4  | 7.9   |
| 5  | 26.5  |
| 6  | 22.1  |
| 7  | 19.4  |
| 8  | 34.9  |

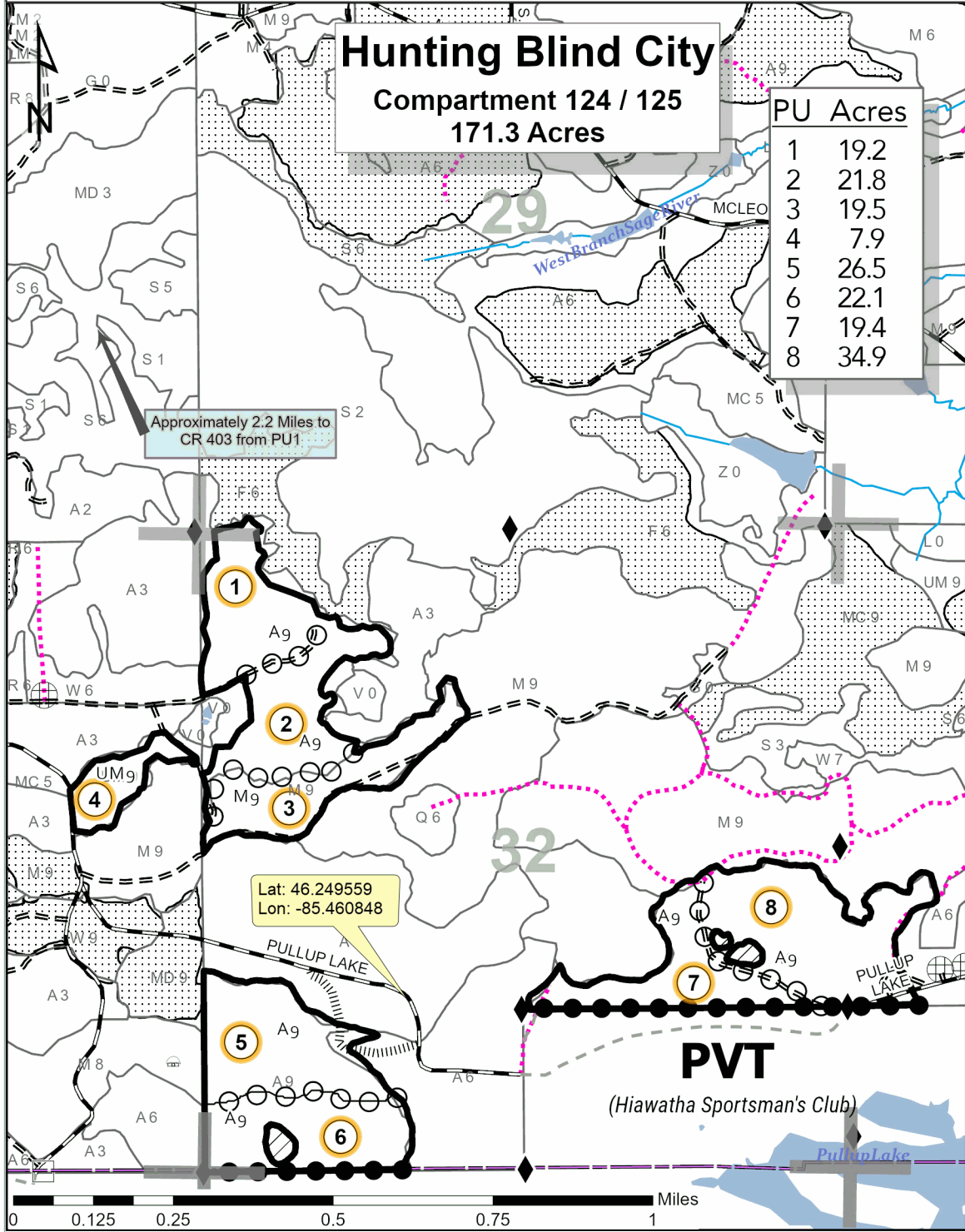
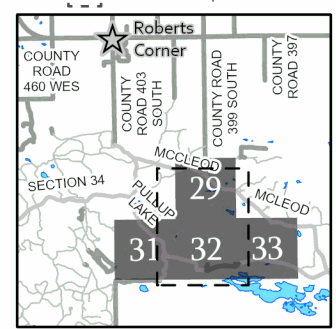


Approximately 2.2 Miles to  
CR 403 from PU1

Lat: 46.249559  
Lon: -85.460848

- Against State (Red)
- Payment Unit (Yellow)
- Private Line (Blue)
- Payment Unit Label
- PVT Private Ownership
- ▨ Retention Area
- 01 Section Numbers
- Section Corners
- ◆ Survey Corners
- Gate
- ⊕ Berms
- ~ Perennial River
- ☪ Lakes and Rivers
- ▭ Nearby Timber Sale
- ||||| Proposed Access
- DNR - Primary Forest Road
- - - DNR - Forest Access Route
- - - Private - Dirt / Gravel Road
- · · DNR - Temporary Management Access

Locator Map: 1:200,000  
 - - - Main Map Extent





## TIMBER SALE INFORMATION

Who Let the Cows Out (42-028-21)  
 T45N, R10W, SEC. 4; T45N, R10W, SEC. 5; T45N, R10W, SEC. 6.  
 Luce County (Advertised Price \$10,281.00)

SALE NOTE: This sale has been reduced by approximately 45% due to "NO BID" on 1-20-22. All units of volume listed for this sale were estimated using the Inventory Manager computer program and the new Michigan taper model.

Permission for access across private land is the responsibility of the Purchaser. A copy of written permission must be provided to the DNR (Newberry Unit) prior to bid opening. If this permission is not provided, the bid will be rejected.

Note that mixed Aspen includes quaking and big tooth. Mixed Hardwoods includes red maple, ironwood and paper birch.

The sale area cannot be accessed without permission from the adjacent landowner bordering the sale. See Sale Spec. 4.4.4 and 4.4.3 for specifics.

Within Payment Unit(s) #'s 2 and 3, harvesting is limited to the period of December 15 to April 1 because of low, wet ground.

Access may be through private land.

A timber sale contract for this lump sum, sealed bid timber sale will be awarded to the responsible bidder offering the highest sealed bid price. All units of volume listed below were estimated using the Inventory Manager computer program and the new Michigan taper model. Bids must be at or above the following advertised price for each product and species:

| <u>PRODUCTS &amp; SPECIES</u> | <u>ESTIMATED UNITS*</u> | <u>ADVERTISED PRICE</u> |
|-------------------------------|-------------------------|-------------------------|
| Sawtimber                     |                         |                         |
| Basswood                      | 2.0 MBF                 | \$ 46.00 / MBF          |
| Red Maple                     | 0.9 MBF                 | \$ 77.00 / MBF          |
| Pulpwood                      |                         |                         |
| Balsam Fir                    | 67 Cords                | \$ 9.05 / Cord          |
| Black Spruce                  | 329 Cords               | \$ 18.60 / Cord         |
| Mixed Aspen                   | 74 Cords                | \$ 19.10 / Cord         |
| Mixed Hardwood                | 11 Cords                | \$ 10.85 / Cord         |
| N. White Cedar                | 241 Cords               | \$ 4.50 / Cord          |
| Paper Birch                   | 30 Cords                | \$ 9.55 / Cord          |
| Tamarack                      | 129 Cords               | \$ 3.80 / Cord          |

\* The total volume is statistically estimated within plus (+) or minus (-) 12.32 percent. There are an estimated 884 cords on this timber sale, plus or minus 109 cords at the 95% confidence level. The estimated units are final and not subject to adjustment. Prospective bidders are urged to examine this timber and to make their own estimates of quantity and quality.

### **BOND AND PAYMENT SCHEDULE:**

1. A bond in the amount of \$514.00 to insure faithful performance of the conditions of the contract will be deposited by the successful bidder within 21 days of the sale award.
2. Cutting in any sale or unit without the required advance payment would be considered a trespass.
3. Total payment must be paid in advance or according to the following schedule :
  - (a) Ten percent (10%) of the sale value must be paid within 21 days of the sale award.
  - (b) The 10% down payment will be credited towards the first unit cut.
  - (c) Payment for each of the following units must be made before cutting begins in that unit:
 

| PAYMENT UNIT NUMBER | PERCENT OF TOTAL SALE VALUE |
|---------------------|-----------------------------|
| 01                  | 13.8%                       |
| 02                  | 8.1%                        |
| 03                  | 78.1%                       |
4. If no cutting takes place, the 10% down payment will not be refunded.
5. Operations on the contract issued will terminate on 06/30/2026.

### **SALE STATISTICS**

Volumes were calculated in cubic feet using the Michigan taper model. Cubic foot volume includes all wood inside bark for the product indicated. For display purposes, cubic feet were converted to cords and MBF using a simple conversion factor, e.g. 79 cubic feet per cord and 185 cubic feet per MBF. The cubic foot volumes are precise; the cords and MBF volumes are not. Cubic foot volume cannot be directly converted to cords or boards with precision.

### SALE VOLUMES

The total estimated sale volume may not equal the sum of the species/products due to the nature of statistical calculations associated with double sampling methodology.

| VOLUME           |             |               | STATISTICAL RANGE IN CORDS |         |
|------------------|-------------|---------------|----------------------------|---------|
| TOTAL CUBIC FEET | TOTAL CORDS | PERCENT ERROR | MINIMUM                    | MAXIMUM |
| 69,833           | 884         | 12.32%        | 775                        | 993     |

### VDU VOLUMES

A VDU is a Volume Determination Unit. Volumes and their associated statistics are calculated at the VDU level and summarized to the sale level. There is often a one to one relationship between a VDU and a Payment Unit, but not always, depending on the cruise design. Refer to the VDU TO PAYMENT UNIT table.

| VDU           | VOLUME           |             | PERCENT ERROR | RANGE IN CORDS |              |
|---------------|------------------|-------------|---------------|----------------|--------------|
|               | TOTAL CUBIC FEET | TOTAL CORDS |               | MINIMUM        | MAXIMUM      |
| 1             | 56,762           | 719         | 14.10%        | 617            | 820          |
| 4             | 6,093            | 77          | 37.21%        | 48             | 106          |
| 5             | 7,179            | 91          | 32.08%        | 62             | 120          |
| <b>TOTAL:</b> | <b>70,034</b>    | <b>887</b>  |               | <b>727</b>     | <b>1,046</b> |

### VDU TO PAYMENT UNIT

When a VDU is associated with more than one Payment Unit (PU), the VDU volumes are assigned to the PU based on acres of the VDU within the PU.

| VDU           | VDU ACRES   | PU | PU ACRES    |
|---------------|-------------|----|-------------|
| 1             | 29.9        | 3  | 29.9        |
| 4             | 7.2         | 1  | 7.2         |
| 5             | 7.5         | 2  | 7.5         |
| <b>TOTAL:</b> | <b>44.6</b> |    | <b>44.6</b> |



**DESCRIPTION OF TIMBER BY PAYMENT UNIT (PU)**

| PU                 | MARKET GROUP         | PRODUCT      | QUANTITY | UNIT         | ACRES | ADVERTISE PRICE |
|--------------------|----------------------|--------------|----------|--------------|-------|-----------------|
| 1                  | Basswood             | Sawtimber    | 2.0      | MBF          | 7.2   | \$1,415.60      |
|                    | Red Maple            |              | 0.9      | MBF          |       |                 |
|                    | Balsam Fir           | Pulpwood     | 3        | Cords        |       |                 |
|                    | Mixed Aspen          |              | 58       | Cords        |       |                 |
|                    | <i>B. T. Aspen</i>   |              | 37       | <i>Cords</i> |       |                 |
|                    | <i>Quaking Aspen</i> |              | 21       | <i>Cords</i> |       |                 |
|                    | Mixed Hardwood       |              | 11       | Cords        |       |                 |
|                    | <i>Basswood</i>      |              | 5        | <i>Cords</i> |       |                 |
|                    | <i>Ironwood</i>      |              | 3        | <i>Cords</i> |       |                 |
|                    | <i>Red Maple</i>     |              | 3        | <i>Cords</i> |       |                 |
|                    | 2                    | Black Spruce | Pulpwood | 24           |       |                 |
| Mixed Aspen        |                      |              | 6        | Cords        |       |                 |
| <i>B. T. Aspen</i> |                      |              | 6        | <i>Cords</i> |       |                 |
| N. White Cedar     |                      |              | 56       | Cords        |       |                 |
| Tamarack           |                      |              | 5        | Cords        |       |                 |
| 3                  | Balsam Fir           | Pulpwood     | 64       | Cords        | 29.9  | \$8,033.40      |
|                    | Black Spruce         |              | 305      | Cords        |       |                 |
|                    | Mixed Aspen          |              | 10       | Cords        |       |                 |
|                    | <i>Quaking Aspen</i> |              | 10       | <i>Cords</i> |       |                 |
|                    | N. White Cedar       |              | 185      | Cords        |       |                 |
|                    | Paper Birch          |              | 30       | Cords        |       |                 |
|                    | Tamarack             |              | 124      | Cords        |       |                 |
| TOTAL:             |                      |              | 2.9      | MBF          |       |                 |
| TOTAL:             |                      |              | 881      | Cords        |       |                 |

## Sale Specific Conditions & Requirements

**Sale Name: Who Let the Cows Out**

**Sale Number: 42-028-21 Seq#: 2**

### 1 - Sale Area

#### 1.2 - Boundaries

##### 1.2.1 - Painted boundaries (9/19)

The sale boundary and Payment Unit boundaries are marked and identified by blue and red paint. Exterior sale boundary lines against private property are marked with blue paint. Exterior sale boundary lines against state are marked with red paint. The painted boundary line trees are not Included Timber and are to be protected unless marked with orange paint.

### 2 - Timber Specifications

#### 2.1 - Included Timber

##### 2.1.2 - Clearcut unit(s) w/o unmerchantable trees (8/11)

Within Payment Unit(s) 2 and 3, cut all trees which meet minimum piece specifications in 2.2 Utilization. Leave all hemlock and sub-merchantable balsam fir. Areas with higher densities of cedar have been marked with green or blue paint above and below stump height. These trees marked with green or blue paint above and below stump height should be retained as retention.

##### 2.1.3 - Cut tree marked unit(s) (12/08)

Within Payment Unit(s) 1, all trees are designated for cutting when marked with orange paint above and below stump height, regardless of merchantability. Additionally, cut all aspen, except for aspen marked with green pain.

##### 2.1.11 - Description of timber note (2/04)

Note that mixed aspen includes quaking and big tooth. Mixed Hardwoods includes red maple, ironwood, and paper birch.

### 4 - Transportation

#### 4.1 - Construction

##### 4.1.4 - Timber removed for construction (12/09)

Trees cut or damaged in the process of pre-approved road, landing or skid trail construction will be decked in an area separate from other Designated Timber and not removed until measured by the sale administrator. Payment will be made at the specified Purchase Unit Price.

##### 4.1.6 - Road construction (1/09)

Construction of new roads or improvements of existing roads shall be done in such a way as to minimize the environmental and visual impacts. Merchantable trees shall be cut and utilized unless otherwise directed. Non-merchantable trees shall be severed and laid flat on the ground. Slash shall be scattered, and not left in windrows and kept a minimum of 10 feet back from the road edge. Stumps shall be set upright, not left on edge, and be moved at least 10 feet away from the road edge. Disturbed soil shall be feathered into the woods and not left in berms or windrows.

##### 4.1.7 - Road closure (10/11)

All new roads built into the sale must be blocked to vehicle traffic within 30 days of completion of hauling. Overgrown roads that are reopened shall be considered new roads. In general, this will require constructing double earthen berms at strategic locations. These roads must be rendered impassable to cars and trucks. Temporary berms may be required if no sale activity occurs for 30 or more consecutive days. Contact the sale administrator for specific details of design and placement.

#### 4.4 - Access

##### 4.4.1 - Private property access (3/11)

Permission for access across private land is the responsibility of the Purchaser. A copy of written permission must be provided to the DNR - Newberry FMU prior to bid opening. If this permission is not provided, the bid will be rejected.

##### 4.4.3 - Access gate (12/08)

The gate on main access road must be closed upon entry and exiting. There is livestock with the Sale Area during certain times of year.

#### 4.4.4 - Restricted access (10/05)

The Sale Area cannot be accessed without permission from the adjacent landowner bordering the sale. Cattle fencing will need to be removed in certain locations to access the Sale Area with equipment.

## 5 - Operations

### 5.1 - Notification

#### 5.1.1 - Pre-sale conference (10/16)

A pre-sale conference between the Purchaser and sale administrator is required prior to beginning any operations to discuss access into the sale. There is a gate and fencing to consider when accessing the sale. The Unit Manager or his/her representative must be contacted at least 10 days in advance to schedule the conference.

### 5.2 - Conduct of Operations

#### 5.2.1 - Slash

##### 5.2.1.8 - Slash height (12/08)

No slash or tree tops may exceed 36 inches in height.

#### 5.2.2 - Hazard Trees/Snags

##### 5.2.2.1 - Den trees (10/16)

Obvious hollow and/or den trees shall be protected and left standing unless they are a safety hazard.

#### 5.2.3 - Operating Restrictions

##### 5.2.3.1 - Operating restrictions (9/11)

Within Payment Unit(s) 2 and 3, unless changed by written agreement, cutting, skidding and hauling are limited to the period of December 15 to April 1. This restriction is because of low, wet ground.

#### 5.2.32 - Decking/landing restoration (9/13)

All decking and landing areas must have the surface area restored to a condition equal to or better than before. This is to ensure the proper regeneration of the stand. Wood debris, chips, and "cookies" from trimmings must be removed or scattered away from landing and loading areas and may not be windrowed on the edge.

#### 5.2.38 - No decking against live trees (2/04)

Cut products may not be decked against unmarked or designated leave trees.

### 5.4 - Soil Protection

#### 5.4.1 - Rutting restriction, general (7/16)

Operations are to cease immediately if equipment and weather conditions result in rutting of roads and/or skid trails which is 12 inches or greater in depth and 50 feet in length. The Unit Manager or his/her representative may restrict hauling and/or skidding if ruts exceed the specified depth. With the Unit Manager or his/her representative's approval, the Purchaser may return to the area when the risk of rutting has decreased.

#### 5.4.7 - Rutting restriction, Riparian Management Zone (RMZ) (1/09)

Within the Riparian Management Zone (RMZ), as shown on the attached Timber Sale Map, operations are to cease immediately if equipment and weather conditions result in rutting of roads and skid trails which is 6 inches or greater in depth and 25 feet in length. Within the Riparian Management Zone (RMZ), as shown on the attached Timber Sale Map, operations are to cease immediately if equipment and weather conditions result in rutting of roads which is 6 inches or greater in depth and 25 feet in length. In addition, operations are to cease immediately if equipment and weather conditions result in rutting of skid trails which is 6 inches or greater in depth and 25 feet in length. The Unit Manager or his/her representative may restrict hauling and/or skidding if ruts exceed the specified depth. With the Unit Manager or his/her representative's approval, the Purchaser may return to the area when the risk of rutting has decreased.

### 5.8 - Protection of Endangered Species

#### 5.8.5 - Protection of raptor nests (3/13)

All trees with raptor nests will be protected if found during harvesting operations. Notification will be made to the Unit

Manager or his/her representative who will notify the Wildlife Biologist so an on-site evaluation and recommendation can be made, if necessary.

## **7 - Other Conditions**

### 7.2 - Extensions

#### 7.2.5 - Weather related extension (1/13)

If weather conditions during the operating period of this contract prevent harvesting, this sale may qualify for a weather related extension. If approved, the normal extension fee would be waived. To qualify, there must be a documented attempt each year to harvest in the difficult portion of the sale.



# TIMBER SALE MAP

This information provided by authority of Part 525, 1994 PA 451, as amended.

|                                    |                |   |                   |           |         |
|------------------------------------|----------------|---|-------------------|-----------|---------|
| Forest Management Unit<br>Newberry | County<br>Luce | Mapped By<br>Kriehn   | Date<br>9/22/2021 | Page<br>1 | of<br>1 |
| Township<br>45N                    | Range<br>10W   | Section(s) and Subdivision(s)<br>Section 4: SWNW; Section 5: NWNW,SENE; Section 6: SENE | Scale<br>1:15,840 |           |         |

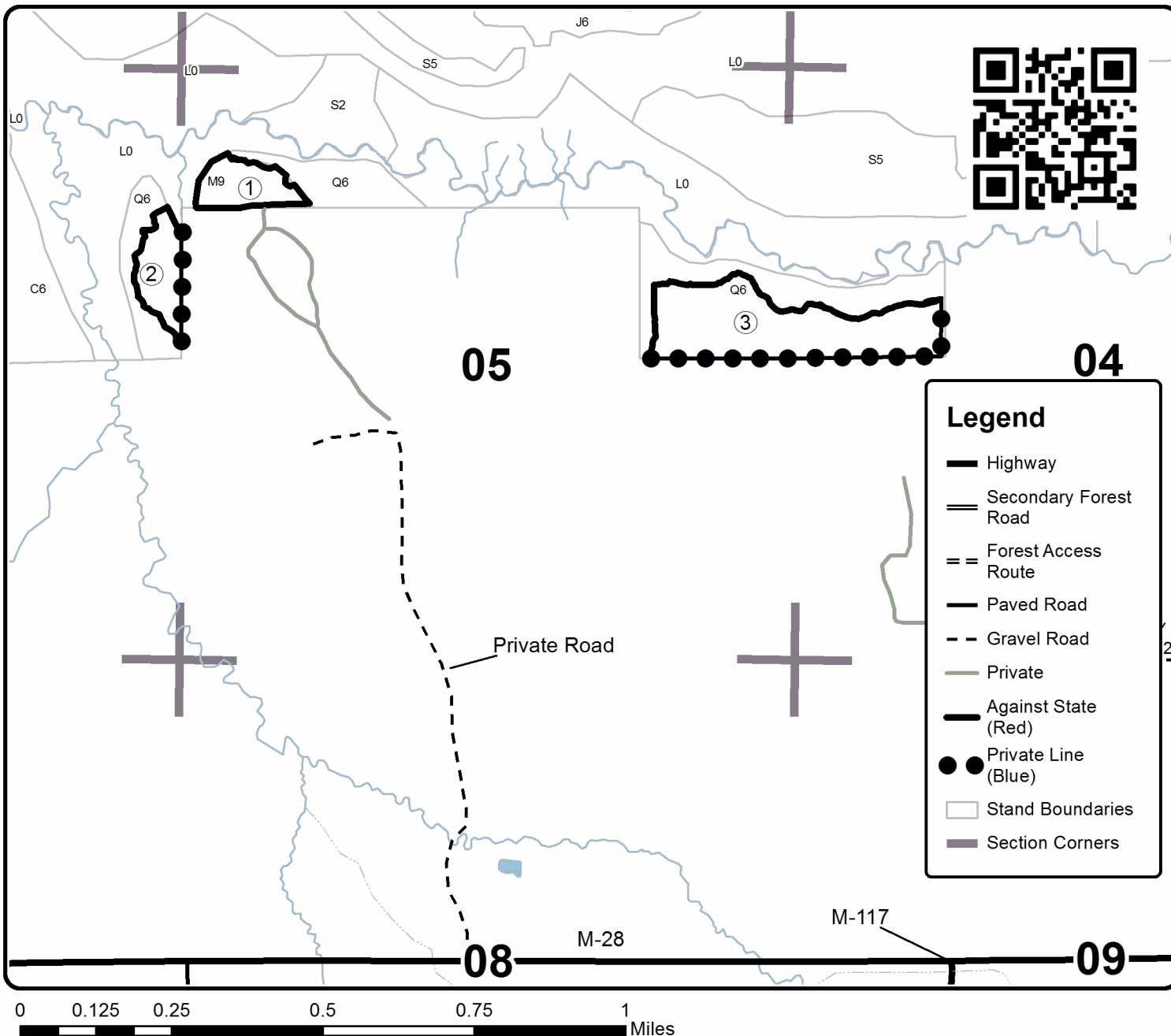
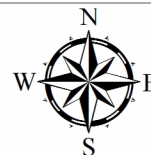
| Cover Type        |                      |                         |                   | Density                     |                        |
|-------------------|----------------------|-------------------------|-------------------|-----------------------------|------------------------|
| A = Aspen         | H = Hemlock          | N = Marsh               | U = Upland Brush  | 0 = Non Stocked             | 5 = Pole Timber Medium |
| B = Paper Birch   | J = Jack Pine        | O = Oak                 | UM = Upland Mixed | 1 = Seedling Sapling Poor   | 6 = Pole Timber Well   |
| C = Cedar         | L = Lowland Brush    | P = Lowland Poplar      | V = Bog or Marsh  | 2 = Seedling Sapling Medium | 7 = Saw Timber Poor    |
| D = Treed Bog     | LM = Lowland Mixed   | Q = Mixed Swamp Conifer | W = White Pine    | 3 = Seedling Sapling Well   | 8 = Saw Timber Medium  |
| E = Swamp Hdwoods | M = Mpl, Bch, Brch   | R = Red Pine            | X = Non Stocked   | 4 = Pole Timber Poor        | 9 = Saw Timber Well    |
| F = Spruce Fir    | MC = Mixed Conifer   | S = Black Spruce        | Z = Water         |                             |                        |
| G = Grass         | MD = Mixed Deciduous | T = Tamarack            |                   |                             |                        |

| PU | Acres |
|----|-------|
| 1  | 7.2   |
| 2  | 7.5   |
| 3  | 29.9  |

## Who Let the Cows Out

### Compartment 106

44.6 Acres





Toilet Bowl Aspen (42-003-21)  
T45N, R09W, SEC. 28; T45N, R09W, SEC. 29; Luce COUNTY

In response to the notice of sale to be held 3:00 p.m. (local time) on April 28, 2022, I am hereby submitting my sealed bid (firm offer) for the following forest products to be cut. Bids for individual species must be at or above the advertised price. All non-responsive bid forms may be rejected.

| <u>PRODUCTS &amp; SPECIES</u> | <u>ESTIMATED VOLUME*</u> | <u>ADVERTISED PRICE</u> | <u>BID PRICE/UNIT</u> |
|-------------------------------|--------------------------|-------------------------|-----------------------|
| <b>Sawtimber</b>              |                          |                         |                       |
| Black Cherry                  | 1.3 MBF                  | \$ 80.00/MBF            | \$ _____              |
| Red Maple                     | 7.4 MBF                  | \$ 77.00/MBF            | \$ _____              |
| <b>Pulpwood</b>               |                          |                         |                       |
| Balsam Fir                    | 223 Cords                | \$ 9.05/Cord            | \$ _____              |
| Jack Pine                     | 2 Cords                  | \$ 16.25/Cord           | \$ _____              |
| Mixed Aspen                   | 2,094 Cords              | \$ 19.10/Cord           | \$ _____              |
| Mixed Hardwood                | 243 Cords                | \$ 10.85/Cord           | \$ _____              |
| Mixed Spruce                  | 278 Cords                | \$ 18.60/Cord           | \$ _____              |
| Red Pine                      | 26 Cords                 | \$ 43.30/Cord           | \$ _____              |
| White Pine                    | 155 Cords                | \$ 13.05/Cord           | \$ _____              |

\*The volumes are statistically estimated within plus (+) or minus (-) 5.50 percent at 95% confidence level. These estimated volumes are final and not subject to adjustment. Prospective bidders are urged to examine this timber and to make their own estimates of quantity and quality.

I understand that any or all bids may be rejected. All bids must be signed and all bid items must be bid or the bid form may be rejected. I also understand that consideration and awarding a contract will be based upon my past performance and ability to complete the contract based upon equipment and staffing subject to my control.

FEDERAL ID: \_\_\_\_ - \_\_\_\_ - \_\_\_\_ or SOCIAL SECURITY NUMBER: \_\_\_\_ - \_\_\_\_ - \_\_\_\_

Company or individual bidding: \_\_\_\_\_

Company representative's name: \_\_\_\_\_

Address: \_\_\_\_\_

City: \_\_\_\_\_ State: \_\_\_\_\_ Zip: \_\_\_\_\_

IF AVAILABLE, PLEASE PLACE THE PERSONALIZED LABEL FROM YOUR PROSPECTUS IN THE ABOVE BOX.

Individual or company representative's signature: \_\_\_\_\_ Date: \_\_\_\_\_

Phone number : \_\_\_\_\_ Email (optional): \_\_\_\_\_

**THE WINNING BIDDER MUST COMPLETE THE VERIFICATION OF WORKER'S DISABILITY COMPENSATION ACT COMPLIANCE (ON REVERSE SIDE IF DOUBLE SIDED) WITHIN 21 DAYS OF SALE AWARD DATE**



|                                  |
|----------------------------------|
| <b>FOR DEPARTMENT USE ONLY</b>   |
| Sale Number (XX - XXX - XX - XX) |
| Forest Management Unit:          |

## TIMBER SALE VERIFICATION OF WORKER'S DISABILITY COMPENSATION ACT COMPLIANCE

*As required by Act 317, P.A. 1969 (Worker's Compensation) and  
Part 5 of Act 451 of 1994, as amended.*

### VERIFICATION OF WORKER'S DISABILITY COMPENSATION ACT COMPLIANCE

- This verification must be completed and submitted within 21 days of contract award and prior to the issuance of the timber sale contract.
- In addition, if boxes 2B or 2C are checked, then Notice of Exclusion or Certificate of Insurance must be submitted within twenty-one (21) days of the contract award and prior to the issuance of the timber sale contract.
- All information must be typed or printed except for written signatures.

Please Check Appropriate Categories:

1. My business is organized as (you **must** check one of the boxes below):
  - A.  Sole Proprietorship (individual)
  - B.  Partnership
  - C.  Corporation
  
2. You **must** check one of the boxes below:
  - A.  I certify my business is a sole proprietorship and it has no employees but the sole proprietor. I am not subject to the Worker's Compensation Laws.
  - B.  I certify my business has satisfied its obligation to the Worker's Compensation Act through the use of an approved Notice of Exclusion (BWC-337, Rev. 5/96). I will provide a copy of the Notice of Exclusion within 21 days of the contract award. (For questions or a copy of the BWC-337, please call the Worker's Compensation Bureau at 517-322-1195).
  - C.  I certify my business has a Worker's Compensation Policy. I will provide an original Certificate of Insurance within twenty-one (21) days of the contract award.
  
3. If you have checked item 2(A) or 2(B), you **must** indicate the number of **both** full-time and part-time employees, other than yourself, including family members and active partners (if none, you must enter "0").

\_\_\_\_\_ Full-time Employees

\_\_\_\_\_ Part-time Employees

|                  |       |                                     |  |
|------------------|-------|-------------------------------------|--|
| Name of Business |       | Federal ID (or) Social Security No. |  |
| Address          |       | Telephone<br>(       )              |  |
| City             | State | ZIP                                 |  |

*I hereby certify that the above information is true and correct. I agree to notify the Michigan DNR of any changes that occur in factors affecting my coverage during any of my present and future operations.*

\_\_\_\_\_  
Signature of Owner or Authorized Representative

\_\_\_\_\_  
Title

\_\_\_\_\_  
Date

**Please complete the "SEALED BID" information on the next page**



Hunting Blind City (42-004-21)

T45N, R09W, SEC. 29; T45N, R09W, SEC. 31; T45N, R09W, SEC. 32; T45N,

In response to the notice of sale to be held 3:00 p.m. (local time) on April 28, 2022, I am hereby submitting my sealed bid (firm offer) for the following forest products to be cut. Bids for individual species must be at or above the advertised price. All non-responsive bid forms may be rejected.

| <u>PRODUCTS &amp; SPECIES</u> | <u>ESTIMATED VOLUME*</u> | <u>ADVERTISED PRICE</u> | <u>BID PRICE/UNIT</u> |
|-------------------------------|--------------------------|-------------------------|-----------------------|
| <b>Sawtimber</b>              |                          |                         |                       |
| Black Cherry                  | 11.3 MBF                 | \$ 80.00/MBF            | \$ _____              |
| Paper Birch                   | 9.1 MBF                  | \$ 36.00/MBF            | \$ _____              |
| Red Maple                     | 164.0 MBF                | \$ 77.00/MBF            | \$ _____              |
| Sugar Maple                   | 70.6 MBF                 | \$ 217.00/MBF           | \$ _____              |
| White Pine                    | 84.9 MBF                 | \$ 45.00/MBF            | \$ _____              |
| Yellow Birch                  | 9.6 MBF                  | \$ 70.00/MBF            | \$ _____              |
| <b>Pulpwood</b>               |                          |                         |                       |
| Balsam Fir                    | 185 Cords                | \$ 9.05/Cord            | \$ _____              |
| Jack Pine                     | 32 Cords                 | \$ 16.25/Cord           | \$ _____              |
| Mixed Aspen                   | 2,997 Cords              | \$ 19.10/Cord           | \$ _____              |
| Mixed Hardwood                | 1,485 Cords              | \$ 10.85/Cord           | \$ _____              |
| Red Pine                      | 36 Cords                 | \$ 43.30/Cord           | \$ _____              |
| White Pine                    | 460 Cords                | \$ 13.05/Cord           | \$ _____              |
| White Spruce                  | 67 Cords                 | \$ 18.60/Cord           | \$ _____              |

\*The volumes are statistically estimated within plus (+) or minus (-) 3.71 percent at 95% confidence level. These estimated volumes are final and not subject to adjustment. Prospective bidders are urged to examine this timber and to make their own estimates of quantity and quality.

I understand that any or all bids may be rejected. All bids must be signed and all bid items must be bid or the bid form may be rejected. I also understand that consideration and awarding a contract will be based upon my past performance and ability to complete the contract based upon equipment and staffing subject to my control.

FEDERAL ID: \_\_\_\_\_ or SOCIAL SECURITY NUMBER: \_\_\_\_\_

Company or individual bidding: \_\_\_\_\_

Company representative's name: \_\_\_\_\_

Address: \_\_\_\_\_

City: \_\_\_\_\_ State: \_\_\_\_\_ Zip: \_\_\_\_\_

IF AVAILABLE, PLEASE PLACE THE PERSONALIZED LABEL FROM YOUR PROSPECTUS IN THE ABOVE BOX.

Individual or company representative's signature: \_\_\_\_\_ Date: \_\_\_\_\_

Phone number : \_\_\_\_\_ Email (optional): \_\_\_\_\_

**THE WINNING BIDDER MUST COMPLETE THE VERIFICATION OF WORKER'S DISABILITY COMPENSATION ACT COMPLIANCE (ON REVERSE SIDE IF DOUBLE SIDED) WITHIN 21 DAYS OF SALE AWARD DATE**



|                                  |
|----------------------------------|
| <b>FOR DEPARTMENT USE ONLY</b>   |
| Sale Number (XX - XXX - XX - XX) |
| Forest Management Unit:          |

## TIMBER SALE VERIFICATION OF WORKER'S DISABILITY COMPENSATION ACT COMPLIANCE

*As required by Act 317, P.A. 1969 (Worker's Compensation) and  
Part 5 of Act 451 of 1994, as amended.*

### VERIFICATION OF WORKER'S DISABILITY COMPENSATION ACT COMPLIANCE

- This verification must be completed and submitted within 21 days of contract award and prior to the issuance of the timber sale contract.
- In addition, if boxes 2B or 2C are checked, then Notice of Exclusion or Certificate of Insurance must be submitted within twenty-one (21) days of the contract award and prior to the issuance of the timber sale contract.
- All information must be typed or printed except for written signatures.

Please Check Appropriate Categories:

1. My business is organized as (you **must** check one of the boxes below):
  - A.  Sole Proprietorship (individual)
  - B.  Partnership
  - C.  Corporation
2. You **must** check one of the boxes below:
  - A.  I certify my business is a sole proprietorship and it has no employees but the sole proprietor. I am not subject to the Worker's Compensation Laws.
  - B.  I certify my business has satisfied its obligation to the Worker's Compensation Act through the use of an approved Notice of Exclusion (BWC-337, Rev. 5/96). I will provide a copy of the Notice of Exclusion within 21 days of the contract award. (For questions or a copy of the BWC-337, please call the Worker's Compensation Bureau at 517-322-1195).
  - C.  I certify my business has a Worker's Compensation Policy. I will provide an original Certificate of Insurance within twenty-one (21) days of the contract award.
3. If you have checked item 2(A) or 2(B), you **must** indicate the number of **both** full-time and part-time employees, other than yourself, including family members and active partners (if none, you must enter "0").

\_\_\_\_\_ Full-time Employees

\_\_\_\_\_ Part-time Employees

|                  |       |                                     |  |
|------------------|-------|-------------------------------------|--|
| Name of Business |       | Federal ID (or) Social Security No. |  |
| Address          |       | Telephone<br>(       )              |  |
| City             | State | ZIP                                 |  |

*I hereby certify that the above information is true and correct. I agree to notify the Michigan DNR of any changes that occur in factors affecting my coverage during any of my present and future operations.*

\_\_\_\_\_  
Signature of Owner or Authorized Representative

\_\_\_\_\_  
Title

\_\_\_\_\_  
Date

**Please complete the "SEALED BID" information on the next page**

Fire and Ice Pine (42-001-22)  
T50N, R06W, SEC. 21; Chippewa COUNTY

In response to the notice of sale to be held 3:00 p.m. (local time) on April 28, 2022, I am hereby submitting my sealed bid (firm offer) for the following forest products to be cut. Bids for individual species must be at or above the advertised price. All non-responsive bid forms may be rejected.

| <u>PRODUCTS &amp; SPECIES</u> | <u>ESTIMATED VOLUME*</u> | <u>ADVERTISED PRICE</u> | <u>BID PRICE/UNIT</u> |
|-------------------------------|--------------------------|-------------------------|-----------------------|
| Pulpwood                      |                          |                         |                       |
| B. T. Aspen                   | 16 Cords                 | \$ 19.10/Cord           | \$ _____              |
| Red Pine                      | 671 Cords                | \$ 43.30/Cord           | \$ _____              |
| White Pine                    | 70 Cords                 | \$ 13.05/Cord           | \$ _____              |

\*The volumes are statistically estimated within plus (+) or minus (-) 11.74 percent at 95% confidence level. These estimated volumes are final and not subject to adjustment. Prospective bidders are urged to examine this timber and to make their own estimates of quantity and quality.

I understand that any or all bids may be rejected. All bids must be signed and all bid items must be bid or the bid form may be rejected. I also understand that consideration and awarding a contract will be based upon my past performance and ability to complete the contract based upon equipment and staffing subject to my control.

FEDERAL ID: \_\_\_\_ - \_\_\_\_ - \_\_\_\_ or SOCIAL SECURITY NUMBER: \_\_\_\_ - \_\_\_\_ - \_\_\_\_

Company or individual bidding: \_\_\_\_\_

Company representative's name: \_\_\_\_\_

Address: \_\_\_\_\_

City: \_\_\_\_\_ State: \_\_\_\_\_ Zip: \_\_\_\_\_

IF AVAILABLE, PLEASE PLACE THE PERSONALIZED LABEL FROM YOUR PROSPECTUS IN THE ABOVE BOX.

Individual or company representative's signature: \_\_\_\_\_ Date: \_\_\_\_\_

Phone number : \_\_\_\_\_ Email (optional): \_\_\_\_\_

**THE WINNING BIDDER MUST COMPLETE THE VERIFICATION OF WORKER'S DISABILITY COMPENSATION ACT COMPLIANCE (ON REVERSE SIDE IF DOUBLE SIDED) WITHIN 21 DAYS OF SALE AWARD DATE**



|                                  |
|----------------------------------|
| <b>FOR DEPARTMENT USE ONLY</b>   |
| Sale Number (XX - XXX - XX - XX) |
| Forest Management Unit:          |

## TIMBER SALE VERIFICATION OF WORKER'S DISABILITY COMPENSATION ACT COMPLIANCE

*As required by Act 317, P.A. 1969 (Worker's Compensation) and  
Part 5 of Act 451 of 1994, as amended.*

### VERIFICATION OF WORKER'S DISABILITY COMPENSATION ACT COMPLIANCE

- This verification must be completed and submitted within 21 days of contract award and prior to the issuance of the timber sale contract.
- In addition, if boxes 2B or 2C are checked, then Notice of Exclusion or Certificate of Insurance must be submitted within twenty-one (21) days of the contract award and prior to the issuance of the timber sale contract.
- All information must be typed or printed except for written signatures.

Please Check Appropriate Categories:

1. My business is organized as (you **must** check one of the boxes below):
  - A.  Sole Proprietorship (individual)
  - B.  Partnership
  - C.  Corporation
2. You **must** check one of the boxes below:
  - A.  I certify my business is a sole proprietorship and it has no employees but the sole proprietor. I am not subject to the Worker's Compensation Laws.
  - B.  I certify my business has satisfied its obligation to the Worker's Compensation Act through the use of an approved Notice of Exclusion (BWC-337, Rev. 5/96). I will provide a copy of the Notice of Exclusion within 21 days of the contract award. (For questions or a copy of the BWC-337, please call the Worker's Compensation Bureau at 517-322-1195).
  - C.  I certify my business has a Worker's Compensation Policy. I will provide an original Certificate of Insurance within twenty-one (21) days of the contract award.
3. If you have checked item 2(A) or 2(B), you **must** indicate the number of **both** full-time and part-time employees, other than yourself, including family members and active partners (if none, you must enter "0").

\_\_\_\_\_ Full-time Employees

\_\_\_\_\_ Part-time Employees

|                  |       |                                     |  |
|------------------|-------|-------------------------------------|--|
| Name of Business |       | Federal ID (or) Social Security No. |  |
| Address          |       | Telephone<br>(       )              |  |
| City             | State | ZIP                                 |  |

*I hereby certify that the above information is true and correct. I agree to notify the Michigan DNR of any changes that occur in factors affecting my coverage during any of my present and future operations.*

\_\_\_\_\_  
Signature of Owner or Authorized Representative

\_\_\_\_\_  
Title

\_\_\_\_\_  
Date

**Please complete the "SEALED BID" information on the next page**

Who Let the Cows Out (42-028-21)

T45N, R10W, SEC. 4; T45N, R10W, SEC. 5; T45N, R10W, SEC. 6; Luce COUNTY

In response to the notice of sale to be held 3:00 p.m. (local time) on April 28, 2022, I am hereby submitting my sealed bid (firm offer) for the following forest products to be cut. Bids for individual species must be at or above the advertised price. All non-responsive bid forms may be rejected.

| <u>PRODUCTS &amp; SPECIES</u> | <u>ESTIMATED VOLUME*</u> | <u>ADVERTISED PRICE</u> | <u>BID PRICE/UNIT</u> |
|-------------------------------|--------------------------|-------------------------|-----------------------|
| <b>Sawtimber</b>              |                          |                         |                       |
| Basswood                      | 2.0 MBF                  | \$ 46.00/MBF            | \$ _____              |
| Red Maple                     | 0.9 MBF                  | \$ 77.00/MBF            | \$ _____              |
| <b>Pulpwood</b>               |                          |                         |                       |
| Balsam Fir                    | 67 Cords                 | \$ 9.05/Cord            | \$ _____              |
| Black Spruce                  | 329 Cords                | \$ 18.60/Cord           | \$ _____              |
| Mixed Aspen                   | 74 Cords                 | \$ 19.10/Cord           | \$ _____              |
| Mixed Hardwood                | 11 Cords                 | \$ 10.85/Cord           | \$ _____              |
| N. White Cedar                | 241 Cords                | \$ 4.50/Cord            | \$ _____              |
| Paper Birch                   | 30 Cords                 | \$ 9.55/Cord            | \$ _____              |
| Tamarack                      | 129 Cords                | \$ 3.80/Cord            | \$ _____              |

\*The volumes are statistically estimated within plus (+) or minus (-) 12.32 percent at 95% confidence level. These estimated volumes are final and not subject to adjustment. Prospective bidders are urged to examine this timber and to make their own estimates of quantity and quality.

I understand that any or all bids may be rejected. All bids must be signed and all bid items must be bid or the bid form may be rejected. I also understand that consideration and awarding a contract will be based upon my past performance and ability to complete the contract based upon equipment and staffing subject to my control.

FEDERAL ID: \_\_\_\_ - \_\_\_\_ - \_\_\_\_ or SOCIAL SECURITY NUMBER: \_\_\_\_ - \_\_\_\_ - \_\_\_\_

Company or individual bidding: \_\_\_\_\_

Company representative's name: \_\_\_\_\_

Address: \_\_\_\_\_

City: \_\_\_\_\_ State: \_\_\_\_\_ Zip: \_\_\_\_\_

IF AVAILABLE, PLEASE PLACE THE PERSONALIZED LABEL FROM YOUR PROSPECTUS IN THE ABOVE BOX.

Individual or company representative's signature: \_\_\_\_\_ Date: \_\_\_\_\_

Phone number : \_\_\_\_\_ Email (optional): \_\_\_\_\_

**THE WINNING BIDDER MUST COMPLETE THE VERIFICATION OF WORKER'S DISABILITY COMPENSATION ACT COMPLIANCE (ON REVERSE SIDE IF DOUBLE SIDED) WITHIN 21 DAYS OF SALE AWARD DATE**



| FOR DEPARTMENT USE ONLY          |  |
|----------------------------------|--|
| Sale Number (XX - XXX - XX - XX) |  |
| Forest Management Unit:          |  |

## TIMBER SALE VERIFICATION OF WORKER'S DISABILITY COMPENSATION ACT COMPLIANCE

As required by Act 317, P.A. 1969 (Worker's Compensation) and  
Part 5 of Act 451 of 1994, as amended.

### VERIFICATION OF WORKER'S DISABILITY COMPENSATION ACT COMPLIANCE

- This verification must be completed and submitted within 21 days of contract award and prior to the issuance of the timber sale contract.
- In addition, if boxes 2B or 2C are checked, then Notice of Exclusion or Certificate of Insurance must be submitted within twenty-one (21) days of the contract award and prior to the issuance of the timber sale contract.
- All information must be typed or printed except for written signatures.

Please Check Appropriate Categories:

1. My business is organized as (you **must** check one of the boxes below):
  - A.  Sole Proprietorship (individual)
  - B.  Partnership
  - C.  Corporation
2. You **must** check one of the boxes below:
  - A.  I certify my business is a sole proprietorship and it has no employees but the sole proprietor. I am not subject to the Worker's Compensation Laws.
  - B.  I certify my business has satisfied its obligation to the Worker's Compensation Act through the use of an approved Notice of Exclusion (BWC-337, Rev. 5/96). I will provide a copy of the Notice of Exclusion within 21 days of the contract award. (For questions or a copy of the BWC-337, please call the Worker's Compensation Bureau at 517-322-1195).
  - C.  I certify my business has a Worker's Compensation Policy. I will provide an original Certificate of Insurance within twenty-one (21) days of the contract award.
3. If you have checked item 2(A) or 2(B), you **must** indicate the number of **both** full-time and part-time employees, other than yourself, including family members and active partners (if none, you must enter "0").

\_\_\_\_\_ Full-time Employees

\_\_\_\_\_ Part-time Employees

|                  |       |                                     |  |
|------------------|-------|-------------------------------------|--|
| Name of Business |       | Federal ID (or) Social Security No. |  |
| Address          |       | Telephone<br>(       )              |  |
| City             | State | ZIP                                 |  |

*I hereby certify that the above information is true and correct. I agree to notify the Michigan DNR of any changes that occur in factors affecting my coverage during any of my present and future operations.*

\_\_\_\_\_  
Signature of Owner or Authorized Representative

\_\_\_\_\_  
Title

\_\_\_\_\_  
Date

Please complete the "SEALED BID" information on the next page