



**DEPARTMENT OF NATURAL RESOURCES
STATE OF MICHIGAN
TIMBER SALE PROSPECTUS #6964**

SCHEDULED SALE DATE AND TIME: 9:00 a.m. (local time) on June 8, 2022.

LOCATION: **BARAGA MGMT UNIT, 427 US 41 NORTH, BARAGA, MI 49908.**

PROSPECTUS NOTE: The bid opening will take place at the Baraga CSC.

The bidder is advised to inspect the sale area and review the location, estimated volumes, operating costs and contract terms of proposed sales. Please be aware that some landowners may request 60 days or more notice for access across their land.

Notice is hereby given that bids will be received by the Unit Manager, CRYSTAL FALLS MANAGEMENT UNIT, for certain timber on the following described lands:

Conifer Corner (12-001-21) / T44N, R27W, SEC. 1, NW, NWNE, S1/2NE, NESW, N1/2SE.

T44N, R27W, SEC. 11, SE.

T44N, R27W, SEC. 12, SESW.

T44N, R27W, SEC. 13, NENW.

T44N, R27W, SEC. 14, N1/2NE.

T45N, R27W, SEC. 36, SWSE.

Dickinson County, Advertised Price \$129,370.35, 260.8 Acres, Aspen, Jack Pine.

SALE NOTE: All units of volume listed for this sale were estimated using the Inventory Manager computer program and the new Michigan taper model.

A recreation site such as a trail, pathway, or campground is within the sale area or the vicinity. Certain restrictions/specifications may be applicable including time restrictions.

The Schultz Project (12-004-21) / T43N, R27W, SEC. 1, S1/2SW.

T43N, R27W, SEC. 11, SENW, NE, NESW, S1/2SW, SE.

T43N, R27W, SEC. 12, NW, N1/2NE, SENE, W1/2SW.

Dickinson County, Advertised Price \$191,833.80, 382.0 Acres, Aspen, Hardwood.

SALE NOTE: All units of volume listed for this sale were estimated using the Inventory Manager computer program and the new Michigan taper model.

BID INSTRUCTIONS (VER. 07/02/2018):

1. Scheduled Bid Location, Date, and Time (2/11)

Bids must be received by the Unit Manager, BARAGA OFFICE, 427 US 41 North, Baraga, MI 49908, no later than 9:00 a.m. (local time) on June 8, 2022. For further information concerning this sale, contact Dan McNamee at 906-875-6622.

2. Bidder's Qualifications (5/16)

Purchaser shall obtain workers compensation insurance to cover claims under Michigan's Worker's Disability Compensation Act of 1969 or similar employee benefit act of any other state applicable to an employee. If all or part of a timber sale was prepared by a private contractor, the contractor and that contractor's company are not permitted to bid on the timber sale contract. Bids will not be accepted from individuals or companies appearing on the DNR/FRD No-Bid List. This list contains the names of purchasers who previously failed to execute a contract within 21-days or who have a history of poor performance.

3. Preparation of Sealed Bids (5/16)

Bid Forms may be completed online thru Michigan DNR Timber Sale Online Bidding (OLB) at www.michigan.gov/timberbidding or by completing the hardcopy Bid Form found in the Timber Sale Prospectus. Hardcopy Bid Forms shall be manually signed in ink. Registration in OLB is considered your 'signature' for all bids submitted thru that system. Bid prices must be entered for each species and product in the Bid Price column for all material subject to bidding and all fill-in blanks must be completed. If erasures or other changes appear on the hardcopy Bid Form, each erasure or change must be initialed by the person signing the bid.

4. Submission of Sealed Bids (5/16)

Bid forms may be obtained from the Unit Manager or thru OLB. Bids may be submitted hardcopy or thru OLB. All hardcopy bids must be submitted on the bid form and in an envelope clearly identified as described in this section. NOTE: Only one bid form per bid envelope. Sealed bids must be submitted to the Unit office designated in the prospectus and must be submitted at or prior to the time established in the prospectus. The envelope should show on the outside (a) the sale name or number and (b) the date and time of bid opening, as shown in the prospectus. Bids received after the time specified in the sale prospectus are late bids and will be rejected.

It is possible for a bidder to submit multiple bids on a single sale. For example, a bid may be submitted hardcopy and a bid may be submitted thru OLB. Or, two bidders from the same company could both submit bids on the same sale. If this were to happen, the State would accept all bids received and award the contract accordingly. All bidding and contractual requirements would apply to all bids received.

5. Public Opening of Sealed Bids (7/16)

If conditions permit, the sealed bids will be publicly opened and posted at the time and place set in the prospectus.

If a bidder, present at a bid opening, has submitted bids on more than one sale, that bidder may withdraw their unopened bid envelopes or announce the withdrawal of their online bid after being declared the successful bidder on one sale.

6. Award of Contract (1/11)

Award of the contract will be made to the Bidder whose bid, conforming to the prospectus, is most advantageous to the State of Michigan on the basis of total value at rates bid for the estimated quantities. The State reserves the right to reject any bid or waive any minor irregularity in bids received. A written award mailed (or otherwise furnished) to the successful Bidder shall be deemed to result in a binding contract without further action by either party.

7. Down Payment (1/11)

The Bidder to whom award is made must make a down payment within 21 days of the sale award. The amount of the down payment will be calculated as shown in the Bond and Payment Schedule of this prospectus. Only cash may be used to meet this requirement.

8. Performance Security (1/11)

As guarantee of faithful performance, a cash bond, certificate of deposit, surety bond or irrevocable letter of credit (LOC) is required within 21 days of the sale award. The amount of the performance security is shown in the Bond and

Payment Schedule of this prospectus. If an LOC or surety is used, the coverage must extend for at least 6 months beyond the contract expiration.

9. Timber Sale Contract (7/18)

Additional conditions and requirements common to all timber sales are listed on the timber sale contract (R4031) and are available on line at www.michigan.gov/timber. Contact the Unit Manager for additional information or a sample contract. Within 21 days of the date of the award letter, the bidder must sign the contract and provide the required down payment, performance security, and verification of worker's disability compensation. The down payment and performance security shall be in accordance with the provisions of the timber sale contract, in the sums stated in this prospectus. If these actions are not taken, then the Bidder, the Bidder's corporation, and the corporation's principals may not be permitted to bid on State timber sales for a period of 3 months after the first offense, 6 months after the second offense, and 1 year after the third offense. An offense will only be counted against the Bidder for 5 years. In addition, the Bidder certifies that if awarded this contract, the Bidder will complete the timber sale contract in accordance with its terms and any modifications thereof including requirements to purchase, cut, and remove the included timber by the expiration date.

Payment Unit values in the State Forest Timber Sale Contract are calculated based on the advertised value of the Payment Unit as a percentage of the total advertised value of the contract. The advertised value of each Payment Unit is given in the Description of Timber by Payment Unit table on the Timber Sale Information page. For example, if the value of Payment Unit 1 is advertised as \$1,500 and the total Timber Sale value is advertised as \$10,000, the contract price for Payment Unit 1 will be 15% of the total bid price ($\$1,500/\$10,000 * 100$).

10. Disclaimer of Estimates and Bidder's Warranty of Inspection (7/16)

Before submitting this bid, the Bidder is advised and cautioned to inspect the sale area, review the requirements of the sale contract, and take other steps as may be reasonably necessary to ascertain the location, estimated volumes, construction estimates, and operating costs of the proposed sale. Failure to do so will not relieve the Bidder from responsibility for completing the contract.

The Bidder warrants that this bid is submitted solely on the basis of the Bidder's examination and inspection of the quality and quantity of the timber offered for sale and the Bidder's opinion of the value thereof and the costs of recovery. No reliance should be placed on the State of Michigan's estimates of timber quality, quantity or costs of recovery. Bidder further acknowledges that the State of Michigan: (i) expressly disclaims any warranty of fitness of timber for any purpose; (ii) offers this timber as is without any warranty of quality (merchantability) or quantity and (iii) expressly disclaims any warranty as to the quantity or quality of timber sold.

11. Certification and Chain-of-Custody (10/14)

Unless otherwise indicated in the contract under section 7 – Other Conditions of the Sale Specific Conditions & Requirements, the area encompassed by this timber sale is certified to the standards of the Forest Stewardship Council (FSC) - Certificate #SCS-FM/COC-00090N and the Sustainable Forestry Initiative (SFI) - Certificate #NSF-SFIS-5Y031-SF5. Forest products from this sale may be delivered to the mill as "FSC 100% and / or SFI certified" as long as the contractor hauling the forest products is chain-of-custody (COC) certified or covered under a COC certificate from the destination mill. The purchaser is responsible for maintaining COC after leaving the sale area.

12. Good Neighbor Authority (GNA) Requirements (7/16)

If the name of this timber sales contains the acronym GNA, it is authorized by the Good Neighbor Authority (GNA) and covered by various agreements between the U.S. Forest Service and the State. The timber sale occurs on federal land and the following conditions apply:

GNA contracts on US Forest Service land will not be awarded to purchasers on the Federal list of excluded parties. The System for Award Management (SAM) will be checked for active excluded parties prior to award of contract. In addition, the Bidder to whom award is made must complete an Assurance Regarding Felony Conviction or Tax Delinquent Status for Corporate Applicants (AD-3031).

13. Good Neighbor Authority (GNA) Requirements, con't (9/16)

Bidder certifies, by signing this bid form, that to the best of Bidder's knowledge that the following representations are accurate and complete.

- a. That the Bidder and its principals are not presently debarred, suspended, proposed for debarment, declared ineligible, or voluntary excluded from timber sales (covered transactions) by any Federal department or agency.
- b. That the Bidder and its principals have not within a 3-year period preceding this bid been convicted of or had a civil judgment rendered against them for commission of fraud or a criminal offense in connection with obtaining , attempting to obtain, or performing a public (Federal, State, or local) transaction or contract under a public transaction; violation of Federal or State antitrust statutes or commission of embezzlement, theft, forgery, bribery, falsification or destruction of records, making false statements, or receiving stolen property.
- c. That the Bidder and its principals are not presently indicted for or otherwise criminally or civilly charged by a governmental entity (Federal, State, or local) with commission of any of the offenses enumerated in paragraph b of this certification.
- d. That the Bidder and its principals have not within a 3-year period preceding this bid had one or more public transactions (Federal, State, or local) terminated for breach or default of a timber or forest product contract.

Bidders that cannot certify this requirement, in whole or in part, shall submit an explanation with their bid.

DAN EICHINGER
Director

TIMBER SALE INFORMATION

Conifer Corner (12-001-21)

T44N, R27W, SEC. 1; T44N, R27W, SEC. 11; T44N, R27W, SEC. 12; T44N, R27W, SEC. 13; T44N, R27W, SEC. 14; T45N, R27W, SEC. 36.

SALE NOTE: All units of volume listed for this sale were estimated using the Inventory Manager computer program and the new Michigan taper model.

A recreation site such as a trail, pathway, or campground is within the sale area or the vicinity. Certain restrictions/specifications may be applicable including time restrictions.

A timber sale contract for this lump sum, sealed bid timber sale will be awarded to the responsible bidder offering the highest sealed bid price. All units of volume listed below were estimated using the Inventory Manager computer program and the new Michigan taper model. Bids must be at or above the following advertised price for each product and species:

<u>PRODUCTS & SPECIES</u>	<u>ESTIMATED UNITS*</u>	<u>ADVERTISED PRICE</u>
Sawtimber		
Basswood	15.5 MBF	\$ 39.00 / MBF
Red Pine	346.8 MBF	\$ 81.00 / MBF
Pulpwood		
Balsam Fir	65 Cords	\$ 4.95 / Cord
Basswood	19 Cords	\$ 4.30 / Cord
Jack Pine	1,864 Cords	\$ 24.35 / Cord
Mixed Hardwood	196 Cords	\$ 12.75 / Cord
Mixed Spruce	552 Cords	\$ 6.30 / Cord
Quaking Aspen	2,252 Cords	\$ 19.90 / Cord
Red Pine	113 Cords	\$ 31.40 / Cord
Tamarack	93 Cords	\$ 3.60 / Cord
White Pine	16 Cords	\$ 13.05 / Cord

* The total volume is statistically estimated within plus (+) or minus (-) 3.79 percent. There are an estimated 5,840 cords on this timber sale, plus or minus 221 cords at the 95% confidence level. The estimated units are final and not subject to adjustment. Prospective bidders are urged to examine this timber and to make their own estimates of quantity and quality.

BOND AND PAYMENT SCHEDULE:

1. A bond in the amount of \$6,469.00 to insure faithful performance of the conditions of the contract will be deposited by the successful bidder within 21 days of the sale award.
2. Cutting in any sale or unit without the required advance payment would be considered a trespass.
3. Total payment must be paid in advance or according to the following schedule :
 - (a) Ten percent (10%) of the sale value must be paid within 21 days of the sale award.
 - (b) The 10% down payment will be credited towards the first unit cut.
 - (c) Payment for each of the following units must be made before cutting begins in that unit:

PAYMENT UNIT NUMBER	PERCENT OF TOTAL SALE VALUE
01	39.7%
02	31.2%
03	4.1%
04	0.8%
05	9.1%
06	15.1%
4. If no cutting takes place, the 10% down payment will not be refunded.
5. Operations on the contract issued will terminate on 06/30/2025.

SALE STATISTICS

Volumes were calculated in cubic feet using the Michigan taper model. Cubic foot volume includes all wood inside bark for the product indicated. For display purposes, cubic feet were converted to cords and MBF using a simple conversion factor, e.g. 79 cubic feet per cord and 185 cubic feet per MBF. The cubic foot volumes are precise; the cords and MBF volumes are not. Cubic foot volume cannot be directly converted to cords or boards with precision.

SALE VOLUMES

The total estimated sale volume may not equal the sum of the species/products due to the nature of statistical calculations associated with double sampling methodology.

VOLUME			STATISTICAL RANGE IN CORDS	
TOTAL CUBIC FEET	TOTAL CORDS	PERCENT ERROR	MINIMUM	MAXIMUM
461,329	5,840	3.79%	5,618	6,061

VDU VOLUMES

A VDU is a Volume Determination Unit. Volumes and their associated statistics are calculated at the VDU level and summarized to the sale level. There is often a one to one relationship between a VDU and a Payment Unit, but not always, depending on the cruise design. Refer to the VDU TO PAYMENT UNIT table.

	VOLUME			RANGE IN CORDS	
VDU	TOTAL CUBIC FEET	TOTAL CORDS	PERCENT ERROR	MINIMUM	MAXIMUM
1	183,471	2,322	4.54%	2,217	2,428
2	178,867	2,264	7.59%	2,092	2,436
3	22,092	280	13.72%	241	318
28	45,054	570	11.66%	504	637
29	25,288	320	14.29%	274	366
999	6,557	83	23.53%	63	103
TOTAL:	461,329	5,840		5,392	6,287

VDU TO PAYMENT UNIT

When a VDU is associated with more than one Payment Unit (PU), the VDU volumes are assigned to the PU based on acres of the VDU within the PU.

VDU	VDU ACRES	PU	PU ACRES
1	64.9	1	64.9
2	92.6	2	92.6
3	26.7	3	26.7
28	34.2	6	34.2
29	34.9	5	34.9
999	7.5	4	7.5
TOTAL:	260.8		260.8

DESCRIPTION OF TIMBER BY PAYMENT UNIT (PU)

PU	MARKET GROUP	PRODUCT	QUANTITY	UNIT	ACRES	ADVERTISE PRICE				
1	Balsam Fir	Pulpwood	37	Cords	64.9	\$51,445.40				
	Jack Pine		1,597	Cords						
	Mixed Spruce		163	Cords						
	<i>Black Spruce</i>		130	Cords						
	<i>White Spruce</i>		33	Cords						
	Quaking Aspen		552	Cords						
	Tamarack		43	Cords						
	White Pine		16	Cords						
	2		Balsam Fir	Pulpwood			26	Cords	92.6	\$40,374.00
Jack Pine		255	Cords							
Mixed Hardwood		83	Cords							
<i>Black Cherry</i>		10	Cords							
<i>Red Maple</i>		73	Cords							
Mixed Spruce		381	Cords							
<i>Black Spruce</i>		324	Cords							
<i>White Spruce</i>		57	Cords							
Quaking Aspen		1,507	Cords							
Red Pine		13	Cords							
Tamarack		50	Cords							
3		Balsam Fir	Pulpwood		2	Cords	26.7	\$5,289.70		
		Jack Pine			12	Cords				
	Mixed Hardwood	86		Cords						
	<i>Black Cherry</i>	2		Cords						
	<i>Paper Birch</i>	45		Cords						
	<i>Red Maple</i>	39		Cords						
	Mixed Spruce	8		Cords						
	<i>White Spruce</i>	8		Cords						
	Quaking Aspen	193		Cords						
	4	Basswood		Sawtimber	15.5	MBF			7.5	\$1,030.45
Basswood		Pulpwood	19	Cords						
Mixed Hardwood			27	Cords						
<i>Sugar Maple</i>		Sawtimber	1.4	MBF						
<i>Balsam Poplar</i>		Pulpwood	10	Cords						
<i>Sugar Maple</i>			14	Cords						
5	Red Pine	Sawtimber	133.3	MBF	34.9	\$11,739.30				
	Red Pine	Pulpwood	30	Cords						
6	Red Pine	Sawtimber	213.5	MBF	34.2	\$19,491.50				
	Red Pine	Pulpwood	70	Cords						
TOTAL:			362.3	MBF						
TOTAL:			5,170	Cords						

Sale Specific Conditions & Requirements

Sale Name: Conifer Corner

Sale Number: 12-001-21 Seq#: 1

1 - Sale Area

1.2 - Boundaries

1.2.1 - Painted boundaries (9/19)

The sale boundary and Payment Unit boundaries are marked and identified by blue, red, and yellow paint. Exterior sale boundary lines against private property are marked with blue paint. Exterior sale boundary lines against state are marked with red paint. Interior Payment Unit boundaries are marked with yellow paint. The painted boundary line trees are not Included Timber and are to be protected unless marked with orange paint. Yellow painted trees designating an interior Payment Unit boundary are only to be cut when all surrounding Payment Units have been paid.

2 - Timber Specifications

2.1 - Included Timber

2.1.1 - Clearcut unit(s) with unmerchantable trees (6/14)

Within Payment Unit(s) 1-3, cut all trees that are two (2) inches or more at DBH, except cedar and oak. In addition:

- Within Payment Unit 1 leave pine greater than 24 inches at DBH,
- Within Payment Unit 2 leave white pine and red pine,
- Within Payment Unit 3 leave pine greater than 24 inches at DBH, and conifers measuring less than 6 inches at the stump.

2.1.3 - Cut tree marked unit(s) (12/08)

Within Payment Unit(s) 4-6, all trees are designated for cutting when marked with orange paint above and below stump height, regardless of merchantability.

3 - Payments

3.3 - Pre-measured Sales

3.3.4 - Dividing payment units (7/14)

Payment Unit(s) may be divided at the request of the Purchaser and upon approval of the Unit Manager. Dividing Payment Units is a contract modification which requires a Timber Sale Contract Amendment. There will be only one division per Payment Unit.

4 - Transportation

4.1 - Construction

4.1.6 - Road construction (1/09)

Construction of new roads or improvements of existing roads shall be done in such a way as to minimize the environmental and visual impacts. Merchantable trees shall be cut and utilized unless otherwise directed. Non-merchantable trees shall be severed and laid flat on the ground. Slash shall be scattered, and not left in windrows and kept a minimum of 10 feet back from the road edge. Stumps shall be set upright, not left on edge, and be moved at least 10 feet away from the road edge. Disturbed soil shall be feathered into the woods and not left in berms or windrows.

5 - Operations

5.2 - Conduct of Operations

5.2.1 - Slash

5.2.1.13 - Dispose of slash as directed (12/05)

Slash is to be disposed of as directed by the sale administrator.

5.2.4 - Dead and Down Creation

5.2.4.2 - Dead and down creation, hare and grouse (1/14)

To improve habitat for snowshoe hare, grouse, and other species, the Purchaser is to leave two slash piles on the ground

for every Payment Unit. They should be scattered throughout the sale. These piles will measure a minimum of six feet in diameter and six feet tall. They can be of any tree species and can be an un-merchantable piece of wood or a full tree.

5.2.41 - Snowmobile trail protection (9/11)

The snowmobile trail and is shown on the Timber Sale Map. Do not cut or damage posts with orange trail markers or traffic control signs. If the trail is used, it must be maintained and restored to a condition equal to or better than before the sale. The road maintenance/restoration must be done prior to December 1. If the trail is used for hauling, it must be graded to the satisfaction of the Unit Manager or his/her representative prior to December 1. If the trail road is to be used for hauling during the snowmobile season, then a snow-covered base must be left on the trail.

5.4 - Soil Protection

5.4.1 - Rutting restriction, general (7/16)

Operations are to cease immediately if equipment and weather conditions result in rutting of roads and/or skid trails which is 12 inches or greater in depth and 50 feet in length. The Unit Manager or his/her representative may restrict hauling and/or skidding if ruts exceed the specified depth. With the Unit Manager or his/her representative's approval, the Purchaser may return to the area when the risk of rutting has decreased.

6 - Safety and Fire Prevention

6.2 - Signing

6.2.2 - Snowmobile trail posting (10/20)

The Purchaser is responsible for posting and maintaining caution signs on the snowmobile trail prior to beginning operations during the snowmobile season (approximately December 1 to March 31). The trail must be posted at appropriate distances from the Sale Area to warn of logging activity and truck traffic. Signs must be removed when harvest operations are suspended or completed. The Purchaser will provide these signs.

7 - Other Conditions

7.5 - Loss

7.5.1 - Deteriorating timber (7/09)

The sale area has received damage from spruce budworm. The Purchaser should harvest the wood as soon as possible. The Department of Natural Resources is held free of responsibility of any further damage or deterioration due to delay in harvesting.



Sale Number	Year
12 - 001	21

TIMBER SALE MAP

This information provided by authority of Part 525, 1994 PA 451, as amended.

Forest Management Unit Crystal Falls	County Dickinson	Mapped By Andy Church	Date 09/17/2021	Page 1	of 2
Township 44N	Range 27W	Section(s) and Subdivision(s) S1 NW,NWNE,S1/2NE,NESW,N1/2SE S11 SE S12 SESW S13 NENW S14 N1/2NE S36 SWSE	Scale 1:15,840		

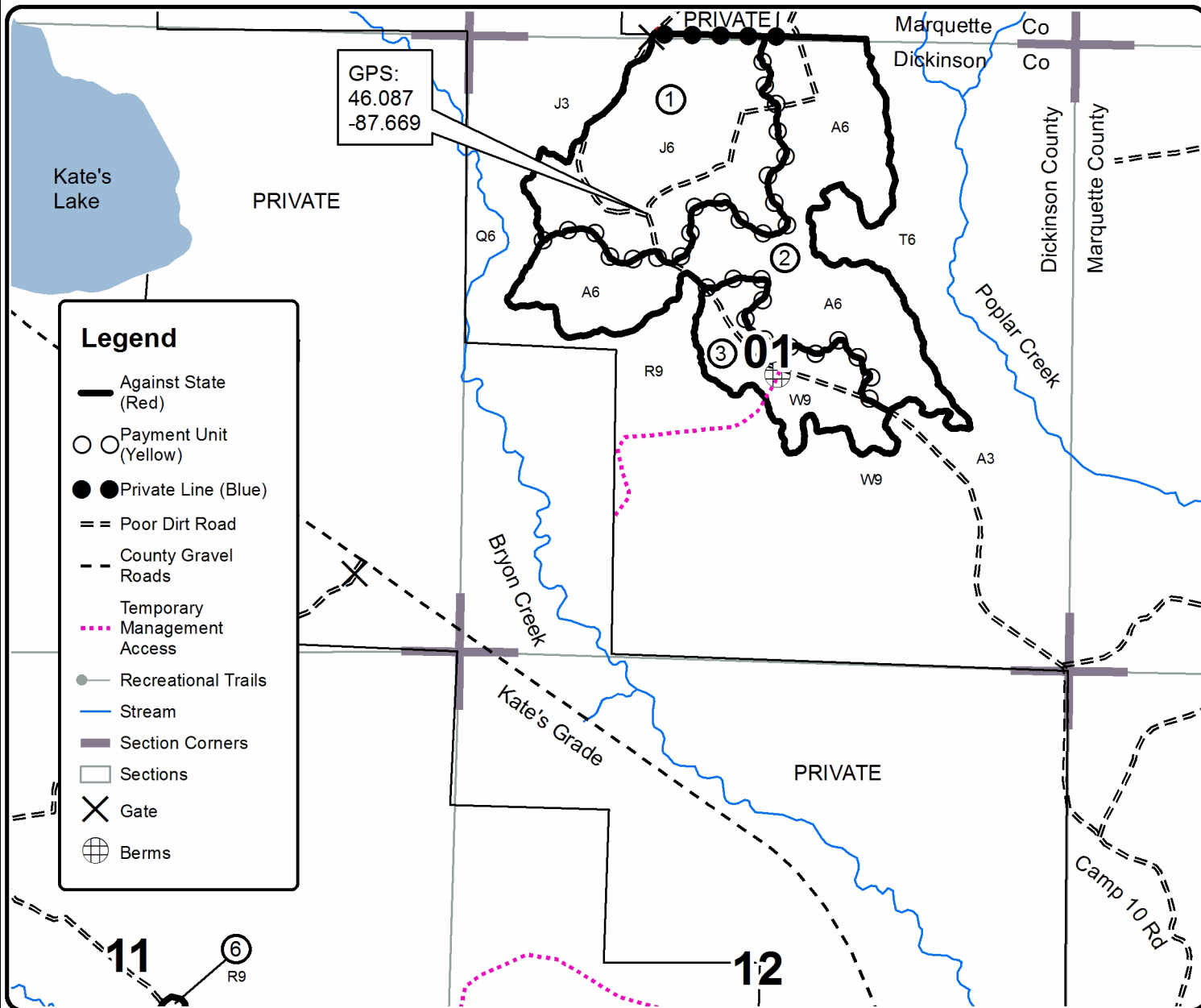
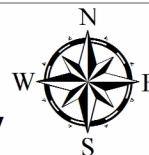
Cover Type				Density	
A = Aspen	H = Hemlock	N = Marsh	U = Upland Brush	0 = Non Stocked	5 = Pole Timber Medium
B = Paper Birch	J = Jack Pine	O = Oak	UM = Upland Mixed	1 = Seedling Sapling Poor	6 = Pole Timber Well
C = Cedar	L = Lowland Brush	P = Lowland Poplar	V = Bog or Marsh	2 = Seedling Sapling Medium	7 = Saw Timber Poor
D = Treed Bog	LM = Lowland Mixed	Q = Mixed Swamp Conifer	W = White Pine	3 = Seedling Sapling Well	8 = Saw Timber Medium
E = Swamp Hdwoods	M = Mpl, Bch, Brch	R = Red Pine	X = Non Stocked	4 = Pole Timber Poor	9 = Saw Timber Well
F = Spruce Fir	MC = Mixed Conifer	S = Black Spruce	Z = Water		
G = Grass	MD = Mixed Deciduous	T = Tamarack			

PU	Acres	PU	Acres
1	64.9	4	7.5
2	92.6	5	34.9
3	26.7	6	34.2

Conifer Corner

Compartment 22
260.8 Acres

For GeoReferenced
PDF map, contact
churcha1@michigan.gov





Sale Number	Year
12 - 001	21

TIMBER SALE MAP

This information provided by authority of Part 525, 1994 PA 451, as amended.

Forest Management Unit Crystal Falls		County Dickinson	Mapped By Andy Church	Date 09/17/2021	Page 2	of 2
Township 44N	Range 27W	Section(s) and Subdivision(s) S1 NW,NWNE,S1/2NE,NESW,N1/2SE S11 SE S12 SESW S13 NENW S14 N1/2NE S36 SWSE			Scale 1:15,840	

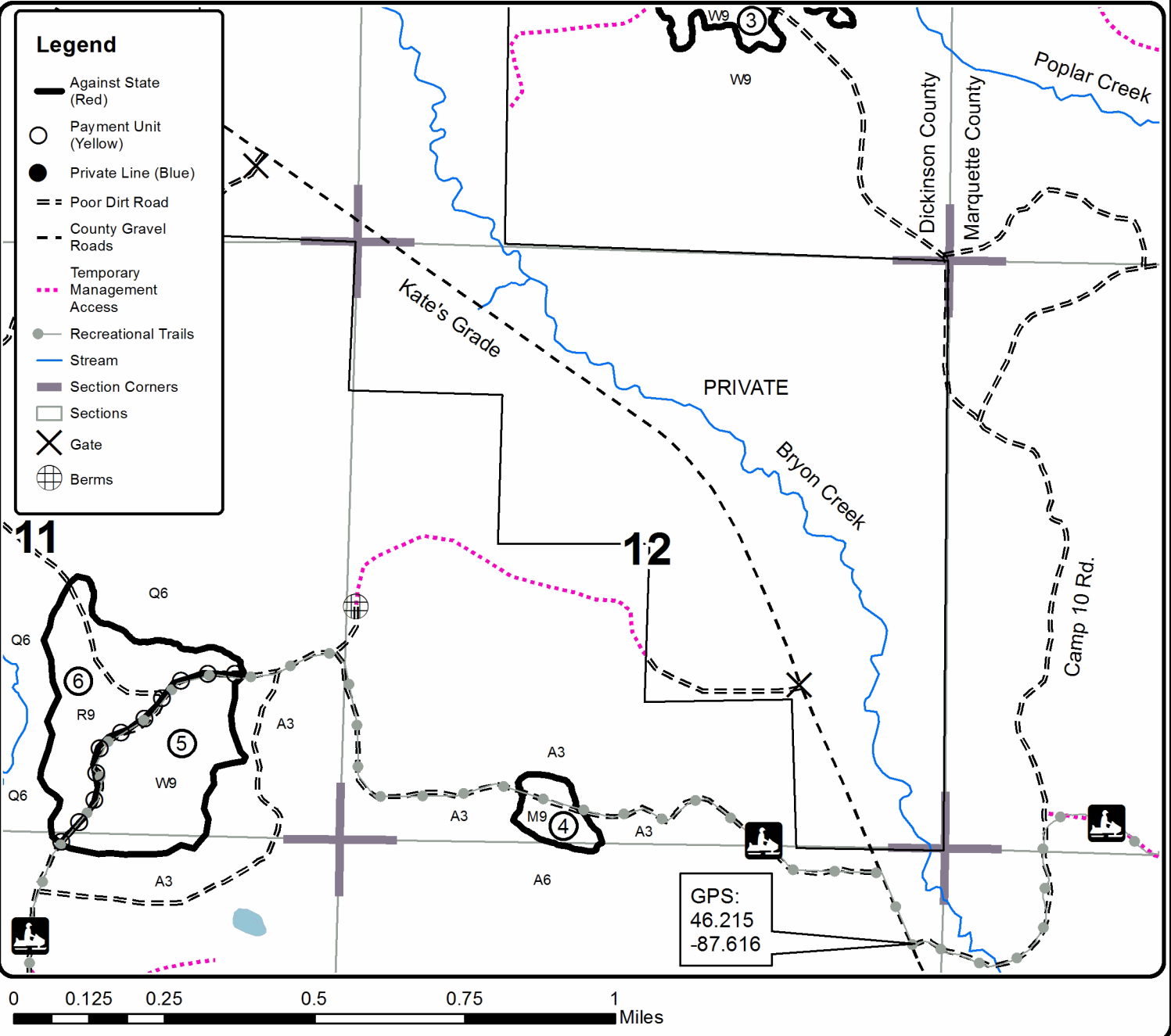
Cover Type				Density	
A = Aspen	H = Hemlock	N = Marsh	U = Upland Brush	0 = Non Stocked	5 = Pole Timber Medium
B = Paper Birch	J = Jack Pine	O = Oak	UM = Upland Mixed	1 = Seedling Sapling Poor	6 = Pole Timber Well
C = Cedar	L = Lowland Brush	P = Lowland Poplar	V = Bog or Marsh	2 = Seedling Sapling Medium	7 = Saw Timber Poor
D = Treed Bog	LM = Lowland Mixed	Q = Mixed Swamp Conifer	W = White Pine	3 = Seedling Sapling Well	8 = Saw Timber Medium
E = Swamp Hdwoods	M = Mpl. Bch, Brch	R = Red Pine	X = Non Stocked	4 = Pole Timber Poor	9 = Saw Timber Well
F = Spruce Fir	MC = Mixed Conifer	S = Black Spruce	Z = Water		
G = Grass	MD = Mixed Deciduous	T = Tamarack			

PU	Acres	PU	Acres
1	64.9	4	7.5
2	92.6	5	34.9
3	26.7	6	34.2

Conifer Corner

Compartment 22
260.8 Acres

For GeoReferenced
PDF map, contact
churcha1@michigan.gov



TIMBER SALE INFORMATION

The Schultz Project (12-004-21)
 T43N, R27W, SEC. 1; T43N, R27W, SEC. 11; T43N, R27W, SEC. 12.
 Dickinson County (Advertised Price \$191,833.80)

SALE NOTE: All units of volume listed for this sale were estimated using the Inventory Manager computer program and the new Michigan taper model.

A timber sale contract for this lump sum, sealed bid timber sale will be awarded to the responsible bidder offering the highest sealed bid price. All units of volume listed below were estimated using the Inventory Manager computer program and the new Michigan taper model. Bids must be at or above the following advertised price for each product and species:

<u>PRODUCTS & SPECIES</u>	<u>ESTIMATED UNITS*</u>	<u>ADVERTISED PRICE</u>
Sawtimber		
Basswood	105.3 MBF	\$ 38.00 / MBF
Paper Birch	39.1 MBF	\$ 79.00 / MBF
Sugar Maple	175.9 MBF	\$ 160.00 / MBF
White Ash	40.0 MBF	\$ 33.00 / MBF
Pulpwood		
Balsam Fir	672 Cords	\$ 4.80 / Cord
Basswood	136 Cords	\$ 4.15 / Cord
Mixed Hardwood	2,350 Cords	\$ 12.35 / Cord
Mixed Spruce	405 Cords	\$ 6.05 / Cord
Quaking Aspen	6,233 Cords	\$ 19.25 / Cord
Tamarack	9 Cords	\$ 3.50 / Cord

* The total volume is statistically estimated within plus (+) or minus (-) 3.05 percent. There are an estimated 10,189 cords on this timber sale, plus or minus 311 cords at the 95% confidence level. The estimated units are final and not subject to adjustment. Prospective bidders are urged to examine this timber and to make their own estimates of quantity and quality.

BOND AND PAYMENT SCHEDULE:

1. A bond in the amount of \$9,592.00 to insure faithful performance of the conditions of the contract will be deposited by the successful bidder within 21 days of the sale award.
2. Cutting in any sale or unit without the required advance payment would be considered a trespass.
3. Total payment must be paid in advance or according to the following schedule :
 - (a) Ten percent (10%) of the sale value must be paid within 21 days of the sale award.
 - (b) The 10% down payment will be credited towards the first unit cut.
 - (c) Payment for each of the following units must be made before cutting begins in that unit:

PAYMENT UNIT NUMBER	PERCENT OF TOTAL SALE VALUE
01	10.2%
02	12.1%
03	13.8%
04	19.8%
05	14.0%
06	13.4%
07	9.9%
08	2.8%
09	4.0%
4. If no cutting takes place, the 10% down payment will not be refunded.
5. Operations on the contract issued will terminate on 06/30/2026.

SALE STATISTICS

Volumes were calculated in cubic feet using the Michigan taper model. Cubic foot volume includes all wood inside bark for the product indicated. For display purposes, cubic feet were converted to cords and MBF using a simple conversion factor, e.g. 79 cubic feet per cord and 185 cubic feet per MBF. The cubic foot volumes are precise; the cords and MBF volumes are not. Cubic foot volume cannot be directly converted to cords or boards with precision.

SALE VOLUMES

The total estimated sale volume may not equal the sum of the species/products due to the nature of statistical calculations associated with double sampling methodology.

VOLUME			STATISTICAL RANGE IN CORDS	
TOTAL CUBIC FEET	TOTAL CORDS	PERCENT ERROR	MINIMUM	MAXIMUM
804,945	10,189	3.05%	9,878	10,500

VDU VOLUMES

A VDU is a Volume Determination Unit. Volumes and their associated statistics are calculated at the VDU level and summarized to the sale level. There is often a one to one relationship between a VDU and a Payment Unit, but not always, depending on the cruise design. Refer to the VDU TO PAYMENT UNIT table.

	VOLUME			RANGE IN CORDS	
VDU	TOTAL CUBIC FEET	TOTAL CORDS	PERCENT ERROR	MINIMUM	MAXIMUM
1	298,957	3,784	5.28%	3,584	3,984
2	278,639	3,527	5.56%	3,331	3,723
3	113,050	1,431	6.58%	1,337	1,525
4	61,809	782	7.18%	726	839
5	52,489	664	11.88%	585	743
TOTAL:	804,945	10,189		9,564	10,814

VDU TO PAYMENT UNIT

When a VDU is associated with more than one Payment Unit (PU), the VDU volumes are assigned to the PU based on acres of the VDU within the PU.

VDU	VDU ACRES	PU	PU ACRES
1	108.8	1	30.7
		2	36.6
		3	41.5
2	100.7	4	58.8
		5	41.9
		6	35.6
3	35.6	6	35.6
4	60.1	7	60.0
5	76.8	8	0.1
		7	0.1
		8	31.1
		9	45.6
TOTAL:	382.0		382.0

DESCRIPTION OF TIMBER BY PAYMENT UNIT (PU)

PU	MARKET GROUP	PRODUCT	QUANTITY	UNIT	ACRES	ADVERTISE PRICE
1	Sugar Maple	Sawtimber	4.5	MBF	30.7	\$19,539.00
	Balsam Fir	Pulpwood	72	Cords		
	Basswood		6	Cords		
	Mixed Hardwood		193	Cords		
	<i>Balsam Poplar</i>		98	<i>Cords</i>		
	<i>Black Ash</i>		7	<i>Cords</i>		
	<i>Paper Birch</i>		10	<i>Cords</i>		
	<i>Red Maple</i>		10	<i>Cords</i>		
	<i>Sugar Maple</i>		62	<i>Cords</i>		
	<i>White Ash</i>		6	<i>Cords</i>		
	Mixed Spruce		24	Cords		
	<i>Black Spruce</i>		1	<i>Cords</i>		
	<i>White Spruce</i>		23	<i>Cords</i>		
	Quaking Aspen		827	Cords		
2	Sugar Maple	Sawtimber	5.4	MBF	36.6	\$23,297.50
	Balsam Fir	Pulpwood	85	Cords		
	Basswood		7	Cords		
	Mixed Hardwood		230	Cords		
	<i>Balsam Poplar</i>		117	<i>Cords</i>		
	<i>Black Ash</i>		8	<i>Cords</i>		
	<i>Paper Birch</i>		12	<i>Cords</i>		
	<i>Red Maple</i>		12	<i>Cords</i>		
	<i>Sugar Maple</i>		74	<i>Cords</i>		
	<i>White Ash</i>		7	<i>Cords</i>		
	Mixed Spruce		29	Cords		
	<i>Black Spruce</i>		1	<i>Cords</i>		
	<i>White Spruce</i>		28	<i>Cords</i>		
	Quaking Aspen		986	Cords		
3	Sugar Maple	Sawtimber	6.1	MBF	41.5	\$26,431.65
	Balsam Fir	Pulpwood	97	Cords		
	Basswood		8	Cords		
	Mixed Hardwood		262	Cords		
	<i>Balsam Poplar</i>		132	<i>Cords</i>		
	<i>Black Ash</i>		10	<i>Cords</i>		
	<i>Paper Birch</i>		14	<i>Cords</i>		
	<i>Red Maple</i>		14	<i>Cords</i>		
	<i>Sugar Maple</i>		84	<i>Cords</i>		
	<i>White Ash</i>		8	<i>Cords</i>		
	Mixed Spruce		33	Cords		
	<i>Black Spruce</i>		1	<i>Cords</i>		
	<i>White Spruce</i>		32	<i>Cords</i>		
	Quaking Aspen		1,118	Cords		
4	Basswood	Sawtimber	12.1	MBF	58.8	\$37,835.55
	Paper Birch		13.1	MBF		
	Sugar Maple		27.3	MBF		
	Balsam Fir	Pulpwood	125	Cords		
	Basswood		24	Cords		
	Mixed Hardwood		496	Cords		
	<i>Red Maple</i>	<i>Sawtimber</i>	1.1	<i>MBF</i>		
	<i>Balsam Poplar</i>	<i>Pulpwood</i>	36	<i>Cords</i>		
	<i>Ironwood</i>		6	<i>Cords</i>		
	<i>Paper Birch</i>		150	<i>Cords</i>		
	<i>Red Maple</i>		24	<i>Cords</i>		
	<i>Sugar Maple</i>		248	<i>Cords</i>		
	<i>Yellow Birch</i>		30	<i>Cords</i>		
	Mixed Spruce		103	Cords		

DESCRIPTION OF TIMBER BY PAYMENT UNIT (PU), CON'T

PU	MARKET GROUP	PRODUCT	QUANTITY	UNIT	ACRES	ADVERTISE PRICE
4 con't	<i>Black Spruce</i>	<i>Pulpwood</i>	27	<i>Cords</i>		
	<i>White Spruce</i>		76	<i>Cords</i>		
	Quaking Aspen		1,274	<i>Cords</i>		
5	Basswood	Sawtimber	8.6	MBF	41.9	\$26,942.65
	Paper Birch		9.4	MBF		
	Sugar Maple		19.5	MBF		
	Balsam Fir	Pulpwood	89	Cords		
	Basswood		17	Cords		
	Mixed Hardwood		351	Cords		
	<i>Red Maple</i>	<i>Sawtimber</i>	0.7	<i>MBF</i>		
	<i>Balsam Poplar</i>	<i>Pulpwood</i>	26	<i>Cords</i>		
	<i>Ironwood</i>		5	<i>Cords</i>		
	<i>Paper Birch</i>		106	<i>Cords</i>		
	<i>Red Maple</i>		16	<i>Cords</i>		
	<i>Sugar Maple</i>		176	<i>Cords</i>		
	<i>Yellow Birch</i>		21	<i>Cords</i>		
	Mixed Spruce		73	<i>Cords</i>		
	<i>Black Spruce</i>		19	<i>Cords</i>		
	<i>White Spruce</i>		54	<i>Cords</i>		
	Quaking Aspen		908	<i>Cords</i>		
6	Basswood	Sawtimber	1.8	MBF	35.6	\$25,621.80
	Paper Birch		7.5	MBF		
	Sugar Maple		13.9	MBF		
	Balsam Fir	Pulpwood	204	Cords		
	Basswood		3	Cords		
	Mixed Hardwood		164	Cords		
	<i>American Elm</i>		3	<i>Cords</i>		
	<i>Balsam Poplar</i>		26	<i>Cords</i>		
	<i>Paper Birch</i>		25	<i>Cords</i>		
	<i>Red Maple</i>		17	<i>Cords</i>		
	<i>Sugar Maple</i>		91	<i>Cords</i>		
	<i>White Ash</i>		2	<i>Cords</i>		
	Mixed Spruce		117	<i>Cords</i>		
	<i>Black Spruce</i>		76	<i>Cords</i>		
	<i>White Spruce</i>		41	<i>Cords</i>		
	Quaking Aspen		986	<i>Cords</i>		
	Tamarack		9	<i>Cords</i>		
7	Basswood	Sawtimber	43.0	MBF	60.1	\$19,074.45
	Paper Birch		4.0	MBF		
	Sugar Maple		64.8	MBF		
	White Ash		8.3	MBF		
	Basswood	Pulpwood	26	Cords		
	Mixed Hardwood		379	Cords		
	<i>Yellow Birch</i>	<i>Sawtimber</i>	1.5	<i>MBF</i>		
	<i>American Elm</i>	<i>Pulpwood</i>	8	<i>Cords</i>		
	<i>Ironwood</i>		4	<i>Cords</i>		
	<i>Paper Birch</i>		5	<i>Cords</i>		
	<i>Sugar Maple</i>		345	<i>Cords</i>		
	<i>White Ash</i>		13	<i>Cords</i>		
	<i>Yellow Birch</i>		1	<i>Cords</i>		
	Quaking Aspen		88	<i>Cords</i>		
8	Basswood	Sawtimber	16.2	MBF	31.2	\$5,312.70
	Paper Birch		2.1	MBF		
	Sugar Maple		14.0	MBF		
	White Ash		12.9	MBF		
	Basswood	Pulpwood	18	Cords		

DESCRIPTION OF TIMBER BY PAYMENT UNIT (PU), CON'T

PU	MARKET GROUP	PRODUCT	QUANTITY	UNIT	ACRES	ADVERTISE PRICE			
8 con't	Mixed Hardwood	Pulpwood	110	Cords					
	<i>Red Maple</i>	<i>Sawtimber</i>	0.6	<i>MBF</i>					
	<i>Yellow Birch</i>		0.6	<i>MBF</i>					
	<i>Paper Birch</i>	<i>Pulpwood</i>	11	<i>Cords</i>					
	<i>Red Maple</i>		4	<i>Cords</i>					
	<i>Sugar Maple</i>		80	<i>Cords</i>					
	<i>White Ash</i>		10	<i>Cords</i>					
	<i>Yellow Birch</i>		3	<i>Cords</i>					
	Mixed Spruce		11	<i>Cords</i>					
	<i>White Spruce</i>		11	<i>Cords</i>					
	Quaking Aspen		19	<i>Cords</i>					
9	Basswood	Sawtimber	23.6	MBF	45.6	\$7,766.15			
	Paper Birch		3.0	MBF					
	Sugar Maple		20.4	MBF					
	White Ash		18.8	MBF					
	Basswood	Pulpwood	27	Cords					
	Mixed Hardwood		164	Cords					
	<i>Red Maple</i>	<i>Sawtimber</i>	0.8	<i>MBF</i>					
	<i>Yellow Birch</i>		0.8	<i>MBF</i>					
	<i>Paper Birch</i>	<i>Pulpwood</i>	16	<i>Cords</i>					
	<i>Red Maple</i>		7	<i>Cords</i>					
	<i>Sugar Maple</i>		117	<i>Cords</i>					
	<i>White Ash</i>		16	<i>Cords</i>					
	<i>Yellow Birch</i>		4	<i>Cords</i>					
	Mixed Spruce		15	<i>Cords</i>					
	<i>White Spruce</i>		15	<i>Cords</i>					
	Quaking Aspen		27	<i>Cords</i>					
	TOTAL:			360.3			MBF		
	TOTAL:			9,804			Cords		

Sale Specific Conditions & Requirements

Sale Name: The Schultz Project

Sale Number: 12-004-21 Seq#: 1

1 - Sale Area

1.2 - Boundaries

1.2.1 - Painted boundaries (9/19)

The sale boundary and Payment Unit boundaries are marked and identified by blue, red, and yellow paint. Exterior sale boundary lines against private property are marked with blue paint. Exterior sale boundary lines against state are marked with red paint. Interior Payment Unit boundaries are marked with yellow paint. Retention patches are marked with red paint; no harvesting activities may occur within these areas. The painted boundary line trees are not Included Timber and are to be protected unless marked with orange paint. Yellow painted trees designating an interior Payment Unit boundary are only to be cut when all surrounding Payment Units have been paid.

2 - Timber Specifications

2.1 - Included Timber

2.1.1 - Clearcut unit(s) with unmerchantable trees (6/14)

Within Payment Unit(s) 1-6, cut all trees that are two (2) inches or more at DBH, except cedar, hemlock and pine if found. In addition, leave conifers measuring 6 inches in diameter or less at the stump.

2.1.3 - Cut tree marked unit(s) (12/08)

Within Payment Unit(s) 7-9, all trees are designated for cutting when marked with orange paint above and below stump height, regardless of merchantability.

3 - Payments

3.3 - Pre-measured Sales

3.3.4 - Dividing payment units (7/14)

Payment Unit(s) 1-6 may be divided at the request of the Purchaser and upon approval of the Unit Manager. Dividing Payment Units is a contract modification which requires a Timber Sale Contract Amendment. There will be only one division per Payment Unit.

3.4 - Damaged Timber

3.4.1 - Damaged timber (7/16)

General Condition and Requirement 3.4 Damaged Timber, defines liquidated damages for undesignated live merchantable trees which are cut or injured. In addition, extreme care should be taken to avoid damage to tree seedlings and saplings. Within the Sale Area, if more than 25% of the tree seedlings or saplings (1/4" to 4.5" DBH) within a specified portion of the Sale Area are damaged, liquidated damages will be assessed at \$100 per acre for all acreage within that specified portion of the Sale Area that was damaged.

No damage is acceptable to undesignated live merchantable trees. Within the Sale Area, if more than 10% of trees (> 4.5" DBH) within a specified area of the sale are damaged, liquidated damages will be assessed for all trees damaged. Rates will be in accordance with General Condition and Requirement 3.4 Damaged Timber.

4 - Transportation

4.1 - Construction

4.1.5 - Culverts (5/14)

Roads will require the installation of culverts for cross drainage or at natural drainage-ways. Seven (7) culverts are needed in locations as indicated on the Timber Sale Map, and they shall be installed prior to hauling. The culverts shall be new, double-walled plastic gauge. All culverts shall be permanently set into place. Culverts will be a minimum of 18 inches in diameter and 24 feet in length. Soils shall be maintained and left in a non-erodible condition as directed by the sale administrator and as specified in the BMP manual. Stream crossing permits, if needed, will be obtained by the DNR.

4.2 - Maintenance

4.2.2 - Fill material (4/07)

To maintain roads, fill material may be needed in areas where "holes" exist or may be expected to develop. This fill material should be placed before trucking begins. Onsite pit run gravel sources, from adjacent State-owned lands, is available and located on Timber Sale Map. A minimum of 400 cubic yards of pit run gravel is required. Contact sale administrator for placement and source of fill material.

4.2.4 - Grading (10/16)

For completion of the sale, Schultz Road must be graded. In general, this will require a road grader or bulldozer to shape up the roads after forest products have been hauled off site. This includes cleaning of drainage areas, grading, crowning, and filling with gravel, if necessary. The grading equipment to be used must be approved by the Unit Manager or his/her representative.

5 - Operations

5.2 - Conduct of Operations

5.2.1 - Slash

5.2.1.13 - Dispose of slash as directed (12/05)

Slash is to be disposed of as directed by the sale administrator.

5.2.3 - Operating Restrictions

5.2.3.3 - Bark slippage restriction (3/09)

Within Payment Unit(s) 7-9, unless changed by written agreement, cutting and skidding are not permitted during the period of April 15 to July 15. This restriction is because of bark slippage.

5.2.3.11 - Coppice regeneration protection (4/10)

Timber harvesting in any Payment Unit must be completed before significant aspen sprouting occurs in that Payment Unit to minimize damage to the new regeneration. The Unit Manager or his/her representative may cease such operations if sprouting occurs before the operation is complete.

5.2.4 - Dead and Down Creation

5.2.4.2 - Dead and down creation, hare and grouse (1/14)

To improve habitat for snowshoe hare, grouse, and other species, the Purchaser is to leave two large slash piles on the ground for every Payment Unit. They should be scattered throughout the Payment Unit per the sale administrator's instructions. If possible, the logs or trees should be felled so they overlap. These piles will measure a minimum of six feet in diameter and six feet tall. They can be of any tree species and can be an un-merchantable piece of wood or a full tree.

5.4 - Soil Protection

5.4.1 - Rutting restriction, general (7/16)

Operations are to cease immediately if equipment and weather conditions result in rutting of roads and/or skid trails which is 12 inches or greater in depth and 50 feet in length. The Unit Manager or his/her representative may restrict hauling and/or skidding if ruts exceed the specified depth. With the Unit Manager or his/her representative's approval, the Purchaser may return to the area when the risk of rutting has decreased.

6 - Safety and Fire Prevention

6.2 - Signing

6.2.1 - Road posting (10/20)

The Purchaser is responsible for posting and maintaining caution signs on the Schultz Road prior to beginning operations. The road must be posted at appropriate distances from the Sale Area to warn of logging activity and truck traffic. Signs must be removed when harvest operations are suspended or completed. The Purchaser will provide these signs.

7 - Other Conditions

7.5 - Loss

7.5.1 - Deteriorating timber (7/09)

The sale area has received damage from spruce budworm. The Purchaser should harvest the wood as soon as possible. The Department of Natural Resources is held free of responsibility of any further damage or deterioration due to delay in harvesting.



TIMBER SALE MAP

This information provided by authority of Part 525, 1994 PA 451, as amended.

Sale Number	Year
12 - 004	21

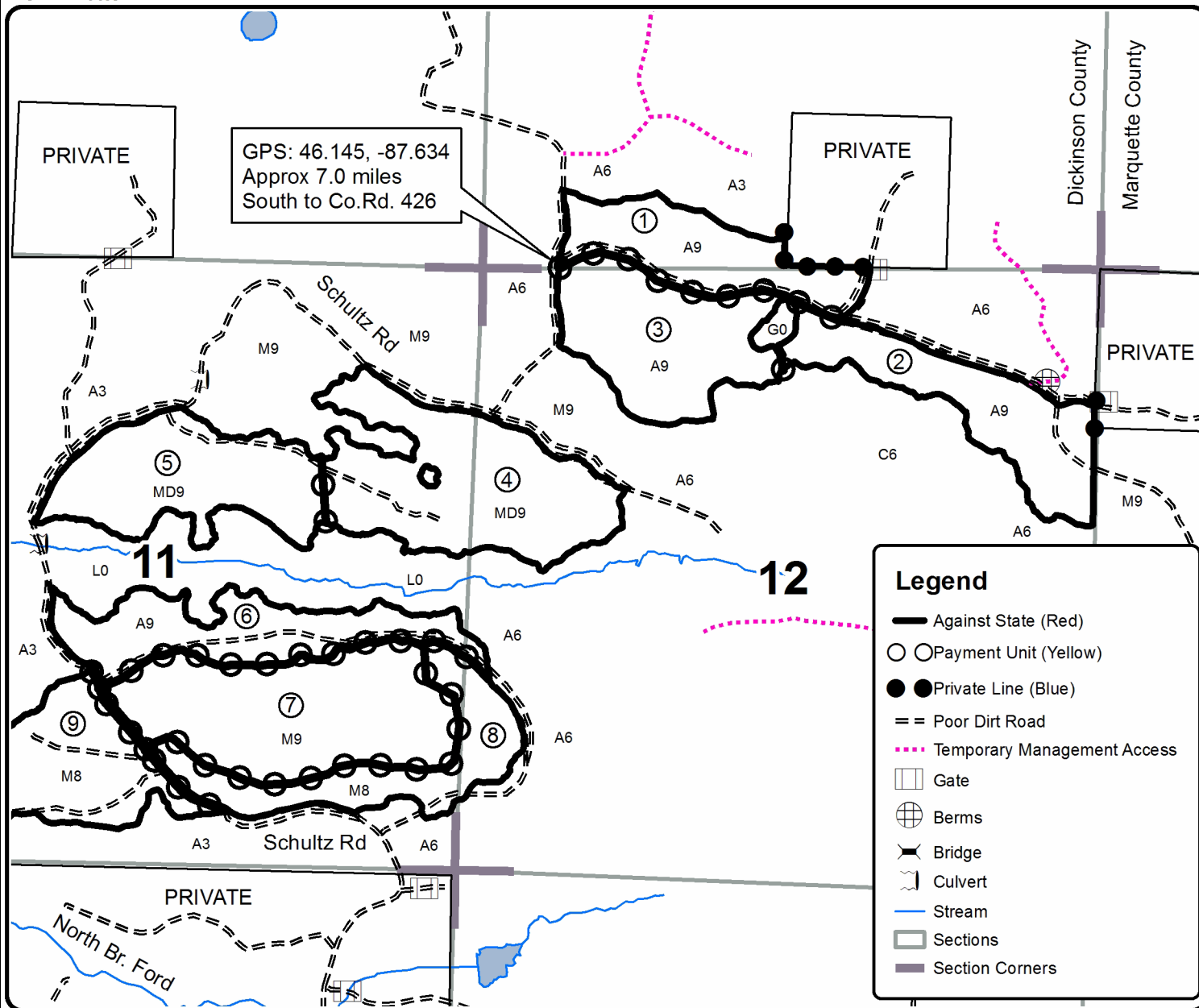
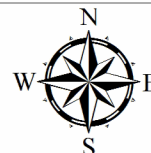
Forest Management Unit Crystal Falls	County Dickinson	Mapped By Andy Church	Date 07/28/2021	Page 1	of 3
Township 43N	Range 27W	Section(s) and Subdivision(s) Sec 1: S1/2SW, Sec11: SENW, NE,NESW,S1/2SW,SE, Sec 12: NW,N1/2NE,SENE,W1/2SW	Scale 1:15,840		

Cover Type				Density	
A = Aspen	H = Hemlock	N = Marsh	U = Upland Brush	0 = Non Stocked	5 = Pole Timber Medium
B = Paper Birch	J = Jack Pine	O = Oak	UM = Upland Mixed	1 = Seedling Sapling Poor	6 = Pole Timber Well
C = Cedar	L = Lowland Brush	P = Lowland Poplar	V = Bog or Marsh	2 = Seedling Sapling Medium	7 = Saw Timber Poor
D = Treed Bog	LM = Lowland Mixed	Q = Mixed Swamp Conifer	W = White Pine	3 = Seedling Sapling Well	8 = Saw Timber Medium
E = Swamp Hdwoods	M = Mpl, Bch, Brch	R = Red Pine	X = Non Stocked	4 = Pole Timber Poor	9 = Saw Timber Well
F = Spruce Fir	MC = Mixed Conifer	S = Black Spruce	Z = Water		
G = Grass	MD = Mixed Deciduous	T = Tamarack			

PU	Acres	PU	Acres
1	30.7	6	35.6
2	36.6	7	60.1
3	41.5	8	31.2
4	58.8	9	45.6
5	41.9		

The Schultz Project Compartment 26 382.0 Acres

For GeoReferenced
PDF map, contact
churc1@michigan.gov





TIMBER SALE MAP

This information provided by authority of Part 525, 1994 PA 451, as amended.

Sale Number	Year
12 - 004	21

Forest Management Unit Crystal Falls	County Dickinson	Mapped By Andy Church	Date 07/28/2021	Page 2	of 3
Township 43N	Range 27W	Section(s) and Subdivision(s) Sec 1: S1/2SW, Sec11: SENW, NE,NESW,S1/2SW,SE, Sec 12: NW,N1/2NE,SENE,W1/2SW	Scale 1:15,840		

Cover Type

A = Aspen	H = Hemlock	N = Marsh	U = Upland Brush
B = Paper Birch	J = Jack Pine	O = Oak	UM = Upland Mixed
C = Cedar	L = Lowland Brush	P = Lowland Poplar	V = Bog or Marsh
D = Treed Bog	LM = Lowland Mixed	Q = Mixed Swamp Conifer	W = White Pine
E = Swamp Hdwoods	M = Mpl. Bch, Brch	R = Red Pine	X = Non Stocked
F = Spruce Fir	MC = Mixed Conifer	S = Black Spruce	Z = Water
G = Grass	MD = Mixed Deciduous	T = Tamarack	

Density

0 = Non Stocked	5 = Pole Timber Medium
1 = Seedling Sapling Poor	6 = Pole Timber Well
2 = Seedling Sapling Medium	7 = Saw Timber Poor
3 = Seedling Sapling Well	8 = Saw Timber Medium
4 = Pole Timber Poor	9 = Saw Timber Well

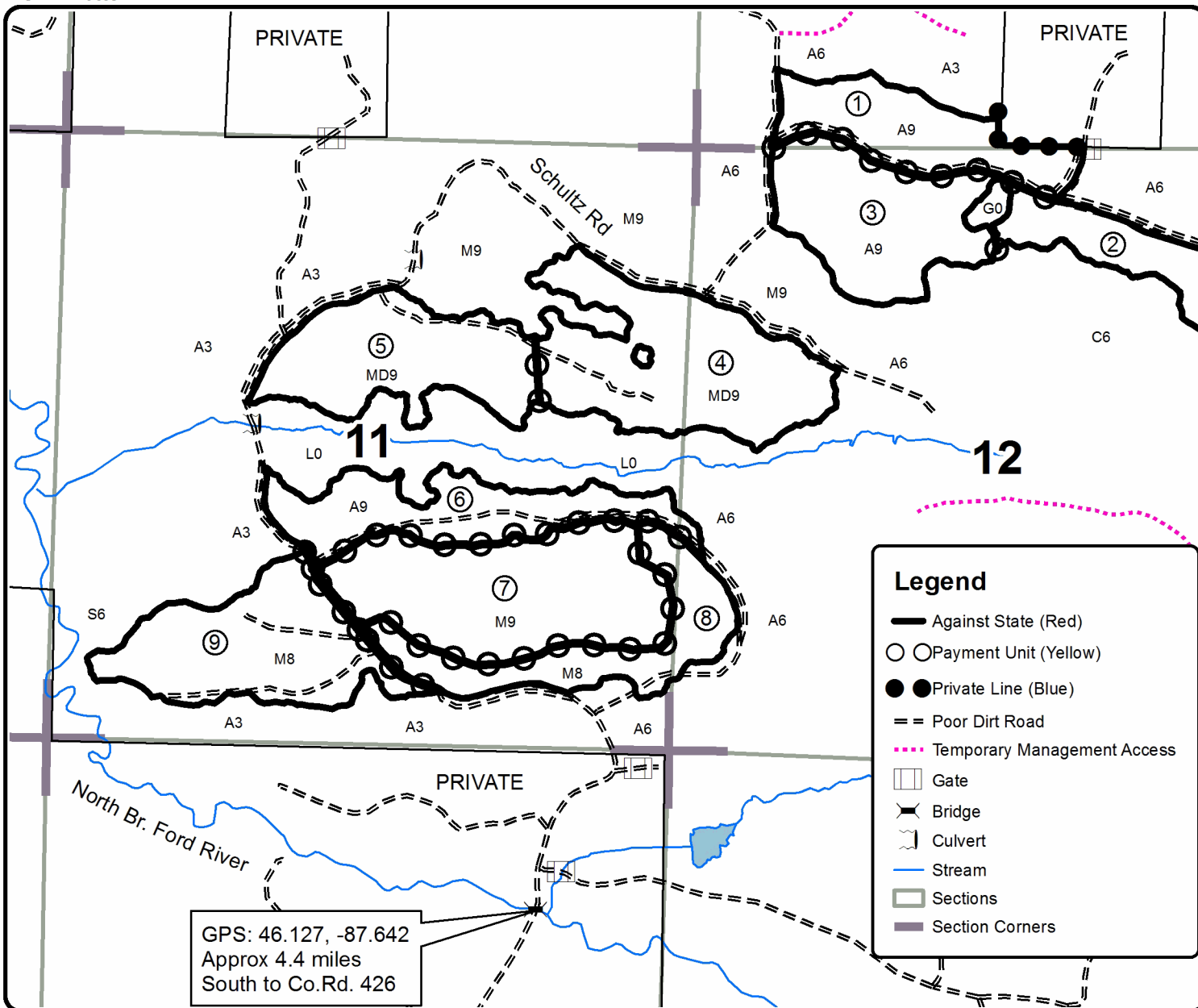
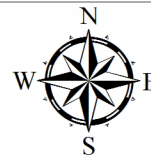
PU	Acres	PU	Acres
1	30.7	6	35.6
2	36.6	7	60.1
3	41.5	8	31.2
4	58.8	9	45.6
5	41.9		

The Schultz Project

Compartment 26

382.0 Acres

For GeoReferenced
PDF map, contact
churcha1@michigan.gov





Sale Number	Year
12 - 004	21

TIMBER SALE MAP

This information provided by authority of Part 525, 1994 PA 451, as amended.

Forest Management Unit Crystal Falls		County Dickinson	Mapped By Andy Church	Date 07/28/2021	Page 3	of 3
Township 43N	Range 27W	Section(s) and Subdivision(s) Sec 1: S1/2SW, Sec11: SENW, NE,NESW,S1/2SW,SE, Sec 12: NW,N1/2NE,SENE,W1/2SW		Scale 1:45,000		

Cover Type

A = Aspen	H = Hemlock	N = Marsh	U = Upland Brush
B = Paper Birch	J = Jack Pine	O = Oak	UM = Upland Mixed
C = Cedar	L = Lowland Brush	P = Lowland Poplar	V = Bog or Marsh
D = Treed Bog	LM = Lowland Mixed	Q = Mixed Swamp Conifer	W = White Pine
E = Swamp Hdwoods	M = Mpl, Bch, Brch	R = Red Pine	X = Non Stocked
F = Spruce Fir	MC = Mixed Conifer	S = Black Spruce	Z = Water
G = Grass	MD = Mixed Deciduous	T = Tamarack	

Density

0 = Non Stocked	5 = Pole Timber Medium
1 = Seedling Sapling Poor	6 = Pole Timber Well
2 = Seedling Sapling Medium	7 = Saw Timber Poor
3 = Seedling Sapling Well	8 = Saw Timber Medium
4 = Pole Timber Poor	9 = Saw Timber Well

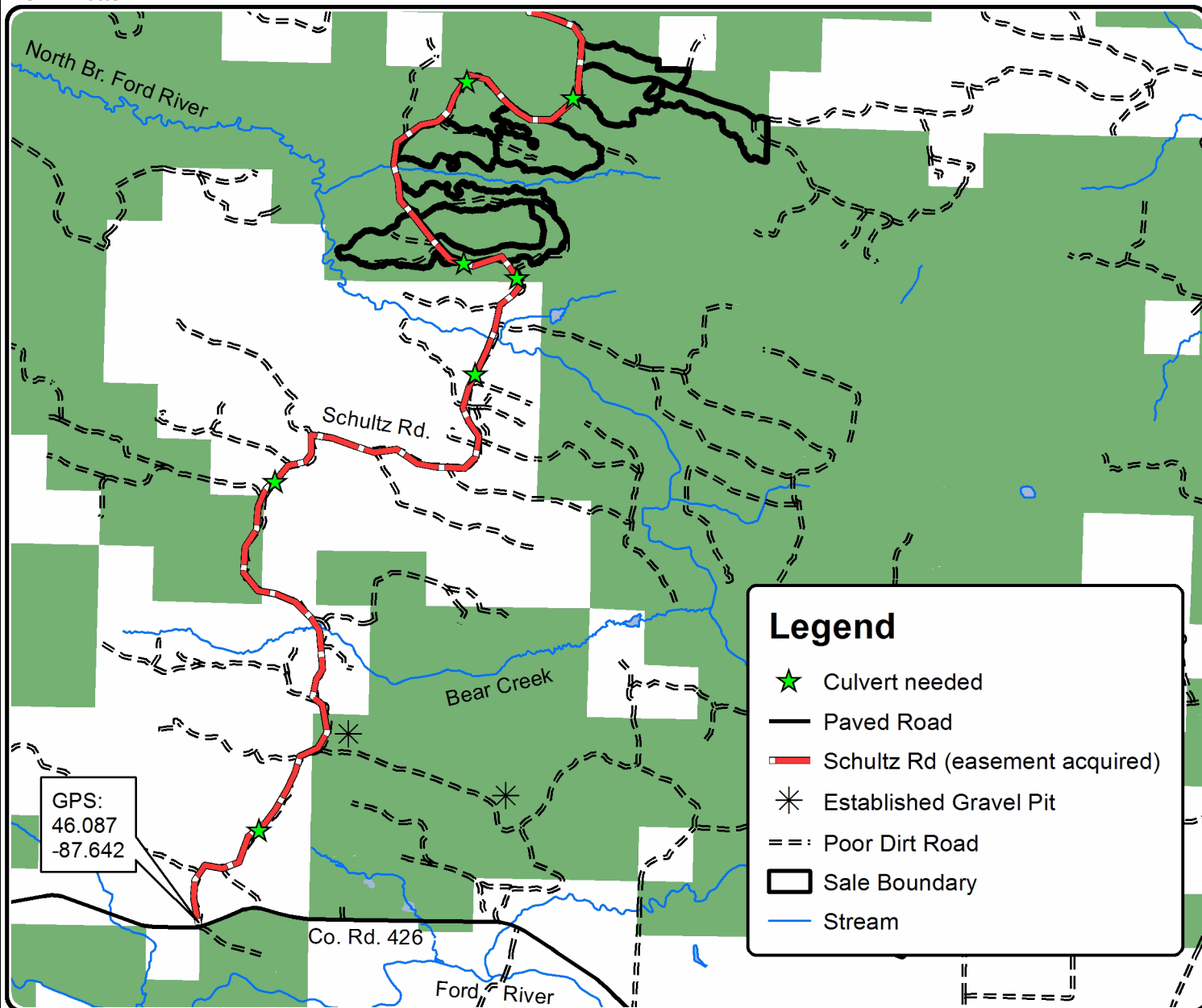
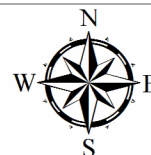
PU	Acres	PU	Acres
1	30.7	6	35.6
2	36.6	7	60.1
3	41.5	8	31.2
4	58.8	9	45.6
5	41.9		

The Schultz Project

Compartment 26

382.0 Acres

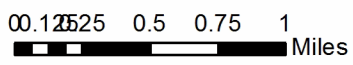
For GeoReferenced
PDF map, contact
churcha1@michigan.gov



GPS:
46.087
-87.642

Legend

- ★ Culvert needed
- Paved Road
- Schultz Rd (easement acquired)
- * Established Gravel Pit
- - - Poor Dirt Road
- ▭ Sale Boundary
- Stream



The Schultz Project (12-004-21)

T43N, R27W, SEC. 1; T43N, R27W, SEC. 11; T43N, R27W, SEC. 12; Dickinson

In response to the notice of sale to be held 9:00 a.m. (local time) on June 8, 2022, I am hereby submitting my sealed bid (firm offer) for the following forest products to be cut. Bids for individual species must be at or above the advertised price. All non-responsive bid forms may be rejected.

<u>PRODUCTS & SPECIES</u>	<u>ESTIMATED VOLUME*</u>	<u>ADVERTISED PRICE</u>	<u>BID PRICE/UNIT</u>
Sawtimber			
Basswood	105.3 MBF	\$ 38.00/MBF	\$ _____
Paper Birch	39.1 MBF	\$ 79.00/MBF	\$ _____
Sugar Maple	175.9 MBF	\$ 160.00/MBF	\$ _____
White Ash	40.0 MBF	\$ 33.00/MBF	\$ _____
Pulpwood			
Balsam Fir	672 Cords	\$ 4.80/Cord	\$ _____
Basswood	136 Cords	\$ 4.15/Cord	\$ _____
Mixed Hardwood	2,350 Cords	\$ 12.35/Cord	\$ _____
Mixed Spruce	405 Cords	\$ 6.05/Cord	\$ _____
Quaking Aspen	6,233 Cords	\$ 19.25/Cord	\$ _____
Tamarack	9 Cords	\$ 3.50/Cord	\$ _____

*The volumes are statistically estimated within plus (+) or minus (-) 3.05 percent at 95% confidence level. These estimated volumes are final and not subject to adjustment. Prospective bidders are urged to examine this timber and to make their own estimates of quantity and quality.

I understand that any or all bids may be rejected. All bids must be signed and all bid items must be bid or the bid form may be rejected. I also understand that consideration and awarding a contract will be based upon my past performance and ability to complete the contract based upon equipment and staffing subject to my control.

FEDERAL ID: _____ - _____ or SOCIAL SECURITY NUMBER: _____ - _____ - _____

Company or individual bidding: _____

Company representative's name: _____

Address: _____

City: _____ State: _____ Zip: _____

IF AVAILABLE, PLEASE PLACE THE PERSONALIZED LABEL FROM YOUR PROSPECTUS IN THE ABOVE BOX.

Individual or company representative's signature: _____ Date: _____

Phone number : _____ Email (optional): _____

THE WINNING BIDDER MUST COMPLETE THE VERIFICATION OF WORKER'S DISABILITY COMPENSATION ACT COMPLIANCE (ON REVERSE SIDE IF DOUBLE SIDED) WITHIN 21 DAYS OF SALE AWARD DATE



FOR DEPARTMENT USE ONLY	
Sale Number (XX - XXX - XX - XX)	
Forest Management Unit:	

TIMBER SALE VERIFICATION OF WORKER'S DISABILITY COMPENSATION ACT COMPLIANCE

As required by Act 317, P.A. 1969 (Worker's Compensation) and
Part 5 of Act 451 of 1994, as amended.

VERIFICATION OF WORKER'S DISABILITY COMPENSATION ACT COMPLIANCE

- This verification must be completed and submitted within 21 days of contract award and prior to the issuance of the timber sale contract.
- In addition, if boxes 2B or 2C are checked, then Notice of Exclusion or Certificate of Insurance must be submitted within twenty-one (21) days of the contract award and prior to the issuance of the timber sale contract.
- All information must be typed or printed except for written signatures.

Please Check Appropriate Categories:

1. My business is organized as (you **must** check one of the boxes below):
 - A. Sole Proprietorship (individual)
 - B. Partnership
 - C. Corporation
2. You **must** check one of the boxes below:
 - A. I certify my business is a sole proprietorship and it has no employees but the sole proprietor. I am not subject to the Worker's Compensation Laws.
 - B. I certify my business has satisfied its obligation to the Worker's Compensation Act through the use of an approved Notice of Exclusion (BWC-337, Rev. 5/96). I will provide a copy of the Notice of Exclusion within 21 days of the contract award. (For questions or a copy of the BWC-337, please call the Worker's Compensation Bureau at 517-322-1195).
 - C. I certify my business has a Worker's Compensation Policy. I will provide an original Certificate of Insurance within twenty-one (21) days of the contract award.
3. If you have checked item 2(A) or 2(B), you **must** indicate the number of **both** full-time and part-time employees, other than yourself, including family members and active partners (if none, you must enter "0").

_____ Full-time Employees

_____ Part-time Employees

Name of Business		Federal ID (or) Social Security No.	
Address		Telephone ()	
City	State	ZIP	

I hereby certify that the above information is true and correct. I agree to notify the Michigan DNR of any changes that occur in factors affecting my coverage during any of my present and future operations.

Signature of Owner or Authorized Representative

Title

Date

Please complete the "SEALED BID" information on the next page

Conifer Corner (12-001-21)

T44N, R27W, SEC. 1; T44N, R27W, SEC. 11; T44N, R27W, SEC. 12; T44N, R27W,

In response to the notice of sale to be held 9:00 a.m. (local time) on June 8, 2022, I am hereby submitting my sealed bid (firm offer) for the following forest products to be cut. Bids for individual species must be at or above the advertised price. All non-responsive bid forms may be rejected.

<u>PRODUCTS & SPECIES</u>	<u>ESTIMATED VOLUME*</u>	<u>ADVERTISED PRICE</u>	<u>BID PRICE/UNIT</u>
Sawtimber			
Basswood	15.5 MBF	\$ 39.00/MBF	\$ _____
Red Pine	346.8 MBF	\$ 81.00/MBF	\$ _____
Pulpwood			
Balsam Fir	65 Cords	\$ 4.95/Cord	\$ _____
Basswood	19 Cords	\$ 4.30/Cord	\$ _____
Jack Pine	1,864 Cords	\$ 24.35/Cord	\$ _____
Mixed Hardwood	196 Cords	\$ 12.75/Cord	\$ _____
Mixed Spruce	552 Cords	\$ 6.30/Cord	\$ _____
Quaking Aspen	2,252 Cords	\$ 19.90/Cord	\$ _____
Red Pine	113 Cords	\$ 31.40/Cord	\$ _____
Tamarack	93 Cords	\$ 3.60/Cord	\$ _____
White Pine	16 Cords	\$ 13.05/Cord	\$ _____

*The volumes are statistically estimated within plus (+) or minus (-) 3.79 percent at 95% confidence level. These estimated volumes are final and not subject to adjustment. Prospective bidders are urged to examine this timber and to make their own estimates of quantity and quality.

I understand that any or all bids may be rejected. All bids must be signed and all bid items must be bid or the bid form may be rejected. I also understand that consideration and awarding a contract will be based upon my past performance and ability to complete the contract based upon equipment and staffing subject to my control .

FEDERAL ID: _____ or SOCIAL SECURITY NUMBER: _____

Company or individual bidding: _____

Company representative's name: _____

Address: _____

City: _____ State: _____ Zip: _____

IF AVAILABLE, PLEASE PLACE THE PERSONALIZED LABEL FROM YOUR PROSPECTUS IN THE ABOVE BOX.

Individual or company representative's signature: _____ Date: _____

Phone number : _____ Email (optional): _____

THE WINNING BIDDER MUST COMPLETE THE VERIFICATION OF WORKER'S DISABILITY COMPENSATION ACT COMPLIANCE (ON REVERSE SIDE IF DOUBLE SIDED) WITHIN 21 DAYS OF SALE AWARD DATE



FOR DEPARTMENT USE ONLY	
Sale Number (XX - XXX - XX - XX)	
Forest Management Unit:	

TIMBER SALE VERIFICATION OF WORKER'S DISABILITY COMPENSATION ACT COMPLIANCE

As required by Act 317, P.A. 1969 (Worker's Compensation) and
Part 5 of Act 451 of 1994, as amended.

VERIFICATION OF WORKER'S DISABILITY COMPENSATION ACT COMPLIANCE

- This verification must be completed and submitted within 21 days of contract award and prior to the issuance of the timber sale contract.
- In addition, if boxes 2B or 2C are checked, then Notice of Exclusion or Certificate of Insurance must be submitted within twenty-one (21) days of the contract award and prior to the issuance of the timber sale contract.
- All information must be typed or printed except for written signatures.

Please Check Appropriate Categories:

1. My business is organized as (you **must** check one of the boxes below):
 - A. Sole Proprietorship (individual)
 - B. Partnership
 - C. Corporation
2. You **must** check one of the boxes below:
 - A. I certify my business is a sole proprietorship and it has no employees but the sole proprietor. I am not subject to the Worker's Compensation Laws.
 - B. I certify my business has satisfied its obligation to the Worker's Compensation Act through the use of an approved Notice of Exclusion (BWC-337, Rev. 5/96). I will provide a copy of the Notice of Exclusion within 21 days of the contract award. (For questions or a copy of the BWC-337, please call the Worker's Compensation Bureau at 517-322-1195).
 - C. I certify my business has a Worker's Compensation Policy. I will provide an original Certificate of Insurance within twenty-one (21) days of the contract award.
3. If you have checked item 2(A) or 2(B), you **must** indicate the number of **both** full-time and part-time employees, other than yourself, including family members and active partners (if none, you must enter "0").

_____ Full-time Employees

_____ Part-time Employees

Name of Business		Federal ID (or) Social Security No.	
Address		Telephone ()	
City	State	ZIP	

I hereby certify that the above information is true and correct. I agree to notify the Michigan DNR of any changes that occur in factors affecting my coverage during any of my present and future operations.

Signature of Owner or Authorized Representative

Title

Date

Please complete the "SEALED BID" information on the next page