



**DEPARTMENT OF NATURAL RESOURCES  
STATE OF MICHIGAN  
TIMBER SALE PROSPECTUS #7077**

SCHEDULED SALE DATE AND TIME: **9:00 a.m. (local time) on July 14, 2022.**

LOCATION: **BARAGA MGMT UNIT, 427 US 41 NORTH, BARAGA, MI 49908.**

PROSPECTUS NOTE: Contact Dan McNamee 906-235-5830 for questions regarding timber sales Iron Sea Bass 12-001-22, Gnome Homes Hardwood 12-005-22, Trax Kik Ash 11-006-22 or Moose Cut 12-057-22.

The bidder is advised to inspect the sale area and review the location, estimated volumes, operating costs and contract terms of proposed sales. Please be aware that some landowners may request 60 days or more notice for access across their land.

Notice is hereby given that bids will be received by the Unit Manager, CRYSTAL FALLS MANAGEMENT UNIT, for certain timber on the following described lands:

Iron Sea Bass (12-001-22) / T44N, R28W, SEC. 4 , SWNW,SW,S1/2SE.

T44N, R28W, SEC. 5 , S1/2NE,N1/2SE.

T44N, R28W, SEC. 9 , NENW,N1/2NE.

Dickinson County, Advertised Price \$35,480.75, 204.9 Acres, Hardwood, Paper Birch.

SALE NOTE: All units of volume listed for this sale were estimated using the Inventory Manager computer program and the new Michigan taper model.

See sale spec 5.2.3.3 and 5.2.3.4 for information on bark slip and oak wilt.

See sale spec 4.3.2 for information on decking restrictions.

A recreation site such as a trail, pathway, or campground is within the sale area or the vicinity. Certain restrictions/specifications may be applicable including time restrictions.

Gnome Homes Hardwood (12-005-22) / T44N, R28W, SEC. 26, NWNW,SW,W1/2SE.

T44N, R28W, SEC. 27, NW,NENE,S1/2NE,NESW,NWSE.

T44N, R28W, SEC. 34, NENE.

T44N, R28W, SEC. 35, NW.

Dickinson County, Advertised Price \$41,875.85, 189.2 Acres, Hardwood, Aspen.

SALE NOTE: All units of volume listed for this sale were estimated using the Inventory Manager computer program and the new Michigan taper model.

See sale spec 4.1.12 for road restrictions.

Trax Kik Ash (12-006-22) / T42N, R28W, SEC. 2 , W1/2NW,NWSW.

T42N, R28W, SEC. 3 , S1/2NW,E1/2NE,N1/2SW,SESW,NESE.

T42N, R28W, SEC. 4 , SENE,NESE.

Dickinson County, Advertised Price \$77,450.20, 263.4 Acres, Hardwood, Aspen.

SALE NOTE: All units of volume listed for this sale were estimated using the Inventory Manager computer program and the new Michigan taper model.

See sale spec 5.2.43 for information on crossing and skidding restrictions.

Moose Cut (12-057-22) / T46N, R31W, SEC. 36, S1/2SW,W1/2SE.

Iron County, Advertised Price \$11,151.05, 26.7 Acres, Aspen, Hardwood.

SALE NOTE: This timber sale is accessed entirely through private land. Perspective purchasers must obtain access prior to bidding.

Access may be through private land.

## BID INSTRUCTIONS (VER. 07/02/2018):

### 1. Scheduled Bid Location, Date, and Time (2/11)

Bids must be received by the Unit Manager, BARAGA OFFICE, 427 US 41 North, Baraga, MI 49908, no later than 9:00 a.m. (local time) on July 14, 2022. For further information concerning this sale, contact Dan McNamee at 906-875-6622.

### 2. Bidder's Qualifications (5/16)

Purchaser shall obtain workers compensation insurance to cover claims under Michigan's Worker's Disability Compensation Act of 1969 or similar employee benefit act of any other state applicable to an employee. If all or part of a timber sale was prepared by a private contractor, the contractor and that contractor's company are not permitted to bid on the timber sale contract. Bids will not be accepted from individuals or companies appearing on the DNR/FRD No-Bid List. This list contains the names of purchasers who previously failed to execute a contract within 21-days or who have a history of poor performance.

### 3. Preparation of Sealed Bids (5/16)

Bid Forms may be completed online thru Michigan DNR Timber Sale Online Bidding (OLB) at [www.michigan.gov/timberbidding](http://www.michigan.gov/timberbidding) or by completing the hardcopy Bid Form found in the Timber Sale Prospectus. Hardcopy Bid Forms shall be manually signed in ink. Registration in OLB is considered your 'signature' for all bids submitted thru that system. Bid prices must be entered for each species and product in the Bid Price column for all material subject to bidding and all fill-in blanks must be completed. If erasures or other changes appear on the hardcopy Bid Form, each erasure or change must be initialed by the person signing the bid.

### 4. Submission of Sealed Bids (5/16)

Bid forms may be obtained from the Unit Manager or thru OLB. Bids may be submitted hardcopy or thru OLB. All hardcopy bids must be submitted on the bid form and in an envelope clearly identified as described in this section. NOTE: Only one bid form per bid envelope. Sealed bids must be submitted to the Unit office designated in the prospectus and must be submitted at or prior to the time established in the prospectus. The envelope should show on the outside (a) the sale name or number and (b) the date and time of bid opening, as shown in the prospectus. Bids received after the time specified in the sale prospectus are late bids and will be rejected.

It is possible for a bidder to submit multiple bids on a single sale. For example, a bid may be submitted hardcopy and a bid may be submitted thru OLB. Or, two bidders from the same company could both submit bids on the same sale. If this were to happen, the State would accept all bids received and award the contract accordingly. All bidding and contractual requirements would apply to all bids received.

### 5. Public Opening of Sealed Bids (7/16)

If conditions permit, the sealed bids will be publicly opened and posted at the time and place set in the prospectus.

If a bidder, present at a bid opening, has submitted bids on more than one sale, that bidder may withdraw their unopened bid envelopes or announce the withdrawal of their online bid after being declared the successful bidder on one sale.

### 6. Award of Contract (1/11)

Award of the contract will be made to the Bidder whose bid, conforming to the prospectus, is most advantageous to the State of Michigan on the basis of total value at rates bid for the estimated quantities. The State reserves the right to reject any bid or waive any minor irregularity in bids received. A written award mailed (or otherwise furnished) to the successful Bidder shall be deemed to result in a binding contract without further action by either party.

### 7. Down Payment (1/11)

The Bidder to whom award is made must make a down payment within 21 days of the sale award. The amount of the down payment will be calculated as shown in the Bond and Payment Schedule of this prospectus. Only cash may be used to meet this requirement.

### 8. Performance Security (1/11)

As guarantee of faithful performance, a cash bond, certificate of deposit, surety bond or irrevocable letter of credit (LOC) is required within 21 days of the sale award. The amount of the performance security is shown in the Bond and

Payment Schedule of this prospectus. If an LOC or surety is used, the coverage must extend for at least 6 months beyond the contract expiration.

#### 9. Timber Sale Contract (7/18)

Additional conditions and requirements common to all timber sales are listed on the timber sale contract (R4031) and are available on line at [www.michigan.gov/timber](http://www.michigan.gov/timber). Contact the Unit Manager for additional information or a sample contract. Within 21 days of the date of the award letter, the bidder must sign the contract and provide the required down payment, performance security, and verification of worker's disability compensation. The down payment and performance security shall be in accordance with the provisions of the timber sale contract, in the sums stated in this prospectus. If these actions are not taken, then the Bidder, the Bidder's corporation, and the corporation's principals may not be permitted to bid on State timber sales for a period of 3 months after the first offense, 6 months after the second offense, and 1 year after the third offense. An offense will only be counted against the Bidder for 5 years. In addition, the Bidder certifies that if awarded this contract, the Bidder will complete the timber sale contract in accordance with its terms and any modifications thereof including requirements to purchase, cut, and remove the included timber by the expiration date.

Payment Unit values in the State Forest Timber Sale Contract are calculated based on the advertised value of the Payment Unit as a percentage of the total advertised value of the contract. The advertised value of each Payment Unit is given in the Description of Timber by Payment Unit table on the Timber Sale Information page. For example, if the value of Payment Unit 1 is advertised as \$1,500 and the total Timber Sale value is advertised as \$10,000, the contract price for Payment Unit 1 will be 15% of the total bid price ( $\$1,500/\$10,000 * 100$ ).

#### 10. Disclaimer of Estimates and Bidder's Warranty of Inspection (7/16)

Before submitting this bid, the Bidder is advised and cautioned to inspect the sale area, review the requirements of the sale contract, and take other steps as may be reasonably necessary to ascertain the location, estimated volumes, construction estimates, and operating costs of the proposed sale. Failure to do so will not relieve the Bidder from responsibility for completing the contract.

The Bidder warrants that this bid is submitted solely on the basis of the Bidder's examination and inspection of the quality and quantity of the timber offered for sale and the Bidder's opinion of the value thereof and the costs of recovery. No reliance should be placed on the State of Michigan's estimates of timber quality, quantity or costs of recovery. Bidder further acknowledges that the State of Michigan: (i) expressly disclaims any warranty of fitness of timber for any purpose; (ii) offers this timber as is without any warranty of quality (merchantability) or quantity and (iii) expressly disclaims any warranty as to the quantity or quality of timber sold.

#### 11. Certification and Chain-of-Custody (10/14)

Unless otherwise indicated in the contract under section 7 – Other Conditions of the Sale Specific Conditions & Requirements, the area encompassed by this timber sale is certified to the standards of the Forest Stewardship Council (FSC) - Certificate #SCS-FM/COC-00090N and the Sustainable Forestry Initiative (SFI) - Certificate #NSF-SFIS-5Y031-SF5. Forest products from this sale may be delivered to the mill as "FSC 100% and / or SFI certified" as long as the contractor hauling the forest products is chain-of-custody (COC) certified or covered under a COC certificate from the destination mill. The purchaser is responsible for maintaining COC after leaving the sale area.

#### 12. Good Neighbor Authority (GNA) Requirements (7/16)

If the name of this timber sales contains the acronym GNA, it is authorized by the Good Neighbor Authority (GNA) and covered by various agreements between the U.S. Forest Service and the State. The timber sale occurs on federal land and the following conditions apply:

GNA contracts on US Forest Service land will not be awarded to purchasers on the Federal list of excluded parties. The System for Award Management (SAM) will be checked for active excluded parties prior to award of contract. In addition, the Bidder to whom award is made must complete an Assurance Regarding Felony Conviction or Tax Delinquent Status for Corporate Applicants (AD-3031).

#### 13. Good Neighbor Authority (GNA) Requirements, con't (9/16)

Bidder certifies, by signing this bid form, that to the best of Bidder's knowledge that the following representations are accurate and complete.

- a. That the Bidder and its principals are not presently debarred, suspended, proposed for debarment, declared ineligible, or voluntary excluded from timber sales (covered transactions) by any Federal department or agency.
- b. That the Bidder and its principals have not within a 3-year period preceding this bid been convicted of or had a civil judgment rendered against them for commission of fraud or a criminal offense in connection with obtaining , attempting to obtain, or performing a public (Federal, State, or local) transaction or contract under a public transaction; violation of Federal or State antitrust statutes or commission of embezzlement, theft, forgery, bribery, falsification or destruction of records, making false statements, or receiving stolen property.
- c. That the Bidder and its principals are not presently indicted for or otherwise criminally or civilly charged by a governmental entity (Federal, State, or local) with commission of any of the offenses enumerated in paragraph b of this certification.
- d. That the Bidder and its principals have not within a 3-year period preceding this bid had one or more public transactions (Federal, State, or local) terminated for breach or default of a timber or forest product contract.

Bidders that cannot certify this requirement, in whole or in part, shall submit an explanation with their bid.

DAN EICHINGER  
Director



# TIMBER SALE INFORMATION

Iron Sea Bass (12-001-22)

T44N, R28W, SEC. 4; T44N, R28W, SEC. 5; T44N, R28W, SEC. 9.

Dickinson County (Advertised Price \$35,480.75)

SALE NOTE: All units of volume listed for this sale were estimated using the Inventory Manager computer program and the new Michigan taper model.

See sale spec 5.2.3.3 and 5.2.3.4 for information on bark slip and oak wilt.

See sale spec 4.3.2 for information on decking restrictions.

A recreation site such as a trail, pathway, or campground is within the sale area or the vicinity. Certain restrictions/specifications may be applicable including time restrictions.

A timber sale contract for this lump sum, sealed bid timber sale will be awarded to the responsible bidder offering the highest sealed bid price. All units of volume listed below were estimated using the Inventory Manager computer program and the new Michigan taper model. Bids must be at or above the following advertised price for each product and species:

<u>PRODUCTS &amp; SPECIES</u>	<u>ESTIMATED UNITS*</u>	<u>ADVERTISED PRICE</u>
<b>Sawtimber</b>		
Basswood	620.9 MBF	\$ 36.00 / MBF
Paper Birch	23.4 MBF	\$ 82.00 / MBF
Sugar Maple	19.5 MBF	\$ 167.00 / MBF
White Ash	29.2 MBF	\$ 37.00 / MBF
<b>Pulpwood</b>		
Basswood	625 Cords	\$ 2.95 / Cord
Mixed Hardwood	402 Cords	\$ 10.55 / Cord
Quaking Aspen	39 Cords	\$ 20.20 / Cord

\* The total volume is statistically estimated within plus (+) or minus (-) 8.05 percent. There are an estimated 891 cords on this timber sale, plus or minus 72 cords at the 95% confidence level. The estimated units are final and not subject to adjustment. Prospective bidders are urged to examine this timber and to make their own estimates of quantity and quality.

**BOND AND PAYMENT SCHEDULE:**

1. A bond in the amount of \$2,838.00 to insure faithful performance of the conditions of the contract will be deposited by the successful bidder within 21 days of the sale award.
2. Cutting in any sale or unit without the required advance payment would be considered a trespass.
3. Total payment must be paid in advance or according to the following schedule :
  - (a) Ten percent (10%) of the sale value must be paid within 21 days of the sale award.
  - (b) The 10% down payment will be credited towards the first unit cut.
  - (c) Payment for each of the following units must be made before cutting begins in that unit:

PAYMENT UNIT NUMBER	PERCENT OF TOTAL SALE VALUE
01	20.2%
02	22.2%
03	20.5%
04	20.0%
05	17.1%

4. If no cutting takes place, the 10% down payment will not be refunded.
5. Operations on the contract issued will terminate on 06/30/2025.

**SALE STATISTICS**

Volumes were calculated in cubic feet using the Michigan taper model. Cubic foot volume includes all wood inside bark for the product indicated. For display purposes, cubic feet were converted to cords and MBF using a simple conversion factor, e.g. 79 cubic feet per cord and 185 cubic feet per MBF. The cubic foot volumes are precise; the cords and MBF volumes are not. Cubic foot volume cannot be directly converted to cords or boards with precision.

## SALE VOLUMES

The total estimated sale volume may not equal the sum of the species/products due to the nature of statistical calculations associated with double sampling methodology.

VOLUME			STATISTICAL RANGE IN CORDS	
TOTAL CUBIC FEET	TOTAL CORDS	PERCENT ERROR	MINIMUM	MAXIMUM
70,423	891	8.05%	820	963

## VDU VOLUMES

A VDU is a Volume Determination Unit. Volumes and their associated statistics are calculated at the VDU level and summarized to the sale level. There is often a one to one relationship between a VDU and a Payment Unit, but not always, depending on the cruise design. Refer to the VDU TO PAYMENT UNIT table.

	VOLUME			RANGE IN CORDS	
VDU	TOTAL CUBIC FEET	TOTAL CORDS	PERCENT ERROR	MINIMUM	MAXIMUM
6	212,246	2,687	8.05%	2,470	2,903
<b>TOTAL:</b>	<b>212,246</b>	<b>2,687</b>		<b>2,470</b>	<b>2,903</b>

## VDU TO PAYMENT UNIT

When a VDU is associated with more than one Payment Unit (PU), the VDU volumes are assigned to the PU based on acres of the VDU within the PU.

VDU	VDU ACRES	PU	PU ACRES
6	204.9	1	41.4
		2	45.5
		3	42.0
		4	41.0
		5	35.0
<b>TOTAL:</b>	<b>204.9</b>		<b>204.9</b>



**DESCRIPTION OF TIMBER BY PAYMENT UNIT (PU)**

PU	MARKET GROUP	PRODUCT	QUANTITY	UNIT	ACRES	ADVERTISE PRICE
1	Basswood	Sawtimber	125.5	MBF	41.4	\$7,160.85
	Paper Birch		4.7	MBF		
	Sugar Maple		3.9	MBF		
	White Ash		5.9	MBF		
	Basswood		Pulpwood	126		
	Mixed Hardwood	81		Cords		
	<i>Paper Birch</i>	14		<i>Cords</i>		
	<i>Red Maple</i>	3		<i>Cords</i>		
	<i>Sugar Maple</i>	52		<i>Cords</i>		
	<i>White Ash</i>	12		<i>Cords</i>		
	Quaking Aspen	8		Cords		
	2	Basswood	Sawtimber	137.8		
Paper Birch		5.2		MBF		
Sugar Maple		4.4		MBF		
White Ash		6.5		MBF		
Basswood		Pulpwood		139	Cords	
Mixed Hardwood			90	Cords		
<i>Paper Birch</i>			16	<i>Cords</i>		
<i>Red Maple</i>			3	<i>Cords</i>		
<i>Sugar Maple</i>			57	<i>Cords</i>		
<i>White Ash</i>			14	<i>Cords</i>		
Quaking Aspen			8	Cords		
3		Basswood	Sawtimber	127.3	MBF	42.0
	Paper Birch	4.8		MBF		
	Sugar Maple	4.0		MBF		
	White Ash	6.0		MBF		
	Basswood	Pulpwood		128	Cords	
	Mixed Hardwood		82	Cords		
	<i>Paper Birch</i>		14	<i>Cords</i>		
	<i>Red Maple</i>		3	<i>Cords</i>		
	<i>Sugar Maple</i>		53	<i>Cords</i>		
	<i>White Ash</i>		12	<i>Cords</i>		
	Quaking Aspen		8	Cords		
	4	Basswood	Sawtimber	124.2	MBF	
Paper Birch		4.7		MBF		
Sugar Maple		3.9		MBF		
White Ash		5.8		MBF		
Basswood		Pulpwood		125	Cords	
Mixed Hardwood			81	Cords		
<i>Paper Birch</i>			14	<i>Cords</i>		
<i>Red Maple</i>			3	<i>Cords</i>		
<i>Sugar Maple</i>			52	<i>Cords</i>		
<i>White Ash</i>			12	<i>Cords</i>		
Quaking Aspen			8	Cords		
5		Basswood	Sawtimber	106.1	MBF	35.0
	Paper Birch	4.0		MBF		
	Sugar Maple	3.3		MBF		
	White Ash	5.0		MBF		
	Basswood	Pulpwood		107	Cords	
	Mixed Hardwood		68	Cords		
	<i>Paper Birch</i>		12	<i>Cords</i>		
	<i>Red Maple</i>		2	<i>Cords</i>		
	<i>Sugar Maple</i>		44	<i>Cords</i>		
	<i>White Ash</i>		10	<i>Cords</i>		
	Quaking Aspen		7	Cords		

TOTAL:	693.0	MBF
--------	-------	-----

TOTAL:	1,066	Cords
--------	-------	-------

# Sale Specific Conditions & Requirements

**Sale Name: Iron Sea Bass**

**Sale Number: 12-001-22 Seq#: 1**

## 1 - Sale Area

### 1.2 - Boundaries

#### 1.2.1 - Painted boundaries (9/19)

The sale boundary and Payment Unit boundaries are marked and identified by blue, red, and yellow paint. Exterior sale boundary lines against private property are marked with blue paint. Exterior sale boundary lines against state are marked with red paint. Interior Payment Unit boundaries are marked with yellow paint. The painted boundary line trees are not Included Timber and are to be protected unless marked with orange paint.

## 2 - Timber Specifications

### 2.1 - Included Timber

#### 2.1.3 - Cut tree marked unit(s) (12/08)

Within Payment Unit(s) 1-5, all trees are designated for cutting when marked with orange paint above and below stump height, regardless of merchantability.

### 2.2 - Utilization

#### 2.2.5 - Limbed tree skidding (1/09)

The skidding of whole trees or tree segments with limbs attached is prohibited unless approved by the Unit Manager or his/her representative.

## 4 - Transportation

### 4.1 - Construction

#### 4.1.4 - Timber removed for construction (12/09)

Trees cut or damaged in the process of pre-approved road, landing or skid trail construction will be decked in an area separate from other Designated Timber and not removed until measured by the sale administrator. Payment will be made at the specified Purchase Unit Price.

#### 4.1.12 - No new roads (1/12)

No new roads will be permitted in any Payment Unit. All operations are limited to existing roads. Skid trails only will be allowed.

### 4.3 - Public Right-of-Way

#### 4.3.2 - County R-O-W (12/06)

The county must be contacted prior to decking along the county road R-O-W. This applies to Payment Units 1 and 3-5 and Schwartz Creek Dam Road. The Dickinson County Road Commission may require a permit.

## 5 - Operations

### 5.2 - Conduct of Operations

#### 5.2.3 - Operating Restrictions

##### 5.2.3.3 - Bark slippage restriction (3/09)

Within Payment Unit(s) 1-5, cutting and skidding are not permitted during the period of April 15 to July 15. This restriction is because of bark slippage and to prevent oak wilt infection.

##### 5.2.3.4 - Oak wilt restriction, no exceptions (1/18)

Within Payment Unit(s) 1-5, cutting, skidding, hauling within the sale and brushing of access roads to the sale are not permitted during the period of April 15 to July 15. No exceptions will be granted. This is necessary to reduce the spread of oak wilt.

#### 5.2.32 - Decking/landing restoration (9/13)

All decking and landing areas must have the surface area restored to a condition equal to or better than before. This is to ensure the proper regeneration of the stand. Wood debris, chips, and "cookies" from trimmings must be removed or scattered away from landing and loading areas and off county roads and may not be windrowed on the edge.

#### 5.2.38 - No decking against live trees (2/04)

Cut products may not be decked against unmarked or designated leave trees.

#### 5.2.41 - Snowmobile trail protection (9/11)

The McGregor Creek/Schwartz Creek Roads to the south is a snowmobile trail and is shown on the Timber Sale Map. Do not cut or damage posts with orange trail markers or traffic control signs. It is recommended, but not required, that the trail not be used for hauling during the snowmobile season (generally December 1-March 31). However, if the trail road is to be used for hauling during the snowmobile season, then a snow-covered base (minimum 4") must be left on the entire trail and well posted to advise of logging activity. If the trail is used, it must be maintained and restored to a condition equal to or better than before the sale. The road maintenance/restoration must be done prior to December 1.

### 5.4 - Soil Protection

#### 5.4.1 - Rutting restriction, general (7/16)

Operations are to cease immediately if equipment and weather conditions result in rutting of roads and/or skid trails which is 12 inches or greater in depth and 50 feet in length. The Unit Manager or his/her representative may restrict hauling and/or skidding if ruts exceed the specified depth. With the Unit Manager or his/her representative's approval, the Purchaser may return to the area when the risk of rutting has decreased.

## 6 - Safety and Fire Prevention

### 6.2 - Signing

#### 6.2.1 - Road posting (10/20)

The Purchaser is responsible for posting and maintaining caution signs on Schwartz Creek Road prior to beginning operations. The road must be posted at appropriate distances from the Sale Area to warn of logging activity and truck traffic. Signs must be removed when harvest operations are suspended or completed. The Purchaser will provide these signs.



# TIMBER SALE MAP

This information provided by authority of Part 525, 1994 PA 451, as amended.

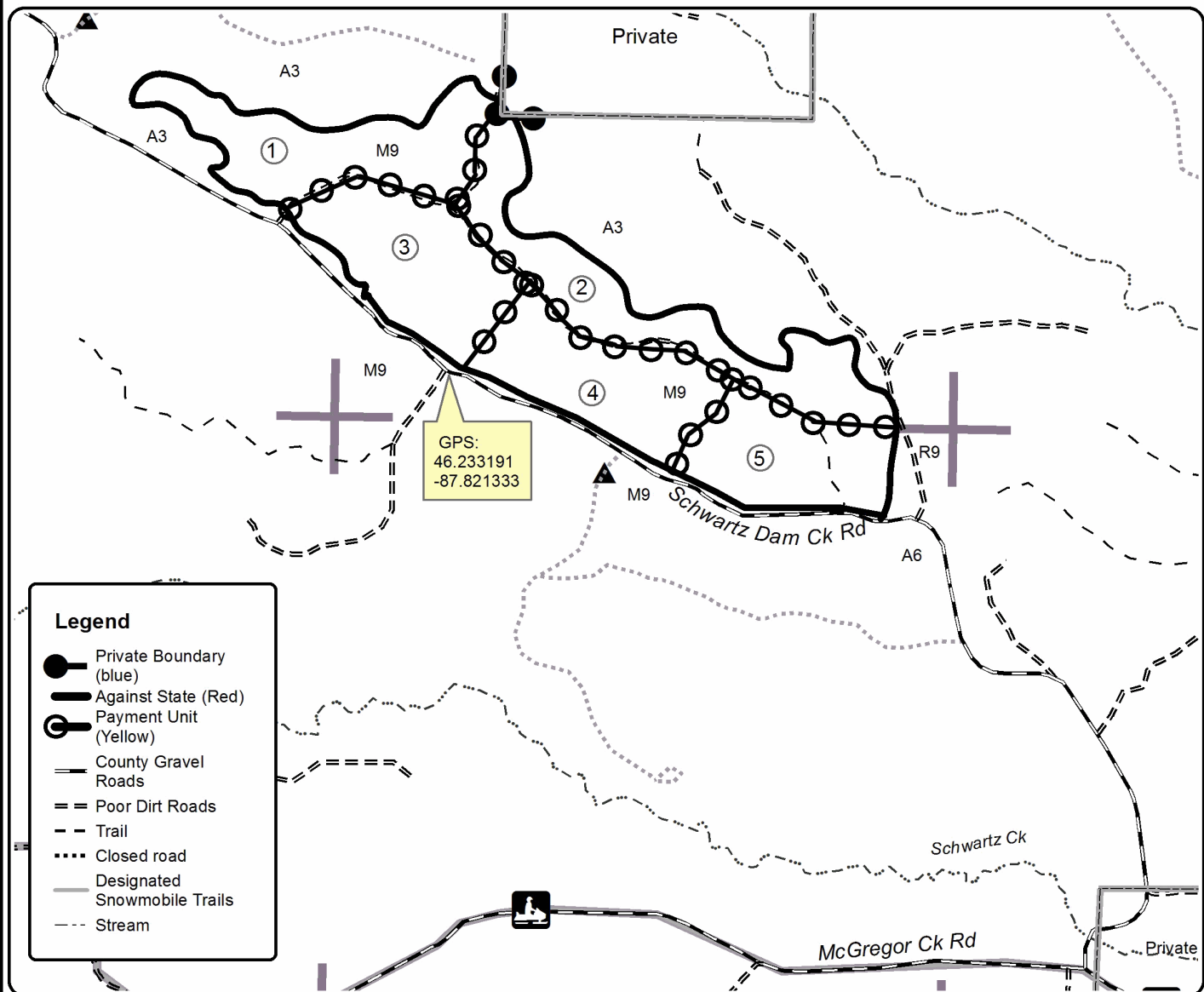
Sale Number	Year
001	2022

Forest Management Unit	County	Mapped By	Date	Page	of
Crystal Falls Management Unit	Dickinson Co.	Debbie Goupell	11/15/2021	1	1
Township	Range	Section(s) and Subdivision(s)	Scale		
44N	28W	Sec 4: SW1/4, S1/2SE, SWNW Sec 5: S1/2NE, N1/2SE Sec 9: N1/2NE, NENW	1:15,840		

Cover Type				Density	
A = Aspen	H = Hemlock	N = Marsh	U = Upland Brush	0 = Non Stocked	5 = Pole Timber Medium
B = Paper Birch	J = Jack Pine	O = Oak	UM = Upland Mixed	1 = Seedling Sapling Poor	6 = Pole Timber Well
C = Cedar	L = Lowland Brush	P = Lowland Poplar	V = Bog or Marsh	2 = Seedling Sapling Medium	7 = Saw Timber Poor
D = Tread Bog	LM = Lowland Mixed	Q = Mixed Swamp Conifer	W = White Pine	3 = Seedling Sapling Well	8 = Saw Timber Medium
E = Swamp Hdwoods	M = Mpl, Bch, Brch	R = Red Pine	X = Non Stocked	4 = Pole Timber Poor	9 = Saw Timber Well
F = Spruce Fir	MC = Mixed Conifer	S = Black Spruce	Z = Water		
G = Grass	MD = Mixed Deciduous	T = Tamarack			

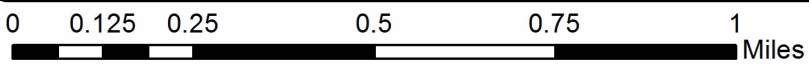
Unit	Acres
1	41.4
2	45.5
3	42.0
4	41.0
5	35.0

## Iron Sea Bass Compartment 16 204.9 Acres



**Legend**

- Private Boundary (blue)
- Against State (Red)
- Payment Unit (Yellow)
- County Gravel Roads
- == Poor Dirt Roads
- - - Trail
- ⋯ Closed road
- Designated Snowmobile Trails
- - - Stream





## TIMBER SALE INFORMATION

### Gnome Homes Hardwood (12-005-22)

T44N, R28W, SEC. 26; T44N, R28W, SEC. 27; T44N, R28W, SEC. 34; T44N, R28W, SEC. 35.  
Dickinson County (Advertised Price \$41,875.85)

SALE NOTE: All units of volume listed for this sale were estimated using the Inventory Manager computer program and the new Michigan taper model.

See sale spec 4.1.12 for road restrictions.

A timber sale contract for this lump sum, sealed bid timber sale will be awarded to the responsible bidder offering the highest sealed bid price. All units of volume listed below were estimated using the Inventory Manager computer program and the new Michigan taper model. Bids must be at or above the following advertised price for each product and species:

<u>PRODUCTS &amp; SPECIES</u>	<u>ESTIMATED UNITS*</u>	<u>ADVERTISED PRICE</u>
Sawtimber		
Basswood	203.3 MBF	\$ 36.00 / MBF
Red Maple	13.4 MBF	\$ 91.00 / MBF
Sugar Maple	73.7 MBF	\$ 167.00 / MBF
White Ash	11.2 MBF	\$ 37.00 / MBF
Pulpwood		
Balsam Fir	99 Cords	\$ 4.35 / Cord
Basswood	223 Cords	\$ 2.95 / Cord
Mixed Hardwood	1,378 Cords	\$ 10.55 / Cord
Mixed Spruce	49 Cords	\$ 5.35 / Cord
Quaking Aspen	234 Cords	\$ 20.20 / Cord

\* The total volume is statistically estimated within plus (+) or minus (-) 4.80 percent. There are an estimated 2,750 cords on this timber sale, plus or minus 132 cords at the 95% confidence level. The estimated units are final and not subject to adjustment. Prospective bidders are urged to examine this timber and to make their own estimates of quantity and quality.

### **BOND AND PAYMENT SCHEDULE:**

1. A bond in the amount of \$3,350.00 to insure faithful performance of the conditions of the contract will be deposited by the successful bidder within 21 days of the sale award.
2. Cutting in any sale or unit without the required advance payment would be considered a trespass.
3. Total payment must be paid in advance or according to the following schedule :
  - (a) Ten percent (10%) of the sale value must be paid within 21 days of the sale award.
  - (b) The 10% down payment will be credited towards the first unit cut.
  - (c) Payment for each of the following units must be made before cutting begins in that unit:

PAYMENT UNIT NUMBER	PERCENT OF TOTAL SALE VALUE
01	13.2%
02	11.2%
03	11.8%
04	10.0%
05	21.8%
06	17.0%
07	15.0%

4. If no cutting takes place, the 10% down payment will not be refunded.
5. Operations on the contract issued will terminate on 06/30/2027.

### **SALE STATISTICS**

Volumes were calculated in cubic feet using the Michigan taper model. Cubic foot volume includes all wood inside bark for the product indicated. For display purposes, cubic feet were converted to cords and MBF using a simple conversion factor, e.g. 79 cubic feet per cord and 185 cubic feet per MBF. The cubic foot volumes are precise; the cords and MBF volumes are not. Cubic foot volume cannot be directly converted to cords or boards with precision.

## SALE VOLUMES

The total estimated sale volume may not equal the sum of the species/products due to the nature of statistical calculations associated with double sampling methodology.

VOLUME			STATISTICAL RANGE IN CORDS	
TOTAL CUBIC FEET	TOTAL CORDS	PERCENT ERROR	MINIMUM	MAXIMUM
217,224	2,750	4.80%	2,618	2,882

## VDU VOLUMES

A VDU is a Volume Determination Unit. Volumes and their associated statistics are calculated at the VDU level and summarized to the sale level. There is often a one to one relationship between a VDU and a Payment Unit, but not always, depending on the cruise design. Refer to the VDU TO PAYMENT UNIT table.

	VOLUME			RANGE IN CORDS	
VDU	TOTAL CUBIC FEET	TOTAL CORDS	PERCENT ERROR	MINIMUM	MAXIMUM
14	12,789	162	17.99%	133	191
17	52,082	659	8.08%	606	713
19	38,091	482	14.42%	413	552
49	114,262	1,446	6.54%	1,352	1,541
<b>TOTAL:</b>	<b>217,224</b>	<b>2,750</b>		<b>2,503</b>	<b>2,996</b>

## VDU TO PAYMENT UNIT

When a VDU is associated with more than one Payment Unit (PU), the VDU volumes are assigned to the PU based on acres of the VDU within the PU.

VDU	VDU ACRES	PU	PU ACRES
14	18.0	4	18.0
17	56.1	2	27.2
		3	28.9
19	15.3	1	15.3
49	99.8	5	40.3
		6	31.6
		7	27.9
<b>TOTAL:</b>	<b>189.2</b>		<b>189.2</b>



**DESCRIPTION OF TIMBER BY PAYMENT UNIT (PU)**

PU	MARKET GROUP	PRODUCT	QUANTITY	UNIT	ACRES	ADVERTISE PRICE
1	Sugar Maple	Sawtimber	0.9	MBF	15.3	\$5,528.20
	Balsam Fir	Pulpwood	70	Cords		
	Mixed Hardwood		263	Cords		
	<i>Paper Birch</i>		6	<i>Cords</i>		
	<i>Red Maple</i>		117	<i>Cords</i>		
	<i>Sugar Maple</i>		140	<i>Cords</i>		
	Mixed Spruce		37	Cords		
	<i>Black Spruce</i>		4	<i>Cords</i>		
	<i>White Spruce</i>		33	<i>Cords</i>		
	Quaking Aspen		104	Cords		
	2	Red Maple	Sawtimber	1.9		
Sugar Maple			8.0	MBF		
Mixed Hardwood		Pulpwood	257	Cords		
<i>Paper Birch</i>		<i>Sawtimber</i>	3.6	<i>MBF</i>		
<i>Ironwood</i>		<i>Pulpwood</i>	10	<i>Cords</i>		
<i>Paper Birch</i>			11	<i>Cords</i>		
<i>Red Maple</i>			54	<i>Cords</i>		
<i>Sugar Maple</i>			175	<i>Cords</i>		
Mixed Spruce			6	Cords		
<i>White Spruce</i>			6	<i>Cords</i>		
Quaking Aspen			21	Cords		
3	Red Maple	Sawtimber	2.1	MBF	28.9	\$4,956.70
	Sugar Maple		8.5	MBF		
	Mixed Hardwood	Pulpwood	272	Cords		
	<i>Paper Birch</i>	<i>Sawtimber</i>	3.8	<i>MBF</i>		
	<i>Ironwood</i>	<i>Pulpwood</i>	10	<i>Cords</i>		
	<i>Paper Birch</i>		11	<i>Cords</i>		
	<i>Red Maple</i>		58	<i>Cords</i>		
	<i>Sugar Maple</i>		185	<i>Cords</i>		
	Mixed Spruce		6	Cords		
	<i>White Spruce</i>		6	<i>Cords</i>		
	Quaking Aspen		22	Cords		
4	Red Maple	Sawtimber	2.5	MBF	18.0	\$4,208.45
	Sugar Maple		16.6	MBF		
	Mixed Hardwood	Pulpwood	105	Cords		
	<i>Red Maple</i>		20	<i>Cords</i>		
	<i>Sugar Maple</i>		85	<i>Cords</i>		
	Quaking Aspen		5	Cords		
5	Basswood	Sawtimber	82.1	MBF	40.3	\$9,094.15
	Red Maple		2.8	MBF		
	Sugar Maple		16.0	MBF		
	White Ash		4.6	MBF		
	Balsam Fir	Pulpwood	12	Cords		
	Basswood		90	Cords		
	Mixed Hardwood		195	Cords		
	<i>Yellow Birch</i>	<i>Sawtimber</i>	0.9	<i>MBF</i>		
	<i>Red Maple</i>	<i>Pulpwood</i>	38	<i>Cords</i>		
	<i>Sugar Maple</i>		147	<i>Cords</i>		
	<i>White Ash</i>		7	<i>Cords</i>		
	<i>Yellow Birch</i>		1	<i>Cords</i>		
	Quaking Aspen		33	Cords		
6	Basswood	Sawtimber	64.4	MBF	31.6	\$7,129.70
	Red Maple		2.2	MBF		
	Sugar Maple		12.6	MBF		
	White Ash		3.5	MBF		
	Balsam Fir	Pulpwood	9	Cords		

**DESCRIPTION OF TIMBER BY PAYMENT UNIT (PU), CON'T**

PU	MARKET GROUP	PRODUCT	QUANTITY	UNIT	ACRES	ADVERTISE PRICE
6 con't	Basswood	Pulpwood	71	Cords		
	Mixed Hardwood		152	Cords		
	<i>Yellow Birch</i>	<i>Sawtimber</i>	0.7	<i>MBF</i>		
	<i>Red Maple</i>	<i>Pulpwood</i>	29	<i>Cords</i>		
	<i>Sugar Maple</i>		115	<i>Cords</i>		
	<i>White Ash</i>		6	<i>Cords</i>		
	<i>Yellow Birch</i>		1	<i>Cords</i>		
	Quaking Aspen		26	Cords		
7	Basswood	Sawtimber	56.8	MBF	27.9	\$6,282.10
	Red Maple		1.9	MBF		
	Sugar Maple		11.1	MBF		
	White Ash		3.1	MBF		
	Balsam Fir	Pulpwood	8	Cords		
	Basswood		62	Cords		
	Mixed Hardwood		134	Cords		
	<i>Yellow Birch</i>	<i>Sawtimber</i>	0.6	<i>MBF</i>		
	<i>Red Maple</i>	<i>Pulpwood</i>	26	<i>Cords</i>		
	<i>Sugar Maple</i>		101	<i>Cords</i>		
	<i>White Ash</i>		5	<i>Cords</i>		
	<i>Yellow Birch</i>		1	<i>Cords</i>		
	Quaking Aspen		23	Cords		
	TOTAL:			301.6		
TOTAL:			1,983	Cords		

# Sale Specific Conditions & Requirements

**Sale Name: Gnome Homes Hardwood**

**Sale Number: 12-005-22 Seq#: 1**

## 1 - Sale Area

### 1.2 - Boundaries

#### 1.2.1 - Painted boundaries (9/19)

The sale boundary and Payment Unit boundaries are marked and identified by blue, red, and yellow paint. Exterior sale boundary lines against private property are marked with blue paint. Exterior sale boundary lines against state are marked with red paint. Interior Payment Unit boundaries are marked with yellow paint. The painted boundary and Payment Unit line trees are not Included Timber and are to be protected unless marked with orange paint.

## 2 - Timber Specifications

### 2.1 - Included Timber

#### 2.1.3 - Cut tree marked unit(s) (12/08)

Within Payment Unit(s) 2-7, all trees are designated for cutting when marked with orange paint above and below stump height, regardless of merchantability. In addition, within Payment Units 5-7, all aspen is designated for harvest except aspen marked with an orange X.

#### 2.1.7 - Leave tree marked unit(s) (6/14)

Within Payment Unit(s) 1, cut all trees that are two (2) inches or more at DBH, except cedar, hemlock, oak, white pine, red pine (if found) and trees marked with green paint above and below stump height. In addition, retain live clumps of 1 stick and less balsam and spruce, as available.

### 2.2 - Utilization

#### 2.2.5 - Limbed tree skidding (1/09)

The skidding of whole trees or tree segments with limbs attached is prohibited in Payment Units 2-7.

## 3 - Payments

### 3.3 - Pre-measured Sales

#### 3.3.4 - Dividing payment units (7/14)

Payment Unit(s) 5 may be divided at the request of the Purchaser and upon approval of the Unit Manager. Dividing Payment Units is a contract modification which requires a Timber Sale Contract Amendment. There will be only one division per Payment Unit.

## 4 - Transportation

### 4.1 - Construction

#### 4.1.12 - No new roads (1/12)

No new roads will be permitted in Payment Unit 1. All operations are limited to existing roads. Skid trails only will be allowed.

### 4.2 - Maintenance

#### 4.2.1 - Hauling restriction (12/08)

Hauling may be restricted on forest roads by the Unit Manager or his/her representative. The restriction may occur during spring break up or excessively wet weather periods.

### 4.3 - Public Right-of-Way

#### 4.3.2 - County R-O-W (12/06)

The county must be contacted prior to decking along the county road R-O-W. This applies to all Payment Units and Aimone Road. Dickinson County Road Commission may require a permit.

## 5 - Operations

## 5.2 - Conduct of Operations

### 5.2.3 - Operating Restrictions

#### 5.2.3.3 - Bark slippage restriction (3/09)

Within Payment Unit(s) 2-7, unless changed by written agreement, cutting and skidding are not permitted during the period of April 1 to July 15. This restriction is because of bark slippage.

### 5.2.22 - Operating Caution

#### 5.2.22.1 - Operating caution (6/11)

It is recommended, but not required, that within Payment Unit(s) 1, cutting, skidding, and hauling occur during dry summer or frozen winter conditions. The reason for the recommendation is because of some shallow soils, particularly in the south portion.

### 5.2.32 - Decking/landing restoration (9/13)

All decking and landing areas must have the surface area restored to a condition equal to or better than before. This is to ensure the proper regeneration of the stand. Wood debris, chips, and "cookies" from trimmings must be removed or scattered away from landing and loading areas and may not be windrowed on the edge.

### 5.2.38 - No decking against live trees (2/04)

Cut products may not be decked against unmarked or designated leave trees.

## 5.4 - Soil Protection

### 5.4.1 - Rutting restriction, general (7/16)

Operations are to cease immediately if equipment and weather conditions result in rutting of roads and/or skid trails which is 12 inches or greater in depth and 50 feet in length. The Unit Manager or his/her representative may restrict hauling and/or skidding if ruts exceed the specified depth. With the Unit Manager or his/her representative's approval, the Purchaser may return to the area when the risk of rutting has decreased.

## 6 - Safety and Fire Prevention

### 6.2 - Signing

#### 6.2.1 - Road posting (10/20)

The Purchaser is responsible for posting and maintaining caution signs on Aimone Road prior to beginning operations. The road must be posted approximately 350 feet from the Sale Area in both directions to warn of logging activity and truck traffic. Signs must be removed when harvest operations are suspended or completed. The Purchaser will provide these signs.



# TIMBER SALE MAP

This information provided by authority of Part 525, 1994 PA 451, as amended.

Sale Number	Year
005	2022

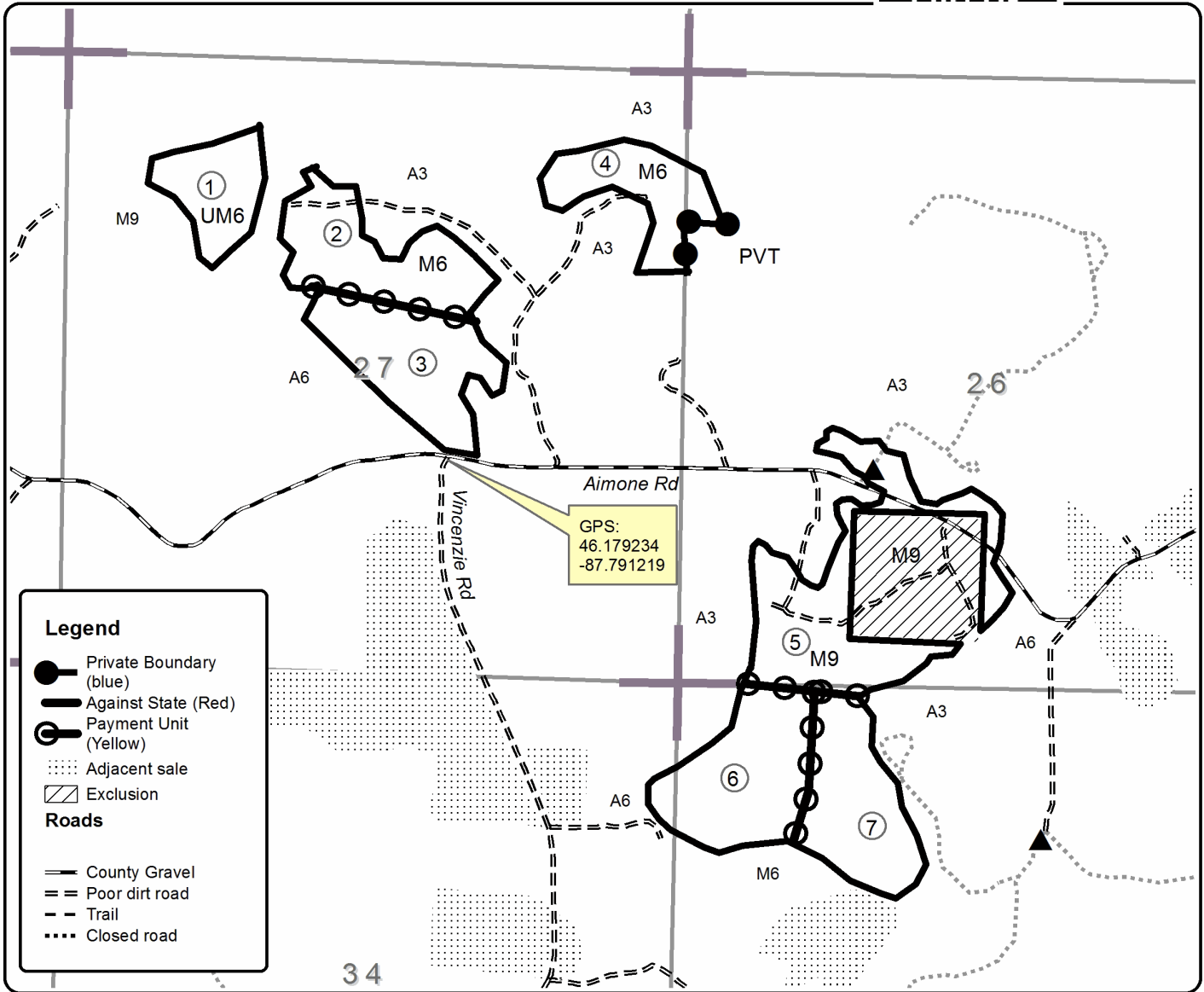
Forest Management Unit	County	Mapped By	Date	Page	of
Crystal Falls Management Unit	Dickinson Co.	Debbie Goupell	2/18/22	1	1
Township	Range	Section(s) and Subdivision(s)	Scale		
44N	28W	S26: SW1/4, W1/2SE, NWNW S27: E1/2NE, SWNE, NW1/4, NESW, NWSE S34: NENE S35: NW1/4	1:15,840		

Cover Type			
A = Aspen	H = Hemlock	N = Marsh	U = Upland Brush
B = Paper Birch	J = Jack Pine	O = Oak	UM = Upland Mixed
C = Cedar	L = Lowland Brush	P = Lowland Poplar	V = Bog or Marsh
D = Treed Bog	LM = Lowland Mixed	Q = Mixed Swamp Conifer	W = White Pine
E = Swamp Hdwoods	M = Mpl, Bch, Brch	R = Red Pine	X = Non Stocked
F = Spruce Fir	MC = Mixed Conifer	S = Black Spruce	Z = Water
G = Grass	MD = Mixed Deciduous	T = Tamarack	

Density	
0 = Non Stocked	5 = Pole Timber Medium
1 = Seedling Sapling Poor	6 = Pole Timber Well
2 = Seedling Sapling Medium	7 = Saw Timber Poor
3 = Seedling Sapling Well	8 = Saw Timber Medium
4 = Pole Timber Poor	9 = Saw Timber Well

Unit	Acres	Unit	Acres
1	15.3	5	40.3
2	27.2	6	31.6
3	28.9	7	27.9
4	18.0		

## Gnome Homes Hardwood Compartment 34 189.2 Acres





## TIMBER SALE INFORMATION

Trax Kik Ash (12-006-22)

T42N, R28W, SEC. 2; T42N, R28W, SEC. 3; T42N, R28W, SEC. 4.  
Dickinson County (Advertised Price \$77,450.20)

SALE NOTE: All units of volume listed for this sale were estimated using the Inventory Manager computer program and the new Michigan taper model.

See sale spec 5.2.43 for information on crossing and skidding restrictions.

A timber sale contract for this lump sum, sealed bid timber sale will be awarded to the responsible bidder offering the highest sealed bid price. All units of volume listed below were estimated using the Inventory Manager computer program and the new Michigan taper model. Bids must be at or above the following advertised price for each product and species:

<u>PRODUCTS &amp; SPECIES</u>	<u>ESTIMATED UNITS*</u>	<u>ADVERTISED PRICE</u>
Sawtimber		
Basswood	290.1 MBF	\$ 36.00 / MBF
Sugar Maple	185.0 MBF	\$ 167.00 / MBF
White Ash	222.2 MBF	\$ 37.00 / MBF
Pulpwood		
Balsam Fir	6 Cords	\$ 4.35 / Cord
Basswood	435 Cords	\$ 2.95 / Cord
Mixed Aspen	627 Cords	\$ 20.20 / Cord
Mixed Hardwood	1,319 Cords	\$ 10.55 / Cord

\* The total volume is statistically estimated within plus (+) or minus (-) 5.03 percent. There are an estimated 4,048 cords on this timber sale, plus or minus 204 cords at the 95% confidence level. The estimated units are final and not subject to adjustment. Prospective bidders are urged to examine this timber and to make their own estimates of quantity and quality.

### **BOND AND PAYMENT SCHEDULE:**

1. A bond in the amount of \$6,196.00 to insure faithful performance of the conditions of the contract will be deposited by the successful bidder within 21 days of the sale award.
2. Cutting in any sale or unit without the required advance payment would be considered a trespass.
3. Total payment must be paid in advance or according to the following schedule :
  - (a) Ten percent (10%) of the sale value must be paid within 21 days of the sale award.
  - (b) The 10% down payment will be credited towards the first unit cut.
  - (c) Payment for each of the following units must be made before cutting begins in that unit:

PAYMENT UNIT NUMBER	PERCENT OF TOTAL SALE VALUE
01	8.7%
02	14.6%
03	8.6%
04	4.1%
05	9.2%
06	5.9%
07	4.1%
08	20.3%
09	20.6%
10	3.9%
4. If no cutting takes place, the 10% down payment will not be refunded.
5. Operations on the contract issued will terminate on 06/30/2026.

### **SALE STATISTICS**

Volumes were calculated in cubic feet using the Michigan taper model. Cubic foot volume includes all wood inside bark for the product indicated. For display purposes, cubic feet were converted to cords and MBF using a simple conversion factor, e.g. 79 cubic feet per cord and 185 cubic feet per MBF. The cubic foot volumes are precise; the cords and MBF volumes are not. Cubic foot volume cannot be directly converted to cords or boards with precision.

## SALE VOLUMES

The total estimated sale volume may not equal the sum of the species/products due to the nature of statistical calculations associated with double sampling methodology.

VOLUME			STATISTICAL RANGE IN CORDS	
TOTAL CUBIC FEET	TOTAL CORDS	PERCENT ERROR	MINIMUM	MAXIMUM
319,815	4,048	5.03%	3,844	4,252

## VDU VOLUMES

A VDU is a Volume Determination Unit. Volumes and their associated statistics are calculated at the VDU level and summarized to the sale level. There is often a one to one relationship between a VDU and a Payment Unit, but not always, depending on the cruise design. Refer to the VDU TO PAYMENT UNIT table.

	VOLUME			RANGE IN CORDS	
VDU	TOTAL CUBIC FEET	TOTAL CORDS	PERCENT ERROR	MINIMUM	MAXIMUM
5	30,293	383	22.32%	298	469
7	43,334	549	11.28%	487	610
11	139,646	1,768	8.58%	1,616	1,919
20	89,871	1,138	7.06%	1,057	1,218
200	16,670	211	15.00%	179	243
<b>TOTAL:</b>	<b>319,815</b>	<b>4,048</b>		<b>3,637</b>	<b>4,459</b>

## VDU TO PAYMENT UNIT

When a VDU is associated with more than one Payment Unit (PU), the VDU volumes are assigned to the PU based on acres of the VDU within the PU.

VDU	VDU ACRES	PU	PU ACRES
5	13.3	1	13.3
7	15.2	2	15.2
11	132.7	3	35.7
		4	17.1
		5	38.3
		6	24.5
		7	17.1
20	63.4	8	31.4
		9	31.9
		10	0.1
200	38.8	9	0.1
		10	38.7
<b>TOTAL:</b>	<b>263.4</b>		<b>263.4</b>



**DESCRIPTION OF TIMBER BY PAYMENT UNIT (PU)**

PU	MARKET GROUP	PRODUCT	QUANTITY	UNIT	ACRES	ADVERTISE PRICE
1	Basswood	Sawtimber	23.4	MBF	13.3	\$6,746.50
	Sugar Maple		10.7	MBF		
	White Ash		2.9	MBF		
	Balsam Fir		6	Cords		
	Basswood		35	Cords		
	Mixed Aspen		131	Cords		
	<i>Quaking Aspen</i>		131	Cords		
	Mixed Hardwood		117	Cords		
	<i>Sugar Maple</i>		115	Cords		
	<i>White Ash</i>		2	Cords		
2	Basswood	Sawtimber	8.6	MBF	15.2	\$11,279.85
	Sugar Maple		14.8	MBF		
	Basswood		84	Cords		
	Mixed Aspen		386	Cords		
	<i>Balsam Poplar</i>		22	Cords		
	<i>Quaking Aspen</i>		364	Cords		
	Mixed Hardwood		43	Cords		
	<i>Sugar Maple</i>		43	Cords		
3	Basswood	Sawtimber	67.3	MBF	35.7	\$6,646.30
	Sugar Maple		7.1	MBF		
	White Ash		24.8	MBF		
	Basswood		82	Cords		
	Mixed Aspen		23	Cords		
	<i>Quaking Aspen</i>		23	Cords		
	Mixed Hardwood		134	Cords		
	<i>Ironwood</i>		6	Cords		
	<i>Sugar Maple</i>		55	Cords		
	<i>White Ash</i>		73	Cords		
4	Basswood	Sawtimber	32.2	MBF	17.1	\$3,179.75
	Sugar Maple		3.4	MBF		
	White Ash		11.9	MBF		
	Basswood		39	Cords		
	Mixed Aspen		11	Cords		
	<i>Quaking Aspen</i>		11	Cords		
	Mixed Hardwood		64	Cords		
	<i>Ironwood</i>		3	Cords		
	<i>Sugar Maple</i>		26	Cords		
	<i>White Ash</i>		35	Cords		
5	Basswood	Sawtimber	72.1	MBF	38.3	\$7,125.20
	Sugar Maple		7.6	MBF		
	White Ash		26.6	MBF		
	Basswood		89	Cords		
	Mixed Aspen		25	Cords		
	<i>Quaking Aspen</i>		25	Cords		
	Mixed Hardwood		143	Cords		
	<i>Ironwood</i>		6	Cords		
	<i>Sugar Maple</i>		59	Cords		
	<i>White Ash</i>		78	Cords		
6	Basswood	Sawtimber	46.2	MBF	24.5	\$4,558.95
	Sugar Maple		4.9	MBF		
	White Ash		17.0	MBF		
	Basswood		56	Cords		
	Mixed Aspen		16	Cords		
	<i>Quaking Aspen</i>		16	Cords		
	Mixed Hardwood		91	Cords		
	<i>Ironwood</i>		4	Cords		

**DESCRIPTION OF TIMBER BY PAYMENT UNIT (PU), CON'T**

PU	MARKET GROUP	PRODUCT	QUANTITY	UNIT	ACRES	ADVERTISE PRICE
6 con't	<i>Sugar Maple</i>	<i>Pulpwood</i>	37	<i>Cords</i>		
	<i>White Ash</i>		50	<i>Cords</i>		
7	Basswood	Sawtimber	32.2	MBF	17.1	\$3,179.75
	Sugar Maple		3.4	MBF		
	White Ash		11.9	MBF		
	Basswood	Pulpwood	39	Cords		
	Mixed Aspen		11	Cords		
	<i>Quaking Aspen</i>		11	<i>Cords</i>		
	Mixed Hardwood		64	Cords		
	<i>Ironwood</i>		3	<i>Cords</i>		
	<i>Sugar Maple</i>		26	<i>Cords</i>		
	<i>White Ash</i>		35	<i>Cords</i>		
8	Basswood	Sawtimber	1.4	MBF	31.4	\$15,703.00
	Sugar Maple		62.7	MBF		
	White Ash		59.2	MBF		
	Basswood	Pulpwood	2	Cords		
	Mixed Aspen		12	Cords		
	<i>Quaking Aspen</i>		12	<i>Cords</i>		
	Mixed Hardwood		260	Cords		
	<i>Red Maple</i>	<i>Sawtimber</i>	1.7	<i>MBF</i>		
	<i>Paper Birch</i>	<i>Pulpwood</i>	2	<i>Cords</i>		
	<i>Red Maple</i>		7	<i>Cords</i>		
	<i>Sugar Maple</i>		182	<i>Cords</i>		
	<i>White Ash</i>		66	<i>Cords</i>		
	9	Basswood	Sawtimber	1.5		
Sugar Maple			63.7	MBF		
White Ash			60.2	MBF		
Basswood		Pulpwood	3	Cords		
Mixed Aspen			12	Cords		
<i>Quaking Aspen</i>			12	<i>Cords</i>		
Mixed Hardwood			267	Cords		
<i>Red Maple</i>		<i>Sawtimber</i>	1.8	<i>MBF</i>		
<i>Paper Birch</i>		<i>Pulpwood</i>	3	<i>Cords</i>		
<i>Red Maple</i>			7	<i>Cords</i>		
<i>Sugar Maple</i>			186	<i>Cords</i>		
<i>White Ash</i>			67	<i>Cords</i>		
10	Basswood	Sawtimber	5.2	MBF	38.8	\$3,043.50
	Sugar Maple		6.7	MBF		
	White Ash		7.7	MBF		
	Basswood	Pulpwood	6	Cords		
	Mixed Hardwood		136	Cords		
	<i>Paper Birch</i>	<i>Sawtimber</i>	3.9	<i>MBF</i>		
	<i>Ironwood</i>	<i>Pulpwood</i>	2	<i>Cords</i>		
	<i>Paper Birch</i>		8	<i>Cords</i>		
	<i>Red Maple</i>		5	<i>Cords</i>		
	<i>Sugar Maple</i>		103	<i>Cords</i>		
	<i>White Ash</i>		10	<i>Cords</i>		
TOTAL:			697.3	MBF		
TOTAL:			2,387	Cords		

# Sale Specific Conditions & Requirements

**Sale Name: Trax Kik Ash**

**Sale Number: 12-006-22 Seq#: 1**

## 1 - Sale Area

### 1.2 - Boundaries

#### 1.2.1 - Painted boundaries (9/19)

The sale boundary and Payment Unit boundaries are marked and identified by blue, red, and yellow paint. Exterior sale boundary lines against private property are marked with blue paint. Exterior sale boundary lines against state are marked with red paint. Interior Payment Unit boundaries are marked with yellow paint. The painted boundary line trees are not Included Timber and are to be protected unless marked with orange paint. Yellow painted trees designating an interior Payment Unit boundary are only to be cut if marked with orange paint.

## 2 - Timber Specifications

### 2.1 - Included Timber

#### 2.1.1 - Clearcut unit(s) with unmerchantable trees (6/14)

Within Payment Unit(s) 1 and 2, cut all trees that are two (2) inches or more at DBH, except red pine or white pine. In addition, retain small clumps of sub merchantable spruce and fir.

#### 2.1.3 - Cut tree marked unit(s) (12/08)

Within Payment Unit(s) 3-10, all trees are designated for cutting when marked with orange paint above and below stump height, regardless of merchantability.

### 2.2 - Utilization

#### 2.2.4 - Skidding length (2/14)

Skidding of unlimbed tops or lengths over 17 feet is not permissible.

## 4 - Transportation

### 4.2 - Maintenance

#### 4.2.1 - Hauling restriction (12/08)

Hauling may be restricted on forest roads by the Unit Manager or his/her representative. The restriction may occur during spring break up or prolonged wet weather conditions.

#### 4.2.5 - Two wheel drive condition (2/04)

All existing trail roads on and adjacent to the sale area must be passable by two-wheel drive traffic for the duration of the sale.

### 4.3 - Public Right-of-Way

#### 4.3.2 - County R-O-W (12/06)

The county must be contacted prior to decking along the county road R-O-W. This applies to all Payment Units and the Lantz Road. Dickinson County Road Commission may require a permit for decking.

## 5 - Operations

### 5.2 - Conduct of Operations

#### 5.2.3 - Operating Restrictions

##### 5.2.3.3 - Bark slippage restriction (3/09)

Within Payment Unit(s) 3-10, unless changed by written agreement, cutting and skidding are not permitted during the period of April 1 to July 15. This restriction is because of bark slippage.

#### 5.2.32 - Decking/landing restoration (9/13)

All decking and landing areas must have the surface area restored to a condition equal to or better than before. This is to ensure the proper regeneration of the stand. Wood debris, chips, slash, and "cookies" from trimmings must be removed or

scattered away from landing and loading areas and may not be windrowed on the edge.

#### 5.2.43 - Opening protection (2/21)

Equipment may NOT cross/skid through the exclusions shown on the map (between Payment Units 4 and 5) to reduce the spread of invasive shrubs through the adjacent stand. Wood may be decked in openings.

### 5.4 - Soil Protection

#### 5.4.1 - Rutting restriction, general (7/16)

Operations are to cease immediately if equipment and weather conditions result in rutting of roads and/or skid trails which is 12 inches or greater in depth and 50 feet in length. The Unit Manager or his/her representative may restrict hauling and/or skidding if ruts exceed the specified depth. With the Unit Manager or his/her representative's approval, the Purchaser may return to the area when the risk of rutting has decreased.

## 6 - Safety and Fire Prevention

### 6.2 - Signing

#### 6.2.1 - Road posting (10/20)

The Purchaser is responsible for posting and maintaining caution signs on the Lantz Road prior to beginning operations. The road must be posted at appropriate distances from the Sale Area to warn of logging activity and truck traffic. Signs must be removed when harvest operations are suspended or completed. The Purchaser will provide these signs.



# TIMBER SALE MAP

This information provided by authority of Part 525, 1994 PA 451, as amended.

Sale Number	Year
006	2022

Forest Management Unit Crystal Falls Management Unit	County Dickinson Co.	Mapped By Debbie Goupell	Date 3/1/22	Page 1	of 1
Township 42N	Range 28W	Section(s) and Subdivision(s) S2: W1/2NW,NWSW S3: E1/2NE, NESE, S1/2NW, N1/2SW S4: SENE, NESE	Scale 1:15,840		

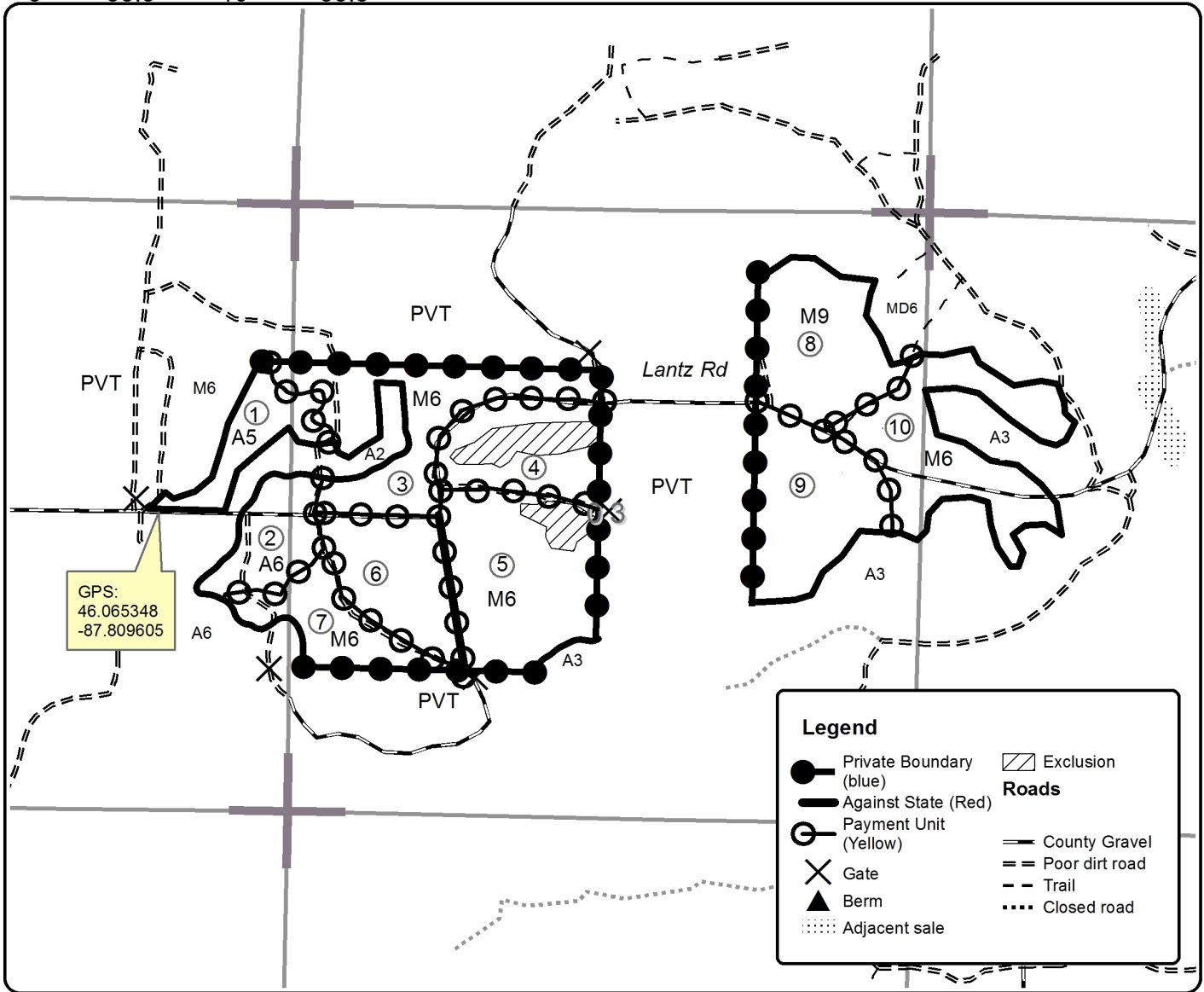
Cover Type				Density	
A = Aspen	H = Hemlock	N = Marsh	U = Upland Brush	0 = Non Stocked	5 = Pole Timber Medium
B = Paper Birch	J = Jack Pine	O = Oak	UM = Upland Mixed	1 = Seedling Sapling Poor	6 = Pole Timber Well
C = Cedar	L = Lowland Brush	P = Lowland Poplar	V = Bog or Marsh	2 = Seedling Sapling Medium	7 = Saw Timber Poor
D = Treed Bog	LM = Lowland Mixed	Q = Mixed Swamp Conifer	W = White Pine	3 = Seedling Sapling Well	8 = Saw Timber Medium
E = Swamp Hdwoods	M = Mpl, Bch, Brch	R = Red Pine	X = Non Stocked	4 = Pole Timber Poor	9 = Saw Timber Well
F = Spruce Fir	MC = Mixed Conifer	S = Black Spruce	Z = Water		
G = Grass	MD = Mixed Deciduous	T = Tamarack			

Unit	Acres	Unit	Acres
1	13.3	6	24.5
2	15.2	7	17.1
3	35.7	8	31.4
4	17.1	9	32.0
5	38.3	10	38.8

## Trax Kik Ash

### Compartment 63

263.4 Acres





**TIMBER SALE INFORMATION**

Moose Cut (12-057-22)

T46N, R31W, SEC. 36.

Iron County (Advertised Price \$11,151.05)

SALE NOTE: This timber sale is accessed entirely through private land. Perspective purchasers must obtain access prior to bidding.

Access may be through private land.

A timber sale contract for this lump sum, sealed bid timber sale will be awarded to the responsible bidder offering the highest sealed bid price. All units of volume listed below were estimated using the T-Sale computer program and our traditional volume equations. Bids must be at or above the following advertised price for each product and species:

<u>PRODUCTS &amp; SPECIES</u>	<u>ESTIMATED UNITS*</u>	<u>ADVERTISED PRICE</u>
Sawtimber		
Paper Birch	20.2 MBF	\$ 60.00 / MBF
Red Maple	16.9 MBF	\$ 67.00 / MBF
Pulpwood		
Balsam Fir	32 Cords	\$ 3.15 / Cord
Mixed Hardwood	191 Cords	\$ 7.70 / Cord
Mixed Spruce	91 Cords	\$ 3.90 / Cord
Paper Birch	113 Cords	\$ 4.95 / Cord
Quaking Aspen	430 Cords	\$ 14.70 / Cord

\* The total volume is statistically estimated within plus (+) or minus (-) 21.35 percent. There are an estimated 931 cords on this timber sale, plus or minus 199 cords at the 95% confidence level. The estimated units are final and not subject to adjustment. Prospective bidders are urged to examine this timber and to make their own estimates of quantity and quality.

**BOND AND PAYMENT SCHEDULE:**

- A bond in the amount of \$1,500.00 to insure faithful performance of the conditions of the contract will be deposited by the successful bidder within 21 days of the sale award.
- Cutting in any sale or unit without the required advance payment would be considered a trespass.
- Total payment must be paid in advance or according to the following schedule :
  - Ten percent (10%) of the sale value must be paid within 21 days of the sale award.
  - The remainder is due before cutting begins.
  - Payment for each of the following units must be made before cutting begins in that unit:
 

PAYMENT UNIT NUMBER	PERCENT OF TOTAL SALE VALUE
01	100.0%
- If no cutting takes place, the 10% down payment will not be refunded.
- Operations on the contract issued will terminate on 06/30/2025.

**SALE STATISTICS**

**SALE VOLUMES**

VOLUME		STATISTICAL RANGE IN CORDS		
TOTAL CUBIC FEET	TOTAL CORDS	PERCENT ERROR	MINIMUM	MAXIMUM
73,525	931	21.35%	732	1,129

**VDU VOLUMES**

A VDU is a Volume Determination Unit. Volumes and their associated statistics are calculated at the VDU level and summarized to the sale level. There is often a one to one relationship between a VDU and a Payment Unit, but not always, depending on the cruise design. Refer to the VDU TO PAYMENT UNIT table.

VDU	VOLUME			RANGE IN CORDS	
	TOTAL CUBIC FEET	TOTAL CORDS	PERCENT ERROR	MINIMUM	MAXIMUM
59	0	0	21.35%	0	0
<b>TOTAL:</b>	<b>0</b>	<b>0</b>		<b>0</b>	<b>0</b>

**VDU TO PAYMENT UNIT**

When a VDU is associated with more than one Payment Unit (PU), the VDU volumes are assigned to the PU based on acres of the VDU within the PU.

VDU	VDU ACRES	PU	PU ACRES
59	26.7	1	26.7
<b>TOTAL:</b>	<b>26.7</b>		<b>26.7</b>

**DESCRIPTION OF TIMBER BY PAYMENT UNIT (PU)**

PU	MARKET GROUP	PRODUCT	QUANTITY	UNIT	ACRES	ADVERTISE PRICE			
1	Paper Birch	Sawtimber	20.2	MBF	26.7	\$11,151.05			
	Red Maple		16.9	MBF					
	Balsam Fir	Pulpwood	32	Cords					
	Mixed Hardwood		191	Cords					
	<i>Red Maple</i>		163	<i>Cords</i>					
	<i>Sugar Maple</i>		28	<i>Cords</i>					
	Mixed Spruce		91	Cords					
	<i>White Spruce</i>	<i>Sawtimber</i>	8.4	<i>MBF</i>					
	<i>White Spruce</i>	<i>Pulpwood</i>	74	<i>Cords</i>					
	Paper Birch		113	Cords					
	Quaking Aspen		430	Cords					
	TOTAL:			37.1			MBF		
	TOTAL:			857			Cords		



## Sale Specific Conditions & Requirements

**Sale Name: Moose Cut**

**Sale Number: 12-057-22 Seq#: 3**

### 1 - Sale Area

#### 1.2 - Boundaries

##### 1.2.1 - Painted boundaries (9/19)

Sale boundary lines against state land are marked with double red paint dots. The painted boundary line trees are not Included Timber and are to be protected.

### 2 - Timber Specifications

#### 2.1 - Included Timber

##### 2.1.2 - Clearcut unit(s) w/o unmerchantable trees (8/11)

Within Payment Unit(s) 1, cut all aspen, red maple, white birch, spruce, balsam fir, and tamarack trees which meet minimum piece specifications in 2.2 Utilization (one 100" piece to a top diameter inside bark of 4 inches). Do not cut trees marked with yellow paint.

#### 2.2 - Utilization

##### 2.2.3 - Stump heights (4/07)

Stump heights within the Sale Area shall not exceed 12 inches for trees greater than 10 inches at DBH and 4 inches for trees smaller than 10 inches at DBH.

### 3 - Payments

#### 3.4 - Damaged Timber

##### 3.4.1 - Damaged timber (7/16)

General Condition and Requirement 3.4 Damaged Timber, defines liquidated damages for undesignated live merchantable trees which are cut or injured. In addition, extreme care should be taken to avoid damage to tree seedlings and saplings. No damage is acceptable to undesignated live merchantable trees. Rates will be in accordance with General Condition and Requirement 3.4 Damaged Timber.

### 4 - Transportation

#### 4.1 - Construction

##### 4.1.3 - Slash and earthen piles (8/04)

Piles or windrows of earth along roads and landings that have been widened or constructed shall be leveled. Slash from road maintenance or construction, including stumps, shall be dispersed throughout the Sale Area.

##### 4.1.6 - Road construction (1/09)

Improvements of existing roads shall be done in such a way as to minimize the environmental and visual impacts.

Merchantable trees shall be cut and utilized unless otherwise directed. Non-merchantable trees shall be severed and laid flat on the ground. Slash shall be scattered, and not left in windrows. Stumps shall be set upright, not left on edge, and be moved at least 5 feet away from the road edge. Disturbed soil shall be feathered into the woods and not left in berms or windrows.

##### 4.1.7 - Road closure (10/11)

Overgrown roads that are reopened must be blocked to vehicle traffic within 30 days of completion of hauling. In general, this will require constructing a four (4') foot high berm of stumps and logs covered with earth. Contact the sale administrator for specific design and placement.

##### 4.1.12 - No new roads (1/12)

No new roads will be permitted. Existing overgrown roads may be opened and utilized with approval from the sale administrator.

#### 4.2 - Maintenance

#### 4.2.5 - Two wheel drive condition (2/04)

All existing trail roads on and adjacent to the sale area must be passable by two-wheel drive traffic for the duration of the sale.

#### 4.4 - Access

##### 4.4.1 - Private property access (3/11)

Permission for access across private land is the responsibility of the Purchaser. A copy of the written permission from the private landowner must be provided upon bid opening.

### 5 - Operations

#### 5.2 - Conduct of Operations

##### 5.2.1 - Slash

###### 5.2.1.8 - Slash height (12/08)

No slash or tree tops may exceed 24 inches in height.

###### 5.2.1.11 - Slash for reforestation (5/07)

To facilitate reforestation, the Sale Area shall be left with slash evenly distributed. Bunched tops within the cutting area shall be broken up and scattered. Stumps shall be cut low to the ground. Processing sites shall not be left with a compacted layer of slash; tops from these sites shall be hauled back into the cut area and scattered.

##### 5.2.2 - Hazard Trees/Snags

###### 5.2.2.1 - Den trees (10/16)

Obvious hollow and/or den trees shall be protected and left standing unless they are a safety hazard.

##### 5.2.3 - Operating Restrictions

###### 5.2.3.1 - Operating restrictions (9/11)

Within Payment Unit(s) 1, unless changed by written agreement, cutting, skidding, and hauling are not permitted from March 1 to May 15. This restriction is to avoid resource damage during spring break up and damage to low ground areas. If prolonged wet weather conditions occur throughout the operating season, the sale administrator may suspend operations until favorable weather and ground conditions are present.

###### 5.2.38 - No decking against live trees (2/04)

Cut products may not be decked against unmarked or designated leave trees.

#### 5.4 - Soil Protection

##### 5.4.1 - Rutting restriction, general (7/16)

Operations are to cease immediately if equipment and weather conditions result in rutting of roads and/or skid trails which is 12 inches or greater in depth and 50 feet in length. The Unit Manager or his/her representative may restrict hauling and/or skidding if ruts exceed the specified depth. With the Unit Manager or his/her representative's approval, the Purchaser may return to the area when the risk of rutting has decreased.

##### 5.4.6 - Wet area protection (5/10)

No harvesting operations, including skidding and felling, are to take place within any vernal pond areas or drainages. Not all wet areas within the Sale Area are shown on the Timber Sale Map. When harvesting occurs, there should be no disturbance to the vernal pond depression. All equipment, trees and tops should be kept out of this area. Within 100 feet of the pond, equipment should only be used when the soil is in a dry or frozen condition. Care must be taken by the Purchaser to identify and avoid operating in these areas of the timber sale.

#### 5.8 - Protection of Endangered Species

##### 5.8.5 - Protection of raptor nests (3/13)

All trees with raptor nests will be protected if found during harvesting operations. Notification will be made to the Unit Manager or his/her representative who will notify the Wildlife Biologist so an on-site evaluation and recommendation can be made, if necessary.



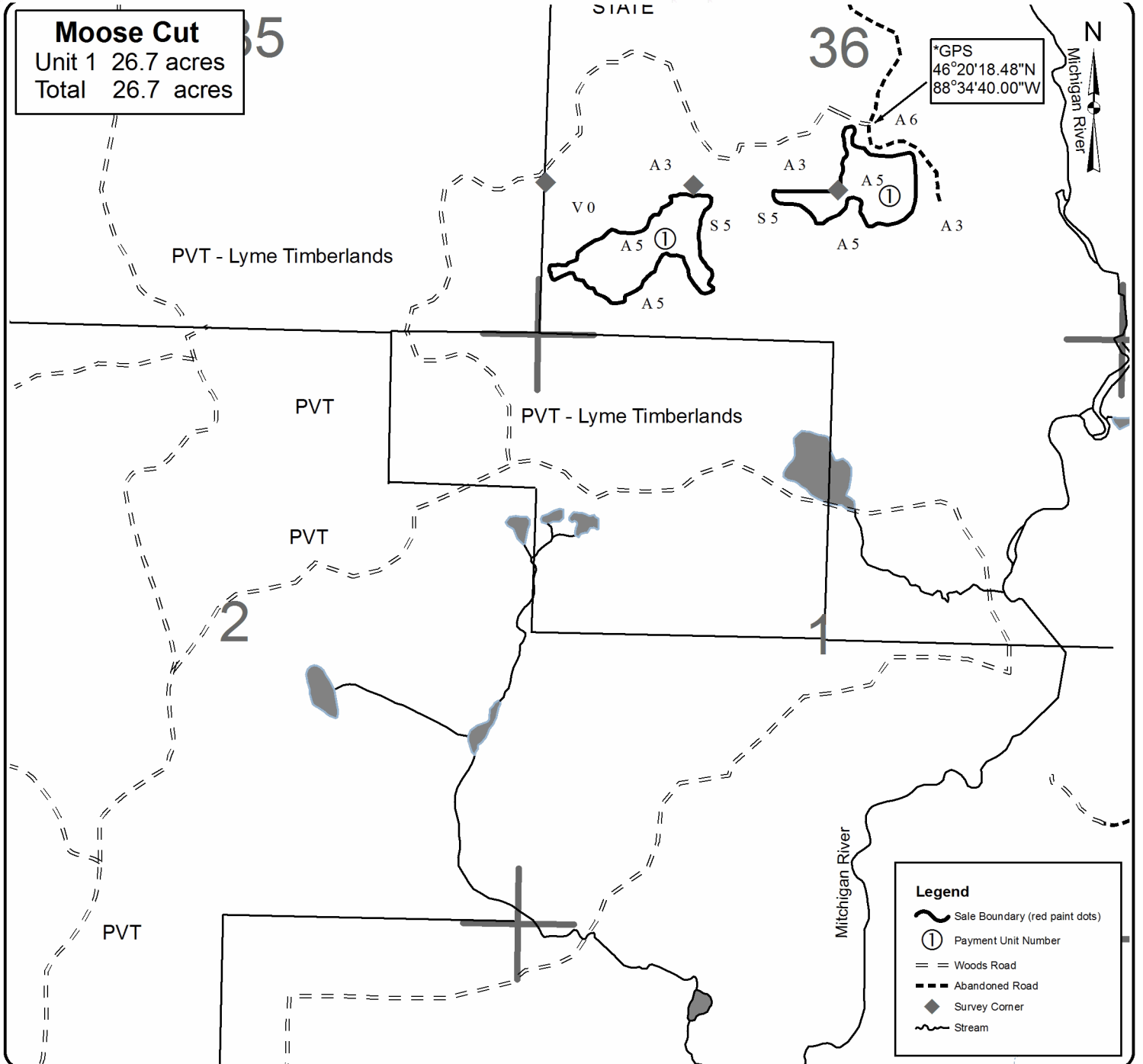


# TIMBER SALE MAP

This information provided by authority of Part 525, 1994 PA 451, as amended.

Forest Management Unit <b>CRYSTAL FALLS</b>		County <b>IRON</b>	Mapped By <b>Rice</b>	Date <b>03/25/22</b>	Page <b>1</b>	of <b>1</b>
Township <b>46N</b>	Range <b>31W</b>	Section(s) and Subdivision(s) <b>sec 36 S1/2SW, W1/2SE</b>		Scale <b>4 inches = 1 mile</b>		
Cruised By <b>Ritchie</b>						

Cover Type				Density	
A = Aspen	H = Hemlock	N = Marsh	U = Upland Brush	0 = Non Stocked	5 = Pole Timber Medium
B = Paper Birch	J = Jack Pine	O = Oak	UM = Upland Mixed	1 = Seedling Sapling Poor	6 = Pole Timber Well
C = Cedar	L = Lowland Brush	P = Lowland Poplar	V = Bog or Marsh	2 = Seedling Sapling Medium	7 = Saw Timber Poor
D = Treed Bog	LM = Lowland Mixed	Q = Mixed Swamp Conifer	W = White Pine	3 = Seedling Sapling Well	8 = Saw Timber Medium
E = Swamp Hdwoods	M = Mpl, Bch, Brch	R = Red Pine	X = Non Stocked	4 = Pole Timber Poor	9 = Saw Timber Well
F = Spruce Fir	MC = Mixed Conifer	S = Black Spruce	Z = Water		
G = Grass	MD = Mixed Deciduous	T = Tamarack			



Iron Sea Bass (12-001-22)

T44N, R28W, SEC. 4; T44N, R28W, SEC. 5; T44N, R28W, SEC. 9; Dickinson

In response to the notice of sale to be held 9:00 a.m. (local time) on July 14, 2022, I am hereby submitting my sealed bid ( firm offer) for the following forest products to be cut. Bids for individual species must be at or above the advertised price. All non-responsive bid forms may be rejected.

<u>PRODUCTS &amp; SPECIES</u>	<u>ESTIMATED VOLUME*</u>	<u>ADVERTISED PRICE</u>	<u>BID PRICE/UNIT</u>
<b>Sawtimber</b>			
Basswood	620.9 MBF	\$ 36.00/MBF	\$ _____
Paper Birch	23.4 MBF	\$ 82.00/MBF	\$ _____
Sugar Maple	19.5 MBF	\$ 167.00/MBF	\$ _____
White Ash	29.2 MBF	\$ 37.00/MBF	\$ _____
<b>Pulpwood</b>			
Basswood	625 Cords	\$ 2.95/Cord	\$ _____
Mixed Hardwood	402 Cords	\$ 10.55/Cord	\$ _____
Quaking Aspen	39 Cords	\$ 20.20/Cord	\$ _____

\*The volumes are statistically estimated within plus (+) or minus (-) 8.05 percent at 95% confidence level. These estimated volumes are final and not subject to adjustment. Prospective bidders are urged to examine this timber and to make their own estimates of quantity and quality.

I understand that any or all bids may be rejected. All bids must be signed and all bid items must be bid or the bid form may be rejected. I also understand that consideration and awarding a contract will be based upon my past performance and ability to complete the contract based upon equipment and staffing subject to my control.

FEDERAL ID: \_\_\_\_\_ or SOCIAL SECURITY NUMBER: \_\_\_\_\_

Company or individual bidding: \_\_\_\_\_

Company representative's name: \_\_\_\_\_

Address: \_\_\_\_\_

City: \_\_\_\_\_ State: \_\_\_\_\_ Zip: \_\_\_\_\_

IF AVAILABLE, PLEASE PLACE THE PERSONALIZED LABEL FROM YOUR PROSPECTUS IN THE ABOVE BOX.

Individual or company representative's signature: \_\_\_\_\_ Date: \_\_\_\_\_

Phone number : \_\_\_\_\_ Email (optional): \_\_\_\_\_

**THE WINNING BIDDER MUST COMPLETE THE VERIFICATION OF WORKER'S DISABILITY COMPENSATION ACT COMPLIANCE (ON REVERSE SIDE IF DOUBLE SIDED) WITHIN 21 DAYS OF SALE AWARD DATE**



FOR DEPARTMENT USE ONLY	
Sale Number (XX - XXX - XX - XX)	
Forest Management Unit:	

## TIMBER SALE VERIFICATION OF WORKER'S DISABILITY COMPENSATION ACT COMPLIANCE

As required by Act 317, P.A. 1969 (Worker's Compensation) and  
Part 5 of Act 451 of 1994, as amended.

### VERIFICATION OF WORKER'S DISABILITY COMPENSATION ACT COMPLIANCE

- This verification must be completed and submitted within 21 days of contract award and prior to the issuance of the timber sale contract.
- In addition, if boxes 2B or 2C are checked, then Notice of Exclusion or Certificate of Insurance must be submitted within twenty-one (21) days of the contract award and prior to the issuance of the timber sale contract.
- All information must be typed or printed except for written signatures.

Please Check Appropriate Categories:

1. My business is organized as (you **must** check one of the boxes below):
  - A.  Sole Proprietorship (individual)
  - B.  Partnership
  - C.  Corporation
2. You **must** check one of the boxes below:
  - A.  I certify my business is a sole proprietorship and it has no employees but the sole proprietor. I am not subject to the Worker's Compensation Laws.
  - B.  I certify my business has satisfied its obligation to the Worker's Compensation Act through the use of an approved Notice of Exclusion (BWC-337, Rev. 5/96). I will provide a copy of the Notice of Exclusion within 21 days of the contract award. (For questions or a copy of the BWC-337, please call the Worker's Compensation Bureau at 517-322-1195).
  - C.  I certify my business has a Worker's Compensation Policy. I will provide an original Certificate of Insurance within twenty-one (21) days of the contract award.
3. If you have checked item 2(A) or 2(B), you **must** indicate the number of **both** full-time and part-time employees, other than yourself, including family members and active partners (if none, you must enter "0").

\_\_\_\_\_ Full-time Employees

\_\_\_\_\_ Part-time Employees

Name of Business		Federal ID (or) Social Security No.	
Address		Telephone (       )	
City	State	ZIP	

*I hereby certify that the above information is true and correct. I agree to notify the Michigan DNR of any changes that occur in factors affecting my coverage during any of my present and future operations.*

\_\_\_\_\_  
Signature of Owner or Authorized Representative

\_\_\_\_\_  
Title

\_\_\_\_\_  
Date

Please complete the "SEALED BID" information on the next page

Trax Kik Ash (12-006-22)

T42N, R28W, SEC. 2; T42N, R28W, SEC. 3; T42N, R28W, SEC. 4; Dickinson

In response to the notice of sale to be held 9:00 a.m. (local time) on July 14, 2022, I am hereby submitting my sealed bid ( firm offer) for the following forest products to be cut. Bids for individual species must be at or above the advertised price. All non-responsive bid forms may be rejected.

<u>PRODUCTS &amp; SPECIES</u>	<u>ESTIMATED VOLUME*</u>	<u>ADVERTISED PRICE</u>	<u>BID PRICE/UNIT</u>
<b>Sawtimber</b>			
Basswood	290.1 MBF	\$ 36.00/MBF	\$ _____
Sugar Maple	185.0 MBF	\$ 167.00/MBF	\$ _____
White Ash	222.2 MBF	\$ 37.00/MBF	\$ _____
<b>Pulpwood</b>			
Balsam Fir	6 Cords	\$ 4.35/Cord	\$ _____
Basswood	435 Cords	\$ 2.95/Cord	\$ _____
Mixed Aspen	627 Cords	\$ 20.20/Cord	\$ _____
Mixed Hardwood	1,319 Cords	\$ 10.55/Cord	\$ _____

\*The volumes are statistically estimated within plus (+) or minus (-) 5.03 percent at 95% confidence level. These estimated volumes are final and not subject to adjustment. Prospective bidders are urged to examine this timber and to make their own estimates of quantity and quality.

I understand that any or all bids may be rejected. All bids must be signed and all bid items must be bid or the bid form may be rejected. I also understand that consideration and awarding a contract will be based upon my past performance and ability to complete the contract based upon equipment and staffing subject to my control .

FEDERAL ID: \_\_\_\_\_ or SOCIAL SECURITY NUMBER: \_\_\_\_\_

Company or individual bidding: \_\_\_\_\_

Company representative's name: \_\_\_\_\_

Address: \_\_\_\_\_

City: \_\_\_\_\_ State: \_\_\_\_\_ Zip: \_\_\_\_\_

IF AVAILABLE, PLEASE PLACE THE PERSONALIZED LABEL FROM YOUR PROSPECTUS IN THE ABOVE BOX.

Individual or company representative's signature: \_\_\_\_\_ Date: \_\_\_\_\_

Phone number : \_\_\_\_\_ Email (optional): \_\_\_\_\_

**THE WINNING BIDDER MUST COMPLETE THE VERIFICATION OF WORKER'S DISABILITY COMPENSATION ACT COMPLIANCE (ON REVERSE SIDE IF DOUBLE SIDED) WITHIN 21 DAYS OF SALE AWARD DATE**



<b>FOR DEPARTMENT USE ONLY</b>
Sale Number (XX - XXX - XX - XX)
Forest Management Unit:

## TIMBER SALE VERIFICATION OF WORKER'S DISABILITY COMPENSATION ACT COMPLIANCE

*As required by Act 317, P.A. 1969 (Worker's Compensation) and  
Part 5 of Act 451 of 1994, as amended.*

### VERIFICATION OF WORKER'S DISABILITY COMPENSATION ACT COMPLIANCE

- This verification must be completed and submitted within 21 days of contract award and prior to the issuance of the timber sale contract.
- In addition, if boxes 2B or 2C are checked, then Notice of Exclusion or Certificate of Insurance must be submitted within twenty-one (21) days of the contract award and prior to the issuance of the timber sale contract.
- All information must be typed or printed except for written signatures.

Please Check Appropriate Categories:

1. My business is organized as (you **must** check one of the boxes below):
  - A.  Sole Proprietorship (individual)
  - B.  Partnership
  - C.  Corporation
2. You **must** check one of the boxes below:
  - A.  I certify my business is a sole proprietorship and it has no employees but the sole proprietor. I am not subject to the Worker's Compensation Laws.
  - B.  I certify my business has satisfied its obligation to the Worker's Compensation Act through the use of an approved Notice of Exclusion (BWC-337, Rev. 5/96). I will provide a copy of the Notice of Exclusion within 21 days of the contract award. (For questions or a copy of the BWC-337, please call the Worker's Compensation Bureau at 517-322-1195).
  - C.  I certify my business has a Worker's Compensation Policy. I will provide an original Certificate of Insurance within twenty-one (21) days of the contract award.
3. If you have checked item 2(A) or 2(B), you **must** indicate the number of **both** full-time and part-time employees, other than yourself, including family members and active partners (if none, you must enter "0").

\_\_\_\_\_ Full-time Employees

\_\_\_\_\_ Part-time Employees

Name of Business		Federal ID (or) Social Security No.	
Address		Telephone (       )	
City	State	ZIP	

*I hereby certify that the above information is true and correct. I agree to notify the Michigan DNR of any changes that occur in factors affecting my coverage during any of my present and future operations.*

\_\_\_\_\_  
Signature of Owner or Authorized Representative

\_\_\_\_\_  
Title

\_\_\_\_\_  
Date

**Please complete the "SEALED BID" information on the next page**



Gnome Homes Hardwood (12-005-22)  
T44N, R28W, SEC. 26; T44N, R28W, SEC. 27; T44N, R28W, SEC. 34; T44N,

In response to the notice of sale to be held 9:00 a.m. (local time) on July 14, 2022, I am hereby submitting my sealed bid ( firm offer) for the following forest products to be cut. Bids for individual species must be at or above the advertised price. All non-responsive bid forms may be rejected.

<u>PRODUCTS &amp; SPECIES</u>	<u>ESTIMATED VOLUME*</u>	<u>ADVERTISED PRICE</u>	<u>BID PRICE/UNIT</u>
<b>Sawtimber</b>			
Basswood	203.3 MBF	\$ 36.00/MBF	\$ _____
Red Maple	13.4 MBF	\$ 91.00/MBF	\$ _____
Sugar Maple	73.7 MBF	\$ 167.00/MBF	\$ _____
White Ash	11.2 MBF	\$ 37.00/MBF	\$ _____
<b>Pulpwood</b>			
Balsam Fir	99 Cords	\$ 4.35/Cord	\$ _____
Basswood	223 Cords	\$ 2.95/Cord	\$ _____
Mixed Hardwood	1,378 Cords	\$ 10.55/Cord	\$ _____
Mixed Spruce	49 Cords	\$ 5.35/Cord	\$ _____
Quaking Aspen	234 Cords	\$ 20.20/Cord	\$ _____

\*The volumes are statistically estimated within plus (+) or minus (-) 4.80 percent at 95% confidence level. These estimated volumes are final and not subject to adjustment. Prospective bidders are urged to examine this timber and to make their own estimates of quantity and quality.

I understand that any or all bids may be rejected. All bids must be signed and all bid items must be bid or the bid form may be rejected. I also understand that consideration and awarding a contract will be based upon my past performance and ability to complete the contract based upon equipment and staffing subject to my control.

FEDERAL ID: \_\_\_\_ - \_\_\_\_ - \_\_\_\_ or SOCIAL SECURITY NUMBER: \_\_\_\_ - \_\_\_\_ - \_\_\_\_

Company or individual bidding: \_\_\_\_\_

Company representative's name: \_\_\_\_\_

Address: \_\_\_\_\_

City: \_\_\_\_\_ State: \_\_\_\_\_ Zip: \_\_\_\_\_

IF AVAILABLE, PLEASE PLACE THE PERSONALIZED LABEL FROM YOUR PROSPECTUS IN THE ABOVE BOX.

Individual or company representative's signature: \_\_\_\_\_ Date: \_\_\_\_\_

Phone number : \_\_\_\_\_ Email (optional): \_\_\_\_\_

**THE WINNING BIDDER MUST COMPLETE THE VERIFICATION OF WORKER'S DISABILITY COMPENSATION ACT COMPLIANCE (ON REVERSE SIDE IF DOUBLE SIDED) WITHIN 21 DAYS OF SALE AWARD DATE**



<b>FOR DEPARTMENT USE ONLY</b>	
Sale Number (XX – XXX – XX – XX)	
Forest Management Unit:	

### TIMBER SALE VERIFICATION OF WORKER'S DISABILITY COMPENSATION ACT COMPLIANCE

As required by Act 317, P.A. 1969 (Worker's Compensation) and  
Part 5 of Act 451 of 1994, as amended.

#### VERIFICATION OF WORKER'S DISABILITY COMPENSATION ACT COMPLIANCE

- This verification must be completed and submitted within 21 days of contract award and prior to the issuance of the timber sale contract.
- In addition, if boxes 2B or 2C are checked, then Notice of Exclusion or Certificate of Insurance must be submitted within twenty-one (21) days of the contract award and prior to the issuance of the timber sale contract.
- All information must be typed or printed except for written signatures.

Please Check Appropriate Categories:

1. My business is organized as (you **must** check one of the boxes below):
  - A.  Sole Proprietorship (individual)
  - B.  Partnership
  - C.  Corporation
2. You **must** check one of the boxes below:
  - A.  I certify my business is a sole proprietorship and it has no employees but the sole proprietor. I am not subject to the Worker's Compensation Laws.
  - B.  I certify my business has satisfied its obligation to the Worker's Compensation Act through the use of an approved Notice of Exclusion (BWC-337, Rev. 5/96). I will provide a copy of the Notice of Exclusion within 21 days of the contract award. (For questions or a copy of the BWC-337, please call the Worker's Compensation Bureau at 517-322-1195).
  - C.  I certify my business has a Worker's Compensation Policy. I will provide an original Certificate of Insurance within twenty-one (21) days of the contract award.
3. If you have checked item 2(A) or 2(B), you **must** indicate the number of **both** full-time and part-time employees, other than yourself, including family members and active partners (if none, you must enter "0").

\_\_\_\_\_ Full-time Employees

\_\_\_\_\_ Part-time Employees

Name of Business		Federal ID (or) Social Security No.	
Address		Telephone (      )	
City	State	ZIP	

*I hereby certify that the above information is true and correct. I agree to notify the Michigan DNR of any changes that occur in factors affecting my coverage during any of my present and future operations.*

\_\_\_\_\_  
Signature of Owner or Authorized Representative

\_\_\_\_\_  
Title

\_\_\_\_\_  
Date

Please complete the "SEALED BID" information on the next page

Moose Cut (12-057-22)  
T46N, R31W, SEC. 36; Iron COUNTY

In response to the notice of sale to be held 9:00 a.m. (local time) on July 14, 2022, I am hereby submitting my sealed bid ( firm offer) for the following forest products to be cut. Bids for individual species must be at or above the advertised price. All non-responsive bid forms may be rejected.

<u>PRODUCTS &amp; SPECIES</u>	<u>ESTIMATED VOLUME*</u>	<u>ADVERTISED PRICE</u>	<u>BID PRICE/UNIT</u>
<b>Sawtimber</b>			
Paper Birch	20.2 MBF	\$ 60.00/MBF	\$ _____
Red Maple	16.9 MBF	\$ 67.00/MBF	\$ _____
<b>Pulpwood</b>			
Balsam Fir	32 Cords	\$ 3.15/Cord	\$ _____
Mixed Hardwood	191 Cords	\$ 7.70/Cord	\$ _____
Mixed Spruce	91 Cords	\$ 3.90/Cord	\$ _____
Paper Birch	113 Cords	\$ 4.95/Cord	\$ _____
Quaking Aspen	430 Cords	\$ 14.70/Cord	\$ _____

\*The volumes are statistically estimated within plus (+) or minus (-) 21.35 percent at 95% confidence level. These estimated volumes are final and not subject to adjustment. Prospective bidders are urged to examine this timber and to make their own estimates of quantity and quality.

I understand that any or all bids may be rejected. All bids must be signed and all bid items must be bid or the bid form may be rejected. I also understand that consideration and awarding a contract will be based upon my past performance and ability to complete the contract based upon equipment and staffing subject to my control.

FEDERAL ID: \_\_\_\_\_ or SOCIAL SECURITY NUMBER: \_\_\_\_\_

Company or individual bidding: \_\_\_\_\_

Company representative's name: \_\_\_\_\_

Address: \_\_\_\_\_

City: \_\_\_\_\_ State: \_\_\_\_\_ Zip: \_\_\_\_\_

IF AVAILABLE, PLEASE PLACE THE PERSONALIZED LABEL FROM YOUR PROSPECTUS IN THE ABOVE BOX.

Individual or company representative's signature: \_\_\_\_\_ Date: \_\_\_\_\_

Phone number : \_\_\_\_\_ Email (optional): \_\_\_\_\_

**THE WINNING BIDDER MUST COMPLETE THE VERIFICATION OF WORKER'S DISABILITY COMPENSATION ACT COMPLIANCE (ON REVERSE SIDE IF DOUBLE SIDED) WITHIN 21 DAYS OF SALE AWARD DATE**



<b>FOR DEPARTMENT USE ONLY</b>	
Sale Number (XX - XXX - XX - XX)	
Forest Management Unit:	

## TIMBER SALE VERIFICATION OF WORKER'S DISABILITY COMPENSATION ACT COMPLIANCE

As required by Act 317, P.A. 1969 (Worker's Compensation) and  
Part 5 of Act 451 of 1994, as amended.

### VERIFICATION OF WORKER'S DISABILITY COMPENSATION ACT COMPLIANCE

- This verification must be completed and submitted within 21 days of contract award and prior to the issuance of the timber sale contract.
- In addition, if boxes 2B or 2C are checked, then Notice of Exclusion or Certificate of Insurance must be submitted within twenty-one (21) days of the contract award and prior to the issuance of the timber sale contract.
- All information must be typed or printed except for written signatures.

Please Check Appropriate Categories:

1. My business is organized as (you **must** check one of the boxes below):
  - A.  Sole Proprietorship (individual)
  - B.  Partnership
  - C.  Corporation
2. You **must** check one of the boxes below:
  - A.  I certify my business is a sole proprietorship and it has no employees but the sole proprietor. I am not subject to the Worker's Compensation Laws.
  - B.  I certify my business has satisfied its obligation to the Worker's Compensation Act through the use of an approved Notice of Exclusion (BWC-337, Rev. 5/96). I will provide a copy of the Notice of Exclusion within 21 days of the contract award. (For questions or a copy of the BWC-337, please call the Worker's Compensation Bureau at 517-322-1195).
  - C.  I certify my business has a Worker's Compensation Policy. I will provide an original Certificate of Insurance within twenty-one (21) days of the contract award.
3. If you have checked item 2(A) or 2(B), you **must** indicate the number of **both** full-time and part-time employees, other than yourself, including family members and active partners (if none, you must enter "0").

\_\_\_\_\_ Full-time Employees

\_\_\_\_\_ Part-time Employees

Name of Business		Federal ID (or) Social Security No.	
Address		Telephone (       )	
City	State	ZIP	

*I hereby certify that the above information is true and correct. I agree to notify the Michigan DNR of any changes that occur in factors affecting my coverage during any of my present and future operations.*

\_\_\_\_\_  
Signature of Owner or Authorized Representative

\_\_\_\_\_  
Title

\_\_\_\_\_  
Date

Please complete the "SEALED BID" information on the next page