



**DEPARTMENT OF NATURAL RESOURCES
STATE OF MICHIGAN
TIMBER SALE PROSPECTUS #7079**

SCHEDULED SALE DATE AND TIME: 3:00 p.m. (local time) on July 18, 2022.

LOCATION: ESCANABA MGMT UNIT, 6833 HWY'S 2, 41 & M-35, GLADSTONE, MI 49837.

PROSPECTUS NOTE: The bidder is advised to inspect the sale area and review the location, estimated volumes, operating costs and contract terms of proposed sales. Please be aware that some landowners may request 60 days or more notice for access across their land.

Notice is hereby given that bids will be received by the Unit Manager, ESCANABA MANAGEMENT UNIT, for certain timber on the following described lands:

Jimtown Point EAB (33-023-22) / T34N, R25W, SEC. 5 , S1/2SW.

T34N, R25W, SEC. 6 , SE.

T34N, R25W, SEC. 8 , SWNE.

Menominee County, Advertised Price \$23,089.90, 81.0 Acres, Hardwood, Aspen.

SALE NOTE: All units of volume listed for this sale were estimated using the Inventory Manager computer program and the new Michigan taper model.

Springs Aspen (33-024-22) / T35N, R25W, SEC. 18, NENE,S1/2NE,SE.

Menominee County, Advertised Price \$24,546.55, 73.0 Acres, Aspen, Hardwood.

SALE NOTE: All units of volume listed for this sale were estimated using the Inventory Manager computer program and the new Michigan taper model.

BID INSTRUCTIONS (VER. 07/02/2018):

1. Scheduled Bid Location, Date, and Time (2/11)

Bids must be received by the Unit Manager, ESCANABA OFFICE, 6833 Hwy's 2, 41 & M-35, Gladstone, MI 49837, no later than 3:00 p.m. (local time) on July 18, 2022. For further information concerning this sale, contact Eric Thompson at 906-789-8231.

2. Bidder's Qualifications (5/16)

Purchaser shall obtain workers compensation insurance to cover claims under Michigan's Worker's Disability Compensation Act of 1969 or similar employee benefit act of any other state applicable to an employee. If all or part of a timber sale was prepared by a private contractor, the contractor and that contractor's company are not permitted to bid on the timber sale contract. Bids will not be accepted from individuals or companies appearing on the DNR/FRD No-Bid List. This list contains the names of purchasers who previously failed to execute a contract within 21-days or who have a history of poor performance.

3. Preparation of Sealed Bids (5/16)

Bid Forms may be completed online thru Michigan DNR Timber Sale Online Bidding (OLB) at www.michigan.gov/timberbidding or by completing the hardcopy Bid Form found in the Timber Sale Prospectus. Hardcopy Bid Forms shall be manually signed in ink. Registration in OLB is considered your 'signature' for all bids submitted thru that system. Bid prices must be entered for each species and product in the Bid Price column for all material subject to bidding and all fill-in blanks must be completed. If erasures or other changes appear on the hardcopy Bid Form, each erasure or change must be initialed by the person signing the bid.

4. Submission of Sealed Bids (5/16)

Bid forms may be obtained from the Unit Manager or thru OLB. Bids may be submitted hardcopy or thru OLB. All hardcopy bids must be submitted on the bid form and in an envelope clearly identified as described in this section. NOTE: Only one bid form per bid envelope. Sealed bids must be submitted to the Unit office designated in the prospectus and must be submitted at or prior to the time established in the prospectus. The envelope should show on the outside (a) the sale name or number and (b) the date and time of bid opening, as shown in the prospectus. Bids received after the time specified in the sale prospectus are late bids and will be rejected.

It is possible for a bidder to submit multiple bids on a single sale. For example, a bid may be submitted hardcopy and a bid may be submitted thru OLB. Or, two bidders from the same company could both submit bids on the same sale. If this were to happen, the State would accept all bids received and award the contract accordingly. All bidding and contractual requirements would apply to all bids received.

5. Public Opening of Sealed Bids (7/16)

If conditions permit, the sealed bids will be publicly opened and posted at the time and place set in the prospectus.

If a bidder, present at a bid opening, has submitted bids on more than one sale, that bidder may withdraw their unopened bid envelopes or announce the withdrawal of their online bid after being declared the successful bidder on one sale.

6. Award of Contract (1/11)

Award of the contract will be made to the Bidder whose bid, conforming to the prospectus, is most advantageous to the State of Michigan on the basis of total value at rates bid for the estimated quantities. The State reserves the right to reject any bid or waive any minor irregularity in bids received. A written award mailed (or otherwise furnished) to the successful Bidder shall be deemed to result in a binding contract without further action by either party.

7. Down Payment (1/11)

The Bidder to whom award is made must make a down payment within 21 days of the sale award. The amount of the down payment will be calculated as shown in the Bond and Payment Schedule of this prospectus. Only cash may be used to meet this requirement.

8. Performance Security (1/11)

As guarantee of faithful performance, a cash bond, certificate of deposit, surety bond or irrevocable letter of credit (LOC) is required within 21 days of the sale award. The amount of the performance security is shown in the Bond and

Payment Schedule of this prospectus. If an LOC or surety is used, the coverage must extend for at least 6 months beyond the contract expiration.

9. Timber Sale Contract (7/18)

Additional conditions and requirements common to all timber sales are listed on the timber sale contract (R4031) and are available on line at www.michigan.gov/timber. Contact the Unit Manager for additional information or a sample contract. Within 21 days of the date of the award letter, the bidder must sign the contract and provide the required down payment, performance security, and verification of worker's disability compensation. The down payment and performance security shall be in accordance with the provisions of the timber sale contract, in the sums stated in this prospectus. If these actions are not taken, then the Bidder, the Bidder's corporation, and the corporation's principals may not be permitted to bid on State timber sales for a period of 3 months after the first offense, 6 months after the second offense, and 1 year after the third offense. An offense will only be counted against the Bidder for 5 years. In addition, the Bidder certifies that if awarded this contract, the Bidder will complete the timber sale contract in accordance with its terms and any modifications thereof including requirements to purchase, cut, and remove the included timber by the expiration date.

Payment Unit values in the State Forest Timber Sale Contract are calculated based on the advertised value of the Payment Unit as a percentage of the total advertised value of the contract. The advertised value of each Payment Unit is given in the Description of Timber by Payment Unit table on the Timber Sale Information page. For example, if the value of Payment Unit 1 is advertised as \$1,500 and the total Timber Sale value is advertised as \$10,000, the contract price for Payment Unit 1 will be 15% of the total bid price ($\$1,500/\$10,000 * 100$).

10. Disclaimer of Estimates and Bidder's Warranty of Inspection (7/16)

Before submitting this bid, the Bidder is advised and cautioned to inspect the sale area, review the requirements of the sale contract, and take other steps as may be reasonably necessary to ascertain the location, estimated volumes, construction estimates, and operating costs of the proposed sale. Failure to do so will not relieve the Bidder from responsibility for completing the contract.

The Bidder warrants that this bid is submitted solely on the basis of the Bidder's examination and inspection of the quality and quantity of the timber offered for sale and the Bidder's opinion of the value thereof and the costs of recovery. No reliance should be placed on the State of Michigan's estimates of timber quality, quantity or costs of recovery. Bidder further acknowledges that the State of Michigan: (i) expressly disclaims any warranty of fitness of timber for any purpose; (ii) offers this timber as is without any warranty of quality (merchantability) or quantity and (iii) expressly disclaims any warranty as to the quantity or quality of timber sold.

11. Certification and Chain-of-Custody (10/14)

Unless otherwise indicated in the contract under section 7 – Other Conditions of the Sale Specific Conditions & Requirements, the area encompassed by this timber sale is certified to the standards of the Forest Stewardship Council (FSC) - Certificate #SCS-FM/COC-00090N and the Sustainable Forestry Initiative (SFI) - Certificate # NSF-SFIS-5Y031-SF5. Forest products from this sale may be delivered to the mill as "FSC 100% and / or SFI certified" as long as the contractor hauling the forest products is chain-of-custody (COC) certified or covered under a COC certificate from the destination mill. The purchaser is responsible for maintaining COC after leaving the sale area.

12. Good Neighbor Authority (GNA) Requirements (7/16)

If the name of this timber sales contains the acronym GNA, it is authorized by the Good Neighbor Authority (GNA) and covered by various agreements between the U.S. Forest Service and the State. The timber sale occurs on federal land and the following conditions apply:

GNA contracts on US Forest Service land will not be awarded to purchasers on the Federal list of excluded parties. The System for Award Management (SAM) will be checked for active excluded parties prior to award of contract. In addition, the Bidder to whom award is made must complete an Assurance Regarding Felony Conviction or Tax Delinquent Status for Corporate Applicants (AD-3031).

13. Good Neighbor Authority (GNA) Requirements, con't (9/16)

Bidder certifies, by signing this bid form, that to the best of Bidder's knowledge that the following representations are accurate and complete.

- a. That the Bidder and its principals are not presently debarred, suspended, proposed for debarment, declared ineligible, or voluntary excluded from timber sales (covered transactions) by any Federal department or agency.
- b. That the Bidder and its principals have not within a 3-year period preceding this bid been convicted of or had a civil judgment rendered against them for commission of fraud or a criminal offense in connection with obtaining , attempting to obtain, or performing a public (Federal, State, or local) transaction or contract under a public transaction; violation of Federal or State antitrust statutes or commission of embezzlement, theft, forgery, bribery, falsification or destruction of records, making false statements, or receiving stolen property.
- c. That the Bidder and its principals are not presently indicted for or otherwise criminally or civilly charged by a governmental entity (Federal, State, or local) with commission of any of the offenses enumerated in paragraph b of this certification.
- d. That the Bidder and its principals have not within a 3-year period preceding this bid had one or more public transactions (Federal, State, or local) terminated for breach or default of a timber or forest product contract.

Bidders that cannot certify this requirement, in whole or in part, shall submit an explanation with their bid.

DAN EICHINGER
Director

TIMBER SALE INFORMATION

Jimtown Point EAB (33-023-22)
T34N, R25W, SEC. 5; T34N, R25W, SEC. 6; T34N, R25W, SEC. 8.
Menominee County (Advertised Price \$23,089.90)

SALE NOTE: All units of volume listed for this sale were estimated using the Inventory Manager computer program and the new Michigan taper model.

A timber sale contract for this lump sum, sealed bid timber sale will be awarded to the responsible bidder offering the highest sealed bid price. All units of volume listed below were estimated using the Inventory Manager computer program and the new Michigan taper model. Bids must be at or above the following advertised price for each product and species:

<u>PRODUCTS & SPECIES</u>	<u>ESTIMATED UNITS*</u>	<u>ADVERTISED PRICE</u>
Sawtimber		
Beech	2.2 MBF	\$ 25.00 / MBF
Green Ash	1.8 MBF	\$ 30.00 / MBF
Paper Birch	0.8 MBF	\$ 50.00 / MBF
Red Maple	72.4 MBF	\$ 79.00 / MBF
Sugar Maple	5.8 MBF	\$ 122.00 / MBF
Pulpwood		
Balsam Fir	92 Cords	\$ 9.30 / Cord
Mixed Aspen	217 Cords	\$ 15.85 / Cord
Mixed Hardwood	982 Cords	\$ 11.35 / Cord
N. White Cedar	16 Cords	\$ 6.30 / Cord
White Pine	41 Cords	\$ 18.55 / Cord
White Spruce	23 Cords	\$ 9.20 / Cord

* The total volume is statistically estimated within plus (+) or minus (-) 5.29 percent. There are an estimated 1,580 cords on this timber sale, plus or minus 84 cords at the 95% confidence level. The estimated units are final and not subject to adjustment. Prospective bidders are urged to examine this timber and to make their own estimates of quantity and quality.

BOND AND PAYMENT SCHEDULE:

1. A bond in the amount of \$1,154.00 to insure faithful performance of the conditions of the contract will be deposited by the successful bidder within 21 days of the sale award.
2. Cutting in any sale or unit without the required advance payment would be considered a trespass.
3. Total payment must be paid in advance or according to the following schedule :
 - (a) Ten percent (10%) of the sale value must be paid within 21 days of the sale award.
 - (b) The 10% down payment will be credited towards the first unit cut.
 - (c) Payment for each of the following units must be made before cutting begins in that unit:

PAYMENT UNIT NUMBER	PERCENT OF TOTAL SALE VALUE
01	10.7%
02	32.6%
03	30.0%
04	11.0%
05	5.9%
06	9.8%
4. If no cutting takes place, the 10% down payment will not be refunded.
5. Operations on the contract issued will terminate on 09/30/2025.

SALE STATISTICS

Volumes were calculated in cubic feet using the Michigan taper model. Cubic foot volume includes all wood inside bark for the product indicated. For display purposes, cubic feet were converted to cords and MBF using a simple conversion factor, e.g. 79 cubic feet per cord and 185 cubic feet per MBF. The cubic foot volumes are precise; the cords and MBF volumes are not. Cubic foot volume cannot be directly converted to cords or boards with precision.

SALE VOLUMES

The total estimated sale volume may not equal the sum of the species/products due to the nature of statistical calculations associated with double sampling methodology.

VOLUME			STATISTICAL RANGE IN CORDS	
TOTAL CUBIC FEET	TOTAL CORDS	PERCENT ERROR	MINIMUM	MAXIMUM
124,790	1,580	5.29%	1,496	1,663

VDU VOLUMES

A VDU is a Volume Determination Unit. Volumes and their associated statistics are calculated at the VDU level and summarized to the sale level. There is often a one to one relationship between a VDU and a Payment Unit, but not always, depending on the cruise design. Refer to the VDU TO PAYMENT UNIT table.

	VOLUME			RANGE IN CORDS	
VDU	TOTAL CUBIC FEET	TOTAL CORDS	PERCENT ERROR	MINIMUM	MAXIMUM
1	17,169	217	16.93%	181	254
10	76,947	974	6.64%	909	1,039
12	13,578	172	19.52%	138	205
40	4,674	59	22.80%	46	73
44	12,421	157	7.78%	145	169
TOTAL:	124,790	1,580		1,419	1,740

VDU TO PAYMENT UNIT

When a VDU is associated with more than one Payment Unit (PU), the VDU volumes are assigned to the PU based on acres of the VDU within the PU.

VDU	VDU ACRES	PU	PU ACRES
1	12.8	1	12.8
10	50.1	2	26.1
		3	24.0
12	7.4	4	7.4
40	4.5	5	4.5
44	6.2	6	6.2
TOTAL:	81.0		81.0

DESCRIPTION OF TIMBER BY PAYMENT UNIT (PU)

PU	MARKET GROUP	PRODUCT	QUANTITY	UNIT	ACRES	ADVERTISE PRICE				
1	Balsam Fir	Pulpwood	11	Cords	12.8	\$2,464.05				
	Mixed Aspen		33	Cords						
	<i>Balsam Poplar</i>		33	Cords						
	Mixed Hardwood		162	Cords						
	<i>Black Ash</i>		9	Cords						
	<i>Green Ash</i>		77	Cords						
	<i>Paper Birch</i>		8	Cords						
	<i>Red Maple</i>		68	Cords						
	2		Beech	Sawtimber			1.1	MBF	26.1	\$7,535.50
Red Maple		Pulpwood	27.2	MBF						
Balsam Fir			30	Cords						
Mixed Aspen			72	Cords						
<i>B. T. Aspen</i>			46	Cords						
<i>Balsam Poplar</i>			3	Cords						
<i>Quaking Aspen</i>			23	Cords						
Mixed Hardwood			303	Cords						
<i>American Elm</i>			1	Cords						
<i>Beech</i>			4	Cords						
<i>Black Ash</i>			3	Cords						
<i>Green Ash</i>			112	Cords						
<i>Paper Birch</i>			7	Cords						
<i>Red Maple</i>			176	Cords						
White Pine			21	Cords						
White Spruce			12	Cords						
3			Beech	Sawtimber	1.1	MBF	24.0	\$6,927.20		
			Red Maple	Pulpwood	25.0	MBF				
	Balsam Fir	27	Cords							
	Mixed Aspen	66	Cords							
	<i>B. T. Aspen</i>	42	Cords							
	<i>Balsam Poplar</i>	3	Cords							
	<i>Quaking Aspen</i>	21	Cords							
	Mixed Hardwood	278	Cords							
	<i>American Elm</i>	1	Cords							
	<i>Beech</i>	3	Cords							
	<i>Black Ash</i>	3	Cords							
	<i>Green Ash</i>	103	Cords							
	<i>Paper Birch</i>	7	Cords							
	<i>Red Maple</i>	161	Cords							
	White Pine	20	Cords							
	White Spruce	11	Cords							
	4	Green Ash	Sawtimber		1.8	MBF			7.4	\$2,540.85
		Red Maple	Pulpwood		9.3	MBF				
Balsam Fir		11		Cords						
Mixed Aspen		11		Cords						
<i>Quaking Aspen</i>		11		Cords						
Mixed Hardwood		130		Cords						
<i>Black Ash</i>		6		Cords						
<i>Green Ash</i>		55		Cords						
<i>Paper Birch</i>		6		Cords						
<i>Red Maple</i>		63		Cords						
5		Paper Birch		Sawtimber	0.8	MBF	4.5	\$1,360.70		
	Red Maple	Pulpwood	10.9	MBF						
	Sugar Maple		0.9	MBF						
	Balsam Fir		1	Cords						
	Mixed Hardwood		30	Cords						
	<i>Green Ash</i>		8	Cords						

DESCRIPTION OF TIMBER BY PAYMENT UNIT (PU), CON'T

PU	MARKET GROUP	PRODUCT	QUANTITY	UNIT	ACRES	ADVERTISE PRICE
5 con't	<i>Paper Birch</i>	<i>Pulpwood</i>	1	<i>Cords</i>		
	<i>Red Maple</i>		18	<i>Cords</i>		
	<i>Sugar Maple</i>		3	<i>Cords</i>		
6	Sugar Maple	Sawtimber	4.9	MBF	6.2	\$2,261.60
	Balsam Fir	Pulpwood	12	Cords		
	Mixed Aspen		35	Cords		
	<i>B. T. Aspen</i>		10	<i>Cords</i>		
	<i>Balsam Poplar</i>		9	<i>Cords</i>		
	<i>Quaking Aspen</i>		16	<i>Cords</i>		
	Mixed Hardwood		79	Cords		
	<i>Black Ash</i>		15	<i>Cords</i>		
	<i>Green Ash</i>		59	<i>Cords</i>		
	<i>Sugar Maple</i>		5	<i>Cords</i>		
	N. White Cedar		16	Cords		
	TOTAL:			83.0		
TOTAL:			1,371	Cords		

Sale Specific Conditions & Requirements

Sale Name: Jimtown Point EAB

Sale Number: 33-023-22 Seq#: 1

1 - Sale Area

1.2 - Boundaries

1.2.1 - Painted boundaries (9/19)

The sale boundary and Payment Unit boundaries are marked and identified by blue, red, and yellow paint. Exterior sale boundary lines against private property are marked with blue paint. Exterior sale boundary lines against state are marked with red paint. The western and southern boundaries of Payment Unit 1 is Jimtown Road. The southern boundary of Payment Unit 3 is Jimtown Road. There is no red paint along the Jimtown Road. Interior Payment Unit boundaries are marked with yellow paint. The painted boundary line trees are not Included Timber and are to be protected unless marked with orange paint. Yellow painted trees designating an interior Payment Unit boundary are only to be cut when all surrounding Payment Units have been paid for.

2 - Timber Specifications

2.1 - Included Timber

2.1.1 - Clearcut unit(s) with unmerchantable trees (6/14)

Within Payment Unit(s) 1, 4, and 6, cut all trees that are three (3) inches or more at DBH, except hemlock and trees marked with green paint. In addition, within Payment Unit 4, do not cut cedar.

2.1.2 - Clearcut unit(s) w/o unmerchantable trees (8/11)

Within Payment Unit(s) 2 and 3, cut all trees which meet minimum piece specifications in 2.2 Utilization, except cedar, hemlock, and trees marked with green paint.

2.1.3 - Cut tree marked unit(s) (12/08)

Within Payment Unit(s) 5, all trees are designated for cutting when marked with orange paint above and below stump height, regardless of merchantability.

2.1.15 - Hazard trees near roads (11/20)

Cut and remove all standing dead trees within 100 feet of the cleared portion of the Jimtown Road. These trees may be utilized or must be scattered back into the Sale Area.

2.2 - Utilization

2.2.4 - Skidding length (2/14)

Skidding of unlimbed tops or lengths over 17 feet is not permissible within Payment Unit 5, unless approved by the Unit Manager or his/her representative.

3 - Payments

3.3 - Pre-measured Sales

3.3.4 - Dividing payment units (7/14)

Payment Unit(s) \$18,000 in value or greater may be divided at the request of the Purchaser and upon approval of the Unit Manager. Dividing Payment Units is a contract modification which requires a Timber Sale Contract Amendment. There will be only one division per Payment Unit.

4 - Transportation

4.2 - Maintenance

4.2.1 - Hauling restriction (12/08)

Hauling may be restricted on forest roads by the Unit Manager or his/her representative. The restriction may occur during spring break up or during other wet weather conditions.

4.2.4 - Grading (10/16)

For completion of the sale, state forest roads must be graded. In general, this will require a road grader or bulldozer to shape

up the roads after forest products have been hauled off site. This includes cleaning of drainage areas, grading, crowning, and filling with gravel, if necessary. The grading equipment to be used must be approved by the Unit Manager or his/her representative.

4.3 - Public Right-of-Way

4.3.2 - County R-O-W (12/06)

The county must be contacted prior to crossing or harvesting in the county road R-O-W. This applies to Payment Unit 1 and the Jimtown Road.

4.4 - Access

4.4.1 - Private property access (3/11)

Permission for access across private land is the responsibility of the Purchaser. The best access into Payment Units 4 and 5 is through private property, from the south. The landowner has indicated he would allow access, but the Purchaser and any interested bidders must contact him prior to crossing his property. To obtain the landowners contact information call Dan 906-399-0879 or Dustin 906-399-1828.

5 - Operations

5.2 - Conduct of Operations

5.2.3 - Operating Restrictions

5.2.3.1 - Operating restrictions (9/11)

Within Payment Unit(s) 1, 4, and 6, cutting and skidding are limited to the period of December 1 to March 31, unless there is an extended dry or frozen period, and the sale administrator allows harvesting during that period. This restriction is because of low wet ground throughout each of the Payment Units. About half of Payment Unit 6 is upland and could be harvested during a dry summer.

5.2.3.3 - Bark slippage restriction (3/09)

Within Payment Unit(s) 5, unless changed by written agreement, cutting and skidding are not permitted during the period of April 15 to July 15. This restriction is because of bark slippage.

5.2.22 - Operating Caution

5.2.22.1 - Operating caution (6/11)

It is recommended, but not required, that within Payment Unit(s) 2 and 3, cutting and skidding occur during dry summer or frozen winter conditions. The reason for the recommendation is because of some low wet ground within each of the Payment Units.

6 - Safety and Fire Prevention

6.2 - Signing

6.2.1 - Road posting (10/20)

The Purchaser is responsible for posting and maintaining caution signs on the Jimtown Road prior to beginning operations. The road must be posted at appropriate distances from the Sale Area to warn of logging activity and truck traffic. Signs must be removed when harvest operations are suspended or completed. The Purchaser will provide these signs.

7 - Other Conditions

7.5 - Loss

7.5.1 - Deteriorating timber (7/09)

The sale area has received damage from the emerald ash borer. The Purchaser should harvest the wood as soon as possible. The Department of Natural Resources is held free of responsibility of any further damage or deterioration due to delay in harvesting.



TIMBER SALE MAP

This information provided by authority of Part 525, 1994 PA 451, as amended.

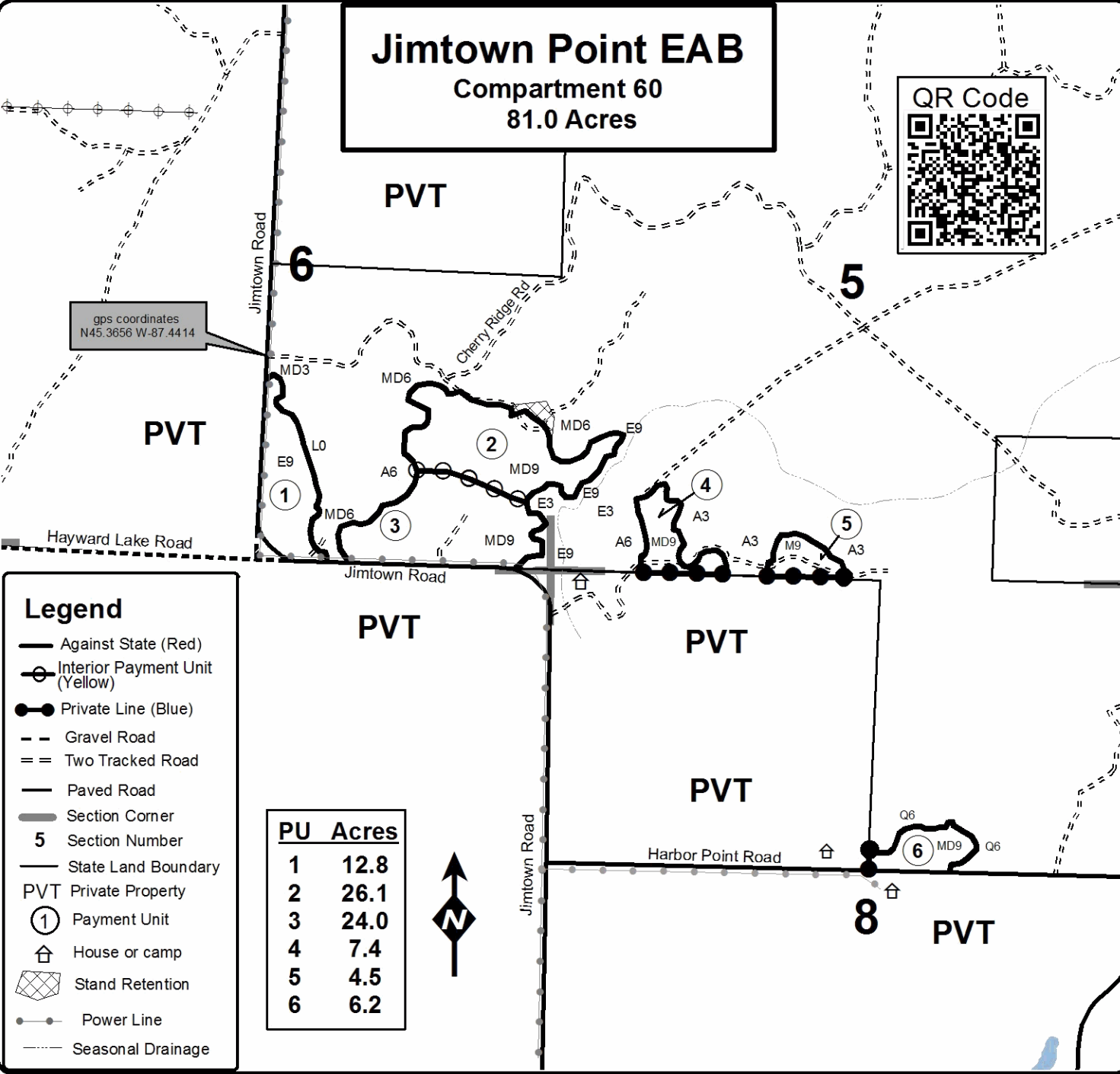
Forest Management Unit Escanaba Management Unit	County Menominee County	Mapped By Bealdo	Date 5/6/2022	Page 1	of 1
Township 34N	Range 25W	Section(s) and Subdivision(s) Sec 5 - S1/2SW; Sec 6 - SE; Sec 8 - SWNE.	Scale 1:15,840		

Cover Type				Density	
A = Aspen	H = Hemlock	N = Marsh	U = Upland Brush	0 = Non Stocked	5 = Pole Timber Medium
B = Paper Birch	J = Jack Pine	O = Oak	UM = Upland Mixed	1 = Seedling Sapling Poor	6 = Pole Timber Well
C = Cedar	L = Lowland Brush	P = Lowland Poplar	V = Bog or Marsh	2 = Seedling Sapling Medium	7 = Saw Timber Poor
D = Treed Bog	LM = Lowland Mixed	Q = Mixed Swamp Conifer	W = White Pine	3 = Seedling Sapling Well	8 = Saw Timber Medium
E = Swamp Hdwoods	M = Mpl, Bch, Brch	R = Red Pine	X = Non Stocked	4 = Pole Timber Poor	9 = Saw Timber Well
F = Spruce Fir	MC = Mixed Conifer	S = Black Spruce	Z = Water		
G = Grass	MD = Mixed Deciduous	T = Tamarack			

Jimtown Point EAB

Compartment 60

81.0 Acres

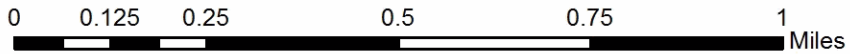


gps coordinates
N45.3656 W-87.4414

Legend

- Against State (Red)
- Interior Payment Unit (Yellow)
- Private Line (Blue)
- Gravel Road
- Two Tracked Road
- Paved Road
- Section Corner
- 5** Section Number
- State Land Boundary
- PVT Private Property
- Payment Unit
- House or camp
- Stand Retention
- Power Line
- Seasonal Drainage

PU	Acres
1	12.8
2	26.1
3	24.0
4	7.4
5	4.5
6	6.2



TIMBER SALE INFORMATION

Springs Aspen (33-024-22)

T35N, R25W, SEC. 18.

Menominee County (Advertised Price \$24,546.55)

SALE NOTE: All units of volume listed for this sale were estimated using the Inventory Manager computer program and the new Michigan taper model.

A timber sale contract for this lump sum, sealed bid timber sale will be awarded to the responsible bidder offering the highest sealed bid price. All units of volume listed below were estimated using the Inventory Manager computer program and the new Michigan taper model. Bids must be at or above the following advertised price for each product and species:

<u>PRODUCTS & SPECIES</u>	<u>ESTIMATED UNITS*</u>	<u>ADVERTISED PRICE</u>
Sawtimber		
Red Maple	3.9 MBF	\$ 93.00 / MBF
Pulpwood		
Balsam Fir	14 Cords	\$ 11.00 / Cord
Mixed Aspen	1,192 Cords	\$ 18.70 / Cord
Mixed Hardwood	67 Cords	\$ 13.40 / Cord
White Pine	31 Cords	\$ 21.90 / Cord
White Spruce	15 Cords	\$ 10.85 / Cord

* The total volume is statistically estimated within plus (+) or minus (-) 6.72 percent. There are an estimated 1,217 cords on this timber sale, plus or minus 82 cords at the 95% confidence level. The estimated units are final and not subject to adjustment. Prospective bidders are urged to examine this timber and to make their own estimates of quantity and quality.

BOND AND PAYMENT SCHEDULE:

1. A bond in the amount of \$1,227.00 to insure faithful performance of the conditions of the contract will be deposited by the successful bidder within 21 days of the sale award.
2. Cutting in any sale or unit without the required advance payment would be considered a trespass.
3. Total payment must be paid in advance or according to the following schedule :
 - (a) Ten percent (10%) of the sale value must be paid within 21 days of the sale award.
 - (b) The 10% down payment will be credited towards the first unit cut.
 - (c) Payment for each of the following units must be made before cutting begins in that unit:

PAYMENT UNIT NUMBER	PERCENT OF TOTAL SALE VALUE
01	35.0%
02	35.9%
03	29.1%
4. If no cutting takes place, the 10% down payment will not be refunded.
5. Operations on the contract issued will terminate on 09/30/2025.

SALE STATISTICS

Volumes were calculated in cubic feet using the Michigan taper model. Cubic foot volume includes all wood inside bark for the product indicated. For display purposes, cubic feet were converted to cords and MBF using a simple conversion factor, e.g. 79 cubic feet per cord and 185 cubic feet per MBF. The cubic foot volumes are precise; the cords and MBF volumes are not. Cubic foot volume cannot be directly converted to cords or boards with precision.

SALE VOLUMES

The total estimated sale volume may not equal the sum of the species/products due to the nature of statistical calculations associated with double sampling methodology.

VOLUME		STATISTICAL RANGE IN CORDS		
TOTAL CUBIC FEET	TOTAL CORDS	PERCENT ERROR	MINIMUM	MAXIMUM
96,158	1,217	6.72%	1,135	1,299

VDU VOLUMES

A VDU is a Volume Determination Unit. Volumes and their associated statistics are calculated at the VDU level and summarized to the sale level. There is often a one to one relationship between a VDU and a Payment Unit, but not always, depending on the cruise design. Refer to the VDU TO PAYMENT UNIT table.

VDU	VOLUME		PERCENT ERROR	RANGE IN CORDS	
	TOTAL CUBIC FEET	TOTAL CORDS		MINIMUM	MAXIMUM
25	96,158	1,217	6.73%	1,135	1,299
TOTAL:	96,158	1,217		1,135	1,299

VDU TO PAYMENT UNIT

When a VDU is associated with more than one Payment Unit (PU), the VDU volumes are assigned to the PU based on acres of the VDU within the PU.

VDU	VDU ACRES	PU	PU ACRES
25	73.0	1	25.6
		2	26.2
		3	21.2
TOTAL:	73.0		73.0

DESCRIPTION OF TIMBER BY PAYMENT UNIT (PU)

PU	MARKET GROUP	PRODUCT	QUANTITY	UNIT	ACRES	ADVERTISE PRICE			
1	Red Maple	Sawtimber	1.4	MBF	25.6	\$8,586.45			
	Balsam Fir	Pulpwood	5	Cords					
	Mixed Aspen		417	Cords					
	<i>B. T. Aspen</i>		177	<i>Cords</i>					
	<i>Balsam Poplar</i>		3	<i>Cords</i>					
	<i>Quaking Aspen</i>		237	<i>Cords</i>					
	Mixed Hardwood		23	Cords					
	<i>Black Ash</i>		1	<i>Cords</i>					
	<i>Black Cherry</i>		1	<i>Cords</i>					
	<i>Green Ash</i>		13	<i>Cords</i>					
	<i>Red Maple</i>		8	<i>Cords</i>					
	White Pine		11	Cords					
	White Spruce		5	Cords					
	2	Red Maple	Sawtimber	1.4			MBF	26.2	\$8,816.40
Balsam Fir		Pulpwood	5	Cords					
Mixed Aspen			428	Cords					
<i>B. T. Aspen</i>			182	<i>Cords</i>					
<i>Balsam Poplar</i>			3	<i>Cords</i>					
<i>Quaking Aspen</i>			243	<i>Cords</i>					
Mixed Hardwood			24	Cords					
<i>Black Cherry</i>			2	<i>Cords</i>					
<i>Green Ash</i>			13	<i>Cords</i>					
<i>Red Maple</i>			9	<i>Cords</i>					
White Pine			11	Cords					
White Spruce			6	Cords					
3		Red Maple	Sawtimber	1.1	MBF	21.2	\$7,143.70		
		Balsam Fir	Pulpwood	4	Cords				
	Mixed Aspen		347	Cords					
	<i>B. T. Aspen</i>		147	<i>Cords</i>					
	<i>Balsam Poplar</i>		3	<i>Cords</i>					
	<i>Quaking Aspen</i>		197	<i>Cords</i>					
	Mixed Hardwood		20	Cords					
	<i>Black Ash</i>		1	<i>Cords</i>					
	<i>Black Cherry</i>		1	<i>Cords</i>					
	<i>Green Ash</i>		11	<i>Cords</i>					
	<i>Red Maple</i>		7	<i>Cords</i>					
	White Pine		9	Cords					
	White Spruce		4	Cords					
	TOTAL:			3.9	MBF				
TOTAL:			1,319	Cords					

Sale Specific Conditions & Requirements

Sale Name: Springs Aspen

Sale Number: 33-024-22 Seq#: 1

1 - Sale Area

1.2 - Boundaries

1.2.1 - Painted boundaries (9/19)

The sale boundary and Payment Unit boundaries are marked and identified by red and yellow paint. Exterior sale boundary lines against state are marked with red paint. Interior Payment Unit boundaries are marked with yellow paint. Retention patches are marked with red paint; no harvesting activities may occur within these areas. Yellow painted trees designating an interior Payment Unit boundary are only to be cut when all surrounding Payment Units have been paid for.

2 - Timber Specifications

2.1 - Included Timber

2.1.1 - Clearcut unit(s) with unmerchantable trees (6/14)

Within Payment Unit(s) 1-3, cut all trees that are three (3) inches or more at DBH; except do not cut white pine greater than twenty (20) inches at DBH and trees marked with green paint.

3 - Payments

3.3 - Pre-measured Sales

3.3.4 - Dividing payment units (7/14)

Payment Unit(s) \$18,000 in value or greater may be divided at the request of the Purchaser and upon approval of the Unit Manager. Dividing Payment Units is a contract modification which requires a Timber Sale Contract Amendment. There will be only one division per Payment Unit.

4 - Transportation

4.2 - Maintenance

4.2.1 - Hauling restriction (12/08)

Hauling may be restricted on forest roads by the Unit Manager or his/her representative. The restriction may occur during spring break up or during other wet weather conditions.

4.2.4 - Grading (10/16)

For completion of the sale, state forest roads must be graded. In general, this will require a road grader or bulldozer to shape up the roads after forest products have been hauled off site. This includes cleaning of drainage areas, grading, crowning, and filling with gravel, if necessary. The grading equipment to be used must be approved by the Unit Manager or his/her representative.

6 - Safety and Fire Prevention

6.2 - Signing

6.2.1 - Road posting (10/20)

The Purchaser is responsible for posting and maintaining caution signs on the Indian Springs Road prior to beginning operations. The road must be posted at appropriate distances from the Sale Area to warn of logging activity and truck traffic. Signs must be removed when harvest operations are suspended or completed. The Purchaser will provide these signs.



TIMBER SALE MAP

This information provided by authority of Part 525, 1994 PA 451, as amended.

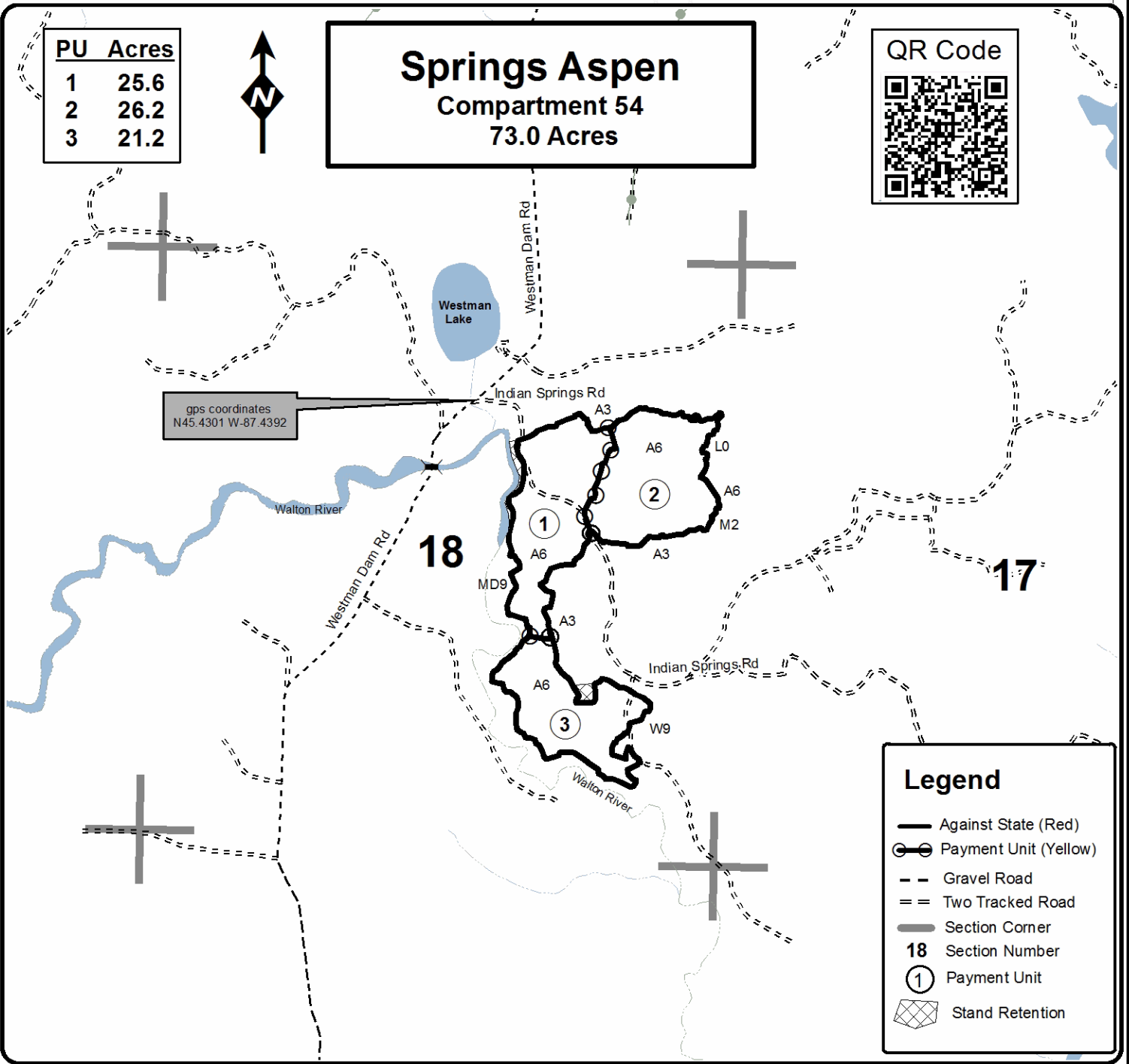
Forest Management Unit Escanaba Management Unit	County Menominee County	Mapped By Beudo	Date 5/20/2022	Page 1	of 1
Township 35N	Range 25W	Section(s) and Subdivision(s) Sec 18 - NENE, S1/2NE, SE.	Scale 1:15,840		

Cover Type				Density	
A = Aspen	H = Hemlock	N = Marsh	U = Upland Brush	0 = Non Stocked	5 = Pole Timber Medium
B = Paper Birch	J = Jack Pine	O = Oak	UM = Upland Mixed	1 = Seedling Sapling Poor	6 = Pole Timber Well
C = Cedar	L = Lowland Brush	P = Lowland Poplar	V = Bog or Marsh	2 = Seedling Sapling Medium	7 = Saw Timber Poor
D = Treed Bog	LM = Lowland Mixed	Q = Mixed Swamp Conifer	W = White Pine	3 = Seedling Sapling Well	8 = Saw Timber Medium
E = Swamp Hdwoods	M = Mpl, Bch, Brch	R = Red Pine	X = Non Stocked	4 = Pole Timber Poor	9 = Saw Timber Well
F = Spruce Fir	MC = Mixed Conifer	S = Black Spruce	Z = Water		
G = Grass	MD = Mixed Deciduous	T = Tamarack			

PU	Acres
1	25.6
2	26.2
3	21.2

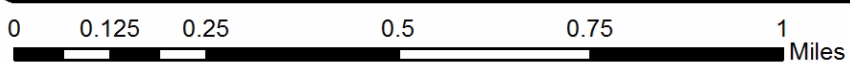


Springs Aspen
Compartment 54
73.0 Acres



gps coordinates
N45.4301 W-87.4392

Legend	
	Against State (Red)
	Payment Unit (Yellow)
	Gravel Road
	Two Tracked Road
	Section Corner
18	Section Number
	Payment Unit
	Stand Retention



Jimtown Point EAB (33-023-22)
T34N, R25W, SEC. 5; T34N, R25W, SEC. 6; T34N, R25W, SEC. 8; Menominee

In response to the notice of sale to be held 3:00 p.m. (local time) on July 18, 2022, I am hereby submitting my sealed bid (firm offer) for the following forest products to be cut. Bids for individual species must be at or above the advertised price. All non-responsive bid forms may be rejected.

<u>PRODUCTS & SPECIES</u>	<u>ESTIMATED VOLUME*</u>	<u>ADVERTISED PRICE</u>	<u>BID PRICE/UNIT</u>
Sawtimber			
Beech	2.2 MBF	\$ 25.00/MBF	\$ _____
Green Ash	1.8 MBF	\$ 30.00/MBF	\$ _____
Paper Birch	0.8 MBF	\$ 50.00/MBF	\$ _____
Red Maple	72.4 MBF	\$ 79.00/MBF	\$ _____
Sugar Maple	5.8 MBF	\$ 122.00/MBF	\$ _____
Pulpwood			
Balsam Fir	92 Cords	\$ 9.30/Cord	\$ _____
Mixed Aspen	217 Cords	\$ 15.85/Cord	\$ _____
Mixed Hardwood	982 Cords	\$ 11.35/Cord	\$ _____
N. White Cedar	16 Cords	\$ 6.30/Cord	\$ _____
White Pine	41 Cords	\$ 18.55/Cord	\$ _____
White Spruce	23 Cords	\$ 9.20/Cord	\$ _____

*The volumes are statistically estimated within plus (+) or minus (-) 5.29 percent at 95% confidence level. These estimated volumes are final and not subject to adjustment. Prospective bidders are urged to examine this timber and to make their own estimates of quantity and quality.

I understand that any or all bids may be rejected. All bids must be signed and all bid items must be bid or the bid form may be rejected. I also understand that consideration and awarding a contract will be based upon my past performance and ability to complete the contract based upon equipment and staffing subject to my control.

FEDERAL ID: _____ or SOCIAL SECURITY NUMBER: _____

Company or individual bidding: _____

Company representative's name: _____

Address: _____

City: _____ State: _____ Zip: _____

IF AVAILABLE, PLEASE PLACE THE PERSONALIZED LABEL FROM YOUR PROSPECTUS IN THE ABOVE BOX.

Individual or company representative's signature: _____ Date: _____

Phone number : _____ Email (optional): _____

THE WINNING BIDDER MUST COMPLETE THE VERIFICATION OF WORKER'S DISABILITY COMPENSATION ACT COMPLIANCE (ON REVERSE SIDE IF DOUBLE SIDED) WITHIN 21 DAYS OF SALE AWARD DATE



FOR DEPARTMENT USE ONLY	
Sale Number (XX - XXX - XX - XX)	
Forest Management Unit:	

TIMBER SALE VERIFICATION OF WORKER'S DISABILITY COMPENSATION ACT COMPLIANCE

As required by Act 317, P.A. 1969 (Worker's Compensation) and
Part 5 of Act 451 of 1994, as amended.

VERIFICATION OF WORKER'S DISABILITY COMPENSATION ACT COMPLIANCE

- This verification must be completed and submitted within 21 days of contract award and prior to the issuance of the timber sale contract.
- In addition, if boxes 2B or 2C are checked, then Notice of Exclusion or Certificate of Insurance must be submitted within twenty-one (21) days of the contract award and prior to the issuance of the timber sale contract.
- All information must be typed or printed except for written signatures.

Please Check Appropriate Categories:

1. My business is organized as (you **must** check one of the boxes below):
 - A. Sole Proprietorship (individual)
 - B. Partnership
 - C. Corporation
2. You **must** check one of the boxes below:
 - A. I certify my business is a sole proprietorship and it has no employees but the sole proprietor. I am not subject to the Worker's Compensation Laws.
 - B. I certify my business has satisfied its obligation to the Worker's Compensation Act through the use of an approved Notice of Exclusion (BWC-337, Rev. 5/96). I will provide a copy of the Notice of Exclusion within 21 days of the contract award. (For questions or a copy of the BWC-337, please call the Worker's Compensation Bureau at 517-322-1195).
 - C. I certify my business has a Worker's Compensation Policy. I will provide an original Certificate of Insurance within twenty-one (21) days of the contract award.
3. If you have checked item 2(A) or 2(B), you **must** indicate the number of **both** full-time and part-time employees, other than yourself, including family members and active partners (if none, you must enter "0").

_____ Full-time Employees

_____ Part-time Employees

Name of Business		Federal ID (or) Social Security No.	
Address		Telephone ()	
City	State	ZIP	

I hereby certify that the above information is true and correct. I agree to notify the Michigan DNR of any changes that occur in factors affecting my coverage during any of my present and future operations.

Signature of Owner or Authorized Representative

Title

Date

Please complete the "SEALED BID" information on the next page

Springs Aspen (33-024-22)
T35N, R25W, SEC. 18; Menominee COUNTY

In response to the notice of sale to be held 3:00 p.m. (local time) on July 18, 2022, I am hereby submitting my sealed bid (firm offer) for the following forest products to be cut. Bids for individual species must be at or above the advertised price. All non-responsive bid forms may be rejected.

<u>PRODUCTS & SPECIES</u>	<u>ESTIMATED VOLUME*</u>	<u>ADVERTISED PRICE</u>	<u>BID PRICE/UNIT</u>
Sawtimber			
Red Maple	3.9 MBF	\$ 93.00/MBF	\$ _____
Pulpwood			
Balsam Fir	14 Cords	\$ 11.00/Cord	\$ _____
Mixed Aspen	1,192 Cords	\$ 18.70/Cord	\$ _____
Mixed Hardwood	67 Cords	\$ 13.40/Cord	\$ _____
White Pine	31 Cords	\$ 21.90/Cord	\$ _____
White Spruce	15 Cords	\$ 10.85/Cord	\$ _____

*The volumes are statistically estimated within plus (+) or minus (-) 6.72 percent at 95% confidence level. These estimated volumes are final and not subject to adjustment. Prospective bidders are urged to examine this timber and to make their own estimates of quantity and quality.

I understand that any or all bids may be rejected. All bids must be signed and all bid items must be bid or the bid form may be rejected. I also understand that consideration and awarding a contract will be based upon my past performance and ability to complete the contract based upon equipment and staffing subject to my control.

FEDERAL ID: _____ - _____ or SOCIAL SECURITY NUMBER: _____ - _____ - _____

Company or individual bidding: _____

Company representative's name: _____

Address: _____

City: _____ State: _____ Zip: _____

IF AVAILABLE, PLEASE PLACE THE PERSONALIZED LABEL FROM YOUR PROSPECTUS IN THE ABOVE BOX.

Individual or company representative's signature: _____ Date: _____

Phone number : _____ Email (optional): _____

THE WINNING BIDDER MUST COMPLETE THE VERIFICATION OF WORKER'S DISABILITY COMPENSATION ACT COMPLIANCE (ON REVERSE SIDE IF DOUBLE SIDED) WITHIN 21 DAYS OF SALE AWARD DATE



FOR DEPARTMENT USE ONLY	
Sale Number (XX - XXX - XX - XX)	
Forest Management Unit:	

TIMBER SALE VERIFICATION OF WORKER'S DISABILITY COMPENSATION ACT COMPLIANCE

As required by Act 317, P.A. 1969 (Worker's Compensation) and
Part 5 of Act 451 of 1994, as amended.

VERIFICATION OF WORKER'S DISABILITY COMPENSATION ACT COMPLIANCE

- This verification must be completed and submitted within 21 days of contract award and prior to the issuance of the timber sale contract.
- In addition, if boxes 2B or 2C are checked, then Notice of Exclusion or Certificate of Insurance must be submitted within twenty-one (21) days of the contract award and prior to the issuance of the timber sale contract.
- All information must be typed or printed except for written signatures.

Please Check Appropriate Categories:

1. My business is organized as (you **must** check one of the boxes below):
 - A. Sole Proprietorship (individual)
 - B. Partnership
 - C. Corporation
2. You **must** check one of the boxes below:
 - A. I certify my business is a sole proprietorship and it has no employees but the sole proprietor. I am not subject to the Worker's Compensation Laws.
 - B. I certify my business has satisfied its obligation to the Worker's Compensation Act through the use of an approved Notice of Exclusion (BWC-337, Rev. 5/96). I will provide a copy of the Notice of Exclusion within 21 days of the contract award. (For questions or a copy of the BWC-337, please call the Worker's Compensation Bureau at 517-322-1195).
 - C. I certify my business has a Worker's Compensation Policy. I will provide an original Certificate of Insurance within twenty-one (21) days of the contract award.
3. If you have checked item 2(A) or 2(B), you **must** indicate the number of **both** full-time and part-time employees, other than yourself, including family members and active partners (if none, you must enter "0").

_____ Full-time Employees

_____ Part-time Employees

Name of Business		Federal ID (or) Social Security No.	
Address		Telephone ()	
City	State	ZIP	

I hereby certify that the above information is true and correct. I agree to notify the Michigan DNR of any changes that occur in factors affecting my coverage during any of my present and future operations.

Signature of Owner or Authorized Representative

Title

Date

Please complete the "SEALED BID" information on the next page