



**DEPARTMENT OF NATURAL RESOURCES
STATE OF MICHIGAN
TIMBER SALE PROSPECTUS #7084**

SCHEDULED SALE DATE AND TIME: 10:00 a.m. (local time) on July 27, 2022.

LOCATION: GLADWIN MGMT UNIT, 801 NORTH SILVERLEAF, GLADWIN, MI 48624.

PROSPECTUS NOTE: The bidder is advised to inspect the sale area and review the location, estimated volumes, operating costs and contract terms of proposed sales. Please be aware that some landowners may request 60 days or more notice for access across their land.

Notice is hereby given that bids will be received by the Unit Manager, GLADWIN MANAGEMENT UNIT, for certain timber on the following described lands:

Timber Island (73-007-21) / T15N, R01E, SEC. 3 , W1/2NW,NWSW.

T15N, R01E, SEC. 4 , NENE,S1/2NE.

T16N, R01E, SEC. 33, SESE.

T16N, R01E, SEC. 34, SWSW.

Midland County, Advertised Price \$37,829.10, 103.5 Acres, Hardwood, Aspen.

SALE NOTE: All units of volume listed for this sale were estimated using the Inventory Manager computer program and the new Michigan taper model.

Access may be through other public land.

Banks of the Sturgeon Aspen (73-008-21) / T15N, R01E, SEC. 10, N1/2NE,SENE.

T15N, R01E, SEC. 11, SWNW,N1/2SW.

T15N, R01E, SEC. 3 , SWSE.

Midland County, Advertised Price \$49,244.45, 48.1 Acres, Aspen, Hardwood.

SALE NOTE: All units of volume listed for this sale were estimated using the Inventory Manager computer program and the new Michigan taper model.

Carrol Creek Select (73-009-21) / T14N, R01W, SEC. 4 , N1/2NW,SWNW.

T14N, R01W, SEC. 5 , SENW,NE.

T14N, R01W, SEC. 8 , S1/2NW.

T15N, R01W, SEC. 33, NENW,W1/2NE.

Midland County, Advertised Price \$47,354.20, 144.5 Acres, Hardwood, Red Oak.

SALE NOTE: All units of volume listed for this sale were estimated using the Inventory Manager computer program and the new Michigan taper model.

A recreation site such as a trail, pathway, or campground is within the sale area or the vicinity. Certain restrictions/specifications may be applicable including time restrictions.

BID INSTRUCTIONS (VER. 07/02/2018):

1. Scheduled Bid Location, Date, and Time (2/11)

Bids must be received by the Unit Manager, GLADWIN OFFICE, 801 NORTH SILVERLEAF, GLADWIN, MI 48624, no later than 10:00 a.m. (local time) on July 27, 2022. For further information concerning this sale, contact Patrick Mohney at 989-426-9205 extension 7640.

2. Bidder's Qualifications (5/16)

Purchaser shall obtain workers compensation insurance to cover claims under Michigan's Worker's Disability Compensation Act of 1969 or similar employee benefit act of any other state applicable to an employee. If all or part of a timber sale was prepared by a private contractor, the contractor and that contractor's company are not permitted to bid on the timber sale contract. Bids will not be accepted from individuals or companies appearing on the DNR/FRD No-Bid List. This list contains the names of purchasers who previously failed to execute a contract within 21-days or who have a history of poor performance.

3. Preparation of Sealed Bids (5/16)

Bid Forms may be completed online thru Michigan DNR Timber Sale Online Bidding (OLB) at www.michigan.gov/timberbidding or by completing the hardcopy Bid Form found in the Timber Sale Prospectus. Hardcopy Bid Forms shall be manually signed in ink. Registration in OLB is considered your 'signature' for all bids submitted thru that system. Bid prices must be entered for each species and product in the Bid Price column for all material subject to bidding and all fill-in blanks must be completed. If erasures or other changes appear on the hardcopy Bid Form, each erasure or change must be initialed by the person signing the bid.

4. Submission of Sealed Bids (5/16)

Bid forms may be obtained from the Unit Manager or thru OLB. Bids may be submitted hardcopy or thru OLB. All hardcopy bids must be submitted on the bid form and in an envelope clearly identified as described in this section. NOTE: Only one bid form per bid envelope. Sealed bids must be submitted to the Unit office designated in the prospectus and must be submitted at or prior to the time established in the prospectus. The envelope should show on the outside (a) the sale name or number and (b) the date and time of bid opening, as shown in the prospectus. Bids received after the time specified in the sale prospectus are late bids and will be rejected.

It is possible for a bidder to submit multiple bids on a single sale. For example, a bid may be submitted hardcopy and a bid may be submitted thru OLB. Or, two bidders from the same company could both submit bids on the same sale. If this were to happen, the State would accept all bids received and award the contract accordingly. All bidding and contractual requirements would apply to all bids received.

5. Public Opening of Sealed Bids (7/16)

If conditions permit, the sealed bids will be publicly opened and posted at the time and place set in the prospectus.

If a bidder, present at a bid opening, has submitted bids on more than one sale, that bidder may withdraw their unopened bid envelopes or announce the withdrawal of their online bid after being declared the successful bidder on one sale.

6. Award of Contract (1/11)

Award of the contract will be made to the Bidder whose bid, conforming to the prospectus, is most advantageous to the State of Michigan on the basis of total value at rates bid for the estimated quantities. The State reserves the right to reject any bid or waive any minor irregularity in bids received. A written award mailed (or otherwise furnished) to the successful Bidder shall be deemed to result in a binding contract without further action by either party.

7. Down Payment (1/11)

The Bidder to whom award is made must make a down payment within 21 days of the sale award. The amount of the down payment will be calculated as shown in the Bond and Payment Schedule of this prospectus. Only cash may be used to meet this requirement.

8. Performance Security (1/11)

As guarantee of faithful performance, a cash bond, certificate of deposit, surety bond or irrevocable letter of credit (LOC) is required within 21 days of the sale award. The amount of the performance security is shown in the Bond and

Payment Schedule of this prospectus. If an LOC or surety is used, the coverage must extend for at least 6 months beyond the contract expiration.

9. Timber Sale Contract (7/18)

Additional conditions and requirements common to all timber sales are listed on the timber sale contract (R4031) and are available on line at www.michigan.gov/timber. Contact the Unit Manager for additional information or a sample contract. Within 21 days of the date of the award letter, the bidder must sign the contract and provide the required down payment, performance security, and verification of worker's disability compensation. The down payment and performance security shall be in accordance with the provisions of the timber sale contract, in the sums stated in this prospectus. If these actions are not taken, then the Bidder, the Bidder's corporation, and the corporation's principals may not be permitted to bid on State timber sales for a period of 3 months after the first offense, 6 months after the second offense, and 1 year after the third offense. An offense will only be counted against the Bidder for 5 years. In addition, the Bidder certifies that if awarded this contract, the Bidder will complete the timber sale contract in accordance with its terms and any modifications thereof including requirements to purchase, cut, and remove the included timber by the expiration date.

Payment Unit values in the State Forest Timber Sale Contract are calculated based on the advertised value of the Payment Unit as a percentage of the total advertised value of the contract. The advertised value of each Payment Unit is given in the Description of Timber by Payment Unit table on the Timber Sale Information page. For example, if the value of Payment Unit 1 is advertised as \$1,500 and the total Timber Sale value is advertised as \$10,000, the contract price for Payment Unit 1 will be 15% of the total bid price ($\$1,500/\$10,000 * 100$).

10. Disclaimer of Estimates and Bidder's Warranty of Inspection (7/16)

Before submitting this bid, the Bidder is advised and cautioned to inspect the sale area, review the requirements of the sale contract, and take other steps as may be reasonably necessary to ascertain the location, estimated volumes, construction estimates, and operating costs of the proposed sale. Failure to do so will not relieve the Bidder from responsibility for completing the contract.

The Bidder warrants that this bid is submitted solely on the basis of the Bidder's examination and inspection of the quality and quantity of the timber offered for sale and the Bidder's opinion of the value thereof and the costs of recovery. No reliance should be placed on the State of Michigan's estimates of timber quality, quantity or costs of recovery. Bidder further acknowledges that the State of Michigan: (i) expressly disclaims any warranty of fitness of timber for any purpose; (ii) offers this timber as is without any warranty of quality (merchantability) or quantity and (iii) expressly disclaims any warranty as to the quantity or quality of timber sold.

11. Certification and Chain-of-Custody (10/14)

Unless otherwise indicated in the contract under section 7 – Other Conditions of the Sale Specific Conditions & Requirements, the area encompassed by this timber sale is certified to the standards of the Forest Stewardship Council (FSC) - Certificate #SCS-FM/COC-00090N and the Sustainable Forestry Initiative (SFI) - Certificate #NSF-SFIS-5Y031-SF5. Forest products from this sale may be delivered to the mill as "FSC 100% and / or SFI certified" as long as the contractor hauling the forest products is chain-of-custody (COC) certified or covered under a COC certificate from the destination mill. The purchaser is responsible for maintaining COC after leaving the sale area.

12. Good Neighbor Authority (GNA) Requirements (7/16)

If the name of this timber sales contains the acronym GNA, it is authorized by the Good Neighbor Authority (GNA) and covered by various agreements between the U.S. Forest Service and the State. The timber sale occurs on federal land and the following conditions apply:

GNA contracts on US Forest Service land will not be awarded to purchasers on the Federal list of excluded parties. The System for Award Management (SAM) will be checked for active excluded parties prior to award of contract. In addition, the Bidder to whom award is made must complete an Assurance Regarding Felony Conviction or Tax Delinquent Status for Corporate Applicants (AD-3031).

13. Good Neighbor Authority (GNA) Requirements, con't (9/16)

Bidder certifies, by signing this bid form, that to the best of Bidder's knowledge that the following representations are accurate and complete.

- a. That the Bidder and its principals are not presently debarred, suspended, proposed for debarment, declared ineligible, or voluntary excluded from timber sales (covered transactions) by any Federal department or agency.
- b. That the Bidder and its principals have not within a 3-year period preceding this bid been convicted of or had a civil judgment rendered against them for commission of fraud or a criminal offense in connection with obtaining , attempting to obtain, or performing a public (Federal, State, or local) transaction or contract under a public transaction; violation of Federal or State antitrust statutes or commission of embezzlement, theft, forgery, bribery, falsification or destruction of records, making false statements, or receiving stolen property.
- c. That the Bidder and its principals are not presently indicted for or otherwise criminally or civilly charged by a governmental entity (Federal, State, or local) with commission of any of the offenses enumerated in paragraph b of this certification.
- d. That the Bidder and its principals have not within a 3-year period preceding this bid had one or more public transactions (Federal, State, or local) terminated for breach or default of a timber or forest product contract.

Bidders that cannot certify this requirement, in whole or in part, shall submit an explanation with their bid.

DAN EICHINGER
Director

TIMBER SALE INFORMATION

Timber Island (73-007-21)

T15N, R01E, SEC. 3; T15N, R01E, SEC. 4; T16N, R01E, SEC. 33; T16N, R01E, SEC. 34.
Midland County (Advertised Price \$37,829.10)

SALE NOTE: All units of volume listed for this sale were estimated using the Inventory Manager computer program and the new Michigan taper model.

Access may be through other public land.

A timber sale contract for this lump sum, sealed bid timber sale will be awarded to the responsible bidder offering the highest sealed bid price. All units of volume listed below were estimated using the Inventory Manager computer program and the new Michigan taper model. Bids must be at or above the following advertised price for each product and species:

<u>PRODUCTS & SPECIES</u>	<u>ESTIMATED UNITS*</u>	<u>ADVERTISED PRICE</u>
Sawtimber		
B. T. Aspen	84.3 MBF	\$ 63.00 / MBF
Mixed Oak	18.4 MBF	\$ 52.00 / MBF
Red Maple	121.7 MBF	\$ 37.00 / MBF
Red Oak	27.5 MBF	\$ 78.00 / MBF
Pulpwood		
Mixed Aspen	596 Cords	\$ 21.50 / Cord
Mixed Hardwood	718 Cords	\$ 13.85 / Cord
Mixed Oak	169 Cords	\$ 11.60 / Cord
Red Pine	8 Cords	\$ 24.35 / Cord

* The total volume is statistically estimated within plus (+) or minus (-) 8.45 percent. There are an estimated 2,004 cords on this timber sale, plus or minus 169 cords at the 95% confidence level. The estimated units are final and not subject to adjustment. Prospective bidders are urged to examine this timber and to make their own estimates of quantity and quality.

BOND AND PAYMENT SCHEDULE:

1. A bond in the amount of \$1,891.00 to insure faithful performance of the conditions of the contract will be deposited by the successful bidder within 21 days of the sale award.
2. Cutting in any sale or unit without the required advance payment would be considered a trespass.
3. Total payment must be paid in advance or according to the following schedule :
 - (a) Ten percent (10%) of the sale value must be paid within 21 days of the sale award.
 - (b) The 10% down payment will be credited towards the first unit cut.
 - (c) Payment for each of the following units must be made before cutting begins in that unit:

PAYMENT UNIT NUMBER	PERCENT OF TOTAL SALE VALUE
01	25.2%
02	41.6%
03	33.2%
4. If no cutting takes place, the 10% down payment will not be refunded.
5. Operations on the contract issued will terminate on 09/30/2025.

SALE STATISTICS

Volumes were calculated in cubic feet using the Michigan taper model. Cubic foot volume includes all wood inside bark for the product indicated. For display purposes, cubic feet were converted to cords and MBF using a simple conversion factor, e.g. 79 cubic feet per cord and 185 cubic feet per MBF. The cubic foot volumes are precise; the cords and MBF volumes are not. Cubic foot volume cannot be directly converted to cords or boards with precision.

SALE VOLUMES

The total estimated sale volume may not equal the sum of the species/products due to the nature of statistical calculations associated with double sampling methodology.

VOLUME		STATISTICAL RANGE IN CORDS		
TOTAL CUBIC FEET	TOTAL CORDS	PERCENT ERROR	MINIMUM	MAXIMUM
158,322	2,004	8.45%	1,835	2,173

VDU VOLUMES

A VDU is a Volume Determination Unit. Volumes and their associated statistics are calculated at the VDU level and summarized to the sale level. There is often a one to one relationship between a VDU and a Payment Unit, but not always, depending on the cruise design. Refer to the VDU TO PAYMENT UNIT table.

VDU	VOLUME		PERCENT ERROR	RANGE IN CORDS	
	TOTAL CUBIC FEET	TOTAL CORDS		MINIMUM	MAXIMUM
9	62,542	792	11.08%	704	879
10	59,464	753	14.47%	644	862
119	25,164	319	22.99%	245	392
128	11,151	141	43.49%	80	203
TOTAL:	158,322	2,004		1,673	2,335

VDU TO PAYMENT UNIT

When a VDU is associated with more than one Payment Unit (PU), the VDU volumes are assigned to the PU based on acres of the VDU within the PU.

VDU	VDU ACRES	PU	PU ACRES
9	25.6	2	25.6
10	46.1	3	46.1
119	25.3	1	25.3
128	6.5	1	5.3
		2	1.2
TOTAL:	103.5		103.5

DESCRIPTION OF TIMBER BY PAYMENT UNIT (PU)

PU	MARKET GROUP	PRODUCT	QUANTITY	UNIT	ACRES	ADVERTISE PRICE
1	B. T. Aspen	Sawtimber	39.2	MBF	30.6	\$9,518.45
	Mixed Oak		13.3	MBF		
	<i>Northern Pin Oak</i>		13.3	<i>MBF</i>		
	Red Maple		10.9	MBF		
	Red Oak		11.1	MBF		
	Mixed Aspen	Pulpwood	159	Cords		
	<i>B. T. Aspen</i>		149	<i>Cords</i>		
	<i>Quaking Aspen</i>		10	<i>Cords</i>		
	Mixed Hardwood		77	Cords		
	<i>Black Cherry</i>		18	<i>Cords</i>		
	<i>Blackgum</i>		4	<i>Cords</i>		
	<i>Red Maple</i>		55	<i>Cords</i>		
	Mixed Oak		52	Cords		
	<i>Bl/R/Hybrid Oak</i>		8	<i>Cords</i>		
	<i>Northern Pin Oak</i>		13	<i>Cords</i>		
	<i>Red Oak</i>		31	<i>Cords</i>		
	2	B. T. Aspen	Sawtimber	22.6		
Red Maple			16.2	MBF		
Red Oak			7.8	MBF		
Mixed Aspen		Pulpwood	358	Cords		
<i>B. T. Aspen</i>			195	<i>Cords</i>		
<i>Quaking Aspen</i>			163	<i>Cords</i>		
Mixed Hardwood			320	Cords		
<i>Black Cherry</i>			6	<i>Cords</i>		
<i>Blackgum</i>			7	<i>Cords</i>		
<i>Red Maple</i>			307	<i>Cords</i>		
Mixed Oak			87	Cords		
<i>Bl/R/Hybrid Oak</i>			2	<i>Cords</i>		
<i>Northern Pin Oak</i>			70	<i>Cords</i>		
<i>Red Oak</i>			7	<i>Cords</i>		
<i>White Oak</i>			8	<i>Cords</i>		
3	B. T. Aspen	Sawtimber	22.5	MBF	46.1	\$12,540.85
	Mixed Oak		5.1	MBF		
	<i>Bl/R/Hybrid Oak</i>		5.1	<i>MBF</i>		
	Red Maple		94.6	MBF		
	Red Oak		8.6	MBF		
	Mixed Aspen	Pulpwood	79	Cords		
	<i>B. T. Aspen</i>		70	<i>Cords</i>		
	<i>Quaking Aspen</i>		9	<i>Cords</i>		
	Mixed Hardwood		321	Cords		
	<i>Red Maple</i>		321	<i>Cords</i>		
	Mixed Oak		30	Cords		
	<i>White Oak</i>	Sawtimber	2.0	<i>MBF</i>		
	<i>Bl/R/Hybrid Oak</i>	Pulpwood	13	<i>Cords</i>		
	<i>Red Oak</i>		10	<i>Cords</i>		
	<i>White Oak</i>		3	<i>Cords</i>		
	Red Pine		8	Cords		
	<i>Red Pine</i>	Sawtimber	1.8	<i>MBF</i>		
<i>Red Pine</i>	Pulpwood	4	<i>Cords</i>			
TOTAL:			251.9	MBF		
TOTAL:			1,491	Cords		

Sale Specific Conditions & Requirements

Sale Name: Timber Island

Sale Number: 73-007-21 Seq#: 1

1 - Sale Area

1.2 - Boundaries

1.2.1 - Painted boundaries (9/19)

The sale boundary and Payment Unit boundaries are marked and identified by blue, red, and yellow paint. Exterior sale boundary lines against private property are marked with blue paint. Exterior sale boundary lines against state are marked with red paint. Interior Payment Unit boundaries are marked with yellow paint. Retention patches are marked with red paint; no harvesting activities may occur within these areas. The painted boundary line trees are not Included Timber and are to be protected unless marked with orange paint. Yellow painted trees designating an interior Payment Unit boundary are only to be cut when all surrounding Payment Units have been paid.

2 - Timber Specifications

2.1 - Included Timber

2.1.1 - Clearcut unit(s) with unmerchantable trees (6/14)

Within Payment Unit(s) 1 and 2, cut all trees that are two (2) inches or more at DBH, except do not cut trees marked with green paint above and below stump height and within Payment Unit 1, do not cut oak saplings less than four (4) inches in diameter.

2.1.3 - Cut tree marked unit(s) (12/08)

Within Payment Unit(s) 3, all trees are designated for cutting when marked with orange paint above and below stump height, regardless of merchantability. In addition, cut all aspen 2" at DBH and up regardless of merchantability.

2.2 - Utilization

2.2.6 - Roundwood operation required (3/21)

The skidding of whole trees or tree segments with limbs attached is prohibited within Payment Unit(s) 3. All products must be produced as roundwood and forwarded to existing roads or landing areas in final product length.

2.2.9 - No chipping permitted (12/08)

Within Payment Unit(s) 1-3, all wood must be removed in final product length. No chipping is permitted.

4 - Transportation

4.1 - Construction

4.1.2 - Stream crossings, specific (3/11)

The Sturgeon Creek crossing will require the installation of a culvert or portable bridge which may be borrowed from the DNR. This installation will be performed in accordance with the specifications on the appropriate permits which shall be provided by the DNR.

4.1.12 - No new roads (1/12)

No new roads will be permitted in any Payment Unit. All operations are limited to existing roads. Skid trails only will be allowed.

5 - Operations

5.2 - Conduct of Operations

5.2.1 - Slash

5.2.1.11 - Slash for reforestation (3/21)

To facilitate reforestation, Payment Unit(s) 1 and 2 shall be left with slash evenly distributed. Bunched tops within the cutting area shall be broken up and scattered. Stumps shall be cut low to the ground. Processing sites shall not be left with a compacted layer of slash; tops from these sites shall be hauled back into the cut area and scattered.

5.2.3 - Operating Restrictions

5.2.3.1 - Operating restrictions (9/11)

Within Payment Unit(s) 1-3, unless changed by written agreement, cutting, skidding, and hauling are limited to the periods of December 1 to April 15 and from June 15 to October 15. This restriction is because seasonally saturated soils.

5.2.3.3 - Bark slippage restriction (3/09)

Within Payment Unit(s) 3, unless changed by written agreement, cutting and skidding are not permitted during the period of April 15 to July 15. This restriction is because of bark slippage.

5.2.3.4 - Oak wilt restriction, no exceptions (1/18)

Within Payment Unit(s) 3, cutting, skidding, hauling within the sale and brushing of access roads to the sale are not permitted during the period of April 15 to July 15. No exceptions will be granted. This is necessary to reduce the spread of oak wilt.

5.2.4 - Dead and Down Creation

5.2.4.4 - Dead and down creation, grouse (6/18)

To encourage grouse and other wildlife, in Payment Unit(s) 1-2, leave one 12" or larger diameter whole tree on the ground for every 3 acres. Trees should be scattered throughout the sale and at least two chains from any roads, two-tracks, or trails open to vehicles, or positioned per the sale administrator's instructions. The butt end of the tree must be placed on the severed stump. These stumps must be at least 3 feet tall.

5.2.31 - Landing locations (9/13)

Recommended landing areas are marked on the Timber Sale Map with the letter "L". These landing locations are recommendations only. All landings must be approved by the sale administrator.



TIMBER SALE MAP

This information provided by authority of Part 525, 1994 PA 451, as amended.

Forest Management Unit Gladwin		County Midland	Mapped By Scott Shooltz	Date 09/30/2021	Page 1	of 1
Township 16N, 15N	Range 01E	Section(s) and Subdivision(s) 3, 4, 33, & 34		Scale 1:15,840		
Cruised By Shooltz, Lewicki, Martell						

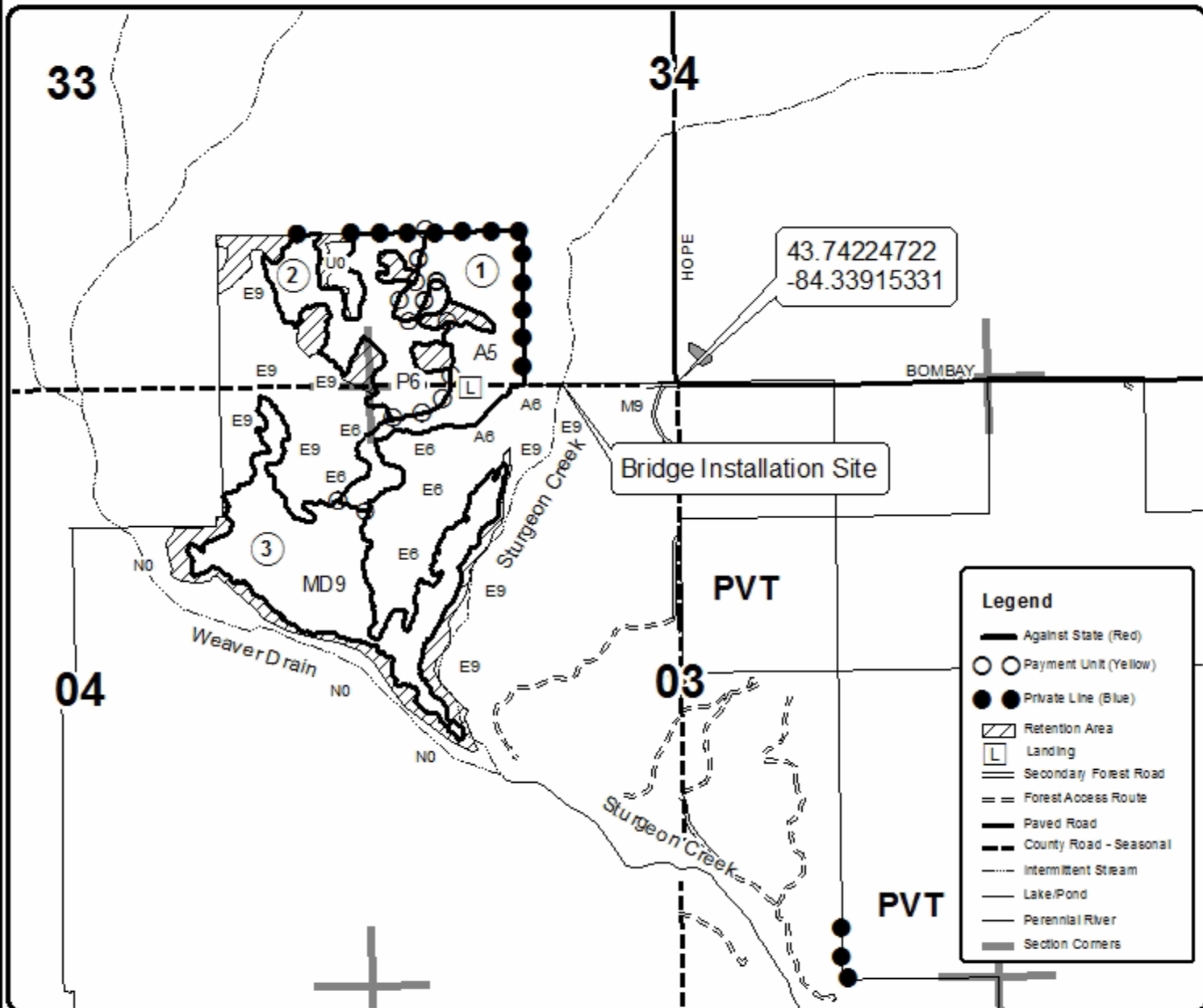
Cover Type				Density	
A = Aspen	H = Hemlock	N = Marsh	L = Upland Brush	0 = Non Stocked	5 = Pole Timber Medium
E = Paper Birch	J = Jack Pine	O = Oak	LM = Upland Mixed	1 = Seedling Sapling Poor	6 = Pole Timber Well
C = Cedar	L = Lowland Brush	P = Lowland Poplar	V = Bog or Marsh	2 = Seedling Sapling Medium	7 = Saw Timber Poor
D = Treed Bog	LM = Lowland Mixed	Q = Mixed Swamp Conifer	W = White Pine	3 = Seedling Sapling Well	8 = Saw Timber Medium
C = Swamp Hardwoods	M = Mpl. Bch. Brok	R = Red Pine	X = Nutt Bluked	4 = Pole Timber Poor	9 = Saw Timber Well
F = Spruce Fir	MC = Mixed Conifer	S = Black Spruce	Z = Water		
C = Cress	MD = Mixed Deciduous	T = Tamarack			

PU	Acres
1	30.6
2	26.8
3	46.1

Timber Island

Compartment 101

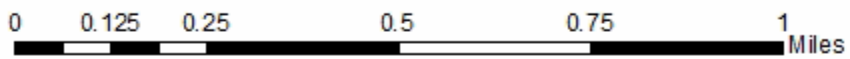
103.5 Acres



43.74224722
-84.33915331

Bridge Installation Site

Legend	
	Against State (Red)
	Payment Unit (Yellow)
	Private Line (Blue)
	Retention Area
	Landing
	Secondary Forest Road
	Forest Access Route
	Paved Road
	County Road - Seasonal
	Intermittent Stream
	Lake/Pond
	Perennial River
	Section Corners



TIMBER SALE INFORMATION

Banks of the Sturgeon Aspen (73-008-21)
 T15N, R01E, SEC. 10; T15N, R01E, SEC. 11; T15N, R01E, SEC. 3.
 Midland County (Advertised Price \$49,244.45)

SALE NOTE: All units of volume listed for this sale were estimated using the Inventory Manager computer program and the new Michigan taper model.

A timber sale contract for this lump sum, sealed bid timber sale will be awarded to the responsible bidder offering the highest sealed bid price. All units of volume listed below were estimated using the Inventory Manager computer program and the new Michigan taper model. Bids must be at or above the following advertised price for each product and species:

<u>PRODUCTS & SPECIES</u>	<u>ESTIMATED UNITS*</u>		<u>ADVERTISED PRICE</u>
Sawtimber			
Mixed Aspen	164.0	MBF	\$ 76.00 / MBF
Mixed Oak	13.7	MBF	\$ 63.00 / MBF
Red Maple	83.2	MBF	\$ 44.00 / MBF
Pulpwood			
Mixed Aspen	905	Cords	\$ 25.85 / Cord
Mixed Hardwood	31	Cords	\$ 16.65 / Cord
Mixed Oak	208	Cords	\$ 13.95 / Cord
Red Maple	327	Cords	\$ 16.65 / Cord

* The total volume is statistically estimated within plus (+) or minus (-) 8.67 percent. There are an estimated 2,048 cords on this timber sale, plus or minus 178 cords at the 95% confidence level. The estimated units are final and not subject to adjustment. Prospective bidders are urged to examine this timber and to make their own estimates of quantity and quality.

BOND AND PAYMENT SCHEDULE:

1. A bond in the amount of \$2,462.00 to insure faithful performance of the conditions of the contract will be deposited by the successful bidder within 21 days of the sale award.
2. Cutting in any sale or unit without the required advance payment would be considered a trespass.
3. Total payment must be paid in advance or according to the following schedule :
 - (a) Ten percent (10%) of the sale value must be paid within 21 days of the sale award.
 - (b) The 10% down payment will be credited towards the first unit cut.
 - (c) Payment for each of the following units must be made before cutting begins in that unit:

PAYMENT UNIT NUMBER	PERCENT OF TOTAL SALE VALUE
01	43.5%
02	32.8%
03	23.7%
4. If no cutting takes place, the 10% down payment will not be refunded.
5. Operations on the contract issued will terminate on 09/30/2025.

SALE STATISTICS

Volumes were calculated in cubic feet using the Michigan taper model. Cubic foot volume includes all wood inside bark for the product indicated. For display purposes, cubic feet were converted to cords and MBF using a simple conversion factor, e.g. 79 cubic feet per cord and 185 cubic feet per MBF. The cubic foot volumes are precise; the cords and MBF volumes are not. Cubic foot volume cannot be directly converted to cords or boards with precision.

SALE VOLUMES

The total estimated sale volume may not equal the sum of the species/products due to the nature of statistical calculations associated with double sampling methodology.

VOLUME		STATISTICAL RANGE IN CORDS		
TOTAL CUBIC FEET	TOTAL CORDS	PERCENT ERROR	MINIMUM	MAXIMUM
161,802	2,048	8.67%	1,871	2,226

VDU VOLUMES

A VDU is a Volume Determination Unit. Volumes and their associated statistics are calculated at the VDU level and summarized to the sale level. There is often a one to one relationship between a VDU and a Payment Unit, but not always, depending on the cruise design. Refer to the VDU TO PAYMENT UNIT table.

VDU	VOLUME		PERCENT ERROR	RANGE IN CORDS	
	TOTAL CUBIC FEET	TOTAL CORDS		MINIMUM	MAXIMUM
1	161,802	2,048	8.67%	1,871	2,226
TOTAL:	161,802	2,048		1,871	2,226

VDU TO PAYMENT UNIT

When a VDU is associated with more than one Payment Unit (PU), the VDU volumes are assigned to the PU based on acres of the VDU within the PU.

VDU	VDU ACRES	PU	PU ACRES
1	48.1	1	20.9
		2	15.8
		3	11.4
TOTAL:	48.1		48.1

DESCRIPTION OF TIMBER BY PAYMENT UNIT (PU)

PU	MARKET GROUP	PRODUCT	QUANTITY	UNIT	ACRES	ADVERTISE PRICE
1	Mixed Aspen	Sawtimber	71.3	MBF	20.9	\$21,415.50
	<i>B. T. Aspen</i>		51.4	<i>MBF</i>		
	<i>Quaking Aspen</i>		19.9	<i>MBF</i>		
	Mixed Oak		6.0	MBF		
	<i>Northern Pin Oak</i>		3.6	<i>MBF</i>		
	<i>Red Oak</i>		2.4	<i>MBF</i>		
	Red Maple	36.2	MBF			
	Mixed Aspen	Pulpwood	393	Cords		
	<i>B. T. Aspen</i>		329	<i>Cords</i>		
	<i>Quaking Aspen</i>		64	<i>Cords</i>		
	Mixed Hardwood		14	Cords		
	<i>Black Cherry</i>		3	<i>Cords</i>		
	<i>Sugar Maple</i>		6	<i>Cords</i>		
	<i>Swamp White Oak</i>		5	<i>Cords</i>		
	Mixed Oak		91	Cords		
	<i>Northern Pin Oak</i>		78	<i>Cords</i>		
	<i>Red Oak</i>		13	<i>Cords</i>		
	Red Maple		142	Cords		
2	Mixed Aspen		Sawtimber	53.8	MBF	15.8
	<i>B. T. Aspen</i>	38.8		<i>MBF</i>		
	<i>Quaking Aspen</i>	15.0		<i>MBF</i>		
	Mixed Oak	4.5		MBF		
	<i>Northern Pin Oak</i>	2.7		<i>MBF</i>		
	<i>Red Oak</i>	1.8		<i>MBF</i>		
	Red Maple	27.3	MBF			
	Mixed Aspen	Pulpwood	298	Cords		
	<i>B. T. Aspen</i>		249	<i>Cords</i>		
	<i>Quaking Aspen</i>		49	<i>Cords</i>		
	Mixed Hardwood		10	Cords		
	<i>Black Cherry</i>		2	<i>Cords</i>		
	<i>Sugar Maple</i>		4	<i>Cords</i>		
	<i>Swamp White Oak</i>		4	<i>Cords</i>		
	Mixed Oak		68	Cords		
	<i>Northern Pin Oak</i>		58	<i>Cords</i>		
	<i>Red Oak</i>		10	<i>Cords</i>		
	Red Maple		107	Cords		
3	Mixed Aspen		Sawtimber	38.9	MBF	11.4
	<i>B. T. Aspen</i>	28.0		<i>MBF</i>		
	<i>Quaking Aspen</i>	10.9		<i>MBF</i>		
	Mixed Oak	3.2		MBF		
	<i>Northern Pin Oak</i>	1.9		<i>MBF</i>		
	<i>Red Oak</i>	1.3		<i>MBF</i>		
	Red Maple	19.7	MBF			
	Mixed Aspen	Pulpwood	214	Cords		
	<i>B. T. Aspen</i>		179	<i>Cords</i>		
	<i>Quaking Aspen</i>		35	<i>Cords</i>		
	Mixed Hardwood		7	Cords		
	<i>Black Cherry</i>		1	<i>Cords</i>		
	<i>Sugar Maple</i>		3	<i>Cords</i>		
	<i>Swamp White Oak</i>		3	<i>Cords</i>		
	Mixed Oak		49	Cords		
	<i>Northern Pin Oak</i>		42	<i>Cords</i>		
	<i>Red Oak</i>		7	<i>Cords</i>		
	Red Maple		78	Cords		
TOTAL:			260.9	MBF		

TOTAL:	1,471	Cords
--------	-------	-------

Sale Specific Conditions & Requirements

Sale Name: Banks of the Sturgeon Aspen

Sale Number: 73-008-21 Seq#: 1

1 - Sale Area

1.2 - Boundaries

1.2.1 - Painted boundaries (9/19)

The sale boundary and Payment Unit boundaries are marked and identified by blue, red, and yellow paint. Exterior sale boundary lines against private property are marked with blue paint. Exterior sale boundary lines against state are marked with red paint. Interior Payment Unit boundaries are marked with yellow paint. The painted boundary line trees are not Included Timber and are to be protected unless marked with orange paint. Yellow painted trees designating an interior Payment Unit boundary are only to be cut when all surrounding Payment Units have been paid.

2 - Timber Specifications

2.1 - Included Timber

2.1.1 - Clearcut unit(s) with unmerchantable trees (6/14)

Within Payment Unit(s) 1-3, cut all trees that are two (2) inches or more at DBH, except do not cut trees marked with green paint above and below stump height.

4 - Transportation

4.1 - Construction

4.1.12 - No new roads (1/12)

No new roads will be permitted in any Payment Unit. All operations are limited to existing roads. Skid trails only will be allowed.

5 - Operations

5.2 - Conduct of Operations

5.2.1 - Slash

5.2.1.11 - Slash for reforestation (3/21)

To facilitate reforestation, the Sale Area shall be left with slash evenly distributed. Bunched tops within the cutting area shall be broken up and scattered. Stumps shall be cut low to the ground. Processing sites shall not be left with a compacted layer of slash; tops from these sites shall be hauled back into the cut area and scattered.

5.2.3 - Operating Restrictions

5.2.3.1 - Operating restrictions (9/11)

Within Payment Unit(s) 1-3, unless changed by written agreement, cutting, skidding, and hauling are limited to the period of December 1 to April 15 and from June 15 to November 1. This restriction is because of seasonally saturated soils.

5.2.4 - Dead and Down Creation

5.2.4.4 - Dead and down creation, grouse (6/18)

To encourage grouse and other wildlife, in Payment Unit(s) 1-3, leave 12" or larger diameter whole tree on the ground for every 3 acres. Trees should be scattered throughout the sale and at least two chains from any roads, two-tracks, or trails open to vehicles, or positioned per the sale administrator's instructions. The butt end of the tree must be placed on the stump. These stumps must be at least 3 feet tall.

5.2.17 - Timber Mats and Interlocking Composite Mats (10/20)

Some skid trails may require extra protection such as that afforded by timber mats, interlocking composite mats, or another approved system. If available, mats may be borrowed from the DNR. A Timber Sale Contract Supplement will be used to document the Purchaser's use of the DNR's mats. Contact the sale administrator regarding availability and pick-up. Timber mats are available from various field offices. Composite mats are only available from the Grayling field office and the Marquette ICC. The Purchaser is responsible for picking up and hauling the mats to and from the site. The composite mats

will require DNR staff onsite for installation and removal. Contact the sale administrator to schedule at least 30 days before desired install/removal date. All mats must be cleaned prior to drop off. This may include, but is not limited to, power washing and brushing to remove mud and debris. A charge of \$700.00 per timber mat and \$2,000.00 per composite mat will be assessed for all damaged or non-returned mats. Damage for the crane/timber mats is defined as three or more broken cants. Damage for the composite mats is defined as cracked or broken mats.

5.2.31 - Landing locations (9/13)

Recommended landing areas are marked on the Timber Sale Map with the letter "L". The landings are recommendation only. All landing locations must be approved by the sale administrator.

5.4 - Soil Protection

5.4.1 - Rutting restriction, general (7/16)

Operations are to cease immediately if equipment and weather conditions result in rutting of roads and/or skid trails which is 12 inches or greater in depth and 50 feet in length. The Unit Manager or his/her representative may restrict hauling and/or skidding if ruts exceed the specified depth. With the Unit Manager or his/her representative's approval, the Purchaser may return to the area when the risk of rutting has decreased.



TIMBER SALE MAP

This information provided by authority of Part 525, 1994 PA 451, as amended.

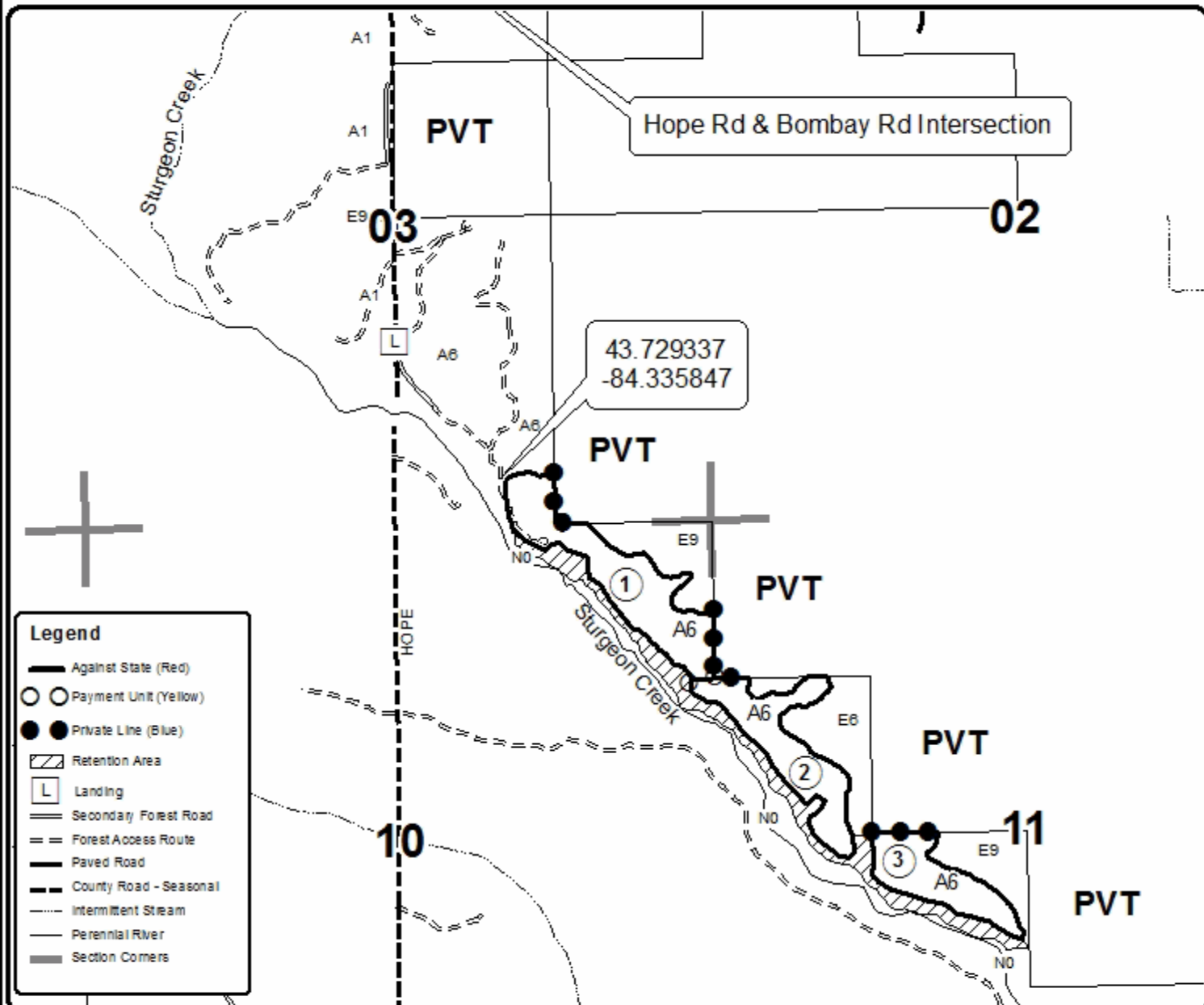
Forest Management Unit Gladwin	County Midland	Mapped By Scott Shooltz	Date 09/30/2021	Page 1	of 1
Township 15N	Range 01E	Section(s) and Subdivision(s) 3, 10, & 11	Scale 1:15,840		

Cover Type				Density	
A = Aspen	H = Hemlock	N = Marsh	L = Upland Brush	0 = Non Stocked	5 = Pole Timber Medium
E = Paper Birch	J = Jack Pine	O = Oak	LM = Upland Mixed	1 = Seedling Sapling Poor	6 = Pole Timber Well
C = Cedar	L = Lowland Brush	P = Lowland Poplar	V = Bog or Marsh	2 = Seedling Sapling Medium	7 = Saw Timber Poor
D = Treed Bog	LM = Lowland Mixed	Q = Mixed Swamp Conifer	W = White Pine	3 = Seedling Sapling Well	8 = Saw Timber Medium
C = Swamp Hardwoods	M = Mpl. Bch. Brok	R = Red Pine	X = Nut Blaked	4 = Pole Timber Poor	9 = Saw Timber Well
F = Spruce Fir	MC = Mixed Conifer	S = Black Spruce	Z = Water		
G = Cress	MD = Mixed Deciduous	T = Tamarack			

PU	Acres
1	20.9
2	15.8
3	11.4

Banks of the Sturgeon Aspen

Compartment 101
48.1 Acres



Legend	
	Against State (Red)
	Payment Unit (Yellow)
	Private Line (Blue)
	Retention Area
	Landing
	Secondary Forest Road
	Forest Access Route
	Paved Road
	County Road - Seasonal
	Intermittent Stream
	Perennial River
	Section Corners

TIMBER SALE INFORMATION

Carrol Creek Select (73-009-21)

T14N, R01W, SEC. 4; T14N, R01W, SEC. 5; T14N, R01W, SEC. 8; T15N, R01W, SEC. 33.
Midland County (Advertised Price \$47,354.20)

SALE NOTE: All units of volume listed for this sale were estimated using the Inventory Manager computer program and the new Michigan taper model.

A recreation site such as a trail, pathway, or campground is within the sale area or the vicinity. Certain restrictions/specifications may be applicable including time restrictions.

A timber sale contract for this lump sum, sealed bid timber sale will be awarded to the responsible bidder offering the highest sealed bid price. All units of volume listed below were estimated using the Inventory Manager computer program and the new Michigan taper model. Bids must be at or above the following advertised price for each product and species:

<u>PRODUCTS & SPECIES</u>	<u>ESTIMATED UNITS*</u>		<u>ADVERTISED PRICE</u>
Sawtimber			
Mixed Aspen	37.9	MBF	\$ 70.00 / MBF
Mixed Oak	101.0	MBF	\$ 57.00 / MBF
Red Maple	91.2	MBF	\$ 40.00 / MBF
Red Oak	134.2	MBF	\$ 86.00 / MBF
Swamp White Oak	53.1	MBF	\$ 88.00 / MBF
White Oak	32.1	MBF	\$ 65.00 / MBF
White Pine	10.9	MBF	\$ 57.00 / MBF
Pulpwood			
Mixed Aspen	164	Cords	\$ 23.70 / Cord
Mixed Hardwood	19	Cords	\$ 15.25 / Cord
Mixed Oak	299	Cords	\$ 12.75 / Cord
Red Maple	428	Cords	\$ 15.25 / Cord
Swamp White Oak	88	Cords	\$ 16.20 / Cord
White Pine	20	Cords	\$ 21.65 / Cord

* The total volume is statistically estimated within plus (+) or minus (-) 6.58 percent. There are an estimated 2,129 cords on this timber sale, plus or minus 140 cords at the 95% confidence level. The estimated units are final and not subject to adjustment. Prospective bidders are urged to examine this timber and to make their own estimates of quantity and quality.

BOND AND PAYMENT SCHEDULE:

1. A bond in the amount of \$2,368.00 to insure faithful performance of the conditions of the contract will be deposited by the successful bidder within 21 days of the sale award.
2. Cutting in any sale or unit without the required advance payment would be considered a trespass.
3. Total payment must be paid in advance or according to the following schedule:
 - (a) Ten percent (10%) of the sale value must be paid within 21 days of the sale award.
 - (b) The 10% down payment will be credited towards the first unit cut.
 - (c) Payment for each of the following units must be made before cutting begins in that unit:

PAYMENT UNIT NUMBER	PERCENT OF TOTAL SALE VALUE
01	3.9%
02	10.5%
03	11.2%
04	12.1%
05	44.8%
06	6.8%
07	10.7%
4. If no cutting takes place, the 10% down payment will not be refunded.
5. Operations on the contract issued will terminate on 09/30/2025.

SALE STATISTICS

Volumes were calculated in cubic feet using the Michigan taper model. Cubic foot volume includes all wood inside bark for the product indicated. For display purposes, cubic feet were converted to cords and MBF using a simple conversion factor, e.g. 79 cubic feet per cord and 185 cubic feet per MBF. The cubic foot volumes are precise; the cords and MBF volumes are not. Cubic foot volume cannot be directly converted to cords or boards with precision.

SALE VOLUMES

The total estimated sale volume may not equal the sum of the species/products due to the nature of statistical calculations associated with double sampling methodology.

VOLUME			STATISTICAL RANGE IN CORDS	
TOTAL CUBIC FEET	TOTAL CORDS	PERCENT ERROR	MINIMUM	MAXIMUM
168,165	2,129	6.58%	1,988	2,269

VDU VOLUMES

A VDU is a Volume Determination Unit. Volumes and their associated statistics are calculated at the VDU level and summarized to the sale level. There is often a one to one relationship between a VDU and a Payment Unit, but not always, depending on the cruise design. Refer to the VDU TO PAYMENT UNIT table.

	VOLUME			RANGE IN CORDS	
VDU	TOTAL CUBIC FEET	TOTAL CORDS	PERCENT ERROR	MINIMUM	MAXIMUM
17	17,256	218	15.18%	185	252
18	69,585	881	8.69%	804	957
25	21,519	272	21.81%	213	332
39	8,858	112	22.26%	87	137
43	20,264	257	20.69%	203	310
96	10,186	129	22.51%	100	158
97	20,496	259	27.00%	189	330
TOTAL:	168,165	2,129		1,782	2,475

VDU TO PAYMENT UNIT

When a VDU is associated with more than one Payment Unit (PU), the VDU volumes are assigned to the PU based on acres of the VDU within the PU.

VDU	VDU ACRES	PU	PU ACRES
17	12.5	4	12.5
18	51.2	5	51.2
25	29.7	3	29.7
39	8.5	1	8.5
43	13.8	2	13.8
96	6.9	6	6.9
97	21.9	7	21.9
TOTAL:	144.5		144.5

DESCRIPTION OF TIMBER BY PAYMENT UNIT (PU)

PU	MARKET GROUP	PRODUCT	QUANTITY	UNIT	ACRES	ADVERTISE PRICE	
1	Mixed Aspen	Sawtimber	1.9	MBF	8.5	\$1,824.15	
	<i>Quaking Aspen</i>		1.9	<i>MBF</i>			
	Mixed Oak		3.1	MBF			
	<i>Bl/R/Hybrid Oak</i>		3.1	<i>MBF</i>			
	Red Maple		7.4	MBF			
	Mixed Aspen		Pulpwood	1			Cords
	<i>Quaking Aspen</i>			1			<i>Cords</i>
	Mixed Oak			4			Cords
	<i>Bl/R/Hybrid Oak</i>			4			<i>Cords</i>
	Red Maple			75			Cords
2	Mixed Oak	Sawtimber	44.4	MBF	13.8	\$4,950.05	
	<i>Bl/R/Hybrid Oak</i>		44.4	<i>MBF</i>			
	Red Maple		17.3	MBF			
	Mixed Hardwood		Pulpwood	10			Cords
	<i>Paper Birch</i>			10			<i>Cords</i>
	Mixed Oak			35			Cords
	<i>Bl/R/Hybrid Oak</i>			35			<i>Cords</i>
	Red Maple		74	Cords			
3	Mixed Oak	Sawtimber	2.2	MBF	29.7	\$5,283.65	
	<i>Northern Pin Oak</i>		2.2	<i>MBF</i>			
	Red Maple		20.3	MBF			
	Red Oak		9.5	MBF			
	Swamp White Oak		4.3	MBF			
	White Oak		7.4	MBF			
	White Pine		2.0	MBF			
	Mixed Aspen		Pulpwood	29			Cords
	<i>B. T. Aspen</i>			29			<i>Cords</i>
	Mixed Oak			63			Cords
	<i>Northern Pin Oak</i>			52			<i>Cords</i>
	<i>Red Oak</i>			5			<i>Cords</i>
	<i>White Oak</i>			6			<i>Cords</i>
	Red Maple			61			Cords
	Swamp White Oak			7			Cords
	White Pine		1	Cords			
4	Red Maple	Sawtimber	7.3	MBF	12.5	\$5,745.75	
	Red Oak		34.2	MBF			
	Swamp White Oak		2.7	MBF			
	White Oak		21.0	MBF			
	Mixed Oak		Pulpwood	39			Cords
	<i>Red Oak</i>			26			<i>Cords</i>
	<i>White Oak</i>			13			<i>Cords</i>
	Red Maple			26			Cords
	Swamp White Oak			1			Cords
5	Mixed Aspen	Sawtimber	27.3	MBF	51.2	\$21,258.90	
	<i>B. T. Aspen</i>		5.8	<i>MBF</i>			
	<i>Quaking Aspen</i>		21.5	<i>MBF</i>			
	Red Maple		35.7	MBF			
	Red Oak		90.5	MBF			
	Swamp White Oak		46.1	MBF			
	White Oak		2.8	MBF			
	Mixed Aspen		Pulpwood	38			Cords
	<i>B. T. Aspen</i>			2			<i>Cords</i>
	<i>Quaking Aspen</i>			36			<i>Cords</i>
	Mixed Hardwood			9			Cords
	<i>Paper Birch</i>			2			<i>Cords</i>
	<i>Rock Elm</i>			7			<i>Cords</i>

DESCRIPTION OF TIMBER BY PAYMENT UNIT (PU), CON'T

PU	MARKET GROUP	PRODUCT	QUANTITY	UNIT	ACRES	ADVERTISE PRICE
5 con't	Mixed Oak	Pulpwood	81	Cords		
	<i>Red Oak</i>		71	<i>Cords</i>		
	<i>White Oak</i>		10	<i>Cords</i>		
	Red Maple		166	Cords		
	Swamp White Oak		80	Cords		
6	Mixed Aspen	Sawtimber	8.7	MBF	6.9	\$3,215.60
	<i>B. T. Aspen</i>		8.7	<i>MBF</i>		
	Mixed Oak		2.4	MBF		
	<i>B/I/R/Hybrid Oak</i>		2.4	<i>MBF</i>		
	Red Maple	3.2	MBF			
	Mixed Aspen	Pulpwood	84	Cords		
	<i>B. T. Aspen</i>		67	<i>Cords</i>		
	<i>Quaking Aspen</i>		17	<i>Cords</i>		
	Mixed Oak		6	Cords		
	<i>B/I/R/Hybrid Oak</i>		6	<i>Cords</i>		
	Red Maple		18	Cords		
7	Mixed Oak		Sawtimber	48.9	MBF	21.9
	<i>B/I/R/Hybrid Oak</i>	48.9		<i>MBF</i>		
	White Oak	0.9		MBF		
	White Pine	8.9	MBF			
	Mixed Aspen	Pulpwood	12	Cords		
	<i>B. T. Aspen</i>		12	<i>Cords</i>		
	Mixed Oak		71	Cords		
	<i>B/I/R/Hybrid Oak</i>		69	<i>Cords</i>		
	<i>White Oak</i>		2	<i>Cords</i>		
	Red Maple		8	Cords		
	White Pine		19	Cords		
TOTAL:			460.4	MBF		
TOTAL:			1,018	Cords		

Sale Specific Conditions & Requirements

Sale Name: Carrol Creek Select

Sale Number: 73-009-21 Seq#: 1

1 - Sale Area

1.2 - Boundaries

1.2.1 - Painted boundaries (9/19)

The sale boundary and Payment Unit boundaries are marked and identified by blue, red, and yellow paint. Exterior sale boundary lines against private property are marked with blue paint. Exterior sale boundary lines against state are marked with red paint. Interior Payment Unit boundaries are marked with yellow paint. The painted boundary line trees are not Included Timber and are to be protected unless marked with orange paint. Yellow painted trees designating an interior Payment Unit boundary are only to be cut when all surrounding Payment Units have been paid.

2 - Timber Specifications

2.1 - Included Timber

2.1.1 - Clearcut unit(s) with unmerchantable trees (6/14)

Within Payment Unit(s) 6, cut all trees that are two (2) inches or more at DBH, except trees marked with green paint above and below stump height.

2.1.3 - Cut tree marked unit(s) (12/08)

Within Payment Unit(s) 1 and 3, all trees are designated for cutting when marked with orange paint above and below stump height, regardless of merchantability.

2.1.5 - Overstory removal unit(s) (8/11)

Within Payment Unit(s) 2, 4, and 7, all trees with DBH equal to or greater than 4 inches which meet minimum piece specifications in 2.2 Utilization, are designated for cutting, except for trees marked with green paint above and below stump height. Do not cut red and white pine within Payment Units 2 and 4.

2.1.7 - Leave tree marked unit(s) (6/14)

Within Payment Unit(s) 5, cut all trees that are six (6) inches or more at DBH, except trees marked with green paint above and below stump height.

2.2 - Utilization

2.2.6 - Roundwood operation required (3/21)

The skidding of whole trees or tree segments with limbs attached is prohibited within Payment Unit(s) 1-5 and 7. All products must be produced as roundwood and forwarded to existing roads or landing areas in final product length. Trees must be harvested with in-woods processor to retain existing understory and protect residual canopy trees.

2.2.9 - No chipping permitted (12/08)

Within Payment Unit(s) 1-5 and 7, all wood must be removed by whole tree, tree segment, or roundwood. No chipping is permitted.

3 - Payments

3.4 - Damaged Timber

3.4.1 - Damaged timber (7/16)

General Condition and Requirement 3.4 Damaged Timber, defines liquidated damages for undesignated live merchantable trees which are cut or injured. In addition, extreme care should be taken to avoid damage to tree seedlings and saplings. Within the Sale Area, if more than 25% of the tree seedlings or saplings (1/4" to 4.5" DBH) within a specified portion of the Sale Area are damaged, liquidated damages will be assessed at \$100 per acre for all acreage within that specified portion of the Sale Area that was damaged.

No damage is acceptable to undesignated live merchantable trees. Within the Sale Area, if more than 10% of trees (> 4.5" DBH) within a specified area of the sale are damaged, liquidated damages will be assessed for all trees damaged. Rates will be in accordance with General Condition and Requirement 3.4 Damaged Timber.

4 - Transportation

4.1 - Construction

4.1.6 - Road construction (1/09)

Construction of new roads or improvements of existing roads shall be done in such a way as to minimize the environmental and visual impacts. Merchantable trees shall be cut and utilized unless otherwise directed. Non-merchantable trees shall be severed and laid flat on the ground. Slash shall be scattered, and not left in windrows and kept a minimum of 10 feet back from the road edge. Stumps shall be set upright, not left on edge, and be moved at least 10 feet away from the road edge. Disturbed soil shall be feathered into the woods and not left in berms or windrows.

4.1.7 - Road closure (10/11)

All new roads built into the sale must be blocked to vehicle traffic upon completion of the sale. Overgrown roads that are reopened shall be considered new roads. In general, this will require constructing a four (4') foot high berm of stumps and logs covered with earth. Stumps and brush must be placed along the remainder of the trail. These roads must be rendered impassable to cars and trucks. Contact the sale administrator for specific details of design and placement.

4.1.8 - Road work (1) (8/07)

The following road work is required if the Purchaser uses 11 Mile Road to access Payment Unit 3: cap road with 400 feet of geotextile fabric and 40 yards of gravel. On site fill may be used to raise roadbed.

4.1.11 - Permits (2/12)

The Purchaser will secure any necessary driveway and stream crossing permits that may be required.

5 - Operations

5.2 - Conduct of Operations

5.2.1 - Slash

5.2.1.11 - Slash for reforestation (3/21)

To facilitate reforestation, the Sale Area shall be left with slash evenly distributed. Bunched tops within the cutting area shall be broken up and scattered. Stumps shall be cut low to the ground. Processing sites shall not be left with a compacted layer of slash; tops from these sites shall be hauled back into the cut area and scattered.

5.2.3 - Operating Restrictions

5.2.3.1 - Operating restrictions (9/11)

Within Payment Unit(s) 1-7, unless changed by written agreement, cutting, skidding, and hauling are limited to the period of December 1 to April 15 and from June 15 to November 1. This restriction is because of seasonally saturated soils.

5.2.3.3 - Bark slippage restriction (3/09)

Within Payment Unit(s) 1, 3, and 5, unless changed by written agreement, cutting and skidding are not permitted during the period of April 15 to July 15. This restriction is because of bark slippage.

5.2.3.4 - Oak wilt restriction, no exceptions (1/18)

Within Payment Unit(s) 1-5 and 7, cutting, skidding, hauling within the sale and brushing of access roads to the sale are not permitted during the period of April 15 to July 15. No exceptions will be granted. This is necessary to reduce the spread of oak wilt.

5.2.4 - Dead and Down Creation

5.2.4.4 - Dead and down creation, grouse (6/18)

To encourage grouse and other wildlife, in Payment Unit(s) 6, leave one 12" or larger diameter whole tree on the ground for every 3 acres. Trees should be scattered throughout the sale and at least two chains from any roads, two-tracks, or trails open to vehicles, or positioned per the sale administrator's instructions. Stumps must be at least 3 feet tall.

5.2.17 - Timber Mats and Interlocking Composite Mats (10/20)

Some roads or skid trails may require extra protection such as that afforded by timber mats, interlocking composite mats, or another approved system. A Timber Sale Contract Supplement will be used to document the Purchaser's use of the DNR's mats. Contact the sale administrator regarding availability and pick-up. Timber mats are available from various field offices.

Composite mats are only available from the Grayling field office and the Marquette ICC. The Purchaser is responsible for picking up and hauling the mats to and from the site. The composite mats will require DNR staff onsite for installation and removal. Contact the sale administrator to schedule at least 30 days before desired install/removal date. All mats must be cleaned prior to drop off. This may include, but is not limited to, power washing and brushing to remove mud and debris. A charge of \$700.00 per timber mat and \$2,000.00 per composite mat will be assessed for all damaged or non-returned mats. Damage for the crane/timber mats is defined as three or more broken cants. Damage for the composite mats is defined as cracked or broken mats.

5.2.31 - Landing locations (9/13)

Recommended landing areas are marked on the Timber Sale Map with the letter "L". All landing locations must be approved by the timber sale administrator.

5.2.32 - Decking/landing restoration (9/13)

All decking and landing areas must have the surface area restored to a condition equal to or better than before. This is to ensure the proper regeneration of the stand. Wood debris, chips, and "cookies" from trimmings must be removed or scattered away from landing and loading areas and may not be windrowed on the edge.

5.4 - Soil Protection

5.4.1 - Rutting restriction, general (7/16)

Operations are to cease immediately if equipment and weather conditions result in rutting of roads and/or skid trails which is 12 inches or greater in depth and 50 feet in length. The Unit Manager or his/her representative may restrict hauling and/or skidding if ruts exceed the specified depth. With the Unit Manager or his/her representative's approval, the Purchaser may return to the area when the risk of rutting has decreased.



TIMBER SALE MAP

This information provided by authority of Part 525, 1994 PA 451, as amended.

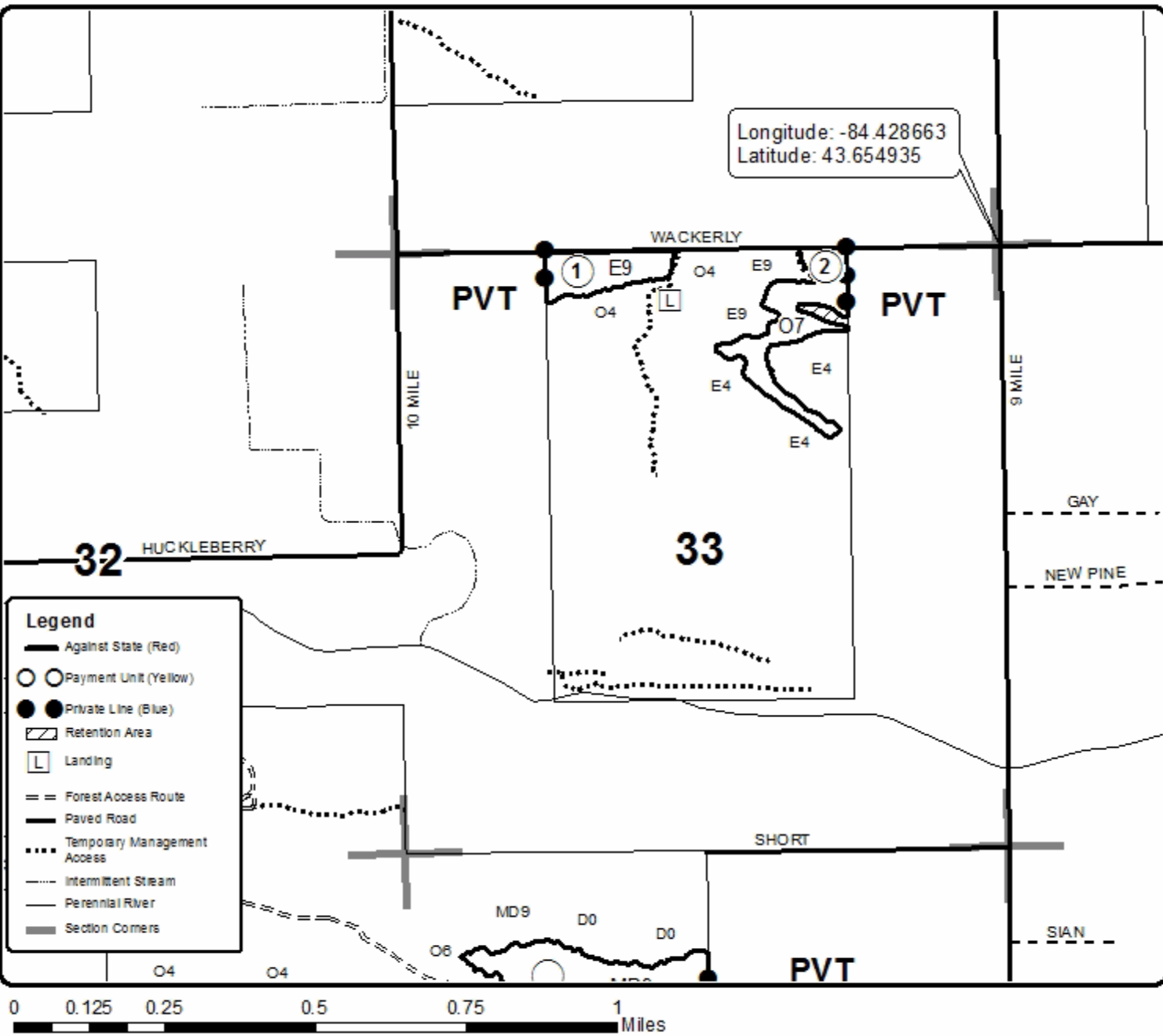
Forest Management Unit Gladwin	County Midland	Mapped By Scott Shooltz	Date 09/30/2021	Page 1	of 3
Township 15N, 14N	Range 01W	Section(s) and Subdivision(s) 33, 04, 05, 08	Scale 1:15,840		
Cruised By Shooltz, Nyhoff					

Cover Type				Density			
A = Aspen	H = Hemlock	N = Marsh	L = Upland Brush	0 = Non Stocked	5 = Pole Timber Medium		
E = Paper Birch	J = Jack Pine	O = Oak	LM = Upland Mixed	1 = Seedling Sapling Poor	6 = Pole Timber Well		
C = Cedar	L = Lowland Brush	P = Lowland Poplar	V = Bog or Marsh	2 = Seedling Sapling Medium	7 = Saw Timber Poor		
D = Treaded Bog	LM = Lowland Mixed	Q = Mixed Swamp Conifer	W = White Pine	3 = Seedling Sapling Well	8 = Saw Timber Medium		
E = Swamp Hardwoods	M = Mpl. Bch. Broch	R = Red Pine	X = Nutt Bluked	4 = Pole Timber Poor	9 = Saw Timber Well		
F = Spruce Fir	MC = Mixed Conifer	S = Black Spruce	Z = Water				
G = Creas	MD = Mixed Deciduous	T = Tamarack					

PU	Acres	PU	Acres	PU	Acres
1	8.5	4	12.5	7	21.9
2	13.8	5	51.2		
3	29.7	6	6.9		

Carrol Creek Select

Compartment 112
144.6 Acres





TIMBER SALE MAP

This information provided by authority of Part 525, 1994 PA 451, as amended.

Sale Number	Year
73 - 009	21

Forest Management Unit Gladwin		County Midland	Mapped By Scott Shooltz	Date 09/30/2021	Page 2	of 3
Township 15N, 14N	Range 01W	Section(s) and Subdivision(s) 33, 04, 05, 08		Scale 1:15,840		
Cruised By Shooltz, Nyhoff						

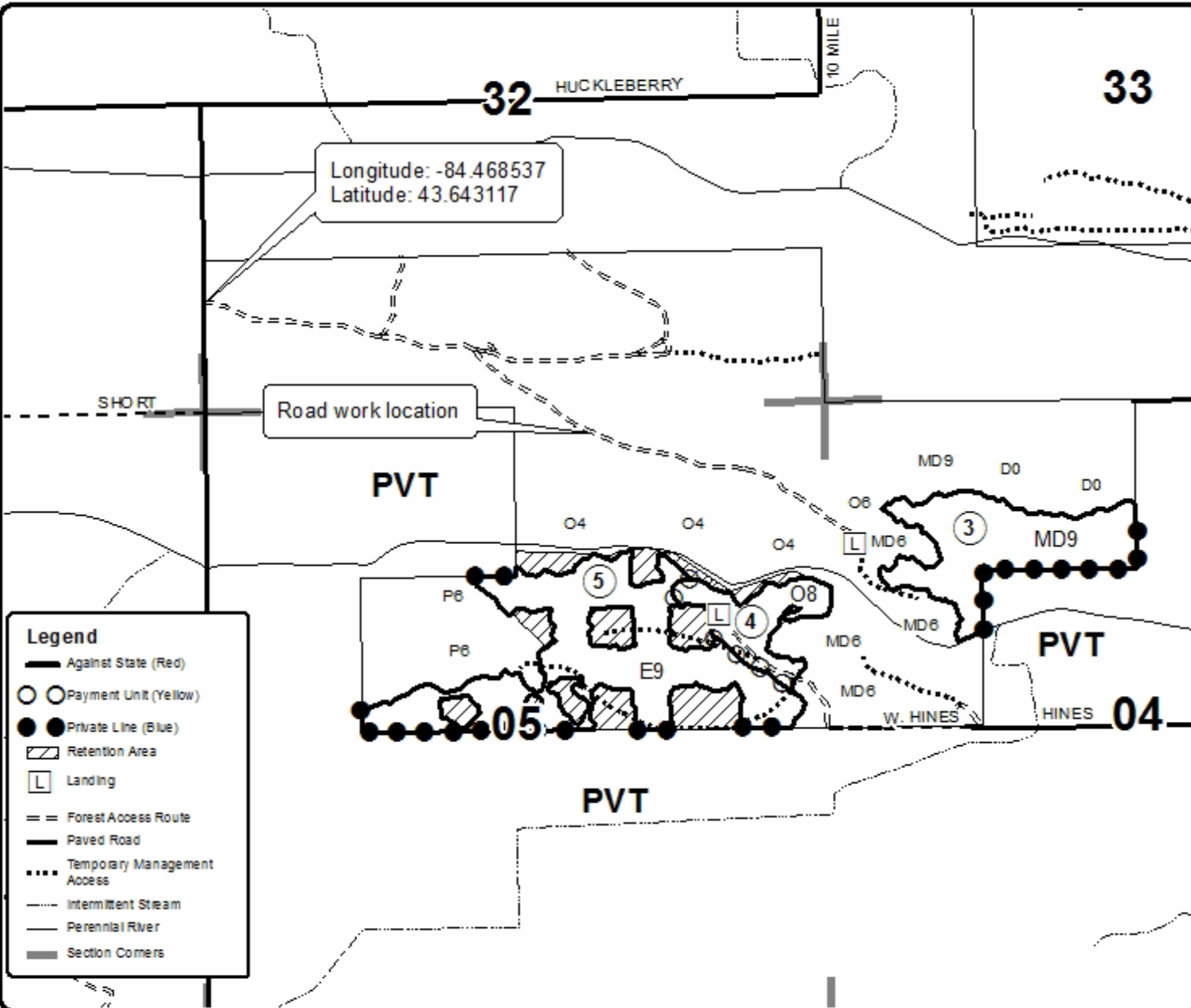
Cover Type				Density			
A = Aspen	H = Hemlock	N = Marsh	U = Upland Brush	0 = Non Stocked	5 = Pole Timber Medium		
E = Paper Birch	J = Jack Pine	O = Oak	LM = Upland Mixed	1 = Seedling Sapling Poor	6 = Pole Timber Well		
C = Cedar	L = Lowland Brush	P = Lowland Poplar	V = Bog or Marsh	2 = Seedling Sapling Medium	7 = Saw Timber Poor		
D = Treed Bog	LM = Lowland Mixed	Q = Mixed Swamp Conifer	W = White Pine	3 = Seedling Sapling Well	8 = Saw Timber Medium		
G = Swamp Hardwoods	M = Mpl. Bch. Brch	R = Red Pine	X = Non Stocked	4 = Pole Timber Poor	9 = Saw Timber Well		
F = Spruce Fir	MC = Mixed Conifer	S = Black Spruce	Z = Water				
G = Cress	MD = Mixed Deciduous	T = Tamarack					

PU	Acres	PU	Acres	PU	Acres
1	8.5	4	12.5	7	21.9
2	13.8	5	51.2		
3	29.7	6	6.9		

Carrol Creek Select

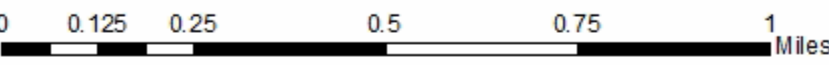
Compartment 112

144.6 Acres



Legend

- Against State (Red)
- Payment Unit (Yellow)
- Private Line (Blue)
- ▨ Retention Area
- L Landing
- == Forest Access Route
- Paved Road
- Temporary Management Access
- Intermittent Stream
- Perennial River
- Section Corners





TIMBER SALE MAP

This information provided by authority of Part 525, 1994 PA 451, as amended.

Sale Number	Year
73 - 009	21

Forest Management Unit	County	Mapped By	Date	Page	of
Gladwin	Midland	Scott Shooltz	09/30/2021	3	3
Township	Range	Section(s) and Subdivision(s)	Scale		
15N, 14N	01W	33, 04, 05, 08	1:15,840		

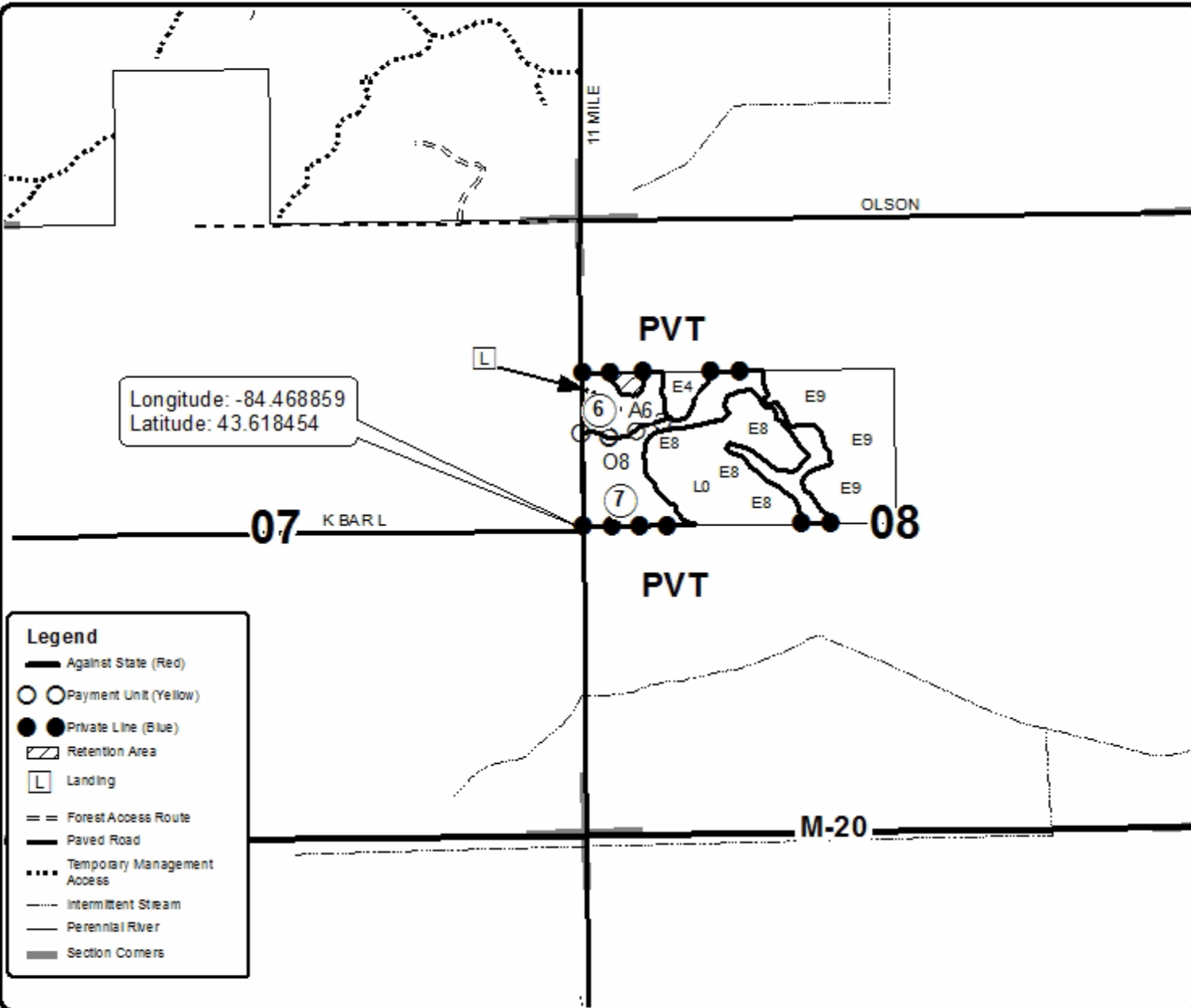
Cover Type				Density	
A = Aspen	H = Hemlock	N = Marsh	U = Upland Brush	0 = Non Stocked	5 = Pole Timber Medium
E = Paper Birch	J = Jack Pine	O = Oak	LM = Upland Mixed	1 = Seedling Sapling Poor	6 = Pole Timber Well
C = Cedar	L = Lowland Brush	P = Lowland Poplar	V = Bog or Marsh	2 = Seedling Sapling Medium	7 = Saw Timber Poor
D = Treed Bog	LM = Lowland Mixed	Q = Mixed Swamp Conifer	W = White Pine	3 = Seedling Sapling Well	8 = Saw Timber Medium
E = Swamp Hardwoods	M = Mpl. Bch. Brch	R = Red Pine	X = Non Stocked	4 = Pole Timber Poor	9 = Saw Timber Well
F = Spruce Fir	MC = Mixed Conifer	S = Black Spruce	Z = Water		
G = Cress	MD = Mixed Deciduous	T = Tamarack			

PU	Acres	PU	Acres	PU	Acres
1	8.5	4	12.5	7	21.9
2	13.8	5	51.2		
3	29.7	6	6.9		

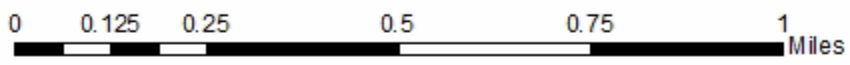
Carrol Creek Select

Compartment 112

144.6 Acres



Legend	
	Against State (Red)
	Payment Unit (Yellow)
	Private Line (Blue)
	Retention Area
	Landing
	Forest Access Route
	Paved Road
	Temporary Management Access
	Intermittent Stream
	Perennial River
	Section Corners



Banks of the Sturgeon Aspen (73-008-21)
T15N, R01E, SEC. 10; T15N, R01E, SEC. 11; T15N, R01E, SEC. 3; Midland

In response to the notice of sale to be held 10:00 a.m. (local time) on July 27, 2022, I am hereby submitting my sealed bid (firm offer) for the following forest products to be cut. Bids for individual species must be at or above the advertised price. All non-responsive bid forms may be rejected.

<u>PRODUCTS & SPECIES</u>	<u>ESTIMATED VOLUME*</u>	<u>ADVERTISED PRICE</u>	<u>BID PRICE/UNIT</u>
Sawtimber			
Mixed Aspen	164.0 MBF	\$ 76.00/MBF	\$ _____
Mixed Oak	13.7 MBF	\$ 63.00/MBF	\$ _____
Red Maple	83.2 MBF	\$ 44.00/MBF	\$ _____
Pulpwood			
Mixed Aspen	905 Cords	\$ 25.85/Cord	\$ _____
Mixed Hardwood	31 Cords	\$ 16.65/Cord	\$ _____
Mixed Oak	208 Cords	\$ 13.95/Cord	\$ _____
Red Maple	327 Cords	\$ 16.65/Cord	\$ _____

*The volumes are statistically estimated within plus (+) or minus (-) 8.67 percent at 95% confidence level. These estimated volumes are final and not subject to adjustment. Prospective bidders are urged to examine this timber and to make their own estimates of quantity and quality.

I understand that any or all bids may be rejected. All bids must be signed and all bid items must be bid or the bid form may be rejected. I also understand that consideration and awarding a contract will be based upon my past performance and ability to complete the contract based upon equipment and staffing subject to my control .

FEDERAL ID: _____ or SOCIAL SECURITY NUMBER: _____
 Company or individual bidding: _____
 Company representative's name: _____
 Address: _____
 City: _____ State: _____ Zip: _____

IF AVAILABLE, PLEASE PLACE THE PERSONALIZED LABEL FROM YOUR PROSPECTUS IN THE ABOVE BOX.

Individual or company representative's signature: _____ Date: _____
Phone number : _____ Email (optional): _____

THE WINNING BIDDER MUST COMPLETE THE VERIFICATION OF WORKER'S DISABILITY COMPENSATION ACT COMPLIANCE (ON REVERSE SIDE IF DOUBLE SIDED) WITHIN 21 DAYS OF SALE AWARD DATE



FOR DEPARTMENT USE ONLY	
Sale Number (XX - XXX - XX - XX)	
Forest Management Unit:	

TIMBER SALE VERIFICATION OF WORKER'S DISABILITY COMPENSATION ACT COMPLIANCE

As required by Act 317, P.A. 1969 (Worker's Compensation) and
Part 5 of Act 451 of 1994, as amended.

VERIFICATION OF WORKER'S DISABILITY COMPENSATION ACT COMPLIANCE

- This verification must be completed and submitted within 21 days of contract award and prior to the issuance of the timber sale contract.
- In addition, if boxes 2B or 2C are checked, then Notice of Exclusion or Certificate of Insurance must be submitted within twenty-one (21) days of the contract award and prior to the issuance of the timber sale contract.
- All information must be typed or printed except for written signatures.

Please Check Appropriate Categories:

1. My business is organized as (you **must** check one of the boxes below):
 - A. Sole Proprietorship (individual)
 - B. Partnership
 - C. Corporation
2. You **must** check one of the boxes below:
 - A. I certify my business is a sole proprietorship and it has no employees but the sole proprietor. I am not subject to the Worker's Compensation Laws.
 - B. I certify my business has satisfied its obligation to the Worker's Compensation Act through the use of an approved Notice of Exclusion (BWC-337, Rev. 5/96). I will provide a copy of the Notice of Exclusion within 21 days of the contract award. (For questions or a copy of the BWC-337, please call the Worker's Compensation Bureau at 517-322-1195).
 - C. I certify my business has a Worker's Compensation Policy. I will provide an original Certificate of Insurance within twenty-one (21) days of the contract award.
3. If you have checked item 2(A) or 2(B), you **must** indicate the number of **both** full-time and part-time employees, other than yourself, including family members and active partners (if none, you must enter "0").

_____ Full-time Employees

_____ Part-time Employees

Name of Business		Federal ID (or) Social Security No.	
Address		Telephone ()	
City	State	ZIP	

I hereby certify that the above information is true and correct. I agree to notify the Michigan DNR of any changes that occur in factors affecting my coverage during any of my present and future operations.

Signature of Owner or Authorized Representative

Title

Date

Please complete the "SEALED BID" information on the next page

Timber Island (73-007-21)

T15N, R01E, SEC. 3; T15N, R01E, SEC. 4; T16N, R01E, SEC. 33; T16N, R01E,

In response to the notice of sale to be held 10:00 a.m. (local time) on July 27, 2022, I am hereby submitting my sealed bid (firm offer) for the following forest products to be cut. Bids for individual species must be at or above the advertised price. All non-responsive bid forms may be rejected.

<u>PRODUCTS & SPECIES</u>	<u>ESTIMATED VOLUME*</u>	<u>ADVERTISED PRICE</u>	<u>BID PRICE/UNIT</u>
Sawtimber			
B. T. Aspen	84.3 MBF	\$ 63.00/MBF	\$ _____
Mixed Oak	18.4 MBF	\$ 52.00/MBF	\$ _____
Red Maple	121.7 MBF	\$ 37.00/MBF	\$ _____
Red Oak	27.5 MBF	\$ 78.00/MBF	\$ _____
Pulpwood			
Mixed Aspen	596 Cords	\$ 21.50/Cord	\$ _____
Mixed Hardwood	718 Cords	\$ 13.85/Cord	\$ _____
Mixed Oak	169 Cords	\$ 11.60/Cord	\$ _____
Red Pine	8 Cords	\$ 24.35/Cord	\$ _____

*The volumes are statistically estimated within plus (+) or minus (-) 8.45 percent at 95% confidence level. These estimated volumes are final and not subject to adjustment. Prospective bidders are urged to examine this timber and to make their own estimates of quantity and quality.

I understand that any or all bids may be rejected. All bids must be signed and all bid items must be bid or the bid form may be rejected. I also understand that consideration and awarding a contract will be based upon my past performance and ability to complete the contract based upon equipment and staffing subject to my control.

FEDERAL ID: ____ - ____ - ____ or SOCIAL SECURITY NUMBER: ____ - ____ - ____

Company or individual bidding: _____

Company representative's name: _____

Address: _____

City: _____ State: _____ Zip: _____

IF AVAILABLE, PLEASE PLACE THE PERSONALIZED LABEL FROM YOUR PROSPECTUS IN THE ABOVE BOX.

Individual or company representative's signature: _____ Date: _____

Phone number : _____ Email (optional): _____

THE WINNING BIDDER MUST COMPLETE THE VERIFICATION OF WORKER'S DISABILITY COMPENSATION ACT COMPLIANCE (ON REVERSE SIDE IF DOUBLE SIDED) WITHIN 21 DAYS OF SALE AWARD DATE



FOR DEPARTMENT USE ONLY	
Sale Number (XX - XXX - XX - XX)	
Forest Management Unit:	

TIMBER SALE VERIFICATION OF WORKER'S DISABILITY COMPENSATION ACT COMPLIANCE

As required by Act 317, P.A. 1969 (Worker's Compensation) and
Part 5 of Act 451 of 1994, as amended.

VERIFICATION OF WORKER'S DISABILITY COMPENSATION ACT COMPLIANCE

- This verification must be completed and submitted within 21 days of contract award and prior to the issuance of the timber sale contract.
- In addition, if boxes 2B or 2C are checked, then Notice of Exclusion or Certificate of Insurance must be submitted within twenty-one (21) days of the contract award and prior to the issuance of the timber sale contract.
- All information must be typed or printed except for written signatures.

Please Check Appropriate Categories:

1. My business is organized as (you **must** check one of the boxes below):
 - A. Sole Proprietorship (individual)
 - B. Partnership
 - C. Corporation
2. You **must** check one of the boxes below:
 - A. I certify my business is a sole proprietorship and it has no employees but the sole proprietor. I am not subject to the Worker's Compensation Laws.
 - B. I certify my business has satisfied its obligation to the Worker's Compensation Act through the use of an approved Notice of Exclusion (BWC-337, Rev. 5/96). I will provide a copy of the Notice of Exclusion within 21 days of the contract award. (For questions or a copy of the BWC-337, please call the Worker's Compensation Bureau at 517-322-1195).
 - C. I certify my business has a Worker's Compensation Policy. I will provide an original Certificate of Insurance within twenty-one (21) days of the contract award.
3. If you have checked item 2(A) or 2(B), you **must** indicate the number of **both** full-time and part-time employees, other than yourself, including family members and active partners (if none, you must enter "0").

_____ Full-time Employees

_____ Part-time Employees

Name of Business		Federal ID (or) Social Security No.	
Address		Telephone ()	
City	State	ZIP	

I hereby certify that the above information is true and correct. I agree to notify the Michigan DNR of any changes that occur in factors affecting my coverage during any of my present and future operations.

Signature of Owner or Authorized Representative

Title

Date

Please complete the "SEALED BID" information on the next page

Carrol Creek Select (73-009-21)

T14N, R01W, SEC. 4; T14N, R01W, SEC. 5; T14N, R01W, SEC. 8; T15N, R01W,

In response to the notice of sale to be held 10:00 a.m. (local time) on July 27, 2022, I am hereby submitting my sealed bid (firm offer) for the following forest products to be cut. Bids for individual species must be at or above the advertised price. All non-responsive bid forms may be rejected.

<u>PRODUCTS & SPECIES</u>	<u>ESTIMATED VOLUME*</u>	<u>ADVERTISED PRICE</u>	<u>BID PRICE/UNIT</u>
Sawtimber			
Mixed Aspen	37.9 MBF	\$ 70.00/MBF	\$ _____
Mixed Oak	101.0 MBF	\$ 57.00/MBF	\$ _____
Red Maple	91.2 MBF	\$ 40.00/MBF	\$ _____
Red Oak	134.2 MBF	\$ 86.00/MBF	\$ _____
Swamp White Oak	53.1 MBF	\$ 88.00/MBF	\$ _____
White Oak	32.1 MBF	\$ 65.00/MBF	\$ _____
White Pine	10.9 MBF	\$ 57.00/MBF	\$ _____
Pulpwood			
Mixed Aspen	164 Cords	\$ 23.70/Cord	\$ _____
Mixed Hardwood	19 Cords	\$ 15.25/Cord	\$ _____
Mixed Oak	299 Cords	\$ 12.75/Cord	\$ _____
Red Maple	428 Cords	\$ 15.25/Cord	\$ _____
Swamp White Oak	88 Cords	\$ 16.20/Cord	\$ _____
White Pine	20 Cords	\$ 21.65/Cord	\$ _____

*The volumes are statistically estimated within plus (+) or minus (-) 6.58 percent at 95% confidence level. These estimated volumes are final and not subject to adjustment. Prospective bidders are urged to examine this timber and to make their own estimates of quantity and quality.

I understand that any or all bids may be rejected. All bids must be signed and all bid items must be bid or the bid form may be rejected. I also understand that consideration and awarding a contract will be based upon my past performance and ability to complete the contract based upon equipment and staffing subject to my control.

FEDERAL ID: _____ or SOCIAL SECURITY NUMBER: _____

Company or individual bidding: _____

Company representative's name: _____

Address: _____

City: _____ State: _____ Zip: _____

IF AVAILABLE, PLEASE PLACE THE PERSONALIZED LABEL FROM YOUR PROSPECTUS IN THE ABOVE BOX.

Individual or company representative's signature: _____ Date: _____

Phone number : _____ Email (optional): _____

THE WINNING BIDDER MUST COMPLETE THE VERIFICATION OF WORKER'S DISABILITY COMPENSATION ACT COMPLIANCE (ON REVERSE SIDE IF DOUBLE SIDED) WITHIN 21 DAYS OF SALE AWARD DATE



FOR DEPARTMENT USE ONLY	
Sale Number (XX - XXX - XX - XX)	
Forest Management Unit:	

TIMBER SALE VERIFICATION OF WORKER'S DISABILITY COMPENSATION ACT COMPLIANCE

As required by Act 317, P.A. 1969 (Worker's Compensation) and
Part 5 of Act 451 of 1994, as amended.

VERIFICATION OF WORKER'S DISABILITY COMPENSATION ACT COMPLIANCE

- This verification must be completed and submitted within 21 days of contract award and prior to the issuance of the timber sale contract.
- In addition, if boxes 2B or 2C are checked, then Notice of Exclusion or Certificate of Insurance must be submitted within twenty-one (21) days of the contract award and prior to the issuance of the timber sale contract.
- All information must be typed or printed except for written signatures.

Please Check Appropriate Categories:

1. My business is organized as (you **must** check one of the boxes below):
 - A. Sole Proprietorship (individual)
 - B. Partnership
 - C. Corporation
2. You **must** check one of the boxes below:
 - A. I certify my business is a sole proprietorship and it has no employees but the sole proprietor. I am not subject to the Worker's Compensation Laws.
 - B. I certify my business has satisfied its obligation to the Worker's Compensation Act through the use of an approved Notice of Exclusion (BWC-337, Rev. 5/96). I will provide a copy of the Notice of Exclusion within 21 days of the contract award. (For questions or a copy of the BWC-337, please call the Worker's Compensation Bureau at 517-322-1195).
 - C. I certify my business has a Worker's Compensation Policy. I will provide an original Certificate of Insurance within twenty-one (21) days of the contract award.
3. If you have checked item 2(A) or 2(B), you **must** indicate the number of **both** full-time and part-time employees, other than yourself, including family members and active partners (if none, you must enter "0").

_____ Full-time Employees

_____ Part-time Employees

Name of Business		Federal ID (or) Social Security No.	
Address		Telephone ()	
City	State	ZIP	

I hereby certify that the above information is true and correct. I agree to notify the Michigan DNR of any changes that occur in factors affecting my coverage during any of my present and future operations.

Signature of Owner or Authorized Representative

Title

Date

Please complete the "SEALED BID" information on the next page