



**DEPARTMENT OF NATURAL RESOURCES
STATE OF MICHIGAN
TIMBER SALE PROSPECTUS #7108**

SCHEDULED SALE DATE AND TIME: 2:00 p.m. (local time) on August 17, 2022.

LOCATION: SHINGLETON MGMT UNIT, PO BOX 67, M 28 WEST, SHINGLETON, MI 49884.

PROSPECTUS NOTE: The bidder is advised to inspect the sale area and review the location, estimated volumes, operating costs and contract terms of proposed sales. Please be aware that some landowners may request 60 days or more notice for access across their land.

Notice is hereby given that bids will be received by the Unit Manager, SHINGLETON MANAGEMENT UNIT, for certain timber on the following described lands:

Petrel Contract Hardwood (41-001-22) / T47N, R17W, SEC. 34, S1/2NW,SWNE,SW,W1/2SE.

Alger County, Advertised Price \$308,464.10, 163.7 Acres, Hardwood, Sugar Maple.

SALE NOTE: All units of volume listed for this sale were estimated using the Inventory Manager computer program and the new Michigan taper model.

Road work is required on this sale. See Sale Spec. 4.1.8 for specifics.

Harvesting is not permitted during the period of April 15 to July 15 due to bark slippage.

The Sunrise Grade and Petrel Roads are snowmobile trails. See Sale Spec. 5.2.41 for restrictions.

A recreation site such as a trail, pathway, or campground is within the sale area or the vicinity. Certain restrictions/specifications may be applicable including time restrictions.

Got Me Thinking (41-004-22) / T43N, R15W, SEC. 21, SWNW,SW,SWSE.

T43N, R15W, SEC. 28, NW,N1/2NE,SWNE.

Schoolcraft County, Advertised Price \$34,017.75, 260.5 Acres, N White Cedar, Spruce/Fir/ Tamarack.

SALE NOTE: All units of volume listed for this sale were estimated using the Inventory Manager computer program and the new Michigan taper model.

It is the Purchaser's responsibility to obtain access across private land for any routes other than the route shown on the Timber Sale Map.

Harvesting is limited to hauling are limited to frozen conditions, this period is generally from December 1 through March 31, because of the soft, wet soil conditions.

Some roads or skid trails may require extra protection such as that afforded by timber mats , interlocking composite mats, or another approved system. See Sale Spec. 5.2.17 for additional information.

If weather conditions during the operating period of this contract prevent harvesting, this sale may qualify for a weather-related extension. See Sale Spec. 7.2.5 for details.

A recreation site such as a trail, pathway, or campground is within the sale area or the vicinity. Certain restrictions/specifications may be applicable including time restrictions.

Green and Gold (41-018-21) / T49N, R15W, SEC. 19, SESW,SE.

T49N, R15W, SEC. 20, S1/2SW.

T49N, R15W, SEC. 29, N1/2NW,SWNW,NWSW,S1/2SW.

T49N, R15W, SEC. 30, NW,NE,N1/2SW,SE.

T49N, R15W, SEC. 31, NWNE.

T49N, R15W, SEC. 32, NWNW.

T49N, R16W, SEC. 25, E1/2NE,S1/2SE.

Alger County, Advertised Price \$143,846.40, 434.4 Acres, Red Pine, White Pine.

SALE NOTE: All units of volume listed for this sale were estimated using the Inventory Manager computer program and the new Michigan taper model.

Note that within Payment Unit 4, a forest fire, approximately 8 acres in size, occurred in summer of 2021. See Sale Spec. 2.1.11 for additional information.

The county must be contacted prior to crossing or harvesting in the county road R-O-W. This applies to H-58.

Permission for access across private land is the responsibility of the Purchaser.

The Fox River Pathway is a hiking trail and H-58 is a snowmobile trail. Both are shown on the Timber Sale Map. See Sale Spec 5.2.40 and 5.2.41 for restrictions.

A recreation site such as a trail, pathway, or campground is within the sale area or the vicinity. Certain restrictions/specifications may be applicable including time restrictions. Access may be through private land.

BID INSTRUCTIONS (VER. 07/02/2018):

1. Scheduled Bid Location, Date, and Time (2/11)

Bids must be received by the Unit Manager, SHINGLETON OFFICE, PO Box 67 M 28 West, Shingleton, MI 49884, no later than 2:00 p.m. (local time) on August 17, 2022. For further information concerning this sale, contact Robert Burnham at 906-420-1645 extension n/a.

2. Bidder's Qualifications (5/16)

Purchaser shall obtain workers compensation insurance to cover claims under Michigan's Worker's Disability Compensation Act of 1969 or similar employee benefit act of any other state applicable to an employee. If all or part of a timber sale was prepared by a private contractor, the contractor and that contractor's company are not permitted to bid on the timber sale contract. Bids will not be accepted from individuals or companies appearing on the DNR/FRD No-Bid List. This list contains the names of purchasers who previously failed to execute a contract within 21-days or who have a history of poor performance.

3. Preparation of Sealed Bids (5/16)

Bid Forms may be completed online thru Michigan DNR Timber Sale Online Bidding (OLB) at www.michigan.gov/timberbidding or by completing the hardcopy Bid Form found in the Timber Sale Prospectus. Hardcopy Bid Forms shall be manually signed in ink. Registration in OLB is considered your 'signature' for all bids submitted thru that system. Bid prices must be entered for each species and product in the Bid Price column for all material subject to bidding and all fill-in blanks must be completed. If erasures or other changes appear on the hardcopy Bid Form, each erasure or change must be initialed by the person signing the bid.

4. Submission of Sealed Bids (5/16)

Bid forms may be obtained from the Unit Manager or thru OLB. Bids may be submitted hardcopy or thru OLB. All hardcopy bids must be submitted on the bid form and in an envelope clearly identified as described in this section. NOTE: Only one bid form per bid envelope. Sealed bids must be submitted to the Unit office designated in the prospectus and must be submitted at or prior to the time established in the prospectus. The envelope should show on the outside (a) the sale name or number and (b) the date and time of bid opening, as shown in the prospectus. Bids received after the time specified in the sale prospectus are late bids and will be rejected.

It is possible for a bidder to submit multiple bids on a single sale. For example, a bid may be submitted hardcopy and a bid may be submitted thru OLB. Or, two bidders from the same company could both submit bids on the same sale. If this were to happen, the State would accept all bids received and award the contract accordingly. All bidding and contractual requirements would apply to all bids received.

5. Public Opening of Sealed Bids (7/16)

If conditions permit, the sealed bids will be publicly opened and posted at the time and place set in the prospectus.

If a bidder, present at a bid opening, has submitted bids on more than one sale, that bidder may withdraw their unopened bid envelopes or announce the withdrawal of their online bid after being declared the successful bidder on one sale.

6. Award of Contract (1/11)

Award of the contract will be made to the Bidder whose bid, conforming to the prospectus, is most advantageous to the State of Michigan on the basis of total value at rates bid for the estimated quantities. The State reserves the right to reject any bid or waive any minor irregularity in bids received. A written award mailed (or otherwise furnished) to the successful Bidder shall be deemed to result in a binding contract without further action by either party.

7. Down Payment (1/11)

The Bidder to whom award is made must make a down payment within 21 days of the sale award. The amount of the down payment will be calculated as shown in the Bond and Payment Schedule of this prospectus. Only cash may be used to meet this requirement.

8. Performance Security (1/11)

As guarantee of faithful performance, a cash bond, certificate of deposit, surety bond or irrevocable letter of credit (LOC) is required within 21 days of the sale award. The amount of the performance security is shown in the Bond and

Payment Schedule of this prospectus. If an LOC or surety is used, the coverage must extend for at least 6 months beyond the contract expiration.

9. Timber Sale Contract (7/18)

Additional conditions and requirements common to all timber sales are listed on the timber sale contract (R4031) and are available on line at www.michigan.gov/timber. Contact the Unit Manager for additional information or a sample contract. Within 21 days of the date of the award letter, the bidder must sign the contract and provide the required down payment, performance security, and verification of worker's disability compensation. The down payment and performance security shall be in accordance with the provisions of the timber sale contract, in the sums stated in this prospectus. If these actions are not taken, then the Bidder, the Bidder's corporation, and the corporation's principals may not be permitted to bid on State timber sales for a period of 3 months after the first offense, 6 months after the second offense, and 1 year after the third offense. An offense will only be counted against the Bidder for 5 years. In addition, the Bidder certifies that if awarded this contract, the Bidder will complete the timber sale contract in accordance with its terms and any modifications thereof including requirements to purchase, cut, and remove the included timber by the expiration date.

Payment Unit values in the State Forest Timber Sale Contract are calculated based on the advertised value of the Payment Unit as a percentage of the total advertised value of the contract. The advertised value of each Payment Unit is given in the Description of Timber by Payment Unit table on the Timber Sale Information page. For example, if the value of Payment Unit 1 is advertised as \$1,500 and the total Timber Sale value is advertised as \$10,000, the contract price for Payment Unit 1 will be 15% of the total bid price ($\$1,500/\$10,000 * 100$).

10. Disclaimer of Estimates and Bidder's Warranty of Inspection (7/16)

Before submitting this bid, the Bidder is advised and cautioned to inspect the sale area, review the requirements of the sale contract, and take other steps as may be reasonably necessary to ascertain the location, estimated volumes, construction estimates, and operating costs of the proposed sale. Failure to do so will not relieve the Bidder from responsibility for completing the contract.

The Bidder warrants that this bid is submitted solely on the basis of the Bidder's examination and inspection of the quality and quantity of the timber offered for sale and the Bidder's opinion of the value thereof and the costs of recovery. No reliance should be placed on the State of Michigan's estimates of timber quality, quantity or costs of recovery. Bidder further acknowledges that the State of Michigan: (i) expressly disclaims any warranty of fitness of timber for any purpose; (ii) offers this timber as is without any warranty of quality (merchantability) or quantity and (iii) expressly disclaims any warranty as to the quantity or quality of timber sold.

11. Certification and Chain-of-Custody (10/14)

Unless otherwise indicated in the contract under section 7 – Other Conditions of the Sale Specific Conditions & Requirements, the area encompassed by this timber sale is certified to the standards of the Forest Stewardship Council (FSC) - Certificate #SCS-FM/COC-00090N and the Sustainable Forestry Initiative (SFI) - Certificate #NSF-SFIS-5Y031-SF5. Forest products from this sale may be delivered to the mill as "FSC 100% and / or SFI certified" as long as the contractor hauling the forest products is chain-of-custody (COC) certified or covered under a COC certificate from the destination mill. The purchaser is responsible for maintaining COC after leaving the sale area.

12. Good Neighbor Authority (GNA) Requirements (7/16)

If the name of this timber sales contains the acronym GNA, it is authorized by the Good Neighbor Authority (GNA) and covered by various agreements between the U.S. Forest Service and the State. The timber sale occurs on federal land and the following conditions apply:

GNA contracts on US Forest Service land will not be awarded to purchasers on the Federal list of excluded parties. The System for Award Management (SAM) will be checked for active excluded parties prior to award of contract. In addition, the Bidder to whom award is made must complete an Assurance Regarding Felony Conviction or Tax Delinquent Status for Corporate Applicants (AD-3031).

13. Good Neighbor Authority (GNA) Requirements, con't (9/16)

Bidder certifies, by signing this bid form, that to the best of Bidder's knowledge that the following representations are accurate and complete.

- a. That the Bidder and its principals are not presently debarred, suspended, proposed for debarment, declared ineligible, or voluntary excluded from timber sales (covered transactions) by any Federal department or agency.
- b. That the Bidder and its principals have not within a 3-year period preceding this bid been convicted of or had a civil judgment rendered against them for commission of fraud or a criminal offense in connection with obtaining , attempting to obtain, or performing a public (Federal, State, or local) transaction or contract under a public transaction; violation of Federal or State antitrust statutes or commission of embezzlement, theft, forgery, bribery, falsification or destruction of records, making false statements, or receiving stolen property.
- c. That the Bidder and its principals are not presently indicted for or otherwise criminally or civilly charged by a governmental entity (Federal, State, or local) with commission of any of the offenses enumerated in paragraph b of this certification.
- d. That the Bidder and its principals have not within a 3-year period preceding this bid had one or more public transactions (Federal, State, or local) terminated for breach or default of a timber or forest product contract.

Bidders that cannot certify this requirement, in whole or in part, shall submit an explanation with their bid.

DAN EICHINGER
Director

TIMBER SALE INFORMATION

Petrel Contract Hardwood (41-001-22)

T47N, R17W, SEC. 34.

Alger County (Advertised Price \$308,464.10)

SALE NOTE: All units of volume listed for this sale were estimated using the Inventory Manager computer program and the new Michigan taper model.

Road work is required on this sale. See Sale Spec. 4.1.8 for specifics.

Harvesting is not permitted during the period of April 15 to July 15 due to bark slippage.

The Sunrise Grade and Petrel Roads are snowmobile trails. See Sale Spec. 5.2.41 for restrictions.

A recreation site such as a trail, pathway, or campground is within the sale area or the vicinity. Certain restrictions/specifications may be applicable including time restrictions.

A timber sale contract for this lump sum, sealed bid timber sale will be awarded to the responsible bidder offering the highest sealed bid price. All units of volume listed below were estimated using the Inventory Manager computer program and the new Michigan taper model. Bids must be at or above the following advertised price for each product and species:

<u>PRODUCTS & SPECIES</u>	<u>ESTIMATED UNITS*</u>	<u>ADVERTISED PRICE</u>
Sawtimber		
Red Maple	50.5 MBF	\$ 93.00 / MBF
Sugar Maple	945.8 MBF	\$ 307.00 / MBF
Pulpwood		
Mixed Hardwood	1,051 Cords	\$ 12.60 / Cord
White Pine	1 Cords	\$ 13.40 / Cord
White Spruce	10 Cords	\$ 15.10 / Cord

* The total volume is statistically estimated within plus (+) or minus (-) 4.49 percent. There are an estimated 3,455 cords on this timber sale, plus or minus 155 cords at the 95% confidence level. The estimated units are final and not subject to adjustment. Prospective bidders are urged to examine this timber and to make their own estimates of quantity and quality.

BOND AND PAYMENT SCHEDULE:

1. A bond in the amount of \$15,423.00 to insure faithful performance of the conditions of the contract will be deposited by the successful bidder within 21 days of the sale award.
2. Cutting in any sale or unit without the required advance payment would be considered a trespass.
3. Total payment must be paid in advance or according to the following schedule :
 - (a) Ten percent (10%) of the sale value must be paid within 21 days of the sale award.
 - (b) The 10% down payment will be credited towards the first unit cut.
 - (c) Payment for each of the following units must be made before cutting begins in that unit:

<u>PAYMENT UNIT NUMBER</u>	<u>PERCENT OF TOTAL SALE VALUE</u>
01	30.7%
02	28.7%
03	11.2%
04	29.4%
05	0.0%

4. If no cutting takes place, the 10% down payment will not be refunded.
5. Operations on the contract issued will terminate on 06/30/2025.

SALE STATISTICS

Volumes were calculated in cubic feet using the Michigan taper model. Cubic foot volume includes all wood inside bark for the product indicated. For display purposes, cubic feet were converted to cords and MBF using a simple conversion factor, e.g. 79 cubic feet per cord and 185 cubic feet per MBF. The cubic foot volumes are precise; the cords and MBF volumes are not. Cubic foot volume cannot be directly converted to cords or boards with precision.

SALE VOLUMES

The total estimated sale volume may not equal the sum of the species/products due to the nature of statistical calculations associated with double sampling methodology.

VOLUME			STATISTICAL RANGE IN CORDS	
TOTAL CUBIC FEET	TOTAL CORDS	PERCENT ERROR	MINIMUM	MAXIMUM
272,909	3,455	4.49%	3,299	3,610

VDU VOLUMES

A VDU is a Volume Determination Unit. Volumes and their associated statistics are calculated at the VDU level and summarized to the sale level. There is often a one to one relationship between a VDU and a Payment Unit, but not always, depending on the cruise design. Refer to the VDU TO PAYMENT UNIT table.

	VOLUME			RANGE IN CORDS	
VDU	TOTAL CUBIC FEET	TOTAL CORDS	PERCENT ERROR	MINIMUM	MAXIMUM
4	272,608	3,451	4.50%	3,295	3,606
5	301	4	50.00%	2	6
TOTAL:	272,909	3,455		3,297	3,612

VDU TO PAYMENT UNIT

When a VDU is associated with more than one Payment Unit (PU), the VDU volumes are assigned to the PU based on acres of the VDU within the PU.

VDU	VDU ACRES	PU	PU ACRES
4	162.6	1	49.8
		2	46.7
		3	18.3
		4	47.8
5	1.1	5	1.1
TOTAL:	163.7		163.7

DESCRIPTION OF TIMBER BY PAYMENT UNIT (PU)

PU	MARKET GROUP	PRODUCT	QUANTITY	UNIT	ACRES	ADVERTISE PRICE
1	Red Maple	Sawtimber	15.5	MBF	49.8	\$94,512.60
	Sugar Maple		289.8	MBF		
	Mixed Hardwood	Pulpwood	322	Cords		
	<i>Beech</i>		1	<i>Cords</i>		
	<i>Red Maple</i>		18	<i>Cords</i>		
	<i>Sugar Maple</i>		303	<i>Cords</i>		
	White Spruce		3	Cords		
2	Red Maple	Sawtimber	14.5	MBF	46.7	\$88,552.50
	Sugar Maple		271.6	MBF		
	Mixed Hardwood	Pulpwood	301	Cords		
	<i>Beech</i>		2	<i>Cords</i>		
	<i>Red Maple</i>		16	<i>Cords</i>		
	<i>Sugar Maple</i>		283	<i>Cords</i>		
	White Spruce		2	Cords		
3	Red Maple	Sawtimber	5.7	MBF	18.3	\$34,696.80
	Sugar Maple		106.4	MBF		
	Mixed Hardwood	Pulpwood	118	Cords		
	<i>Beech</i>		1	<i>Cords</i>		
	<i>Red Maple</i>		6	<i>Cords</i>		
	<i>Sugar Maple</i>		111	<i>Cords</i>		
	White Spruce		1	Cords		
4	Red Maple	Sawtimber	14.8	MBF	47.8	\$90,646.00
	Sugar Maple		278.0	MBF		
	Mixed Hardwood	Pulpwood	309	Cords		
	<i>Beech</i>		2	<i>Cords</i>		
	<i>Red Maple</i>		17	<i>Cords</i>		
	<i>Sugar Maple</i>		290	<i>Cords</i>		
	White Spruce		2	Cords		
5	Mixed Hardwood	Pulpwood	1	Cords	1.1	\$56.20
	<i>Black Cherry</i>		1	<i>Cords</i>		
	White Pine		1	Cords		
	White Spruce		2	Cords		
TOTAL:			996.3	MBF		
TOTAL:			1,062	Cords		

Sale Specific Conditions & Requirements

Sale Name: Petrel Contract Hardwood

Sale Number: 41-001-22 Seq#: 1

1 - Sale Area

1.2 - Boundaries

1.2.1 - Painted boundaries (9/19)

The sale boundary and Payment Unit boundaries are marked and identified by red and yellow paint. Exterior sale boundary lines against state are marked with red paint. Interior Payment Unit boundaries are marked with yellow paint. The painted boundary line trees are not Included Timber and are to be protected unless marked with orange paint.

2 - Timber Specifications

2.1 - Included Timber

2.1.2 - Clearcut unit(s) w/o unmerchantable trees (8/11)

Within Payment Unit(s) 5, cut all trees which meet minimum piece specifications in 2.2 Utilization, except crab apple, apple, juneberry, and oak.

2.1.3 - Cut tree marked unit(s) (12/08)

Within Payment Unit(s) 1-4, all trees are designated for cutting when marked with orange paint above and below stump height, regardless of merchantability.

3 - Payments

3.3 - Pre-measured Sales

3.3.4 - Dividing payment units (7/14)

Payment Unit(s) 1-4 may be divided at the request of the Purchaser and upon approval of the Unit Manager. Dividing Payment Units is a contract modification which requires a Timber Sale Contract Amendment.

4 - Transportation

4.1 - Construction

4.1.3 - Slash and earthen piles (8/04)

Piles or windrows of earth along roads and landings that have been widened or constructed shall be leveled. Slash from road maintenance or construction, including stumps, shall be dispersed throughout the sale.

4.1.4 - Timber removed for construction (12/09)

Trees cut or damaged in the process of pre-approved road, landing or skid trail construction will be decked in an area separate from other Designated Timber and not removed until measured by the sale administrator. Payment will be made at the specified Purchase Unit Price.

4.1.6 - Road construction (1/09)

Construction of new roads or improvements of existing roads shall be done in such a way as to minimize the environmental and visual impacts. Merchantable trees shall be cut and utilized unless otherwise directed. Non-merchantable trees shall be severed and laid flat on the ground. Slash shall be scattered, and not left in windrows and kept a minimum of 10 feet back from the road edge. Stumps shall be set upright, not left on edge, and be moved at least 10 feet away from the road edge. Disturbed soil shall be feathered into the woods and not left in berms or windrows.

4.1.7 - Road closure (10/11)

All new roads built into the sale must be blocked to vehicle traffic upon completion of the sale. Overgrown roads that are reopened shall be considered new roads. In general, this will require constructing a four (4') foot high berm of stumps and logs covered with earth. Stumps and brush must be placed along the remainder of the trail. These roads must be rendered impassable to cars and trucks. All stumps from road building and landing construction must be reserved to block any newly constructed roads upon completion of the sale. These stumps must be scattered along the road system to prohibit vehicular movement. Contact the sale administrator for specific details of design and placement.

4.1.8 - Road work (1) (8/07)

The following road work is required: If hauling occurs in non-frozen conditions 300 cubic yards of breaker run gravel must be purchased, hauled and spread on the haul route. The specific locations of the work will be determined at the pre-sale meeting. All work is at the Purchaser's expense, no deductions will be given. All work must be done before any harvesting operations begin unless frozen conditions exist.

4.2 - Maintenance

4.2.4 - Grading (10/16)

For completion of the sale, state forest roads must be graded. In general, this will require a road grader or bulldozer to shape up the roads after forest products have been hauled off site. This includes cleaning of drainage areas, grading, crowning, and filling with gravel, if necessary. The grading equipment to be used must be approved by the Unit Manager or his/her representative.

5 - Operations

5.1 - Notification

5.1.1 - Pre-sale conference (10/16)

A pre-sale conference between the Purchaser and sale administrator is required prior to beginning any operations to determine landing and road locations. The Unit Manager or his/her representative must be contacted at least 5 days in advance to schedule the conference.

5.2 - Conduct of Operations

5.2.1 - Slash

5.2.1.10 - No slash in openings (5/10)

No brush or logging debris is to be left in the maintained wildlife opening which is indicated by G0 on the Timber Sale Map. Any damage to the opening shall be repaired according to specifications of the Unit Manager or his/her representative. No decking is allowed in these openings.

5.2.2 - Hazard Trees/Snags

5.2.2.1 - Den trees (10/16)

Obvious hollow and/or den trees shall be protected and left standing unless they are a safety hazard.

5.2.3 - Operating Restrictions

5.2.3.3 - Bark slippage restriction (3/09)

Within Payment Unit(s) 1-4, unless changed by written agreement, cutting and skidding are not permitted during the period of April 15 to July 15. This restriction is because of bark slippage.

5.2.32 - Decking/landing restoration (9/13)

All decking and landing areas must have the surface area restored to a condition equal to or better than before. This is to ensure the proper regeneration of the stand. Wood debris, chips, and "cookies" from trimmings must be removed or scattered away from landing and loading areas and may not be windrowed on the edge.

5.2.38 - No decking against live trees (2/04)

Cut products may not be decked against unmarked or designated leave trees.

5.2.41 - Snowmobile trail protection (9/11)

The Sunrise Grade and Petrel Roads are snowmobile trails. Do not cut or damage posts with orange trail markers or traffic control signs. If the trail is used, it must be maintained and restored to a condition equal to or better than before the sale. The road maintenance/restoration must be done prior to December 1. The Sunrise Grade cannot be used for hauling during the snowmobile season, December 1 to March 31. Hauling during this period will be limited to the Petrel Road. If the trail road is to be used for hauling during the snowmobile season, then a snow-covered base must be left on the trail. Maintain a 20-foot-wide slash, debris, and rut free zone daily using the snowmobile trail as the centerline. No decking of forest products will be permitted along the snowmobile trail. All stumps within 20 feet of the snowmobile trail must be cut at ground level.

5.4 - Soil Protection

5.4.1 - Rutting restriction, general (7/16)

Operations are to cease immediately if equipment and weather conditions result in rutting of roads and/or skid trails which is 12 inches or greater in depth and 50 feet in length. The Unit Manager or his/her representative may restrict hauling and/or skidding if ruts exceed the specified depth. With the Unit Manager or his/her representative's approval, the Purchaser may return to the area when the risk of rutting has decreased.

5.8 - Protection of Endangered Species

5.8.3 - Red shoulder hawk or goshawk (2/16)

In the event that an active red shoulder hawk or goshawk nest is found, the contract may be amended to protect the nest site until the nest is determined to be inactive. The value of the trees in this excluded area will be refunded or credited to the Purchaser. The nest will be buffered with a five-chain radius (eight acre) protection area, centered on the nest tree, in which there will be no cutting or new roads constructed. Avoid human disturbance, including loading and skidding, in the protection area.

An additional zone of five chains (ten chains centered on the active nest tree) will be established in which there is no management activity from April 1 to July 30 (UP). Limit biomass harvesting and chipping operations within this ten-chain zone, retain the maximum one-third of residues per the Woody Biomass Harvesting Guidelines (Michigan DNR 2010). Nests determined to be inactive will be protected with a one-chain no-harvest buffer.

6 - Safety and Fire Prevention

6.2 - Signing

6.2.1 - Road posting (10/20)

The Purchaser is responsible for posting and maintaining caution signs on the Sunrise Grade prior to beginning operations. The road must be posted approximately 350 feet from the Sale Area to warn of logging activity and truck traffic. Signs must be removed when harvest operations are suspended or completed. The Purchaser will provide these signs.

6.2.2 - Snowmobile trail posting (10/20)

The Purchaser is responsible for posting and maintaining caution signs on the Sunrise Grade and Petrel Roads prior to beginning operations during the snowmobile season (approximately December 1 to March 31). The trail must be posted at locations designated on the map at appropriate distances from the Sale Area approximately 350 feet from the Sale Area to warn of logging activity and truck traffic. Signs must be removed when harvest operations are suspended or completed. The DNR will provide these signs.



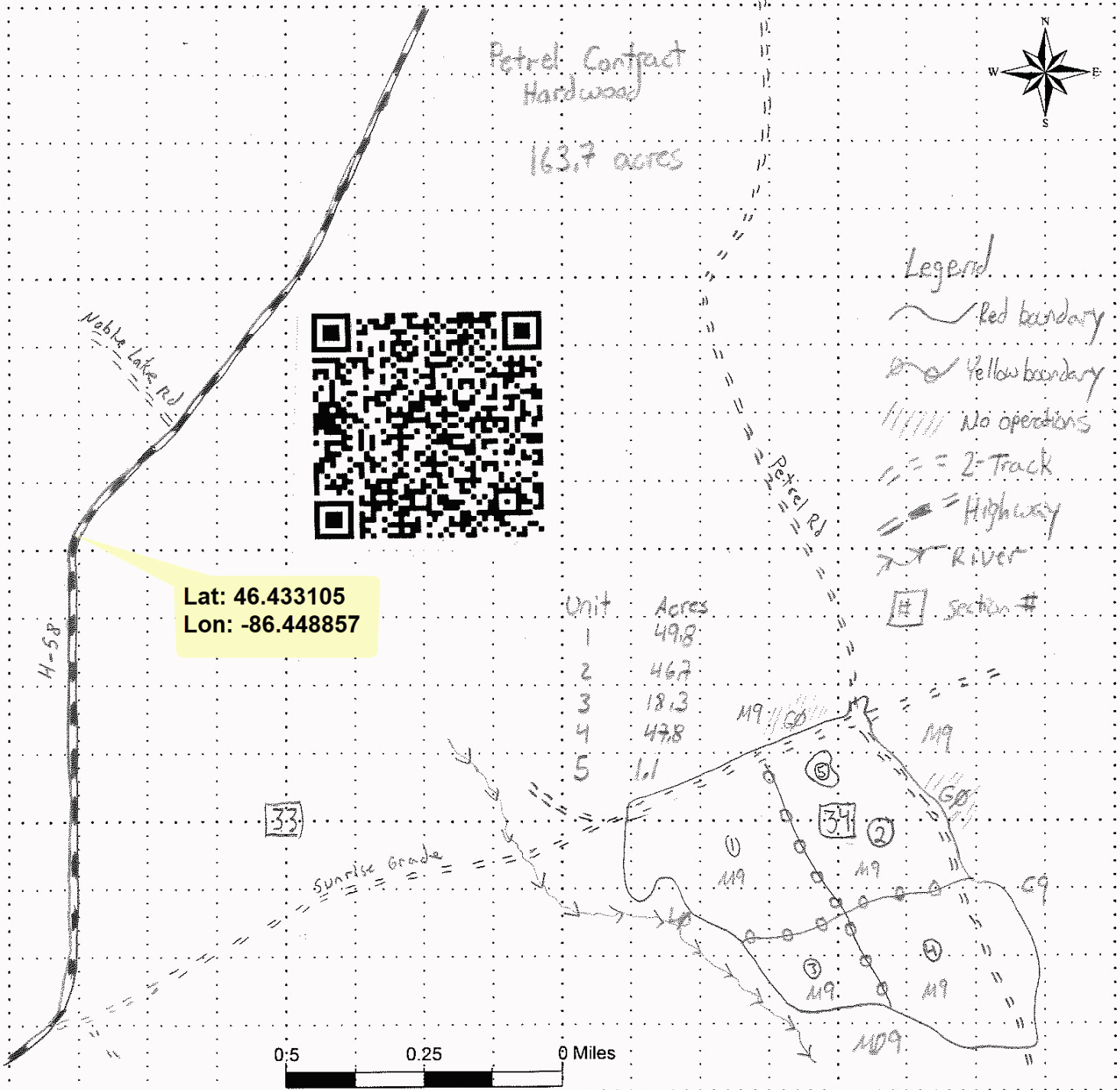
TIMBER SALE MAP

This information provided by authority of Part 5, 1994 PA 451, as amended.

Sale Number	Year
41-001-22	22
Date	Page of
10/28/21	1 / 1
Section(s) and Subdivision(s)	
34-5 1/2 NW, SWNE, SW, W 1/2 SE	

Forest Management Unit	County	Mapped By
Shingleton	Alger	Malin
Compartment Number	Township	Cruised By
180	47 N	Superior Forestry
	Range	
	17 W	

Cover Type				Density	
A = Aspen	J = Jack Pine	O = Oak	U = Upland Brush	0 = Non Stocked	5 = Pole Timber Medium
B = Paper Birch	K = Rock	P = Lowland Poplar	UM = Upland Mix Forest	1 = Seedling Sapling Poor	6 = Pole Timber Well
C = Cedar	L = Lowland Brush	Q = Mixed Swamp Conifer	V = Bog or Marsh	2 = Seedling Sapling Medium	7 = Saw Timber Poor
D = Treed Bog	LM = Lowland Mix Forest	R = Red Pine	W = White Pine	3 = Seedling Sapling Well	8 = Saw Timber Medium
E = Swamp Hardwoods	M = Maple, Beech, Birch	S = Black Spruce	X = Non Stocked	4 = Pole Timber Poor	9 = Saw Timber Well
F = Spruce/Fir	MC = Mixed Conifer	T = Tamarack	Y = Sand		
G = Grass	MD = Mixed Deciduous	Z = Water			
H = Hemlock	N = Marsh				



TIMBER SALE INFORMATION

Got Me Thinking (41-004-22)

T43N, R15W, SEC. 21; T43N, R15W, SEC. 28.
Schoolcraft County (Advertised Price \$34,017.75)

SALE NOTE: All units of volume listed for this sale were estimated using the Inventory Manager computer program and the new Michigan taper model.

It is the Purchaser's responsibility to obtain access across private land for any routes other than the route shown on the Timber Sale Map.

Harvesting is limited to hauling are limited to frozen conditions, this period is generally from December 1 through March 31, because of the soft, wet soil conditions.

Some roads or skid trails may require extra protection such as that afforded by timber mats , interlocking composite mats, or another approved system. See Sale Spec. 5.2.17 for additional information.

If weather conditions during the operating period of this contract prevent harvesting, this sale may qualify for a weather-related extension. See Sale Spec. 7.2.5 for details.

A recreation site such as a trail, pathway, or campground is within the sale area or the vicinity. Certain restrictions/specifications may be applicable including time restrictions.

A timber sale contract for this lump sum, sealed bid timber sale will be awarded to the responsible bidder offering the highest sealed bid price. All units of volume listed below were estimated using the Inventory Manager computer program and the new Michigan taper model. Bids must be at or above the following advertised price for each product and species:

<u>PRODUCTS & SPECIES</u>	<u>ESTIMATED UNITS*</u>	<u>ADVERTISED PRICE</u>
Pulpwood		
Black Spruce	594 Cords	\$ 12.35 / Cord
N. White Cedar	3,248 Cords	\$ 6.80 / Cord
Paper Birch	139 Cords	\$ 8.55 / Cord
Red Maple	83 Cords	\$ 10.30 / Cord
Tamarack	717 Cords	\$ 2.75 / Cord
White Pine	53 Cords	\$ 10.95 / Cord

* The total volume is statistically estimated within plus (+) or minus (-) 7.49 percent. There are an estimated 5,014 cords on this timber sale, plus or minus 376 cords at the 95% confidence level. The estimated units are final and not subject to adjustment. Prospective bidders are urged to examine this timber and to make their own estimates of quantity and quality.

BOND AND PAYMENT SCHEDULE:

1. A bond in the amount of \$1,701.00 to insure faithful performance of the conditions of the contract will be deposited by the successful bidder within 21 days of the sale award.
2. Cutting in any sale or unit without the required advance payment would be considered a trespass.
3. Total payment must be paid in advance or according to the following schedule :
 - (a) Ten percent (10%) of the sale value must be paid within 21 days of the sale award.
 - (b) The 10% down payment will be credited towards the first unit cut.

(c) Payment for each of the following units must be made before cutting begins in that unit:

<u>PAYMENT UNIT NUMBER</u>	<u>PERCENT OF TOTAL SALE VALUE</u>
01	15.0%
02	10.1%
03	13.0%
04	10.5%
05	17.1%
06	16.4%
07	17.9%

4. If no cutting takes place, the 10% down payment will not be refunded.
5. Operations on the contract issued will terminate on 06/30/2026.

SALE STATISTICS

Volumes were calculated in cubic feet using the Michigan taper model. Cubic foot volume includes all wood inside bark for the product indicated. For display purposes, cubic feet were converted to cords and MBF using a simple conversion factor, e.g. 79 cubic feet per cord and 185 cubic feet per MBF. The cubic foot volumes are precise; the cords and MBF volumes are not. Cubic foot volume cannot be directly converted to cords or boards with precision.

SALE VOLUMES

The total estimated sale volume may not equal the sum of the species/products due to the nature of statistical calculations associated with double sampling methodology.

VOLUME			STATISTICAL RANGE IN CORDS	
TOTAL CUBIC FEET	TOTAL CORDS	PERCENT ERROR	MINIMUM	MAXIMUM
396,087	5,014	7.49%	4,638	5,389

VDU VOLUMES

A VDU is a Volume Determination Unit. Volumes and their associated statistics are calculated at the VDU level and summarized to the sale level. There is often a one to one relationship between a VDU and a Payment Unit, but not always, depending on the cruise design. Refer to the VDU TO PAYMENT UNIT table.

VDU	VOLUME		PERCENT ERROR	RANGE IN CORDS	
	TOTAL CUBIC FEET	TOTAL CORDS		MINIMUM	MAXIMUM
1	342,540	4,336	8.50%	3,967	4,705
2	53,547	678	10.64%	606	750
TOTAL:	396,087	5,014		4,573	5,455

VDU TO PAYMENT UNIT

When a VDU is associated with more than one Payment Unit (PU), the VDU volumes are assigned to the PU based on acres of the VDU within the PU.

VDU	VDU ACRES	PU	PU ACRES
1	206.7	1	37.7
		2	25.4
		3	32.7
		4	26.5
		5	43.2
		6	41.2
2	53.8	7	53.8
TOTAL:	260.5		260.5

DESCRIPTION OF TIMBER BY PAYMENT UNIT (PU)

PU	MARKET GROUP	PRODUCT	QUANTITY	UNIT	ACRES	ADVERTISE PRICE
1	Black Spruce N. White Cedar Paper Birch Red Maple Tamarack White Pine	Pulpwood	52 534 25 15 124 10	Cords Cords Cords Cords Cords Cords	37.7	\$5,092.15
2	Black Spruce N. White Cedar Paper Birch Red Maple Tamarack White Pine	Pulpwood	35 360 17 10 84 7	Cords Cords Cords Cords Cords Cords	25.4	\$3,436.25
3	Black Spruce N. White Cedar Paper Birch Red Maple Tamarack White Pine	Pulpwood	45 463 22 13 108 8	Cords Cords Cords Cords Cords Cords	32.7	\$4,410.75
4	Black Spruce N. White Cedar Paper Birch Red Maple Tamarack White Pine	Pulpwood	36 375 18 11 87 7	Cords Cords Cords Cords Cords Cords	26.5	\$3,577.70
5	Black Spruce N. White Cedar Paper Birch Red Maple Tamarack White Pine	Pulpwood	59 611 29 17 142 10	Cords Cords Cords Cords Cords Cords	43.2	\$5,806.50
6	Black Spruce N. White Cedar Paper Birch Red Maple Tamarack White Pine	Pulpwood	56 583 28 17 136 11	Cords Cords Cords Cords Cords Cords	41.2	\$5,564.95
7	Black Spruce N. White Cedar Tamarack	Pulpwood	311 322 36	Cords Cords Cords	53.8	\$6,129.45
TOTAL:			4,834	Cords		

Sale Specific Conditions & Requirements

Sale Name: Got Me Thinking

Sale Number: 41-004-22 Seq#: 1

1 - Sale Area

1.2 - Boundaries

1.2.1 - Painted boundaries (9/19)

The sale boundary and Payment Unit boundaries are marked and identified by blue, red, and yellow paint. Exterior sale boundary lines against private property are marked with blue paint. Exterior sale boundary lines against state are marked with red paint. Interior Payment Unit boundaries are marked with yellow paint. Retention patches are marked with red paint; no harvesting activities may occur within these areas. The painted boundary line trees are not Included Timber and are to be protected unless marked with orange paint. Yellow painted trees designating an interior Payment Unit boundary are only to be cut when all surrounding Payment Units have been paid.

2 - Timber Specifications

2.1 - Included Timber

2.1.2 - Clearcut unit(s) w/o unmerchantable trees (8/11)

Within Payment Unit(s) 1-7, cut all trees which meet minimum piece specifications in 2.2 Utilization, except hemlock and oak.

3 - Payments

3.4 - Damaged Timber

3.4.1 - Damaged timber (7/16)

General Condition and Requirement 3.4 Damaged Timber, defines liquidated damages for undesignated live merchantable trees which are cut or injured. In addition, extreme care should be taken to avoid damage to cedar tree seedlings and saplings.

Within the Sale Area, if more than 25% of the tree seedlings or saplings (1/4" to 4.5" DBH) within a specified portion of the Sale Area are damaged, liquidated damages will be assessed at \$500 per acre for all acreage within that specified portion of the Sale Area that was damaged.

4 - Transportation

4.1 - Construction

4.1.1 - Stream crossings, general (3/11)

All stream crossing structures will be temporary and therefore, shall be provided by the Purchaser, and must be removed upon completion of the sale. All permits for stream crossings will be provided by the DNR.

4.1.3 - Slash and earthen piles (8/04)

Piles or windrows of earth along roads and landings that have been widened or constructed shall be leveled. Slash from road maintenance or construction, including stumps, shall be dispersed throughout the sale.

4.1.6 - Road construction (1/09)

Construction of new roads or improvements of existing roads shall be done in such a way as to minimize the environmental and visual impacts. Merchantable trees shall be cut and utilized unless otherwise directed. Non-merchantable trees shall be severed and laid flat on the ground. Slash shall be scattered, and not left in windrows and kept a minimum of 10 feet back from the road edge. Stumps shall be set upright, not left on edge, and be moved at least 10 feet away from the road edge. Disturbed soil shall be feathered into the woods and not left in berms or windrows.

4.1.7 - Road closure (10/11)

All new roads built into the sale must be blocked to vehicle traffic within 30 days of completion of hauling. In general, this will require constructing double earthen berms at strategic locations. These roads must be rendered impassable to cars and trucks. Contact the sale administrator for specific details of design and placement.

4.2 - Maintenance

4.2.4 - Grading (10/16)

For completion of the sale, state forest roads must be graded. In general, this will require a road grader or bulldozer to shape up the roads after forest products have been hauled off site. This includes cleaning of drainage areas, grading, crowning and filling with gravel, if necessary. The grading equipment to be used must be approved by the Unit Manager or his/her representative.

4.4 - Access

4.4.2 - Alternate route on private property (2/04)

It is the Purchaser's responsibility to obtain access across private land for any routes other than the route shown on the Timber Sale Map.

5 - Operations

5.2 - Conduct of Operations

5.2.2 - Hazard Trees/Snags

5.2.2.1 - Den trees (10/16)

Obvious hollow and/or den trees shall be protected and left standing unless they are a safety hazard.

5.2.3 - Operating Restrictions

5.2.3.1 - Operating restrictions (9/11)

Within Payment Unit(s) 1-7, unless changed by written agreement, cutting, skidding, and hauling are limited to frozen conditions, this period is generally from December 1 to March 31. This restriction is because of the soft, wet soil conditions.

5.2.17 - Timber Mats and Interlocking Composite Mats (10/20)

Some roads or skid trails may require extra protection such as that afforded by timber mats, interlocking composite mats, or another approved system. If available, mats may be borrowed from the DNR. A Timber Sale Contract Supplement will be used to document the Purchaser's use of the DNR's mats. Contact the sale administrator regarding availability and pick-up. Timber mats are available from various field offices. Composite mats are only available from the Grayling field office and the Marquette ICC. The Purchaser is responsible for picking up and hauling the mats to and from the site. The composite mats will require DNR staff onsite for installation and removal. Contact the sale administrator to schedule at least 30 days before desired install/removal date. All mats must be cleaned prior to drop off. This may include, but is not limited to, power washing and brushing to remove mud and debris. A charge of \$700.00 per timber mat and \$2,000.00 per composite mat will be assessed for all damaged or non-returned mats. Damage for the crane/timber mats is defined as three or more broken cants. Damage for the composite mats is defined as cracked or broken mats.

5.2.32 - Decking/landing restoration (9/13)

All decking and landing areas must have the surface area restored to a condition equal to or better than before. This is to ensure the proper regeneration of the stand. Wood debris, chips, and "cookies" from trimmings must be removed or scattered away from landing and loading areas and may not be windrowed on the edge.

5.2.41 - Snowmobile trail protection (9/11)

The Old Camp Manistique Road is a snowmobile trail and is shown on the Timber Sale Map. Do not cut or damage posts with orange trail markers or traffic control signs. If the trail is used, it must be maintained and restored to a condition equal to or better than before the sale. The road maintenance/restoration must be done prior to December 1. If the trail road is to be used for hauling during the snowmobile season, then a snow-covered base must be left on the trail. No decking of forest products will be permitted along the snowmobile trail.

5.4 - Soil Protection

5.4.1 - Rutting restriction, general (7/16)

Operations are to cease immediately if equipment and weather conditions result in rutting of roads and/or skid trails which is 12 inches or greater in depth and 50 feet in length. The Unit Manager or his/her representative may restrict hauling and/or skidding if ruts exceed the specified depth. With the Unit Manager or his/her representative's approval, the Purchaser may return to the area when the risk of rutting has decreased.

5.8 - Protection of Endangered Species

5.8.3 - Red shoulder hawk or goshawk (2/16)

In the event that an active red shoulder hawk or goshawk nest is found, the contract may be amended to protect the nest site until the nest is determined to be inactive. The value of the trees in this excluded area will be refunded or credited to the Purchaser. The nest will be buffered with a five-chain radius (eight acre) protection area, centered on the nest tree, in which there will be no cutting or new roads constructed. Avoid human disturbance, including loading and skidding, in the protection area.

An additional zone of five chains (ten chains centered on the active nest tree) will be established in which there is no management activity from April 1 to July 30. Limit biomass harvesting and chipping operations within this ten-chain zone, retain the maximum one-third of residues per the Woody Biomass Harvesting Guidelines (Michigan DNR 2010). Nests determined to be inactive will be protected with a one-chain no-harvest buffer.

6 - Safety and Fire Prevention

6.2 - Signing

6.2.2 - Snowmobile trail posting (10/20)

The Purchaser is responsible for posting and maintaining caution signs on the snowmobile trail prior to beginning operations during the snowmobile season (approximately December 1 to March 31). The trail must be posted at appropriate distances from the Sale Area to warn of logging activity and truck traffic. Signs must be removed when harvest operations are suspended or completed. The Purchaser will provide these signs.

7 - Other Conditions

7.2 - Extensions

7.2.5 - Weather related extension (1/13)

If weather conditions during the operating period of this contract prevent harvesting, this sale may qualify for a weather related extension. If approved, the normal extension fee would be waived. To qualify, there must be a documented attempt each year to harvest in the difficult portion of the sale.



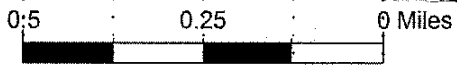
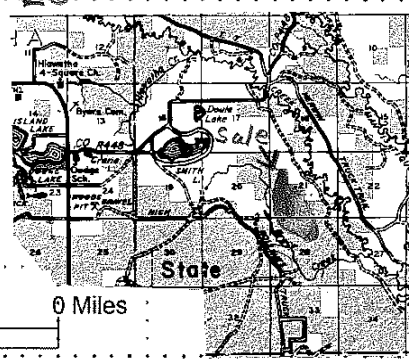
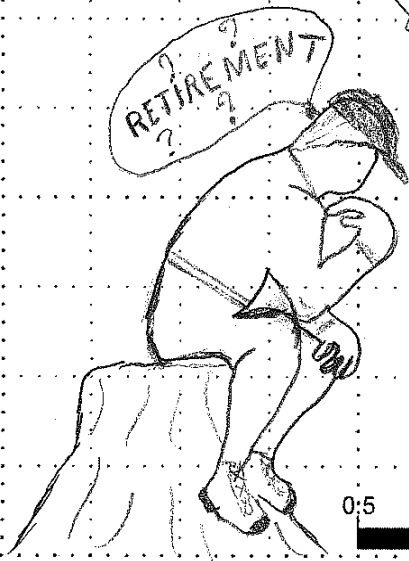
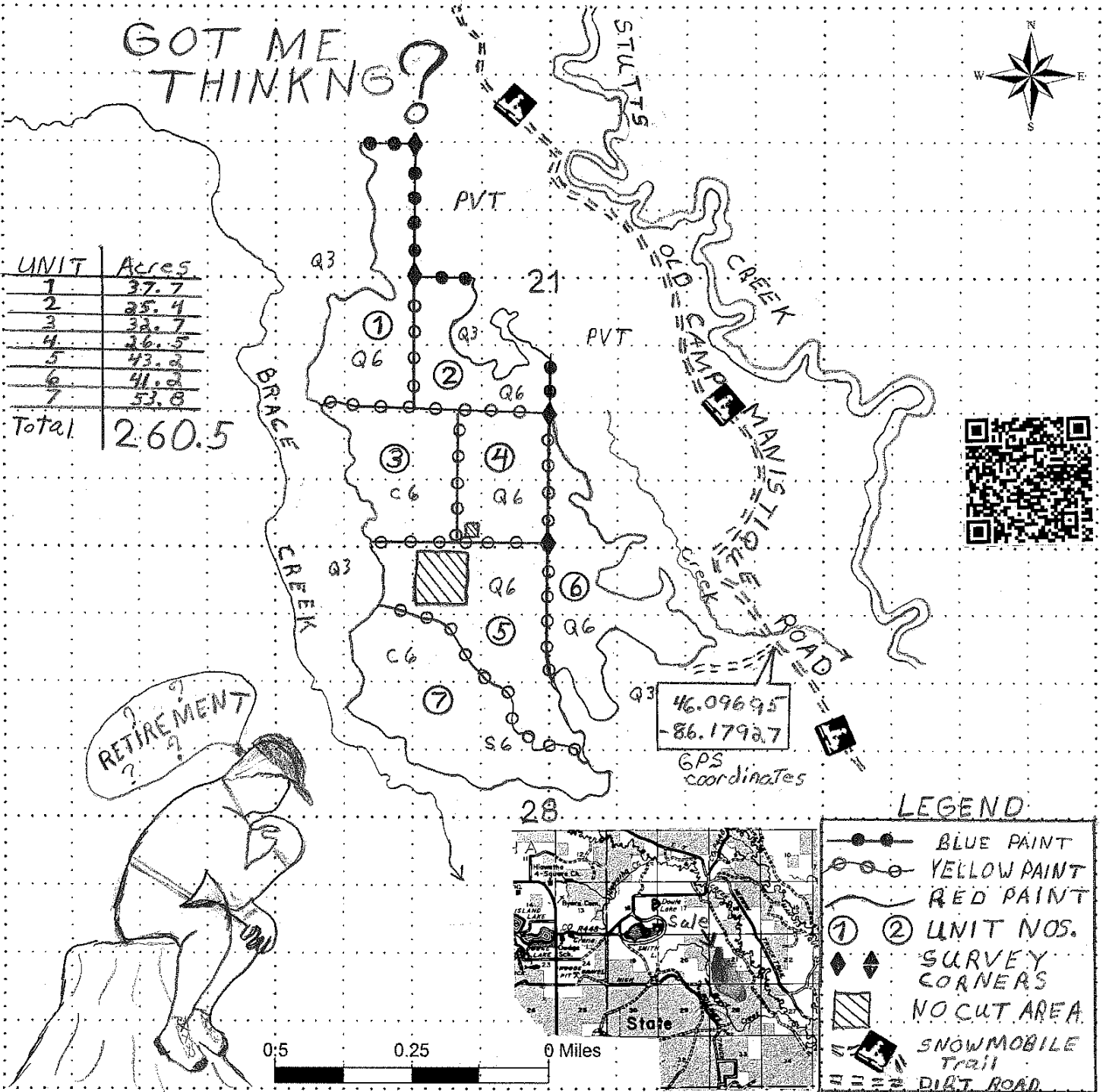
Sale Number	Year
41-004	2022

TIMBER SALE MAP

This information provided by authority of Part 5, 1994 PA 451, as amended.

Forest Management Unit Shingleton	County Schoolcraft	Mapped By T. Burnis	Date 04/16/2022	Page 1	of 1
Compartment Number 58	Township 43N	Range 15W	Section(s) and Subdivision(s) 21, 28 <i>SWNW, SW, SWSE NW, N/4 NE, S/4 NE</i>		

Cover Type				Density	
A = Aspen	J = Jack Pine	O = Oak	U = Upland Brush	0 = Non Stocked	5 = Pole Timber Medium
B = Paper Birch	K = Rock	P = Lowland Poplar	UM = Upland Mix Forest	1 = Seedling Sapling Poor	6 = Pole Timber Well
C = Cedar	L = Lowland Brush	Q = Mixed Swamp Conifer	V = Bog or Marsh	2 = Seedling Sapling Medium	7 = Saw Timber Poor
D = Tread Bog	LM = Lowland Mix Forest	R = Red Pine	W = White Pine	3 = Seedling Sapling Well	8 = Saw Timber Medium
E = Swamp Hardwoods	M = Maple, Beech, Birch	S = Black Spruce	X = Non Stocked	4 = Pole Timber Poor	9 = Saw Timber Well
F = Spruce/Fir	MC = Mixed Conifer	T = Tamarack	Y = Sand		
G = Grass	MD = Mixed Deciduous	Z = Water			
H = Hemlock	N = Marsh				



TIMBER SALE INFORMATION

Green and Gold (41-018-21)

T49N, R15W, SEC. 19; T49N, R15W, SEC. 20; T49N, R15W, SEC. 29; T49N, R15W, SEC. 30; T49N, R15W, SEC. 31; T49N, R15W, SEC. 32; T49N, R16W, SEC. 25.

SALE NOTE: All units of volume listed for this sale were estimated using the Inventory Manager computer program and the new Michigan taper model.

Note that within Payment Unit 4, a forest fire, approximately 8 acres in size, occurred in summer of 2021. See Sale Spec. 2.1. 11 for additional information.

The county must be contacted prior to crossing or harvesting in the county road R-O-W. This applies to H-58.

Permission for access across private land is the responsibility of the Purchaser.

The Fox River Pathway is a hiking trail and H-58 is a snowmobile trail. Both are shown on the Timber Sale Map. See Sale Spec 5.2.40 and 5.2.41 for restrictions.

A recreation site such as a trail, pathway, or campground is within the sale area or the vicinity. Certain restrictions/specifications may be applicable including time restrictions. Access may be through private land.

A timber sale contract for this lump sum, sealed bid timber sale will be awarded to the responsible bidder offering the highest sealed bid price. All units of volume listed below were estimated using the Inventory Manager computer program and the new Michigan taper model. Bids must be at or above the following advertised price for each product and species:

<u>PRODUCTS & SPECIES</u>	<u>ESTIMATED UNITS*</u>	<u>ADVERTISED PRICE</u>
Sawtimber		
Paper Birch	12.2 MBF	\$ 96.00 / MBF
Red Maple	1.1 MBF	\$ 93.00 / MBF
Pulpwood		
Balsam Fir	60 Cords	\$ 7.90 / Cord
Black Spruce	17 Cords	\$ 15.10 / Cord
Jack Pine	97 Cords	\$ 17.05 / Cord
Mixed Aspen	467 Cords	\$ 19.00 / Cord
Mixed Hardwood	399 Cords	\$ 12.60 / Cord
Paper Birch	675 Cords	\$ 10.45 / Cord
Red Pine	2,141 Cords	\$ 48.80 / Cord
White Pine	1,101 Cords	\$ 13.40 / Cord

* The total volume is statistically estimated within plus (+) or minus (-) 4.22 percent. There are an estimated 4,995 cords on this timber sale, plus or minus 211 cords at the 95% confidence level. The estimated units are final and not subject to adjustment. Prospective bidders are urged to examine this timber and to make their own estimates of quantity and quality.

BOND AND PAYMENT SCHEDULE:

1. A bond in the amount of \$7,192.00 to insure faithful performance of the conditions of the contract will be deposited by the successful bidder within 21 days of the sale award.
2. Cutting in any sale or unit without the required advance payment would be considered a trespass.
3. Total payment must be paid in advance or according to the following schedule:
 - (a) Ten percent (10%) of the sale value must be paid within 21 days of the sale award.
 - (b) The 10% down payment will be credited towards the first unit cut.

(c) Payment for each of the following units must be made before cutting begins in that unit:

PAYMENT UNIT NUMBER	PERCENT OF TOTAL SALE VALUE
01	6.2%
02	3.9%
03	6.7%
04	11.2%
05	5.9%
06	12.5%
07	8.8%
08	5.1%
09	3.0%
10	2.5%
11	3.6%
12	1.5%
13	4.1%
14	4.3%
15	5.7%
16	7.5%
17	5.1%
18	2.4%

4. If no cutting takes place, the 10% down payment will not be refunded.

5. Operations on the contract issued will terminate on 12/31/2025.

SALE STATISTICS

Volumes were calculated in cubic feet using the Michigan taper model. Cubic foot volume includes all wood inside bark for the product indicated. For display purposes, cubic feet were converted to cords and MBF using a simple conversion factor, e.g. 79 cubic feet per cord and 185 cubic feet per MBF. The cubic foot volumes are precise; the cords and MBF volumes are not. Cubic foot volume cannot be directly converted to cords or boards with precision.

SALE VOLUMES

The total estimated sale volume may not equal the sum of the species/products due to the nature of statistical calculations associated with double sampling methodology.

VOLUME		STATISTICAL RANGE IN CORDS		
TOTAL CUBIC FEET	TOTAL CORDS	PERCENT ERROR	MINIMUM	MAXIMUM
394,593	4,995	4.22%	4,784	5,206

VDU VOLUMES

A VDU is a Volume Determination Unit. Volumes and their associated statistics are calculated at the VDU level and summarized to the sale level. There is often a one to one relationship between a VDU and a Payment Unit, but not always, depending on the cruise design. Refer to the VDU TO PAYMENT UNIT table.

VDU	VOLUME		PERCENT ERROR	RANGE IN CORDS	
	TOTAL CUBIC FEET	TOTAL CORDS		MINIMUM	MAXIMUM
1	38,145	483	11.05%	430	536
2	5,011	63	25.98%	47	80
3	73,282	928	9.40%	840	1,015
4	56,077	710	10.18%	638	782
5	45,731	579	8.66%	529	629
6	160,743	2,035	7.68%	1,878	2,191
7	15,604	198	20.20%	158	237
TOTAL:	394,593	4,995		4,519	5,470

VDU TO PAYMENT UNIT

When a VDU is associated with more than one Payment Unit (PU), the VDU volumes are assigned to the PU based on acres of the VDU within the PU.

VDU	VDU ACRES	PU	PU ACRES
1	50.5	9	16.8
		10	13.7
		11	20.0
2	11.9	12	11.9
3	34.7	15	15.0
		16	19.7
4	48.6	1	48.6
5	75.1	2	17.9
		8	23.1
		17	23.3
		18	10.8
		3	27.7
6	205.2	4	46.3
		5	24.4
		6	52.5
		7	36.7
		14	17.6
		13	8.4
7	8.4	13	8.4
TOTAL:	434.4		434.4

DESCRIPTION OF TIMBER BY PAYMENT UNIT (PU)

PU	MARKET GROUP	PRODUCT	QUANTITY	UNIT	ACRES	ADVERTISE PRICE
1	Paper Birch	Sawtimber	11.0	MBF	48.6	\$8,904.35
	Red Maple		1.1	MBF		
	Balsam Fir	Pulpwood	29	Cords		
	Black Spruce		11	Cords		
	Jack Pine		2	Cords		
	Mixed Aspen		101	Cords		
	<i>Quaking Aspen</i>		101	Cords		
	Mixed Hardwood		197	Cords		
	<i>Beech</i>		31	Cords		
	<i>Red Maple</i>		166	Cords		
Paper Birch		279	Cords			
2	Jack Pine	Pulpwood	9	Cords	17.9	\$5,667.10
	Mixed Aspen		2	Cords		
	<i>Quaking Aspen</i>		2	Cords		
	Mixed Hardwood		3	Cords		
	<i>Red Maple</i>		3	Cords		
	Paper Birch		1	Cords		
	Red Pine		106	Cords		
	White Pine		19	Cords		
3	Balsam Fir	Pulpwood	1	Cords	27.7	\$9,574.85
	Mixed Aspen		3	Cords		
	<i>Quaking Aspen</i>		3	Cords		
	Mixed Hardwood		3	Cords		
	<i>Red Maple</i>		3	Cords		
	Paper Birch		3	Cords		
	Red Pine		166	Cords		
	White Pine		100	Cords		
4	Balsam Fir	Pulpwood	1	Cords	46.3	\$16,041.35
	Mixed Aspen		6	Cords		
	<i>Quaking Aspen</i>		6	Cords		
	Mixed Hardwood		5	Cords		
	<i>Red Maple</i>		5	Cords		
	Paper Birch		5	Cords		
	Red Pine		278	Cords		
	White Pine		167	Cords		
5	Balsam Fir	Pulpwood	1	Cords	24.4	\$8,425.45
	Mixed Aspen		3	Cords		
	<i>Quaking Aspen</i>		3	Cords		
	Mixed Hardwood		2	Cords		
	<i>Red Maple</i>		2	Cords		
	Paper Birch		3	Cords		
	Red Pine		146	Cords		
	White Pine		88	Cords		
6	Balsam Fir	Pulpwood	2	Cords	52.5	\$18,124.70
	Mixed Aspen		6	Cords		
	<i>Quaking Aspen</i>		6	Cords		
	Mixed Hardwood		5	Cords		
	<i>Red Maple</i>		5	Cords		
	Paper Birch		6	Cords		
	Red Pine		314	Cords		
	White Pine		190	Cords		
7	Balsam Fir	Pulpwood	1	Cords	36.7	\$12,694.30
	Mixed Aspen		4	Cords		
	<i>Quaking Aspen</i>		4	Cords		
	Mixed Hardwood		4	Cords		

DESCRIPTION OF TIMBER BY PAYMENT UNIT (PU), CON'T

PU	MARKET GROUP	PRODUCT	QUANTITY	UNIT	ACRES	ADVERTISE PRICE
7 con't	<i>Red Maple</i>	<i>Pulpwood</i>	4	<i>Cords</i>		
	Paper Birch		4	Cords		
	Red Pine		220	Cords		
	White Pine		133	Cords		
8	Jack Pine	Pulpwood	12	Cords	23.1	\$7,334.50
	Mixed Aspen		2	Cords		
	<i>Quaking Aspen</i>		2	<i>Cords</i>		
	Mixed Hardwood		4	Cords		
	<i>Red Maple</i>		4	<i>Cords</i>		
	Paper Birch		2	Cords		
	Red Pine		137	Cords		
	White Pine		25	Cords		
9	Balsam Fir	Pulpwood	2	Cords	16.8	\$4,348.50
	Black Spruce		2	Cords		
	Jack Pine		18	Cords		
	Mixed Aspen		38	Cords		
	<i>B. T. Aspen</i>		38	<i>Cords</i>		
	Mixed Hardwood		12	Cords		
	<i>Red Maple</i>		12	<i>Cords</i>		
	Paper Birch		36	Cords		
	Red Pine		56	Cords		
	White Pine		1	Cords		
10	Balsam Fir	Pulpwood	1	Cords	13.7	\$3,557.50
	Black Spruce		2	Cords		
	Jack Pine		15	Cords		
	Mixed Aspen		31	Cords		
	<i>B. T. Aspen</i>		31	<i>Cords</i>		
	Mixed Hardwood		9	Cords		
	<i>Red Maple</i>		9	<i>Cords</i>		
	Paper Birch		29	Cords		
	Red Pine		46	Cords		
	White Pine		1	Cords		
11	Balsam Fir	Pulpwood	2	Cords	20.0	\$5,187.80
	Black Spruce		2	Cords		
	Jack Pine		22	Cords		
	Mixed Aspen		45	Cords		
	<i>B. T. Aspen</i>		45	<i>Cords</i>		
	Mixed Hardwood		14	Cords		
	<i>Red Maple</i>		14	<i>Cords</i>		
	Paper Birch		42	Cords		
	Red Pine		67	Cords		
	White Pine		2	Cords		
12	Balsam Fir	Pulpwood	1	Cords	11.9	\$2,186.95
	Jack Pine		2	Cords		
	Mixed Aspen		3	Cords		
	<i>Quaking Aspen</i>		3	<i>Cords</i>		
	Mixed Hardwood		1	Cords		
	<i>Red Maple</i>		1	<i>Cords</i>		
	Paper Birch		3	Cords		
	Red Pine		32	Cords		
	White Pine		36	Cords		
13	Mixed Aspen	Pulpwood	6	Cords	8.4	\$5,927.00
	<i>Quaking Aspen</i>		6	<i>Cords</i>		
	Paper Birch		16	Cords		
	Red Pine		94	Cords		

DESCRIPTION OF TIMBER BY PAYMENT UNIT (PU), CON'T

PU	MARKET GROUP	PRODUCT	QUANTITY	UNIT	ACRES	ADVERTISE PRICE
13 con't	White Pine	Pulpwood	79	Cords		
14	Balsam Fir	Pulpwood	1	Cords	17.6	\$6,122.40
	Mixed Aspen		2	Cords		
	<i>Quaking Aspen</i>		2	<i>Cords</i>		
	Mixed Hardwood		2	Cords		
	<i>Red Maple</i>		2	<i>Cords</i>		
	Paper Birch		2	Cords		
	Red Pine		106	Cords		
	White Pine		64	Cords		
15	Paper Birch	Sawtimber	0.5	MBF	15.0	\$8,181.00
	Balsam Fir	Pulpwood	8	Cords		
	Mixed Aspen		91	Cords		
	<i>Quaking Aspen</i>		91	<i>Cords</i>		
	Mixed Hardwood		57	Cords		
	<i>Red Maple</i>		57	<i>Cords</i>		
	Paper Birch		104	Cords		
	Red Pine		74	Cords		
	White Pine		69	Cords		
16	Paper Birch		Sawtimber	0.7	MBF	19.7
	Balsam Fir	Pulpwood	10	Cords		
	Mixed Aspen		121	Cords		
	<i>Quaking Aspen</i>		121	<i>Cords</i>		
	Mixed Hardwood		75	Cords		
	<i>Red Maple</i>		75	<i>Cords</i>		
	Paper Birch		137	Cords		
	Red Pine		97	Cords		
	White Pine		90	Cords		
17	Jack Pine		Pulpwood	12	Cords	23.3
	Mixed Aspen	2		Cords		
	<i>Quaking Aspen</i>	2		<i>Cords</i>		
	Mixed Hardwood	4		Cords		
	<i>Red Maple</i>	4		<i>Cords</i>		
	Paper Birch	2		Cords		
	Red Pine	138		Cords		
	White Pine	25		Cords		
18	Jack Pine	Pulpwood	5	Cords	10.8	\$3,423.90
	Mixed Aspen		1	Cords		
	<i>Quaking Aspen</i>		1	<i>Cords</i>		
	Mixed Hardwood		2	Cords		
	<i>Red Maple</i>		2	<i>Cords</i>		
	Paper Birch		1	Cords		
	Red Pine		64	Cords		
White Pine	12	Cords				
TOTAL:			13.3	MBF		
TOTAL:			4,957	Cords		

Sale Specific Conditions & Requirements

Sale Name: Green and Gold

Sale Number: 41-018-21 Seq#: 2

1 - Sale Area

1.2 - Boundaries

1.2.1 - Painted boundaries (9/19)

The sale boundary and Payment Unit boundaries are marked and identified by blue, red, and yellow paint. Exterior sale boundary lines against private property are marked with blue paint. Exterior sale boundary lines against state are marked with red paint. Interior Payment Unit boundaries are marked with yellow paint. The painted boundary line trees are not Included Timber and are to be protected unless marked with orange paint. Yellow painted trees designating an interior Payment Unit boundary are only to be cut when all surrounding Payment Units have been paid.

2 - Timber Specifications

2.1 - Included Timber

2.1.1 - Clearcut unit(s) with unmerchantable trees (6/14)

Within Payment Unit(s) 12, 15, and 16, cut all trees that are two (2) inches or more at DBH, except hemlock and oak. Special protection trees identified in accordance with condition 3.4.2, within clearcutting unit boundaries, are not Included Timber and are to be protected.

2.1.3 - Cut tree marked unit(s) (12/08)

Within Payment Unit(s) 2-8, 14, 17, and 18, all trees are designated for cutting when marked with orange paint above and below stump height, regardless of merchantability.

2.1.7 - Leave tree marked unit(s) (6/14)

Within Payment Unit(s) 1, 9, 10, 11, and 13, all trees, which meet minimum piece specifications in 2.2 Utilization, are designated for cutting except hemlock, oak, and trees marked with green paint above and below stump height. In addition, Within Payment Unit 1 do not cut red and white pine. In Payment Units 9-11 do not cut white pine. Special protection trees identified in accordance with condition 3.4.2, within clearcutting unit boundaries, are not Included Timber and are to be protected.

2.1.11 - Description of timber note (2/04)

Note that within Payment Unit 4, a forest fire approximately 8 acres in size, occurred in summer of 2021. Trees within this Payment Unit contain char. DNR staff have made no deductions in volume or adjustments of price for these trees. If the Purchaser does not want to harvest these trees the acres and volume will be removed from the Payment Unit without penalty.

2.2 - Utilization

2.2.3 - Stump heights (4/07)

Stump heights within Payment Unit(s) 2-8, 14, 17, and 18 shall not exceed 12 inches for trees greater than 10 inches at DBH and 4 inches for trees smaller than 10 inches at DBH.

3 - Payments

3.3 - Pre-measured Sales

3.3.4 - Dividing payment units (7/14)

Payment Unit(s) with a value greater than \$20,000 may be divided at the request of the Purchaser and upon approval of the Unit Manager. Dividing Payment Units is a contract modification which requires a Timber Sale Contract Amendment.

3.4 - Damaged Timber

3.4.1 - Damaged timber (7/16)

General Condition and Requirement 3.4 Damaged Timber, defines liquidated damages for undesignated live merchantable trees which are cut or injured. In addition, extreme care should be taken to avoid damage to tree seedlings and saplings.

Within Payment Unit 1, if more than 25% of the tree seedlings or saplings (1/4" to 4.5" DBH) within a specified portion of the Sale Area are damaged, liquidated damages will be assessed at \$300 per acre for all acreage within that specified portion of

the Sale Area that was damaged.

3.4.2 - Special Protection Trees (4/14)

The Purchaser shall not cut live or dead special protection trees within cutting units or clearings. Special protection trees are hemlock and oak. If the Purchaser's operations have cut or damaged special protection trees through carelessness, the Purchaser shall pay \$100 as fixed, agreed and liquidated damages for each special protection tree cut or damaged. Such payment does not constitute ownership of the undesignated timber.

4 - Transportation

4.1 - Construction

4.1.3 - Slash and earthen piles (8/04)

Piles or windrows of earth along roads and landings that have been widened or constructed shall be leveled. Slash from road maintenance or construction, including stumps, shall be dispersed throughout the sale.

4.1.4 - Timber removed for construction (12/09)

Trees cut or damaged in the process of pre-approved road, landing or skid trail construction will be decked in an area separate from other Designated Timber and not removed until measured by the sale administrator. Payment will be made at the specified Purchase Unit Price.

4.1.6 - Road construction (1/09)

Construction of new roads or improvements of existing roads shall be done in such a way as to minimize the environmental and visual impacts. Merchantable trees shall be cut and utilized unless otherwise directed. Non-merchantable trees shall be severed and laid flat on the ground. Slash shall be scattered, and not left in windrows and kept a minimum of 10 feet back from the road edge. Stumps shall be set upright, not left on edge, and be moved at least 10 feet away from the road edge. Disturbed soil shall be feathered into the woods and not left in berms or windrows.

4.1.7 - Road closure (10/11)

All new roads built into the sale must be blocked to vehicle traffic upon completion of the sale. Overgrown roads that are reopened shall be considered new roads. In general, this will require constructing a four (4') foot high berm of stumps and logs covered with earth. Stumps and brush must be placed along the remainder of the trail. These roads must be rendered impassable to cars and trucks. Contact the sale administrator for specific details of design and placement.

4.2 - Maintenance

4.2.4 - Grading (10/16)

For completion of the sale, state forest roads must be graded. In general, this will require a road grader or bulldozer to shape up the roads after forest products have been hauled off site. This includes cleaning of drainage areas, grading, crowning, and filling with gravel, if necessary. The grading equipment to be used must be approved by the Unit Manager or his/her representative.

4.3 - Public Right-of-Way

4.3.2 - County R-O-W (12/06)

The county must be contacted prior to crossing or harvesting in the county road R-O-W. This applies to H-58.

4.4 - Access

4.4.1 - Private property access (3/11)

Permission for access across private land is the responsibility of the Purchaser.

5 - Operations

5.2 - Conduct of Operations

5.2.2 - Hazard Trees/Snags

5.2.2.1 - Den trees (10/16)

Obvious hollow and/or den trees shall be protected and left standing unless they are a safety hazard.

5.2.3 - Operating Restrictions

5.2.3.6 - Bark beetle restriction (12/08)

In the event drought creates a high risk of pine bark beetle infestation, pine is not to be cut during the period March 1 through July 1, unless all portions of trees greater than two inches in diameter are removed from the sale area, reduced to chips, or treated to the satisfaction of the Unit Manager or his/her representative, within fifteen days of being severed from the stump. Pine log decks, pulpwood piles and treetops that are piled for chipping in the fall or winter within a 1/4 mile of susceptible sites must be removed before March 15. Residual slash must not be placed in piles or rows and must be spread over the site for quick drying. The Department of Natural Resources will exercise this specification if the risk of damage warrants.

5.2.32 - Decking/landing restoration (9/13)

All decking and landing areas must have the surface area restored to a condition equal to or better than before. This is to ensure the proper regeneration of the stand. Wood debris, chips, and "cookies" from trimmings must be removed or scattered away from landing and loading areas and may not be windrowed on the edge.

5.2.38 - No decking against live trees (2/04)

Cut products may not be decked against unmarked or designated leave trees.

5.2.40 - Pathway protection (10/10)

The Fox River Pathway is a hiking trail and is shown on the Timber Sale Map. Do not cut trees or damage posts with blue pathway markers. Maintain a 20-foot-wide slash, debris, and rut free zone daily, using the pathway as the centerline. Do not run equipment down the pathway.

5.2.41 - Snowmobile trail protection (9/11)

H-58 is a snowmobile trail and is shown on the Timber Sale Map. Do not cut or damage posts with orange trail markers or traffic control signs. The snowmobile trail may not be used for any timber sale operations from December 1 to March 31.

5.4 - Soil Protection

5.4.1 - Rutting restriction, general (7/16)

Operations are to cease immediately if equipment and weather conditions result in rutting of roads and/or skid trails which is 12 inches or greater in depth and 50 feet in length. In addition, operations are to cease immediately if equipment and weather conditions result in rutting on skid trails which is 12 inches or greater in depth and 50 feet in length. The Unit Manager or his/her representative may restrict hauling and/or skidding if ruts exceed the specified depth. With the Unit Manager or his/her representative's approval, the Purchaser may return to the area when the risk of rutting has decreased.

5.4.4 - Slope protection (9/19)

Skid trails and roads on slopes shall be water barred with slash, stumps, and/or clean straw bales native to the area as soon as use is complete to prevent erosion.

5.7 - Protection of Historical Sites

5.7.1 - Historical sites (7/12)

The Purchaser shall not cut live or dead trees or operate equipment within historical sites. Historical sites are excluded with the sale but will be discussed at the pre-sale meeting to ensure the Purchaser's roadwork does not interfere with a site. The Purchaser shall protect historical sites from damage by the Purchaser's operations. If Purchaser's operations have cut or damaged historical sites through carelessness, the Purchaser shall pay \$1000 as fixed, agreed and liquidated damages for each acre or part thereof cut or damaged.

5.8 - Protection of Endangered Species

5.8.3 - Red shoulder hawk or goshawk (2/16)

In the event that an active red shoulder hawk or goshawk nest is found, the contract may be amended to protect the nest site until the nest is determined to be inactive. The value of the trees in this excluded area will be refunded or credited to the Purchaser. The nest will be buffered with a five-chain radius (eight acre) protection area, centered on the nest tree, in which there will be no cutting or new roads constructed. Avoid human disturbance, including loading and skidding, in the protection area.

An additional zone of five chains (ten chains centered on the active nest tree) will be established in which there is no management activity from April 1 to July 30 (UP). Limit biomass harvesting and chipping operations within this ten-chain zone, retain the maximum one-third of residues per the Woody Biomass Harvesting Guidelines (Michigan DNR 2010). Nests

determined to be inactive will be protected with a one-chain no-harvest buffer.

6 - Safety and Fire Prevention

6.2 - Signing

6.2.1 - Road posting (10/20)

The Purchaser is responsible for posting and maintaining caution signs on H-58 prior to beginning operations. The road must be posted at appropriate distances from the Sale Area to warn of logging activity and truck traffic. Signs must be removed when harvest operations are suspended or completed. The Purchaser will provide these signs.

6.2.3 - Recreational trail posting (10/20)

The Purchaser is responsible for posting and maintaining caution signs on Fox River pathway prior to beginning operations. The trail must be posted at appropriate distances from the Sale Area to warn of logging activity and truck traffic at both ends of the trail. Signs must be removed when harvest operations are suspended or completed. The Purchaser will provide these signs.



TIMBER SALE MAP

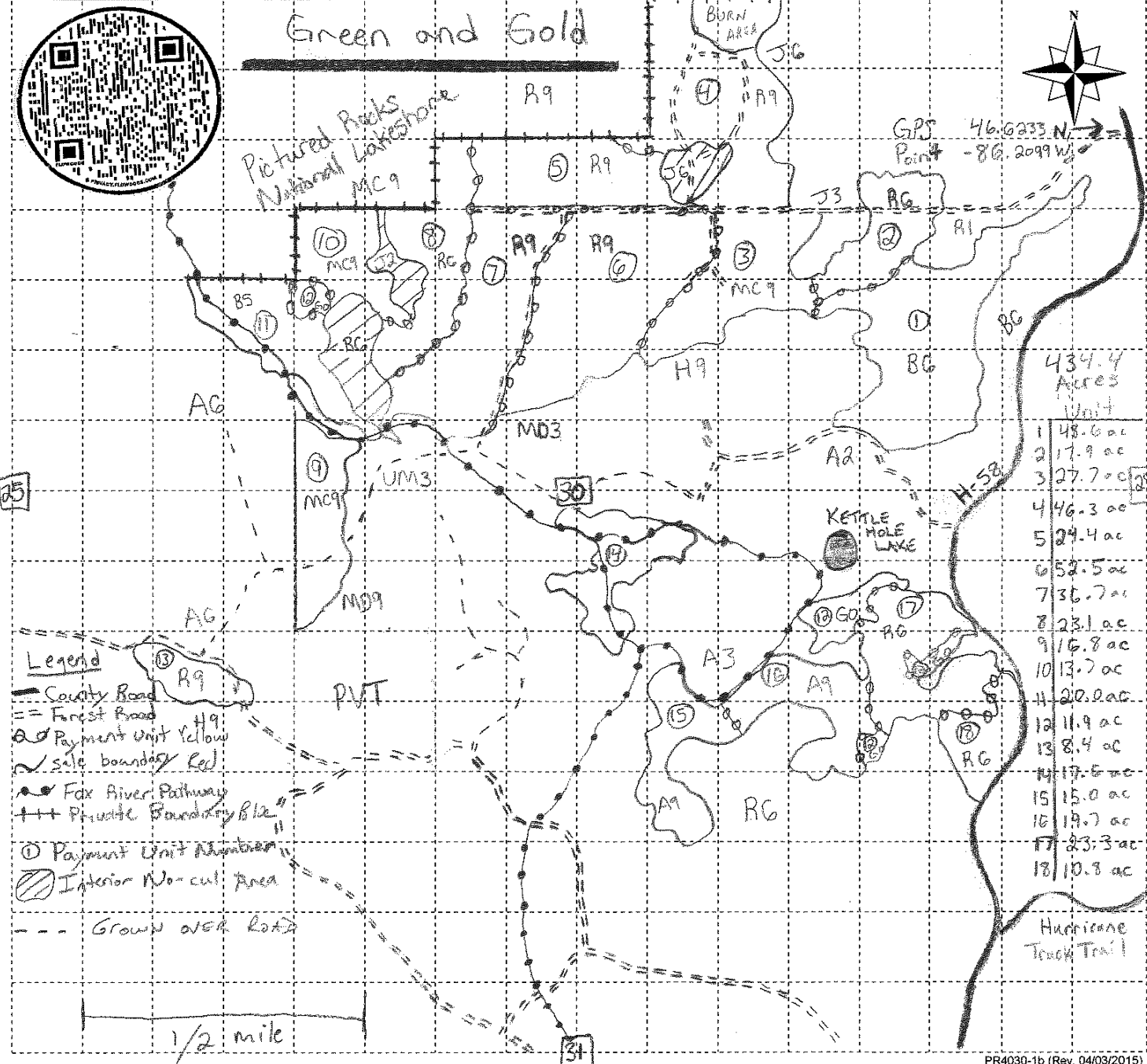
This information provided by authority of Part 5, 1994 PA 451, as amended.

Sale Number	Year
41-018-21	2021

Forest Management Unit Shingleton	County Alger	Mapped By Kyle Gould	Date 4/13/2022	Page of 1 1
Compartment Number 41134, 41135	Township 49N	Range 15W, 16W	Section(s) and Subdivisions(s) 49N, 15W Sec 19 SESW, SE Sec 20 S1/2SW, Sec 29 N1/2NW, SWNW, NWSW, S1/2SW, Sec 30 NNW, NE, N1/2SW, SE Sec 31 NNAE, Sec 32 NNW, 49N, 16W Sec 25 E1/2NE, S1/2SE	Scale: [1/4 inches] = 1 mile

Cover Type			
A = Aspen	J = Jack Pine	O = Oak	U = Upland Brush
B = Paper Birch	K = Rock	P = Lowland Poplar	UM = Upland Mix Forest
C = Cedar	L = Lowland Brush	Q = Mixed Swamp Conifer	V = Bog or Marsh
D = Treed Bog	LM = Lowland Mix Forest	R = Red Pine	W = White Pine
E = Swamp Hardwoods	M = Maple, Beech, Birch	S = Black Spruce	X = Non Stocked
F = Spruce/Fir	MC = Mixed Conifer	T = Tamarack	Y = Sand
G = Grass	MD = Mixed Deciduous	Z = Water	
H = Hemlock	N = Marsh		

Density	
0 = Non Stocked	5 = Pole Timber Medium
1 = Seedling Sapling Poor	6 = Pole Timber Well
2 = Seedling Sapling Medium	7 = Saw Timber Poor
3 = Seedling Sapling Well	8 = Saw Timber Medium
4 = Pole Timber Poor	9 = Saw Timber Well



Petrel Contract Hardwood (41-001-22)
T47N, R17W, SEC. 34; Alger COUNTY

In response to the notice of sale to be held 2:00 p.m. (local time) on August 17, 2022, I am hereby submitting my sealed bid (firm offer) for the following forest products to be cut. Bids for individual species must be at or above the advertised price. All non-responsive bid forms may be rejected.

<u>PRODUCTS & SPECIES</u>	<u>ESTIMATED VOLUME*</u>	<u>ADVERTISED PRICE</u>	<u>BID PRICE/UNIT</u>
Sawtimber			
Red Maple	50.5 MBF	\$ 93.00/MBF	\$ _____
Sugar Maple	945.8 MBF	\$ 307.00/MBF	\$ _____
Pulpwood			
Mixed Hardwood	1,051 Cords	\$ 12.60/Cord	\$ _____
White Pine	1 Cords	\$ 13.40/Cord	\$ _____
White Spruce	10 Cords	\$ 15.10/Cord	\$ _____

*The volumes are statistically estimated within plus (+) or minus (-) 4.49 percent at 95% confidence level. These estimated volumes are final and not subject to adjustment. Prospective bidders are urged to examine this timber and to make their own estimates of quantity and quality.

I understand that any or all bids may be rejected. All bids must be signed and all bid items must be bid or the bid form may be rejected. I also understand that consideration and awarding a contract will be based upon my past performance and ability to complete the contract based upon equipment and staffing subject to my control.

FEDERAL ID: ____ - ____ or SOCIAL SECURITY NUMBER: ____ - ____ - ____

Company or individual bidding: _____

Company representative's name: _____

Address: _____

City: _____ State: _____ Zip: _____

IF AVAILABLE, PLEASE PLACE THE PERSONALIZED LABEL FROM YOUR PROSPECTUS IN THE ABOVE BOX.

Individual or company representative's signature: _____ Date: _____

Phone number : _____ Email (optional): _____

THE WINNING BIDDER MUST COMPLETE THE VERIFICATION OF WORKER'S DISABILITY COMPENSATION ACT COMPLIANCE (ON REVERSE SIDE IF DOUBLE SIDED) WITHIN 21 DAYS OF SALE AWARD DATE



FOR DEPARTMENT USE ONLY	
Sale Number (XX - XXX - XX - XX)	
Forest Management Unit:	

TIMBER SALE VERIFICATION OF WORKER'S DISABILITY COMPENSATION ACT COMPLIANCE

As required by Act 317, P.A. 1969 (Worker's Compensation) and
Part 5 of Act 451 of 1994, as amended.

VERIFICATION OF WORKER'S DISABILITY COMPENSATION ACT COMPLIANCE

- This verification must be completed and submitted within 21 days of contract award and prior to the issuance of the timber sale contract.
- In addition, if boxes 2B or 2C are checked, then Notice of Exclusion or Certificate of Insurance must be submitted within twenty-one (21) days of the contract award and prior to the issuance of the timber sale contract.
- All information must be typed or printed except for written signatures.

Please Check Appropriate Categories:

1. My business is organized as (you **must** check one of the boxes below):
 - A. Sole Proprietorship (individual)
 - B. Partnership
 - C. Corporation
2. You **must** check one of the boxes below:
 - A. I certify my business is a sole proprietorship and it has no employees but the sole proprietor. I am not subject to the Worker's Compensation Laws.
 - B. I certify my business has satisfied its obligation to the Worker's Compensation Act through the use of an approved Notice of Exclusion (BWC-337, Rev. 5/96). I will provide a copy of the Notice of Exclusion within 21 days of the contract award. (For questions or a copy of the BWC-337, please call the Worker's Compensation Bureau at 517-322-1195).
 - C. I certify my business has a Worker's Compensation Policy. I will provide an original Certificate of Insurance within twenty-one (21) days of the contract award.
3. If you have checked item 2(A) or 2(B), you **must** indicate the number of **both** full-time and part-time employees, other than yourself, including family members and active partners (if none, you must enter "0").

_____ Full-time Employees

_____ Part-time Employees

Name of Business		Federal ID (or) Social Security No.	
Address		Telephone ()	
City	State	ZIP	

I hereby certify that the above information is true and correct. I agree to notify the Michigan DNR of any changes that occur in factors affecting my coverage during any of my present and future operations.

Signature of Owner or Authorized Representative

Title

Date

Please complete the "SEALED BID" information on the next page

Got Me Thinking (41-004-22)
T43N, R15W, SEC. 21; T43N, R15W, SEC. 28; Schoolcraft COUNTY

In response to the notice of sale to be held 2:00 p.m. (local time) on August 17, 2022, I am hereby submitting my sealed bid (firm offer) for the following forest products to be cut. Bids for individual species must be at or above the advertised price. All non-responsive bid forms may be rejected.

<u>PRODUCTS & SPECIES</u>	<u>ESTIMATED VOLUME*</u>	<u>ADVERTISED PRICE</u>	<u>BID PRICE/UNIT</u>
Pulpwood			
Black Spruce	594 Cords	\$ 12.35/Cord	\$ _____
N. White Cedar	3,248 Cords	\$ 6.80/Cord	\$ _____
Paper Birch	139 Cords	\$ 8.55/Cord	\$ _____
Red Maple	83 Cords	\$ 10.30/Cord	\$ _____
Tamarack	717 Cords	\$ 2.75/Cord	\$ _____
White Pine	53 Cords	\$ 10.95/Cord	\$ _____

*The volumes are statistically estimated within plus (+) or minus (-) 7.49 percent at 95% confidence level. These estimated volumes are final and not subject to adjustment. Prospective bidders are urged to examine this timber and to make their own estimates of quantity and quality.

I understand that any or all bids may be rejected. All bids must be signed and all bid items must be bid or the bid form may be rejected. I also understand that consideration and awarding a contract will be based upon my past performance and ability to complete the contract based upon equipment and staffing subject to my control.

FEDERAL ID: ____ - ____ - ____ or SOCIAL SECURITY NUMBER: ____ - ____ - ____

Company or individual bidding: _____

Company representative's name: _____

Address: _____

City: _____ State: _____ Zip: _____

IF AVAILABLE, PLEASE PLACE THE PERSONALIZED LABEL FROM YOUR PROSPECTUS IN THE ABOVE BOX.

Individual or company representative's signature: _____ Date: _____

Phone number : _____ Email (optional): _____

THE WINNING BIDDER MUST COMPLETE THE VERIFICATION OF WORKER'S DISABILITY COMPENSATION ACT COMPLIANCE (ON REVERSE SIDE IF DOUBLE SIDED) WITHIN 21 DAYS OF SALE AWARD DATE



FOR DEPARTMENT USE ONLY	
Sale Number (XX - XXX - XX - XX)	
Forest Management Unit:	

TIMBER SALE VERIFICATION OF WORKER'S DISABILITY COMPENSATION ACT COMPLIANCE

As required by Act 317, P.A. 1969 (Worker's Compensation) and
Part 5 of Act 451 of 1994, as amended.

VERIFICATION OF WORKER'S DISABILITY COMPENSATION ACT COMPLIANCE

- This verification must be completed and submitted within 21 days of contract award and prior to the issuance of the timber sale contract.
- In addition, if boxes 2B or 2C are checked, then Notice of Exclusion or Certificate of Insurance must be submitted within twenty-one (21) days of the contract award and prior to the issuance of the timber sale contract.
- All information must be typed or printed except for written signatures.

Please Check Appropriate Categories:

1. My business is organized as (you **must** check one of the boxes below):
 - A. Sole Proprietorship (individual)
 - B. Partnership
 - C. Corporation
2. You **must** check one of the boxes below:
 - A. I certify my business is a sole proprietorship and it has no employees but the sole proprietor. I am not subject to the Worker's Compensation Laws.
 - B. I certify my business has satisfied its obligation to the Worker's Compensation Act through the use of an approved Notice of Exclusion (BWC-337, Rev. 5/96). I will provide a copy of the Notice of Exclusion within 21 days of the contract award. (For questions or a copy of the BWC-337, please call the Worker's Compensation Bureau at 517-322-1195).
 - C. I certify my business has a Worker's Compensation Policy. I will provide an original Certificate of Insurance within twenty-one (21) days of the contract award.
3. If you have checked item 2(A) or 2(B), you **must** indicate the number of **both** full-time and part-time employees, other than yourself, including family members and active partners (if none, you must enter "0").

_____ Full-time Employees

_____ Part-time Employees

Name of Business		Federal ID (or) Social Security No.	
Address		Telephone ()	
City	State	ZIP	

I hereby certify that the above information is true and correct. I agree to notify the Michigan DNR of any changes that occur in factors affecting my coverage during any of my present and future operations.

Signature of Owner or Authorized Representative

Title

Date

Please complete the "SEALED BID" information on the next page

Green and Gold (41-018-21)
T49N, R15W, SEC. 19; T49N, R15W, SEC. 20; T49N, R15W, SEC. 29; T49N,

In response to the notice of sale to be held 2:00 p.m. (local time) on August 17, 2022, I am hereby submitting my sealed bid (firm offer) for the following forest products to be cut. Bids for individual species must be at or above the advertised price. All non-responsive bid forms may be rejected.

<u>PRODUCTS & SPECIES</u>	<u>ESTIMATED VOLUME*</u>	<u>ADVERTISED PRICE</u>	<u>BID PRICE/UNIT</u>
Sawtimber			
Paper Birch	12.2 MBF	\$ 96.00/MBF	\$ _____
Red Maple	1.1 MBF	\$ 93.00/MBF	\$ _____
Pulpwood			
Balsam Fir	60 Cords	\$ 7.90/Cord	\$ _____
Black Spruce	17 Cords	\$ 15.10/Cord	\$ _____
Jack Pine	97 Cords	\$ 17.05/Cord	\$ _____
Mixed Aspen	467 Cords	\$ 19.00/Cord	\$ _____
Mixed Hardwood	399 Cords	\$ 12.60/Cord	\$ _____
Paper Birch	675 Cords	\$ 10.45/Cord	\$ _____
Red Pine	2,141 Cords	\$ 48.80/Cord	\$ _____
White Pine	1,101 Cords	\$ 13.40/Cord	\$ _____

*The volumes are statistically estimated within plus (+) or minus (-) 4.22 percent at 95% confidence level. These estimated volumes are final and not subject to adjustment. Prospective bidders are urged to examine this timber and to make their own estimates of quantity and quality.

I understand that any or all bids may be rejected. All bids must be signed and all bid items must be bid or the bid form may be rejected. I also understand that consideration and awarding a contract will be based upon my past performance and ability to complete the contract based upon equipment and staffing subject to my control.

FEDERAL ID: _____ or SOCIAL SECURITY NUMBER: _____

Company or individual bidding: _____

Company representative's name: _____

Address: _____

City: _____ State: _____ Zip: _____

IF AVAILABLE, PLEASE PLACE THE PERSONALIZED LABEL FROM YOUR PROSPECTUS IN THE ABOVE BOX.

Individual or company representative's signature: _____ Date: _____

Phone number : _____ Email (optional): _____

THE WINNING BIDDER MUST COMPLETE THE VERIFICATION OF WORKER'S DISABILITY COMPENSATION ACT COMPLIANCE (ON REVERSE SIDE IF DOUBLE SIDED) WITHIN 21 DAYS OF SALE AWARD DATE



TIMBER SALE VERIFICATION OF WORKER'S DISABILITY COMPENSATION ACT COMPLIANCE

As required by Act 317, P.A. 1969 (Worker's Compensation) and
Part 5 of Act 451 of 1994, as amended.

FOR DEPARTMENT USE ONLY	
Sale Number (XX - XXX - XX - XX)	
Forest Management Unit:	

VERIFICATION OF WORKER'S DISABILITY COMPENSATION ACT COMPLIANCE

- This verification must be completed and submitted within 21 days of contract award and prior to the issuance of the timber sale contract.
- In addition, if boxes 2B or 2C are checked, then Notice of Exclusion or Certificate of Insurance must be submitted within twenty-one (21) days of the contract award and prior to the issuance of the timber sale contract.
- All information must be typed or printed except for written signatures.

Please Check Appropriate Categories:

1. My business is organized as (you **must** check one of the boxes below):
 - A. Sole Proprietorship (individual)
 - B. Partnership
 - C. Corporation
2. You **must** check one of the boxes below:
 - A. I certify my business is a sole proprietorship and it has no employees but the sole proprietor. I am not subject to the Worker's Compensation Laws.
 - B. I certify my business has satisfied its obligation to the Worker's Compensation Act through the use of an approved Notice of Exclusion (BWC-337, Rev. 5/96). I will provide a copy of the Notice of Exclusion within 21 days of the contract award. (For questions or a copy of the BWC-337, please call the Worker's Compensation Bureau at 517-322-1195).
 - C. I certify my business has a Worker's Compensation Policy. I will provide an original Certificate of Insurance within twenty-one (21) days of the contract award.
3. If you have checked item 2(A) or 2(B), you **must** indicate the number of **both** full-time and part-time employees, other than yourself, including family members and active partners (if none, you must enter "0").

_____ Full-time Employees

_____ Part-time Employees

Name of Business		Federal ID (or) Social Security No.	
Address		Telephone ()	
City	State	ZIP	

I hereby certify that the above information is true and correct. I agree to notify the Michigan DNR of any changes that occur in factors affecting my coverage during any of my present and future operations.

Signature of Owner or Authorized Representative

Title

Date

Please complete the "SEALED BID" information on the next page