



**DEPARTMENT OF NATURAL RESOURCES
STATE OF MICHIGAN
TIMBER SALE PROSPECTUS #7121**

SCHEDULED SALE DATE AND TIME: 3:00 p.m. (local time) on October 26, 2022.

LOCATION: **BALDWIN OFFICE, 2468 W 24TH STREET, BALDWIN, MI 49304.**

PROSPECTUS NOTE: The bidder is advised to inspect the sale area and review the location, estimated volumes, operating costs and contract terms of proposed sales. Please be aware that some landowners may request 60 days or more notice for access across their land.

Notice is hereby given that bids will be received by the Unit Manager, CADILLAC MANAGEMENT UNIT, for certain timber on the following described lands:

Pine Country Aspen (63-003-22) / T24N, R10W, SEC. 30, NWSW.

T24N, R10W, SEC. 31, NWNW.

T24N, R11W, SEC. 24, SENW,NWNE,S1/2NE.

T24N, R11W, SEC. 25, SENW,S1/2NE,NESW,S1/2SW,SE.

T24N, R11W, SEC. 36, N1/2NW,N1/2NE.

Wexford County, Advertised Price \$82,879.60, 139.2 Acres, Aspen, Hardwood.

Manton Zone Jack Pine (63-004-22) / T24N, R11W, SEC. 23, NENE,S1/2NE,SE.

T24N, R11W, SEC. 24, S1/2NW,N1/2SW,SWSW.

T24N, R11W, SEC. 25, SWNW,NWSW,S1/2SW.

T24N, R11W, SEC. 26, SENE,N1/2SE,SESE.

Wexford County, Advertised Price \$140,710.65, 222.1 Acres, Jack Pine, Red Pine.

Deer Camp Pinery (63-005-22) / T24N, R11W, SEC. 25, SWNW,SW,SWSE.

T24N, R11W, SEC. 26, SW.

Wexford County, Advertised Price \$75,355.55, 95.3 Acres, White Pine, Red Pine.

BID INSTRUCTIONS (VER. 07/02/2018):

1. Scheduled Bid Location, Date, and Time (2/11)

Bids must be received by the Unit Manager, BALDWIN OFFICE, 2468 W 24th Street, Baldwin, MI 49304, no later than 3:00 p.m. (local time) on October 26, 2022. For further information concerning this sale, contact Joe Ventinglia at 231-878-0047 extension .

2. Bidder's Qualifications (5/16)

Purchaser shall obtain workers compensation insurance to cover claims under Michigan's Worker's Disability Compensation Act of 1969 or similar employee benefit act of any other state applicable to an employee. If all or part of a timber sale was prepared by a private contractor, the contractor and that contractor's company are not permitted to bid on the timber sale contract. Bids will not be accepted from individuals or companies appearing on the DNR/FRD No-Bid List. This list contains the names of purchasers who previously failed to execute a contract within 21-days or who have a history of poor performance.

3. Preparation of Sealed Bids (5/16)

Bid Forms may be completed online thru Michigan DNR Timber Sale Online Bidding (OLB) at www.michigan.gov/timberbidding or by completing the hardcopy Bid Form found in the Timber Sale Prospectus . Hardcopy Bid Forms shall be manually signed in ink. Registration in OLB is considered your 'signature' for all bids submitted thru that system. Bid prices must be entered for each species and product in the Bid Price column for all material subject to bidding and all fill-in blanks must be completed. If erasures or other changes appear on the hardcopy Bid Form, each erasure or change must be initialed by the person signing the bid.

4. Submission of Sealed Bids (5/16)

Bid forms may be obtained from the Unit Manager or thru OLB. Bids may be submitted hardcopy or thru OLB. All hardcopy bids must be submitted on the bid form and in an envelope clearly identified as described in this section. NOTE: Only one bid form per bid envelope. Sealed bids must be submitted to the Unit office designated in the prospectus and must be submitted at or prior to the time established in the prospectus. The envelope should show on the outside (a) the sale name or number and (b) the date and time of bid opening, as shown in the prospectus. Bids received after the time specified in the sale prospectus are late bids and will be rejected.

It is possible for a bidder to submit multiple bids on a single sale. For example, a bid may be submitted hardcopy and a bid may be submitted thru OLB. Or, two bidders from the same company could both submit bids on the same sale. If this were to happen, the State would accept all bids received and award the contract accordingly. All bidding and contractual requirements would apply to all bids received.

5. Public Opening of Sealed Bids (7/16)

If conditions permit, the sealed bids will be publicly opened and posted at the time and place set in the prospectus.

If a bidder, present at a bid opening, has submitted bids on more than one sale, that bidder may withdraw their unopened bid envelopes or announce the withdrawal of their online bid after being declared the successful bidder on one sale.

6. Award of Contract (1/11)

Award of the contract will be made to the Bidder whose bid, conforming to the prospectus, is most advantageous to the State of Michigan on the basis of total value at rates bid for the estimated quantities. The State reserves the right to reject any bid or waive any minor irregularity in bids received. A written award mailed (or otherwise furnished) to the successful Bidder shall be deemed to result in a binding contract without further action by either party.

7. Down Payment (1/11)

The Bidder to whom award is made must make a down payment within 21 days of the sale award. The amount of the down payment will be calculated as shown in the Bond and Payment Schedule of this prospectus. Only cash may be used to meet this requirement.

8. Performance Security (1/11)

As guarantee of faithful performance, a cash bond, certificate of deposit, surety bond or irrevocable letter of credit (LOC) is required within 21 days of the sale award. The amount of the performance security is shown in the Bond and

Payment Schedule of this prospectus. If an LOC or surety is used, the coverage must extend for at least 6 months beyond the contract expiration.

9. Timber Sale Contract (7/18)

Additional conditions and requirements common to all timber sales are listed on the timber sale contract (R4031) and are available on line at www.michigan.gov/timber. Contact the Unit Manager for additional information or a sample contract. Within 21 days of the date of the award letter, the bidder must sign the contract and provide the required down payment, performance security, and verification of worker's disability compensation. The down payment and performance security shall be in accordance with the provisions of the timber sale contract, in the sums stated in this prospectus. If these actions are not taken, then the Bidder, the Bidder's corporation, and the corporation's principals may not be permitted to bid on State timber sales for a period of 3 months after the first offense, 6 months after the second offense, and 1 year after the third offense. An offense will only be counted against the Bidder for 5 years. In addition, the Bidder certifies that if awarded this contract, the Bidder will complete the timber sale contract in accordance with its terms and any modifications thereof including requirements to purchase, cut, and remove the included timber by the expiration date.

Payment Unit values in the State Forest Timber Sale Contract are calculated based on the advertised value of the Payment Unit as a percentage of the total advertised value of the contract. The advertised value of each Payment Unit is given in the Description of Timber by Payment Unit table on the Timber Sale Information page. For example, if the value of Payment Unit 1 is advertised as \$1,500 and the total Timber Sale value is advertised as \$10,000, the contract price for Payment Unit 1 will be 15% of the total bid price ($\$1,500/\$10,000 * 100$).

10. Disclaimer of Estimates and Bidder's Warranty of Inspection (7/16)

Before submitting this bid, the Bidder is advised and cautioned to inspect the sale area, review the requirements of the sale contract, and take other steps as may be reasonably necessary to ascertain the location, estimated volumes, construction estimates, and operating costs of the proposed sale. Failure to do so will not relieve the Bidder from responsibility for completing the contract.

The Bidder warrants that this bid is submitted solely on the basis of the Bidder's examination and inspection of the quality and quantity of the timber offered for sale and the Bidder's opinion of the value thereof and the costs of recovery. No reliance should be placed on the State of Michigan's estimates of timber quality, quantity or costs of recovery. Bidder further acknowledges that the State of Michigan: (i) expressly disclaims any warranty of fitness of timber for any purpose; (ii) offers this timber as is without any warranty of quality (merchantability) or quantity and (iii) expressly disclaims any warranty as to the quantity or quality of timber sold.

11. Certification and Chain-of-Custody (10/14)

Unless otherwise indicated in the contract under section 7 – Other Conditions of the Sale Specific Conditions & Requirements, the area encompassed by this timber sale is certified to the standards of the Forest Stewardship Council (FSC) - Certificate #SCS-FM/COC-00090N and the Sustainable Forestry Initiative (SFI) - Certificate #NSF-SFIS-5Y031-SF5. Forest products from this sale may be delivered to the mill as "FSC 100% and / or SFI certified" as long as the contractor hauling the forest products is chain-of-custody (COC) certified or covered under a COC certificate from the destination mill. The purchaser is responsible for maintaining COC after leaving the sale area.

12. Good Neighbor Authority (GNA) Requirements (7/16)

If the name of this timber sales contains the acronym GNA, it is authorized by the Good Neighbor Authority (GNA) and covered by various agreements between the U.S. Forest Service and the State. The timber sale occurs on federal land and the following conditions apply:

GNA contracts on US Forest Service land will not be awarded to purchasers on the Federal list of excluded parties. The System for Award Management (SAM) will be checked for active excluded parties prior to award of contract. In addition, the Bidder to whom award is made must complete an Assurance Regarding Felony Conviction or Tax Delinquent Status for Corporate Applicants (AD-3031).

13. Good Neighbor Authority (GNA) Requirements, con't (9/16)

Bidder certifies, by signing this bid form, that to the best of Bidder's knowledge that the following representations are accurate and complete.

- a. That the Bidder and its principals are not presently debarred, suspended, proposed for debarment, declared ineligible, or voluntary excluded from timber sales (covered transactions) by any Federal department or agency.
- b. That the Bidder and its principals have not within a 3-year period preceding this bid been convicted of or had a civil judgment rendered against them for commission of fraud or a criminal offense in connection with obtaining , attempting to obtain, or performing a public (Federal, State, or local) transaction or contract under a public transaction; violation of Federal or State antitrust statutes or commission of embezzlement, theft, forgery, bribery, falsification or destruction of records, making false statements, or receiving stolen property.
- c. That the Bidder and its principals are not presently indicted for or otherwise criminally or civilly charged by a governmental entity (Federal, State, or local) with commission of any of the offenses enumerated in paragraph b of this certification.
- d. That the Bidder and its principals have not within a 3-year period preceding this bid had one or more public transactions (Federal, State, or local) terminated for breach or default of a timber or forest product contract.

Bidders that cannot certify this requirement, in whole or in part, shall submit an explanation with their bid.

DAN EICHINGER
Director

TIMBER SALE INFORMATION

Pine Country Aspen (63-003-22)

T24N, R10W, SEC. 30; T24N, R10W, SEC. 31; T24N, R11W, SEC. 24; T24N, R11W, SEC. 25; T24N, R11W, SEC. 36.
Wexford County (Advertised Price \$82,879.60)

A timber sale contract for this lump sum, sealed bid timber sale will be awarded to the responsible bidder offering the highest sealed bid price. All units of volume listed below were estimated using the Inventory Manager computer program and the new Michigan taper model. Bids must be at or above the following advertised price for each product and species:

<u>PRODUCTS & SPECIES</u>	<u>ESTIMATED UNITS*</u>		<u>ADVERTISED PRICE</u>
Sawtimber			
B. T. Aspen	229.0	MBF	\$ 70.00 / MBF
Jack Pine	11.6	MBF	\$ 13.00 / MBF
Red Maple	65.2	MBF	\$ 70.00 / MBF
Red Oak	23.8	MBF	\$ 142.00 / MBF
Red Pine	39.3	MBF	\$ 82.00 / MBF
White Pine	35.3	MBF	\$ 57.00 / MBF
Pulpwood			
B. T. Aspen	1,806	Cords	\$ 20.65 / Cord
Balsam Fir	18	Cords	\$ 9.80 / Cord
Black Cherry	22	Cords	\$ 15.95 / Cord
Jack Pine	119	Cords	\$ 10.70 / Cord
Red Maple	578	Cords	\$ 15.95 / Cord
Red Oak	40	Cords	\$ 22.00 / Cord
Red Pine	40	Cords	\$ 35.30 / Cord
White Pine	206	Cords	\$ 14.15 / Cord

* The total volume is statistically estimated within plus (+) or minus (-) 9.85 percent. There are an estimated 3,699 cords on this timber sale, plus or minus 365 cords at the 95% confidence level. The estimated units are final and not subject to adjustment. Prospective bidders are urged to examine this timber and to make their own estimates of quantity and quality.

BOND AND PAYMENT SCHEDULE:

1. A bond in the amount of \$4,144.00 to insure faithful performance of the conditions of the contract will be deposited by the successful bidder within 21 days of the sale award.
2. Cutting in any sale or unit without the required advance payment would be considered a trespass.
3. Total payment must be paid in advance or according to the following schedule :
 - (a) Ten percent (10%) of the sale value must be paid within 21 days of the sale award.
 - (b) The 10% down payment will be credited towards the first unit cut.
 - (c) Payment for each of the following units must be made before cutting begins in that unit:

PAYMENT UNIT NUMBER	PERCENT OF TOTAL SALE VALUE
01	26.0%
02	28.4%
03	17.3%
04	28.3%
4. If no cutting takes place, the 10% down payment will not be refunded.
5. Operations on the contract issued will terminate on 12/31/2024.

SALE STATISTICS

Volumes were calculated in cubic feet using the Michigan taper model. Cubic foot volume includes all wood inside bark for the product indicated. For display purposes, cubic feet were converted to cords and MBF using a simple conversion factor, e.g. 79 cubic feet per cord and 185 cubic feet per MBF. The cubic foot volumes are precise; the cords and MBF volumes are not. Cubic foot volume cannot be directly converted to cords or boards with precision.

SALE VOLUMES

The total estimated sale volume may not equal the sum of the species/products due to the nature of statistical calculations associated with double sampling methodology.

VOLUME			STATISTICAL RANGE IN CORDS	
TOTAL CUBIC FEET	TOTAL CORDS	PERCENT ERROR	MINIMUM	MAXIMUM
292,257	3,699	9.85%	3,335	4,064

VDU VOLUMES

A VDU is a Volume Determination Unit. Volumes and their associated statistics are calculated at the VDU level and summarized to the sale level. There is often a one to one relationship between a VDU and a Payment Unit, but not always, depending on the cruise design. Refer to the VDU TO PAYMENT UNIT table.

	VOLUME			RANGE IN CORDS	
VDU	TOTAL CUBIC FEET	TOTAL CORDS	PERCENT ERROR	MINIMUM	MAXIMUM
11	80,094	1,014	14.41%	868	1,160
27	71,978	911	21.59%	714	1,108
64	140,185	1,774	13.29%	1,539	2,010
TOTAL:	292,257	3,699		3,121	4,278

VDU TO PAYMENT UNIT

When a VDU is associated with more than one Payment Unit (PU), the VDU volumes are assigned to the PU based on acres of the VDU within the PU.

VDU	VDU ACRES	PU	PU ACRES
11	31.4	4	31.4
27	26.3	1	26.3
64	81.5	2	50.6
		3	30.9
TOTAL:	139.2		139.2

DESCRIPTION OF TIMBER BY PAYMENT UNIT (PU)

PU	MARKET GROUP	PRODUCT	QUANTITY	UNIT	ACRES	ADVERTISE PRICE
1	B. T. Aspen	Sawtimber	70.2	MBF	26.3	\$21,571.45
	Jack Pine		2.7	MBF		
	Red Maple		14.9	MBF		
	Red Oak		8.2	MBF		
	White Pine		35.3	MBF		
	B. T. Aspen	Pulpwood	433	Cords		
	Black Cherry		8	Cords		
	<i>Black Cherry</i>	<i>Sawtimber</i>	1.7	<i>MBF</i>		
	<i>Black Cherry</i>	<i>Pulpwood</i>	5	<i>Cords</i>		
	Jack Pine		6	Cords		
	Red Maple		157	Cords		
	Red Oak		20	Cords		
	White Pine		23	Cords		
	2	B. T. Aspen	Sawtimber	55.1		
Jack Pine			5.5	MBF		
Red Maple			31.2	MBF		
Red Oak			1.9	MBF		
B. T. Aspen		Pulpwood	567	Cords		
Balsam Fir			5	Cords		
<i>Balsam Fir</i>		<i>Sawtimber</i>	1.7	<i>MBF</i>		
<i>Balsam Fir</i>		<i>Pulpwood</i>	2	<i>Cords</i>		
Black Cherry			9	Cords		
<i>Black Cherry</i>			9	<i>Cords</i>		
Jack Pine			43	Cords		
Red Maple			217	Cords		
Red Oak			6	Cords		
Red Pine			22	Cords		
White Pine			27	Cords		
3		B. T. Aspen	Sawtimber	33.6	MBF	30.9
	Jack Pine		3.4	MBF		
	Red Maple		19.1	MBF		
	Red Oak		1.1	MBF		
	B. T. Aspen	Pulpwood	347	Cords		
	Balsam Fir		4	Cords		
	<i>Balsam Fir</i>	<i>Sawtimber</i>	1.1	<i>MBF</i>		
	<i>Balsam Fir</i>	<i>Pulpwood</i>	2	<i>Cords</i>		
	Black Cherry		5	Cords		
	<i>Black Cherry</i>		5	<i>Cords</i>		
	Jack Pine		27	Cords		
	Red Maple		132	Cords		
	Red Oak		4	Cords		
	Red Pine		13	Cords		
	White Pine		16	Cords		
	4	B. T. Aspen	Sawtimber	70.1	MBF	
Red Oak			12.6	MBF		
Red Pine			39.3	MBF		
B. T. Aspen		Pulpwood	459	Cords		
Balsam Fir			8	Cords		
<i>Balsam Fir</i>			8	<i>Cords</i>		
Jack Pine			43	Cords		
Red Maple			72	Cords		
Red Oak			10	Cords		
Red Pine			5	Cords		
White Pine			140	Cords		
TOTAL:			404.2	MBF		

TOTAL:	2,828	Cords
--------	-------	-------

Sale Specific Conditions & Requirements

Sale Name: Pine Country Aspen

Sale Number: 63-003-22 Seq#: 1

1 - Sale Area

1.2 - Boundaries

1.2.1 - Painted boundaries (9/19)

The sale boundary and Payment Unit boundaries are marked and identified red and blue paint. Blue paint marks boundary along private property. Retention area is marked with red as well as boundary of sale along State. The painted boundary line trees are not Included Timber and are to be protected unless marked with orange paint.

2 - Timber Specifications

2.1 - Included Timber

2.1.1 - Clearcut unit(s) with unmerchantable trees (6/14)

Within Payment Unit(s) 1 and 4, cut all trees that are two (2) inches or more at DBH except protect WHITE PINE 3 inches in diameter and under as much as practical during operations.

2.1.2 - Clearcut unit(s) w/o unmerchantable trees (8/11)

Within Payment Unit(s) 2 and 3, cut all trees which meet minimum piece specifications in 2.2 Utilization except leave all WHITE PINE 6 inches in diameter and under. As well leave all RED PINE unless marked with orange paint.

3 - Payments

3.3 - Pre-measured Sales

3.3.4 - Dividing payment units (7/14)

Payment Unit(s) may be divided at the request of the Purchaser and upon approval of the Unit Manager. Dividing Payment Units is a contract modification which requires a Timber Sale Contract Amendment. There will be only one division per Payment Unit.

4 - Transportation

4.1 - Construction

4.1.12 - No new roads (1/12)

No new roads will be permitted in any Payment Unit. All operations are limited to existing roads. Skid trails only will be allowed.

4.2 - Maintenance

4.2.5 - Two wheel drive condition (2/04)

All existing trail roads on and adjacent to the sale area must be passable by two-wheel drive traffic for the duration of the sale.

5 - Operations

5.1 - Notification

5.1.1 - Pre-sale conference (10/16)

A pre-sale conference on site between the Purchaser and sale administrator is required prior to beginning a Payment Unit to determine landing and road locations. The Unit Manager or his/her representative must be contacted at least 3 days in advance to schedule the conference.

5.2 - Conduct of Operations

5.2.2 - Hazard Trees/Snags

5.2.2.1 - Den trees (10/16)

Obvious hollow and/or den trees shall be protected and left standing unless they are a safety hazard.

5.2.3 - Operating Restrictions

5.2.3.11 - Coppice regeneration protection (4/10)

Timber harvesting in any Payment Unit must be completed before significant aspen sprouting occurs in that Payment Unit so as to minimize damage to the new regeneration. Any post harvest operations, such as chipping, must be completed before sprouting of regeneration occurs. If it is anticipated that chipping will be delayed, then tops shall be carried to one central location or left unchipped. The Unit Manager or his/her representative may cease such operations if sprouting occurs before the operation is complete.

5.2.4 - Dead and Down Creation

5.2.4.2 - Dead and down creation, hare and grouse (1/14)

To improve habitat for snowshoe hare, grouse, and other species, the Purchaser is to leave two 10 inch diameter or larger log size pieces on the ground for every four acres. They should be scattered throughout the sale or positioned per the sale administrators instructions. If possible, the logs or trees should be felled so they overlap. Note these pieces should have a minimum length of five feet. They can be of any tree species and can be an un-merchantable piece of wood or a full tree.

5.4 - Soil Protection

5.4.1 - Rutting restriction, general (7/16)

Operations are to cease immediately if equipment and weather conditions result in rutting of roads and/or skid trails which is 12 inches or greater in depth and 50 feet in length. Operations are to cease immediately if equipment and weather conditions result in rutting of roads which is 12 inches or greater in depth and 50 feet in length. In addition, operations are to cease immediately if equipment and weather conditions result in rutting on skid trails which is 12 inches or greater in depth and 50 feet in length. The Unit Manager or his/her representative may restrict hauling and/or skidding if ruts exceed the specified depth. With the Unit Manager or his/her representative's approval, the Purchaser may return to the area when the risk of rutting has decreased.

6 - Safety and Fire Prevention

6.2 - Signing

6.2.1 - Road posting (10/20)

The Purchaser is responsible for posting and maintaining caution signs on main access roads prior to beginning operations. The road must be posted at appropriate distances from the sale area to warn of logging activity and truck traffic. Signs must be removed when harvest operations are suspended or completed. The Purchaser will provide these signs.



TIMBER SALE MAP

This information provided by authority of Part 525, 1994 PA 451, as amended.

Forest Management Unit Cadillac		County Wexford	Mapped By Ventimiglia	Date 05/20/22	Page 1	of 2
Township 24N	Range 11W	Section(s) and Subdivision(s) Section 24		Scale 1:15,840		

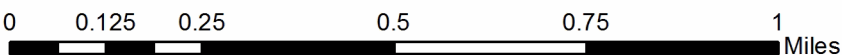
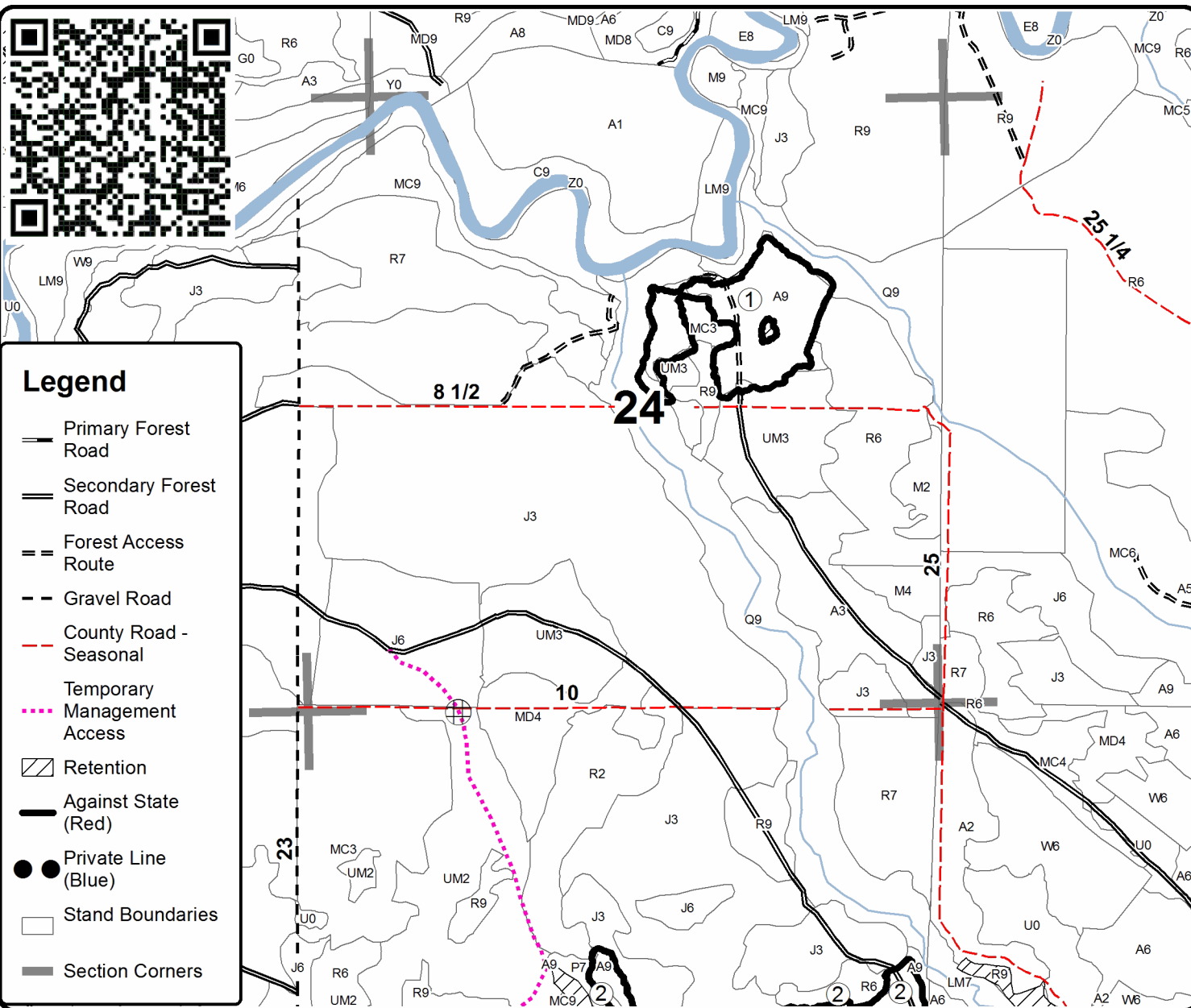
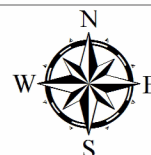
Cover Type				Density	
A = Aspen	H = Hemlock	N = Marsh	U = Upland Brush	0 = Non Stocked	5 = Pole Timber Medium
B = Paper Birch	J = Jack Pine	O = Oak	UM = Upland Mixed	1 = Seedling Sapling Poor	6 = Pole Timber Well
C = Cedar	L = Lowland Brush	P = Lowland Poplar	V = Bog or Marsh	2 = Seedling Sapling Medium	7 = Saw Timber Poor
D = Treed Bog	LM = Lowland Mixed	Q = Mixed Swamp Conifer	W = White Pine	3 = Seedling Sapling Well	8 = Saw Timber Medium
E = Swamp Hdwoods	M = Mpl, Bch, Brch	R = Red Pine	X = Non Stocked	4 = Pole Timber Poor	9 = Saw Timber Well
F = Spruce Fir	MC = Mixed Conifer	S = Black Spruce	Z = Water		
G = Grass	MD = Mixed Deciduous	T = Tamarack			

PU	Acres	PU	Acres
1	26.3	4	31.4
2	50.6		
3	30.9		

Pine Country Aspen

Compartment 133

139.2 Acres





TIMBER SALE MAP

This information provided by authority of Part 525, 1994 PA 451, as amended.

Forest Management Unit Cadillac		County Wexford	Mapped By Ventimiglia	Date 05/20/22	Page 2	of 2
Township 24N	Range 11W	Section(s) and Subdivision(s) Section 25 and 36		Scale 1:15,840		

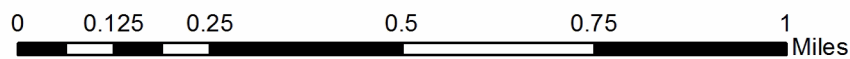
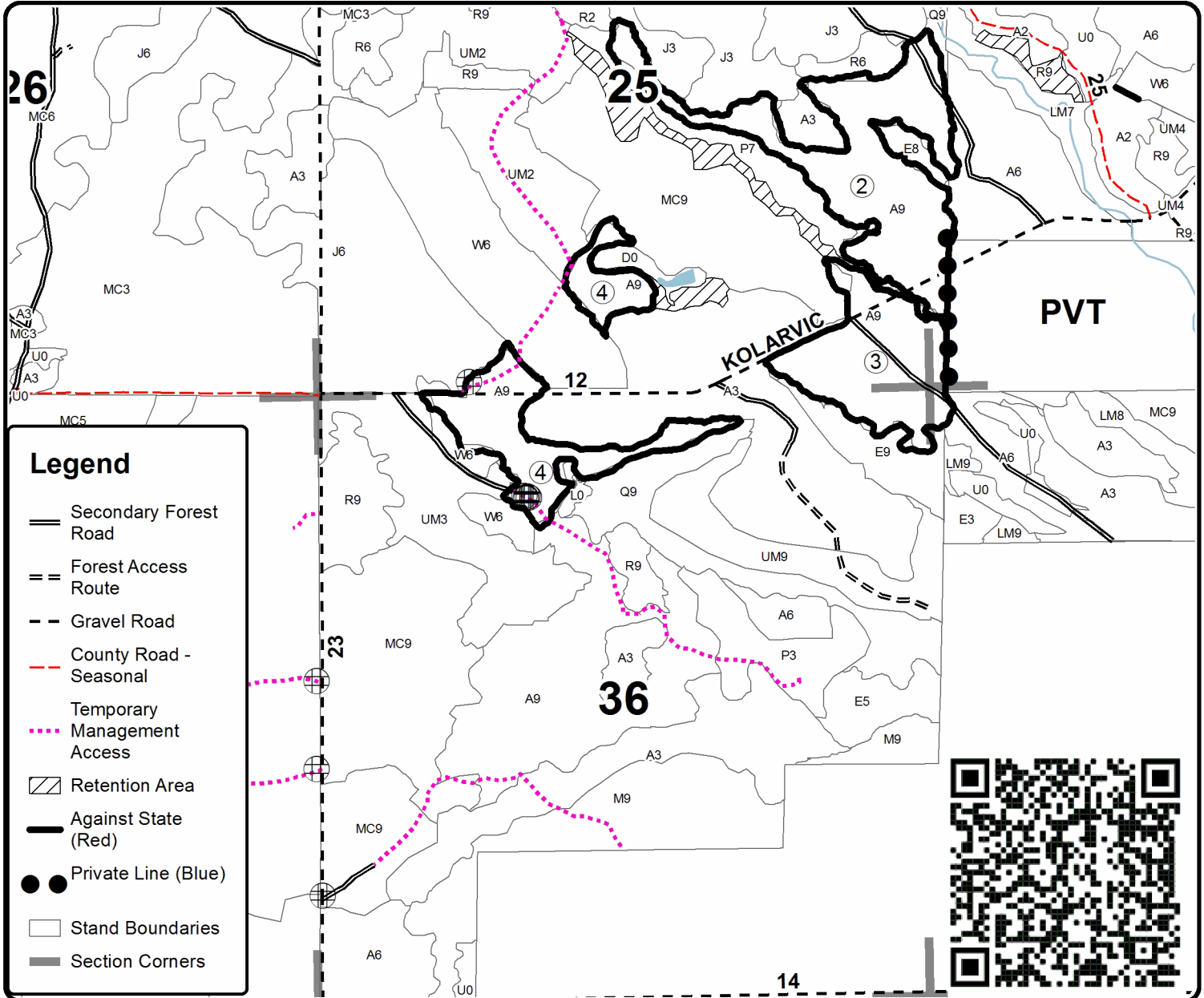
Cover Type				Density	
A = Aspen	H = Hemlock	N = Marsh	U = Upland Brush	0 = Non Stocked	5 = Pole Timber Medium
B = Paper Birch	J = Jack Pine	O = Oak	UM = Upland Mixed	1 = Seedling Sapling Poor	6 = Pole Timber Well
C = Cedar	L = Lowland Brush	P = Lowland Poplar	V = Bog or Marsh	2 = Seedling Sapling Medium	7 = Saw Timber Poor
D = Treed Bog	LM = Lowland Mixed	Q = Mixed Swamp Conifer	W = White Pine	3 = Seedling Sapling Well	8 = Saw Timber Medium
E = Swamp Hdwoods	M = Mpl. Bch, Brch	R = Red Pine	X = Non Stocked	4 = Pole Timber Poor	9 = Saw Timber Well
F = Spruce Fir	MC = Mixed Conifer	S = Black Spruce	Z = Water		
G = Grass	MD = Mixed Deciduous	T = Tamarack			

PU	Acres	PU	Acres
1	26.3	4	31.4
2	50.6		
3	30.9		

Pine Country Aspen

Compartment 133

139.2 Acres



TIMBER SALE INFORMATION

Manton Zone Jack Pine (63-004-22)

T24N, R11W, SEC. 23; T24N, R11W, SEC. 24; T24N, R11W, SEC. 25; T24N, R11W, SEC. 26.
Wexford County (Advertised Price \$140,710.65)

A timber sale contract for this lump sum, sealed bid timber sale will be awarded to the responsible bidder offering the highest sealed bid price. All units of volume listed below were estimated using the Inventory Manager computer program and the new Michigan taper model. Bids must be at or above the following advertised price for each product and species:

<u>PRODUCTS & SPECIES</u>	<u>ESTIMATED UNITS*</u>	<u>ADVERTISED PRICE</u>
Sawtimber		
B. T. Aspen	82.6 MBF	\$ 95.00 / MBF
Jack Pine	147.2 MBF	\$ 18.00 / MBF
Red Oak	50.6 MBF	\$ 193.00 / MBF
Red Pine	231.0 MBF	\$ 112.00 / MBF
White Oak	12.7 MBF	\$ 62.00 / MBF
White Pine	191.0 MBF	\$ 78.00 / MBF
Pulpwood		
B. T. Aspen	354 Cords	\$ 28.20 / Cord
Black Cherry	25 Cords	\$ 21.75 / Cord
Jack Pine	2,772 Cords	\$ 14.55 / Cord
Red Maple	291 Cords	\$ 21.75 / Cord
Red Oak	73 Cords	\$ 30.00 / Cord
Red Pine	268 Cords	\$ 48.15 / Cord
White Oak	30 Cords	\$ 30.00 / Cord
White Pine	295 Cords	\$ 19.35 / Cord

* The total volume is statistically estimated within plus (+) or minus (-) 6.06 percent. There are an estimated 5,791 cords on this timber sale, plus or minus 351 cords at the 95% confidence level. The estimated units are final and not subject to adjustment. Prospective bidders are urged to examine this timber and to make their own estimates of quantity and quality.

BOND AND PAYMENT SCHEDULE:

1. A bond in the amount of \$7,036.00 to insure faithful performance of the conditions of the contract will be deposited by the successful bidder within 21 days of the sale award.
2. Cutting in any sale or unit without the required advance payment would be considered a trespass.
3. Total payment must be paid in advance or according to the following schedule:
 - (a) Ten percent (10%) of the sale value must be paid within 21 days of the sale award.
 - (b) The 10% down payment will be credited towards the first unit cut.
 - (c) Payment for each of the following units must be made before cutting begins in that unit:

PAYMENT UNIT NUMBER	PERCENT OF TOTAL SALE VALUE
01	31.8%
02	18.2%
03	15.0%
04	15.0%
05	20.0%

4. If no cutting takes place, the 10% down payment will not be refunded.
5. Operations on the contract issued will terminate on 12/31/2025.

SALE STATISTICS

Volumes were calculated in cubic feet using the Michigan taper model. Cubic foot volume includes all wood inside bark for the product indicated. For display purposes, cubic feet were converted to cords and MBF using a simple conversion factor, e.g. 79 cubic feet per cord and 185 cubic feet per MBF. The cubic foot volumes are precise; the cords and MBF volumes are not. Cubic foot volume cannot be directly converted to cords or boards with precision.

SALE VOLUMES

The total estimated sale volume may not equal the sum of the species/products due to the nature of statistical calculations associated with double sampling methodology.

VOLUME			STATISTICAL RANGE IN CORDS	
TOTAL CUBIC FEET	TOTAL CORDS	PERCENT ERROR	MINIMUM	MAXIMUM
457,452	5,791	6.06%	5,439	6,142

VDU VOLUMES

A VDU is a Volume Determination Unit. Volumes and their associated statistics are calculated at the VDU level and summarized to the sale level. There is often a one to one relationship between a VDU and a Payment Unit, but not always, depending on the cruise design. Refer to the VDU TO PAYMENT UNIT table.

	VOLUME			RANGE IN CORDS	
VDU	TOTAL CUBIC FEET	TOTAL CORDS	PERCENT ERROR	MINIMUM	MAXIMUM
7	279,316	3,536	9.10%	3,214	3,857
54	178,136	2,255	7.61%	2,083	2,427
TOTAL:	457,452	5,791		5,297	6,284

VDU TO PAYMENT UNIT

When a VDU is associated with more than one Payment Unit (PU), the VDU volumes are assigned to the PU based on acres of the VDU within the PU.

VDU	VDU ACRES	PU	PU ACRES
7	136.7	1	67.0
		2	38.2
		3	31.5
54	85.4	4	36.6
		5	48.8
TOTAL:	222.1		222.1

DESCRIPTION OF TIMBER BY PAYMENT UNIT (PU)

PU	MARKET GROUP	PRODUCT	QUANTITY	UNIT	ACRES	ADVERTISE PRICE
1	B. T. Aspen	Sawtimber	17.7	MBF	67.0	\$44,800.80
	Jack Pine		27.8	MBF		
	Red Oak		22.1	MBF		
	Red Pine		99.4	MBF		
	White Oak		6.3	MBF		
	White Pine		15.7	MBF		
	B. T. Aspen	Pulpwood	74	Cords		
	Jack Pine		850	Cords		
	Red Maple		122	Cords		
	<i>Red Maple</i>	<i>Sawtimber</i>	3.0	<i>MBF</i>		
	<i>Red Maple</i>	<i>Pulpwood</i>	116	<i>Cords</i>		
	Red Oak		27	Cords		
	Red Pine		125	Cords		
	White Oak		15	Cords		
	White Pine		63	Cords		
2	B. T. Aspen	Sawtimber	10.1	MBF	38.2	\$25,602.70
	Jack Pine		15.8	MBF		
	Red Oak		12.6	MBF		
	Red Pine		56.6	MBF		
	White Oak		3.5	MBF		
	White Pine		9.0	MBF		
	B. T. Aspen	Pulpwood	42	Cords		
	Jack Pine		485	Cords		
	Red Maple		71	Cords		
	<i>Red Maple</i>	<i>Sawtimber</i>	1.8	<i>MBF</i>		
	<i>Red Maple</i>	<i>Pulpwood</i>	67	<i>Cords</i>		
	Red Oak		16	Cords		
	Red Pine		72	Cords		
	White Oak		8	Cords		
	White Pine		36	Cords		
3	B. T. Aspen	Sawtimber	8.3	MBF	31.5	\$21,108.75
	Jack Pine		13.1	MBF		
	Red Oak		10.4	MBF		
	Red Pine		46.7	MBF		
	White Oak		2.9	MBF		
	White Pine		7.4	MBF		
	B. T. Aspen	Pulpwood	35	Cords		
	Jack Pine		400	Cords		
	Red Maple		58	Cords		
	<i>Red Maple</i>	<i>Sawtimber</i>	1.5	<i>MBF</i>		
	<i>Red Maple</i>	<i>Pulpwood</i>	55	<i>Cords</i>		
	Red Oak		13	Cords		
	Red Pine		59	Cords		
	White Oak		7	Cords		
	White Pine		30	Cords		
4	B. T. Aspen	Sawtimber	19.9	MBF	36.6	\$21,066.30
	Jack Pine		38.8	MBF		
	Red Oak		2.4	MBF		
	Red Pine		12.1	MBF		
	White Pine		68.1	MBF		
	B. T. Aspen	Pulpwood	87	Cords		
	Black Cherry		11	Cords		
	Jack Pine		444	Cords		
	Red Maple		17	Cords		
	<i>Red Maple</i>		17	<i>Cords</i>		
	Red Oak		7	Cords		

DESCRIPTION OF TIMBER BY PAYMENT UNIT (PU), CON'T

PU	MARKET GROUP	PRODUCT	QUANTITY	UNIT	ACRES	ADVERTISE PRICE
4 con't	Red Pine	Pulpwood	5	Cords		
	White Pine		71	Cords		
5	B. T. Aspen	Sawtimber	26.6	MBF	48.8	\$28,132.10
	Jack Pine		51.7	MBF		
	Red Oak		3.1	MBF		
	Red Pine		16.2	MBF		
	White Pine		90.8	MBF		
	B. T. Aspen		Pulpwood	116		
	Black Cherry	14		Cords		
	Jack Pine	593		Cords		
	Red Maple	23		Cords		
	<i>Red Maple</i>	23		<i>Cords</i>		
	Red Oak	10		Cords		
	Red Pine	7		Cords		
	White Pine	95		Cords		
	TOTAL:			715.1		
TOTAL:			4,108	Cords		

Sale Specific Conditions & Requirements

Sale Name: Manton Zone Jack Pine

Sale Number: 63-004-22 Seq#: 1

1 - Sale Area

1.2 - Boundaries

1.2.1 - Painted boundaries (9/19)

The sale boundary are marked and identified by red paint. Payment Unit boundaries are identified by county roads and two tracks(See Map) Retention patches are marked with red paint; no harvesting activities may occur within these areas. The painted boundary line trees are not Included Timber and are to be protected.

2 - Timber Specifications

2.1 - Included Timber

2.1.1 - Clearcut unit(s) with unmerchantable trees (6/14)

Within Payment Unit(s) 1, 2 and 3 , cut all trees that are two (2) inches or more at DBH.

2.1.2 - Clearcut unit(s) w/o unmerchantable trees (8/11)

Within Payment Unit(s) 4 and 5, cut all trees which meet minimum piece specifications in 2.2 Utilization except leave all WHITE OAK . As well leave all WHITE PINE 6 inches in diameter and under.

2.2 - Utilization

2.2.2 - Chipping required (2/18)

Payment Units 1 , 2 and 3 must be chip harvested to facilitate subsequent planting operations. The Purchaser has the option to produce sawlogs or pulpwood bolts, but the remaining portion of the trees must be chipped and hauled. Products may be produced as roundwood and forwarded to decking areas in final product length, but the tops must be left intact and skidded to the landing for chipping in order to minimize the amount of residual slash. If market conditions limit the practicality of chipping, tops and slash must be arranged in a way that will not inhibit future planting operations, as directed by the sale administrator. A chipping exemption can be obtained if proposed operations are determined to be suitable for planting by reforestation staff. This exemption must be granted in writing.

2.2.3 - Stump heights (4/07)

Stump heights within Payment Unit(s) 1, 2 and 3 shall not exceed 6 inches for all trees. This is in order to facilitate planting operations.

3 - Payments

3.3 - Pre-measured Sales

3.3.4 - Dividing payment units (7/14)

Payment Unit(s) may be divided at the request of the Purchaser and upon approval of the Unit Manager. Dividing Payment Units is a contract modification which requires a Timber Sale Contract Amendment. There will be only one division per Payment Unit.

4 - Transportation

4.1 - Construction

4.1.12 - No new roads (1/12)

No new roads will be permitted in any Payment Unit. . All operations are limited to existing roads. Skid trails only will be allowed.

4.2 - Maintenance

4.2.5 - Two wheel drive condition (2/04)

All existing trail roads on and adjacent to the sale area must be passable by two-wheel drive traffic for the duration of the sale.

5 - Operations

5.1 - Notification

5.1.1 - Pre-sale conference (10/16)

A pre-sale conference on site between the Purchaser and sale administrator is required prior to beginning any operations in a Payment Unit to determine landing and road locations. The Unit Manager or his/her representative must be contacted at least 3 days in advance to schedule the conference.

5.2 - Conduct of Operations

5.2.2 - Hazard Trees/Snags

5.2.2.1 - Den trees (10/16)

Obvious hollow and/or den trees shall be protected and left standing unless they are a safety hazard. This is only for units 4 and 5.

6 - Safety and Fire Prevention

6.2 - Signing

6.2.1 - Road posting (10/20)

The Purchaser is responsible for posting and maintaining caution signs on main access roads near landings prior to beginning operations. The road must be posted at appropriate distances from the sale area approximately 350 feet from the sale area to warn of logging activity and truck traffic. Signs must be removed when harvest operations are suspended or completed. The Purchaser will provide these signs.

7 - Other Conditions

7.3 - Contract Modifications

7.3.3 - Modification for reforestation (8/05)

When contractual work of Purchaser has been accepted for any Payment Unit identified on Sale Area Map, Payment Unit will be eliminated from the Sale Area on written notice so that reforestation operations can begin.



TIMBER SALE MAP

This information provided by authority of Part 525, 1994 PA 451, as amended.

Forest Management Unit Cadillac		County Wexford	Mapped By Ventimiglia	Date 06/6/22	Page 1	of 1
Township 24N	Range 11W	Section(s) and Subdivision(s) Sections 23, 24, 25 and 26 various		Scale 1:18,000		

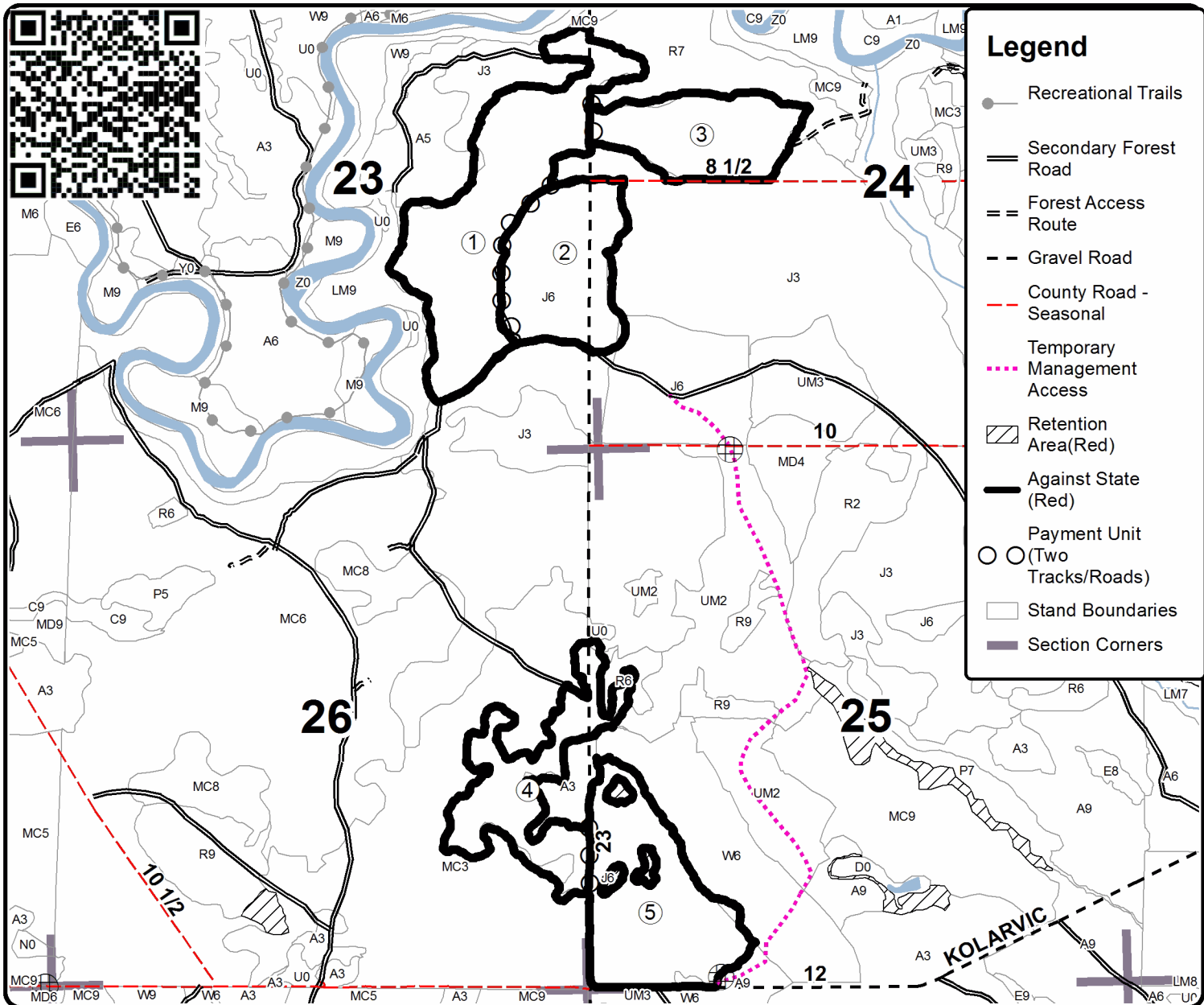
Cover Type				Density	
A = Aspen	H = Hemlock	N = Marsh	U = Upland Brush	0 = Non Stocked	5 = Pole Timber Medium
B = Paper Birch	J = Jack Pine	O = Oak	UM = Upland Mixed	1 = Seedling Sapling Poor	6 = Pole Timber Well
C = Cedar	L = Lowland Brush	P = Lowland Poplar	V = Bog or Marsh	2 = Seedling Sapling Medium	7 = Saw Timber Poor
D = Treed Bog	LM = Lowland Mixed	Q = Mixed Swamp Conifer	W = White Pine	3 = Seedling Sapling Well	8 = Saw Timber Medium
E = Swamp Hdwoods	M = Mpl, Bch, Brch	R = Red Pine	X = Non Stocked	4 = Pole Timber Poor	9 = Saw Timber Well
F = Spruce Fir	MC = Mixed Conifer	S = Black Spruce	Z = Water		
G = Grass	MD = Mixed Deciduous	T = Tamarack			

PU	Acres	PU	Acres
1	67	4	36.6
2	38.2	5	48.8
3	31.5		

Manton Zone Jack Pine

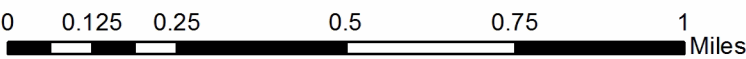
Compartment 133

222.1 Acres



Legend

- Recreational Trails
- Secondary Forest Road
- Forest Access Route
- Gravel Road
- County Road - Seasonal
- Temporary Management Access
- Retention Area (Red)
- Against State (Red)
- Payment Unit
- (Two Tracks/Roads)
- Stand Boundaries
- Section Corners



TIMBER SALE INFORMATION

Deer Camp Pinery (63-005-22)
T24N, R11W, SEC. 25; T24N, R11W, SEC. 26.
Wexford County (Advertised Price \$75,355.55)

A timber sale contract for this lump sum, sealed bid timber sale will be awarded to the responsible bidder offering the highest sealed bid price. All units of volume listed below were estimated using the Inventory Manager computer program and the new Michigan taper model. Bids must be at or above the following advertised price for each product and species:

<u>PRODUCTS & SPECIES</u>	<u>ESTIMATED UNITS*</u>	<u>ADVERTISED PRICE</u>
Sawtimber		
B. T. Aspen	18.3 MBF	\$ 70.00 / MBF
Jack Pine	71.1 MBF	\$ 22.00 / MBF
Red Maple	14.6 MBF	\$ 70.00 / MBF
Red Pine	416.1 MBF	\$ 82.00 / MBF
White Pine	170.8 MBF	\$ 57.00 / MBF
Pulpwood		
B. T. Aspen	102 Cords	\$ 20.65 / Cord
Jack Pine	219 Cords	\$ 10.70 / Cord
Red Maple	32 Cords	\$ 15.95 / Cord
Red Oak	18 Cords	\$ 22.00 / Cord
Red Pine	318 Cords	\$ 35.30 / Cord
White Pine	781 Cords	\$ 14.15 / Cord

* The total volume is statistically estimated within plus (+) or minus (-) 13.46 percent. There are an estimated 3,018 cords on this timber sale, plus or minus 406 cords at the 95% confidence level. The estimated units are final and not subject to adjustment. Prospective bidders are urged to examine this timber and to make their own estimates of quantity and quality.

BOND AND PAYMENT SCHEDULE:

1. A bond in the amount of \$3,768.00 to insure faithful performance of the conditions of the contract will be deposited by the successful bidder within 21 days of the sale award.
2. Cutting in any sale or unit without the required advance payment would be considered a trespass.
3. Total payment must be paid in advance or according to the following schedule :
 - (a) Ten percent (10%) of the sale value must be paid within 21 days of the sale award.
 - (b) The 10% down payment will be credited towards the first unit cut.
 - (c) Payment for each of the following units must be made before cutting begins in that unit:

PAYMENT UNIT NUMBER	PERCENT OF TOTAL SALE VALUE
01	36.2%
02	29.5%
03	4.7%
04	29.6%
4. If no cutting takes place, the 10% down payment will not be refunded.
5. Operations on the contract issued will terminate on 12/31/2024.

SALE STATISTICS

Volumes were calculated in cubic feet using the Michigan taper model. Cubic foot volume includes all wood inside bark for the product indicated. For display purposes, cubic feet were converted to cords and MBF using a simple conversion factor, e.g. 79 cubic feet per cord and 185 cubic feet per MBF. The cubic foot volumes are precise; the cords and MBF volumes are not. Cubic foot volume cannot be directly converted to cords or boards with precision.

SALE VOLUMES

The total estimated sale volume may not equal the sum of the species/products due to the nature of statistical calculations associated with double sampling methodology.

VOLUME		STATISTICAL RANGE IN CORDS		
TOTAL CUBIC FEET	TOTAL CORDS	PERCENT ERROR	MINIMUM	MAXIMUM
238,430	3,018	13.46%	2,612	3,424

VDU VOLUMES

A VDU is a Volume Determination Unit. Volumes and their associated statistics are calculated at the VDU level and summarized to the sale level. There is often a one to one relationship between a VDU and a Payment Unit, but not always, depending on the cruise design. Refer to the VDU TO PAYMENT UNIT table.

VDU	VOLUME		PERCENT ERROR	RANGE IN CORDS	
	TOTAL CUBIC FEET	TOTAL CORDS		MINIMUM	MAXIMUM
36	117,357	1,486	21.79%	1,162	1,809
37	8,759	111	58.10%	46	175
57	111,683	1,414	13.56%	1,222	1,605
TOTAL:	237,799	3,010		2,430	3,590

VDU TO PAYMENT UNIT

When a VDU is associated with more than one Payment Unit (PU), the VDU volumes are assigned to the PU based on acres of the VDU within the PU.

VDU	VDU ACRES	PU	PU ACRES
36	40.6	1	22.4
		2	18.2
37	5.9	3	5.9
57	48.8	4	48.8
TOTAL:	95.3		95.3

DESCRIPTION OF TIMBER BY PAYMENT UNIT (PU)

PU	MARKET GROUP	PRODUCT	QUANTITY	UNIT	ACRES	ADVERTISE PRICE
1	Red Maple	Sawtimber	5.4	MBF	22.4	\$27,294.35
	Red Pine		227.4	MBF		
	White Pine		44.7	MBF		
	B. T. Aspen	Pulpwood	5	Cords		
	Red Maple		13	Cords		
	Red Oak		10	Cords		
	Red Pine		121	Cords		
	White Pine		65	Cords		
	2	Red Maple	Sawtimber	4.4		
Red Pine			184.8	MBF		
White Pine			36.3	MBF		
B. T. Aspen		Pulpwood	4	Cords		
Red Maple			11	Cords		
Red Oak			8	Cords		
Red Pine			99	Cords		
White Pine			53	Cords		
3		Jack Pine	Pulpwood	12	Cords	5.9
	Red Pine		96	Cords		
4	B. T. Aspen	Sawtimber	18.3	MBF	48.8	\$22,334.60
	Jack Pine		71.1	MBF		
	Red Maple		4.8	MBF		
	Red Pine		3.9	MBF		
	White Pine		89.8	MBF		
	B. T. Aspen	Pulpwood	93	Cords		
	Jack Pine		207	Cords		
	Red Maple		8	Cords		
	Red Pine		2	Cords		
	White Pine		663	Cords		
TOTAL:			690.9	MBF		
TOTAL:			1,470	Cords		

Sale Specific Conditions & Requirements

Sale Name: Deer Camp Pinery

Sale Number: 63-005-22 Seq#: 1

1 - Sale Area

1.2 - Boundaries

1.2.1 - Painted boundaries (9/19)

The sale boundary and Payment Unit boundaries are marked and identified by red paint, along with a two track. Exterior sale boundary lines against state are marked with red paint. The interior Payment Unit boundary between Payment Units 1 and 2 is unpainted and identified by the two track road (see Timber Sale Map). The painted boundary line trees are not Included Timber and are to be protected unless marked with orange paint.

2 - Timber Specifications

2.1 - Included Timber

2.1.3 - Cut tree marked unit(s) (12/08)

Within Payment Unit(s) 3, all trees are designated for cutting when marked with orange paint above and below stump height, regardless of merchantability.

2.1.5 - Overstory removal unit(s) (8/11)

Within Payment Unit(s) 1 and 2, all trees with a DBH equal to or greater than 5 inches, which meet minimum piece specifications in 2.2 Utilization, are designated for cutting, except do not cut any white oak.

2.1.8 - Designated plantation row unit(s) (12/08)

Within Payment Unit(s) 4, all trees which meet minimum piece specifications in 2.2 Utilization, within designated plantation rows are designated for cutting. Designated plantation rows follow a take two, leave two pattern. The producer will be responsible for maintaining row orientation, as the rows are not perfectly straight. In addition, cut all aspen and jack pine, regardless of rows.

2.2 - Utilization

2.2.6 - Roundwood operation required (3/21)

The skidding of whole trees or tree segments with limbs attached is prohibited. All products must be produced as roundwood and forwarded to existing roads or landing areas in final product length. This restriction is a result of the need to protect understory trees in Payment Units 1 and 2, and to protect residual trees in Payment Units 3 and 4.

4 - Transportation

4.1 - Construction

4.1.12 - No new roads (1/12)

No new roads will be permitted. All operations are limited to existing roads. Skid trails only will be allowed.

4.2 - Maintenance

4.2.5 - Two wheel drive condition (2/04)

All existing trail roads on and adjacent to the sale area must be passable by two-wheel drive traffic for the duration of the sale.

5 - Operations

5.1 - Notification

5.1.1 - Pre-sale conference (10/16)

A pre-sale conference on site between the Purchaser and sale administrator is required prior to beginning any operations to determine landing and road locations. The Unit Manager or his/her representative must be contacted at least 5 days in advance to schedule the conference.

5.2 - Conduct of Operations

5.2.3 - Operating Restrictions

5.2.3.3 - Bark slippage restriction (3/09)

Within Payment Unit(s) 3 & 4, unless changed by written agreement, cutting and skidding are not permitted during the period of April 15 to July 15. This restriction is because of bark slippage. If producer can operate without damage to residual trees this can be waived.

6 - Safety and Fire Prevention

6.2 - Signing

6.2.1 - Road posting (10/20)

The Purchaser is responsible for posting and maintaining caution signs on timber access roads prior to beginning operations. The road must be posted at appropriate distances from the sale area to warn of logging activity and truck traffic. Signs must be removed when harvest operations are suspended or completed. The Purchaser will provide these signs.



TIMBER SALE MAP

This information provided by authority of Part 525, 1994 PA 451, as amended.

Sale Number	Year
63-005-22	2022

Forest Management Unit Cadillac	County Wexford	Mapped By Ventimiglia	Date 06/6/22	Page 1	of 1
Township 24N	Range 11W	Section(s) and Subdivision(s) Sections 25 and 26 Various	Scale 1:15,840		

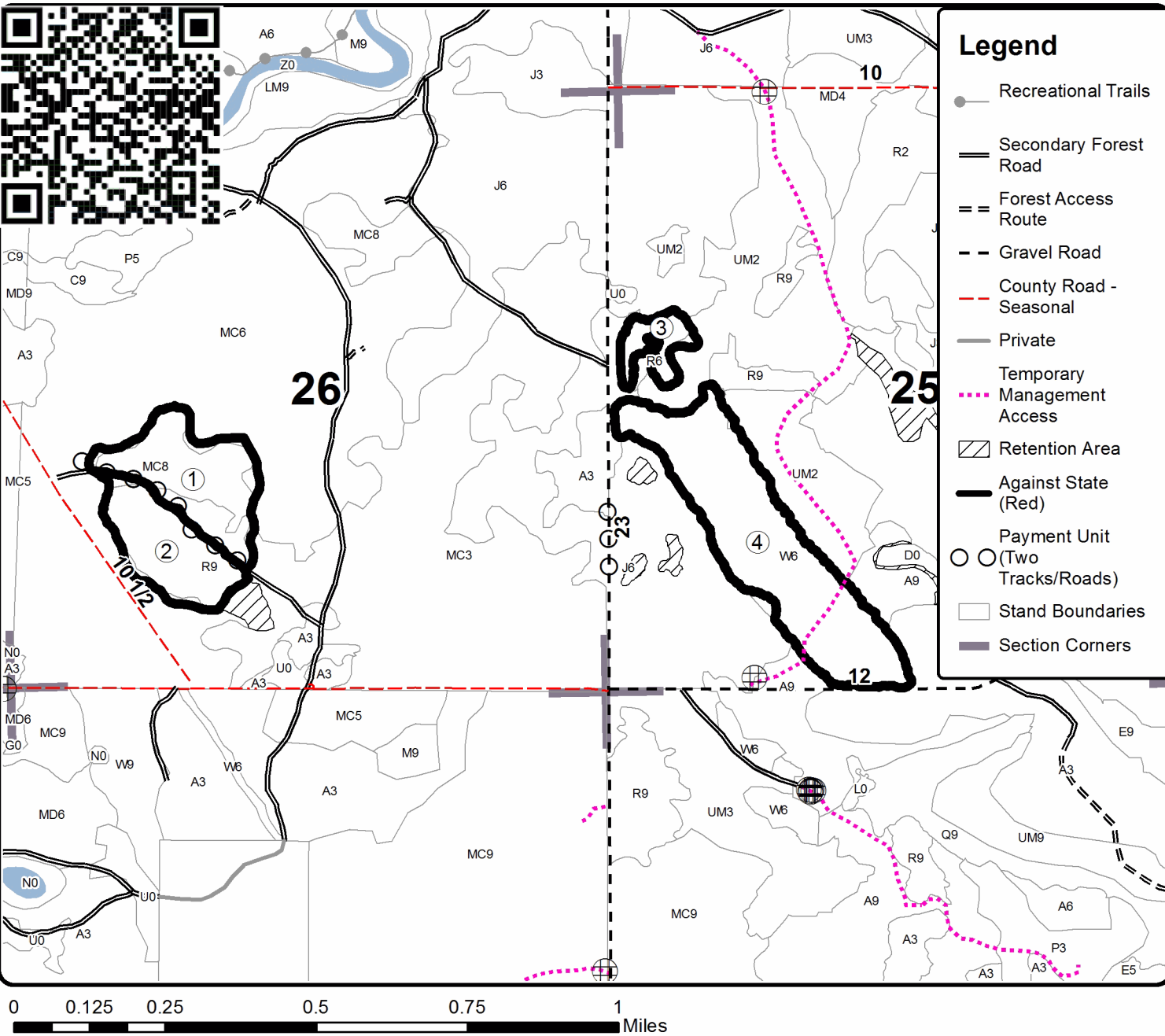
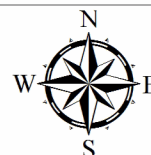
Cover Type				Density	
A = Aspen	H = Hemlock	N = Marsh	U = Upland Brush	0 = Non Stocked	5 = Pole Timber Medium
B = Paper Birch	J = Jack Pine	O = Oak	UM = Upland Mixed	1 = Seedling Sapling Poor	6 = Pole Timber Well
C = Cedar	L = Lowland Brush	P = Lowland Poplar	V = Bog or Marsh	2 = Seedling Sapling Medium	7 = Saw Timber Poor
D = Treed Bog	LM = Lowland Mixed	Q = Mixed Swamp Conifer	W = White Pine	3 = Seedling Sapling Well	8 = Saw Timber Medium
E = Swamp Hdwoods	M = Mpl, Bch, Brch	R = Red Pine	X = Non Stocked	4 = Pole Timber Poor	9 = Saw Timber Well
F = Spruce Fir	MC = Mixed Conifer	S = Black Spruce	Z = Water		
G = Grass	MD = Mixed Deciduous	T = Tamarack			

PU	Acres	PU	Acres
1	22.4	4	48.8
2	18.2		
3	5.9		

Deer Camp Pinery

Compartment 133

95.2 Acres



Pine Country Aspen (63-003-22)

T24N, R10W, SEC. 30; T24N, R10W, SEC. 31; T24N, R11W, SEC. 24; T24N,

In response to the notice of sale to be held 3:00 p.m. (local time) on October 26, 2022, I am hereby submitting my sealed bid (firm offer) for the following forest products to be cut. Bids for individual species must be at or above the advertised price. All non-responsive bid forms may be rejected.

<u>PRODUCTS & SPECIES</u>	<u>ESTIMATED VOLUME*</u>	<u>ADVERTISED PRICE</u>	<u>BID PRICE/UNIT</u>
Sawtimber			
B. T. Aspen	229.0 MBF	\$ 70.00/MBF	\$ _____
Jack Pine	11.6 MBF	\$ 13.00/MBF	\$ _____
Red Maple	65.2 MBF	\$ 70.00/MBF	\$ _____
Red Oak	23.8 MBF	\$ 142.00/MBF	\$ _____
Red Pine	39.3 MBF	\$ 82.00/MBF	\$ _____
White Pine	35.3 MBF	\$ 57.00/MBF	\$ _____
Pulpwood			
B. T. Aspen	1,806 Cords	\$ 20.65/Cord	\$ _____
Balsam Fir	18 Cords	\$ 9.80/Cord	\$ _____
Black Cherry	22 Cords	\$ 15.95/Cord	\$ _____
Jack Pine	119 Cords	\$ 10.70/Cord	\$ _____
Red Maple	578 Cords	\$ 15.95/Cord	\$ _____
Red Oak	40 Cords	\$ 22.00/Cord	\$ _____
Red Pine	40 Cords	\$ 35.30/Cord	\$ _____
White Pine	206 Cords	\$ 14.15/Cord	\$ _____

*The volumes are statistically estimated within plus (+) or minus (-) 9.85 percent at 95% confidence level. These estimated volumes are final and not subject to adjustment. Prospective bidders are urged to examine this timber and to make their own estimates of quantity and quality.

I understand that any or all bids may be rejected. All bids must be signed and all bid items must be bid or the bid form may be rejected. I also understand that consideration and awarding a contract will be based upon my past performance and ability to complete the contract based upon equipment and staffing subject to my control.

FEDERAL ID: _____ - _____ or SOCIAL SECURITY NUMBER: _____ - _____ - _____

Company or individual bidding: _____

Company representative's name: _____

Address: _____

City: _____ State: _____ Zip: _____

IF AVAILABLE, PLEASE PLACE THE PERSONALIZED LABEL FROM YOUR PROSPECTUS IN THE ABOVE BOX.

Individual or company representative's signature: _____ Date: _____

Phone number : _____ Email (optional): _____

THE WINNING BIDDER MUST COMPLETE THE VERIFICATION OF WORKER'S DISABILITY COMPENSATION ACT COMPLIANCE (ON REVERSE SIDE IF DOUBLE SIDED) WITHIN 21 DAYS OF SALE AWARD DATE



FOR DEPARTMENT USE ONLY
Sale Number (XX - XXX - XX - XX)
Forest Management Unit:

TIMBER SALE VERIFICATION OF WORKER'S DISABILITY COMPENSATION ACT COMPLIANCE

*As required by Act 317, P.A. 1969 (Worker's Compensation) and
Part 5 of Act 451 of 1994, as amended.*

VERIFICATION OF WORKER'S DISABILITY COMPENSATION ACT COMPLIANCE

- This verification must be completed and submitted within 21 days of contract award and prior to the issuance of the timber sale contract.
- In addition, if boxes 2B or 2C are checked, then Notice of Exclusion or Certificate of Insurance must be submitted within twenty-one (21) days of the contract award and prior to the issuance of the timber sale contract.
- All information must be typed or printed except for written signatures.

Please Check Appropriate Categories:

1. My business is organized as (you **must** check one of the boxes below):
 - A. Sole Proprietorship (individual)
 - B. Partnership
 - C. Corporation
2. You **must** check one of the boxes below:
 - A. I certify my business is a sole proprietorship and it has no employees but the sole proprietor. I am not subject to the Worker's Compensation Laws.
 - B. I certify my business has satisfied its obligation to the Worker's Compensation Act through the use of an approved Notice of Exclusion (BWC-337, Rev. 5/96). I will provide a copy of the Notice of Exclusion within 21 days of the contract award. (For questions or a copy of the BWC-337, please call the Worker's Compensation Bureau at 517-322-1195).
 - C. I certify my business has a Worker's Compensation Policy. I will provide an original Certificate of Insurance within twenty-one (21) days of the contract award.
3. If you have checked item 2(A) or 2(B), you **must** indicate the number of **both** full-time and part-time employees, other than yourself, including family members and active partners (if none, you must enter "0").

_____ Full-time Employees

_____ Part-time Employees

Name of Business		Federal ID (or) Social Security No.	
Address		Telephone ()	
City	State	ZIP	

I hereby certify that the above information is true and correct. I agree to notify the Michigan DNR of any changes that occur in factors affecting my coverage during any of my present and future operations.

Signature of Owner or Authorized Representative

Title

Date

Please complete the "SEALED BID" information on the next page

Manton Zone Jack Pine (63-004-22)
T24N, R11W, SEC. 23; T24N, R11W, SEC. 24; T24N, R11W, SEC. 25; T24N,

In response to the notice of sale to be held 3:00 p.m. (local time) on October 26, 2022, I am hereby submitting my sealed bid (firm offer) for the following forest products to be cut. Bids for individual species must be at or above the advertised price. All non-responsive bid forms may be rejected.

<u>PRODUCTS & SPECIES</u>	<u>ESTIMATED VOLUME*</u>	<u>ADVERTISED PRICE</u>	<u>BID PRICE/UNIT</u>
Sawtimber			
B. T. Aspen	82.6 MBF	\$ 95.00/MBF	\$ _____
Jack Pine	147.2 MBF	\$ 18.00/MBF	\$ _____
Red Oak	50.6 MBF	\$ 193.00/MBF	\$ _____
Red Pine	231.0 MBF	\$ 112.00/MBF	\$ _____
White Oak	12.7 MBF	\$ 62.00/MBF	\$ _____
White Pine	191.0 MBF	\$ 78.00/MBF	\$ _____
Pulpwood			
B. T. Aspen	354 Cords	\$ 28.20/Cord	\$ _____
Black Cherry	25 Cords	\$ 21.75/Cord	\$ _____
Jack Pine	2,772 Cords	\$ 14.55/Cord	\$ _____
Red Maple	291 Cords	\$ 21.75/Cord	\$ _____
Red Oak	73 Cords	\$ 30.00/Cord	\$ _____
Red Pine	268 Cords	\$ 48.15/Cord	\$ _____
White Oak	30 Cords	\$ 30.00/Cord	\$ _____
White Pine	295 Cords	\$ 19.35/Cord	\$ _____

*The volumes are statistically estimated within plus (+) or minus (-) 6.06 percent at 95% confidence level. These estimated volumes are final and not subject to adjustment. Prospective bidders are urged to examine this timber and to make their own estimates of quantity and quality.

I understand that any or all bids may be rejected. All bids must be signed and all bid items must be bid or the bid form may be rejected. I also understand that consideration and awarding a contract will be based upon my past performance and ability to complete the contract based upon equipment and staffing subject to my control.

FEDERAL ID: _____ - _____ or SOCIAL SECURITY NUMBER: _____ - _____ - _____

Company or individual bidding: _____

Company representative's name: _____

Address: _____

City: _____ State: _____ Zip: _____

IF AVAILABLE, PLEASE PLACE THE PERSONALIZED LABEL FROM YOUR PROSPECTUS IN THE ABOVE BOX.

Individual or company representative's signature: _____ Date: _____

Phone number : _____ Email (optional): _____

THE WINNING BIDDER MUST COMPLETE THE VERIFICATION OF WORKER'S DISABILITY COMPENSATION ACT COMPLIANCE (ON REVERSE SIDE IF DOUBLE SIDED) WITHIN 21 DAYS OF SALE AWARD DATE



FOR DEPARTMENT USE ONLY	
Sale Number (XX - XXX - XX - XX)	
Forest Management Unit:	

TIMBER SALE VERIFICATION OF WORKER'S DISABILITY COMPENSATION ACT COMPLIANCE

As required by Act 317, P.A. 1969 (Worker's Compensation) and
Part 5 of Act 451 of 1994, as amended.

VERIFICATION OF WORKER'S DISABILITY COMPENSATION ACT COMPLIANCE

- This verification must be completed and submitted within 21 days of contract award and prior to the issuance of the timber sale contract.
- In addition, if boxes 2B or 2C are checked, then Notice of Exclusion or Certificate of Insurance must be submitted within twenty-one (21) days of the contract award and prior to the issuance of the timber sale contract.
- All information must be typed or printed except for written signatures.

Please Check Appropriate Categories:

1. My business is organized as (you **must** check one of the boxes below):
 - A. Sole Proprietorship (individual)
 - B. Partnership
 - C. Corporation
2. You **must** check one of the boxes below:
 - A. I certify my business is a sole proprietorship and it has no employees but the sole proprietor. I am not subject to the Worker's Compensation Laws.
 - B. I certify my business has satisfied its obligation to the Worker's Compensation Act through the use of an approved Notice of Exclusion (BWC-337, Rev. 5/96). I will provide a copy of the Notice of Exclusion within 21 days of the contract award. (For questions or a copy of the BWC-337, please call the Worker's Compensation Bureau at 517-322-1195).
 - C. I certify my business has a Worker's Compensation Policy. I will provide an original Certificate of Insurance within twenty-one (21) days of the contract award.
3. If you have checked item 2(A) or 2(B), you **must** indicate the number of **both** full-time and part-time employees, other than yourself, including family members and active partners (if none, you must enter "0").

_____ Full-time Employees

_____ Part-time Employees

Name of Business		Federal ID (or) Social Security No.	
Address		Telephone ()	
City	State	ZIP	

I hereby certify that the above information is true and correct. I agree to notify the Michigan DNR of any changes that occur in factors affecting my coverage during any of my present and future operations.

Signature of Owner or Authorized Representative

Title

Date

Please complete the "SEALED BID" information on the next page

Deer Camp Pinery (63-005-22)
T24N, R11W, SEC. 25; T24N, R11W, SEC. 26; Wexford COUNTY

In response to the notice of sale to be held 3:00 p.m. (local time) on October 26, 2022, I am hereby submitting my sealed bid (firm offer) for the following forest products to be cut. Bids for individual species must be at or above the advertised price. All non-responsive bid forms may be rejected.

<u>PRODUCTS & SPECIES</u>	<u>ESTIMATED VOLUME*</u>	<u>ADVERTISED PRICE</u>	<u>BID PRICE/UNIT</u>
Sawtimber			
B. T. Aspen	18.3 MBF	\$ 70.00/MBF	\$ _____
Jack Pine	71.1 MBF	\$ 22.00/MBF	\$ _____
Red Maple	14.6 MBF	\$ 70.00/MBF	\$ _____
Red Pine	416.1 MBF	\$ 82.00/MBF	\$ _____
White Pine	170.8 MBF	\$ 57.00/MBF	\$ _____
Pulpwood			
B. T. Aspen	102 Cords	\$ 20.65/Cord	\$ _____
Jack Pine	219 Cords	\$ 10.70/Cord	\$ _____
Red Maple	32 Cords	\$ 15.95/Cord	\$ _____
Red Oak	18 Cords	\$ 22.00/Cord	\$ _____
Red Pine	318 Cords	\$ 35.30/Cord	\$ _____
White Pine	781 Cords	\$ 14.15/Cord	\$ _____

*The volumes are statistically estimated within plus (+) or minus (-) 13.46 percent at 95% confidence level. These estimated volumes are final and not subject to adjustment. Prospective bidders are urged to examine this timber and to make their own estimates of quantity and quality.

I understand that any or all bids may be rejected. All bids must be signed and all bid items must be bid or the bid form may be rejected. I also understand that consideration and awarding a contract will be based upon my past performance and ability to complete the contract based upon equipment and staffing subject to my control.

FEDERAL ID: _____ or SOCIAL SECURITY NUMBER: _____

Company or individual bidding: _____

Company representative's name: _____

Address: _____

City: _____ State: _____ Zip: _____

IF AVAILABLE, PLEASE PLACE THE PERSONALIZED LABEL FROM YOUR PROSPECTUS IN THE ABOVE BOX.

Individual or company representative's signature: _____ Date: _____

Phone number : _____ Email (optional): _____

THE WINNING BIDDER MUST COMPLETE THE VERIFICATION OF WORKER'S DISABILITY COMPENSATION ACT COMPLIANCE (ON REVERSE SIDE IF DOUBLE SIDED) WITHIN 21 DAYS OF SALE AWARD DATE



FOR DEPARTMENT USE ONLY	
Sale Number (XX - XXX - XX - XX)	
Forest Management Unit:	

TIMBER SALE VERIFICATION OF WORKER'S DISABILITY COMPENSATION ACT COMPLIANCE

As required by Act 317, P.A. 1969 (Worker's Compensation) and
Part 5 of Act 451 of 1994, as amended.

VERIFICATION OF WORKER'S DISABILITY COMPENSATION ACT COMPLIANCE

- This verification must be completed and submitted within 21 days of contract award and prior to the issuance of the timber sale contract.
- In addition, if boxes 2B or 2C are checked, then Notice of Exclusion or Certificate of Insurance must be submitted within twenty-one (21) days of the contract award and prior to the issuance of the timber sale contract.
- All information must be typed or printed except for written signatures.

Please Check Appropriate Categories:

1. My business is organized as (you **must** check one of the boxes below):
 - A. Sole Proprietorship (individual)
 - B. Partnership
 - C. Corporation
2. You **must** check one of the boxes below:
 - A. I certify my business is a sole proprietorship and it has no employees but the sole proprietor. I am not subject to the Worker's Compensation Laws.
 - B. I certify my business has satisfied its obligation to the Worker's Compensation Act through the use of an approved Notice of Exclusion (BWC-337, Rev. 5/96). I will provide a copy of the Notice of Exclusion within 21 days of the contract award. (For questions or a copy of the BWC-337, please call the Worker's Compensation Bureau at 517-322-1195).
 - C. I certify my business has a Worker's Compensation Policy. I will provide an original Certificate of Insurance within twenty-one (21) days of the contract award.
3. If you have checked item 2(A) or 2(B), you **must** indicate the number of **both** full-time and part-time employees, other than yourself, including family members and active partners (if none, you must enter "0").

_____ Full-time Employees

_____ Part-time Employees

Name of Business		Federal ID (or) Social Security No.	
Address		Telephone ()	
City	State	ZIP	

I hereby certify that the above information is true and correct. I agree to notify the Michigan DNR of any changes that occur in factors affecting my coverage during any of my present and future operations.

Signature of Owner or Authorized Representative

Title

Date

Please complete the "SEALED BID" information on the next page