



**DEPARTMENT OF NATURAL RESOURCES
STATE OF MICHIGAN
TIMBER SALE PROSPECTUS #7237**

SCHEDULED SALE DATE AND TIME: 10:00 a.m. (local time) on May 18, 2023.

LOCATION: GLADWIN MGMT UNIT, 801 NORTH SILVERLEAF, GLADWIN, MI 48624.

PROSPECTUS NOTE: The bidder is advised to inspect the sale area and review the location, estimated volumes, operating costs and contract terms of proposed sales. Please be aware that some landowners may request 60 days or more notice for access across their land.

Notice is hereby given that bids will be received by the Unit Manager, GLADWIN MANAGEMENT UNIT, for certain timber on the following described lands:

Old Secord Shores (73-004-22) / T18N, R01E, SEC. 10, N1/2NW,SWNW.

T18N, R01E, SEC. 2 , S1/2NW.

T18N, R01E, SEC. 3 , SW,W1/2SE.

T18N, R01E, SEC. 9 , E1/2NE.

T19N, R01E, SEC. 34, NENW.

T19N, R01E, SEC. 35, S1/2SW.

Gladwin County, Advertised Price \$185,833.95, 162.6 Acres, Aspen, Hardwood.

SALE NOTE: Several of the units are seasonally wet so they should only be harvested during to dry or frozen conditions. The gate on the south road is locked from March 31 thru September 1. The gate is to be locked at the end of each work day during this period. Also the soils under the trail at the south end are clay so they are prone to rutting and dry out slowly in the spring.

Black 3 Rivers (73-005-22) / T18N, R01E, SEC. 2 , S1/2NE,SE.

T19N, R01E, SEC. 35, NENE,S1/2NE,SE.

T19N, R01E, SEC. 36, SWSW.

Gladwin County, Advertised Price \$183,598.65, 177.7 Acres, Aspen, Hardwood.

SALE NOTE: Some units are seasonally wet and should only be harvested during dry or frozen conditions. Access to units 9, 10, and 11 will require a temporary culvert to cross a broad drainage. Access to the northeastern portion of unit 8 will require a culvert to cross a drainage ditch along Three Rivers Road and permission from road commission. Crossing from the western portion of unit 8 to the eastern portion of unit 8 is possible but would require a stream crossing permit. The creek is a man made drain that flows in the spring through early summer.

A recreation site such as a trail, pathway, or campground is within the sale area or the vicinity. Certain restrictions/specifications may be applicable including time restrictions.

BID INSTRUCTIONS (VER. 10/10/2022):

1. Scheduled Bid Location, Date, and Time (2/11)

Bids must be received by the Unit Manager, GLADWIN OFFICE, 801 NORTH SILVERLEAF, GLADWIN, MI 48624, no later than 10:00 a.m. (local time) on May 18, 2023. For further information concerning this sale, contact Blair Tweedale at 989-426-9205 extension 7640.

2. Bidder's Qualifications (10/22)

If all or part of a timber sale was prepared by a private contractor, the contractor and that contractor's company are not permitted to bid on the timber sale. A person must be 18 years of age or older to purchase timber. Permanent employees of the Department of Natural Resources or members of their immediate household may not bid. Former employees, in the permanent or seasonal class, may not bid until 3 months after the last day of active duty. Bids will not be accepted from individuals or companies appearing on the DNR/FRD No-Bid List. This list contains the names of purchasers who previously failed to execute a contract within 21-days or who have a history of poor performance.

3. Preparation of Sealed Bids (5/16)

Bid Forms may be completed online thru Michigan DNR Timber Sale Online Bidding (OLB) at www.michigan.gov/timberbidding or by completing the hardcopy Bid Form found in the Timber Sale Prospectus. Hardcopy Bid Forms shall be manually signed in ink. Registration in OLB is considered your 'signature' for all bids submitted thru that system. Bid prices must be entered for each species and product in the Bid Price column for all material subject to bidding and all fill-in blanks must be completed. If erasures or other changes appear on the hardcopy Bid Form, each erasure or change must be initialed by the person signing the bid.

4. Submission of Sealed Bids (5/16)

Bid forms may be obtained from the Unit Manager or thru OLB. Bids may be submitted hardcopy or thru OLB. All hardcopy bids must be submitted on the bid form and in an envelope clearly identified as described in this section. NOTE: Only one bid form per bid envelope. Sealed bids must be submitted to the Unit office designated in the prospectus and must be submitted at or prior to the time established in the prospectus. The envelope should show on the outside (a) the sale name or number and (b) the date and time of bid opening, as shown in the prospectus. Bids received after the time specified in the sale prospectus are late bids and will be rejected.

It is possible for a bidder to submit multiple bids on a single sale. For example, a bid may be submitted hardcopy and a bid may be submitted thru OLB. Or, two bidders from the same company could both submit bids on the same sale. If this were to happen, the State would accept all bids received and award the contract accordingly. All bidding and contractual requirements would apply to all bids received.

5. Public Opening of Sealed Bids (7/16)

If conditions permit, the sealed bids will be publicly opened and posted at the time and place set in the prospectus.

If a bidder, present at a bid opening, has submitted bids on more than one sale, that bidder may withdraw their unopened bid envelopes or announce the withdrawal of their online bid after being declared the successful bidder on one sale.

6. Award of Contract (1/11)

Award of the contract will be made to the Bidder whose bid, conforming to the prospectus, is most advantageous to the State of Michigan on the basis of total value at rates bid for the estimated quantities. The State reserves the right to reject any bid or waive any minor irregularity in bids received. A written award mailed (or otherwise furnished) to the successful Bidder shall be deemed to result in a binding contract without further action by either party.

7. Down Payment (1/11)

The Bidder to whom award is made must make a down payment within 21 days of the sale award. The amount of the down payment will be calculated as shown in the Bond and Payment Schedule of this prospectus. Only cash may be used to meet this requirement.

8. Performance Security (1/11)

As guarantee of faithful performance, a cash bond, certificate of deposit, surety bond or irrevocable letter of credit (LOC) is required within 21 days of the sale award. The amount of the performance security is shown in the Bond and

Payment Schedule of this prospectus. If an LOC or surety is used, the coverage must extend for at least 6 months beyond the contract expiration.

9. Worker's Compensation (10/22)

Purchaser shall obtain worker's compensation insurance to cover claims under Michigan's Worker's Disability Compensation Act of 1969 or similar employee benefit act of any other state applicable to an employee. Verification of Worker's Disability Compensation Act Compliance must be completed and submitted within 21 days of contract award and prior to the issuance of the timber sale contract. In addition, if applicable, Notice of Exclusion or Certificate of Insurance must also be submitted.

10. Timber Sale Contract (10/22)

Additional conditions and requirements common to all timber sales are listed on the timber sale contract (R4031) and are available on line at www.michigan.gov/timber. Contact the Unit Manager for additional information or a sample contract. Within 21 days of the date of the award letter, the bidder must sign the contract and provide the required down payment, performance security, and verification of worker's disability compensation. The down payment and performance security shall be in accordance with the provisions of the timber sale contract, in the sums stated in this prospectus. If these actions are not taken, then the Bidder, the Bidder's corporation, and the corporation's principals may not be permitted to bid on State timber sales for a period of 3 months after the first offense, 6 months after the second offense, and 1 year after the third offense. An offense will only be counted against the Bidder for 5 years. In addition, the Bidder certifies that if awarded this contract, the Bidder will complete the timber sale contract in accordance with its terms and any modifications thereof including requirements to purchase, cut, and remove the included timber by the expiration date.

Payment Unit values in the State Forest Timber Sale Contract are calculated based on the advertised value of the Payment Unit as a percentage of the total advertised value of the contract. The advertised value of each Payment Unit is given in the Description of Timber by Payment Unit table on the Timber Sale Information page. For example, if the value of Payment Unit 1 is advertised as \$1,500 and the total Timber Sale value is advertised as \$10,000, the contract price for Payment Unit 1 will be 15% of the total bid price ($\$1,500/\$10,000 * 100$).

11. Disclaimer of Estimates and Bidder's Warranty of Inspection (10/22)

Before submitting this bid, the Bidder is advised and cautioned to inspect the sale area, review the requirements of the sale contract, and take other steps as may be reasonably necessary to ascertain the location, estimated volumes, construction estimates, and operating costs of the proposed sale. Failure to do so will not relieve the Bidder from responsibility for completing the contract.

The Bidder warrants that this bid is submitted solely on the basis of the Bidder's examination and inspection of the quality and quantity of the timber offered for sale and the Bidder's opinion of the value thereof and the costs of recovery. No reliance should be placed on the State of Michigan's estimates of timber quality, quantity or costs of recovery. Bidder further acknowledges that the State of Michigan: (i) expressly disclaims any warranty of fitness of timber for any purpose; (ii) offers this timber as is without any warranty of quality (merchantability) or quantity and (iii) expressly disclaims any warranty as to the quantity or quality of timber sold.

12. Certification and Chain-of-Custody (10/22)

Unless otherwise indicated in the contract under section 7 – Other Conditions of the Sale Specific Conditions & Requirements, the area encompassed by this timber sale is certified to the standards of the Forest Stewardship Council (FSC) - Certificate #SCS-FM/COC-00090N and the Sustainable Forestry Initiative (SFI) - Certificate #NSF-SFIS-5Y031-SF5. Forest products from this sale may be delivered to the mill as "FSC 100% and / or SFI certified" as long as the contractor hauling the forest products is chain-of-custody (COC) certified or covered under a COC certificate from the destination mill. The purchaser is responsible for maintaining COC after leaving the sale area.

13. Good Neighbor Authority (GNA) Requirements (10/22)

If the name of this timber sales contains the acronym GNA, it is authorized by the Good Neighbor Authority (GNA) and covered by various agreements between the U.S. Forest Service and the State. The timber sale occurs on federal land and the following conditions apply:

GNA contracts on US Forest Service land will not be awarded to purchasers on the Federal list of excluded parties. The System for Award Management (SAM) will be checked for active excluded parties prior to award of contract. In

addition, the Bidder to whom award is made must complete an Assurance Regarding Felony Conviction or Tax Delinquent Status for Corporate Applicants (AD-3031).

14. Good Neighbor Authority (GNA) Requirements, con't (10/22)

Bidder certifies, by signing this bid form, that to the best of Bidder's knowledge that the following representations are accurate and complete.

- a. That the Bidder and its principals are not presently debarred, suspended, proposed for debarment, declared ineligible, or voluntary excluded from timber sales (covered transactions) by any Federal department or agency.
- b. That the Bidder and its principals have not within a 3-year period preceding this bid been convicted of or had a civil judgment rendered against them for commission of fraud or a criminal offense in connection with obtaining , attempting to obtain, or performing a public (Federal, State, or local) transaction or contract under a public transaction; violation of Federal or State antitrust statutes or commission of embezzlement, theft, forgery, bribery, falsification or destruction of records, making false statements, or receiving stolen property.
- c. That the Bidder and its principals are not presently indicted for or otherwise criminally or civilly charged by a governmental entity (Federal, State, or local) with commission of any of the offenses enumerated in paragraph b of this certification.
- d. That the Bidder and its principals have not within a 3-year period preceding this bid had one or more public transactions (Federal, State, or local) terminated for breach or default of a timber or forest product contract.

Bidders that cannot certify this requirement, in whole or in part, shall submit an explanation with their bid.

SHANNON LOTT, Acting
Director

TIMBER SALE INFORMATION

Old Secord Shores (73-004-22)

T18N, R01E, SEC. 10; T18N, R01E, SEC. 2; T18N, R01E, SEC. 3; T18N, R01E, SEC. 9; T19N, R01E, SEC. 34; T19N, R01E, SEC. 35.
Gladwin County (Advertised Price \$185,833.95)

SALE NOTE: Several of the units are seasonally wet so they should only be harvested during to dry or frozen conditions. The gate on the south road is locked from March 31 thru September 1. The gate is to be locked at the end of each work day during this period. Also the soils under the trail at the south end are clay so they are prone to rutting and dry out slowly in the spring.

A timber sale contract for this lump sum, sealed bid timber sale will be awarded to the responsible bidder offering the highest sealed bid price. All units of volume listed below were estimated using the Inventory Manager computer program and the new Michigan taper model. Bids must be at or above the following advertised price for each product and species:

<u>PRODUCTS & SPECIES</u>	<u>ESTIMATED UNITS*</u>	<u>ADVERTISED PRICE</u>
Sawtimber		
Black/Red (Hybrid) Oak	72.0 MBF	\$ 84.00 / MBF
Mixed Aspen	318.5 MBF	\$ 94.00 / MBF
Red Maple	92.4 MBF	\$ 63.00 / MBF
Red Pine	30.2 MBF	\$ 116.00 / MBF
White Pine	128.2 MBF	\$ 82.00 / MBF
Pulpwood		
Black/Red (Hybrid) Oak	280 Cords	\$ 17.35 / Cord
Jack Pine	19 Cords	\$ 25.20 / Cord
Mixed Aspen	2,830 Cords	\$ 34.55 / Cord
Mixed Hardwood	106 Cords	\$ 21.80 / Cord
Red Maple	622 Cords	\$ 21.80 / Cord
Red Pine	169 Cords	\$ 51.25 / Cord
White Pine	73 Cords	\$ 32.40 / Cord

* The total volume is statistically estimated within plus (+) or minus (-) 12.16 percent. There are an estimated 5,385 cords on this timber sale, plus or minus 655 cords at the 95% confidence level. The estimated units are final and not subject to adjustment. Prospective bidders are urged to examine this timber and to make their own estimates of quantity and quality.

BOND AND PAYMENT SCHEDULE:

1. A bond in the amount of \$9,292.00 to insure faithful performance of the conditions of the contract will be deposited by the successful bidder within 21 days of the sale award.
2. Cutting in any sale or unit without the required advance payment would be considered a trespass.
3. Total payment must be paid in advance or according to the following schedule :
 - (a) Ten percent (10%) of the sale value must be paid within 21 days of the sale award.
 - (b) The 10% down payment will be credited towards the first unit cut.
 - (c) Payment for each of the following units must be made before cutting begins in that unit:

PAYMENT UNIT NUMBER	PERCENT OF TOTAL SALE VALUE
01	3.5%
02	3.2%
03	27.1%
04	24.6%
05	4.4%
06	3.7%
07	7.7%
08	9.9%
09	5.7%
10	10.2%

4. If no cutting takes place, the 10% down payment will not be refunded.
5. Operations on the contract issued will terminate on 06/30/2025.

SALE STATISTICS

Volumes were calculated in cubic feet using the Michigan taper model. Cubic foot volume includes all wood inside bark for the product indicated. For display purposes, cubic feet were converted to cords and MBF using a simple conversion factor, e.g. 79 cubic feet per cord and 185 cubic feet per MBF. The cubic foot volumes are precise; the cords and MBF volumes are not. Cubic foot volume cannot be directly converted to cords or boards with precision.

SALE VOLUMES

The total estimated sale volume may not equal the sum of the species/products due to the nature of statistical calculations associated with double sampling methodology.

VOLUME			STATISTICAL RANGE IN CORDS	
TOTAL CUBIC FEET	TOTAL CORDS	PERCENT ERROR	MINIMUM	MAXIMUM
425,437	5,385	12.16%	4,730	6,040

VDU VOLUMES

A VDU is a Volume Determination Unit. Volumes and their associated statistics are calculated at the VDU level and summarized to the sale level. There is often a one to one relationship between a VDU and a Payment Unit, but not always, depending on the cruise design. Refer to the VDU TO PAYMENT UNIT table.

	VOLUME			RANGE IN CORDS	
VDU	TOTAL CUBIC FEET	TOTAL CORDS	PERCENT ERROR	MINIMUM	MAXIMUM
56	17,376	220	41.80%	128	312
132	15,418	195	44.30%	109	282
142	44,540	564	23.18%	433	694
151	16,535	209	39.00%	128	291
156	21,878	277	30.36%	193	361
157	206,082	2,609	15.16%	2,213	3,004
328	18,266	231	27.41%	168	295
366	85,341	1,080	19.97%	865	1,296
TOTAL:	425,437	5,385		4,236	6,535

VDU TO PAYMENT UNIT

When a VDU is associated with more than one Payment Unit (PU), the VDU volumes are assigned to the PU based on acres of the VDU within the PU.

VDU	VDU ACRES	PU	PU ACRES
56	8.5	1	8.5
132	8.1	6	8.1
142	12.6	10	12.6
151	13.2	9	13.2
156	17.3	5	17.3
157	46.4	3	24.3
		4	22.1
328	20.4	2	20.4
366	36.1	7	15.8
		8	20.3
TOTAL:	162.6		162.6

DESCRIPTION OF TIMBER BY PAYMENT UNIT (PU)

PU	MARKET GROUP	PRODUCT	QUANTITY	UNIT	ACRES	ADVERTISE PRICE	
1	Mixed Aspen	Sawtimber	12.7	MBF	8.5	\$6,485.55	
	<i>B. T. Aspen</i>		12.7	<i>MBF</i>			
	Red Maple		20.3	MBF			
	Red Pine		3.7	MBF			
	White Pine		10.9	MBF			
	Black/Red (Hybrid)		Pulpwood	4			Cords
	Mixed Aspen			12			Cords
	<i>B. T. Aspen</i>			12			<i>Cords</i>
	Mixed Hardwood			12			Cords
	<i>Paper Birch</i>			12			<i>Cords</i>
	Red Maple			69			Cords
	Red Pine			1			Cords
	White Pine			12			Cords
2	Black/Red (Hybrid)	Sawtimber	44.2	MBF	20.4	\$5,912.80	
	Mixed Aspen		1.9	MBF			
	<i>B. T. Aspen</i>		1.1	<i>MBF</i>			
	<i>Quaking Aspen</i>		0.8	<i>MBF</i>			
	Red Maple		1.1	MBF			
	Black/Red (Hybrid)		Pulpwood	99			Cords
	Mixed Aspen			3			Cords
	<i>Quaking Aspen</i>			3			<i>Cords</i>
	Red Maple			6			Cords
3	Black/Red (Hybrid)	Sawtimber	2.3	MBF	24.3	\$50,367.10	
	Mixed Aspen		123.6	MBF			
	<i>B. T. Aspen</i>		123.6	<i>MBF</i>			
	Red Maple		18.2	MBF			
	White Pine		5.3	MBF			
	Black/Red (Hybrid)		Pulpwood	17			Cords
	Mixed Aspen			997			Cords
	<i>B. T. Aspen</i>			896			<i>Cords</i>
	<i>Quaking Aspen</i>			101			<i>Cords</i>
	Mixed Hardwood			4			Cords
	<i>Paper Birch</i>			4			<i>Cords</i>
	Red Maple			91			Cords
	White Pine			5			Cords
4	Black/Red (Hybrid)	Sawtimber	2.1	MBF	22.1	\$45,749.30	
	Mixed Aspen		112.5	MBF			
	<i>B. T. Aspen</i>		112.5	<i>MBF</i>			
	Red Maple		16.5	MBF			
	White Pine		4.8	MBF			
	Black/Red (Hybrid)		Pulpwood	15			Cords
	Mixed Aspen			905			Cords
	<i>B. T. Aspen</i>			814			<i>Cords</i>
	<i>Quaking Aspen</i>			91			<i>Cords</i>
	Mixed Hardwood			3			Cords
	<i>Paper Birch</i>			3			<i>Cords</i>
	Red Maple			83			Cords
	White Pine			5			Cords
5	Black/Red (Hybrid)	Sawtimber	9.5	MBF	17.3	\$8,243.90	
	Mixed Aspen		11.2	MBF			
	<i>B. T. Aspen</i>		11.2	<i>MBF</i>			
	Red Maple		3.7	MBF			
	Red Pine		7.5	MBF			
	White Pine		6.4	MBF			
	Black/Red (Hybrid)		Pulpwood	52			Cords
	Jack Pine			3			Cords

DESCRIPTION OF TIMBER BY PAYMENT UNIT (PU), CON'T

PU	MARKET GROUP	PRODUCT	QUANTITY	UNIT	ACRES	ADVERTISE PRICE
5 con't	<i>Jack Pine</i>	<i>Pulpwood</i>	3	<i>Cords</i>		
	Mixed Aspen		63	Cords		
	<i>B. T. Aspen</i>		39	<i>Cords</i>		
	<i>Quaking Aspen</i>		24	<i>Cords</i>		
	Mixed Hardwood		12	Cords		
	<i>Paper Birch</i>		12	<i>Cords</i>		
	Red Maple		38	Cords		
	Red Pine		7	Cords		
	White Pine		5	Cords		
6	Black/Red (Hybrid)	Sawtimber	1.1	MBF	8.1	\$6,796.65
	Red Maple		2.8	MBF		
	White Pine		46.4	MBF		
	Black/Red (Hybrid)	Pulpwood	20	Cords		
	Mixed Aspen		39	Cords		
	<i>B. T. Aspen</i>		36	<i>Cords</i>		
	<i>Quaking Aspen</i>		3	<i>Cords</i>		
	Red Maple		13	Cords		
	White Pine		23	Cords		
7	Black/Red (Hybrid)	Sawtimber	4.7	MBF	15.8	\$14,372.85
	Mixed Aspen		14.6	MBF		
	<i>B. T. Aspen</i>		8.7	<i>MBF</i>		
	<i>Quaking Aspen</i>		5.9	<i>MBF</i>		
	Red Maple		3.4	MBF		
	White Pine		1.3	MBF		
	Black/Red (Hybrid)	Pulpwood	30	Cords		
	Mixed Aspen		261	Cords		
	<i>B. T. Aspen</i>		78	<i>Cords</i>		
	<i>Quaking Aspen</i>		183	<i>Cords</i>		
	Mixed Hardwood		20	Cords		
	<i>Misc. Species 1</i>		6	<i>Cords</i>		
	<i>Paper Birch</i>		14	<i>Cords</i>		
Red Maple		106	Cords			
8	Black/Red (Hybrid)	Sawtimber	6.1	MBF	20.3	\$18,433.00
	Mixed Aspen		18.7	MBF		
	<i>B. T. Aspen</i>		11.1	<i>MBF</i>		
	<i>Quaking Aspen</i>		7.6	<i>MBF</i>		
	Red Maple		4.3	MBF		
	White Pine		1.6	MBF		
	Black/Red (Hybrid)	Pulpwood	39	Cords		
	Mixed Aspen		335	Cords		
	<i>B. T. Aspen</i>		101	<i>Cords</i>		
	<i>Quaking Aspen</i>		234	<i>Cords</i>		
	Mixed Hardwood		24	Cords		
	<i>Misc. Species 1</i>		7	<i>Cords</i>		
	<i>Paper Birch</i>		17	<i>Cords</i>		
Red Maple		137	Cords			
9	Red Pine	Sawtimber	15.9	MBF	13.2	\$10,560.80
	White Pine		1.0	MBF		
	Black/Red (Hybrid)	Pulpwood	2	Cords		
	Mixed Aspen		10	Cords		
	<i>B. T. Aspen</i>		10	<i>Cords</i>		
	Red Maple		1	Cords		
	Red Pine		160	Cords		
	White Pine		1	Cords		
10	Black/Red (Hybrid)	Sawtimber	2.0	MBF	12.6	\$18,912.00
	Mixed Aspen		23.3	MBF		

DESCRIPTION OF TIMBER BY PAYMENT UNIT (PU), CON'T

PU	MARKET GROUP	PRODUCT	QUANTITY	UNIT	ACRES	ADVERTISE PRICE
10 con't	<i>B. T. Aspen</i>	<i>Sawtimber</i>	23.3	<i>MBF</i>		
	Red Maple		22.1	MBF		
	Red Pine		3.1	MBF		
	White Pine		50.5	MBF		
	Black/Red (Hybrid)	Pulpwood	2	Cords		
	Jack Pine		16	Cords		
	<i>Jack Pine</i>	<i>Sawtimber</i>	3.5	<i>MBF</i>		
	<i>Jack Pine</i>	<i>Pulpwood</i>	9	<i>Cords</i>		
	Mixed Aspen		205	Cords		
	<i>B. T. Aspen</i>		205	<i>Cords</i>		
	Mixed Hardwood		31	Cords		
	<i>Paper Birch</i>		31	<i>Cords</i>		
	Red Maple		78	Cords		
	Red Pine		1	Cords		
	White Pine		22	Cords		
TOTAL:			641.3	MBF		
TOTAL:			4,099	Cords		

Sale Specific Conditions & Requirements

Sale Name: Old Secord Shores

Sale Number: 73-004-22 Seq#: 1

1 - Sale Area

1.2 - Boundaries

1.2.1 - Painted boundaries (9/19)

The sale boundary and Payment Unit boundaries are marked and identified by blue, red and yellow paint. Exterior sale boundary lines against private property are marked with blue paint. Exterior sale boundary lines against state are marked with red paint. Interior Payment Unit boundaries are marked with yellow paint. Retention patches are marked with red paint; no harvesting activities may occur within these areas. Yellow painted trees designating an interior Payment Unit boundary are only to be cut when all surrounding Payment Units have been paid.

2 - Timber Specifications

2.1 - Included Timber

2.1.1 - Clearcut unit(s) with unmerchantable trees (6/14)

Within Payment Unit(s) 2, 4, 5, 6, 7, 8, and 10, cut all trees that are two (2) inches or more at DBH except trees marked with green paint above and below stump height. In addition, within unit 2 do not cut oak less than or equal to six (6) inches at DBH and within unit 6 retain all red pines.

2.1.3 - Cut tree marked unit(s) (12/08)

Within Payment Unit(s) 9, all trees are designated for cutting when marked with orange paint above and below stump height, regardless of merchantability.

2.1.7 - Leave tree marked unit(s) (6/14)

Within Payment Unit(s) 1 and 3, cut all trees that are two (2) inches or more at DBH except trees marked with green paint above and below stump height. In addition, within unit 3 retain all red pine.

3 - Payments

3.3 - Pre-measured Sales

3.3.4 - Dividing payment units (7/14)

Payment Unit(s) 3 and 4 may be divided at the request of the Purchaser and upon approval of the Unit Manager. Dividing Payment Units is a contract modification which requires a Timber Sale Contract Amendment.

3.4 - Damaged Timber

3.4.1 - Damaged timber (7/16)

General Condition and Requirement 3.4 Damaged Timber, defines liquidated damages for undesignated live merchantable trees which are cut or injured. In addition, extreme care should be taken to avoid damage to tree seedlings and saplings.

Within units 2, if more than 25% of the tree seedlings or saplings (1/4" to 4.5" DBH) within a specified portion of the sale area are damaged, liquidated damages will be assessed at \$300 per acre for all acreage within that specified portion of the sale area that was damaged.

No damage is acceptable to undesignated live merchantable trees. Within the sale area, if more than 5% of trees (> 4.5" DBH) within a specified area of the sale are damaged, liquidated damages will be assessed for all trees damaged. Rates will be in accordance with General Condition and Requirement 3.4 Damaged Timber.

4 - Transportation

4.1 - Construction

4.1.7 - Road closure (10/11)

All new roads built into the sale must be blocked to vehicle traffic upon completion of the sale. Overgrown roads that are reopened shall be considered new roads. These roads must be rendered impassable to cars and trucks. All stumps from road

building and landing construction must be reserved to block any newly constructed roads upon completion of the sale. These stumps must be scattered along the road system to prohibit vehicular movement. Contact the sale administrator for specific details of design and placement.

4.2 - Maintenance

4.2.5 - Two wheel drive condition (2/04)

All existing trail roads on and adjacent to the sale area must be passable by two-wheel drive traffic for the duration of the sale.

4.4 - Access

4.4.3 - Access gate (12/08)

The access gate must be locked at the completion of each day unless otherwise approved by the Unit Manager or his/her representative. Exception, between September 1 through March 1 the gate will be locked open.

5 - Operations

5.2 - Conduct of Operations

5.2.2 - Hazard Trees/Snags

5.2.2.1 - Den trees (10/16)

Obvious hollow and/or den trees shall be protected and left standing unless they are a safety hazard.

5.2.3 - Operating Restrictions

5.2.3.3 - Bark slippage restriction (3/09)

Within Payment Unit(s) 3 and 4, unless changed by written agreement, cutting and skidding are not permitted during the period of April 15 to July 15. This restriction is because of bark slippage.

5.2.3.4 - Oak wilt restriction, no exceptions (1/18)

Within Payment Unit(s) 2 cutting, skidding, hauling within the sale and brushing of access roads to the sale are not permitted during the period of April 15 to July 15. No exceptions will be granted. This is necessary to reduce the spread of oak wilt.

5.2.3.5 - Oak wilt restriction (1/18)

Within Payment Unit(s) 1, 2 and 6, unless changed by written agreement, cutting, skidding, hauling within the sale and brushing of access roads to the sale are not permitted during the period of April 15 to July 15. Operations may be allowed if specific steps are taken to prevent damaging uncut oak during the high risk period. Those steps may include completing all road brushing before April 15th and clearing a tree-length buffer along uncut oak cover before April 15th. This is necessary to reduce the spread of oak wilt. For more information, contact the Unit Manager or his/her representative.

5.2.3.6 - Bark beetle restriction (12/08)

In the event drought creates a high risk of pine bark beetle infestation, pine is not to be cut during the period March 1 through July 1, unless all portions of trees greater than two inches in diameter are removed from the sale area, reduced to chips, or treated to the satisfaction of the Unit Manager or his/her representative, within fifteen days of being severed from the stump. Pine log decks, pulpwood piles and treetops that are piled for chipping in the fall or winter within a 1/4 mile of susceptible sites must be removed before March 15. Residual slash must not be placed in piles or rows and must be spread over the site for quick drying. The Department of Natural Resources will exercise this specification if the risk of damage warrants.

5.2.4 - Dead and Down Creation

5.2.4.4 - Dead and down creation, grouse (6/18)

To encourage grouse and other wildlife, in Payment Unit(s) 5, 6, 7, 8, 9 and 10 leave one 12" or larger diameter whole tree on the ground for every 3 acres. Trees should be scattered throughout the sale and at least two chains from any roads, two-tracks, or trails open to vehicles, or positioned per the sale administrators instructions. Stumps must be at least 3 feet tall.

5.2.22 - Operating Caution

5.2.22.1 - Operating caution (6/11)

It is recommended, but not required, that within Payment Unit(s) 2, 5, and 6, cutting, skidding, and hauling occur during dry summer or frozen winter conditions. The reason for the recommendation is because seasonally wet conditions.

5.4 - Soil Protection

5.4.1 - Rutting restriction, general (7/16)

Operations are to cease immediately if equipment and weather conditions result in rutting of roads and/or skid trails which is 12 inches or greater in depth and 50 feet in length. The Unit Manager or his/her representative may restrict hauling and/or skidding if ruts exceed the specified depth. With the Unit Manager or his/her representative's approval, the Purchaser may return to the area when the risk of rutting has decreased.

6 - Safety and Fire Prevention

6.2 - Signing

6.2.1 - Road posting (10/20)

The Purchaser is responsible for posting and maintaining caution signs on Lake Shore Drive prior to beginning operations. The road must be posted at appropriate distances from the sale area to warn of logging activity and truck traffic. Signs must be removed when harvest operations are suspended or completed. The Purchaser will provide these signs.



TIMBER SALE MAP

This information provided by authority of Part 525, 1994 PA 451, as amended.

Forest Management Unit Gladwin Management Unit	County Gladwin	Mapped By Steven Nyhoff	Date 09/12/2022	Page 1	of 2
Township 18 & 19N	Range 1E	Section(s) and Subdivision(s) Various	Scale 1:15,840		
Cruised By Steven Nyhoff					

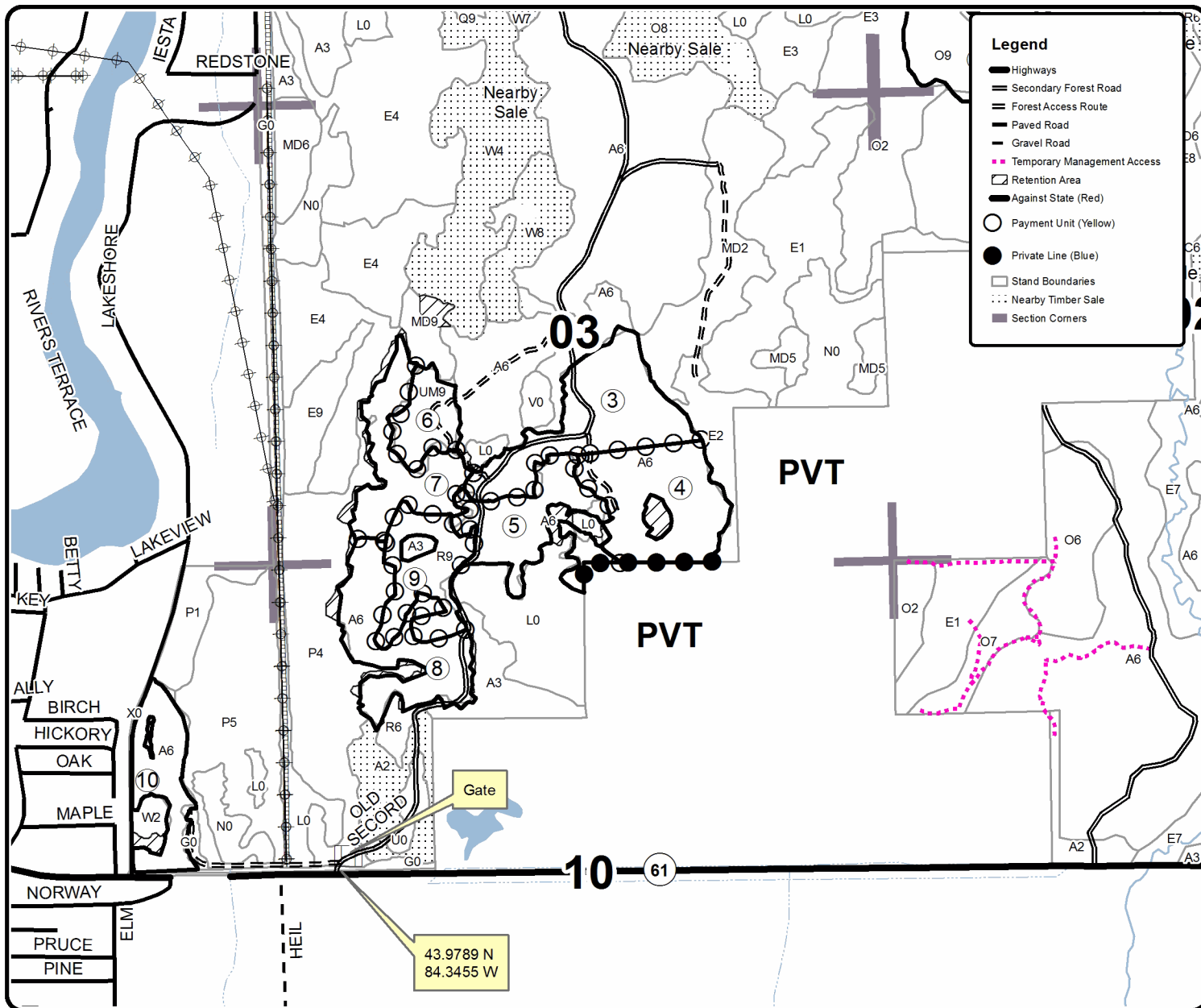
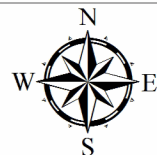
Cover Type				Density	
A = Aspen	H = Hemlock	N = Marsh	U = Upland Brush	0 = Non Stocked	5 = Pole Timber Medium
B = Paper Birch	J = Jack Pine	O = Oak	UM = Upland Mixed	1 = Seedling Sapling Poor	6 = Pole Timber Well
C = Cedar	L = Lowland Brush	P = Lowland Poplar	V = Bog or Marsh	2 = Seedling Sapling Medium	7 = Saw Timber Poor
D = Treed Bog	LM = Lowland Mixed	Q = Mixed Swamp Conifer	W = White Pine	3 = Seedling Sapling Well	8 = Saw Timber Medium
E = Swamp Hdwoods	M = Mpl, Bch, Brch	R = Red Pine	X = Non Stocked	4 = Pole Timber Poor	9 = Saw Timber Well
F = Spruce Fir	MC = Mixed Conifer	S = Black Spruce	Z = Water		
G = Grass	MD = Mixed Deciduous	T = Tamarack			

PU	Acres	PU	Acres	PU	Acres
1	8.5	5	17.3	9	13.2
2	20.4	6	8.1	10	12.6
3	24.3	7	15.8		
4	22.1	8	20.4		

Old Secord Shores

Compartment 36

162.6 Acres





TIMBER SALE MAP

This information provided by authority of Part 525, 1994 PA 451, as amended.

Sale Number	Year
73 - 004	22

Forest Management Unit	County	Mapped By	Date	Page	of
Gladwin Management Unit	Gladwin	Steven Nyhoff	09/12/2022	2	2
Township	Range	Section(s) and Subdivision(s)	Scale		
18 & 19N	1E	Various	1:15,840		

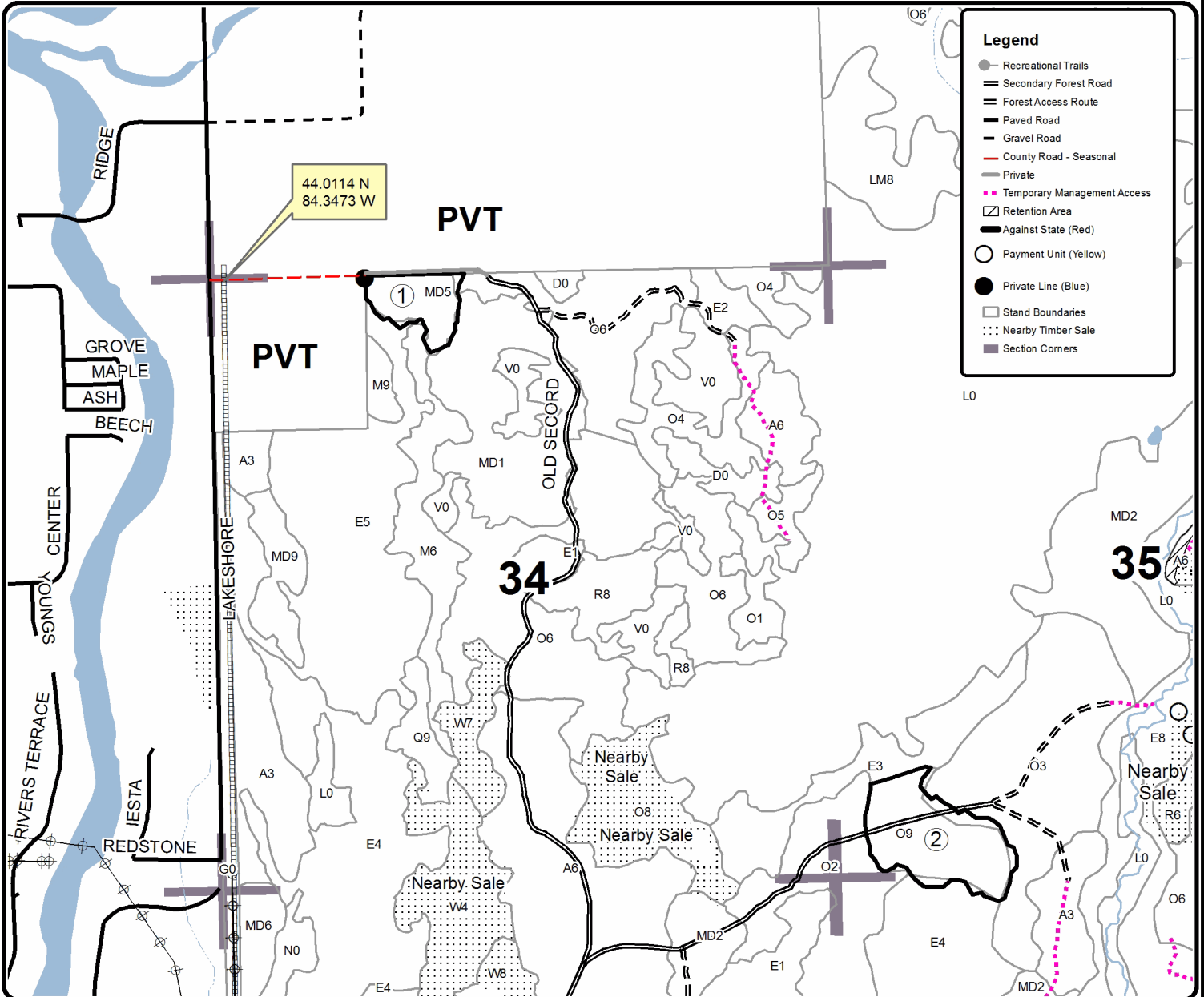
Cover Type				Density	
A = Aspen	H = Hemlock	N = Marsh	U = Upland Brush	0 = Non Stocked	5 = Pole Timber Medium
B = Paper Birch	J = Jack Pine	O = Oak	UM = Upland Mixed	1 = Seedling Sapling Poor	6 = Pole Timber Well
C = Cedar	L = Lowland Brush	P = Lowland Poplar	V = Bog or Marsh	2 = Seedling Sapling Medium	7 = Saw Timber Poor
D = Treed Bog	LM = Lowland Mixed	Q = Mixed Swamp Conifer	W = White Pine	3 = Seedling Sapling Well	8 = Saw Timber Medium
E = Swamp Hdwoods	M = Mpl, Bch, Brch	R = Red Pine	X = Non Stocked	4 = Pole Timber Poor	9 = Saw Timber Well
F = Spruce Fir	MC = Mixed Conifer	S = Black Spruce	Z = Water		
G = Grass	MD = Mixed Deciduous	T = Tamarack			

PU	Acres	PU	Acres	PU	Acres
1	8.5	5	17.3	9	13.2
2	20.4	6	8.1	10	12.6
3	24.3	7	15.8		
4	22.1	8	20.4		

Old Secord Shores

Compartment 36

162.6 Acres



TIMBER SALE INFORMATION

Black 3 Rivers (73-005-22)

T18N, R01E, SEC. 2; T19N, R01E, SEC. 35; T19N, R01E, SEC. 36.
Gladwin County (Advertised Price \$183,598.65)

SALE NOTE: Some units are seasonally wet and should only be harvested during dry or frozen conditions. Access to units 9, 10, and 11 will require a temporary culvert to cross a broad drainage. Access to the northeastern portion of unit 8 will require a culvert to cross a drainage ditch along Three Rivers Road and permission from road commission. Crossing from the western portion of unit 8 to the eastern portion of unit 8 is possible but would require a stream crossing permit. The creek is a man made drain that flows in the spring through early summer.

A recreation site such as a trail, pathway, or campground is within the sale area or the vicinity. Certain restrictions/specifications may be applicable including time restrictions.

A timber sale contract for this lump sum, sealed bid timber sale will be awarded to the responsible bidder offering the highest sealed bid price. All units of volume listed below were estimated using the Inventory Manager computer program and the new Michigan taper model. Bids must be at or above the following advertised price for each product and species:

<u>PRODUCTS & SPECIES</u>	<u>ESTIMATED UNITS*</u>		<u>ADVERTISED PRICE</u>
Sawtimber			
Black/Red (Hybrid) Oak	250.5	MBF	\$ 84.00 / MBF
Mixed Aspen	278.9	MBF	\$ 94.00 / MBF
Paper Birch	4.1	MBF	\$ 60.00 / MBF
Red Maple	78.7	MBF	\$ 63.00 / MBF
Red Pine	135.8	MBF	\$ 116.00 / MBF
White Pine	20.8	MBF	\$ 82.00 / MBF
Pulpwood			
Black Cherry	43	Cords	\$ 21.80 / Cord
Black/Red (Hybrid) Oak	506	Cords	\$ 17.35 / Cord
Mixed Aspen	1,378	Cords	\$ 34.55 / Cord
Paper Birch	25	Cords	\$ 27.05 / Cord
Red Maple	510	Cords	\$ 21.80 / Cord
Red Pine	834	Cords	\$ 51.25 / Cord
White Pine	56	Cords	\$ 32.40 / Cord

* The total volume is statistically estimated within plus (+) or minus (-) 12.27 percent. There are an estimated 5,037 cords on this timber sale, plus or minus 618 cords at the 95% confidence level. The estimated units are final and not subject to adjustment. Prospective bidders are urged to examine this timber and to make their own estimates of quantity and quality.

BOND AND PAYMENT SCHEDULE:

1. A bond in the amount of \$9,180.00 to insure faithful performance of the conditions of the contract will be deposited by the successful bidder within 21 days of the sale award.
2. Cutting in any sale or unit without the required advance payment would be considered a trespass.
3. Total payment must be paid in advance or according to the following schedule:
 - (a) Ten percent (10%) of the sale value must be paid within 21 days of the sale award.
 - (b) The 10% down payment will be credited towards the first unit cut.
 - (c) Payment for each of the following units must be made before cutting begins in that unit:

PAYMENT UNIT NUMBER	PERCENT OF TOTAL SALE VALUE
01	4.4%
02	3.5%
03	3.2%
04	13.9%
05	17.7%
06	13.5%
07	12.7%
08	6.1%
09	3.4%
10	6.4%
11	15.2%

4. If no cutting takes place, the 10% down payment will not be refunded.
5. Operations on the contract issued will terminate on 06/30/2025.

SALE STATISTICS

Volumes were calculated in cubic feet using the Michigan taper model. Cubic foot volume includes all wood inside bark for the product indicated. For display purposes, cubic feet were converted to cords and MBF using a simple conversion factor, e.g. 79 cubic feet per cord and 185 cubic feet per MBF. The cubic foot volumes are precise; the cords and MBF volumes are not. Cubic foot volume cannot be directly converted to cords or boards with precision.

SALE VOLUMES

The total estimated sale volume may not equal the sum of the species/products due to the nature of statistical calculations associated with double sampling methodology.

VOLUME			STATISTICAL RANGE IN CORDS	
TOTAL CUBIC FEET	TOTAL CORDS	PERCENT ERROR	MINIMUM	MAXIMUM
397,907	5,037	12.27%	4,418	5,655

VDU VOLUMES

A VDU is a Volume Determination Unit. Volumes and their associated statistics are calculated at the VDU level and summarized to the sale level. There is often a one to one relationship between a VDU and a Payment Unit, but not always, depending on the cruise design. Refer to the VDU TO PAYMENT UNIT table.

VDU	VOLUME		PERCENT ERROR	RANGE IN CORDS	
	TOTAL CUBIC FEET	TOTAL CORDS		MINIMUM	MAXIMUM
314	23,331	295	22.70%	228	362
316	35,499	449	20.32%	358	541
319	78,512	994	20.38%	791	1,196
320	32,143	407	36.35%	259	555
321	123,383	1,562	18.72%	1,270	1,854
340	18,015	228	46.22%	123	333
342	54,919	695	26.04%	514	876
358	32,104	406	20.65%	322	490
TOTAL:	397,907	5,037		3,865	6,208

VDU TO PAYMENT UNIT

When a VDU is associated with more than one Payment Unit (PU), the VDU volumes are assigned to the PU based on acres of the VDU within the PU.

VDU	VDU ACRES	PU	PU ACRES
314	8.5	1	8.5
316	24.1	2	12.6
		3	11.5
319	20.9	6	10.8
		7	10.1
320	36.3	8	36.3
321	33.0	4	14.6
		5	18.4
340	10.2	9	10.2
342	14.0	11	14.0
358	30.7	10	30.7
TOTAL:	177.7		177.7

DESCRIPTION OF TIMBER BY PAYMENT UNIT (PU)

PU	MARKET GROUP	PRODUCT	QUANTITY	UNIT	ACRES	ADVERTISE PRICE
1	Black/Red (Hybrid	Sawtimber	3.3	MBF	8.5	\$8,096.55
	Mixed Aspen		22.3	MBF		
	<i>B. T. Aspen</i>		22.3	<i>MBF</i>		
	Red Maple		29.0	MBF		
	Black/Red (Hybrid	Pulpwood	2	Cords		
	Mixed Aspen		31	Cords		
	<i>B. T. Aspen</i>		31	<i>Cords</i>		
	Red Maple		128	Cords		
2	Black/Red (Hybrid	Sawtimber	15.7	MBF	12.6	\$6,428.80
	Mixed Aspen		7.5	MBF		
	<i>B. T. Aspen</i>		7.5	<i>MBF</i>		
	Paper Birch		1.8	MBF		
	Red Maple		3.2	MBF		
	White Pine		0.4	MBF		
	Black Cherry	Pulpwood	13	Cords		
	<i>Black Cherry</i>	<i>Sawtimber</i>	0.4	<i>MBF</i>		
	<i>Black Cherry</i>	<i>Pulpwood</i>	12	<i>Cords</i>		
	Black/Red (Hybrid		38	Cords		
	Mixed Aspen		44	Cords		
	<i>B. T. Aspen</i>		6	<i>Cords</i>		
	<i>Quaking Aspen</i>		38	<i>Cords</i>		
	Paper Birch		10	Cords		
	Red Maple		58	Cords		
White Pine		2	Cords			
3	Black/Red (Hybrid	Sawtimber	14.4	MBF	11.5	\$5,843.15
	Mixed Aspen		6.9	MBF		
	<i>B. T. Aspen</i>		6.9	<i>MBF</i>		
	Paper Birch		1.6	MBF		
	Red Maple		3.0	MBF		
	White Pine		0.3	MBF		
	Black Cherry	Pulpwood	12	Cords		
	<i>Black Cherry</i>	<i>Sawtimber</i>	0.4	<i>MBF</i>		
	<i>Black Cherry</i>	<i>Pulpwood</i>	11	<i>Cords</i>		
	Black/Red (Hybrid		34	Cords		
	Mixed Aspen		40	Cords		
	<i>B. T. Aspen</i>		5	<i>Cords</i>		
	<i>Quaking Aspen</i>		35	<i>Cords</i>		
	Paper Birch		9	Cords		
Red Maple		52	Cords			
White Pine		2	Cords			
4	Black/Red (Hybrid	Sawtimber	4.9	MBF	14.6	\$25,591.25
	Mixed Aspen		80.6	MBF		
	<i>B. T. Aspen</i>		80.6	<i>MBF</i>		
	Red Maple		2.9	MBF		
	White Pine		3.8	MBF		
	Black Cherry	Pulpwood	6	Cords		
	<i>Black Cherry</i>		6	<i>Cords</i>		
	Black/Red (Hybrid		31	Cords		
	Mixed Aspen		446	Cords		
	<i>B. T. Aspen</i>		293	<i>Cords</i>		
	<i>Quaking Aspen</i>		153	<i>Cords</i>		
Red Maple		25	Cords			
White Pine		15	Cords			
5	Black/Red (Hybrid	Sawtimber	6.2	MBF	18.4	\$32,246.45
	Mixed Aspen		101.5	MBF		
	<i>B. T. Aspen</i>		101.5	<i>MBF</i>		

DESCRIPTION OF TIMBER BY PAYMENT UNIT (PU), CON'T

PU	MARKET GROUP	PRODUCT	QUANTITY	UNIT	ACRES	ADVERTISE PRICE
5 con't	Red Maple	Sawtimber	3.7	MBF		
	White Pine		4.7	MBF		
	Black Cherry	Pulpwood	8	Cords		
	<i>Black Cherry</i>		8	<i>Cords</i>		
	Black/Red (Hybrid		38	Cords		
	Mixed Aspen		563	Cords		
	<i>B. T. Aspen</i>		370	<i>Cords</i>		
	<i>Quaking Aspen</i>		193	<i>Cords</i>		
	Red Maple		32	Cords		
	White Pine		18	Cords		
6	Black/Red (Hybrid	Sawtimber	8.7	MBF	10.8	\$24,867.50
	Red Maple		2.8	MBF		
	Red Pine		51.2	MBF		
	White Pine		4.1	MBF		
	Black/Red (Hybrid	Pulpwood	27	Cords		
	Mixed Aspen		35	Cords		
	<i>B. T. Aspen</i>		35	<i>Cords</i>		
	Red Maple		28	Cords		
	Red Pine		296	Cords		
	White Pine		7	Cords		
7	Black/Red (Hybrid	Sawtimber	8.1	MBF	10.1	\$23,261.95
	Red Maple		2.6	MBF		
	Red Pine		47.8	MBF		
	White Pine		3.9	MBF		
	Black/Red (Hybrid	Pulpwood	25	Cords		
	Mixed Aspen		33	Cords		
	<i>B. T. Aspen</i>		33	<i>Cords</i>		
	Red Maple		27	Cords		
	Red Pine		277	Cords		
	White Pine		6	Cords		
8	Black/Red (Hybrid	Sawtimber	13.2	MBF	36.3	\$11,291.00
	Mixed Aspen		32.1	MBF		
	<i>B. T. Aspen</i>		32.1	<i>MBF</i>		
	Paper Birch		0.7	MBF		
	Red Maple		31.5	MBF		
	White Pine		3.6	MBF		
	Black Cherry	Pulpwood	4	Cords		
	<i>Black Cherry</i>		4	<i>Cords</i>		
	Black/Red (Hybrid		19	Cords		
	Mixed Aspen		25	Cords		
	<i>B. T. Aspen</i>		25	<i>Cords</i>		
	Paper Birch		6	Cords		
	Red Maple		153	Cords		
	White Pine		2	Cords		
9	Black/Red (Hybrid	Sawtimber	28.7	MBF	10.2	\$6,329.65
	Mixed Aspen		4.5	MBF		
	<i>B. T. Aspen</i>		4.5	<i>MBF</i>		
	Black/Red (Hybrid	Pulpwood	73	Cords		
	Mixed Aspen		62	Cords		
	<i>B. T. Aspen</i>		21	<i>Cords</i>		
	<i>Quaking Aspen</i>		41	<i>Cords</i>		
	Red Maple		4	Cords		
10	Black/Red (Hybrid	Sawtimber	107.1	MBF	30.7	\$11,729.10
	Black/Red (Hybrid	Pulpwood	150	Cords		
	Red Maple		3	Cords		
	White Pine		2	Cords		

DESCRIPTION OF TIMBER BY PAYMENT UNIT (PU), CON'T

PU	MARKET GROUP	PRODUCT	QUANTITY	UNIT	ACRES	ADVERTISE PRICE
11	Black/Red (Hybrid Mixed Aspen <i>B. T. Aspen</i> Red Pine	Sawtimber	40.2 23.5 23.5 36.8	MBF MBF <i>MBF</i> MBF	14.0	\$27,913.25
	Black/Red (Hybrid Mixed Aspen <i>B. T. Aspen</i> Red Pine White Pine	Pulpwood	69 99 99 261 2	Cords Cords <i>Cords</i> Cords Cords		
TOTAL:			768.8	MBF		
TOTAL:			3,352	Cords		

Sale Specific Conditions & Requirements

Sale Name: Black 3 Rivers

Sale Number: 73-005-22 Seq#: 1

1 - Sale Area

1.2 - Boundaries

1.2.1 - Painted boundaries (9/19)

The sale boundary and Payment Unit boundaries are marked and identified by blue, red and yellow paint. Exterior sale boundary lines against private property are marked with blue paint. Exterior sale boundary lines against state are marked with red paint. Interior Payment Unit or cut boundaries are marked with yellow paint. Retention patches are marked with red paint; no harvesting activities may occur within these areas. Yellow painted trees designating an interior Payment Unit boundary are only to be cut when all surrounding Payment Units have been paid.

2 - Timber Specifications

2.1 - Included Timber

2.1.1 - Clearcut unit(s) with unmerchantable trees (6/14)

Within Payment Unit(s) 1, 2, 3, 4, 5, 6, 7, 9, 10, and 11, cut all trees that are two (2) inches or more at DBH except do not cut any trees marked with green paint above and below stump height.

2.1.3 - Cut tree marked unit(s) (12/08)

Within Payment Unit(s) 8, all trees are designated for cutting when marked with orange paint above and below stump height, regardless of merchantability. In addition, all trees that are two (2) inches or more at DBH are designated to be harvested between the yellow line and Three Rivers Road regardless of merchantability.

3 - Payments

3.3 - Pre-measured Sales

3.3.4 - Dividing payment units (7/14)

Payment Unit(s) 4, 5, 6, 7, and 11 may be divided at the request of the Purchaser and upon approval of the Unit Manager. Dividing Payment Units is a contract modification which requires a Timber Sale Contract Amendment. There will be only one division per Payment Unit.

3.4 - Damaged Timber

3.4.1 - Damaged timber (7/16)

General Condition and Requirement 3.4 Damaged Timber, defines liquidated damages for undesignated live merchantable trees which are cut or injured. In addition, extreme care should be taken to avoid damage to tree seedlings and saplings.

Within unit 8, if more than 25% of the tree seedlings or saplings (1/4" to 4.5" DBH) within a specified portion of the sale area are damaged, liquidated damages will be assessed at \$300 per acre for all acreage within that specified portion of the sale area that was damaged.

No damage is acceptable to undesignated live merchantable trees. Within the sale area, if more than 5% of trees (> 4.5" DBH) within a specified area of the sale are damaged, liquidated damages will be assessed for all trees damaged. Rates will be in accordance with General Condition and Requirement 3.4 Damaged Timber.

4 - Transportation

4.1 - Construction

4.1.5 - Culverts (5/14)

Roads may require the installation of culverts for cross drainage or at natural drainage-ways. If culverts are needed in these locations, their placement will be specified by the sale administrator and they shall be installed prior to hauling. The culverts shall be new, corrugated metal or plastic gauge. Culverts will be a minimum of 12 inches in diameter and 24 feet in length. If culverts are removed, fill shall be removed from wetland soils as specified. Soils shall be maintained and left in a non-erodible condition, with water bars, seed, fertilizer, mulch, and slash installed as directed by the sale administrator and as specified in

the BMP manual.

4.1.7 - Road closure (10/11)

All new roads built into the sale must be blocked to vehicle traffic upon completion of the sale. Overgrown roads that are reopened shall be considered new roads. Stumps and brush must be placed along the remainder of the trail. These roads must be rendered impassable to cars and trucks. All stumps from road building and landing construction must be reserved to block any newly constructed roads upon completion of the sale. These stumps must be scattered along the road system to prohibit vehicular movement. Contact the sale administrator for specific details of design and placement.

4.2 - Maintenance

4.2.5 - Two wheel drive condition (2/04)

All existing trail roads on and adjacent to the sale area must be passable by two-wheel drive traffic for the duration of the sale.

5 - Operations

5.2 - Conduct of Operations

5.2.2 - Hazard Trees/Snags

5.2.2.1 - Den trees (10/16)

Obvious hollow and/or den trees shall be protected and left standing unless they are a safety hazard. Except in units 6, 7, and 11 which are to be replanted to red pine.

5.2.3 - Operating Restrictions

5.2.3.5 - Oak wilt restriction (1/18)

Within Payment Unit(s) 8 and 10 unless changed by written agreement, cutting, skidding, hauling within the sale and brushing of access roads to the sale are not permitted during the period of April 15 to July 15. Operations may be allowed if specific steps are taken to prevent damaging uncut oak during the high risk period. Those steps may include completing all road brushing before April 15th and clearing a tree-length buffer along uncut oak cover before April 15th. This is necessary to reduce the spread of oak wilt. For more information, contact the Unit Manager or his/her representative.

5.2.4 - Dead and Down Creation

5.2.4.4 - Dead and down creation, grouse (6/18)

To encourage grouse and other wildlife, in Payment Unit(s) 1, 2, 3, 4, 5, and 9 leave one 12" or larger diameter whole tree on the ground for every 3 acres. Trees should scattered throughout the sale and at least two chains from any roads, two-tracks, or trails open to vehicles, or positioned per the sale administrators instructions. Stumps must be at least 3 feet tall.

5.2.22 - Operating Caution

5.2.22.1 - Operating caution (6/11)

It is recommended, but not required, that within Payment Unit(s) 1, 2, 3, and 8, cutting, skidding, and hauling occur during dry summer or frozen winter conditions. The reason for the recommendation is because units are seasonally wet and prone to rutting.

5.2.40 - Pathway protection (10/10)

The Midland to Mackinac is a hiking trail goes through unit 1, 2, and 4 and is shown on the Timber Sale Map. Do not cut trees or damage posts with blue pathway markers. Maintain a 20-foot wide slash, debris, and rut free zone daily, using the pathway as the centerline.

5.4 - Soil Protection

5.4.1 - Rutting restriction, general (7/16)

Operations are to cease immediately if equipment and weather conditions result in rutting of roads and/or skid trails which is 12 inches or greater in depth and 50 feet in length. The Unit Manager or his/her representative may restrict hauling and/or skidding if ruts exceed the specified depth. With the Unit Manager or his/her representative's approval, the Purchaser may

return to the area when the risk of rutting has decreased.

6 - Safety and Fire Prevention

6.2 - Signing

6.2.1 - Road posting (10/20)

The Purchaser is responsible for posting and maintaining caution signs on Three Rivers Road prior to beginning operations. The road must be posted at locations designated on the map at appropriate distances from the sale area to warn of logging activity and truck traffic. Signs must be removed when harvest operations are suspended or completed. The Purchaser will provide these signs.



TIMBER SALE MAP

This information provided by authority of Part 525, 1994 PA 451, as amended.

Forest Management Unit	County	Mapped By	Steven Nyhoff	Date	Page	of
Gladwin Management Unit	Gladwin	Cruised By	Steven Nyhoff	09/21/2022	1	1
Township	Range	Section(s) and Subdivision(s)	Scale			
18 & 19N	1E	Various	1:15,840			

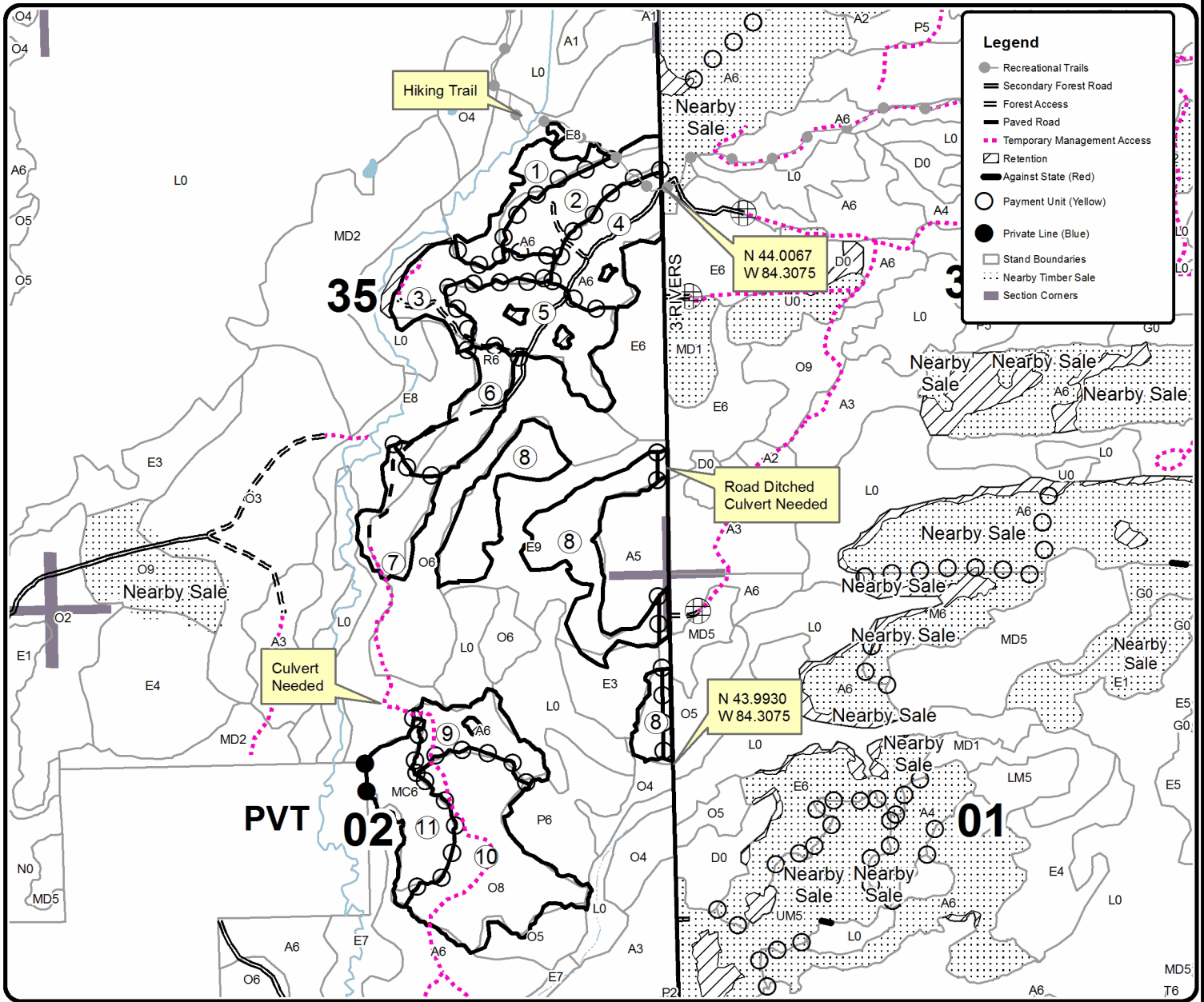
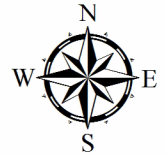
Cover Type				Density			
A = Aspen	H = Hemlock	N = Marsh	U = Upland Brush	0 = Non Stocked	5 = Pole Timber Medium		
B = Paper Birch	J = Jack Pine	O = Oak	UM = Upland Mixed	1 = Seedling Sapling Poor	6 = Pole Timber Well		
C = Cedar	L = Lowland Brush	P = Lowland Poplar	V = Bog or Marsh	2 = Seedling Sapling Medium	7 = Saw Timber Poor		
D = Treed Bog	LM = Lowland Mixed	Q = Mixed Swamp Conifer	W = White Pine	3 = Seedling Sapling Well	8 = Saw Timber Medium		
E = Swamp Hdwoods	M = Mpl, Bch, Brch	R = Red Pine	X = Non Stocked	4 = Pole Timber Poor	9 = Saw Timber Well		
F = Spruce Fir	MC = Mixed Conifer	S = Black Spruce	Z = Water				
G = Grass	MD = Mixed Deciduous	T = Tamarack					

PU	Acres	PU	Acres	PU	Acres
1	8.5	5	18.4	9	10.2
2	12.6	6	10.8	10	30.7
3	11.5	7	10.1	11	14.0
4	14.6	8	36.3		

Black 3 Rivers

Compartment 36

177.7 Acres



Old Second Shores (73-004-22)
T18N, R01E, SEC. 10; T18N, R01E, SEC. 2; T18N, R01E, SEC. 3; T18N, R01E,

In response to the notice of sale to be held 10:00 a.m. (local time) on May 18, 2023, I am hereby submitting my sealed bid (firm offer) for the following forest products to be cut. Bids for individual species must be at or above the advertised price. All non-responsive bid forms may be rejected.

<u>PRODUCTS & SPECIES</u>	<u>ESTIMATED VOLUME*</u>	<u>ADVERTISED PRICE</u>	<u>BID PRICE/UNIT</u>
Sawtimber			
Black/Red (Hybrid) Oak	72.0 MBF	\$ 84.00/MBF	\$ _____
Mixed Aspen	318.5 MBF	\$ 94.00/MBF	\$ _____
Red Maple	92.4 MBF	\$ 63.00/MBF	\$ _____
Red Pine	30.2 MBF	\$ 116.00/MBF	\$ _____
White Pine	128.2 MBF	\$ 82.00/MBF	\$ _____
Pulpwood			
Black/Red (Hybrid) Oak	280 Cords	\$ 17.35/Cord	\$ _____
Jack Pine	19 Cords	\$ 25.20/Cord	\$ _____
Mixed Aspen	2,830 Cords	\$ 34.55/Cord	\$ _____
Mixed Hardwood	106 Cords	\$ 21.80/Cord	\$ _____
Red Maple	622 Cords	\$ 21.80/Cord	\$ _____
Red Pine	169 Cords	\$ 51.25/Cord	\$ _____
White Pine	73 Cords	\$ 32.40/Cord	\$ _____

*The volumes are statistically estimated within plus (+) or minus (-) 12.16 percent at 95% confidence level. These estimated volumes are final and not subject to adjustment. Prospective bidders are urged to examine this timber and to make their own estimates of quantity and quality.

I understand that any or all bids may be rejected. All bids must be signed and all bid items must be bid or the bid form may be rejected. I also understand that consideration and awarding a contract will be based upon my past performance and ability to complete the contract based upon equipment and staffing subject to my control.

FEDERAL ID: ____ - ____ - ____ or SOCIAL SECURITY NUMBER: ____ - ____ - ____

Company or individual bidding: _____

Company representative's name: _____

Address: _____

City: _____ State: _____ Zip: _____

IF AVAILABLE, PLEASE PLACE THE PERSONALIZED LABEL FROM YOUR PROSPECTUS IN THE ABOVE BOX.

Individual or company representative's signature: _____ Date: _____

Phone number : _____ Email (optional): _____

THE WINNING BIDDER MUST COMPLETE THE VERIFICATION OF WORKER'S DISABILITY COMPENSATION ACT COMPLIANCE (ON REVERSE SIDE IF DOUBLE SIDED) WITHIN 21 DAYS OF SALE AWARD DATE



FOR DEPARTMENT USE ONLY	
Sale Number (XX - XXX - XX - XX)	
Forest Management Unit:	

TIMBER SALE VERIFICATION OF WORKER'S DISABILITY COMPENSATION ACT COMPLIANCE

As required by Act 317, P.A. 1969 (Worker's Compensation) and
Part 5 of Act 451 of 1994, as amended.

VERIFICATION OF WORKER'S DISABILITY COMPENSATION ACT COMPLIANCE

- This verification must be completed and submitted within 21 days of contract award and prior to the issuance of the timber sale contract.
- In addition, if boxes 2B or 2C are checked, then Notice of Exclusion or Certificate of Insurance must be submitted within twenty-one (21) days of the contract award and prior to the issuance of the timber sale contract.
- All information must be typed or printed except for written signatures.

Please Check Appropriate Categories:

1. My business is organized as (you **must** check one of the boxes below):
 - A. Sole Proprietorship (individual)
 - B. Partnership
 - C. Corporation
2. You **must** check one of the boxes below:
 - A. I certify my business is a sole proprietorship and it has no employees but the sole proprietor. I am not subject to the Worker's Compensation Laws.
 - B. I certify my business has satisfied its obligation to the Worker's Compensation Act through the use of an approved Notice of Exclusion (BWC-337, Rev. 5/96). I will provide a copy of the Notice of Exclusion within 21 days of the contract award. (For questions or a copy of the BWC-337, please call the Worker's Compensation Bureau at 517-322-1195).
 - C. I certify my business has a Worker's Compensation Policy. I will provide an original Certificate of Insurance within twenty-one (21) days of the contract award.
3. If you have checked item 2(A) or 2(B), you **must** indicate the number of **both** full-time and part-time employees, other than yourself, including family members and active partners (if none, you must enter "0").

_____ Full-time Employees

_____ Part-time Employees

Name of Business		Federal ID (or) Social Security No.	
Address		Telephone ()	
City	State	ZIP	

I hereby certify that the above information is true and correct. I agree to notify the Michigan DNR of any changes that occur in factors affecting my coverage during any of my present and future operations.

Signature of Owner or Authorized Representative

Title

Date

Please complete the "SEALED BID" information on the next page

Black 3 Rivers (73-005-22)

T18N, R01E, SEC. 2; T19N, R01E, SEC. 35; T19N, R01E, SEC. 36; Gladwin

In response to the notice of sale to be held 10:00 a.m. (local time) on May 18, 2023, I am hereby submitting my sealed bid (firm offer) for the following forest products to be cut. Bids for individual species must be at or above the advertised price. All non-responsive bid forms may be rejected.

<u>PRODUCTS & SPECIES</u>	<u>ESTIMATED VOLUME*</u>	<u>ADVERTISED PRICE</u>	<u>BID PRICE/UNIT</u>
Sawtimber			
Black/Red (Hybrid) Oak	250.5 MBF	\$ 84.00/MBF	\$ _____
Mixed Aspen	278.9 MBF	\$ 94.00/MBF	\$ _____
Paper Birch	4.1 MBF	\$ 60.00/MBF	\$ _____
Red Maple	78.7 MBF	\$ 63.00/MBF	\$ _____
Red Pine	135.8 MBF	\$ 116.00/MBF	\$ _____
White Pine	20.8 MBF	\$ 82.00/MBF	\$ _____
Pulpwood			
Black Cherry	43 Cords	\$ 21.80/Cord	\$ _____
Black/Red (Hybrid) Oak	506 Cords	\$ 17.35/Cord	\$ _____
Mixed Aspen	1,378 Cords	\$ 34.55/Cord	\$ _____
Paper Birch	25 Cords	\$ 27.05/Cord	\$ _____
Red Maple	510 Cords	\$ 21.80/Cord	\$ _____
Red Pine	834 Cords	\$ 51.25/Cord	\$ _____
White Pine	56 Cords	\$ 32.40/Cord	\$ _____

*The volumes are statistically estimated within plus (+) or minus (-) 12.27 percent at 95% confidence level. These estimated volumes are final and not subject to adjustment. Prospective bidders are urged to examine this timber and to make their own estimates of quantity and quality.

I understand that any or all bids may be rejected. All bids must be signed and all bid items must be bid or the bid form may be rejected. I also understand that consideration and awarding a contract will be based upon my past performance and ability to complete the contract based upon equipment and staffing subject to my control.

FEDERAL ID: _____ or SOCIAL SECURITY NUMBER: _____

Company or individual bidding: _____

Company representative's name: _____

Address: _____

City: _____ State: _____ Zip: _____

IF AVAILABLE, PLEASE PLACE THE PERSONALIZED LABEL FROM YOUR PROSPECTUS IN THE ABOVE BOX.

Individual or company representative's signature: _____ Date: _____

Phone number : _____ Email (optional): _____

THE WINNING BIDDER MUST COMPLETE THE VERIFICATION OF WORKER'S DISABILITY COMPENSATION ACT COMPLIANCE (ON REVERSE SIDE IF DOUBLE SIDED) WITHIN 21 DAYS OF SALE AWARD DATE



TIMBER SALE VERIFICATION OF WORKER'S DISABILITY COMPENSATION ACT COMPLIANCE

As required by Act 317, P.A. 1969 (Worker's Compensation) and
Part 5 of Act 451 of 1994, as amended.

FOR DEPARTMENT USE ONLY	
Sale Number (XX - XXX - XX - XX)	
Forest Management Unit:	

VERIFICATION OF WORKER'S DISABILITY COMPENSATION ACT COMPLIANCE

- This verification must be completed and submitted within 21 days of contract award and prior to the issuance of the timber sale contract.
- In addition, if boxes 2B or 2C are checked, then Notice of Exclusion or Certificate of Insurance must be submitted within twenty-one (21) days of the contract award and prior to the issuance of the timber sale contract.
- All information must be typed or printed except for written signatures.

Please Check Appropriate Categories:

1. My business is organized as (you **must** check one of the boxes below):
 - A. Sole Proprietorship (individual)
 - B. Partnership
 - C. Corporation
2. You **must** check one of the boxes below:
 - A. I certify my business is a sole proprietorship and it has no employees but the sole proprietor. I am not subject to the Worker's Compensation Laws.
 - B. I certify my business has satisfied its obligation to the Worker's Compensation Act through the use of an approved Notice of Exclusion (BWC-337, Rev. 5/96). I will provide a copy of the Notice of Exclusion within 21 days of the contract award. (For questions or a copy of the BWC-337, please call the Worker's Compensation Bureau at 517-322-1195).
 - C. I certify my business has a Worker's Compensation Policy. I will provide an original Certificate of Insurance within twenty-one (21) days of the contract award.
3. If you have checked item 2(A) or 2(B), you **must** indicate the number of **both** full-time and part-time employees, other than yourself, including family members and active partners (if none, you must enter "0").

_____ Full-time Employees

_____ Part-time Employees

Name of Business		Federal ID (or) Social Security No.	
Address		Telephone ()	
City	State	ZIP	

I hereby certify that the above information is true and correct. I agree to notify the Michigan DNR of any changes that occur in factors affecting my coverage during any of my present and future operations.

Signature of Owner or Authorized Representative

Title

Date

Please complete the "SEALED BID" information on the next page